

Historic, Archive Document

Do not assume content reflects current scientific knowledge, policies, or practices.

FALL PLANTING

EVERY DAY some one writes us to ask: "When is the better time to plant—the Fall or the Spring?" The answer depends on the sort of material to be planted, the climate in which it is to be planted, and the time when the question is asked.

The Fall is the better time to handle all planted material of unquestioned hardiness. It is a time of comparative leisure in gardening operations. Generally the weather is pleasant, whereas the Spring is usually cold and wet. In the Fall the soil is dry, in better condition for planting, and more pleasant to work with than in Spring. Excepting in the very cold states, one may plant practically all the shrubs, trees, and herbaceous plants in Fall.

The trees and shrubs should be planted between October 15 and November 15. The herbaceous plants should get into the ground between September 15 and October 15. Dutch bulbs and a few lilies must be planted in the Fall, and may be planted at no other time. Hardy Roses, Iris, and Peonies give best results when planted in the Fall. Except in the South, evergreens, and such material as Magnolias, Azaleas, and Altheas should be planted in the Spring.

It is our practice to ship nothing except at the season when it is likely to give best results. Every order is examined, and every condition likely to affect successful transplanting is considered. This work is not left to employees; it is done by a responsible official of the company. It is part of our service to our customers.

ELLIOTT NURSERY COMPANY

Nurseries, Springdale, Pa.

MAGEE BLDG.
336 FOURTH AVE.

PITTSBURGH, PA.



KEIZERSKROON TULIPS.

The Largest and Showiest of the Early Flowering Tulips. (See page 3.)



Darwin Tulips

Single Early Tulips

Those varieties marked T after the name are best for forcing in the house or greenhouse. The following are the very best varieties of Single Tulips in cultivation, and all will be found extremely effective for bedding.

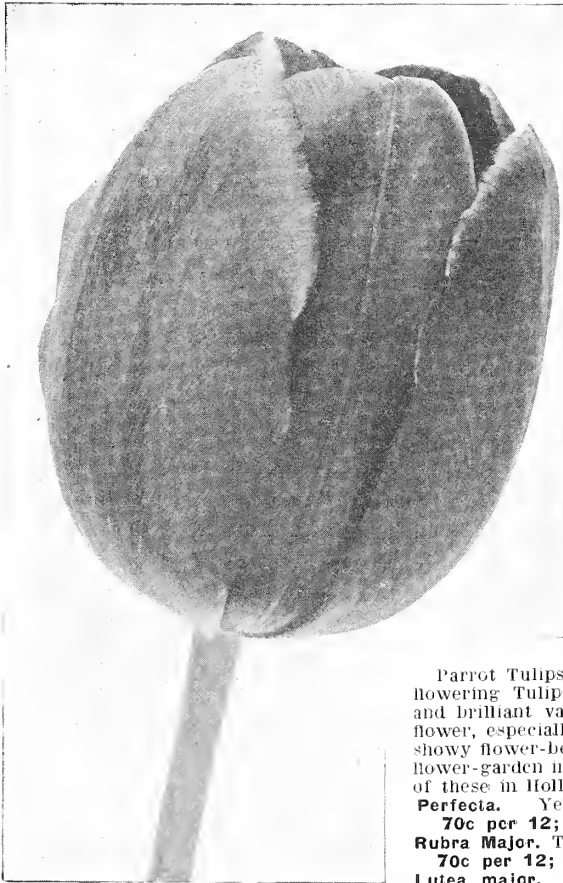
	Per 12	100	1000
Albion (White Hawk). The finest pure white Tulip in cultivation	\$1.00	\$7.00	
Chrysolora . E. Large; golden yellow; best yellow for outdoors	.90	6.50	55.00
Cottage Maid . White; edged with rose; extra fine; lovely; splendid for bedding	.90	6.50	55.00
Couleur Cardinal . E. Cardinal-red; one of the best	1.15	8.00	
Craonoi Brilliant . E. Bright vermilion; large flower; fine for forcing	.85	6.00	
Joot Van Vondel . Large; cherry-red and white; splendid	.90	6.50	55.00
Keizerskroon . E. Red and gold; large and fine. A grand Tulip	1.25	9.00	
La Reine Maxima (Queen Victoria). E. Rosy white; one of the best	.90	6.50	
Mica Tresor . Yellow; extra fine; best yellow for early forcing	1.20	8.50	
Queen of the Netherlands . E. Lovely delicate bluish-pink; large, globe-shaped flowers; extra fine	.90	6.50	55.00
Rose Gris-de-Lin . E. Beautiful pink; splendid sort	.85	6.00	54.00
Extra Fine Mixed Single . Extra selected	.65	4.50	40.00

Darwin, Prince of Tulips

A handsome May-flowering class, and quite distinct in style of growth from other late flowering sorts. Stately in appearance, attaining a height of 18 to 30 inches, and bearing on long stems beautiful, globular flowers of remarkably heavy texture, in a large range of colors, embracing almost every conceivable tint in rose, heliotrope, claret, crimson, maroon, and other rich and rare shades. In no class of Tulips has the improvement been so marked, and they are now of the most distinguished character and are unsurpassed, either in the garden or for cutting. **They are undoubtedly the most striking and beautiful of all Tulips.**

Darwin Tulips are most valuable for permanent planting. With deep planting, 4 to 5 inches in heavy soil and 6 inches in light soil, they will continue to bloom for years, and for this reason they are very valuable for planting in shrubberies and borders.

	Per 12	100	1000
Baronne de la Tonnaye . Vivid pink	\$0.70	\$5.00	\$45.00
Clare Butt . Delicate salmon pink; beautiful	.65	4.50	40.00
Dream . Beautiful, delicate blue	.75	5.50	48.00
Farncombe Sanders . Immense flower of the most brilliant scarlet; one of the best Darwins	.85	6.00	55.00
Gretchen . Delicate flesh color; very lovely	.65	4.50	40.00
Harry Veitch . Rich, brilliant red	.85	6.00	
La Tulipe Noire . Comes nearest of all to black; dark rich purple; splendid; flowers of enormous size	1.10	7.50	
Massachusetts . Light pink; large flower	.85	6.00	55.00
Mrs. Potter Palmer . Bright purplish violet; fine, large flower	.75	5.50	
Painted Lady . Milk white; on dark stem; an effective combination	.70	5.00	45.00
Pride of Haarlem . Carmine pink; large	.70	5.00	45.00
Fine Mixed	.60	4.25	38.00
Special Mixed	.70	5.00	45.00



Bronze Queen Tulip.

Breeder Tulips

Breeders, formerly listed among the Cottage Tulips, really form a distinct class by themselves, being unbroken forms of the old-time "Florists' Tulips." A long time we thought there would be no room for this class of Tulips next to the Darwins, the colors of which are so much brighter; but we have been greatly mistaken, for, more and more, the peculiar dull-toned bronze colors of the Breeders are becoming popular, and last year there was a big demand for them.

It is these odd colors which form one of the chief characteristics of the Breeders. Outside of that, most of them produce flowers with great lasting qualities and with a sweet, agreeable fragrance.

The kinds which we list, with a few exceptions, are large-flowering ones, surpassing in height and size even the largest Darwins.

	Per 12	100
Apricot. Dull, bronzy buff, shaded ruddy apricot above base	\$1.50	\$10.00
Attraction. Light bluish violet, inside glowing purple, white base	1.75	12.00
Bronze Queen. Soft buff, inside tinged golden bronze ..	1.10	7.50
Cardinal Manning. Dark rosy violet	1.10	7.50
Golden Bronze. Rich golden brown	1.20	8.50
Lucifer. Bright terra-cotta orange, enormous flowers. New	3.50	22.00
Panorama. Deep orange-red, shaded mahogany; immense flower	1.25	9.00
All Colors Mixed	\$54.00 per 1000..	.85 6.00

Parrot Tulips

Parrot Tulips sometimes do not bloom satisfactorily, owing to improper planting. They like a light, sandy soil, shallow planting and a sunny location.

Parrot Tulips do not receive the attention they deserve. They belong to the late- or May-flowering Tulips and have immense, attractive flowers of singular and picturesque form, and brilliant varied colors. The petals are curiously fringed or cut, and the form of the flower, especially before it opens, resembles the neck of a parrot. They form extravagantly showy flower-beds, are of endless variety of form and color, and should be grown in every flower-garden in quantities. The Parrot Tulips we import are from the most famous grower of these in Holland, and very superior to those usually sent out.

- Perfecta.** Yellow and scarlet.
70c per 12; \$5.00 per 100.
- Rubra Major.** The finest red of all.
70c per 12; \$5.00 per 100.
- Lutea major.** Yellow; very fine.
70c per 12; \$5.00 per 100.
- Fine Mixed.** 65c per 12; \$4.50 per 100; \$40.00 per 1000.

Named Double Early Tulips

The varieties of Double Tulips described below are the most showy bedding Tulips that can be planted, and continue for an unusually long time in perfection.

	Per 12	100	1000
Imperator Rubrorum. Brilliant scarlet; fine for forcing, and one of the grandest for bedding	\$1.15	\$8.00	
La Candeur. Pure white; a splendid bedding kind ..	.85	6.00	52.00
Murillo. Light pink; very early; splendid for forcing and bedding75	5.50	50.00
Rubra maxima. Early; bright red; splendid bedder, taking the place of Rex Rubrorum	1.00	7.00	
Crown of Gold. Splendid yellow; fine for forcing ...	1.00	7.00	60.00
Tournesol. Red and yellow; a most showy, striking flower	1.00	7.00	
Extra Fine Mixed Double. Extra selected75	5.50	49.00

Cottage or May-Flowering Tulips A Great Tulip, Gesneriana (Hortensis)

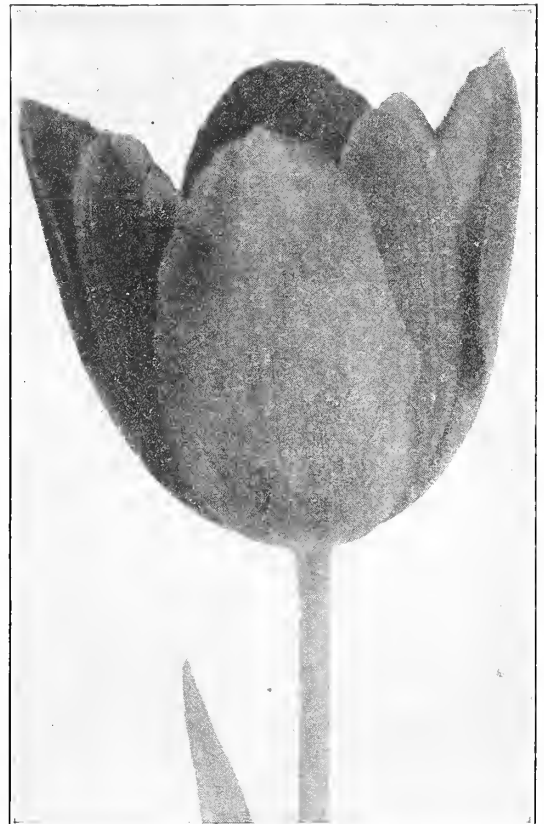
For bedding out in masses it deserves to be largely grown. Height 18 to 24 inches. Flowers of enormous size, on long, graceful stems. Color rich crimson-scarlet, with glittering blue-black center. The demand for this grand Tulip has been so great that it is very difficult to get flowering bulbs. To be sure of getting bulbs that will bloom, we pay a premium in Holland for guaranteed bulbs. This makes them higher priced, but insures that our bulbs will bloom satisfactorily. 70c per 12; \$5.00 per 100; \$45.00 per 1000.

Late Tulip, Blushing Bride

This is one of the largest, showiest and most beautiful Tulips in cultivation, blooming in May at the same time as Gesneriana. Beautiful rose-pink, slightly shaded white; fine form and extra large flower, held on stiff, strong stem, making it a feature in the garden. 65c per 12; \$4.50 per 100; \$40.00 per 1000.

Late Tulip, Bouton d'Or

Very bright, deep, rich yellow flowers, carried on tall stems. The best late yellow Tulip in cultivation, and fine for cutting. Good for planting in mass or in contrast with the darker varieties of Tulips. 65c per 12; \$4.50 per 100; \$40.00 per 1000.



Tulip, Gesneriana.

First Size Named Hyacinths

The following Hyacinths are a selection of the best varieties for house culture. Bulbs of the best quality and size.

	Each	Per 12	100
Baroness Van Thuyll. Early; pure white.....	\$.25	\$2.75	\$20.00
Cardinal Wiseman. Soft rose, carmine-striped; very large truss.....	.25	2.75	20.00
City of Haarlem. Pure yellow; grand spike.....	.25	2.75	20.00
General Vetter. Blush white.....	.25	2.75	20.00
General De Wet. (Pink sport of Grand Matron). Lovely soft pink; very large truss well filled with fine bells. A splendid variety for forcing and bedding.....	.30	3.00	23.00
Gigantea. Blush; splendid truss.....	.25	2.75	20.00
Grand Lilas. Azure-blue; perfect spike....	.25	2.75	20.00
Ida. Enron yellow; large spike; one of the finest yellows in cultivation.....	.25	2.75	20.00
King of the Blues. Finest very dark blue.....	.25	2.75	20.00
Lady Derby. Light pink, fine.....	.25	2.75	20.00
La Grandesse. Finest white, extra fine; best of all whites.....	.25	2.75	20.00
La Victoire. Brilliant red, one of the earliest and by far the best of its color. A grand novelty.....	.25	2.75	20.00
Lord Derby. One of the very finest blues....	.25	2.75	20.00
Paix de l'Europe. Very fine snow-white; very large truss.....	.25	2.75	20.00
Perle Brillante. Light blue, very large spike, fine.....	.25	2.75	20.00
Queen of the Blues. Light blue with silvery appearance, extra fine.....	.25	2.75	20.00
Rosea Maxima. Early; delicate rose; splendid.....	.25	2.75	20.00
Willette. Pearl-gray lilac—a new color in Hyacinths—distinct and lovely.....	.25	2.75	20.00

Single Small Hyacinths for Forcing

These single Hyacinths, planted on arrival from Holland, may be had in flower early in January. The bulbs and flowers of these small Hyacinths are about the same size as Roman Hyacinths, but much stronger, and the bells are larger, while they do not cost half the price of the Romans. Only those varieties which produce the fine flowers and force easily are selected for this purpose. They may be planted like Tulips in pots or boxes close together. Last season we sold large quantities, and our customers inform us that they are a great acquisition to succeed the Roman Hyacinths, blooming from January to April.

	Per 12	100
Dark Red	\$1.50	\$10.00
Pink	1.50	10.00
Pure White	1.50	10.00
Cream-White	1.50	10.00
Dark Blue	1.50	10.00
Light Blue	1.50	10.00
All Colors Mixed	1.50	10.00

Single Mixed Hyacinths

	Per 12	100
Red and Dark Red	\$2.00	\$14.00
Pink	2.00	14.00
Blush White	2.00	14.00
Pure White	2.00	14.00
Dark Blue and Purple	2.00	14.00
Light Blue	2.00	14.00
Yellow	2.00	14.00
All Colors Mixed	\$65.00 per 500	2.00 14.00

Potting Materials

POTTING FIBER

Very light and clean. A satisfactory soil substitute for forcing bulbs. **Pk., 75c; 1/2 bu., \$1.25; bu., \$2.25.**

SPHAGNUM MOSS

For transferring bulbs grown in soil to ornamental receptacles. **Pk., 25c; 1/2 bu., 40c; bu., 75c.**



Hyacinths and Lilies in Border.

Select Named Crocuses

The Crocus is one of the first flowers to bloom in the spring, and it is no unusual sight to see the ground covered with snow and the Crocuses in bloom at the same time. They are entirely hardy, do not deteriorate, and may be left undisturbed for years. It is a good plan to plant tulip and hyacinth beds full of them, as they bloom and are out of the way before the other bulbs flower. They are also fine for naturalizing in the grass, but the tops of the Crocus must have time to ripen before the grass is cut.

Except Where Noted All Crocuses, 40c per 12.

	Per 12	100
Baron von Brunow. Dark blue.....	2.00	14.00
Grand Lilas. Lilac; very early and fine.....	2.00	14.00
Large Yellow. Mammoth bulb; one per dozen.....	3.00	20.00
Madame Mina. Light blue, striped; very early; extra fine.....	2.00	14.00
Mont Blanc. White, best.....	2.00	14.00
Sir John Franklin. Large, dark purple.....	2.00	14.00
Sir Walter Scott. Fine striped.....	2.00	14.00
All Colors Mixed	1.50	10.00

Lilium Candidum

Many people think that it is necessary to plant this lovely Easter or Annunciation Lily early in September. This is not true. We have repeatedly planted them in November, and with complete success. In the Fall of 1918 we planted over 10,000 bulbs late in November. These bloomed splendidly the following June, and we sold flowers in the wholesale cut-flower market for more than double the price of the bulbs. Owing to the demoralization of the transportation systems of the world, it is no longer possible to deliver Candidum Lilies by September 1st, and people who insist on such early delivery are only depriving themselves of one of the loveliest of all garden Lilies. We have made arrangements for the earliest possible delivery, and, if these Lilies come in late, will not ship them to Northern points where it is actually too late to plant them.

Selected bulbs 35c each.. \$3.50 \$25.00
 Per 12 100

Extra selected 45c each.. 4.50 32.00

Our bulbs of this splendid white Lily are the finest that come to America and are much larger than those usually sent out. We can supply bulbs from both southern and northern France.

Special Offer of Superbum Lilies

We make an annual contract to have 25,000 bulbs of this grand Lily grown for us. This enables us to offer it at low prices, which makes it available for naturalizing in quantity. It is unquestionably one of the most satisfactory Lilies that can be planted either in the garden or in meadows, on the edge of woods or in any rough or wild parts of the grounds, where it will take care of itself without any attention whatever after planting. It will also thrive in wet or swampy places. It is a grand Lily often growing over 8 feet high, and produces twenty to thirty beautiful orange-red flowers in July, when flowers are apt to be rather scarce.

Prices of extra selected bulbs, \$2.50 per 12; \$4.50 for 25; \$15.00 per 100; \$35.00 per 250.



Lilium Superbum.

Japanese Lilies

Transportation between Japan and United States is not yet back to its pre-war schedule and consequently, Japanese Lilies may not arrive in time for Fall planting. In this event the bulbs will be carefully packed in sand and placed in safe storage until the proper planting time in the Spring, when they will be distributed.

	Each	Per 12	100
Auratum (Gold-banded Lily of Japan).			
8 to 9 inches	\$0.35	\$3.50	\$25.00
9 to 11 inches45	4.50	35.00
11 to 13 inches60	6.00	

Auratum Platyphyllum. Undoubtedly the choicest of all Auratum varieties. Enormous white flowers richly spotted yellow. Extra selected bulbs

.75 7.50

Longiflorum. Ready in November. Has large, pure white, trumpet-shaped flowers like the Bermuda Easter Lily, but is perfectly hardy.

6 to 8 inches25	2.75	20.00
7 to 9 inches40	4.00	28.00

Speciosum Melpomene. Similar to Roseum or Rubrum; more brilliant.

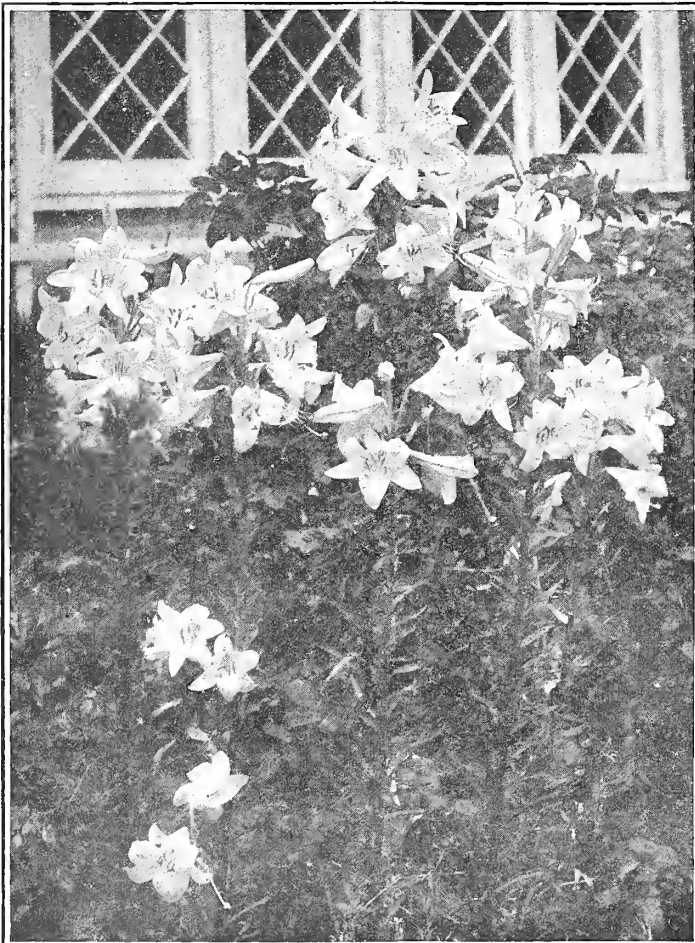
7 to 9 inches30	3.00	22.00
9 to 11 inches40	4.00	30.00

Speciosum album. White, 7 to 9 in .50 5.50

Speciosum rubrum or roseum.

7 to 9 inches30	3.00	22.00
9 to 11 inches40	4.00	
Monsters, 11 to 13 inches55	5.50	

The Speciosum varieties are exceedingly beautiful and desirable and perfectly hardy and reliable.



Lilium Candidum.

Native and American-Grown Lilies

October and November Delivery

	Per 12	100
Batemaniae. A vigorous, sturdy Lily growing from 3 to 4 feet, bearing from 5 to 10 splendid reddish-orange flowers in July and August	\$3.00	\$22.00
Canadense flavum. Our dainty, beautiful native Lily. Graceful and charming yellow flowers...	2.25	14.00
Canadense rubrum. Red flowers	2.50	15.00
Canadense, mixed	2.00	12.00
Elegans, Fine Mixed. The Elegans Lilies bloom in June, are of easy culture, and very desirable.	2.75	20.00
Elegans, Leonard Joerg. Rich apricot, spotted...	3.00	22.00
Hansoni. A handsome variety, flowering in June. Has bright rich yellow flowers. One of the best Lilies in cultivation. Bulbs sometimes remain dormant after planting, but will come up vigorously the next season	75c each..	7.50
Henryi. A new Japanese Lily that has made a sensation in Europe. It has the same form and appearance as the Speciosum varieties, but the flowers are bright orange-yellow...	75c each..	7.50
Philadelphicum. Native Lily. Orange-red, black spots	2.00	12.00
Tigrinum splendoris (The well-known Single Tiger Lily). Of easiest culture and worthy of general planting on account of stately habit and fine effect in the landscape	2.75	20.00
Tigrinum splendens fl. pl. Double Tiger Lily. Orange-red blooms spotted with black. Extra large Bulbs	2.75	20.00

Lilium Harrisii

(True Bermuda Easter Lily)

These Lilies are suitable for growing in greenhouse only.

	Each	Per 12	100
Bulbs 6 to 7 inches in circumference.....	\$0.35	\$3.75	\$30.00
Bulbs 7 to 9 inches in circumference.....	.50	5.00	38.00

Lilium Formosum

(Japanese Easter Lily)

An early-flowering variety of Longiflorum Lily, fine for forcing or planting outdoors. Large bulbs.

	Each	Per 12
7 to 9 inches	\$0.35	\$3.75
9 to 10 inches50	5.00



Lilium Auratum.

Lilium Regale

	Each	Per 12
A new hardy Lily with remarkably beautiful blooms. Color white, shaded pink; canary-yellow center. May be used for forcing	\$0.75	\$7.50

Calla Lilies

White Calla (Richardia athiopica). The White Calla, or Lily-of-the-Nile, is a well-known plant of easy culture, and in Winter is one of our best window plants. To aid profuse blooming keep them dormant from the middle of June until the last of August; repot in good, rich soil, using 6- to 8-inch pot; give water, light and heat in abundance.

	Each	Per 12	100
Good flowering bulbs	\$0.25	\$2.50	\$17.00
Extra-large bulbs35	3.75	27.00

Lily-of-the-Valley

	Per 25	100	1000
American Pips. Ready in October. For outdoor planting only. 2-year-old pips ...	\$1.00	\$3.50	\$32.00
Extra selected Berlin Pips. Ready in December. For forcing (American pips will not force)	1.60	6.00	55.00
Large clumps. American grown. Ready in December. ...	50c each;	\$5.00 per doz.	

Freesia, Purity

This charming flower is one of the most satisfactory bulbs that can be forced. It is certain to flower either in the conservatory or the house.

	Per 25	100	1000
Selected bulbs	\$0.30	\$2.25	\$20.00
Mammoth bulbs. Extra50	3.50	32.00

Rainbow, Fardel's Strain. A wonderful improved stock of colored Freesia, comprising a large number of beautiful shades of yellow, blue, mauve, pink, lavender, etc. The flowers are as large as the best white type, and equally as fragrant. We offer them in mixed colors only. **12, 70c; 100, \$5.00; 1000, \$45.00.**

Scilla

	Per 12	100	1000
Sibirica. Finest sky-blue. One of the loveliest Spring flowers; it has a color almost as deep as the sky itself. It is quite hardy and flowers outdoors at the same time as Snowdrops, in front of which it has a charming effect. It is fine for planting in the grass	\$0.75	\$5.50	\$50.00



Lilium Regale.



Euonymus Radicans Vegetus—Evergreen Bittersweet.

EVERGREEN BITTERSWEET

*Euonymus radicans
vegetus*

We have known for several years of the great merit of the vine, *Euonymus radicans vegetus*, so enthusiastically described by Professor Miller, and have been steadily getting up a large stock of it, and now have several thousand plants. It is a sport from *Euonymus radicans*, but absolutely distinct from that vine.

Planted in rows and kept sheared, this vine makes a splendid evergreen hedge. It is also a splendid ground-cover plant for either sun or shade.

Perfectly hardy, but when planted in the Fall should be protected with a mulching or 3 inches of stable manure, being careful not to cover the evergreen foliage. Very slow-growing at first, but when well established grows with great vigor.

Strong pot plants, 50c each;
\$5.00 per 12; \$35.00 per 100.

The Best Evergreen Vine For America

"Is the Ivy the best vine in the world? Doubtless every Englishman will cry 'Yes!' because the European or English Ivy (*Hedera Helix*) is the oldest evergreen vine in cultivation and has made the deepest impression in literature, art and history. But if your standard is merit, not association, there is another vine which seems to me inherently better, viz., the Climbing *Euonymus*, or as I now propose to call it, the 'Evergreen Bittersweet.' True, the form of its leaf is not unique like that of Ivy, but it has one overwhelming advantage in its gorgeous red berries, which are resplendent all Winter against a noble background of evergreen foliage. And in many other ways it has greater value than Ivy, even in regions where the Ivy is hardy.

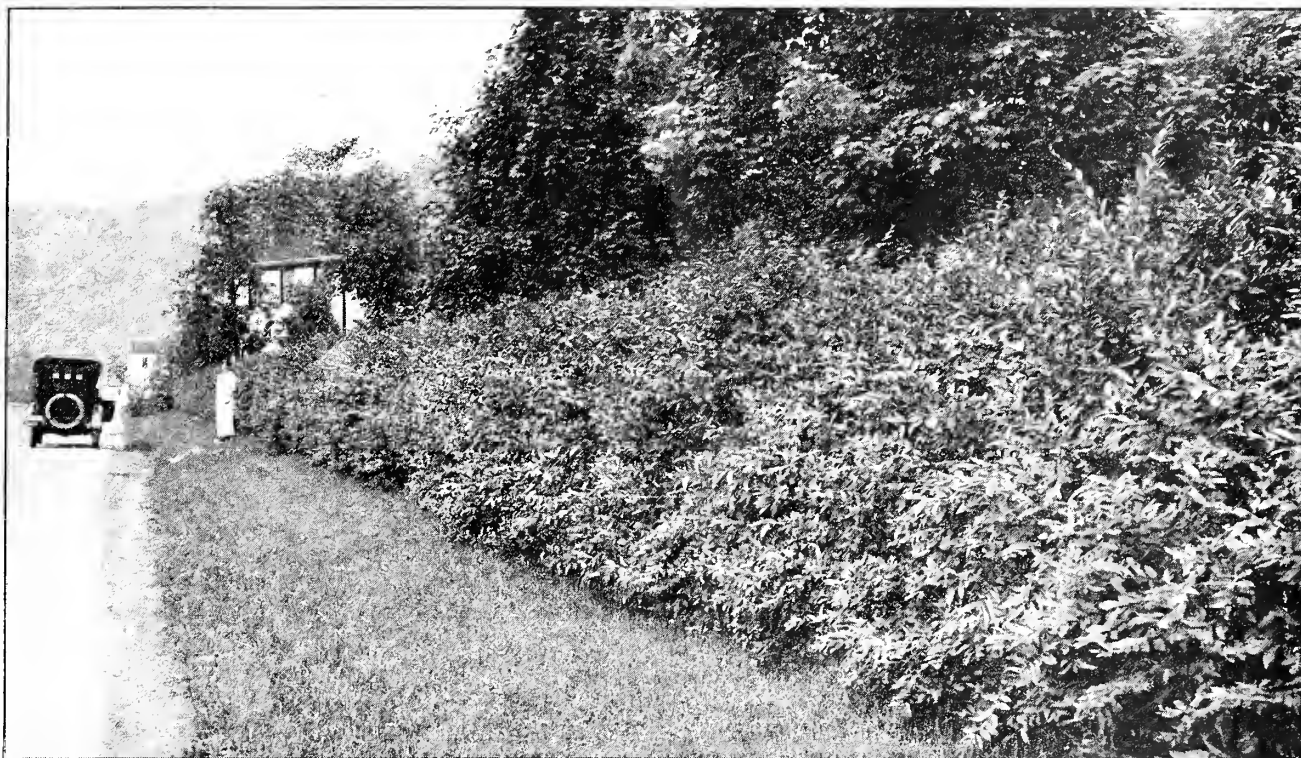
"The accompanying picture gives but a faint hint of the fivefold glories of the Evergreen Bittersweet. In the first place, it is evergreen, and therefore has an obvious advantage over deciduous vines in being beautiful 365 days of the year, instead of two weeks or seven months.

"Secondly, it is very accommodating as to soils, climate, exposures; is easy to grow; and will trail over the ground or climb to the noble height of 30 feet.

"Thirdly, it has an immense advantage over ivy, in being much hardier, growing 20 feet high in New England where ivy can only be grown as a ground-cover.

"Fourthly, its superb red fruits, which closely resemble those of our common wild bittersweet, seem divinely appointed to redeem our American Winters from their bleak, ugly and cheerless moods.

"And, fifthly, it promises to develop a strong American character, becoming universal and dear to the American heart. If I had a million dollars to spare I should like to plant an Evergreen Bittersweet against every stone, brick and concrete wall in America. The effect would be electrical, for it would add 100 per cent to the beauty of America and it would only be anticipating by a hundred years what will surely happen, for it is hardly possible that the world holds any plant with a greater power to transform a house into a home. As in England every home and every church is enriched, dignified and ennobled by ivy, so every American home will come to be connected so closely with the Evergreen Bittersweet that it will be impossible to think of one without the other,"—WILHELM MILLER, in the Garden Magazine.



Regel's Privet Hedge, Slightly Trimmed

The Best Hedges

Amoor River Privet

A more slender grower than the common Privet. Hardier than the California while the foliage is finer and of a lighter green, and retains better color during the Winter. It makes a more satisfactory hedge than the California, and should be more extensively planted. We offer the true variety. The Privet generally sold in the South for Amoor River is *Ligustrum chinense*, and is not hardy in the North. **2-3 feet, \$3.00 per 12; \$20.00 per 100.**

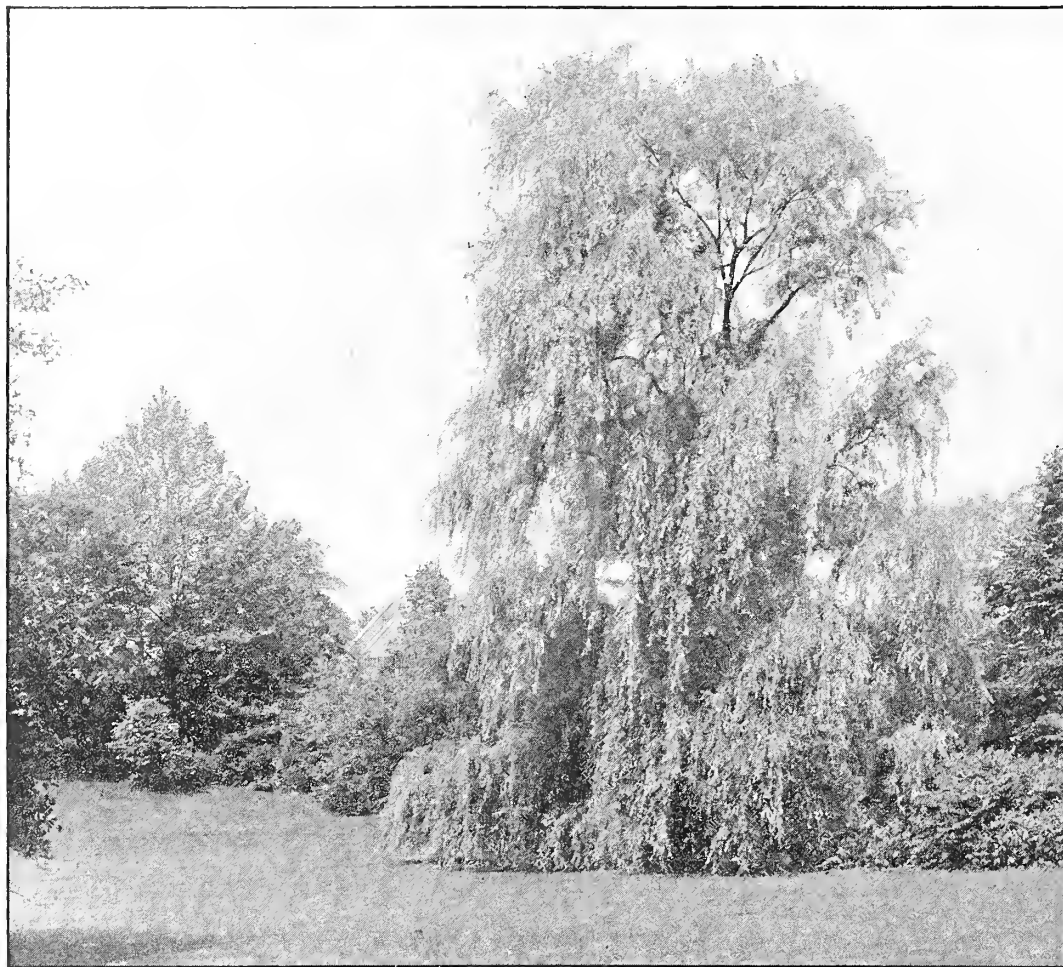
Regel's Privet

Regel's Privet, *Ligustrum Regelianum*, is not only the best Privet, but it is also one of the very best shrubs for many purposes that we know of. It is perfectly hardy, of most beautiful, pendulous habit and splendid foliage. It is of vigorous growth and will thrive in either sun or shade. In good soil it will attain a height of 8 to 10 feet, and spread almost as great. It is fine as a specimen or for planting in masses in shrubbery, but its greatest value is for hedging. As a hedge plant it is unsurpassed. It can be kept closely trimmed or trimmed but little, when it will preserve its natural drooping character which is most graceful and beautiful. A partially trimmed hedge of this Privet on the grounds of Mr. Clarence Byrnes, Sewickley, Pa., we think one of the most handsome hedges we have ever seen. On account of its spreading habit this Privet makes a hedge solid to the ground whether it is sheared hard or not. We can not understand why people continue to plant California Privet, which is inferior in every respect and not reliably hardy. Regel's Privet is somewhat higher priced, but on

account of its spreading habit it requires only half the quantity that it does of the California Privet to plant a hedge. For a hedge, plant Regel's Privet 18 inches apart in a single row. **Strong plants, \$4.50 per 12; \$35.00 per 100.**

Japanese Barberry

We are frequently asked to recommend the best shrub for hedge planting, and after many years experience, we are decidedly of the opinion that the **Japanese Barberry**, *Berberis Thunbergii*, is the best hedge plant in existence, and either as an ornamental, defensive, trimmed or untrimmed hedge, it is unsurpassed. As an ornamental hedge it is beautiful throughout the year, its abundant crop of bright red berries making it even more attractive in the Winter than in the Summer. Its compact growth and thorny branches make a defensive hedge that will turn cattle after five years growth. As an untrimmed hedge, it requires no attention except an occasional cutting of a few straggling branches. The natural growth is so dense and even that it forms a perfect hedge without shearing, but if a formal hedge is desired, by shearing, it can be made as even as a stone wall. The *Berberis* is absolutely hardy, of the easiest culture, and will grow in any soil or situation. It will stand considerable shade and can be grown under trees if not planted too close to the trunks. It is of slow, compact growth, but will eventually attain a height of 5 or 6 feet. It is one of the very best of shrubs for general planting. For a hedge, plant a single row, 18 inches apart in the row. We have a very large stock of fine plants. **18-24 inch plants, \$4.00 per 12; \$30.00 per 100. 15-18 inch plants, \$3.00 per doz.; \$20.00 per 100.**



Salix Salamoni, From a Photograph Taken Ten Years after Planting.

Salix Salamoni

This is a variety of the Weeping Willow, but not nearly so pendulous as the common form, and we believe it to be the fastest-growing tree in the world, not excepting the eucalyptus, so much planted in California. We cut down one of these Willows in our nursery when it was seven years old, and it measured 13 inches

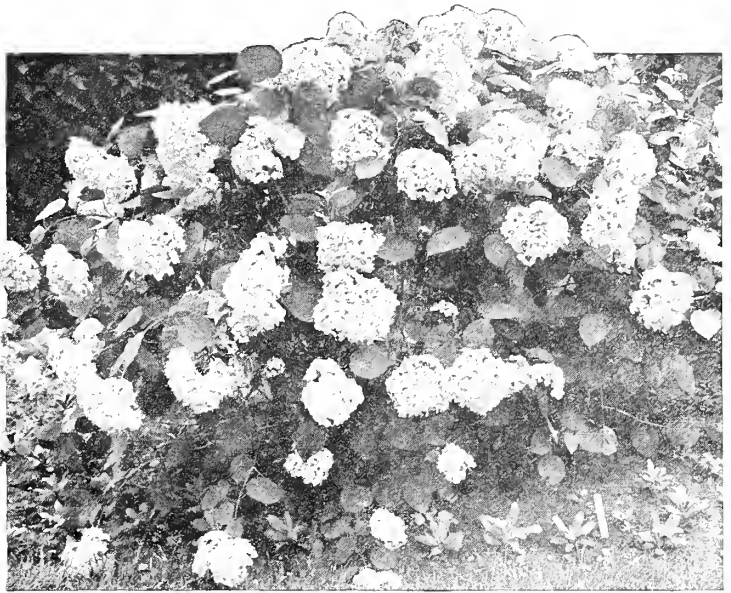
through the trunk. It makes a very good-looking tree, as will be seen by the illustration above, and has the good qualities of leafing out very early in the Spring, and of holding its foliage until late in the Fall. This tree starts into growth quite early and should be planted as early as possible in the Spring.

One-year-old trees, 75c each; \$8.00 per 12; \$55.00 per 100. Two-year-old trees; \$1.25 each; \$13.00 per 12; \$95 per 100. Trees older than this are really too large to handle.

Hills of Snow

(*Hydrangea Arborescens Grandiflora*)

Quite similar in appearance to a low-growing snowball, as it produces large clusters of white blooms not far above the ground. Especially adapted for border plantings, and if placed in large masses it produces a literal sea of bloom in late Summer and early Fall. The bright green leaves add much to its decorative form. Prefers a moist, fertile soil, with full or partial exposure to the sun. It will even make a fairly strong growth in complete shade, but it is not particularly recommended for shade planting. H 3, S 3. 2 to 3 feet. 75c each; \$7.50 per doz.



Hydrangea Arborescens Grandiflora—Hills of Snow.



Spirea Van Houttei.

Van Houtte's Bridal Wreath

(*Spirea Van Houttei*)

A most graceful shrub with numerous arching branches, which are almost concealed by compact umbels of pure white flowers in late Spring. The leaves are dark green, with incised edges, and are pale, bluish green on the under side. They cling to the plant until late Autumn. This is easily the most beautiful of all the Spireas, as it possesses beautiful foliage at all times, and the wealth of beauty in May and June is unsurpassed by any shrub in existence. As a flowering hedge it is delightful, and it is equally adapted to specimen planting. H 6-8, S 6. 60c each; \$6.00 per doz.

Lilac Villosa Lutea

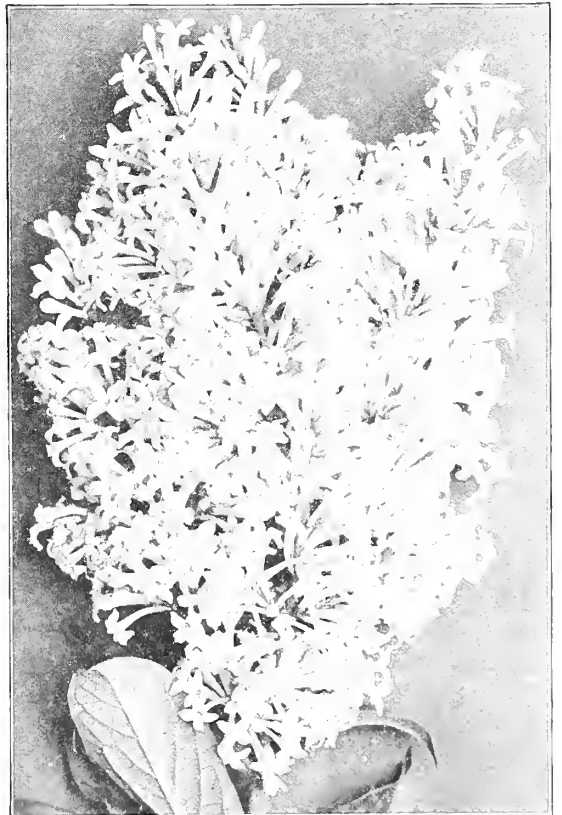
Stout, warty branches, carried almost upright, and dull green leaves give this variety quite a distinctive appearance. The pinkish flowers are borne in broad panicles, 3 to 6 inches long, in late Spring. One of the best of the Lilac species. \$1.00 each; \$10.00 per doz.

Lilac Wilsoni

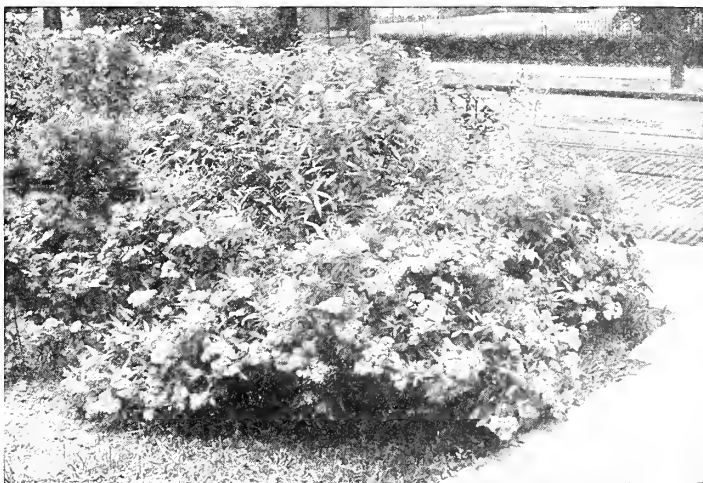
Splendid species of the Villosa section, growing 6 feet or more, bearing flowers with reflexed lobes of a pale pink. \$1.50 each.

Spirea Anthony Waterer

A dwarf shrub with dense corymbs or heads of pinkish red flowers. These appear first about July, and if removed the plant will continue to produce blooms until frost. Valuable because the blooming period comes when much of the shrub border is past the flowering stage. H 2-3, S 3. 50c each; \$5.00 per doz.



Lilac Villosa Lutea.



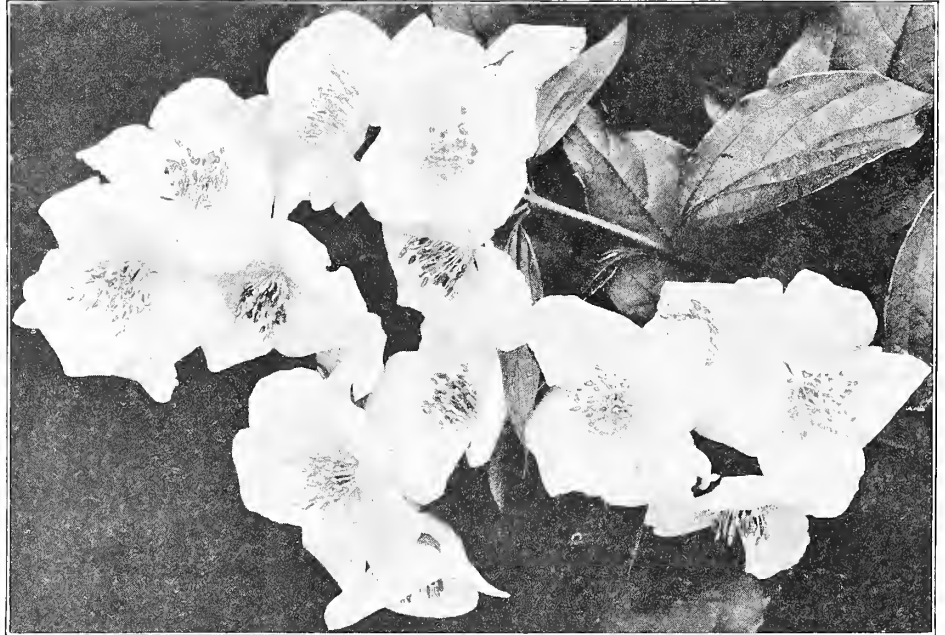
Spirea Anthony Waterer.

New Hybrid Philadelphus

The great French hybridizer, Lemoine, has produced a new race of Philadelphus, commonly known as Syringa or Mock Orange, that are the most valuable introduction in shrubs in twenty-five years. Not only are the flowers wonderfully improved, but they are produced in marvelous profusion and the smallest and youngest plants are covered with flowers. Nothing has ever attracted more attention and admiration in our trial grounds where they have been thoroughly tested.

Albatre. An extremely floriferous shrub in the way of the beautiful variety "Mer de Glace." Slender branches furnished with middle sized serrated leaves. Full double flowers produced in dense panicles, pure white. Very sweet. **\$1.00 each; \$10.00 per doz.**

Avalanche. Slender, arching branches of graceful habit; snow-white flowers in great profusion. Fragrant. **\$1.00 each; \$10.00 per doz.**



Philadelphus, Mer de Glace.

Mer de Glace (Sea of Ice). Undoubtedly one of the most beautiful shrubs introduced in recent years. Everyone is familiar with the so-called Syringa or Mock Orange, but Lemoine, the great French hybridizer, has improved this old favorite wonderfully. The flowers are globular, semi-double, of a glistening pure white and deliciously sweet scented. It would be impossible for a shrub to bear more flowers and the smallest plants are covered. People who have seen it flower on our trial grounds have been delighted with this shrub. **\$1.50 each; \$15.00 per doz.**

Virginal. A vigorous, tall-growing shrub. Flowers in dense clusters, large and double pure white. A grand sight. **\$1.00 each; \$10.00 per doz.**
One each of the above varieties (4 in all), **\$3.75.**

Globe Flower - Trollius

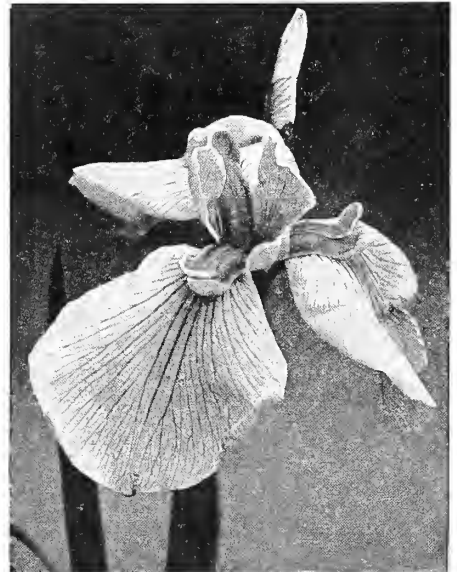
Beautiful and desirable free-flowering plants, producing their giant bright yellow, buttercup-like blossoms on stems 1 to 2 feet high from May until August; succeed admirably in the border in a half-shady position in well drained soil.

Earliest of All. Deep yellow.
Europeus superba. Orange-yellow.
40c each; \$4.00 per dozen.

Her Majesty. Bright yellow.
Japonica. Orange-yellow.

Elliott's Fine Mixture of Japanese Iris

Quarantine No. 37 prohibits the importation of nursery stock, and, consequently, it is no longer possible to produce some of the varieties of Japanese Iris in sufficient quantities to offer in a catalog which has the wide distribution that ours has. We have numerous varieties of these plants with only a few plants of each variety. We intend to save two or three plants of each sort for reference, and we are making a mixture of the rest and offering this mixture at bargain prices. These plants sold for from 50c to \$1.00 each, but as long as they last we will supply them, without names, at **\$3.00 per doz.; \$22.00 per 100.**



Japanese Iris.



Globe Flower.

Tall English Delphiniums

We are tempted to say that the improved English Delphiniums are the most beautiful hardy plants in cultivation, but we are also tempted to say this of a score of other things, and, of course, it is impossible to say which is the most beautiful of hardy plants, for they have such an immense variety of beauty that the wonder grows that people continue to plant, by the million, bedding plants which have little or no beauty, are an annual expense, and cost quite as much as hardy plants whose first cost is their only cost and which increase in size, in beauty, and often in quantity, year after year. These Delphiniums may not be the most beautiful hardy plants, but they are among the most beautiful, and nothing can be more distinct and satisfactory. They are stately and picturesque, some varieties growing 8 feet high in rich soil; they have immense spikes of most beautiful flowers of every imaginable shade of blue, and their season is a long one.

Culture of Delphiniums.

The culture of Delphiniums is exceedingly simple, and the results out of all proportion to the slight amount of care necessary. They thrive in almost any position, and may be planted at any time of the year, provided that in Summer the plants are not too forward, and that they be well watered if the weather be dry. The soil may be a rich, friable loam, which suits them finely; but any soil, even hot and sandy, if well watered and manured, will give excellent results. Dig deeply—trenching is better—add plenty of well-rotted manure, and plant about 2½ feet apart. Placed in lines, as a background to a border, or in groups of, say, three plants at intervals, the effect of the Delphinium is exceedingly fine. They look well in beds, also, arranged at the same distance apart each way. They are grand grown in masses of large groups of separate colors, and may be associated with shrubs with great advantage, succeeding well in shrubberies because of their robustness. A succession of flowers may be expected from Spring to early Autumn, especially if the spikes which have done flowering early be cut down to the ground; fresh growth will then be produced which will give blossom. Copious watering in Summer will be attended by increased size of spike and flower; in fact, in seasons of prolonged drought, water is absolutely a necessity on many soils if the varieties are to exhibit themselves in their true size and beauty of flower and spike. Top-dressing is greatly recommended on certain soils, instead of the bare surface of the ground being left exposed to the sun. Some of the neater dwarf alpine and other hardy plants may be utilized to plant between and around Delphiniums. As we have intimated, any garden soil suits the Delphiniums; it is, however, necessary to secure sorts such as are offered below in order to obtain an effect superior to that afforded by the old smaller-flowered varieties.

Special Offer Improved English Delphiniums

I want everyone who receives this list to try these improved English Delphiniums, and to that end offer them at extremely low prices. I guarantee that they will give unqualified satisfaction in every instance and will be a revelation of beauty to most people.

Fine Mixed English, grown from seed of famous named sorts \$2.50 100 \$15.00

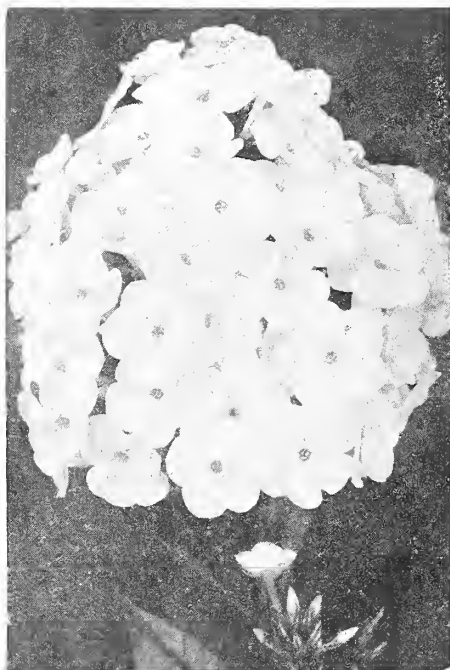
Extra-selected Varieties. Varieties selected from thousands of seedlings grown from choicest named sorts 50c each... 5.00



Delphinium—Larkspur.

Standard Sorts

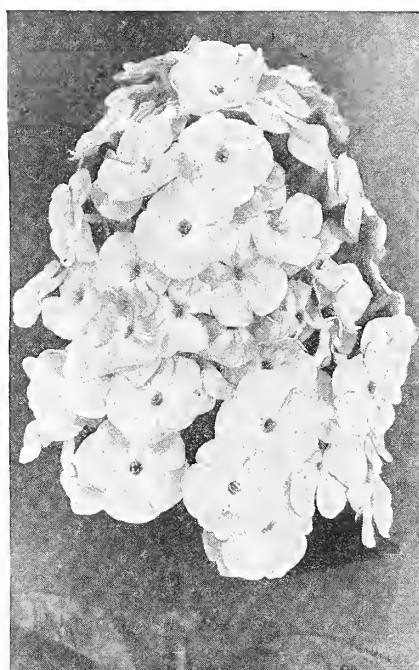
- Belladonna**. The freest and most continuous blooming of all, never being out of flower from the end of June until cut down by hard frost. The clear turquoise-blue of its flowers is not equaled for delicacy and beauty by any other flower. **25c each; \$2.50 per 12; \$15.00 per 100.**
- Bellamosa (Improved Formosum)**. A dark blue of the type of Belladonna with the color of the old Formosum variety, but not liable to mildew like the latter and of stronger growth. **\$2.50 per 12; \$15.00 per 100.**
- Chinense**. A very pretty variety, with fine, feathery foliage and intense gentian blue flowers in open panicles. **\$2.00 per 12; \$12.00 per 100.**
- Chinense album (Slender Larkspur)**. A pure white form of the above. **\$2.00 per 12; \$12.00 per 100.**



Phlox, Miss Jenkins



Phlox, Riverton Jewel.



Phlox, Europa.

Hardy Perennial Phloxes

The beauty and usefulness of these grand border plants give them a deservedly first place among hardy plants. For cutting, their large trusses go a long way in floral decoration. In color they range from pure white to the richest crimson and purple, and from soft rose and salmon to bright coral-red, all having a delicate fragrance. **Perennial Phloxes** succeed in almost any soil enriched with manure, but are much benefited by a mulching of decomposed manure in Spring, and in hot weather an occasional soaking of water. If the first spikes of bloom are removed as soon as over, and the plants given a good soaking of water, they will produce a second supply of flowers, thus continuing the display until late in Autumn. These later blooms are often finer than the first.

Field-grown plants, 25c each; \$2.50 per 12; \$15.00 per 100, except where noted.

Albion. Pure white, with a faint red eye.

Antoin Mercie. Light ground color, one-half of each petal suffused lilac.

Asia. One of the prettiest. Delicate shade of mauve, with crimson-carmine eye.

A. G. McKimmon. Early flowering; lilac; large trusses.

Athis. Salmon; a splendid tall variety.

Baron von Dedem. Intense scarlet or red; individual flowers and trusses are very large. One of the best varieties.

Cheswick. Salmon, bright crimson center.

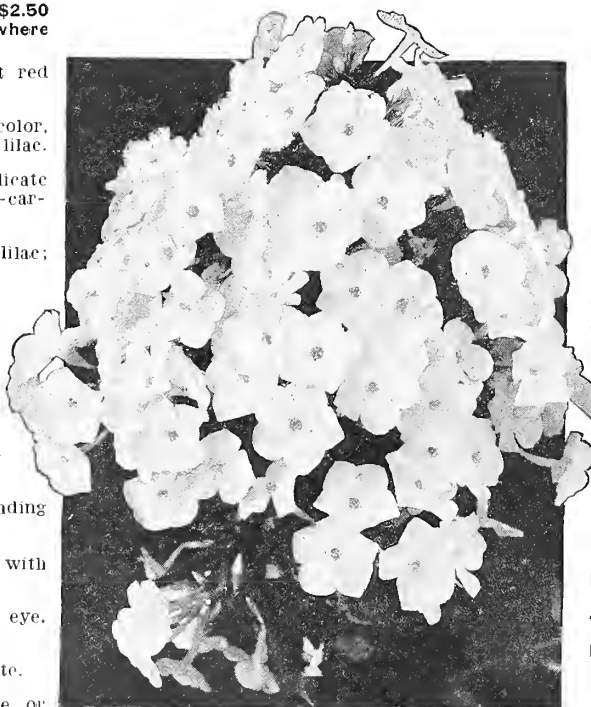
Duqueslin. Deep rose; lilac shading on edge.

Eclairer. Purple-carmine blooms with a white center.

Europa. White with crimson eye. Extra large. Distinct and fine.

F. B. Waldeck. Splendid pure white.

Frau Antoine Buchner. Pure white, or slightly suffused with pink.



Phlox, Miss Lingard.

Kossuth. Deep rose, maroon center.

Frau Buchner. One of the prettiest delicate shades of mauve with crimson eye.

Mrs. Jenkins. One of the earliest pure white varieties.

Miss Lingard. Early flowering; pure white blooms with a faint lilac eye. Splendid for mass planting, as it will bloom in June and again in September if the old flowers are cut. Not infested with red spider.

N. Smith. Dark crimson.

Otto Thalacker. Rosy crimson.

Prof. Schliemann. Lilac-rose with carmine eye.

Rhinlander. Salmon-pink; both flower and truss are immense in size, and the color is intensified by a brilliant carmine eye.

Rijnstroom. Rose-pink; flowers and trusses extremely large; possibly the finest Phlox of this color.

Riverton Jewel. Rose with brilliant carmine or red eye.

Richard Wallace. White with crimson eye. Splendid.

Thor. Flowers rose-pink, extra large.

Mixed Varieties. Contains many of the preceding named varieties, but of course they are sent out unlabeled. 20c each; \$2.00 per 12; \$12.00 per 100.



Peonies

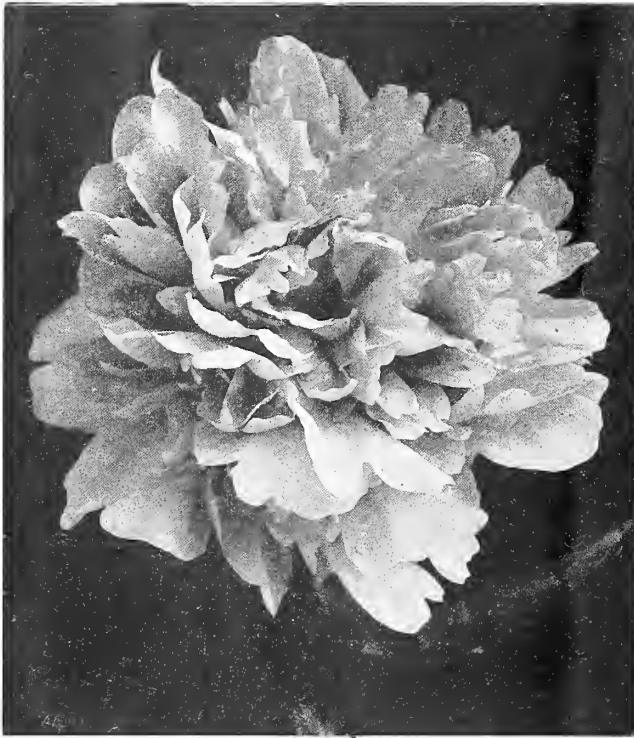
Few flowers have become more popular in recent years than the Peonies. Even the common old-fashioned sorts possess unusual beauty and make excellent flowers for cutting because of their large blooms and vivid colors. The varieties which have been introduced in the past thirty years are much superior to those previously known. Some of them will attain a diameter of 8 inches or more, while in beauty of form and exquisite coloring they easily surpass any other perennial. Peonies possess another advantage which is important, they require no special care or attention—**anyone can grow them successfully.** We have long appreciated their possibilities, and our present collection includes

	Each	Per 12
Albert Crousse. Very fresh salmon-pink, delicate color. Large, compact bomb shape; fragrant; erect; medium height. Late	\$0.75	\$7.50
Asa Gray. Large, full bloom imbricated rosiform. Salmon flesh sprinkled with carmine-lilac. Extra fine	1.50	
Avalanche. Large flowers of perfect shape; milk-white, with a creamy center having a few carmine stripes; late and very free-flowering; splendid habit. A variety of great beauty.....	1.50	15.00
Couronne d'Or. Pure white blooms with a circle of yellow stamens about the center tuft of petals, which are tipped with carmine. They are quite large and flat, with petals of uniform width throughout. This is one of the best white varieties and an excellent sort for cutting75	7.00

a large number of varieties which we have succeeded in gathering together only after years of effort.

Well-developed root clusters, if planted in August or September, will bloom the following season. We do not offer large undivided clumps as we find that they do not justify their cost. It must be remembered that Peonies seldom bloom satisfactorily the first season after planting; many of the finest double sorts will produce single flowers at this time. The second season after planting it is difficult to tell medium-sized plants from the large undivided clumps sometimes sold; for that reason ordinary size plants produce typical blooms just as soon as huge and expensive root clusters, yet cost much less.

	Each	Per 12
Duchesse de Nemours. A beautiful, fragrant, cup-shaped flower, white and sulphur-white. Blooms very freely	\$0.60	\$ 6.00
Duke of Wellington. Quite large, sulphury white blooms, of medium fragrance. Makes a strong, vigorous growth and blooms freely50	5.00
Delachei. Large violet-crimson blooms perfectly cup-shaped. Unusually good sort. Late mid-season60	6.00
Edulis Superba. Very large bloom of perfect shape; pure brilliant pink shaded violet, silvery reflex. Early bloomer. Extra60	6.00
Eugene Verdier. Large pink flower, rose type; guard petals lilac-white. Erect habit, extra strong stems	2.50	



Peony, Festiva Maxima.

PEONIES—Continued

	Each	Per 12
Felix Crousse. Extra-large blooms; quite fragrant. One of the most brilliant red varieties. Strong, vigorous plants	\$1.00	\$10.00
Festiva. Creamy white blooms, with crimson flecks in the center. Flowers are nearly as large as Festiva Maxima but the plant is of dwarf habit. .50	.50	5.00
Festiva Maxima. This is probably the best of the low-priced varieties. It produces extremely large white flowers, flecked with crimson in the center. The plant makes a tall, strong growth, and produces its blooms early in the season. Some of the most recently introduced varieties, which sell for \$50 or more, are in no way superior to this sort75	7.50
Francois Ortegat. Large, handsome flowers of deep crimson, shaded with amaranth; brilliant yellow anthers60	6.00
Karl Rosenfield. Very large globular semi-rose type. Dark crimson, strong grower, free bloomer, slightly fragrant	1.50	
Livingstone. Pale lilac-rose, turning to silver at the tips of the petals. Very large, compact flowers	1.00	10.00
La Tulipe. Large lilac-white blooms, with crimson stripings on the outer petals. Fragrant. Late midseason75	7.50
Lady Bramwell. Pale lilac-rose, the center petals creamy white at the tips, and sometimes flecked with crimson. Grows vigorously and blooms freely. Early midseason60	6.00
Louis Van Houtte. Large flower of lively violet-red; very brilliant; a very beautiful variety60	6.00

	Each	Per 12
Marguerite Gerard. Lovely light pink; one of the most exquisitely beautiful Peonies in cultivation	\$1.00	\$10.00
Marie Crousse. Soft salmon-pink shaded with lilac. Very full flower on strong stems. Exquisite	3.00	
Mme. Calot. Light pink, rose-type, with center slightly darker. Medium fragrance. Strong grower75	7.50
Mad. Carpentier. Light carmine-pink with silvery reflex75	7.50
Mad. Chaumy. Soft pink, shaded bright rose. Large silvery border. Late bloomer60	6.00
Mme. Coste. A good early sort; light pink guard petals and crimson center60	6.00
Mme. Crousse. White, tinted pink, center carmine; bordered very lovely75	7.50
Mme. de Verneville. Very full, large blooms, pure white center, tinted with pink when first opening, later fading to pure white, although it is frequently flecked with carmine. Slightly fragrant. A variety which should be in every garden75	7.50
Mons. Jules Elie. An extra-fine early sort of medium fragrance. The blooms are pale lilac-rose, shading to rich amber at the base. The plants make a strong growth, and are generally of medium size. One of the most popular varieties	1.50	
Ne Plus Ultra. Violet-rose, center mauve-rose, with lighter stripes60	6.00
Officinalis mutabilis alba. The blooms are light pink on opening, gradually changing to white75	7.50
Old Double Crimson. Crimson. This fine old Peony is very effective when planted in masses. One of the earliest to bloom	1.00	10.00
Petite Renee. Very large, semi-double type. The light magenta blooms are borne freely on plants of medium height. Midseason	1.50	
President Taft. A very tall growing variety producing lots of large, perfectly formed flowers on long, stiff stems. Color uniform pink, flecked crimson, admired by everyone	1.50	
Prolifera tricolor. Medium size flowers, with loosely set petals. The guards are flesh-white, with collar of sulphury yellow; a pale rose crown encloses white petals and red carpels. Fragrant. Late75	7.50
Prince d'Arenberg. Medium-sized, full double, dark red flowers. Midseason60	6.00
Peace Offering. An attractive, semi-double variety, with light guard petals; light buff center ...	1.50	
Queen Victoria. Large, globular bloom, with milk-white guards and cream-white center. Midseason50	5.00
Rosea elegans. A splendid pale lilac-rose bloom, with a delicate cream-white collar50	5.00
Rubra superba. Deep crimson blossoms, large and compact. The best very late crimson variety ...	1.00	10.00
Tricolor grandiflora. A popular garden variety. Center is pink, shaded with salmon60	6.00
Mixed Varieties. Double and single, all colors35	3.50

(Six plants at the dozen rate; fifty plants at the hundred rate.)

German Iris

Probably the Japanese Iris rank first in beauty, but they cannot approach in popularity the German Iris. A great number of new varieties have been introduced in the last decade and many of them are far superior to the older sorts in beauty and size of flowers. Some of these recent introductions, however, are extremely delicate and refuse to bloom except when conditions are "just so." These have been carefully eliminated from our list. The German Irises in our collection may be raised with success by anyone. Give them a good sunny situation and plant the tubers so that they are only about half buried. In the descriptions which follow, the upright petals are referred to as "Standards," while those which droop are known as "Falls."

	Per 12	100
Canary Bird. The general effect of the bloom is pale yellow; both standards and falls are about the same color	\$1.50	\$10.00
Caprice. Rosy red standards; falls of a deeper red. A large handsome bloom. 2 feet	2.00	12.00
Don Carlos. Blue standards; falls velvety reddish purple	1.50	10.00
Florentina. Sometimes known as Silver King. Fragrant, creamy white blooms, slightly flushed with lavender, produced early in the season. 2 feet	2.00	12.00
Florentina purpurea. Blue standards and velvety purple falls, together with a bright yellow beard, make this bloom very attractive	2.00	12.00
Gracchus. Crimson falls veined with white, standards yellow. An extra-fine early sort. 18 inches	2.00	12.00
Her Majesty. Standards and falls rose-pink. A variety of great distinction and beauty. 22 inches	35c each	3.50
Ingeborg. Pure white blooms of great size. The petals of this variety are 2 inches wide. An extremely beautiful variety	1.50	10.00
Jeanne d'Arc. A splendid pure white sort. 50c each	5.00	
Juniata. Standards and falls flaring clear blue, deeper than Pallida Dalmatica. White beard. One of the tallest. Large flowers	35c each	3.50
Lohengrin. Standards and falls are soft Cattleya rose; extremely large blooms. 35c each	3.50	
Loreley. Falls are deep blue, bordered with crimson; standards are light yellow. 25c each	2.50	
Massasoit. Standards and falls are a very distinct shade of metallic Venetian blue. Difficult to describe accurately	50c each	5.00
Midnight. A rich deep purple, the finest in this color. Excellent for cutting	35c each	3.50
Monsignor. Standards violet; falls heavily veined purple, leaving a border of violet. 35c each	3.50	
Mrs. Horace Darwin. General effect white, although the upper parts of the falls are veined with gold and violet; golden beard. 24 inches	2.25	14.00
Mrs. Alan Gray. Both standards and falls are a delicate pale rose-mauve	2.00	12.00
Nibelungen. Standards fawn-yellow; falls violet-purple. Extremely large bloom	2.50	15.00
Nuee d'Orange. Standards gray; falls bronze and purple	35c each	3.50
Pallida Dalmatica. Lavender standards and clear deep lavender falls. Most effective when planted in masses; an excellent variety for cut flowers	35c each	3.50
Princess Victoria Louise. Sulphury yellow standards; falls plum color, bordered with cream	35c each	3.50



Clump of German Iris.

Rhein Nixe. White standards, falls violet-blue, with white border. Large blooms on tall stems.	Per 12	100
.....	35c each	\$3.50
Walhalla. Both standards and falls are blue and purple. Strong grower and free bloomer	2.00	13.00

Siberian Iris

Narrow, grassy foliage and tall, flat stems make the Irises of this class the most delicate and ornamental of the whole family. They are especially desirable for borders, or for marking lines, etc., their slender graceful foliage and delicately poised blossoms holding a distinctive beauty that is peculiar to them. They are very persistent and will thrive even in blue-grass sod. Coming into bloom just at the close of the bearded Iris season, they flower quite freely and are extensively used for naturalizing and water-side plantings.

	Per 12	100
Alba. White shading to yellow at the base of the petals	\$2.00	\$12.00
Distinction. Blue standards; white falls veined blue	2.25	14.00
Orientalis. Sometimes known as Iris sanguinea. Very brilliant blue flowers; the buds are enclosed in a crimson spathe and are decidedly ornamental	2.00	13.00
Orientalis, Snow Queen. Large ivory-white flowers produced in great abundance	2.50	15.00
Orientalis superba. Large violet-blue flowers; foliage extends almost to the height of the flowers.	2.00	13.00



Lilacs.

New Lilacs on Their Own Roots

Of late years there has been a multitude of new varieties of Lilacs grown, and some of them have very great beauty; but unfortunately, almost all the stock offered, both in this country and Europe, has been budded on privet and is practically worthless, being certain to die in a few years. Nurserymen bud Lilacs on privet because they can produce a large stock quickly and inexpensively; but one Lilac on its own roots is worth a score of budded plants.

Ten years ago we bought all the available stock of choice named Lilacs on their own roots in Europe, and since then we have been both growing and buying until we have a very large and fine stock, and the only stock of named Lilacs grown on their own roots in America. On account of their starting into growth so early in spring, Lilacs do best when planted in the fall.

Strong plants, except where noted, \$2.00 each; \$20.00 per 12.

Alphonse Lavalée. Double, clear lilac; extra large and fine.
Charles Joly. Double; blackish red; distinct and extra fine.
Charles X. Large, shining leaves and great trusses of reddish purple flowers.
Edith Cavell. (L.) Big pyramidal trusses, large regular imbricated flowers, pure milk-white, buds suffused cream and pale sulphur.
Hippolyte Maringer. Double, large, compact trusses; purplish-mauve.
Lamartine. Large panicles of mauve-rose flowers, very early.
La Tour d'Auvergne. Double; purplish violet flowers borne in large trusses.
La Vestali. Enormous panicles, large flowers perfectly shaped. Pure white.
Leon Simon. Double, compact panicles, bluish crimson.
Lemoine fl. pl. Double, carmine-violet.
Marechal Lannes. Double, clear lilaceous violet, buds carmine-violet.
Marie Legraye. Large panicles of white flowers. Single.
Collections. 1 each of six (6) named varieties **\$10.00.**

Michael Buchner. Dwarf plant, very double, pale lilac.
Negro. Dark violaceous purple.
Paul Thirion (L.). Broad, obtuse panicles of large regular flowers, claret rose with carmine buds, very late.
President Carnot. Double; lilac tint, marked in center with white; extra large, fine truss.
President Grevy. Double; vinous-violet.
Souvenir de Louis Spaeth. Most distinct and beautiful variety, trusses immense; very large, compact florets; deep purplish red.
Toussaint l'Ouverture. Dark crimson.
Victor Lemoine. Double; malva-lilac.
William Robinson. Double; violaceous pink. The flower trusses are extra large and the bush is vigorous and hardy.

Special Offer if the selection of varieties is left entirely to us, we will furnish six fine named French Lilacs, grown on their own roots, **\$8.00** for

Some Notable Hardy Plants

Clematis Paniculata

This handsome hardy climber is one of the choicest and most satisfactory climbing flowering plants we know. The plant is of strong, rapid growth, with small, dense, cheerful green foliage, giving it a grace and elegance possessed by no other hardy climber, and, even did it not flower at all, it would be one of the most desirable vines. The flowers appear in the greatest profusion during August and continue until late in the Fall, are of white color and most deliciously fragrant. The plant succeeds in almost any position; not only is it well adapted to run up all kinds of supports, but it is just as useful for planting among rock-work, sloping banks, or, in fact, in any position where a graceful vine is desired.

	Each	Per 12	100
2-year-old	\$0.35	\$3.50 \$25.00
3-year-old, extra strong	50	5.00

Pentstemon Barbatus Torreyi (Beard Tongue)

An excellent variety of this American plant that is used chiefly for garden borders. The flowers, which are scarlet or crimson and orange, are produced freely in July and August. **\$2.25 per 12; \$14.00 per 100.**

Hardy Garden Heliotrope (Valeriana Officinalis)

Produces showy heads of flowers during June and July, with delicious, strong heliotrope odor.

	Per 12	100
Red\$2.25	\$14.00
White 2.25	14.00
Pink 2.25	14.00



Oriental Poppies.



Clematis Paniculata.



Stokesia Cyanea.

Stokesia Cyanea

(The Cornflower, or Stokes' Aster)

A most charming and beautiful native hardy plant. The plant grows from 18 to 24 inches high, bearing freely, from early in July and until late in October, its handsome lavender-blue centaurea-like blossoms, which measure from 4 to 5 inches across. It is of the easiest culture, succeeding in any open sunny position, and not only is it desirable as a single plant in the hardy border, but it can also be used with fine effect in masses or beds of any size. **25c each; \$2.50 per 12; \$15.00 per 100.** **Alba.** Pure white variety of above. **25c each; \$2.50 per 12; \$15.00 per 100.**

Oriental Poppies

The Perennial Poppies are among the most brilliant of hardy flowers, the graceful, brightly colored, cup-shaped flowers are borne on long stems. The large-flowering, or Oriental Poppies, are also the most showy plants for a garden and should be planted early. The foliage of Oriental Poppies dies away in the Summer, and many think they are dead, but they will start into growth again in the Fall. They are rather hard to establish, but once established, prove the most persistent perennial.

	Per 12	100
Cerise Beauty. Extra-large blooms; cerise-pink with crimson center and black blotch at base of petals	\$2.50 \$15.00
Mrs. Marsh. Scarlet, flecked with white 2.50	15.00
Mrs. Perry. Orange-apricot—distinct and unusual color 2.50	15.00
Silberblick. Salmon, with violet-blue blotches; white anthers and stamens 2.50	15.00
Oriental Hybrids. An assortment of the best varieties and colors 2.50	15.00



Polyanthus or Cowslip.

Foxglove - Digitalis

In England the Foxglove grows wild, but, notwithstanding this, it is a great garden favorite, as it well deserves to be. For stately and picturesque beauty it is not to be surpassed and, planted in masses in the garden among shrubs or naturalized on the edge of woods, in the orchard or along brooks, it is extremely effective and satisfactory. Strictly speaking, it is a biennial, but, as it renews itself from self-sown seed, it may be treated as a perennial. Mr. Falconer has naturalized thousands of Foxgloves in Schenley Park, and nothing he has planted attracts more attention and admiration. Planted in the Fall, Foxgloves will bloom well the following season. I offer a fine lot of strong plants, grown from the best strains obtainable in Europe.



Dianthus Barbatus—Sweet William.

	Per 12	100
purpurea gloxiniaeflora. The white blooms are spotted with shades of white, rose and purple.....	\$2.25	\$14.00
maculata superba. A French introduction. Large flowers spotted with red, blue, purple, and similar shades	2.25	14.00
purpurea. The old-fashioned purple Foxglove. The flower-spikes are from 4 to 7 feet tall, coming to perfection in July	2.25	14.00
purpurea alba. White form of purpurea	2.25	14.00

Chrysanthemum Maximum

(Shasta Daisy type)

Alaska. A decided improvement. Flowers are 3 to 4 inches in diameter, of pure white, very free and blooms nearly all Summer	\$2.00	\$12.00
------------------------------------------------------------------------------------------------------------------------------------------	--------	---------

HARDY PLANTS—Continued.

Polyanthus, or Cowslip

This charming Spring-blooming plant belongs to the Primrose family, the hardy varieties of which are so very popular in England, but are rarely seen in this country, owing partly to an impression that they cannot be grown in this climate. This is a mistake, as they do very well here. For the front of the borders and shrubbery, for Spring bedding, and for naturalizing in moist and partly shaded places nothing can be finer. The coloring in the flowers is especially rich and fine. At this writing we have a long border of these plants in bloom in our garden, and nothing gives us greater pleasure. They are so charming in habit, rich and varied in coloring, and so early to bloom, coming with the Spring-flowering bulbs, that nothing can be more acceptable. We use them freely for decorating the dining-table and library windows, taking plants up from the border and putting them in fern-dishes and pots, where they go on blooming as if they had never been disturbed. Their hardiness has been pretty well settled by the severe Winter of 1911 and 1912. The minimum temperature at our country place was 2 degrees below zero. Not a single Polyanthus was injured, and they were planted in wet soil at that.

Large-flowered White. An improved variety with very large flowers; very fine. 20c each; \$2.00 per 12; \$13.00 per 100.

Large-flowered, mixed, \$2.00 per 12; \$12.00 per 100.

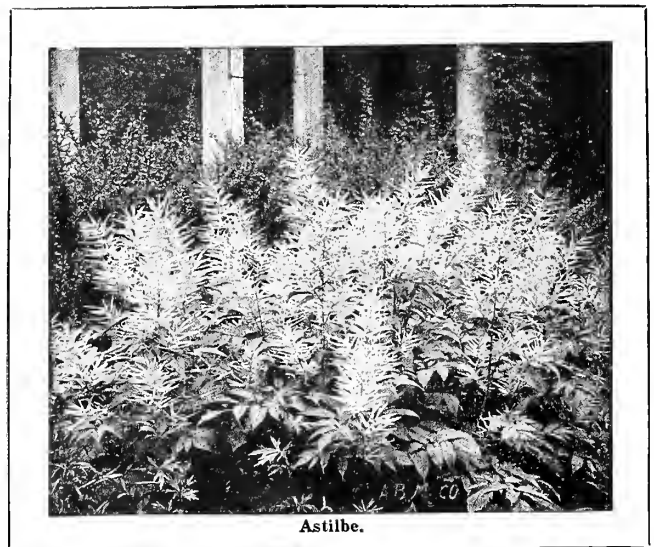
Dianthus Barbatus - Sweet William

That old-fashioned favorite, the Sweet William, has almost disappeared from our gardens; more's the pity, for its place has been taken by plants of far less beauty. The Sweet William is a fine old plant which produces great masses of bloom of extremely rich and varied colors. The flowers are very lasting and fine for cutting. The plants offered are grown from the finest strains to be obtained in England. We offer them in Pink, White, Crimson, Scarlet or Mixed Colors. **Fine, large plants, 20c each; \$2.00 per 12; \$13.00 per 100.**

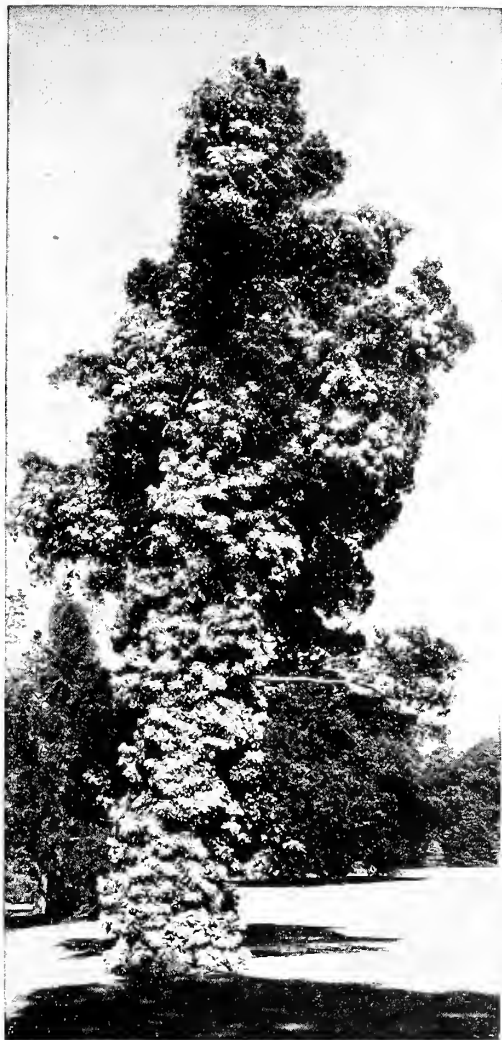
Astilbe Arendsi

These hardy plants are easily grown in the perennial border, and should give quantities of blooms all Summer. In general they are quite tall, varying from 3 to 5 feet, according to the soil conditions and location. A new type obtained by crossing one of the older varieties with some of the new Japanese introductions. The plants are of vigorous growth, and produce feathery heads of flowers on many-branched stems. This variety will succeed in ordinary garden soils, if shaded from hot sun and given plenty of moisture.

	Per 12	100
Thunbergi Moerheimi. A new variety introduced from Europe. The panicles are extremely large, but the flowers are quite small and pure white.		
July	40c each	\$4.00



Astilbe.



Climbing Hydrangea.

Hydrangea Climbing

We have at last succeeded in getting a stock of the rare Schizophragma Hydrangeoides, known as the Climbing Hydrangea. It is one of the rarest and most beautiful vines, having flowers similar to Hydrangea Hortensia. **Fine strong, pot-grown plants \$1.00 each; \$10.00 per 12.**

Thalictrum Aquilegifolium

This is undoubtedly one of the most desirable hardy plants in cultivation. Its fine habit, beautiful foliage and masses of lovely flowers, varying from white to purple through all intermediate shades, makes it one of the most handsome things that can be planted. A graceful plant of much charm and distinction. Height 2 to 3 feet; blooms in May and June. **\$2.50 per 12; \$15.00 per 100.**



Gaillardia.

Anchusa

Italica, Dropmore Variety.

One of the most important hardy plants of recent introduction, and a grand improvement on the original type of A. Italica, or Italian Alkanet, and a plant which, on account of its remarkable freedom of flowering and its beautiful blue color, is sure to become one of our most popular hardy perennials. It attains a height of 5 to 6 feet, and produces its pretty blue flowers, which are from 1 to 1 1/4 inches in diameter, throughout the entire Summer. **\$2.50 per 12; \$15.00 per 100.**



Anchusa Italica.

Improved Gaillardias

We consider the Gaillardia one of the most beautiful and desirable hardy plants in cultivation, and believe our strain of these brilliant-flowered plants to be the finest extant. We offer these plants for less than they have ever been sold for, either in this country or Europe. Though such an ornamental addition to the herbaceous border, the perennial Gaillardia is content with extremely simple treatment. Dig the soil deeply and enrich with well-rotted manure. We recommend the Gaillardia for bedding purposes as well as for borders. Give a moderate amount of room and peg down, and a grand effect is to be obtained. Everyone will have noticed how grandly Gaillardias have thriven through the recent drought; they seem hardly to need water, but we recommend watering liberally to insure the finest flowers. The Gaillardia which Kelway & Son have been so successful in improving and popularizing is, of course, simply invaluable as a cut flower, on account of its being so lasting when gathered and so brilliant and beautiful. The gay blossoms are obtainable in perpetual profusion from June to November, and the greater the drought and scarcity of other flowers the more the utility of the perennial Gaillardia is demonstrated. No more brilliant and beautiful sight can be imagined than a large bed of Gaillardias, with their profusion of highly colored flowers of all shades. Some of the varieties of this improved strain measure fully 5 inches in diameter. Mr. Robinson, in the English Flower Garden, recommends that they should be planted in bold groups, and remarks that no plants have finer effect in a bed by themselves, and we quite agree with him. Extra strong, fine plants, in a splendid assortment of colors, which will be sure to give complete satisfaction. **\$2.25 per 12; \$14.00 per 100.**

Aubrietia Deltoides Purpurea

An evergreen trailing plant with silvery foliage. Many lovely purplish flowers in Spring and early Summer. **\$2.50 per 12; \$15.00 per 100.**



Thalictrum Aquilegifolium.

PERENNIAL PLANTS—Continued

Hardy Salvias

Azurea. A Rocky Mountain species; grows 3 to 4 feet high, producing during August and September pretty sky-blue flowers in the greatest profusion. \$2.50 per 12; \$15.00 per 100.

Greggi. Partakes of the nature of a shrub rather than a herbaceous perennial. Flowers are red and produced in such freedom that the plant looks like one immense bloom. \$2.50 per 12; \$15.00 per 100.

Hardy Garden Pinks

These pinks are very hardy, and bloom with wonderful freedom in May and June. The flowers are greatly varied in color and marking and are deliciously fragrant. They should be included in every garden. Care must be taken not to cover the foliage with manure or other mulching, in the Fall, as it will cause them to rot.



Hardy Garden Pinks.

Dianthus Plumarius. A charming single Pink, with fringed petals. Flowers all of light colors, but greatly varied in markings. Mixed colors, \$2.00 per 12; \$12.00 per 100.

Dianthus Plumarius semperflorans. Similar to the above, but darker colors in a great variety of shades and markings; charming. Mixed colors, \$2.00 per 12; \$12.00 per 100.



Salvia Azurea.

Scabiosa

Japonica. An introduction from Japan with lavender or blue flower, 1 to 1½ inches in diameter. 2 to 3 feet. June to September. \$2.50 per 12; \$15.00 per 100.



Pyrethrus.

Pyrethrums

The Pyrethrums are so simply and easily cultivated that they may be recommended to all who possess a garden, whether small or large. They are perfectly hardy and absolutely invaluable for cut flowers through the Summer and Autumn months. The flowers are bright and elegantly borne on long stems; most convenient for vase decoration. In form the double varieties are somewhat aster- or chrysanthemum-like, and as their chief beauty is in the months of May or June, they may well be designated Spring Chrysanthemums, possessing the advantage over the chrysanthemums of being able to withstand the severest Winter without protection. The single-flowered varieties are veritable colored marguerites and possess a range of color and hardiness that marguerites might envy in vain. Nothing can surpass the Pyrethrum for profusion of flowers in the season; flowers succeed flowers without stint, and the blossoms are not injured by storm or sun. Their position should be in the border or in beds. The plants may, with advantage, be cut down after June, which will keep up a greater succession of bloom through the Autumn. Pyrethrums grow freely in any ordinary garden soil; a good rich loam suits them, perhaps, best, and in order to secure size, brilliancy and number of flowers, plenty of ordinary well-rotted manure may be added to well-trenched, well-drained soil, and plenty of water may be given when they are in bud in the dry Summer weather. A mulching may be applied in dry localities with advantage. The older varieties have been greatly improved upon during the past ten or fifteen years, which is the period during which Kelway & Son have made them a specialty, and the refined shape and brilliant or soft shades of the newer sorts have caused the Pyrethrum to become deservedly popular. We offer a splendid lot of plants of the choicest single varieties grown from Kelway's famous strains. All colors mixed, \$2.50 per 12; \$15.00 per 100.



Hardy Herbaceous Perennials

Until hardy plants come into general use, we cannot hope for artistic, interesting, and beautiful gardens in this country. People of taste and culture are realizing the ugliness of the stereotyped bedding with lines of color, and will no longer allow their lawns to be daubed with a flower-garden like a colored lithograph, although many of our public parks are still guilty of this atrocious work. With the material offered in this list, the most beautiful and interesting gardens are to be made, gardens that increase in interest and beauty year after year; gardens that change their aspect with every change of season. To make garden with hardy plants and shrubs requires far more taste and knowledge than it does to make one with a few varieties of bedding plants generally used, but the majority of gardeners do not have this knowledge, and have no idea of proper arrangement. But the garden of hardy plants has this advantage; the individual beauty of the plants themselves is so great that a garden cannot fail to be interesting and lovely, no matter how badly arranged, if the cultural skill is sufficient to bring them to perfection. One of the most effective ways of using hardy plants is to plant in a wide border in front of a hedge or shrubbery. The trouble with this arrangement is that the roots of the shrubs or hedge get into the border and rob the plants of a large share of their food. This can easily be prevented by placing a sunken wall of concrete between the hedge or shrubbery and border. This wall need be only 2 feet deep and 4 inches thick, and is inexpensively constructed of gravel and cement. Another very effective arrangement is two broad borders through the vegetable-garden, with a broad grass-walk between them. The effect will be enhanced by building trellises back of the borders and covering them with climbing roses or flowering vines.

Cultivation is of the simplest: beginning with any good garden soil, dig it deeply and enrich with old rotted stable manure. The best time to plant hardy perennials is when they are just starting

into growth in the Spring or early in the fall. The soil should be comparatively dry when plants are set out. Avoid wet planting. Do not make the mistake of planting too thickly. The nearest approach to a rule which may be followed in planting is to set out plants which grow to a height of 2 feet or less, 12 inches apart, and all taller one-half their height. For example, Aquilegia and Coreopsis, which grow 2 feet high, may be planted 12 inches apart, while Delphinium formosum and Japanese Iris, which grow 3 feet high, should be 18 inches apart.

During the Summer, the soil about the plants should be frequently stirred and weeds kept down. During hot, dry weather, or when it is not convenient to water, a mulch of any loose, light material is very beneficial in retaining the moisture and preventing the ground from baking. Grass clippings from the lawn are excellent material for this purpose.

About the middle of November, or later, when all soft growth has been killed and the plants are thoroughly ripened, the old hard-wooded stems should be removed and burned. Then cover the plants with 2 or 3 inches, not more, of loose strawy stable manure. Care must be taken, however, not to cover the foliage, of evergreen plants such as Phlox subulata, Hardy Pinks, and Candy-tutts, as such a covering would cause the foliage to rot and kill the plants.

Most hardy plants which flower during the Spring or early Summer months, such as Peonies, Anthericum, Dielytras, Funkias, German Iris, etc., are better left undivided and undisturbed for several years, but they should be given a liberal dressing of stable manure or other fertilizer every Spring. The late-flowering plants, like Phloxes, Helianthus, Rudbeckias, Asters, Boltonias, Physostegias, etc., are better for being replanted at least every two years. The Japanese Anemones are an exception; they should be allowed to remain undisturbed, for several years.

Special Offers of Hardy Plants in Variety

Plants in the following collections will be the best and most desirable varieties and of the best quality, but in every instance the selection of varieties is to be made by us; but if purchasers will state the things they have, or don't wish, they will not be included in the selection. Sometimes people write asking for a list of the plants contained in these collections. This cannot be given, so please save us the unpleasantness of refusing by not asking for it.

OFFER NO. 1.	25 first class Hardy Plants in variety for	\$ 4.00
OFFER NO. 2.	50 first-class Hardy Plants in variety for	7.50
OFFER NO. 3.	100 first-class Hardy Plants in varied assortment of best species and varieties...	13.00
OFFER NO. 4.	500 Hardy Plants, same as above, but in larger variety, for	60.00
OFFER NO. 5	1,000 Hardy Plants, same as above but in much larger variety, for	110.00

In the following list, height and time of blooming are indicated as follows: Figures following the letter H indicate height in feet; figures following the letter F indicate the number of month or months the plants bloom in. This is only approximate, as height and time of flowering vary with soils and seasons.

Plants suitable for growing in the shade are marked *; for growing in partial shade are marked †.

Prices quoted are for not less than half the quantities named, but single plants will be furnished at following low rates: Plants at \$1.75 and \$2 per 12; 20c each; plants at \$2.50 per 12, 25c each; plants at \$3 per 12; 30c each; plants at \$4 per 12; 40c each, plants at \$5 per 12, 50c each.

HARDY HERBACEOUS PERENNIALS—Continued

	Per 12	100
ACHILLEA <i>ægyptica</i> . Sulphur-yellow flowers; silvery gray foliage; very neat. H 1-3, F 6-8... \$2.00	\$14.00	
Millefolium roseum . Red flowers produced in profusion for a long season; little known here, but very popular in Eng ^l and. H 1-3, F 4-10... 2.00	14.00	
Pтарmica , The Pearl . An improvement of <i>Pтарmica</i> fl. pl. H 2, F 6-10 2.25	14.00	
* ACONITUM napellus (Monkshood). Beautiful but poisonous plant with blue flowers. H 2, F 7 4.00		
Fischeri . Tall panicles of blue flowers. F 7-8... 4.00		
ACTAEA rubra . Baneberry. Showy spike of clustered white flowers from April to June, followed by bright red berries in Autumn. 1-2 feet 2.50	15.00	
ÆGOPODIUM Podagraria variegata . A rapid-growing plant, with neat green and yellow variegated foliage, thriving in any soil; makes a fine border for a bed of shrubs or for covering waste ground. H 1 2.50	15.00	
AGROSTEMMA coronaria . Beautiful rich crimson flowers. H 1½, F 7 2.25	14.00	
coronaria alba . Pure white 2.25	14.00	
coronaria atrosanguinea . Brilliant dark crimson. 2.25	14.00	
coronaria bicolor . White and red 2.25	14.00	
Flos-Jovis . Extremely desirable rose tinted flowers, fine for cutting. H 1½, F 7 2.25	14.00	
AJUGA reptans atropurpurea . Large spikes of purplish blue flowers in May. Valuable plant for the rockery and for carpeting the ground in shady places where grass will not grow... 2.50	14.00	
ALYSSUM saxatile compactum . Masses of golden yellow flowers. Invaluable for Spring flowering. H 1, F 4 2.50	15.00	
ANEMONE pennsylvanica . A beautiful native Anemone. Fine for naturalizing. H 1½, F 6... 2.25	14.00	
ANTHEMIS Kelwayi . Soft, clear yellow. H 1½, F 6-8 2.25	14.00	



Aquilegia.

Aquilegia

All of the single, long-spurred Aquilegias, or Columbines, are extremely beautiful, and a collection of them should be a feature in every garden. Foremost among these choice plants are our native Aquilegias. If these and other choice hardy plants were as well known as bedding plants, the day of geraniums, cæcus, and other commonplace plants would soon be over. The flowers of these Aquilegias are most lovely and delicate, ranging from white to crimson, including shades of blue and yellow. The exquisite Rocky Mountain Columbine, *Aquilegia cœrulea*, is one of the loveliest flowers in cultivation, and it and *Aquilegia canadensis*, which grows wild so plentifully in many localities, are both fine for naturalizing and will thrive if planted in the grass of meadows and allowed to take care of themselves. They are also fine for the formal garden. Assorted varieties, our selection.

	Per 12	100
Alpina superba . Blue and white \$2.25	\$14.00	
Cærulea (Rocky Mountain Columbine). The most beautiful of all Columbines; one of the most charming hardy flowers in cultivation. H 1½, F 4-5 2.50	15.00	
Cærulea Hybrids . Lovely rose shades, long-spurred 2.25	15.00	
† Californica . Large orange-yellow 2.25	14.00	
† Canadensis (native). Red and yellow. H 1, F 5 2.25	14.00	
† Chrysantha . Beautiful golden yellow flowers; blooms for two months. H 3-4, F 5-6 ... 2.50	15.00	
† Chrysantha alba . A white variety of the above. 2.25	14.00	
† Glandulosa . Splendid dwarf; lovely blue and white flowers 2.25	14.00	
Olympica . Purplish flowers, white corolla ... 2.25	14.00	
Skinneri . Scarlet, handsome and distinct. 2.25	14.00	
Long Spurred Hybrids . Beautiful; all shades.. 2.50	15.00	
Rose Queen . Rose colored 2.50	15.00	
† Vulgaris . Old-fashioned double Columbine ... 2.00	13.00	
ARABIS alpina . Forms a dense carpet, completely covered with pure white flowers in early Spring. Fine for rockwork and edging.... 2.50	15.00	
alpina fl. pl. Double form of the above; very lasting and beautiful 2.50	15.00	
† ARALIA Racemosa . Splendid native foliage plants, growing 6 to 8 feet high; of striking effect... 2.50		
ARENARIA montana . Beautiful dwarf white-flowering plant which will thrive in a dry situation 2.50	15.00	
ARMERIA cephalotes 2.25	14.00	
dianthoides 2.25	14.00	
formosa 2.25	14.00	
maritima splendens (Thrift; Sea Pink). H 1¼, F 5-7 2.25	14.00	
ARRHENATHERUM bulbosum variegatum . A neat and distinct new variegated grass which should prove very attractive in the rock-garden 2.25	14.00	
ARTEMISIA Abrotanum (Old Man; Southern Wood). Dark green, finely cut foliage; aromatic odor 2.50		
lactiflora . Stately plant with feathery white flowers. H 6-8, F 9-10 2.50		
Stelleriana (Old Woman). Deeply cut silvery foliage; much used in carpet bedding. H 18 in. 2.25	14.00	
ASCLEPIAS incarnata . Rosy pink flowers; very desirable. H 2-3, F 7-9 2.00	13.00	
tuberosa . Orange-scarlet; one of the showiest and finest hardy plants grown. H 1-2, F 7-9... 2.50	15.00	
ASTER . (Michaelmas Daisy). This is a native of North America, although some have been brought from the Old World. They are entirely hardy and will grow readily in ordinary soil and exposure.		
Climax . A late introduction. Plants are heavily branched and covered with light lavender-blue flowers. 5 feet. August to October 2.50	18.00	
novæ-angliæ, Rubra . A showy American variety, flowers deep red. 3 to 4 feet. Early Autumn. 2.25	14.00	
novæ-angliæ, Rycroft Pink . Dainty rose-pink flowers in September. 4 feet 2.50		
novæ-angliæ, Wm. Bowman . Rosy purple petals surround the deep golden bronze disc. Extremely showy. 4 to 5 feet. August to October 2.50	15.00	
novi-belgi, St. Egwin . A soft pink, very free-flowering 2.25		
Snowflake . Very free, pure white. 18 inches... 2.50		
turbinellus albus . Petals and disc clear white. 2 to 3 feet. September and October 2.25	14	

HARDY HERBACEOUS PERENNIALS—Continued

	Per 12	100		Per 12	100
ASTILBE Arendsi. This new type is the result of crossing <i>A. Davidi</i> with <i>A. japonica compacta</i> , <i>A. astilloides</i> , and <i>A. Thumbergi</i> . The plants are of very vigorous growth, 2½ to 4 feet high, producing many-branched, feathered heads of flowers.					
Pink Pearl. Shell pink	50c each..	\$5.00			
Ceres. Rosy blue	50c each..	5.00			
Pyramidalis. Pure white	50c each..	5.00			
Juno. Strong, upright grower; plumes of a deep violet-rose color	50c each..	5.00			
Vesta. Very graceful plumes of light lilac-rose	50c each..	5.00			
BAPTISIA australis (False Indigo). Dark green, deeply cut foliage and spikes of dark blue flowers. H 2, F 6-7	2.25	14.00			
BELLIS Perennis (Double English Daisy)	1.50	10.00			
BERGAMOT. See Monarda.					
BOCCONIA cordata. Large, broad, striking leaves; large plumes of white flowers; fine for sub-tropical effects. H 5-6, F 7-8	2.50	15.00			
Giralda. A handsome new variety with large silvery gray foliage and bold heads of milky white flowers	2.50	15.00			
Macrorcarpa	2.50				
BOLTONIA asteroides. Pure white; very effective. H 3-4, F 9-10	2.00	13.00			
latisquama. Light pinkish blue flowers; very lovely; blooms late in Fall. Highly recommended. H 3-4	2.25	14.00			
CALIMERIS incisifolia. A graceful little plant with finely cut foliage, and is the prettiest of all single white daisy flowers; blooms all Summer and is distinct and fine	2.00	13.00			
CAMPANULA (Bellflower). The Campanula genus is one of the largest and choicest. The varieties are all of elegant habit and should be represented in every garden.					
carpatica. Dwarf; light blue. H ¾, F 6	2.50				
carpatica alba. Dwarf white	2.50	15.00			
Mariesi compacta nana. A new improved dwarf variety of great beauty; large white or purple flowers	2.00	13.00			
Mariesi grandiflora. Large white and purple flowers; desirable	2.00	13.00			
Medium (Canterbury Bells). One of the showiest and prettiest of garden plants; but being only a biennial, dies after blooming. Should be planted in Spring	2.50	15.00			
persicifolia. Large blue flowers, almost as showy as Canterbury Bells. H 2, F 6	2.50	15.00			
persicifolia alba. White flowers; a grand border plant. H 1-3, F 7	2.50				
pyramidalis. Very showy, tall variety. H 4-5, F 7	2.50				
CANDYTUFT. See Iberis.					
CANTERBURY BELLS. See Campanula Medium.					
CARDINAL FLOWER. See Lobelia.					
CASSIA marylandica. Handsome pinnate foliage and numerous racemes of showy yellow flowers; extremely desirable plant of the easiest culture. H 4-5, F 7	2.00	13.00			
CATANANCHE cærulea. Blue Cupidone. Fine border plant about 2 feet high, flowering in Summer. Blue, and grows easily in any good soil.					
cærulea alba. White, as easy to grow as the blue form	2.50	15.00			
CENTAUREA macrocephala. Yellow; very fine. H 3-5, F 7	2.50				
montana (Cornflower). Blue flowers. H 2, F 6	2.50				
montana alba. White flowers	2.50	15.00			
CERASTIUM Biebersteini. Very dwarf plant, covered with small white flowers; very desirable for carpeting or edging borders and beds; silvery white foliage, which is very attractive throughout the season	2.50	15.00			
CHRYSANTHEMUM—					
Hardy Large-Flowered Varieties. These are the old-fashioned Chrysanthemums that used to be in every garden. They are perfectly hardy, and make a brave show of color late in the Fall, after all other flowers are gone. H 3-4, F 10-11	\$2.50	\$15.00			
leucanthemum (Shasta Daisy). Advertised as a California wonder	2.00	13.00			
*maximum, Princess Henry. A variety with very large white flowers	2.00	13.00			
Speaker. The largest of the Maximum varieties; immense showy flowers	2.00	13.00			
CIMICIFUGA racemosa simplex. Most valuable by reason of its extreme late-flowering, beginning in September and attaining full perfection about the middle of October, a time when flowers are scarce. Its flowering stems are from 2½ to 3 feet high, terminated with a dense spike of white flowers, which, when cut last in perfection a long time	3.00				
CLEMATIS recta. Large heads of pure white flowers	25c each..	2.50			
integrifolia. Large purple flowers in great profusion in July and August	2.50				
*COREOPSIS grandiflora. An improved variety with large, bright yellow flowers; one of the best hardy plants in cultivation. Fine for cut flowers. H 2-3, F 5-7	2.00	12.00			
verticillata. Masses of small golden yellow flowers; nicely cut foliage. H 2-3, F 7-8	2.00	13.00			
CORONILLA varia. Compact sheets of beautiful pink bloom. H 1, F 5-10	2.25	14.00			
CYPRIPEDIUM acaule. Pink	2.50				
pubescens. Large; yellow	2.50				
spectabile. The most beautiful hardy orchid, and one of the most lovely flowers in the world; does well in a shady location.... 40c each..	4.00				
DAY LILY, WHITE. See Funkia.					
Yellow. See Hemerocallis.					
DIANTHUS deltoides. A creeping Pink of great beauty	2.25	14.00			
latifolius atrococcineus fl. pl. (Everblooming Hybrid Sweet William). A beautiful Summer bedding variety, producing masses of brilliant fiery crimson flowers during the entire season	2.50	15.00			
*DICENTRA eximia. Beautiful fern-like foliage; blooms all Summer. H ¾-1½, F 4-8	3.00				
DRACOCEPHALUM Ruyschiana. Dark violet-blue; neat border plant. H 2, F 6	2.50	15.00			
ERIGERON speciosus (Fleabane). Somewhat like the native aster, but blooms much earlier. Rich colors, varying from rose to violet and purple. 1 to 2 feet. Midsummer	2.50	15.00			
EULALIA. The Eulalias are splendid grasses for making beds and groups for tropical effects.					
gracillima. Very graceful. H 5-7	2.00	13.00			
japonica. H 5-7	2.50	15.00			
japonica variegata. H 5-7	2.00	13.00			
EUPHORBIA corollata. A choice native plant with white flowers; largely used by florists for cut flowers	2.00	13.00			
EVENING PRIMROSE. See Oenothera.					
FESTUCA glauca. A very dwarf grass with pretty blue foliage; fine for edging	2.25	14.00			
FUNKIA Aoki. Large glaucous green leaves....	2.00	13.00			
*aurea maculata. Young foliage in early Spring is of a bright yellow color	2.00				
*cærulea (Blue Day Lily). H 2½, F 7	2.00	13.00			
*Sieboldi. One of the finest of hardy plants on account of its splendid foliage. H 2-3, F 7-8	2.50	15.00			
*subcordata (White Day Lily). H 1½, F 5-8	4.00				
*variegata. Variegated foliage, blue flowers. H 1, F 5	2.25	14.00			

HARDY HERBACEOUS PERENNIALS—Continued

HARDY FERNS. Varieties marked (*) require shade; those marked (†) succeed in open border.

* <i>Adiantum pedatum</i> (Maidenhair Fern).	† <i>Onclea Struthiopteris</i> (Ostrich Fern).		
* <i>Aspidium acrostichoides</i> (Wood Fern).	† <i>Osmunda gracilis</i> (Flowering Fern).		
* <i>Aspidium marginale</i>	† <i>Osmunda Claytoniana</i> (Flowering Fern).		
* <i>Aspidium Goldieanum</i> (Shield Fern).	† <i>Osmunda cinnamomea</i> (Cinnamon Fern).		
† <i>Asplenium Filix-fœmina</i> (Lady Fern).	† <i>Osmunda regalis</i> (Royal Fern).		
† <i>Asplenium thelypteris</i>	* <i>Woodwardia angustifolia</i> (Chain Fern).		
† <i>Dicksonia punctilobula</i> (Gossamer Fern).	† <i>Woodwardia virginica</i>		
† <i>Onclea sensibilis</i> (Sensitive Fern).			
Any of the above Ferns 25c each; \$2.50 per 12; \$15.00 per 100.		Per 12	100

GENTIANA Andrewsii (Blue Gentian). Pretty native species with blue flowers. H 1½, F 9. \$2.25 \$14.00

GEUM coccineum. Pretty border plants, growing 18 inches high and producing brilliant scarlet flowers throughout the Summer 2.50
atrosanguineum. Orange-scarlet 2.50

GYPSOPHILA paniculata (Baby's Breath). When in bloom in August and September it forms a symmetrical mass 2 to 3 feet in height and as much through, of minute white flowers having a beautiful gauze-like appearance. 2.50 15.00
paniculata flore pleno. Beautiful double variety of above 2.50
scorzonerifolia. Beautiful rose-colored Baby's Breath 2.50 15.00

HELIENIUM autumnale superbum. An improved variety of great beauty 2.50
Hoopesii. Bright orange flowers. H 2-3, F 7-8. 2.50

HELIANTHEMUM mutabile (Sun Rose). Charming dwarf evergreen plants with pink and white flowers. H ½, F 5-6 2.25 14.00

HELIANTHUS. The hardy Sunflowers are among the most desirable of hardy plants. They are free-flowering over a long season, are very decorative in the garden, and are fine for cutting. All have bright yellow flowers.

Maximiliani. Tall and very late; one of the most stately and elegant hardy plants in cultivation; best Sunflower to bloom in the Fall. H 7-9, F 10-11 2.00 13.00
orgyalis. A very striking, tall Sunflower. H 5-6, F 6-10 2.00 13.00
Scaberrimus, Miss Mellish. Very large duplex flowers of exquisite shape and bright orange-yellow, freely produced during August and September. Grand for cutting. H 5 2.00 13.00

HELIOPSIS, B. Ladhams. Broad-petal, rich yellow flowers; the best of the Helioipsis. H 2, F 7-9 2.25 14.00
Pitcheriana. Similar to the hardy Sunflower, but blooming during a much longer season. H 3-6, F 8-10 2.00 13.00

HEMEROCALLIS aurantiaca. Large orange-yellow flower 3.50
Dumortieri. H 1½, F 6-7 1.75 12.00
flava (Lemon Day Lily). H 2-3, F 6-7 2.25 14.00
graminea. Bright yellow; one of the best. 2.00 13.00
Quanso fl. pl. Double 2.50 15.00
Sieboldi. Clear, deep bright yellow. H 3, F 5-6 2.25
Thunbergi. Bright yellow. H 3, F 7-8. 2.00

HERACLEUM giganteum (Giant Parsnip). A remarkable foliage plant 2.50

HESPERIS matronalis, Purple (Sweet Rocket). H 2-3, F 6-9 2.00 13.00
Matronalis, White 2.00 13.00

HEUCHERA, sanguinea. Very choice, dwarf graceful plant with lovely crimson flowers; fine for cutting. H ¾-1½, F 7-9 2.50 15.00

HEUCHERA—	Per 12	100
<i>sanguinea gracillima.</i> (Alum Root). Dwarf plants for the border or rockeries. Flowers produced from June to September	\$2.50	\$15.00
<i>sanguinea splendens.</i> Not quite so tall as the preceding variety. Intense crimson flowers.	2.50	15.00
* HIBISCUS Moscheutos. Bright pink	2.00	13.00
<i>Moscheutos, Crimson Eye.</i> White. H 3-6, F 8-10	2.50	15.00
Mallow Marvels. Enormous single flowers of white, pink and crimson		
Separate Colors	35c each..	3.50
Mixed Colors	20c each..	2.00 12.00

Hollyhocks

Have you ever noticed that painters choose single Hollyhocks as subjects for floral paintings oftener than any other flower. We suppose the reason for this is that artists have a keener appreciation of beauty than other people, and recognize that the common, and we fear sometimes despised, single Hollyhock, is one of the most stately, picturesque and beautiful plants in the world. Nothing can be more effective than a large group or mass of single Hollyhocks, and once planted they will literally take care of themselves, even if planted in the grass. We know of patches that have not been cultivated or disturbed in any way for twenty years. We are determined to have single Hollyhocks for our landscape gardening work, so we collected seed from old-fashioned (they will soon be new-fashioned) gardens and had thousands of plants grown for our customers. Some people think double Hollyhocks are more beautiful than single. They are mistaken, although the doubles are beautiful, but inclined to be top-heavy often need staking and are liable to disease. Hollyhocks planted in the Fall will bloom well the following Summer.

Special Offer of Hollyhocks

	Per 12	100
Best Large-flowered, Single, all colors, mixed.	\$2.25	\$14 00
Best Large-flowered, Double, mixed colors	2.50	15.00
Chater's Famous Strain. Best double grown, in separate colors	2.50	15.00
New Allegheny. Immense semi-double flowers, with fringed edges; very beautiful	2.50	15.00

Our Hollyhocks are free from disease, and to insure this we are having them grown in Ohio in soil which is entirely free from the Hollyhock disease.

IBERIS cœrifolia (Candytuft). Large snow-white flowers. H ¾, F 5 2.50 15.00
sempervirens (Hardy Candytuft). It covers the ground with a mat of pure white flowers. H ¾-1, F 4-5 2.50 15.00
sempervirens nana. Improved dwarf variety. 2.50 15.00

INULA Helenium. Free-flowering border plants with yellow flowers. H 2, F 6-8 2.50

LATHYRUS latifolius albus (White Everlasting Pea). These Everlasting Peas are but little known in this country, but are great favorites in England. They are extremely showy and fine 2.50 15.00

latifolius splendens. Bright pink 2.50

LAVENDER. The well-known garden herb. 2.00 13.00

LIATRIS callilepsis. A new variety of Liatris, similar to *Pycnostachya*, but dwarfer and blooms a month earlier. A valuable introduction. H 1½-2, F 6 2.25 14.00

graminifolia rubra. (Blazing Star; Button Snake-root). A hardy plant native to the eastern part of the United States. Stems are rather slender. 2 to 3 feet high with many deep red blooms. 2.00 13.00

Pycnostachya. The popular name of this striking plant is Kansas Gay Feather. Nothing can be planted that will attract more attention on account of its very unusual appearance; but it is very beautiful as well as odd. It blooms in midsummer and throws up long, narrow spikes of rich purple flowers, which last a long time 2.50 12.00

LINUM perenne (Flax). H 1½, F 6-8 2.25 14.00
perenne album 2.25 14.00

HARDY HERBACEOUS PERENNIALS—Continued

Per 12 100

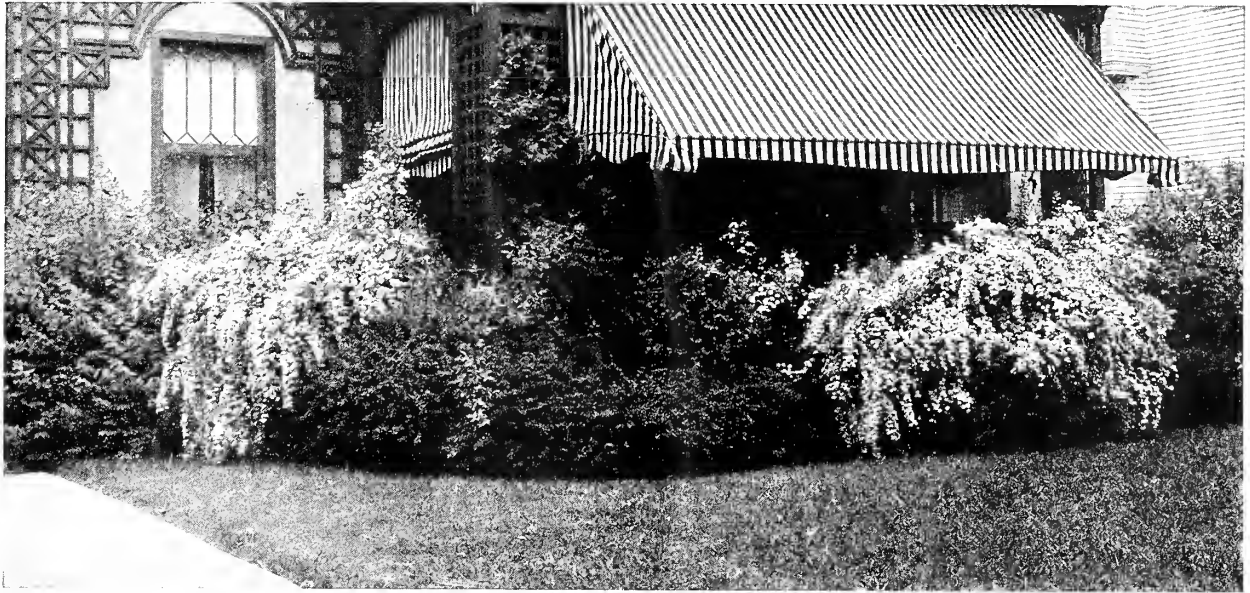
Per 12 100

LOBELIA cardinalis. Native plant, with intensely brilliant cardinal flowers. H 2-3, F 7-9.....	\$2.50	\$15.00
syphilitica. Grows freely in rather moist places. The flowers, which are borne in long racemes, are blue or purple. 2 to 3 feet. July to September	2.50	15.00
LYCHNIS chalconica. Dense head of brilliant scarlet flowers; one of the best border plants. H 1½-3, F 5-8	2.25	13.00
viscaria splendens	2.50	15.00
LYSIMACHIA clethroides (Loosestrife). Semi-aquatic, with white flowers. H 2-3, F 7-9... ..	2.25	
Nummularia (Moneywort). Splendid plant for carpeting the ground in shaded places, or for vases and baskets. Foliage dark green	2.25	14.00
Nummularia aurea (Golden Moneywort). Fine for carpeting	2.25	14.00
punctata. Showy yellow flowers. H 1½-2, F 6	2.00	
LYTHRUM superbum roseum. Very showy; splendid for banks of streams and ponds. H 3-5, F 7-8	2.25	14.00
MALVA moschata alba. This lovely Mallow blooms profusely in June and July, and grows 18 to 24 inches high. The flowers are white; 2 inches across	2.25	
moschata rosea. Same as above with rose-colored flowers	2.25	
MERTENSIA virginica. A lovely blue flower, blooming in early Spring. H 2, F 4	2.50	15.00
*MONARDA didyma (Bergamot). Very showy crimson flowers. H 2, F 7-9	2.00	13.00
Cambridge Scarlet (Oswego Tea; Bee-Balm). One of the most brilliant red flowers, almost as intense in color as the cardinal flower. For mass planting, it has no superior. 2 feet. July to September	2.25	14.00
MYOSOTIS palustris semperflorens (Water Forget-Me-Not). Splendid for naturalizing on edge of ponds and streams; also for beds and borders	1.75	11.00
palustris semperflorens grandiflora. Improved form with larger flowers	1.75	11.00
CENOTHERA (Evening Primrose). The Evening Primrose is very effective in the garden on moonlight nights.		
Lamarckiana. Large, sulphur-yellow flowers, lovely beyond description. H 4-5, F 7-8 ...	2.50	15.00
missouriensis. H ½, F 6-8	2.50	15.00
speciosa rosea. Dwarf; large white flowers tinted pink	2.50	
glauca Fraseri. Flowers are yellow, quite large, and borne in clusters. 2 to 3 feet. Midsummer	2.00	
PACHYSANDRA terminalis. A trailing plant 6 to 8 inches high, forming broad mats of bright, glossy green foliage and small spikes of flowers during May and June; invaluable as a cover plant either in the sun or shade.....	2.50	15.00
PANSIES, Best Strain. Plants for Spring bedding75	5.50
PARDANTHUS chinensis (Blackberry Lily).	2.00	13.00
PENNISETUM Japonicum. This new Hardy Grass is very desirable. It grows 4 feet high, with slender, graceful foliage and showy plumes thrown well above the leaves. Most valuable for adding variety to the garden planting....	25c each..	2.50

*PENTSTEMON barbatus Torreyi. Brilliant crimson and orange flowers in July; one of the best hardy plants. H 3-5	\$2.25	\$14.00
pubescens. A very showy variety, with rosy purple flowers. F 7-8	25c each.....	2.00 13.00
PHLOX divaricata cœrulea	2.50	15.00
divaricata canadensis	1.75	10.00
divaricata alba. A white sport of <i>P. divaricata canadensis</i>	2.50	15.00
Stelleriana. Lovely light blue; distinct.....	1.75	10.00
subulata (Moss Pink). Rose-pink. Fine for covering banks; thrives in hot dry situations, and blooms profusely	1.75	12.00
subulata, Bridesmaid	1.75	12.00
atropurpurea. Deep rosy purple	1.75	12.00
PHYSOSTEGIA virginica. Erect stems of pretty pink flowers. H 1½-2½	2.00	13.00
virginica alba. A beautiful white variety. H 2-3, F 7-8	2.00	12.00
virginica compacta. Dwarf; flowers pink, on erect stems. H 1¼-1½	2.00	12.00
PINK. See Dianthus.		
PLANTAIN LILY. See Funkia.		
PLUMBAGO Larpentæ. A dwarf plant covering the ground completely with its foliage. In September it is a mass of beautiful deep blue flowers, which gradually change to violet	2.50	15.00
PLUME POPPY. See Boeconia.		
POLYGONUM cuspidatum (Giant Knotweed). Grows to 12 feet high; makes a splendid group for tropical effect	1.75	
*PRIMULA auricula. Commonly known as auriculas	2.50	18.00
cashmerianæ (New). Large globular heads of a pleasing purplish blue shade; prefers a moist shaded situation	2.50	18.00
Japonica. Beautiful and desirable variety	2.50	
RANUNCULUS acris fl. pl. (Bachelor's Buttons). A showy border plant with double yellow flowers in early Summer	2.50	
RHEUM Collinianum, Foliage deeply cut; splendid	3.50	
emodi. Grows 5 feet high; wrinkled leaved, with red veins; very effective	3.50	
officinale (Chinese Rhubarb). The immense leaves of this noble foliage plant produce a bold and striking effect. Robinson says this is the most effective foliage plant introduced for many years	35c each..	3.50
tanguticum. Has fine foliage and is of rapid growth; distinct and striking....	40c each..	4.00
RODGERSIA podophylla. A stately plant, both in foliage and flower; planted in rich, deep soil, in a sunny situation, and liberally supplied with water, produces five-lobed leaves 2½ to 3 feet in diameter, at first bright green, changing to a metallic-brown hue; flowers white, not unlike a spirea, and borne in large, fluffy, feathery sprays in midsummer	75c each..	7.50
tabularis. A rare Siberian species with attractive pale green foliage, which in established plants is borne on stems 3 to 4 feet high, and is fully 18 inches in diameter, retaining its fresh and stately appearance throughout the season. Its fluffy, feathery white flowers are borne on sprays 6 feet high during midsummer	\$1.00 each..	10.00

HARDY HERBACEOUS PERENNIALS—Continued

	Per 12	100		Per 12	100
ROSEMARY. An old-fashioned plant with scented foliage	\$1.75		STACHYS lanata. White, woolly leaves and purple flowers; useful for edging. H 1, F 7.....	\$2.25	
RUBBECKIA			STATICE latifolia	2.50	
laciniata (Golden Glow). Double Rudbeckia. Grows 10 to 12 feet high, and is undoubtedly one of the most effective plants in cultivation. It is becoming very popular. F 7-9	1.75	12.00	STENANTHIUM robustum	4.00	
nitida. Pure yellow flowers	2.00		TEUCRIUM Chamaedrys. Evergreen shining leaves; purple flowers; will grow on barren soils.....	2.00	12.00
*purpurea. Large crimson-maroon flowers; very distinct	2.25	14.00	THALICTRUM adiantifolium. Beautiful foliage like maidenhair fern	2.25	
speciosa. Native. One of the very best border plants in cultivation. A group of "Golden Glow" surrounded by this variety makes a splendid effect. H 2-3, F 7-9	1.75	12.00	glaucum. Bronzy-yellow flowers, bluish foliage.	2.50	
subtomentosa. Densely branched plant, 2½ feet high, completely covered throughout the Summer with a mass of brilliant lemon-colored flowers, with purple centers	2.25	14.00	dipterocephalum. A new variety with lilac-mauve flowers, yellow stamens and anthers. 4 feet. August and September	3.50	
RUTA graveolens (Rue). This is a well known herb	1.50		THERMOPSIS caroliniana. Showy plants, with attractive yellow flowers	2.50	15.00
SAGE. The well known herb	1.50		TRADESCANTIA virginiana (Spiderwort). Produces a succession of purple flowers all Summer	1.75	12.00
SALVIA turkestanica. Extremely decorative sweet-scented foliage and showy whorls of white flowers surrounded by pale pink. H 2, F 6.....	2.50		TUNICA saxifraga. A pretty tufted plant with light pink flowers, produced all Summer; useful either for the rockery or the border.....	2.25	14.00
globosa. Dwarf. Light blue	2.50	15.00	UNIOLA latifolia. A very useful ornamental grass.	2.00	
SAPONARIA ocymoides splendens. A charming little creeping plant covered with lovely bright crimson flowers during the month of June.....	2.25		VERBASCUM nigrum. Yellow flowers in long spikes; dwarfed habit	2.00	
officinalis fl. pl. Beautiful plant growing about 2 feet high and blooming in August; large double flowers of a lovely soft rose-pink	2.00	13.00	olympicum. Bright yellow flowers; large woolly foliage; stately	2.50	15.00
SAXIFRAGA Leichtlini. Large, shiny evergreen foliage and large panicles of bright pink flowers. H 1, F 4-5	2.50	15.00	phoeniceum. Seedlings; crimson-rose, lilac and white; large and showy	2.50	14.00
SCABIOSA caucasica. Large head of pale blue flowers; one of the best hardy plants in cultivation; grows and flowers freely in any garden soil	3.50		VERBENA venosa. A hardy Verbena; very extensively used in England for bedding. It grows about 18 inches high, but if pegged down will cover the ground with heads of lovely purple-violet flowers throughout the season. Not quite hardy except on thoroughly well-drained soils	2.00	13.00
caucasica alba. A white-flowered variety of the above	3.50		VERONICA amethystina	2.00	
SEDUM acre. Fine for covering graves and for carpeting	2.00	12.00	*longifolia. Spikes of deep bluish-purple flowers; very handsome. H 2, F 8-9	2.50	
spectabile. A fine Fall-flowering plant with great heads of purple flowers. H 1½, F 9-10.....	2.25	13.00	rupestris. A trailing variety used in rock-work and for carpeting in semi-shaded places. Flowers blue	2.50	15.00
stoloniferum	2.00		spicata. Violet-blue flowers on long spikes; dwarf habit	2.50	15.00
Sieboldi (Siebold's Stonecrop). This Japanese variety, with its exquisite glaucous leaves, is considered the best foliage plant in the Sedum family. Flowers rosy pink	2.50	15.00	virginica (Great Virginian Speedwell). A free growing perennial which likes the bright sunshine. Flowers are white or pale blue. 2 to 6 feet. August to September	2.50	15.00
reflexum (Stone Orpine). Small, bright yellow flowers making up a flat cluster, 1 to 1½ inches across. July	2.50	15.00	VINCA caerulea. The well known hardy Myrtle; fine for carpeting under trees where grass will not grow	2.50	15.00
sexangulare (Six-rowed Stonecrop). Flowers golden yellow. The reddish cast of the new growth is charming. July	2.50	15.00	VIOLA cornuta. Flowers almost as large as a Pansy. This is the most desirable of hardy plants. Blooms continuously all season. Blue flowers.	1.75	12.00
SILENE Schafta (Catchfly). A low-growing plant with rose-pink flowers in clusters. Useful for edging and the rock-garden. June to September	2.50	15.00	pedata bicolor. Deep purple flowers	1.75	12.00
SILPHIUM perfoliatum. Yellow flowers. H 4-8, F 7	2.50		cornuta alba. Clear white	1.75	12.00
*SPIREA filipendula. A beautiful dwarf variety, with elegant fern-like foliage. H ½-3, F 6-7.	2.25	14.00	cornuta lutea grandiflora. Large golden-yellow.	1.75	12.00
palmata. Broad clusters of the most beautiful crimson flowers above splendid palmate foliage. H 2, F 7-8	2.50	15.00	cornuta atropurpurea. Deep violet-blue	1.75	12.00
palmata elegans. A lovely new variety with light pink flowers. H 2, F 7-8	2.50	15.00	Velvet Purple. Very dark and glossy, resembling velvet	1.75	12.00
ulmaria	2.25		White Perfection. The best pure white variety. Free-flowering and fragrant	1.75	12.00
			WAHLENBERGIA grandiflora	2.00	
			grandiflora alba	2.00	
			WALLFLOWER	1.75	12.00
			*YUCCA filamentosa (Spanish Bayonet; also known as the Mexican Soap Plant). Fine, strong plants; a stately decorative plant with immense spikes of large white flowers; fine for the garden or lawn	2.50	15.00



ELLIOTT'S ARE MOVING

The property at Springdale, Pa., where the Elliott Nursery has raised shrubs and plants of sterling worth for thirty-five years, has been taken over by a public service corporation. The new nurseries of the company are at a distance of some thirty miles. The physical burden and expense of transferring the establishment is considerable at best. Naturally, we wish to reduce it as much as possible. Hence, the present offer.

Everything listed below is thoroughly desirable and is offered at low cost for one reason only, as stated. You may order with the same confidence that the reputation of the Elliott Nursery affords to patrons at all times.

**We Don't Want to Move These Shrubs,
Buy Them From Us at Bargain Prices.**

Special Shrub Offer A Collection of 5 plants each of the following shrubs (50 in all), regular value, \$27.00, will be furnished for **\$18.00**

Special Shrub Offer B Collection of 10 plants each of the following shrubs (100 in all), regular value, \$54.00, will be furnished for **\$33.00**

BARBERRY (*Berberis Thunbergi*). Handsome foliage and beautiful red berries. Universally popular as foundation or hedge plant. 40c each; \$4.00 per dozen.

BRIDAL WREATH (*Spiraea*). Graceful arching branches almost concealed by multitudes of pure white flowers in the late Spring. 60c each; \$6.00 per dozen.

BUSH HONEYSUCKLE (*Lonicera*). A profusion of sweet-scented white or pink flowers in the Spring, followed by dazzling red berries in midsummer. 50c each; \$5.00 per dozen.

DEUTZIA. Hardy and vigorous with a profusion of pure white or pink tinged blossoms. 50c each; \$5.00 per dozen.

FIVE-LEAVED ANGELICA (*Aralia pentaphylla*). The effect of the luxuriant bright glossy green foliage upon the arching branches is splendid. Greenish flowers are borne in long-stalked clusters. Native of Japan. 60c each; \$6.00 per dozen.

GOLDEN BELL (*Forsythia Fortunei*). The arching branches are covered with golden yellow blossoms before the leaves appear. 60c each; \$5.50 per dozen.

GRAY DOGWOOD (*Cornus paniculata*). A round-headed shrub with a profusion of creamy white flowers followed by white fruits borne on bright red stems. The leaves turn dark red in Fall.

Use this *Cornus* with *Rosa lucida*; the flowers harmonize beautifully. 50c each; \$5.00 per dozen.

REGEL'S PRIVET (*Ligustrum Regelianum*). This is not only the best Privet, but is also one of the very best shrubs for many purposes that we know of. Is perfectly hardy, of most beautiful, pendulous habit and splendid foliage and white flowers. It is of vigorous growth and will thrive in either sun or shade. In good soil it will attain a height of 8 to 10 feet, and spread almost as great. See illustration, page 9. 50c each; \$5.00 per dozen.

SWEETSPIRE (*Itea virginica*). Low shrub; white, fragrant flowers in Summer and bright crimson foliage in Fall. 60c each; \$6.00 per dozen.

WHITE KERRIA (*Rhodotypos kerrioides*). In late Spring produces a multitude of pure white flowers an inch or more across. The ovate leaves have long, slender points and are bright green and lustrous. Some time after the flowers fall there is a large crop of black berries which cling to the branches throughout the Winter. This makes a very showy shrub, excellent for planting in the border with other types, and decidedly useful as a specimen plant. It is a native of Japan. 60c each; \$6.00 per dozen.

**You can set becoming and beautiful shrubs about your home now--
the kind that will lend character and charm--at greatly reduced cost**

Ornamental Flowering Shrubs

Our stock of shrubs is unsurpassed in quality, but our prices will be found much lower than those made by most nurserymen. As a rule, shrubs are much more effective when planted in masses, and our low prices permit them to be used freely in this way.

For a guide in planting, we have indicated the size the shrubs will eventually be, as follows: "H 3-4, S 3-4 June," which means

"height 3 to 4 feet, spread 3 to 4 feet, flowers in June." The sizes given can only be approximate, as the size shrubs attain varies considerably with soils and climate.

Shrubs marked (*) can be grown in partial shade, but they will also thrive in full exposure to the sun.

	Each	Per 12		Each	Per 12
ALMOND, Dwarf Double-flowering Pink. H 3-5 S-4, May	\$1.00	\$11.00	CYDONIA japonica (Japan Quince). Brilliant red. H 4-5, S 5	\$0.75	\$7.50
Dwarf Double-flowering White	1.00	11.00	DESMODIUM penduliflorum. An exceedingly graceful shrub-like plant covered with purplish red flowers in Summer-time when little else is in bloom; strikingly beautiful. H 3-4, S 4	.50	5.00
AMELANCHIER botryapium. H 8-10, S 6-8, May <i>canadensis</i> (Juneberry). H 12-15, S 12, April, May60	6.00	DEUTZIA candidissima. Double white flowers. H 6-8, S 6, May, June50	5.00
AMORPHA canescens. H 2-3, S 2, June.....	.50	5.00	crenata fl. pl. Double pink flowers, H 6-8, S 650	5.00
fruticosa (False indigo). H 6-8, S 8, June.....	.60	6.00	gracilis. Single white flowers. H 2-3, S 3. May	.60	6.00
ARALIA japonica. A distinct and most beautiful tall shrub with palm-like leaves and large heads of white flowers in August. H 8-12, S 5	.75	6.50	Lemoinei. A dwarf and exceedingly free-flower- ing shrub, with pure white single flowers. H 3, S 3, May60	6.00
pentaphylla. A shrub little known but very desir- able. The effect of the luxuriant glossy foliage on the arching branches is very beautiful. H 5-7, S 5-660	6.00	magnifica. The best large flowered Deutzia yet produced75	7.00
*BERBERIS thunbergi (Japanese Barberry). One of the most desirable shrubs in cultivation on account of its habit, foliage and fruit; fine for an untrimmed hedge. 18-24 in.40	4.00	Wellsi. Pure white double flowers. H 6-8, S 6. May50	5.00
..... \$30 per 100..			scabra (Pride of Rochester). Large-flowered Deutzia. A robust form with very handsome double white flowers tinged rose. Excellent for use as a specimen plant. One of the best varieties. H 6-8, S 5, June50	5.00
CALYCANTHUS floridus (Sweet-scented Shrub). H 5-6, S 4-5, June75	7.50	DIERVILLA sessilifolia (Native Weigela).....	.60	6.00
CARAGANA arborescens (Siberian Pea). Pale yel- low pea-shaped flowers. H 8-10, S 8, May June50	5.00	ELAEAGNUS angustifolia. Silvery gray foliage, like the Olive. H 10-12, S 8.....	.60	6.00
CEANOTHUS americanus (Jersey Tea). Sweet- scented white flowers. H 2-3, S 3, July-Sep- tember60	6.00	umbellata. H 10-12, S 860	6.00
CEPHALANTHUS occidentalis (Button Bush). Curious round balls of white flowers in July. H 6-8, S 650	5.00	EUONYMUS alatus (Winged Burning Bush). H 6-8, S 6	1.00	10.00
CERASUS virginiana. A large shrub with brilliant showy fruit; very attractive. H 10-12, S 6-8.	.60	6.00	europæus (European Burning Bush).75	7.50
CERCIS canadensis (American Red-Bud, or Judas Tree). 2-3 ft.75	7.50	americanus (Strawberry Bush). An erect grower that is attractive at all seasons of the year because of its slender green branches. The peculiar, rose-colored fruits, with scarlet pods, make this shrub extremely decorative75	7.00
CHIONANTHUS virginica (White Fringe). H 10-12, S 6-8, May, June	1.50		EXOCHORDA grandiflora (Pearl Bush). A rare Chinese shrub with pure white flowers. H 8-10, S 675	7.50
CLETHRA alnifolia (Sweet Pepper). Splendid Summer-blooming shrub, with deliciously sweet-scented white flowers. H 3-5, S 4, July- September50	5.00	FORSYTHIA Fortunei (Fortune's Golden Bell). Magnificent vigorous-growing shrub, covered with yellow bell-like flowers before the foliage appears in the Spring. Splendid for planting on steep banks, especially above a retaining wall, as some of the branches grow upright while the remainder will hang down over the well for several feet. H 6-8, S 5, April50	5.00
COLUTEA arborescens (Bladder Senna). Rapid grower. H 7-8, S 6-850	5.00	suspensa (Drooping Golden Bell). Long, pendu- lous branches which hang down over a wall like a vine50	5.00
CORNUS (Dwarf or Shrubby Dogwood). Very valuable shrubs on account of their easy growth, luxuriant foliage, bright-colored bark, and showy fruits. Fine for massed and water- side planting.			viridissima. This is the erect form of Forsythia. H 8-10, S 650	5.00
*alba sibirica (Red-twigged Dogwood). Fruit bluish-white. H 6-8, S 650	5.00	intermedia (Hybrid Golden Bell). This variety is a hybrid between <i>F. suspensa</i> Fortunei and <i>F. suspensa</i> , and is considered more handsome than either of its parents. Produces great quantities of golden yellow flowers on its slender, arching branches before the foliage ap- pears. H 6-8, S 6, April50	5.00
alba Spaethii aurea. Yellow variegated foliage. H 3-4, S 475	7.50	*HALESIA tetraptera (Silver Bell). This is one of the most beautiful-flowering large shrubs in cultivation; pure white bell-shaped flowers. H 15-20, S 875	7.50
*sanguinea (European Red Osier). Deep red bark; black berries. H 6-8, S 650	5.00	HAMAMELIS virginiana (Witch Hazel). Blooms in late Fall and early Winter. H 6-8, S 6....	.60	6.00
*sericea. Red bark, bluish fruit. H 8-10, S 6-8	.50	5.00			
*stolonifera (Red Osier; Cornel). Dwarf-spread- ing shrub; white berries. H 4-5, S 550	5.00			
*stolonifera pendula. Pendulous variety of above; distinct and fine50	5.00			
CORYLUS americana (American Hazelnut). H 8-10, S 6	1.00	10.00			
CRATAEGUS (Hawthorn). Very attractive spring- flowering shrubs. Very sweet-scented and showy. They are large shrubs and eventually grow into small trees, but the growth is slow. They are covered with attractive red berries in the Summer and Fall. H 10-20, S 10-20.					
coccinea (American Hawthorn)	1.25	10.00			

ORNAMENTAL FLOWERING SHRUBS—Continued

	Each	Per 12		Each	Per 12
*HYDRANGEA arborescens grandiflora. New variety with immense heads of white flowers. H 3, S 3	\$0.75	\$7.50	PHILADELPHUS—		
paniculata. Distinct from P. grandiflora. A very striking and elegant shrub. H 5-6, S 5	.75	7.50	Mont Blanc. One of the newer dwarf sorts; large white flowers borne in the greatest profusion. H 4-5, S 5	\$0.75	\$7.50
paniculata grandiflora. The well-known hardy Hydrangea. H 4-5, S 4.			Sutzmanni. Large showy white variety. H 8-10, S 8	.60	6.00
18 to 24 inches	\$.38 per 100	5.00	POTENTILLA fruticosa	.50	5.00
2 to 3 feet	.75	7.50	*PRIVET, Common. Desirable for hedging, and harder than California Privet...\$20 per 100	.50	4.50
HYPERICUM densiflorum. Yellow flowers. H 2-3, S 3	.50	5.00	medium. A Privet of beautiful habit; fruits immensely	.50	5.00
prolificum. H 2-3, S 2-3	.50	5.00	Polish. Upright vigorous grower and absolutely hardy \$25.00 per 100	.50	5.00
ITEA virginica. Sweet-scented white flowers in early Summer. H 4-5, S 4	.60	6.00	PRUNUS Pissardi (Purple-leaved Plum). Desirable on account of its rich purple foliage. H 10-12, S 8	1.50	
LILAC (Syringa). Common Purple	.60	6.00	PYRUS arbutifolia (Chokeberry). A native shrub of great beauty and easy culture. Covered with white flowers in early Spring, followed by bright red berries which last all Winter. H 4-5, S 5	.60	6.00
Common White. 2 to 3 feet	.60	6.00	RHODOTYPOS kerrioides. H 4-5, S 5	.60	6.00
persica (Persian Lilac). More graceful and more delicate than the preceding variety. The flowers are pale lilac, in panicles 3 to 4 inches broad, and open in late Spring. 3 to 4 feet	1.00	10.00	RHUS aromatica (Sweet-scented Sumac). H 4-6, S 5	.60	6.00
persica alba. White Persian Lilac. Small white flowers; similar in other respects to the type. 3 to 4 feet	1.00	10.00	copallina (Shining-leaved Sumac). H 4-6, S 5	.50	5.00
japonica. A new and unique species from Japan, attaining the size of a small tree, with large panicles of white flowers; foliage very large, thick and deep green color; blooms a month later than other lilacs	1.00	10.00	Cotinus (Purple Fringe). H 8-10, S 8	1.00	10.00
LONICERA (Upright Honeysuckle). These are very vigorous free-growing shrubs that are very showy and desirable, both on account of their pink or white flowers which are freely produced in the Spring and their bright red or orange fruit with which they are covered in the Summer. H 8-10, S 6-8.			typhina (Common Sumac). H 10-12, S 6	.50	5.00
fragrantissima. A very early sweet-scented species	.50	5.00	RIBES aureum (Missouri Currant). Splendid fragrant yellow flowers followed by black fruits, with a bluish bloom. Smooth, shining leaves. H 4-5, S 5, for Pennsylvania sales only	.50	5.00
Morrowi. Flowers pure white; fruit red	.50	5.00	ROBINIA hispida (Rose-flowered Acacia). Extremely free-flowering and attractive. H 4-5, S 5	.60	6.00
Ruprechtiana	.50	5.00	RUBUS odoratus (Thimble Berry). Splendid foliage and purplish flowers all Summer. H 4-6, S 5	.50	4.50
tatarica. Pink flowers	.50	5.00	SAMBUCUS canadensis (Common Elderberry). Very striking when planted in rich soil. H 6-8	.50	5.00
tatarica alba. White flowers	.50	5.00	racemosa (Red-berried Elder). Distinguished by its warty leaves and large cymes of white flowers. Showy red berries ripen in early mid-summer. A splendid sort to plant with S. nigra aurea as the former variety often has ripe fruits when the latter is blooming. H 6-8, S 5-6, May	.60	6.00
xylocsteum (Fly Honeysuckle)	.50	5.00	SPIRAEA arguta. Pure white flowers early in the Spring. H 5-6, S 5	.60	6.00
bella candida. Slender branches with bluish foliage. In the Spring it produces quantities of small white flowers. Later in the season the bush is covered with bright fruits, which are quite persistent. H 8-10, S 6-8. \$35 per 100	.50	5.00	Bumalda, Anthony Waterer. A beautiful dwarf flowering shrub of great popularity. This is a seedling of that variety of Spiraea japonica which is known in gardens as S. Bumalda, and which is distinguished by its dwarf, compact habit, its persistent flowering, and bright red flowers. Anthony Waterer differs from its parent in the deeper, brighter, and more intense color of the flowers. As it begins to flower freely when only a few inches high and continues to produce its large, flat corymbs from July until frost appears, this shrub promises to be a capital addition to the rather short list of Autumn-flowering hardy shrubs." H 2-3, S 3. Two-year-old plants \$38 per 100	.50	5.00
bella rosea. Exactly like bella candida in all respects, save that the flowers are pink	.50	5.00	callosa. Pink flowers all Summer. H 3-4, S 4	.50	5.00
PAVIA macrostachya (Dwarf Horse-chestnut). Beautiful spreading shrub with large heads of white flowers in June; fine for specimen on the lawn	2.50		callosa alba. Similar to the preceding variety, but with white flowers	.50	5.00
PHILADELPHUS (Syringa; Mock Orange). Vigorous growing with showy white and mostly sweet-scented flowers.			Douglasi. Deep pink spikes of flowers. Fine for massing. H 5-6, S 5. July, August	.50	5.00
aureus. Yellow-leaved. H 4-5, S 4-5	.75	7.50	Froebeli (Froebel's Spiraea). Free-blooming sort with pink flowers	.50	5.00
coronarius. Very sweet-scented white flowers. H 8-10, S 8	.50	5.00	opulifolia aurea (Ninebark). Vigorous-growing variety with yellowish foliage; white flowers followed by showy seed-pods. H 8-10, S 6	.60	6.00
Falconeri. Starry white flowers borne in great profusion. H 6-8, S 6	.50	5.00			
grandiflorus. Large flowers, very showy. H 8-10, S 8	.50	5.00			
Mer de Glace (Sea of Ice). Undoubtedly one of the most beautiful shrubs introduced in recent years. Everyone is familiar with the so-called Syringa or Mock Orange but Lemoine, the great French Hybridizer, has improved this old favorite wonderfully. The flowers are globular, semi-double, of a glistening pure white and deliciously sweet scented. It would be impossible for a shrub to bear more flowers and the smallest plants are covered. People who have seen it flower on our trial ground have been delighted with this shrub	1.50	15.00			

SPIRAEA—

	Each	Per 12
Reevesi fl. pl. Double white flowers in May. H 5-6, S 5	\$0.50	\$5.00
Thunbergi (Snow Garland). The first shrub to flower in the Spring; pure white flowers in profusion. Very lovely. H 4-5, S 4	.60	6.00
Van Houttei. A very graceful variety. One of the best; by many people considered the most satisfactory shrub in cultivation; white flowers in the greatest profusion in May. H 6-8, S 6.	.60	6.00
..... \$40 per 100..		
STEPHANANDRA flexuosa. A very graceful shrub, with deeply cut, fern-like foliage. H 3-5, S 4	.60	6.00
SYMPHORICARPOS. The Symphoricarpos are very desirable in the shade or under trees where nothing else will grow. They are covered with white or red berries in Fall and Winter.		
* racemosus (Snowberry). White-fruited. H 4-5, S 5	.50	5.00
* variegata. Beautiful variegated foliage. H 4-5, S 5	.40	4.00
* vulgaris (Indian Currant). Red-fruited. H 3-4, S 4	.50	5.00
..... \$33 per 100..		
TAMARIX. Tall, slender shrubs with feathery foliage and large panicles of lovely pink flowers in late Spring or early Summer.		
Africana. Slender, light green foliage and small pink flowers. The branches droop very gracefully. H 8-10, S 6	.50	5.00

	Each	Per 12
Gallica. Slender, spreading branches, the leaves dull bluish green. Buds are globose, the flowers flesh white in delicately paniced racemes. May-July	\$0.50	\$5.00
Odessana (Caspian Tamarix). 4 to 6 feet. Exquisitely feathered foliage of silvery green, blooming in July and August with large loose panicles of lavender-pink flowers. Dwarfier growing, more bushy and spreading than the others	.50	5.00
VIBURNUM dentatum. A most beautiful and satisfactory shrub. H 6-8, S 6	.60	6.00
lantana. Showy red fruit. H 8-10, S 6	.75	7.50
opulus sterile (Snowball). H 8-10, S 8	.60	6.00
oxycoccus (Cranberry Tree). Very showy red fruit. H 8-10, S 8	.75	7.50
WEIGELA amabilis. Light pink. H 6-8, S 8	.60	6.00
candida. White. Decidedly the most desirable of its color. H 6-8, S 8	.75	7.50
floribunda. Crimson. H 6-8, S 8	.75	7.50
hybrida, Eva Rathke. Very valuable ever-blooming variety; large crimson flowers. H 5-6, S 6	.75	7.50
hybrida, Floreal. Pale rose, shaded mauve, throat bright carmine; very showy	.75	7.50
hybrida, Gracieux. White, with sulphur throat; outside and buds salmon-pink. One of the most beautiful Weigelas	.75	7.50
rosea. Pink flowers. H 6-8, S 8	.60	6.00
rosea nana variegata (Variegated-leaved). H 4-5, S 5	.75	7.50
XANTHORRHIZA apiifolia	.40	4.00

Hardy Climbing Plants

	Each	Per 12
ACTINIDIA arguta. A Japanese climbing plant with attractive dark green foliage and a multitude of white flowers having purple centers. Edible fruits follow the flowers	\$0.60	\$6.00
AKEBIA quinata. Quite ornamental and graceful, with pretty dark leaves and numerous bunches of violet-brown flowers. Pleasing cinnamon fragrance. Prefers a sunny situation	.50	5.00
AMPELOPSIS quinquefolia. Virginia Creeper. Clings firmly to walls or any support and makes a dense covering because of its large, handsome, green foliage. In the Fall the leaves change to brilliant scarlet. One of the most decorative native climbers	.35	3.50
Veitchi. Boston Ivy. Grows very rapidly after it is once established, and clings closely to any surface. The large, dark green leaves turn to rich crimson in the Fall.		
Standard Plants	.40	4.00
Extra-strong Plants	.75	7.50
ARISTOLOCHIA siph. Dutchman's Pipe. Produces numerous bunches of brownish colored flowers which bear a slight resemblance to small pipes. The leaves are large and round, hanging so that they overlap each other and thus make a dense screen. 2-yr.	1.00	
CELASTRUS paniculatus. Japanese Bittersweet. Valuable because it grows in almost any soil and will succeed as well in shaded places as in sunny positions. The bright red fruits in orange pods usually remain throughout the Winter. This variety is not altogether hardy and should be planted in sheltered positions north of Pennsylvania	.35	3.50
scandens. American Bittersweet. Branches of this vine are often sold for Christmas decorations, because of the bright orange-colored pods and their attractive scarlet seeds. The vine makes a rapid growth	.35	3.50
CLEMATIS Henryi. Large creamy white flowers of remarkable beauty	1.00	10.00
Jackmani. Great velvety purple flowers are borne in profusion. This is the large-flowered sort commonly planted	1.00	10.00
virginiana. Climbs from 12 to 15 feet, and bears an abundance of white flowers	.35	3.50

	Each	Per 12
LONICERA Halliana. Hall's Japanese Honeysuckle. A strong-growing variety, which is in almost continuous bloom. The fragrant flowers open white and gradually change to buff		
..... \$15.00 per 100..	\$0.25	\$2.50
Japonica aureo-reticulata (L. brachypoda reticulata). Golden Honeysuckle. Great quantities of white flowers are borne in pairs. The foliage remains green until late in Autumn, and in protected locations may be evergreen all Winter	.25	2.50
Japonica. Bears a multitude of fragrant yellow flowers, but is particularly desirable because of its dark purplish green foliage, which is practically evergreen	.25	2.50
..... \$15 per 100..		
LYCIUM chinense. Matrimony Vine. Excellent for trellises or banks. The small purple flowers in Summer are followed by scarlet berries which cling long through the Winter. Makes a vigorous growth; if desired, it may be trained as a shrub	.35	3.50
*POLYGONUM Auberti. Perfectly hardy plant which covers itself with a quantity of snowy white flowers, borne in long racemes. Remarkable effects can be obtained when this vine is allowed to twine about an old tree. This variety is an improvement on P. baldschuanicum, as its flowers are larger and it is free from the disease which causes so much injury to the other sort	.75	7.50
VITIS æstivalis. American Wild Grape. A tall-climbing vine which makes a strong growth. The leaves are large and distinguished by a reddish brown fuzz on the under side. The berries are small, black, and exceedingly tough skinned	.50	5.00
vulpina (V. odoratissima). River Bank, or Frost Grape. Vigorous, tall climbing plant, with sweet-scented flowers. The berries are usually less than half an inch in diameter; quite sour	.50	5.00
WISTERIA sinensis. Chinese Wisteria. A hardy, tall-growing climber with pale green, compound foliage, and purplish pea-green flowers in clusters a foot long. Usually blooms in May.	1.00	10.00
sinensis alba. Has white flowers instead of purple ones; in other respects it is similar to the type	1.00	10.00

Ornamental Deciduous Trees

Norway Maple

(*Acer Platanoides*)

Large, handsome trees with spreading branches and a compact, round head. Splendid for edging avenues as the trees make a uniform growth. The leaves are bright green and in the Fall fade to shades of yellow and gold. One of the most popular shade trees. 8 to 10 ft., \$4.00 each.

Wier Cutleaf Maple

(*Acer Saccharinum Wieri*)

A spreading form of the Silver Maple with deeply cleft and divided leaves. The pendulous branches often sweep the ground and give the tree a most graceful appearance. One of the most popular ornamental trees. 8 to 10 ft., \$2.50 each.

Horse-Chestnut

(*Aesculus Hippocastanum*)

The white blooms, tinged with red, are borne in showy clusters 8 to 12 inches long. A prickly green "overcoat" encloses the large, brown attractive nuts so much sought for by children. Forms a large tree, quite commonly used for a shade tree or for edging avenues. 5 to 6 ft., \$3.00 each.

Umbrella Tree

(*Catalpa Bungei*)

The straight, upright trunk and the round head of large, green leaves, makes this form exceedingly useful in formal landscape plantings. 1-yr. heads, 5 to 6 ft., \$2.50 each; \$25.00 per doz. 2-yr. heads, 6-8 ft., \$3.00 each; \$30.00 per doz.

Tulip Tree

(*Liriodendron Tulipifera*)

The conspicuous yellow flowers resemble greenish yellow tulips. Their unusual shape gives you the impression of having the top cut off. A handsome tree for lawn and landscape. Should be transplanted in the Spring. 6 to 8 ft., \$2.50 each.

Maidenhair Tree

(*Ginkgo Biloba*)

6 to 8 feet \$2.50 each.

Teas Weeping Mulberry

(*Morus Tatarica Alba Pendula*)

A weeping form of Mulberry grafted on a straight trunk; the long, slender branches droop to the ground. 1-yr. heads, \$3.50 each. 2-yr. heads, \$5.00 each.

Oriental Plane or Sycamore

(*Platanus Orientalis*)

One of the best street trees known, because it is able to endure smoke and poor soil. The bark is white and peels off at intervals, which gives the tree a very picturesque aspect in Winter. 8 to 10 ft., \$3.00 each; \$30.00 per doz.

Lombardy Poplar

(*Populus Nigra Italica*)

Makes a rapid growth, like all Poplars, and is particularly suited to planting in poor soil where most trees would fail. In addition, its tall, narrow form makes it an excellent accent tree. 6 to 8 ft., \$1.25 each; \$13.00 per doz. 8 to 10 ft., \$1.50 each; \$15.00 per doz.

Purple Leaved Plum

(*Prunus Pissardi*)

Unlike most foliage of unusual shade, this retains its purple color all through the season. In Spring the limbs are covered with a profusion of pink blooms, which harmonize splendidly with the color tone of the unfolding leaves. 3 to 4 ft., \$1.50 each; \$15.00 per doz.

Triloba. \$1.50 each; \$15.00 per doz.

Pin Oak

(*Quercus Palustris*)

Grows as fast as any of the Oaks and forms a handsome tree with drooping branches. The crown is broad and shapely. Produces quantities of light brown acorns. 6 to 8 ft., \$2.50 each; \$27.50 per doz. 8 to 10 ft., \$3.00 each; \$33.00 per doz.

Flowering Crab Apples

(*Malus (Pyrus)*)

Coronaria. Common Wild Crab-Apple. \$1.50 each; \$15.00 per doz.

Floribunda. Flowers are of a deep rose color in bud but turn white before the petals fall, and are borne in the greatest profusion. A broad shrub and unquestionably one of the most handsome and satisfactory of all the flowering trees. 3 to 4 ft., \$2.00 each; \$20.00 per doz.

loensis bechteli. Bechtel New Double-flowered Crab. In early Spring this variety is almost covered with large, double, delicate pink flowers which look like small clustered roses. Symmetrical in growth; last Crab-apple in the collection to bloom. 3 to 4 ft., \$2.00 each; \$20.00 per doz.

Willows

Salix Babylonica (Weeping Willow). \$1.50 each.

Caprea (Pussy Willow). \$1.00 each; \$10.00 per doz.

Pentandra (Laurel Leaved Willow). 75c each; \$7.50 per doz.

Vitellina Aurea Pendula (Golden Eark Weeping). \$1.50 each.

Vitellina Britzensis (Flame-colored Willow). 75c each; \$7.50 per doz.

Mountain Ash

(*Sorbus Aucuparia*)

A small tree with symmetrical, round-topped crown. In late Spring or early Summer great corymbs of white flowers make the tree extremely attractive. In Fall there are large clusters of bright red berries which may remain the greater part of the Winter. 6 to 8 ft., \$2.50 each; \$25.00 per doz.

Elm

(*Ulmus Americana*)

A large stately tree with long, graceful branches. The limbs often turn abruptly down from the trunk and form a very graceful vase-like effect. Lives to a great age and is one of the most desirable trees for a lawn and street planting. 8 to 10 ft., \$2.50 each; \$25.00 per doz.

Hazelnut

Corylus Americana. 3 to 4 ft., \$1.00 each; \$10.00 per doz.



Platanus Orientalis—Oriental Plane.

Roses for Fall Planting

Dormant Hardy Roses can be supplied from October to December 1

We have decided to offer Dormant Roses for Fall delivery only, as we find many of our customers delay ordering in the Spring until it is too late to plant. It is important in planting Dormant Roses to cut them well back; one-half the tops should be cut off when planted in the Fall, and any wood that Winter-kills should be cut off early in the Spring.

The varieties of Roses now offered are innumerable, and this great list is added to every year by a host of new varieties which make an intelligent selection of varieties impossible to most buyers. We have reduced our lists to a few of the very best varieties, and no one can make a mistake in selecting any of the sorts offered.

Hybrid Tea and Tea Roses should be planted in the Spring, and a selection of the best varieties is offered in our Spring Catalog.

Hybrid Perpetual Roses

Baroness Rothschild. Large, pale rose blooms of superb shape, each set in a cup of lovely foliage. Delightfully fragrant.

Captain Christy. The plump buds have backward curling petals, which show perfectly the contrast of light and dark pink. When open the blooms are darker toward the center. The plant is rather dwarf but is exceedingly vigorous and produces a great number of blooms annually.

Captain Hayward. Bright crimson-carmine blooms of perfect form; exceedingly fragrant.

Clio. The large globular flowers are borne on long stems, making this a valuable variety for cutting. The color is satiny flesh, with pink center.

Frau Karl Druschki. One of the most popular white Roses. The blooms are quite large, sometimes exceeding 5 inches in diameter. The growth of the plant is unusually strong; it bears great quantities of blooms in June and occasionally will bloom in the Autumn.

General Jacqueminot. An old variety with large, full blossoms, brilliant scarlet-carmine, with deeper veining near the petal bases. Often called the "Jack Rose" and considered one of the best of its color and class. No rose collection is complete without it.

George Ahrends. The plant makes a strong growth, and bears an abundance of well-formed pink flowers.

Magna Charta. Noted for its fragrance and abundance of blooms. The color of the flowers is a rosy pinkish-carmine.

Mme. Gabriel Luizet. Light, satiny pink blooms of splendid form. A variety which is not found in many collections.

Mrs. John Laing. Soft pink blooms, extremely large and exceedingly fragrant. Most attractive when in bud, as the petals are quite long. The plant makes a strong growth.

Ulrich Brunner. The light red flowers are borne in profusion, on long stems. The color of this flower is quite distinct from other red varieties in this list.

Prince Camille de Rohan. Very dark, velvety crimson, almost black. Many experts consider this to be the best dark Rose in existence.

Paul Neyron. Dark rose; of enormous size; perhaps the largest of all.

Prices, except where noted, for strong, 2-year, field-grown plants, \$1.00 each; \$10.00 per 12.

Miscellaneous Varieties

Persian Yellow. An Austrian Briar Rose, which is very popular because of its splendid golden yellow color. Although the flowers are only medium in size they are extremely full. 90c each; \$9.00 per 12.

Harrison's Yellow. Brilliant golden yellow, semi-double flowers completely cover the sturdy plant in Spring. A splendid variety. 90c each; \$9.00 per 12.

ROSA rugosa. Forms an upright shrub, with spreading branches densely covered with spines and prickles. The leaves are wrinkled, dark lustrous green above, lighter beneath. The blooms are purple or white, and ordinarily 3 inches or more across. They are followed by bright red fruits which cling to the bush a long time. 75c each; \$7.50 per 12.

rugosa alba. Originally imported from Japan. Pure white flowers with five petals, highly scented, followed later by pretty berries. 90c each; \$9.00 per 12.

Bianc Double de Coubert. One of the best Rugosa types. The blooms are often 4 to 5 inches in diameter. Semi-double; pure white in color; attractively fragrant. 90c each; \$9.00 per 12.

Conrad Meyer. When fully opened the blooms are clear silvery rose; they possess a fragrance which is delicately penetrating. 90c each; \$9.00 per 12.

ROSA carolina. The well-known American Wild Rose which produces quantities of pink blooms in July. 50c each; \$5.00 per 12.

lucida. A dwarf form of R. carolina. The attractive bright pink flowers are followed by brilliantly colored berries. 50c each; \$5.00 per 12.

multiflora. A beautiful white Japanese Rose which is frequently used as a climber. 50c each; \$5.00 per 12.

rubiginosa. The single bright pink flowers are borne in small clusters. The foliage is blue-green, tinged with purplish red. 50c each; \$5.00 per 12.

setigera (Prairie Rose). Valuable climbing sort, which attains a height of 6 feet. The single, deep rose flowers are borne in great abundance. 50c each; \$5.00 per 12.

spinossissima (Scotch Rose). Flowers are borne singly but are occasionally a light pink or yellow. Ordinarily white, they are closely arranged along the stems. The blooms are followed by black fruit. This Rose is considered the best hardy substitute for the matchless Cherokee Rose of the South. Pot-plants, \$1.00 each.

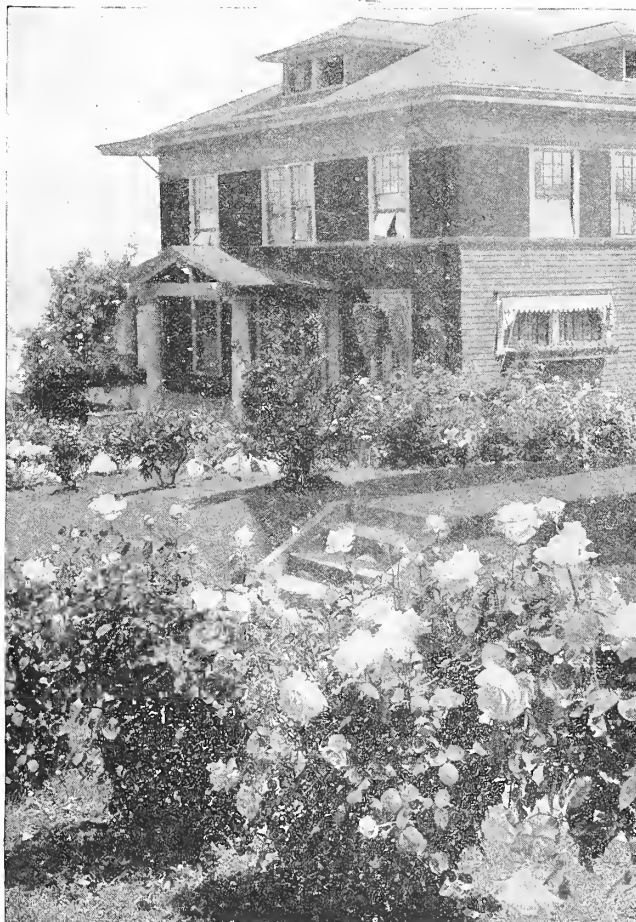
Moss Roses

These Roses are hardy and vigorous, thriving in almost any soil. Prune only the very old canes, as flowers are produced only on canes which are more than two years old.

Blanche Moreau. Large, pure white flowers are borne in clusters. Both flowers and buds are heavily mossed. 90c each; \$9.00 per 12.

Crested Moss. Deep pink flowers of delightful fragrance. 90c each; \$9.00 per 12.

Salet. Rose-pink, with very double blooms. 90c each; \$9.00 per 12.



Frau Karl Druschki Roses.

Climbing and Rambler Roses

Climbing and Rambler Roses are valuable for covering porches, verandas, side-walls, pillars, fences, etc. They are unequalled as ornamental plants and will be found as useful for this purpose as any other climber. They are hardy and require very little pruning.

CLIMBING AMERICAN BEAUTY

A new Rose of great merit. A cross between American Beauty and an unnamed seedling. Color a rosy crimson, similar to its popular parent, and with the same exquisite fragrance, a quality rarely found in Climbing Roses. The plant is of strong habit of growth, making shoots from 10 to 15 feet in one season, and as hardy as an oak. The flowers are from 3 to 4 inches in diameter, of fine form, and are produced in great profusion, not only in May and June, but there is a fair sprinkling of flowers throughout the growing season. **75c each; \$7.50 per 12.**

CLIMBING ROSE, LADY GAY

A new Rambler variety of remarkably vigorous growth, with flowers of a delicate cerise-pink, passing to soft, tinted white. The effect of a plant in full bloom with the combination of the soft white flowers, cherry-pink buds, and deep green of the foliage is indeed charming. **Strong two-year-old plants, 60c each; \$6.00 per 12.**

NEW RAMBLER, TAUSENDSCHOEN

This is an entirely distinct break, not only in rambles, but in climbing Roses generally. The individual flowers are very large for this type of Rose, being fully 3 inches across, and of a most elegant and graceful form, not stiff or unnatural, but as beautiful as a semi-double azalea. In color it is a most delightful shade of soft pink when first opening, changing to paler pink when fully expanded and finally to white. These are produced in trusses of from ten to fifteen flowers. **2-year-old plants, 60c each; \$6.00 per 12.**

AMERICAN PILLAR

A new single-flowering variety of great beauty, which appeals to everyone. The flowers are of enormous size, 3 to 4 inches across, of a lovely shade of pink, with a cluster of yellow stamens. These flowers are borne in immense clusters, and a large plant in full bloom is a sight not easily forgotten. They last in perfection a long time, and are followed by brilliant red hips or berries, which are carried late into the Winter; and as the plant frequently retains its lovely green foliage until the end of November, it forms a beautiful decorative subject throughout the Autumn months. **Strong, two-year-old plants, 75c each; \$7.50 per 12.**

AVIATEUR BLERIOT

(The New Yellow Rambler)

We have discarded the old Yellow Rambler in favor of this new variety, in which we have a strong-growing plant with beautiful glossy, insect- and disease-proof foliage, and bearing large clusters of medium-sized full double flowers of a saffron-yellow, deepening to an almost golden yellow at the center. **90c each, \$9.00 per 12.**

CRIMSON RAMBLER

It is strikingly beautiful, absolutely hardy and no Rose can be used for more purposes. As a climber it is unsurpassed, perhaps unequalled; as a pot-plant for forcing, the florists are finding it extremely popular. By keeping it cut down it makes a splendid bedding Rose, and a hedge of it is a most beautiful object. **75c each; \$7.50 per 12.**

DOROTHY PERKINS

This is a splendid new shell-pink climbing Rose. It attracted much attention at the Pan-American Exposition, where a bed of fourteen-months-old plants produced a show of bloom unequalled by any other variety. This new Rose is of the same strong habit of growth as Crimson Rambler, and the flowers are borne in clusters of 30 to 40, and sometimes even 50 to 60. The flowers are large for a Rose of this class, very double, sweet-scented and of a beautiful shell-pink. Raised from seed of Rosa Wichuraiana and crossed with that grand old Rose, Mme. Gabriel Luizet. Absolutely hardy. The individual flower is larger than the Crimson Rambler, and is a beautiful shell-pink in color. **60c each; \$6.00 per 12; \$40.00 per 100.**

HIAWATHA

Distinctly different from other Rambles. Its small, single flowers—deep ruby-crimson, wonderfully bright—accentuated by a white eye—are uniquely borne on long trails of 40 to 50. This is a charming variety destined to become very popular among Rose lovers. Lovers of single Roses will be delighted with it. In our opinion this Rose is the best and most attractive of all the recent Wichuraiana and Rambler hybrids, which have been so freely offered. **60c each; \$6.00 per 12.**

DR. W. VAN FLEET

A Rose, which on account of its dainty color and exquisitely shaped buds and flowers, appeals to everyone. The long pointed buds are of a rich flesh-pink on stems 12 to 18 inches long; splendid for cutting. **75c each; \$7.50 per 12.**

WHITE DOROTHY

Among Rambler Roses, none has justly gained greater popularity than the beautiful pink Dorothy Perkins. The White Dorothy is a duplicate, in all respects save its color, which is a clear, glistening white. A decided acquisition to this class of Roses. Among the multitude of new Roses offered this is one of the few worth planting. **Strong, two-year-old plants, 50c each; \$5.00 per 12.**

EXCELSA

(Red Dorothy Perkins)

This is a most beautiful Rose and we look to see it supersede Crimson Rambler as soon as it is better known. The color is clear, bright crimson with no trace of magenta, and the foliage is always clean and glossy, with never any of the mildew which sometimes makes Crimson Rambler unsightly. **60c each; \$6.00 per 12.**

PAUL'S SCARLET

The best of the newer scarlet climbers and a real improvement on the older sorts. **\$1.00 each.**

ROSA WICHURAIANA

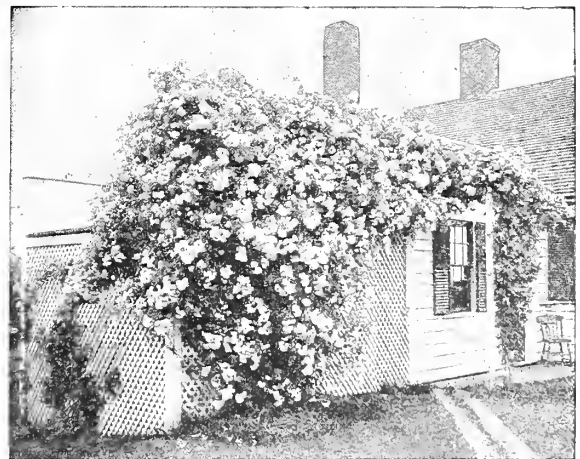
In some respects this Rose, which is also known as the "Memorial Rose," is better than Crimson Rambler, although it lacks the brilliant color of its more advertised contemporary. As a climber for covering porches, trellises and arches, and as a creeper for covering steep banks or any ground needing covering, it is unequalled. The foliage is a lustrous shining green. In bloom the plant is literally covered with exquisitely beautiful single white flowers which are followed by an abundant crop of bright red hips or berries, which remain on the plant all Winter. The Rose is entirely free from attacks of insects or disease, and is absolutely hardy, root and branch. **Strong two-year-old plants, 60c each; \$6.00 per 12.**

MARY WALLACE

The attractive new climber raised by the late Dr. Van Fleet and first disseminated in 1924 by the American Rose Society, under the auspices of the Department of Agriculture. Semi-double, bright clear rose-pink flowers with salmon base to petals. **\$1.00 each; \$10.00 per doz.**

ROSE-PINK ROAMER

This is a hybrid of the Sweetbrier, and carries its characteristics in bloom, while the growth, which is very rampant, partakes more of the Wichuraiana. The single flowers which are produced in close heads are nearly 2 inches in diameter, bright rich pink with almost a white center, which lightens up the orange-red stamens, producing a fine effect. **50c each; \$5.00 per 12.**



Dorothy Perkins.

Please Read Before Ordering

ORDERS. All orders are accepted by the Elliott Nursery Company subject to the following terms and conditions:

TERMS OF PAYMENT. Our terms of payment are invariably cash on delivery. This does not mean that we ship C. O. D., as we will not do so under any circumstances. We deliver the goods and mail bills at the same time, and expect payment within a few days. People unknown to us will please send cash or reference with their order.

PRICES AND PACKING. Prices in this catalog are made subject to stock offered being unsold when ordered, and include all charges for packing trees, shrubs, plants, and bulbs.

Six plants of a kind will be furnished at the dozen rate; 50 or more at the 100 rate; 500 or more at the 1,000 rate. Less than 6 plants of one kind or variety will be sold only at the single rate.

All prices f. o. b. shipping point.

FORWARDING. Shipments will be forwarded exactly as directed, but when without instructions we will use our best judgment and will forward by shortest and safest route. We recommend that all Herbaceous Plants be shipped by express.

RISK. All goods are at the customer's risk after they are delivered to the forwarding company and we receive their receipt for the shipment in good condition.

CLAIMS FOR DAMAGES WHILE IN TRANSIT must be made to the delivery company. Have the delivery agent note the damaged condition on the freight bill and promptly present your claims to the transportation company. Send us copy of all papers so we can help secure prompt settlement.

PARCEL POST. Small shipments can be sent by parcel post. All such shipments will be sent insured, insurance and postage to be paid by the customer.

SHIPPING DIRECTIONS. Please give exact shipping directions, stating whether the stock is to be shipped by freight or express, and by what route. Early orders for trees and bulbs can be shipped by freight.

INSPECTION AND FUMIGATION. Our stock is regularly inspected, and certificates will be sent with each shipment. Stock will be fumigated when requested or when the state laws require it.

IMPORT ORDERS are taken subject to failure of crops and to restrictions of quarantines promulgated by the Federal Horticultural Board.

NO AGENTS EMPLOYED. From time to time it has been reported to us that people have represented themselves as our agents in various parts of the country. We employ no agents whatever, but do an exclusive retail business direct with our customers.

GUARANTEE. We guarantee all nursery stock furnished by us to be first class, true to name. We do not guarantee the stock to grow, neither do we guarantee the result in any way. No complaint will be entertained that is not made immediately upon receipt of stock. There are so many causes for failure, over which we have no control, that we can assume no responsibility after the stock is delivered in good order to the transportation company. Poor soil, changeable weather, ignorant or careless culture—all contribute to failure. A catalog as comprehensive as this must of necessity offer some varieties of difficult culture; when these are ordered we presume the people ordering have the knowledge needed for that culture. Successful gardening requires knowledge, enthusiasm, and perseverance, and these we cannot supply.

PLEASE PRINT YOUR NAME AND ADDRESS on your order. Many times it is extremely difficult to read these two important parts of an order, and the shipment may go astray.



ELLIOTT NURSERY COMPANY

Magee Bldg., 336 Fourth Ave.

PITTSBURGH, PENNSYLVANIA