

Historic, archived document

Do not assume content reflects current scientific knowledge, policies, or practices.

ESTABLISHED 1848

R. Douglas' Sons

WAUKEGAN NURSERIES

Grand Ave.

WAUKEGAN, ILLINOIS

Long Distance Phone Waukegan 30

Spring Price List 1926



GROWERS OF:

HIGH GRADE

ORNAMENTAL SHADE TREES,

POPULAR SHRUBS,

VINES AND ROSES,

FRUIT TREES AND BUSHES

AND SPECIMEN EVERGREENS.

TERMS AND CONDITIONS OF SALE

Our Nursery is located 36 miles north of **Chicago** on the main line of the Chicago and North Western R. R. $1\frac{1}{2}$ miles west of the City of Waukegan Depot. The Chicago North Shore and Milwaukee Electric Railway passes within 10 minutes walk of our Nursery—Grand Ave. station. Chicago North Shore and Milwaukee Ry. Grand Ave. Busses can also be taken in the city of Waukegan at intervals of 20 minutes, these pass our Nursery.

Automobile Route Sheridan Road Route No. 42 to Waukegan, turn west on **Grand Ave.** to Nursery, distance about one mile, or Green Bay Rd. Route No. 42A to **Grand Ave.**, Waukegan, and turn east to Nursery, about one mile.

Conditions: We accept all orders upon condition that they shall be void should any injury befall stock from causes over which we have no control. At the low prices at which our stock is sold we give no warranty except genuineness, expressed or implied, the purchaser assuming all risk and responsibility in the transportation, planting, growth, and life of stock. Our responsibility ceases when goods are turned over to carriers.

Prices: Do not include any guarantee as to growth, except as agreed at the time of purchase.

Terms: To parties unknown to us we must ask for remittance with order or a sufficient amount to cover at least one third of bill, balance to be paid on delivery of stock. Satisfactory references will also expedite shipment of goods.

Payments: All bills are due and payable the first of the month following purchase, unless otherwise arranged.

Prices for Spring 1926: Five plants of same variety will be charged at the 10 rate, while 50 or more of one variety will be charged at special rate. Ask for quotations on quantities.

When special selection is asked for an additional charge of 15% will be added to catalogue price for selected stock.

Packing: Stock is sold F. O. B. our Nursery. Freight or Express shipments are delivered to station free of charge, Boxing and Baling is charged at cost.

We deliver by Motor Truck if requested, within a radius of 25 miles. This delivery is charged at cost. Motor Truck delivery is the better way of transportation within above mentioned radius, as this assures quicker and safer delivery, and save unnecessary boxing and baling expense.

Claims for errors or omissions must be reported upon receipt of goods to enable us to investigate and rectify same. Unless this is adhered to we cannot accept responsibility.

HARDY EVERGREENS. Are the most conspicuous in garden and lawn decoration, there is always an abundance of touch to their very decorative qualities, and when other plants, trees and shrubs have lost their beautiful appearance, the Evergreen towers above them with all dignity and color and adds warmth to the picturesque home.



BALSAM FIR. A handsome compact tree, short needles, dark green above and silvery tint beneath, a good grower.



NORWAY SPRUCE. A lofty elegant tree of perfect pyramidal habit, exceedingly picturesque and beautiful dark green color.

ENGELMAN SPRUCE a very fine specimen tree with rich colored foliage of bluish tint underneath.

**R. DOUGLAS' SONS WAUKEGAN, ILL.
EVERGREENS**

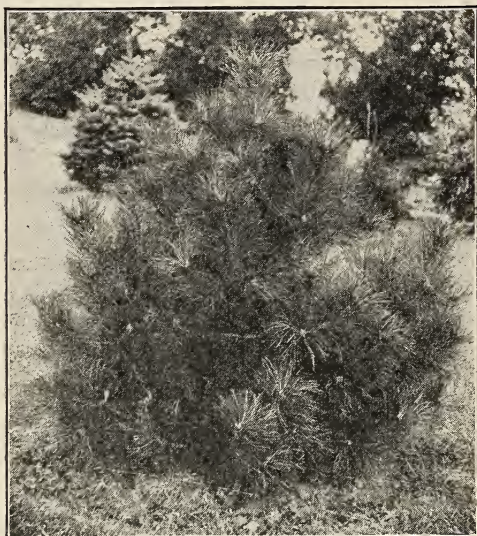
	Each	Ten Rate Each
Abies Balsame (Balsam Fir)		
2- 3 feet	\$ 3.50	\$ 3.25
4- 5 feet	6.25	5.75
Abies Douglassi (Douglas Fir)		
2- 3 feet	4.25	3.75
3- 4 feet	5.50	5.00
4- 5 feet	7.00	6.25
5- 6 feet	8.50	7.50
6- 7 feet	10.50	9.00
Juniperus Hibernica (Irish Juniper)		
12-18 inches	1.50	1.25
18-24 inches	2.25	2.00
24-36 inches	2.75	2.50
Juniperus Sabina (Cypress Savin Juniper)		
8-10 inches	1.75	1.55
Juniperus Suecica (Swedish Juniper)		
12-15 inches	1.50	1.25
Juniperus Pfitzeriana		
30-36 inches	8.50	7.50
Juniperus Virginiana (Red Cedar)		
1½- 2 feet	1.75	1.55
2- 3 feet	2.25	2.00
3- 4 feet	3.75	3.50
4- 5 feet	5.50	5.25
Picea Canadensis (White Spruce)		
2- 3 feet	2.75	2.50
3- 4 feet	5.00	4.50
4- 5 feet	6.75	6.00
5- 6 feet	8.50	7.75
6- 7 feet	9.50	8.50
7- 8 feet	11.50	10.50
10-12 feet	14.00	13.00
12-14 feet	16.50	15.50
Picea Engelmanni (Engelman Spruce)		
4- 5 feet	10.50	9.00
5- 6 feet	12.00	11.00
6- 7 feet	14.00	13.00
Picea Excelsa (Norway Spruce)		
1½- 2 feet	2.25	2.00
2- 3 feet	2.75	2.50
3- 4 feet	4.75	4.25
4- 5 feet	6.25	5.75
5- 6 feet	8.50	7.75
6- 7 feet	10.25	9.75
7- 8 feet	12.50	11.50
8- 9 feet	16.00	14.50
9-10 feet	18.00	16.50
10-12 feet	20.00	19.00
12-14 feet	25.00	22.50
Picea Pungens Glauca (Colorado Blue Spruce)		
1- 2 feet	6.25	5.75
2- 3 feet	8.25	7.50
3- 4 feet	9.50	8.75
4- 5 feet	11.00	10.00
5- 6 feet	14.50	13.50
6- 7 feet	17.50	16.25
Picea Pungens Viridis (Colorado Green Spruce)		
2- 3 feet	5.50	5.25
3- 4 feet	7.50	7.00
4- 5 feet	9.00	8.50
5- 6 feet	11.50	10.00
6- 7 feet	15.00	14.00

Evergreens are dug with ball of earth and burlapped



COLORADO BLUE SPRUCE. This is the king of Spruces, clothed in robes of silver and sapphire, a very Kohinoor among the gems of West Rockies.

COLORADO GREEN SPRUCE is also very beautiful in shape and color and very much like the Blue Spruce in habit.



PINES. Our variety of Pines gives you an assortment of the very best. These are very valuable in any setting as they are rapid growers and add their charm to any landscape, also used extensively for wind breaks and forest planting.

Growers of High Grade Nursery Stock since 1848

	Each	Ten Rate Each
Pungens Kosteriana (Koster Blue Spruce)		
2- 3 feet	13.50	12.00
3- 4 feet	16.50	15.00
4- 5 feet	20.00	18.00
5- 6 feet	23.00	21.00
Pinus Austriaca (Austrian Pine)		
4- 5 feet	7.00	6.50
Pinus Montana Mughus (Mugho Pine)		
2-2½ feet	8.50	7.50
Pinus Ponderosa (Western Yellow Pine)		
1½- 2 feet	1.75	1.55
2- 3 feet	2.50	2.25
Pinus Resinosa (Red Pine)		
2- 3 feet	5.00	4.50
3- 4 feet	6.25	5.75
4- 5 feet	7.25	6.75
Pinus Strobus (White Pine)		
1- 2 feet	2.25	2.00
2- 3 feet	2.50	2.25
3- 4 feet	3.50	3.25
4- 5 feet	5.00	4.50
5- 6 feet	7.00	6.50
8- 9 feet	14.00	13.00
10-12 feet	18.00	16.00
12-14 feet	19.00	17.00
Pinus Sylvestrus (Scotch Pine)		
1½- 2 feet	2.50	2.25
2- 3 feet	3.10	2.85
Retinospora Plumosa (Plume Cypress)		
12-15 inches	2.75	2.50
Taxus Canadensis (Canadian Yew)		
8-10 inches90	.85
10-12 inches	1.20	1.15
Thuja Compacta		
1½- 2 feet	1.75	1.55
Thuja Ellwangeriana (Tom Thumb Arbor Vitae)		
8-10 inches	1.00	.95
10-12 inches	1.50	1.25
12-18 inches	1.75	1.55
Thuja Globosa (Globe Arbor Vitae)		
8-10 inches	1.45	1.25
10-12 inches	1.75	1.55
15-18 inches	2.25	2.00
18-24 inches	3.50	3.25
2- 3 feet	5.25	4.75
3- 4 feet	6.25	5.75
Thuja Occidentalis (American Arbor Vitae)		
1-1½ feet	1.00	.95
1½- 2 feet	1.75	1.55
2- 3 feet	2.75	2.50
3- 4 feet	5.00	4.50
4- 5 feet	6.00	5.50
5- 6 feet	7.50	7.00
Thuja Occidentalis Hoveyi (Hovey Arbor Vitae)		
1-1½ feet	1.90	1.75
2- 3 feet	3.75	3.50
3- 4 feet	6.25	5.75
Thuja Occidentalis Wareana (Siberian Arbor Vitae)		
1½- 2 feet	3.50	3.25
2- 3 feet	5.00	4.50
Thuja Pyramidalis		
10-12 inches	1.75	1.55
12-18 inches	2.25	2.00
18-24 inches	2.50	2.25
2- 3 feet	3.10	2.85
3- 4 feet	4.25	3.75
5- 6 feet	7.50	6.50

Evergreens are dug with ball of earth and burlapped



ARBOR VITAE. The variety of these plants makes them an added necessity to your home lawn and garden decoration, they are used extensively for hedge work and for planting along the house and porch, they are compact in habit and are very hardy and rapid growers.

IRISH JUNIPER. Very erect and tapering in its growth; silvery green foliage; a pretty little tree; very hardy and ornamental.

SAVIN JUNIPER. This plant is of a spreading habit; dark green foliage, which color it maintains all year.

SWEDISH JUNIPER. Grows very tall in column form; of rich silvery green color and dense foliage.

JUNIPER PFITZERIANA. Has a spreading habit of rich silvery green foliage, very fine in appearance; one of the best for low planting.

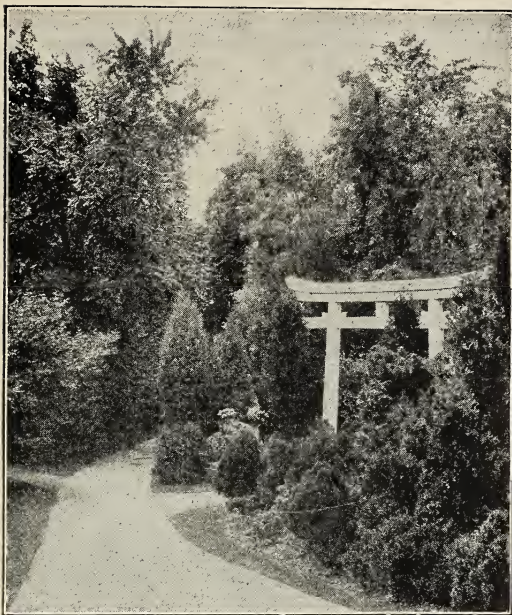
RED CEDAR. This type of plant grows symmetrical in form, foliage is a nice green turning to purple color in fall.



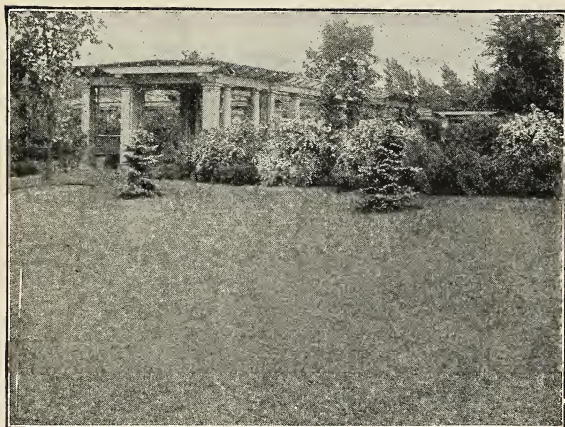
DOUGLAS FIR. This type has proven very popular in our section of the country; branches spread horizontal and foliage is of light green above and silvery white below.

KOSTER BLUE SPRUCE. This is the most showy of the Blue Spruce; is a grafted type producing a rich blue color almost white; considered the finest type of Spruce.

RETINOSPORUS PLUMOSA. A dwarf Japanese Cypress of low-spreading habit; color of foliage sea green and is very graceful.



We stop to admire the attractive lawns with their abundance of shrubs, vines, shade trees, and evergreens: Why? It was an inspiration to us to behold nature's beauty so diversified, yet so attractive.



We should give equal consideration to the outer appearance of our surroundings: It is surprising what a little touch of Nature will do for us, with just a little effort on our part in helping it's levelopement.

PLAN TO PLANT ANOTHER TREE, SHRUB,
VINE or EVERGREEN.

DECIDUOUS TREES

There is an untiring loveliness in trees as they continually change with the seasons. At the first breath of Spring, the swelling buds open into dainty flowers, often inconspicuous, but none the less beautiful, then follows the delicate tints of expanding foliage that deepen into the richness of mid-summer greens. The chill of autumn brings new beauty in the myriad of gorgeous hues that come almost overnight. Even in the bleak cold days of winter there is beauty in bark and twig and form.



MAPLE TREES. This variety of trees are used extensively for parks, lawns or streets, are always beautiful, with an abundance of foliage and large crowns.



CATALPA TREES This ornamental tree is becoming very much of a favorite, for its beautiful shaped crown make it quite an attraction, they are also very hardy and flourish in most any soil.

	Each	Ten Rate Each
DECIDUOUS TREES		
Acer Dasycarpum (Silver or Soft Maple)		
1½- 2 inches caliper	2.75	2.50
2-2½ inches caliper	3.50	3.25
Acer Platanoides (Norway Maple)		
1½- 2 inches caliper	3.10	2.85
Acer Rubrum (Bar Harbor Maple)		
1½- 2 inches caliper	3.10	2.85
Betula Papyrifera (Canoe Birch)		
1½- 2 inches caliper	2.75	2.50
Catalpa Bungei (Umbrella Catalpa)		
5- 6 feet	1.75	1.55
6- 7 feet	2.25	2.00
3 year very heavy	3.50	3.25
Catalpa Speciosa (Western Catalpa)		
1½- 2 inches caliper	1.75	1.55
Fraxinus Americana (American White Ash)		
1-1½ inches caliper	2.25	2.00
Juglans Nigra (Black Walnut)		
1½- 2 inches caliper	3.50	3.25
Malus Florabunda (Japanese Flowering Crab)		
3- 4 feet	1.10	1.05
Malus Niedwetzkyana (Japanese Flowering Crab)		
3- 4 feet	1.10	1.05
Malus Schedecki (Japanese Flowering Crab)		
3- 4 feet	1.10	1.05
Malus Wensis Plena (Bechtels Crab Tree)		
3- 4 feet	1.10	1.05
Morus Tartarica Alba (Russian Mulberry Tree)		
3- 4 feet50	.45
4- 5 feet65	.60
6- 7 feet	1.00	.95
Morus Tartarica Pendula (Weeping Mulberry Tree)		
5- 6 feet	3.10	2.85
Populus Alba (Silver Leaf Poplar) Bush Form		
4- 5 feet65	.60
5- 6 feet75	.70
6- 8 feet	1.00	.95
Populus Bolleana (Bolleana Poplar) Silver Pyramid		
1-1½ inches caliper	1.45	1.25
Populus Nigra Italica (Lombardy Poplar)		
4- 5 feet90	.85
5- 6 feet	1.00	.95
6- 7 feet	1.10	1.05
7- 8 feet	1.50	1.25
1½- 2 inches caliper	2.50	2.25
2-2½ inches caliper	3.75	3.50
Populus Simonii (Simonds Pyramidal Poplar)		
5- 6 feet85	.75
1 inch caliper	1.75	1.55
1½- 2 inches caliper	2.50	2.25
Norway Poplar		
1 inch caliper90	.85
1½- 2 inches caliper	1.50	1.25
Populus Trichocarpa (Cottonwood)		
1½- 2 inches caliper	1.50	1.25
Prunus Pissardi (Purple Plum)		
5- 6 feet	1.60	1.45
Pyrus Sorbus Americana (Mt. Ash)		
4- 5 feet70	.65
5- 6 feet90	.85
Quercus Rubra (Red Oak Tree)		
1 inch caliper	2.25	2.00
1½ inch caliper	3.50	3.25

For lining out stock see separate sheet



FLOWERING CRAB TREE

ASH. This well known native tree grows very tall with wide round head and dense foliage.

BLACK WALNUT. A large growing tree, develops rapidly is ornamental and flowers in June.

MALUS. This variety of flowering Crab Trees are very popular for lawns as they blossom quite young and are very showy when in fruit.

MORUS TARTARICA. Weeping Mulberry Tree this is a very graceful, beautiful and hardy tree, forming a perfect umbrella-shaped head, with long slender willowy branches drooping to the ground. very rich foliage.

POPULUS. Our variety of Poplar trees are of good growth and the many shapes they attain make them very ornamental as well as useful for windbreaks and ornamentation, where quick growth is desired.

PRUNUS. This tree grows quite tall, round in form and has deep bronzy purple foliage which it retains all summer makes a very striking object amongst surrounding green foliage.

PYRUS SORBUS. A beautiful small tree of erect habit, dark green finely cut foliage blossoms in early June followed by brilliant yellowish red clusters of fruit; fine for small lawns.

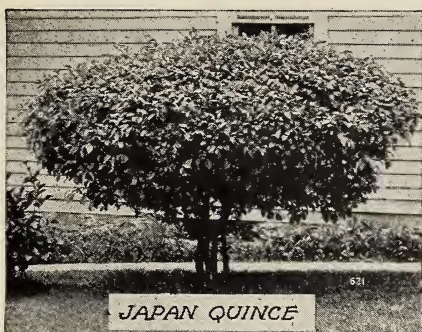
QUERCUS RUBRA (Red Oak Tree). This is a very beautiful tree, grows rapidly and becomes very tall, foliage is purplish red in fall.

ROBINIA HISPIDA (Rose Acacia Standard). This is a very beautiful shaped tree form; having a profusion of pink pea shaped flowers in May and June.

SALIX (Willows). Our variety of Willows cannot be surpassed as to their hardiness; the various forms in which they grow makes them a favorite with many

TILIA (Linden). This tree also grows either in round top or pyramidal shape and is a splendid street or lawn tree; foliage is very beautiful in summer and fall.

ULMUS (Elm). This is one of the tallest growing trees; one of the grandest of our native trees, makes a beautiful street or lawn tree.



	Each	Ten Rate Each
Robinia Hispida (Rose Acacia Standard)		
4- 5 feet	1.75	1.55
6- 7 feet	2.50	2.25
Salix Blanda (Wisconsin Weeping Willow)		
5- 6 feet90	.85
8-10 feet	1.50	1.25
Salix Discolor (Pussy Willow)		
4- 5 feet80	.75
5- 6 feet90	.85
6- 7 feet	1.00	.95
7- 8 feet	1.50	1.25
Salix Laciniata (Wisconsin Green Willow)		
5- 6 feet90	.85
Salix Pentandra (Laurel Leaf Willow)		
3- 4 feet55	.50
5- 6 feet80	.75
Salix Vitellina (Golden Willow)		
4- 5 feet50	.45
5- 6 feet90	.85
6- 7 feet	1.00	.95
Tilia Europea (European Linden)		
1½- 2 inches caliper	2.75	2.50
2-2½ inches caliper	3.50	3.25
Ulmus Americana (American Elm)		
1-1½ inches caliper	2.25	2.00
1½- 2 inches caliper	3.10	2.85
2-2½ inches caliper	3.75	3.50
3½- 4 inches caliper	12.50	11.50
Ulmus Racemosus Major (Cork Bark Elm)		
1 inch caliper 4-6 feet	2.75	2.50



Growers of High Grade Nursery Stock since 1848.

For lining out stock see separate sheet

ORNAMENTAL SHRUBS

People, generally, are appreciating more the permanent value and beauty of shrubs. The charm and grace they lend to home grounds is invaluable, and, if judiciously selected, it is possible to have flowers in bloom from early Spring until frost again nips the flowers of the latest bloom.

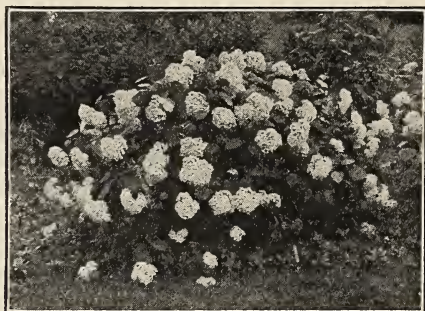
ALTHEA (Rose of Sharon)

This is a very fine free growing Shrub of various colors, blooms in August and September when other Trees and Shrubs are out of bloom.

AMORPHA. A splendid Shrub for group planting, flowers are of dark purple bloom in June and July.

ARALIA. A Shrub of slender branches with luxuriant foliage lasts until late in the fall.

JAPANESE BARBERY. A pretty dwarf species suitable with any planting and will grow most anywhere, foliage is bright green turning to a brilliant copper red and orange in autumn, remaining until late fall, the small berries hang until well into winter and look beautiful with snow covered ground.



HYDRANGEA ARBORESCENS STERILIS

CARAGANA. This is a low tree shaped Shrub bearing small pea shaped yellow flowers and blooms in May.

CEPHALANTUS. This is a good grower in moist ground, retaining its blossoms through the summer.

CORNUS. This variety of red and yellow colored bark is in great demand since it looks well at any time and in any place, having a pleasing effect in contrast to the snow and Evergreens.

COTONEASTER. A tall upright Shrub has small lustrous foliage white flowers followed by black fruit.

CYDONIA. A very attractive Shrub its branches are covered in early Spring with red flowers followed by foliage.

Don't overlook our list of **Fruit Trees and Bushes.** Prices are exceptionally low and stock is very good and properly developed for quick returns.

	Each	Ten Rate Each
Althea Hibiscus Syriacus (Rose of Sharon)		
1½- 2 feet50	.45
2- 3 feet65	.60
Tree Form		
3- 4 feet90	.85
Amorpha Fruiticosa		
2- 3 feet56	.52
Aralia Pentaphylla		
2- 3 feet55	.50
Berberis Thunbergi (Japan Barberry)		
1-1½ feet30	.25
1½- 2 feet50	.45
2- 3 feet55	.50
Box Barberry		
6- 8 inches30	.25
8-10 inches35	.32
10-12 inches42	.38
Box Wood		
8-10 inches55	.50
Caragana (Siberian Pea Tree)		
2- 3 feet35	.32
3- 4 feet50	.45
Cephalantus (Button Bush)		
2- 3 feet50	.45
Cornus Alba Siberica (Siberian Red Dogwood)		
2- 3 feet45	.40
3- 4 feet55	.50
4- 5 feet70	.65
Cornus Lutea (Yellow Dogwood)		
2- 3 feet50	.45
3- 4 feet63	.58
Cornus Paniculata (Gray Dogwood)		
2- 3 feet35	.32
3- 4 feet50	.45
Cornus Stolonifera (Dark Red Branched Dogwood)		
2- 3 feet45	.40
3- 4 feet55	.50
4- 5 feet70	.65
Cotoneaster Acutifolia (Black Fruited Quinceberry)		
1½- 2 feet30	.25
2- 3 feet45	.40
Cydonia Japonica (Japan Quince)		
12-15 inches45	.40
2- 3 feet90	.85
Deutzia (Pride of Rochester)		
2- 3 feet45	.40
3- 4 feet55	.50
4- 5 feet70	.65
Deutzia Lemoine (Dwarf Shrub)		
2- 3 feet45	.40
Deutzia Gracilis (Slender Dwarf Shrub)		
1½- 2 feet45	.40
Euonymus Alatus (Cork Barked Dwarf Shrub)		
2- 3 feet	1.10	1.05
Euonymus Americana (Burning Bush)		
3- 4 feet75	.70
Forsythia Fortunei (Golden Bell)		
2- 3 feet45	.40
3- 4 feet55	.50
Forsythia Intermedia (Golden Bell)		
2- 3 feet45	.40
3- 4 feet63	.58
Hydrangea Arborescens		
12-18 inches35	.32
18-24 inches50	.45
2- 3 feet75	.70

For lining out stock see separate sheet



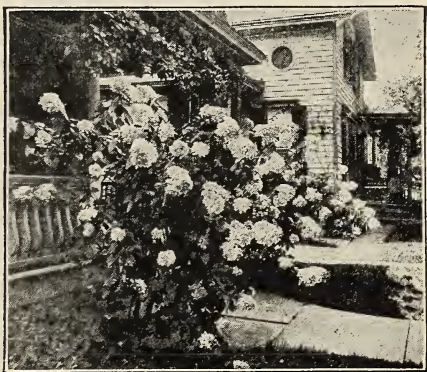
DEUTZIA

DEUTZIA. A very hardy Shrub with fine rich looking foliage and a profusion of white flowers tinged with rose, produced in late June on long racemes; one of the most desirable in cultivation.

EUONYMUS. This Shrub has peculiar cork barked branches bearing bright red fruit; of erect habit; brilliant colored foliage in fall.

FORSYTHIA. A beautiful Shrub of medium size; flowers are of bright yellow and appear before the leaves very early in spring; foliage dark green; the best of early flowering Shrubs.

HYDRANGEA. This grand American Shrub deserves increased attention. Handsome foliage and showy, snow white ball shape clusters of flowers make it a most conspicuous object wherever grown. Blooms the greater part of the summer does well under all circumstances and is best in moist soil and full exposure of sun.



HYDRANGEA PANICULATA GRANDIFLORA

LIGUSTRUM (Amoor Privet). A hardy upright hedge plant can be pruned into any desired shape, bears small white fragrant flowers, Regal and Ibota Privet are of a low growing habit with drooping branches, very effective for hedges.

	Each	Ten Rate Each
Hydrangea Paniculata Grandiflora		
12-18 inches35	32
18-24 inches50	.45
2- 3 feet75	.70
Ligustrum Amurense (Amoor Privet)		
1½- 2 feet25	.20
2- 3 feet30	.25
3- 4 feet35	.32
Ligustrum Ibota (Japan Privet)		
1½- 2 feet25	.20
2- 3 feet30	.25
3- 4 feet35	.32
Ligustrum Regalianum (Regal Privet)		
2- 3 feet35	.32
3- 4 feet50	.45
Ligustrum Vulgaris (English Privet)		
2- 3 feet30	.25
3- 4 feet35	.32
Lonicera Chrysantha (Creamy Bell Honeysuckle)		
12-18 inches30	.25
2- 3 feet42	.38
Lonicera Morrowi (Chinese Honeysuckle)		
18-24 inches35	.32
2- 3 feet42	.38
3- 4 feet50	.45
4- 5 feet55	.50
Lonicera Tartarica Alba (White Honeysuckle)		
12-18 inches30	.25
18-24 inches35	.32
2- 3 feet42	.38
3- 4 feet50	.45
Lonicera Tartarica Rosea (Red Honeysuckle)		
18-24 inches35	.32
Lonicera Tartarica Rubra (Red Honeysuckle)		
2- 3 feet42	.38
3- 4 feet50	.45
Lonicera Orthomensis		
2- 3 feet45	.40
Philadelphus Coronarius (Mock Orange)		
1½- 2 feet35	.32
2- 3 feet42	.38
3- 4 feet50	.45
4- 5 feet55	.50
5- 6 feet80	.75
Philadelphus Grandiflora (Large Flowering)		
1- 2 feet35	.32
2- 3 feet45	.40
3- 4 feet50	.45
4- 5 feet55	.50
Potentilla Fruticosa		
1-1½ feet35	.32
Prunus Othello (Purple Leaf Plum)		
2- 3 feet70	.65
Prunus Pumilla (Sand Cherry)		
1½- 2 feet35	.32
3- 4 feet55	.50
4- 5 feet70	.65
Prunus Triloba (Double Flowering Plum)		
1- 2 feet90	.85
5- 6 feet	1.60	1.50
Rhamnus Catharica (Common Buckthorn)		
2- 3 feet30	.25
3- 4 feet35	.32

For lining out stock see separate sheet

EFFECTIVE LANDSCAPING



In the accompanying illustrations we have endeavored to picture to you an apparently unsightly vacant space adjoining a garage which was transformed into a veritable flower garden with the use of shrubs and perennials as well as Pergola

The possibilities in transformation of any vacant space is simply unlimited, and depends entirely on the manner and method employed, as well as amount to be expended for this purpose.

Shrubs in their unlimited variety of color and blossoms, are very beautiful during the early Spring and Summer months, and again in the fall when the autumn tints of foliage together with the various colored berries make them another attractive aspect

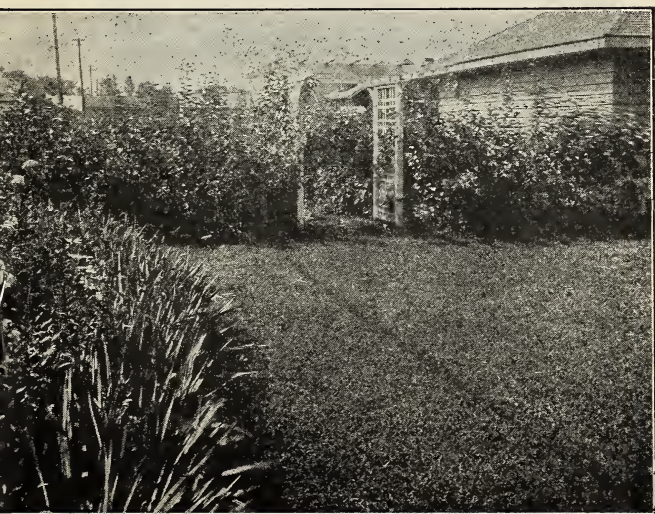
Then again Shade Trees of the variety we list are very good and



offer their attraction in foliage, height and general appearance with very little care to enhance their growth and general development.

In recent years there has been a great demand for fruit trees and plants as these not only are attractive from early spring until late fall, but they offer shade as well as an abundance of fruit, which everyone cherishes at all times.

For general appearance and continuous attraction we call your attention to our large assortment of Evergreens. Their beauty and charm cannot be too highly recommended. In every season of the year you will find some charm in their stately appearance; just another of Nature's wonders in their development, and when you stop to consider their adaptability in any setting you cannot but feel that a Landscape without Evergreens is incomplete.



Growers of High Grade Nursery Stock since 1848



LILAC

LONICERA. This variety of Shrubs have a profusion of blossoms of various colors followed by showy berries lasting until late in fall, fine for mass planting.

PHILADELPHUS (Mock Orange.) A shrub of vigorous habit with plenty of flowers which make them very attractive.



PHILADELPHUS

POTENTILLA FRUITICOSA. A charming low compact growing Shrub of small downey silvery green foliage, yellow single flowers; blooms from early June until frost; does well in shade also. This Shrub is not well known, but we recommend it very highly were low growth and continuous bloom is desired.

PRUNUS TRILOBA. A very beautiful Shrub shaped like a tree full of blossoms similar to roses, very showy, blooms in May.

ESTABLISHED 1848

R. Douglas' Sons

WAUKEGAN NURSERIES

Grand Ave.

WAUKEGAN, ILLINOIS

Long Distance Phone Waukegan 30

Spring Price List 1926



GROWERS OF:

HIGH GRADE ORNAMENTAL

SHADE TREES,

POPULAR SHRUBS, VINES AND ROSES,

FRUIT TREES AND BUSHES.

AND SPECIMEN EVERGREENS

LINING OUT STOCK

Aesculus (European Horse Chestnut)		
1- 2 feet	2.00	15.00
Celtis (Northern Hackberry)		
2- 3 feet	1.50	10.00
Fraxinus Americana (American White Ash)		
1-1½ feet80	5.00
Populus Alba (Silver Leaf Poplar)		
1 year 2-3-feet	1.50	10.00
2 year 3-4 feet	2.00	15.00
Populus Bolleana		
1 year80	5.00
2 year	1.00	8.00
Populus Nigra Italica (Lombardy Poplar)		
1 year80	5.00
Populus Simoni (Pyramidal Poplar)		
1 year 2-3 feet	1.50	12.00
Quercus Rubra (Red Oak Tree)		
3 feet bushy	1.50	12.00
Robinia Pseudoadacia (Black Locust)		
8-10 inches 1 year50	3.00
1- 2 feet80	5.00
2- 3 feet	2.00	15.00
3- 4 feet	2.50	20.00
Robinia (Honey Locust)		
2- 3 feet	2.50	20.00
Salix Babylonica (Weeping Willow)		
1½- 2 feet	1.50	10.00
Salix Discolor (Pussy Willow)		
1 year cuttings	1.00	8.00
Salix Vitellina (Golden Willow)		
1 year 8-10 inches	1.50	10.00
2 year 1-2 feet	1.50	12.00
2 year 2-4 feet	2.00	15.00
Salix Uranalis		
6- 8 inches	1.00	8.00
2- 4 feet 2 year	3.00	25.00
Salix Capria		
1½- 2 feet 1 year	1.00	8.00
Sorbus Aucuparia (Mt. Ash)		
2- 3 feet	2.50	20.00
3- 4 feet	3.00	25.00
Tilia Americana		
1 year cuttings 2-4 inches80	5.00
Tilia Europaea		
2-3 feet	2.00	15.00
Tulip Tree		
2- 3 feet	2.00	15.00
3- 4 feet	2.50	20.00
Ulmus Americana (American Elm)		
3- 4 feet	5.00	45.00
4- 5 feet	6.00	55.00
5- 6 feet	7.50	65.00
Ulmus Molinii Grafted		
4- 5 feet	6.00	50.00
Chamacyparis (Goldenplume Retinospora)		
6- 8 inches	7.50	70.00
Juniperus Canadensis Aurea (Common Juniper)		
4- 6 inches	2.25	20.00
6- 8 inches	3.00	27.50
Juniper Chinensis (Chinese Juniper)		
6- 8 inches	3.00	27.50
Juniper Horizontalis		
6- 8 inches	2.75	25.00
Juniper Pfitzeriana		
6- 8 inches	2.75	25.00
Juniper Stricto		
6- 8 inches	2.75	25.00
Juniperus Prostrata		
4- 6 inches	3.00	27.50

Juniperus Sabina (Cypress Savin Juniper)		
4- 6 inches	2.75	25.00
6- 8 inches	3.75	35.00
Juniperus Virginiana (Red Cedar)		
8-10 inches	3.50	32.50
Mahonia Acquefolia		
1 year 2-3 inches		10.00
Picea Alba (White Spruce)		
6-10 inches	1.50	14.50
12-18 inches	1.75	16.50
Picea Excelsa (Norway Spruce)		
4- 6 inches60	5.75
6- 8 inches70	6.75
8-10 inches	1.00	9.75
12-18 inches	1.50	14.00
Picea Pungens (Colorado Blue Spruce)		
2- 4 inches seedlings40	3.75
4- 6 inches transplant	1.50	14.50
10-12 inches transplant	5.00	47.50
Picea Pungens (Colorado Green Spruce)		
10-12 inches	4.75	45.00
Pungens Kosteriana (Koster Blue Spruce)		
6- 8 inches	10.00
Pinus Austriaca (Austrian Pine)		
2- 3 inches 1 year seedlings25	2.25
3- 4 inches 2 year35	3.25
8-10 inches 2 year transplant	1.00	8.50
Pinus Montana (Mugho Pine)		
2- 4 inches seedlings30	2.75
6- 8 inches transplant	1.20
Pinus Ponderosa (Western Yellow Pine)		
6-12 inches	1.00
12-18 inches	1.50
Pinus Resinosa (Red Pine)		
6- 8 inches twice transplanted	2.50
Pinus Sylvestrus (Scotch Pine)		
6- 8 inches twice transplanted	1.50
8-12 inches	2.00
Pinus Strobus (White Pine)		
6- 8 inches	1.50
1- 2 feet	2.50
Thuja assorted		
4- 6 inches seedlings30	2.75
Thuja Douglassi (Douglas Pyramidal Arbor Vitae)		
6- 8 inches transplant	2.50
Thuja Globosa (Globe Arbor Vitae)		
6- 8 inches	2.25
Thuja Occidentalis (American Arbor Vitae)		
4- 6 inches seedlings30
8-10 inches50
2 year in bed40
2 year in bed twice transplanted50
Thuja Orientalis		
6- 8 inches	1.25
Thuja (Geo. Peabody) Golden		
6- 8 inches	3.00
Thuja Plicata		
6- 8 inches	3.00
8-10 inches	4.50
Thuja Pyramidalis		
6- 8 inches	3.00
8-10 inches	4.50
Thuja Rosenthali		
6- 8 inches	3.50
Thuja Woodwardi		
4- 6 inches	2.50
8-10 inches	3.00

Each

	Amelanchier Vulgaris (Juneberry)	
1½- 2 feet	\$.15
	Aronia Nigra (Black Chokeberry)	
2 feet28
	Forsythia Fortunei (Golden Bell)	
1½- 2 feet15
	Forsythia Intermedia (Golden Bell)	
1½- 2 feet15
	Ligustrum Amurense (Amoor Privet)	
1 year cuttings08
10-12 inches10
12-18 inches12
	Ligustrum Vulgaris (English Privet)	
1 year cuttings08
	Lonicera Bella Albida (White Bell Honeysuckle)	
1 year cuttings08
	Lonicera Bella Chrysantha (Yellow Flowering Red Fruited)	
8-12 inches09
	Lonicera Morrowi (Chinese Honeysuckle)	
1 year cuttings08
	Lonicera Tartarica Alba (White Honeysuckle)	
1 year cuttings08
	Lycium Chinensis (Matrimony Vine)	
1 year cuttings08
	Philadelphus Gordoniana (Western Mock Orange)	
1 year cuttings08
2 year cuttings10
	Philadelphus Aurea	
2 year cuttings10
	Philadelphus Coronarius	
1 year cuttings08
2 year cuttings10
	Prunus Sylvestrus	
8-10 inches08
	Rhamnus Catharica (Common Buckthorn)	
18-24 inches15
	Rhamnus Frangula (Glossy Buckthorn)	
18-24 inches15
	Ribes Aurea (Yellow Flowering Currant)	
1 year cuttings08
	Sambucus Canadensis (Common Elder)	
1 year 1-2 feet08
	Spirea Anthony Waterer	
1 year cuttings08
6-8 inches10
8-10 inches12
	Spirea Billardi (Pink Flowers)	
1 year cuttings08
	Spirea Collosa Alba (Dwarf White)	
1 year cuttings08
	Spirea Douglassi	
1 year cuttings08
2 year cuttings10
	Spirea Golden	
1 year cuttings08
	Spirea Opulifolia	
1 year cuttings08
	Spirea Opulus Aurea	
12-18 inches12
	Spirea Thunbergi	
10-12 inches12
	Symphoricarpus Racemosus	
1 year cuttings06
	Syringa French Grafts	
6- 8 inches15
	Viburnum Lantago (Sheepberry)	
8-10 inches12
	Apple Grafts in Leading Varieties	
2 year old 8-10 inches	10c each \$8.00 per C.

	Each	Ten Rate Each
Rhamnus Frangula (Glossy Buckthorn)		
2- 3 feet35	.32
3- 4 feet50	.45
Rhodotypos Kerriodes (White Kerria)		
1- 2 feet35	.32
2- 3 feet50	.45
Rhus Aromatica (Fragrant Sumac)		
1½- 2 feet50	.45
Rhus Glabra (Smooth Sumac)		
3- 4 feet50	.45
Rhus Glabra Laciniata (Cut Leaf Sumac)		
2- 3 feet65	.60
Ribes Aurea (Yellow Flowering Currant)		
3- 4 feet70	.65
Ribes Alpina (Mt. Currant)		
2- 3 feet65	.60
Rubus Odoratus (Flowering Raspberry)		
2- 3 feet50	.45
Rosa Blanda (Meadow Rose)		
2- 3 feet50	.45
Rosa Rubiginosa (Sweetbriar)		
3- 4 feet55	.50
Rosa Rugosa (Rugosa Rose)		
2- 3 feet50	.45
Rosa Setigera (Illinois Rose)		
2- 3 feet50	.45
3- 4 feet65	.60
Rosa Rugosa Hybrid		
Hansa Alba		
Conrad F. Meyer Rubra		
Sir Thomas Lipton		
2 year80	.75
Roses Hybrid Perpetuals General Assortment		
Anna de Diesbach	Fisher Holmes	
Frau Karl Druschke	General Jack	
Margaret Dickson	Paul Neyron	
Soliel de Or	Ulrich Brunner	
Geo Ahrends	Clio	
Harrisons Yellow		
2 year90	.85
Hybrid Teas in Variety General Assortment		
Gruss an Teplitz	Killarney Pink	
Lady Hillington	Mad Ed. Herriot	
Radiance Pink	Sunburst	
2 year90	.85
New Nameless Rose Very Beautiful ..	1.50	1.25
Salix Rosmarinifolia (Rosemary Willow Bush Form)		
2- 3 feet35	.32
Sambucus Canadensis (Common Elder)		
2- 3 feet45	.40
4- 5 feet65	.60
Sambucus Nigra Aurea (Golden Elder)		
2- 3 feet45	.40
4- 5 feet65	.60
Sambucus Racemosus Pubens (Red Fruited Elder)		
4- 5 feet80	.75
Spirea Anthony Waterer		
18-24 inches55	.50
Spirea Bethlehemensis (Pink Flowers)		
2- 3 feet35	.32
3- 4 feet50	.45
Spirea Billardi (Pink Flowers)		
2- 3 feet35	.32
4- 5 feet65	.60

For lining out stock see separate sheet



RHAMNUS (Buckthorn). This is a dense growing Shrub becomes very tall in time; has white flowers and then black fruit and very showy foliage.

RHODOTYPOS (Japanese Kerria). Its fine white blossoms in May with glossy foliage, followed with black fruit is quite attractive all winter.

RHUS (Sumac). This type of Shrub is very attractive in Autumn foliage and fruit which lasts well into winter; is very easily grown.

RIBES (Flowering Currant). A very showy Shrub with an abundance of yellow flowers followed by black fruit blossoms in May.

MT. CURRANT has a dwarf compact habit also very beautiful.

RUBUS (Flowering Raspberry). This Shrub grows very heavy with large foliage and flowers of rose and purple tint.



RUGOSA ROSES are especially suited for our climate, are extremely hardy of sturdy growth; foliage is glossy dark green and wrinkled; flowers single and double large and attractive, followed in Autumn with a profusion of orange red and crimson fruit; suitable for planting most anywhere.

	Each	Ten Rate Each
Spirea Bumalda (Dwarf Pink)		
2- 3 feet65	.60
Spirea Douglassi (Deep Rose Colored)		
2- 3 feet35	.32
3- 4 feet50	.45
Spirea Froebeli		
2- 3 feet65	.60
Spirea Opulifolia (Ninebark Spirea)		
1½- 2 feet30	.25
2- 3 feet35	.32
Spirea Prunifolia (Bridal Wreath)		
1½- 2 feet30	.25
2- 3 feet50	.45
3- 4 feet60	.55
Spirea Rosea		
3- 4 feet50	.45
Spirea Sorbifolia (White Spirea)		
3- 4 feet50	.45
4- 5 feet65	.60
Spirea Thunbergi (Small White Flowers)		
2- 3 feet55	.50
Spirea Van Houttei (Bridal Wreath)		
1½- 2 feet35	.32
2- 3 feet42	.38
3- 4 feet55	.50
4- 5 feet70	.65
Symphoricarpus Racemosus (Snowberry)		
1½- 2 feet45	.40
2- 3 feet50	.45
3- 4 feet70	.65
Symphoricarpus Vulgaris (Indian Currant)		
1½- 2 feet35	.32
2- 3 feet45	.40
3- 4 feet50	.45
Syringa French in Variety		
2- 3 feet80	.75
Syringa Persica Alba (Persian White Lilac)		
2- 3 feet65	.60
3- 4 feet75	.70
4- 5 feet90	.85
Syringa Persica Rothomagensis (Chinese Lilac)		
3- 4 feet75	.70
4- 5 feet90	.85
Syringa Vulgaris Alba (White Lilac)		
2- 3 feet55	.50
3- 4 feet65	.60
Syringa Vulgaris (Purple Lilac)		
2- 3 feet55	.50
3- 4 feet65	.60
4- 5 feet75	.70
Tamarix Africana (African Tamarix)		
3- 4 feet55	.50
4- 5 feet65	.60
Tamarix Hispida Aestivalis (Spanish Tamarix)		
3- 4 feet55	.50
4- 5 feet65	.60
Viburnum Acerfolium (Dwarf)		
6 inches70	.65
Viburnum Dentatum (Arrowwood)		
1½- 2 feet50	.45
2- 3 feet65	.60
Viburnum Lantana (Wayfaring Tree)		
2- 3 feet65	.60
3- 4 feet75	.70
Viburnum Opulus (High Bush Cranberry)		
2- 3 feet75	.70
3- 4 feet95	.90



HYBRID PERPETUAL ROSES. Every home should have an abundance of roses; they are very hardy and produce a profusion of blossoms; we list a variety of the hardiest and most vigorous as well as best bloomers for our territory.

SALIX (Rosemary Willow). This is a very showy plant, grows in bush form with a profusion of foliage; good for ornamental planting and hedges.

SAMBUCUS (Elder). This Shrub has the most beautiful foliage and also attractive white flowers in June with red berries in autumn.

SPIREAS. This group of Shrubs affords the greatest range in size and habit and color of flowers; when in bloom they are simply beautiful, and much in demand for decorative purposes, and ornamental planting.

SYMPHORICARPUS (Snowberry). An upright slender branched Shrub valuable for shady places, flowers are rose colored and berries white which hang well into winter. Vulgaris type same as above but fruit of purple red.

SYRINGA (Lilac). This well known Shrub is indispensable in any collection, and comes in a variety of colors.

No. 345

Department of Agriculture

Division of Plant Industry

OFFICE OF CHIEF INSPECTOR

Urbana, Ill. October 1, 1925

This is to certify that the growing nursery stock and premises of R. Douglas' Sons Nursery, situated at Waukegan, Illinois, have been inspected by a duly appointed inspector of this office, according to the provisions of the Plant Inspection Act of 1917, as amended in 1919, and that said nursery and premises are apparently free from the San Jose scale and other dangerous insects and dangerous plant diseases.

This certificate is valid until October 1st, 1926 unless sooner revoked.

P. A. GLENN,

Chief Inspector.

B. M. DAVIDSON,

Director.

Growers of High Grade Nursery Stock since 1848.



WEIGELA

TAMARIX. A beautiful Shrub with fine leaves similar to Juniper foliage small pink flowers borne on long spikes blooms from May until frost.

VIBURNUM. One of our most useful and hardy Shrubs bears fine flowers and very showy fruit which remains through winter.

SNOWBALLS. One of our old time favorites, always in demand for its splendid ornamentation.

WEIGELA. Is a Shrub of erect habit while young but gradually spreads and droops as they acquire age; flowers are trumpet shaped of various colors; very effective for grouping and borders, blossoms in June and July, and some varieties more or less all summer.

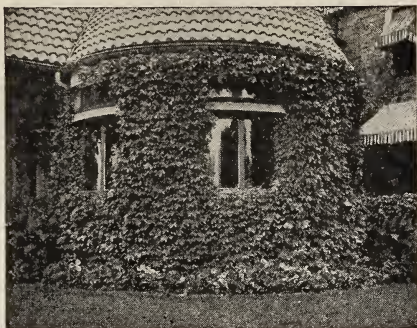
	Each	Ten Each
Viburnum Opulus Sterilis (Common Snowball)		
3- 4 feet95	.90
Viburnum Tomentosum (Doublefile Viburnum)		
1½- 2 feet65	.60
2- 3 feet75	.70
Viburnum Molle (Kentucky Viburnum)		
2- 3 feet70	.65
Weigelia Amabilis (Rose Weigelia)		
2- 3 feet55	.50
Weigelia Deboise		
18-24 inches30	.25
Weigelia Eva Rathke		
2- 3 feet85	.80
Weigelia Floribunda (Crimson Weigelia)		
1½- 2 feet65	.60
3- 4 feet	1.00	.95
Weigelia Rosea (Pink Weigelia)		
1½- 2 feet35	.32
2- 3 feet50	.45
3- 4 feet65	.60

Successful Planting, Pruning and Care of Stock is by all means of utmost importance to you when purchasing Nursery Stock.

For those not familiar with the method employed in planting, etc., we have prepared a little booklet giving every detail as to this work and shall be glad to mail same write for it.

For lining out stock see separate sheet

HARDY CLIMBING VINES. Vines are useful in many ways. They give quick results when planted on a new place, before trees and shrubs become established. For covering fences, rocks, walls, banks and trellises. A porch without a vine is incomplete.



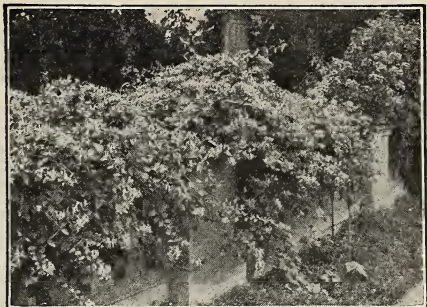
AMPELOPSIS ENGLEMANNI (American Ivy). A very rapid growing vine clings to rough surfaces, very beautiful in spring as well as fall, when foliage turns from green to a scarlet.

VEITCHI (Boston Ivy). This vine is used extensively to cover brick or stone buildings, the foliage is dense completely carpeting a surface and the autumn tints of green and red are unsurpassed for beauty.

CELASTRUS (Bittersweet Vine). A native climber with handsome glossy foliage, and large clusters of beautiful orange-crimson fruits retained all winter. Very bright in effect and charming for winter house decoration.



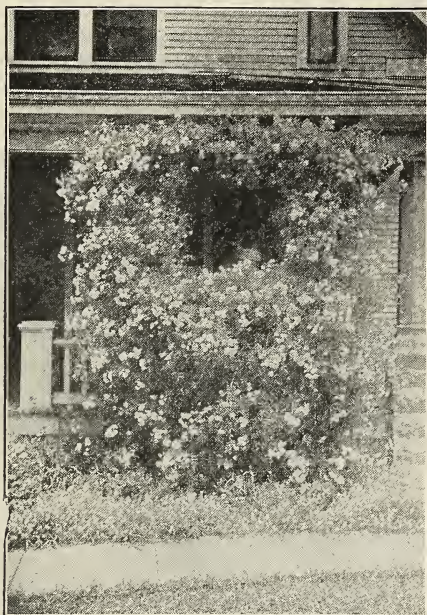
CLEMATIS. Of all the vines used for shade or decorative purposes, none can compare with the Clematis in its many and various forms; is a strong grower and does best in rich soil and sunny spot, very hardy.



HONEYSUCKLE

EUONYMUS. This is also a very showy vine, foliage is large.

LONICERA (Honeysuckle). A strong vigorous vine with a profusion of flowers which bloom almost entire season, foliage is of a rich green.

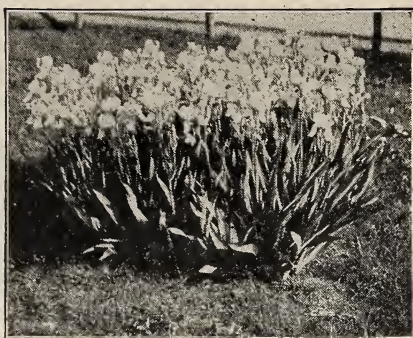


DOROTHY PERKINS

LYCIUM (Matrimony Vine). Grows more like a Shrub, but is very beautiful; the pink flowers are followed by brilliant crimson fruit which it retains through winter.

CLIMBING ROSES. In our assortment of these vines we have endeavored to give you what we considered the best in every way, plenty of blossoms with beautiful colors and perfectly hardy.

Growers of High Grade Nursery Stock since 1848.

**IRIS**

DELPHINUM (Larkspur). Indispensable in the garden, their long showy spikes of flowers persist from June until frost in the many shades of blue.

IRIS. The tall sword like leaves are showy in themselves, and the gorgeous flowers in the many shades which appear in May make this a very attractive plant for any garden.

**PEONIES**

PEONIES. These should be planted in good rich deep moist soil, they require less attention than any other class of flowering plants. They are perfectly hardy, free from disease and insects. Come in many colors.

PHLOX. One of the most showy of the hardy perennials and should be in every garden; they are excellent bloomers in all varieties of shades.

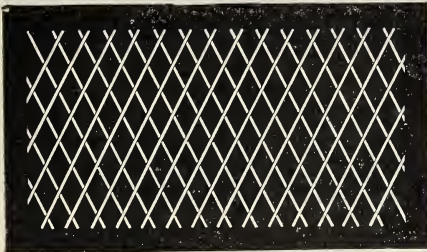
Where large quantities of Shrubs and other Nursery stock is required write for special quotations on quantities desired.

Growers of High Grade Nursery Stock since 1848.

Each Ten
Rate
Each

CLIMBING VINES

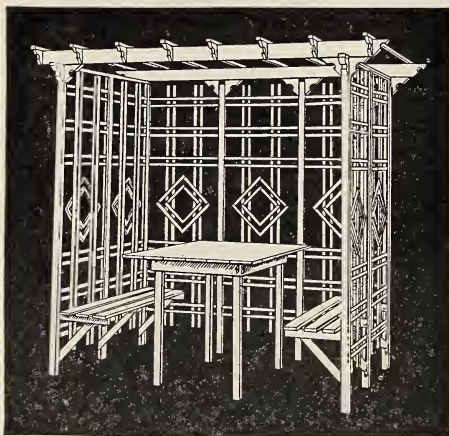
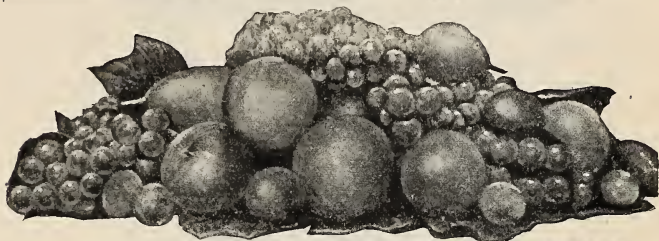
Ampelopsis Englemanni (American Ivy Vine)		
3 year55	.50
Ampelopsis Veitchi (Boston Ivy Vine)		
2 year55	.50
Celastrus Orbiculatus (Japan Bittersweet Vine)		
2 year45	.40
3 year55	.50
Clematis Jackmanni		
3 year65	.60
Clematis Paniculata		
3 year55	.50
Euonymus Vegetus (Broad Leaved Climbing Euonymus)		
2 year55	.50
Lonicera Halleana (Halls Honeysuckle)		
2 year55	.50
Lonicera Heckrotti		
2 year55	.50
Lycium Chinensis (Matrimony Vine)		
2 year55	.50
Lycium Barbarum (Matrimony Vine)		
3-4 feet55	.50
Roses Climbing in Variety		
Dorothy Perkins, Crimson Rambler, Tausendschon, Hiawatha, Philadelphia, Paul Scarlet, Rosa Excelsa		
2 year55	.50
Delphinium in Variety		
2 year clumps30	.25
Iris in Variety		
Small clumps20	.15
Large clumps35	.30
Apply for special quotations for mass planting		
Peony Clumps Fifty Varieties		
2 year small clumps	1.00	.95
3 year medium clumps	1.75	1.55
4 year very large clumps	2.75	2.50
Phlox in Variety		
3 year clumps30	.25



FOLDING TRELLIS

No. 1—34" wide folded; extends 3' to 8'. Each 2.25
 No. 2—46" wide folded; extends 4' to 14'. Each 3.25
 No. 3—70" wide folded; extends 8' to 16'. Each 4.50
 These three numbers are highly suitable for mounting on porches or posts, and also may be used as fence for lawn parkway or flower beds. Especially adapted for guard fence around newly seeded lawns. Painted white. Neatly designed, painted fence posts may be had extra. Our No. 15.
 Each .75.

FRUIT TREES AND FRUITS. Wherever possible it would be well to plant either a fruit tree or any of the other varieties of fruits which we are listing, as they always add their share to the home garden. It always feels well when one can go to the garden to pick some home grown fruit, their flavor is somewhat different.



THE COMPLETE SUMMER HOUSE

No. 112 XTS—Height 82", width 68", depth 45". One of our standard designs assembled into a charming summer house. Comfortable seats and spacious table. A serviceable summer garden ornament. Regularly painted solid white, but may be had in the natural wood, permitting home owner to paint in uniformity with his general surroundings. Listed without table, without seats, or in various combinations as desired.

No. 112 XTS—COMPLETE	Each \$75.00
No. 112 XS—WITHOUT TABLE	Each 65.00
No. 112X—WITHOUT TABLE OR SEATS	Each 57.00

FRUIT TREES AND FRUITS

Apples, Yellow Transparent, Red Astrachan, Early Harvest, Fall, Duchess of Oldenburg, Gravenstein, Wealthy, Winter, Baldwin, Fameuse or Snow, Delicious, Jonathan, Grims Golden, Northern Spy, Wolf River, Northern Greening, Salome, Rome Beauty.

	Each	Ten Rate Each
9 16 to 11 16 inches caliper90	.75
¾- 1 inch caliper	1.50	1.25
1-1½ inches caliper	2.00	1.75
1½- 2 inches caliper	3.00	2.75

Crab Apple Trees

Hyslop, Whitney, Transcendant, Martha

11 16 inches caliper	1.25	1.00
1-1½ inches caliper	1.50	1.25

Cherries

Early Richmond, Montmorency, May Duke

11 16 inches caliper	1.50	1.25
1-1½ inches caliper	2.75	2.50

Pears

Standard Summer, Bartlett, Clapp's Favorite

11 16 inches caliper	1.50	1.25
Dwarf Bartlett	1.25	1.15

Standard Winter, Beurre D'Anjou Lawrence,

Keiffer

11 16 inches caliper	1.50	1.25
----------------------------	------	------

Standard Autumn, Duchess, Flemish Beauty,

Sheldon, Seckel

11-16 inches caliper	1.50	1.25
----------------------------	------	------

Dwarf Duchess

11 16 inches caliper	1.25	1.15
----------------------------	------	------

Peaches

Champion Elberta

11 16 inches caliper60	.55
----------------------------	-----	-----

Dwarf Champion, Elberta

11 16 inches caliper75	.60
----------------------------	-----	-----

Plums

Abundance, Burbank, Surprise, Sapa, Lombard,

Bradshaw, German Prunes

11 16 inches caliper	1.50	1.25
1 inch caliper	1.75	1.55

Blackberries

Snyder, Eldorado, Stone, Erie

2 year old20	.15
------------------	-----	-----

Currants

Red, Red Cross, Red Dutch, Fay's Prolific, Cherry

3 year old35	.30
------------------	-----	-----

White, Wilder, White Grape

3 year old35	.30
------------------	-----	-----

Gooseberries

Downing Houghton, Industry, Red Jacket

2 year old50	.45
------------------	-----	-----

Grapes

Delaware, Niagara, Campbell's Early, Moores Early,

Concord, Catawba

3 year old35	.30
------------------	-----	-----

Raspberries (Red)

Columbia, St. Regis

2 year old15	.10
La France, Everbearing30	.25



54

53

50

52

51

HIGH GRADE 24-ROOM MARTIN HOUSE

No. 50—24" square. Constructed of high-grade lumber, slate coated roofing, and fiber board partition. Top made of heavy galvanized iron, and has projecting wood rafters. Ample landing platforms. Shipped without pedestal. An exceedingly comfortable martin home. Wood parts painted white. Each \$16.00

WREN HOUSE

No. 52—Of guaranteed slate coated roofing, diameter 5½", height 7". In both green and red slate coated body with galvanized iron door for cleaning. Priced right. Heavy screw eye in top for suspending. Each 1.50

BIRD HOUSE

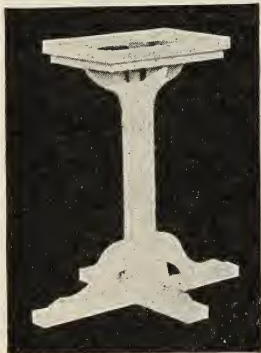
No. 53—A very unique design made of green or red slate coated roofing material with wood landing platform and four square columns supporting walls and roof. A substantial well built bird house. Screw eye for suspending. Very attractive. Wooden parts painted white. Each 1.25

SMALL WREN HOUSE

No. 51—Diameter 4", height over all 7". Red or green guaranteed slate coated roofing with galvanized iron door to permit cleaning. A beautiful house, very low priced. Heavy screw eye in top for suspending. Each 1.25

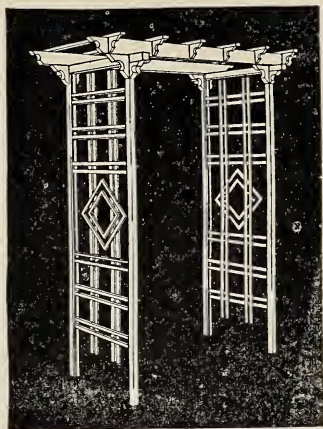
WOODEN BIRD HOUSE

No. 54—Made entirely of lumber. Approximately 7 inches square outside measurements with projecting roof and floor with entrance portico. Very substantially built. Painted green with entrance portico and landing. Each 2.00



BIRD BATH

No. 55—Height 32 inches, bowl 16 inches square. A very necessary and decorative piece for the garden or lawn. Massive design of wood with heavy galvanized iron bath bowl. Painted white. Each 11.50



PERGOLA DE LUXE

No. 12A—Height 82", depth 25", width 70". Heavy projecting top cross beams. Panels of standard attractive design. A really handsome structure at a moderate price. One of our best sellers. Made in several widths, ranging from 6 feet to 14 feet. An excellent design for the driveway. Depth may be increased on special orders by adding additional panels and cross beams. Painted solid white.

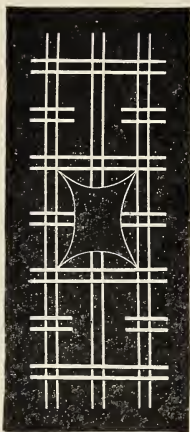
- | | |
|--------------------------------|--------------|
| No. 12A 6 ft. width | Each \$22.00 |
| No. 12E. 14ft. width | Each 30.00 |
| No. 12S Seats for any of above | Each 7.00 |



**PLAIN SECTIONAL
TRELLIS**

No. 5—Height 94", width 17". Each 1.75

This trellis may be used in combination with any number of the same item producing a solid grille work trellis for vines around porches, or may be used to form numerous rectangular designs. Suitable for curved porches. Painted white.



**BOW INSERT LAWN
AND PORCH TRELLIS**

No. 128—Height 94", width 34". Each \$5.00
No. 126—Height 70", width 34". Each 4.75

As shown by the photo above, a beautiful design, bow insert lavishly built with our standard clear trellis sticks. Six foot design similar with bow insert. Painted solid white.

TO OUR FRIENDS:

With the issue of this catalogue we have endeavored to illustrate and quote you what we considered a very complete line of EVERGREENS, SHADE AND ORNAMENTAL TREES AND SHRUBS, also FRUIT TREES, BUSHES AND VINES. It has been our aim in our many years of endeavors to grow only such NURSERY STOCK as we find will thrive well and withstand the rigors of our climate, and we feel satisfied that any selection you might make from this catalogue will prove equally satisfactory to you.

To our many friends and customers we offer our further help in the selection of your needs in our line, and can assure you that it will always be our aim to give entire **satisfaction** in every instance.

To those who contemplate making changes or extensive improvements in landscaping, we will be glad to assist with our knowledge in this field, as we have connections with very good **Landscape Artists** whose services are at our disposal.

We also wish to express our appreciation and gratitude to you who have been instrumental in our attainments, and want to assure you that our future efforts will be to further merit your confidence and good will.

R. DOUGLAS' SONS

