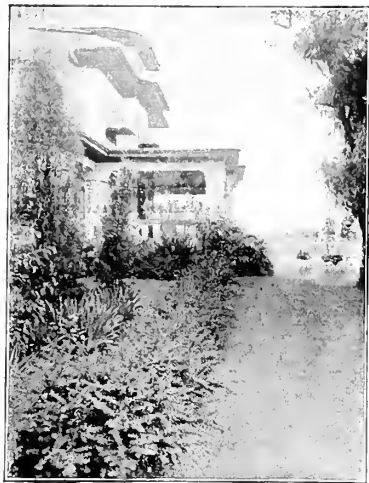


## **Historic, Archive Document**

Do not assume content reflects current scientific knowledge, policies, or practices.





**Barberry Thunbergii**

## Every Home Needs Hedges and Hedging

No item in use for landscape planting will improve the appearance of your property as much as a well trimmed hedge. Note artistic effect of a growing Barberry Thunbergii hedge at left and upright growing Privet hedge at the right.

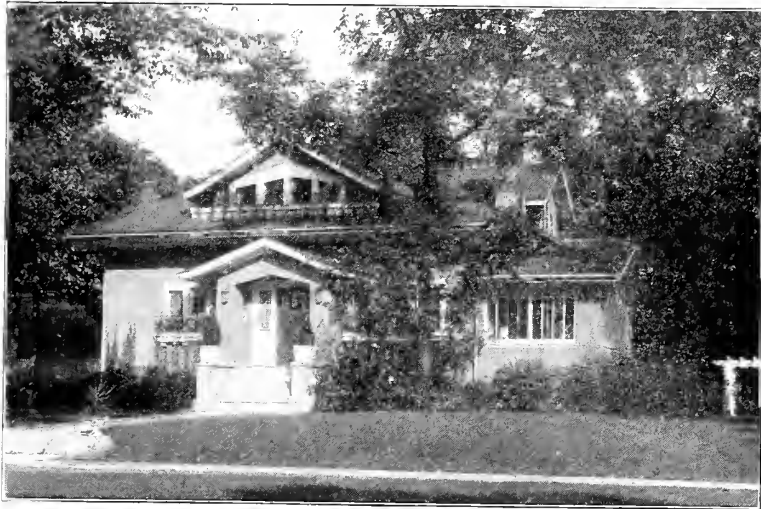
### A Few of Our Hardy Perennials

These Perennials when properly arranged will give a profusion of bloom continuing from Spring until Fall; also fine for borders and cut flowers.

- Aquilegia** (Columbine)—Assorted colors of bloom.
- Chrysanthemums** (Hardy Varieties) — Assorted.
- Monarda, Fistulosa**—Red flowering. June to Sept.
- Shasta Daisy**—White. June-Sept., free flowering.
- Delphinium** (Hardy Larkspur)—Blue. June-July.
- Gailardia, Grandiflora**—Yellow to red, all summer.
- Iris**—A large assortment of colors. May to July.
- Phlox**—A great variety of colors. July-October.
- Platycodon** (Chinese Bell Flower)—July-August.

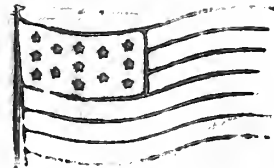


**Amoor River Privet**

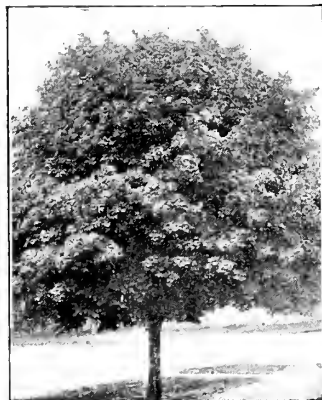


## FOREST NURSERY COMPANY

Forest and Shade Trees, Ornamental Shrubs, Evergreens and Roses.  
McMINNVILLE, TENNESSEE.



## Trees Especially Adapted to Street and Lawn Planting



**Norway Maple**

- Birch, Cut-leaved Weeping**—40 ft. Extremely vigorous and hardy; white bark; drooping branches; finely cut foliage.
- Catalpa, Speciosa**—40 ft. Fragrant white flowers in July; open irregular growth; large heart-shaped leaves.
- Elm, American White**—60-80 ft. A magnificent tree with graceful drooping branches; a favorite fast growing tree.
- Linden, American (Basswood)**—50-60 ft. Fragrant yellow flowers in July; large smooth showy leaves.
- Magnolia, Soulangiana**—10-15 ft. large cup-shaped white and rosy pink flowers in May in showy clusters.
- Maple, Norway**—50-60 ft. A beautiful handsome tree with spreading branches; round head; great favorite everywhere.
- Maple, Schwedleri**—30-40 ft. Handsome, with color changing foliage; crimson to green, red and brown.
- Mulberry, Tea's Weeping**—20-30 ft. A most graceful weeping tree; dense green foliage forms umbrella shape.
- Sycamore, American (Buttonwood)**—50-60 ft. A beautiful majestic tree with bright foliage.
- Sugar Maple**—50-60 ft. A tall, handsome, moderately rapid growing tree. Autumn foliage gold and scarlet. Very handsome. Grows rather erect, but spreads nicely.



**Weeping Birch**



# Home Beautifying

The principles of proper planting are not hard to master. The shrubs should be massed into corners and borders, and a selection made differing in height so that all of them can be seen and intermingle in effect, with their bloom coming at different seasons so that they are always interesting. You can easily choose this graduation from the lists referred to. One often sees an elegant house that lacks the final touch to change it into a "home." Landscape planting is the frame of the picture; the artistic setting; that final touch that changes your house to a home.

As a background or a frame to the picture which is to be created, shrubs or trees are indispensable. The idea being to have the surroundings harmonize so that the impression will be comfortable and homelike. If you need any assistance in producing an artistic effect our landscape department is at your command.

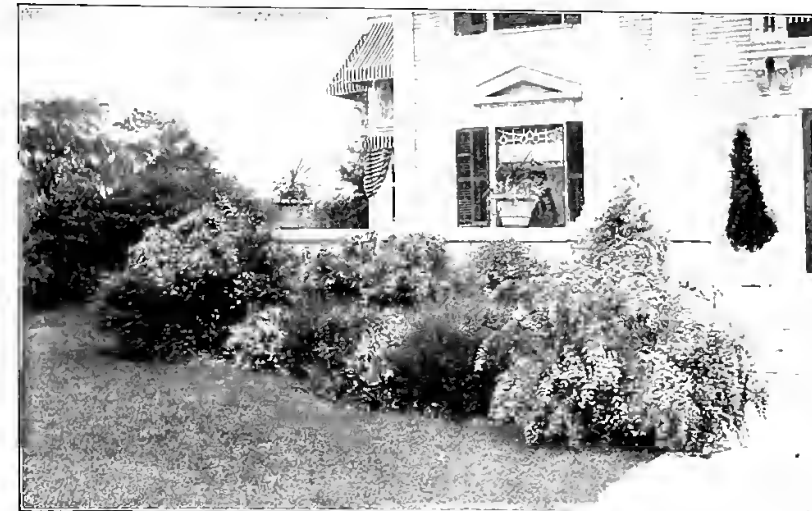


## Shrubs Suitable for Screens and Backgrounds

- Crab, Bechtel's Flowering—10-15 ft. Pink rose like flowers. May.
- Elder, Golden-Leaved—6-8 ft. Clusters of white flowers. July.
- Elder, Fern-Leaf—6-8 ft. White fragrant flowers in June.
- Honeysuckle, Grandiflora, Bush—White flowers May-June
- Lilac, Purple and White—6-8 ft. Flowers in May-June.
- Philadelphus Grandiflora—White flowers in June.
- Rhus, Copinus—8-10 ft. Yellow green flowers in June. Leaves to purple and plumose in fall. Beautiful autumnal coloring.
- Sumach, Fern-Leaf and Glabra—Flowers in fall. Beautiful autumnal coloring.
- Tamarix—White or pink flowers.
- Asplenifolia—Blue-green foliage.
- Viburnum, Opulus Stralis (Snow-bell)—Pure white flowers in June.

## A Few of Our Shrubs for Nifty Foundation Plantings

- Polyanthus, Sweet Scented Shrub—4-6 feet. Delicate fragrant flowers through summer.
- Deutzia, Pride of Rochester—White flowers. May.
- Porsythia, Intermedia—Yellow flowers in April.
- Hydrangea, P. nunculata Grandiflora—Hardy, immense rounded heads of flowers in September-October.
- Honeysuckle, Tartarian Bush—Pink flowers May-June.
- Rhodotypos, Karcides—Single white flowers in May.
- Snowberry, Red and White—Flowers in July; white berries.
- Spirea Vanhouttei, Bridal Wreath—White flowers. May-June.
- Syringa, Philadelphus Coronarius—White flowers. May-June.
- Weigelia, Rosea—Pink flowers in June; an old garden favorite.



## Dwarf Shrubs Suitable for Foundation Planting

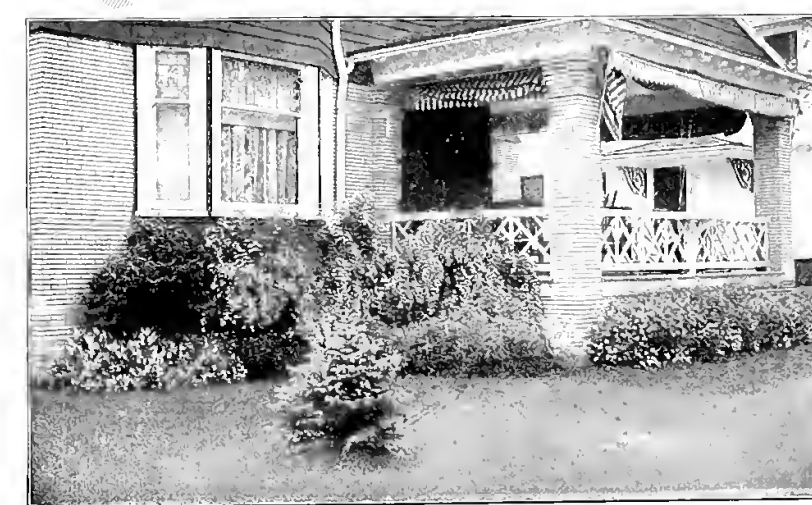
- Barberry, Thunbergii—Orange-yellow flowers in May and June; superb foliage coloring in the fall; vari-colored fruits; ornamental.
- Deutzia, Lemoinei—Panicles of extra large white flowers. June
- Deutzia, Gracilis—Numerous white flowers in May and June
- Spirea, Anthony Waterer—A beautiful shrub with broad heads of deep pink flowers; blooms almost continuously.
- Spirea, Arguta (Snow Garland)—Flowers in clusters along drooping slender branches; blooms in May.
- Spirea, Callosa Alba—Upright in growth, with flat clusters of flowers on erect branches.
- Spirea, Thunbergii—White flowers. April and May; retains delicate foliage late
- Syringa, Philadelphus Avalanche—White flowers in May and June.
- Weigelia, Eva Rathke—Handsome, fragrant flowers in June and July.
- Weigelia, Variegata—Rose flowers in June. leaves are margined with white.
- Desmodium Penduliflorum — (Lespedeza Sieboldi)—Rose-colored; hardy. September.



Screen and Foundation Planting



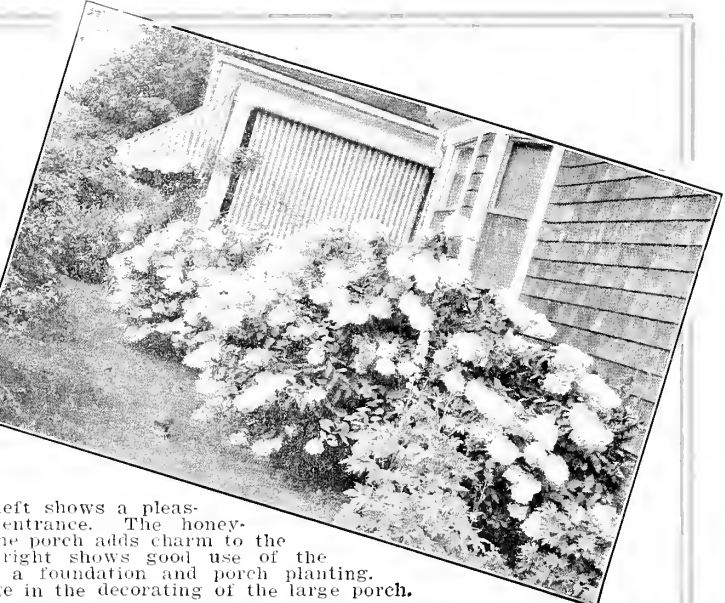
Porch and Foundation Planting



## FOREST NURSERY CO.

Forest and Shade Trees, Ornamental Shrubs, Evergreens and Roses.

McMINNVILLE, TENNESSEE.



The picture on the left shows a pleasing planting about an entrance. The honey-suckle vine entwined about the porch adds charm to the residence. The picture to the right shows good use of the *Hydrangea paniculata grandiflora* as a foundation and porch planting. A climbing rose is here used to advantage in the decorating of the large porch.



**Foundation Planting for Factories**

The plantings below show the value of mass planting. The one on the left consists of *Barberry Thunbergii*, *Deutzia Gracilis*, and *Englemanni* ivy which is the vine that, in a few years will thoroely beautify this home. The picture on the right is of an ideal home and shows good use of a specimen tree. The shrubs planted surrounding this home are: *Snow-berry*, *Syringa*, *Rhodotypos*, *Barberry Thunbergii* and *Fragrant Sumac*.

