

## **Historic, archived document**

Do not assume content reflects current scientific knowledge, policies, or practices.





FLOWERING  
TREES  
*of the*  
ORIENT

Wholesale Price List  
" for Spring 1926

From The Garden Nurseries

A. E. WOHLERT, Owner

Narberth, Pa.

し  
ら  
ば  
ら  
の  
さ  
き



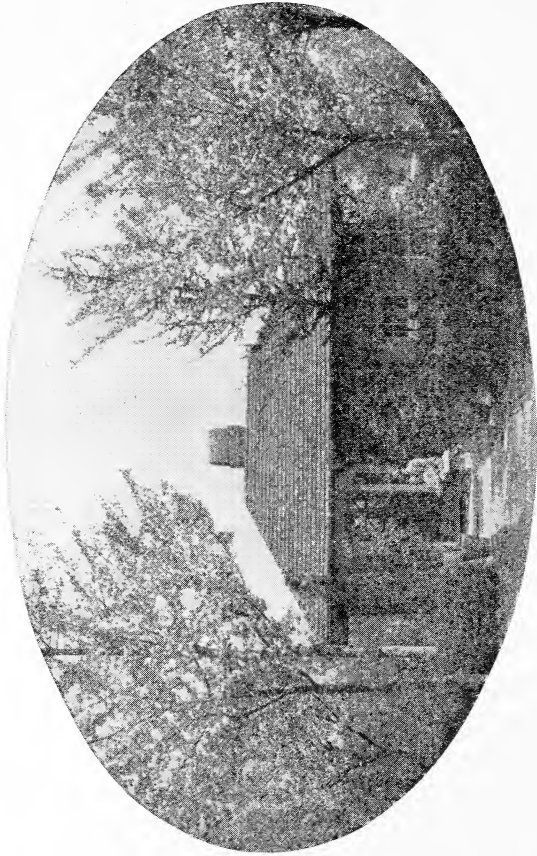
*Flowering  
Trees of  
the Orient*



*Japanese Cherries  
Flowering Crabs  
Japanese and German Iris  
for  
Nurserymen*



*Usual Terms*



Japanese Roseflowering Cherry Trees as Flowering Shade Trees by My Office



## JAPANESE ROSEFLOWERING AND WEeping CHERRIES

### Bench Grafts

*Not less than fifty (50) of any one variety sold.  
Three hundred (300) of one variety at thousand rate.*

	<i>Fifty</i>	<i>Hundred</i>
Prunus— <i>Beni Higan</i> . “ <i>Spring Cherry</i> .” The first of all to bloom. Single, blush pink, very vig. growing tree; will make five to six feet in two years. Dwarf variety.....	\$10.00	\$18.00
Prunus— <i>Kofugen</i> . (James H. Vietch.) A vig. tall sort, late, rose red or old rose fls. freely produced. A good street tree, and of course a good ornamental lawn tree. One of the best if we are to judge by the demand.....	15.00	25.00
Prunus— <i>Mikuruma Gaeshi</i> . ( <i>Lannesiana mikuruma gaeshi</i> .) Blush, double fl., mid-season, spreading, med. growth. One of the loveliest. In Japan this is the most popular sort.....	25.00	45.00
Prunus— <i>Naden</i> . (Frequently sold as <i>Sieboldi</i> .) Large, blush pink double fls. freely produced on long stems, vig. grower. A splendid ornamental tree suited for street planting. Late fl. A banner sort, very popular here. Our favorite.	12.00	20.00
Prunus— <i>Ojochin</i> . Paper Lantern or “ <i>Chinese Lantern</i> .” Very large, semi-double, blush pink fl. A vig. sort, in good demand. The growth is upright and the tree takes less room than most sorts—an indispensable variety.....	12.00	20.00

	Fifty	Hundred
Prunus— <i>Rosea</i> . In general outside of coloring, a counterpart of Naden, a strong grower, suitable for street planting. A change in color from the rest, rose colored fls. . . . .	12.00	20.00
Prunus— <i>Sargenti</i> . (Sacheliensis.) <i>Yama Cherry</i> . Blooms early, flowers are purple, single and freely produced. Tree vig., vase shaped. Spring fol. purple. A valuable sort, quite scarce.	12.00	20.00
Prunus— <i>Sekizan</i> . Old rose, late flowering; very large dbl. fls. on long stems; a splendid sort. With Jas. H. Vietch and Naden, one of the leaders, not as tall growing as the above mentioned. Bushy habit. . . . .	15.00	25.00
<i>Weeping Cherry</i> “ <i>Shidare Higan</i> .” Red buds, deep pink flowers, a mass of bloom; a very strong grower. Grafts generally reach 4 ft. to 5 ft. the second year. The best sort of the Weeping varieties. . . . .	13.50	25.00

The prices are not based on the value of the variety, but on the stock available.

It is advisable to place your order at once as the supply is far from unlimited and the demand is very active.

With proper care, planting in fertile soil and possibly a mulch, you may expect close to 100% stand among the crabs, and 95% or better with the Cherries.



A Pair of Weeping Cherry Trees Planted at an Entrance



## FLOWERING CRAB AND APPLES

**BENCH GRAFTS:**—Not less than a hundred sold of any variety.  
300 at the thousand rate.

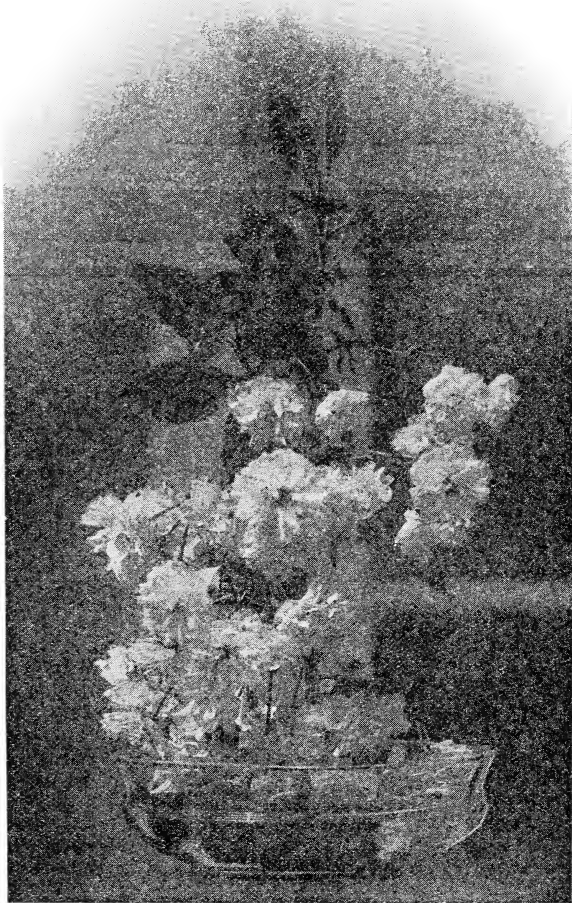
**LINING OUT STOCK:**—6 inches to 2 feet. Not less than 10 sold of any variety.

**SALEABLE STOCK:**—Not less than 5 sold of any variety.

	<i>Ten</i>	<i>H'dred</i>	<i>Thous.</i>
<b>Malus (Pyrus) ARNOLDIANA. <i>Arnold Crab</i></b> ( <i>Baccata X Floribunda</i> ). Semi-double, pink, early. Glossy foliage, vigorous grower. A popular favorite. Suits for forcing.			
Grafts . . . . .		\$10.00	\$ 75.00
6-12" . . . . .	\$ 2.50		
12-18" . . . . .	3.00		
18-24" . . . . .	4.50		
2-3 ft. . . . .	5.50		
3-4 ft. . . . .	6.50		
4-5 ft. . . . .	8.00		
<b>Malus (Pyrus) ATROSANGUINEA. <i>Carmine Crab</i></b> . Single red fading to pink, the most popular sort of all. Vigorous, gl. fol. For tree of standard form, pyramid or bush form, hedges, arches and an endless lot of uses in ornamental gardening. A good forcing sort.			
Grafts . . . . .		6.50	60.00
6-12" . . . . .	2.50	20.00	
12-18" . . . . .	3.00	25.00	
18-24" . . . . .	4.50	40.00	
2-3 ft. . . . .	5.50	50.00	
3-4 ft. . . . .	6.50	60.00	500.00
4-5 ft. . . . .	8.00	70.00	650.00
<b>Malus (Pyrus) BACCATA. <i>Siberian Crab</i></b> . Large single white early fl., crimson buds, very frag.; highly colored fruit of good size suitable for jelly, vigorous upright growth forming when unpruned a broad pyramid.			
Grafts . . . . .		6.00	50.00

Malus (Pyrus) ELEYI. Award of Merit, R.H.S., London, England. Malus Eleyi is a hybrid between M. Niedzwetzkyana and M. Spectabilis. It has inherited many of the characteristics of the mother plant, M. Niedzwetzkyana. The young shoots are fuzzy and the foliage has a brownish red purple hue similar to the species, but of a brighter color. It blossoms very freely, the flowers, which are borne in thick clusters like apple blossoms, are of a most pleasing rich vinous red. In autumn the fruit, the size and color of Morello Cherries, hang in dense clusters from the lower side of the branches, and there are few crabapples which make such a display in blossom and fruit.		
Grafts.....	10.00	
Malus (Pyrus) FLEXILIS. Delicate rose-pink. Early flowering.		
2-3 ft.....	6.00	
3-4 ft.....	7.00	
4-5 ft.....	8.00	
5-6 ft.....	9.00	
Malus (Pyrus) FLORIBUNDA. (Pulcherrima) <i>Japanese Flowering Crab</i> . The well known single pink, at one time and possibly now where Atrosanguinea is unknown. The most popular foreign crab. Spreading habit, med., vig. A good sort. Early.		
Grafts.....	6.00	50.00
Malus (Pyrus) FLORIBUNDA PURPUREA. <i>Purple Crab</i> . Single purple fl., abundantly produced, purple foliage and sap. In summer dark green fol. Purple fruit size of cherries. Vig. Popular sort here. Sell on sight.		
Grafts.....	6.00	50.00
Malus (Pyrus) IOENSIS PLENA. <i>Bechtels Crab</i> . Late fl., double pink, med. or slow growth. A well known sort. Fragrant.		
Grafts.....	6.00	60.00

Malus (Pyrus) IOENSIS. <i>Prairie Crab</i> . Single, pink, frag., vig. grower; superior to Bechtels as a fl. tree. Only objection is the fruit which is green and not ornamental. Late flowering.		
Grafts.....	6.00	60.00
Malus (Pyrus) MICROMALUS. It was first sent to Europe from Japan by von Siebold in 1856 under the name of "Kaido," a name which in Japan belongs to Malus Halliana. The habit of this plant is strictly upright and more pyramidal than that of any other flowering apple. The flowers are of a deep delicate rose pink, the fruit is light yellow, and very often reddish brown colored on one side. Is usually one of the first ornamental apples to come into bloom. It has a smooth pale grayish black bark and is considered one of the best of the flowering crabs.		
Grafts.....	12.00	
Malus (Pyrus) PARKMANI. A lovely slow-growing sort. Semi-double pink fl. on wiry red pendulous stems. An old favorite. Early fl.		
Grafts.....	8.00	75.00
2-3 ft.....	7.00	
3-4 ft.....	8.50	
4-5 ft.....	10.00	
Malus (Pyrus) (Petuila) NIEDZWETZKYANA. <i>Redvein Crab</i> . Purple fl., large purple fruit, red to and including the core. Purple sap and fol. Spreading habit. Early fl.		
Grafts.....	6.00	50.00
2-3 ft.....	6.00	
3-4 ft.....	7.00	
4-5 ft.....	8.50	
Malus (Pyrus) SARGENTI. <i>Sargent Crab</i> . Apparently a dwarf form of Toringo (Sieboldi). Yellowish white fls. in great abundance; followed by cherry red fruit in equal abundance. The fls. give		



Photograph of Naden Zakura. Kofugen, Sekizan and  
Rosea are of a similar form

	<i>Ten</i>	<i>H'dred</i>	<i>Thous.</i>
effect of plum blossoms and are a great show, but the fruit that persists nearly all winter is yet more conspicuous.— Dwarf spreading growth.			
Grafts.....		10.00	75.00
3-4 ft.....	12.50		
4-5 ft.....	20.00		
Malus (Pyrus) SCHEIDECKERI. Early double pink large fl. on short stems in bottlebrush formation all over the tree including the one year wood. Very free blooming. The red buds are deeper colored than the fls. Fruit yellow, size of cherries, extra good for jelly. Forcing sort too. Vig.			
Grafts.....		6.00	50.00
2-3 ft.....	5.00		
3-4 ft.....	6.50		
4-5 ft.....	8.00		
Malus (Pyrus) (Toringo) SIEBOLDI. Description of Sargent Crab covers this sort but it is more vig. A splendid variety. Almost unknown. We sell out as soon as trees are old enough to bear fruit, as this sort and Sargent's Crab are both indispensable in planting.			
Grafts.....		10.00	
Seedlings.....		12.00	
Malus (Pyrus) SIEBOLDI ARBORESCENS. Tall growing; otherwise like the foregoing even to the peculiar cut fol. that reminds one of Crataegus Oxycantha.			
Grafts.....		10.00	
Malus (Pyrus) SIEBOLDI CALOCARPA. A hybrid of the foregoing; retaining the peculiar fol. and other good features.			
Grafts.....		10.00	
Malus (Pyrus) SPECTABILIS. <i>Chinese Fl. Crab</i> . Resembles Scheideckeri in distribution of the fl., but they are nearly twice as large, double, pink and showy. Early. A drawback is that young trees of this sort are not free flowering, but when they finally reach this stage they make up for the lost time.			
Grafts.....		8.00	70.00

*Malus* (*Pyrus*) **THEIFERA**. A species from central and western China. Introduced into England in 1900, and in 1907 to the Arnold Arboretum. It is a smooth clean upright branched tree of medium height. The branches which are rather zigzag are covered during the early part of May with numerous clusters of flowers deep rose red in bud, becoming pale rose white when fully opened. It is one of the most beautiful crabapples of recent introduction. In early Fall the tree is covered with small pea-shaped mahogany colored fruit which are readily consumed during the Winter by birds.

Grafts..... 10.00

(Extract from "America's Greatest Garden" by E. H. Wilson.)

There are Crabapples suitable for the lawn or park, for steep banks or edge of woodlands, for open places or forest glades; Crabapples garlanded with myriad blossoms in the spring; Crabapples brilliantly jewelled with countless fruits in autumn. Crabapples whose scented flowers are my lady's delight; Crabapples whose characteristics are the artist's joy; Crabapples whose wholesome fruit makes delicious preserves; Crabapples whose tiny fruits save our feathered friends from starving in the depth of winter. Their beauty is indescribable, their charm irresistible. Come to the Arboretum at Crabapple time.

## BUXUS SUFFRUTICOSA

### Dwarf Boxwood Edging.

American hedges over a hundred years old supplied our cuttings.

<i>Height</i>	<i>Across</i>	<i>Per 1000</i>
6-8 in.	x 3-3½ in.	\$200.00
6-8 in.	x 4-4½ in.	225.00
8-9 in.	x 5-5½ in.	250.00
9-11 in.	x 7-8½ in.	300.00

250 plants at thousand rate.

## GERMAN OR BEARDED IRIS

The figures after the names indicate the rating given by the American Iris Society. For instance: "Lord of June 9.1" is about as high a rating as any sort will receive.

Not less than five (5) sold of any one sort.

Fifty (50) at one hundred (100) rate.

Five hundred (500) at thousand rate.

	<i>Ten</i>	<i>Hundred</i>
Afterglow (Sturtevant 1918) 8.6—Flowers of loose Pallida form. Soft grey-lavender shading to buff with rich yellow at the haft. Well branched and of strong growth. . . . .	\$ 2.50	\$ 20.00
Alcazar (Vilmorin 1910) 8.9—A giant in flower and growth. S. light bluish-violet. F. deep purple with a bronze veined throat. One of the most magnificent and striking. . . . .	2.00	15.00
Ambassadeur (Vilmorin 1920) 9.4—A strong growing late variety with very large flowers. S. reddish-violet. F. deep velvety beard and style arms yellow. Of exceptional merit and superior to many varieties of a similar color. . . . .	10.00	75.00
Anna Farr (Farr 1913)—A beautiful white Iris of splendid form and substance. The standards and falls delicately margined pale blue. Probably the best of the frilled varieties. . . . .	10.00	
Ann Page (Newlands 1919) 8.4—Lovely pale lavender-blue self with large flowers of splendid shape. F. long, heavily pencilled with brown at haft. Stem stout and erect. One of Sir A. Hort's best and possibly the finest of the pale purple varieties. . . . .	50.00	
Asiaticus (Trojana)—S. light violet-blue. F. deep purple-violet. . . . .	0.60	4.00
Aurea (Jacques 1833) 7.4—Beautiful form, rich chrome-yellow, nothing to do with the species Aurea. . . . .	2.00	15.00
Ballerine 9.4—An improved "Lord of June." The largest, tallest, finest and most fragrant light blue, not as vigorous. . . . .	6.00	45.00

	<i>Ten</i>	<i>Hundred</i>
Belladonna (Koehler 1922)—The forerunner of an early Plicata. Belladonna blooms regularly and profusely. It is distinct in that its standards are darker than the falls, caused by a more heavy mottling and striping of purple on the white ground. An excellent and showy variety that has been greatly admired.....	2.50	20.00
Caterina (Foster 1909) 8.9—One of the handsomest. Lavender-blue in color—color being uniform in standards and falls.....	2.50	20.00
B. Y. Morrison (Sturtevant 1918) 8.8—A strikingly beautiful purple bicolor of American origin. S. pale lavender-violet. F. raisin-purple, velvety texture, its wide lavender border has a dark outline. Slender in growth and strong in constitution.....	2.50	20.00
Caprice (Vilmorin 1904)—Rosy red-purple flowers of broad segments and fine form. A thrifty grower and dependable bloomer.....	2.50	20.00
Mme. Chereau (Lemon 1844)—Standards and falls white, widely margined lavender-violet. One of the very finest Irises of blended tones. An old favorite.....	0.60	4.00
Dalila (Denis 1914) 8.0—A very choice seedling of I. Riccardi. S. pale flesh-white. F. rich red-purple with a yellow beard. It is one of the most distinct and striking in color.....	1.00	9.00
Dalmarius (G. & K. 1907) 7.5—S. silvery-grey. F. soft lilac-purple, beard bright orange.....	0.75	4.00
Darius (Parker 1873)—S. rich yellow. F. reticulated purple on white, margined primrose, very fine.....	0.75	4.00
Elberon (Koehler 1922)—An entirely new shade in the deep red, not as tall growing as Rosedale, but a good size flower of artistic form.....	2.50	20.00
Eldorado (Vilmorin 1910)—A peculiar and distinctive blending of violet-purple and yellow. An open flower on stalks thirty inches high. There is nothing else like it.....	2.00	15.00
Fairy 8.0—White, delicately bordered and suffused soft blue.....	0.75	4.00
Flavescens 7.0—The large early June flowering primrose Iris, very beautiful.....	0.60	4.00



	<i>Ten</i>	<i>Hundred</i>
Florentina alba 7.6—Creamy white, finely flushed lavender. The flowers are quite fragrant and are produced early in the season.....	0.60	4.00
Foster Yellow (Foster 1909)—S. and F. creamy yellow.....	0.75	5.00
Fro—S. deep gold. F. brilliant chestnut-brown...	0.75	5.00
Halfdan (G. & K. 1908)—Creamy white; large flowers; good substance.....	0.60	4.00
Her Majesty (Perry 1903) 7.3—Rose pink and bright crimson.....	0.75	5.00
Isoline (Vilmorin 1904) 6.6—S. lilac pink. F. purplish old-rose, golden at the throat and yellow beard. A grand distinct Iris. Extra large flowers, unusual color.....	2.00	15.00
Jeanne D'Arc (Verdier 1907)—Standards and falls white edged lavender.....	2.00	15.00
Juniata (Farr 1909) 8.1—S. and F. clean blue, deeper than Dalmatica; tallest of the bearded Iris; large, fragrant flowers.....	0.75	5.00
King of Iris—Iris King (G. & K. 1907) 7.9—S. clear lemon-yellow. F. rich maroon, bordered yellow; large flowers, brilliant.....	0.75	5.00
Lent A. Williamson (Williamson 1918) 9.6—A new Iris of massive growth. S. soft lavender-violet, very broad. F. velvety royal purple, very large. There is a blend of yellow at the haft and a bright golden beard.....	3.50	25.00
Lohengrin (G. & K. 1910) 8.2—S. and F. uniform soft shade of cattleya rose; large.....	2.00	15.00
Lord of June (Yeld 1911) 9.1—An exceedingly handsome Iris of noble proportions. S. of lavender-blue and F. rich violet-blue; very bold and vigorous habit. One of the very best, if not the best of all.....	5.00	35.00
Per thousand.....	\$275.00	
Loreley (G. & K. 1909) 7.9—S. light yellow. F. ultramarine, bordered with cream.....	2.00	15.00
Midnight—Kochi—A rich deep purple, the finest in this color; excellent cut flower.....	0.75	5.00
Monsignor (Vilmorin 1907) 8.4—S. rich satiny violet; F. velvety purple-crimson with lighter margin; large flowers; exquisite; very late.....	2.50	20.00

	<i>Ten</i>	<i>Hundred</i>
Mrs. Alan Gray (Foster 1909) 7.6—Delicate pale rose-mauve; free bloomer; blooms twice.....	0.75	5.00
Mrs. H. Darwin (Foster 1888) 6.8—White and reticuled violet.....	0.75	5.00
Mrs. Neubronner (Ware) 6.8—A beautiful deep golden self color. Very lovely.....	0.75	5.00
Mrs. Reuthe (Ware 1899)—S. white softly veined and shaded pale lilac. F. white frilled pale blue.....	1.00	8.00
Navajo (Farr 1913) 7.4—S. light bronzy yellow, shaded lavender. F. deep maroon heavily veined white and yellow. Stigmas yellow; deep orange beard. Large, exquisite.....	2.00	15.00
Neptune (Yeld 1916)—Bright pale blue standards, rich dark purple-blue falls; the tall branched habit setting off nobly its large flowers and wide spreading falls. The effect is blue and Neptune is the best of this color.....	5.00	35.00
Nibelungen (G. & K. 1910) 7.3—S. fawn yellow. F. violet-purple on bronze. Very large.....	1.75	15.00
Oriflame (Vilmorin 1904)—Standards lavender-blue, falls violet-purple.....	2.00	15.00
Pallida Dalmatica 8.8—The finest of all Irises. Has a tall stem of very pale blue flowers, broad glaucous foliage. Finest of all the old Iris....	2.00	15.00
Pallida Mandraliscae—A very tall, rich lavender-purple Iris. Large. Very fine.....	2.00	15.00
Pauline (Farr 1913)—Fine large flowers of pansy-violet on three-foot stems. Prominent orange beard. A very good red-purple variety, vigorous and free flowering.....	1.00	8.00
Pocahontas (Farr 1915) 7.7—S. tall and waved margined violet-blue on a white ground. F. white, slightly margined violet-blue.....	1.00	8.00
Powhatan (Farr 1913) 8.0—Tall, strong and early, very distinct reddish-purple. F. deep with a tinge of crimson. A fine shaped flower.....	1.00	8.00
Princess Victoria Louise (G. & K. 1910) 7.2—S. primrose-yellow. F. reddish-purple with a distinct narrow primrose edge. Very pleasing...	0.60	4.00
Prof. A. Seeliger (Koehler 1922)—A tall grower of distinct deep Bordeaux vine red color. New..	1.00	8.00
Prosper Laugier (Verdier 1914)—Flowers of strongly bronzed crimson-purple. Good.....	2.00	15.00

*Ten    Hundred*

Queen Caterina (Sturtevant 1918) 9.0—Pale lavender-violet self, white haft with bronzed reticulations and beard of rich cadmium yellow.....	8.00	60.00
Queen of May (Salter before 1859) 7.4—Soft rose, almost pink.....	1.00	8.00
Red Ridinghood (Koehler 1922)—The nearest approach to red in the Iris family, and for that reason it has a place in the Iris garden that no other variety can fill. S. attractive reddish-lavender. F. purplish solferinored, with mottlings of brown near the base. The backs of the petals are pinkish-lavender. Greatly admired wherever seen.....	2.50	20.00
Rhein Nixe (G. & K. 1910) 8.4—Very charming form with large flowers. S. white, very large. F. rich violet-purple with a narrow but distinct white edge.....	1.00	8.00
Rhein Traube (G. & K. 1917)—\$1.00 each.		
Rosedale (Koehler 1922)—A very strong tall grower of clear lavender, overlaid Lobelia blue, conspicuous orange beard, distinct in its satiny finish.....	2.00	15.00
Rose Unique (Farr 1910) 6.9—S. and F. bright violet-rose. The nearest approach to a pink Iris.	1.00	8.00
Shekinah (Sturtevant 1918) 8.8—Pale lemon-yellow deepening to rich yellow around its bright orange beard. It is the first clear yellow of Pallida growth.....	3.00	25.00
Sherwin Wright (Kohankie 1915) 7.6—Golden yellow.....	2.50	18.00
Souvenir de Mme. Gaudichau (Millet 1914) 9.3—One of the most striking and remarkable of all Irises. A tall, early and very distinct variety; a deep purple bicolor of an unusual velvety appearance.....	15.00	120.00
Trautlieb (G. & K. 1899)—The nearest pink Iris. Shaded lighter at base. New.....	2.00	15.00
Undine (Koehler 1922)—A very strong grower and very conspicuous among other Pallida varieties. S. lovely shade of deep lavender, while the falls are rich velvety purple. No collection of Irises is complete without this handsome variety....	2.50	20.00
Walhalla (G. & K. 1908) 7.3—Lavender and red...	0.60	4.00

Not less than five (5) sold of any one sort.

Fifty (50) at one hundred (100) rate.

Five hundred (500) at thousand rate.

## JAPANESE IRIS

This variety blooms much later and is very unusual and exotic in appearance. Large flat flowers carried high on tall stems. The colors range from white through lavender to deep purple. They love moisture but will thrive in any rich soil. They may be naturalized along streams.

	<i>Ten</i>	<i>Hundred</i>	<i>Thousand</i>
Plants.....	\$1.50	\$11.00	\$90.00



*Malus floribunda*



A·E·WOHLERT



*The* GARDEN  
NURSERIES  
*Narberth Pa.*