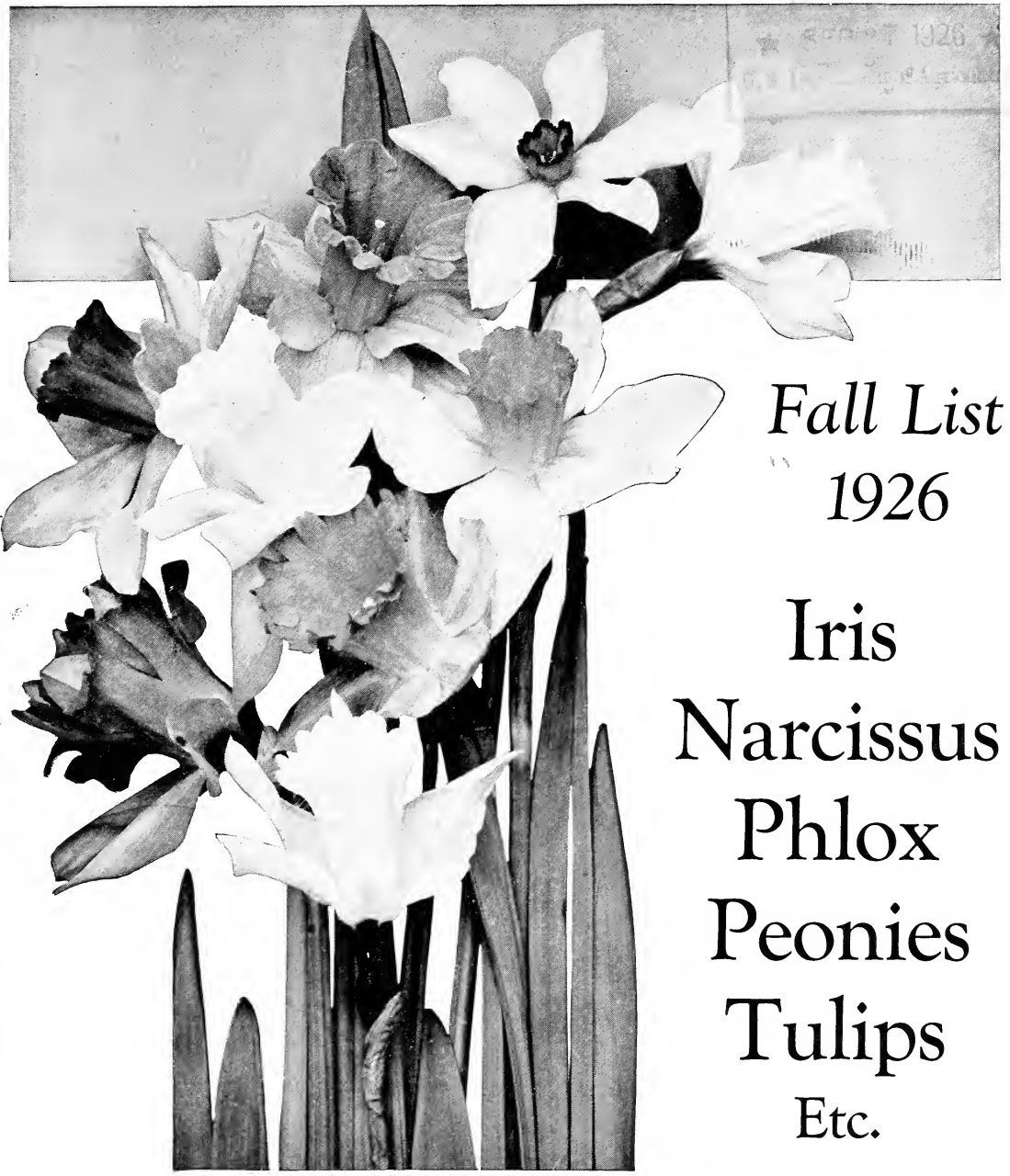


Historic, archived document

Do not assume content reflects current scientific knowledge, policies, or practices.

6216



Fall List
1926

Iris
Narcissus
Phlox
Peonies
Tulips
Etc.

GEO. W. HUNTER, GROWER
Dowagiac, Michigan

A.B.M.CO

Greetings to Our Customers, Old and New

The year 1926 finds us better prepared than ever before to give to you, our customers, the highest quality, with the best service, at a fair price.

You may order from this catalog with full assurance that your order will have our personal attention and the same care which we have given to all the orders intrusted to us in the past.

We are deeply grateful to those who have helped make our business a success, through their patronage.

To those who are just getting acquainted with Hunter's Service, and Hunter's Plants and Bulbs, we extend a cordial welcome. We hope we will please you, and our best efforts will be extended toward doing just this, for after all, our main purpose is to give complete satisfaction to every customer.

MICHIGAN STATE COLLEGE
OF AGRICULTURE AND APPLIED SCIENCE
EAST LANSING

July 2, 1926.

DEPARTMENT OF
LANDSCAPE ARCHITECTURE

TO THE PUBLIC:

As a Graduate of the Michigan State College of Agriculture and Applied Science, George W. Hunter, of Dowagiac, Michigan, has the scientific training in the propagation of *Gladiolus* and other bulbous stock, and in the improving of varieties of these, and other ornamental plants, which fits him particularly well to serve the public in these capacities.

I am therefore extremely pleased to hear that he is lending his efforts and using the training which he has received at this Institution for the improving and development of these plants for the public enjoyment and landscape use.

Very truly yours,


Professor of Landscape
Architecture.

CPH:F

The Hunter Policy

Every bulb or plant listed in this catalog is obtained from the best sources available in Holland and America. Many of the items, such as Iris, Narcissi, etc., are grown in our own nursery, located east of Dowagiac. Every bulb or plant is hand selected and thoroughly inspected before it leaves our packing department. We guarantee every bulb or plant offered to be true-to-name, healthy, and in growing condition, and will replace free, or refund the purchase price immediately upon notice from the customer of any that prove otherwise. Such complaints must, however, be made within three days after receipt of goods from transpor-

tation company, except in the case of trueness to name of the variety. This clause holds good through the season. We regret that we cannot guarantee results of all the plants, bulbs and seeds which we sell, but the vagaries of Nature are such that no responsible or reliable nurserymen can honestly assume this burden. We make complete trials and tests of all the varieties which we send out, and know, from long experience, that all of our bulbs and plants will flower satisfactorily, if given just ordinary attention. Study carefully the cultural directions which we include with each shipment.

Important Things You Will Want to Know

Shipping Seasons

Iris: July 1st to October 1st. July and August are the best months for transplanting this flower.

Narcissi: August 1st to October 1st. These are best planted in September.

Peonies and Hardy Phlox: September 15th to October 15th. Orders are booked much earlier, however.

Tulips and other Holland Bulbs: September 30th to November 1st.

All orders will be filled in rotation.

Shipping Methods

Shipments are made by parcel post, express, freight or truck, depending upon the location of the customer, and the nature of the order. All transportation charges are prepaid.

Kindly state preference as to method of shipping, and in case of large shipments, give best routing, otherwise we will rely on our best judgment.

Order Early

All orders from this catalog will be filled in rotation. The early orders receive first selections from existing stocks. We allow customer to state preference as to shipping date, and we can defer shipment to suit the customer, but cannot rush shipment, unless we have the order early in the season.

Planting Your Garden for Special Effects

We are always glad to make suggestions and assist our customers in any way in which we may be of help. You are entitled to good service, and our extended experience is yours for the asking. Send us a rough sketch of your garden or border, giving planting areas and dimensions, and we shall do our best to aid you in producing those charming special effects which are possible only with Narcissi, Tulips, Iris, Peonies, etc.

Substitutions

Substitutions are made only by permission or request of the customer. We aim to supply what you order. On late orders, if you are not particular as to variety, kindly make this note on order, and it will facilitate rapid handling of the order.

Prices

Prices are for A-1 quality stocks, prepaid to you. We do not handle any cheaper grades or inferior stocks. The best in quality and service is worth a fair price. A trial order will convince you.

All stocks are offered subject to prior sale, crop failure and all other contingencies beyond our control.

Quantity Rates

Six plants or bulbs will be furnished at the dozen rate; twenty-five at the 100 rate; or 250 at the 1000 rate. They must be, however, the same single variety; that is, 6 Emperor Narcissi; 25 Pride of Haarlem Tulips; or 250 Mixed Narcissi, etc.

Terms

Cash with order, or thirty days net, providing satisfactory credit rating or references are given. On all advance orders received before August 15th, 1926, we allow a discount of 5%, when cash accompanies order. Cash does not need to accompany order, however, on these advance orders, and you may reserve stock, and we will mail invoice at time of shipping goods. These bills will be due in thirty days, net. Unless expressly requested, we do not ship bulbs or plants from this catalog Collect on Delivery. However, we ship to please the customer, but all C. O. D. orders will go forward collect in full for all transportation charges.

Bank Reference

As to our business and financial responsibility, we refer, by permission, to the Lee State Bank, Dowagiac, Michigan.

Kindly Read This Page Carefully

Twelve Beautiful Iris

The Iris is one of the finest, if not the finest of our hardy plants. It is not particular as to soil or location, but asks only that the sun shine on it. It is a flower of culture and refinement. The Iris is a typical and highly desirable flower for the collector. They are most effective planted in groups, and are particularly desirable for border use, as the foliage remains fresh and upright after the blossom stalks are removed. Well established plants will often produce fifty or more spikes of bloom. Many are deliciously fragrant, and all are fine for cutting. Plant, preferably, in July or August, but they may be planted much later with good results. In the descriptions the letter "S" refers to standards or upright petals; "F" to the falls or drooping petals.

***Fairy** (Kennicott). S and F white, delicately bordered soft blue. A beautiful tall variety. 35c each; 3 for 75c.

Fro (G. & K.). S deep gold; F brilliant chestnut-brown. A very distinct variety, and one of the best in this color. 25c each; 3 for 60c.

***Her Majesty** (Perry). S lovely rose-pink; F about same color, with darker veinings. A very vigorous, satisfactory variety. 35c each; 3 for 75c.

Ingeborg (G. & K.). About the only pure white intermediate Iris in general cultivation. A strong grower and free bloomer. Flowers well in advance of other varieties on this list. 25c each; 3 for 60c.

Lewis Trowbridge (Farr). S bright violet; F blue-violet, shaded rose. Effect is violet. Very large flower, with wide S and F. 50c each; 3 for \$1.00.

Loreley (G. & K.). S light yellow, with occasional blue markings; F blue with cream border. The best landscape Iris in this color. Very free bloomer. 25c each; 3 for 60c.

Mary Garden (Farr). S pale yellow, flushed pale lavender; F long and drooping, creamy white, minutely dotted and veined maroon. A very



German Iris.

distinct and odd Iris. Plants are a trifle slow to establish themselves, but a very satisfactory novelty. 35c each; 3 for 75c.

Queen of May (Salter). S and F soft rose-lilac. General effect is pink. Much admired and very effective for mass planting. 25c each; 3 for 60c.

Rhein Nixe (G. & K.). S white; F deep violet-blue with white edge. A tall, large Iris, which is a very vigorous grower and very effective for planting in the shrubby border. Much prized for cutting. 25c each; 3 for 60c.

***Sherwin-Wright** (Kohankie). Yellow Iris. Flowers are small and of only medium height, but the color is good, and the plant is hardy and very free flowering. 35c each; 3 for 75c.

Wyomissing (Farr). S creamy white, suffused with delicate soft rose; F deep rose, shaded to flesh colored border. This Iris is very fine for landscape effects where light delicate colors are desired. It is a distinct Iris and worthy of a place in every collection. 35c each; 3 for 75c.

***Zanardelli**. Lavender-blue Iris. Very free flowering and desirable. Not a new variety, but seldom seen in general cultivation. A splendid color. 35c each; 3 for 75c.

August 29th, 1925.

Mr. Geo. W. Hunter,
Dowagiac, Michigan.

Dear Sir:

Package of Sherwin Wright Iris
arrived O. K. -- Fine. Enclosed find
check for payment of same.

Thanking you, I am,

Yours truly,

Ed. Van Winkle,
Granger, Ind.

Three each of the above four (*) varieties,
(12 divisions), valued at \$3.00, for only \$2.50,
prepaid to you.

Nine Superb Narcissus or Daffodils

We are no longer able to import bulbs of this beautiful flower from Holland. However, we have been experimenting with Narcissi for the past several seasons, and in these five or six years have been able to successfully propagate and grow Narcissus bulbs of very good quality, equal, no doubt, to the very best Holland bulbs. Our collection embraces at least seventy-five varieties, and those who are interested in the newer and rarer varieties should get in touch with us and we will be glad to quote prices on these varieties. In fact, the American grown Narcissi will come into bloom slightly earlier than Holland grown bulbs. We invite you to try these bulbs, and would greatly appreciate hearing how you succeed with them the coming season. All orders will be filled from bulbs from our own stock as long as supply lasts. Please order early, as shipments can be made much earlier than is the case with Holland grown stock. No garden could be complete without the Narcissus or Daffodil, but it is not only for garden culture that they are used. Many of the varieties are extensively grown in pots or pans for indoor decoration. If you want bulbs for forcing, kindly state so on your order and we will see that you get stock that will be satisfactory in every way, if you carefully follow our cultural directions. Narcissi prefer partial shade, although most of them will grow equally well in the open. Plant them in large groups of irregular outline for sweeping landscape effects. They are also very satisfactory for naturalizing in the grass. All the varieties listed are splendid for cutting and are of the easiest possible culture.

Emperor (Yellow Trumpet). Deep primrose perianth, with rich yellow trumpet. A very large and free-blooming Narcissus. \$1.75 per doz.; \$12.50 per 100.

King Alfred (Yellow Trumpet). Uniform, clear, rich golden yellow. The large trumpet is of elegant form, with open, deeply frilled mouth. A very tall and vigorous grower. One of the finest and showiest trumpet Daffodils. \$3.75 per doz.; \$30.00 per 100.

Empress (Bicolor Trumpet). Pure white perianth, with deep yellow trumpet. One of the oldest and best known varieties. Splendid for the garden, and one of the best for naturalizing. \$1.75 per doz.; \$12.50 per 100.

Spring Glory (Bicolor Trumpet). Perianth white. Trumpet golden yellow. Very early and of very large size. Excellent in every way. \$3.00 per doz.; \$25.00 per 100.

Weardale Perfection (Bicolor Trumpet). Perianth white. The Trumpet is a light primrose-yellow. The flower is very large, and it is considered one of the best Bicolors. \$5.50 per doz.; \$40.00 per 100.

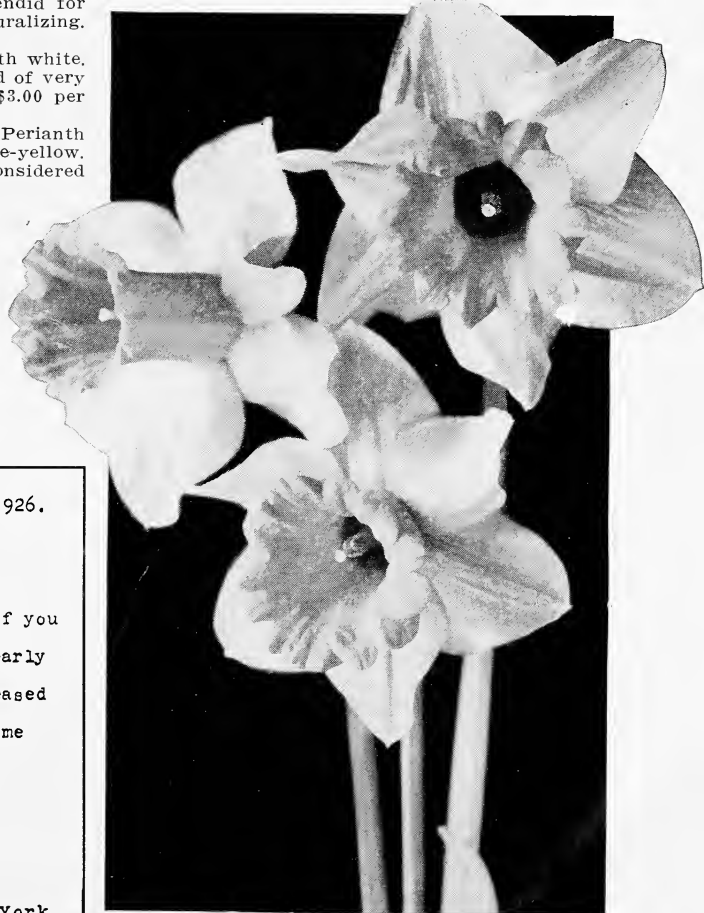
Conspicuous (Barri). Large, broad, pale yellow perianth, with a deep yellow cup, which has a bright, almost scarlet edge. This variety is highly prized for naturalizing, and is very free flowering, and of the true Barri type. \$1.75 per doz.; \$12.00 per 100.

Sir Watkin (Incomparabilis). Immense all yellow flower, with cup an inch long, and tinted deeper. A very large, tall, strong grower; profuse bloomer. Probably the most satisfactory of this type. \$1.75 per doz.; \$12.50 per 100

Glory of Lisse (Poeticus). Large, pure white perianth, orange-scarlet cup. An improved Poeticus Ornatus. \$1.75 per doz.; \$12.00 per 100.

Poeticus Ornatus. Very fine for cutting. Unexcelled for natural planting, and follows the other varieties on this list in season. Perianth is snow-white; cup is yellow, margined scarlet. An old favorite. \$1.35 per doz.; \$10.00 per 100.

SPECIAL OFFER CHOICE MIXED NARCISSI
\$1.60 per dozen. \$11.50 per 100.



Emperor Narcissi.

June 3rd., 1926.

Mr. Geo. W. Hunter,

Dear Sir:

The Irises I purchased of you last Fall wintered nicely, and nearly every one is budded. I am so pleased with them. Will you please send me prices on other bulbs this Fall?

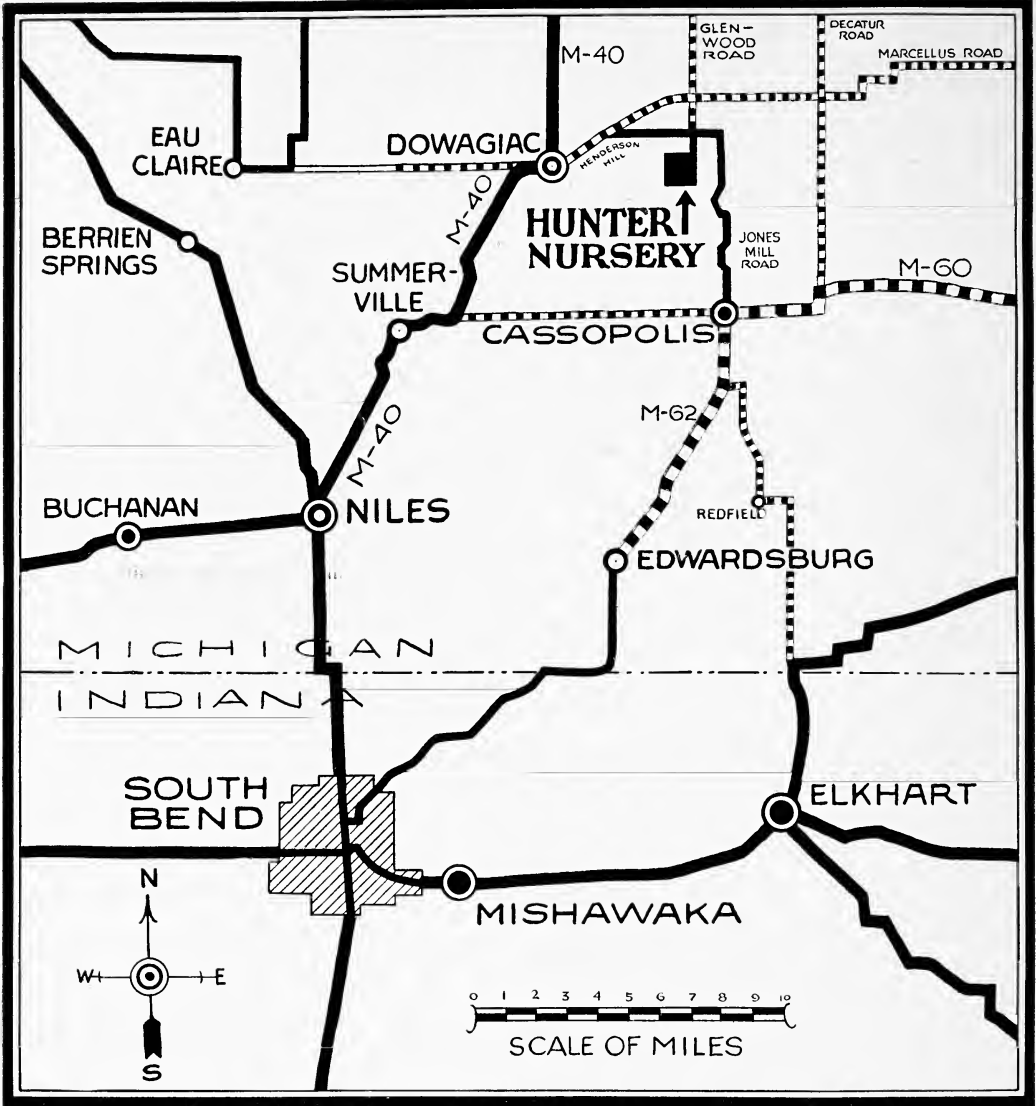
Respectfully yours,

Mrs. Burr Ruger,

Box 34,

Andover, New York.

You Are Invited



A Partial List of the Gladiolus Growing In Our Fields This Season

VIOLET AND PURPLE SHADES

Anna Eberius.
Baron J. Hulot.
Duchess of York.
Jacoba van Beijeren.
Louis Bouwmeester.
Othello.
Paul Pfitzer.
Purple Perfection.
Violet Glory.

LAVENDER, BLUE AND VIOLET SHADES

Byron L. Smith.
Capt. Boynton.
Geraldine Farrar.
Heavenly Blue.
Herada.
Mad. von Konynenburg.
Mary Fennell.
Mrs. F. C. Peters.
Rev. Ewbank.
Ruth Huntington.
Veilchenblau.

LAVENDER-PINK SHADES

America.
Mona Lisa.
Rosemary.
Ruffled America.
Wilbrinck.
Youell's Favorite.

TRUE PINK AND ROSE- PINK SHADES

Apple Blossom.
Crinkles.
Dr. W. Van Fleet.
E. J. Shaylor.
Eugene Lefebure.
Evelyn Kirtland.
Jumbo.
Le Marechal Foch.
Miss Madison.
Mrs. Dr. Norton.
Mrs. Frank Pendleton.
Myrtle.
1910 Rose.
Panama.
Pink Wonder.
Rose Glory.
Thos. Kent.

SALMON-PINK SHADES

Gretchen Zang.
Halley.
J. A. Carbone.
Karl Volkert.
Mrs. H. E. Bothin.
Mrs. Leon Douglass.

Myra.
Odin.
Phaenomen.
Prince of Wales.
Salmon Beauty.
Virginia Hale.
W. H. Phipps.

WHITE, AND WHITE WITH MARKINGS

Carmen Sylva.
Europa.
Fern Kyle.
Hollyhock.
Imperator.
La Beaute.
Lidy.
Lilywhite.
Maine.
Marie Kunderd.
Mary Pickford.
Peace.
Purest of All.
Snow Boy.
Snow Glory.
Vesta Tilly.
White Beauty.

CREAM, YELLOW AND BUFF SHADES

Fortuna.
Gold.
Golden Measure.

Jewell.
Niagara.
Obelisque.
Schwaben.
Souvenir.
Topaz.
Twilight.
Wm. Kent.
Yellow Wonder.

SALMON, ORANGE AND SAFFRON

Alice Tiplady.
Alton.
A. W. Hunt.
Herbstzauber.
Ida Van.
Jean du Tailles.
Jenny Lind.
Marietta.
Mary Stearns Burke.
Orange Brilliant.
Orange Glory.
Orange Queen.
Pfitzer's Triumph.
Primunella.
Scarlano.

SMOKY AND MANY- COLORED SHADES

Dunlaps.
Enigma.
Mrs. Wm. Kent.
Old Glory.
Romance.
Rose Ash.

SCARLET-RED, AND SCAR- LET-RED WITH MARKINGS

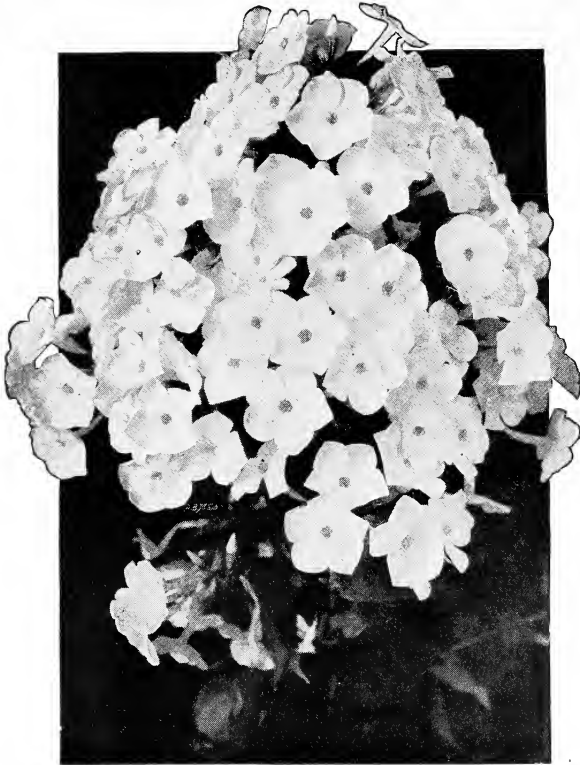
Arden.
Crimson Glow.
Dream.
Dr. F. E. Bennett.
Frank J. Symmes.
Krelage's Favorite.
Mrs. Francis King.
Scarlet Cardinal.
Scarlet Princes.
Thistle.
Vesuvius.

DARK RED, WINE AND MAROON SHADES

Al Shira.
Goliath.
Persia.
Purple Glory.
Rajah.
Splendor.



*Your favorite flower
-the Gladiolus*



Phlox, Miss Lingard.

- Mrs. Jenkins.** A very free blooming, dependable white variety.
- ***Rheinlander.** A beautiful salmon-pink, slightly deeper in color than Elizabeth Campbell, and of very large size. Height medium.
- R. P. Struthers.** Bright rosy carmine, with claret-red eye.
- Rijnstroom.** A lively rose-pink. Very effective for mass planting.
- Siebold.** A very bright color, and though it sometimes fades in the sun, it holds its color very well for such a vivid orange-scarlet.
- Thor.** This variety is really an improvement on Rijnstroom and Rheinlander. Color is a lively shade of deep salmon-pink with a very bright eye. It is strong in growth, and very free-flowering, and worthy of a place in every garden.

Three each of the above four (*) varieties, (12 plants), valued at \$3.00, for only \$2.60, prepaid to you.

April 12th, 1926.

Geo. W. Hunter, Grower,

Dowagiac, Michigan.

Dear Sir:

Bulbs came in fine condition.

Many thanks for extras.

Mrs. C. W. Terwilliger,

Hillsdale, Michigan.

The Popular Phlox

The Phloxes are one of the few popular perennials which can be entitled an all-American flower. The fragrant blooms cover a wide range of colors, and are borne in large heads or clusters at the tips of the stems. The newer varieties which we are listing below are much larger in size of heads and in the individual flowers, than were the Phloxes of our grandmother's garden. Phloxes will grow and bloom almost anywhere, but best results are obtained in rich soil which has plenty of moisture during the blooming season. Plant the Phlox in masses for bold and striking effects. Their wide range of colors offer many possibilities.

All varieties are priced at 25c per division; \$2.50 per dozen.

B. Comte. Rich Burgundy red. A rather late variety, but very strong grower.

Elizabeth Campbell. A delicate shade of salmon, changing to pink in the center, eye much darker. Large trusses. One of the most attractive pink Phloxes.

***Europa.** White with large crimson-carmine eye. Mammoth, perfect trusses.

Frau G. von Lassburg. A very large, fine white flower. Season medium. A very free bloomer.

***La Vague.** Immense conical heads. Warm mauve, with emphatic carmine eye. The very best lavender-mauve color. A very vigorous Phlox.

***Miss Lingard.** A very early-flowering variety, often called the best Phlox in cultivation. It produces immense heads of beautiful white flowers in June, and with good culture will bloom again in September or October. Splendid foliage and habit, and excellent for cutting.



Phlox, Thor.

Twelve Dependable Peonies

Peonies are probably the most valuable of all perennial plants. Once planted, they require little care, and are practically permanent. They do, however, repay for good cultivation and attention in more plentiful bloom and better quality of bloom. Though they come in but the three main colors of white, pink and red, the various shadings of these colors give us a beautiful range of color. The plants must not be planted over three inches deep, and when cutting their flowers, do not remove all the leaves from the plant. The various sorts give a very extended blooming period, and it is possible to have Peonies for at least a month, if one has a dozen or so varieties. We offer below twelve very moderately priced, beautiful, dependable varieties, which will please the most exacting. These are furnished in three- to five-eye divisions, and are so priced on this list. To those that want smaller plants, and are willing to wait longer for the bloom, we can offer one-eye divisions at half price.

Baroness Schroeder. Color white, with shadings of flesh color. Season late. This is one of the finest Peonies, and its immense flowers have great substance. It is also very fragrant. \$2.00 each.

Claire Dubois. Immense, well rounded flower of a clear satin-pink. Late midseason. All around good variety. \$1.50 each.

Couronne d'Or. White with yellow tints arising from a few stamens, showing amidst the petals. The center petals are tipped with carmine. A large, rather full flower of wonderful form. Height medium. Season late. 75c each.

***Duchesse de Nemours.** The guard petals are white; center lemon-yellow at first, then gradually fades to white. The flower is fragrant, and is two or three days later than Festiva Maxima. 50c each.

***Festiva Maxima.** The most popular and best known Peony. Immense pure white flowers with center petals lightly marked with carmine. Very tall and vigorous, and a most dependable bloomer. Season early. 50c each.



Peony, Duchesse de Nemours.

***Karl Rosenfield.** Dark crimson. A very fine grower, and free-flowering. It is the best early red. Season second early or midseason. \$1.50 each.

Mons. Jules Elie. Pale lilac-rose with lighter collar, which shades to an almost amber-yellow at the base. The flowers are borne on long, stiff, strong stems. An extra good early pink variety. \$1.50 each.

Mons. Martin Cahuzac. Very deep maroon, with garnet shadings and a black luster. The darkest Peony known, often called the Black Peony. A very free-flowering variety, and a vigorous grower. Midseason. \$2.75 each.

Officinalis Rubra fl. pl. Rich deep crimson. The earliest of the Peonies, and very famous as the Decoration Day Peony. Unfortunately, it does not last long as a cut flower. Season early, but short. 75c each.

Reine Hortense. A beautiful hydrangea-pink, with bright rose stripes on the petals. Very fragrant, and a most gorgeous flower. Flowers are extra large and very double. Midseason. \$1.25 each.

Sarah Bernhardt. Mauve-rose-pink, with silver sheen on tips of petals. Late midseason. The flower is full and double, of remarkable size. \$3.50 each.

Therese. Violet-rose, shading to light pink. This fades to an almost lilac-white. The largest Peony in this shade, and a fine addition to the midseason sorts, of which it is one of the best. \$3.50 each.

April 26th, 1926.

Geo. W. Hunter, Grower,

Dowagiac, Michigan.

Dear Sir:

Please find enclosed M. O.

I received the bulbs in good order.

Thanks very much for those you enclosed free. I hope another year to be able to grow more.

I am, Sir,

Yours respectfully,

W. Cölyer,

1329 Hays Park Ave.,

Kalamazoo, Mich.

SPECIAL OFFER

One each of the three (*) varieties, valued at \$2.50, for only \$2.25, prepaid to you.

Miscellaneous Flowering Bulbs

Special Selected Stock

Do not fail to include a liberal supply of these with your order. They are all useful for edgings and border plantings, and as they bloom early in the Spring, when flowers are much needed, they should become more generally known than they are at present.

Crocus

The Heralds of Spring.

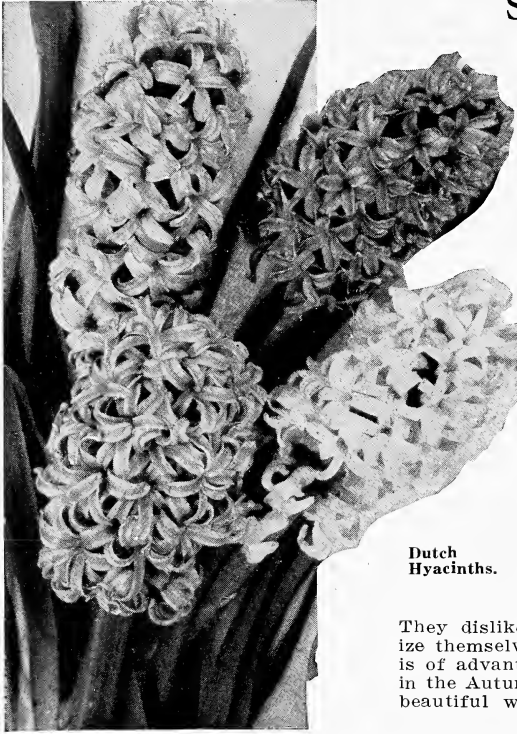
Crocuses are very effective when planted in masses on the lawn or arranged in three or four rows of one color in a border. They are perfectly hardy, and may be left in the ground three or four years after planting, without being disturbed. They are also very effective in the rock garden. Plant them generously. We can supply the following colors:

Blue, Purple, White, Yellow, or Choicest Mixture of these colors, at 50c per doz.; \$3.50 per 100.

GRAPE HYACINTH (Muscari). Very beautiful little flowers for planting in masses. They can be left undisturbed, and do exceedingly well. Each year adds to their beauty and profuse blooming qualities. Bloom in May. They do very well in shady places.

Heavenly Blue. The best and largest of the Grape Hyacinths. The bells are large and form a fine truss. 50c per doz.; \$3.50 per 100.

SNOWDROPS (Galanthus). These are the very first to open in the Spring, and are very lovely. They dislike being moved, and should be left alone to naturalize themselves. Some Winter protection, such as a light mulch, is of advantage, but not absolutely necessary. Plant as early in the Autumn as possible. We offer a fine mixture of these beautiful white flowers at 50c per doz.; \$3.50 per 100.



Dutch Hyacinths.

These flourish in the sun as well as in shade, and they are not particular about the soil in which they grow. Useful for the wild garden, the rock garden, or the hardy borders. Once established, they practically take care of themselves, and will bloom to perfection year after year. Will bloom where other flowers refuse to grow, such as near foundations and under evergreen trees.

Sibirica (Siberian Squill). This is the earliest to flower, and is fine for naturalizing. The flowers are bell-like, and produced on stems three to four inches in height, and have a drooping effect. Excellent for the rock garden. Color bright blue. A fine companion for the Snowdrops. 50c per doz.; \$4.00 per 100.

Campanulata (Wood Hyacinth). Bears spikes up to 15 inches high, during early May. Flowers are of bell-like formation, and in form like small Hyacinths. We offer the following colors:
Blue. 50c per doz.; \$4.00 per 100.
White. 60c per doz.; \$5.00 per 100.
Rose. 70c per doz.; \$6.00 per 100.

Hyacinth

Everyone is acquainted with the merits of Hyacinths, especially are they famous for pot culture. They are much prized for bedding. Of the hundreds and hundreds of varieties offered, we have singled out one of each color, which we consider the very best for forcing or outdoor growing. These are grown by one of the finest growers in Holland, and we assure you of the high quality of our stock. Prices, considering the high quality, are very reasonable. For those who are interested in a larger list of named varieties, kindly write us early in the season, and we will import just what you want. We offer named varieties in the following colors:

Yellow, White, Pink, Red, Blue, Violet, Mixed. Uniformly priced at \$3.00 per doz.; \$25.00 per 100.

Scillas



Scilla Sibirica.

Twelve Delightful Tulips

The enthusiasm for Tulips is not due so much to fad and fancy, as to an awakened sense of their beauty. Their range of color is unequalled by any other Spring-flowering plant, and once grown, the amateur becomes interested, and soon becomes a fancier, and no wonder, for when one considers the wide range of colors, the varying heights and the many uses which the Tulips fill in the Spring plantings, the wonder is how anyone with any garden room at all will refrain from planting at least a few dozen. They are valuable for permanent planting, and are thus highly prized for use in shrubberies and borders, but for the very best effects it is well to dig the bulbs when the foliage begins to fade and replant in prepared soil again in very early October. The varieties which we offer are the best of the moderately priced varieties. Those who are interested in the newer varieties, please get in touch with us at the very earliest opportunity.

Darwin Tulips

This class of Tulips is unexcelled for cutting, and often are in bloom for Decoration Day.

Farncombe Sanders. Brilliant rosy red with a clear white base. A large flower of very fine shape. Excellent for forcing or for the border. 65c per doz.; \$5.00 per 100.

***Clara Butt.** Beautiful clear salmon-pink with a blue base. The flower is of medium size and of very good form. One of the very finest Tulips for outdoor planting, and is also highly prized for forcing. 60c per doz.; \$4.50 per 100.

***Pride of Haarlem.** Immense flower of a brilliant, deep rosy carmine with a light blue base. This very popular variety is produced on tall, strong stems, and has a very fine fragrance. Superb for either outdoor planting or for forcing. 60c per doz.; \$4.50 per 100.

***Psyche.** Silvery rose, edged to soft rose, with a pale blue base. A very delicate color, and a handsome flower. Fine for a sheltered position in the garden, where it will not be exposed to the direct rays of the sun. Also good for very early forcing. 60c per doz.; \$4.50 per 100.

Rev. H. Ewbank. Soft lavender-violet, slightly shaded silver-gray, white base. Flower of medium size, and of medium height. 60c per doz.; \$4.00 per 100.

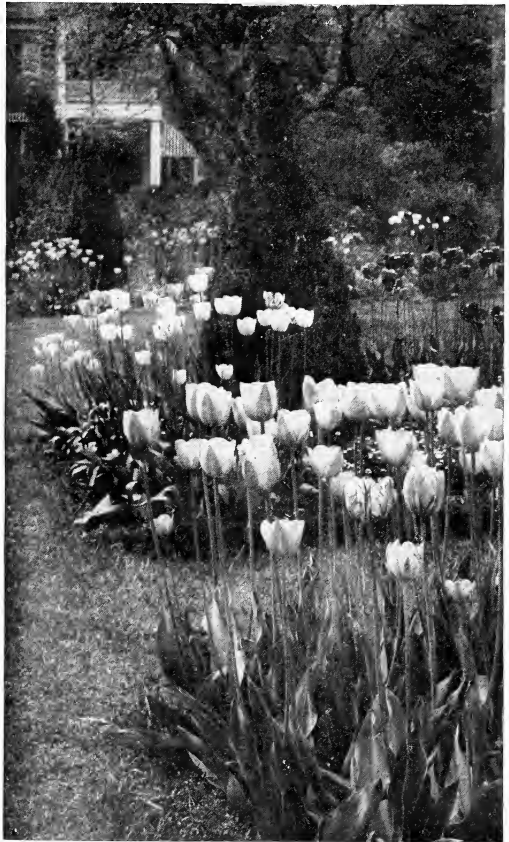
Faust. Satiny purple with a blue base. \$1.20 per doz.; \$9.00 per 100.

Cottage Tulips

These Tulips bloom with the Darwins in season, but come in the lighter and paler colors. Also, this class contains many yellow varieties, which are very fine for mixing with the Darwin Tulips, or for use as borders around beds of Darwin Tulips.

***Inglescombe Yellow.** Glossy canary-yellow. Large, globular flower, of perfect form, on a strong stem. This is frequently called a Yellow Darwin Tulip. Of medium height, and one of the best yellow Tulips. 60c per doz.; \$4.50 per 100.

Moonlight. Soft canary-yellow, which fades to crimson-rose. A very excellent yellow, and the large, oval-shaped flowers, with outer petals slightly reflexed at the tips, are much prized for bedding. 80c per doz.; \$6.00 per 100.



Darwin Tulips.

Fawn. The large, egg-shaped flower is a unique shade of pale rosy fawn. This, upon opening, changes to a cream, flushed blush rose. Very desirable for border and edging planting. 75c per doz.; \$5.50 per 100.

Breeder Tulips

These are similar in habit to the Darwin, and flower at the same time. The blooms, however, are usually larger, and come in buff and brown shades. These Tulips are, at the present, very strong favorites with all lovers of this beautiful flower.

Louis XIV. Dark purple, flushed bronze, with a broad margin of golden brown. Very large, globular flower, with green-black base. Starred yellow. Unquestionably the finest Tulip in existence, as the large flowers are produced on very long, stiff stems. Very scarce. \$3.00 per doz.; \$22.00 per 100.

Dom Pedro. Coffee-brown with a very narrow edge of golden brown. Inside is rich mahogany with an olive base. The flower is large and very fragrant. Height medium. 75c per doz.; \$12.50 per 100.

Bacchus. Dark plum-violet. The inside is violet-blue with white star at base. The immense, large, egg-shaped flower is quite the nearest approach to dark blue in late Tulips. A very hardy and long-lived Tulip. Stands heat and rain very well. \$2.50 per doz.; \$8.00 per 100.

Six each of the four (*) varieties, (24 bulbs), valued at \$1.20, for only \$1.00, prepaid to you.

Hunter's SELECTED MIXED Tulips

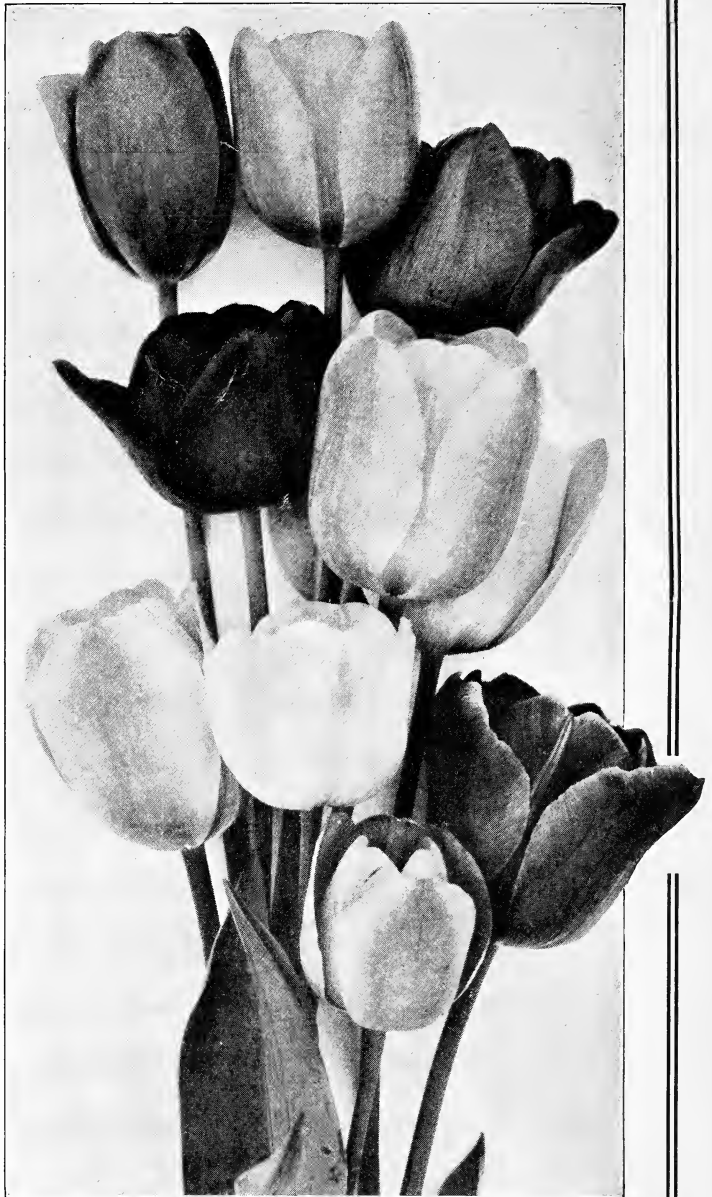
For

Beds and Borders

*Blended from the
Best Named Varieties
of Imported
Stock*



\$5.00 per 100
\$40.00 per 1000



GEO. W. HUNTER, GROWER

Dowagiac, Michigan