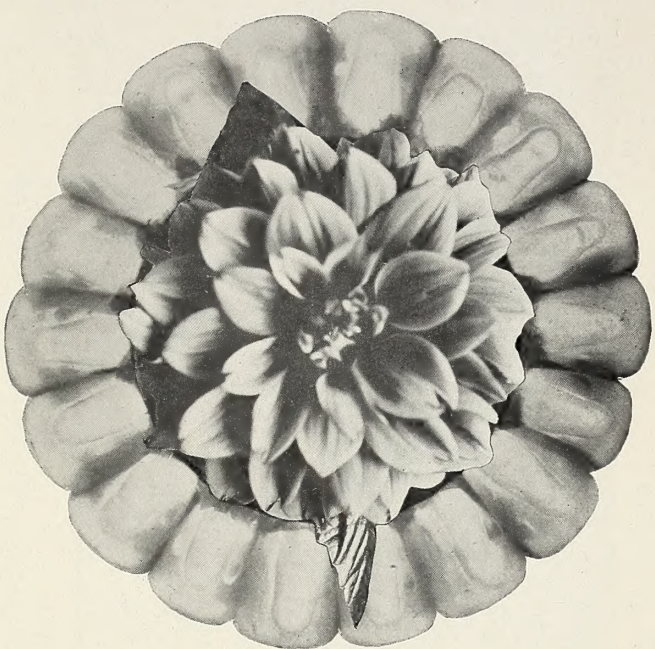


Historic, archived document

Do not assume content reflects current scientific knowledge, policies, or practices.

62.23



Mid West Dahlias Farm

Earle W. Houghton's

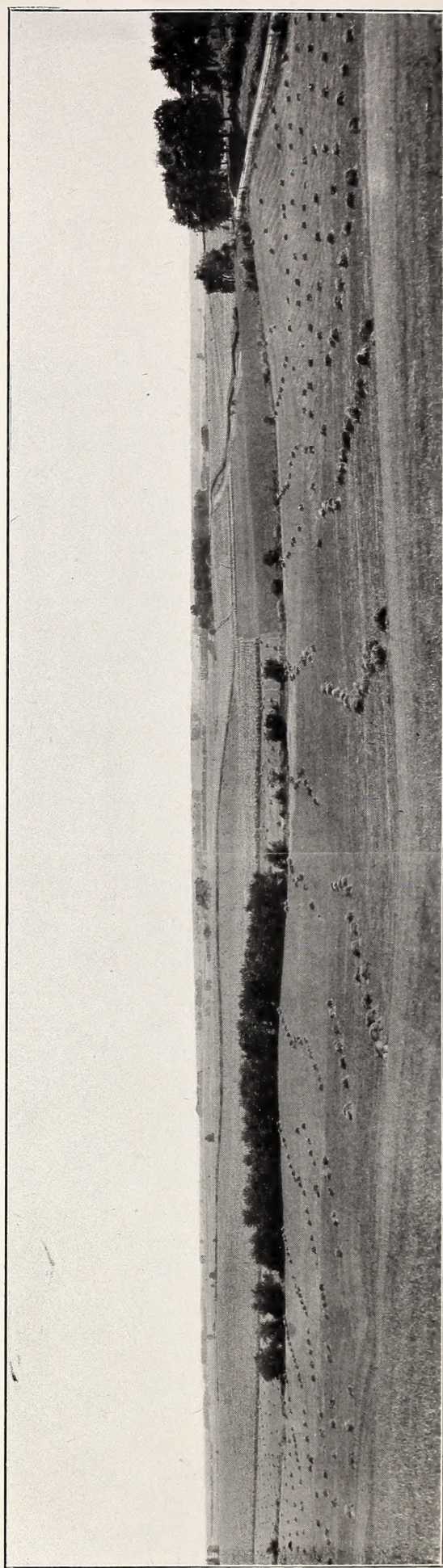
Mid-West Corn Belt

DAHLIAS

1926

LIBRARY
BROOKLYN
★ APR 28 1926 ★
U.S. Department of Agriculture.

We have tried to make this folder as brief as possible and at the same time give you the information which we consider **important**; so please read it **all very carefully** if you are interested.



Glimpse of the Corn Country Where Mid-West Dahlias are Grown

FOREWORD

THE WRONG HOUSE

I went into a house, and it wasn't a house,
It has big steps and a great big hall,
But it hasn't got a Garden,

A Garden,
A Garden,
It isn't like a house at all.

The above verse, taken from one of A. A. Milne's poems, "The Wrong House," seems to us rather appropriate as a preface to our remarks. We trust this small folder has not been sent to the "Wrong House." Perchance it has, we shall very much appreciate your passing it on to some friend who has a Garden.

‡ ‡

Greetings of the Dahlia Season

‡

To Our Present and Prospective Patrons:

This is our introductory Descriptive Folder and Price List of Present-day Dahlias, and we trust it will meet with the approval of those of you who are taking an interest in this Most Wonderful of Modern Out-door Flowers.

We have what we believe is the Very Finest Selection of Varieties offered by any grower in this, the North Central States (Corn Belt) section of the United States.

This folder is gotten out primarily for the benefit of those of you who have, as yet, been unable to visit our Gardens and see the various blooms first hand. We have not gone into great detail, for it would be utterly impossible to give you an adequate impression of these glorious flowers in print or even in picture. However, we have so marked these listings as to give you at least a partial check on the respective merits of the different varieties, as they are regarded by those personally familiar with them. That is we have given, where possible, the ratings taken from Professor Norton's 1925 Rating Book of Dahlias (the latest and most authoritative source of information on this subject); we have marked our personal favorites; and lastly, as "proof of the pudding," we have indicated the ones which have been out best sellers.

Our first and foremost aim in connection with this business is to secure customers; satisfied customers, who are so pleased with the results from the stock which we send them, that they will not only come back with future orders for themselves, but for their friends as well. If we can build up this kind of a business, our success will be a gratifying one for all concerned; and you who read these lists may rest assured that we have taken the greatest

precautions against misrepresenting any of the stock offered, and that we shall exercise the greatest possible care in the filling of your orders.

Furthermore, if, at any time, any of our customers are in need of special information or advice pertaining to Dahlias, we shall be more than pleased to give you the benefit of our own knowledge of and experience with this flower.

Now, in closing, we want to urge you and your friends to make it a point to visit our Show Gardens during the coming season. Our Dahlias should start to bloom about the first of August and continue until the frosts come. In this way, and in this way only, will you be able to secure an accurate impression and estimate of the real qualities and beauty of the various blooms.

Each year we shall be adding new and possibly improved varieties to our collection, in an endeavor to keep it on a par with the best in the country; and so we say to those of you who have favored us with a previous visit, **Come Again;** and to those of you by whom we have not as yet been so favored,

We say: Come Down to the End (East) of Town, and See What There is To See.

We shall try our best not to disappoint you.

EARLE W. HOUGHTON.

GENERAL INSTRUCTIONS

(Please Read Carefully Before Ordering)

ORDER EARLY. Stocks of some varieties are in great demand and soon exhausted.

TERMS. Cash with order. On all orders of \$2.00 or over, shipping charges prepaid. On orders amounting to less than \$2.00, add 25 cents to cover these charges.

REMITTANCES may be made by Check, Bank Draft or Post Office Money Order. Stamps will be accepted on orders amounting to less than \$1.00.

SHIPMENT OF ORDERS. We start shipping about April 15. Orders are filled in rotation, unless a delay of shipment is specially requested.

SUBSTITUTION. We never substitute one variety for another, unless given express permission to do so. In event of our inability to supply any of the stock ordered, your money will be refunded, unless you see fit to name a second choice.

CULTURAL DIRECTIONS. Full directions for planting and care after planting are enclosed with each shipment.

NAME AND ADDRESS. Be sure to write these plainly. Preferably print them.

GUARANTEE. Every tuber sent out is warranted to be from healthy, field-grown stock. Every tuber is also guaranteed to be true to name; to have at least one

healthy eye or sprout, and to reach the purchaser in good growing condition. Beyond this point our liability ceases, for after the root is delivered, its subsequent care and handling are beyond our control.

CAUTION. As soon as you receive your shipment, unpack at once, check the stock received with your order sheet (notifying us immediately of any error)—then place the tubers in moist, **but not wet**, earth or sand and leave them there until you are ready to make your permanent planting. This will probably start their growth, which is to be desired; otherwise they may dry out and this growth become impaired.

Study the Cultural Directions carefully and follow them. This is important, for, to the contrary notwithstanding, Dahlias, to give the **best** results, require intelligent care and attention during their period of growth, the same as any other plant.

SPECIAL COLLECTIONS. For the benefit of those who are not sufficiently informed as to the respective qualities and merits of the different varieties listed, after reading over the various descriptions, or who may have no special preferences; we would suggest your allowing us to make up a selection of varieties, all named and labeled, which we think will please you, and which we shall be pleased to make in keeping with any amount you may wish to spend, from two dollars up. We can

guarantee you an appreciable saving off the list price on collections of this sort.

CUT FLOWERS. We ship Fresh-cut Dahlia Blooms, in season, to any point within 18 hours express radius.

\$2.50 per dozen, plus shipping charges, to any point within six hours.

\$3.00 per dozen, plus shipping charges, to points beyond—requiring special packing.

REMEMBER, we ship only our **CHOICEST FRESH-CUT** Blooms.

Note: Give us 24 hours' notice, if possible.

REFERENCES: Galva First National Bank, Galva, Illinois; L. M. Yocum & Co., Bankers, Galva, Illinois; and Farmers' Co-Operative Bank, Galva, Illinois.

Memberships in the following Dahlia Societies: American Dahlia Society; Dahlia Societies of California, Southern California, New England and New Jersey.

NOTE: If you want to learn more about Dahlias than any one person would probably ever be able to tell you, you should not fail to send in your application for membership in the American Dahlia Society. This membership entitles you to the Quarterly Bulletins of the Society, which contain much information of importance to any Dahlia grower. Send your application and check for \$2.00 to William J. Rathgeber, Secretary, 198 Norton St., New Haven, Connecticut.

DAHLIA TYPES

For the benefit of those unfamiliar with the various Types of Dahlias, the following brief descriptions of the different classes are given:

D. DECORATIVE TYPE: Double flowers, full to the center, ranging from rather flat to fully hemispherical in form. Petals or floral rays, ranging from cup-shape to flat, with rather broadly pointed or rounded tips, which may be either straight or turned back. Outer margins of petals revolute, if rolled at all.

S. SHOW TYPE: Globular or ball-shaped blooms, with quilled or semi-quilled petals, of which the margins may be either straight or involute. Flowers double and full to the center, and ranging in size or diameter from two to about three and one-half inches.

H. S. HYBRID or COLOSSAL TYPE: Similar to the Show Type in formation, but of larger dimensions.

H. D. S. HYBRID DECORATIVE-SHOW TYPE: Characteristics of both the Decorative and Show or Hybrid-Show Types.

C. CACTUS TYPE: Double flowers with full centers. Petals long, narrow, pointed, rolled, twisted, or fluted, giving a spidery or scraggly effect. Margins of petals as a rule revolute, forming a more or less perfect roll for over half the length of the petal.

Under the true Cactus Type there are two classes: The ENGLISH CACTUS (E. C.) with long, narrow, tightly rolled, incurved florets; and the AMERICAN CACTUS (A. C.) with straight or only slightly incurved petals, which as a rule are not quite so tightly rolled as those of

the English Type, thereby giving the bloom a somewhat heavier appearance.

H. C. HYBRID-CACTUS TYPE: Full centered double flowers of coarser and broader formation than the true Cactus. Rolling of the petals less pronounced. Flowers of this type are often "shaggy" in appearance, though they may be of fairly regular formation and still come in this class.

H. D. HYBRID-DECORATIVE TYPE: Characteristics of both the Decorative and Hybrid-Cactus.

P. PEONY TYPE: Semi-double flowers, showing an open yellow center. Petal formation similar to that of the Decorative. Open centers usually encircled with small curled petaloids.

C. P. CACTUS-PEONY TYPE: An unusual type, having the Cactus petal formation, with the open curly center of the Peony.

P. P. POMPON TYPE: Miniature Show. Must be less than two inches in diameter.

THESE ABBREVIATIONS, as indicated above, are used in the description of varieties, which follows:

THE CUTS OF SIX OF THE DIFFERENT TYPES which are shown in this folder will help you to form a mental picture of our listings, and in case you are not quite familiar with these Types, we suggest that you inspect these cuts carefully before going over the descriptive matter.



DAHLIA "ELLINOR VANDERVEER"
Typical Decorative

CONCERNING NO. ONE LIST

All the varieties shown on this list have been grown and have given satisfaction in our own Gardens. Some, in fact quite a number of the kinds which we have tried out, have, in one way or another, failed to come up to our requirements. These we have either discarded or held over for another year's test. Oftentimes a variety in new surroundings will not do well the first season, whereas, after it has had time to become accustomed to the changed conditions of soil or climate, or both, it will prove entirely satisfactory. We do not list or send out any varieties concerning which we have the slightest misgivings.

In the brief descriptions which follow we have tried to give you an accurate account of the important, and also the unusual or outstanding characteristics of each variety.

Where numbers are shown following the name of the variety, they have been taken from Professor Norton's Dahlia Rating Book (1925 edition). 80 to 85 is a very good rating; 85 to 88 is excellent; and anything above these figures is superfine.

The varieties for which we have a personal preference, we have marked with an "x" or "xx", in accordance with the degree of preference.

The ones which have been our Best Sellers, we have marked (S).



DAHLIA "BRIDE'S BOUQUET"
Typical American Cactus

LIST NO. ONE

	Each
AGNES HAVILAND —D.—(Marean)—xx (S). Unusual and beautiful color. Rose-ash shade with slight yellow suffusion at base of petals. 5 to 6-inch blooms produced freely on excellent stems. Vigorous grower.	\$1.50
AMUN RA (Sun God) —D.—(Seal)—84 xx (S). One of the Front Rank. Copper, orange and bronzy red—Autumn shades. 6 to 9-inch blooms on top of extra long, strong stems. Profuse bloomer and rank grower.	\$1.50
AMBASSADOR —A. C.—(Broomall)—90 x. The largest and finest of the Type. Buff-yellow with pink suffusion. 6 to 9-inch blooms, produced freely on spindly stems. Must be given plenty of room for best results.	\$1.50
ATTRACTION —H. C.—(Hornsveld)—84 x (S). An unusually attractive Holland variety. Lavender-pink, 6 to 7-inch blooms on extra heavy stems. Waved and twisted petal formation—very artistic. Plenty of blooms. Strong plants.	\$.50
A. D. LAVONI —S.—(Vick or S. H.)—83 xx (S). An old time variety, but still one of the best, if not the very best of this Type. Beautiful rose-pink with perfectly quilled petals. Medium size. All good qualities.	\$.25
AMERICAN BEAUTY —H. S.—x (S). Perfect H. S. Type in wine-crimson. Lots of 5 to 6-inch blooms on good stems. Plant vigorous.	\$.25
ACHILLES —P. P.—xx. Dainty coloring in lavender, pink and white. O. K.	\$.35

ELSIE DREXLER—H. C.—(Boston)—90 xx (S). One of the dark ones. Very rich, velvety maroon. 5 to 7-inch blooms, produced very freely on excellent stems. \$1.50

ELSIE OLIVER—H. C.—(Boston)—80 x. Wonderful coloring—pink and cream. Large sized blooms of an unusually artistic formation. Good stems. \$2.50

EVEQUE—H. C.—xx (S). Very attractive shade of purple. Strong plant, which produces an abundance of medium to large, well formed flowers on fine stems. This Dahlia should be disbudded some for best results. \$.50

F. W. FELLOWES—E. C.—(Stredwick)—84 xx (S). One of the best of this Type. Large, 6 to 8-inch orange-scarlet blooms, produced very freely on long, slender, wiry stems. As is the case with practically all the varieties of this class, the stems are more or less arched. \$.75

GIANT RUBY—D.—(Greinberg)—88 xx (S). Very possibly the best colored "Red" ever produced. Has taken the lead at the New York Show for the past three seasons. Very satisfactory in every way. \$3.00

GRIZZLY, The—H. D.—(Burns)—86 xx (S). Deep, rich, velvety red with a silvery suffusion on the reverse of the petals. Shaggy formation. Large blooms, freely produced on good stems. Plant very strong and vigorous. \$1.00

GLADYS SHERWOOD—H. C.—(Broomall)—87 x (S). Extra large white. One of the best of this Type. Strong grower. An exhibition variety. \$.75

GORGEIOUS—P.—(Boston)—87 xx. This flower is all that the name implies. Huge scarlet and gold blossoms, held far above the foliage on strong stems. Probably the most striking variety in our collection. \$2.00

CLARA SEATON—H. S.—(Doolittle)—x (S). Free producer of bronze colored blooms, ranging from 4 1/2 to 6 inches in diameter. Quilled petals. \$.50

DR. TEVIS—D.—(Pellicano)—83. Color salmon, rose, amber and yellow. This Dahlia has one failing, namely, that about a third of the blooms do not come fully double. Otherwise it is a very beautiful and satisfactory flower. \$.50

DOROTHY ROBBINS—D.—86 x. Beautiful Autumn shades—orange-red and amber. 6 to 7-inch blooms on long, strong stems. Fine for the big vases and baskets. \$1.00

DINORAH—H. D.—(Lohrmann)—xx. Pale, soft yellow. Not quite so large as some, but really one of my very finest varieties. 5 to 6-inch blooms on splendid stems. An excellent keeping Dahlia and a strong grower. \$1.50

DOROTHY DURNBAGH—A. C.—(Broomall)—x. Large blooms with incurved petals. Fine shade of deep pink. Stems strong, and as a rule straight, though occasionally arched. Dwarf growing vigorous plant. Blooms well above foliage. \$.75

DUNDEE—A. C.—x. Miniature Cactus blooms, 2 to 3 inches in diameter. Burnt-orange shades. Free. Good for bouquets and small baskets. \$.50

DREER'S WHITE—S.—(Dreer)—80. Beautifully formed quilled petal, white. Stems stiff, but arched. Free bloomer. \$.25

ESTHER R. HOLMES—H. C.—(Greinberg)—88 xx. Rose-lilac, shading to an almost pure white center, giving a luminous depth to the bloom. Unusually strong growing plant. Most excellent keeping cut-flower. \$1.00

BRIDE'S BOUQUET—A. C.—(Wilmore)—x. An excellent Florist's flower of medium size and pure white color. Wonderful, long, slender, wiry stems. This variety made an excellent showing late in the season. \$.50

BOBBY—P. P.—xx. Deep plum color. Usual size 1 to 1 1/2 inches. O. K. \$.35

CARMENCITA—D.—(Boston)—87 xx (S). A beautiful and artistically formed variegated in clear bright yellow, streaked with scarlet. Vigorous dwarf grower. 6 to 7-inch blooms on A-1 stems. Plenty of them. \$1.00

CHARM—D.—(Marean)—81 xx (S). A "Blaze of Glory." Large, fiery burnt orange and yellow on stiff, but slightly arched stems. One of the late Judge Marean's most beautiful creations. \$2.00

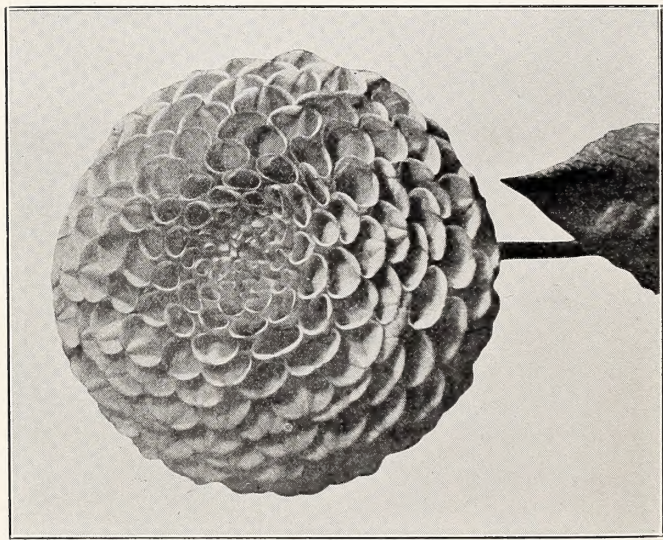
CHICOTA—D.—(Wilmore)—x (S). Clear, rich yellow on exceptionally long, slender (wiry stems). Blooms 4 to 6 inches. Excellent cut-flower variety. \$.50

CLEMENTINA WING—H. D. S.—x (S). Brilliant red cut-flower variety. Medium size (4 to 5-inch) blooms, produced freely on good stems. \$1.00

CALICO—D.—x. Small, fancy red and white striped novelty, on good stems. Oddly formed blooms, resembling somewhat those of the Zinnia. \$.50

CORONA—D.—x. Miniature Decorative blooms, 1 1/2 to 2 inches diameter, perfectly formed and of a fine, clear, ivory-white color. \$.50

CHAMPAGNE—D.—90 xx (S)—(Boston). Here's one that will be hard to tie. Rare color—Golden chamois. Lots of big 6 to 8-inch blooms on wonderful long, strong stems, which carry the flower so it looks right at you. Vigorous. \$3.50



DAHLIA "CLARA SEATON"
Show Type

- | | |
|-----------------------------------------------------------------------------------------------------------------------------------------------------------------------------------------------------------------------------------------------------------------------------------------------------------------------------------------------------------------------------------------------------------------------------------------------------------------------------------------------------------------------------------------------------------------------------------------------------------------------------------------------------------------------------------------------------------------------------------------------------------------------------------------------------------------------------------------------------------------------------------------------------------------------------------------------------------------------------------------------------------------------------------------------------------------------------------------------------------------------------------------------------------------------------------------------------------------------------------------------------------------------------------------------------------------------------------------------------------------------------------------------------------------------------|----------------------------------------------------------------------------------------------------------------------------------------------------------------------------------------------------------------------------------------------------------------------------------------------------------------------------------------------------------------------------------------------------------------------------------------------------------------------------------------------------------------------------------------------------------------------------------------------------------------------------------------------------------------------------------------------------------------------------------------------------------------------------------------------------------------------------------------------------------------------------------------------------------------------------------------------------------------------------------------------------------------------------------------------------------------------------------------------------------------------------------------------------------------------------------------------------------------------------------------------------------------------------------------------------------------------------------------------------------------------------------------------------------------------------------------------------------------------------------------------------------------------------------------------------------------------------------------------------------|
| <p>GEORGE WALTERS—H. C.—(Carter)—86 xx (S). An old-timer, but still going strong. Large flowers of salmon-buff and cream, produced freely on good stems\$.75</p> <p>GOLDEN BEDDER—H. D. S.—(Burbank)—82. Fluffy fringed flower of medium size. Clear yellow. Different from the rest of our yellows.....\$.50</p> <p>GOLDEN WEST—A. C.—(Broomall)—81 x. Golden-buff. Fine formation. Medium to large blooms on most excellent stems. Splendid cut-flower.....\$.35</p> <p>GRAND DUKE ALEXIS—S.—80. (S). White with faint lavender suffusion on the tips of the petals. Beautiful quilled formation. Stems pendant.....\$.25</p> <p>GOLD MINE—S. Free blooming yellow on gold stems. Garden variety\$.25</p> <p>GEORGE W. GERO—S.—(Gero.) Large size pink. Vigorous. Satisfactory\$.25</p> <p>GOLDEN OPPORTUNITY — H. S. — (Doolittle)—x. Quilled petal Hybrid in amber and gold. Quite similar to Clara Seaton.....\$.50</p> <p>GIRLIE—P. P.—xx. Pure lavender. All of this type are about the same in size and formation. They are all good free bloomers on good stems, so when you see "P. P." after the name, all you have to look for is the color.....\$.35</p> <p>GLOW—P. P.—xx. Old rose. A rare color in this type\$.35</p> <p>HELEN LAMBERT—P. P.—xx. Canary yellow. Brilliant little bloom.....\$.35</p> | <p>HENRIETTE—D.—x. Glistening terracotta-red. A good sized flower on excellent stems. Fair bloomer and vigorous grower.....\$.50</p> <p>HELEN DURNBAUGH—H. C.—(Broomall)—83. Light pink, growing deeper with age. Fluffy, medium to large flowers, which keep unusually well when cut.....\$.50</p> <p>HELIO—P.—(Deiner) x. Clear bright yellow blooms of good size on fine stems. The color of this variety is unusually attractive.....\$1.00</p> <p>INSULINDE—D.—(Kriest)—89 xx (S). Probably the finest of the Holland introductions. Orange-bronze. Beautiful waved and twisted petal formation. Blooms set right on top of most excellent stems.....\$1.00</p> <p>IONE—C. P.—x. An unusual type. Lavender and white rolled petals, with open yellow Peony center, surrounded by curled petaloids. Good stems.....\$.50</p> <p>JERSEY'S BEAUTY—D.—(Waite)—91 xx (S). True rose pink. Marvelously magnificent. Without question the finest Pink Dahlia thus far produced.....\$3.50</p> <p>J. M. GOODRICH—D.—xx (S). Medium sized flower. Salmon-pink. Base and tips of petals flushed yellow or gold. Profuse bloomer. Strong grower. Good stems. All in all one of our very best and especially good for cutting.....\$.50</p> <p>JUDGE MAREAN—D.—(Marean)—88 xx (S). The color of this one is very difficult to describe. It is a sort of rose-pink, suffused with copper and gold. This was our very best selling variety during the past season. This should be sufficient recommendation. It is one of the Big Type.....\$1.50</p> |
|-----------------------------------------------------------------------------------------------------------------------------------------------------------------------------------------------------------------------------------------------------------------------------------------------------------------------------------------------------------------------------------------------------------------------------------------------------------------------------------------------------------------------------------------------------------------------------------------------------------------------------------------------------------------------------------------------------------------------------------------------------------------------------------------------------------------------------------------------------------------------------------------------------------------------------------------------------------------------------------------------------------------------------------------------------------------------------------------------------------------------------------------------------------------------------------------------------------------------------------------------------------------------------------------------------------------------------------------------------------------------------------------------------------------------------|----------------------------------------------------------------------------------------------------------------------------------------------------------------------------------------------------------------------------------------------------------------------------------------------------------------------------------------------------------------------------------------------------------------------------------------------------------------------------------------------------------------------------------------------------------------------------------------------------------------------------------------------------------------------------------------------------------------------------------------------------------------------------------------------------------------------------------------------------------------------------------------------------------------------------------------------------------------------------------------------------------------------------------------------------------------------------------------------------------------------------------------------------------------------------------------------------------------------------------------------------------------------------------------------------------------------------------------------------------------------------------------------------------------------------------------------------------------------------------------------------------------------------------------------------------------------------------------------------------|

JERSEY'S RADIANT —D.—(Waite)—86 xx (S). Another of Waite's splendid introductions. A very unusual color termed Bittersweet Orange. Really a clear pale orange. A very beautiful and satisfactory flower in every way.....	Each \$5.00
JESSIE K. PRESCOTT —D.—(Boston)—xx (S). We liked this Dahlia so well we had a picture taken of it for our folder, but the orange shades took black, thereby spoiling the effect. It is really one of our most beautiful varieties, being a deep orange shading to lighter orange at the tips.....	\$3.00
JOE FETTE —P. P.—xx. Pure white. The best white Pompon.....	\$.35
KALIF —H. C.—(Engelhardt)—85. One of the older standard red varieties, 5 to 6-inch blooms on stiff, but rather short stems. Should be disbudded.....	\$.50
KITTIE DUNLAP —D.—(Boston)—89 xx. A wonderfully fine Dahlia of the same coloring as the American Beauty Rose. Large, perfectly formed blooms, set on top of extra long, clean, strong stems. Every good quality.....	\$2.50
LOS ANGELES —E. C.—(Broomall) A vigorous growing English type with long, narrow, incurved petals. Fine brilliant yellow. This variety did not bloom as freely as we would have liked. Perhaps it will do better another year.....	\$1.00
LA FAVORITA —H. C.—(Lohrmann)—82 x. This variety has been a great prize-winner during the years past. Sort of an orange-salmon color. 5 to 6-inch blooms, freely produced on good stems. Requires dis-budding.....	\$.75
LUCERO —D.—x. A medium size golden-buff flower, on long, slender, wiry stems. An excellent cut-flower variety.....	Each \$.35
MANDARIN —D.—xx (S). Unusually clear, rich yellow, on excellent stems. The blooms will average about 5½ inches. This is our best yellow cut-flower.....	\$1.00
LITTLE JENNIE —P. P.—xx. Pale or cream yellow.....	\$.35
MARCELLA —D. Rather small and flatly formed flower, in a good shade of pink, and on excellent stems for cutting. Free bloomer.....	\$.35
MR. CROWLEY —D.—(Broomall)—85 xx (S). One of Broomall's best. The main color is salmon-pink, with yellow shadings. Very beautiful when fully open. Large size. Stiff stems, which must be disbudded for length. Dwarf grower.....	\$1.50
MR. H. C. DRESSELHUYS —D.—(Ballego)—83 xx. One of the newer varieties from Holland. Pure rose-pink, with white suffusion. 4 to 5-inch blooms on extra good stems. Remarkably fine Florist's flower. Very free bloomer.....	\$.75
MRS. CARL SALBACH —D.—(Salbach)—86. Generally regarded as one of the best Dahlias ever introduced. Mauve-pink on white ground. 5 to 7-inch blooms on excellent stems. Vigorous grower and free bloomer.....	\$.50
MRS. I. DE VER WARNER —D.—(Marean)—91 xx (S). Considered by many, who are supposed to know Dahlias, as the most perfect Decorative ever produced. Large, perfectly formed blooms of a clear mauve or rose-lavender shade—a rare and beautiful color. Preeminently satisfactory in every way.....	\$1.50
MARIPOSA —H. C.—(Boston)—90 xx (S). One of Bessie Boston's most beautiful and artistic creations. Large lavender-pink blooms with exquisitely twirled petals. All good qualities.....	Each \$3.50
MYRA VALENTINE —D.—(Mills)—86 xx (S). This variety has been a consistent winner among the 'Autumn shades', at most of the larger Eastern shows. Large golden-bronze blooms. Our best Dahlia of this, or similar, color.....	\$3.50
MRS. A. A. PARKER —H. C.—(Greinberg)—xx. This new Dahlia has not as yet received the attention it deserves. It is one of our most satisfactory varieties, which produces large and unusually attractively formed blooms varying in shade from a light to a dark orange. A most superior sort.....	\$4.00
MRS. W. E. ESTES —H. C.—(Estes)—85 (S). Large exhibition white. One of the best 'Whites' in this class.....	\$.75
MRS. WILLIAM BUEHL —H. C.—(Lohrmann)—xx. This Dahlia has never been officially introduced. We had it on trial during the past season and consider it one of the finest and most beautiful varieties we have ever grown. The color is an unusually rich brilliant red and habit of growth excellent.....	\$2.50
MAUDE ADAMS —S.—(Alexander)—86 xx (S). A beautiful and perfectly formed cut-flower variety. The color is white with a delicate pink suffusion. Produces an abundance of blooms on good stems.....	\$.25
MANZANITA —S.—(Wilmore)—x. A ball shaped Dahlia with more of the Decorative petal formation. Small blooms of a clear lavender shade, slightly suffused white. Fair bloomer on excellent stems.....	\$.25

Each

MRS. BAGGE—H. D. S.—xx. 3½ to 4½-inch, rather flatly formed blooms on good stems. The color is unusually attractive—old rose-pink. The flowers are produced very freely. An exceptionally fine bouquet variety.....\$.50

NORMA—S.—xx (S). One of our best in this type. An attractive orange-bronze shade which goes splendidly with A. D. Lavoni.....\$.35

PATRICK O'MARA—D.—(Vincent)—88 xx (S). A golden orange-buff flower of good size, which we regard as our very finest variety for cutting. The blooms are produced in abundance on most excellent stems. Vigorous grower.....\$1.00

PENATAQUIT—D.—xx (S). Another fine Autumn shade in reddish-bronze. Large, perfectly formed blooms, which stand well above the foliage on splendid stems. One of the outstanding Eastern varieties.....\$2.50

PRIDE OF CALIFORNIA—D.—(Lohrmann)—83 xx (S). Not especially new, but still one of the best Reds which has ever been sent us from California. The color is a rich crimson-scarlet. Probably the best "buy" in our Garden.....\$.50

PRINCESS PAT—D.—(McWhirter)—83. Old rose with a reddish suffusion. One of the standard Western varieties. Good size, stems and keeping qualities.....\$.75

PURPLE MANITOU—D.—79 x (S). Large, perfectly formed blooms of a deep plum purple. One of the best for the money in our collection.....\$.35

PIERROT—E. C.—(Stredwick)—83 xx. One of the best known English introductions. Amber tipped cream. Most excellent for decorative purposes.....\$.50

Each

PAHASKA (Buffalo Bill)—H. C.—(Wilmore)—xx. Shaggy flower in copper-red and bronze. Large blooms freely produced on fine, strong, rather slender stems. One of the best we have seen from Colorado—or elsewhere.....\$2.00

QUEEN MAB—H. C.—(Boston)—x. Medium to large blush-pink flowers on good stems. An excellent keeping variety when cut.....\$2.00

ROSA NELL—D.—(Broomall)—87 x. Large flower of a bright, glistening rose shade on wonderfully fine stems. Handsome foliage. Broomall regards this as one of the very best varieties he has ever brought out.....\$.75

ROBERT LAURIE BLACK—H. D. S.—xx (S). A rather formal flower of good size and the best keeping white variety in our Garden. A beautiful, waxy, ivory-white of great substance, carried on fine stems. Recent introduction.....\$1.50

REGENT—A. C.—(Boston)—85 x. Mauve-pink, with incurved petals. Just a trifle heavier formation than the English type. Very satisfactory.....\$1.50

RUTH VAN FLEET—H. C.—(Stillman)—x. Bright light yellow of fairly large size and carried on very good stems. This is one of the most beautiful Dahlias in our Garden, but not as free a bloomer as some.....\$1.50

SENORITA—D.—(Lohrmann)—89 xx. An unusually rich, deep, dark, velvety red flower of enormous size and carried on stems which hold the blooms up in proper fashion. A really sensational Dahlia.....\$1.50

Each

SHUDOW'S LAVENDER—D.—(Boston)—91 xx (S). A large and artistic flower of pure lavender with a white suffusion. Conceded to be the very best Dahlia of this color. It is not a really new variety, but it won the Cup for the Most Beautiful and Perfect Dahlia at the last San Francisco Show.....\$3.00

SUSAN G. TEVIS—D.—(Boston)—89 xx (S). A new Dahlia of a new shade—deep lilac with silvery suffusions. Large blooms on good stems. Some of our blooms did not come perfectly formed, but those that did were positively magnificent.....\$5.00

SNOWDRIFT—D.—(Broomall)—86 xx (S). Large, broad-petaled, snow-white blooms on sturdy stems. The bushes are dwarf, but very vigorous. This is the best all-round white we have tried thus far.....\$1.00

SPA—H. D.—(Boston)—xx (S). Another of the newer varieties from California. An exquisitely formed and artistic flower of clear lilac coloring. Good sized blooms, produced freely on vigorous low growing bushes.....\$1.50

SUNBEAM—P. P.—x. Double-quilled red. Trifle larger than the usual run.....\$.35

SUNNY DAYBREAK—P. P.—xx. Orange, tipped red. Very showy little fellow.....\$.35

STOLZ VON BERLIN—P. P.—xx. Classed as a Pompon, but most of the blooms come over 2 inches in diameter. Extra fine for Florist work. A recent Holland introduction. Perfect form. Clear pink.....\$.50

Each

TANFORAN—H. D.—(Boston)—xx (S). Wonderfully formed and artistic red. Broad, wavy, pointed petals. Large sized blooms on excellent stems. This is a new one. A new "Red" has got to be good to "get by" these days.....\$3.00

TALISMAN—H. C.—(Boston)—xx. A large reddish-brown flower with a tan reflex. A very unusual color combination. The petals twist at the points, giving a two-tone effect. This variety has most satisfactory growing habits\$2.50

U. S. A., The—H. C.—(Stillman)—86 xx (S). One of our most abundant bloomers, producing quantities of large orange colored blossoms on excellent stems. This variety has found favor in all sections of the country\$1.25

WHITE COLOSSE—H. D. S.—x. Large, broad-petaled blooms of great substance. The color is white, suffused and edged purple. Extra heavy stems.....\$.50

WHITE LADY—S.—Beautiful snow-white blooms, on pendant stems\$.25

W. W. RAWSON—S.—(Johnson)—87 x. A beautiful quilled petal, white with lavender shadings. One of the best of this type.....\$.25

YELLOW KING—H. C.—(Hornsveld)—80 x. One of the most beautiful yellow Dahlias ever created, but unfortunately it is a shy bloomer and a poor root producer. There is a new Dahlia almost exactly like "Yellow King," except that it produces more blooms and has a better crop of tubers. It sells for \$7.50.....\$.50



DAHLIA "MAID MARIAN"
(Mastick-Tyler—1927)
Hybrid-Cactus Type

CONCERNING NO. TWO LIST

The varieties included in this list are, for the most part, new or comparatively recent introductions, which have shown outstanding qualities at the various trial grounds and larger exhibitions.

Our stock of these varieties is the best obtainable, and carries our guarantee, the same as that on our Number One List.

The prices indicated are in keeping with those of other recognized and reputable growers.

All of these varieties are in great demand, and to avoid being disappointed, we suggest that you make up your order as early as possible.

As a matter of avoiding repetition in the descriptions, we wish to say right here that every one of the following Dahlias, unless otherwise indicated, is a strong and vigorous grower, bearing large, well-formed blooms, on straight stems of ample strength to carry them erect. Under normal conditions they will all produce a goodly supply of blossoms and roots. Any exceptions to these characteristics of growth have been noted specially in such individual cases as they appear.

You must remember that these are every one, what might be termed "Extra Fancy" or "Super Quality" Dahlias. Practically all of them are many-time prize-winners; most of them carry Official Trial Ground Certificates of Merit; and not a few are in the Gold Medal Class.

DECORATIVES

AL KORAN —(Davies)—87. Yellow, golden-rod and amber. Long, wavy petals.....	Each \$3.00	JERSEY'S GEM —(Waite)—88. Large lavender-pink. Very fine bloomer.....	Each \$5.00
BASHFUL GIANT, The —(Marean)—84. Apricot, gold shading. Extra large. Stems strong, but somewhat arched.....	\$2.00	JERSEY'S JEWEL —(Waite)—87. Mallow-pink. Immense long-petaled blooms. Fair root producer. Splendid exhibition sort.....	\$5.00
BEN WILSON —(Murphy)—91. Orange-red, gold tips. Profuse bloom.....	\$2.00	JERSEY'S MONARCH —(Waite). Deep salmon. yellow base. Extra large and deep blooms.....	\$5.00
BLACK JACK —(Dressler)—Very dark maroon. Free bloomer. Does not fade.....	\$3.50	JERSEY'S QUEEN —(Waite)—86. Coral-pink. Medium size blooms. Very free.....	\$2.50
CALIFORNIA SUPERBA —(Wintjen-Boston)—89. Pink to white center. Extra large and deep. Petals narrow. Excellent keeper.....	\$3.50	JERSEY'S SOVEREIGN —(Waite). Salmon-orange (self color). Meidium large.....	\$5.00
CHARLES STRATTON —(Stratton). Pale gold, tipped old rose. Extra large, fluffy.....	\$7.50	J. W. DAVIES —(Boston)—86. Deep cerise shade. Extra large. Profuse.....	\$3.00
CITY OF LAWRENCE —(Murphy)—89. Yellow. Extra large, deep blooms, produced with more than usual freedom.....	\$5.00	KIWANIS —(Vincent)—87. Glowing canary yellow. (Hybrid-decorative with twisted and curled petals.) Very free.....	\$2.50
CLAUDE HARLAN —(Spacher)—Pure, clear lavender. Medium large blooms.....	\$4.00	LADY BOWDEN —(Wintjen-Hodgens). Deep bluish-lavender. Large, deep blooms.....	\$4.00
COLLEEN BAWN —(Kernan). Deep pink. Shaggy blooms of unusual depth.....	\$5.00	LOGAN'S WHITE —(Logan)—87. White.....	\$2.00
CONCHITA —(Boston). Pure pale pink (no lavender). Deep blooms (many of them).....	\$3.50	LYDIA POOLE —(Weston)—Lavender-pink.....	\$5.00
CONSTANCY —(Seal). Deep glowing pink. Unusually large.....	\$2.50	MABEL THATCHER —(Marean)—90. Pale yellow. Extra large. Profuse bloomer.....	\$1.50
		MANATAUG —(Symonds). Glistening American Beauty Rose. Extra fine keeper.....	\$6.00
		MARGARET MASSON —(Fisher & Masson)—90. Silvery rose-pink. Very large. Extra keeper.....	\$7.50
COPPER KING —(Harding-Marean). Copper and gold. Light red reverse. Enormous blooms, with tubular petals.....	Each \$7.50		
DON WILLIAMS —(Doolittle). Lavender, shading to white tips. Very fine blooming variety, which sometimes shows open center.....	\$2.50		
EL DORADO —(Boston)—87. Deep vivid gold. Extra large.....	\$7.50		
ELIZA CLARKE BULL —(Boston)—88. White. One of the largest and best.....	\$7.50		
ELLINOR VANDERVEER —(Seal). Glowing, satiny rose-pink. Extra large, early and free.....	\$7.50		
EMPEROR, The —(Marean)—87. Deep, rich maroon. Unusually large.....	\$2.00		
E. T. BEDFORD —(Marean)—87. Purple, silver shadings. Very free bloomer.....	\$2.00		
FAITH GARIBALDI —(Garibaldi-Boston). Silvery rose-pink. Immense blooms, which keep unusually well when cut.....	\$7.50		
FIRELIGHT —(Harding-Marean). Yellow, tipped orange-red.....	\$5.00		
GLORIEUX —(Tyler-Mastick). Golden yellow, bronze center (usually tipped white).....	\$2.00		
HALVELLA —(McWhirter)—90. Old rose, golden sheen. Extra large and free.....	\$2.00		
HARRY SHELDON, JR. —(Murphy). Lavender-pink, cream center. Unusually large and deep on stems slightly pendant.....	\$7.50		



DAHLIA "PEARL RUGGLES"
Peony Type

	Each
MARIE LOUISE—(Greinberg). Yellow, blush-pink tips	\$2.50
MASSACHUSETTS—(Davis). Amaranth and pansy purple. Immense blooms.....	\$5.00
MEADOW LARK—(Burns). Old rose, buff and yellow. Rose shadings reflex.....	\$3.50
MERRICK—(Albright)—90. Dark mahogany, lighter edges and tips.....	\$3.50
MERRITT—(Vincent)—90. Clear lemon yellow. Extra free bloomer	\$4.00
M. H. DE YOUNG—(Boston)—89. Pure old gold. Extra large, deep and free.....	\$7.50
MISS BRIDGETON—(Venable). Old rose and violet. Large, deep blooms. Free.....	\$3.50
MISS CALIFORNIA—(Pelicano). Oriental fuschia. Very large. Fine keeper.....	\$5.00
MORDELLA—(King-Kemp). Apricot-buff. Profuse bloomer	\$5.00
MRS. ELEANOR MARTIN—(Pelicano). Mulberry, gold sheen. Immense.....	\$5.00
MRS. E. A. OLIVER—(Spacher). Old rose, edged gold. Extra large and free.....	\$2.50
MRS. E. L. LINDSEY—(Broomall)—85. Scarlet and gold. One of the largest.....	\$1.50
MRS. GEORGE W. ELKINS, JR.—(Root)—86. Salmon-pink and old gold. Pointed and twisted petals. Extra large	\$1.50

	Each
MRS. JOHN M. ROOT—(Root)—88. Canary yellow. Long, broad, slightly twisted petals. Extra large Hybrid-Decorative	\$5.00
MRS. JOHN T. SCHEEPPERS—(Marean)—87. Yellow, shading pink tips.....	\$2.00
NAZARENO—(Jost). Almost true purple. Free bloomer and extra good keeper.....	\$4.00
NOBILIS—(Doolittle)—87. Scarlet and white (white predominating)	\$2.00
PAUL MICHAEL—(Michael)—87. Bright apricot-bronze. Extra large. Pendant.....	\$1.50
PAUL REVERE—(Bissell). Brilliant satiny crimson. Does not burn.....	\$5.00
POP STEWART—(Fisher & Masson). Lilac and lavender-pink. Extra large and free.....	\$7.50
PINK TRIUMPHANT—(Deniston). Clear rose-pink, shading lighter at tips. Medium size. Free. Extra fine keeper	\$2.50
PRESIDENT WILSON—(Jones)—88. Red, tipped white. Long, pointed petals.....	\$2.50
PRIDE OF SAN FRANCISCO — (McWhirter) — 85. Golden salmon-pink. Medium size. Profuse. Extra cut-flower.....	\$2.00
RADIO—(Sampson). Blood-red, edged and tipped gold. Extra large.....	\$5.00
ROBERT TREAT—(Mueller-Kemp). American Beauty Rose. Wonderful formation.....	\$5.00

HYBRID CACTUS

ROOKWOOD —(Boston)—88. Rosy cerise. Very large and free.....	Each \$4.00
RORY O'MORE —(Boston-Hodgens). Purple-violet-maroon, tipped white. Medium large. Deep.....	\$3.50
ROTARIAN —(Vincent)—88. Purple-maroon. Curled and twisted petals (Hybrid).....	\$2.50
SAGAMORE —(Kirby-Badetty)—91. Lemon and apricot shades. Medium large. Extra good keeper.....	\$7.50
SAN MATEO —(Boston)—91. Yellow, striped and splashed scarlet. Very large.....	\$1.50
SOMERSET —(Eierman). Old rose. Large, free bloomer. Artistic formation.....	\$5.00
ST. FRANCIS —(Boston). Soft cream, pinkish glow. Very large. Rather late.....	\$3.50
TOMMY ATKINS —(Boston)—90. Brilliant, vivid scarlet. Extra large.....	\$3.00
TRENTONIAN, The —(Fisher & Masson). Rich, dark copper-bronze. Very large.....	\$7.50
WHITE GLORY —(Alling). White.....	\$3.50
WHITE SISTER —(Stout)—87. White.....	\$4.50
WILLIAM SLOCOMBE —(Slocombe)—86. Canary yellow. Very free.....	\$1.50
WINFIELD SLOCOMBE —(Slocombe)—87. Yellow, orange and gold. Medium large.....	\$3.50
WIZARD OF OZ —(Doolittle)—88. Amber-pink. Extra large. Free.....	\$5.00
WORLD'S BEST WHITE —(Murphy)—91. White, ivory center. Large. Deep. Free.....	\$4.00
ELSIE DANIELS —(Meachen & Sherman). Pale orchid to white center. Extra large.....	Each \$5.00
EMMA MARIE —(Maytrott)—87. Clear pink, distinct cream center. Extra cut-flower.....	\$6.00
ESTHER HUNT —(Boston)—89. Oriental orange. Petals rolled and split at tips.....	\$3.00
ETHEL M. —(Reed). Amaranth-pink, lighter tips, white center. Profuse.....	\$3.00
HEINWEH —(German introduction). Violet-purple, distinct greenish-yellow base.....	\$1.50
IRMA STARK —(Pelicano). Pure white. Medium size. Extra keeper and profuse.....	\$2.50
ISLAM PATROL —(Davies)—90. Scarlet, tipped and flushed gold. Wonderful keeper.....	\$3.50
JEAN CHAZOT —(Cayeux)—86. Golden-bronze, suffused nasturtium-red. Extra cut-flower.....	\$1.00
J. W. LEE —(Lee). Scarlet and pale orange (sunset shades). Profuse.....	\$2.00
KOHINOOR —(Boston). Very dark maroon. Extra large and free.....	\$5.00
LADY ELIZABETH —(Totty). Canary, overlaid bronze-pink. New "Plume" type, rolled and split petals. Center erect.....	\$2.50
LORNA SLOCOMBE —(Slocombe)—86. Vermillion-flame and apricot shades. Very large. Unusual and attractive formation. Free bloomer.....	\$5.00
ALASKA-YUKON —(Grienberg). Clear lemon-yellow. Very large. Splendid keeper.....	Each \$7.50
ALIVE VOISINET —(Davies). Bronze, buff and hen-na shades. Extra large, fine keeping variety, with deep purple-green foliage.....	\$5.00
BETTY AUSTIN —(Peacock). Rose, yellow base and tips. Medium to large.....	\$1.00
BIANCA —(Hornsveid)—88. White, suffused rose-lilac. Extra large.....	\$1.00
BOB PLEUSE —(Gutting). Deep crimson, outer half petals shaded white (uniform).....	\$3.50
CALIFORNIA BEAUTY —(Broomall)—84. Burnished copper. Medium size. Profuse.....	\$1.00
CALIFORNIA ENCHANTRESS —(Boston)—87. Pale pink. Large, free-blooming sort.....	\$1.00
CIGARETTE —(Boston). Orange-red, edged and tipped white (variable). Narrow petal.....	\$3.00
CINDERELLA —(Boston). Fawn-pink, amber-yellow center.....	\$5.00
CLAIRE WINDSOR —(Dane). White. Extra long stems. Excellent keeper.....	\$3.50
DADDY BUTLER —(Boston). American Beauty Rose, lighter reverse. Profuse bloomer. One of the very best keepers when cut.....	\$2.50

	Each
LOUISE SURTES —(Leonard-Boston). White, penciled carmine-rose (new coloring).....	\$4.00
MAC GREGOR —(Tyler-Mastick)—90. Spectrum-red, lemon-yellow base. Fine keeper.....	\$2.50
MANDALAY —(Jost). Tawny gold, shading to amber center. Beautiful formation.....	\$3.00
MRS. RICHARD LOHRMANN —(Lohrmann)—88. Pure golden yellow. Not new, but very fine.....	\$1.00
NEW MOON —(Burns). Light lemon yellow, usually tipped white.....	\$1.00
PAPILLON —(Boston)—90. Old rose with golden lights. Extra large and free.....	\$3.00
PARADISE —(Boston). Old rose, suffused gold. Very large.....	\$3.50
PREMIER GEORGES CLEMENCEAU —(Brown). Clear yellow base, balance pure white. Medium large. Free blooming.....	\$5.00
ROLLO BOY —(Pelicano). Amber-gold. One of the largest.....	\$5.00
SERENADE —(Boston). Pale iridescent old rose, violet reverse. Water-lily form.....	\$3.50
SISKIYOU —(Broomall)—88. Pink and lavender shades. Huge blooms on strong stems.....	\$5.00
SUNKISS —(Yezeck-Childs)87. Rosy-salmon; distinct canary center.....	\$2.00

	Each
VIOLETTA —(Waite)—85. Petunia violet. Fine Dahlia in a very rare shade.....	\$2.50
WONDERLAND —(Bissell). Purple-garnet; silvery rose-pink reflex. Large and shaggy.....	\$5.00

ENGLISH and AMERICAN CACTUS

(Note: It is characteristic of the English Cactus to have somewhat arched stems, which, while they are generally strong enough, do not carry the blooms perfectly erect.)

	Each
ALABASTER —(Stredwick)—E. C. Pure white. Very large.....	\$1.00
AMBER GLOW —(Boston)—E. C.—87. Bright yellow, pale orange center. Very large.....	\$1.50
BALLET GIRL —(Boston)—E. C.—89. Orange and white (variable). Extra good stems.....	\$1.50
BRIDAL VEIL —(Stillman)—A. C.—86. Pure white. Profuse bloomer.....	\$1.50
EMPIRE —(Boston)—A. C.—86. Raspberry. Free.....	\$3.00

	Each
FARNCOT —(P. A. Davis)—A. C. Aster purple with white tips; amarath-pink reverse. Profuse. Extra keeper.....	\$5.00
GLADYS BATES —(Boston)—87. Tan, rose reverse. (Might go in either American or English class).....	\$1.50
HOLLYWOOD —(Vincent)—85. A. C. Rose. Large, free-blooming variety.....	\$3.00
LOLITA VELASCO —(Boston)—A. C.—85. Extra large, pure white.....	\$3.00
MERCEDES —(Boston)—E. C. Cream-yellow, suffused pink. Free and with exceptional stems for this class.....	\$4.00
MRS. ALFRED HARVEY —(Stredwick)—E. C.—86. Bright salmon-pink. Good stem and free.....	\$1.50
MRS. C. A. GILLATT —E. C. Rose-pink; yellow base and tips. Huge size.....	\$2.50
MRS. C. COOPER —(Burrell)—E. C.—79. Brownish tan. Another of the "big ones".....	\$1.00
MRS. MARGARET STREDWICK —(Stredwick)—E. C.—85. La France rose-pink. Extra large.....	\$1.50
PHOENIX —E. C. Reddish bronze with golden cast. Better stem than most.....	\$2.00
WINTER TIME —(Murphy)—A. C. White.....	\$4.00

PEONY TYPE

ALMA DAVIES —(Davies)—88. Salmon and old rose. Fine keeper with extra long stems.....	Each \$5.00
ARCTIC —(Sheffield). Pure white. Extra large.....	\$1.00
CHANSON —(Boston). Deep lilac with bluish sheen.....	\$1.00
CARDINAL MERCIER —(Stillman)—83. Deep flesh-pink with canary veins.....	\$2.00
CLEOPATRA —(Marean). Yellow tangerine reverse.....	\$1.00
DREAMLIGHT —(Boston)—86. Pale old rose, yellow base. Large, Profuse.....	\$2.50
ELIZABETH BOSTON —(Boston)—87. Deep crimson, tipped gold. Extra large. Profuse.....	\$2.50
ISOLINE —(Kahle-Waite). Ivory-white, suffused yellow. (New).....	\$5.00
MRS. JESSIE L. SEAL —(Gleadell)—86. Old rose and gold. (Standard. Very fine).....	\$1.00
ORIOLE, The —(Burns)—88. Burnt-orange, red and yellow (occasional white tips).....	\$1.50
PEARL RUGGLES —(Ruggles)—82. Cerise-pink and white. Free.....	\$1.00
PEG O' ME HEART —(Marean). Old rose, shaded gold.....	\$1.00
TISH —(Hodgens). Gold. Extra keeper. Profuse. (New).....	\$5.00
UNCLE SAM —(Meachen & Sherman)—89. Brilliant copper color. Very large.....	\$3.00

SHOW AND HYBRID SHOW TYPE

ALDA —(Boston)—H. S. (New.) Vivid rose.....	Each \$1.00
ANNA REHORST —H. S.—(Boston). Deep purple.....	\$.50
BLACK DIAMOND —S. Deep, dark maroon.....	\$.50
BETTY BIRD —H. S.—(Seal)—88. Rose-pink.....	\$5.00
EMIL PAUNSKI —S. Light lavender with maroon stripes and spots.....	\$.50
ESMOND —S. Yellow.....	\$.50
ESTELLE CHRISTY —H. S. Yellow.....	\$1.00
GENERAL HAIG —S.—(Kettlewell). Scarlet.....	\$1.00
GENERAL MILES —S.—90. Purple, streaked mar-jenia.....	\$1.00
GOLD MEDAL —S.—89. Red and yellow.....	\$.50
JEAN KERR —H. S.—86—(Burpee). White.....	\$.50
KING OF SHOWS —H. S.—90—(Stillman). Deep butter yellow.....	\$1.50
MRS. C. D. ANDERSON —H. S.—(Anderson). Purple-crimson.....	\$.50
STORM KING —S.—(Alexander). White. Very free.....	\$.50
SUPT. AMRHYN —H. S. Rich lavender-pink.....	\$2.00



English Type Cactus, of which "F. W. Fellows" Is a Good Specimen

PUBLICATION ORDER BLANK

MIDWEST DAHLIA FARM,
GALVA, HENRY COUNTY, ILLINOIS.

Date.....

Dear Sirs: Enclosed find..... for \$....., for which please send me the Publications marked on the following list:

	Amount	Amount
Amateur's Book of the Dahlia (Stout)	\$3.25	
Little Book of Modern Dahlia Culture (Waite)	1.65	
Sies Dahlia Manual.....	.75	
1926 Dahlia Ratings (Norton).....	1.00	
The Dahlia Manual (Wilmore).....	.35	
7000 Dahlias (Names, colors, etc.) (Norton).....	2.00	
Individual Dahlia Record (Loose-leaf).....	2.50	
		Total Amount
		.50
		2.00
		2.00
		2.00
		2.00
		2.00

(NOTE: Amounts sent to cover Dahlia Society Memberships are subject to the acceptance of the various and respective Societies.)

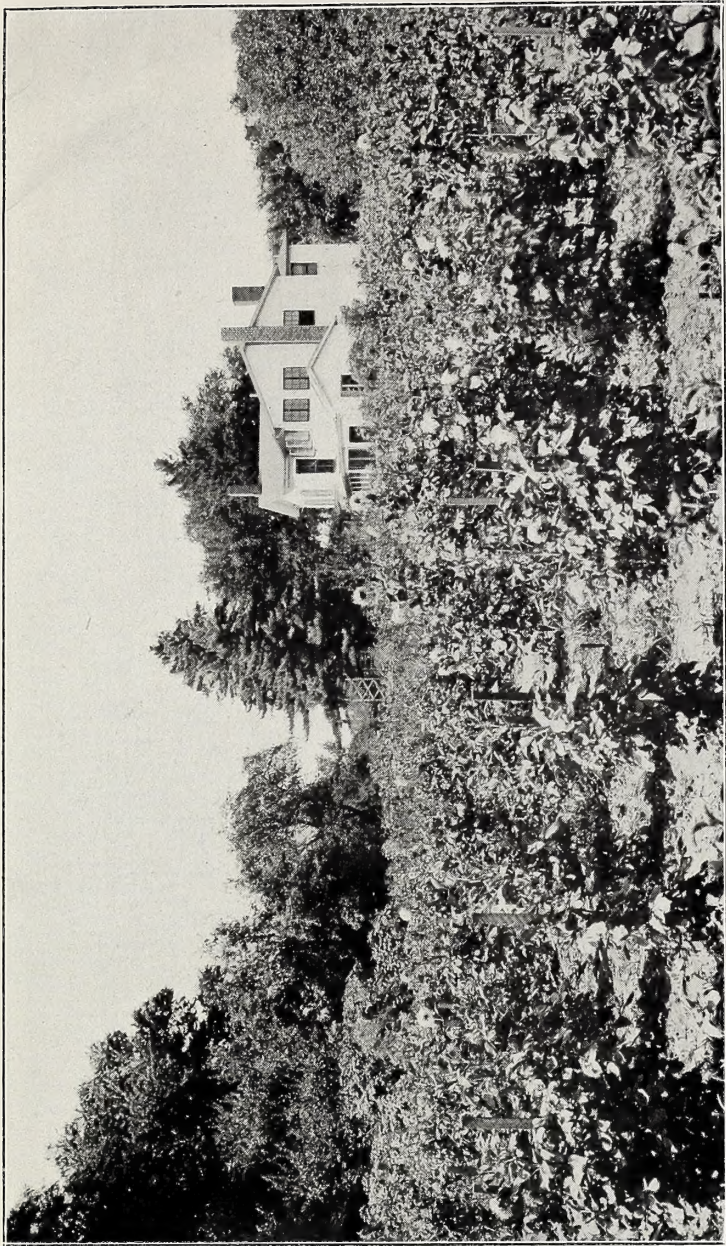
(We are taking orders for these publications simply as a matter of convenience to our Patrons. We are, however, anxious that you should become as well informed as possible in regard to Dahlias and their culture, for it helps to create a much better mutual understanding of the subject in hand. All of these publications contain information of vital importance to every Dahlia grower.)

Name Address

.....
At the present time we do not specially solicit business outside the Corn Belt, but as far as our stock permits we shall accept orders from beyond this territory. As time goes on we shall increase our output to meet every outside demand, but for the first year our advertising and catalogue circulation are being confined to Home Territory.

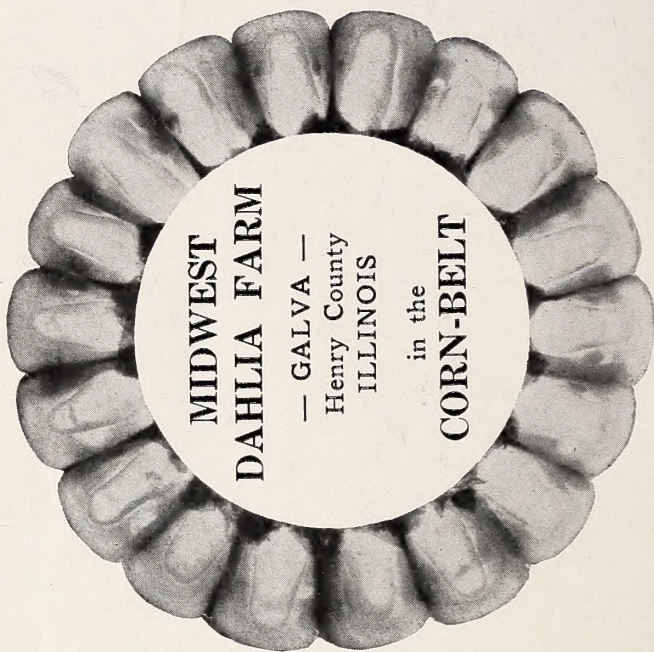
It is our ultimate aim to have at least a Show Collection, comprising ALL the VERY BEST Dahlias. At the present time we have MANY of these. This coming season we shall have MORE of them. So, when the time comes (after about August 1), **DON'T FORGET TO COME DOWN TO THE END OF TOWN AND SEE WHAT THERE IS TO SEE.**

.....



Down at the End of Town — The Home of Mid-West Dahlias

KEEP THIS FOLDER



It is not merely a Current Price List, but contains information of permanent value.