

Historic, Archive Document

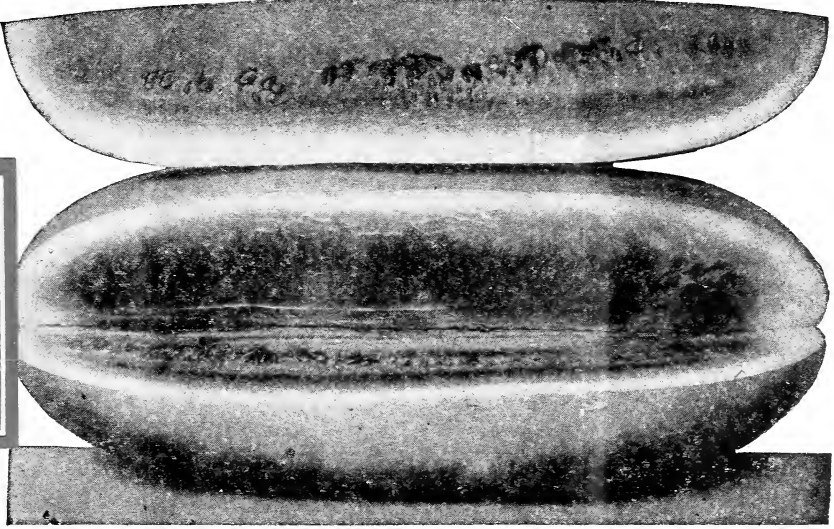
Do not assume content reflects current scientific knowledge, policies, or practices.

62.33

127

RECEIVED
★ AUG 31 192★
U. S. Department of Agriculture

Catalog of Garden, Field and Flower Seeds



D. N. Shoemaker

Jumbo Sweet Watermelon

LEHMANN'S SEED STORE

BATON ROUGE, LOUISIANA

Pure and Vital Seeds—True to Type

D. N. Shoemaker

Introductory

It is our desire to furnish a practical garden book of instruction for the man who buys seeds. It is our purpose to inculcate confidence in every customer, our service to supply the qualities that we KNOW will make a satisfied customer of this establishment.

We know from nearly two score years experience in the exclusive seed business, farming conditions in the South has taught us what varieties and their source is best adapted for a maximum yield. It is purely a matter of confidence. The less experienced handler of seeds, who buys bargain lots here and there from jobbers and clearing houses, does not know the grower or source of production, hence the ultimate planter will not know until after sowing. It is not enough to buy seeds that germinate—even weeds grow. No expert on earth can tell good seeds by appearance. Fine photos, high sounding words and big promises, won't help yields. You want pure and vital seeds—true to type and you can be sure of getting these only from reliable dealers. Our personal attention to each order—our special knowledge of source and their adaptability to our soils and climate is your insurance. We make no apology to competitors offering FIRE SALE BARGAINS. Let them have it. We believe in the best money can buy. For this we are entitled to a fair price and our quotations are based on just and honest margin for service rendered.

Demand the best seeds. It costs as much to plow, plant, cultivate and harvest a poor crop as it does a good one. We point with pride to a long list of satisfied customers. You want the best service and we want to give it to you—let's get together for our mutual benefit.

Yours very truly,
LEHMANN'S SEED STORE.

Frost Proof Cabbage Plants

Genuine Field Grown, which are the hardiest. Will mature three weeks earlier than your home-grown plants. Varieties: Jersey Wakefield, Charleston Wakefield, Succession and Early Flat Dutch.

These plants are grown in the open field during the fall and winter months, which causes them to make a slow, tough, hardy growth—so hardy that the outer leaves turn to a reddish brown. They can be shipped to distant points without danger of spoiling, and should be planted in the open ground from four to five weeks earlier than frame plants.

The plants, when received, will be somewhat wilted and have a hard stunted appearance, which will be disappointing to persons who have never used these plants before. Regardless of appearance, they will produce the crop results.

Prices: Parcel Post paid, 100, 50c; 500, \$1.60; 1,000, \$3.00.

Not prepaid, by express, 500, \$1.25; 1,000, \$2.00; 5,000, \$7.50; 10,000, \$12.50.

We usually have plants ready to ship promptly, but occasionally, on account of heavy orders, we may be compelled to hold your order a few days but rest assured, however, we will get them to you as quick as possible.

No order filled for less than 100 of a variety. We do not ship any plants C. O. D. Our terms are cash with order.

Orders for all plants will be taken subject to crop failures.

Home-Grown Cabbage Plants

These are ready about the first part of March; they should not be set out earlier, being tender they are not as hardy as the frost-proof kind.

We can furnish the following varieties: Jersey Wakefield, Early Flat Dutch, Charleston Wakefield, Succession.

Prices: Parcel Post paid—100, 50c; 500, \$1.50; 1,000, \$2.75. By Express, not prepaid—100, 35c; 500, \$1.25; 1,000, \$2.25.

Cauliflower Plants

Ready March 1st.

Varieties—Early Snowball and Dry Weather.

Prices: By Parcel Post paid—Doz. 20c; 50, 75c; 100, \$1.25. By Express, not prepaid—Doz. 15c; 50, 60c; 100, \$1.00.

Egg Plants

These are ready about March 20th.

Varieties—Black Beauty, N. Y. Improved Purple.

Prices: Parcel Post paid—Doz. 25c; 50, 75c; 100, \$1.25. By Express, not prepaid—Doz. 20c; 50, 60c; 100, \$1.00.

Lettuce Plants

Ready March 1st.

Varieties—Big Boston, New York or Wonderful.

Prices: Parcel Post paid—50, 25c; 100, 45c; 500, \$1.75. By express, not prepaid—50, 20c; 100, 35c; 500, \$1.50; 1,000, \$2.50.

Pepper Plants

Ready April 15th.

Varieties—Chinese Giant, Ruby King, Long Cayenne.

Prices: Parcel Post paid—Doz. 25c; 50, 75c; 100, \$1.25. By Express, not prepaid—Doz. 20c; 50, 60c; 100, \$1.00.

Tomato Plants

These are ready about the 20th of March. Our stock is raised from the very best quality of seed and will give perfect satisfaction.

Varieties—Gulf State Market, Ponderosa, Norton Wilt Resistant, Early Detroit, Globe, Stone.

Prices: Hot Bed or Seedling Stock: Parcel Post paid—Doz. 20c; 50, 50c; 100, 70c; 500, \$2.75. Not prepaid—Doz. 15c; 50, 35c; 100 50c; 500, \$2.25.

Prices Transplanted Stock: Parcel Post paid—Doz. 30c; 50, 75c; 100, \$1.25; 500, \$4.25. Not prepaid—Doz. 20c; 50, 60c; 100, \$1.00; 500, \$3.75.

Sweet Potato Slips

Certified Nancy Hall—Porto Rico Yams

These plants have been inspected by the State Plant Board and certified to be free from Black Rot and other plant diseases. The State of Mississippi refuse to allow any slips that have not been certified to come into that State.

Prices Certified Slips: Parcel Post paid—500, \$2.00; 1,000, \$3.50; 5,000, \$15.00. Not prepaid—500, \$1.75; 1,000, \$3.00; 5,000, \$13.75; 10,000, \$25.00. No order filled for less than 500 certified plants. All shipments will be made from our nearest growers.

Prices Non-Certified Slips, which cannot be shipped into Mississippi.

Nancy Hall, Porto Ricans, Bunch Yams and Early Triumph prices uniform as follows:

Parcel Post paid—500, \$1.75; 1,000, \$2.75; 5,000, \$12.50; 10,000, \$22.50. Not prepaid—500, \$1.50; 1,000, \$2.50; 5,000, \$11.25; 10,000, \$20.00.

Asparagus

Roots 2 years old. \$1.25 per 100.

Artichoke

Plants. \$3.75 per 100.

Bush Beans**Green Pod**

IMPROVED RED VALENTINE—If you are in doubt about what variety to plant, you will make no mistake in selecting Red Valentine. The pods are about 4 inches long, fleshy, crisp, tender. Parcel Post paid—Pkt. 10c; ½ pt. 18c; pt. 32c; qt. 50c. Parcel Post not prepaid—½ pt. 15c; pt. 25c; qt. 40c.

LONGFELLOW—Yields round, straight, fleshy pods that average 6 inches or more in length; free of tough lining and until the pods are old are almost entirely stringless. Parcel Post paid—Pkt. 10c; ½ pt. 20c; pt. 35c; qt. 60c. Not prepaid—½ pt. 15c; pt. 30c; qt. 50c.

REFUGEE OR 1000 to 1—Fine for later planting, pickling and canning. The round pods are 5 inches long, tender and of splendid quality. Parcel Post paid—Pkt. 10c; ½ pt. 18c; pt. 30c; qt. 50c. Not prepaid—½ pt. 15c; pt. 25c; qt. 40c.

BLACK VALENTINE—The hardiest of all beans; will stand more frost than any other sort. The pods are long, straight, very handsome; are produced very profusely. Parcel Post paid—Pkt. 10c; ½ pt. 18c; pt. 30c; qt. 50c. Not prepaid—½ pt. 15c; pt. 25c; qt. 40c.

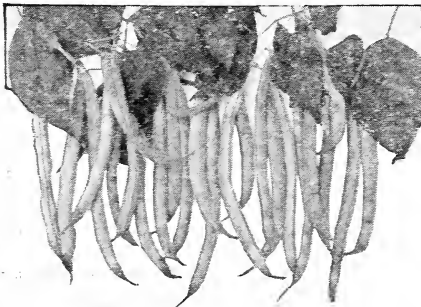
BURPEE'S STRINGLESS GREEN POD—Early and hardy, pods round, perfectly stringless, tender and brittle, and of the highest quality. Parcel Post paid—Pkt. 10c; ½ pt. 20c; pt. 30c; qt. 55c. Not prepaid—½ pt. 15c; pt. 25c; qt. 45c.

GIANT STRINGLESS GREEN POD—Exceptionally fine for either home use or market. The pods are round, 5 to 6 inches long, meaty, perfectly stringless, and are borne continuously for weeks. Parcel Post paid—Pkt. 10c; ½ pt. 20c; pt. 30c; qt. 55c. Not prepaid—½ pt. 15c; pt. 25c; qt. 45c.

HOPKINS EARLY RED VALENTINE—An improved strain of the Red Valentine, having quite fleshy pods, which are round, brittle and tender. Parcel Post paid—Pkt. 10c; ½ pt. 18c; pt. 30c; qt. 50c. Not prepaid—½ pt. 15c; pt. 25c; qt. 40c.

BOUNTIFUL—Not quite as early as some kinds, but bears for a long season; the rich, green pods are extra long, broad, thick, meaty, meltingly tender and with scarcely a trace of string. Parcel Post paid—Pkt. 10c; ½ pt. 18c; pt. 30c; qt. 55c. Not prepaid—½ pt. 15c; pt. 25c; qt. 45c.

TENNESSEE GREEN POD—Yields the longest and largest pods of any Bush Bean, often 6 to 7 inches long, flat and somewhat irregular in shape but of fine flavor. Parcel Post paid—Pkt. 10c; ½ pt. 20c; pt. 30c; qt. 55c. Not prepaid—½ pt. 15c; pt. 25c; qt. 45c.



Burpee's Stringless Green Pod



Improved Red Valentine

Wax Pod

DAVIS WHITE—Productive; the pods are long, creamy yellow and free from rust. Pkt. 10c; ½ pt. 20c; pt. 30c; qt. 55c. Parcel Post paid. Not prepaid—½ pt. 15c; pt. 25c; qt. 45c.

WEBBER WAX—A dependable bean for the home garden; fine quality; ready to pick in 40 days. Pkt. 10c; ½ pt. 20c; pt. 35c; qt. 60c. Parcel Post paid. Not prepaid—½ pt. 15c; pt. 30c; qt. 50c.

SURE CROP WAX—Bears round, clear, rich, yellow pods in 50 days which are meaty and tender. Pkt. 10c; ½ pt. 20c; pt. 35c; qt. 60c. Parcel Post paid. Not prepaid—½ pt. 15c; pt. 30c; qt. 50c.

IMPROVED GOLDEN WAX—Vines medium sized, vigorous and hardy; pods broad, flat and of golden yellow color. This variety is an improvement over the old Golden Wax. The plants are very resistant to rust. Pkt. 10c; ½ pt. 18c; pt. 30c; qt. 50c. Parcel Post paid. Not prepaid—½ pt. 15c; pt. 25c; qt. 40c.

ROGERS IMP. WAX—A popular variety; color of pod waxy yellow; tender, productive. Pkt. 10c; ½ pt. 18c; pt. 30c; qt. 50c. Parcel Post paid. Not prepaid—½ pt. 15c; pt. 25c; qt. 40c.

CURRIES RUST PROOF WAX—The best round podded variety. Sure to yield an early and profitable crop. Pkt. 10c; ½ pt. 20c; pt. 30c; qt. 55c. Parcel Post paid. Not prepaid—½ pt. 15c; pt. 25c; qt. 45c.

EARLY WONDER WAX—Ready to pick in 35 days; a real money maker for truckers; yields beautifully. Pkt. 10c; ½ pt. 25c; pt. 35c; qt. 60c. Parcel Post paid. Not prepaid—½ pt. 15c; pt. 30c; qt. 50c.

WARDWELL'S KIDNEY WAX—A strong grower; bears heavy crop of broad, waxy yellow pods, brittle and fine flavor. Pkt. 10c; ½ pt. 20c; pt. 30c; qt. 55c. Parcel Post paid. Not prepaid—½ pt. 15c; pt. 25c; qt. 45c.

Bush Lima

HENDERSON'S BUSH LIMA—Beans are small but very productive. Parcel Post paid—Pkt. 10c; ½ pt. 20c; pt. 35c; qt. 55c. Not prepaid—½ pt. 15c; pt. 30c; qt. 45c.

Prices on Bush Lima and Green Pod Bush Beans by the peck and bushel are quoted on Special Price Sheet.

Pole or Running Beans

KENTUCKY WONDER, or OLD HOMESTEAD—It is almost needless to say anything about this great Pole Bean, for who has not grown it? The yield is great, the quality is good, and no bean is more sure of making a crop. It bears in 65 days from planting; should be kept picked so that it will continue bearing until frost. The beans are 6 to 12 inches long, tender and rich. Parcel Post paid—Pkt. 10c; ½ pt. 20c; pt. 30c; qt. 55c. Not prepaid—½ pt. 15c; pt. 25c; qt. 45c.

SCOTIA OR STRIPED CORNFIELD—This is the real Cornfield Bean that you have read so much about. If you want a bean to plant in your corn this is your one choice. It will produce the kind of results that you'll expect. Parcel Post paid—Pkt. 10c; ½ pt. 20c; pt. 30c; qt. 55c. Not prepaid—½ pt. 15c; pt. 25c; qt. 45c.

WHITE CREASEBACK—Especially valuable on account of its earliness. Parcel Post paid—Pkt. 10c; ½ pt. 20c; pt. 35c; qt. 55c. Not prepaid—½ pt. 15c; pt. 30c; qt. 45c.

CAROLINA OR SIEVA—This very early and reliable small seeded Pole Lima is especially adapted for planting in the south. The vines are vigorous, with many short branches. The leaves are small, smooth, stiff, glossy dark green. The pods are dark green, short, about three inches, curved, flat. Seed small, flat, white with slight tinge of yellow. This is sometimes called Sewee. It is the most generally known "butter bean" of the south. Parcel Post paid—Pkt. 10c; ½ pt. 20c; pt. 30c; qt. 55c. Not prepaid—½ pt. 15c; pt. 25c; qt. 45c.

SPECKLED OR CALICO BUTTER BEANS—A mottled or speckled butter bean; no variety can equal them in bearing, and we know that you will like them. Parcel Post paid—Pkt. 10c; ½ pt. 20c; pt. 35c; qt. 65c. Not prepaid—½ pt. 15c; pt. 30c; qt. 55c.

Brussels Sprouts

CULTURE—A vegetable cultivated the same as Cabbage. The small heads which appear along the upper part of the stalk between the leaves make a fine dish when well prepared. Should be sown during Spring and Fall. Matures in 90 days to 120 days. Pkt. 10c; oz. 35c; 2 oz. 60c; ¼ lb. 90c; 1 lb. \$3.00. Parcel Post paid.

Beets

EARLY ECLIPSE—An early beet especially desirable for the home garden and used for bunching. The tops are small. The roots are bright deep red, smooth, round or slightly top shaped, with a small tap and small collar. The flesh is bright red, zoned with pinkish white, very sweet, crisp and tender. Pkt. 5c; oz. 15c; 2 oz. 25c; ¼ lb. 35c; 1 lb. 75c.

BASSANO—This variety when young is very sweet and tender. The tops are large and especially adapted for use as greens. The roots attain a large size, are light red in color, flesh is white, circled with bright pink. Pkt. 5c; oz. 15c; 2 oz. 25c; ¼ lb. 40c; 1 lb. \$1.00. Parcel Post paid.

DETROIT DARK RED—Here is a beet you will like, whether you grow for home use or market. Almost globe shaped with small tops and tap root, very smooth and of dark blood-red color without light rings. A good beet for both early and late planting. The quality is fine; for canning it has no superior. Pkt. 5c; oz. 15c; 2 oz. 25c; ¼ lb. 40c; 1 lb. \$1.00. Parcel Post paid.

EARLY BLOOD TURNIP—It is distinctly a beet that will please you. A beet that has the approval of the most discriminating gardeners everywhere. The roots are medium sized, round, of dark red color and fine flavor. Matures in about 45 days. Pkt. 5c; oz. 15c; 2 oz. 20c; ¼ lb. 30c; 1 lb. 70c. Parcel Post paid.

CRIMSON GLOBE—This is a splendid sort; medium size, about 10 inches around, globe shape, bronze color. Flesh is rich blood red, sweet, tender and never stringy. Pkt. 5c; oz. 15c; 2 oz. 25c; ¼ lb. 35c; 1 lb. 85c. Parcel Post paid.

EARLY WONDER BEET—The first beet on the market where it will command fancy prices; most perfect in shape and a beautiful red color. Superior to Crosby's Egyptian and one week earlier. Early Wonder Beet is the result of years of selection and the improving resulting we believe in the earliest and most handsome globe-shaped beet on the market. Pkt. 5c; oz. 15c; 2 oz. 25c; ¼ lb. 40c; 1 lb. \$1.00. Parcel Post paid.

ELECTRIC—The root is deep red, while the flesh is rich dark red, very sweet, crisp and tender, being good at all stages of growth. It is a rapid grower. Pkt. 5c; oz. 15c; 2 oz. 25c; ¼ lb. 35c; 1 lb. 90c. Parcel Post paid.

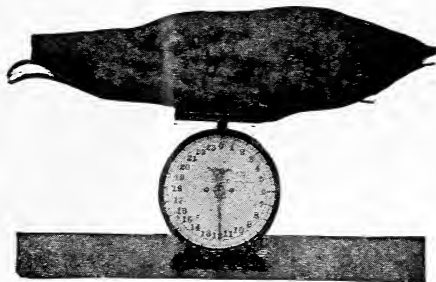
CROSBY'S IMPROVED EGYPTIAN—We recommend Crosby's Egyptian as a combination of earliness, good shape, good color and good quality. It is not as flat as Extra Early Egyptian nor as round as Eclipse—these varieties are its rivals in earliness. The color is bright red with bright vermilion-red flesh, very sweet and tender. It has the advantage of being fit for use earlier than most beets, as it takes on its turnip shape at a very early stage of its growth. The tops and tap root are both small. Pkt. 5c; oz. 15c; 2 oz. 25c; ¼ lb. 35c; 1 lb. 75c. Parcel Post paid.

IMPROVED LONG DARK BLOOD—Flesh tender and sweet. Pkt. 5c; oz. 15c; 2 oz. 25c; ¼ lb. 30c; 1 lb. 80c. Parcel Post paid.



Early Wonder Beets

PLANTING INSTRUCTIONS ON BACK COVER.



Long Red Mangel

Mangel Beets

Use for Feeding Cattle—Sow Five Lbs. Per Acre

GOLDEN TANKARD MANGEL—Small top, smooth, rich skin, broad shoulders, very solid fleshed, golden stemmed, heavy producer. Pkt. 5c; oz. 10c; 2 oz. 15c; ¼ lb. 25c; 1 lb. 60c; 5 lbs. \$2.50. Parcel Post paid.

LONG RED MANGEL WURZEL—The well-known large, long variety; grows well out of ground. Color light red. Very productive. Pkt. 5c; oz. 10c; 2 oz. 15c; ¼ lb. 25c; 1 lb. 60c; 5 lbs. \$2.50. Parcel Post paid.

Cabbage

DENMARK AND LONG ISLAND STOCKS

EARLY JERSEY WAKEFIELD—Long recognized as the earliest marketable cabbage. In size, medium; in shape, pyramidal with pointed peak. Its uncommonly fine heading qualities, together with its fitness for wintering in cold frames, pleases the most critical gardeners. Our strain of seed is of superior quality and Long Island grown stock. Pkt. 5c; oz. 25c; 2 oz. 45c; ¼ lb. 75c; 1 lb. \$2.00. Parcel Post paid.

SUCCESSION—Matures in about 110 days. Heads are ready for use long before it has full matured. Heads round, slightly flattened. Pkt. 5c; oz. 25c; 2 oz. 45c; ¼ lb. 75c; 1 lb. \$2.00. Parcel Post paid.

COPENHAGEN MARKET—Solid round head; comes in just after Wakefield. Pkt. 5c; oz. 25c; 2 oz. 40c; ¼ lb. 70c; 1 lb. \$1.85. Parcel Post paid.

LARGE CHARLESTON WAKEFIELD—Classed with the second earlies, similar in many respects to the Jersey Wakefield, only it is somewhat later and much larger, equally as solid and less pointed. Maturing as it does in about 95 days, it makes an ideal variety to follow the Jersey Wakefield either for market or home use. Of exceeding hardiness. Vigorous grower, slightly spreading leaves. Heads hard and solid. Mild pleasing flavor. Crisp and tender. Good keeper and shipper. Long Island grown seed. Pkt. 5c; oz. 25c; 2 oz. 45c; ¼ lb. 75c; 1 lb. \$2.00. Parcel Post paid.

EARLY DWARF FLAT DUTCH—It is a large cropper and a dependable header. A short stemmed variety. Belongs to the second earlies. Matures in about 110 days. Grows compact and upright. Leaves few and short. Flat round, solid heads, which are very large for size of plant. Pkt. 5c; oz. 25c; 2 oz. 45c; ¼ lb. 75c; 1 lb. \$2.00. Parcel Post paid.

ALL-HEAD EARLY—Early, large, flat, solid-headed, very early for its size, few outside leaves, consequently can be planted closer together than other large cabbages. A very reliable sort and well named. Pkt. 5c; oz. 25c; 2 oz. 45c; ¼ lb. 75c; 1 lb. \$2.00. Parcel Post paid.

MAMMOTH RED ROCK—By far the best, largest and hardest heading red cabbage in cultivation; very uniform in size, weight, solidity and deep red color. The heads grow to weigh 10 or 12 pounds. Pkt. 5c; oz. 35c; 2 oz. 60c; ¼ lb. \$1.00. Parcel Post paid.

EARLY DRUM HEAD—One of the best second early varieties; large, deep heads; solid, uniform in color, size and shape. Pkt. 5c; oz. 20c; 2 oz. 35c; ¼ lb. 55c; 1 lb. \$1.75. Parcel Post paid.

LARGE LATE DRUMHEAD—Rounder than Flat Dutch, and not quite so short stemmed. Good, large heads. Pkt. 5c; oz. 25c; 2 oz. 40c; ¼ lb. 70c; 1 lb. \$1.85. Parcel Post paid.

LATE FLAT DUTCH—Sure header, producing large, round, solid heads, flat on the top, of low growing habit, and few outer leaves. Pkt. 5c; oz. 25c; 2 oz. 40c; ¼ lb. 70c; 1 lb. \$1.75. Parcel Post paid.

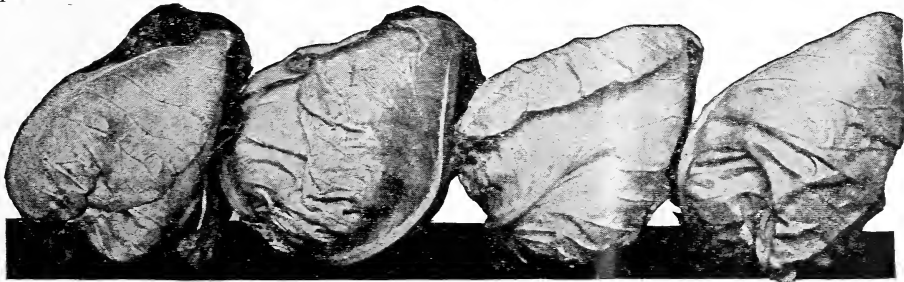
LARGE DRUMHEAD SAVOY—The best and largest heading of the Savoy Cabbage. Few people seem to know the delicious flavor of Savoy Cabbage. It is far superior to the flat-leaved sorts, and as tender as cauliflower after frosts. Pkt. 5c; oz. 25c; 2 oz. 45c; ¼ lb. 75c; 1 lb. \$2.00. Parcel Post paid.

CHINESE OR CELERY CABBAGE—Pe-Tsai—Has a mild cabbage flavor, very delicate and very fine salad. When cooked it makes greens delicately cabbage-flavored and not at all like boiled cabbage. It blanches to almost clear white.

The culture is the same as for Cabbage. The seed should be sown for fall crop in June, July to September, half inch deep in the row and rows about 24 inches apart. When the plant has grown up to 5 or 6 inches in height, thin to 10 inches apart. Pkt. 5c; oz. 30c; 2 oz. 50c; ¼ lb. 90c; 1 lb. \$2.50. Parcel Post paid.

EARLY EUREKA—This valuable variety is as early as Large Wakefield, produces fine solid medium heads in 75 to 80 days from sowing the seed. Pkt. 5c; oz. 50c; 2 oz. 75c; ¼ lb. \$1.25; 1 lb. \$4.00. Parcel Post paid.

ALL SEASONS—A splendid main crop sort. Remarkable for its ability to stand hot sun and dry weather. Makes solid hard heads, of large size. Pkt. 5c; oz. 25c; 2 oz. 45c; ¼ lb. 70c; 1 lb. \$2.00. Parcel Post paid.



Large Charleston Wakefield Cabbage

PLANTING INSTRUCTIONS ON BACK COVER.

Carrots

- HALF-LONG SCARLET**—One of the best for home or market. Pkt. 5c; oz. 15c; 2 oz. 25c; ¼ lb. 35c; 1 lb. 85c. Parcel Post paid.
- IMPROVED LONG ORANGE**—Long and tapering; deep orange. Pkt. 5c; oz. 15c; 2 oz. 25c; ¼ lb. 30c; 1 lb. 75c. Parcel Post paid.
- OXHEART OR GUERANDE**—Mature roots 4½ to 5 inches long, very stout and thick, ending in an abrupt, small tap root, small top and easily harvested; color, light bright orange. Lb. 85c. Parcel Post paid.
- DANVER'S HALF LONG**—Rich, dark orange colored, good quality. Pkt. 5c; oz. 15c; 2 oz. 25c; ¼ lb. 35c; 1 lb. 85c. Parcel Post paid.
- EARLY SCARLET HORN**—Very early, with small tap; roots about 3 inches long, rather blunt rooted; color orange-red. Pkt. 5c; oz. 15c; 2 oz. 25c; ¼ lb. 35c; 1 lb. 80c. Parcel Post paid.



Danvers Half Long Carrot

Celery

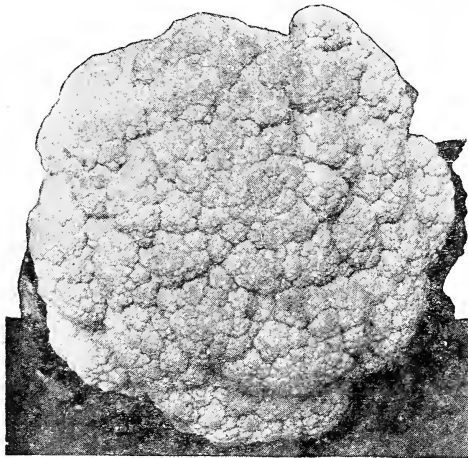
- GIANT PASCAL**—This is a green leaved variety. It bleaches very quickly after earthing up and is a beautiful yellowish white color; very solid and crisp, and of a sweet flavor. Pkt. 5c; oz. 25c; 2 oz. 40c; ¼ lb. 75c. Parcel Post paid.
- HENDERSON'S WHITE PLUME**—One of the best for early use; handsome; good quality; blanches easily. Pkt. 5c; oz. 25c; 2 oz. 40c; ¼ lb. 75c. Parcel Post paid.
- GOLDEN SELF-BLANCHING**—Early, large, crisp, solid, good flavor. Pkt. 5c; oz. 40c; 2 oz. 60c; ¼ lb. \$1.00. Parcel Post paid.

Cauliflower

Cultivate like cabbage. Sow in January or February for early crop; May or June for late. Transplant to rich, moist soil; manure heavily and water freely. When heading begins, fasten leaves over top of head to whiten. One ounce of seed makes 2,000 plants. We handle only the very best quality seed that will make a head.

- EARLY SNOWBALL**—A sure header; large solid, perfectly white and good quality. Pkt. 10c; ¼ oz. 50c; oz. \$1.50. Parcel Post paid.
- EARLY SIX WEEKS**—This new cauliflower has overcome most obstacles of cauliflower raising as well as removing practically all the elements of failure. It is early in maturing. Produces a solid attractive head of large size, running ten inches or more in diameter. It is of fine flavor, tender and lustrous, matures 95 days. Pkt. 10c; ¼ oz. 60c; oz. \$2.00.

- IMPROVED LONG GREEN**—A fine bearer of superior quality. Pkt. 5c; oz. 15c; 2 oz. 25c; ¼ lb. 35c; 1 lb. \$1.25. Parcel Post paid.
- DAVIS' PERFECT**—Possesses all the merits of the best slicing varieties; wonderfully uniform in shape and exceedingly productive. Their handsome shape and fine dark green color commands the highest price on the market. Pkt. 5c; oz. 15c; 2 oz. 25c; ¼ lb. 40c; 1 lb. \$1.50. Parcel Post paid.
- HENDERSON'S PERFECTED**—An extra long, dark green cucumber. Pkt. 5c; oz. 15c; 2 oz. 25c; ¼ lb. 35c; 1 lb. \$1.25. Parcel Post paid.



Early Six Weeks Cauliflower

Cucumbers

- EARLY FORTUNE**—One of the best selections of the White Spine type, is becoming very popular among the market men of the South. Pkt. 5c; oz. 15c; 2 oz. 25c; ¼ lb. 35c; 1 lb. \$1.25. Parcel Post paid.
- JERSEY PICKLE**—A favorite with pickle growers and commercial market gardeners; good for table use; very productive. Fruit small and uniform in size. Pkt 5c; oz. 15c; 2 oz. 25c; ¼ lb. 35c; 1 lb. \$1.25. Parcel Post paid.
- EARLIEST WHITE SPINE**—An extra early cucumber; it is smooth, straight and very handsome in appearance; skin is dark; flesh is a greenish white, very firm and crisp. Pkt. 5c; oz. 15c; 2 oz. 30c; ¼ lb. 50c; 1 lb. \$1.50. Parcel Post paid.
- JAPANESE CLIMBING**—This is a strong and vigorous grower, fine for pickling. Pkt. 5c; oz. 15c; 2 oz. 25c; ¼ lb. 35c; 1 lb. \$1.25. Parcel Post paid.
- GHERKIN or BURR**—Used only for pickling. Pkt. 5c; oz. 20c; 2 oz. 30c; ¼ lb. 50c; 1 lb. \$1.75. Parcel Post paid.
- IMPROVED EARLY WHITE SPINE**—An improved strain of the White Spine; good for forcing or outdoors. Pkt. 5c; oz. 15c; 2 oz. 25c; ¼ lb. 35c; 1 lb. \$1.25. Parcel Post paid.
- EVERBEARING**—This variety is of small size; very early, enormously productive, and valuable as a green pickle. Its peculiar merit, however, is, the vines continue to flower and produce fruit until killed by frost. Pkt. 5c; oz. 15c; 2 oz. 25c; ¼ lb. 35c; 1 lb. \$1.25. Parcel Post paid.



Early White Spine Cucumbers

PLANTING INSTRUCTIONS ON BACK COVER.

Garden and Sweet Corn

For early market, plant the garden varieties latter part of March. Sugar Corns should not be planted until April, then at intervals of two weeks for a succession. Sugar and Garden Corns planted in July will mature late in the fall. The garden varieties listed below are as follows: Early Surprise, Early Adams, Extra Early Adams, Elam's Early Market, White Flint, and Improved Adams. Plant these first.

IMPROVED ADAMS—A fine variety, slightly larger than Early Adams and one week later. Sells well on account of the size of the ear. Pkt. 10c; ½ pt. 20c; pt. 30c; qt. 45c. Parcel Post paid. Not prepaid—½ pt. 15c; pt. 25c; qt. 35c. Pk. \$3.50.

LARGE WHITE FLINT—A standard and large yielding White Flint. Pkt. 10c; ½ pt. 20c; pt. 30c; qt. 45c. Parcel Post paid. Not prepaid—½ pt. 15c; pt. 25c; qt. 35c.

MAMMOTH SUGAR—The Mammoth ears are thick through, with many rows of large, broad grains of excellent quality. Pkt. 10c; ½ pt. 20c; pt. 30c; qt. 50c. Parcel Post paid. Not prepaid—½ pt. 15c; pt. 25c; qt. 40c.

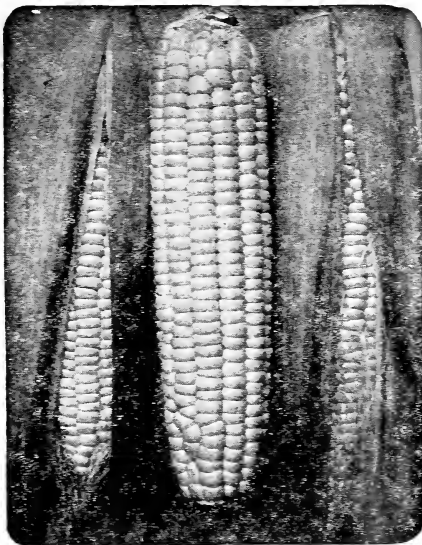
EXTRA EARLY ADAMS—Earliest white corn; small ear and stalk. It is not a Sugar Corn, but is grown for early use. Ears short; kernels very white. Pkt. 10c; ½ pt. 20c; pt. 30c; qt. 45c. Parcel Post paid. Not prepaid—½ pt. 15c; pt. 25c; qt. 35c; peck \$3.50.

HOWLING MOB—One of the finest second early, large eared sorts; very productive, white, and of excellent quality. Ears 9 to 10 inches long, 16-rowed. Pkt. 10c; ½ pt. 20c; pt. 30c; qt. 50c. Parcel Post paid. Not prepaid—½ pt. 15c; pt. 25c; qt. 40c.

GOLDEN BANTAM SWEET CORN—You know how tender, delicious and sweet Golden Bantam is. Pkt. 10c; ½ pt. 20c; pt. 35c; qt. 60c. Parcel Post paid. Not prepaid—½ pt. 15c; pt. 30c; qt. 50c; peck, \$3.50.

MAMMOTH WHITE CORY—A large-eared, second early sort; on the order of Howling Mob, but while a trifle earlier, will not average so large an ear; ears 8 to 9 inches long, 12-rowed. Pkt. 10c; ½ pt. 20c; pt. 30c; qt. 50c. Parcel Post paid. Not prepaid—½ pt. 15c; pt. 25c; qt. 40c.

BLACK MEXICAN—Well known and a favorite in a great many home gardens, the kernels having a decidedly bluish tinge when ready to eat, later turning to black. It is one of the sweetest varieties in cultivation. Pkt. 10c; ½ pt. 20c; pt. 35c; qt. 60c. Parcel Post paid. Not prepaid—½ pt. 15c; pt. 30c; qt. 50c.



Stowell's Evergreen

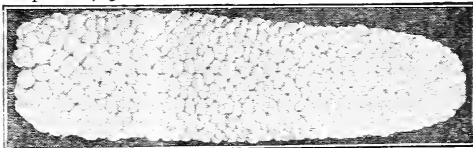
EARLY MINNESOTA

Five days earlier than the Golden Bantam. Peep O'Day Corn, in addition to its sensational earliness, is entirely distinct in appearance and habit of growth. The stalk grows from 3 to 4 ft. in height. The ears average about 5 inches in length and are of perfect form, well filled out to the tip. When cooked, the corn is exceedingly sweet and tender. 65 days. Pkt. 10c; ½ pt. 20c; pt. 30c; qt. 50c. Parcel Post paid. Not prepaid—½ pt. 15c; pt. 25c; qt. 40c; peck \$3.50.

TRUCKER'S FAVORITE

—For a second early corn to follow Adams Early, or for late planting to mature early, this is a good sort. It is a white corn, with good depth of grain, tender and sweet, and makes most desirable size for roasting ears. In addition to being a fine garden corn, it makes an excellent field corn to plant late. Pkt. 10c; ½ pt. 20c; pt. 30c; qt. 45c. Parcel Post paid. Not prepaid—½ pt. 15c; pt. 25c; qt. 35c.

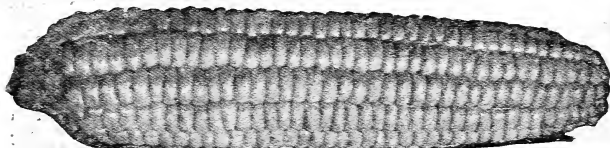
COUNTRY GENTLEMAN—Small cob; long, slender, white grains, which are very sweet. Pkt. 10c; ½ pt. 25c; pt. 35c; qt. 60c. Parcel Post paid. Not prepaid—½ pt. 20c; pt. 30c; qt. 50c; peck \$3.75.



Country Gentleman

STOWELL'S EVERGREEN—The standard and best known Sweet Corn. Ears 8 to 9 inches long, 16 to 18 rowed, with a very deep, sweet grain. Pkt. 10c; ½ pt. 20c; pt. 30c; qt. 50c. Parcel Post paid. Not prepaid—½ pt. 15c; pt. 25c; qt. 40c; peck \$3.00.

CHAMPION WHITE PEARL—This is a very handsome white corn. The grain is pure white, exceedingly heavy and long. Being medium in size of stalk, it can be planted much thicker than a large corn, and at the same time bear a full-sized ear. The originator has established in Champion White Pearl Corn a short, thick stalk, an advantage in stormy weather. Planted largely in this section by market gardeners and for shipping. Packet, 10c; 1 lb. 25c; 2 lbs. 45c, postpaid; 14-lb. peck, \$1.25; 56-lb. bu. \$3.75, not prepaid. Pt. 25c; gal. 75c; peck, \$1.50; bu. \$4.50. not prepaid.



Champion White Pearl

PLANTING INSTRUCTIONS ON BACK COVER.

Pop Corn

Write for Special Prices on Large Quantities.

POP CORN—This is smallest variety of kernels; cultivated same as field or garden corn, but drilled instead of hills. Very extensively used for pop corn candy. We handle the two best varieties, the Rice and Pearl, for seed purposes. Pkt. 10c; lb. 30c; postpaid. 10 lbs. \$2.00; 50 lbs. \$6.00, not prepaid.

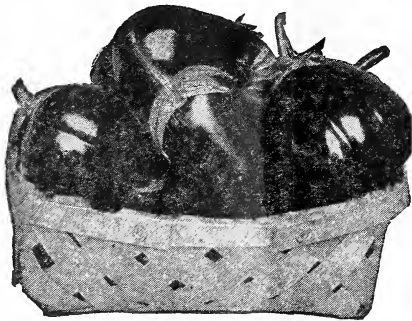
GLOBE RICE SHELLED POP CORN—For candy manufacturing purposes, \$8.00 per 100 lbs.

All Prices in this Catalog are Subject to Market Fluctuations

Endive

GREEN CURLED—The hardiest variety; beautifully curled. Pkt. 5c; oz. 25c; 2 oz. 40c; ¼ lb. 75c; 1 lb. \$2.00. Parcel Post paid.

Broad Leaved Batavian—Pkt. 5c; oz. 25c; 2 oz. 40c; ¼ lb. 75c; 1 lb. \$2.00. Parcel Post paid.



Black Beauty Egg Plant

Egg Plant

BLACK BEAUTY—This is the earliest and best of all large fruited Egg Plants. The large fruits are thick and of the most attractive form. The skin is a rich, lustrous purplish black, and it is entirely free from spines or thorns. Pkt. 5c; oz. 50c; 2 oz. 75c; ¼ lb. \$1.25. Parcel Post paid.

NEW YORK IMPROVED PURPLE—The old standard variety. Pkt. 5c; oz. 50c; 2 oz. 75c; ¼ lb. \$1.25. Parcel Post paid.



Big Boston Lettuce



Improved Iceberg

Lettuce

IMPROVED ICEBERG—A large, late, crisp cabbage-heading variety; heads very firm, hard and well balanced; leaves unusually broad and quite blistered and crumpled, borders finely frilled. Pkt. 5c; oz. 25c; 2 oz. 35c; ¼ lb. 65c; 1 lb. \$2.00. Parcel Post paid.

BLACK SEEDED SIMPSON—Produces a compact mass of leaves, light color. Pkt. 5c; oz. 20c; 2 oz. 30c; ¼ lb. 45c; 1 lb. \$1.00. Parcel Post paid.

PRIZE HEAD—Solid heading, leaves edged with reddish brown. Pkt. 5c; oz. 20c; 2 oz. 30c; ¼ lb. 45c; 1 lb. \$1.00. Parcel Post paid.

WAXYHEAD—A superb new heading lettuce. Outer leaves light green, and the inner leaves blanch to a rich butter tint. Pkt. 5c; oz. 25c; 2 oz. 40c; ¼ lb. 65c; 1 lb. \$2.00. Parcel Post paid.

COS or ROMAINE—Forms large, light green, well-folded heads of upright growth and popular for its crispness and mild flavor. Pkt. 5c; oz. 20c; 2 oz. 35c; ¼ lb. 60c; 1 lb. \$1.75. Parcel Post paid.

CALIFORNIA CREAM BUTTER—A splendid variety for summer. Produces very large heads. Pkt. 5c; oz. 20c; 2 oz. 35c; ¼ lb. 60c; 1 lb. \$1.75. Parcel Post paid.

BIG BOSTON—This fine variety is extremely popular for outdoor culture in the Spring and Fall, and for cold frame forcing. The large flattened heads are compact, solid and crisp. The broad leaves are comparatively smooth, wavy at the edge, thin and crisp. Pkt. 5c; oz. 20c; 2 oz. 30c; ¼ lb. 50c; 1 lb. \$1.25. Parcel Post paid.

LARGE WHITE CABBAGE HEAD—Makes fine, large, solid heads with blanched hearts. Pkt. 5c; oz. 20c; 2 oz. 30c; ¼ lb. 45c; 1 lb. \$1.00. Parcel Post paid.

WONDERFUL OR NEW YORK—This splendid mammoth heading and long-keeping variety has been grown to weigh 3 lbs. to the head. Heart is solid, of light green color, very sweet, tender and crisp. Pkt. 5c; oz. 25c; 2 oz. 40c; ¼ lb. 75c; 1 lb. \$2.50. Parcel Post paid.

ALL SEASONS—One of the best head lettuce; stands the hot midsummer sun without burning. Heads are very solid, large and of a most desirable light green color. Pkt. 5c; oz. 20c; 2 oz. 30c; ¼ lb. 50c; 1 lb. \$1.25. Parcel Post paid.

PLANTING INSTRUCTIONS ON BACK COVER.

Muskmelons or Cantaloupe

ROCKY FORD—One of the most popular. Just right size for restaurant and hotel service; flesh is green, thick, and lusciously sweet. It is netted and ribbed and ripens early. Pkt. 5c; oz. 15c; 2 oz. 25c; ¼ lb. 35c; 1 lb. \$1.00. Parcel Post paid.

PINK MEAT ROCKY FORD—This variety is quite similar in appearance to an Eden Gem type of Rocky Ford, being beautifully netted, but the flesh is pink. Its shipping qualities are excellent, quality all that can be desired. Pkt. 5c; oz. 15c; 2 oz. 25c; ¼ lb. 40c; 1 lb. \$1.25. Parcel Post paid.

EARLY GREEN NUTMEG—An early variety of medium to a small size; nutmeg in shape and thickly netted. Pkt. 5c; oz. 15c; 2 oz. 25c; ¼ lb. 30c; 1 lb. \$1.00. Parcel Post paid.

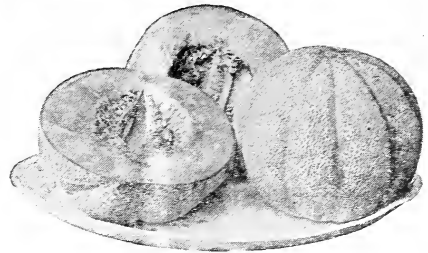
POLLOCK 10-25—The salmon or pink meat Rocky Ford combining earliness in addition to the good qualities of the Green Flesh Rocky Ford melon.

Pollock 10-25 has a very small seed cavity with thick salmon flesh which is juicy and sweet. Ripens in about 75 to 80 days. Pkt. 5c; oz. 15c; 2 oz. 25c; ¼ lb. 35c; 1 lb. \$1.25. Parcel Post paid.

TIP TOP—Nearly round, deeply ribbed, moderately netted; flesh is bright salmon, thick and of good flavor. Pkt. 5c; oz. 15c; 2 oz. 25c; ¼ lb. 35c; 1 lb. \$1.00. Parcel Post paid.

BANANA—Long, shaped like a banana; has a most delicious flavor. Pkt. 5c; oz. 15c; 2 oz. 25c; ¼ lb. 35c; 1 lb. \$1.25. Parcel Post paid.

EDEN GEM—One of the best of cantaloupes for main crop. The flesh is thick, of a beautiful deep rich green. Pkt. 5c; oz. 15c; 2 oz. 25c; ¼ lb. 35c; 1 lb. \$1.00. Parcel Post paid.



Rocky Ford

MAMMOTH ROCKY FORD—The general type of this melon is similar to the regular Rocky Ford, but they grow somewhat larger in size, making it a splendid variety for market. Pkt. 5c; oz. 15c; 2 oz. 25c; ¼ lb. 40c; 1 lb. \$1.25. Parcel Post paid.

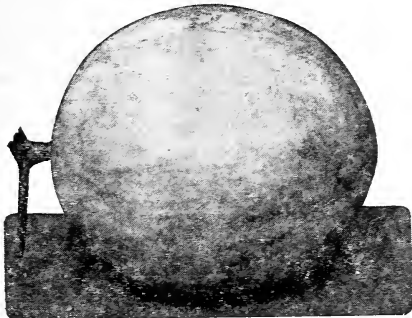
OSAGE—Fruit medium size to large, nearly round, slightly ribbed, dark green, almost smooth. Flesh very thick, deep salmon and of the finest quality. Pkt. 5c; oz. 15c; 2 oz. 25c; ¼ lb. 40c; 1 lb. \$1.25. Parcel Post paid.

NEW ORLEANS MARKET—This is an absolutely distinct and very superior Melon. It is one of the sweetest and most luscious green-fleshed cantaloupes now on the market. Of desirable size, round, inclined to oval in shape, distinctly ribbed and thickly netted—color of skin gray-green. Because of its firm flesh and solidity it is a splendid shipper. Seed cavity is small. The flesh is an attractive green of exquisite texture, sugary, juicy and tender. Pkt. 10c; oz. 20c; 2 oz. 35c; ¼ lb. 50c; 1 lb. \$1.50. Parcel Post paid.

HONEY DEW MELON—A splendid new variety; rind dull white when ripe. The flesh is a rich green, very sweet and delicious flavor. The average size is about six inches in diameter and they weigh five to six pounds. The skin is smooth with little netting. Green Flesh Honey Dew and Pink Meat Honey Dew. Pkt. 5c; oz. 20c; 2 oz. 35c; ¼ lb. 50c; 1 lb. \$1.50. Parcel Post paid.

BURELL'S GEM—Skin is rather dark green and rind thin, leaving a thick lining of salmon flesh, which is of most delicious, juicy flavor. Pkt. 5c; oz. 15c; 2 oz. 25c; ¼ lb. 35c; 1 lb. \$1.00. Parcel Post paid.

CANNON BALL—Large size, heavily netted and perfectly round; flesh green, of excellent quality. Pkt. 5c; oz. 15c; 2 oz. 25c; ¼ lb. 35c; 1 lb. \$1.25. Parcel Post paid.



Honey Dew

Herb Seed

Parcel Post paid.

	Oz.	Pkt.
BASIL, Sweet —For flavoring soups.....	.50	\$.05
DILL, Mammoth —For flavoring pickles.....	.15	.05
LAVENDER —Used for its odor.....	.80	.10
MARJORAM, Sweet —Used in seasoning meats.....	.40	.10
ROSEMARY —For seasoning meats and soups.....	.70	.10
SAVORY, Summer —Used as a culinary herb.....	.70	.10
SAGE, Broad Leaved —A popular flavoring plant.....	.50	.10
THYME —Much used for dressing.....	.60	.10

Kohl-Rabi

EARLY WHITE VIENNA—This is the best and earliest variety for table use. Pkt. 5c; oz. 25c; 2 oz. 40c; ¼ lb. 75c; 1 lb. \$2.50. Parcel Post paid.

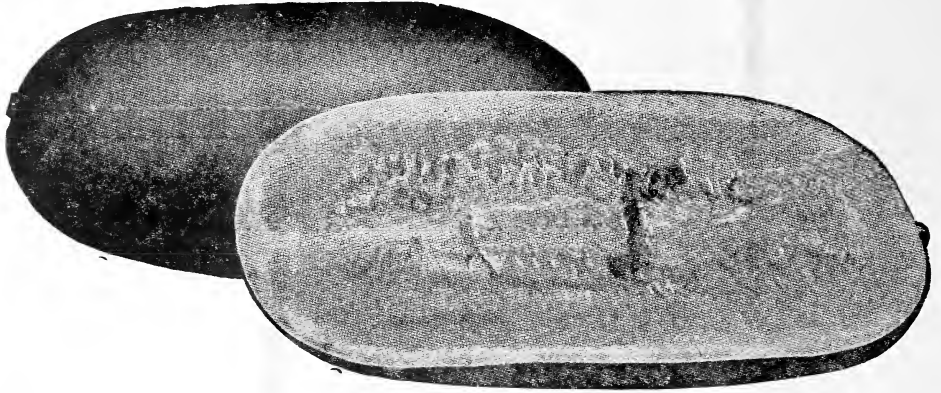
Kale

DWARF GREEN CURLED—Very hardy; leaves curled. The best variety for Fall sowing. Stands all Winter. Pkt. 5c; oz. 10c; 2 oz. 15c; ¼ lb. 30c; 1 lb. 60c. Parcel Post paid.

Leek

LONDON FLAG—Broad leaves, of strong and vigorous growth. Pkt. 5c; oz. 20c; 2 oz. 35c; ¼ lb. 60c; 1 lb. \$1.75. Parcel Post paid.

PLANTING INSTRUCTIONS ON BACK COVER.



Tom Watson Watermelon

Watermelons

ALABAMA SWEET—The flesh is bright red, fine grained, sweet and luscious. Pkt. 5c; oz. 10c; 2 oz. 20c; ¼ lb. 30c; 1 lb. 90c. Parcel Post paid.

FLORIDA FAVORITE—Oblong in shape, growing to a very large size; rind dark green striped with lighter; highly prized on account of its delicious flavor; seed light color. Pkt. 5c; oz. 15c; 2 oz. 25c; ¼ lb. 40c; 1 lb. 75c. Parcel Post paid.

GEORGIA RATTLESNAKE—A large striped variety of oblong shape; flesh scarlet and of superior quality. Pkt. 5c; oz. 15c; 2 oz. 25c; ¼ lb. 40c; 1 lb. 75c. Parcel Post paid.

"IRISH GRAY" WATERMELON (Also called General Pershing)—The size of this melon is uniformly large and it closely resembles Kleckley's Sweets except the color, which is a yellowish gray. Flesh is very sweet and firm, without hard center, brilliant sparkling red. Rind almost as tough as a citron, making a grand shipper. Earlier than Tom Watson, Irish Gray has instantly met with universal favor. Pkt. 5c; oz. 20c; 2 oz. 35c; ¼ lb. 50c; 1 lb. \$1.00. Parcel Post paid.

THE JONES—Oval or nearly round; large in size, rind dark green, flesh bright red and very sweet. Pkt. 5c; oz. 10c; 2 oz. 15c; ¼ lb. 35c; 1 lb. 90c. Parcel Post paid.

NEW WONDER—Introduced in the South last year, resembles Kleckley Sweets, but grows to a large size; the bright red flesh is deliciously sweet and melting. The introducer claims it is the melon of quality, the sweetest of them all. \$1.50. Postpaid. Special Quantity Price—Write.

BRADFORD—This excellent shipping melon is one of the leading sorts grown by Texas and other Southern Melon Growers' Associations and extensive individual growers. The rind is dark green marked with a still darker green mottled stripe, and while thin it is very tough, making the melon a first-class shipper. The flesh is bright red, fine grained, sweet and luscious, entirely stringless and very firm. The seeds are white, slightly tipped with brown, and are firmly set in small cavities near the rind. Pkt. 5c; oz. 20c; 2 oz. 35c; ¼ lb. 50c; 1 lb. \$1.00. Parcel Post paid.

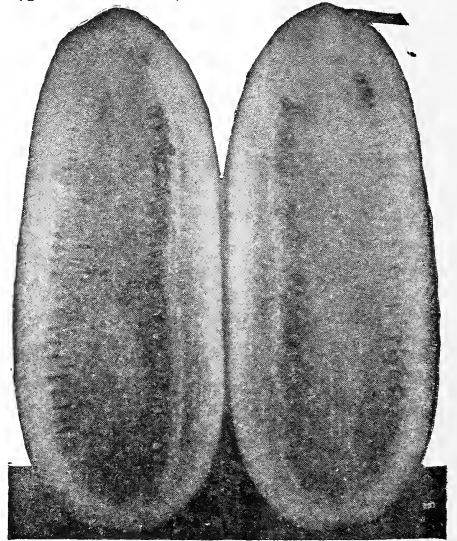
KLECKLEY'S SWEET—The best melon grown. Oblong, very large, dark green, faintly striped, very sweet, entirely stringless; very prolific. Pkt. 5c; oz. 15c; 2 oz. 25c; ¼ lb. 40c; 1 lb. 75c. Parcel Post paid.

JUMBO SWEET—Immense in size, and grows to average 70 to 90 lbs.; rich dark green, uniform, long shape; flesh deep red, of fine quality. Pkt. 5c; oz. 15c; 2 oz. 25c; ¼ lb. 40c; 1 lb. \$1.00. Parcel Post paid.

HALBERT HONEY—The melons average eighteen to twenty inches long and are full or bluntly rounded at both ends. The skin is a dark, glossy green. The flesh is a beautiful crimson, the rich coloring and luscious quality extending to the thin rind. Pkt. 5c; oz. 20c; 2 oz. 35c; ¼ lb. 35c; 1 lb. \$1.00.

TOM WATSON—Long, green and very prolific. The melons are uniformly large, running from 30 pounds to 40 pounds. The flesh scarlet, of extra fineness and sweetness, entirely stringless, fairly melts in your mouth. The rind is exceptionally strong, making it an excellent shipper. Pkt. 5c; oz. 10c; 2 oz. 15c; ¼ lb. 30c; 1 lb. 75c. Parcel Post paid.

NEW EXCEL—This is an extra selected stock of this splendid well-known and popular melon. Seed is saved only from specimens made as near uniform as possible. The grower will no doubt appreciate this from the fact that this stock will grow larger and more regular melons than the ordinary strain. We are pleased to offer this special stock this season, as we are sure you will be highly pleased with the results. Pkt. 5c; oz. 15c; 2 oz. 30c; ¼ lb. 50c; 1 lb. \$1.00. Parcel Post paid.



New Wonder Watermelon

WRITE FOR SPECIAL QUANTITY PRICE

PLANTING INSTRUCTIONS ON BACK COVER.

Mustard

MAMMOTH CHINESE—Not curled as the Southern Giant; leaves are very broad and smooth. Pkt. 5c; oz. 15c; 2 oz. 20c; ¼ lb. 35c; lb. 75c. Parcel Post paid.

SOUTHERN GIANT CURLED—Leaves are large, light green with yellowish tinge, much crimped and frilled at the edges. Very succulent, pungent and of sweet flavor. Pkt. 5c; oz. 10c; 2 oz. 15c; ¼ lb. 20c; 1 lb. 50c. Parcel Post paid.

JAPANESE—A single plant fills a bushel basket; leaves tender at all times. Your garden won't be complete unless you try some of this new mustard. Pkt. 5c; oz. 15c; 2 oz. 25c; ¼ lb. 40c; 1 lb. 90c. Parcel Post paid.

Okra

One Ounce Will Plant 100 Hills—This plant is extensively cultivated for its green pods, which are used in soups and stews and are very wholesome and nutritious. Sow about the first of May, in drills 3 feet apart, and thin out the plants to one foot apart. Soak seeds in water 12 hours—they germinate easier.

DWARF GREEN—Very early; pods green and tender. Pkt. 5c; oz. 10c; 2 oz. 15c; ¼ lb. 20c; 1 lb. 50c. Parcel Post paid.

PERKINS' MAMMOTH POD—this variety is about three feet high, very early and productive. Pods deep green, very long, slender, slightly corrugated, very tender and of good quality. Pkt. 5c; oz. 10c; 2 oz. 15c; ¼ lb. 20c; 1 lb. 55c. Parcel Post paid.

WHITE VELVET—This Okra takes its name from the smoothness of its pods, which are round, differing in this respect from the old sort. Pkt. 5c; oz. 10c; 2 oz. 15c; ¼ lb. 20c; 1 lb. 50c. Parcel Post paid.

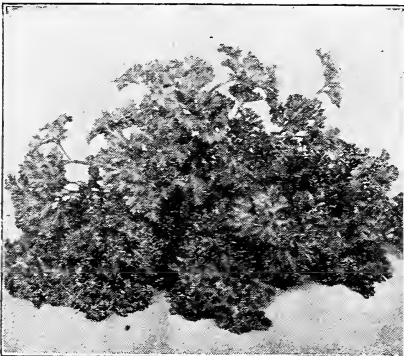
TALL, OR LONG GREEN—Long ribbed pods; very productive. Pkt. 5c; oz. 10c; 2 oz. 15c; ¼ lb. 20c; 1 lb. 50c. Parcel Post paid.

Parsley

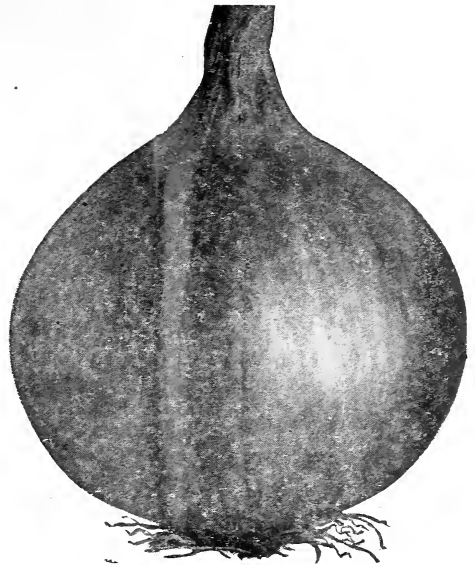
CULTURE—Soak seed in water for a few hours and sow in rich soil early in spring in rows a foot apart and cover lightly. Parsley is slow to germinate and is sometimes 3 or 4 weeks in coming up. One ounce will sow 150 feet of drill. Sow in March and April, also in September.

CHAMPION MOSS CURLED—More densely crimped and curled than some other sorts. Pkt. 5c; oz. 15c; 2 oz. 25c; ¼ lb. 35c; lb. 85c.

PLAIN OR SINGLE—Leaves are flat, deeply cut, and dark green. Pkt. 5c; oz. 10c; 2 oz. 15c; ¼ lb. 25c; lb. 70c.



Champion Moss Curled



La Creole

Onion Seed

LARGE RED LA CREOLE—Medium early; skin is purplish red; flesh purplish white; a general favorite. Pkt. 5c; oz. 20c; 2 oz. 35c; ¼ lb. \$1.20; 1 lb. \$3.50. Parcel Post paid.

WHITE SILVER SKIN—Pure white; mild flavor; best for growing sets. Pkt. 5c; oz. 25c; 2 oz. 40c; ¼ lb. 75c; 1 lb. \$2.25. Parcel Post paid.

LARGE RED BERMUDA—Grows to good size; rich red color with small neck; a fine keeper. Pkt. 5c; oz. 20c; 2 oz. 40c; ¼ lb. \$1.00; 1 lb. \$3.50. Parcel Post paid.

Onion Sets

Prices are subject to market fluctuations. When you want large quantities ask for market prices. Thirty-two pounds constitute a bushel.

Plant 4 to 6 inches apart in 12 to 24-inch rows (except Potato Onions, which should be in 2-foot rows). Plant in Spring or Fall in fine rich soil, well manured.

RED WETHERSFIELD—Quart 20c; gallon 60c; peck \$1.00. Parcel Post paid.

YELLOW DANVERS—Quart 20c; gallon 60c; peck \$1.00. Parcel Post paid.

WHITE SILVER SKIN—Quart 25c; gallon 70c; peck \$1.20. Parcel Post paid.

WHITE MULTIPLIER SETS—Quart 30c; gallon \$1.00; peck \$2.00. Parcel Post paid.

Parsnips

SUGAR OR HOLLOW CROWN—The best for table use; easily raised and of great productiveness. Pkt. 5c; oz. 15c; 2 oz. 25c; ¼ lb. 35c; 1 lb. \$1.00.

IN YOUR HOME GARDEN
 "Dig deep, manure well, work often".
 Thus Pliny the Elder, nearly 2,000 years ago, summed up gardening. His advice is good today.

PLANTING INSTRUCTIONS ON BACK COVER.

Peas



Laxtonian Peas

LAXTONIAN PEAS — The best of all Dwarf Peas. Produces finest quality. Pkt. 10c; ½ pt. 20c; pt. 30c; qt. 60c. Parcel Post paid. Not Prepaid—½ pt. 15c; pt. 25c; qt. 50c.

GRADUS OR PROSPERITY — Ripens early; vines about 3 feet high; bears profusely. The pods almost as large as those of Telephone. Pkt. 10c; ½ pt. 20c; pt. 30c; qt. 60c. Parcel Post paid. Not prepaid—½ pt. 15c; pt. 25c; qt. 50c.

NOTT'S EXCELSIOR — A strong, vigorous grower and continues to bear for a long time. Height 15 inches. Pkt. 10c; ½ pt. 20c; pt. 30c; qt. 60c. Parcel Post paid. Not prepaid—½ pt. 15c; pt. 25c; qt. 50c.

CHAMPION OF ENGLAND—It grows 4 to 5 feet high and requires support, and large crop production more than repays any extra labor required. Pkt. 10c; ½ pt. 20c; pt. 35c; qt. 60c. Parcel Post paid. Not prepaid—½ pt. 15c; pt. 30c; qt. 50c.

LAXTON PEAS — Pods large, deep rich green, filled from end to end with plump peas. Vines grow from 3 to 3½ feet high. The seed is wrinkled, so don't plant until March. Pkt. 10c; ½ pt. 20c; pt. 30c; qt. 60c. Parcel Post paid. Not prepaid—½ pt. 15; pt. 25c; qt. 50c.

ALASKA—The earliest of all the extra early sorts; vines about 2 feet in height. The pods is about 3 inches long, well filled with uniformly round peas. Pkt. 10c; ½ pt. 20c; pt. 30c; qt. 45c. Parcel Post paid. Not prepaid—½ pt. 15c; pt. 25c; qt. 35c.

BLISS EVERBEARING — A good variety that continues in bearing a long time. A general favorite. Height 3 feet. Pkt. 10c; ½ pt. 20c; pt. 30c; qt. 55c. Parcel Post paid. Not prepaid—½ pt. 15c; pt. 25c; qt. 45c.

TELEPHONE*—The vines are tall, about four feet high, with large leaves, and producing an abundance of pointed pods of largest size, often four and one-half to five inches long, filled with very large peas, which are tender and sweet. Pkt 10c; ½ pt. 20c; pt. 30c; qt. 60c. Parcel Post paid. Not prepaid—½ pt. 15c; pt. 25c; qt. 50c.

McLEAN'S LITTLE GEM—The best and most popular Dwarf Wrinkled variety. Grows about 15 inches high and bears good-sized pods. Pkt. 10c; ½ pt. 20c; pt. 35c; qt. 60c. Parcel Post paid. Not prepaid—½ pt. 15c; pt. 30c; qt. 60c.

LARGE WHITE MARROWFAT—Height 5 feet. Vine and foliage stout, deep green. Pkt. 10c; ½ pt. 20c; pt. 30c; qt. 50c. Parcel Post paid. Not prepaid—½ pt. 15c; pt. 25c; qt. 40c.

Irish Potatoes

CULTURE—Potatoes thrive and produce best in a light, dry, but rich soil. Cottonseed meal, raw bone or any other fertilizer should be used to make the ground rich enough. If the ground was planted the Fall previous with cow peas, which are plowed under, it will be in good condition for Potatoes. Good size tubers should be selected for planting, which can be cut in pieces not too small; each piece ought to contain at least three eyes.

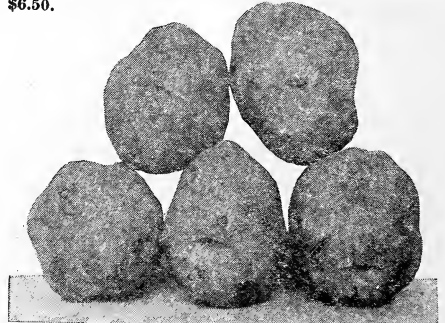
Matures in 85 to 100 days. Plant in drills from two to three feet apart. Corona Dry is particularly efficient in the control of the ordinary potato bug. Dust the potato plants with Corona when they are 6 to 8 inches high. Repeat when necessary or at intervals of two weeks for the rest of the season. Planted from January to April, 10 bushels per acre.

Certified Red Triumphs, Wisconsin Grown. One of the earliest Potatoes grown, round in shape, pink skin, white flesh, with deeply indented eyes and of handsome appearance. It seems to be specially adapted to the Southern soil and climate and is a great favorite with Southern Truckers for an extra early. Can only supply 150 lb. sacks. These potatoes come certified and tagged from Wisconsin Growers in original sacks of 150 lbs. Price, \$6.50.

EARLY RED TRIUMPH—One of the best early potatoes, combining the productiveness of the White Star with the excellent qualities of Irish Cobbler. A most valuable early variety for the South, and a dependable producer and ready seller. It withstands drouth. Matures in about ten weeks. Medium size, round, very uniform in shape; eyes slightly depressed and color of a beautiful light red and is a standard variety for shipping. 15 lbs., \$1.09; 60 lb. bu., \$3.25; 150-lb. sack, \$6.50, not prepaid.

WHITE STAR—A very handsome and productive variety of medium earliness, tubers oblong, large and uniform in size; vines strong, of a dark green color, stocky and vigorous; skin and flesh white and of a fine quality. Good for shipping as it keeps well, popular in the South. 15 lb. \$1.00; 60 lb. bu., \$2.75; 150-lb. sack, \$6.00, not prepaid.

IRISH COBBLER—One of the most popular of the early varieties. Resembles the Triumph in shape. Its excellent quality, together with its cream-white color, makes it fine for the best trade. It is a vigorous grower, a good keeper and ripens uniformly. 15 lbs. \$1.00; 60 lb. bu. \$3.25; 150 lb. sack, \$6.75, not prepaid.

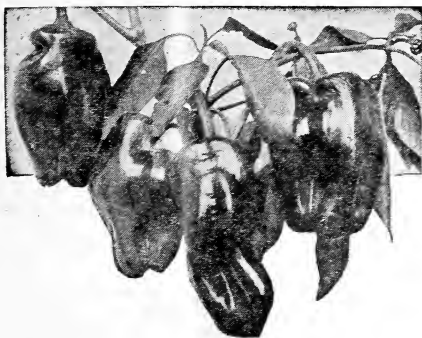


Early Red Triumph

ALL SELECTED STOCKS WISCONSIN GROWN CERTIFIED.

Write for Prices on Quantity Lots. Prices Subject to Market Fluctuations.

PLANTING INSTRUCTIONS ON BACK COVER.



World Beater peppers

Peppers

- CHINESE GIANT**—Very large size. Fruit is mild and sweet. Pkt. 5c; oz. 50c; 2 oz. 90c; ¼ lb. \$1.50; 1 lb. \$4.75.
- LONG RED CAYENNE**—Bears long slender pods, bright red when ripe. Pkt. 5c; oz. 35c; 2 oz. 60c; ¼ lb. \$1.09; 1 lb. \$3.50.
- PIMENTO PEPPER**—A delicious variety, most all meat. Very mild. Pkt. 5c; oz. 45c; 2 oz. 70c; ¼ lb. \$1.25; 1 lb. \$4.50.
- ROYAL KING**—Extra large size, flavor is sweet and mild. Pkt. 5c; oz. 40c; 2 oz. 70c; ¼ lb. \$1.25; 1 lb. \$4.50.
- BELL OR BULL NOSE**—A large early sort, of mild flavor. Fruits are large. Pkt. 5c; oz. 35c; 2 oz. 60c; ¼ lb. \$1.00; 1 lb. \$3.75.
- RUBY KING**—A fine variety, very large and attractive. Fruits are 4 to 5 inches long, bright red when ripe. Pkt. 5c; oz. 40c; 2 oz. 65c; ¼ lb. \$1.15; 1 lb. \$4.00.
- WORLD BEATER**—A mammoth variety with mild flesh, splendid cropper. Pkt. 5c; oz. 50c; 2 oz. 90c; ¼ lb. \$1.50; 1 lb. \$4.50.

Pumpkins

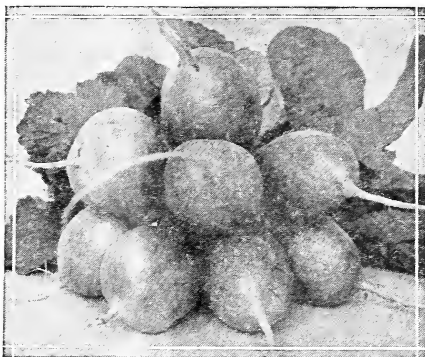
- CUSHAW GREEN STRIPED**—Very productive, good for table and stock feeding. Pkt. 5c; oz. 15c; 2 oz. 25c; ¼ lb. 35c; 1 lb. \$1.09. Parcel Post paid.
- KING OF THE MAMMOTH**—Of extraordinary large size; good for growing for prizes; skin is orange colored, with bright yellow flesh of fine quality. Pkt. 5c; oz. 15c; 2 oz. 25c; ¼ lb. 50c; 1 lb. \$1.25. Parcel Post paid.
- KENTUCKY YELLOW FIELD**—A large variety of good quality. Pkt. 5c; oz. 10c; 2 oz. 15c; ¼ lb. 20c; 1 lb. 50c. Parcel Post paid.



Perfection White Tip Radishes

Radishes

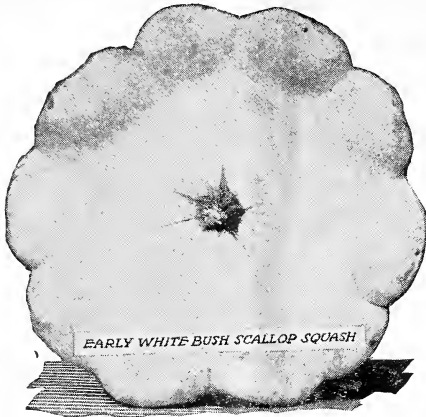
- To be tender and crisp, radishes must be grown quickly, and this requires rich soil and moisture. Begin as early as possible in the spring and sow at intervals of about 10 days in a light, rich, deeply worked soil. For fall and winter sow in August and September. One ounce sows 50 feet.
- EARLY SCARLET GLOBE**—A very distinct shape, brilliant red color, short leaved, crisp and white, of excellent flavor. Pkt. 5c; oz. 15c; 2 oz. 25c; ¼ lb. 35c; 1 lb. 90c. Parcel Post paid.
- EARLY SCARLET TURNIP**—A very early, small, round radish; entire radish is of a rich scarlet color. Pkt. 5c; oz. 15c; 2 oz. 25c; ¼ lb. 30c; 1 lb. 80c. Parcel Post paid.
- EARLY SCARLET TURNIP WHITE TIP**—Market gardeners' favorite radish outdoor planting. A very desirable one for the home garden. Turnip-shaped; handsome scarlet in color, with a distinct white tip. Pkt. 5c; oz. 15c; 2 oz. 25c; ¼ lb. 35c; 1 lb. 90c. Parcel Post paid.



Early Scarlet Globe

- EARLY LONG SCARLET SHORT TOP**—Early, very short top, splendid shape and color. Pkt. 5c; oz. 15c; 2 oz. 25c; ¼ lb. 30c; 1 lb. 90c. Parcel Post paid.
- EARLY WHITE TURNIP**—Both skin and flesh of pure white. Pkt. 5c; oz. 15c; 2 oz. 25c; ¼ lb. 30c; 1 lb. 80c. Parcel Post paid.
- MIXED RADISHES**—A general mixture of all varieties, giving you radishes for the whole season at one planting. Pkt. 5c; oz. 40c; 2 oz. 20c; ¼ lb. 30c; 1 lb. 90c. Parcel Post paid.
- FRENCH BREAKFAST**—A very popular French variety of very rapid growth, color scarlet, tipped with white, and small in size. Pkt. 5c; oz. 15c; 2 oz. 25c; ¼ lb. 35c; 1 lb. 75c. Parcel Post paid.
- ICICLE**—Long, slender, pure white, the earliest and finest long, white radish. Pkt. 5c; oz. 15c; 2 oz. 25c; ¼ lb. 35c; 1 lb. 70c. Parcel Post paid.
- PERFECTION WHITE TIP RADISH**—The most attractive bunching radish on the market—The best strain of Scarlet Turnip White Tip Radish, with the white tip well developed, covering the lower half of the radish. Extra early, crisp and tender. Pkt. 5c; oz. 15c; 2 oz. 25c; ¼ lb. 40c; 1 lb. 85c. Parcel Post paid.
- CHINA ROSE WINTER**—One of the very best for fall and winter use, bright rose color, flesh white and firm, superior quality. Pkt. 5c; oz. 15c; 2 oz. 25c; ¼ lb. 30c; 1 lb. 90c. Parcel Post paid.
- ROUND BLACK SPANISH WINTER**—This is a large, black-skinned radish; flesh white and firm; a good keeper. Pkt. 5c; oz. 15c; 2 oz. 25c; ¼ lb. 30c; 1 lb. 80c. Parcel Post paid.
- LONG BLACK SPANISH WINTER**—Like the above, but the roots are longer and somewhat milder in flavor. Pkt. 5c; oz. 15c; 2 oz. 25c; ¼ lb. 30c; 1 lb. 80c. Parcel Post paid.

PLANTING INSTRUCTIONS ON BACK COVER.



Squash

CULTURE—After danger of frost is past, plant in a warm, well-pulverized, rich soil, mixing well-rotted manure with the soil in each hill. Plant 8 or 10 seeds to the hill; the bush varieties 4 to 6 feet apart, the running sorts 8 to 10 feet.

GOLDEN CUSTARD—This is very much like the White Bush, except the color. It matures early, meat is rich yellow, fine and sweet. Pkt. 5c; oz. 15c; 2 oz. 25c; ¼ lb. 40c; 1 lb. \$1.25. Parcel Post paid.

MAMMOTH WHITE BUSH—Is nearly double the size of Early White Bush—Patty Pan—very uniform in size, prolific and fine quality; grows to 12 inches in diameter. Pkt. 5c; oz. 15c; 2 oz. 25c; ¼ lb. \$1.25. Parcel Post paid.

EARLY WHITE BUSH—The well-known summer variety. Pkt. 5c; oz. 15c; 2 oz. 25c; ¼ lb. 35c; 1 lb. \$1.25. Parcel Post paid.

YELLOW CROOKNECK—A bush variety, early and prolific; surface deep yellow, densely warted; quality and flavor good. Pkt. 5c; oz. 15c; 2 oz. 25c; ¼ lb. 40c; 1 lb. \$1.25. Parcel Post paid.

GIANT YELLOW SUMMER CROOKNECK—Fruit is large, bright yellow, and covered with warts. Pkt. 5c; oz. 15c; 2 oz. 25c; ¼ lb. 40c; 1 lb. \$1.50. Parcel Post paid.

HUBBARD—A favorite winter squash. Shell dark green and extremely hard. Flesh rich orange; dry and sweet. Splendid for cooking or pies. Pkt. 5c; oz. 15c; 2 oz. 25c; ¼ lb. 40c; 1 lb. \$1.50. Parcel Post paid.

Spinach

BDOOMSDALE CURLLED SAVOY—In appearance the leaf is wrinkled in the same way as that of the Savoy Cabbage, hence the name. It produces nearly twice the bulk of crop as the ordinary sort, is fully as hardy. Pkt. 5c; oz. 10c; 2 oz. 15c; ¼ lb. 20c; 1 lb. 45c; 5 lbs. \$1.75. Parcel Post paid.

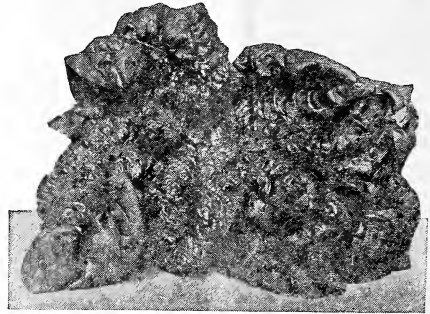
LONG SEASON—Of flat spreading but compact growth, this sort is especially noticeable for its short-stemmed, dark green leaves. Stands longer before going to seed than any other sorts. Pkt. 5c; oz. 10c; 2 oz. 20c; ¼ lb. 25c; 1 lb. 60c. Parcel Post paid.

KING OF DENMARK—The largest growing variety. The glossy dark green foliage is attractively crumpled and thick in texture. The numerous leaves are extra large, broad and rounded. Ready to cut in 48 days. Pkt. 10c; oz. 15c; 2 oz. 25c; ¼ lb. 40c; 1 lb. 75c. Parcel Post paid.

BROAD LEAF FLANDERS—A very vigorous grower; the leaves are very broad, thick, tender and of a delicious flavor. Pkt. 5c; oz. 10c; 2 oz. 15c; ¼ lb. 20c; 1 lb. 45c. Parcel Post paid.

LONG STANDING—Is especially desirable because of the fact that it is much later in going to seed than the average variety. Pkt. 5c; oz. 10c; 2 oz. 15c; ¼ lb. 20c; 1 lb. 50c. Parcel Post paid.

NEW ZEALAND SPINACH—This is not a spinach of the ordinary kind, but a plant of branching growth. One single plant will grow to dimensions of six feet across, producing an abundance of thick, fleshy, juicy stems and leaves. Plant in hills 2 feet apart each way 3 or 4 seeds to a hill. Pkt. 5c; oz. 15c; 2 oz. 25c; ¼ lb. 40c; 1 lb. \$1.00. Parcel Post paid.



Bloomsdale Spinach

Salsify, or Oyster Plant

MAMMOTH SANDWICH ISLAND—This splendid variety grows to fully double the size of the old sort; is of superior quality and delicate flavor. Pkt. 5c; oz. 20c; 2 oz. 40c; ¼ lb. 75c; 1 lb. \$2.50. Parcel Post paid.

Swiss Chard or Silver Beet

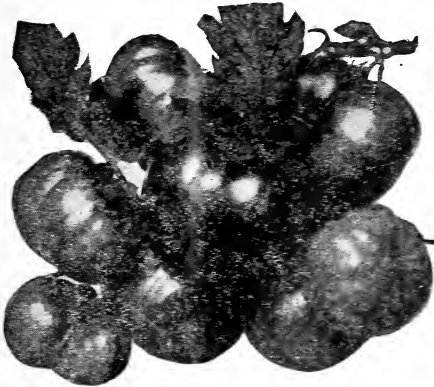
Grown for its leaves and stems only. Cook the leaves as you do spinach and the stems like asparagus. The plant is almost perpetual if kept trimmed; also good for poultry greens. Lucillus Swiss Chard is the best variety. Pkt. 5c; oz. 15c; 2 oz. 25c; ¼ lb. 35c; 1 lb. \$1.00. Parcel Post paid.



Swiss Chard

PLANTING INSTRUCTIONS ON BACK COVER.

Tomatoes

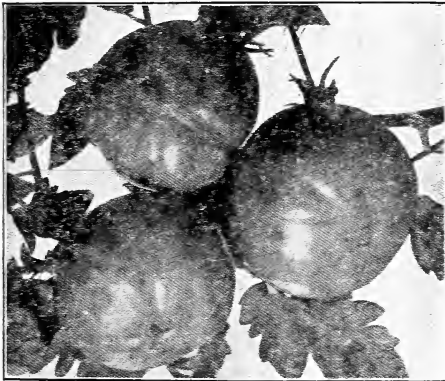


Earliana

BRIMMER—A new tomato which is said to grow larger than any other kind. The fruit is unusually large, of a bright red color; is thick, meaty and contains but few seeds. Pkt. 10c; oz. 50c; 2 oz. 90c; ¼ lb. \$1.50. Parcel Post paid.

GULF STATE MARKET—One of the finest early globe shaped tomatoes yet produced. A very vigorous grower and withstands blight exceptionally well. Color deep purple pink, smooth skin, smooth and free from cracks. Pkt. 10c; oz. 75c; 2 oz. \$1.35; ¼ lb. \$2.00. Parcel Post paid.

JOHN BAER—An extra early red fruited sort of merit. The fruits are large, nearly round, smooth and of good quality. Pkt. 5c; oz. 35c; 2 oz. 60c; ¼ lb. \$1.00. Parcel Post paid.



Stone

TRUCKER'S FAVORITE—A purple fruited sort of excellent quality. Fruits are invariably smooth, solid and the flesh is of finest color throughout. Plants are very thrifty, free from rust or blight, and bear continually until killed by frost. Pkt. 5c; oz. 35c; 2 oz. 60c; ¼ lb. \$1.00. Parcel Post paid.

MATCHLESS—A fine, smooth main crop tomato of rich cardinal red color, with solid flesh of finest quality. Grows to good size. Pkt. 5c; oz. 25c; 2 oz. 40c; ¼ lb. 60c. Parcel Post paid.

ISTROUMA WILT-RESISTANT—Somewhat larger than Stone, which variety it resembles in every way, but has a longer bearing season; very smooth, excellent flavor, solid, bright red color; ripens in mid-season and will bear until frost; blight resistant. Pkt. 10c; oz. 50c; ¼ lb. \$1.50. Parcel Post paid.

BONNY BEST—An excellent extra-early variety, maturing between Earliana and Chalk's Early Jewel. Medium sized, scarlet, smooth, round shape. Pkt. 5c; oz. 40c; 2 oz. 70c; ¼ lb. \$1.00; lb. \$3.50.

EARLIANA—A fine scarlet tomato. Ready for the market several days ahead of any other variety. Ripens uniformly and is a good yielder. Pkt. 5c; oz. 30c; 2 oz. 50c; ¼ lb. 75c. Parcel Post paid.

EARLY ACME—Smooth, solid, purplish pink in color. Pkt. 5c; oz. 25c; 2 oz. 40c; ¼ lb. 60c; 1 lb. \$2.00. Parcel Post paid.

LIVINGSTON'S GLOBE—A desirable variety; large, roundish fruits, excellent for slicing. Flesh firm, with few seeds; ripens evenly; has a delicate, agreeable flavor; vines very productive. Pkt. 5c; oz. 35c; 2 oz. 60c; ¼ lb. \$1.00; lb. \$3.50. Parcel Post paid.

EARLY AVON—Fully as early as Earliana; fruits much larger and always perfectly smooth, of a deep scarlet color and don't crack; a fine variety for early market trade. Pkt. 15c; 1 oz. 75c; 2 oz. \$1.25; ¼ lb. \$2.00. Parcel Post paid.

JUNE PINK—The best extra early purple or pink fruited tomato, excellent for early market. Pkt. 5c; oz. 35c; 2 oz. 60c; ¼ lb. \$1.00; 1 lb. \$3.50. Parcel Post paid.

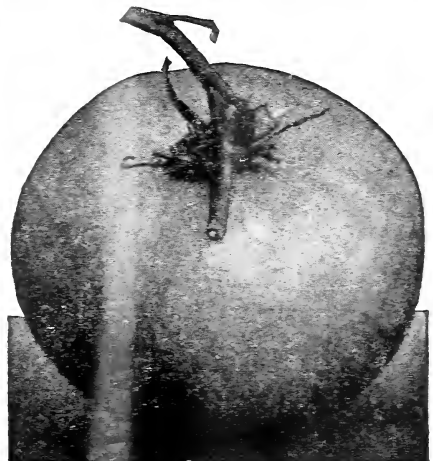
PONDEROSA—An exceptionally large, purple-fruited tomato, and for home use one of the best; fruit very solid, with few seeds. Pkt. 5c; oz. 50c; 2 oz. 90c; ¼ lb. \$1.25; lb. \$4.50. Parcel Post paid.

STONE—Especially valuable for late plantings. Very solid and a good shipper; smooth and uniform in growth. Color a desirable red. Fine for canning for its solidity. Pkt. 5c; oz. 25c; 2 oz. 40c; ¼ lb. 60c; 1 lb. \$2.00. Parcel Post paid.

EARLY DETROIT—The largest and best of the early purplish tomatoes. Fruits very smooth, nearly globe-shaped, firm and of excellent quality. Pkt. 5c; oz. 35c; 2 oz. 60c; ¼ lb. 75c; lb. \$2.75. Parcel Post paid.

REDFIELD BEAUTY—A popular variety, a good shipper, very regular in size and shape; color glossy crimson and slight tinge of purple. Pkt. 5c; oz. 35c; 2 oz. 60c; ¼ lb. \$1.00. Parcel Post paid.

DWARF PONDEROSA—It is much the largest fruited of all dwarf tomatoes. The color is a rich purple crimson. Pkt. 10c; oz. 60c; 2 oz. \$1.00; ¼ lb. \$1.50. Parcel Post paid.



Istrouma Wilt-Resistant

Turnips

EXTRA EARLY PURPLE TOP MILAN—A white variety, purple top and strapleaf. This with the White Milan, is the earliest of all turnips. Pkt. 5c; oz. 15c; 2 oz. 25c; ¼ lb. 40c; 1 lb. \$1.00. Parcel Post paid.

EXTRA EARLY WHITE MILAN—The earliest turnip. Tops very small, distinctly strap-leaved and growing very erect. Pkt. 5c; oz. 15c; 2 oz. 25c; ¼ lb. 40c; 1 lb. \$1.00. Parcel Post paid.

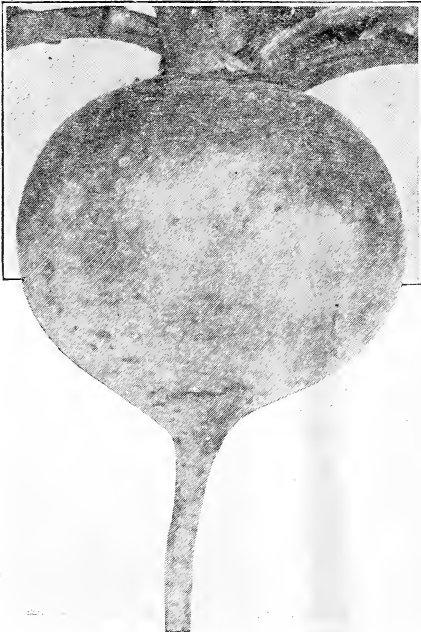
EXTRA EARLY WHITE EGG—A quick growing egg shaped, pure white variety. Very sweet firm and mild. Pkt. 5c; oz. 10c; 2 oz. 15c; ¼ lb. 20c; 1 lb. 75c. Parcel Post paid.

LARGE WHITE GLOBE—Excellent for table or salad. A popular variety for winter. Makes large, round white roots, flesh white, solid, sweet and fine grained, maturing in about 75 days. Excellent for table or stock; also quite largely used for spring salad. Pkt. 5c; oz. 10c; 2 oz. 15c; ¼ lb. 20c; 1 lb. 75c. Parcel Post paid.

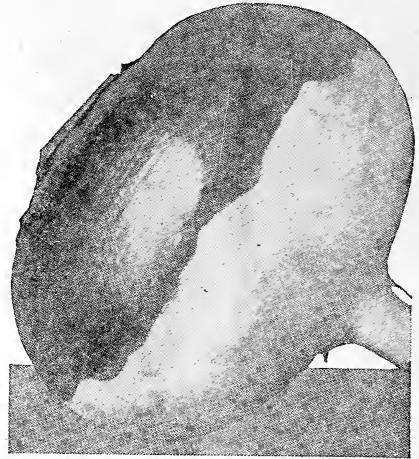
COW HORN—Excellent for Table or Stock. A long white turnip, 12 to 15 inches in length, 2½ inches in diameter and growing well above the ground. Of rapid growth, producing large, heavy roots in 75 days. One of the best and sweetest for home use or for stock feeding and excellent to plow under as a green fertilizer. Pkt. 5c; oz. 10c; 2 oz. 15c; ¼ lb. 25c; 1 lb. 75c. Parcel Post paid.

AMBER GLOBE—Of large size, globe shaped, solid yellow flesh; green top. Fine for table and stock. Pkt. 5c; oz. 10c; 2 oz. 15c; ¼ lb. 20c; 1 lb. 75c. Parcel Post paid.

MAMMOTH PURPLE TOP WHITE GLOBE—The Popular Variety for General Planting. One of the handsomest and most salable turnips. For home or market it is unsurpassed. It is a large, rapid growing sort, being ready for the table or market in about 65 days, with globular shaped roots. Flesh pure white, and the best flavored of all turnips raw or cooked. The skin is white, with a purple top. The most desirable sort. Pkt. 5c; oz. 10c; 2 oz. 15c; ¼ lb. 20c; 1 lb. 75c. Parcel Post paid.



Mammoth Purple Top White Globe



American Red Top Globe Turnip

AMERICAN RED TOP GLOBE TURNIP—Grown for us on contract from our own special seed stock. A perfect globe shape, with bright red or purple top and snow white bottom. It does not taper like other types of the same variety. This is due to the utmost care in selection when growing for seeds. Our market gardeners here will have nothing but American grown Red Top White Globe, and we pride ourselves on this stock. Pkt. 5c; oz. 15c; 2 oz. 25c; ¼ lb. 35c; 1 lb. 80c. Parcel Post paid.

RED OR PURPLE TOP STRAPLEAF—Flat, white, with purple top. Fine grained and tender. Used for early market and table. Pkt. 5c; oz. 10c; 2 oz. 15c; ¼ lb. 20c; 1 lb. 70c. Parcel Post paid.

SEVEN TOP—The old standard popular salad variety, grown extensively for this purpose. Pkt. 5c; oz. 10c; 2 oz. 15c; ¼ lb. 20c; 1 lb. 45c. Parcel Post paid.

WHITE FLAT DUTCH STRAPLEAF—An extra early pure white, flat-growing variety. Recommended for early market. Pkt. 5c; oz. 10c; 2 oz. 15c; ¼ lb. 20c; 1 lb. 70c. Parcel Post paid.

YELLOW ABERDEEN PURPLE TOP—A splendid keeping variety with firm, solid, yellow meat. Pkt. 5c; oz. 10c; 2 oz. 15c; ¼ lb. 25c; 1 lb. 75c. Parcel Post paid.

MIXED TURNIPS—A general mixture; very desirable; produces greens and turnips, early and late; fine for home gardens. Pkt. 5c; oz. 10c; 2 oz. 15c; ¼ lb. 20c; 1 lb. 45c. Parcel Post paid.

Rutabaga

Sow in drills or broadcast in June, July and August.

IMPROVED PURPLE TOP RUTABAGA—The perfect Rutabaga, of symmetrical shape and firm flesh. The finest and most profitable of all yellow, purple top Rutabagas, being the hardiest, heaviest, best shaped and most productive. The roots are better keepers than most sorts. The flesh is of a beautiful yellow color, of the choicest quality, full of nourishment. Excellent for table use and stock feeding. Matures in 95 days. Pkt. 5c; oz. 10c; 2 oz. 15c; ¼ lb. 20c; 1 lb. 70c. Parcel Post paid.

PLANTING INSTRUCTIONS ON BACK COVER.

Flower Seeds

MIXED ALL COLORS—10c PER PACKET POSTPAID

Asters
Balsam
Carnation
Cosmos
Cypress Vine
Larkspur
Marigold
Pansy

Petunia
Phlox
Pinks
Poppy
Portulaca
Salvia
Snapdragon
Sweet Alyssum

Sweet Peas
Verbena
Zinnia
Moonflower
Morning Glory
Evening Glory
Balsam Apple
Calliopsis

Calendula
Hollyhock
Nasturtiums
Periwinkle
Sweet William
Stocks
Salpiglossis
AND MANY OTHERS

Sweet Peas

IN BULK

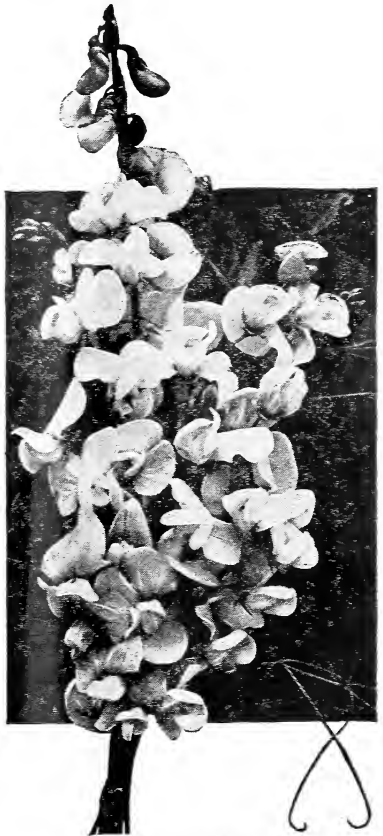
Sow in January, February, March or April. Cover seed 2 to 4 inches, according to depth of your trench. The soil for Sweet Peas should be rich and deep, with Pulverized Sheep Manure in it. On high and dry soils they may be sown in drills from 4 to 6 inches deep, covered with an inch or two of soil pressed firmly, and the furrow filled in as the plants grow. When the seed is well above the ground, the little plants should be thinned out so as to be at least from 2 to 4 inches apart.

Early Flowering Mixed Spencers

A rare combination containing all the shades of early flowering Spencers. Pkt. 10c; oz. 40c; 2 oz. 60c; ¼ lb. \$1.00; 1 lb. \$3.50. Parcel Post paid.

Finest Spencers

From the house of Burpee. Their own special mixture of Spencer Sweet Peas. Pkt. 5c; oz. 25c; 2 oz. 40c; ¼ lb. 75c; 1 lb. \$2.25. Parcel Post paid.



Spencer Sweet Peas



Nasturtiums

Nasturtiums

Annual. For ease of culture, duration of bloom, brilliancy of coloring and general excellence, nothing excels Nasturtiums. All they need is a moderately good soil in a well drained, sunny position.

DWARF CHOICE MIXTURE—A magnificent strain containing countless shades, colors, stripes, blotches and veinings. Pkt. 5c; oz. 10c; ¼ lb. 25c; 1 lb. 75c.

FANCY TALL MIXED—Giant flowers, the plants producing a profusion of bloom. Pkt. 10c; oz. 15c; ¼ lb. 25c; 1 lb. 75c.

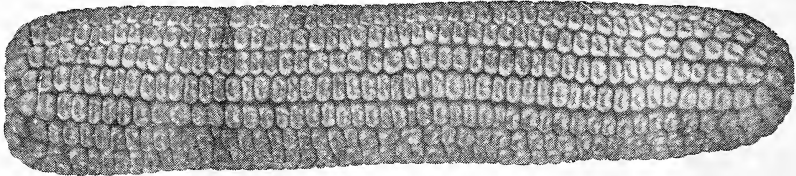
Seed Corn

We make a specialty of the best Seed Corn, and our immense volume of business enables us to supply the best stocks at prices that are very reasonable, indeed. As a bushel of corn will plant six to eight acres, there is no excuse for any farmer planting anything but the very best.

Our men have made a study of corn growing. They know good corn when they see it and they know how to select only the best. For general field crops we urgently recommend our Southern grown varieties, however, for a quick maturing crop we are prepared to furnish the best of the Northern varieties. Whatever variety you may select, you may be assured that you can depend on getting the best seed from us.

Plant in April and up to July 15th; 4 to 6 quarts will plant one acre; rows should be 4 feet apart; plant 2 to 3 grains 2 feet apart in the row, thin to one stalk. Cultivate shallow.

All quotations are subject to important market changes. Special prices quoted on large amounts.



Iowa Silvermine

BOONE COUNTY WHITE — A large eared variety. Is especially adapted to Southern States. Requires from 100 to 120 days to mature. The ears are of large size, well proportioned, well rounded at butt and tip. Qt. 30c; gallon 80c. Parcel Post paid. Not prepaid—Qt. 20c; gal. 55c; peck \$1.00; bushel \$3.50.

IOWA SILVER MINE (100 days)—The stalks grow to a height of 7 to 8 feet and set the ears about 3½ to 4 feet from the ground. The ears measure from 10 to 12 inches in length. They are very uniform in size and shape, 16 to 20 straight rows of deep, pure white kernels on a small cob. It is the heaviest yielder we know, having yielded over 100 bushels to the acre. Seventy pounds of ears will make 62 pounds of corn. It is entirely distinct and will give satisfaction. Qt. 30c; gal. 80c. Parcel Post paid.... Not prepaid—Qt. 25c; gal. 55c; peck \$1.00; bushel \$3.50.

YELLOW LEAMING—A very early growing corn; matures in about 90 days; always dries out quickly, therefore a desirable variety for early crop. Qt. 30c; gal. 70c. Parcel Post paid. Not prepaid—Qt. 20c; gal. 50c; peck 80c; bu. \$3.25.

HASTINGS PROLIFIC WHITE—This variety of corn is prolific even under unfavorable conditions; two ears are formed on a stalk. They are naturally small, weighing from seven to nine ounces, but the cobs are extremely small and the kernels average more than one-half an inch in depth. The production of two or more ears on almost every stalk is one of the reasons for the variety ranking so high in yield. Packet, 10c; 1 lb. 30c; 2 lbs. 45c; postpaid; 14 lb. peck, \$1.25; 56 lb. bu. \$4.50, not prepaid.

IOWA GOLD MINE—Large ears; grains are a bright golden yellow; matures in about 100 days. Qt. 30c; gal. 70c. Parcel Post paid. Not prepaid—Qt. 20c; gal. 50c; peck 80c; bu. \$3.50.

ST. CHARLES RED COB—Qt. 20c; gal. 50c; peck 90c; bu. \$3.50.

REID'S YELLOW DENT—Qt. 20c; gal. 50c; peck 90c; bu. \$3.75.

MEXICAN JUNE—Qt. 25c; gal. 50c; peck \$1.00; bu. \$3.50.

CALHOUN RED COB—Qt. 25c; gal. 65c; peck \$1.25; bu. \$4.00.

LA. RED CREOLE—Qt. 25c; gal. 65c; peck \$1.25; bu. \$4.00.

Oats

All Prices in this Catalogue are Subject to Market Fluctuations.

Oats should be planted for hay making during early October, though they may be sown as late as the early part of December, also in early Spring, with the expectation of making a fair return. When they are to be cut for hay, it is best to cut when the grain is in milk, and that will be about the first week in May. While the time of planting is given under each variety, oats are also sown successfully in the early Spring.

LOUISIANA RED RUST PROOF OATS—In the South Atlantic and Gulf States Red Rust Proof Oats have attained a prominent place in farming operations. This is particularly true in the coast region, where other varieties have not proved altogether satisfactory, but where the Red Rust Proof seems to be especially well adapted to the light, sandy soil of that section. They are vigorous growers, robust and productive, and have heavy heads. Planted from October to March. They are also preferred for sowing on low grounds and on land where other varieties seem inclined to rust. Peck 50c; bu. \$1.50; 5 bu. sack \$6.25, not prepaid.

Re-Cleaned Seed Oats

Texas Red Rust-Proof Oats. Bushel \$1.25; 5 bushel sack, \$4.90, not prepaid.

Hairy, Winter or Sand Vetch

HAIKY, WINTER OR SAND VETCH—Planted from August to November or in early Spring, with small amounts of rye, oats, wheat or barley, for a support after it begins to run, vetch makes a magnificent hay crop in Spring, coming in ahead of everything else except thoroughly established yields of alfalfa, and at the same time leaves added fertility to the soil. Crops like Vetch makes possible profitable live stock raising, which in turn means prosperity on Southern farms. Forty pounds per acre during October and November. Price, lb. 40c; postpaid; ½ bu. \$5.00; 60 lbs. bu. \$9.50, not prepaid.

Seed Barley

SEED BARLEY—(Southern Grown)—The particular value of Barley in the South is for Winter and Spring grazing. Planted from September to December. Two bushels per acre. 1 lb. 25c, postpaid; ½ bu. \$2.00; 48 lb. bu. \$3.50, not prepaid.

Sorghums and Millets

Suitable for the Southern States

All Prices in this Catalogue are Subject to Market Fluctuations.

EGYPTIAN WHEAT — (Shallu). 1 lb. 25c. postpaid; ½ bu. \$4.00; 50 lb. bu. \$7.50, not prepaid.

PEARL OR CATTAIL MILLET—1 lb. 25c. postpaid; ½ bu. \$4.50; 50 lb. bu. \$8.00, not prepaid.

GERMAN MILLET—Of all the Millets this is one of the favorites. It makes good hay, and produces heavily. Can be sown from April to June, but the former month is the best time. 15 to 20 pounds to the acre drilled. Should be cut when in bloom. Recommended for this climate. 1 lb. 25c. postpaid; ½ bu. \$2.50; 50 lb. bu. \$4.50, not prepaid.

EARLY AMBER SORGHUM—More popular than ever for forage. Relished in its green state or cured, by all stock, on account of sweetness of stalk and leaves. Equals in value any other crop known. Makes good syrup, but as the stalk is smaller than the Orange, that variety is recommended when the intention is to grow for syrup. Twelve and a half pounds of seed will plant an acre. Plant at any time from March to last of July in rows 3 feet apart, 6 to 10 seeds, 12 to 18 inches apart in the row, or drill slightly; can be sown broadcast. ½ bushel per acre. Price, 1 lb. 25c. postpaid; ½ bu. \$2.00; 50 lb. bu. \$3.50, not prepaid.

EARLY ORANGE SORGHUM—Price, 1 lb. 25c. postpaid; ½ bu. \$2.00; 50 lb. bu. \$3.50, not prepaid.

RED TOP, OR SUMAC SORGHUM—1 lb. 25c. postpaid; ½ bu. \$2.00; 50 lb. bu. \$3.50, not prepaid.

TEXAS SEEDED RIBBON CANE—Grows very similar to the Crookneck variety except that it has a straight head. Is first class to use for ensilage, also for syrup. 15 lbs. per acre. Plant from March to August. 1 lb. 30c. postpaid; 10 lbs. \$2.25; 50 lb. bu. \$7.00, not prepaid.

JOHNSON GRASS—1 lb. 40c. postpaid; ½ bu. \$2.75; 25 lb. bu. \$5.00, not prepaid.

SUDAN GRASS—A live stock food. Grows successfully everywhere. Stock of all kinds eat it readily. Yields more tonnage per acre than any other forage crop. Produces from ten to fifteen thousand pounds of great fodder per acre, suitable for hay or silage. Planted during August and September, but does better planted in March and April. 10 to 15 pounds per acre. 1 lb. 30c. postpaid; 10 lbs. \$2.00; 100 lbs. \$15.00, not prepaid. Write for quantity prices.

JAPANESE HONEY DRIP CANE—1 lb. 30c. postpaid; 10 lbs. \$2.50; 50 lb. bu. \$6.00, not prepaid.

DWARF YELLOW MILO MAIZE—1 lb. 30c. postpaid; ½ bu. \$3.25; 50 lb. bu. \$6.25, not prepaid.

WHITE KAFFIR CORN—Grows 4 to 5 feet high. The stems are very leafy and keep green and brittle, unlike other sorghums, which harden. Makes an excellent fodder, either green or dried. For grain, sow 10 pounds to the acre in rows 3 feet apart. For fodder, sow from one-half to one bushel, either broadcast or in drills. Very good poultry feed. Sow from March to June. 1 lb. 30c. postpaid; ½ bu. \$2.25; 50 lb. bu. \$4.00, not prepaid.

FETERITA—1 lb. 25c. postpaid; ½ bu. \$2.50; 50 lb. bu. \$4.75, not prepaid.

EVERGREEN BROOM CORN—There are many farmers who make this a most profitable crop. One acre will produce about 500 cwt. of brush and nearly 50 bushels of seed which is equal in value almost to oats for feed. Requires soil similar to corn, same cultivation, but should be planted some later in the season. Put ground in prime condition. We think that more of our Southern farmers should grow Broom Corn for market. It is profitable. Frequently planted in drills 3½ feet apart, leaving plants 6 inches apart; 20 pounds to an acre. Sow during March and April. 1 lb. 25c. postpaid; ½ bu. \$2.75; 46 lb. bu. \$5.00, not prepaid.

Grass Seeds

All Prices in this Catalogue are Subject to Market Fluctuations.

ENGLISH OR PERENNIAL RYE GRASS—Is largely sown by our landscape gardeners for winter lawns on Bermuda sod. The Bermuda blades being easily affected by frost, become red and rusty looking, while English Rye, during Winter, presents a most beautiful appearance, being of a vivid green, and as the Bermuda during April and May makes its appearance it overgrows the English Rye, causing the later to decay and act as a fertilizer to the existing grass. It's also valuable for permanent pasture as it makes a heavy growth. The Bermuda sod should be mowed as closely as possible, scarify the surface thoroughly, broadcast the English Rye on top, rake in and cover with a light soil. Similar to Italian Rye, but a little slower in offgrowth. It should be sown from September to March, at the rate of 60 lbs. per acre. 1 lb. 40c. postpaid; 10 lbs. \$3.00; 20 lb. bu. \$4.50; 100, \$18.00 not prepaid.

ITALIAN RYE GRASS—Lb. 40c. postpaid; 10 lbs. \$3.00; 20 lb. bu. \$4.50; 100 lbs. \$18.00, not prepaid.

ORCHARD GRASS—Price, 1 lb. 40c. postpaid; 10 lbs. \$3.00, not prepaid.

BERMUDA GRASS—Almost everybody living in this section of the country knows this grass; it is planted as a lawn grass; and nothing will stand the sun better or will make prettier carpet, when kept short, than this grass. It is also very valuable as a pasture and hay grass. Six pounds will sow an acre. Should be planted from February to June. 1 lb. \$1.00; 5 lbs. \$4.50, postpaid.

CARPET GRASS—(*Paspalum Platycanle*.) (Petit Gazon.) (*Axinopus Compressus*.)—This grass grows tenaciously in any soil. Excellent for lawns, golf courses or pasture purposes on most any soil and grows well on clay uplands. Green all the year in lower Gulf States. It stools heavily and is one parent stalk. An excellent pasture grass combined with Japan Clover, spreads rapidly, stands heavy tramping and close grazing. Planted from November to March, also during Spring. Ten pounds per acre. 1 lb. 30c. postpaid; 10 lbs. \$7.50, not prepaid.

SUNNY SOUTH LAWN GRASS—For Winter lawns. Prepared in the South and prepared for the South by those who know the soil, climate and conditions under which it should be sown. Use this mixture and give proper attention to your lawn, watering when necessary and during dry spells frequently and you will have the finest and greenest lawn. Twenty pounds to the bushel; 3 bushel per acre. Planted September to April. Price, 1 lb. 65c. postpaid; 10 lbs. \$6.00, not prepaid.

RED TOP GRASS, Reclaimed—Lb. 45c. postpaid; 10 lbs. \$3.00, not prepaid.

KENTUCKY BLUE GRASS—Lb. 60c. postpaid; 10 lbs. \$5.00, not prepaid.

Sunflower

MAMMOTH RUSSIAN SUNFLOWER—Packet 10c; 1 lb. 50c. postpaid; 10 lbs. \$3.00, not prepaid.

Clovers

ALFALFA OR LUCERNE CLOVER—The most talked of and most widely planted of all the varieties of clover.

Alfalfa in the South will produce 5 to 7 tons of hay to the acre each year and in money value is worth 45 per cent more than other clovers and 60 per cent more than Timothy hay. It will grow 4 or 5 crops a year and it does not exhaust the soil; it enriches the soil. Its long branching roots penetrate far down, 15 to 20 feet and so loosen the subsoil that is a gigantic subsoiler, resists drought, and gets plant food where other crops would be a failure.

It is said that the feeding value of a ton of alfalfa is equal to a ton of shell corn. Plant from January to April for Spring, and September to November for Fall at the rate of 30 lbs. per acre.

We handle the following brands:

Peruvian—Price, postpaid, 50c per pound; not prepaid, \$15.00 per bushel.

Kansas Fancy—Price, postpaid, 40c per pound; not prepaid, \$15.50 per bushel.

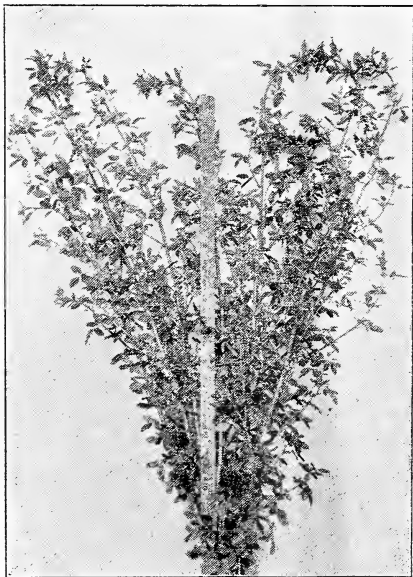
Write for prices in large quantities.

ALSIKE CLOVER—Lb. 50c, postpaid; 10 lbs. \$4.50; 60 lb. bu. \$18.00, not prepaid.

MEDIUM RED CLOVER—The most universally grown throughout the country. On fertile soil and especially where hay is desired, it has only one superior, and that is Alfalfa. Sow in the Spring and fall, 12 pounds per acre. Lb. 60c, postpaid; 10 lbs. \$4.50; bu. \$31.00, not prepaid.

WHITE DUTCH CLOVER—This is the common little running clover found in most good pastures. Its chemical analysis shows it to be richer in protein than almost any other legume which we grow for forage. It is, of course, too small to grow for hay, but it is invaluable in all pastures. Sow in Spring and Fall. 8 pounds to acre. 1 lb. \$1.00, postpaid; 1 lbs. \$9.00, not prepaid. Write for quantity prices.

YELLOW BLOSSOM SWEET CLOVER — Per lb. 35c, postpaid; 1 bu. 60 lbs. \$7.00, not prepaid.



Alfalfa

JAPANESE CLOVER OR LESPEDEZA—One of the most valuable Southern clovers, growing well on rich or poor soil. On poor land it has a creeping habit; on better quality of land a bush form, making a vigorous plant, growing 12 to 18 inches high. Sow in spring or fall, about 25 pounds per acre. Harrow in to the depth of 1½ to 2 inches, according to character of soil, then roll or firm the soil in the most convenient way. Makes good grazing. Well adapted for use as green manure by turning it under; it enriches the soil and prevents "washing" of hill lands. Its abundant long taproots and laterals decaying make the soil porous and leave in it much valuable nitrogenous matter to be used by the following crops. Roots penetrate deeply, enabling the plant to stand severe dry spells, also bring up valuable plant food from the subsoil. For Louisiana plant from December to March; in Florida sow in the fall for best results; in Georgia, Texas, Alabama and Mississippi sow in March or early April. Lb. 50c, postpaid. Write for prices on bushel or larger lots.

WHITE BLOSSOM SWEET CLOVER—Millilotus Alba or Bokhara. A relative of alfalfa and will make luxuriant growth on soils rich in lime and of insufficient depth for successful growing, of either Alfalfa or Red Clover. Seeds may be sown at the rate of 20 pounds to the acre from September to December or February to April, producing one cutting the first season, but furnishes three cuttings thereafter of from one to two each. Hulled, weight, 60 pounds to bushel. 35c per lb., postpaid; 10 lbs. \$3.00; bu. \$12.00, not prepaid.

CRIMSON CLOVER—For the South. Farmers all through the Middle Atlantic and Southern States are increasing the acreage of Crimson Clover very materially, as they find it one of the best and most satisfactory of early forage and soil-improving crops. Its greatest value is a soil-improver, practical farmers maintaining that a crop of Crimson Clover turned under is equal to a good application of stable manure. Planted during September, October, February and March. Twenty pounds per acre, 60 lbs. to bushel. Lb. 40c, postpaid; 10 lbs. \$2.25, not prepaid.

Wheat

RED MAY WHEAT—We have never been able to see where this variety was any earlier and better than the Fultz, although many prefer it to that variety, claiming great earliness. It is a standard variety. Beardless. Price, lb. 25c., postpaid; peck, \$1.00; bu. 60 lbs., \$3.25, not prepaid.

Rye

ROSEN RYE—Rosen Rye in comparison with other ryes in the same season has the reputation of yielding 10 bushels more and sometimes 15 bushels more to the acre. Planted from September to December, 1½ bushels per acre. 56 lbs. per bushel. 1 lb. 35c, postpaid; ½ bu. \$2.00; bu. \$3.75, not prepaid.

RYE (Southern Grown)—It stools heavily, can be grazed several times and then allowed to go to seed. Cut and feed green; has made as much as ten tons of green food per acre in five months. It is sown from the middle of August until November, and then again in the early Spring. The main planting time is in the Fall, however, as it is more valuable when sown early. It is a very hardy plant, withstanding all kinds of very cold weather without serious injury. Sown both broadcast and in drills; 1½ bushels per acre. The seed should be covered no more than two inches. For hogs, sow from September 10th to November 1st, together with crimson clover. Graze from December 1st to April 15th. Rye can be planted for late Fall and Winter grazing at the last laying by of cotton. 1 lb. 25c, postpaid; peck, \$1.00; 56 lb. bu. \$3.50, not prepaid.

Selected Quality Cotton Seed

All Prices in this Catalog are subject to Market Fluctuations.

Directions for Planting and Cultivating Cotton.

Thoroughly break and prepare your land early, having the rows $3\frac{1}{2}$ to 4 feet wide, and hill $1\frac{1}{2}$ to 14 inches apart in drill. When the cotton comes up it should be off-barred deep while it is small, in order to let the heat of the sun strike through the beds. As it gets larger shallow down, and towards the last cultivate very shallow. Always keep the top crust of the ground broken in dry weather, as it prevents it from losing its form. Never stop plowing for wet weather until the ground turns in slices; then quit immediately until it dries off. Never lay-by until the middle of August. The most successful time we have ever had in planting for a big yield was on the 5th and 6th days of April; in fact, the first week in April is the best time for planting cotton for good results. One bushel of cotton seed is required to plant an acre.

All of our Cotton Seed is free from Boll Weevil. These are all good varieties which have been thoroughly tested and recommended by Agricultural Colleges and Experiment Stations of the Southern States.

EXPRESS COTTON—The Experimental Station at Starkville, Miss., recommending it above all others. It has been planted for several years and has been found prolific, early maturing, and much sought after by the cotton buyers. It is a fine character of cotton, a strong 1 3-16 inch staple, always commanding a good liberal premium. 1 lb. 40c, postpaid; bu. 30 lbs. \$3.50, not prepaid.

EARLY KING COTTON—Extra long staple; lint $1\frac{1}{2}$ or $1\frac{3}{4}$ to 2 inches. Seed black and lintless. Plant $\frac{1}{2}$ bushel to acre in row—5 foot rows, 3-foot drill. The famous Sea Island Cottons are known all over. 1 lb. 50c, postpaid; bu. 40 lbs. \$6.50, not prepaid.

SIMPSON'S EARLY PROLIFIC COTTON—(Short Staple.)—The superiority of this cotton over all others consists of its extreme earliness and heavy fruiting; has long limbs, which come out at the ground. 1 lb. 30c, postpaid; bu. 30 lbs. \$3.25, not prepaid.

KING'S EARLY IMPROVED COTTON—This short staple Cotton has wonderfully increased in popularity. It is extra early, wonderfully prolific, long limbed, seed small, lint $\frac{3}{8}$ to $\frac{4}{8}$ per cent. 1 lb. 30c, postpaid; bu. 30 lbs. \$3.25, not prepaid.

ALLEN'S IMPROVED COTTON—(Long Staple). Runs full $1\frac{1}{2}$ to $1\frac{3}{8}$. Considered by the mills as the most desirable cotton raised in the United States, Sea Island excepted. 1 lb. 40c, postpaid; bu. 30 lbs. \$3.50, not prepaid.

BANK ACCOUNT COTTON—(Short Staple.)—Early for boll weevil lands. While some very extravagant claims have been made in certain quarters for this cotton, it is in all truth one of our best types today. 1 lb. 30c, postpaid; bu. 30 lbs., \$3.25, not prepaid.

WANNAMAKER CLEVELAND BIG BOLL—Plant vigorous, thrifty, with low close-jointed basal fruit limbs; large bolls easily picked, medium size seed, $\frac{3}{4}$ to $\frac{5}{8}$ per cent lint, $1\frac{3}{8}$ to $1\frac{1}{2}$ inches long, fine and strong. Earliest and most prolific at experimental stations. Especially recommended for sections where the boll weevil is present. 1 lb. 30c, postpaid; bu. 30 lbs. \$3.25, not prepaid.

Special prices on large quantities of any of the above Cotton Seed.



Field of Express Cotton

Cow or Field Peas

Write for Prices on Cow Peas as the Market Fluctuates

Prices on Bushels and Large Quantities Quoted on Application

Planted from March to September

BRABHAM—This variety of Pea is adapted for this part of the country. It is a hybrid and has the earliness of the Whippoorwill. It is a small, hard speckled pea, about the size of the Iron and New Era. Will make two crops. Agricultural test at Washington, the yield was, Brabham 20 per cent more hay than Iron Pea, and 27 bushels of seed per acre. Packet, 10c; lb., 25c, postpaid.

LARGE WHITE BLACK EYE—The dry peas which are produced in large quantities find a ready sale during the Winter. Vines furnish excellent forage. Packet, 10c; lb. 35c, postpaid.

NEW ERA—(The famous Hay Pea.)—The New Era Pea is one of the best peas grown. In fact the United States Department of Agriculture States that it is one of the best of our varieties. It is 2 weeks earlier than the Whippoorwill and about one-third smaller. It is a bush pea and stands erect. Packet, 10c; lb. 25c, postpaid.

WHITE SUGAR CROWDER—Exceptionally fine for table use and very prolific. Pkt. 10c; lb. 40c, postpaid.

BROWN SUGAR CROWDER—Exceptionally fine for table use and very prolific. Pkt. 10c; lb. 40c, postpaid.

WHIPPOORWILL—Has brown, speckled seeds, easily gathered on account of the upright, bushy growth of the plants. A great favorite on account of its early maturity. Packet, 10c; lb. 25c, postpaid.

CLAY—Furnishes large crop of nutritious forage, while the roots enrich the soil. Packet, 10c; lb. 25c, postpaid.

CANADA FIELD—Principally used for pigeon feed. It is a round pearl, planted in Spring and Fall. $1\frac{1}{2}$ bushels to the acre. Packet, 10c; lb. 35c, postpaid.

MIXED PEAS—Every year thousands of bushels of peas become mixed in handling, and on account of this they sell for a little less, although they are just as good for forage purposes as the straight varieties. Packets, 10c; lb. 25c, postpaid.

LADY—These are small, round and pure white, and are generally planted between corn. A delicate vegetable. Packet, 10c; lb. 50c, postpaid.

Velvet and Soy Beans for Fertilizers

All Prices in this Catalogue are Subject to Market Fluctuations.

Prices on Larger Quantities Quoted on Application.

MAMMOTH YELLOW SOJA—One of the most valuable forage plants for pasturing or feeding green. The vines are bushy and of vigorous, erect habit. Fed in the green state, they afford most nutritious forage. Sow broadcast at the rate of one-half bushel to the acre, or plant in drills 3½ feet apart, and 1½ feet between the plants, dropping three beans in a hill. One gallon will sow one acre, if drilled. Planted from March to August. 1 lb. 25c, postpaid; 15 lb. peck, \$1.50; 60 lb. bu. \$1.00, not prepaid.

EXTRA EARLY SPECKLED VELVET—Is very productive, making from one to two tons of beans in hull per acre. Land that will make 20 bushels of corn, will make one ton of beans in addition to the corn, doubling the feed value of every acre planted. It is a great fattener for all stock, and one of the greatest milk producers. As, the hull is very thin, proportion of seed to hull is about double that of the thick hulled varieties. Does not pop open and will remain good in field indefinitely if it is clear of the ground. One peck to the acre. Planted from March to August. 1 lb. 25c, postpaid, 15 lb. peck, \$1.50; 60 lb. bu. \$3.50, not prepaid.

LAREDO—A variety that is a distinct addition to the forage crops of the Cotton Belt. As a soil builder, it ranks favorably with other summer legumes making equal growth. May be planted from the earliest cotton planting date to the first of July with reasonable certainty of a good crop. Seeds are very small and one bushel will plant from 8 to 10 acres in 2½ ft. rows. Covered very lightly. Price, 50c. per lb., postpaid; 15 lb. peck, \$5.00; 60 lb. bu. \$10.00, not prepaid.

O-TOO-TAN—This is a fast-growing soy bean, growing 4 to 5 feet high. The O-Too-Tan is a black bean, rather small. One half peck plants an acre in rows 2½ to 3 feet apart. Cut when just beginning to turn and cure in the regulation way, or let stand until pods are almost ripe, if wanted for grain. The O-Too-Tan will greatly out-yield cowpeas. Prices, 1b. 40c, postpaid; 15 lb. peck, \$3.00; 60 lb. bu. \$11.00, not prepaid.

BLOXI—An upright variety, covered with a dense mass of foliage that does not shed easily. A heavy yielder, and a fine bean for hogging down for planting with corn or sorghum. For grazing, it is unexcelled. 6 to 8 pounds to the acre. 1b. 35c, postpaid; peck, \$2.00; bu. \$5.00, not prepaid.

Rape

DWARF ESSEX RAPE—A splendid winter forage plant. This is sown broadcast and furnishes a rich, nutritious winter pasture; can be grazed 6 weeks after planted; used 20 lbs. per acre. Planted from September to March. Price, 1b. 30c, postpaid; 10 lbs. \$2.00; 50 lb. bu. \$6.50; 100 lbs. \$12.00, not prepaid.

Seed Rice

Louisiana grown Honduras. 30c per lb., postpaid; \$1.25 per peck; \$3.50 per bu. of 44 lbs.; \$11.50 per bbl. of 162 lbs., not prepaid. Japan, 30c per lb., postpaid; \$1.25 per peck; \$3.50 per bu., \$11.50 per bbl. of 162 lbs., not prepaid.

UPLAND RICE—Rice can be grown on upland as well as on flooded lands, any ground having a reasonable amount of moisture making fair crops of 20 to 40 bushels per acre.

Conkey's Remedies

We recommend Conkey's because we know Conkey's is absolutely dependable. Conkey's must satisfy you or we'll refund your money quick.



	By Parcel Post	
Conkey's Canker Special, Box.....	\$0.50	\$0.60
Conkey's Cholera Remedy, Small.....	.25	.30
Conkey's Cholera Remedy, Large.....	.50	.60
Conkey's Blackhead Remedy.....	.50	.60
Conkey's Gape Remedy, Small.....	.25	.30
Conkey's Gape Remedy, Large.....	.50	.60
Conkey's Limberneck Remedy.....	.50	.60
Conkey's Lice Fix, Small Box.....	.25	.30
Conkey's Lice Fix, Large Box.....	.50	.55
Conkey's Headlice Ointment, Small.....	.10	.12
Conkey's Headlice Ointment, Large.....	.25	.30
Conkey's Lice Powder, Small.....	.10	.12
Conkey's Lice Powder, 48-oz.....	.50	.60
Conkey's Poultry Worm Powder Small.....	.25	.35
Conkey's Poultry Worm Powder, Large.....	.50	.60
Conkey's Poultry Laxative, Small.....	.25	.35
Conkey's Poultry Laxative, Large.....	.50	.60
Conkey's Poultry Condition, Small.....	.25	.35
Conkey's Poultry Condition, Large.....	.50	.60
Conkey's Poultry Tonic, 1½ lb. pkg.....	.25	.35
Conkey's Poultry Tonic, 3 lb. pkg.....	.50	.60
Conkey's Poultry Tonic, 12 lb. pkg.....	1.60	2.00
Conkey's Roup Remedy, Small.....	.30	.35
Conkey's Roup Remedy, Med.....	.60	.65
Conkey's Roup Remedy, Large.....	1.20	1.30
Conkey's Roup Pills, Small.....	.30	.35

	By Parcel Post	
Conkey's Roup Pills, Med.....	.60	.65
Conkey's Roup Pills, Large.....	1.20	1.30
Conkey's Scaley Leg Remedy.....	.25	.30
Conkey's Sorehead Remedy, Small.....	.25	.35
Conkey's Sorehead Remedy, Large.....	.50	.60
Conkey's Sulphur Candles.....	.15	.20
Conkey's White Diarrhea Remedy Small.....	.30	.35
Conkey's White Diarrhea Remedy Medium.....	.60	.65
Conkey's White Diarrhea Rem. Large.....	1.20	1.30
Conkey's White Diarrhea Remedy, 1200 Tablets.....	4.00	4.10
Conkey's Cow Special, 1½ lb.....	.50	.60
Conkey's Cow Special, 2¾ lb.....	1.00	1.10
Conkey's Bag Ointment.....	.25	.30
Conkey's Stock Tonic, 1 lb.....	.25	.35
Conkey's Stock Tonic, 2½ lbs.....	.50	.60
Conkey's Stock Tonic, 7 lbs.....	1.00	1.15
Conkey's Gall Salve.....	.25	.30
Conkey's Nox, 6 cubes.....	.25	.30
Conkey's Nox, 15 cubes.....	.60	.65
Conkey's Nox, 30 cubes.....	1.00	1.10
Conkey's Nox, 75 cubes.....	1.75	1.85
Conkey's Lice Liq. qt. (not mailable).....	.60	
Conkey's Lice Liq. 2 qts. (not mailable).....	.90	
Conkey's Lice Liq. gal. (not mailable).....	1.50	
Conkey's Noxicide, pt. (not mailable).....	.50	
Conkey's Noxicide, qt. (not mailable).....	.80	
Conkey's Noxicide, 2 qts. (not mailable).....	1.30	
Conkey's Noxicide, gal. (not mailable).....	2.00	

Make Bigger Poultry Profits

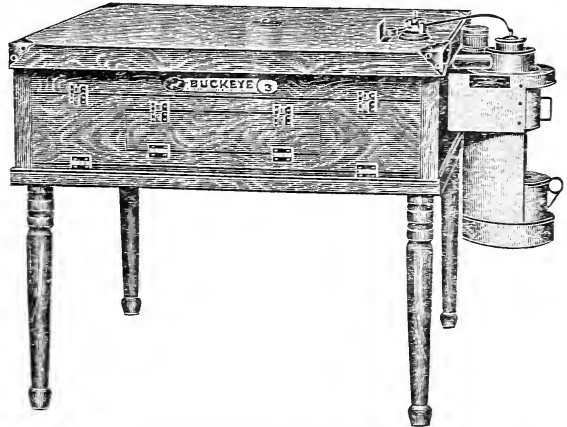
Your poultry profits depend entirely on how many chicks you hatch and how many birds you raise. The more good layers you have and the more birds for market, the more money you will make—that's just plain common sense. And that's why the most successful poultrymen and farmers everywhere use Buckeye Incubators and Brooders. The Buckeye Incubator is guaranteed to hatch a higher percentage of chicks and to hatch better chicks than any other incubator in the world. Its famous hot water heating system and its guaranteed regulator insure even temperature, the proper amount of moisture and fresh oxygen-bearing air for every egg. It hatches every hatchable egg. Weaklings and cripples are practically unknown. The Buckeye is the original "Colony" brooder. It affords abundant heat combined with the fresh, pure air. No crowding or chilling. It raises every raisable chick into big, normal, healthy birds.

Poultry is the biggest farm money-maker today. If you aren't making big poultry profits, it's because you haven't the right equipment. Install Buckeye Incubators and Brooders, and you'll be sure of bigger poultry profits.

Note this: Both Buckeye "Standard" and Buckeye "Style E" Incubators carry the same unlimited guarantee—to hatch every hatchable egg every time and under all conditions. You can select either type of Buckeye Incubator and be sure of the best possible hatching results.

Buckeye Incubators Hatch More and Better Chicks

Buckeye Incubators are the result of over thirty-five years of study and experiment. There are no other incubators like them. Buckeye "Standard" Incubators are made with a double-thick case. Heat insulation is practically perfect. The hot water circulating tank is of pure copper—it will never rust or corrode. The automatic regulator assures uniform temperature at all times without any attention whatever. The lamp is supplied with either an oil or gas burner—each one efficient, economical in operation, dependable and fire-proof. Buckeye "Style E" Incubators are a little more simply constructed and a little less expensive in price—but they contain all the essential features of Buckeye design.



Buckeye "Colony" Brooders Raise Every Raisable Chick

Buckeye "Colony" Brooders are made in two types—coal-burning and oil-burning. The coal-burner is made with the most scientifically designed brooder stove ever invented. Accurate thermostat assures uniform temperature at all times, holds even fire and prevents it from going out. The oil-burning Buckeye has an extra large wick burner, clog-proof supply line and leak-proof fuel tank. Both types are remarkably economical and require very little attention.

CAPACITIES, WEIGHTS AND PRICES "Standard"

No. 1—120 eggs—110 lbs.\$37.50
No. 2—175 eggs—135 lbs. 44.50
No. 3—250 eggs—200 lbs. 57.75
No. 4—350 eggs—230 lbs. 68.00
No. 5—600 eggs—325 lbs.167.00
"Style E"	
No. 14—65 eggs—55 lbs.\$16.50
No. 16—120 eggs—85 lbs. 27.50
No. 17—210 eggs—125 lbs. 36.75

CAPACITIES, WEIGHTS AND PRICES OF BUCKEYE "COLONY" BROODERS

Coal-Burning		Oil-Burning	
No. 15—500 chicks—75 lbs.\$21.50	No. 27—200 chicks—40 lbs.\$17.50
No. 19—1000 chicks—95 lbs. 25.50	No. 28—350 chicks—50 lbs. 20.00
No. 25—1200 chicks—109 lbs. 30.00	No. 29—500 chicks—60 lbs. 22.50

A FULL LINE OF FEEDS, LEG BANDS, FEEDERS, DRINKING FOUNTAINS, ETC.

SPRAY PUMPS, DUST GUNS, OIL-EMULSION—150 Gallons for tree spray.

SHERMAN-WILLIAMS PRODUCTS

Spraying your trees will save 90 per cent of your crop. It is worth all your labor and expense to try it.

Poisonous insecticides and liquids are not mailable. Prices are F. O. B. buyer paying carriage charges, excepting where priced parcel post paid.

NICOTINE SULPHATE—A nicotine solution for destroying aphids, lice, etc., on both garden and flowering plants. A teaspoonful makes 1 quart of solution. This is one of the most effective preparations for general sucking insects. Oz. bottles, 35c; ½ lb. tin, \$1.25; 2 lb. tin, \$3.30; 10 lb. tin, \$13.50. Not mailable.

BORDEAUX WITH ARSENATE OF LEAD DRY—Controls at one spraying all fungus troubles and insects. Lb. 60c; 5 lbs. \$2.75; 10 lbs. \$5.00. Not mailable.

ARSENATE OF LEAD—Kills every insect that eats it; superior in every way to Paris Green, as it does not burn or scald the foliage; can be used dry as a powder or as a solution in water. ½ lb. 25c; lb. 45c; 5 lbs. \$2.00; 10 lbs. \$3.95; 100 lbs. \$35.00. Not mailable.

BORDEAUX MIXTURE DRY—The new form of Bordeaux will keep indefinitely; cures and controls blight. Lb. 40c; 5 lbs. \$1.75; 25 lbs. \$6.25. Not mailable.

CALCIUM ARSENATE—Recommended by all experimental stations for cotton boll weevil; also a sure remedy for army and other worms. 1 lb. 35c; 5 lbs. \$1.50; 100 lbs. \$18.50. Not mailable.

CUT WORM—KILLER—Absolutely certain death to the troublesome cut worm. Lb. box 30c. Not mailable.

FISH OR WHALE OIL SOAP—Prevents and cures aphids and other troubles on plants and trees. No. 4—1 lb. 30c; 5 lbs. \$1.35. By parcel post: 1 lb. 40c; 5 lbs. \$1.40. No. 7—With Tobacco: 1 lb. 35c; By parcel post: 1 lb. 45c.

PLANTING TABLE

What—When—How

Kind of Vegetable	Seeds or Plants Required for 100 ft. Drill	Distance for Plants to Stand				Depth of Planting	Time of Planting in Open Ground	Ready for use After Planting	Average Yield per 100 ft. Row
		One Acre	Rows Apart		Plants Apart in Rows				
			Horse Cultivation	Hand Cultivation					
COMPILED BY LEHMANN'S SEED STORE—BATON ROUGE, LA.									
Asparagus Roots	60 to 80	1000	3 to 5 ft.	12 to 24 in.	15 to 20 in.	3 to 5 in.	Jan. to Meh.	one year	15-2 lb. Bnchs.
Artichoke Plants	25 to 40	600	4 to 6 ft.	30 to 36 in.	24 to 36 in.	2 to 4 in.	Oct. to Meh.	one year	3 to 5 Hampers
Bush Beans	1 pt.	1 Bu.	30 to 36 in.	18 to 24 in.	2 in.	1 in.	Feb. to May— Aug. & Sept.	42 to 75 days	2 Bushels
Beans—Pole	½ pt.	½ bu.	3 to 4 ft.	3 to 4 ft.	2 to 3 ft.	1 in.	Mch. to Aug.	72 to 90 days	3 Bushels
Beets	1 oz.	6 lbs.	28 to 36 in.	12 to 18 in.	2 in.	1 in.	Feb. to May— July to Dec.	45 to 60 days	2½ Bushels
Brussel Sprouts	¼ oz.	2 oz.	30 to 36 in.	24 to 30 in.	16 to 24 in.	½ in.	Feb. to Meh.— June to Oct.	100 to 120 days	30 quarts
Cabbage (early)	¼ oz.	¼ lb.	30 to 36 in.	24 to 30 in.	12 to 18 in.	½ in.	Feb. to Apr.	90 to 120 days	45 to 55 heads
Cabbage (late)	¼ oz.	¼ lb.	30 to 36 in.	24 to 30 in.	12 to 18 in.	½ in.	June to Nov.	110 to 120 days	45 to 55 heads
Carrots	½ oz.	2 lbs.	30 to 36 in.	18 to 24 in.	2 in.	½ in.	Feb. to Apr.— Aug. to Nov.	55 to 80 days	2 Bushels
Cauliflower	¼ oz.	2 oz.	30 to 36 in.	24 to 30 in.	14 in.	½ in.	Jan. to Meh.— June to Oct.	120 to 150 days	40 to 50 heads
Celery	¼ oz.	¼ lb.	3 to 6 ft.	18 to 36 in.	2 in.	½ in.	Aug. to Jan.	120 to 150 days	200 stalks
Collards	¼ oz.	¼ lb.	30 to 36 in.	24 to 30 in.	16 in.	½ in.	Aug. to Meh.	100 to 120 days	3 to 4 bushels
Corn (Sweet)	¼ pt.	6 pts.	36 to 42 in.	30 to 36 in.	4 ev. 3 ft.	1 in.	Mch. to July	50 to 90 days	40 to 50 ears
Cucumbers	½ oz.	2 lbs.	4 to 6 ft.	4 to 6 ft.	4 ev. 3 ft.	1 in.	Mch. to July	50 to 70 days	150 to 200 cucumber
Egg Plants	½ oz.	¼ lb.	30 to 36 in.	24 to 30 in.	18 in.	½ in.	Nov. to Feb. (htbd.) & Meh.	125 to 140 days	125 Egg Plants
Endive	1 oz.	2 lbs.	30 in.	18 in.	12 in.	½ in.	Mch. to May— Aug. to Nov.	100 days	65 Endive
Kale	¼ oz.	1 lb.	30 to 36 in.	18 to 24 in.	18 in.	½ in.	Mch. to May— Aug. to Nov.	55 to 60 days	60 bushels
Kohlrabi	¼ oz.	1 lb.	30 to 36 in.	18 to 24 in.	6 in.	½ in.	Mch. to May— Aug. to Nov.	50 to 70 days	2 bushels
Lettuce	½ oz.	3 lbs.	30 in.	12 to 18 in.	6 in.	½ in.	Mch. to Apr.— Aug. to Nov.	70 to 90 days	70 heads
Musk Melon	½ oz.	2 lbs.	6 to 8 ft.	6 to 8 ft.	4 ev. 6 ft.	1 in.	Mch. to June	60 to 90 days	100 to 140 melons
Watermelon	1 oz.	2 lbs.	8 to 12 ft.	8 to 12 ft.	4 ev. 5 ft.	1 in.	Mch. to June	100 to 130 days	30 to 50 melons
Mustard	¼ oz.	1 lb.	30 to 36 in.	12 to 18 in.	12 in.	1 in.	Mch. to June— Aug. to Nov.	40 to 75 days	4-5 bushels
Okra	2 oz.	8 lbs.	4 to 5 ft.	3 to 4 ft.	24 in.	1 in.	Mch. to June	90 to 140 days	900 to 1000 pods
Onions	1 oz.	4 lbs.	24 to 36 in.	12 to 18 in.	2 in.	½ in.	Sept. to Nov.	160 days	1 to 3 bushels
Onion Sets	1 qt.	5 bu.	24 to 36 in.	12 to 18 in.	2 in.	1 in.	Aug. to May	90 days	140 bushels
Parsley	¼ oz.	3 lbs.	24 to 36 in.	12 to 18 in.	3 in.	½ in.	Feb. to June— Sept. to Nov.	65 to 90 days	90 to 100 Bnchs.
Peas	1 pt.	1 bu.	3 to 4 ft.	30 to 36 in.	1 in.	1 in.	Aug. to Meh.	45 to 75 days	2 bunches
Peppers	½ oz.	2 oz.	30 to 36 in.	18 to 24 in.	15 in.	½ in.	Nov. to Feb. (htbd.) to May	130 to 150 days	5 to 6 bushels
Potato (Irish)	5 lbs.	6 bu.	30 to 36 in.	24 to 36 in.	14 in.	4 in.	Jan. to May— & Aug.	90 to 150 days	3 bushels
Pumpkin	½ oz.	4 lbs.	8 to 12 in.	8 to 12 in.	4 ev. 6 ft.	1 in.	Mch. to July	75 to 90 days	75 pumpkins
Radish	1 oz.	10 lbs.	24 to 36 in.	12 to 18 in.	1 in.	½ in.	Mch. to June— Aug. to Nov.	25 to 75 days	100 bunches
Spinach	1 oz.	8 lbs.	30 to 36 in.	12 to 18 in.	2 in.	1 in.	Sept. to Meh.	40 to 50 days	3 to 5 bushels
Squash	½ oz.	2 lbs.	7 to 10 ft.	7 to 10 ft.	4 ev. 4 ft	1 in.	Mch. to July	120 to 130 days	135 to 150 squash
Tomato	¼ oz.	3 oz.	3 to 5 ft.	3 to 4 ft.	8 in.	1 in.	Jan. to Meh.— (htbd.) Apr & Aug.	125 to 150 days	4 bushels
Turnips	½ oz.	1 lb. row 3 lbs. B.C.	24 to 36 in.	12 to 18 in.	2 in.	½ in.	Mch. to May— Sept. to Nov.	45 to 90 days	2 bushels

Lehmann's Seed Store