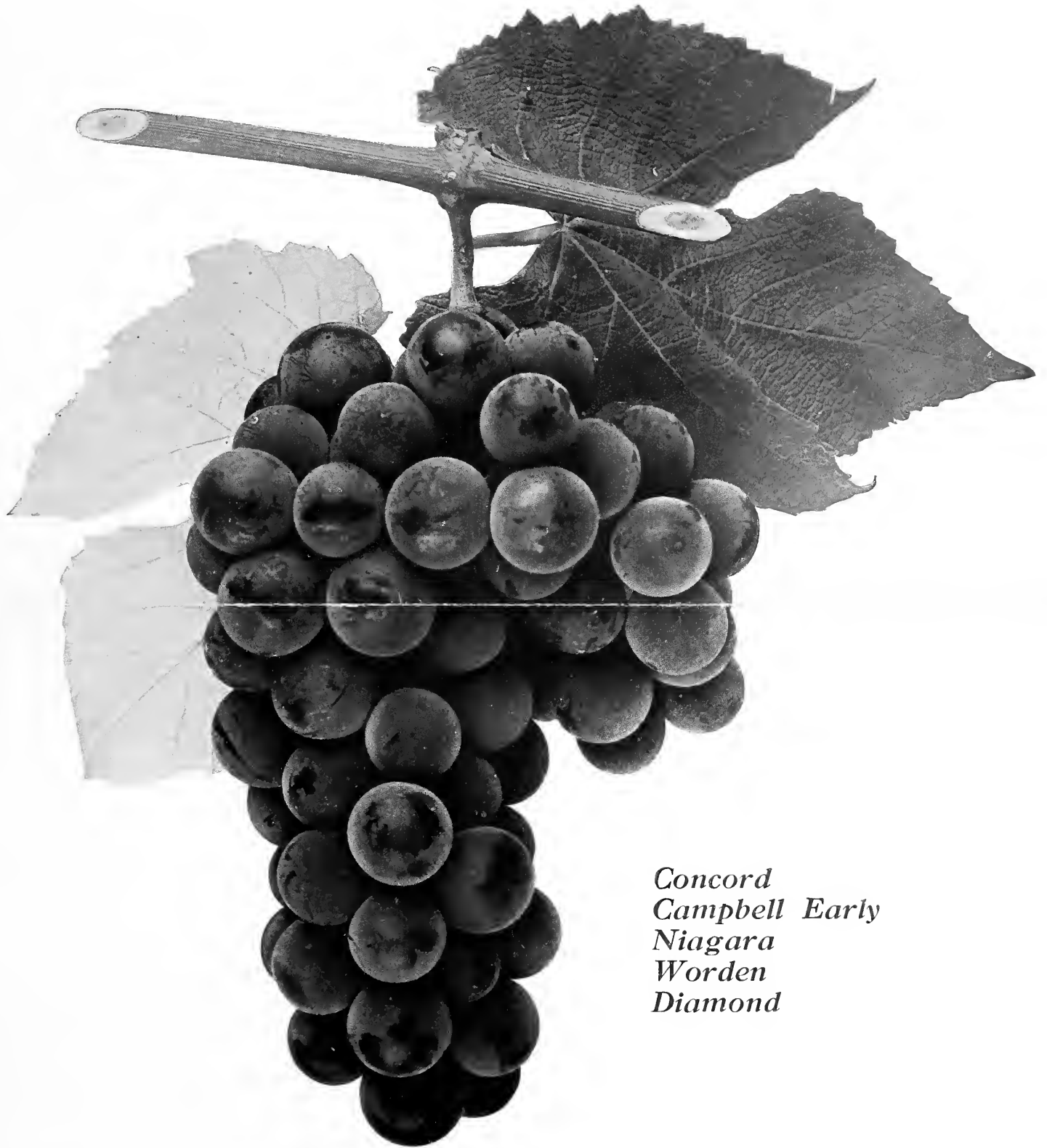


## **Historic, Archive Document**

Do not assume content reflects current scientific knowledge, policies, or practices.



# American Wine and Table Grapes for Connecticut Climates



*Concord  
Campbell Early  
Niagara  
Worden  
Diamond*

**THE MILLANE TREE EXPERT CO.**

The Masin Building

MIDDLETOWN, CONN.

# Bearing Size FRUIT TREES

## Three Varieties in Extra Large Trees

BALDWIN. Large, bright red, crisp, juicy and rich; very productive.

MCINTOSH. Medium, deepest crimson, finest quality.

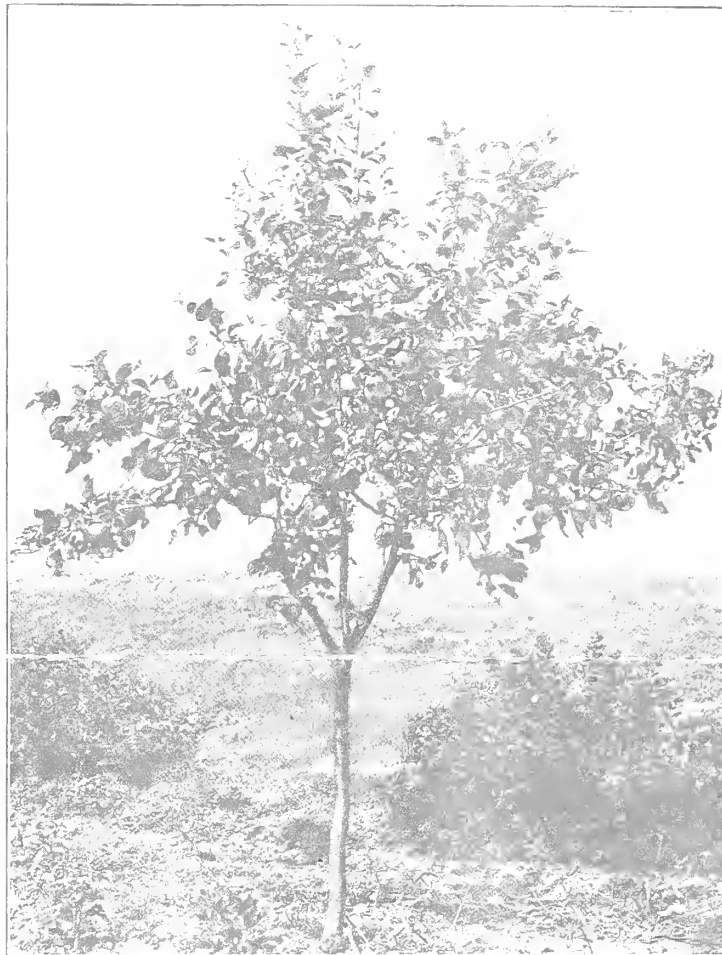
RHODE ISLAND GREENING. Fruit rather acid; excellent both for dessert and cooking.

### Dwarf Apple Trees

The Dwarf Apple will appeal to everyone on account of the ease of culture, the quickness of results and the fine specimen fruit that can be obtained for table use. But the greatest appeal probably is to those of our customers who have not a large space to plant, and wish something worth while.

These small trees will produce almost unbelievable crops of rich, juicy apples, and when planted in your garden will be a great source of joy and satisfaction. The youngsters especially take great interest in these little trees.

We are fortunate, indeed, to be able to offer some real bearing Dwarf Apples, much superior to the Dwarf Apples that are usually offered. These trees have borne in the nursery row and will give immediate results.



### Bearing Grape Vines Six Years Old

We have about 200 Bearing Grape Vines in Concord and Worden varieties, something you have never had a chance to get in a nursery before.

Grapes should be planted on high, dry, sandy or gravelly soil; they will not thrive on low, wet soils. Any dry soil fertile enough to produce a good crop of corn or potatoes and of suitable exposure will be all right for vineyard planting. If naturally poor, a large application of manure should be plowed in previous to planting the vines.

Mail orders early for these vines at \$4.00 each, \$45.00 per dozen.

We have a limited number of these extra large trees at \$5.00 each.  
Prices gladly quoted on regular nursery grown stock.

## ORCHARD EXPERTS

### Twenty-five Bushels of Hand Picked Apples

Seven bushels of windfalls from a SINGLE TREE was the results after our experts had treated it. The various blights that your trees are subject to yield to the treatment we administer.

### YOU Can Make Your Orchard PAY

Your Orchard should pay. If it doesn't, an examination by our experts will determine the cause and our treatment will remedy it. We Guarantee it. It costs you nothing to have our representatives examine your trees. Why not

WRITE US TODAY!

### Tree Surgery

You may have beautiful shade trees about your place that are diseased, full of dead branches, broken limbs, cavities, which are breeding places for insects, and in time will mean the loss of your trees. Such trees are not in good health and do not give as pure an atmosphere as trees in perfect health.

The trees should be properly pruned, the cavities thoroughly cleaned by the removal of all dead and infected wood, reinforced when necessary, and filled with cement.

Often do we see the work of amateurs that had better been left undone.

It is a work that requires care and study, and the nature of plant life must be taken into consideration to obtain the desired results. Our years of experience mean a thorough understanding of the work.

Estimates cheerfully furnished. Equipment complete and up-to-date.