

Historic, Archive Document

Do not assume content reflects current scientific knowledge, policies, or practices.

FEB 3 1925

Trustworthy GARDEN·FIELD·FLOWER SEEDS

ADAPTED TO NEW ENGLAND



ESTABLISHED

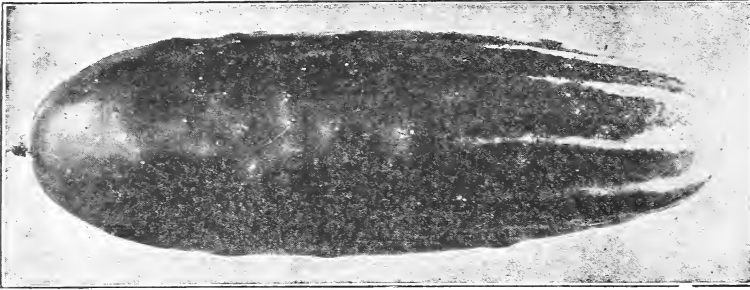
1894

1926

PINE TREE STATE SEED CO.
BATH, MAINE

Some New Varieties of Special Merit

Cucumber— Early Fortune



The finest type of White Spine yet introduced. Early, very productive and disease-resistant. Color, rich dark green; flesh, white, very firm and crisp with few seeds. It keeps its color a long time. A fine shipping sort, also fine for pickles.

Pkt. 10c; oz. 25c; $\frac{1}{4}$ lb. 75c.

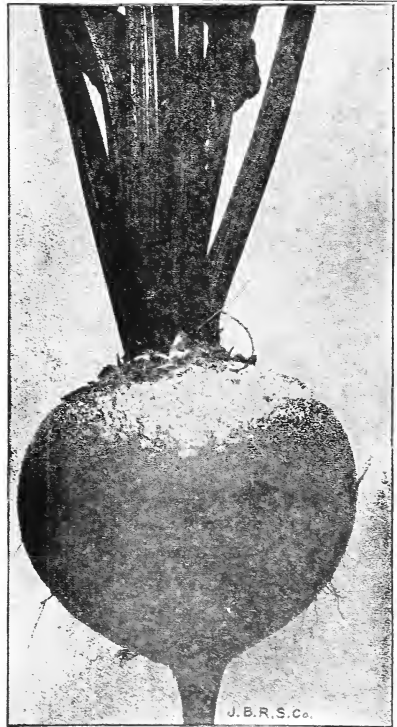
Beet—Early Wonder

One of the earliest and most perfect shaped Beets. Its beautiful, deep bloodred, nearly globular-shaped root, small-sized top, and small clean tap root, make it desirable. Its attractive appearance, uniformity of size, shape and color, and excellent keeping qualities have created a splendid demand for this sort.

Pkt. 10c; Oz. 20c. $\frac{1}{4}$ lb. 50c; lb. \$1.50.

OUR GUARANTEE

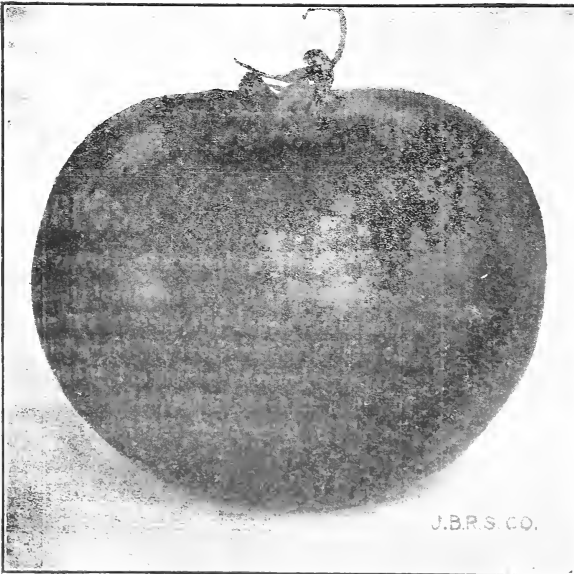
We guarantee the safe arrival of your seeds and we guarantee their quality to the full amount of the purchase price.



New Tomato— Red Head

An exceptionally fine, large, bright red variety, as early as Chalk's Jewel and nearly as large as Stone and as productive; fruits nearly globe shaped, very solid; vine of medium growth; an excellent canning variety.

Pkt. 10c; $\frac{1}{2}$ oz. 35c; oz. 65c



See Page 8 For Two Fine
NEW TOMATOES
Burbank and John Baer

"BEST SEED MAINE'S CREED"

ORDER SHEET

PINE TREE STATE SEED CO., BATH, MAINE

We give no warranty, express or implied, as to description, quality, productiveness or any other matter of any seeds, bulbs or plants we send out, and will not be in any way responsible for the crop. If the purchaser does not accept the goods on these terms, they are at once to be returned.

WRITE YOUR NAME AND ADDRESS PLAINLY

Date.....Forward (State whether by Mail)
 Express or Freight)
Name
Street Address or Rural Delivery
Post Office
Express
County State

Please Do Not Write Here.

Orders Rec'd
Shipped p
Packed by
MoExo
CkStC
BgsBxBd
.....

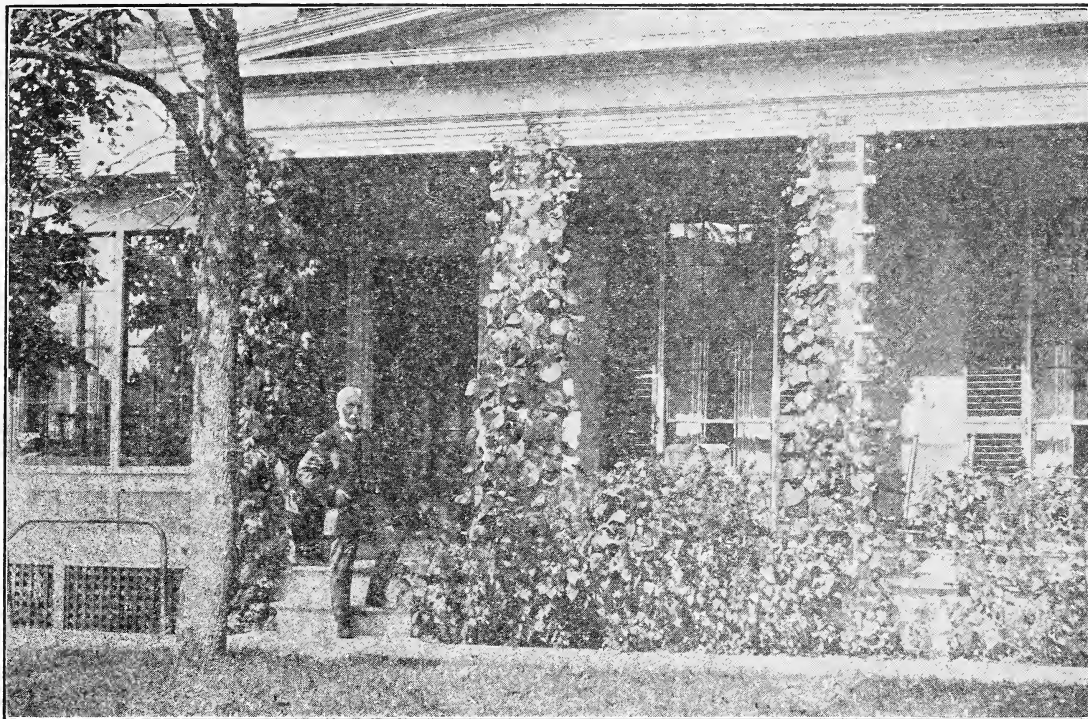
Amount Enclosed \$.....

To insure prompt reply, letters requiring an answer should be written on separate sheet.

QUANTITY	ARTICLES	PRICE
.....
.....
.....
.....
.....
.....
.....
.....
.....
.....
.....
.....
.....
.....
.....
.....
.....
.....
.....
.....
.....
.....
.....
.....
.....
.....
.....
.....
.....
.....

IMPORTANT—If the seeds or other articles ordered are to be sent by **Parcel Post** do not forget to add the necessary amount for postage. See rates on page 1. Quarts of Beans, Corn and Peas weigh 2 lbs., pints 1 lb., pecks 15 lbs. We pay the postage on all Seeds by the Packet, Ounce and Quarter Pound. Free Seeds with every order.

A CHAT WITH THE MANAGER



Here is our Manager, Mr. William R. Kimball at the entrance of his residence.

WE wish to extend our hearty thanks to all those who so kindly favored us with their orders last year. We had one of the largest seasons in the 31 years of our business history. This is our thirty-second Annual and we appreciate highly the support of our customers who have contributed to our success during all these years. Our constant aim during these past years has been to produce seeds of the best possible quality and sell them at as low a price as is consistent with the cost of production. The cost of seed is a small item compared with the value of the crop and it never pays to buy seed because they are low in price. If it were possible to get better seeds we would have them.

Your orders will be given every care and attention.

Fraternally yours, **WILLIAM R. KIMBALL, Manager.**

A FEW WORDS ABOUT CROPS AND PRICES

The unseasonable conditions in the seed growing sections during the past season has caused a shortage in many varieties, particularly Beans, Corn, Peas, Lettuce, Vine Seeds and the Onion seed crop was almost a total failure. and for this reason we have been compelled to advance prices on some varieties but only in cases where necessity required it.

GENERAL INSTRUCTIONS FOR CUSTOMERS

Order—Early. Terms—Our terms are cash. **Remittances—**May be made by check, express or post office order or money in registered letter; small amounts in stamps. **Packing—**We make no charge for boxes or packing, or delivery to depot or express office. **Seeds Postpaid by Mail—**We pay the postage on seeds by the packet, ounce, quarter pound and half pound. If pints and quarts of Beans, Corn, Peas, Onion Sets and Lawn Seeds are wanted sent by Parcel Post, add at the rate of 8 cents for first quart and 3 cents for each additional quart. Seeds by the pound add at the rate of 7 cents for the first pound and 2 cents for each additional pound. This will include safe and proper packing.

Address—In ordering be particular to sign your name, postoffice, R. F. D. route, county and state, plainly. **Small Orders—**If you only want a single packet, do not hesitate to send for it. **Free Seeds—**With every order we shall include, free of charge, a liberal amount of Trial Packets. **Seed Packets—**Our Vegetable and Flower Seeds are put up in neat packets, large and well filled. **Agents—**We want an agent in every town. Write for terms. Telephone 154-R.

25c.

WORTH OF SEEDS EXTRA WILL BE ALLOWED ON EACH ONE DOLLAR SENT FOR SEEDS IN PACKETS AND OUNCES ONLY.

N. B.—This does not apply to Bulbs or Seeds by pound, quart, peck, collections or agents' orders.



“Hearts of Gold”

Musk Melon

The melons are almost round, thickly netted and very firm. The flesh is deep orange color, firm, very sweet and of delicious flavor. It ripens clear to the skin. A splendid keeping melon of uniform size. The vines are vigorous and free from blight and very productive.

Pkt. 15c; oz. 35c; $\frac{1}{4}$ lb. 80c.



TO MEMBERS OF THE GRANGE

You can save money by getting up a Seed Club in your Grange and sending the order to us.

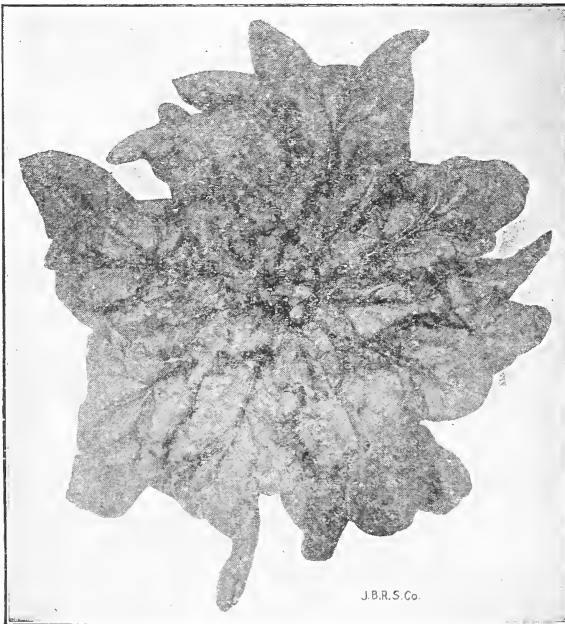
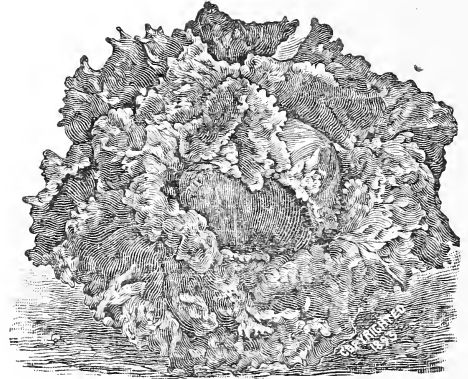
We will send you some extra Catalogs and order blanks free. (Will also wrap each order separately and properly label them and will include a lot of free packets.) Write for full information about the advantages secured on Grange orders. Address Grange Department.

Lettuce

New York or Wonderful

Recommended for Summer heading. Produces immense heads, 15 to 18 inches across and as solid as a cabbage. The outer leaves are rich dark green, white, the heart blanches up beautifully and the quality is superb. Crisp, tender and delicious. Absolutely free from bitterness. This is the lettuce grown so largely in California and shipped East.

Pkt. 10c; oz. 40c; $\frac{1}{4}$ lb. \$1.25.



J.B.R.S. Co.

King of Denmark Spinach

A remarkable new spinach that is far superior to all of the older kinds. Its principal advantage is that it stands two weeks longer before running to seed than any other variety. It also grows larger and yields more and is of superior quality.

The leaves are large, rounded, somewhat blistered, and deep green. The plants grow vigorously and are ready to use as soon as any kind; while at the same time they remain a long time in good condition after other kinds have run to seed.

Pkt. 10c; oz. 15c; $\frac{1}{4}$ lb. 30c; lb. 85c.

BLUE HUBBARD SQUASH.—A new variety obtained by selection from the original Hubbard. The fruit is of a gray-blue color, grows very large and keeps remarkably well as the shell is extremely hard. The quality is equal to or even better than the original Hubbard. The meat is thick, fine grained, dry and very sweet. Pkt. 10c; oz. 25c; $\frac{1}{4}$ lb. 85c.

OUR 10c PACKETS OF VEGETABLE SEEDS ARE EXTRA LARGE AND WELL FILLED



Gathering Bobolink Beans for Home Canning

BOBOLINK POLE BEANS

BEST ON EARTH

If you want the very best, most tender and delicious "String Beans," raise the Bobolink. The best pole bean for northern planting, extremely early and very prolific, the vines bearing long, flat, meaty pods, entirely free from strings or fiber, a rich, light green color, very attractive, most excellent quality, the very best of all the pole beans. Plant enough to can—they are delicious. This splendid variety is soon bound to be the most popular Pole Bean grown. In many respects they surpass anything we know of. The pods retain their stringless and tender qualities until they are almost ripe. They are hardy, easily grown and enormously productive.

Large packet, post paid, 15c; 1/2 pt. 20c; pt. 40c; qt. 75c.

Monmouth, Me., Feb. 1st, 1921.

Pine Tree State Seed Co.,

W. R. Kimball, Mgr.

My dear Mr. Kimball:—The years but confirm my judgment regarding the superiority of your **Bobolink Pole Beans**. Selecting my seed from the pods at the top of the pole, I find that the season for maturity has been shortened so that the past year they were ready for the table three days after the first picking of my earliest bush Wax. Growth is rapid and abundant, yield heavy and quality beyond anything I ever raised.

Twenty years' reliance on your goods justifies a strong word of commendation—my best wishes are with you.

Sincerely,

G. M. TWITCHELL.

A GRAND MELON FOR NEW ENGLAND

Metcalf's "Thousand Dollar" Musk Melon

This melon has been grown by Mr. Metcalf of Cumberland County for over twenty years, of whom we secured a small supply of seed.

The following is his description:

"More than 20 years ago, a horticultural friend told me he had been talking with a man interested in gardening who told him of a superior variety of Musk Melon he was growing. Soon after he gave him a few of the seeds; these he divided with me. We both planted them the next season with good success. After they had ripened I called at the home of my friend one evening. When he brought in a nice looking melon and opened it, as he did so, its fine appearance and delightful odor caused him to exclaim:

'Ah! That's worth a thousand dollars.' Since then it has been known as the Thousand Dollar Melon. I have continued to plant this variety every year since, saving seeds from the best and first to ripen each year and know of no other variety any better or will ripen as early."

The Melons average two to six pounds.

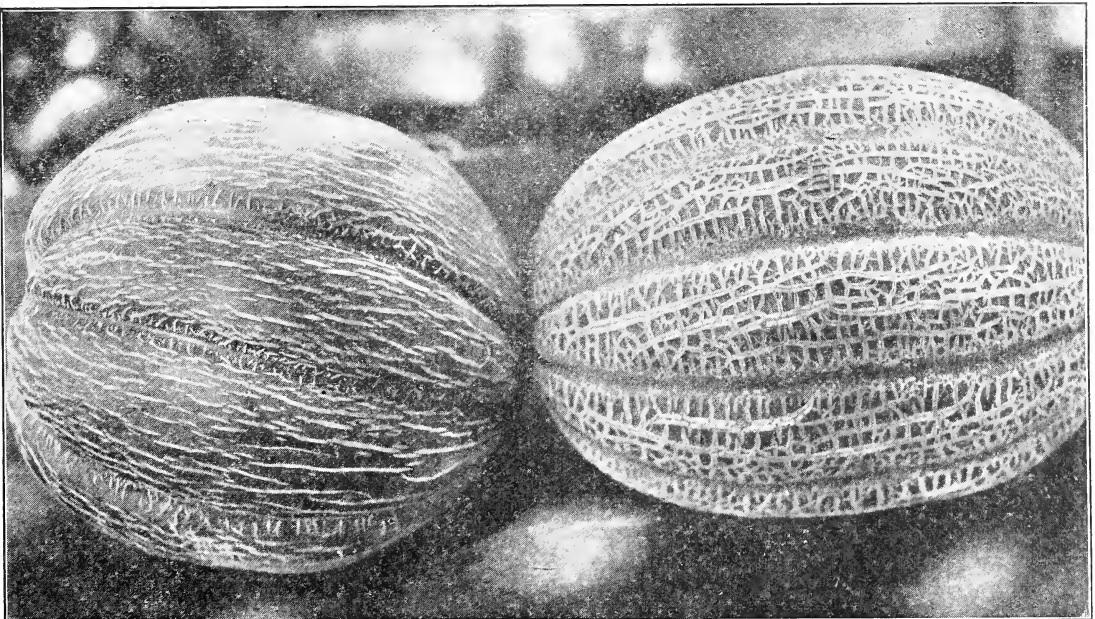
Price per packet, 15c. Maine Grown Seed.

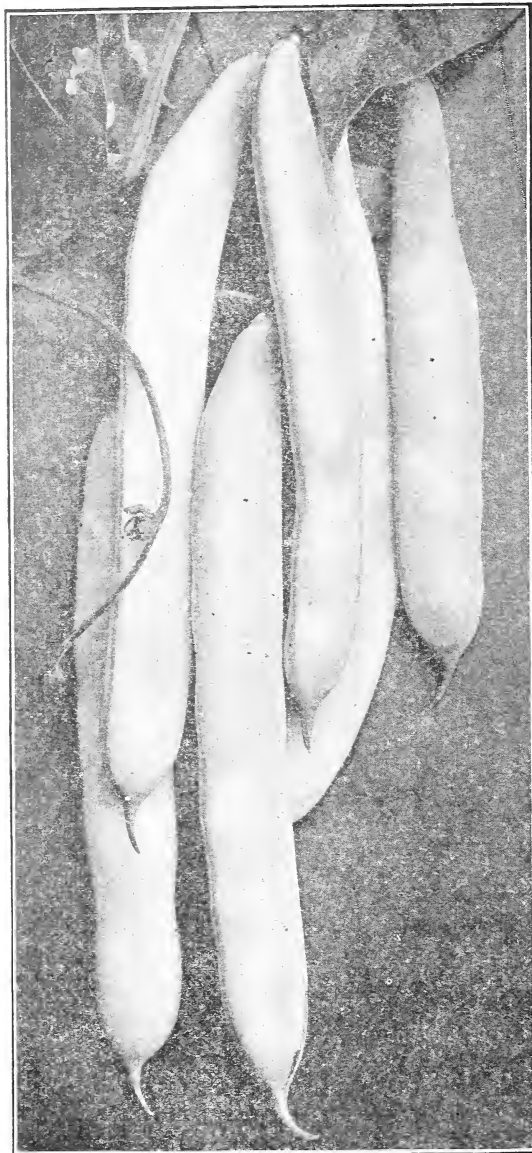
Per ounce, 35c.

Your Thousand Dollar Musk Melon is the best melon I ever saw, very meaty and the finest flavor. Grew some that weighed 14 lbs. and they were just as good as those that weighed 5 to 8 pounds.

Auburn, Maine.

W. P. JONES.





New Pole Bean—Sunset or Golden Podded Bobolink

New Pole Bean—Sunset Or Golden Podded Bobolink

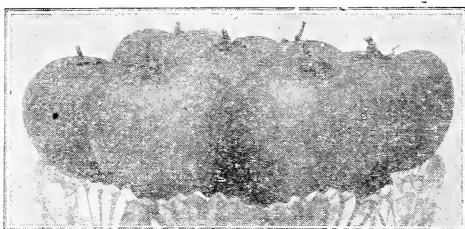
This fine new golden podded butter pole bean originated here in Maine. We have named it the Sunset. The seed was grown for us by Mr. Donald W. Ellis at Sunset Ridge Farm in Kennebec Co. The pods are of a bright golden yellow sunset color, very early, a few days earlier than our celebrated Bobolink Bean which it resembles in many ways except for the color of the pod.

Extremely tender and entirely stringless, of a rich melting buttery flavor possessed by no other bean, very productive and bears a large quantity of rich golden yellow pods until the vines are killed by frost, very meaty and growing in clusters and entirely stringless at all stages of growth. The dry beans are of very superior quality for baking.

We are the first to introduce this fine bean and after giving it a thorough trial last season we offer it with confidence to the public. If you want the very best, most tender and delicious "String beans," raise the Sunset. Packet 15c; ½Pt. 25c; Pt. 45c; Qt. 80c.

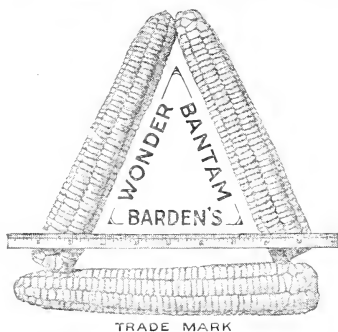
Hybridized Potato Seed

From the Seed-Balls—Headquarters Stock



Millions never saw a Potato Seed Ball. Thousands have tried in vain to get the seed. Now is your opportunity. This unrivaled seed will produce an endless variety of new kinds. They are as easy to grow as tomatoes.

There's money in it, and fun galore. No product so interesting—none may be of such value. The result will be amazingly diversified—potatoes of all conceivable colors, shapes and sizes—50 or more new varieties. This may be your last chance to obtain this rapidly vanishing seed. Please tell your friends. Packet with full Directions for Growing, 15c. 4 for 50c.



Sweet Corn—Wonder Golden Bantam

It is the very cream of the Yellow Sweet Corns today on the market. It is Golden Bantam, larger, stronger grower and a much better yielder. The stalks grow from five to six feet high and have ears from eight to ten inches in length, filled with eight rows of rich golden colored kernels and just as early as the old style Golden Bantam but more vigorous and productive. It is a variety that will appeal to the critical Market and Home Gardener. Packet 15c; ½ pt. 20c; pt. 35c; qt. 70c.



Golden Giant Sweet Corn

The most desirable sweet corn yet introduced with its 12 to 16 rowed ears and deep golden kernels, very sweet and extremely early. The stocks are short and sturdy and producing two large ears. It excels all other early varieties in size, productiveness and quality. The seed we offer this year has been carefully grown by Dr. Twitchell at his experimental farm, Monmouth, Me. The photo at the left was taken in August at the farm.

Large packets 10c; $\frac{1}{2}$ pt. 15c; pt. 30c; qt. 60c.

BURPEE'S GOLDEN BANTAM.—One of the best extreme early varieties. Dwarf and sturdy in habit, growing about four feet high and bearing two or three good ears to each stalk. The ears five or six inches in length, having eight rows of broad yellow grains of a delicious flavor. Pkt. 10c; $\frac{1}{2}$ pt. 15c; pt. 30c; qt. 60c.

GOLDEN NUGGET.—Sweetest on earth. The ears of this new golden sweet corn are larger and more prolific than Golden Bantam, tender and unusually sweet. Ready for market only a few days behind the earliest. Pkt. 10c; $\frac{1}{2}$ pt. 20c; pt. 30c; qt. 60c.

GOLDEN ROD.—Very productive, having two or three good ears on a stock, golden yellow kernels; quality unequalled. Good variety to follow Golden Bantam. Pkt. 10c; $\frac{1}{2}$ pt. 15c; pt. 30c; qt. 60c.

FOUR CHOICE VARIETIES OF GOLDEN SWEET CORN.—One large packet of each of the above for 30c, post paid.

FOUR CHOICE RUTA BAGA SWEDE TURNIPS.—We have imported these seeds from a noted English grower of turnips, and we urge all our customers to try at least one variety.

RUTA BAGA NE PLUS ULTRA.—A new English turnip, superior to our American varieties. Flesh richly colored, fine grained and sweet. Cooks quickly, free from strong odor. Pkt. 10c; oz. 20c; $\frac{1}{4}$ lb. 50c; lb. \$1.50.

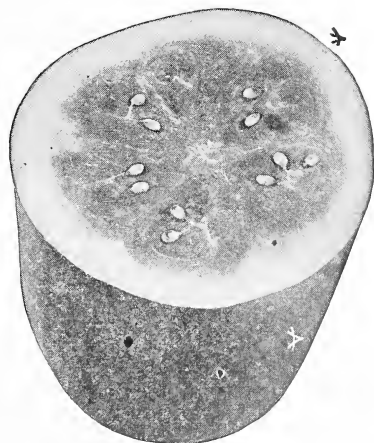
RUTA BAGA PERFECT MODEL.—A heavy cropping purple top Swede with small tops of fine flavor, and a long keeper. Matures early. Pkt. 10c; oz. 20c; $\frac{1}{4}$ lb. 50c; lb. \$1.50.

RUTA BAGA IMPERIAL.—A heavy cropper. One of the best general purpose Swedes in cultivation, flesh solid and of fine quality, roots globular and of handsome appearance. Pkt. 10c; oz. 20c; $\frac{1}{4}$ lb. 50c; lb. \$1.50.

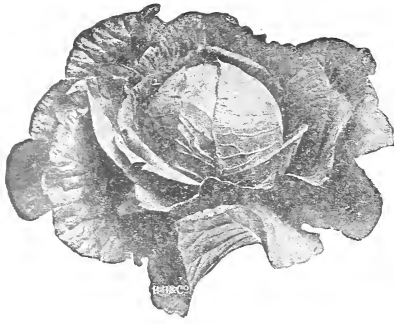
RUTA BAGA KELWAY'S MAMMOTH.—An enormous cropper, grows freely in all kinds of soil. It possesses very dense, sound flesh, globe shaped, short neck, dwarf foliage and a clean, single tap root. The highest quality Swede in cultivation. Pkt. 10c; oz. 20c; $\frac{1}{4}$ lb. 50c; lb. \$1.50.

One packet each of the above Swedes for 30c.
One ounce each of the above Swedes for 65c.

WATER MELON YANKEE.—Best for New England. This new melon is a fine variety for the family and market, very early and prolific. The bright red flesh is cool, crisp and sweet. Will mature anywhere in Yankee land. Pkt. 10c; oz. 20c; $\frac{1}{4}$ lb. 45c; lb. \$1.50.



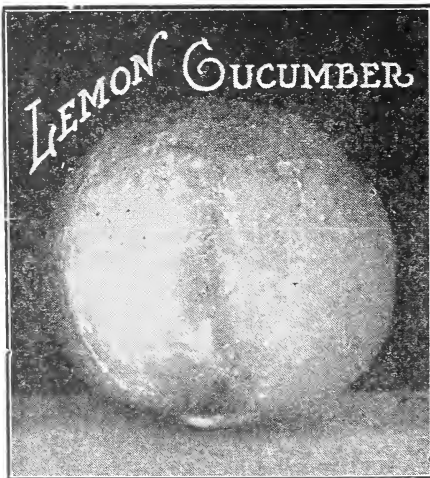
Yankee Water Melon



Copenhagen Market Cabbage

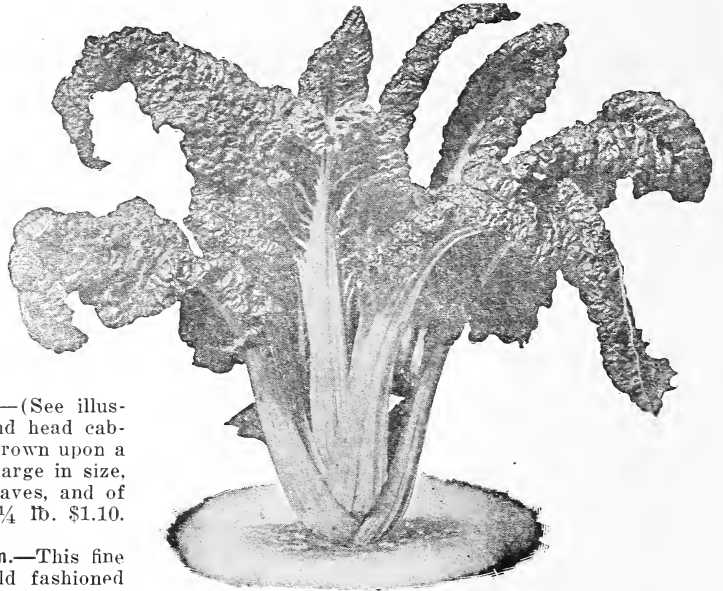
COPENHAGEN MARKET CABBAGE.—(See illustration.) A splendid extra-early round head cabbage from Denmark. The heads are grown upon a remarkably short stem, are solid and large in size, weighing 10 to 12 lbs., light green leaves, and of excellent quality. Pkt. 10c; oz. 45c; $\frac{1}{4}$ lb. \$1.10.

POLE BEAN, DIRIGO—15 Minute Bean.—This fine bean is not a new variety it's an old fashioned Yellow Cranberry type of a green string bean. Very little known and grown only by a few gardeners who prize it highly. Early, broad green flat pods, absolutely stringless, fine flavor as a string or shell bean, also makes a fine bean to cook when dry. When used as a snap bean it is often called fifteen minute bean on account of its quick cooking qualities. Supply limited. Large Pkt. 15c; $\frac{1}{2}$ pt. 25c; pt. 40c; qt. 75c.



LEMON CUCUMBER.—The Garden Lemon.—The Lemon Cucumber resembles a lemon in shape color and size, but grows on a vine like a cucumber. It has a thin skin, is crisp, tender, sweet and fine flavored. We are safe in predicting the Lemon Cucumber will become a great favorite for slicing, or pickles. The best time for picking is just as it turns yellow. Pkt. 10c; oz. 25c; $\frac{1}{4}$ lb. 75c.

WHITE WONDER CUCUMBER.—Ivory white in color, thin skin, excellent quality and very hardy. Can be planted early. It is a sure cropper and very prolific. Pkt. 10c; oz. 25c; $\frac{1}{4}$ lb. 75c.



Swiss Chard—Giant Lucullus

SWISS CHARD LUCULLUS.—The stalks are thick and broad. The leaves are large and heavily crumbled, crisp, tender and of fine flavor. Pkt. 10c; oz. 20c; $\frac{1}{4}$ lb. 50c; lb. \$1.50.

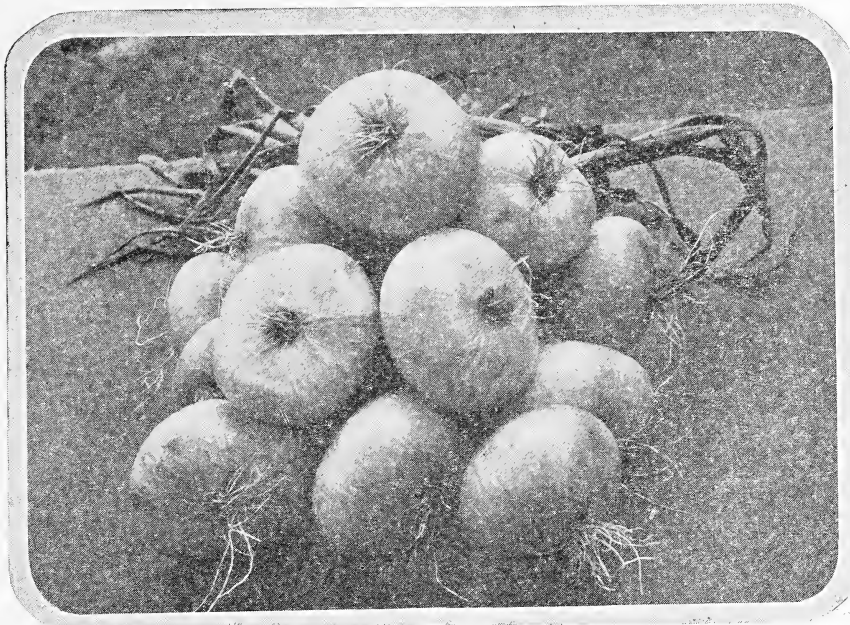
LETTUCE, MAY KING.—A new early head lettuce, its growth is extremely rapid and its fine large heads are ready in advance of any other heading variety. Crisp and very brittle. Pkt. 10c; oz. 35c; $\frac{1}{4}$ lb. 75c.

LETTUCE, BRITTLE ICE.—Very large, extremely crisp, hard-heading variety. The plants grow to a large size, sweet and mild in flavor. Pkt. 10c; oz. 35c; $\frac{1}{4}$ lb. 75c.

BEEFSTEAK LETTUCE.—This grand new variety grows to an immense size, and makes large, loose heads of a rich and buttery flavor. The leaves are of a soft green, tinged and flaked with red, never grows bitter. A fine summer variety. Pkt. 10c; oz. 35c; $\frac{1}{4}$ lb. 75c.

A WONDERFUL NEW TOMATO, JOHN BAER.—Earliest and best; brilliant deep red color; smoothest; no core; almost free from seed; delicious flavored; far more solid and meaty than any other; no culls; ripens even up to the stem; perfect beauties; uniform in size and ripening; a perfect shipper; blight proof. Pkt. 10c; $\frac{1}{2}$ oz. 30c; oz. 50c; $\frac{1}{4}$ lb. \$1.25.

NEW BURBANK TOMATO.—One of the earliest Tomatoes in existence. Burbank is everything that can be desired in a home garden tomato, attractive bright red fruits—medium size, smooth—well formed and ripens evenly all over. It is a good cropper also, so you will enjoy many good dishes from your plants. Pkt. 10c; $\frac{1}{4}$ oz. 25c; oz. 75c.



Monmouth, Maine,
Oct. 17, 1922.

Friend Kimball:

I want to thank you for sending me the Japanese Onion Sets. From two quarts I grew three bushels of very choice onions, many weighing three-quarters of a pound each and some fifteen ounces. The quality superior. The sets were planted April 26th and early in July I was selling bunches of four each, weighing one and one-half pounds. I want to thank you for introducing this very valuable variety of onion sets. Have just closed the twenty-seventh year with your seeds and have not met failure in any case yet.

Very truly,

G. M. Twitchell.

JAPANESE ONIONS GROWN FROM SETS

We call your attention to the photograph above of **Japanese Onions** grown from sets. This onion was originally called **Ebenezer**, was grown and introduced by the Market Gardeners of Ebenezer, N. Y.

These sets were grown by Dr. G. M. Twitchell at his experimental farm at Monmouth, Maine and weigh three-quarters of a pound each.

This onion will actually double the yield of any other onion set on the market. It throws no seed stalks; is the best keeper and best flavored onion we have ever seen. Similar in size and shape to the Old Fashioned Yellow Danvers. **One Thousand Bushels Per Acre** is common. One customer last year actually reported ninety bushels of onions grown from one bushel of sets. Price per $\frac{1}{2}$ pt. 15c; pt. 25c; qt. 40c.

JAPANESE OR EBENEZER ONION SEED.—See Page 17 for a description of this fine new onion.

FIVE GRAND NEW GARDEN PEAS

FAMOUS NEW PEA—PIONEER.—In this wonderful new pea we believe we have something that has long been sought after by the market gardener who wishes to second crop his ground. The plant is very robust in habit, makes a very heavy crop of large dark green pods. In our trial grounds last summer it grew a vine about 16 inches high and they were so heavily-podded on dwarf vines that it resembled almost a windrow of picked peas. They are more than a week earlier than Gradus and fully as handsome in appearance. Pkt. 10c; $\frac{1}{2}$ pt. 20c; pt. 35c; qt. 65c; pk. \$3.75.

QUITE CONTENT PEA—The largest and finest podded pea in cultivation. Received First Class Certificate from the Royal Horticultural Society of London. A main crop variety. Grows 5 feet high; foliage and pods deep green; pods 6 to 7 inches long, hanging mostly in pairs; ten to twelve peas in a pod. Flavor superb. Pkt. 10c; $\frac{1}{2}$ pt. 20c; pt. 35c; qt. 60c; pk. \$3.50.

EARLY MORN PEA.—The earliest large wrinkled pea in cultivation, a great cropper. Larger pod and more prolific than Gradus. The best money-making pea grown. Pkt. 10c; $\frac{1}{2}$ pt. 20c; pt. 30c; qt. 60c; pk. \$3.50.

GRAND NEW PEA, MAY DAWN.—The largest and earliest of the wrinkled varieties of peas. It is an improved Gradus but earlier, more prolific, large pods, a great cropper. One of the best money-making peas that grow. Pkt. 15c; $\frac{1}{2}$ pt. 20c; pt. 35c; qt. 60c; pk. \$3.50.

WORLD'S RECORD PEA (New).—A popular large-podded, extra early, wrinkled pea which matures a little earlier than the well-known Gradus. Its growth is very similar to that of Gradus, but somewhat more dwarfed and stouter; pods uniformly large, measuring from four and one-half to five inches, nearly round and packed with extra large, handsome peas of the finest flavor. Pkt. 10c; $\frac{1}{2}$ pt. 20c; pt. 30c; qt. 60c; pk. \$3.50.

SEE PAGES 17 AND 18 FOR OTHER VARIETIES OF GARDEN PEAS

GIANT SPENCER TYPE OF SWEET PEAS

SIX BEAUTIFUL SPENCER SWEET PEAS.—We have selected for our customers six beautiful sorts which we offer as our Spencer Collection of Giant Sweet Peas.—6 regular size 10c pkts. for 35c.—Giant White, Countess, Lovely, King Edward, Sweet Lavender and Helen Lewis.



Best of the Spencers

FIVE NEW SPENCERS

BUTTERCUP.—Rich deep cream.
GLADYS.—A beautiful lilac.
PICTURE.—Flesh pink and apricot.
WARRIOR.—Rich deep maroon.
VALENTINE.—Large bluish pink.
 Price of above New Spencers: 10c pkt.; 35c oz.
 Special offer one 10c pkt., each for 35c

ASTA OHN SPENCER.—A charming soft lavender, suffused with mauve.
BLANCHE FERRY SPENCER.—Bright rose standards with white wings.
CONSTANCE HINTON.—The best black seeded variety, very large size, best white.
CHARM SPENCER.—Snow white suffused with delicate pink; most beautiful for bunching.
COUNTESS OF SPENCER.—Large, wavy petals, soft, rose-pink in color, free flowering. The large handsome flowers are produced on long stems.
DAINTY SPENCER.—A most beautiful pink edged variety.
DOBIES CREAM.—The best of all the primrose or cream shades.
FIERY CROSS.—Has all the appearance of live fire, the color being a scorching fire-red. Pkt. 15c; oz. 35c.
FLORA NORTON SPENCER.—The flowers are nicely waved, of a bright blue with tint of purple.
HELEN LEWIS SPENCER.—A rich crimson orange, enormous sized flowers.
KING EDWARD SPENCER.—The best pure red Spencer. Very large.

FLORENCE MORSE SPENCER.—Light pink edged variety, very beautiful, borne upon strong, stiff stems, four flowers to each stem.

BURPEE'S KING WHITE.—The finest pure white Sweet Pea ever offered. The vines are extremely strong, flowers the largest, of the finest frilled type, while the color is of the purest white, and eclipses all other white kinds.

MARGARET ATLEE SPENCER.—The largest and finest Spencer Sweet Pea yet introduced. A rosy salmon pink on a creamy buff ground. The flowers are of extraordinary size, beautifully waved. Pkt. 10c; oz. 35c.

LOVELY.—White ground with blotch of deep pink at base shading to light pink.

OTHELLO SPENCER.—A rich deep maroon; flowers beautifully waved.

PRIMROSE SPENCER.—The color is a primrose or creamy yellow.

SWEET LAVENDER SPENCER.—A charming soft lavender, large flowers, finely waved.

VERMILION BRILLIANT.—The most brilliant iridescent scarlet Spencer yet produced. The standard is very bold and beautifully waved.

WEDGEWOOD SPENCER.—Producing usually four flowers to a stem of Wedgewood blue.

TWO FINE NEW SPENCERS

YOUTH.—A large, fine white, edged with a delicate soft rose pink.

THE CARDINAL.—Intense scarlet, large wavy flowers.

Each of the above 15c pkt.; ½ oz. 25c; 1 oz. 40c

MRS. TOM JONES.—Bright delphinium blue, flowers very large and beautifully waved and usually borne four on a stem. Pkt. 10c; oz. 35c.

HAWLMARK PINK.—The color is a most beautiful shade of rich, rose pink deeply flushed and shaded with salmon. Large well waved blooms. Pkt. 10c; oz. 35c.

Price each of above Spencers, except where noted otherwise: pkt. 10c; ½ oz. 15c; oz. 25c; ¼ lb. 75c; lb. \$2.50.

SUPERB MIXED SPENCER.—This blend contains the cream of all the best Spencers, including many novelties. It is the finest and most gorgeous mixture ever offered and will delight all who want a good variety of colors. Pkt. 10c; ½ oz. 15c; oz. 25c; ¼ lb. 75c.

THE BURPEE BLEND SPENCERS.—Contains the cream of all the finest Spencers and will surely delight all who want a grand variety of colors. Pkt. 10c; oz. 30c; ¼ lb. 75c; lb. \$2.75.

THREE NOVELTY SPENCERS

AMETHYST.—A new bright blue. Flowers large and beautifully waved, producing usually four flowers to a stem.

AMERICAN LEGION.—Intense poppy-scarlet. Very large waved flowers retaining its bright color after cutting. Blooms freely.

SUNPROOF SCARLET.—The color of the flower is an intense bright pure scarlet, finely waved. The blooms are borne freely on long stems and does not fade or burn in the brightest sun.

Price of above Novelty Spencers, 10c pkt.; 20c ½ oz.; 35c oz.

Special offer one packet each for 25c.

SEE PAGE 23 FOR OTHER VARIETIES OF SWEET PEAS

NEW, TALL AND DWARF NASTURTIUMS



Variegated Leaved Nasturtiums

TALL NASTURTIUMS

- TALL NASTURTIUM, TWILIGHT.**—The flowers are extra large in size and of the full, expanded form. They are most distinct and pleasing in color, having a faint salmon or buff tint heavily overlaid or suffused with a deeper rosy salmon. Oz. 20c.
- TALL NASTURTIUM, MOONLIGHT.**—This is a companion variety to the preceding, with flowers fully equal in size, but of an exquisite pale straw yellow.
- TALL NASTURTIUM, SUNLIGHT.**—This grand variety bears flowers of the largest size, most beautifully colored—clear, rich, golden yellow, and are produced so profusely as to almost conceal the large dark green foliage.
- TALL NASTURTIUM, MIDNIGHT.**—The foliage is a deep dark green and the flowers are a deep red.

CHOICE NEW ASTERS

- ASTER LAVENDER GEM.**—Large double flowers of exquisite lavender shade of the Ostrich feathered type. The flowers are borne in profusion on long stems. Pkt. 15c.
- ASTER, PINK ENCHANTRESS.**—A splendid new Aster, immense flowers of a soft, delicate pink, borne on strong, upright stems. Pkt. 15c.
- ASTER SENSATION.**—A new branching Aster, bright red. Pkt. 10c.
- ASTER CREGO GIANT MIXED.**—Grand large flowers, measure four inches. The petals are double the length of the old varieties and are twisted and curled. Pkt. 10c.
- ASTER PEERLESS PINK.**—Large double flowers the color is a wonderful and most pleasing shade of rich pink. Pkt. 10c.
- HEART OF FRANCE.**—A new startling beautiful type of aster of the purest deep red flowers on long strong stems. Pkt. 15c.
- SPECIAL MIXTURE.**—All of the above kinds mixed, large packet 15c.

SEE PAGE 21 FOR OTHER VARIETIES OF ASTERS

TALL NASTURTIUM, VARIEGATED LEAVED.—

A new race of Nasturtiums, every leaf is variegated with yellow, white and green, beautifully blotched and striped. The flowers of many bright colors in charming contrast to the handsomely variegated foliage. Pkt. 10c; oz. 30c.

TALL NASTURTIUM, IVY LEAVED.—The leaves are of a rich green, veined with white resembling the foliage of the English ivy. The flowers are of many colors and star-like in appearance. Pkt. 10c; oz. 30c.

RAINBOW MIXTURE TALL NASTURTIUM.—The most showy and varied in color of all the Running Nasturtiums, the mixture contains over thirty of the choicest named varieties, exceedingly fragrant and flower freely until severe frost.

Price each of above, except where noted, pkt. 10c; oz. 20c; $\frac{1}{4}$ lb. 50c.

Five packets of any of the above for 35c.

DWARF NASTURTIUMS

DWARF NASTURTIUM.—Golden leaved. Pkt. 10c; oz. 20c.

DWARF SPENCER NASTURTIUM.—A new type of Nasturtium. The very peculiar wavy emerald green foliage is different from any other known variety. The plants grow very compact, covered with beautiful velvety flowers borne on long stems. Choice mixed, pkt. 10c; oz. 30c.

DWARF NASTURTIUM, CLOTH OF GOLD.—The foliage is of bright golden yellow, with scarlet flowers. Pkt. 10c; oz. 30c.

DWARF NASTURTIUM, VARIEGATED LEAVED.—Many colored flowers in charming contrast to the silver variegated foliage. Oz. 30c.

RAINBOW MIXTURE DWARF NASTURTIUM.—The most showy and varied in color of all the Dwarf Nasturtiums, the mixture contains over thirty of the choicest named varieties, exceedingly fragrant and flower freely until severe frost.

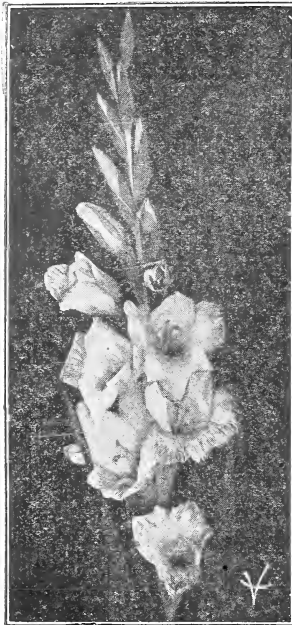
Price each of above, except where noted, pkt. 10c; oz. 20c; $\frac{1}{4}$ lb. 50c.

Five packets of any of the above for 35c.

See Page 22 for other varieties of Nasturtiums.



GLADIOLI BULBS



Gladiolus are the most attractive and useful of summer flowering bulbs, and as a cut flower all through the summer months and well into the autumn they hold a place that cannot be taken by any other flower.

(If wanted by mail add 5c per dozen; 25c per 100.)

20 small Gladiolus bulblets for 10c postpaid.

These make fine blooming bulbs next season.

Good Mixed.—3 for 15c, 50c doz.; \$2.75 per 100.

Rainbow Mixed.—A splendid mixture, including all of the above kinds and many others, 6 for 40c, 75c doz., \$3.50 per 100.

America.—One of the best Gladiolus. The color is a most beautiful soft lavender pink; very large and massive. Large bulbs 10c each; 3 for 25c; 60c doz., \$3.50 per 100; medium size 50c doz., \$3.00 per 100.

Anna Eberius.—Dark velvet purple rose, 15c each.

Baron Hulot.—Rich, royal violet blue, 15c each, \$1.25 doz.

Chicago White.—Pure white with lavender markings in throat, 12c each, \$1.00 per doz.

Crystal White.—Large white with red stripes. 15c each, \$1.25 doz.

Empress of India.—A rich maroon red, 12c each, 75c per doz.

Glory of Holland.—Pure white, 15c each, \$1.00 per doz.

Halley.—A delicate salmon pink, large flowers, blooms early, 10c each, 75c doz., \$3.00 per 100.

Herada.—Pure mauve, deep markings in throat. 15c each; \$1.50 doz.

Le Marshal Foch.—A new bright early pink, very large flowers. 15c each \$1.50 doz.

Loveliness.—Cream white and apricot, 20c each

Miss Helen Franklin.—Pure white with violet markings on lower petals, vigorous and tall, averaging 6 to 10 open blooms at one time. An early variety. 15c each, \$1.50 doz.

Mrs. Francis King.—A splendid light scarlet, flowers large, well expanded, tall, straight spike, 10c each, 75c doz., \$3.50 per 100.

Mrs. Watt.—American rose color. 15c each, \$1.25 doz.

Niagara.—Magnificent large flowers, soft primrose yellow, tinged rose pink in the throat, tall strong spike. 15c each, \$1.25 per doz.

Panama.—The finest pink, long spikes and large flowers, very beautiful, 15c each, \$1.25 per doz.

Peace.—Immense, pure white flowers with a delicate lilac feathering in the lower petals. The flowers are unusually large, and borne on a strong spike, 15c each, \$1.25 per doz.

Pink Perfection.—Apple blossom pink, 15c each, \$1.25 per doz.

PRINCE OF WALES.—A delicate salmon rose with a warm, yellow feathering in the throat. Early and very fine. 15c each, \$1.25 per doz.

Rose Ash.—Ashes of roses, 20c each.

Salmon Beauty.—A beautiful salmon pink, 10c each, 75c doz., \$3.00 per 100.

Scarlet King.—The best bright scarlet, 10c each, 75c doz., \$3.00 per 100.

Schwaben.—Canary yellow, red stripe on lower petals. 15c each, \$1.25 doz.

Wilbrink.—Flesh pink, cream blotch, 15c each.

GIANT DAHLIA FLOWERED ZINNIA

This type is the latest development in Zinnias, bears flowers of mammoth size, in form like a perfect decorative Dahlia. The flowers often measure 6 to 8 inches in diameter, choice mixed. 15c Pkt.

EXTRA EARLY COSMOS.—A new early type coming into flower a month ahead of the late varieties. 15c pkt.

SHIRLEY POPPY, AMERICAN LEGION.—This fine new poppy is a dazzling orange-scarlet of large size and free bloomer. 10c Pkt.

ALL SEASON MIXTURE OF CHOICE VEGETABLE SEEDS

We sell a great many packets and ounces of mixed vegetable seeds. Our mixtures contain the best of the early, medium and late varieties, all good standard varieties and the seed the same as we use in any other packet. These mixtures are very popular. Keeps one in fresh vegetables throughout the season.

TABLE BEET.—A mixture of all varieties for summer and winter use.

CUCUMBERS.—Early and late, long and short.

CARROTS.—A mixture of five varieties, long and short, early and late.

CELERY.—Several good kinds. Oz. 20c.

LETTUCE.—Ten of the best varieties, early and late, curled and smooth leaved.

PUMPKINS.—All kinds, mostly pie pumpkins.

SQUASH.—Winter squash of all known varieties.

TOMATO.—Ten choice varieties, early and late, large and small fruited. Oz. 25c.

TURNIP.—Early and late, white, purple and yellow.

SWISS CHARD.—Three varieties, mixed.

MUSK MELON.—Four good kinds.

CITRON MELON.—Red and green seeded.

HERBS.—All kinds, mixed. Large packet, 10c.

ONIONS.—Big onions, little onions, red, white and yellow. Pkt. 10c; oz. 25c.

POPCORN.—Four kinds. Large packet 10c.

CABBAGE.—Early and late, Red and Savoy. Pkt. 10c; oz. 35c.

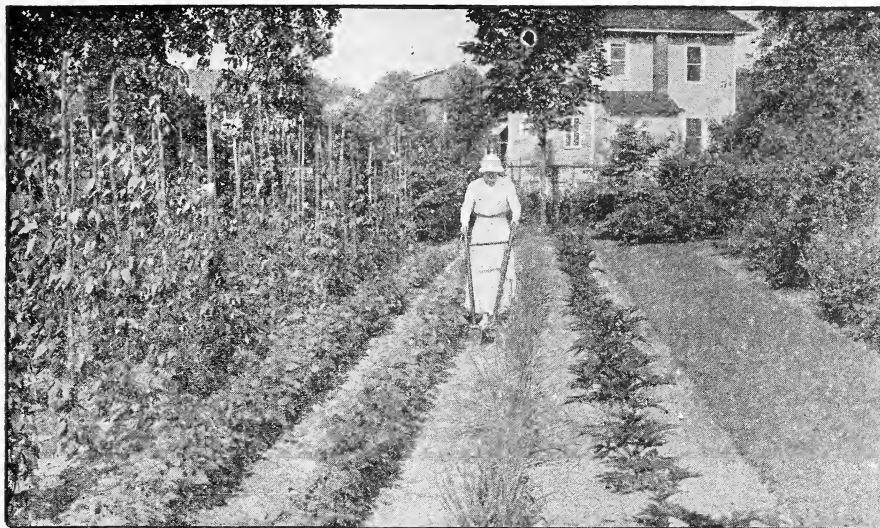
CAULIFLOWER.—Early and late. Pkt. 10c.

PARSNIP.—Several good kinds. Pkt. 10c; oz. 15c.

SPINACH.—All kinds. Pkt. 10c; oz. 15c.

RUTA BAGA.—Five best kinds. Pkt. 10c; oz. 15c.

Price any of the above, large pkt. 10c; oz. 15c; except as noted.



**CHOICE
LIST OF
VEGETABLE
SEEDS**

ASPARAGUS

PALMETTO.—Bright green color; very desirable. Pkt. 10c; oz. 15c; $\frac{1}{4}$ lb. 40c.

BEANS (DWARF OR BUSH)

If pints and quarts are wanted sent by Parcel Post, add at the rate of 8 cents first quart and 3 cents for each additional quart.

GOLDEN EYED WAX.—Early, hardy and productive. No finer wax bean known. Pkt. 10c; $\frac{1}{2}$ pt. 20c; pt. 30c; qt. 60c.

RUST PROOF WAX.—Pods long, nearly straight, broad, flat, golden yellow, stringless and brittle. Pkt. 10c; $\frac{1}{2}$ pt. 20c; pt. 35c; qt. 60c.

DETROIT WAX.—Early and productive. Pkt. 10c; pt. 30c; qt. 60c.

BOUNTIFUL.—Extra early, flat, green pods, tender and stringless. Pkt. 10c; $\frac{1}{2}$ pt. 20c; pt. 30c; qt. 60c.

BURPEE'S BUSH LIMA.—This bean grows from fifteen to eighteen inches high in a compact bush form, and produces heavy crops. Two weeks earlier than the common Lima. Pkt. 10c; $\frac{1}{2}$ pt. 20c; pt. 30c; qt. 65c.

IMPROVED GODDARD DWARF HORTICULTURAL.—A standard variety shell bean, very prolific, long, highly colored pods. Very attractive. Pkt. 10c; $\frac{1}{2}$ pt. 20c; pt. 30c; qt. 60c.

LOW'S CHAMPION.—Early, hardy and enormously productive, large podded, stringless and very tender. Pkt. 10c; $\frac{1}{2}$ pt. 15c; pt. 30c; qt. 60c.

BURPEE'S NEW STRINGLESS GREEN POD.—For either the market or home garden, no other green-podded bean is so satisfactory. The pods are a rich green, round and straight, five inches long, solid, meaty and broad, tender and brittle, and stringless. Pkt. 10c; $\frac{1}{2}$ pt. 15c; pt. 30c; qt. 60c.

DWARF RED CRANBERRY.—Early, tender and stringless. Pkt. 10c; $\frac{1}{2}$ pt. 15c; pt. 30c; qt. 60c.

FIELD BEANS

OLD FASHIONED YELLOW EYE.—An excellent field bean, very productive. Qt. 40c.

SULPHUR.—An excellent field bean, very fine for baking light cream colored. Qt. 45c.

SNOWFLAKE PEA.—A decided improvement over the common pea bean, early and very productive. Qt. 40c.

SOLDIER.—Early, very productive. Qt. 40c.

RED KIDNEY.—Fine for baking. Pt. 25c; qt. 40c. Per peck of any of the above, \$2.75.

POLE BEANS

KENTUCKY WONDER WAX.—Pkt. 10c; $\frac{1}{2}$ pt. 20c; pt. 35c; qt. 65c.

POLE HORTICULTURE.—Excellent as a string or shell bean. Pkt. 10c; $\frac{1}{2}$ pt. 20c; pt. 30c; qt. 60c.

LARGE RED CRANBERRY.—The good old fashioned variety, tender and excellent. Pkt. 10c; $\frac{1}{2}$ pt. 20c; pt. 35c; qt. 65c.

MAMMOTH PODDED HORTICULTURAL.—The vine is vigorous, pods very large, bright carmine, slightly streaked, very handsome and exceedingly productive. Beans large, splashed and spotted with red, either green or dry. Pkt. 10c; $\frac{1}{2}$ pt. 20c; pt. 35c; qt. 65c.

LAZY WIFE'S.—Abundantly productive, and of excellent flavor, with long green, fleshy and stringless pods. Fine for shelling or baking when dry. Pkt. 10c; $\frac{1}{2}$ pt. 20c; pt. 35c; qt. 65c.

EARLY GOLDEN CLUSTER WAX.—The pods of this variety are enormously large and long and borne in clusters. Pkt. 10c; $\frac{1}{2}$ pt. 20c; pt. 35c; qt. 60c.

SCARLET RUNNER.—Very ornamental, free climbers, bright scarlet flowers. Pkt. 10c; $\frac{1}{2}$ pt. 20c; pt. 35c; qt. 65c.

WHITE RUNNER.—Very pretty planted with the scarlet runner. Pkt. 10c; $\frac{1}{2}$ pt. 20c; pt. 35c; qt. 65c.

BOBOLINK.—Very early, tender and stringless. Best of all the pole varieties. Pkt. 15c; $\frac{1}{2}$ pt. 20c; pt. 40c; qt. 75c. For full description see Novelty page.

SUNSET OR GOLDEN PODDED BOBOLINK.—(New.) Best wax pole bean. See Novelty Page 6 for full description.

LARGE PACKET OF ANY OF THE ABOVE VARIETIES OF BEANS 10c POSTPAID

KENTUCKY WONDER.—Very early and productive. The pods, though large, cook tender and delicious. Pkt. 10c; ½ pt. 20c; pt. 30c; qt. 60c.

INDIAN CHIEF OR WAX.—An excellent variety with long, light yellow pods, stringless and tender. Pkt. 10c; pt. 35c; qt. 70c.

ARLINGTON RED CRANBERRY.—Early and productive, pods large and tender. Pkt. 10c; ½ pt. 20c; pt. 35c; qt. 65c.

BEETS

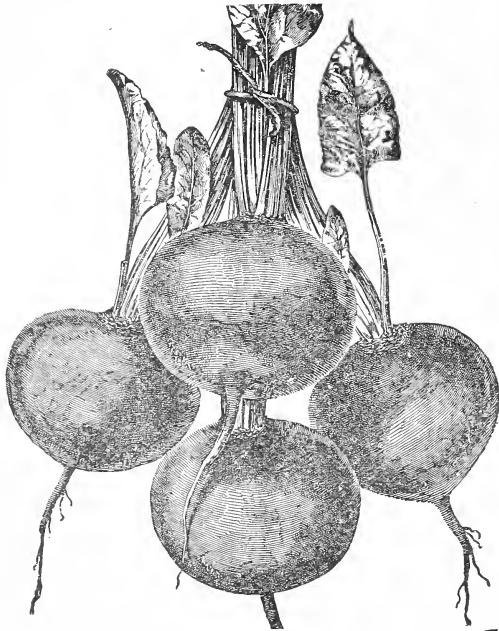
(For large shipments by mail, see rates on page 1)

EARLY WONDER.—See Novelty Page for description. Pkt. 10c; oz. 20c; ¼ lb. 50c.

CRIMSON GLOBE BEET.—This beet is remarkable for its smooth skin and fine shape, and it does not grow large and coarse. The flesh is very dark and quality fine, sweet and tender. Pkt. 10c; oz. 20c; ¼ lb. 50c; lb. \$1.50.

EARLY BLOOD TURNIP.—A standard sort, early, round and smooth. Pkt. 10c; oz. 15c; ¼ lb. 40c; lb. \$1.25.

ECLIPSE.—One of the best early sorts, fine grained, crisp and tender. Pkt. 10c; oz. 20c; ¼ lb. 45c; lb. \$1.25.



Crimson Globe Beet.

DETROIT DARK RED.—One of the very best sorts, either for market or home use. Tops small, roots globular and very smooth skin, dark red, flesh bright red. Very crisp, tender and sweet. Pkt. 10c; oz. 20c; ¼ lb. 45c; lb. \$1.50.

CROSBY'S EGYPTIAN.—For early use, either for market or family gardens, this variety easily takes the lead. Pkt. 10c; oz. 20c; ¼ lb. 45c; lb. \$1.50.

EDMAND'S TURNIP.—The flesh is deep, blood red in color and exceedingly sweet and tender in quality. Pkt. 10c; oz. 20c; ¼ lb. 45c; lb. \$1.25.

BEEF SEED.—To sow for greens only. Oz. 10c; 30c ¼ lb.; \$1.00.

MIXED VARIETIES.—Of all of the above kinds. Large package 10c; oz. 15c; ¼ lb. 35c; lb. \$1.00.

SWISS CHARD—LUCULLUS.—See novelties. Pkt. 10c; oz. 20c; ¼ lb. 50c.

SWISS CHARD.—Used as greens. Pkt. 10c; oz. 20c; ¼ lb. 35c; lb. \$1.25.

PERPETUAL SPINACH BEET.—Fine for greens, has the flavor of spinach. Pkt. 10c; oz. 20c; ¼ lb. 45c; lb. \$1.50.

MANGLE WURZEL

LANE'S IMPERIAL SUGAR.—Long white variety, excellent for feeding stock.

MAMMOTH LONG RED.—Producing roots of mammoth size. This is the best long red.

GATE POST.—Heavy cropper, small top.

Price each of the above varieties, pkt. 10c; oz. 15c; ¼ lb. 30c; ½ lb. 50c; lb. 80c.

KELWAY'S NEW YELLOW MANGOLD.—"Best of All." A new English yellow mangold. A very heavy cropper, largest and best of all the yellow mangolds, producing enormous crops. Be sure and try it. Oz. 15c; ¼ lb. 40c; lb. \$1.25.

GIANT SLUDSTRUP.—The best of all the Mangolds, the largest yield per acre and of great feeding value. Pkt. 10c; oz. 15c; ¼ lb. 35c; lb. \$1.00

SPECIAL OFFER

VARIETIES OF MANGOLDS MIXED.—Oz. 10c; ¼ lb. 25c; lb. 75c, postpaid.

BRUSSELS SPROUTS

IMPROVED EXTRA.—Closely covered with large, compact sprouts. The very best sort. Pkt. 10c; oz. 30c.

SUTTON'S MATCHLESS.—Large and extra fine. Pkt. 10c; oz. 35c.

CABBAGE

COPENHAGEN MARKET.—See Novelty page.

EARLY JERSEY WAKEFIELD.—Very early, sure heading, pyramidal shape. Pkt. 10c; ½ oz. 20c; 1 oz. 35c; ¼ lb. \$1.00.

HENDERSON'S EARLY SUMMER.—Earliest of all the large cabbages, solid and compact. Pkt. 10c; ½ oz. 20c; oz. 40c; ¼ lb. \$1.00.

EARLY WINNIGSTADT.—Heads large, cone-shaped, solid one of the best for all soils. Pkt. 10c; ½ oz. 20c; oz. 35c; ¼ lb. \$1.00.

DANISH BALL HEAD.—The hardest heading cabbage in existence, and of excellent quality, white, crisp and tender. The heads are round, fine grained and a good keeper. Pkt. 10c; ½ oz. 20c; oz. 40s; ¼ lb. \$1.00.

HENDERSON'S SUCCESSION.—One of the finest cabbages in existence, whether for medium, main crop or winter use. Pkt. 10c; ½ oz. 20c; oz. 40c; ¼ lb. \$1.00.

PREMIUM FLAT DUTCH.—Excellent winter variety. Pkt. 20c; ½ oz. 20c; oz. 35c; ¼ lb. 90c.

BURPEE'S SUREHEAD.—Heads remarkably uniform, very hard and firm. A good keeper. Pkt. 10c; ½ oz. 20c; oz. 35c; ¼ lb. 90c.

ALL SEASONS.—An early drumhead, sure headings, solid variety. Pkt. 10c; ½ oz. 20c; oz. 35c; ¼ lb. 90c.

FOTTLER'S IMPROVED BRUNSWICK.—An excellent early drumhead variety, produces a firm and solid head. Pkt. 10c; ½ oz. 20c; oz. 35c; ¼ lb. \$1.

MAMMOTH RED ROCK.—Best and deepest blood red. Pkt. 10c; ½ oz. 25c; oz. 40c.

WARREN STONE MASON.—A fine late variety. In reliability for heading, no cabbage surpasses it; an excellent sort to carry through the winter. Pkt. 10c; ½ oz. 25c; oz. 45c; ¼ lb. \$1.25.

SAVOY, SUTTON'S BEST OF ALL.—Fine curled leaves, delicate flavor. Pkt. 10c; oz. 45c.

MIXED VARIETIES.—A large packet of all the above mixed, 10c; oz. 30c; ¼ lb. 85c; lb. \$3.00.

CARROTS

EARLY FRENCH FORCING.—Very early and small. Pkt. 10c; oz. 20c; ¼ lb. 60c.

OXHEART.—Very thick, enormous cropper. Pkt. 10c; oz. 20c; ¼ lb. 50c; lb. \$1.50.

IMPROVED DANVERS.—Best main crop variety, fine quality, a great yielder. Pkt. 10c; oz. 20c; ¼ lb. 50c; lb. \$1.50.

LONG ORANGE IMPROVED.—Roots large and long, yields large crops. Pkt. 10c; oz. 20c; ¼ lb. 50c; lb. \$1.50.

CHANTENAY.—Early, of a rich dark orange color, fine for bunching. Pkt. 10c; oz. 20c; ¼ lb. 50c; lb. \$1.50.

LARGE WHITE BELGIAN.—Very large, good keeper, fine for stock. Pkt. 10c; oz. 20c; ¼ lb. 35c; lb. \$1.25.

CAULIFLOWER

DANISH GIANT.—(Dry Weather).—The growth is very similar to that of Early Dwarf Erfurt but with heavier foliage, and is less liable to blight in hot weather. It has been grown with excellent results where other varieties fail to form heads. Pkt. 20c; oz. \$2.25.

EARLY FAVORITE.—One of the best large growing, early kind, forming solid heads. Pkt. 15c; ¼ oz. 50c; oz. \$1.75.

HENDERSON'S EARLY SNOWBALL.—An extremely early dwarf variety, producing large white heads of the finest quality. Pkt. 15c; ¼ oz. 65c; ½ oz. \$1.20; oz. \$2.25.

EARLY DWARF ERFURT.—Very early dwarf, compact heads, tender and delicious. Pkt. 15c; ¼ oz. 60c; oz. \$2.00.

SNOWSTORM.—New early dwarf variety with beautiful snowy heads. Very early. Pkt. 20c; ¼ oz. 75c; oz. \$2.25.

ECLIPSE.—Early, fine flavor, large heads. Pkt. 15c, ¼ oz. 60c; ½ oz. \$1.00; oz. \$1.50.

PARIS EARLY.—A popular white sureheading variety. Pkt. 10c; ½ oz. 75c; oz. \$1.50.

MIXED CAULIFLOWER.—A mixture of all the above kinds, pkt. 10c; ½ oz. 50c; oz. \$1.25.

CRESS, OR PEPPER GRASS

Extensively used as a small salad. Pkt. 10c; oz. 20c; ¼ lb. 50c.

CELERY

GOLDEN SELF-BLANCHING.—Solid and crisp, in color a beautiful golden yellow; very tender. Pkt. 10c; ½ oz. 30c; oz. 50c; ¼ lb. \$1.50.

WHITE PLUME.—Crisp, solid and of a sweet, nutty flavor; needs very little earthing up. Pkt. 10c; oz. 30c; ¼ lb. 75c.

BOSTON MARKET.—A favorite variety, peculiarly mild flavor; keeps well. Pkt. 10c; oz. 25c.

GIANT PASCAL.—An easy blanched variety, superior for late use. Pkt. 10c; oz. 25c.

ALL KINDS MIXED.—Pkt. 10c; oz. 25c.

EASY BLANCHING.—The very best variety for general use. In quality it is very sweet and tender. Pkt. 10c; oz. 30c; ¼ lb. \$1.00.

SWEET CORN

☞ If pints and quarts are wanted sent by Parcel Post, add at the rate of 8 cents for the first quart and 3 cents for each additional quart, Large Packets prepaid, 10c.

GOLDEN GIANT.—See Novelty page.

GOLDEN BANTAM.—See Novelty Page.

GOLDEN NUGGET.—See Novelty page.

GOLDEN ROD.—See Novelty Page.

Price of above 10c pkt.; ½ pt. 15c; pt. 30c; qt. 60c.

WONDER BANTAM.—See Novelty Page for a description of this wonderful golden sweet corn.

EARLY MAYFLOWER CORN.—The earliest variety yet produced, seven to ten days earlier than Cory. Very productive and for so early a variety, is of excellent quality. Pkt. 10c; ½ pt. 15c; pt. 30c; qt. 50c.

PEEP-O'DAY SWEET CORN.—Ten days earlier than any other sort and the sweetest of all Extra Early Corn. The stalks are 3½ to 4½ feet high and bear from two to five ears; will stand very close planting. Pkt. 10c; pt. 25c; qt. 50c.

EARLY CROSBY.—The very best early sweet corn, habit dwarf ears set low, twelve to sixteen rowed and of rich flavor. Pkt. 10c; pt. 25c; qt. 50c.

BLACK MEXICAN.—Late, sweetest of all. Pkt. 10c; pt. 25c; qt. 50c.

COUNTRY GENTLEMAN.—The sweetest and most tender of all sweet corns. Kernels and cob pure white; cob small, kernels deep; ears average twelve inches in length. Pkt. 10c; pt. 25c; qt. 50c.

STOWELL'S EVERGREEN.—A late standard variety, ears very large, keeps green till cold weather. Pkt. 10c; pt. 25c; qt. 50c.

FODDER AND FIELD CORN

(Corn ordered by mail is subject to an extra charge. See page 1. Write for bushel rates.)

SWEET FODDER CORN.—This variety excels all others for feeding to stock. Qt. 30c; pk. \$1.50.

LEAMING.—An early, hardy, dented flint variety. It is tall and leafy, with large ears, will mature in New England. The best for ensilage. Qt. 25c; pk. \$1.25.

EARLY YELLOW MAINE.—A fine yellow variety, long ears, matures early. Qt. 30c; pk. \$1.50.

LONGFELLOW.—The best early yellow variety, having long ears, large kernels and small cob; yields immense crop. Safe to plant in New England. Qt. 30c; pk. \$1.25.

MAMMOTH 90 DAY YELLOW FLINT.—A fine, early yellow variety, extra large ears. Stalks 10 to 12 feet. Matures early. Qt. 30c; pk. \$1.50.

EUREKA ENSILAGE CORN.—Grows from 12 to 15 feet high and will produce more tons of good material for the silo than any other kind. Also very productive of ears. Our seed is the genuine Eureka grown from stock seed procured from Ross Bros., the originators. Qt. 30c; ½ pk. 75c; pk. \$1.25.

EARLY SANFORD.—Early white flint variety for ensilage or grinding. Qt. 30c; pk. \$1.25.

Write for bushel rates.

POPCORN

POPCORN, BLACK BEAUTY.—An extra early variety, pops very large, most tender and crisp of all. Pkt. 10c.

POPCORN, RED BEAUTY.—An improved variety, very prolific and tender when popped. Pkt. 10c.

WHITE RICE.—One of the best. Pkt. 10c.

CUCUMBERS

EARLY FORTUNE.—See Novelty page.

WHITE WONDER.—See Novelty page.

LEMON.—See Novelty page. Pkt. 10c.

THE NEW DAVIS PERFECT.—This new variety beats all others in points of beauty, quality and productiveness, a beautiful dark green color, handsome shape and enormously productive. This variety enables one who has no glass to produce the same high priced cucumbers as those grown in a greenhouse. Pkt. 10c; oz. 20c; ¼ lb. 60c; lb. \$2.00.

BURPEE'S FORDHOOK FAMOUS.—Pkt. 10c; oz. 20c; ¼ lb. 50c.

EARLY CLUSTER.—Bears in clusters, early and productive. Pkt. 10c; oz. 20c; ¼ lb. 50c; lb. \$1.50.

WHITE SPINE IMPROVED.—A great bearer, an excellent variety for the table. Pkt. 10c; oz. 20c; ¼ lb. 50c; lb. \$1.50.

IMPROVED LONG GREEN.—Fruit of above twelve inches long tender and excellent. Pkt. 10c; oz. 20c; ¼ lb. 50c; lb. \$1.50.

BOSTON PICKLING.—Splendid for pickles. Pkt. 10c; oz. 20c; ¼ lb. 50c; lb. \$1.50.

CUMBERLAND CUCUMBER.—This new variety is of the Hardy White Spine type, is a rapid, strong and vigorous grower, and very prolific in fruit. The flesh is firm, but very crisp and tender at all stages, as choice as a slicing variety as it is for pickles. Pkt. 10c; oz. 20c; ¼ lb. 50c; lb. \$1.50.

JAPANESE CLIMBING.—Pkt. 10c; oz. 20c.

WEST INDIA GHERKIN.—Grown exclusively for pickling. Pkt. 10c; oz. 20c; ¼ lb. 50c.

ALL VARIETIES MIXED.—Pkt. 10c; oz. 20c; ¼ lb. 40c; lb. \$1.25.

DANDELION

IMPROVED.—Large leaved.—Pkt. 10c; oz. 50c.

ENDIVE

GREEN CURLED.—One of the best salad plants. Pkt. 10c; oz. 20c; ¼ lb. 50c.

KALE

GREEN CURLED SCOTCH.—A round dwarf variety rarely exceeding eighteen inches in height but spreading out under good cultivation to three feet. Pkt. 10c; oz. 20c; ¼ lb. 40c; lb. \$1.50.

KOHLRABI, OR TURNIP CABBAGE

EARLY PURPLE.—Tender, best market sort. Pkt. 10c; oz. 25c; ¼ lb. 75c.

LEEK

GIANT CARENTAN.—A large variety of superior quality. Pkt. 10c; oz. 25c; ¼ lb. 75c.

LETTUCE

BEEFSTEAK.—See Novelty page. Pkt. 10c; oz. 35c.

BRITTLE-ICE (new).—See Novelty page. Pkt. 10c; oz. 35c.

NEW YORK OR WONDERFUL.—A large crisp cabbage-heading variety, maturing late and very slow to shoot to seed. Extra large heads, a fine lettuce salad. Pkt. 10c; oz. 40c.

MAY KING.—See Novelty page. Pkt. 10c; oz. 35c.

BOSTON CURLED.—The best curled variety. Pkt. 10c; oz. 30c; ¼ lb. 75c.

BOSTON MARKET.—Forms fine, perfect heads, crisp and tender, grows very compact, good for forcing. Pkt. 10c; oz. 30c.

BIG BOSTON.—Is of unusual size and solidity of head. Pkt. 10c; oz. 35c.

WHITE SEEDED TENNIS BALL.—A fine early sort and very hardy. Pkt. 10c; oz. 30c.

BLACK SEEDED TENNIS BALL.—Fine for forcing. Pkt. 10c; oz. 30c.

EARLY CURLED SIMPSON.—Curled variety. Fine for cutting. Pkt. 10c; oz. 30c.

HANSON.—Large, solid heads and fine flavor. Pkt. 10c; oz. 35c.

ICEBERG.—Quick growing, large head. Pkt. 10c; oz. 40c.

PRIZE HEAD.—Large, loose heads tinged with red; very fine. Pkt. 10c; oz. 35c.

CHOICE VARIETIES mixed in one package, try it. Pkt. 10c; oz. 30c; ¼ lb. 75c; lb. \$1.50.

MELON (MUSK)

METCALF'S "THOUSAND DOLLAR" MELON.—See Novelty page. Pkt. 15c; oz. 35c.

HEARTS OF GOLD.—See Novelty Page.

ROCKY FORD MUSK MELON.—The fruit is oval, slightly ribbed, densely covered with coarse netting, greenish flesh and delicious flavor. Pkt. 10c; oz. 20c; ¼ lb. 50c.

OSSAGE GEM.—Similar to the Rocky Ford. The flesh is salmon color, of the highest quality in both sweetness and flavor. Pkt. 10c; oz. 20c.

MILLER CREAM.—The fruits are large and round with a light green netted skin, fine flavor. Pkt. 10c; oz. 20c.

BANANA.—The fruits are from fifteen to twenty inches in length, having a banana-like aroma, of delicious flavor. Pkt. 10c; oz. 25c.

ALL VARIETIES MIXED.—Pkt. 10c; oz. 20c; ¼ lb. 40c.

MELON (WATER)

YANKEE.—See Novelty page. Pkt. 10c; oz. 20c.

MOUNTAIN SWEET.—One of the best for northern cultivation, oblong, fruit dark green.

COLE'S EARLY.—Extra early, best for New England. Pkt. 10c; oz. 20c; ¼ lb. 50c.

SWEETHEART.—This new melon is uniformly of good size, skin light green mottled. The bright red flesh is solid and sweet. Pkt. 10c.

CITRON.—The standard for preserves. Pkt. 10c.

COLORADO CITRON.—Fine for preserves. Price each, pkt. 10c; oz. 20c; ¼ lb. 40c.

ALL VARIETIES MIXED.—Pkt. 10c; oz. 20c.

MARTYNIA

The pods when young and tender are used for pickles. Pkt. 10c; oz. 35c.

OKRA

Excellent for soups, stews, etc. They impart a rich flavor. Pkt. 10c; oz. 20c; ¼ lb. 35c.

ONIONS

EBENEZER OR JAPANESE.—This is the mildest flavored onion we have ever tasted. The flesh is white, firm and of a very delicate flavor. The onions are large, somewhat flattened, yellow skinned and have very small tops and mature early. They will keep sound and hard all winter. Pkt. 10c; oz. 45c; ¼ lb. \$1.25; lb. \$4.50.

LARGE EARLY RED.—A close-grained, mild-flavored variety. A good keeper. Pkt. 10c; oz. 40c; ¼ lb. \$1.00; lb. \$3.75.

BURPEE'S YELLOW DANVERS.—One of the very best varieties for general crops. Succeeds well in New England. True stock. Pkt. 10c; oz. 40c; ¼ lb. \$1.25; lb. \$4.00.

LARGE RED WETHERSFIELD.—Very large, of finest flavor. keeps well. Pkt. 10c; oz. 45c; ¼ lb. \$1.25; lb. \$3.75.

BEST YELLOW GLOBE DANVERS.—(True stock.) The best variety for general crop, an early, round variety, yield large crops and keeps well. We ask attention to the seed we offer and recommend it as a superior quality. Pkt. 10c; oz. 45c; ¼ lb. \$1.50; lb. \$4.50.

PRIZE TAKER.—A large yellow globe onion, sweet, mild and tender. Pkt. 10c; oz. 40c; ¼ lb. \$1.25.

BARLETTA.—Very early white onion, fine for pickles. Pkt. 10c; oz. 40c; ¼ lb. \$1.25.

All the above varieties mixed, 10c pkt.; 35c oz.; ¼ lb. 90c; lb. \$3.25.

ONION SETS

If wanted sent by Parcel Post, add at rate of 8 cts. for first quart and 3 cts. for each additional quart.

YELLOW SETS.—The best for general use. The small bulbs are used in the spring for setting out, in place of sowing the seed, and produce large onions earlier than can be done by the seed. Qt. 35c; pk. \$2.00.

MULTIPLIER ONIONS.—Same price as above.

JAPANESE SETS.—See novelty page.

PARSNIPS

KELWAY'S DON.—Crop failed.

HOLLOW CROWN.—Good old sort, fine flavor.

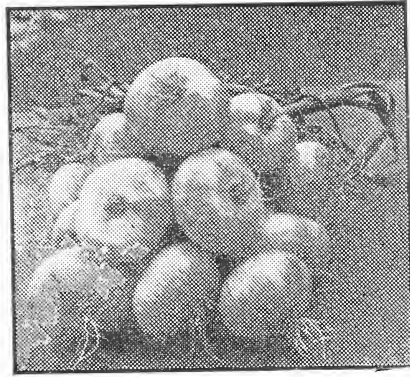
LONG SMOOTH WHITE.—Smooth and quite large
Each, per Pkt. 10c; oz. 20c; ¼ lb. 40c; lb. \$1.25

PARSLEY

EXTRA FINE CURLED.—Fine for garnishing. Pkt. 10c; oz. 20c; ¼ lb. 40c.

PEANUTS

MAMMOTH VIRGINIA.—Pkt. 10c; pt. 30c.



EBENEZER ONIONS
GROWN FROM SETS

EBENEZER SETS (Also called "Japanese" sets).

By the uses of these sets large ripe onions of the finest quality can be easily raised. The quality of the onions is far superior to other kinds and the yield is also larger. If the sets are planted early in the Spring the onions will be ripe in July and can be used all through the Fall and Winter. The onions, whether raised from seed or sets are wonderfully firm and solid and will keep almost the year around. Seed—Pkt. 10c; oz. 45c. Sets—40c qt.

For further description see page 9.

GARDEN PEAS

If pints and quarts are wanted by Parcel Post, add at the rate of 8 cts. for first quart and 3 cts for each additional quart.

Extra large packet, 10c, postpaid. Write for bushel rates.

WORLD RECORD.—See Novelty page.

MAY DAWN.—See Novelty page.

EARLY MORN.—See Novelty page.

PIONEER.—See Novelty page.

QUITE CONTENT.—See Novelty page.

NOTT'S EXCELSIOR.—A fine new extra early dwarf wrinkled pea, producing in profusion, long, handsome pods, closely packed with large peas of fine flavor. An improvement on American Wonder, being more vigorous and prolific, with larger pods and more peas. Height, 15 in. Pkt. 10c; ½ pt. 15c; pt. 30c; qt. 60c.

BOSTON UNRIVALLED.—Improved Telephone, extra large podded, very prolific. Pkt. 10c; ½ pt. 20c; pt. 35c; qt. 60c.

SUTTONS'S EXCELSIOR PEA.—A new early dwarf English variety. Pods very large and well filled with delicious flavored peas. Grows about 18 inches high. Pkt. 10c; ½ pt. 15c; pt. 30c; qt. 60c.

IMPROVED AMERICAN WONDER.—The earliest and very best wrinkled pea known, growing about 15 ins. high, in productiveness, flavor and quality it is unsurpassed. Pkt. 10c; ½ pt. 15c; pt. 30c; qt. 60c.

Price on any of the above varieties: peck \$3.50; ½ peck \$2.00.

LAXTONIAN.—One of the most remarkable varieties yet introduced; very dwarf, 12 to 15 inches high, producing pods in great abundance; nearly as large as the Telephone. The peas are large with a flavor the very sweetest and best. Pkt. 10c; ½ pt. 20c; pt. 35c; qt. 65c; peck \$3.75.

DWARF CHAMPION or JUNO.—Very similar to the Champion of England except in growth of vine, which is only about two and one-half feet in height. Pods are dark green, good size, and very prolific. Quality excellent. Pkt. 10c; pt. 30c; qt. 60c.

DWARF TELEPHONE.—Is the famous Telephone without its long vines. Pods dark green, frequently measure five inches, well adapted to marketing. Pkt. 10c; ½ pt. 20c; pt. 35c; qt. 60c.

THOMAS LAXTON.—A new extra early, large podded pea, very hardy and productive. As early as the Gradus and the pods a little larger and a deeper green. Pkt. 10c; ½ pt. 20c; pt. 35c; qt. 60c.

GRADUS OR PROSPERITY.—Large, handsome pods resembling Telephone in size and shape, well filled with large peas, ripening with the earliest, of vigorous habit, very quick to germinate and push to maturity. The best extra early wrinkled pea ever introduced. Height 3 ft. Pkt. 10c; ½ pt. 15c; pt. 30c; qt. 60c.

ALDERMAN.—A fine large pea of the Telephone type. Pkt. 10c; ½ pt. 15c; pt. 30c; qt. 60c.

BLISS EVERBEARING.—A splendid general cropper with large, well-filled pods, very sweet. Height 2 ft. Pkt. 10c; ½ pt. 15c; pt. 30c; qt. 60c.

IMPROVED STRATAGEM.—The vines are strong and vigorous and covered with immense pods, filled with large, dark green peas of the finest quality. Pkt. 10c; ½ pt. 15c; pt. 30c; qt. 60c.

PRINCE EDWARD.—An extra large podded variety, vines five feet high, pods are large, filled with enormous peas, tender and sweet. Pkt. 10c; ½ pt. 15c; pt. 30c; qt. 60c.

ADMIRAL DEWEY PEA.—Without exception the largest podded pea grown, a tremendous cropper, dark green pods, of excellent quality. Remarkable healthy and vigorous, producing abundance of pods of very large size and well filled. Height 3½ ft. The very best of the late varieties. Pkt. 10c; ½ pt. 15c; pt. 30c; qt. 60c.

TELEPHONE.—Immensely productive of the finest quality, pods of large size and filled with large, delicious peas. Pkt. 10c; ½ pt. 15c; pt. 30c; qt. 60c.

Price on any of the above varieties: peck \$3.50; ½ peck \$2.00.

MARROWFAT.—20c pt.; 40c qt.

WHITE CANADA FIELD.—25c qt.; \$1.50 pk.; \$5.00 bu.

PUMPKINS

LARGE FIELD.—The common large yellow, good for stock. Pkt. 10c; oz. 20c; ¼ lb. 30c; lb. 95c.

PUMPKIN, WINTER LUXURY.—We consider this the best pumpkin grown for making pies, medium in size, very finely netted, and in color it is golden russet. Pkt. 10c; oz. 20c; ¼ lb. 35c; lb. \$1.25.

GOLDEN OBLONG.—Fine for pies. Pkt. 10c; oz. 20c; ¼ lb. 35c; lb. 95c.

SUGAR.—A small variety, fine-grained and sweet. Pkt. 10c; oz. 20c; ¼ lb. 35c; lb. 95c.

PUMPKIN, KING OF MAMMOTHS.—Grows to enormous size, a splendid keeper, always a prize winner at fairs. Pkt. 10c; oz. 25c.

CHOICE MIXED.—Mixed in one package. Pkt. 10c; oz. 15c; ¼ lb. 30c; lb. 85c.

GIANT PUMPKIN MIXED.—All the known mammoth varieties, mixed. Pkt. 10c; oz. 25c.

PEPPER

SWEET MOUNTAIN.—Large and fine. Pkt. 10c; oz. 35c.

LARGE BELL.—Large, bright red, a handsome variety. Pkt. 10c; oz. 40c; ¼ lb. \$1.15.

FINE CHOICE VARIETIES.—Mixed in one package. Pkt. 10c; oz. 40c.

RADISH

VICK'S SCARLET GLOBE.—Best of the globe varieties.

CRIMSON GIANT GLOBE.—Large size, remains solid a long time.

FRENCH BREAKFAST.—A variety of quick growth, mild tender, olive-shaped.

EARLY SCARLET GLOBE.—Small top, very crisp and tender.

WHITE TIPPED SCARLET GLOBE.—Early, crisp and tender.

EARLY SCARLET TURNIP.—Round, scarlet, mild and crisp.

LONG SCARLET.—Very long and crisp, a standard variety.

CHARTIER.—Long, crimson, tipped with white.

ICICLE.—A handsome first class early long variety, snow white in color. Very mild.

NE PLUS ULTRA.—One of the best round, red radishes.

MIXED RADISH.—All of the above kinds mixed. Price each, Pkt. 10c; oz. 20c; ¼ lb. 50c; lb. \$1.25

RHUBARB

VICTORIA.—Pkt. 10c; oz. 20c; ¼ lb. 90c.

SALSIFY, OR VEGETABLE OYSTER

MAMMOTH SANDWICH ISLAND.—The roots are very large and very delicate in flavor. Pkt. 10c; oz. 20c; ¼ lb. 65c.

SPINACH

LONG STANDING.—One of the best varieties, dark green, slow in running to seed.

VICTORIA SPINACH.—We can recommend this variety as very large, thick dark green leaf. As early as any other.

Each, Pkt. 10c; oz. 15c; ¼ lb. 30c; lb. 75c

NEW ZEALAND.—Pkt. 10c; oz. 20c; ¼ lb. 60c.

KING OF DENMARK.—See Novelty Page.

SQUASH

SYMMES BLUE HUBBARD (new).—For description of this fine squash see page 4. Pkt. 10c; oz. 25c; ¼ lb. 85c.

MAMMOTH SUMMER CROOKNECK.—Early, large, fine for Summer use. Pkt. 10c; oz. 20c; ¼ lb. 40c; lb. \$1.50.

NEW MAMMOTH WHITE BRUSH SCALLOPED.—The earliest Summer sort. Pkt. 10c; oz. 20c; ¼ lb. 40c; lb. \$1.50.

EARLY PROLIFIC ORANGE MARROW.—No variety can compete with it for earliness, very productive. Pkt. 10c; oz. 20c; ¼ lb. 40c; lb. \$1.50.

BOSTON MARROW.—A standard early fall squash, rich orange color, sweet and dry. Pkt. 10c; oz. 20c; ¼ lb. 40c; lb. \$1.50.

HUBBARD.—Standard winter squash, an excellent keeper. Pkt. 10c; oz. 20c; ¼ lb. 50c; lb. \$1.75.

MARBLEHEAD.—An excellent winter variety, remarkably sweet and dry. Pkt. 10c; oz. 20c; ¼ lb. 50c; lb. \$1.50.

GOLDEN HUBBARD.—A true Hubbard except in color, which is a beautiful orange red. Pkt. 10c; oz. 20c; ¼ lb. 50c; lb. \$1.65.

WARTED HUBBARD.—This excellent strain of Hubbard squash grows to a large size, is blackest green in color, with warty knobs all over it. Pkt. 10c; oz. 20c; ¼ lb. 50c; lb. \$1.75.

DUNLAP'S EARLY MARROW.—No variety can compete with it for earliness, excellent quality and a good keeper. Pkt. 10c; oz. 15c; ¼ lb. 50c; lb. \$1.50.

THE FAXON.—Matures early, one of the best fall and winter varieties, of medium size, sweet and dry. Pkt. 10c; oz. 20c; ¼ lb. 50c; lb. \$1.50.

DELICIOUS.—A superior fall and winter variety that for thickness of flesh and richness of flavor is unsurpassed. Color a handsome green, weighing from 5 to 10 lbs. Pkt. 10c; oz. 20c; ¼ lb. 50c; lb. \$1.75.

ESSEX HYBRID TURBAN.—Productive, with very hard shell, of excellent flavor, and keeps well. Pkt. 10c; oz. 20c; ¼ lb. 45c; lb. \$1.50.

MAMMOTH WHALE.—Largest and heaviest of all squashes, fine for exhibition. Pkt. 10c; oz. 25c.

MAMMOTH CHILI.—Grows to an immense size. Pkt. 10c; oz. 25c; ¼ lb. 80c.

MIXED SQUASHES.—All above varieties mixed, 10c Pkt.; 20c oz.; 40c ¼ lb.; \$1.50 lb.

TOMATO

RED HEAD.—See Novelty page.

NEW BURBANK TOMATO.—See Novelty page.

JOHN BAER.—The wonderful new tomato. See Novelty page. Pkt. 10c; oz. 50c.

DWARF CHAMPION.—A very early variety, beautiful, solid fruit, fine flavor. Pkt. 10c; oz. 35c; ¼ lb. 95c.

NEW STONE.—Large perfectly smooth, scarlet, one of the best. Pkt. 10c; oz. 30c; ¼ lb. 75c.

LIVINGSTONE'S BEAUTY.—Very glossy, crimson in color, slight tinge of purple, early, free from rot, bears handling remarkably well. Pkt. 10c; oz. 30c.

BONNEY BEST.—Early productive, smooth and uniform in size. Pkt. 10c; oz. 35c.

CHALK'S EARLY JEWEL.—The earliest tomato in cultivation. Large smooth and fine flavored, flesh bright scarlet. Pkt. 10c; oz. 40c.

PONDEROSA.—Very large, solid and of good flavor. Pkt. 10c; oz. 45c.

EARLIANA.—Best early. Pkt. 10c; oz. 40c.

YELLOW PEAR.—For preserving. Pkt. 10c.

RED PEAR.—For preserving. Pkt. 10c.

YELLOW PONDEROSA.—Mammoth yellow. Pkt. 10c.

HUSK OR STRAWBERRY.—Small yellow fruit used for preserves. Pkt. 10c.

TWENTY CHOICE VARIETIES MIXED.—Including all the above varieties and others. Pkt. 10c; oz. 30c; ¼ lb. 75c.

SMALL FRUITED VARIETIES.—Mixed, 10c pkt.; 40c oz.

TURNIPS

EARLY PURPLE TOP STRAPLEAF.—Very early, sweet, mild and a rapid grower. Pkt. 10c; oz. 20c; ¼ lb. 35c; lb. \$1.00.

WHITE EGG.—Excellent early variety, egg shaped, mild flavor. Pkt. 10c; oz. 20c; ¼ lb. 35c; lb. \$1.00.

EXTRA EARLY WHITE MILAN.—The best of the white varieties, early and sweet. Pkt. 10c; oz. 20c; ¼ lb. 45c; lb. \$1.25.

EARLY RED MILAN.—Best of the red top varieties, early and sweet. Pkt. 10c; oz. 20c; ¼ lb. 40c; lb. \$1.20.

GOLDEN BALL.—Bulb of fine form and bright yellow color; a fine keeper; unsurpassed for table use. Pkt. 10c.; oz. 20c; ¼ lb. 45c.

SWEDE, OR RUTA BAGA

IMPROVED PURPLE TOP.—Very early, free growing, the best Purple Top Swede in cultivation. Pkt. 10c; oz. 15c; ¼ lb. 40c; lb. \$1.00.

CARTER'S IMPERIAL.—Very popular, flesh very solid and a fine keeper. Pkt. 10c; oz. 15c; ¼ lb. 35c; lb. \$1.00.

SKIRVING'S PURPLE TOP.—A standard variety, hardy and productive. Pkt. 10c; oz. 15c; ¼ lb. 35c; lb. \$1.00.

LARGE WHITE FRENCH.—The best of the white varieties, sweet and excellent. Pkt. 10c; oz. 15c; ¼ lb. 40c; lb. \$1.00.

See Novelty page for three fine Swedes—Perfect Model, Ne plus Ultra, and Kelway's Mammoth.

HERBS

SAGE—Pkt. 10c; oz. 50c.

DILL

SUMMER SAVORY

CATNIP

SWEET MARJORAM

HOREHOUND

LAVENDER

WORMWOOD

THYME

CARAWAY

Each, per pkt. 10c.

CHIVES.—15c Pkt.

DANDELION.—Pkt. 10c; of. 50c.

TOBACCO, CONNECTICUT LEAF.—10c Pkt.

LAWN SEEDS

EVERGREEN LAWN SEED.—A superior mixture of lawns, tennis courts, etc. Gives a fine, smooth, velvet sward within a few weeks after sowing. ½ lb. 25c; lb. 45c.

KIMBALL'S VELVET LAWN GRASS MIXTURE.—A very fine mixture and will give general satisfaction. ½ lb. 25c; lb. 45c.

SHADY SPOT LAWN SEED.—For shady places and under trees. ½ lb. 25c; lb. 50c.

ENGLISH LAWN SEED.—Imported mixture, makes the finest lawn. Lb. 50c.

We are prepared to make special mixtures for Tennis Courts, Golf Links, Shady Lawns, etc.

WHITE CLOVER.—65c lb.

KENTUCKY BLUE GRASS.—For lawns, 45c lb.

PLANT
THE BEST

RELIABLE FARM SEEDS

PLANT
THE BEST

Bags are Free and not weighed in with seed. Bags are expensive, but we make no charge as most firms do. This will mean a big saving to you. We will ship your seeds in heavy cotton bags, they to be returned at our expense.

Too much emphasis cannot be laid upon the importance of selecting the purest seed obtainable. Clean seed means clean crops. It is economy to buy the best, for results will justify the slight increase in cost over cheaper grades. The crop is what counts.

GRASSES, GRAINS, CLOVERS, ETC.

(Prices on all field seeds subject to change)

We wish our customers to know that we deal only in the very highest grade of grass seed, quality and purity our first considerations. Every farmer has learned to his sorrow that the ordinary and low priced grass seed contain more or less foul weeds, chaff, sand, etc. Our choice Timothy and Red Clover guaranteed 99% to 99.5% pure U. S. Government test.

TIMOTHY.—Very best lb. 13c; pk. \$1.35; bu \$5.00.

TIMOTHY PINE TREE STATE BRAND.—Extra choice, clean, plump seed. Lb. 13c; pk. \$1.35; bu. \$5.00.

TIMOTHY.—Domestic Brand. 12c lb.; pk. \$1.25; bu. \$4.75.

TIMOTHY AND ALSIKE MIXED.—Extra fancy, large plump berries, no inferior seed. Lb. 20c; send for sample.

RED CLOVER.—Domestic Brand. 42c lb.

RED CLOVER.—Pine Tree State Brand. 45c lb.

RED CLOVER.—Choice Strain. 40c lb.

ALSIKE CLOVER.—Domestic Brand. 33c lb.

ALSIKE CLOVER.—Pine Tree State Brand. 35c lb.

RED TOP.—Pine Tree State Brand. 42c lb.

RED TOP.—Fancy re-cleaned. 40c lb.

RED TOP.—Fancy unhulled. 26c lb.

ALFALFA.—Pine Tree State Brand. 33c lb.

HUNGARIAN.—10c lb; \$1.25 pk.

JAPANESE MILLET.—12c lb.; \$1.25 pk.

BARLEY.—\$1.00 pk.

JAPANESE BUCKWHEAT.—\$1.00 pk.

SELECTED SEED OATS.—\$1.25 bushel.

DWARF ESSEX RAPE.—15c per lb.

SPRING WHEAT.—\$1.25 pk.; \$3.50 bu.

WINTER RYE.—\$1.00 pk.

SPRING RYE.—\$1.00 pk.

SWEET CLOVER.—A valuable sow for soiling and for ensilage and bees. 20c lb.

SUNFLOWER.—Mammoth Russian. 15c lb.

CANADA FIELD PEAS AND OATS FOR FODDER

Sow at the rate of one bushel of peas to two bushels of oats per acre. Makes profitable fodder from June to August. Peas per peck, \$1.50; bushel, \$5.00.

The prices on Farm and Field Seed are constantly changing, write for prices.



PINE TREE TIMOTHY.—The economy of sowing high grade, extra re-cleaned Timothy seed explains why "Pine Tree" has met with such favor. It meets the requirements of careful farmers. Costs only a trifle more than inferior qualities. Write for prices.

STATE OF MAINE OATS NO. 340.—The best oat thus far produced for New England, a very high bushel weight, a low hull percentage, and a good stiff straw. True stock, Maine grown. Pk. 60c; ½ bu. \$1.00; bu. \$1.75.

PINE TREE STATE BRAND OATS.—One of the most productive oats we have ever introduced. The straw is of good height, and does not readily lodge, ripens uniformly, free from rust. Price, pk. 50c; ½ bu. 80c; bu. \$1.50.

POTATOES

Maine Grown Certified Stock. Free From Disease

If to be shipped by Parcel Post add at the rate of 21c per peck.

IRISH COBBLER.—A splendid cropper and very early, about two weeks ahead of the Early Rose. Smooth skin, white flesh and good flavor. ½ pk. 75c; pk. \$1.25.

GREEN MOUNTAIN.—A tremendous cropper, strong and vigorous, good keeper, white skin, best quality. ½ pk. 75c; pk. \$1.25. Write for bushel rates.

SHEEP MANURE.—5c lb.; 25 lbs. \$1.00; \$3.50 100 lbs.; 5 lbs., prepaid, 40c; 10 lbs. prepaid, 65c.

NITRATE OF SODA.—10c lb., not prepaid.

GROUND BONE MEAL.—5c lb., not prepaid.

If small orders of grass or field seeds are to be sent by parcel post, add at the rate of 7c for first pound and 2c for each additional pound to cover postage and packing.

FARM SEEDS ARE SENT BY FREIGHT OR EXPRESS at customer's expense. We pack carefully and deliver to transportation company here, and always make the shipments via the best and quickest route

PRICES ON ALL FARM SEEDS ARE SUBJECT TO MARKET CHANGES



ASTERS

Peerless Pink.—See Novelty page.

Sensation.—See Novelty page.

Giant Crego.—See Novelty page.

Lavender Gem.—See Novelty page.

Vick's New Branching.—Magnificent large flowers borne on long stems. The long, broad petals are frequently twisted and-curved, giving the blossom the appearance of a large graceful chrysanthemum. Finest mixed, 10c.

White, Pink, Crimson and Lavender, 10c each.

New Come.—These varieties make a grand display, often carrying thirty-two flowers on one plant, curled and twisted like Japanese chrysanthemums. Mixed, 10c. White, 10c.

Simple's Branching.—A new American strain, producing handsome, large, double flowers on long stems. Finest mixed, 10c.

Queen of the Market.—Very early, many beautiful colors, mixed, 10c.

Chrysanthemum Flowered.—Very beautiful, the flowers are exceedingly large and very double, mixed, 10c.

Victoria.—One of the best and most popular asters grown. Forms a handsome, pyramidal bush, with perfectly double imbricated flowers on long stems, mixed, 10c. Pure white, very fine, 10c.

Paeony Perfection.—A fine class with large, double, incurved flowers of great beauty. Choice mixed, 10c.

Ostrich Feather.—A new class of asters, with long, curved, fringe-like petals, mixed, 10c. White, 10c.

Finest Mixed.—This collection includes all colors and shades of many choice varieties, 10c.

Adonis.—Free flowering border plant, 10c.

Acroclinium.—One of the handsomest everlastings, and used extensively in bouquet of dried flowers, mixed, 10c.

} All 15c pkt.

Choice Flower Seeds and Bulbs

Ageratum Blue.—Free flowering; good for the beds and pots, 10c.

Agrostemma.—Attractive, free-flowering plants of easy culture and excellent for cutting, mixed, 10c.

Alyssum.—Sweet scented, white flowers, 10c pkt.; oz. 40c.

Amaranthus.—Highly ornamented foliage and flowering plants of easiest culture. Annual, mixed, 10c.

Antirrhinum or Snapdragon.—One of the most beautiful and useful border plants. Half hardy perennial, flowering the first season. Tall mixed, 10c; dwarf mixed, 10c; all kinds, mixed, 10c.

Aquilega—(Columbine).—Popular free-flowering plants, blooming profusely through the spring and early summer. Hardy perennial, mixed, 10c.

Bachelor's Buttons.—A fine, deep blue, 10c pkt.; oz. 50c.

Bachelor's Buttons.—Various colors, mixed, 10c.

Double Mixed.—All colors, 10c; oz. 50c.

Balsam.—Superb, fine double mixed, 10c.

California Poppy.—Hardy annual, profusion of rich, single, yellow flowers. Mixed, 10c; oz. 40c.

Calendula—(Marigold).—Prince of Orange, color intense orange, blooms all summer, 10c.

Calendula—(Meteor).—Beautifully striped, 10c.

Calendula—(Orange Giant).—10c.

Calendula—(Choice Mixed).— $\frac{1}{2}$ oz. 30c; pkt. 10c.

Canterbury Bells.—Best mixed, 10c.

Coreopsis.—All shades of yellow, orange and brown, 10c.

Coreopsis—(Drummondii).—Large, yellow, red spots, 10c.

Coreopsis—(Sunshine).—Mixture, 10c.

Canary Bird Flower.—A beautiful climber with bright yellow flowers, 10c.

Candytuft, White Queen.—A mass of white flowers, 10c pkt.; oz. 35c.

Candytuft—(Finest Mixed).—All colors, 10c pkt.; oz. 40c.

Candytuft—(Empress).—Large flowering white, 10c.

Cannas.—Handsome foilage, choice mixed, 10c.

Carnation Marguerite.—A very large percentage of the flowers come double and of good size, fine form and great beauty. They begin to bloom four months from the time seeds are sown. Finest mixed, 10c.

Chrysanthemum.—Glorious and snowy annual, are easily raised from seed, finest mixed, 10c.

Celosia—(Cockcomb).—Dwarf mixed, strikingly brilliant, 10c.

Clarkia.—Snowy, hardy annuals of easy cultivation, mixed, 10c.

Cosmos.—Mammoth California, mixed, 10c.

Cosmos.—Extra early flowering, mixed, 10c.

Cosmos.—Pink, white, red, 10c each.

Cobæa Scandens.—A climber of rapid growth. Flower first season if sown early, 10c.

Cupha—(Cigar Plant).—A fine border plant, bright scarlet, 10c.

Dahlia.—Single mixed, many colors, 10c.

Dahlia.—Double mixed, 20c.

Dianthus—(China Pink).—Finest mixed, double, in great variety of colors, 10c.

Heddewigi—(Japan Pink).—Best double, 10c.

Datura—(Trumpet Flower).—Handsome, bushy plants, covered with deliciously fragrant, trumpet-shaped flowers, until late in the fall, mixed, 10c.

Dojichos—(Hyacinth Bean).—A rapid climber, with clusters of white or purple flowers, 10c.

Eschscholtzia.—Fine for edgings, 10c.

Everlasting Flowers.—10c pkt.

Forget-Me-Not—(Myosotis).—Beautiful little plants, with bright, star-like flowers; useful for cutting. Succeed best in moist situations. Last nearly perennial, 10c.

Gaillardia.—Greatly admired, blooming from July until frost, choicest mixed, 10c.

Gilia.—Handsome plants with showy flowers. Hardy annual. Finest mixed, in great variety, 10c.

Godetia.—Profuse blooming plants, very snowy, deserving more extensive cultivation, 10c.

Gourds.—Ornamental climbers, varieties of singular shaped fruit, mixed, 10c.

Orange shape, 10c. Egg shape, 10c.

Grasses.—Ornamental, all the best mixed varieties, 10c.

Gypsophila—(Baby's Breath).—Fine to mix with bouquets, 10c.

Helianthus—(Sunflower).

Chrysanthemum.—Flowered Sunflower, very double, a truly beautiful variety, 10c.

New Red Sunflower.—10c pkt.

New Mammoth Russian.—Very large, single, 10c.

Many fine varieties.—Mixed, 10c pkt.; oz. 25c.

Hollyhock.—One of the oldest garden favorites, which ranks among the finest of our autumn flowers. The beautiful flowers of almost every shade and color, on the tall spikes, are very striking, 10c.

Humulus Japonica—(Japan Hop).—Rapid summer climber, foliage very luxuriant, 10c.

Ice Plant.—Pretty trailing plant, with thick, succulent foliage covered with transparent gloomies. Tender annual, 10c.

Kochia or Mexican Fire Plant.—Pkt. 10c.

Larkspur.—Annuals of great beauty, stock flowered all colors, mixed, 10c.

Double Rocket, choice mixed, 10c.

Hyacinth.—Flowered, choice mixed, 10c.

Lobelia.—Free flowering and of easy culture, mixed, 10c.

Marigold—(African).—Planted by everyone, larger flowers than the French, mixed, 10c.

French Double Dwarf, best mixed choice. Mixed, all kinds, 10c.

Marvel of Peru—(Four o'clock).—Brilliant, does well in any location, 10c.

Mignonette.—Sweet-scented, large flowering, per oz. 40c; pkt. 10c.

Mignonette—(Golden Queen).—Flowers very large and very fragrant, 10c.

Mignonette—(Matchet).—Fine for pot culture, 10c.

Morning Glory.—Splendid climbers, profusion of bloom, 12 colors. 10c; oz. 40c.

Morning Glory—(Double Mixed).—Many colors, 10c.

Morning Glory—(Imperial Japanese).—Of exquisite beauty and enormous size, 10c.

Moonflower.—A beautiful climber, 10c.

Mimulus—(Monkey Flower).—They bloom early from seed and are treated as annuals, mixed, 10c.

Nicotina.—Fragrant annual with clusters of white, tube-shaped flowers, 10c.

Nigella.—Love in the Mist, 10c.

TALL NASTURTIUM

Our seeds of these popular flowers have gained a reputation for brilliancy and variety of color, form and substance of flower, which cannot be surpassed. In our mixture, which we make up from separate and distinct sorts, will be found a very great variety of most beautiful colors.

Choice Mixed.—Pkt. 5c; oz. 15c; ¼ lb. 35c; lb. \$1.25.

Extra Choice Mixed.—Pkt. 10c; oz. 20c; ¼ lb. 50c; lb. \$1.50.

Rainbow Mixture.—Pkt. 10c; oz. 20c; ¼ lb. 50c; lb. \$1.50.

Loo's.—This magnificent climber is unusual vigorous growth, with beautiful foliage and splendid large flowers in the richest and most brilliant colors. Mixed, oz. 20c; pkt. 10c; ¼ lb. 50c; lb. \$1.50.

Variegated Leaved.—The flowers are of many bright colors in charming contrast to the handsomely variegated foliage. Pkt. 10c; oz. 20c.

Madame Gunter's Hybrid Varieties.—The foliage is mostly dark, and forms a striking contrast with the rich colors and shades, many of which are new to this family. Finest mixed, pkt. 10c; oz. 15c; ¼ lb. 60c.

Ivy Leaved.—Choice mixed, pkt. 10c; oz. 20c.

Dark Crimson, Scarlet, Deep Maroon, Yellow, Violet, Blush Rose, Striped Rose, each 10c; oz. 20c.

Collection of seven tall varieties, for 50c.

For Other Varieties See Novelty Page.

DWARF NASTURTIUM

Prize Mixed Dwarf Varieties.—Embraces all the best colors; pkt. 10c; oz. 20c; ¼ lb. 50c; lb. \$1.50.

Choice Mixed.—Oz. 15c; pkt. 5c; ¼ lb. 35c; lb. \$1.25.

Rainbow Mixed.—10c pkt.; oz. 20c.

King of Tom Thumb.—Oz. 20c; pkt. 10c.

New Chameleon.—A grand new variety, flower varying in color, pkt. 10c; oz. 20c.

Dark Leaved Sorts.—Mixed, pkt. 10c; oz. 20c.

Spotted Varieties.—Mixed, pkt. 10c; oz. 20c.

Empress of India.—Best brilliant scarlet, 10c; oz. 20c.

Ivy Leaved.—10c pkt.; 20c oz.

Golden Leaved.—10c pkt.; 20c oz.

Variegated Leaved.—This new Royal Race of Dwarf Nasturtium are very attractive. The leaves are variegated with yellow, white and green. Pkt. 10c; oz. 20c; ¼ lb. 60c.

Dwarf Spencer.—See Novelty Page. Pkt. 10c; oz. 30c.

PANSIES

Bugnots.—This is the finest strain known, finest mixed, 15c.

Odier.—Superb flowers of fine form and beautifully blotched choice mixed, 15c.

Trimardeau or Giant.—Extra choice strain of vigorous growth and flowers of enormous size, 15c pkt.; ¼ oz. \$1.00.

PANSIES---Continued

- Cassier Giant.**—Large flowers, a rich, showy strain, choice mixed, 15c.
French Mixed.—A fine mixture in a great variety of choice colors, 10c.
Giant Royal Show.—This is the finest mixture ever produced, and of enormous size, 15c.
Good Mixed.—Fine showing of flowers, 10c; ¼ oz. 65c.
Special Mixed.—The best strain of large flowering sorts from the leading European growers; a grand variety, finest mixed, 15c; ¼ oz. 75c.
Bugnot, Cassier, Odier and Trimardeau mixed, large pkt. 15c.
Snow Queen.—A beautiful large white, 10c.
Golden Yellow, King of the Blacks, Shining Red, Pure Yellow, Pure White, Azure Blue, each, per pkt. 10c.
Masterpiece.—New Giant Curled or ruffled pansy, mixed, 15c.

Petunia.—Finest single varieties, mixed, 10c.
Petunia—(Finest Mixed).—Colors mixed in great variety, 10c.
Petunia—(Large Flowered).—Best mixed, 10c.
Petunia—(Fringed).—Large fringed varieties, 30c.
Petunia—(Doubled Mixed).—All colors, 30c.

Portu'acca.—Valuable for bedding, showy colors, mixed, 10c.

Phlox.—Unequaled, showy for bedding, all colors, 10c.

POPPY

- Poppy.**—Exceedingly showy annual, making a gorgeous display, fine mixed, 10c; oz. 35c.
Carnation Flowered.—Mixed, splendid large double, 10c pkt.; oz. 35c.
Mikado.—Double white fringed petals tipped with scarlet, 10c.
Admiral.—Pure white with a broad band of brilliant scarlet around the top, 10c.
Peony Flowered.—All colors, mixed, 10c pkt.; oz. 40c.
The Shirley.—Beautiful light shades of white and pink, desirable, 10c; oz. 40c.
Scarlet King.—Very brilliant, 10c.
White Swan.—Large double pure white, 10c.
Mephisto.—Deep scarlet with violet spots, 10c.
Danebrog.—Single scarlet with white blotch on each petal, 10c.
 All the above varieties, mixed, 10c pkt.; oz. 40c

- Ricinus**—(Castor Bean).—Large tropical plants, ornamental leaved, 10c.
Salpiglossis.—Grandiflora, finest mixed, 10c.
Salvia—(Scarlet Sage).—An old time favorite red bedder, 10c.
Scabiosa—(Mourning Bride).—Old time plant, but better and larger, choice mixed, 10c.
Schizanthus—(Butterfly flower).—10c.
Snape dragon.—Mixed, 10c. See Antirrhinum.
Stock.—German ten-weeks, double, fine mixed, 10c.
Sweet William.—A well known and popular favorite. Single mixed, 10c; double mixed, 10c.
Silene—(Catchfly).—A beautiful genus of profuse flowering plants, with bright and attractive flowers, mixed, 10c.
Thunbergia.—A rapid climbing vine, 10c.
Venus Looking Glass.—Finest mixed free flowering, hardy annual, blooming the entire season, 10c.

- Verbena.**—Finest mixed, a splendid strain, 10c.
Verbena.—Mammoth mixed 10c

- Violets.**—Blue, sweet, 10c.
Viscaria.—(Rose of Heaven).—10c.
Wild Cucumber—(Creeping Jennie).—A rapid climber, 10c.

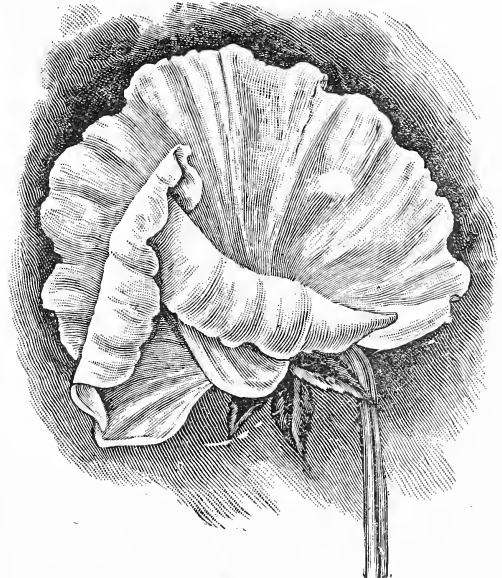
- Xeranthemum.**—Showy, everlasting flowers, 10c.
Zea.—Striped leaves, ornamental foliage, 10c.

ZINNIA

- Zinnia.**—Always popular, easily grown, brilliant display all Summer, double mixed 10c; ½ oz. 40c.
Dwarf Mixed.—Large flowering, 10c.
Single Mixed.—All colors, 10c.
Giant or Robusta.—Extra large, beautiful double flowers in great variety of colors, 10c.
Scarlet Zinnia.—10c.
 All above kinds mixed.—10c pkt.; ½ oz. 50c.
New Dahlia Flowered Zinnia.—Mammoth flowers, a wonderful new variety, choice mixed, 15c pkt.

SWEET PEAS

- Eckford's Finest Mixed.**—Includes the newest and best large flowering varieties of the most beautiful shades and colors. Pkt. 5c; oz. 10c; ¼ lb. 35c; lb. \$1.25.
American Beauties.—This mixture contains only grand, new named varieties of the large flowering type, highly recommended. Pkt. 10c; oz. 15c; ¼ lb. 40c; lb. \$1.50.



White Spencer

- Our Gilt Edge or Invincible Mixture.**—This is an up-to-date mixture of sweet peas and contains only grand, new varieties of the large flowering type, embracing a fine assortment of novelties. Pkt. 10c; oz. 15c; 2 ozs. 25c; ¼ lb. 40c; lb. \$1.50, postpaid.
Spencer Mixture.—A mixture of the Spencer type, large fluted flowers, in light shades. Pkt. 10c; oz. 25c; ¼ lb. 75c; lb. \$2.50.
Rainbow Mixture.—Best mixture obtainable, all new varieties are included in this mixture. Large pkt. 10c; oz. 15c; ¼ lb. 40c; lb. \$1.50.

PRICES OF ALL THE FOLLOWING VARIETIES:
 Pkt. 10c; oz. 15c; ¼ lb. 40c; unless otherwise noted.

- Blanche Ferry,** extra early, pink and white. Oz. 15c.
Dorothy Eckford, best pure white. Oz. 15c.
King Edward VII, best scarlet. Oz. 15c.
Lady Hamilton, best lavender. Oz. 15c.
Lovey, soft shell pink, a grand flower. Oz. 15c.
Othe'o, deep glossy maroon. Oz. 15c.
Primrose, pale primrose-yellow color.
Prima Donna, best light pink. Oz. 15c.

WILD GARDEN MIXED FLOWER SEED

A splendid mixture of over one hundred varieties of beautiful, free-blooming, hardy growers, which can be offered at a much less price than when sold in separate packages. When flowering commences something new blooms almost daily. Extra large packages, 10c; 1/2 oz. 25c; oz. 40c; 1/4 lb. 75c.

CUT FLOWER GARDEN MIXTURE

A mixture of choice annuals suitable for cut flowers. A splendid mixture of over fifty choice varieties. Pkt. 10c; 1/2 oz. 20c; oz. 35c.

EVERLASTING OR STRAW FLOWERS FOUR BEST VARIETIES

- Acroclinium.—Mixed, 10c pkt.
- Gomphrena.—Mixed. 10c pkt.
- Helichrysum.—Mixed, 10c pkt.
- Xeranthemum.—Mixed, 10c pkt.

All of above kinds mixed, 10c pkt. One packet each of the above four varieties for 30c.

DAHLIAS

Will grow in any kind of soil and give continuous bloom from July till after frost. Ours are from finest named sorts. Show, Decorative, Pompon, and Single varieties, 15c each, postpaid.

- Jack Rose.—Brilliant crimson red, 20c each.
- White, Yellow, Red.—Each 15c.

Special offer, one that will please you. 5 for 50c; 10 for \$1.00. The selection to be left to us. Mailed to your door, postpaid.

EVERLASTING FLOWERS

The Everlasting flowers with their rich, brilliant colors, are very valuable for winter decorations. They should be cut as soon as they come into full bloom, tied in small bunches and dried slowly in the shade. Choice mixed, large packages, 10c.

Cinnamon Vine.—From the Oriental land is one of the most charming climbers. Beautiful hardy and very fragrant. Grows in sun or shade, wet or dry. Can be grown in the house in the winter. Everyone should plant these lovely vines. No home is complete without them. They stand the hardest winter without injury, and burst forth in all their marvelous splendor early in the spring—as fine a climber as any lover of beautiful flowers can wish. Postpaid, 10c each, 3 for 25c.



Japanese Gazon Flower Garden.—This mixture we imported direct from Japan and it contains almost every imaginable kind of Annual flower. It is most interesting to plant and cultivate, because you never know what hour new beauties may spring up and blossom out. It is also useful as an inexpensive way to produce displays on large borders or to sow on hillsides or along lanes or walks. By using this seed liberally it is easy to convert many an unsightly spot into a bower of beauty. For the children nothing is so interesting, as they can pick flowers and bouquets to their hearts' content. Every day furnishes new surprises. Pkt. 10c; 3 pkts. 25c; oz. 35c; 1/4 lb. 75c.

A Very Special Offer for You



if you are the first in your locality to sign and mail this blank

The "Kant-Klog" has original and distinct features found on no other sprayer. Larger diameter, stands more firmly on uneven surfaces, doesn't tip over. The only nozzle ever made to give flat sprays, round sprays and solid streams. Nozzle cleaned without stopping spray—saves time and solution. All styles—two to fifty gallons. Last a lifetime. Many users write—"After twenty years it's still working fine."

Mail this blank promptly and get a special discount on one for your tree or garden spraying, whitewashing, etc., or a plan to get one free for introducing them to your friends. Sign and mail now—not to us—but to

THE ROCHESTER SPRAY PUMP CO.
181 Broadway, Rochester, N.Y.

Name

P. O.

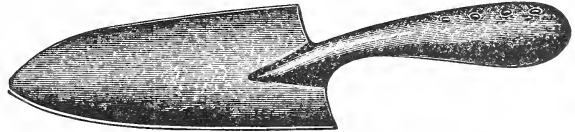
343 St..... State.....

Special Notice: In the front of this catalog and return envelope for your convenience in ordering. We hope there will be something you will want even if only a small amount. We would appreciate the address of some of your friends who are interested in gardening.

Collections at Reduced Prices

The collections we offer contain the best seed obtainable. Because they are made up in advance of the busy season we cannot make any changes in the assortments, but of course, anyone may order additional seed to go with the collections.

This Extra Heavy
GALVANIZED TROWEL
Free with each collection on this
page.



Made of heavy pressed steel, all one piece, and indestructible. No loose wood handle. and nothing to break.

EXTRA GALVANIZED TROWELS—30c EACH PREPAID

HOME GARDEN COLLECTION \$1.00 PREPAID

A splendid collection for the Home Garden. If purchased separately would cost \$1.80—Prepaid for \$1.00
ONE 10c PACKET EACH OF THE FOLLOWING

BEET—Early Blood; CABBAGE—Succession; CARROT—Oxheart; CUCUMBER—White Spine; CORN—Early Mayflower; ONION—Yellow Globe; RADISH—Scarlet Globe; PUMPKIN—Sugar; SPINACH—Victoria; SQUASH—Hubbard; SQUASH—Crookneck; RUTA BAGA—Purple Top; SWISS CHARD—Lucullus; PARSNIP—Hollow Crown; LETTUCE—May King; MUSK MELON—Rocky Ford; TOMATO—Early Jewel; BUSH BEAN—Golden Wax.

KITCHEN GARDEN COLLECTION \$1.25 PREPAID

A complete assortment that will meet the requirements of the Suburban or Country Garden. Every farm should have a Kitchen Garden

If purchased separately would cost \$2.10—Prepaid for \$1.25

BEET—Crimson Globe; CAULIFLOWER—Mixed; CARROT—Chantenay; CABBAGE—Danish Ball Head; CUCUMBER—White Spine; LETTUCE—Beefsteak; CORN—Golden Bantam; CORN—Mayflower; ONION—Yellow Globe; PARSNIP—Hollow Crown; RADISH—Scarlet Globe; PUMPKIN—Mixed; SQUASH—Hubbard; SQUASH—Marrow; SWISS CHARD—Lucullus; TOMATO—Earlana; TURNIP—White Egg; RUTA BAGA—Purple Top; one-half pint PEAS—Gradus; one-half pint BUSH BEANS—Golden Wax.

LAWN SEED FOR EVERY PURPOSE

Make your home grounds beautiful. We blend our own lawn seed mixtures.

For the best lawns we recommend our Evergreen Lawn Seed. It contains a well-balanced blend of various fine-bladed and deep-rooting varieties which will produce the best results under varied conditions as to soil and climate. Our "Evergreen Mixture" contains the right kind of grasses in correct proportions and will produce a thick sod of rich, deep green throughout the entire growing season.

We use only the finest grades of cleaned seeds in this mixture. It contains no chaff and will give a green, smooth, velvety sod within a few weeks after sowing. It is the best value at any price.

Quantity required for new lawns, one pound to 400 square feet.

Price 1/2 lb. 25c; 1 lb. 45c. By Parcel Post prepaid, 50c per lb.

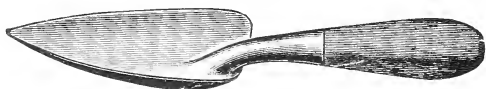
WIZARD BRAND Sheep Manure

We find the Wizard Brand of Sheep Manure is a most effective fertilizer for lawns. Send for a copy of our free circular.

SEE OUTSIDE COVER PAGE FOR OTHER BARGAIN COLLECTIONS

FLOWER AND VEGETABLE SEED COLLECTIONS

Save time and money by ordering one of the following collections. The seeds are of the best quality and regular sized packets. All collections sent pre-paid.



This Handy Garden Tool FREE

With Every Collection

VEGETABLE COLLECTION NO. 1. Price 50c Postpaid.

One 10 cent packet each of the following.

BEET—Crimson Globe.
CABBAGE—All Seasons.
CUCUMBER—White Spine.
SWISS CHARD—Lucullus.
RADISH—Scarlet Globe.

SPINACH—Long Standing.
CARROTS—Chantenay.
LETTUCE—Hanson.
SQUASH—Delicious.
TURNIP—White Egg.

VEGETABLE COLLECTION NO. 2. Price 75c.

One 10 cent packet each of the following.

BEET—Crimson Globe.
CABBAGE—Succession.
CARROT—Chantenay.
LETTUCE—Hanson.
PARSNIP—Hollow Crown.
RADISH—Scarlet Globe.
WINTER SQUASH—Hubbard.

SWISS CHARD—Lucullus.
BUSH BEANS—Golden Wax.
CUCUMBER—Davis Perfect.
SWEET CORN—Golden Bantam.
ONION—Yellow Globe.
SUMMER SQUASH—Crookneck.
TURNIP—White Egg.

FLOWER SEED COLLECTION. Price 50c.

One 10 cent packet each of the following.

ASTER—All kinds.
BACHELORS' BUTTONS—Single and double.
CALENDULA—Best mixed.
TALL NASTURTIUM—Best Mixed.
MIGNONETTE.

If purchased separately would cost \$1.10.

ALYSSUM—Sweet Scented.
CALIFORNIA POPPY.
MORNING GLORY—All colors.
PETUNIA—Single mixed.
POPPY—All kinds.
SWEET PEAS—Grandiflora mixed.

SPENCER SWEET PEA COLLECTION. Price 50c.

Nine regular 10c packets of the following choice Spencers

COUNTESS SPENCER.
HELEN LEWIS SPENCER.
LOVELY SPENCER.
PRIMROSE SPENCER.

CREAM SPENCER.
KING EDWARD SPENCER.
KING WHITE SPENCER.
SWEET LAVENDAR SPENCER.

Large Packet Superb Best Mixed Spencer varieties, including new and old varieties.

COMBINATION COLLECTION. Price 50c.

Five 10 cent packets of Choice Flower Seeds and five 10 cent packets of Standard Vegetable Seeds and a handy Garden Trowel all for 50 cents, prepaid.

ASTER—Best mixed.
CALENDULA—Choice mixed.
POPPY—A'l kinds.
BACHELORS' BUTTONS—Single and double, mixed.
SWEET PEAS—Superb mixed Spencers.

BEET—Detroit Dark Red.
CARROT—Chantenay.
CUCUMBER—White Spine.
LETTUCE—Choice mixed.
RADISH—Scarlet Globe.

OUR DOLLAR BOX OF VEGETABLES

A Complete Vegetable Garden for \$1.00. Sent prepaid to any address.

This box contains an ideal selection of Vegetables suited to New England. If purchased alone would cost \$2.00.

One Packet Each: BEET—Detroit Dark Red; CARROT—Oxheart; CABBAGE—Succession; CABBAGE—Danish Ball head; CUCUMBER—White Spine; LETTUCE—Beefsteak; LETTUCE—Hanson; MUSK MELLON—Hearts of Gold; PARSNIP—Hollow Crown; PUMPKIN—Mixed varieties; RADISH—Scarlet Globe; TURNIP—White Egg; SQUASH—True Hubbard; SQUASH—Marrow; SPINACH—New King of Denmark; SWISS CHARD—Lucullus; TOMATO—Earliana; and one half pint each: SWEET CORN, Golden Bantam; BUSH BEANS, Burpees Stringless Green Pod.

Also our Handy Garden Tool FREE with each of the above collections.

SEE THIRD COVER PAGE FOR OTHER COLLECTIONS