

Historic, Archive Document

Do not assume content reflects current scientific knowledge, policies, or practices.

**PRINCETON
NURSERIES**

PRINCETON, NEW JERSEY

Wholesale Price List

FALL 1926

WM. FLEMER'S SONS

Proprietors also of the
F. & F. NURSERIES
Springfield, N. J.

Princeton, N. J.

Aug. 1st, 1926

Dear Friends:

We are glad of the opportunity to send you this, our 13th fall catalogue and to be able to say the stock offered is of our regular high quality, in fact if anything a little better, as we try hard to make improvements each year.

As our list is increasing each year and now embraces a number of items that are evergreens in the south and practically deciduous in the north, so that it is difficult to know where to put them in the list, we have listed them twice both as deciduous and evergreen.

There is much confusion often in trying to separate the trees from the shrubs when we take the class of small trees or large shrubs, we so have put them all in one list alphabetically with figures of approximate sizes the plant reaches at maturity and a brief description of its outstanding characteristics.

We have also added an appendix with classified lists of plants for various purposes, which we believe will help our customers in making up their lists.

We look forward with pleasure to supplying your requirements this fall and invite you to visit us at any time. If you are too far away to come by auto, take the Pennsylvania Railroad to Princeton Junction where we will meet you by appointment or when notified by phone.

Fall prospects are good as stock seems to be in demand and our Princeton Products are established as the "Standard of Excellence" in Ornamentals.

Yours very truly,

PRINCETON NURSERIES,

WILLIAM FLEMER, Jr.,

Manager



Office and grounds, Princeton Nurseries.

Members: American Association of Nurserymen.

Eastern Nurserymen's Association.

New Jersey Nurserymen's Association.

Quotations, prices, and grading are based on HORTICULTURAL STANDARDS adopted by the American Association of Nurserymen, June 1923.

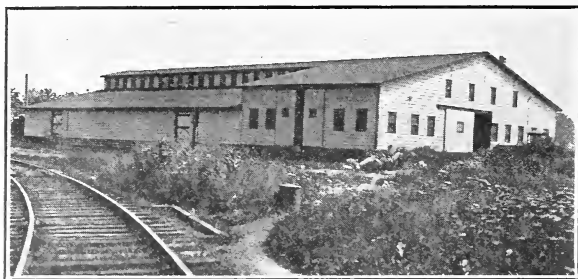
PRICES

Prices are as low as is consistent with the market, taking into consideration that the stock offered is of the best quality, carefully grown, with ample room for full development. Princeton grown stock should not be compared with poorly grown plants often offered. Prices are for Fall 1926.

CREDIT AND TERMS

We are glad to extend credit on the basis of our regular terms to established nurserymen who are known to us, or are rated satisfactorily. Cash before shipment is required from parties unknown to us, who have no commercial rating.

Terms, 2% 10 days, 1% 30 days from date of invoice. Interest at 6% will be charged on overdue accounts, Spring accounts from July 1st, Fall accounts from Jan. 1st.



Packing house and storage cellar, Princeton Nurseries. They are on our own siding which insures the minimum of exposure when loading and facilitates rapid shipment. We specialize in carload orders for which no charge is made for packing.

LIABILITY AND CLAIMS

We are not liable for injury to stock from frost, hail, fire, or other causes beyond our control, and book all orders with this understanding. Errors made by us will be gladly corrected, but complaints must be made within ten days time after receipt of stock.

Plants become your property upon delivery to transportation company, and we cannot be responsible for loss, damage, or delay in transit.

After the botanical name, in the following pages, we have embodied a new feature of giving the approximate height the plant attains at maturity; and a short description, giving the chief quality or characteristic of the plant, feeling that it would be a help to you in making up your order.

Princeton Nurseries employ no agents.

All stock offered herein is grown on our own nurseries under our own direct supervision.

PACKING

Bales and Boxes charged at cost. No packing charge is made for stock packed in full carlots. Boxes are made in the following sizes:

31 in. x 36 in.—10 ft. long	\$5.25
28 in. x 32 in.—10 ft. long	4.75
23 in. x 28 in.—10 ft. long	4.25
19 in. x 24 in.—10 ft. long	3.75
17 in. x 20 in.—10 ft. long	3.25
15 in. x 16 in.—10 ft. long	2.75
12 in. x 15 in.—10 ft. long	2.00

Add 50 cents for each additional 2 feet of length.

Decreases are in the same proportion, 50 cents for each 2 feet.

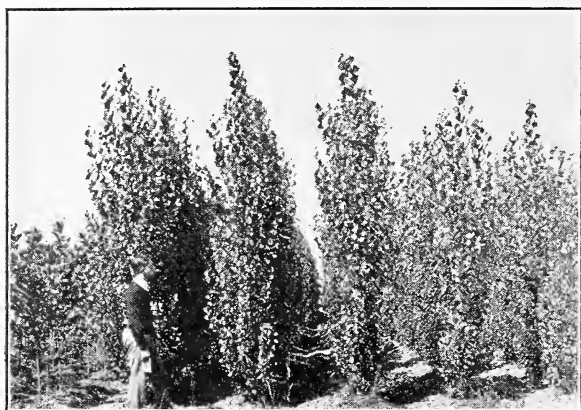
Deciduous Trees, Shrubs, Evergreens and Vines

NOTE—The figures in italics, following each variety, indicate in feet the approximate height of that plant when mature. It must be understood, however, that many varieties in their native habitat greatly exceed this height, but soil and climatic conditions modify their growth and character to a variable extent, and allowance for this has been made in the heights given here.

	Each	Per 10	Per 100
ABELIA grandiflora , <i>3'-4'</i>			
	GLOSSY ABELIA		
Choice small evergreen shrub, with white tinted lilac flowers, produced throughout the entire summer months.			
3 inch pots	\$.35	\$3.00	\$25.00
ABIES , (See EVERGREENS)			
ACANTHOPANAX pentaphyllum , <i>7'-8'</i>			
	FIVE LEAF ARALIA		
Graceful, arching habit; splendid for banks; very adaptable; good foliage for smoky exposures.			
18 to 24 in.25	2.00	15.00
2 to 3 ft.30	2.50	20.00
3 to 4 ft.35	3.00	25.00
ACER buergerianum , <i>12'-15'</i>			
	TRIDENT MAPLE		
5 to 6 ft.75	—	—
8 to 7 ft.	1.00	—	—
— ACER campestre , <i>25'-30'</i>			
	HEDGE MAPLE		
Useful for dry locations in undergrowth; has corky bark; grows slowly.			
3 to 4 ft.	1.00	—	—
4 to 6 ft.	1.50	—	—
— dasycarpum , <i>60'-80'</i>			
	SILVER MAPLE		
Quick growing, graceful shade tree; leaves silvery underneath.			
6 to 8 ft.75	6.00	50.00
8 to 10 ft.	1.00	9.00	75.00
8 to 10 ft.— <i>1¼ to 1½ in.</i>	1.25	11.50	100.00
10 to 12 ft.— <i>1½ to 1¾ in.</i>	1.75	16.50	150.00
10 to 12 ft.— <i>1¾ to 2 in.</i>	2.00	18.50	175.00
12 to 13 ft.— <i>2 to 2¼ in.</i>	2.50	22.50	—
12 to 13 ft.— <i>2¼ to 2½ in.</i>	2.75	—	—
12 to 14 ft.— <i>2½ to 3 in.</i>	3.50	—	—
— pyramidale , <i>30'-40'</i>			
	PYRAMIDAL SILVER MAPLE		
A narrow form, useful for accent or screen.			
6 to 8 ft.	1.00	9.00	—
8 to 10 ft.	1.50	14.00	—
8 to 10 ft.— <i>1¼ to 1½ in.</i>	2.00	18.50	—
9 to 10 ft.— <i>1½ to 2 in.</i>	2.50	23.50	—
10 to 11 ft.— <i>2 to 2¼ in.</i>	3.00	28.50	—
11 to 12 ft.— <i>2¼ to 2½ in.</i>	3.50	33.50	—
— wieri , <i>60'-80'</i>			
	WIER CUTLEAF MAPLE		
Graceful, drooping form; very desirable.			
8 to 10 ft.	1.25	11.50	—
8 to 10 ft.— <i>1¼ to 1½ in.</i>	1.75	16.50	—
10 to 12 ft.— <i>1½ to 1¾ in.</i>	2.00	19.00	—
10 to 12 ft.— <i>1¾ to 2 in.</i>	2.75	—	—
— negundo , <i>60'</i>			
	BOXELDER		
Will grow where other trees fail; especially good for dry, barren places and seashore.			
8 to 10 ft.80	7.00	—
8 to 10 ft.— <i>1¼ to 1½ in.</i>	1.00	9.00	—
10 to 12 ft.— <i>1½ to 1¾ in.</i>	1.35	12.50	—
10 to 12 ft.— <i>1¾ to 2 in.</i>	1.75	15.00	—
12 to 13 ft.— <i>2 to 2¼ in.</i>	2.50	22.50	—
12 to 13 ft.— <i>2¼ to 2½ in.</i>	2.75	25.00	—

ACER—continued	Each	Per 10	Per 100
— <i>palmatum</i> (<i>polymorphum</i>), 12'-15' GREEN JAPANESE MAPLE Develops into a splendid specimen for lawn planting.			
3 to 4 ft., B. and B.	\$2.50	\$22.50	—
4 to 5 ft., B. and B.	3.00	27.00	—
— <i>pennsylvanicum</i> (<i>striatum</i>), 20'-30' STRIPED MAPLE Green bark striped with white; thrives in wet soils.			
3 to 4 ft.75	—	—
4 to 6 ft.	1.00	—	—
— <i>platanoides</i> , 50'-75' NORWAY MAPLE The most popular street tree; retains its green leaves until late autumn.			
6 to 8 ft.	1.75	16.50	\$140.00
8 to 10 ft.	2.25	21.50	190.00
8 to 10 ft.—1¼ to 1½ in.	3.00	27.50	—
10 to 12 ft.—1½ to 1¾ in.	3.50	32.50	—
10 to 12 ft.—1¾ to 2 in.	4.50	42.50	—
12 to 13 ft.—2 to 2¼ in.	5.50	—	—
12 to 13 ft.—2¼ to 2½ in.	6.50	—	—
12 to 14 ft.—2½ to 3 in.	7.50	—	—
— <i>schwedleri</i> , 40'-60' SCHWEDLER PURPLE LEAF MAPLE Probably the best large growing purple leaf tree.			
4 to 5 ft.	1.00	—	—
5 to 6 ft.	1.50	—	—
6 to 8 ft.	2.00	—	—
8 to 10 ft.—1¼ to 1½ in.	3.00	—	—
10 to 12 ft.—1½ to 1¾ in.	3.75	—	—
— <i>rubrum</i> , 50'-75' RED OR SCARLET MAPLE Best in moist locations; also thrives in upland; brilliant red autumn coloring.			
6 to 8 ft.	1.50	12.50	110.00
8 to 10 ft.	2.00	17.50	150.00
8 to 10 ft.—1¼ to 1½ in.	2.35	22.50	—
— <i>saccharum</i> , 50'-75' SUGAR MAPLE Most popular in northern states; best planted in spring.			
6 to 8 ft.	1.25	11.50	100.00
8 to 10 ft.	1.50	14.00	—
8 to 10 ft.—1¼ to 1½ in.	2.00	19.00	—
10 to 12 ft.—1½ to 1¾ in.	2.50	23.50	—
10 to 12 ft.—1¾ to 2 in.	3.50	32.50	—
12 to 13 ft.—2 to 2¼ in.	4.50	—	—
— <i>tataricum ginnala</i> , 10'-12' TARTARIAN MAPLE Graceful and valuable for bright red autumn coloring.			
2 to 3 ft.40	3.50	—
3 to 4 ft.60	5.50	—
4 to 5 ft.	1.00	9.50	—
ACTINIDIA <i>arguta</i> , 20'-30' BOWER ACTINIDIA Greenish white, July. Rich, dark green foliage. Yellow berries.			
18 to 24 in.35	3.00	—
2 to 3 ft.40	—	—
AILANTHUS <i>glandulosa</i> , 50'-60' TREE OF HEAVEN Succeeds under most adverse city conditions.			
4 to 6 ft.65	5.00	40.00
6 to 8 ft.85	7.00	60.00
8 to 10 ft.	1.00	9.00	80.00
10 to 12 ft.	1.50	13.50	—
AKEBIA <i>quinata</i> , 15'-20' FIVELEAF AKEBIA Dainty beautiful vine, purple flower, May. Deep green leaves—persisting till winter.			
2 yr.35	3.00	—

	Each	Per 10	Per 100
AMELANCHIER canadensis (<i>botryapium</i>), 10'-12'			
White flowers in early spring before leaves; fruits are relished by birds.			
2 to 3 ft.	\$.40	\$3.50	—
3 to 4 ft.50	4.50	—
AMORPHA canescens , 2'-3'			
Bluish purple flowers in June.			
18 to 24 in.40	3.50	—
— <i>fruticosa</i> , 8'-10'			
Deep purple flowers, June, spreading habit.			
2 to 3 ft.25	2.00	—
3 to 4 ft.30	2.50	—
AMPELOPSIS quinquefolia , 30'-50'			
Valuable for rich, fiery autumn coloring.			
2 year light, 18 to 24 in.12	1.00	\$ 6.00
2 year medium, 2 to 3 ft.18	1.60	12.00
— — <i>engelmanni</i> , 30'-40'			
A good, self-clinging woodbine; very hardy.			
2 year light, 18 to 24 in.15	1.20	8.00
2 year medium, 2 to 3 ft.20	1.80	15.00
— — <i>veitchi</i> , 40'-50'			
Brilliant autumn coloring, blue berries, turning black; closely self clinging.			
2 year med., 18 to 24 in.35	3.00	20.00
2 year 1st cl., 2 to 2½ ft.40	3.50	30.00
2 year extra, 2½ ft.50	4.50	40.00
— — <i>atropurpurea</i> , 40'-50'			
Similar habit as the type, with purplish foliage in early spring, persisting more or less during the summer months.			
3 inch pots.40	3.00	—
— — <i>lowi</i> , 6'-8'			
A good variety of the type, with smaller, deeply cut foliage. Very graceful and distinct.			
3 inch pots.35	2.50	—
AMYGDALUS nana , 5'-6'			
Flowers double, May; very showy; there are Pink and White varieties.			
18 to 24 in.40	3.50	30.00
2 to 2½ ft.50	4.50	40.00
2½ to 3 ft.60	5.50	50.00
3 to 3½ ft.75	6.50	60.00
— <i>persica</i> (PRUNUS), 8'-10'			
PINK, RED AND WHITE FLG. PEACH			
Very decorative double flowering form; blooms before leaves.			
2 to 3 ft.45	4.00	35.00
3 to 4 ft.55	5.00	45.00
4 to 5 ft.65	6.00	—
5 to 6 ft.75	—	—
ANDROMEDA (See LEUCOTHOE AND PIERIS IN EVER-GREENS)			
— <i>aborea</i> (See OXYDENDRON)			
ARALIA pentaphyllum (See ACANTHOPANAX)			
— <i>spinosa</i> , 18'-20'			
Useful for tropical effects and shadows; white flowers, July.			
2 to 3 ft.30	2.50	20.00
3 to 4 ft.35	3.00	25.00
4 to 5 ft.40	3.50	30.00
5 to 6 ft.55	5.00	—
ARISTOLOCHIA siphon			
DUTCHMAN'S PIPE			
2 year.60	5.00	—



Lombardy Poplars, the type grown at Princeton. Note how evenly branched from the ground up. See page 30.

	Each	Per 10	Per 100
ARONIA arbutifolia, 6'-8'			
		RED CHOKEBERRY	
Valuable because of its red berries; very handsome in fall.			
18 to 24 in.	\$.40	\$3.50	\$30.00
2 to 3 ft.50	4.50	40.00
3 to 4 ft.60	5.50	50.00
4 to 5 ft.70	6.50	—
— melanocarpa (nigra), 8'-10'			
		BLACK CHOKEBERRY	
Delicate white flowers in May; black berries persist until late.			
18 to 24 in.30	2.50	20.00
2 to 3 ft.40	3.50	30.00
3 to 4 ft.50	4.50	40.00
AZALEA arborescens, 10'-12'			
		SWEET AZALEA	
Fragrant white flowers, June.			
12 to 15 in., B. & B.	1.00	9.00	—
15 to 18 in., B. & B.	1.35	12.50	—
1½ to 2 ft., B. & B.	1.75	—	—
— amoena, 3'-4'			
Conspicuous purple-red flowers, April-May. Leaves turn a rich, bronze-green in winter.			
6 to 8 in.60	5.50	45.00
8 to 10 in., B. & B.75	6.00	50.00
10 to 12 in., B. & B.	1.00	9.00	—
— Calendulacea, 4'-5'			
		FLAME AZALEA	
The great flame Azalea of Carolina Mountains; very showy; burnt orange flowers.			
12 to 15 in., B. & B.	1.25	—	—
— hinodegiri, 3'-4'			
Larger leaves and looser growth than above; flowers very bright crimine-pink; effective in masses or with Rhododendron.			
6 to 8 in.85	7.50	65.00
8 to 10 in., B. & B.	1.10	10.00	90.00
10 to 12 in., B. & B.	1.35	12.50	—
— indica alba (ledifolia alba), 3'-4'			
Pure white flowers and a profuse bloomer.			
10 to 12 in., B. & B.	1.00	8.50	75.00
12 to 15 in., B. & B.	1.25	11.50	—

AZALEA—continued	Each	Per 10	Per 100
— — lilacina , 3'-4'			
A beautiful addition to the indica type with very large individual flowers of pure lilac color.			
10 to 12 in., B. & B.	\$1.00	\$ 8.50	\$75.00
12 to 15 in., B. & B.	1.25	11.50	—
— — rosea (magnifica) , 3'-4'			
Rose colored flowers.			
15 to 18 in., B. & B.	1.50	13.50	—
— kaempferi , 4'-5'		TORCH AZALEA	
Warm brick-red flowers, May.			
3 yr. seedlings transplanted.....	.35	3.00	25.00
12 to 15 in., B. & B.	1.50	—	—
— macrantha , 2½'-3'		RED SALMON AZALEA	
A beautiful plant, with large flowers that appear at intervals, and not at one time like the preceding.			
8 to 10 in., B. & B.	1.00	9.00	80.00
10 to 12 in., B. & B.	1.25	12.00	—
12 to 15 in., B. & B.	1.35	12.50	—
— mollis , 4'-6'		CHINESE AZALEA	
Large showy flowers in shades of orange and red. May-June. Large hairy leaves.			
3 yr. seedlings.....	.30	2.50	20.00
12 to 15 in., B. & B.	1.25	11.00	—
15 to 18 in., B. & B.	1.75	15.00	—
1½ ft.	2.00	—	—
— nudiflora , 6'-8'		PINXTERBLOOM	
Sweet scented pink flowers in May. Prefers moist, slightly shady place. A beautiful variety.			
12 in., B. & B.	1.00	—	—
15 in., B. & B.	1.25	—	—
1½ ft., B. & B.	1.50	—	—
— vaseyi , 8'-9'		PINK SHELL AZALEA	
Delicate pink,—April and May.			
12 to 15 in., B. & B.	1.25	—	—
15 to 18 in., B. & B.	1.50	—	—
— viscosa , 6'-7'		SWAMP AZALEA	
White, very fragrant, June, July.			
12 to 15 in., B. & B.	1.25	—	—
15 to 18 in., B. & B.	1.50	—	—
— yodogawa , 3'-4'		YODOGAWA AZALEA	
Double pinkish-lavender flowers, May. Very hardy and of exceptional merit.			
8 to 10 in.75	6.00	—
10 to 12 in.	1.00	8.50	—
12 to 15 in., B. & B.	1.25	11.00	—
15 to 18 in., B. & B.	1.50	13.50	—
18 to 24 in., B. & B.	2.00	17.50	—

KURUME AZALEAS

A new evergreen Japanese type, with semi-double flowers in white, pink, red and lavender, making a valuable addition to the list of plants that can be easily forced for Christmas and Easter trade. These are also suitable in protected locations, and perfectly hardy from Washington south.

8 to 10 in.	1.25	10.00	—
10 to 12 in.	1.50	12.50	—
12 to 15 in.	1.75	15.00	—

- Christmas Cheer**, red, semi-double.
- Coral Bells**, coral pink, semi-double. ✓
- Flame**, orange red, single.
- Pink Pearl**, salmon rose, semi-double ✓
- Snow**, pure white, semi-double.



Oriental Planes, the finest that can be grown. Note straight stems and well-shaped heads. See page 29.

HARDY JAPANESE AZALEAS

We have a number of named varieties of Japanese Azaleas which have proven hardy in this section. They are very desirable for landscape work. Sizes run from 10 inch to 18 inch and prices will be gladly quoted on application.

	Each	Per 10	Per 100	
BACCHARIS halimifolia, 9'-10'				
	GROUNDSEL BUSH			
Conspicuous fluffy seed pods in Sept. Good for seashore planting.				
18 to 24 in.	\$.30	\$2.50	—	
2 to 3 ft.35	3.00	—	
3 to 4 ft.45	4.00	—	
BENZOIN aestivale (LINDERA benzoin), 10'-12'				
	SPICEBUSH			
Flowers yellow, April. Scarlet berries, beautiful autumn coloring, leaves aromatic.				
18 to 24 in.35	3.00	—	
2 to 3 ft.40	3.50	—	
3 to 4 ft.50	4.50	—	
BERBERIS ilicifolia, 5'-6'				
	HOLLY BARBERRY			
Holly-like leaves, persisting until new foliage appears; flowers yellow. Semi-evergreen.				
15 to 18 in., B. and B.55	—	—	
18 to 24 in., B. and B.65	—	—	
— julianae, 4'-5'				
	WINTERGREEN BARBERRY			
Beautiful evergreen hardy variety, of compact growth, with nice glossy green foliage throughout the winter.				
3 inch pots.75	6.00	—	
— subcaulialata, 5'-6'				
A new Chinese introduction similar in habit to Wilsonii but stronger grower. Especially attractive in the winter months, with its mass of pink berries.				
3 inch pots.50	4.00	—	
	Each	Per 10	Per 100	Per 1000
— thunbergii, 4'-5'				
	JAPANESE BARBERRY			
A splendid low hedge plant, or for massing; brilliant autumn coloring; scarlet berries.				
9 to 12 in.10	.75	5.00	\$40.00
12 to 15 in.15	1.00	7.50	65.00
15 to 18 in.20	1.50	10.00	90.00
18 to 24 in.25	2.00	15.00	130.00
2 to 2½ ft.30	2.50	—	—

BERBERIS—continued	Each	Per 10	Per 100
— — <i>minor</i> , 2'-3'		BOX BARBERRY	
A dwarf, compact form of Japanese Barberry; fruits sparingly. Used for edging where Box is not hardy.			
6 to 8 in.	\$.15	\$1.00	—
8 to 10 in.18	1.30	—
10 to 12 in.20	1.50	—
12 to 15 in.25	—	—
— <i>vulgaris</i> , 7'-8'		EUROPEAN BARBERRY	
Yellow flowers, May. Fruit red, persisting to midwinter; upright habit.			
18 to 24 in.20	1.50	\$10.00
2 to 3 ft.25	2.00	15.00
3 to 4 ft.30	2.50	—
— — <i>purpurea</i> , 7'-8'		PURPLE EUR. BARBERRY	
Has pleasing soft purplish foliage.			
18 to 24 in.25	2.00	15.00
2 to 3 ft.30	2.50	20.00
3 to 4 ft.40	3.50	—
BETULA <i>alba</i> , 30'-50'		EUROPEAN WHITE BIRCH	
Known by its white bark.			
4 to 5 ft.85	7.50	—
5 to 6 ft.	1.00	9.00	—
6 to 8 ft.	1.25	—	—
— — <i>laciniata</i> , 30'-40'		CUTLEAF WEEPING BIRCH	
Graceful tree for lawn planting.			
3 to 4 ft.	1.25	11.00	—
4 to 5 ft.	1.65	15.00	—
5 to 6 ft.	2.00	18.50	—
— — <i>purpurea</i> , 30'-40'		PURPLELEAF WHITE BIRCH	
A desirable purple sort.			
3 to 4 ft.	1.00	—	—
— — <i>pyramidalis</i> , 30'-40'		PYRAMIDAL WHITE BIRCH	
Dense and columnar.			
3 to 4 ft.	1.00	—	—
— — <i>youngi</i> , 20'-30'		YOUNGS WEEPING BIRCH	
A dwarf, spreading, pendulous tree; unique form.			
3 to 4 ft.	1.00	—	—
4 to 5 ft.	1.50	—	—
— <i>lenta</i> , 40'-60'		SWEET BIRCH	
Has attractive, smooth, reddish bark, and conspicuous catkins in spring.			
3 to 4 ft.60	5.00	—
4 to 6 ft.80	7.00	—
6 to 8 ft.	1.00	9.00	—
— <i>lutea</i> , 50'-70'		YELLOW BIRCH	
Makes fine windbreak.			
3 to 4 ft.60	5.00	—
4 to 6 ft.85	7.50	70.00
6 to 8 ft.	1.15	10.00	90.00
— <i>nigra</i> , 50'-60'		RIVER BIRCH	
Thrives in moist places; its torn, ragged bark is quite unique.			
4 to 6 ft.	1.00	8.50	—
6 to 8 ft.	1.25	11.00	—
— <i>papyrifera</i> , 40'-50'		PAPER OR CANOE BIRCH	
Picturesque paper bark, very white when older.			
4 to 6 ft.90	8.00	70.00
6 to 8 ft.	1.25	11.00	90.00
8 to 10 ft.	1.75	16.50	140.00
10 to 12 ft.	2.50	22.50	185.00

BETULA—continued	Each	Per 10	Per 100
— <i>populifolia</i> , 30'-40'		GRAY BIRCH	
Will grow in poor soil and dry places. Commonly found native in New Jersey.			
4 to 6 ft.	\$.85	\$ 7.50	—
6 to 8 ft.	1.25	11.50	—
BIGNONIA radicans , 20'-30'		TRUMPET CREEPER	
Showy, trumpet-shaped flowers, scarlet and orange, July. Roots as it climbs.			
1 year, 18 to 24 in.20	1.50	\$10.00
2 year, 2 to 3 ft.25	2.00	15.00
— — <i>grandiflora</i> , 10'-20'		CHINESE TRUMPETCREEPER	
One of the handsomest of flowering vines with large trusses of orange yellow flowers, July and August.			
1 yr. grafts.40	3.00	—
2 yr. grafts.50	4.00	—
— — Mad. Gallen , 10'-20'			
An improved variety better than <i>grandiflora</i> of a darker red. Very handsome and a valuable addition to our list.			
1 yr. grafts.50	4.00	—
2 yr. grafts.60	5.00	—
BIOTA (See EVERGREENS)			
BUDDLEIA variabilis magnifica , 5'-6'		BUTTERFLY BUSH	
Very effective with gray-green foliage and deep lilac flowers; likes sun. June, September.			
18 to 24 in.20	1.50	10.00
2 to 3 ft.25	2.00	15.00
3 to 4 ft.30	2.50	20.00
— — <i>nanhoensis</i> , 3'-4'			
A good new variety recently introduced from China. Bloom similar to the type but of good dwarf compact habit.			
3½ inch pots.75	—	—
BUXUS (See EVERGREENS)			
CALLICARPA purpurea , 3'-4'		CHINESE BEAUTY BERRY	
Lilac-violet berries, especially attractive in August. Graceful habit.			
15 to 18 in.25	2.00	15.00
18 to 24 in.30	2.50	20.00
2 to 3 ft.35	3.00	25.00
3 to 4 ft.45	4.00	35.00
CALYCANTHUS floridus		SWEETSHRUB	
18 to 24 in.35	3.00	25.00
2 to 3 ft.45	4.00	—
3 to 4 ft.55	5.00	—
CARAGANA arborescens , 10'-12'		SIBERIAN PEA-TREE	
Yellow pea-shaped flowers, May-June.			
2 to 3 ft.30	2.50	—
3 to 4 ft.35	3.00	—
4 to 5 ft.40	3.50	—
CARPINUS caroliniana , 30'-40'		AMERICAN HORNBEAM	
Closely resembles the Beech in appearance.			
2 to 3 ft.40	3.50	—
3 to 4 ft.50	4.50	—
4 to 5 ft.60	—	—
CARYOPTERIS incana (mastacantha) , 2'-3'		BLUEBEARD	
Lavender-blue flowers, Sept.-Oct. Splendid for massing. Requires protection.			
2 year.25	2.00	15.00



Pin Oaks at Princeton. We use every possible care to make our trees the best that can be produced. Pin Oaks are one of our specialties, and it is one of the best shade trees.

	Each	Per 10	Per 100
CATALPA bungei, 10'-15'			
Useful in formal planting.			
Light Heads, 1 yr., 5 to 6 ft., 1 in.	\$1.10	\$10.00	\$ 90.00
Med. Heads, 1 yr., 5 to 6 ft., 1 1/4 in.	1.25	11.50	100.00
First Class Heads, 2 yr., 5 to 6 ft., 1 1/2 in.	1.60	15.00	135.00
Extra Large Heads, 2 yr., 5 to 6 ft., 1 3/4 in.	2.00	17.50	165.00
— speciosa, 30'-35'			
4 to 6 ft.	.50	4.00	—
6 to 8 ft.	.60	5.00	—
8 to 9 ft., 1 1/4 in.	.75	—	—
9 to 10 ft., 1 1/2 in.	1.25	—	—
CEANOTHUS americanus, 3'-4'			
Very attractive, dwarf native shrub; white flowers.			
12 to 18 in.	.40	3.50	30.00
18 to 24 in.	.45	4.00	35.00
CELASTRUS orbiculatus (articulatus), 15'-20'			
Has very decorative orange and crimson berries which persist all winter. Picturesque, shrubby growth.			
2 year	.25	2.00	15.00
3 year	.30	2.50	20.00
— scandens, 20'-25'			
Most adaptable vine with orange and red berries that retain color when cut and dried.			
1 year—18 to 24 in.	.20	1.50	10.00
2 year—2 to 3 ft.	.25	2.00	12.00
3 year—3 to 4 ft.	.30	2.50	15.00
CELTIS occidentalis, 50'-60'			
Similar foliage and habit as Elm.			
3 to 4 ft.	.30	—	—
4 to 5 ft.	.40	—	—
CEPHALANTHUS occidentalis, 5'-6'			
Round heads of creamy white flowers, July-Sept. Good foliage; likes moisture.			
18 to 24 in.	.20	1.50	—
2 to 3 ft.	.25	2.00	—
3 to 4 ft.	.30	2.50	—

UMBRELLA CATALPA

WESTERN CATALPA

JERSEY-TEA

ORIENTAL BITTERSWEET

HACKBERRY

BUTTONBUSH

	Each	Per 10	Per 100
CERASUS (See Prunus)			
CERCIDIPHYLLUM japonicum , 60'-80'			KATSURA TREE
Develops into a magnificent, symmetrical tree; beautiful spring and autumn colors.			
3 to 4 ft.	\$.75	\$6.50	\$50.00
4 to 5 ft.85	7.50	65.00
5 to 6 ft.	1.00	9.00	—
CERCIS canadensis , 12'-15'			AMERICAN REDBUD
Rosy-pink, April, very effective when planted with Dogwood; good foliage.			
2 to 3 ft.40	3.50	30.00
3 to 4 ft.55	5.00	—
4 to 5 ft.65	—	—
— chinensis , 10'-12'			CHINESE REDBUD
Flowers a little larger and darker than above, but more compact habit of growth.			
12 to 18 in.40	3.50	30.00
18 to 24 in.50	4.00	35.00
2 to 3 ft.60	5.00	—
CHIONANTHUS virginica , 15'-18'			WHITE FRINGE
Fragrant tassel-like white flowers. May-June. Blue-black plum-like fruits follow.			
18 to 24 in.60	5.00	—
2 to 3 ft.70	6.00	—
3 to 4 ft.80	7.00	—
CLADRASTIS lutea (tinctoria) , 30'-40'			YELLOW-WOOD
A striking tree with long panicles of fragrant white flowers in June.			
4 to 5 ft.	1.25	—	—
5 to 6 ft.	1.50	—	—
CLEMATIS jackmani , 10'-15'			JACKMAN CLEMATIS
Large, very showy, rich purple flowers.			
2 year No. 1.60	5.50	50.00
— monatana rubens , 15'-20'			PINK ANEMONE CLEMATIS
A strong climber with pink anemone like flowers covering the entire plant through the spring months.			
3 inch pots.50	4.00	—
— paniculata , 20'-25'			SWEET AUTUMN CLEMATIS
White, fragrant flowers, Sept. Woolly seed pods also attractive.			
2 year first class.30	2.00	15.00
2 year extra.35	2.50	20.00
3 year.40	3.00	25.00
CLETHRA alnifolia , 4'-5'			SUMMERSWEET
Spikes of very fragrant flowers, July-Sept. Prefers moist, shady places.			
18 to 24 in.35	3.00	20.00
2 to 2½ ft.35	3.00	25.00
2½ to 3 ft.40	3.50	30.00
COLUTEA arborescens , 8'-10'			BLADDER SENNA
Yellow flowers, June-August. Useful for dry places.			
2 to 3 ft.30	2.00	—
3 to 4 ft.35	3.00	—
4 to 5 ft.40	3.50	—
CORNUS alba (sibirica) , 8'-10'			CORAL DOGWOOD
Bright red bark, porcelain blue fruits. Quick grower; useful for winter effect.			
18 to 24 in.20	1.50	10.00
2 to 3 ft.25	2.00	15.00
3 to 4 ft.30	2.50	20.00
4 to 5 ft.35	3.00	—



A block of young two-year Silver Maple and Weeping Willow showing how our shade trees are staked in the early stages to make absolutely straight trunks.

CORNUS—continued		Each	Per 10	Per 100
— —	<i>elegantissima</i> , 5'-6'	VARIEGATED CORNELIAN-CHERRY		
	Silver and green leaves; red bark.			
	18 to 24 in.....	\$.30	\$2.50	—
	2 to 3 ft.....	.40	3.50	—
	3 to 4 ft.....	.45	4.00	—
— —	<i>spaethi</i> , 6'-8'	YELLOW SPAETH DOGWOOD		
	The leaves are margined with yellow.			
	18 to 24 in.....	.35	3.00	\$25.00
	2 to 3 ft.....	.40	3.50	30.00
—	<i>alternifolia</i> , 15'-18'	PAGODA DOGWOOD		
	Branches spread horizontally; most picturesque. Blue-black fruit.			
	2 to 3 ft.....	.40	3.50	—
	3 to 4 ft.....	.45	4.00	—
	4 to 5 ft.....	.55	5.00	—
	5 to 6 ft.....	.65	—	—
—	<i>amomum</i> (<i>sericea</i>), 8'-9'	SILKY DOGWOOD		
	Pale blue fruits; young twigs purple. Prefers moist places.			
	18 to 24 in.....	.20	1.50	10.00
	2 to 3 ft.....	.25	2.00	15.00
	3 to 4 ft.....	.30	2.50	20.00
	4 to 5 ft.....	.35	3.00	—
	5 to 6 ft.....	.40	3.50	—
—	<i>florida</i> , 15'-25'	WHITE FLOWERING DOGWOOD		
	Among the best of the spring flowering small trees. Good locally collected stock.			
	2 to 3 ft.....	.50	—	—
	3 to 4 ft.....	.75	—	—
	4 to 5 ft.....	1.00	—	—
—	<i>rubra</i> , 15'-20'	RED FLOWERING DOGWOOD		
	The pink flowers are more persistent than the white.			
	18 to 24 in.....	1.50	—	—
	2 to 2½ ft.....	2.00	—	—
	2½ to 3 ft.....	2.50	—	—
	3 to 4 ft.....	3.00	—	—
—	<i>kousa</i> , 16'-18'	KOUSA DOGWOOD		
	White flowers in June. Conspicuous cherry-like scarlet fruits, attractive to birds.			
	18 to 24 in.....	.40	—	—
	2 to 3 ft.....	.50	—	—

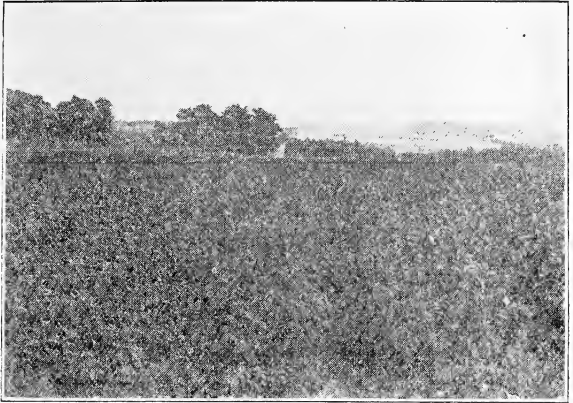
CORNUS—continued	Each	Per 10	Per 100
— <i>paniculata</i> , 10'-12'		GRAY DOGWOOD	
Numerous small white flowers in May, followed by white fruits on red stems.			
18 to 24 in.	\$.25	\$2.00	\$15.00
2 to 3 ft.30	2.50	20.00
3 to 4 ft.35	3.00	25.00
4 to 5 ft.40	3.50	—
— <i>stolonifera</i> , 7'-8'		RED-OSIER DOGWOOD	
Spreading habit, dark red bark, white fruits. Does well in moisture.			
2 to 3 ft.25	2.00	15.00
3 to 4 ft.30	2.50	20.00
4 to 5 ft.35	3.00	—
— <i>lutea</i> , 6'-7'		GOLDEN BARK DOGWOOD	
Has distinct yellow bark; fine for winter effects.			
18 to 24 in.25	2.00	15.00
2 to 3 ft.30	2.50	20.00
3 to 4 ft.35	3.00	25.00
CORYLUS <i>americana</i> , 8'-9'		HAZEL-NUT	
Useful for natural plantings, delights in half-shade.			
2 to 3 ft.75	—	—
3 to 4 ft.	1.00	—	—
COTONEASTER <i>acutifolia</i> , 5'-6'			
Red flowers—black fruit.			
1½ to 2 ft.50	4.50	—
2 to 2½ ft.60	5.00	—
2½ to 3 ft.75	6.00	—
— <i>francheti</i> , 5'-6'		FRANCHET COTONEASTER	
Upright growing variety with spreading branches. Leaves dark green, white tomentum underneath. Berries bright orange, freely produced.			
3 inch pots.50	4.50	—
6 inch pots.75	6.50	60.00
— <i>horizontalis davidiana</i> , 1'-1½'		ROCK COTONEASTER	
Small box-like leaves; bright red berries; effective among rocks.			
3 inch pots.50	4.00	30.00
5 inch pots.75	6.50	60.00
— <i>lemoinei</i> , 4'-5'			
Similar to Francheti in habit with smaller foliage and more tomentose giving a silvery effect. Fruit red.			
3 inch pots.50	4.50	—
5 inch pots.75	6.50	—
— <i>microphylla</i> , 1½'-2'		ROCKSPRAY	
Very small leaves, very deep green. Rather more bushy than the Rock Cotoneaster.			
3 inch pots.50	4.00	30.00
5 inch pots.75	6.50	60.00
— <i>thymifolia</i> , 1½'-2'		THYME COTONEASTER	
3 inch pots.50	4.50	40.00
5 inch pots.75	6.50	—
— <i>rotundifolia (buxifolia)</i> , 1½'-2'			
Prostrate growing, semi-evergreen shrub with small round green foliage and bright red berries.			
3 inch pots.50	4.50	40.00
5 inch pots.75	6.50	60.00
— <i>simonsi</i> , 5'-6'		SIMONS COTONEASTER	
Almost evergreen. Good grower with loose habit.			
6 inch pots.75	6.50	—

	Each	Per 10	Per 100
CRATAEGUS coccinea, 15'-20'	THICKET HAWTHORN		
Large scarlet fruits in autumn.			
2 to 3 ft.	\$.65	\$5.00	—
3 to 4 ft.75	6.00	—
4 to 5 ft.90	7.50	—
— cordata, 12'-15'	WASHINGTON HAWTHORN		
Berries are small, brilliant red, and persist nearly all winter. brilliant autumn foliage.			
2 to 3 ft.65	5.00	—
3 to 4 ft.75	6.00	—
4 to 5 ft.90	7.50	—
— crusgalli, 15'	COCKSPUR THORN		
Deep green, shiny leaves make this Hawthorn distinctive; white flowers are also conspicuous.			
2 to 3 ft.65	5.00	—
3 to 4 ft.75	6.00	—
4 to 5 ft.90	7.50	—
— oxycantha, 12'-15'	ENGLISH HAWTHORN		
18 to 24 in.50	4.00	—
2 to 3 ft.65	5.00	—
— — Pauls scarlet, 12'-15'	DOUBLE SCARLET HAWTHORN		
2 to 3 ft.	1.00	8.50	—
3 to 4 ft.	1.25	—	—
4 to 5 ft.	1.50	—	—
5 to 6 ft.	2.00	—	—
— — dbl. white, 12'-15'			
2 to 3 ft.	1.00	8.50	—
3 to 4 ft.	1.25	—	—
4 to 5 ft.	1.50	—	—
5 to 6 ft.	2.00	—	—
— — dbl. pink, 12'-15'			
2 to 3 ft.	1.00	8.50	—
3 to 4 ft.	1.25	—	—
4 to 5 ft.	1.50	—	—
5 to 6 ft.	2.00	—	—
— pyracantha lalandi (See PYRACANTHA—EVERGREENS)			
CYDONIA japonica, 4'-5'	FLOWERING QUINCE		
Scarlet flowers in April, May.			
12 to 18 in.30	2.50	\$20.00
18 to 24 in.35	3.00	25.00
2 to 2½ ft.40	3.50	30.00
CYTISUS scoparius, 4'-6'	SCOTCH BROOM		
Thin, green branches, covered with yellow flowers.			
18 to 24 in.30	2.50	—
2 to 3 ft.40	3.50	—
DAPHNE cneorum (See EVERGREENS)			
DESMODIUM (See LESPEDEZA)			
DEUTZIA candidissima, 9'-10'	SNOWFLAKE DEUTZIA		
Graceful habit, double white, June.			
18 to 24 in.25	2.00	15.00
2 to 3 ft.30	2.50	20.00
3 to 4 ft.35	3.00	25.00
4 to 5 ft.40	3.50	30.00
— crenata fl. pl., 6'-8'	DOUBLE PINK DEUTZIA		
Pink, slightly fragrant, June.			
18 to 24 in.25	2.00	15.00
2 to 3 ft.30	2.50	20.00
3 to 4 ft.35	3.00	25.00
4 to 5 ft.40	3.50	—

DEUTZIA—continued	Each	Per 10	Per 100
— <i>gracilis</i> , 3'			
SLENDER DEUTZIA			
Profuse bloomer, pure white, May. Useful "facing" shrub.			
10 to 12 in.	\$.25	\$2.00	\$15.00
12 to 15 in.30	2.50	20.00
15 to 18 in.35	3.00	25.00
18 to 24 in.45	4.00	35.00
— <i>lemoinei</i> , 4'-5'			
LEMOINE DEUTZIA			
Large white flowers, June, graceful.			
15 to 18 in.30	2.50	18.00
18 to 24 in.35	3.00	22.00
2 to 2½ ft.40	3.50	30.00
— <i>longifolia veitchii</i> , 3'-4'			
LONG LEAVED DEUTZIA			
Beautiful variety with large light pink individual flowers produced in large corymbs.			
3 inch pots.50	4.00	—
— <i>parviflora</i> , 3'			
MONGOLIAN DEUTZIA			
Semi-erect habit, white, June. Distinctive.			
15 to 18 in.25	2.00	—
18 to 24 in.30	2.50	—
2 to 2½ ft.35	3.00	—
— <i>scabra pride of Rochester</i> , 9'-10'			
LARGE FLWD. DEUTZIA			
Vigorous, large flower tinged pink, June.			
18 to 24 in.25	2.00	15.00
2 to 3 ft.30	2.50	20.00
3 to 4 ft.35	3.00	25.00
4 to 5 ft.40	3.50	—
DIERVILIA <i>trifida</i> , 3'			
DWARF BUSH HONEYSUCKLE			
Yellow, June-July. A good low shrub for shady places.			
15 to 18 in.30	2.50	—
18 to 24 in.35	3.00	—
2 to 3 ft.40	3.50	—
— <i>sessilifolia (lutea)</i> , 4'-5'			
SOUTHERN BUSH HONEYSUCKLE			
Yellow, more vigorous than preceding, June-July.			
2 to 3 ft.30	2.50	—
3 to 4 ft.35	3.00	—
DIOSPYROS <i>virginiana</i> , 15'			
PERSIMMON			
Handsome foliage.			
3 to 4 ft.65	5.00	—
4 to 5 ft.75	6.00	—
ELAEAGNUS <i>angustifolia</i> , 15'-18'			
RUSSIAN-OLIVE			
Silver-gray leaves and branchlets, orange berries; good for massing.			
2 to 3 ft.25	2.00	15.00
3 to 4 ft.35	3.00	20.00
4 to 5 ft.40	3.50	30.00
5 to 6 ft.45	4.00	—
— <i>longipes</i> , 6'-8'			
CHERRY ELAEAGNUS			
Silvery leaves, fragrant yellow flowers. May. Large red berries ripe in July.			
18 to 24 in.35	3.00	25.00
2 to 3 ft.45	4.00	35.00
3 to 4 ft.55	5.00	—
EUONYMUS <i>alatus</i> , 9'-10'			
WINGED EUONYMUS			
Interesting corky bark, warm crimson autumn coloring. Makes fine specimen shrub.			
18 to 24 in.40	3.50	30.00
2 to 2½ ft.50	4.50	40.00
2½ to 3 ft.60	5.50	50.00
3 to 4 ft.75	7.00	—
— <i>americanus</i> , 7'-8'			
BROOK EUONYMUS			
Pink fruits; prefers moist locations.			
18 to 24 in.25	2.00	—
2 to 3 ft.30	—	—

EUONYMUS—continued		Each	Per 10	Per 100
— bungeanus , 12'-14'	WINTERBERRY EUONYMUS			
Fruits profusely. The orange and white seed pods persist on bush for a long time. Good autumn coloring.				
2 to 3 ft.	\$.30	\$2.50	\$20.00	
3 to 4 ft.40	3.50	—	
4 to 5 ft.50	4.50	—	
— europaeus , 12'-14'	EUROPEAN BURNINGBUSH			
Pink fruits on long stalks, persisting a long time.				
18 to 24 in.30	2.50	—	
2 to 3 ft.35	3.00	—	
— japonicus , 5'-6'	EVERGREEN BURNINGBUSH			
Lustrous, deep green leaves; upright bushy habit; needs winter protection here.				
8 to 10 in.35	3.00	20.00	
10 to 12 in.50	3.50	25.00	
12 to 15 in.75	6.00	40.00	
15 to 18 in.85	7.50	—	
18 to 24 in.	1.00	9.00	—	
— japonicus latifolia marginata alba , 4'-5'	IDENTICAL TO THE TYPE IN GROWTH BUT WITH LARGER FOLIAGE VERY NICELY VARIEGATED.			
5 inch pots50	4.00	—	
— patens (sieboldianus) , 6'-8'	SPREADING EUONYMUS			
Grows vigorously, forming broad, rather loose shrub; leaves persist until late winter. Ornamental fruits. Effective among denser conifers.				
12 to 15 in.50	—	—	
15 to 18 in.60	—	—	
18 to 24 in.75	—	—	
— pulchellus , 6''-8''	BOX LEAVED EUONYMUS			
Low growing variety, with box like foliage; evergreen, suitable for edging. Hardy in protected locations in vicinity of Philadelphia. Perfectly hardy from Washington south.				
2 inch pots20	1.50	10.00	
— radicans , climbing to 15'	WINTERCREEPER			
Self-clinging vine. Good for covering low walls, also useful for under planting among evergreens.				
9 to 12 in., 2 year, bushy20	1.50	10.00	
12 to 15 in., 3 year, bushy25	2.00	15.00	
— acutus , 6''-12''	SHARPLEAF WINTERCREEPER			
A graceful form, with long narrow leaves, white veins, purplish underneath.				
2 year20	—	—	
— carrieri , 3'-4'	GLOSSY WINTERCREEPER			
Has large, shiny, pointed leaves; bushy habit.				
9 to 12 in.25	2.00	15.00	
12 to 15 in., 2 year30	2.50	20.00	
15 to 18 in., 3 year35	3.00	—	
— colorata , 6'-12'	LONG NARROW LEAVES PURPLE UNDERNEATH, TINGED PURPLE ABOVE. VERY EFFECTIVE IN WINTER.			
2 year30	—	—	
— minimus , 6''-12''	Each	Per 10	Per 100	Per 1000
BABY WINTERCREEPER				
Has tiny evergreen leaves and a dainty trailing habit. Charming rock subject.				
3 inch pots30	2.50	20.00	180.00
— variegatus , 12''-15''	VARIEGATED LEAF WINTERCREEPER			
Leaves veined and marked yellowish white and pink. Clinging vine.				
9 to 12 in., 2 year bushy18	1.50	12.00	
12 to 15 in., 3 year, bushy20	1.80	15.00	

EUONYMUS—continued		Each	Per 10	Per 100
— <i>vegetus</i> , 3'-4'		BIGLEAF WINTERCREEPER		
Bushy, interesting growth. Bright scarlet fruits, freely produced. Handsome among evergreens.		Leaves, round, dull green.		
9 to 12 in., 2 year.....		\$.30	\$2.50	\$20.00
12 to 15 in., 3 year.....		.35	3.00	25.00
15 to 18 in., 3 year, bushy.....		.40	3.50	—
EXOCHORDA <i>grandiflora</i> , 6'-9'		PEARLBUSH		
Dazzling white flowers, May. Is improved by pruning.				
18 to 24 in.....		.35	3.00	25.00
2 to 3 ft.....		.40	3.50	30.00
3 to 4 ft.....		.45	4.00	35.00
4 to 5 ft.....		.50	4.50	40.00
FAGUS <i>americana</i> (<i>ferruginea</i>), 75'-100'		AMERICAN BEECH		
One of our best native trees; distinctive silver-gray bark.				
2 to 3 ft.....		1.00	9.00	80.00
3 to 4 ft.....		1.50	14.00	—
4 to 5 ft.....		2.00	19.00	—
— <i>sylvatica</i> , 75'-100'		EUROPEAN BEECH		
Slow growing but makes a large, handsome tree.				
2 to 3 ft.....		1.00	—	—
3 to 4 ft.....		1.25	—	—
8 to 10 ft., specimens, B. and B.		5.00	—	—
— <i>purpurea</i> , 75'-100'				
8 to 10 ft. specimens, B. and B..		7.50	—	—
FORSYTHIA <i>intermedia</i> , 6'-8'		BORDER GOLDEN BELL		
Bright yellow flowers in April before leaves unfold. Profuse and beautiful.				
2 to 3 ft.....		.30	2.50	20.00
3 to 4 ft.....		.35	3.00	25.00
4 to 5 ft.....		.40	3.50	—
— <i>spectabilis</i> , 6'-8'		SHOWY BORDER GOLDEN BELL		
Most profuse of all, with large rich golden yellow flowers.				
2 to 3 ft.....		.30	—	—
3 to 4 ft.....		.40	—	—
— <i>suspensa</i> , 4'-6'		WEeping GOLDEN BELL		
Graceful drooping habit; excellent for massing or banks.				
2 to 3 ft.....		.30	2.50	20.00
3 to 4 ft.....		.35	3.00	25.00
4 to 5 ft.....		.45	4.00	—
— <i>fortunei</i> , 7'-8'		FORTUNE GOLDEN BELL		
Good habit, arching branches, vigorous grower.				
2 to 3 ft.....		.25	2.00	15.00
3 to 4 ft.....		.30	2.50	20.00
4 to 5 ft.....		.35	3.00	—
— <i>viridissima</i> , 7'-8'		GREEN STEM FORSYTHIA		
Most vigorous; has green bark and thick, dark green leaves. Last to flower.				
18 to 24 in.....		.20	1.50	10.00
2 to 3 ft.....		.25	2.00	15.00
3 to 4 ft.....		.30	2.50	20.00
FRAXINUS <i>americana</i> , 70'-80'		WHITE ASH		
Fairly rapid grower; assumes pleasing golden tones in autumn; good in moist soils.				
6 to 8 ft.....		.60	5.00	40.00
8 to 10 ft.....		.90	8.00	70.00
8 to 10 ft.—1¼ to 1½ in.....		1.00	9.00	80.00
10 to 12 ft.—1½ to 1¾ in.....		1.25	11.00	—
10 to 12 ft.—1¾ to 2 in.....		1.65	15.00	—
12 to 13 ft.—2 to 2¼ in.....		2.15	20.00	—
12 to 13 ft.—2¼ to 2½ in.....		2.50	—	—



Viburnum Plicatum one of the fine three year blocks we have for this year. See page 43.

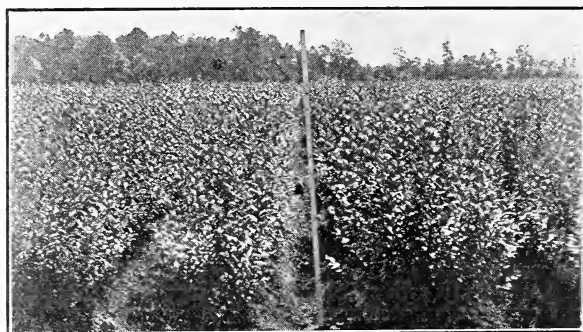
	Each	Per 10	Per 100
GENISTA tinctoria, 3'			
Yellow pea-shaped flower, June.			
18 to 24 in.	\$.35	—	—
2 to 2½ ft.40	—	—
WOADWAXEN			
— <i>scoparia</i> (See CYTISUS)			
GINKGO biloba (SALISBURIA), 50'-75'			
MAIDENHAIR TREE			
Picturesque, interesting, quite distinct leaves shaped like maidenhair fern; immune from insects.			
6 to 8 ft.	1.25	—	—
8 to 10 ft.	1.50	—	—
8 to 10 ft.—1¼ to 1½ in.	1.75	—	—
10 to 12 ft.—1½ to 1¾ in.	2.00	—	—
GLEDITSIA triacanthos, 60'-70'			
HONEYLOCUST			
Thorny tree with fragrant white flowers in May; good for gravelly soil.			
2 to 3 ft.25	\$2.00	\$15.00
3 to 4 ft.40	3.50	30.00
4 to 5 ft.60	5.00	45.00
5 to 6 ft.80	7.00	60.00
GYMNOCLADUS dioica, 40'-50'			
KENTUCKY COFFEE TREE			
Light blue-green foliage of slow growth; picturesque outline.			
2 to 3 ft.50	—	—
3 to 4 ft.75	—	—
4 to 5 ft.	1.00	—	—
HALESIA tetraptera, 12'-15'			
GREAT SILVERBELL			
Snow-white, bell-shaped flowers in May, profusely borne along the branchlets. Can be grown as single specimen or massed.			
18 to 24 in.40	3.50	30.00
2 to 3 ft.45	4.00	35.00
3 to 4 ft.55	5.00	45.00
4 to 5 ft.70	6.00	55.00
5 to 6 ft.90	8.00	—
HAMAMELIS virginiana, 10'-12'			
WITCH-HAZEL			
Yellow ribbon-like flowers, Oct.—Nov. Bushy habit, good foliage. Succeeds best in moist, half-shady places.			
18 to 24 in.30	2.50	—
2 to 3 ft.40	3.50	—
3 to 4 ft.50	4.50	—
4 to 5 ft.60	5.50	—

	Each	Per 10	Per 100
HEDERA colchica dentata, 20'-50'			
GIANT ENGLISH IVY			
Strong growing climber, with large evergreen heart shaped leaves, very decorative.			
3½ inch pots.....	\$.30	\$2.50	—
— gracilis, 8'-10'			
MINIATURE ENGLISH IVY			
Similar to English Ivy, with small dark green foliage. A most graceful vine.			
3 inch pots.....	.25	2.00	—
— helix, 20'-50'			
ENGLISH IVY			
Evergreen; good ground cover in shady locations. An ideal wall cover.			
2 yr. field grown.....	.25	2.00	\$18.00
HIBISCUS syriacus (Althea), 10'-12'			
ROSE OF SHARON			
Rather formal in outline, flowering in August and September. Pink, purple, red, and white, single and double.			
18 to 24 in.....	.25	2.00	—
2 to 3 ft.....	.30	2.50	—
3 to 4 ft.....	.35	3.00	—
— variegata, 6'-8'			
VARIEGATED LEAVED ROSE OF SHARON			
Leaves striped yellow; compact grower.			
18 to 24 in.....	.40	3.50	—
2 to 2½ ft.....	.45	4.00	—
2½ to 3 ft.....	.50	4.50	—
3 to 4 ft.....	.55	5.00	—
HIBISCUS (MALLOW)	See Perennials and Ground Covers		
HYDRANGEA arborescens, 4'-5'			
SMOOTH HYDRANGEA			
White, June-July. Single white flower. August.			
18 to 24 in.....	.30	2.50	20.00
2 to 3 ft.....	.35	3.00	25.00
3 to 4 ft.....	.40	3.50	—
— grandiflora alba (sterilis), 4'-5'			
SNOWHILL			
Large double white flower panicles, very showy. August.			
18 to 24 in.....	.35	3.00	25.00
2 to 3 ft.....	.45	4.00	35.00
3 to 4 ft.....	.50	4.50	40.00
— paniculata (type), 8'-9'			
PANICLE HYDRANGEA			
Bears long, loose panicles of white flowers, August.			
18 to 24 in.....	.35	3.00	—
2 to 3 ft.....	.40	3.50	—
3 to 4 ft.....	.50	4.50	—
— grandiflora, 8'-9'			
PEEGEE HYDRANGEA			
Very showy, blooming in August.			
18 to 24 in.....	.35	3.00	25.00
2 to 2½ ft.....	.40	3.50	30.00
2½ to 3 ft.....	.45	4.00	35.00
3 to 4 ft.....	.50	4.50	40.00
— standard			
TREE HYDRANGEA			
Medium, 3 to 4 ft.....			
	.75	6.50	60.00
First Class, 3 to 4 ft.....			
	.85	7.50	70.00
Extra, 4 to 5 ft.....			
	1.00	9.00	—
— quercifolia, 3'-4'			
OAKLEAF HYDRANGEA			
Leaves shaped like an oak leaf. Splendid autumn coloring; succeeds in shade.			
12 to 15 in.....	.40	3.50	—
15 to 18 in.....	.50	4.50	—
18 to 24 in.....	.60	5.50	—
2 to 2½ ft.....	.75	—	—
— radiata (nivea), 4'-5'			
SILVERLEAF HYDRANGEA			
2 to 3 ft.....	.30	2.50	—
3 to 4 ft.....	.35	3.00	—

	Each	Per 10	Per 100
HYPERICUM aureum, 3'-4'	GOLDEN ST. JOHNSWORT		
Yellow. July-August. Blue-green foliage; dense habit.			
15 to 18 in.	\$.25	\$2.00	\$15.00
18 to 24 in.30	2.50	18.00
2 to 2½ ft.35	3.00	22.00
— densiflorum, 4'-5'	DENSE FLOWERING ST. JOHNSWORT		
Yellow. July-September. Free flowering; good for sandy soil.			
18 to 24 in.30	2.50	20.00
2 to 2½ ft.35	3.00	25.00
2½ to 3 ft.40	3.50	30.00
— moserianum, 2'	GOLDFLOWER		
Large waxy yellow flowers. July-August. Dainty, half-herbaceous, splendid mass plant.			
2 yr., 12 to 15 in.25	2.00	15.00
2 yr., 15 to 18 in.30	2.50	20.00
2 yr., 18 to 24 in.35	3.00	—
— patulum henryi, 2½'-3'			
Of shrub-like growth, with large clear yellow flowers in July and August.			
2 yr., 12 to 15 in.30	2.50	20.00
2 yr., 15 to 18 in.35	3.00	25.00
ILEX crenata, 8'-10'	JAPANESE HOLLY		
Box-like leaves, rich, deep green, and leathery. Stiff branching, makes a good hedge. Black berries. Evergreen.			
12 to 15 in., B. and B.75	6.50	—
15 to 18 in., B. and B.	1.00	9.00	—
18 to 24 in., B. and B.	1.50	—	—
— microphylla, 6'-8'	SMALL-LEAF JAPANESE HOLLY		
Smaller leaves and more hardy than preceding.			
12 to 15 in., B. and B.75	6.50	—
15 to 18 in., B. and B.	1.00	9.00	—
18 to 24 in., B. and B.	1.50	14.00	—
2 to 3 ft., B. and B.	2.25	21.50	—
— glabra, 5'-6'	INKBERRY		
Shining, dark green leaves, purplish in winter; black berries. Useful for shady spots, also succeeds in sun. Evergreen.			
12 to 15 in., B. and B.75	—	—
— verticillata (prinos), 6'-8'	WINTERBERRY		
Bright red berries persisting to mid-winter, not eaten by birds. Prefers moist soil.			
18 to 24 in.35	3.00	25.00
2 to 2½ ft.40	3.50	30.00
2½ to 3 ft.50	4.50	40.00
3 to 4 ft.60	5.50	—
INDIGOFERA amblyantha, 1'-2'	PINK INDIGOFERA		
A handsome upright shrub with numerous racemes of small pink flowers produced in large quantities.			
3½ inch pots.50	4.00	—
ITEA virginica, 3'-4'	SWEETSPIRE		
Spikes of fragrant, white flower. July. Good for low places; brilliant autumn coloring.			
18 to 24 in.30	2.50	20.00
2 to 2½ ft.35	3.00	25.00
JASMINUM nudiflorum, 3'	WINTER JASMINE		
Yellow. April-May. Needs protection in northern states. One of the first to bloom in the spring.			
15 to 18 in.25	2.00	15.00
18 to 24 in.30	2.50	20.00
2 to 2½ ft.35	3.00	25.00

JUNIPERUS (See EVERGREENS)

KALMIA (See EVERGREENS)



Two year California Privet, cut back last winter, and with room enough in the row to permit proper development. This is real Privet at a moderate price for the quality. See page 25.

	Each	Per 10	Per 100
KERRIA japonica, 4'-5'			
JAPANESE KERRIA			
Golden yellow flowers, June-Sept. Green branches useful for winter effects.			
18 to 24 in.	\$.40	\$3.50	—
2 to 2½ ft.45	4.00	—
— fl. pl., 4'-5'			
DBL. JAPANESE KERRIA			
Desirable double form of above and stronger grower.			
18 to 24 in.40	3.50	\$30.00
2 to 2½ ft.50	4.50	40.00
2½ to 3 ft.60	5.00	55.00
KOELREUTERIA paniculata, 25'-30'			
GOLDENRAIN-TREE			
Has bright yellow flowers in July; is a valuable small flowering tree.			
3 to 4 ft.50	4.00	—
4 to 5 ft.75	6.00	—
5 to 6 ft.	1.00	—	—
6 to 7 ft.	1.25	—	—
LABURNUM vulgare, 20'-25'			
GOLDENCHAIN			
Beautiful clusters of yellow flowers in spring.			
2 to 3 ft.35	—	—
3 to 4 ft.50	—	—
4 to 5 ft.75	—	—
LARIX europaea, 50'-60'			
EUROPEAN LARCH			
Especially good for spring effects; grows rapidly.			
18 to 24 in.35	2.50	—
2 to 3 ft.50	4.00	—
— leptolepis, 60'-75'			
JAPANESE LARCH			
Fast growing, handsome tree, similar to above.			
18 to 24 in.50	4.00	—
2 to 3 ft.70	6.00	—
3 to 4 ft.90	8.00	—
4 to 5 ft.	1.00	9.00	—
5 to 6 ft.	1.25	11.50	—
LESPEDAZA bicolor, 5'-6'			
BUSHCLOVER			
Rose and white flower, September. Slender, graceful shrub.			
18 to 24 in.30	2.50	—
2 to 3 ft.35	3.00	—
3 to 4 ft.40	3.50	—
— formosa (Desmodium penduliflorum), 3'-4'			
PURPLE BUSHCLOVER			
Rosy purple flower conspicuous in Sept. An attractive herbaceous shrub.			
2 year.35	3.00	25.00

Each Per 10 Per 100

LEUCOTHOE (See **EVERGREENS**)

LIGUSTRUM amurense, 14'-15'

AMUR PRIVET

Half evergreen; very hardy.

18 to 24 in.....	\$.15	\$1.00	\$ 8.00
2 to 3 ft.....	.20	1.50	10.00
3 to 4 ft.....	.25	2.00	15.00
4 to 5 ft.....	.30	2.50	—

— **ibota**, 9'-10'

IBOTA PRIVET

Good dense habit; flowers and fruits freely. Decorative black berries. Very hardy.

18 to 24 in.....	.20	1.50	10.00
2 to 3 ft.....	.25	2.00	15.00
3 to 4 ft.....	.30	2.50	20.00
4 to 5 ft.....	.35	3.00	—

— **regelianum** (cuttings), 5'-6'

TRUE SPREADING REGEL PRIVET

Makes a splendid, low, dense hedge; also good in shrubbery or evergreen plantings. Very desirable.

15 to 18 in.....	.20	1.50	8.00
18 to 24 in.....	.25	2.00	12.00
2 to 2½ ft.....	.30	2.50	18.00
2½ to 3 ft.....	.35	3.00	22.00

— — (seedlings)

SEEDLING REGAL PRIVET

A form between the above and *Ibota*.

18 to 24 in.....	.15	1.00	—
2 to 3 ft.....	.20	1.50	—
3 to 4 ft.....	.25	2.00	—

— **lodense**, 2½'

DWARF PRIVET

Very compact, dwarf form.

1 year.....	.30	2.50	20.00
2 year.....	.35	—	—

— **lucidum**, 6'-8'

GLOSSY PRIVET

A very attractive evergreen privet with rich, glossy leaves. Not hardy in the North.

3 inch pots.....	.30	2.50	—
5 inch pots.....	.50	—	—

Per 10 Per 100 Per 1000

— **ovalifolium**, 9'-10'

CALIFORNIA PRIVET

Most popular hedge plant. We offer good bushy 2 yr. stock well worth the price.

12 to 18 in.....	.60	3.50	25.00
18 to 24 in.....	.80	4.00	30.00
2 to 3 ft.....	1.00	6.00	45.00
3 to 4 ft.....	1.50	7.50	60.00

Each Per 10 Per 100

— **aureum**, 8'-9'

GOLDEN PRIVET

Grows rather slowly.

12 to 15 in.....	.20	1.80	15.00
15 to 18 in.....	.30	2.50	—
18 to 24 in.....	.40	—	—

— **vulgare**, 10'-12'

EUROPEAN PRIVET

Creamy-white flowers. June-July. Black berries.

2 to 3 ft.....	.25	2.00	15.00
3 to 4 ft.....	.30	2.50	20.00
4 to 5 ft.....	.35	3.00	25.00

LIQUIDAMBAR styraciflua, 75'-100'

SWEET GUM

One of the best trees for autumn color; grows well in moist places; has corky bark; rather difficult to transplant.

3 to 4 ft.....	.75	—	—
4 to 5 ft.....	1.35	—	—
5 to 6 ft.....	1.75	—	—

	Each	Per 10	Per 100
LIRIODENDRON tulipifera, 60'-80'			TULIPTREE
A quick grower; the yellow tulip-like flowers are produced in June.			
4 to 6 ft.	\$.75	\$6.00	—
6 to 8 ft.	1.15	—	—
8 to 10 ft.	1.50	—	—
LONICERA alberti, 2'			ALBERT HONEYSUCKLE
Rose-pink fragrant flowers. May-June. Bluish-green leaves. Dwarf in habit.			
12 to 18 in.30	2.50	—
18 to 24 in.40	3.50	—
— bella albidia, 8'-9'			WHITE BELLE HONEYSUCKLE
Grows vigorously.			
2 to 3 ft.25	2.00	\$15.00
3 to 4 ft.30	2.50	20.00
4 to 5 ft.35	3.00	25.00
— fragrantissima, 6'-8'			WINTER HONEYSUCKLE
Fragrant white flower. April-May. Half-evergreen.			
2 to 3 ft.30	2.50	20.00
3 to 4 ft.35	3.00	25.00
4 to 5 ft.40	3.50	30.00
— heckrotti, 15'-20'			EVERBLOOMING HONEYSUCKLE
Flowers purple outside, yellow inside, July-Sept.			
2 year.30	2.50	—
3 year.35	3.00	—
— henryi, 15'-20'			HENRY HONEYSUCKLE
Strong vine, with dark green leathery foliage, practically evergreen. Flowers yellowish red.			
4 inch pots.35	3.00	—
— japonica (brachypoda), 15'-20'			JAPANESE HONEYSUCKLE
Rapid grower and blooms freely from June to Sept. Useful for covering steep banks. Almost evergreen.			
2 year.25	2.00	15.00
3 year.30	2.50	20.00
— aurea, 15'-20'			JAPANESE GOLDEN HONEYSUCKLE
Leaves veined golden yellow.			
2 year.25	2.00	15.00
3 year.30	2.50	20.00
— halliana, 15'-25'			HALL JAPANESE HONEYSUCKLE
Grows rampantly. Blooms freely, deliciously fragrant.			
1 year first class.20	1.50	10.00
2 year first class.25	2.00	15.00
3 year first class.30	2.50	20.00
— maacki, 8'-9'			AMUR HONEYSUCKLE
Large white flowers; June. Scarlet berries persisting until midwinter. Very desirable.			
2 to 3 ft.30	2.50	20.00
3 to 4 ft.35	3.00	25.00
— morrowi, 7'-8'			MORROW HONEYSUCKLE
Spreading habit, white. May-June. Red fruits, good foliage.			
18 to 24 in.20	1.50	10.00
2 to 3 ft.25	2.00	15.00
3 to 4 ft.30	2.50	20.00
4 to 5 ft.40	3.50	—
— (upright)			
18 to 24 in.20	1.50	10.00
2 to 3 ft.25	2.00	15.00
3 to 4 ft.30	2.50	20.00
4 to 5 ft.40	3.50	—
— pileata, 2'			PRIVET HONEYSUCKLE
Dwarf evergreen shrub; needs protection in cold regions.			
9 to 12 in., bushy, B. and B.40	—	—

LONICERA—continued		Each	Per 10	Per 100
— <i>ruprechtiana</i> , 8'-9'	MANCHURIAN HONEYSUCKLE			
	Creamy white flowers, June. Berries red, sometimes orange.			
18 to 24 in.		\$.20	\$1.50	\$10.00
2 to 3 ft.25	2.00	15.00
3 to 4 ft.30	2.50	20.00
— <i>sempervirens</i> , 15'-20'	TRUMPET HONEYSUCKLE			
	Bright, scarlet, showy flowers, July-Sept.			
2 year.30	2.50	—
3 year.35	3.00	—
— <i>tatarica</i> , Pink, Red and White, 9'-10'	TARTARIAN HONEYSUCKLE			
	Flowers and fruit freely produced. A most adaptable shrub.			
18 to 24 in.20	1.50	10.00
2 to 3 ft.25	2.00	15.00
3 to 4 ft.30	2.50	20.00
4 to 5 ft.35	—	—
LYCIUM barbarum 10'-12'	BARBARY MATRIMONY-VINE			
	Violet flowers in June, followed by bright red fruits; useful for banks or hanging over retaining walls.			
18 to 24 in.20	1.50	10.00
2 to 3 ft.25	2.00	15.00
3 to 4 ft.30	2.50	20.00
— <i>chinense</i> 12'-15'	CHINESE MATRIMONY-VINE			
	More vigorous and fruitful than preceding.			
18 to 24 in.20	1.50	10.00
2 to 3 ft.25	2.00	15.00
3 to 4 ft.30	2.50	20.00
MAGNOLIA tripetala 30'-40'	UMBRELLA MAGNOLIA			
	Very large leaves; flowers white, and seed pods are pink.			
4 to 5 ft.		1.50	—	—
5 to 6 ft.		2.00	—	—
6 to 8 ft.		3.00	—	—
MAHONIA (See EVERGREENS)				
MALUS coronaria 15'-20'			SWEET CRAB	
	Blush pink flowers in early spring.			
3 to 4 ft.50	4.00	—
4 to 5 ft.75	6.50	—
5 to 6 ft.		1.00	9.00	—
— <i>floribunda</i> 10'-15'	JAPANESE FLOWERING CRAB			
	Literally covered with rose-colored flowers in early spring.			
3 to 4 ft.60	5.00	40.00
4 to 5 ft.85	7.50	65.00
5 to 6 ft.		1.00	9.00	—
— <i>atrosanguinea</i> 10'-15'	CARMINE CRAB			
	Deeper flowering form of above.			
3 to 4 ft.60	5.00	40.00
4 to 5 ft.85	7.50	65.00
5 to 6 ft.		1.00	9.00	—
— <i>halliana parkmani</i> 10'-15'	PARKMAN CRAB			
	Semi-double pink; good, compact habit.			
2 to 3 ft.50	4.00	—
3 to 4 ft.75	6.50	—
4 to 5 ft.		1.00	9.00	—
— <i>ioensis plena</i> 10'-15'	BECHTEL CRAB			
	Large double pure pink flowers with noticeable fragrance; vigorous grower.			
18 to 24 in.50	4.00	—
2 to 2½ ft.60	5.00	—
2½ to 3 ft.70	6.00	—
3 to 4 ft.90	7.50	—
4 to 5 ft.		1.35	12.50	—

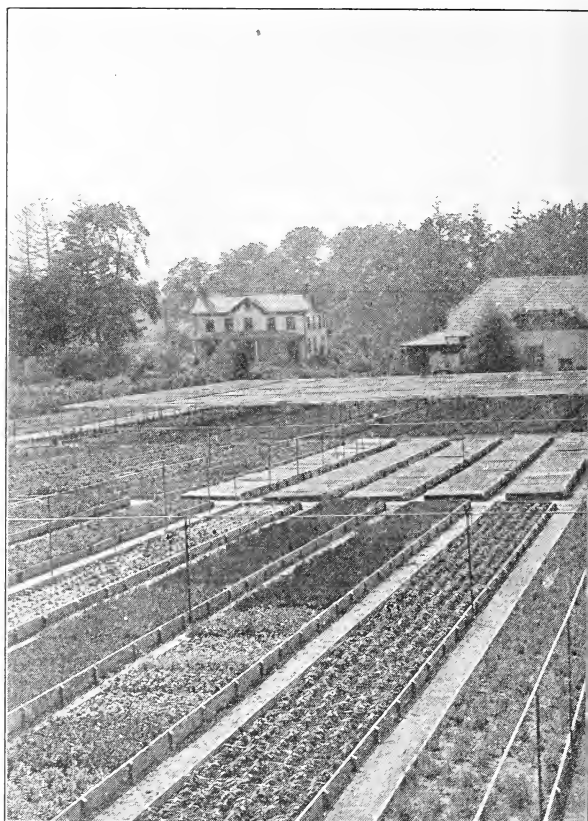
MALUS—continued	Each	Per 10	Per 100
— <i>scheideckeri</i> 10'-15'	SCHEIDECKER CRAB		
Double pink; handsome flower clusters.			
2 to 3 ft.	\$.50	—	—
3 to 4 ft.75	—	—
4 to 5 ft.90	—	—
— <i>spectabilis</i> 10'-15'	CHINESE FLOWERING CRAB		
Beautiful pink or white flowers; sweet scented; double.			
2 to 3 ft.50	—	—
3 to 4 ft.75	—	—
MORUS alba pendula 8'-10'	TEA'S WEEPING MULBERRY		
The most popular small "weeping" tree.			
Medium Grade, 1 yr. heads	1.60	\$15.00	\$140.00
First Class Heads, 2 yr. heads . .	2.00	19.00	—
Extra, 3 yr. heads	2.50	24.00	—
MYRICA cerifera 4'-5'	SOUTHERN WAXMYRTLE		
Does well in poor, gravelly soil. Has decorative gray berries, and glossy green foliage. Good for seashore.			
12 to 15 in.30	2.50	20.00
15 to 18 in.35	3.00	25.00
18 to 24 in.40	3.50	30.00
2 to 2½ ft.45	4.00	35.00
2½ to 3 ft.50	4.50	—
OXYDEDRUM aboreum 25'-30'	SOURWOOD		
Graceful clusters of white flowers. August. Good leathery foliage. Fine autumn coloring.			
2 to 3 ft.65	6.00	—
3 to 4 ft.80	7.50	—
4 to 5 ft.	1.00	8.50	—
OSMANTHUS (See EVERGREENS)			
PACHYSANDRA (See Perennials and Ground Covers)			
PAULOWNIA tomentosa	ROYAL PAULOWNIA		
(<i>imperialis</i>), 30'-40'			
Grows rapidly; very large leaves; purple flowers; not quite hardy in North.			
4 to 6 ft.85	7.50	—
6 to 8 ft.	1.25	11.50	—
8 to 10 ft.	1.75	—	—
PHELLODENDRON chinense 50'-60'	CHINESE CORKTREE		
A rapid growing, tropical appearing small tree.			
3 to 4 ft.50	4.00	—
4 to 5 ft.75	6.50	—
PHILADELPHUS avalanche 3'-4'	DWARF MOCKORANGE		
Graceful, arching habit.			
18 to 24 in.25	2.00	18.00
2 to 3 ft.30	2.50	22.00
3 to 4 ft.35	3.00	—
— boquet blanc 4'-5'	WHITE BOQUET MOCKORANGE		
Low, dense habit. Blooms freely. May-June.			
18 to 24 in.30	2.50	20.00
2 to 3 ft.35	3.00	25.00
3 to 4 ft.40	3.50	—
— coronarius 9'-10'	SWEET MOCKORANGE		
White fragrant flowers profusely borne in May-June.			
2 to 3 ft.25	2.00	15.00
3 to 4 ft.30	2.50	20.00
4 to 5 ft.35	3.00	25.00
— — aurea 4'-5'	GOLDEN LEAF MOCKORANGE		
Dwarf, compact form. Yellow leaves.			
12 to 15 in.30	2.50	20.00
15 to 18 in.35	3.00	25.00
18 to 24 in.40	3.50	30.00
2 to 2½ ft.50	4.50	40.00

PHILADELPHUS—continued		Each	Per 10	Per 100
— <i>grandiflorus</i> 7'-8'		LARGE FLOWERED MOCKORANGE		
Has no fragrance.				
2 to 3 ft.		\$.25	\$2.00	\$15.00
3 to 4 ft.		.30	2.50	20.00
4 to 5 ft.		.40	3.50	30.00
— <i>gordonianus</i> (<i>lewisi</i>), 10'-12'		GORDON MOCKORANGE		
Flowers in June-July. Slightly fragrant. Blooms late.				
2 to 3 ft.		.25	2.00	15.00
3 to 4 ft.		.30	2.50	20.00
4 to 5 ft.		.40	3.50	—
— <i>lemoinei</i> , 4'-5'		LEMOINE MOCKORANGE		
Good compact habit. Flowers sweetly scented.				
15 to 18 in.		.20	1.50	—
18 to 24 in.		.25	2.00	—
2 to 2½ ft.		.30	2.50	—
— <i>virginalis</i> , 7'-8'		VIRGINAL MOCKORANGE		
Beautiful semi-double flowers produced intermittently all summer.				
2 to 3 ft.		.50	4.50	—
— <i>zeyheri</i> , 8'-9'		ZEYHER MOCKORANGE		
18 to 24 in.		.20	1.50	—
2 to 3 ft.		.25	2.00	—
3 to 4 ft.		.30	2.50	—
PHOTINIA <i>villosa</i> , 8'-9'		REDBERRIED PHOTINIA		
Flowers white, June. Rich scarlet berries profusely borne in autumn. Splendid foliage for color and texture.				
2 to 3 ft.		.40	3.50	30.00
3 to 4 ft.		.50	4.50	40.00
4 to 5 ft.		.60	5.50	50.00
— <i>glabra</i>			4.50	—
3 to 4 ft.		.50	4.50	—
PHYSOCARPUS <i>opulifolius</i> , 9'-10'		NINEBARK		
Creamy white, June. Vigorous. Good for shade.				
18 to 24 in.		.20	1.50	10.00
2 to 3 ft.		.25	2.00	15.00
3 to 4 ft.		.30	2.50	20.00
4 to 5 ft.		.35	3.00	25.00
— <i>aureus</i> , 9'-10'		GOLDLEAF NINEBARK		
Golden-leaved variety; white flowers in early June.				
18 to 24 in.		.20	1.50	10.00
2 to 3 ft.		.25	2.00	15.00
3 to 4 ft.		.30	2.50	20.00
4 to 5 ft.		.35	3.00	25.00
PICEA (See EVERGREENS)				
PIERIS (See EVERGREENS)				
PINUS (See EVERGREENS)				
PLATANUS <i>orientalis</i> , 70'-80'		EUROPEAN PLANE TREE		
A good tree for park and street use; grows rather quickly; withstands smoky city conditions.				
6 to 8 ft.		1.25	11.50	100.00
8 to 10 ft.		1.60	14.50	135.00
8 to 10 ft.—1¼ to 1½ in.		2.00	18.50	—
10 to 12 ft.—1½ to 1¾ in.		2.25	21.00	—
10 to 12 ft.—1¾ to 2 in.		3.00	28.50	—
12 to 13 ft.—2 to 2¼ in.		3.50	—	—
12 to 13 ft.—2¼ to 2½ in.		4.00	—	—
POPULUS <i>bolleanu</i> , 50'-60'		BOLLEANA POPLAR		
Leaves white underneath; similar columnar character to Lombardy Poplar.				
4 to 6 ft.		.65	5.50	—
6 to 8 ft.		.85	7.50	65.00
8 to 10 ft.—1¼ to 1½ in.		1.35	—	—
8 to 10 ft.—1½ to 1¾ in.		1.50	—	—

PLATANUS—continued	Each	Per 10	Per 100
— <i>monilifera</i> , 75'-90'		CAROLINA POPLAR	
A rapid grower; succeeds even in dry places and near sea-shore.			
8 to 10 ft.	\$.40	\$3.50	\$25.00
8 to 10 ft.—1¼ to 1½ in.45	4.00	30.00
10 to 12 ft.—1½ to 1¾ in.75	6.50	60.00
12 to 14 ft.—1¾ to 2 in.	1.15	—	—
— <i>nigra italica</i> , 60'-80'		LOMBARDY POPLAR	
Tall spire-like character; valued for landscape work and screens.			
6 to 8 ft.45	3.50	30.00
8 to 10 ft.65	5.00	45.00
10 to 12 ft.—1¼ to 1½ in.90	8.00	70.00
11 to 13 ft.—1½ to 1¾ in.	1.25	10.00	90.00
POTENTILLA <i>fruticosa</i> 3'-4'		SHRUBBY CINQUEFOIL	
Blooms profusely, yellow, June-Sept. Very adaptable and useful shrub.			
15 to 18 in.30	2.50	20.00
18 to 24 in.35	3.00	25.00
2 to 2½ ft.40	3.50	30.00
PRINOS (See ILEX)			
PRUNUS <i>cerasifera pissardi</i> 12'-15'		PURPLELEAF PLUM	
Valued chiefly because of purplish foliage; should be pruned every year for best color effect.			
2 to 3 ft.50	4.50	—
3 to 4 ft.65	6.00	—
4 to 5 ft.85	7.50	—
— J. H. Veitch 30'-40', B. and B.		SIEBOLD CHERRY	
The best double Japanese flowering cherry; double rose.			
3 to 4 ft.	3.00	—	—
4 to 5 ft.	4.00	—	—
— <i>maritima</i> 9'-10'		BEACH PLUM	
Small white flowers, April. Fruits are purple. Splendid subject for sandy soils or near seashore.			
18 to 24 in.30	—	—
2 to 3 ft.35	—	—
3 to 4 ft.45	—	—
— <i>subhirtella pendula</i> 12'-15'		WEEPING JAPAN CHERRY	
A most beautiful and graceful tree, covered with pink blossoms in early spring.			
Grafted low and trained to stake.			
3 to 4 ft., B. and B.	2.00	—	—
4 to 5 ft., B. and B.	2.75	—	—
5 to 6 ft., B. and B.	4.00	—	—
Grafted high, on standards.			
3 to 4 ft. stems, 1 yr. heads.	2.00	—	—
4 to 5 ft. stems, 1 yr. heads.	2.50	—	—
5 to 6 ft. stems, 1 yr. heads, extra	3.00	—	—
— <i>tomentosa</i> 6'-7'		NANKING CHERRY	
Fruits are light red. Flowers white, before leaves appear. Very showy.			
2 to 3 ft.35	3.00	25.00
3 to 4 ft.45	4.00	—
4 to 5 ft.50	4.50	—
— <i>triloba</i> 7'-8'		DOUBLE FLG. PLUM	
Double pink flowers, April-May. Handsome and useful.			
18 to 24 in.40	3.50	30.00
2 to 3 ft.50	4.50	40.00
3 to 4 ft.60	5.50	—

PSEUDOTSUGA (See EVERGREENS)

	Each	Per 10	Per 100
PTELEA trifoliata 10'-12'			HOP TREE
Has clusters of fruit that look and smell like hops.			
3 to 4 ft.	\$.30	\$2.50	—
4 to 6 ft.40	3.50	—
6 to 8 ft.50	4.50	—
PYRACANTHA (See EVERGREENS)			
QUERCUS cerris 60'-70'			TURKEY OAK
Small-leaved, compact growing Oak.			
8 to 10 ft.	1.50	14.00	—
8 to 10 ft.—1¼ to 1½ in.	2.00	18.50	—
10 to 12 ft.—1½ to 1¾ in.	2.50	23.50	—
— coccinea 75'-90'			SCARLET OAK
Most striking autumn colors; tall, stately grower, deeply cut leaves.			
6 to 8 ft.	1.50	13.50	—
8 to 10 ft.—1¼ to 1½ in.	2.65	25.00	—
8 to 10 ft.—1½ to 1¾ in.	3.00	—	—
— palustris 75'-90'			PIN OAK
Takes most kindly to cultivation; prefers moist soil, but is very adaptable. Particularly fitting as a street tree; good autumn effects.			
8 to 10 ft.	2.00	18.50	\$175.00
8 to 10 ft.—1¼ to 1½ in.	2.50	23.50	225.00
9 to 10 ft.—1½ to 1¾ in.	3.00	28.50	275.00
10 to 11 ft.—1¾ to 2 in.	3.75	36.00	350.00
11 to 12 ft.—2 to 2¼ in.	4.50	43.50	—
12 to 13 ft.—2¼ to 2½ in.	5.25	—	—
— phellos 60'-80'			WILLOW OAK
Leaves long and entire, like the Willow; retain their green color until late in autumn.			
8 to 10 ft.—1¼ to 1½ in.	1.75	—	—
10 to 12 ft.—1½ to 1¾ in.	2.00	—	—
— robur 70'-80'			ENGLISH OAK
The large Oak of England.			
8 to 10 ft.—1¼ to 1½ in.	2.50	23.50	—
10 to 12 ft.—1½ to 1¾ in.	3.00	28.50	—
10 to 12 ft.—1¾ to 2 in.	3.75	36.00	—
— rubra 75'-90'			RED OAK
Comparatively quick growth; rich autumn coloring in greens and reds.			
6 to 8 ft.	1.50	13.50	—
8 to 10 ft.	2.15	20.00	—
8 to 10 ft.—1¼ to 1½ in.	2.50	23.50	—
9 to 10 ft.—1½ to 1¾ in.	3.00	28.50	—
9 to 11 ft.—1¾ to 2 in.	3.75	36.00	—
10 to 12 ft.—2 to 2¼ in.	4.50	—	—
RETINOSPORA (See EVERGREENS)			
RHAMNUS cathartica 9'-10'			COMMON BUCKTHORN
Dark green leaves, black berries. Valuable background shrub.			
2 to 3 ft.25	2.00	—
3 to 4 ft.30	2.50	—
4 to 5 ft.40	—	—
— frangula 8'-9'			GLOSSY BUCKTHORN
Berries red, changing to black.			
2 to 3 ft.25	2.00	15.00
3 to 4 ft.30	2.50	20.00
4 to 5 ft.35	3.00	25.00
RHODODENDRON (See EVERGREENS)			
RHODOTYPUS kerrioides 4'-5'			JETBEAD
Fresh green foliage, pure white flowers. May-June. Shining black bead-like berries all winter.			
18 to 24 in.40	3.50	30.00
2 to 3 ft.45	4.00	35.00
3 to 4 ft.55	5.00	45.00



General view from the greenhouses toward the office showing

	Each	Per 10	Per 100
RHUS canadensis (aromatica) 4'-5'			
			FRAGRANT SUMAC
Clusters of small yellow flowers, April-May. Most attractive in June when covered with coral-red fruits. Withstands drought. Aromatic foliage.			
18 to 24 in.	\$.35	\$3.00	—
2 to 3 ft.45	4.00	—
3 to 4 ft.55	5.00	—
— copallina 12'-13'			SHINING SUMAC
Showy crimson fruits; good autumn coloring. Makes show in poor arid situations; good for massing.			
18 to 24 in.25	2.00	\$15.00
2 to 3 ft.30	2.50	20.00
3 to 4 ft.35	3.00	—
— cotinus 10'-12'			SMOKE TREE
Purple fringe.			
18 to 24 in.65	6.00	—
2 to 3 ft.85	7.00	—
3 to 4 ft.	1.00	9.00	—
— glabra 10'-12'			SMOOTH SUMAC
Crimson fruits in bunches; rich autumn coloring; thrives in poor soils.			
2 to 3 ft.25	2.00	15.00
3 to 4 ft.30	2.50	20.00
4 to 5 ft.35	3.00	25.00
5 to 6 ft.40	3.50	—



Transplanting beds with latin nose for azaleas in the distance.

RHUS—continued	Each	Per 10	Per 100
— — <i>laciniata</i> 4'-5'	CUTLEAF SMOOTH SUMAC		
Delicately cut leaves; grows slowly.			
18 to 24 in.	\$.35	\$3.00	\$25.00
2 to 2½ ft.40	3.50	—
2½ to 3 ft.45	4.00	—
— <i>typhina</i> 15'-18'	STAGHORN SUMAC		
Picturesque habit; brilliant autumn effect.			
2 to 3 ft.25	2.00	15.00
3 to 4 ft.30	2.50	20.00
4 to 5 ft.35	3.00	25.00
5 to 6 ft.40	3.50	30.00
— — <i>laciniata</i> 14'-15'	CUTLEAF STAGHORN SUMAC		
Leaves are finely cut, giving attractive feathery appearance.			
18 to 24 in.20	1.50	10.00
2 to 3 ft.25	2.00	15.00
3 to 4 ft.35	3.00	25.00
4 to 5 ft.40	3.50	30.00
5 to 6 ft.45	4.00	—
RIBES odoratum (aureum) 7'-8'	GOLDEN CURRANT		
Fragrant yellow flowers in May. Useful for under planting.			
2 to 3 ft.30	2.50	20.00
3 to 4 ft.35	3.00	25.00
4 to 5 ft.40	3.50	30.00

	Each	Per 10	Per 100
ROBINIA hispida 5'-6'			
Rosy pink, attractive flowers, May-June. into a mass.			
18 to 24 in.	\$.30	\$2.50	\$20.00
2 to 3 ft.35	3.00	25.00
3 to 4 ft.40	3.50	30.00
— pseudoacacia 60'-80'			
Has fragrant white flowers in May.			
4 to 6 ft.50	4.00	30.00
6 to 8 ft.60	5.00	40.00
ROSA blanda 4'-5'			
Pink, May. Almost thornless; reddish branches.			
18 to 24 in.30	2.50	20.00
2 to 3 ft.35	3.00	25.00
— hugonis 5'-6'			
A very desirable border rose with very attractive yellow flowers.			
2 yr. No. 1.	1.00	—	—
— lucida 5'-6'			
Pink, June. Red decorative fruits.			
15 to 18 in.25	2.00	—
18 to 24 in.30	2.50	—
2 to 3 ft.35	3.00	—
— multiflora japonica 9'-10'			
White, June. Vigorous, free flowering and fragrant.			
18 to 24 in.25	2.00	15.00
2 to 3 ft.30	2.50	20.00
3 to 4 ft.35	3.00	25.00
— nitida 3'-4'			
Deep pink, June. Good for holding banks and general mass planting; good autumn coloring.			
15 to 18 in.25	2.00	15.00
18 to 24 in.30	2.50	20.00
2 to 3 ft.40	3.50	—
— palustris (carolina) , 6'-7'			
Pink, May-July. Good for swampy places.			
15 to 18 in.20	1.50	—
18 to 24 in.25	2.00	—
— rubiginosa , 5'-6'			
Bright pink flowers, June. Good foliage with aromatic odor.			
18 to 24 in.30	2.50	20.00
2 to 3 ft.35	3.00	25.00
3 to 4 ft.40	3.50	30.00
— rubrifolia (ferruginea) , 5'-6'			
Has distinct purplish-red leaves and bark; good winter subject.			
18 to 24 in.30	2.50	—
2 to 3 ft.35	3.00	—
3 to 4 ft.40	—	—
— rugosa , 4'-5'			
Handsome shrub, large pink flowers, June-Sept. Rich green foliage and large red fruits; useful either in shrubbery border or as hedge.			
18 to 24 in.30	2.50	20.00
2 to 3 ft.35	3.00	25.00
3 to 4 ft.40	3.50	30.00
4 to 4½ ft.45	4.00	35.00
— alba , 4'-5'			
18 to 24 in.35	3.00	—
2 to 3 ft.40	3.50	—
3 to 4 ft.45	4.00	—
— setigera , 5'-6'			
Deep rose flower, June-July. Vigorous grower.			
18 to 24 in.20	1.50	10.00
2 to 3 ft.25	2.00	15.00
3 to 4 ft.30	2.50	20.00

ROSA—continued	Each	Per 10	Per 100
— <i>spinosissima</i> , 3'-4'			SCOTCH ROSE
A dainty grower, but compact; branches covered with soft thorns; attractive small foliage.			
12 to 15 in.....	\$.30	—	—
15 to 18 in.....	.40	—	—
18 to 24 in.....	.50	—	—

CLIMBING AND TRAILING ROSES

— <i>wichuraiana</i> , white			MEMORIAL ROSE
2 to 3 ft.....	.30	\$2.50	\$20.00
3 to 4 ft.....	.35	3.00	25.00
— <i>albertine</i>			
Very free flowering rambler with well-shaped large double flowers of a pleasing cameo pink with silvery suffusion. Sweetly scented.			
2 yr.....	.50	4.00	—
— American pillar,—single red, white center			
18 to 24 in.....	.30	2.50	20.00
2 to 3 ft.....	.35	3.00	25.00
— Dr. W. Van Fleet, shell pink			
18 to 24 in.....	.30	2.50	—
2 to 3 ft.....	.35	3.00	—
3 to 4 ft.....	.40	3.50	—
— Dorothy Perkins, pink			
18 to 24 in.....	.25	2.00	\$15.00
2 to 3 ft.....	.30	2.50	—
3 to 4 ft.....	.35	3.00	—
— — — white			
18 to 24 in.....	.25	2.00	—
2 to 3 ft.....	.30	2.50	—
3 to 4 ft.....	.35	3.00	—
— Emily Gray			
A real yellow climbing rose with well-shaped long pointed buds. Color beautiful orange yellow.			
2 yr.....	.60	5.00	—
— <i>excelsa</i>			RED DOROTHY PERKINS
2 to 3 ft.....	.30	2.50	20.00
3 to 4 ft.....	.35	3.00	25.00
— <i>gardenia</i> , yellow			
2 to 3 ft.....	.35	3.00	—
3 to 4 ft.....	.40	3.50	—
— <i>hiawatha</i> , single red			
2 to 3 ft.....	.30	2.50	—
3 to 4 ft.....	.35	3.00	—
— <i>silver moon</i> , semi-double white			
18 to 24 in.....	.35	3.00	—
2 to 3 ft.....	.40	3.50	—
3 to 4 ft.....	.45	4.00	—
— <i>yellow rambler</i>			
18 to 24 in.....	.25	2.00	—
2 to 3 ft.....	.30	2.50	—
RUBUS <i>odoratus</i> , 5'-6'			FLOWERING RASPBERRY
Rose-colored, fragrant flowers produced all summer. Particularly good for covering banks, especially in shade.			
2 to 3 ft.....	.25	2.00	—
3 to 4 ft.....	.30	2.50	—
4 to 5 ft.....	.35	3.00	—
SALISBURIA <i>adiantifolia</i> (See GINKGO)			
SALIX <i>babylonica</i> , 50'-60'			BABYLON WEEPING WILLOW
Particularly appropriate for waterside planting with its long pendulous branches.			
4 to 6 ft.....	.60	5.00	40.00
6 to 8 ft.....	.75	6.00	50.00
8 to 10 ft.....	1.00	—	—

SALIX—continued	Each	Per 10	Per 100
— <i>salamoni</i> , 60'-70'	SALAMON WEeping WILLOW		
The most vigorous of all "weeping willows."			
4 to 6 ft.	\$.50	\$4.00	—
6 to 8 ft.	.65	5.00	—
8 to 10 ft.	.75	—	—
— <i>blanda (dolorosa)</i> , 40'-50'	WISCONSIN WEeping WILLOW		
Very hardy.			
4 to 6 ft.	.50	4.00	—
6 to 8 ft.	.65	5.50	—
— <i>caprea (bush form)</i> , 15'-20'	PUSSY WILLOW		
Very desirable for spring effects. Will do well on dry as well as wet places.			
2 to 3 ft.	.25	2.00	\$15.00
3 to 4 ft.	.30	2.50	29.00
4 to 5 ft.	.35	3.00	25.00
5 to 6 ft.	.40	3.50	30.00
— <i>elegantissima</i> , 60'-70'	THURLOW WEeping WILLOW		
Vigorous upright grower; best for street planting.			
4 to 6 ft.	.50	4.00	30.00
6 to 8 ft.	.65	5.50	—
8 to 10 ft.	.80	7.00	—
10 to 12 ft.	1.10	—	—
— <i>incana (rosmarinifolia)</i> , 12'-15'	ROSEMARY WILLOW		
Good for fine texture in foliage effects.			
2 to 3 ft.	.25	2.00	15.00
3 to 4 ft.	.30	2.50	20.00
4 to 5 ft.	.35	3.00	25.00
— <i>pentandra</i> , 20'-30'	LAUREL WILLOW		
Shining rich dark green leaves make this a worthwhile background; valuable for seashore planting.			
3 to 4 ft.	.30	2.50	20.00
4 to 6 ft.	.35	3.00	25.00
6 to 8 ft.	.45	4.00	35.00
— <i>vitellina aurea</i> , 25'-30'	RUSSIAN GOLDEN WILLOW		
3 to 4 ft.	.30	2.50	20.00
4 to 5 ft.	.35	3.00	25.00
5 to 6 ft.	.40	3.50	—
— <i>britzensis</i> , 20'-25'	BRONZE GOLDEN WILLOW		
Particularly good when used with the preceding variety.			
3 to 4 ft.	.25	2.00	15.00
4 to 6 ft.	.35	3.00	25.00
— <i>pendula</i>	WEeping GOLDEN WILLOW		
Weeping habit, similar to <i>babylonica</i> , with yellow branches.			
4 to 5 ft.	.50	4.00	30.00
5 to 6 ft.	.60	5.00	45.00
6 to 8 ft.	.75	6.50	50.00
8 to 10 ft.	1.00	9.00	—
SAMBUCUS <i>canadensis</i> , 8'-9'	AMERICAN ELDER		
Useful for swampy places; fragrant flowers, June-July.			
2 to 3 ft.	.30	2.50	20.00
3 to 4 ft.	.35	3.00	25.00
4 to 5 ft.	.40	3.50	—
— <i>acutiloba</i> , 8'-9'	CUTLEAF AMERICAN ELDER		
Leaves intricately cut.			
2 to 3 ft.	.30	2.50	—
3 to 4 ft.	.35	3.00	—
4 to 5 ft.	.40	3.50	—
— <i>aurea</i> , 10'-12'	GOLDEN AMERICAN ELDER		
Has conspicuous yellow foliage.			
18 to 24 in.	.25	2.00	15.00
2 to 3 ft.	.30	2.50	20.00
3 to 4 ft.	.35	3.00	25.00

SAMBUCUS—continued		Each	Per 10	Per 100
— <i>pubens</i> , 7'-8'			SCARLET ELDER	
Flowers in April-May. Bright red fruits ripen in June. Very attractive.				
2 to 3 ft.		\$.30	\$2.50	—
3 to 4 ft.		.35	3.00	—
4 to 5 ft.		.40	3.50	—
— <i>racemosa</i>			EUROPEAN RED ELDER	
2 to 3 ft.		.30	2.50	—
3 to 4 ft.		.35	3.00	—
4 to 5 ft.		.40	3.50	—
SOPHORA <i>japonica</i> , 30'-40'			CHINESE SCHOLARTREE	
White flowers in late summer; noticeable green bark in winter.				
2 to 3 ft.		.75	—	—
3 to 4 ft.		1.00	8.50	—
4 to 6 ft.		1.25	—	—
— <i>vicifolia</i> , 2'-3'			VETCH-LEAF SOPHORA	
Slender spreading shrub, with bluish violet flowers. Hardy at Arnold Arboretum.				
3½" pots.		.50	4.00	—
SORBARIA <i>aitchisoni</i> , 4'-5'			KASHMIR FALSE SPIRAEA	
Graceful, compound foliage; flowers creamy white, July-Sept.				
2 to 3 ft.		.35	3.00	\$25.00
3 to 4 ft.		.40	3.50	30.00
4 to 5 ft.		.45	4.00	35.00
— <i>sorbifolia</i> , 4'-5'			URAL FALSE SPIRAEA	
Fluffy heads of white flowers, June-August.				
2 to 3 ft.		.35	3.00	—
3 to 4 ft.		.40	3.50	—
SORBUS <i>americana</i> , 25'-30'			MOUNTAIN ASH	
A valuable tree with orange scarlet berries.				
3 to 4 ft.		.75	6.50	—
4 to 5 ft.		.85	7.50	—
— <i>aucuparia</i> , 25'-30'			EUROPEAN MOUNTAIN ASH	
A valuable tree on a small lawn; the scarlet berries are quite striking.				
4 to 5 ft.		.75	6.50	—
5 to 6 ft.		.85	7.50	—
6 to 8 ft.		1.25	11.00	—
— <i>pendula</i>				
5 to 6 ft. stems—1 yr. heavy (double budded)				
		1.50	—	—
SPIRAEA <i>alba</i> (<i>salicifolia</i>)			MEADOW SPIRAEA	
18 to 24 in.		.20	1.50	—
2 to 3 ft.		.25	2.00	15.00
3 to 4 ft.		.30	2.50	20.00
— <i>arguta</i> , 5'-6'			GARLAND SPIRAEA	
Small light green leaves; very free flowering. May. Similar to, but more vigorous than <i>thunbergi</i> .				
12 to 18 in.		.25	2.00	—
18 to 24 in.		.30	2.50	—
2 to 2½ ft.		.35	3.00	—
— <i>billiardi</i> , 5'-6'			BILLIARD SPIRAEA	
Bright pink fluffy flower spikes, July-October. Valuable for dry places.				
18 to 24 in.		.20	1.50	10.00
2 to 3 ft.		.25	2.00	15.00
3 to 4 ft.		.30	2.50	20.00
— <i>bumalda</i> , 3'			BUMALDA SPIRAEA	
Light pink flower, July-Sept. A good dwarf "facing" shrub.				
18 to 24 in.		.35	3.00	20.00
2 to 2½ ft.		.40	3.50	25.00
2½ to 3 ft.		.45	4.00	30.00



Two-year Spirea Anthony Waterer, averaging 2 and ½ ft. The plants are well-branched, well-grown, the best that can be found anywhere. See page 38.

SPIRAEA—continued		Each	Per 10	Per 100	Per 1000
— — <i>anthony waterer</i> , 3'					
WATERER SPIRAEA					
Deeper rose pink than preceding; very free flowering all summer.					
12 to 18 in.	\$.30	\$2.50	\$20.00	\$150.00
18 to 24 in.35	3.00	25.00	200.00
2 to 2½ ft.40	3.50	30.00	250.00
2½ to 3 ft.45	4.00	35.00	—
— — <i>froebeli</i> , 4'			Each	Per 10	Per 100
FROEBEL SPIRAEA					
Smaller, but more vigorous than preceding.					
18 to 24 in.25		2.00	18.00
2 to 2½ ft.30		2.50	20.00
2½ to 3 ft.35		3.00	25.00
3 to 4 ft.40		3.50	30.00
— <i>fortunei</i> (<i>callosa rosea</i>), 4'					
FORTUNE SPIRAEA					
Pink flowering; more vigorous form of following variety.					
18 to 24 in.20		1.50	—
2 to 3 ft.25		2.00	—
3 to 4 ft.30		2.50	—
— <i>japonica</i> (<i>callosa alba</i>), 3'					
JAPANESE SPIRAEA					
White, June–July. Purplish-green foliage when young.					
12 to 15 in.30		2.50	18.00
15 to 18 in.35		3.00	22.00
18 to 24 in.40		3.50	27.00
2 to 2½ ft.45		4.00	32.00
— <i>prunifolia</i> , 7'–8'					
BRIDALWREATH					
White, May. Free-flowering; handsome dark green shining foliage, turning orange in autumn.					
2 to 3 ft.35		3.00	22.00
3 to 4 ft.40		3.50	28.00
4 to 5 ft.45		4.00	35.00
— <i>reevesiana</i> , 7'–8'					
REEVES SPIRAEA					
Pure white, May–June. Graceful, arching habit; retains leaves until late.					
18 to 24 in.25		2.00	15.00
2 to 3 ft.30		2.50	20.00
3 to 4 ft.35		3.00	25.00
— <i>thunbergi</i> , 4'–5'			Each	Per 10	Per 100
THUNBERG SPIRAEA					
Slender, arching branches clothed with pure-white flowers. April–May. Small, feathery, light-green leaves. Valuable for seaside planting.					
12 to 18 in.30		2.50	20.00
18 to 24 in.35		3.00	22.00
2 to 2½ ft.40		3.50	25.00

SPIRAEA—continued		Each	Per 10	Per 100
— tomentosa, 3'-4'		HARDHACK		
Woolly, rose-pink flowers, July–Sept. Leaves brownish under- side. Good in masses for low ground.				
2 to 3 ft.		\$.30	\$2.50	\$20.00
3 to 4 ft.35	3.00	25.00
		Each	Per 10	Per 100 Per 1000
— van houttei, 8'-9'		VANHOUTTE SPIRAEA		
White, May–June. Graceful habit. Extremely free flower- ing and very adaptable.				
18 to 24 in.25	2.00	15.00	100.00
2 to 3 ft.30	2.50	20.00	150.00
3 to 4 ft.35	3.00	25.00	200.00
STAPHYLEA colchica, 10'-12'		COLCHIS BLADDERNUT		
Flowers white, May–June. Fragrant. Decorative seed pods.				
2 to 3 ft.50	—	—
3 to 4 ft.60	—	—
4 to 5 ft.70	—	—
STEPHANANDRA flexuosa, 5'-6'		CUTLEAF STEPHANANDRA		
Graceful, compact habit; handsome foliage.				
18 to 24 in.30		2.50	20.00
2 to 3 ft.35		3.00	25.00
3 to 4 ft.40		3.50	30.00
STYRAX japonica, 12'-15'		CUTLEAF STEPHANANDRA		
White, bell-shaped, pendant flowers, June–July. Makes a handsome specimen.				
18 to 24 in.30		2.50	—
2 to 3 ft.35		3.00	25.00
3 to 4 ft.45		4.00	35.00
4 to 5 ft.60		5.00	—
SYMPHORICARPOS racemosus, 5'-6'		SNOWBERRY		
Conspicuous, white berries, attractive foliage. Most adapt- able, but best in half shady moist locations.				
18 to 24 in.25		2.00	15.00
2 to 3 ft.30		2.50	20.00
3 to 4 ft.40		3.50	30.00
— vulgaris, 4'-5'		CORALBERRY		
Coral red berries persisting throughout winter. Good for shade, and bank planting.				
18 to 24 in.20		1.50	10.00
2 to 3 ft.25		2.00	15.00
3 to 4 ft.30		2.50	20.00
SYRINGA chinensis (rothomagensis), 8'-9'		CHINESE LILAC		
Slender branches, graceful habit. Violet flowers in May. Free flowering.				
18 to 24 in.35		3.00	25.00
2 to 3 ft.40		3.50	30.00
3 to 4 ft.50		4.50	40.00
— saugeana, 8'-9'		PURPLE CHINESE LILAC		
Deep purple flowers.				
18 to 24 in.35		3.00	25.00
2 to 3 ft.40		3.50	30.00
3 to 4 ft.50		4.50	40.00
— japonica, 18'-20'		JAPANESE TREE LILAC		
Loose bunches creamy white flowers, June–July. Handsome foliage; grows into well-shaped specimen.				
2 to 3 ft.40		3.50	30.00
3 to 4 ft.50		4.50	40.00
4 to 5 ft.60		5.50	50.00
— josikaea, 9'-10'		HUNGARIAN LILAC		
Violet flowers, June. Good shining dark green foliage.				
18 to 24 in.35		3.00	25.00
2 to 3 ft.40		3.50	30.00
3 to 4 ft.50		4.50	—

SYRINGA—continued		Each	Per 10	Per 100
— <i>persica</i> , 9'-10'		PERSIAN PURPLE LILAC		
Blooms freely, lilac, May-June.				
18 to 24 in.		\$.35	\$3.00	—
2 to 3 ft.		.40	3.50	—
— <i>villosa</i> , 7'-8'		LATE LILAC		
Pale pinkish-lilac, June. Fragrant; bushy, compact habit.				
18 to 24 in.		.30	2.50	\$20.00
2 to 3 ft.		.40	3.50	30.00
3 to 4 ft.		.50	4.50	40.00
— <i>vulgaris</i> , 12'-15'		COMMON PURPLE LILAC		
Blooms in early May.				
18 to 24 in.		.25	2.00	18.00
2 to 3 ft.		.35	3.00	25.00
3 to 4 ft.		.40	3.50	—
— <i>alba</i> , 12'-15'		COMMON WHITE LILAC		
18 to 24 in.		.30	2.50	22.00
2 to 3 ft.		.40	3.50	30.00
3 to 4 ft.		.45	4.00	—

FRENCH LILACS—NAMED VARIETIES

These are all grown from cuttings and are on their own roots, which is the best way Lilacs can be grown, as they will not sucker. It is the most expensive way to grow them, but our prices compare favorably with the cheap, grafted stock. These named Lilacs generally grow from 6'-12' in height, depending on the variety and locality.

18 to 24 in.	.45	4.00	35.00
2 to 2½ ft.	.55	5.00	45.00
2½ to 3 ft.	.65	6.00	—
3 to 4 ft.	.75	7.00	—

- ✓ Alphonse Lavalle, double light purple
- ✓ Charles the Tenth, reddish purple, single
- ✓ Ludwig Spaeth, single reddish purple
- Michel Buchner, double lilac **Bunny**
- Marie Le Graye, single white
- Mme. Lemoine, double white
- Mme. Casimir Perrier, double white
- ✓ President Grevy, double blue
- ✓ Rubra de Marly, single light blue
- ✓ Wm. Robinson, double violet pink

TAMARIX <i>africana</i> , 12'-14'		AFRICAN TAMARIX		
Pink, April-May. Has feathery, gray-green foliage. Very effective near water; thrives at seashore.				
2 to 3 ft.	.25	2.00	15.00	
3 to 4 ft.	.30	2.50	20.00	
4 to 5 ft.	.35	3.00	25.00	
— <i>gallica</i> , 8'-9'		FRENCH TAMARIX		
Light pink, May-June, blue-green foliage.				
2 to 3 ft.	.25	2.00	15.00	
3 to 4 ft.	.30	2.50	20.00	
4 to 5 ft.	.35	3.00	25.00	

TAXUS (See EVERGREENS)

THUJA (See EVERGREENS)

TILIA <i>americana</i> , 75'-90'		AMERICAN LINDEN		
Grows rather quickly, forming an open head. Has fragrant yellow flowers.				
8 to 10 ft.	1.75	16.00	—	
8 to 10 ft.—1¼ to 1½ in.	2.00	18.50	—	
9 to 11 ft.—1½ to 1¾ in.	2.25	21.00	—	
10 to 12 ft.—1¾ to 2 in.	2.50	23.50	—	
11 to 13 ft.—2 to 2¼ in.	3.25	—	—	
12 to 13 ft.—2¼ to 2½ in.	4.50	—	—	



Two year Weigelia rosea on the left; two-year Weigelia nana variegata on the right. The rosea will average 3 to 4 ft., and the variegata 2 to 3 ft. See Page 44.

TILIA—continued

	Each	Per 10	Per 100
— euchlora (dasystyla), 60'-75'			
Beautiful glossy dark green foliage with yellow twigs.			
8 to 10 ft.	\$1.75	\$16.00	—
8 to 10 ft.—1¼ to 1½ in.	2.00	18.50	—
9 to 11 ft.—1½ to 1¾ in.	2.25	21.00	—
9 to 11 ft.—1¾ to 2 in.	2.50	23.50	—
10 to 12 ft.—2 to 2¼ in.	3.25	—	—
12 to 14 ft.—2¼ to 2½ in.	4.50	—	—
— platyphyllos, 60'-75'			
Beautiful glossy dark green foliage with yellow twigs.			
8 to 10 ft.—1¼ to 1½ in.	2.00	18.50	—
9 to 10 ft.—1½ to 1¾ in.	2.25	21.00	—
10 to 11 ft.—1¾ to 2 in.	3.00	—	—
11 to 12 ft.—2 to 2¼ in.	4.00	—	—
— tomentosa (argentea), 60'-70'			
Symmetrical and compact. Leaves silvery gray underneath; very noticeable when blown by wind.			
1½ to 1¾ in.	2.25	21.00	—
1¾ to 2 in.	2.50	23.50	—
2 to 2¼ in.	3.75	—	—
2¼ to 2½ in.	4.50	—	—
— vulgaris, 60'-70'			
In late June the fragrant flowers are noticeable; grows symmetrical and compact.			
8 to 10 ft.—1¼ to 1½ in.	2.00	18.50	—
10 to 12 ft.—1½ to 1¾ in.	2.50	23.50	—
10 to 12 ft.—1¾ to 2 in.	3.25	—	—
11 to 12 ft.—2 to 2¼ in.	3.75	—	—

TSUGA (See EVERGREENS)

ULMUS americana, 80'-100'			
Statelyness and dignity are here exemplified. Fairly rapid in growth, this typical American tree soon assumes regal proportions and commands respect of all who look upon it.			
6 to 8 ft.	1.00	8.50	\$ 75.00
8 to 10 ft.	1.35	12.00	110.00
8 to 10 ft.—1¼ to 1½ in.	1.85	17.00	160.00
9 to 11 ft.—1½ to 1¾ in.	2.25	21.00	—
10 to 12 ft.—1¾ to 2 in.	2.75	26.00	—
— glabra (latifolia), 60'-80'			
A spreading tree of rapid growth and attractive foliage.			
8 to 10 ft.	1.25	—	—
8 to 10 ft.—1¼ to 1½ in.	1.75	—	—
9 to 11 ft.—1½ to 1¾ in.	2.25	—	—
10 to 12 ft.—1¾ to 2 in.	3.00	—	—
11 to 12 ft.—2 to 2¼ in.	3.75	—	—

ULMUS—continued		Each	Per 10	Per 100
— <i>camperdowni</i> , 8'-10'		CAMPERDOWN ELM		
The weeping Elm of good foliage and habit for weeping trees.				
1 year head, 5 ft. stems.....	\$1.50	—	—	—
2 year head, 5 ft. stems.....	2.00	—	—	—
VACCINIUM <i>corymbosum</i> , 5'-6'		HIGHBUSH BLUEBERRY		
12 to 18 in.....	.30	\$2.50	—	—
18 to 24 in.....	.35	3.00	—	—
VIBURNUM <i>acerifolium</i> , 4'-5'		MAPLELEAF VIBURNUM		
White, May-June. Black fruits, maple-like leaves, turning purple in autumn; good for dry shady places.				
18 to 24 in.....	.35	3.00	—	—
2 to 3 ft.....	.40	3.50	—	—
— <i>americanum</i> (<i>oxycoccos</i>), 8'-9'		AMERICAN CRANBERRYBUSH		
Bright scarlet berries in large bunches, persisting all winter.				
18 to 24 in.....	.35	3.00	\$25.00	—
2 to 3 ft.....	.45	4.00	35.00	—
3 to 4 ft.....	.55	5.00	54.00	—
— <i>cassinoides</i> , 5'-6'		WITHE-ROD		
White, June-July. Berries pink, changing to dark blue. Rich autumn coloring; splendid for massing and near water.				
18 to 24 in.....	.35	3.00	25.00	—
2 to 3 ft.....	.45	4.00	35.00	—
3 to 4 ft.....	.50	4.50	—	—
	Each	Per 10	Per 100	Per 1000
— <i>dentatum</i> , 10'-12'		ARROW-WOOD		
White, May-June. Berries blue-black, autumn coloring purple and red; thrives in wet soil.				
18 to 24 in.....	.30	2.50	20.00	150.00
2 to 3 ft.....	.35	3.00	25.00	200.00
3 to 4 ft.....	.40	3.50	30.00	250.00
4 to 5 ft.....	.45	4.00	35.00	—
	Each	Per 10	Per 100	Per 1000
— <i>dilatatum</i> , 8'-9'		LINDEN VIBURNUM		
White, May-June. Scarlet showy berries persisting. Handsome and valuable.				
18 to 24 in.....	.40	3.50	30.00	—
2 to 3 ft.....	.45	4.00	35.00	—
3 to 4 ft.....	.50	4.50	40.00	—
— <i>lantana</i> , 15'-18'		WAYFARING TREE		
White, May-June. Handsome, dark green, wrinkled leaves. Berries red, changing to black.				
18 to 24 in.....	.35	3.00	25.00	—
2 to 3 ft.....	.40	3.50	30.00	—
3 to 4 ft.....	.50	4.50	40.00	—
4 to 5 ft.....	.60	5.50	—	—
— <i>rugosum</i> , 15'-18'		WRINKLELEAF WAYFARING TREE		
Has larger and more wrinkled leaves.				
18 to 24 in.....	.40	3.50	—	—
2 to 3 ft.....	.40	3.50	—	—
3 to 4 ft.....	.50	4.50	—	—
4 to 5 ft.....	.60	5.50	—	—
— <i>lentago</i> , 18'-20'		NANNYBERRY		
White, May-June. Handsome, shining leaves. Blue-black fruits. Splendid shrub for massing.				
18 to 24 in.....	.35	3.00	25.00	—
2 to 3 ft.....	.40	3.50	30.00	—
3 to 4 ft.....	.50	4.50	40.00	—
4 to 5 ft.....	.60	5.50	50.00	—
	Each	Per 10	Per 100	Per 1000
— <i>molle</i> , 10'-12'		KENTUCKY VIBURNUM		
Larger, darker green leaves, but otherwise similar to "dentatum."				
18 to 24 in.....	.30	2.50	20.00	150.00
2 to 3 ft.....	.35	3.00	25.00	200.00
3 to 4 ft.....	.40	3.50	30.00	250.00
4 to 5 ft.....	.45	4.00	—	—

VIBURNUM—continued		Each	Per 10	Per 100
— <i>opulus</i> , 9'-10'		EUROPEAN CRANBERRYBUSH		
18 to 24 in.		\$.35	\$3.00	\$25.00
2 to 3 ft.		.45	4.00	35.00
— — <i>nanum</i> , 18''-24''		DWARF CRANBERRYBUSH		
Useful edging or facing shrub. Rarely flowers. Very compact.				
4 to 6 in.		.15	1.00	—
6 to 8 in.		.20	1.50	—
8 to 10 in.		.25	2.00	—
— — <i>sterile</i> , 9'-10'		COMMON SNOWBALL		
Has showy, round head of white flowers, May-June.				
18 to 24 in.		.40	3.50	30.00
2 to 3 ft.		.45	4.00	35.00
3 to 4 ft.		.50	4.50	40.00
— <i>prunifolium</i> , 10'-12'		BLACKHAW		
Pure white flowers, April-June. Blue-black, glaucous berries. Sturdy habit; handsome shrub.				
18 to 24 in.		.40	3.50	—
2 to 2½ ft.		.50	4.50	—
2½ to 3 ft.		.60	5.00	—
— <i>rhytidophyllum</i> , 6'-8'		LEATHERLEAF VIBURNUM		
Evergreen. Large, oblong leaves, deep green above, gray beneath; a bold, handsome shrub.				
9 to 12 in.		.35	3.00	—
12 to 15 in.		.50	4.50	—
15 to 18 in.		.75	—	—
18 to 24 in.		1.00	—	—
2 to 2½ ft.		1.50	—	—
2½ to 3 ft.		2.00	—	—
— <i>sieboldi</i> (<i>japonicum</i>), 9'-10'		SIEBOLD VIBURNUM		
White, May-June. Berries pink, changing to black. Handsome, large, dark green leaves. Vigorous.				
18 to 24 in.		.30	2.50	22.00
2 to 3 ft.		.40	3.50	30.00
3 to 4 ft.		.50	4.50	—
— <i>tomentosum</i> , 7'-8'		DOUBLEFILE VIBURNUM		
Flat heads of white flowers, June. Berries red to black. Good foliage.				
18 to 24 in.		.35	3.00	25.00
2 to 3 ft.		.45	4.00	35.00
3 to 4 ft.		.55	5.00	—
— — <i>plicatum</i> , 7'-8'		JAPANESE SNOWBALL		
Showy white flowers in balls, June. Handsome foliage with purple autumn coloring.				
12 to 18 in.		.35	3.00	25.00
18 to 24 in.		.45	4.00	30.00
2 to 2½ ft.		.50	4.50	35.00
2½ to 3 ft.		.60	5.50	45.00
3 to 4 ft.		.65	6.00	50.00
VINCA (See PERENNIALS AND GROUND COVERS)				
WEIGELIA <i>amabilis</i> , 7'-8'		ROSE WEIGELIA		
Light pink.				
18 to 24 in.		.25	2.00	15.00
2 to 3 ft.		.30	2.50	20.00
3 to 4 ft.		.35	3.00	—
— <i>candida</i> , 7'-8'		WHITE WEIGELIA		
Large, pure white flowers.				
2 to 3 ft.		.35	3.00	25.00
3 to 4 ft.		.40	3.50	30.00
4 to 5 ft.		.45	4.00	35.00
— <i>Eva Rathke</i> , 4'-5'		RED FLOWERED WEIGELIA		
Carmine, June-August. Most floriferous.				
12 to 18 in.		.30	2.50	20.00
18 to 24 in.		.40	3.50	25.00
2 to 2½ ft.		.45	4.00	30.00
2½ to 3 ft.		.50	4.50	35.00
3 to 4 ft.		.55	5.00	45.00

WEIGELIA—continued		Each	Per 10	Per 100
— <i>floribunda</i> , 7'-8'		CRIMSON WEIGELIA		
Crimson, June. Free flowering.				
18 to 24 in.	\$.30	\$2.50	—
2 to 3 ft.40	3.50	—
3 to 4 ft.45	4.00	—
— <i>lavalle</i> , 7'-8'		BRIGHT CRIMSON FLWD. WEIGELIA		
Bright crimson.				
2 to 3 ft.30	2.50	\$20.00
3 to 4 ft.35	3.00	25.00
		Each	Per 10	Per 100
— <i>nana variegata</i> , 4'-5'		VARIEGATED LEAF WEIGELIA		
Pale pink flower; variegated leaves; dwarf, compact growth.				
18 to 24 in.30	2.50	20.00
2 to 2½ ft.40	3.50	25.00
2½ to 3 ft.45	4.00	30.00
3 to 4 ft.50	4.50	35.00
— <i>rosea</i> , 7'-8'		PINK WEIGELIA		
Showy, pink flowers freely produced, June. Vigorous grower.				
18 to 24 in.25	2.00	15.00
2 to 3 ft.30	2.50	20.00
3 to 4 ft.35	3.00	25.00
4 to 5 ft.40	3.50	30.00
		Each	Per 10	Per 100
WISTERIA <i>multijuga</i>		LONGCLUSTER WISTERIA		
(seedlings), 40'-50'				
Deep blue, long clusters, May. Seen to best advantage when trained on old trees or open trellises.				
2 to 3 ft.35	3.00	—
3 to 4 ft.45	4.00	—
— <i>sinensis</i> (seedlings), 40'-50'		CHINESE WISTERIA		
Purple-blue flowers about a week before preceding.				
2 to 3 ft.35	3.00	—
3 to 4 ft.45	4.00	—
— <i>alba</i> (seedlings), 40'-50'		CHINESE WHITE WISTERIA		
2 to 3 ft.40	3.50	—
3 to 4 ft.50	4.50	—
— grafted (from good flg. plants)		BLUE AND WHITE		
This is by far the best stock to plant in wisterias because they will really bloom.				
18 to 24 in.40	3.50	—
2 to 3 ft.50	4.50	—
3 to 4 ft.60	5.50	—
ZANTHORHIZA <i>apiifolia</i> , 2'-3'		YELLOWROOT		
Good ground cover. Will succeed on dry, sandy soil, banks, etc. Small purplish flowers, May-June.				
12 to 15 in.20	1.50	10.00
15 to 18 in.25	2.00	15.00
18 to 24 in.30	2.50	20.00

YUCCA (See EVERGREENS)

EVERGREENS AND CONIFERS

Princeton Evergreens have been transplanted frequently. Each time they have been given ample room for proper growth. Every one is sheared into a symmetrical shape. Freshly dug in the nursery for your individual order. Balled and burlapped, at prices named, unless marked with an "*".

ABELIA <i>grandiflora</i> , 3'-4'		Each	Per 10	Per 100
		GLOSSY ABELIA		
Choice small evergreen shrub, with white tinted lilac flowers, produced throughout the entire summer months.				
3" pots	\$.35	\$3.00	\$25.00



Azalea hinodegiri at Princeton. This shows part of our stock of this variety. Note how symmetrical and bushy the plants are. See page 45.

	Each	Per 10	Per 100
ABIES concolor, 70'-80'			
WHITE FIR			
Grows quickly and forms symmetrical, beautiful specimen. Large, gray-green needles.			
18 to 24 in.	\$2.00	—	—
2 to 2½ ft.	2.75	—	—
2½ to 3 ft.	3.50	—	—
3 to 4 ft.	4.50	—	—
— douglasi (See PSEUDOTSUGA douglasi)			
— nordmanniana, 60'-70'			
NORDMANN FIR			
Grows slowly when young. Flat leaves are rich, shining green above, silvery white beneath.			
2 to 3 ft.	3.00	—	—
3 to 4 ft.	5.00	—	—
— Spruce (See PICEA)			
ANDROMEDA catesbaei (See LEUCOTHOE)			
— japonica (See PIERIS)			
AZALEA amoena, 3'-4'			
Conspicuous purple-red flowers, April-May. Leaves turn a rich, bronze-green in winter.			
6 to 8 in.*60	\$5.50	\$45.00
8 to 10 in.75	6.00	50.00
10 to 12 in.	1.00	9.00	—
— hinodegiri, 3'-4'			
Larger leaves and looser growth than above; flowers very bright carmine-pink; effective in masses or with Rhododendron.			
6 to 8 in.*85	7.50	65.00
8 to 10 in.	1.10	10.00	90.00
10 to 12 in.	1.35	12.50	—
— indica alba (ledifolia alba), 3'-4'			
Pure white flowers and profuse bloomer.			
10 to 12 in.	1.00	8.50	75.00
12 to 15 in.	1.25	11.50	—
— lilacina, 3'-4'			
A beautiful addition to the indica type with large individual flowers of pure lilac color.			
10 to 12 in.	1.00	8.50	75.00
12 to 15 in.	1.25	11.50	—
— rosea (magnifica), 3'-4'			
Rose colored flowers.			
15 to 18 in.	1.50	13.50	—

AZALEA—continued— *macrantha*, 2½'-3'

Each Per 10 Per 100

RED SALMON AZALEA

A beautiful plant, with large flowers that appear at intervals, and not at one time like the preceding.

8 to 10 in.	\$1.00	\$ 9.00	\$80.00
10 to 12 in.	1.25	12.00	—
12 to 15 in.	1.35	12.50	—

KURUME AZALEAS

A new evergreen Japanese type, with semi-double flowers in white, pink, red and lavender, making a valuable addition to the list of plants that can be easily forced for Christmas and Easter trade. These are also suitable for planting in protected locations, and perfectly hardy from Washington south.

8 to 10 in.	1.25	10.00	—
10 to 12 in.	1.50	12.50	—
12 to 15 in.	1.75	15.00	—

Christmas Cheer, red semi-double
 Coral Bells, coral pink, semi-double
 Flame, orange red, single
 Pink Pearl, salmon rose, semi-double
 Snow, pure white, semi-double

HARDY JAPANESE AZALEAS

We have a number of named varieties of Japanese Azaleas which have proven hardy in this section. They are very desirable for landscape work. Sizes run from 10" to 18" and prices will be gladly quoted on application.

— *BERBERIS ilicifolia*, 5'-6'

HOLLY BARBERRY

Holly-like leaves, persisting until new foliage appears; flowers yellow.

15 to 18 in.55	—	—
18 to 24 in.65	—	—

— *julianae*, 4'-5'

WINTERGREEN BARBERRY

Beautiful evergreen hardy variety, of compact growth with nice glossy green foliage throughout the year.

3 in. pots.75	6.00	—
------------------	-----	------	---

— *BIOTA orientalis*, 20'-25'

ORIENTAL ARBORVITAE

Rather stiff, columnar habit; bright green foliage, bronze in winter; a good accent plant.

18 to 24 in.75	6.50	55.00
2 to 2½ ft.	1.00	9.00	80.00
2½ to 3 ft.	1.75	16.50	155.00
3 to 4 ft.	2.75	26.50	—
4 to 5 ft.	3.75	36.50	—

— *aurea nana*, 2½'-3'

BERCKMANS GOLDEN ARBORVITAE

A gem for dwarf planting; compact, roundish shape; warm golden yellow foliage. Especially good for formal work and edging.

8 to 10 in.	1.00	8.50	75.00
10 to 12 in.	1.25	11.00	100.00
12 to 15 in.	1.50	13.50	125.00
15 to 18 in.	2.00	18.50	—

— *elegantissima*, 7'-8'

YELLOW COLUMN ARBORVITAE

Assumes a rich, deep golden bronze color in winter. Compact, columnar.

15 to 18 in.	1.25	11.00	—
18 to 24 in.	1.50	13.50	—
2 to 2½ ft.	2.50	—	—
2½ to 3 ft.	3.25	—	—

— *rosedale*, 3'-4'

ROSEDALE HYBRID

Fine foliage; soft texture.

12 to 15 in.	1.00	8.50	75.00
15 to 18 in.	1.25	11.00	—
18 to 24 in.	1.50	—	—

	Each	Per 10	Per 100
BUXUS sempervirens (bush form), 12'-15'			BOXWOOD
Useful for formal hedges.			
8 to 10 in.*	\$.50	\$4.50	\$40.00
10 to 12 in.*	.75	6.00	50.00
12 to 15 in.*	1.00	8.50	75.00
15 to 18 in.	1.25	11.00	—
18 to 24 in.	1.50	—	—
— — suffruticosa, 3'-4'	Per 10	Per 100	Per 1000
			TRUEDWARF BOX
Extensively used for edging.			
3 to 4 in.*	1.00	8.00	60.00
4 to 6 in.*	1.50	12.00	90.00
6 to 8 in.*	2.50	15.00	—
8 to 10 in.*	5.00	—	—
	Each	Per 10	Per 100
COTONEASTER francheti, 5'-6'			FRANCHET COTONEASTER
Upright growing variety with spreading branches. Leaves dark green, white tomentum underneath. Berries bright orange freely produced.			
3 in. pots.	.50	4.50	—
6 in. pots.	.75	6.50	60.00
— horizontalis davidiana, 1'-1½'			ROCK COTONEASTER
Small box-like leaves; bright red berries; effective among rocks.			
3" pots.	.50	4.00	30.00
5" pots.	.75	6.50	60.00
— lemoinei, 4'-5'			
Similar to Francheti in habit with smaller foliage and more tomentose, giving a silvery effect. Fruit red.			
3" pots.	.50	4.50	—
5" pots.	.75	6.50	—
— microphylla, 1½'-2'			ROCKSPRAY
Very small leaves, very deep green. Rather more bushy than the Rock Cotoneaster.			
3" pots.	.50	4.00	30.00
5" pots.	.75	6.50	60.00
— — thymifolia, 1½'-2'			THYME COTONEASTER
3" pots.	.50	4.50	40.00
5" pots.	.75	6.50	—
— rotundifolia boxifolia, 1½'-2'			
Prostrate growing, with small round green foliage and bright red berries.			
3" pots.	.50	4.50	40.00
5" pots.	.75	6.50	60.00
CRATAEGUS pyracantha lalandi (See PYRACANTHA)			
DAPHNE cneorum, 1'			ROSE DAPHNE
Gray-green foliage, low spreading. Pretty pink flowers in April-May. Delightful fragrance.			
3" pots.	.50	4.50	40.00
5" pots.	.75	6.00	55.00
8 to 10 in.—field grown.	.85	8.00	75.00
EUONYMUS japonicus, 5'-6'			EVERGREEN BURNINGBUSH
Lustrous, deep green leaves; upright bushy habit; needs winter protection here.			
8 to 10 in.*	.35	3.00	20.00
10 to 12 in.*	.50	3.50	25.00
12 to 15 in.*	.75	6.00	40.00
15 to 18 in.*	.85	7.50	—
18 to 24 in.*	1.00	9.00	—
— — latifolia marginata alba, 4'-5'			
Identical to the type in growth but with larger foliage very nicely variegated.			
5" pots.	.50	4.00	—



Part of our evergreens. On the right are *Juniper pfitzeriana*, one of the best and hardiest evergreen. See page 49.

EUONYMUS—continued		Each	Per 10	Per 100
— patens (sieboldianus), 6'-8'				
	SPREADING EUONYMUS			
	Grows vigorously, forming broad, rather loose shrub; leaves persist until late winter. Ornamental fruits. Effective among denser conifers.			
12 to 15 in.*	\$.50	—	—
15 to 18 in.*60	—	—
18 to 24 in.*75	—	—
— pulchellus, 6''-8''				
	BOX-LEAVED EUONYMUS			
	Low growing variety, with box-like foliage; evergreen, suitable for edging. Hardy in protected locations in vicinity of Philadelphia. Perfectly hardy from Washington south.			
2'' pots20	\$1.50	\$10.00
— radicans, climbing to 15'				
	WINTERCREEPER			
	Self-clinging vine. Good for covering low walls, also useful for under planting among evergreens.			
8 to 12 in.,* 2 year, bushy20	1.50	10.00
12 to 15 in.,* 3 year, bushy25	2.00	15.00
— acutus, 6''-12''				
	SHARPLEAF WINTERCREEPER			
	A graceful form, with long narrow leaves, white veins, purplish underneath.			
2 year20	—	—
— carrieri, 3'-4'				
	GLOSSY WINTERCREEPER			
	Has large, shiny, pointed leaves; bushy habit.			
8 to 12 in.*25	2.00	15.00
12 to 15 in.,* 2 year30	2.50	20.00
15 to 18 in.,* 3 year35	3.00	—
— colorata, 6''-12''				
	Long narrow leaves purple underneath, tinged purple above. Very effective in winter.			
2 year*30	—	—
	Each		Per 10	Per 100
— minimus, 6''-12''				Per 1000
	BABY WINTERCREEPER			
	Has tiny evergreen leaves and a dainty trailing habit. Charming rock subject.			
3'' pots30	2.50	20.00
			Each	Per 10
— variegatus				Per 100
	VARIEGATED LEAF WINTERCREEPER			
	Leaves veined and marked yellowish white and pink. Clinging vine.			
8 to 12 in.,* 2 year, bushy18	1.50	12.00
12 to 15 in.,* 3 year, bushy20	1.80	15.00

EUONYMUS—continued	Each	Per 10	Per 100
— <i>vegetus</i> , 3'-4'	BIGLEAF WINTERCREEPER		
Bushy, interesting growth. Bright scarlet fruits, freely produced. Handsome among evergreens.	Leaves, round, dull green.		
8 to 12 in.,* 2 year	\$.30	\$2.50	\$20.00
12 to 15 in.,* 3 year35	3.00	25.00
15 to 18 in.,* 3 year, bushy40	3.50	—
HEDERA colchica dentata , 20'-50'	GIANT ENGLISH IVY		
Strong growing climber, with large evergreen, heart shaped leaves. Very decorative.			
3½" pots30	2.50	—
— <i>gracilis</i> , 8'-10'	MINIATURE ENGLISH IVY		
Similar to English Ivy with small dark green foliage. A most graceful vine.			
3" pots25	2.00	—
— <i>helix</i> , 20'-50'	ENGLISH IVY		
Evergreen; good ground cover in shady locations. An ideal wall cover.			
2 year field grown*25	2.00	18.00
ILEX crenata , 8'-10'	JAPANESE HOLLY		
Box-like leaves, rich, deep green, and leathery. Stiff branching, makes a good hedge. Black berries.			
12 to 15 in75	6.50	—
15 to 18 in	1.00	9.00	—
18 to 24 in	1.50	—	—
— <i>microphylla</i> , 6'-8'	SMALL-LEAF JAPANESE HOLLY		
Smaller leaves and more hardy than preceding.			
12 to 15 in75	6.50	—
15 to 18 in	1.00	9.00	—
18 to 24 in	1.50	14.00	—
2 to 3 ft	2.25	21.50	—
— <i>glabra</i> , 5'-6'	INKBERRY		
Shining, dark green leaves, purplish in winter; black berries. Useful for shady spots, also succeeds in sun.			
12 to 15 in75	—	—
JUNIPERUS chinensis oblonga , 7'-8'			
Forms a broad, irregular, pyramid with feathery branches. Grayish foliage.			
18 to 24 in	1.50	—	—
2 to 2½ ft	2.25	—	—
2½ to 3 ft	2.75	—	—
— <i>pfitzeriana</i> , 5'-6'	PFITZER JUNIPER		
Broad, bushy habit. Gray-green foliage, giving feathery appearance. A most adaptable, hardy evergreen, highly recommended.			
12 to 18 in	1.60	15.00	—
18 to 24 in	1.75	16.50	—
2 to 2½ ft	2.50	24.00	—
2½ to 3 ft	3.50	34.00	—
3 to 4 ft	5.00	—	—
— <i>communis</i> , 2'-2½'	COMMON JUNIPER		
Forms a vase-shaped bush.			
12 to 18 in	1.25	11.50	—
18 to 24 in	1.35	12.50	—
2 to 2½ ft	1.85	17.50	—
2½ to 3 ft	2.15	—	—
3 to 4 ft	2.65	—	—
— <i>aurea</i> , 1'-1½'	GOLDEN COMMON JUNIPER		
Low spreading habit. Golden foliage, particularly bright in spring.			
12 to 15 in	1.00	9.00	—
12 to 18 in	1.50	—	—
18 to 24 in	1.75	—	—
2 to 2½ ft	2.00	—	—

JUNIPERUS—continued		Each	Per 10	Per 100
— <i>canadensis</i> , 2½'-3'		CANADA JUNIPER		
Forms a low vase-shaped bush. Leaves dark green above, bluish underneath.				
12 to 15 in.		\$.85	\$ 7.50	—
15 to 18 in.		1.15	10.00	—
18 to 24 in.		1.50	14.00	—
2 to 2½ ft.		2.00	—	—
— <i>cracovica</i> , 4'-5'		POLISH JUNIPER		
Upright, branching from ground, making very narrow column.				
18 to 24 in.		1.50	14.00	—
2 to 2½ ft.		2.00	—	—
2½ to 3 ft.		2.50	—	—
— <i>hibernica</i> , 7'-8'		IRISH JUNIPER		
A very narrow pyramid. Useful for its spire-like effect.				
18 to 24 in.		1.00	9.00	\$80.00
2 to 2½ ft.		1.25	11.50	—
— <i>suecica nana</i> , 3'-3½'		DWARF SWEDISH JUNIPER		
A narrow, compact column.				
12 to 15 in.		.90	8.00	—
15 to 18 in.		1.25	11.50	—
— <i>excelsa stricta</i> , 4'-5'		SPINY GREEK JUNIPER		
Compact, well-shaped pyramid. Foliage gray-green. Most useful for formal effects.				
10 to 12 in.		1.00	9.00	75.00
12 to 15 in.		1.35	12.50	—
15 to 18 in.		1.75	16.50	—
— <i>horizontalis (sabina porstrata)</i> , 1'-1½'		CREEPING SAVIN		
Branches trail along ground. Adapted to rockwork and ground covering.				
2 to 2½ ft.		2.00	—	—
2½ to 3 ft.		2.50	—	—
— <i>douglasi</i> , 1'-1½'		WAUKEGAN JUNIPER		
Long branches trailing along ground. Steely-blue foliage. A splendid ground cover; also effective among rock. Distinct purple hue in winter.				
12 to 15 in.		1.00	—	—
15 to 18 in.		1.50	—	—
18 to 24 in.		2.00	—	—
— <i>japonica</i> , 3'-4'		JAPANESE JUNIPER		
Los grower, spreading branches, dark green, scaly leaves. Adapted to rock planting. Grows slowly.				
12 to 15 in.		1.00	9.00	—
15 to 18 in.		1.35	12.50	—
18 to 24 in.		2.00	—	—
— <i>sabina</i> , 6'-7'		SAVIN JUNIPER		
Dense, dark green foliage. Spreading branches, forming irregular vase-shaped bush.				
10 to 12 in.		.85	7.50	—
12 to 15 in.		1.00	9.00	80.00
15 to 18 in.		1.35	12.50	115.00
18 to 24 in.		2.00	19.00	—
2 to 2½ ft.		2.50	—	—
— <i>tamariscifolia</i> , 1'-1½'		TAMARIX SAVIN		
Flat, spreading growth, making compact but soft texture in low evergreen planting.				
10 to 12 in.		1.00	9.00	—
12 to 15 in.		1.25	11.50	—
15 to 18 in.		1.50	14.00	—
— <i>virginiana</i> , 25'-30'		REDCEDAR		
Forms a dense column, deep green foliage, purplish in winter. Useful in formal work, or mixed plantings.				
3 to 4 ft.		3.00	28.50	275.00
4 to 5 ft.		4.00	38.50	375.00
5 to 6 ft.		5.25	51.00	—

JUNIPERUS—continued		Each	Per 10	Per 100
— <i>glauca</i> , 15'-20'		SILVER REDCEDAR		
Bluish-gray foliage. Distinct.				
18 to 24 in.		\$1.25	—	—
2 to 2½ ft.		1.85	—	—
2½ to 3 ft.		2.50	—	—
3 to 4 ft.		3.50	—	—
— <i>tripartita</i> , 4'-5'		FOUNTAIN REDCEDAR		
A bushy, half upright grower with feathery branches.				
18 to 24 in.		1.50	—	—
2 to 2½ ft.		2.00	—	—
2½ to 3 ft.		2.75	—	—
— <i>waukegan</i> (See <i>horizontalis douglasi</i>)				
KALMIA latifolia, 5'-7'		MOUNTAIN LAUREL		
Most effective in June when the clusters of pink flowers open. This stock is nursery grown. Good foliage; like shade.				
12 to 18 in.		1.50	\$12.50	\$100.00
18 to 24 in.		1.75	16.00	135.00
2 to 2½ ft.		2.25	20.00	165.00
2½ to 3 ft.		3.00	—	—
LEUCOTHOE catesbaei, 3'-4'		DROOPING LEUCOTHOE		
Attractive white flowers, May. Handsome, lustrous leaves, rich autumn coloring. Splendid for under planting in shade.				
12 to 15 in.		.85	7.50	65.00
15 to 18 in.		1.10	10.00	90.00
LIGUSTRUM lucidum, 6'-8'		GLOSSY PRIVET		
A very attractive evergreen privet with rich, glossy leaves. Not hardy in the North.				
3" pots.		.30	2.50	—
5" pots.		.50	—	—
LONICERA pileata, 2'-3'		PRIVET HONEYSUCKLE		
Dwarf spreading evergreen shrub. Not hardy in the North.				
2 year.		.50	—	—
MAHONIA aquifolium, 4'-5'		OREGON HOLLY GRAPE		
Shining green leaves turn rich scarlet in Autumn; striking in May when yellow flowers appear; blue-black fruits. Best in half shade.				
12 to 15 in.		1.00	9.00	—
15 to 18 in.		1.25	11.00	—
— <i>japonica</i> , 5'-6'		JAPANESE MAHONIA		
A broad-leaved evergreen with leaves similar to Holly. Yellow flowers in June are very showy.				
12 to 18 in.		1.25	11.50	—
18 to 24 in.		1.50	—	—
OSMANTHUS aquifolium, 3'-4'		HOLLY OSMANTHUS		
Evergreen shrub with holly-like leaves, dark green and glossy. Suitable for protected locations.				
3" pots.		.60	5.00	—
3½" pots.		.75	6.50	—
PICEA alba, 50'-60'		WHITE SPRUCE		
Silvery foliage; develops into shapely specimen of close texture.				
12 to 15 in.		.85	7.50	—
15 to 18 in.		1.00	9.00	—
18 to 24 in.		1.25	—	—
2 to 2½ ft.		1.50	—	—
— <i>excelsa</i> , 80'-100'		NORWAY SPRUCE		
Has dark green foliage and grows rapidly. Makes a good windbreak, and also lends itself well to trimmed hedges.				
15 to 18 in.		.75	6.50	50.00
18 to 24 in.		1.00	8.50	75.00
2 to 2½ ft.		1.50	13.50	125.00
2½ to 3 ft.		1.85	17.50	—
3 to 3½ ft.		2.50	23.50	—
3½ to 4 ft.		3.50	—	—

PICEA—continued	Each	Per 10	Per 100
— <i>conica</i> , 6'-7'	ARROWHEAD NORWAY SPRUCE		
Grows slowly. Compact and symmetrical. Good for foundation planting.			
10 to 12 in.	\$1.00	—	—
12 to 15 in.	1.25	—	—
15 to 18 in.	1.50	—	—
2 to 2½ ft.	2.50	—	—
2½ to 3 ft.	3.50	—	—
— <i>pungens</i> , 60'-80'	COLORADO SPRUCE		
Branches in distinct whorls, forming handsome lawn specimen.			
18 to 24 in.	1.25	—	—
2 to 2½ ft.	2.00	—	—
PIERIS japonica (ANDROMEDA) , 5'-6'	JAPANESE ANDROMEDA		
Thick, shiny leaves, turning bronze in winter. Drooping clusters of small white flowers open in May. Grows slowly. Best in moist, partially shaded place.			
12 to 15 in.	1.50	\$14.00	\$130.00
15 to 18 in.	1.75	16.50	—
18 to 24 in.	2.25	21.50	—
PINUS densiflora	JAPANESE RED PINE		
Foliage dark green. A good desirable variety.			
18 to 24 in.	1.25	11.50	105.00
2 to 2½ ft.	1.50	14.00	130.00
2½ to 3 ft.	1.75	16.50	155.00
3 to 4 ft.	2.75	26.00	—
— <i>flexilis</i> , 30'-40'	LIMBER PINE		
Dark bluish green foliage; very hardy.			
18 to 24 in.	1.50	—	—
2 to 2½ ft.	2.00	—	—
2½ to 3 ft.	2.50	—	—
3 to 3½ ft.	3.00	—	—
— <i>montana mughus</i> , 2½'-3'	MUGHO PINE		
Forms a round-topped clump. Useful for rock planting and foundation work.			
12 to 15 in.	1.60	—	—
15 to 18 in.	1.90	—	—
— <i>nigra austriaca</i> , 60'-70'	AUSTRIAN PINE		
Rich, dark green. Vigorous, dense grower. Good for background. Thrives at seashore.			
18 to 24 in.	1.00	—	—
2 to 2½ ft.	1.50	—	—
2½ to 3 ft.	2.00	—	—
— <i>ponderosa</i>	WESTERN YELLOW PINE		
A rapid-growing Pine, growing to large dimensions. Silvery-green foliage.			
2 to 2½ ft.	1.50	—	—
2½ to 3 ft.	2.00	—	—
3 to 4 ft.	2.50	—	—
— <i>resinosa</i> , 50'-60'	RED PINE		
Rich, green, stiff leaves; reddish brown bark. Vigorous, symmetrical grower.			
2 to 2½ ft.	1.50	—	—
2½ to 3 ft.	2.00	—	—
3 to 4 ft.	3.00	—	—
— <i>rigida</i> , 40'-50'	PITCH PINE		
Irregular, picturesque habit. Useful for dry, poor soil and seashore planting; quick grower.			
2 to 2½ ft.	1.50	—	—
2½ to 3 ft.	2.00	—	—
3 to 4 ft.	2.50	—	—
— <i>strobus</i> , 80'-100'	WHITE PINE		
Probably our most adaptable and useful pine. Very picturesque when old.			
2 to 2½ ft.	1.50	14.00	—
2½ to 3 ft.	2.00	19.00	—
3 to 4 ft.	2.50	24.00	—



In the foreground is part of a row of *Retinospora squarrosa veitchi*. They are sheared and are almost as broad as they are high. Next is *Retinospora pisifera*, which is a more open grower, although the plants have been sheared frequently. Behind is *Juniper cracovica* and other sorts. See pages 53 and 54.

PINUS—continued	Each	Per 10	Per 100
— <i>sylvestris</i> , 25'-30'			SCOTCH PINE
A rapid-growing, handsome tree, especially when young. Good for windbreaks.			
18 to 24 in.....	\$1.00	\$ 9.00	—
2 to 2½ ft.....	1.50	14.00	—
2½ to 3 ft.....	2.00	19.00	—
3 to 4 ft.....	2.75	26.00	—
— <i>thunbergi</i>			JAPANESE BLACK PINE
A large growing tree with rich, dark green foliage and long needles; good for grouping effects.			
18 to 24 in.....	1.00	9.00	—
2 to 2½ ft.....	1.50	14.00	—
2½ to 3 ft.....	2.00	19.00	—
3 to 4 ft.....	2.50	24.00	—
4 to 5 ft.....	3.50	—	—
PSEUDOTSUGA douglasi , 70'-80'			DOUGLAS FIR
Very hardy; dark bluish-green coloring. Prefers well drained situation.			
18 to 24 in.....	1.50	14.00	—
2 to 2½ ft.....	2.00	19.00	—
2½ to 3 ft.....	2.50	24.00	—
3 to 4 ft.....	3.25	31.50	—
PYRACANTHA coccinea lalandi , 9'-12'			LALAND FIRETHORN
A beautiful broad-leaved evergreen with large clusters of orange berries in the fall. Needs protection in the North.			
3" pots.....	.40	3.50	\$30.00
5" pots.....	.60	5.50	—
RETINOSPORA ericoides , 3'-4'			HEATH RETINOSPORA
Has heather-like leaves, giving woolly effect. Forms a round, broad bush.			
12 to 15 in.....	.70	6.00	50.00
15 to 18 in.....	.90	8.00	—
18 to 24 in.....	1.25	11.50	—
— <i>obtusa compacta</i> , 2½'-4'			FOOTBALL CYPRESS
Almost spherical in shape. Good green throughout winter. Very useful in foundation or formal work.			
12 to 15 in.....	1.00	—	—
15 to 18 in.....	1.75	—	—

RETINOSPORA—continued		Each	Per 10	Per 100
— <i>pisifera</i> , 25'-35'		SAWARA CYPRESS		
Quick grower. Loosely pyramidal.				
15 to 18 in.		\$1.25	\$11.50	\$100.00
18 to 24 in.		1.50	13.50	125.00
2 to 2½ ft.		2.00	18.50	175.00
2½ to 3 ft.		2.75	—	—
3 to 3½ ft.		3.50	—	—
— — <i>aurea</i> , 25'-35'		GOLDEN SAWARA CYPRESS		
Foliage bright yellow, especially in spring.				
15 to 18 in.		1.40	13.00	—
18 to 24 in.		1.75	16.50	—
2 to 2½ ft.		2.50	24.00	—
2½ to 3 ft.		3.00	29.00	—
3 to 3½ ft.		3.75	—	—
— <i>plumosa</i> , 25'-35'		PLUME CYPRESS		
Forms a dense cone of fine texture. Useful for shearing into formal shapes.				
12 to 15 in.		1.00	8.50	65.00
15 to 18 in.		1.25	11.50	90.00
18 to 24 in.		1.50	13.50	120.00
2 to 2½ ft.		2.00	19.00	—
2½ to 3 ft.		2.75	26.50	—
3 to 3½ ft.		3.75	—	—
— — <i>aurea</i> , 20'-25'		GOLDENPLUME CYPRESS		
12 to 15 in.		1.10	10.00	85.00
15 to 18 in.		1.35	12.50	115.00
18 to 24 in.		1.75	16.50	—
2 to 2½ ft.		2.50	—	—
2½ to 3 ft.		3.00	—	—
— — <i>lutescens</i> , 2½'-3'		DWARF YELLOW PLUME CYPRESS		
Forms a low, broad, round-topped bush; bright yellow tipped branchlets.				
10 to 12 in.		1.00	—	—
12 to 15 in.		1.25	—	—
15 to 18 in.		1.75	—	—
— — <i>filifera</i> , 15'-20'		THREAD BRANCHED CYPRESS		
Has long, stringy, drooping branches and bright green foliage. Graceful and decorative.				
12 to 15 in.		1.00	9.00	85.00
15 to 18 in.		1.25	11.50	100.00
18 to 24 in.		1.75	16.50	150.00
2 to 2½ ft.		2.50	—	—
2½ to 3 ft.		3.00	—	—
3 to 3½ ft.		4.00	—	—
— — <i>aurea</i> , 10'-12'		GOLDEN THREAD BRANCHED CYPRESS		
Very bright, conspicuous, golden yellow. Grows more slowly than preceding.				
8 to 10 in.		1.00	9.00	—
10 to 12 in.		1.35	12.50	—
12 to 15 in.		1.75	16.50	—
15 to 18 in.		2.25	—	—
— <i>squarrosa veitchi</i> , 25'-30'		VEITCH MOSS CYPRESS		
Foliage blue-gray, feathery and dense, giving soft woolly appearance. Broad pyramidal outline when young.				
12 to 15 in.		1.00	9.00	75.00
15 to 18 in.		1.25	11.50	100.00
18 to 24 in.		1.75	16.50	—
2 to 2½ ft.		2.25	—	—
RHODODENDRON <i>maximum</i> , 8'-12'		ROSEBAY RHODODENDRON		
Beautiful light pink flowers freely produced in May-June. Large, handsome foliage, most effective in masses.				
2 to 3 ft.		2.50	22.50	200.00
3 to 4 ft.		3.00	27.50	250.00
4 to 5 ft.		4.25	40.00	325.00



Pyramidal Arborvitae. Good, bushy, well trimmed stock. Globe Arborvitae on the right. See page 56.

	Each	Per 10	Per 100
TAXUS baccata adpressa erecta, 3'-5' SHORTLEAF ENGLISH YEW			
Compact, upright habit. Stiff, dark green leaves crowded on branches.			
10 to 12 in.	\$1.00	\$9.00	—
— repandens, 18"-24" SPREADING ENGLISH YEW			
Spreading, horizontal branches, dark blue-green leaves. Valuable for low planting.			
10 to 12 in.	1.00	9.00	\$ 75.00
12 to 15 in.	1.25	11.50	100.00
15 to 18 in.	1.75	16.50	150.00
— canadensis, 2'-2½' CANADA YEW			
Spreading habit. Bronzy in winter. Prefers shade; good for underplanting.			
10 to 12 in.	1.00	—	—
12 to 15 in.	1.25	—	—
15 to 18 in.	1.75	—	—
— cuspidata, 4'-5' SPREADING JAPANESE YEW			
Rich, deep green leaves. Spreading, bushy habit. Valuable in foundation plantings. Exceptionally hardy.			
12 to 15 in.	1.25	11.00	85.00
15 to 18 in.	1.75	16.00	140.00
18 to 24 in.	2.50	22.50	200.00
2 to 2½ ft.	3.50	33.00	—
— brevifolia, 2'-3' DWARF JAPANESE YEW			
Broad, thick leaves, blackish green. Slow growing and irregular, spreading habit. Exceptionally hardy.			
8 to 10 in.85	7.50	—
10 to 12 in.	1.15	10.00	—
12 to 15 in.	1.35	12.50	—
15 to 18 in.	1.75	—	—
— capitata, 5'-10' UPRIGHT JAPANESE YEW			
The upright type of Taxus Cuspidata.			
12 to 15 in.	1.25	—	—
15 to 18 in.	1.75	—	—
18 to 24 in.	2.75	—	—
THUJA occidentalis, 15'-30' AMERICAN ARBORVITAE			
Slender pyramid with broad base. Bronzy winter coloring. Good accent plant or for a hedge.			
18 to 24 in.	1.00	9.00	80.00
2 to 2½ ft.	1.25	11.50	105.00
2½ to 3 ft.	1.75	16.50	155.00
3 to 3½ ft.	2.35	22.50	—
3½ to 4 ft.	3.00	—	—
4 to 5 ft.	4.00	—	—

THUJA—continued	Each	Per 10	Per 100
— — compacta , 2½'-4'	PARSONS ARBORVITAE		
Almost globe-shaped. Bright green. Useful in formal or foundation planting.			
10 to 12 in.	\$.75	\$ 6.00	\$50.00
12 to 15 in.	1.00	9.00	75.00
15 to 18 in.	1.25	11.50	—
18 to 24 in.	1.85	—	—
— — elegantissima , 10'-15'	GOLDENTIPPED ARBORVITAE		
Branches tipped with yellow. Rich, lustrous green.			
18 to 24 in.	1.50	—	—
2 to 2½ ft.	2.00	—	—
2½ to 3 ft.	2.75	—	—
— — ellwangeriana , 4'-6'	TOM THUMB ARBORVITAE		
Has heather-like leaves; dense habit; soft, close texture. Forms low, broad, blunt pyramid. Rich purple winter coloring.			
12 to 15 in.75	6.00	—
15 to 18 in.	1.00	8.50	—
18 to 24 in.	1.25	11.00	—
2 to 2½ ft.	1.50	—	—
— — globosa , 2½'-3'	GLOBE ARBORVITAE		
Useful in formal work. Naturally globe shaped.			
8 to 10 in.65	5.50	45.00
10 to 12 in.85	7.50	65.00
12 to 15 in.	1.00	9.00	—
15 to 18 in.	1.35	—	—
— — hoveyi , 3'-4'	HOVEY ARBORVITAE		
Oval in shape, nearly as broad as high. Bright green foliage.			
12 to 15 in.90	8.00	65.00
15 to 18 in.	1.25	11.00	100.00
18 to 24 in.	1.50	13.50	125.00
2 to 2½ ft.	1.75	16.00	—
— — lutea , 10'-15'	GEO. PEABODY ARBORVITAE		
Conspicuous golden yellow form. Columnar outline.			
15 to 18 in.	1.00	—	—
18 to 24 in.	1.50	—	—
2 to 2½ ft.	2.00	—	—
2½ to 3 ft.	2.75	—	—
— — plicata , 10'-20'	MOSS ARBORVITAE		
Rich, deep blue-green foliage. Short, stiff branchlets give pleasing effect in light and shade. Formal pyramid.			
18 to 24 in.	1.25	11.50	—
2 to 2½ ft.	1.50	14.00	130.00
2½ to 3 ft.	2.00	19.00	—
3 to 3½ ft.	2.50	—	—
— — pyramidalis , 15'-30'	PYRAMIDAL ARBORVITAE		
Retains bright green coloring throughout winter. Narrow columnar shape; splendid for accents or formal planting.			
15 to 18 in.	1.00	8.50	75.00
18 to 24 in.	1.25	11.50	100.00
2 to 2½ ft.	1.50	13.50	125.00
2½ to 3 ft.	2.00	18.50	175.00
3 to 3½ ft.	2.75	26.50	250.00
3½ to 4 ft.	3.50	—	—
— — rosenthalii , 6'-10'	ROSENTHAL ARBORVITAE		
Dense, rugged, columnar form. Slow grower.			
15 to 18 in.	1.25	—	—
18 to 24 in.	1.50	—	—
2 to 2½ ft.	1.75	—	—
— — vervaeneana , 8'-12'	VERVAENE ARBORVITAE		
Variegated with greenish yellow foliage, bronzy in winter. Broadly pyramidal.			
18 to 24 in.	1.25	—	—
2 to 2½ ft.	1.50	—	—
2½ to 3 ft.	2.00	—	—
3 to 3½ ft.	2.75	—	—

THUJA—continued	Each	Per 10	Per 100
— <i>wareana</i> , 12'-15'	SIBERIAN ARBORVITAE		
Light green, fleshy foliage. Broadly pyramidal, rugged in appearance.			
15 to 18 in.	\$1.00	\$9.00	\$80.00
18 to 24 in.	1.35	12.50	—
TSUGA canadensis , 75'-90'	CANADA HEMLOCK		
Most graceful and adaptable, the spreading horizontal branches making effective shadow effects. Useful as either clipped hedge or informal planting.			
18 to 24 in.	1.50	—	—
2 to 2½ ft.	2.00	—	—
2½ to 3 ft.	2.50	—	—
3 to 3½ ft.	3.25	—	—
— <i>caroliniana</i>	CAROLINA HEMLOCK		
One of our choicest native evergreens; slower in growth than above.			
2½ to 3 ft.	4.00	—	—
3 to 4 ft.	5.00	—	—
VIBURNUM rhytidophyllum , 6'-8'	LEATHERLEAF VIBURNUM		
Large, oblong leaves, deep green above, gray beneath; a bold, handsome shrub.			
9 to 12 in.35	3.00	—
12 to 15 in.50	4.50	—
15 to 18 in.75	—	—
18 to 24 in.	1.00	—	—
2 to 2½ ft.	1.50	—	—
2½ to 3 ft.	2.00	—	—
YUCCA filamentosa , 2'-3'	ADAM'S NEEDLE		
Long lance-like leaves. Tall flower spike grows up quickly in June-July. Numerous creamy flowers and general appearance give tropical effect. Useful for massing with either evergreens or shrubby.			
1 year* trsp.10	.80	5.00
2 year trsp.15	1.30	10.00

PERENNIALS AND GROUND COVERS

	Each	Per 10	Per 100	Per 1000
ENONYMUS radicans minimus , 6''-12''	BABY WINTERCREEPER			
A dainty trailing plant with tiny evergreen leaves. Will do equally well in shaded locations and is excellent for rock work.				
3'' pots.30	2.50	20.00	180.00
	Each	Per 10	Per 100	
HEDERA helix , 20'-50'	ENGLISH IVY			
Evergreen; good ground cover in shady locations. An ideal wall cover. Ready April first.				
2 year field grown.25	2.00	18.00	
HIBISCUS	MALLOW			
2 year field grown.15	1.20	10.00	
Crimson eye, moscheutos, militaris, mallow marvel.				
	Each	Per 10	Per 100	Per 1000
PACHYSANDRA terminalis , 6'-8'	JAPANESE SPURGE			
One of the best bedding plants for green effect in shady places.				
2'' pots.20	1.50	10.00	80.00
2 year field grown.20	1.50	10.00	—
VINCA minor	PERIWINKLE			
3'' pots.15	1.20	8.00	70.00

FRUIT DEPARTMENT

Graded according to Horticultural Standards, 1923, of the American Association of Nurserymen. Caliper taken two inches above bud.

	Each	Per 10	Per 100
APPLES			
STANDARDS AND CRABS			
1 in. and up 7 ft. and up XX	\$.75	\$6.50	\$60.00
$\frac{7}{8}$ to 1 in. 6 ft. and up X	.55	4.50	40.00
$\frac{11}{16}$ to $\frac{7}{8}$ in. 5 ft. and up A	.45	3.50	30.00
$\frac{9}{16}$ to $\frac{11}{16}$ in. 4 ft. and up M	.35	2.50	20.00
$\frac{7}{16}$ to $\frac{9}{16}$ in. 3 $\frac{1}{2}$ ft. and up B	.25	1.50	10.00

SUMMER

Early Harvest
Gravenstein
Red Astrachan
Yellow Transp.

AUTUMN

Duchess
Fall Pippin
Grimes Golden
King
Wolf River

WINTER

Baldwin
Ben Davis
Delicious
Golden Russet
Jonathan
McIntosh
N. W. Greening

Northern Spy
Rome Beauty
Roxbury Russet
Staymans Winesap
Stark
York Imperial
Winter Banana

Crab Apples:—Hyslop, Red Siberian, Transcendent.

DWARF APPLES

1 in. and up 6 ft. and up XX	.85	7.50	—
$\frac{3}{4}$ to 1 in. 5 ft. and up X	.70	6.00	—
$\frac{5}{8}$ to $\frac{3}{4}$ in. 4 ft. and up A	.50	4.00	—
$\frac{1}{2}$ to $\frac{5}{8}$ in. 3 ft. and up M	.40	3.00	—

Dwarf Apples:—Baldwin, Delicious, Fall Pippin, Red Astrachan, R. I. Greening, Stayman Winesap, Yellow Transparent.

CHERRIES (SOUP)

$\frac{11}{16}$ in. and up . . . 4 ft. and up X	.75	6.50	60.00
$\frac{9}{16}$ to $\frac{11}{16}$ in. 3 $\frac{1}{2}$ ft. and up A	.60	5.00	45.00
$\frac{7}{16}$ to $\frac{9}{16}$ in. 3 ft. and up M	.45	3.50	30.00
$\frac{5}{16}$ to $\frac{7}{16}$ in. 2 $\frac{1}{2}$ ft. and up B	.35	2.50	20.00

Sour Cherries:—Early Richmond, May Duke, Montmorency.

CHERRIES (SWEET)

$\frac{11}{16}$ in. and up . . . 5 ft. and up X	.85	7.50	—
$\frac{9}{16}$ to $\frac{11}{16}$ in. 4 ft. and up A	.70	6.00	—
$\frac{7}{16}$ to $\frac{9}{16}$ in. 3 $\frac{1}{2}$ and up M	.50	4.00	—
$\frac{5}{16}$ to $\frac{7}{16}$ in. 3 ft. and up B	.40	—	—

Sweet Cherries:—Bing, Black Tartarian, Dykeman, Lambert, Napoleon, Windsor.

PEACHES

1 in. and up 7 ft. and up XXX	.50	4.50	40.00
$\frac{13}{16}$ to 1 in. 6 ft. and up XX	.40	3.50	30.00
$\frac{11}{16}$ to $\frac{13}{16}$ in. 5 ft. and up X	.35	3.00	25.00
$\frac{9}{16}$ to $\frac{11}{16}$ in. 4 ft. and up A	.30	2.50	20.00
$\frac{7}{16}$ to $\frac{9}{16}$ in. 3 ft. and up M	.25	2.00	15.00
$\frac{5}{16}$ to $\frac{7}{16}$ in. 2 ft. and up B	.20	1.50	10.00

Peaches:—Belle of Georgia, Carmen, Champion, Crawford Early, Crawford Late, Elberta, Fitzgerald, Fox, Greensboro, Hale, Hiley, Iron Mountain, Krummells October, Miss Lola, Mountain Rose, Ray.

New Varieties:—Cumberland, Eclipse, Radiance, Oriole.

These last named were originated at the New Jersey Experimental Station. Prices and description will be sent on request.



Two year Apples, grown at Princeton. Our fruit trees are clean, fully up to size, and true to name. We do not grow immense quantities of fruits, but have enough to supply the needs of customers who want a medium quantity to go in an assortment order. By growing them ourselves, we can stand back of them and know that we are delivering the right kind of stock.

Each Per 10 Per 100

PEARS (STANDARD)

1 to 1 $\frac{1}{8}$ in.	6 ft. and up.	X	\$.90	\$8.00	\$ —
$\frac{11}{16}$ to 1 in.	5 ft. and up.	A	.60	5.00	45.00
$\frac{9}{16}$ to $\frac{11}{16}$ in.	4 ft. and up.	M	.50	4.00	35.00
$\frac{7}{16}$ to $\frac{9}{16}$ in.	3 $\frac{1}{2}$ ft. and up.	B	.40	3.00	25.00

Standard Pears:—Bartlett, Clapps Favorite, Duchess, Kieffer, Lawrence, Seckel, Sheldon, Vermont Beauty.

PLUMS

(ALL BUDDED ON PLUM ROOTS)

1 $\frac{1}{8}$ in. and up.	7 ft. and up.	XX	.85	7.50	—
1 to 1 $\frac{1}{8}$ in.	6 ft. and up.	X	.70	6.00	55.00
$\frac{11}{16}$ to 1 in.	5 ft. and up.	A	.60	5.00	45.00
$\frac{9}{16}$ to $\frac{11}{16}$ in.	4 ft. and up.	M	.50	4.00	35.00

Plums:—Abundance, Bradshaw, Burbank, Fellenberg, German Prune, Imperial Green Gage, Wickson, Yellow Egg.

QUINCES .

$\frac{5}{8}$ in. and up.	3 ft. and up.	A	.70	6.00	55.00
$\frac{1}{2}$ to $\frac{5}{8}$ in.	2 $\frac{1}{2}$ ft. and up.	M	.55	4.50	40.00
$\frac{3}{8}$ to $\frac{1}{2}$ in.	2 ft. and up.	B	.40	3.00	25.00

Quinces:—Champion, Orange.

GRAPES

2 year, No. 120	1.80	15.00
-------------------------	-----	------	-------

Grapes:—Catawba, Concord, Moore's Diamond, Moore's Early, Niagara.

NUTS

WALNUT, black			
2 to 3 ft.75	6.50	—
3 to 4 ft.	1.00	9.00	—
4 to 5 ft.	1.25	11.50	—
— English			
2 to 3 ft.	1.00	9.00	—
3 to 4 ft.	1.50	14.00	—
— Japan			
4 to 6 ft.	1.00	9.00	—
6 to 8 ft.	1.50	14.00	—
8 to 10 ft.	2.00	19.00	—

BROADLEAVED EVERGREEN SHRUBS

Andromeda	Euonymus patens
Azalea amoena	Euonymus radicans and varieties
Azalea hinodegiri	Ilex crenata microphylla
Berberis illicifolia	Ilex glabra
Berberis julianae	Ilex opaca
Buxus	Kalmia latifolia
Cotoneaster acutifolia	Leucothoe catesbasi
Cotoneaster francheti	Lonicera pileata
Cotoneaster horizontalis	Mahonia aquifolia
Cotoneaster lemoinei	Fieris floribunda
Cotoneaster microphylla	Pieris japonica
Cotoneaster simonsii	Rhododendrons in variety
Cotoneaster thymifolia	Yucca filamentosa
Daphne cneorum	

PLANTS FOR SHADED SITUATIONS

SHRUBS AND SMALL TREES

Deciduous

Acanthopanax pentaphylla—7'-8'	Hypericum aureum—3'-4'
Amelanchier canadensis—12'-15'	Ligustrum ibota regelianum —5'-6'
Aronia melanocarpa—8'-10'	Ligustrum vulgare—10'-12'
Azalea arborescens—10'-12'	Lonicera fragrantissima—6'-8'
Azalea nudiflora—6'-8'	Lonicera Morrowi—7'-8'
Azalea vaseyi—5'-6'	Lonicera tatarica—9'-10'
Azalea viscosa—4'-5'	Myrica cerifera—4'-5'
Benzoin aestivalis—10'-12'	Oxydendrum arboreum—25'-30'
Calycanthus floridus—4'-5'	Philadelphus—9'-10'
Cephananthus occidentalis—5'-6'	Physocarpus opulifolia—9'-10'
Cercis canadensis—12'-15'	Pyrus arbutifolia—6'-8'
Chionanthus virginica—15'-18'	Rhodotypos kerrioides—4'-5'
Clethra alnifolia—4'-5'	Rubus odoratus—5'-6'
Cornus alternifolia—15'-18'	Symphoricarpos racemosa—5'-6'
Cornus amomum—8'-9'	Symphoricarpos vulgare—4'-5'
Cornus florida—15'-25'	Viburnum dentatum—10'-12'
Cornus florida rubra—15'-20'	Viburnum lentago—18'-20'
Halesia tetraptera—12'-15'	Viburnum molle—10'-12'
Hydrangea arborescens—4'-5'	
Hydrangea quercifolia—3'-4'	

Evergreen

Andromeda floribunda—4'	Rhododendron carolinianum —5'-6'
Andromeda japonica—4'-5'	Rhododendron catawbiense —6'-9'
Azalea amoena—2½'-3'	Rhododendron catawbiense varie- ties—3'-8'
Azalea hinodegiri—3'-4'	Rhododendron maximum—8'-12'
Buxus sempervirens—12'-15'	Taxus canadensis—2'-2½'
Ilex crenata microphylla—6'-8'	Taxus cuspidata—4'-5'
Ilex glabra—5'-6'	Taxus cuspidata brevifolia—2'-3'
Juniperus canadensis—2½'-3'	Tsuga canadensis—75'-90'
Kalmia latifolia—5'-7'	
Leucothoe—3'-4'	
Mahonia aquifolium—4'-5'	
Pachysandra terminalis—6'-8'	

PLANTS FOR WET OR MARSHY PLACES

TREES

Deciduous

Acer rubrum—50'-75'	Quercus palustris—75'-90'
Betula nigra—50'-60'	Salix babylonica—50'-60'
Larix leptolepis—50'-60'	Salix discolor—15'-20'
Liquidambar styraciflua—50'-60'	Ulmus americana—80'-100'
Quercus bicolor—75'-90'	

Shrubs

Aronia arbutifolia—6'-8'	Ilex glabra—5'-6'
Aronia melanocarpa—8'-10'	Ilex verticillata—6'-8'
Azalea viscosa—4'-5'	Itea virginica—3'-4'
Benzoin aestivalis—10'-12'	Rosa palustris—6'-7'
Calycanthus floridus—4'-5'	Sambucus canadensis—8'-9'
Cephalanthus occidentalis—5'-6'	Spiraea tomentosum—3'-4'
Clethra alnifolia—4'-5'	Viburnum cassinoides—5'-6'
Cornus amomum—8'-9'	Viburnum dentatum—10'-12'
Cornus stolonifera—7'-8'	Viburnum lentago—18'-20'

PLANTS FOR DRY SOILS

TREES

Deciduous

Acer negundo—60'
Ailanthus glandulosus—50'-60'
Betula populifolia—30'-40'
Quercus rubra—75'-90'

Evergreen

Pinus resinosa—50'-60'
Pinus regida—40'-50'
Pinus strobus—80'-100'

SHRUBS

Deciduous

Acanthopanax pentaphylla—7'-8'	Rhus typhina—15'-18'
Colutea arborescens—8'-10'	Ribes aureum—7'-8'
Cornus paniculata—10'-12'	Robinia hispida—5'-6'
Lespedeza bicolor—5'-6'	Rosa setigera—5'-6'
Myrica cerifera—4'-5'	Symphoricarpos racemosus—5'-6'
Prunus maritima—9'-10'	Symphoricarpos vulgare—4'-5'
Rhamnus cathartica—9'-10'	Viburnum lantana—15'-18'
Rhus canadensis—4'-5'	

Evergreen

Juniperus communis—2'-2½'	Juniperus sabina—6''-7''
Juniperus communis depressa —1'-1½'	Mahonia aquifolia—4'-5'
Juniperus horizontalis—1'-1½'	Pachysandra terminalis—8''
	Pinus montana mughus—2½'-3'

PLANTS FOR BINDING AND COVERING SOIL
ON STEEP BANKS

SHRUBS

Aralia pentaphylla—7'-8'	Rosa rugosa—4'-5'
Berberis thunbergi—4'-5'	Rosa setigera—5'-6'
Lonicera tatarica—9'-10'	Sambucus canadensis—8'-9'
Myrica cerifera—4'-5'	Spiraea tomentosa—3'-4'
Rhus canadensis—4'-5'	Symphoricarpos racemosus—5'-6'
Rhus glabra—10'-12'	Symphoricarpos vulgare—4'-5'
Rhus typhina—15'-18'	

VINES

Celastrus scandens—20'-25'	Rosa lucida—5'-6'
Lonicera japonica—15'-20'	Rosa nitida—3'
Lycium chinense—12'-15'	Rosa wichuraiana—

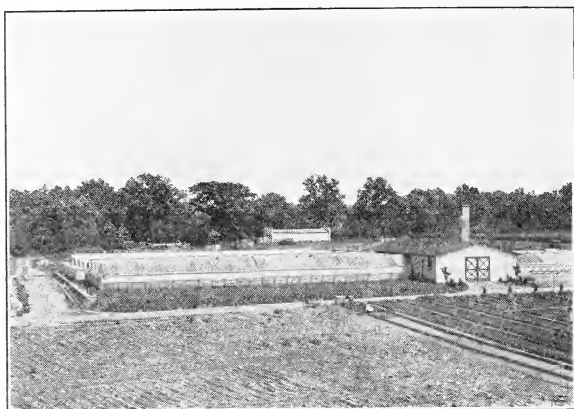
PLANTS FOR AUTUMN COLORING

TREES

Acer rubrum—50'-75'	Crataegus cordata—12'-15'
Acer saccharum—50'-75'	Liquidambar styraciflua—50'-60'
Cornus florida—15'-25'	Quercus palustris—75'-90'

SHRUBS

Aronia arbutifolia—6'-8'	Euonymus americana—7'-8'
Aronia nigra—8'-10'	Oxydendrum arboreum—25'-30'
Berberis thunbergi—4'-5'	Rhus aromatica—4'-5'
Cornus alternifolia—15'-18'	Rhus copallina—12'-13'
Cornus paniculata—10'-12'	Rhus glabra—10'-12'
Euonymus alatus—9'-10'	Viburnum (all species)



Partial view of our eight greenhouses and six sash houses, with potting shed in the center.

BERRY-BEARING TREES AND SHRUBS

RED BERRIES

Benzoin aestivale—10'-12'	Lonicera Maackii—8'-9'
Berberis thunbergii—4'-5'	Lonicera morrowii—7'-8'
Berberis vulgaris—7'-8'	Lonicera tatarica—9'-10'
Cornus florida—15'-25'	Rosa blanda—4'-5'
Cotoneaster horizontalis—1'-1½'	Rosa rubiginosa—5'-6'
Crataegus coccinea—15'-20'	Rosa rugosa—4'-5'
Crataegus cordata—12'-15'	Sambucus racemosus—8'-10'
Crataegus Crus-galli—15'	Sorbus aucuparia—25'-30'
Euonymus alatus—9'-10'	Viburnum americanum—8'-9'
Euonymus bungeana—12'-14'	Viburnum dilatatum—8'-9'
Euonymus europaeus—12'-14'	Viburnum opulus—9'-10'
Ilex verticillata—6'-8'	

WHITE BERRIES

Cornus alba—8'-10'
Cornus stolonifera—7'-8'
Symphoricarpos racemosus—5'-6'

YELLOW BERRIES

Eleagnus angustifolia—15'-18'
Eleagnus longipes—6'-8'

BLACK BERRIES

Amelanchier canadensis—12'-15'	Rhamnus cathartica—7'-10'
Aralia spinosa—18'-20'	Rhodotypos kerrioides—4'-5'
Aronia melanocarpa—8'-10'	Sambucus canadensis—8'-9'
Ilex crenata microphylla—6'-8'	Viburnum lantana—15'-18'
Ilex glabra—5'-6'	Viburnum plicatum—7'-8'
Ligustrum vulgare—10'-12'	Viburnum sieboldi—9'-10'

DEEP BLUE-BLACK BERRIES

Mahonia aquifolia—4'-5'	Viburnum dentatum—10'-12'
Viburnum cassinoides—5'-6'	Viburnum lentago—18'-20'

BLUE BERRIES

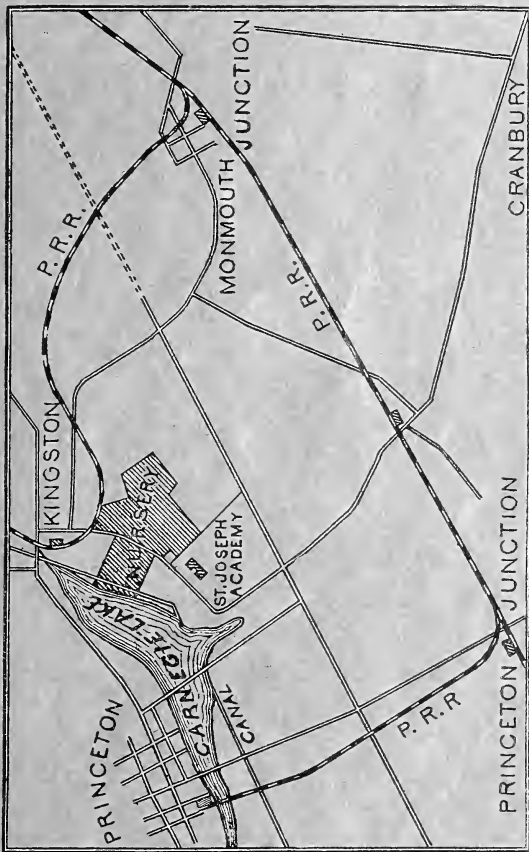
Callicarpa purpurea—3'-4'	Cornus amomum—8'-9'
---------------------------	---------------------

INDEX

DECIDUOUS TREES, SHRUBS, VINES.....Page 5
 EVERGREENS AND CONIFERS.....Page 44
 PERENNIALS AND GROUND COVERS.....Page 57
 FRUITS.....Page 58
 APPENDED CLASSIFIED LISTS.....Page 60

Freight and Express

A Pennsylvania Railroad siding at our packing shed enables us to make shipments to all points with minimum exposure, both carloads and less.



Location

Princeton Nurseries are located at Kingston, Middlesex Co., N. J. (three miles East of Princeton) just off the Lincoln Highway. We are halfway between New York City and Philadelphia.

PRINCETON
PRODUCTS

*The Standard
of
Excellence*