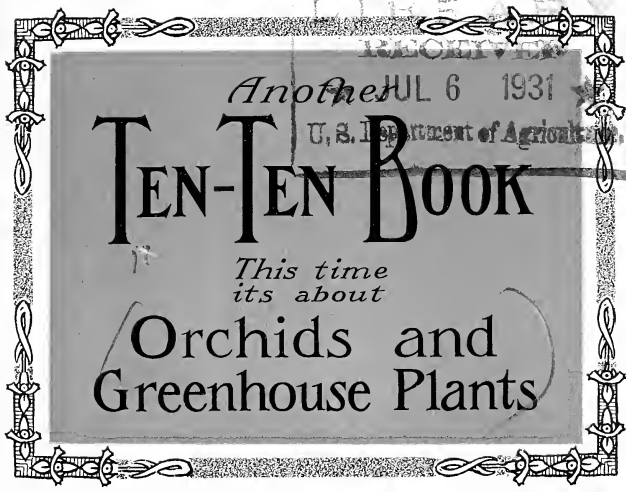


Historic, Archive Document

Do not assume content reflects current scientific knowledge, policies, or practices.

2.37



Another JUL 6 1931

U. S. Department of Agriculture

TEN-TEN BOOK

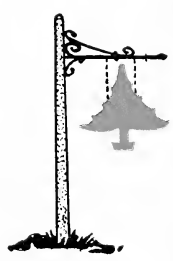
*This time
its about*

Orchids and Greenhouse Plants

FOREIGN PLANT QUARANTINE

REC'D FEB 17 1926

Recorded



from the
Sign of the Tree



The Joy There Is In Growing Orchids and Exotics

When it comes to talking about growing your own orchids and exotic plants, it is hard to know where to begin. But the fact is, there is so much joyful satisfaction in growing them, in spite of wintry weather and old Dame Nature's frowns, that every year more and more people do it.

And they are finding out, too, that instead of being difficult, it is a surprisingly easy thing to do in a greenhouse.

You can, then, not only turn the calendar upside down but have blooming riotously in your own glass garden the rarest and loveliest orchids and the most gorgeous tropical plants.

With that in mind we have made this Ten-Ten Book for your convenience so you may get the best results and the greatest joys with the least trouble.

Like our Ten-Ten Books for the outside garden this orchid and greenhouse one lists the ten best of everything for every purpose.

For example, there are "Ten Orchids of Easy Culture," "Ten Yellow Orchids," "Ten Flowering Climbing Plants," and so on.

This doesn't mean that these are all the varieties we have. On the contrary, we have been growing Orchids and Tropical plants for years, and have a large stock of practically every known variety. All of which are listed in the Alphabetical Indexes.

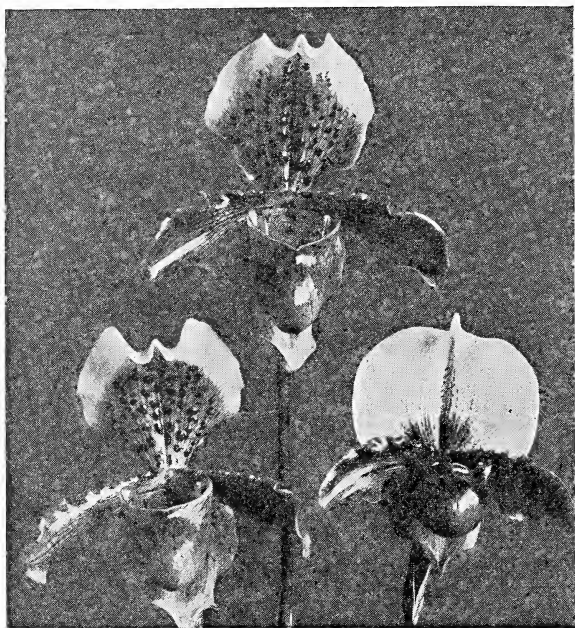
New York Office

With an idea of convenience for our customers, we have established a New York Office at 31 West 18th Street. Here our representatives can usually be found and appointments made.

You are cordially invited to visit our Nurseries and Tropics Under Glass at Rutherford, N. J., only eleven miles from New York.

Edward H. Rogers

Orchids



Three Cyripediums of Exceptional Interest

Cyripediums are the most sturdy of Orchids.

Way back in early jungle days they started with just the toe of the slipper, quite as are our Yellow Moccasins found wild in the woods today.

The three Hybrids shown, stand up in a dominantly vigorous way in their wonderment of structure and color gradations. Notice the jewel-like studding on two of them.

That upper one is Simoni—variety Julius Roehrs. The lower left hand one is insigne—Harefield Hall. The one at its right Leeanum Clinkaberryanum.

The two lower ones were crossed and produced the upper one. It gives you an inkling of the great variety of forms that exist among the Hybrids. You can buy Hybrid Cyripediums in endless number and still have no two alike.

Orchids

Orchids



OF all the floral gifts that Nature has showered on us to satisfy our longings for beauty of form, exquisite texture and splendor of coloring, nothing compares with the orchid.

And best of all they are by no means hard to grow.

As a matter of fact, when you begin with properly grown and well-established plants, orchids are as easy of culture as any other greenhouse plant.

Invariably, we respond to their loveliness.

It is as though they cast a spell on all who beheld them.

Once you have looked on their splendid beauty, inhaled their delicate fragrance, you instantly become an Orchid lover and long to grow them yourself, so that you may learn the magic of this flower—in appearance so fragile, in reality so strong.

Naturally orchids require certain conditions to invite their best results.

They must be grown in the proper kind of receptacles in the right temperature. They require moisture suitable to their kinds, and all of them must have light and air, though they never should be subjected to direct sunlight.

All these are simple matters which but prove that orchids are not the “temperamental beauties” they seem to be.

Nor are they “the rich man’s flower,” as they are sometimes called. There never was a more mistaken opinion, for many of the varieties are relatively cheap.

With even a limited outlay of money, one may have an orchid collection of superlative loveliness.

Besides, superlative loveliness that lasts long is cheap.

The orchid blooms for weeks together and even when cut, its blossoms last much longer than do other flowers, preserving its contours and fresh colorings for many days.

So by selecting those that bloom early, late and in between you can have orchids in your greenhouse and in your home, giving to the full of their rare beauty and rich fragrance.

Orchids

Ten Orchids of Easy Culture

Contrary to general opinion, Orchids are not hard to grow. Starting with properly established plants such as ours, their culture is as simple a matter as that of any greenhouse plants.

The following collections have been chosen particularly to satisfy amateurs and beginners who wish to try their capabilities as orchid growers.

Cypripedium insigne
 Harrisianum
Coelogyne cristata
Lælia anceps
Dendrobium Nobile
 Thrysiflorum
Oncidium Kramerianum
Odontoglossum grande
 citrosimum
Cattleya Trianae

Collection of one each, \$40.

Ten Cool House Orchids

The owner of a small greenhouse can get a lot more out of it by raising a few orchids.

Given the right location (they need light and air, but no sun), the correct receptacles and the attention all growing things must have, your orchids will reward you abundantly.

This list is especially arranged to answer the letters we so frequently receive, beginning, "I have a small greenhouse where I grow a few carnations, and I would like to try some orchids." Most of the following orchids are of easy culture and require a cool temperature.

Odontoglossum Pescatorei
 crispum
 grande
 Schlieperianum
 Bictoniense
Oncidium Varicosum
 ornithorynchum
Miltonia Vexillaria
 Bleueana
Odontoglossum citrosimum

Collection of one each, \$50.

ROEHRS' PATENTED POT-HANGERS

Made from single and double wire. Fit any size pot from 4 inch to 8 inch. Easily adjusted and removed.

Single Wire.....	Each
Double Wire.....	\$0.15
	.20

Orchids

Ten Yellow Flowered Orchids

We have recently received a number of inquiries for yellow orchids. Hence we have made up this collection to satisfy this desire, to include all shades of color from pale yellow to chrome.

Owing to the beauty of the blossoms as well as their brilliant shadings, we believe this set will have great popularity.

Cattleya Dowiana
aurea
Oncidium splendidum
Cypripedium insigne Sanderæ
Oncidium varicosum
Dendrobium Brymerianum
Thyrsiflorum
chrysotoxum
Lælia flava
Odontoglossum Schlieperianum

Collection of one each, \$85.

Ten Orchids of Botanical Interest

The Orchidaceous plants are of particular botanical interest, because of their odd looking flowers and foliage. The following group of these are very unusual and interesting.

The varied colorings of the individual varieties, blue, red, brown, etc., being their great attraction to orchid lovers.

Epipendrum vitellinum
Platyclinis filiformis
Goodyera Dawsoniana
Vanda Coerulescens
Leptotes bicolor
Oncidium Cebolleta
Odontoglossum pulchellum
Maxillaria porphyrostela
Cymbidium aloifolium
Bulbophyllum barbigerum

Collection of one each, \$60.

Ten Points About Orchids

Healthy Orchids are the cheapest to buy.

Never give an Orchid plant full sunshine or keep it very dark.

Do not over-pot or under-pot an Orchid.

Give an Orchid lots of fresh air and moisture.

Do not keep an Orchid-house below 55 degrees at night.

Transplant an Orchid plant every second year.

Never keep an Orchid plant dry or too wet.

Keep your plants free of all insect pests.

Orchid flowers last longer in perfection than any other flower.

Ten healthy Orchid plants can be bought for \$50.

Orchids

Ten Large Flowering Cypripediums

The Cypripediums are one of the most interesting branches of the orchid family, and the following collection of Cypripedium Hybrids has been selected from hundreds of crosses remarkable for their large, vari-colored flowers—colorings that are not only striking, but marvelous.

The dorsal petals of each are very wide and in each variety these are distinctly different—which striking peculiarity makes this collection of ten one of the finest ever offered to the American Public.

Cypripedium Dicksonianum
Acteus Julius Roehrs
Leeanum Clinkaberryanum
William McKinley superbum
Alfred Dimmock
Frau Ida Brandt
Gigas
Van Dyck
Boadicea
Alcibiades

Collection of one each, strong flowering plants, \$100.

Ten Yellow Flowering Cypripediums

The Cypripediums are that interesting branch of the Orchid family known as "Terrestrials." Meaning that while most orchids have their habitat in trees, this particular family are found growing in swampy and mossy land.

They do very well in a temperate house and offer great enjoyment to the amateur.

Resembling our native "Lady Slipper," though much larger, the following collection are all yellow, varying from each other in both shapes and shade of color.

Cypripedium insigne Amesiana
Dorothy
Lucianæ
Mrs. Geo. B. Wilson
Sanderæ
Laura Kimball
Sanderianum
Chantinii Lindeni
callosum Sanderæ
Mandiæ

Collection of one each, strong plants, \$87.50.

CELLULOID LABELS

These labels are most attractive and very durable.

	Per 100
4-inch.....	\$3.00
5-inch.....	3.50

Orchids

Ten Cymbidiums

The Cymbidiums are of terrestrial growth and clustering habit, with narrow long flat foliage and erect flower spikes. Chiefly natives of tropical Asia, they require an intermediate temperature but will do well if grown with the Cattleyas.

A number of beautiful Hybrids have been produced among them of late and we offer a few in the following collection, all of which produce large flowers on long spikes lasting months in beauty.

Cymbidium **Gottianum**
Pauwelsii
Lowianum
insigne
Doris
Schlegelii
Tracyanum
Alexanderi
Chaffinch
C. Wiganianum

Collection of one each, \$300.

Ten Dendrobiums

This orchid family is a very large one and is mostly found in the British East Indies—with the exception of the variety *Phalaenopsis Schroederianum*.

They grow best in pans or baskets, hung near the glass, in a mixture of fibrous peat and sphagnum moss in a temperature of from 65 to 70 degrees during their growing season. Their flowers, produced in clusters of two or three from the nodes of the bulbs, last a long time in perfect loveliness.

Dendrobium **Nobile**
Thyrsiflorum
Phalaenopsis
Brymerianum
Chrysotoxum
Dearei
crassinode
Moschatum
Fimbriatum
Goldei

Collection of one each, \$65.

SQUARE ORCHID BASKETS. OAK.

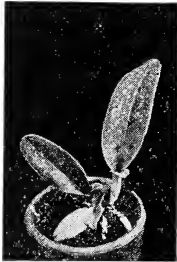
Size	Each
4-inch.....	\$0.15
5-inch.....	.20
6-inch.....	.25
7-inch.....	.30
8-inch.....	.35
9-inch.....	.40



Here is a pot of Seedling Cattleya that are *six months* old, or about the size of two radish leaves a *week* after planting. Literally thousands of seeds are planted to get a few hundred worthy plants



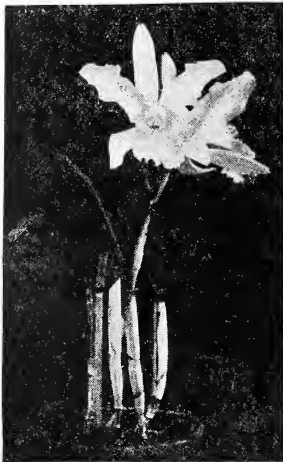
After one year the tiny seedling has grown only to this size



At the end of three years the plant begins to look more its part



When four years have passed, it has quite asserted itself and is full of promise



At five it bursts into such lovely blooms that the five years of waiting are all forgotten

Orchids

Ten Large Flowering Cattleyas

The Cattleyas are perhaps the best known and most popular orchids with flower lovers and cut flower buyers, because of their amazing range of colors and delicious fragrance and they are especially sought after for corsage bouquets.

Cattleyas are of easy culture, thriving best in a temperate house in pots or pans or baskets of fibrous well drained peat. While they should be shaded from strong sunlight, they need light and air, and there is an ideal place in every greenhouse for these exquisite orchids.

Cattleya Labiata
Percivaliana
Mossiæ
Schroederæ
Bowringiana
Trianæ
Gigas
speciosissima
Dowiana
Gaskelliana

Collection of one each, \$50.

Ten Large Flowering Cattleya Hybrids

Among the hundreds of Hybrids of the Cattleya family raised in the past years, we have selected the following ten because of their large sized, gorgeous blossoms, free growth and generously flowering habit.

Their blossoms ranging through the various shades of lavender and pink, these Hybrid Cattleyas require a temperate, well ventilated house, and good light without being subjected to direct sunlight.

Every greenhouse owner can raise these splendid flowers and get a world of joy in doing it.

Cattleya Fabia
Hardyana
Armainvillierensis
Rafaeliæ
Empress Frederick
Octave Doin
Adonis
Moiræ
Achine
Lord Rothschild

Collection of one each, strong flowering plants, \$200.

ORCHID PEAT AND MOSS

Orchid Peat.....	per bag	\$2.50
Orchid Peat, Picked.....	" "	4.50
Sphagnum Moss.....	per barrel	3.50
Sphagnum Moss, Picked.....	" "	5.

Orchids

Ten Unflowered Hybrid Orchids

For some years we have been raising large numbers of seedlings, so that now we are able to offer the amateur orchid grower a very fine selection of these strong, unflowered plants in 3 and 4-inch pots. Their parentage is of the best—consequently you may expect some very fine things from them.

So that you may have the widest possible choice, we are offering you the following list of twenty unflowered plants from which to select the ten you want most.

However, our stock will not permit us to give you more than two of any one cross.

- Cattleya Enid x Cattleya Dowiana
- Dowiana x Cattleya aurea
- Maxima x Cattleya aurea
- Gigas x Cattleya Labiata
- Speciosissima x Cattleya Dowiana
- Dowiana x Cattleya Hardyana
- Aurea x Cattleya suavior
- Aurea x Cattleya Hyeana
- Aurea x Laelia crispa
- Aurea x Cattleya Hardyana alba
- Miss Williams x Cattleya aurea
- Dusseldorfii x Cattleya Dowiana
- Aurea x Cattleya Labiata
- Trianae x Cattleya aurea
- Aurea x Cattleya Gigas alba
- Dowiana x Cattleya Gigas alba
- Prince Edward x Cattleya Dowiana
- Mendellii x Cattleya Hardyana
- Atalanta x Cattleya Hardyana
- Laelia Perrini x Cattleya aurea

Ten plants in variety, ten varieties for \$75.

Ten Oncidiums

The Oncidium are epiphytal orchids of rare beauty, great variation in form and color, and are most prolific bloomers. Distributed by Nature throughout the Central Americas and as far south as Southern Brazil, the Oncidiums include a great number of species, the flowers of which vary greatly in size, shape and color.

They require a temperature of from 50 to 55 degrees and should be watered sparingly, though not withheld when they show flower spikes.

- Oncidium altissimum
- ampliatum majus
- ornithorhynchum
- splendidum
- tigrinum
- varicosum
- Kramerianum
- incurvum
- oblongatum
- flexuosum

Collection of one each, \$50.

Orchids

Ten Spray Orchids

When it comes to effectiveness in floral beauty the Spray Orchids rank among the best—not to mention any other of their wonders.

As many orchid lovers continually ask us for them we have arranged the following list of Spray Orchids in response to their requests. All of them produce flower spikes averaging about 2 feet long and have splendid blossoms ranging generally through the various shades of blue, white, yellow and pink.

Vanda coerulea

Oncidium varicosum

Splendidum

tigrinum

Dendrobium Phalaenopsis Schroederianum

Odontoglossum Bictoniense

Laelia Gouldiana

anceps

Oncidium Altissimum

Cymbidium Gottianum

Collection of one each, \$75.



As lovely as is a single orchid bloom, a collection of them just multiplies and remultiplies your joy of possession.

Orchids

Special Notice to Prospective Buyers

This catalogue does not by any means complete our collection of rare, exotic foliage, warm-house or orchid plants. This list is simply gotten up to give the amateur an idea of our extensive cultures in them.

The prices quoted are made up merely as a guide. At the time of making your purchases we may have smaller or larger sizes, and it is for this reason that we urge anyone interested to pay us a visit or to make a selection of their requirements from this catalog; upon receipt of which we will be pleased to quote special prices on the nearest size on hand at the time.

It can be readily understood that a unique, commercial collection of this kind must vary practically every week.

We have at all times fine, large specimen plants, such as palm, tree ferns, foliage plants, most adaptable for stocking large conservatories where immediate effect is desired.

If you are particularly interested in these, you are invited to come and see them, or if you prefer, avail yourself of our special specimen service—that is a list of such specimens will be drawn up and mailed to you upon application.

Books on Orchids

The growing of Orchids will be much simplified by the perusal and study of some of the following books upon their culture and management. All of them are by experts in their specific lines, and give concise directions. One very important thing about Orchids is close familiarity with their nomenclature.

ORCHIDS, THE BOOK OF. By W. H. WHITE, F. R. S.

The author of this book is Orchid-grower to Sir Trevor Lawrence, Bart., President of the Royal Horticultural Society of England, and one of the foremost authorities on the subject. \$1.

ORCHIDS, THEIR CULTURE AND MANAGEMENT.

By W. WATSON, Curator Royal Gardens, Kew, England.

Descriptions of all kinds in general cultivation. \$10.

ORCHID-GROWERS' MANUAL, THE. By B. S.

WILLIAMS, F. L. S., F. R. H. S. Super royal, 8 vo., gild edge, cloth; 300 illustrations. Contains 800 pages and descriptions of upward of 2,500 species and varieties.

The most complete work on Orchids published. \$10.

ORCHIDS, FERTILIZATION OF, THE. By CHARLES

DARWIN. Dealing with the various contrivances by which Orchids are fertilized. \$1.50.

SANDER'S LIST OF ORCHID HYBRIDS. Entire new

edition, including all Orchid Hybrids grown up-to-date. \$15.

Orchids

Alphabetical List of Orchids

Acineta Humboldtii.....	\$5.
Aerides affine roseum.....	\$10.
crassifolium.....	\$10.
Fieldingii.....	\$15.
odoratum.....	\$10.
Sanderianum.....	\$20.
Angraecum eburneum.....	\$10.
Eichlerianum.....	\$10.
sesquipedale.....	\$20.
Anguloa Clowesii.....	\$7.50
Arachnanthe Lowii.....	\$25.



OLLEA coelestis.....	\$10.
Brassavola Digbyana.....	\$7.50
Brassia verrucosa.....	\$5.
gigantea.....	\$10.
Brasso-Cattleya Admiral Jellico (B.-C. Veitchii x C. Lord Rothschild)....	\$35.
Calypso (C. Bicolor x B. Digbyana).....	\$35.
Cordelia (C. intermedia x B. Digbyana)...	\$35.
Cyclops.....	\$200.
Empress of Russia (C. Mendellii x B. Digbyana).....	\$35.
Enterpe (B.-C. Veitchi x C. Schilleriana)..	\$35.
Fournierae (C. Labiata x B. Digbyana)....	\$35.
Heatonensis (B. Digbyana x C. Hardyana).	\$35.
Ilene (B.-C. Maronæ x C. Dowiana).....	\$35.
Leemanii (C. Dowiana x B. Digbyana)....	\$35.
Langleyensis (C. Schroederæ x B. Digby- ana).....	\$35.
Maronæ (C. Gigas x B. Digbyana).....	\$35.
Mariae (C. Warneri x B. Digbyana).....	\$35.
Mars (B.-C. Leemanii x C. Raphael).....	\$50.
Menda (B.-C. Veitchi x C. Labiata).....	\$35.
Sedeni (C. Trianæ x B. Digbyana).....	\$35.
Sedeni var. Rosiland.....	\$100.
Siren (C. Skinneri x B. Digbyana).....	\$25.
Veitchi (C. Mossiæ x B. Digbyana).....	\$35.
Veitchi alba.....	\$50.
() (Brassavola Digbyana x L.-C. Rubens).....	\$20.
() (Brassavola Digbyana x L.-C. Martinetti).....	\$15.
() (Maronæ x L.-C. Gertrude)	\$20.
() (Leemanii x Cattleya Labiata).....	\$20.
() (Leemanii x L.-C. Nella).	\$20.
() (Maronæ x L.-C. Voltaire)	\$20.
() (Leemanii x Cattleya Schroederæ).....	\$25.

Orchids

Brasso-Lælia Helen (L. tenebrosa x B. Digbyana)	\$15.
Jessopi (L. Xanthina x B. Digbyana)....	\$20.
Louis-Bel (L. Boothiana x B. Digbyana) ..	\$20.
Brasso-Cattleya-Lælia Helen Skinner (C. Skinneri x B.-L. Helen).....	\$25.
Mackayi (C. elegans x B. Digbyana).....	\$25.
Rowena (L.-C. Doris x B. Digbyana)....	\$20.
Woton (B.-C. Leemanæ x L.-C. Callisto- glossa).....	\$35.
Bulbophyllum barbigerum	\$10.
Careyanum.....	\$10.
Congoensis.....	\$10.
cupreum.....	\$7.50
Lobii.....	\$7.50



ALANTHE Sandhurstiana	\$5.
Veitchii.....	\$3.
Cattleya Aurea	\$25.
Aurea alba.....	\$100.
Bowringiana.....	\$5.
Bowringiana Coerulescens...	\$25.
citrina.....	\$4.
Dowiana.....	\$10.
Rosettii.....	\$125.
Forbesii.....	\$5.
Gaskelliana.....	\$5.
alba.....	\$50.
coerulea.....	\$50.
Gigas Sanderiana.....	\$7.50
Beyrodtii (alba).....	\$50.
Hardyana (type).....	\$7.50
Harrisonæ.....	\$5.
intermedia.....	\$5.
Labiata.....	\$7.50
alba.....	\$100.
Cooksonæ.....	\$75.
Mrs. M. Roehrs.....	\$125.
Lawrenceana.....	\$35.
Maxima.....	\$20.
alba.....	\$50.
Mendelii.....	\$7.50
Mossiæ.....	\$5.
alba.....	\$35.
coerulea (a wonder).....	\$100.
Mrs. H. Komitsch.....	\$50.
Reineckiana.....	\$25.
Rutherford.....	\$60.
Percivaliana.....	\$5.
alba.....	\$50.
coerulea.....	\$25.
gigantea.....	\$25.
superba.....	\$25.
Schroederæ.....	\$5.
alba.....	\$50.
Wm. Duckham.....	\$25.
Skinnerii.....	\$5.
alba.....	\$25.

Orchids

speciosissima.....	\$5.
alba	\$200.
Stanleyii	\$50.
Trianæ	\$5.
alba	\$50.
A. N. Cooley No. 69	\$100.
A. C. Burrage No. 86	\$100.
coerulea No. 66	\$150.
No. 99	\$50.
The Pearl No. 196	\$75.
The President	\$150.

NOTE: Many other fine varieties from white to the darkest forms from \$25. up. List on application.

Warnerii	\$10.
alba	\$250.
Cattleya Adonis (C. Mossiæ x C. Gigas).....	\$25.
Adula (C. bicolor x C. Hardyana).....	\$20.
A. Dimmock (C. Dowiana x C. Lawrenceana).....	\$40.
amabilis (C. Labiata x C. Gigas).....	\$25.
armainvillierense (C. Mendelii x C. Gigas).....	\$25.
Armstrongiæ (C. Hardyana x C. Harrisoniæ).....	\$20.
Atalanta (C. Leopoldii x C. Gigas).....	\$20.
Ballantineana (C. Trianæ x C. Gigas).....	\$25.
var. Clement Moore	\$100.
Bertii (C. Harrisoniæ x C. Labiata).....	\$15.
Blackii (C. Gaskelliana x C. Mendelli).....	\$20.
Brenda (C. Dusseldorfii x C. Gaskelliana alba).....	\$35.
Boadicea (C. Gaskelliana x C. Hardyana).....	\$25.
Cappei alba (C. Schroederæ x C. Trianæ alba).....	\$25.
Carmen (C. speciosissima x C. Gigas).....	\$25.
C. G. Roebling (C. Harrisoniæ x C. Mendelii).....	\$15.
Comet (C. Dowiana x C. Warneri).....	\$35.
Cooksonii (C. Hardyana x C. Trianæ).....	\$35.
Dupreana (C. Warneri x C. Gigas).....	\$25.
Dusseldorfii Undine (C. intermedia alba x C. Mossiæ alba).....	\$25.
Empress Frederick (C. Dowiana x C. Mossiæ).....	\$25.
Enid (C. Gigas x C. Mossiæ).....	\$25.
Fabia (C. Dowiana x C. Labiata).....	\$25.
alba (C. Dowiana x C. Labiata alba).....	\$40.
Ferdinand Denis (C. Aclaudiæ x C. Gigas).....	\$20.
General French (C. Dowiana x C. Ella).....	\$40.
General Pau (C. Labiata x C. speciosissima).....	\$25.
Hardyana (C. Gigas x C. Dowiana).....	\$25.
alba (C. Gigas alba x C. Dowiana).....	\$30.
Hassellii (C. Emp. Frederick x C. Labiata).....	\$40.
H. S. Leon (C. Schroederæ x C. Gigas).....	\$25.
Iris (C. bicolor x C. Dowiana).....	\$15.
Kienastiana (C. Dowiana x C. speciosissima).....	\$25.
Leda (C. Dowiana x C. Percivaliana).....	\$25.
Lord Rothschild (C. Dowiana x C. Gaskelliana).....	\$25.
alba (C. Dowiana x C. Gaskelliana alba).....	\$40.

Orchids

M. Raphael (see Raphaelæ).....	\$25.
M. Sander (C. Dusseldorfii x C. Mossiæ alba).....	\$20.
Magnet (C. Mossiæ x C. Whitei).....	\$20.
Mantinii (C. Bowringiana x C. Dowiana)..	\$20.
Mabel (Myra Peters x Warnerii alba)....	\$50.
Maronii (C. Dowiana x C. velutina).....	\$30.
Mimicia (C. Harrisoniæ x C. Gigas).....	\$20.
Miss Williams (C. Harrisoniæ x C. Gaskell- liana).....	\$15.
Moira (C. Fabia x C. Mantinii).....	\$30.
alba (C. Fabia x C. Mantinii).....	\$150.
Mrs. J. W. Whiteley (C. Bowringiana x C. Hardyana).....	\$20.
Mrs. Pitt (C. Dowiana x C. Harrisoniæ)..	\$20.
Octave Doin (C. Dowiana x C. Mendellii).	\$25.
Parthenia (calummata x C. Mossiæ).....	\$20.
Peetersii (C. Hardyana x C. Labiata)....	\$25.
Phrygia (C. Enid x C. Portia).....	\$20.
Portia (C. Bowringiana x C. Labiata)....	\$15.
Prince Edward (C. Schilleriana x C. Gigas)	\$25.
Prince John (C. Dowiana x C. Hardyana).	\$25.
Prince Royal (C. Fabia x C. Hardyana)...	\$30.
Quibo (C. Dowiana x C. Miss Williams)..	\$15.
Raphaelæ (C. Trianæ x C. Dowiana).....	\$25.
alba (C. Trianæ alba x C. Dowiana)..	\$25.
Rembrandt (C. elongata x C. Labiata)....	\$15.
Roehrsiana (C. Hardyana x C. Mendellii)..	\$30.
Snowdon (C. Labiata alba x C. Suzanne Hye de Crom).....	\$40.
Snowflake (C. Labiata alba x C. Dussel- dorfii undine).....	\$25.
Snow Queen (C. Gaskelliana x C. Suzanne Hye de Crom).....	\$50.
Stuartii (C. Mendellii x C. Mossiæ).....	\$25.
suavior (C. Mendellii x C. intermedia)....	\$15.
Suzanne Hye de Crom (C. Gaskelliana alba x C. Mossiæ alba).....	\$40.
Thayeriana (C. intermedia x C. Schroederæ)	\$15.
Thurgoodiana (C. Hardyana x speci- osissima).....	\$25.
Venus (C. Dowiana x C. Iris).....	\$25.
Vestalis (C. Dowiana x C. maxima).....	\$30.
Zephyr (C. Dowiana x C. Schroederæ)....	\$25.
Chysis aurea.....	\$5.
bractescens.....	\$5.
Cirrhopetalum appendiculata.....	\$7.50
picturatum.....	\$7.50
pulchrum.....	\$7.50
Cœlia macrostachya.....	\$7.50
Cœlogyne asperata.....	\$10.
cristata.....	\$3.
alba.....	\$5.
Lemoinii.....	\$5.
Dayana.....	\$5.
Massangeana.....	\$5.
Meyeriana.....	\$10.
Mooreana.....	\$20.
pandurata.....	\$15.

Orchids

Sanderiana.....	\$20.
sparsa.....	\$5.
speciosa.....	\$5.
tomentosa.....	\$7.50
Cymbidium aloifolium.....	\$5.
eburneum.....	\$12.
Findlaysonianum.....	\$15.
giganteum.....	\$10.
insigne.....	\$10.
Lowianum.....	\$10.
tigrinum.....	\$15.
Traceyanum.....	\$25.
Alexanderi (eburneo-Lowianum x insigne).....	\$35.
Beatrice (Lowii x Schlegellii).....	\$25.
Butterfly (insigne x Lowio-grandiflorum).....	\$35.
Chaffinch (Doris x Gottianum).....	\$35.
Capella (Pauwelsii x Wiganianum).....	\$35.
Castar (insigne x Woodhamsianum).....	\$35.
Diana (eburneo-Lowianum x Pauwelsii).....	\$30.
Doris (insigne x Tracyanum).....	\$35.
Gottianum (eburneum x insigne).....	\$25.
Hamburyanum (erythrostylum x Tracyanum).....	\$30.
Jasper (eburneo-Lowianum x Parishii).....	\$35.
Maira (Pauwelsii x Tracyanum).....	\$30.
Pauwelsii (insigne x Lowianum).....	\$35.
Schlegellii (insigne x Wiganianum).....	\$35.
Swallow (Alexanderi x Pauwelsii).....	\$35.
Wiganianum (eburneum x Tracyanum).....	\$35.
Cypripedium barbatum.....	\$3.
Boxallii.....	\$3.50
callosum Sanderæ.....	\$25.
Dayanum.....	\$5.
Druryi.....	\$10.
Exul.....	\$5.
Gratixianum.....	\$5.
Hirsutissimum.....	\$7.50
insigne.....	\$3.
Amesiana.....	\$5.
Chantinii.....	\$5.
Cobbianum.....	\$5.
Coulsenianum.....	\$5.
Dorothy.....	\$5.
Charlesworthii.....	\$5.
Ernestii.....	\$5.
Olivine.....	\$5.
Harefield Hall.....	\$5.
Heatonense.....	\$5.
Hurrellianum.....	\$5.
Lagerii.....	\$5.
Lindenæ.....	\$5.
Monkshood.....	\$5.
Sanderæ.....	\$5.
Sanderianum.....	\$10.
Watsonii.....	\$10.
Xanthinum.....	\$5.
Youngianum.....	\$5.
Sadlerii.....	\$5.
Rutherfordii.....	\$5.
zebrinum.....	\$5.

Orchids

Lævigatum.....	\$10.
Lawrenceanum.....	\$5.
Hyeanum.....	\$50.
longifolium.....	\$5.
Rothschildianum.....	\$15.
villosum.....	\$5.
Cypripedium Actæus (insigne x Leeanum).....	\$3.
Victor (insigne x Leeanum).....	\$7.50
A. de Laresse (Curtisi x Rothschildianum).....	\$12.
A. Dimmock (Godseffianum x Druryi)....	\$15.
Alciabiades (Leeanum x Mons. de Curte)..	\$10.
Alma Gevært (Lawrenceanum x Maudiaë)..	\$25.
Arthurianum (Fairrieianum x insigne)....	\$5.
pulchellum (Fairrieianum x insigne)....	\$10.
Ashburtoniæ (barbatum x insigne).....	\$5.
aureum (nitens x Spicerianum).....	\$5.
Hyeana (nitens x Spicerianum).....	\$7.50
Surprise (nitens x Spicerianum).....	\$10.
Brunianum (Leeanum x spicerianum).....	\$5.
callo-Rothschildianum (callosum x Rothschildianum).....	\$10.
Calypso (Boxallii x spicerianum).....	\$5.
Chamber-Leeanum (syn. Mortonii).....	\$7.50
Crossianum (insigne x venustum).....	\$5.
Cymatodes (curtisi x superbiens).....	\$5.
Dauthieri (barbatum x Villosum).....	\$3.
Dicksonianum (Hera x Villosum).....	\$5.
Draco (Hera x insigne).....	\$5.
Duke of Marlborough (Hera x Leeanum)..	\$25.
Edwardii (Fairrieianum x superbiens)....	\$25.
Emily Roebling	\$15.
Emile Cappel (Hera x Lathamianum).....	\$7.50
Eucharis (Lawrenceanum x insigne).....	\$5.
Euryades (Boxallii x Leeanum).....	\$5.
Frau Ida Brandt (Io x Youngianum).....	\$10.
Gaston Bultel (Fairrieianum x Mad. Coffinet).....	\$40.
gigas (Harrisianum x Lawrenceanum)....	\$10.
Cordean Hall (Harrisianum x Lawrenceanum).....	\$15.
Gordon Highlander (Dreadnought x Mons. de Curte).....	\$20.
Hansenii (Hynaldianum x Villosum).....	\$7.50
Harrisianum (Barbatum x Villosum).....	\$3.
Helen II. (Bellatulum x insigne).....	\$25.
Hera (Boxallii x Leeanum).....	\$5.
Hiawatha (Godseffianum x Leeanum)....	\$5.
Hitchensiaë (Charlesworthii x insigne)....	\$5.
Josephiana (Druryi x Sementa).....	\$10.
King George V. (Charlesworthii x Talisman).....	\$50.
Kubele (œnanthum x Youngianum).....	\$20.
Lathamianum (spicerianum x villosum)....	\$5.
Leander (Leeanum x villosum).....	\$5.
Leeanum (insigne x Spicerianum).....	\$5.
Clinkaberryanum (insigne x Spicerianum).....	\$15.
Albertianum (insigne x Spicerianum)..	\$10.
E. B. Dane (insigne x Spicerianum)....	\$10.
Magnificum (insigne x Spicerianum)..	\$15.

Orchids

Roehrsiana (insigne x Spicerianum) ..	\$10.
superbum (insigne x Spicerianum)	\$10.
virginale (insigne x Spicerianum)	\$10.
Deedmanianum (Chamberlainianum x Spicerianum)	\$15.
Lord Derby (Rothschildianum x superbians)	\$20.
Maudiaë (Collosum x Lawrencianum)	\$15.
magnificum (Collosum x Lawrencianum)	\$25.
Milo (insigne x CEnanthum)	\$5.
Minos (Arthurianum x spicerianum)	\$10.
Youngi (Arthurianum x spicerianum) ..	\$20.
Morganæ (Stonei x superbians)	\$15.
Nieuport (Hera x Vandyck)	\$25.
Niobe (Fairrieanum x spicerianum)	\$15.
Nitens (villosum x insigne)	\$3.
Oakes Ames (ciliolare x Rothschildianum)	\$50.
Olivia (neveum x Tonsum)	\$10.
CEnanthum (Harrisianum x insigne)	\$5.
Polletianum (calophyllum x CEnanthum) ..	\$3.
Prewettii (see Gigas)	\$10.
Romulus (insigne x nitens)	\$7.50
Rosetti (insigne x Maudiaë)	\$15.
St. Albans (Antigone x Harrisianum)	\$10.
Sallieri (insigne x villosum)	\$5.
Selligerum (barbatum x Philippinense) ...	\$5.
Simoni (see Actæus)	\$3.
Solon (Rothschildianum x Tonsum)	\$10.
Snowflake (Godseffianum x insigne)	\$10.
Sunshine (Rothschildianum x Beekmanii)	\$10.
Thalia—Mrs. F. Wellesley (insigne x Schroederæ)	\$20.
Transvaal (Chamberlainianum x Rothschildianum)	\$20.
Triumphans (nitens x CEnanthum)	\$10.
Vandyke (hirsutissimum x Mons. de Curte).	\$10.
W. H. Harrison	\$15.
Wm. McKinley	\$15.



ENDROBIUM aureum	\$5.
bigibbum	\$5.
Bronchartii	\$15.
Brymerianum	\$7.50
chrysanthum	\$10.
chrysotoxum	\$5.
Cœlogyne	\$10.
crassinode	\$5.
chrysellinum	\$5.
Dearei	\$10.
densiflorum	\$10.
fimbriatum	\$10.
Goldei	\$10.
moschatum	\$10.
nobile	\$3.
virginale	\$10.
Phalænopsis Schroederianum	\$5.
alba	\$100.

Orchids

regium.....	\$7.50
speciosum.....	\$7.50
superbiens.....	\$7.50
thrysiflorum.....	\$5.
Dendrobium Ainsworthii (aureum x nobile).....	\$5.
Casseope (moniliformum x nobile).....	\$5.
Juno (Linawianum x Wardianum).....	\$7.50
Epi-Cattleya Nibo (Clæsiana x E. O'Brienianum).	\$10.
Epidendrum ciliare.....	\$3.
atropurpureum.....	\$5.
prismatocarpum.....	\$10.
vitellinum majus.....	\$5.
Epidendrum Boundi (Burtoni x radicans).....	\$7.50
Epiphronitis Veitchi (E. radicans x S. grandiflora).	\$7.50



ÆLIA acuminata.....	\$5.
anceps.....	\$5.
alba varieties.....	\$5.-\$15.
Bull's Var.....	\$25.
autumnalis.....	\$5.
Boothiana.....	\$10.
cinnabarina.....	\$5.
crispa.....	\$7.50
flava.....	\$5.
Gouldiana.....	\$10.
Perrinii.....	\$7.50
purpurata.....	\$10.
superbiens.....	\$10.
tenebrosa.....	\$10.
Walton Grange.....	\$200.
Lælia-Cattleya Acis (C. Mendellii x tenebrosa)..	\$20.
Alphand (C. Fabia x L.-C. callistoglossa)..	\$25.
Antimachus (C. Gigas x L.-C. Dominiana).	\$20.
Aphrodite (C. Mendelli x L. purpurata)...	\$20.
Armstrongiæ (C. Iris x L.-C. G. Woodhouse)	\$20.
Atalanta (C. Gigas x L.-C. elegans).....	\$25.
Australia (L.-C. Luminosa x Tenebrosa)...	\$25.
Alex (C. Dowiana x L.-C. Tunis).....	\$35.
Bedouin (L.-C. Hyeana x L. purpurata)...	\$25.
Bella (C. Labiata x L. purpurata).....	\$25.
alba (C. Labiata alba x L. purpurata).	\$35.
Berthe Fournier (C. Dowiana x L.-C. elegans).....	\$25.
Black Prince (C. Hardyana x L.-C. bletchleyensis).....	\$25.
bletchleyensis (C. Gigas x L. tenebrosa)...	\$25.
Bola (C. Labiata x L.-C. Callistoglossa)....	\$30.
Britannia (C. Gigas x L.-C. Canhamiana)..	\$25.
alba (C. Gigas alba x L.-C. Canhamiana alba).....	\$50.
Bryan (C. Gaskelliana x L. crispa).....	\$20.
callistoglossa (C. Gigas x L. purpurata)....	\$25.
Canhamiana (C. Mossiæ x L. purpurata)...	\$20.
alba (C. Mossiæ alba x L. purpurata)..	\$25.
Carmencita (C. Dowiana x L.-C. luminosa).	\$25.

Orchids

C. G. Roebling (C. Gaskelliana x purpurata)	\$25.
Cholletiana (C. Mossiæ x L. superbiens) ..	\$30.
Colmaniana (C. Dowiana x L.-C. callistoglossa).....	\$25.
Dr. R. Schiffman (C. Mendelii x L.-C. callistoglossa).....	\$20.
Domas (C. Mossiæ x L.-C. Dominiana) ..	\$40.
Dominiana (C. Dowiana x L. purpurata) ..	\$25.
Edwardii (C. Hardyana x L. cinnabarina) ..	\$20.
Elsie (C. Trianæ x L. cinnabrosa).....	\$20.
Endymion (C. Gaskelliana x L. tenebrosa) ..	\$25.
Eximia (C. Warneri x L. purpurata).....	\$25.
exoniensis (C. Mossiæ x L. crispa).....	\$25.
Fascinator (C. Schroederæ x L. purpurata)	\$25.
Felicity (C. Mendelii x L. crispa).....	\$25.
Gen. Baden Powell (Lawrenciana x tenebrosa).....	\$20.
G. Whitelegge (C. Hardyana x L.-C. Callistoglossa).....	\$25.
G. S. Ball (C. Schroederæ x L. cinnabarina).	\$15.
Golden Oriole alba (C. Dowiana x L.-C. Charlesworthii).....	\$100.
Haroldiana (C. Hardyana x L. tenebrosa)	\$25.
Hector (C. Dowiana x L.-C. Martinetti) ..	\$25.
Herscentiæ (C. Dowiana x L. Boothiana).	\$25.
Hon. Mrs. Astor (C. Gaskelliana x L. xanthina).....	\$15.
Hyeana (C. Lawrenciana x L. purpurata) ..	\$25.
Isabel Sander (C. Mossiæ x L.-C. Canhamiana).....	\$35.
Josephine (C. Trianæ x L. crispa).....	\$25.
Kathleen Grey (L.-C. Canhamiana x L. tenebrosa).....	\$20.
Labiosa (C. Labiata x L.-C. luminosa)....	\$25.
Lady Rothschild (C. Gigas x L. Perrinii) ..	\$20.
Luminosa (C. Dowiana x L. tenebrosa)....	\$25.
Lustra (C. speciosissima x L.-C. callistoglossa).....	\$25.
Mabel (C. Trianæ x L. tenebrosa).....	\$20.
Martinetti (C. Mossiæ x L. tenebrosa)....	\$20.
Mauretania (L.-C. Canhamiana x L.-C. Martinetti).....	\$35.
Moonbeam (C. Schroederæ x L.-C. G. S. Ball).....	\$25.
Mrs. Temple (C. Mossiæ x L.-C. Henry Greenwood).....	\$25.
Mygdon (C. Trianæ x L.-C. Luminosa) ..	\$30.
Myra alba (C. Trianæ x L. flava).....	\$25.
Nysa (C. Gigas x L. crispa).....	\$20.
Ophir C. Dowiana x L. xanthina).....	\$25.
Pallas (C. Dowiana x L. crispa).....	\$25.
Purple Emperor (C. Gigas x L.-C. callistoglossa).....	\$20.
Soulangé (C. Dowiana x L.-C. Lustre)....	\$35.
Thurgoodiana (C. Hardyana x L.-C. Martinetti).....	\$25.
Warnhamensis (C. Trianæ x cinnabarina) ..	\$20.
Ziza (C. Mendellii x L.-C. Bella).....	\$25.
Leptotes bicolor	\$7.50

Orchids

Lycaste aromatica.....	\$3.
Harrisoniæ.....	\$5.
losioglossa.....	\$25.
Skinneri.....	\$3.




ASDEVALLIA Bella.....	\$5.
Harryana.....	\$7.50
Houtteana.....	\$10.
Schlimi.....	\$6.
Maxillaria densa.....	\$5.
picta.....	\$5.
Sanderiana.....	\$10.
Miltonia candida.....	\$5.
cuneata.....	\$5.
flavescens.....	\$5.
Phalænopsis.....	\$5.
alba.....	\$35.
spectabilis.....	\$5.
Moreliana.....	\$7.50
vexillaria.....	\$5.
Empress Augusta Victoria.....	\$10.
gigantea.....	\$10.
Lambaniana (alba).....	\$40.
Leopoldi.....	\$20.
Memoria G. D. Owen.....	\$100.
Miltonia Bleuana (vexillaria x Roezlii).....	\$25.
Bluntii (Clowesii x spectabilis).....	\$25.
Charlesworthii (Hyeana x vexillaria).....	\$75.
Hyeana (Bleueana x vexillaria).....	\$25.
St. Andre (Bleueana x Roezlii).....	\$30.



DONTIODA Bradshawiæ (C. Noezliana x O. crispum).....	\$25.
Brewii (Odontioda Charlesworthii x O. Harryanum) ..	\$25.
Charlesworthii (C. Noezliana x O. Harryanum).....	\$25.
Cleopatra (C. Noezliana x Lairessii).....	\$25.
Cooksoniæ (C. Noezliana x O. ardentissimum).....	\$25.
Diana (C. Noezliana x O. amabile).....	\$25.
Don (C. Noezliana x Lindleyanum).....	\$25.
Joan (Odontioda Charlesworthii x O. ardentissimum).....	\$25.
Lady Colman (C. Noezliana x O. Queen of Gatton).....	\$25.
Lutetia (C. Noezliana x O. Luteo-purpureum).....	\$25.
Madeline (Odontioda Charlesworthii x O. crispum).....	\$25.
Red Cross (Odontioda Cooksoniæ x O. ardentissimum).....	\$25.

Orchids

Royal Gem (Odontioda Vuylstekeæ x O. ardentissimum).....	\$25.
Sanderæ (C. Noezliana x O. percultum) ..	\$25.
Vuylstekeæ (C. Noezliana x O. Pescatorei) .	\$25.
Odontoglossum bictoniense.....	\$5.
citrosimum.....	\$5.
crispum.....	\$5.
grande.....	\$5.
Harryanum.....	\$7.50
hastilabium.....	\$7.50
Insleayi.....	\$5.
Pescatorei.....	\$5.
pulchellum.....	\$5.
triumphans.....	\$5.
Schlipperianum.....	\$5.
album.....	\$10.
Oncidium altissimum.....	\$5.
ampliatum.....	\$5.
Cebolleta.....	\$5.
crispum.....	\$5.
flexuosum.....	\$5.
incurvum.....	\$5.
Kramerianum.....	\$5.
Leucochilum.....	\$5.
microchilum.....	\$5.
oblongatum.....	\$5.
ornithorhynchum.....	\$5.
album.....	\$25.
sarcodes.....	\$7.50
splendidum.....	\$5.
tigrinum.....	\$5.
varicosum Rogersii.....	\$5.
Wentworthianum.....	\$5.
 HALÆNOPSIS amabilis.....	\$10.
Luddemanniana.....	\$10.
Schilleriana.....	\$10.
Phaius maculata.....	\$5.
Sanderiana.....	\$10.
Platyclinis cobbiana.....	\$5.
glumacea.....	\$5.
latifolia.....	\$5.
Renanthera Imshootiana.....	\$7.50
coccinea.....	\$10.
Sobralia macrantha.....	\$10.
Sophronitis grandiflora.....	\$10.
Stanhopea oculata.....	\$5.
tigrina.....	\$5.
Stenoglottis longifolius.....	\$5.
Tetramica bicolor.....	\$5.

Orchids

Vanda Amesiana	\$5.
coerulea	\$7.50
Roehrsiana (pink)	\$100.
coerulescens	\$7.50
Lusonica	\$15.
Parishii	\$7.50
Sanderiana	\$25.
suavis	\$10.
teres	\$5.
tricolor	\$10.



Down this palm and flower bordered bower came the wedding party.

From their own greenhouses were brought the decorations. Palms, Foliage and Flowering Plants we have in a wide gamut of sizes and choice varieties.

Greenhouse Plants

Greenhouse Plants



HAVE you ever seen a tropical forest dressed in its rich verdure, decked with marvelous flowers?

If so, then you know the lure of Nature in all her royal splendor.

Your senses have been feasted on marvelous shapes, gorgeous colors, rare perfumes.

Forever after you picture them in memory and take the keenest pleasure in assembling these tropical glories under your own glass roofs.

For the best of it all is, that you not only can bring them there at comparatively small cost, but you can have the satisfaction of raising them to their fullest beauty.

All of the plants in the following lists can be grown in the ordinary greenhouse, though, like everything else, they respond to attention and, when supplied with the cultural conditions proper to their native state, will yield their splendid best.

Beside proper temperature, careful shading and thorough watering are among their chief requirements.

Several methods get the right shading.

Ground glass is satisfactory in some climates, but it does not give sufficient shade in hot climates or in very strong sunlight.

Whitewashing either the ground or clear glass will yield shade sufficient for most of these tropical plants.

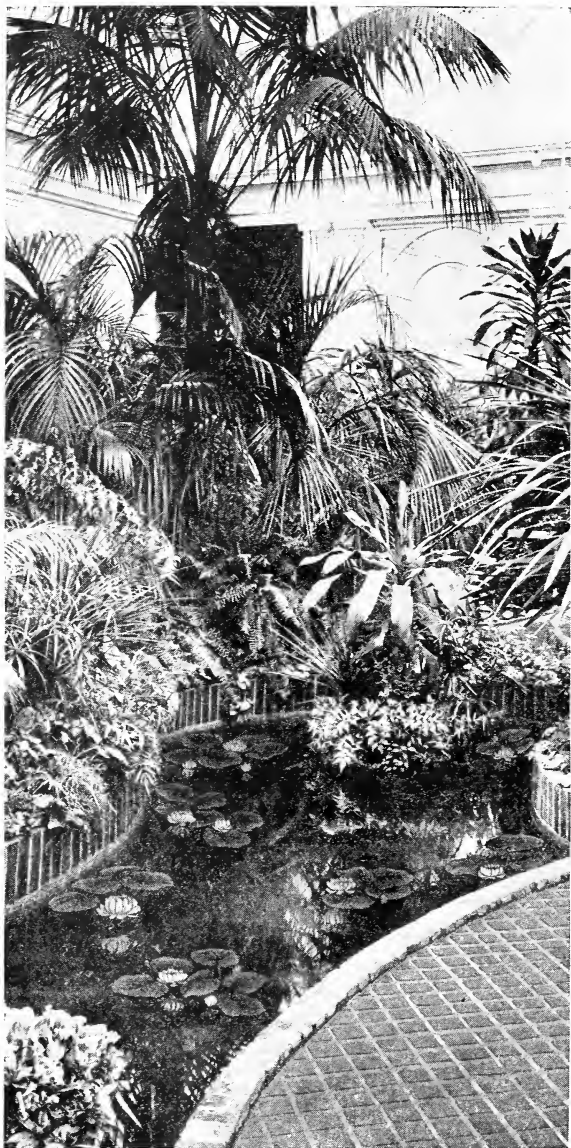
And for plants requiring deeper shade, this can be supplemented by using bamboo, or slat roll shades.

All foliage plants require a heavy loam soil, plenty of water on both their roots and foliage, and good drainage.

Especial care should be taken of drainage.

There should be pieces of broken pot or clinkered coal ashes beneath the soil to assure perfect drainage.

We have taken pleasure in assembling in these lists the ten best plants for every greenhouse purpose, for the amateur grower. We have, however, large specimens of foliage plants and ferns, including rare tree ferns, that may be used to get immediate effects.



Gracefully drooping Ferns, oddly colored Foliage Plants, languorously swaying Palms; a Pool, some Lilies—what a picture!

What a joy spot!

What wealth from which to draw for the beautifying of your home!

What a soothing place to visit when one's nerves are a bit on edge!

Greenhouse Plants

Ten Decorative Palms

The following list is made up entirely of the most popular palms for greenhouse and conservatory, for which latter purpose the Phoenix Roebelinii is particularly good.

The cultural needs are comparatively simple but it is necessary to water them profusely and to spray both the surface and the reserve sides of the foliage in order to prevent palm scale.

It will be noticed that in the descriptive text we refer to "single" and "made up" plants.

By a "single" plant we mean an individual specimen plant in a pot or a tub, while a "made up" plant is usually one specimen surrounded by several small ones to get a bushy effect.

KENTIA Forsteriana. A very graceful variety; long fronds; drooping dark green in color. This variety may be had in specimens, single plant to a container or made up several plants to a pot. All sizes. Single plants \$1.-\$500. Made up plants \$10.-\$150.

KENTIA Belmoreana. Similar to the preceding but of somewhat dwarfer growth; dark green, most compact. Single plants \$1.-\$75. Made up plants \$2.-\$35.

COCOS Weddelliana. A very dainty species. Very often used for center of ferneries. Dark green foliage. Very attractive. Single plants \$1.-\$2.50. Specimens \$15.

ARECA lutescens. Splendid for the conservatory. Graceful light green foliage, deeply cut. Strong bushy plants. Each \$7.50-\$25.

PHOENIX Roebelinii. Very graceful species, rather dwarf in growth. Foliage dark glossy green and very narrow. Splendid plants at \$10.-\$75.

PHOENIX Canariensis. Very stately palm of robust growth; erect pointed foliage. Native of the Riviera. Excellent plants at from \$20.-\$100.

PHOENIX Zeylanica. Native of Ceylon. Foliage dark green; strong texture. Will make a wonderful specimen which will produce an edible fruit resembling a date. Color of which is violet blue. Excellent plants. Each \$5.-\$7.50.

LATANIA Borbonica. Fan-leaf Palm. Very popular; hardy, broad fan-shaped leaves. Excellent plants. Each \$3.50-\$35.

LICUALA horrida. A very valuable Palm for the collection. Spiny foliage deeply cut; dark green. Fine plants. Each \$5.-\$25.

KENTIA Sanderiana. Elegant variety when grown into a specimen; foliage very finely divided, pale green. Each \$15.-\$35.

We have in addition to the above, a collection of rare palms in limited quantities. Anyone interested in making up such a collection is invited to inspect them. If unable to do so, we will be glad to send a special list of these, together with prices.

Greenhouse Plants

Ten Greenhouse Ferns

Ferns have come to be so much a part of our lives that the thought of greenhouses instantly brings a mental vision of ferns, and the demand for them never ceases. Therefore, we have arranged the following list so that you can be sure of having the best possible fern effects. Ferns need a shaded light, never direct sunlight; and all these can be grown as easily as the Boston Fern with but little more attention to their cultural needs.

While all of these ferns have foliage that will add to the beauty of the greenhouse or conservatory, the *Cibotium Schiedii* is a specimen plant grown in 12 to 15-inch tubs and is wonderfully decorative because of its lace-like drooping foliage. The *Platyceriums*, too, lend themselves to decorative purposes because they grow flat and, established on planks, they are strikingly effective when hung on the sides of the greenhouse.

Very popular, too, are the *Adiantum Crowianum* or Maidenhair fern, with their dainty feathery foliage and purplish black stems.

One can hardly have enough of this variety growing because of the constant demands made on them for cutting, for house decoration and corsage bouquet uses.

PLATYCERIUM. Stag Horn Fern. In a number of varieties such as *Hillii*, *Alcicorne*, *Biforme*, *Veitchii* and *Willinckii*. Some established on rafts, others in baskets. All sizes. Each \$3.50-\$35.

SELAGINELLA *Emilliana aurea*. A very dainty variety. golden yellow. Dwarf in growth at its best. In 4-inch pots. Beautiful plants. Each \$1.

NEPHROLEPIS *Bostoniensis*. The Boston Fern. We grow this variety in all sizes from \$1.50-\$15. In baskets for hanging in the conservatory. Each \$7.50-\$25.

NEPHROLEPIS *Whitmanii*. A lace-like variety. Dark green foliage. Fine plants. Each \$2.-\$5.

ADIANTUM *Crowianum*. The dainty Maiden-hair Fern. Splendid for cutting. Beautiful plants. Each \$1.50-\$2.

CIBOTIUM *Schiedei*. A very showy species. Makes a wonderful specimen. Foliage deeply cut, of drooping and graceful habit. Excellent plants. Each \$7.50-\$25.

CYRTOMIUM *Rochfordianum*. The Holly Fern. Called this because the foliage resembles the English Holly. Very glossy, dark green foliage. Most useful. Splendid plants. Each \$2.50-\$5.

ASPLENIUM *Nidus-Avis*. Bird's Nest Fern. A splendid house plant. Excellent keeper. Erect growing species. Broad pale green foliage. Fine plants. Each \$3.50-\$7.50.

BLECHNUM *Braziliensis*. A most attractive fern. Finely cut, dark green foliage borne on a short stem. New foliage has a deep pink shade. Excellent plants. Each \$2.50-\$5.

MICROLEPIA *platyphylla*. Large, light green fronds; makes a splendid specimen plant. Each \$2.50-\$15.

Greenhouse Plants

Ten Flowering Climbing Plants

One of the greatest satisfactions in greenhouse owning is found in the flowering climbing plants.

In these you get not only those splendid showers of verdure that never fail to react happily on the beholder, but they yield colorful blossoms as well.

The following list has been chosen to give you plants that will bear beautiful clusters of flowers in the widest range of colors from early Spring until late Fall, and cover the trellises of your greenhouse or conservatory with their showers of greenery between times.

These plants may be grown either in pots or planted out underneath the benches, and the latter method opens another vista to greenhouse joy—because you have a garden within a garden.

To get the best result a temperature of from 60 to 65 degrees is desirable.

All these plants require plenty of water, while they are flowering. But after the flowering period, they ought to have a period of rest when only enough water should be given to allow them to subsist.

Following the rest period, which varies from one to two months, these plants ought to be repotted and trimmed back to suit housing conditions.

All of them bear flowers that are excellent for cutting.

THUNBERGIA laurifolia. Foliage elongated dark green.

Flowers celestial blue, trumpet shaped. Each \$7.50-\$10.

STEPHANOTIS floribunda. Fleshy heavy foliage; flowers white, produced in clusters, unusually sweet scented. Each \$7.50-\$10.

ALLAMANDA Hendersonii. Splendid climber; flowers funnel shaped; bright golden yellow. Each \$7.50-\$10.

DIPLADENIA rosea. This is about the only pink colored climber which can be obtained today. Very similar in shape to the preceding. Each \$7.50-\$10.

IPOMOEA Horsfalliæ. Clusters of from eight to ten crimson red flowers. Most attractive. Each \$7.50-\$10.

HOYA Carnosa. (The Wax Plant.) Flowers, a waxy texture appearing pinkish white. Each \$7.50.

CLERODENDRON Balfouri. The flower of this plant is very unusual. Produced in clusters from twenty-five to thirty blooms; pure white with a corolla center. Each \$7.50-\$15.

PASSIFLORA Princeps. (The Passion Flower.) A beautiful plant. Bright scarlet flowers. Each \$7.50-\$10.

BIGNONIA argyreo violascens. Dark American climber, bearing purple flowers. Foliage bluish when young; striped when developed. Fine plants. Each \$7.50-\$10.

STIGMAPHYLLON ciliatum. (The Golden Butterfly Vine of Brazil.) Each \$7.50-\$10.

Greenhouse Plants

Ten Warm-House Flowering Plants

Their very odd shaped and colored flowers are the chief attraction of these plants and make them highly desirable for conservatory and greenhouse use.

The Anthuriums, for example, producing an unusual flower on long, narrow stem in different shades of pink, white and red. These last from two or three weeks and are excellent for all cut flower uses.

Like the *Strelitzia Augusta*, it is very uncommon.

Indeed the *Strelitzia* is becoming quite rare, owing to the embargo on importing foreign plants, and its very slow growth.

All these plants are natives of tropical countries and need a warm moist temperature—but the *Amaryllis* is the only one requiring a rest period.

ISOLOMA bogotense. Foliage velvety, producing scarlet flowers. Trumpet-shaped, center of which is mottled yellow. Fine plants. Each \$2.-\$3.

MEDINILLA magnifica. Large pink clusters of flowers resembling a bunch of grapes, suspended on the ends of the previous year's growth. Large plants. Each \$10.-\$75.

ANTHURIUM Andræanum. A rather remarkable plant with an unusual flower borne on stiff, narrow stems, 4-5 inches in diameter. Different colors. Fine plants. Each \$7.50-\$50.

ANTHURIUM Scherzerianum. A Central American plant, grown for its interesting flowers. We have a very fine collection of seedlings showing flowers, usually bright scarlet. Each \$5.-\$35.

GARDENIA Veitchii. Fragrant, pure white flowers. Very popular. Excellent plants. Each \$1.50-\$5.

NEPENTHES. The Pitcher Plant. Very odd species. Flowers conspicuous and fascinating. We grow these in a number of varieties; such as *Atrosanguinea*, *Courtii*, *Dominii*, *Edinensis* and *Mastersiana*. In baskets of various sizes. Each \$7.50-\$25.

CLIVIA (*Imantophyllum miniata*). Trumpet-shaped flowers, borne on short stems in various shades of orange to orange red and scarlets. Excellent plants. Each \$5.-\$15.

AMARYLLIS. Our choice Hybrids must not be compared to the California grown stock. Flowers vary from bluish white, white striped pink, red, scarlet. Large flowers 7 to 8 inches in diameter, in 6-inch pots, our selection. Each \$3.50-\$15.

STRELITZIA Augusta. The Bird of Paradise. Unique. Gorgeous flowers, clear blue with white side wings. Fine plants. Each \$15.-\$35.

CLERODENDRON fallax. Warm house plant. Continuous bloomer. Flowers bright scarlet. Excellent plants. Each \$2.50-\$5.

Greenhouse Plants

Ten Cool House Flowering Plants

The following ten set is made up of things that are so often sought that it might well be called the popular set. All of them require a cool temperature and full sunlight, and all of them can be grown out-of-doors in Summer except the Begonias.

ACACIA longifolia. Very free growing and flowering variety. Egg yellow. Splendid bush plants; drooping foliage. Each \$5.-\$15.

ACACIA Baileyana. An unusually fine variety. Very free flowering; pale yellow; usually grown in standard form. Price on application.

ERICA Melanthera. The white flowering Christmas Heather. Blooming at an opportune time, it is one of the most useful winter flowering plants. \$2.50-\$10.

AZALEA Indica. Indian Azalea. Grown in many varieties, pink, white or red. Some are winter flowering while others will not bloom until Easter. All sizes. Each \$7.50-\$25.

CAMELLIA Japonica. Owing to the embargo on the importation of plants in general, our collection is not great, but we can supply a few in unnamed varieties. Each \$10.-\$15.

BEGONIAS. Winter flowering varieties, usually at their best around Christmas. Very free flowering.

Concurrent. Dark pink. **Mrs. J. A. Peterson.** Crimson.

Gloire de Lorraine. Pink. **Turnford Hall.** White.

Glory of Cincinnati. Dark pink. **Melior**—large. Pink.

All the above ready in pots for June delivery. See page 54. Large plants in bloom for Christmas shipment, \$2.-\$7.50.

BEGONIAS. Tuberous Winter Flowering Type. Large individual flowers, 2-3 inches in diameter; flower about the same time.

Pink Perfection. Double. Pink, turning pale rose.

Altrinham Pink. Double. Rose red, turning rose.

Emily Clibran. Double. Rose red.

Optima. Single. Flame scarlet.

Mrs. Heal. Single. Deep scarlet.

Tubers in January-March, or, green pot plants in June-September. Each \$2.50-\$3.

BAUERA rubioides. The Ruby plant. A splendid plant; compact grower; very free flowering; bright pink. Nice plants. Each \$3.50-\$5.

CHOROZEMA cordatum splendens. One of the most attractive flowering plants. Foliage holly like; flowers spikes in great profusion; pea shaped, yellow and red. Fine plants. Each \$3.50-\$7.50.

AGAPANTHUS umbellatus. (Lily of the Nile.) Beautiful blue flowers. Large plants. Each \$5.-\$15.

Greenhouse Plants

Ten Large Growing Decorative Foliage Plants

All the plants in the following list are sought after by plant lovers because of their bizarre foliage.

And all of them require tropical temperature, except the *Araucaria excelsa plumosa*, since they are natives of the South American tropics.

The *Araucaria* alone has its habitat on this continent.

Like all tropical plants they thrive best when plentifully watered, both their roots and foliage.

Then these plants need dark shading besides.

Brilliancy of foliage being their chief attraction, they make wonderful spots of color in the greenhouse and conservatory and several of them, the *Pandanus Veitchii*, *Araucaria* and *Ficus pandurata*, can be used as porch plants in mild weather.

As is usual with plants having variegated foliage, the blossoms of these are completely outshone by the gorgeousness of the plants themselves, which never fail to make a great impression wherever used.

MARANTA Zebrina. Large grower; foliage velvety green, variegated brown on surface. Reverse dark maroon. Fine plants. Each \$5.-\$50.

ALPINIA Sanderæ. Attractive plant producing narrow pointed green leaves, variegated pure white, supported on tall stalks. Fine plants. Each \$5.-\$25.

PANDANUS Veitchii. Long variegated leaves; very attractive in all sizes. Excellent plants. Each \$3.50-\$25.

FICUS pandurata. A Rubber Plant. Foliage resembles a fiddle; dark green and glossy. A very stately and useful plant. Fine plants. Each \$5.-25.

BOUGAINVILLEA Harrisii. A most remarkable variegated foliage plant. Some leaves are half green and white; others yellow white; still others almost pure white. Splendid plants. Each \$2.50-\$75.

ARAUCARIA excelsa plumosa. The plumed form of Norfolk Island Pine. Beautiful specimen plants in pots or tubs. Each \$15.-\$25.

COLOCASIA Fontanesii violaceum. Long blade-shaped leaves terminating club shaped; dull green with violet margins. Splendid plants. Each \$7.50-\$15.

HELICONIA Edwardus Rex. One of our most handsome and most beautiful foliage plants. Leaves broad and elongated. Dark red at the base gradually becoming more vivid towards center. Excellent plants. Each \$7.50-\$25.

CROTON Reidi. One of the finest broad-leaved crotons. Ground being dark green, mottled and marbled pink; very often striped with deep pink veins. Beautiful plants. Each \$4.-\$25.

COCCOLOBA pubescens. A very interesting tropical tree with large round dark green foliage. Each \$10.-\$50.



Nonsense, you don't need a special kind of greenhouse to grow orchids, palms and foliage plants. They will grow in any house where anything will grow. They simply need warmth and moisture.

Greenhouse Plants

Ten Short Growing Foliage Plants

When you are looking for plants to fill in among the larger ones and make your benches more attractive, you will find that nothing fills your needs quite so well as these short growing foliage plants.

Native to the tropical Americas and Brazil in particular, they have not only the beautifully colored foliage found in the tall growing plants, but require the same kind of treatment, temperature and general culture.

They are at their best in 4 to 5-inch pots, though three of this list can be grown into specimen plants: The *Hoffmannia regalis*, *Phrynium Lindenii* and *Maranta Oppenheimii tricolor*.

Plenty of water is needed to get the best results from these short growing foliage plants and they ought to be well shaded. Indeed proper shading is a point which cannot be too greatly stressed in regard to most tropical plants. Not only do they respond to shading, but their brilliant colors seem to take on greater strength and fairly blaze in the shade.

The following list has been chosen to give your greenhouse the greatest variety of rich colorings.

BEGONIA Rex. One of the most attractive foliage plants growing in a number of varieties. They vary considerably in color; silvery foliage mottled with pink or red; white, veined with green, etc. Excellent plants. Each \$1.-\$2.

HOFFMANNIA regalis. Foliage of fleshy texture; color, runs from dark pink to red; low growing. Fine plants. Each \$2.50-\$5.

PHRYNIUM Lindenii. Erect in growth; oval shaped foliage; pale green, striped white. Splendid plants. Each \$2.-\$5.

MARANTA Oppenheimii tricolor. An unusually distinct and well colored variety. Background of foliage being pink, mottled orange red; very fine green spots. Elongated foliage. Each \$5.-\$15.

FITTONIA argyroneura. Attractive plants. Foliage light green, daintily striped silvery white. Excellent plants. Each \$1.-\$2.

TRADESCANTIA fuscata. Brown, hairy foliage with gray stripe in center. Blue flowers. Each \$1.-\$3.50.

POLLEA condensata variegata. Very showy. Leaves, light green and yellow. Each \$2.-\$3.50.

PEPEROMIA arifolia. Very handsome, dark red foliage. Each \$1.-\$2.50.

MARANTA INSIGNIS. Very distinct foliage; elongated, narrow. Surface dark green with brown markings; reverse, dark lavender. Fine plants. Each \$3.-\$5.

FITTONIA Verschaffeltii. Dark green, striped pink. Fine plants. Each \$1.-\$2.

Greenhouse Plants

Ten Plants Suitable for Edging of Benches

(HAVING A DROOPING NATURE)

When you are filling your benches with the things you like most, don't forget to include plants of drooping habit. You will need these for edging the benches. To break their straight-a-way stiffness, and to heighten the beauty of the plants of erect habit with their trailing graces.

The following collection is made up of plants ideal in colorings and size for the edging of benches.

All of them are small growth and are at their best in 3½ to 5-inch pots.

They need a tropical temperature with good shade and copious waterings on both their foliage and roots.

Their colorings are so varied that when used alternately they will give a very brilliant effect to the benches.

They are admirable, too, for rockery use and around the conservatory fountain.

And two of this list are excellent for hanging baskets; the *Hemigraphis colorata* and the *Asparagus Sprengeri*.

The *Tradescantias* included here must not be confused with the commonly known pale green Wandering Jew. These *Tradescantias* have very rich coloring and will add greatly to the beauty of your greenhouse.

These plants of drooping habit will give a delightful sense of intimacy to your greenhouse and go far toward getting the much desired effect of lush tropical growth.

ISOLEPIS gracilis. A grassy-like foliage plant rather dainty and most striking. Fine plants. Each 50c.-75c.

HEMIGRAPHIS colorata. Most attractive plant. Foliage, a silvery hue, striped and blotched dark lavender. Excellent plants. Each \$2.-\$3.50.

FICUS repens. Small leaved, dark green foliage. May be used for climbing against the conservatory wall. Elegant plants. Each 75c.-\$1.

TRADESCANTIA fluminensis variegatis. The white and green variegated form. Each 50c.-75c.

TRADESCANTIA Lækensis. Very distinct coloring, the variegation being lavender to pink. Each \$1.-\$1.50.

ASPARAGUS Sprengeri. Beautiful plants. Each 50c.-\$2.

PANICUM variegatum. Foliage resembling Bamboo, but very dwarf; rampant. Variegated alternately white, pink and green. Each \$1.-\$2.

PIPER ornatum. Creeping Pepper. Shiny grayish green foliage covered with purplish spots. Each \$1.-\$2.

PELLIONIA Dauveauana. Fleshy, dark bronze and gray leaves. Each \$1.-\$1.50.

ÆSCHYNANTHUS pulchra. Leaves dark green; beautiful scarlet flowers. Each \$1.-\$1.50.

Greenhouse Plants

Ten Fine Colored Dracaenas

Dracaenas are also known as Cordylenes.

But by whatever name they are called, when it comes to amazing color combinations in masses, nothing quite equals these ten fine colored Dracaenas.

They run the whole gamut of the spectrum and several do not stop with one combination of colors, but change them as they grow.

As, for example, the Lord Wolseley, which changes from crimson carmine to bronze—giving you double effects.

All of these Dracaenas can be grown into specimen plants, and two of them, the Dracaena Massangeana and Lindenii, reach heights of from 10 to 15 feet, which makes them ideal for the column effects so desirable in conservatories and greenhouses.

Being strictly tropical plants all these Dracaenas require warm house culture with shaded light, good ventilation and copious supplies of water on both their foliage and roots.

The proper watering of tropical plants is one of the most important operations in their culture. In their natural habitat they are continually drenched with moisture and thrive because of it

DRACÆNA Deremensis Warneckii. Narrow foliage variety. Base dark green with narrow, silvery white stripe. Fine plants. Each \$5.-\$15.

DRACÆNA Improved Deremensis Warneckii. Similar in growth to the preceding, but its variegation is much more intense. Stripes, creamy white, one inch or more in width. Each \$7.50-\$15.

DRACÆNA Massangeana. Broad dark green foliage, with yellow stripe in center, curving somewhat on the tips. Excellent plants. Each \$3.50-\$15.

DRACÆNA Lindenii. In growth and texture it is similar to the preceding, but each leaf not only has a creamy border but a creamy yellow center about one inch in diameter. Beautiful plants. Each \$5.-\$15.

DRACÆNA Victoria. The finest of the whole family. Foliage resembling both the preceding. Its variegation being bright golden yellow. Elegant plants. Each \$7.50-\$75.

DRACÆNA Terminalis. Very fine, decorative and highly colored variety; during winter, lower foliage is bronze green with white through center; younger leaves are scarlet red. Each \$1.50-\$5.

DRACÆNA Amabilis. Broad dark green foliage, the central set of leaves usually turning to a bright pink during the winter months. Each \$1.50-\$5.

DRACÆNA Godseffiana. A rather peculiarly colored plant; foliage oval shaped, dark green and spotted pure white. Each 75c.-\$1.50.

DRACÆNA Youngii. Broad and long, purple leaves; strong plants. Each \$5-\$7.50.

DRACÆNA Lord Wolseley. Very beautiful variety, crimson carmine changing later to bronze. \$1.50-\$5.

Greenhouse Plants

Ten Bromeliaceae

Among the many brilliant hued tropical plants the Bromeliaceae are distinct because of their stiff leaves which are marbled green, and red and purple striped.

Also for their conspicuous floral spikes of red, pink, blue, purple and creamy white.

These characteristics make them ideal for obtaining clear points of light and color among the softer leaved plants in the greenhouse and conservatory. Being natives of the American tropics, they require the cultural conditions necessary to other tropical plants.

The following list of Bromeliaceae gives you the ten finest and most brilliant of all this family.

Æchmea Thibautiana. Leaves bluish gray; flowers ovary red, petals blue. \$3.50-\$5.

Billbergia Morelii. Leaves green and gray, flowers beautiful purple. \$3.50.

Sanderi. Upper sides of leaves grayish green with white spots. Beneath reddish, beautifully marked with gray. \$5.

Emphantha. Green and gray blue flowers. \$2.50.

Quantitissima. Long grayish leaves, very showy purple flowers. \$5.

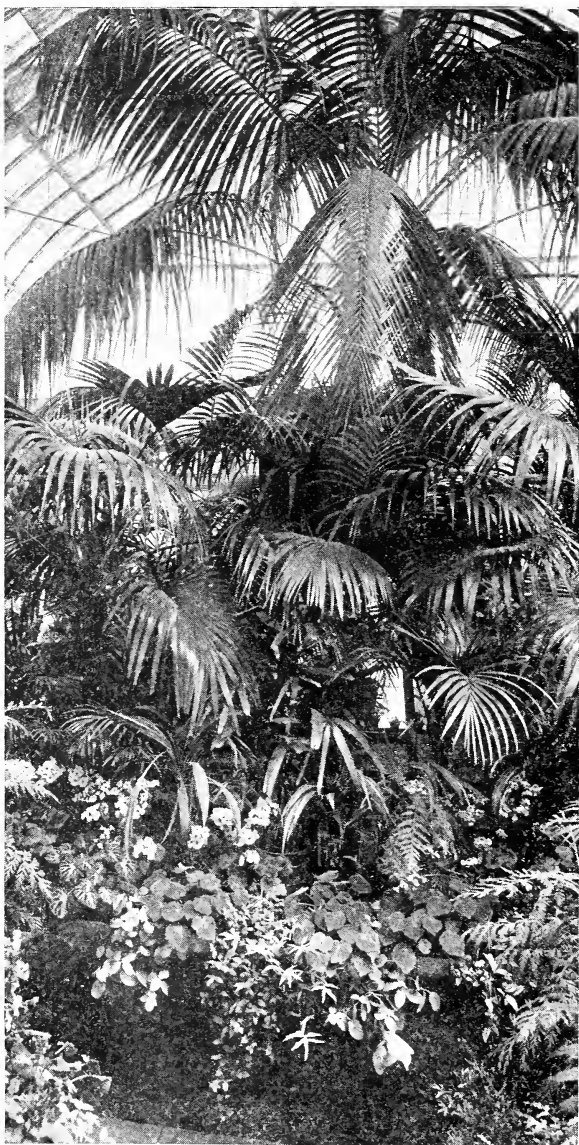
Guzmania musaica. Beautifully marked with undulating brown and green; flowers golden, striped with pink. \$5.

Nidularium Amazonica. Beautiful metallic blue leaves; flowers red. \$5.-\$7.50.

Lindeni. Long narrow reddish leaves; orange red flowers. \$5.-\$7.50.

Vriesia Coppei. Light green leaves; red spike with yellow petal. \$5.

Tillandsia Duvali. Brownish green leaves with violet blue flowers. \$5.



With a house full of fine, healthy palms like this, you always have material right at hand for decorating your rooms for "short notice" occasions, as well as elaborate functions.

We have palms in all sizes, from 3 inches up.

Greenhouse Plants

Alphabetical List of Greenhouse Plants

Abbreviations: fl. —Flowering greenhouse plants.
fol.—Better known for their fine foliage.



CACIA Baileyana. fl. Bright yellow. Price on application.

Drummondii. fl. Caterpillar shaped flowers. \$5.-\$7.50.

longifolia. fl. Very free flowering. \$5.-\$10.

longifolia magnifica. fl. Somewhat larger and trusses of flowers. Price on application.

pubescens. fl. Finest of all Acacias. Rare. \$10.-\$150.

pulchella. fl. Bright canary yellow. Price on application.

Acalypha Sanderi. fol. Long narrow spikes of crimson flowers. \$1.-\$2.50.

Acanthus montanus. fol. Mottled; thistle-shaped foliage. \$2.50-\$5.

Æchmea Thibautiana. fl. Leaves bluish gray; flowers ovary red; petals blue. \$3.50-\$5.

Æschynanthus pulchra. fl. A handsome trailing plant with brilliant scarlet flowers. \$1.-\$2.

Agapanthus umbellatus. fl. (Lily of the Nile.) Tall spikes of blue flowers. \$3.50-\$15.

Allamanda cathartica. Climber. Funnel-shaped golden yellow flowers. \$7.50.

Hendersonii. Climber. Very free flowering; large yellow blossoms. \$7.50.

Williamsii. Climber. Flowers continually in clusters. \$7.50.

Alpinia Sanderae. fol. Beautiful variegated foliage plant. \$2.-\$5.

Amaryllis Hybrids. fl. Roehrs very finest strain; best varieties. \$3.50-\$15.

Amomum Cardamon. fol. Ginger plant. \$1.-\$2.50.

Vitellinum. fol. \$1.50.

Ananas sativus. fol. var. fol. Variegated pink, cream and red. \$5.-\$15.

Anthurium Andræanum. fl. Various colored flowers. \$3.50-\$25.

crystallinum. fl. Velvety foliage, white ribs. \$3.50-\$10.

crystallinum folius variegatis. fl. Splashed crystal white. \$10.-\$25.

Duchartii. fl. Pure white flowers. \$3.-\$7.50.

Greenhouse Plants

- Scherzerianum hybrids.** fl. Bright scarlet flowers. \$2.50-\$25.
- Aphelandra aurantiaca.** fl. Beautiful scarlet flowers; silvery gray foliage. \$1.-\$1.50.
- Aralia aurea.** fol. Yellow and green leaves. \$1.50-\$2.50.
- elegantissima.** fol. Finely cut foliage; color bronze red. \$5.-\$10.
- Chabrieri.** fol. Very dark long leaves. \$3.50-\$15.
- Kerchoveana.** fol. Dark green leaves. \$5.-\$15.
- Veitchii gracillima.** fol. Very narrow foliage. \$5.-\$15.
- Araucaria excelsa.** fol. (Norfolk Island Pine.) \$7.50-\$15.
- robusta.** fol. Very dense foliage variety. \$10.-\$15.
- robusta plumosa.** fol. Very compact grower. \$10.-\$15.
- Aristolochia elegans.** Fine climber; flowers the shape of a pipe; large plants. \$7.50.
- Galeata.** Flowers mottled grayish green; large plants. \$7.50.
- Gigas Sturtevantii.** Very large and showy. \$7.50.
- Asparagus Duchesnei.** Rapid growing, good climbing variety; dark green foliage. \$7.50-\$10.
- plumosus.** fol. Splendid for cutting. 35c.-\$2.
- Sprengeri.** fol. Drooping habit; fine for baskets. 50c.-\$2.50.
- Aspidistra lurida.** fol. Dark green leaves. \$3.50-\$5.
- fol. var.** fol. Variegated form. \$5.-\$10.
- Azalea Indica.** fl. Indian Azalea. All sizes and varieties. \$7.50-\$15.



AUERA rubioides. fl. Bright pink flowers. \$2.50-\$5.

Begonia Haageana. fol. Pink to red foliage. \$1.-\$3.50.

manicata aurea. fol. Green, spotted yellow. \$1.50-\$5.

manicata cristata. fol. Green spotted yellow and white. \$2.-\$5.

Metallica. fol. Dark bronze. 75c.-\$2.50.

Pres. Carnot. fol. Metallic colored foliage. \$2.-\$3.50.

Punctata. fol. Spotted leaves. \$1.-\$3.50.

Concurrent. **Melior.**


Gloire de Cincinnati. **Mrs. J. A. Peterson.**

Gloire de Lorraine. **Turnford Hall.**

Note: For descriptions of the above six Begonias see page 54.

Altrincham Pink; Emily Clibran, Bowden Beauty, Mrs. Heal, Mrs. T. H. Cook; for description, see page 33. Tubers or pot-grown plants. \$2.50-\$3.50.

Greenhouse Plants

- Bertolonia Sanderiana.** fol. Silvery foliage. \$2.-\$3.
- Bignonia argyreo-violascens.** Climber. Foliage small, purple in growing, changing to variegated later. Large plants. \$7.50.
- grandiflora.** Climber. Green leaves, light blue flowers. Large plants. \$7.50.
- venusta.** Climber. Beautiful deep orange flowers. Large plants. \$7.50.
- violacea.** Clusters of purple flowers. Large plants. \$7.50.
- Billbergia Forgettiana.** The beautiful variegated Bromeliaceæ. \$15.-\$25. See other Billbergias on page 39.
- Bougainvillea glabra Sanderiana.** fl. Lavender flowers. \$2.50-\$5.
- Harrisii.** fl. Variegated foliage. \$2.50-\$15.
- Bouvardias in mixed variety.** fl. Pink and red colors. 35c.-\$2.
- Humboldtii.** fl. Pure white. 25c.-\$1.50.
-  **ALADIUM.** fol. Fancy leaved mixed dormant bulbs. 35c.-75c. Plants, \$1.50-\$2.50.
- Campylobotrys Ghiesbreghtii.** fol. Velvety purple foliage. \$1.50-\$2.50.
- fol. var.** Foliage variegated silver white. \$2.-\$3.
- Ceropegia Woodii.** fol. Very dainty fleshy leaf, creeping habit. Silvery gray foliage. \$1.50-\$2.
- Centropogon Lucyanus.** fl. Rose pink flowers. \$2.50.
- Centrosema bullata.** fol. Beautiful velvety bronze leaves. \$1.50-\$2.50.
- Cestrum elegans.** fl. Half climbing plant. Bright orange red flowers. \$7.50.
- Chorozema cordata splendens.** fl. Pea-shaped flower, red and yellow. Bush plants. \$3.50-\$7.50; stand-ard trained, \$7.50.
- Cissus discolor.** fol. Beautiful stove climber. Silvery white and purple foliage. \$5.-\$7.50.
- Citrus (Fruit); Otaheite Orange.** Nice plants. Spring. \$1.50-\$2.50.
- Clerodendron Balfourii.** fol. var. Fine climber; clusters of white flowers with a corolla center; strong plants. \$7.50-\$10.
- fallax.** fl. Flowers bright scarlet. \$1.50-\$3.50.
- Clivia miniata.** fl. Gorgeous orange-red flowers. \$5.-\$7.50.
- Coccoloba pubescens.** fol. Exhibition plant. Very large foliage, velvety dark green. \$10.-\$25.
- Colocasia Fontanesii.** fol. Strong grower; large leaves. \$5.-\$7.50.

Greenhouse Plants

Columnnea gloriosa. fl. Very showy trailing plant with brilliant scarlet flowers. \$1.50-\$2.

Costus zebrina. fol. Dark green velvety leaves. \$2.50-\$3.50.

Crossandra infundibuliformis. fl. Beautiful orange-red flowers. \$1.50-\$3.

Crotons: fol. Large leaved varieties, all sizes. \$1.-\$10.

Andreanum.

B. Comte.

Craigi.

Edwin Lonsdale.

Rose Hill.

Reidii.

Souv. de Laeken.

W. R. Smith.

Craigi Suprem.

Juliet Delaruye.

Crotons: fol. Narrow leaved varieties, all sizes. \$1.50-\$10.

Edmontonense.

Golden Ring.

Lady Zetland.

Masterpiece.

punctata aurea.

Queen Victoria.

ruberrimum.

Souvenir de Thomas

Rochford.

superbus.

Warrenii.

Cryptanthus Beuckeri. fol. Leaves green and yellow blotches. \$1.-\$2.

zonatus zebrinus. fol. (Brazilian Bromeliad.) Leaves crowded in a rosette, marked with transverse bands of brownish white. \$1.50-\$2.50.

Cyanophyllum magnificum. fol. One of the best and most striking foliage plants. \$5.-\$35.

Cyclamen. fl. Roehrs' very best strain. White, pink, red, white with pink eye. All sizes, according to season. 25c.-\$5.

Cyperus alternifolius. (Umbrella Plant.) fl. Fine aquatic. 75c.-\$5.

alternifolius folius variegatis. fol. Variegated form. \$2.-\$3.

alternifolius gracilis. fol. Very narrow foliage. \$1.-\$2.



DIEFFENBACHIA Barraquiniana. fol. Midrib almost all white, blade scattered white spots. \$2.50-\$7.50.

Bausei. fol. Yellow, spotted green and white. \$1.50-\$3.

costata. fol. Dark green foliage with yellow and white spots. \$1.50-\$5.

Imperialis. fol. Very strong variety, spotted yellow. \$3.-\$5.

picta. Very dark green leaves finely spotted with white. \$2.50-\$7.50.

Rex. fol. Dark green foliage with yellow spots. \$1.50-\$3.

Seguine picta. Dark green foliage with stripes and spots. \$1.50-\$3.

Greenhouse Plants

- Dioscorea discolor.** Climber. Rapid grower, very handsome foliage. \$5.
- Dipladenia amœna.** Climber. Flowers beautiful pink. \$7.50.
hybrida. Flowers very dark pink with yellowish throat. \$7.50.
insignis. Flowers rosy purple. \$7.50.
- Dracæna (Cordyline) Amabilis.** fol. Dark green and pink. \$1.50-\$5.
deremensis. fol. Dark green. \$3.-\$5.
deremensis Warneckii. fol. Grayish green, striped white. \$5.-\$10.
Improved deremensis. fol. Broad white stripes. \$7.50-\$15.
fragrans. fol. Dark green pointed leaves. \$2.50-\$5.
Lindenii. fol. Striped pale yellow. \$3.50-\$7.50.
Massangeana. fol. Striped light yellow. \$3.50-\$6.
Godseffiana. fol. Small foliage spotted white. 75c.-\$1.50.
gracilis. fol. Very narrow bronze foliage. \$1.50-\$5.
Imperialis. fol. Pink and green. \$1.50-\$5.
Lord Wolseley. fol. Striped red, narrow. \$1.50-\$5.
Sanderiana. fol. Narrow, striped white. 50c. \$3.50.
terminalis. fol. Bronze and red. \$1.50-\$5.
Victoria. fol. Finest of all. Golden yellow with green stripes. \$7.50-\$35.
Youngii. fol. A very showy variety, broad purple leaves. \$3.50-\$7.50.



PIPHYLLUM truncatum. fl. Rose colored flowers. \$1.50-\$3.

Erica condonodes Veitchii. fl. Pure white. \$2.50-\$5.

melanthera. fl. White, black anthers. \$2.50-\$7.50.

French Hybrids. fl. Tubular pink flowers. \$2.50-\$5.

Erythrina marmorata. fol. A very striking white variegated plant, trilobed leaved. \$5.-\$25.

Eucharis Amazonica. fl. Pure white flowers, green center and sweet scented. \$1.-\$2.

Eugenia microphylla. fol. Very fine foliage, pea green. \$2.50-\$5.

Euphorbia Jacquinæflora. Spikes scarlet, yellow flowers. 35c.-50c.

splendens. fl. (Crown of Thorns.) Bright red flowers. \$1.-\$5.

Greenhouse Plants



ERNS. For Alphabetical List see page 48.

Ficus Canonii. fol. Dark reddish foliage. \$2.-\$3.50.

elastica. fol. (The Rubber plant.) \$1.50-\$3.

elastica. fol. var. fol. The variegated leaved rubber plant. \$3.-\$5.

pandurata. fol. Large broad leaves. \$5.-\$25.

Parcellii. fol. Pale green leaves, mottled white. \$3.-\$5.

radicans. fol. Dark green creeping variety. 50c.-\$1.

radicans. fol. var. fol. Variegated form of preceding. \$1.-\$2.50.

repens. fol. Small leaved climbing variety, useful for covering walls. 50c.-75c.

Utilis. fol. Large smooth leaves; brown. \$3.50-\$15.

Fittonia argyroneura. fol. Light green, white veined. 75c.-\$2.

Pearcei. fol. Bronzy green with pink variegation. 50c.-\$1.50.

Verschaffeltii. fol. Dark green, striped pink. 75c.-\$2.

Franciscea floribunda. fl. Bright green leaves with beautiful blue flowers. \$1.50-\$3.50.

Gardenia Veitchii. fl. Flowers pure white, sweet scented. 25c.-\$2.50.

Genista elegantissima. fl. Grayish green foliage, bright yellow flowers. Fine keeper. \$1.50-\$7.50.

fragrans veitchii. fl. Good flowering variety. \$1.-\$5.

racemosus. fl. Grown in standard form. \$7.50-\$10.

Gloriosa Roehrsiana. (African Climbing Lily.) fl. Flowers very showy, yellow and scarlet red. \$2.

Guzmania mosaica. Beautifully marked with undulating brown and green; flowers golden striped with pink. \$5.



ELICONIA aureo-striata. fol. Large leaves like a Canna. Striped and mottled yellow. \$5.-\$10.

Edward Rex. fol. Striped and mottled scarlet red. \$5.-\$15.

Hæmanthus King of Saxony. fl. A bulbous plant producing a magnificent spike of pink, ball shaped flowers. \$2.50-\$5.

Hemigraphis colorata. fol. Very fine foliage, dark purple, make a wonderful basket plant. \$1.-\$2.

Hoffmannia regalis. fol. Dwarf growing plant, foliage deep red and pink. \$1.50-\$2.50.

Greenhouse Plants

- Hoya carnosa.** (Wax Plant.) Fleshy, dark green foliage; pinkish white flowers. Large plants. \$7.50.
carnosa fol. variegata. The variegated Wax plant. \$5.-\$7.50.
- Isolepis gracilis.** fol. Fine, grassy-like foliage. 50c.-75c.
- Isoloma bogotense.** fl. Tubular flowers, scarlet, yellow center. \$1.50-\$3.
- Ixora coccinea.** fl. Dark red flowers, similar to the Bouvardias. \$2.-\$3.50.
Westii. fl. Deep orange flowers. \$2.-\$3.50.
Williamsii. fl. Reddish salmon flowers. \$2.-\$3.50.
- Jacquemontia pentantha.** Beautiful Climber. Produces a mass of violet-blue flowers. Large plants. \$7.50.
- Jasminum gracillimum.** fl. White and very fragrant flowers. \$5.-\$7.50.
revolutum. fl. Golden yellow sweet flowers. \$5.-\$7.50.



ARANTA. fol. Extensively grown for their varied beautiful foliage. Some are dwarf, others tall growing; striped, marked, mottled—pink, white, green, maroon, etc. \$2.-\$15. each, in the following varieties:

arundinacea.
eximia.
insignis.
Kummeriana.
Lubersii.
Louiseæ.

Oppenheimii.
Oppenheimii tricolor.
Porteana.
roseo-lineata.
Sanderiana.
Zebrina.

- Medinilla magnifica.** fl. Flowers in large clusters, pink. Drooping. Long keeping qualities. \$5.-\$35.
magnifica superba. fl. Flowers same color as above with compact habit. \$5.-\$35.
- Mimosa pudica.** fol. (Sensitive Plant.) Very interesting. \$1.-\$2.
- Musa Cavendishii.** (Banana Plant.) Dark green foliage. \$5.-\$15.
Zebrina. Bright green leaves, with brown stripes. \$5.-\$15.
- Nepenthes.** (Pitcher Plant.) fl. Growing in square hanging baskets and pots, \$7.50-\$15. each, in the following varieties:
- atrosanguinea.**
Courtii.
Dominii.
Edinensis.
Intermedia.
Mastersiana.
- Nephtytis tryphyllus.** fol. Foliage striped white. \$1.
- Nidularium Amazonica.** Beautiful metallic blue leaves; red flowers. \$5.-\$10.
Lindeni. Long, narrow reddish leaves, orange red flowers. \$5.-\$7.50.

Greenhouse Plants

Olea (*Osmanthus*) *fragrans*. fl. Delightfully sweet-scented flowers; creamy white. \$1.50-\$2.50.



ALMS. For Alphabetical List see page 49.

Panax Balfourii. fol. Foliage pea-green, mottled cream white. \$1.-\$3.

Victoriæ. fol. Finely divided foliage, striped white. \$1.50-\$3.

Pandanus graminifolius. fol. Very narrow dark green foliage. \$1.50-\$15.

Utilis. fol. Leaves green, red spines. \$2.50-\$7.50.

Veitchii. fol. Variegated foliage, white and green. \$2.50-\$7.50.

Panicum variegatum. fol. Narrow drooping foliage, white and pink. 50c.-75c.

plicatum. fol. (Grass Palm.) Long green and white foliage, very graceful. \$1.-\$2.50.

Passiflora Pfordtii. (Passion Flower.) Blue flowers. Large plants. \$7.50.

princeps racemosus. (*Tacsonia racemosa*.) Flowers bright scarlet. \$7.50-\$10.

quadrangularis. fol. var. Yellow and green foliage with beautiful reddish flowers. \$7.50-\$10.

trifasciata. Very showy foliage, white flowers. \$5.

Pellionia Dauveauana. fol. Creeping habit, fleshy dark bronze and gray leaves. \$1.-\$2.

pulchra. fol. Creeping foliage plant, gray with dark green veins. \$1.50-\$2.50.

Peperomia arifolia. fol. Dark narrow striped foliage. 50c.-\$1.

maculosa. fol. Fleshy gray leaves, striped green. 50c.-\$2.50.

Philodendron acuminata. Climbing variety. Leaves green, very good for covering walls in a conservatory or greenhouse. \$2.50-\$7.50.

Carderi. fol. Large velvety leaves. \$2.50-\$5.

Devansayanum. fol. Large bronze leaves. \$2.50-\$15.

Phrynium Lindenii. fol. Fine variegated leaves, green and white. \$2.-\$5.

Phyllanthus mimosæfolia. Leaves light green, very graceful. \$2.50-\$7.50.

roseo-pictus. Fine variegated leaves. \$1.50-\$3.

speciosus. Just like an *Aralia*. \$1.50-\$5.

Phyllotænium Lindenii. fol. Light green leaves, creamy white. \$2.50-\$5.

Piper metallicum. fol. Dark maroon reddish leaves. \$3.50-\$7.50.

Greenhouse Plants

- Plumbago capensis.** fl. Very free growing with azure-blue flowers. 75c.-\$2.50.
coccinea rosea. fl. Scarlet flowers. \$1.-\$2.50.
- Poinsettia pulcherrima.** fl. Double bracts of red flowers. 35c.-\$.2. Single bracts of red flowers. 25c.-\$1.50.
- Pollea condensata.** folius variegatis. fol. Dwarf growing. \$2.-\$5.
- Pothos argyrea.** Fine climber. Foliage variegated silvery white. \$1.-\$1.50.
aurea. Fine climber. Leaves green and yellow, very good for covering walls. \$2.50-\$7.50.



- EINECKIA carnea.** Narrow green leaves, very hardy. 50c.-75c.
fol. var. Very graceful. 75c.-\$1.
- Rhynchospermum jasminoides.** Very fragrant white flowers, produced in clusters. \$7.50-\$10.

- Ruellia floribunda.** fl. Bright red flowers, fine winter flowering plant. \$1.50-\$2.50.
- Sanchezia nobilis.** fol. Foliage yellow and green, very showy. \$1.-\$2.50.
- Sansevieria zeylanica.** fol. Long, sword-like leaves. \$2.-\$5.
Laurentii. fol. Similar to the above with yellow variegation. \$5.-\$7.50.
- Solandra spectabilis.** fl. Tall, slender plant. Flowers, white, fragrant. \$5.-\$7.50.
- Spathiphyllum heliconæfolium.** fol. Leaves long and broad, light green and yellow. \$3.50-\$10.
- Stigmaphyllon ciliatum.** (The Golden Butterfly Vine of Brazil.) \$7.50.
- Strelitzia Augusta.** (Bird of Paradise.) fl. Flowers white and blue. \$10.-\$15.
Reginæ. Flowers orange and blue. \$10.-\$25.
- Strobilanthes Dyerianus.** fol. Foliage blue and lilac. \$1.-\$2.50.
- Tabernæmontana coronaria flore-pleno.** Shiny green foliage with fragrant, pure white, double flowers. \$1.50-\$3.50.
- Tradescantia discolor.** fol. Green and purple leaves. \$1.-\$2.50.
fuscata. fol. Dark maroon hairy foliage. \$1.-\$2.50.
Lækensis. fol. Lavender and pink variegation. \$1.
Reginæ. fol. Beautiful purple and gray. 75c.-\$1.50.

Greenhouse Plants

- Trevesia Sanderiana.** Leaves dark green, deeply cut, very decorative. \$25.-\$50.
- Vanilla aromatica.** (Vanilla Vine.) fol. var. Leaves yellowish white and green. \$7.50-\$15.
- Vriesia hybrids.** (Bromeliaceas.) Most of the following varieties have light green, dark green and reddish leaves; showy red spikes with yellow petals. Each \$5.
- | | |
|-------------------|--------------------|
| aurora. | Favorite. |
| Coppei. | Magnesiana. |
| Duchartii. | nigrescens. |
| Dr. Lebel. | Poelmani. |
| Erecta. | Rex. |
- Young Flowering Stock.** For Alphabetical List of young flowering stock for May and June delivery see page 50.
- Zyophylla latifolia.** Very rare and attractive. Similar to the Aralia. \$3.50-\$15.

Alphabetical List of Ferns

- Adiantum** (Maidenhair Fern).
Crowianum. Strong erect fronds. Each \$1.-\$2.
cuneatum. Dainty dark green. Each \$1.-\$2.
grandiceps. A handsome, dark green variety. Each \$1.-\$2.
- Alsophila australis.** Specimens only. Each \$15.-\$25.
- Asplenium Nidus-Avis.** (Bird's Nest Fern). Each \$1.50-\$5.
- Blechnum Braziliensis.** Fine showy variety. Each \$2.50-\$7.50.
- Cibotium Schiedei.** Large fronds, beautiful fern. Each \$5.-\$25.
- Cyrtomium Rochfordianum** (Holly Fern). Each \$1.50-\$3.
- Davallia Fijiensis.** Very hardy; arching fronds. Each \$3.50-\$7.50.
- Goniophlebium subauriculatum.** Splendid basket fern. Each \$5.-\$35.
- Lygodium scandens.** Strong growing, climbing fern. Each \$2.50-\$7.50.
- Microlepia platyphylla.** Large frond, makes a good specimen. Each \$2.50-\$15.
- Nephrolepis Bostoniensis** (Boston Fern). Each \$1.50-\$15.
 In baskets, each \$10.-\$25.
Scottii. (Scott's dwarf Boston Fern). Each \$1.50-\$5.
Macawii. (Macaw's filmy Boston Fern). Each \$2.-\$3.50.
Verona. Very fine novelty. Each \$1.-\$2.50.

Greenhouse Plants

Platycerium (Staghorn Fern).**alcicorne.** Long, narrow fronds. Each \$3.50-\$15.**biforme.** Broad, hairy foliage. Each \$3.50-\$15.**grande.** Large, heavy fronds. Each \$15.**Hillii.** Very spreading habit. Each \$5.-\$15.**Veitchii.** Very rare. Erect, light gray, narrow fronds. Each \$5.-\$15.**Willinckii.** Long, drooping fronds. Each \$4.-\$15.**Polypodium Knightii.** Fine for baskets. Each \$5.-\$15.**Pteris tremula.** Very hardy, light green fronds. Each 50c.-\$2.**Selaginella caesia.** Fine trailing variety with bluish foliage. Each \$1.-\$1.50.**caesia arborea.** Beautiful climbing fern; bronze and blue foliage. Each \$3.50-\$7.50.**Brownii.** Very compact habit. Each 35c.-50c.**denticulata.** Useful for covering ground. Each 25c.-50c.**Emelliana.** Dark green, very useful. Each 50c.-75c.**Emelliana aurea.** Golden yellow. The finest of all. Each 75c.-\$1.**Martensii.** A hardy variety. Each 50c.-\$1.50.**Martensii.** fol. var. Each 50c.-\$2.Alphabetical List
of Palms**ARECA lutescens.** A bushy growing species; narrow foliage; makes a beautiful specimen. Each \$7.50-\$25.**Cocos Wedelliana.** Dark green leaves, finely divided. Very useful for decoration and fern dishes. Each 25c.-\$15.**Kentia Belmoreana.** One of the best house Palms; dwarf in growth.

Single—small plants. Each 50c.-\$1.50.

Single—medium plants. Each \$5.-\$15.

Bushy—made up small plants. Each \$1.50-\$2.50.

Bushy—made up medium plants. Each \$7.50-\$15.

Kentia Forsteriana. Free growing variety; somewhat taller than the preceding.

Single—small plants. Each \$1.

Single—medium plants. Each \$5.-\$35.

Single—specimen plants. Each \$150.-\$500.

Made up plants—medium size. Each \$7.50-\$15.

Made up plants—large size. Each \$35.-\$150.

Latania Borbonica (Fan Leaf Palm). Very popular. Nice plants. Each \$2.50-\$5.**Licuala horrida.** Foliage spreading, deeply cut. Each \$5.-\$25.

Greenhouse Plants

- Phoenix Canariensis.** Elegant foliage; erect growth; very decorative. Specimens. Each \$25.-\$100.
- Phoenix Roebelinii.** Very graceful and splendid house palm. Each \$10.-\$15. Specimens \$35.-\$150.
- Phoenix rupicola.** Bright green, shining yellow foliage. Each \$3.50-\$7.50.

Young Flowering Stock for May, June and July Delivery

- Begonia Concurrent.** fl. Dark pink flowers. May and June delivery. 2¼-inch pots, \$5. per dozen; \$40. per 100.
- Gloire de Cincinnati.** fl. Bud dark red opening pink. May and June delivery. 2¼-inch pots, \$5. per dozen; \$40. per 100.
- Gloire de Lorraine.** fl. Rosy crimson flowers. May and June delivery. 2¼-inch pots, \$5. per dozen; \$40. per 100.
- Melior.** fl. Large deep pink flowers. May and June delivery. 2¼-inch pots, \$5. per dozen; \$40. per 100.
- Mrs. J. A. Peterson.** fl. Crimson flowers. May and June delivery. 2¼-inch pots. \$5. per dozen; \$40. per 100.
- Turnford Hall.** fl. White flowers. May and June delivery. 2¼-inch pots, \$5. per dozen; \$40. per 100.

Note.—All the above six begonias may be had in large plants in bloom for Christmas shipment, \$2.-\$7.50 each.

- Bouvardias.** Red and pink. \$3.50 per dozen, \$25. per 100.
Humboldtii. White. \$3.50 per dozen, \$25. per 100.
- Cyclamen.** All colors; best strain. 2½-inch pots \$3.50 per dozen, \$25. per 100.
- Euphorbia jacquinaeflora.** 2¼-inch pots \$4. per dozen, \$30. per 100.
- Hydrangea.** French varieties. 2¼-inch pots \$3.50 per dozen, \$25. per 100.
- Poinsettia pulcherimma.** 2¼-inch pots \$3. per dozen, \$20. per 100.

Greenhouse Plants

Business Terms

If it happens that we have not previously had the pleasure of doing business with you, it is but natural we should ask the courtesy of your sending along with your order either a remittance or reference.

By the same token you will appreciate our view point in asking that in requesting C. O. D. shipments that you accompany your request with at least fifty per cent of the amount.

Customers of approved reference will gladly be extended a credit of 30 days.

Claims and Replacements

We are at all times willing to replace free of charge any stock should it prove to be untrue to name. We do not, however, hold ourselves liable for any amount greater than the original cost of the plant to you.

All claims must be made promptly on receipt of goods, otherwise we cannot make any allowances.

All goods, as in business in general, travel at the purchaser's risk.

For any damages resulting after the goods have been delivered by us to the Express Company the purchaser must look to the Express Company.

Packing is done in a thorough, careful way and charged for at cost.

All quotations are F. O. B. Rutherford, N. J.

Forcing Stock

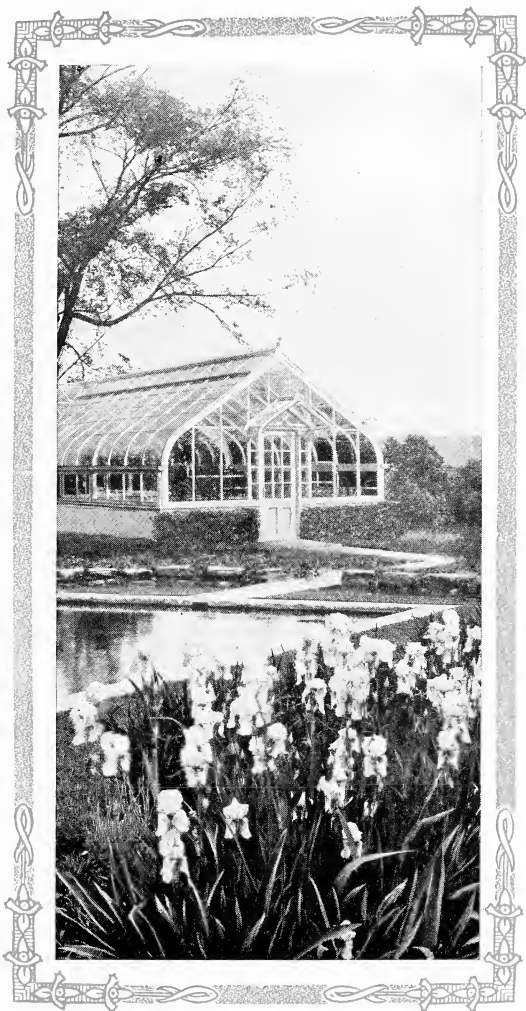
Always we have on hand every Fall such things as Flowering Peaches, Flowering Crab Apples, Deutzias, Lilacs, Spireas and Wistarias. This list appears in our Fall Ten-Ten Bulb Book and if you have no copy of this catalog, we will be glad to send you one.

For Lily-of-the-Valley Pips, which are imported, the prices are not shown in the catalog, due to fluctuations in Foreign exchange. But we always have these on hand in case lots of 250, 500, 1000, or in case lots to suit your needs.

Index

Index of All Orchids and Greenhouse Plants

PAGE		PAGE		PAGE	
Acacia.....	31-39	Cecylogyne.....	4-17	Microlepia.....	28-48
Acalypha.....	39	Colocasia.....	32-41	Miltonia.....	4-22
Acanthus.....	39	Columnea.....	42	Mimosa.....	45
Acineta.....	13	Costus.....	42	Musa.....	45
Adiantum.....	28-48	Crossandra.....	42	Nepenthes.....	30-45
Aechmea.....	37-39	Crotons.....	32-42	Nephrolepis.....	28-48
Aerides.....	13	Cryptanthus.....	42	Nephtytis.....	45
Aeschynanthus.....	35-39	Cyanophyllum.....	42	Nodularium.....	37-45
Agapanthus.....	31-39	Cyclamen.....	42-50	Odontioda.....	22
Allamanda.....	29-39	Cymbidium.....	5-7-11-17	Odontoglossum.....	4-5-11-23
Alsophila.....	48	Cyperus.....	42	Olea.....	46
Alpinia.....	32-39	Cyripedium.....	4-5-6-17-19	Oncidium.....	4-5-10-11-23
Amaryllis.....	30-39	Cyrtomium.....	28-48	Palms.....	46-49
Amomum.....	39	Davallia.....	48	Panax.....	46
Ananas.....	39	Dendrobium.....	4-5-7-11-19-20	Pandanus.....	32-46
Angræcum.....	13	Dieffenbachia.....	42	Panicum.....	35-46
Anguloa.....	13	Dioscorea.....	43	Passiflora.....	29-46
Anthurium.....	30-39	Dipladenia.....	29-43	Pellionia.....	35-46
Aphelandra.....	40	Dracæna.....	36-43	Peperomia.....	34-46
Aralia.....	40	Epi-Cattleya.....	20	Phalænopsis.....	23
Arachnanthe.....	13	Epidendrum.....	5-20	Phaius.....	23
Araucaria.....	32-40	Epiphronitis.....	20	Philodendron.....	46
Areca.....	27-49	Epiphyllum.....	43	Phœnix.....	27-50
Aristolochia.....	40	Erica.....	31-43	Phrynium.....	34-46
Asparagus.....	35-40	Erythrina.....	43	Phyllanthus.....	46
Aspidistra.....	40	Eucharis.....	43	Phyllotænium.....	46
Asplenium.....	28-48	Eugenia.....	43	Piper.....	35-46
Azalia.....	31-40	Euphorbia.....	43-50	Platynerium.....	28-49
Bauera.....	31-40	Ferns.....	44-48	Platyclinis.....	5-23
Begonia.....	31-34-40-50	Ficus.....	32-35-44	Plumbago.....	47
Bertolonia.....	41	Fittonia.....	34-44	Poinsettia.....	47-50
Bignonia.....	29-41	Forcing Stock.....	51	Pollea.....	34-47
Billbergia.....	37-41	Franciscea.....	44	Polypodium.....	49
Blechnum.....	28-48	Gardenia.....	30-44	Pothos.....	47
Bollea.....	13	Genista.....	44	Pteris.....	49
Bougainvillea.....	32-41	Gloriosa.....	44	Reineckia.....	47
Bouvardias.....	41-50	Goodyera.....	5	Renanthera.....	23
Brassavola.....	13	Goniophlebium.....	48	Rhynchospermum.....	47
Brassia.....	13	Guzmania.....	37-44	Ruellia.....	47
Brasso-Cattleya.....	13	Heliconia.....	32-44	Sanchezia.....	47
Brasso-Lælia.....	14	Hæmanthus.....	44	Sansevieria.....	47
Brasso-Cattleya-Lælia.....	14	Hemigraphis.....	35-44	Selaginella.....	28-49
Bromeliaceæ.....	37	Hoffmannia.....	34-44	Sobralia.....	23
Bulbophyllum.....	5-14	Hoya.....	29-45	Solandra.....	47
Caladium.....	41	Hydrangea.....	50	Sophronitis.....	23
Calanthe.....	14	Ipomœa.....	29	Spathiphyllum.....	47
Camellia.....	31	Isolepis.....	35-45	Stanhopia.....	23
Campylobotrys.....	41	Isoloma.....	30-45	Stenoglottis.....	23
Cattleya.....	4-5-9-10-14	Ixora.....	45	Stephanotis.....	29
Ceropegia.....	41	Jacquemontia.....	45	Stigmaphyllon.....	29-47
Centropogon.....	41	Jasminum.....	45	Strelitzia.....	30-47
Centrosema.....	41	Kentia.....	27-49	Strobilanthes.....	47
Cestrum.....	41	Lælia.....	4-5-10-11-20	Tabernæmontana.....	47
Chorozema.....	31-41	Lælia-Cattleya.....	20	Tetramica.....	23
Chysis.....	17	Latania.....	27-49	Thunbergia.....	29
Cibotium.....	28-48	Leptotes.....	5-21	Tillandsia.....	37
Cirrhopetolum.....	17	Licuala.....	27-49	Tradescantia.....	34-35-47
Cissus.....	41	Lily-of-the-Valley.....	51	Trevesia.....	48
Citrus.....	41	Lycaste.....	22	Vanda.....	5-11-24
Clerodendron.....	29-30-41	Lygodium.....	48	Vanilla.....	48
Clivia.....	30-41	Maranta.....	32-34-45	Vriesia.....	37-48
Coccoloba.....	32-41	Masdevallia.....	22	Young Flowering Stock.....	48
Cocos.....	27-49	Maxillaria.....	5-22	Zyophylla.....	48
Cœlia.....	17	Medinilla.....	30-45		



Julius Roehrs Co
Rutherford, N. J.

