

Historic, Archive Document

Do not assume content reflects current scientific knowledge, policies, or practices.

Popular Perennials, Roses Flowering Shrubs, Fruit Trees

It's Planting Time!

The air carries the tang of burning rubbish and newly turned earth. There are gaps to fill in the garden, also new and better sorts to buy to replace older, less satisfactory sorts.

So this is an invitation to you to send for my general catalogue or to visit my nursery where you can see that I am ready to furnish you with the best varieties of ornamental and fruit

trees, flowering shrubs, hardy garden plants, and other garden needs.

It will be a pleasure to serve you. You know I am close to town and am an experienced landscape gardener and nurseryman who will give you prompt and efficient service.

When ordering by mail be sure to give name and address in full.

Remittance in full must accompany orders; a 5 per cent discount is allowed for cash.

All plants and trees are full-size roots, grown in the open ground, and sure to please you.

E. E. RANDALL, *Nurseryman and Landscape Planter*

185 West Street, Reading, Massachusetts

TWENTY-FIVE YEARS OF EXPERIENCE BACK MY WORK



Columbine (Aquilegia)

HARDY GARDEN FLOWERS

IN THE old days, when each farm was an independent unit producing all it used, grandmother learned that, for the least outlay in time and money, hardy garden plants rewarded her watchful care with the greatest amount of flowers—an abundance of the most glorious blooms all summer long. Some of the old gardens have persisted till this day and are models upon which later gardens have been built. If you would have a flower garden, I most heartily commend to you these hardy perennial plants. Blooming year after year, they grow richer and fuller of beauty, bringing greater joy to the raiser. There are few yards that cannot find place for some of them—along the walk, against the fence, or along the side of the vegetable-garden.

The following are only a few of the good ones; there are many more kinds growing on my place and described in my catalogue which is sent free upon request.

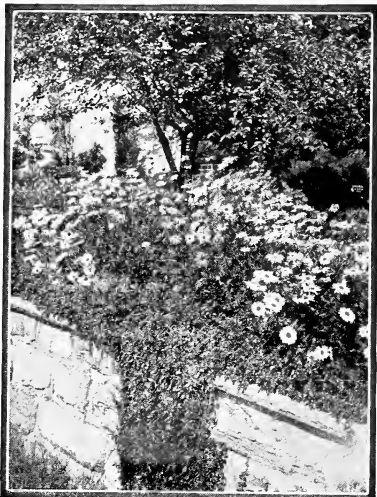
Price, 25 cts. each, \$2.50 per doz., except where noted

ACHILLEA ptarmica, The Pearl. Double white flowers in large clusters, on long, slender stems that give a refreshingly cool, airy effect in the hottest weather.

ANCHUSA italica, Dropmore. Gentian-blue flowers, produced all summer if not allowed to go to seed.

AQUILEGIA, Long-Spurred Hybrids. Exceptionally large blooms with long spurs. A magnificent strain containing many exquisite colors.

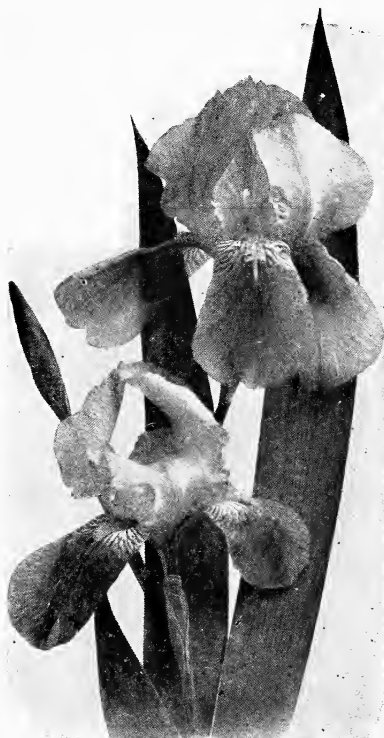
CHRYSANTHEMUM (Pyrethrum) coccineum. Painted Lady. Very beautiful flowers resembling colored daisies; deep red to white. They last longer as cut-flowers than most kinds. Illustrated on page 2.



Chrysanthemum coccineum

FIRST IRIS COLLECTION.
100 roots of the varieties listed, our selection, \$25.

SECOND IRIS COLLECTION.
A mixture of choice named varieties for landscape effects. \$2.50 per doz., \$18 per 100.



Tall bearded Iris, Kharput

COREOPSIS grandiflora. Low plants with long, slender stems crowned with big golden yellow flowers. One of the most easily grown and abundant bloomers of all the hardy garden flowers. July till frost. 2 ft.

DELPHINIUM, Kelway Hybrids. One of the most beautiful tall herbaceous plants, with wonderfully colored flowers in long spikes. A hardy garden is not complete without them. 4 to 6 ft.

DICENTRA spectabilis. Bleeding Heart. Long, gracefully curved stems loaded with deep rose, heart-shaped flowers. 75 cts. each.

LYCHNIS (Agrostemma) coronaria. Rose Campion. Large, rosy crimson flowers, with curiously fringed throats on 1 to 2-foot stems. June to July.

PEONY. The largest-flowered hardy perennial, dominating the garden when in bloom, just before rose-time. Big bomb-shaped blooms of white, pink, red, or yellow are produced year after year, with but little attention except to remove the old leaves in the fall. Come to the nursery in June when they bloom and pick the kinds you like best; I will ship them in August and September, the best time for planting Peonies. 3 to 5-eyed roots, 50 cts. each. I furnish strong 5 to 7-eyed roots, 75 cts. each, \$4 for 6, \$7.50 per doz.

IRIS, Tall Bearded. The orchids of the garden. Exquisitely beautiful blooms as colorful as the rainbow, as fragile as an orchid, and as hardy and easily grown as a daisy. Order now, for shipping in July and August while they are dormant. Irises like the hot summer sun, and a strong fall growth follows. Do not use manure about them; mix a little lime rubble and bone-meal in the soil. They do not need watering during summer drought; for the person who spends the summer at the seashore or mountains, a garden of Irises gives its full glory before vacation time. Come to the nursery in Iris-time to select varieties.

S. indicates standards or the upper part of the flower; F., falls, or the lower petals.

Dalmatica. S. and F. clear lavender-blue, shaded silvery blue at base. 40 in.

Florentina. S. and F. white, slightly tinged lavender. A fine very early variety. 27 in.

Kharput. S. violet-blue; F. velvety dark blue. Very large blooms on long stems. 27 in.

Mme. Chereau. S. and F. white with delightfully fringed edges and wide border of clear blue. One of the most beautiful Irises.

Rhein Nixe. S. pure white; F. deep violet-blue with a white edge. One of the most admired varieties. 50 cts. each.

HARDY FERNS

All Ferns in large clumps, \$2 per doz.

OSMUNDA cinnamomea. Cinnamon Fern. Very beautiful green fronds 5 feet tall. Moist soil; sun or shade.

O. regalis. Royal Fern. The best large Fern. Pale green fronds, 2 to 3 feet high. Moist soil, sun or shade.

MIXED FERNS. I have many other species that succeed in gardens.

GLADIOLI

For cut-flowers all summer long, nothing will give more satisfaction than the Gladiolus. I have only the best present-day varieties.

Extra-large bulbs. Prices include free delivery

Lily White. Large, snow-white blooms, six or seven open at once. \$1.75 per doz.

Mrs. G. W. Moulton. Very large; violet-red or cerise. \$2.50 per doz.

Mrs. Frank Pendleton. Rose-pink, on pure white ground. \$1.25 per doz.

Mrs. Watt. A beautiful rich, deep cherry-red. 70 cts. per doz.

Panama. Rose-pink, wax-like flowers of great beauty. 80 cts. per doz.

Peace. Pure white flowers, lower petals fringed pink. 80 cts. per doz.

Schwaben. Canary-yellow, garnet blotch in throat. 80 cts. per doz.

War. Blood-red, shaded crimson-black. \$1 per doz.

Mixed Gladioli. Large-flowering bulbs of good varieties whose names have been lost, 50 cts. to 75 cts. per doz., \$4 to \$6 per 100. Mammoth-sized bulbs, \$8 per 100.



General Jack

ROSES FOR EVERY HOME

A YARD or garden without Roses is poor indeed, for their fragrant flowers are produced all summer long. Hybrid Perpetual Roses give a wealth of bloom in June, and if cut with long stems there will be bloom in the fall. The same treatment will produce a continuous crop of flowers on Hybrid Teas from June till frost.

Climbing Roses may be grown in places too small for bush Roses. They may be trained over fences, porches, stumps and trunks of dead trees, and on trellises on the sides of houses. Prolific bloom lasting several weeks will reward the grower. Strong field-grown plants, \$1 each, \$10 per doz.



Radiance

BUSH ROSES

HP., Hybrid Perpetual Roses; HT., Hybrid Tea Roses.

Alfred Colomb. HP. Big carmine blooms produced over a long season; none more sweetly fragrant.

Columbia. HT. Lively pink, its intensity increasing with age.

Edward Mawley. HT. Deep black-erimson blooms of perfect form.

Frau Karl Druschki. HP. A perfect white Rose; blooms profusely in June and again in fall if properly pruned.

General Jacqueminot. HP. Sweetly fragrant, bright crimson blooms. An old favorite.

Grass an Teplitz. HT. Clear erimson-scarlet blooms in profusion from June to frost. A fine bedding Rose.

Hadley. HT. A distinctive and beautiful bright red Rose.

Kaiserin Auguste Viktoria. HT. Large, creamy white blooms, sometimes shaded primrose, on long stems; fragrant.

Magna Charta. HP. A massive, globular, rosy pink, fragrant bloom, often tinted carmine. An old sort with many friends.

Mrs. John Laing. HP. Delightfully soft pink blooms, with a sweet fragrance that carries far in the air; blooms all summer.

Ophelia. HT. Superb light salmon-flesh blooms, shading to yellow. The standard by which others are judged.

Paul Neyron. HP. The biggest flower in Rosedom; clear pink, shading to rose; fragrant. One of the best.

Radiance. HT. Gives heavy crops of silvery pink to salmon-pink blooms; most dependable.

Sunburst. HT. Long, lovely buds, opening to large, full, beautiful sulphur-yellow fragrant blooms. Moderate grower, unusually good foliage, and few thorns.

CLIMBING ROSES

Climbing American Beauty. A strong-growing Rose, often producing canes 10 to 12 feet long, bearing moderately fragrant, 3 to 4-inch, rich carmine flowers in great abundance.

Dorothy Perkins. Slightly fragrant, clear cherry-pink, very double blooms, borne in large clusters, lasting a long time. The crinkling of the petals gives them a delightful fluffy appearance.

Excelsa. Very double, intense erimson flowers borne in immense clusters. Similar to, but far superior to Crimson Rambler, having better color and glossy, attractive, disease-resistant foliage till late fall.

Paul's Scarlet Climber. Vivid scarlet semi-double flowers that retain their color till they fall, never turning purple; the color is intensified by numerous yellow stamens. The most brilliant Rose in its class and color.



Rosa Hugonis

BABY RAMBLERS

Dwarf plants with small blooms in large clusters like the climbers, 25 to 100 blooms in a truss. Exceedingly useful as bedding plants, for edging borders, and for pot culture.

Miss Edith Cavell. Brilliant scarlet blooms, overlaid with velvety erimson, borne in immense trusses. Shiny dark green disease-resistant foliage.

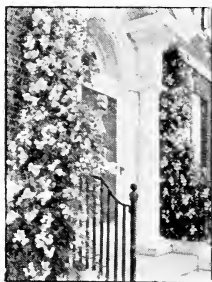
Mrs. W. H. Cutbush. Baby Dorothy. Great masses of semi-double, pink blooms, the same color as Dorothy Perkins, are produced all summer. An unusually good Rose for growing in crowded places.

ROSA HUGONIS

A mound of gold at lilac-time. A fast-growing shrub with long, arching canes producing 2 to 2½-inch blooms so abundantly that they crowd one another. Probably the most beautiful single-flowered Rose in cultivation.



Kaiserin Auguste Viktoria



Dorothy Perkins Rose

EVERY MAN'S FRUIT-GARDEN

A FEW FRUITS in the yard will add pleasure to life in the spring, when in bloom, and in summer and fall when they are ready for eating.

APPLES. I can furnish big Apple trees that will bear soon. All have good heads and fine balls of roots. **Early Harvest, Red Astrachan, Stayman Winesap, Wolf River,** and others. 5-yr. trees, \$2 each.

Baldwin (winter) and **McIntosh** (fall), two of the best Apples for New England. 3-yr. trees, \$1.50 each.

Wealthy, a delicious early fall sort, No. 1 size, \$1 each.

PEACHES. These varieties provide a succession of delicious fruit from early August until October. They mature in the order given. **Carman, Champion, Rochester, Belle, Elberta,** and **Stump.** 75 cts. each.

CHERRIES. For pies **Early Richmond** is most popular. \$1.50 each.

PEARS. **Bartlett, Beurre Bosc, Sheldon,** and **Kieffer** furnish fruit from early September till Christmas. \$1.50 each.

PLUMS. Fresh tree-ripened Plums are most luscious. **Abundance** (July), **Burbank** (early September). \$1.50 each.

GRAPES. Train them over porch, pergola, or a trellis alongside of the house. The better varieties are, **Campbell Early, Concord, Delaware,** and **Diamond.** 75 cts. each. A few large vines of **Concord** that bore a crop in 1924, \$1.50 each.

SUCCULENT ROOTS

ASPARAGUS. A hundred roots will provide a family's need in season, and canned Asparagus for the remainder of the year. 2-yr.-old roots, \$2.25 per 100.

RHUBARB. Rhubarb sauce is a fine spring tonic. Good roots, 25 cts. each.

CHIVES. Clumps, 25 cts. each.

VEGETABLE PLANTS

Every spring we grow vegetable plants by the million, all kinds of **Cabbage** (including Savoy, and Red Pickling), **Cauliflower, Brussels Sprouts,** and **Curled Kale.** We sell by the dozen, hundred, or thousand.

LANDSCAPE SERVICE

I take as much pleasure and pride in designing a 50 x 100-foot suburban lot as a 100-acre estate. I now have a large supply of trees, shrubs, and other plants that will give immediate and pleasing effects. Some are listed below. The prices given *do not include planting service.*

TREES

POPLAR, Carolina, the fastest growing shade tree. 8 to 10-ft. size, \$10 per doz.

P., Lombardy. A tall, narrow tree for formal gardens. 6 to 8-ft. size, \$10 per doz.

HEDGE PLANTS

BERBERIS thunbergi. Japanese Barberry. A very satisfactory dwarf hedge plant requiring little pruning. 25 cts. to 40 cts. each.

LIGISTRUM ibota. Ibota Privet. Glossy green leaves; fragrant white flowers; very hardy. 10 cts. to 20 cts. each.

L. ibolium. A hybrid combining the hardiness of *L. ibota* and the attractiveness of the California Privet. Especially desirable for New England. 25c. each.

EVERGREENS

Evergreen foundation and boundary plantings add beauty to the home grounds the year round. Come to the nursery and select such as appeal to your fancy. I have a great variety, and all are reasonably priced.

VINES \$1 each, \$10 per doz.

AMPELOPSIS tricuspidata (veitchii). Japanese Creeper. Clings to masonry walls.

CLEMATIS paniculata. Sweet Autumn Clematis. Covered with fragrant white flowers in late summer.

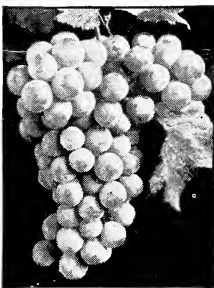
LONICERA japonica halliana. Hall's Japanese Honeysuckle. Unsurpassed for covering banks and unsightly ground.

LAWN GRASS SEED

To get good lawns, good seed is essential. Using my seed, and following my instructions, will give satisfactory results. Lb. 40 cts.



Elberta Peach



Diamond Grape



Clematis paniculata



We create lawn pictures



Attractive Perennial bed

E. E. RANDALL, Nurseryman and Landscape Planter

185 WEST STREET, READING, MASS.