

Historic, Archive Document

Do not assume content reflects current scientific knowledge, policies, or practices.



AZALEA NUDIFLORA. See page 4

FALL 1925

SPRING 1926

NATIVE BROAD-LEAVED EVERGREENS

FOR IMMEDIATE EFFECT

And Many Other Specialties for Fall and Spring Planting. Exceptional Quotations on Large Lists Submitted. My supply and facilities are unequalled, and backed up by 33 years' constant experience growing and handling Hardy Native Ornamentals which should recommend the favor of your orders



GARDENS OF THE BLUE RIDGE

E. C. ROBBINS, *Ornamental
Nurseryman*

NOTE NEW AND PERMANENT ADDRESS

ASHFORD, McDOWELL COUNTY

NORTH CAROLINA

Member American Association of Nurserymen



The celebrated Blue Ridge Mountains, near Ashford, N. C.

Note to Customers

NEW LOCATION

Is in the heart of the Blue Ridge Mountains, "the most beautiful mountain region of the continent," in western North Carolina, nearly 4,000 feet above sea-level. My new and permanent headquarters is Ashford, McDowell County, North Carolina, on the scenic Clinchfield Railroad.

All offers of stock are made subject to conditions beyond my control

PACKING AND GRADING

Will be done in the most careful way. Boxing and burlapping included at prices named. Certificate of Inspection attached to all shipments.

QUOTATIONS

This list cancels previous offers and prices quoted are net and not subject to discount except by special agreement.

REMITTANCE OR REFERENCE

Should accompany orders from unknown correspondents. Discount of 5 per cent on cash orders. All bills due and payable 30 days from date of invoice. Interest charged after 30 days.

SHIPPING INSTRUCTIONS

Should always be given fully, unless you prefer to leave to our best judgment. In this we assume no risk, our responsibility ceasing upon receipt of signed bill of lading by forwarders. All claims for damages in transit must be handled by consignee.

CLAIMS

All claims for errors must be reported upon receipt of goods and will be rectified promptly. Unless this is done we can accept no responsibility of any kind.

ALL ORDERS

Are accepted and filled on these terms, unless otherwise agreed.



Flowers of *Amelanchier canadensis*

Hardy Deciduous Trees and Shrubs

ACER saccharum. Sugar Maple. Handsome, rapid-growing tree for general use. Splendid fall coloring of foliage.	10	100	1,000
1 to 2 feet. Strong, select trees.....	\$1 25	\$10 00	
2 to 3 feet. X select.....	2 00	17 50	
3 to 4 feet. X select.....	5 00	40 00	
4 to 6 feet. Specimen trees.....	7 50		
ALNUS viridis. European Green Alder. Low shrub, with attractive foliage. From high altitudes. 1 to 2 feet...	4 00	37 50	
2 to 3 feet. Strong, stocky plants.....	6 00	50 00	
AMELANCHIER canadensis. Downy Serviceberry. Very handsome early-flowering small tree. Snow-white flowers, appearing in early spring. Fruit edible and ripening in July. 6 to 12 inches. Strong established.	1 20	10 00	\$85 00
1 to 2 feet. Strong transplanted.....	2 25	20 00	175 00
2 to 3 feet. Strong transplanted, stocky.....	4 00	35 00	325 00
3 to 4 feet. Strong transplanted, stocky.....	6 50	60 00	
4 to 6 feet. Strong transplanted, stocky. Each \$1.25..	10 00	85 00	
ARALIA spinosa. Devil's Walking-Stick. Prickly stemmed low tree or shrub with large compound foliage and large panicles of showy white flowers in midsummer.			
1 to 2 feet. Strong plants.....	3 00	25 00	
ARONIA arbutifolia. Red Chokeberry. Large-flowering shrub, with clusters of red berries in autumn and early winter. 1 to 2 feet. Strong, stocky plants.....	2 75	25 00	
melanocarpa. Black Chokeberry. A very desirable ornamental shrub. White flowers in early spring, with clusters of black fruit in autumn and early winter. Foliage colors dark red in early fall.			
1 to 2 feet. Extra-heavy stocky plants.....	3 50	30 00	
2 to 3 feet. Extra-heavy stocky plants.....	4 50	40 00	
AZALEA arborescens. Sweet White Azalea. Large, fragrant white flowers in early summer. Of easy culture and lasting beauty.			
9 to 12 inches. X strong bushy plants.....	8 00	75 00	
1 to 2 feet. XX strong bushy plants.....	15 00	135 00	
2 to 3 feet. XXX heavy clumps..... Each \$4..	35 00		
One-year heavy transplanted clumps.....	6 50	60 00	

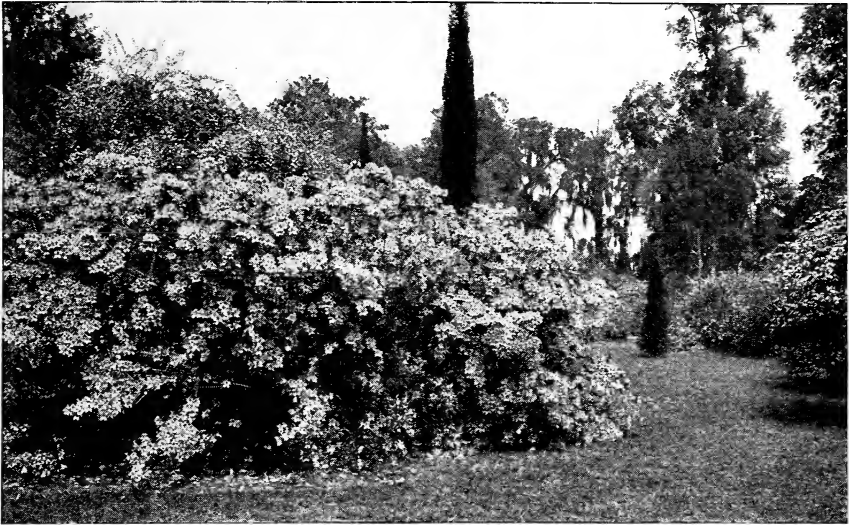
NOTE: 5 at 10 rate, 25 at 100 rate, 250 at 1,000 rate



Azalea Vaseyi

HARDY DECIDUOUS TREES AND SHRUBS, continued

Azalea calendulacea. Flame Azalea. The most beautiful and varied species of all native Azaleas. All the way in color from orange to canary and very conspicuous in early summer throughout the Carolina Mountains.	10	100	1,000
8 to 12 inches. X heavy transplanted.....	\$8 00	\$75 00	
1 to 2 feet. XX heavy select clumps.....	12 50	100 00	
2 to 3 feet. XXX heavy select stocky clumps.....	15 00	135 00	
3 to 4 feet. XXX heavy select stocky clumps.....			
Each	\$2.50..20 00	185 00	
Heavy 1-yr. trans. cut-back clumps for growing on....	6 50	60 00	\$500 00
canescens (<i>A. rosea</i>). Piedmont Azalea. Excellent rare species. Very similar to <i>Azalea Vaseyi</i> .			
9 to 12 inches. Heavy clumps.....	8 00	75 00	700 00
1 to 2 feet. Very select heavy clumps.... Each \$1.20..	10 00	90 00	850 00
One-year cut-back heavy clumps for growing on. Very special bargain.....	7 50	65 00	600 00
nudiflora. Pinxter Bloom. Very handsome free-flowering shrub. Deep pink; profuse and showy.			
9 to 12 inches. Heavy established clumps.....	10 00	85 00	800 00
12 to 18 inches. Heavy established, good value.....	15 00	135 00	1250 00
Heavy one-year cut-back clumps for growing on.....	6 00	50 00	450 00
Vaseyi. Pinkshell Azalea. A distinct and remarkably free-flowering hardy shrub of extreme rarity and beauty. The flowers are of an exquisite shade of pink or rose, appearing in profusion before the leaves unfold in early spring. In autumn the foliage assumes deep rich shades of red and crimson. Very attractive ornamental shrub.			
9 to 12 inches. Transplanted and grown in nursery....	10 00	85 00	750 00
12 to 18 inches. Heavy transplanted.....	25 00	225 00	
One-year heavy transplanted clumps, for growing on....	8 00	75 00	



Azalea calendulacea. See page 4

HARDY DECIDUOUS TREES AND SHRUBS, continued

<i>Azalea viscosa</i> . Swamp Azalea. White; fragrant. Late blooming, thriving well along streams.	10	100	1,000
9 to 12 inches. Heavy transplanted.....	\$6 00	\$50 00	
1 to 2 feet. Heavy transplanted.....	8 00	75 00	
One-year heavy transplanted cut-back clumps.....	5 00	45 00	
<i>CASTANEA dentata</i> . American Chestnut. Large, admirable shade tree, bearing edible nuts.			
8 to 12 inches. Strong nursery-grown seedlings.....	1 00	7 50	
<i>COMPTONIA asplenifolia</i> . Sweet Fern. Fine shrub, with sweet-scented leaves. Easy of culture and succeeds well on dry upland. 1 to 2 feet. Strong plants.....	2 50	20 00	
<i>CORYLUS americana</i> . American Hazelnut. Vigorous-growing and very ornamental shrub, bearing edible nuts which are very desirable.			
1 to 2 feet. Strong plants.....	1 25	10 00	
<i>rostrata</i> . Beaked Hazelnut. Smaller than above species and equally as desirable.			
1 to 2 feet. Strong, stocky plants.....	2 00	17 50	
2 to 3 feet. Heavy, stocky plants.....	3 00	25 00	
<i>CYTISUS scoparius</i> . Scotch Broom. Strange, interesting shrub. Bright yellow flowers in great profusion.			
1 to 1½ feet. Strong nursery-grown seedlings.....	1 25	10 00	\$85 00
1½ to 2 feet. Strong nursery-grown seedlings.....	2 00	17 50	150 00
<i>DIERVILLA sessilifolia</i> . Southern Bush Honeysuckle. Very handsome shrub, with spreading branches and clusters of yellow terminal flowers.			
1 to 2 feet. Strong plants.....	4 00	37 50	
<i>GENISTA tinctoria</i> . Woadwaxen. Low, spreading shrub, with green branches covered with yellow flowers in summer. Excellent rock-garden subject.			
9 to 12 inches. Strong nursery-grown seedlings.....	1 00	8 00	75 00

NOTE: 5 at 10 rate, 25 at 100 rate, 250 at 1,000 rate



Azalea canescens. See page 4

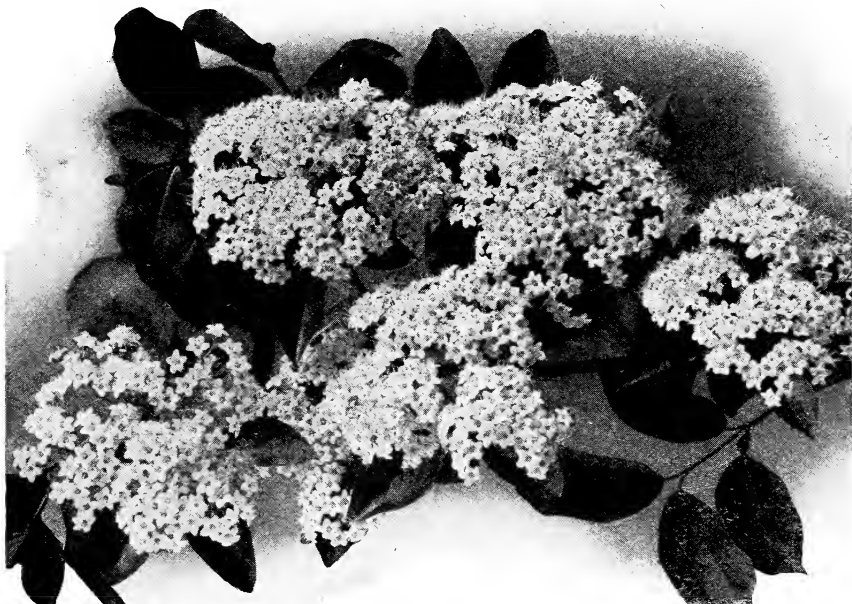
HARDY DECIDUOUS TREES AND SHRUBS, continued

HYDRANGEA arborescens. Smooth Hydrangea. Upright shrub; bright green foliage and large creamy white flowers. Attractive for large plantings.	10	100	1,000
1 to 2 feet. Strong, stocky plants.....	\$1 25	\$10 00	\$85 00
2 to 3 feet. X strong, stocky plants.....	2 50	20 00	
paniculata. Panicle Hydrangea. Hardy, tall shrub. Creamy white flowers; dark green leaves. Splendid for mass planting or single specimens.			
1 to 2 feet. Strong, stocky plants.....	6 50	60 00	
2 to 3 feet. X strong plants.....	8 50	80 00	
HYPERICUM aureum. Golden St. Johnswort. Hardy shrub with bluish green leaves and large golden yellow flowers. 1 to 1½ feet. Strong plants.....	1 25	10 00	
densiflorum. Common St. Johnswort. Ornamental shrub. Widely distributed. Narrow green leaves, and clusters of bright yellow flowers. Very effective.			
1 to 2 feet. Strong, select plants.....	1 25	10 00	85 00
prolificum. Shrubby St. Johnswort. Vigorous, hardy shrub. Compact branches, with dark green leaves. Flowers bright yellow, in terminal clusters in late summer. 1 to 2 feet. Strong plants.....	1 50	12 50	
ILEX monticola. Mountain Winterberry. Deciduous small tree, with spreading branches. Bright green leaves and scarlet berries in autumn.			
6 to 12 inches. Strong, stocky plants.....	1 50	12 00	100 00
1 to 2 feet. X strong, stocky plants.....	1 75	15 00	
2 to 3 feet. XX strong, stocky plants.....	3 50	30 00	
3 to 4 feet. XXX strong, stocky plants....Each 75c..	6 00	50 00	
MAGNOLIA acuminata. Cucumber Tree. Pyramidal tree. Spreading branches, with bright green leaves. Greenish yellow flowers in early summer, producing rosy red cucumber fruit in early fall.			
5 to 6 feet. Strong trees.....Each \$1..	7 50		
Fraseri. Fraser Magnolia. Handsome, spreading tree. Flowers large, creamy white, and very sweet-scented. Hardy tree of unusual merit, bearing large cucumber fruit. 4 to 6 feet. Strong, select trees.....Each \$1..	8 00		

NOTE: 5 at 10 rate, 25 at 100 rate, 250 at 1,000 rate

HARDY DECIDUOUS TREES AND SHRUBS, continued

OXYDENDRUM arboreum. Sourwood. Handsome hardy tree that succeeds well under varied conditions. Beautiful autumn coloring of foliage.	10	100	1,000
6 to 12 inches. Strong, stocky plants.....	\$1 25	\$10 00	
1 to 2 feet. Strong, stocky, nur.-grown.....	2 50	20 00	
2 to 3 feet. Strong, stocky, nur.-grown... Each \$0.65..	4 50	40 00	
3 to 4 feet. Strong, stocky, nur.-grown... Each .80..	6 50	60 00	
4 to 6 feet. Strong, stocky, nur.-grown... Each 1.00..	8 50	80 00	
6 to 8 feet. Strong, select specimens..... Each 1.50..	13 50		
ROBINIA hispida. Rose-Acacia. Drooping, rose-colored flowers in early spring. Splendid shrub for rock-garden and shrubbery border. 1 to 2 feet. Strong plants...	2 50	20 00	
RUBUS odoratus. Flowering Raspberry. Vigorous, upright shrub. Leaves large, resembling the maple. Flowers rose-purple; berries light red, edible.			
6 to 12 inches. Strong plants.....	1 50	12 50	
1 to 2 feet. Strong plants.....	2 00	17 50	
SAMBUCUS pubens. Scarlet Elder. Shrub with warty branches and red pith. Large, white flowers in late spring; large red berries in clusters.			
1 to 2 feet. Heavy select plants.....	2 00	17 50	
SPIRÆA Vanhouttei. Desirable native shrub. Free bloomer; large white flowers.			
2 to 3 feet. Heavy, clumpy plants..... Each 85 cts..	7 50		
VACCINIUM pallidum. Blue Ridge Blueberry. Best of all Blueberries and a desirable ornamental shrub.			
1 to 2 feet. Select, stocky plants.....	5 00	45 00	
2 to 3 feet. Select, stocky clumps.....	7 50	65 00	
3 to 4 feet. Select, stocky clumps..... Each \$1..	9 00	85 00	



Viburnum cassinoides. See page 8

HARDY DECIDUOUS TREES AND SHRUBS, continued

VIBURNUM cassinoides. Withe-Rod. Very hardy flowering shrub. Widely distributed. The oval, green leaves color beautifully in autumn. Flowers creamy white; berries pink to black. Desirable for planting along streams and in shrubbery border.

1 to 2 feet. Heavy stocky clumps, with several stems..	\$6 00	\$50 00	
2 to 3 feet. Heavy stocky clumps, with several stems..	8 00	75 00	
3 to 4 feet. Heavy stocky clumps, with several stems..			
Each \$1.25..	10 00	90 00	

ZANTHORHIZA apiifolia. Yellowroot. Low shrub. Beautiful golden foliage in autumn. Very desirable for ground-cover and thrives in variable soil conditions.

3 to 6 inches. Strong transplants.....	1 00	7 50	\$60 00
6 to 12 inches. Strong transplants.....	1 50	10 00	80 00



Rhododendron carolinianum. See page 12

Hardy Native Evergreen Trees and Shrubs

ABIES Fraseri. Fraser Fir. Southern species. Very handsome tree and extremely hardy. Foliage fragrant, dark green.

3 to 6 inches. Strong plants.....	\$1 00	\$8 50	\$75 00
6 to 12 inches. Strong plants.....	2 00	17 50	150 00

ANDROMEDA polifolia. Bog Rosemary. Small, desirable evergreen shrub for border planting.

4 to 6 inches. Strong, established plants.....	4 00	35 00	
--	------	-------	--

BUXUS sempervirens. Common Box. Large, dense shrubs. Very symmetrical.

6 to 8 in. Compact plants, balled and burlaped	6 50	60 00	
--	------	-------	--



Ilex opaca (American Holly)

HARDY NATIVE EVERGREEN TREES AND SHRUBS, continued

ILEX glabra. Inkberry. Upright, well-branched shrub. Each	10	100	1,000
Leaves dark, shining, retained throughout the winter. Berries black.			
4 to 6 inches. Strong plants.....	\$2 50	\$22 00	
opaca. American Holly. A handsome, broad-leaved evergreen, known to many as "Christmas Holly," and much used for holiday decorations. Easy of culture and adapts itself to varied soil conditions. We are well stocked on this.			
4 to 6 inches. Heavy transplanted.....	1 50	12 50	\$100 00
6 to 12 inches. Heavy transplanted.....	2 50	22 00	200 00
12 to 18 inches. X strong trans. bl'd. and bur....	4 50	40 00	350 00
KALMIA latifolia. Mountain Laurel. This matchless Laurel is, without question, one of the most beautiful and attractive of the broad-leaved evergreen shrubs on account of its dark green, lustrous foliage and masses of glorious pink or rose-colored flowers, appearing in lavish profusion in late spring and early summer. Our stock is equal to the demand. We are able to make prompt shipment in season.			
4 to 6 inches. Strong transplanted.....	1 50	12 50	100 00
6 to 12 inches. Extra-heavy trans. stocky plants	2 50	20 00	185 00
9 to 12 inches. XXX heavy specimen clumps... \$1 25	10 00	90 00	

Other sizes and prices of *Kalmia latifolia* on page 10

NOTE: 5 at 10 rate, 25 at 100 rate, 250 at 1,000 rate



Kalmia latifolia

HARDY NATIVE EVERGREEN TREES AND SHRUBS, continued

<i>Kalmia latifolia</i> , continued	Each	10	100	1,000
1 to 2 feet. XXX heavy specimen clumps.....	\$2 00	\$17 50	\$160 00	
2 to 3 feet. XXX heavy specimen clumps.....	3 00	27 50	260 00	
3 to 4 feet. XXX heavy specimen clumps.....	4 00	37 50	365 00	
4 to 5 feet. XXX heavy specimen clumps.....	5 00	45 00	400 00	
One-year heavy transplanted cut-back clumps for growing on.....	1 25	10 00	85 00	\$800 00

NOTE: Carload orders our specialty. Special prices promptly furnished on large requirements according to quantities taken. Our facilities for collecting this item are unequalled, although we always recommend nursery-grown material for best results. Let us figure on your requirements for above and larger sizes.

LEIOPHYLLUM buxifolium. 10 100 1,000

Sand Myrtle. Neat, attractive shrub. Splendid border plant. Flowers white or pinkish in early spring.

4 to 6 inches. Heavy transplanted.....	\$3 00	\$25 00	
6 to 12 inches. Heavy transplanted.....	4 50	40 00	
12 to 18 inches. Heavy bushy, trans. clumps..	6 00	50 00	

prostratum. Allegheny Sand Myrtle. Unusual rock-garden subject. Small desirable border plant.			
3 to 4-inch spread. Strong select clumps.....	2 00	15 00	\$140 00
4 to 6-inch spread. XX strong select clumps...	4 00	35 00	300 00



Leiophyllum (Sand Myrtle)

NOTE: 5 at 10 rate, 25 at 100 rate, 250 at 1,000 rate



Leucothoe Catesbaei

HARDY NATIVE EVERGREEN TREES AND SHRUBS, continued

LEUCOTHÖE Catesbaei. Drooping *Leucothoe*. Hardy, graceful shrub of wide distribution. Very ornamental and much used for florist's trade. Flowers fragrant, showy, creamy white. Too much cannot be said in favor of this wonderful shrub.

	10	100	1,000
4 to 6 inches. X strong transplanted.....	\$2 00	\$17 00	\$150 00
6 to 12 inches. XX strong trans., stocky clumps.....	8 00	70 00	650 00
1 to 2 feet. XXX strong trans., stocky clumps.....	12 00	110 00	1000 00
One-year heavy trans. cut-back clumps.....	9 00	80 00	750 00

PICEA mariana. Black Spruce. Medium-sized tree. Foliage dark bluish green. Very ornamental.

9 to 12 inches. Strong transplanted.....	3 00	25 00
1 to 2 feet. Heavy trans., balled and burlaped.....	5 00	45 00



Pinus Strobus (White Pine). See page 12



Pieris floribunda

HARDY NATIVE EVERGREEN TREES AND SHRUBS, continued

PIERIS floribunda. Mountain Andromeda. Extremely hardy ornamental evergreen, and a gem for any planting. Showy flowers produced in clusters in early spring and lasting a long time.

6 to 12 inches. Heavy transplanted clumps.....	\$20 00	\$190 00	\$1850 00
12 to 18 inches. Heavy transplanted clump s.....			

Each \$3.25... 30 00 275 00 2600 00

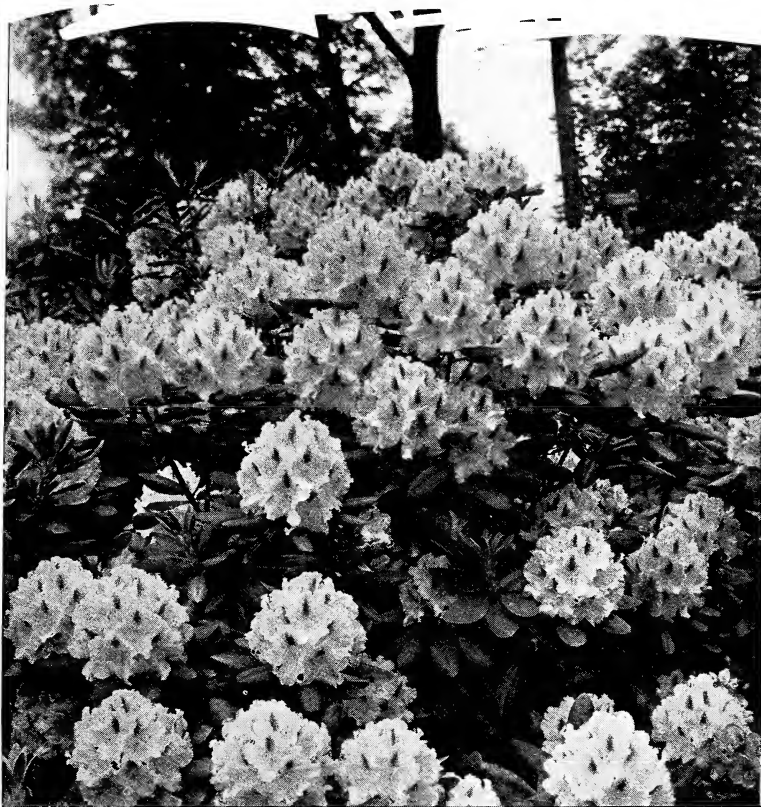
NOTE: This is one of our specialties. Our source for collecting this item is the best to be found. **Special offer in solid carload** in 12 to 18-inch size. Very best clumps balled and burlaped. 75 cts. each for carload shipment. Estimated number to carload about 2,000 clumps. Let us figure on your requirements.

PINUS flexilis. Limber Pine. Western species. Very desirable evergreen tree.

Each	10	100	1,000
9 to 12 inches. Trans., balled and burlaped....	\$10 00		
1 to 2 feet. Trans., balled and burlaped.....	15 00		
Strobis. White Pine. Best-known American evergreen tree. Tall and most beautiful.			
4 to 6 inches. Strong nursery-grown seedlings..	1 00	\$5 00	\$27 50
6 to 12 inches. Strong transplanted.....	2 50	20 00	
1 to 2 feet. Strong trans., balled and burlaped...	12 00	100 00	
2 to 3 feet. Strong trans., balled and burlaped...	15 00	140 00	
3 to 4 feet. Strong trans., balled and burlaped...\$2 00	18 50	175 00	
5 to 6 feet. Strong trans., balled and burlaped... 3 00	25 00	240 00	
6 to 8 feet. Strong trans., balled and burlaped... 5 00	45 00	425 00	

RHODODENDRON carolinianum. Carolina Rhododendron. An early, free bloomer, with light to deep pink flowers. A distinct hardy species from Piedmont section of the southern Alleghany Mountains and the earliest flowering native Rhododendron.

4 to 6 inches. Strong, nursery-grown seedlings...	2 50	20 00	185 00
6 to 9 inches. Strong transplanted.....	4 00	35 00	
9 to 18 inches. Strong transplanted.....	17 50	150 00	
18 to 24 inches. Strong transplanted..... 2 25	20 00	185 00	
2 to 3 feet. XX strong transplanted clumps.... 3 50	30 00	280 00	
3 to 4 feet. XX strong transplanted clumps.... 5 00	45 00	425 00	
One-year heavy cut-back trans. clumps.....	8 00	75 00	650 00



Rhododendron catawbiense

HARDY NATIVE EVERGREEN TREES AND SHRUBS, continued

Rhododendron carolinianum album. White Carolina Rhododendron, from Piedmont section. Dwarf, early-blooming variety. Rare and most beautiful.

Each	10	100	1,000
4 to 6 inches. Transplanted.....	\$15 00	\$135 00	

catawbiense. Catawba Rhododendron. Most vigorous, hardy, free-blooming variety, with gorgeous display of rosy purple flowers in early summer. Foliage dark green and exceedingly showy. Hardest of all Rhododendrons. We have the largest stock in existence of this variety.

Special price on carload orders.

4 to 6 inches. Strong transplanted.....	3 50	30 00	\$275 00
6 to 12 inches. Strong trans., stocky plants....	5 00	45 00	400 00
9 to 12 inches. XX strong trans., stocky cl....	\$1 75	15 00	140 00
1 to 2 feet. XX strong trans., stocky cl.....	2 75	25 00	235 00
2 to 3 feet. Strong established clumps.....	4 00	35 00	325 00
3 to 4 feet. Strong established clumps.....	5 00	40 00	375 00
4 to 5 feet. X strong established clumps.....	6 50	60 00	500 00
5 to 6 feet. XX specimen clumps.....	9 00	85 00	800 00
One-year strong cut-back trans. clumps.....	12 00	100 00	900 00

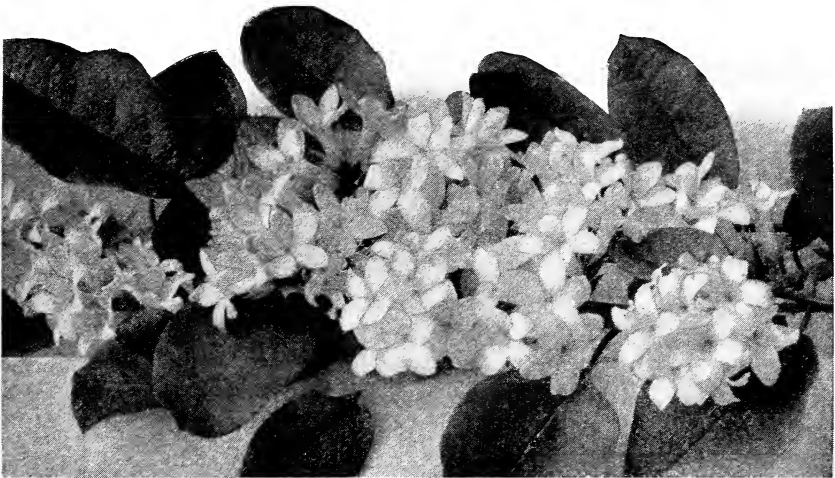
NOTE: Let us figure on your requirements in carload shipments.



Planting of *Rhododendron maximum*

HARDY NATIVE EVERGREEN TREES AND SHRUBS, continued

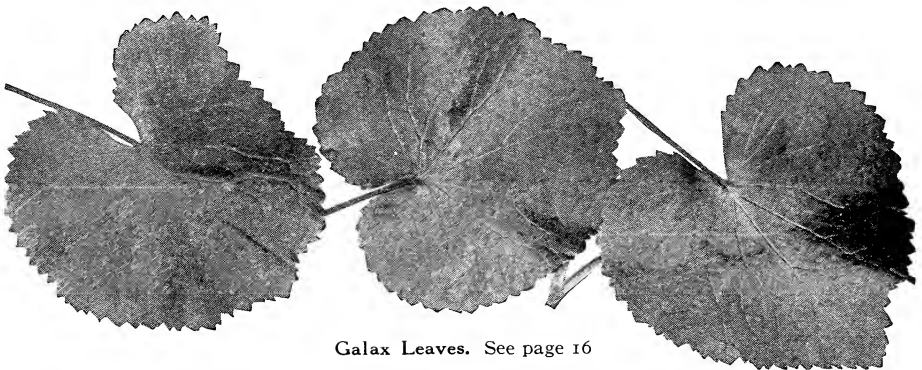
Rhododendron maximum. Rosebay. This is the grandest species and most used for massing and naturalistic planting of all native broad-leaved evergreens. Flowers pinkish white in large clusters in July. We are prepared to supply splendid plants in all sizes. Special quotations for carload shipments. Send in your list of requirements early to allow best opportunity of serving.	Each	10	100	1,000
4 to 6 inches. Strong transplanted.....		\$2 00	\$17 50	\$160 00
6 to 12 inches. Strong transplanted.....		3 00	25 00	220 00
9 to 12 inches. XX heavy transplanted clumps..	\$1 50	12 50	120 00	
1 to 2 feet. XXX heavy transplanted clumps...	2 50	20 00	185 00	1700 00
2 to 3 feet. XXX heavy transplanted clumps..	3 50	30 00	280 00	
3 to 4 feet. XXX heavy transplanted clumps...	5 00	45 00	420 00	
NOTE: Very special prices promptly quoted for carload shipments. Let us figure on your requirements.				
TSUGA canadensis. Canada Hemlock. Tall, graceful tree with spreading branches. Beautiful tree for park or landscape. One of our best hedge products and becoming more popular for general planting.	Each	10	100	1,000
9 to 12 inches. Strong transplanted.....		\$3 50	\$30 00	
1 to 2 feet. Strong trans., balled and burlaped..		15 00	135 00	
2 to 3 feet. Strong trans., balled and burlaped..	\$3 50	30 00	275 00	
3 to 4 feet. Strong trans., balled and burlaped..	5 00	45 00	425 00	
4 to 5 feet. Strong trans., balled and burlaped..	6 50	60 00	550 00	
5 to 6 feet. Strong trans., balled and burlaped..	8 50	75 00	650 00	
6 to 7 feet. Strong trans., balled and burlaped..	9 50	85 00		
caroliniana. Carolina Hemlock. Queen of American evergreen trees. One of the hardiest and most desirable evergreens from the Carolina mountains.				
4 to 12 inches. Strong transplanted.....		3 50	30 00	\$275 00
1 to 2 feet. Strong trans., balled and burlaped..		25 00	200 00	
2 to 3 feet. Strong trans., balled and burlaped..	5 00	45 00		
3 to 4 feet. Strong trans., balled and burlaped..	6 50			
4 to 5 feet. Strong trans., balled and burlaped..	8 00			



Epigaea repens

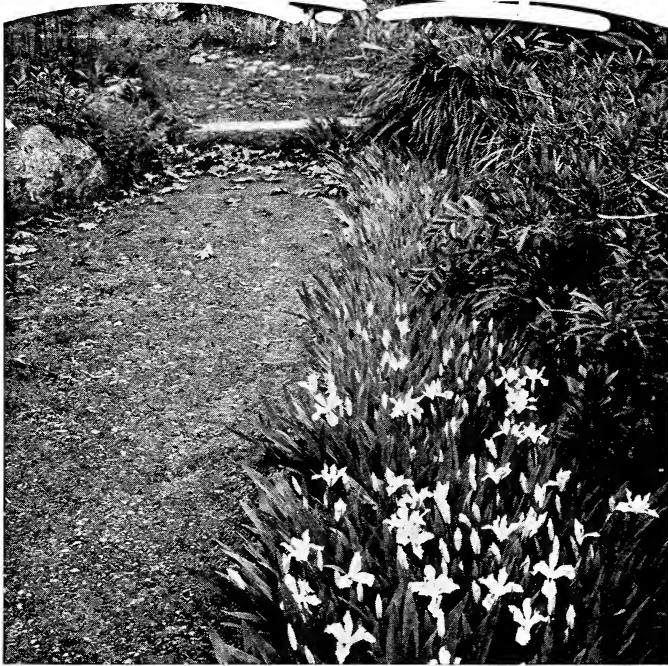
Hardy Vines, Climbers, and Creepers

AMPELOPSIS Engelmanni. Engelmann Creeper. Finest clinging form of Virginia Creeper. A good climber, with beautifully colored foliage in autumn.	10	100	1,000
Strong plants.....	\$1 25	\$10 00	\$85 00
quinquefolia. Virginia Creeper. High-climbing vine, clinging to walls and trees, with beautifully colored foliage in autumn. Heavy transplanted plants.....	2 00	15 00	
CELASTRUS scandens. American Bittersweet. High-climbing vine. Very ornamental. Strong, stocky plants.....	1 50	12 50	
CLEMATIS crispa. Curly Clematis. Graceful vine. Flowers purple in midsummer. Strong plants.....	3 00	25 00	
virginiana. Virgin's Bower. Hardy climber. Very popular for general planting. X strong, stocky plants.....	2 00	17 50	150 00
DIOSCOREA villosa. Yam. Showy vine with leaves turning golden yellow in autumn. Strong plants.....	1 50	12 50	100 00
EPIGÆA repens. Trailing Arbutus. Charming plant, with very fragrant white or pink flowers.			
Strong, stocky plants.....	2 50	20 00	175 00



Galax Leaves. See page 16

NOTE: 5 at 10 rate, 25 at 100 rate, 250 at 1,000 rate



Iris cristata

HARDY VINES, CLIMBERS, AND CREEPERS, continued

GALAX <i>aphylla</i> . Galax. One of our best ground-cover plants for shady locations. The very ornamental bronze and green leaves are much used in florist's trade.	10	100	1,000
Strong established clumps.....	\$2 00	\$15 00	\$125 00
GAULTHERIA <i>procumbens</i> . Wintergreen. Very desirable ground-cover, with brilliant green and bronze leaves. Bright red edible fruit in winter.			
Strong established clumps.....	1 75	15 00	125 00
HOUSTONIA <i>serpyllifolia</i> . Creeping Bluets. Early white and blue flowers. Very ornamental for rockery and along streams. Strong established clumps.....	1 75	15 00	125 00
IRIS <i>cristata</i> . Crested Iris. Splendid ground-cover for shady or open locations. Leaves green. Flowers blue.			
X strong established clumps.....	1 50	12 50	100 00
germanica . German Iris. Vigorous growing species with large, showy flowers of assorted colors.			
X strong established plants.....	3 50	30 00	
verna . Vernal Iris. Blue flowers. Splendid ground-cover. Strong clumpy plants.....	1 75	15 00	125 00
LONICERA <i>japonica</i> Halliana . Hall's Honeysuckle. Very strong-growing vine. Fragrant white and yellow flowers in summer and autumn. Best for trellises and ground-cover. Strong plants.....	1 50	12 50	100 00
Light plants for lining out.....	1 00	7 50	65 00
MITCHELLA <i>repens</i> . Partridge Berry. A splendid evergreen ground-cover best suited to shady places. Flowers white or purple tinged. Berries bright red in winter. Strong clumps.....	1 75	15 00	125 00

HARDY VINES, CLIMBERS, AND CREEPERS, continued

PHLOX stolonifera (<i>P. reptans</i>). Creeping Phlox. Free-growing ground-cover. Flowers reddish purple in early spring. Strong clumps.....	10	100	1,000
subulata . Moss Pink. Evergreen ground-cover. Good for rockery and border planting. Flowers vary from white to pink, purple, and rose. Strong plants.....	2 00	17 50	150 00
RUBUS hispidus . Swamp Dewberry. Good ground-cover. Leaves color beautifully in autumn. Strong plants...	1 50	10 00	85 00
trivialis . Southern Dewberry. Showy flowers and fruit. Splendid ground-cover. 2 to 3 feet. Strong plants..	1 25	10 00	85 00
SEDUM telephoides . Wild Liveforever. Fleshy leaves and flowers. Suitable for rockery and other dry situations. Strong plants.....	2 50	20 00	
ternatum . Mountain Stonecrop. Handsome creeping ground-cover with white flowers in early spring. Widely distributed. Strong clumps.....	1 25	10 00	85 00
SHORTIA galacifolia . Oconee Bells. Beautiful shade-loving evergreen ground-cover. Flowers nodding, pink and white, in very early spring.			
Light established plants.....	1 75	15 00	100 00
X strong established, clumpy plants.....	2 50	20 00	175 00

Hardy Native Ferns

For shady locations, no class of plants can equal the Ferns. They are easily grown in ordinary soils and will thrive where it is often impossible to make flowering plants succeed. We handle large quantities of Ferns annually and recommend the following:

ADIANTUM pedatum . American Maidenhair Fern. Deciduous. One of the most distinct and beautiful.	10	100	1,000
Strong established clumpy plants.....	\$1 00	\$8 00	\$65 00



Adiantum pedatum



Osmunda regalis. See page 19

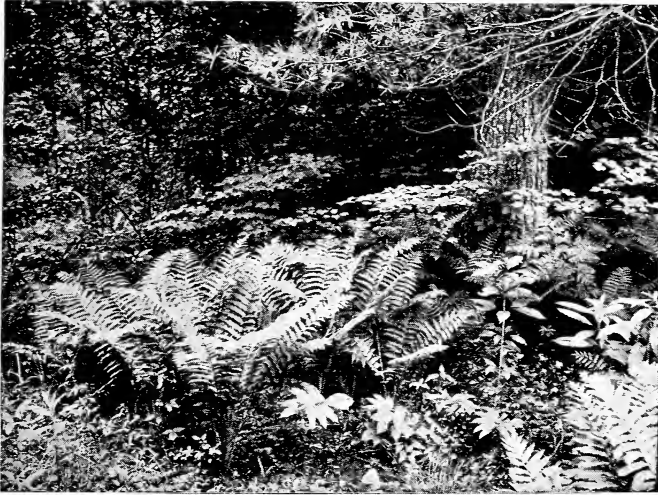
HARDY NATIVE FERNS, continued

ATHYRIUM <i>Filix-fœmina</i> . Lady Fern. Large; deciduous; exceedinglly showy.	10	100	1,000
X strong established plants.....	\$1 25	£10 00	\$75 00
BOTRYCHIUM <i>virginianum</i> . Rattlesnake Fern. Deciduous. Triangular fronds, deeply cut. Showy.			
Strong plants.....	1 25	9 00	75 00
CYSTOPTERIS <i>bulbifera</i> . Berry Bladder Fern. Deciduous. Narrow, slender, delicate species, with bulblets on ends of fronds. Strong plants.....	2 00	17 50	
DICKSONIA <i>punctilobula</i> . Hay-scented Fern. A very handsome, vigorous-growing deciduous species. Recommended for shade or open situations. Widely distributed. X strong clumps.....	1 00	6 00	50 00



Dicksonia punctilobula

NOTE: 5 at 10 rate, 25 at 100 rate, 250 at 1,000 rate



Osmunda cinnamomea

HARDY NATIVE FERNS, continued

DRYOPTERIS hexagonoptera. Winged Woodfern. Deciduous. Broad, triangular fronds. Strong plants.	10	100	1,000
	\$1 25	\$9 00	\$75 00
marginalis. Leather Wood Fern. Robust, evergreen, showy species. X strong plants.	1 00	9 00	75 00
spinulosa. Toothed Wood Fern. Evergreen. X strong plants.	1 00	8 50	70 00
ONOCLEA sensibilis. Sensitive Fern. Deciduous. Suitable for dry or moist locations. Strong established plants.	1 25	10 00	
OSMUNDA cinnamomea. Cinnamon Fern. A stately, very large, deciduous grower. XX strong established.	1 25	10 00	85 00
claytoniana. Interrupted Fern. Deciduous. Very bold, attractive species. XX strong established.	1 25	10 00	85 00
regalis. Royal Fern. Large; deciduous, bearing attractive foliage. X strong established plants.	1 25	10 00	85 00
POLYPODIUM vulgare. Common Polypody. A charming little evergreen Fern. Excellent for rockery. Strong clumpy plants.	1 25	9 00	75 00
POLYSTICHUM acrostichoides. Christmas Fern. Evergreen and extremely ornamental. Much used for florists' trade. X strong established.	1 00	8 50	75 00
PTERETIS nodulosa. Ostrich Fern. Strong, deciduous, bold growing, of immense size. X heavy established clumpy plants.	2 00	17 50	150 00
PTERIDIUM aquilinum. Bracken. Deciduous. Tall-growing. Strong plants.	1 00	6 00	50 00

Home-owners and gardeners who require large quantities of plants will do well to consult with me. I specialize in *Pieris floribunda*, Azaleas, Rhododendrons, Kalmias, *Oxydendrum*, *Leucothoe Catesbæi*, *Zanthorhiza*, *Trilliums*, *Stenanthium*s, and other rare native plants.

NOTE: 5 at 10 rate, 25 at 100 rate, 250 at 1,000 rate



Caltha palustris



Mertensia virginica

Hardy Aquatic and Bog Plants

ACORUS Calamus. Sweet Flag. Hardy waterside plant, with sword-shaped bright green leaves.	10	100	1,000
Strong established plants.....	\$1 25	\$9 00	\$80 00
ASTER puniceus. Swamp Aster. Lilac-blue; tall-growing.			
X strong established clumps.....	1 25	9 00	80 00
BIDENS trichosperma. Ditch Sunflower. Strong plants.....	1 00	8 00	70 00
CALTHA palustris. Marsh Marigold. Beautiful marsh plant. Leaves bright green, heart-shaped. Flowers bright yellow, showy. Strong plants.....	2 00	17 50	
CHELONE glabra. White Turtlehead. Strong grower. Flowers white to rose. Suitable for dry or wet locations.			
Strong plants.....	1 25	9 00	75 00
Lyoni. Pink Turtlehead. Flowers red or rose. Splendid bog-plant. Strong established plants.....	1 25	9 00	75 00
CICUTA maculata. Spotted Water Hemlock. 3 to 5 feet. Cut leaves. Greenish white flowers. Strong plants.....	1 00	8 50	
COPTIS trifolia. Gold-thread. Free-growing, small bog-plant. Strong plants.....	2 00	17 50	
CORNUS canadensis. Bunchberry. Splendid ground-cover, with scarlet berries in late summer and early autumn.			
Strong plants.....	2 00	17 50	
DIONÆA muscipula. Venus' Flytrap. Strange and most unusual in captivating flies and other insects for food. Rare and very interesting. Strong plants....	2 50	20 00	
HEMEROCALLIS fulva. Tawny Day Lily. Stems 2 to 4 feet high. Flowers tawny orange. Very showy.			
Strong plants.....	1 50	12 50	
IRIS pseudacorus. Yellow Flag. Stems 3 to 5 feet high. Large, sword-shaped leaves. Yellow flowers.			
Heavy established plants.....	1 75	15 00	125 00
versicolor. Blue Flag. Height 2 to 4 feet. Suitable for border planting along ponds and streams.			
Strong established plants.....	1 75	15 00	125 00
MERTENSIA virginica. Virginia Bluebells. Height 9 to 18 inches. Green foliage and showy blue flowers.			
Strong established plants.....	1 75	15 00	125 00

NOTE: 5 at 10 rate, 25 at 100 rate, 250 at 1,000 rate

HARDY AQUATIC AND BOG PLANTS, continued

MONARDA didyma. Oswego Beebalm. Height 3 to 5 feet. One of our most brilliant perennials. Leafy stems with bright scarlet flowers.	10	100	1,000
Strong established plants.....	\$1 25	\$10 00	\$85 00
ORONTIUM aquaticum. Golden Club. Water-loving plant. Dark green foliage. Flowers club-like, golden yellow, in early spring. Strong plants.....	3 00	25 00	
SARRACENIA flava. Trumpet Pitcherplant. Interesting bog-plant. Height 1 to 2 feet. Yellowish green trumpet-shaped leaf. Flowers large, yellow, very conspicuous. Strong established plants.....	2 00	17 50	
purpurea. Common Pitcherplant. Hardy plant 9 to 15 inches high. Succeeds best in mossy bogs. Flowers purplish yellow. Strong established.....	1 75	15 00	
SAXIFRAGA virginiensis. Virginia Saxifrage. Height 6 to 18 inches. Lettuce-like foliage. Flowers white. Damp locations. Strong plants.....	1 50	12 00	
TYPHA latifolia. Common Cat-tail. Water-loving plant 4 to 8 feet high, widely distributed. Large green leaves. Flowers large brown spikes. Very pleasing. Strong plants.....	1 25	10 00	70 00
VERATRUM viride. American False Hellebore. Height 2 to 4 feet. Yellowish green plant; large leaves. Succeeds well in either dry or moist soil. Flowers greenish white in early spring. Heavy, established, clumpy plants.....	2 00	17 50	150 00
VERNONIA noveboracensis. Common Ironweed. Height 4 to 6 feet. Dark green leaves. Large purple flowers. Strong established clumps.....	1 25	10 00	85 00



Cypripedium acaule

Hardy Native Orchids

CALOPOGON pulchellus. Grass-Pink Orchid. Height 12 to 18 inches. Grass-like foliage. Pink-purple flowers. Showy and succeeds well in cultivation. Strong plants.....	10	100	1,000
	\$1 25	\$10 00	\$85 00
CYPRIPEDIUM acaule. Pink Lady Slipper. Height 6 to 15 inches. Thick clusters of leaves flat on ground. Large, purple, upright flowers in early spring. Light established plants..	75	5 00	45 00
X strong established plants.....	2 00	17 50	150 00
parviflorum. Small Yellow Lady Slipper. Height 9 to 18 inches. Fragrant flowers in early spring. Established plants.....	2 00	17 50	

Note that my new address is Ashford, McDowell Co., North Carolina, on the famous scenic Clinchfield Railroad.

NOTE: 5 at 10 rate, 25 at 100 rate, 250 at 1,000 rate



Cyripedium spectabile

HARDY NATIVE ORCHIDS, continued

<i>Cyripedium pubescens</i> . Common Lady Slipper. Height 12 to 20 inches. Flowers bright yellow in May.	10	100	1,000
Medium-size established plants.....	\$1 00	\$8 00	\$70 00
X strong established plants.....	2 00	17 50	150 00
<i>spectabile</i> . Showy Lady Slipper. Height 1 to 2½ feet. White to rose-color flowers in June and July. Extra-strong grower in peat soils. By far the best of all <i>Cyripediums</i> . We have splendid stock of several thousand strong clumps, and shipment can be made promptly.			
X strong, 1 to 3 flowering crowns to each plant.....	4 00	35 00	300 00
XX strong, 4 to 6 flowering crowns to each clump.....	12 50	100 00	850 00



Arisæma triphyllum

HABENARIA ciliaris . Yellow Fringe Orchid. Height 12 to 20 in. Yellow flowers. Very handsome free bloomer. Suitable for rockery.			
Strong established plants.....	1 25	10 00	85 00
psycodes . Small Purple Fringe Orchid. Height 9 to 18 in. Best suited to shade.			
Strong established plants.....	2 00	17 50	
ORCHIS spectabilis . Showy Orchid. Height 6 to 12 in. Flowers showy pink-purple in early spring. Best adapted to shade. Strong established plants..	1 50	12 50	100 00



Dicentra eximia

Hardy Native Lilies and Bulbous Plants

ARISÆMA triphyllum. Jack-in-the-Pulpit. Height 2 to 2½ feet. Strong, fleshy top and conspicuous greenish white flowers. Light established plants.....	10	100	1,000
X strong established plants.....	\$0 75	\$6 00	\$50 00
	1 25	10 00	85 00
CONVALLARIA majalis. Lily-of-the-Valley. Height 6 to 10 inches. Soft green leaves. Flowers fragrant, white. Of easy cultivation, preferring partial shade.			
Strong established plants.....	1 25	9 00	75 00
DICENTRA eximia. Fringed Bleeding-heart. Height 10 to 18 inches. Graceful fernlike foliage and deep rose flowers, nodding in slender scape-like racemes all summer. A splendid rock-garden subject.			
Medium-size established plants.....	1 75	15 00	125 00
Strong established, for quick effect.....	3 00	25 00	
ERYTHRONIUM americanum. Common Troutlily. Height 5 to 10 inches. Green mottled leaves with bright yellow flowers in very early spring. Strong plants....	75	5 00	40 00
LILIUM canadense. Canada Lily. Slender stems 2 to 4 feet high. Flowers in various shades of orange, yellow, and red. Very ornamental.			
X strong established first-size flowering bulbs.....	1 75	16 00	150 00
Strong second size (many will flower first season).....	1 00	7 50	65 00
Third size, for growing on.....	75	5 00	45 00
carolinianum. Carolina Lily. Height 3 to 4 feet. Leaves verticillate. Flowers orange-red and extremely fragrant. No Lily collection complete without this rare variety.			
X strong established first-size bulbs.....	3 50	30 00	
Second size, for growing on.....	1 75	15 00	

NOTE: 5 at 10 rate, 25 at 100 rate, 250 at 1,000 rate



Lilium Grayi

HARDY NATIVE LILIES AND BULBOUS PLANTS, continued

Lilium Grayi. Gray's Lily. Height 2 to 4 feet. A beautiful Lily, with deep reddish bell-shaped flowers, orange spotted within. Exceedingly showy and continues to grow in demand. My stock is sufficient to meet demands. Early orders solicited.

First-size strong flowering bulbs. \$1.75 for 10, \$15 per 100, \$125 per 1,000.

Second size, mostly flowering bulbs. 85c. for 10, \$7.50 per 100, \$65 per 1,000.

Third size, for growing on. 65 cts. for 10, \$5 per 100, \$40 per 1,000.

philadelphicum. Orange-cup Lily. Height 1 to 3 feet. Reddish orange flowers, with purple spots.

Strong first-size flowering bulbs. \$1.75 for 10, \$15 per 100, \$135 per 1,000.

Strong second-size flowering bulbs. \$1 for 10, \$8 per 100, \$75 per 1,000.

regale. Royal Lily. Height 2 to 3 feet. Large, white, attractive, fragrant flowers. Finest novelty of the Lily family. Hardy and most beautiful.

First-size strong flowering bulbs. 85 cts. each, \$7.50 for 10, \$70 per 100.

Strong second size. \$5 for 10, \$45 per 100.

superbum. American Turkscap Lily. Height 3 to 8 feet. Flowers with dark purple spots; inside of bright orange. The finest and most used American Lily for massing among shrubbery and in border plantings. Often more than forty large flowers on a single stem. We are headquarters for this famous Lily and have more than 75,000 flowering bulbs on hand for autumn delivery. Early orders solicited and will have best attention. XX largest select bulbs.....\$3 00 \$27 50

First-size. X select flowering bulbs.....	1 50	12 50	\$100 00
Second size, mostly flowering bulbs.....	75	5 00	45 00
Third size (many will bloom first season).....	50	4 00	35 00

Special offer for trial. 100 assorted Lilies, strong flowering size, prepaid for \$12.50

TRILLIUM erectum. Purple Trillium. Large; very ornamental, 9 to 18 inches high. Large red fruit, flowers brown to purple. Early, vigorous, spring bloomer. More than 50,000 ready for immediate shipment. Recommended for border and woodland planting.

Largest X select bulbs.....	\$1 00	\$7 00	\$60 00
Strong first size. Real bargain.....	75	4 00	30 00
Second size (majority will bloom first season).....	40	1 75	12 50

grandiflorum. Snow Trillium. The finest and largest species. Flowers 2 to 3 inches across, in early spring; white turning to rose color. One of our best spring bloomers. We have more than 100,000 strong flowering bulbs for prompt shipment. It flourishes and blooms to perfection in woodland and border plant-

NOTE: 5 at 10 rate, 25 at 100 rate, 250 at 1,000 rate



Trillium grandiflorum

HARDY NATIVE LILIES AND BULBOUS PLANTS, continued

Trillium grandiflorum, continued	10	100	1,000
ings and cannot be recommended too highly for general use. Early orders solicited. Samples will be sent on request.			
XXX largest size, unusually heavy.....	\$1 25	\$8 00	\$75 00
XX first-size heavy bulbs.....	75	4 00	30 00
Strong second size, X value.....	60	1 25	10 00
nivale. Dwarf Trillium. Height 4 to 6 inches. Drooping white flowers. Western species. Rare.			
Strong flowering bulbs.....	I 50	12 50	
recurvatum. Prairie Trillium. Height 10 to 18 inches. Strong, erect. Flowers dark purple. Rare western species. Strong flowering bulbs.			
\$1.50 for 10, \$12.50 per 100.			
stylosum. Rose Trillium. Height 10 to 18 inches. Large, rose-pink, nodding flowers. Rare and beautiful southern species. Strong flowering size bulbs. \$1 for 10, \$7 per 100, \$60 per 1,000.			
Strong second size, mostly flowering. 60 cts. for 10, \$3.50 per 100, \$30 per 1,000.			
undulatum. Painted Trillium. Very strong, vigorous grower. Height 8 to 15 inches. Earliest bloomer of all Trilliums. Large flowers with scarlet and white markings. XX strong first-size \$1 for 10, \$6.50 per 100, \$50 per 1,000.			
Strong second size. 60 cts. for 10, \$2.50 per 100, \$20 per 1,000.			
Special Offer. 100 first-size assorted Trilliums, prepaid for \$6.			



Trillium undulatum

NOTE: 5 at 10 rate, 25 at 100 rate, 250 at 1,000 rate



Asclepias tuberosa

Hardy Native Herbaceous Perennials

This list contains a variety of Herbaceous Plants furnishing a succession of bloom from early spring to late autumn, all having been tried out with success in cultivation. The height specified indicates approximate height of each plant as found in wild state. The time of blooming naturally depends on locality.

ACONITUM uncinatum. Clambering Monkshood. Height 3 to 6 feet. Blue, hood-shaped flowers.	10	100	1,000
Strong established plants.....	\$1 25	\$10 00	\$80 00
ACTÆA alba. White Baneberry. Height 1½ to 3 feet. Flower-stalk red; white flowers and berries. Early June.			
Strong established plants.....	1 25	10 00	
rubra. Red Baneberry. Height 1 to 3 feet. May. White flowers and red berries. Strong established plants..	1 50	12 50	
ANGELICA Curtisi. Filmy Angelica. Height 3 to 5 feet. Greenish white flowers in August.			
Strong established plants.....	1 00	7 50	65 00
ARALIA racemosa. American Spikenard. Height 2 to 5 feet. Smooth stem; large compound leaves; white paniced flowers in July. Strong established plants.....	1 25	10 00	
ASARUM Shuttleworthi. Mottled Wild Ginger. Height 4 to 6 inches. Heart-shaped leaf; flowers purplish brown in June; fragrant.			
X strong established plants.....	1 50	12 50	
ARUNCUS sylvester. Goatsbeard. Height 4 to 6 feet. Cut leaves and white flowers in May and June.			
X strong established.....	1 25	10 00	80 00
ASCLEPIAS tuberosa. Butterfly Weed. Height 1 to 2 feet. Very showy. Flowers orange or red.			
Strong established plants.....	1 50	12 50	100 00
Light grade plants for growing on.....	80	6 00	50 00
ASTER cordifolius. Blue Wood Aster. Height 2 to 4 feet. Free bloomer. Flowers pale blue or nearly white.			
Strong plants.....	1 00	7 50	60 00

HARDY NATIVE HERBACEOUS PERENNIALS, continued

BAPTISIA australis. Blue Wild-Indigo. Height 3 to 5 feet.	10	100	1,000
Flowers blue; very showy. Strong established plants.	\$1 75	\$15 00	
tinctoria. Yellow Wild-Indigo. Height 2 to 3 feet. Abundant yellow flowers in June. Showy.			
X heavy transplanted.....	I 75	15 00	\$125 00
CAMPANULA divaricata. North Carolina Harebell. Height 1 to 2 feet. Flowers pale blue, bell-shaped, in July. Good for rockery. Strong established plants.....	I 25	10 00	85 00
CAREX Fraseri. Fraser Sedge. Height 9 to 18 inches. Rare, broad-leaved evergreen. Flowers white in spikes, in March. Best suited for shade.			
X strong established clumpy plants.....	2 50	20 00	
CAULOPHYLLUM thalictroides. Blue Cohosh. Height 2 to 3 feet. Yellowish green flowers in April. Fruit blue and showy. X strong established.....	I 00	8 50	75 00
CHAMAELIRIUM luteum. Fairy Wand. Height 1 to 2 feet. Spike of small white flowers in June. Showy.			
Strong established plants.....	I 00	8 00	70 00
CIMICIFUGA americana. American Bugbane. Height 3 to 6 feet. Flowers showy white, in August. Leaves divided. Strong established.....	I 25	10 00	85 00
racemosa. Cohosh. 4 to 8 feet. Flowers white; decompose leaves. X strong plants.....	I 25	8 00	75 00
CLINTONIA borealis. Bluebead. Height 6 to 12 inches. Greenish yellow flowers. Showy species. June.			
Strong established plants.....	I 25	10 00	85 00
umbellulata. Speckled Clintonia. Height 9 to 15 inches. Fragrant white flowers in June.			
Strong established plants.....	I 00	8 00	65 00
COREOPSIS lanceolata. Lance Coreopsis. Height 2 to 4 feet. Free yellow bloomer. July. Strong estab. plants..	I 25	10 00	
DIPHYLLEIA cymosa. Umbrella	10	100	
Leaf. Height 1 to 3 feet. Large-lobed leaves. Flowers white, in May. Purple showy fruit in bunches. Prefers moist location. Strong established plants.....	\$I 25	\$10 00	
DISPORUM lanuginosum. Fairy Bells. Height 1 to 3 feet. Greenish flowers in May. Fruit red and drooping.			
Strong established plants.....	I 25	10 00	
DODECATHÉON meadia. Common Shooting Star. Height 9 to 18 inches. Flowers pink, purple, and white. Extremely showy. April. Strong established plants .	I 50	12 50	
EUPATORIUM purpureum. Joe-Pye-Weed. Height 4 to 8 feet. Flowers purple, in large panicles in June.			
X strong established plants... ..	I 25	10 00	
urticæfolium. Snow Thoroughwort. Height 3 to 4 feet. Flowers white, late in Aug. Strong established plants.....			
	1,000, \$70..	I 00	8 00



Cimicifuga racemosa

NOTE: 5 at 10 rate, 25 at 100 rate, 250 at 1,000 rate

HARDY NATIVE HERBACEOUS PERENNIALS, continued

EUPHORBIA corollata. Flowering Spurge. Height 1 to 4 feet. Flowers white, in August.	10	100	1,000
Strong established plants.....	\$1 25	\$10 00	
GENTIANA Andrewsii. Closed Gentian. Height 10 to 18 inches. Foliage green; blue closed flowers in September. Strong established plants.....	1 00	7 50	\$65 00
Medium-size plants for growing on.....	50	3 50	30 00
GEUM montanum. Mountain Avens. Height 6 to 18 inches. Showy yellow flowers in June. Well suited to rock-gardens. Strong established.....	1 50	12 50	100 00
GILLENIA stipulata. Indian Physic. Height 2 to 4 feet. Handsome cut foliage. Flowers pure white or rose-tinted, in June. Splendid for massing among shrubbery. X strong established plants.....	1 25	10 00	80 00
HELENIUM autumnale. Common Sneezeweed. Height 3 to 5 feet. Flowers handsome, yellow, in August.			
X strong established flowering clumps.....	1 00	8 00	70 00
HEPATICAC acutiloba. Sharplobe Hepatica. Height 5 to 10 inches. White and purple flowers in March and April. Strong established plants.....	1 00	8 00	70 00
triloba. Roundlobe Hepatica. Height 6 to 8 inches. Flowers blue, purplish, or white, in April. Strong established plants.....	1 25	10 00	
HEUCHERA americana. American Alumroot. Height 1 to 2 feet. Large-lobed leaves. Coloring beautiful, mottled bronze in early winter. Flowers greenish white in June. Splendid rock-garden subject.			
X strong established plants.....	1 25	10 00	85 00
villosa. Hairy Alumroot. Height 12 to 18 inches. Good for rockery. Flowers white, in August.			
Strong established clumps.....	1 25	10 00	85 00
HOUSTONIA purpurea. Mountain Houstonia. Height 6 to 18 inches. Purple flowers in July. Strong established clumps.....	1 25	10 00	85 00
HYDRASTIS canadensis. Golden Seal. Height 10 to 20 inches. A medical herb of great value. We have a large stock of this item on hand and can make prompt shipment on sizes named and seeds.			
One-year strong established plants.....	1 00	6 00	50 00
Two-year strong established plants.....	1 25	9 00	75 00
Three-year, X strong established plants.....	2 00	17 50	160 00
Seeds, crop of 1925.....		50	3 50
NOTE: Special prices for large quantities of seeds or plants.			
IRIS Kaempferi. Japanese Iris. Finest species. Assorted colors. X strong established plants.....	2 50	20 00	180 00
LIATRIS montana. Dwarf Gayfeather. Showy Alpine variety. 1 to 1½ feet high. Flowers purple, in spikes, in July. Strong established plants.....	2 50	20 00	
spicata. Spike Gayfeather. Height 3 to 5 feet. Purple flower-spikes in August. Strong established plants..	1 75	15 00	
LOBELIA cardinalis. Cardinal Flower. Height 3 to 5 feet. Showy scarlet flowers in August.			
X strong plants.....	1 50	12 50	100 00
siphilitica. Large Blue Lobelia. Height 1 to 3 feet. Flowers large, blue, last of August.			
X strong established plants.....	1 50	12 50	100 00

NOTE: 5 at 10 rate, 25 at 100 rate, 250 at 1,000 rate



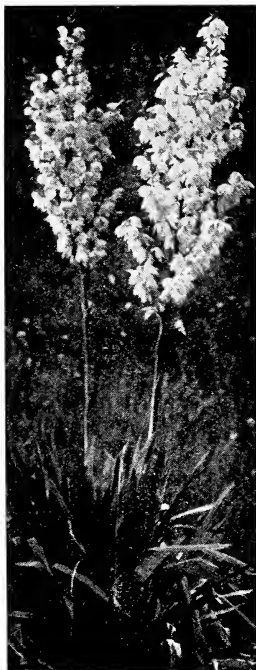
Smilacina racemosa (False Solomon Seal)

HARDY NATIVE HERBACEOUS PERENNIALS, continued

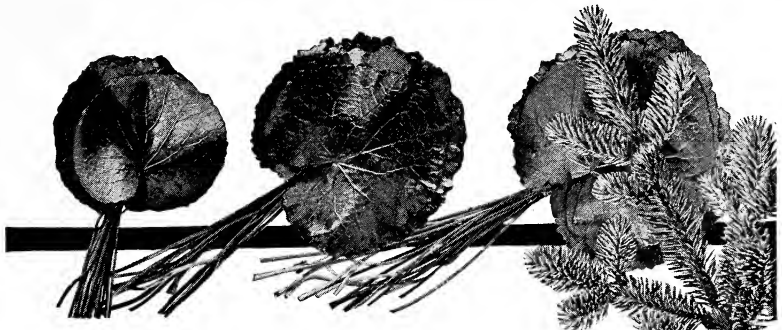
PANAX <i>quinquefolium</i> . American Ginseng. Height 1 to 3 feet. Great Chinese medical herb, fast becoming rare and scarce. We have splendid stock in all sizes on hand ready for prompt shipment.	10	100	1,000
One-year established plants.....	\$1 00	\$6 00	\$50 00
Two-year strong established plants.....	1 25	8 00	75 00
Three-year, X heavy stocky plants.....	1 75	15 00	125 00
Seeds, crop of 1925.....		50	3 50
Special quotations on large quantities of seeds and plants			
PHLOX <i>divaricata</i> . Blue Phlox. Height 9 to 18 inches. Blue flowers in May or June.....	1 50	12 50	
<i>pilosa</i> . Downy Phlox. Height 12 to 20 inches. Flowers pink or rose color. August.....	1 50	12 50	
PODOPHYLLUM <i>peltatum</i> . May Apple. Height 1 to 1½ feet. Large light green leaves. White flowers in May. Prefers shade. Strong established plants....	1 00	8 00	75 00
POLYGONATUM <i>commutatum</i> . Great Solomon Seal. Height 3 to 6 feet. Drooping greenish white flowers in June. XX strong established plants.....	1 00	8 00	65 00
POTENTILLA <i>tridentata</i> . Wineleaf Cinquefoil. An evergreen 1 to 3 inches high. Foliage coloring beautiful brilliant bronze in winter. White flowers in July. From high altitude. Very desirable rock-garden subject.			
Small plants, never large.....	1 75	15 00	
SANGUINARIA <i>canadensis</i> . Bloodroot. Height 5 to 8 inches. One of our best perennials. Large white flowers in early spring. Strong established plants.....	1 00	7 50	60 00
SAXIFRAGA <i>Michauxi</i> . Michaux Saxifrage. Height 9 to 18 inches. Rare Alpine variety. Flowers white with pink markings. Strong established plants.....	3 00	25 00	
SILENE <i>stellata</i> . Starry Campion. Height 2 to 4 feet. Flowers in white showy panicles in July.....	1 25	10 00	
<i>virginica</i> . Fire Pink. Very showy crimson flowers in June. Strong established plants.....	1 50	12 50	100 00
SMILACINA <i>racemosa</i> . False Solomon Seal. Height 2 to 3 feet. White flowers in June. Red speckled berries in August. Strong established plants.....	1 25	10 00	90 00
SOLIDAGO <i>odora</i> . Fragrant Goldenrod. Height 2 to 4 feet. Yellow flowers in August and early September.....	1 25	10 00	80 00

HARDY NATIVE HERBACEOUS PERENNIALS, continued

STENANTHIUM robustum. Feather Fleece. Long, white, delicate flowers on stems 3 to 5 feet high in late summer. Extremely ornamental and altogether one of our finest perennials. Thrives in damp situations as well as in drier soil.	10	100	1,000
XX largest first-size, well-established plants.....	\$1 50	\$12 50	\$100 00
Strong second blooming size.....	1 00	8 00	70 00
Strong third size for growing on.....	75	5 00	40 00
THALICTRUM dioicum. Early Meadow Rue. Height 2 to 4 feet. Odd greenish flowers in May. Attractive cut foliage. Established plants.....	1 75	15 00	
THERMOPSIS caroliniana. Carolina Thermopsis. Height 3 to 5 feet. Very showy yellow flowers in large terminal racemes in June. Strong established plants.	2 00	17 50	
UVULARIA perfoliata. Wood Merrybells. Height 6 to 18 inches. Pale yellow flowers in early spring.			
Strong established plants.....	1 00	8 50	75 00
sessilifolia. Little Merrybells. Height 10 to 20 inches. Yellow flowers in May. Strong established plants..	1 00	8 50	75 00
VIOLA blanda. Sweet White Violet. Height 2 to 4 inches. Fragrant white flowers in early spring.			
Strong established clumps.....	1 00	8 00	65 00
cucullata. Blue Marsh Violet. Height 6 to 10 inches. Blue flowers all summer. Strong established plants.....	1 00	8 00	65 00
pedata. Birdsfoot Violet. Height 3 to 7 inches. Showy blue flowers in May. Strong established plants....	1 00	8 50	75 00
pedata bicolor. Two-color Birdsfoot Violet. Height 4 to 6 inches. Velvety light blue and purple flowers in May. Rare and beautiful, pansy-like.			
Strong established.....	1 75	15 00	125 00
rotundifolia. Roundleaf Violet. Height 3 to 4 inches. Large yellow flowers in early spring. Large prostrate shining leaves. Strong established.....	1 00	8 50	75 00
sagittata. Arrowleaf Violet. Height 4 to 8 inches. Deep blue flowers in May. Strong established plants..	1 00	8 50	
XEROPHYLLUM asphodeloides. Turkeysbeard. Height 3 to 5 feet. Long grass-like leaves. Tall spikes of very attractive white flowers. Rock-garden subject.			
Heavy established clumpy plants.....	3 00	25 00	200 00
YUCCA filamentosa. Common Yucca. Height 3 to 8 feet. Large white panicles of flowers in July and August.			
X strong established clumpy plants.....	3 00	25 00	200 00
Strong two-year nursery-grown seedlings.....	1 00	8 50	65 00
glauca. Soapweed Yucca. Height 2 to 5 feet. Stiff narrow leaves. White flowers in June and July.			
Two-year strong nursery-grown seedlings.....	1 25	10 00	80 00



Yucca filamentosa



Southern Evergreens for Holiday Greetings

A box of fresh, fragrant evergreens from the Blue Ridge, redolent with the odor of Pine and Balsam and brilliant with Galax and Holly.

Can you imagine anything more in keeping with the Christmas season, or that will convey in such unique fashion your Christmas message?

These Christmas greens are carefully selected, and skillfully packed, which insures delivery in perfect condition. The keeping qualities are unsurpassed under ordinary conditions, and even in warm rooms they will retain for days their freshness and brilliant natural colorings.



PRICES PREPAID

Cash with order from unknown parties

GALAX LEAVES. Medium and small sizes, green or bronze. per 1,000	\$3.00
Large selected sizes per 1,000	4.00
LEUCOTHÖE SPRAYS. Beautiful foliage, naturally in the shape of a partial garland or wreath. Extremely decorative. Deep green or rich bronze. 1 to 2 ft. per 100	4.00
BALSAM FIR. Choice branches 1 to 2 ft. long; woody fragrance. per doz.	3.00
BALSAM NEEDLES and TWIGS, clipped for pillows. 10 lbs.	3.00
GROUND PINE (Bouquet Green). Very effective. 5 lbs.	4.00
AMERICAN HOLLY. (Branches). Deep green leaves with bright red berries. 1 to 2 ft. per doz.	4.00

SPECIAL PREPAID BOX PRICES

Order by mail or wire

CASE N. 500 Assorted Galax and introductory assortment made up from list opposite. Splendid value, to get acquainted.	\$3.00
CASE O. 1,000 Assorted Galax, with extra-nice assortment from all of list opposite.	5.00
CASE P. 2,000 Assorted Galax, 50 Leucothöe Sprays, 25 Fern Sprays, 6 Fir branches, 1 lb. Bouquet Green, and 6 sprays choice Holly.	8.00
CASE Q. 4,000 Assorted Galax and extra quantities of all list opposite. This beautiful collection will be enough for yourself and to divide with all your neighbors. XX Special Value.	12.50



LILIUM SUPERBUM. See page 24

MY SPECIALTIES

Pieris floribunda, Azaleas, Rhododendrons, Kalmias
Oxydendrum, Tsugas, Leucothoe Catesbæi, Zanthorhiza, Iris
Galax, Shortia, Ferns, Cypripediums, Dicentra, Liliums
Trilliums, Hydrastis, Panax, Polygonatum
Sanguinaria and Stenanthium

Landscape, Architects, Nurserymen, and Large Planters find my stock particularly suited to their requirements. Those who have known me longest are the largest users of my products. Prices reasonable to the extreme, quality considered. Your correspondence is invited and your orders will be given good attention. Send me your list of requirements quickly as possible to insure getting the stock in good time for planting. Prices named include all packing cost and delivery to our station.

SPECIAL PRICE ALLOWED ON LARGE ORDERS

E. C. ROBBINS

ASHFORD, McDOWELL COUNTY NORTH CAROLINA

FORMERLY PINEOLA, AVERY COUNTY