

Historic, archived document

Do not assume content reflects current scientific knowledge, policies, or practices.

62,39

SEP 11 1926

Recorded

FOREIGN PLANT QUARANTINES

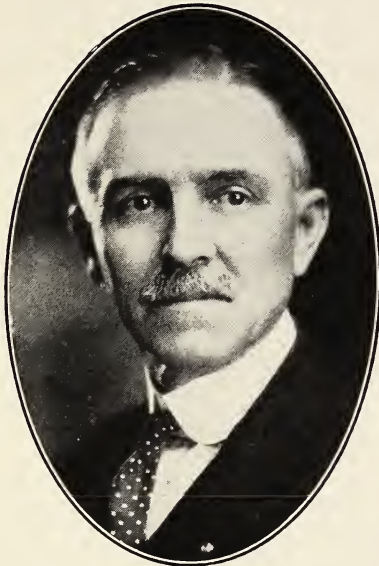
Success Dahlia Gardens

1926

LIBRARY
RECEIVED
SEP 27 1931 ★
Dept of Agriculture.



171 FERRY ST. LAWRENCE, MASS



CHARLES G. REED

Our Best Wishes
for 1926

Our Thanks for 1925



We cannot think of any better wish for our patrons, nor of any better hope for ourselves than a continuance in 1926 of the happiness and prosperity we shared with one another in 1925

**To Our Prospective
Customers:**

We respectfully solicit your valued patronage and assure you that you will be as much pleased with our treatment, as we will, in being permitted to serve you.

Sincerely yours

SUCCESS DAHLIA GARDENS

"The Birthplace of Better Dahlias"



HAROLD G. REED

Member, American Dahlia Society; Dahlia Society of New Jersey; Dahlia Society of New England; Dahlia Society of California.

REFERENCES: Merchants Trust Co., Lawrence, Mass., Mr. Wm. J. Rathgeber, Sec'y American Dahlia Society, New Haven, Conn.



General Information.

TERMS: Remittance with order on or before shipment. Retail orders are delivered prepaid. Please remit by bank draft, Post Office Order, or registered mail. No stock sent C. O. D. unless 50 per cent of purchase price accompanies order.

ORDER EARLY and avoid disappointment should the variety desired be sold out. Orders are filled in rotation as received.

SHIPPING: We begin shipping tubers about April 15th unless otherwise desired. Green plants are shipped from May 15th to June 15th.

SUBSTITUTION: We never substitute without permission, but suggest you mention a second choice.

CULTURE: Complete instructions for growing dahlias will be sent with each order.

GUARANTEE: All stock is guaranteed to be true to name and in growing condition upon arrival. If for any reason it is found otherwise please return at once and we will cheerfully replace or refund purchase price if requested to do so.

GREEN PLANTS: Our green plants are all base cuttings, which make stocky well rooted plants that will grow and produce fine bloom and make good clean tubers. Our plants are grown in a specially built green house for this purpose. They are grown under moderate heat, and at the proper time are hardened off in cold frames. We have shipped green plants to California and they arrived in fine condition.

COMMERCIAL GROWERS: We cater to a high class retail trade, but we will allow the usual trade discount on our own introductions and on other varieties where our stock will permit. Write for discount mentioning varieties wanted. We grow many varieties not listed.

SPECIAL BARGAINS: Collections of 12 named varieties \$3.00, \$5.00 and \$10.00. Our selection, all different large blooming kind.

ABBREVIATIONS: C., Cactus; H. C., Hybrid Cactus; D., Decorative; P., Peony-flowered; S., Show.

NOTICE: This list cancels all previous prices.

Dahlia Seed.

We have a small quantity of selected dahlia seed to offer for \$2.00 per package of about 50 seeds. The kind we are producing our Trial Garden winners from. Dahlia grown from seed will produce flowers and tubers the first year if directions on package are followed.

Join Some Dahlia Society.

You owe it to yourself to join some dahlia society and we take great pleasure in presenting the names of the Secretaries: Wm. J. Rathgeber, Sec'y American Dahlia Society, 198 Norton St., New Haven, Conn.; Mr. Thomas Hughes, Sec'y Dahlia Society of New England, 78 Brownell St., New Bedford, Mass.; Mrs. Stephen H. Van Hoesen, Sec'y Dahlia Society of New Jersey, Fanwood, N. J.; H. T. Hennig, Sec'y Dahlia Society of California, 621 Third Ave, San Francisco, California. All the societies issue interesting Bulletins chock full of doings of interest to all dahlia growers. A \$2.00 bill will enroll you in any of these worthy societies. Mail it NOW.

Our Certified Introductions of Supreme Merit

THEY HAVE WON FOR OTHERS THEY WILL WIN FOR YOU



"Alice Whittier" in our garden and Mr. Chas. G. Reed. Large bloom on top right nearly 11 inches in diameter and six inches deep, grown without forcing.

ALICE WHITTIER.

Awarded Certificate of Merits by the American Dahlia Society and the Dahlia Society of New Jersey in 1925. Winner of the President's Cup (cut of which is shown on front cover) at the Dahlia Society of New England show Horticultural Hall, Boston, Mass., 1924. This dahlia has also won other prizes galore including the best dahlia in the show.

This dahlia is considered by competent judges to be the Queen of all yellow dahlias. This immense hybrid cactus is truly a wonder and has made good wherever grown. It

created a sensation at the Boston show. Awarded Certificates of Merits by the two leading dahlia societies. After being grown in their trial gardens it has proven its worth. The color of this prize winning dahlia is a most beautiful heavy primrose or sulphur yellow, the flower is evenly built with long, deep spike-like petals from 5-6 inches deep and 9-10 inches in diameter without forcing. The very large bloom are held perfectly erect on long straight cane stiff stems. The plant is a tall grower, 6-7 feet, always covered with immense flowers glistening like crystals in the sunlight. We have never seen a dahlia that will stand up any better after cutting, making it ideal for exhibitions. If you want a winner you should grow "Alice Whittier".

Bulb \$10.00. Plant \$5.00

What Other Growers Think of "Alice Whittier"

E. M. Bissell—"I think that "ALICE WHITTIER is the BEST yellow Hybrid Cactus in cultivation."

Thomas J. Murphy—"In "Alice Whittier" you have one, if not the best Hybrid Cactus ever produced."

Thomas H. Hughes—"In judging "Alice Whittier" at the Boston show I was very much impressed with it as an exhibition flower and I have been told by visitors at your garden that the plant is a wonderful grower with plenty of very large bloom on stems that hold the flowers perfectly erect. These are the varieties I am looking for."

Mr. Andrew Lufkin—"The dahlia "Alice Whittier" is certainly a fine flower. A large thick bloom of wonderful formation, a very pleasing color, and is bound to be a favorite."

Mr. B. Hatten Bastian, a well known Penn. grower, writes: "The dahlia "Alice Whittier" is one of the best dahlias I ever grew. It was a winner wherever shown, it is a wonderful grower and free bloomer of large bloom 9-10 inches on good strong stems. "Alice Whittier" was admired more than any other dahlia in my field."

A Schenectady, N. Y., grower, writes: "I think "Alice Whittier" is a wonderful flower."

Mr. Walter A. Angell, the well known Rhode Island grower of better dahlias, writes: "Nearly every visitor to my gardens this season admired and commented upon "Alice Whittier" which is a free bloomer with flowers of large size borne upon long strong stems."

THE BANDIT.

Here is the dahlia that we received so many requests for last season after it made such a wonderful showing at the trial garden of the American Dahlia Society at Storrs, Conn., in 1924. We were unable to offer this dahlia last year as our stock was limited, but we booked orders for 1926 delivery and we will surely sell our entire stock out early as the demand has exceeded our fondest expectations. In addition to being the second highest scoring dahlia at Storrs last year, "The Bandit" was awarded a Certificate of Merit at the New Jersey Dahlia Society's trial garden in 1925. The judges were right at Storrs when they reported "a striking flower." It is the most striking flower we have ever grown, not a monster in size, but what it lacks in size it makes up in its spectacular color combination, spectrum red, reverse a snappy buff yellow, the petals twist and whorl

making a most attractive formation. The plants are always covered with vivid colored flowers held perfectly erect on wiry long stems. The average size of flowers are 8-9 inches. If you want a flashy dahlia that stops the visitors we guarantee The Bandit will do it as it has done to the thousands of visitors in the gardens and show room.

Bulbs while they last \$10.00.

Green Plants \$5.00

A few of the many comments received on "THE BANDIT." A Nebraskan grower writes: "The Bandit was the most striking dahlia in my entire collection. I exhibited it in a hot class of the newer creation and it won First Prize. It also makes a fine cut flower, as it keeps for days after cutting." A Rhode Island grower writes: "The Bandit" was one of the most attractive dahlias I have seen. I had no trouble growing it 10 inches and the large flowers are of a most striking color combination held perfectly erect on small wiry long cane stiff stems. Others write: "The Bandit" the best new dahlia I have seen." "The Bandit" is a wonder, it has everything, size, new color combination not seen in other dahlias and a perfect stem, flower looking you in the face." "The Bandit" is a large but very refined dahlia in every way, a free bloomer, attractive formation, unusual color combination, perfect stem." If you want something different this beautiful hybrid cactus will please you.

CITY OF LAWRENCE.

This immense yellow decorative needs no introduction. When we introduced this dahlia we claimed it to be an improvement over any other yellow dahlia. Since then we have introduced "Alice Whittier," another yellow which we think is superior, but "City of Lawrence" is still making friends and the demand is growing greater each year and we have letters from all parts of this country commending this wonderful dahlia. This dahlia has made good everywhere being awarded two Certificates of Merit by the American Dahlia Society in 1923 and 1924 scoring 88 at Storrs, Conn., and 89 (Second highest scoring dahlia) at the Southern trial gardens at College Park 1924. Judges' description: "A dahlia of excellent flowering habit, color picric yellow, shading to lemon yellow, size of flower 7-8 inches and 3-6 inches deep, stem slightly drooping." Reports of over 11 inch flowers have often been received from many growers. The stems are not weak but the immense flowers would make most any stem slightly droop. Some of the foremost growers pronounced it the finest yellow in existence in their 1925 catalogs. They know, as they grow the best. Stock limited.....**Bulb \$5.00. Plant \$2.50**

UNCLE TOM (D) (Reed-Adams)

We first saw this dahlia growing in a friend's garden. The nearly black color would attract any dahlia lover. Mr Adams being an amateur grower consented to have us send this seedling to the trial gardens and to introduce it, which we did. Uncle Tom was awarded Certificates of Merit by the American Dahlia Society and the Dahlia Society of New Jersey in 1925. The flowers are very large and are held erect on very long stiff stems looking you straight in the face. We have never seen as dark a dahlia as Uncle Tom. Stock limited.....**Bulb \$7.50. Plant \$3.75**

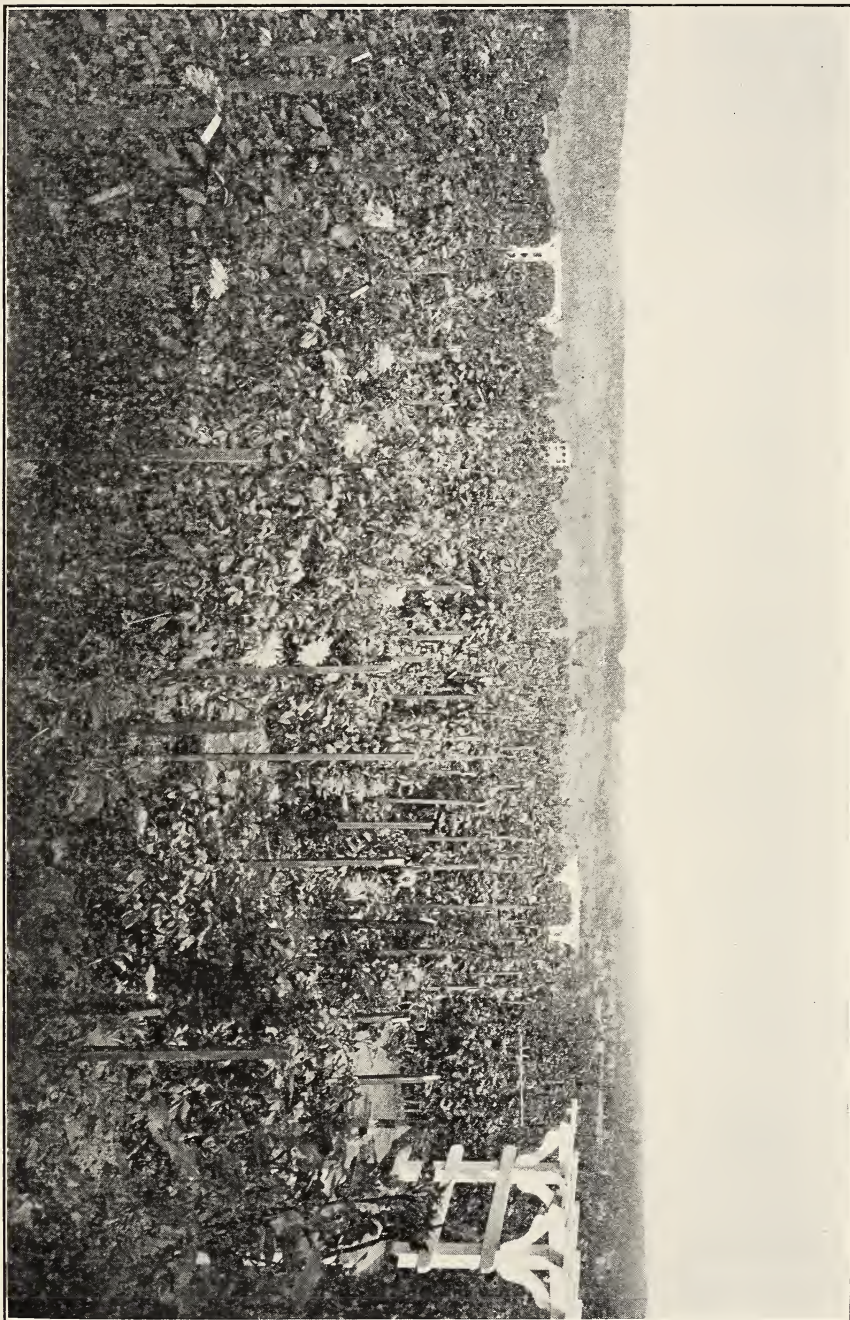
- ALICE LONGFELLOW (H. C.) (F. & M.)**—A very fine new dahlia. Color a blending of shrimp pink, shading to pale gold at the center of flower, each petal tipped with pale pink, shading to white. Free bloomer. A dahlia that is chosen by those who love sheer beauty.....**Bulb \$5.00. Plant \$2.50**
- AMBASSADOR (H. C.) (Broomall)**—This beautiful dahlia which has always been a prize winner was awarded the prize for being the best Dahlia in the show of the Dahlia Society of California 1925. The color is a soft yellow center with salmon, amber and pink shadings, gradually deepening towards the tips and outer floral rays. Has won prizes for the largest in the show. Sold for \$50.00 per bulb when introduced..... **Bulb \$2.00. Plant \$1.00.**
- AMANDA D. GREINBERG (H. C.)**—Soft dark crimson. Very large flower with long, loose broad petals. First prize winner A. D. S. Show 1923.....**Bulb \$1.00.**
- A. C. LAWRENCE (H. C.)**—Extra large, color a most pleasing shade of pink at base of petals shading to white at the tips.....**Bulb \$1.50.**
- AQUITANA (H. C.)**—the color of this gorgeous new cactus is beautiful salmon pink. Flowers are very large with long stems.....**Bulb \$1.00.**
- AMUN RA (D.) (Seal)**—A gold Medal Dahlia. The outer petals of the immense bloom are shades of copper and orange, shading to gold and amber, deepening in the large, full center to a rich, dark, reddish bronze. Held erect on cane stiff stems. **Bulb \$1.50.**
- AMBER GLOW (D.)**—A bright yellow, deepening to a pale orange at center. The petals are long, narrow and straight. An exhibition and cut-flower variety. **Bulbs \$1.00.**
- ALICE VOISINET (H. C.) (Davies)**—Mr. Davies claims this 1925 dahlia to be the finest of his introductions, and describes it as follows: The color is bronze and copper, shading to buff and henna, with beautiful golden sheen. The flowers are very large with perfect form and extra good stems.”.....**Bulb \$5.00.**
- BONNIE BRAE (D.) (Broomall)**—The flowers are immense in size, making it excellent for exhibition. Color cream, shaded bluish pink.....**Bulbs \$1.00.**
- BASHFUL GIANT (D.) (Marean)**—This is without doubt one of the very largest dahlias that has been introduced; the immense blooms are excellent for exhibition where size is one of the requisites. The color is beautiful, being an apricot with golden shadings.....**Plant \$1.00. Bulb \$2.00.**
- BEN WILSON (D.) (Murphy)**—Attracts attention in any garden. The flowers are very large, the color is an orange-red with the petals tipped with gold....**Bulb \$1.00.**
- BIG BROTHER (D.) (Bissell)**—Very large flowers of a very deep salmon, held erect on stiff stems. A fine bloomer and good in every way.....**Bulb \$5.00. Plant \$2.50**
- BOSTON WHITE (Dec) (Murphy)**—This is one of the best white dahlias we have grown. The flowers are large and deep, with perfect centers. **Bulbs \$3.00. Plant \$1.50**
- BALLET GIRL (C.)**—Buff orange tipped white; red-striped white and solid buff: on the same bush. Splendid type and very large.....**Bulb \$1.00**
- BLACK JACK (D) (Dressler)**—Another California introduction of great merit. The flowers are extremely large, with long, stout stems, and the color is a very rich dark maroon, almost black, does not burn and has good keeping qualities. A grand exhibition variety.**Bulb \$3.00. Plant \$1.50**
- CINDERELLA (H. C.) (Boston)**—The sturdy bushes are always covered with immense deep, full flower of incurving formation, held high on long stems which stand up and look you in the face. Color pale salmon, or fawn pink shading to a tan center..... **Bulb \$1.00**
- COPPER KING (Dec) (Marean)**—Wonderful arrangement of copper, yellow and light red reverse. Considered by many to be the finest dahlia in existence. The stock on this variety is very scarce. This dahlia was listed at \$50.00 per bulb in 1923, but was not marketed until 1924**Bulb \$10.00. Plant only \$5.00**

- CIGARETTE (H. C.) (Boston)**—Color, creamy white, heavily edged orange, but no two flowers are exactly alike. The petals are long and narrow and inclined to roll. Bloom is large and of good substance. Good stems.....**Bulb \$1.50**
- CAMBRIA (D)**—The color is rich rosy pink, toning in white in center. The massive flowers are held erect on perfect stems.....**Bulb \$1.00**
- CHAMPAGNE (D)**—One of the largest dahlias ever originated by Bessie Boston. A massive flower standing upright on long stiff stem. Coloring is rare—a dull golden champagne varying to chamois and showing more color later in the season.
Bulb \$2.00
- CHARLES STRATTON (D) (Chester)**—A grand exhibition fluffy flower that won sixteen prizes in New Jersey for size and artistic coloring. Color is pale gold, shaded and tipped with old rose. This is new and deserves a place in the finest collections.
Bulb \$7.50. Plant \$3.75
- CHARLES P. NOYES (D) (Selsam)**—A large deep flower with a most attractive coloring, white suffused rosy pink. A new dahlia of merit.. **Bulb \$3.00. Plant \$1.50**
- DADDY BUTLER (H. C.) (Boston)**—A large hybrid cactus of fine form for exhibitions. Color is of the American Beauty rose shades. The reverse of the petals is a lighter tint, giving a variation of color. The stems are perfect.
Bulb \$2.50. Plant \$1.25
- DR. RAYMOND (H. C.) (Feeny-Boston)**—Color pink, suffused with yellow, and heavily splashed and striped with a very deep crimson. Stem has necessary length and stiffness for cutting.....**Bulbs \$3.00**
- DR. MARSHALL HOWE (Dec) (Brocmall)**—A magnificent large pink, edge of petals a shade darker; flowers nine inches in diameter.....**Bulb \$2.00**
- DR. P. A. GARNEAU (D)**—A new dahlia with a pleasing new color, Zue purple. The blossoms are of good size and are held erect on fine stiff stems. Very much admired by visitors..... **Bulb \$3.00. Plant \$1.50**
- ELIZA CLARKE BULL (D) (Boston)**—It is great pleasure to recommend this fine white dahlia. It is large and regularly formed and will produce very large flowers without forcing. A prize winner in every way. We might add that sometimes there is a slight pinkish cast on the reverse of the petals, which we think adds beauty to the bloom. Fine stiff stems.**Bulb \$7.50. Plant \$3.75**
- EVA COLE (D) (Murphy)**—One of Mr. Murphy's finest. Considered one of the finest of recent introductions. A most attractive color combination of bright red and gold. Wonderful for exhibitions and claims have been made growing it eleven inches and over.....**Bulb \$7.50. Plant \$3.75**
- EVA WILLIAMS (D) (F. & M.)**—One of the finest dahlias we had the pleasure of growing of its color, a most beautiful amethyst color with silver shadings, very full center, stems upright and rigid, free bloomer.....**Bulb \$3.00. Plant \$1.50**
- ELITE GLORY (D) (Kennedy)**—New 1926. "It is a monstrous flower of a brilliant rich, red color, without any apparent purple or maroon shading. Its blooms and foliage are gigantic in size, and strange to say, not awkward in appearance, but pleasing and graceful. Elite Glory is regarded as a 'Break' in the Dahlia World and cannot be surpassed for spectacular effect, either for exhibition or garden purposes." (Introducer's description). This dahlia has won first prizes galore everywhere it has been grown at the trial gardens or in the show rooms. If you want size and something unusual in your garden that will attract attention, by all means try this one.....**Bulb \$25.00. Plant \$10.00**
- ETHEL M. (H. C.) (Reed)**—The plant is always covered with large bloom of the most pleasing and attractive shade of glowing amaranth pink at the base of the deep perfectly quilled petals, gradually shading lighter at the tips, with white center. The color is difficult to describe: it is a shade that fascinates. The formation of the flowers are perfect, the petals are very long. This dahlia was awarded a Certificate of Merit at the American Dahlia Society's trial garden at Storrs, Conn., scoring 88 points. First prize for the best 6 pink cactus long stems, Boston.
Bulb \$3.00. Plant \$1.50

- ESTHER R. HOLMES (H. C.)**—Always a prize winner. Beautiful orchid pink flower of wonderful formation on extra good stems. First prize at A. D. S. Show.
Bulbs \$2.00
- EL-GRANADA (H. C.) (Boston)**—We consider this variety to be one of the finest dahlias ever introduced by Bessie Boston. At the show of the Dahlia Society of California in 1923 this dahlia won the prize for being the best and most artistic dahlia in the show, and other prizes too numerous to mention. The color is a vivid orange, and the petals twist and interlace, showing at the tips a creamy yellow reverse. The long stem grows well out of the foliage and is absolutely stiff and faultless.Bulb \$10.00. Plant \$5.00
- EARLE WILLIAMS (D) (Doolittle)**—The brilliant crimson and white of this flower are well distributed. It has both blooming quality and size with a very luxuriant foliage. Bulb \$1.00
- EL DORADO (D) (Bessie Boston)**—A dahlia that was always covered with large flowers of the most vivid gold coloring, which was emphasized by the deeper tones at the base of the petals, with stems strong enough to hold the immense golden blooms erect looking you in the face.....Bulb \$5.00. Plant \$2.50
- EASTERN STAR (D) (Maytrott)**—This dahlia is one of the very best 1925 introductions that will produce very large exhibition flowers which are carried erect on strong stems. A beautiful soft yellow with old shadings attract attention in any garden.
Bulb \$7.50. Plant \$3.75
- ELBERON BEAUTY (D)**—Considered one of the best for exhibitions as the bloom is very large of a most attractive shade of apricot, carried erect on perfect stems. A winner. Bulb \$2.50. Plants \$1.50
- ELENA EYRE (D) (Hodgens)**—An introduction that received the highest award at The Dahlia Society of California at Berkeley, Calif. A huge bloom of the novel two-toned coloring, light amaranth pink shading to Tyrian pink on outside of the petals, while the reverse of the petals is a deep Tyrian rose. Carried on erect stems. Bulb \$2.00
- ELSIE DANIELS (H. C.) (Meachen & Sherman)**—This new creation introduced 1924 is considered by many to be the outstanding dahlia of the year. The color of this wonderful dahlia is a pale orchid shade on the outer petals which are long and shaggy, the center ones are white, making a wonderful combination of colors. The stems are strong enough to hold the extra large flowers erect above the foliage.
Bulb \$7.50. Plant \$3.75
- EMMA MARIE (H. C.) (Maytrott)**—New. This was considered one of the finest 1925 introductions. A great prize winner. Certificate of Merit 1924. Beautiful pink, white center.Bulb \$5.00. Plant \$2.50
- ELIZABETH A. BOSTON (P) (Boston)**—We are not partial to the peony type of dahlia, but at the recent New York show we marveled at the keeping qualities and beauty of this variety. The last day of the show they were as fresh looking as any other flower in the show. Very large bloom of deep crimson, shading to old gold tips carried erect on long, stiff stems.....Bulb \$2.00. Plant \$1.00
- FRANCELLA PRINCE (D)**—A new dahlia that appealed to us on a visit to other gardens. Color a pleasing shade of Tyrian rose. The bloom are of good size held perfectly erect on stiff stems, making it a fine cut flower.....Bulb \$1.00
- FIRELIGHT (D) (Marean)**—One of the most attractive dahlias. Beautiful large flower carried on stiff stems. Color yellow base of petals, points of petals red. Very fine exhibition flower.....Bulb \$5.00. Plant \$2.50
- FRANCES LA ROCCO (D) (Rindfleisch)**—A very fine 1925 introduction. Flowers are large held erect on long stiff stems. Color pale yellow. A prize winner of great merit. Stock limited.....Bulb \$10.00. Plant \$5.00
- GOLDEN RULE (H. C.) (Bissell)**—This dahlia is an eastern creation that stands out in any class. The size is immense, 9-11 inches in diameter. Color, burnt orange of most beautiful shade. Very few dahlias attracted more attention than this variety in our garden last year. Stock limited.....Bulb \$3.00. Plant \$1.50

- FORT WASHINGTON (D) (Rindfleisch)**—(New 1925.) Here is a dahlia that can and has won many prizes of the largest in the show. Very seldom less than 10 inches without forcing. The larger flowers are held perfectly erect on long cane stiff stems. Winner of many prizes in all classes for decoratives. Has size, refinement a free bloomer, and the color is a most charming deep maroon. We guarantee this dahlia to make good anywhere. It will win for you.
Bulb \$15.00. Plant \$7.50
- GEORGE S. HARVEY (D) (Murphy)**—One of the largest dahlias that we have ever grown. It is a most attractive dahlia in the garden and fine for exhibition. Color, purple magenta with silver veins running through the petals. Here is a dahlia that you should grow.....**Bulbs \$5.00. Plants \$2.50**
- GEORGE WALTERS**—Perhaps the most popular Hybrid Cactus that has been produced and as a prize winner it is in a class by itself, winning gold medal in California in 1915, and has been winning ever since wherever it is exhibited. A beautiful pinkish salmon, shading to yellow base..... **75 Cents**
- G. H. CARR (D)**—The largest and best deep purple we ever grew, flowers grow to 9 inches and very deep. One of the best.....**\$1.00**
- GYPSY (D)**—A new Geisha Seedling with flowers of enormous size on long, stiff stems. Color scarlet and gold. Fine for exhibition. First prize A. D. S. Show.
Bulb \$2.50
- GIANT RUBY (D)**—Enormous flower of a most beautiful vivid red, considered by many to be the best red. Large blooms are held erect on good stiff stems. Excellent for exhibition. First prize A. D. S. Show for the best red 1925. Here is a winner.
Bulb \$2.50
- GLADYS BATES (C) (Boston)**—Immense, heavy blooms of incurved petals of tan with reverse of rose. Perfect form, closed center, long, straight stems, and a profusion of blooms.....**Bulb \$1.50**
- GEORGE SKEENE (D) (Seltsam)**—Very large orange buff flower that attracts attention in the garden. Hybrid cactus type of flower on long stiff stems. Stock limited.
Bulb \$8.00. Plant \$4.00
- GRENADIER (D)**—Purplish maroon shade combined with silver. The petals one side maroon and on the other silver, and quill and turn back. Very unique, large flowers on good stems.....**Bulb \$5.00. Plant \$2.50**
- GORDON BLANDING (D) (Asmus)**—Very large and full, measuring nine inches in diameter. When the flower first opens it is a light roseling purple, changing when fully open to roseline pink. The stems are long and strong, holding the large flowers erect. Awarded Certificate by the American Dahlia Society.....**Bulb \$2.00**
- GERTRUDE BRINTON (D) (Seltsam)**—We first saw this dahlia at the trial gardens at Storrs, Conn., where it was awarded a Certificate of Merit. The dwarf bush is loaded with very large bloom of a most pleasing shade of spectrum red, held erect on long stiff stems. No better dahlia of its color.....**Bulb \$3.50. Plant \$1.75**
- HEAD OF THE NATION (Stillman)**—Originator's description is as follows: "The largest incurved, claw shaped true cactus Dahlia in existence. I have grown this wonderful Dahlia in my garden perfectly natural, without disbudding whatever, to measure nine inches in diameter. Think what can be done with this flower by disbudding. In color this dahlia is purple with a magenta overcast. It makes a tall plant and is an exceedingly free bloomer." This dahlia was awarded a Certificate of Merit at Storrs trial garden in 1923. Mr. Stillman's price for this dahlia in 1924 was \$75.00 per bulb.....**Plant \$10.00**
- HARRY SHELDON, JR. (Dec) (Murphy)**—This is without doubt the largest flowering dahlia introduced to date. With us they averaged ten inches and some growers claim to have grown them 12 inches in diameter, and 5-6 inches deep. It is a beautiful pink and white flower and a fine exhibition dahlia. Sold for \$25.00 1924.
Bulbs \$7.50. Plant \$3.75

- HOLLANDER (H. C.)**—A very large flower of a most pleasing color, a purplish maroon, held erect on good stems. Attracted much attention in our garden..... **Bulb \$1.50**
- ISLAM PATROL (H. C.) (Davies)**—Here is a gem of a Dahlia. Color, very dark variety scarlet, tipped and flushed with gold. Some of the flowers have a little more gold than others, which makes them more beautiful..... **Bulb \$4.00**
- INSULINDE (D)**—The finest and most artistic dahlia of distinct form with petals twisted and curled. Stems are two to three feet long, and flowers 9 to 10 inches across. Color, a rich saffron yellow shaded russet orange..... **Bulb \$1.00**
- ITALIAN SUNSET (D) (Beatrice)**—This wonderful novelty created quite a stir at 1925 Boston show, where it won first prize for best vase of seedlings. Color cream to yellow background, with shades of mauve-pink orchid, rose and cerise, all blending, and radiating from a full center. Large flower 8-10 inches held erect on long stiff stems..... **Plants only \$15.00**
- JERSEY'S BEACON (D)**—Chinese scarlet with paler reverse, giving a two-toned effect, a very large flower, with good stem. Winner of the silver medal for the best new variety, at New York show 1924. Best vase red 1925..... **Bulb \$10.00. Plant \$5.00**
- JERSEY'S JOY (D)**—Rich golden yellow, flowers of fine formation, of good size, on good stems..... **Bulb \$5.00. Plant \$2.50**
- JERSEY MAMMOTH (D) (H. C.)**—Truly a monster. Winner of the largest bloom class in New York show. Color a rich golden mahogany... **Bulb \$10.00. Plant \$5.00**
- JERSEY'S MATCHLESS (D)**—Golden buff, large flowers, on good stems.
Bulb \$10.00. Plant \$5.00
- JERSEY IDEAL (D) (Waite)**—The color of this fine new dahlia is best described as lavender-pink, although sometimes it is nearer lavender, flowers are borne face up on top of the long stiff stems, the petals falling down and making a very deep flower. A vigorous grower and free bloomer. Certificate of Merit, score 89 points.
Plants only \$5.00
- JERSEY EMPRESS (D) (Waite)**—The flowers produced by this variety are large, having a very pleasing formation, color Anthracene violet, is sunproof, petals narrow and wavy, giving the flower great depth..... **Bulb \$10.00. Plant \$5.00**
- JERSEY'S SOVEREIGN (D)**—A new shade of color; it is a salmon orange. A vigorous grower with very dark foliage. Flowers are of good size on stiff stems.
Bulb \$2.50
- JERSEY ROSE (D) (Waite)**—New 1924 introduction of great merit, a very fine free bloomer, flowers large, on good stiff stems. Color cerise..... **Bulb \$3.00**
- JERSEY JEWEL (D) (Waite)**—Mr. Waite describes as follows: "Mallow pink, very large, long, petaled flowers, on good stems. A splendid exhibition variety. Flowers can be had nine inches without disbudding. Certificated A. D. S." A. D. S. Bulletin mentions it as "A grand pink giant"..... **Bulb \$5.00**
- JERSEY RADIANT (H. C.) (Waite)**—Bitter sweet orange, large flowers produced on long, stiff stems, well above the foliage. A very attractive variety. Award of Merit A. D. S. 1923..... **Bulb \$5.00**
- JERSEY BEAUTY (D) (Waite)**—This is no doubt the most talked of dahlia that has been introduced in years. It was an outstanding dahlia at the American Dahlia Society show in New York 1925. Has beaten everything in competition. First prize wherever exhibited. Pink blooms, held erect on perfect long, stiff stems. Scored 91 trial garden California 1924..... **Bulb \$3.00. Plant \$1.50**
- JERSEY EMPEROR (D) (Waite)**—In its color, a dark maroon. The low growing bushes were always loaded with great large bloom, until the bushes are cut down by frost..... **Plant \$2.50. Bulb \$5.00**
- JERSEY'S MONARCH (D)**—Very large deep salmon flower, with yellow at base of petals..... **Bulb \$10.00. Plant \$5.00**
- JUDGE MAREAN (D)**—Very large flower of perfect type. Color most difficult to describe, a sort of a riot of colors composing salmon, pink, red iridescent orange, and pure gold. Free bloomer, strong stem..... **Bulb \$1.00**



A VIEW OF A SECTION OF OUR DISPLAY GARDEN

- JOHN LEWIS CHILDS (D)**—One of the best fancy novelties. Yellow, suffused, splashed and striped with brilliant scarlet, and usually tipped white. Immense size. stiff stems.....**Bulb \$2.00**
- JUNIOR (D)** (Seal)—An enormous flower of pure lavender. This Dahlia is one of the very best from California to date. It has surely made good in the East, and no collection is complete without it. The blooms are monsters in size.
Plant \$1.00. Bulb \$2.00
- JEAN ROOSEVELT (P)**—This new dahlia is one of the finest in our collection, the size is very large, growing up to ten inches in diameter. The color, amber center, shading through salmon pink to a rose, with rose reverse.
Bulbs \$10.00. Plants \$5.00
- JEANNETTE SELINGER (D)**—A large, deep flower of glowing maroon, twisting and showing a lighter reverse. Stiff stems holding the large flowers erect.
Bulbs \$5.00
- JUDGE LANGFORD (D)** (Mastick)—A large and graceful flower of good depth, held perfectly erect on good strong stems well above the foliage. Color is a deep, rich, velvety pansy purple faintly lined white.....**Bulb \$3.00**
- JEAN CHAZOT (H. C.)**—A free, upright grower, long, stiff stems hold the flowers well above the foliage in such a manner as to display their full beauty. Those are of good size, and in color a beautiful golden bronze with just a faint suffusion of Nasturtium-red that intensifies its brilliancy and adds to its charm.....**Bulbs \$1.00**
- KALIF (H. C.)**—A monster Cactus of perfect form. Color is a rich, pure scarlet. The large flowers are borne on long, stiff stems and hold erect. A most satisfactory dahlia wherever grown.....**Bulb 75 Cents**
- KITTY DUNLAP (D)** (Boston)—A delightful new shade of American Beauty Rose. Blooms freely all season, has excellent keeping qualities, long stiff stems, immense size and great substance. The petals are broad but have a slight tendency to roll. First prize A. D. S. Show and first prize for best fifty blooms, San Francisco, and other prizes galore.....**Bulb \$1.50**
- LORNA SLOCOMBE (Slocombe)**—An immense hybrid cactus variety, of an unusual shade of orange, beautifully blended with flame and apricot shadings, very distinct and always covered with bloom. The formation as well as the color is unique and attractive, and commands attention and admiration.....**Bulbs \$3.00. Plants \$1.50**
- LAKE ERIE (D)** (Stillman)—Immense lavender flower, one of the very largest, growing 8 to 10 inches without disbudding. Stock limited.....**Bulb \$2.00**
- LECIAN VON BERNUTH (H. C.)**—A new one, flame color shading to yellow center. Flowers average to eight inches or over and are held well above the foliage. One of the best new varieties.....**Bulb \$2.50**
- LORRAINE WOERNER (H. C.)** (Broomall)—The beautiful blossoms of this variety are large and of fine formation, carried on long stems. Color, creamy yellow, shaded salmon pink, making a wonderful color combination. Stock limited....**Bulbs \$3.00**
- LAURINE (H. C.)** (Broomall) Very large flowers of good form of a most distinct Amaranth pink, shading lighter towards the edges with silvery suffusion. Wonderful exhibition flower**Bulbs \$2.00**
- MRS. C. A. GILLATT (Cactus)**—A monster Cactus, easily one of the very largest grown. Color clear yellow at base, deepening to rose pink towards the tips, but yellow again at extreme points. Awarded Gold Medal as the best Cactus Dahlia shown in England.....**Bulb \$3.00**
- MRS. E. P. JUDD (D)** (Wegand)—Carmine and rose suffused with cream, a very beautiful flower, free blooming and carried on strong stems. This is one of the largest dahlias we have grown. You should have this one in your collection.
Bulb \$4.00. Plant \$2.00

- MANDALAY (H. C.) (Jost)**—Yellow ground overlaid with copper bronze, most delicate lavender pink, with white suffusion, making the flower unusually attractive. A large stunning hybrid cactus that fairly glistens.....Bulb \$2.50
- MARGARET WOODROW WILSON (D) (F. & M.)**—A dahlia of great beauty and of large size. Color is opalescent-pink. Face of petals creamy white, reverse Phlox-pink. Strong upright stems.....Bulb \$10.00. Plant \$5.00
- MRS. JOHN L. GARDNER (H. C.) (Fisher & Mason)**—A large bi-color exhibition hybrid cactus of dazzling brilliancy. Blood red petals tipped pure white, on a long stiff stem well above the foliage. This dahlia was awarded a gold medal and a silver medal.Bulb \$3.00
- MRS. CHARLES SMITHERS (D) (Bemister)**—One of the largest in our garden, of a shade that is different, a reddish plum at base of petals, with reverse lighter, and splashed with white at the tips.....Bulb \$5.00. Plant \$2.50
- MRS. ESTELLE L. LINDSEY (D) (Broomall)**—Immense flower of the most striking combination of colors, scarlet and gold, held erect on good stems.....Bulbs \$2.00
- MABEL THATCHER (D) (Marean)**—Large flowers of a pale yellow shade, are borne on stiff, strong stems. An immense exhibition dahlia and a profuse bloomer. One of the finest.Bulb \$2.00
- MASSACHUSETTS (Dec.) (Davis)**—The largest dahlia grown at Storrs, Conn. Trial Gardens 1922 and at the Dahlia Society of California Trial Gardens 1923, winning a Certificate of Merit at each trial garden. Color Amaranth-purple, center of petals pansy purple, outer petals Syrian rose. Flowering habit excellent, size immense, will grow 9 inches without disbudding. Good stems.....Bulb \$5.00
- MRS. ELEANOR MARTIN (D) (Pelicans)**—A wonderful new decorative of deep mulberry and rose, with a suffused gold coloring. The flowers are very large and are held erect on long, stiff stems.....Bulb \$5.00. Plant \$2.50
- MERRICK (Decorative Hybrid)**—A glorious shade of light maroon tipped and reverse of the petals mahogany shading purple: a combination that instantly appealed to all visitors at our garden and in our First Prize display at the Boston Dahlia Show. Very large and a wonderful free bloomer, with fine stems and a good keeper. This beautiful creation scored 92 A. D. S. Southern Trial Grounds. Stock limited. **Bulb \$3.00**
- MRS. JOHN K. ALLEN (D)**—One of the most attractive dahlias that we have grown. The form is unusual, the petals are high in the center then reflex at the same time they seem to whorl, giving the whole flower a most pleasing form. The color is also different than any other dahlia, red at base of petals with buff to the tips. **Bulb \$2.00**
- MYRA VALENTINE (D) (Mills)**—A new decorative of remarkable vigor and substance; its mammoth flowers, carried on very long, cane stiff stems, make it a splendid dahlia for all purposes. It was awarded a certificate of merit by the American Dahlia Society, three certificates by other societies, two silver medals and several first prizes for the best decorative Dahlia. Color is a pleasing shade of bronze deepening to salmon rose toward the center.....Bulb \$2.50
- MORDELLA (D)**—One of the outstanding 1925 introductions, a beautiful bright clear shade of apricot buff. The flower is large, held well above the foliage on a strong growing plant, on long, strong stems. You should try this dahlia. A dahlia of the prize winning habitBulb \$5.00. Plant \$2.50
- MARIE LOUISE (D)**—The large double flowers are a beautiful yellow with a faint touch of salmon pink blending towards the outside petals.....Bulb \$2.00
- MRS. CARL SELBACH (D)**—A large flower of lavender pink with lighter tints toward the base of petals, no better stems on any dahlia that grows.....Bulb \$1.00
- MR. CROWLEY (D) (Broomall)**—Glowing shade of salmon-pink; the base of the petals is yellow; held erect on strong stems, which are rather short.....Bulb \$1.00

- MRS. CALVIN COOLIDGE (P)**—This new introduction is of mammoth size and fine form, with extra large wide petals. The color is a solid rosy mauve, glowing and very attractive. **Bulb \$3.00**
- MAID OF THE MIST (D)** (Slocambe)—This magnificent Dahlia, in color a lovely deep cream shading to a beautiful salmon pink on outer petals, which roll back to a depth of four inches, prettily pointed and twisted. These beautiful delightful blendings are glorious to behold. The vigorous plants are always laden with immense glowing blossoms, nine inches or over in diameter. **Bulb \$2.50**
- MRS. I. DE VER WARNER (Dec)** (Marean)—A very large blossom of soft orchid coloring seldom seen in a Dahlia. A refined lovely deep pink, beautifully formed flower of great size, produced on perfect stems. **Bulb \$1.00**
- MEXICO (P)**—An attractive red and yellow. Very large flowers held on good stems. Prize winner largest Dahlia in show. **Bulb \$1.00**
- MARGARET MASSON (D)** (F. & M.)—One of the largest dahlias we have grown. This beautiful silvery rose pink dahlia has won prizes galore, several first prizes for largest in the show and Certificate of Merit by The Dahlia Society of New Jersey. Wonderful exhibition variety on account of size, good keeping qualities and fine upright stems. Always covered with bloom. You should grow this dahlia. **Bulb \$5.00. Plant \$3.00**
- MRS. E. C. KUSTERER (D)**—Flower of good size and new. Color lemon yellow with petals tipped salmon buff. Good stiff stems. **Bulb \$1.00**
- MISS BRIDGEPORT (D)** (Seltsam)—Extra large flower held erect on cane stiff stems. Color creamy white overlaid with light lavender. A dahlia much admired for its color and size and beautiful foliage. **Bulb \$5.00**
- MRS. S. LEVARE (H. C.)**—Very fine flower with appealing color, Amaranth purple held erect on stiff stems. **Bulbs \$1.00**
- NOBILIS (D)** (Coy)—A captivating combination of crimson and white. The flowers are large and held erect on long, stiff stems. Awarded first prize for best vase in its class at A. D. S. Show. This dahlia should be in every exhibitor's collection. **Bulb \$1.00**
- OBERON (Bessie Boston)**—A Cactus in a new color hard to describe. "A deep rose with a most pronounced violet suffusion." Many visitors were struck with oddity of the color combination and particularly noticed the strong violet tones. Immense well built flowers. A splendid, free flowering variety, with strong, upright stems. **Bulb \$2.00**
- PAUL REVERE (D)** (Bissell)—This is the best red dahlia ever introduced. A well known commercial grower in New Jersey called it a 100 per cent. dahlia. This dahlia is equal in every way to our "City of Lawrence" in size, freedom of bloom, fine stem, but the color is a dazzling bright red. It is a red "City of Lawrence." **Bulb \$5.00. Plant \$2.50**
- PRIDE OF WAYNE (D)**—Produces flowers of enormous size on stiff stems. Rich plum color. Fine for exhibition, winning first prize at the A. D. S. Show. **Bulb \$2.00**
- PAUL MICHAEL (Dec)** (Michael)—An immense flower of bright apricot and bronze shadings. Good stems and unexcelled for exhibition. It has won several first prizes for largest in the show. **Bulb \$1.00**
- PROMETHEUS (H. C.)**—The huge flowers are held erect on long, stiff stems. The color is golden fawn, overlaid with salmon, and the blooms are full to the center all season. First prize A. D. S. for "Vase of twelve, any color." **Bulb \$2.00**
- PAPILLION (C.)** (Bessie Boston)—We consider this new variety worthy a place in any collection. The flowers are very large, held erect on perfect stems. Color is a beautiful shade of old rose with golden lights. **Plant \$1.50. Bulb \$3.00**



Miss Lucy Dodson and "Our Country."

OUR COUNTRY (D) (Stillman)—One of the most fascinating dahlias that grows, and of a color that is different, a most beautiful shade of deep purple with every petal tipped the purest white. This dahlia never sports to a solid color. It absolutely comes true to color, we guarantee it in this respect. The flowers are large, but the stems are not strong enough to hold the heavy flowers erect. Never shows an open center. Award of Merit American Dahlia Society trial garden. Sold for \$50.00 for two years after introduction. Everyone who is fond of something different should grow this dahlia.Bu'b \$5.00. Plant \$2.50

- FOLAR SNOW (D) (Marean)**—This is one of the finest white dahlias in cultivation. It's a bloom of gigantic proportions and perfect in form, held erect on stiff straight stems. This wonderful dahlia creates a sensation in the show room. Scheepers listed this at \$50.00 in 1923.....Bulb \$5.00. Plant \$2.50
- PREMIER GEORGE CLEMENCEAU (H. C.) (Brown)**—This is a new dahlia of the finest Hybrid Cactus type. The flowers are of large size without forcing. The flowers are borne on the best of stems. The color combination is wonderful, a rich lemon yellow for about half the length of petals, then shading to the purest white at tips. Sold for \$20.00 1924.....Bulb \$4.00. Plant \$2.00
- POP STEWART (D) (F. & M.)**—A giant flower that was awarded a Certificate of Merit at the Trial Gardens of the Dahlia Society of New Jersey, scoring 90 points. Color a rosy pink toning out into almost exquisite shade of the purest lilac-pink. Always a mass of large bloom held erect on splendid stems. A winner of first prize largest dahlia in the show.Bulb \$7.50. Plant \$3.75
- ROBERT TREAT (D) (Mueller)**—A flower of remarkable size and charming color. A most pleasing American Beauty Rose in color and is unlike any existing variety in shade or color. Exhibition type on stiff, upright stems. Winner of many prizes including the Garden Magazine Sweepstake prize, New York, for the best dahlia never before exhibited at an A. D. S. Show. It also received a special silver medal at the Penn. Hort. Society.Bulbs \$5.00. Plant \$2.50
- ROOKWOOD (D) (Boston)**—This dahlia is one of the finest introductions. Color, a new shade of pure bright cerise rose without the slightest touch of magenta. The flowers are immense, with good depth, and are held aloft on splendid straight stems. You should grow this dahlia.Bulb \$3.00
- RODNEY WANAMAKER (D) (Peacock)**—A most wonderful dahlia. The blooms were 9-10 inches in diameter. In color again this variety is entirely distinct. The buds are pale lemon yellow as each petal expands, but quickly develops into a golden bronzy pink and finally into a bright shade of Ochraceous Salmon, with reflex of Spinal pink. Immense bloom held perfectly erect on stiff stems. Sold for \$25.00 in 1924.....Bulb \$5.00. Plant \$2.50
- ROBERT LAURIE BLACK**—The largest and best white hybrid show in existence. Twelve bloom of this dahlia won first prize in show or hybrid show class at New York. Flowers will keep a week after cutting.....Bulb \$2.50
- ROSA BONHEUR (H. C.)**—Ivory white center shading to a beautiful shell pink. The outer petals twist and curl, adding much to its marvelous beauty. Free blooming on perfect stems.Bulb \$2.50
- RADIO (D) (Sampson)**—Without doubt one of the largest and most beautiful variegated dahlias to date. Won many prizes as largest in the show. Color blood red, edged and tipped yellow.Bulb \$4.00. Plant \$2.00
- ROLLO BOY (H. C.) (Pelicano)**—This dahlia won first prize for the largest dahlia and also first prize for the best dahlia in California 1924. Hybrid Cactus of great size carried perfectly erect on strong stems. Color a delicate shade of amber shading to old gold. If you want beauty and size grow this one.Bulb \$4.00. Plant \$2.00
- ROSE MARIE (New 1925.)**—We have grown this dahlia several years and sent it to the New Jersey trial garden in 1925, where it was awarded a certificate. We should call this an old rose in color, very large flowers held erect on very long stems. This dahlia is a very strong grower. We have a good stock and have placed the price very low.....Bulbs \$3.00
- ROMAN EAGLE (D) (F. & M.)**—Another new introduction that should be grown in every first class garden. Large exhibition flower of a flaming, brilliant burnished copper. Scored 89 at the trial gardens 1925. Has come to stay.
Bulb \$5.00. Plants \$2.50

- ROSE FALLON (D) (Harding)**—We consider this dahlia the finest dahlia in the New York show 1925. We are simply listing it as a compliment to Mr. John Harding, the creator of the famous Judge Marean's dahlias. We saw this dahlia growing in the field and it is a wonder. Mr. Harding is to be congratulated for this introduction. Color, old gold held erect on perfect stems.....Tubers \$25.00. Plants \$15.00
- SANHICAN'S MAGNATE (D) (F. & M.)**—A new 1926 introduction hard to describe, an exhibition variety of great size, color a pale amaranth pink, face of petals tinged with a deeper shade, reverse a solid scarlet, heavily veined. Flowers held erect on perfect stems.....Bulb \$10.00. Plant \$5.00
- SISKIYOU (H. C.) (Broomall)**—The size is enormous, often growing over 11 inches in diameter. Flowers are held erect on cane stiff stems. Mr. Broomall claims it to be the largest flowers he has ever grown. Color, pink, tinged mauve, a great many of our visitors call it lavender. If you are looking for dahlia to win the largest in the show, here you have it. It cleaned up in most of the shows in 1925 for the largest bloom. Sold for \$15.00 1924. Stock limited....Bulb \$5.00. Plant \$2.50
- SUNRISE TRAIL (D)**—A glorious flower of large size on perfect stems. The main coloring is scarlet, suffused geranium lake, edged and tipped with cadmium yellow. The center, high and finely formed, and the whole flower gives a dazzling effect.
Bulb \$5.00. Plant \$2.50
- SAMADH (D)**—A very massive dahlia on strong stems. Body of flower is purple garnet, deepened with purple brown, the high center tinted with vinous mauve, and many petals show a reverse of same color. A new dahlia that's different, one of the finest in our collection.Bulb \$3.00. Plant \$1.50
- SUSAN G. TEVIS (Dec) (Bessie Boston)**—This introduction is a rich lilac—a new color—which deepens to the perfect center. The blossoms are held erect on long, stout stems. It is one of the very best introductions from California. An ornament in any garden, and an excellent exhibition and cut flower.
Bulbs \$4.00. Plant \$2.00
- SNOWDRIFT (Broomall)**—This is one of the very best decorative white dahlias that we have grown. A very deep built, immense flower, with broad waxy, pure white petals. The bloom opens quickly, remaining perfect for a long time. A giant in size.Bulb \$1.00
- SHUDOWS LAVENDER (D) (Boston)**—Cleans up the show of the Dahlia Society's of California 1925 by winning the prize for the most beautiful and perfect Dahlia. A beautiful lavender blossom of exquisite coloring. The flowers are of large size, held erect on long stiff stems high above the unusual lace-like foliage on a vigorous plant.Bulb \$3.00
- SUSAN LEE (D) (Bissell)**—A monster flaming orange flower that will make everybody stop when they visit your garden if you grow this variety. The stems are stiff, but not long enough to make a cut-flower, but if you want size, grow this new dahlia. First prize largest flower class in several of the Eastern shows.
Bulb \$3.00
- SANHICAN BLUEBIRD (D) (F. & M.)**—The nearest approach to a blue dahlia we have seen. The color is an uncommon blending. The outer petals at maturity are bright violet-blue, while the center retains the violet tint. It is a bloom of very large size, erect on strong wiry stems. We highly recommend this dahlia as something different and a winner.Bulb \$3.50. Plant \$2.00
- SANHICAN RUBY (D) (F. & M.)**—Large attractive 1925 introduction that is sure to please. Color is a deep shade of "Pigeon's Blood" suffused with bronze. Petals pointed and fluffy, thickly placed to form a very full flower. Very large bloom on stiff stems.Bulb \$2.50. Plant \$1.50
- SANHICAN GEM (D) (F. & M.)**—A grand specimen of a giant decorative. Color is a delightful shade of old rose, thickly suffused with amber in young state. At maturity it is a clear old rose shade. The petals are large and thickly placed, true staghorn type. One of the best.....Bulb \$5.00. Plant \$2.50

- TOMMY ATKINS (D) (Besten)**—The color is described as flaming scarlet—so full of metallic lustre that it fairly glistens in the sunshine. The large, deep blossom is attractively formed and is not stiff and formal. The flowers are held erect on cane stiff stems. **Bulb \$2.00**
- THE PRESIDENT (D) (Jones)**—One of the most attractive flowers in our garden. A deep velvety red, the point of the petals tipped white, making a most charming dahlia. Always in demand. **Bulb \$2.50. Plant \$1.50**
- THE EMPEROR (D) (Marean)**—This beautiful flower is sure to please those who admire a deep solid color. It is a maroon of finest type and a prize winner of merit. Sold in 1922 for \$25 per bulb. **Bulb \$3.00**
- TRENTONIAN (D) (F. & M.)**—This is a giant decorative that we won the prize with for the largest dahlia in the Beverly, Mass., show 1925. It was an outstanding dahlia in the garden, beautiful foliage, large bloom, stiff stems and a new color. A wonderful blending of old gold, amber and coppery bronze of marvelous brilliancy, with a central zone of reddish bronze. Awarded Certificate of Merit at the trial garden of The Dahlia Society of New Jersey, scoring 89 points. A winner anywhere. **Bulb \$7.50. Plant \$3.75**
- WANDA MILLER (D) (Kindfleisch)**—A new dahlia. The same color as "Our Country," deep purple with white tips, never sports to solid color, large flowers held erect on very long stiff stems. Early and a free bloomer. Stock limited. **Bulb \$3.00. Plants \$1.50**
- WARREN'S JUMBO**—This is an immense gold decorative, one of the most fascinating dahlias that we have seen. The stems are stiff. We highly recommend this dahlia as one of the very best, and worthy of a place in the finest collection. Stock is very limited. **Bulb \$5.00. Plant \$2.50**
- WONDERLAND (D) (Bissell)**—This is truly a wonder. We have seen no other dahlia of the same color combination, violet carmine petals with creamy white reverse curled and twisted at tips. We exhibited this flower at the Boston show and it surely made a hit and was one of the finest in the show room. The bushes are always loaded with bloom not less than 8 inches and some over 10 inches. If you are looking for something different than your neighbor grows, try this one. **Bulb \$5.00. Plant \$2.50**
- WIZARD OF OZ (D)**—A giant, the color is a rare shade of glowing amber pink, soft in tone. The originator says, "have never forced for size, yet have had blooms over 11 inches. It should go 12 or 13 inches in diameter." **Plant \$2.00. Bulb \$1.00**
- WORLD'S BEST WHITE (D) (Murphy)**—One of, if not the best whites on the market at this time, considering size, freedom of bloom, stems and substance. Mr. Murphy's best white to date. **Bulb \$2.50. Plant \$1.50**
- WM. SLOCOMBE (D)**—One of the older varieties that is still very popular. Color sulphur yellow, large flowers held erect on good stems. One of the best that grows at the price now offered. **Bulb \$1.00**

Dear Friend:—You have looked through this interesting catalog and we trust that it has been of as much interest to you as it has been to us in having the privilege of preparing and sending it to you. We trust it may be the means of us becoming better acquainted. We have made our prices as low as possible for quality stock. Our collection contains many of the world's finest dahlias, but you may have in mind some variety not listed. If so, we would be pleased to quote you prices of varieties not listed of the newer introductions. We thank you.



Kindly write your Special Instructions on a Separate Sheet.

ORDER SHEET

Issued by

SUCCESS DAHLIA GARDENS

171 FERRY STREET, LAWRENCE, MASS.

Date Amount Enclosed

Your Name
(Write it plainly, Ladies will please use the prefix Miss or Mrs.)

City Street

State County

Shall we substitute for any that are sold out ?

About what date do you want them shipped ?

FILL ALL THESE BLANKS

HOW MANY BULBS	NAME OF DAHLIA	PRICE	
		\$	c



