

Historic, archived document

Do not assume content reflects current scientific knowledge, policies, or practices.

62.71

1826



U. S. DEPARTMENT OF AGRICULTURE. Penalty for private use to avoid the
payment of postage, \$300.
Official Business.

Please Read Order Instructions

ORDERS placed early are the ones that generally have the best selection of the stock on hand. Late orders often are not being filled complete, as stock will run out sometimes. The use of order sheet is a time saver to you and the sender—helps to avoid errors.

☞ **COMPLAINTS**—We strive at all times to be accurate in filling orders, but errors may occur and we are always glad to rectify same if advised timely. When stock arrives have the parcels opened quickly and, if errors have been made, advise us at once so that we may have the opportunity to correct same immediately.

☞ **Shipments** will be best forwarded by express wherever possible, unless they are very light or small. While in transportation they are insured for safe arrival unless shipped by parcel post, when extra insurance has to be paid for.

☞ **All orders** must be prepaid or satisfactory reference furnished. Remittances may be made by personal check, post-office orders or bank drafts. Plant orders of \$10.00 and over will be prepaid.

NON-WARRANTY IS CONDITION OF ALL SALES MADE

☞ **We give no warranty** as to nature, description, productivity or general success with plants or shrubs and bulbs sold by us. These are conditions beyond our control, and those who do not accept our stock on these terms must return same, as there is no sale made thereof.

☞ **Local Customers** may order by phone and deliveries will be made within reasonable time anywhere in the city.

☞ **SUBSTITUTION**—We will not substitute varieties out of stock for your order unless you have order sheet marked indicating that some other similar variety may be sent if the one selected cannot be had.

LANDSCAPE ART

and Timely Hints About This Science



A NEWLY constructed building, be it a modest bungalow or a fine, costly residence, has an appearance of stiff formality and bareness, lacking altogether that inviting, cozy, cheerful effect that a well-planted yard will produce if wisely arranged, and of all investments that a home calls for, **GOOD LANDSCAPE PLANTING** is the only one that will **increase in value** as time goes on.

☛ Yet there is a vast difference in the manner that grounds are planted, for one may see yard after yard where shrubs overcrowd each other or have outgrown their location so that they look seedy and out of place.

☛ This condition is invariably due to lack of experience and poor selection on the part of those who undertake the planting. An ambitious nursery salesman may have run riot at the customer's expense in his planting advice and only time will tell of the errors made.

☛ Those who are not wise to the intricacies of landscape planting will always do best by consulting men of known reputation with the experience and knowledge required for such purposes and then avoid the disappointment that always follows poorly conceived or illy arranged plantings.

☛ Often the idea of low cost to begin with appears very alluring, yet never fails to deceive in the end and frequently means total waste of money and material used.

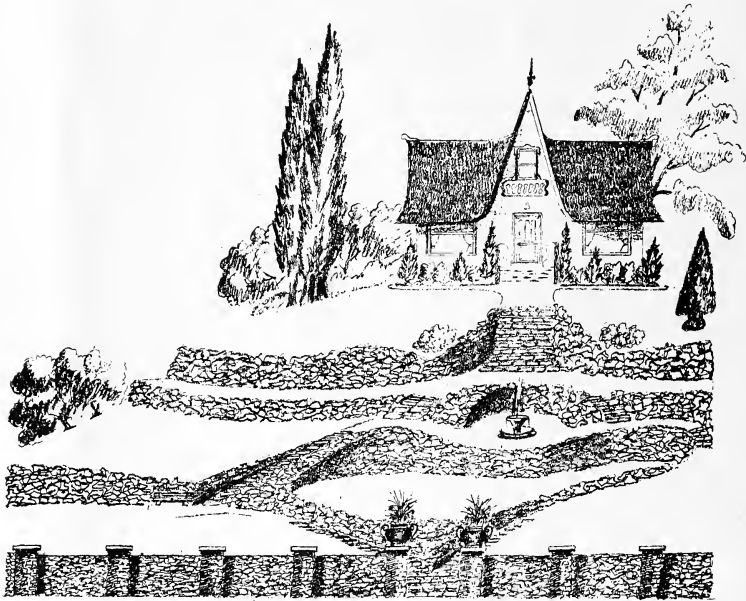
☛ Good material and skilled service are invariably the surest way to real economy, for when the desired results are obtained right from the start the cost is usually very reasonable in the end.

☛ Many plantings are poorly balanced. Often one sees yards planted with nothing but green shrubs—no color effects and monotonous in appearance. A really effective planting should combine shrubs, hardy flowers, bulbs and annuals, and as the seasons change the effects in the planting will reflect the march of nature by corresponding timely color changes.

☛ Such plantings mean real **garden art** but are the product of **MASTER GARDENERS** only, for this takes genuine knowledge of Nature's laws and way of developing. Such skill is rare and worth inquiring after.

☛ Well-done planting appeals to the human mind, and the property value of a home is vastly increased when its outside appearance fairly radiates Nature's beauty in vegetation. October to March is the best planting time, but with care it can be done in every month of the year.

☛ Consultation with Portland's Master Gardener is easily arranged for by writing or calling Swiss Floral Co., East 5370.



Where the Need of Fuller Planting Is Apparent

MUCH of present day planting may consist of evergreen species such as the following list. By their use yards may look attractive the year around and still be colorful and varying so that a planting will not become monotonous. Of course greater charm is obtained when these evergreen shrubs are used as a background for flowers such as perennial plants (listed separately) or even summer flowers will enhance the beauty of a yard by their masses of cheery colors in front of the more massive evergreen foliage.

¶ Almost any individual taste may be gratified by proper selection if made personally. When plantings are made on the suggestion of some salesman calling at your door you nearly always obtain a stereotyped effect that you may discover later on to be a duplicate of many other yards. For this reason we strongly advocate individual and personal selection whenever possible so that your garden reflects somewhat your individuality.

¶ Prices of shrubs hereafter listed vary largely, and depend much on the size, age or perfection of specimens. Often a few larger specimens are on hand but not listed or some smaller ones may be had than are listed. Personal selection will always assure greater satisfaction, as much information of benefit to the planter can also be given by the employees serving you.

¶ Shipping costs must be assumed by purchaser, and when shipped by express they are insured against loss at no additional expense. Orders of \$10.00 or over will be prepaid within a radius of 50 miles of Portland, while in the city free delivery is made to your door.

¶ Planting of orders will be done within the city limits at a reasonable fee covering the gardener's time for the work done. Orders for planting cannot always be accepted on short notice as weather conditions often derange labor schedules. We therefore ask that you inquire somewhat in advance to make arrangements for planting service

¶ Fertilizing of soil is often of great benefit or even essential to success with shrubs or flowers. We gladly make suggestions in the matter of what fertilizers to use or the quantity needed, and in many instances will supply the suitable kinds if we find it possible to do so.

Proper Planting Seasons



EVERGREEN shrubs that are transplanted with soil on their roots will grow readily if transplanted any time between October and April. With special care and effort they can be transplanted even during summer. Those shrubs that lose their leaves during the winter can be transplanted with bare roots from October to March or until such time that they start growing again.

☐ Tulip bulbs, Narcissus, Hyacinths—in fact all spring flowering varieties—will only bloom normally if set out before December. Later planting results in short stem flowers, abnormally small or crippled, if they bloom at all. The earlier they are planted in fall the better the results, if soil conditions are right. Gladiolas and other late flowering bulbs are not hardy and must be set out when heavy frosts are not to be feared any more.

☐ All shrubs, flowering during the spring, cannot be expected to flower normally the first season after planting, for the growth of the flowers depends upon perfect root action, which is not yet established. Please bear this in mind when such shrubs show nothing but weakly, puny flowers the first season.

Practical Hints on the Watering of Newly Planted Stock

ALL IMPORTANT is the watering of newly planted trees and shrubs during the first weeks of dry weather, usually early in April. Few persons think of watering at that time, as the soil is generally moist, yet the root system, being unestablished, cannot find enough to sustain life when dry March or April winds start blowing. By the time the average person observes the suffering of the newly planted stock it is already seriously damaged and the result is a partial drying up of the leaves or a stunted growth for the balance of the season. **MOST LOSSES IN EVERGREEN SHRUBS ARE DUE TO ABOVE NEGLECT.** **Non-warranty clause of every catalog** is largely based on the feature above indicated and similar influential conditions.



☐ When planting shrubs or trees during the fall a real soaking or flooding in of the root system is usually enough. Use of hose without nozzle is best. Let water run and form pool around newly planted specimen, as in this manner the soil packs down firmly around the root system and greater success is certain. For spring planting such flooding in may be required two or three times at intervals of ten days. Watering with sprinklers is very often only surface watering and a mere deceptive performance, causing frequent loss of things planted.

☐ To be sure that the watering has been ample, take a trowel and dig into the soil eight or ten inches deep to see if the water has soaked in deep enough. Such examinations



furnish sure proof of correct watering, for if the surface of the soil only is dampened the plants are being stunted without the owner becoming aware of it.

☛ Once the roots are well established, plants are able to stand some drying out for short periods without much damage, but **never** while they are **not** established.

Descriptive List of Broadleaf Evergreen Shrubs

Abelia Rupestris—Neat, glossy foliage of bronzy hue, with graceful branches, flowering during late summer. White bells and bronzy bracts. Height 10 to 24 inches. 75 cents to \$1.50 each.

Aralia Sieboldi—A Japanese shrub with leathery, glossy, large leaves of tropical appearance. For coast climate only. \$2.50 to \$5.00 each.



Aucuba Japonica—Japanese gold dust laurel. Large rubber plant-like foliage of leathery substance, dotted with yellow

spots. Especially adapted to heavy soil and shade. Will grow under trees if given water in dry weather. The most satisfactory slow-growing evergreen for local climate. \$1.50, \$2.00 and \$2.50 each. Also a green-leaved form, often bearing large red berries, same price as preceding.

THE HARDY EVERGREEN CRIMSON AZALEA

Azalea Hinodegiri—This is the brilliant crimson red, dwarf flowering shrub so much admired during early March, when they are completely covered with their masses of flowers. Very slow growing and need a loose, sandy soil. Small plants, 6 to 9 inches, only \$1.25 each. A few specimens at \$5.00.

AZALEA NOVELTIES OFFERED FIRST TIME—PORTLAND GROWN

Azalea Kurume, Christmas Cheer—A new type of Japanese Azalea with larger flowers of brilliant Christmas red hue.

Azalea Kurume, Coral Bells—A delightful coral pink color with semi-double flowers.

Azalea Kurume, Pink Pearl—Semi double flowers of exquisite salmon pink color, light green foliage.

Azalea Kurume, Macrostemma Salmonea—Larger foliage than preceding, of deeper salmon shade.



Shrubs of Finest Choice Grace This Stately Home

Azalea Kurume, Debutante—Fine shade of rose.

Azalea Kurume, Yayegiri—Salmon red, large flowered.

All above listed Kurume Azaleas are novelties never before grown in Portland, but are showing the same characteristics as the well-known bright crimson evergreen Azalea Hinodegiri and will grow under the same conditions as far as known to us. Stock is however limited and we reserve the right to limit orders to not over three plants with any order for other kinds of shrubs. No order for Kurume Azaleas only will be accepted until we have a larger stock on hand. Plants vary in size from 6 to 10 inches, well branched and are modestly priced at \$1.50 each.



Azara Microphylla—Very small leaved, graceful evergreen shrub, too little seen in local gardens. Bears fragrant flowers

and orange berries when fully matured. Each, \$1.25.

Andromeda Japonica—Dwarf evergreen shrub with small, shiny leaves and bearing clusters of white Lily-of-the-Valley-like flowers in early spring. Young foliage often bronze colored. Requires sandy or peat soil. Small plants, \$1.50 each.

Bambusa Aurea—Golden bamboo; a very fine, graceful shrub for foliage effects. Clumps, \$1.50 to \$2.50 each.

EVERGREEN BARBERRIES

A wonderful collection of Evergreen Barberries, the finest ever offered in any catalog of this region. These shrubs are not recommended for territory east of the Cascade Range.

Berberis Buxifolia—Dwarf, compact, dark green foliage. Very fine for border shrub. 75 cents to \$1.50 each.

Berberis Darwinii—Small, glossy foliage, somewhat holly-like, with bronzy cast, covered in spring with golden yellow little bell-like flowers. Very charming. \$1.00 and \$1.50 each.

Berberis Gagnepainii—Handsome foliage, acquiring reddish tint during winter, upright growing character. Very fine for south exposures and dry locations. \$1.00 and \$1.50 each.

Berberis Knightii—Rather large, glossy, leathery foliage of attractive shape, upright growth with long, spiny thorns. A fine shrub too little known. \$1.50 each for fine plants.

Berberis Sanguinolenta or **Sanguinea**—A new variety from China of rather dwarf character with dark green massed foliage.

Berberis Stenophylla—Rather tall, spreading grower with small elongated, dark green, leathery leaves and rich golden yellow blossoms produced in handsome sprays along the branches. Must be planted in gravelly soil and sunny locations. \$1.50 each.

Berberis Stenophylla Compacta Gracilis—A charming dwarf compact form with dense, very dark green foliage and small yellow flower. Exceedingly fine border shrub for gravelly soil. \$1.00 and \$1.50 each.

Berberis Pruinosa (New)—Evergreen shrub, branches brownish yellow. Leaves ovate oblong to 2 inches long; flowers, yellow; fruit, bluish black. Each \$2.00.

Berberis Levis (New)—Evergreen shrub to 5 feet tall. Bright yellowish gray branches. Leaves narrow lanceolate, dark green above, light green beneath. Flowers yellow, fruit black. From Western China. Each \$2.00.

Berberis Tricanthifolia—A rare semi-dwarf shrub with graceful foliage, light green color, and narrow, sharp-pointed leaves. Fine for large rockery. \$1.50 each.

Berberis Verruculosa—A very handsome dwarf form of compact growth with small crinkly holly-like leaves with glaucous shade on under side of leaves. The handsomest Barberry known. \$1.50 each.

Berberis Wilsonii—A densely fine-branched shrub with bluish-green foliage, covering itself with masses of small, red berries during the winter of a unique shade of color. Very thorny but of attractive appearance. 75 cents to \$1.50.

All of the above listed Barberries require a sunny location and should be sheltered in extreme weather, prefer an open and perhaps gravelly soil; will resist drought. A collection of one of each kind at special price of \$10.00 makes a worthy addition to any garden adapted for these interesting shrubs.

BOXWOOD BORDERS

Buxus Sempervirens (Boxwood)—For bordering walks or beds, the best low-growing evergreen shrub known. Has small, dark green, leathery foliage. Will grow best in rich soil, and prefers shady location. Stands clipping well and can be pruned to any shape desired.

Small plants, 4 to 6 inches, 25 cents; dozen, \$2.50.

Small plants, 6 to 8 inches, 30 cents; dozen, \$3.00.

Small plants, 8 to 12 inches, 35 cents; dozen, \$3.50.



Boxwood Pyramids—These are neatly clipped, pyramid-shaped bushes, well adapted for planting in urns at entrance of buildings or for feature specimens in yard where formal effects are desired. Size 18 to 24-inch height, \$4.00 each. Size 24 to 30-inch height, \$5.00 each. Globe shaped, size 12 to 14-inch diameter, \$2.50 each.

Broom—See **Genista**.

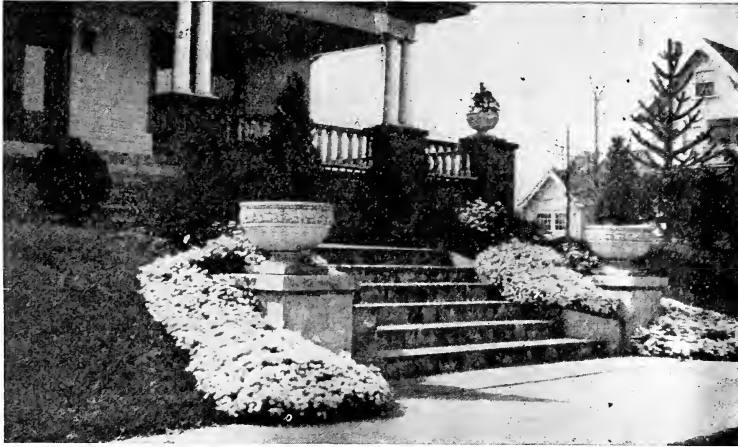
Camellia—This Japanese shrub is now very rare and we have only small plants to offer in very limited quantity at \$2.00 each.

Cassonia Aurea—A rare Australian shrub, much branched with heather-like foliage of a yellow tint. Needs protected location. Each, \$1.00.



MEXICAN ORANGE

Choisya Ternata (Mexican Orange)—This is the finest of our broad-leaved evergreen shrubs with leaves somewhat clover-



Effective Entrance Planting

shaped, of leathery substance, very glossy, of particularly attractive rich green color. It grows rather profuse and 4 to 5 feet high. Bears during April great quantities of white orange blossom-shaped flowers without perfume, however. It is a charming shrub to have, due to its usefulness for fine cut foliage during the winter months, once the bushes attain a fair size. This winter pruning will not hurt them and the elegance of its foliage for decorative effect has no equal and is very lasting. This is a new feature of usefulness of this shrub and garden lovers all will appreciate same when this fact is once recognized. Its hardiness will permit it to be grown in the Willamette Valley, but not east of the Cascades, as zero weather kills it. Very fine plants, 18 to 20 inches high, \$1.50 to \$2.00.

COTONEASTERS

Cotoneasters are our finest berried shrubs for producing winter color in the garden. The following selection is the best so far offered in this city.

Cotoneaster Angustifolia—A rather large growing, narrow leaved shrub with foliage glaucous underneath, producing great masses of rich orange berries, retaining their color all winter. In full fruit, it is one of the most magnificent berried shrubs, somewhat thorny. Needs gravelly soil and sunny location. Small plants, 75 cents. Larger sizes, \$1.50 to \$2.50.

Cotoneaster Horizontalis—Low spreading growth, profusely covered with scarlet berries. Drops its foliage during winter. Fine for covering steep banks. Requires fertile soil. 50 to 75 cents.

Cotoneaster Microphylla—Of creeping nature with tiny evergreen leaves of glossy dark green texture, covered during the winter with masses of carmine red berries. 50 to 75 cents each.

Cotoneaster Microphylla Thymifolia—Resembling preceding with leaves similar to those of thyme. This variety is little known as yet. Small plants, 75 cents; larger, \$1.50.

Cotoneaster Franchetti—A rather large-growing, gracefully branched shrub, covering itself with bright red berries during the winter. Its arching, graceful, pendant branches give a shower-like effect of colorful beauty for landscape settings, and its liberal use cannot be too strongly recommended. Leaves are evergreen with glaucous under-surface. Fine plants from \$1.00 to \$2.00 each; \$10 to \$18 per dozen.

Cotoneaster R. Henryi—This is a new, large-growing variety, with dark green, willow-like leaves and drooping branches. \$2.50 each.

Cotoneaster Salicifolia Floccosa—Evergreen shrub of spreading habit. Shiny, willow-shaped leaves with under surface tomentose grayish. Berries bright red in clusters. Each \$1.50.

Cotoneaster Horroviana—A newly discovered variety from China, resembling greatly the variety Franchetti, but bearing larger clusters of red berries, and more of an upright character. Only small plants available at \$1.00 each.

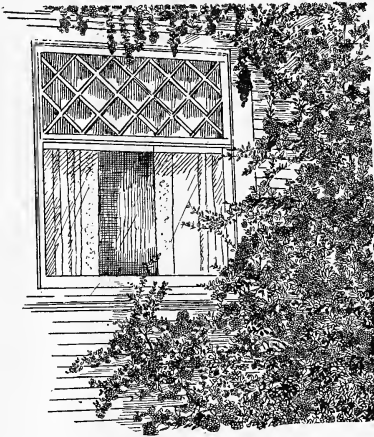
Cotoneaster Dammeri (Humifusa)—Low creeping evergreen, fine for trailing over rocks. Bright green leathery leaves. Branches studded with scarlet berries of

pendant character. Small plants from 50 cents to \$1.50 each.

Cotoneaster Pannosa—Upright, rather large growing, of spreading habit with foliage of silvery gray underneath, producing red berries in great profusion. Each, \$1.50.

Cotoneaster Schneiderii—A recent introduction from China of rather compact, bushy character. Its nature is yet to become known. \$1.50.

Cotoneaster Dielsiana Elegans—A new species from China. Upright, spreading branches. Foliage ovate, semi-glaucous below with shiny surface. Berries in pendulous clusters, bright coral red. \$1.75 each.



Firethorns for Decorative Effect Are Unsurpassed. This picture shows the result of one bush set out a few years ago by S. F. C.

Crataegus Pyracantha Lalandii (Lalands Firethorn)—Bright orange red-berried evergreen shrub with stiff, upright-growing branches, completely covered with berries during the winter months. This is beyond question the finest shrub to grow for winter color, and thrives well against south walls. Its gorgeous mass of berries needs to be protected against the migrating birds in late fall, as they often strip them. A covering of mosquito bar for a short period while the birds are gathering is the best preventative measure. Fine plants \$2.50 each; small sizes, \$1.50, and some larger specimens at \$5.00 each.

Crataegus Coccinea—Slightly smaller foliage with bronzy cast when young and

glossy. Berries smaller of brilliant crimson hue. Not nearly as hardy as preceding kind. Each \$1.50.

Crataegus Yunnanense—A larger leaved more irregular and spreading growth with large bright red berries. Fine for specimen among shrubberies. Large plants, \$2.50 each.

Daphne Odora—The sweetest of all fragrant flowering shrubs with handsome glossy leaves and producing small clusters of light pink waxy flowers very early in spring. Will grow in sun or shade. Foliage is slightly variegated, yellow edged. Very hardy. Needs good soil. Small plants with several branches, \$1.50; larger specimens, \$2.50 each.

Daphne Odora Alba—This variety is more vigorous and taller growing. It flowers a little later, and its perfume is somewhat stronger, and distinct from the pink form. A wonderful companion to preceding kind as it prolongs the flowering season perhaps two weeks longer.

Escallonia Virgata—An upright growing shrub with branches terminating in panicles of small white flowers late summer and fall. Needs sheltered location and is fine against red chimneys. Medium size plants, \$1.00 each.

Escallonia Rosea—Glossy foliage with branches of rather low spreading character, each terminated with a cluster of cheery pink flowers produced all summer long. Needs sheltered situation. 75 cents each.

Erica Vagans (Cornish Heather)—Upright growing gracefully branching shrubs with clusters of rose pink flowers at end of branches during summer. \$7.50 and \$9.00 per dozen; 75 cents and \$1.00 each.

Erica Mediterranea (Scotch Heather)—A low growing, finely branched shrub, covering itself with masses of bright pink flowers from end of January to March, according to season. Particularly handsome for rockeries or borders along steps. Must have a loose soil and will not thrive in limy clay ground. 75 cents and \$1.00 each.

Erica Carnea—Similar to preceding but more dwarf in growth, and bearing denser masses of red flowers. This is without question one of the finest rockery shrubs to be had, and when planted in open, porous soil is a real gem of nature beauty during the earliest spring days. Each \$1.00.

Erica Vulgaris (Calluna)—A loosely-branched shrub; low growing, with masses of rose pink flowers along the stems during summer months. 75 cents each.

Euonymus Japonica — Upright growing evergreen with glossy roundish leaves, very dark green. Will grow in shaded location as well as in a sunny one. May be clipped to formal shape. Small plants, 50 cents; medium, 75 cents; larger, \$1.00 each.

Euonymus Japonica Argentea — Leaves silver edged. 75 cents each.

Euonymus Japonica Macrophylla Aurea—Larger leaved, more spreading growth.

Euonymus Japonica Aurea — Compact dwarf grower, golden marked leaves.

Euonymus Japonica Erecta—Dark green, erect growing.

Euonymus Japonica President Gauthier —A beautifully white-leaved form with yellow and green shadings.

Inquire for prices on the four preceding varieties.

Euonymus Japonica Radicans Argentea—Low creeping shrub that also will cling to stone walls or tree trunks like Ivy with handsome small white variegated foliage and where exposed to sun takes on beautiful bronzy pink tones during the winter. It can well be used for covering slopes, in rockeries or on walls and tree trunks in stead of ivy. 50 and 75 cents each.

COLLECTION OF BROOMS

The Spanish Broom, known as *Genista Hispanica* or *Spartium Junceum*.

Genista Hispanica—This is the so-called Spanish broom of unique, upright growth, with very sweet-scented flowers from July to frost. It is a very graceful cutflower to use in bouquets and its delightful fragrance is a charm of much merit. It is best planted in sunny locations and should be severely pruned each spring for best flower production. We have some very fine, strong bushes at \$1.50 each and smaller ones at \$1.00 each.

Genista Tinctoria—Rather dwarf, compact, much branched shrub of bright green color with yellow flowers along the branches. Strong bushes, \$1.00 each.

Genista Scoparius Alba—This is the white Scotch broom of tall growing nature, producing fairy-like showers of white flowers of exquisite gracefulness. It also is a fine variety for cutting, often blooming for Mother's Day. Used among other

shrubs, it forms a beauty spot wherever seen. Very strong shrubs, \$1.25 each; small pot-grown plants, 35 cents. Should be planted during fall and early winter only.

Genista Andreana—Red and gold colored broom. Small plants only available this season. 35 cents each.

Genista Daisy Hill—Peculiar chocolate and cream colored flower, producing a pink effect seen from the distance. This is the most unique colored broom known to gardens. Small plants only from pots at 50 cents each.

Genista Praecox—The earliest variety of broom to flower in spring. Of a delightful cream color and rather dwarf growth. Plants from pots, 35 cents; strong bushes, \$1.00.

Hypericum Calycinum — Low growing shrub of bright green foliage and branches, bearing single yellow flowers during the summer. Its fast spreading habit makes it useful for covering of banks or strips of ground near buildings. 25 cents each for small plants; larger specimens, 50 cents.

Hypericum Moserianum—Flowers similar to preceding but more wax like and forming shrub of a taller character, flowering until very late in the season. Strong bushes, 75 cents.

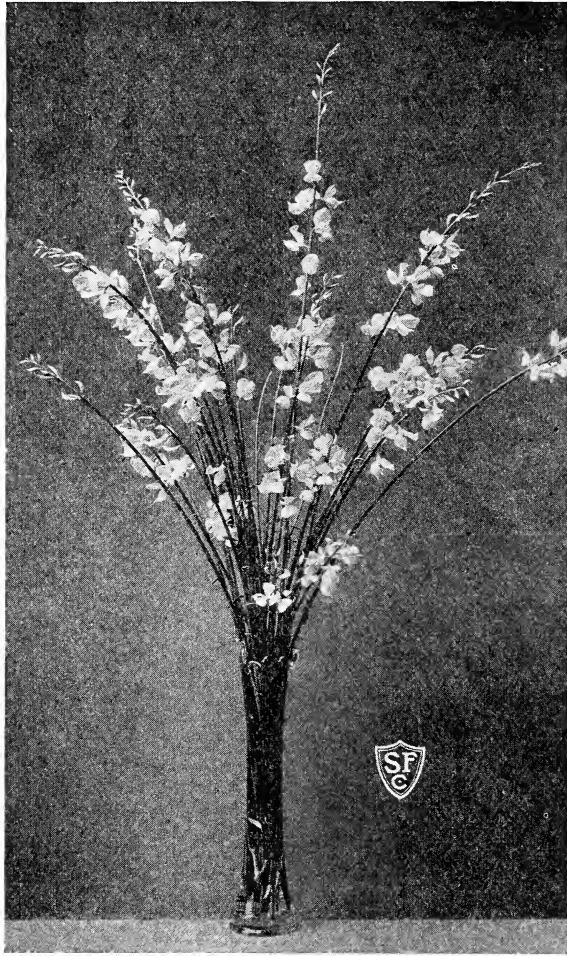
Ilex or Holly—Hollies are on hand in many sizes, ranging in price for berry-bearing specimens from \$2.50 to \$10.00. The latter are exceptionally well branched, compact trees, literally covered with berries and weighing with their balls of earth between 100 to 200 pounds.

Laurus Nobilis—This is the genuine bay-leaf shrub, the foliage of which is used for seasoning. It is a wonderful evergreen shrub for sheltered locations, rarely ever seen, although it has lived through very severe winters. We have this noble shrub in small sizes only, priced 50 cents to \$2.00 each.

Laurus Cerasus—The Common English Laurel. Fine for hedges and high background planting. Large, dark green, glossy leaves. Priced from 50 cents each to \$1.50. Large specimens to \$2.50 each.

Laurus Lusitanica (Portuguese Laurel)—Smaller dark green shiny leaves, rather compact, neat growing. \$1.00 to \$1.50 each.

Laurus Tinus—One of our early spring flowering evergreen shrubs with handsome clusters of flowerbuds forming during fall and taking a reddish color which



Cutflowers of Spanish Broom

then changes to white when the buds come into bloom, often in January. Plants from 75 cents to \$1.50.

Ligustrum Ovalifolium (California Privet)
—Fast growing evergreen shrub for use as background or large hedges. Produces formal effects if frequently clipped. Fine specimens, balled, 75 cents and \$1.00 each; young plants, 25 cents each.

Ligustrum Ovalifolium Aureum—This is a fine golden leaved form, very attractive and showy in sunny locations, where its color becomes particularly brilliant. Evergreen shrub plantings acquire more life and charm if a color feature such as this

privet is used judiciously. Our stock ranges in many sizes, priced from 50 cents to \$2.50 each.

Ligustrum Chinensis—A small leaved, much-branched, attractive variety of Privet. Very strong bushes, \$1.50 each.

Ligustrum Vulgaris (Common English Privet)—Used for hedge planting. Only 15 cents each, \$12.00 per 100.

Ligustrum Lucidum Tricolor—A silver-leaved form of Japanese Privet, rather rare in local gardens. \$2.00 for strong balled bushes.

Lonicera Nitida—Densely branched, small

glossy leaved, dark green foliage. Very effective and neat, especially when clipped and grown in heavy, rich soil. Fine, shapely shrubs, 75 cents to \$1.00 each. Will thrive in shade as well as in sunny locations.

Mahonia Aquifolia (Oregon Grape)—This well-known evergreen is very attractive when grown in sunny locations where its bronzy winter color is really handsome. Will also thrive in shade where other shrubs frequently fail. Handsome, large plants, \$1.25 and \$1.50 each.

Pernetta Mucronata—This is a heather-like shrub with small, scaly-like, bright green foliage, growing somewhat taller than the heather and bearing various colored berries the size of huckleberries. Needs an open or sandy soil and sunny location. \$1.50 for neat, compact specimens.

Pittosporum Tobira—A dwarf Japanese evergreen shrub resembling *Daphne* with somewhat similar flowers produced late in the spring and a fragrance of unique charm. Cream colored flowers. Needs sheltered situation and is worthy of space in the finest gardens. Neat plants, \$2.00 each.

Rhododendrons Hybrids—Unnamed seedlings, very thrifty young plants, well branched, \$2.00 each. Some large specimens, grafted stock, assorted colors, \$10.00 each.

Skimmia Japonica—A rare dwarf shrub from Japan with small, exceedingly fragrant white flowers and glossy, leathery foliage. Needs a porous or sandy soil. Will thrive in partial shade. \$1.50 each to \$2.50 for best stock.

Umbellularia Californica—The spice or Myrtle tree of southern Oregon. Inquire for prices.

Ulex Hispanica—So-called Garze. A very spiny, bright green shrub with sprawling branches covered with broomlike yellow flowers. Will grow in the poorest of clay or sand soils. \$1.00 each.

Veronica Buxifolia—This dwarf New Zealand shrub is very fine for border planting with its compact, dense masses of bright green foliage, not over 8 to 10 inches high. Small plants 25 cents and 50 cents each.

Veronica Carnosula—Semi-dwarf, fat, round leaves, very dark green. Flowers pink. Small bushes, 50 cents; larger specimens, 75 cents.



Cypress Veronica

Veronica Cupressoides—This grows almost cypress-like into globular, neat blue-green bushes and makes a very fine border shrub. Up to 2 feet high, 50, 75 cents and \$1.00 each.

Veronica Ericoides—This has heather-like small dark green foliage and grows to 2 feet high. Neat plants, 50 cents; some large specimens, \$1.00 each.

Veronica Menziesii—This has gray-green foliage and is one of the hardiest varieties. Nice plants, 50 cents; large, \$1.00 each.

Veronica Pimeleoides Glauca—Very dwarf, compact growth, rich blue-green. 50 cents each.

Veronica Traversii—This is the largest of the kinds that are hardy here in the coast climate. None are hardy east of the Cascades and in severe winters they are frequently frost-damaged, yet seldom killed outright. This variety produces masses of white flowers in early summer and its neat, symmetrical foliage appeals to many. Will grow 3 to 4 feet high. 50 and 75 cents each.



ATTENTION

A collection of 6 varieties of Veronica, two of each, makes an interesting purchase of a dozen shrubs at \$3.50 plus \$1.00 for packing when same have to be shipped.

Deciduous Hardy Flowering Shrubs

These lose their leaves during the winter.

Almond Flowering—This double flowering, light pink shrub is one of our earliest bloomers and very charming. Strong bush, \$1.50.

Althea, Rose of Sharon—Very fine late summer flowering bush, growing rather tall and flowers have somewhat the appearance of hollyhock blossoms, single and double, according to variety. Its proper name is really Hibiscus. We have three distinct sorts at \$1.25 each for very strong specimens.

Azalea Mollis—The early flowering yellow and orange flowering shrubs, blooming before the young leaves appear. \$1.50 and \$2.00.

Berberis Thunbergii—This is the Japanese Barberry, acquiring brilliant fall coloring, before shedding their foliage. 75 cents each.

Buddleya Magnifica—The butterfly shrub, of large, rapid growing character, branches terminating in long purple spikes of fragrant flowers during late summer. 75 cents each.

Calycanthus—Spice shrub, with dark reddish-brown flowers. 75 cents each.

Clerodendron Trichotomum—A Japanese rather large growing shrub for dry locations. It has almost heart-shaped leaves

that emit a fragrance when young, recalling the odor of peanut butter (when bruised). Its flowers are somewhat star-shaped, white, and set in bronzy bracts. A very interesting and unusual bush seldom seen. Various sizes from \$1.00 to \$2.50 each.

Cherry—Japanese double flowering. We have a limited number of fine grafted standard forms at \$3.50 to \$5.00 each.

Cydonia (Japanese Quince)—This brilliant scarlet, early flowering shrub is the pride of early spring gardens. Grows to large size and may be pruned to hedge size if needed. Various sizes from 75 cents to \$1.50 each.

Deutzia Crenata—Upright spring flowering shrub with clusters of white flowers along the branches. 75 cents each.

Deutzia Gracilis—Dwarf growing form with masses of small white flowers during early spring. 75 cents each.

Deutzia Gracilis Rosea—A pink flowering form. Same price as preceding.

Cornus Spaethy—Richly gold and yellow variegated shrub of spreading nature. Very well adapted for partial shade. \$1.50 each.

Evonymus Alatus—Spindle shrub. An upright growing semi-dwarf shrub with foliage turning a rich red towards fall. \$1.50 each.

Forsythia—One of the first yellow flowering shrubs in early spring with branches carrying little yellow bells in clusters. A much-spreading shrub that also may be used to cover walls. 75 cents each.

Hydrangea Arborescens—This produces snowball-like flowers, cream white, during midsummer on tall, slender branches. 60 to 75 cents each.

Hydrangea Hortensis Mont Rose—This is one of the finest French garden hydrangeas with handsome bright pink flowers in profusion. Soils rich in iron change this color to rich blue shade. 75 cents to \$1.50 each.

Hydrangea Mme. Mouillere—A beautiful large white flowering French variety with slightly indented edges on petals. 75 cents and \$1.00 each.

Hydrangea Excelsior—This new importation from France has never been grown in local gardens before, and is vigorous in growth, promising large, showy flowers for next season. \$1.50 each.

Hydrangea Paniculata—This is the Japanese hydrangea with large cone-shaped flowers changing from cream-white to pink and gradually to a rusty bronze shade. These flowers can be cut and dried on the stem and used for winter decoration with striking success. Plant the shrubs in rich soil and sunny location and prune very freely each year to obtain flowers of large size. 75 cents for strong plants.

Hydrangea Paniculata (Tree Form)—These miniature trees are especially effective as single specimens on lawns and become objects of great beauty when in full bloom and of fair size. Trees with fine crowns, \$2.50 each.

Hibiscus—See *Althea*.

Hawthorne (Paul's Double Scarlet)—This small growing tree is one of the beautiful flowering objects for yard planting, being a mass of rich red double flowers in solid cluster usually towards middle of May. Slow growing, forming round heads. Particularly well adapted for specimen tree in the lawn or parkings. \$2.50 each; larger, \$3.50 each.

Kerria Japonica—A tall-growing, slender shrub with double yellow flowers in clusters along the stem in early spring. 75 cents each.

Locust—See *Robinia*.

Lilacs—Common lilacs in lilac and white, 75 cents to \$1.50 each; very large, old specimens, \$2.50 each.

Charles Sargent—Enormously flowered double violet mauve blended with sky blue. A recent introduction of great merit.

Souvenir de Louis Spaeth—The finest of single flowered dark reddish purple varieties existing; produces very long flower trusses.

Leon Gambetta—This double flowered variety is a pink color of very early flowering habit with roundish trusses.

Ellen Willmott—Large, elegant flower spikes, pure white, double.

These are today's best varieties of Lilacs known in the newer sorts. Fine stock ready late December. Price \$2.00 each.

Malus Atrosanguinea (Flowering Crab)—This is the carmine-red flowering variety with dark reddish branches and reddish foliage. Strong specimens, \$3.50; smaller, \$2.50.

Malus Halliana—Hall's semi-double flowering rose colored Crab. Price same as preceding.

Malus Ioensis Flore Pleno (Bechtel's Crab)—Very large double light pink, flowering in late spring. Trees are literally covered with flowers. \$1.50 to \$3.00 each. Flowering Crabs are especially fine as specimen trees in the lawn by themselves singly or in groups. They require little or no care once established but judicious pruning permits of training them to better shape.

Philadelphus Mock Orange, Virginalis—Fine double white, large flowered (novelty), \$1.25 each.

Philadelphus Mock Orange, Sibille—Smaller, more profuse flowering. Fine pink colored novelty. \$1.25 each.

Punica Pomegranate—This is one of the loveliest bright scarlet flowering shrubs known today. Of upright growing character with glossy, narrow leaves. Orange scarlet flowers produced in profusion during midsummer. These greatly resemble a real double fuchsia blossom, but are more waxy in texture. This shrub will grow best in real sunny, hot locations and preferably in gravelly or well-drained soil. Will withstand great droughts. Very strong specimen shrubs at \$2.50 each.

This beautiful shrub, while not a novelty, is rarely ever seen, yet it is a real garden jewel worthy a space in almost every yard where a sunny spot is to be planted.



Punica Pomegranate

Prunus Blirieana—A handsome double-flowering form of *Prunus Pissardii*, of rich pink color and bearing dark bronzy foliage. This new variety has flowers to $1\frac{1}{4}$ inches across. \$2.00 each.

Prunus Vesuvius—This is the purple-leaved plum in its newest and finest variety for dark red colored foliage. Grows to fair size and is covered in early spring with a mass of handsome peach-pink flowers of great beauty. Its rich copper-red foliage keeps its rich shade of color throughout the summer instead of turn-

ing a dull green as the old variety has done. Prices from \$2.00 to \$3.00 each for fine specimens.

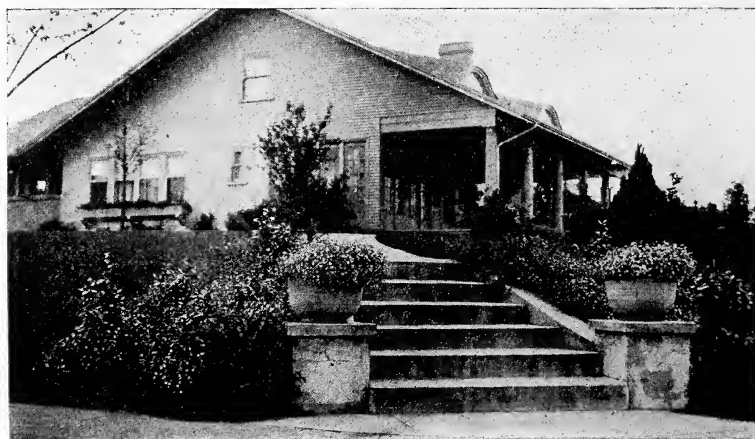
Robinia Hispida or Moss Locust—This form of locust tree is thornless and its branches are covered with a hairy form resembling moss. The chief charm are its satiny pink clusters of flowers resembling in shape the Wisteria but not so long. Flowers are produced very profusely along the branches during summer and for real charm and floral beauty this small growing tree is unique. Top grafted trees from \$2.50 to \$5.00 each.

Robinia Inermis—This variety of locust is also thornless and its unique character of growing globular heads makes it a formal tree of exceptional type. A few fine specimens available, only \$3.50 and \$7.50 each.

Syringa—See Lilac.

Sorbus Aucuparia (the Mountain Ash)—This bright red-berried, graceful-leaved tree is one of our finest berried shrubs for this climate. Its oval-shaped outline makes it particularly desirable for planting in small parkings. Young stems, 5 to 6 feet, \$1.00 each; dozen, \$9.00.

Sorbus Aucuparia Pendula—This is the weeping mountain ash, a tree of spreading pendulous branches, irregularly formed crown. During fall this tree is covered with large red berries in clusters, producing a shower effect in scarlet. While little known, it is one of the most striking features in landscape settings on sloping grounds where, if properly arranged, it may produce a regular cascade effect of scarlet berries, something impossible to obtain with any other tree existing today.



Shrubs and Flowers Well Combined

Only a few specimens grafted over ten years ago now available. \$7.50 to \$15.00.

Spiraea Froebeli—A new variety of recent introduction from Europe.

Spiraea Thunbergii—White, flowering in the earliest spring with small, bright green asparagus-like foliage, turning a rich yellow to red towards winter, if grown in sunny location. An excellent dwarf shrub for large plantings. 75 cents each.

Spiraea Anthony Waterer—This is another dwarf-growing form of spiraea, covered with flat clusters of a magenta rose flower in great profusion nearly all summer long. 75 cents each.

Spiraea Van Houttei—The true Bridal Wreath Spiraea of the eastern states. Tall growing with drooping-over branches, covered with innumerable clusters of tiny white flowers during spring. 75 cents each.

Spiraea Cariopteris—The so-called Blue Spiraea. A low, grayish-leaved, rather compact-growing shrub, covering itself during September with clusters of light blue flowers of great attraction to bees. 75 cents each.

Snowball—See **Viburnum Sterile**.

Tamarix Africana—This large-growing shrub with its very fine thread-like foliage is a shrub of peculiar charm and bears masses of fine mist-like flowers, a pale rose-pink. Foliage and flowers are exquisite for picking. 75 cents to \$1.50 each, according to size.

Tamarix Aestivalis Glauca—Has fine bluish green foliage. Price same as above.

Viburnum Sterile or Common Snowball—This well-known shrub or small tree needs no description. Price \$1.00 and \$1.50 each.

Viburnum Davidianum—A recent introduction, little known here. \$2.50 each.

Weigelia Rosea—This large-growing shrub is one of the finest flowering bushes for garden planting, where lots of space is available. Their masses of pink flowers all along the branches are bell shaped with tube. Flowering season extends from during May to June.

Weigelia Rosea Variegata—Flowers similar to other, but leaves are marked white and yellow.

Weigelia Eva Rathke—This is a dark red flowering variety.

Price on all Weigedias is 75 cents each for strong plants.



Cottages as Well as Finer Homes Improve Their Appearance Where Shrubs and Flowers Grow

Conifers or Needle-Bearing Trees

THESE are trees and shrubs of endless variety and beauty, well adapted for planting in home grounds under all sorts of conditions. They are easily cared for, an occasional pruning or shearing being about all that is needed when once established. Planting of them may be done at almost any time of the year, if it is done carefully. The richly varied texture and tints of their foliage is of great charm and no planting should be without at least some of the Conifers, as often in winter they are the finest things visible for miles around.

Our assortment is more prevalent in the small sizes and transplanting is more successful when small than with larger specimens. All are well balled with ample soil on their root system. For spring planting great care must be taken to water them well into the ground, and keep them well moistened for the first few months after planting.

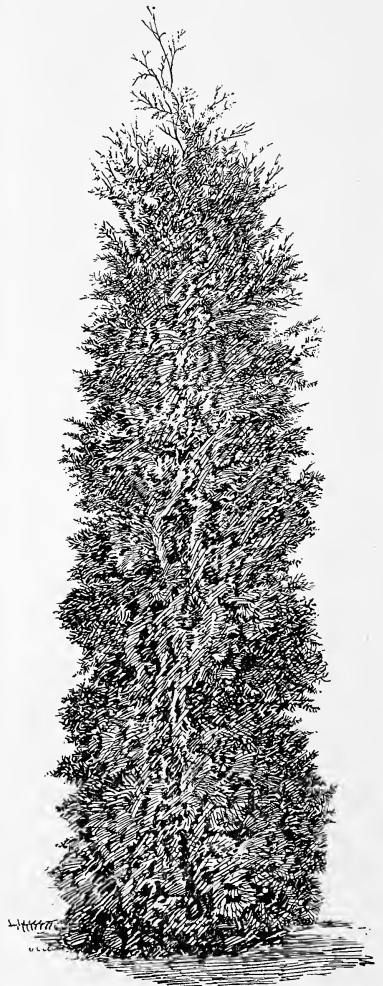
Abies Concolor or Blue Fir—This very formal, symmetrical-growing tree is much admired for its large soft needles of a rich blue-green or glaucous color. Fine specimens, 4 to 5 feet, \$7.50 each.

Cedrus Deodara (Deodara Cedar)—This soft-needled, bluish-green tree with somewhat pendulous branches is the most graceful of evergreens for the yard. 18 to 24 inches, \$2.50.

Cryptomeria Elegans—This is the most elegant of all Japanese needle-bearing trees. Its feathery branches with somewhat billowy outlines of tenderest blue green have a charming feature of changing their color towards winter, when they acquire tints of bronzy red, varying in intensity according to temperature and season. This chameleon-like feature is of great value to gardens in winter, for with the passing away of floral beauty, yards planted with this tree will again acquire new color combinations of much charm and with the appearance in spring of flowers the color of the Elegant Cryptomeria returns to its normal shade of soft blue-green. Other conifers have a trace of this interesting habit but none so distinctly pronounced as this tree from Japan, well named by the scientists as ELEGANT Cryptomeria. Fine, stocky, compact plants, 12 to 18 inches, \$1.50 to \$2.00; 18 to 24 inches, \$2.50 to \$3.00; larger specimens, \$5.00 each.

Cryptomeria Japonica—This bright green, soft-needled tree is of upright growth, retaining its same color of foliage at all seasons. Its beauty may be much enhanced by an occasional clipping, making a denser foliage. Its rapid growth is a pleasure to watch. 24 to 30 inches, \$2.50 to \$3.50.

Cryptomeria Araucarioides—This is a dwarf, very rare form, appealing to those who admire the odd and unusual in trees or shrubs. Foliage bright green, resem-



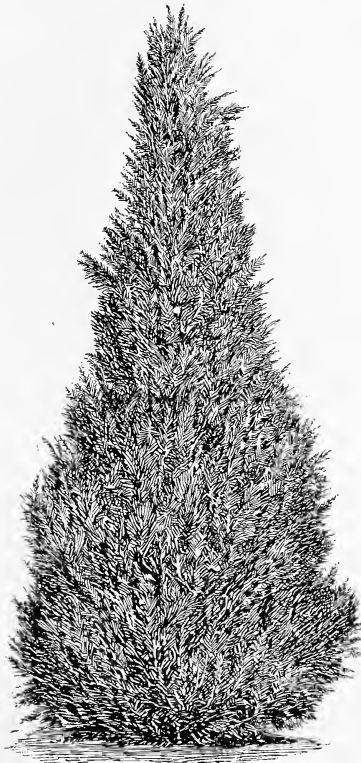
Conifer Tree

bling in some degree the Araucaria or Norfolk pine. 6 to 12 inches, \$2.50 to \$3.50.

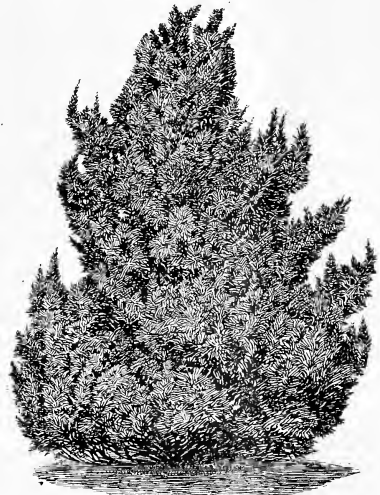
Chamaecyparis Lawsoniana (Lawson Cypress)—This most popular of evergreen trees is one of the garden's stateliest conifers. A fairly rapid grower, with loose, rather pendulous branches, which cover themselves in early spring with minute little red catkins or male blossoms, giving the appearance of reddish dew for a short time only. Color of foliage, gray-green to blue-green. Sizes from 3 feet to 4 feet 6 inches. \$3.00 to \$5.00; 18 inches to 30 inches, \$2.00 to \$3.00 each.

Chamaecyparis Alumii—This erect-growing, rich blue-green form is of pyramidal shape and much used for formal effects. 18 to 24 inches, \$2.00 to \$3.00 each; 24 to 36 inches, \$3.00 to \$4.00.

Chamaecyparis Erecta—Similar to preceding with exception of color, which is a deep rich green. Same prices; larger size, 48 inches, \$6.00.



Lawson Cypress



Cham.-pisifera Plumosa

Chamaecyparis Lawsoniana Minima Glauca—This tiny, very dwarf form is a real pigmy among Cypress trees and a collector's object of Nature's art. It is compact in foliage, of oval outline and blue-green color. A real gem that will not outgrow any yard, no matter how small. Rare. \$3.50 each.

Chamaecyparis Lawsoniana Nidiformis—This is another very rare form of great merit, especially in rock gardening, for its habit is of prostrate nature, all the little branches overlaying each other in a circle, forming a nest-like appearance from whence its botanical name. Color of foliage blue-green with gray stripings below not visible from above. Full grown it may not exceed 12 inches in height. \$3.50 each.

Chamaecyparis Lawsoniana Globosa—This ball-shaped form of Lawson Cypress is a very practical garden form and also for planting in pots and urns where globular outline is desired in a conifer. Fine plants, \$2.50 each.

Chamaecyparis Belle of Boscoop—This form of Lawson Cypress is distinguished by its loose yet erect growth of a rich blue-green color. It grows to fine large-size trees. 30 to 36 inches, \$3.00 to \$3.50; 36 to 42 inches, \$3.50 to \$4.50, according to perfection in shape.

Chamaecyparis L: Wiselii—Erect blue-green form of distinct formation in branches terminating in triangular formation. Rare small plants, \$2.50 each.

Chamaecyparis Pisifera Plumosa—Formerly *Retinospora Plumosa*. This handsome, blue-green, feathery evergreen from Japan is of tall-growing character, at times spreading pyramidally. Its striking brownish winter coloring is one feature little observed and much misunderstood, yet a valuable feature for landscape effects. Pruning is of great value in this type as it then becomes a full branched specimen of much finer surface texture. Sizes from 18 inches to 36 inches at price of \$2.00 to \$3.00 each.

Chamaecyparis Pisifera Aurea—This is a golden form of the preceding with similar features except that its surface coloring is of yellowish tint. Same price as former.

Chamaecyparis Pisifera Type—Forms loosely-branched pyramids with foliage resembling *Thuja Orientalis*, yet akin to the *Plumosa* variety. 18 to 24 inches, \$2.50 to \$3.50.

Chamaecyparis Pisifera Squarosa—This is a dwarf, compact form with nearly moss-like, finely divided foliage of rich blue-green color, sometimes slightly tipped with bronze during winter. In small sizes it is beautiful as a potted shrub, and also elegant for windowbox-filling for the winter season. 4 to 6-inch size, 75 cents; 8 to 10-inch size, \$1.25 to \$1.50; 12 to 18-inch size, \$2.00 to \$3.00.

Chamaecyparis Squarosa Veitchii—Very soft, finely-branched variety of preceding with blue-green colored foliage. Growth loose, billowy, irregular and growing into pyramidal massive shape with old age. A very handsome conifer and perfectly hardy. 18 to 24 inches, \$2.50.

Chamaecyparis Obtusa Ericoides Sanderii—A globose to oval shaped, growing type with bluish-gray fine foliage, making neat compact plants in their early stages. 8 to 12-inch plants, \$1.00 each; large specimens, \$6.00.

Chamaecyparis Obtusa Lycopodioides—The Club moss cypress of odd and varied form. Inquire for prices.

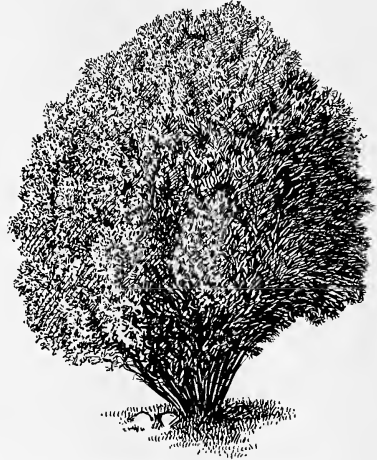
Chamaecyparis Obtusa Selaginoides—Another very rare form. Inquire.

Chamaecyparis Thyoides Variegata—Curiously variegated and branched kind of white Cedar for collections of conifers. Slow growing. 18 inches, \$3.50.

Cupressus Arizona—The Arizona Cypress is a tall-growing, fine-leaved, richly blue-green shaded form. Its graceful, plummy branches make it one of the garden's greatest show trees. They may be left to grow of their own accord or those who love more compact foliage may have the tree clipped occasionally, which causes a thickening of the branches with

corresponding increase in formality of outline. Fine young specimens, 15 to 18 inches tall, \$1.50.

Cupressus Goveniana—A beautiful bright green colored foliage with the fineness of asparagus fern, rather rapid growth. Pruning will increase its juvenile beauty and retain compactness of foliage. 12 to 15 inches, \$1.50 each.

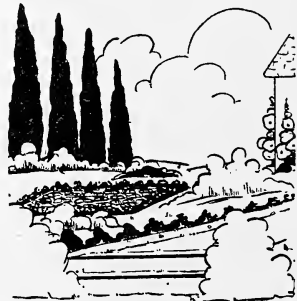


Chamaecyparis O. E. Sanderii

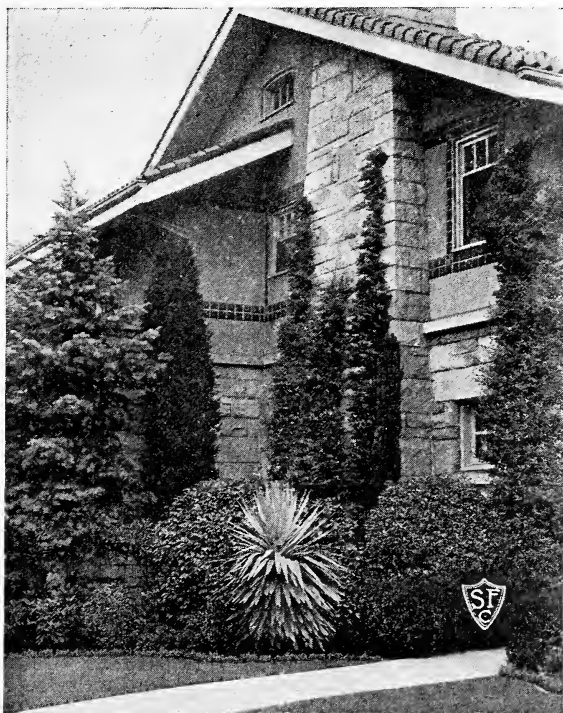
CYPRESS TREES

Cupressus Sempervirens—The true Italian Cypress. Seedlings 12 to 13 inches, \$1.50 to \$2.50; larger specimens available after February, 1926, 4 to 5 feet, \$3.50 to \$5.00.

Juniperus Chinensis—A compact rich blue-green growing Chinese juniper of attractive formal outline. 12 to 15 inches, \$2.50; 18 to 24 inches, \$5.00.



Juniperus Hibernica—The Irish Juniper is a tall columnar growing tree with gray-green needles, well adapted to dry, sunny locations. 18 to 24 inches, \$2.50 each; 24 to 30 inches, \$3.00 each; 48 to 60 inches, \$6.00 each.



Grouping of Evergreens

Juniperus Sabina Prostrata Tamariscifolia

—This is a very choice type of creeping Juniper with rich blue-green foliage, especially adapted for slopes. Very fine, small plants at \$2.50 each.

Juniperus Sabina Prostrata Variegata—creeping form with some of branchlets tipped light yellow or white. Large specimens, \$3.50 each.

Juniperus Sabina Pfitzeriana—Peculiar gray-green form with spreading, ascending branches. \$2.50 to \$3.50 each.

Juniperus Kosteriana—This is a form of the Virginian Juniper with spreading branches of pendulous nature. \$3.50 each.

Pinus Thunbergii—Japanese variety of Pine resembling the Austrian Black Pine and very fine. Strong, healthy specimens at \$2.00 to \$3.00 each.

Scyadopitis Verticillata—The true Japanese Umbrella Pine. One of the most attractive and unique conifers known with long, broad needles in clusters at end of branches, forming an umbrella effect. Very slow growing. 18 to 24 inches, \$5.00 each.

Thuja Lobbii—This beautifully variegated Alaska Cedar is one of the best trees

for the garden where colored foliage is desired. Very robust and rather rapid growing, it however is well adapted to pruning and may be kept within bounds by occasional clipping. 18 to 20 inches, \$2.50; 24 to 30 inches, \$3.50 each.

Thuja Orientalis Nana Aurea—Dwarf golden Oriental Arbor Vitae. This is a very compact, low-growing tree with rather formal outline, mostly oval or pyramidal. The tips of the closely-crowded branches are golden yellow at certain seasons, especially in late spring. 10 to 12 inches, \$2.25 each.

Thuja Orientalis Compacta—Dwarf Oriental Arbor Vitae. A neat, bright green globose or pyramidal shaped small evergreen. 15 to 18 inches, \$2.00 to \$2.50 each.

Thuja Obtusa—Japanese form of Arbor Vitae with graceful leaflets expanding in rounded form horizontally, then slightly pendant. Color very dark green. Extremely slow growth. Especially fine for specimens in the lawn where they cannot be overgrown by other faster-growing trees or shrubs. Special prices.

Thuja Obtusa Aurea—Similar to preceding except color is a rich golden yellow. Special prices.

Roses and Rosebushes

MANY books have been written on the subject and much remains yet to be told. But a yard without some roses growing in it cannot pretend to the name of garden, for they are the queens of flowerdom.

TIME TO PLANT—Almost any time from October on is right for planting them till March, when growth begins again.

FERTILITY OF SOIL—Roses will only be thrifty and worth while, if the soil is made rich; planted in poor ground, they are a disappointment.

PRUNING—All young bushes when received must be cut back very short in order to make a normal growth. Do not be afraid to cut to within 6 inches from the ground all of the branches and the weak ones, remove them altogether. This may sound radical, but a trial may prove the wisdom of it. Once established, you need not prune quite so short.

Never leave rose bushes newly purchased dry at the roots before planting—that may cause partial or total failure. Dip the whole bush in water when received in case the least indication of drying out is perceived. You may leave them under water for six to twelve hours before planting. It helps them immensely if they have suffered during transportation.

SELECTION OF VARIETIES—Roses are listed in specialists' catalogs in nearly a thousand varieties, simply bewildering in their variation, yet from the practical standpoint the average garden is best served if the assortment is less than two dozen, for then more flowers of a kind can be gathered than if only one bush of a kind is grown.

The following represents the cream of today's fine and practical rose varieties, including some of the latest new ones that have proven their merit. Those who do not find sufficient assortment in this list will be gladly furnished additional kinds as we are able to supply nearly one hundred varieties on orders at current market prices.

Write us for your special favorites. Our plants are all two-year-old grafted stock with the exception of a few vigorous kinds on their own roots.

Constance — Cadmium yellow buds, streaked orange crimson; flowers large; foliage rich glossy green. Each 75 cents.

Duchess of Wellington—Rich saffron yellow with reddish glow. Very large, well-formed bud of fine, long-pointed shape. 50 cents each.

Golden Emblem—Rich golden yellow. Very large double flower. Of recent introduction. \$1.25 each.

Irish Elegance—Beautiful, long, slender buds, of apricot shaded pink color. Single flower when open. Graceful cutflower. 75 cents each.

Irish Fireflame—Very fine single rose of rich orange color shaded red. 75 cents.

Juliet—Richly fragrant, very double rose, inside of petals scarlet, reverse side old gold. Very effective tall-growing rose. 75 cents.

Isabel—Carmine shaded orange, fine long bud, graceful cutflower. 75 cents.

Lady Hillingdon—Deep apricot yellow, finely formed buds on slender stems, blooming profusely all summer. 75 cents each.

Los Angeles—Flame pink toned with coral red shaded gold at base. Very large fine formed flower. Somewhat fragrant. 75 cents.



Louise Catherine Breslau—Very large full flower of delightful chrome yellow with coral red shading and large glossy foliage. 75 cents.

Mme. Edw. Herriott—Coppery red shaded bright pink, very fine pointed buds of long lasting character and continuous bloomer. 75 cents.

Mrs. Farmer—A recent introduction of richest brown, yellow inside, with reverse side of petals coral yellow. Very effective and distinct free flowering rose. Each, \$1.50.

Miss Lolita Armour—Large full flower, coppery orange shading to shrimp pink with age. New. \$1.25.

Ophelia—Light salmon shaded rose, very finely formed bud and continuous bloomer, semi-double. 75 cents.

Padre—This is a novelty of finest long pointed buds with rich coppery color, turning to tyrian rose when its large semi-double flowers are expanded. Free blooming and resembling Mme. Ed. Herriott somewhat in its glorious beauty. \$1.50.

Queen Alexandra—A very large peony shaped rose of most unique coloring, being a rich distinct shade of vermilion red on inside of petals while the outside of them is a fine shade of old gold, giving a striking two-tone color scheme. Recent introduction. \$1.50 each.

Souvenir de Claudius Pernet—Beautifully formed rose, light sulphur yellow early in the season with richest cadmium yellow once the weather is warm enough. Recent introduction. \$1.50.

Sunburst—Finely shaped with graceful buds, deep yellow towards center of flower, lighter on the outer surface of petals. 75 cents.

Uprichard (Betty)—A strong growing novelty of upright vigorous character, free flowering. Petals salmon pink to carmine inside while reverse is coppery carmine with orange glow of charming effect. \$1.50 each.

WHITE ROSES

Frau Karl Druschki—This grand large flowering vigorous growing rose is to date still the purest white, perfectly formed variety in existence. 50 cents each.

Kaiserin Augusta Victoria—Extremely free flowering, very double, finely shaped rose, of creamy white with yellowish glow in center of bud. A very desirable rose for all gardens, as it flowers continuously from early spring to frost. 50 cents.

Mrs. David McKee—A vigorous, upright growing rose of fine shape, and white, well-formed flowers produced on stiff branches. 75 cents.

RED ROSES

Chateau de Clos Vougeot—This remarkable rose is not a free grower, but its red color is the most striking among all roses, being a fiery red, the center of petals being overlaid with a deep maroon red of intense hue, giving them an almost black glow of unusual attraction. Bush branching rather low, and spreading of distinct appearance. 85 cents.

General McArthur—A nice, free growing red rose, very sweet scented and blooming throughout the whole season. 75 cents.

Gruss an Teplitz—This old rose is still much admired for its vigorous strong-growing character. The foliage showing a bronzy tinge during summer, and its masses of brightest scarlet flowers semi-double and cup shaped all during midsummer, make it a fine hedge rose. 50 cents.

Hadley—This deep velvety crimson rose is today's most popular variety for cut-flowers. Blooms very freely and is of excellent shape. Richly fragrant. 75 cents.

Hoosier Beauty—Also a crimson scarlet variety of very sweet fragrance and lovely shaped buds, long lasting; a garden favorite that ought to be planted wherever roses are grown. 75 cents.

K. of K.—Long, exquisite shaped buds of the most intense geranium red. Unique and brilliant color. Single flower when open. Free flowering all season long. 75 cents.

Ulrich Brunner—This grand old garden rose is still one of the finest large red fragrant roses with much resemblance to the famous American Beauty. Its vigorous upright growth, and branches almost thornless make it a very pleasing cut-flower, with long stems, and the blossoms last a long time. 50 cents each.

PINK ROSES

George Ahrends—This rose, of very vigorous growth, is called the pink Druschki, due to its resemblance in growth to that famous white variety. Large flowering, bright pink. 75 cents.

Mlle. Cecile Brunner—The popular baby rose with its tiny, wonderfully shaped, pink buds of tea fragrance, is always a popular variety for cutting, blooming freely all season long. 75 cents.

Columbia—Large bright pink, very fragrant flower with shrub of upright growing nature. Awarded gold medal in local trial gardens. 75 cents.

Mme. Caroline Testout—The well-known pink garden rose of large size flower, constantly blooming. 50 cents.

Mrs. Chas. Russell—Very fine, deep pink, almost red, well formed bud of long shape and lasting quality. Fine, stout branches for cutting. 75 cents each.

Lady Alice Stanley—A very thrifty growing bush with fine well-formed flower of a rich coral pink on the outside of petals and rich silvery rose inside, making a splendid effect. 75 cents.

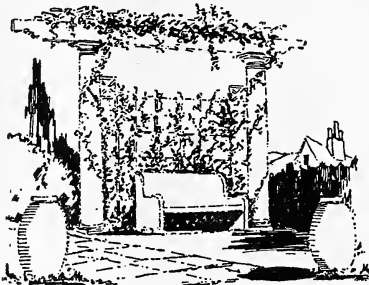
Mme. Leon Paine—Flower of large size, Testout-like, but fuller and of a fine shade of salmon pink. 75 cents.

Premiere—Very fine pointed bud, large double flower of rich deep pink with a strong fragrance. Nearly thornless. 75 cents.

Rose Marie—This is one of the finest formed roses in existence, with delightful fragrance and a very lasting flower, continuous bloomer. Color a rich uniform deep pink shade. 85 cents.

CLIMBING ROSES AND VINES

American Pillar—A wonderful growing rose, with clean, glossy leaves of darkest green, producing clusters of single roses of bright cerise red, with center mass of golden stamens. One of the most effective mass-flowering roses for covering walls or trellises. 75 cents.



Climbing Roses

Billiard et Barre—A rich deep, yellow-flowering climber, with large blossoms produced throughout the season. The finest of yellow climbers. \$1.00.

Climbing Cecile Brunner—This small flowered form resembles the dwarf Cecil Brunner but its flowers are slightly larger and less elegant, yet it has a wonderful clean foliage, and free, profuse growth. 75 cents.

Dorothy Perkins—Omitted owing to its mildew habit.

Dr. Van Fleet—Very fast, rank growing rose with clean, glossy foliage, and semi-double light pink flower. 75 cents.

Kaiserine (Climbing)—This very large double flowering cream white rose is a rather conservative grower, yet one of the finest flowering roses among climbers known today. 75 cents.

Pauls Scarlet Climber—This new variety of red flowering climbers eclipses all former red flowering climbers with its superior colored, and fairly large flowers, produced in good sized clusters. Color a rich flame scarlet of long lasting quality, and superior to anything so far known among climbing red roses. \$1.00.

Silvermoon—This is an immense grower with large, glossy, very attractive foliage, and single petaled rose of largest size in cream fading to pure white. Buds before opening are of very attractive shape. Its clean, large foliage is not subject to mildew. 75 cents.

Thousand Beauty (Tausend Schoen)—Among cluster flowered Rambler roses this is unquestionably the nicest variety we have so far, with its beautiful, large sprays of flowers opening almost white, then gradually changing through many shades of pink to nearly red. As a cut-flower rose for decorative purposes it has no equal for beauty and its nearly thornless branches make it a gentle pleasure to gather it compared to the vicious thorns of most other climbers. Plant in sunny locations only. 75 cents.

OTHER VINES

Ampelopsis Veitchii—Known as Boston Ivy, which clings to walls of wood or stones. Colors beautifully during fall in sunny locations. 60 cents each.



Trumpet Vine (*Bigonia Radicans*)

Ampelopsis Quinquefolia—The common Virginia Creeper, very useful for producing shade in a short time or covering

pergolas. Its berries are a slow-acting poison, however, to be avoided where children are about. 50 cents.

Aristolochia Sipo—The climbing Dutchman's Pipe, has large heart-shaped leaves and is a very heavy vine for shade. \$1.00.

Bignonia Radicans—So-called Trumpet Vine, a free-growing climber with divided foliage somewhat like Wisteria. It will cling to walls of brick or wood and flowers best in sunny locations and open, porous soil. Flowers are trumpet shaped, of orange-red color, in clusters of several blossoms. 75 cents.

Clematis Montana Rubens—This rapid-growing, vigorous vine is a beautiful climber for early spring flowering, as its flowers begin to open before the new foliage comes out in spring. Flowers are nearly the size of a dollar, a glistening white overlaid with a shadow of pink. This new form is so far but little known, yet very beautiful. 75 cents each.

Clematis Grandiflora Hybrids—These are seedlings raised from the large flowered, light blue Lanuginos and Nellie Moser. A giant flowering variety with white petals and large pink center through every petal. These seedlings may be expected to vary greatly in character and colors and should be planted in porous soil of limy nature, yet in rich soil, as they are great feeders, if large blossoms are desired. Thrive best in partial shade, with morning sun where possible. Price \$1.00 each.



Euonymus Radicans as a Cover for Brick Wall

Euonymus Radicans Argentea—This Japanese plant or shrub is one of the creepers far too little known and used, as its permanent, small, graceful foliage and habit of growing up over walls, especially in the shade, make it one of the handsomest wall covers known, especially for red brick walls. Its dainty foliage is richly marked with white and in sunny locations it takes on a gorgeous tinge of pink dur-

ing the winter. It is slower growing than Ivy, yet very persistent. 50 cents, 75 cents and \$1.00 each, according to size.

Ficus Repens—This is a greenhouse or indoor vine with very tiny, leathery foliage of persistent character and is of merit for indoor work where a trailing or climbing plant is desired. Plants from 50 cents to \$1.00 per pot.

Hedera Helix—Known as English Ivy, this popular evergreen vine is practical for covering of walls, tree trunks, covering of steep banks and permanent buildings. The prevailing opinion that build-ings become damp when overgrown with green Ivy is largely erroneous as the foliage is closely overlapping, therefore shed-ding all rain and any moisture coming into contact with the wall proper is rapidly absorbed by the fine root system cover-ing the wall surface. To remain neat and compact looking an annual pruning must be done each spring before young growth begins. Making a choice of the right variety is important, as results vary greatly according to kind in use. They are generally slow growing the first season but grow more rapidly from the second season on. Rich ground stimulates their development.

Hedera Helix Dentata—Large, green leaves, best for banks and high walls. Unrooted slips for fall planting, 50 cents dozen; rooted plants, 25 cents each; strong, 50 cents each.

Hedera Helix Cuspidata—Small leaves, finely veined gray-green. 50 cents.

Hedera Helix Sagitifolia—This is an ex-cceedingly graceful small-leaf form with deeply cut lobes, sometimes known as Skeleton Ivy. Rich dark green. Makes an excellent vine for small walls and pergolas, also for growing on frames in pots, as for indoor use it is one of the most resistant plants known. 75 cents for 3-inch pots; \$1.00 for 4-inch potted plants. (Larger specimens accordingly.)

Hedera Maderensis Variegata—A large-leaved form, richly variegated, yellowish white, turning to bronze and pink tints during winter when exposed to sun. Colors best, however, in shade during summer months. A fine potted specimen or covering for tree trunks in the shade. \$1.00 to \$1.50 each.

Hoya Carnosa—The so-called Wax Plant. A tender, indoor vine with stiff, fleshy leaves, making a wonderful trailing, or vining plant to grow in sunny window. It bears clusters of star-shaped, pink, waxy flowers, lasting for a long time. 75 cents each.



Jasmine-Covered Porch

Jasminum Officinale (White Jasmine)—

This graceful leaved vine is one of our best climbers to cover sunny porches. Its white starry little flowers in clusters are produced freely all summer long, and emit the most wonderful fragrance of any flower known. It is also a serviceable cut-flower and a perfectly hardy vine in this climate. Its fern-like, graceful, dark green foliage is beautiful by itself. It is a little slow growing the first season but very rapid afterwards, but demands good soil and requires a generous pruning each spring to remain handsome. Strong vines, \$1; smaller plants, 75 cents.

Jasminum Nudiflorum—This is yellow flowering with somewhat larger blossoms and blooms during the early part of January if weather happens to be mild, otherwise as soon as a few mild days permit flowering. Plant in sheltered location for early flowers. 75 cents each.

Lathyrus Alba and Delicata—These are the hardy Peas, flowering during mid-summer. A very useful ground cover for banks where soil is not rich. Must be cut to the ground each season as deep roots emit new growth each season. They are nice, small, almost sweet pea like flowers, good for cutting. 75 cents each.

Lonicera Belgica—The fragrant Belgian honeysuckle is well adapted for covering walls or fences in locations not too dry or sunny as it prefers partial shade. 75 cents each.

Lonicera Jap. Halliana—Hall's Japanese honeysuckle is nearly evergreen with

somewhat hairy foliage and white flowers changing to yellow when mature. Very rank growing. 75 cents.

Solanum Jasminoides—A half hardy, pretty vine producing little graceful white flowers all during late summer, foliage resembling somewhat the jasmin except larger. Grows rapidly in rich soil and warm sunny location. Must be sheltered to live over winter. 50 cents each, pot-grown plants.

Solanum Dulcamarra—The Bitter Sweet Vine is a rapid growing climber covered with small violet colored flowers followed later with bright scarlet berries in drooping clusters. Foliage very dense with heart-shaped leaves. Plants entirely hardy and profuse growers. 75 cents each.

Stauntonia Hexaphylla—This is a rare Chinese vine with peculiar five-lobed leaves disposed on slender petioles in palmate formation of striking appearance and leathery hard substance. These leaves acquire a weird winter color becoming at times purplish black, then turning green again towards spring. Must be planted in shade only and are somewhat of Honeysuckle nature and very hardy. Rare yet handsome but slow growing. Small plants, \$1.50.

Tradescantia or Wandering Jew—This is a tender plant for indoor use be it as a trailer or vine covering a frame in a pot or indoor box. The red leaved form is a very handsome pot plant and 5-inch pots well filled with plants are a pleasure to grow indoors as they can thrive when

SWISS FLORAL COMPANY, PORTLAND, OREGON

other plants often prove failures. For summer use in rockeries or banks they are of great value. Cannot stand frost, however. Fine made up pots, 50 to 75 cents.

Vinca Minor—So-called green Periwinkle, a low evergreen trailing plant covering itself with pretty blue flowers in early spring. A wonderful plant for covering sloping ground or to trail over low walls where it forms a handsome curtain of green foliage studded with masses of blue flowers. It will also grow in dense shade but cannot thrive well in dry sunny locations being a moisture loving plant. 15 and 25 cents each for potted plants.

Wistaria Chinensis—The well-known wistarias are among our best known climbing vines for pergolas to grow over buildings or on trees. To flower well they must have a sunny location and not receive any water or sprinkling after end of June as their flower buds are formed

during August at which time a slowing up of the flow of sap will produce flower bud formation instead of rank young growth which never flowers. Producing this semi-dormant condition is the real secret of free flowering Wistarias and August is the period to have this occur. A July watering, however, will cause rapid growth and prevent the desired result. Seedlings, thrifty vigorous plants, 75 cents each.

Wistaria Multiflora—Grafted, purple colored, \$2.00 each.

Wistaria Violacea Plena—A double flowering violet colored variety, very fine flowering grafted specimen, \$2.00.

Grafted Wistarias are always disposed to earlier flowering and more profusely than seedlings and are well worth the difference in price as they render service and last more than a life time.



Shrubs and Flowers Make This Spot So Charming



Flower Shopping in Our Greenhouses

FLOWER lovers will find our greenhouses a place worthy of a visit any time, as there are at all times flowers to be seen of uncommon nature. New and rare things are being grown indoors as well as outside. Prices are all reasonable on our great assortment of plants, and the choice is far larger than any store in the city can display. For house plants it is therefore a logical place to go shopping, for ever so often it means that you can practise sensible economy, and enjoy the benefits of a larger assortment, and plants in better health than the average flower store has to offer.

☛ On special days like **Christmas, Easter or Mothers' Day** shopping in our greenhouses is a pleasure, for there is room to get about to see things and more is to be seen, so that it is an economical thing to do when you are intending to buy flowers or plants for special days.

☛ Another feature is that our salesmen are all practical greenhouse men who know what information to give about the nature of plants and their care. The filling of **FERNERIES**, or repotting of plants is done **RIGHT** for the facilities are here and the experienced men also, as there is a **vast difference** between a store salesman and a practical greenhouse man when the subject of plant raising is in question.

☛ All potted plants are shipped by **express only** at purchaser's cost for transportation. We guarantee the safe arrival of all shipments by express. If shipped in any other manner they travel entirely at purchaser's risk. Orders are shipped soon after receipt unless customers wish to have plants reserved for special dates to be shipped, in which case we shall endeavor to carry out instructions as given when this can possibly be done. No reservations will be made unless stock is prepaid.

☛ Deliveries are made to all parts of the city, and when in need of a **floral design** or simply a **bouquet** or **spray**, our service will be found equally as satisfactory for such occasion as the modern store. Greenhouses are not adapted to displays of cutflowers,

yet the arranging of flowers can be done just as effectively as in any store. The telephone is the practical way to place orders if time will not permit a visit or personal selection. All cutflowers in season are to be had and a supply of flowering plants or foliage is invariably on hand.

Anthericum Variegatum—This is the gold-striped so-called air plant, a very handsome, easily grown foliage plant that lives when other plants can hardly exist. It throws up long flowering stems that, instead of flowers, often carry young plants again, hence its name. Very nice. Four-inch pots, 75 cents.



Kentia Palm (Belmoreana)

Kentia Belmoreana—This is the best of graceful indoor palms, on hand in many sizes, of which a very popular one is priced at \$2.50, standing from 24 to 30 inches high in 5-inch pot with six full-grown leaves.

A smaller size in 4-inch pots averages about 20 inches high, with five leaves, at price of \$1.50.

Larger size palms range in price from \$3.50 to \$5.00.

Rubber Plant—Easiest of all house plants to grow. Our fine, healthy specimens, carrying large, glossy leaves right from the pot up, are a delight to see. Under house culture they can readily be washed and kept clean and free of pests which often bother other plants. Plants 15 to 18 inches high carrying 12 fine leaves or more are priced at \$1.50 each. Larger ones accordingly from \$2.00 to \$3.50.



Rubber Plant

For hotels and store lobbies we have generally some very fine large specimens at from \$5.00 to \$10.00 each.

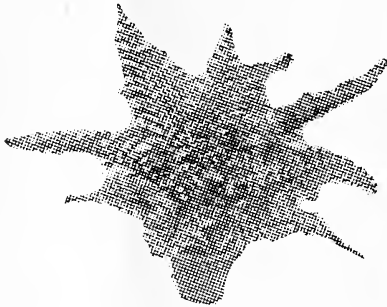


Boston Fern

The Boston Fern—The gracefulness and resisting qualities of a healthy fern make it one of the most desirable indoor decorative plants, yet they must at all times be kept near the light or will soon suffer if kept too dark. Occasional shower baths with luke warm water will help much to keep them happy and healthy as it frees them of dust so pernicious to plant life. Sizes in ferns vary greatly, but our most popular medium size is sold at \$2.00 to \$2.50 each, while the large sizes range

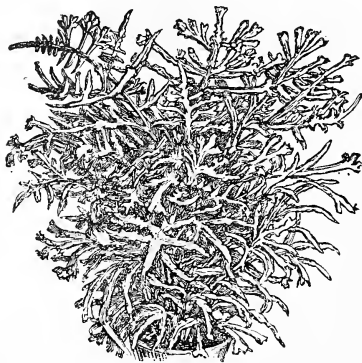
from \$3.50 to \$5.00, and small sizes \$1.00 to \$1.50.

A New Boston Fern is our so-called MOSS FERN. It is the finest, divided moss-like foliage any Boston fern has ever shown, beside which the graceful ostrich plume variety seems to look coarse. For a bright sun room there can be nothing so charming as this moss variety, known to florists as *Nephrolepis Smithii*. Fine specimens range from \$1.50 to \$2.50 each.



Ostrich Plume Fern

Ostrich Plume Ferns—This graceful, much-divided or fringed leaf form of Boston fern has been popular at all times, and is carried in stock in many sizes all the way from 25 cents each to \$3.50.



Staghorn Fern

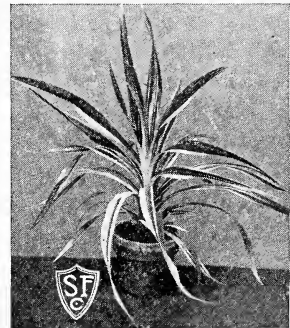
Pteris or Staghorn Ferns—These are entirely distinct ferns from the Boston variety, but are equally, if not more, robust, and easily grown. Most of them have been used in the past for filling of table ferneries, but are also very charming to grow on into large size plants by themselves. They must, however, be kept in front of a window with unobstructed light.

Especially is this true with all house plants during the dark winter months when it is hardest to keep the plants doing well. All ferns must be moist continually, yet never stand in water. The Staghorn ferns are in great variety too numerous to describe here, but all are neat and easy to care for.

Very fine plants range in price from 50 to 75 cents for 4-inch pots. Those in 2-inch pots are used for fern dishes and are priced at 15 cents each. Three-inch pots also make nice plants at 25 cents to 35 cents each.

These can all be readily grown on into large size plants worth many dollars by transplanting them to larger pots whenever the soil becomes full of roots. If you do not have the facilities to do that bring them to our greenhouse and we will gladly do it for only a few cents to cover cost of new pot.

Asparagus Fern—This well-known, old-time plant has lost much of its popularity but not its beauty, so for those who still care for it we can supply them in various sizes priced from 15 cents to 75 cents. With the modern heating systems this plant suffers much from the extreme dryness of the air, and where this feature is overcome, the asparagus fern will thrive as in the earlier days.



Pandanus Palm

Pandanus Veitchii—Lovers of exquisite tropical foliage will find this a plant able to resist the arid superheated air of the modern home and all is needed to keep this plant in good condition is to see that the temperature does not go below 50 degrees at any time. Too much water must not be given it, as it wants moisture in sparing quantity. Its glossy, leathery foliage is hard and shiny and beautifully striped white and dark green. Fine specimens, \$5.00 each.

Begonia Corallina Lucerna—This large, sturdy-growing begonia is one of the much-admired plants in our greenhouses and is also the sturdiest of that group of plants. We have nearly always sizes ranging in price from 50 cents to \$5.00 each, of which the large ones are wonders to behold when fully in bloom. In super-heated air, however, they are not successful, preferring cool, well-ventilated rooms.



Cyclamen

Cyclamen—The beauty of this plant is universally admired, and as pot plants for

indoor flowering they are unsurpassed, provided they are right near a bright window and in a temperature of about 60 degrees or less. Never let them get very dry. Price of these plants ranges from 50 cents to \$2.50 each.

Primula Obconica (Japanese Primroses)—These are great bloomers, which do not know how to stop blooming if given half a chance, that is, if they are given plenty of water and kept in the light at a temperature not to exceed 60 degrees; less is better. Their constant addition of new flower clusters is a pleasure to watch, and their colors vary from almost white through all shades of pink to carmine red. Price of plants varies from 35 cents each to \$2.00 for very large ones.

As seasons change our greenhouses display new flowers too numerous to list here separately and those interested are always welcome to visit in our "Flower Land" that we hope to make in time the greatest floral display house in the state. You are equally welcome as a visitor or as a purchaser. Bring your friends, if you wish, and enjoy a stroll among plants from all corners of the globe in an atmosphere balmy and pleasant with fragrance.

Old-Fashioned Hardy Flowers or so called Perennials

THESE are flowers which, once set out, will thrive and bloom for many years. They provide the garden with colorful effects of endless hues. One can have a constant supply of cutflowers from them, and can plant them, when properly selected, in beds by themselves, in among shrubbery, or as a border for shrubs. They will provide the material for the rock garden, and for all those spots in the yard where flowers are needed to give life and color.

☞ Some hardy plants may be depended upon to flourish and bloom freely the first season after planting, while others take two seasons to get well started.

☞ Most of them prefer a well-prepared, enriched soil, but there are some that also grow in poor soil and dry spots, while others will thrive in shade and wet places and those known as rockery plants will often do best growing over rocks, as they need a gravelly, humus soil.

☞ Cultivation, care, water and the picking of old flowers so that they do not go to seed, is very essential to success with hardy plants, and the brightest minds find a never ending source for study among these flowers.

☞ Those without experience, or with little knowledge of kinds, may do best when purchasing in collection adapted to definite purposes, as, for instance:

- Collection of 12 hardy plants for cutflower production, 6 varieties....\$2.50
- Collection of 24 hardy plants for cutflower production, 12 varieties.... 4.50
- Collection of 48 hardy plants in 12 or 18 varieties..... 8.00

☞ Collections by colors are interesting and can be made as in previous schedule consisting of pink, red, yellow, white, and blue colors. Collections to bloom at certain seasons, be it spring, summer or fall, are practical for some persons who often spend certain seasons away from home. Collections of low border plants, or very tall ones for background, are convenient in certain cases.

☞ In making up these collections we shall make efforts to suit the desired purpose best with suitable varieties. Always state number of varieties and number of plants for each combination wanted.

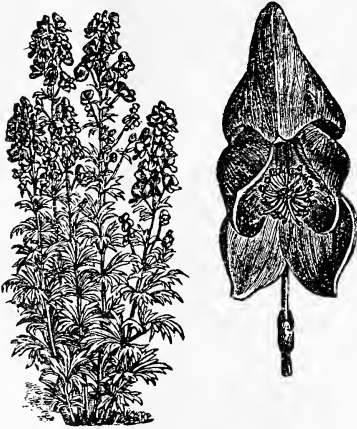
☞ **NOTICE**—When ordering only one of a kind the price per individual plant must be applied, even when 12 or more specimens are purchased. Price per dozen will apply only if three or more of each kind are ordered.

☞ Your attention is also drawn to the fact that our stock of plants is grown in many different fields and places and orders cannot always be assembled at once, at times requiring delays. Shipments will, however, be made at earliest date possible. Placing orders in advance is a wise precaution and insures better service and stock.

☞ See Special Assortment at end of list, page 52.

Descriptive Alphabetical List of Hardy Garden Plants

ACONITUM WILSONII



Tall-growing flower stems resembling Delphinium, with hooded, deep purple flowers.

Alstroemeria Peruviana—This gorgeous Peruvian lily with its richly colored, deep orange and flame shaded flowers, is the finest of our midsummer cutflowers among perennials. The flowers are very lasting when cut and are of graceful, striking appearance. It wants a rich but well-drained soil in sunny location to prosper best, and, once established, is the pride of gardens for many years to come. While very little known it deserves a space in every garden. 50 cents per clump.

AGROSTEMMA CORONARIA

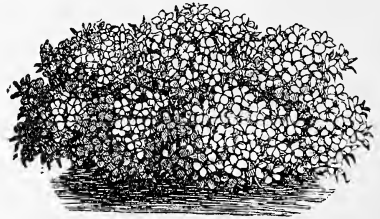
Woolly gray foliage, with magenta red flowers.

ACHILLEA



The Pearl—Pure white, small flowers; fine for cutting in July and August.

ALYSSUM



Saxatile—Early, yellow-flowering, low-growing, border plant.

Petraeum—Yellow flowering rock plant.

Alyssum Rostratum—This is one of the late flowering rockery plants, producing masses of little richly yellow blossoms during summer.

All Perennials unless noted
otherwise
25 cts. each or \$2.50 per doz.

ANEMONE



St. Brigid's Anemone

Anemone Coronaria—So-called Wind-flower. This is a bulbous rooted plant, flowering very early and often during the winter months in sheltered situations. Finely divided foliage with flowers borne on long stems. Fine for cutting. The colors are very brilliant and of endless variations, ranging from white to richest purples, fiery scarlets, pinks of many shades; in fact, it is the finest early garden bulbous plant existing. They require a loose, well-drained soil, very rich in humus, to do their best. We are offering field-grown clumps at 25 cents each.

ANEMONE JAPONICA



Japanese Windflower—This is a late fall flowering plant of very robust habit of growth with heavy foliage and growing to 3 feet high. Rich, porous soils are best suited and a partially shady location is most adapted to them, yet they will also thrive in full sun. Fine for cutting.

Alba—Single, pure white, rather tall.

Rubra—Rosy red, single flowering.

Queen Charlotte—Beautiful semi-double, very large, satiny pink.

Whirlwind—Semi-double, pure white.

Hupehensis—A new variety from China of lower stature than the preceding, of a beautiful mauve color, starting to flower earlier in the season. 30 cents.

AQUILEGIA OR COLUMBINE



Hybrida—Long spurred mixed. A fine perennial for partial shade; good cut-flower.

Glandulosa Superba—Siberian form with dark blue flowers and white center.

Olympica—Native of the Olympic Mountains.

Mrs. Nichols—A very fine new European variety in blue. Each 35 cents.

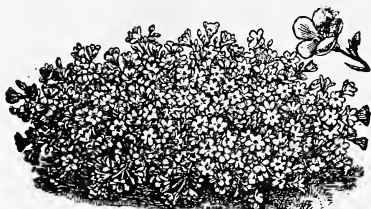
Rose Shades—Fine strain of pink colored types.

ARABIS FLORE PLENO



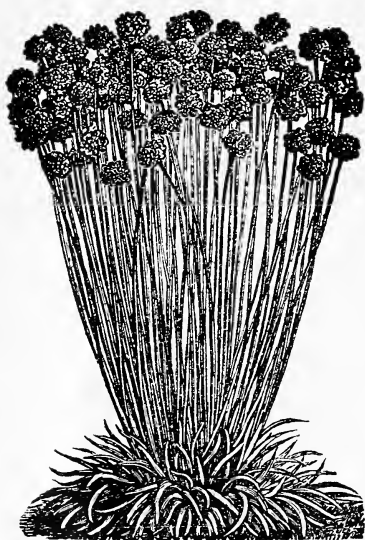
Double Flowering Rock Cress—A very early low-growing white flowered Rock plant that is also nice for cutting.

ARENARIA ALPINA



Very tufted pink flowering rock plant; also for borders.

ARMERIA FORMOSIANA



So-called Seapink or Thrift, low tufted foliage, pink flowers in little balls on long, slender stems.

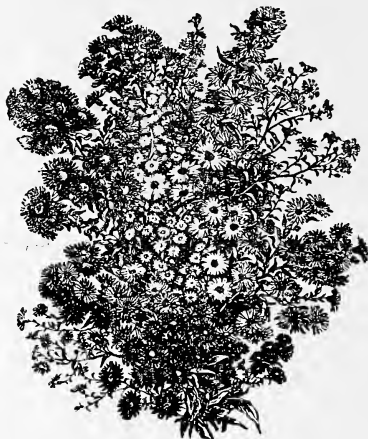
Arrhenatherum Bulbosum Variegatum—

So-called tuber Oat Grass or Spanish Ribbon Grass. Of variegated grasses for the perennial border this is the finest species existing, yet seldom seen. Forms neat clumps of very highly colored white and green foliage making very attractive spots for the rock garden. Small divisions 25 cents.

Asperula Rosea—This very fine leaved plant has almost a moss-like appearance and its tiny pink flowers form a carpet

of dainty pink color over rocks, of charming appearance. The rockery is its logical place.

PERENNIAL ASTER



Climax—Tall, late-flowering, rich blue, with yellow center; very fine for cutting.

Lil Fardell—Tall growing, late flowering, hardy Aster, with bright magenta pink flowers of distinct and handsome hue.

Aster Ericoides Chastity—Medium tall-growing, finely branched in flat tiers, producing sheets of tiny white flowers from September. Plants of this variety not ready till spring.

Aster Perry's White—Tall-growing, large white flowering. Fine for cutting. Companion to Climax.

Aster Mesagrande Grandiflora—Very large flowering, dark purple, late bloomer. Height 2 to 3 feet.

Aster Mme. Michaud—This new French perennial Aster is a semi-dwarf form of beautiful soft lavender pink color and a very profuse bloomer. One of the most distinct and interesting late introductions worthy of space in every garden. 50 cents each.

Mauve Cushion—The latest of all in flowering; pale lavender; very slow growing. Fine for rockery work. Each 30 cents.

Amellus—A perennial late summer flowering plant, producing great masses of small blue flowers; fine for cutting.



Aster Alpinus Roseus—Dwarf rockery plant, flowering in early spring. Plants ready in spring.

Subcoeruleus—A low-growing plant with fine lavender blue flowers and yellow center. Excellent for cutting around Decoration Day. Very handsome.



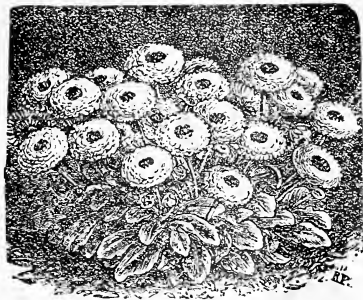
A. Subcoeruleus

Astilbe Japonica Queen Alexandra—This is the gorgeous hardy Spirea with soft feathery light pink plumes of flowers. It is a beautiful perennial that thrives best in damp partly shady locations and rich soil. Strong clumps, 75 cents to \$1.00.

AUBRIETIA, HYBRIDA

This is one of the earliest flowering rockery plants, flowers in many shades of blue and pink. Needs damp situations.

Bellis Monstrosa—Double red quilled. Is one of the fine border plants for spring flowering, producing masses of very double quilled flowers. It is particularly desirable for beds or borders and demands rich soil to be prosperous and large flowering. Price 85 cents per dozen, for fall delivery. Large plants during spring, 3 for 50 cents, \$1.50 per dozen.



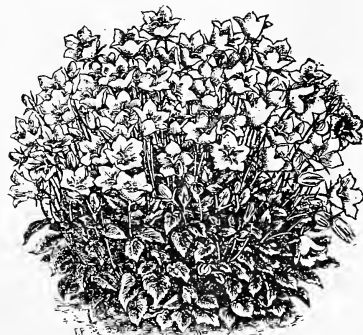
Bellis Monstrosa

Bocconia Cordata—So-called Plume Poppy. A large heart-shaped foliage of glaucous color with tall-growing stems and plummy yellowish tassel of flowers. Effective in large gardens.

BOLTONIA LATISQUAMA

Boltonia—A tall late-flowering, light pink or white flower resembling perennial Asters. A very handsome plant for background planting and really fine for cutting.

Campanula Carpatica—The Carpathian Harebell, with its masses of cup-shaped flowers of rich dark blue color, is one of the finest perennial Campanulas to grow in the garden for rockeries or perennial borders. It does best in a rich soil and wants liberal waterings during the flowering period.



Campanula Carpatica

Campanula Pusilla—A neat, low-tufted Harebell from the mountains, forming small clumps of roundish oval leaves covered by June with masses of small bell-like flowers, elongated, of rich blue color. This is one of the finest of dwarf bell flowers for rockery planting. 35 cents each.



C. Pusilla

Campanula Alliariefolia—A species of woolly-leaved foliage resembling Cineraria; upright flower spikes.

Campanula Nobile Macrantha—Upright, tall-growing form with long tubular pendant flowers of rich violet, blue color.

Campanula Turbinata—A low tuft-forming plant with large open, erect bells of rich deep blue.

Campanula Pilosa—Erect-growing, with long, slender, deep blue flowers of drooping character.

Campanula Lamifolia—Erect branching plant covering itself with white tubular flowers during early summer.

Campanula Lactiflora—A much-branched spreading variety with upright tubular flowers in clusters in various shades of blue during July to September.



Campanula Medium—The regular Canterbury Bell, a biennial, and for showy, large flowers the finest of all Campanulas. It comes in pink, blue and purple colors, also white. \$2.00 per dozen.



Campanula Persicifolia—This is the well-known Peach Bell Flower, so popular in the perennial border for cutting and garden effect. We have the white and blue forms.



Campanula Rotundifolia—The Scotch Harebell is one of the popular, easily-grown garden flowers for rockeries and perennial borders, where low plants and a great profusion of handsome flowers are desired. Beginners in rockery gardens will do well to use it freely, for it seldom fails to please with its cheery masses of bell-like flowers.

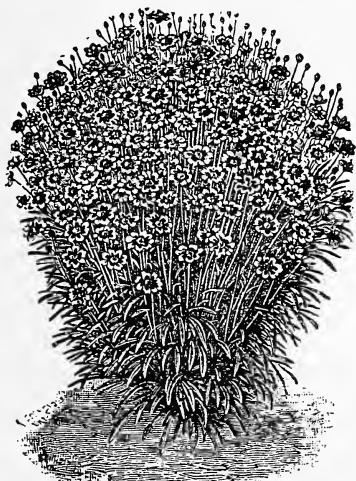
CARNATIONS



Carnation

Dwarf Vienna Floramour—A very fine salmon pink flowering border Carnation; very effective and handsome.

Yellow—This yellow border Carnation is a real jewel for beauty and a novelty, locally scarce. Each, 30 cents.



Catananche Coerulea

Catananche Coerulea—A lovely cornflower blue perennial, flowering nearly the whole summer long. Nice long stems for cutting, with strawflower like bracts. Each, 30 cents.

Cerastium Tomentosum—So-called Snow

on the Mountain, due to its silvery gray masses of foliage and creeping habit of growth. Useful for large rockeries where it can spread over much space. Showy pure white daisy-like flowers in great mass.

CHELONE BARBATA



Brilliant red slender tubular flowers on tall stems, Pentstemon-like in appearance. **Cheiranthus**—See Wallflowers.

Chrysanthemum Japonica, Early Flowered Strain—This new type of single and semi-double flowering chrysanthemums will be one of the early fall flowers of exceptional merit as they bloom freely during September before the heavy rain season ruins the flowers. They are available in several choice colors and may prove one of the garden novelties of great merit. Young plants will be available from April to June, 1926, at price of \$2.50 per dozen or 25 cents each.

Chrysanthemum Maximum—See Shasta Daisy.

COREOPSIS LANCEOLATA



Fine yellow Cosmos-like flower, continuous blooming; good for cutting.

Cistus Villosus—Shrubby Alpine plant with reddish purple flowers, sun-rose-like, and small woolly leaves on erect stems.

Columbine—See *Aquilegia*.

Cowslips—See *Primula*.

Crucianella Stylosa—A rapid growing, low-spreading plant with fine foliage and erect, slender stems, bearing small, pink flowers.

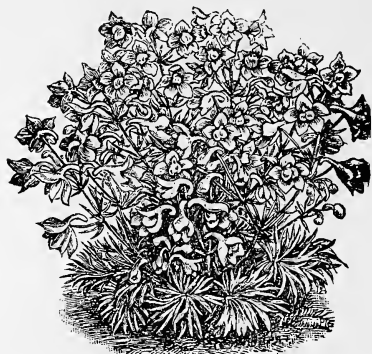
DELPHINIUM

Delphinium Hybridum—We have a fine collection of English seedlings, many of exceptional quality, in large flowered types. Finest selection, 50 cents each.

Delphinium Hybridum—Fine mixed types, per dozen, \$2.50.



Delphinium Belladonna—This is one of the fine cutflower producing forms of *Delphinium* with smaller foliage and graceful branching flower stems, and almost continuous blooming habit.



Delphinium Chinese Butterfly—This is a very dwarf-growing, graceful-flowering type of richest deep blue and purple color, particularly fine for rock garden work and border effect.

DIANTHUS

Allwoodii—A new English cross between the everblooming carnation and the garden pink, flowering all season long in several attractive colors, each separately named. Fully as handsome as true Carnations and easily grown.

Dianthus Atrococcinea—This is a little-known variety of exceptional beauty for its fiery crimson red flowers in clusters, resembling Sweet William, produced throughout the whole season. Lovers of this strong, rich color will glory in the possession of this plant as it thrives freely in good soil and is one of the garden jewels contained in this book.



Dianthus Plumarius—The Scotch Feather Pink with its fragrant masses of flowers around Decoration Day, is one of the fine border plants useful for many purposes. Available in several colors.

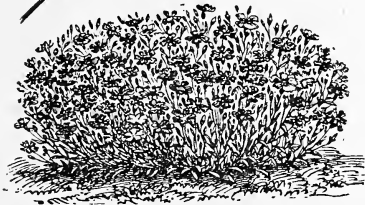


Dianthus Alpinus—A low-growing, small Pink, resembling *Deltoides*.

Dianthus Balbisii—A rare form of tiny Alpine Pink of much charm.

Dianthus Controversus—This is one of the Alpine forms of Pink with clusters of small carmine pink flowers in great profusion. Adapted to rockery planting only.

Dianthus Collinus—A loosely-growing, graceful Alpine plant, for rock garden use. Vivid shade of pink.



D. *Deltoides*

Dianthus Deltoides (or Cheddar Pink)—This forms a carpet-like foliage over rocks or walls and becomes covered with brilliant cerise to crimson red flowers during early summer or late spring.

Dianthus Pancissii—This is a rockery Pink of unusual appearance, leaves rather large, forming a cluster on the ground with flower stems larger than a pencil

and three feet tall. Very stout, bearing a dense cluster of small deep rose flowers. 35 cents each.

Dianthus Superbus—This is beyond question of all rockery plants the most delightfully scented odoriferous Pink, and its marvelously fine lacinated single flower or pure white, sometimes shading to pink flowers, displays a lace-like elegance of superb appearance. Foliage very fine, in compact clumps, bearing a great profusion of flower stems. This is the pride of our collection for rock gardens. 35 cents for strong plants.

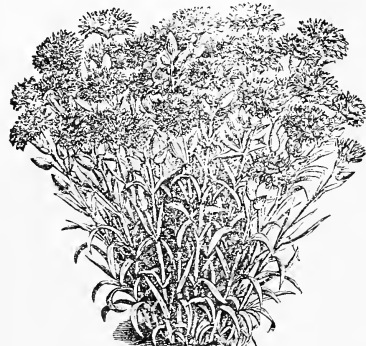
Dianthus Virgineus—This is one of the very fine leaved, tuft forming Alpine pinks for rockeries.

Other varieties of rockery pinks not listed are in stock.

Dianthus Barbatus (Sweet William)—This popular perennial is one of our best garden plants and comes in a rich assortment of colors, all mixed.



Dianthus Barbatus (Newport Pink)—This is the variety with brilliant salmon red color of exquisite beauty.



D. *Barbatus*

Dianthus Dwarf Border Carnations—Are beautiful for the perennial garden and a

pleasure to pick as a cutflower. A good percentage of flowers are double, balance are single. All love a substantial soil, well enriched, to do their best for large blossoms. Varieties in stock are **Dwarf Scarlet**, **Salmon Pink**, **Yellow**.

DORONICUM



Early yellow flowering plant for cutflowers.

Echinops Ritro—This striking plant has some resemblance in the flower to Eryngium, but its flowers are more globular, of bright blue color.

ERIGERON



Erigeron Speciosus Grandiflorus—Large Daisy-like flower of fine blue color, plant growing to 24 inches high, flowering during late spring and early summer. Fine for cutting. 30 cents each.

ERYNGIUM



Eryngium Planum—The Blue Thistle, with tall, upright branches, terminating in large flat clusters of rich steel blue thistle-like flowers. Fine for cutting and preserving. 35 cents each.

Francoa Ramosa (So-called **Bridal Wreath**)—A late white flowering plant, with long sprays of small white flowers on pendulous branches. A rather rare and little known plant. 30 cents each.

Funkia Cordata—The so-called **Plantain Lily**, is handsome in its foliage of stately appearance and stems with blue pendant flowers. They grow well in the shade and damp places.

Funkia Sieboldii—This is a richly silver-white striped leaf, for shady locations, where its beauty is seen to best advantage. A very choice perennial. 35 cents each.

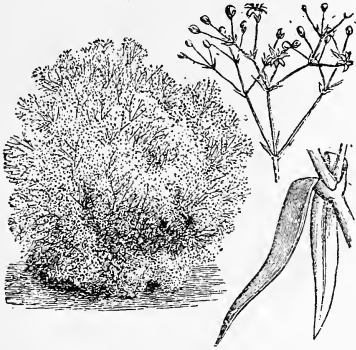
GAILLARDIA



So-called **Blanket Flower**, with large brown and yellow flowers on long, wiry

stems. Blooms all season and is fine for cutting. For sunny locations.

GYPSOPHILA



Paniculata—The finest Baby Breath known for cut flowers; can also be dried and used as an everlasting for winter bouquets. 2-year roots, each, 35 cents; 3-year roots, each, 50 cents.

Galega Officinale—Fragrant sweet pea-shaped, small flowers in cluster, lilac colored or blue. Nice for cutting.

GEUM



Mrs. Bradshaw—Brilliant red Carnation-like flowers on long stems.

Lady Stratheden—New, double, orange-yellow variety of great merit. Each, 35 cents.

Borisii—A beautiful, yet rare, form of single flowering type, rich orange-red colored flowers produced in greatest profusion all summer long. 25 and 50 cents each.

Hispidum—A new European introduction. 35 cents each.

Kolbianum—A new European introduction. 50 cents each.

GEUM



Gynerium (Pampas Grass)—This well-known, plume-like, showy, giant grass is a remarkably fine plant for landscape effects. 50 cents to \$1.00 each.

HELENIUM



Helenum Autumnale—This is one of the tall, late-flowering perennials with large, orange-brown colored flowers, resembling Cosmos. Very fine for cutting and a lasting garden flower.

Helenum Riverton Gem—Rich, terra cotta-colored, flowering during August and September. About three feet 6 inches tall.

Helenum Bigelowii—Fine golden yellow flowers. Very showy.

Helenum Hoopesii—This is of more recent discovery, bright yellow and early summer flowering, growing about 24 inches high. 30 cents.

HELIANTHEMUM



Helianthemum (the Sun or Rock Rose)—A small, low-growing shrub-like perennial. Particularly fine for sunny borders, rockeries or bank planting. Flowers like small wild roses in yellow, white, red or pink colors, produced in great masses during fore part of summer.

HELIANTHUS



Sparsifolius—Very tall, late-flowering, single yellow cut flower, finely adapted to sunny, dry locations unfit for other plants.

Heliopsis Pitcheriana—A sunflower-like plant with rich yellow flowers on stiff stems, flowering during late summer and early fall, flowers semi-double. Very fine for cutting.

HELLEBORUS



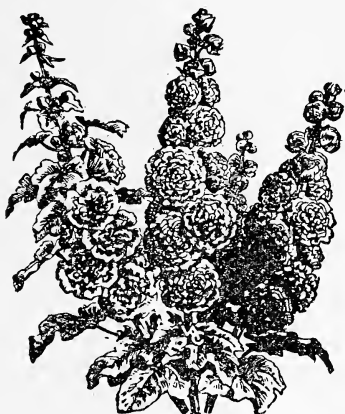
Viridis—This rare plant is called Lenten Rose, owing to its flowering habit during the Lenten season. Thrives in shady places, where soil is rich but well drained. Blooms are rosy purple or white. Large palmate, leathery leaves. Slow growing but very long lived. Each, \$2.50.

HEUCHERA SANGUINEA



Low-growing plants, producing slender, neat sprays of brilliant red flowers; will thrive in partial shade.

HOLLYHOCKS



Hollyhocks—Double flowering sorts in separate colors.

HYPERICUM

St. Johns Worth—Yellow flowering, low-growing plant. Will grow in shade or sun. Each 25 cents, 50 cents.

IBERIS

Iberis Sempervirens—This is the perennial Candytuft, flowering in masses of white flowers during early spring, and is one of the best plants in white for permanent borders, along steps, for rockeries, on banks, etc.

INCARVILLEA



Delavayi—So-called Hardy Gloxinia. One of the very choicest hardy flowers known to plant fanciers. Tall stems, with deep rose, long tubular flowers, fleshy roots. This is the pride of the finer gardens. Each, 35 cents, 50 cents.

Brevipes—A rare form, resembling preceding with perhaps larger flowers and heavier, shorter leaves. Flower stems do not grow so tall as former. 50 cents each.

Iris Kaempferi—The Japanese Iris is one of the richest colored, and largest flowering kinds known and comes in great variety of shades, single and double flowered. They do best in very rich soil and must have a sunny location with lots of water during the flowering period as they are really swamp plants in Japan. 50 cents each for choice types.

Iris Germanica—This, the easiest grown and most widely known of all Iris, is not grown as a specialty here, and can be supplied in the most popular types only at 25 cents each; dozen, \$2.50.

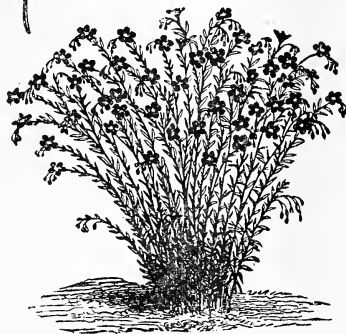
LAVENDULA

Vera—True lavender is worthy of a space in every garden for its fragrant flowers, dry or fresh. Each, 25 cents, 50 cents.

LATHYRUS

Latifolius—The perennial Pea. A fine, permanent vine, with pink or white flowers; very neat for cutting during mid-summer; will thrive in dry locations. Each, 50 cents.

LINUM PERENNE



Siberian Flax—One of the most graceful flowering blue perennials known; delights in rich soil and sunny location.

LOBELIA

Cardinalis—The Cardinal Flower is the richest red flower to be found in the garden; tall spikes during the summer; loves lots of water and sunshine. Rare.

Fulgens Gerardii—Similar to preceding, but smaller leaves; richly colored bronze

red and very vivid scarlet flower. A real jewel among garden plants; rich soil, plenty of moisture and sun will make this a gorgeous plant. Each, 50 cents.

LYCHNIS



Chalcedonica (Jerusalem Cross)—A medium-tall-growing plant, with flat clusters of fiery red flowers during summer.

Haageana—A low-growing plant, upright habit, with very showy, large Phlox-like flowers, in several beautiful colors. Very choice and little known; easily grown. Each, 35 cents; 3 for \$1.00.

LUPINUS



Polyphillus—A fine Lupin for cutting; in several colors of pink, shading to white and blue.

Lythrum Salicaria Superba—A good plant for water garden planting, with purplish-red flowers on long stems, flowering during late summer.

Meconopsis Cambrica—The orange Welch Poppy, flowers profusely in early summer and resembles the Iceland Poppy

Michauxia Campanulata—A comparatively rare plant in gardens, but very showy and interesting, with its large saucer-like blooms on stems to four feet tall, light blue or white. 35 cents each.



Mimulus Grandiflorus—While not a perennial and hardy, is one of the showiest garden flowers that can be set out in the earliest spring days, like pansies. The gorgeous-colored and oddly-marked flowers are produced in great masses and are known sometimes as Pansy Nasturtiums, a name well applied. Plants will be ready for setting out in March at 15 to 25 cents each or \$1.50 and \$2.50 per dozen. A very rich, swampy soil will suit them best, and partial shade will agree with them to some extent.

Monarda Didyma—Known as Bergamot, is one of the rather showy perennials for those who love variety in collections. Flowers are a rich red, in whorls along the stems.

Myosotis Victoria—This is the rich, deep blue Forget-me-not and for spring flowering deserves to be planted very liberally, as it makes a fine cover for Tulip beds, Daffodils or Narcissus; also is wonderful for blending colors of Wallflower groupings or borders. It is very charming when used as border for shrubbery plantings and often reseeds itself for many years after. Dozen, \$1.00.

Nepeta Mussina—So-called Cat Mint, is one of the finest perennials for large border planting and in rockeries. It is very charming, as it flowers nearly throughout the whole summer with delicate light sprays of lavender-blue blossoms in great masses, giving a mist-like effect when seen from the distance.

Oenothera Biennis—The Evening Primrose, is a biennial, reseeding itself freely, grows three to four feet high with large single hollyhock-like flowers of pale sulphur yellow. Its flowers open evenings and bloom throughout the night. Very showy.

Paeonia (Peonies)—A specialty not grown by us, but can be supplied at current prices, of specialists, in any variety desired.

PAPAVER



Papaver Orientale—The large flowering, brilliant red Oriental Poppy, is one of the garden's greatest flowers for spring effect. The type is brilliant orange-scarlet, with immense blossoms. Prefers well-drained and good soil in sunny location.

Papaver Orientale Salmon Queen—This is the soft salmon pink form.

Papaver Orientale Mahony—A new variety of rich maroon-black color; very novel and distinct. 50 cents each.

Papaver Orientale Perry's White—This is the white flowering type, with rich maroon blotch in the center; very distinct and rare. 35 cents.

NUDICAULE

Papaver Nudicaule Sunbeam Improved—The so-called Iceland Poppy, one of the handsomest perennials known for cut-flowers and garden use. This is one of the most improved, large flowering strains known, and has a wide range of colors, varying from pure white to various shades of pink, yellow, orange and scarlet. Must



P. Nudicaule

have sunny location and well drained, porous soil.

Papaver Alpinum—Similar in appearance to former, but smaller and daintier in foliage and growth; especially adapted for fine rock garden planting. 35 cents each.

PENTSTEMON HYBRIDUS



Pentstemon Hybridus—Very large flowered type with rich red flowers, blooming during midsummer to late fall; also comes in mixed colors. This is one of the choicest perennials known, but needs shelter in severe weather, and we recommend spring planting for safety.

Pentstemon Azureus—This is a handsome native blue-flowering type, growing on sandy slopes in sunny, dry locations, and is one of our best native flowers of the coast.

PHLOX DECUSSATA



Phlox Decussata—Is well the Queen of all hardy flowers, and begins its flowering season end of July continuing till fall. A loose, rich soil is best for all, well fertilized annually for best results. Partial shade is preferred, as the colors last better and are more beautiful. Growth three to four feet high.

- Albion**—White, tall.
 - Von Lassburg**—Medium tall, white; very pure.
 - A. Buchner**—Large, pure white.
 - Eclaireur**—Rosy magenta, tall.
 - Europe**—White with distinct carmine eye.
 - Lavender Queen**—Lavender.
 - R. P. Struthers**—Rosy carmine, with clar-et eye.
 - Mrs. Milly von Hobocken**—Very large flowers of a pure soft pink, without eye. Extra fine, 40 cents each.
 - Selma**—Very tall, salmon pink, with crimson eye.
 - William Robinson**—Deep salmon pink.
- With exception of one, above listed sell at \$2.50 per dozen.

The following at \$3.00 per dozen or 30 cents each:

- Beacon**—Rich orange red.
- Baron von Dedem**—Dark orange-scarlet.
- Elizabeth Campbell**—The softest of salmon pinks.
- Goliath**—Very tall, crimson scarlet.
- Prof. Virchow**—Bright carmine, overlaid with orange scarlet.
- Rynstrom**—Very large, uniform carmine pink.

Deutschland—The richest orange-scarlet known to date. 50 cents.

Evelyn—A gorgeous, new, deep salmon pink. 50 cents.

Phlox Divaricata Canadense—This early flowering type is of fine, light blue color, and grows to 18 inches high, blooming in May. \$2.00 per dozen.

Phlox Subulata—This low, creeping Phlox blooms in early spring and is especially adapted for rockery planting. Pink and lavender colors. \$2.50 per dozen.

Phlox Suffruticosa—Miss Lingard. This is an early flowering variety, with fine, glossy foliage, white. \$2.50 per dozen.

PHYSOSTEGIA

Physostegia Virginica—Upright-growing Pink, flowering during midsummer, with long, tubular flowers in spike formation.

PINKS

Pinks Everblooming—Also listed as Dianthus Allwoodii. These are some of the perennial garden's finest and most satisfactory plants to grow, and can be had in the following named varieties at 30 cents each or \$3.00 per dozen.

- Harold**—Fine, pure white
- Jean**—Pure white with crimson center.
- Robert**—Old rose with light maroon center.
- Mary**—Light rose with deep maroon center.
- Elsie**—

PLATYCODON GRANDIFLORA

Platycodon—The Chinese Balloon Flower is one of the few really choice blue flowering plants during midsummer, and is very showy with balloon-like flower buds. In general it bears resemblance to Canterbury Bells. Has fat, fleshy roots and requires rich, porous soil.

Plumbago Larpentae—A low-growing, late summer flowering border plant with rich, deep blue flowers. Fine for rockeries and borders.

POLEMONIUM

Polemonium Coeruleum—Jacob's Ladder. A light blue, upright-growing plant with slender, upright flower stems, bearing blue flowers in June.

POTENTILLA

Ellen Wilmott—A low-growing foliage with fine stems of strawberry-like flowers, in vivid cerise color and dark center. Very handsome and often blooming until December.

PRIMULA VERIS CLATIOR



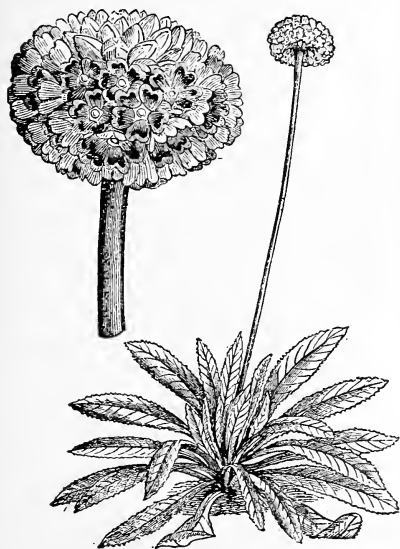
Primula—This genus of plants is worthy of special attention, containing some of the finest garden flowers known, and no real garden can be complete without some of these Primulas. From earliest spring to midsummer they are to be found blooming in many rich shades of color. All love a rich soil, and several prefer shady situations to thrive in.

VERIS ACULIS



Veris Acaulis—This early flowering garden Primrose is grown in many brilliant colors from light yellow through all shades of white to bronze and maroon red. For bordering paths they are charming and also do well in rockeries. Mixed colors only, \$2.50 per dozen.

DENTICULATA



Primula Denticulata Cashmeriana—A large-leaved variety, wrinkled foliage and powdery underneath. Twelve-inch stems, bearing globular clusters of flowers, pale lilac in color. Partial shade and wet ground are best suited for it.

JAPONICA



Primula Japonica—Very large foliage, throwing up immense stems of flowers, often reaching 24 to 30 inches high, with flowers carried in whorls of several tiers in many shades of color, varying from deepest crimson, mauve, white, rose, pink and intermediary colors. This is the stately of all Primulas existing and a glorious sight when well grown. Loves rich, damp soil and partial shade. We have immense plants at 75 cents each; smaller at 50 cents. Must be expressed, as they are too heavy for parcel post. Large and brittle foliage is hard for shipping.

Primula Bullesiana—This is a gorgeous new form of Primula, somewhat resem-

bling the preceding, but later flowering and more richly varied in its colors. Flower stems often 30 inches tall. From a hybrid of Chinese species. 50 to 75 cents each.

Primula Lissadell Red Hugh—This is another sensational novelty among Primulas of Chinese descent, recently introduced. It has large, corrugated leaves, dark colored, and throws up vigorous, stout flower stems with many tiers of rich, bright maroon-red flowers of various degrees of intensity. Strong plants, 75 cents; smaller, 50 cents. Soil requirements similar to preceding varieties.

Primula Sikkimense—From the Sikkim range of mountains in Thibet. This Primula is one of the tall, flowering types with drooping, sweet-scented yellow flowers. Needs some protection and leaf-mould soil. 50 cents each.

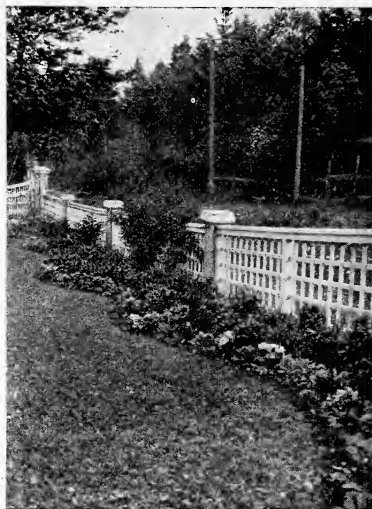
Primula Verticillata—This is the Abyssinian Primrose, with slightly fragrant yellow flowers borne on 8 to 10-inch stems, surrounded by an involucre of green leaves. Needs protection from severe cold. 35 cents each.

AURICULA



Primula Auricula—This is another of Nature's jewels among plants, and is a dwarf-growing plant with handsome, smooth-leaved foliage, often covered with a whitish powder. Flowers in clusters, delightfully fragrant at times, and in many fine color combinations, displaying shades often seen in Pansies. Partial shade and rich, loose soil, not wet, during winter, will suit them best. A very fancy rockery plant of unusual beauty. 35 to 50 cents each.

Rare Alpine Primulas are also on hand in small quantity for those interested in them.



A Perennial Bed With Primrose Border

PULMONARIA

Pulmonaria Angustifolia—One of the very early flowering plants with large, rampant foliage, sprouting from the ground like a Primula and rich blue, somewhat cowslip-like flowers, often shading to pink. Fine plant for damp, shady location and leafmould soil. 35 cents each.

PYRETHRUM



Pyrethrum Roseum—This Marguerite-like flowering perennial is very hardy and the finest, most useful cutflower a garden can have. Its clumps of carrot-like, fine fo-

liage throw up the flower stems in great profusion in many shades of pink, red, and white flowers, some double, semi-double and single, all lasting exceedingly well when cut, and permitting graceful arrangement, due to its long stems. May and June. Very large clumps, 35 cents each. Selected, choice flowers, 50 cents each. Average \$2.50 per dozen.

SALVIA

Azurea—Tall-flowered, slender-stemmed, fine blue plant. Each, 30 cents.

SALVIA AZUREA



Salvia Patens—Rich blue flowering Salvia of intense deep ultramarine color, needing protection during severe weather and preferring a light, sandy soil. 35 cents.

SALVIA PATENS



Salvia Greggii—A shrubby, cherry-red-flowering variety, adapted to fine rockery work for sunny locations. Very fine, 50 cents each. Rare.

Saponaria Ocyroides—A low, creeping plant with small Phlox-like blossom, forming a carpet of flowers in the rock garden, of cherry-pink color.

SAXIFRAGA UMBROSA

London Pride—One of the neat, low-growing flowers for rockeries and shady, damp situations. Fine mist-like sprays of dainty pink flowers for Decoration Day or later. Each, 15 cents, 25 cents.

SAXIFRAGA DECIPIENS

Neat, tufted, low rock plant. Each, 15 cents, 25 cents.

SAXIFRAGA PYRAMIDALIS



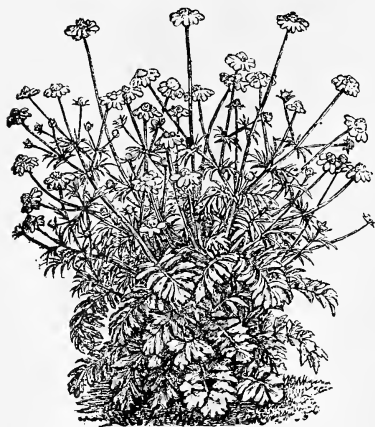
A neat rosette-forming rock plant, throwing up a stout flowering stem, bearing a large panicle of white flowers. \$3.00 per dozen; 30 cents each.

SAXIFRAGA MEGASEA



Megasea—Large, leathery leaves, with bright pink Primula-like flowers in earliest spring. Each, 25 cents to 50 cents.

SCABIOSA JAPONICA



Japonica—A lavender-blue cut flower producing plant of very profuse flowering habit. For sunny locations only.

SEDUM

Sieboldi—One of the handsomest rock plants known for dry and sunny places; also good for boxes or pots, blooming in late fall with fuzzy little clusters of a beautiful shade of pink. Fat blue-green foliage, very neat.

SHASTA DAISY



Excelsior—This large flowering Shasta Daisy is fine for cutting as a white flower.
Solidaga (Golden Rod)—Well-known native, golden-yellow-flowered plant.

STACHIS LANATA

So-called Lamb's Ear. A white, woolly-leaved plant of interesting and neat appearance; for rockery.

SEDUM SPECTABILE



Another fat-leaved plant, with upright flowering sprays, blooming during late summer or early fall.

THALICTRUM DIPTEROCARPUM



A new tall-growing perennial with charming little blue flowers in graceful feathery sprays resembling Baby Breath somewhat; foliage like Columbine. The most desirable of all recent introductions to the perennial garden. Each, 50 cents.

THYMUS

Citriodora—So-called Lemon Thyme, due to its rich lemon fragrance, in the neat golden yellow-marked leaves. This is one of the fine creeping plants for rockeries or borders along steps.

C. Lanigera—This variety is woolly leaved gray green, covering soil like a carpet.

Thymus Coccinea—This is the crimson-flowered variety; also a neat creeping plant for rockery work.

STATICE



Latifolia—Slow-growing, but permanent plant with large leaves on ground throwing up a large spray of mist-like small flowers that may be dried and preserved.

STOKESIA LILACINA



This perennial Cornflower-like plant is one of the very best cut flowers, producing plants in blue, and so far has been too little used in gardens.

Sweet William—See *Dianthus*.

TRITOMA



Red Hot Poker Plant—This showy, late summer flower is worthy of space in better gardens.

VERONICA SPICATA



This upright-growing midsummer flowering blue perennial is a very showy plant for the border.

Veronica Prostrata—This is a creeping plant, covering the ground like a sheet of dark green foliage. During May to June its blossoms appear in such great profusion as to cover the whole with a mass of deepest Forgetmenot blue, a sight not easily forgotten once seen. Demands a rich soil with ample moisture.

VALERIANA



Coccinea—The so-called garden Heliotrope, with magenta pink flowers in rather charming sprays; excellent for cutting. Will grow in shade or sun.

VIOLA (NEW JERSEY GEM)



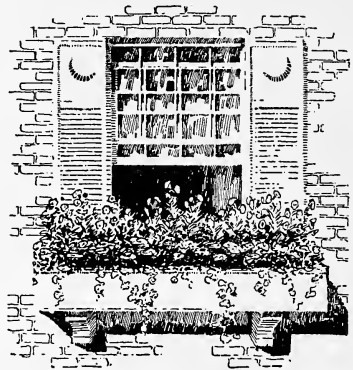
Viola (New Jersey Gem)—A grand, large-flowering Viola of recent introduction, flowering almost continuously all season long. Color rich deep Violet-blue. Long stems. Fine for cutflowers. The best Viola so far seen, and merits to be grown in every garden. Excellent as a border flower, and for rockeries is simply supreme. 35 cents; \$3.00 per dozen.

Viola Munbiana—The Algerian Viola, in various shades of lavender to purple.

Viola Odorata—The fragrant Violet Governor Herrick, one of the finest single, dark purples existing.

Wall Flowers

These old-time favorites deserve to be used freely in every yard or garden, for their excellent qualities of rich colors, delightful fragrance and extreme robustness, make this one of the most satisfactory of perennials for the coast climate. They will grow in sunny, dry places, as well as in moderate shade; do not require rich soil, and their flowering season extends over a very long period of time. Our exceptionally low price for choice quality plants make it the most economical flower for the yard.

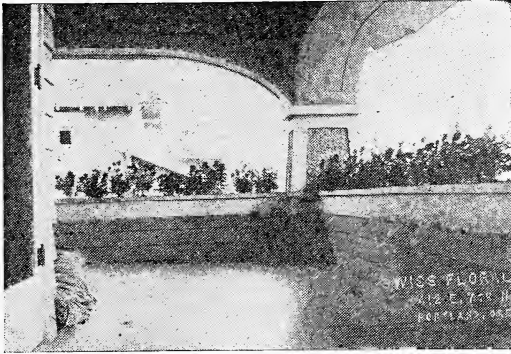


The Winter Window Box

Window boxes during the winter are often left empty and unsightly, even detrimental to the neat appearance of a home in this condition, because the average person does not know what to plant in them except perhaps bulbs, which do not alter the appearance of the boxes until spring, when they come into flowers.

Now, this is a feature that need not be, for they may be filled with dwarf evergreen shrubs, at considerable expense, of course, or, where the feature of cost is to be considered, the Wallflowers are really the most useful and practical selection for such planting.

They are hardy enough to stand the severe spells of winter weather we generally have. Their foliage is evergreen and neat. They flower over a long period of time in spring. The colors adapt themselves to many combinations. They will grow in almost any soil successfully. They can be planted nearly all winter long. When through flowering in spring



Porch Boxes During Winter Are Green and Neat if Filled With Our Wallflower Plants

they will be fit to transplant into the yard to serve there for many years to come.

Boxes planted to wall flowers alone look rich, yet they can be used in combination plantings with bulbs or shrubs and other early flowering perennials such as Candytufts.

Color blendings to please the most artistic taste are possible, and, best of all, the cost is very low, bringing them within the reach of every purse. They should be

spaced about 8 inches apart for box planting while for border or beds they may be set 12 inches from each other. Six plants will fill a 4-foot box.

Shrubby plantings frequently are found to be of monotonous outline or color and can be greatly enhanced at small cost by planting a border of wall flowers in front of them. Also clustering bulbs between them will help, yet the long-flowering period of Wallflowers makes this plant superior to anything else.

Wallflower Varieties

Fireking—This variety is a fiery orange color of richly varying tints.

Golden King—A very large-flowered, fine golden yellow of luminous type.

Ruby Gem—A very fine, unusual shade of violet-blue, somewhat variable, producing a striking contrast when combined with other varieties.

Vulcan—This is a giant-flowering, magnificent, dark maroon-red to crimson shading.

Excelsior Mixed—Colors of this mixture are in great numbers, ranging from cream white to sulphur yellow into all shades of brown, bronze, dark red and

violet. Very interesting when used in large numbers.

Double Dwarf Branching—This is also a mixed color strain, but the flowers are double to various degrees and the dwarf habit of growth makes this type particularly useful for rockery planting. Also for border use along walks it is of unique beauty.

Tom Thumb Mixed—This is a miniature type of single-flowered forms in mixed colors and can be used the same as preceding.

All plants are \$1.50 per dozen till December. Spring prices are \$2.00 to \$2.50 per dozen. Pot-grown plants, 25 to 50 cents each.

Special Collections for Various Use

COLLECTION NO. 1—

Lovers of pink flowers will find the following collection a charming assortment for the perennial bed. Price \$2.50 per dozen, plus shipping cost. All are fine cutflowers.

- 3 Armeria Formosiana.
- 3 Pyrethrum Roseum.
- 2 Valeriana Coccinea.
- 2 Phlox Evelyn.
- 2 Sedum Spectabile.

COLLECTION NO. 2 —

Similar to above collection but all flowering blue is the following assortment at \$2.50. Medium height to tall for cutting.

- 3 Campanula, medium blue Canterbury Bells.
- 3 Delphinium.
- 2 Aster Climax.
- 2 Salvia Azurea.
- 2 Veronica Spicata.

COLLECTION NO. 4—

Assortment of brilliant scarlet perennials at \$2.50 plus shipping cost.

- 3 Geum Mrs. Bradshaw.
- 3 Chelone Barbata.
- 3 Heuchera.
- 3 Dianthus, dwarf scarlet, Vienna.

COLLECTION NO. 4—

Fine assortment of low-growing plants for borders or use in rockery planting. 26 plants for \$5.00, plus shipping costs.

- 3 Arabis Flore Plene, white.
- 3 Aubrietia, in blue shades.
- 3 Armeria, pink shades.
- 3 Helianthemum or Sun Roses, yellow and pink.
- 3 Dianthus Deltoides, brilliant fiery red.
- 3 Erinus Alpinus, rose pink.
- 3 Bellis, crimson.

COLLECTION NO. 5—

Fragrance is the charm of this assortment.

- Primula Auricula.
- Lily of the Valley.
- Dwarf Wallflower.
- Dianthus Superbus.
- Golden Thyme, lemon scented.

Two plants of each of above make a wonderful start for garden fragrance and each season will see these plants grow larger and more delicious. Price \$2.50, plus shipping costs.

COLLECTION NO. 6—

Fine selection of plants for shady spots in the garden. There are many plants that will grow in the shade provided the soil is fertile and the shade not too dense. There should be some sunshine during part of the day at least or their growth will be insipid. In trying out a small assortment a person gets to find the ones that will do best in the given location.

- Anemone Japonica, pink or white.
- Campanula Carpatica, blue.
- Campanula Persicifolia, blue or white.
- Columbine, assorted colors.
- Primula Veris, many colors.
- Heuchera, coral red.
- Saxifraga London Pride), pink.
- Phlox Divaricata Laphami, light blue.
- Myosotis Forgetmenot, blue.

Two each of above 18 plants in all for \$3.50, plus shipping cost.



Francoa Ramosa

COLLECTION NO. 7—

Sample collection of a dozen desirable hardy plants for the garden and for cutting. Price, \$2.50, plus postage or express.

- 3 Sweet Williams (mixed colors).
- 3 Pyrethrum Roseum, pink Marguerites.
- 3 Gaillardias, orange, red and yellow.
- 3 Perennial Asters, blue shades.



Hardy Aster Climax
Fine Cutflower for Fall

COLLECTION NO. 8—

A beginner's best collection of all easily raised perennials, producing flowers from early spring to fall. To cost \$5.00, shipping costs extra.

- 3 Japanese Anemone, pink and white.
- 3 Columbines, assorted colors.
- 3 Canterbury Bells, assorted colors.
- 3 Delphinium, blue shades.
- 3 Shasta Daisy, white.
- 3 Geum, red and yellow.
- 1 Gypsophila Baby Breath.
- 3 Coral Flowers, vivid red.
- 3 Gaillardia, orange and yellow.

All rae very fine for cutting.

COLLECTION NO. 9—

Special collection of early spring flowering plants for garden decoration. 18 plants for \$3.50, shipping cost extra.

- 3 Aubrietia, very early blue flower, low tufts.
- 3 Arabis, low, early, snow white.
- 3 Primula Acaulis, assorted colors of early Primroses.
- 3 Wallflowers, dwarf mixed, yellow or brown, fragrant flowers.
- 3 Doronicum, bright yellow Shasta Daisy-like flowers.
- 3 Alyssum Saxatile, feathery sprays of golden yellow flowers.
- 3 Giant Bellis, red quilled Daisy.

COLLECTION NO. 10—

Special collection for late fall display that brings floral beauty after vacation days are over. All are fine for cutting.

The first season's cutflowers alone are worth many times their cost and the plants are good for many seasons. 18 plants for \$4.00, shipping cost extra.

- 2 Asters, Perry's white.
- 2 Asters, Climax blue.
- 2 Asters, Mme. Michaux pink.
- 2 Helianthus Sparsifolius, golden yellow.
- 2 Anemone Japonica, Whirlwind, double white.
- 2 Anemone, Queen Charlotte, satiny pink.
- 2 Yellow Chrysanthemums.
- 2 Bronze Chrysanthemums.
- 2 Pink Chrysanthemums.

COLLECTION NO. 11—

A fine assortment of midsummer flowering plants for cutting or garden decoration for \$5.00, plus shipping cost.

- 3 Chelone Barbata, Shell Flower, scarlet.
- 3 Geum, Lady Stratheden, double yellow.
- 3 Platyceden Grandiflora, blue.
- 3 Phlox, salmon colors.
- 3 Gaillardia, orange and yellow.
- 2 Gypsophila, white (Baby Breath).
- 3 Thalictrum Dipterocarpum, light blue.
- 1 Eryngium Bourgati, steel blue.
- 3 Pentstemon, red.

Several of above listed kinds are rare and of the finest type perennials known today, making this a great bargain to flower lovers who appreciate quality.



Alyssum Saxatile
Fine Golden Yellow Border Plant

COLLECTION NO. 12—

Another useful assortment of plants for gardens is this one, especially adapted to grow in poor or dry soil when it is not easily possible to change or improve the ground. Sunny location, of course, is needed to suit these plants best.

- Helianthus Sparsifolius, golden yellow.
- Gaillardia, brown and yellow colors.

Sedum Spectabile, pink.
 Aster Perenne Climax, blue.
 Wallflower, Vulcan, dark red.
 Beltonia Latisquama, light pink.
 Alyssum Saxatile, very early, yellow.
 2 plants of each for special price of \$2.50 for collection.

COLLECTION NO. 13—

A novel assortment of spring flowering plants for beds in lawn. The planting of this assortment insures a flower display for six to eight weeks and a neat planted effect all during the winter—something that a tulip bed cannot produce. Its charming color combination and fragrance is particularly agreeable.

For center—6 Wallflower, Ruby Gem, violet.

Second row—12 Wallflower, Fire King, vivid orange.

Third row—24 Forgetmenots, Victoria, rich blue.

Fourth row—36 Giant Bellis, crimson red.

¶ This collection is for fall planting only and will fill a bed from 7 to 9 feet diameter at cost of \$6.00 for plants. They may serve in the garden for several years, being perennials or self-reseeding, and are therefore more economical than bulbs, and remain in bloom twice as long as bulbs without any particular care.

COLLECTION NO. 14—

A delightful, simple combination for a 4 to 5-foot bed for very early spring flowering, consists of planting the center with the early Primula Veris and planting the border with Aubrietia. As both bloom very early it is one of the most attractive features and last for many, many weeks in bloom, at a modest cost. The number of plants is 12 Primula and 12 Aubrietia at cost of \$5.00. When through blooming these plants can be taken up and reset in some out of the way place during the summer for planting again the next fall. Added charm may be obtained by planting in between them Crocus and Siberian Scylla as desired.

COLLECTION NO. 15—

A lovely and simple combination bed for spring flowering is a color effect of blue and yellow obtained by planting a row of 12 Golden King Wallflower and a border of 12 Forgetmenots Victoria. Price of this collection is \$2.50.



Rock and Water Features Bring Charm to Gardens if Done Artistically

COLLECTION NO. 16—

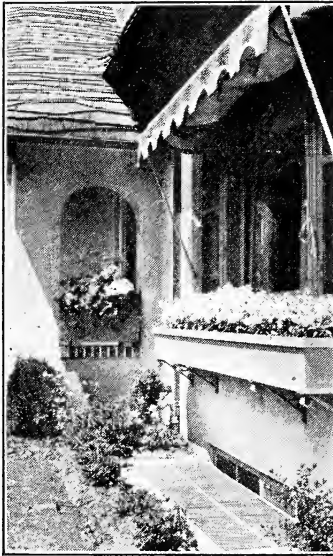
A very interesting bed or border can be made by a mass effect of 36 dwarf double flowering Wallflowers. They are very novel in appearance and altogether delightful to see. This collection can be secured for price of \$5.00.

COLLECTION NO. 17—

Those who care for intense colors will be greatly pleased by a planting of the darkest red of all Wallflowers, that large flowering variety called Vulcan, in combination with Forgetmenot Victoria. 12 plants of each for \$2.50.

COLLECTION NO. 18—

Garden Primulas as a border or bed are delightful and one of the most charming early spring displays to be seen. An assortment of 2 dozen plants will provide flowers of many hues and give that cheery spring-like effect to the garden that fairly is a revelation to the winter tired mind. This collection costs \$5.00 and will serve for perhaps many years with but little care.



Winterstocks made this box a wonderfully fragrant beauty spot during the earliest spring months.

WINTER STOCK

THESE are the richly clove-scented, hardy stocks so much used in earlier days and again becoming garden favorites. They need rich soil and well-drained, sunny location, preferably along a south wall. They may prosper in the same location for many years and nearly always are in full bloom about Decoration Day. They can also be used for window box filling during the earliest spring days. We have them in separate colors as follows: Light Blue, Dark Blue, Blood Red, Pure White. Price for fall and early winter delivery, 25 cents each; late winter and early spring, 35 cents each.

“Say It With Flowers”


NO sentiment of the human heart finds richer expression than through the medium of Nature's most graceful gift — Flowers. They are wreathed around the cradle, the marriage altar and the tomb. The custom of remembering friends in joy or sorrow by a gift of flowers or plants is one of life's sweetest mediums for conveying what words cannot alone reveal. But the great natural beauty of flowers can often be enhanced and the sentiment attached to them emphasized by their artistic arrangement. We make a feature of preparing floral gifts, arranged as you would prefer them. This personal attention to detail accompanies everything from the simplest spray of flowers to the most elaborate and artistic arrangement.



Art in Flower Arrangement
Showing Crescent Design



Art in flower arrangement was known in King Tut's time as proven by the flowers found in his famous tomb. Today flowers carry the message of esteem, respect or love as faithfully to our heart as in the times of those pompous kings. Really to say it with flowers is the most beautiful way of soul expression. Remembering birthdays or anniversaries with a graceful basket of flowers or a fragrant bouquet adds spice to life and crowns a happy day. **WE LOVE TO SERVE YOU WELL.**

ONSULT the Master Gardener BEFORE starting that new garden or alterations. It saves money, prevents errors and insures success of your plans. Over 25 years experience at your service.

Phone for
J. G. BACHER
EAsT 5370



U. S. DEPARTMENT OF AGRICULTURE,

WASHINGTON, D. C.

BUREAU OF PLANT INDUSTRY,
Horticultural Investigations,
(Hort. No. 201.)

GOVERNMENT PRINTING OFFICE
8-2802



for Bureau of Plant Industry

Washington
D. C.

