

Historic, Archive Document

Do not assume content reflects current scientific knowledge, policies, or practices.

\$6,000.00

**For One
Apple
Limb**

See
Page
48

Our New
\$6,000.00
Blood Red
Stark Deli-
cious Bud

STARKING

KING OF
ALL RED APPLES

Trade Mark Reg

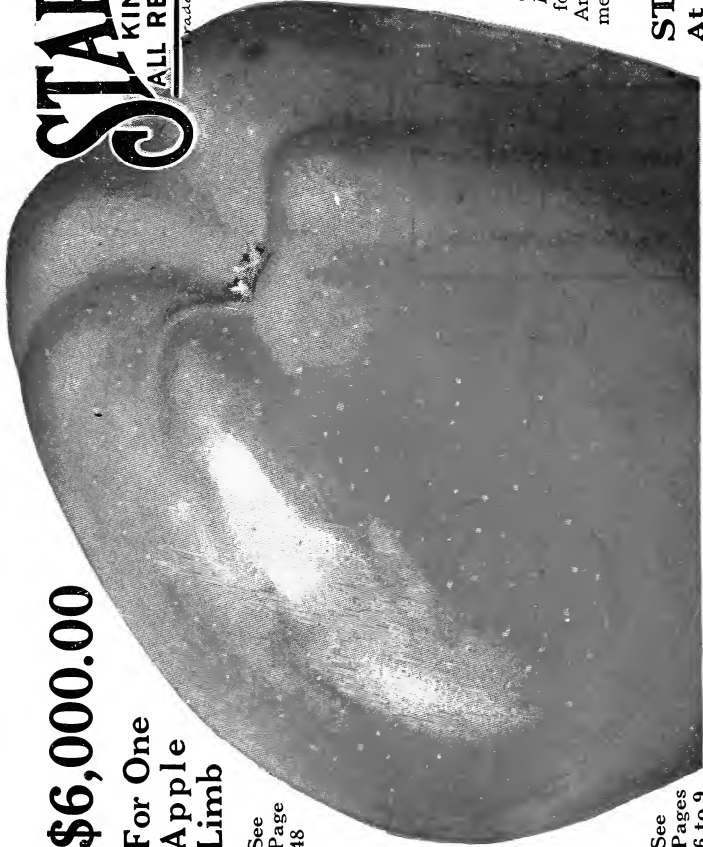
Sport from a Limb of
a Genuine ORIGINAL
NAL TREE Strain
Stark Delicious —
Twice as Red—Colors
Earlier—Keeps Later!

Twice as red as rest of apples on other branches of Original Tree, a Stark Delicious. *Get red all over weeks earlier than Delicious, but keep later.* Because they color earlier, they are right for picking, when hard ripe, crisp, full of juice. And will keep until late Spring without getting mealy. Tested years by us. See Pages 6 to 9.

Sold ONLY By

STARK BRO'S NURSERIES
At LOUISIANA, MO., For 111 Years

See
Pages
6 to 9



Stark's
Golden
Delicious
Apple ➤➤➤

Golden Delicious

Owned and Sold Only by Stark Bro's

"The \$5,000.00 Tree in a Cage!"

YEARS ago we purchased the ORIGINAL Stark's Golden Delicious Tree, paying \$5,000.00 for 30 feet of ground and tree, and placed it in a burglar-proof cage.

To this most wonderfully flavored of all yellow apples, the American Pomological Society has given the only Wilder Silver Medal, with one exception, ever awarded to an apple in the last 35 years. This variety

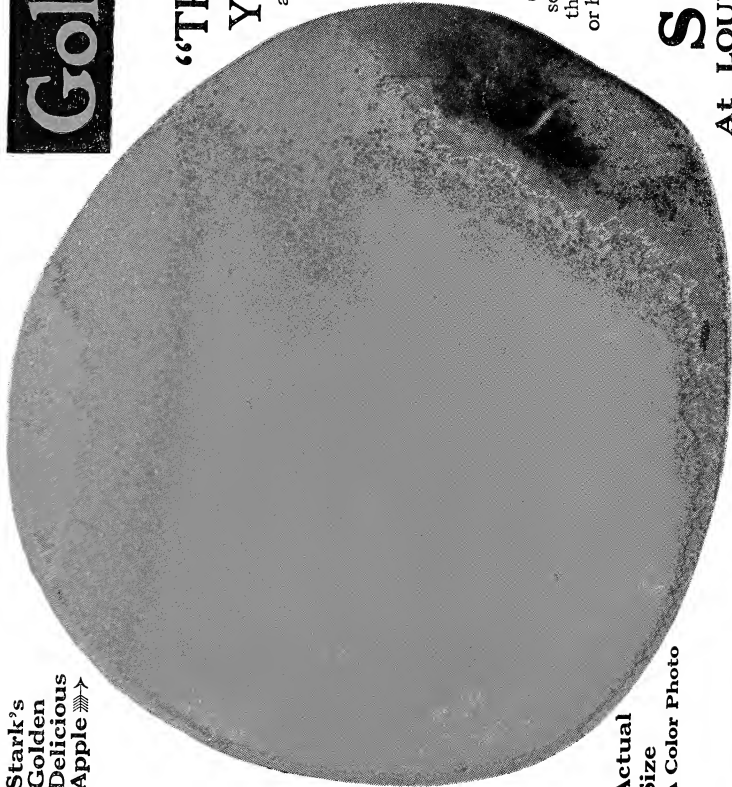
Bore Despite Three Frosts and Two Freezes in 11 States

Where other apples failed, because of its remarkable habit (stated by Prof. Paddock, Ohio) of putting out 3 different sets of blooms—first on fruit spurs, next on lateral buds, and then on terminal buds. "This is the only apple I have seen or heard of doing all this," declares Prof. Crane, Hort. of W. Va.

See page 1 and pages 10 and 11.

STARK BRO'S

At LOUISIANA, MO., For Over 111 Years

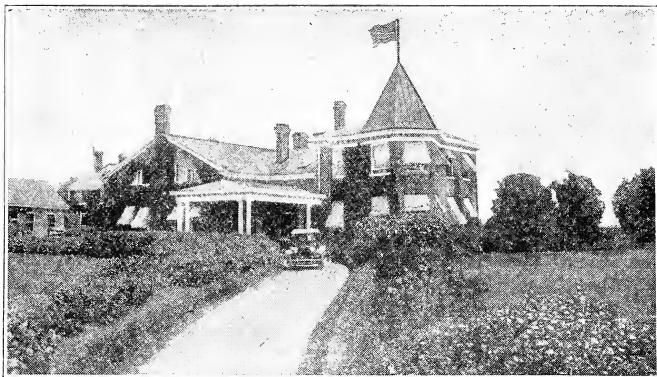


Actual
Size
A Color Photo

Golden Delicious Wins Sweepstakes Against All Other Varieties At the North Carolina State Fair



At the great North Carolina State Fair Stark's Golden Delicious won sweepstakes on Plate, Tray and Commercial Box Exhibit. Above photograph is from the exhibit of Mr. S. C. Stewart of Hunting Creek. Prof. C. D. Matthews, Horticulturist N. C. Experiment Station, wrote us that Golden Delicious practically dominated the show.



General Offices Stark Bro's Nurseries & Orchards Co.—Executive, Sales and Research Departments—200 people employed in this building. Since above photograph was taken, extensive additions have been made, including Immense Seed House and Seed Department Office Building

Facts About Stark Bro's Nurseries & Orchards Co.

THE oldest in America—111 years old—in the same family, from father to son.

The largest in the world—over 3,000 acres in growing Nursery Stock.

Seven Acres of ground covered by Packing Houses.

Immense Seed House that supplies gardeners and flower lovers all over the world with tested seeds.

Large Test Gardens where all varieties are grown and tested.

Ship trees to all foreign countries where deciduous trees are grown.

A Research Department, composed of scientific men. Nothing taken for granted—Horticultural problems worked out on their grounds.

Greatest Private Fruit Experiment Station in America.

Great Branch Nurseries in seven states.

A Special Service Department—Helpful service free to Stark Customers.

Largest Nursery Printing Plant.

Grow Whole Root Trees only.

Superintendent Certifies annually under oath that, to the best of his knowledge and belief, no trees leave Stark Nurseries mislabeled.

In the fight to eliminate Drones, Loafers and Barren Trees from American Orchards, Stark Nurseries are Propagating from **Record Strain Trees**.

The list of leading American varieties of Fruits comprises 161 named sorts which are listed in the Stark catalog. Out of this number, 63 were introduced exclusively by them.

Home Office and Home Nursery, Louisiana, Missouri, located in one of the most fertile and beautiful spots in the Central West.

By the time this book is mailed they will be on the air through their great **5,000-Watt Super-Power Broadcasting Station**—(No Station in America more powerful)—to help educate the people to better methods of orcharding, gardening and Landscaping.



Rows a Mile Long—2-year-old Stark Old Oak Process Whole Root Apple Trees in our Ozark Mountain Nurseries

OLD OAK PROCESS WHOLE ROOT TREES

"OLD OAK PROCESS—Whole Root Trees" is a Trade-Mark, registered in the U. S. PATENT OFFICE and owned by Stark Bro's. It denotes the Superior Whole Root Trees produced by our Over-a-100-Year-Old Nurseries. Stark Bro's are the only Nursery in the world that can supply genuine Old Oak Process Whole Root Trees.

Years ago the Stark Nursery came to the parting of the ways. They could have easily followed the beaten road used by other Nurseries, but they were not satisfied with the then accepted Nursery methods. A new school, headed by men like Charles Downing, was Sounding a Warning against Piece Root trees, and the Starks' Experience bore out their claims. Then it was Stark Bro's took the unbroken road and blazed a new Nursery trail. From this beginning grew the present Stark growing method, later known as the "Stark Old Oak Process" method of growing Whole Root Trees. Better, stronger, longer-lived trees have resulted and the orchard industry tremendously stimulated.

THE GREAT DOWNING, than whom no higher authority has ever lived, in the most famous work of his life, "Fruits and Fruit Trees of America," says: "Large quantities of trees are propagated by using pieces of roots. This practice is by prominent horticulturists considered as tending to debilitate and reduce vitality—the seat of vital life in fact resting in the Natural Crown, and that once destroyed cannot be renewed. But one healthy, permanent tree can ever be grown from a single seedling stock."

THE ROOTS ARE THE LIFE OF THE TREE

The roots are the feeders of a tree. If they are strong and vigorous, they will reach out vigorously and feed hungrily on the soil's fertility and produce big, husky, fast-growing, young-bearing fruit trees. The Vital Part of a Tree is not the top. You can grow a new top, but you cannot change the roots. The Original Root System Remains—and it will always affect the tree. Piece-Root Trees are slow-growing—are easy prey to insects and diseases—and are easily blown over because they have no big brace roots and are only a short distance in the ground.

The tree that has big, strong, vigorous roots quickly extends its root system downward and in all directions and shoots upwards like a husky, healthy outdoors boy. Science, Experience, Common Sense all speak loudly in favor of trees with best possible roots. You have this kind of trees when you purchase Stark **OLD OAK PROCESS** Whole Root Trees.



The Stark Propagating Plan includes a great system of Branch Nurseries located where soils and conditions are ideal for the production of Best Trees of certain kinds. These branches cover the entire country.

WHY WE HAVE STARK NURSERIES IN SEVEN DIFFERENT STATES

Over 100 years' experience proved to us that there are a few small spots of Wonder Tree Soil with ideal climate, that grow apple trees better than all the other sections; others grow finer rooted cherry trees; other places produce the best peach trees. We have 400 acres—once the bed of Lake Erie—where grape vines develop more wonderful roots than elsewhere. Three other little Valleys grow wonderful apple seedlings, etc. Similar exceptional combinations of soil and climate grow better plum, pear, apricots, etc.

We have located a Nursery at Each one of these Ideal Spots—In **Seven Different States in the U. S. And One in France.** That is **One Big Reason Why Stark Trees Are So Much Better** than any other trees. No other concern does this. We not only know **HOW to grow them better**, but we also know **WHERE to Grow Them Best.** We have discovered the ideal soil and climate to produce the best trees of each type, and they are grown under the Direct Supervision of the Starks themselves—**Direct From Our Nurseries To Your Orchards.**

All Trees Shipped from Louisiana, Mo.

We do not ship trees to our customers from these Branch Nurseries. All stock grown at these plants is shipped to Headquarters at Louisiana, Mo., where all trees are graded, inspected, checked and packed under the direction of one man and according to one system and one standard.

Our one aim is to please every customer—to please him not only at planting time, but at fruiting time—so it is necessary that no precaution be overlooked, and that no chances be taken. We absolutely know that all trees and plants are in good, healthy condition, that they are packed right to retain all their splendid vitality and that every shipping precaution is taken. Every detail is handled by a careful system perfected through many years—the experience of five generations, and we seldom have complaints.

Take No Chances—Plant the Best

When preparing to plant an orchard you should give very careful thought to the buying of the trees—a mistake made then can **never** be remedied. The Stark Whole-root system of propagation, and the Scientific Methods employed by Stark Bro's covering every operation from the selection and insertion of buds to the shipping of the trees to customers is your assurance of Satisfaction and Orchard Success.

THE STARK METHOD OF RECORD STRAIN PROPAGATION

It has long been observed by fruit growers that trees of the same variety standing side by side under the same conditions show varying characteristics in growth and production. Barren trees are to be found in many orchards, side by side with heavy-bearing trees, and yet they have received the same attention. In many cases this may be due to soil differences and other natural causes. However, in other cases, these barren trees are doubtless the product of degenerate strains. In such cases the selection of superior strains means the elimination of these unprofitable trees.

Claims have been made by many that such characteristics as Annual Bearing, Increased Size and Yields of fruit can be inherited and passed on to succeeding generations of nursery trees. Whether this be entirely true or not, Stark Brothers have taken the only safe course and have continuously selected the best type heavy bearing tree with highest colored fruit possible to find anywhere, and have used it as the fountain-head of their propagation. There are color variations, however, which occur as true bud sports which we absolutely know are transmitted in propagation and remain constant. Examples of these are found in Red Gravenstein, Starking and others. In these cases there is greatly increased color, making the bud sport far more valuable than the old type from a commercial standpoint.

Safest, Most Scientific Method

Stark Brothers are supplying to fruit growers nursery stock of each variety propagated from the best tree it has been possible to locate. In each instance this parent tree has been carefully selected after years of search and careful watching of orchards in all sections of the country. Where the Original Tree of the variety is still alive, it of course is used, unless some new strain has proven superior. Where it is impossible to go back that far, we have chosen a tree which is either close to the Original Tree from the standpoint of Ancestry or one which is most Typical of the Variety and has a Superior Bearing Record. In all cases Stark "Mother Trees" are chosen because they possess the very best qualities of the variety, typical in every respect, showing best color and size of fruit, vigor of tree and a High Production Record.

This carefully worked-out plan of propagation eliminates the possibility of Degenerate Strains in Stark Tree orchards. Promiscuous cutting of buds and scions from any orchard, even if the trees are in good bearing, is dangerous—as this plan permits of degenerate strains creeping into nursery propagation, unless this orchard was grown from trees propagated from a single "Mother Tree" with a known Bearing Record and possessing superior color, size and vigor. Recognition of this undeniable fact is one of the big reasons for our plan of Select Strain Propagation.

We Grow Original Tree Strains

As stated before, Stark Bro's have in all their propagation gone back to the Original Source of the variety when possible. This Original Tree is the purest and safest source obtainable, but in many instances the variety is old and the original tree is dead. In these cases, propagation is made from the best living selected source of the variety.

Examples of varieties propagated from the Original Tree Strain may be found in Stark Delicious, Starking, Golden Delicious, Triple-red Gravenstein, Black Ben, Senator, King David, Stayman Winesap, Paragon, Dark Red Rome Beauty, Champion, Henry Clay, Summer Champion, Cortland, Giant Jeniton, and Stark Summer Queen apples; Stark Early Elberta, Alton, Illinois, Elberta Cling, Golden Sweet Cling, Krummel October, Martha Fern and Wilma peaches; Van Deman quince; Stella apricot; Gold, Omaha, America, Early Gold (Shiro), Stark Damson, Late Goose and Mammoth Gold plum; Lincoln pear and many others.

Fruit growers can not get a better guaranty of true stock.

STARKING—King of All Red Apples

(Sold only by Stark Bro's)



Stark Delicious at left—Starking at right. In taking this photograph apples from the Starking Limb and typical apples from the Parent Stark Delicious Tree were used. Note the Deep Solid Dark Red Color of Starking, while the Delicious are perfectly green. The apples were picked from the tree the same day.

STARKING
KING OF
ALL RED APPLES
Trade Mark Reg.

**THE
SENSATIONAL
NEW IMPROVED
DELICIOUS**

STARKING is just simply a true Stark Delicious, in size, shape and marvelous quality—not an iota of difference in any way except that it colors about three weeks ahead of Delicious, and is a deep solid, glorious red—not striped, that makes it the most beautiful apple any man ever saw.

The Stark Delicious has for many years been the highest priced apple on all markets, but it was sometimes handicapped in some sections because of lack of color, and because growers were at times

compelled to let the apple hang on the tree late in order to secure selling color, thus impairing its keeping qualities.

And Now comes STARKING—eliminating the only fault Stark Delicious ever had.

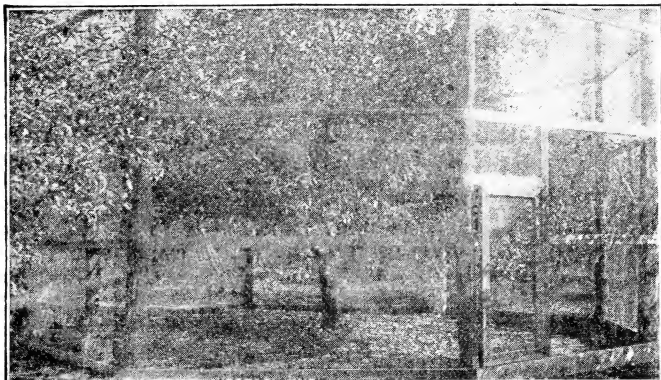
STARKING—A Solid Blood-Red Delicious

By planting this new STARKING you can now grow a blood-red Delicious that colors while the apple is unripe and hard. You can pick it while it is hard ripe. And you can either sell it when you pick it, or you can hold it in storage until late the following Spring and put it on the market then—hard, solid, spicy, juicy and snappy. It does not ripen any earlier than the original Delicious, but it does color much sooner and 100% of the apples take on this deep red color.

\$6,000.00 FOR A SINGLE LIMB

Several years ago newspapers and magazines all over the United States carried an Amazing Story concerning a "Western" Nursery that had paid \$6,000.00 for one small limb growing on a tree in a New Jersey orchard. Scientific Men, Orchardists and Fruit Men everywhere guessed at once the identity of the "Western" Nursery that had made this remarkable purchase. They all knew of Stark Bro's unceasing search for newer and better varieties, and we were besieged with letters asking for information.

To all these letters we made the same answer—"Wait until our tests are complete and until the scientific men of the Country are convinced of the tremendous value of this wonderful find." Then, and then only would we be ready to offer trees of this great variety to orchardists.



This Stark Delicious, in its strong protecting cage, is the Mother Tree of the Famous Starking Apple. On this tree a limb to the left in the photograph produces apples that color deep dark solid red before the apples on the balance of the tree begin to color. Planting Starking trees insures the grower Deep Solid Red Delicious that colors before the apple is ripe and insures very late keeping in storage and common cellar.

GREATEST GATHERING OF HORTICULTURISTS EVER HELD IN AMERICA VIEW THE STARKING TREE AND PARTICIPATE IN WONDERFUL PROGRAM

All attendance records in the history of Scientific Horticulture were eclipsed on August 31, 1925, when Horticulturists from all over America gathered at the New Jersey Orchard where the original **STARKING** stands to see this Famous tree in bearing—also to examine the five-year-old bearing trees propagated from the Original Limb.

They came from all points of the compass—from Oregon and Maine, Idaho and New Hampshire, Missouri and New York, North Carolina and Minnesota, Wisconsin and New Hampshire, Michigan and Connecticut, Nebraska and Maryland, from New Jersey, Delaware, Pennsylvania, Illinois, Indiana, Ohio, the Virginias—from everywhere.

They were America's leading scientists and largest orchardists—men who had studied horticulture in all its phases, who had given their entire lifetime to the work of knowing, growing and improving fruit.

What an imposing array of brainy men! Representatives of scores of America's greatest Universities, the United States Department of Agriculture, Government Marketing Bureau, the leading Commission Houses, the greatest orchards, Newspapers and Magazines that covered the entire United States.—An epoch making gathering—2,000 people—to do honor to an apple they all predict will practically revolutionize fruit growing.

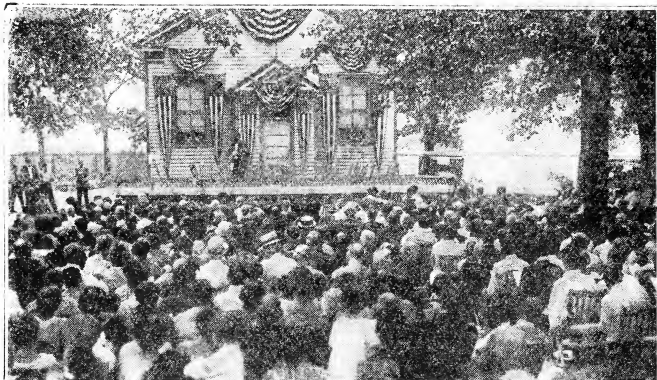
Never was there a more enthusiastic body of scientists and growers—not a dissenting voice concerning the value and the future of this apple. The name **STARKING** is today on the lips of fruit growers from ocean to ocean—and growers are readjusting their planting lists, for thinking orchardists know that this new deep red, Super-colored Delicious, **STARKING**, will be the biggest money maker among apples.

Starking Apple Tree Prices

300 at 1000 rate; 30 of a kind at 100 rate; 10 or more of one variety at 10 rate; less than 10 at Each rate.

1st Class (Late Winter)	Each	10	100	1000
4 to 7 ft.....	\$1.50	\$12.00	\$100.00	\$800
3 to 5 ft.....	1.25	11.00	90.00	700

See Page 46 for Low Price Demonstration Orchard offer on Starking and other leaders.



The President of the N. J. State Horticultural Society before a great crowd of scientists, orchardists and apple men from all over the United States, announces the opening of the meeting which formally notified the Horticultural World of the advent of the greatest apple that has ever been discovered—Starking.

ENTHUSIASTIC, UNANIMOUS STARKING VERDICT

The opinions of these men are, we believe practically summed up in a statement made by Prof. M. J. Dorsey, Horticulturist of the State University of Illinois, formerly Chief of the Department of Horticulture of West Virginia, who said:

"You should have no hesitation as to the stability of this bud sport with reference to color when propagated. THIS APPLE IS WORTH MILLIONS TO THE COUNTRY'S FRUIT GROWERS."

However, some other opinions of scientists who were present and who have given careful study to fruit growing may be interesting—and we quote a few.

PROF. C. D. MATTHEWS, Chief in Horticulture, University of North Carolina: "This will be a tremendous money maker. I want to purchase some of the first trees you have to offer." (Prof. Matthews planted 750 of the first trees we could spare.)

PROF. T. J. TALBERT, State Horticulturist, Missouri: "Colors to a bright all-over-red earlier and can be picked sooner and will keep through the Winter without becoming mealy. Furthermore, the bright red color will insure higher prices."

PROF. F. A. MOTZ, Ext. Hort., Va.: "A revelation to me. I feel that this is a great find, and that it is the very thing that is wanted in Va."

PROF. W. H. ALDERMAN, State Hort., Minn.: "STARKING is unquestionably the biggest thing Stark Bro's have ever uncovered."

PROF. A. J. HEINICKE, Pomologist N. Y. Exp. Sta.: "A distinct improvement. Can be picked when hard ripe and kept in storage in prime condition until late Spring."

PROF. C. C. WIGGANS, Hort. University of Neb.: "A much larger percentage of STARKING will grade extra fancy and they will have better keeping qualities."

PROF. ROY E. MARSHALL, Assoc. Prof. Hort., Mich.: "Color, even from the most shaded portions of the limb, showed more color than was necessary for extra fancy grade."

PROF. E. C. AUCHTER, Horticulturist, Univ. of Maryland: "The fact that STARKING can be picked sooner as a result of early coloring and thus keep far better, is very important to growers."

PROF. C. C. VINCENT, State Hort., Idaho: "In many of our districts where color is hard to obtain, STARKING will soon become a leader. STARKING showed 100% bright red color on all apples in August."



New York sent six of her greatest scientists to observe the Marvelous Starking Apple. They are Prof. U. P. Hedrick, Hort. N. Y. Exp. Sta.; Prof. H. B. Tukey, Asso. Hort.; Prof. D. B. Carrick, Pomologist, Cornell Univ.; Prof. L. H. McDaniels, Prof. Pom., Cornell; Prof. Jos. Oskamp, Prof. Pom., N. Y. Exp. Sta., and Prof. A. J. Heinicke, Chief Pom., N. Y. Exp. Sta.

PROF. D. B. CARRICK, Pomologist Cornell Univ.: "The greater and earlier red color is indeed striking and significant—a more attractive apple capable of keeping over a longer storage season."

PROF. R. A. VAN METER, Prof. of Pomology, Mass. Agri. College: "Stark Bro's are to be congratulated upon the promptness with which they recognized the merits of **STARKING**, and the speed with which they have made it available to the public."

PROF. H. L. CRANE, Prof. Hort. W. Va. State University: "'Seeing is believing.' I believe you are perfectly safe in your belief that this variety is destined to become one of the leading varieties of the future."

PROF. J. H. GOURLEY, Hort. Ohio State Exp. Sta.: "The guaranteed red color of **STARKING** assures fruit growers: Early picking, firmer fruit for longer keeping and better quality during a longer storage season."

PROF. A. J. FARLEY, Pomologist N. J. Exp. Sta.: "Should be a distinct improvement to our present list of apple varieties, because it gives us an apple with the qualities of Stark Delicious, and Much Higher Color."

PROF. JOS. OSKAMP, Prof. Pomology, N. Y. State Univ.: "**STARKING** is simply wonderful and exceeded my most optimistic expectations. There is no question about **STARKING** retaining this all-over-red color when propagated—for fruit on young **STARKING** trees are even Deeper Red."

PROF. F. H. BEACH, Prof. of Hort., Ohio State Univ.: "**STARKING** is a find—a True Bud Sport. It will receive immediate recognition as a superior sort."

PROF. W. S. BROWN, State Horticulturist, Oregon: "You have a winner in **STARKING**." (Prof. Brown traveled 3,000 miles to examine this famous Bud Sport.)

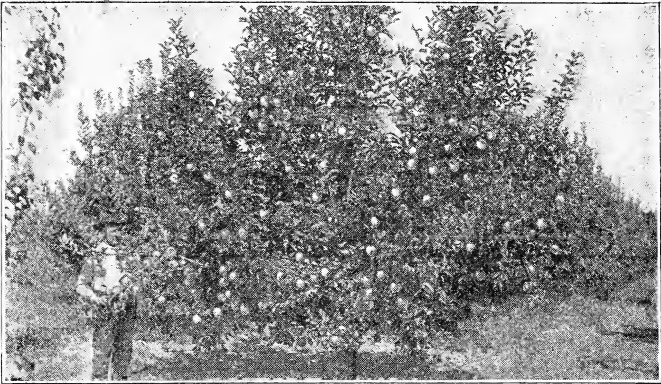
PROF. LAURENZ GREENE, Chief in Hort. Univ. of Ind.: "This is one of the new apples that I can whole-heartedly approve."

PROF. U. P. HEDRICK, Hort. N. Y. Exp. Sta.: "It has taken twenty-five to thirty years to prove the value of Delicious. We may assume without question that this new Red Delicious, which is to take the name of **STARKING**, is as good in every respect as Delicious, and has better color and colors earlier."

YOUR ORCHARD OPPORTUNITY

We are in position this season to supply you with **STARKING** Trees for your New Orchard—But Our Stock Is Limited, and your order should be placed early so reservation may be made. Orders will be filed and filled in the order received. Don't delay—and lose a year.

GOLDEN DELICIOUS—Best Yellow Apple—(Sold only by Stark Bro's)



Six-Year-Old Stark's Golden Delicious—Bore 8 Bushels of Big Apples.

GOLDEN DELICIOUS
QUEEN OF
ALL GOLDEN APPLES
Trade Mark Reg.

The greatest Golden Apple of all time—standing absolutely in a class by itself. Recognized and accepted as such by Scientific Men, Orchardists—and at the court of last resort—the Markets of the

Country, which is the final test of the value of every variety.

**FIFTY PER CENT LARGER—AND BETTER, THAN GRIMES GOLDEN—
ITS NEAREST COMPETITOR**

Stark's Golden Delicious averages about 50% larger than Grimes Golden, grown under ordinary conditions, of even better quality—and far superior in keeping. In shape it is very similar to Stark Delicious and will average about the same size. The flesh is rich creamy yellow—a faint tint of orange—crisp, firm with a sparkling tang-ful flavor reminding one of a particularly fine, perfectly ripe pear, completely saturated with exquisite spicy-honey juice. It is a wonderfully late keeper and goes on the Market in late Spring in perfect condition.

**\$5,583.00 CROP FROM LESS THAN TWO ACRES OF GOLDEN
DELICIOUS**

The American Fruit Growers, Inc., of Pittsburgh, Pa., largest orchardists in the world, who early recognized the tremendous value of Golden Delicious in their orchards, report as follows from their Wenatchee Office:

"We harvested 1,220 bushel boxes of Golden Delicious from 130 trees on less than two acres. We sold these apples for \$5,583.00 f. o. b.—an average of \$4.57 per bushel."

When writing us concerning this wonderful crop, Mr. Barnhill, Regional Supervisor for this Company, says: "Golden Delicious is the heaviest bearing of all commercial varieties—the trees are strong and healthy, quite frost resistant and they bear a commercial load of high quality fruit on one-year wood, being the only variety that does this."

HEAVIEST CROPPER—DEFIES FROST

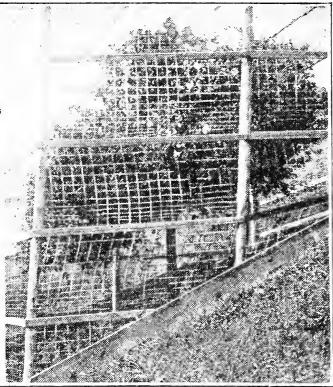
Golden Delicious is the Wonder tree of the orchard—the heaviest bearer ever produced. Its 3-time blooming habit (first on terminal buds, then fruit spurs, then lateral buds—and all three sets of blooms very late) enables it to escape late freezes and produce enormous crops when other sorts are killed.

"As hardy as Wealthy"—Wisconsin grower; "Bloomed for a month"—Ohio grower; "Not affected by blight"—Mass. grower; "Thirty-five below zero—bore as usual"—South Dakota grower; "The youngest, heaviest bearer of fifteen varieties"—N. J. grower.

Go where you will and you will find the leading orchardists talking Golden Delicious—and planting it. It is truly the Wonder Tree of the Orchard.



Golden Delicious 2 1/2 years old—Youngest, heaviest bearer of all apples. Thirty-three states reported Golden Delicious in bearing at 2 years old.



The Original Golden Delicious Tree. 25 years old. Never failed to bear except one year. Our propagation direct from this tree.

“All My 250 Golden Delicious Planted in 1920 Bore 20 to 80 Big Apples Each in 1922.”

So declares Mr. Chas. Riendenbaker, Burlington Co., NEW JERSEY. He bought a tract of poor stump land that wasn't worth “a nickel an acre,” so everyone said. Planted to Stark Trees, it is fattening his bank account every year. Of Stark's Golden Delicious, he says:

“These trees are very **HARDY** and **RAPID GROWERS**. I never knew of any other apple that **BORE SO YOUNG** and **HEAVY CROPS**. It is the **BEST YELLOW APPLE GROWN!**”

ONE HUNDRED PER CENT BETTER THAN GRIMES GOLDEN

Wm. Hotaling, Columbia Co., NEW YORK, writes: “I am sending photo of Stark's Golden Delicious. These trees show four years top-worked growth and this is the third crop. **THEY AVERAGED 4 BUSHELS TO THE TREE**. Stark's Golden Delicious apples are **100 per cent better than Grimes Golden**. This is from actual experience and trees of both varieties grown side by side and **UNDER IDENTICAL CONDITIONS**. The difference in size alone—which is well above **100 per cent**—would exclude Grimes Golden from consideration.”

TWO-YEAR GOLDEN DELICIOUS BEAR CROPS IN 33 DIFFERENT STATES

What do you think of that? In scores of orchards North, East, South and West—in Illinois, Missouri, Virginia, California, District of Columbia, Louisiana, Wisconsin, New Jersey, New Hampshire, Oregon, Pennsylvania, Tennessee, Texas, Iowa, Maryland, Connecticut, Massachusetts, Michigan, New Mexico, Washington, West Virginia, Indiana, Kansas, Ohio, Kentucky, New York and several other states come enthusiastic reports from orchardists that their Golden Delicious bore fruit the second year from planting. **That's the record of two-year-old Stark's Golden Delicious.**

Golden Delicious Apple Tree Prices

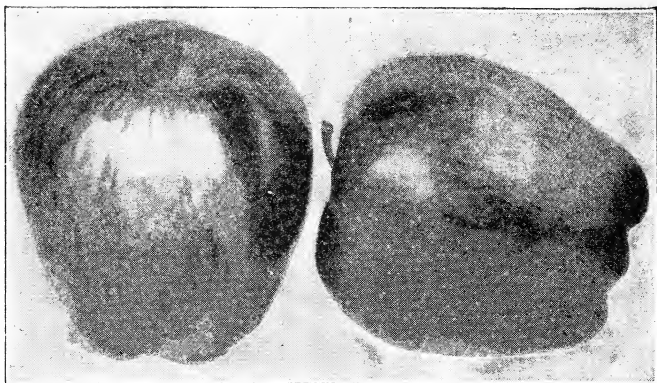
300 at 1000 rate; 30 of a kind at 100 rate; 10 or more of one variety at 10 rate; less than 10 at Each rate.

1st Class	Each	10	100	1000
4 to 7 ft.....	\$1.50	\$12.00	\$100.00	\$800
3 to 5 ft.....	1.25	11.00	90.00	700

STARK RED DELICIOUS

The ORIGINAL TREE Strain Trees

(Sold Only by Stark Bro's)



Typical Specimens of Stark Delicious—most popular and most profitable American apple. Our propagation direct from the Original Tree. Within 25 years Stark Delicious has completely revolutionized Commercial Apple Growing. It was introduced when Ben Davis and other poor quality apples were largely grown, and its matchless quality was the great factor in effecting the change to better varieties.

The World's Greatest Apple—Grown from Ocean to Ocean

Stark Delicious is a great big waxen red striped apple with crisp, tender flesh of exquisite juiciness and flavor. Its aromatic flavor is so refreshing, its flesh so meltingly tender and juicy, that after eating one and learning of its marvelous quality, **NO OTHER RED APPLE** will ever completely satisfy you. Its strong skin, sound flesh, immunity from bruise and rot, and ability to hold its alluring flavor and aroma during months of storage, have earned for Stark Delicious the **highest reputation** as a **long keeper** and a **top-market-price** apple that will safely undergo long distance shipment—and on every market, year after year it outsells all others.

For over 20 years Stark Delicious has been the most talked-about and most profitable American apple—and it is **just now at the peak of its popularity**. Its introduction marked the passing of poor quality varieties in this country, and changed the entire scheme of apple producing and selling.

"THE FINEST APPLE IN ALL THE WORLD"—Luther Burbank

People no longer want just "apples." They have been educated up to the **Stark Delicious Standard**—and the tree planter should keep this thought in mind when selecting varieties for a new orchard. Stark Delicious, Golden Delicious and **STARKING** are the three great commercial orchard money makers and along with **Double-Life Grimes, Jonathan, Stayman Winesap** and **Stark King David** should be used almost to the exclusion of all others.

SUCCEEDS EVERYWHERE AND IN EVERY SOIL—RECOMMENDED BY STATE AUTHORITIES IN THIRTY-FIVE STATES

To try to enumerate the Scientific Horticulturists who have given their enthusiastic endorsement to this acknowledged King of all apples would be like preparing a roster of all the Scientific men in America, for Stark



Original Stark Delicious Tree—over 50 years old, and still bearing.

Three-year-old Stark Delicious in bearing. Nearly every apple "Extra Fancy."

Delicious is the accepted leader in practically every section in this country.

To give an idea of its far-reaching popularity, we have only to call attention to the fact that out of 37 states that grow apples, the horticultural authorities of 35 of them include Stark Delicious on their select list of commercial varieties for their states. These figures are the result of an investigation by Prof. Close, U. S. Pomologist.

No other variety is recommended in even one-half as many States; no other variety except Golden Delicious has ever attained—or probably ever will attain, such universal endorsement. It stands today **The One Great Red Apple** that never disappoints and never fails to pay.

Plant Only the True Original Tree Strain Stark Red Delicious—Take No Chances

"Just as a spring is purest at its source" so the True Original Tree Strain of Stark Delicious guarantees the pure, unchanged, unapproached quality of fruit and sturdiness of tree that characterized the Mother tree and the orchards that were propagated directly from it.

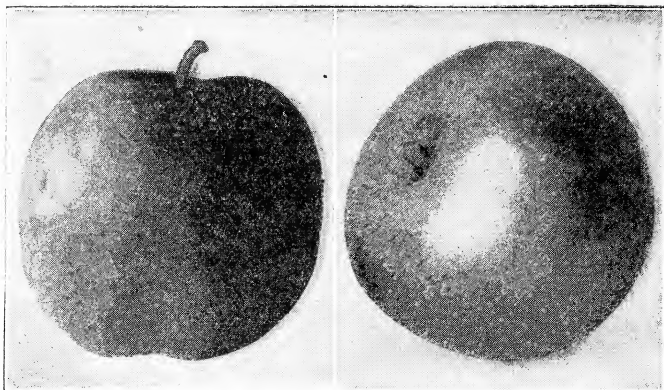
The Stark Delicious from Stark Bro's are direct from this tree and only twice removed from it. The purity of this original strain is jealously guarded, and is your guaranty against deterioration and inferiority.

Your orchard is a lifetime proposition. The chances are that you will plant that orchard but once, so look well to the Stark Delicious trees you plant—and to the fundamental idea behind their production. Promiscuous cutting of buds from orchards where many strains of the same variety may exist and from weak and strong trees alike is, in our judgment, a dangerous practice and is not tolerated in our propagating system. Be sure that your Stark Delicious are the Original Tree Strain—so the fruit they bear may not be disappointing. (Sold only by Stark Bro's.)

Stark Red Delicious Apple Tree Prices

300 at 1000 rate; 30 of a kind at 100 rate; 10 or more of one variety at 10 rate; less than 10 at Each rate.

1st Class (Late Winter)	Each	10	100	1000
4 to 7 ft.....	\$1.20	\$10.00	\$90.00	\$600
3 to 5 ft.....	.90	8.00	70.00	450



Early Red Bird—The best early red apple. Henry Clay—The best early yellow apple

SUMMER AND FALL APPLES

Lack of space prevents extended descriptions of the long list of Summer Apples—we must be brief. During more than a century of observation we have culled the variety list carefully, and the Summer and Fall apples we grow and offer comprise the best—all others have been discarded.

THE PREFERRED LIST OF EARLY AND LATE SUMMER APPLES

Here are the varieties we grow and recommend, ripening in the order named: Summer—Early Red Bird, Henry Clay, Yellow Transparent, Early Harvest, Liveland Raspberry, Red June, Sweet Bough, Duchess, Stark Summer Queen, Summer Champion, Wilson Red June, Maiden Blush, Jefferis Red, Banks Red Gravenstein, "Triple Red" Gravenstein. Fall—Lowell, Wealthy, Early Melon, Rambo, Imperial Rambo, Buckingham, Imp'd (Stark Strain), and Mother.

Below are short, terse descriptions of the varieties we most strongly recommend: (See Bottom Page 15 for Prices.)

EARLY RED BIRD (Crimson Beauty in Canada). Earliest of apples—fiery flaming red, good size, best quality; ripe 7 to 10 days before Yellow Transparent; a strong, hardy, producing tree. **Our choice of all red Earliest Summer apples for home and market.**

S. B. Chute, Nova Scotia Apple King, says: "Any man with an orchard of this apple has a Gold Mine." Prof. Sanders, Canadian Dept. Agri., says: "**Earliest apple**, young bearer—half bushel on 2-year trees; better shipper than Yellow Transparent. 15 acres in one year brought Mr. Chute 1,500 bbls., sold at \$7.00—or \$10,500.00." Mr. Adney, son-in-law of Mr. Sharpe, famous originator of this apple, says: "Remarkably prolific, extremely hardy, never Winter kills. 10 days earlier than earliest early apple. **Occupies a place no other apple fills.**" (10c extra.)

HENRY CLAY (Trade-Mark). A large golden apple that looks and tastes like Maiden Blush—but **ripe 60 days earlier**. Immeasurably superior to any other Summer golden apple for all purposes. "The most delicious apple I ever tasted." R. F. Rutledge, Tenn. "Very hardy and thrifty; Yellow Transparent, **two weeks earlier than Williams**; sells at better price; no signs of aphid or blight. We consider it one of the best apples." N. J. yellow, reddish cheek, very fine flavor." M. Roach, Mont. "**Larger than Fruit and Produce Co.** "Resembles Maiden Blush—nearly 60 days earlier, better, has never failed a crop."—W. H. Knight, Originator, Ky.

YELLOW TRANSPARENT. Ripe just after Henry Clay; widely planted, but runs rather small and the tree often damaged by blight. However, a profitable sort.



No other Fall apple can compare with Wealthy. Noted for its hardiness.

SUMMER CHAMPION. Best all-round Mid-Summer apple. Big brilliant red-striped, luscious—most attractive. Introduced by us, and recommended. Just ahead of Maiden Blush. **Best shipper and keeper of its season.**

WILSON RED JUNE. The biggest, handsomest Summer Apple—almost as large and brilliantly colored as Black Ben—and keeps and ships remarkably well. Ripe mid-summer, brings highest prices—in Kansas City as high as **\$16.00 per barrel.**

DUCHESS. One of the well-known good Summer Apples that is largely planted, especially in the north—as it is one of the hardiest. Medium size, red striped, and a money-maker; tree a young and regular bearer.

FALL APPLES

WEALTHY. When an apple is wanted that ripens between Summer Champion and Jonathan, there is just one—**Wealthy.** Good size, brilliant, red-striped, best quality—refreshing wine-like flavor—best cooker. Young bearing, hardy, dependable tree. Known everywhere and sought on all markets—profitable. We advise its planting everywhere.

WONDERFUL MONEY MAKER. "From 30 Wealthy trees we picked \$1,100.00 worth of fruit."—T. J. Maney, Iowa Exp. Sta. "**Best of its season**—for hardiness, productiveness and early bearing; recommend for all sections. Few apples show such wide adaptability. Very refreshing for dessert. Fine for sauce and pies."—Ohio Exp. Sta. "**Bears almost as soon as set out**—and bears heavily and persistently."—Rural New Yorker. "**Very best Fall apple.**"—Ill. Hort. Soc. "**Fine commercial variety for New Jersey.**"—N. J. Exp. Sta. "**Close approximation to perfection.**"—Country Gentleman. "**Should be planted by the millions—Frost Proof, finest drying apple.**"—Chas. Scott, Brice, Mo.

Other Summer and Fall Apples

In addition to the Summer and Fall apples described above we can supply the following, ripening in the order named: Early Harvest, Liveland Raspberry, Red June (Carolina), Sweet Bough, Stark Summer Queen (10c Extra), Jefferis Red, Maiden Blush, Lowell, Banks Red Gravenstein, Early Melon, Rambo, Imperial Rambo (10c Extra), Buckingham Improved (Stark Strain) and Mother (A Fall Delicious).

Apple Tree Prices—Pages 14 and 15.

300 at 1000 rate; 30 of a kind at 100 rate; 10 or more of one variety at 10 rate; less than 10 at Each rate.

1st Class	Each	10	100	1000
4 to 7 ft.....	\$1.10	\$10.00	\$85.00	\$550
3 to 5 ft.....	.80	7.50	65.00	400



Double-Life Grimes Golden is profitable everywhere and a favorite dessert apple.

Jonathan is rich and luscious. One of the best and most popular American apples.

WINTER APPLES

JONATHAN (Special Strain)

Our Jonathan is a special strain selected as the best type of this good and profitable apple. This parent tree was chosen for several reasons: 1st, young bearing—as it bore continuously after the third year; 2nd, regular bearing, as it has not missed a crop; 3rd, size and color—extra large and deepest red color; 4th, vigor and strength of tree—one of the most beautiful and vigorous Jonathan we ever saw.

Jonathan is an apple that always sells, and with the exception of Stark Delicious, is probably known to more people than any other variety. Of good medium size, beautiful bright red-all-over color, and widely adapted to soils and climates—largely grown throughout the Central West, Northwest, East and South—everywhere except the far North, where Stark Delicious and McIntosh take its place.

The tree is spreading, extremely long lived, resists Canker, but its heaviest crops are generally borne every other year. By proper fertilizing, however, growers are getting good crops every year—and it always pays.

GRIMES GOLDEN (Double-Life)

The usual Grimes grown by ordinary methods have a fatal defect—Collar Rot, which usually causes the death of the tree before it is 20 years old. The Stark “Double-Life” Method of growing them, however, absolutely eliminates all this danger. If you contemplate planting Grimes use our “Double-Life” trees and insure against Collar Rot. Our “Double-Life” Method of growing is an expensive process—but it pays.

Grimes is one of the old varieties that has stood the tests of time—and has grown more and more popular. Until Golden Delicious became known to the apple eating public it was the unquestioned yellow apple leader—and it is still a favorite with many.

Grimes is of good medium size, of beautiful golden color and is a splendid dessert apple. It cooks well, but in the words of Dr. Warder, one of the pioneer American Apple authorities, “it is too good to cook.”

Prices for Apple Trees. Pages 16 and 17.

300 at 1000 rate; 30 of a kind at 100 rate; 10 or more of one variety at 10 rate; less than 10 at Each rate.

1st Class	Each	10	100	1000
4 to 7 ft.....	\$1.10	\$10.00	\$85.00	\$550
3 to 5 ft.....	.80	7.50	65.00	400



Stayman Winesap—"Nearest approach toward the ideal all-purpose apple."—
Frank Moffit, Ind.

STAYMAN—The Master Winesap

Following our carefully worked-out plan of propagating from special strains, we selected as the parent tree of all our Stayman Winesap, a tree that has a marvelous record for heavy and constant bearing—and carrying wonderful color.

This tree stands in a famous orchard in the Shenandoah Valley of Virginia and during a period of years has an unsurpassed record as a producer—bearing as much as 22 barrels of fruit. Our propagation is direct from this famous tree.

RANKS HIGH AMONG THE BEST APPLES

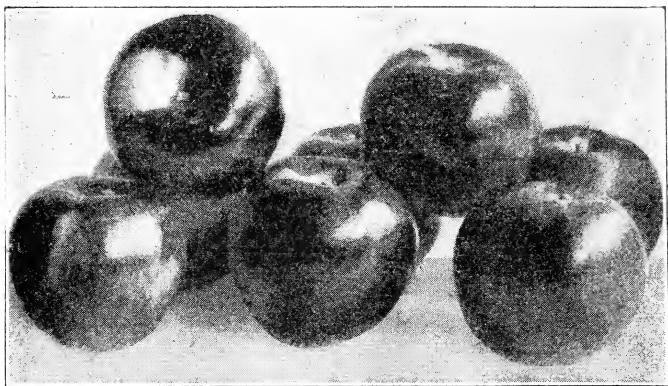
Stayman Winesap is unquestionably the best of all the Winesap type of apples—and in our judgment ranks just after Starking, Golden Delicious and Stark Delicious in orchard and market value. The Mo. State Exp. Sta. Circular No. 12 declares: "Stayman is the best variety of the Winesap group. Tree vigorous and has wide adaptation to soils. Comes into bearing young. Abundantly productive." "Nearest approach toward the ideal all-purpose apple."—Frank Moffit, Hamilton Co., Ind. "A grand apple."—Prof. M. B. Waite, U. S. Dept. of Agr. "With us by far most popular winter variety."—Prof. C. P. Close, Pom., U. S. Dept. Agri.

PLANT OTHER VARIETIES WITH STAYMAN TO PROPERLY POLLENIZE IT

Like other apples of the Winesap group Stayman should not be planted in solid blocks, as it requires other varieties near it to insure proper pollenization. For this purpose Starking, Stark's Golden Delicious, Stark Delicious or Grimes Golden are recommended—all are good pollenizers. The fruit is of large size with plenty of red to be attractive, of splendid commercial shape, keeps well, and is of superb quality—luscious, rich and juicy. The tree is just about as perfect as a tree can be; grows to immense size, with spreading, strong, tough branches that hold up its immense crops without splitting or breaking. It bears young, heavily, and the fruit is uniformly large—only a small percent goes to culls.

AN APPLE FOR ALL SECTIONS

Stayman Winesap is grown satisfactorily and profitably in all apple sections, except the far north—and it stands much farther north than any other apple of the Winesap type. Colorado, Idaho, Nebraska, Iowa, the entire Central West and East—Kansas to New York and South to North Carolina, Georgia and Alabama—and even parts of New England—consider Stayman one of their standard sorts, and one of the most profitable apples they grow. Washington, Oregon and California also grow Stayman largely and profitably. (See Page 16 for Prices.)



Stark King David: "The Monarch, Emperor, best of all."—W. H. Scott, Mo.

STARK KING DAVID (Trade-Mark)

STARK KING DAVID (Trade-Mark)—An Improved Jonathan That Does Not Drop. Many orchardists over the country plant King David in preference to Jonathan—of which it is thought to be a seedling, probably crossed with Winesap. We introduced the variety over 25 years ago and our propagation is direct from the Original Tree.

In comparing them there are many points of similarity. About the same size—probably King David averaging a little larger. Color, both solid red, but King David a much darker red—colors up early and hangs on the tree, even after hot Fall weather when Jonathan sometimes drops. Quality ranks among the best—even better than Jonathan. King David keeps well in storage until late Spring, when it commands extremely high prices. Another valuable point is that King David sometimes escapes late frosts that catch Jonathan.

The one outstanding advantage of King David is its young, heavy and annual bearing. King David is one of the youngest bearers of all the really good quality apples and for that reason is ideal for use as a filler, as well as a splendid permanent tree. It is thrifty, healthy and long lived. We recommend King David and Golden Delicious for fillers.

King David is of good size, deep dark red with markings of deepest (almost black) red; flesh rich cream color, full of spicy wine-like juice. The tree is a tremendous cropper and has made good all over America. "King David was best—bore from 12 to 16 bushels per tree."—John E. Walters, Newton Co., Ark.

BLACK BEN (Trade-Mark)

"The Apple for the Millions." Has made fortunes for Orchardists from the Atlantic to the Pacific. Will produce more bushels to the tree, hence costs less per bushel to grow than any other apple, except possibly Stark's Golden Delicious. Marvelously beautiful. Extremely large, glowing deep solid blood red (no stripes), snow white flesh. No apple will stand hard handling or long distance shipping better; keeps perfectly in cellar and storage, no scald. Always commands premium prices because of its unsurpassed beauty. Our propagation is direct from the original tree, and is pure. Tree hardier than Ben Davis or Gano, stronger, much thriftier.

Prices for Apple Trees, Pages 18, 19 and 20.

300 at 1000 rate; 30 of a kind at 100 rate; 10 or more of one variety at 10 rate; less than 10 at Each rate.

1st Class	Each	10	100	1000
4 to 7 ft.....	\$1.10	\$10.00	\$85.00	\$550
3 to 5 ft.....	.80	7.50	65.00	400



Dark Red Rome Beauty—Deepest red.

Paragon—"The Glorified Winesap."

DARK RED ROME BEAUTY

This magnificent apple—an improved strain, has every good point of the Rome Beauty, and in addition it is a brilliant dark red in color, adding tremendously to its value. We are growing and fruiting several red strains of this popular old apple, but are concentrating on the Dark Red Strain from the orchard of U. T. Cox, Proctorville, Ohio—probably the most noted Rome Beauty grower in America. In our own orchards trees of this Dark Red Strain are bearing in the third generation and the fruit has maintained its marvelous deep red color—the color being as solid and bright as a highly colored Jonathan. Our propagation is **direct through the original tree**. The fruit is large, tender, juicy, good quality; hardy, one of the latest bloomers, and bears heavy crops every year. Season before last it was **one of four varieties out of 200 in our orchards** that came through the killing late Spring frosts and bore a crop of fruit. Here is one of the finest baking apples on the list—the highest class hotels and restaurants prefer them for kitchen uses.

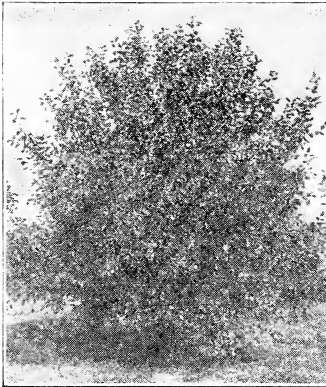
PARAGON

Some poetically inclined orchardists once called Paragon "The Glorified Winesap"—and we have never been able to find a title more fitting. Don't confuse this variety with so-called, misnamed Paragons. Little Paragon originated by the same man, and still grown is inferior; Mammoth Black Twig, a shy and tardy bearer, has been mistakenly called Paragon—and is still sold by some as Paragon. Following our safe plan we **grow all trees of this variety from a proved tree fully typical in every way, selected as a perfect type young bearing, regular bearing Paragon, and this strain is fruiting in our own orchards three times removed from the parent tree**. We know we have the true deep red Paragon. It ranks close to Stayman Winesap in value.

CORTLAND

"A late keeping McIntosh" that does not drop. Our parent Cortland tree was propagated **direct from the original tree** by the New York Experiment Station. The tree we are using for propagation has fruited for years and is a **perfect type Cortland**. All Cortland we will propagate will be direct descendants of this tree—and kept very close to it. Growers can know that Stark grown Cortland are **true type trees**. Cortland originated on the grounds of the New York Experiment Station, and was recommended for propagation after many years of testing on the Station grounds and elsewhere. It is a **seedling of McIntosh** and as compared with its parent it is **larger, brighter red, firmer fleshed, keeps very much later** and is blessed with almost the same exquisite flavor.

(Prices for Trees of Varieties Above on Page 18.)



The Stark Mother Tree of Cortland—
Propagated direct from the original tree.

McIntosh—Luscious fruit and hardy
tree. A great hardy apple.

WINESAP

In Virginia, where Winesap has been a leading apple for generations, and where it seems to grow to its greatest perfection, we located after diligent search what we consider as nearly a perfect true type Winesap as we have ever seen—and that tree was selected as the parent tree for our Winesap propagation. During an 8-year period this grand tree has averaged 15 barrels—which we believe to be a record. Winesap still has its place in our orchards—and is a standard variety. For prices see Page 18.

McINTOSH

We grow the **True Red McIntosh**—a carefully selected strain that we keep pure. Growers, especially in New England, tell us that there are McIntosh all through their orchards that have not the true McIntosh color—hence are not so valuable. Our method of **Special Strain Propagation** is an effort to correct just such conditions, and we want to impress upon orchardists that we have the **True Red McIntosh**. For prices see Page 18.

Other Winter Apples Offered but not Described

In addition to the varieties of Winter varieties described in this booklet we grow and offer many other kinds, but because of limited space we cannot carry descriptions. The list follows:

Baldwin	North Western Greening
Bellflower Improved	Rome Beauty
Banana	Rome Beauty (Ohio Bright Red)
Champion	Paradise Winter Sweet
Golden Winesap	Rhode Island Greening
Jeniton	Senator
Giant Jeniton	White Winter Pearmain
Mammoth Black Twig (Impr.)	White Pippin (10c extra)
Northern Spy	Willow Twig
	York Imperial

Prices on Apple Trees above are same as schedule on Page 18.

CRAB APPLES

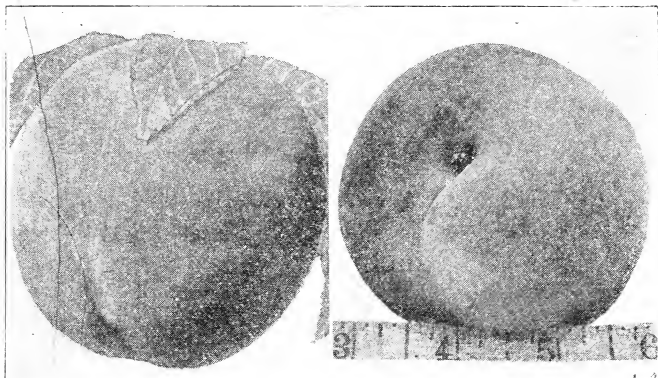
STARK FLORENCE CRAB. "Worth All Others Put Together."—Most valuable crab we have tested—and we have fruited them all.

STARK GOLD CRAB. To those planters who prefer a yellow crab, we offer the Stark Gold. It is beautiful golden color, hardy as an oak.

Crab Apple Prices

300 at 1000 rate; 30 of a kind at 100 rate; 10 or more of one variety at 10 rate; less than 10 at Each rate.

1st Class	Each	10	100	1000
4 to 7 ft.....	\$1.50	\$13.00	\$120.00	\$800
3 to 5 ft.....	1.25	11.00	100.00	700
2 to 3 ft.....	1.00	9.00	80.00	600



Red Bird Cling—The finest early peach. Alton—The best of the white fleshed peaches.

EARLY PEACHES

RED BIRD CLING. Earliness, large size, glorious colored fruit and hardy, young, heavy bearing trees combine to make Red Bird Cling by far the most popular and profitable early season peach. The flesh is firm like Heath Cling, making it an ideal shipper, and it rots very little. The first peach of consequence to go on the market. A big and sure money maker. Our propagation is from a tree in a Mo. orchard—the fruit the finest we have ever seen. "From 175 Red Bird sold \$442.00 worth of fruit, besides giving away many bushels."—W. A. Hill, Johnson Co., Ark. "Red Bird fruited well—nearly all others killed; **grand lookers, sell well.**"—J. W. Bell & Son, Chautauqua Co., N. Y. "Red Bird from 75 trees brought \$412.50."—R. F. Kietar, Smith Co., Texas. "Sold on Memphis market as fast as I could ship; largest early peach, beautiful, ships well. Wish you could have seen these blood red peaches in my Red Bird Cling block."—Dr. E. L. Morris, Fayette Co., Tenn.

JUNE ELBERTA. The earliest ripening good yellow peach; fine flavor, flesh a deep yellow clear to the seed—by far the best very early yellow peach. A big, fine looking variety that ripens just after Red Bird Cling.

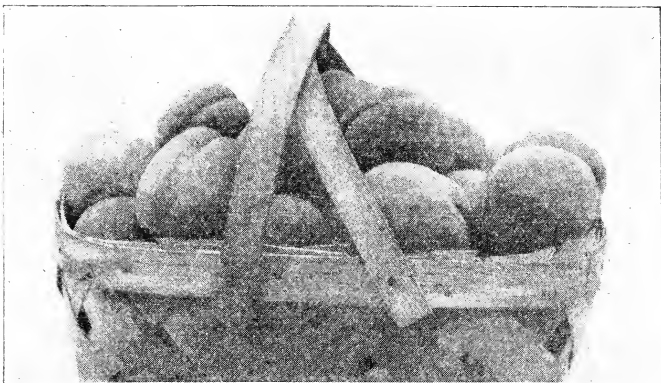
ALTON. Of all white peaches, no other is so dependable. Early and much better in quality and less rot than Carman, while its rosy red cheek with a background of creamy white makes it one of the handsomest of all peaches and one of the most profitable. Because of hardiness will stand far North, while in Southern regions it is a great favorite. Introduced by Stark Bro's and propagation through Original Tree on the grounds of E. A. Riehl, Alton, Ill. Plant this great white and red peach everywhere for market and home use. Ideal for canning, preserving, sweet pickles; 24 degrees below zero killed practically all peaches, including seedlings. Alton and Eureka came through with a fairly big crop.

In addition to the Early Peaches described we can supply the following: Mayflower, Greensboro, Early Rose, Early Mamie Ross, Eureka, Hiley Champion, Crawford Early Imp'd, Worth and Carman.

Prices for Peach Trees on this Page.

300 at 1000 rate; 30 of a kind at 100 rate; 10 or more of one variety at 10 rate; less than 10 at Each rate.

1st Class	Each	10	100	1000
3 to 5 ft.....	\$0.60	\$5.50	\$45.00	\$300
4 to 7 ft.....	.75	7.00	60.00	400
6 to 8 ft.—Heavy.....	25c	more than 4 to 7 ft. price		



Stark Early Elberta—Ripe 10 days ahead of Elberta. Luther Burbank says: "A model peach."

STARK EARLY ELBERTA

Great Midseason Peach Ripens Ahead J. H. Hale

The grower of Peaches does not want all of his peaches to come off the trees at one time, as the congestion of handling is too great and the time is too short to handle them properly.

THE MOST PROFITABLE PEACH COMBINATION—Stark Early Elberta, J. H. Hale and Late Elberta are the best peach ripening combination we have ever seen. The Early Elberta begins ripening about a week earlier, and picking and marketing, beginning at that time, can be continuous until the J. H. Hale picking is completed; then follows Late Elberta. Growers who have planted these varieties have the most profitable, most easily handled peach orchards in their community.

THE SUPREME YELLOW PEACH

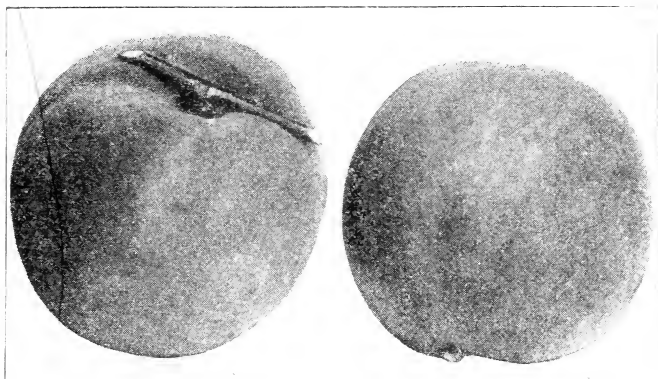
Stark Early Elberta was introduced by us nearly 20 years ago, and it is today the best liked and most profitable peach of its type. Growers from New York to California, from Michigan to Georgia, have put upon it the stamp of their approval—because it pays. **Our propagation is very close to the Original Tree**—and is kept pure. Be sure you get the true Stark Early Elberta; some other so-called Early Elbertas have not proved valuable.

Stark Early Elberta is the supreme yellow fleshed peach, and the most delicious quality peach of this type. It is of huge size, glorious pure golden yellow—sometimes tinted with flashing red; averages larger than old Elberta, has a strong protecting skin, covering a luscious flesh that is flavored with a juice as sweet as nectar. It allures with its beauty, gratifies with its quality and sells for top-market price everywhere. The peach lovers of the nation have put upon it the stamp of their approval and it is today the most-talked-of and best liked of all peaches. The tree is a sturdy grower, hardier than Elberta and can be depended upon for big crops. It has sold for \$3.50 when Elbertas from the same orchard brought only \$1.50. This difference in price is easily explained, as the Early Elbertas went on the market over a week ahead of Elbertas when the peach markets were eager for good peaches, and it is far superior to Elberta in flavor.

MOST BEAUTIFUL AND PERFECT PEACH

E. W. Kirkpatrick, nationally known Texas peach authority, says: "THE MOST BEAUTIFUL AND PERFECT PEACH I HAVE EVER SEEN: texture finer than ELBERTA, COLOR RICHER AND MORE BEAUTIFUL; A GREAT ACQUISITION TO THE WEALTH OF THE WORLD."

(Prices for Stark Early Elberta Trees on Page 23)



Two Specimens of the wonderful *J. H. Hale Peach*—Large as small cantaloupes—Grown in Ohio—Succeeds all over America.

J. H. HALE

J. H. HALE. (The Million Dollar Peach) originated by Mr. J. H. Hale—"The Peach King"—and was named in his honor. In size, color, texture, flavor, keeping and shipping qualities *J. H. Hale* surpasses old *Elberta* and outsells it, often selling for \$5.00 per bushel when *Elberta* brings \$3.50. Mammoth in size, vivid carmine over golden yellow, almost perfectly round, fuzzless and smooth as a glove. Commands instant attention on all markets by **Giant size and Glorious color.** Flesh solid like a cling, yet melting, tender, free from grain and stringiness, has exquisite peachy flavor—without any of the bitter tang of *Elberta*; almost as firm as a clingstone, and shipping ability is really marvelous. We do not advise planting *J. H. Hale* in solid blocks, as careful experiments have shown that the blossom is, to a certain extent, self sterile—therefore some other variety should be planted with it to insure proper pollenization and best crops. *Stark Early Elberta*, *Belle of Georgia*, *Alton* or *Late Elberta* are excellent for that purpose.

MUCH SUPERIOR TO ELBERTA

The tree is a stocky grower, bears young, heavily and has proved its adaptability to a wide range of soils and climates, but does best on good land. The New Jersey Experiment Station says: "From our experience *J. H. Hale* is a much superior peach commercially to *Elberta*."

\$5.00 Per Bushel for *J. H. Hale*—Among the best known orchards in America are the Simpson orchards at Vincennes, Ind. For several years *J. H. Hale* has been their big profit maker. Last summer, when most peaches were killed, *J. H. Hale* produced a big crop that BROUGHT \$5.00 PER BUSHEL. The Simpsons consider it their greatest money-maker.

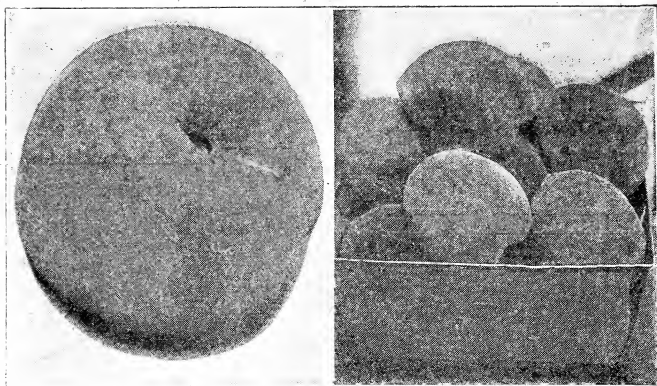
Handsomest of All Peaches—*J. H. Hale* is the handsomest thing in the peach line that I have ever seen. Prof. Chenoweth and I agree that it is a much handsomer peach than the *Elberta*, better in quality and a much better market peach.—F. C. Sears, Prof. Pom., Mass. Agri. College.

Brought 25c Each—We quote from Columbus, Ohio, Citizen: "Some *J. H. Hale* grown by J. C. Taylor on the north side of a big hill in Northwestern Ross Co. are almost five in. in diameter. Experts pronounced them the finest they had ever seen and expressed the opinion that they were the finest in the world. Mr. Taylor disposed of his fruit at 25c per peach."

Prices for *J. H. Hale* & *Stark Early Elberta* Peach Trees.

300 at 1000 rate; 30 of a kind at 100 rate; 10 or more of one variety at 10 rate; less than 10 at Each rate.

1st Class	Each	10	100	1000
3 to 5 ft.....	\$0.70	\$6.50	\$55.00	\$400
4 to 7 ft.....	.85	8.00	70.00	500
6 to 8 ft.—Heavy.....	25c more than 4 to 7 ft. price			



Krummel October—The Queen of late peaches. Late Elberta—Ripe just when the markets want them.

MID-SEASON AND LATE PEACHES

LATE ELBERTA. The best variety ripening between J. H. Hale and Krummel October. A big, yellow freestone peach that resembles Elberta, but is of better quality and a splendid shipper. 10c Extra.

STARK HEATH CLING. Best strain of the well-known White Heath. Fruit tender, melting, juicy, luscious, and firm. Tree hardy, good grower, and a good bearer. This is a special strain originated by us—the finest White Heath we ever saw.

KRUMMEL OCTOBER. Unquestionably the best of all late peaches. Of splendid size, almost round, deep yellow in color with bright red cheek; luscious, sweet, no bitterness at the pit; flesh firm, finest canning quality; ships well. Our propagation is from Original Tree.

OCTOBER ELBERTA. An Elberta in size, color and quality that ripens 40 days later. It comes in just ahead of Krummel October and sells remarkably well. (10c Extra.)

ELBERTA. The old standby—the standard yellow peach. We grow an Improved Strain.

ELBERTA CLING. The finest yellow clingstone—just like Elberta in size and color, but a perfect Cling and of excellent quality.

ILLINOIS. A magnificent white peach; hardy, good orchard tree, heavy bearer. Introduced by Stark Bro's and our propagation is from the Original Tree.

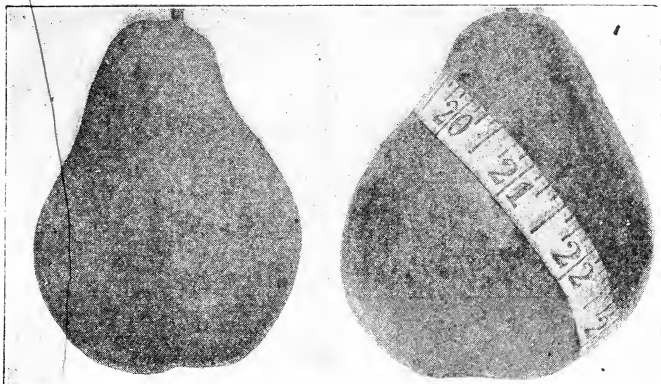
OTHER VARIETIES OF PEACHES

In addition to the mid-season and late Peaches described above we can supply the following, ripening in the order named: Oldmixon Free Improved (5c Extra); Belle of Georgia, Japan Golden Giant Cling (5c Extra); Washington, Golden Sweet Cling (5c Extra); Salway Imp'd Holsinger (5c Extra); Shippers Late (10c Extra); Crawford Late Imp'd, Chairs Choice, Big Indian Blood Cling (5c Extra); Wilma, Hyslop Cling (5c Extra); Yates Cling (5c Extra); Fox Seedling, Sea Eagle Imp'd (5c Extra); Crothers Late, Martha Fern Cling (5c Extra); Mammoth Heath Cling, Stark Summer Heath, and Marionville Cling.

Prices for Peach Trees on this Page.

300 at 1000 rate; 30 of a kind at 100 rate; 10 or more of one variety at 10 rate; less than 10 at Each rate.

1st Class	Each	10	100	1000
3 to 5 ft.....	\$0.60	\$5.50	\$45.00	\$300
4 to 7 ft.....	.75	7.00	60.00	400
6 to 8 ft.—Heavy.....	25c more than 4 to 7 ft. price			



Lincoln—Blight resistant and equals Fame—A hardy native American pear. Bartlett in quality.

GLORIOUS PEARS

LINCOLN. Best all-round pear tested in our over 100 years of fruit growing. Was introduced by us and found worthy of our highest commendation; fruit large, clear, beautiful yellow, sometimes blushed—**MARVELOUSLY BEAUTIFUL**—ideal shipper; **QUALITY SUPERB.** Tree remarkably **BLIGHT RESISTANT**, heavy cropper, long-lived. Ripe in late summer. Our propagation of Lincoln is direct through the **Original Tree.** Be sure you get the **TRUE LINCOLN.** "Lincoln more blight resistant than any other; equals Bartlett in flavor and texture."—J. W. Jones, Emmet Co., Idaho.

FAME. There is no more **DELICIOUS PEAR** than this; juicy, **MELTING, SWEET** and rich. Seeds few, **ALMOST NO CORE**; large, blushed yellow, late summer. Hardy, strong, long-lived orchard tree; a young bearer. Our propagation is from the **Original Tree**, as we introduced the variety over 25 years ago, and propagation kept pure. (25c Extra.) "I am greatly pleased with the quality of Fame; flesh very fine grained, buttery, and of **highest excellence**—seed few, almost no core."—E. H. RIEHL, Illinois Experiment Station.

STARK SECKEL (Sugar Pear). A select strain of this wonderful pear that we have grown for years. Medium size, beautiful yellow; **SPICY, HONEYED FLAVOR**—the acme of **PEAR PERFECTION.** The parent tree of our record strain stood on the grounds of E. A. Riehl, Alton, Ill.

BARTLETT. The great favorite in all orchards and on all markets because of **delicious quality.** Large, rich, golden yellow with soft blush; juicy, melting, with a rich, indescribable flavor. One of the finest summer pears.

OTHER VARIETIES. In addition to the four varieties of Standard Pear described above we also offer the following varieties at the same prices: Anjou, Duchess, Honey Dew, Kieffer, King Karl, Triumph, Tyson, Beurre Bosc and Garber. If **Dwarf Pears** are wanted, we offer the following: Anjou, Bartlett, Duchess and King Karl at the same prices as Standard Pear.

Lincoln Pear Prices.

300 at 1000 rate; 30 of a kind at 100 rate; 10 or more of one variety at 10 rate; less than 10 at Each rate.

1st Class	Each	10	100	1000
4 to 7 ft.....	\$2.50	\$23.00	\$200.00	\$1,200
3 to 5 ft.....	2.00	18.00	160.00	1,000

Other Pear Prices.

1st Class	Each	10	100	1000
4 to 7 ft.....	\$2.00	\$18.00	\$160.00	\$1,100
3 to 5 ft.....	1.50	13.00	120.00	800



Gold—The sensational \$3,000 plum from Luther Burbank. America. Reliable as Wild Goose—and twice as large

THE BEST PLUMS

GOLD (Trade-Mark). Our wonderful \$3,000.00 Gold Plum has created a greater sensation and made more friends among Plum Growers than any other variety ever introduced. Luther Burbank, who originated Gold Plum, says: "Among plums there is nothing on earth so beautiful and good." Fruit ripens in mid-season, is clear, semi-transparent, light golden yellow, later nearly overspread with a hazy carmine blush. Rather dwarfish growing, but strong, healthy and one of the hardiest. We paid Burbank \$3,000.00 for this wonderful fruit and trade-marked the name. Buy the genuine Stark Gold from Stark Bro's—the exclusive introducers and owners. Our propagation is kept very close to the **Original Tree**. Succeeds everywhere—from the Atlantic to the Pacific, from the Great Lakes to the Gulf. "Best plum the earth produces."—T. E. Keith, Tex. "Stands winters like hardiest natives."—A. N. Seymour, Wis.

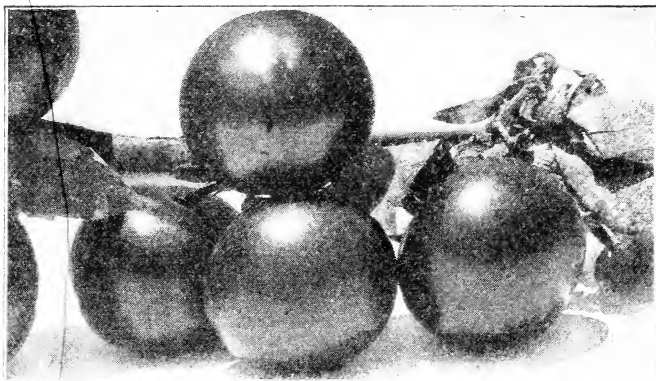
AMERICA. A full Brother of Gold, the Sensational \$3,000.00 Plum.

From the far-reaching experimental hybridizing by the great scientist, Luther Burbank, came two grand plums—Gold and America; it was then plum growing received its greatest impetus. America is a large, glossy, coral red—one of the most beautiful and delicious plums ever grown. Tree large, very vigorous, thoroughly hardy, bears extremely young, and bears enormous crops every year. Ripens very early and succeeds everywhere. Buds for our first trees of America were cut by Luther Burbank from the **Original Tree**, and our propagation has been kept very close to it. "Almost phenomenally free from rot."—Plums of New York. "Uninjured by 55 degrees below zero."—R. J. Williams, Quebec.

EARLY GOLD (Shiro). A pure, transparent, very early golden yellow plum—a huge honey-drop; sweet and excellent. Tree hardy and satisfactory every way in the orchard. A tree loaded with this golden fruit is a wonderful sight. Another Burbank production that has made good; few plums are more satisfactory. Our propagation is direct through the **Original Tree**.

OMAHA. Originated in Nebraska on the grounds of Theodore Williams, noted plum authority and experimenter. Introduced by us at his request, and propagation held very close to the **Original Tree**. In less than twenty years it has become one of America's greatest plums. It is of immense size, rich coral red, very striking and handsome; flesh rich yellow, firm, juicy, highly flavored, of wonderful quality and ripens in mid-season. The tree is one of the hardiest, a strong grower and an every-year bearer. We do not recall one single bad report on Omaha, and they have been planted by hundreds of thousands.

(Prices for Above Plum Trees on Page 27.)



Omaha—Tree as sturdy and hardy as an oak, succeeds everywhere.

PLUMS—Continued

When we introduced Omaha, the originator wrote us: "No other plum in existence is so cosmopolitan as Omaha; it has fruited from Alberta (Canada) south to the Gulf; it thrives in Vermont and west to the Pacific." In the final test of the variety—in the orchards of the country—it has borne out every one of the originator's claims. The tree is as sturdy and hardy as an oak, rather spreading in growth, bears tremendous crops every year. It is the good plum for everywhere.

Hardest Plum That Has Commercial Value—"Omaha gave me a fine crop this season. Last winter worst for thirteen years, even Earliest of All froze—Omaha came through smiling 100 per cent alive and Omaha is the hardest plum that has commercial value."—Echo Fruit Farm, N. H.

TATGE (Imp'd Lombard). One of the finest European plums—superior to Lombard in size, color and quality and has less rot. Fruit light purplish red, large size, good quality—the ideal kitchen plum. Hardy, immensely productive, bears young. (10c Extra.)

STARK DAMSON (Big Mackey). European. A true Freestone. The largest and best of all Damsons; originated in Pike Co., Mo., and known locally as Big Mackey. The fruit is deep purple, juicy, rich, small stone, fine for preserves. Propagation is kept very close to the Original Tree.

STARK GREEN GAGE (Missouri). "Sweet as honey." Best Gage plum. Greenish yellow, mid-season, much larger than old Green Gage. Tree strong grower, bears wonderful crops. For preserving and canning it has no superior. The home or market orchard is not complete without it. Originated in Stark Nurseries. This strain selected from a Missouri Orchard, and our propagation is direct through the Original Tree.

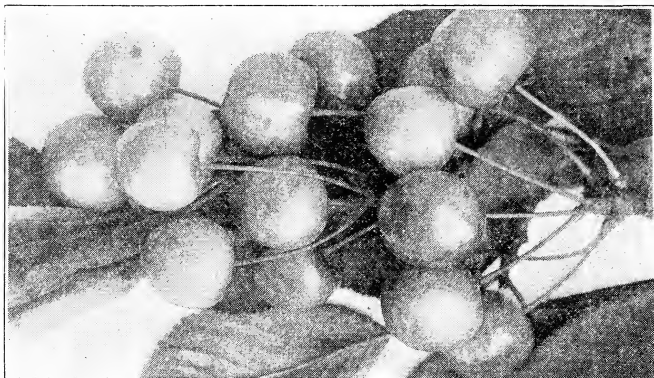
ABUNDANCE. A large, bright cherry red, Japanese plum. Firm, sweet, excellent quality, and ships well. The tree is hardy, healthy and productive; rots less than Burbank—the best of the Japanese plums.

In addition to the Plums described above we can supply the following varieties: Santa Rosa, Indian Blood, Burbank, Compass (Cherry Plum), Damson Shropshire, Freestone Goose, Late Goose, Lombard Improved (Tatge) (10c Extra), Mammoth Gold, Poole Pride, Prune German (Dansville strain), Red June, and Wild Goose Imp'd.

Prices for Plums on Pages 26 and 27.

300 at 1000 rate; 30 of a kind at 100 rate; 10 or more of one variety at 10 rate; less than 10 at Each rate.

1st Class	Each	10	100	1000
4 to 7 ft.....	\$1.25	\$11.00	\$100.00	\$700
3 to 5 ft.....	1.00	9.00	80.00	600
2 to 3 ft.....	.80	7.50	65.00	400



Stark Gold Cherry—at last, a sweet cherry that is really hardy—40 below zero, no injury.

CHERRIES

STARK GOLD CHERRY (sold only by Stark Bro's). The great sweet cherry for the North and for the East and Central West where the usual sweet cherries do not thrive.

A long row of Stark Gold Cherries in our orchard here in north Missouri, now eleven years old, began bearing at 2 years of age, and have never missed a crop—standing 20 to 25 degrees below zero without injury. Growers from farther north tell us that 40 degrees has not injured them.

As we grow it here, and as we have seen it in other communities, the fruit is of immense size, glossy, almost transparent pure golden in color without a single touch of red—and the quality is superb. Here we have compared it for several seasons with ten or twelve of the best sweet varieties—and without exception it has borne more fruit than any other. It ripens about two weeks later than Early Richmond, and will hold on to the tree 10 days after ripening. Cherry growers throughout the whole country who have seen it in bearing and tested its quality are enthusiastic concerning it—unhesitatingly pronouncing it one of the greatest horticultural finds of recent years.

At last we can offer a sweet cherry that is **really hardy**. The variety originated in Richardson County, Nebraska, was discovered, introduced, owned and sold only by us. It has never disappointed since we began its testing and introduction. We quote Mr. Thomas, the originator, who called our attention to the variety and who has watched its fruiting under all conditions for many years: "Surpassed in hardiness any cherry on my place; thermometer often registers 40 degrees below zero, and average winter reaches 25 to 30 below. Stark Gold has never missed a crop. It sells for **three times the price of other cherries.**"

Our propagation is direct from the **Original Tree**.

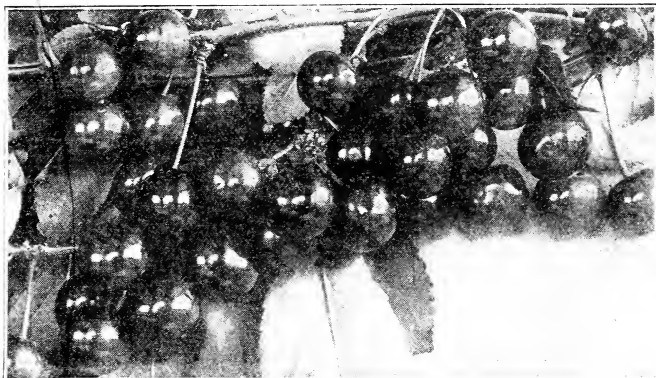
Trees full of Great Big, Glowing, Golden Cherries. My Stark Gold Cherry blossomed less than fourteen months after being set out. It has borne every year since and this is the third year.—Mrs. J. S. Browne, Conn.

Great, Big Yellow Cherries. Our four-year-old Stark Gold Cherry Tree is five inches in diameter and eighteen feet high. Last year it was full of great, big yellow cherries, solid meat, splendid flavor.—Roy F. Barnes, Ills.

Prices for Gold Cherry

300 at 1000 rate; 30 of a kind at 100 rate; 10 or more of one variety at 10 rate; less than 10 at Each rate.

1st Class	Each	10	100	1000
4 to 7 ft.....	\$2.00	\$18.00	\$160.00	\$1,200
3 to 5 ft.....	1.75	16.00	140.00	1,000
2 to 3 ft.....	1.50	13.00	120.00	800



Montmorency Stark—Largest of all sour cherries and succeeds throughout the United States—The Perfect Cherry

CHERRIES—Continued

MONTMORENCY STARK. The best strain of Montmorency. From a select tree on our grounds which uniformly bore large fruit—larger than any other Montmorency. This strain has been kept pure and propagation close to the original tree. It is a stronger grower than Montmorency King (Ordinaire). Our favorite for over 20 years. Fruit large, flesh firm, ships perfectly; tree strong grower, sure and young bearer, largest of all the sour cherries, very hardy; produces tremendous money making crops.

MONTMORENCY KING (Ordinaire). Cannot be too highly recommended for quality and quantity of fruit, hardiness and beauty of tree, and unending crops. All strains of Montmorency ripen ten days after Early Richmond.

MONTMORENCY MONARCH. A splendid strain of Montmorency from the Iowa Experiment Station. Seventy Monarch trees on our grounds produced 1,175 gallons after the birds and the children had feasted many times.

MONTMORENCY SWEET. A true Montmorency, but sweeter than any other strain. Originated on our grounds, and propagation is from original tree.

MONTMORENCY LARGE. A large strain from one of our orchards and should not be confused with other so-called large Montmorencies. A magnificent type of Montmorency.

DYEHOUSE (Earliest of All). A better cherry than Early Richmond, a week earlier, larger, smaller seed—best very early variety. Dyehouse, Montmorency Stark and Suda Hardy give fruit during the entire cherry season. Propagation from a selected and typical tree.

SUDA HARDY (Late). Wherever a late cherry is wanted, Suda Hardy should always be planted. The tree is perfectly hardy, and the fruit is produced in immense quantities.

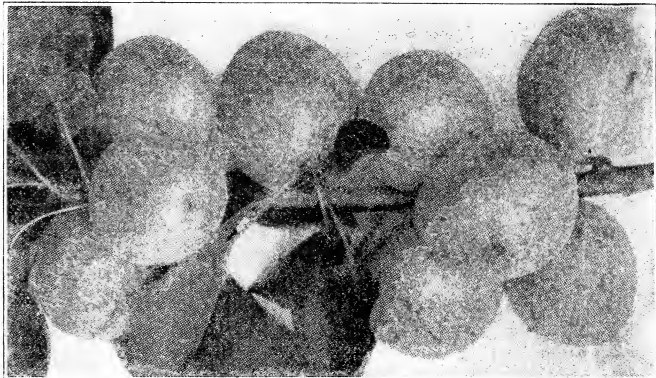
BLACK TARTARIAN IMPROVED (Deacon) Sweet. A select and greatly improved seedling of old Black Tartarian; a large, black, heart-shaped, juicy sweet cherry; widely known and extensively planted. Tree upright, dense grower, vigorous, regular bearer. The ideal variety to plant with Stark Gold Cherry. (25c Extra.) **Sold Only by Stark Bro's.**

OTHER VARIETIES OF CHERRIES: We can also supply Early Richmond, Bing (Sweet), Lambert (Sweet), Napoleon (Royal Ann) (Sweet), English Morello, Royal Duke, Governor Wood (Sweet), Windsor (Sweet).

Cherry Tree Prices.

300 at 1000 rate; 30 of a kind at 100 rate; 10 or more of one variety at 10 rate; less than 10 at Each rate.

1st Class	Each	10	100	1000
4 to 7 ft.....	\$1.75	\$16.00	\$140.00	\$1000
3 to 5 ft.....	1.50	13.00	120.00	900
2 to 3 ft. (Sweets Only).....	1.25	11.00	100.00	600



Stella Apricot—Hardier than any peach—a glorious fruit.

APRICOTS

STELLA. A very productive Apricot; originated in Nebraska. **The hardest variety;** unsurpassed for productiveness, size and color. The originator, Theodore Williams, said, "Hardier than most apples, peaches, pears and plums. Every other sort killed, but Stella has gone on bearing full crops." We introduced Stella nearly 20 years ago. Our Propagation has been kept very close to the original tree.

SUPERB. A very hardy Russian Apricot that came up as a Seedling in Kansas. Our propagation is through the original tree. Superb has been largely and successfully planted throughout the Central West. Tree thrifty, hardy, good bearer.

Apricot Prices.

300 at 1000 rate; 30 of a kind at 100 rate; 10 or more of one variety at 10 rate; less than 10 at Each rate.

1st Class	Each	10	100	1000
4 to 7 ft.....	\$1.50	\$13.00	\$120.00	\$800
3 to 5 ft.....	1.25	11.00	100.00	600
2 to 3 ft.....	1.00	9.00	80.00	500

QUINCES

VAN DEMAN (Trade-Mark). Best and largest quince. "The Golden Apple of the Hesperides." One of our \$9,000.00 fruits purchased from Luther Burbank. Superb flavor. Two-year tree bore 11 fine quinces. Fine for baking and canning. Tree hardy, healthy. If room for only one quince, plant a Van Deman. Our first buds were from this original tree, cut by Mr. Burbank, and **present propagation is close to the original.**

When we introduced Van Deman, Mr. Burbank wrote us: "Often weighs 25 ounces—baked, canned or dried it retains its best quince flavor. No other variety can compare with Van Deman in size, quality, flavor and beauty."

We can also supply trees of **ORANGE Quince**, a well-known old variety that is planted largely in some sections (25c less than Van Deman).

Van Deman Quince Prices.

300 at 1000 rate; 30 of a kind at 100 rate; 10 or more of one variety at 10 rate; less than 10 at Each rate.

1st Class	Each	10	100	1000
4 to 7 ft.....	\$1.75	\$16.00	\$140.00	\$1,000
3 to 5 ft.....	1.50	13.00	120.00	900
2 to 3 ft.....	1.25	11.00	100.00	800



Heavy, magnificently rooted 2-year-old Grape Vines grown by the millions in our Great Grape Belt Nurseries.

GRAPES

STARK ECLIPSE (Trade-Mark). The earliest of all black grapes- ripens a week to 10 days ahead of Moore Early. Best of all varieties for grape juice. Handsome, compact bunch, hangs tenaciously to the vine. Vine healthy, hardy, vigorous grower. It originated on the grounds of Mr. E. A. Riehl, Illinois Experiment Station, Alton, Illinois, a nationally known authority on grapes. We introduced the variety after exhaustive tests and it HAS NEVER DISAPPOINTED us. Our propagation is from vineyards just twice removed from the original vine. After fruiting the variety for years, Mr. Geo. W. Endicott, famous Illinois authority, wrote us: "Eclipse is the BEST EARLY GRAPE THAT HAS BEEN PRODUCED IN THIS COUNTRY so far as I have been able to learn from 50 years' experience."

MOORE EARLY. A black grape similar to Concord in appearance and quality, but ripens two weeks earlier and is the leading standard black grape of its season. Bunch and berry large, quality good. Vine healthy, vigorous, hardy, HEAVY BEARER. In all grape propagation wood is carefully taken from select vineyards.

CAMPBELL EARLY. A black early grape of great size that ripens about two weeks ahead of Concord, but the ripening season is variable, ripening through a long season, and is generally marketable slightly earlier than Worden. Keeps and ships well. Vine vigorous, productive, hardy, with thick mildew-resisting foliage.

DIAMOND (Moore's Diamond). We recommend Diamond as the best hardy white grape. Berry and bunch large. Vine hardy and as dependable as Concord, of which it is a seedling. In our experience more dependable than Niagara.

WORDEN. Splendid black grape. Hardy, Healthy, productive like Concord. Larger, better quality, 10 days earlier. Large bunch and berry, excellent quality. Mr. Fullerton, L. I., N. Y., Experiment Station, writes: "Worden positively paralyzed us with its yields."

CONCORD. The most widely grown, most popular of all grapes, and is making money for vineyardists everywhere. Healthy, hardy, vigorous vine, large bunch and berry and produces immense crops. The great grape of American Commerce. Fine for Grape Juice.



Stark Eclipse — Earliest Black Grape. Diamond—Best White Grape. Lutie—Choice Red Grape.

LUTIE. A rich red grape that is good everywhere and under all conditions. Vine vigorous, heavy bearer; fruit delicious in quality, seldom rots, and ripens in mid-season. We recommend this wonderful red grape.

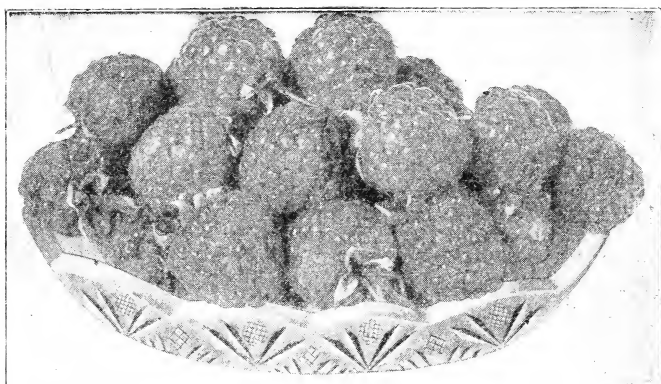
NIAGARA. Best known white grape. Ranks with old reliable Concord in vigor and productiveness. Widely planted. Bunch large; handsome, juicy and a fine flavor. Recommended for planting in every section.

OTHER VARIETIES. In addition to above described kinds we offer many other well known kinds, and they are priced in the price schedule below.

GRAPE VINE PRICES

IMPORTANT—A bunch of 25 of one variety of Raspberry, Blackberry, Dewberry, Roses, Shrubs, Climbers, Hedge Plants, Garden Roots, may be sold at 100 rate; 300 at 1000 rate. Buy a bunch of 25—it is cheaper. Where no 1000 rate is quoted the 100 rate governs.

LARGEST TWO-YEAR			If over 1000 Vines wanted, write for Special Prices GRAPE	LARGEST ONE-YEAR		
Each	100	1000		Each	100	1000
\$.30	\$ 25	\$220	Agawam (d. red).....	\$.25	\$ 20	\$175
1.50	140	*Banner (T-M) (red).....	1.40	130
.30	25	220	*Brighton (red).....	.25	20	175
.35	30	250	*CAMPBELL EY. (blk.).....	.30	25	210
.30	25	Carman (blk.).....	.25	20
.30	25	220	Catawba (red).....	.25	20	175
.35	30	Cynthiana (blk.).....	.30	25
.35	30	Clinton (blk.).....	.30	25
.25	15	100	*CONCORD (blk.).....	.20	12	75
.30	25	220	Delaware (red).....	.25	20	175
.30	25	220	*DIAMOND (white).....	.25	20	175
.50	40	300	*ECLIPSE (blk.).....	.40	35	250
.50	40	*Herbert (blk.).....	.40	30
.35	28	250	*Hicks (blk.).....	.30	25	210
.30	25	220	Ives (blk.).....	.25	20	175
.35	28	250	*King (blk.).....	.30	25	210
.50	40	King Philip.....	.40	30
.30	25	220	Lindley (red).....	.25	20
.35	30	250	*Lucile (red).....	.30	25	210
.35	28	240	*LUTIE (red).....	.30	22	190
.30	25	220	*MOORE EARLY (blk.).....	.25	20	175
.30	25	220	*Niagara (white).....	.25	20	175
.....
.50	40	300	*STARK ECLIPSE.....	.40	35	250
.30	25	220	*WORDEN (blk.).....	.25	20	175
.35	30	250	Woodruff (red).....	.30	25	210



Flaming Giant Raspberry—Dr. Morris, of Tenn., says: "Bear four times as much as any other variety."

BLACKBERRIES

EARLY HARVEST. The old standby. A valuable early ripening berry that is firm, good quality, excellent flavor and most productive.

MERSEREAU. One of the hardiest. Berries large, excellent quality, ship well. Canes spreading first season, becoming upright following year.

LUCRETIA DEWBERRY. Large, jet black, best quality. Plant is a strong grower and is enormously productive. The best Dewberry.

RASPBERRIES

FLAMING GIANT. It was from Prof. N. E. Hansen, M. S., Vice Director, S. D. Exp. Sta., that the first Flaming Giant (Ohta) Red Raspberry came to us. Now, after years of severe tests we believe it to be the greatest red Raspberry. On our grounds and elsewhere bears twice as much as others.

CUTHBERT. A large, firm, good quality red raspberry that is the most widely planted of all varieties of this type. The plants are vigorous, hardy and bear tremendous crops. Flaming Giant is superior.

COLUMBIAN. Best of the purple raspberries. Fruit is large, firm, good quality; plant hardy and productive.

CUMBERLAND. This splendid berry is by far the most successful and most profitable black raspberry. Extremely hardy, vigorous grower, extraordinarily productive, disease resistant. Fruit large, firm, excellent quality.

Berry Prices

300 at 1000 rate; 30 of a kind at 100 rate; 10 or more of one variety at 10 rate; less than 10 at Each rate.

1st Class	Each	100	1000
Black Pearl Raspberry (Black).....	\$0.20	\$ 9.00	\$ 50.00
Columbian Raspberry (Purple).....	.22	12.00	60.00
Cumberland Raspberry (Black).....	.20	9.00	50.00
Cuthbert Raspberry (Red).....	.20	9.00	50.00
Flaming Giant Raspberry (Red).....	.50	40.00	200.00
Kansas Raspberry (Black).....	.20	9.00	50.00
King Raspberry (Red).....	.20	9.00	50.00
Plum Farmer Raspberry (Black).....	.22	12.00	60.00
St. Regis Raspberry (Red).....	.22	12.00	60.00
Blowers Blackberry20	9.00	50.00
Early Harvest Blackberry.....	.20	9.00	50.00
Early King Blackberry.....	.20	9.00	50.00
Eldorado Blackberry25	14.00	75.00
McDonald Blackberry22	12.00	60.00
Mersereau Blackberry25	14.00	75.00
Snyder Blackberry20	9.00	50.00
Lucretia Dewberry20	10.00	50.00

ASPARAGUS—RHUBARB—HORSERADISH

F. O. B. Nurseries	Each	100	1000
Asparagus, Bonvalette Giant.....	\$0.10	\$ 5.00	\$25.00
Asparagus, Conover's Col.....	.10	5.50	25.00
Asparagus, Palmetto.....	.10	6.00	30.00
Asparagus, Mam., White.....	.10	6.00	30.00
Asparagus, Martha Washington (Rust Proof).....	.15	8.00	40.00
Asparagus, Reading Giant.....	.15	8.00	40.00
Rhubarb, Myatt's Linnaeus.....	.25	12.00	80.00
Rhubarb, Victoria Giant.....	.30	18.00	90.00
Horseradish.....	.20	10.00	70.00

CLIMBING VINES

F. O. B. Nurseries			
	Each	10	100
Bitter Sweet (<i>Celastrus scandens</i>).....	\$0.60	\$5.50	\$5.50
Clematis, Japanese.....	.55	5.00	5.00
(<i>Clematis paniculata</i>)			
<i>Clematis paniculata</i>55	5.00	5.00
(Japanese Clematis)			
<i>Clematis "Jackmanni"</i> (Purple Clematis).....	1.25	11.00	11.00
<i>Clematis "Madam Andre"</i> (Red Clematis).....	1.25	11.00	11.00
<i>Clematis "Henryii"</i> (White Clematis).....	1.25	11.00	11.00
Honeysuckle, Hall's Japan.....	.50	4.50	4.50
(<i>Lonicera Halleana</i>)			
Honeysuckle, Trumpet (<i>Lonicera sempervirens</i>).....	.60	5.50	5.50
Ivy, American.....	.50	4.50	4.50
(<i>Ampelopsis quinquefolia</i>)			
Ivy, Boston (<i>Ampelopsis Veitchii</i>).....	.70	6.50	6.50
Ivy, Engleman's (<i>Ampelopsis quinquefolia Englemanni</i>).....	.55	5.00	5.00
<i>Lonicera Halleana</i>50	4.50	4.50
(Hall's Japan Honeysuckle)			
<i>Lonicera sempervirens</i> (Trumpet honeysuckle).....	.60	5.50	5.50
Matrimony vine (<i>Lycium chinense</i>).....	.50	4.50	4.50
Trumpet vine (<i>Bignonia radicans</i>).....	.50	4.50	4.50
Wisteria, White (<i>Wisteria sinensis alba</i>).....	.85	8.00	8.00
<i>Wisteria sinensis</i> (Chinese Wisteria).....	.75	7.00	7.00

PAEONIES

F. O. B. Nurseries			
	Each	10	100
Assorted Varieties.....	\$0.50	\$4.50	\$35.00
Festiva Maxima (Giant White).....	.70	6.50	50.00
Eduis Superba (Pink).....	.70	6.50	50.00
Officinalis Rubra (Red).....	1.25	11.00	75.00
Queen Victoria (White).....	.60	5.50	45.00
Felix Crousse (Red).....	1.25	11.00	75.00

HARDY CLIMBING ROSES

F. O. B. Nurseries			
	Each	10	100
American Pillar (<i>Pink</i>).....	\$1.00	\$9.00	\$9.00
Baltimore Belle (<i>White</i>).....	.60	5.50	5.50
Crimson Rambler (<i>Red</i>).....	.75	7.00	7.00
Climbing Baby Rambler (<i>Red</i>).....	1.10	10.00	10.00
Climbing American Beauty (<i>Red</i>).....	1.00	9.00	9.00
Christine Wright (<i>Pink</i>).....	.85	8.00	8.00
Dorothy Perkins (<i>Pink</i>).....	.60	5.50	5.50
Dr. W. Van Fleet (<i>Flesh</i>).....	.90	8.50	8.50
Everblooming Crimson Rambler (<i>Red</i>).....	1.00	9.00	9.00
Excelsa (<i>Dark Red</i>).....	.75	7.00	7.00
Hiawatha (<i>Red</i>).....
Lady Gay (<i>Light Pink</i>).....	.75	7.00	7.00
Paul's Scarlet Climber.....	1.00	9.00	9.00
Queen of Prairies.....	.60	5.50	5.50
Silver Moon (<i>White</i>).....	1.00	9.00	9.00

HARDY CLIMBING ROSES—Continued

F. O. B. Nurseries

	Each	10
Thousand Beauties (<i>Pink</i>).....	\$0.90	\$8.50
Trier (<i>Creamy White</i>).....	.75	7.00
White Dorothy Perkins (<i>White</i>).....	.75	7.00

HARDY GARDEN ROSES—BUSH FORM

Classes are indicated thus: H. T.—Hybrid Tea; H. P.—Hybrid Perpetual; T.—Tea; Pol.—Polyantha; H. R.—Hybrid Rugosa.

F. O. B. Nurseries

	Each	10
Anna de Diesbach (<i>H. P.</i>) <i>Pink</i>	\$0.80	\$7.50
Baby Rambler (<i>Pol.</i>) <i>Red</i>80	7.50
Burbank (<i>China</i>) <i>Light Pink</i>85	8.00
Catherine Zeimet (<i>Pol.</i>) <i>White</i>85	8.00
Clio (<i>H. P.</i>) <i>Flesh</i>85	7.50
Clothilde Soupert (<i>Pol.</i>) <i>Flesh</i>85	8.00
Conrad F. Meyer (<i>H. P.</i>) <i>Dark Pink</i>85	8.00
Eugene Furst (<i>H. P.</i>) <i>Red</i>85	8.00
Gen. Jacqueminot (<i>H. P.</i>) <i>Red</i>80	7.50
Gruss an Teplitz (<i>China</i>) <i>Red</i>90	8.50
Helen Gould (<i>H. T.</i>) <i>Pink</i>90	8.50
Hermosa (<i>China</i>) <i>Pink</i>80	7.50
J. B. Clark (<i>H. P.</i>) <i>Dark Red</i>90	8.50
Jessie (<i>Pol.</i>) <i>Red</i>85	8.00
Jonkheer, J. L. Mock (<i>H. T.</i>) <i>Pink</i>	1.00	9.00
Kaiserin A. Victoria (<i>H. T.</i>) <i>White</i>	1.00	9.00
Killarney (<i>H. T.</i>) <i>Pink</i>	1.00	9.00
Killarney White (<i>H. T.</i>) <i>White</i>	1.00	9.00
La France (<i>H. T.</i>) <i>Light Pink</i>80	7.50
Mad. Caroline Testout (<i>H. T.</i>) <i>Pink</i>90	8.50
Madame Plantier (<i>H. P.</i>) <i>White</i>75	7.00
Maman Cochet (<i>T.</i>) <i>Pink</i>85	8.00
Marshall P. Wilder (<i>H. P.</i>) <i>Red</i>80	7.50
Mrs. Aaron Ward (<i>H. T.</i>) <i>Yellow</i>	1.00	9.00
Mrs. B. R. Cant (<i>T.</i>) <i>Red</i>90	8.50
Mrs. John Laing (<i>H. P.</i>) <i>Light Pink</i>85	8.00
Paul Neyron (<i>H. P.</i>) <i>Pink</i>85	8.00
Persian Yellow, <i>Yellow</i>	1.00	9.00
Pink Moss (<i>M.</i>) <i>Pink</i>75	7.00
Prince C. de Rohan (<i>H. P.</i>) <i>Dark Red</i>85	8.00
Radiance (<i>H. T.</i>) <i>Dark Pink</i>	1.00	9.00
Red Radiance (<i>H. T.</i>) <i>Red</i>	1.00	9.00
Rosa Wichuriana.....	.60	5.50
Sir Thomas Lipton (<i>H. R.</i>) <i>White</i>90	8.50
Snow Queen (<i>H. P.</i>) <i>White</i>90	8.50
Sunburst (<i>H. T.</i>) <i>Yellow</i>	1.00	9.00
Ulrich Brunner (<i>H. P.</i>) <i>Dark Red</i>85	8.00
White Cochet (<i>T.</i>) <i>White</i>85	8.00
W. R. Smith (<i>T.</i>) <i>Pink</i>	1.00	9.00

SHADE TREES

F. O. B. Nurseries

	Size Feet	Each	10	100
<i>Acer Negundo</i>	5-6	\$0.75	\$ 7.00	\$ 60.00
(Box Elder)	6-8	1.10	10.00	90.00
	8-10	1.50	13.00	115.00
<i>Acer platanoides</i>	5-6	1.50	13.00	115.00
(Norway Maple)	6-8	2.25	20.00	160.00
	8-10	3.00	28.00	250.00
<i>Acer platanoides Schwedleri</i>	5-6	2.00	18.00
(Purple Leaf Norway Maple)	6-8	2.75	25.00
<i>Acer saccharum</i>	6-6	1.25	11.00	95.00
(Sugar Maple)	6-8	1.60	14.00	130.00
	8-10	2.25	20.00	160.00

SHADE TREES—Continued

		F. O. B. Nurseries		
	Size Feet	Each	10	100
<i>Acer saccharinum</i>	5-6	\$0.75	\$ 7.00	\$ 60.00
(Silver Leaf Maple)	6-8	1.10	10.00	90.00
	8-10	1.50	13.00	115.00
<i>Acer saccharinum Wieri</i>	5-6	1.00	8.00	70.00
(Wier's Cut-Leaf Maple)	6-8	1.30	11.00	100.00
	8-10	2.00	18.00	160.00
Ash, American.....	5-6	.65	6.00	50.00
(<i>Fraxinus Americana</i>)	6-8	.85	8.00	70.00
	8-10	1.10	10.00	90.00
Ash, Mountain.....	5-6	1.00	9.00
(<i>Sorbus Aucuparia</i>)	6-8	1.50	13.00
Birch, Cut-leaf Weeping White.....	4-6	2.50	22.00
(<i>Betula alba laciniata pendula</i>)				
Birch, European White.....	5-6	2.00	18.00
(<i>Betula alba</i>)	6-8	2.75	25.00
Box Elder.....	5-6	.75	7.00	60.00
(<i>Acer Negundo</i>)	6-8	1.10	10.00	90.00
	8-10	1.50	13.00	115.00
<i>Catalpa Bungei</i>	Extra	2.40	22.50
(Umbrella Catalpa)	2 yr.	2.10	20.00
	1 yr.	1.75	16.00
<i>Catalpa speciosa</i>	5-6	.65	6.00	55.00
(Western Catalpa)	6-8	.85	8.00	70.00
Dogwood, White Flowering.....	2-3	.85	8.00
(<i>Cornus florida</i>)	3-4	1.10	10.00
<i>Elaeagnus angustifolia</i>	2-3	.55	5.00	40.00
(Russian Olive)	3-4	.75	7.00	60.00
	4-6	1.00	9.00	80.00
Elm, American.....	5-6	.85	8.00	60.00
(<i>Ulmus Americana</i>)	6-8	1.10	10.00	90.00
	8-10	1.50	13.00	120.00
Flowering Crab.....	3-4	1.35	12.50
(<i>Pyrus Parkmannii</i>)	4-5	1.50	14.00
<i>Fraxinus americana</i>	5-6	.65	6.00	50.00
(American Ash)	6-8	.85	8.00	70.00
	8-10	1.10	10.00	90.00
Ginkgo Tree.....	5-6	1.60	14.00
(<i>Salisburia adiantifolia</i>)	6-8	1.80	16.00
Linden, American.....	5-6	1.30	12.00
(<i>Tilia Americana</i>)	6-8	1.80	16.00
	8-10	2.50	22.00
Linden, European.....	5-6	1.30	12.00
(<i>Tilia platyphyllos</i>)	6-8	1.80	16.00
	8-10	2.50	22.00
<i>Liriodendron tulipifera</i>	5-6	1.20	10.00
(Tulip Tree)	6-8	1.80	16.00
	8-10	2.40	22.00
Locust, Black.....	5-6	.85	8.00	70.00
(<i>Robinia pseudacacia</i>)	6-8	1.10	10.00
Maiden Hair Tree.....	5-6	1.60	14.00
(<i>Salisburia adiantifolia</i>)	6-8	1.80	15.00
Maple, Ash-leaf.....	5-6	.75	7.00	60.00
(<i>Acer Negundo</i>)	6-8	1.10	10.00	90.00
	8-10	1.50	13.00	115.00
Maple, Norway.....	5-6	1.50	13.00	115.00
(<i>Acer platanoides</i>)	6-8	2.25	23.00	160.00
	8-10	3.00	28.00	250.00
Maple, Purple-leaf Norway.....	5-6	2.00	18.00
(<i>Acer platanoides Schwedleri</i>)	6-8	2.75	25.00
Maple, Sugar.....	5-6	1.25	11.00	95.00
(<i>Acer saccharum</i>)	6-8	1.60	14.00	130.00
	8-10	2.25	20.00	160.00
Maple, Silver-leaf.....	5-6	.75	7.00	60.00
(<i>Acer saccharinum</i>)	6-8	1.10	10.00	90.00
	8-10	1.50	13.00	115.00

SHADE TREES—Continued

		F. O. B. Nurseries		
	Size Feet	Each	10	100
Maple, Wier's Cut-leaf.....	5-6	\$1.00	\$ 8.00	\$70.00
(<i>Acer saccharinum Wieri</i>)	6-8	1.30	11.00	100.00
	8-10	2.00	18.00	160.00
Mountain Ash.....	5-6	1.00	9.00
(<i>Sorbus aucuparia</i>)	6-8	1.50	13.00
<i>Morus tatarica</i>	3-4	.75	7.00	65.00
(Russian Mulberry)	4-5	.90	8.50
Mulberry, "Abundance".....	3-4	.85	8.00
	4-5	1.00	9.00
Mulberry, "Downing".....	3-4	.85	8.00
	4-5	1.00	9.00
Mulberry, "Gorgeous".....	3-4	1.50	14.00
	4-5	1.75	16.00
Mulberry, "Monarch".....	3-4	1.20	10.50
	4-5	1.50	13.00
Mulberry, "New American".....	3-4	.85	8.00
	4-5	1.00	9.00
Mulberry, "Russian".....	3-4	.75	7.00	65.00
(<i>Morus Tatarica</i>)	4-5	.90	8.50
Mulberry, "Tea's Weeping".....		2.75	25.00
Oak, Pin.....	4-6	1.70	15.00
(<i>Quercus palustris</i>)	6-8	2.40	22.00
Persimmon.....	3-4	1.10	10.00
(<i>Diospyros, Virginica</i>)	4-6	1.50	13.00
Plane Tree, Oriental.....	5-6	.85	8.00	75.00
(<i>Platanus orientalis</i>)	6-8	1.20	10.00
	8-10	1.70	15.00
<i>Platanus orientalis</i>	5-6	.85	8.00	75.00
(European Sycamore)	6-8	1.20	10.00
	8-10	1.70	15.00
Poplar, Carolina.....	5-6	.60	5.50	50.00
(<i>Populus monilifera deltoides</i>)	6-8	.85	8.00	70.00
	8-10	1.10	10.00	90.00
Poplar, Lombardy.....	5-6	.80	7.50	65.00
(<i>Populus nigra fastigiata</i>)	6-8	1.00	9.00	80.00
	8-10	1.25	11.00	100.00
	10-12	1.60	15.00
Poplar, Yellow.....	5-6	1.20	10.00
(<i>Liriodendron tulipifera</i>)	6-8	1.80	16.00
	8-10	2.40	22.00
<i>Populus monilifera deltoides</i>	5-6	.60	5.50	50.00
(Carolina Poplar)	6-8	.85	8.00	70.00
	8-10	1.10	10.00	90.00
<i>Populus nigra fastigiata</i>	5-6	.80	7.50	65.00
(Lombardy Poplar)	6-8	1.00	9.00	80.00
	8-10	1.25	11.00	100.00
	10-12	1.60	15.00
<i>Prunus Pissardii</i>	3-4	.85	8.00	70.00
(Crimson Leaf Plum)	4-6	1.10	10.00
<i>Quercus palustris</i>	4-6	1.70	15.00
(Pin Oak)	6-8	2.40	22.00
Red Bud.....	3-4	.90	8.50	75.00
(<i>Cercis canadensis</i>)	4-6	1.10	10.00	90.00
<i>Robinia pseudacacia</i>	5-6	.85	8.00	70.00
(Black Locust)	6-8	1.10	10.00
Russian Olive.....	2-3	.55	5.00	40.00
(<i>Elaeagnus angustifolia</i>)	3-4	.75	7.00	60.00
	4-6	1.00	9.00	80.00
Sycamore, American.....	5-6	.85	8.00	75.00
(<i>Platanus occidentalis</i>)	6-8	1.20	10.00
	8-10	1.70	15.00
Sycamore, European.....	5-6	.85	8.00	75.00
(<i>Platanus orientalis</i>)	6-8	1.20	10.00
	8-10	1.70	15.00

SHADE TREES—Continued

		F. O. B. Nurseries			
	Size Feet	Each	10	100	
<i>Tilia Americana</i>	5-6	\$1.30	\$12.00	
(American Linden)	6-8	1.80	16.00	
	8-10	2.50	22.00	
<i>Tilia platyphyllos</i>	5-6	1.30	12.00	
(European Linden)	6-8	1.80	16.00	
	8-10	2.50	22.00	
Tulip Tree.....	5-6	1.20	10.00	
(<i>Liriodendron tulipifera</i>)	6-8	1.80	16.00	
	8-10	2.40	22.00	
<i>Ulmus Americana</i>	5-6	.85	8.00	\$ 60.00	
(American Elm)	6-8	1.10	10.00	90.00	
	8-10	1.50	13.00	120.00	
Umbrella Catalpa.....	Extra	2.40	22.50	
(<i>Catalpa Bungeii</i>)	2 yr.	2.10	20.00	
	1 yr.	1.75	16.00	
Willow, Pussy.....	3-4	.70	6.50	55.00	
(<i>Salix caprea</i>)	4-6	1.00	9.00	85.00	
Willow, Weeping.....	4-6	.85	8.00	75.00	
(<i>Salix babylonica</i>)	6-8	1.10	10.00	

ORNAMENTAL SHRUBS

Extra Large Sizes Quoted on Application. These Bushy Specimen Shrubs Give Immediate Effect

		F. O. B. Nurseries			
	Size Feet	Each	10	100	
Adam's Needle.....		\$0.45	\$ 4.00	\$ 35.00	
(<i>Yucca filamentosa</i>)					
<i>Amelanchier Canadensis</i>	2-3	.60	5.50	50.00	
Angelica, Five-leaved.....	2-3	.55	5.00	40.00	
(<i>Acanthopanax pentaphylla</i>)	3-4	.65	6.00	55.00	
<i>Aralia Spinosa</i>	2-3	.60	5.50	50.00	
(Hercules Club)	3-4	.75	7.00	65.00	
	4-6	.90	8.50	
Arrowwood.....	2-3	.65	6.00	55.00	
(<i>Viburnum dentatum</i>)	3-4	.80	7.50	65.00	
Barberry, Japanese.....	1-1½	.45	4.00	35.00	
(<i>Berberis Thunbergii</i>)	1½-2	.55	5.00	45.00	
<i>Berberis Thunbergii</i>	1-1½	.45	4.00	35.00	
(Japanese Barberry)	1½-2	.55	5.00	45.00	
<i>Buddleia variabilis var. mag.</i>	1-1½	.50	4.50	40.00	
(Butterfly Bush)	1½-2	.60	5.50	50.00	
Burning Bush.....	1½-2	.60	5.50	50.00	
(<i>Evonymus alatus</i>)	2-3	.90	8.50	75.00	
Butterfly Bush.....	1-1½	.50	4.50	40.00	
(<i>Buddleia variabilis var. mag.</i>)	1½-2	.60	5.50	50.00	
Button Bush.....	2-3	.60	5.50	50.00	
(<i>Cephalanthus occidentalis</i>)	3-4	.75	7.00	60.00	
<i>Calycanthus floridus</i>	1½-2	.55	5.00	45.00	
(Carolina Allspice)	2-3	.65	6.00	55.00	
Carolina Allspice.....	1½-2	.55	5.00	45.00	
(<i>Calycanthus floridus</i>)	2-3	.65	6.00	55.00	
<i>Cephalanthus occidentalis</i>	2-3	.60	5.50	50.00	
(Button Bush)	3-4	.75	7.00	60.00	
<i>Cercis canadensis</i>	3-4	.90	8.50	75.00	
(Red Bud)	4-6	1.10	10.00	90.00	
Coralberry.....	2-3	.50	4.50	40.00	
(<i>Symphoricarpos vulgaris</i>)	3-4	.60	5.50	45.00	
<i>Cornus alba "Siberica"</i>	2-3	.55	5.00	45.00	
(Red Stem Dogwood)	3-4	.65	6.00	50.00	
<i>Cornus florida</i>	2-3	.85	8.00	75.00	
(White Flowered Dogwood)	3-4	1.10	10.00	95.00	
<i>Corylus americana</i>	2-3	.75	7.00	60.00	
(Hazel-nut)	3-4	.90	8.50	75.00	

ORNAMENTAL SHRUBS—Continued

F. O. B. Nurseries

	Size Feet	Each	10	100
<i>Cydonia Japonica</i>	1½-2	\$0.60	\$5.50	\$50.00
(Japan Quince)	2-3	.75	6.50	60.00
<i>Desmodium penduliflorum</i>	2 yr.	.60	5.00	45.00
(Desmodium)				
<i>Deutzia gracilis</i>	1-1½	.55	5.00	45.00
(Slender Deutzia)	1½-2	.65	6.00	50.00
<i>Deutzia lemoinei</i>	1½-2	.60	5.50	50.00
(Lemoine's Deutzia)	2-3	.75	7.00	65.00
<i>Deutzia rosea</i>	1½-2	.60	5.50	50.00
(Dwarf Pink Deutzia)	2-3	.75	7.00	65.00
<i>Deutzia Scabra</i>	2-3	.55	5.00	45.00
(Pride of Rochester)	3-4	.65	6.00	55.00
<i>Diervilla florida</i>	2-3	.55	5.00	45.00
(Weigela rosea)	3-4	.65	6.00	55.00
<i>Diervilla hybrida candida</i>	2-3	.65	6.00	50.00
(White Weigela)	3-4	.80	7.50	65.00
<i>Diervilla hybrida, Eva Rathke</i>	2-3	.75	7.00	60.00
(Red Weigela)	3-4	.95	8.50	75.00
Dogwood Red Stem	2-3	.55	5.00	45.00
(<i>Cornus alba "Siberica"</i>)	3-4	.65	6.00	50.00
Dogwood, White Flowered.....	2-3	.85	8.00	75.00
(<i>Cornus florida</i>)	3-4	1.10	10.00	95.00
<i>Elaeagnus angustifolia</i>	2-3	.55	5.00	40.00
(Russian Olive)	3-4	.75	7.00	60.00
	4-6	1.00	9.00	80.00
Elder, Golden	2-3	.55	4.00	35.00
(<i>Sambucus aurea</i>)	3-4	.70	6.00	55.00
Elderberry, American	2-3	.50	4.50	40.00
(<i>Sambucus canadensis</i>)	3-4	.65	6.00	50.00
<i>Evonymus alatus</i>	1½-2	.60	5.50	50.00
(Burning Bush)	2-3	.90	8.50	75.00
Flowering Almond.....	2-3	.85	8.00	70.00
(<i>Prunus triloba</i>)	3-4	1.00	9.00	80.00
<i>Forsythia fortunei</i>	2-3	.65	6.00	55.00
(Fortune's Forsythia)	3-4	.80	7.50	65.00
<i>Forsythia suspensa</i>	2-3	.65	6.00	55.00
(Weeping Forsythia)	3-4	.80	7.50	65.00
Globe Flower.....	1½-2	.55	5.00	45.00
(<i>Kerria japonica</i>)	2-3	.65	6.00	55.00
Golden Bell (See Forsythia)				
<i>Hamamelis virginiana</i>	2-3	.65	6.00	55.00
(Witch Hazel)	3-4	.85	8.00	75.00
Hazel-nut.....	2-3	.75	7.00	60.00
(<i>Corylus americana</i>)	3-4	.90	8.50	75.00
Hercules Club	2-3	.60	5.50	50.00
(<i>Aralia spinosa</i>)	3-4	.75	7.00	65.00
	4-6	.90	8.50
Hibiscus, assorted colors	2-3	.45	4.00	35.00
	3-4	.60	5.50	50.00
Hibiscus, double red	2-3	.55	5.00	45.00
	3-4	.65	6.00	55.00
Hibiscus, double purple	2-3	.55	5.00	45.00
	3-4	.65	6.00	55.00
Hibiscus, double rose	2-3	.55	5.00	45.00
	3-4	.65	6.00	55.00
Hibiscus, white, "Snowdrift"	2-3	.55	5.00	45.00
	3-4	.65	6.00	55.00
<i>Hibiscus syriacus</i>	2-3	.45	4.00	35.00
(Rose of Sharon)	3-4	.60	5.50	50.00
High Bush Cranberry	2-3	.65	6.00	55.00
(<i>Viburnum opulus</i>)	3-4	.80	7.50	65.00
Honeysuckle, Fragrant Bush	2-3	.65	6.00	55.00
(<i>Lonicera fragrantissima</i>)	3-4	.85	8.00	70.00
Honeysuckle, Pink Bush	2-3	.60	5.50	50.00
(<i>Lonicera grandiflora rosea</i>)	3-4	.80	7.50	65.00

ORNAMENTAL SHRUBS—Continued

		F. O. B. Nurseries		
	Size Feet	Each	10	100
Honeysuckle, Japanese Bush	2-3	\$0.60	\$ 5.50	\$ 50.00
(<i>Lonicera Morrowii</i>).....	3-4	.80	7.50	65.00
Honeysuckle, White Bush.....	2-3	.60	5.50	50.00
(<i>Lonicera tatarica alba</i>).....	3-4	.80	7.50	65.00
Honeysuckle, Red Bush.....	2-3	.60	5.50	50.00
(<i>Lonicera tatarica rubra</i>).....	3-4	.80	7.50	65.00
<i>Hydrangea arborescens grandiflora</i>	1½-2	.70	6.50	55.00
(Everblooming Hydrangea).....	2-3	.80	7.50	65.00
Hydrangea, Everblooming.....	1½-2	.70	6.50	55.00
(<i>Hydrangea arborescens grandiflora</i>).....	2-3	.80	7.50	65.00
Hydrangea, Large Flowering	1½-2	.60	5.50	50.00
(<i>Hydrangea paniculata grandiflora</i>).....	2-3	.75	7.00	60.00
	3-4	.85	8.00	75.00
<i>Hydrangea paniculata grand.</i>	1½-2	.60	5.50	50.00
(Large Flowering Hydrangea).....	2-3	.75	7.00	60.00
	3-4	.85	8.00	75.00
Japan Quince.....	1½-2	.60	5.50	50.00
(<i>Cydonia japonica</i>).....	2-3	.75	6.50	60.00
June Berry.....	2-3	.60	5.50	50.00
(<i>Amelanchier canadensis</i>).....	3-4	.80	7.50	70.00
<i>Ligustrum Regelianum</i>	1½-2	.50	4.50	40.00
(Regl's Privet).....	2-3	.60	5.50	50.00
Lilac, Common Purple.....	2-3	.55	5.00	45.00
(<i>Syringa vulgaris</i>).....	3-4	.65	6.00	55.00
Lilac, Common White.....	2-3	.60	5.50	50.00
(<i>Syringa vulgaris alba</i>).....	3-4	.80	7.50	70.00
Lilac, budded, "Belle de Nancy".....		1.25	11.00	100.00
(<i>Double Pink</i>).....				
Lilac, budded, "Frau Damman".....		1.25	11.00	100.00
(<i>Single White</i>).....				
Lilac, budded, "Ludwig Spaeth".....		1.25	11.00	100.00
(<i>Purplish Red</i>).....				
Lilac, budded, "Mad. Abel Chatenay".....		1.25	11.00	100.00
(<i>Double White</i>).....				
Lilac, budded, "Michael Buchner".....		1.25	11.00	100.00
(<i>Double Blue</i>).....				
Lilac, budded, "Marie LeGraye".....		1.25	11.00	100.00
(<i>Large White</i>).....				
Lilac, budded, "President Grevy".....		1.25	11.00	100.00
(<i>Double Blue</i>).....				
Lilac, Persian.....	2-3	.85	8.00	70.00
(<i>Syringa persica</i>).....	3-4	.95	9.00	75.00
Lilac, Rouen.....	2-3	.65	6.00	55.00
(<i>Syringa rothomagensis</i>).....	3-4	.85	8.00	70.00
<i>Lonicera fragrantissima</i>	2-3	.65	6.00	55.00
(Fragrant Bush Honeysuckle).....	3-4	.85	8.00	70.00
<i>Lonicera grandiflora rosea</i>	2-3	.60	5.50	50.00
(Pink Bush Honeysuckle).....	3-4	.80	7.50	65.00
<i>Lonicera Morrowii</i>	2-3	.60	5.50	50.00
(Japanese Bush Honeysuckle).....	3-4	.80	7.50	65.00
<i>Lonicera tatarica alba</i>	2-3	.60	5.50	50.00
(White Bush Honeysuckle).....	3-4	.80	7.50	65.00
<i>Lonicera tatarica rubra</i>	2-3	.60	5.50	50.00
(Red Bush Honeysuckle).....	3-4	.80	7.50	65.00
Mock Orange	2-3	.55	5.00	45.00
(<i>Philadelphus coronarius</i>).....	3-4	.65	6.00	55.00
Moss Locust.....	2-3	.75	7.00	60.00
(<i>Robinia hispida</i>).....	3-4	.90	8.50	80.00
<i>Philadelphus coronarius aureus</i>	1-1½	.75	7.00	60.00
(Golden Syringa).....	1½-2	.90	8.50	75.00
<i>Philadelphus coronarius</i>	2-3	.55	5.00	45.00
(Mock Orange).....	3-4	.65	6.00	55.00
<i>Philadelphus Gordonianus</i>	2-3	.55	5.00	45.00
(Gordon's Syringa).....	3-4	.65	6.00	55.00

ORNAMENTAL SHRUBS—Continued

F. O. B. Nurseries

	Size Feet	Each	10	100
<i>Philadelphus Lemoinei</i>	1½-2	\$0.60	\$5.50	\$ 50.00
(Lemoine's Syringa)	2-3	.75	6.50	60.00
Privet, Regel's.....	1½-2	.50	4.50	40.00
(<i>Ligustrum regelianum</i>)	2-3	.60	5.50	50.00
<i>Prunus triloba</i>	2-3	.85	8.00	70.00
(Flowering Almond)	3-4	1.00	9.00	80.00
Red Bud.....	3-4	.90	8.50	75.00
(<i>Cercis canadensis</i>)	4-6	1.10	10.00	90.00
<i>Rhodotyus Kerrioides</i>	2-3	.60	5.50	50.00
(White Kerria)	3-4	.75	7.00	65.00
<i>Rhus canadensis</i>	1½-2	.55	5.00	45.00
(Fragrant Sumac)	2-3	.65	6.00	55.00
<i>Rhus cotinus</i>	2-3	.60	5.50	50.00
(Smoke Bush)	3-4	.80	7.50	70.00
<i>Rhus glabra</i>	2-3	.60	5.00	45.00
(Smooth Sumac)	3-4	.75	6.50	60.00
<i>Rhus typhina</i>	2-3	.65	6.00	50.00
(Staghorn Sumac)	3-4	.85	8.00	70.00
<i>Rhus typhina laciniata</i>	2-3	.75	7.00	60.00
(Cut Lf. Staghorn Sumac)	3-4	.90	8.50	75.00
<i>Rosa rugosa</i>	1½-2	.60	5.50	50.00
(Red Japanese Rose)	2-3	.80	7.50	65.00
<i>Rosa rugosa alba</i>	1½-2	.70	6.50	60.00
(White Japanese Rose)	2-3	.85	8.00	70.00
Rose of Sharon.....	2-3	.45	4.00	35.00
(<i>Hibiscus syriacus</i>)	3-4	.60	5.50	50.00
Russian Olive.....	2-3	.55	5.00	40.00
(<i>Elaeagnus Angustifolia</i>)	3-4	.75	7.00	60.00
	4-6	1.00	9.00	80.00
<i>Sambucus aurea</i>	2-3	.55	4.00	35.00
(Golden Elder)	3-4	.70	6.00	55.00
<i>Sambucus canadensis</i>	2-3	.50	4.50	40.00
(American Elderberry)	3-4	.65	6.00	50.00
Smoke Bush.....	2-3	.60	5.50	50.00
(<i>Rhus cotinus</i>)	3-4	.80	7.50	70.00
Snowball, Common.....	2-3	.55	5.00	45.00
(<i>Viburnum opulus sterile</i>)	3-4	.65	6.00	50.00
Snowball, Japanese.....	2-3	.80	7.50	65.00
(<i>Viburnum tomentosum plicatum</i>)	3-4	.90	8.50	80.00
Snowberry.....	2-3	.50	4.50	40.00
(<i>Symphoricarpos racemosus</i>)	3-4	.60	5.50	45.00
Spirea, Crimson.....	1-1½	.60	5.50	50.00
(<i>Spirea Anthony Waterer</i>)	1½-2	.75	7.00	60.00
Spirea, Billard's "Pink Plume".....	2-3	.55	5.00	45.00
(<i>Spirea Billardii</i>)	3-4	.65	6.00	55.00
Spirea, Golden.....	2-3	.55	5.00	45.00
(<i>Spirea opulifolia aurea</i>)	3-4	.65	6.00	50.00
Spirea, Thunberg's.....	1½-2	.60	5.50	50.00
(<i>Spirea Thunbergii</i>)	2-3	.75	7.00	65.00
<i>Spirea Van Houttei</i>	2-3	.50	4.50	40.00
(Van Houtte's Spirea)	3-4	.60	5.50	50.00
	4-5	.75	6.00	55.00
Sumac, Smooth.....	2-3	.60	5.00	45.00
(<i>Rhus glabra</i>)	3-4	.75	6.50	60.00
Sumac, Staghorn.....	2-3	.65	6.00	50.00
(<i>Rhus typhina</i>)	3-4	.85	8.00	70.00
Sumac, Cut Leaf Staghorn.....	2-3	.75	7.00	60.00
(<i>Rhus typhina laciniata</i>)	3-4	.90	8.50	75.00
Sumac, Fragrant.....	1½-2	.55	5.00	45.00
(<i>Rhus canadensis</i>)	2-3	.65	6.00	55.00
<i>Symphoricarpos racemosus</i>	2-3	.50	4.50	40.00
(Snowberry)	3-4	.60	5.50	45.00
<i>Symphoricarpos vulgaris</i>	2-3	.50	4.50	40.00
(Coralberry)	3-4	.60	5.50	45.00

ORNAMENTAL SHRUBS -Continued

		F. O. B. Nurseries		
	Size Feet	Each	10	100
Syringa, Golden.....	1-1½	\$0.75	\$7.00	\$60.00
(<i>Philadelphus coronarius aureus</i>)	1½-2	.90	8.50	75.00
Syringa, Gordon's.....	2-3	.55	5.00	45.00
(<i>Philadelphus Gordonianus</i>)	3-4	.65	6.00	55.00
Syringa, Lemoine's, Dwarf.....	1½-2	.60	5.50	50.00
(<i>Philadelphus Lemoinei</i>)	2-3	.75	6.50	60.00
<i>Tamarix Africana</i>	2-3	.45	4.00	35.00
(Tamarisk)	3-4	.50	4.50	40.00
<i>Viburnum dentatum</i>	2-3	.65	6.00	55.00
(Arrowwood)	3-4	.80	7.50	65.00
<i>Viburnum Lantana</i>	2-3	.70	6.50	60.00
(Wayfaring Tree)	3-4	.85	7.50	70.00
<i>Viburnum Opulus</i>	2-3	.65	6.00	55.00
(High Bush Cranberry)	3-4	.80	7.50	65.00
<i>Viburnum Opulus sterile</i>	2-3	.55	5.00	45.00
(Snowball)	3-4	.65	6.00	50.00
<i>Viburnum tomentosum plicatum</i>	2-3	.80	7.50	65.00
(Japanese Snowball)	3-4	.90	8.50	80.00
Wayfaring Tree.....	2-3	.70	6.50	60.00
(<i>Viburnum Lantana</i>)	3-4	.85	7.50	70.00
<i>Weigela rosea</i> (pink).....	2-3	.55	5.00	45.00
(<i>Diervilla Florida</i>)	3-4	.65	6.00	55.00
Weigela, White.....	2-3	.65	6.00	50.00
(<i>Diervilla hybrida candida</i>)	3-4	.80	7.50	65.00
Weigela, Red.....	2-3	.75	7.00	60.00
(<i>Diervilla hybrida, Eva Rathke</i>)	3-4	.95	8.50	75.00
Witch Hazel.....	2-3	.65	6.00	55.00
(<i>Hamamelis virginiana</i>)	3-4	.85	8.00	75.00
<i>Yucca filamentosa</i>45	4.00	35.00
(Adam's Needle)				

We Specialize On Beautifying Farm, Small Town and City Homes

This business is constantly growing. With increasing prosperity, the farmer and his wife wish to improve their home's surroundings. They turn to us naturally for the needed ornamental trees, shrubs and hedges. The satisfaction they get from our service is indicated by the thousands of letters we receive from delighted customers.

Home Beautifying Plans and Advice Free

Our Free Plans for beautifying the grounds around your home will include vegetable garden and "back yard orchard" if you so desire. The landscape plan for your grounds will be individually designed and furnished Free. However, if your grounds are very large or if you require complex designs, we will make a moderate charge for the plans, but we will first tell you just what the cost will be.

We are not so much interested in big real estate subdivisions, or large municipal park plantings as we are in the home owners' orders. We feel that we do more good and get better results in specializing on smaller home grounds. However, we are qualified and equipped to take care of the largest estate or municipal beautifying plan and planting—and do handle hundreds of such big propositions every year. If you would like for our Experts in Landscaping to help you beautify your home grounds—no matter how small or how large they are, write us for full particulars.

LOW PRICE COLLECTIONS

The following collections contain the best varieties known and are arranged to save customers' time, and to give them the advantage of the help of Expert Orchard men in selection of varieties if they intend to plant a home orchard.

These experts have prepared collections that will please every customer—ranging in price from \$5.00 to \$35.00. Each collection is numbered, so in ordering be sure that this number is given. This will facilitate handling here.

Remember, please, we cannot make any change whatever in varieties, and we reserve the right to use another similar variety if any sort named sells out before your order is received.

Here is a chance to save some money—figure the prices yourself.

The trees used in these collections are the heavy 4 to 7 ft. size—the size sure to please. Get your order in early.

12 Big Apple Trees for the Price of 10

ALL-AMERICA PRIZE APPLE SELECTIONS

No Changes of Varieties in Selections Allowed

\$10.00 for Both Golden and Red Apple Selections (12 trees),
Both Collections No. 1 and No. 2—Size 4 to 7 ft.

No. 1 Collection—GOLDEN APPLE SELECTION

\$5.00.....Complete Golden Apple Selection

- | | |
|----------------------|-------------------------------|
| 1 Henry Clay (T-M) | 1 "Double-Life" Grimes Golden |
| 1 Yellow Transparent | (Trade-Mark) |
| 1 Maiden Blush | 1 Stark's Golden Delicious |
| 1 Banana (Winter) | (Sign Contract) |

No. 2 Collection—RED APPLE SELECTION

\$5.00.....Complete Red Apple Selection

- | | |
|--------------------------|-------------------------|
| 1 Duchess | 1 Stark Delicious (T-M) |
| 1 Stark King David (T-M) | 1 Stayman Winesap |
| 1 Jonathan | 1 Paragon Winesap |

No. 3 Collection—HOME APPLE ORCHARD

\$8.00.....For **\$10.00** Worth of Fine 4 to 7 Ft. Trees
(When Ordering, Just Write "Collection No. 3, \$8.00")

- | | |
|-----------------------------|-------------------------|
| 1 Stark King David | 1 Jonathan |
| 1 Double-Life Grimes Golden | 1 Northwestern Greening |
| 1 Black Ben | 1 Bellflower Improved |
| 1 Yellow Transparent | 1 Paragon Winesap |
| | 1 McIntosh Red |

No. 4 Collection—BIG LEADER VARIETIES

\$10.00.....For **\$13.40** Worth of Big 4 to 7 Ft. Trees
(When Ordering, Just Write "Collection No. 4, \$10.00")

Don't fail to sign Starking and Golden Delicious Agreement.

- | | |
|--------------------------|-----------------------------|
| 1 Starking Apple | 1 Stark Early Elberta Peach |
| 1 Golden Delicious Apple | 1 J. H. Hale Peach |
| 1 Stark Delicious Apple | 1 Stark Green Gage Plum |
| 1 Lincoln Pear | 1 Stark Gold Plum |
| | 1 Stark Gold Cherry |

No. 5 Collection—BACK YARD ORCHARD

\$12.00.....For \$14.25 Worth of Big 4 to 7 Ft. Trees

(When Ordering, Just Write "Collection No. 5, \$12.00")

- | | |
|------------------------------|----------------------|
| 1 Paragon Winesap Apple | 1 Alton Peach |
| 1 Dark Red Rome Beauty Apple | 1 Gold Plum |
| 1 Red Bird Cling Peach | 1 America Plum |
| 1 Stark Early Elberta Peach | 1 Omaha Plum |
| 1 J. H. Hale Peach | 1 Mont. Stark Cherry |
| | 1 Stark Gold Cherry |
| | 1 Stella Apricot |

No. 6 Collection—Assorted HOME ORCHARD

\$15.00.....For \$19.90 Worth of Big 4 to 7 Ft. Trees

(When Ordering, Just Write "Collection No. 6, \$15.00")

Our best varieties, ripening from early to late.

- | | |
|--|-----------------------------|
| 1 Stark Delicious Apple | 1 Mont. King Cherry |
| 1 Golden Delicious Apple (Sign Contract) | 1 Gold Plum |
| 1 Champion Apple | 1 Omaha Plum |
| 1 Duchess Apple | 1 Early Rose Peach |
| 1 Yellow Transparent Apple | 1 Stark Early Elberta Peach |
| 1 Stark King David Apple | 1 J. H. Hale Peach |
| 1 Jonathan Apple | 1 Red Bird Cling Peach |
| 1 Paragon Winesap Apple | 2 Concord Grape (2 yr.) |
| 1 Early Richmond Cherry | 2 Lucile Grape (2 yr.) |
| | 2 Worden Grape (2 yr.) |

No. 7 Collection—BIG FARM ORCHARD AND VINEYARD

\$35.00.....For \$44.85 Worth of Big 4 to 7 Ft. Trees

(When Ordering, Just Write "Collection No. 7, \$35.00")

An Acre of Finest sorts, ripening from early to late.

- | | |
|--|-----------------------------|
| 1 Stark Delicious Apple | 1 Stark Gold Cherry |
| 1 Golden Delicious Apple (Sign Contract) | 1 Dyehouse Cherry |
| 1 Early Red Bird Apple | 1 Early Richmond Cherry |
| 1 Duchess Apple | 1 Mont. King Cherry |
| 1 Wilson Red June Apple | 1 Lincoln Pear |
| 1 Early Melon Apple | 1 Anjou Pear |
| 1 Yellow Transparent Apple | 1 Stark Early Elberta Peach |
| 1 Liveland Raspberry Apple | 1 J. H. Hale Peach |
| 1 Jefferis Red Apple | 1 Early Rose Peach |
| 1 Jonathan Apple | 1 Elberta Queen Peach |
| 1 Stark King David Apple | 1 Late Elberta Peach |
| 1 Paragon Winesap Apple | 1 Red Bird Cling Peach |
| 1 Red Rome Beauty Apple | 10 Concord Grape (2 yr.) |
| 1 Stayman Winesap Apple | 10 Lucile Grape (2 yr.) |
| 1 Willow Twig Apple | 1 America Plum |
| 1 Winesap Apple | 1 Gold Plum |
| | 1 Big Mackey Damson Plum |
| | 1 Champion Apple |

No. 8 Collection—SILVER MEDAL PEACHES

(All White Fleshed)

\$4.00 for these 6 Big 4 to 7 Ft. Trees—save 50c

- | | |
|------------------|----------------------|
| 1 Red Bird Cling | 1 Stark Summer Heath |
| 1 Eureka | 1 Illinois |
| 1 Alton | 1 Stark Heath Cling |

No. 9 Collection—GOLD MEDAL PEACHES

(All Yellow Fleshed)

\$4.00 for these 6 Big 4 to 7 Ft. Trees—save 70c

- | | |
|-----------------------|-------------------|
| 1 June Elberta | 1 Elberta Cling |
| 1 Stark Early Elberta | 1 Elberta (Queen) |
| 1 J. H. Hale | 1 Krummel October |

12 Fine Peach Trees for the Price of 10

Here are the 6 most desirable white peaches and the 6 most desirable yellow peaches. If you order the 12 trees, we will make a special price of \$7.00—a saving to you of \$2.20.

Demonstration Orchard Offers

Very Low Prices for 250 Trees or More

To demonstrate the superiority of Stark Early Elberta and J. H. Hale Peach; Stark Gold Cherry and Cortland Apple, we are making some very low prices for **one orchard in each locality**, on the above named varieties.—See descriptions in this catalogue. See page 46 for Starking, Golden Delicious and Stark Delicious Demonstration Offers.

Provided not less than 250 trees ordered.

- | | | |
|--------------------------------|----------------|------------|
| Stark Early Elberta Peach..... | 3 to 5 ft..... | 25c a tree |
| Stark Early Elberta Peach..... | 4 to 7 ft..... | 35c a tree |

Provided not less than 250 trees ordered.

- | | | |
|-----------------------|----------------|------------|
| J. H. Hale Peach..... | 3 to 5 ft..... | 25c a tree |
| J. H. Hale Peach..... | 4 to 7 ft..... | 35c a tree |

Provided not less than 250 trees ordered.

- | | | |
|---------------------------|----------------|------------|
| Early Red Bird Apple..... | 3 to 5 ft..... | 35c a tree |
| Early Red Bird Apple..... | 4 to 7 ft..... | 45c a tree |

Provided not less than 250 trees ordered.

- | | | |
|---------------------|----------------|------------|
| Cortland Apple..... | 3 to 5 ft..... | 35c a tree |
| Cortland Apple..... | 4 to 7 ft..... | 45c a tree |

Provided not less than 30 trees ordered.

- | | | |
|------------------------|----------------|---------------|
| Stark Gold Cherry..... | 2 to 3 ft..... | 80c a tree |
| Stark Gold Cherry..... | 3 to 5 ft.... | \$1.00 a tree |
| Stark Gold Cherry..... | 4 to 7 ft.... | \$1.20 a tree |

TERMS.—All cash with order, except on orders of 300 trees or more where parties are known to be reliable—one-fourth cash, balance upon arrival.

NON-WARRANTY.—In the event that any nursery stock or seeds sold by us should prove untrue to name under which it is sold, we hereby agree on proper proof of such untruthness to name to replace that portion of the order proven untrue to name, or to refund the purchase price thereof. Except for such liability, and in respect to all nursery stock or seed sold by us, we give no warranty, express or implied, as to description, quality, growth, productiveness or any other matter.—Stark Bro's Nurseries & Orchards Co.

We do not replace stock that fails to live. Possible neglect, unavoidable climatic conditions, etc., prevent us guaranteeing trees or seeds to grow. We deliver to transportation company in good condition and our responsibility ends there. If stock is damaged in transit, claim for damage should be made promptly on transportation company.

SPECIAL LOW PRICE DEMONSTRATION ORCHARD OFFERS

Starking (Trade-Mark)

Stark Delicious (Trade-Mark)

Stark's Golden Delicious (Trade-Mark)

To encourage one orchardist in every neighborhood to plant Starking, Stark's Golden Delicious, and Stark Delicious—the best apples and the biggest money makers they can plant, we will supply **not less than 250 trees** (5 acres) of either at the following **SPECIAL DEMONSTRATION PRICES**:

NOT LESS THAN 250 STARKING TREES AT THESE SPECIAL PRICES

4 to 7 ft. at.....65c each
3 to 5 ft. at.....55c each

NOT LESS THAN 250 STARK'S GOLDEN DELICIOUS TREES AT THESE SPECIAL PRICES

4 to 7 ft. at65c each
3 to 5 ft. at55c each

NOT LESS THAN 250 STARK DELICIOUS TREES AT THESE SPECIAL PRICES

4 to 7 ft. at48c each
3 to 5 ft. at36c each
2 to 3 ft. at28c each

IMPORTANT

When ordering Starking or Stark's Golden Delicious, do not fail to **sign agreement** which will be found at the bottom of our regular Order Blank, a copy of which is enclosed with this book.

You surely should grasp this money-saving, money-making opportunity **AT ONCE**.

We cannot continue this offer all season, in all probability. We have set aside certain blocks of these varieties for these Demonstration Offers. When these reserve blocks begin to show signs of running low, **WE WILL CANCEL THIS OFFER**.

So, it's absolutely a case of "First Come—First Served." We will reserve the trees for the Demonstration Orchard customers in the order that they are received—and those who order Demonstration Orchards too late, will have only themselves to blame.

Customers to be first class, reliable and agree to take good care of trees. These demonstration orchards must be clearly marked on the order "Demonstration Orchard" so we will understand the reduction in price.

Not less than 250 trees can be sold at this low demonstration price. Customers may buy one, two or all 3 offers—or more.

Plant a Demonstration Orchard of Starking, Stark Delicious and Golden Delicious, and take advantage of these low prices. Remember we are offering one Demonstration Orchard for each neighborhood. **Order your trees today. Don't fail to sign the Starking-Golden Delicious Agreement at the bottom of the Order Blank.**

Brimful
of
NEW
Seed
Vari-
eties



FREE

Just
Send Us
Your Name
and Address

**Janet
Gaynor**
Famous Movie Queen
Admiring Our Zinnias.

**GORGEOUS New, FREE
SEED Catalog!**

An amazingly beautiful catalog—with radiantly colored photo of Janet Gaynor, Star of that famous screen-drama, "The Return of Peter Grimm" on the front cover. A remarkably helpful catalog—brimful of **NEW, DIFFERENT FLOWERS** and **NEW BETTER VEGETABLES!**

Send for **YOUR FREE ADVANCE COPY.** Write name and address on the coupon below or a post card.

Address
Dept. C. **STARK BRO'S**

At **LOUISIANA, MO.,** for Over 111 Years

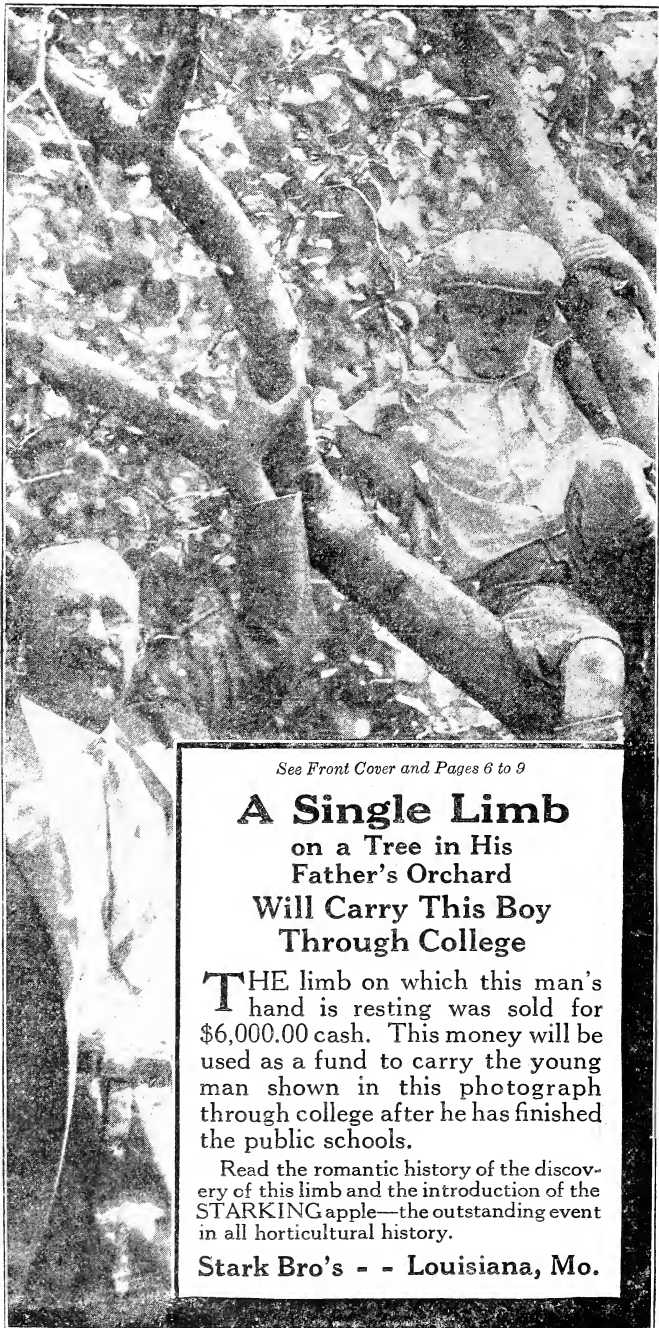
Stark Bro's, Louisiana, Mo. COUPON

Send me at once **FREE COPY** of your Big, Beautiful 1927 Catalog of Flower, Vegetable and Farm Seed. (Dept. C)

Name.....

P. O.

St. or R. F. D. No.....State.....



See Front Cover and Pages 6 to 9

A Single Limb on a Tree in His Father's Orchard Will Carry This Boy Through College

THE limb on which this man's hand is resting was sold for \$6,000.00 cash. This money will be used as a fund to carry the young man shown in this photograph through college after he has finished the public schools.

Read the romantic history of the discovery of this limb and the introduction of the **STARKING** apple—the outstanding event in all horticultural history.

Stark Bro's - - Louisiana, Mo.

STARKING Apple

Demonstration Orchards

At Special Low Prices

 NOT LESS THAN 250 STARKING
Trees at these Special Prices


- 4 to 7 ft. trees.....65c.
- 3 to 5 ft. trees.....55c.
- 2 to 3 ft. trees.....45c.

GOLDEN DELICIOUS

Apple

Demonstration Orchards

At Special Low Prices

 NOT LESS THAN 250 GOLDEN DELICIOUS
Trees at these Special Prices


- 65c each for the 4-7 ft. size
- 55c each for the 3-5 ft. size
- 45c each for the 2-3 ft. size

STARK RED DELICIOUS

Apple (Genuine Original Tree Strain)

Demonstration Orchards

At Special Low Prices

 NOT LESS THAN 250 STARK DELICIOUS
Trees at these Special Prices

- 48c each for the 4-7 ft. size
- 36c each for the 3-5 ft. size
- 28c each for the 2-3 ft. size

Special Low Price APPLE AND PEACH Demonstration Orchards

Knowing the commercial value of these remarkable apples and peaches we make the following Low Demonstration Price on orchards of 250 or more trees to encourage the planting of large orchards of these varieties in each community. Customers to be first class, reliable, and agree to take good care of the trees.

Make out your Demonstration Order On The Enclosed Order Blank—and do not fail to Sign the Agreement at the bottom of the blank for either or both Golden Delicious or Starking.

Not Less Than 250 Trees of a variety at these Special Low Prices—**BUT you may order more than 250 trees**—if ordered at the same time.

J. H. HALE Peach Demonstration Orchards At Special Low Prices

**➔ NOT LESS THAN 250 J. H. HALE
Trees at these Special Prices**

- 4 to 7 ft. trees..... 35c.
- 3 to 5 ft. trees..... 25c.
- 2 to 3 ft. trees..... 17c.

STARK EARLY ELBERTA Peach Demonstration Orchards

**➔ NOT LESS THAN 250 EARLY ELBERTA
Trees at these Special Prices**

- 4 to 7 ft. trees..... 35c.
- 3 to 5 ft. trees..... 25c.
- 2 to 3 ft. trees..... 17c.

(Apple Demonstration Orchards On Other Side)

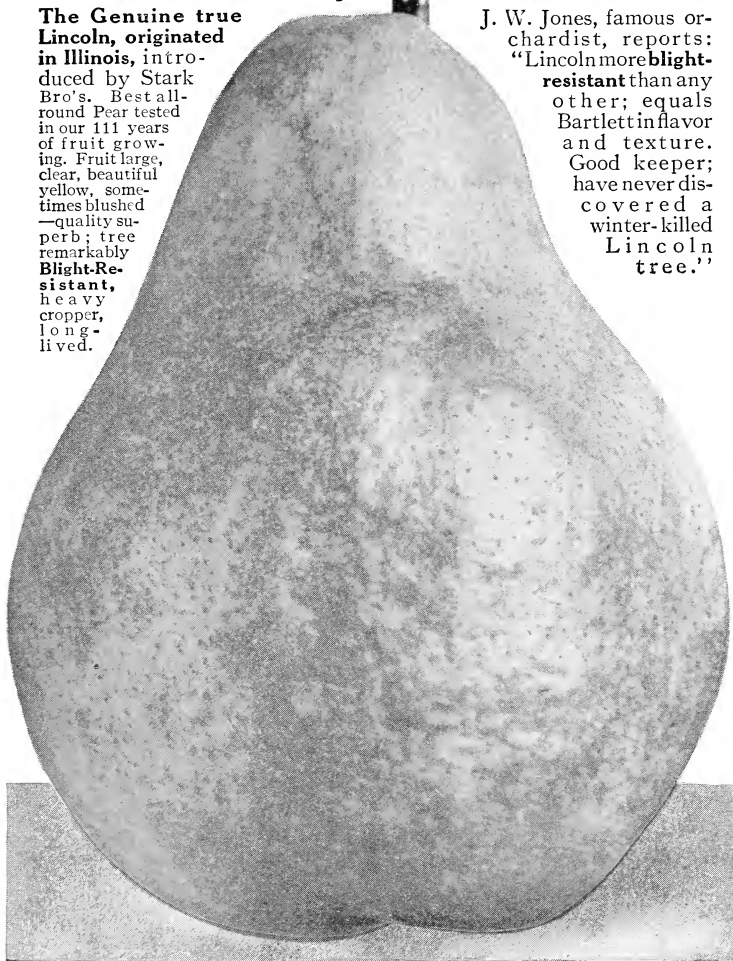
LINCOLN PEAR

Sold ONLY By

The Genuine true Lincoln, originated in Illinois, introduced by Stark Bro's. Best all-round Pear tested in our 111 years of fruit growing. Fruit large, clear, beautiful yellow, sometimes blushed—quality superb; tree remarkably **Blight-Resistant, heavy cropper, long-lived.**

Stark Bro's

J. W. Jones, famous orchardist, reports: "Lincoln more **blight-resistant** than any other; equals Bartlett in flavor and texture. Good keeper; have never discovered a winter-killed Lincoln tree."



Original Lincoln Pear Tree Over 80 Years Old and Still Bearing

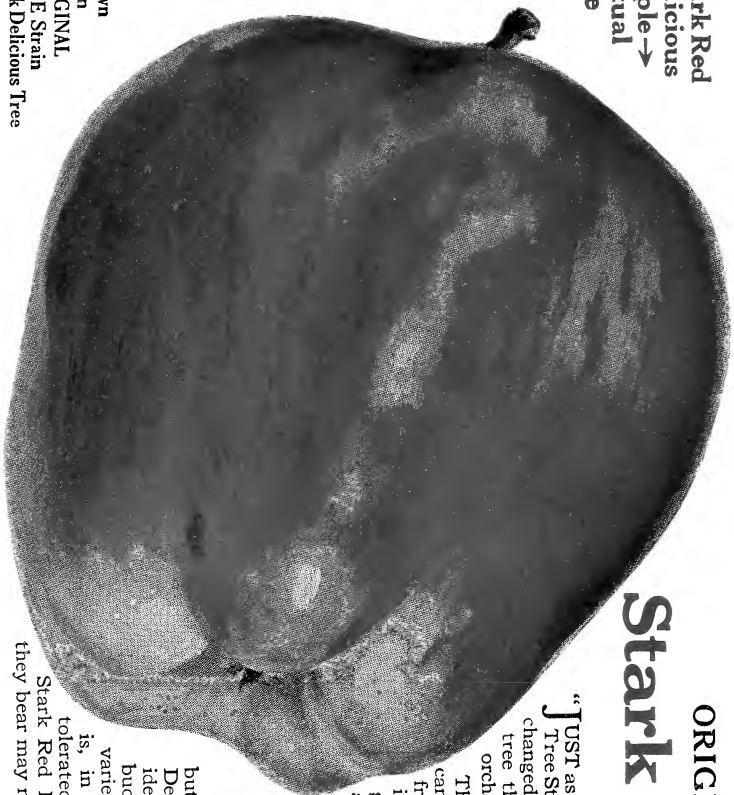
Unquestionably the most Blight-Resistant of all high quality pear trees. Fruit even finer flavor than Bartlett, long known as the best pear grown.

This combination of a long-lived tree and heavy crops of superbly flavored, large sized fruit makes Lincoln the best pear of all for both home orchardists and commercial orchardists to plant.

Lincoln is without doubt the "Stark Delicious" of pear trees—and will be planted by everyone desiring the best pears for home use and the most profit from pear crops.

**Stark Red
Delicious
Apple →
Actual
Size**

**Grown
on an
ORIGINAL
TREE Strain
Stark Delicious Tree**



ORIGINAL TREE Strain of

Stark Red Delicious

Sold Only by Stark Bro's

JUST as a spring is purest at its source," so the True Original Tree Strain of Stark Red Delicious guarantees the pure, unchanged, unapproached quality of fruit and sturdiness of tree that characterized the Original Mother tree and the orchards that we propagated directly from it.

The True Original Tree Strain Stark Red Delicious can be obtained *Only from Stark Bro's* and direct from the Original tree and only twice removed from it. The purity of this Original Tree Strain is jealously guarded, and is your guaranty against deterioration and inferiority.

Your Orchard is a Lifetime Proposition

The chances are that you will plant that orchard but once, so look well to the quality and strain of Delicious trees you plant—and to the fundamental idea behind their production. Promiscuous cutting of buds from orchards where many strains of the same variety may exist and from weak and strong trees alike is, in our judgment, a dangerous practice and is not tolerated in our propagating system. Be sure that your Stark Red Delicious are the Original Tree Strain—so the fruit they bear may not be disappointing. See pages 12 and 13.