

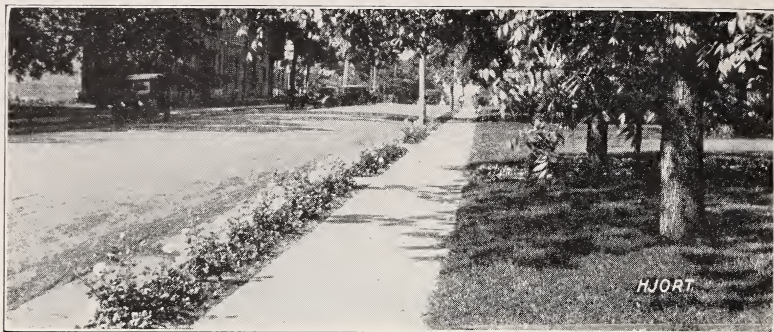
Historic, Archive Document

Do not assume content reflects current scientific knowledge, policies, or practices.

Hjort's 1926 Booklet of Roses
Evergreens, Flowering Shrubs
Fruit & Nut Trees



THOMASVILLE NURSERIES
"Home of Roses"
THOMASVILLE GEORGIA



A planting of Roses between sidewalk and curb of a Thomasville street

Terms of Business

Location.—Main nursery, lathhouses, trial grounds and field office at intersection of Boston and Summerhill roads with Boulevard, two miles east of Thomasville. Rose, conifer and fruit tree nursery and business office on Boston road, three miles east of Thomasville. The Thomasville-Boston road is a link of the Lone Star Trail from Los Angeles to St. Augustine, and is also known as Georgia State Road No. 38.

Invitation to Visitors.—Visitors are welcome at our place every day in the year. We transact no business on Sundays, but leave our gates open for visitors to see the Azaleas, Roses, etc. The Rose field for the coming Spring will be three miles east of Thomasville on the Boston road. Go in "Entrance" gate at sign "To Rose Field 1926," all traffic in one direction, leaving by "Exit" gate. A visit to the nurseries is not an obligation to purchase.

Terms.—Cash with order or satisfactory references, except to parties of known responsibility.

Transportation at Purchaser's Risk.—All transportation expenses are to be paid by the purchaser; our responsibility ceases upon delivery, in good order, to forwarding companies.

Substitution.—We do not substitute unless so authorized. It is well, as the season advances, to name substitute varieties to be used in the event of shortage.

Inspection.—Our nurseries are regularly inspected by a representative of the State Entomologist, and a certificate to this effect, and that the plants have been fumigated as required by law, accompanies every shipment, and we comply with the various laws of the states into which we ship. We offer no plants grown on nut grass lands.

Claims.—If, by any possibility, errors should occur, they will be promptly rectified, if claim is made within ten days after receipt of the goods.

Guarantee.—We cannot control conditions after plants leave our hands, and we cannot therefore, guarantee our plants to live. We do guarantee all stock sent out to be well rooted, well grown, true to name, properly packed and shipped according to instructions.

Quantity Rates.—Twenty-five or more plants at the 100 rate, 300 or more at the 1000 rate.

Order Early.—We cannot too strongly urge the advisability of ordering early. In so doing, one gets the assortment and pick of the stock and avoids disappointment of possible failure to get order filled complete. Orders may be sent early and stock reserved for later delivery.

About Ourselves.—Thomasville Nurseries is owned by P. J. Hjort & Son, none other are financially interested, and there is no connection with any other nursery concern.

Address all communications and make remittances payable to Thomasville Nurseries, Thomasville, Ga.



Coniferous Evergreens and Roses in our Boston Road nursery

Foreword

There is always something of interest to see at the "Home of Roses." In January, February and March the main attraction is the Azaleas, where may be seen many varieties of Indica and the new Kurumes. In April the Roses come into bloom, and the Rose fields have become an attraction that last through Fall. In the Spring, Summer and Fall many kinds of flowering trees and shrubs may be seen, and in the Winter there are other attractions besides the Azaleas. At all seasons evergreens are beautiful.

We could not appropriate the joy of lovely Roses and other things here to ourselves alone, visitors are always welcome and not expected to buy every time they come. Good drives are maintained through the nurseries, and there are no gates to open. No permission is necessary, drive through any day in the year. The territory we serve is in the main Florida, south Alabama and Georgia, where good roads generally prevail, and in the coming year we look for a great many more visitors through the nursery fields.

In the tests of Roses we have led the Southeast a long time. We have just the conditions for growing fine Roses, and we do grow them. We don't claim that we grow all the good ones, there are other reliable firms in the southeast; but none excel ours.

Not only in Roses, but in evergreens and deciduous flowering trees and shrubs, we have developed our enterprise to the extent that we have a well-rounded collection of plants for Georgia, Florida (except tropical) and the coastal sections.

To meet an ever-increasing demand, last Winter we organized a landscape department, and will undertake a limited amount of this work in the coming season.

We wish to warn prospective customers that the only way to be sure of getting stock from us is to buy it from us. Our solicitors drive machines carrying the signs "Thomasville Nurseries, Home of Roses." Orders given to other traveling solicitors do not reach us. The bulk of our sales however, come from parties sending their orders through the mails after consulting the catalogue.

We believe our twenty-eight years of experience here are worth something to those who may be interested in securing the proper trees and shrubs for the home grounds. Preparation has been made for the prompt handling of business in the 1926 season, and we pledge ourselves toward rendering faithful service.

THOMASVILLE NURSERIES,

Thomasville, Ga.

By S. C. Hjort

October 1, 1925.

Broad-leaved Evergreens

In the South we may have a great diversity of broad-leaved evergreens, both flowering and strictly foliage plants, which may be attractively used in landscape effects in many ways, as in foundation planting, screen work, grouping, hedges or specimen effect.

ABELIA grandiflora. This plant fills a wider usage than perhaps any other evergreen. It can be trimmed as a specimen plant, used in groups, in screening about buildings, or trimmed as a dense hedge plant. The graceful, drooping stems and branches are covered with dark, glossy leaves, making it one of the most beautiful, popular and satisfactory evergreens. When trimmed it makes a densely compact plant, and is covered from May until frost with a profusion of small, tubular-shaped white flowers about an inch long, with pink throat. It is hardy as far north as Philadelphia, and we cannot recommend it too highly for its various uses.

	Each	12	100
12 to 18 in., strong, from open ground.....	\$0.35	\$3.50	\$25.00
18 to 24 in., strong, from open ground.....	.50	5.00	40.00
2 to 3 ft., strong, from open ground.....	.75	7.50	60.00

AUCUBA japonica. A beautiful plant of dwarf habit, large, dark green leaves, bright red berries. It does best in shady location, and is one of the very best plants to use in such places. 8 to 12 in., \$1.00; 12 to 15 in., \$1.25; 15 to 18 in., \$1.50 each.

AUCUBA japonica variegata (Gold Dust Plant). A form of the above with leaves beautifully spotted bright golden. Like the green variety it requires a shady location. Prices same as Aucuba japonica.



CAMELLIA japonica. This delightful Winter flowering shrub or small tree, commonly called "japonica" is too well known to need description. Practically all of the Camellias planted in America were imported up to the time Quarantine No. 37, shutting off importations, went into effect. Camellias can be grown in America, and nurserymen are gradually developing a stock. We offer in double varieties, red, deep pink, shell pink, variegated. We also have single red. Strong plants from 4-in. pots, 8 to 12 in., \$1.00 each, \$10.00 per 12; from 5-in. pots, 12 to 18 in., \$1.50 each, \$15.00 per 12.

CAMELLIA, Single Red. 8 to 12 in., 75c. each, \$7.50 per 12; 12 to 18 in., \$1.00 each, \$10.00 per 12.

EUONYMUS japonica. A strictly foliage plant with shiny, dark green leaves. Small plants, 50c. each.

GARDENIA florida. A very popular evergreen, with dark, glossy foliage and large, fragrant white flowers from May until Fall.

	Each	12	100
8 to 12 in.....	\$0.50	\$5.00	\$40.00
12 to 18 in.....	.75	7.50	60.00

Camellia japonica, Residence of Mr. and Mrs. Louis Steyerman, Thomasville, Ga.



Hedge of *Abelia grandiflora*, *Ligustrums* and *Spiraea* in the background

ILLICIUM anisatum (East India Anise Tree). A small, evergreen tree of light green foliage. The leaves when bruised emit a pleasing anise fragrance. 12 to 18 in., \$1.00 each.

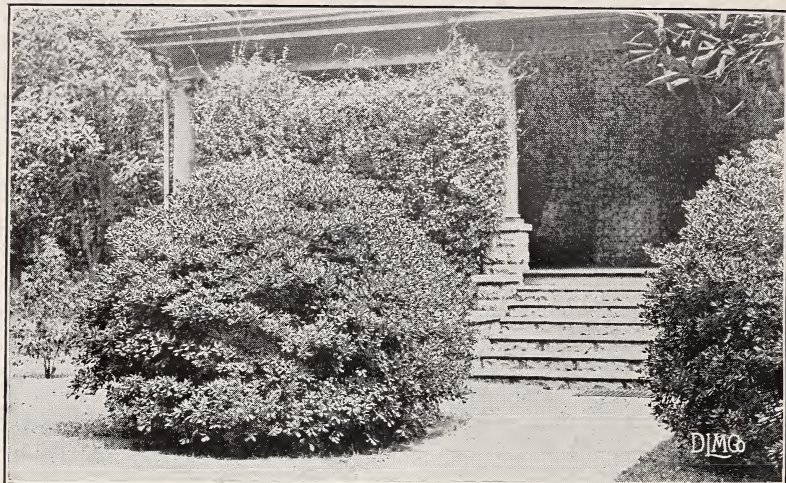
LIGUSTRUM amurense, South. Most popular hedge plant in the South. 2 to 3 ft., \$1.50 per 12, \$10.00 per 100.

LIGUSTRUM iwata. A comparatively new and scarce evergreen Privet of great merit. This plant has glossy green leaves with lighter center and habit of growing very compact. Visitors to our nurseries usually show a preference for this variety over other evergreen Japanese Privets. It is now used extensively in this section in foundation, mass and screen plantings, and as trimmed specimens or a dense hedge. A strong reason for its popularity is its resistance to white fly, which infests Privet hedges in some localities. We especially recommend *Ligustrum iwata*, a shrub which should be used all along the coastal section.

	Each	12	100
8 to 12 in.....	\$0.75	\$7.50	\$60.00
12 to 15 in.....	1.00	10.00	80.00
15 to 18 in.....	1.50	15.00	125.00
18 to 24 in.....	2.00	20.00	150.00
2 to 3 ft.....	3.50	35.00	300.00

LIGUSTRUM marginatum aureum. One of the finest of the variegated evergreens, having, as the name implies, leaves margined in gold. Is a tall and upright grower, and makes a beautiful specimen plant. It is also used most effectively in groups with green leaved plants.

	Each	12
18 to 24 in.....	\$1.50	\$15.00
2 to 3 ft.....	2.50	25.00
3 to 4 ft.....	3.50	35.00
4 to 6 ft.....	5.00	



Pittosporum tobira. *Rhynchospermum jasminoides* for front porch shade
Residence of Mr. and Mrs. Cader S. Parker, Thomasville, Ga.

LIGUSTRUM quihoui (Summer Privet). Small, dark green leaves, shapely and compact bush. 2 to 3 ft., \$2.00; 3 to 4 ft., \$3.00 each.

LIGUSTRUM lucidum (Wax Leaf Privet). A beautiful form of evergreen Japanese Privet with large, very dark green leaves, and large heads of white flowers in May, followed by black berries which are retained throughout the Winter. Same prices as *Ligustrum iwata*. Adapted to all extremes of cold and heat in the South.

MAGNOLIA grandiflora (Evergreen or Southern Magnolia). The most prized native evergreen tree. It is valuable for lawns, specimens, avenue plantings or for shade.

	Each	12	100
2 to 3 ft.....	\$0.75	\$7.50	\$60.00
3 to 4 ft.....	1.00	10.00	80.00

MICHELIA fuscata (Banana Shrub). One of the most popular and desirable evergreens for the South. 10 to 12 in., \$1.00; 12 to 15 in., \$1.25; 15 to 18 in., \$1.50 each.

NANDINA domestica (Japanese Nandina). A very showy evergreen or nearly evergreen shrub. In Winter its leaves turn a bright red and hang on the plant until early Spring, which, with the bright red berries, makes it a conspicuously attractive specimen plant.

	Each	12	100
8 to 12 in.....	\$0.75	\$7.50	\$60.00
12 to 15 in.....	1.00	10.00	80.00
15 to 18 in.....	1.25	12.50	100.00
18 to 24 in.....	1.50	15.00	125.00

OSMANTHUS fragrans (Tea or Sweet Olive). Small white flowers produced in clusters, which emit a pleasing fragrance. In the lower South plant is in bloom the greater part of the year.

	Each	12
10 to 12 in.....	\$1.25	\$12.50
12 to 15 in.....	1.50	15.00
15 to 18 in.....	1.75	17.50
18 to 24 in.....	2.00	20.00

THOMASVILLE NURSERIES, THOMASVILLE, GEORGIA

OLEANDER (*Nerium Oleander*). One of the finest evergreens for specimen or mass plantings, and popular in South Georgia, the Gulf coast and Florida. It is not adapted to colder climate. We have selected hardy varieties, and offer single and double of pink, white and red. We especially recommend the double pink, a fragrant variety and thrifty grower. 75c. each, \$7.50 per 12, \$60.00 per 100. Extra heavy plants, \$1.50 each.

PHOTINIA serrulata. Handsome shrub with dark green foliage, leaves turn a striking bright red in coldest weather and remain so until they fall in early Spring when new leaves form. Same prices as Pittosporums.

PITTIOSPORUM tobira. An excellent shrub, very popular and extensively used in the South, having dark green leaves clustered at the ends of branches. The plant is of compact growth, flowers yellowish white, very fragrant, appearing in early Spring. The Pittosporum may be used in foundation planting, massing, trimmed as a specimen or as a dense hedge. Too much cannot be said in favor of this evergreen, for in its many uses it is greatly prized in landscape plantings, and we always advise its planting.



Oleander

	Each	12	100
6 to 8 in.....	\$0.50	\$5.00	\$40.00
8 to 12 in.....	.75	7.50	60.00
12 to 15 in.....	1.00	10.00	80.00
15 to 18 in.....	1.50	15.00	125.00
18 to 24 in.....	2.00	20.00	150.00



Drive bordered with *Ligustrum iwata*

THOMASVILLE NURSERIES, THOMASVILLE, GEORGIA

PYRACANTHA coccinea Lalandi (Laland's Firethorn). One of the showiest of all evergreens, particularly attractive in Winter when loaded with small, orange-red berries. The Pyracantha makes a small tree, and has small, evergreen leaves of the darkest green.

18 to 24 in.	Each 12	
2 to 3 ft.	\$1.50	\$15.00
4 to 6 ft.	2.50	25.00
	5.00	

VIBURNUM odoratissimum. A valuable evergreen in mass or specimen planting. Attains height of 12 ft. Large, green leaves, and showy white flowers. Highly recommended for Florida, but higher it is sometimes killed down like an Oleander in a Winter when temperatures run lower than average seasons. 2 to 3 ft., stocky, \$3.50 each.

VIBURNUM odoratissimum nanum. A very scarce and valuable evergreen destined to be used extensively in the South because of the lustrous, dark green color of its leaves, its compact habit and its resistance to disease affecting laurels. This plant is now being used about Thomasville and has been affected by no disease. A valuable feature is that old leaves, as well as new ones, are of polished, shiny green. This Viburnum does not bloom in this locality, and attains an ultimate height of 5 ft., but can be kept trimmed lower if desired. More hardy than tall kind.

	Each 12		Each 12
24 to 30 in.	\$2.00	\$20.00	30 to 36 in. \$3.00
	3 to 4 ft. each	\$5.00, 12	\$40.00

VIBURNUM tinus. An evergreen of great value as a Winter bloomer. Creamy white flowers in February, very fragrant. Shrub compact in growth, foliage dark green.

	Each 12		Each 12
6 to 8 in., from pots ...	\$0.50	\$5.00	8 to 12 in., from pots... \$0.75
			\$7.50



Beautiful Foundation Planting Featuring Lantanas
Residence of Mr. and Mrs. J. L. Giddens, Valdosta, Ga.



Evergreen Foundation Planting
Residence of Mr. and Mrs. A. C. Moye, Cuthbert, Ga.

Coniferous Evergreens

These evergreens are extensively used as specimen plants on lawns, but their value in banking or foundation planting has often been overlooked. The various colors, dark green, light green, blue-green and golden, afford strikingly effective color schemes when properly used. More coniferous evergreens should be used with broad-leaved evergreens and deciduous shrubs.

CHAMAECYPARIS pisifera plumosa (*Retinospora plumosa*). A showy conifer of plummy, dark green foliage. May be trimmed rounded, or allowed to grow to a point at the top, somewhat like native red Cedar. The most of our stock has been carefully trimmed into shape, and may be easily kept so.

CHAMAECYPARIS plumosa aurea (*Retinospora plumosa aurea*). Another beautiful form of the Japanese Cypress, of compact habit and rich, golden foliage. All of the *Chamaecyparis* plants are offered in trimmed specimen, and we can easily match pairs or dozens.

Prices of <i>Chamaecyparis</i> :							
	Each	12	100	Each	12	100	
8 to 12 in.....	\$0.75	\$7.50	\$60.00	15 to 18 in.....	\$1.50	\$15.00	\$125.00
12 to 15 in.....	1.00	10.00	80.00	18 to 24 in.....	2.00	20.00	150.00

THUJA Rosedale (*Biota Rosedale*). A very attractive and popular variety of compact habit and feathery foliage; of dark, bluish-green color. This evergreen withstands any extremes of temperature ever experienced here, and is used more than any other plant in its class. We can easily match these plants, and they require no trimming.

	Each	12	100		Each	12	100
8 to 12 in.....	\$0.75	\$7.50	\$60.00	15 to 18 in.....	\$1.50	\$15.00	\$125.00
12 to 15 in.....	1.00	10.00	80.00	18 to 24 in.....	2.00	20.00	150.00

THOMASVILLE NURSERIES, THOMASVILLE, GEORGIA

CUNNINGHAMIA lanceolata (sinensis). One of the aristocrats among coniferous evergreens. Trees shape up like the well-known Deodar Cedar, and the foliage is of the darkest green, Pine-like, but very compact. Cunninghamias in south Georgia and north Florida have stood all extremes of temperature without any injury. We have never known a Cunninghamia in the plantings in this section to be affected by any disease. For a number of years these evergreens were practically off the market, but in the last few years nurserymen in this country have developed a stock. Cunninghamias, like the Cedars, should be given plenty of room; they make a tall, pyramidal tree.

	Each	12		Each	12
8 to 12 in.....	\$0.75	\$7.50	2 to 2½ ft.....	\$2.00	\$20.00
12 to 15 in.....	1.00	10.00	2½ to 3 ft.....	3.00	30.00
15 to 18 in.....	1.25	12.50	3 to 4 ft.....	5.00	50.00
18 to 24 in.....	1.50	15.00	4 to 6 ft.....	7.50	75.00

JUNIPERUS ashfordi. A development from the English Juniper, with graceful, oblong branches, of brightest bluish-green color. In contrast to English and Irish Junipers, Ashfordi is loose and wavy, making it a good conifer in group and foundation plantings.

	Each	12
18 to 24 in.....	\$1.50	\$15.00
2 to 3 ft.....	2.50	25.00
3 to 4 ft.....	4.00	40.00

OTHER CONIFEROUS EVERGREENS

We have in limited stock an assortment of other Conifers not listed here. These include *Biota aurea anana*, *Biota compacta*, *Cedrus deodara*, Junipers of various kinds, etc. We invite correspondence if you are interested; we may have just what you want.



Retinospora plumosa



Azalea Georges Franc. Two-thirds natural size

Azaleas

The Azaleas are the most attractive of Winter-flowering shrubs in the South. Their value in landscape uses is too little recognized, for evergreen Azaleas are indispensable in Southern landscape effects. Varieties of *Azalea indica*, coming into flower when so little else is in bloom, are a mass of beauty on the private estates of Northern Winter residents of Thomasville in the late Winter and early Spring, and no one who has seen these plantings will ever forget the scene. The famous Magnolia Gardens near Charleston, S. C., where many varieties of Azaleas are seen by throngs of visitors every Spring, has been said to be more like heaven than any place on this planet.

Azaleas, contrary to general belief, are by no means hard to grow. They thrive in rather acid soil, leafmold or pond muck, with

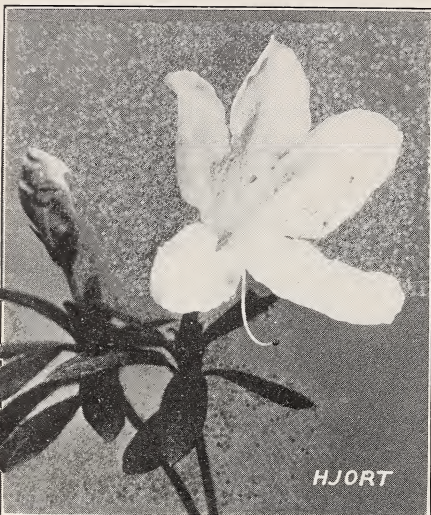


Azalea Formosa. One-half natural size

AZALEAS—Continued

little or no manure, but, being surface feeders, they like a good mulch of leaves and Pine straw and should not be allowed to suffer for want of water. They should be planted in partly shaded situations. Clay, lime, and an excess of potash should be avoided. When Azaleas are well grown they are among the most delightful and satisfactory plants in existence. The flowers last in perfect condition a long time, and the wonderful color effects are rarely approached by any class of plants.

There is a prejudice in some quarters against the purplish-pink, or cerise, varieties, but this shows a lack of the proper appreciation of values in color effects. What could be more delightful than a combination of Azalea formosa and Spiraea reevesiana flore pleno as a fore-



Azalea alba

ground to a piece of Pine woods? To extend the blooming season, Azalea phoenicia and Azalea Omurasaki could be used, as they are at their best when Azalea formosa is about through.

Owing to the high color effects of these Azaleas, it is not always wise to use them together with reds or clear pinks, as the colors disagree, but with white or yellow-flowering shrubs the combination is delightful. Another feature in favor of the purplish-pink Azaleas is that they are often successful under unfavorable conditions where other varieties would barely exist. Azaleas often vary in color in different localities. Nurserymen grade by spread as well as height.

The Rhododendrons, which are used so largely in landscape effects farther north, are worthless here except in high altitudes. Their place is filled by the evergreen Azaleas, which have all the colors of the Rhododendrons, and several besides.

All of the Azaleas we list are evergreen.

Prices of Azaleas alba, formosa, Phoenicia, Omurasaki and Vittatti fortunei:

	Each	12	100
6 to 8 in.	\$0.50	\$5.00	\$40.00
8 to 12 in.75	7.50	60.00
12 to 15 in.	1.00	10.00	80.00
15 to 18 in.	1.50	15.00	100.00
18 to 24 in.	2.00	20.00	150.00

THOMASVILLE NURSERIES, THOMASVILLE, GEORGIA

AZALEAS—Continued

Prices of Azaleas Amoena, Elegans and Georges Franc:

	Each	12	100
6 to 8 in.....	\$0.75	\$7.50	\$60.00
8 to 12 in.....	1.00	10.00	80.00
12 to 15 in.....	1.50	15.00	125.00

Prices of Red Azaleas

	Each	12	
6 to 8 in.....	\$1.00	\$10.00	
8 to 12 in.....	1.50	15.00	

VARIETIES DESCRIBED

- Alba.** Large, single flowers. A very hardy kind, used extensively in the North. Plantings are successful on Long Island. Used a lot about Thomasville. Tall grower.
- Amoena.** Another hardy Azalea, a popular kind in the North, but succeeding equally as well in the South. Small claret-pink flowers, small dark green leaf. Tall grower.
- Elegans.** An even shade of clear pink as a rule, but some years is inclined to show some purple. An upright grower, produces large single flowers. An early variety.
- Formosa.** The most generally satisfactory Azalea grown in the Southern states. A planting of this variety at Inwood Plantation near Thomasville is a mass of beauty in early Spring. Large, single, purplish-pink flowers, dark green leaves. A thrifty kind, easiest of all to grow. A midseason variety and tall grower. See color illustration.
- Georges Franc.** This is a very scarce Azalea, and one that has attracted more attention at our place than any other variety. It is a profuse bloomer, and is one of the earliest varieties. The flowers are described as flame-pink with deep carmine spot. They never show a trace of purple. See color illustration.



An Azalea plant in bloom. Azaleas produce a mass of bloom in early Spring



Azalea Omurasaki

AZALEAS—Cont'nued

Omurasaki. A very fine Azalea, producing large, single flowers, midseason to late. In color this kind shows slightly more pink and less purple than Formosa, as a rule, but in some seasons there is practically no difference in color. Omurasaki makes a spreading bush and is a profuse bloomer. It is the principal kind used at Greenwood Plantation, which each year attracts many visitors, and is the finest planting of Azaleas at Thomasville. We strongly recommend this variety. See color illustration.

Phoenicia. This variety is of practically the same color as Omurasaki, but the flower is slightly smaller. However, there is a noticeable difference in the shape of the leaf, and of all Azaleas we have observed that Phoenicia will stand the most sun. A late flowering kind and tall grower.

Vittatti fortunei. The best variegated Azalea. The plant is of upright growth and is the earliest Azalea to come into flower at Thomasville. The blooms are like *Azalea alba*, but striped purplish-pink.

Red Azaleas. We have these in very limited stock, sold only with orders for other kinds.



Kurume Azaleas

Within the past few years a wonderful new race of Azaleas, the Kurumes, has been introduced in America. Mr. E. H. Wilson, an eminent authority on Azaleas, says in his "Monograph of Azaleas": "To my mind, the 'Kurume Azaleas' are the loveliest of all Azaleas. The colors are so pure and exquisite and of every hue and shade from white, pink and salmon to scarlet, crimson and the richest magenta. The hose-in-hose forms have none of the ugly features of double flowers, but on the contrary are singularly attractive and last much longer. They are extremely floriferous, and in season the blossoms often completely hide the leaves."

The oldest and best collection of Kurume Azaleas in Japan is that of Mr. Kijiro Akashi. This foremost propagator of Japanese Azaleas states that the best six Kurume varieties are:

Takasago (pale pink, hose-in-hose)
Azuma Kagami (deep pink, hose-in-hose)
Kirin (deep rose, hose-in-hose),
Kumo No Uye (pure salmon, single)
Kurai No Himo (carmine, hose-in-hose)
Kureno Yuki (white, hose-in-hose)

We have developed a stock of these plants, which also go by the American names of

Cherry Blossoms
Pink Pearl

Coral Bells
Salmon Queen

Carmine
Snow

The Kurume Azaleas are extremely hardy, small plants having stood the severe freeze of January, 1924, without any injury. They are all very dwarf, but are profuse bloomers, and may be used for pot culture or outdoor planting.

	Each	12
6 to 8 in.....	\$1.00	\$10.00
8 to 12 in.....	1.50	15.00
12 to 15 in.....	2.00	20.00



Lantanas in Foundation Planting

Beautiful color effects. Residence of Mr. and Mrs. B. F. Reid, Dothan, Ala.

Deciduous Trees and Shrubs

ACER dasycarpum (Silver Maple). A desirable shade and specimen tree. Foliage bright green, silver white beneath.

	Each	12	100		Each	12	100
2 to 3 ft.....	\$0.40	\$4.00	\$30.00	4 to 6 ft.....	\$0.85	\$8.50	\$75.00
3 to 4 ft.....	.65	6.50	50.00	6 to 8 ft.....	1.25	12.50	100.00

ACER dasycarpum weiri (Weir's Cut-leaf Maple). A beautiful variety with deeply divided leaves and graceful, drooping branches. Color of leaves green, undersides silvery green. 4 to 6 ft., \$2.00; 6 to 8 ft., \$2.50 each.

ACER rubrum (Scarlet Maple). This is a very beautiful Maple, leaves light green above, silvery white beneath, and changing to scarlet in the Fall. Prices and sizes same as *Acer dasycarpum*.

ALTHAEA (*Hibiscus syriacus*). A free flowering shrub or small tree, producing single and double flowers in red, pink, purple, variegated and white, in the Summer.

	Each	12	100		Each	12	100
2 to 3 ft.....	\$0.50	\$5.00	\$40.00	4 to 5 ft.....	\$0.75	\$7.50	\$60.00
3 to 4 ft.....	.60	6.00	50.00				

CALYCANTHUS floridus (Sweet Shrub). The Sweet Shrub of the old-fashioned gardens of the South is really too well known to need description. The chocolate-colored flowers are always borne in profusion. Same prices as *Deutzias*.

CORNUS florida. The native, large, white flowering Dogwood; a very showy tree in early Spring. Same prices and sizes as *Althaeas*.

CORNUS florida flore pleno. A double form of the above. Grafted, 3 to 4 ft., \$1.50 each.

CORNUS florida rubra. Similar to the white flowering Dogwood, but with flowers of rose-pink color. A very showy tree in early Spring. 2 to 3 ft., \$1.50; 3 to 4 ft., \$2.50, 4 to 5 ft., \$3.50 each.



Spiraea, Mass Planting

- CERCIS canadensis** (Redbud or Judas Tree). In early Spring this tree is covered with reddish-purple flowers. One of the best native plants. Each 12 100
 2 to 3 ft. \$0.50 \$5.00 \$40.00
 3 to 4 ft.75 7.50 60.00
- DEUTZIA**. Very showy, Spring flowering shrubs, fine for massing or screen work, or adapted to natural plantings. We offer pure white and white with pink tinge.
 Each 12 100
 1-year plants. \$0.35 \$3.50 \$25.00
 2-year plants.50 5.00 40.00
 3-year plants.75 7.50 60.00
- EXOCHORDA grandiflora** (Pearlbush). Large, pure white flowers produced in great profusion early in March. When in full bloom the plants have the appearance of a snowbank. Fine for massing. 50c. each, \$5.00 per 12.
- FORSYTHIA** (Goldenbell). Late Winter and early Spring flowering shrubs with golden-yellow flowers. We have upright and drooping kinds. Prices same as Deutzias.
- GINKGO biloba** (Maidenhair-tree). A beautiful tree with foliage resembling the Maidenhair fern. While this tree is deciduous, it is a conifer. A good shade tree. 2 to 3 ft. \$1.00, 3 to 4 ft. \$1.50 each.
- HYDRANGEA otaksa**. The fine old Hydrangea, useful and beautiful in southern plantings. In South Georgia the bloom is usually blue, due to existence generally of clay subsoil. To make it pink dig out the clay and fill in with black or sandy soil. Prices same as Deutzias.
- JASMINUM primulinum**. A rapid growing shrub producing an abundance of yellow flowers in early Spring. Can be trimmed in shape, or the canes trained up as a climbing shrub. Same prices as Deutzias.
- LANTANA**. Beautiful, showy, quick growing shrubs. White, yellow, orange, pink, red. Ready March 15th. 40c. each, \$4.00 per 12, \$25.00 per 100.
- LONICERA bella**. This shrub produces an abundance of fragrant white flowers with pink tinge in Spring and early Summer. Same prices as Deutzias.

THOMASVILLE NURSERIES, THOMASVILLE, GEORGIA

LONICERA fragrantissima (Upright Bush Honeysuckle). Masses of fragrant white flowers are produced on upright and slightly drooping branches in Winter. An excellent deciduous flowering shrub for using with evergreens. Same prices as Deutzias.

LAGERSTROEMIA indica (Crapemyrtle). A vigorous, deciduous shrub or small tree, with beautifully fringed flowers in the Summer. The Crapemyrtle is easy to grow, thriving often when given no care for years. Clumps of these trees brighten the roadways here and there in the South. When fitted into landscape plantings they are extremely valuable for their long season of bloom.

	Each	12		Each	12
2 to 3 ft.....	\$0.50	\$5.00	4 to 6 ft.....	\$1.25	\$12.50
3 to 4 ft.....	.75	7.50	6 to 8 ft.....	2.50	25.00

PHILADELPHUS virginal (Syringa or Mockorange). Pretty and vigorous small trees bearing a profusion of white flowers in late Spring and Summer. Same prices as Deutzias.

POPULUS fastigiata (Lombardy Poplar). Lombardy Poplars give quick effects in landscape plantings. They show up the first season and give sky line and background long before other trees develop any considerable height. In formal effects they are sometimes used where Italian Cypress is too expensive. Among other shrubs they give variety and interest to the planting.

	Each	12
4 to 5 ft.....	\$0.80	\$8.00
5 to 7 ft.....	1.20	12.00
7 to 9 ft.....	2.00	20.00

SPIRAEA. Spiraeas are indispensable for mass or border planting, and are used attractively with evergreens. They bear a profusion of showy white flowers in late Winter and early Spring. We can supply Reevesiana (upright) in single and double flowering; the Vanhouttei (Bridal-wreath); Thunbergi (dwarf, feathery foliaged); and also the Spiraea



Anthony Waterer, a Summer flowering red kind. Prices of all same as Deutzias.

Weigela rosea

WEIGELA rosea. A vigorous shrub, producing a wealth of showy, bell-shaped flowers in early Spring, color rose-pink. This plant makes an attractive mass or screen planting. Same prices as Deutzias.



English Ivy on Fence and Trees

Residence of Mr. and Mrs. Homer Williams, Thomasville, Ga.

Vines

	Prices on Vines	Each	12
Medium plants.....		\$0.50	\$5.00
Strong plants.....		.75	7.50
Extra strong plants.....		1.50	15.00

Except where noted.

BIGNONIA venusta. A strong and rapid growing vine which requires some Winter protection in south Georgia in getting started. It bears a profusion of showy orange-red flowers in the Spring.

FIGUS repens. An evergreen climber with small, bright green leaves. An excellent plant for completely covering and screening brick walls, posts, rockwork, etc.

HEDERA helix (English Ivy). Shiny, evergreen leaves, clings to any surface without support. Extensively used in covering trunks of trees and in trailing from window boxes. From 2½-in. pots, 20c. each, \$2.00 per 12, \$15.00 per 100.

LONICERA halliana (Climbing Honeysuckle). A rampant climber with evergreen foliage and fragrant white flowers, changing to yellow.

LONICERA sempervirens (Coral Honeysuckle, Woodbine). An excellent native vine of fast growth with evergreen foliage and coral-red blooms. Attractively used on fences, pergolas, etc.

TRACHELOSPERNUM jasminioides (Rhynchospermum, Star Jasmine). A rapid growing, twining vine of dark, glossy green leaves. It is covered in the Spring with a mass of starry, white flowers of intense and pleasing fragrance.

VINCA minor (Periwinkle). A rapid growing vine with dark green leaves and blue flowers. Used extensively as a ground cover, and for trailing from window boxes. 20c. each, \$2.00 per 12, \$15.00 per 100.

VINCA variegata. A variegated Vinca which finds its principal use in trailing from window boxes as a screen. 20c. each, \$2.00 per 12, \$15.00 per 100.

WISTERIA chinensis. A vine used extensively in the South for covering pergolas and arched-over drives. Long, drooping clusters of fragrant blooms in early Spring. We offer purple and white.

The Thomasville Rose Show

A BEAUTIFUL and instructive Rose Show is staged every April by Rose lovers of Thomasville, the date being fixed according to the season by the Executive Committee. Last April the Show, held at the Basketball Shell, was acclaimed by all visitors a big success, and was a wonderful display of many kinds of beautiful Roses. There were also Sweet Peas, Gladiolus, Larkspur, many annuals and pot plants to add to the brilliance of the display.

The Rose Show is an institution of Thomasville, the "City of Roses." Every organization and every individual of the city and county is interested, and it is supported as much for the pleasure of visitors from sister cities as for the residents of Thomasville.

Last season the Basketball Shell afforded more room than other places where the show had been held, but when the exhibits were placed it was found to be inadequate. Next April, under the present plans, the exhibit will be held in the very large and commodious Tobacco Warehouse. There will be plenty of room for all exhibits and plenty of room for the thousands of visitors to easily see all of the Show.

And while you are in Thomasville to visit the Rose Show, we invite you to drive through our Rose fields where may be seen the best collection of Rose varieties in Georgia.

You will thoroughly enjoy the two days of the Rose Show, the dates of which will be advertised early in April. If you can come only one day, you can see it all on the first, as well as the second.

Thomasville promises its visitors to the Fifth Annual Rose Show in April, 1926, a genuine "treat." If you miss the Rose Show you miss a great experience, so come and bring your friends.

"Miss Radiance"

of the front cover of this booklet is Miss Virginia Bracey, the pretty and charming young daughter of Mr. and Mrs. M. Bracey, and granddaughter of Mr. and Mrs. E. L. Neel of Thomasville. The photograph, like others of the catalogue, was taken by Mr. A. W. Moller.



Bush and Climbing Roses used together at Thomasville, Ga.

Roses

The Rose has been justly termed the "Queen of Flowers" for its wide range of beautiful color and its easy culture. In the South it is by far the most valuable flowering plant, for such a wealth of varieties may be grown, the climate being suited to practically all of the most desirable kinds. Our Roses are budded on vigorous stocks adapted to the long Summer and occasional droughts in the South, and which rarely ever "sucker" from below the bud union. The superiority of budded Roses has long been recognized in the South.

Rose growing has advanced rapidly in the past few years. We have been diligent in testing the new varieties, and from them some wonderful Roses are selected.

While the Rose will adapt itself to many situations, the best results are to be obtained by planting in well drained locations, although the Rose does not like too dry soil. Where the soil is sandy, clay should be filled in, and Rose beds should have stable manure and leafmold added for best results. On situations where there is a good clay subsoil it is unnecessary to add clay. In fertilizing, where stable manure is not available, or even if it has been used, the best commercial preparation is bonemeal.

To control leaf black spot, spray with Bordeaux mixture. To eliminate powdery mildew in Dorothy Perkins Roses or such kinds as may be subject to this disease, dust with lime-sulphur. To kill insects spray with a tobacco preparation—the spray we use is Black Leaf 40, a teaspoonful to a gallon of water.

Some years ago when our firm began sending the catalogue into a wide territory of the Southeast, the prices of 2-year Roses were reduced, in order to get our products distributed and well known. None will deny that we are entitled to a fair profit in our Rose production. We are raising our prices to the figures other reputable nurserymen of the South have sold Roses for a long time, and we are still under the prices of some of the larger nurseries. We do not ask higher figures for our Radiance Roses. Rose growing has been the biggest item of our work the twenty-eight years we have conducted our business here, and the plants we send out are as good as can be bought anywhere, and better than the general run.

Neltje Blanchan says in her delightful book, "The American Flower Garden," that "When buying Roses, the general rule holds good: it is economy in the end to get only the best quality of stock from the most reliable dealer. The market is flooded with Roses alleged to be cheap; but in reality they are very small, weak, inferior plants, not really worth half what is asked for them. A dozen such would not furnish the real joy contained in one large, healthy, superlatively fine plant.

PRICES OF ROSES

Strong, 2-year budded plants, 70c. each, \$7.00 per 12, \$55.00 per 100.

Tea Roses

Alexander Hill Gray. Solid yellow in bud, opening lighter, a vigorous grower, free bloomer.

Duchess de Brabant. Light rose to shell-pink, an excellent grower and bloomer; one of the most popular Roses in the South.

Etoile de Lyon. Deep yellow, opening lighter.

Helen Good. A blush pink sport of Maman Cochet, with the good qualities of its parent.

Lady Hillingdon. Beautiful pointed buds of deep yellow, the favorite of the deep yellow Roses in this section.

Mlle. Franziska Kruger. Coppery-yellow, a wonderful bloomer, the best Tea Rose of its color.

Freiherr von Marschall. One of the best red Roses. A vigorous grower, with long pointed buds and large, full blooms of dark carmine red.

Mme. Demaizin. A big, double Rose of flesh-pink color. One of the best Roses at Thomasville.

Mme. Lambard. Bright, deep rose, variable in color, deepens in tone in the Fall; large, fine form, beautiful buds, strong grower, excellent bloomer. We grow this well-known favorite in large quantities because it is always in demand and always satisfactory. No one who has seen the great display of Mme.



Lady Hillingdon

Lambard Roses on the private estates near Thomasville will ever forget the beauty of the sight. This Rose held first place with us 20 years. It is the best of the Tea Roses.

Mme. Melanie Soupert. A salmon-yellow Rose with shadings of pink; a very free bloomer, long pointed buds and large, heavy, double flowers. The plant is vigorous and a consistent bloomer throughout a long season. A Rose we especially recommend.

Mrs. B. R. Cant. Deep rose to light red, flowers somewhat similar to Maman Cochet in form; a wonderful bloomer and an altogether satisfactory Rose.

Mrs. Dudley Cross. In form and blooming qualities it easily passes for what it is often called, a yellow Maman Cochet. It is a yellow Rose, tinged with pink in the same manner as the White Cochet is tinged with pink. One of the best bloomers.



Mme. Lambard

- Maman Cochet.** This is the famous Pink Cochet. Light pink, shaded with bright rose; beautiful, long pointed buds and large and full flower. The most generally popular Tea Rose in America, and one that is always a success in the South, giving blooms over a long season.
- Marie Van Houtte.** Canary-yellow, deeper center, border of petals tipped bright rose. A vigorous grower, profuse bloomer and great favorite in this section.
- Minnie Frances.** Dark pink, strong grower and good bloomer; long buds, a Rose on the order of Mme. Lambard.
- Papa Gontier.** Rosy-crimson; fine, long pointed buds, a vigorous and altogether excellent Rose.
- Safrano.** A fine old Tea Rose of bright apricot color and free blooming qualities. It is beautiful in bud and in mild Winters continues to bloom along the Gulf Coast.
- White Maman Cochet.** A white Rose of the excellent qualities of its parent, Maman Cochet. Edges of petals tipped rose. The best white Tea Rose.
- William R. Smith** (The Blush Rose). A cross between Maman Cochet and Kaiserin Auguste Viktoria, of lovely blush-pink color. Free bloomer, strong grower: long, pointed buds, heavy flowers.

Hybrid Tea Roses

- Aspirant Marcel Rouyer.** One of the best of the new Roses. Deep apricot, tinted salmon flesh on outer petals and veined deep yellow at the base. Bud is very long pointed, and the open flower is large and full. Has shown excellent growth in our grounds.
- Betty.** Coppery-yellow with shadings of rose; beautiful, long-pointed buds, excellent bloomer. One of the best varieties.
- Bloomfield Abundance.** A new Rose producing an abundance of salmon-pink flowers singly and in sprays, on order of Mme. Cecile Brunner, but larger.
- Bloomfield Endurance.** A new pure white Rose, full blooms, free flowering foliage dark green and shiny.
- Bloomfield Perpetual.** This new Rose has the appearance of a bush Cherokee. It has large, fragrant, single white flowers, and is a free bloomer.
- Countess of Gosford.** A Rose from England. Exquisite salmon-pink with delightful shadings of rose; a thrifty grower and profuse bloomer over a long flowering season. One of the best Roses and a variety we always recommend when asked to name the best kinds.
- Charles K. Douglas.** Scarlet, flushed velvety crimson, well shaped blooms, fragrant.
- Columbia.** Brilliant pink flowers on stiff stems. Introduced as a forcing Rose, it has proven to be a fairly successful garden kind.



Countess of Gosford

- Crusader.** A new red Rose of good qualities. Produces heavy, double flowers on good stems; deep crimson, fragrant.
- Dora.** Pale flesh, shaded bright rose. A very large, heavy, double Rose, good bloomer, good grower.
- Edel.** A comparatively new white Rose, which produces immense white flowers in the Spring. It is primarily an exhibition Rose.
- Etoile de France.** This Rose is generally considered the best of the dark red hybrid teas for this section. It is a dark velvety crimson, and an excellent bloomer.
- Gladys Holland.** A comparatively new Rose of good qualities. The bush has proven to be vigorous, and produces large and sweet-scented blooms of buff, shaded yellow, on stiff stems. This is an English Gold Medal Rose.
- Gorgeous.** The buds and open flowers are shaped like the Roses of the Radiance family. Beautiful shadings of yellow and pink; in a class by itself. The bush is a small grower, but strong, and the flowers are always large.
- Helen Gould.** Watermelon-red, good grower and bloomer.
- Hoosier Beauty.** Glowing crimson, beautiful buds, fairly good grower.
- H. V. Machin.** Scarlet-crimson, with deeper shadings; large and well shaped blooms.
- Jonkheer J. L. Mock.** A great Rose from Holland. Carmine-pink outside, imperial pink inside of petals, large flower. A vigorous new Rose.
- Kaiserin Auguste Viktoria.** This Rose has long been a great favorite in the South, with its large blooms of creamy white.



Killarney

- Killarney.** One of the finest Roses ever produced. A dependable grower; free bloomer over a long season; especially pretty buds, color varies from light pink to deep pink. A great favorite in the South.
- Killarney Brilliant.** While this Rose does not bloom quite as freely as its parent, Killarney, it is a Rose of fine color, deepest pink, almost red.
- Killarney Queen.** The flowers of this Rose are somewhat larger than Killarney and are of unvarying dark pink throughout a long season of flowering.
- Lady Alice Stanley.** The longer we grow this Rose the better we like it. Deep coral rose on outside of petals, inside flesh pink; profuse bloomer, shapely flowers on upright stems. A fine Rose.
- Laurent Carle.** Large, full flowers of brilliant velvety crimson, a good bloomer, strong grower, and satisfactory Rose.
- Lady Pirrie.** Long-pointed buds and large, well formed flowers, outside reddish salmon, inside lighter. A good Rose.



Rose Garden of Mrs. F. Wiegand, Thomasville, Ga.

Molly Bligh. Of our new roses this is one of the best. Immense and shapely buds of deep madder pink, zoned orange at the base of petals. Musk rose perfumed. The bush is a vigorous one.

Mme. Butterfly. An Ophelia of intensified coloring. Habit of growth and blooming qualities like Ophelia.

Mme. Jules Grolez. Deep rose to light red, fine form, profuse bloomer. The buds and flowers shape up in such form that this rose is sometimes called the Red Kaiserin Auguste Viktoria.

Mme. Marcel Delanney. Large and fragrant flowers of pale pink, beautifully shaded hydrangea-pink, on stiff stems. This rose was introduced by a leading Dutch grower, and is exactly like Jonkheer J. L. Mock except color.

Mme. Raymond Poincare. Light yellow with shadings of orange and pink, beautiful, long-pointed buds; bush of good growth. One of the newest roses.

Mrs. A. R. Waddell. Deep apricot-pink, shading to orange-salmon. The bush is vigorous and free flowering, a satisfactory kind.

Mrs. Charles Bell. This rose can best be described as a light pink Radiance, being a sport from that variety. We have had it under observation since its introduction, and we find it equally as good grower and bloomer as its parent Radiance; in fact, it stands conspicuously above most roses in gardens where it is planted in the Southeast, and it has been a big attraction to visitors to our nurseries. In color it varies from shell-pink to salmon-pink.

Mrs. P. L. Baudet. Deep rose-pink, long-pointed buds, fine, full flowers borne freely over a long season.

Mrs. Wakefield Christie-Miller. Soft pearly blush, shaded salmon, very large flowers on stiff stems. The bush is a healthy one and can be depended on for a large crop of flowers.

Natalie Bottner. Full and well formed flowers of light yellow.

Nerissa. White, tinted copper, pretty buds.

Noblesse. Large, full flowers of apricot and primrose yellow, shaded peach. The buds are especially well formed. This Rose is a strong grower, and has proven to be one of the leading new kinds.

Ophelia. Salmon flesh, shaded rose, beautiful buds on good stems. An immensely popular Rose.

Prima Donna. An even shade of light red, shapely flowers.

Pharisae. Rosy white, with shadings of salmon. The buds are especially beautiful, long-pointed.



Rose Marie

Prince Charming. A beautiful Rose of blush-pink color, long, pointed bud, large flower.

Radiance. This is the Rose we unhesitatingly call the best of all varieties, and it is the one in the biggest demand by those who have tried many kinds. In color it is a brilliant rosy-carmine, displaying beautiful opaline pink tints in the open flower. As a cut flower variety Radiance leads the field of outdoor Roses, its nearest competitors being its sports. Its wonderful growth, freedom of bloom and large and shapely buds and full flowers on stiff stems make it a complete success in the South.

Red Radiance. A sport of Radiance, and of the same freedom of bloom and vigorous growth characteristic of this family. Like Radiance and Mrs. Charles Bell, it is a wonder for blooming in hot weather when most Roses have slowed up. Easily the leading red Rose.

Red Letter Day. An extremely vigorous Rose, producing strikingly showy, half-double, velvety crimson flowers; very attractive.

Rosalind. This Rose is a sport from Ophelia, and the best of the developments from that parent. It shows more intense pink tones than Ophelia; the buds are very shapely, and the flower lasting.



Mrs. W. G. King, Waycross, Ga., and a Mrs. Wakefield Christy-Miller Rose planted in February. Picture taken following April



Radiance Roses

Residence of Mr. and Mrs. P. S. Heeth, Thomasville, Ga.

Rose Marie. This is the finest new rose since Radiance and its sports were put on the market. Rose Marie shapes up very much like the well known Kaiserin Auguste Viktoria, making attractive buds and full flowers. The color is a clear, bright rose-pink, and the flower is fragrant. It is a wonder for freedom of bloom, throughout the long rose blooming season in south Georgia. We unhesitatingly recommend it, and have grown sufficient stock to offer it at no increase in price.

September Morn. Flesh pink, fragrant, large flower.

Shell-Pink Radiance. See Mrs. Charles Bell.

T. F. Crozier. The ideal yellow rose is yet to be produced, but we never had one of this color that looked more promising than T. F. Crozier. It has shown great vigor of growth, and produces large, full and globular blooms of canary-yellow. The flowers are shaped so much like those of the Radiance family, and the stems so strong, that it has the appearance of being a "Yellow Radiance." It deserves a tryout in every section of the Southeast.

W. C. Gaunt. Brilliant scarlet-crimson, buds are especially attractive. This is a new red rose, and the brilliant display it made in our fields the past two seasons was a big attraction. It is a strong grower.

White Killarney. A white sport of the well known Killarney, and a valuable and popular rose.

Hybrid Perpetual Roses

Duchess of Sutherland. A new Rose of its class which has attracted a lot of attention. Large, shapely buds and fine open flowers of beautiful, peach-pink color.

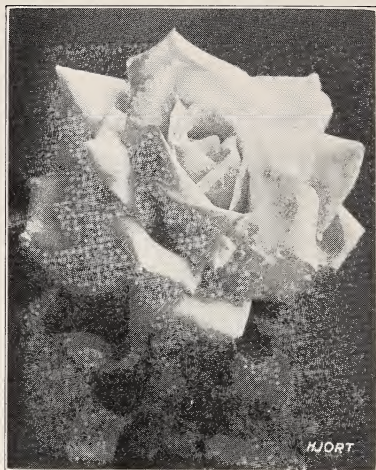
Frau Karl Druschki. This grand white Rose, sometimes called White American Beauty, has become renowned as the very highest type of its class and the best snow white Rose ever introduced. It is a strong grower and good bloomer, and its magnificent flowers are nothing less than glorious. It is a true Paper-white, without a tinge of other coloring.

George Ahrends. This is one of the most beautiful Roses ever produced, and it will be many days before a variety of its merits can be displaced. It is of delicate pink coloring, and keeps well as a cut flower. Owing to its form it is often called the Pink Frau Karl Druschki.

Heinrich Munch. Soft pink, very large and full, a fine companion to Paul Neyron and Frau Karl Druschki.



Paul Neyron



Frau Karl Druschki

J. B. Clark. Intense crimson flowers, free and strong, long a great favorite in the hybrid perpetual class.

J. G. Glassford. Like the other hybrid perpetual Roses listed here, J. G. Glassford is a very free and vigorous grower. The buds are long and the flowers of largest size, color deep crimson-lake which holds well. A fine new Rose from Ireland.

King George V. A wonderful new English hybrid perpetual Rose, our favorite of the reds. Immense, very double flowers of dark, velvety crimson; destined to become popular in this section along with Paul Neyron and Frau Karl Druschki.

Paul Neyron. Really too well known to require a description. We can recommend it to anyone who wishes to plant hybrid Roses; it is a dependable grower and bloomer in the South. It is the largest Rose known; deep, rosy pink, full flower, fragrant.

Climbing Roses

- Beauty of Glazenwood.** Orange yellow with reddish tints; a good climbing Rose. Also known as Gold of Ophir and Fortune's Double Yellow.
- Cherokee.** A vigorous climber with single white flowers which appear in earliest Spring. A well known Rose in this section.
- Cloth of Gold.** Sulphur yellow, deeper center, large and double.
- Cl. Kaiserin Auguste Viktoria.** Like the bush form, except habit.
- Cl. Lady Ashtown.** Soft rose colored blooms. Those who did not succeed with the bush Lady Ashtown should try this vigorous climber.
- Cl. Killarney.** A climbing Rose in much favor about Thomasville. It is a vigorous grower and profuse bloomer.
- Cl. Malmaison.** An unusually strong and vigorous climber of free flowering qualities, producing large, shapely buds and full, double blooms of flesh pink color.
- Cl. Maman Cochet.** A pink climber of sterling qualities, identical in color with the bush Maman Cochet.
- Cl. Mme. Caroline Testout.** A strong, satiny pink climbing Rose.
- Cl. Mrs. Aaron Ward.** Those who have not been able to grow the bush Mrs. Aaron Ward are offered a climber, which is a good yellow variety.
- Cl. White Cochet.** A most dependable white climber, extensively used in this section. Large, shapely buds and flowers, like the bush form from which it was derived.
- Cl. White Killarney.** A very good white climbing Rose, color, form and flowering habit like the bush kind.
- Empress of India.** In early Spring this Rose produces an abundance of small Apple blossom Roses in clusters.
- Gainsborough.** Creamy white, shaded salmon, a strong Rose and free bloomer.
- Pink Cherokee.** Glowing pink flowers shaped like the white Cherokee.
- Red Cherokee.** A red Rose developed from the Pink Cherokee.
- Reine Marie Henriette.** Long considered the best red climber for the South; here only Paul's Scarlet Climber is as popular. Cherry-red, fine buds, heavy flower, a great favorite.
- Reve d'Or.** Considered the best yellow climbing Rose at Thomasville, where many kinds have been tried. Vigorous, free flowering, of good foliage.
- Solfatare.** Clear sulphur-yellow, very fine, large, shapely bud and fluffy double open flower.
- Wm. Allen Richardson.** Deep orange-yellow flowers of medium size borne in profusion.
- Yellow Banksia.** A vigorous grower, has often been planted to climb tall trees. It is one of the very earliest flowering Roses, producing a great profusion of sulphur-yellow flowers with the first coming of Spring. We recommend it highly.



A planting of Mrs. Charles Bell Roses

Hybrid Wichuraiana Roses

American Pillar. Rich, rosy pink to brilliant carmine, with a little white in center; semi-double, long stems. One of the best climbing or pillar roses; vigorous plant, glossy foliage, profuse bloomer.

Cl. American Beauty. This rose produces an abundance of carmine-red flowers, and its shiny foliage adds to its beauty.

Dorothy Perkins. Beautiful deep pink, flowers borne in large clusters of small, double blooms, sweet scented; fine for use on fences or trellis. In sections where mildew has developed, dust this rose with lime sulphur to control the disease.

Dr. Huey. Semi-double flowers of the deepest scarlet borne in large clusters, never fades blue. This rose trained as a climber or pillar rose is very showy.

Dr. Van Fleet. This is one of the most beautiful roses ever introduced. The plant is vigorous, makes a good climber or pillar rose.

Mary Lovett. This rose is like Dr. Van Fleet and Cl. American Beauty, except that it is pure white.

Paul's Scarlet Climber. One of the most brilliant roses ever introduced, because of its clear, vivid, shining scarlet, in large, semi-double flowers which remain unusually long, and in good condition on the plants. These flowers retain their intense coloring until they fall. This rose may be used as a climber, or trained up as a strikingly effective pillar or archway rose. We recommend it highly.

Red Dorothy Perkins. It is a good deal to claim for a rose, but we are within bounds when we describe Red Dorothy Perkins, or Excelsa, as a brilliant Crimson Rambler on glossy, varnished, Wichuraiana foliage. In certain sections where mildew has developed, this rose, like the pink variety, should be dusted with lime sulphur as a control measure.

Silver Moon. Flowers very large, pure white, semi-double, petals of great substance, beautifully cupped, forming a clematis-like flower. The large bunch of yellow stamens in center adds to its attractiveness. A vigorous climbing or pillar variety.



Dwarf Polyantha Roses fronting shrubbery border

Dwarf Polyantha Roses

- Baby Echo.** Delicate, light pink flowers are produced in profusion; a long blooming season.
- Catherine Zeimet.** Small, double, pure white flowers produced in profusion over a long flowering season. The best of the white baby Roses, and a variety always satisfactory.
- Erna Teschendorff.** Deep red, double, dwarf, free flowering. It is easily the leading red baby Rose, and with a little attention in keeping the seed pods off will bloom from Spring till frost.
- La Marne.** This is an excellent baby Rose. Semi-double flowers, bright salmon-rose at the edges, rosy blush inside, are borne freely from Spring till frost, if seed pods are not allowed to mature.
- Mrs. W. H. Cutbush.** Shell-pink, small double flowers, excellent bloomer, and has come to be known as the best pink baby Rose.
- Orleans.** Cerise-red with white eye at center, a very showy and satisfactory baby Rose. Fine for a border or hedge of dwarf Roses.
- Peach Blossom.** Another good baby Rose, with flowers of beautiful peach-pink color, borne in clusters. A good bloomer.



Large bushes of Thomasville's favorite Tea Rose Mme. Lambert
Residence of Mr. and Mrs. C. E. Hay, Thomasville, Ga.

Miscellaneous Roses

Eugene E. Marlitt (Bourbon). An excellent bedding rose, producing a wealth of bright crimson flowers throughout the rose blooming season.

Gruss an Teplitz (Hybrid China). Bright scarlet, shaded to deep crimson, strong grower, profuse and constant bloomer.

Hugonis. A single yellow species from China; throws long, half-climbing branches covered with single flowers. It is one of the most strikingly showy roses ever introduced, and thrives in this section. A very early bloomer.

Louis Philippe (Bengal). Deep crimson flowers and shiny foliage. An excellent Fall and Winter bloomer, and makes one of the best hedge roses.

WE HAVE MANY OTHER ROSES

in too limited quantity to list in a catalogue. Altogether in our fields are growing about 500 varieties, and it is quite likely if we have not catalogued one of your favorites if you will write us we can supply it. We have many new roses, along with older ones.

Palms

Palms are among the most beautiful of evergreen plants used in Southern plantings. Specimen palms, erect and stately, always attract the most favorable attention. The varieties we handle are the hardiest, and can generally be planted in Florida and along the Gulf coast 150 miles inland.

COCOS australis (Pindo Palm). A very hardy palm of graceful, long, recurved leaves, pinnate, and bluish green color. Succeeds some farther north than Phoenix or Washingtonias.

	Each	12
1 to 1½ ft.....	\$2.00	\$20.00
1½ to 2 ft.....	3.00	30.00
2 to 3 ft.....	3.50	
3 to 4 ft.....	5.00	

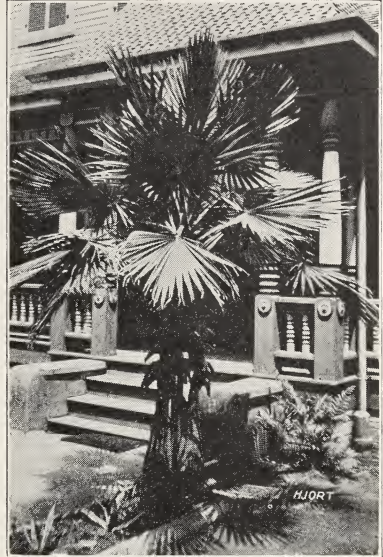
PHOENIX canariensis (Canary Island Date Palm). A dark green palm of rapid growth. Large, graceful, recurved leaves, and beautiful, stately trunks. It is a great favorite, and specimens are doing well at Albany, Moultrie and other Georgia cities.

	Each	12
1 to 1½ ft.....	\$1.50	\$15.00
1½ to 2 ft.....	2.00	20.00
2 to 3 ft.....	3.50	
3 to 4 ft.....	5.00	

WASHINGTONIA robusta. One of the most beautiful of all palms, and perfectly adapted to Florida and coastal plantings. Specimens at Quitman, Moultrie and other Georgia cities withstood the severe freeze of January, 1924, without serious injury. Many Georgians who visit Florida in going through Gainesville are charmed by the sight of the beautiful Washingtonias planted on the streets of that city. We believe more Washingtonias should be planted in South Georgia and the coastal section.

	Each	12
1 to 1½ ft.....	\$1.00	\$10.00
1½ to 2 ft.....	2.00	20.00
2 to 3 ft.....	3.50	35.00
3 to 4 ft.....	5.00	

Sometimes we can supply Cabbage Palmetto and Sago Palms. Write your requirements.



Washingtonia robusta
Residence of Dr. and Mrs. E. L. Jelks, Quitman, Ga

Ophiopogon

jaburan. A border plant in great favor where known. Grass-like, narrow leaves and straight stem of blue flowers, height 8 to 10 in. Used extensively at the Wade and Archbold places near Thomasville in bordering walks and drives. \$3.00 per 12, \$20.00 per 100, \$150.00 per 1000.



Canna, King Humbert

Cannas

Nothing excels cannas for quick effect of bright color needed in plantings for the long Summers of the Southeast. A planting of cannas was a feature which attracted visitors to our grounds the past Summer. To keep cannas blooming a long season keep the old flowers cut off when they begin to form seed. If canna worms appear, cut the affected leaves off and burn them. You can then keep your canna bed bright from Spring till late Fall. Bulbs, 10c. each, \$1.00 per 12, \$7.50 per 100.

Burbank. One of the older varieties, pure yellow, green foliage, grows 4 ft. tall.

City of Portland. One of the newer cannas, a deep pink, does not fade in hot weather. Is a free bloomer, flowers borne well above the green foliage. 3½ ft.

Eureka. The best white canna. The large, substantial flowers are very freely produced on strong, upright stalks. 4 ft.

Italia. Golden yellow with bright orange-scarlet center, green foliage. 4½ ft.

Kate Gray. One of the very best red-flowering cannas of green foliage. A free bloomer, flowers borne well above the foliage. 5 ft.

King Humbert. This is decidedly the most popular canna for this section, always the great favorite with those who have tried many kinds. It bears heavy heads of brilliant orange-scarlet blooms well above rich, bronze foliage. It is a very free bloomer, flowering over a long season. 5 ft.

Louisiana. Large, dark red flowers and green foliage; very tall grower. 6 ft.

Shenandoah. A bronze leaf pink flowering variety, dwarf grower.

The President. The new red canna about which so much has been said. It is of rich, glowing scarlet color, and the foliage is green. Not as tall grower as Kate Gray or Louisiana, but the flowers are brighter.

Wyoming. This canna makes great plumes of orange blossoms, borne well above purplish bronze foliage. It is one of the best cannas for this section, a worthy companion to King Humbert and Yellow King Humbert. 5 ft.

Yellow King Humbert. A yellow form of King Humbert, but with green foliage. Deep yellow, with orange-red dots. Easily the showiest and best yellow canna for this section. 5 ft.

Pansies

STEELE'S MASTODON AND PITZONKA'S PRIZE STRAINS

Each of these strains is very floriferous and produces mammoth flowers. We can supply good mixed plants or separate color of blue, yellow or white. Pansy plants are ready November 1st and may be set as late as January. 50c. per doz., \$1.50 per 50, \$3.00 per 100, \$20.00 per 1000.

Zinnias

The Zinnia flower has been perfected in the past few years, so that the "Old Maids" we used to know have come to be valued above all other annuals for putting a wealth of color into Summer gardens. We have never catalogued an annual before, but we have been so strongly impressed with the value of Zinnias in garden uses that we decided to grow and offer plants of the finest strains. A variety of forms are obtained in our Zinnias, as heavy double, Dahlia flowered, quilled and single flowered. We do not grow our own seed, but get them direct from California, which is necessary to get the largest flowers. These Zinnias afford a wonderful range of beautiful color. It can't be said that a Zinnia is just a Zinnia, there is a marked difference in strains. **Mixed and Separate Colors.** 50c. per doz., \$1.50 per 50, \$3.00 per 100. Ready April, May, June.

Violets

Of all delightful perfumes, that of the Violet is the sweetest and most pleasing. A bed or border of Violets requires very little attention. We offer the deep blue variety Governor Herrick. \$1.00 per doz., \$3.75 per 50, \$7.50 per 100, \$60.00 per 1000.

Figs

The Fig can be depended on for a heavy crop of fruit every year. It comes into bearing very early, is fine for canning, and the market for the fresh fruit is developing. Figs require very little cultivation above mulching. In an orchard they should not be plowed deeply, as the roots are close to the surface.

	Each	12	100
2 to 3 ft.....	\$0.35	\$3.50	\$25.00
3 to 4 ft.....	.50	5.00	40.00
4 to 6 ft.....	.75	7.50	60.00

Celeste. A small fig of fine flavor, highly valued for canning. An extremely hardy variety, can be grown over a wide territory. It is by long odds the favorite kind in the Southeast. Sometimes called Brown Sugar fig.

Green Ischia. A variety of fine quality, fruit of medium size, greenish-white, tree a strong grower.

Lemon. A very large fig of yellowish-green color, flavor good. It is next to Celeste in popularity in this section.

Grapes

Grapes are one of the surest crops in the Southeast. Everyone who has the space for an arbor should plant one or more vines for fruit for home use. We list only varieties which have proven successful in this section.

Strong Plants: Each 50c., 12 \$5.00.

Concord. A blue-black bunch variety; sweet, pulpy, tender, quality good. Vigorous grower, very prolific, bunch and berries large.

Scuppernong. Berries large, 8 to 10 in cluster, color brown when ripe, flesh pulpy, very vinous, sweet. Vine is free from all diseases and insect depredations. Very prolific bearer. Commonly called the "White Scuppernong." August.

Thomas. Large clusters of 6 to 10 berries. Violet to black when ripe, large, sweet. Sometimes erroneously called the "Black Scuppernong."

Plum

EXCELSIOR PLUM. We have found this variety, a hybrid which originated in north Florida, to be the best kind for this section. Fruit large, purplish red, skin thin, flesh firm and juicy, of excellent flavor. Ripens early, about June 10th. Tree is very vigorous and a prolific bearer. Same prices as figs.

Peaches

Peaches for commercial orchards may be planted in many sections of the Southeast, and for home use in practically the entire territory. We have selected the varieties best adapted to this section. All are Freestone kinds except as noted.

	Each	12	100
2 to 3 ft.....	\$.35	\$3.50	\$25.00
3 to 4 ft.....	.50	5.00	40.00

VARIETIES OF PEACHES

Belle of Georgia. Large fruit, skin white with red cheek, flesh white, quality excellent, prolific variety. July.

Carman. Size large, yellow with red cheek, flesh yellow, quality excellent, prolific and dependable. June.

Elberta. Fruit very large, yellow with red cheek, flesh yellow, flavor excellent, a choice variety. July.

Early Elberta. Just what the name implies. June.

Greensboro. Large and showy, skin bright yellow with red cheek, flesh juicy and of fine quality, semi-cling variety. An excellent kind for general planting. June.

Hiley. An early Belle of Georgia. June.

Jewel. A great favorite in Florida. Medium, oblong, highly colored, red outside, flesh yellow, finest quality. Last of May.

Mayflower. A large, red cling Peach of good quality. The earliest variety. May.



Carman Peaches

Persimmons

Within the past few years, as they have become better known, varieties of Japanese Persimmons have rapidly come into favor in the Southeast. They are of easy culture, and can be depended on to bear annually. Same prices as Figs.

VARIETIES OF PERSIMMONS

Tamopan. Fruit large, rounded-flattened, oddly marked by constriction around, quality very good. Tree a vigorous grower, bears well, does not require pollination from other varieties to fruit. September.

Tane-Nashi. Fruit very large, roundish-conical in shape, flesh seedless, quality good, variety prolific, the most desirable market kind. Self-pollinating. September.

Triumph. A heavy bearer of medium-sized fruits of the very best quality; a most desirable variety for home use. Self-pollinating. October.

We have a limited quantity of other persimmons, **Fuyugaki, Okame, Yemon, Hyakume, Yedo-Iichi** and **Gailey**, at no increase in price.

Miscellaneous Plants

There are many plants in coniferous and broad-leaved evergreens, deciduous flowering trees and shrubs, roses, etc., which we have in too limited quantity to list in this catalogue. If you do not see listed in this catalogue something you want, it is quite probable we would have it if you write us.

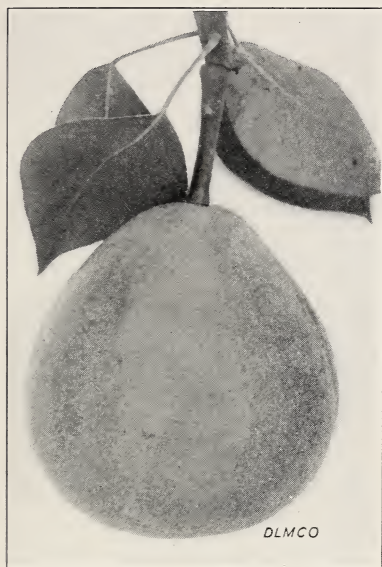
Pears

Owing to the prevalence of Pear blight in the South the Pear industry has been at a standstill for many years. This disease, a bacterial one, could not be controlled by spraying, and but merely checked by severe pruning.

It has long been recognized in this section that the only solution of the problem of Pear growing would be the development of a variety resistant to Pear blight. A number of such Pears have appeared, and failed through inferior quality of fruit, tree being shy bearer or not sufficiently resistant to blight.

THE PINEAPPLE PEAR

One variety, however, has stood the test in southern Alabama, Georgia and northern Florida—the Pineapple Pear. This Pear is an introduction from China, and its value was first recognized in southwest Alabama. Extensive trials in south Georgia and in Florida have shown favorable results, to the extent that some growers offer it as guaranteed against blight. We do not guarantee it, in keeping with conservative policy, but with us it has never shown a trace of blight, and we have had it next to other Pears which blighted badly.



Pineapple Pear

With the coming of blight resistant stocks in the near future in quantity, Pear orcharding in the Southeast will take on a new impetus. At present we are using the best stock available, the seedling Japan Pear stock, highly resistant to blight.

The Pineapple Pear is not of as fine quality of fruit as the Le Conte, but it is better than the Keiffer. It is a fairly good fresh eating Pear, and as a cooking or canning Pear and for any culinary use, it is unexcelled. Its season of ripening is July to August.

Returns on plantings of Pineapple Pears have been very satisfactory.

Our block of Pineapple Pear nursery trees this season is one of the finest lots of Pear trees ever grown in this section. Our trees are straight, clean and healthy, sure to please.

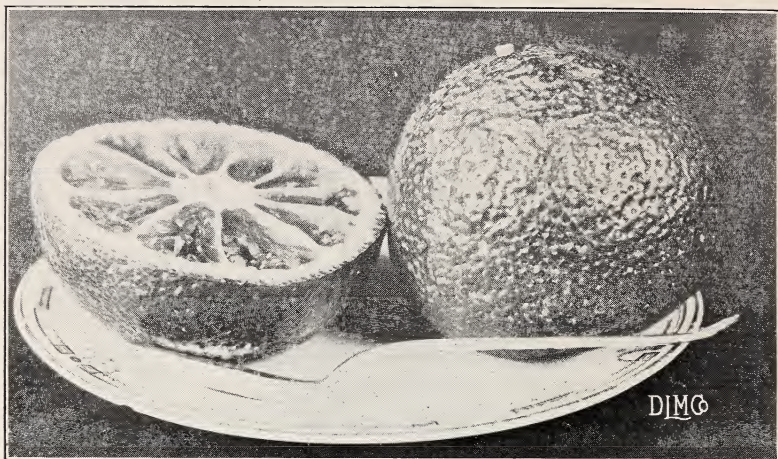
GARBER PEAR. Resembles the well known Kieffer, except tree is more open in growth and fruits earlier. August.

KEIFFER PEAR. A fine variety for canning and preserving. It is a regular bearer in the Southeast, blighting very little most seasons. Fruit large, yellow with reddish cheek. August.

LE CONTE PEAR. An early variety of fine quality, valued for eating when properly ripened. Large, pyriform fruit, pale yellow. July.

PRICES OF PEARS INCLUDING PINEAPPLE PEAR

	Each	12	100
2 to 3 ft.....	\$0.35	\$3.50	\$25.00
3 to 4 ft.....	.50	5.00	40.00
4 to 6 ft.....	.65	6.50	50.00
6 to 8 ft.....	.80	8.00	70.00



Satsuma Orange

Citrus Fruits

Apart from their culinary worth, hardy Citrus fruit trees are decidedly ornamental. Kumquats and Satsuma Orange trees, loaded with golden fruit on the dark background of their evergreen leaves at Christmas time always attract favorable attention. Certainly there ought to be many more fruit trees planted in this section, and hardy Citrus fruits deserve to be planted more extensively. Our Citrus fruits are budded on Citrus trifoliata, the hardiest of all stocks.

Kumquat. The Kumquats are small Citrus trees, often called bushes, and are extremely hardy. Kumquats in this section stood temperatures down to 10 degrees Fahrenheit in the severe freeze of January, 1924. Two kinds are in general commerce, the Nagami (oblong), and the Marumi (round). Both are extremely heavy producers of small golden-yellow fruits, rather too well known to need description.

	Each	12	100
1-year buds on 2-year stocks.....	\$1.25	\$12.50	\$100.00

Satsuma Orange. The hardiest of all Oranges, belonging to the Tangerine family, and a regular and very prolific bearer of deep, orange-colored fruits. The best strain of Satsuma Orange is the Owari, which produces uniform fruits, ripening early, and of the finest flavor. The trees in our nursery were all grown from buds supplied by Mr. W. S. Reeve, Cottage Hill, Fla., from his heavy bearing orchard where he has kept fruit records on the trees. If a tree is a Satsuma orange it does not necessarily mean it is a good one, the safer plan is to buy Satsuma trees grown from selected buds taken from pedigreed trees.

	Each	12	100
1-year buds on 2-year stocks.....	\$0.50	\$5.00	\$40.00

We cannot ship Citrus fruit trees into Florida, the law prohibits their entry. We can ship anything else into Florida, using our Florida permit tags.

Pecans

The Pecan stands out conspicuously as the leading orchard crop in the South, it being adapted to a variety of soils, and its long life making it worth many times over the value of fruit trees. Seedling Pecans should not be planted in the expectation of gathering a harvest, they are a loss since only a small percentage of them ever make bearing trees of value. We grow budded trees of the varieties that have stood the tests of this section. Different varieties of Pecans have their preferences for different locations. Unless one knows from observation the best varieties of Pecans for his immediate section, we advise consulting the county agent or some local authority as to the most profitable kinds, since no statistics are available covering the South or any state.

PRICES OF PECANS

	Each	12	100
2 to 3 ft.....	\$0.90	\$9.00	\$70.00
3 to 4 ft.....	1.00	10.00	80.00
4 to 5 ft.....	1.10	11.00	90.00
5 to 6 ft.....	1.25	12.50	100.00
6 to 8 ft.....	1.50	15.00	125.00

VARIETIES OF PECANS

Frotscher. Oblong nut, large, shell very thin, cracking easily, kernels large, full and easily removed, good quality. Tree of spreading habit, thrifty growth. A favorite in south Georgia.

Moneymaker. A medium, rounded-oblong nut, good cracking quality, kernel full, flavor good. This variety is a heavy bearer, and the one Pecan never known to be affected with scab disease.

Moore. Small, oblong nut, shell thin, cracks easily, kernel plump, quality good. This variety is a very prolific one, and bears large crops in some of the "off years," and can be depended on for nuts every year.

Schley. Oblong nut, large, very thin shelled, fills well, kernel plump, quality the best of all Pecans, fair bearer. For home plantings, where the highest quality is desired, it is especially recommended.

Stuart. Large nut, oblong, fills out well, shell medium, quality good. Prolific and succeeds over a large area.

Success. Size large, oblong, tapering at apex, shell thin, cracks well, kernel large and full, quality very good. Tree vigorous, a good variety.

Teche. Medium in size but very prolific, thin shell, quality good. In our orchards the most reliable variety. Sometimes known as Frotscher No. 2.

Index

Abelia..... 4	Deutzia.....17	Ligustrum..... 5	Pittosporum..... 7
Acer..... 16	Dogwood.....16	Lonicera.....18, 19	Plum..... 35
Althaea.....16	Euonymus..... 4	Magnolia..... 6	Poplar.....18
Arborvitae..... 9	Exochorda.....17	Maidenhair-tree ..17	Privet..... 5
Aucuba..... 4	Ficus..... 19	Maple..... 16	Pyracantha..... 8
Azalea.....11	Fig..... 35	Mock Orange.....18	Redbud Tree.....17
Bignonia.....19	Forsythia.....17	Nandina..... 6	Rose..... 21
Biota..... 9	Gardenia..... 4	Oleander..... 7	Spiraea.....18
Calycanthus.....16	Ginkgo.....17	Osmanthus..... 6	Sweet Shrub.....16
Camellia..... 4	Grape..... 35	Ophiopogon.....33	Syringa.....18
Canna..... 34	Honeysuckle.....18, 19	Palms..... 33	Tea Olive..... 6
Cape Jasmine..... 4	Hydrangea.....17	Pansy..... 34	Thuja..... 9
Cercis..... 17	Illicium..... 5	Peach..... 36	Trachelospernum.....19
Chamaecyparis..... 9	Ivy..... 19	Pear..... 37	Viburnum..... 8
Coral Vine.....19	"Japonica"..... 4	Pecan..... 39	Vinca..... 19
Cornus..... 16	Jasmine.....17	Persimmon.....36	Violet..... 35
Crapemyrtle.....18	Juniper.....10	Philadelphus.....18	Wisteria.....19
Cunninghamia.....10	Lantana.....17	Photinia..... 7	Zinnia..... 35

