

Historic, Archive Document

Do not assume content reflects current scientific knowledge, policies, or practices.

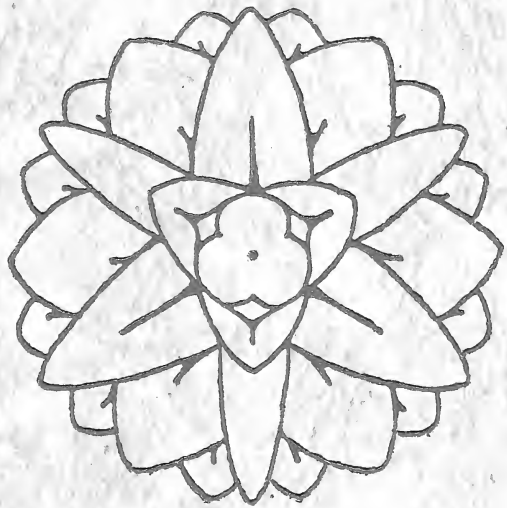
62.03

1927

✓

CALIFORNIA

DAHLIAS



NINETEEN · HUNDRED · AND · TWENTY · SEVEN

· · · · ADVANCE · DAHLIA · FARM · · · ·

· · · BOX-AA · · GARDENA · · · ·

LOS · ANGELES · COUNTY · · · · CALIFORNIA



ADVANCE DAHLIA FARM

Catalogue 1927

For the season of 1927, we offer two new varieties of merit. Both are prize winners developed in Southern California. Many older introductions are listed which have been and are consistent prize winners in the exhibits of leading amateur and professional growers. That a dahlia has been before the public for several years is no indication of inferiority. The reverse is apt to be the case. Taste in color and form differs and the variety to order is that which best pleases the individual fancy.

We are withholding all our own introductions for the present year. We won at the seventh annual show of The Dahlia Society of Southern California, 1926, first premium on best three-year seedling, six blooms, and shall have this, with others, for the season of 1928. It is not our policy to offer merely new varieties. These must have distinct merit and appeal before being placed in our catalogue. We won ten first prizes in two leading shows of Southern California the season of 1926.

We thank our friends for past support and bespeak a continuation of their patronage. If you desire varieties not listed in our catalogue, we shall be glad to try to get them for you. It is our aim to send out tubers and seed of the highest quality and we shall thank any of our patrons for any suggestions that may be of assistance.

The former manager is no longer connected with the Advance Dahlia Farm. The new manager will exercise every care to meet the requirements and retain the friendship of all customers.

PLEASE READ BEFORE ORDERING

Order Early: Orders are reserved strictly in rotation and are forwarded when requested by customer or after frost dangers are over.

Substitution: Please indicate a second choice as we do not substitute without permission.

Terms: Unless otherwise arranged, cash must accompany all orders. Remit by check, Express Money Order or P. O. Order on Los Angeles.

Transportation: We prepay forwarding charges on retail orders amounting to \$1.00 or more. On wholesale orders, forwarding charges are paid by purchaser.

Guarantee: Great care is taken that all tubers sent out are true to name and in good growing condition. All stock sent is field grown and not forced. If shipment arrives in bad condition, please notify us at once. We wish to satisfy our customers and will use our best endeavors to do so but cannot warrant growing results as wrong treatment may ruin any plant or tuber.

Address: Print or write your name and complete address plainly. Keep a copy of your order.

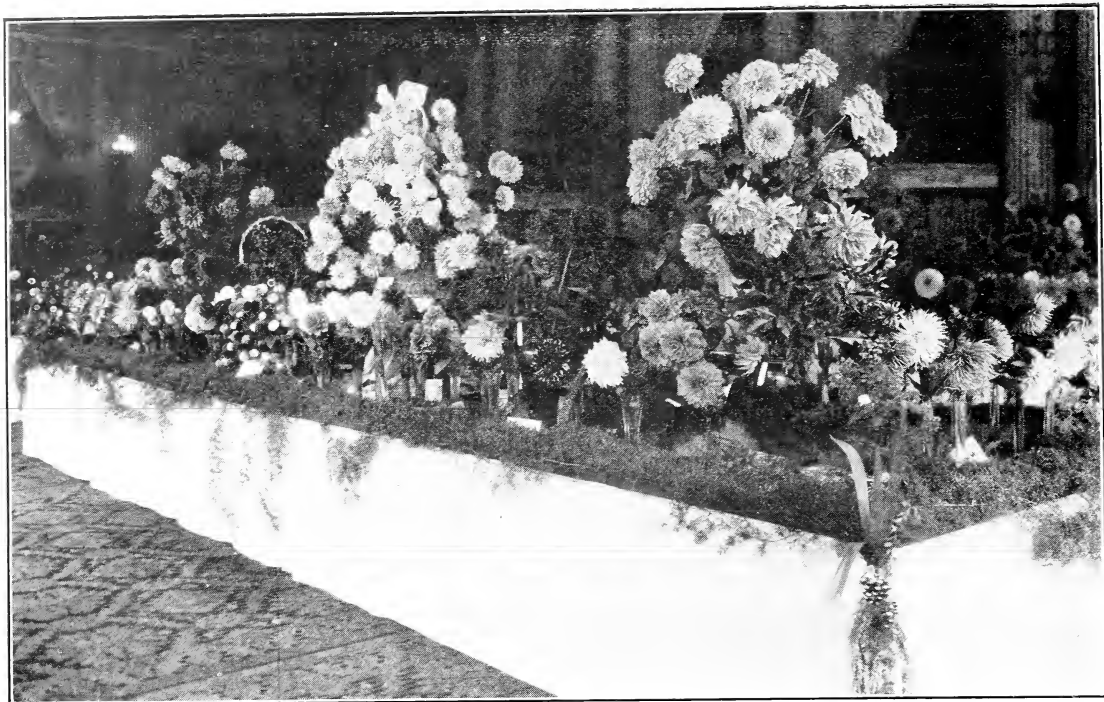
Address all letters

ADVANCE DAHLIA FARM,

BOX AA, GARDENA, CALIFORNIA.

C. E. SEAMAN, Owner

C. G. SEAMAN, Manager



The above cut shows the exhibit of The Advance Dahlia Farm at the seventh annual show of the Dahlia Society of Southern California. Winning Cactus may be seen in foreground.

TWO GOOD NEW DAHLIAS

Kalliste. A new decorative of desirable quality and habits. The color of this beautiful dahlia is a bright crimson, each petal usually having a tiny gold tip which at a distance makes the bloom appear spotted. The large flowers usually attain a diameter of ten inches or more. Each stem is exceedingly stiff and holds the bloom well above the plant, which is unusually sturdy and reaches the height of about four feet. Keeping qualities are excellent and although later in the season the flower will assume the peony type, it is just as beautiful. This dahlia was awarded first prize at the Los Angeles Show, 1924, for the best two year old seedling. It was not exhibited in 1925 as the originator was one of the judges.

Field grown tubers.....\$2.00

Midnight. A decorative of the form of Insulinde. For those desiring a dahlia nearest black in color, this variety should answer all requirements. It was grown alongside several highly advertised "black" dahlias and was darker than any of them. Blooms which rarely show an open center are early and late. Stems are almost perfect. Plants will not exceed four feet in height. The dark green foliage resembles huge holly leaves. Received first prize for best three year seedling at the 1924 Los Angeles Show.

Field grown tubers.....\$2.00

San Clemente



SAN CLEMENTE. We are very fortunate in being able to offer our customers a limited stock of Mr. Lovell Swisher's introduction San Clemente. This dahlia took first prize for the best established three year old seedling at the California Dahlia Show, Santa Monica, California, and second prize for the best established three year old seedling at the Southern California Dahlia Society's Show at Los Angeles.

Mr. Swisher is one of the outstanding amateur dahlia growers of Southern California, having originated a number of very fine dahlias the last ten years, which, however, have never before been offered to the public.

The above cut shows his exhibit of seedlings at the Biltmore Show, Los Angeles, 1926. The vase of six decoratives in the background are San Clementes. Some idea of the size of these blooms can be determined by the flower in the single vase in the center of this table—the winner of first prize for the best 1926 seedling open for all class, also winning second prize for the best dahlia in the show, a 11½ inch flower.

The originator says: "It is very difficult to describe the color of San Clemente, as it is a distinct new break in coloring, being a rich brilliant rose color. It runs uniformly large in size from the beginning of the season to the end. The size and color, however, are by no means the best feature of this dahlia as it has a perfect stem, fine foliage, and bears a profusion of bloom in my garden from the first of July to the middle of November. Last, and by no means least, it is an excellent keeper."

Price per tuber \$10.00



FLAMING METOR. The Barker Dahlia Farm is responsible for this striking variety. The long straight stems and good substance of this giant decorative makes it an ideal flower. The color, which is the liveliest flame imaginable, shows to advantage in any kind of light. This beauty, a very prolific bloomer with good center, has created a sensation and proved a winner wherever shown.....Net **\$5.00**

Winnings—Times Mirror Cup for the best 50 decoratives and in collections that won best 12 decoratives and best 12 dahlias originated in California at the Seventh annual Dahlia Show of The Dahlia Society of Southern California, Los Angeles, Biltmore Hotel, 1926. Best 50 dahlias one variety at the State Flower and Horticultural Exhibition Montebello, 1926. Best 25 dahlias, one variety, and best dahlia in the Show at the Monterey Park Dahlia Show 1926. Best three year old seedling sixth annual show of The Dahlia Society of Southern California, 1925.

We call especial attention to our 1926 introductions given below. The first two are outstanding varieties. The second on the list has not been featured in any show the past season but has been greatly admired and is worthy to be entered in any competition. For those who wish a smaller cut flower for table use, we strongly recommend Vivian Wright.

We won at the seventh annual Show of The Dahlia Society of Southern California, 1926, first prize for best three-year seedling, six blooms, but will not place this variety on the market until the season of 1928 as we wish to increase our stock.

Dr. Rufus Von Kleinsmid. Here we have a splendid large crimson cactus on perfectly stiff, strong stems, a wonderful robust grower. The color and growth are all that could be desired; the type is medium, more like Guardian. It is an English Cactus seedling. Price per tuber.....**\$3.00**

Mary Murphy. An immense yellow and apricot flower on splendid stem, a true decorative from the celebrated Amun Ra. Our stock of this variety is limited. Price per tuber.....**\$5.00**

Opportunity. Another hybrid show from King of Shows, of similar type in a coloring of buff and gold. Price per tuber.....**\$2.00**

Penitent Pat. This decorative is an artistic flower, averaging seven inches across with twisted petals, in color not unlike its parent Patrick O'Mara, a flesh buff, shading to yellow, a wonderfully upright grower, towering well above the foliage. Visitors seem delighted with it. It has proved with us a splendid keeper. Price per tuber.....**\$2.00**

Perplexity. A true incurved English Cactus, winner of Silver Cup offered by Mrs. Stout, Short Hills, N. J. at Los Angeles Show. In color crimson purple, a tremendous bloomer. The stems throw the bloom well out where you can see the full flower. We have a large stock on hand and make the price very low. Price per tuber.....**\$1.50**

Queen of Shows. A beautiful lilac hybrid show dahlia, very similar to its parent King of Shows, differing only in color which shades from a true mauve to lilac. Price per tuber.....**\$2.00**

The Title Hunter. Winner of Silver Cup at Santa Monica for best established seedling. This is a large decorative in a salmon shaded with autumn tints, a seedling from Snowdrift, and with similar heavy green foliage, strong stem and great keeping quality of bloom. It has been greatly admired in our displays. We have a good supply of stock and are making the price low for such a splendid new variety. Price per tuber.....**\$3.00**

Vivian Wright. This is a very beautiful cut flower dahlia of a vivid flame pink. Flowers run from four to five inches on straight stems. This flower seems to meet the approval of the cut flower trade, by orders we have received for it from growers in that business. It is full of bloom throughout the flowering season. Price per tuber.....**\$2.00**

DECORATIVE DAHLIAS

Decorative Dahlias are double flowers, full to the centre, early in the season flat rather than ball shaped, with broad, flat, somewhat loosely arranged floral rays.

- ***Alex. Waldie.** A large flower of creamy ground color, overlaid with pale salmon pink.....Price **75c**
- ***Al Koran.** A fine large golden yellow, petals slightly waved. A tall strong grower with the best of habit.....**\$1.50**
- ***Amun Ra.** This is Mrs. Seals' sensational prize-winning Sun God of Egypt, a very strong grower, producing immense burnished copper blooms. We are fortunate in having some nice field-grown stock of this wonderful new Californian that is now in such great demand.....**\$1.00**
- ***Augusta R. Johnson.** A large golden apricot, strong upright growers, flowers of good substance.....**75c**
- ***Barranca.** A large medium yellow, with good depth, a strong grower, and good as a cut flower.....**50c**
- Bertha Jost.** A strong heavy foliage variety, good bloomer, the flowers are large, yellow shading to pink, overlaid with burnt orange.....**\$3.00**
- ***California Superba.** A large well formed flower of a rather pale pink, shading to white at center, a prize winner and in good demand.....**\$2.50**
- Catherine Wilcox.** A large flower in white tipped with pink.....**50c**
- ***Champagne.** An enormous exhibition flower in a new coloring of golden buff and bronze, a strong grower with perfect stem.....**\$2.50**
- Charm.** This is a Marean variety, color burnt orange and yellow.....**50c**
- Dolores.** A medium sized flower in a golden orange.....**50c**
- ***Dr. Tevis.** A famous California prize winner, a large flower on perfect stem, in color old gold and rose.....**75c**
- Duchesse De Vendome.** An imported French decorative of medium size, pure white and a splendid keeper.....**50c**
- Eastern Star.** A soft yellow with old gold shadings.....**\$5.00**
- ***Eastwego.** A very substantial flower on an extra stiff stem, the color being a rich old gold, petals curve back to stem. A big strong grower with excellent foliage, something new.....**\$3.00**
- ***El Dorado.** A large exhibition flower of old gold on very strong stems. Our stock is very limited.....**\$5.00**
- Emily Renwick.** A bright rosy decorative from the east, a profuse bloomer, flowers of medium size on good stems.....**50c**
- Emma Marie.** Pink with white centre.....**\$3.50**
- Empress Eugenie.** Rosaline purple. Certificate of Merit A. D. S. 1921.....**50c**
- ***Equilibrium.** A rich rosy maroon on splendid stem.....**50c**
- Eventide.** A strong growing variety, in color white shaded with pale pink, stems straight, a good bloomer.....**50c**
- ***Faith Garibaldi.** Rose colored, shading lighter to outer petals, long stiff stems. A beautiful flower and great prize winner.....**\$5.00**
- George E. Meachen.** Yellow overlaid with golden sheen.....**\$3.50**
- Giant Ruby.** Large red flower with full center and good stem.....**\$1.00**
- ***Gladys Meyer.** A good yellow medium sized flower, upright grower with very stiff stems, a fine cut flower variety.....**\$1.00**
- Glory of New Haven.** Large bloom with broad twisting petals, clear lavender pink. Good stems.....**\$1.00**
- ***Golden Gardena.** Our 1925 introduction. Prof. Norton writes that it did splendidly with them at Trial Grounds, Md. and scored 86 points Commercial. A very upright grower, long stiff stems, carrying the large blooms well above the foliage, in color a glorious golden orange....**\$3.00**

*Goodbye Delice. A true pink in medium sized flower, good stem and keeping qualities.....	75c
*Halloween. A new variety of good size and a strong grower, color buff shaded with orange and bronze, stem perfect, an improvement on King of the Autumn.....	50c
*Halvella. A beautiful large salmon rose flower, strong grower, a good dahlia in every way, very much in demand.....	\$1.00
Harvest Moon. A large globular true bright yellow with good stem.....	75c
Hercules. Yellow orange.....	\$1.00
Hortulanus Fiet. A Holland decorative taking on peony form later on in season, salmon pink and cream, splendid stem and keeping qualities.....	\$1.00
Insulinde. An imported hybrid Holland decorative in great demand, a rich golden yellow with bronze shading, perfect stem and beautiful formation.....	\$1.00
Isabel Street. A new eastern variety in a yellow overlaid with carmine. A tall grower, flowers medium sized, well formed. We like it.....	50c
Jack London. A good bright red of good substance, upright grower....	\$1.00
Jersey's Beauty. One of the most beautiful dahlias. It was an especial feature at the great Biltmore Show, Los Angeles, 1926. A fine pink flower carried on long strong stems, excellent for show or exhibition.....	\$2.50
Jersey's Beacon. Originator gives color as Chinese scarlet with a paler reverse. Flowers large and attractive.....	\$5.00
Jersey's Queen. Coral pink flowers of fine form produced freely on fine stems.....	\$2.00
John Lewis Childs. Yellow, streaked red.....	\$1.00
Judge Marean. A bright yellow flower of strong formation powdered over with carmine red.....	\$1.00
*J. W. Davies. A fine bright purplish rose, profuse bloomer.....	\$1.50
*Kalliste. This flower was originated by Mr. Frank C. Mulkey, president of The Dahlia Society of Southern California. It is a large crimson decorative with tiny orange tips. A free bloomer with dwarf habits.....	\$2.00
*Kittie Dunlap. A wonderfully popular variety, bright old rose, stems long and straight, can be grown to enormous size.....	\$1.50
Lady Diana. Orchid pink with a touch of yellow at center and tips. Good stem.....	\$1.50
*La Mascotte. A large decorative, quite conspicuous on account of the contrasting colors of white and pale purple. A strong grower and good bloomer with perfect stems.....	\$1.00
*Laddie. A very fine flower, of large size and good depth, a bright yellow overlaid with rose, a stout, low grower.....	75c
Le Grand Manitou. This popular French decorative is a fancy colored flower with a lilac ground color splashed with purple.....	50c
Le Toreador. A large crimson red Marean dahlia, excellent bloomer with good stem, a first-class variety.....	\$1.00
*Liberty Bond. A high class dahlia, strong grower, foliage good, flower large. The color is buff, yellow, and tinted with pink. We have a splendid stock of it.....	75c
Marcella Gill. A soft pink with light tips, excellent as a cut flower.....	50c
*May Blumer. Somewhat similar to Frances Seaman in character and growth, has with us produced very large and deep blooms. The color is a lilac pink, a very attractive flower.....	\$2.50
Mephistopheles. A large Marean ruby red variety with light tips to petals. Quite in demand.....	\$1.50

- ***Midnight.** A deep maroon, almost black. Seldom shows an open center..... \$2.00
- ***M. H. De Young.** An unusually attractive flower of pure old gold, borne on long stiff stems.....\$5.00
- ***Millie Rodgers.** A splendid long stem variety in golden buff, heavily shaded with dark amber.....50c
- Millionaire.** A formal shaped lavender.....50c
- ***Miss Worn.** Something new to take the place of Futurity, yellow, old rose, slightly burnished with copper and shaded with amber.....75c
- ***Moon Glow.** A rather dwarf variety that has done well in the east. The flower is a full primrose yellow heavily tipped with lilac.....50c
- ***Mr. Crowley.** One of the most beautiful dahlias we grow, bright glowing salmon pink, shaded with bright yellow. The bush is a sturdy grower with glossy dark green foliage.....\$1.00
- ***Mrs. Carl Salbach.** A very popular California variety with long stem, largely used in decorative work, a large flower, with us a bright lilac pink, shading lighter at base of petals, generally described as mauve pink. We have a splendid lot of high colored flowering stock.....50c
- ***Mrs. Estelle Lawton Lindsay.** In 1923 this dahlia took the prize in Los Angeles show for the largest flower. It is a mixture of red and gold \$1.00
- ***Mrs. F. C. Burns.** A splendid cut flower in a cream and pale pink, good foliage and stem.....50c
- Mrs. I. De Ver Warner.** The best of the Marean group, a lively pinkish mauve, large and always popular.....\$1.00
- ***Mrs. O. D. Baldwin.** A rich bright pink, with good stem.....\$1.00
- Myra Valentine.** This eastern variety has done splendidly for us the past season, a very tall grower, flowers with extra long stems. The color of this variety is a new, golden bronze salmon. The flower is large and a good keeper.....\$2.00
- ***Native Son.** A good cut flower dahlia in golden apricot, a very strong grower, stem straight.....50c
- Nazareno.** One of the best varieties we have received from Mr. Jost. It is a very large decorative, a robust grower on splendid stem, in color a lilac purple, and has been greatly admired by visitors the past summer. It has done as well as any dahlia we ever received from eastern growers..\$3.00
- ***Nobilis.** A bright attractive flower in crimson and white, somewhat resembling Earle Williams.....\$1.00
- ***Old Rose.** More of a decorative show, a cut flower variety, in a very pretty coloring of old rose shaded with heliotrope.....50c
- ***Osam Shudow.** A most sensational dahlia where it can be grown, a very large flower, slow to open out, a beautiful old rose shaded with golden yellow. It needs plenty of sun.....\$1.00
- Patrick O'Mara.** A golden apricot.....50c
- ***Paul Michael.** A large pure old gold, a prize winner.....\$1.00
- ***Pink Madonna.** A large stem cut flower dahlia, bright pink shading lighter, better than Queen Mary.....50c
- ***Pink Triumphant.** A wonderful new cut flower dahlia in a clear pink, excellent every way.....\$1.50
- ***Polar Bear.** A large fluffy white on long stems, a very strong grower....50c
- ***Pride of California.** A large crimson red with a full dark center, long stiff stems.....50c
- ***Pride of San Francisco.** A beautiful rose salmon, flower held upright on stiff stem. Only limited stock.....\$2.00
- ***Prince Imperial.** A large royal purple flower, an improvement on the old Holland, variety King Albert.....\$1.00

Princess Mary. Pink shaded slightly with yellow, a popular cut flower variety on stiff stem.....	50c
*Princess Pat. A splendid long stem flower in rose shaded with buff and amber, very popular.....	75c
Purple Manitou. A purple form of the French variety.....	50c
*Red Rover. Rich crimson red. A large flower with broad flat petal, fine stem.....	\$1.50
*Rookwood. A very popular California variety in an unusual color, a bright cerise rose, a large flower and good bloomer.....	\$3.00
*Rosa Nell. This variety always attracts attention, grows an enormous bloom on long stem, color is vivid sparkling rose.....	75c
*Royal Gold. This is a fine cut flower dahlia of medium size, in color an even shade of bright golden yellow.....	50c
Sagamore. Amber gold, shaded with salmon rose and orange buff. Large size good keeping qualities.....	\$3.50
Scottish Chief. An old popular imported variety in golden amber tipped with white, a very strong upright grower.....	50c
Shelikoff. A good flower, has size and depth, a dark rich reddish maroon with plenty of brilliance, not a tall grower.....	75c
*Shudow's Lavender. A very hard dahlia to surpass, when well grown, a rich lavender, in the hot weather shaded with white, can be grown to immense size, a great prize winner, very strong grower with perfect stem.....	\$2.00
*Snowdrift. We grow several white dahlias from various continents, but this large white decorative surpasses all. It has great substance and keeping qualities, luxuriant dark green foliage and is rather a dwarf grower. It is one of the most profuse bloomers of large flowers we have yet seen, often three on one stem. We cannot recommend it too highly.....	75c
*Somerset. Salmon and old rose, a healthy and strong grower. A valuable exhibition and prize winning flower.....	\$2.00
Souvenir de Gustave Deuzon. Rich orange red.....	50c
Sulphurea. This English variety, always popular as a cut flower, has good keeping qualities, a tall upright grower in sulphur yellow.....	50c
*Sun Maid. This new Californian gave us some beautiful blooms the past season, the blooms are large and compact, very deep, the coloring is a blending of gold and red, somewhat resembling Mrs. E. L. Lindsay.....	\$7.50
*T. A. Leonard. A wonderfully brilliant rich cerise rose that immediately arrests attention through its uncommon coloring, a large flower on perfect stem, one we highly recommend.....	\$2.00
Tommy Atkins. A most attractive red dahlia with upright stem, described by originator as flaming scarlet, full of metallic lustre. Winner of first prize for best twelve blooms, Los Angeles, 1924.....	\$2.50
*Tryphinnie. This variety, somewhat resembling a water lily, is pale yellow and pink, a large flower on a very strong stem.....	\$1.00
Venus. A large pale lavender white Marean variety.....	50c
*Vivian Butler. A splendid dark bright rich maroon, a strong grower, quite one of the best in color.....	75c
*Westwego. A large compact flower, darker in color than Northwego, which it somewhat resembles, quite a profuse bloomer, classed as fawn and rose by originator, perfectly straight stems.....	\$5.00
*W. E. Cooper. Probably our best true pink decorative, a good grower, has good stem and keeping qualities, a large flower of perfect color....	\$1.00
William Slocombe. Canary yellow with good stem.....	\$1.00
*Wizard of Oz. A very large glowing salmon pink carried on stout stems, quite a sensational flower, stock limited.....	\$3.00
*Ysleta. This dahlia unique in color, being a rich copper rose, grows large blooms on good stems, a strong grower.....	50c

HYBRID CACTUS DAHLIAS

Corollas short compared with the cactus, broad, flat recurved or twisted with margins slightly revolute.

- Ambassador.** Yellow buff, shaded salmon pink. Large flowers held well above foliage on strong stems.....\$1.00
- ***Arthur Twitchett.** Classed by originator as American Cactus. This variety is a very strong grower, the flowers large with petals incurving, color white delicately shaded with pale pink, stems erect.....\$1.00
- ***Bertha Horne.** A dwarf grower, flower large on strong stem, color yellow and bronze, petals fairly narrow.....50c
- ***California Beauty.** In American Cactus class, a tall grower with perfect stem, flower of medium size with splendid keeping qualities, darker in color than Golden West, a very beautiful flower in a copper and rich amber yellow, the tips of petals light.....75c
- C. B. Githens.** This variety from New Jersey has proven with us a profuse bloomer. The color is a true yellow without shading. It is fairly narrow in petal for a hybrid cactus, has excellent stems with flowers five to seven inches across.....\$2.00
- ***Cigarette.** Base of petals orange red with white tips, a fancy colored variety. Some flowers come red on some bushes. We have a large stock carefully segregated, a wonderfully striking and popular dahlia in our gardens..... \$1.00
- ***Daddy Butler.** An extremely beautiful flower of rosy carmine coloring, the petals twisted showing a lighter reverse, an erect grower, foliage rather scant, stem of the best.....\$2.00
- ***Dardanella.** A large tawny scarlet flower on long stems.....\$1.00
- ***El Granada.** We are indeed glad to be able to offer this wonderful Bessie Boston creation to our patrons, because it is one of the greatest dahlias yet produced anywhere. The formation is wonderful, all that could be desired in a hybrid cactus, the color dazzling, orange red and gold. It is carried well above the foliage on long stems, and its keeping qualities at the shows has been good.....\$5.00
- ***El Rubio.** A very beautiful flower, rather globular, crimson with light tips to petals.....\$1.00
- ***Elsie Oliver.** A well formed, large flower, creamy pink, a good grower and quite popular.....\$2.00
- ***Evelyn M. Dane.** A very sturdy grower with exceptionally stout stem, a large, beautifully formed flower of pink shading to cream white in center, has good depth to bloom, a fine dahlia.....75c
- ***George Walters.** This has been the most popular California dahlia in the east, possibly excepting Golden West, a splendid strong grower, the flower very large of salmon pink.....50c
- ***Gladys Bates.** American cactus, a splendid flower and profuse bloomer, stem erect, the color is a shade of tan and rose.....75c
- ***Gladys Sherwood.** An immense star shaped white with luxuriant dark green foliage, a noted prize winner.....75c

- *Golden West.** American cactus. A popular cut flower variety in golden orange..... **50c**
- *Helen Durnbaugh.** A very pretty fluffy flower, popular as a cut flower, a pale cream white shaded pink..... **50c**
- *Islam Patrol.** An extra fine new dahlia in a dark velvety scarlet edged with gold. A strong grower..... **\$3.00**
- Jean Chazot.** A new French variety nasturtium red suffused with gold, a medium sized flower on good stem..... **50c**
- Josephine Mendillo.** Another of the Jost dahlias, very striking in color, a bright rich red, rather narrow in petal, very strong upright grower and profuse bloomer, stems long and straight. Has been very favorably spoken of in the east..... **\$1.50**
- Lady Helen.** This splendid eastern dahlia has done remarkably well with us, a large beautifully formed flower in carmine rose tipped with cream yellow, nothing finer. We have a remarkably fine stock of field grown stock **\$1.50**
- Laurine.** A large American cactus form of flower on a long stem, the color is a heliotrope pink, extra fine..... **\$1.00**
- *Lolita Velasco.** In American cactus class, a first rate flower every way, quite one of the best whites we grow, a great bloomer with perfect stem and abundant foliage. We have a large stock..... **\$1.00**
- Lorraine Woerner.** Creamy yellow-shaded, salmon pink..... **\$3.00**
- MacGregor.** Spectrum red with base of petal lemon yellow. A. D. F. Certificate of Merit 1922..... **\$2.00**
- *Mariposa.** A wonderfully popular variety east and west. The color runs between a lavender white and pink, a large artistically formed bloom, popular in our dahlia shows. We are especially fortunate in having a large stock of the very best..... **\$2.50**
- Mary Lair.** A fine variety in a true bright pink, flowers medium in size on fine stems..... **50c**
- *Mme. E. P. De Normandie.** A beautiful, tall growing, silver pink..... **50c**
- Mrs. C. H. Breck.** A bright carmine and yellow flower with good stems, used in the cut flower business..... **50c**
- *Mrs. Edna Spencer.** American cactus, popular as a cut flower, an upright grower, in color lavender and white..... **50c**
- *Mrs. Ethel Smith.** Pale primrose of similar habit as Gladys Sherwood.... **75c**
- *Mrs. W. E. Estes.** One of the best white dahlias to date, immense blooms of beautiful formation, a tall erect grower..... **75c**
- Nibelungenhort.** An old popular Holland dahlia, always in demand as a cut flower, in color old rose, straight erect stems..... **50c**
- Pahaska.** The Indian name for Buffalo Bill. A profuse bloomer on fine stems, in color a rich apricot fawn..... **75c**
- *Pink Beauty.** A strong grower, flowers creamy white shaded with lilac rose. **50c**

- ***Queen Zenobia.** Our own introduction. We have had a wonderful report from Winnipeg on this variety. A large pansy purple with lavender reverse. Three Certificates of Merit.....\$1.50
- ***Regent.** A heavy petaled cactus, very fine indeed, in color heliotrope pink, a large bloom on very long stems.....\$1.00
- ***Rising Beauty.** Nothing better in its class. A hybrid cactus early in season, but late develops peony form—beautiful either way. Velvety rich red edged with gold—one of our very best cut flower varieties.....\$1.00
- ***Shirley Brown.** A splendid acquisition to this group, a large artistically formed flower of bright golden orange.....\$1.00
- ***Siskiyou.** Always in great demand for its huge size. Lavender and rose color, blooms borne on very stiff stems. We now have considerable stock of it.....\$2.50
- Skagerrak.** A very beautiful clear yellow variety imported from Germany, good stem and keeping qualities.....\$1.50
- ***Sunny South.** One of the very best garden varieties we grow. A low grower with immense golden blooms supported on strong stems. The character of the flower is all that could be desired. As a hybrid cactus, it always creates a sensation.....\$2.50
- ***Washington City.** A large waxy white bloom on good stem, a fine cut flower, foliage abundant.....50c

ENGLISH CACTUS DAHLIAS

Corollas long, narrow, incurved or twisted, a more or less perfect tube the greater part of the length of the corolla.

- ***Ballet Girl.** Another Californian that is a conspicuous entry in this class, an incurved variety with a mass of fine petals. The base is orange red and tips white, a very strong grower, flowers large.....\$1.00
- Bizarre.** English incurved cactus, rosy purple at base with white tips, very beautiful and quite a favorite. Its great drawback is the twisty habit of growth.....75c
- British Lion.** Yellow and red cactus from Stredwick.....75c
- Captain Bairnsfather.** A real good English importation, very fine incurving petals, color for the most part shrimp pink shading to yellow at tips, the stems good, a profuse bloomer.....50c
- Dr. Roy Appleton.** Straight petals, a pale yellow shaded pink, with excellent stems.....50c
- F. W. Fellowes.** Considered the finest English cactus dahlia in cultivation, outer petals straight. The color is bright orange scarlet, the stem straight and wiry, a very large flower and a strong grower.....75c
- Goldwyn.** This is a New York gold medal cactus dahlia originated by Mr. Jost, Conn. The color golden amber, growth and stem extra strong, petals fine and long, slightly incurved. It can be grown very large by forcing.....\$1.00
- Guardian.** A splendid English variety in a pleasing color of glowing crimson scarlet. The stem is perfect.....75c
- Gwendolyn Tucker.** An imported pink and white, one of the straight petal kind, a strong grower with perfect stem.....50c

- Herbert Raby.** A large ruby red flower with incurved petals, stem good..75c
- John Riding.** A very large rich red flower on perfectly straight stems.....50c
- *Los Angeles.** Our best bright yellow, a California variety, a strong grower with good stem, profuse bloomer, petals quite fine and slightly incurved. We have a very large stock of this splendid dahlia.....75c
- Mary Purrier.** This English variety is always popular, a fine exhibition flower with good stem, in color a rich bright red with incurving petals.....75c
- Melody.** An incurved medium yellow, generally tipped with white.....50c
- Meridian.** One we imported from England, a pale primrose yellow with the finest of petals, the flower carried on a straight stem, a strong grower. We now have a large stock of it.....50c
- Mrs. Alfred Harvey.** This is one of the finest we imported from Stredwick of England. It is a large flower on a strong straight stem, grows some five feet high for us, the color of flower a bright salmon pink slightly incurved..... \$1.00
- Mrs. D. B. Crane.** The best white we imported from England. It has straight petals and is a good grower with straight stem.....\$1.00
- Mrs. Frank Lansdale.** A new and very beautiful variety, color yellow shaded rose and tipped white, wonderful stems.....\$1.00
- Mrs. Herbert Blackman.** In this English variety we have a very beautiful blending of colors, lavender pink shading to white, the stem straight and wiry, a strong grower and profuse bloomer.....75c
- Mrs. Margaret Stedwick.** Quite the best incurved form to date, a beautiful clear pink. Stem might be better.....\$1.00
- Natalie Alsop.** A good pink on nice stems, incurved and full.....75c
- Norman.** A very large straight petal English introduction, color bright crimson, has stout straight stems and plenty of foliage.....75c
- Pennant.** Another of our English importations which has done well with us. It grows like Fellowes, the stem straight, color coral red.....50c
- Richard Box.** A good medium yellow of the straight petal form, on stiff stems 50c
- Sentinel.** The tallest of all English importations, a large deep rose pink, stem good, petals straight.....75c
- Silverhill Park.** Stredwick's recent white introduction, a strong grower, the flower large.....75c
- Sovereignty.** Another very tall growing variety, the flower very massive, a rich golden yellow, popular as an exhibition variety.....50c
- St. Elias.** Originated at Denver, is considered especially useful as a cut flower, is a pure white with good stem.....50c
- St. Leonards.** A strong grower with good stem, the color striking, bright yellow tipped with scarlet.....50c
- Sweetbriar.** We have especially featured this variety as it is one of the most beautiful dahlias we grow, color true rose pink.....50c
- Vicar of Wasperton.** A really delightful English importation, a strong upright grower, has great size and character, and capital stem. The base is very pale yellow shading into pink in mainbody of flower, and the tips shade off lighter.....75c

PEONY FLOWERED DAHLIAS

Semi-double flowers with open centers.

Alma Davies. Salmon pink shading to old rose and apricot.....	\$3.00
Cardinal Mercier. A large salmon variety, very fine.....	\$1.50
*Chanson. A very large massive flower on stout stems, the color a very dark lilac with violet sheen.....	\$1.00
City of Portland. Deep rich yellow, large flower on strong stems.....	75c
*Clarissa Blanco. Classed by originator as a decorative, but with us more of a full peony flower. A large flower of deep wine color, sometimes variegated with white. Visitors the past season have been greatly taken with it especially in the variegated form. The stem is very strong and the blooms are large and deep.....	\$2.50
*Elizabeth Boston. A magnificent flower, quite one of the best, a rich bright red edged with gold, with long straight stem.....	\$2.00
Geisha. The old Holland variety, bright yellow and red.....	75c
*Golden Arbor. With us early in season, a decorative, a large massive flower, old gold with back of outer petals a dull red, very strong grower....	75c
*Grace Marie. This variety has done splendidly for us. Certificate of Merit A. D. S. 1921. A new color, Alizarine pink, or what we might call a rosy terra cotta with a tracing of yellow at base, strong grower with good stem.....	75c
*Helio. Above the best yellow peony we have so far grown, splendid size, color and stem.....	75c
*Maid of Watts. Almost a hybrid decorative. It is a large compact flower of chamoise yellow and buff coloring, a very strong grower.....	35c
Mary Jean Warner. A strong grower in a bright golden yellow.....	75c
Meyerbeer. A splendid French variety in crimson purple.....	50c
*Mrs. Jessie Seal. A large old rose shaded with gold, stem long and stiff, popular as a cut flower.....	\$1.00
*None-So-Fair. An upright grower on good stems, a beautifully formed flower in a uniform shade of pale mauve pink, especially good late in the season.....	\$1.00
Oregon Sunset. A large massive flower on strong stem, in color rich red and gold, very fine.....	\$1.00
Pacific Sunset. Salmon buff.....	\$1.50
Peg O' Me Heart. This Marean variety has been much admired in our gardens the past summer, in color a beautiful bright rose shaded with gold, a tall grower with very long stems.....	\$1.00
Pink Perfection. Similar to Hort. Fiet in a bright pink shade, same strong habit of growth.....	\$1.00
Pride of Portland. Quite an improved Geisha in red and bright yellow, a tall grower with good stem.....	50c
Shantung. A very large open flower in the Geisha colorings of red and yellow, stems long and straight.....	75c

- Sweetheart's Bouquet.** One of the most beautiful dahlias in this class, a bright old rose held on perfect stem..... 50c
- *The Screamer.** Another Doolittle sensation. A very large purple flower, full and deep. A strong upright grower and good bloomer..... \$2.00
- U. S. A.** This ever popular Stillman peony we are now able to offer at a much lower price. The color is an orange salmon, flowers large, and a profuse bloomer..... \$1.00
- *Vivandiere.** Described by originator as cerise carmine in color. It is a real good maroon peony, attractive to visitors at our gardens and at the shows \$1.00

SHOW DAHLIAS

Flowers globular showing regular spiral arrangement of florets.

- *Anna Rehorst.** One of the finest hybrid shows grown, a large rich purple flower held well up..... 50c
- Arthur Lefavor.** A fancy in gold, heavily splashed with red, tall grower 50c
- Black Diamond.** A dark black maroon, quite popular..... 50c
- *Bonnie Blue.** Quite an attractive variety of bluish lilac coloring, stems first class..... 50c
- Daniel Cornish.** An English variety, good large flower in a brownish red, an exhibition variety..... 75c
- Dorothy de la Mare.** Delicate pink color, large well rounded flowers..... 35c
- Dorothy Peacock.** A medium sized pale pink with white center..... 50c
- Frank Smith.** Rich crimson maroon tipped with white..... 50c
- *General Haig.** A bright crimson, very compact flower, low grower..... 75c
- George W. Gero.** A very fine hybrid in a clear rose pink, one of the new varieties..... 50c
- *Golden Opportunity.** A large rich old gold, strong grower..... 75c
- Gold Medal.** A most striking variety, good every way, orange edged with bright red..... 50c
- Grand Duchess Marie.** A tall growing orange buff, flowers large..... 50c
- John Walker.** A popular white variety, tall grower..... 75c
- King of Shows.** Always a prominent feature in our prize exhibits and again helped us to win the silver cup, a hybrid show in a rich old gold..... 75c
- Les Armours de Madame.** Flowers pink and splashed with crimson..... 50c
- *Maritana.** A large lilac flower of the best of form..... \$1.00
- Mary Pickford.** Pink shaded with yellow, tall grower..... 50c
- Maude Adams.** A very popular cut flower variety, medium in size, white just faintly flushed with pink..... 35c
- Mr. Chamberlain.** A large dark maroon, a good exhibition flower..... 75c

Mrs. Bottomley. More of a lavender than lilac rose.....	50c
Mrs. J. P. Smith. A very large flower of the English type, a perfect ball, in cherry red, one of the best.....	50c
Molalla. Pale yellow with light tip, profuse bloomer.....	25c
Slocombe's White. More of a decorative show in a pure white.....	50c
Tillamook. A soft cream pink, profuse bloomer.....	25c
Tom Jones. A capital English variety, cream yellow tipped with lilac making a very handsome flower.....	75c

COLLARETTE DAHLIAS

Single type, open centered flowers, not more than nine floral rays, with one or more smaller rays from each floret.

Ami Nonin. A fine French variety, old rose with white collar.....	35c
Baron Rothschild. A compact red with yellow collar.....	50c
Dora Fisher. A very beautiful pink, has more than one row of petals, the collar is white.....	50c
Esmeralda. A very pretty flower of pale yellow with white collar, slightly shaded with pink.....	50c
Geant De Lyon. The finest of all, a large French variety, the color is rich velvety maroon with white collar.....	\$1.00
*Gil Blas. A very fine flower in rosy maroon with light tips and a white collar.....	50c
Herald. A pretty rose pink with white collar.....	50c
*Hoof Mon. Rosy carmine with white collar.....	50c
Innocentia. White.....	50c
Mrs. Courage. A new English variety, one of the most beautiful of all collar-ettes. A rich maroon shading to wine color, with a white collar, making a wonderful contrast—conspicuous in our prize collections the past season, straight stems and strong grower.....	50c
*Rafael Velasco. Good size, petals rather pointed, deep maroon with white collar.....	75c
Scarlet Queen. Imported from Scotland, a vivid red with yellow collar, an excellent variety.....	75c
Schwarzatal. A very fine German variety, carmine, rose tipped white and with white collar.....	75c
Silver Medal. Crimson, maroon and white.....	50c
Souv. Bel Accueil. An orange red variety from France, quite attractive, the collar is yellow.....	50c
Swallow. A delightful pure white variety.....	35c
Virginia Lee. A pretty flower in maroon and white.....	50c
*William Welch. A pure yellow of good size.....	50c

POM PON DAHLIAS

Achilles. A fine pink.....	35c
Adrienne. A splendid bright red on long stems, one of the very best in this class.....	35c
Amber Queen. A lovely shade of golden amber.....	35c
Anna Von Schwerin. A new Holland variety, an extra good light pink with long stems.....	50c
Cheerfulness. Orange suffused red, strong grower.....	35c
Clarissa. Primrose yellow, darker center, good form.....	50c
*Dandy. Quite one of the best in a new color, bright orange.....	75c
Dee Dee. One of the best small lavenders.....	35c
Fairy Queen. Popular as a cut flower, yellow, tipped coral.....	35c
Ganymede. Pale pink edged with creamy yellow, very fine.....	50c
George Ireland. A popular variety in a mauve.....	35c
Glow. A splendid variety in a coral pink.....	50c
Gretchen Heine. White tipped bright rose, always popular.....	25c
Guiding Star. A very beautiful white with serrated petals, giving it a fluffy appearance, quite a favorite for cut flowers.....	25c
Henrietta. Yellow edged with bright carmine, very fine.....	50c
*Joe Fette. Good shape in a pure white.....	25c
Lassie. A very beautiful English pom. It is a glistening wine red with us shaded a lighter tone of color, extra good.....	50c
Leader. A well formed pom in pale yellow and tipped with purple.....	50c
Madeline. Yellow edged with rosy purple.....	35c
Marietta. Deep wine color.....	35c
*Mavis. Violet mauve, new, and a good one.....	50c
Midget. A fine English variety, old rose edged cream.....	50c
Neatness. Salmon pink, fine form.....	35c
Nelly Broomhead. Pale yellow, edged with lilac.....	50c
Prince Charming. A bright flower on long stems, base white with heavy purple edging, good every way.....	35c
Regulus. A bright crimson purple, very fine.....	50c
Rosea. A pretty shade of bluish lilac.....	35c
Rosebud. White edged with rosy pink.....	50c
Tommy Keith. Red tipped white.....	35c
Winifred. A splendid English light lavender, long stems.....	50c
*Yellow Gem. Quite the best yellow we have seen, good bright lemon color, splendid form, a great seller.....	50c
Zoe. Pale yellow tipped with white, very pretty.....	35c

DAHLIA SEED

The varieties of dahlias produced from seeds are almost numberless. The principles of Mendel's law show that differentiating characteristics in the parent plant affect the offspring. These characteristics in the dahlia are of such a nature that one may select a number of seed from the same flower, plant them and have no two flowers alike. The new plant may be as thrifty as the parent, in every respect, but one flower may be white, another yellow, another red, followed by pink, gold, autumn tint or any of the usual colors, except blue. A blue dahlia has never been produced. So may there be a different type—decorative, show cactus.

Hence the futility of planting seed and expecting a flower similar to the parent plant. But these very differentiating characteristics put into the "being" of the grower zeal akin to that of the hunter or the fisherman when he plants and waits for a few weeks to see whether he has produced a flower better than any known or whether it is just commonplace. In any event he is not a loser for he is sure to bring color and variety to his garden.

PLANTING DAHLIA SEED

We sow our seed in rows in "flats"—boxes 18 inches square, 3 inches deep. We use fine garden soil and plant a quarter of an inch deep, then cut a square of burlap and lay over the box and keep fairly moist so that the surface does not dry out. The burlap is removed when the seeds sprout. When the plants are four or five inches high we pot them. We find an ordinary putty-knife an excellent article with which to lift them.

ADVANCE XXX

This is the highest grade of seed we send out, and justly has earned its reputation. This is by far our best seller.

Name of parent on each package as furnished on pink order sheet.

Twelve Seeds for 50 Cents.

DOUBLE SPECIAL

Seed in this group has given splendid satisfaction the past years, having produced some wonderful seedlings. The U. S. A. seed is still one of the strong leaders in this class.

Twenty-five Seeds for 50 Cents.

SPECIAL SELECTED

This is our regular high grade mixed seed. No seed is gathered from inferior varieties. We have sold a very large quantity of this grade the past three seasons, and it has given splendid satisfaction.

One Hundred Seed for \$1.00.

We can also furnish the following:

Mixed Show Dahlias..... 100 Seed for \$1.00

Mixed Collarettes..... 100 Seed for \$1.00

Mixed Pom Pons..... 100 Seed for \$1.00

DAHLIA FLOWERED ZINNIAS

California Grown



This Improved Strain of Zinnias was granted an Award of Merit by the Royal Horticultural Society of England, 1924. This wonderful flower creates a sensation wherever it is grown and it has probably gained popularity more quickly than any other improved garden flower offered in recent years. The large size, fullness of petals, extraordinary color range, and good keeping qualities have all contributed to its popularity. The flowers resemble in appearance the Decorative Dahlia and is called the Dahlia Flowered Zinnia for this reason. When in full bloom they often measure five to six inches in diameter. The Dahlia Flowered Zinnia is strictly a California introduction and since it is so easily grown and is immune from disease at this time we cannot recommend it too highly to our friends.

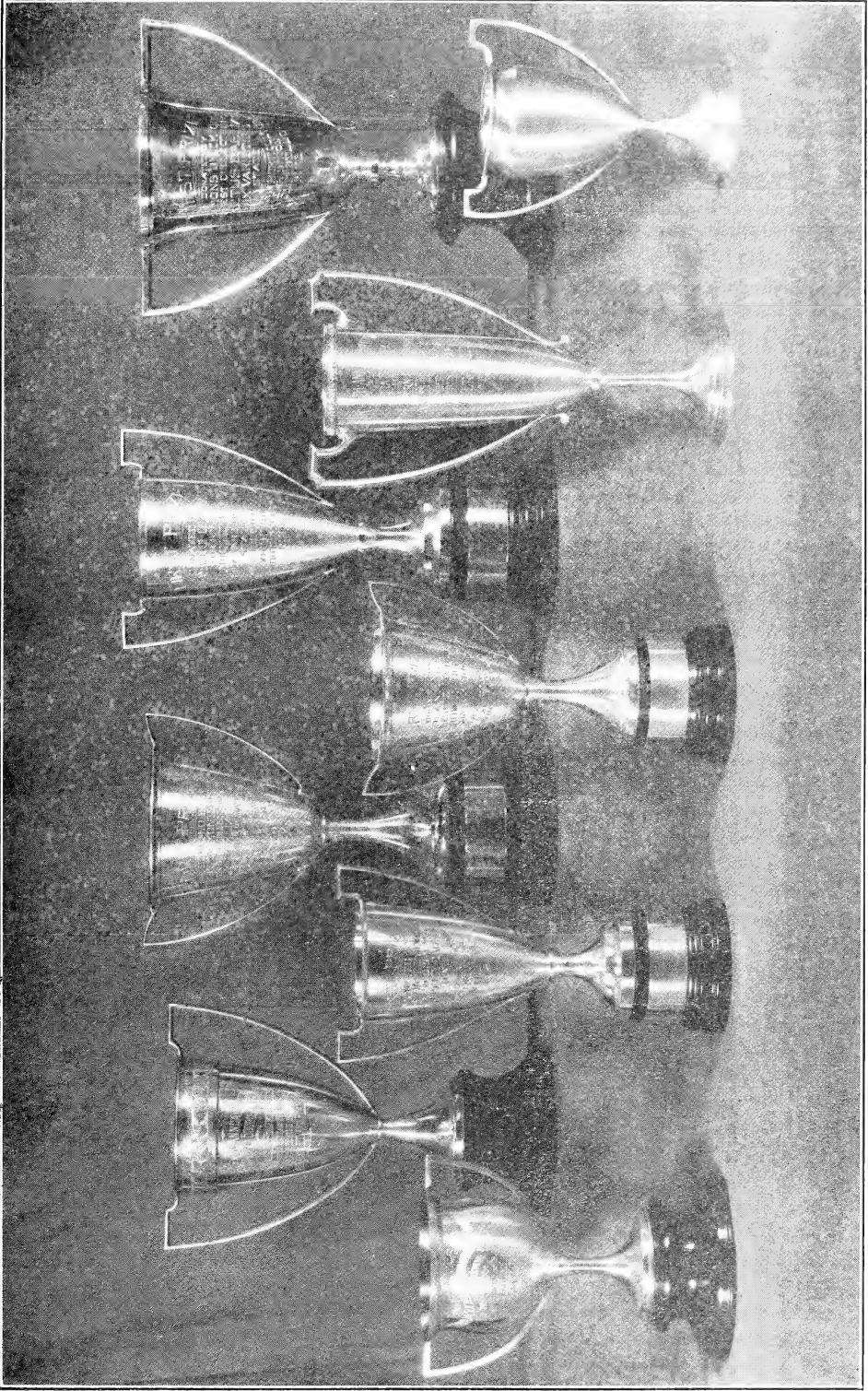
- Exquisite.** One of the most pleasing shades. Color a light rose with deeper rose center. Pkt.....**25c**
- Golden State.** Yellow in bud, turning to a rich orange when in full bloom. Pkt..... **25c**
- Crimson Monarch.** Bright crimson. The largest of the dahlia-flowered type. Pkt..... **25c**
- Oriole.** Immense flowers of orange and gold. Very fine. Pkt.....**25c**
- Buttercup.** Flowers large size, deep creamy yellow. Pkt.....**25c**
- Canary Bird.** A delicate shade of primrose. Does not burn in the sun. Pkt..... **25c**
- Dream.** Deep lavender purple, a very beautiful shade. Pkt.....**25c**
- Old Rose.** A very fine flower, of a beautiful rose shade. Ranks among the very best. Pkt.....**25c**
- Polar Bear.** A beautiful pure white flower of the form of a Dahlia. Pkt..**25c**
- Collection** of one of each of the above which makes a beautiful and vareigated display **\$2.00**

SPECIAL DAHLIA FLOWERED MIXTURE

This mixture contains all of the Zinnia novelties and is a most wonderful collection. It will make an excellent garden show and produce fine flowers for cutting. Pkt.....**25c**

DAHLIA FLOWERED MIXTURE

While this mixture does not contain all of the novelties, its color range is very good and will please you. Pkt.....**15c**



CUPS WON BY ADVANCE DAHLIA FARM 1926

Index Price List

Achilles. Pom. fine pink.....	\$.35	Emma Marie. D. pink, white ecnter	3.50
Adrienne. Pom. bright red.....	.35	Empress Eugenie. D. deep lilac.....	.50
Alex. Waldie. D. cream pink.....	.75	Equilibrium. D. rosy maroon.....	.50
Al Koran. D. golden yellow.....	1.50	Esmeralda. Col. yellow, white.....	.50
Alma Davies. P. salmon pink apricot	3.00	Evelyn Dane. H.C. cream pink.....	.75
Ambassador. H.C. yellow shaded pink	1.00	Eventide. D. pale pink.....	.50
Amber Queen. Pom. golden amber	.35		
Ami Nonin. Col. rose, white col.....	.35	Fairy Queen. Pom. yellow, red.....	35
Amun Ra. D. copper red.....	1.00	Faith Garibaldi. D. rose colored.....	5.00
Anna Rehorst. H. S. purple.....	.50	Flaming Meteor. D. flame colored	5.00
Anna Von Schwerin. Pom. pink.....	.50	F. W. Fellowes. C. bright orange.....	.75
Arthur Lefavor. S. red and yellow..	.50	Frank Smith. S. maroon, white tips	.50
Arthur Twitchett. H.C. white, pink	1.00		
Augusta R. Johnson. D. apricot.....	.75		
		Ganymede. Pom. cream pink.....	.50
Ballet Girl. C. orange and white.....	1.00	Geant De Lyon. Col. red maroon.....	1.00
Baron Rothschild. Col. rose, white..	.50	Geisha. P. red and yellow.....	.75
Barranca. D. yellow.....	.50	General Haig. S. crimson.....	.75
Bertha Horne. H.C. yellow, bronze..	.50	George Ireland. Pom. mauve.....	.35
Bertha Jost. D. burnt orange, pink	3.00	George E. Meachen. D. yellow & gold	3.50
Bizarre. C. purple, white tip.....	.75	George Walters. H.C. salmon pink..	.50
Black Diamond. S. black maroon.....	.50	George W. Gero. S. bright pink.....	.50
Bonnie Blue. S. bluish lilac.....	.50	Giant Ruby. D. red.....	1.00
British Lion. C. yellow and red.....	.75	Gil Blas. Co. rose, cream.....	.50
		Gladys Bates. H.C. tan and rose.....	.75
California Beauty. H.C. copper.....	.75	Gladys Meyer. D. yellow.....	1.00
California Suberba. D. light pink....	2.50	Glory of New Haven. D. lav. pink	1.00
Captain Bairnsfather. C. pink.....	.50	Glow. Pom. coral pink.....	.50
Cardinal Mercier. P. salmon.....	1.50	Gladys Sherwood. H.C. white.....	.75
Cathrine Wilcox. D. pink and white	.50	Gold Medal. S. orange and red.....	.50
C. B. Githens. H.C. yellow.....	2.00	Golden Arbor. P.D. old gold.....	.75
Champaigne. D. copper buff.....	2.50	Golden Gardena. D. golden orange	3.00
Charm. D. burnt orange.....	.50	Golden Opportunity. D. old gold....	.75
Chanson. P. deep lilac.....	1.00	Golden West. H.C. golden orange..	.50
Cheerfulness. Pom. gold and red....	.35	Goldwyn. C. amber gold.....	1.00
Cigarette. H. C. orange and white	1.00	Goodbye Delice. D. pink.....	.75
City of Portland. P. rich yellow....	.75	Grace Marie. P. pink shaded yellow	.75
Claret Cup. S. velvety maroon.....	.50	Grand Duchess Marie. S. buff orange	.50
Clarissa. Pom. primrose yellow.....	.50	Gretchen Heine. Pom. pink, white..	.25
Clarissa Blanco. P.D. wine color....	2.50	Guardian. C. crimson.....	.75
		Guiding Star. Pom. serrated, white..	.25
Daddy Butler. H.C. rosy carmine..	2.00	Gwendolyn Tucker. C. pink.....	.50
Dandy. Pom. orange.....	.75		
Daniel Cornish. S. deep red.....	.75	Halloween. D. buff bronze.....	.50
Dardanella. H.C. tawny red.....	1.00	Halvella. D. rose pink.....	1.00
Dee Dee. Pom. lavender.....	.35	Harvest Moon. D. rich yellow.....	.75
Dolores. D. golden orange.....	.50	Helen Durnbaugh. H.C. white, pink	.50
Dora Fisher. Col. pink and white....	.50	Helio. P. bright yellow.....	.75
Dorothy De La Mare. S. pink.....	.35	Henrietta. Pom. yellow and carmine	.50
Dorothy Peacock. S. pink, white cen.	.50	Herald. Col. pink, white collar.....	.50
Dr. Roy Appleton. C. pink, yellow..	.50	Herbert Raby. C. ruby red.....	.75
Dr. Rufus von Kleinsmid. C. crimson	3.00	Hercules. D. yellow orange.....	1.00
Dr. Tevis. D. rose and gold.....	.75	Hoot Mon. Col. maroon, white col.	.50
Duchess De Vendome. D. white.....	.50	Hortulanus Fiet. D.P. salmon.....	1.00
Eastern Star. D. yellow and old gold	5.00	Innocentia. Col. white.....	.50
Eastwego. D. old gold.....	3.00	Insulinde. D. bronzy orange.....	1.00
El Dorado. D. old gold.....	5.00	Isabel Street. D. yellow and carmine	.50
El Granada. H.C. orange red.....	5.00	Islam Patrol. H.C. scarlet and gold	3.00
Ellinor Vanderveer. D. rose pink	5.00	Jack London. D. bright red.....	1.00
El Rubio. H.C. crimson, cream.....	1.00	Jean Chazot. H.C. red and yellow..	.50
Elizabeth Boston. P. red and gold	2.00	Jersey's Beacon. D. chinese scarlet	2.00
Elsie Oliver. H.C. cream pink.....	2.00	Jersey's Beauty D. fine pink.....	2.50
Emily Renwick. D. rich rose.....	.75	John Lewis Childs. D. variegated....	1.00
		Joe Fette. Pom. white.....	.25

John Riding. C. crimson..... .50
 John Walker. S. white..... .75
 Josephine Mendillo. H.C. red..... 1.50
 Judge Marean. D. yellow, rose..... 1.00
 J. W. Davies. D. purplish rose..... 1.50

Kalliste. D. crimson, orange tips... 2.00
 King of Shows. H.S. rich gold..... .75
 Kittie Dunlap. old rose..... 1.50

La Mascotte. D. white and purple.. 1.00
 Laddie. D. yellow and rose..... .75
 Lady Diana. D. pink and yellow.... 1.50
 Lady Helen H.C. carmine and cream 1.50
 Lassie. Pom. wine red..... .50
 Laurine. H.C. heliotrope pink..... 1.00
 Leader. Pom. yellow tipped purple .50
 Le Grande Manitou. D. lilac, purple .50
 Les Amours de Madame. S. pink.... .50
 Le Toreador. D. crimson..... 1.00
 Liberty Bond. D. buff and rose..... .75
 Lolita Velasco. H.C. white..... 1.00
 Lorraine Woerner. H.C. yellow shaded
 pink 3.00
 Los Angeles. C. bright yellow..... .75

Madeline. Pom. yellow, lilac..... .35
 MacGregor. H.C. red and yellow 2.00
 Marietta. Pom. deep wine..... .35
 Maid of Watts. D.P. buff yellow..... .35
 Marcella Gill. D. pale pink..... .50
 Mariposa. H.C. pink shaded lav.... 2.50
 Maritana. S. lilac..... 1.00
 Mary Jean Warner. P. golden yellow .75
 Mary Lair. H.C. pink..... .50
 Mary Murphy. D. yellow apricot.... 5.00
 Mary Pickford. S. cream pink..... .50
 Mary Purrier. C. bright rich red... .50
 Maude Adams. S. white, pale pink.. .35
 Mavis. Pom. lilac..... .50
 May Blumer. D. lilac rose..... 2.50
 Melody. C. yellow, white tip..... .50
 Mephistopheles. D. ruby red..... 1.50
 Meridian. C. pale yellow..... .50
 Meyerbeer. P. crimson purple..... .50
 M. H. DeYoung. D. old gold..... 5.00
 Midget. Pom. bright rose..... .50
 Midnight. D. deep maroon..... 2.00
 Millie Rodgers. D. golden amber... .50
 Millionaire. D. lavender..... .50
 Miss Judd. C. straw yellow and pink .75
 Miss Worn. D. old rose..... 1.00
 Mme. De Normandie. H.C. pink.... .50
 Moon Glow. D. primrose, lilac..... .50
 Mr. Chamberlain. S. dark maroon... .75
 Mr. Crowley. D. rose and gold.... 1.00
 Mrs. Alfred Harvey. C. salmon pink 1.00
 Mrs. Bottomley. S. lilac rose..... .50
 Mrs. Carl Salbach. D. mauve pink.. .50
 Mrs. C. H. Breck. H.C. carmine... .50
 Mrs. Courage. Col. purple maroon,
 white50
 Mrs. D. B. Crane, C. white..... 1.00
 Mrs. Edna Spencer. H.C. lavender... .50
 Mrs. Ethel Smith. H.C. primrose... .75
 Mrs. E. L. Lindsay. D. red and gold 1.00
 Mrs. F. C. Burns. D. cream pink.... .50
 Mrs. Frank Lansdale. C. pink..... 1.00
 Mrs. I de Warner. D. rosy lilac..... 1.50

Mrs. H. Blackman. C. lavender..... .75
 Mrs. Jessie Seal. P. old rose..... 1.00
 Mrs. J. P. Smith. S. cherry red.... .50
 Mrs. Marg. Stredwick. C. pink..... 1.00
 Mrs. O. D. Baldwin. D. old rose.... 1.00
 Mrs. Paul Audette. D. golden apricot 1.00
 Mrs. W. E. Estes. H.C. white..... .75
 Molalla. S. yellow..... .25
 Myra Valentine. D. bronze salmon 2.00

Natalie Alsop. C. bright pink..... .75
 Native Son. D. golden apricot..... .50
 Nazareno. D. lilac purple..... 3.00
 Neatness. Pom. salmon pink..... .35
 Nelly Broomhead. Pom. yellow and
 lilac50
 New Moon. H.C. yellow, white tip.. 1.00
 Nibelungenhort. H.C. old rose..... .50
 Nobilis. D. crimson and white..... 1.00
 None-So-Fair. P. orchid pink..... 1.00
 Norman. C. brilliant rich red..... .75

Old Rose. D.S. rose heliotrope..... .50
 Opportunity. H.S. buff and gold.... 2.00
 Oregon Sunset. P. gold and rich red 1.00
 Osam Shadow. D. rose..... 1.00

Pacific Sunset. P. red and gold.... 1.50
 Pahaska. H.C. apricot fawn..... 1.00
 Patrick O'mara. D. golden apricot... .50
 Paul Michael. D. rich gold..... 1.00
 Peg O' Me Heart. P. rose..... 1.00
 Penitent Pat. D. buff and yellow... 2.00
 Pennant. C. coral..... .50
 Perplexity. C. crimson purple..... 1.50
 Pink Madonna. D. rose..... .50
 Pink Perfection. P. salmon pink.... 1.00
 Pink Triumphant. D. pink..... 1.50
 Polar Bear. D. white..... .50
 Pride of California. D. crimson red.. .50
 Pride of San Francisco. D. pink.... 2.00
 Pride of Portland. P. red and gold.. .50
 Prince Charming. Pom. white and
 purple35
 Prince Imperial. D. purple..... 1.00
 Princess Mary. D. bright pink..... .50
 Princess Pat. D. rose and buff..... .75
 Purple Manitou. D. purple..... .50

Queen Zenobia. H.C. purple..... 1.50

Raphael Velasco. Col. red, white col. .75
 Red Rover. D. rich crimson red.... 1.50
 Regulus. Pom. crimson purple..... .50
 Regent. C. mauve pink..... 1.00
 Richard Box. C. yellow..... .50
 Rising Beauty. H.C. red and gold... 1.00
 Rookwood. D. cerise rose..... 3.00
 Rosa Nell. D. bright rose..... .75
 Rosea. Pom. lilac..... .35
 Rosebud. Pom. rose and white..... .50
 Royal Gold. D. bright golden yellow .50

St. Elias. C. white..... .50
 St. Leonard's C. gold tipped red.... .50
 San Clemente. D. flaming salmon... 10.00
 Sagamore. D. gold shaded..... 3.50
 Scarlet Queen. Col. scarlet..... .75
 Schwarzatal. Col. rose, white..... .75

Scottish Chief. D. amber, white.....	.50	Tillamook. S. cream pink.....	.25
Sentinel. C. deep rose pink.....	.75	Tom Jones. S. yellow, tipped lilac	.75
Shantung. P. red and gold.....	.75	Tommy Keith. Pom. red tipped white	.35
Shelikoff. D. rich red.....	.75	Tryphinnie. D. pink, pale yellow....	1.00
Shirley Brown. H.C. golden orange	1.00		
Shudow's Lavender. D. lavender.....	2.00	U. S. A. (P.) salmon orange.....	1.00
Silverhill Park. C. white.....	.75		
Silver Medal. Col. crimson and gold	.50	Venus. D. pale lavender white.....	.50
Siskiyou. H.C. rose lavender.....	2.50	Vicar of Wasperton. C. cream pink	.75
Skagerrak. H.C. yellow.....	1.50	Virginia Lee. Col. rose.....	.50
Slocombe's White. H.S. white.....	.50	Vivian Butler. D. dark rich maroon	.75
Snowdrift. D. white.....	.75	Vivandiere. P. cerise carmine.....	1.00
Somerset. D. salmon and o'd rose	2.00		
Souv. Bel Accueil. Col. orange red	.50	Washington City. H.C. white.....	.50
Souv. de Gusave Douzon. D. rich.....		W. E. Cooper. D. bright pink.....	1.00
red50	Westwego. D. fawn and rose.....	5.00
Sovereignty. C. golden yellow.....	.50	William Slocombe. D. canary yellow	1.00
Sulphuria. D. yellow.....	.50	Winifred. Pom. lavender.....	.50
Sun Maid. D. red and gold.....	7.50	Wizard of Oz. D. rose.....	3.00
Sunny South. H.C. yellow.....	2.50	Wm. Welch. Col. yellow.....	.50
Sunshine. D. scarlet and gold.....	.75		
Swallow. Col. white.....	.35	Yellow Gem. Pom. bright yellow....	.50
Sweetbriar. C. bright pink.....	.50	Ysleta. D. copper rose.....	.50
Sweetheart's Bouquet. P. old rose....	.50		
		Zoe. Pom. yellow, white.....	.35
T. A. Leonard. D. rosy cerise.....	2.00		
The Screamer. P. purple.....	2.00		

Seed Order Sheet

PLEASE TAKE NOTICE

Dahlia seed do not come true to the color of the bearing parent. Seed from the same bloom throw a variety of colors and flowers of various forms.

PLANTING DAHLIA SEED

We sow our seed in rows in "flats," boxes 18 inches square, 3 inches deep. We use fine garden soil and plant a quarter of an inch deep, then cut a square of burlap and lay over the box and keep fairly moist so that the surface does not dry out. The burlap is removed when the seed sprouts. When the plants are four or five inches tall we pot them. An ordinary putty knife is an excellent thing with which to lift them.

NOTICE

Names of parent plant are not given here as certain varieties may be sold out early, which would call for a constant revision of our list. Kindly mention parent plant preferred and we will do our best to meet your wishes. The name of the parent plant will be placed on the packet.

ADVANCE XXX

This is the highest grade of seed we send out and is by far our best seller.
Named Varieties, Twelve Seeds for Fifty Cents

DOUBLE SPECIAL

The seed in this group has given splendid satisfaction in the past, having produced some truly wonderful seedlings.

Named Varieties, Twenty-Five Seeds for Fifty Cents

SPECIAL SELECTED

This is our regular high-grade mixed seed. No seed is gathered from inferior varieties. We have sold a very large quantity of this grade and it has given splendid satisfaction.

One Hundred Seeds for One Dollar

Mixed Show Dahlias.....	100	Seeds for \$1.00
Mixed Collarettes.....	100	Seeds for \$1.00
Mixed Pom Pons.....	100	Seeds for \$1.00

Number of Packets	Parent Plant Preferred	Price

