

Historic, archived document

Do not assume content reflects current scientific knowledge, policies, or practices.

62107 1925 ✓

PEONIES
and
IRISES



Buechly's Nurseries
GREENVILLE, OHIO

Season 1926
Peonies and Irises

A Descriptive Price List of
Choice and Rare Varieties



MME. JULES DESSERT

BUECHLY'S NURSERIES

E. M. BUECHLY, Proprietor

GREENDVILLE, OHIO

Telephone A-2027

MEMBER AMERICAN PEONY ASSOCIATION

Introduction

In the following list in which we briefly describe and price the varieties offered we do not wish to make extravagant claims to have better stock than any one else, but having the right soil and climate, and giving proper care and cultivation we get results that are at least as good as the best. It will be seen that our peonies mostly grade 8 and above, or 80 per cent of a perfect flower. The grading as given in the figures following the names of the peonies and irises is the result of the reports from a large number of the growers who are members of the Peony and Iris Associations respectively, being averaged. This is a great help in making selections, where one wishes to secure high quality. It will be seen that it is not the highest priced varieties that grade the highest, but it is absolute quality that counts. We have abundant faith in the intelligence of our patrons, and therefore do not make up selections for them unless asked to do so, in which case our services and experience are at your command.

Size of Plants: At prices quoted are for good strong standard divisions, 3 to 5 eyes, in most cases from dividing 2 or 3 year old plants. In some cases we use one year old plants without dividing. We do not recommend so called one eye divisions, but to meet a demand for such, we will supply of any peonies selling for \$3.00 or more. **Good 2 eye divisions for 3-5 the list price for the regular size.** Our object is to give good value for the money. Not how little, but how much can we afford to give for the price paid, and the repeat orders sent in go to show that our efforts are appreciated. Orders should be sent as early as possible as stock of rarest varieties is limited, and shipments are made in the order received. Please advise whether shipment is to be by express or parcel post.

If our plants please you tell your friends, if not kindly advise us.

Visitors

We are always glad to welcome visitors to our grounds who may be interested in hardy plants, for one can always select to much better

satisfaction in the field from seeing the flowers than from any descriptive catalog, be it ever so elaborate.

Terms

The prices given in this list are net cash, unless otherwise arranged, and supercede all former lists. All retail orders will be delivered free by parcel post or express.

Cultural Directions

Peonies and Irises thrive in most any soil that is not too wet. Should it be inclined to be acid, a light dressing of lime will be beneficial. Never permit fresh manure to come in contact with the roots. Bone-meal is a safe proposition, and well decomposed barnyard manure may be worked around the plants but not over the crown of the plants. Peonies should be planted at least 3 feet apart, and for field culture rows should be 4 feet apart. The plants should be set so the top buds are 2 or 3 inches below the surface of the soil. Deeper planting may cause shy blooming. September and October are the best months to set peonies, but they may be set any time before the ground freezes. The plants start growth too early to handle well in the spring; we therefore never advise spring setting.

Irises should be planted rather shallow, just covering the rhizome, and both peonies and irises are better planted in full sunlight, away from trees and shrubs and not too close to the walls of a building, although they may endure partial shade. Give good, clean shallow cultivation and you will be rewarded with fine bloom.

This descriptive list with prices should be filed for reference another season, when we may issue a new price-list without the descriptive matter.

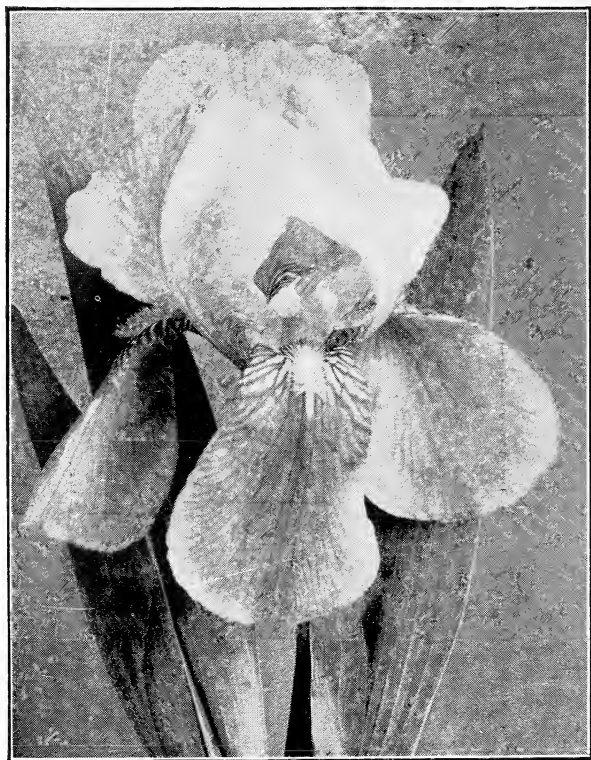
Any disinterested party receiving this catalog, by kindly handing it to some friend who may be interested, will confer a double favor.

The following list of our peonies includes double, single and Japanese varieties all in alphabetical order. We could offer a much longer list, but have discarded nearly all that do not grade over 7.5 in a possible 10, or 75 per cent of the perfect flower as rated.

We are pleased to note that our line of business has been increasing year by year, and we surely appreciate the patronage which has enabled us to do this, and hereby tender our sincere thanks for same, and trust that the benefit has been mutual, and that we may have the pleasure of continued patronage, and to those who have not yet given our stock a trial we solicit a trial of our superior well grown and carefully packed goods and for which we thank them in advance.

Guarantee

We guarantee safe arrival of plants, and that they are healthy and true to name, and hold ourselves ready to replace two for one any that prove otherwise.



QUAKER LADY

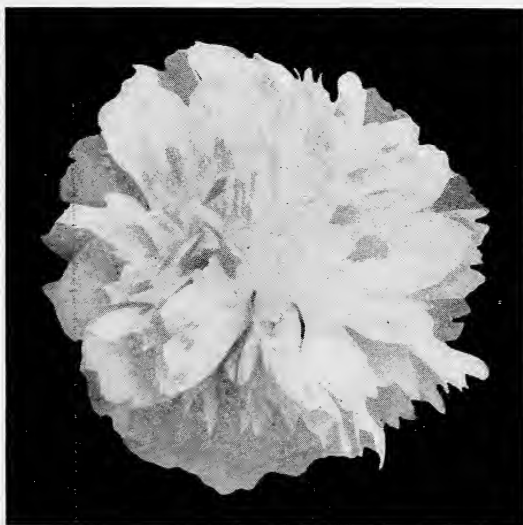
PRIZE WINNING PEONIES

In a class of 68 entries, our 6 Milton Hill won 2nd place at the Ft. Wayne show and we also took 2nd place in a class of 24 entries for best 10 varieties double blooms of each.

PEONIES

The following abbreviations are used in the following lists: Brand (B.), Crousse (Cr.), Lemoine (Lem.), Kelway (Kel.), Hollis (Hol.), Richardson (R.), Guerin (G.), Goos & Kenne-man (G. & K.), Calot (Ca.), Pleas (P.), Donka-lier (Don.), Rosefield (Ros.), Gombault (Gom.), Verdier (Ver.), Vilmorin (Vil.), Sturtevant (Sturt.), Millet (Mil.).

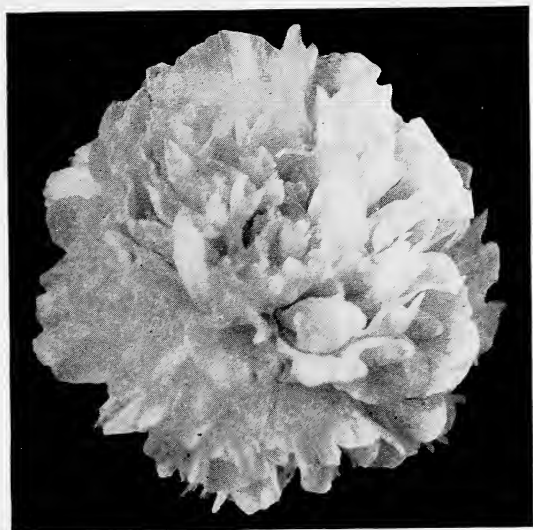
- Albert Crousse**, 8.6 (Cr. 1893) bomb type, late, extra good\$ 1.00
- Alice Harding**, (Lem.) Tall vigorous stems, very large flower of the most perfect shape, broad petals of best substance, cream white. Not for sale this season.
- Alsace Lorraine**, 8.8 (Lem. 1906) pointed, white petals lit up with a golden light in center make this a charming flower, tall and vigorous, late..... 3.00
- Adolph Rousseau**, 8.5, (Des. & Mechin '90) very tall, strong grower, rather loose, double or sometimes semi-double flowers of deep garnet, conspicuous and fine, M. 1.50
- Ama no Soda**, (Jap.) pink with yellow center 15.00
- Avalanche**, 8.7, (Cr. 1886) an extra good white, high center 1.00



AVALANCHE

Archie Brand , 7.5 (B. 1913) prize winner, bomb, pink, fragrant	1.00
Augustin d'Hour , 7.8, (Ca. 1867) large, free bloomer, good red.....	1.00
Baroness Schroeder , 9.0, (Kel.) one of the very best and most useful white varieties, large globular blooms, white guard petals with a delicate blush center fading to pure white, stems strong, foliage light green. L. M.	1.50
Berlioz , 7, (Cr. 1886) good, large, solferino red, white tip	1.00
Bishop Burke , (Vories 1925) crimson with a silvery sheen good form on long stiff stems and a free bloomer. Plant has excellent habits. Midseason	\$50.00
Blanche King , (B. 1923) one of the new ones, a fine pink with extra large broad petals, distinct, midseason. Delivery 1927	50.00
Chestine Gowdy , 8.4, (Brand 1913) shell-pink and cream, a dainty high built flower, L. M.	3.00
Claire Dubois , 8.7, (Cr. 1886) rose type, late pink, extra	1.00
Clemenceau , (Des.), a late variety with flowers of very deep rose or carmine color with silver edged petals	7.00
Couronne D'Or , 8.1 (Ca. 1873) semi-rose, symmetrical, late, white75
Dorchester , 7.7 (R. 1870) perfect rose type, latest pink, extra75
Dr. Boisduval , 7.6 (Gr. 1850) a fine brilliant red with gold stamens.....	1.00
Duchess de Nemours , 8.1, (Ca. 1856) crown type, early, white, no red marks, sulphur center50
E. B. Browning , 9.2, (Brand 1907) delicate pink bud that opens into a very fine white bloom of large size, late.....	7.50
Edwin C. Shaw , (Thurlow), clear shell pink, broad rounded petals sometimes edged crimson; cupshaped bloom of elegant form. In a class with President Wilson	25.00

- Elwood Pleas**, 8.7 (Pleas 1900) large flat rose type flowers of delicate pink color, M. 3.00



ELWOOD PLEAS

- Edulis Superba**, 7.6, (Lem. 1854) very early, free, pink, fragrant..... .50
- Enchantresse**, 8.9, (Lem. 1903) rose type large globular, creamy white flowers, strong grower, very late..... 6.00
- Etta**, 8.0, (Terry) very large, flat rose type of deep shell pink color, one of Terry's best, and one of the very late ones, vigorous 1.50
- Eugene Verdier**, 8.3, (Ca. 1864) dwarf, grown with extra stiff stems, deep shell pink with creamy shades, late..... 1.50
- Felix Crousse**, 8.4, (Cr. 1881) one of the best reds, brilliant75
- Festiva Maxima**, 9.3, (Miellez 1851) the standard early white, rose type, perfect form and color, extra75
- Floral Treasure**, 7.5, (Ros. 1900) free bloomer, delicate pink75
- Florence Nightingale**, 9.1, (Brand), a very late pure white with rarely a small fleck of crimson 1.00

- Frances Willard, 9.1 (B. 1907)** This is considered one of Brand's best of his earlier introductions, color creamy white, large size, late mid-season..... 3.00



FRANCES WILLARD

- Frankie Curtis, (Vories 1924)** very similar to the famous M. Jules Elie in form, but color is white 50.00
- Fuyajo, (Jap),** guard petals very deep red with dark crimson petaloids in center tipped cream; very distinct..... 12.50
- Galathee, 8.1. (Lem. 1900),** a fine, pearly-white, full double yet opens well, long stem and very late, pronounced extra by leading grower 3.50
- Georgiana Shaylor, 8.9, (Shaylor 1908)** a pale rose-pink, large and somewhat flat, vigorous grower, very high class, mid-season 5.00
- Germaine Bigot, 8.5, (Des. 1902)** large, pale lilac rose, splashed crimson..... 1.50
- Ginette, 8.6, (Des. 1915)** large, deep flesh color, fragrant, on established plants the flowers are extra fine 4.50
- Governor Morton, (Teas') new, red, fine form, vigorous, good keeper 3.00**
- Grace Loomis, 9.2, (Sounders 1920)** clear white, full double flowers, tall strong stems, very fine, late 20.00

Grandiflora , 8.8, (Rich.) very large flat flowers silvery shell-pink, petals pointed with a fine effect, very late.....	1.50
Grover Cleveland , 8.2, (Terry) dark crimson blooms on upright stems of medium height, fine garden variety, late.....	1.50
Harriett Farnsley , 7.9, (B. 1916) delicate pink, very late	1.00
Henry Avery , 8.5 (Brand), light pink, medium height, midseason, with large blooms that are quite fragrant.....	4.50
Henri Murger , 7.4, (Cr. 1895) rose-type, deep pink, good, late	1.50
Isani Gidui , (Jap), one of the leading white Japanese varieties	12.00
James R. Mann , 8.7, large, deep rose pink, one or two crimson streaks in center of flower, central petals in-curved, graceful, M.	25.00
James Kelway , 8.7, (Kel.) white with a glow of blush of pink or gold, broad petals, very tall and strong, fragrant, midseason	1.50
Jeannot , 9.2, (Des. 1918) cup-shaped bloom of soft shell-pink slightly tinted lavender, very promising variety.....	12.00
John M. Good , a new white that comes highly recommended	50.00
Jubilee , 8.9, (Pleas 1908) very large flat flowers of ivory white, narrow petals loosely arranged giving a feathery effect. A fine show flower which we have grown to ten inches in diameter. Stems rather weak, midseason	3.00
Judge Berry , 8.6, (B. 1907) very large flat blooms of soft pink, very early.....	5.00
Kelway's Glorious , 9.8 (Kel. 1909) pink-tinted buds opening into large iridescent white, fragrant, late midseason, one of the most sought after peonies.....	21.00
Kelway's Queen , 8.8 (Kel.) globular blooms good form and habit, deep flesh pink with slight carmine markings in center, fine form and good size, scarce, mid-season	10.00

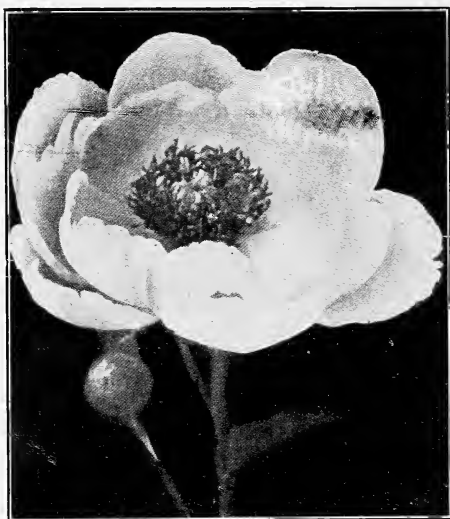


KARL ROSEFIELD

- Karl Rosefield**, 8.8, (Ros. 1908) rich silky dark crimson, full rose type, one of the best reds, midseason 1.50
- Le Cygne**, 9.9 (Lem. 1907) charming flower of ivory white petalage of good substance, always attracts attention and generally a prize winner, one of the best peonies we have 12.00
- Lilian Gumm**, (Gumm) large crown type shell-pink lighter at tips..... 7.50
- Livingstone**, 8.1, (1879) rose type, late, large and beautiful 1.00
- Longfellow**, 9.0, (B. 1907) brilliant cherry red, large size, considered among the few best red peonies 4.00
- Lora Dexheimer**, 8.4 (Brand), the splendid habit and bright color of this plant have marked it since selecting it first in 1904. Color an intense flaming crimson. Early midseason. Ranks with Longfellow.... 3.00
- Louis Van Houtte**, 6.9, a deep glossy red, midseason, an attractive bloom, strong stem75
- Loveliness**, 8.8, (Hollis 1907) large full flowers of light pink, stem strong, upright, late, sometimes in a dry hot season it burns in opening 5.00
- Mabel L. Franklin**, 9. (Franklin 1919) outer petals light pink deepening towards center, fragrant, the true variety, mid-season 15.00

Lady Alexandra Duff , 9.1, (Kel. '09) broad petals of soft French pink, of medium height upright stems, the true variety, a strong grower, and one of the finest of Kelway's introductions, mid-season	4.00
La Fiancee , 8.6, (Dessert '02) one of the very best single white varieties, beautiful as a water-lily, five to six inches in diameter, midseason	2.00
La France , 9.0, (Lem. 1901) large flat blooms on strong stems, soft rose-pink, late	5.00
Lady Beresford , 8.2, (Kel. 1895) a fine acquisition	2.00
La Fee , 9.2, (Lem.), rose type color rose-pink. Not for sale this year.	
Lady Iris , 7.9, (P.) a refined beauty.....	2.50
Lamertine , 8.4, (Lem. 1908), rose type, the rose colored petals tipped white, strong stems, quite scarce	5.00
La Perle , 8.5 (Cr. 1885) blush-white in-center with deeper edging, fragrant, late	1.50
Laura Dessert , 8.8, (Des. 1913) creamy guards deepening to canary yellow in er petals light pink deepening towards center mingled with some short creamy petals that add much to its beauty, fine fragrance	7.50
Madame Boulanger , 7.8, (Cr. 1886) large, soft pink, fragrant, extra fine.....	1.50
Madame DeVerneville , 7.9, (Cr. '85) a well formed charming flower, bomb type, early75
Madame Emile Galle , 8.5, (Cr. 1881) delicate pink, fine form, very beautiful, late midseason	1.00
Madame Emile Dupraz , 8.4, (Riv.), Carmine pink color a very fine flower when well grown, somewhat resembling the famous Milton Hill	5.00
Madame Emile Lemoine , 8.9, (Lem. 1899) ivory-white with markings of crimson, fine, midseason	1.00

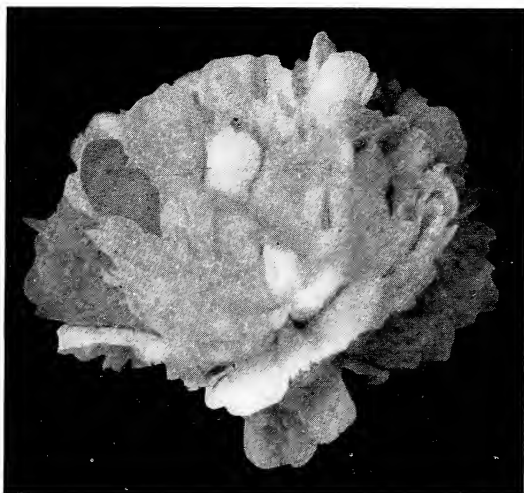
Madame Forel , 7.7, (Cr. 1881) enormous, full rose shaped bloom, deep pink.....	1.00
Madame Geisler , 7.9, (Cr. '80) glossy pink, very good, late midseason.....	1.00
Mademoiselle Leonie Calot , 8.1, (Ca. 1861) delicate rose-white, distinct and beautiful75
Mademoiselle Rousseau , 8.1, (Ca. 1886) an elegant blending of pink and white.....	1.00
Marguerite Gerard , 8.4, (Cr. 1892) enormous flat shaped bloom, hydrangea pink, midseason	1.25
Marcelle Dessert , 8.2, (Des. 1899) creamy white splashed with minute dots of lilac, fragrant, midseason	2.00
Marie Jacquin , 8.3, (Ver.) white and gold, water lily effect	1.00



MARIE JACQUIN

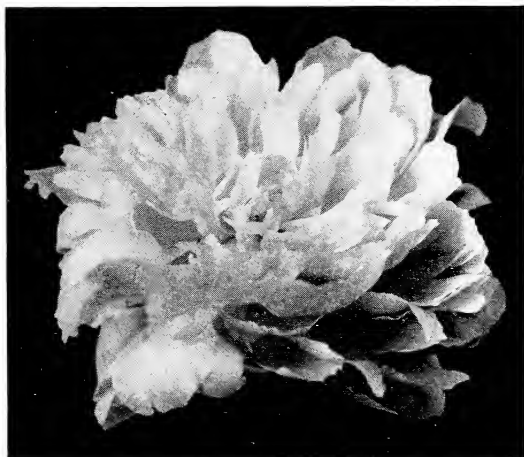
Marie Crousse , 8.9, (Cr. 1892), a very delicate shell-pink, good stems, midseason to late	3.00
Marie Stuart , 7.8, (Ca. 1856) pink guards, yellowish collar and in strong flowers a crown in center, extra early, fades to nearly white, the very next after <i>Officinalis Rubra</i>75
Mary Baker Eddy , 7.5, (Hollis 1910) said to be one of Hollis' best, deep pink.....	2.50

Marie Lemoine, 8.5, (Ca. 1869) best very late, white 1.00



MARIE LEMOINE

Martha Bulloch, 9.1, (B. 1907) one of the largest and best of Mr. Brand's early productions, blooms up to ten inches have been grown here, a soft rose-pink color with good substance 10.00



MARTHA BULLOCH

Mary Woodbury Shaylor, 9.0, (Shaylor 1916) clear pink with cream colored center, rose type, a cup shaped flower of great beauty, one of Shaylor's best, mid-season 15.00

Mathilde de Roseneck, 7.9, (Cr. 1883) late, fine every way 1.00

- Mary P. King**, 8.7, (Franklin) one of the new ones from the northwest, highly recommended 5.00
- M. Dupont**, 8.3 (Ca. 1872) very large bloom with more red markings than any other white one we know of, strong grower, free bloomer, very good, midseason..... 1.00
- Midsummer Night's Dream**, 8.2 (P.) ivory white, rare and beautiful 3.00
- Mignon**, 8.7, (Lem. 1908) very large globular rose type, extra fragrant, fine, midseason 4.00
- Milton Hill**, 9.0, (Rich.) "One of the best peonies in existence" were the words expressed by our lamented friend Mr. Farr when describing this variety, and we fully agree with him. One of the varieties to grow to ten inches in diameter with us and yet without any coarseness 3.00
- Mikado**, 8.6, (Jap.) red and gold, attracts universal attention, large size, tall erect stems, good grower, midseason, splendid variety 3.00



MIKADO

- Mrs. Edward Harding**, 9.3, (Shaylor 1918) large pure white, fine quality, full rose type 22.00

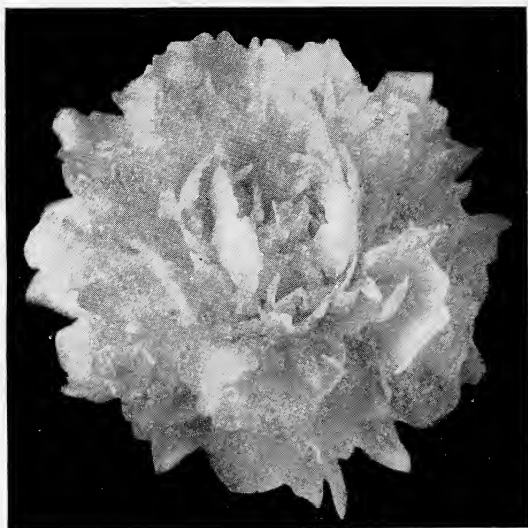
Mme. Jules Dessert , 9.4, (Des. 1909) one of the very best peonies as to form, free blooming, and delicacy of coloring that we have ever grown, midseason, extra	4.50
Mont Blanc , 8.6 (Lem. 1899) high built, white, high quality	3.00
M. Martin Cahuzac , 8.8, (Des. 1899) darkest of all peonies to date, dark garnet or maroon. globular flowers of medium size on strong upright stems, mid-season	3.00
Mrs. C. S. Minot , 9.2, (Minot), shell-pink and white, said to be a very excellent variety by expert growers, but we have not tried it out fully yet	45.00



MONS. JULES ELIE

M. Jules Elie , 9.2, (Cr. 1888) immense blooms, resembling a chrysanthemum, clear pink with a silvery tinge, good in every way, a universal favorite, and should be in every collection.....	1.25
Mrs. Geo. Bunyard , 8.6, (Kel. 1898) shell-pink, well formed blooms, free bloomer, good stems, midseason to late.....	5.00
Octavie Demay , 8.5, (Ca. 1867) flesh-pink, dwarf habit, good stems, early.....	1.00
Officinalis Rubra , the old fashioned extra early deep red75
Opal , 8.5, (Pleas 1908) large, rose type, pink, exquisite	3.00

- Phoebe Cary**, 8.8, (Brand 1907) large, very soft rose-pink blooms, carried on tall strong stems, very excellent..... 6.00

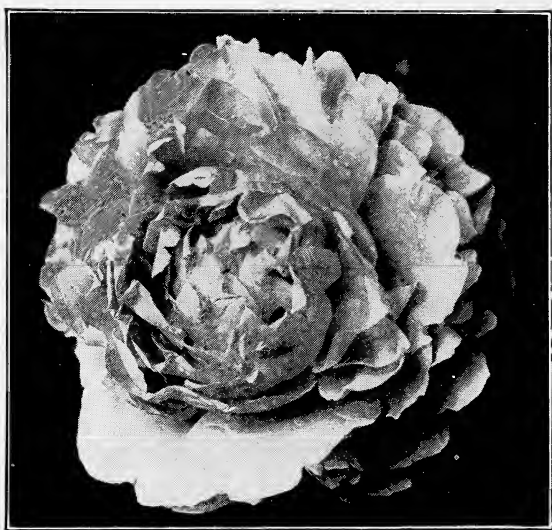


PHOEBE CARY

- Petite Renee**, very odd variety, approaching the Japanese type, wide guards and tufted center of narrow petals, a violaceous pink, midseason 1.00
- Philippe Rivoire**, 9.2, (Riviere 1911) fine, bright crimson, good form and habit, one of the very few red peonies with agreeable fragrance, very scarce..... 15.00
- Pierre Dessert**, 7.6 (Des. & M. 1890) one of the very best early deep reds..... 1.00
- Pink Baroness Schroeder**, (Kel.) said to be identical with the peony sent out as La Verne, large, pink, similar to Elwood Pleas, a vigorous grower, very showy.... 5.00
- Pres. Wilson**, 9.3, (1918) soft rose-pink fading to shell-pink, some crimson markings on guard petals, fragrant, late, exquisite color and form..... 45.00
- Reine Hortense**, 8.7, (Ca. 1857) a universal favorite, very charming, pink with crimson splashes, strong upright stems, good grower, mid-season 1.50
- Rosa Bonheur**, 9.0, (Des. 1905) a fine soft pink bloom with incurved petals giving it a globular rose shape, rather dwarf grower, mid-season 5.00

Richard Carvel , 8.8, (B. 1913) a splendid early red, bomb type, earlier and said to be better than Felix Crousse in color.....	5.00
Rubra Superba , 7.2, (R) best, extra late red75
Ruth Brand , 7.9 (B. 1907) large compact bomb type, soft lavender pink, good strong stems with length, a good one, some days later than M. J. Elie, mid-season	2.00
Sarah Bernhardt , 9.0, (Lem. 1906) large well formed flowers of a soft shell-pink color, an extra good one, late.....	2.50
Suzanne Dessert , 7.7, (Des. & Mechin 1890) very large, pure mauve, fine, mid-season	1.50
Snow Wheel , (Jap.) white guard petals with yellow petaloids	2.00
Suzette , 8.2, (Des. 1911) brilliant rose-pink with gold stamens, full bloomer, good strong stems, midseason	1.50
Some Ganako , (Jap.) guards darker than Mikado, center tufted golden, very fine, but habit not as upright as Mikado.....	7.50
Solange , 9.7 (Lem. 1907) here we have unique coloring of a glowing yellowish brown tint found in only a very few peonies and in no other so well defined as in this. Won first as best individual specimen bloom at A. P. A. show, St. Paul, in 1923. Late midseason	5.00
Souvenir De Louis Bigot , 9.1, (Des.), a beautiful Bengal rose color. Somewhat similar to Walter Faxon, a choice variety and quite scarce	5.00
Souv. de Gaspard Calot , 7.4, (Ca. 1865) fine pink, midseason	1.00
Splendida , 8.3, (Kel.) strong, tall grower, large rose shaped blooms of lilac-pink color, very fragrant, midseason to late	3.00
Solfatare , 7.6, (Ca. 1861) one of the few yellow tinted peonies when opening, fading if left in sun.....	.50
Tamatbako (Jap.) pink with yellow tufted center, extra good.....	15.00

- Stephanie**, 8.0 (Terry) a beautiful delicate pink flower, good grower, large, late or midseason 2.50
- Therese**, 9.8, (Des. 1904) one of the most satisfactory in every way, extra large, vigorous, free blooming, soft shell-pink with lighter center, midseason, should be in every collection 4.50



THERESE

- Tokio**, (Jap) rose-pink, golden center, highly recommended 7.50
- Two eye 6.00
- Tourangelle**, 9.4, (Des. 1910) very large, exquisitely tinted delicate pink, extra fine, should be shaded to preserve the color, fragrant, late 4.50
- Umbellata Rosea**, 7.4, (1895) very early, pink guards with creamy center..... .75
- Venus**, 8.3, (Kel.) a very free blooming pink, fine for cutting, vigorous, mid-season 1.50
- Virginie**, 7.6, (Ca. 1858) dainty pink and gold, rather flat bloom, midseason..... 1.00
- Walter Faxon**, 9.3, (Rich.) a distinct and beautiful shade of pink not found in any other, should be in every garden, extra good 5.00
- W. F. Christman**, 8.8, (Franklin), rose type, flesh pink color, very refined in both form and color, large and fragrant 10.00

IRISES

Tall Bearded Varieties

In the Iris list, S. indicates the standards and F. the falls or lower petals.

ea. five

After Glow , 8.3, (Sturtevant), soft grayish pink, 36"	\$.50	\$2.00
Alcazar , 8.9, (V. A. and C. '20), S. bluish lavender, F. rich purple, vigorous, 36"50	2.00
Ambassadeur , 9.4 (Vilm. '20) strong plant with stout stems, about 4 feet high. Flowers very large, S. reddish violet, F. rich velvety dark reddish violet of great substance and almost horizontal. A magnificent variety90	3.50
Ambigu , 8.3, (Vilm. 1916), a fine variety, a strong grower and free bloomer. S. smoky red, F. velvety reddish brown	1.00	3.00
Anna Farr , 8.4, (Farr '13) white, blue markings, 36"95	3.00
Anna Leslie , 8.3, (Sturt. '18) S. white, flushed rose, reddish carmine, 27"50	2.00
Ann Page , 8.6, (Hort.), 919, a lovely pale lavender self with large flowers of splendid shape. The stems are stout and branching and the blooms deliciously scented. Gives the general effect of blue. One of the very best.....	5.00	
Archeveque , 8.3, (Vil. '11) one of the finest dark irises, 30"50	2.00
Asia , 9.2, (Yeld. '20), A grand iris, very large flowers and fine, bold upstanding foliage, S. silvery lavender deepening at base to a golden yellow. F. pale reddish purple, lightening in color toward the margin. One of the finest in cultivation, 4½ feet high.....	4.00	
Ballerine , 9.4 (Vil. '20) another one of the outstanding good irises of		

recent introduction, said by some to be even more beautiful than Ambassadeur, S. light blue-violet, broad and waved at margins, F. deeper color	1.50	
Bluet , 7.4 (Sturt.) pure blue self, white beard, 24"50	2.00
Blue Jay , 7.1, (Farr '13) fine blue very late, 30"35	1.00
B .Y. Morrison , 8.5, S. bluish lavender, F. purple	1.00	
Caprice , 7.5, (Vil. '04) good, violet, 24"25	1.00
Caterina , 8.9, (Foster '09) red violet, tall branched, 42"50	1.75
Chester Hunt , 6.9 (Farr) fine blue 30"35	1.50



CLUNY

Cluny , 8.6, (Vil. '20) S. pale lilac blue, F. darker, magnificent, tall, large flower	1.00	4.00
Eduard Michel , 8.6 (Verd '04) deep red violet, S. and F. uniform, wine red, 36"	1.00	4.00

Eldorado , 7.8, (Vil.), a beautiful reddish bronze50	1.75
Fairy , 8.0, (Kennicott '05) white, some delicate soft blue marks 30"25	1.00
Georgia , 8.9, (Farr), Cattleya rose, 18"	2.00	
Glory of Hillegom , 7.6, S. and F. clear light blue30	1.00
Glory of Reading , 6.8 (Farr) S. deep blue, F. royal purple, 30"25	1.00
Her Majesty , 7.3 (Perry '03) light pink, 24"25	1.00
Harriet Presby , (Presby. 1922), pinkish lilac, somewhat near Aphrodite in color and habit. Very tall and desirable	1.50	
Iris King , 7.9 (G & K '07) S. rich yellow, F. plum edged yellow.....	.35	1.25
Isolene , 8.6 (Vil. '04) S. upright pink, F. mauve, one of best in list, 36"40	1.50
Juniata , 8.1 (Farr '09) clear blue tall, large flowers, very fine 36"....	.25	1.00
Kathryn Fryer , 8.1, (Fryer), S. violet, F. maroon50	2.00
Kochii , 7.8 rich deep purple, early 20"25	1.00
Loreley , 7.9, (G & K '09) S. light yellow F. blue bordered cream 24"25	.75
Lady Foster , 8.5, (Foster), blue and violet, 42"	1.25	
Lent A. Williamson , 9.0 (Wmsn. '18) S. deep blue, F. royal purple, free, vigorous, 36"75	3.25
Lohengrin , 8.2 (G & K. '10) old rose shade, free, vigorous, fine.....	.25	1.00
Lord of June , 9.1, (Yeld '11) extra, S. blue-lavender, F. blue-violet, 40"	1.00	4.00
Magnifica , 9.1, (Vil. '20) extra large flower, very fine, 3 to 4 ft.....	1.00	3.50

Mildred Presby , (Farr.), S. white, F. rich pansy violet with narrow edge of white, very fine and by some considered Farr's master- piece, 32"	3.00	
Miss Eardley , (Perry '10) S. yellow, F. blue bordered cream, 24"40	1.50
Mme. Chereau , 7.4 (Lemon '44) S. & F. frilled with blue border, 32"25	.75
Mme. Cheri , 8.4, (Sturt.), violaceous pink, 48"	1.00	
Mme. Gaudichau , 9.3, (Millet '14) S. & F. rich dark purple, vigorous, 36"	2.00	
Moliere , 8.5, (Vil.), dark violet.....	1.00	
Monsignor , 8.4, (Vil. '07) S. rich violet, F. darker25	1.00
Morning Splendor , (Shull) said to be very fine, extra rich color.....	7.00	
Mother of Pearl , (Sturt. '21).....	2.00	
Mrs. Nuebrunner , 6.8, deep gold- en yellow, 24"25	1.00
Navajo , 7.4, (Farr '13) S. bronzy- yellow, F. deep maroon, veined, 20"40	1.50
Neu de Orage , 7.6 (Verd. '05) S. slaty gray, F. bronze and purple 24"50	2.00
Niebelungen , 6.8, (G & K '10) S. faun yellow, F. violet, handsome and free, 24"30	1.50
Nirvana , 7.7, (Sturt. '28)50	
Oriflamme , 7.8, (Vil. '04) S. blue, very large, F. dark purple, broad 30"75	3.00
Opera , 8.7 (Vil. '16) red, violet and purple, rich, 33"75	3.50
Oriental , 7.2 (Farr '13) S. clear blue F. rich, royal blue, 32"25	1.00
Pallida Dalmatica , 8.8.....	.25	1.00
Parc de Neuilly , 8.1, (Ver., deep violet, 30"35	1.25

Pauline , 7.5 (Farr '12) S. & F. large rich, pansy violet, orange beard, fragrant, 36"25	1.00
Pocahontas , 7.7, (Farr '15) S. & F. white, S. bordered blue, frilled....	.30	1.00
Princess Beatrice , 9.5 (S. & F.) clear lavender blue, large, 40"50	2.00
Prosper Laugier , 8.3. (Verd. '14) S. bronze red, F. pansy purple, 30"25	1.00
Prospero , 8.5, (Yeld. '20) S. pale lavender, F. deep red purple, very large and fine, 48"90	4.00
Quaker Lady , 8.4, (Farr '09) S. a smoky lavender, F. blue and gold, fine, 38"40	1.25
Queen Catarina , 9.0, (Sturt '18) light lavender, extra fine, 30"	1.00	
Red Cloud , 7.8, (Farr '13) S. rosy lavender bronze, F. maroon-crimson, 24"35	1.00



RHEIN NIXIE

Rhein Nixie , 8.4, (G. & K. '10) S. white, F. violet bordered white 30"35	1.00
--	-----	------

Rembrant , distinct, light blue-purple color, 24"50	1.50
Seminole , 8.3, (Farr), S. violet, F. crimson, 18 to 24"	1.00	
Sherbert , 8.1 (Sturt '18) effective in height form and tone, 42".....	.75	
Sherwin Wright , 7.6, (Roh. '05), bright yellow, 24"25	1.00
Susan Bliss , (Bliss) a new English variety, lavender-pink with the lavender fading out and leaving full pink	7.50	
Trojana , 8.1, S. blue, F. rich purple-blue, large, handsome30	1.25
Tropic Seas (Shull) a new one highly recommended	7.50	
White Knight , 8.3, (Saunders '16) sweet scented, pure white.....	.50	2.00
Windham , 7.3 (Farr '09) S. lavender pink, F. veined darker.....	.50	2.00
Wyomissing , 7.2, (Farr 09) S. creamy suffused soft rose, F. rose25	.75
Zua , 7.5, (Crawford), white, creped75

MISCELLANEOUS IRISES

Blue King , (Orientalis), deep blue graceful for table bouquets.....	.25	1.00
Snow Queen , (Orientalis) cream white25	1.00
Gold Band , (Koempherii) white and gold, very large and fine.....	.35	1.25
Ocre Leucea , ivory white, light yellow markings, very tall.....	.50	2.00
Pseudo Acoris , yellow, vigorous, tall, likes moist location.....	.35	1.25

General list of Gladiolii will be issued later

Perennial Delphinium, or **English Larkspur**, these are in beautiful shades of blue, from a mere tint through all shades to dark blue and purple; 5 to 6 ft. high second year. Beautiful. Plants per doz.\$2.00
Seed per large package..... .25

Address all communications to

E. M. BUECHLY, Greenville, Ohio.

