

## **Historic, Archive Document**

Do not assume content reflects current scientific knowledge, policies, or practices.





# FALL GUIDE TO GOOD ROSES BULBS and PERENNIALS



**THE CONARD-PYLE CO.**  
*Star Rose Growers*  
Robert Pyle, Pres. West Grove, Pa.



## Brilliant Hardy Chrysanthemums

### The Most Desirable Fall Flowers

You can give a gay appearance to an otherwise somber autumn garden by planting Hardy Chrysanthemums. For indoor decoration they are fine, as the flowers last a long time, and the spicy, healthy, outdoor fragrance is always exhilarating and refreshing.

Price, Field Plants, 35c. each, any 12 for \$3, ppd.

Here are five distinct varieties:

**Tints of Gold.** Very early; large; yellow, tinted with bronze.

**Cherry-Red.** Dark cherry-crimson.

**Mrs. E. D. Godfrey.** Light pink.

**Diana.** Snow-white.

**Hilda Canning.** Bronze.

**OFFER No. 2.** 1 each of above 5 Chrysanthemums, \$1.50; or 5 of each, 25 in all, for \$6, postpaid.

**OFFER No. 23.** 10 varieties of Hardy Chrysanthemums offered on page 23 for \$2.50, postpaid.

## Fragrant Hardy Phlox

### For Summer and Fall Bloom

Hardy Phlox are needed in every perennial garden, and if you have a bed, say, alongside a walk or some conspicuous place where you want a brilliant color effect, just plant an entire bed of Rhijnstroom. You will find it enchantingly lovely.

Price, Field Plants, 35c. each; any 12 for \$3, ppd.

If you wish an assortment of colors here are four of the best:

No. 1. **EUROPA.** White, with deep crimson eye.

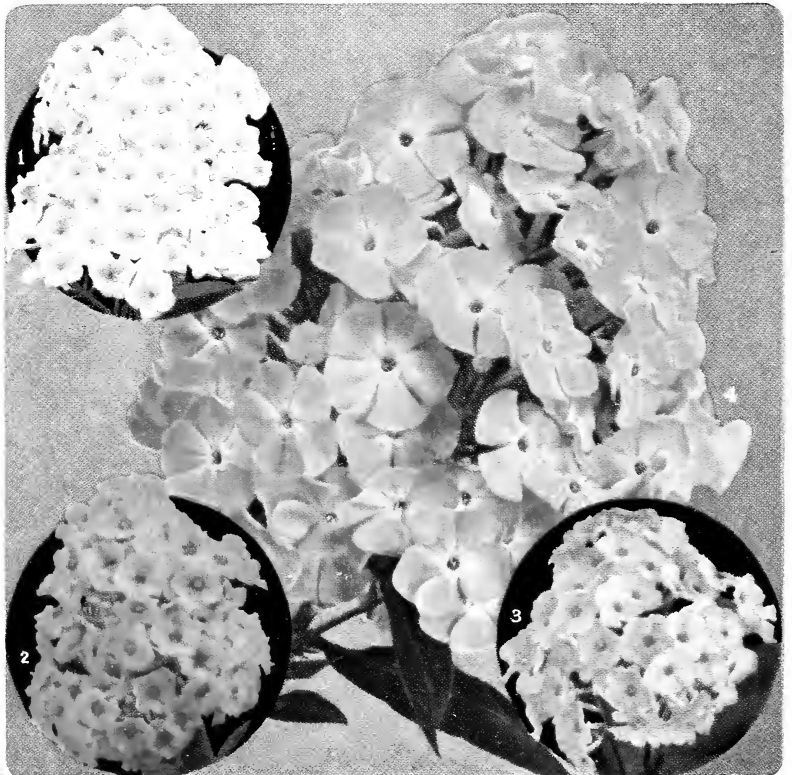
No. 2. **THOR.** Salmon-pink, with a scarlet glow.

No. 3. **W. C. EGAN.** Lilac with bright solierino eye.

No. 4. **RHIJNSTROOM.** Carmine-rose color.

**OFFER No. 2a.** The set of four for \$1.25; or 5 of each, 20 in all, \$5 postpaid.

**OFFER No. 23a.** 9 varieties of Hardy Phlox offered on page 23 for \$2.25, postpaid.





# This Fall Plant ★ STAR Roses

Why this fall? Because there is no better time. We've tried it long enough to be convinced of that. Many others have tried it, too, as far north as Michigan and Maine. To be sure, they completely covered the base of the plants with soil—and so should you. With what results? When winter passed, the branches that were covered came out green and plump; they started to grow at the earliest crack of spring because the roots were "settled in" the fall before. And don't forget this, that transplanting is always most successful at seasons *when the soil is warmer than the air*, as it usually is in the fall and late into the winter, which condition stimulates root-growth.

In the spring the situation is reversed, and newly planted plants may start top-growth before the roots have begun to function properly, with the probable result of loss or at least weakness and possible death from sheer exhaustion after a supreme attempt at blooming.

We not only recommend fall planting—we practice it in our own Rose-garden pictured on page 5. Both last year and the year before we set out, each autumn, over a half-thousand Roses.

A Rose plant, you see, is a highly bred type of shrub, ready to respond to intelligent care and thoughtfulness. You can figure it out in your own mind, how much better it is to have the roots snugly nestled away this fall in the bed from which the plants are expected to bloom next year and thus be ready to grow at the very first impulse of spring. So we say "Take time by the forelock *this fall—plant ★Star Roses.*"

*Why Star Roses?* you may ask. Not because they are (as we believe they are) the only *Trade-Marked* Roses offered by anyone (see Registered Trade-Mark, p. 5) or just because they are guaranteed to bloom or your money back (see complete guarantee, p. 5) but because it is foolish to risk your time, your ground, and your money on Roses not good enough to be trade-marked and not good enough to be guaranteed. Star plants produced the Roses that won the Grand Prize for our Rose-garden at the Philadelphia flower show last spring.

The satisfaction of our customers with ★ Star Rose plants has been so great that they are demanded in such increased numbers that we are compelled to add continually to the area of rich Chester County land upon which we grow these quality plants.

## TWO MAGNIFICENT ROSES SHOWN IN NATURAL COLORS

### ★Rev. F. Page-Roberts HT

See Front Cover

One of the most beautiful and satisfactory of the new two-tone Roses. The long-shaped buds are Indian yellow, splashed with carmine, which covers the reverse of the petals when the blooms open; the inside of the petals is rich yellow, almost like Marechal Niel. In form it is good, the inner petals standing upright as long as the flower lasts.

The bush is spreading in growth, with abundant, dark green foliage, not entirely disease resistant. The new foliage is as ornamental as polished bronze. Blooms freely; delightful for cut-flowers. A noteworthy feature of this Rose is its piquant fruit-like fragrance.

Winner of the National Rose Society Gold Medal. (See our 1927 fall "Star Dozen" on page 7.) **Price, \$1.50 each.**

### ★Souv. de Georges Pernet PERN.

See Back Cover

Long, pointed buds of unusual size, opening slowly to very large, double, well-formed, faintly scented blooms that last long on the plant or as cut-flowers. They have a heart-appealing color of brilliant pink, overlaid with an orange glow, which turns to shining carmine-pink, with a deep yellow base to the petals when the flower is fully open. There is such a sheen in the color that the petals seem to be made of glistening Oriental silk. The plant is rather spreading in growth and makes very strong, thorny canes, furnished with healthy, disease-resistant, dark green foliage. Rose enthusiasts who compete at Rose shows need this new variety, for it is a wonder for size, form, and color, and a prize-winner. Awarded Bagatelle Gold Medal. **Price, \$1 each.**

# 70,000 ★ Roses Cheerily Waving "Howdy-do" to Every Passer-by



Motorists from Washington to Philadelphia will remember this field of brilliant Star Roses

## From Far and Wide

### THIS IS FROM HAWAII

Order No. 26943 December 14, 1926

I have received Roses which you sent me November 10 and 15 in good condition. Again send me, please, the following Roses, \$20 enclosed.—Dr. G. K., Hanapepe, Kauai, Hawaii.

### THIS FROM ALASKA

Order No. 2195 March 10, 1927

The Roses I purchased last year were simply splendid. Please accept my heartiest thanks and congratulations. May I also add that the greenhouse men here were unanimous in declaring that the Roses were shipped in the best manner they had ever seen. Every Rose bloomed.—D. A., Fairbanks, Alaska.

### STAR ROSES IN IOWA

Order No. 4456 March 12, 1927

Just a word to tell you how very pleased I am with the Roses I have purchased from your company. None other can equal them. They were wonderful last year. In August I cut a dozen every other day for two weeks, and I have but eight Star bushes.—Mrs. C. G., Cherokee, Iowa.

### "EXCEPTIONAL LUCK" IN WISCONSIN

Order No. 7641 March 18, 1927

The writer had such exceptional luck with Roses purchased from you that people came for miles around last summer to see our Roses, and no doubt a number of orders have been sent in to you by reason of the success the writer has had.—G. L., Beaver Dam, Wis.

The above picture may seem to some like the wholesale growing of Roses, but if ever there was a crop that responds to individual care for every individual *plant*, it is the Rose.

From the time we start, throughout the long three years until you get the finished plant, "vigilance" is our watchword, and every possible precaution is taken to ward off what might hurt, every possible aid is given to feed and foster strong, natural growth, and to produce rugged, healthy STAR ROSE specimen plants.

This growing of tens of thousands of Roses for American gardens is a fascinating story, if only we had room to tell it all. To begin with, the best of Chester County soil, grown rich with cover crops of clover, is, in the autumn before planting, plowed under 18 inches deep to let the winter freezes kill all grubs and eggs and pulverize the upturned soil. Then, for example, we do not plant carelessly with a planting-machine, but every single Rose plant is set

### STAR ROSES A TREAT TO THE NEIGHBORS

Order No. 10994 April 4, 1927

My success with the Roses you sent me last year will speak for itself when you glance over my order for this spring. The blooms on all the bushes were gorgeous beyond description and were a constant delight, not only to ourselves but to all our neighbors.—Mrs. Wm. T. N., St. Louis, Mo.

### HAS CONFIDENCE IN OUR METHOD OF FAIR DEALING

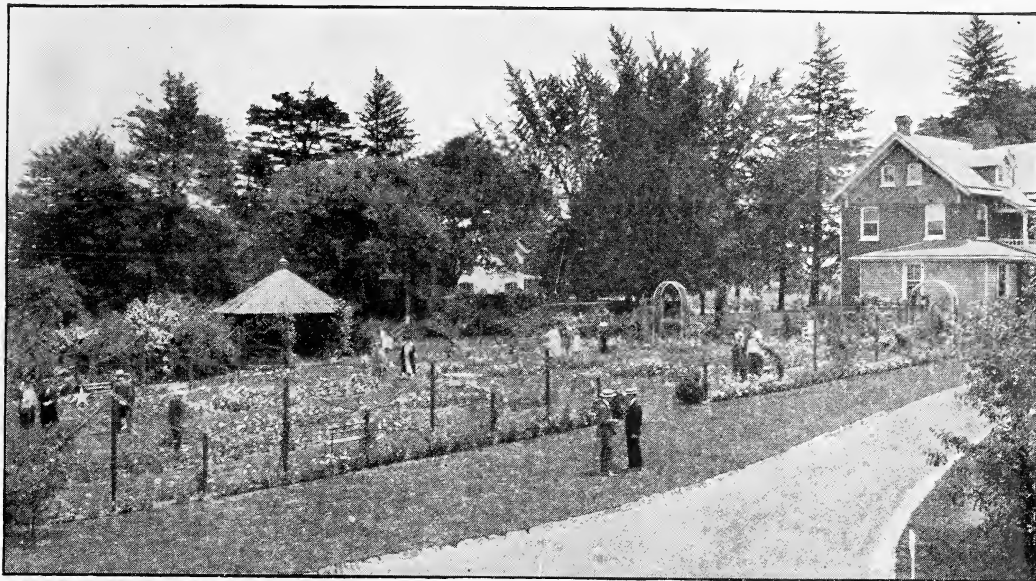
Order No. 4029 March 18, 1927

I have your letter of the 12th instant, and also shipment of my order in good condition.

Your rebate is much appreciated. While it was not necessary to establish my confidence in your method of fair dealing, it will certainly cement the same.—Jos. L. A., Portland, Ore.

AUTUMN, 1927 · TIME TO PLANT ROSES

# This Shows What Fall Planted, Sturdy ★ Roses Will Do



Roses here are enjoyed by motoring patrons from many states. A section of our Rose-garden

out by hand, one man preparing the hole, a second one planting, and a third finishing it off.

That is only the first step. The other steps—and there are many of them before we reach the star at the top—are those that the ordinary Rose-growers too often fail to climb. These steps are made up of unceasing work in the face of every kind of weather, from blazing sun to frost and snow; work to ward off the first approach of any blight that might interfere with the season-long excellence of a full leaf system, with which is built up strong branches and still stronger roots.

So, it has taken our todays and yesterdays of experience, end on end, for years, to gather together all that goes into the "Know How" of growing the Star Roses we now produce, and which our many friends declare to be quite above the average, Roses that have earned the right to wear the star label, the C.-P. mark for a superior Rose.

August 5, 1927.

*Robert Pyle*  
PRESIDENT

## OUR ★ GUARANTEE

*Such As Has Been Made by No Other Rose-grower*

We guarantee Star Roses to bloom the first natural blooming period after planting, or you may have your money back.

(Hybrid Tea, Tea, and Polyantha Roses are guaranteed to bloom the first season after they are planted. Hardy Climbing Roses, Hybrid Perpetuals, and some Roses in other classes cannot be expected to bloom until the second year after planting.) This guarantee does not cover loss from admitted neglect on the part of the purchaser.



WHAT THE NATIONAL BANK AND TRUST CO. OF WEST GROVE, PA., SAYS OF US

*"To Whom It May Concern:*

It affords us pleasure to testify to the high standing and character of The Conard-Pyle Co. It is composed of practical, up-to-date nurserymen and Rose specialists. In our opinion any statement they may make or any agreement into which they may enter can be absolutely relied upon."

July 27, 1927.

R. B. Ewing, Cashier.

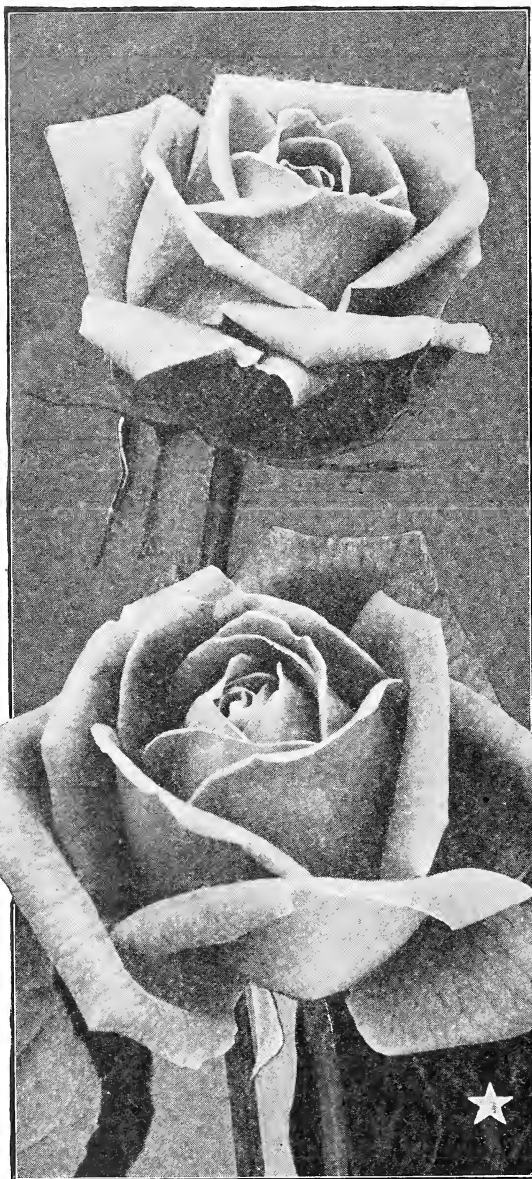
## OUR STAR TAG .

The durable Star Tag on every Star Rose is the symbol of our guarantee. It is the *recognized sign of quality* in the Rose world and can be used only by The Conard-Pyle Company. Every Star Tag carries the name of the Rose to which it is attached, thus adding the joy of always knowing the name of every ★Star Rose when it blooms.



The name of the Rose is on the Reverse Side of the Celluloid Tag

# New and Rare Roses



Lady Margaret Stewart

## ★Lady Margaret Stewart HT

(See illustration)

The color is unusual, best described as coming between the tangerine-orange color of Mme. Alexandre Dreux and the Indian-yellow and carmine of Rev. F. Page-Roberts. The pointed bud is deep orange, splashed with scarlet, and opens in a large, full bloom of deep sunflower yellow, the reverse of the petals heavily shaded orange-brown. A delightfully fragrant Rose with upright habit. A continuous bloomer. Gold Medal N. R. S. \$2 each.

## ★Mari Dot

Introduced in U.S.A., fall 1927, by The Conard-Pyle Co.

A most exquisite, free-blooming, bedding Rose, spreading in growth, with deep, holly-green, undulated foliage. Buds are deep Chinese orange color. The long-lasting blooms are double to the center and deep glowing apricot when fully opened. They have a rich, fruity fragrance. Awarded a Gold Medal at Saverne in Alsace, another at Barcelona, Spain, and a Certificate of Merit at Bagatelle, France. Stock is limited. \$5 each.

## ★Agnes Rug.

The only yellow Rugosa. See description, page 15.

## ★Dame Edith Helen HT

A Rose of such unusual merit that it was selected from a noted rosarian's seedlings by the Duchess of Londonderry, a great patron and connoisseur of the Rose, as worthy of bearing her name. In form it resembles the famous Francis Scott Key, which is illustrated on page 9, but the color is lovely Neyron-pink, brilliant and without shading. The blooms open well in any weather, large and full, long-lasting, and richly fragrant. \$2 each.

## ★Etoile de Hollande HT

New. Lovely bud with strong Rose fragrance, borne on long stems. Flower of good size, but not very full, deep velvety crimson, without shading. It does not blue, but lightens with age. It blooms all summer long. Unusually hardy. A new red Rose of first magnitude. \$2 each.

## ★Henry Nevard HP

A new red HP. See description, page 14.

## ★John Russell HT

New. Flowers very dark, velvety crimson, flashing off to a deeper shade toward the center, *extra large*, full, perfectly formed and carried singly on strong, erect stems. Awarded Bagatelle Gold Medal, 1924, and N. R. S. Gold Medal, 1925. \$2 each.

## ★Sarah Van Fleet Rug.

A new pink Rugosa. See description, page 15.

## ★Ville de Paris Pernet. City of Paris

Another great Rose of Mons. Pernet-Ducher which was awarded a Gold Medal at the Bagatelle (Paris) Garden. The buds are long and flowers are fairly large, but not very full, with *no light shadings* in the rich buttercup-yellow color. Slight Marechal Niel fragrance. It resembles Radiance so much in form of flower, upright growth, and freedom of bloom that it has often been referred to as a "Yellow Radiance." It is the best pure yellow Rose now offered and holds its color in an astonishing way, even in bright sunshine. \$2 each.

THE 1927 IMPROVED, FALL

# 12 ★ Star Dozen Roses \$10.50

If bought at single rate these would cost you \$12.50

To the 1927 Fall "Star Dozen" we have added the beautiful Rev. F. Page-Roberts Rose as shown in color on the front cover. This addition makes this the highest quality dozen we have ever offered.

This dozen Roses, singly or collectively, are positive winners when it comes to producing exquisite blooms, and quantities of them, from early in June until November, in this latitude. In our Rose-fields, where we have to grow them by the tens of thousands, they are enchantingly lovely. Visitors always find it easy to pick out the "Star Dozen" by noting the nursery rows that show the most bloom.

Rose hybridizers are never-ceasing in their efforts to improve on existing varieties, and constant tests are being made in our test-garden and Rose-fields to determine what is best to offer in the Conard-Pyle Star Dozen, so changes have been made in this set of 12 since 1907, when the first Star Dozen was offered, until now we have for you Roses that will give the maximum of satisfaction in ease of growth and quality of bloom.

There is no more effective proof of the quality of this dozen Roses than to have our customers order them for their friends. One customer of many years' standing became so enthusiastic that he ordered and paid for 15 sets to be sent direct to his friends in several states (order No. 11740). Many, many others order an extra dozen for birthday gifts, wedding gifts, and Christmas presents.

In growing these Roses, nothing is spared to bring to you perfect plants with vigorous roots, full of vitality, and guaranteed to grow and bloom. All Rose colors are represented—red, pink, yellow, white, and tinted—and when asked for a dozen Roses we recommend the Everblooming Star Dozen *always*. Our reputation as Rose Specialists depends on what we recommend.

**FOR BEST RESULTS PLANT THESE ROSES THIS FALL**

★**REV. F. PAGE-ROBERTS.** HT. A two-toned Rose—carmine and yellow. Shown on the front cover and described on page 3. **\$1.50 each.**

★**RADIANCE.** HT. The most popular pink Rose in America. It stands at the top of the list. The fragrant flowers are large, globular, but not compact, brilliant rose-pink, with lighter tints on the inner surface of the petals. **\$1 ea.**

★**DUCHESS OF WELLINGTON.** HT. The most popular yellow Rose to date. Its lovely buds are very long and pointed. They unfold slowly, changing from deep orange-yellow to lighter shades. Richly tea-scented. **\$1 each.**

★**MME. EDOUARD HERRIOT.** (The Daily Mail Rose.) (Pernet.) This vivid Rose is the earliest to bloom in this class. The large buds glow like dusky fire, and the newly opened blooms like red-hot copper which soon changes to a pleasing orange-pink. **\$1 each.**

★**ETOILE DE FRANCE.** HT. A sparkling red Rose. The flowers are large, unusually double, and of informal shape when fully open. Splendid for cutting. In our test-gardens this has been one of the most satisfactory reds. **\$1 each.**

★**MRS. AARON WARD.** HT. A most delightful continuously blooming Rose. In cool seasons, and on first opening, it is rich, golden fawn, but in bright sunlight it quickly changes to soft pink. **\$1 each.**

★**SOUV. DE GEORGES PERNET.** HT. Brilliant carmine-pink. Shown in natural colors on the back cover and described on page 3. **\$1 each.**

★**RED RADIANCE.** The big blooms of cerise-red endear this Rose to everyone. The buds are particularly fine in the half-open state, and the flowers are good for cutting, but also endure well in the garden and hold their color. Its fragrance is sweet and fairly strong. **\$1 each.**

★**LOS ANGELES. (Pernet.)** Shades of salmon-pink, apricot, and orange almost impossible to describe. It is remarkable for its brilliant color and beauty of form. **\$1 each.**

★**SOUVENIR DE CLAUDIUS PERNET. (Pernet.)** Both bud and bloom are clear sunflower-yellow. As the flower ages, the outside petals become light sulphur-yellow edged with white. The foliage is holly-like and olive-green. **\$1 each.**

★**MME. BUTTERFLY.** HT. Delicately modeled flowers of tender pink and gold. One of the sweetest and most pleasing Roses. Its lovely spiral buds slowly unfold into big flowers, very highly scented, and unusually long-lasting. **\$1 each.**

★**KAISERIN AUGUSTE VIKTORIA.** HT. The standard of perfection in form. Its very double flowers are white, tinted with lemon at the base, and are long-lasting. A most perfect white Rose. **\$1 each.**

**12** One each of the famous Star Dozen, hardy, reliable everblooming Roses **\$10.50**

**ASK FOR OFFER No. F7**



# Everblooming Hybrid Tea Roses

In this strong, free-flowering race, the Rose hybridizers have given us much of the hardiness of the Hybrid Perpetuals combined with the free, if not constant flowering habit of the Teas. Blending these two classes has developed rare and beautiful colors undreamed of only a few years ago. On this and the following five pages you have the best representative varieties to select from for planting this fall.

SEE PRICES AT FOOT OF PAGE



Columbia. An ideal Rose for cutting

- ★**COLUMBIA.** HT. (Illustrated above.) An extremely popular American-bred Rose. Its large and firm buds open very slowly to wide, impressive flowers whose color deepens as it expands to a rich rose-pink, slightly tinged with yellow at the base of the petals. The stems are long and very strong, making it ideal for cutting because of its heavy substance and fine lasting quality. It is delightfully fragrant. This Rose is particularly good in the cooler seasons, when the color is richer and it produces flower after flower with great freedom. It has few thorns, and the foliage is healthy. Columbia comes as near to perfection for the amateur as can possibly be expected from any Rose. Awarded Hubbard Gold Medal of American Rose Society. \$1 each.
- ★**EDEL.** HT. A strong-growing Rose, producing very double ivory-white flowers of notable quality. Makes a magnificent bloom full to the center. A vigorous grower and quite healthy, although the flowers sometimes nod and fail to open in wet weather. Specially recommended for warm and dry situations. \$1 each.
- ★**ETOILE DE FRANCE.** HT. A sparkling crimson-red Rose with unusually large, double, richly fragrant flowers. Fine for cutting. One of the hardiest of the Hybrid Teas and has more points in its favor than most reds. (See Star Dozen, page 7.) \$1 each.
- ★**ANGELE PERNET.** (Pernet.) Not a full Rose but a free bloomer and exceedingly brilliant in color when the bloom opens. Orange-red edged chrome-yellow, and outside petals golden yellow. A really enchanting color. There is no other Rose just like it. Bushy, upright in growth. Bagatelle Gold Medal. \$1.50 each.
- ★**BETTY.** HT. A dependable Rose with beautiful coppery buds of exquisite form, and large and very attractive salmon-pink flowers with a golden sheen; golden yellow center. A satisfactory Rose, very fine early in the season, and even better in the fall. N. R. S. Gold Medal. \$1 each.
- ★**BETTY UPRICHARD.** HT. The carmine-colored buds open to medium-sized salmon flowers, suffused with orange on the inside and with coppery carmine reverse. The fine long petals stand erect and hold fast their colors on both sides under any weather, at no time showing fatigue. Not very scented outdoors, but the perfume develops when used as cut-flowers. \$1 each.
- ★**CHATEAU DE CLOS VOUGEOT.** HT. The darkest of all red Roses. Bush is low-growing, of sprawling habit, and should always be planted in the outside row of a bed. \$1 each.
- ★**DAME EDITH HELEN.** HT. New. See description page 6.
- ★**DUCHESS OF WELLINGTON.** HT. The best yellow Rose to date. Its lovely buds are very long and pointed. They unfold slowly, changing from deep orange-yellow to lemon and lighter shades. Half-open, there is nothing more beautiful than its deep blooms of glowing yellow. The open flowers are cup-shaped. They are richly tea-scented, and freely produced. The bush is a lusty grower, spreading wide, and is unusually free from pests. Prune lightly, removing only the lower horizontal growths. Duchess of Wellington is a top-of-the-list, thoroughly tested yellow Rose. \$1 each.
- ★**ETOILE DE FEU.** (Pernet.) Remarkable in color. The globular buds of glowing flame tints gradually open to blooms of coral-pink and reddish salmon, which are full, cactus-form, and very large. More resistant to disease than most other Pernetianas. \$1.50 each.

**PRICES** (UNLESS OTHERWISE NOTED), ★2-YEAR, FIELD-GROWN, STAR SIZE ROSES, \$1 EACH; 90c. ea. when any 12 or more are ordered; 80c. ea. for 25 or more \$1 kinds. See order sheet for low delivery cost

# Everblooming Hybrid Tea Roses

SEE PRICES AT FOOT OF PAGE

★**FRANCIS SCOTT KEY.** HT. (See illustration below.) The color is bright crimson which changes to bluish crimson as the flower ages. It is a wonder for size, but not a profuse bloomer and no other variety surpasses it for fullness and perfection of form. During cold, rainy weather, the outside petals may stick and prevent the flower opening. Especially fine in late summer. \$1 each.

★**GENERAL MACARTHUR.** HT. Bright crimson; notable for its fragrance. The buds are well shaped, the open flower usually full and of fair form, but in hot weather it is likely to open flat. It blooms persistently. Foliage is almost immune to disease. \$1 each.

★**GEORGE C. WAUD.** HT. Striking orange-vermilion, the flowers of this Rose are large, very double, with high-pointed center and petals of fine substance. Its fragrance is pleasant and spicy. The stems are long and strong. N. R. S. Gold Medal. \$1 each.

★**GOLDEN EMBLEM.** (Pernet.) Another clear yellow Rose, the buds of which are marked with narrow stripes of deep carmine. Of better form than most of this type, and does not hang its head. Sweetly fragrant, but a somewhat shy bloomer. N. R. S. Gold Medal. \$1 each.

★**GORGEOUS.** HT. Gorgeous indeed is this Rose and extremely well named, for it is gorgeous in size, form, and color, which is soft orange, flushed with copper, coral-red and shrimp-pink. The flowers are very large, double, and borne on erect, strong stems. It likes partial shade during the hot summer months. A prolific fall bloomer. \$1 each.

★**GRUSS AN AACHEN.** T.-Poly. Remarkable for its beautifully colored flowers which combine shades of carmine, yellow, tinted and white on the same bush and at the same time. Extremely hardy anywhere. No other Rose just like it. \$1 each.

★**GRUSS AN TEPLITZ.** H.-Bengal. Flowers are rich velvety crimson, of fair form and size. It is seldom out of bloom, and is intensely fragrant. \$1 each.

★**HAWLMARK CRIMSON.** HT. Simply ideal as a bedding Rose to give brilliancy to your garden, as it blooms profusely in all kinds of weather. The semi-double flowers are deep, velvety blackish crimson, a rich fascinating color that does not scorch or turn blue. Deliciously Tea scented. \$1 each.

★**H. V. MACHIN.** HT. (See illustration, page 10.) This Rose makes a hearty splash of bright, true red. The large buds are very dark, and remain in the lovely half-open state for several days. N. R. S. Gold Medal. \$1 each.

★**INDEPENDENCE DAY.** (Pernet.) The buds are long, deep coppery orange in color, and very freely produced. The semi-single open flowers are apricot, suffused with golden yellow, and deliciously fragrant. Sensationally attractive. \$1 each.

★**JOHN RUSSELL.** HT. Novelty. See page 6.

★**KAISERIN AUGUSTE VIKTORIA.** HT. Very double white flowers, tinted with lemon at the base. They last well when cut. The beautiful buds are considered the standard of perfection in form. An entirely satisfactory white Rose. \$1 each.

★**KILLARNEY QUEEN.** HT. Considered the best of all the Killarney sports. It is a sprightly pink, and brightest in hot weather. The bud has the same lovely form as all the Killarneys, but slightly fuller and is sweetly perfumed. \$1 each.

★**KONIGIN CAROLA.** HT. Large, perfectly formed buds. Open flower very large, double, and of perfect shape. Bright satiny rose, reverse of petals having a silvery sheen. A glorified Mme. Caroline Testout. \$1 each.

★**LADY ALICE STANLEY.** HT. A noble Rose of large size and finest shape. Exquisite flesh-pink, shaded with rich coral in the center and on the reverse of petals. Flowers are borne on strong, erect stems—fine for cutting. A low, compact grower with deep green, corrugated, leathery foliage, so healthy that it is seldom attacked by insects or disease. \$1 each.



Francis Scott Key. Great Red Blooms

**PRICES (UNLESS OTHERWISE NOTED),** ★2-YEAR, FIELD-GROWN, STAR SIZE ROSES, \$1 EACH; 90c. ea. when any 12 or more are ordered; 80c. ea. for any 25 or more \$1 kinds. See order sheet for low delivery cost

# Everblooming Hybrid Tea Roses See prices at foot of page

★**LADY ASHTOWN.** HT. Brilliant shining pink with a golden underglow. Flower moderately large, with a fine, high-pointed center, borne on erect stems. Blooms abundantly over a long season, but flowers are apt to lose shape in hot weather. It is a glorious Rose in late summer and fall. Bush grows lustily, is very hardy, and indispensable where winters are severe. This truly is the pink Rose for every one, everywhere. It should be in *your* garden. \$1 each.

★**LADY HILLINGDON.** T. Very rich golden yellow semi-single cup-shaped blooms, very sweetly scented, and holding color better than most yellow Teas. Bush is erect, strong, disease-proof with bronzy branches that are almost thornless and deep green foliage. There is practically always a bud or bloom on this Rose, which blooms continuously but not profusely. Always admired. N. R. S. Gold Medal. \$1 each.

★**LADY MARGARET STEWART.** HT. Novelty. See page 6.

★**LADY URSULA.** HT. (See illustration, page 12.) A very dependable, almost flawless Rose, distinguished by extremely vigorous growth. Practically immune to disease. Blooms continuously into freezing weather. Flowers of medium size, light flesh-pink, with shell-like petals reflexing from a delicately shaped bud. \$1 each.

★**LA TOSCA.** HT. Flowers bright silvery pink with darker center; medium size, open shell shape. Remarkable for its very vigorous growth, its extremely free-blooming habit, and resistance to disease. Best in the colder sections, and in cool seasons. \$1 each.

★**LOS ANGELES.** (See illustration, page 11.) (Pernet.) Well-formed flowers, alike attractive in bud and bloom, show shades of salmon-pink, apricot, and orange. It is a somewhat temperamental Rose of varying performance, filling its friends with unlimited enthusiasm where it does well, and evoking astonishment and delight from those who are able to obtain only a few perfect blooms from it each season. It was awarded the coveted Gold Medal at the Bagatelle Gardens in Paris in 1918. It is not as prolific in bloom as some other Roses, but its exquisite form and the color of the buds fully compensate for this. \$1 each.

★**MME. CAROLINE TESTOUT.** HT. (See illustration, page 12.) Un-

beatable in the cooler regions, where it grows most vigorously and covers itself with its silky globular flowers. In Portland, Ore., it is planted extensively between the curbs and sidewalks along many streets, and there flourishes luxuriantly. The flowers are of large size, bright rose-pink, and delightfully fragrant. \$1 each.

★**MME. EDOUARD HERRIOT.** The Daily Mail Rose. (Pernet.) This vivid Rose is the earliest to bloom in this class. The large buds glow like dusky fire, and the newly opened blooms like red-hot copper which soon changes to a pleasing orange-pink. Ideal for mass planting, for garden decoration, where a profusion of bright and rare colored blooms are desired. Winner of N. R. S. and Bagatelle Gold Medals, also \$5,000 prize offered by the *Daily Mail* newspaper of London. \$1 each.



H. V. Machin. A vivid red Rose that pleases everyone

★**MME. ALEXANDRE DREUX.** (Pernet.) This is a captivating Rose of deep rich color, like the skin of a ripe tangerine orange, and never fades white. It is a moderate grower but a profuse bloomer, with lovely long buds. The blooms are not large, and when fully open they are artistically disheveled. \$1.50 each.

★**MME. BUTTERFLY.** HT. This American sport of the favorite Ophelia has delicately modeled flowers of tender pink and gold, and is one of the sweetest and most pleasing Roses. Its lovely spiral buds slowly unfold into big flowers, though not very full, of charming shape and dreamy color, very highly scented, and unusually long-lasting. The stems are fine and very strong, making it one of the best Roses for cutting. A deliberate and steady bloomer, and quite hardy. \$1 each.

**PRICES (UNLESS OTHERWISE NOTED), ★2-YEAR, FIELD-GROWN, STAR SIZE ROSES, \$1 EACH;** 90c. ea. when any 12 or more are ordered; 80c. ea. for 25 or more \$1 kinds. See order sheet for low delivery cost



# Everblooming Hybrid Tea Roses

See prices  
at foot of  
page

★**MME. JULES BOUCHE.** HT. Noted for free blooming and fine growth, this Rose is part of the backbone of every Rose-garden. The buds are long-pointed and the flowers are very double, white with a strong tinge of pink in the center. The plant is hardy and very healthy. One of the best. \$1 each.

★**MME. SECOND WEBER.** HT. A most pleasing salmon-pink color, shaded silvery pink. In warm sections, this Rose has no superior, with its long buds and fully double, fragrant flowers. One of the "old-fashioned" double Roses that have survived the onslaught of the semi-singles, although we cannot question their beauty. This Rose is a liberal bloomer, on strong stems, with good foliage. N. R. S. Gold Medal. \$1 each.

★**MARI DOT.** HT. Novelty. See page 6.

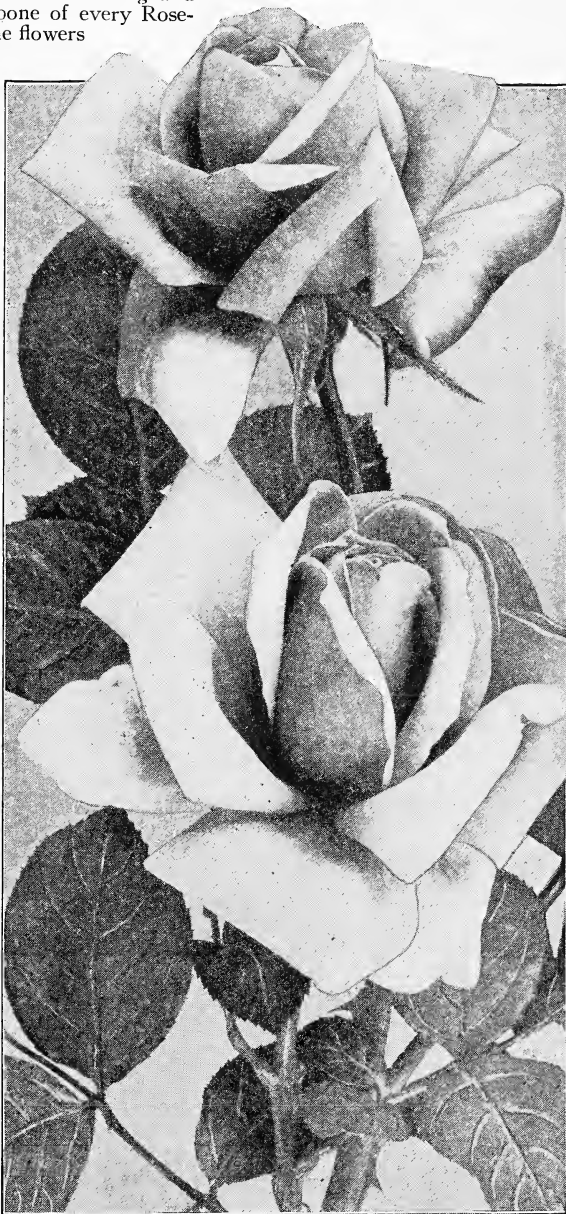
★**MISS CYNTHIA FORDE.** HT. A medium-sized bloom of pure silvery pink. The ovoid-pointed buds open well into perfectly formed flowers in sunshine or in cloudy weather. Its petals unroll gracefully and evenly into a well-formed, imbricated, deliciously fragrant bloom. A most dependable Rose. \$1 each.

★**MISS LOLITA ARMOUR.** (Pernet.) Sensational in its coloring of orange and copper, yellow and fawn. Won the coveted Bagatelle Prize in 1921. Large, heavy, globular flowers that sometimes hang, illumined with glowing hues, are freely produced on an erect branching plant. Mignonette fragrance. \$1 each.

★**MISS WILLMOTT.** HT. Graceful buds, opening to large, cupped flowers of pale sulphur-white, lightly tinted with pink, borne on long stems. It is a remarkably free-blooming variety, especially fine in the fall. A good Rose for cutting. Classed A No. 1. in our test-garden. N. R. S. Gold Medal. \$1.50 each.

★**MRS. AARON WARD.** HT. This is a most delightful continuously blooming Rose. The blooms are only faintly yellow when the weather is cold and wet. The color is most variable, depending on weather, but you will find Mrs. Aaron Ward Rose lovely always, and it is seldom out of bloom. Flowers are not large, but gracefully formed, fully double, and quite fragrant. The bush grows low, branches vigorously, and bears clean, pointed foliage which is almost immune to pests. \$1 each.

★**MRS. ARTHUR ROBERT WADDELL.** HT. Remarkable for its vigorous, branching growth and its long reddish copper buds of finest shape. The open flowers are coppery gold, but change to soft pink as the flower ages. A lovely, decorative, free-blooming Rose that apparently thrives in any climate. It is unusually free flowering. \$1 each.



Los Angeles. A perfectly formed enchanting Rose

★**MRS. HENRY MORSE.** HT. A sweetly scented, large-flowered Rose with pointed buds. Color is striking because the light pink of the inner petals is in lovely contrast to the deep pink of the outer petals. This is undoubtedly the best of the large-flowered, two-toned pink varieties. A superb Rose for cutting. \$1 each.

**PRICES** (UNLESS OTHERWISE NOTED), ★2-YEAR, FIELD-GROWN, STAR SIZE ROSES, \$1 EACH; 90c. ea. when any 12 or more are ordered; 80c. ea. for any 25 or more \$1 kinds. See order sheet for low delivery cost.

# Everblooming Hybrid Tea Roses See prices at foot of page

*You will appreciate our Durable Celluloid Star Tags when your Roses are in bloom*

★**MRS. WM. C. EGAN.** HT. Very large and firm, beautifully shaped buds, with long, deep petals, opening to a large flower of irregular cactus form, delicately shaded with two light tones of pink, and touched with gold at the base. A very lasting flower when cut. \$1 each.

★**MRS. WAKEFIELD CHRISTIE-MILLER.** HT. An immense pink Rose, so sturdy and dependable that it is a necessity in every garden. It is a stocky, stubby grower, with blunt canes bearing large bunches of big, fluffy flowers, bright rose and pearly pink. One of the hardest and best for bedding. \$1 each.

★**OPHELIA.** HT. A dependable although not profuse bloomer, and the flowers are almost always perfect. In hot weather they are apt to be creamy white, while in cool autumn nights they develop rich tints of pink and shades of gold. Quite hardy. \$1 each.

★**PREMIER.** HT. A magnificent Rose with splendid, double, large, fragrant flowers of rich, deep rose color. It is practically thornless. There is nothing handsomer in the whole range of dark pinks, with the color, form, and big, ample foliage, being fine in the extreme. The fragrance is unsurpassed. \$1 each.

★**PRESIDENT CHERIOUX.** (Per-net.) The half-opened buds are superb, prawn-red in color with orange shading at the base. The open flower has a coral-red center and is immense, full, globular and sweet-scented. Foliage is bronzy and rather small. A vigorous grower. \$1.50 each.

★**PRESIDENT WILSON.** HT. Immense, bright pink blooms of exceedingly high-class quality, with a luminous glow overspreading the petals, but not noticeably fragrant. Plant is branching, strong, and quite liberal in blooming. \$1 each.

★**RADIANCE.** HT. The most popular pink Rose in America. The fragrant flowers are large, globular but not compact, brilliant rose-pink, with lighter tints on the inner surface of the petals. This Rose for years has topped our list of sales. \$1 each.

★**RED RADIANCE.** HT. Its big, bouncing blooms of cerise-red endear this Rose to all lovers of the Queen of Flowers. The fragrance is sweet and fairly strong. Growth is exceptionally fine, equaling, if not better than the famous Radiance. \$1 each.

LADY  
URSULA



A bed of Mme. Caroline Testout Roses with another grand bedding Rose, Lady Ursula, shown above. See descriptions on page 10

**PRICES (UNLESS OTHERWISE NOTED),** ★2-YEAR, FIELD-GROWN, STAR SIZE ROSES, \$1 each; 90c. ea. when any 12 or more are ordered; 80c. ea. for any 25 or more \$1 kinds. See order sheet for low delivery cost

# Everblooming Hybrid Tea Roses

See prices  
at foot of  
page

**25** Everblooming Hybrid Tea  
Roses to Plant This Fall **\$20**

This set of 25 includes the 12 in the  
Famous ★ Star Dozen

Every plant labeled with our celluloid ★ Star tag  
and guaranteed to grow and bloom next June

All these described or illustrated on preceding pages

## SHADES OF RED

Etoile de France  
Francis Scott Key  
George C. Waud

Gruss an Teplitz  
H. V. Machin  
Red Radiance

## SHADES OF PINK

Columbia  
Lady Alice Stanley  
Lady Ashtown  
Lady Ursula  
Los Angeles

Mme. C. Testout  
Miss Cynthia Forde  
Mrs. W. C.-Miller  
Radiance  
Souv. de Geo. Pernet

## SHADES OF YELLOW

Duchess of Wellington  
Mrs. Aaron Ward

Rev. F. Page-Roberts  
Souv. de Claudius Pernet

## SHADES OF APRICOT

Miss Lolita Armour

Mme. E. Herriot

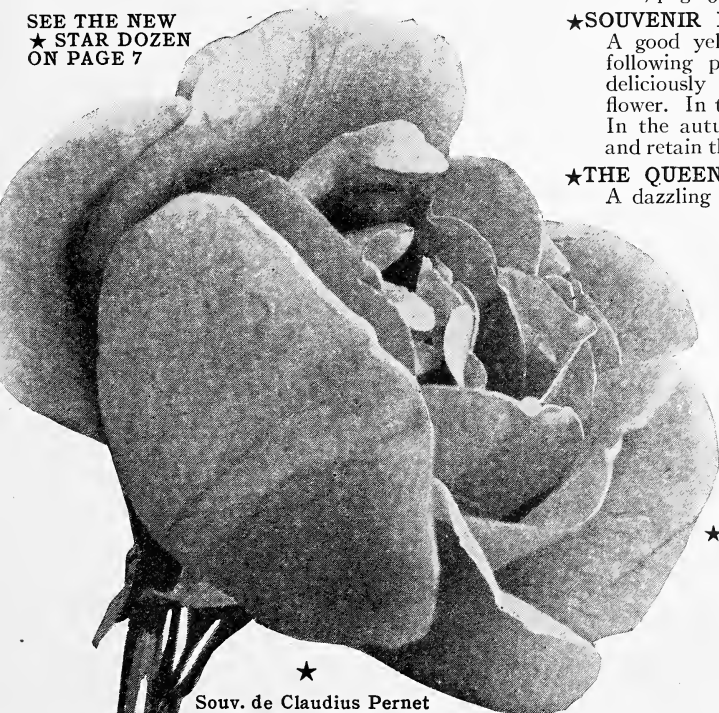
## WHITE AND LIGHT SHADES

Edel  
Mme. Butterfly

Kaiserin Auguste Vik-  
toria

►OFFER► 13. 25 above selected Hardy  
Hybrid Tea Roses **\$20**

SEE THE NEW  
★ STAR DOZEN  
ON PAGE 7



★  
Souv. de Claudius Pernet  
Sunflower-yellow

★REV. F. PAGE-ROBERTS. HT. See in natural color on front cover. Description, page 3.

★ROSELANDIA. HT. New. A wonderfully pure golden yellow Rose of Ophelia type, large, full, with heavy petals that do not curl back. Very prolific in bloom. Makes beautiful flowers for cutting. \$1.50 each.

★SOUVENIR DE CLAUDIUS PERNET. (Pernet.) The Actually Yellow Rose. Both bud and bloom are clear sunflower-yellow, unstained by any other color, and are attractively formed. As the flower ages, the outside petals become light sulphur-yellow. This Rose performs best in hot, dry, bright weather. It is not suitable for localities where the summers are wet and cold. Flowers often appear in clusters and occasional blooms will show an unsightly center, so it is best to cut them when in bud form. A vase full of these glorious yellow blooms is like a bouquet of captured sunshine, so get several plants to insure having plenty of flowers to cut. (See illustration.) \$1 each.

★SOUVENIR DE GEORGE BECKWITH. (Pernet.) An immense Rose of shrimp-pink color, tinted with chrome-yellow. The buds are ovoid and the blooms very full and globular, borne on strong, erect stems. This Rose never opens flat, retains its salmon-pink color to the last, and has true Rose fragrance. \$1.50 each.

★SOUV. DE GEORGES PERNET. (Pernet.) See this in natural color on back cover. Description, page 3.

★SOUVENIR DE H. A. VERSCHUREN. HT. A good yellow Rose with extra-large flowers following perfect, long pointed buds. It is deliciously fragrant and extra fine as a cut-flower. In the open sun, the color gets lighter. In the autumn the blooms open more slowly and retain their yellow color to the end. \$1 each.

★THE QUEEN ALEXANDRA ROSE. (Pernet.) A dazzling Rose of scintillating red, with the back of the petals buff-yellow or old-gold. A brilliant, showy Rose of absolutely unique coloration. N. R. S. Gold Medal. \$1 each.

★UNA WALLACE. HT. Beautiful, soft, clear-toned cherry-rose color, without any shading, but the petals are deeply veined. Graceful, long-pointed buds open well into medium-sized full blooms, sweetly perfumed. \$1 each.

★VILLE DE PARIS. (Pernet.) See description, page 6.

★WILLIAM F. DREER. (Pernet.) A many-colored Rose of tawny yellow, intermingled with pink and salmon in delightful opalescent shades. It is sweetly scented and of fine semi-double form. Best in cool weather, as it wilts in heat, but the color fades less than many of the yellow varieties. N. R. S. Gold Medal. \$1 each.

PRICES (UNLESS OTHERWISE NOTED), ★2-YEAR, FIELD-GROWN, STAR SIZE ROSES, \$1 EACH; 90c. ea. when any 12 or more are ordered; 80c. ea. for any 25 or more \$1 kinds. See order sheet for low delivery cost.

# Hardy Hybrid Perpetual Roses

PERFECTLY HARDY—NEED NO WINTER PROTECTION. SEE PRICES AT FOOT OF PAGE

Hybrid Perpetual Roses are very strong in growth and will grow from 4 to 6 feet in height. They should be pruned back every spring to about 1½ to 2 feet high to make them produce more and better blooms. They bloom profusely in June. If the *bloom stems* are pruned again, back to about three eyes, after

June bloom is over, some varieties will make another showing of Roses in the fall. The immense blooms, rich fragrance, and perfect hardiness of the plants endear to us these delightful June-blooming Hybrid Perpetuals. They are especially satisfactory for northern planting, because they are so hardy.

★**ANNA DE DIESBACH** (Glory of Paris). One of the old varieties, introduced in 1858. Color is a beautiful shade of carmine-pink; flowers are extra large, full and very sweet. Makes a vigorous growth and the immense blooms often show double centers. \$1 each.

★**FRAU KARL DRUSCHKI**. (See illustration.) Universally acclaimed as the best white Rose in existence. It is pure snow-white. Its buds are unusually long for its class and are often shaded pink, but they open into immense and perfectly double flowers often more than 4 inches across, and with waxy petals that are very durable, but, unfortunately, scentless. It has the admirable habit of blooming almost continually. \$1 each.

★**GENERAL JACQUEMINOT**. Standard of color for years, the clear velvety red blooms are just as bright today as seventy years ago. The plant is very hardy, but needs quite careful attention in thinning and pruning if the best-formed flowers are wanted. You should have at least one "General Jack" in your Rose-garden to make it complete. \$1 each.

This is Frau Karl Druschki the snow-white, freeblooming hardy rose



★**GLOIRE DE CHEDANE-GUINOISSEAU**. The blooms are of large size, dark velvety crimson in color, with deep claret reflexes and delightfully fragrant. It is vigorous in growth, perfect in form, and holds its color better than most reds. \$1 each.

★**HENRY NEVARD**. New. A charming, deep red Rose with large, perfect blooms combined with the lovely foliage and excellent habit of the famous Frau Karl Druschki. In addition, it is most delightfully fragrant. \$1.50 each.

★**MAGNA CHARTA**. Full flowers of unusual depth and substance; bright rosy pink; very profuse bloomer on long, stiff stems. Blooms are large and very sweet-scented. \$1 each.

★**MRS. JOHN LAING**. Produces a succession of flowers all summer, until late in the fall, on erect plants, of strong growth. It is very hardy and its medium-sized flowers of cup-like form are very sweet. It is a lively shade of solid pink, and so distinct in form that it can never be mistaken. \$1 each.

★**PAUL NEYRON**. Color is clear pink. Flowers are immense, often 5 to 6 inches across, and sweetly perfumed. This is said to be the largest Rose in cultivation and magnificent in every way. \$1 each.

★**PRINCE CAMILLE DE ROHAN**. A Rose much superior to "Black Prince." The color is very dark, velvety crimson, almost black; considered the best very dark perfectly hardy Rose ever produced. \$1 each.

★**ULRICH BRUNNER**. A healthy-growing bush of moderate size, buried in June beneath thumping big blooms of bright cherry-red. It is one of the most extravagantly blooming Roses, and a plant in the height of the season is a thing of unequalled splendor. One of the finest of the Hybrid Perpetuals for cutting, as its flowers are not too compact to open well in the house and are intensely fragrant. \$1 each.

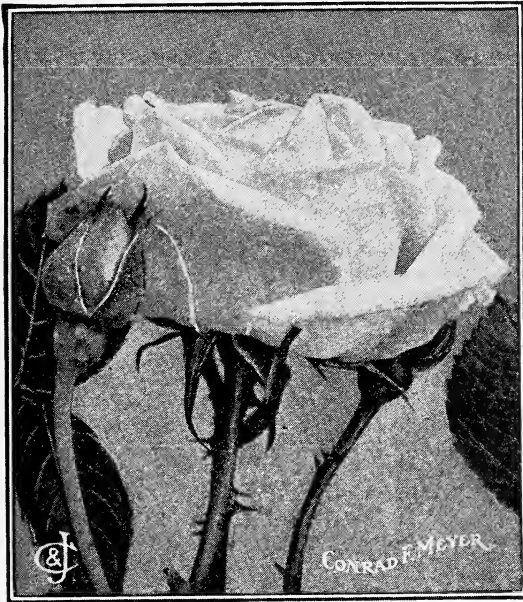
➤**OFFER**➤ 14 One each of the 10 oak-hardy Hybrid Perpetuals on this page for \$9.

**PRICES** (UNLESS OTHERWISE NOTED), ★2-YEAR, FIELD-GROWN, STAR SIZE ROSES, \$1 EACH; 90c. ea. when any 12 or more are ordered; 80c. ea. for 25 or more \$1 kinds. See order sheet for low delivery cost



# Rugged Rugosa and Shrub Roses

NEED NO PROTECTION ANYWHERE. THEY MAKE BEAUTIFUL SPECIMEN BUSHES



The great Tea Rugosa. Produces bushels of bloom in June

Rugosa Roses and other types offered here are hardy as oaks and are used for hedges and wind-breaks around Rose-gardens, also for growing as bright specimen bushes on lawns.

- ★**XANTHINA.** Species. This is a double Hugonis with flowers of brilliant buttercup-yellow produced in great profusion early in May. \$2 each.
- ★**YORK AND LANCASTER.** Damask. An old favorite. Buds and flowers are wonderfully marked with irregular blotches or stripes of pale red and white and sometimes of solid color. In late summer the large red hips are very conspicuous. \$1.50 each.

- ★**AGNES.** Rug. New, 1927. The only truly yellow Rugosa. Buttercup-yellow buds, passing to clear yellow and opening to full, large blooms of fawn color and fruity fragrance. \$2 each.
- ★**CONRAD F. MEYER.** T.Rug. (See illustration.) One of the finest of the Hybrid Rugosas, producing very fragrant, silvery pink flowers of large size, equal to Hybrid Perpetuals in form. Foliage is not corrugated like the Rugosas. \$1 each.
- ★**DR. E. M. MILLS.** H.Hugonis. New, 1927. The color is light primrose, with pink suffusion. Flowers come singly all along the stem, like Hugonis. No other Rose just like it. \$2 each.
- ★**F. J. GROOTENDORST.** Poly.-Rug. Bright red flowers of small size, fringed and double, produced freely and continuously in large bunches, through spring, summer, and fall. Ideal for a hedge. \$1 ea.
- ★**HARISON'S YELLOW.** AB. The cheery yellow Rose of the old-time door-yards. Tough, wiry, almost indestructible. Its sparkling yellow flowers come about the middle of May. Do not prune it. Very showy when planted among shrubs. \$1 each.
- ★**HUGONIS.** Species. The Golden Rose of China. See in natural color on inside back cover.
- ★**MAX GRAF.** Rug. Trailing Rugosa. See page 17.
- ★**ROSA RUGOSA ALBA.** Species. Bud is pink, but opens into large, five-petaled snow-white flowers of great beauty. Fragrant. \$1 each.
- ★**ROSA RUGOSA RUBRA.** Species. Fine for massing or hedges, absolutely hardy. Flowers are very fragrant. Color bright pink to deep carmine. It blooms very early. \$1 each.
- ★**SARAH VAN FLEET.** H.Rug. New, fall 1927. The fragrant cupped flowers of wild-rose-pink are freely produced. Makes a fine specimen. \$2 each.
- ★**SIR THOMAS LIPTON.** H.Rug. Flowers snow-white with a greenish tint, and they come at intervals all summer. \$1 each.

## Oak-Hardy Polyantha (Baby Rambler) Roses

IDEAL FOR EDGING WALKS, BORDERING ROSE-BEDS, CEMETERY PLANTINGS, ETC.

These Roses are perfectly hardy, bloom constantly, and, as a rule, grow only 15 to 18 inches high. Their hardiness and freedom of bloom make them especially valuable for cemetery planting.

- ★**EBLOUISSANT (Resplendence).** A new intensely rich maroon-red Polyantha which does not fade or blue; it is the neatest growing edging Rose we know. The plant grows low and compact and is very free-flowering. \$1 each.
- ★**ELLEN POULSEN.** The brilliant flowers are larger than the Baby Rambler type of Polyantha Roses. Very floriferous, pink, and sweetly scented. \$1 each.
- ★**GRETA KLUIS.** A lovely shade of carmine-pink passing to carmine-red. Continuous in bloom. \$1 each.
- ★**IDEAL.** Ideal indeed for making a brilliant bed of rich, lustrous garnet, blooming continuously all summer and until frost. The flowers are semi-double, come in great heads of thirty or more, and the color is retained remarkably well until they drop. A neat and compact grower. \$1 each.
- ★**LAFAYETTE (Joseph Guy).** Brilliant cherry-crimson flowers, produced in branched trusses continuously from June until frost. The most satisfactory Rose in this class. \$1 each.

- ★**CHATILLON.** (Illustrated below.) Makes really gigantic trusses of very lasting silvery pink flowers. A flower show in itself for weeks at a time, and one of our favorites. Good for low hedges. \$1 each.

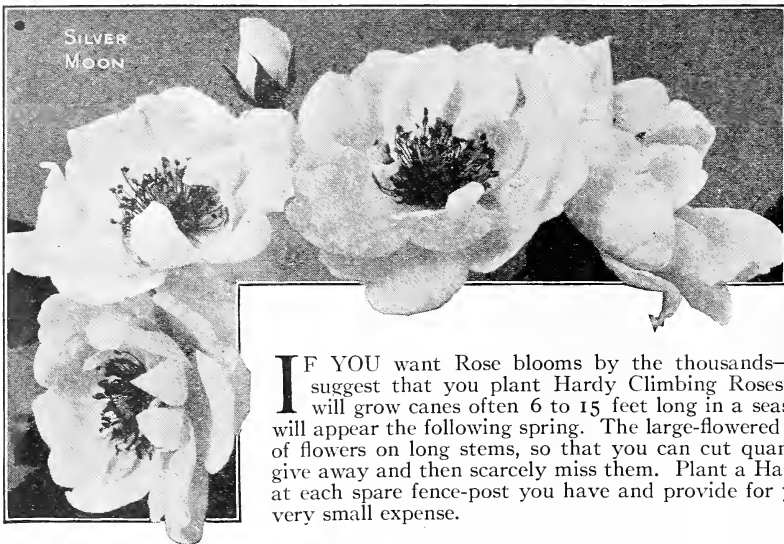


Chatillon. Heads of long-lasting flowers

**PRICES (UNLESS OTHERWISE NOTED), ★2-YEAR, FIELD-GROWN, STAR SIZE PLANTS, \$1 EACH; 90c. ea. when any 12 or more are ordered; 80c. ea. for any 25 or more \$1 kinds. See order sheet for low delivery cost**

# Hardy Climbing Roses

See prices at foot of page



Hardy Climbing Roses are brilliantly beautiful, in shades of red, pink, yellow, and in pure white. For weeks at a time they present a gorgeous display of color that is obtainable from no other hardy climbing vine, and the foliage is lovely after the flowers are gone. You get a thousandfold return for an investment in these Roses.

**I**F YOU want Rose blooms by the thousands—and most people do—we suggest that you plant Hardy Climbing Roses. These vigorous varieties will grow canes often 6 to 15 feet long in a season, on which the blossoms will appear the following spring. The large-flowered kinds will give you bushels of flowers on long stems, so that you can cut quantities to sell, to use, or to give away and then scarcely miss them. Plant a Hardy Climbing Rose this fall at each spare fence-post you have and provide for yourself plenty of Roses at very small expense.



Blooms Early

Dr. W. Van Fleet

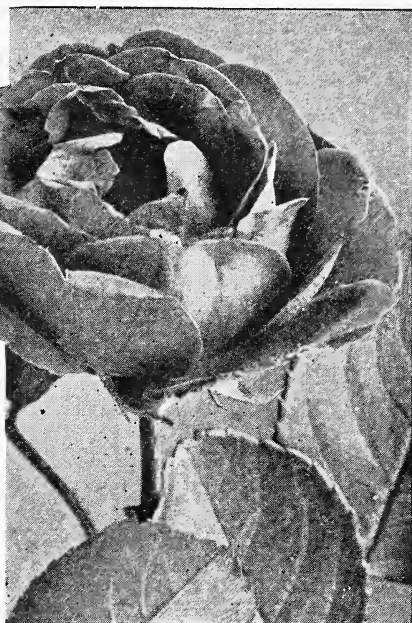
- ★**ALBERTINE.** Midseason. New. The buds are orange-vermilion and the fragrant blooms come in bunches of five to ten large, double flowers, often 4 inches across. The petals are large and are coppery chamois inside with the reverse bright salmon, turning to coppery pink. An aristocrat among climbers. **\$1.50 each.**
- ★**CLIMBING AMERICAN BEAUTY.** Early. Large, perfectly formed, rosy crimson, sweet-scented flowers on long stems. With the pruning out each year of the older canes, the plant continues permanently and increasingly a pleasure. **\$1 each.**
- ★**AMERICAN PILLAR.** Midseason. In mid-June the tremendously vigorous canes become covered with single flowers about 2 inches across, in shadings of carmine and rosy pink to white in the center, where they meet a cluster of long golden yellow stamens. The delicately fragrant blooms become lighter in tint as the days go by, and the effect is wonderful as they open successively in very large and symmetrical clusters all over the plant. **\$1 each.**
- ★**BONNIE PRINCE.** Early. A new and very beautiful snow-white, semi-double climber. Combined with Tausendschön and the darker pink Roserie, it affords an extraordinary symphony of colors in climbing Roses that are similar in shape and style of flower. **\$1 each.**
- ★**DOROTHY PERKINS.** Late. Perfectly double, clear shell-pink flowers, the petals of which are attractively crinkled. Subject to mildew but a very vigorous grower, and for years the most popular of this group. **\$1 each.**
- ★**DR. HUEY.** Midseason. Color dark crimson-maroon shading to almost white in the center, with golden stamens that add an artistic touch. The flowers are rather large and semi-double, borne in greatest profusion for an unusually long season. It has no rival in color. **\$1 each.**
- ★**DR. W. VAN FLEET.** Early. The Topnotch Hardy Climber. (See illustration.) *Stands No. 1 in the list of hardy climbing Roses, by vote of the members of the American Rose Society, October, 1926.* The color is pure, dainty apple-blossom-pink, and the buds, with their long individual stems look much like Roses from a greenhouse. Utterly unlike any other known hardy climbing Rose. Its beauty you can bring indoors, carry to a friend, decorate a church, or bring cheer to a hospital, for you should harvest a *thousand or more* beautiful long-stemmed blooms every year after the second season. **\$1 each.**

**PRICES** (UNLESS OTHERWISE NOTED), ★2-YEAR, FIELD-GROWN, STAR SIZE ROSES, \$1 EACH; 90c. ea., when any 12 or more are ordered; 80c. ea. for any 25 or more \$1 kinds. See order sheet for low delivery cost

# Hardy Climbing Roses

Prices at  
foot of page

- ★**EXCELSA** (Red Dorothy Perkins). Late. The color is an intense, clear carmine-lake. Flowers are perfectly double, produced thirty to forty on a stem, and almost every eye on a shoot produces a cluster of bright blossoms. Gold Medal, A. R. S. \$1 each.
- ★**GARDENIA**. Early. Of rampantly vigorous growth, with numerous long canes that will go anywhere, and which produce in early summer a mass of pleasing small yellow buds opening to creamy white. This Rose is the most dependable of climbers with a yellow tendency. \$1 each.
- ★**ILE DE FRANCE**. Midseason. New. A truly double form of the great American Pillar Rose with somewhat more cerise in the coloring. It blooms profusely. A splendid addition to the hardy climbing Roses. \$1 each.
- ★**JACOTTE**. Midseason. Large flowers of reddish copper, heavily shaded with yellow. A startling new color in climbing Roses and a typical climbing Pernetiana with rich glossy foliage. Deliciously fragrant. \$1 each.
- ★**MARY WALLACE**. Early. Long buds and charming flowers of brilliant warm pink color. This is one of the best productions of the late Dr. W. Van Fleet. \$1 each.
- ★**PAUL NOEL**. Midseason. The buds are salmon-orange-pink, with a yellow base, and open to perfectly double fragrant blooms with a tufted center of salmon-pink which holds while the flower lasts. \$1.50 each.
- ★**PAUL'S SCARLET CLIMBER**. Midseason. The most brilliant vivid scarlet of any Rose grown. The color is intense and the flowers come in beautiful open cluster-heads with from 5 to 15 blooms, on very long, strong stems. See illustration. \$1 ea.
- ★**SILVER MOON**. Midseason. (See illustration, page 16.) The flowers are very large, semi-double, and open from primrose buds of pleasing shape to what looks like a fine white clematis with a center of golden anthers. \$1 each.
- ★**STAR OF PERSIA**. Early. New. A marvelously vivid buttercup-yellow Rose that grows 8 to 10 feet or more, and holds its color. The blooms are 3 inches in diameter, semi-single, and come early in the spring. \$1.50 each.
- ★**TAUSENDSCHON**. Early. "Thousand Beauties" is the translation of this German name for what is almost the one finest Rose, if it would be possible to confine oneself to one. The round, cup-shaped, double blossoms, borne in clusters, will vary on the plant from white to deep pink at the same time, and there are so many of them that the bush disappears in a mass of rosy beauty. The plant has but few thorns. \$1 each.

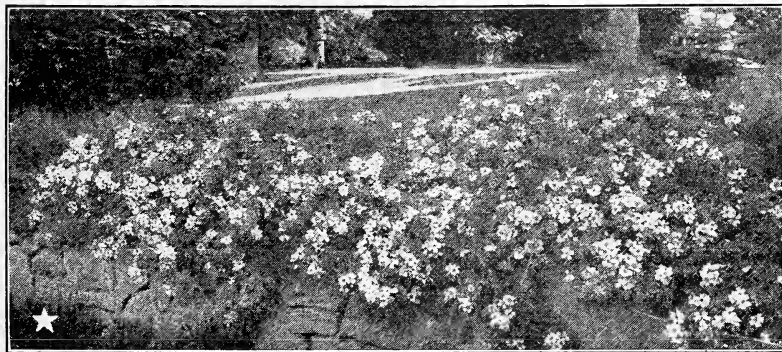


Paul's Scarlet Climber. The most vivid Scarlet Climbing Rose in existence

- ★**THE BEACON**. Midseason. New. Blooms are the same type as the famous American Pillar but the color is vivid, fiery red. It is most attractive when grown in pillar form, blooming in showy masses all over and around the branches. This Red American Pillar is a real novelty as there are too few reds in the climbing class. \$1.50 each.
- ★**WHITE DOROTHY**. Late. Just like Dorothy Perkins, save that it is pure white, wherefore it goes well with that variety and with Excelsa. \$1 ea.
- ★**ZEPHIRINE DROUHIN**. Early. Climbing Bourbon. A rare old Rose of beautiful form, bright silvery pink, and very fragrant. It is thornless. \$1 each.

## Two Roses to Beautify Retaining Walls and Embankments

These Roses grow horizontally and the branches root where they touch soil. They are charmingly decorative and effective on walls and embankments.



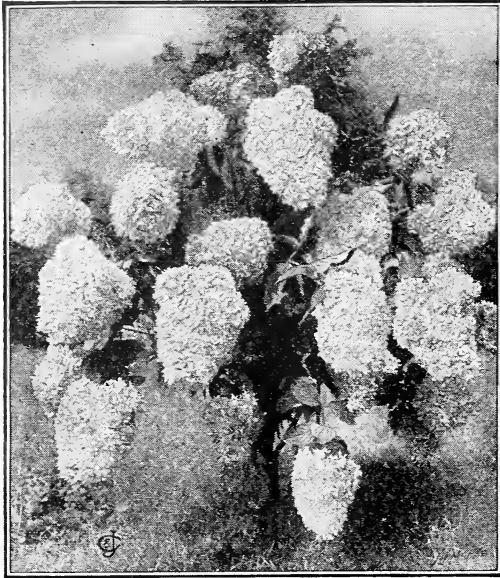
There's a wildwood charm in Climbing Roses loosely growing over a retaining wall

- ★**MAX GRAF**. Large, rosy pink, single flowers, like crimped silk. This is the only pink trailing Rose for embankments. It grows rapidly and the foliage is beautiful always. \$1 each, 25 for \$20.
- ★**WICHURAIANA**. Its greatest use is for retaining embankments from washing. Flower is single, glistening white, with brilliant golden anthers. \$1 each, 10 for \$6.50, 100 for \$60.

**PRICES** (UNLESS OTHERWISE NOTED), ★2-YEAR, FIELD-GROWN, STAR SIZE ROSES. \$1 EACH; 90c. ea. when any 12 or more are ordered; 80c. ea. for any 25 or more \$1 kinds. See order sheet for low delivery cost

# Hardy Ornamental Flowering Shrubs

SEE PRICES AT FOOT OF THE PAGE (except where noted after the variety)



*Hydrangea paniculata grandiflora*. Blooms for 3 months

## Two Forsythias (Golden Bells)

**Forsythia spectabilis.** This shrub has seemed to us, after several years' trial, as the most desirable of the Forsythias. The habit is compact and every branch is closely covered with yellow flowers before the foliage appears. Price, 1-yr. size, 50 cts., postpaid; 2-yr. size, \$1; 3-yr. size, \$1.50 □

**F. viridissima.** The earliest blooming shrub. The vivid yellow flowers tell you that spring has come.

## Honeysuckle, Bush (*Lonicera Morrowi*)

Yellow flowers in May, are followed by masses of brilliant scarlet berries which remain on the bush a long time. The bush grows 8 to 10 feet high and about the same in diameter, with long, pendulous, berry covered branches. Useful for filling in corners or screening unsightly places.

## Hydrangea Paniculata Grandiflora

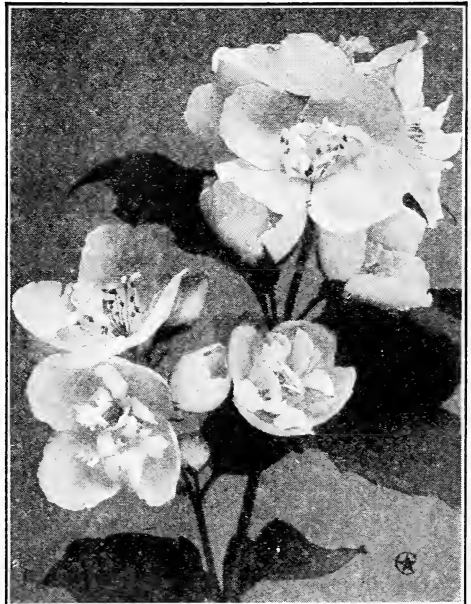
Considered by many to be the grandest hardy flowering shrub that grows. The immense bloomheads, often 12 inches long, are borne in great conical clusters from July till frost. If left untrimmed, this shrub will grow 10 feet high, but it can be kept pruned to any height without injury to the plant. See illustration above.

## Philadelphus (Mock Orange) <sup>See cut</sup>

**P. Virginal.** Beautiful, large, crested flowers. The grandest of all Philadelphus. An amazing advance on the old-time varieties, all of which bloom bountifully, but the richly fragrant flowers of Virginal, almost 3 inches across, surpass them all and continue blooming during the summer. Price, 1-yr. size, 50 cts. each, postpaid; 2-yr. size, \$1 each; 3-yr. size, \$1.50 each □

**P., Bouquet Blanc.** A new variety. Large white flowers, produced in great quantities.

**P., Avalanche.** New and particularly fine. Large white flowers on slender arching branches.



New Philadelphus Virginal

## New Red-leaved Japanese Barberry

A NOVELTY IN SHRUBS

The foliage is rich, lustrous, bronzy red, becoming more gorgeous as the summer advances. The small yellow blooms are followed by brilliant scarlet berries that remain on the bushes. A charming plant to use in spots along a sunny shrub border or to make a picturesque hedge. Makes lovely specimens. Plant always in full sunlight. Price, 2 yr. field-grown plants, \$1 each; 12 for \$10 □

## Beauty Fruit (*Callicarpa purpurea*)

Grows 3 to 4 feet high. The masses of tiny pink flowers which come in August are followed by compact little clusters of vivid violet-purple berries. Charming for indoor decoration.

## Sweet Shrub (*Calycanthus floridus*)

Many people who come here speak of this plant simply as "shrub." Well known for its spicy, fragrant, maroon-colored flowers.

## Deutzia Crenata Magnifica

Flowers like driven snow come in great fluffy bunches along the branches; extremely lovely. The very best Deutzia. Price, 1-yr. size, 50 cts., postpaid; 2-yr. size, \$1; 3-yr. size, \$1.50 □

We can also supply *D. gracilis*, dwarf white; *D. gracilis rosea*, dwarf pink; *D. lemoinei*, dwarf white; *D. crenata rosea*, 4 to 6 ft., pink; *D., Pride of Rochester*, 4 to 6 feet, white and pink. Prices below.

## Evergreen Bush (*Euonymus japonicus*)

Beautiful, glistening, dark green foliage on an up-standing bush. Makes lovely specimen plants.

**Prices of Shrubbery,** except where noted, 1-year size, 35 cts. each, 10 for \$3, postpaid; 2-yr. size, 60 cts. each, 10 for \$5; extra-heavy, 3-yr. size, 90 cts. each, 10 for \$7.50. Delivery not prepaid.

□ This sign indicates delivery at your expense.



HARDY ORNAMENTAL SHRUBS, continued. See prices below

*Hydrangea arborescens grandiflora*

("Hills of Snow," or Snowball Hydrangea.) See cut

Blooms five weeks earlier than *H. paniculata grandiflora*. Produces exquisite, lasting, snow-white flowers during June and July when few other shrubs are in bloom. A shrub you will be proud to own.

Lilac, Persian Red

The most universally popular flowering shrub. Reddish purple flowers in open clusters. Very free-blooming and charmingly fragrant.

Snowberry (*Symphoricarpos racemosus*)

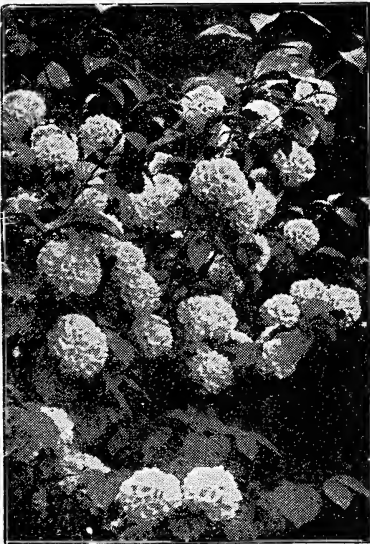
A small, native shrub that succeeds in shaded locations. It is quite hardy, produces small white or pinkish flowers in July and August, and these are succeeded by white berries that last well into the winter.

Japan Snowball (*Viburnum plicatum*)

Flowers are pure white and come in dense, globular clusters resembling balls of snow, each cluster being 4 to 5 inches in diameter, and they fairly cover the bush. It grows 8 to 10 feet in height with strong, crinkled, dark green leaves. A most attractive shrub when in full bloom in June. It will bloom in partial shade. See illustration below.



*Hydrangea arborescens* (Hills of Snow)



*Viburnum plicatum* (Japan Snowball)

Three Choicest Spireas

*Spiraea Van Houttei*. Blooms in May and June. One of the most beautiful of all Spireas. Profuse bloomer; pure snow-white flowers borne in elegant, plume-shaped clusters.

**Red Spirea, Anthony Waterer, Perpetual-blooming.** Makes nice, shapely bushes 2 to 3 feet high; begins to bear its large flat clusters of rich rosy red flowers almost as soon as planted, and continues blooming all summer and fall.

*Spiraea prunifolia* (Bridal Wreath). Makes a profusion of dainty, double white flowers like little rosettes. A most popular shrub.

DO YOU WANT "A SUCCESSION OF BLOOM"?

Plant the following 12 shrubs; they will give you bloom from spring to frost. All are hardy.

- 1 Forsythia (April)
- 2 Spireas (May)
- 1 Philadelphus (May)
- 2 Deutzias (June)
- 1 Snowball (June)
- 2 Weigela (June)
- 1 Snowball Hydrangea (July)
- 1 Beauty Fruit (August)
- 1 Hydrangea (September)

**OFFER 19.** The above 12 Hardy Shrubs, \$3, postpaid; or 2-yr. size, the 12 for \$5 □



*Weigela candida*

Three Free-Flowering Weigelas

**Eva Rathke.** Red. Considered the handsomest of all the Weigelas. The flowers are crimson, with creamy markings, and are borne in great quantities. This variety blooms all summer and is, without question, the choicest shrub in this class. It is low-growing and spreading in habit, therefore it should be planted alone or in clumps or else on the outside of shrubby borders.

**Candida** (White Weigela). A strong, erect-growing bush with heavy foliage. The snow-white, bell-shaped flowers come in great profusion along the branches, as shown in the illustration, and the bush is in bloom all summer.

**Rosea.** The lovely rose-pink flowers come in such profusion that they almost hide the foliage. One of the finest shrubs.

**Prices of Shrubbery,** except where noted, 1-yr. size, 35 cts. each, 10 for \$3, postpaid; 2-yr. size, 60 cts. each, 10 for \$5; extra-heavy, 3-yr. size, 90 cts. each, 10 for \$7.50 □

□ This sign indicates delivery at your expense.

## Lovely Evergreen Boxwood for Edging



Border pathways neatly with Boxwood or use it for edging flower beds

At no time in the past two hundred years has there been such an insistent demand for large Boxwood as there is today. It forms in many eminent places the outstanding feature of distinction but only because somebody's grandparents appreciated the possibilities of the increasing value of a reasonable investment in a Boxwood border, or specimen plants.

It is delightful to have a pathway bordered with this dwarf, spicy, evergreen shrub. The old-fashioned evergreen dwarf edging plant offered here grows to

about 15 inches high and is, without question, the most beautiful formal edging plant known. *Our plants are bushy, symmetrical,* and have an unusually strong root system. May be kept trimmed as desired.

Use Evergreen Boxwood for Winter Window Boxes	10 ppd.	100 <input type="checkbox"/>	1,000 <input type="checkbox"/>
3 to 4 in. well-furnished bushy plants.	\$2 00	\$18 00	\$150 00
4 to 6 in. well-furnished bushy plants.	3 00	25 00	225 00
6 to 8 in. well-furnished bushy plants.	4 50	40 00	

## Hardy Ornamental Evergreens

DESIRABLE PERMANENT PLANTS FOR LAWN DECORATION

By planting our small Evergreens you can secure a richly furnished effect on your lawn and around your home, at small expense and enjoy a permanent snugness and beauty obtainable from no other class of plants. Plant them at the corners of your house and the angles of the porch, to break the sharp lines of the building and tie it to the ground. Evergreens are an investment in happiness, for they increase in beauty year by year and are always there to enjoy, winter and summer, whenever you step outdoors.

**Juniperus Pfitzeriana.** Makes a spreading, vase-shaped growth. Foliage light green and feathery. Beautiful as a lawn specimen or planted at the corner of a house. 6 to 8-inch plants, \$1 each, 12 to 18-inch spread, \$2 each, 18 to 24-inch spread, \$3 each

**Retinospora filifera** (Thread-branched Japan Cypress). Slender, string-like, bright green foliage drooping in long filaments, most attractive. 9 to 12-inch plants, \$1 each, 15 to 18-inch, \$2 each

**Retinospora pisifera aurea.** Broad, flat foliage, deep green, tipped with golden yellow. 12 to 15-inch plants, \$2 each

**Retinospora plumosa** (Plume-like Japan Cypress). A most desirable evergreen. The foliage is light and feathery. 12 to 18-inch, \$1.50 each, 18 to 24-inch, \$2.50 each

**Taxus cuspidata brevifolia** (Dwarf Japanese Yew). Very ornamental, shiny, dark green foliage. Low and spreading habit and very slow in growth. 8 to 12-inch plants, \$2 each, 12 to 18-inch, \$3.50 and \$5 each

**Thuja aurea elegantissima** (Golden Arborvitae). Very ornamental, with lace-like golden tipped foliage. 12 to 15-inch plants, \$2 each, 15 to 18-inch, \$3 each, 3-foot, \$5 each

**Thuja occidentalis** (American Arborvitae). Soft, green foliage. Grows rapidly, foliage has a fine aromatic odor. 2½-foot plants, \$3 each, 3 to 4-ft., \$5 each

**Thuja pyramidalis** (Arborvitae). Columnar in form. Foliage light green and growth is dense and compact. 2-foot size, \$2, 3-foot, \$3, 4-foot, \$5 each

**Thuja sibirica** (Siberian Arborvitae). Branches stout and foliage dense. Slow in growth and has rich, dark green foliage. 6 to 8-inch plants, \$1 each, 12-inch, \$1.50 each, larger size, 2-foot, bushy, \$3.50 each

**Thuja Vervæneana.** Foliage is gold and green becoming bronzy in winter. 12 to 18-inch plants, \$1.50 each, 18 to 24-inch, \$2.50 each

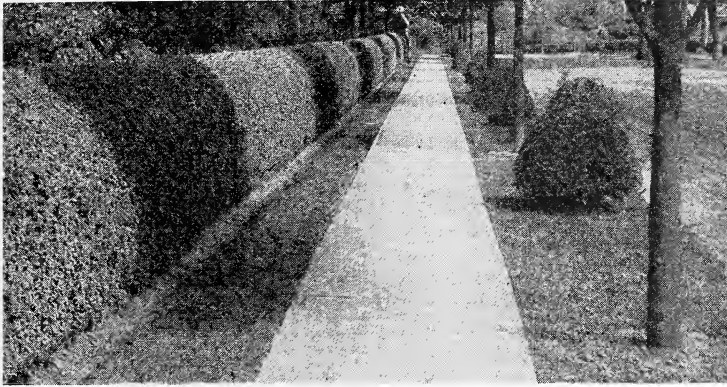


Evergreens are restful to the eye all year round and add richness and warmth to the appearance of a house

A LASTING, LIVING GREEN FENCE FOR 6½ cts. PER FOOT

## California Privet (*Ligustrum ovalifolium*)

THRIVES IN SUN OR SHADE—AROUND SMOKY FACTORIES—NEAR RAILROADS, ETC.



Hedge of California Privet. Thrives in sun or shade

A remarkably vigorous grower, compact and regular in form, with glossy wax-like foliage; a beautiful shade of green. Thrives in all kinds of soils and situations, in sun or shade, and for seashore planting it is one of the best things you can get.

25 at 100 rate, 250 at 1,000 rate

By express only, not prepaid

	100	1,000
12 to 18 inch.....	\$6 50	\$55 00
18 to 24 inch.....	8 00	65 00
2 to 3 feet.....	10 00	85 00
Specimen plants, 3 feet high, 12 to 15-inch spread, \$1 each	□	□

## Tree Form California Privet (Ball-shaped Heads)

These plants have sturdy stems about 2½ feet high with ball-shaped heads 1 foot across. They make nice lawn ornaments and are often used for placing on each side of porch steps or garden entrance when a formal effect is desired. \$1.75 each, by express only.

## Entirely Hardy Privet (New) (*Ligustrum Ibolium ovalifolium*)

The foliage of this new hardy Privet closely resembles that of the ever-popular California Privet. Best of all, however, it is *perfectly hardy* and our northern customers can now enjoy having a hedge of beautiful Privet without fear of having it winter-killed.

PRICES, delivery not prepaid	100	1,000
18 to 24-inches, field plants.....	\$10 00	\$75 00
2 to 3 feet, field plants.....	15 00	135 00
3 to 4 feet, field plants.....	20 00	180 00

## Japan Barberry (*Berberis Thunbergi*) HARDY EVERYWHERE

Japan Barberry is the ideal shrub and hedge plant, gracefully beautiful in summer, with its arching thorny branches thickly covered with small, fine, rich green leaves, which change in the autumn to a unique fiery crimson. Brilliant scarlet berries make the hedge attractive after the leaves have fallen.

PRICES, delivery not prepaid	10	100	1,000
9 to 12 inches, field plants.....	\$2 00	\$15 00	\$120 00
12 to 18 inches, field plants.....	2 50	20 00	180 00
18 to 24 inches, field plants.....	3 00	25 00	200 00
2 to 2½ feet, field plants.....	3 50	30 00	250 00

## Box Barberry (See Cut)

PERFECTLY HARDY ANYWHERE  
IN THE UNITED STATES

This *dwarf* Barberry comes to fill a long-felt need for an edging plant that is dwarf in growth, free from all diseases and insect pests, and *absolutely hardy*. The foliage is small and dainty and turns red in the fall. Use it for bordering walks if kept trimmed low. It makes a lovely hedge around a low porch if allowed to grow full height.

PRICE: Strong, hardy, field-grown plants:

	10	100	1,000
1-yr. size.....	\$1 25 ppd.	\$9 00	□ \$75 00
2-yr. size.....	1 50 ppd.	12 00	□ 100 00
3-yr. size.....	2 50 ppd.	20 00	□ 175 00
4-yr. size.....	4 50 ppd.	35 00	□ Ex. bushy



This is the new Box Barberry used for edging

# Hardy Ornamental Vines and Ivies

FOR ARCHES, ARBORS, PORCHES, ETC.

SEE CLIMBING ROSES, PAGES 16 AND 17

The following 5 Vines and Honeysuckles need supports to climb on.

**Akebia quinata.** A lovely, rapid-growing old-time vine with neat clean foliage and graceful habit of growth. The clusters of violet-brown, cinnamon-scented, cup-shaped flowers are unique and attractive. 2-yr., 50 cts., postpaid.

**Sweet-Scented Japan Clematis** (*Clematis paniculata*, or *Virgin's Bower*). The sweetest of all Clematis and the easiest to grow. Plant in good, mellow soil and support the plants as soon as they have made even a few inches of growth. We consider this the most satisfactory, hardy, flowering vine we offer. Flowers small, rich creamy white, borne in clusters, completely covering the vine. Makes beautiful sprays for bouquets. 2-yr., 50 cts. each, postpaid.

**Bitter-Sweet** (*Celastrus scandens*). Has attractive foliage and yellow flowers in June, followed by bright orange fruit which usually remains all winter. 1-yr. size, 35c. postpaid; 2-yr. size, 60c. each; 3-yr. size, 75c. □

**Chinese Matrimony Vine** (*Lycium barbarum*). A strong, hardy, climbing vine. Bright rosy purple flowers, followed by brilliant scarlet berries; makes a dense, thick growth. 1-yr. size, 35c. postpaid; 2-yr. size, 60c. each; 3-yr. size, 75c. □

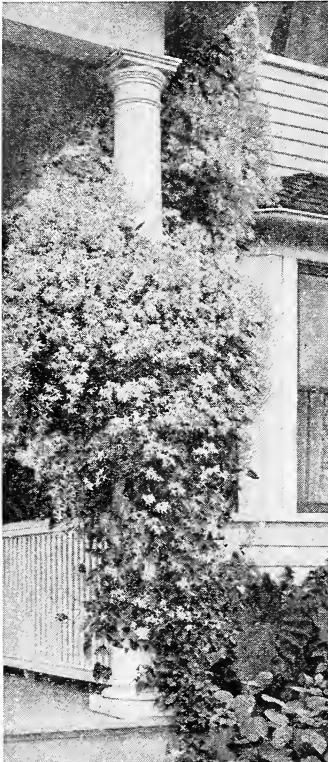
## Sweet-scented Honeysuckles

For covering summer-houses and for training on porches for shade, also for beautifying fences, try the combination of Honeysuckle and roses, for the cultivated Honeysuckles do not grow too rank like the wild variety and therefore will not smother the roses. In our opinion the best Honeysuckle is the everblooming Heckrotti.

**Everblooming Honeysuckle, Heckrotti.** Flowers crimson-carmine with golden apricot center. Blooms unceasingly. 35 cts. ea., postpaid; 2-yr., 50 cts. ea.; 3-yr., 75 cts. ea. □ (We also have Halliana, Golden-leaved, and Evergreen if wanted. Price same as Heckrotti.)



Everblooming Honeysuckle



Sweet-Scented Japan Clematis



Vigorous-Growing Wisteria

□ This indicates delivery not prepaid.

## 4 Leading Ivies

They beautify bare walls and cling to stone, brick, or stucco. They need no other support.

**JAPAN, or BOSTON IVY** (*Ampelopsis Veitchi*). The handsome, deep green foliage changes in autumn to crimson. 1-yr. 25 cts. ea., \$2.50 per doz.; 2-yr. 50 cts. ea., \$5 per doz., postpaid.

**AMERICAN IVY** (*Ampelopsis quinquefolia*). The true Virginia Creeper. Hardy and noted for its colored foliage in autumn. 1-yr. 25c. ea., \$2.50 per doz.; 2-yr., 35c. ea., \$3 per doz.; 3-yr., 50c. ea., \$5 per doz., ppd.

**HARDY ENGLISH IVY** (*Hedera helix*). Evergreen, with dark, glossy green leaves. 25 cts. each, \$2.50 per doz., postpaid.

**EVERGREEN BITTER-SWEET** (*Euonymus radicans vegetus*). A vigorous-growing vine on which is produced brilliant orange-red berries. These decorative and attractive fruits remain on the plant a long time. Price, 35c. each; larger size, 60c. each, postpaid.

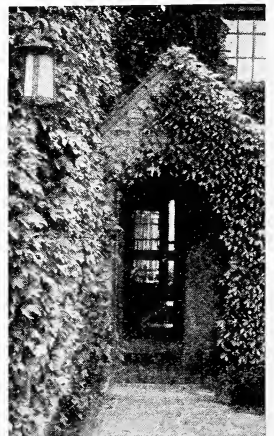
## 3 Wisterias See cut

Magnificent vines, producing masses of flowers in dense, pendent clusters. Blooms come in May and make an attractive sight. Vigorous growers that will climb to the roof of your house if desired. **Magnifica.** Blue-lavender.

**Chinese Blue.** Sky-blue.

**Chinese White.** Creamy white.

Prices, 2-yr. size, 50 cts., each; 3-yr. size, 75 cts. □

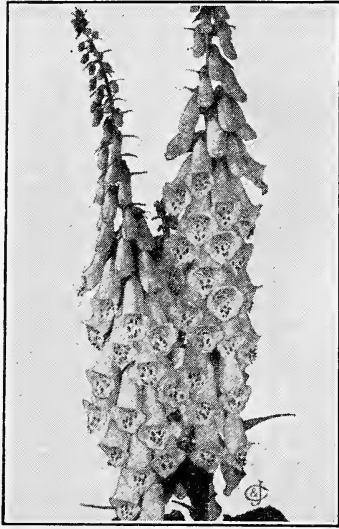


Japan or Boston Ivy (*Ampelopsis Veitchi*). The foliage turns crimson in the fall. Makes a house a home.

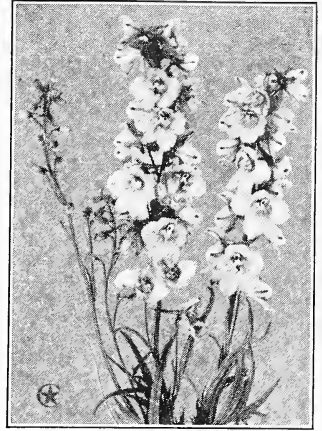


# Hardy Perennials

OLD-FASHIONED  
GARDEN FLOWERS



Digitalis (Foxglove)



A double spike of Delphinium

Autumn is a good time to plant Hardy Perennials. They get well established during the winter and are ready to start growth with the first sign of spring.

A comparatively small collection enables you to have flowers in bloom all summer. Useful as cut-flowers.

The first figure after a variety indicates height of growth. The next figures indicate the months the flowers bloom in this locality. Allow some variation, according to latitude.

**Directions.**—We send you most of these in strong roots. Allow from 2 to 3 square feet of space for each. After the first severe frost in the fall, cut down the tops to within 3 inches of the ground. *Never* put manure of any kind on top or in contact with perennial clumps. If any need of protection, use coal ashes or sand.

**PRICES:** Unless otherwise noted, 35 cts. each, 10 for \$2.90, postpaid (remember that our postpaid prices include delivery charges for which many other firms charge extra), or \$25 per 100 □. 25 or more at 100 rate □

**Achillea alba, The Pearl.** 2 ft. 6-10 mo. Bears an abundance of pure white, perfectly double flowers, borne in pretty, graceful sprays. 35 cts. each, postpaid.

**Aquilegia (Columbine).** You can plant in the sun or partial shade and obtain satisfactory results. Three distinct kinds.

**A. chrysantha.** 3-4 ft. 5-8 mo. A beauty. Large yellow flowers tipped with claret. 35 cts. each, ppd.

**A. cærulea.** 9-15 in. 4-7 mo. Dainty violet-blue and white blooms. Fine for rockeries. 35 cts. each, ppd.

**A., Farquhar, Pink.** 1-1½ ft. 4-5 mo. Clear pink blooms on strong stems. 35 cts. each, postpaid.

**Christmas Rose (Helleborus niger).** 6-8 in. 1-3 mo. The unique, large single white flowers, often tinged with purple, bloom in the snow. 50 cts. each, postpaid.

**Coreopsis lanceolata grandiflora.** 2-3 ft. 6-9 mo. **Emblem Flower of the International Sunshine Society.** For profusion of bloom this flower is unsurpassed. Buttercup-yellow flowers on long stems. Splendid for cutting. 35 cts. each, postpaid.

**Cornflower Aster (Stokesia cyanea).** 1½-2 ft. 7-10 mo. Large lavender-blue flowers, 4 to 5 inches across, that somewhat resemble the annual Asters. It is quite hardy and blooms freely on long stems. 35c. each, postpaid.

**Digitalis (Foxglove).** 3 ft. 7 mo. (See cut.) The bold, pointed racemes of cone-shaped flowers are odd and attractive, and look like spires or towers of bells. Does well in a shady place. Plant 6 or more in a clump. Mixed colors only. 35 cts. each, 10 for \$2.90, postpaid.

**Delphinium Belladonna, the Everblooming Hardy Larkspur.** (See cut.) 2-3 ft. 6-10 mo. Flowers are clear turquoise-blue. This variety is *seldom out of bloom* from the end of June until cut down by frost. These constant blooming Delphiniums are greatly valued in perennial borders as blue flowers are scarce. 35c. each, 10 for \$2.90, ppd.

**D. formosum.** 1½-2½ ft. 6-8 mo. Flowers are clear deep gentian-blue with white in the center. Harmonizes beautifully with *Delphinium Belladonna*. 35 cts. each, 10 for \$2.90, postpaid.

## Hardy Chrysanthemums

AS SHOWN IN COLOR ON INSIDE FRONT COVER

These are the most brilliant and showy fall flowers we have. They bloom so abundantly that, from a few plants armfuls of flowers can be gathered for indoors. Their fresh, spicy fragrance has a charm no other flower possesses, and the blooms come at a time when nearly all other flowers have gone.

You can gather bushels of bloom the first season from this selected set of 10

Price 35 cts. each; any 10 for \$2.90, postpaid

**Cherry Red.** Dark cherry-crimson.

**Christmas Gold.** Late-blooming yellow.

**Hilda Canning.** The best bronze.

**Lilla.** Lovely dark wine-red color.

**Murillo.** Fresh light rose color.

**Mrs. E. D. Godfrey.** Light pink Smith's Advance. Early; large-flowered white.

Blooms in September.

**Sunshine.** Anemone-flowered. Yellow.

**Tints of Gold.** Very early. Yellow and bronze.

**Uvalde.** Early-flowering; white.

**OFFER 23** The set of 10 Hardy Chrysanthemums for \$2.50, postpaid.

**OFFER 2** One each of 5 Hardy Chrysanthemums named on inside front cover for \$1.50, postpaid.

## Fragrant Hardy Phlox

AS SHOWN IN COLOR ON INSIDE FRONT COVER

They will make a handsome display of brilliant flowers year after year. Plant 18 inches apart and keep well watered to insure large heads of bloom.

Price, 35 cts. each, 10 for \$2.90, postpaid

**Champs Elysees.** A royal shade of rosy purple or magenta; very effective when massed in solid beds.

**Europa.** White flowers with crimson eye. (See page 2.)

**Jewel.** Mauve-rose with carmine-red eye.

**Mrs. Jenkins.** Pure white. Fine bloom-heads.

**Pantheon.** Bright carmine-rose.

**Prof. Schliemann.** Lavender or lilac-rose.

**Rhijnstroom.** Beautiful Paul Neyron pink. (See page 2.)

**Thor.** Salmon-pink with a scarlet glow. (See page 2.)

**W. C. Egan.** Lilac, with bright solferino eye. (See page 2.)

**OFFER 23a** The set of 9 Phlox for \$2.25, or, 4 of each, 36 in all, for \$7.50, postpaid.

**OFFER 2a** The set of 4 shown in color on inside front cover for \$1.25, postpaid.

**EARLY-FLOWERING WHITE PHLOX, MISS LINGARD.** Blooms from May till frost. Grows about 2 feet high. Large white flowers with lilac eye. 35 cts. each, 10 for \$2.90, postpaid.

HARDY PERENNIALS, continued

Bearded Iris (Fleur-de-lis)

These Irises are easily grown and for best results should be planted in a well-drained, sunny position, the roots barely covered. The flowers are large and handsome. They flower in May and June.

**Dr. Bernice.** You should have some of this kind to plant with Loreley (described below). Color is coppery-bronze and dark crimson, making a handsome combination. 35 cts. each, postpaid.

**Florentina Alba.** Grows about 2 feet high and produces large, fragrant white flowers during May. 35 cts. each, postpaid.

**Loreley.** (See illustration.) In our opinion this is the loveliest Iris we have seen anywhere. The flowers are very large and are borne in profusion on erect, strong stems, well above the foliage. Color is deep blue, veined white and bordered sulphur-yellow. 35c. each, ppd.

**Mme. Chereau.** White with edges feathered sky-blue. 35c. each, ppd.

**Mrs. Darwin.** Large white flowers spotted with violet and golden yellow. A popular Iris. 35 cts. each, postpaid.

»OFFER» 24 One each of the above 5 Irises for \$1.50, postpaid



The Lovely Iris, Loreley

**Iris pallida speciosa.** Blooms in May. 2 1/2 ft. Standards dark lavender with lighter shadings, falls shaded light purple. Sweet-scented. 40c. each, ppd.

**Daisy, Burbank's Shasta.** 1 1/2-2 ft. 7-10 mo. This is a lovely pure white flower for mixing with colored flowers of almost any kind in a vase. Excellent for cutting. 35 cts. each, postpaid.

**Daisy, Lothian Bell.** The largest white-flowered Daisy. Flowers sometimes measure 6 inches across. 35 cts. each, postpaid.

**Eulalia gracillima.** Hardy Ornamental Grass. Very graceful. 35 cts. each, postpaid; clumps, 50 cts. each □

**Funkia grandiflora** (Plantain Lily or Large White Day Lily). 2 1/2-3 ft. 8-9 mo. Succeeds in sun or shade. 35c. each, postpaid.

**Gaillardia grandiflora** (Blanket Flower). 2 ft. 6-10 mo. Large daisy-like flower, which blooms all summer. Red center with scarlet and yellow edge. 35 cts. each, postpaid.

**Golden Glow** (Double Rudbeckia). 5-7 ft. 7-9 mo. Golden yellow flowers. Makes an excellent screen for unsightly places. 25 cts. each, postpaid; clumps, 35 cts. each □

**Helianthus, Miss Mellish** (Perennial Sunflower). 4 ft. 7-8 mo. Large, brilliant, yellow flowers. The best of the splendid Hardy Sunflowers. 35 cts. each, postpaid.

**Hemerocallis** (Tawny Day Lily). 3-4 ft. 7-8 mo. Bronze yellow, with carmine marking. 35 cts. each, ppd.

**Lychnis chalconica** (Maltese Cross, or Scarlet Lightning). 2-3 ft. 7-9 mo. Vermilion-scarlet flowers. 35 cts. each, ppd.

**Pachysandra terminalis.** Use it as a ground-cover, especially in the shade. Grows 5 to 8 inches high. 10 for \$2, postpaid, \$15 per 100 □

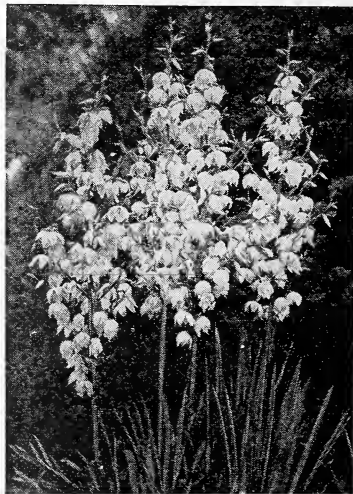
**Pentstemon barbatus torreyi.** 3-4 ft. 6-8 mo. Graceful, slender stems almost entirely covered with bright scarlet flowers. 35 cts. each, postpaid.

**Plumbago** (Leadwort). 4-6 in. 6-10 mo. Especially suitable for bordering beds. The deep blue flowers are borne all summer. 35 cts. each, 10 for \$2.75, postpaid.

**Platycodon** (Balloon Flower, or Japanese Bellflower). 2-3 ft. 7-9 mo. Violet-blue, bell-shaped flowers. Easy to grow and blooms profusely. 35 cts. each, postpaid.

**Veronica** (Speedwell). 2-4 ft. 6-8 mo. Flowers clear blue with purple stamens, on spikes 2 to 4 feet high. 35 cts., postpaid.

**Yucca filamentosa.** (Adam's Needle, or Spanish Bayonet). 4 ft. 6-7 mo. Most ornamental when used among Perennials. Foliage is always decorative. (See cut.) 35 cts., postpaid.



Yucca (Adam's Needle)

Nine CHAMPION PEONIES Average Rating by the American Peony Society, 9.2 \$40.00

**GRANDIFLORA, RICHARDSONS.** 8.8. Rose type; very late. Bright seashell-pink, overlaid with salmon and lilac. \$2.50 each.

**JUBILEE.** 8.9. Rose type; midseason. An immense flower, ivory-white with primrose-tinted center. A true aristocrat. \$7.50 each.

**LADY ALEXANDRA DUFF.** 9.1. Semi-double type; midseason. Lovely French white tinted with blush. Very scarce. \$3.50 each.

**MME. JULES DESSERT.** 9.4. Rose type, midseason. Snow-white with definite pink center. Blooms as large as dinner-plates. \$5 each.

**MONS. MARTIN CAHUZAC.** 8.8. Semi-rose type, midseason. Deep maroon and garnet, almost black. A gorgeous flower. \$3.50 each.

**SARAH BERNHARDT.** 9.0. Semi-rose type, late midseason. Silver-tipped, apple-blossom-pink. Simply superb. \$3.50 each.

**SOLANGE.** 9.7. Rose type, midseason. A unique color—Havanna-brown or reddish salmon. \$5 each.

**THERESE.** 9.8. Rose type, midseason. Enormous flower of satiny pink, with glossy reflex. \$6 each.

**TOURANGELLE.** 9.4. Rose type, late midseason. Opaline pearly pink overlaid with salmon. \$7.50 each.

»OFFER» 24a The above 9 CHAMPION PEONIES, average rating 9.2, for \$40, postpaid

# C.-P. Selected Peonies ALL PRICES POSTPAID

For permanent plantings, no flower can surpass the Peony for massive, showy blooms, and quantities of them from each established plant. They grow well, even in partly shaded locations. Whether you seek pleasure or profit, rich returns may be expected if you plant *good* Peonies. These are good Peonies. Note the superior sorts on page 24 and the excellent kinds here. The best for the price in each set has been our aim, and more than that, we give you roots which produce results.

Colors range from snow-white to deepest maroon. We have many more varieties but we offer only the best. We are members of the American Peony Society.

## 14 Superb Peonies

*Note the Ratings by the American Peony Society*

**ALBERT CROUSSE. 8.6.** Bomb type, *late*. Delicate shell-pink, large, full and well-developed; fragrant. Profuse bloomer. \$1.50 each.

**ADOLPHE ROUSSEAU. 8.4.** Semi-double; *early midseason*. Very large and spectacular. Deep garnet color with a distinct metallic reflex. An ideal red Peony with shell-like petals. \$1.50 each.

✪ **AUGUSTIN D'HOOR. 7.8.** Bomb type; *midseason*. Rich, brilliant solferino-red with slight silvery reflex. Extremely large, perfect bloom. \$1 each.

**BARONESS SCHROEDER. 9.0** Rose type; *late*. Flesh-pink, changing to pure white; very fragrant. A great cut-flower. \$2 each.

✪ **COURONNE D'OR. 8.1.** Semi-rose type; *late midseason*. This is the famous "Crown of Gold." Immense, very full, ball-shaped blooms. The flowers are white but the golden stamens reflect through the petals. \$1 each.

✪ **EDULIS SUPERBA. 7.6.** Crown type; *very early*. Beautiful clear pink with silvery reflex; very fragrant. *In normal seasons it blooms in time for Memorial Day.* 75 cts. each.

✪ **EUGENE VERDIER. 8.3.** Rose type; *late*. Delicate hydrangea-pink, with outer guard petals lilac-white. \$1.50 each.

✪ **FELIX CROUSSE. 8.4.** Rose type; *midseason*. The color is exceptionally fine, a brilliant dazzling ruby-red, bright and effective. Fragrant. \$1 each.

✪ **FESTIVA MAXIMA. 9.3.** Rose type; *early*. Immense, pure snow-white flowers, often 7 inches in diameter, with a beautiful flake of carmine in the center. So perfect is this flower that it has held first place for over sixty years. A perfect Peony. 75 cts. each.

**JAMES KELWAY. 8.7.** Semi-rose type; *early midseason*. Gigantic flowers, white, overlaid with delicate pink. \$2.50 each.

**KARL ROSENFELD. 8.8.** Semi-rose type; *midseason*. Rich, clear, glowing crimson. Simply superb. Erect grower and fine for cutting. \$2.50 each.

**MME. DUCEL. 7.9.** Bomb type; *midseason*. Very large, double, compact flower, with center petals incurved. Color silvery lilac-pink. \$1.50 each.

**MARIE LEMOINE. 8.3.** Rose type; *very late*. A masterpiece. Ivory-white, with occasional carmine tracing on the edge of some petals. \$1 each.

**TRIOMPHE DE L'EXPOSITION DE LILLE. 7.8.** Rose type; *late midseason*. Hydrangea-pink, splashed with crimson tints. A delicate, pleasing color. \$1.50 each.



PEONY ROOTS MATURE AND ARE READY TO SHIP IN THE FALL. NOW IS THE TIME TO PLANT

✪ **OFFER** 25. An assortment of six of the finest Peonies, early, midseason, and late varieties, average rating, 8.25, all distinct, the 6 marked ✪ for \$5.50, postpaid.

# C.-P. Finest Named Hyacinths



C.-P. CHOICE SELECTED HYACINTHS BLOOM LIKE THIS

The delightful, fresh fragrance of Hyacinths, combined with their bright colors and lasting qualities, places them foremost among flowers for indoor growing in winter.

## Red, White, and Blue Set

Use a set of the 3 National colors in several windows and start some for your friends. A gift of this kind is appreciated. One each, Marconi (deep rose, almost red), L'Innocence (pure white), and Grand Maitre (deep blue)

**OFFER 26a.** The 3 above Hyacinths for 70 cts., ppd.

## SPECIALLY SELECTED FOR HOUSE CULTURE AND BEDDING

Every Hyacinth bulb we send out *has the blossom already formed inside it.* By regulating the culture (see directions with each order) you can have a beautiful display of bloom for Christmas or other special occasions. Hyacinths remain beautiful a long time and are splendid for table, window, or mantel decoration. Beds on the lawn in the early spring are exquisite. Plant now.

**Grow Hyacinths for Fragrance,** bright colors, and long-lasting flowers. You want these qualities in an indoor flower during the months of winter and no other flowering bulbs can give you more enjoyment, with less care, than C.-P. Finest Named Hyacinths.

The figures, 1, 2, 3 and 4 after the names of the Hyacinths indicate the relative time of flowering—the 1's flower together and are the earliest; the 4's the latest.

**Price 25 cts. each, 12 for \$2.50, postpaid**

Delivered free in the U. S. A. at these prices

## Light Rose and Pink

**General de Wet.** 2. Soft light pink with a lighter center. Large-sized bells.

**Lady Derby.** 1. Considered the finest clear rose-pink Hyacinth.

**Queen of the Pinks.** 3. Lovely salmon-pink of unusually clear tone.

## Red and Deep Rose

**Gertrude.** 1. Deep rose-pink. Compact spikes.

**King of the Belgians.** 4. Crimson-scarlet.

**La Victoire.** 1. Bright carmine-rose with large, well-filled spikes.

**Marconi.** 1. Bright deep rose, almost red. Strong spikes. Fine bedder.

## Dark and Light Blue

**Grand Maitre.** 2. Deep blue, with long, compact spikes and large bells.

**King of the Blues.** 4. Best dark blue. A very rich, attractive color.

**Queen of the Blues.** 4. Clear, light porcelain-blue. Very lovely.

## Shades of Yellow

**City of Haarlem.** 3. Golden orange-yellow. Large, well-formed truss and good stem.

**Yellow Hammer.** 1. A fine yellow color shaded with gold. Very charming.

## Pure White

**Arentine Arendsen.** 1. Early. Snow-white.

**La Grandesse.** 3. The standard pure white.

**L'Innocence.** 1. Pure white. Large bells.

**OFFER 26** One each of the 15 choice named Hyacinths for \$3.50, or 3 of each (45) for \$9.50, postpaid.

## French Roman Hyacinths

**Very early flowering.** Special for indoors only, to be grown in pots or pans. Pot these bulbs at different times and have some in bloom from late November till May. The flowers are delightfully fragrant and smaller than the Dutch Hyacinths, but each bulb produces two or three flower-stalks. **Flowers white.** 27 cts. each, 3 for 75 cts., 12 for \$2.75, 100 for \$20.25, postpaid.



## BEDS OF BRIGHT FLOWERS ARE A DELIGHT IN EARLY SPRING



One of the keenest delights in early spring is the fresh fragrance from a bed of Hyacinths

# C.-P. Hyacinths for Pots and Bedding

Hyacinths are perfectly hardy and can be planted outdoors any time before the ground freezes for the winter. It is best, however, to get them planted early, and they can be shipped any time after the middle of September.

They *must* be planted in the fall, for if stored over winter the bulbs lose their vitality and cannot be expected to produce good blooms.

Plant so that the tops will be at least 3 to 4 inches below the surface of the soil when the bed is finished, and put about 2 inches of coarse sand or fine gravel below each bulb, to provide proper drainage. This will also induce good root-growth and consequently

better heads of bloom. Any good garden soil that is properly drained will be just right for growing Hyacinths. A little bone-meal can be added if the ground is poor.

Even a small bed of Hyacinths will make a bright spot of color, laden with fragrance in the spring, or, try a row along the base of your porch, with the bulbs 5 to 6 inches apart. A glimpse of these in the morning before you begin your day's work will help start your day right. Try this.

Our Fine Selected Hyacinths in separate colors enable you to get the colors that please you most and at much lower prices than the named varieties.

Delivered free in the U. S. A. at these prices. Plant 5 to 6 inches apart. Select the color or colors you prefer.

<b>FIVE COLORS, White, Pink, Red, Blue, and</b>	3 for	Doz.	100
<b>Yellow</b> .....	\$0 50	\$1 75	\$12 00
<b>ALL COLORS MIXED.</b> A bed of mixed			
colors is always interesting.....	40	1 50	10 00

## "Pan" or "Dutch" Single Miniature (Roman) Hyacinths

Price, 12 cts. each, 3 for 35 cts., 12 for \$1.25, 100 for \$8, postpaid

These bulbs are smaller than the regular Dutch Hyacinths and quite distinct from the French Romans. (See page 26.) If you get several sets and plant them in pots at intervals of two weeks you can have bloom for months in the winter and early spring. These Hyacinths are quite hardy. Try a bright border around your front porch and use them in your perennial bed. For outdoors plant 4 to 5 inches apart.

**City of Haarlem.** A lovely golden orange-yellow.

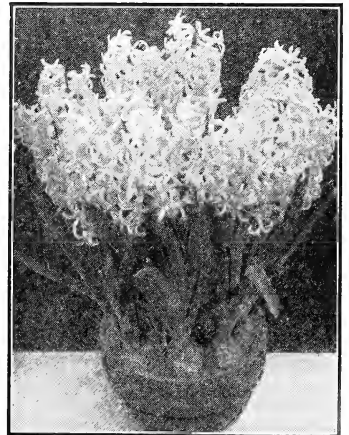
**General De Wet.** A most beautiful shade of soft pink.

**Gertrude.** Deep rose-pink. Makes a very erect, compact truss.

**Grand Maitre.** Deep blue. The most popular of this color.

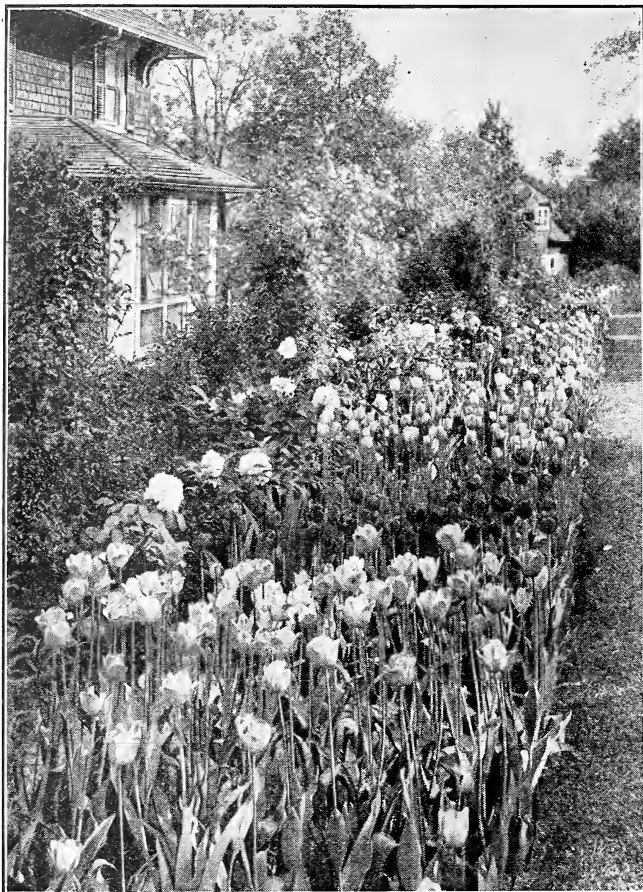
**L'Innocence.** Pure white. Makes extra-fine spikes.

**Queen of the Blues.** Light porcelain-blue. A delicate shade.



➤ **OFFER** ➤ 27 One each above Hyacinths, 6 in all, for 65 cts. postpaid

Pot some "Pan" Hyacinths for indoors



## Vivid Radiant TULIPS for Early Spring Bloom

Before the trees and shrubs come in leaf, how eagerly one looks forward to the first touch of color outdoors. Tulips provide this color, and give it lavishly, for they can be had in such variety that you may arrange practically any color scheme you want, to make a delightful and never-to-be-forgotten picture.

You can grow these hardy bulbs in any reasonably good soil if they are planted where they will get at least a moderate amount of moisture, because it will not do to have the ground too dry. Plant so that the top of the bulb is *about 4 inches* below the surface of the soil when planting is done.

Some coarse sand placed under each bulb will be beneficial and will induce quicker root action.

Tulips must be planted now if you want a gay bed next April and May. What a wealth of beauty you can get for a minimum of trouble in planting and at very moderate expense.

## Single Early Tulips. 12 Best Named Sorts

The figures following the variety names indicate their earliness of bloom. The r's are the earliest of all; 2's follow before the r's are gone, etc. The height is indicated by M for Medium and T for Tall.

Prices, delivered free in U. S. A.			Each	Doz.	100	Prices, delivered free in U. S. A.			Each	Doz.	100
Belle Alliance. 3 M. Rich scarlet with yellow base. ....	cts.	cts.	08	85	\$6 00	President Lincoln. 2 M. Clear violet. Very effective when grown beside a light-colored variety. ....	cts.	cts.	07	75	\$5 00
Couleur Cardinal. 3 M. Brilliant crimson. Large flower on strong stems. ....	10	1 00	7 00			Prince of Austria. 2 M. Orange-red. Sweet-scented. Fine bedder. ..	10	1 00	7 00		
Diana. 2 M. An immense pure white. ....	08	85	6 00			Rising Sun. 2 M. Enormous flowers of brilliant yellow. ....	09	1 00	7 00		
Flamingo. 2 M. Extremely lovely. Carmine-rose on white ground. ....	09	85	6 00			Rose Luisante. 2 T. Brilliant rosy pink. ....	09	90	7 00		
Keizerkroon (Grand Duke). 1 T. Red, gold, and yellow. ....	11	1 10	8 50			Vermillion Brilliant. 2 M. Bright glittering scarlet, yellow base. ....	09	90	7 00		
Lady Boreel (White Joost von Vondel). 2 M. Largest intense white. ....	08	85	6 00			Yellow Prince. 2 T. Yellow, sometimes streaked red. ....	08	85	6 00		

➤ **OFFER** ➤ 28 One each of these lovely early-blooming named Tulips, 12 in all, for 90 cts., postpaid.

## C.-P. Superfine Single Tulips for Bedding

IN SEPARATE COLORS

You can have these superfine Tulips in separate colors or mixed, just as you prefer. You can depend upon these bulbs to produce exquisite blooms.

First-class blooming bulbs, your choice. *White, Pink, Crimson, or Yellow.*

60 cts. per doz., \$4.25 per 100, delivered free.

*Specially selected to bloom at the same time, and make a gorgeous blaze of color*

C.-P. SUPERFINE MIXTURE

Try some for permanent plantings among or around your shrubs. Tulips do not need to be taken up after blooming if planted 4 to 5 inches deep.

Mixed by ourselves, so that we know these are uniform in height. *Will include four colors.*

50c. per doz., \$3.75 per 100, delivered free.

AVOID DISAPPOINTMENT BY ORDERING AT ONCE

## Mammoth Breeder Tulips

Breeder Tulips are so named because they are the "Mother bulbs" from which were developed the striped and vari-colored varieties by the Holland hybridizers. In this class you can get the apricot, bronze and old gold colors not to be had in the Giant Darwins.

You can plant these Tulips with the Darwins for they have the same type of growth, magnificent, firm, large flowers on long strong stems and they bloom at the same time. The lovely bronze tones in the Breeder Tulips cannot be duplicated in any other popular flower, and they harmonize beautifully with the more brilliant colors of the Darwins. See cut.

### Ten Named Varieties

Price, 12c. each, 12 for \$1.25, 100 for \$9, postpaid

**Apricot.** Beautiful bronzy buff color, shaded ruddy apricot, with olive base. A magnificent Tulip, large and well formed.

**Bronze Queen.** Color is a blending of deep yellow and brown with a touch of rose.

**Cardinal Manning.** Rosy violet, flushed bronze, with almost pure orange at the edges of the petals.

**Dom Pedro.** Coffee-brown and maroon, shaded with old-gold. An outstanding color.

**Godet Parfait.** Damson plum color feathered with brownish black. Flowers are extra large.

**Golden Bronze.** Light brownish yellow flushed with heliotrope, yellow base; inside of flower rich mahogany-brown.

**Jaune d'Œuf.** Bright deep lemon-chrome or apricot, inside soft yellow, black base and anthers.

**Louis XIV.** Rich dark purple, heavily flushed with bronze and edged golden brown. A gorgeous Tulip with very large flowers.

**Panorama.** Deep orange-red or terra-cotta, shaded with mahogany. Large goblet-shaped flower.

**Yellow Perfection.** Light bronze-yellow, edged golden yellow. Interior is bronze-brown with yellow base, starred green.

**C.-P. Breeder Tulips, Mixed.** A mixture of the above lovely art shades, bronze, buff, etc., price 12 for 85 cts., 100 for \$6, postpaid.



Breeder Tulip. Bronze and old-gold colors

➤OFFER➤ 29 One each of the 10 named Breeder Tulips for \$1.10, or 5 of each, 50 in all, for \$5, postpaid.

## Best Double Tulips

Beautiful Double Flowers Like Dwarf Peonies

**Boule de Neige.** 2. Immense white flower. Splendid for bedding. 7 cts. each, 12 for 75 cts.

**Crown of Gold (Couronne d'Or).** 2. Semi-double, deep yellow, flushed orange-red. The large, brilliant flowers come on sturdy, upright stems. This is the most popular of the Double Tulips. 8 cts. each, 12 for 80c.

**Imperator Rubrorum.** 2. Large, lovely, rich brilliant scarlet flowers. 8 cts. each, 12 for 90 cts.

**Murillo.** 2. Delicate rosy pink, flushed with white. 6 cts. each, 12 for 65 cts.

**Peach Blossom.** 2. Large, very double, bright pink flowers flushed with white. Most effective. 12 cts. each, 12 for \$1.25.

**Salvator Rosa.** 2. Color, deep rose, slightly flushed white. 7 cts. each, 12 for 80 cts.

**Vuurbaak.** 2. Brilliant scarlet. Like a gorgeous dwarf peony. 12 cts. each, 12 for \$1.25.

**Tournesol.** 2. A most attractive rich scarlet, edged with yellow. 7 cts. each, 12 for 85 cts.

**Separate Colors, Varieties not Named.** Your choice: *White, Pink, Crimson, or Yellow.* 12 for 65 cts., 100 for \$4.50.

**Mixed Colors.** Fine to use in large beds, around porches, along fences, etc. 12 for 50 cts., 100 for \$4.

➤OFFER➤ 29a One each of the above 8 named Double Early Tulips for 60 cts., or 5 of each, 40 in all, for \$2.75.

## Fancy Parrot or Dragon Tulips

Price, 7 cts. each, 12 for 70 cts., 100 for \$5

Parrot Tulips are very large and belong to the May-flowering class. The unique flowers are distinct from all others and have intensely brilliant, curiously fringed and corrugated petals. Plant five or six of a kind in your perennial bed, for these bulbs are quite hardy and bloom year after year. When fully open the blooms are 6 to 7 inches across and the vivid colors attract attention and admiration as they brighten up flower beds in early spring. Try some. They are so novel you will be delighted with them.

**Constantinople.** Gorgeous orange-scarlet, shaded orange, with black markings in the center.

**Cramoisi Brillant.** Brilliant, vivid crimson.

**Lutea Major.** Bright yellow with distinct markings of crimson and green.

**Perfecta.** Immense canary-yellow flower, vividly striped with red.

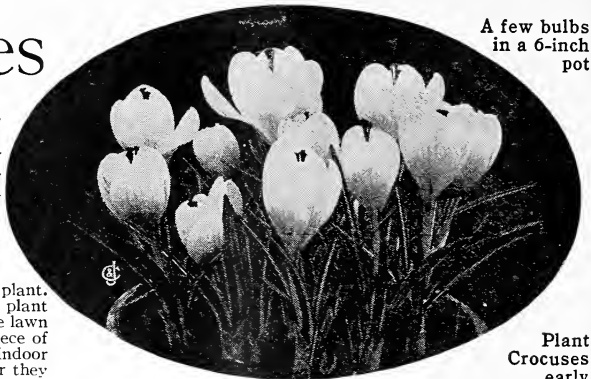
**Mixed Parrot Tulips.** They are delightfully interesting and you will have something unusual to show your friends. In this mixture are all varieties named above. You should have some Parrot Tulips, they are so novel and brilliant. Price, 3 for 20 cts., 12 for 60 cts., 100 for \$4, postpaid.

➤OFFER➤ 29b Three each of above named Parrot Tulips, 12 in all, for 65 cts., postpaid.

# C.-P. Crocuses

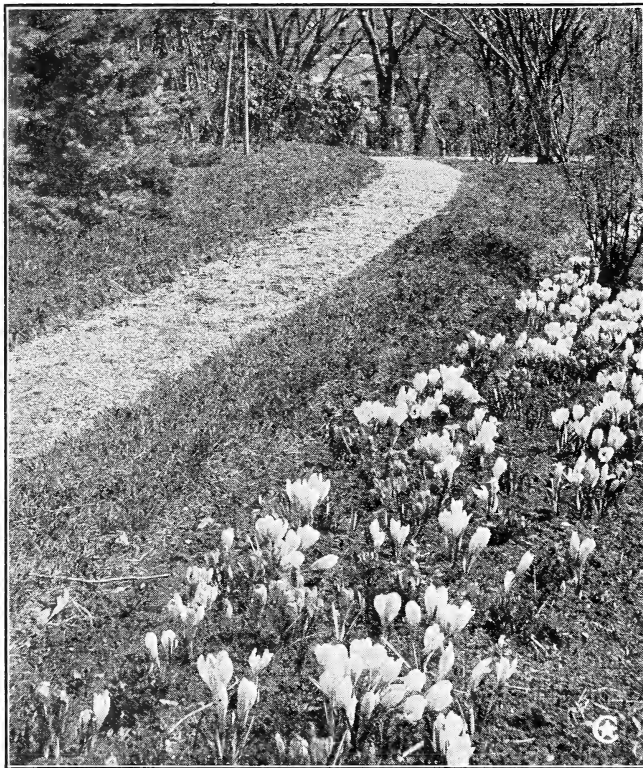
These Crocuses are the improved strains, noted for large flowers and brightest colors. They are entirely hardy, and like a rich, dry soil and sunny location. They are suitable for planting in beds and borders, also for edging in ribbon lines of any desired color; for planting in the grass in lawn or yard. Crocuses are also very highly valued for indoor flowers.

*How to Grow Crocuses.*—One inch is deep enough to plant. If planted deeper they may not bloom. It is best not to plant in even rows, and a good plan is to scatter them over the lawn and plant where they happen to fall. Just dig up a piece of sod and put two or three bulbs in each spot. For indoor growing they are fine but do not expose them to heat or they will not flower. Plant six to eight bulbs in a 5-inch pot.



A few bulbs in a 6-inch pot

Plant Crocuses early



Plant Crocuses (plenty of them) about one inch deep in early autumn

## LARGE-FLOWERING Named Crocuses

**King of the Yellows.** A beautiful pure golden yellow; large flower. 12 for 75c., 100 for \$4.50, 250 for \$9, postpaid.  
**Baron von Brunow.** Rich purplish blue flower. Very fine.  
**King of the Whites.** The best and largest white Crocus.  
**Sir Walter Scott.** White, striped purple.  
 Price (except King of Yellows), 12 for 50c., 100 for \$3, 250 for \$6, postpaid

➤OFFER➤ 30 6 each of the above, 24 in all, for \$1; 12 of each, 48 in all, for \$1.90, postpaid.

## Crocuses in Separate Colors for Naturalizing

Scatter them bountifully over your lawn and these brilliant, dainty flowers will give you joy next spring at extremely low cost.

Prices, delivered free in U. S. A.

	Doz.	100	250
White and Light . . . . .	\$0 35	\$2 00	\$4 50
Purples . . . . .	35	2 00	4 50
Striped colors . . . . .	35	2 00	4 50
Yellows, First-size . . . . .	35	2 00	4 50
All colors mixed . . . . .	25	1 25	3 00

Order in quantity. It often pays to get a friend to order with you

➤OFFER➤ 30a Remember the wonderful colors in Crocuses—Purple, Yellow, Violet, Striped and White. We will select and send you 25 White and Light, 25 Purples, 25 Striped, and 25 Yellows—  
 100 SPLENDID CROCUSES, AS ABOVE, ONLY \$1.85, OR 200 FOR \$3.50, POSTPAID

## May-Flowering or Cottage Garden Tulips

Price, 6 cts. each, 12 for 60 cts., 100 for \$4.50, postpaid

**Gesneriana lutea.** Splendid, large, bold flowers, bright, rich golden yellow, fringed orange-red.  
**Gesneriana spathulata major.** Hardy and very durable; grows 1½ to 2 feet high. Intense fiery scarlet with bright, shining, blue-black center.  
**Grenadier.** Immense orange scarlet flower, exceptionally brilliant.  
**Inglescombe Pink.** Rosy pink with a lovely flush of salmon and buff.

**Inglescombe Yellow.** Canary-yellow. Sometimes referred to as a "Yellow Darwin Tulip."  
**John Ruskin.** Salmon-rose edged with lemon-yellow; the inside is deep rosy lilac, edged yellow. Very handsome.  
**La Merveille.** Delightfully scented, long, large flower. Orange scarlet flushed rose.  
**Picotee, White.** Snow white edged with crimson. Flower reflexed and vase shaped.

MIXED COTTAGE GARDEN TULIPS. 12 for 45 cts., 100 for \$3.50, 1,000 for \$32, prepaid

➤OFFER➤ 30b The above 8 named Tulips for 35 cts., or 5 of each, 40 in all, for \$1.65, postpaid



# PLANT HARDY NARCISSUS ALONG THE EDGE OF THE SHRUB BORDER

We offer what we believe to be the best American-grown Narcissus bulbs to be had, though without any guarantee as to their blooming qualities.

## Giant Paper-White Narcissus (See illustration)

Grows in water and pebbles, or in soil

PLANT YOUR BULBS IN TIME TO HAVE THEM IN BLOOM ON CHRISTMAS DAY

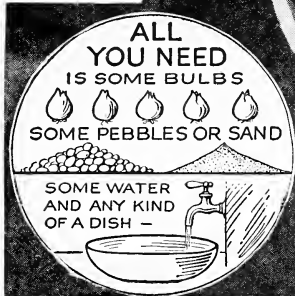
Plant your bulbs in a dish, cover them with water and set in a cool, dark place for two weeks. When brought to the light, keep them in a cool place and they will bloom in six weeks, or eight weeks altogether after planting. A succession of deliciously fragrant, snow-white flowers can be obtained by planting every two weeks. Take one lot out to the light and plant another lot. Order your winter's supply now and store them in a cool cellar to use as wanted. **Order early.** Price, 15 cts. each, 4 for 50 cts., 6 for 75 cts., 9 for \$1, 12 for \$1.25, 100 for \$9, postpaid.

## Chinese Sacred Lily

THE WATER FAIRY or "SHIN SIN FAR"—CHINESE "JOSS FLOWER"

Bears great clusters of deliciously fragrant, pure white, wax-like blossoms with golden yellow centers. They are usually grown in a bowl of water with pebbles to hold the bulbs in place. Plant 3 to 6 bulbs in a dish and place a piece of charcoal with the pebbles to keep the water sweet. First-size, quick-blooming bulbs, 25 cts. each, 3 for 60 cts., 12 for \$2, postpaid.

►OFFER► 31 Six Giant White Narcissus and 6 Chinese Sacred Lilies (12 bulbs in all) for \$1.60, postpaid.



## Hardy Narcissus (Daffodils)

No flowers in early spring are more eagerly and lovingly welcomed than the cheery Daffodils. With their golden trumpets they seem to announce that they are foremost among the flowers that will keep you happy till winter comes again. There are two distinct groups, the single, large-flowered trumpet shape and the double Daffodils. Plant them in quantity in woodlands, along hedges and in perennial borders.

### 2 LARGE-FLOWERED TRUMPET NARCISSUS

**Emperor.** Clear, rich golden yellow, with immense fluted trumpet. 20 cts. each, 12 for \$2, 100 for \$12.50, postpaid.  
**Empress, White Wings.** Large, bold flowers; wings white, trumpet yellow. 20 cts. each, 12 for \$2, 100 for \$12.50, postpaid.

### 3 LARGE-FLOWERED DOUBLE NARCISSUS

**Alba plena odorata** (The Double White Poet's Narcissus). Double, snow-white. A most charming variety and one of the most satisfactory of the double Narcissus. 15 cts. each, 12 for \$1.40, 100 for \$8, postpaid.  
**Orange Phoenix** ("Eggs and Bacon"). Cream-white, mixed orange and white. 20 cts. each, 12 for \$1.75, 100 for \$12, postpaid.  
**Sulphur or Silver Phoenix** ("Codlins and Cream"). Creamy white, sulphur center. 20 cts. each, 12 for \$1.75, 100 for \$12, postpaid.

►OFFER► 31a One each of above 5 Daffodils for 75 cts., or 3 of each (15 in all) for \$2.10, postpaid.

### Hardy Poet's Narcissus

Delightfully fragrant, long-stemmed, and splendid for cutting. They increase rapidly when undisturbed. See illustration. **Narcissus poeticus** (The Pheasant's Eye). Pure white, star-like flowers with orange cup edged with crimson; hardy, 10 cts. each, 3 for 25 cts., 12 for 75 cts., 100 for \$5, postpaid.

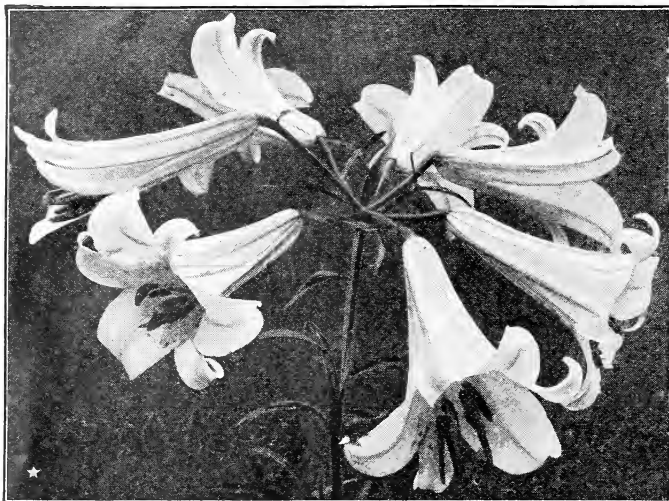
### Narcissus Jonquilla (Jonquils)

Blooms resemble the Giant White Narcissus and are very fragrant. The flowers are golden yellow.  
**Double Jonquils.** 15 cts. each, 3 for 40 cts., 12 for \$1.25, 100 for \$9, postpaid.  
**Single Jonquils.** 12 cts. each, 3 for 30 cts., 12 for \$1, 100 for \$6, postpaid.



Poet's Narcissus Naturalized

# The Regal Lily (*Lilium myriophyllum*)



The Regal Lily. Delicious Jasmine fragrance

See Illustration

This is considered the King of all Lilies and is, without question, the easiest to grow. It comes from the bleak slopes of the hills in northern China and thrives where other plants would perish. The blooms are very large. They are trumpet-shaped, white, slightly suffused pink, with a lovely shade of canary-yellow in the throat. The flowers come early in July, on erect, strong stems with from three to eight blooms on a stalk. This Regal Lily is particularly noted for its penetrating jasmine fragrance. Plant the bulbs about 5 inches deep in any good garden soil, keep free from weeds, and you will have gorgeous blooms next July. The photograph shown opposite reflects what we have enjoyed here. Price, first-size bulbs, \$1 each. Smaller bulbs, 60 cts. each, postpaid.

**PINK AMARYLLIS, or Belladonna Lily.** Rose-pink, penciled silvery white; very sweet. 25 cts. each, 3 for 60 cts., postpaid.

**Amaryllis Hallii** (*Lycoris squamigera*). The Magic Wand Flower. Delicate lilac-pink, shaded with clear blue. The foliage dies down in July, after which masses of bloom spring up as if by magic. Plant in the fall. 75 cts. each, postpaid.

**Ismene Calathina** (Peruvian Daffodil). Large fragrant flowers, like an amaryllis, novel in form and snowy white. Generally blooms in three to four weeks after planting. 25 cts. each, postpaid.

## Bermuda Easter Lily (*Lilium Harrisii*)

The Bermuda Easter Lily grows easily and is sure to bloom. The flowers are pure snow-white, very large and fragrant, and borne in splendid clusters. Plant in a pot or box which is at least 6 inches deep and well drained; good, turfy soil with a little old, well-rotted manure is best; the bulb should be covered about 1 inch deep; firm the earth well around it, water thoroughly and set away in a cool place three weeks or more till the roots begin to start, then bring to the light. They should bloom in about three months from time of planting. Ready in August. 50 cts. each, 3 for \$1.25, postpaid.

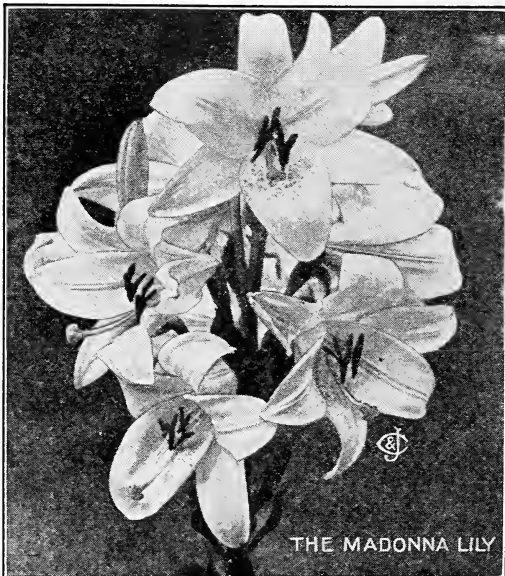
## The Madonna Lily (*Lilium candidum*)

WE SUPPLY THE LARGEST SIZE PROCURABLE

Also known to many as the Annunciation Lily. Its deliciously fragrant, pure white, perfectly formed flowers come on strong, upright stems. *Bulbs for outdoors should be planted early in the autumn.* For indoors, plant 2 or 3 bulbs in a pot and bury the pot outside until they freeze, then take indoors and keep in a cool place until you want them to grow. Dust the bulbs lightly with powdered sulphur, and do not cover with more than 2 inches of soil. 30 cts. each, 3 for 75 cts., 12 for \$2.50, postpaid. (See cut.)

## Giant Amaryllis, Hybrids of Vittata FLOWERS 5 TO 7 INCHES ACROSS

If you could see in reality, the flowers of these magnificent Amaryllis you would be amazed, first at their size and then at the brilliancy of the colorings, which range from deep reddish maroon to pure white and striped. Our bulbs are grown from seed obtained several years ago from France through the Department of Agriculture at Washington, where they had tested these Amaryllis. Every bulb has a magnificent, flower-crowned stalk and some have two, with two or more flowers to each. Amaryllis bloom best when they are pot-bound. Strong blooming bulbs, 50 cts. each, 3 for \$1.35, postpaid.



THE MADONNA LILY

The Madonna Lily (*Lilium candidum*)

# Free-Flowering Fragrant Freesias



Fragrant Freesias

## Grape Hyacinths

**Heavenly Blue.** A rich purple color and noted for their agreeable musky fragrance. Dwarf in growth and effective as an edging. Plant them throughout the perennial border. 7 cts. each, 12 for 60 cts., 100 for \$4, postpaid.

Freesias are extremely valuable as cut-flowers, as they fill the air with delicate perfume and their endurance is remarkable. The bulbs are small and can be planted six to twelve in a pot. Graceful in form, easily grown, and if planted early you can have blooms for Thanksgiving and a later planting for Christmas.

**FREESIA, "PURITY."** The flowers of this grand Freesia are pure, glistening white. The stems are 10 to 12 inches long and very wiry, making it most valuable for cutting. Each bulb should produce from two to four stems of lovely, fragrant flowers. First size, 3 for 15 cts., 12 for 45 cts., 100 for \$3. Largest size, 2 for 12 cts., 12 for 60 cts., 100 for \$4, postpaid.

## 3 New Colored Freesias

Plant some colored varieties with "Purity" for added charm to your Freesia display.

**California.** A lovely shade of yellow. } Price 8 cts. each,  
**General Pershing.** Orange-red shading to pink. } 12 for 85 cts., 100  
**Splendens.** Delicate blue or lavender shade. } for \$6, postpaid.  
**Freesias. Mixed Colors.** 6 cts. each, 12 for 65 cts., 100 for \$4.50, postpaid.

## Beautiful Calla Lilies (Richardias)

**SPOTTED CALLA** (*Richardia albo-maculata*). Flowers are white, with a black center. 25 cts. each, postpaid.

**WHITE CALLA, or Lily-of-the-Nile** (*R. ethiopica*). Needs rich soil, heat, and moisture. Use liquid manure once a week. 35 cts. each, postpaid.

**CALLA ELLIOTTIANA.** Foliage dark green with creamy white spots. Flowers are rich golden yellow, of velvety texture. Hardy, with protection. 30 cts. each, postpaid.

## Early Snowdrops (Galanthus)

**Single.** The single Snowdrops are charming in their simplicity. They multiply rapidly when left undisturbed. 12 for 65 cts., 100 for \$4, postpaid.

## Scilla Sibirica (Wood Hyacinths)

These lovely little wild Hyacinths are suitable for planting among hardy perennials. They flower with the snowdrops. Color exquisite bright blue. 12 for 75 cts., 100 for \$5, postpaid.

# Flower Seeds for Fall Planting

Hardy Biennials and Perennials should be sown now

	Pkt.		Pkt.
<b>Aquilegia</b> (Columbine). Many beautiful colors. \$0 10		<b>Japan Iris.</b> Lovely orchid-like flowers. . . . .	\$0 10
<b>Bellis perennis</b> (English Double Daisy). White, pink, red, and variegated, mixed. . . . .	10	<b>Myosotis</b> (Forget-me-not). Beautiful blue. . .	10
<b>Campanula</b> (Canterbury Bells). Lovely bell-shaped flowers in blue, pink, white, etc. Single, mixed colors. . . . .	10	<b>Tufted or Bedding Pansies</b> (Violas), Mixed. Brilliant colors, all shades. . . ¼oz. 50 cts. . .	10
<b>Carnations.</b> Double mixed. Sown now, will bloom next season. . . . .	10	<b>Pansy, Giant Exhibition.</b> The largest and best shaped flowers and finest colors. Plant seed now for spring bloom. . . . ½oz. \$1.50. . .	25
<b>Chrysanthemum.</b> Finest mixed. C.-P. Hardy Pompons, to bloom in the fall. . . . .	15	<b>Poppy, Oriental.</b> Brilliant scarlet. . . . .	10
<b>Coreopsis.</b> Like golden yellow cosmos. . . . .	10	<b>Shasta Daisy.</b> Large snow-white flowers. . . .	10
<b>Delphinium, Belladonna</b> (Everblooming Hardy Larkspur). Sky-blue flowers on long stems. . . . .	15	<b>Sweet Peas, C.-P. Mixed Spencers.</b> Sow late in October or early in November, according to latitude, in a situation that will warm up quickly in the spring. Spade the ground 1 to 1½ feet deep and sow the Peas thickly in a trench about 2 inches deep. Cover well for winter. Oz. 35 cts., ¼lb. 85c. . .	10
<b>Delphinium formosum.</b> One of the finest Larkspurs; blue with white eye. . . . .	10	<b>Sweet William.</b> Deliciously sweet. ½oz. 25c. . .	10
<b>Dianthus plumarius.</b> Original Clove Pink. . . .	10	<b>Wallflower.</b> Makes lovely heads of delightfully fragrant golden flowers. Can be grown in very poor soil. . . . .	10
<b>Digitalis</b> (Foxglove). Mixed colors. . . . .	10		
<b>Gaillardia</b> (Blanket Flower). Large daisy-like flowers red and yellow. Blooms all summer. . . . .	10		
<b>Hollyhock, Mammoth Allegheny.</b> Finest mixed. . . . .	10		

**Grass Seed, C.-P. VELVET GREEN MIXTURE.** For seeding down new lawns and renovating old ones. Use 1 quart (10 ounces) for 200 square feet. Price, 50c. per qt., ppd. (Send for prices in bulk.)

# Brilliant Giant Darwin Tulips

SEE IN NATURAL COLORS ON OPPOSITE PAGE

Nature's gayest early spring flowers, beautiful beyond description, are produced in Darwin Tulips in most intensely brilliant colors. The great bowl-shaped blooms remain for weeks and sway gracefully in the gentle breezes, on long, strong, upright stems.

Lovers of these gorgeous flowers are enchanted with the distinct Tulip fragrance.

Most effective displays are made by massing colors in separate beds, in perennial borders, or even along the edges of shrubbery where they need not be disturbed. They will bloom early every spring for years to come.

\***BARONNE DE LA TONNAYE.** Vivid pink, margined with silvery rose or blush. (See No. 6.)

**BLEU AIMABLE.** Bright, violet, with distinct steel-blue shading, the inside dark purple.

**CENTENAIRE.** Enormous flowers of rich violet-rose with electric-blue center.

\***CLARA BUTT.** Soft salmon-pink, shaded with rose, inside much deeper, with blue base. (At foot of bed.)

**DREAM.** Beautiful, uniform light lilac or pale heliotrope.

**EDMEE.** Vivid shade of cherry-rose, edged with soft old-rose. A most attractive color.

**FAUST.** Lustrous deep pansy-violet color with blue base. Large flower.

**FEU BRILLANT.** A glorious scarlet Tulip and one of the earliest to bloom.

\***GLOW.** Vermilion-scarlet with white base, marked with blue. (See No. 4.)

**ISIS.** Flowers intense fiery scarlet with blue base. Exceptionally brilliant.

**KING HAROLD.** Glossy ox-blood-red with purple-black base; very large flower of fine form.

\***LA TULIPE NOIRE.** Color is deep maroon-black, the darkest of all the Tulips. It has a rich velvety sheen in the sunlight. (See No. 5.)

\***MR. FARNCOMBE SANDERS.** Orange-red with rosy bloom; inside vivid cerise-scarlet. (See No. 3.)

\***MRS. POTTER PALMER.** Deep purple that goes well with the lavender and red varieties. (See No. 7.)

\***PRIDE OF HAARLEM.** Brilliant rosy carmine with electric-blue base; very large flower of superb form. A wonderful Tulip, stately in habit, sweet-scented and unsurpassed for mass planting. (Shown on opposite page in natural size.)

**PRINCE OF THE NETHERLANDS.** Glowing cerise-scarlet, flushed salmon-rose; blue base.

**PRINCESS ELIZABETH.** Clear deep pink, changing to rose-pink; white base.

**PROFESSOR RAUWENHOF.** Bright cherry-red, with scarlet glow inside; brilliant blue base.

\***REV. H. EWBANK.** Soft lavender-violet or heliotrope, darkening toward the base.

**WHITE QUEEN.** Tinted rose at first but becomes pure white. A lovely variety.

**PRICE.** All above named varieties, 8 cts. each, 12 for 85 cts., 100 for \$6.00, postpaid

**OFFER 34.** 3 each of the 8 kinds marked \* (24 bulbs), for \$1.50, postpaid

**OFFER 34a.** 10 each of the 8 kinds marked \* (80 bulbs), for 4.75, postpaid

**OFFER 34b.** 1 each of the 20 named Darwins for \$1.40; or 5 of each, 100 in all, for 5.50, postpaid

## Mixed Darwin Tulips for a Galaxy of Color

(NAMED VARIETIES ARE DESCRIBED AND OFFERED ABOVE)

A vivid, multi-colored display can be made by planting Mixed Darwins in large beds by themselves and do not overlook their value when they are grown along the edge of shrub borders or perhaps two or three rows around the base of your porch. In fact, they are satisfactory wherever used and the larger the planting the greater your pleasure when they bloom.

These Tulips are perfectly hardy and, as they do not need to be taken up after they have bloomed, they are very suitable for using in clumps of six or more throughout hardy perennial borders to give brilliant spots of color early in the spring. Darwin Tulips are fine to cut for indoor decoration.

**Mixed Darwin Tulips. Price, 12 for 60 cts., 100 for \$4.50, 1,000 for \$40, prepaid**

## Index to Plants

Achillea.....	Page 23	Chrysanthemums, Hardy.....	Page 2, 23	Hedge Plants.....	Page 21	Philadelphus (Mock Orange).....	Page 18
Adam's Needle.....	24	Clematis.....	22	Helleborus niger.....	23	Platycodon.....	24
Akebia quinata.....	22	Columbine.....	23	Helianthus.....	24	Plumbago.....	24
American Ivy.....	22	Coreopsis.....	23	Hemerocallis.....	24	Privet.....	21
Ampelopsis.....	22	Cornflower Aster.....	23	Honeysuckle, Bush.....	18	Ribes.....	3-17, 35
Aquilegia.....	23	Cypress, Japan.....	20	Honeysuckles (4 kinds).....	22	Rudbeckia.....	21
Arbortvitæ.....	20	Daisy, Shasta.....	24	Hydrangeas (2 kinds).....	18, 10	Roses.....	18-21
Balloon Flower.....	24	Delphinium.....	23	Iris, Bearded.....	24	Snowball.....	10
Barberry.....	18, 21	Deutzias.....	18	Ivies.....	22	Snowberry.....	10
Beauty Fruit (Callicarpa).....	18	Digitalis (Foxglove).....	18	Japanese Bellflower.....	24	Spiræas.....	10
Bittersweet.....	22	Edging Plants.....	20-21	Juniper.....	20	Sweet-scented Shrub.....	18
Blanket Flower.....	24	English Ivy.....	22	Larkspur.....	23	Symphoricarpos.....	10
Boston Ivy.....	24	Eutalia.....	22	Lilacs.....	19	Veronica.....	24
Box Barberry.....	21	Euonymus.....	24	Lychnis.....	24	Viburnum.....	22
Box Edging.....	20	Euonymus.....	20	Matrimony Vine.....	22	Vines, Hardy.....	19
Bridal Wreath.....	10	Ferns.....	Insert	Mock Orange.....	18	Weigelas.....	22
Callicarpa purpurea.....	18	Forsythias.....	18	Pachysandra.....	24	Wisterias (3 kinds).....	22
Calycanthus (Sweet Shrub).....	18	Foxglove.....	23	Pentstemon.....	24	Yew, Japan (Taxus).....	20
Celastrus scandens.....	22	Funkia.....	24	Peonies.....	24, 25	Yucca.....	24
Christmas Rose (Helleborus niger).....	23	Gaillardia.....	24	Perennials.....	23, 24		
		Golden Glow.....	24	Phlox.....	23, 23		

Flowering Plants and Bulbs are always welcome and *lasting* gifts. We can ship direct to your friends

## Index to Bulbs, Insecticides, Etc.

Amaryllis, (3 kinds).....	Page 32	Easter Lily, Bermuda.....	Page 32	Lilium.....	Page 32	Seeds for Fall.....	Page 33
Belladonna Lily.....	32	Freesias.....	33	Madonna Lily.....	32	Snowdrops.....	33
"Black-Leaf 40".....	Insert	Giant White Narcissus.....	31	Narcissus.....	31	Sprayer, Rubber.....	Insert
Calla Lilies (Richardias).....	38	Grape Hyacinths.....	33	Peruvian Daffodil.....	32	Star Rose Dust.....	Insert
Chinese Sacred Lily.....	31	Grass Seed.....	33	Plant Food.....	Insert	Stim-u-plant (Plant Food).....	Insert
Crocuses, all varieties.....	30	Hyacinths, all kinds.....	26, 27, 33	Regal Lily.....	32	Tulips.....	28, 29, 30, 34, 35
Daffodils (Narcissus).....	31	Ismene calathina.....	32	Scilla.....	33		
Dust Gun.....	Insert	Jonquils.....	31				



# GIANT DARWIN TULIPS



See opposite page for list of  
Darwin Tulips

## ★ HUGONIS (Golden Rose of China)

THIS graceful-growing, dainty-leaved Shrub Rose is an inspiring sight early in May in this latitude, when the branches on the entire plant become covered with dainty, yellow, fairy-like flowers, enchantingly lovely. This Rose blooms with the daffodils, tulips, and other spring-flowering bulbs. A group, or even a single specimen, of Hugonis, surrounded by some brilliant-colored tulips, makes a picture that is unique.

Hedges of Hugonis are now being planted, for the bushes grow dense and the foliage is always attractive. Entirely hardy. Plant this fall.

Price \$1 each, or 90 cts. each when 12 or more are ordered

Extra-size plants \$1.50 each, 12 for \$15



**HUGONIS ROSE  
BLOOMS WITH THE  
DARWIN TULIPS**



*Souvenir  
de Georges Pernet*  
See description  
page 3

# THE CONARD-PYLE CO.

*Star Rose Growers*

Robert Pyle, Pres.

West Grove, Pa.