

## **Historic, Archive Document**

Do not assume content reflects current scientific knowledge, policies, or practices.



SEP 28 1931

FOREIGN PLANT QUARANTINES

1281  
TRADE LIST NUMBER 39

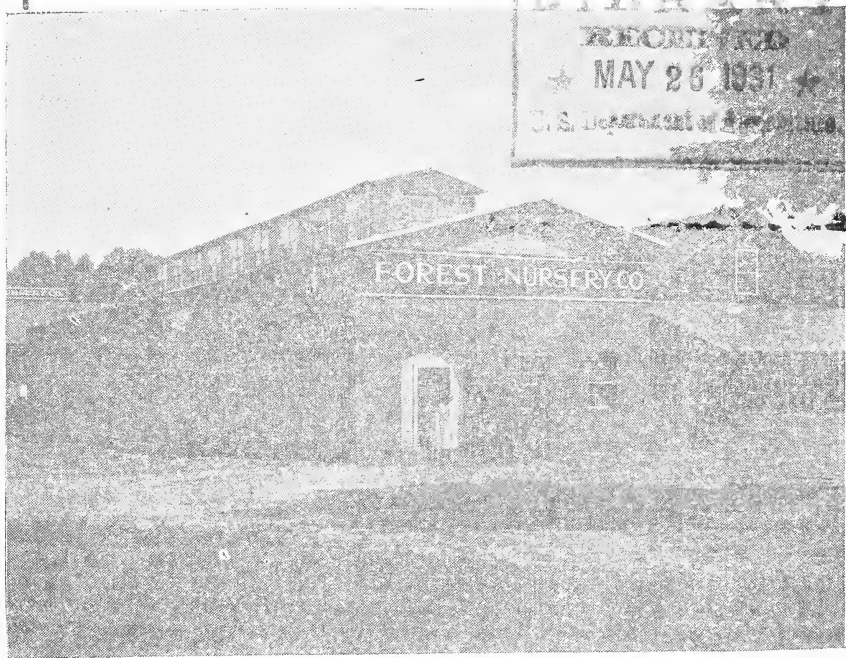
SEASON 1926-27

GROWERS AND DEALERS IN

FOREST AND SHADE TREES

AND ORNAMENTAL SHRUBS

LIBRARY  
RECORDED  
★ MAY 26 1931 ★  
U. S. DEPARTMENT OF AGRICULTURE



PACKING HOUSE, FOREST NURSERY COMPANY

FOREST NURSERY COMPANY, Inc.

ESTABLISHED 1887 BY J. H. H. BOYD

McMINNVILLE,

TENNESSEE

## FOR YOUR INFORMATION

To those who are not acquainted with our firm, would say that this business was started in 1887 by J. H. H. Boyd, who began gathering wild tree seeds and selling them. Soon afterwards, began cultivating wild plants in the nursery. Today we have over four hundred acres in cultivation, practically all ornamental tree seedlings, shrubs, evergreens, etc., The progress we have made in that time is due to the strict adherence to the rules by the founder—"quality and satisfaction to customer" and "Service above Self."

Our trees and shrubs are clean, healthy, vigorous, true-to-name, they are carefully grown where soil and climate are the most favorable, dug with good root system and carefully handled, rarely fail to give entire satisfaction. Trees and shrubs from our nursery are grown in almost every State in the Union.

LOCATION—McMinnville is located on Sparta branch of N. C. & St. L. Railway, 35 miles from Tullahoma, which is on the main line, half way between Nashville and Chattanooga. Parties wishing to visit our nursery and coming by way of Nashville, may find it more convenient and quicker to take bus from Nashville to McMinnville, as these busses make several trips a day. Our packing house and office is located just south of the depot.

SHIPPING SEASON—Usually begins October 15th. Shipments can be made beginning with date, or a little later, and continue almost every day throughout the Winter Season, and up until April 15th. Full shipping instructions should be given with every order, as to how shipment is to be made, whether by Parcel Post, Express or Freight. Where no directions are given, we use our best judgments. All shipments travel at purchaser's risk.

TERMS AND CONDITIONS—This list cancels all previous quotations.

Conditions always exist over which we have no control, and it is understood in case of error on our part, or in the event that damage is caused to the stock by an unforeseen conditions, such as hail, fire, drought, etc., that we shall not be liable for a greater amount than the original price paid for the stock.

Cash with orders except to such persons who satisfy us as to their responsibility. All bills due sixty days after date. Interest will be charged at the rate of six per cent on bills unpaid December 1st in Fall and June 1st in Spring.

Certificate of inspection with each shipment.

We use every care to secure prompt delivery, but we are not liable for delays or damage in transit. Our responsibility in this respect ends upon delivery in good condition to transportation company.

REFERENCE—Any Bank or business house in McMinnville. Bradstreet's or Dunn.

## FOREST AND SHADE TREES

NURSERY GROWN STOCK—S, SEEDLINGS; TR., TRANSPLANTED; C  
FOR CUTTINGS

## ACER Dasycarpum, Silver Maple.

	Each	Per 100
2 to 3 feet Tr.....	\$ .20	\$16.00
3 to 4 feet Tr.....	.40	37.00
4 to 5 feet Tr.....	.60	40.00
6 to 7 feet Tr.....	.85	

## ACER Negundo, Box Elder.

2 to 3 feet Tr.....	.20	15.00
3 to 4 feet Tr.....	.25	20.00
4 to 5 feet Tr.....	.35	30.00

## ACER Platanoides, Norway Maple.

2 to 3 feet Tr. Whips.....	.35	25.00
3 to 4 feet Tr. Whips.....	.50	40.00
4 to 6 feet Br.....	.75	
6 to 7 feet Br.....	1.25	

## ACER Rubrum, Scarlet or Red Maple.

2 to 3 feet.....	.20	15.00
3 to 4 feet.....	.25	20.00
4 to 5 feet.....	.35	27.50
5 to 7 feet.....	.75	50.00
7 to 8 feet.....	1.25	

## ACER Saccharum, Sugar or Hard Maple

2 to 3 feet.....	.20	15.00
3 to 4 feet.....	.30	25.00
4 to 5 feet.....	.50	35.00
5 to 7 feet.....	.75	50.00
7 to 8 feet.....	1.25	

## AESCULUS Octandra. Yellow Buckeye (Horse Chestnut)

18 to 24 inch.....	.20	15.00
2 to 3 feet.....	.35	25.00
3 to 4 feet.....	.60	

## ANDROMEDA Oxydendron Arboreum. Bog-Rosemary (Sourwood)

18 to 24 inch Tr.....	.20	15.00
2 to 3 feet Tr.....	.35	25.00
3 to 4 feet Tr.....	.60	

## BETULA Alba. White Birch.

2 to 3 feet.....	.40	35.00
3 to 4 feet.....	.75	60.00
4 to 5 feet.....	1.00	

Nigra. Red or River Birch.		Each	Per 100
2 to 3 feet.....		\$ .20	\$15.00
3 to 4 feet.....		.35	30.00
4 to 5 feet.....		.50	40.00
5 to 6 feet.....		.75	
<b>CATALPA Bungei.</b>			
4 to 6 feet, 1 year heads.....		1.25	
5 to 7 feet, 2 year heads.....		1.75	
2 and 3 year heads heavy Select.....		2.50	
<b>Speciosa. Western Catalpa.</b>			
18 to 24 inch S.....		.10	7.00
2 to 3 feet S.....		.15	10.00
3 to 4 feet S.....		.20	15.00
4 to 5 feet Tr.....		.25	20.00
5 to 6 feet Tr.....		.40	30.00
<b>CARPINUS Carolina (Am. Hornbeam)</b>			
2 to 3 feet.....		.20	15.00
3 to 4 feet.....		.35	27.50
4 to 5 feet.....		.50	40.00
5 to 6 feet.....		.75	
<b>CASTANEA Dentata. Am. Sweet Chestnuts. See Nut Trees.</b>			
<b>Japonica. Japanese Chestnuts.</b>			
18 to 24 inch.....		.35	
2 to 3 feet.....		.50	
3 to 4 feet.....		.75	
<b>CELTIS Occidentalis. Hackberry.</b>			
2 to 3 feet.....		.20	15.00
3 to 4 feet.....		.35	27.50
4 to 5 feet.....		.50	40.00
5 to 6 feet.....		.75	
<b>CERCIS Canadensis. Red Bud.</b>			
18 to 24 inch S.....		.15	10.00
2 to 3 feet S.....		.20	15.00
3 to 4 feet S.....		.30	25.00
4 to 5 feet Tr.....		.50	40.00
5 to 6 feet Tr.....		.75	50.00
<b>CLADRASTIS Lutea. Yellow-wood.</b>			
12 to 18 inch.....		.25	20.00
18 to 24 inch.....		.35	25.00
2 to 3 feet.....		.40	30.00
3 to 4 feet.....		.50	40.00

**CORNUS Florida.** White Flowering Dogwood.

	Each	Per 100
18 to 24 inch.....	\$ .15	\$10.00
2 to 3 feet.....	.20	15.00
3 to 4 feet.....	.30	25.00
4 to 5 feet.....	.50	40.00
5 to 6 feet.....	.75	60.00

**CORYLUS Americana, Am.** Hazelnuts.

2 to 3 feet Tr.....	.25	20.00
3 to 4 feet Tr.....	.40	35.00

**DIOSPYROS Virginiana, Am.** Persimmon.

18 to 24 inch.....	.15	10.00
2 to 3 feet.....	.25	20.00
3 to 4 feet.....	.35	30.00

## Japanese Persimmon.

2 to 3 feet.....	.40	35.00
3 to 4 feet.....	.60	

**ELM, Am.** White.

18 to 24 inch S.....	.15	10.00
2 to 3 feet S.....	.25	15.00
3 to 4 feet S.....	.40	25.00

**Ulmus Fulva,** Slippery Elm.

18 to 24 inch S.....	.15	10.00
2 to 3 feet S.....	.25	15.00
3 to 4 feet S.....	.40	25.00

**FAGUS Ferregania, Am.** Beech.

18 to 24 inch S.....	.15	10.00
2 to 3 feet S.....	.20	15.00
3 to 4 feet S.....	.25	20.00

**HAMAMELIS Virginica,** Witch Hazel.

18 to 24 inch S.....	.20	15.00
2 to 3 feet S.....	.25	20.00
2 to 3 feet Tr.....	.35	30.00
3 to 4 feet Tr.....	.45	40.00
4 to 5 feet Tr.....	.60	50.00

**LIRIODENDRON,** Tulip Poplar.

18 to 24 inch.....	.15	10.00
2 to 3 feet S.....	.20	15.00
2 to 3 feet Tr.....	.30	25.00
3 to 4 feet Tr.....	.40	35.00
4 to 6 feet Tr.....	.60	50.00
6 to 8 feet Tr.....	.90	80.00

## LOCUST, Black

	Each	Per 100
18 to 24 inch S.....	\$ .06	\$ 5.00
2 to 3 feet S.....	.08	7.00
3 to 4 feet S.....	.10	9.00

## Honey Locust.

18 to 24 inch S.....	.20	15.00
2 to 3 feet S.....	.30	25.00

LIQUIDAMBER *Styraciflua*. Sweet Gum.

12 to 18 inch S.....	.20	15.00
18 to 24 inch S.....	.30	25.00
2 to 3 feet.....	.40	35.00

## MELIA. Texas Umbrella Tree.

18 to 24 inch S.....	.10	8.00
2 to 3 feet whips S.....	.15	10.00
3 to 4 feet Br.....	.35	30.00
4 to 6 feet Br.....	.50	45.00

## MULBERRY. Russian.

18 to 24 inch S.....	.10	8.00
2 to 3 feet S.....	.15	10.00
3 to 4 feet S.....	.25	20.00
3 to 4 feet Tr.....	.35	30.00
4 to 5 feet Tr.....	.40	35.00

## MULBERRY. Hicks Everbearing.

3 to 4 feet.....	.45	40.00
4 to 5 feet.....	.60	50.00

## MULBERRY. Teas Weeping.

1 year heads.....	2.00	
2 year heads.....	3.50	

MAGNOLIA *Accuminata*.

18 to 24 inch.....	.35	25.00
2 to 3 feet.....	.50	35.00
3 to 4 feet.....	.75	

## Tripetala.

18 to 24 inch.....	.35	25.00
2 to 3 feet.....	.50	35.00
3 to 4 feet.....	.75	

## Grandiflora.

18 to 24 inch.....	1.25	
2 to 3 feet.....	1.50	
3 to 4 feet.....	2.50	



## OSAGE ORANGE.

	Each	Per 100
18 to 24 inch.....	\$ .10	\$ 8.00
2 to 3 feet.....	.15	10.00
3 to 4 feet.....	.25	20.00

## POPLAR, Balm of Gilead.

2 to 3 feet C.....	.15	12.00
3 to 4 feet C.....	.20	15.00

## Carolina.

2 to 3 feet C.....	.15	12.00
3 to 4 feet C.....	.20	15.00

## POPLAR, Lombardy Poplar.

18 to 24 inch whips.....	.10	8.00
2 to 3 feet whips.....	.15	12.00
3 to 4 feet whips.....	.20	15.00

## New Chinese Lombardy Poplar.

18 to 24 inch Whips.....	.10	8.00
2 to 3 feet Whips.....	.15	12.00
3 to 4 feet Whips.....	.20	15.00

## Silver Poplar.

18 to 24 inch C.....	.10	8.00
2 to 3 feet C.....	.15	12.00

## SYCAMORE, American.

12 to 18 inch S.....	.08	5.00
18 to 24 inch S.....	.10	8.00
2 to 3 feet S.....	.15	12.00
3 to 4 feet S.....	.20	17.50

## WILLOW, Weeping.

18 to 24 inch C. 1-yr.....	.25	20.00
2 to 3 feet C. 1-yr.....	.35	30.00
3 to 4 feet C. 1-yr.....	.50	40.00

## Basket Willow.

18 to 24 inch C. 1-yr.....	.25	20.00
2 to 3 feet C. 1-yr.....	.35	30.00
3 to 4 feet C. 1-yr.....	.50	40.00

## WILLOW Salix Caprea, Pussy Willow.

18 to 24 inch 1-yr. C.....	.25	20.00
2 to 3 feet 1-yr. C.....	.35	30.00
3 to 4 feet 1-yr. C.....	.50	40.00

## NUT TREES HARDY FIELD GROWN

	Each	Per 100
CHESTNUTS. <i>Castanea Dentata</i> Am. Sweet Chestnut.		
18 to 24 inch.....	\$ .35	\$3.00
2 to 3 feet.....	.50	4.50
HICKORYNUTS. <i>Laciniosa</i> . Shellbark.		
12 to 18 inch. S. ....	.20	1.75
18 to 24 inch. S. ....	.35	3.00
PECANS. Paper Shell		
Following varieties:		
Frotscher.....	Schley	
Moneymaker.....	Stuart	
2 to 3 feet.....	.50	4.50
3 to 4 feet.....	.75	7.00
4 to 5 feet.....	1.25	
WALNUTS. <i>Juglans Nigra</i> . Black Walnut.		
12 to 18 inch.....	.15	1.25
18 to 24 inch.....	.20	1.75
2 to 3 feet.....	.25	2.25
3 to 4 feet.....	.35	3.00
<i>Juglans Cinera</i> . Butternuts—White Walnut		
18 to 24 inch.....	.20	1.75
2 to 3 feet.....	.25	2.25
3 to 4 feet.....	.35	3.00
4 to 6 feet.....	.65	6.00
English Walnuts.		
18 to 24 inch.....	.40	3.50
2 to 3 feet.....	.60	5.00
<i>Juglans Sieboldiana</i> , Japan Walnut.		
18 to 24 inch.....	.35	3.00
2 to 3 feet.....	.50	4.50

## HARDY DECIDUOUS SHRUBS

We are offering an unusually nice lot of well-grown, thrifty, bushy shrubs. Most of them have been transplanted once or twice, grown on good land with plenty of room in the rows to develop well-finished plants. Will be carefully dug to preserve the root system, our grades are strong and are sure to please.

## ALMONDS. Pink Flowering. (On Peach)

	Each	Per 100
18 to 24 inch.....	\$ .35	\$30.00
2 to 3 feet.....	.45	35.00

**ALTHEA, Rose of Sharon, Mixed Colors.**

	Each	Per 100
18 to 24 inch S.....	\$ .10	\$ 8.00
2 to 3 feet S.....	.15	10.00

**Rosea, Bush Form.**

2 to 3 feet Tr.....	.25	20.00
3 to 4 feet Tr.....	.35	30.00

**Rosea, Tree Form.**

2 to 3 feet Tr.....	.25	20.00
3 to 4 feet Tr.....	.35	30.00

**Double Varieties, Tree Form (Red and Pink)**

2 to 3 feet.....	.40	35.00
------------------	-----	-------

**Double Varieties, Bush Form, following varieties:**

Amplissima, Boule de Feu, Bicolor, Comte de Haimont, Joan of Arc, Lady Stanley,

Paeoniflora, Totus Alba:

18 to 24 inch.....	.20	15.00
2 to 3 feet.....	.35	25.00
3 to 4 feet.....	.50	40.00

**AMORPHA Fruticosa**

2 to 3 feet.....	.25	15.00
3 to 4 feet.....	.30	17.50

**ARALIA Pentaphylla**

18 to 24 inch.....	.30	25.00
2 to 3 feet.....	.50	40.00

**ARONIA Chokeberry, Black.**

2 to 3 feet.....	.25	20.00
------------------	-----	-------

**BARBERRY Thunbergii**

12 to 18 inch.....	.10	8.00
18 to 24 inch.....	.20	15.00
2 to 3 feet.....	.35	30.00

**BUDDLEIA, Butterfly Bush**

2 to 3 feet.....	.25	20.00
3 to 4 feet.....	.40	30.00

**CALLICARPA American, Mulberry (Beautyberry)**

2 to 3 feet.....	.35	25.00
3 to 4 feet.....	.50	35.00

**CALYCANTHUS, Sweet Shrub.**

18 to 24 inch.....	.25	20.00
2 to 3 feet.....	.40	30.00

	Each	Per 100
CEANOTHUS Americanus. Jersey-Tea.		
18 to 24 inch.....	\$ .25	\$20.00
2 to 3 feet.....	.35	30.00
COMPTONIA Asplenifolia.		
12 to 18 inch.....	.18	15.00
18 to 24 inch.....	.25	20.00
CORNUS Amomum, Silky Dogwood.		
2 to 3 feet.....	.25	20.00
3 to 4 feet.....	.30	25.00
Lutea, Yellow Stemmed Dogwood.		
18 to 24 inch.....	.25	20.00
2 to 3 feet.....	.40	30.00
Siberica, Coral Dogwood.		
18 to 24 inch.....	.25	20.00
2 to 3 feet.....	.40	30.00
Stolonifera, Red Ozier Dogwood.		
2 to 3 feet.....	.20	17.50
3 to 4 feet.....	.25	22.50
CRAPE MYRTLE, Pink and Red Varieties.		
12 to 18 inch.....	.25	20.00
18 to 24 inch.....	.40	30.00
2 to 3 feet.....	.50	40.00
3 to 4 feet.....	.75	
CYDONIA JAPONICA, Japan Quince.		
18 to 24 inch.....	.35	30.00
2 to 3 feet.....	.50	40.00
3 to 4 feet.....	.75	60.00
DEUTZIA. The following varieties:		
Candidissima—Snowflake		
Crenata—Double Pink		
Pride of Rochester—Double White.		
18 to 24 inch, 1-yr. C.....	.15	10.00
2 to 3 feet, heavy.....	.25	20.00
3 to 4 feet, heavy.....	.40	35.00
ELDER, American, Sambucus Canadensis.		
18 to 24 inch.....	.25	20.00
2 to 3 feet.....	.35	30.00
Cut Leaf Elder.		
18 to 24 inch Tr.....	.25	20.00
2 to 3 feet Tr.....	.35	30.00

Golden Elder, Sambucus Nigra.

	Each	Per 100
18 to 24 inch .....	\$ .25	\$20.00
2 to 3 feet .....	.35	30.00

EUONYMUS Americanus, Brook Euonymus.

18 to 24 inch .....	.15	10.00
2 to 3 feet .....	.25	18.00

Japonicus Euonymus.

15 to 18 inch .....	.75	60.00
18 to 24 inch .....	1.00	80.00

EXOCHORDA Grandiflora, Common Pearlbrush.

18 to 24 inch .....	.35	30.00
2 to 3 feet .....	.50	40.00
3 to 4 feet .....	.75	60.00

FORSYTHIA, The following varieties:

Golden Bell

Intermedia

Suspensa

Viridissima.

18 to 24 inch .....	.15	10.00
2 to 3 feet .....	.25	20.00
3 to 4 feet .....	.40	35.00

FLOWERING CRAB, Bechtels.

2 to 3 feet .....	1.00	75.00
-------------------	------	-------

LONICERAS, Bush Honeysuckle: Following varieties:

Bella

Candida

Fragrantissima

Tartarica Alba

Tartarica Rosea

Tartarica Rubra

Morrowi

18 to 24 inch .....	.15	10.00
2 to 3 feet .....	.25	20.00
3 to 4 feet .....	.40	30.00

LILAC, Common White.

18 to 24 inch .....	.30	25.00
2 to 3 feet .....	.40	35.00
3 to 4 feet .....	.50	40.00

Common Purple		Each	Per 100
18 to 24 inch	.....	\$ .30	\$25.00
2 to 3 feet	.....	.40	35.00
3 to 4 feet	.....	.50	45.00
Persian. Syringa Rothomagensis.			
18 to 24 inch	.....	.20	15.00
2 to 3 feet	.....	.30	25.00
HYDRANGEA Arborescens, Wild			
12 to 18 inch, Tr.	.....	.20	15.00
18 to 24 inch, Tr.	.....	.25	20.00
2 to 3 feet, Tr.	.....	.30	25.00
3 to 4 feet, Tr.	.....	.35	30.00
Arborescens Grandiflora.			
12 to 18 inch, Tr.	.....	.25	20.00
18 to 24 inch, Tr.	.....	.30	25.00
2 to 3 feet, Tr.	.....	.35	30.00
3 to 4 feet, Tr.	.....	.60	
Paniculata Grandiflora.			
12 to 18 inch, Tr.	.....	.25	20.00
18 to 24 inch, Tr.	.....	.30	25.00
2 to 3 feet, Tr.	.....	.35	30.00
3 to 4 feet, Tr.	.....	.60	
Quercifolia Hydrangea, Oak Leaf.			
18 to 24 inch	.....	.40	
2 to 3 feet	.....	.60	
HYPERICUM Prolificum, Shrubby St. Johnswort.			
18 to 24 inch	.....	.25	20.00
2 to 3 feet	.....	.40	35.00
JASMINUM, Jasmine, Trailing.			
1 year	.....	.30	25.00
2 year	.....	.40	35.00
Cape Jasmine (Bush Form)			
12 to 18 inch Tr.	.....	.60	50.00
18 to 24 inch Tr.	.....	.80	70.00
LINDERA Benzoin, Spice Bush.			
18 to 24 inch	.....	.20	15.00
2 to 3 feet	.....	.25	20.00

PHILADELPHUS *Syringa*, Mockorange. Following varieties:

Coronarius  
 Gordonianus  
 Grandiflora  
 Mont Blanc

	Each	Per 100
12 to 18 inch.....	\$ .20	\$15.00
18 to 24 inch.....	.25	20.00
2 to 3 feet.....	.30	25.00

## PRIVETT, Amur River North

12 to 18 inch, 1-yr. C. Br.....		3.00
18 to 24 inch, 1-yr. C. Br.....		4.00
2 to 3 feet, 1-yr. C. Br.....		6.00

## Amur River South.

12 to 18 inch, 1-yr. S.....		2.00
18 to 24 inch, 1-yr. S.....		2.50
2 to 3 feet, 1-yr. S.....		3.00
12 to 18 inch, C. Br.....		2.50
18 to 24 inch, C. Br.....		3.00
2 to 3 feet, C. Br.....		4.00
18 to 24 inch, Tr. Br.....		4.00
2 to 3 feet, Tr. Br.....		5.00

## California Privett.

12 to 18 inch, C. 2-Br.....		2.00
18 to 24 inch, C. Br.....		2.50
2 to 3 feet, Br.....		5.00

## Ibota Privett.

12 to 18 inch, S. 1-yr.....		2.00
18 to 24 inch, S. 1-yr.....		3.00
18 to 24 inch, Br.....		4.00
2 to 3 feet, Br.....		6.00

## RIBES Aureum.

18 to 24 inch.....	.20	15.00
2 to 3 feet.....	.25	20.00

## RHUS Aromatica, Fragrant Sumach.

18 to 24 inch, Br.....	.25	20.00
2 to 3 feet, Br.....	.35	30.00
3 to 4 feet, Br.....	.45	40.00

## Rhus Cotinus, Purple Fringe

18 to 24 inch.....	.35	25.00
2 to 3 feet.....	.50	45.00
3 to 4 feet.....	.75	

	Each	Per 100
Rhus Glabra. Smooth Sumach.		
18 to 24 inch.....	\$ .10	\$ 8.00
2 to 3 feet.....	.15	12.00
Rhus Typhina. Staghorn Sumach.		
18 to 24 inch.....	.15	12.00
2 to 3 feet.....	.25	17.00
RHAMNUS Carolina. Buckthorn		
2 to 3 feet.....	.25	20.00
3 to 4 feet.....	.35	25.00
4 to 6 feet.....	.50	35.00
SPIREA. Anthony Waterer.		
18 to 24 inch.....	.30	25.00
2 to 3 feet.....	.50	40.00
Arguta. Garland Spirea, white		
2 to 3 feet.....	.60	50.00
3 to 4 feet.....	.80	75.00
Billardi Alba.		
18 to 24 inch.....	.15	10.00
2 to 3 feet.....	.20	15.00
3 to 4 feet.....	.25	20.00
Blue		
18 to 24 inch.....	.30	25.00
2 to 3 feet.....	.50	40.00
Bumalda, Pink		
12 to 18 inch.....	.25	20.00
18 to 24 inch.....	.30	25.00
Callosa Alba		
12 to 15 inch.....	.25	20.00
15 to 18 inch.....	.30	25.00
Callosa Rosea.		
18 to 24 inch.....	.15	10.00
2 to 3 feet.....	.25	20.00
3 to 4 feet.....	.40	35.00
Douglasi.		
18 to 24 inch.....	.30	25.00
2 to 3 feet.....	.50	40.00
Opulifolia.		
18 to 24 inch.....	.15	10.00
2 to 3 feet.....	.20	15.00
3 to 4 feet.....	.25	20.00



**Prunifolia.**

	Each	Per 100
18 to 24 inch.....	\$ .25	\$20.00
2 to 3 feet.....	.30	25.00
3 to 4 feet.....	.40	35.00

**Thunbergi**

18 to 24 inch.....	.25	20.00
2 to 3 feet.....	.30	25.00
3 to 4 feet.....	.40	35.00

**Van Houttei**

18 to 24 inch.....	.20	15.00
2 to 3 feet.....	.30	25.00
3 to 4 feet.....	.40	30.00

**SYMPHORICARPOS Racemosus, White Snowberry.**

18 to 24 inch.....	.30	25.00
2 to 3 feet.....	.40	30.00

**Vulgaris, Red Snowberry.**

18 to 24 inch.....	.15	12.50
2 to 3 feet.....	.20	17.50
3 to 4 feet.....	.25	22.50

**TAMARIX.**

18 to 24 inch.....	.25	20.00
2 to 3 feet.....	.35	30.00
3 to 4 feet.....	.50	40.00

**TAXODIUM DISTICHUM, Common Bald Cypress.**

18 to 24 inch.....	.35	30.00
2 to 3 feet.....	.50	40.00
3 to 4 feet.....	.75	60.00

**VIBURNUM Opulis, Common Snowball.**

12 to 18 inch.....	.35	30.00
18 to 24 inch.....	.50	45.00
2 to 3 feet.....	.75	

**Plicatum, Japan Snowball.**

18 to 24 inch.....	.50	45.00
2 to 3 feet.....	.75	

**Prunifolium, Black Haw.**

2 to 3 feet.....	.35	30.00
3 to 4 feet.....	.40	35.00

**Tomentosia, Doublefile Viburnum.**

2 to 3 feet.....	.35	30.00
------------------	-----	-------

## VITEX AGNUS CASTUS.

	Each	Per 100
12 to 18 inch .....	\$ .15	\$12.50
18 to 24 inch.....	.20	15.00
2 to 3 feet.....	.25	20.00
3 to 4 feet.....	.40	30.00

## WEIGELIA. In the following varieties:

Amabilis

Candida

Gustav Mallet

Hendersonia

Lutea

Mme. Lemoine

Pink Flower

Simondsi

18 to 24 inch .....	.20	15.00
2 to 3 feet.....	.30	20.00
3 to 4 feet.....	.40	

## HARDY CLIMBING VINES

Vines are useful in many ways. They give quick results when planted on a new place, before trees and shrubs become established. For covering fences, rocks, walls, banks and trellises, they are peculiarly adapted. A porch without a vine is desolate and incomplete.

## AMPELOPSIS Engelmanni (Engelman Ivy)

	Each	Per 100
2 year Tr.....	\$ .30	\$25.00

## Quinquefolia. Virginia Creeper.

Seedlings .....	.20	15.00
2 year Tr.....	.25	20.00
3 year Tr. heavy.....	.30	25.00

## Veitchi. Boston Ivy.

Medium .....	.35	30.00
2 year Tr.....	.55	

## ARISTOLOCHIA Tomentosa. Dutchman's Pipe Vine.

1 year Seedlings.....	.20	15.00
2 year Transplanted.....	.25	20.00

## BIGNONIA RADICANS. Trumpet creeper.

1 year Seedlings.....	.15	10.00
1 year Transplanted.....	.25	20.00

	Each	Per 100
<b>CELASTRUS Scandens.</b> (Am. Bittersweet)		
1 year.....	\$ .20	\$15.00
2 year Tr. Heavy.....	.35	25.00
<b>CLEMATIS Paniculata,</b> Japanese White.		
2 year.....	.30	25.00
<b>Virginiana,</b> Wild Clematis.		
2 year.....	.30	25.00
<b>The Following Large Flowering Variety, Field Grown Clematis:</b>		
<b>Dutchess of Edinburg,</b> Double White.		
2 year.....	.60	55.00
<b>Henryi,</b> White		
2 year.....	.60	55.00
<b>Jackmanni,</b> Purple		
2 year.....	.60	55.00
<b>Mde. Andre,</b> Red Flowering.		
2 year.....	.60	55.00
<b>Ramona,</b> Sky Blue.		
2 year.....	.60	55.00
<b>HEDERA Helix,</b> English Ivy.		
Transplanted .....	.30	20.00
<b>LONICERA</b>		
<b>Halliana.</b> Hall's Japanese Honeysuckle.		
Medium .....	.15	10.00
1 year No. 1, Tr.....	.25	15.00
2 year, No. 1, Tr.....	.35	30.00
<b>Sempervirens,</b> Scarlet Trumpet Honeysuckle.		
2 year, Tr.....	.25	20.00
3 year, Tr.....	.35	30.00
<b>LYGIUM Chinense,</b> Matrimony Vine.		
2 year.....	.25	20.00
<b>PUERARIA Thunbergiana.</b> Japan or Kudzu Bean.		
1 year, S.....	.15	10.00
2 year, strong.....	.25	20.00
3 year, strong.....	.40	35.00
<b>PASSIFLORA,</b> Passion Flower.		
1 year.....	.15	10.00
2 year, Tr.....	.25	20.00

## VINCA Minor. Common Periwinkle.

	Each	Per 100
Small Layers.....	\$ .10	\$ 8.00
Clumps .....	.35	25.00

## VITIS Aestivalis. Summer Grape.

2 year.....	.20	15.00
-------------	-----	-------

## Cordifolia. Frost Grape.

2 year.....	.20	15.00
-------------	-----	-------

## Labrusca. Fox Grape.

2 year.....	.20	15.00
-------------	-----	-------

## Rotundifolia. Muscadine Grape.

2 year.....	.25	20.00
-------------	-----	-------

## WISTERIA Chinensis Blue

2 year Medium.....	.25	20.00
2 year Transplanted.....	.35	30.00

## Chinensis White.

2 year Medium.....	.25	20.00
2 year Transplanted.....	.35	30.00

## Magnifica. Common Purple.

2 year Medium.....	.25	20.00
2 year Tr. Strong.....	.35	30.00

## EVERGREENS

Without the evergreen the home is lacking that one thing that makes it complete. The cold winter days are never so dreary when one can glance out and see that stately green tree that brings cheer to the gloomy feeling.

## ABIES Balsames, Balsam Fir.

	Each	Per 10
12 to 18 inch.....	\$1.25	\$10.00
18 to 24 inch.....	2.00	18.00

## ARBOR VITAE, American.

12 to 18 inch.....	.50	4.00
18 to 24 inch.....	.75	7.00
2 to 3 feet.....	1.25	10.00

## Chinese.

12 to 18 inch.....	.35	3.00
18 to 24 inch.....	.75	6.00
2 to 3 feet.....	1.25	10.00
3 to 4 feet.....	2.50	
4 to 5 feet.....	3.50	

**Chinese Compacta.**

	Each	Per 10
12 to 18 inch.....	\$1.00	\$ 8.00
18 to 24 inch.....	2.00	18.00
2 to 3 feet.....	3.00	25.00
3 to 4 feet.....	4.00	

**Globe, Dwarf.**

12 to 18 inch.....	2.50	22.50
18 to 24 inch.....	3.50	30.00

**Globosia, Tall Growing.**

18 to 24 inch.....	2.25	20.00
2 to 3 feet.....	3.00	25.00

**Berckmans Golden.**

12 to 15 inch.....	2.00	18.00
15 to 18 inch.....	2.50	22.50
18 to 24 inch.....	3.50	30.00
2 to 2½ feet.....	4.50	40.00

**Pyramidalis.**

12 to 18 inch.....	2.25	20.00
18 to 24 inch.....	3.00	25.00
2 to 3 feet.....	3.50	30.00
3 to 4 feet.....	4.50	40.00

**Rosedale.**

9 to 12 inch.....	.80	7.50
12 to 15 inch.....	1.10	9.00
15 to 20 inch.....	2.25	20.00
20 to 30 inch.....	3.50	30.00
30 to 40 inch.....	4.50	40.00

**Tom Thumb.**

8 to 12 inch.....	1.50	12.50
12 to 18 inch.....	2.00	18.00
18 to 24 inch.....	3.00	25.00
2 to 3 feet.....	5.00	

**BIOTA Elegantisima, Golden Foliage.**

2 to 3 feet.....	3.50	30.00
------------------	------	-------

**JUNIPER Canadensis Spreading Juniper.**

8 to 12 inch spreads.....	1.00	9.00
12 to 18 inch spreads.....	1.50	12.00
18 to 24 inch spreads.....	3.00	
24 to 36 inch spreads.....	5.00	

## Irish Juniper.

	Each	Per 10
12 to 18 inch.....	\$ .50	\$ 4.00
18 to 24 inch.....	.85	7.50
2 to 3 feet.....	1.50	12.50
3 to 4 feet.....	2.25	

## Pfitzeriana Juniper.

12 to 18 inch spreads.....	2.50	22.50
18 to 24 inch spreads.....	3.50	30.00

## Virginiana Glauca Juniper.

12 to 18 inch.....	1.75	15.00
18 to 24 inch.....	3.00	25.00
2 to 3 feet.....	5.00	45.00

## Virginiana, Red Cedar.

12 to 18 inch.....	.25	2.00
18 to 24 inch.....	.50	4.50
2 to 3 feet.....	.75	6.00
3 to 4 feet.....	1.50	12.00

## PINE, Australian.

12 to 18 inch.....	1.00	8.00
18 to 24 inch.....	2.00	18.00
2 to 3 feet.....	3.00	25.00

## Scotch Pine.

12 to 18 inch.....	1.00	8.00
18 to 24 inch.....	2.00	18.00
2 to 3 feet.....	3.00	25.00

## RETINOSPORA, Golden.

12 to 15 inch.....	1.25	
15 to 18 inch.....	1.50	
18 to 24 inch.....	2.00	

## TSUGA Canadensis, Hemlock Spruce.

12 to 15 inch.....	.80	7.50
15 to 18 inch.....	1.50	12.50
18 to 24 inch.....	2.50	22.50

## Norway Spruce.

8 to 12 inch.....	.40	3.50
12 to 18 inch.....	.75	6.00
18 to 24 inch.....	1.25	10.00
2 to 3 feet.....	2.00	18.00

## Colorado Blue Spruce.

	Each	Per 10
8 to 12 inch.....	\$2.00	\$
12 to 18 inch.....	4.00	
18 to 24 inch.....	7.00	
2 to 3 feet.....	12.00	

## BROAD LEAF EVERGREENS

## ABELIA Grandiflora

	Each	Per 10
12 to 18 inch.....	\$ .40	\$3.50
18 to 24 inch.....	.60	5.00
2 to 3 feet.....	.85	7.50

## BUXUS Sempervirens, Boxwood

12 to 15 inch.....	.60	5.00
15 to 18 inch.....	.85	7.00
18 to 24 inch.....	1.10	10.00

## Suffruticosa, Dwarf Box.

12 to 15 inch.....	.60	5.00
15 to 18 inch.....	.85	7.00

## EUONYMUS Japonica, Evergreen Euonymus.

12 to 18 inch.....	.60	5.00
18 to 24 inch.....	1.00	9.00
2 to 3 feet.....	1.75	15.00

## ILEX Opaca, American Holly.

12 to 18 inch.....	.50	4.00
18 to 24 inch.....	1.00	8.00
2 to 3 feet.....	1.50	12.00

## KALMIA Latifolia, Mountain Laurel.

12 to 18 inch, Tr.....	.75	6.00
18 to 24 inch, Tr.....	1.25	10.00
2 to 3 feet, Tr.....	2.00	18.00

## MAGNOLIA Grandiflora.

18 to 24 inch.....	1.25	
2 to 3 feet.....	1.50	
3 to 4 feet.....	2.50	

## RHODODENDRONS

Prices on Rhododendrons are for North Carolina grown plants. We have very few growing in our nursery, but are in connection with a North Carolina grower, who supplies our wants with fresh-dug, well-developed, nice plants.

**RHODODENDRON Carolinianum, Carolina Rhododendron.**

Early free bloomer with light to deep pink flowers

	Each	Per 10
12 to 18 inch Tr. Clumps.....	\$1.50	\$12.50
18 to 24 inch Tr. Clumps.....	2.25	20.00

**Catawbiense. Catawba Rhododendron.**

Vigorous, free-blooming variety, with gorgeous display of rosy purple flowers in May

12 to 18 inch Tr. Clumps.....	1.50	12.50
18 to 24 inch Tr. Clumps.....	2.25	20.00

**Maximum Rhododendron, Rosebay**

Large clusters of pinkish white flowers in July, Strongly recommended for mass planting and woodland development.

12 to 18 inch Tr. Clumps.....	1.50	12.50
18 to 24 inch Tr. Clumps.....	2.25	20.00

**ROSES****HARDY OUT-DOOR GROWN BUSH ROSES**

The very name of roses carries with it the suggestion of the greatest perfection and beauty of the world of vegetation. No arrangement is satisfactory that neglects them, in fact, they are indispensable. The stock we offer is all field-grown, acclimated to the outdoor life and will make much quicker and more hardy growth than the greenhouse plants offered by rose specialists.

**ROSES, 2-YEAR, NO. 1.**

	Each	Per 10
<b>ALEXANDER HILL GRAY</b>		
Lemon Yellow.....	\$ .45	\$ 4.00
<b>ANTOINE REVOIRE</b>		
Rosy flesh on yellow ground shaded carmine.....	.45	4.00
<b>BESSIE BROWN</b>		
Creamy White.....	.40	3.50
<b>CHARLES DINGEE</b>		
Very delicate creamy pink and quite free-blooming	.45	4.00
<b>ETOILE de FRANCE</b>		
Crimson, long pointed buds, fragrant constant bloomer .....	.45	4.00
<b>ETOILE de LYON</b>		
Golden yellow, fragrant, large flower light grower....	.45	4.00
<b>FRAU KARL DRUSCHKI</b>		
White, good bloomer.....	.40	3.50
<b>GENERAL JACQUEMINOT,</b>		
Brilliant Red.....	.45	4.00



## GRUSS an TEPLITZ

	Each	Per 10
Scarlet crimson, free bloomer.....	\$ .40	\$ 3.50

## KILLARNEY,

Brilliant sparkling pink, large pointed buds wax-like petals.....	.45	4.00
---	-----	------

## KILLARNEY

White .....	.45	4.00
-------------	-----	------

## LADY HILLINGDON

Deep apricot yellow.....	.45	4.00
--------------------------	-----	------

## LaFRANCE

Beautiful bright silvery pink, pale lilac shadings.....	.45	4.00
---	-----	------

## MAMAN COCHET

Pink, outer petals deep rose-pink, light center.....	.45	4.00
--	-----	------

## MAMAN COCHET

White .....	.45	4.00
-------------	-----	------

## PAUL NEYRON

Pink shading to rose.....	.40	3.50
---------------------------	-----	------

## RADIANCE

Pink, brilliant rosy pink.....	.50	4.50
--------------------------------	-----	------

## RADIANCE

Red, glowing crimson.....	.50	4.50
---------------------------	-----	------

## RED LETTER DAY

Scarlet .....	.50	4.50
---------------	-----	------

## SUNBURST

Orange and golden yellow.....	.50	4.50
-------------------------------	-----	------

## STANDARD OR TREE ROSES

	Each	Per 10
No. 1 Assorted Varieties.....	\$2.00	
No. 2 Assorted Varieties.....	1.50	

## HARDY CLIMBERS AND RAMBLERS

	Each	Per 10
AMERICAN BEAUTY		
Carmine .....	\$ .40	\$3.50
AMERICAN PILLAR		
Rosy pink, single.....	.40	3.50
BALTIMORE BELLE		
Pale blush, nearly white.....	.40	3.50

## CRIMSON RAMBLER

	Each	Per 10
Deep Crimson.....	\$ .40	\$ 3.50

## DAYBREAK

A rapid grower, flowers single pink in clusters.....	.40	3.50
--	-----	------

## DOROTHY PERKINS

Shell pink.....	.40	3.50
-----------------	-----	------

## DR. VAN FLEET

Rich flesh pink.....	.40	3.50
----------------------	-----	------

## EMPRESS OF CHINA

Very hardy, grows vigorously and has dark pink flowers in clusters.....	.40	3.50
---	-----	------

## EVERGREEN GEM

Very hardy, a free grower, with creamy white blooms.....	.40	3.50
--	-----	------

## EXCELSA, (Red Dorothy Perkins)

Clear Scarlet.....	.40	3.50
--------------------	-----	------

## FLOWER OF FAIRFIELD

Red.....	.40	3.50
----------	-----	------

## GARDENIA

Buds yellow, flowers cream.....	.40	3.50
---------------------------------	-----	------

## HIAWATHA

Crimson, white eye.....	.40	3.50
-------------------------	-----	------

## LADY GAY

Pink, similar to Dorothy Perkins.....	.40	3.50
---------------------------------------	-----	------

## MARECHAL NEIL

Yellow.....	.40	3.50
-------------	-----	------

## MRS. AARON WARD

Yellow.....	.40	3.50
-------------	-----	------

## ORLEANS

Brilliant red.....	.40	3.50
--------------------	-----	------

## QUEEN of the PRAIRIE

Rosy-red.....	.40	3.50
---------------	-----	------

## SEVEN SISTERS

Color varies from white to crimson.....	.40	3.50
---	-----	------

## SILVER MOON

Silvery white, yellow stamens.....	.40	3.50
------------------------------------	-----	------

## WICHURAIANA

Memorial Rose, almost evergreen foliage and attractive single white flowers.....	.40	3.50
--	-----	------

**FRUIT TREES AND BERRY PLANTS**

We do not grow Fruit Trees ourselves, but so many of our customers prefer to have us fill their complete orders, that we are prepared to do that, buying our supply of fruit trees from reliable growers and shipping with our ornamentals, which makes it very convenient for our friends. In this way, we buy nothing but the best and handle only what we would be willing to plant ourselves.

**APPLES**

The apple is universally recognized as the most desirable fruit of the United States, because of its great varieties of delicious flavors, nutritious qualities and nutritive value. Whether as commercial crop or for the satisfaction of the family, a well selected orchard of a few varieties is a most desirable investment that any landowner can place on his premises.

Early Harvest	Red June	Yellow Transparent
Alexander	Fall Pippin	Maiden Blush
Duches of Oldenberg	Arkansas Black	Kinnard's Choice
Baldwin	Grimes Golden	Rome Beauty
Ben Davis	Jonathan	Talmon Sweet
Delicious	Mammoth Black Twig	Winesap
Gano	Northern Spy	York Imperial

	Each	Per 100
2 to 3 feet.....	\$ .15	\$12.50
3 to 5 feet, 7-16 to 9-16.....	.25	20.00
4 to 5 feet, 9-16 to 11-16.....	.35	30.00
11-16 and up.....	.50	45.00

**APRICOTS**

Royal	Tilton	Wenatchee Moorpark
		Each Per 100
		2 to 3 feet.....\$ .30 \$25.00
		3 to 4 feet, 7-16 to 9-16..... .40 35.00
		4 to 5 feet, 9-16 to 11-16..... .50 45.00

**CHERRIES**

At least a few Cherry Trees should be in every orchard. They are almost a sure crop each year. Our Cherry Trees are grown in Indiana on soil especially adapted to growing sturdy, healthy and hardy trees, free from disease and first class in every respect.

**Varieties in Sweet**

Black Tartarian	Governor Wood	Napoleon Big
		Each Per 100
		2 to 3 feet.....\$ .35 \$30.00
		3 to 4 feet, 7-16 to 9-16..... .45 40.00
		4 to 5 feet, 9-16 to 11-16..... .50 45.00

Dyehouse	Varieties in Sour		Montmorency	
	Early Richmond	May Duke	Each	Per 100
2 to 3 feet.....			\$ .30	\$25.00
3 to 4 feet, 7-16 to 9-16.....			.40	35.00
4 to 5 feet, 9-16 to 11-16.....			.45	40.00

## FIGS

	Each	Per 100
18 to 24 inch, 1-yr.....	\$ .25	\$20.00
2 to 3 feet.....	.35	30.00

## GRAPES

We list three colors as follows:

RED	BLACK	WHITE
Brighton	Campbell's Early	Niagara
Catawba	Concord	Pocklington
Delaware	Moore's Early	Martha
Lutie	Worden	

	Each	Per 100
Two year No. 1.....	\$ .15	\$10.00
Two year No. 2.....	.10	7.00
One year No. 1.....	.10	7.00

## PEACHES

Every home should have a few peach trees as there is no more delicious fruit in its season, and that purchased on the market is often of an inferior quality because of the necessities of picking comparatively green. Peach trees grow quickly but are of short life and to keep a good supply of fruit, a few trees should be set out each year to replace those that die of old age or accident.

We have the following varieties:

Belle of Georgia	Elberta	Mayflower
Carman	Early Rose	Red Bird
Champion	J. H. Hale	Stump O' World
Cling	Heath Cling	Beer Smock
Crawford's Early	Hiley	

## JUNE BUD AND ONE YEAR PEACHES.

	Per 100	Per 1000
6 to 12 inch.....	\$4.00	\$35.00
12 to 18 inch.....	6.00	55.00
18 to 24 inch.....	10.00	85.00
2 to 3 feet.....	15.00	110.00
9-12 to 11-16.....	18.00	165.00
11-16 and up.....	25.00	200.00

PEARS

Following Varieties:

	Garber	Sugar Keiffer
	Each	Per 100
2 to 3 feet, one year whips.....	\$ .20	\$17.50
3 to 4 feet, one year whips.....	.30	25.00
4 to 5 feet, one year whips.....	.40	35.00

PLUMS

Abundance Burbank	German Prune Kelseys Japan	Red June Shropshire Damson
		Each Per 100
2 to 3 feet.....		\$ .30 \$25.00
3 to 4 feet, 7-16 to 9-16.....		.40 35.00
4 to 5 feet, 9-16 to 11-16.....		.50 40.00

BLACKBERRIES AND RASPBERRIES

BLACKBERRIES:

	Each	Per 100
Blower.....	\$ .05	4.00
Early Harvest.....	.05	4.00
Eldorado.....	.05	4.00
Snyder.....	.05	4.00

RASPBERRIES.

	Each	Per 100
Columbian (Purple).....	\$ .05	\$4.00
Cumberland (Black).....	.05	4.00
Cuthbert (Red).....	.05	4.00
Gregg and Kansas (Black).....	.05	4.00
St. Regis (Everbearing).....	.08	6.00
Wild Common Black Cap.....	.04	3.00

STRAWBERRIES

Strawberires, the "Queen of Small Fruits." Tempting in appearance and delicious in taste.

Per 100 \$3.00, Per 1000 \$12.00

Following Varieties:

Aroma	Kellogg's Perfection	New York
Campbell's Early	Klondyke	Progressive
Champion	Lady Thompson	Senator Dunlap
Gandy	Lupton Late	Tennessee

## MISCELLANEOUS PLANTS

## ASPARAGUS

Following Varieties:

Palmetto	Washington		
	Per Doz.	Per 100	Per 1000
One year.....	\$ .40	\$2.00	\$12.00
Two year.....	.50	2.50	15.00

## RHUBARB

Linneaus	Victoria		
	Per Doz.	Per 100	Per 1000
1 year Medium.....	\$ .50	\$2.50	\$22.50
1 year.....	.75	4.00	25.00
2 year.....	1.00	5.00	30.00
3 year.....	1.50	8.00	

GAYLUSSACIA Baccata, Dwarf Black Huckleberry (Suckers)

	Per Doz.	Per 100	Per 1000
6 to 12 inch.....	\$ .50	\$2.50	\$20.00
1 to 2 feet.....	.75	4.00	30.00

RUBUS Occidentalis, Common Blackcap Raspberry.

1 to 2 feet, cut back.....	.25	1.25	10.00
----------------------------	-----	------	-------

## HARDY PERENNIAL AND BULB LIST

## CANNAS

Cannas are fine for decorative effect on the lawn. They are tropical looking, and the rank green foliage and gay flowers make a brilliant sight. Plant about six inches deep in rich moist soil when weather is warm and settled.

	Per Doz.	Per 100
CANARY, Yellow flower.....	\$ .75	\$6.00
CALIFORNIA, deep yellow.....	.75	6.00
FLORENCE VAUGHAN, Yellow dotted red.....	.75	6.00
INDIANA, Orange orchid.....	.75	6.00
KING HUMBERT, Red, Bronze Leaf.....	.75	6.00
KING HUMBERT, Yellow.....	.75	6.00
MME. CROZY, Vermillion and Golden.....	.75	6.00
Mixed Varieties and Colors.....	.50	4.00

## GLADIOLI

Of all our summer flower bulbs Gladiolis stand at the head of the most varied and beautiful class. The flowers are produced in spikes two feet in height and upwards; the brilliant scarlet and crimson of some form a striking contrast with the

delicate shades and penciling of the lighter colored varieties. By planting at intervals from May 1st to July 1st a succession of flowers can be had from July to October. We have the following varieties:

AMERICA, Pale pink with small rose colored blotches.

CRACKER JACK, Red.

GLORY OF HOLLAND, Shaded to Orange.

HERADA, Orchid.

LE MARECHAL FOCH, Rose Pink.

MRS. FRANCIS KING, Vermillion

PANAMA, Deep Pink.

(Primulinus Hybrids)

PRINCE OF WALES, Salmon Pink.

SCHWABEN, Yellow with small purple blotch on lower petals.

WILLBRINK, Early bloomer, Flash Pink.

	Per Doz.	Per 100
Number 4, Small Bulb, 3-4 inch.....	\$ .25	\$2.00
Number 3, Small Bulb, 1 inch.....	.40	3.00
Number 2, Small Bulb, 1 1-4 inch.....	.60	4.50
Number 1, Small Bulb, 1 1-2 inch and up.....	.85	7.50

### IRIS GERMANICA

German Iris—The tall sword like leaves are interesting in themselves until the gorgeous flowers, with their usual form, their beautiful variegated and numerous shades of color make their appearance in May. We have the following varieties:

	Per Doz.	Per 100
CELESA, Light Blue.....	\$ .60	\$5.00
CHARLES DICKENS, Dark Blue.....	.60	5.00
EVANGELINE, White and Pink.....	.60	5.00
MARS, Light Blue.....	.60	5.00
QUEEN OF MAY, Lilac pink blended with pink.....	.60	5.00
SAN SOUSI, Lemon Yellow.....	.60	5.00

### LILLIES Hemerocallis (Day Lilly)

Few people realize the great beauty of the Lillies. They grow quick in almost any kind of soil and begin flowering early.

	Per Doz.	Per 100
FULVA, Large single orange, strong tubers.....	\$ .75	\$6.00
FLOREHAM, Lemon Lilly, Strong tubers.....	.75	6.00
HYMENOCALLIS OCCIDENTALIS, White Spider Lily.....	.75	6.00

## PEONIES

For glory of flowers, Peonies, like roses, are practically indispensable and are especially well adapted for massing in beds and planting in groups with perennial and shrubby borders. Our list is not very extensive, but we have a few good varieties as follows:

	Each	Per doz.
DUCHESS de NEMOURS, Ivory white.....	\$ .35	\$3.50
PECTIVA MAXIMA, Globularose Type, White center .....	.35	3.50
DUKE OF WELLINGTON, Sulphur white.....	.35	3.50
QUEEN VICTORIA, White flower.....	.35	3.50
PRESIDENT ROOSEVELT, Red.....	.35	3.50
LA PERLE, Light pink.....	95	
Unnamed Mixed Varieties.....	.25	2.50

## TUBE ROSE

Beautiful long compact spikes of fragrant white flowers in August.

	Per Doz.	Per 100
MEXICAN TUBE ROSE.....	\$ .50	\$3.00

## MISCELLANEOUS BULBS AND ROOTS

	Per Doz.	Per 100
SHASTA DAISY, Snow white.....	\$ .75	\$ 4.00
TULIP BULBS, Assorted varieties.....	1.00	10.00
HYACINTHS, Assorted varieties.....	1.00	10.00
NARCISSUS, Assorted varieties.....	.75	6.00
PHLOX, Assorted varieties.....	1.25	10.00
DIGITALIS, Fox glove.....	2.00	15.00
YUCCA FILAMENTOSA, Adams Needle, Creamy Yellow.....	1.00	6.00
DAHLIA, Assorted varieties, nice bulbs.....	.85	7.00
PACHYSANDRA TERMINALIS, for ground cover .....	2.00	10.00

## HARDY ORNAMENTAL GRASSES

	Per Doz.	Per 100
EULALIA JAPONICA, grows 5 to 6 feet.....	\$1.00	\$8.00
EULALIA GRACILLINA, striped grows 3 to 4 ft.	1.00	8.00
EULALIA ZEBRINA, grows 3 to 4 feet.....	1.00	8.00



## HARDY HIBISCUS

Marvel Mallows—A wonderful perennial shrub grows from 4 to 7 feet high and in a clump several feet around, loaded with a mass of flowers. Absolutely hardy, thrives well on all soils, comes to greatest perfection where ground is rich. All our plants have large roots as they have already bloomed.

	Per Doz	Per 100
RED, Giant large flowering.....	\$2.00	\$12.00
PINK AND WHITE, mixed colors.....	1.25	8.00

## HARDY FERNS

The five varieties of hardy ferns, which we are offering here, are dug up in the mountains and have not been cultivated in the nursery rows. The Cinnamon, Royal and Christmas ferns are clumps, the other two varieties are small roots. They will make nice plants in a year or so, and these prices are very attractive.

	Per Doz.	Per 100
ADIATUM PEDATUM, small root.....	\$1.00	\$5.00
DICKSONIA PUNCTILOBULA, smal root.....	1.00	5.00
OSMUNDA CINNAMONEA, Cinnamon Fern, clumps .....	1.50	8.00
OSMUNDA REGALIS, Royal Fern, clumps.....	1.50	8.00
POLYSTACA ACRESTIOCHOIDES, Christmas Evergreen .....	1.50	8.00

## IN APPRECIATION

To our many patrons of the past, we want to express our deep appreciation of your patronage and confidence.

Already, for another shipping season, we have booked many orders from you who have been our customers for years.

Our best efforts in the future will be to continue to serve you to the best of our ability.

Our experience together with honest endeavor enables us to keep pace with the demands for the newer varieties as well as for the more staple and generally used ornamentals.

Yours Respectfully,

FOREST NURSERY COMPANY, Inc.

BOYD BROTHERS.



McMinnville, Tenn., September 14th, 1926.

To Whom It May Concern:—

We have known the Forest Nursery Company since it began business many years ago under the ownership and management of Messrs. F. C. Boyd and J. R. Boyd, who still largely own and who are the active directors and managers of the company. It has been a real pleasure to watch the growth and development of this business and to see the wonderful progress it has made.

This nursery has sold its product always under guarantees which they had every reason to know they were able to carry out and fulfill. It has never been their policy to misrepresent their stock and they have always been ready, willing and able to make good their contracts.

We believe the management is honorable competent and conservative. In our business relations of many years standing we have always found them so. Their standing in this community is of the highest and they enjoy good credit.

We heartily recommend the Forest Nursery Company to any prospective customers and believe they will at all times receive a fair and square deal from them.

Respectfully,

FIRST NATIONAL BANK,

G. M. Smith, Vice President.