

Historic, Archive Document

Do not assume content reflects current scientific knowledge, policies, or practices.



GENESEE COUNTY NURSERIES

L. T. Curtis & Son

Everything that is Good and Hardy

Member
American Association
of Nurserymen

FLINT, MICHIGAN

Phone 7360

Member
Michigan Association
of Nurserymen

To Our Customers

THE varieties in this catalog have been purposely limited to those which have proved worthy and dependable in this locality. We have omitted many plants which are not sufficiently hardy to succeed well here; and also a few which are difficult to grow and transplant. As we make a specialty of material for landscape planting, however, we grow many trees and shrubs which we do not catalog. Customers who wish "something different" or distinctive may feel assured that we will be able to supply them.

Our Policy and Aims

We aim to sell what the customer can use to best advantage, and refuse to take advantage of his ignorance as to varieties or prices. Thorough, first-hand knowledge of what we are selling enables us to give dependable information and advice about planting. As we well realize that a continuation of our success depends upon giving satisfactory stock and service, we are particular about the quality of the plants we deliver. It is our consistent purpose to give full value at all times; to deal honestly and fairly with our customers, and to give prompt attention to all just complaints.

Our Credentials and Responsibility

Our membership in both the American Association of Nurserymen and the Michigan Association of Nurserymen indicates our standing in the trade. These Associations admit to membership only those nurserymen who are financially responsible, and who have an established reputation for honorable, fair and square dealing. Many of our customers have been with us for twenty years or more, as our business was established in 1886. Our Nursery is inspected periodically by the State Inspector of Nurseries. You are assured of getting healthy stock, free from disease. Our license number is 8129.

Planting Season

In the Spring from the time the ground thaws out until the leaves are practically out—usually April 1 to about June 1. Evergreens and bulbs a little later.

Fall Planting

Any time after the first heavy frost until the ground freezes solid; ordinarily from October 1 to December 1. There is a longer planting season in the Fall, and it is just as reliable as Spring for hardy stock. Perennials, hardy flowers, may be planted from September 15 to November 1. Fall is a particularly favorable time to do landscape planting.

How to Order

1. Phone your order direct to Nursery. Our one-party line, recently installed, assures good service. Flint Bell telephone.
2. Mail your order. "Flint, Mich.," or "City" is address enough. We send many orders parcels post, prepaid.
3. Drive to Nursery. You may personally select your stock if you wish. During the planting seasons, we are open evenings.
4. Representative will call and take your order upon request. Also help you in making selections, and give general advice.

Route to Nursery

Drive out by way of Fenton St. and Torrey Rd. (W. 12th St.) About five miles out. Watch for our sign at right. (Gas station at left). You are welcome to look around. There is a lot of satisfaction in seeing what you are getting. You will always find something to interest you.



Trees for Shade and Beauty

Maples

Norway Maple. Sturdy, compact, vigorous, it is one of the very best trees for lawns, parks and gardens. A handsome tree, forming a dense, rounded head of strong branches and broad, deep green leaves. A hardwood tree, and a rather slow grower. 8 to 10 ft., \$4.00; 10 to 12 ft., \$5.50; 1 3/4-in. caliper, \$7.00; 2-in. caliper, \$8.50. Larger trees, \$10.00 to \$25.00.

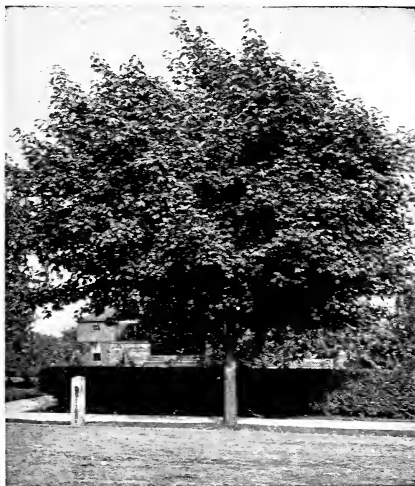
Silver Maple. Of rapid growth, large size and irregular rounded form; foliage bright green above and silvery white beneath. Silver Maple is the best of the fast-growing shade trees. We have a fine stock of quality trees, correctly grown for street planting. Sturdy bodies, good tops and plenty of roots. They will be fresh dug, carefully handled, and if desired, properly pruned. We can furnish heavy trees, four inches and five inches in diameter. 8 to 10 ft., \$1.75; 5 for \$7.50; 10 for \$13.50. 10 to 12 ft., \$2.75; 5 for \$12.00; 10 for \$20.00. 1 3/4-in. trunks, \$4.50; 2 in., \$5.50. Large trees, 3- to 6-in. trunks, \$10.00 to \$25.00.

Box Elder (Ash Leaf Maple). A very rapid grower, and succeeds where other kinds fail. Makes a head of good size quickly. Soft wooded, and variable habit. Prices same as Silver Maple.

Red Leaf Maple (Schwedler's Maple). A variety of Norway Maple with bright crimson foliage, which gradually turns to a bronze green in Summer. A very beautiful tree, and valuable for shade. Stock is scarce. 6 to 8 ft., \$5.00; 8 to 10 ft., \$6.00.



Silver Maple.



Norway Maple.

Catalpa

Catalpa Bungei (Umbrella Catalpa). It makes an umbrella-shaped top without pruning. Flourishes in almost all soils and climates. Its leaves are large and glossy, heart-shaped, deep green and lie like shingles on a roof. It always makes a globular, symmetrical head, which makes it very unique. 1-yr. heads, \$2.50 and \$3.00 each; 2-yr. heads, \$3.50 and \$4.00 each.

Catalpa Speciosa. Rapid grower, and also a long-lived tree, which is not the case with other quick-growing trees. The Catalpa has the distinction of bearing the most showy flowers of all our ornamental trees. 8 to 10 ft., \$1.75; 10 to 12 ft., \$2.50; 2-in. caliper, \$4.50.

Elm - Ulmus

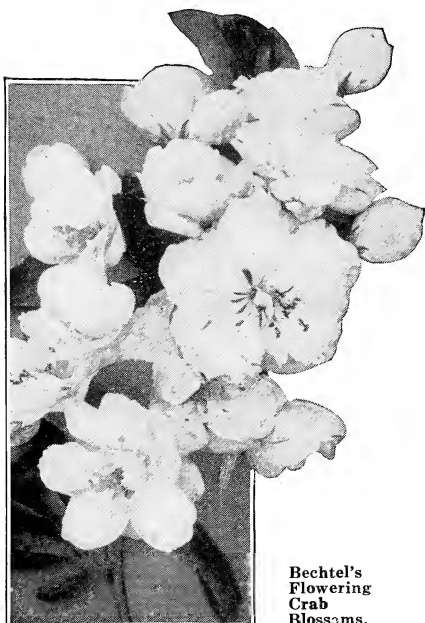
American White Elm. One of the most largely used trees for street planting, and as a shade tree for lawns and parks. It is the most characteristic tree of this region and one of the most beautiful. 8 to 10 ft., \$2.00; 10 to 12 ft., \$3.00; 1 3/4-in. caliper, \$5.00; 2-in., \$6.50.

Poplar - Populus

Lombardy Poplar. Well known; remarkable for its tall slender form, and erect rapid growth. Much used for special landscape effects. Valuable for screens and as an accent in shrubbery borders. 8 to 10 ft., \$1.75. 10 to 12 ft., \$3.00.

Bolleana Silver Poplar. A distinct and beautiful tree. Tall spirelike form. Glossy deep green leaves, silvery beneath. Much favored by landscape architects. 8 to 10 ft., \$3.00. 6 to 8 ft., \$2.50.

Plant Trees where they will afford useful shade, but not between the house and the street. They are usually most appropriately placed along the boundary lines of the property.



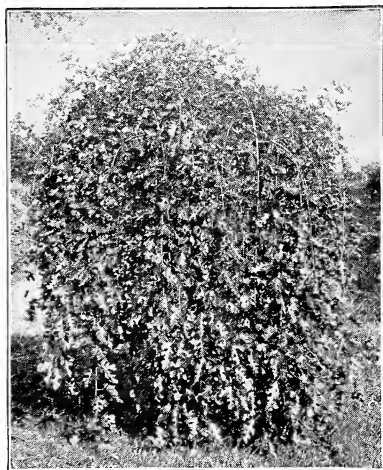
Bechtel's
Flowering
Crab
Blossoms.

Plum - Prunus

Purple-Leaved Plum (P. Pissardi). A small tree or shrub. The foliage and young shoots are of a rich reddish purple, which they retain throughout the season. 4 to 5 ft., \$1.75. 5 to 6 ft., \$2.25.

Flowering Crab - Pyrus

Bechtel's Double Flowering Crab. One of the most beautiful of the flowering crabs; tree of medium size, covered in early Spring with large, beautiful, fragrant flowers of a delicate pink color. 2 to 3 ft., \$1.50. 3 to 4 ft., \$2.00. 4 to 5 ft., \$3.00.



Teas' Weeping Mulberry.

Maidenhair Tree - Salisburia

Ginkgo. A rare and elegant tree with peculiar fan-shaped leaves. One of the oldest forms of plant life in existence but seldom seen. It is absolutely hardy and makes an interesting lawn specimen. We have never seen one attacked by insects or disease and have grown it for the past twelve years. 8 to 10 ft., \$4.00. 10 to 12 ft., \$5.50. 1 1/4 in., \$7.50.

Pin Oak - Quercus Palustris

Very glossy, attractive, deep green leaves, finely divided. Beautiful Fall coloring. Fairly fast grower. 1 1/4-in. caliper, \$7.00 each.

Wisconsin Willow - Salix Blanda

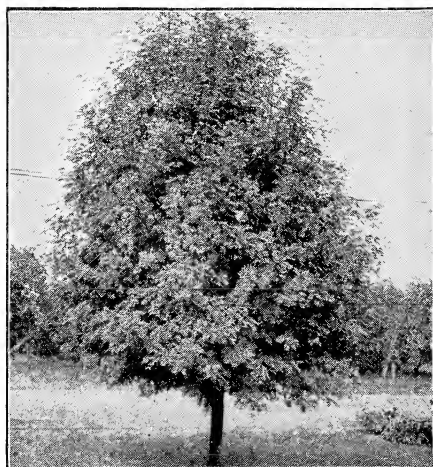
Weeping Willow. Long pendulous branches. Very effective for waterside planting. 6 to 8 ft., \$2.00. 8 to 10 ft., \$3.00.

Juglans - Walnut

Black Walnut. Our native Walnut, which develops into a beautiful tree for lawn and park planting. 6 to 8 ft., \$2.50. 8 to 10 ft., \$3.50. 2 in., \$5.00.

Horse-Chestnut - Aesculus

White-Flowering Horse-Chestnut. A large-growing tree with symmetrical head. Covered in May with white flowers marked with red. 5 to 6 ft., \$3.00. 6 to 7 ft., \$4.00.



Mountain Ash.

Mountain Ash - Sorbus

European. Medium sized tree, producing white flowers in the Spring, followed by large clusters of scarlet fruit. 5 to 6 ft., \$2.00. 6 to 8 ft., \$3.00.

Weeping Mulberry

Teas' Weeping. The most graceful and hardy weeping tree in existence. Forms a perfect-shaped head, with long, slender, willowy branches, drooping to the ground. It has beautiful foliage, is hardy and easy to transplant. Admirably adapted for small or large grounds, or cemetery planting. Fine trees, \$4.00 to \$6.00 each.



Hardy Flowering Shrubs

A Select List of the Finest and Hardest Kinds

A house and lawn without shrubs is like a picture without a frame. Trees and vines are of course essential, but shrubs are the most important feature of landscape planting. They furnish the main foliage masses and drifts of color which first catch and delight the eye. Planting of shrubs about the base of the house and porch is now considered a matter of course, and is indispensable for good effect. Their value and desirability in the shrubbery border, as in enclosing and screening in the back lawn, is not so well known. The taller varieties are at their best planted in groups of three or more at the side of the lawn or in the back yard as suggested.

Nothing else will so quickly and economically give an aspect of finish and completeness to the new home, and add 10% to 20% to its cash value.

Shrubs are Our Main Specialty

We are listing the most important and valuable varieties, but grow several kinds not mentioned here. Our shrubs are heavy, well-rooted, and carefully grown and handled; mostly three years old. As we are growing them especially for landscape planting, and with plenty of room to develop, they will give good satisfaction and a quick effect. You are welcome to our advice and help in selecting varieties.

Quantity Prices: Six plants of one kind for five times the price of one. (Six 70c plants for \$3.50, etc.). For large lots, planting, etc., ask for special estimates.

In listing Shrubs we have disregarded alphabetical order, and have placed them somewhat in the order of their importance.

Japanese Barberry

The most useful of all dwarf shrubs. Invaluable for foundation planting, and for edging taller shrubs. Goes well with Spirea Van Houttei, Snowberry, Mock Orange, etc. The bright green of its Summer foliage turns to the most striking effects in Autumn coloring. Don't confuse this Barberry with those which distribute wheat rust, as it is immune. It grows well in either sun or shade, transplants well, and thrives in almost any soil. (See picture, page 6).

Bushy, heavy, 3-yr. plants, 15-18 in., 50c each; 6 for \$2.50.

18 to 24 in., extra heavy, 60c each; 6 for \$3.00.

12 to 15 in., 35c each; 6 for \$1.75.

10 to 15 in., 2-yr., 20c each; 6 for \$1.00.

SPECIAL. Extra quality, 4-yr. Barberry. Broad, bushy plants, 2 to 3 ft. for immediate effect, 90c each; 6 for \$4.50.

Spirea Van Houttei

The most popular shrub for planting around the base of houses and porches. Its curving branches outlined by myriads of tiny blooms form one of the chief characteristics of our springtime landscape. For best effect plant it with Japanese Barberry, Spirea Froebeli, or some of the other dwarf shrubs. Its adaptability to any soil, quick growth, its fine foliage and graceful habit, all combine to make it a great favorite. Our plants have been grown with care, and with plenty of room to develop. (See picture, page 6).

Bushy, well rooted, 3-yr. plants. 2 to 3 ft., 50c each; 6 for \$2.50; 25 for \$9.00. 3 to 4 ft., extra fine plants, 70c each; 6 for \$3.50. 18 to 24 in., 35c each; 6 for \$1.75; 25 for \$6.50. 12 to 18 in., 2-yr., 20c each; 6 for \$1.00.

SPECIAL. Extra heavy, 4-yr. plants, \$1.00 each.



Japanese Barberry. (See page 5).

Spirea Froebeli

One of the newer sorts. Dwarf, bushy habit, blooming in midsummer. Flowers of a deep rose shade. A free bloomer, with healthy, bluish green foliage. Will flower the first season planted.

A good edging shrub for Spirea Van Houttei. Hardier, and a little taller grower than Anthony Waterer. Much used for massing in corners and angles of walks and drives. Plant 30 inches apart in groups of three to five; prune severely.

Bushy 3-yr. plants, 18 to 24 in., 75c; 6 for \$3.75. 15 to 18 in., 60c; 6 for \$3.00.

Spirea Anthony Waterer

Red, dwarf. This is a valuable variety because it can be used for edging and borders. An excellent low growing shrub with large corymbs of bright, red flowers almost throughout the season. 18 to 24 in., 85c; 6 for \$4.25; 12 to 18 in., 65c; 6 for \$3.25.



Spirea Anthony Waterer.



Spirea Van Houttei. (See page 5).

Spirea Thunbergi

Distinctive in both flowers and foliage. One of the earliest shrubs to bloom, the clouds of tiny white blossoms appearing before the leaves. Very fine, feathery, light green foliage. This shrub will add finish to your planting. Grows to medium height. Plant 30 to 36 inches apart. Use it where you want fine texture, as about the house foundation. 2 to 3 ft., bushy, \$1.00; 6 for \$5.00. 18 to 24 in., 75c; 6 for \$3.75.

Spirea Billiardi

Rose-pink, plume-like flowers in dense upright panicles. Blooms "in the dead of Summer" when flowers are scarce. Fairly tall grower. Plant three feet apart, in the border around your back lawn. Cut back severely. Try it out as a cut flower. 18 to 24 in., 40c; 2 to 3 ft., 60c; 3 to 4 ft., 75c.

Golden Spirea

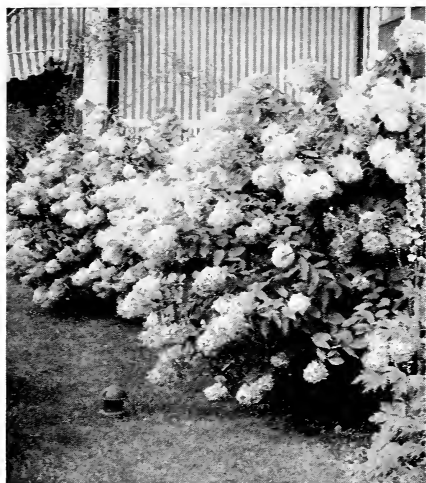
Spirea Aurea. Very tall; fast grower with leaves tinged yellow. White flowers, and attractive reddish seed pods. One of the best shrubs to make a screen and border about the back lawn. Plant four feet apart. 2 to 3 ft., 65c; 3 to 4 ft., 85c; 4 to 5 ft., \$1.00.

Spirea Prunifolia

The Bridal Wreath of old-time gardens. Very early double, button-like blooms of pure white. Bridal Wreath and Golden Bell make a frame worthy of your Spring bulb garden. 18 to 24 in., 75c; 2 to 3 ft., \$1.00.

Spirea Douglassi

Fairly tall upright grower. Deep pink spikes of flowers in late July. Very desirable for late bloom. Good with Spirea Van Houttei. 2 to 3 ft., 60c; 3 to 4 ft., 75c.



Hydrangea Paniculata.

Hydrangeas for Fall Bloom

Hydrangea Paniculata. Flowers are borne in large, globe-shaped panicles, white in color, becoming tinged with a delicate pink at the first frost, and last for weeks after opening up. This plant is absolutely hardy, and blooms the same year it is set out. Very attractive in beds or masses, and should be used for the most part in the foreground. You cannot do without them, for they come at a time when blooms are scarce—during September and October. When used in foreground work, they should be trimmed back severely every March. 18 to 24 in., 75c; 6 for \$3.75. 15 to 18 in., 50c; 6 for \$2.50. 2 to 3 ft., 3 yr., \$1.00; 6 for \$5.00. 4 yr., extra heavy plants, \$1.25.

Arborescens Grandiflora ("Hills of Snow"). The flowers are similar to the familiar "Snowball" in appearance; conspicuously white and imposing. July to September. By cutting back to the crown each Spring, the bushes may be kept round and dense at a normal height of three to five feet. They are excellent for solid low borders or in foundation plantings. Prices and sizes same as *Hydrangea Paniculata* (above).

THINK IT OVER!

A tree out of ground is "like a fish out of water." A great part of the value of nursery stock lies in the condition in which you receive it. We are able to supply this locality with fresh stock, with all its life and vitality right in it—not dried out by long shipping and careless handling. We often dig and deliver to Flint customers on the same day. Your soil—your climate, and your interests and problems are the same as ours. This enables us to understand your wants, and to give you superior service, and stock adapted to this section.

Snowberries for Fall and Winter Effects

All good landscape planting includes some of the berryed shrubs. Grounds planted with mainly flowering effects in mind will lack interest and prove disappointing. Plant Snowberries 30 to 36 inches apart. Prune back each season.

White Snowberry. When the attractiveness of most of the other shrubs is on the wane, the Snowberries are at their best. Their large clusters of milk-white berries persist until Winter. Snowberry and Coralberry (Red Snowberry) are two of the best shrubs for planting in shade, and are much favored by landscape gardeners. Be sure to consider them for the northern and eastern exposures of your foundation planting. 18 to 24 in., 60c each; 6 for \$3.00. 2 to 3 ft., 70c each; 6 for \$3.50.

Red Snowberry. Similar to the White Snowberry except that its fruits are red and that the smaller red berries cluster in thick ropes along the weighted-down stems. The foliage is distinct in its fineness, and with the White Snowberry is very valuable for border planting. Rather dwarf in form, growing from two to four feet high, and should be used in the fore part of mass and border plantings. This species of the Snowberry is often called "Indian Currant" and "Coralberry." Prices and grades same as White Snowberry.



Red Snowberry.

Forsythia - Golden Bell

Forsythia Intermedia. The first shrub to bloom in the Spring. Like golden glints of sunshine the bell-like blossoms burst forth and light up the garden with masses of bright yellow. Healthy deep green foliage; fast grower, reaching 6 to 8 feet. Fine for the angles and corners of house foundations. Try a clump of three at the back corner of your house—to give setting and background, and to partially screen the back lawn. We could not get along without Golden Bell in borders, screens, and all good landscape work. 2 to 3 ft., 60c; 6 for \$3.00. 3 to 4 ft., 80c; 6 for \$4.00.

Forsythia Suspensa. Graceful drooping branches strung with bright rosettes of yellow bloom. Fine for terraces and banks. 2 to 3 ft., 70c; 3 to 4 ft., 90c.

Pink Weigela

Weigela Rosea. An indispensable shrub of great beauty. Arching branches studded with a profusion of rose pink trumpet-shaped flowers. Blooms in June. Heavy foliage, retained late in the Fall makes it especially valuable in conspicuous positions, and foundation planting. Same height as *Spirea Van Houttei*. Much used about house and porch bases. Plant three feet apart. This is the best of the great number of *Weigela* varieties. 18 to 24 in., 50c; 6 for \$2.50. 2 to 3 ft., 75c; 6 for \$3.75. 3 to 4 ft., \$1.00; 6 for \$5.00.

Syringa or Mock Orange

Syringa Coronarius. (Botanical name is *Philadelphus*). The "Sweet Syringa" of old-fashioned gardens. A tall, hardy bush. In May and June it bears profuse white flowers resembling orange blossoms, which are fine for cutting and deliciously fragrant. This shrub is valuable for backgrounds, screens or specimen plants. 2 to 3 ft., 60c each; 6 for \$3.00. 3 to 4 ft., 80c each; 6 for \$4.00. 4 to 5 ft., \$1.00 and \$1.25 each.

Syringa Grandiflora. Tall; very fast grower. Extra large flowers in June. Will soon screen off your neighbor's ash heap, and enclose your back lawn. Syringas will grow in almost any soil, and are an old standby for tall borders. They are at home with Bush Honeysuckle, Golden Bell, Red Bark Dogwood, Golden *Spirea*, etc. Prices and grades same as *Syringa Coronarius*.

Golden Leaf Syringa. This is the dwarf yellow-leaved shrub you have admired so much planted with *Spirea Van Houttei*. Many customers ask for "Golden *Spirea*" (a very tall shrub) when they mean this one. Flowers



Weigela Rosea.

sparingly, but makes an interesting foliage contrast in sunny exposures. It should be planted about two feet apart, in front of taller shrubs, not between them. We have a limited stock of extra fine plants. 12 to 15 in., 70c; 6 for \$3.50. 15 to 18 in., 85c. 18 to 24 in., \$1.10 each; 6 for \$5.50. Extra heavy, 4 yr., \$1.25 and \$1.50 each.

The Bush Honeysuckles

Tartarian. A tall rapid grower. Very early bright green leaves, soon followed by a profusion of fragrant pink blossoms. Later the branches are clothed with clusters of brilliant red berries lasting for a long time. Honeysuckles are the most useful of all tall shrubs, and landscape gardeners use thousands for borders, screens and for enclosing back lawns. They will grow twice as fast as Lilacs, and make a good tall hedge, as they may be clipped. Don't use a privet hedge in the back lawn where you should have a tall border of Honeysuckle, *Syringa*, Golden Bell, Lilacs, etc. Let them grow to form a background and screen—the framework of your whole place. Our plants are very heavy, and carefully grown. 18 to 24 in., 40c; 6 for \$2.00. 2 to 3 ft., 65c; 6 for \$3.25. 3 to 4 ft., 85c; 6 for \$4.25.

Morrowi (Japanese Honeysuckle). The best variety to plant about houses and porches. More spreading but not so tall as Tartarian, Creamy white flowers and dark red berries. Much favored by landscape men, as their plans show. Keep it in mind for the back corner of your house (a clump of three or four), and between the windows—where you need height. Plant about 4 feet apart. 2 to 3 ft., 70c; 6 for \$3.50. 3 to 4 ft., \$1.00; 6 for \$5.00.



Tartarian Bush Honeysuckle.

A SUGGESTION TO THOSE BUYING SHRUBS

Too much consideration is ordinarily given to the flowers. Shrubs should be judged largely by their foliage, berries, and year-round effect. A selection based upon flowers mainly is sure to be a failure from a landscape viewpoint. Many of the most showy of the flowering shrubs have too sparse foliage for good effect in planting about the house and porch foundation, unless used in front of other shrubs. The trained landscape man thinks in terms of foliage and general mass effects; and less of flowers, and individual plants.

Plant in clumps, groups and "drifts". Single plants, excepting in special positions, are not good.

Remember two things. Practically all houses and porches need a base or "foundation" planting; and all grounds need enclosing by planting on the property lines—in the back lawn as well as the front. If interested, ask for our suggestions.



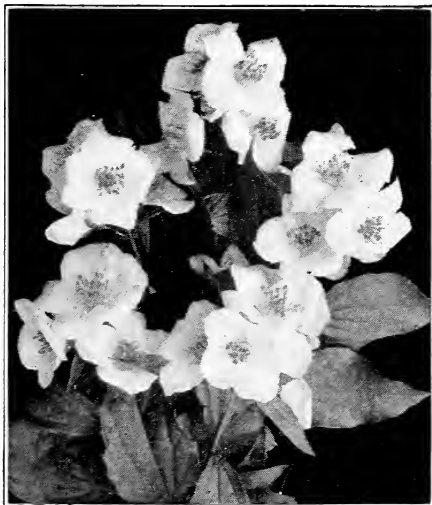
French Lilac, Madame Lemoine.

Althea or Rose of Sharon

Blooming late when flowers in the shrubbery plantation are scarce. Can be grown in standard form, making small, picturesque trees. It requires protection and should be planted only in the Spring. Colors: Red, Pink, Purple. 2 to 3 ft., 75c. 3 to 4 ft., \$1.00.

Pink Flowering Almond

This old-time favorite with its wealth of double, pink flowers, strung along the stems like so many gems, should find a place on every lawn. Their wealth of blossoms come to delight us at a time when there are few other shrubs in bloom. Useful in cemeteries, as it blooms about Decoration Day. 18 to 24 in., \$1.00. 2 to 3 ft., \$1.25.



Syringa Grandiflora. (See page 8).

Lilacs

Common Purple Lilac. Fragrant purple flowers. 18 to 24 in., 60c. 2 to 3 ft., 75c. 3 to 4 ft., \$1.00. Extra heavy, 5 yr., dug with a ball of soil for immediate bloom, \$2.00 to \$5.00 each.

White Lilac. 2 to 3 ft., 90c. 3 to 4 ft., \$1.25.

Persian Lilac. Graceful rounded form; slender upright branches, with rather fine leaves. Blooms very young, pale to deep lilac color. Moderate in height, 4 to 6 feet. The best Lilac for limited space, and foundation planting. Much used in landscape planting. 18 to 24 in., 75c. 2 to 3 ft., \$1.00. 3 to 4 ft., \$1.25.

Villosa Lilac. Why not have Lilac-time last until Summer? This one blooms long after the other Lilacs have finished, and is unique in flower and foliage. Flowers are light lilac in bud and silvery rose when open. Bush is dwarf and compact in habit, with large, waxy leaves. Not new, but still rare and little known. 2 to 3 ft., \$1.00. 3 to 4 ft., \$1.50.

French or Hybrid Lilacs

The Named Hybrid Lilacs, with their larger panicles of delicate and rich hued flowers, always prove a surprise and revelation to those who do not know them. They are a distinct type, rather dwarf in habit, blooming when very young. The stock of these is always scarce throughout the country.

Madame Lemoine. Large trusses; a superb double white.

Pres. Grevy. A beautiful double blue.

Ludwig Spaeth. Very dark, reddish purple; single.

Michael Buchner. Pale pinkish lilac; double.

Charles X. Large panicles of reddish purple; single.

All French Lilacs: 18 to 24 in., \$1.25. 2 to 3 ft., \$1.50. 3 to 4 ft., \$3.00.



Pink Flowering Almond.

Aralia

Aralia Pentaphylla. Unusually attractive, lustrous deep green leaves, with five lobes. Slender arching branches, reaching 6 to 8 feet. This Aralia is a very distinct and ornamental shrub. Does well in shade, and indifferent soil. Used in quantity by landscape men for its adaptability and the attractive bright green of its foliage mass. 2 to 3 ft., 75c. 3 to 4 ft., \$1.00.

Aralia Spinosa. A tall interesting, tree-like shrub of sub-tropical appearance. Enormous palmate leaves sometimes four feet long. Our stock of this Aralia always interests visitors who want "something different". Its foliage is unique, and differs from any plant that we know of. 3 to 4 ft., \$1.25. 4 to 5 ft., \$1.75. 5 to 6 ft., \$2.25.



Siberian Dogwood.

The Dogwoods - Cornus

Consideration of the Winter aspect of your grounds will lead to the increased use of Dogwoods, which are almost at their best in a leafless state. The brilliant and varied tints of their branches, ranging from soft gray, yellow, rosy purple to brilliant red, contribute a most welcome quota of life and color to the shrubby groups. Successful landscape planting usually includes Dogwoods for their special value in creating year-round effects. They do well in shade, have good, strong healthy foliage, and nearly all of them produce attractive berries.

Siberian Dogwood. Grows 6 to 10 feet high. The best Dogwood for Winter color; branches blood red. White berries in clusters; flowers in fuzzy heads of white. Do not overlook it in planning your border, and screen. 2 to 3 ft., 65c. 3 to 4 ft., 80c. 4 to 5 ft., \$1.00.

Yellow Bark Dogwood (Cornus Lutea). Bright yellow bark. Deep green leaves. Spreading habit. Plant it with Siberian Red Bark Dogwood if you like contrast. Goes well with red brick walls for background. Prices same as Siberian Dogwood.

Variegated Leaf Dogwood. One of the most desirable shrubs with variegated foliage. The leaves are broadly margined with white, and some are almost entirely white. 2 to 3 ft., \$1.00; 3 to 4 ft., \$1.50.

Panicled Dogwood. Medium height, upright habit. Many clusters of pearly berries, on attractive red stems. Bark of a pleasant silvery gray. Splendid Fall coloring. Scores high as a landscape shrub. 2 to 3 ft., 70c. 3 to 4 ft., \$1.00.

Silky Dogwood (Cornus Sericea). Medium size. Purplish red bark. White berries, tinted purple. 2 to 3 ft., 60c. 3 to 4 ft., 80c. 4 to 5 ft., \$1.00.

Mascula Dogwood (Cornelian Cherry). Very early clusters of small yellow flowers. Large bright red fruits. 3 to 4 ft., \$1.50. 5 to 6 ft., \$3.00 and up.

Japanese Quince - Cydonia

Cydonia Japonica. Dazzling scarlet flowers in early Spring. An old favorite. 18 to 24 in., 85c. 2 to 3 ft., \$1.00.

Caragana - Pea Tree

Caragana Arborescens. Fine, light green, very small leaves. Pretty clusters of yellow pea-shaped flowers very early in the season. Here is an absolutely hardy shrub of real merit, although seldom seen. Plant just one. You will enjoy watching it develop. So will your neighbor. It makes an interesting little specimen planted alone. 2 to 3 ft., 75c. 3 to 4 ft., \$1.25. 4 to 5 ft., \$1.50.



Deutzia, Pride of Rochester.

Deutzia

Pride of Rochester. Grows 6 feet high, and blooms very early. Large white flowers, tinged pink. 2 to 3 ft., 65c. 3 to 4 ft., 85c.

Deutzia Lemoinei. Large clusters of white flowers. Dwarf habit; splendid bloomer. 18 to 24 in., \$1.00.



Golden Elder.

Elder - Sambucus

Golden Elder. A large shrub with attractive golden yellow foliage retained throughout the season. Adds a welcome note of color and contrast to shrubby clumps. May be pruned back, and kept of moderate size. Typical elderberry flowers. 3 to 4 ft., \$1.00. 4 to 5 ft., \$1.25 and \$1.50.

Euonymus - Wahoo

Americanus. Erect shrub, with slender green branches. Peculiar pink fruits. Good Autumn color. 2 to 3 ft., \$1.25. 3 to 4 ft., \$1.50.

Alatus. Interesting corky bark; crimson Autumn coloring. Small bright red berries. Specimen plants, 4 to 5 ft., \$4.00 to \$7.50 each.



Showing Bark and Berries of
Euonymus Alatus.

Sumac - Rhus

Sumacs give a blaze of color in the Fall, and an interesting skyline all Winter. Their bold pinnate leaves and picturesque habit of growth add a much needed contrast with the rounded masses and fine textured foliage of most shrubs. They are at home with Dogwoods, Honeysuckles and Viburnums, although much more wayward in growth.

Staghorn Sumac. Very tall, rugged grower; picturesque crooked branches. Becomes "leggy" and needs "facers" planting. 2 to 3 ft., 60c. 3 to 4 ft., 75c. 4 to 5 ft., \$1.00.

Fern Leaf Sumac. Leaves deeply cut and laciniate, giving a fernlike effect. Superb Fall coloring. Habit similar to Staghorn Sumac. A much-admired shrub and will give variety to your border. 2 to 3 ft., 65c. 3 to 4 ft., 85c. 4 to 5 ft., \$1.00.



Tamarix Africana.



Fern Leaf Sumac.

Russian Olive - Elaeagnus

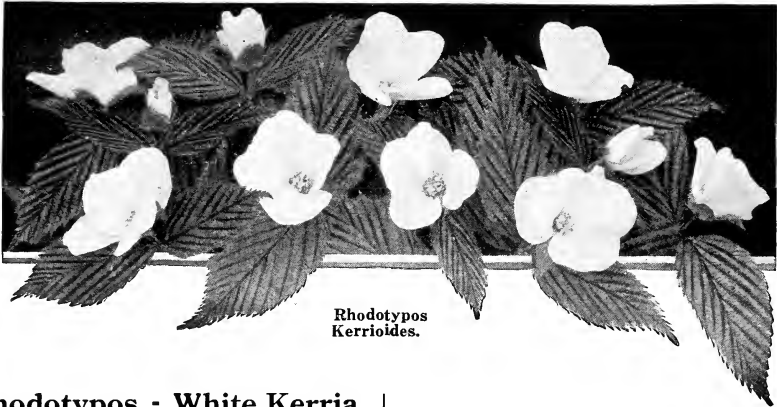
Elaeagnus Angustifolia. This tall shrub affords a striking contrast among dark leaved associates. Its foliage is most unusual, a rich silvery light green, almost white. Small, inconspicuous but very fragrant, yellow flowers. The distinctive color of its leaves and branchlets make it a desirable subject to plant with the ordinary greens of shrub clumps. As its growth is tall, rather slender and willowy, attaining the size of a small tree, it is of special value in the extreme background to add skyline interest. Keep this shrub in mind to plant with your Syringas and Honeysuckles as an "accent" plant. We have a fine stock of this shrub, 2 to 6 years old. 3 to 4 ft., \$1.00. 4 to 5 ft., \$1.50. 5 to 6 ft., \$2.00.

Tamarix

Beautiful, slender, tall growing shrubs, reaching 8 to 10 feet, with fine feathery, Juniper-like foliage. Spikes of very delicate pink or rose flowers. Both foliage and flowers are used for cutting. This most distinctive shrub is not at all well known, although easily grown. Plant at least one in your garden, and cut the flowering sprays for your vases.

Tamarix Africana. Early, light pink flowers, in May and June. Olive-green foliage. 2 to 3 ft., 60c. 3 to 4 ft., 80c.

Tamarix Pentandra. Attractive silvery blue-green foliage. Rose-pink flowers in large panicles, blooming from July to October. This is a choice, and rather rare, shrub, always exciting the admiration of visitors when in bloom on our grounds. Florists use the foliage in "making up." 2 to 3 ft., 65c. 3 to 4 ft., \$1.00.



Rhodotypos
Kerrioides.

Rhodotypos - White Kerria

Rhodotypos Kerrioides. A shrub with many points of excellence, and suited to positions requiring good foliage texture and refined habit of growth. It has handsome, corrugated leaves, and large, Syringa-like, single white flowers late in May; shining, jet-black berries in clusters lasting all Winter. Usually grows 4 to 5 feet high. Rhodotypos appears commonly in the planting lists of landscapers. It will help you avoid the commonplace in developing that new lawn. Plant 3 feet apart. Not less than three plants should be used. Good for foundations and porches. 2 to 3 ft., \$1.00; 6 for \$5.00. 3 to 4 ft., \$1.25.

Viburnum - Snowball

Common Snowball. 18 to 24 in., \$1.00. 2 to 3 ft., \$1.25.

High Bush Cranberry (Viburnum Opulus). Tall; one of the best berried shrubs. Clusters of brilliant red berries nearly all Winter. 2 to 3 ft., \$1.00. 3 to 4 ft., \$1.50.

Viburnum Lantana. Large white flowers in June, followed by crimson fruits, changing to black. Very handsome, thick, crinkly leaves, retained until Winter. A very distinctive tall shrub, with great landscape value. Plant one for the birds. 2 to 3 ft., \$1.00. 3 to 4 ft., \$1.50. 4 to 5 ft., \$2.00.

Viburnum Dentatum (Arrow-wood). White flower heads in June; blue berries. Glossy, bright green foliage coloring to purple and red in Fall. A large, broad shrub of excellent form and habit. Good for shady places, but needs moisture. Our plants are all heavy four year stock. 2 to 3 ft., \$1.00. 3 to 4 ft., \$1.50.

Shrub Roses - Rosa

Japanese Rose (Rosa Rugosa). The finest bush Rose for landscape planting. It is really a shrub, with very fine foliage. Leaves of a rich, deep green, deeply crinkled; single pink flowers followed by very large, bright red fruits. Does especially well in clay soil. 2 yr., 75c. 3 yr., 90c.

Rosa Multiflora. Tall arching canes, 4 to 5 feet high, covered with a profusion of great clusters of small white flowers in June. 2 yr., 60c. 3 yr., 85c.

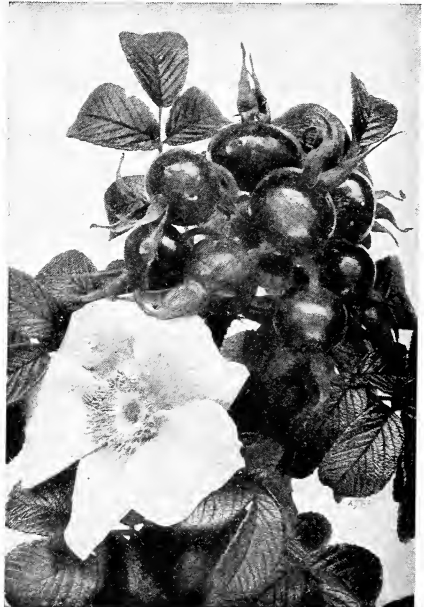
Rosa Setigera. Deep pink single roses. One of the best of the wild roses for naturalistic landscapes. 2 yr., 65c. 3 yr., 85c.

Calycanthus - Sweet Shrub

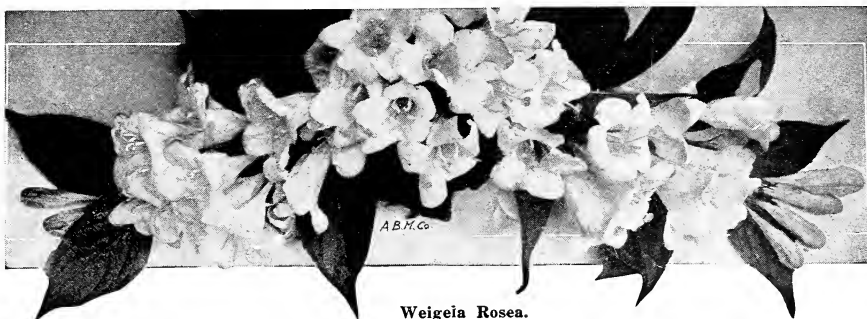
An odd shrub, better known in the South. Upright growth, reaching 5 to 6 feet. Peculiar fragrant, chocolate-red flowers. The wood itself is very aromatic. Large glossy leaves. 2 to 3 ft., \$1.00.

Flowering Plum - Prunus Triloba

A lovely, Spring-blooming shrub which adds a welcome note of color and cheer to the leafless landscape. Very double, closely set, roselike blooms of light pink, bursting out a week ahead of the leaves. One of the most beautiful flowers of Spring. Effective as a specimen. 3 to 4 ft., \$1.50. 4 to 5 ft., \$2.00.



Rugosa Rose.



Weigela Rosea.

Weigela

Weigela Eva Rathke. A small-growing shrub with deep crimson-red flowers. It blooms over a long period, from June to September. Makes a bright spot of color for the foreground. Foliage not heavy. Stock of this Weigela is always scarce. 18 to 24 in., \$1.00. 2 to 3 ft., \$1.25.

Weigela Candida. Pure white flowers; similar to Weigela Rosea. 2 to 3 ft., \$1.00. 3 to 4 ft., \$1.25.

Variegated Weigela. Leaves strikingly marked with white and cream. Dwarf compact grower. Pink flowers. The best variegated shrub. Needs a strong green background. 18 to 24 in., 75c. 2 to 3 ft., \$1.00.

Flowering Currant - Ribes

Ribes Aureum. Fragrant, very early yellow flowers in May. Smooth shining leaves, attractively lobed. A good old-fashioned shrub for the Spring garden, reaching 6 feet in height. A rival of Golden Bell in the pageant of Spring bloom. 2 to 3 ft., 80c. 3 to 4 ft., \$1.00.

The Privets - Ligustrum

We find that few people know of the many attractions of this family. In a clipped hedge, they do not flower or show their natural habits, and beautiful clusters of blue-black berries. They are close relatives of the Lilac botanically and their panicles of delicate white flowers much resemble the Lilac.

Regel Privet. A graceful and distinctive shrub, with low-spreading branches and clear cut fine foliage. Good landscape architects use it in large numbers. Its lateral habit of growth makes it harmonize with slopes, terraces, and low house foundations. Plant it in clumps of three to six, 30 inches apart, about as you would Barberry but it needs a little more room. It holds its leaves late in the Fall and takes on striking tones of purple and red. Why not take this shrub into your service? Our plants are bushy and fine. 15 to 18 in., 60c; 6 for \$3.00. 18 to 24 in., 3 yr., 70c; 6 for \$3.50. 2 to 3 ft., 80c.

Botata Privet. A stronger and taller grower than Regel Privet. Extensively used for shrubbery groups, and unclipped hedges. Presents a good foliage mass in difficult situations; endures shade and dryness well. Spreading habit; numerous small panicles of white flowers; followed by large clusters of attractive black berries. A good choice of a tall shrub for foundations, and property lines. 18 to 24 in., 50c; 6 for \$2.50. 2 to 3 ft., 3 yr., 65c; 6 for \$3.25.

Amoor River Privet. (See Hedge Plants). Most used in hedges, but valuable in general planting. Vigorous upright grower; very tall and erect. 2 to 3 ft., 4 yr., heavy, 50c; 6 for \$2.50. 3 to 4 ft., 4 yr., heavy, 65c; 6 for \$3.25.

English Privet. Lustrous, bright green leaves. Pretty panicles of white flowers; shining black berries. Tall, upright habit. Prices same as Amoor River.

California Privet. (See Hedge Plants). Not sufficiently hardy to permit its use in general planting, except as a hedge.



Regel Privet, Showing Berries.

FOR SHADY PLACES

Special Offer: Eight assorted shrubs, in at least three varieties, suitable for porch planting, for \$3.25.

New Shrubs of Merit

And a Few That Are Rare, or Little Known

A Real Novelty in Shrubs New Red-leaved Japanese Barberry

It is similar in all respects to the green-leaved Japanese Barberry which is so popular for planting in clumps on the lawn or for foundation plantings but the foliage of this new variety is of a rich, lustrous, bronzy red, becoming more brilliant and gorgeous throughout the Summer and in the Fall changes to vivid orange, scarlet and red shades. In this coloring it is unequalled by any other shrub and is followed by brilliant scarlet berries. In order to develop its brilliant coloring it must be planted in full exposure to the sun.

Price: 2 yr. plants, 15 to 18 in., \$1.25 each; 3 for \$3.50; 5 for \$5.50.

Dwarf Ninebark - Spirea Monogynus

A new shrub of distinction and beauty. Attractive lustrous bright green foliage of fine texture, retained until Winter. Flower heads of fine white florets, tinged pink. Fall coloring of purple and wine red. Compact, bushy habit, and medium size. It ranks high in landscape value, and is admired by all who see it. Fine for foundation planting. We have grown this shrub for the past three years and find it absolutely hardy. Stock is limited.

Price: 18 to 24 in., \$1.00. 2 to 3 ft., \$1.25.

Lodense Privet

One of the few new shrubs of outstanding merit, which we have tested on our grounds. It is unique in its very low, densely compact habit. Beautiful shining dark green leaves. Very hardy and may be kept as low as one foot in height. Resembles Boxwood and makes a perfect low hedge. Admirable as a "facer", and may be easily clipped into any form.

Price: 2 yr., 60c; 6 for \$3.00. 3 yr., heavy, 75c; 6 for \$3.75. For hedges, \$25.00 and \$35.00 for 100.

Beautiful New Mock Oranges

Syringa Virginialis (Philadelphus). A magnificent new sort, with remarkably large, semi-double flowers in great profusion. Its sweetly fragrant blooms are produced off and on throughout the entire season. Moderately tall; foliage good and habit compact and pleasing. 18 to 24 in., \$1.00. 2 to 3 ft., \$1.25.

Syringa Banniere (Philadelphus). A tall shrub with long branches covered with a profusion of large, semi-double, snow-white flowers. Extra fine and very early; the foliage large, dark green. 2 to 3 ft., \$1.00. 3 to 4 ft., \$1.25.

Cotoneaster Acutifolia

Upright grower, with handsome, glossy leaves of a rich deep green. Attractive Fall coloring and clusters of large black berries. Extremely hardy and may be clipped like Privet. Frequently seen in high class landscape plantings but is little known as yet. We have tested it thoroughly in our Nursery for the past three years. Our plants are extra fine and 3 years old. 2 to 3 ft., 80c; 6 for \$4.00. 3 to 4 ft., \$1.00; 6 for \$5.00.

Alpine Currant - Ribes Alpinum

Also called Mountain Currant. A very dense dwarf shrub, absolutely hardy, but seldom seen in this section. The bright green leaves come out very early, and hang on late in the Fall. It is very bushy, shearing well, if desired, although naturally a small shrub. Adds character to foundation planting, used in the foreground. Stands shade well. Here is your chance to get something "different", and meritorious for that new lawn. 3 yr., 15 to 18 in., 80c. 4 yr., 18 to 24 in., \$1.00 and \$1.25.

Box Barberry

Dwarf Barberry *Thunbergi*. Very low growing, round and dense; growth so evenly compact that it makes an ideal edging for beds and borders. Much slower and lower growing than Japanese Barberry and its density permits very close trimming. Very hardy. 12 to 15 in., 3 yr., 70c; 6 for \$3.50.

Potentilla Fruticosa - Cinquefoil

A bright flowered little shrub with yellow flowers from July to frost. Very dwarf with silky gray-green foliage. Its midsummer bloom and hardness make it valuable. 18 to 24 in., \$1.00 each.

Dwarf Tartarian Maple

Acer Ginnala. Not a tree but a large shrub with attractive maple foliage and superb Fall coloring. Few shrubs equal it in brilliancy after a touch of frost. Grows 10 feet high and will grace the finest of shrubbery borders. 3 to 4 ft., \$1.25. 4 to 5 ft., \$1.75.



A Pleasing Garage Entrance Planting.



Japanese Barberry Hedge.

Plant a Hedge

Start a hedge this season. It is the finest kind of a fence, and will increase in beauty for years to come. Aside from its practical value, it frames your house and lawn in a charming manner. For the back lawn the hedge should often be tall enough to form a screen. Perhaps an unclipped hedge or border of Bush Honeysuckle, Mock Orange, Golden Bell, Lilacs, etc., planted in irregular style would be best. Ask us about your hedge problem.

Plant Privets 9 to 12 inches apart in a well prepared trench. If the soil is poor, use plenty of fine manure or fertilizer to mix in. Pulverized sheep manure or Vigoro Fertilizer is good. A still better way is to use good, loamy fresh soil in filling in the trench. Plant Barberry, etc., in same manner, 12 to 15 inches apart.

Please note that both the Amoor River and California Privet plants we sell are two years old. Much of the Privet sold so cheaply is but one year old.

California Privet

The most popular of the hedge plants. Glossy, dark green foliage; rapid grower. It transplants easily, and grows so quickly that in good soil it will often make a hedge the first year. Plant about 10 to 12 inches apart and cut back to 4 to 6 inches above the ground. 2 to 3 ft., \$13.00 per 100. 18 to 24 in., \$10.00 per 100. 12 to 18 in., \$6.00 per 100. (20 or more at 100 rates).

Japanese Barberry

Where a dwarf hedge is wanted, nothing equals this beautiful Barberry. The leaves are small, light green, and towards Fall assume rich, brilliant colors. Absolutely hardy in all parts of the country. 3-yr., 18 to 24 in., \$32.00 per 100. 15 to 18 in., \$22.00 per 100. 12 to 15 in., \$18.00 per 100. 2-yr., 10 to 12 in., \$12.00 per 100. (20 or more at 100 rates).

Spirea Van Houttei

This well known shrub can be used as a hedge and will grow quick and make a striking effect when in bloom, as it has the appearance of a bank of snow for days before the bloom sheds. 12 to 18 in., \$12.00 per 100. 18 to 24 in., \$20.00 per 100. 2 to 3 ft., \$30.00 per 100. (Not less than 25 at these rates).

Bush Honeysuckle

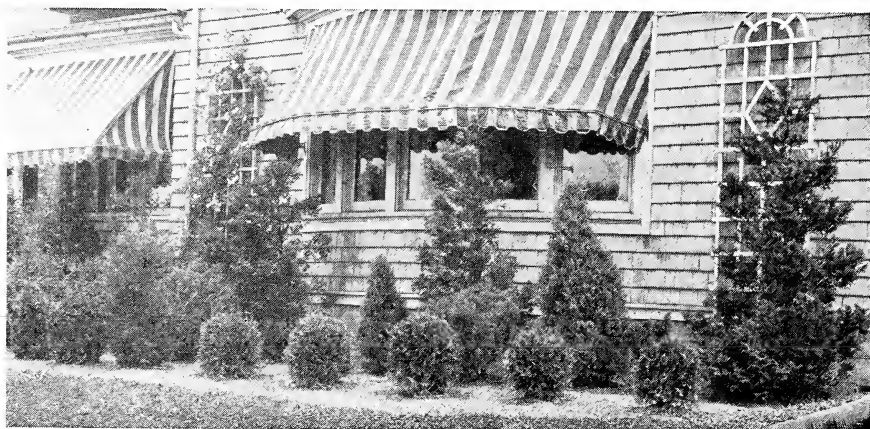
A very hardy plant of quick growth with red berries and a honeysuckle bloom. It is the first plant to green up in the Spring and holds its foliage well into the Fall. It can be trimmed to any shape. One plant every two feet is sufficient. Tall grower. 18 to 24 in., \$24.00 per 100. 2 to 3 ft., \$32.00 per 100.

Amoor River Privet

A very superior Privet, tested during the past 15 years and found to be absolutely hardy. Similar to the California Privet, although much hardier. After our coldest Winters, it will be found alive to the tips. It forms a dense, compact hedge. The best Privet for Michigan. All 2-year plants. 12 to 18 in., \$1.50 per 10; \$12.00 per 100. 18 to 24 in., \$2.00 per 10; \$15.00 per 100. 2 to 3 ft., \$2.50 per 10; \$20.00 per 100. (20 or more at 100 rates).



Amoor River Privet Hedge.



Evergreens for Beauty and Variety

A well-balanced planting list for the new home should include Evergreens. In fact, it is hard to make a complete and finished effect without them. Aside from their Winter contribution to the landscape, the definiteness of their outlines, and the rich and varied textures of their foliage, lend indispensable variety and distinction to the picture.

Our Evergreens are fine bushy trees, carefully handled, and dug with a ball of soil about the roots. It should be borne in mind that good Evergreens are rather scarce, and orders should be placed early. (Plants personally selected will be priced according to their individual value).

Arbor Vitae - Thuja

American Arbor-Vitae. Erect, pyramidal habit with soft bright green foliage, dense from ground up; grows rapidly and soon forms a most beautiful tree. Like other types of Arbor-vitae, the American can be trimmed at will, or even closely sheared when sufficiently developed. 18 to 24 in., \$2.50. 2 to 3 ft., \$3.50. 3 to 4 ft., \$6.00 and \$7.00.

Pyramidal Arbor-Vitae. A densely branched Arbor-vitae, of perfectly columnar form. One of the most remarkable Evergreens in respect to its symmetry. It is perfectly hardy and will succeed anywhere that the American Arbor-vitae grows. A very valuable variety for ornamental planting and wherever columnar effects are desired. 18 to 24 in., \$3.50. 2 to 3 ft., \$5.00. 3 to 4 ft., \$7.50 to \$8.50.

Globe Arbor-Vitae. Of dense dwarf habit, globular in outline. Very fine foliage of a handsome light green. 12 to 15 in., \$3.00 and \$3.50. 15 to 18 in., \$4.00 and \$5.00.

Hovey's Golden Arbor-Vitae. A dwarf Arbor-vitae of oval outline. Very pretty, plaited leaves of light green color, tinged yellow. 12 to 18 in., \$3.00. 18 to 24 in., \$4.00 and \$5.00.

Siberian Arbor-Vitae. Rather dwarf habit; foliage stiff, heavy and of a deep blue-green. Slow grower but very hardy. 12 to 18 in., \$3.50. 18 to 24 in., \$5.00.

Spruce - Picea

Norway Spruce. Rapid vigorous grower; dark green foliage. Useful as specimens where height and quick growth is desired. Picturesque pyramidal habit. Typical Christmas

tree form. 18 to 24 in., \$2.00. 2 to 3 ft., \$3.50. 3 to 4 ft., \$4.50 and \$5.00.

White Spruce. A shapely medium-tall Spruce of pleasing outline. Light green in color, tinged blue and silvery gray. More compact than Norway Spruce. A choice specimen evergreen. 12 to 18 in., \$2.00. 18 to 24 in., \$3.00. 2 to 3 ft., \$4.00.



This doorstep and curving walk have been exquisitely treated. A most inviting prospect as one approaches the house. It seems to really invite you to enter and be welcome.

Colorado Blue Spruce. Silvery blue shades, varying considerably in color. Attractive symmetrical form. Rather long needles, thickly set on the branches. Its pronounced blue color and its sharply defined Spruce form make it a valuable specimen tree. 2 to 3 ft., \$10.00 to \$13.00 each. 3 to 4 ft., \$14.00 to \$19.00 each.

Koster Blue Spruce. The showiest of all the spruces and one of the scarcest trees in existence. Uniform silvery blue color. A grafted form of Colorado Blue. \$20.00 to \$30.00 each.

Juniper - Juniperus

Virginian Juniper. A native tree, somewhat variable in habit. It forms a dense column, growing to considerable height. The hardiest of all Junipers and is useful in foundation planting. Often specified in landscape plans for planting at either side of steps and entrances. Deep green in Summer, turning to bronze and purple hues in Winter. Called Red Cedar. 18 to 24 in., \$2.50. 2 to 3 ft., \$3.50. 3 to 4 ft., \$5.00 and \$6.00 each.

Irish Juniper. Much used in cemeteries. Erect slender form, needing no shearing. Attractive sage-green foliage, tipped silvery white. Very narrow and spire-like. 18 to 24 in., \$3.00. 2 to 3 ft., \$4.00. 3 to 4 ft., \$5.00 and \$6.00.

Juniper, Greek (J. excelsa). This is an unusually attractive dwarf pyramidal form with very compact bluish green foliage. 15 to 18 in., \$5.00. 18 to 24 in., \$6.00.

Juniper, Pfitzer's. This is the most popular of all the spreading types. Its habit of growth, its pendulous branches and attractive foliage are strikingly beautiful. The branches are horizontally spreading and the terminals slightly drooping. 15 to 18 in., \$5.00. 18 to 24 in., \$6.00.

Juniper, Savin's (J. sabina). One of the best. Spreading fan shape habit, of pleasing color, dark green. 15 to 18 in., \$4.00. 18 to 24 in., \$5.00.

Blue Juniper (Virginiana Glauca). A rival of Koster Spruce in its beautiful silvery blue color. One of the choicest Evergreens in existence. Pyramidal form of irregular outline with gracefully spreading branches. A landscape subject of the first rank. 12 to 18 in., \$3.50. Specimens, 3 to 4 ft., \$7.50 to \$10.00 each.



Colorado Blue Spruce.



Savin Juniper.



American Arbor-Vitae.

Pine - Pinus

Austrian. Broadbased, heavy needled, massive; darkest and richest green of the Pines, silhouetting to inky blackness against the skyline. Quite densely and evenly branched, well furnished with attractive tufts of foliage. 18 24 in., \$3.00. 2 to 3 ft., \$4.00. 3 to 4 ft., \$5.50 and \$6.50 each.

Mugho Dwarf Pine. The most dwarf of all the pine family and a very beautiful low-growing evergreen. The genuine variety is not at all common, being about as broad as high and of very dense, close growth. Rich, dark green, very thickly set needles; numerous slender short branches, well furnished with foliage. Ideal for edging Arbor-vitae and other tall evergreens. Often used in foundation and entrance groups. 12 to 15 in., \$4.00. 15 to 18 in., \$6.00 to \$7.00 each.

White Pine. Well known native pine. Needles silvery light green. Tall rapid grower. 2 to 3 ft., \$4.00. 3 to 4 ft., \$5.00 to \$6.00.

"CANINES AND CONIFERS"

— a bad combination. Screen the Arbor-vitae with low growing shrubs, or tie up the PUP for good results.

Hardy Climbing Vines

Ivy - Ampelopsis

Boston Ivy. The beautiful self-clinging vine that is used to cover walls of stone or brick. Leaves form a dense sheet of green, as they overlap each other; a little difficult to start, but when once established, requires no further care. Foliage changes to a crimson-scarlet in the Fall. 2 yr., 90c. 3 yr., \$1.20. 2-yr. medium, 70c.

Common Woodbine or Virginia Creeper. A vigorous high climbing vine of rapid growth; foliage rich crimson in Autumn; valuable for covering walls or old tree trunks. 2 yr., 60c. 3 yr., 75c.

Clematis

Clematis Paniculata. It is a strong, luxuriant grower, with light green foliage that is handsome in itself. At the close of August innumerable star-like flowers cover the vine in a sheet of fragrant white. 2 yr., 75c. 3 yr., \$1.00. 4 yr., \$1.50.

Purple Clematis (C. Jackmani). Large single flowers of deep velvety purple. A well known and popular variety. Ordinarily rather difficult to transplant but our plants are grown in 4-inch pots, and are as easy to plant as a Geranium. 2 yr., in 4-inch pots, \$1.25 each.

Wisteria

American Purple Wisteria (W. magnifica). After 25 years of experience with Wisterias, we have decided that this is the best variety for this locality. It is hardy, a very fast grower, and the best vine we know of for screening porches, windows, etc. Purplish-blue flowers in dense drooping clusters. An ideal climber for pergolas and summerhouses. Our plants are extra fine. 2 yr., 75c. 3 yr., \$1.00. Extra heavy, 4 yr., \$1.50.

Hall's Japan Honeysuckle

Of strong growth, has dark, rich foliage, which it holds all Winter, and is covered from May to November with fragrant, pure white flowers. 2 yr., 65c. 3 yr., 85c.

Aristolochia - Dutchman's Pipe

Sipho. A robust, vigorous plant, bearing very large leaves. 3 yr., \$1.50. 4 yr., \$2.00.



Boston Ivy.



Hall's Japan Honeysuckle.



Clematis Paniculata.

Bignonia - Trumpet Vine

Abundant flowers in July and August; a rampant grower. Orange flowers. 2 yr., 75c.

Lycium - Matrimony Vine

Lycium Chinense. Slender, drooping branches; bears pink and purple flowers from June until September. 2 yr., 60c. 3 yr., 75c.

Bittersweet - Celastrus

A very vigorous grower. Its scarlet fruit, adherent nearly all Winter, is an object of much beauty. 2 yr., 75c. 3 yr., \$1.00.

Perennial Pea - Lathyrus

Lathyrus Latifolius. Everlasting or Perennial Pea. Clusters of large, rosy red flowers, similar to the Sweet Pea, during the entire Summer. 2 yr., 50c.

Hardy Garden Roses

Here are the Finest and Hardest Roses for This Locality

NOTE. We correctly prune (cut back) all Roses before shipment.

Our Roses are 2-year, field grown plants. Here are the best varieties for this section. Why risk failure and disappointment by buying Roses not suited to the climate and soil of this locality?

All Roses appreciate good soil, preferably inclined to clay. They require sunshine, good cultivation, and Winter protection in the form of a heavy mulch of straw or manure. If the weather is hot and dry when they are planted, protect the tops from the sun by mounding the soil up around them until they start growth.

Rose buyers should keep in mind that many of the Rose plants advertised so cheaply are either 2-year "Medium", or 2-year "No. 2". Our plants are strictly First Grade, largest size, two year stock.

Hardy Hybrid Perpetual Roses

The old-fashioned hardy garden roses. The largest, most fragrant, and the most brilliant in color of all bush roses. Not as continuous bloomers as the Hybrid Teas ("Everbloomers"), but much harder and very dependable. Many of the finest roses are in this class. **Strong**, 2-yr. plants, \$1.00 each; 6 for \$5.00. **Special**: Six, all different, for \$4.50; our selection of varieties.

Prince Camille de Rohan. The nearest approach to a black rose, being a deep, velvety crimson.

Salet Moss. An attractive pink moss.

Magna Charta. Bright pink, suffused with carmine; vigorous in growth and very hardy.

J. B. Clark. Large, double, intense scarlet flowers, produced profusely during June and July.

Ulrich Brunner. Brilliant cherry red; fine form, and unusually free bloomer.

George Arends. Large, full, delicate rose-pink blooms. Attractive in bud and bloom. Fragrant and vigorous.



Gen. Jacqueminot.



Paul Neyron.

Clio. Flesh, shaded rosy pink; large, globular.

Frau Karl Druschki. Of strong, upright growth. Flowers extra large, of purest possible white.

General Jacqueminot. A universal favorite. Bright crimson-scarlet, exceedingly rich and velvety.

Mrs. John Laing. Delicate pink; large, productive and fragrant.

Paul Neyron. Large; deep rose, a favorite; the largest flower among Hybrid Perpetual Roses.

Persian Yellow. Fine foliage. Early bloomer with deep yellow, small but very handsome flowers.

Everblooming Hybrid Tea Roses

Sometimes called "monthly bloomers". These are all extra good continuous bloomers but are not so hardy as the Hybrid Perpetuals. They need good Winter protection in the form of a mulch of straw or coarse manure. A still better method is to heap the soil up about the plants before applying the mulch. Do this between November 15 and December 1. Strong, 2-yr., field-grown plants, \$1.25 each; 6 for \$6.00.

Gruss an Teplitz. Greatest red Rose in existence. Continuous bloomer and hardiest of all Hybrid Teas.

Radiance. Voted by the American Rose Society as the most popular pink rose in America. Brilliant rose-pink.

Red Radiance. Bright pure red; splendid bloomer and strong grower. New.

Mrs. Aaron Ward. An exquisite shade of rich coppery yellow.

Kaiserin Augusta Victoria. A fine, very full, fragrant white.

Etoile de France. A sparkling clear red, with shapely buds and rich fragrance.



Radiance.

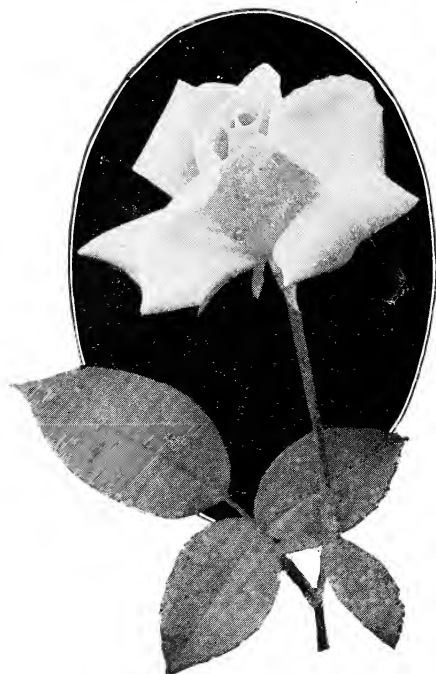
Jonkheer J. L. Mock. Large, deep carmine-pink.

Duchess of Wellington. Yellow, tinged salmon.

Mme. Butterfly. Color bright pink, apricot and gold. Clear and brilliant in color; very fragrant.

Mad. Edouard Herriot. A glorious commingling of terra cotta, bronze, geranium red and dull copper; fine long, pointed buds of coral-red and yellow.

Special Offer: Six Hybrid Teas, all different, including 2 reds, 2 pinks, 1 yellow and 1 white, carefully labeled and correctly pruned, for \$5.50.



Mad. Caroline Testout.

Columbia. A much admired rose-pink; warm and glowing. New.

Los Angeles. Luminous flame-pink, tinged with coral and gold. Famed for its marvelous coloring.

Souv. de Claudius Pernet. New. A deep clear glorious yellow—a rare color. Remarkably beautiful in both color and form. A peerless golden yellow Rose. \$1.50 each.

Mad. Caroline Testout. Light satiny pink.

Gen. McArthur. Rich crimson-scarlet; fragrant.



Gruss an Teplitz.

Rose Garden Collection

Twelve Roses, all different, for \$10.00.

All heavy, 2-year bushes. 6 Hybrid Teas and 6 Hybrid Perpetuals. Carefully pruned, labeled and delivered ready to plant.



Climbing American Beauty.

Miscellaneous Hardy Roses

Baby Rambler. Red, pink and white. Dwarf everblooming Roses with flowers like the Ramblers. Any color, \$1.00 each.

Rosa Hugonis. The new "Golden Rose of China." A shrub-rose bearing bright yellow, single flowers. Absolutely hardy and may be used as a shrub, blooming very early in May. Heavy, 2-year plants, \$1.50.

F. J. Grootendorst. It is a Rugosa crossed with Red Baby Rambler. Will bloom all Summer and is a shrub that has no comparison. It should be in every garden. They are the admiration of everyone who sees them. Wonderful red, dazzling flowers. Hardy, disease resistant. Flowers come in clusters like the Baby Rambler class; will bloom from June until frost. \$1.00 each. 3 for \$2.75.

The Choicest Climbing Roses

Heavy, 2-year, field grown plants. Here are the finest tested varieties.

Climbing American Beauty. Large individual flowers of rich red; beautiful shapely buds. Strong grower, with fine healthy foliage. 90c each; extra heavy, 3-year plants, \$1.25 each.

Paul's Scarlet Climber. Bright brilliant vivid scarlet—yes, we mean it. A hardy new climber which will light up your trellises with its clusters of dazzling red flowers. \$1.00 each; extra heavy, 3-year plants, \$1.35 each.

Dr. W. Van Fleet. Dainty apple blossom-pink. Charming large, pointed buds of fine form, and resembling fine Tea Roses. A vigorous grower with leaves of deep rich green. Voted the best Climbing Rose in America by the members of the American Rose Society. \$1.00 each.

Excelsa. Fine intense crimson in color. Flow-ers in large clusters like Crimson Rambler, but has better and healthier foliage. In fact, it is gradually superseding that variety. 75c each. 2-year, medium size, 60c each. 3-year, extra heavy, \$1.00 each.

Dorothy Perkins. Shell-pink, double blooms in immense clusters. 75c each. 3-year, \$1.00 each.

White Dorothy Perkins. White-flowering form of Dorothy Perkins. 75c each.

Gardenia. Buds bright yellow; open flowers cream. 75c each.

American Pillar. Very large, single flowers of carmine-rose. \$1.00 each.

Christine Wright. Bright, wild-rose-pink; love-ly form. \$1.00 each.

Silver Moon. Immense, semi-double white flow-ers. \$1.00 each.

Crimson Rambler. The old original red Rambler. 75c each.

Mary Wallace. A most beautiful new Climber introduced by the American Rose Society. Lovely long buds of warm rose-pink, slightly tinted salmon. Each, \$1.25.

Dr. Huey. A most striking new climber which always attracts attention by its unusual color, a deep crimson maroon. Buds are almost black and finely formed. Blooms very early. \$1.25 each, 3 yr., heavy, \$1.50.

Japanese Rose - Rosa Rugosa

The finest bush Rose for landscape planting. It is really a shrub, with very fine foliage. Leaves of a rich, deep green, deeply crinkled; single pink flowers followed by very large, bright red fruits. Does especially well in clay soil. 75c and 90c each; \$7.50 and \$9.00 per doz.





Hardy Flowering Plants—Perennials

These old-fashioned hardy flowers continue to increase in popularity from year to year. They are not only most effective in furnishing color and variety to the shrubby plantings, but yield a prodigal supply of cut flowers from Spring until late Fall. Unlike the tender annuals, Geraniums, Salvias, etc., they are permanent, require little care, and spring forth each season with increased vigor. We have found the following to be the finest and most satisfactory perennials.

Price of all Hardy Flowering Plants, unless otherwise noted, 30c each; 6 for \$1.60; 12 for \$3.00.

ACHILLEA, *Boule de Neige* (Ball of Snow). Pure white flowers borne in the grandest of profusion during entire Summer.

A. rosea. Becomes a mass of rose colored flowers. Fine, feathery foliage.

BLEEDING-HEART. A favorite in our grandmothers' gardens and still deserves a place in the most up-to-date planting. Price, 60c and 75c each.

AGROSTEMMA coronaria (Rose Campion). Bright crimson, phlox shaped; with velvety silvery foliage.

AQUILEGIA (Columbine). Distinct, clear-cut foliage and delicate arrangement of colors; its habit especially suitable for rock-work, at the base of foundation walls and under trees. Bloom in early Spring.

BUTTERFLY BUSH (*Buddleia*). Tall perennial, with long spikes of purple flowers in August. Fine foliage. 50c and 60c each.

CHRYSANTHEMUM. A grand display of color when other plants are on the wane. September until heavy frost; excellent for cutting. Red, yellow, pink, and white.

COREOPSIS lanceolata grandiflora. Flowers are rich golden yellow, borne in great profusion nearly the entire Summer. This is one of the most serviceable and dependable perennials, furnishing a prodigious amount of excellent cut flowers.

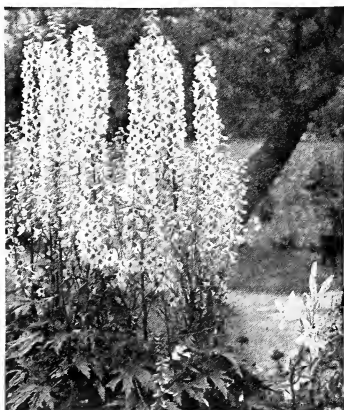
DELPHINIUM, Belladonna (Hardy Larkspur). The freest and most popular subjects of the Delphiniums. Most continuous blooming, never being out of flower from end of June until frost. The clear turquoise-blue of its flowers is not equaled for delicacy and beauty by any other flower.

D. Bellamosa. This Delphinium has a dark blue flower and is identical in habit of growth, freedom of bloom and all other good qualities of the Belladonna.

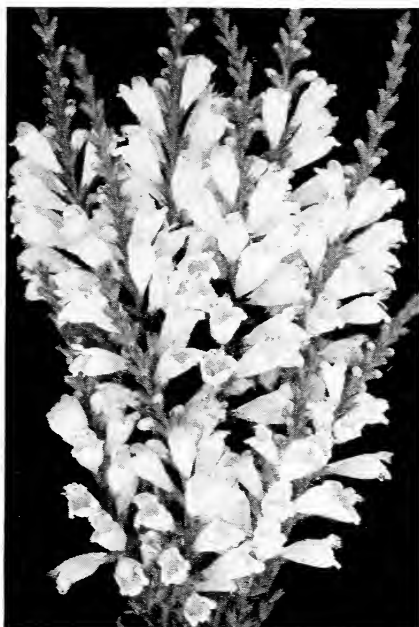
D. Gold Medal Hybrids. The finest strain of mixed hybrids.

GAILLARDIA (Blanket Flower). Striking color combinations of yellow, orange and red. Unusually fine cut flower, blooming freely all Summer.

GYPSOPHILA paniculata (Baby's Breath). Pleasing for its extremely delicate foliage, thickly set with tiny white flowers. Can be used advantageously in arranging bouquets.



Delphinium.



Physostegia.

HELENIUM (Sneezewort). Distinctive yellow and terra cotta flowers in late Summer.

HIBISCUS (Mallow). Giant flowers in red, white and mixed colors. 30c and 40c each.

HEMEROCALLIS (Yellow Day Lily). An abundance of yellow lily-like flowers during July and August. Leaves narrow and dark green.

HOLLYHOCKS. The old-fashioned popular flower in red, pink, white, and yellow. July.

ERYNGIUM (Sea Holly). Finely cut spiny foliage and thistle-like heads of flowers of a beautiful steel blue. Very decorative in the hardy border, and useful for dry bouquets in Winter.

PYRETHRUM roseum, Mixed. The semi-double, daisy-like flowers of pink, white, and red are produced in May and June. Grows 1½ to 2 feet high.

PHYSOSTEGIA (False Dragon Head). Especially fine for cut flowers, requires rather rich moist soil. Dense spikes of delicate pink.

PLATYCODON (Balloon Flower). Blue bell-shaped flowers. A distinctive perennial of great merit; easy culture.

ORIENTAL POPPY (Papaver). Immense flaming flowers of orange scarlet. Most striking flower of Spring.

LIATRIS pycnostachya (Blazing Star). Tall spikes of purple flowers in July. This is a native of the southwestern prairies and is perhaps the showiest of the genus. 40c each.

RUDBECKIA laciniata (Golden Glow). It always thrives and is therefore common. Masses of double golden flowers in August and September.

R. Newmani (Black-eyed Susan). Plant this for memory's sake. Everyone has picked Black-eyed Susans.

R. purpurea (Giant Purple Coneflower). A strong, rigid-growing variety, 2 to 3 feet high, with reddish purple flowers.

SEDUM spectabile. One of the prettiest of the erect growing species, attaining a height of 18 inches, with bright light green, fleshy foliage and immense heads of handsome, showy, rose-colored flowers.

STATICE latifolia (Giant Sea Lavender). A valuable rock-plant with immense heads of very showy and lasting small blue flowers in August. Grows 2 feet high.

STOKESIA cyanea (Cornflower). One of the most desirable of perennials. Clusters of blue aster-like blossoms in August and September.

SHASTA DAISY (Chrysanthemum). The flowers are very large; color white with golden center. They are bold in effect and profusely borne on good stems for cutting.

SWEET WILLIAM (D. barbatus). It sports into endless varieties of color—white, pink, purple, crimson and scarlet.

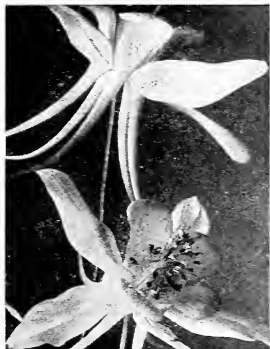
SCOTCH PINK (D. plumarius). Nearly all with a decided carnation fragrance. The foliage is grasslike, very thick and makes a good border.

VERONICA longifolia subsessilis (Speedwell). A handsome blue flowered plant. 2 feet high. Spikes of blue flowers.

YUCCA filamentosa. This is one thing that will grow in poor soil. The swordlike leaves remain green all Winter and in July there is a stately spike 5 to 6 feet high loaded with beautiful cream colored bell's. 50c and 75c each.



Shasta Daisy.



Aquilegia.



Coreopsis.

Choice Named Peonies

Of all the flowers in the hardy garden, the Peony is easily recognized as the Queen—in fact, it vies with the Rose for that title in many ways, for while in bloom it is without question the most glorious object in the garden. Once Peonies are planted they last for a lifetime. They stand the severest Winters without the slightest protection. After blooming, their charm lies in the beauty of their foliage, for even when not in bloom the Peony plant is decorative in the extreme and well worthy of a prominent place in the garden.

Peonies need good rich soil, and full exposure to the sun. Plant rather shallow—only about 2 or 3 inches below the surface.

Festiva Maxima. The finest white Peony; large, free bloomer; center tinged red. 75c.

Mme. de Verneville. Pure white, center blushed; very large and full, fragrant. 75c.

La Roserie. White petals interspersed with golden stamens. Flat flower resembling a waterlily. Free bloomer. 90c.

Couronne d'Or. A superb yellowish white; late. 75c.

Louis Van Houtte. Dark velvety purple; fine form. 75c.

Felix Crousse. Clear, brilliant red; the finest in this color. Midseason. \$1.00.

Officinalis Rubra. The old-fashioned very early red. \$1.00.

Delachei. Deep rich red; late. 75c.

Karl Rosenfield. Rich, clear, glowing crimson. Semi-rose type flower of fine form. Full double, large and solidly built. \$1.75.

Meissonier. Crimson-purple; splendid cut flower. Midseason. 75c.

Edulis Superba. Bright clear deep pink. Very early and fragrant as a rose. Free bloomer. 75c.

Grandiflora. Rose pink; large, full blossoms. \$1.00.

Floral Treasure. Rose type; midseason; pink. 75c.

Philomele. Bright violet-rose, anemone center. Midseason. 90c.

Albert Crousse. Delicate shell pink. Bomb type; large, full and well developed. Fragrant, profuse bloomer. \$1.00.

Mme. Calot. Pale hydrangea-pink, center shaded darker; large, rose type, free flowering; fragrant; early. 75c.

Claire Dubois. Rich, clear, satiny pink delicately tinted lavender and overlaid with a sheen of silver. Rose type. \$1.50.

M. Jules Elie. Immense blooms, resembling a chrysanthemum, clear pink with a silvery tinge. \$1.25.

Reine Hortense. A universal favorite, very charming, pink with crimson splashes. \$1.75.



Phlox, Von Lassburg.

Hardy Phlox

Decorative plants of first importance, indispensable for their flowers of great beauty in the softest shades of pink and rose, salmon, mauve, red and white, which are fine for cutting, and will brighten the hardy borders in July and August, filling in between the early Summer and Fall blooming garden plants.

Price, except as noted, 30c each; \$3.50 per dozen. Special: 6 Phlox, all different, for \$1.50 (our selection).

Bridesmaid. A fine tall white, red center. Von Lassburg. Pure white; very large trusses. Rijnstroom. Beautiful clear pink; large florets. Eclairer. Purple carmine; lighter center. R. P. Struthers. Cherry red, suffused salmon. Von Hochberg. Crimson; large trusses. 35c each.

Thor. A beautiful lively shade of deep salmon-pink.

B. Comte. Rich satiny amaranth. 35c each.

Beacon. Brilliant cherry-red.

Commander. Beautiful. New. Crimson-red with darker eye. The most striking of Phloxes. 45c each.

Elizabeth Campbell. Bright salmon-pink, with dark red eye; one of the handsomest and most attractive. 40c each.



Peonies Rival the Rose in Beauty.

Selected Iris

The Iris is one of our specialties and it gives us great pleasure to be able to offer our customers the following splendid varieties. In getting together the propagating stock of our present Iris we have selected the best we could find in the collections of many growers.

The name Iris is from the Greek meaning rainbow, and it is appropriate as these flowers have gathered all the tints of earth and sky and made them their own. They are very effective in the general landscape as the foliage remains fresh throughout the season. One of our finest hardy plants; are not particular as to soil, but prefer sun for best results in bloom. Plant very shallow, about one foot apart.

Price, 25c each; 5 for \$1.10; 10 for \$2.00. Special: Ten, all different (unlabeled), for \$1.85.

Fairy. White, suffused soft blue.

Florentina alba. White.

Lohengrin. Silvery mauve, tinted rose.

Rhein Nixe. White, edged violet, extra fine.

Her Majesty. Lovely rose-pink and mauve.

Loreley. Deep ultramarine blue, bordered yellow.

Sherwin-Wright. Clear deep yellow; new. 30c each.

Caprice. Deep rosy claret, nearly red.

Kochi. A very striking dark purple.

Mme. Chereau. White edged with blue.

Nibelungen. Violet purple and soft yellow.



Rhein Nixe.

- Pallida Dalmatica.** Lavender, extra fine.
Honorable. Golden yellow and mahogany.
Queen of May. Rosy lilac, nearly pink.
Wyomissing. Creamy white, suffused delicate soft rose.
Juniata (Pal). S. and F. clear blue, deeper than Dalmatica. 30c each.
Quaker Lady. Smoky lavender shaded yellow.
Prosper Laugier. S. light bronze red, F. velvety ruby purple.

SOME OF THE NEWER EXTRA FINE IRISES

- Alcazar.** S. light bluish violet, F. deep purple with bronze veined throat. A striking variety. Each, 40c.
Eldorado. A beautiful reddish bronze. 30c.
Iris King. S. rich yellow, F. plum edged yellow. 30c.
Isoline. S. upright pink, F. mauve, one of the best in the list. 25c.
Shekinah. Beautiful soft yellow. 85c.
Lent A. Williamson. S. lavender violet; F. velvety pansy purple. One of the best. 65c.
Parisiana. White, dotted and shaded lilac-purple. 30c.
Queen Caterina. A large iridescent pale lavender violet with yellow beard. Large and vigorous. 85c.
Zua. Delicate lavender white, ruffled like fine crepe. 50c.



Fairy.

Glorious Gladioli

All of our bulbs are largest size. No. 1 grade—full of pep and ready to grow for you. Plant some of the newer and finer varieties. They will delight and surprise you.

All largest size bulbs. Six at dozen rates.

America. A fine soft lavender-pink. 5c each; 50c per doz.

Mrs. Francis King. Light scarlet. 8c each; 75c per doz.

Peace. White flower, feathered lilac. 8c each; 75c per doz.

Schwaben. Very large light yellow, carmine blotch. 8c each; 75c per doz.

Mrs. Frank Pendleton. Light salmon-pink, with brilliant red throat. 8c each; 75c per doz.

Attraction. A beauty. Pure deep rose; white center. 10c each; \$1.00 per doz.

Baron Hulot. A rich, royal purplish blue. 12c each; \$1.20 per doz.

Halley. An early delicate salmon-pink. 8c each; 75c per doz.



Mrs. Francis King. Schwaben. Peace. War.

Kennemerland. Giant blooms of rose pink. 12c each; \$1.20 per doz.

War. Deep blood-red; large, open flowers. 12c each; \$1.25 per doz.

Helen Franklin. A rare ruffled white, marked with lilac. 10c each; \$1.00 per doz.

Herada. Pure glistening mauve; immense size. 10c each; \$1.00 per doz.

Niagara. A delightful creamy yellow. 10c each; \$1.00 per doz.

Scarlet Princes. Pure glowing scarlet-red; massive spikes; a striking variety. New. 15c each; \$1.50 per doz.

Gold Standard Mixture. Extra fine mixed. 75c per doz.; 50 for \$2.50.

Special Rainbow Mixture. 50c per doz.; 50 for \$1.50.

Finest Named Kinds Mixed. \$1.25 per doz.; 50 for \$4.50.

THE PEERLESS TEN GLADIOLI

A real thrill awaits the gardener who plants these.

1 each of the Peerless Ten, \$1.25; 3 each (30 bulbs), \$3.50.

Crimson Glow. Well named; massive spikes of glowing scarlet; a winner. 15c each; \$1.50 per doz.

Evelyn Kirtland. A beautiful glistening rosy pink with brilliant scarlet blotches; tall, stately spikes. 10c each; \$1.00 per doz.

Anna Eberius. Dark velvety raspberry purple; a rich, distinctive flower which is much admired. 10c each; \$1.00 per doz.

Chateau Thierry. A sensational light scarlet; enormous flowers, creamy throat. 13c each; \$1.25 per dozen.

Mona Lisa (Kunderd). Of palest soft rose pink. Almost pure self color. Gorgeous. 15c each; \$1.50 per doz.

Mrs. Dr. Norton. An exquisite blend of white, soft pink and primrose-yellow. Of indescribable beauty. 13c each; \$1.25 per doz.

Alice Tiplady (Primulinus). A beautiful orange-saffron; very distinct and striking. 12c each; \$1.25 per doz.

Pink Wonder. Rightly named. A tall, regal flower of soft La France pink; superb in coloring, size and form. A wonder. 20c each; \$2.00 per doz.

Golden Measure. Large flower of deep pure yellow; tall spikes. Called the world's best yellow. 20c each; \$2.00 per doz.

Orange Glory (Kunderd). Grand; orange colored, with beautiful lighter throat. Very rich, striking color. 12c each; \$1.25 per doz.



Mrs. Frank Pendleton.

Dahlias of Distinction



Maude Adams.

Choice Named Varieties

Delivered Postpaid at Prices Named

- A. D. Livoni. A favorite soft pink, of ball form. 25c each.
- Dreer's White. Glistening white, beautifully quilled. 25c each.
- Queen Victoria. Pure yellow, show type. 20c each.
- Mina Burgle. A rich, luminous dark scarlet. Immense flowers and greatly admired. 30c each; 3 for 75c.
- F. L. Bassett. A free-flowering lavender-purple. 25c each.
- Queen Mary. Beautiful soft pearly pink. A quality Dahlia. 20c each.
- Orange King. A shade of orange-yellow. 25c each.
- Jack Rose. A favorite bright carmine-red. 20c each.
- J. H. Jackson. Striking large cactus type of velvety maroon. 30c each.
- F. A. Walker. Charming shade of lavender-pink. 30c each.
- Yellow Duke. Large, very fine clear yellow. 30c each.
- Chas. Clayton. A rich red cactus Dahlia. 35c each.
- Pink Pearl. Delicate soft pink; cactus type. 30c each.
- Countess of Lonsdale. Salmon-red cactus. 35c each.

SPECIAL. One each of the above kinds (un-labeled) for \$3.25.

MIXED. All named sorts. 6 for \$1.00; \$2.00 per doz.

New and Rare Varieties

These modern, up-to-date kinds will surely renew your garden interest, and make a Dahlia fan of you.

All Tubers are Delivered Postpaid

- Dr. Tevis.** Magnificent blooms of soft salmon-rose and gold; a regal flower of immense size. Decorative. 75c each.
- Mrs. C. D. Anderson.** A very large show Dahlia of rich purplish crimson. A rare and distinctive variety. 60c each.
- Helen Hollis.** A large, bright ball of red, full center. 30c each.
- Maude Adams.** A beautiful white, tinted with lavender and pink. A very fine show type. 30c each.
- Kalif (Cactus).** Giant blooms of pure glowing scarlet, beautifully quilled and tufted. 75c each.
- Golden West.** Rich golden bronzy yellow with scarlet shading; large cactus type. 50c each.
- Attraction.** Beautiful lilac-mauve; immense broad-petaled blooms. 75c each.
- Pride of California.** Gigantic flowers of intense dark crimson. 40c each.
- Mrs. Carl Salbach.** A sensational Dahlia of great size. Lovely solferino-pink, tinged white. 65c each.
- Patrick O'Mara.** A beautiful shade of orange buff, tinged rose. 60c each.

SPECIAL OFFER. One each of above 10 superb Dahlias for \$5.00, postpaid.



Queen Victoria.

Grow Your Own Fruit!

Even the small city lot has room enough for a few fruit trees. You will be surprised to find how many odd corners you have, which will yield bushels of fine fruit.

The varieties listed below are the ones which succeed best in this locality. Be wary of the many new kinds of fruits which have not been tested in the soils and climate of this section. Consult our State Experiment Station at East Lansing first.

NOTE. There are three grades, or sizes, of 2-year fruit trees. Many firms just state "2 year", which means little. Our trees are the largest and best of these three grades, and 11/16-inch caliper-diameter of trunk.

Apples

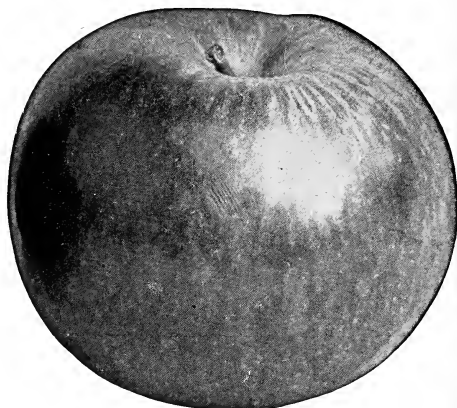
2 yr., first class, 5 to 6 ft., \$1.00 each; 10 for \$8.00; 20 for \$13.50.

- Yellow Transparent. Early, yellow; fine quality.
- Red Astrachan. Early, striped red.
- Duchess. Early Fall, beautiful striped red.
- Wealthy. Fall, high quality red.
- Northern Spy. Winter, an old stand-by.
- Baldwin. Winter, large, red; fine quality.
- Snow. Red, highest quality.
- Greening. Winter, large, green.
- Delicious. Winter, new, dark red; finest quality.
- McIntosh Red. Large, deep crimson. Flesh white and tender.
- Jonathan. Old reliable. Brilliant red, rich, fine acid flavor, hardy. Late Fall.
- Tolman. Yellow and red, rich, sweet. Winter.

Pears

2 yr., first class, 5 to 6 ft., \$1.25 each; 10 for \$9.50; 20 for \$16.00.

- Bartlett. Summer, golden yellow, none better.
- Clapp's Favorite. Early, juicy, fine quality.
- Duchess. Fall, large, very good.
- Seckel. Small, but highest quality of all.



Wealthy Apple.

Sour Cherries

2 yr., first class, 4 to 6 ft., \$1.25 each; 10 for \$9.00; 20 for \$15.00.

- Montmorency. Large, red; standard sour sort.
- Early Richmond. Light red, sour; very productive.

Sweet Cherries

2 yr., first class, 5 to 6 ft., \$1.50 each; 10 for \$11.00; 20 for \$17.00.

- Gov. Wood. Large, light color, very sweet.
- Black Tartarian. Rich black, juicy and sweet.

Plums

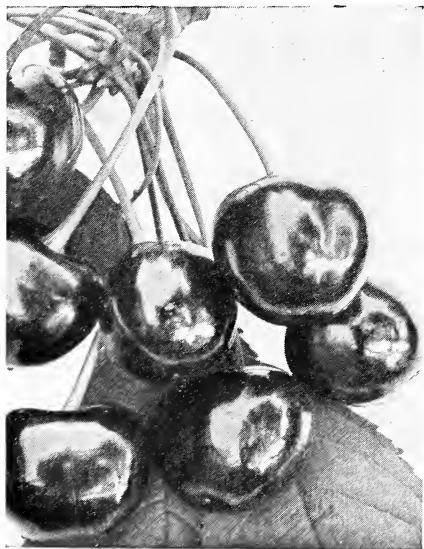
2 yr., first class, 5 to 6 ft., \$1.25 each; 10 for \$9.00; 20 for \$14.00.

- Lombard. Standard red, large; late August.
- Abundance. Early red, sweet, and juicy.
- Burbank. Large, dark red; high quality.
- German Prune. Large, dark purple, sweet, good.
- Green Gage. Large, round-ovate; green.

Peaches

First class, 4 to 6 ft., 75c each; 10 for \$5.00; 20 for \$7.50.

- Early Crawford. Standard early yellow.
- Elberta. September; hardiest and best.
- J. H. Hale. Fine quality; large, productive.
- Late Crawford. Standard late yellow.
- Rochester. An unusually early freestone peach of wonderful sweetness.



Montmorency Cherries.



Concord
Grapes.

Quinces

Champion. Large, greenish yellow. 2 yr., 4 to 6 ft., \$1.50 each.

Grapes

This delicious fruit is early bearing and combines such desirable qualities as hardiness, rapid growth, ornament, and abundant crops.

Price of all Grapes, excepting Concord, heavy, 2 yr. No. 1 plants, 50c each; 10 for \$4.00; 50 for \$11.00.

Concord. 2 yr. No. 1, 35c; 10 for \$2.50; 50 for \$6.00.

Concord. The leading black grape for any purpose.

Worden. Larger, earlier and of better quality than Concord.

Moore's Early. Large size, black, fine quality, hardy.

Niagara. The standard white grape, large and productive.

Brighton. In our estimation the best all-round red grape. Bunches large.

Niagara. The handsomest white Grape, with large bunches.

Delaware. Small red, sweet, highest quality.

Currants

2 yr. No. 1 plants, except as noted, 35c each; 10 for \$2.50; 50 for \$8.00.

Fay's Prolific. Standard red sort; very productive; good stems.

Wilder. Good size berries on nice long stems. Good quality.

Cherry. Large berries; rather short stems.

Perfection. The finest red currant. Large size; long stems; extra fine flavor. 50c each; 10 for \$4.00; 50 for \$11.00.

Black Champion. The best black currant.

Gooseberries

Downing. Light green, smooth, fine quality. 2 yr. No. 1, 50c; 10 for \$4.00.

Raspberries

Price, except as noted, \$1.00 per doz.; 25 for \$1.50; \$4.00 per 100; \$22.00 per 1000.

Cuthbert. The standard red variety. Fine color and quality; very productive.

King. Early, hardy, and attractive berry; bright red.

Cumberland. The best black raspberry. Large size, sweet, and productive.

St. Regis. The best everbearer; fine flavor and color.

Columbian Purple. The leading purple sort. Very large and vigorous. \$1.25 per doz.; 25 for \$2.00; 100 for \$6.50.

Blackberries

\$1.25 per doz.; 25 for \$1.75; 50 for \$3.00.

Eldorado. Large sweet berries. Hardy, and a great bearer. The best variety for Michigan.

Rhubarb

Linnaeus. Large stalks; tender and fine. Heavy, 2 yr. plants, 25c each; 10 for \$2.00.

Asparagus

Conover's Colossal. A standard sort of fine quality; tender and delicious. Strong 2 yr. plants, 60c per doz.; 25 for 75c; 100 for \$2.50.

Washington. A new rust-proof variety. Long tender shoots of excellent flavor. Strong, 2 yr. plants, 75c per doz.; 25 for \$1.20; 100 for \$3.00.

Strawberries

Delivered by parcel post only, prepaid. 25 for 75c; 100 for \$1.75; 500 for \$4.25.

Premier. Very early.

Dunlap. Midseason.

Gibson. Medium late.

Dr. Burrill. Medium early.

Aroma. Late.

Progressive. Everbearer. Price, 25 for \$1.50; 100 for \$3.50; 500 for \$10.50.



Cumberland Black Raspberries.

Fertilizers

Every tree, plant or bulb must have an adequate supply of plant food, moisture, and sun or air to give good results. Most soils need the addition of fertilizers; in fact, some ground is so poor that fertilizing is indispensable. Insure the success of your planting by feeding them properly.

Vigoro. A well-balanced, correctly prepared plant food of the highest quality. Clean, odorless, and pleasant to handle. We have used Vigoro in our own planting for the past two years with excellent results and recommend it to our customers. Packed in heavy cotton bags, with very complete and detailed directions for use. 25 lbs. for \$1.75; 50 lbs. for \$3.00; 100 lbs. for \$5.00.

Pulverized Sheep Manure. 25 lbs. for \$1.00; 50 lbs. for \$1.75; 100 lbs. for \$3.00.

Bone Meal—Ground Bone. 25 lbs. for \$1.40; 50 lbs. for \$2.25; 100 lbs. for \$4.00.

Pexto Pruning Shears

The best and cheapest good pruning shears made. We use them in our nursery pruning. Price, \$1.15.

A Few Bargains

Ten Shrubs. Nice little 2-yr. plants. In at least 6 varieties, for \$2.50.

Silver Maple Shade Trees. 6 to 8 ft., 85c each.

Three Evergreens. All different. Fine 12-in. plants, for \$2.25.

One Plum, one Pear, one Cherry, one Apple. Our selection. 2-yr. No. 1 trees for \$3.25.

Peonies. Six all different for \$3.50.

We are Members of
THE AMERICAN ASSOCIATION OF
NURSERYMEN
THE MICHIGAN ASSOCIATION OF
NURSERYMEN

Both of these organizations stand for the highest ideals of business integrity in the growing and selling of nursery stock. The products and service of each member who enters, or remains in them, must measure up to the high standards set by these Associations.



Chicago Parks Lawn Grass Seed.

A high quality mixture of the best lawn grass seeds which we can unreservedly recommend. Good seed cannot be sold for less. 1 lb., 50c; 5 lbs., \$2.40.

Information and Terms

TERMS. Our prices are made on a basis of cash with order or cash upon delivery. Phone orders strictly C. O. D. Variation from this rule is a matter for special arrangement.

PERSONALLY SELECTED STOCK. Plants of special value, personally selected, will be priced according to their individual value, and catalog prices will not govern.

GUARANTEE AND CLAIMS. We exercise the utmost care to have our stock true to name, and will replace free, upon proper proof, any that proves otherwise. It is mutually agreed and understood, however, that in no case shall we be held liable for a sum greater than the amount originally paid us.

COMPLAINTS AND ADJUSTMENTS. Claims of any nature should be made as soon as possible. We wish to make fair adjustments in all cases of complaints, but are unable to assume any responsibility for some classes of stock, such as Evergreens, Perennials, and bulbs. We do guarantee, however, all stock to be in perfect condition when it leaves our hands, or our delivery trucks. Please report any stock which does not prove satisfactory, but do this the same season planted.

Our stock will help you succeed because it is adapted to the soil and climate of this locality. And because we are interested in our business and your success sufficiently to deliver it to you fresh and in perfect condition.



Landscape Planning Service

For several years we have made a specialty of landscape planning and planting, and each season has brought us an increasing number of applications for this service. Many of the finest homes in this locality have been planted by us, and are the best argument for our ability in this line.

COME TO US WITH YOUR PLANTING PROBLEMS

Bring or send us a rough sketch of house and grounds, with dimensions, if possible. A kodak picture will help. This will enable us to draw up a simple plan, showing the best planting arrangement. No charge for this service. During the shipping season, however, we are able to do but a limited amount of this work.

If your place is in Flint or vicinity, we will be glad to call and give it a personal inspection.

“SHOW ME HIS GARDEN,” said the king “and I will tell you what manner of man he is.”

We are rated and judged by the appearance of our homes. Few people see our living rooms while thousands see our lawns and grounds. The finest architecture will not save a house from an unpleasing aspect of bareness if the planting has been neglected. Good landscaping adds beauty, distinction, and a satisfying sense of finish and completeness attainable in no other way. We give special attention to the planting of homes—no matter how small—and can give our customers intimate and valuable service which will give them lasting pleasure and satisfaction.

It's Not a Home Until It's Planted



Unusual Service to Our Flint Customers

To customers in Flint we deliver direct by truck from nursery—no shipping, no delays, no dried-out, half-alive stock! You can get your stock when you want it, and when it is most convenient for you to plant. Our trucks make daily deliveries during the planting season. Just think this over before you send that order out of town.

It is Easy to Phone Your Order

Our one-party line which we have had recently installed direct to our Nursery assures good service. During the planting season you may phone your order any time between the hours of 6:30 A. M. and 10:30 P. M.

Phone 7360

Genesee County Nurseries - Flint, Michigan