

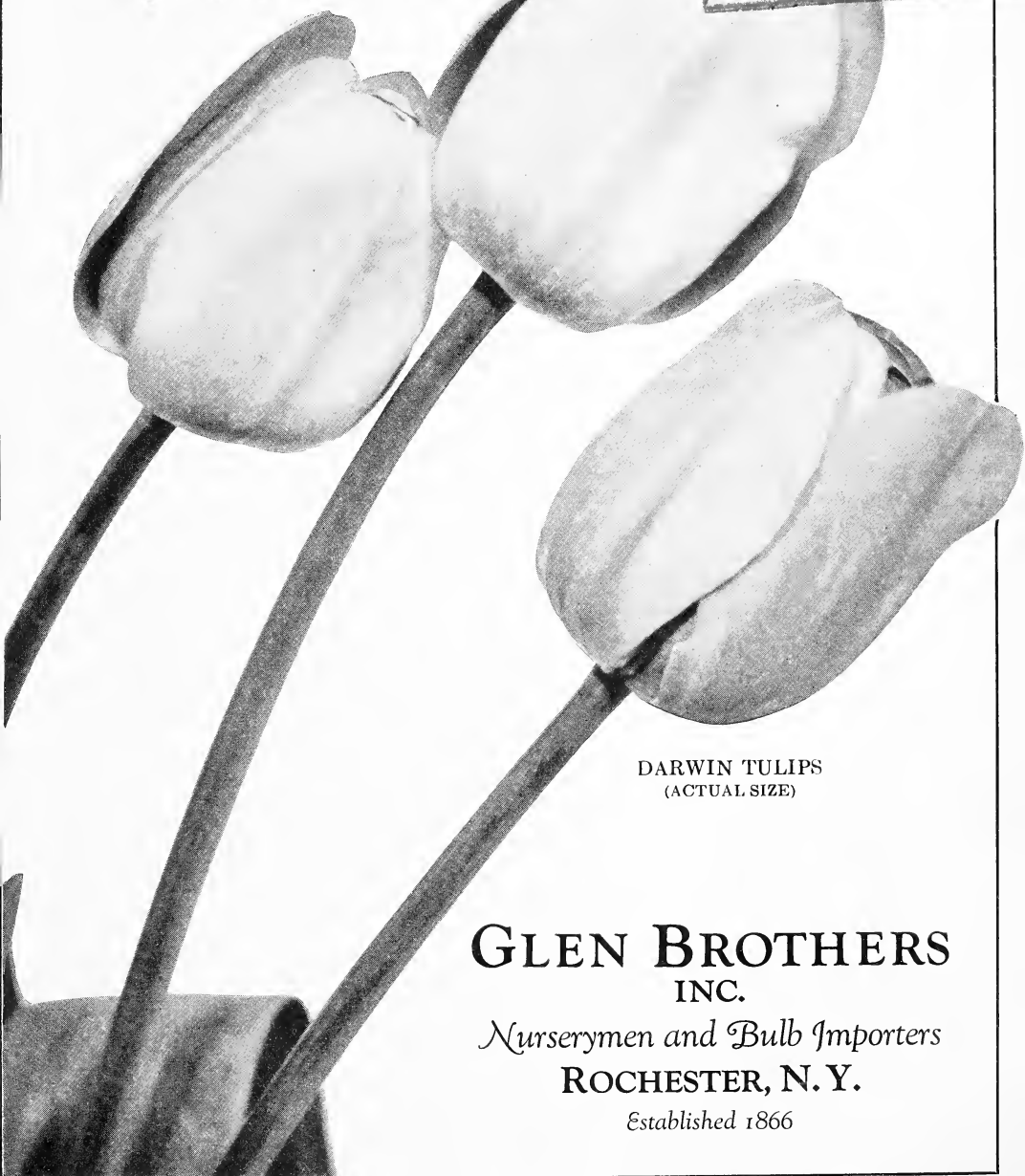
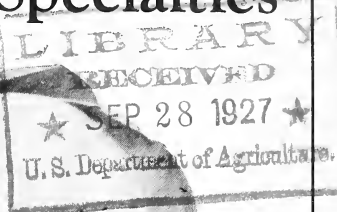
Historic, Archive Document

Do not assume content reflects current scientific knowledge, policies, or practices.

62, 61 1927

DARWIN TULIP BULBS

and Other Fall Planting Specialties
at
**BARGAIN
PRICES**



DARWIN TULIPS
(ACTUAL SIZE)

**GLEN BROTHERS
INC.**

Nurserymen and Bulb Importers
ROCHESTER, N. Y.

Established 1866

Sky-High Quality ⇌ *Rock Bottom Price* ⇌ *Satisfied Customers*



LONG-STEMMED DARWIN TULIPS ~ PLANTED AS A BORDER

DUTCH BULBS

It is impossible to buy DARWIN TULIP BULBS of a higher quality than we offer—and our price we believe to be the lowest in America.

~[Thousands of SATISFIED CUSTOMERS this year, last year and the year before]~

**Extra Large Bulbs producing Extra Large Flowers
on Extra Long Stems and at an Extra Low Price**

\$3.50 per 100 ~ \$16.50 per 500 ~ \$30.00 per 1000

You can afford to plant a thousand or two at these prices

WE ordered a half million of these bulbs way back last November for *delivery in the Fall of 1927*. These bulbs are shipped direct from the fields near Schoten-Haarlem, Holland, where some of the finest bulbs in the world are produced.

But, You Must Order Now

and under this guarantee—that if the bulbs are not the largest and finest you have ever seen at double the price we ask, wrap them up and return and we will not only refund your money in full but pay transportation charges both ways.

No Middle Man, Brokers or Agents

We Import Direct and Sell Direct which means an enormous saving to our customers.

Make your selection from the varieties on next page. Shipment will be made at proper time for planting so that you may have some wonderful tulip blooms, the envy of all your neighbors next Spring.

Glen Brothers,
Gentlemen:

Plymouth, Wisconsin, June 6, 1927

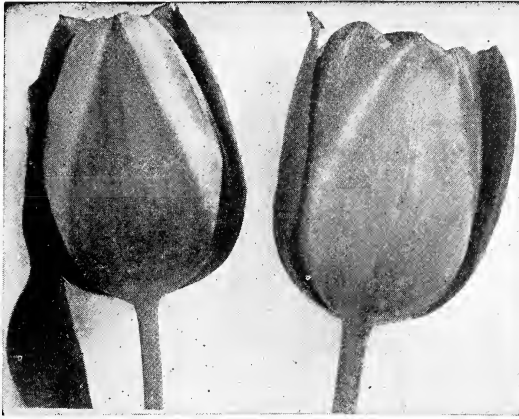
Would you please send me one of your Tulip and Bulb catalogues and also a shrub catalogue if you have them. The Tulips you sent were fine and I want a few more and some of my friends enjoyed them with me and want to order.

Thanking you in advance for the favor, I remain,

Yours truly,

Mrs. R. R. Schorer.

608 East Main Street



131 Morristown Road,
Elizabeth, N. J.,
June 13, 1927

Glen Bros., Inc.,
Rochester, N. Y.

Gentlemen:

About this time last year I ordered 100 tulips from you for fall delivery. The tulips are done blooming and the whole neighborhood was most enthusiastic about them. The cherry colored ones were especially gorgeous and I was wondering if you were again having special sales this year. If so please advise me as I want more tulips.

Yours truly,

ALICE S. McMILLAN

OUR MAGNIFICENT VARIETIES

with LARGE FLOWERS *on* LONG STEMS

ANTON ROOZEN—Vivid rose-pink with white base, marked blue. Handsome and beautiful. Length of stem 25 inches.

GLOW—Dazzling vermilion scarlet, white base with blue markings. A very beautiful tulip—like a large poppy, so brilliant in color. A splendid variety. Length of stem 24 inches.

DREAM—Beautiful, soft, uniform lilac. Large flowers of perfect shape. Length of stem 26 inches.

FARNCOMBE SANDERS — Fiery rose-scarlet, inside vivid cerise scarlet with white center, marked blue. Large, broad petaled flower of perfect shape. One of the finest sorts, if not the finest, of all red and salmon color varieties. Length of stem 25 inches.

REV. H. EWBANK—Vivid heliotrope lilac. Likely bordered. Magnificent flower. Extremely beautiful outside and a beautiful tulip when forced. Length of stem 24 inches.

INGLESCOMBE YELLOW—Large flower of perfect form. Glossy canary-yellow. Very beautiful. Length of stem 24 inches.

PAINTED LADY—Creamy white, faintly tinged. Soft heliotrope when opening. A very beautiful flower, resembling a Water Lily. Length of stem 27 inches.

SUZON—Soft buff rose, shading to blush at margin of petals. Inside, soft flesh pink with white center. Very large, erect flower of delightful shade. Length of stem 25 inches.

NAUTICUS—Glowing dark cerise rose. Center dark violet shaded bronze. Large and handsome. One of the best. Length of stem 30 inches.

PRIDE OF HAARLEM—Bright rose suffused with purple. An enormous flower of superb form and grand beauty. A stately plant for borders and amongst shrubs. For groups this variety is unsurpassed both for its glorious color and its stately habit. Length of stem 28 inches.

Glen Bros.,
Rochester, N. Y.

Box 1019, Schenectady, N. Y.
June 8, 1927

Gentlemen:

Last November I purchased from you 200 very choice tulips. I am wondering if you will have a special offer of the same kind of tulips this year and if so I am desirous of being put on your mailing list to receive a circular to that effect. Or better, will you kindly write me and let me know just what the offer will be and when to expect your booklet covering the tulip order.

I may state here that several of my neighbors were delighted to see what lovely flowers came up from your bulbs and they are to place orders this fall.

May I hear from you soon.

Very truly yours,

(MISS) MARION LAVERY



SINGLE EARLY TULIPS

HIGH QUALITY DUTCH BULBS

Fresh Fall Importation Direct from Grower to Us

TALK about your luck! Due to a fortunate spot cash purchase of Single Early Tulips from Messrs. P. Byvoet, Limited, famous bulb growers, Schoten-Haarlem, Holland, we are able to offer several hundred thousand superior quality large size bulbs at

\$3.50 per 100 ~ \$30.00 per 1000

Act quickly as this is a ridiculously low price and our stock will soon be exhausted. These bulbs will reach this country about October 1st and shipments will be made promptly thereafter and in rotation—the first orders received will be the first orders shipped. Order at once.

VARIETIES

ARTUS—Dark scarlet, large elegant flower, splendid for bedding.

BUTTERCUP—Pure golden yellow, large flower, the earliest of the yellow tulips.

CARDINAL'S HAT—Dark brownish red.

CRAMOISI BRILLIANT—Brilliant red, large flower, a good variety for bedding and forcing.

FRED MOORE — Bright orange, scarlet shaded, early forcer.

JACOBA VAN BEYEREN—Pure white, useful for growing cool for late purposes.

LA REINE—White and if grown cool rose shaded.

POTTEBAKKER SCARLET—*Verboom*, bright scarlet, large flower.

PRESIDENT LINCOLN—*Queen of the Violets*, light violet with white base.

STANDARD ROYAL—Red and gold striped.



Hyacinths

\$2 per 12

\$15 per 100

Double or Single—
Any Color desired.

Not a Poor Variety—
Make your selection
from the following list:

GERTRUDE—Rosy pink compact flower, good forcing variety, profitable for market work. Also excellent for bedding. *Single.*

LA VICTOIRE — Brilliant carmine red, forces early. *Single.*

LA GRANDESSE — Intense snow-white, very large well shaped spike on long strong stem; fine formed bells of great substance. *Single.*

DR. LIEBER — Deep blue, excellent for early forcing. *Single.*

KING OF THE YELLOWS — Very bright yellow, fine, tall and handsome spike, well formed, large bells. An excellent pot hyacinth for medium early, and late. *Single.*

QUEEN OF THE VIOLETS—Mauve. *Single.*

SUNFLOWER — Pure yellow. *Double.*

LA TOUR D'AUVERGNE—Pure white, large spike, very early. *Double.*

PRESIDENT ROOSEVELT—Lively pink, large compact spike. *Double.*

Narcissus (Daffodils)

\$3.00 per dozen

\$20.00 per 100

EMPEROR—Perianth deep primrose, trumpet full yellow, splendid grower, motherbulbs. *Single.*

KING ALFRED—A remarkably handsome daffodil; flowers of large size, great substance and refined finish, color uniform clear rich golden-yellow, motherbulbs. *Single.*

MAD. DE GRAAFF—One of the largest and finest of all white trumpet daffodils, perianth pure white, trumpet very pale primrose passing off pure white. *Single.*

VICTORIA—Bold, erect flower with creamy white perianth and rich yellow trumpet, motherbulbs. *Single.*

ORANGE PHOENIX—*Eggs and Bacon.* Large double rose shaped flowers, white with rich reddish orange center. *Double.*

VAN SION — *Telemomus plenus.* Yellow trumpet and petals, large flowers on strong erect stem. The best for early forcing. *Double.*

Crocus

\$2.50 per 100

\$20.00 per 1000

Crocuses are especially desirable for early blooming and are most effective when planted along the border or scattered in the lawn.

ALBION—purple.

BARON VON BRUNOW—Large, blue.

LADY STANHOPE—Porcelain, striped purple.

KING OF THE WHITES—Extra white.

CLOTH OF GOLD—*Susianus.*

MME. MINA—Greyish white striped purple.

You Will Enjoy Really Fine

LILIES

Order Now for Fall Planting

SPECIAL COLLECTION of six varieties best hardy lilies \$3.00. No class of plants capable of being cultivated out of doors possesses so many charms. Rich and varied in color—stately and handsome in habit—profuse in variety and delicious fragrance. They thrive best in dry rich soil where water will not stand in winter. After planting they require very little care and should not be disturbed for several years.

MADONNA LILY—The old fashioned pure white garden lily. One of the hardiest.

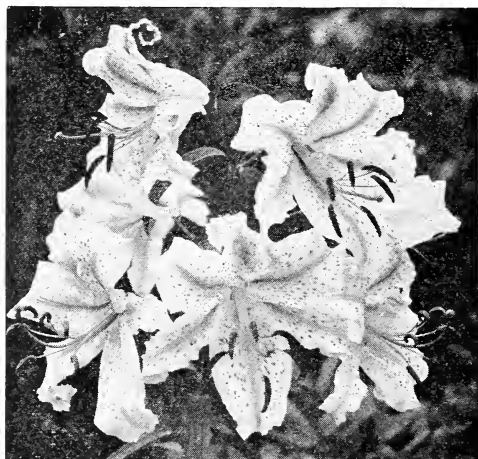
AURATUM LILY—*Gold-banded lily of Japan*. Flowers very large, delicate ivory white color thickly dotted with rich chocolate crimson spots with the bright golden bands through the center of each petal. The finest of all lilies.

TIGER LILY—Bright orange scarlet with dark spots. A strong growing, showy variety and entirely hardy. Succeeds well everywhere.

SUPERBUM—Averages from 3 to 6 ft. in height. Its nodding crests adding to the general brilliancy of July with from 5 to 40 handsome orange red blossoms.

SPECIOSUM ALBUM—Pure white with a green band traversing the center of each petal.

HENRYI—*Yellow Speciosum*. One of the finest hardy lilies of strong, vigorous growth with flower stalks 3 to 5 ft. long. Deep apricot yellow, light and spotted brown.



This splendid collection of six large size bulbs only \$3.00

Special Price on

LILY OF THE VALLEY

IN "CLUMP FORM" FOR GARDEN OR FIELD PLANTING

WE take pleasure in offering for Fall Planting a large quantity of Lily of the Valley in "clump form," each of which contains a plentiful supply of flowering pips. Especially recommended for massing near shrubs or along shaded borders, as they will produce flowering results the first season. Price per doz., **\$3.50**; per 100, **\$25.00**.

GORGEOUS PEONIES

They rival roses in beauty, form and exquisite coloring, and excel them in size. Noblest and most beautiful of all flowers.



Planted this Fall will Bloom next Summer

These lovely flowers are all indispensable in every garden. They not only combine stateliness of growth with gorgeous coloring, but many of the huge blossoms possess the exquisite fragrance of a tea rose.

Our roots planted this fall will bloom next summer.

And we offer you these six of our choicest varieties for only \$3.75.



For Cut Flowers these Varieties are Excellent

CANARI—Yellowish; globular bomb type of medium size, fragrant; late.

EDULIS SUPERBA—Bright mauve-pink; large, rather flat, crown type; free-flowering; fragrant; medium early.

MME. CALOT—Pale hydrangea-pink, center shaded darker; large, rose type, free flowering; fragrant; early. Very good.

MARECHAL MacMAHON — Rich, dark red; large, bomb type; a fine flower of rare beauty.

FESTIVA MAXIMA — Pure white, flecked with carmine; very large rose type; fine flowering; fragrant; medium early.

L'ECLATANTE—Brilliant red; very large bomb type; strong growing; midseason.

September and October are the best months in which to plant Peonies, although they are planted fairly satisfactorily in March or early April. In planting, cover the "eyes" with about two inches of soil and use a slight mulch. Too deep planting is the cause of many Peonies not blooming. Fertilize with bone-meal, wood ashes and sparingly with stable manure.

ORDER TODAY FOR FALL PLANTING

Glenwood Nursery

WAS SOME FLOWER SHOW

in June

OUR FIELDS of Iris were a beautiful sight when in bloom. Let us send you this fall a collection of assorted varieties of Fleur-de-Lis and Japanese Iris, so that you may enjoy their wonderful bloom next season. Masses of Iris planted along walks, drives or in shrub borders, create a setting that cannot be achieved by any other shrub or plant and the cost is insignificant as compared with the effect.

Let us send you
our selection of

10 for
\$1.50

or

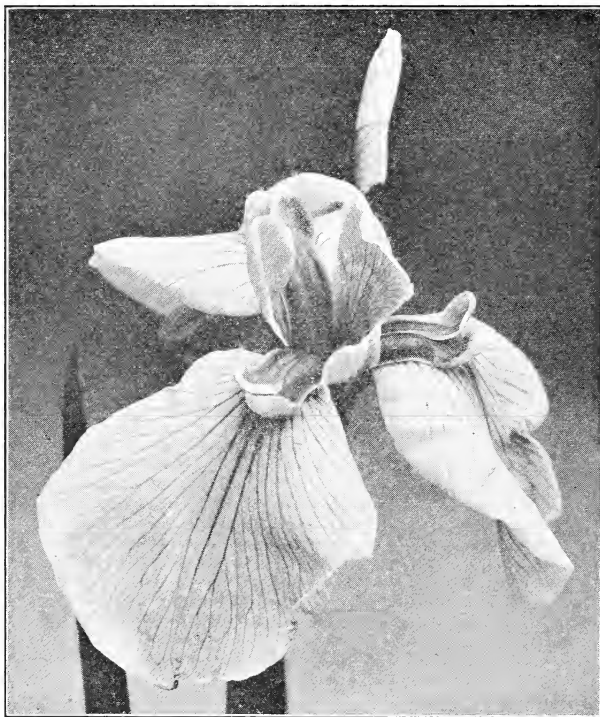
50 for
\$6.00

or

100 for
\$10.00

~

**TRY TO BEAT
THESE PRICES**



What a Leading Horticultural Journal Says:

"In our own experience the best success has resulted in transplanting trees and shrubs in the fall in properly prepared soil, and giving winter protection by mulching with litter or leaves. Such subjects usually start to grow before spring-planted trees have started. We do not hesitate to advise fall planting in climates not more severe than our own."—*Vick's Magazine*.

AN AZALEA COLLECTION

of Six Beautiful, Hardy Varieties All Different

For outdoor planting. All colors of the rainbow. Deep Pink, Shell Pink, White, Orange, and Canary.

A wonderful collection for lovers of these exquisite shrubs.

The plants we offer are blooming plants, shipped to you with ball of earth burlapped to roots and will transplant easily—Plant this fall, mulch with plenty of leaves and they should bloom next summer.

ARBORESCENS (Sweet Azalea). Very attractive white, or faintly rose-tinted, fragrant flowers whose beauty is enhanced by the long, bright red filaments of the stamens. The flowers are borne after the foliage appears, and it is one of the most beautiful of all the hardy Azaleas. In sheltered places it often reaches 15 to 18 feet in height. May.

CALENDULACEA (Flame Azalea). Probably the most gorgeous of the native Azaleas. From early May until well into the month of June, the plants are literally covered with orange-yellow or flame-red blooms which in size are often 2 inches across. The well-known Ghent Azaleas rarely equal in brilliancy this native species. Foliage remains good until late fall and breaks in the spring just before the blooms appear.

CANESCENS (Piedmont Azalea)—Rosy pink or whitish trumpet-shaped flowers of great beauty, borne in May before or with the unfolding leaves, fill the air with sweet fragrance. Plant in masses against a dark background to show the flowers to the best advantage.

NUDIFLORA (Pinxter Bloom)—An extremely beautiful Azalea. Rosy pink or whitish blooms; after or before the foliage develops, of strong, sweet fragrance, and borne in great profusion at about the same time as *A. canescens*. Fall, foliage assumes attractive shades of orange and bronze. Fine for dry open places.

VISCOSA (Swamp Azalea)—The last of the Azaleas to flower, nearly all the other shrubs having passed out of bloom when it bears its heavy load of pure white, fragrant flowers, clothed with sticky hairs.

VASEYI (Pink Shell Azalea)—One of the earliest flowering Azaleas, blooming in April, and its glorious pink flowers open before the foliage appears. It is the most beautiful of all the Azaleas, and in delicacy and purity of color is unsurpassed by the flowers of any other plant.



***One each of the above (all different), 6 in all,
size 12 to 18 inches, \$10.00***

Highland Park Variety of

LILACS

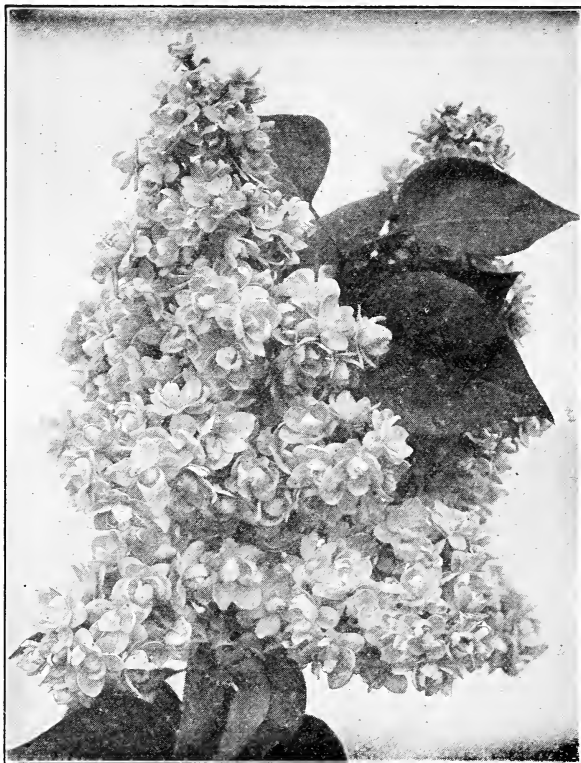
SIX of the LOVELIEST as well as SHOWIEST

Lilacs grow everywhere — Any one can have lilacs—Plant more lilacs, but plant the choice varieties.

OUR collection is admirable. We were helped in the selection by the late Mr. John Dunbar, famous as the assistant-superintendent of Highland Park, Rochester, N. Y., containing one of the finest collections if not the finest in the whole world. In the last five years, we have sold at retail nearly 25,000 plants, shipping to nearly every state in the Union. We have selected the following six choice varieties, which we have named "Highland Park Collection." We offer the collection, composed of one each of the varieties described, to a limited number of customers. Planted this Fall, they should bloom next season as ours are strong plants, two to three feet high, well rooted and branched. Order now before stock is exhausted.

We Offer for Fall Planting this splendid Selection of SIX distinct Varieties for

\$6.00



BELLE DE NANCY—Great panicles of pink flowers with white center. *Double.*

CONGO—Flowers a beautiful deep wine-red. *Single.*

PRESIDENT GREVY—Beautiful lilac-blue flowers in huge panicles. *Double.*

MME. ABEL CHATENAY—Sweetly scented pure white flowers in large panicles. *Double.*

CHARLES X—Strong, rapid grower; rather loose trusses of reddish purple flowers. *Single.*

LEON SIMON—Double large flowers of a purplish crimson shade.

Before Spring, stock which has been planted in the Fall gets well established in its new position and so gets an early start, and makes a large growth the first season, while stock planted in the Spring loses considerable valuable time in getting established in its new quarters.

NEW and RARE HYBRID LILACS

2 to 3 ft. size, \$2 each, \$20 per doz.

Adelaide Dunbar. Semi-double. Deep maroon in bud, flowers violet-red. when fully opened. Open branching habit.

Gen. Kitchener. Semi-double. Buds reddish lilac, flowers when fully opened bluish lilac, tinged violet. Branching habit, compact.

Gen. Pershing. Semi-double. Buds deep lilac, opening to bluish lavender flowers with a tinge of very delicate azure-lilac. Branching habit, medium dense.

Gen. Sherman. Single. Deep lavender bud, flowers creamy lavender-lilac when fully open, with a faint tinge of porcelain-blue at center. Compact branching habit.

Hiram H. Edgerton. Single. Reddish lilac in bud, flower bluish lilac to violet-lavender when open. Branching habit, compact.

President Harding. Single. Buds deep crimson, flowers reddish lilac when fully open; clusters 7 to 8 inches long. Branching habit, low and compact.

President Roosevelt. Single. Bud deep purple-red, bright purplish red when open. Branching habit, open and vigorous.

Princess Alexandra. Single. White flowers. One of the best.

LILAC DAY

Is an annual event in Highland Park and Rochester. Thousands come from far and near and a special excursion from Canada is run every year. It would be interesting to know just how many have seen and admired this great collection of Lilacs, the largest in this country and one of the largest in the world, surpassing that in the famous Arnold Arboretum and rivaling that at Nancy, France.

A Rose Garden Next Summer



If
You
Plant
This
Fall



10 Choice HARDY ROSES for Only \$8.00

STRONG, TWO-YEAR FIELD-GROWN BLOOMING PLANTS

10 Hardy, Vigorous Varieties that are Dependable in All Parts of the United States

- 1 **AMERICAN BEAUTY**, red—Magnificent, large, globular flowers of a beautiful rosy crimson; delightfully fragrant.
- 1 **FRAU KARL DRUSCHKI**, white—The buds are handsome, long-pointed, opening to very large pure snowy white cupped flowers of great substance. A very vigorous grower and exceptionally hardy; very free and continuous bloomer.
- 1 **GEORGE AHREND'S**, pink—Also known as "Pink Druschki." In color, a fine rose pink; blooms full and double; of strong growth and free blooming habit.
- 1 **CAPTAIN CHRISTY**, pink—Plump and heavy buds with backward-curling petals. Color light pink shaded dark. The large open bloom showing darker towards the center.
- 1 **J. B. CLARK**, red—Intense deep scarlet, shaded blackish maroon, in exceedingly large and full blooms of moderate fragrance. Plant, a rampant grower, blooming best in June, but sometimes repeating in the Fall.
- 1 **HEINRICH MUNCH**, pink—Delicate pink blooms, resembling those of the Frau Karl Druschki. The flowers are very large and full. A vigorous grower.
- 1 **JUBILEE**, crimson—A true hybrid perpetual, perfectly hardy, blooming in fall as well as in early summer; bush vigorous, foliage dark green, an abundant bloomer; very large, reaching six inches across under high culture; color purest and deepest red, shading to deep crimson and velvety maroon.
- 1 **ULRICH BRUNNER**, crimson — Large cherry-crimson flowers of fine form. Very free flowering and vigorous. A fine all-purpose rose of standard excellence.
- 1 **MAGNA CHARTA**, pink—Large, full, well-formed flowers of bright pink; very fragrant. Exceedingly vigorous; fine for forcing under glass.
- 1 **PERSIAN YELLOW**—A Briar Rose with deep golden yellow flowers of large size and fairly full. Vigorous grower.

Reduced Prices on Large Specimen Fruit Trees

Trees 4 Years Old · Seven to Nine Feet Tall · Beautifully Rooted · Handsomely Branched

\$2.00 each; \$18.50 per 10; \$150.00 per 100

FALL is the real time to plant. The ground is in much better condition in the Fall, being mellow and warm. Stock is completely dormant in the Fall, and, therefore, can be easily and safely handled, while in the Spring the weather often comes off warm so early as to start the buds seriously before the customer can receive and plant his stock.

Many extensive and experienced planters, like the late horticultural writer, E. P. Roe, always prefer to plant in the Fall.

Shipment will be made at precisely the proper time for planting this Fall. Shipping notice will be mailed on date of shipment. Order now, today, while you have the matter fresh in your mind. Order one tree or one thousand. Our 60 years experience is back of every tree.

VARIETIES OF SUPER-SIZE FRUIT TREES

Luscious Apples for "Apple Jell"

Red Astrachan: Large; deep crimson; juicy. August.

Yellow Transparent: Medium size; pale yellow; good. July and August.

Fameuse (Snow): Medium size; bright red; flesh white. Juicy. October.

Gravenstein: Large; yellow overlaid with red; juicy, productive. September to November.

Twenty-Ounce (Cayuga Red Streak): Very large; yellow splashed with red. October.

Baldwin: Large; deep red; crisp and juicy; vigorous grower; heavy bearer. November to March.

Delicious: Ranks high as a variety for commercial or home orchards. Large; brilliant dark red; flesh fine-grained, crisp, juicy. November to February.

McIntosh: Large; deep red; flesh crisp; tender, juicy. October to December.

Northern Spy: Large; bright red; spread with delicate bloom; flesh tender, rich, delicious. November to March.

Rhode Island Greening: Large, greenish yellow; flesh tender. December to April.

Wealthy: Medium to large; deep red, juicy. October to January.



Just a few of the super-size 4 year old apple, large, beautiful trees; straight trunks, well shaped, branched tops. Note how they tower over the small evergreens in the foreground which average about 3 ft. in height.

Sweet cherries for "Cherry Pies"

Dikeman: Large; black.

Governor Wood: Large, light yellow, shaded and mottled with light red.

Lambert: Very large; dark purplish red, turning to almost jet-black when full ripe.

Napoleon: Very large; pale yellow, spotted and shaded with deep red.

Black Tartarian: Very large; black; tender.

Large Montmorency (Sour).

Juicy Plums for "Plum Conserve"

Bradshaw: Very large; dark violet-red.

German Prune: Large, oval; dark purple.

Yellow Gage (Prince's Yellow Gage): Large, oval; golden yellow, slightly clouded; flesh deep yellow, rich, sugary, melting.

Lombard: Medium size; violet-red.

Burbank: Large, nearly globular; clear cherry-red, sweet, meaty and quite firm.

October Purple: Large, round; purple.

Red June: Professor Bailey says, "By all odds the best Japanese Plum." Large; brilliant red.

Sugary Pears for "Spiced Pears"

Bartlett: Large; waxen yellow with red blush; buttery, very juicy and high-flavored.

Anjou (Beurre d'Anjou): Large, handsome; greenish yellow, with a dull red cheek on the exposed side, flesh fine-grained.

Clapp's Favorite: Very large; yellowish; green to full yellow, rich.

Angouleme: Large; greenish yellow, splashed with russet; a good bearer.

Seckel: Small, but handsome and delicious; very juicy.

Kieffer: Large, very handsome; rich yellow, tinged with red, excellent when canned.

Invitation:—Tourists visiting the "Flower City" are cordially invited to visit our nursery any week day eight to four o'clock.

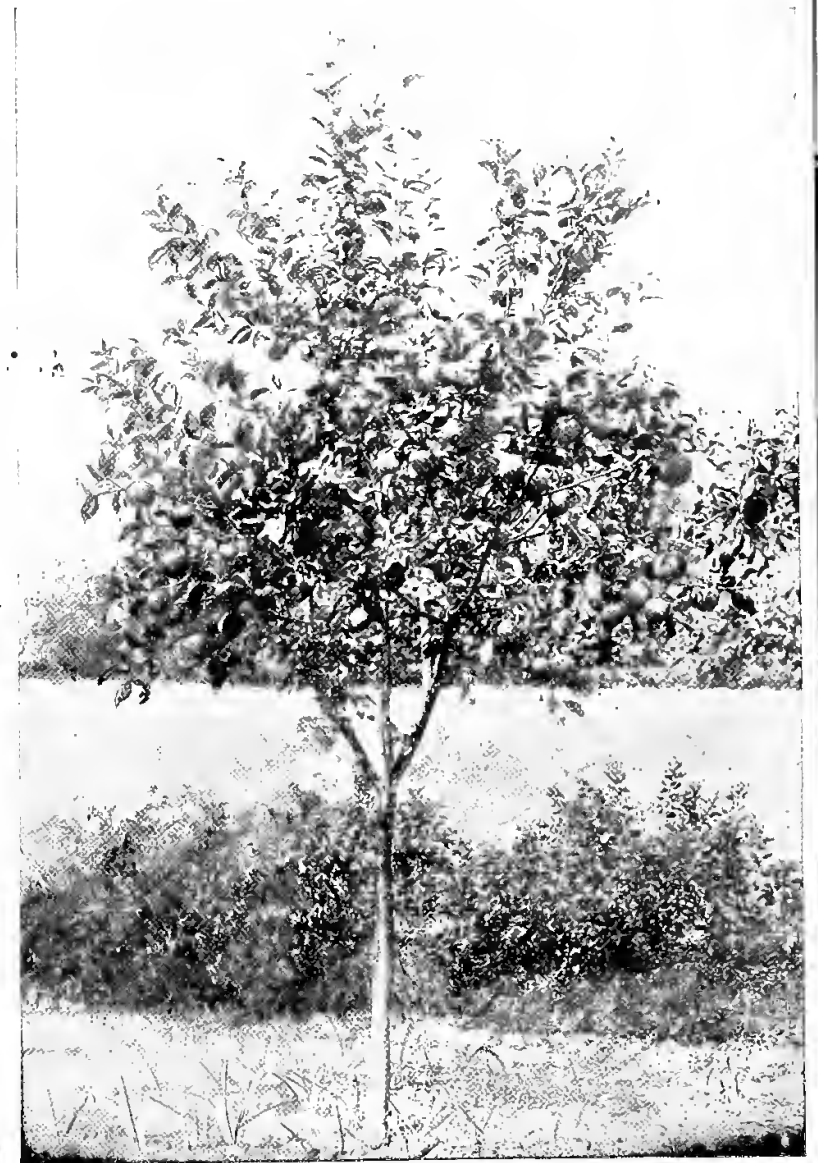
Sodus, N. Y., April 26, 1927.
Glen Bros., Inc.

We received the last shipment of Rochester peaches and Montmorency cherries and they are certainly fine trees. I am enclosing check of \$330.00 for both shipments of this Spring.

Yours truly,
GEORGE TUNLEY,
Sodus, N. Y.
Route 1.

MONEY BACK GUARANTEE

Money back if not perfectly satisfied, providing trees are returned properly packed the same day as received. You couldn't ask for anything fairer than this.

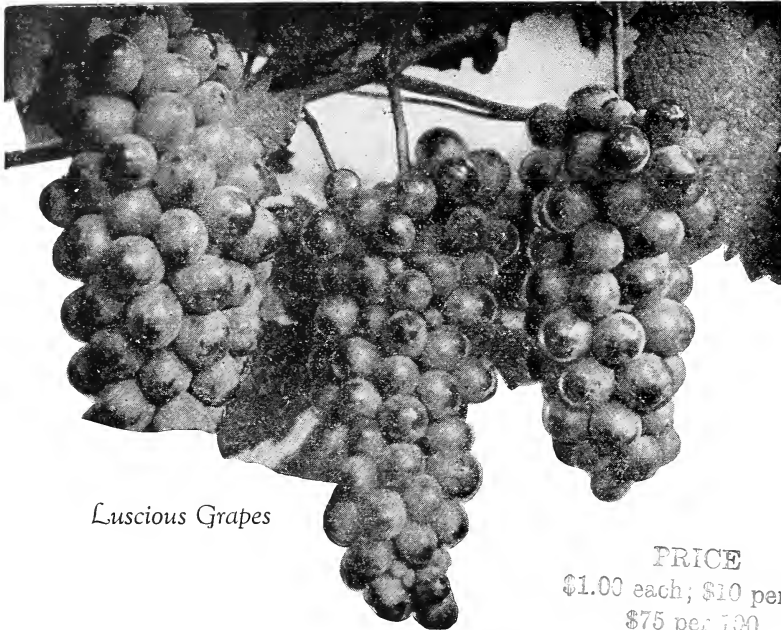


Many varieties bear fruit soon after transplanting. Time is money. Plant our super-size 4 year old tree and save time and money.

Big, Juicy GRAPES for Delicious Grape Juice

Nothing quite so sure to grow, nothing quite so sure to bear, nothing quite so sure to please every taste. Nothing unusual for these large plants to fruit first year planted. Planted this Fall should produce fruit first season.

Extra large, extra old, extra fine 3-year old plants that should fruit next fall.



Luscious Grapes

PRICE
\$1.00 each; \$10 per 12;
\$75 per 120.

Best Varieties for Pressing the Juice

CONCORD (black)—Large and handsome, very hardy, productive and reliable; succeeds well over a great extent of country, and is one of the most popular market grapes.

IVES (black)—Bunch extremely large, shouldered compact, handsome; Berry—large tender, juicy, sprightly vinous, rich, sweet without pulp. Vine is vigorous, healthy, hardy.

MOORE—Bunches larger; berries large, round, black with a heavy bloom; pulp of good quality; vine notably resistant to disease, very hardy, withstanding temperatures of 20° below zero without injury.

Best Varieties for Eating Fresh

CAMPBELL'S EARLY (black) — Clusters large and handsome; berries large, nearly round, black, with light purple bloom; flesh rather firm, but tender; quality rich, sweet, slightly vinous; a strong and vigorous grower.

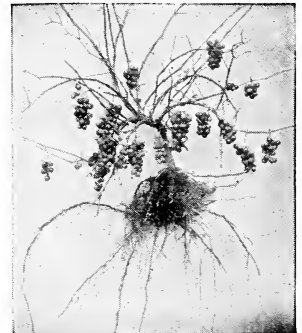
BRIGHTON (red)—Flesh rich, sweet, and of the best quality, equal if not superior to

Delaware; ripens early. Productive and vigorous.

McPIKE—Bunches large and compact, like its parent, Worden; berries very large, black; pulp tender and very juicy. Healthy and hardy.

GREEN MOUNTAIN—Bunches long, compact and shouldered; berries oval, greenish white; pulp tender, juicy, very sweet and rich; vine hardy, vigorous, healthy, and very productive. Ripens three weeks earlier than Concord.

NIAGARA (white)—Bunch medium to large, compact, occasionally shouldered; berry large, roundish, uniform; skin thin but tough, pale green, changing to pale yellow, with a thin whitish bloom; flesh slightly pulpy, tender, sweet; ripens with the Concord.



Your order will be filled with plants like this.

Glen Brothers, Inc., Rochester, N. Y.

Dear Sirs:

Two or three years ago, while living in the Kentucky mountains, at Coxton, I bought from you a Niagara grape that bore the year it was set out. I am now living at Lexington, Ky., and have a little room in my yard for a few vines. I want one each of a Niagara, Delaware and Champagne grape that will bear this year. Have you them? If so, please let me know the price.

Truly yours,

463 Oldham Avenue.

Lexington, Ky.,

February 23, 1927

F. A. ATKINS

Asparagus Plants with a Come-Back

EXTRA LARGE - EXTRA OLD - EXTRA FINE

100 of these Whopping Big Plants for \$7.00

500 Plants for \$30.00

1000 Plants for \$55.00

Washington Asparagus

The New Rust Resisting Variety
Developed by The United
States Department of
Agriculture

WASHINGTON ASPARAGUS is the first result of a blister proof campaign for the eradication of asparagus rust and is as far as possible an extremely resistant, vigorous, and high yielding strain of giant asparagus. The plants represented in Pedigreed of the last three generations are the best found in a ten-year search among millions of plants tested.

By best we mean the ones that have produced offspring uniform—rust resistant—high yielding—large size—unbranched shoots—with good top buds of rapid growth which indicates tenderness.

**For quick results plant these
extra heavy roots 3 yrs. old.**

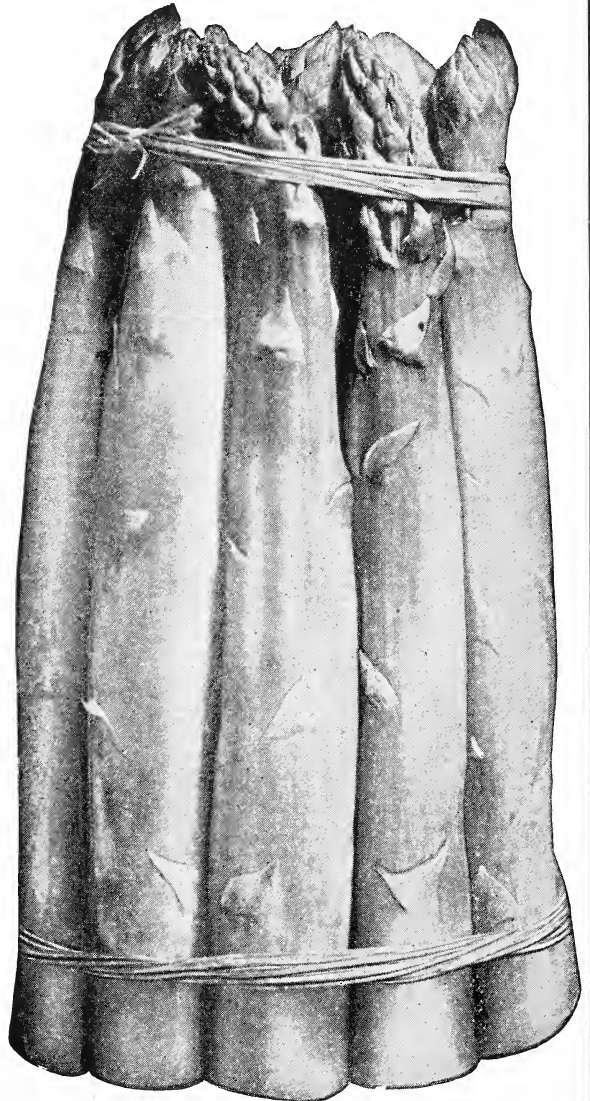
¶ For success, the soil in which Asparagus roots are planted should be well drained, and while it does not need to be necessarily rich, always remember the richer the better. Set the roots in trenches, six to ten inches deep, and cover with only a few inches of soil; as the plant grows the soil can be levelled in. A heavy mulch of coarse manure should be given in the late fall. Be sure and cut the tips off before the seeds begin to ripen.

+

We offer you one million 3 year old crowns that should produce stocks large enough for cutting next summer if you plant this fall.

Remember—you risk nothing. If upon receipt of shipment you find that the plants are not the finest and largest 3 year asparagus roots you have ever seen, wrap them up and return to us, and we will refund your money without question, quibble or controversy.

ORDER NOW FOR FALL PLANTING



Why pay fancy prices for Asparagus—Grow your own

Burbank Giant Crimson Rhubarb

*A Luther Burbank
Creation*

EXTRA large, of fine bloom, and crimson clear through, this new variety of appetizing "pie-plant" should be in every garden, and will be when known. Plant a few this fall along beside that you now have growing in your garden and note the difference. **Burbank Giant Crimson** is superior in size and quality to any variety we have ever tested. It is an early variety, without being in the least tough or stringy, with a mild sub-acid flavor. Largest and best of all for market or home use.

Plant this fall in good garden soil, manure well, and have delicious pie and sauce next May.

PRICE—For strong roots, 2 year old, 25c each, \$2.00 per dozen.



Second to Blueberry pie, Rhubarb, the pie of heart's desire.

6 Best Dwarf Apples

An All Season Dwarf Apple Collection

Come into bearing immediately, producing same quality and size fruit as standard trees. Excellent for planting where area is limited—may be planted as close as 8 feet apart. Trees reach height of about 15 feet at maturity. One each of the following six varieties for \$6.00.

RED ASTRACHAN—Large; deep crimson; juicy, rich, acid; productive. *August.*

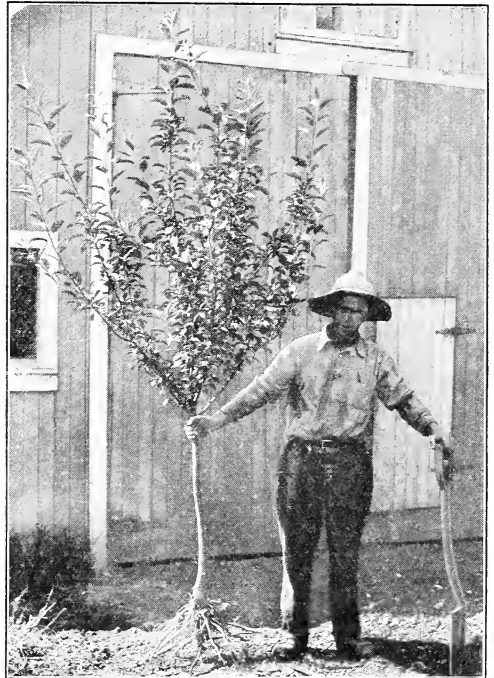
YELLOW TRANSPARENT—Medium size; pale yellow; pleasantly acid, good. *July and August.*

BALDWIN—Large; deep red; crisp and juicy; vigorous grower; heavy bearer. *November to March.*

DELICIOUS—A relatively new apple, ranking high as a variety for commercial or home orchards. Large; brilliant dark red, flesh fine-grained, crisp, melting, juicy, with a delightful aroma; splendid keeper and shipper; tree bears heavy crop, annually, a profitable sort to grow. *November to February.*

NORTHERN SPY—Large; bright red spread with delicate bloom; flesh tender, rich, delicious; bears well. *November to March.*

WEALTHY—Medium to large; deep red, juicy. *October to January.*



One of our Dwarf Apples 2 years after transplanting and in bearing.

Erskine Park Everbearing Red Raspberry



Pick berries all through next summer and autumn. The Erskine Park Everbearing Red Raspberry is a seedling from the old Reliable Cuthbert, discovered on the Westinghouse Estate (Erskine Park) at Lee, Mass., by Mr. Edward Norman. This magnificent estate is in the midst of the beautiful Berkshire Hills, with temperatures in winter of 30 or 40 degrees below zero, so that the hardiness of this berry is unquestioned. The estate is surrounded by the summer homes of many wealthy people, and much to the surprise of his neighbor and not without a great deal of personal satisfaction, Mr. Norman furnished large, luscious raspberries throughout the fall for various dinner parties. Two-year bearing bushes, \$3 per doz., \$20 per 100.

From June till November continuously, Erskine Park produces delicious fruit sweet as honey. Best in size, taste and productivity. Plants that will produce fruit the first season planted, at \$3.50 per doz., \$20 per 100.

tiveness. Plants that will produce fruit the first season planted,

Our Three Best Strawberries

The Best are None too Good for You to Plant

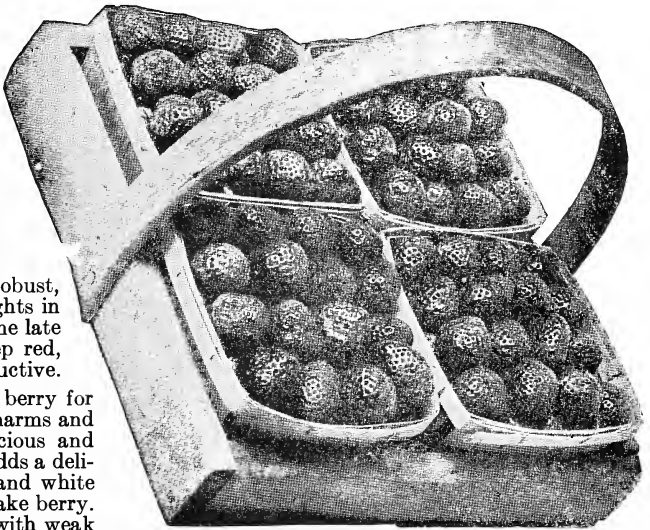
Plant them this Fall and pick Berries next Summer

JUMBO is just what its name implies — a mammoth plant and a whale of a berry. 64 quarts picked Nov. 7, 1924 sold at 50c per quart. Jumbo is not classed as an everbearer but an enormously productive variety of the regular season. We regard it as the best strawberry on the market today.

SUNSET—Plant extremely robust, will grow on all soils and delights in heavy clay. The blossoms come late and resist frost. Berries, deep red, good fresh or cooked. Very productive.

TABLE QUEEN—A high class berry for any purpose. For dessert it charms and satisfies the palate; it is delicious and appetizing for the sick room; adds a delicate relish to meats, cereals, and white bread; unrivalled as a short cake berry. It is the one berry for those with weak digestion. Bright red, medium to large, vigorous vines and production.

50 of each variety of these real quality and high yielding plants 50 Jumbo, 50 Sunset, 50 Table Queen for \$4.50.



Glen Bros.,
Rochester, N. Y.

341 So. Vermont Ave.,
Los Angeles, Calif.
April 7, 1927

Gentlemen:

Herewith please find my check for the sum of \$1.05 to cover the shipment of three grape vines recently sent.

Please be advised they came in good condition and appear to be thrifty.

May I state that some three or four—possibly more years ago I bought some of your Ever-bearing Red Raspberries and they have proven very satisfactory.

On last Christmas and New Year's days and on the same days a year ago I picked ripe berries.

Sincerely,

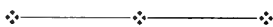
L. W. WINSTED



The Last Flower to Bloom in the Fall

HARDY CHRYSANTHEMUMS

A great Fall flower show, all your own, at little cost



These TEN (every one different) for \$3.00

AUTUMN GLOW—Deep pink.

EXCELSIOR—Large, yellow.

GLORY OF SEVEN OAKS—Best early yellow.

INDIAN—Red shaded bronze.

L'ARGENTENILLAIS—Chestnut brown.

LUCIFER—Dark purplish red.

MARIE ANTOINETTE—Attractive rose color.

NORMANDIE—A very good pink variety.

OLD HOMESTEAD—Dark red.

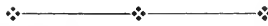
WHITE FLORA—Large pure white.

CHRYSANTHEMUM—Indispensable for late fall bloom. Should be given rich culture and fully exposed to the sun for best results.



Sixty-first Anniversary Collection of
12 Beautiful Shrubs
 All Two Years Old · Well Rooted · Bushy
 for **\$5.00**

If you Order Now for Fall Planting



Make Your Grounds *as Attractive as Your House*

Plant More Flowering Shrubs

12 Shrubs—All Different

One Plant Each · *of the following list* · for **\$5.00**
 (A **\$7.00** VALUE)

Order at once for fall planting. Planted this fall they will bloom next summer.



ONE EACH OF THE FOLLOWING SPLENDID VARIETIES

GOLDEN-LEAF ELDER—Handsome golden yellow foliage; flowers white in Cymes, 3 to 10 inches across; fruit purplish.

FORSYTHIA—Golden yellow flowers borne in great profusion along the branches before leaves appear.

MOCK ORANGE—A medium size shrub with graceful branches; flowers pure white, very fragrant.

SNOWBALL—Upright bushy shrub; foliage changes to purple and red; flowers white in May, berries blue-black.

HONEYSUCKLE PINK—Fragrant pink flowers in May and June; red orange fruit.

SPIREA VANHOUTTEI—Height 6 feet; in early spring literally covered with small double white flowers; autumn leaves orange and scarlet.

HONEYSUCKLE WHITE—Similar to the pink, flowers large, color white, bright red berries.

SNOWBERRY—Height 3 to 5 feet, pinkish flowers, white berries.

CORAL BERRY—Plump red fruit clustered along the branches, beautiful green foliage, flowers white.

HYDRANGEA PANICULATA—The hardiest and most popular Hydrangea. In July and August massive plumes of white flowers later change to pink, bend the branches with their weight.

DOGWOOD—A hardy ornamental shrub with handsome foliage, attractive flowers, conspicuous berries and brightly colored bark.

SYRINGA—Height 8 feet, large pure white fragrant flowers.

Lombardy Poplar

Grows from 40 to 80 feet in height. Introduced from Italy soon after the Revolutionary War. Is extensively planted in fine estates, along driveways and for backgrounds. Gives a most artistic effect as it catches the eye from a far distance, on account of standing out prominently against the sky line. Tall, slender and columnar. Its

branches are crowded, all growing upward. Fills a place that no other tree can fill.



Price Low

Branched (Italian Style)



These trees will grade 8/10 ft. and 10/12 ft. We offer the former size at \$1.50 each, \$15.00 per dozen and the latter size at \$2.25 each, \$22.50 per dozen—a reduction of 25% from our regular printed catalogue prices.

For thirty days, which is as long as they will remain unsold, we offer a beautiful block of Lombardy Poplars growing on leased land which must be cleared in the Fall.

You may order one tree or one thousand. The trees will be reserved and shipment made at proper time for planting this Fall.

Let us make reservation now at these special prices.



A Collection of 3 Beautiful Dwarf Ornamentals for the Lawn for Fall Planting

Extremely Attractive



BLOOD LEAF PEACH—Brilliant Red Bark, Dark Red Foliage, Handsome Pink Blossoms in profusion in early spring. Plant as an ornamental, also for its fine fruit.

1 **BLOOD LEAF PEACH**—Of this remarkable variety "PEACHES OF NEW YORK" by Professor U. P. Hedrick, Vice Director and Horticulturist of the New York State Agricultural Experiment Station says "Blood leaf is a handsome ornamental, its beet-red leaves in early spring and its pink blossoms borne in great profusion entitle it to esteem for both foliage and flowers. It is worth growing as well as for its fruits." Plant it on the lawn, in your shrub border or in the garden.

1 **PURPLE LEAVED PLUM**—Small, compact-growing ornamental trees that will prove effective as a part of any planting scheme. The foliage is dark crimson, changing to purple as it matures, retaining that color until late in November.

1 **JAPANESE FLOWERING QUINCE** — In early spring the branches are hidden by the wealth of dazzling scarlet flowers which are borne in great profusion. The quince-shape fruits which follow are rather fragrant. One of the best hardy shrubs grown.

We offer this
Collection of 3 for
\$3.50

A FALL SPECIAL of 3 Delightful VINES all Different for \$2.00

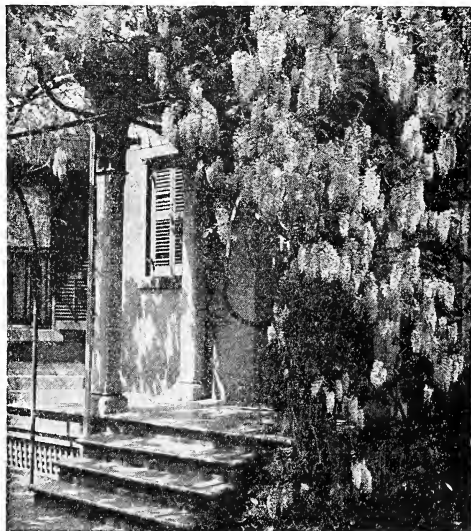
1 **WISTERIA**—Picturesque climber with great clusters of pale bluish violet, pea-shaped flowers that make a handsome showing when a vine has been properly trained over a porch or arbor. After becoming established, the vine makes an enormous annual growth.

1 **HALL'S HONEYSUCKLE**—Evergreen climber with deliciously fragrant white flowers that change to yellow.

1 **EVERGREEN BITTERSWEET**—A beautiful, low-trailing evergreen with aerial rootlets which cling to any support. Forms a lovely decoration on walls or trees, with its masses of red berries in winter. As an evergreen, absolutely hardy wall cover, this plant is unequalled.

All 3 for \$2.00

Vines are completely dormant in the fall, and, therefore, can be easily and safely handled, while in the spring the weather often comes off warm so early as to start the buds seriously before the customer can receive and plant them.



Great clusters of light bluish-violet pea-shaped flowers give the Wisteria a distinctive ornamental value.

Blueberry Plants · Nursery Grown

CAN you imagine anything more satisfactory than having delicious blueberries growing in your own garden? No doubt you have enjoyed these wonderful fruits on the hotel or restaurant menu, served with cream for breakfast, or as blueberry pie or dumplings for luncheon or dinner. They are a fruit that satisfies for three meals a day and one dozen plants are quite sufficient to supply the average family with blueberries. They can be used freely for making breakfast muffins or preserves. Old enough and large enough to fruit next season if planted this Fall.

Hardy and Ornamental

The bushes we offer are the result of careful cultivation of the wild blueberries, and you want these bushy, well rooted plants to start with. As one of our good customers recently wrote us: "I want 'Glenwood Grown' stock—no other will do." The blueberry is one of the hardiest of all fruit. The bushes yield their juicy berries freely from early August until frost strikes them. The bushes are very ornamental especially when they are filled with fruits, and when Jack Frost gives them a rich russet touch in autumn.

Blueberries require an acid soil to produce the best results. This is prevalent in many sections of the country. Where your soil is not acid, we sug-



gest the following method to get the most from your plants. Choose a well-drained location, easily supplied by water during the dry summer months. Blueberries do best with full sun, although they will grow and produce fruit in partial shade. In order to get the proper acid condition to your soil, mix partly rotted leaves with the soil of your garden.

Strong Nursery-Grown plants as illustrated with ball and burlap, \$1.50 each, \$15 per doz.

Nor should the ornamental value of Blueberries be overlooked. Prof. Bailey says:

"In the spring the young shoots and leaves are a rich bronzy red, later the clusters of long, white flowers, followed by clusters of dainty pink buds. In winter the red bark creates a charming tracing of red twigs against the snow. Rarely does a plant or shrub combine such exquisite beauty with a fruit which there is none more delicious. It is one of the most valuable species both for fruit and as an ornamental shrub. It thrives in the garden and is readily susceptible to improvement by cultivation."



Photograph of a nursery grown Blueberry plant ready to pack for safe shipment to any part of the United States

Plants are completely dormant in the fall, and therefore can be easily and safely handled, while in the Spring the weather often comes off warm so early as to start the buds seriously before the customer can receive and plant his stock. **ORDER NOW FOR FALL PLANTING.**

1600 lbs. Delicious Nuts

From less than 3 acres planted to these Improved varieties of European Filberts growing at Rochester, N. Y.

Plant Some of These Hardy Trees This Fall

ORDER NOW!



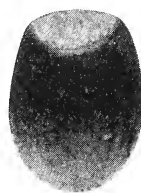
Kentish Cob



Minna's Zeller



White Lambert



Medium Long



Italian Red

These illustrations are actual size of nuts and are reproduced from photographs of the different varieties harvested from these trees last fall.



VARIETIES

ITALIAN RED—One of the finest of the Improved Filberts. Nut large, of fine brown color, oblong, shell remarkably thin and kernel of excellent flavor. A fine upright grower and a prolific bearer.

KENTISH COB—Tree upright and conical in growth. Thrifty and prolific. Nut large, very long, somewhat light in color. One of our best varieties.

MEDIUM LONG—Tree upright and vigorous, somewhat bushy. Fruit long, narrow, medium to large, beautifully striped. We consider this a very fine nut.

WHITE LAMBERT—Tree of low and drooping growth. Nut short and broad, large and a fine variety.

MINNA'S ZELLER — Tree low, drooping. Nut large, almost round, quite early. A very valuable variety and an excellent pollenizer.

PRICES

Strong, well rooted plants, size 2 to 3 feet, \$1.50 each, \$15.00 per doz.

HARDY NUT-BEARING TREES

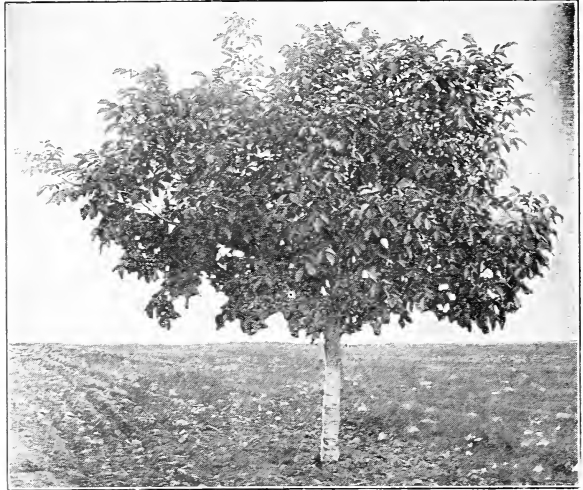
PLANT THEM THIS FALL

The English or Persian Walnut was brought to America in the early Colonial days but varieties sufficiently hardy to withstand the rigorous climate were not to be had then. In later years new and hardier varieties have developed and in and about Rochester, N. Y., are growing English Walnut trees that withstand 20 degrees below zero without winter-killing. It is reasonable to expect these acclimated trees to thrive wherever peaches succeed. Our trees are grown from nuts produced by hardy bearing trees growing in this vicinity.

4 to 5 ft., \$2 each, \$18 per 10, \$175 per 100; 5 to 6 ft., \$3.50 each, \$30 per 10, \$275 per 100; 6 to 8 ft., \$5 each, \$45 per 10, \$400 per 100.

Extra-Large English Walnut Trees

Superb for lawns and driveways, for those of our customers who wish to get the earliest possible results. 8 to 10 ft., \$10 each.



8 Year Old Bearing English Walnut at Glenwood Nursery

American Black Walnut

The Black Walnut is one of America's most useful nut-bearing trees. In fertile, loamy soils underlaid with firm clay subsoils, moist yet well-drained, it is one of the most rapid-growing of America's valuable forest trees. It should never be planted in coarse, gravelly, stiff heavy clay, or thin sandy soils. For roadside planting and for reforestation, we have these valuable trees in quantity at the following prices:

3 to 4 ft., 75 cts. each, \$8 per doz., \$60 per 100; 6 to 8 ft., \$1.25 each, \$12 per doz., \$90 per 100; Extra-large trees, 8 to 10 ft., \$3 each, \$30 per doz., \$200 per 100.

Japanese Walnut (Heart Nut)

Nearly as hardy as the Black Walnut and is especially appropriate for farm and dooryard planting. It is a dwarfish species, with dull green rough leaflets, often as many as fifteen or seventeen to the leaf, and bears nuts in racemes of a dozen or more. The shells are thinner than those of the Black Walnut but thicker than those of the Persian Walnuts.

3 to 4 ft., \$1 each, \$10 per doz., \$75 per 100; 4 to 5 ft., \$1.25 each, \$12 per doz., \$90 per 100; 6 to 7 ft., \$2 each, \$20 per doz.

The trees that we offer bear in cold New England. Read Mr. Avery's letter.

AVERY, KRETZMER, OLCOTT, Inc.
Scales, Engines, Specialties
30 High Street

Hartford, Conn., March 11th, 1925

Glen Brothers, Rochester, N. Y.
Gentlemen:

Will you please send me a copy of your latest catalogue?

It might interest you to know that some nine years ago I purchased several English Walnut trees from you, these trees have made a most satisfactory growth, and have borne a few nuts for the last three or four years. Last year four of them bore fruit of a very good size and quality. One tree in particular bore some five or six quarts of very good nuts. Have been quite pleased with the results from these trees.

Wolcott Hill, Wethersfield, Conn.

Very truly yours, (Signed) IRVING J. AVERY

Norfolk, Va., March 11, 1927

Gentlemen:

The nice English walnut tree just received. Many thanks for fine selection. Several of my neighbors admired it and spoke of getting one. With best wishes.

2414 Ballantine Blvd.,

Truly,

MRS. G. GORDON BROWDER

GLEN BROS., Inc. Nurserymen & Bulb Importers **Rochester, N. Y.**
ESTABLISHED 1866