

## **Historic, archived document**

Do not assume content reflects current scientific knowledge, policies, or practices.



**KEY ROUTE  
HEIGHTS NURSERY  
COMPANY**

---

**1926-  
1927**

**CALIFORNIA  
DAHLIAS**

---

**POT GROWN BULBS  
FIELD RIPENED  
OUR SPECIALTY**

**OUR SPRING CATALOG**

**PUBLISHED IN JANUARY, CONTAINING  
A MOST COMPLETE ASSORTMENT OF FLOWERING  
PLANTS FOR THE GARDEN IN THE VERY LATEST  
AND BEST IMPROVED VARIETIES  
MAILED ON REQUEST**

**3852 LOMA VISTA AVENUE  
OAKLAND, CALIFORNIA**

## DECORATIVE DAHLIAS

Large double flowers, full to center, with broad flat, somewhat loosely arranged floral rays with broad points or rounded tips.	Each
<b>Al Koran.</b> Yellow suffused with golden rod and amber. The petals of this flower have the marcelle wave which makes it very attractive. It won first prize at the San Francisco and Oakland Shows in 1922 for best-established seedling. Also first prize for vase of twelve shown with stems at the latter show	.75
<b>Al Malaikah.</b> Salmon shading to orange yellow, suffused with old rose. Impossible to describe the beauty of this dahlia	.50
<b>Amun Ra (Seal).</b> Wondrous coloring, size of flower, free-flowering and vigor place it on the zenith. The outer petals are gorgeous shades of copper and orange shading to gold and amber, deepening in the centre to a rich, dark, reddish bronze with metallic lustre	.75
<b>Aibonita.</b> An immense flower of a lavender or violet pink, shading to white, with a rich golden yellow at base of petals	.50
<b>California Superba (Bessie Boston).</b> This is probably the largest and best light pink dahlia. With narrow petals of a delicate shade of pink and shades to a blush center, stem strong and prolific bloomer. A fine cut flower	1.50
<b>Champagne (Bessie Boston).</b> Is easily 100 per cent in all the requisites for a perfect dahlia. Color is warm autumn shades, varying from burnished copper to dull golden champagne and chamois. Stem is heavy and holds the massive flower absolutely upright, and the bushes are plentiful producers of blooms. A prize winner of great quality and rare beauty	1.00 <del>1.50</del>
<b>Dorothy Robbins.</b> Color ochraceous buff, carrot red in center. A splendid variety in every respect	.50
<b>Dawn (Pelicano 1925).</b> A large exhibition decorative color, a wonderful cream, shading to yellow suffused with shell pink. Flowers held erect on good stiff stems, far above the foliage. Average size eight to nine inches. Dawn has won first prize for the best 1920 seedling at the Palace Hotel Show. Best dahlia in the show 1921 held by the Alameda County Floral Society, and also best dahlia 1921 at Palace Hotel Show.	2.00
<b>Earl Williams (Doolittle).</b> An immense flower of perfect form. In color, the base of the petals are crimson with white tips. Plants are very free in bloom. This is one of the finest and most attractive dahlias ever introduced	.75 <del>1.00</del>
<b>Ellinor Vanderveer.</b> An incomparable dahlia of exquisite beauty and great size, having every desirable quality. The large blossoms are of a glowing, satiny, rose pink. The flowers are of great depth and substance, and are held far above a tall, sturdy bush, on exceptionally long, stiff stems. One of the very first to bloom in our garden, making it very desirable, where the blooming season is short	2.00
<b>El Dorado (A new introduction).</b> An immense blossom of vivid gold, deepening in the center. This exceptionally fine dahlia of great substance stands well out of the foliage of a low growing bush, on strong erect stems, making it not only an exhibition variety, but an excellent cut flower.	2.00

DECORATIVE DAHLIAS—(Continued)

Each

<b>Hercules.</b> A quilled flower of enormous size, color a blending of Tangarine and deep yellow .....	.75
<b>Judge Langford.</b> A new Mastick dahlia, flower large, color velvety purple, lined white; a great producer with strong stems .....	1.00
<b>Judge Alton B. Parker.</b> Very true to form, color a brilliant golden buff, fine for exhibition .....	.75
<b>Judge Marean.</b> The color is a blending of salmon pink, red, Iridescent orange, yellow and pure gold. Medium size, very prolific .....	.75
<b>Jersey's Beauty.</b> The most talked of Eastern dahlia, originated by W. H. Waite. A perfect bloom of Erosine pink, carried high above the foliage on a long wiry stem. This beautiful pink dahlia is a famous prize winner, and one of the best keepers as a cut flower we have ever grown. [REDACTED] .....	1.25
<b>Jessie K. Prescott.</b> A beautiful large flower of an unusual lovely coloring. Deep orange at the center, gradually shading to creamy orange on the rows of outer petals, and illuminated with a violet glow .....	1.00
<b>Katherine Valentine.</b> Flower of medium size, stem long and stiff; color clear salmon tinted orange to center, a fine new cut-flower for the Florist trade .....	1.00
<b>Kittie Dunlap (Bessie Boston).</b> Blooms freely all season, has good keeping qualities, long firm stems, immense size and great substance. In color like American Beauty rose .....	.50
<b>Lucy Davis.</b> The form is that of the perfect decorative type. Color, rich golden apricot, clear and without shading .....	.50
<b>Mary C. Burns.</b> Very large flower of the beautiful two-toned coloring. The outside of the petals are of gold, and the reverse a dull red .....	.50
<b>Meadow Lark (Pelicano. A 1924 introduction).</b> A fine dahlia of a new coloring. It has shadings of buff and straw, with the reverse side of the florets darker. A very large perfect flower, on extra strong stems, a vigorous grower and great producer, fine for cut flowers and exhibition .....	2.00
<b>Mecca.</b> A brilliant burnt orange of the finest form exhibition, flowers carried on a strong stem well above an attractive foliage .....	1.00
<b>Mabel Thatcher.</b> Large flowers of a pale yellow shade are borne on stiff, strong stems; fine exhibition type .....	.50
<b>Millionaire.</b> One of the largest varieties in cultivation. Color is lavender, shading to white .....	.50
<b>Millie Rodgers.</b> A beautiful color of old gold shading to amber. The flowers are held erect on long stems far above the foliage. As a cut flower the blooms last for days. A pretty dahlia for garden effect and good for exhibition purposes .....	.75
<b>Mrs. Carl Salbach.</b> A very attractive shade of lavender pink, with long, straight stems. Unexcelled for exhibition. Consistent prizewinner. A lasting cut-flower .....	.50
<b>Mrs. Florence M. Cornelius.</b> A deep amber shade blending into gold, flowers very deep of the largest size. Stems extra long and wiry, plants very productive; an excellent keeping cut-flower and exhibition variety; a most valuable dahlia for the Florist trade .....	1.25

DECORATIVE DAHLIAS—(Continued)

	Each
Mrs. I. De Ver Warner. This very large blossom of a soft orchid, or rich rosy mauve, is one of the best of the Eastern originations. Refined, beautifully formed flower, with long, stiff stems; a prolific bloomer and a fine cut-flower .....	.75
Mrs. Eleanor Martin (Pelicano New 1924). One of the finest decorative yet offered and it is no exaggeration when we describe it as a Giant flower. The blooms average 10 to 11 inches across on a Giant stem the latter being two feet long and like a cane. The form of the flower is of the best exhibition type, in fact, it combines all the points which go to make a perfect decorative. The color is a beautiful Mulberry suffused with gold; excellent producer, and a good keeper .....	1.50
M. H. De Young (A new introduction). A beautiful blossom of pure old gold with scarcely any variation in color, except perhaps the center is illuminated with a slightly brighter shade. This exceedingly attractive flower is an invaluable addition to the Autumn colored dahlias so much in demand. The large flower is held high on absolutely stiff stems, growing far out of the foliage. An excellent variety for exhibition and cut-flowers. A prize winner of great merit. ....	2.00
Murat. Apricot shading to coral pink. The extreme edge of each petal looks as though an artist's brush had painted it with coral pink .....	1.00
Nobilis. The colors of brilliant crimson and white are well distributed. A constant early and late bloomer .....	.50
Princess Pat. A magnificent new decorative of a glorious shade of old rose .....	.50
President Wilson (New 1924). This is the best sent out by Mr. G. T. West for years. The flowers are large and on long erect stems and of a brilliant vermilion scarlet. A new novelty from England .....	1.50
P. Quimby. Pure white, good keeper .....	.50
Paul Michael. Golden orange in color, shading to old rose on reverse of petals. Won first prize in San Francisco and Oakland. As an exhibition variety, this dahlia is a leader .....	.75
Rosa Nell. A clear, bright rose—a rare color in dahlias. An immense bloom; one of the very largest; of very fine formation, with extra long, stiff stems, held high above a strong, vigorous plant of beautiful foliage .....	.75
Rockwood. A pure bright cerise rose without a touch of magenta, and beautiful under artificial light. The flowers are immense, and are held on stiff stems well above a low growing, spreading bush. An entirely new shade of pink and most difficult to describe, somewhat resembling the Mrs. Charles Russell rose. A prize dahlia of great merit .....	1.00
Senorita. A rich velvety crimson. Each bloom held absolutely erect on extra strong stems, measures from 9 to 10 inches across; of perfect form until late in the season. A 1922 prize winner. ....	1.00
Shudow's Lavender. (Bessie Boston). Very large silvery lavender, shading to white. The stems are perfect and hold the blooms high above the plant. The lavender becomes deeper late in the season, making the flower very attractive. Awarded first prize at Palace Hotel Show for best fifty blooms in 1920, also in 1921, and later .....	1.50
Shannon. A new orange yellow, medium size, wiry stem, very prolific, good keeper as a cut-flower; excellent Florist dahlia .....	.75

DECORATIVE DAHLIAS—(Continued)

	Each
<b>Snowdrift (Broomall).</b> One of the best white decoratives in cultivation; a good keeper .....	.75
<b>The Bashful Giant.</b> Color, apricot with golden shadings. Large flowers on good stems .....	.75
<b>The Grizzly. (.Frank C. Burns).</b> A great dark velvety maroon beauty. Flowers are extra large with reflexed petals, extra long stems .....	.50
<b>"The Pride of California."</b> A crimson red, dark, full center; huge flowers on long perpendicular stems.	.50
<b>The Wizzard of Oz (Doolittle).</b> This vertiable giant is a rare shade of glowing amber pink, of soft salmon shades and held high on strong stems. One of the finest exhibition and cut-flower dahlias. A prize winner wherever shown .....	1.00

HYBRID CACTUS DAHLIAS

The Hybrid Cactus Dahlias are becoming the most popular. They have broader and more massive petals. Many of the largest dahlias are of this type. They are excellent for cut flowers, and being a hardy variety, do well in almost any climate.

	Each
<b>Claremont.</b> Soft rose pink with cream shadings. Extra long stiff stems. A prize winner .....	.75
<b>El Granada (Bessie Boston).</b> The color is a vivid orange, and the petals twist and interlace, showing at the tips a creamy yellow reverse. The long stem grows well out of the foliage and is absolutely stiff and faultless. The high bushes are covered with large, deep flowers with closed centers, from early until late season. As the best six blooms of a three-year-old seedling, it won the Gold Medal of the Dahlia Society of California in 1922. In the show in 1923, two first prizes, for the best twenty-five blooms and Dr. Tevis' prize for the best and most artistic dahlia. ....	2.50
.....	\$ .....
<b>Elsie Oliver (Bessie Boston).</b> A strong grower of a beautiful creamy pink shading to cream in the center. It is a perfect hybrid cactus type, good producer with a strong stem, excellent for exhibition .....	.75
<b>Ismalia.</b> Velvety maroon shading to red. A very large flower with perfect form .....	.50
<b>Insulinda.</b> Very large orange buff, overlaid with a golden sheen, shading to orange deep in center, with old rose on reverse of petals .....	.50
<b>Islam Patrol.</b> Very dark velvety scarlet, tipped and flushed with pure gold. This dahlia should be in every garden as it has wonderful qualities. In 1922 received first prize in collection of eight best California Dahlias shown with stem. First prize in collection of eight Hybrid Cactus Dahlias, Oakland Show. First prize in collection of nine Hybrid Cactus Dahlias, Palace Hotel Show, San Francisco .....	1.00
<b>J. W. Davis.</b> Deep shade of cerise at center, gradually shading to a lighter tint. A very large flower that holds its center throughout the season. One of the finest of the new prize winners .....	1.00
<b>Mariposa.</b> A delightful shade of pink which is intensified by a violet suffusion and deepening in the center. The veining of the petals heightens the beauty and increase the novelty of the coloring. This beautiful bloom of great size and substance, having an extra long, stiff stem, is one of the best for exhibition and for cutting. A prize winner ....	1.25

## HYBRID CACTUS DAHLIAS—(Continued)

	Each
<b>Minamoto.</b> A brilliant scarlet, very large fine form and habit, excellent stem, good cut-flower .....	.50
<b>Moslem.</b> Burnt orange shading to amber. A beautiful flower, large size, and good keeper; a prize winner of great merit .....	.75
<b>Mrs. W. E. Estes.</b> An incomparable white novelty of marvelous beauty. We believe it to be the largest and finest pure white dahlia ever grown. Excellent stem, good keeper .....	.50
<b>Rollo Boy (Pelicano New 1924).</b> This is a Hybrid Cactus of great size with every flower carried perfectly erect on a strong stem. A delicate shade of amber shading to old gold. The plants require little attention as regards thinning. This variety being in a every way one of the most striking advances yet made on the Hybrid Cactus section. It is a conspicuous garden plant and if desired for exhibition it is the largest in this section. Stock limited. A first prize winner .....	1.50

## CACTUS DAHLIA

The Cactus Dahlias described below are of the true type. They have the long narrow pointed petals. When exhibiting for competition, they must have perfectly closed centers.

	Each
<b>Alabastor.</b> Color, pure white, flowers of large size; excellent for exhibition .....	.50
<b>A. R. Perry.</b> Old rose, tipped with gold. A very beautiful and large exhibition flower, with long, narrow, incurved petals .....	.75
<b>Bearclaws.</b> A deep red of giant size American Cactus, fine for exhibition; strong grower, very prolific....	1.00
<b>Curlew.</b> Lavender rose color, fine for exhibition, massive full flowers, very long florets, incurving over center, splendid size and shape .....	.75
<b>Ballet Girl.</b> The biggest percentage of the flowers are orange with a white center .....	.50
<b>Herbret Raby.</b> Wine crimson huge flowers. Long narrow incurving petals; good exhibition cactus .....	.50
<b>Mrs. Margaret Stredwick.</b> A soft pink, deepening at tips and base. Very large and incurved .....	.50
<b>Sydney Jones (New).</b> A new English variety; the most attractive in the cactus of large size; yet easily carried on stiff stems. A deep pink enhanced by a disc of yellow at base tipped with yellow. Very scarce .....	.75
<b>Union Jack.</b> A striking novelty. Large red incurved petals, tipped white. A very attractive dahlia, greatly admired in the garden and on the exhibition table .....	.75



# DAHLIA BULBS 1927

---

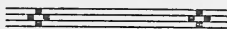
---

## Giant Novelties and Scarce Sorts STOCK LIMITED

---

---

	Each
<b>Amulet.</b> Dec. (Oliver Bessie Boston.) A brownish orange blending into gold, one of the most productive and finest Dahlias we have ever grown .....	\$2.50
<b>Arrow of Gold,</b> (Seal) Dec. ....	1.00
<b>Black Jack.</b> Dec. (Dressler Hogens) .....	1.50
<b>Cambria.</b> (English Dec.) .....	1.00
<b>Dr. H. Derring.</b> Dec. ....	.75
<b>Daddy Butler, H. C.</b> (Bessie Boston) .....	1.50
<b>Dr. James Plunket.</b> Dec. (Seal) .....	.75
<b>Ely Lewiskon.</b> Dec. ....	.75
<b>Faith Garibaldi.</b> Dec. (Bessie Boston) .....	3.50
<b>Gladys Sherwood.</b> Dec. ....	.50
<b>Glory of California.</b> Dec. (Seal) long stem excellent Canary Yellow .....	2.00
<b>Junior.</b> Dec. (Seal) .....	1.00
<b>Leonide.</b> Dec. (Staats) .....	.75
<b>Myra Valentine.</b> Dec. (Mills) .....	.75
<b>Mabel Gardens.</b> Dec. ....	.75
<b>Patty Jane.</b> Dec. (Seal) .....	1.50
<b>Rodman Wanamaker.</b> Dec. ....	2.50
<b>Robert Treat.</b> Dec. (Mueller) .....	1.50
<b>Susan G. Tevis.</b> Dec. (Bessie Boston) .....	2.00
<b>Santa Rosa.</b> Dec. (Pelicano) .....	.75
<b>Somerset.</b> Dec. (Eierman) .....	2.50
<b>Sole Mio. H. C.</b> (Lohrmann) .....	3.00
<b>Sagomore.</b> Dec. ....	2.00
<b>Sun Maid.</b> Dec. ....	1.50
<b>Trentonian.</b> Dec. (Fisher Mason) .....	3.50
<b>Tommy Atkins.</b> Dec. ....	1.50



**KEY ROUTE HEIGHTS NURSERY CO.**

3852 Loma Vista Avenue—Oakland, California

# IMPORTANT

---

---

## How to care for Pot Bulb Tubers when received.

We advise placing the Pot Bulbs in shallow boxes, well drained, cover with leaf mould or pine shavings, keep moderately moist in a temperature at about 55 degrees till planting time. Handled in this manner and with ordinary care in the garden will produce an abundance of blooms of superior quality.

---

---

## TESTIMONIALS

---

---

Cincinnati, Ohio, May 14, 1926.

Dahlias arrived in perfect condition. All looked very good. Many thanks for the extras. I. C. S.

Auburn, R. I., June 12, 1926.

Dahlia plants received. They were on the way just five days. I wish to say that it would be almost impossible to procure as good plants, or have them as well packed. W. S.

Toronto, Ontario, Canada, May 22, 1926.

Dahlia bulbs received. I am more than pleased with the quality and your generous extras. A. T.

Fort Smith, Ark., March 23, 1926.

The Dahlia bulbs have reached me in perfect condition, and I am very much pleased with them.

Mrs. M. L. R.

Cincinnati, Ohio, September 13, 1926.

My numerous visitors have been lavish in their praise of your Dahlia bulbs. J. M. T.

Tipton, Pa., September 8, 1926.

The Dahlias purchased from you done better and bloomed better than any that I got from Eastern growers. Mrs. J. F. K.

Wheeling, W. Va., August 30, 1926.

This was my first season to try your Dahlia Pot Bulbs and to say they were satisfactory, is putting it mildly. In every way they were the best stock I have in my plot this year. T. A. C.

Barrington, N. J., January 15, 1925.

Received Dahlia roots; are very fine; also in best of condition. G. B.

Savannah, Ga., January 22, 1926.

The bulbs received last season did fine; they all grew, which is more than can be said of the field grown Dahlia tubers. P. E.

Sellersburg, Ind., June 1, 1926.

Dahlia plants received in excellent condition; many thanks for the gratis ones. Mrs. A. P.

### PEONY-FLOWERED DAHLIAS

Are of immense size, usually of one to three rows of long flat or twisted and pointed petals, showing a large open yellow center.

	Each
<b>Alma Davis.</b> Salmon pink shading to deep old rose and apricot. A winner of first prizes in California and Eastern Shows; its giant blooms are held on long wiry stems above a strong vigorous plant of a beautiful foliage. It is a fine lasting cut-flower and exhibition variety, the best dahlia in its class and color we have ever grown .....	1.25
<b>Albert Ward.</b> An immense flower of deep purple and one of the best Eastern Dahlias ever introduced. A perfect exhibition flower with good stems.....	1.00
<b>City of Portland.</b> Immense flowers of a clear deep rich yellow, very productive; a first prize winner .....	.50
<b>Gorgeous.</b> Yellow shading to bright scarlet. Because of their unusual substance the blossoms are splendid exhibition and cut-flowers. The plant grows very tall and the late blooms will be as large as the early ones .....	1.00
<b>Miss Strange.</b> A tall growing peony of large size, creamy yellow in color .....	.75
<b>Mrs. Jessie Seal.</b> Pink, great attraction; very superior .....	.50
<b>Mrs. Josiah T. Marean.</b> Old rose with golden shadings at base of flower. Profuse bloomer and vigorous grower. An exceptional exhibition variety .....	1.00
<b>The Oriole (Burns).</b> A stunning big blossom of an attractive mixture of colors, burnt orange, red and yellow. Some flowers on the bush are tipped white. Blooms freely on good stems. Takes the decorative form in the East .....	.75

### COLLARETTE DAHLIAS

Have a single row of eight petals, like the single dahlia, with a collar of small narrow petals around the yellow center.

<b>Abbe Hugonard.</b> Purple edged; collar white .....	.50
<b>Ami Nonin.</b> A beautiful flower shaded old rose .....	.35
<b>Aunt Dinah.</b> Maroon, with a collar of lighter tint ....	.35
<b>Geant De Lyon.</b> An enormous flower of velvety maroon with a long, white collar .....	.50
<b>Herald.</b> Large, rich, rosy pink with white collar .....	.35
<b>The Marksman.</b> Light ground splashed with crimson .....	.35

### POMPON DAHLIAS

The Pompon Dahlias are the finest for cut flowers; blooms are small, compact and full to the center, and produced upon long, wiry stems.

<b>Amber Queen.</b> Golden amber .....	.25
<b>Blush Gem.</b> Pale pink, edged cerise .....	.25
<b>Candy Kid.</b> Coral pink shaded lavender .....	.50
<b>Daisy.</b> Amber shading to apricot .....	.25
<b>Helen Lambert.</b> Canary yellow .....	.25
<b>Johnny.</b> Deep maroon. Very small .....	.25
<b>Little Irene.</b> Clear canary yellow .....	.50
<b>Little Lloyd.</b> Burnt orange to amber .....	.50
<b>Snow Clad.</b> A standard white .....	.25

### SHOW AND HYBRID SHOW DAHLIAS

These Dahlias are the closely quilled ball-shaped varieties. The Hybrid or Giant Shows are becoming great favorites on account of their tremendous size.

<b>Clara Seaton.</b> Color is a rich golden bronze, with a beautiful quilled petals .....	.35
<b>General Haig.</b> Best scarlet show. Remarkably fine....	.35
<b>General Miles.</b> An enormous flower. Color light violet, striped and spotted with purplish magenta ....	.50
<b>Gold Medal.</b> Fancy, bright lemon yellow, regularly striped dark crimson .....	.50
<b>Golden Opportunity.</b> Rich buttercup yellow, shaded burnt orange directly in center of each bloom.....	.35
<b>W. W. Rawson.</b> White overlaid with lavender blush....	.35

# IMPORTANT

---

---

## How to care for Pot Bulb Tubers when received.

We advise placing the Pot Bulbs in shallow boxes, well drained, cover with leaf mould or pine shavings, keep moderately moist in a temperature at about 55 degrees till planting time. Handled in this manner and with ordinary care in the garden will produce an abundance of blooms of superior quality.

---

---

## TESTIMONIALS

---

---

Cincinnati, Ohio, May 14, 1926.

Dahlias arrived in perfect condition. All looked very good. Many thanks for the extras. I. C. S.

Auburn, R. I., June 12, 1926.

Dahlia plants received. They were on the way just five days. I wish to say that it would be almost impossible to procure as good plants, or have them as well packed. W. S.

Toronto, Ontario, Canada, May 22, 1926.

Dahlia bulbs received. I am more than pleased with the quality and your generous extras. A. T.

Fort Smith, Ark., March 23, 1926.

The Dahlia bulbs have reached me in perfect condition, and I am very much pleased with them.

Mrs. M. L. R.

Cincinnati, Ohio, September 13, 1926.

My numerous visitors have been lavish in their praise of your Dahlia bulbs. J. M. T.

Tipton, Pa., September 8, 1926.

The Dahlias purchased from you done better and bloomed better than any that I got from Eastern growers. Mrs. J. F. K.

Wheeling, W. Va., August 30, 1926.

This was my first season to try your Dahlia Pot Bulbs and to say they were satisfactory, is putting it mildly. In every way they were the best stock I have in my plot this year. T. A. C.

Barrington, N. J., January 15, 1925.

Received Dahlia roots; are very fine; also in best of condition. G. B.

Savannah, Ga., January 22, 1926.

The bulbs received last season did fine; they all grew, which is more than can be said of the field grown Dahlia tubers. P. E.

Sellersburg, Ind., June 1, 1926.

Dahlia plants received in excellent condition; many thanks for the gratis ones. Mrs. A. P.

## TO THE TRADE ONLY

25% discount to the Trade for less than 6  
of one variety.

33 1-3% discount for more than 6 of one  
variety.

Special quotations on large lots.

All wholesale orders are F. O. B. Oakland.



## PEONY-FLOWERED DAHLIAS

Are of immense size, usually of one to three rows of long flat or twisted and pointed petals, showing a large open yellow center.

	Each
<b>Alma Davis.</b> Salmon pink shading to deep old rose and apricot. A winner of first prizes in California and Eastern Shows; its giant blooms are held on long wiry stems above a strong vigorous plant of a beautiful foliage. It is a fine lasting cut-flower and exhibition variety, the best dahlia in its class and color we have ever grown .....	1.25
<b>Albert Ward.</b> An immense flower of deep purple and one of the best Eastern Dahlias ever introduced. A perfect exhibition flower with good stems.....	1.00
<b>City of Portland.</b> Immense flowers of a clear deep rich yellow, very productive; a first prize winner .....	.50
<b>Gorgeous.</b> Yellow shading to bright scarlet. Because of their unusual substance the blossoms are splendid exhibition and cut-flowers. The plant grows very tall and the late blooms will be as large as the early ones .....	1.00
<b>Miss Strange.</b> A tall growing peony of large size, creamy yellow in color .....	.75
<b>Mrs. Jessie Seal.</b> Pink, great attraction; very superior .....	.50
<b>Mrs. Josiah T. Marean.</b> Old rose with golden shadings at base of flower. Profuse bloomer and vigorous grower. An exceptional exhibition variety .....	1.00
<b>The Oriole (Burns).</b> A stunning big blossom of an attractive mixture of colors, burnt orange, red and yellow. Some flowers on the bush are tipped white. Blooms freely on good stems. Takes the decorative form in the East .....	.75

## COLLARETTE DAHLIAS

Have a single row of eight petals, like the single dahlia, with a collar of small narrow petals around the yellow center.

<b>Abbe Hugonard.</b> Purple edged; collar white .....	.50
<b>Ami Nonin.</b> A beautiful flower shaded old rose .....	.35
<b>Aunt Dinah.</b> Maroon, with a collar of lighter tint .....	.35
<b>Geant De Lyon.</b> An enormous flower of velvety maroon with a long, white collar .....	.50
<b>Herald.</b> Large, rich, rosy pink with white collar .....	.35
<b>The Marksman.</b> Light ground splashed with crimson .....	.35

## POMPON DAHLIAS

The Pompon Dahlias are the finest for cut flowers; blooms are small, compact and full to the center, and produced upon long, wiry stems.

<b>Amber Queen.</b> Golden amber .....	.25
<b>Blush Gem.</b> Pale pink, edged cerise .....	.25
<b>Candy Kid.</b> Coral pink shaded lavender .....	.50
<b>Daisy.</b> Amber shading to apricot .....	.25
<b>Helen Lambert.</b> Canary yellow .....	.25
<b>Johnny.</b> Deep maroon. Very small .....	.25
<b>Little Irene.</b> Clear canary yellow .....	.50
<b>Little Lloyd.</b> Burnt orange to amber .....	.50
<b>Snow Clad.</b> A standard white .....	.25

## SHOW AND HYBRID SHOW DAHLIAS

These Dahlias are the closely quilled ball-shaped varieties. The Hybrid or Giant Shows are becoming great favorites on account of their tremendous size.

<b>Clara Seaton.</b> Color is a rich golden bronze, with a beautiful quilled petals .....	.35
<b>General Haig.</b> Best scarlet show. Remarkably fine....	.35
<b>General Miles.</b> An enormous flower. Color light violet, striped and spotted with purplish magenta .....	.50
<b>Gold Medal.</b> Fancy, bright lemon yellow, regularly striped dark crimson .....	.50
<b>Golden Opportunity.</b> Rich buttercup yellow, shaded burnt orange directly in center of each bloom.....	.35
<b>W. W. Rawson.</b> White overlaid with lavender blush....	35

# To Our Customers

---

We take great pleasure in presenting you with our new Dahlia Catalog for 1926. We do not list a large collection, but such varieties only that have been selected for their superiority in color, perfection of form, length and stiffness of stem, continuous blooming, etc. We list only novelties, and standard varieties of real merit, based on actual experience and personal observation.

We specialize on pot-grown Bulbs, grown under the most favorable climatic conditions. They will produce for you more perfect blooms, than the field-grown tuber.

Bulbs and green plants will give equally good results.

We supply bulbs after December 15th, pot-grown plants from May 15th to September.

**ORDER EARLY.** As orders are received stock will be reserved and sent at proper time.

**IN COMPARING OUR PRICES** with other Dahlia lists you will find it pays to buy from the grower direct.

**TERMS:** Prices in this Catalog are postpaid first, second and third zones. Cash with order or in advance of shipment.

We **guarantee** all bulbs true to name, and cheerfully replace any that should prove otherwise. Kindly notify us at once. Orders are carefully filled from selected pot-grown Bulbs. We do not substitute unless requested, but it is mutually agreed between the purchaser and ourselves that we shall at no time be liable for an amount larger than the original purchase price.

## Key Route Heights Nursery Company

3852 LOMA VISTA AVENUE

OAKLAND, CALIFORNIA

L. Nelson, Manager