

## **Historic, Archive Document**

Do not assume content reflects current scientific knowledge, policies, or practices.



62.91

RECEIVED  
NOV 26 1927  
U. S. DEPARTMENT of Agriculture



# BULB SUPPLEMENT

## FALL 1927

Also Including Full List of  
ROSES and  
FRUIT TREES

ESTABLISHED 1893  
**MALMO & Co.**  
NURSERYMEN • SEEDSMEN

SEATTLE

Cover Design by  
Landscape Art Department  
MALMO & CO.  
D.W.S. 1925

### WE GROW DAFFODILS, NARCISUS

Importation of which is now prohibited, and offer selected bulbs in all leading varieties, properly grown and matured to assure large blooms and long stems

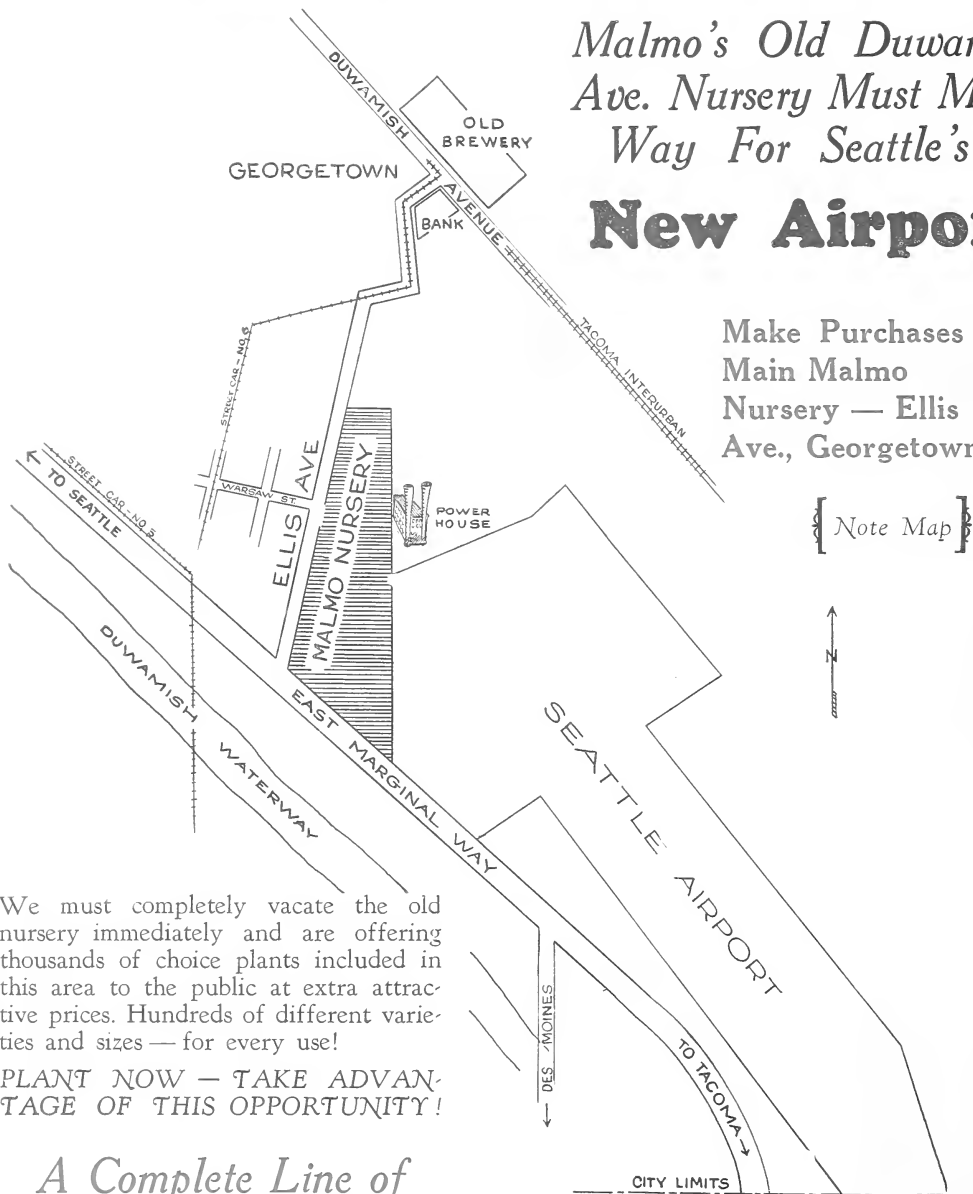
EARLY PLANTING PRODUCES BEST RESULTS

# Home Owners Share In These Exceptional Nursery Stock Values!

*Malmo's Old Duwamish  
Ave. Nursery Must Make  
Way For Seattle's*

## **New Airport**

Make Purchases at  
Main Malmo  
Nursery — Ellis  
Ave., Georgetown



We must completely vacate the old nursery immediately and are offering thousands of choice plants included in this area to the public at extra attractive prices. Hundreds of different varieties and sizes — for every use!

**PLANT NOW — TAKE ADVANTAGE OF THIS OPPORTUNITY!**

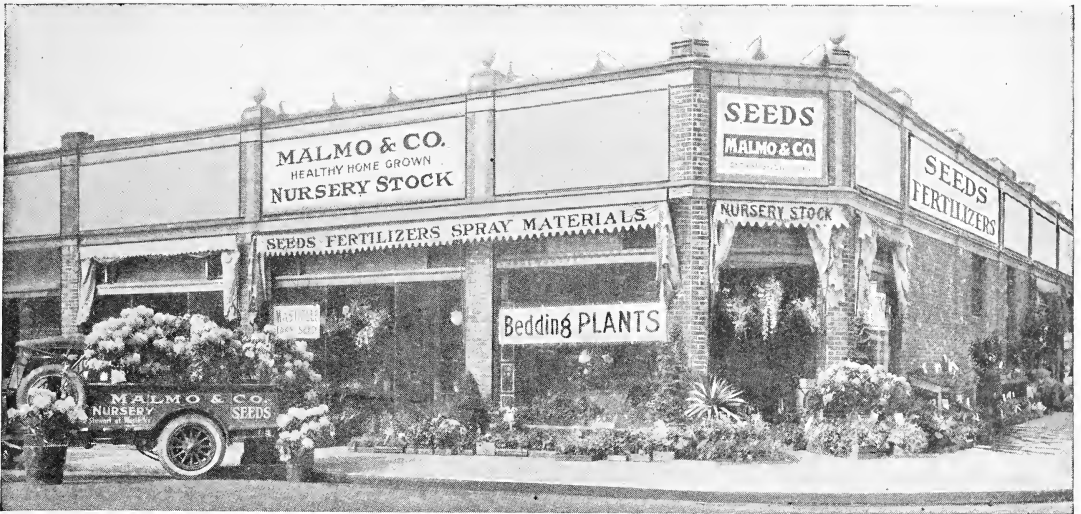
*A Complete Line of  
Ornamental and Fruit Stock Included in these Reductions!*

Large Specimen Trees (Evergreen and Deciduous); Bearing Size Fruit Trees; Berry Bushes  
Over 50,000 Roses in Over 200 Choice Varieties — *Everything for the Landscape!*









CHARLES MALMO  
President and Founder  
of Malmo & Co.



Store: 6th & Westlake  
Times Square, Seattle



Main Nursery:  
Ellis Ave., Georgetown  
Seattle, Wash.



## Announcement!

SEATTLE'S NEW AIRPORT will displace our old Duwamish Avenue Nursery alongside the Tacoma Interurban tracks. Because of this adjustment our Ellis Avenue Nursery, adjoining the airport on the north, will be the scene of exceptional nursery stock values, to which we commend the attention of our many customers.

The increasing business with which we have been favored during the past thirty-five years bespeaks the confidence of a discriminating patronage appreciating the true economy of dependable nursery stock, seeds and bulbs. We cordially invite inquiries and will be pleased to receive suggestions that may assist us in further improving service to our customers.

MALMO & CO.

*Charles Malmo*  
President.

## Write For Our Complete Catalogue!

Our 124-page illustrated 1927 General Nursery Catalog and Planting Guide, listing our complete line of choice ornamental and fruit nursery stock, is mailed free on request.

The Spring 1928 Nursery Stock Catalog, including vegetables and flower tested seeds, will be ready for mailing in January.

MALMO & CO.

## How To Order:

**Local Customers:** You may order by telephone. Shopping from your home is facilitated by our telephone order department. It provides you with a quick and efficient method of placing your order which will receive the same careful and prompt attention by our experienced nurserymen and seedsmen as if you were present.

**Mail Orders:** Fill out order sheet carefully, sending in same as soon as convenient after receiving this catalog. Nursery Stock, Seeds and Bulbs should have the desired quantity written distinctly in the column provided for that purpose, with price after each item.

**Packing and Shipment**—We are especially equipped for packing Nursery Stock and Seeds for long distance shipping. We have had thirty years experience in handling goods of this class and pack to insure arrival at destination in good condition regardless of distance.

**Freight**—On Nursery Stock orders of \$10.00 or more we prepay freight charges to any point within 50 miles of Seattle. On orders for less than \$10.00 add enough to cover transportation.

**Parcel Post.** ..Parcels weighing 8 oz. or less containing seeds, cuttings, bulbs, roots, scions and plants, 1 cent for each 2 oz. or fraction thereof, regardless of distance.

Other parcels of fourth class matter are chargeable according to distance zone as follows:

The limit of size of a package that will be accepted by parcel post is 84 inches in length and girth combined. Larger packages must be forwarded by express or freight.

**TERMS**—Cash with order. Send remittances by Money Order, Draft or Registered Letter.

We exercise the greatest care to furnish seeds, bulbs, plants, shrubs and trees that are pure and reliable, but owing to the various conditions of climate, soil and cultivation attending success, we do not warrant in any way, express or implied, the description, purity, productiveness or any other matter of any seeds, bulbs, plants, shrubs or trees sold by us, and we will not be in any way responsible for the crop. If the purchaser does not accept these goods on above terms, no sale is made thereof and the goods must be returned to us at once and the money will be refunded.

**References**—The National City Bank or any bank or wholesale house in Seattle.

Domestic Parcel Post Rates				For First Pound Allow	For Each Additional Pound Add
Within the U. S. and Possessions, zones from Seattle, Wash.					
First Zone	within	50	miles	\$0.07	\$0.01
Second	"	50 to 150	"	.07	.01
Third	"	150 to 300	"	.08	.02
Fourth	"	300 to 600	"	.09	.04
Fifth	"	600 to 1000	"	.10	.06
Sixth	"	1000 to 1400	"	.11	.08
Seventh	"	1400 to 1800	"	.13	.10
Eighth	"	over 1800	"	.14	.12



# Flowering Bulbs For Fall Planting

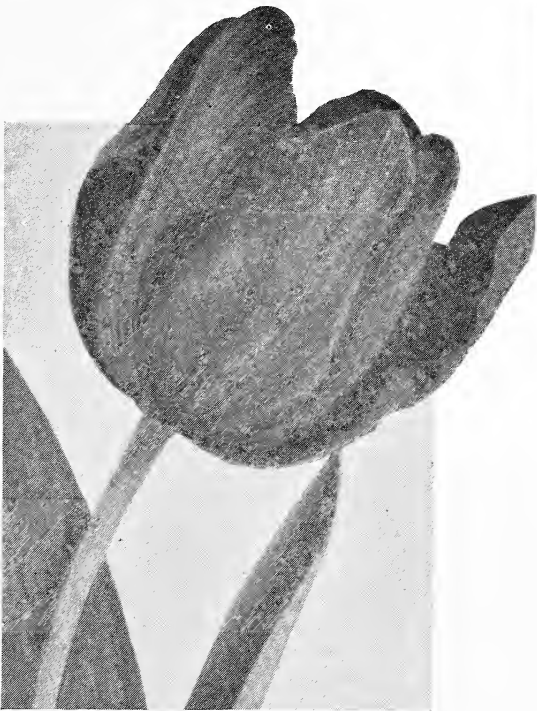
There are no flowers which will give more pleasure and satisfaction than the Winter and Spring Flowering Bulbs. Their culture is so simple and easily understood that anyone can have splendid success with them by exercising a little care and forethought. On the Pacific Coast most bulbs may be planted from October to February. Bulbs planted in October or November will give better results than if planted later. By planting early flowering bulbs, it is possible in our mild climate to have a continuation of flowers the year round.

## Tulips

The climate on the Pacific Coast is ideal for the growing of Tulips. They may be left in the ground from year to year, otherwise the directions for culture are the same as for hyacinths, except that tulips cannot be grown in water.

### EARLY SINGLE TULIPS

The following list is made up entirely of the best varieties, all of which are suitable for either forcing or bedding. We import only the highest grade first size bulbs which always give the best results. **Malmö pays the postage.**



EARLY TULIP—De Wet

**ALBION (White Hawk).** Pure white; globular with delicately crinkled petals; beautiful in mass effect; tall. Doz. 50c; 100 \$3.50.

**ARTUS.** Deep scarlet, dwarf variety. Doz. 50c; 100 \$3.50.

**BELLE ALLIANCE.** Dashing scarlet, sweet scented. Doz. 60c; 100 \$4.50.

**BRILLIANT STAR.** Bright vermilion scarlet, large with long stem; good for forcing; tall variety. Doz. 75c; 100 \$5.50.

**COTTAGE MAID.** Blending of pink and white, gorgeous in pots or window boxes. Doz. 60c; 100 \$4.50.

**CHRYSOLOGA.** Rich, pure golden yellow; large. Doz. 60c; 100 \$4.50.

**COULEUR DE CARDINAL.** Velvety crimson, inside glittering scarlet. Especially adapted to late forcing or outdoor planting. Doz. 75c; 100 \$5.50.

**CRAMOISE BRILLIANT.** Bright vermilion of large size; makes beds of remarkable brilliance. Doz. 50c; 100 \$3.50.

**CULLINAN.** White, changing to delicate pink; extra large flower. Doz. 60c; 100 \$4.50.

**GENERAL DE WET.** Beautiful deep orange, shaded golden yellow at the base of the petals. Large, sweet-scented flower. One of the most beautiful early tulips. Recommended both for forcing and bedding. Each 15c; Doz. \$1.50; 100 \$11.00.

**FRED MOORE.** Deep apricot shaded with orange; very early and beautiful; fine for forcing. Doz. 60c; 100 \$4.50.

**GOLD FINCH.** Long lasting pure yellow; sweet scented; forces well. Doz. 60c; 100 \$4.50.

**HERMAN SCHLEGEL (Primrose Queen).** Beautiful soft primrose with canary yellow border. Doz. 60c; 100 \$4.50.

**IBIS.** Clear, deep unfading rose with white markings; long stems. Doz. \$1.00; 100 \$7.50.

**KEIZERSKROON.** Carmine-scarlet with broad yellow border. Probably the most popular Early Tulip. Enormous flower on tall, stiff stem. Excellent for forcing and bedding. Doz. 85c; 100 \$6.50.

**LADY BOREEL.** Largest pure white tulip; beautifully formed. Doz. 60c; 100 \$4.50.

**LA REINE.** White, flushed with rose edge; splendid for forcing. Doz. 50c; 100 \$3.50.

**LA REINE MAXIMA.** Same color as La Reine but much larger. Doz. 60c; 100 \$4.50.

**PINK BEAUTY.** Large vivid pink with white base starred yellow. Enormous superb flowers on long, stiff stems; fine late forcer. Doz. \$1.00; 100 \$7.50.

**PRINCE OF AUSTRIA.** Large brilliant orange scarlet; long stems; fragrant. Doz. 60c; 100 \$4.50.

**PROSPERITY (Reine des Reines).** Glorious deep pink. Doz. 60c; 100 \$4.50.

**RISING SUN.** Very deep golden yellow, long huge flowers of handsome form and habit. Doz. 75c; 100 \$5.50.

**ROSE GRISDELIN.** Extra fine delicate pink, splendid for edging evergreens. Doz. 50c; 100 \$3.50.

**ROSE LA REINE.** Large exquisite clear pink. Doz. 60c; 100 \$4.50.

**ROSE LUISANTE.** Large, deep silky rose; adapted for borders or late forcing. Doz. 85c; 100 \$6.50.

**VERMILLION BRILLIANT.** Dazzling vermilion; large, excellent for forcing. Doz. 85c; 100 \$6.50.

**YELLOW PRINCE.** Golden yellow; sweet scented; excellent for borders. Doz. 60c; 100 \$4.50.

**WHITE HAWK.** See Albion.

**MALMO'S EARLY MIXED.** For pot culture, beds or borders. Doz. 50c; 100 \$3.50.

## Your Lawn

or garden will produce more luxuriant growth if the proper fertilizer is applied. See page 35



# Early Double Tulips

The large double tulips are a little later in blooming than the single. Their gorgeous peony-like blooms in brilliantly contrasting colors are excellent for bedding as well as forcing.

**BOULE DE NEIGE** (Snowball). Large, pure white, peony-like flower; fine for bedding or forcing. Doz. 85c; 100 \$6.50.

**COURONNE D'OR**. Deep yellow flushed with orange; large flower; good bedding variety. Doz. 85c; 100 \$6.50.

**IMPERATOR RUBRORUM**. Bright scarlet; exceedingly attractive outdoors. Doz. 85c; 100 \$6.50.

**MURILLO**. Delicate rose pink flushed with white; fine for bedding; very easily forced. Doz. 85c; 100 \$6.50.

**RUBRA MAXIMA**. Rich deep red; excellent bedder. Doz. 85c; 100 \$6.50.

**TEA ROSE** (Brimstone Beauty or Yellow Murillo). Soft saffron yellow as in many tea roses; fine for forcing or bedding. Doz. 85c; 100 \$6.50.

**TOURNESOL**. Flashing red with yellow border; very showy. Doz. 85c; 100 \$6.50.

**VUURBANK**. Brilliant scarlet flowers of enormous size borne on fine straight, stiff stems. Doz. 85c; 100 \$6.50.

**MALMO'S DOUBLE MIXED**. Doz. 75c; 100 \$5.50.

## May Flowering or Cottage Tulips

These come into bloom in early May after the single varieties have passed. They are hardy and robust, with long slender, but very stiff stems, being fine to plant with Darwins for color contrast.

Malmö pays the postage.

**AMBROSIA** (new). Lilac rose with broad tan margins inside bright orange changing to tan; yellow base with green halo; one of the finest new cottage tulips. Each 25c; Doz. \$2.50.

**AVIS KENNICOTT**. Rich chrome-yellow, with black base and anthers; long flower of immense size. Doz. \$1.50; 100 \$11.50.

**BOUTON D'OR** (Golden Beauty). Rich golden yellow, distinctive in mass effect; long stems fine for cutting. Doz. 50c; 100 \$3.50.

**CALEDONIA**. Bright flaming orange scarlet. Doz. 50c; 100 \$3.50.

**FAIRY QUEEN**. Rose lilac bordered with amber yellow. Doz. 50c; 100 \$3.50.

**GESNERIANA LUTEA**. Deep yellow; a large magnificent flower. Doz. 50c; 100 \$3.50.

**GESNERIANA LUTEA PALLIDA**. Primrose yellow. Large flowers showing to advantage in foreground of evergreens. Doz. 60c; 100 \$4.50.

**GESNERIANA SPATHULATA MAJOR**. Dazzling scarlet with deep blue base, magnificent against evergreens. Doz. 50c; 100 \$3.50.

**INGLEScombe PINK**. Salmon-pink, blue base, very brilliant. A great favorite in England. Doz. 50c; 100 \$3.50.

**INGLEScombe SCARLET**. Intense vermilion red with black base; large, showy. Doz. 50c; 100 \$3.50.

base; large globular flower of brilliant coloring; sweet scented. Doz. 60c; 100 \$4.50.

**PICOTEE**. White, edge suffused with carmine; pointed petals; fine window box flower. Doz. 50c; 100 \$3.50.

**SIREN**. Dazzling, pure white. Beautiful in contrast to red varieties. Each 10c; Doz. 75c; 100 \$5.50.

**SNOWDON**. Dazzling, pure white. Beautiful in contrast to red varieties. Doz. 60c; 100 \$4.50.

**SUNSET**. Red and gold in a remarkable flashy combination. Doz. 60c; 100 \$4.50.

**THE FAWN**. Pale rose buff changing to cream flushed bluish rose; large egg-shaped flower; fine for bedding. Doz. 60c; 100 \$4.50.

**MALMO'S COTTAGE MIXED**. All colors. Doz. 50c; 100 \$3.50.



MAY FLOWERING TULIP  
Gesneriana Spathulata Major

See Our  
SPECIAL  
SWEET PEA  
OFFER!

Inside Back Cover

**INGLEScombe YELLOW**. Glossy canary yellow; large globular flowers of perfect form; resembles Darwins. Doz. 50c; 100 \$3.50.

**JOHN RUSKIN** (New). Salmon-rose, edged soft lemon-yellow; inside deep rosy lilac, with broad yellow margin and base; a beautiful variety of opalescent coloring; large well shaped flower. Doz. 75c; 100 \$5.50.

**LA MERVEILLE** (New). Orange-scarlet, flushed rose, with yellow base; long, large flower; sweet scented. A fine variety for all purposes. Doz. 60c; 100 \$4.50.

**MOONLIGHT**. Clear sulphur yellow; long oval blooms. Doz. 60c; 100 \$4.50.

**MRS. MOON**. Large pure yellow; sweet scented; long petals. Doz. 75c; 100 \$5.50.

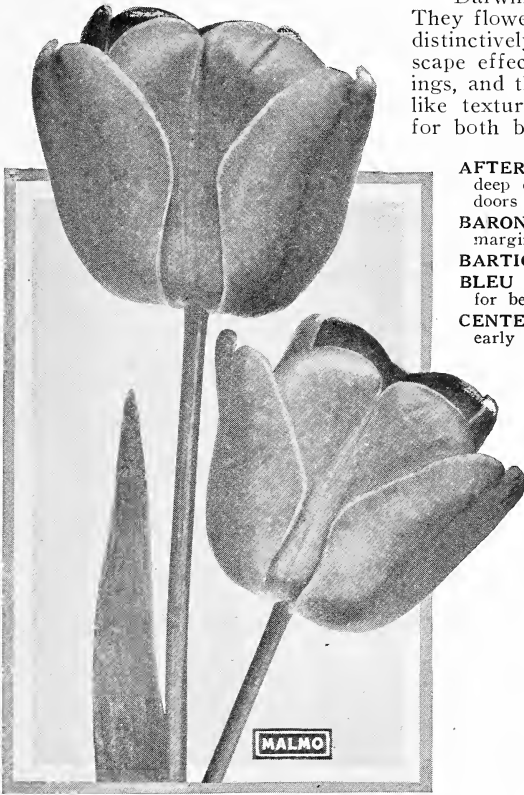
**ORANGE KING** (New). Glistening deep orange with yellow



MAY FLOWERING TULIP  
Mrs Moon

# Giant Darwin Tulips

Darwins are the most popular Tulips for outside planting. They flower in May, are of giant size and have a majestic beauty distinctively their own that is invaluable for garden and landscape effects. They come in the most varied and brilliant colorings, and their immense flowers of perfect form and satiny, wax-like texture, long stems and lasting qualities, make them ideal for both bedding and cutting. **Malmo pays the postage.**



**DARWIN TULIP—Farncombe Sanders**

**LA TULIPE NOIRE.** Very dark maroon-black. The blackest of all tulips. Doz. 75c; 100 \$5.50.

**LENOTRE.** Magnificent clear pink; strong stem; good bedder. Doz. 60c; 100 \$4.50.

**PAINTED LADY.** Creamy white with brushings of lavender; delicate flowers; good for borders. Doz. 50c; 100 \$3.50.

**PHILIPPE DE COMMINES.** Velvety deep maroon. Large flower on sturdy stem. Doz. 50c; 100 \$3.50.

**PRIDE OF HAARLEM.** Brilliant rose carmine with blue base; very large flower of superb form; tall strong stems; sweet scented; excellent for massing with landscape groups. Doz. 50c; 100 \$3.50.

**PRINCESS ELIZABETH (New).** Deep clear pink, later changing to rose-pink, white base. A large flower of perfect shape; quite like a rose when first opening. Doz. 85c; 100 \$6.50.

**PRINCE OF THE NETHERLANDS.** Glowing cerise-scarlet, edged rose with blue base, with showy white mid-rib; large flowers on long stems; last well in garden or when cut. Doz. 75c; 100 \$5.00.

**PROF. RAUWENHOF.** Bright cherry-red, shading to salmon with scarlet glow inside; brilliant blue base; excellent forcer. Doz. 60c; 100 \$4.50.

**PSYCHE.** Silvery rose edged with soft rose, pale blue base; large bloom; excellent for mass formation. Doz. 50c; 100 \$3.50.

**YELLOW DARWIN.** We recommend Inglescombe Yellow for planting with Darwins, as it is superior to the true Darwin yellows. Doz. 50c; 100 \$3.50.

**AFTERGLOW (New).** Deep rosy orange, edges tinted salmon; inside deep orange with yellowish base; a magnificent showy tulip for outdoors only. Each 15c; Doz. \$1.25; 100 \$9.50.

**BARONNE DE LA TONNAYE.** Bright rose pink with blush rose margin; cup-shaped flower; sturdy for bedding. Doz. 50c; 100 \$3.50.

**BARTIGON.** Dazzling scarlet; large with fine stem. Doz. 50c; 100 \$3.50.

**BLEU AIMABLE (New).** Soft lilac blue; large, late flower; excellent for bedding or late forcing. Doz. 60c; 100 \$4.50.

**CENTENAIRE.** Rich violet rose with large blue base; large flowers; early and a good forcer. Doz. 60c; 100 \$4.50.

**CLARA BUTT.** Delicate salmon pink flushed with salmon rose, blue base with white halo; large flower of handsome shape; exceptionally popular for massed bedding. Doz. 50c; 100 \$3.50.

**CITY OF HAARLEM (New).** Fiery cardinal red with deep violet base outlined with white halo; a wonderful cup-shaped flower with petals incurving slightly at tips, giving a striking effect when open. Ea. 25c; Doz. \$2.50.

**DREAM.** Beautiful lilac with flush of deep heliotrope. Doz. 60c; 100 \$4.50.

**FARNCOMBE SANDERS.** Rich brilliant scarlet with base; large broad petals notched at tip forming uniform flowers of perfect shape; gorgeous for bedding. Doz. 50c; 100 \$3.50.

**FAUST.** Deep purple wine violet, produces rich effects among other tulips. Doz. 75c; 100 \$5.00.

**GRETCHEN (Margaret).** Fine delicate flesh pink. Exceptionally pleasing contrast with evergreens. Doz. 50c; 100 \$3.50.

**HARRY VEITCH.** Rich mahogany red with brighter edge, and blue base, very brilliant in sunlight. Doz. 50c; 100 \$3.50.

**KING GEORGE V (New).** Glowing salmon-scarlet shaded bright rose, inside brilliant orange-scarlet with base slightly starred blue with white halo. A flower of immense size and splendid, long strong stem, unsurpassed for outdoor planting. A popular leader at recent flower shows. Ea. 30c; Doz. \$3.00.

**MADAME KRELAGE.** Soft rose-pink, superb variety for borders and pot culture. Doz. 50c; 100 \$3.50.

**MASSACHUSETTS.** Vivid pink with light rose edge, white center; large flower. Doz. 50c; 100 \$3.50.

**REV. EWBANK.** Soft lavender-violet, with silver-gray flush, darkening toward the white base; large flower. Doz. 50c; 100 \$3.50.

**ROI D'ISLANDS.** Lovely soft old rose with narrow whitish border; inside soft violet-rose, with blue base; very large bloom on strong stem; excellent for partially shaded places. Doz. \$1.00; 100 \$7.50.

**VALENTINE.** Soft bluish heliotrope, shaded light violet, blue base; long large flowers, gracefully carried on tall stems. A magnificent tulip. Doz. 75c; 100 \$5.50.

**VESTA (New).** Pure white flower; excellent forcer. Ea. 10c; Doz. \$1.00; 100 \$7.50.

**WHITE QUEEN.** Clear white tinged with delicate blush pink. Doz. 50c; 100 \$3.50.

**WILLIAM COPELAND.** Lovely lilac shade; an excellent forcer; fine for cutting. Doz. 60c; 100 \$4.50.

**WILLIAM PITT.** Very dark crimson, white base; large flower; fine for with purple bloom on outer petals; borders. Doz. 60c; 100 \$4.50.

**ZULU.** Rich velvety purple black with shingling purple edge; large, egg-shaped flower with pointed petals; good for forcing or use in borders. Doz. 60c; 100 \$4.50.

## MALMO'S Darwin Mixed

A select assortment  
of all colors.

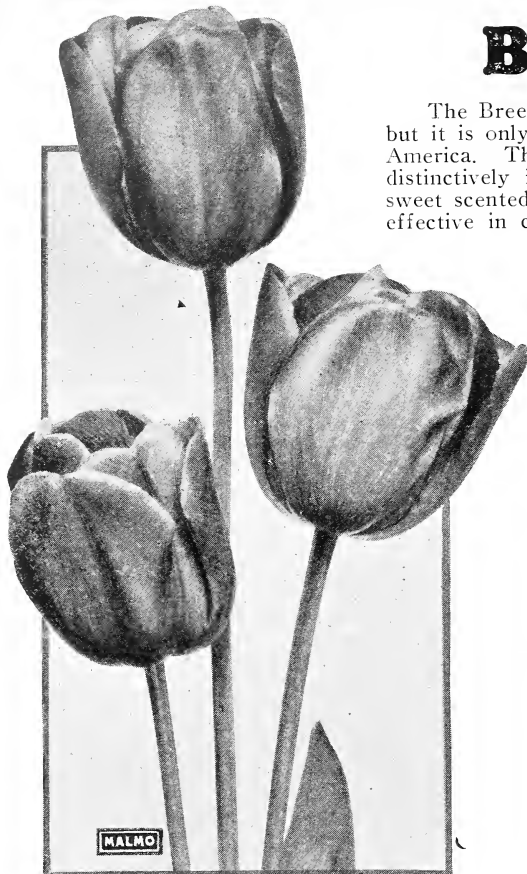
Selected size XX. Doz. 50c;  
100 \$3.50; 1000 \$30.00.

First Size. Doz. 40c; 100  
\$3.00; 1000 \$27.50.

Second size. Doz. 30c; 100  
\$2.50; 1000 \$23.00.

## Breeder Tulips

The Breeder Tulips have been favorites in Holland for centuries, but it is only within recent years that they have become known in America. Their majestic size and remarkable colors place them distinctively in a class by themselves. Many of the flowers are sweet scented, and all are splendid for cutting. They are also very effective in combination with the Darwins, flowering late in May.



BREEDER TULIP—Louis XIV

**BRONZE QUEEN.** Soft bronze outside petals, with inside petals a golden hue; an exceptional color combination greatly admired at recent flower shows. **Doz. 85c; 100 \$6.50.**

**CARDINAL MANNING (New).** Dull wine-red flushed with rosy bronze, changing to rosy violet. A very large flower. **Doz. 85c; 100 \$6.50.**

**CORIDION.** Clear yellow, overlaid with a broad stripe of lilac through center of petals. A tulip of rare form and beauty. **Doz. \$1.25; 100 \$9.50.**

**DON PEDRO.** Coffee-brown and maroon, shaded with old gold; robust in habit and a fine cut flower. **Doz. \$1.00; 100 \$7.50.**

**FEU ARDENT.** Flashing fiery red blending into deep red at base; excellent forcer. **Doz. \$1.25; 100 \$9.50.**

**HAMLET (New).** Dull coffee-brown with a faint flush of rosy purple through center of petals; inside dark brown with yellow base. A flower of good size and distinct color. Splendid for contrast with paler tulips. **Doz. 85c; 100 \$6.50.**

**INDIAN CHIEF.** Reddish mahogany flushed purple with yellow base; a huge flower of wonderful substance and most artistic shape carried on a very tall strong stem. Always a triumphant entry at spring flower shows. **Ea. 75c; Doz. \$7.50.**

**LA SINGULIERE.** White changing to wine-red. **Doz. \$1.00; 100 \$7.50.**

**LOUIS XIV.** Gorgeous rosal purple flushed golden bronze, with broad margin of golden-brown; very large, globular flowers with green black base starred yellow. Creates a sensation wherever shown. **Ea. 15c; Doz. \$1.50; 100 \$11.50.**

**PANORAMA.** Deep orange shaded mahogany red; olive green base with yellow pistil and violet anthers; excellent for bedding. **Doz. 85c; 100 \$6.50.**

**TURENNE (New).** Purplish brown with broad margin and base of amber-yellow; a very large and attractive flower. **Ea. 15c; Doz. \$1.50; 100 \$11.50.**

**YELLOW PERFECTION.** Light bronze-yellow edged with gold. A large flower of remarkable beauty. **Doz. \$1.00; 100 \$7.50.**

**MALMO'S BREEDERS MIXED.** All colors suitable for garden borders, beds, etc. **Doz. 60c; 100 \$4.50.**

## Parrot Tulips

The petals of these tulips have peculiarly feathered and fringed edges, giving them a very ragged appearance. This character, together with the showy striped and shaded coloring and long stems make them unlike any other tulip and a striking and lasting effect in the garden.

**ADMIRAL OF CONSTANTINOPLE.** Large, red tipped with orange. **Doz. 65c; 100 \$5.00.**

**CRAMOISE BRILLIANT.** Deep crimson. **Doz. 65c; 100 \$5.00.**

**LUTEA MAJOR.** Pure yellow. **Doz. 65c; 100 \$5.00.**

**MARKGRAAF.** Inside orange, outside scarlet and yellow. **Doz. 65c; 100 \$5.00.**

**PERFECTA.** Yellow, scarlet feathered. **Doz. 65c; 100 \$5.00.**

**MALMO'S PARROT TULIP MIXTURE.** All colors. **Doz. 60c; 100 \$4.50.**

## Rembrandt, Bybloem, Bizarre Tulips

These flower at the same time and are somewhat similar to the Breeder and Darwin Tulips, but do not grow so tall and are quaintly and very attractively striped and feathered in contrasting colors. They appear especially to advantage in clumps among shrubs or in a border.

**REMBRANDT TULIPS.** All colors mixed. **Doz. 75c; 100 \$5.50.**

**BIZARRE.** Choice mixture of varieties. **Doz. 75c; 100 \$5.50.**

**BYBLOEM.** All colors mixed. **Doz. 75c; 100 \$5.50.**



PARROT TULIP—Lutea Major



# Crocus



## CROCUS

This is the earliest bulb to blossom in spring. Although most showy when massed in large beds, or when planted in lines of distinct colors, a very desirable effect is produced by setting Crocus here and there over the lawn.

Crocus will care for themselves, blooming very

early amid the grass and dying down to the bulb in ample time to be entirely out of the way of the lawn mower. The Crocus should be planted in the autumn, in any good garden soil, about three inches deep and about two inches apart, if in beds or borders.

**ALBION.** Fine purple variety. Good for planting generously in lawns. Doz. 35c; 100 \$2.00; 1000 \$15.00.

**BARON BRUNOW.** Blue-mauve, large spring blooming variety. Doz. 35c; 100 \$2.00; 1000 \$15.00.

**CAESAR.** Huge purple flower; appears well as a garden border. Doz. 35c; 100 \$2.00; 1000 \$15.00.

**KING OF THE WHITES.** Pure white; very large handsome. Doz. 35c; 100 \$2.00; 1000 \$15.00.

**LOTHAIR.** Lilac striped with purple, very dainty. Doz. 35c; 100 \$2.00; 1000 \$15.00.

**MAMMOTH YELLOW.** Rich deep yellow. Very fine for planting in sunshine, or blending with white varieties.

Select size XX; Doz. 45c; 100 \$3.00; 1000 \$25.00.

First size; Doz. 35c; 100 \$2.00; 1000 \$15.00.

**MIKADO.** Lilac deeply flushed with mauve stripes on inside. Very fine for planting with other colors. Doz. 35c; 100 \$2.00; 1000 \$15.00.

**PALLAS.** Blue with white stripes; large flowers, which produce lovely effects in rock gardens. Doz. 35c; 100 \$2.00; 1000 \$15.00.

**PURPUREA GRANDIFLORA.** Deep purple, large flowers of very rich color. One of the earliest. Doz. 35c; 100 \$2.00; 1000 \$15.00.

**SIR WALTER SCOTT.** Snow white with delicate blue stripes; early spring bloomer. Doz. 35c; 100 \$2.00; 1000 \$15.00.

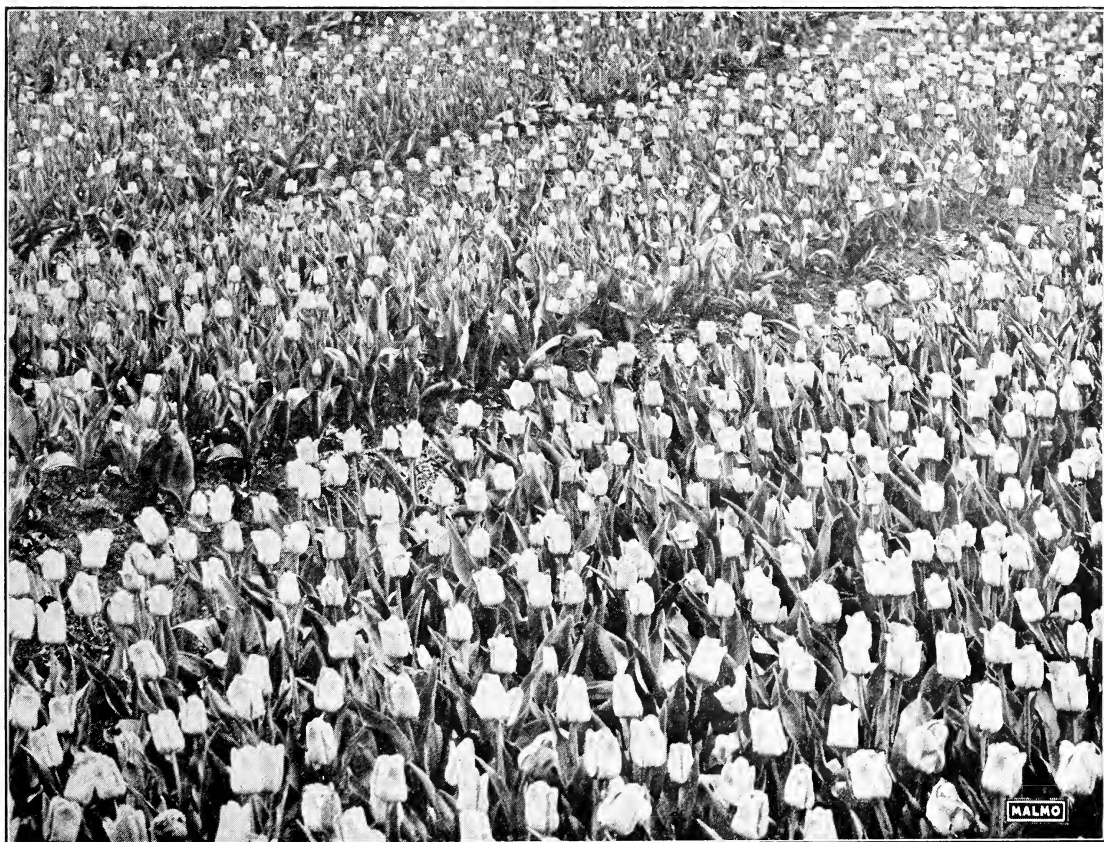
**SHADES OF BLUE AND PURPLE.** Doz. 25c; 100 \$1.50; 1000 \$10.00.

**SHADES OF WHITE.** Doz. 25c; 100 \$1.50; 1000 \$10.00.

**SHADES OF STRIPED.** Doz. 25c; 100 \$1.50; 1000 \$10.00.

**SHADES OF YELLOW.** Doz. 25c; 100 \$1.50; 1000 \$10.00.

**MALMO'S SELECT MIXTURE.** Doz. 25c; 100 \$1.50; 1000 \$10.00.



SECTION OF FIELD OF TULIPS IN TRIAL GROUNDS AT OUR GEORGETOWN NURSERIES

# Mammoth Single Hyacinths

Single Hyacinths are more desirable than the double. They are better for forcing, more vigorous in growth and are more beautiful than those of the double sorts. Customers at a distance will find it convenient to order bulbs by mail. MALMO PAYS THE POSTAGE.

**OUTDOOR CULTURE.** The bulbs may be planted any time from October to February. They succeed in any good, well drained garden soil. Dig deep and mix in a little fertilizer. Set the bulbs so that the tops will be between two and three inches below the surface and six to ten inches apart, with a little sand under and above them if it is convenient, being careful that none of the fertilizer comes in direct contact with the bulbs. Early planting brings the best results.

**POT CULTURE IN THE HOUSE.** Plant from September to December in rich, sandy loam, inserting the bulb (base downward) so that the top is just above the surface. Do not pack the soil in the pots, as the bulbs will be much less liable to push out when the root growth commences if the soil is not packed. Water thoroughly and set the pots away in a cool, dark place for three weeks. This will allow the roots to grow and become firmly fixed in the soil. The plants can then be brought into the light and will at once commence the top growth. Keep near the light, and at a temperature of 50 to 70 degrees. Water frequently.

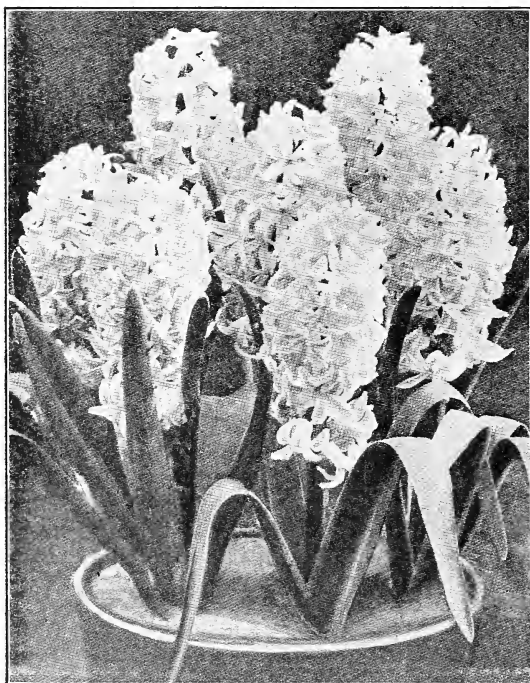
**WATER CULTURE.** Fill the glass with water until the base of the bulb rests on the water. Set away in the dark for three weeks. Fill up the glass with water as fast as it evaporates. If the water becomes impure it should be changed and the roots well cleaned before putting in again. A small piece of charcoal put in the glass will keep the water pure much longer. Give as much fresh air as possible without a direct draught, plenty of light and keep the glasses full of water. If moved out of the direct rays of the sun, flowers will last longer.

**ARENTE ARENSEN.** New. Pure white; very early.  
Extra Selected XX, Ea. 30c; Doz. \$3.00; 100 \$22.50.  
Selected first size, Ea. 25c; Doz. \$2.50; 100 \$18.50.

**BUFF BEAUTY.** A New and odd variety; buff orange yellow; large spike. Extra selected XX, Ea. 30c; Doz. \$3.00; 100 \$22.50.  
Selected first size, Ea. 25c; Doz. \$2.50; 100 \$18.50.

**CITY OF HAARLEM.** Golden yellow; excellent form  
Extra Selected XX, Ea. 30c; Doz. \$3.00; 100 \$22.50.  
Selected first size, Ea. 25c; Doz. \$2.50; 100 \$18.50.

**DR. LIEBER.** Deep porcelain blue; large, early.  
Extra Selected XX, Ea. 30c; Doz. \$3.00; 100 \$22.50.  
Selected first size, Ea. 25c; Doz. \$2.50; 100 \$18.50.



HYACINTHS—L'Innocence

**GENERAL DE WET.** New. Soft pink; handsome, large, well filled spike. Extra Selected XX, Ea. 30c; Doz. \$3.00; 100 \$22.50.  
Selected first size, Ea. 25c; Doz. \$2.50; 100 \$18.50.

**GERTRUDE.** Rosy pink; large attractive, well filled spike.  
Extra Selected XX, Ea. 30c; Doz. \$3.00; 100 \$22.50.  
Selected first size, Ea. 25c; Doz. \$2.50; 100 \$18.50.

**GRAND LILAS.** Light porcelain blue; large spike and bells. Extra Selected XX, Ea. 30c; Doz. \$3.00; 100 \$22.50.  
Selected first size, Ea. 25c; Doz. \$2.50; 100 \$18.50.

**GRAND MAITRE.** Deep lavender blue; very fine spike.  
Extra Selected XX, Ea. 30c; Doz. \$3.00; 100 \$22.50.  
Selected first size, Ea. 25c; Doz. \$2.50; 100 \$18.50.

**KING OF THE BELGIANS.** Fine deep red; extra large spike. Extra Selected XX, Ea. 30c; Doz. \$3.00; 100 \$22.50.  
Selected first size, Ea. 25c; Doz. \$2.50; 100 \$18.50.

**KING OF THE BLUES.** Late flowering and of incomparable beauty; large deep blue bells and compact spikes.  
Extra Selected XX, Ea. 30c; Doz. \$3.00; 100 \$22.50.  
Selected first size, Ea. 25c; Doz. \$2.50; 100 \$18.50.

**LADY DERBY.** Bright rose pink; large bells and spike.  
Extra Selected XX, Ea. 30c; Doz. \$3.00; 100 \$22.50.  
Selected first size, Ea. 25c; Doz. \$2.50; 100 \$18.50.

**LA GRANDESSE.** Pure snow white; fine form.  
Extra Selected XX, Ea. 30c; Doz. \$3.00; 100 \$22.50.  
Selected first size, Ea. 25c; Doz. \$2.50; 100 \$18.50.

**LA VICTOIRE.** Brilliant carmine-red; large spike.  
Extra Selected XX, Ea. 30c; Doz. \$3.00; 100 \$22.50.  
Selected first size, Ea. 25c; Doz. \$2.50; 100 \$18.50.

**L'INNOCENCE.** Pure white, large bells, open spike.  
Extra Selected XX, Ea. 30c; Doz. \$3.00; 100 \$22.50.  
Selected first size, Ea. 25c; Doz. \$2.50; 100 \$18.50.

**MARCHIONESS OF LORNE.** A fine new variety; clear orange yellow; large spike. Extra Selected XX, Ea. 30c; Doz. \$3.00; 100 \$22.50.  
Selected first size, Ea. 25c; Doz. \$2.50; 100 \$18.50.

**MENELIK.** New; very dark glossy blue; large compact spike. Extra Selected XX, Ea. 30c; Doz. \$3.00; 100 \$22.50.  
Selected first size, Ea. 25c; Doz. \$2.50; 100 \$18.50.

**QUEEN OF THE BLUES.** Light blue with a silvery sheen.  
Extra Selected XX, Ea. 30c; Doz. \$3.00; 100 \$22.50.  
Selected first size, Ea. 25c; Doz. \$2.50; 100 \$18.50.

**QUEEN OF THE PINKS.** New; bright pink, large well filled spike of fine form; late. Extra Selected XX, Ea. 30c; Doz. \$3.00; 100 \$22.50.  
Selected first size, Ea. 25c; Doz. \$2.50; 100 \$18.50.

**SALMON QUEEN.** New. Light salmon pink; large well formed spike. Extra Selected XX, Ea. 30c; Doz. \$3.00; 100 \$22.50.  
Selected first size, Ea. 25c; Doz. \$2.50; 100 \$18.50.

**YELLOW HAMMER.** Pure yellow; excellent spike.  
Extra Selected XX, Ea. 30c; Doz. \$3.00; 100 \$22.50.  
Selected first size, Ea. 25c; Doz. \$2.50; 100 \$18.50.

## Single Hyacinths { Second Size }

These Bulbs are much superior to the ordinary bedding hyacinths and are made up from named varieties. The flower spikes are not as large as the selected first size. **Malmo pays the postage.**

Shades of Rose and Pink, Ea. 20c; Doz. \$2.00; 100 \$15.00.  
Shades of Red, Ea. 20c; Doz. \$2.00; 100 \$15.00.  
Shades of Dark Blue, Ea. 20c; Doz. \$2.00; 100 \$15.00.

Shades of Light Blue, Ea. 20c; Doz. \$2.00; 100 \$15.00.  
Pure White, Ea. 20c; Doz. \$2.00; 100 \$15.00.  
All colors mixed, Ea. 20c; Doz. \$2.00; 100 \$15.00.

## Malmo's Water Lilies

**CULTURE**—The water garden, whether a formal concrete pool or just a tub in the corner of the garden, is a source of continual interest and beauty, and requires, perhaps, less effort for the result than anything else in the garden. The essentials are as near as possible one foot of rich garden loam and one foot of water.

\*—Adapted to small pools.

†—Adapted to medium sized pools.

**CONQUEROR.** Immense floating dark red blooms streaked with white on the outer petals. Nine inches across; heavy leaves 12 to 14 inches. One plant will carry as many as 15 buds and blooms at one time. A strong grower requiring an eight-foot space. **Each \$5.00.**

**ESCARBOUCLE.** Large, brilliant, red floating blossoms; strong grower requiring an 8 ft. space. This lily attracted more attention than any other last summer on account of its brilliant coloring. **Each \$7.50.**

**EUGENIE DE LAND†** (See photo No. 3) Pink floating flowers 5 to 6 inches across. A strong grower. **Each \$2.00.**

**HELEN FOWLER†** (See photo No. 2.) A light pink bloom borne about 3 inches above the surface of the water; not as desirable as other varieties. **Each \$1.00.**

**JAMES BRYDON\*** Floating cup shaped flowers, dark rich, reddish rose. A splendid bloomer of beautiful color. Foliage of this variety a bronze red. **Each \$3.00.**

**LAYDEKERI LILACEA\*** Deep, pink flowers, 3 to 5 inches across. Suitable for tub culture. **Each \$1.50.**

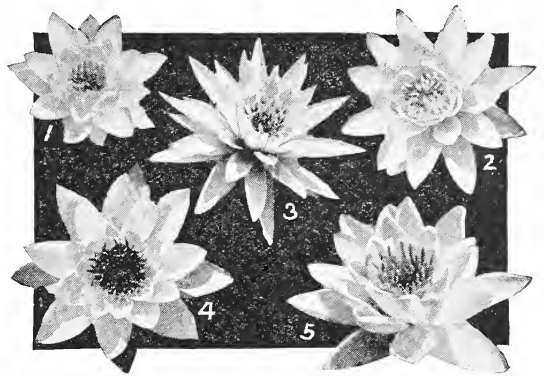
**MARLIAC ROSEA†** (See photo No. 1.) Very large light pink, floating flowers. A free bloomer and one of most popular varieties. **Each \$2.00.**

**MARLIAC WHITE (ALBIDA) †** (See photo No. 4.) Floating large pure white flowers. A good bloomer. **Each \$1.50.**

**MARLIAC YELLOW (CHROMATELLA)†** (See photo No. 5.) Floating large bright canary yellow flowers. Foliage deep green mottled brown. **Each \$2.00.**

**ROSE AREY\*** One of the most beautiful bright pink lilies. Very fragrant floating blooms from 6 to 8 inches across, borne in succession all summer. One of the most admired pinks and one which we strongly recommend. **Ea. \$3.00.**

**SIoux\*** Floating flowers of deep apricot, rose in center. Outer petals slightly flushed with rose. Very attractive and especially good used with Marliac Yellow. **Each \$2.50.**



1—Marliac Rosea                      2—Helen Fowler  
3—Eugenie De Land  
4—Marliac White (Albida)      5—Marliac Yellow (Chromatella)

## Airport Nursery Stock Sale See Inside Front Cover



## BULB BOWLS

**Cliftwood Art Pottery.** Smooth glazed bowls, in tones of green, blue, gray, light brown, rose, maroon and black. Suitable for growing bulbs in gravel and water. Not responsible for breaking in transit.

Diam.	Depth	Each	Diam.	Depth	Each
3 in.	1½ in.	\$0.30	5½ in.	2¼ in.	\$1.25
4 in.	1¼ in.	.50	6½ in.	2 in.	1.50
4 in.	1½ in.	.60	8 in.	2¼ in.	2.25
5 in.	2 in.	.90	9 in.	2¼ in.	2.50

**Hyacinth Glasses**—For growing individual Hyacinths in water. Made of clear glass in the following colors: Blue, green, and purple. Not responsible for breakage in transit. **Each 35c.**

# Malmo's Narcissus or Daffodils

Locally grown by us since embargo against importation—quality and size even finer than Holland product.



**MAMMOTH NARCISSUS**  
—King Alfred

## Giant Trumpet Varieties

The flowers of the Giant Trumpet varieties are of large size; the "perianth" or wing-like petals, according to the variety, measure from 2 to 4 inches across, and the "trumpets" or central funnel-like tubes vary from 2 to 4 inches in length. Flowers are borne on strong, stiff stems, which vary in height from 12 to 18 inches.

**DUKE OF BEDFORD.** White perianth with loose spreading petals, long deep yellow trumpet, frilled at mouth. A magnificent flower offering measuring  $4\frac{1}{2}$  inches across. Ea. 45c; Doz. \$4.00; 100 \$35.00.

**EMPEROR.** Rich deep primrose; large flower of exquisite form; splendid for outdoor planting. Selected size XX, Ea. 15c; Doz. \$1.75; 100 \$13.00. First size, Ea. 15c; Doz. \$1.50; 100 \$11.00.

**EMPRESS.** Perianth light primrose, with a rich yellow trumpet. Splendid for rockeries. Selected size XX, Ea. 15c; Doz. \$1.75; 100 \$13.00. First size, Ea. 15c; Doz. \$1.50; 100 \$11.00.

**GLORY OF LEIDEN.** Perianth and trumpet golden yellow; very large flowers. Ea. 15c; Doz. \$1.75; 100 \$13.00.

**GLORY OF SASSENHEIM.** Perianth white, trumpet clear yellow. A very large and attractive flower; good forcer. Ea. 20c; Doz. \$2.00; 100 \$15.00.

**GOLDEN SPUR.** Perianth and trumpet deep primrose yellow, excellent for pot culture. Selected size XX, Ea. 15c; Doz. \$1.75; 100 \$13.00. First size, Ea. 15c; Doz. \$1.50; 100 \$11.00.

**KING ALFRED.** Perianth and trumpet deep clear yellow. A remarkable handsome flower of large size and beauty. Trumpets frilled at mouth; last well when cut. Selected size XX, Ea. 35c; Doz. \$3.50; 100 \$25.00. First size, Ea. 25c; Doz. \$2.50; 100 \$20.00.

**MADAME DE GRAAF.** Perianth pure white, trumpet primrose. A refined delicate flower of great beauty. Selected first size XX, Ea. 20c; Doz. \$2.00; 100 \$15.00. First size, Ea. 15c; Doz. \$1.50; 100 \$11.00.

**OLYMPIA.** A little lighter in color than King Alfred and about the same size; which makes it exceptionally good for planting for contrast color. Selected size XX, Ea. 35c; Doz. \$3.50; 100 \$25.00. First size, Ea. 25c; Doz. \$2.50; 100 \$20.00.

**PRINCEPS.** Perianth sulphur yellow, trumpet deep golden. Very attractive flower. Ea. 15c; Doz. \$1.50; 100 \$11.00.

**VAN WAVAREN'S GIANT.** Perianth light primrose, with bright yellow trumpet. One of the largest daffodils of tall and vigorous growth. Excellent for forcing. Selected size XX, Ea. 35c; Doz. \$3.50; 100 \$25.00. First size, Ea. 25c; Doz. \$2.50; 100 \$20.00.

**VICTORIA.** Broad perianth of creamy white, trumpet deep yellow; large size. Selected size XX, Ea. 15c; doz. \$1.75; 100 \$13.00. First size, Ea. 15c; Doz. \$1.50; 100 \$11.00.

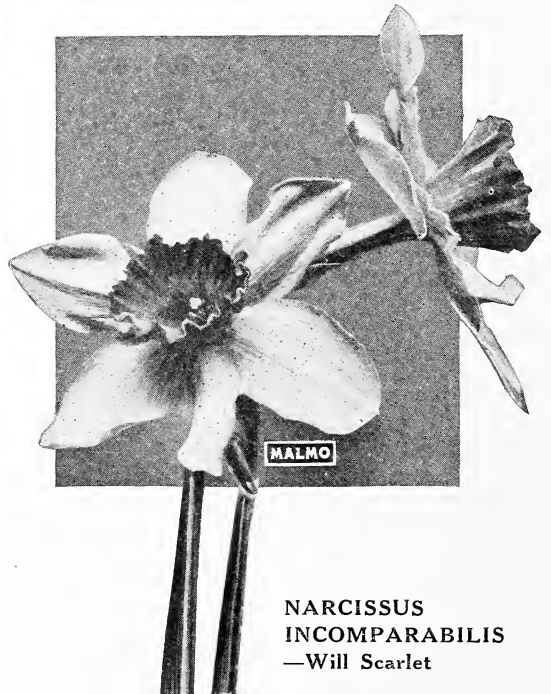
## Double Narcissus

**ALBA PLENA ODORATA** (Double Poeticus Narcissus). Pure white; very fragrant and an exquisitely beautiful flower. Ea. 10c; Doz. 75c; 100 \$5.00.

**PRIMROSE PHOENIX.** Soft lemon yellow, large rose shaped flower; very showy. Ea. 35c; Doz. \$3.50; 100 \$25.00.

**SULPHUR PHOENIX** (Incomparabilis). Creamy white bloom with sulphur center; very large and double producing a flashy contrast with their green foliage; Ea. 15c; Doz. \$1.50; 100 \$11.00.

**VON SION** (Double Daffodil). Rich golden yellow, trumpet very double, especially fine for grouping and rock gardens. Selected size XX, Ea. 15c; Doz. \$1.50; 100 \$11.00. First size, Ea. 15c; Doz. \$1.25; 100 \$9.50. Bedding size, Per doz. \$1.00; 100 \$7.50.



**NARCISSUS**  
**INCOMPARABILIS**  
—Will Scarlet



# Malmo's Single Narcissus

## SHORT TRUMPET OR CUP VARIETIES

These types, which include the Barrii, Incomparabilis, and Leedsii, are a cross between the large trumpet varieties and the Poeticus. They are gorgeous when planted outdoors in masses, may also be grown indoors and are excellent for cut flowers.

**Malmo pays the postage.**

**CONSPICUOUS** (Barrii). Large yellow perianth, orange cup; Ea. 15c; Doz. \$1.50; 100 \$11.00.

**DUKE OF WESTMINSTER** (Leedsii). Pure white perianth; soft yellow cup tinged orange; large; Ea. 15c; Doz. \$1.50; 100 \$11.00.

**LUCIFER** (Incomparabilis). White perianth, intense orange red cup. A very popular variety; Ea. 15c; Doz. \$1.25; 100 \$9.50.

**MRS. LANGTRY**. (Leedsii). Beautiful white perianth with white cup edged with yellow; Ea. 15c; Doz. \$1.50; 100 \$11.

**SIR WATKIN** (Incomparabilis). Sulphur yellow perianth with bright orange cup, large strong flower of remarkable beauty; Ea. 20c; Doz. \$1.75; 100 \$13.00.

**WHITE LADY** (Leedsii). White perianth with soft canary yellow cup. A flower of fine form and beauty. Ea. 20c; Doz. \$1.75; 100 \$13.00.



NARCISSUS INCOMPARABILIS—Lucifer

# Poeticus and Poetaz Narcissus



POETAZ NARCISSUS—Alsace

The Poeticus Narcissus are probably the best known of the short trumpet or cup class. They have only one flower on a stem, but are very hardy and multiply rapidly in the ground. They also force well. The blossoms of the Poetaz class are somewhat similar to the Poeticus and borne in clusters of three to eight flowers on the stem.

Customers at a distance will find it convenient to order by mail. **Malmo pays the postage.**

**ALSACE** (Poetaz). Pure white with yellow eye; large; early. Ea. 15c; Doz. \$1.50; 100 \$11.00.

**ELVIRA** (Poetaz). Pure white perianth, cup golden-yellow, edged with orange, very large. Ea. 15c; Doz. \$1.50; 100 \$11.

**GLORY OF LISSE** (Poeticus). Pure white perianth, broad yellow cup margined scarlet. Improved Poeticus Ornatus; fine for forcing. Ea. 15c; Doz. \$1.50; 100 \$11.00.

**IRENE** (Poetaz). Sulphur yellow perianth, orange eye; large truss. Ea. 15c; Doz. \$1.50; 100 \$11.00.

**KLONDYKE** (Poetaz). Perianth pure yellow, cup deeper golden-yellow. Ea. 15c; Doz. \$1.50; 100 \$11.00.

**LAURENS KOSTER** (Poetaz). Pure white, yellow cup; long stem. Ea. 15c; Doz. \$1.50; 100 \$11.00.

**POETICUS ORNATUS**. Pure white perianth, broad yellow cup margined scarlet; early. Ea. 10c; Doz. \$1.00; 100 \$7.50.

**POETICUS RECURVUS** (Pheasant's Eye). Perianth pure white, cup dark orange red. Ea. 10c; Doz. 75c; 100 \$5.50.

## Evergreens

*add year round beauty to your home—see our 1927 catalog mailed free on request for lowest prices.*

# Plant Bulbs Now

Early planting produces longer stems and early blooms

# Miscellaneous Flowering Bulbs and Roots

## AMARYLLIS

Beautiful, large lily shaped flowers blooming in late summer. Should be mulched when left in ground over winter. May be forced in pots for blooming indoors.

**BELLADONNA** (Belladonna Lily). Very free flowering. Lovely shell pink, sweet scented. Each 25c; Doz. \$2.50.

## ANEMONES

These come in a beautiful range of colors from white to lavender, pink and scarlet, both single and double and are most suitable for planting in borders or small beds.

**DE CAEN**. Mixed colors. Doz. 75c; 100 \$5.00.

**ST. BRIGID**. Mixed colors. Doz. 75c; 100 \$5.00.

## CHIONODOXA (Glory of the Snow)

A lovely early spring flower, largely used in borders and bulb beds, also massed in rock work.

**LUCILIAE**. Beautiful blue with pure white center. Doz. 35c; 100 \$2.50.

## FREESIAS

### For Pot Culture

These popular winter blooming bulbs force readily, and by successive plantings will last throughout the season. Their handsome clusters of flowers have a most delicious fragrance. Plant four to six in a 4-inch pot.

**PURITY**. New giant freesia; large pure white; very fragrant. Doz. 50c; 100 \$3.50.

Select size XX. Doz. 75c; 100 \$5.00.

**CALIFORNIA**. Golden yellow. Doz. 75c; 100 \$5.00.

**CARMENCITA**. Light orange salmon. Doz. 75c; 100 \$5.00.

**CARRIE BUDAU**. Improved General Pershing. Doz. 75c; 100 \$5.00.

**GENERAL PERSHING**. Large lavender-pink. Doz. 75c; 100 \$5.00.

**OLIVETTE**. Carmine red, yellow throat. Doz. 75c; 100 \$5.00.

**RAINBOW MIXTURE**. Doz. 75c; 100 \$5.00.

## ERANTHIS HYEMALIS (Winter Aconite)

Hardy winter flowering plants with beautiful foliage and ranunculus-like flowers, blooming during February and March.

**MIXED**. Doz. 35c; 100 \$2.50.

## FRITILLARI (Crown Lily)

Miniature lily of many colors, thrives almost anywhere in the temperate zone. Blooms through March, April and May.

**MIXED COLORS**. Doz. 75c; 100 \$5.00.

## GALANTHUS (Snowdrop)

The daintiest little flower of early spring. Produces its graceful pendants of pure white and delicate green during March when flowers are scarce. Prefers a cool shady loca-

tion and should be planted, two or three inches deep, in the fall or very early spring.

**SINGLE**. Each 5c; Doz. 35c; 100 \$2.50.

**DOUBLE**. Each 5c; Doz. 50c; 100 \$3.50.

## GRAPE HYACINTHS

### (Muscari Botry)

Beautiful small hyacinth like flowers drooping somewhat like a bunch of grapes. Flowering in March and April if planted in the fall or winter. Used in borders, mixed beds or among rocks.

**BOTRYOIDES BLUE**. Doz. 35c; 100 \$2.50.

**BOTRYOIDES WHITE**. Doz. 50c; 100 \$3.50.

**HEAVENLY BLUE—SELECTED XX**. Doz. 50c; 100 \$3.50.

**HEAVENLY BLUE—FIRST SIZE**. Doz. 25c; 100 \$2.50.

**PLUMOSUS** (Feather Hyacinth). Purple. Doz. \$1.00; 100 \$7.50.

## IRIS SPANISH

Planted out in the early fall the bulbs make an early start in the spring; very hardy.

**BAZAINE** (Gypsy Queen). Beautiful bronze. Doz. \$1.00; 100 \$7.50.

**BELLE CHINOISE**. Yellow. Doz. \$1.00; 100 \$7.50.

**CAJANUS**. Yellow. Doz. \$1.00; 100 \$7.50.

**KING OF THE BLUES**. Doz. 75c; 100 \$5.00.

**QUEEN WILHELMINA**. Pure white, early. Doz. \$1.00; 100 \$7.50.

**ROYAL BLUE**. Real marine blue. Doz. \$1.00; 100 \$7.50.

**MIXED COLORS**. Doz. 75c; 100 \$5.00.

## OXALIS

**BERMUDA BUTTERCUP**. Yellow. Doz. 65c; 100 \$5.00.

**GRAND DUCHESS**. Lavender. Doz. 60c; 100 \$4.00.

**GRAND DUCHESS**. Pink. Doz. 60c; 100 \$4.00.

**GRAND DUCHESS**. White. Doz. 60c; 100 \$4.00.

**MIXED**. All colors. Doz. 50c; 100 \$3.50.

## RANUNCULUS

Giant French strain grown in the United States.

**RED**. Doz. \$1.00; 100 \$7.50.

**ROSE PINK**. Doz. \$1.00; 100 \$7.50.

**PINK**. Doz. \$1.00; 100 \$7.50.

**YELLOW**. Doz. \$1.00; 100 \$7.50.

**WHITE**. Doz. \$1.00; 100 \$7.50.

**MIXED**. Doz. 75c; 100 \$5.00.

## SCILLA

Hardy little inverted star-shaped flowers borne on long graceful stems. Thriving in partly shaded beds and borders. One of the most effective flowers for the early spring garden or rockery.

**CAMPANULATA**. The most valuable of the Scillas. Fine for cutting.

**ALBA MAXIMA**. Large pure white bells, very fine. Doz. 50c; 100 \$3.50.

**BLUE QUEEN**. Porcelain blue, tall growing. Very free flowering. Doz. 50c; 100 \$3.50.

**EXCELSIOR**. Large deep blue bells. Doz. 50c; 100 \$3.50.

**ROSE QUEEN**. Fine rose pink. Doz. 50c; 100 \$3.50.

**SIBIRICA**. Of more dwarf habit than Campanulata. Good in rockeries.

**SKY-BLUE**. Doz. 50c; 100 \$3.50.

**WHITE**. Doz. 50c; 100 \$3.50.

## SPARAXIS

Dwarf growing bright colors, funnel shaped flower. Fine for potting or bedding.

**MIXED COLORS**. Doz. 75c; 100 \$5.50.

# Calla Lilly

Valuable as conservatory or house plant.

**CALLA, ELLIOTTIANA**. Flowers of a rich golden yellow; foliage dark green with white spots. Ea. 35c; Doz. \$3.50.

**CALLA, GODFREY**. Pure white flowers, very fine blooming. Ea. 25c; Doz. \$2.50.

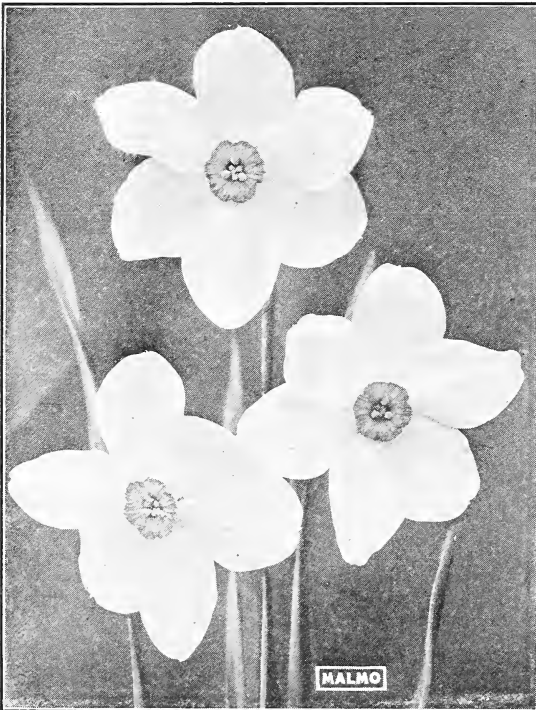
**CALLA, WHITE**. Large, white trumpet shaped flowers. Ea. 25c; Doz. \$2.50.

# Lily of the Valley

One of the most charming spring flowering plants, producing in profusion its delicate bell-shaped, delightfully fragrant white flowers. They thrive best in a rich sandy soil and a shady situation — are perfectly hardy and can be left undisturbed in the open ground, where they will increase from year to year, and are very attractive in beds or borders. For outdoor planting and winter forcing pips are ready December to March.

**SELECTED PIPS**, for forcing indoors or planting outside. Doz. 75c; 100 \$5.50.

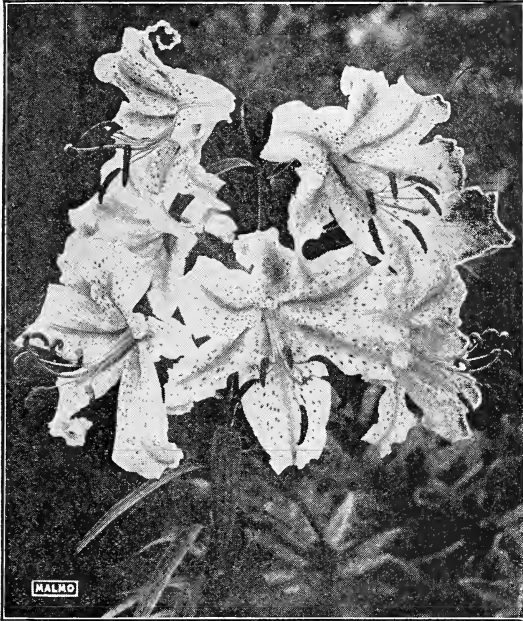
**SELECTED CLUMPS**, for outdoor growing. Ea. 50c.



**POETICUS NARCISSUS—Recurvus**  
(Pheasant's Eye). See page 13.

# Japanese Lilies

Lilies planted outdoors during the fall or early spring flower each year from June to October. After bulbs are set out they should remain undisturbed for five or six years. They will increase in size, beauty and number of flowers; our Coast climate being perfectly suited to their requirements. They may be planted in open ground or beds and are very effective when planted in a border either alone or among perennials or shrubbery. **Malmo pays the postage.**



**LILIUM AURATUM—**  
Golden Banded Lily of Japan

**LILIUM AURATUM.** The gold banded lily of Japan. A white lily with a golden stripe down the center, with crimson spots. Selected size XX, Ea. 45c; Doz. \$4.50. First size, Ea. 25c; Doz. \$2.50.

**LILIUM AURATUM PLATYPHYLLUM.** Improved L. Auratum with the exception of yellow spots instead of crimson. Selected size XX, Ea. 50c; Doz. \$5.00. First size, Ea. 35c; Doz. \$3.50.

**LILIUM CANDIDUM** (Annunciation or Madonna Lily). This Lily of all Lilies should be planted in quantities in every garden. The emblem of purity and the inspiration of poets for centuries. Very fragrant. Selected size XX, Ea. 20c; Doz. \$2.00. First size, Ea. 15c; Doz. \$1.50.

**LILIUM ELEGANS ATROSANGUINEUM.** Deep velvety red inside; brown shaded to orange outside. Flowers upright. Ea. 25c; Doz. \$2.50.

**LILIUM ELEGANS INCOMPARABLE.** Bright vermilion flowers, wide, overlapping petals, throat deeply spotted. Erect. Ea. 25c; Doz. \$2.50.

**LILIUM HENRYI.** Apricot yellow spotted brown. This lovely Lily from China bears its flowers in graceful clusters on tall stems, often five to six feet in height. Ea. 25c; Doz. \$2.50.

**LILIUM LONGIFLORUM FORMOSUM.** Easter Lily. Selected size XX, Ea. 35c; Doz. \$3.50. First size, Ea. 25c; Doz. \$2.50.

**LILIUM LONGIFLORUM GIGANTEUM.** Easter Lily, good for indoor culture. Selected size XX, Ea. 35c; Doz. \$3.50. First size, Ea. 20c; Doz. \$2.00.

**LILIUM MULTIFLORUM.** Easter Lily, true type. Ea. 35c; Doz. \$3.50.

**LILIUM MYRIOPHYLLUM.** See L. Regale.

**LILIUM REGALE** (L. Myriophyllum). New. This grand Lily flowers in the first part of July, reaching a height of 4 feet, has 4 to 12 flowers borne on stiff stems. The same shape as the Easter Lily but more upright; the color is white with a pink rib blending into the white. The inside of the flower is a golden yellow. Fragrant and perfectly hardy. Selected size XX, Ea. 35c; Doz. \$3.50. First size, Ea. 25c; Doz. \$2.50.

**LILIUM SPECIOSUM ALBUM.** Beautiful snow-white flower. This Lily is one of the best varieties. Ea. 25c; Doz. \$2.50.

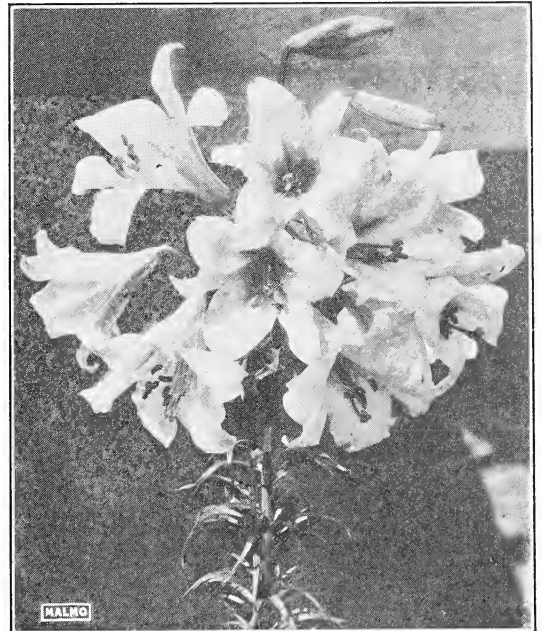
**LILIUM SPECIOSUM MAGNIFICUM.** Rich, ruby carmine margined white; of good substance and broad petals. Selected size XX, Ea. 35c; Doz. \$3.50. First size, Ea. 20c; Doz. \$2.00.

**LILIUM SPECIOSUM MELPOMENE.** Deep, carmine crimson intensified by a narrow margin of white. Selected size XX, Ea. 35c; Doz. \$3.50. First size, Ea. 20c; Doz. \$2.00.

**LILIUM SPECIOSUM RUBRUM.** Similar to L. Speciosum Magnificum, but not quite as large. Selected size XX, Ea. 25c; Doz. \$2.50. First size, Ea. 20c; Doz. \$2.00.

**LILIUM TIGRINUM.** Single Tiger Lily. Ea. 20c; Doz. \$2.00.

**LILIUM TIGRINUM** Double Tiger Lily. Selected size XX, Ea. 25c; Doz. \$2.50. First size, Ea. 15c; Doz. \$1.50.



**LILIUM REGALE—(Myriophyllum)**

**Peonies** planted in the fall produce better roots, assuring larger blooms and longer stems. See page 24.

Complete Stock of Perennials Listed in General Catalog ————— Free on Request



A Prize Winning Exhibit of Malmo Evergreens — Western Washington State Fair

# Malmo's Selected Nursery Stock

## WHEN AND HOW TO PLANT

Special attention is called to the superior quality of Nursery stock which we supply. Our experience in growing and transplanting Nursery stock in the Puget Sound climate covers over thirty years. This climate is particularly well adapted to a wide range of varieties of Nursery stock that heretofore have been successfully grown only in certain parts of Europe. The varieties range from the hardest to semi-tropical plants. Evergreens thrive especially well in our climate, obtaining better growth and color than in any other part of the world.

Evergreens may be successfully transplanted the year round providing sufficient water is used, but the best time to transplant is early in the fall or late in the spring. Ornamental deciduous trees and shrubs and all kinds of fruit trees and berry bushes may be set out any time after the rainy season commences (generally some time in November) until the first of April. The early planting, however, is much preferable as it gives the trees and plants a chance to establish a new root system before the dry season commences. Plants or trees of any size may be transplanted successfully providing they have been properly cared for in the Nursery. Our stock is transplanted every two or three years, thereby producing a root system on the Evergreens that will hold firmly to a ball of soil, and a mass of fibre roots on the deciduous trees, insuring full success in transplanting.

We make a specialty of large size fruit trees in varieties best adapted to this climate. These are transplanted every year in our nursery to insure a perfect root system and can be set out by the planter as safely as smaller trees. Many of these trees are highly ornamental, producing fruit as well as beautifying the home. Our stock is large and complete. We invite requests for estimates on planting of orchards.

### ORCHARD AND GARDEN

The State of Washington ranks among the first in fruit production. With proper care given

to varieties suitable for Western Washington, fruit may be as profitably grown in the Puget Sound section as in the celebrated fruit districts of Eastern Washington.

The Puget Sound climate is adapted to the growing of both sweet and sour cherries, pears and many varieties of apples, including Yellow Transparent and Gravenstein. Western Washington is unexcelled in its production of prunes and plums.

Where one has not sufficient space for an orchard, a few fruit trees in the garden or back yard may be made to yield a high return for the space occupied. Such planting need not exclude the vegetable garden, which may be planted between the trees, and the soil made, with the addition of proper fertilizers, to accomplish double duty production.

The first requisite for the successful growing of trees is proper preparation of the soil. The ground should be plowed or spaded very deeply and thoroughly as the roots will soon gather food from the whole orchard area.

### PLANTING

Trees should be heeled in only in a cool shady place. If the trees have, for any reason, before planting, become dried out, they should be buried, tops and all, in a trench which should be filled with water every day for three or four days, or at least soaked in water for a few hours, until the bark is restored to a healthy, plump condition.

The holes should be staked out and dug before exposing the trees. The roots must be protected carefully from the sun and drying winds, as either will very soon wither up the fibrous roots which are necessary for quick and vigorous growth. The holes should be dug from six to twelve inches larger around than the roots of the trees, to allow for filling in a few inches of loose soil, on top of which the tree should be planted to a depth it formerly stood in the nursery row.



# Malmo's Bearing Size Fruit Trees

WE SPECIALIZE in the production of large, bearing-size fruit trees, to meet the ever increasing demand from the home orchardist who wishes to have fruit from one to three years earlier than by planting small trees.

This stock has been properly transplanted to insure a good root system and properly trained each year through pruning.

All of these trees are strong and vigorous, and can be strongly recommended. Prices are in accordance with size and development, which are the factors influencing early bearing, rather than age only.



A Ready-to-Bear Fruit Tree

## PRUNING

The first object is to establish a balance between the top and the roots, cutting off all bruised and broken branches. The second is to shape the top so as to make a good foundation for a well-shaped tree. Of course, this cannot all be done at one time. It is necessary each year to look after the shape of the tops, selecting such branches as are most desirable for the building of the tree; then cutting off the surplus. This applies especially to fruit trees. For apple trees, it is the general rule to cut back each year one-half of the previous season's growth. Shade trees and other ornamental stock, including shrubs and evergreens, are pruned only for desired shape.

The best time for pruning fruit trees, in the Puget Sound country, is the month of January, and not later than the end of February. On the east side of the Cascades, it may be done one month later. All winter pruning and spraying should be done at the time the trees are dormant.

## SPRAYING

The spraying of fruit trees has proven to be an absolute necessity. Lime and sulphur is effective as a dormant spray to eliminate all pests. Generally the first summer spraying of fruit trees is applied by the time the blossoms are dropping, being followed by a second and third spraying, according to the pest to be eliminated. See **spraying table, in general catalog.**

## SUITABLE DISTANCE FOR PLANTING

Apples, Pears .....	25 to 30	feet
Cherries, sweet and sour .....	20 to 25	feet
Plums .....	20	feet
Currants, Gooseberries, Raspberries	3 to 4	feet
Blackberries .....	5 to 7	feet
Blackberries, Himalaya Giant .....	8 by 15	feet
Blackberries, Thornless .....	8 by 15	feet
Loganberries, rows .....	8 by 8	feet
Strawberries, rows .....	1 by 3½	feet
Strawberries, in beds .....	1½ by 1½	feet

## NUMBER OF PLANTS OR TREES TO THE ACRE AT GIVEN DISTANCE

Dist. Apart	No. Plants	Dist. Apart	No. Plants	Dist. Apart	No. Plants	Dist. Apart	No. Plants
12 x 1 in.....	522,720	24 x 24 in.....	10,890	36 x 36 in.....	4,840	60 x 60 in.....	1,743
12 x 3 in.....	174,240	30 x 1 in.....	209,088	42 x 12 in.....	12,446	8 x 1 ft.....	5,445
12 x 12 in.....	43,560	30 x 6 in.....	34,848	42 x 24 in.....	6,225	8 x 3 ft.....	1,815
16 x 1 in.....	392,040	30 x 12 in.....	17,424	42 x 36 in.....	4,148	8 x 8 ft.....	680
18 x 1 in.....	348,480	30 x 16 in.....	13,068	48 x 12 in.....	10,890	10 x 1 ft.....	4,356
18 x 3 in.....	116,160	30 x 20 in.....	10,454	48 x 18 in.....	7,790	10 x 6 ft.....	726
18 x 12 in.....	29,040	30 x 24 in.....	8,712	48 x 24 in.....	5,445	10 x 10 ft.....	435
18 x 18 in.....	19,360	30 x 30 in.....	6,970	48 x 30 in.....	4,356	12 x 1 ft.....	3,630
20 x 1 in.....	313,635	36 x 3 in.....	58,080	48 x 36 in.....	3,630	12 x 5 ft.....	736
20 x 20 in.....	15,671	36 x 12 in.....	14,520	48 x 48 in.....	2,723	12 x 12 ft.....	302
24 x 1 in.....	261,360	36 x 18 in.....	9,680	60 x 36 in.....	2,901	16 x 1 ft.....	2,722
25 x 18 in.....	15,620	36 x 24 in.....	7,260	60 x 48 in.....	2,178	16 x 16 ft.....	170

Apart each way		Apart each way		Apart each way		Apart each way	
1 foot.....	43,560	6 feet.....	1,210	12 feet.....	302	20 feet.....	109
2 feet.....	10,890	7 feet.....	807	14 feet.....	222	22 feet.....	90
3 feet.....	4,840	8 feet.....	680	15 feet.....	193	24 feet.....	75
4 feet.....	2,722	9 feet.....	537	16 feet.....	170	25 feet.....	69
5 feet.....	1,742	10 feet.....	435	18 feet.....	134	30 feet.....	43

## FRUIT TREES

(Ask for Prices in Large Quantities)

### APPLES

#### PRICES.

One year or light two year old.

4 to 6 feet:

Each, \$0.75; 10 for \$7.00; 100 for 60.00.

Lighter Grade:

Each, \$0.60; 10 for \$5.00; 100 for \$45.00

Large size two year old.

Each \$1.00; 10 for \$9.00; 100 for \$75.00.

Selected heavy two and three year old.

Each, \$1.25; 10 for \$11.00; 100 for \$100.00.

Big three year old, specimen trees.

Each, \$1.50 to \$2.00

### SUMMER AND FALL

**Red Astrachan.** Deep crimson; large.

**Yellow Transparent.** Yellow; very early; best quality.

**Duchess of Oldenburg.** Red and yellow streaked.

**Fameuse (Snow).** Deep crimson streaked. Flesh snowy white.

**Gravenstein (Winterstein).** Bright red and yellow. One of the best for this climate.

**Red Gravenstein.** (New). Bright red. Same good quality as Gravenstein, a little later and better keeper.

**Waxen.** Rich yellow. Crisp, tender and juicy.

**Wealthy.** Yellow shaded with deep red.

**Yellow Bellflower.** Rich yellow, highly flavored.

### WINTER

**Arkansas Black.** Rich flavor. Very good keeper. Strong, healthy grower.

**Delicious.** Thrift grower. Quality and flavor unsurpassed. Very sweet.

**Grimes Golden.** Golden yellow. High quality.

**Jonathan.** Red. Fine for table or market.

**King of Tomkins Co.** Yellowish shaded with red.

**Mammoth Black Twig.** Red. Large. Late keeper.

**Northern Spy.** Greenish, brown ribbed. Good keeper. Fine quality.

**Oregon Red Winter.** Large Red. Called Winter Gravenstein. Good keeper.

**R. I. Greening.** Greenish Yellow. Rich and tender.

**Rome Beauty.** Yellow with red. Aromatic taste.

**Spitzenburg Esopus.** Splashed red.

**Stayman Winesap.** Improved Winesap.

**Wagener.** Deep red. Flesh firm, sub-acid. Early and continuous bearer.

**Winesap.** Dark red. Medium size, excellent. Late keeper.

**Winter Banana.** Golden yellow, shaded red. Large, excellent flavor.

**Yellow Newton Pippin.** Fine flavor. One of the best keepers.

### CRAB APPLES

Prices Same as Apples

**Florence.** Large red.

**Hyslop.** Dark crimson.

**Red Siberian.** Red cheek on yellow ground.

**Transcendent.** Red cheek.

**Yellow Siberian.** Small, golden yellow.

### CHERRIES

#### PRICES.

One year or light two year old.

6 to 8 feet, extra heavy (sweet cherries only).

Each, \$1.50; 10 for \$14.00; 100 for \$125.00.

4 to 6 feet:

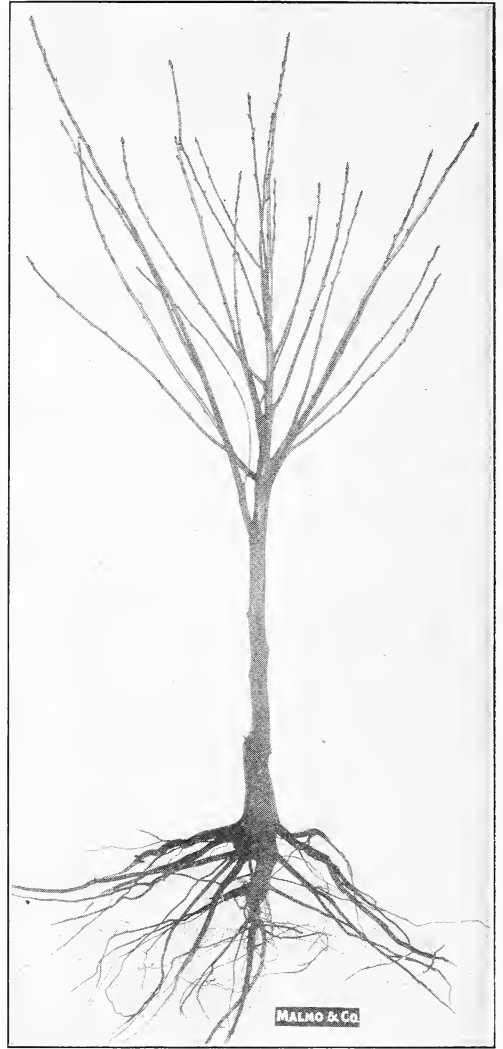
Each, \$1.25; 10 for \$11.00; 100 for \$100.00.

Lighter grade:

Each, \$1.00; 10 for \$9.00; 100 for \$75.00.

Large size two and three year old.

Each, \$2.00; 10 for \$17.50; 100 for \$150.00.



One Year Old Montmorency Cherry  
Illustrating Vigorous Growth and Root System

Extra large specimen trees.

Each, \$2.50 to \$3.00.

Ask for prices on quantity.

### SWEET

**Bing.** Very large. Black with solid meat.

**Black Republican.** Black, medium size.

**Black Tartarian.** Medium black. Very early.

**Lambert.** Very large, dark red. Fine shipper.

**Royal Ann.** Light red on yellow ground.

### SOUR CHERRIES

**Early Richmond (Kentish).** Red. Medium size.

**English Morello.** Medium to large. Blackish-red.

**Late Duke.** Very large. Dark red.

**May Duke.** Medium size. Dark red.

**Montmorency.** Large. Bright red, of semi-dwarf growth. All branched trees.

Extra large selected two year: 4 to 6 ft.

Each, \$1.50; 10 for \$14.00; 100 for \$125.00.

Selected one and two year old: 3 to 4 feet:

Each, \$1.00; 10 for \$9.50; 100 for \$90.00.

2½ to 3 feet:

Each, \$0.80; 10 for \$7.50; 100 for \$65.00.

Complete descriptions and prices of evergreen ornamentals given in general guide, free on request.

**PRICES.****PEARS****One year or light two year old .**

4 to 6 feet:

Each, \$1.00; 10 for \$9.00; 100 for \$75.00.

Lighter grade:

Each, \$0.75; 10 for \$7.00; 100 for \$60.00.

**Large size two and three year old.**

Each, \$1.25; 10 for \$11.50; 100 for \$100.00.

**Extra large specimen trees.**

Each, \$1.50 to \$3.50.

Ask for prices on quantity.

**Bartlett.** Large. Blush cheek. August.**Beurre Bosc.** Deep yellow russet. September.**Beurre d'Anjou.** Late. Best late pear. Oct.-Nov.**Beurre Clairgeau.** Late. Large.**Clapp's Favorite.** Earlier than Bartlett, very large.**Comice.** Yellow. Oct. to Nov.**Flemish Beauty.** Extra large, good keeper.**Fall Butter.** Good fall pear.**Louise Bon de Jersey.** Large, greenish yellow, reddish brown cheek. September.**Seckle.** Small. Reddish cheek. Nov.**Winter Bartlett.** Large. Good quality.**Winter Nellis.** Medium size. Good winter pear.**PRICES.****PLUMS****One year or light two year old.**

4 to 6 feet:

Each, \$1.00; 10 for \$9.00; 100 for \$75.00

Lighter grade :

Each, \$0.75; 10 for \$7.00; 100 for \$65.00.

**Large size two and three year old.**

Each, \$1.50; 10 for \$14.00; 100 for \$125.00.

**Extra large specimen trees.**

Each, \$2.00 to \$3.50.

Ask for prices on quantity.

**Blue Damson.** Fruit small, dark purple.**Bradshaw.** Large, dark purple, juicy.**Burbank (Japan).** Red cheek on yellow ground.**Climax.** Large, dark red; flesh yellow, juicy.**Green Gage.** Small, greenish-yellow.**Jefferson.** Large, yellow, red cheek.**Peach Plum.** Largest size, red cheek. Early.**Reine Claude, or Bavay's Green Gage.** Whitish green, blush cheek.**Washington.** Large. Greenish yellow. Sweet .**Yellow Egg.** Largest size. Yellow, sweet.**MULBERRY**

Selected one and two year old, \$1.50.

**Russian.** Small fruit. Tree hardy and prolific.**Teas, Weeping.** See Weeping Trees, General Catalog.**PRICES.****PRUNES****One year or light two year old.**

4 to 6 feet:

Each, \$1.00; 10 for \$9.00; 100 for \$75.00.

Lighter grade:

Each, \$0.75; 10 for \$7.00; 100 for \$65.00.

**Large size two and three year old.**

Each, \$1.50, 10 for \$14.00; 100 for \$125.00.

**Extra large specimen trees.**

Each, \$2.00 to \$3.50.

**ALMONDS****NUT TREES FILBERTS—(Hazelnut)**

One year old, \$1.00. Selected two and three year old, each \$1.50 to \$2.00.

**I. X. L.** Large, single kernel; soft shell.**Drake's Seedling.** Large, full kernel; thin shell.**CHESTNUTS**

Selected heavy 2 and 3 year, 3-4 ft. \$1.50 to \$2.50.

**American Sweet.** Valuable for timber and nuts.**French (Petite d'Agen).** Medium, reddish-purple.**Italian.** Dark purple, sweet. Drying and shipping variety.

Ask for special quotation on Italian Prunes.

**Hungarian.** Largest; bright red.**Silver.** Large, sweet; good dryer.**Sugar.** Large, purple; rich, sweet.**Tennant.** Large size. Purple. Italian variety.**Tragedy.** Reddish purple. Rich. Sweet.**Date Prune.** The greatest prune ever introduced.

Possesses all the good qualities of the well known Petite and Italian and besides, the Date Prune runs as high as an average of 50 per cent in sugar. It will yield upwards of \$3.00 revenue against \$1.00 derived from any other prune. Unsurpassed as a garden variety.

1-yr., 4-6 ft., each, \$1.25; per 10, \$9.00; per 100 \$75.00.

**PRICES.****PEACHES****One year or light two year old.**

Each, \$1.00; 10 for \$9.00; 100 for \$75.00.

**Large size two and three year old.**

Each \$2.00; 10 for \$15.00.

Ask for prices on quantity.

**Alexander.** Early cling. Red cheek.**Early Crawford.** Large, yellow. Magnificent.**Elberta.** Large, yellow, red streaks. Rich and juicy.**Hale's Early (Cling).** White flesh. Red cheek.**Late Crawford.** Late; large; yellow.**Philips Cling.** Large, yellow. High flavored.**Rochester.** A new, hardy, free-stone peach. Ripens three weeks earlier than the Early Crawford and is the most delicious peach on the market. The color is a rich, golden yellow covered with bright red; flesh, deep yellow; highly flavored. This new peach is no doubt the hardiest and best peach yet introduced and bids to be the coming variety for this section.**Selected Trees.** Each \$1.25; 10 for \$11.00.**Salway.** Large. Deep yellow flesh. Late.**Slappy.** Freestone, medium early, yellow, very hardy and a good keeper.**PRICES.****APRICOTS****Selected heavy one and two year old,** \$1.00.**Two and three year old,** \$1.50 to \$2.50.**Blenheim.** Large, deep yellow.**Moorpark.** Orange. Flesh bright orange. Large.**Royal.** Large yellow with orange cheek.**FIGS****Brown Turkey.** Early, very hardy. Will ripen on Puget Sound.

Well branched, 4 to 6 feet. Each, \$2.50.

**NECTARINES****Boston.** The best variety. Each, \$1.50.**New White.** Juicy and of high quality. \$1.50.**QUINCE**

Strong two and three year old, \$1.50 to \$2.00.

**Champion.** Large; of excellent flavor. Prolific.**Orange.** Large; golden color.

Two and three year old, 2 to 3 feet, each \$1.00; 10 for \$8.50; 100 for \$75.00.

Four to six feet, each \$1.50; 10 for \$12.50; 100 for \$100.00.

**English.** Full flesh, sweet.**Barcelona.** Very large, first quality.**Daviana.** Pollenizer.**Du Chilly.** Full fleshed, largest grown.**White Avaline.** Pollenizer.

## WALNUTS

**English Walnut (Franquette).** We offer a splendid strain of Franquettes, the best variety for this section; hardy, abundant bearers. Well branched. 6-8 ft., \$1.50; 8-10 ft., \$2.50; 10-12 ft., \$3.50.

**Grafted English Walnut (Franquette).** 4-6 ft.,

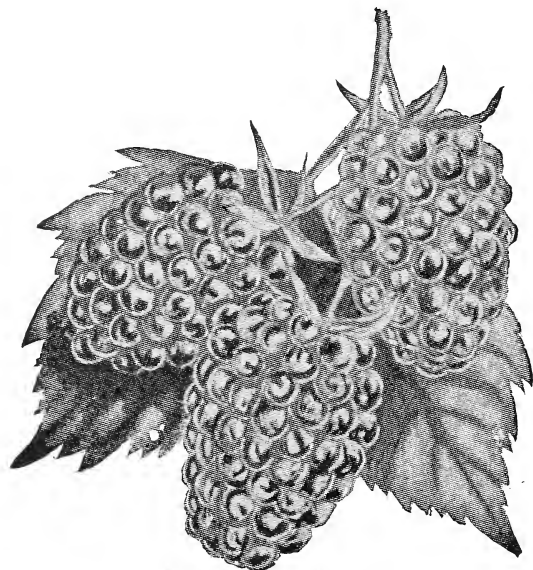
\$2.00; 6-8 ft., \$2.50; 8-10 ft., \$3.50; 10-12 ft., \$5.00 to \$15.00.

**Japan Walnut.** Big trees only, \$10.00 to \$15.00.

**Butternut or White Walnut.** Large, long nut; bears earlier than English. (Same price as Franquette.)

## MALMO'S SMALL FRUITS

Ask for prices on quantity.



## BLACKBERRIES

**Cory Thornless.** Big plants, 50c; doz., \$5.00; 100 for \$25.00.

Large, well rooted tips, 25c each; Doz. \$2.50; 100 for \$15.00.

**Evergreen.** Each, 15c; doz., \$1.50; per 100, \$8.00.

**Himalaya Giant or Everbearing.** Each, 20c; doz., \$2.00; \$12.00 per 100; \$100 per 1000.

Extra large plants, each, 35c to 50c.

**Kittatinny.** Each, 20c; doz., \$2.00; \$12.00 per 100.

**Lawton.** Each, 20c; doz., \$2.00; \$12.00 per 100.

**New Mammoth.** Each, 25c; doz., \$2.00; \$15.00 per 100.

## CURRANTS

One year old; each, 15c; doz., \$1.50; \$10.00 per 100.

Small plants; doz., \$1.00; \$5.00 per 100; \$35.00 per 1000.

Large one year, or two year old; each 25c; doz. \$2.50; \$15.00 per 100.

Large two and three year old; each, 35c; doz. \$3.50; \$25.00 per 100.

Extra large selected plants. Each, 50c.

**Cherry.** Red.

**Fay's Prolific.** Red.

**Perfection.** Red.

**Pomona.** Large red.

**Red Cross.** Red.

**White Grape.** White.

## GOOSEBERRIES

**Oregon Champion.** Strong, well rooted plants.

Each, 15c; doz., \$1.50; \$9.00 per 100.

Large one, or light two-year-old. Each, 25c; doz., \$2.50.

Extra large plants. Each, 50c; doz., \$5.00.

**Pearl or Big English.** Very large fruit, rich yellow with green tint. Each 25c; doz., \$2.50.

Large three year plants, each 50c; doz. \$5.00.

**Poorman.** Large yellow. Each, 50c; doz., \$5.00.

**Red Jacket (Josslyn).** Large prolific. Each, 35c; doz., \$3.50.

Extra large plants. Each, 50c; doz., \$5.00.

## GRAPES

For Cultural Directions see Planting Guide, sent free on request.

Good strong plants. Each, 35c; doz., \$3.50.

Extra large two and three year old plants. Each, 50c; doz., \$5.00.

Prices as above except where noted.

**Agawam.** Pink, very large and sweet.

**Campbell's Early.** Black, very large.

**Concord.** Black, 1 year, doz., \$2.00; per 100, \$12.00.

**Delaware.** Light red, very early.

**Moore's Early.** Large, blue. Very early.

**Niagara.** Yellow, large, sweet. The earliest white.

**Vergennes.** Pink; sweet, very hardy, medium to small.



Island Belle Grapes

**ISLAND BELLE.** Very early, large, blue. A local favorite produced on Puget Sound.

Selected two and three year old :

Each 50c; doz. \$5.00; per 100, \$35.00.

**GRAPES (Continued)**

One year old and light two year old:  
 Each, 35c; doz., \$3.50; per 100, \$25.00.  
 Lighter grade one year old:  
 Per 100, \$20.00.

**PHENOMENAL BERRIES**

**Strong Rooted Tips.** Each, 20c; doz., \$2.00; \$15.00 per 100.  
**Year Old Plants.** Each, 35c; doz., \$3.50.  
**Large Two Year Old Plants.** Each, 50c; \$5.00 per doz.

**RASPBERRIES**

**Cumberland.** Red. Each, 15c; doz., \$1.50; \$10.00 per 100.  
**Cuthbert. Red.** Doz., 75c; \$3.50 per 100; \$15.00 per 1000.  
**Gregg. Blackcap.** Each, 20c; doz., \$2.00.  
**Golden Queen.** Yellow. Each, 15c; doz., \$1.50; \$10.00 per 100.  
**Plum Farmer. Blackcap.** Each, 20c; doz., \$2.00; \$12.00 per 100.  
**St. Regis.** Everbearing. Each, 15c; doz., \$1.50; \$10.00 per 100.

**LOGANBERRIES**

**Strong Rooted Tips.** Ready for planting in March and April. Each, 10c; doz., \$1.00; \$5.00 per 100; \$45.00 per 1000.  
**Year Old Plants.** Each, 15c; doz., \$1.50; \$10.00 per 100.  
**Large Two Year Old Plants.** Each, 25c; doz., \$2.50; \$15.00 per 100.

**STRAWBERRIES**

**Etterburg No. 121.** The berry with the wild strawberry flavor. Fruit very large, extra firm, dark red, produced on strong stiff straws carried well off the ground. Fast becoming the leading variety for market and canning.

	Doz.	100	1000
<b>Etterburg No. 121</b> .....	\$ .35	\$1.50	\$12.00
<b>Clark's Seedling</b> .....	.35	1.50	12.00
<b>Gold Dollar</b> .....	.35	1.75	15.00
<b>Marshall</b> .....	.25	1.25	8.00
<b>Progressive, Everbearing</b> .....	.35	1.75	15.00

**PERENNIALS**

**Plants that bloom from year to year**

Complete list of popular perennials in general catalog.

While all plants that bloom every year are perennial (per annum) the common meaning refers to hardy garden flowers which die down to the ground at frost, coming up again in the spring and blooming again each year. The growing popularity of this class is not surprising when it is considered they give such an ever changing array of color in the garden without the yearly replacement that annuals require. Most varieties, moreover, remain green all winter in our mild climate.

Perennials of suitable habit may be used to brighten the shrub group or used by themselves in a border in an unlimited number of color combinations according to individual taste.

In nearly all cases better results will be secured if deep rich soil is supplied that is well drained and that is kept continually moist, especially until the plants have become well established. A longer period of blooming is possible if flowers are removed before the seed pods form.



Field of Peonies in Bloom in Our Nurseries at Georgetown (See Page 24)



## “Evergreens from the Evergreen State”

THE steadily increasing trade with which we have been favored is largely due to our policy of propagating and furnishing only high grade, dependable nursery stock. We aim to deliver only stock that will, with proper care, give entire satisfaction—from the smallest parcel post shipment to the carloads of evergreens we are now shipping to points outside the state.

Propagation is made from the best strains of the finest varieties. Plants are given scientific care to promote healthy luxuriant growth, and are transplanted often to produce compact balls of fibrous roots close to the plants, which is essential to successful planting after delivery. All plants are carefully dug and



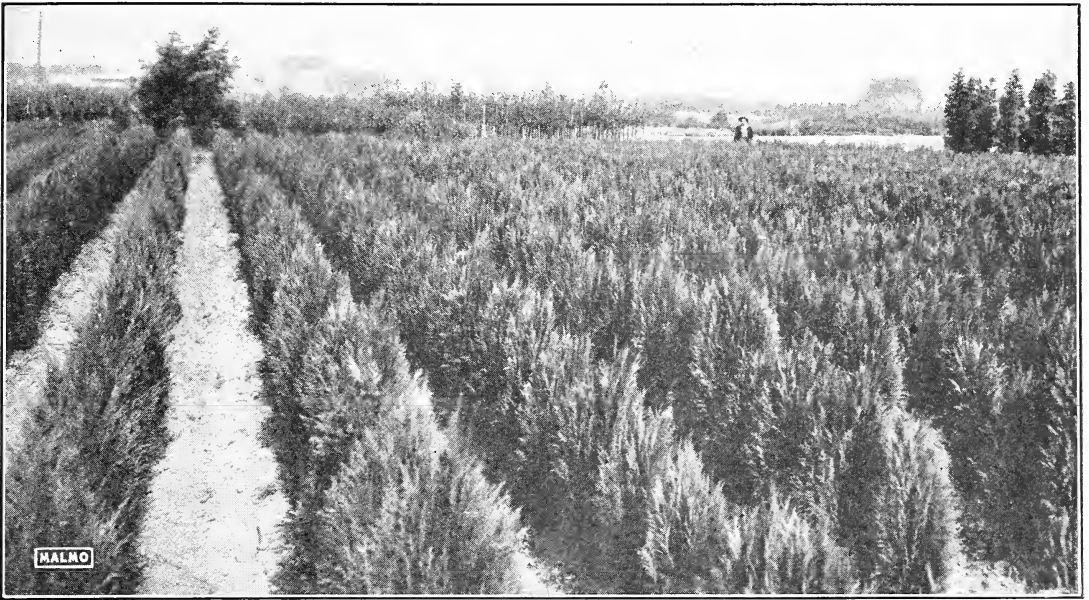
*Large Evergreens Being Dug and Packed for Delivery at Our Nurseries*

packed to insure safety in moving. The photograph above illustrates the balling of large evergreens, each of which weighs several hundred pounds.

We have made a specialty of furnishing large plants for immediate effect, particularly desirable in landscape work. Such material inevitably gives the best results because, through transplanting and trimming, shape and compactness have been built in to these plants at our nurseries.



*Over Half a Million Young Evergreens in the Propagating Houses at Our Nurseries in Georgetown*



*A Section of a Field of Cypress Erecta Viridis at Our Nurseries, a Variety Fast Growing in Public Favor*

Our quantity production of high grade nursery stock has effected economies that are reflected in the greater values received by our customers.

The production of nursery stock, unlike most other produce, requires planning several years in advance to supply future demand. It involves continuous propagation through seeds, cuttings, grafts, layers, etc., in season, and requires the carrying of a large stock of hundreds of varieties in various ages and sizes to insure a continuity of supply of mature stock as fast as the same is sold each year. Toward this end we have been adding land, stock, and equipment in developing one of the most complete nursery establishments in the country to render the largest measure of service though the furnishing of reliable products abreast the latest improvements in horticulture.

**Complete Evergreen List in General Catalog. Free on request.**

*A Portion of the Georgetown Nursery on Ellis Avenue*



*Such Evergreens as are in large demand for creating immediate landscape effects.*



## Malmo's Peonies

Between the magnificent Rhododendron and the lovely June Rose, comes the Peony. It is used in the same way and in conjunction with its two stately rivals, to continue a bold color display from May to July. While in close harmony with the other, the Peony is more lavish in its bloom and makes the most pretentious show; besides which it is hardier than either and more easily cultivated. Modern culture has

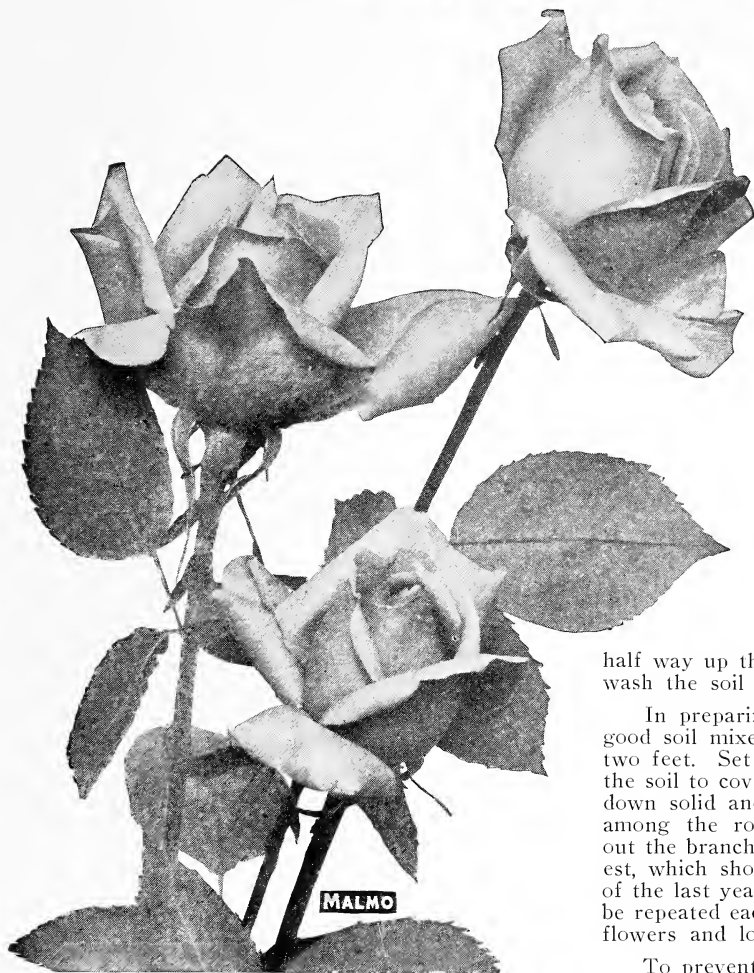
developed many superb varieties, with the most delicate tints as well as the most intense colors. Their cut blooms are very lasting, and in most cases are exquisitely scented.

**Culture.** Peonies are of easy culture being extremely hardy and abundantly repaying proper care. They should be planted early in the fall or winter in deep, rich, well-prepared soil, covering the buds but an inch or two. Do not expect too much of them the first year, as they are a little slow in establishing themselves. **Ask for prices on quantity.**

- ALBATRE.** Midseason. Very large. Color milk white, with a few delicate pencillings of carmine on edge of central petals. Free blooming. Fragrant. **Each \$1.25; Doz. \$12.50.**
- CHARLEMAGNE.** Late. Large double flowers of lilac-white with salmon-pink center. Free flowering. **Each 75c; Doz. \$7.50.**
- CLAIRE DUBOIS.** Midseason. Rich, clear, satiny-pink with a pronounced silvery sheen. Very large and double. **Each \$1.50; Doz. \$15.00.**
- DORCHESTER.** Very late. Color salmon-pink; habit upright. **Each 50c; Doz. \$5.00.**
- DUC DE WELLINGTON.** Midseason. Enormous snow-white blossoms borne on strong, upright stems. Free flowering and fragrant. An ideal cut flower. **Each 75c; Doz. \$7.50.**
- DUCHESS D'ORLEANS.** Midseason. Dark carmine pink with soft pink and salmon center. Vigorous grower. Fragrant. **Each 50c; Doz. \$5.00.**
- ELEGANTISSIMA.** Large, delicate pink, a good cut flower sort; fragrant. **Each 75c; Doz. \$7.50.**
- EDULIS SUPERBA.** Very early. The Decoration Day Peony. A clear mauve-pink with silvery reflex. Fragrant. **Each 50c; Doz. \$5.00.**
- EUGENE VERDIER.** Late. Color delicate hydrangea-pink with outer guard petals lilac-white. Very erect with extra strong stems. Free bloomer. **Each \$1.25; Doz. \$12.50.**
- FELIX CROUSSE.** Midseason. Large, compact flowers of a rich, even ruby-red having none of the purple or crimson shades. Exceptionally brilliant and effective. **Each \$1.00; Doz. \$10.00.**
- FESTIVA MAXIMA.** Early. The finest white peony. Good cut flower. Fragrant. **Each 75c; Doz. \$7.50.**
- GENERAL BERTRAND.** Early pink, will bloom with Officinalis Rubra. **Each 50c; Doz. \$5.00.**
- GENERAL DODDS.** Late. Very large globular flowers of an even shade of dark rose. Tall, strong grower and free bloomer. Very fine. **Each 75c; Doz. \$7.50.**
- GLORY DE BOSKOOP.** Pure white. Tall strong grower; a choice variety. **Each \$1.00; Doz. \$10.00.**
- MARIE LEMOINE.** Very late. Color ivory-white with occasional narrow carmine tracings on the edge of some petals. The flowers are of enormous size often measuring eight to ten inches across. **Each \$1.00; Doz. \$10.00.**
- MONSIEUR JULES ELIE.** Early. Very full globular flowers of glossy lilac-pink shading to deeper rose at the base, the entire flower being overlaid with a silvery sheen. This immense blossom often measures eight or nine inches through. One of the finest cut flowers. Fragrant. **Each \$1.50; Doz. \$15.00.**
- Mlle. LEONIE CALOT.** Midseason. One of the most beautiful peonies, being a delicate rose-white with soft lilac-pink center; tall grower and exceedingly free bloomer. **Each \$1.00; Doz. \$10.00.**
- OFFICINALIS ALBA.** Double white. **Each 75c; Doz. \$7.50.**
- OFFICINALIS ROSEA.** Large double pink. **Each 75c; Doz. \$7.50.**
- OFFICINALIS RUBRA.** Earliest dark red. **Each 75c; Doz. \$7.50.**
- QUEEN VICTORIA.** Early. White, faint blush tint when in bud. **Each 50c; Doz. \$5.00.**
- ROSEA.** Late, dark red, rather small bloom. **Each 50c; Doz. \$5.00.**
- DOUBLE PINK.** **Each 50c; Doz. \$5.00.**
- DOUBLE RED.** **Each 50c; Doz. \$5.00.**
- DOUBLE WHITE.** **Each 50c; Doz. \$5.00.**
- DOUBLE MIXED.** (Big clumps \$1.00.) **Each 50c; Doz. \$5.00.**



# Malmo's Roses



**ROSE MARIE**

In our superb climate roses attain a perfection seldom equaled anywhere, but we cannot expect them to thrive unless properly planted and cared for. Therefore, to promote more successful rose growing, the following suggestions are offered:

Roses thrive best in a rich, sandy clay-loam but will do well in any good garden soil if properly fertilized, either with well decomposed cow manure or good commercial fertilizer. Roses are great feeders and should be fertilized every season.

On the Pacific Coast roses can be planted any time after they drop their leaves in the fall until late in the spring. Early planting, however, will bring the best results. Upon receiving roses for planting, especially if they appear dry, they should be uncovered at once and heeled-in in a shady place, covering them with soil

half way up the stems. Use plenty of water to wash the soil among the plants.

In preparing for planting, dig or trench in good soil mixed with fertilizer to the depth of two feet. Set the plants deep enough to allow the soil to cover above the graft. Firm the soil down solid and water well to wash the soil in among the roots. Trim the bushes, thinning out the branches to three or four of the strongest, which should be cut back at least one-half of the last year's growth. The trimming should be repeated each year in order to produce better flowers and longer stems.

To prevent mildew roses should be watered only in the morning and not in the evening. This is especially important if the nights are cool. Keep the surface well cultivated around the plants, allowing no weeds to rob the rose of its food or sunlight. Fertilizer should be applied two or three times during the season unless the soil is exceptionally rich.

Our Roses are of the choicest, two and three year old full grown stock. We have over two hundred varieties of the most select—new introductions as well as old favorites.

**By Mail  
Postpaid**

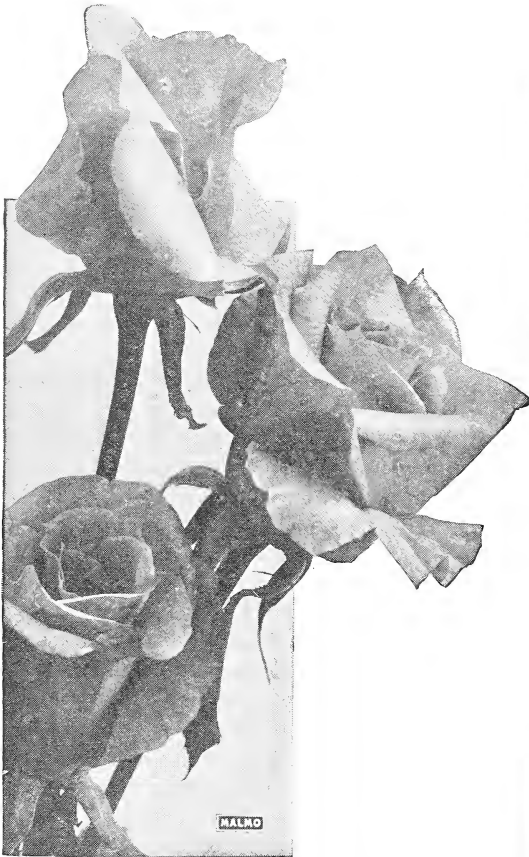
All Roses, one-half dozen at dozen rate.  
Roses at 75c each are 3 for \$2.00.  
Roses at \$1.00 each are 3 for \$2.75.  
Roses at \$1.50 each are 4 for \$5.00.  
**ASK FOR PRICES ON QUANTITY**

**By Mail  
Postpaid**

- ADMIRAL WARD.** Deep velvety red, with darker shadings, good foliage, free bloomer. Each 75c; Doz. \$7.50.
- ALADDIN.** H. T. Beautiful coppery-yellow shading to orange; large and free flowering. Each \$1.50; Doz. \$15.00.
- ALEXANDER HILL GRAY.** T. Deep lemon yellow, more intense as the bloom expands. Large, full flowers with high pointed center. Perfect form, freely produced and strongly tea perfumed. Robust, vigorous and erect. Each 75c; Doz. \$7.50.
- AMERICA.** H. T. New. Large beautiful rose-pink flowers on long stems. Fragrant. Vigorous growth, free bloomer. Each \$1.25; Doz. \$12.50.
- ANGELUS.** H. T. A beautiful white rose with high pointed buds and re-curved outer petals. Each \$1.00; Doz. \$10.00.
- ANGELE PERNET.** Pern. Orange yellow shaded reddish apricot. Flowers medium size; semi-double. Each \$2.50; Doz. \$25.00.

- ANTOINE REVOIR.** H. T. Deep rosy flesh on yellow ground. Each 75c; Doz. \$7.50.
- ARTHUR GOODWIN.** Coppery orange red, changing to salmon pink. Each 75c; Doz. \$7.50.
- AVOCA.** Crimson scarlet, large and full. Each 75c; Doz. \$7.50.
- ASPIRANT MARCEL ROUYER.** H. T. New. Deep apricot, outer petals tinted delicate salmon, base veined deep yellow. Long pointed bud. Each \$1.25; Doz. \$12.50.
- AUGUST HARTMAN.** H. T. Brilliant red flushed with orange. Very large, well-formed flowers with high, pointed centers. Each 75c; Doz. \$7.50.
- BABY CATHERINE ZEIMET.** Dwf. Poly. Pure white. Fragrance similar to hyacinths. Each 75c; Doz. \$7.50.
- BABY DOROTHY.** Clear brilliant pink. Each 75c; Doz. \$7.50.

## MALMO'S ROSES—Continued



## DUCHESS OF WELLINGTON

- BABY ECHO.** Dwf. Poly. Rosy flesh, strong growth, free bloomer. Each 75c; Doz. \$7.50.
- BABY ELLEN PAULSEN.** Dwf. Poly. Deep brilliant pink, very sweetly scented. Each 75c; Doz. \$7.50.
- BABY ERNA TESCHENDORFF.** Flowers glistening dark red, of same type as Red Baby Rambler, but much brighter in color. Each 75c; Doz. \$7.50.
- BABY EUGENE LAMESCH.** Dwf. Poly. Orange yellow, shaded clear yellow and rose, produced in large clusters. Each 75c; Doz. \$7.50.
- BABY HERRIOT.** See Etoile Luisante.
- BABY IDEAL.** The darkest color of all. Rich garnet red. Flowers produced in large clusters. Each \$1.50; Doz. \$15.00.
- BABY JESSIE.** Dwf. Poly. Nonfading bright cherry crimson. Large clusters. Each 75c; Doz. \$7.50.
- BABY C. BRUNNER.** See Cecile Brunner.
- BABY LE MARNE.** Bright salmon rose at the edges, rosy blush at center; exceptionally free blooming. Each \$1.00; Doz. \$10.00.
- BABY MRS. CUTBUSH.** Dwf. Poly. Delicate pink, blooming throughout entire summer. Each 75c; Doz. \$7.50.
- BABY ORLEANS.** Dwf. Poly. Bright geranium pink. Each 75c; Doz. \$7.50.
- BABY PHYLLIS.** Dwf. Poly. Beautiful carmine pink. Each 75c; Doz. \$7.50.
- BABY RAMBLER.** Pol. Color, bright red. Everblooming variety of the improved Philadelphia Rambler, very hardy. Each 75c; Doz. \$7.50.
- BABY TAUSENSCHOEN.** Dwf. Poly. White flushed pink changing to deep rosy carmine. Each 50c; Doz. \$5.00.
- BESSIE BROWN.** H. T. Flesh pink, of great substance, strong grower. Each 75c; Doz. \$7.50.
- BETTY.** Copper rose, shaded gold. Each 75c; Doz. \$7.50.
- BETTY UPRICHARD.** Copper-red buds, opening to semi-double large flowers. Brilliant orange-carmine on outer surface of petals, showing light salmon reflexes; fragrant. Strong grower, persistent blooming. Each \$1.50; Doz. \$15.
- BRILLIANT.** H. T. Intense scarlet, brightest color yet achieved in roses. Each 75c; Doz. \$7.50.

- BRITISH QUEEN.** Pure white, sometimes tinted pink on outside petals. Each 75c; Doz. \$7.50.
- CAPT. HAYWARD.** Dark velvety red, large and full. Each 75c; Doz. \$7.50.
- CECILE BRUNNER.** H. Pol. Rosy shell-pink. Blooms all season. Each 50c; Doz. \$5.00.
- CHATEAU DES CLOS VOUGEAT.** Velvety crimson, shaded dark maroon. Each 50c; Doz. \$5.00.
- CHEERFUL.** Brilliant, pure orange flame, flowers very large, full and fine form, rich green foliage, free from mildew. Each \$1.00; Doz. \$10.00.
- CHRISTINE.** H. T. Deepest, clearest, golden yellow. Fragrant. Each \$1.00; Doz. \$10.00.
- CLARA WATSON.** P. Pearly white center tinted rosy peach. Each \$1.00; Doz. \$10.00.
- COLLEEN.** Rose-pink heavily shaded with crimson. Beautiful large, finely formed flowers. Very distinct. Each \$1.00; Doz. \$10.00.
- COLUMBIA.** Peach pink, deepening in color as flowers expand, strong grower and free bloomer. Each 75c; Doz. \$7.50.
- CONSTANCE.** Rich orange yellow, distinctly streaked and splashed with crimson, long pointed buds. Each 75c; Doz. \$7.50.
- CONSTANCE CASSON.** Rich carmine flushed and veined with apricot and coppery yellow. Coloring is very high and unusually striking. Each \$1.50; Doz. \$15.00.
- COUNTESS CLANWILLIAM.** Peach pink at base of petals, heavily edged with deep cherry red. Each \$1; Doz. \$10.
- CRIMSON EMBLEM.** H. T. A superb new Irish rose of rich, glowing crimson heavily shaded with maroon. Buds and flowers of fine form and size, produced freely on long, stout stems. Each \$1.00; Doz. \$10.00.
- CRUSADER.** H. T. Large crimson flowers. Vigorous upright grower. Each \$1.00; Doz. \$10.00.
- DAILY MAIL.** See Mme. Ed. Herriot.
- DAINTY.** H. T. Rosy apricot heavily tinted cherry pink. Large, full and fragrant. Buds very long and pointed. Each \$1.50; Doz. \$15.00.



LADY HILLINGDON

## MALMO'S ROSES—Continued

**DAME EDITH HELEN.** (Alex Dickson & Sons 1926). Pure glowing pink that does not fade. Blooms large and full with good foliage; very hardy; vigorous grower. Each \$3.50.

**DORIS DICKSON.** (Sandy Dickson 1926.) Orange-cream color heavily veined and penciled with brilliant cherry red. Fragrant, exquisitely formed flowers on good stems. Each \$4.00.

**DOROTHY PAGE ROBERTS.** Coppery pink suffused with apricot yellow, long pointed buds on long stems. Good foliage. Each 75c; Doz. \$7.50.

**DRUSCHKI.** H. P. (Snow Queen.) Pure white, long pointed bud. Each 50c; Doz. \$5.00.

**DRUSCHKI.** Pink. (See Pink Druschki.)

**DUCHESS OF SUTHERLAND.** Warm rosy pink with lemon yellow shadings upon white at base of petals. Vigorous, large, full, finely formed flowers on stout canes. Each \$1.00; Doz. \$10.00.

**DUCHESS OF WELLINGTON.** Intense saffron yellow, tinted copper and very deep crimson. Each \$1.00; Doz. \$10.

**DUCHESS OF YORK.** Pern. Deep golden yellow with vivid orange center. Coloring very vivid. Flowers large, full and well formed. Each \$4.50.

**EDEL.** H. T. Pure white with faint ivory shading at base. Large well formed flowers. Each \$1.50; Doz. \$15.00.

**ETOILE DE FEU.** Flower salmon pink and coral red, shaded with flame. Large, globular Vigorous. Each \$2.00; Doz. \$20.00.

**ETOILE LUISANTE,** or Baby Herriott. Poly. Shrimp-pink, with hintense coppery-scarlet suffusion; base of petals yellow. Each \$1.00; Doz. \$10.00.

**EVENING STAR.** Pern. A sport of Mme. Ed. Herriot and about the same except the color which is a beautiful golden yellow shaded apricot. Very vigorous grower. Each \$1.00; Doz. \$10.00.

**FARBENKONIGEN.** H. T. (Queen of Colors.) Carmine and rosy crimson overlaid with silvery gloss, large and full. Each \$1.00; Doz. \$10.00.

**FEU JOSEPH LOOYMANS.** Yellow with vivid apricot. Particularly brilliant at center. Long and pointed buds. Distinctly novel. Each \$1.50; Doz. \$15.00.

**FLAME OF FIRE.** H. T. Intense orange flame. Very free flowering. Each \$1.00; Doz. \$10.00.

**FLORENCE FORRESTER.** White with a satiny silver sheen, long buds and a fine form when open. Each \$1.00; Doz. \$10.00.

**FLORENCE PEMBERTON.** H. T. Creamy white with pink tint, perfect form. Each 75c; Doz. \$7.50.

**FRAGRANT BOUQUET.** Delicate flesh-pink, with base of petals golden yellow. Very fragrant. Each \$1.50; Doz. \$15.

**GEISHA.** Pern. Bud coppery orange marked coral red opening to golden yellow. Another Herriot sport of vivid coloring. Each \$1.00; Doz. \$10.00.

**GENERAL McARTHUR.** H. T. Bright red, one of the best for bedding. Each 50c; Doz. \$5.00.

**GEN. SUP. A. JENSEN.** Deep glowing carmine, long stiff stems, of good form and a free bloomer. Each 75c; Doz. \$7.50.

**GEORGE ARENDS.** See Pink Druschki.

**GEORGE DICKSON.** Velvety dark crimson with brilliant scarlet, large, full and fragrant. Each 75c; Doz. \$7.50.

**GEORGE C. WAUD.** Glowing orange vermillion shaded bright scarlet, long buds, fine form and strong grower. Each \$1.00; Doz. \$10.00.

**GEORGES CLEMENCEAU.** This new rose issued from Mme. Ed. Herriot is of unique color, bright orange shaded carmine. Each \$1.50; Doz. \$15.00.

**GLADYS HOLLAND.** H. T. Rich buff, shaded orange yellow and pearly peach; a beautiful combination of coloring most pleasing and quite distinct. Of large size and fine form. Each \$1.00; Doz. \$10.00.

**GLORIE DE CHEDANE GUINOISSEAU.** Brilliant vermillion red, shaded deep velvety red, large, full, beautiful form. Each 75c; Doz. \$7.50.

**GLORIE DE LYONNAISE.** White tinted yellow, large, full and good form. Each 75c; Doz. \$7.50.

**GOLDEN EMBLEM.** In color and formation this new rose surpasses the well-known Marechal Niel, being a clear, deep golden yellow. Buds very long, full and well formed on long, stiff stems, with dark green glossy foliage. Each \$1.00; Doz. \$10.00.

**GOLDEN OPHELIA.** H. T. Rich golden yellow flowers in greatest profusion on stout stems with glossy, dark green foliage. Especially well adapted for cutting. This wonderful new rose is a seedling of Ophelia. Each \$1.00; Doz. \$10.00.

**GOLDEN SPRAY.** H. T. Deep Marechal Niel yellow opening to almost single blooms of clear lemon-yellow. The buds are very long and on arching shoots which form great loose sprays. Each \$1.25; Doz. \$12.50.



ISOBELLE

**GORGEOUS.** Deep orange, yellow and reddish copper, beautifully blended, large and full, long strong stem and dark green foliage. Each \$1.00; Doz. \$10.00.

**GRUSS AN TEPLTIZ.** H. T. Bright glowing scarlet, a grand bedding rose. Each 75c; Doz. \$7.50.

**HADLEY.** H. T. Deep velvety crimson, very fragrant, rapid grower. Each \$1.00; Doz. \$10.00.

**HARRY KIRK.** T. Deep lemon yellow, passing to primrose at edges. Each \$1.00; Doz. \$10.00.

**HEINRICH MUNICH.** Flesh pink (light pink Druschki) one of the best roses, a strong, erect grower. Each \$1.00; Doz. \$10.00.

**HELEN TAFT.** H. T. Rich cerise pink, very large, free bloomer. Each 75c; Doz. \$7.50.

**HILLS AMERICA.** Delicate pink; exquisite form and of heavy substance. Long pointed buds. Each \$1.25; Doz. \$12.50.

**HON. E. A. BINGHAM.** Pure rosy pink, large and beautiful. Each \$1.00; Doz. \$10.00.

**HOOSIER BEAUTY.** Flowers dark crimson shaded with maroon, petals of remarkable substance like crimson velvet. Each \$1.00; Doz. \$10.00.

**HUGH DICKSON.** H. P. Intense deep velvety red, one of the leading varieties. Each 75c; Doz. \$7.50.

**H. V. MACHIN.** Grand scarlet crimson, large size and good form; the coloring is very intense, the buds long and well formed. Each \$1.00; Doz. \$10.00.

**INDEPENDENCE DAY.** Pern. Bright gold flushed with coppery old gold and orange. Well formed and remarkably free bloomer. Each \$1.00; Doz. \$10.00.

**IRISH ELEGANCE.** H. T. (Single.) Bronze orange scarlet. Each 75c; Doz. \$7.50.

**IRISH FIRE FLAME.** H. T. (Single.) Fiery orange red, the most brilliant colors imaginable. Each \$1.00; Doz. \$10.00.

**ISOBELLE.** H. T. (Single Irish.) Carmine red shaded scarlet, large petals. One of the best single roses. Each \$1.00; Doz. \$10.00.

**J. B. CLARK.** H. T. Bright deep red. An old but good bedding rose. Each 50c; Doz. \$5.00.

**JOE HILL.** H. T. Clear golden copper, edged with salmon pink. Each 75c; Doz. \$7.50.

**JONKHEER J. L. MOCK.** H. T. Deep clear pink, a very attractive color; a splendid upright strong grower of good form. Each 75c; Doz. \$7.50.

**JOSEPH BAUD.** Pern. Superb bud, orange and carmine. Flower large, full, golden yellow shaded orange. Each \$1.25; Doz. \$12.50.

**JULIET.** Outside of petal old gold, interior rich rosy red changing to deep rose as flowers expand. Each 75c; Doz. \$7.50.

## MALMO'S ROSES—Continued

**K. OF K.** H. T. (Kitchener of Khartoum). A new rose of great beauty, color brilliant scarlet and does not easily fade. Free blooming and of excellent habit. **Each \$1.00; Doz. \$10.**

**KAISERIN A. VICTORIA.** H. T. Cream white, very good for cut flowers. **Each 50c; Doz. \$5.00.**

**KING GEORGE V.** H. T. Very dark, beautiful crimson, almost black, extra large and nest form. **Each \$1; Doz. \$10.**

**LA CHAMPAGNE.** H. T. Outer petals rosy peach with orange yellow base; center buff apricot. Long firm buds. Free bloomer. **Each \$1.25; Doz. \$12.50.**

**LADY ASHTOWN.** Soft rose, shaded yellow at base, long stem. **Each 75c; Doz. \$7.50.**

**LADY BATTERSEA.** H. T. Deep cherry crimson shaded orange. **Each 75c; Doz. \$7.50.**

**LADY GREENALL.** Intense saffron orange zoned on deep cream white ground. **Each \$1.00; Doz. \$10.00.**

**LADY HILLINGDON.** H. T. Deep apricot yellow base, petals chrome yellow, long slender buds. **Each 75c; Doz. \$7.50.**

**LADY MARGARET STEWART.** (Alex Dickson and Sons 1926.) Bud deep sunflower splashed heavily with orange scarlet; reverse of petals deeply marked with carmine, fully developed flower is beautiful cadmium orange effect; bud long pointed. Vigorous habit. Good foliage. Very unique rose. **Each \$3.50.**

**LADY MARY WARD.** Rich orange apricot, very attractive of fine form and good habit. **Each \$1.00; Doz. \$10.00.**

**LADY PIRRIE.** H. T. Deep coppery shaded to apricot and salmon. A strong, erect grower, and a free bloomer. **Each 75c; Doz. \$7.50.**

**LADY URSULA.** H. T. Flesh pink, gracefully reflexed petals, large full and of great substance. **Each 75c; Doz. \$7.50.**

**LAMIA.** H. T. Intense reddish orange. **Each \$1.00; Doz. \$10.00.**

**LAURENT CARLE.** H. T. Brilliant velvet carmine shaded bright scarlet, a handsome rose and robust grower. **Each 75c; Doz. \$7.50.**

**LE PROGRESS.** H. T. Saffron yellow, flowers large and full. **Each \$1.00; Doz. \$10.00.**

**LESLIE PIDGEON.** Orange-buff heavily flushed and suffused. Profuse bloomer. Sweet scented. **Each \$1.50; Doz. \$15.00.**

**LIEUTENANT CHAURE.** H. T. Brilliant crimson flowers; large, pointed buds, cupped blossoms. Excellent bedding rose. **Each \$1.00; Doz. \$10.00.**

**LILLIAN MOORE.** H. T. Pure Indian yellow with slightly deeper center, buds long and pointed, large and full. **Each \$1.25; Doz. \$12.50.**

**LOUISE CRINER.** H. T. Large double, snow-white blooms with creamy center; long buds. Vigorous grower of branching habit. **Each \$1.25; Doz. \$12.50.**

**LOS ANGELES.** H. T. Coral pink, shaded gold, buds long and pointed; extra large and finest form. **Each \$1.00; Doz. \$10.00.**



K. OF K.

**LOUISE C. BRESLAU.** Coral pink shaded chrome yellow, bud long and pointed, extra large and finest form. **Each \$1.00; Doz. \$10.00.**

**LYON.** H. T. Shrimp pink, shaded red and chrome yellow. **Each \$1.00; Doz. \$10.00.**

**MABLE MORSE.** Clear golden yellow without shading. Color particularly fine. Vigorous. **Each \$1.50; Doz. \$15.00.**

**MADAME ABEL CHATENAY.** H. T. Vermillion and salmon pink, a very free bloomer and handsome rose. **Each 75c; Doz. \$7.50.**

**MADAME BUTTERFLY.** H. T. A sport from the popular rose Ophelia, said to be a glorified form of that variety—the colors all intensified, making a rich harmony of bright pink, apricot and gold. The buds are especially distinct with their lovely shades of Indian red passing to golden yellow at base. **Each \$1.00; Doz. \$10.00.**

**MADAME C. TESTOUT.** H. T. Clear pink, strong grower and profuse bloomer. **Each 50c; Doz. \$5.00.**

**MADAME CAROLINE TESTOUT, WHITE.** H. T. Of same form and habit as the well-known Pink Testout. One of the best white roses. **Each 75c; Doz. \$7.50.**

**MADAME CONSTANCE SOUPERT.** H. T. Deep yellow shaded peach blossom pink. **Each \$1.00; Doz. \$10.00.**

**MADAME ED. HERRIOT** (Daily Mail). The buds are long and pointed, of a deep coral red color, shaded to orange yellow at the base of petals, finely formed flower of wonderful shade of rosy scarlet flushed with shrimp and apricot tints. **Each 75c; Doz. \$7.50.**

**MADAME E. ROSTAND.** Clear pink with salmon shading, reddish orange center, beautifully tinted. **Each 75c; Doz. \$7.50.**

**MADAME JULES GROLEZ.** Clear deep rose pink shaded to yellow at the base of petals. **Each 75c; Doz. \$7.50.**

**MADAME LEON PAIN.** H. T. Salmon pink overlaid with silvery white orange center. **Each 75c; Doz. \$7.50.**

**MADAME MELANIE SOUPERT.** H. T. Golden yellow, shading to orange copper at base of petals, large flowers on long straight stems. **Each \$1.00; Doz. \$10.00.**

**MADAME PAUL OLLIVARY.** H. T. Coppery salmon shaded yellow on reverse of petals. Buds long pointed. Flower large and full. **Each \$4.50.**

**MADAME RAVORY.** Golden yellow with orange center, long slim buds. **Each \$1.00; Doz. \$10.00.**

**MADAME SEGUND WEBER.** H. T. Light rosy flesh shaded with salmon. Large, long pointed buds opening into finely formed flowers of wonderful substance. **Each \$1.00; Doz. \$15.00.**

**MAE MARTIN.** H. T. Beautiful sulphur yellow. **Each \$1.50 Doz. \$15.00.**

**MAMAN COCHET.** T. Clear pink, one of the best for summer cut flowers. **Each 75c; Doz. \$7.50.**

**MAMAN COCHET.** T. White, same as above except color. **Each 75c; Doz. \$7.50.**

**MARGARET DICKSON HAMILL.** Deep shell-like petals, colored deep cream, delicately flushed with carmine on back. **Each \$1.25; Doz. \$12.50.**



OPHELIA

## MALMO'S ROSES—Continued

**MARGARET MOLYNEUX.** Varying from saffron-yellow shaded apricot and peach in the bud stage to canary-yellow as the semi-double blooms expand. Each \$2.00; Doz. \$20.00.

**MARQUISE DE SINITY.** Of the Lyon type, color intermingling of sulphur yellow, gold and copper. Each \$1.00; Doz. \$10.00.

**MARY COUNTESS OF ILLCHESTER.** H. T. A clear, bright crimson carmine, large, double and fragrant. Each 75c; Doz. \$7.50.

**MISS CYNTHIA FORDE.** H. T. A grand new rose of special merit; color deep, brilliant rose-pink; buds handsome, large, full and perfectly formed; of good habit of growth. Each \$1.25; Doz. \$12.50.

**MISS EDITH CAVELL.** Small, semi-double flowers of brilliant scarlet-red, shaded darker. Produced in big, compact corymbs by sturdy well-branched plants. Each \$1.00; Doz. \$10.00.

**MISS KATE MOULTON.** H. T. Soft shell pink, with reverse of petals shaded deep pink, good foliage. Each 75c; Doz. \$7.50.

**MISS LOLITA ARMOUR.** Per. Coppery-orange buds developing to a deep coral-red suffused golden coppery-red as they expand. Each \$1.00; Doz. \$10.00.

**MODESTY.** H. T. Pearly-cream faintly tinted rose. Long pointed buds. Each \$1.00; Doz. \$10.00.

**MOLLIE S. CRAWFORD.** T. White, blooms large, of good form, strong grower. Each 75c; Doz. \$7.50.

**MRS. AARON WARD.** H. T. Indian yellow shading to lemon cream. Each 75c; Doz. \$7.50.

**MRS. A. R. WADDELL.** H. T. Long pointed buds of bright rosy scarlet, opening to rich salmon or apricot. Each 75c; Doz. \$7.50.

**MRS. AMBROSE RICCARDO.** H. T. A beautiful new yellow Hybrid Tea rose wonderfully free blooming and vigorous growing for a rose of its class. Buds beautifully formed, honey yellow, very sweet scented. Each \$1.00; Doz. \$10.00.

**MRS. CALVIN COOLIDGE.** Clear yellow suffused with orange at center. Well formed, medium size. Each \$1.00; Doz. \$10.00.

**MRS. CHARLES LAMPLOUGH.** H. T. Large, soft, lemon yellow flowers of fine quality. Excellent exhibition variety. Each \$1.00; Doz. \$10.00.

**MRS. CHARLES RUSSELL.** H. T. Large, bright, rich cerise scarlet of American Beauty type and fragrance, long pointed buds on long stems. Each 75c; Doz. \$7.50.

**MRS. DAVID McKEE.** H. T. A beautiful creamy yellow, extra free flowering and very robust. Each \$1.00; Doz. \$10.00.

**MRS. E. G. HILL.** H. T. Outside petals coral red, inside alabaster white, flowers well formed. Each \$1.00; Doz. \$10.00.

**MRS. FARMER.** Two-toned petals; inside reddish-apricot. Outside deep coral. Color effect very striking. Each \$1.00; Doz. \$10.00.

**MRS. FOLEY HOBBS.** A veritable giant among Tea Roses, color delicate ivory white delicately tinted pink on edge of petals, deliciously scented. Each \$1.00; Doz. \$10.00.

**MRS. FRANK BRAY.** H. T. Rich, deep coppery ecru, developing to a coppery fawn, with a shade of pink; delightfully fragrant. Each \$1.25; Doz. \$12.50.

**MRS. FRANKLIN DENNISON.** H. T. Porcelain white veined primrose yellow deepening to ochre at base of petals. Very large full flowers of splendid build on strong, upright canes. Each \$1.00; Doz. \$10.00.

**MRS. HENRY MORSE.** H. T. Rose pink shaded salmon, deeper at base, with distinct Tea scent. Vigorous habit. Each \$1.00; Doz. \$10.00.

**MRS. HERBERT NASH.** H. T. Scarlet crimson shaded deep crimson. Very fragrant, large flowers, fine petals on erect, stiff stems. Each \$4.50.

**MRS. HERBERT STEVENS.** H. T. Long, beautifully pointed buds, large, full flowers, ivory white with shadings of peach and fawn at edge of petals. Each \$1.00; Doz. \$10.00.

**MRS. JOSEPH H. WELCH.** H. T. A most magnificent exhibition rose of a beautiful rose pink with silvery shading. Large pointed buds of good texture. Each \$1.00; Doz. \$10.00.

**MRS. MONA HUNTING.** H. T. New. Deep chamois-yellow, opening fawn. Long pointed bud. Free flowering. Each \$1.00; Doz. \$10.00.

**MRS. REDFORD.** Per. Brilliant apricot orange. Full flowers of perfect form. Free flowering. Each \$1.25; Doz. \$12.50.

**MRS. S. K. RINDGE.** H. T. A magnificent pure yellow rose without any tints of copper. When in the bud the outside petals are stained with cadmium red. The bud is long and pointed; as the petals age they become suffused with soft pink and do not become colorless and faded. A strong grower with large, leathery foliage, creating a striking effect. Each \$1.00; Doz. \$10.00.

**MRS. WAKEFIELD CHRISTIE MILLER.** Blush pink, shaded salmon, outside of petals darker, flowers large and well formed. Each \$1.00; Doz. \$10.00.

**MRS. WEMYSS QUINN.** H. T. Intense lemon-chrome, overlaid orange, very floriferous. Each \$1.00; Doz. \$10.00.

**NATIONAL EMBLEM.** H. T. Deep velvety crimson shaded to vermilion at edge of petals. Long pointed buds on stout wiry stems. Very sweet scented. A fine, new Irish rose. Each \$1.50; Doz. \$15.00.

**ODETTE FOUSSIER.** H. T. Rosy copper buds, long pointed. Flowers very large, full and cupped, salmon pink tinted yellow on inside of petals. Very fragrant. Each \$4.50.

**OLD GOLD.** H. T. A reddish orange shading on golden yellow ground. Each \$1.00; Doz. \$10.00.

**OPHELIA.** H. T. Color delicate salmon, petals prettily edged with rose, center a rich mingling of orange and copper. Each 50c; Doz. \$5.00.

**OPHELIA SUPREME (Improved Ophelia).** Of more intense coloring, strong, healthy growth, a real wonderful rose. Each \$1.25; Doz. \$12.50.

**PADRE.** H. T. New. Coppery scarlet, base flushed yellow, excellent free bloomer. Each \$1.25; Doz. \$12.50.

**PERLE VON GODESBURG (Yellow Kaiserin).** A counterpart of the white Kaiserin, color deep cream to sulphur yellow. Each \$1.00; Doz. \$10.00.

**PINK DRUSCHKI.** Of same habit as the White Druschki; color a clear pink that does not fade. Each \$1.00; Doz. \$10.00.

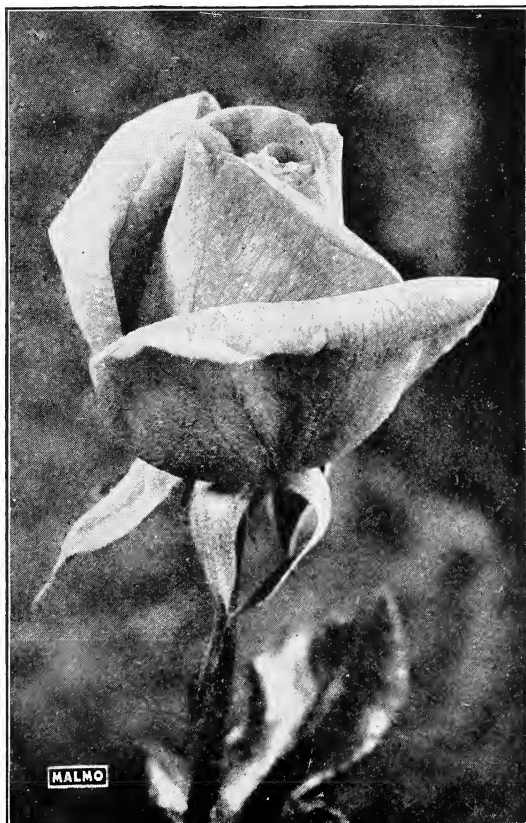
**PREMIER.** New. A clear pleasing red that does not fade. Good form and habit, excellent for cutting and indoor forcing. Each \$1.00; Doz. \$10.00.

**PRESIDENT CARNOT.** H. T. Delicate rosy blush. Each 75c; Doz. \$7.50.

**PRESIDENT CHERIOUX.** Prawn-red with coral center shaded with yellow at base; long pointed buds developing very large, globular flowers. Free grower. Each \$1.25; Doz. \$12.50.

**PRINCE DE BULGARIA.** Salmon pink. Each 75c; Doz. \$7.50.

**PRINCESS MARIE JOSE.** H. T. Orange vermilion on yellow ground, buds pointed, flowers large. Fragrant and free bloomer. Each \$4.50.



LOS ANGELES



## MALMO'S ROSES—Continued

**QUEEN OF FRAGRANCE.** H. T. Rose pink with silvery shadings. Fine large pointed buds opening into large, well-formed flower. Exquisitely fragrant. Each \$1.00; Doz. \$10.00.

**RADIANCE.** H. T. Brilliant rosy carmine, a strong grower, good for cut flowers. Each \$1.00; Doz. \$10.00.

**RAGGED ROBIN.** Deep crimson, semi-double, free constant bloomer. Each 75c; Doz. \$7.50.

**RAYON D'OR (Golden Rays).** H. T. A clear deep golden yellow, beautiful bronze colored foliage. Each \$1; Doz. \$10.

**RED CROSS.** H. T. New. Beautiful crimson-scarlet flowers of fine form. Tea Rose scent. Waxy foliage. Each \$1.00; Doz. \$10.00.

**RED LETTER DAY.** Velvety scarlet crimson, very free bloomer. Each \$1.00; Doz. \$10.00.

**REV. F. PAGE ROBERTS.** H. T. New. Large, well formed blossoms of Marechal Niel yellow. Vigorous and free flowering. Each \$1.50; Doz. \$15.00.

**ROSE MARIE.** H. T. Buds long and pointed, bloom large and well formed. One of the most attractive roses of a delightful shade of pure rose pink. Each \$1.00; Doz. \$10.00.

**SENSATION.** This beautiful new rose is a pleasing bright, yet deep, velvety red that does not fade; long pointed buds, of most perfect shape when open; borne on long stems with heavy, glossy foliage. Each \$1.50; Doz. \$15.00.

**SHOT SILK.** (Alex Dickson and Sons 1924). One of the most charming new roses awarded the Gold Medal of the N. R. of England. Color orange-rose overlaid with yellow and flushed with soft rose. Buds beautiful and long with reflexing outer petals; fine foliage. Each \$2.00; Doz. \$20.00.

**SOUV. DE CLAUDIUS PERNET.** Pern. (New). Winner of the International Gold Medal at Paris in 1920. The best yellow rose ever introduced for garden culture. Clear shining yellow with no tinge of orange and without the faded or white edges so common to many yellow varieties. Beautifully formed, elongated buds, open flowers very double — a vigorous grower with clean shining foliage. Each \$1.25; Doz. \$12.50.

**SOUV. DE GEORGE BECKWITH.** Per. New. Shrimp-pink shaded to chrome and deeper yellow; of vigorous habit and free blooming. A great improvement on the Lyon. Each \$1.25; Doz. \$12.50.

**SOUV. DE GEORGES PERNET.** Per. Oriental red tipped cochineal-carmine. Entire flower faintly shaded yellow. Very large and full on long, strong stems. Each \$1.25; Doz. \$12.50.

**SOUV. DE H. A. VERSCHUREN.** Color two-tone cadmium yellow deepening orange at center. Perfect form. Fragrant and productive. Each \$1.25; Doz. \$12.50.

**SUNBURST.** H. T. Color a rich chrome yellow overlaid and shaded orange-copper with a metallic sheen. Each \$1.00; Doz. \$10.00.



SUNBURST

**SUNSTAR.** H. T. Deep orange and yellow, edged, veined and splashed crimson and vermillion. Vigorous grower; free bloomer. Each \$1.50; Doz. \$15.00.

**SWEET BRIAR.** Pink. Each 75c; Doz. \$7.50.

**T. F. CROZIER.** H. T. Large, well-formed canary-yellow flowers, produced freely and continuously. Each \$1.00; Doz. \$10.00.

**THE QUEEN ALEXANDRA ROSE.** H. T. One of the most unique and striking color effects in roses, the petals being deep vermillion with conspicuous orange base—reverse side richly shaded old gold. Free bloomer and fragrant. Each \$1.00; Doz. \$10.00.

**TIPPERARY.** New Irish rose, bright yellow long, slender, shapely pointed buds. Each \$1.00; Doz. \$10.00.

**ULRICH BRUNNER.** H. P. Cherry red. Each 75c; Doz. \$7.50.

**WILHELM KORDES.** Pern. Golden yellow tinted copper and flushed red. Very fragrant. Petals so stiff that flowers are remarkably lasting. Each \$4.50.

**WILLIAM F. DREER.** Per. This rose of the same parentage as the Los Angeles is similar in shape and, like that variety, beautiful in all stages of development. The flowers are a silvery shell-pink suffused golden yellow. Each \$1.00; Doz. \$10.00.

**WILLOWMERE.** H. T. Color rich shrimp pink shaded yellow at center edges of petals bright rosy carmine about the same as Lyon, except it is a strong, robust grower. Each \$1.00; Doz. \$10.00.

## ROSA RUGOSA and OTHER BEDDING ROSES

Rosa Rugosa and their hybrids are very hardy, they will stand the coldest climate and do well under most trying conditions, the seashore, mountains or Alaska; are excellent for covering steep banks and for planting among native shrubbery. They make well-branched, dense, compact bushes from 4 to 8 feet high, with a shiny, dark green, thick, leathery foliage which is oddly wrinkled. Some bloom all summer, others but once; however, the flowers are followed by a profusion of orange, red and crimson fruit. They are remarkably free from insect pests and disease.

**AUSTRIAN COPPER.** Austrian Briar. Strong erect grower of stately appearance—excellent for planting in borders, alone or with other shrubs. Flowers single bright coppery red, reverse of petals golden yellow. Each 75c; Doz. \$7.50.

**BELLE POITEVINE.** H. Rug. Large double flowers of clear magenta-pink. Vigorous and free flowering. Each 75c; Doz. \$7.50.

**CONRAD F. MEYER.** Rugosa Tea, very large, double, hardy, color clear, silvery pink. Each 75c; Doz. \$7.50.

**ROSA HUGONIS.** This spectacular rose blooms very early. The gracefully arching branches of the previous year's growth become lined to the very tip with closely set wide open, single flowers like dainty yellow hollyhocks, bending over with the weight of the blooms. For planting among shrubbery this unique rose has few equals, the growth is



SENSATION

## MALMO'S ROSES—Continued

symmetrical, being about six feet in height and the same in diameter when fully matured. Each \$1.00; Doz. \$10.00.  
**ROSA RUGOSA ALBA.** Pure white, single. Each 75c; Doz. \$7.50.  
**ROSA RUGOSA RUBRA.** Bright red, single. Each 75c; Doz. \$7.50.  
**ROSA WICHURAIANA.** W. White memorial rose, very hardy, creeping, single. Each 75c; Doz. \$7.50.

## MOSS ROSES (BUSH)

**CRESTED MOSS.** Pink, free from mildew. Each 75c; Doz. \$7.50.  
**GLORIE OF MOSSES.** Beautiful blush, large. Each 75c; Doz. \$7.50.  
**RED MOSS.** Each 75c; Doz. \$7.50.

## Malmo's Standard Roses

These Are Good, Well-Formed Heads on 4 to 5-Foot Stems. For description see general list of Roses.

FRAU KARL DRUSCHKI	Each \$2.50-\$3.00
HADLEY, H. T.	3.50
HOOSIER BEAUTY, H. T.	3.50
HUGH DICKSON	3.00-3.50

LADY HILLINGDON, T.	Each \$2.50-3.50
MADAME CAROLINE TESTOUT	2.50-3.00
MADAME EDWARD HERRIOT	3.00-3.50
SUNBURST	2.50-3.00

## Malmo's Climbing Roses

**AMERICAN PILLAR.** Large single, bright rosy pink approaching carmine. Grows in heavy clusters. Each 75c; Doz. \$7.50.

**AVIATEUR BLERIOT.** Beautiful saffron yellow, a thrifty and profuse bloomer. Each \$1.00; Doz. \$10.00.

**CLIMBING AMERICAN BEAUTY.** Dark pink. Each 75c; Doz. \$7.50.

**CLIMBING CECIL BRUNNER.** Pol. Pink. Each 75c; Doz. \$7.50.

**CLIMBING FRAU KARL DRUSCHKI.** H. P. Pure white long pointed bud. Each 75c; Doz. \$7.50.

**CLIMBING GENERAL McARTHUR.** True Sport from Dwarf Variety—New. Each \$1.00; Doz. \$10.00.

**CLIMBING GRUSS AN TEPLITZ.** Intense bright scarlet. Each \$1.00; Doz. \$10.00.

**CLIMBING HOOSIER BEAUTY.** Velvet crimson. Each \$1.00; Doz. \$10.00.

**CLIMBING J. B. CLARK.** H. P. A rapid climber; color identical with dwarf variety. Each \$1.00; Doz. \$10.00.

**CLIMBING JONKHEER J. L. MOCK.** Identical with dwarf variety except good climber. Each \$1.50; Doz. \$15.00.

**CLIMBING KAISERIN.** H. T. White, see the Dwarf varieties. Each 75c; Doz. \$7.50.

**CLIMBING L. C. BRESLAU.** Good vigorous climber sport of well known dwarf variety. Coral pink shaded chrome yellow. Each \$1.50; Doz. \$15.00.

**CLIMBING LADY HILLINGDON.** T. This is a valuable addition to the list of climbers. The color is the same as the well-known Lady Hillingdon. Each \$1.00; Doz. \$10.00.

**CLIMBING LOS ANGELES.** H. T. Coral pink, shaded gold. Each \$1.50; Doz. \$15.00.

**CLIMBING MME. C. TESTOUT.** H. T. Each 75c; Doz. \$7.50.

**CLIMBING MAMAN COCHET.** Pink. Each 75c; Doz. \$7.50.

**CLIMBING MME. E. HERRIOT.** Brilliant coral red buds and flaming flowers of orange red and salmon. Each \$1.50; Doz. \$15.00.

**CLIMBING MRS. AARON WARD.** Golden buds and tawny flowers paling to cream and faint pink. Excellent growth and foliage. Each \$1.50; Doz. \$15.00.

**CLIMBING OPHELIA.** Identical with the dwarf Ophelia. Each \$1.00; Doz. \$10.00.

**CLIMBING SUNBURST.** Identical with dwarf Sunburst; a good climber. Each \$1.00; Doz. \$10.00.

**CLIMBING VIRGINIA COX.** Dark red, similar to Gruss An Teplitz. Each \$1.00; Doz. \$10.00.

**CRIMSON RAMBLER.** Red, cluster. Each 50c; Doz. \$5.00.

**DOROTHY PERKINS.** Pink, fine foliage, will not mildew. Each 50c; Doz. \$5.00.

**DR. VAN FLEET.** Pink. Each 75c; Doz. \$7.50.

**DUCHESS DE AUERSTAEDT.** Improved Marechal Neil. Each \$1.00; Doz. \$10.00.

**EXCELSA (Wich).** (Red Dorothy Perkins). Brilliant red, free bloomer. Each 50c; Doz. \$5.00.

**FLOWER OF FAIRFIELD.** Red. Each 75c; Doz. \$7.50.

**GLORIE DE DIJON.** T. Rich amber yellow. Each 75c; Doz. \$7.50.

**HIAWATHA.** T. Single, ruby crimson, large single flowers. Each 50c; Doz. \$5.00.



PAUL'S SCARLET

**MME. ALFRED CARRIER.** White. Each 75c; Doz. \$7.50.  
**PAUL'S SCARLET.** W. No other rose can compare with this for brilliancy of color, which is a vivid scarlet. The flowers are semi-double and produced in clusters. It is of strong climbing habit and perfectly hardy. Each \$1.00; Doz. \$10.00.

**SILVER MOON.** Pure white, cluster. Each 75c; Doz. \$7.50.

**STAR OF PERSIA.** H. L. Intense bright yellow, non-fading, semi-double, large beautiful flowers. Each \$1.00; Doz. \$10.00.

## DIRECTIONS

## For handling Rose Bushes

Upon receiving from the nursery:

1. Keep moist until planted.
2. Prune back to about eight inches.
3. Firm well rich soil about roots.
4. Soak thoroughly upon planting.

For best blooms continue to water well, keeping the soil constantly moist throughout the growing season.

## POTTED ROSE BUSHES

For the convenience of our customers we also offer potted rose bushes in leading varieties which allows late planting with safety, even when in leaf and full bloom. We have been meeting an increasing demand for these roses for shipment to Alaska after June 1st.

For roses in pots add 25c each to the prices listed.  
 Packing free, f. o. b. Seattle.

## COLOR TABLE OF ROSES

### COPPER AND FLAME

Arthur Goodwin  
Austrian Copper  
Betty  
Betty Uprichard  
Cheerful  
Constance Casson  
Daily Mail  
Dorothy Page Roberts  
Flame of Fire  
George C. Waud  
Georges Clemenceau  
Irish Elegance  
Irish Fire Flame  
Isabelle  
Juliet  
Lady Pirrie  
Mad. Ed. Herriot  
Mad. Paul Ollivary  
Miss Lolita Armour  
Mrs. Farmer  
Mrs. Frank Bray  
Odette Foussier  
Padre  
Pres. Cherioux  
Souv. de Beckwith  
Souv. de Georges Pernet  
The Queen Alexandra Rose  
Wilhelm Kordes

### Flame Climber

Cl. Mme. E. Herriot

### PINK

America  
Baby Dorothy  
Baby Echo  
Baby Ellen Paulsen  
Baby Le Marne  
Baby Mad. Cecil Brunner  
Baby Mrs. Cutbush  
Baby Orleans  
Baby Phyllis  
Baby Tausendschoen  
Bessie Brown  
Cecil Brunner  
Clara Watson  
Columbia  
Countess Clanwilliam  
Dainty  
Dame Edith Helen  
Dean Hole  
Druschki  
Duchess of Sutherland  
Etoile de Feu  
Etoile Liusante  
Fragrant Bouquet  
George Arends  
Heinrich Munich  
Helen Taft  
Hills America  
Hon. E. A. Bingham  
Jonkheer J. L. Mock  
La Champagne  
Lady Alice Stanley  
Lady Ashtown  
Lady Ursula  
La France

### PINK—Continued

Los Angeles  
Louise C. Breslau  
Lyon  
Mad. Abel Chatenay  
Mad. Butterfly  
Mad. E. Rostand  
Mad. C. Testout  
Mad. Jules Grolez  
Mad. Leon Pain  
Mad. Segund Weber  
Maman Cochet  
Margaret Dickson Hamill  
Mary C. of Ilchester  
Miss Cynthia Forde  
Miss Kate Moulton  
Mrs. Henry Morse  
Mrs. Joseph H. Welch  
Mrs. Wakefield C. Miller  
Ophelia  
Ophelia Supreme  
Pink Druschki  
President Carnot  
Prince of Bulgaria  
Queen of Fragrance  
Rose Marie  
Souv. de Geo. Beckwith  
Wm. F. Dreer  
Willowmere  
Belle Poitevine  
Conrad F. Meyer  
Crested Moss  
Glorie of Mosses

### Pink Climbers

American Pillar  
Cl. American Beauty  
Cl. Cecil Brunner  
Cl. J. J. L. Mock  
Cl. L. C. Breslau  
Cl. Los Angeles  
Cl. Mad. C. Testout  
Cl. Maman Cochet  
Cl. Ophelia  
Dorothy Perkins  
Dr. Van Fleet

### RED

Admiral Ward  
Aug. Hartman  
Avoca  
Baby Erna Teschendorff  
Baby Ideal  
Baby Jessie  
Baby Rambler  
Brilliant  
Capt. Hayward  
Chateau Des Clos Vougeat  
Colleen  
Crimson Emblem  
Crusader  
Farbenkonigen  
Gen. McArthur  
Gen. Sup. A. Jensen  
George Dickson  
Glorie de C. Guinoisseau  
Gruss an Teplitz  
Hadley

### RED—Continued

Hoosier Beauty  
H. V. Machin  
Hugh Dickson  
J. B. Clark  
K. of K.  
King George V.  
Lady Battersea  
Laurent Carle  
Lieutenant Chaure  
Miss Edith Cavell  
Mrs. A. R. Wardell  
Mrs. Chas. Russell  
Mrs. E. G. Hill  
Mrs. Herbert Nash  
National Emblem  
Premier  
Radiance  
Ragged Robin  
Red Cross  
Red Letter Day  
Sensation  
Ulrich Brunner  
Rosa Rugosa Rubra  
Red Moss

### Red Climbers

Cl. Gen. McArthur  
Cl. Gruss an Teplitz  
Cl. Hoosier Beauty  
Cl. J. B. Clarke  
Cl. Virginia Cox  
Crimson Rambler  
Excelsa  
Flower of Fairfield  
Hiawatha  
Paul's Scarlet

### WHITE

Angelus  
Baby Catherine Zeimet  
British Queen  
Druschki  
Edel  
Florence Forrester  
Florence Pemberton  
Glorie de Lyonnaise  
Kaiserin A. Victoria  
Louise Criner  
Mad. Caroline Testout,  
White  
Maman Cochet  
Modesty  
Mollie S. Crawford  
Mrs. Foley Hobbs  
Mrs. Franklin Dennison  
Mrs. Herbert Stevens  
Rosa Rugosa Alba  
Rosa Wichuraiana

### White Climbers

Cl. F. K. Druschki  
Cl. Kaiserin  
Cl. Maman Cochet  
Mad. Alfred Carrier  
Silver Moon

### YELLOW and ORANGE

Aladdin  
Alex. Hill Gray

Angele Pernet  
Antoine Revoir  
Aspirant Marcel Rouyer  
Baby Eugene Lamesch  
Christine  
Constance  
Doris Dickson  
Duchess of Wellington  
Duchess of York  
Etoile de Lyon  
Evening Star  
Feu Jos. Looymans  
Geisha  
Gladys Holland  
Golden Emblem  
Golden Ophelia  
Golden Spray  
Gorgeous  
Harry Kirk  
Independence Day  
Joe Hill  
Joseph Baud  
Lady Greenall  
Lady Hillingdon  
Lady Margaret Stewart  
Lady Mary Ward  
Lamia

Le Progress  
Leslie Pidgeon  
Lillian Moore  
Mable Morse  
Mad. Constance Soupert  
Mad. Melanie Soupert  
Mad. Ravory  
Mae Martin  
Marg. Molyneux  
Marquise de Sinity  
Mrs. Aaron Ward  
Mrs. Ambrose Riccardo  
Mrs. Calvin Coolidge  
Mrs. Charles Lamplough  
Mrs. David McKee  
Mrs. Mona Hunting  
Mrs. Redford  
Mrs. S. K. Rindge  
Mrs. Wemyss Quinn  
Old Gold  
Perle d'Or  
Perle von Godesburg  
Princess Marie Jose  
Rayon d'Or  
Rev. F. Page Roberts  
Shot Silk  
Souv. de Claudius Pernet  
Souv. de H. A. Verschuren  
Sunburst  
Sunstar  
T. F. Crozier  
Tipperary  
Rosa Hugonis

### Yellow Climbers

Cl. Mrs. Aaron Ward  
Aviateur Bleriot  
Cl. Lady Hillingdon  
Cl. Sunburst  
Duchess de Auerstaedt  
Glorie de Dijon



A PRIZE WINNING EXHIBIT OF MALMO ORNAMENTALS—SEATTLE ROSE SHOW





### HOW TO MAKE A HANDSOME VELVETY LAWN

The best time to make a lawn, we consider, is either in late summer or spring.

Spade the soil deep and cultivate well. If the soil is sour use hydrated lime, about 100 pounds to 1000 sq. ft., applying it preferably two to four weeks before seeding. Commercial fertilizer should be scattered on evenly and well raked in just before the seed is sown. In sowing the seed be careful to spread it evenly. The best method is to take half of the seed and sow it walking across the lawn, then take the other half and sow it walking lengthways. After the seed is on do not rake, but roll it in. If a roller is not available, tamp the seed into the ground with the back of the shovel. Sprinkle lightly, being careful not to float the seed.

While the seed is germinating and the grass is young extra care should be used, especially during dry weather, that the ground be kept moist. It should never be allowed to dry out but cannot be soaked, so it is necessary to watch it very closely and sprinkle whenever necessary, sometimes as often as three times a day.

Commence cutting as soon as the grass is long enough, and cut often. This will both thicken the grass and make it finer. If cut often the clippings may be left on the ground for fertilizer. They will not be noticeable unless the grass is allowed to grow too long between cuttings.

After the lawn is established it should be thoroughly soaked about once a week during the dry weather. When watering, saturate the ground thoroughly and it will not be necessary to do it so often.

#### WASHELLI LAWN GRASS

This is the grass that is used exclusively at Washelli Cemetery and has produced all of their beautiful lawns. It is the best mixture of grasses for the purpose of quickly producing a fine, lasting lawn. Each variety of grass is there for a special purpose and nothing but the very highest grade of clean seed is used. It makes a rich, velvety, dark green turf that, when properly cared for, improves with age and stands almost any amount of wear. It starts quickly and makes a good lawn the first season. Sow 1 lb. to every 150 square feet.

**MALMO'S WASHELLI LAWN GRASS** (Subject to market change. Postage extra).....1 lb. 65c;  
10 lbs. \$6.40; 100 lbs. \$63.00.

#### MALMO'S EVERGREEN LAWN GRASS

A special blend of deep rooted, fast growing, turf forming grasses, somewhat coarser than Washelli. It starts quickly and grows well, even on poor soil and for those who want a quick permanent lawn at a minimum price this is the best. Sow 1 lb. to every 150 square feet.

**MALMO'S EVERGREEN LAWN GRASS** (Subject to market change. Postage extra).....1 lb. 35c;  
10 lbs. \$3.45; 100 lbs. \$34.00.

#### MALMO'S SHADY LAWN GRASS

It is usually quite hard to obtain a good lawn under trees or in other shady places. This grass, however, will grow well and make a thick green turf in places where ordinary grass will not thrive for want of light. Sow 1 lb. to every 150 square feet. Ground that is densely shaded is very apt to be "sour" and as a rule the best results are obtained when an application of Hydrated Lime of about 100 lbs. to 1000 square feet is made before seeding.

**MALMO'S SHADY LAWN GRASS** (Subject to market change. Postage extra).....1 lb. \$1.00;  
10 lbs. \$9.50; 100 lbs. \$94.00.

#### MALMO'S GOLF LINKS MIXTURE

This mixture is composed of Creeping Bent and other high grade, fine-bladed grasses best adapted to withstand the frequent close cutting and hard usage required for the Fairways. White Clover not being suitable for this purpose is not included in the mixture. It is of the greatest importance that only such grasses as will fulfill all requirements are used and by a careful study of this subject we are able to offer a superior mixture for golf grounds.

**MALMO'S GOLF LINKS MIXTURE** (Subject to market change. Postage extra) .....1 lb. 65c;  
10 lbs. \$6.40; 100 lbs. \$63.00.

**MALMO'S SPECIAL PUTTING GREEN MIXTURE**

By close observation we have found the Bent Grasses to be particularly well adapted for use in establishing the Putting Green, owing to the smooth, thick, turf they form which withstands the constant close cutting and trampling. This mixture of Seaside Bent and various other Bent Grasses, is made up of seeds of the highest grade only. Subject to market change.

**MALMO'S SPECIAL PUTTING GREEN MIXTURE** (Ask for price on large quantity.; postage extra.) 1 lb. \$1.75; 10 lbs. \$16.50.

**MALMO'S BENT GRASS MIXTURE  
FOR VELVETY LAWNS**

This mixture is a blend of the best imported Creeping Bent and other fine, acid loving grasses, which produce lawns of a beautiful velvety green color, unsurpassed for fine homes, and especially adapted to climate and conditions prevailing around Puget Sound.

It is a mixture, which if used with Malmo's Acid Fertilizer will build a lasting turf free from weeds.  
**MALMO'S BENT GRASS MIXTURE** .....1 lb. \$1.50; 10 lbs. \$14.00

**Grass and Clover Seeds**

On account of market fluctuations, accurate prices on quantity can not be given here. Ask us for current prices. POSTAGE EXTRA.

**GRASS SEED**

	1 lb.	10 lbs.		
CREEPING BENT (IMPORTED)	\$1.75	\$16.50	ORCHARD GRASS	.30 2.75
BLUE GRASS, KENTUCKY, MALMO'S SPCL	.55	5.25	RED TOP, FANCY XX	.45 4.25
BLUE GRASS, KENTUCKY FANCY	.45	4.25	RYE GRASS, ENGLISH	.25 2.30
CRESTED DOGSTAIL	.75	7.40	RYE GRASS, ITALIAN	.20 1.90
FESCUE, CHEWINGS	.55	5.25	RYE GRASS, PACEY'S PERENNIAL	.30 2.75
FESCUE, SHEEP	.35	3.40	SEASIDE BENT (AGROSTIS MARITIMA)	1.75 16.50
FESCUE, MEADOW OR ENG. BLUE	.30	2.75	SUDAN GRASS	.30 2.75
			TIMOTHY	.20 1.40

**CLOVER SEED**

	1 lb.	10 lbs.		
ALFALFA XX	\$.30	\$ 2.75	BOKHARA, SWEET YELLOW BLOSSOM	.25 2.30
ALFALFA, GRIMM	.45	4.25	RED CLOVER, MALMO'S XX	.50 4.75
ALSYKE XX	.45	4.00	RED CLOVER, MAMMOTH	.50 4.75
BOKHARA, SWEET, WHITE BLOSSOM	.25	2.30	WHITE CLOVER, DUTCH FANCY	.60 5.75

Prices subject to market changes.

**Grain and Field Seeds**

	1 lb.	10 lbs.	100 lbs.		
BARLEY, Beardless	\$.10	\$.60	\$ 4.75	RYE	.10 .45 3.75
BARLEY, Common	.10	.50	4.00	RYE, Rosen	.10 .65 4.00
White, Hulless	.10	.65	5.00	VETCH, Common	.10 1.00 8.00
FIELD PEAS, Common	.10	.75	6.00	Hairy or Winter	.25 2.25 18.00
Blue	.10	.75	6.75	WHEAT, Bluestem	.10 .60 4.50
OATS, Swedish Select	.10	.50	4.50	Red Russian	.10 .50 4.50
Danish Giant	.10	.50	4.50	KALE, 1000 Headed	.25 6.00
Oregon Gray Winter	.10	.60	4.00	RAPE, Dwarf Essex	.15 1.35 12.50

**Pet Stock Department**



We take great pleasure in announcing to our many customers and friends that we have equipped our retail store at Sixth and Westlake, with a complete line of Pet Stock Supplies and Remedies and will have imported St. Andreasburg Rollers, Domestic Canaries, Talking Parrots and many other fancy birds in season, under the supervision of experts in this line, who will be glad to give you information in regard to the care of your pets. Call, Phone or Write for our Pet Stock Circular and price list.



TELEPHONE MAin 4484

COMPLETE MAIL ORDER SERVICE

**MALMO & CO.**

6th and Westlake

--

--

Times Square

--

--

Seattle, Wash.

# Malmo's Commercial Fertilizers

Prices are f. o. b. Seattle docks, railroads, or delivered in the city on regular delivery routes, and are subject to market changes without notice. (Ask for prices in quantity.)

An allowance of 25c per sack of 100 lbs. or 50 lbs. may be deducted for call at store, yard or nursery. Less than 50 lbs. are at call prices. Ask for quantity price.

## MALMO'S GARDEN FERTIL-GRO

(Reg. U. S. Patent Office)

Analysis: 2% to 3% Nitrogen, 10 to 15 Phosphoric Acid, 3% to 4% Potash.

The most complete fertilizer for roses, fruits and berries, in fact all vegetables and flowers. This effective garden fertilizer is scientifically prepared to promote the rapid growth and maximum crop. It yields its plant food only as the plants require it and is therefore effective and lasting.

It is applied broadcast and cultivated in or sowed in rows and thoroughly mixed with the soil before the seed is planted, or used as a top dressing alongside the rows and around the hills. It may be used for lawns, but for that purpose we recommend our LAWN FERTIL-GRO, which is especially adapted for that purpose.

5 lbs. 25c; 10 lbs. 45c; 20 lbs. 85c; 50 lbs. \$2.00; 100 lbs. \$3.50.

## MALMO'S LAWN FERTIL-GRO

(Reg. U. S. Patent Office)

Analysis: 8% to 10% Nitrogen as Ammonia, 10 to 15 Phosphoric Acid, 1% to 2% Potash.

This fertilizer is scientifically prepared, purely organic, it is a great foliage builder and designed to release its quickly available high nitrogen content only as fast as it can be assimilated by plant life without danger of over-stimulation or burning. It is unexcelled for lawn use, when used on new lawns should be applied broadcast and raked thoroughly in before sowing the seed at the rate of 100 lbs. per 1500 square feet. For old lawns it is better to give them an even top dressing, seeing that all lumps are pulverized and wet down thoroughly as soon as applied. For this purpose use 100 lbs. to 2500 square feet.

5 lbs. 35c; 10 lbs. 60c; 20 lbs. \$1.10; 50 lbs. \$2.50; 100 lbs. \$4.50.

## HIGH GRADE FISH FERTILIZER

Analysis: 8% to 10% Nitrogen as Ammonia, 10 to 15 Phosphoric Acid.

A high quality ground and dried fish fertilizer for quick results in the growing of roses, or the making of lawns or other uses where production of luxuriant foliage is desired. For use on Flowers and Vegetables: Spread evenly over the ground as far out as the roots extend. Cultivate well; keep from stems of tender plants. For LAWNS, apply broadcast and rake in well, 100 lbs. for 1500 square feet; on old lawns use 100 lbs. to 3000 square feet. Pulverize all lumps, wet down with coarse spray.

5 lbs. 35c; 10 lbs. 60c; 20 lbs. \$1.10; 50 lbs. \$2.75; 100 lbs. \$4.75.

## SEA-PRO-CO

Grass Food Fish Fertilizer.

Analysis: 7% to 10% Nitrogen as Ammonia, 2 to 3 Phosphoric Acid.

Its wonderful rapid action is due to the availability of its high nitrogen content, which is yielded to plant life as fast as it can be assimilated without the danger of over-stimulation or burning attending the use of nitrate of soda. FOR ROSES: One small handful for one treatment well mixed in soil.

FOR NEW LAWNS: 100 lbs. to 1500 square feet. Apply broadcast and rake in well before sowing seed.

FOR OLD LAWNS: 100 lbs. to 3000 square feet. Spread evenly through a screen, if possible. Pulverize all lumps. Wet down with a coarse spray.

5 lbs. 35c; 10 lbs. 60c; 20 lbs. \$1.00; 50 lbs. \$2.50; 100 lbs. \$4.50.

Ask for quantity price.

## SHEEP MANURE

Analysis: 1% to 2% Nitrogen as Ammonia, 1% Phosphoric Acid, 2% to 2½% Potash.

The sheep manure we offer and recommend is kiln dried and finely ground, practically free from germinable seeds and moisture.

20 lbs. 50c; 50 lbs. \$1.25; 100 lbs. \$2.00; 500 lbs. \$9.00; 1000 lbs. \$16.00; per ton \$30.00.

## MURIATE OF POTASH

Analysis: Potash 52%

This is a very strong, quick acting fertilizer and is the best form of Potash available for ground that is lacking in this element. It is packed 200 lbs. in a bag and is generally used at the rate of about 1 bag to the acre.

5 lbs. 35c; 10 lbs. 60c; 20 lbs. \$1.00; 50 lbs. \$2.00; 100 lbs. \$3.50; 1 sack (200 lbs.) \$7.25.

## SULPHATE OF AMMONIA

Strong in nitrogen, about 25%. Is very good to stimulate quick growth, but is not a complete fertilizer. Is valuable for its high percentage of nitrogen, but must be used very carefully or will burn vegetation.

1 lb. 15c; 4 lbs. 50c; 25 lbs. \$2.25; 50 lbs. \$4.25; 100 lbs. \$7.75.

## MALMO'S ACID FERTILIZER

This is a well balanced mixture of acid fertilizers, especially prepared for the use of Creeping Bent and other acid tolerant grasses and should never be used on Washelli, Evergreen, or Blue grasses, which will not tolerate acid, but delight in a lime soil. This fertilizer is made up of ingredients, which tend to sour the soil and eradicate weeds in the lawn. If applied every spring and fall to Creeping Bent lawns, there will be no trouble with weeds, such as dandelions, plantain, etc. Should be applied at the rate of 20 lbs. per 1000 sq. ft., and watered-in thoroughly.

1 lb. 15c; 10 lbs. \$1.25; 50 lbs. \$6.00; 100 lbs. \$11.50.

## MALMO'S WORM ERADICATING FERTILIZER

This is an efficient preparation for destroying earthworms in lawns, putting greens, etc., and an excellent fertilizer for fine grasses. Should be used at the rate of ¼ lb. to every square yard and thoroughly watered-in. Must never be applied when there is frost in the ground or during long dry spells, unless kept continually moist for at least two or three days.

1 lb. 10c; 3 lbs. 25c; 10 lbs. 75c; 50 lbs. \$2.00; 100 lbs. \$3.60.

## NITRATE OF SODA

Analysis: 13% Nitrogen.

Nitrate of Soda is entirely soluble, like salt and should be used frequently in light dressing for best results; 150 to 200 lbs. per acre.

4 lbs. 25c; 10 lbs. 50c; 20 lbs. \$1.00; 50 lbs. \$2.15; 100 lbs. \$4.00; 200 lbs. or more, \$3.75 per 100 lbs.

\$4.00; 200 lbs. or more, \$3.75 per 100 lbs.

## SUPER-PHOSPHATE

Analysis: 17% to 22% Phosphoric Acid.

Super-Phosphate furnishes a quickly available supply of phosphoric acid and is especially desirable as a top dressing for grain and fruit. 300 to 500 lbs. per acre.

10 lbs. 30c; 20 lbs. 50c; 50 lbs. \$1.10; 100 lbs. \$1.75.

## GYPSUM OR LAND PLASTER

For sweetening soil, freeing plant food and supplying sulphur.

50 lbs. \$1.00; 100 lbs. \$1.75.

## HYDRATED LIME

Pure Hydrated Lime, best adapted for general use, including lawns, neutralizes the acid of the soil making it possible for fertilizer to accomplish maximum results. This form is quick and efficient. An application will attain the same results as twice the quantity of Ground Lime Rock.

20 lbs. 50c; 50 lbs. \$1.00; 100 lbs. \$1.75.

## GROUND LIME ROCK

Used for sweetening the soil, but on account of slower action must be used in larger quantities than Hydrated Lime. One ton or more per acre required, according to extent of acidity of the soil. Indispensable to success in growing Alfalfa on the west side of the Cascade Mountains.

100 lb. sack \$1.25.

## "TORO" AGRICULTURAL SULPHUR

No plant can grow to maturity without the element of sulphur. "Toro" Brand is especially prepared to make these elements available for the plants and to act upon other chemicals naturally in the soil, transforming them into plant food. Applications of from 100 to 500 lbs. of "Toro" Sulphur per acre have, in many cases, doubled the yield.

3 lbs. 25c; 5 lbs. 40c; 10 lbs. 75c; 20 lbs. \$1.25; 50 lbs. \$2.75; 100 lbs. \$5.00.

## STIM-U-PLANT

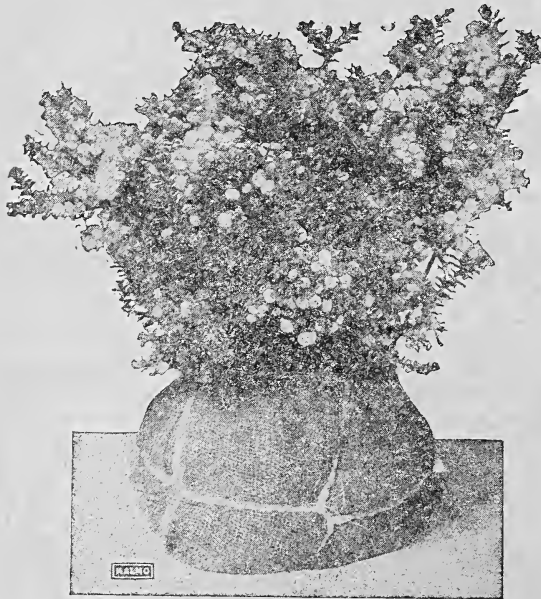
A concentrated fertilizer in tablet form, especially convenient for potted plants, window boxes, etc. May be used either in tablet form or dissolved in water.

30 tablets in pkg. 25c; 100 tablets in pkg. 75c.

## INDEX

BERRIES	20-21	LAWN, HOW TO MAKE	33
BULBS	5-15	LAWN SEED	33-34
FERTILIZERS, COMMERCIAL	35	LILIES, JAPANESE	15
FERTILIZERS, USE	35	MISCELLANEOUS BULBS, ROOTS	14
FRUIT TREES	17-20	NUT TREES	19-20
GRASS SEED	33-34	ROSES	25-32
Almond	19	Fertil-gro	35
Amaryllis	14	Fertilizers	35
Anemones	14	Fertilizers, Use	35
Apples	18	Field Seed	34
Apples, Crab	18	Figs	19
Apricots	19	Filberts	19
Berries	20-21	Flower Seeds (see General Catalog).	
Bizarre Tulips	8	Freezia	14
Blackberries	20	Fritillaria	14
Bowls	15	Fruit Trees	18-19
Breeder Tulips	8	Fruit Trees, bearing size	17
Bulbs	5-15	Galanthus (Snow-drop)	14
Bulb Bowls	11	Giant Trumpet Narcissus	12
Bybloem Tulips	8	Glory of the Snow (Chionodoxa)	14
Calla Lilies	14	Golf Links Grass	33
Chionodoxa	14	Gooseberries	20
Cherries	18-19	Grain Seeds	34
Chestnuts	19	Grapes	20-21
Clover Seed	34	Grape Hyacinths	14
Convallaria (see Lily of the Valley).		Grass Seed	34
Cottage Tulips	6	Hazelnuts	19
Crab Apple	18	How to Order	4
Crocus	9	Hyacinths	10-11
Crown Lily	14	Hyacinth Glasses	15
Currants	20	Iris, Spanish	14
Daffodils	12-15	Island Belle Grapes	20-21
Darwin Tulips	7	Japanese Lilies	15
Double Narcissus	12	Jonquils	11
Double Tulips	6	Lawn Making	33
Easter Lily	15	Lawn Seeds	33-34
Eranthis Hyemalis (Winter Aconite)	14	Lilies	15
Evergreens from the Evergreen State	22-23	Lily of the Valley	14
Evergreens (see General Catalog).		Loganberries	21
		May Flowering Tulips	6
		Miscellaneous Flowering Bulbs and Roots	14
		Mulberry	19
		Muscari Botry (Grape Hyacinth)	14
		Narcissus	12-15
		Nectarines	19
		Nut Trees	19
		Orchard Planting and Culture	16-17
		Ornamental Evergreens (see General Catalog).	
		Oxalis	14
		Parcel Post Rates	4
		Parrot Tulips	8
		Peaches	19
		Pears	19
		Peonies	24
		Perennials	21
		Pet Stock and Supplies (Information furnished on request).	
		Phenomenal Berries	21
		Planting Table	17
		Plums	19
		Poetaz Narcissus	13
		Poeticus Narcissus	13
		Poultry Supplies (List on request).	
		Prunes	19
		Pruning Directions	17
		Quince	19
		Ranunculus	14
		Raspberries	24
		Rembrandt Tulips	8
		Roses	25-32
		Color Table	32
		Bush	25-31
		Climbing	31
		Moss	31
		Potted	31
		Standard	31
		Scilla	14
		Seed, Flower (see General Catalog).	
		Seed, Lawn	33-34
		Seed, Vegetable (see General Catalog).	
		Short Trumpet Narcissus	13
		Shrubs, Flowering (see General Catalog).	
		Single Narcissus	13
		Single Tulips	5
		Small Fruits	20-21
		Snowdrop	14
		Spanish Iris	14
		Sparaxis	14
		Strawberries	21
		Sweet Peas	
		Inside Back Cover	
		Table Planting Distance	17
		Tulips	5-8
		Trumpet Narcissus	12-13
		Vegetable Seeds (see General Catalog).	
		Walnuts	20
		Washelli Lawn Seed	33
		Water Lilies	11
		When and How to Plant	16
		Winter Aconite	14

## SPECIAL SWEET PEA OFFER ORN ON INSIDE BACK COVER



## PERNETTYA

Balled and Burlapped for Safe Delivery  
and Transplanting

## PERNETTYA

## NEW EVERGREEN NOVELTY

THIS evergreen, which is ever growing in use and popularity, is of dense, compact habit, doing well in any location but preferring a rich, humus soil. The leaves are small, dark, glossy green; white flowers in spring. Most valuable for its attractively colored and profusely produced berries in fall and winter. Moderately dwarf growing and can be trimmed compactly.

- Pernettya alba. White berries.
- Pernettya atropurpurea. Bright red berries.
- Pernettya lilacena. Lilac berries.
- Pernettya nigra. Very dark red berries.
- Pernettya rosea. Pink berries.

Well berried, trimmed plants—

- 1 ft. .... (doz. \$20.00) \$2.00
- 1½ to 2 ft. .... \$2.50 to \$4.00

A COMPLETE DESCRIPTIVE LIST OF  
ORNAMENTAL EVERGREENS IN 120  
PAGE PLANTING GUIDE — MAILED  
FREE ON REQUEST

# Special Sweet Pea Offer



## Giant Spencer

*Sweet Pea Collection*

15 TEN CENT  
PACKAGES \$1.00

We will mail postpaid our selection of fifteen 10-cent packets of GIANT SPENCER SWEET PEAS, including such varieties as King Edward, King White, Primrose, Asta Ohn, Othello, Mrs. Routzahn, at above price, a saving of one-third.

This group includes the largest and most beautifully formed Sweet Peas. The Spencers have very large waved flowers which are produced abundantly on long stems, making the blossoms most desirable for cutting. They attain their great perfection on the Pacific Coast, where they are grown extensively for seed, furnishing the greater part of the supply for the entire country.

### SUNKIST

This is a magnificent large Picotee Edged variety. The ground is a clear rich cream, and the Picotee Edging is clearly defined. The flowers are large, well waved and beautifully placed on long strong stems. Per Packet of 25 seeds, 25c

## Cultural Directions For Sweet Peas

Sweet Peas require good soil and plenty of water. On Puget Sound they may be planted from October till Christmas, for early Spring flowering. Most seasons they come through without any protection, but a few inches of straw placed on the row will insure sufficient protection against frosts usually experienced here. Plant in the Spring as early as the ground can be worked.

The best method of planting is to dig a trench 12 to 18 inches deep. If the soil is not good, remove the poor soil and supply a good quality, using plenty of fertilizer, which should be well mixed with the soil, filling up the trench to within three or four inches of the top. On top of this mixture of soil and fertilizer, place about one inch of good mellow soil without any manure or fertilizer in it, on which to sow the seed. Cover the seed one-half to one inch with soil, a half inch being preferable. The trench should always be kept open an inch or two from the top in order that water used will lead to the plants. Sweet Peas require more moisture than most other plants, and whenever it is necessary to water them, soak them thoroughly. When the seeds are well up, thin them out and when grown to one or two inches, fill in some more soil around them.

When the Peas are in bloom they should, unless grown for seed, be cut every day. If this is done they will produce better blooms on longer stems and blossom profusely all through the season. One ounce will plant a 15 to 20 foot row.

### Malmo's Mixed Spencer Sweet Peas

This is made up from standard varieties named Spencers, properly blended, and is an ideal combination for those who want a variety of color.

Pkt. 10c; oz. 25c;  $\frac{1}{4}$  lb. 75c; 1 lb. \$2.50 — Postpaid



**Here's  
One  
Reason  
Why**



# MALMO Evergreens

*add value  
and lasting  
beauty to  
your home!*

Every MALMO grown evergreen is dug with a compact ball of rich soil which firmly holds the complete fibrous root system — developed through frequent transplantings in our nurseries

This is one reason why MALMO grown ornamental evergreens are *DEPENDABLE* and are in demand throughout the state of Washington and along the coast for the landscaping of homes, public buildings and parks

The soft, varying frame of a balanced landscape setting of MALMO ornamentals completes the home picture, assuring enduring beauty and increasing value with the passing of years.

In quantity production we have effected economies that are reflected in greatest values to our customers.

## Visitors Are Always Welcome!

You are cordially invited to inspect our nursery at any time. A staff of experienced nurserymen are at your service to give advice concerning planting requirements and cost estimates — all without obligation to you!

**25 Acre City Display and Sales Grounds**

**ELLIS AVE. GEORGETOWN**

**Nurseries of MALMO & Co**  
NURSERY STOCK • SEEDS

Established 1893

### HOW TO GET THERE

#### By Street Car

Take South Seattle Car (No. 6) southbound on Second Avenue. Get off at Warsaw Street and walk two blocks east.

#### By Auto

Drive south on Fourth Ave South between the depots, as indicated on above map, incline to the left and across railroad tracks into Georgetown. Turn right at bank opposite old brewery and drive three blocks to nursery on Ellis Avenue.