

Historic, Archive Document

Do not assume content reflects current scientific knowledge, policies, or practices.

62.97

1927

MAR 2 1927

CATALOGUE AND PRICE LIST OF

The Northwood Nurseries

The Home of the Flowers

KOETHE BROS., Props.



ORNAMENTAL TREES, SHRUBS VINES AND
HARDY PERENNIALS

Coon Valley, Wisconsin

Phone Coon Valley, No. 8-L 15.



Make Home the Wonderland of Beauty TO THE PUBLIC:

Beauty is instinctive to man. What joy of a Spring morning, to watch the rosy dawn spread along the horizon; while the birds in the trees and nearby woodlands burst forth into melody and song; thus ushering in the day with a vast anthem of praise. The stars pale and fade from sight. The blue sky arches overhead, as the morning light paints the landscape in softened hues, and nowhere is the scene so beautiful as viewed from our own door. That is if we have made home the wonderland of beauty that it should be. Each day brings an ever changing panorama of delight. The bursting buds, the soft green and grays of the new foliage; later taking on the more somber tones of Summer, with opening flowers and new wonders unfolding from day to day; then later the ripe fruit, ready to the pickers hand, the gold and purple of the late flowers, the red and yellow leaves of Autumn and the hazy skies of Indian Summer. Then the early dash of Winter that brings the Evergreens into full prominence. They smile at the swirling snow and cold and give a comforting touch of color to the Winter landscape.

Thanking our many friends and the public for their generous patronage in the past; and wishing all a happy and prosperous year we are,

Yours very truly, KOETHE BROS.

Read Before Ordering

Inspection—Our nurseries are thoroughly inspected by a State Inspector and are licensed under the laws of this state.

Terms—Our terms are cash with order. Remittances should be sent by Postal Money Order, Bank Draft, or Check.

Genuineness—We exercise great care to have our stock true to name and will send out healthy trees and plants only. We will in no way be responsible for the growth, productivity, or genuineness of the stock, as we have no control over it after it leaves our grounds. All orders are accepted under these conditions only.

Prices quoted are for stock at the nursery or on board at nearest railroad station; and apply to nursery run. Specimen plants, specially selected on the grounds will be charged at a higher rate. Where quotations read postpaid this applies to local, first and second zones only.

When to Order—Send your order as soon as possible. All orders are filled in the order received and varieties sold out will be withdrawn without notice. We reserve the right to cancel orders should injury befall our stock from causes over which we have no control.

Shipping Instructions—Please state whether you want stock shipped by Freight, Express, or Mail.

Location—Our nurseries are located 12 miles southeast of LaCrosse and four miles northwest of Coon Valley, on Trunk Highway No. We extend a cordial invitation to all plant lovers and prospective planters to visit our nursery and make their selection while our plants are in bloom.

Prices in This List Cancel All Previous Quotations.



Hardy Flowering Shrubs

A good collection of Flowering Shrubs is not only an unfailing source of pleasure but is absolutely indispensable to the well arranged lawn. Nature plants shrubs with lavish hand along the borders of the woodland. The effect is always restful and beautiful. The attractive home is the one neatly planted with Trees, Shrubs and flowers. Shrubs planted along the borders, massed into the corners, against the porches and sharp angles of the house will greatly enhance the artistic value of any home. Shrub plantings are the harmonizing feature which link the trees, buildings and lawn into one harmonious whole and give that finishing touch of hominess so greatly desired.

All Shrubs, except as noted, 1 to 1½ ft. plants, 30c each, postpaid; 1½ to 2 ft., postpaid, 50c each; 2 to 3 ft., not prepaid, 75c each. Prices on extra-large Shrubs quoted on application.

SHRUB COLLECTION

S. Arguta. Snow Garland. Of medium height; literally covered in May with small, snow-white flowers, while the fine, delicate foliage and slender branches give it an air of gracefulness hardly equaled by any other shrub.

S. sorbifolia. Strong, vigorous grower; pretty both in flower and out, the glossy, finely cut leaves giving a pleasing foliage effect. The flowers are creamy white, appearing in large panicles in July.

Spireae. Froebelli. Similar to Anthony Waterer in many respects, but taller. Dense heads of crimson flowers. The new foliage in Spring has a pretty and distinctive shade of red giving the shrub the appearance of being covered with flowers.

Mock Orange Virginalis. A wonderful, new variety. Of medium height; compact grower. Large, very fragrant

flowers; continuing in bloom for a long time. Very desirable. Price: 12 to 18 inch, 75c each.



Spireae Van Houttei

HARDY FLOWERING SHRUBS, Continued.

Spirea, Anthony Waterer. An excellent low growing shrub with large corymbs of bright, red flowers almost throughout the season. One of our very best display shrubs. Fine for specimens or low hedges. Height 18 to 24 inches when full grown. Should be largely planted.

S. callosa alba. A splendid companion to the Spirea, Anthony Waterer. Of dwarf, dense growth, with white flowers. In bloom all summer.

S. Van Houttei. One of the most beautiful of the flowering shrubs; literally covered with pure white flowers in the spring. For specimen shrubs on the lawn, for massing at the base of the house, or forming a beautiful flowering hedge, no shrub is superior.

S. Bumalda. Similar to Anthony Waterer in growth and habit but with light pink flowers.

S., Golden. A pretty variety with white flowers and attractive, golden tinted foliage.

S. Margarita. Tall loose growing shrub with large clusters of rose colored flowers.

Japanese Quince. Of dense habit, with



Spirea, Anthony Waterer

rich green foliage almost hidden by large, scarlet flowers in May.

Mock Orange. (Philadelphus). Flowers white, resembling orange blossoms and not a bad substitute for that noble flower. One of our best shrubs.

Shrubby Cinquefoil. This beautiful, hardy shrub, with fine cleft foliage; deserves to be largely planted. The bright, golden, yellow flowers, sparkle like stars among the dark foliage. In bloom all Summer. Plant wherever you wish to add brightness to your plantings.

Cornus (Dog Woods.) A very desirable class of shrubs that deserve to be largely planted. Valuable for producing contrast and beautiful effects in winter.

Red Barked, Yellow Barked, Gray Barked, Blue Barked, White Flowered.

Alpine Currant. An attractive shrub of graceful habit with dense currant like foliage.



Cornus

FALL PLANTING

Plant Peonies, Iris, Tulips, Narcissus, etc., in Fall. In our latitude Shrubs and Evergreens should be planted in Spring as Fall planting often proves a total failure.

Calycanthus (Sweet Shrub). Large, chocolate-colored flowers, delicately perfumed. The wood and bark of this shrub have the same agreeable odor as the flowers.



Hydrangea, P. G.

HARDY FLOWERING SHRUBS, Cont.

Polish Privet. This Privet fills a long-felt want in Northern landscape work. Their rich, glossy foliage blends well with other shrubs. Their great hardiness and graceful, rapid growth make them valuable material for deciduous hedges. Flowers white.

High Bush Cranberry. Resembles the common Snowball in foliage and habit of growth, but the flowers appear in large, flat cymes instead of ball-shaped heads, and are followed by clusters of large red berries, remaining on the plant all winter.

Snowball. The old favorite.

Lilac. We have three colors: Purple, white and rose.

Russian Olive. Large shrub or small tree with narrow silvery white leaves and sweet-scented yellow flowers. Invaluable for forming backgrounds in shrub-group plantings.

Caragana (Siberian Pea). Tall shrub with fine, feathery foliage and yellow flowers in May. Fine for mixed plantings.

Fern-leaved Sumac. Splendid for specimens on the lawn. Of rapid growth, rivaling the palm in gracefulness of foliage. Suitable for backgrounds in shrub plantings.

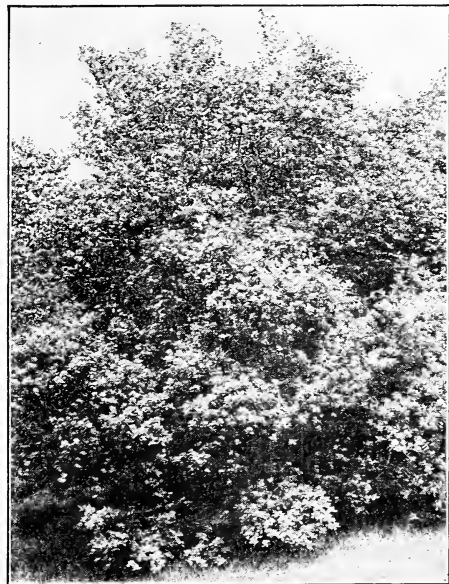
Coral Berry. Small shrub with clusters of red berries during the winter.

Weigela, Eva Rathke. One of the best. Bright crimson flowers.

Siberian Hedgewood. Large, bushy shrub with long, slender willow-like branches and narrow leaves.

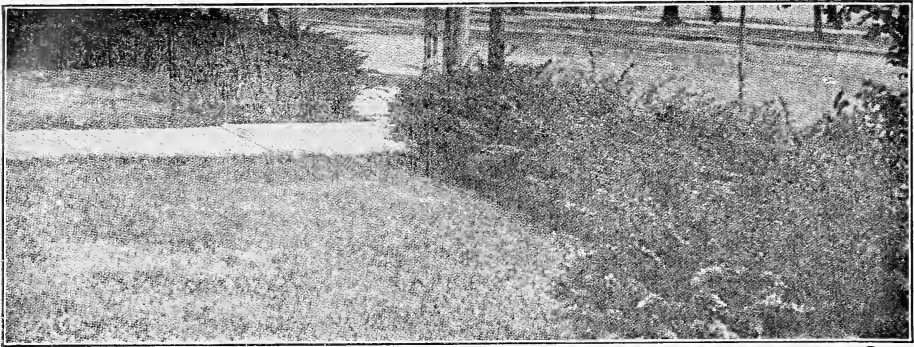
Aronia. Tall, handsome shrub, throwing up many shoots. Foliage glossy green. Brings a wonderful wealth of white flowers in June, followed by black fruits. Ornamental at all times.

Barberry, Thunberg's. A fine shrub for massing, also splendid for single specimens. The green foliage turns to a brilliant scarlet in autumn, while the pretty red berries, which adhere to the bush all winter, present a pleasing appearance against the snow. One of the finest shrubs for using as an untrimmed hedge.



Bush Honeysuckle

HARDY FLOWERING SHRUBS, Continued.



Barberry, Thunberg's

Golden Elder. A beautiful shrub with golden yellow foliage. Fine for single specimens or affords a pleasing variety when massed with other shrubs.

Hydrangea paniculata grandiflora. One of the most desirable of the hardy shrubs, as it bears its heavy trusses of white flowers at a time when most other shrubs are out of bloom.

Bush Honeysuckle. Valuable, fast growing shrubs. Beautiful at all seasons of the year. Hidden in masses of flowers when they bloom and decked in gem-like berries for a great part of the summer.

Tartarian Red, Tartarian White, Morrowi Pink, Grandiflora Rose.

Special—Four Hardy Decorative Shrubs of Exceptional Merit.

Pink Flowering Almond. Own rooted (not budded). This old-time favorite with its wealth of double, pink flowers, strung along the stems like so many gems, should find a place on every lawn. Their wealth of blossoms coming to delight us at a time when there are few other shrubs in bloom. Do not compare our own rooted plants with budded or grafted ones.

Wax Myrtle. A graceful, upright growing shrub; with thick, glossy, almost evergreen leaves; that adhere to the branches far into the Winter. The leaves when crushed emit a delightful, spicy fragrance. The stems are thickly studded with gray, aromatic, wax covered berries.

Sweet Fern. A highly ornamental, round headed shrub that throws up a mass of brown barked stems; thickly set with sweet scented, long, finely dissected foliage, giving it a fern-like appearance and making it one of the finest specimen plants for the lawn.

Pearl Bush (Exochorda). A medium sized shrub with tea green foliage. Coming into flower when most shrubs are out of bloom. The white flowers appear like pearls set among the dark-er foliage.

Cornus Variagata. Of symmetrical growth, and probably best adapted to

specimen planting. Its distinctive feature being its elegantly variegated, green and white foliage. A desirable addition to the list of Northern shrubs.

Price of either of the above shrubs, 12 to 18 inches, \$1.00 each, postpaid.

SAY IT WITH FLOWERS

Is dismal the day, and dreary the sky?
Has the bright smile been replaced with a sigh?
Don't say it in anger. Say it with flowers,
And garland with blossoms the fast fleeting hours.
Say it with flowers; it wont be in vain.
Sunshine has always yet followed the rain.

Hand to the living those pure gems of joy.
Makers of gladness that do not annoy;
Bringing a smile of the keenest delight,
Making eyes sparkle like stars in the night.
Say to the living, "What treasures are ours".
Say it by giving, but say it with flowers.

Rubies and diamonds and silver and gold.
Tell their frail story—their message is cold.
Hand out the floral gems, thrilling with life.
Give some to mother and daughter and wife.
They have a language that speaks to the soul—
Meekness and purity, every whit whole.
Watch how their magic will soothe away pain.
Say it with flowers, let harmony reign.

Send the glad message that life never dies.
To life more abundant the souls of men rise.
God paints the flowers that grow on the plain,
Giving them sunshine and shadow and rain.
If He so cares for the flowers of the field,
God from destruction His likeness will shield.
Oh send the message; dispell the dark hours.
Say it in mercy, but say it with flowers.



A Pleasing Perennial Garden

Hardy Perennials

For permanent planting in beds and borders there is an ever-increasing demand for perfectly hardy flowering plants that may be safely left in the ground throughout the winter. Under this class we include all hardy plants the foliage and stems of which die down to the ground each winter to be renewed each spring by a new and more abundant growth. This useful class of plants is fast gaining in popularity. Their varying heights, different periods of flowering, and wide range of colors make them some of the most satisfactory material for the gardener's art. We offer strong field-grown plants which should bloom the first year.

Price, any Perennial listed, except as noted, strong plants, 25c each, postpaid.

Perennial Asters are particularly valuable on account of their late flowering.

A., New England. Purple.

A., New England. Rose.

Achilleas. Do not fail to plant Achilleas. No plant is more floriferous. They increase rapidly and always insure a grand display of bloom.

Achillea Snowball. Flowers white, very double. A bed of them giving the appearance of a bank of snow.

Achillea Pearl. Flowers white and full. Similar to Snow Ball but taller.

Achillea Yarrow. Flowers white, fragrant foliage.

Achillea Roseum. Becomes a mass of rose colored flowers. Fine, feathery foliage.

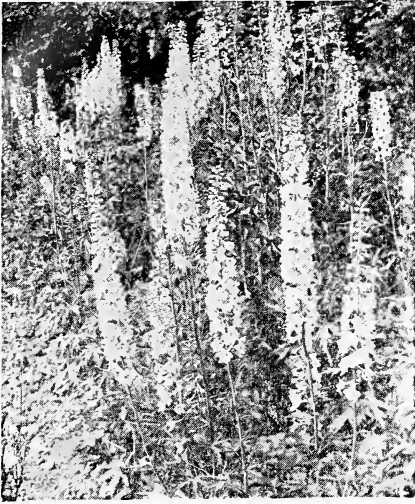
Bleeding-Heart. A favorite in our grandmothers' gardens and still deserves a place in the most up-to-date planting. Price, 50 cents each.

Boltonia asteroides. Aster-like white flowers in September. 3 feet.



Aster

PERENNIALS, Continued.



Delphinium

- Boltonia latisquama.** Aster-like lavender flowers in September. 3 feet.
- Baptisia.** Fine-cut, dark green foliage with deep blue flowers in May. 2 ft.
- Aquilegia.** Columbine. Very pretty and satisfactory plants for spring-flowering. Flowers occur in a variety of delicate shades.
- Daisy.** Among the best display flowers of the garden. They have large blossoms 2 to 3 inches across, produced in great profusion, and remain in flower for months. The flowers are borne on long, stiff stems and are fine for cutting.
- D., Shasta.** Perfectly hardy; in continual bloom from May to frost. Flowers large, white with yellow center and very showy.
- D., Tall (Chrysanthemum latifolium).** Similar to the Shasta Daisy but of taller growth.
- Coreopsis.** Large yellow flowers from May to August.
- Delphinium.** Hardy Larkspur. Some of the most satisfactory plants for the hardy garden. Their colors are deep and intense. They will flower for months if the old flower-heads are cut off as soon as they fade. 2 to 4 ft. We have two colors:
- D. Belladonna.** Turquoise blue.
- D. Formosom.** Dark blue.
- Sweet William.** A well-known old favorite. Mixed colors only.
- Gypsophila. Single.** Minute white flowers, but produced in immense numbers

in large-branched panicles. Nothing is prettier for bouquets than these fine sprays of dainty blossoms. 2 ft. July to September.

Funkia (Plantain Lily). Large clumps of bright green foliage which is very ornamental. Sending up tall stems bearing ten to fifteen lavender, lily-like flowers in June.

Heuchera. Small, bell-shaped rose flowers in long spikes. Fine for cutting.

Heliopsis. Orange Sunflower. Bright golden yellow flowers. Fine for planting among shrubbery; bloom all summer. 3 ft.

Lythrum roseum superbum. Rose Loosestrife. A very attractive plant; tall and bushy, throwing up flower-spikes from 1 to 2 feet in length, bearing myriads of rosy purple flowers; in bloom from June to October. 4 ft.

Artemisia Lactiflora. Fine cut handsome foliage, long spikes of white flowers, suitable for cutting.

Lily of the Valley. The old, well known garden flower.

Yucca filamentosa. An immense grower, with evergreen foliage. Needs no protection. It will send up flower-stalks from 3 to 5 feet high.



Coreopsis

PERENNIALS, Continued.

Scotch Bluebell. A very satisfactory plant. Increases rapidly. Flowers profusely and continues in bloom a long time.

Polemonium. Feathery foliage; deep blue flowers. July and August.

Pyrethrum, White. Tall plants with large daisy-like flowers. 3 ft. August.

P. roseum. Fine-cut foliage and rosy red flowers. 1 to 2 ft. June.

Rudbeckia, Golden Glow. Large yellow flowers from August to frost; tall.

Pink, Mullein. Rich crimson flowers in July.

Thistle, Globe. Large, ball-shaped violet flowers.

Statice latifolia. Sea Lavender. Of medium height, with spreading branches covered with small lavender flowers in such profusion as to hide the foliage. Indispensable for making bouquets.

Spirea. This fine class of hardy ornamental plants should be freely planted. They will succeed in partial shade and are beautiful in leaf and flower.

S. filipendula. Fern-like foliage and cream-colored flowers in long spikes on tall stems. June.

S. Crimson Meadow-Sweet. Elegant foliage and large heads of crimson flowers. July. 4 ft.

S. Ulmaria. Dissected foliage and large spikes of semi-double creamy white flowers.



Spirea Filipendula

S. Aruncus. Beautiful, double, cream-colored flowers in May.

Lychnis (Cross Flower). Intense scarlet flowers in June. 1½ feet.

Astilbe. A stately plant with ornamental foliage and large heads of small white flowers shading pink. 2 ft. May.

Golden Marguerite (Anthemis). A pretty plant with fern-like foliage producing masses of large golden yellow flowers. In bloom all summer. 1 ft.

False or German Balm. A favorite from the old gardens. Its chief attraction being its spicy, aromatic leaves which on account of their fragrance are much used for making bouquets.

Day Lily. The flowers are large, golden yellow, lily-like and very fragrant, borne on tall stems. 2 ft. May.

Thunbergs Day Lily. Deep orange with bronze shadings.

H., crimson eye. Has white flowers with a crimson eye.

Gaillardia. Blanket Flower. One of the showiest perennials. In flower from early summer until frost. Crimson, orange and red. Very effective when massed with Shasta Daisies.

Lily, Tiger, Single. Similar to illustration.

Double Buttercup. Produces pretty yellow flowers in spring and continues in bloom for a long time.



Tiger Lily

PERENNIALS, Continued.

Dusty Miller. Low-growing plant with silvery white foliage.

Platycodon. Balloon Flower. Tall-growing bushy plants blooming profusely from July to frost. Colors blue or white.

Forget-me-not. An old-time favorite. Deserves a place in every garden on account of its pretty, delicate blue flowers. Much used in cemeteries.

CREEPING PERENNIALS

For covering mounds, rockwork, etc.

Bishop's Carpet. Foliage variegated white and green.

Buttercup, Double. Yellow flowers.

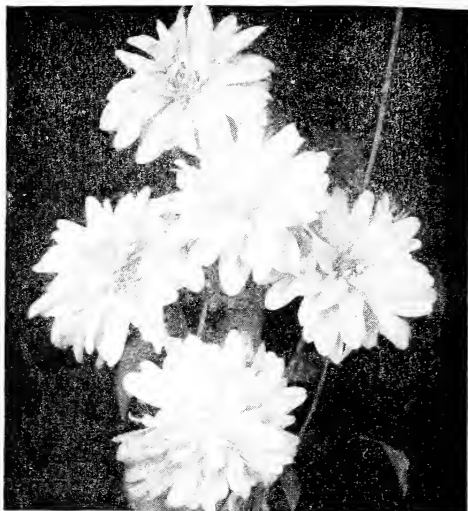
Dusty Miller. White foliage.

Forget-me-not. Blue flowers.

Saxifraga. Fine foliage; pink flowers in great profusion.

Snow-in-Summer. Silver-grey foliage; flowers white.

Any Perennial listed above, strong plants 25c each, postpaid.



Golden Glow

HALF HARDY PERENNIALS

These require Winter protection or may be replanted each Spring and treated as Annuals.

Fox Glove. Purple, rose or white.

Canterbury Bells. Purple, rose or white.

Summer Lilac. Tall growing. Long spikes of lilac flowers. Fine for cutting.

Price any variety 25c each, postpaid.



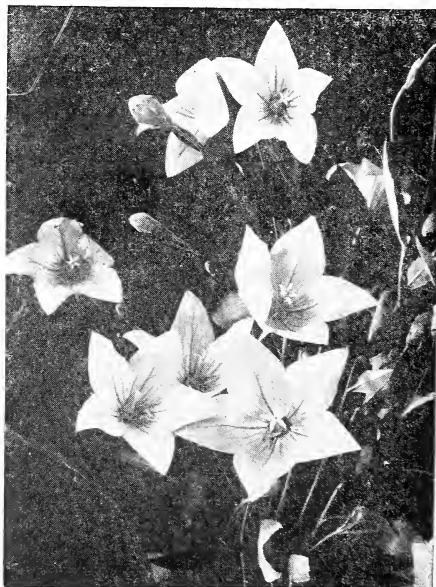
Lilac

FRAGRANT PERENNIALS

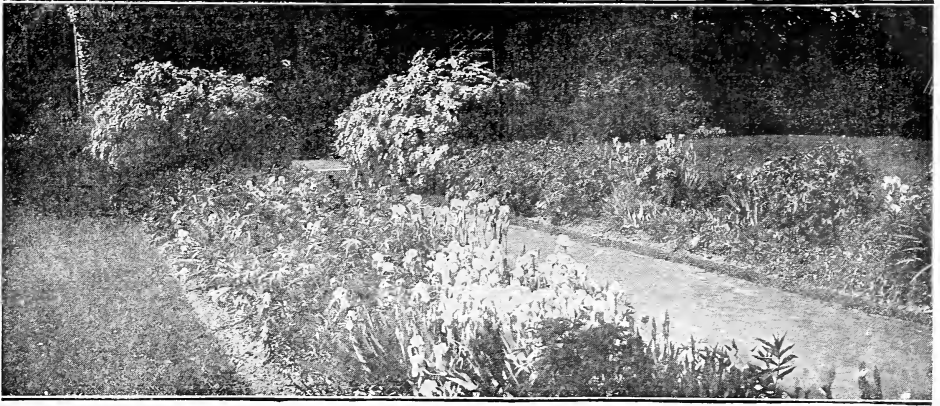
These make an interesting corner in the hardy garden because of the delightful fragrance of their foliage.

False Balm or Sweet Mary, Spearmint, Tansy, Hyssop, Wormwood, Chives, Peppermint, Oswego Tea, Monarda.

Any Perennial listed above, strong plants 25c each, postpaid.



Platycodon



Selected Iris

The Iris is one of our specialties and it gives us great pleasure to be able to offer our customers the following splendid varieties. In getting together the propagating stock of our present Iris we have selected the best we could find in the collections of many growers.

The name Iris is from the Greek meaning rainbow, and it is appropriate as these flowers have gathered all the tints of earth and sky and made them their own. The charm of a bed of mixed Iris is one of the keenest pleasures of June. The graceful beauty of the flowers; running through the whole gamut of color and produced in the most riotous profusion together with their exquisite fragrance make them one of the most beloved flowers in flowerdom. The plants have a decorative value for bordering and edging as their rich, green foliage looks attractive throughout the season.

MEDIUM

DeWitte—S. blue, F. purple.
 Loretus—White veined violet.
 Darius—S. yellow, F. wine.
 Honraribilis—S. yellow, F. bronze.
 Mad. Pacquette—Rich, rosy, purple.
 Her Majesty—Rosy pink.
 Nelly—White, veined and clouded blue.
 Sunset—S. old gold, F. purplish plum.
 Lady Frances—Light lavender.
 Rhien Nixe—S. white, F. wine.
 Sampson—S. gold, F. bronze.
 Mrs. Darwin—White veined violet.
 Celesta—Light blue.
 Purple Queen—Rich purple.
 Sherwin Wright—Intense yellow.
 Mad. De Bonne—Lemon yellow.

TALL IRIS

Pallida Delmatica—Deep lavender.

Lohenghrin—Mauve.

Mad. Chereau—S. White frilled blue; F. White.

Flevesens—Cream.

Florentina—White tinted lavender.

Native—Beautiful in foliage and flower.
 Forget-me-not blue.

DWARF

Blue—S. wine, F. purple.

White—Cream.

Ensata—Fine foliage, light blue.

SIBERINA IRIS

Beautiful, vigorous and hardy. We offer three colors. Intense Blue; White; Yellow.

Any variety, strong plants, 25c each, postpaid. Large clumps, 50c each, postpaid. Mixed Iris, our selection, \$2.00 for 10, postpaid.

DO YOU ADMIRE BLUE?

If you love blue flowers send for our collection of 12 blue Perennials in six varieties (our selection). Price \$2.00 postpaid.

Hardy Phlox

These are without doubt the favorite late summer and autumn flowers, and are unequalled for producing a grand display of color. Planted among the shrubbery they give a dash of color when most shrubs are out of bloom. Grouped among the perennials or massed into the background of the lawn they furnish an abundance of bright flowers and add a wondrous touch of beauty to the late summer and early autumn.



Bridesmaid

Miss Lingard. The earliest of all. White with slight pink shading; medium height.

Richard Wallace. Pure white, maroon eye; medium height.

Luster. Rose-pink with darker eye, dwarf.

Eclairer. Rosy carmine with light halo; medium height.

Comte von Hochberg. Rich crimson purple; medium height.

Maculata. Tall; good for hedging; free-flowering; lake-red.

Rosewine. Rosy wine shade.

Magenta. Medium height; magenta flowers.

Daybreak. Very dwarf; white with colored eye.

Jewel Pink. Delightful shade of pink with darker center.

Any variety listed, 25c each, postpaid. Mixed Phlox, our selection, \$2 per doz., postpaid.

Pearl. Tall; late. Well-formed trusses of pure white flowers.

Pantheon. Bright crimson; midseason; medium height.

Athis. Tall; salmon-red; late.

Bridesmaid. White with red eye, suffused with red; medium height; early.

Landseer. Reddish salmon; medium. Midseason.

Sea Foam. Dwarf; early; large trusses of pure white.

Champs Elyses. Vivid, dark red.

Barron Bon Deedem. Dwarf, blood, red.

Braga. Dwarf; white center, with pink edging.

Widar. White center, with blue edge.

Amelia. Deep red center, shading to a beautiful pink.

Peachblow. Dwarf; bright pink.

Rijnstroom. Clear rose-pink.

Edmond Rostand. Reddish violet, white star in the center.



Planting of Phlox

The Hedge Beautiful. Plant it this Spring. We have American Arbor Vitae, Evergreen, Spirea Van Houttei, deciduous, from 1 to 6 feet. Thunberg's Barberry, from 1 to 3 feet. Fresh dug to your order at the Nursery.



Field of Peonies

Peonies

When the gentle winds of spring waken the wild flowers in the woodland and the Robins and Bluebirds are back in their old haunts; the stately Peonies begin to stir beneath the mold. They never disappoint and like the Robins are sure to greet you in the Spring.

Peonies are unquestionably some of the best hardy bedding and border plants. Increasing in size and beauty as the years go by, rivaling the rose in beauty and perfection of bloom, they should find a place on every lawn. Their culture is very simple. The soil should be rich and the roots not planted too deeply; the crown 2 inches beneath the surface is sufficient. But the soil must be right. They will never do their best on sandy soils without a liberal mixture of clay.

RED

Felix Crouse. Deep crimson; very double.

Rubra Triumphans. Bright, rich crimson. With a satiny finish.

Rubra Superba. Large flowers of glistening ruby-red.

Jupiter. Bright crimson shaded rose; very full and double.

Francois Ortegat. Purplish crimson; very large and fine.

La Sublime. Deep rich crimson; late.

WHITE

Festiva Maxima. Early; fine for cutting. Considered the very best white.

Bride. Outside petals lilac-white; center milk-white.

Ivory. Delicate ivory-white flowers.



Festiva Maxima

PEONIES, Continued.

PINK

Fragrans. Violet-rose; very fragrant.

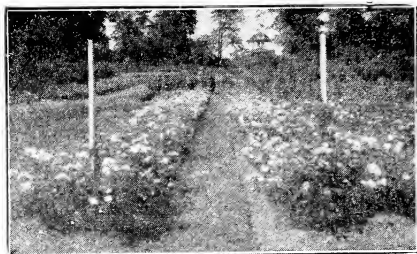
Dorchester. Late; large shell-pink flowers.

L'Esperance. Vivid rose; free flowering and fragrant.

Louis Van Houtte. Deep rosy carmine, petals tipped white.

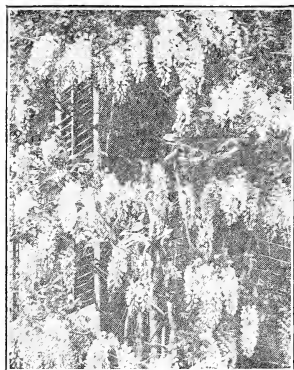
Princess Mathilde. Soft pink.

Price: Strong plants, 50c each; larger plants, 75c each; extra large plants, \$1.00 each, postpaid.

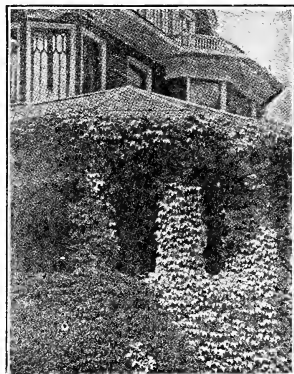


Hardy Ornamental Climbers

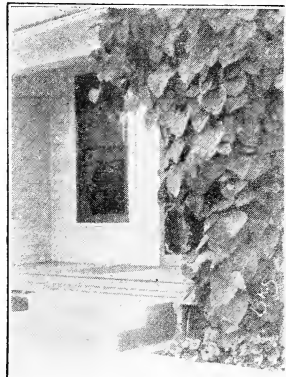
The proper use of climbing vines will add much to the picturesque in all home plantings. They are unsurpassed for shading porches, for breaking the straight lines and angles of corners on buildings, and for covering fences and screening out unsightly objects, thus adding festoons of gracefulness to otherwise harsh outlines.



Wisteria



Ampelopsis Engelmani



Dutchman's Pipe

Ampelopsis Engelmani. The best of the Ivies. Clings by means of tendrils to stone and brick walls.

American Ivy. A strong vigorous, long-lived vine with fine five-parted foliage. One of the best for covering walls, trees, etc.

Bittersweet. A rapid-growing, woody vine, with yellow-husked berries, which split and show the red contents.

Clematis Virginiana. Virgin's Bower. A native vine of great beauty, with masses of white flowers; very graceful.

Clematis paniculata. This is undoubtedly the most satisfactory ornamental climber for northern planting, combining, as it does, rapid growth, delightful fragrance and hardiness. It is bound to give satisfaction. Flowers pure white

and produced in great abundance. One-year vines, 25c each; 2-year, 50c each, postpaid.

Clinton Grape—Useful as well as ornamental; may be trained in any desired position; prolific bearer.

Dutchman's Pipe. Vigorous vine with large, heart-shaped leaves and odd pipe-shaped flowers. Strong vines, 50c postpaid.

Flowering Grape. Vigorous grower, forming dense shade.

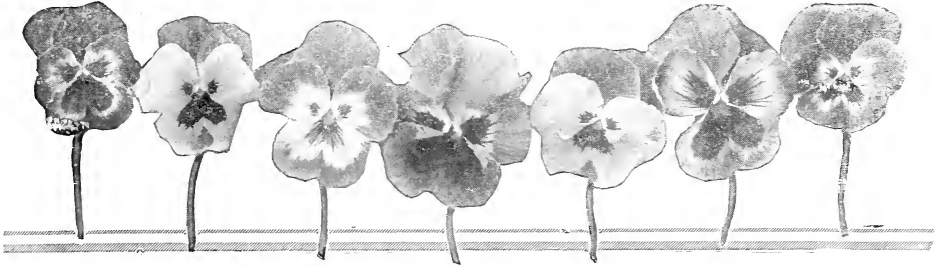
Honeysuckle, Scarlet. The hardiest and handsomest of the Honeysuckles; robust grower, with charming scarlet flowers.

Purple Wistaria. A rapid-growing vine, with large trusses of purple pea-shaped flowers.

Price of any of the above Hardy Vines, 25c each, postpaid.

PANSY PLANTS

The Pansies were the floral treasures of our Grandmothers gardens and today still rank unsurpassed as bedding plants. Up to date methods of culture and selection have vastly improved the size and color range until the modern Pansy stands as a masterpiece of the gardener's art. Be sure to order early as we are sold out of Pansy plants every season.



Price: Choice mixture of colors, 60c per dozen, postpaid.

Annual Flowering and Vegetable Plants

Of these we annually grow a large supply. List of varieties and prices free on request.

Beautiful Roses

The Rose is Queen of flowers, and she has a fascination that is all her own. Think of the pleasure of growing Roses for yourself, of having a bed, or at least a few, of these beautiful flowers on your grounds where they can greet you with their sweetness and fragrance whenever you pass their way, and where you can enjoy their beautiful satiny flowers the whole summer long.



Gruss an Teplitz

Gruss An Teplitz. Always in bloom. One of the richest colored Roses in cultivation. Opening dark red, quickly changing to rich, velvety crimson. If you are not acquainted with Gruss an Teplitz Rose, you have missed one of the rare joys of the floral world. To see them in bloom is to become their friend; a lasting friendship that deep-

ens with the years. With joyous anticipation we watch the first buds unfold in June. With sad regret we see them swept by November's drifting snow and bitter cold still laden with bud and blossom.

J. B. Clark. No description can do justice to the beauty of this rose when in full flower. They open in such masses

ROSES, Continued.



J. B. Clark

as to hide the foliage. When the heavy bloom is over they keep on with scattering flowers all season. Color is a deep scarlet shaded dark crimson.

Captain Christy. Large very double flowers of bright satiny, flesh pink shading deeper at the center. Blooms only in June.

Frau Karl Druschki. (A gem among Roses.) A magnificent variety, with large, double, white Roses, pure as the snow, borne on long stems. We can heartily recommend this variety as one of the few that is altogether beautiful and it is considered the best white Rose for outdoor culture. A splendid companion for the Gruss an Teplitz.

Any of the above varieties, except as otherwise noted, strong plants, 75c each, postpaid.

BABY RAMBLER ROSES

This is something out of the ordinary in Roses. Flowers in clusters like Crimson Rambler but grow in bush form and flower from June till snow flies. They are of spreading growth, become about 18 inches tall and produce such a wealth of blossoms that we class them among the most desirable Roses for the North.

Baby Rambler, Red. Flowers deep red, resembling those of the Crimson Rambler.

Baby Rambler, Pink. Clear soft rose-pink.

Baby Rambler, White. Pure white flowers.

Collection. One of each of the above Baby Rambler Roses, Red, Pink, and White, for \$2.00.

Price: Either color, strong bushes, 75c each, postpaid.

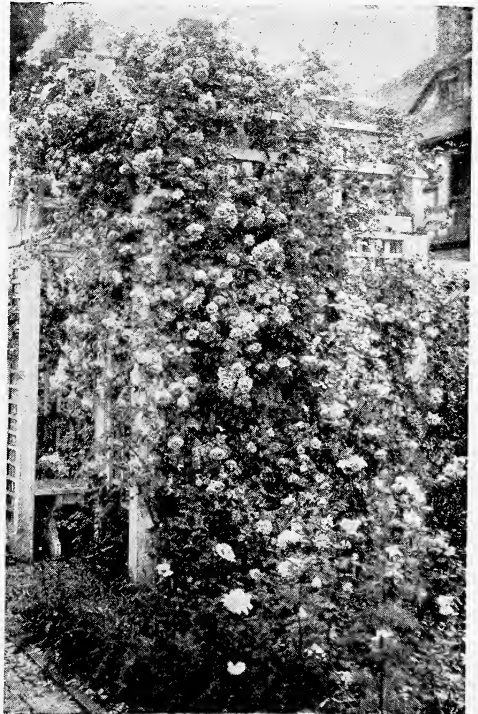
RUGOSA ROSES

A very hardy variety from Japan, with large, leathery, wrinkled foliage and large single flowers followed by Rose apples nearly an inch in diameter. They retain their handsome foliage until late in December. Very useful for hedging and setting off shrub borders. We have these Roses in two colors, Red and White. Price of Rugosa Roses, 50c each, postpaid.

HYBRID RUGOSA ROSES

F. J. Grootendorst. A magnificent, new variety; admirably adapted to Northern planting. Invaluable for Rose beds, and hedges; or for planting around porches. In continual bloom from June to November. Flowers in clusters, deep, rich, crimson, most lavishly produced; delightfully attractive. Each petal delicately fringed; and suggests nothing so much as a rich colored Carnation. Makes a most wonderful combination when planted with Sir Thos. Lipton and New Century. Ultimate height 4 to 5 feet. Price, strong bushes \$1.00 each. Extra size, specimen bushes \$2.50 each.

Sir Thomas Lipton. Strong grower. Double white, fragrant flowers.



Crimson Rambler

ROSES, Continued

New Century. Very free bloomer. Flowers in clusters; bright, silvery pink.

Price of strong bushes, 75c each, postpaid.

The above Roses fill a long felt want. They begin blooming in June; in such profusion as to hide the foliage, and continue in bloom until hard freezing. Thoroughly hardy and need no Winter protection. Suitable for hedges, specimens or mass plantings.

Hugonis. A rare new Rose. A native of China and an ornament in any planting. Grows to a height of 6 feet and over,

with fine cut, very ornamental foliage. The flowers are single, light yellow and produced in great profusion. Proven hardy to the tips with us and is one of the earliest roses to bloom. Price \$1.00 each, postpaid.

CLIMBING ROSES

Crimson Rambler. Very rapid grower becoming a mass of double flowers. Every home needs one or more.

Dorothy Perkins. Rapid grower, with double, shell-pink flowers.

Price: 75c each, postpaid.

Blooming Roses That Can Be Transplanted Any Time

We grow the choicest varieties of Roses in wire baskets that can be safely taken up with basket and soil and transplanted during the growing season. Price of blooming Roses \$1.00 each at the nursery. Blooming Roses not on sale before July 20th.

Summer-Flowering Bulbs and Roots

CANNA

The Canna is considered the king of bedding plants. Their tall rapid growth, luxuriant massive foliage, varying from richest green to coppery bronze, and their flaming gladioli-like flowers make the ideal plant where a tropical effect is desired.

We offer the following colors:

Red. Bronze foliage.

Red. Green foliage.

Pink. Green foliage.

Yellow. Green foliage.

Price, any color, dormant roots, 20c each, \$1.50 per dozen, postpaid.

TEXAS TUBEROSES

Large, white, exquisitely perfumed flowers. Must be celled in fall. 10c each, postpaid.

DAHLIAS

You will want them for cut flowers. Who does not enjoy the beautiful, artistic flowering Dahlias, with their perfect form and attractively arranged petals? Each opening flower a graceful and perfect work of art; from the great workshop of nature. They have much to recommend them: ease of culture, long blooming season, freedom from insects and disease and their great flower producing qualities. We have them in four colors: Red, Pink, Yellow and White. Also specify whether Cactus, Show or Decorative type is wanted. Dahlia roots, any color or type, 30c each, postpaid.

ASTER PLANTS

We have a large stock of Annual Aster Plants in the choicest varieties; grown in open beds and far more vigorous than forced seedlings. Price: Mixed colors only, 2c per plant, postpaid.



Cannas

Choice Gladioli

These are among our foremost Summer Flowering Bulbs. They are of easy culture and their color range is one of the most immense in the floral kingdom. They are excellent for cut flowers, being long stemmed, keeping well in water and in that the unopened buds develop in the vase. Here as well as in our other departments distinctiveness has been our watchword. The following are the choicest varieties of many sorts tested on our grounds. If you want distinctive Gladioli you will find the following list very satisfactory.

- Mrs. F. Pendleton. Elegant combination of red, white and pink.
 Faust. Dark wine red.
 Empress of India. Deep dark red.
 Evelyn Kirtland. Bright rosy pink.
 Victory. Yellow striped pink.
 White Excelsior. Pure white sprayed pink.
 Ida Van. Vivid orange scarlet.
 Flora. Large spike, deep golden yellow.
 Niagara. Light yellow.
 Rouge Torch. Creamy white marked flame red. A beauty.
 Frances King. Salmon red.
 B. J. Huelot. Deep purple.
 Ann Eberius. Rich deep plum color.
 Mrs. Watts. American beauty red.
 Mrs. W. E. Fryer. Orange red, solid color.
 Panama. The peerless pink.
 America. Light pink.
 Louise. A fine lavender.
 Golden West. Orange scarlet marked golden yellow.
 Lily Lehman. Almost pure white, resembles a lily.
 Price any of the above Gladioli, 15c each; \$1.25 per dozen, postpaid.
 Choice Mixture of Gladioli, 50c per doz., postpaid.
 Rose 1910. Early. rose pink.



Gladioli

The Glory Gladioli. In this type the petals are beautifully deep ruffled and frilled. The colors are deep and rich. Glory white with red blotches and pencilings. Rose glory, pink; golden glory, yellow; and violet glory, violet. Each 20c. One of each, 4 bulbs in all, 70c; postpaid.

Primulinus Hybrid Mixture. Sometimes called the Orchid Gladioli. The flowers borne on long graceful stems are excellent for cutting. The prevailing colors are primrose, buff, salmon, apricot, etc. 3 for 25c; 6 for 45c; per dozen 80c postpaid.

FRUIT DEPARTMENT

SPECIAL

NAMELESS—The Winter Apple of the Future.

A Winter Apple of exceptional merit. This variety is our own introduction and combines many good qualities. Its extreme hardiness and freedom from diseases make it the ideal tree for Northern planting.

The fruit is medium to large; attractively colored; deep yellow, overlaid with rich red and russet. The flesh is yellowish, juicy, rich and fine grained; with a distinct, delightful flavor; hard to equal. This Apple can be eaten when picked from the tree and keeps far into the winter.

The original tree from which our trees are propagated is over half a century old, and is still healthy, vigorous and productive.

PRICE—5 to 6-foot trees, \$1.00 each, at the nursery.

GRAPES

Grapes ought to be largely planted. There is scarcely a garden in the land where there is not room for a few more Grape-vines. No fruit so abundantly rewards the planter.

Concord. The old reliable favorite; succeeds everywhere.

Worden. As hardy as the Concord and better in quality. A large, early and desirable black grape.

Lutie. Large; red; good quality; hardy and an early bearer. 45c each.

Niagara. The best white Grape. Berries as large as Concord and fully as hardy in vine; quality the best.

Clinton. Black. Needs no winter protection. Fine for arbors, etc. Very productive.

Moore's Early. A large, desirable grape. The earliest black grape to ripen.

Price, any variety, excepting Lutie, 35c each, postpaid.

CURRANTS

Pomona. Large bunches; bright red; one of the best for market.

White Grape. One of the best white sorts; excellent quality and productive.

Red Cross. Possibly the largest red. Quality good.

Cherry. An old favorite. Hardy and productive.

Price, 20c each, \$2.00 per doz., postpaid.

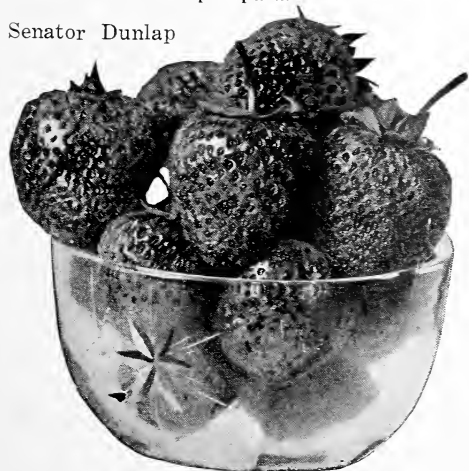
GOOSEBERRIES

Houghton. Sweet and tender; of medium size; prolific bearer.

Downing. Pale green; large size and of best quality.

Price: 25c each, postpaid.

Senator Dunlap

**RASPBERRIES****RED**

Cuthbert. Berries large, fine; cardinal. The best shipper.

Louden. Red; very hardy; good for home or market.

Latham (Mosaic Free). A new variety. Its large size, high quality and productivity, combine to make this a most desirable sort. Vigorous grower and very hardy. Price \$1.50 per dozen; 25 for \$2.75; 50 for \$5.00, postpaid. \$9.00 per 100 prepaid.

BLACK

Plum Farmer and Older.

PURPLE

Columbian. The best purple variety.

St. Regis Everbearing Raspberry

BLACKBERRIES

Snyder. Very hardy and prolific.

Briton. Good late variety.

Eldorado. Berries large, fine and sweet. Price of Raspberry and Blackberry, any variety except Latham, 10c each; \$1.00 per dozen; \$6.50 per 100.

STRAWBERRY PLANTS

It is such an easy matter to have an abundance of this health-giving fruit that every home in the land should have its bed of Strawberries. One hundred plants set 4 feet apart and 18 inches in the row; if given good cultivation in the Summer, and the blossoms pinched out so they will run, should furnish an abundant supply.

Senator Dunlap. Perfect flowering. Still in the lead as a commercial berry and for home planting. Strong, thrifty, and productive. Fruit large and firm.

Aroma. Perfect flowering. Large, conical, quality good; season late.

Dr. Burrill. A perfect-flowering new variety of great promise. Similar in habit to Senator Dunlap. A good plant-maker, with healthy foliage. Quality of berry good. Very productive.

Pocomoke. Very productive; fruit large and of good quality.

Any of the preceding varieties, 25 for 40c; \$1.25 per 100, postpaid.

Cooper. Our experience with this variety is very gratifying. It is rapidly coming to the front in many sections as a fancy variety with home and commercial growers. Price 35c per dozen; 2c per plant in larger quantities.

Champion Everbearing Strawberry. Our experience with this berry is so satisfactory that we have discontinued all other Fall bearing varieties. Price 35c per dozen; 2c per plant in larger quantities, postpaid.



Foundation Planting

Hark to the music of the Pines,
 Their needles play when the North wind blows.
 Through the dreary night, when no star shines;
 Soft music, gently comes and goes.
 Amidst the falling snow and sleet,
 The Evergreens play carols sweet.
 They give protection, warmth and cheer;
 Till the morning breaks serene and clear.

EVERGREENS

No home is complete without a liberal planting of Evergreens. This is especially true of farm homes and suburban residences where planting space is ample. As specimens on the lawn nothing can take the place of Evergreens, they brighten the winter landscape and add comfort and cheer when the cold storms of winter play carols among their branches. For grouping arrange the different varieties so as to produce pleasing contrasts of permanent color.

Norway Spruce. The best all-around evergreen. The ideal tree for wind-breaks. Its close compact growth forms an almost impenetrable barrier to the frigid storms of winter. Norway Spruce deserves to be largely planted on all farms around orchards, barn and cattle-yards, poultry-houses and grounds, and wherever protection from cold and storms is needed. At the same time, Norway Spruce is one of our choicest evergreens for ornamental planting. Price, 12 to 18 inch trees, \$1.00 each, postpaid.

Black Hills Spruce. Of bushy compact growth. Very symmetrical in outline. Foliage varies from rich green to blue tints. 18-24 in., \$1.50 each.

Concolor Fir. Without doubt the most beautiful of all evergreens. A native of the Rocky Mountains. Foliage long, soft and graceful, of a silvery green color. Fine for planting as individual specimens on the lawn where it will be a never-ending source of pleasure to watch them grow in beauty from year to year. Concolor Fir is very useful in group-planting, its light silvery color blending harmoniously with the darker-toned evergreens. Rapid in growth and should be in every collection. 12 to 18 inches, \$2.50 each.

White Spruce. Beautiful in form and color. Very compact. Of dense, regular habit. Grows very broad and tall in the course of time. 12-18 inches, \$1.50 each.

EVERGREENS, Continued

Mugho Pine. A dwarf evergreen of great beauty. Rarely grows over 10 feet tall with a spread of branches as great as its height. Especially useful for border planting or for grouping with other varieties or single specimens on the lawn. Foliage is medium dark green, thick set, and rather long. 18 to 24 inch trees, \$3.00 each.

Colorado Blue Spruce. A splendid tree of dense growth and perfect form, with bluish foliage, making it a striking object on any lawn. 2 foot trees, \$3.00 each, postpaid.

Douglas Fir. A very pretty evergreen with glaucous-green foliage. Grows very compact and bushy. Transplants easily. One of the best for ornamental planting. 12-inch specimens \$1.00 each, postpaid.

White Pine. Lends itself to every purpose and is one of the most beautiful native evergreens. Foliage long and graceful, of a light green color. Fine for lawn specimens or group planting. 2-foot trees, \$1.00 each, postpaid.

Scotch Pine. A wide-spreading tree with long, dark green leaves or needles, rapid in growth. Fine for specimens on large grounds or for grouping with white pine or Jack Pine. 18 to 24 inch specimens. \$1.00 each, postpaid.

The Arbor Vitae: Will add charm and variety to the large estate, where the blending of Pine, Fir, Spruce and other heavy-toned trees is gently set off by the soft foliage of the graceful Arbor Vitae. Their dwarf growth make them an invaluable adjunct for the small lot and for city planting.

Pfitzers Juniper. One of the newer additions to the hardy Evergreen family, but rapidly coming into front rank for ornamental planting. Grows in the form of a low, broad pyramid. Foliage rich tea green. 18 to 24 inch specimens \$3.50 each.

American Arbor Vitae. Very suitable for hedge planting, as it can be kept at any height by shearing. Also widely used in ornamental planting, as they become wonderfully beautiful, if allowed to grow tall. Prices, 12 to 18 inch plants, 35c each at the Nursery or postpaid. The following sizes at the nursery, or by Express or Freight, not prepaid; 2 to 3 feet, \$2.00 each; 3 to 4 feet, \$3.00 each; 4 to 5 feet, \$4.00 each.



White Pine

Compacta Arbor Vitae. Similar in habit to the Globe but of faster growth. Foliage rich, green. Very good for foundation planting, grouping and hedging. 12 to 18 inches \$2.00 each; 18 to 24 inches, \$2.50 each.

Tom Thumb Arbor Vitae. A dwarf compact growing variety, with finely cut foliage. Suitable where a low specimen is wanted; also useful for hedging and foundation planting. 12 to 18 inch plants, \$2.00 each.

Globe Arbor Vitae. Grows in a round, compact form without shearing. One of our most attractive dwarf trees, and a valuable acquisition to any lawn. Foliage rich green turning gold bronze in winter. Price, 18 to 24 inch specimens, \$2.75 each; \$5.00 for two.

Pyramidal Arbor Vitae. Excellent for group planting in corners of the lawn. Grow naturally close and compact. Very branchy and feathery. Holds its bright green color all the year. Prices, 2 to 2½ foot specimens, \$2.75 each; \$5.00 for two.

DECIDUOUS TREES

The following trees are especially suitable for planting in groups or with evergreens. Valuable for producing beautiful bark contrasts in winter and relieving the more somber tone of the Evergreen plantings.

American White Birch. Your plantings will be lacking in charm and variety without the Birches. Their graceful slender branches and smooth white bark blend well with the darker toned trees and add a cheerful aspect to your plantings. For sizes and prices see next page.

Golden Weeping Willow. One of our most beautiful weeping trees, with long pendulous branches and long slender foliage. Their rich golden bark adds a touch of wonderful beauty to any planting. See next page for prices.

European Larch. Ornamental, deciduous, coniferous tree. Beautifully picturesque at all seasons. Invaluable in landscape work and background planting and far superior to Lombardy Poplar for breaking sky lines. Of rapid, pyramidal growth. A striking and beautiful

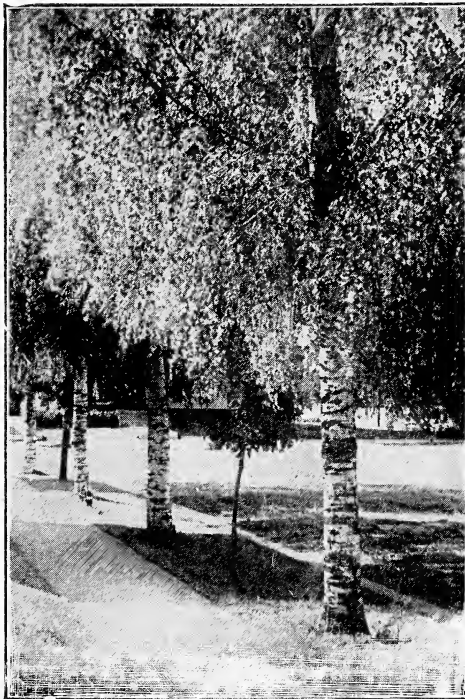


Weeping Willow

object when covered with its feathery growth of light green. Must be planted early in spring.

Prices at Nursery: 4 to 6 foot trees \$2.00 each; 6 to 8 foot trees, \$5.00 each.

Large Sized Evergreens for planting where an immediate effect is desired. We have a large supply of large, specimen Evergreens for sale at the nursery. Prices quoted on request.

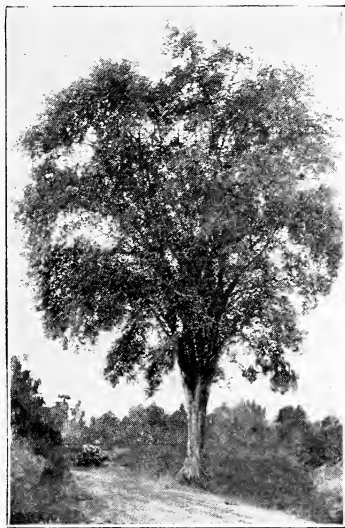


European Larch

HOME THE WONDERLAND OF BEAUTY, around which the sweetest memories will ever cling; each sentinel tree endowed with its own charm and individuality. The stately Elm, the silvery Birch, the Weeping Willow, the graceful Maple, or gnarled Apple Tree, defying time and the elements, giving grateful shade when the hot sunbeams of noontday scorch the earth, or breasting the fierce thunder storm; faithful friends and loyal witnesses of our joys and sorrows. Among the trees are voices that speak to our better natures; ever telling of the beautiful and sublime; and although their trunks to appearance are hoary and old; their summits towering to the arches of the sky, hold in their locked buds the undying promise of perpetual youth and the glad assurance that life is eternal, and though their branches rock and sway in the muttering Winter storm, their song is ever of the softened sky, the swelling buds and the joyful twitter of the returning birds. Trees planted around the farm and city home add beauty, comfort and value to the property.

Deciduous Ornamental Trees

Simonds Poplar. A recent introduction and a very satisfactory tree. Of rapid pyramidal growth, resembling Lombardy poplar, but more healthy than the latter variety. Can be used to advantage wherever a tall, pyramidal tree is desired.



American Elm

Japanese Walnut. A beautiful, fast growing, leafy tree, with light colored bark, bearing great clusters of edible nuts. Do not miss it. Price 6 to 8 ft. trees, \$2.00 each.

Mountain Ash. Covered with great clusters of red berries from July until winter.

White Birch. Fine for specimens and for contrasting with other trees.

Bitter Hickory. A tall-growing native tree of elm-like shape. Very handsome and effective as single specimens.

Linden, American. Splendid shade tree, of rapid growth; very leafy, with a wealth of sweet-scented blossoms in May.

Horse-chestnut (White-flowering). An attractive tree; symmetrical in shape. Flowers in May.

Oak, White. One of our most picturesque lawn and park trees.

Cherry, American Black. Should be largely planted. Beautiful in form; sweet-scented flowers in May. Highly prized for its clear-grained yellow wood.

Box Elder. One of the first to leaf out in spring. Foliage light green. Plant where a quick shade is wanted.

Golden Weeping Willow. No planting complete without at least one Golden Willow. Beautiful at all seasons, especially in winter when their golden bark contrasts prettily with the snow.

American Elm. Tall, leafy tree of vase-like shape. The most admired of all American trees. One of the best for lawn and street planting.

Black Walnut. Very valuable for its timber and its rich, oily nuts.

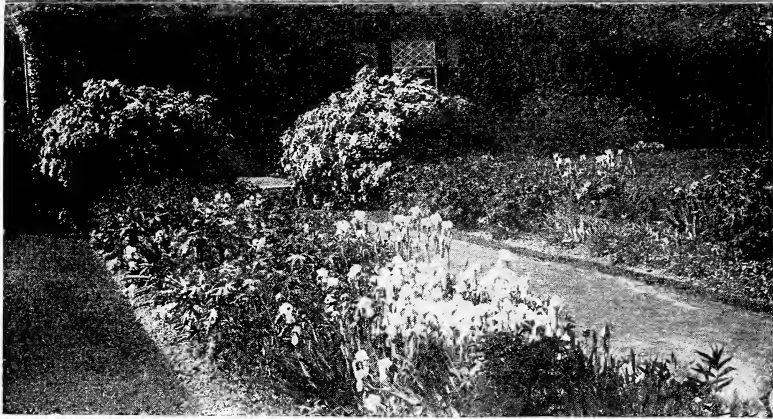
Butternut. A large, handsome tree, valued for its profitable nuts.

Price: 6 to 8 ft. trees, by freight or express, not prepaid, \$1.50 each.

Price, any variety listed above: 10 to 12 feet, \$3.00 each at the nursery.



Simonds Poplar



“Say It With Flowers”

During the growing season we have many cut flowers on sale at right prices. Call and see them.

NATIVE FLOWERING CRABS

Flowers very Beautiful and Fragrant

~~Bechtel's Double Flowering Crab.~~

~~Native Pink Flowering Crab.~~

~~Red Flowering Wild Crab.~~

~~Prairie Crab—Light pink.~~

~~Price, any of the above Crabs, 4 feet trees, 75c each.~~

MEDIUM SIZED FLOWERING TREES

HAWTHORN—A medium sized tree with small, double, white flowers. Grows very compact.

JUNEBERRY—Handsome small tree; graceful in form with snowy white flowers in April and edible fruits in June.

CHOKO CHERRY—A medium-sized tree with clouds of creamy white flowers in spring followed with clusters of maroon-colored fruit.

Price of any of the above—4 to 6 foot trees, 50c each, not prepaid.

PLANT THEM THIS SPRING. Thunberg's Barberry has no connection with the Rust producing Barberry. Extensively used for Hedges, specimens and ornamental planting. Ideal for massing around porches, in nooks, corners etc. Splendid for planting in front of taller shrubbery. Beautiful at all seasons. Let us dig them fresh to your order; direct from the nursery row. Not seedlings but heavyrooted, well developed bushes. Prices, 12 to 18 inch, 30c each, postpaid; 18 to 24 inch, 50c each; and 2 to 3 feet, 75c each, not prepaid.