

62.61

Gladiolus, Roses, Iris,  
Dahlias, Peonies, Can-  
nas, Shrubs, Vines, Per-  
ennials, Hedge Plants,  
Fruit and Ornamental  
Trees, Bulbs, Etc.



*Catalog for 1927*

Pleasant View Gardens

Babcock & Zerfass

*Dansville, New York*

# FOREWORD



Through this, the second issue of the Pleasant View Gardens Catalog C. E. Babcock, Florist and Nurseryman, and Milton R. Zerfass, Wholesale Nurseryman, send greetings to their many patrons and friends. The Catalog pages are filled with opportunities for you to buy Trees, Ornamentals and Bulbs that will please you. There is nothing you can buy for your home ground that will return as much pleasure, satisfaction, health and increased valuation of property as an investment of Nursery Stock will.

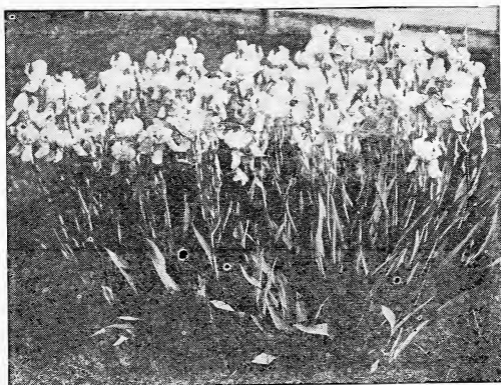
We have the most select varieties of Fruit Trees, Gorgeous Flowers and Lovely Plants and Bulbs—Tulips for Spring, followed by Narcissus, Peonies, Iris, Gladiolus, Phlox, Dahlias, etc., besides many flowering shrubs. Even the average flower lover will be more than interested in the special Roses of which we will have for inspection this summer many new varieties. Words would be inadequate to picture their beauty and fragrance. Evidence in print does not satisfy all people—It may not satisfy you. Therefore, we extend a cordial invitation to visit Pleasant View Gardens and inspect our Bulbs, Plants and Trees which we want to sell to you at prices astonishingly low. Our stock is high in quality and low in price. We are not sacrificing quality to make a low price. Therefore, in comparing our prices with other nurserymen's, also compare values—always.

Study this catalog. You will see that we are giving you not only all you pay for at the lowest possible price, but a service that others who have enjoyed it would not do without. The Babcock-Zerfass service will prove just as valuable to you as it has to hundreds of others. These

two men have combined their efforts in Pleasant View Gardens for your as well as their mutual benefit. Mr. Babcock has had years of experience in the propagation of flowers and ornamentals. Mr. Zerfass's life work has been the propagation of fruit trees. Through Pleasant View Gardens you are given the opportunity to benefit by the long experience and application of these nurserymen. Their ability and efforts place their Gardens in a class by itself. Words can only describe, but Pleasant View Gardens Trees, Ornamentals and Bulbs will prove their worth to your personal satisfaction.

In the nursery trade there has grown up a standard of ethics which is observed by all reputable nurserymen and you are respectfully referred to these terms and conditions when placing your order. Remember, please, no order is too large or too small to receive our careful attention.

## PLEASANT VIEW GARDENS.



# Please Read

**Non Warranty.**—The greatest care is exercised to have and keep everything **True to Name** and as represented. We will, upon proper proof replace all stock that proves otherwise, or return the original purchase price of same. We give no warranty, expressed or implied, as to description, quality, growth, productiveness, flowering qualities or any other matter, in respect to any stock sold by us.

**Terms.**—Our Terms are invariably Cash with Order. Our prices are based on these terms.

**Substitutions.**—Occasionally we find ourselves out of a certain variety. In such cases we always send the nearest match in color and season, unless you instruct us when placing the order to make no substitutions.

**Time of Shipment.**—Unless otherwise instructed we will ship all orders at their approximate planting time. Indicate plainly how you want the order shipped, whether by freight, express or mail. If by mail add postage. When by freight give us both your postoffice address and the name of your railroad station

**Order Early.**—On all orders sent to us before April 1st you may add an additional order free of charge to the amount of ten per cent of the money you are sending.

## COLLECTIONS

### SPECIAL OFFER NO. 1—ROSES

10 Roses, all different, worth \$7.50, for -- \$5.00

### SPECIAL OFFER NO. 2—GLADIOLUS

12 Gladiolus for ----- \$1.00

### SPECIAL OFFER NO. 3—GLADIOLUS

250 finest mixed Gladiolus for ----- \$5.00

### SPECIAL OFFER NO. 4—DAHLIAS

14 named Dahlias, worth \$2.10, for ----- \$1.50

### SPECIAL OFFER NO. 5—DAHLIAS

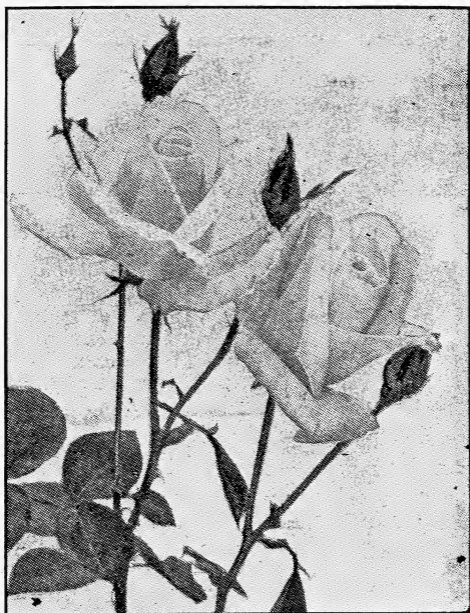
30 Dahlias, our selection, for ----- \$2.90

### SPECIAL OFFER NO. 6—PHLOX

25 named Phlox, worth \$6.25, for ----- \$5.00

### SPECIAL OFFER NO. 7—HEDGE PLANTS

100 small size Barberry Thunbergii for -- \$5.00



## ROSES

After years of breeding, experimentation and testing, rose varieties have advanced many steps beyond the garden of our grandmothers, so wonderful in June. Now we may have a succession of bloom all through the growing season, in colors and shades to suit every fancy. They can be used everywhere a foliage plant or blossom is wanted.

Roses come under two classes, Hybrid Perpetual and Hybrid Tea. The Hybrid Tea, or everbloomer, blooms the entire summer. The Hybrid Perpetual while it blooms profusely during its season, is not a continual bloomer.

Winter protection in the way of soil mounded up several inches about the plant, straw manure, leaves or litter, especially about the tender varieties, repays in flowers the extra trouble.

Budded roses should be planted deeper to cover the offset or crook just above the soil mark on the plant.

**Hybrid Tea Roses ----- Each \$0.75 Dozen \$7.50**

**COLUMBIA**—Large glowing pink.

**CRUSADER**—Crimson-red, lighter in center.

**DUCHESS OF WELLINGTON**—Saffron yellow.

**GENERAL MAC ARTHUR**—Bright scarlet-red.

**GRUSS AN TEPLITZ**—Scarlet, constantly in bloom.

**KAISERIN AUGUSTA VICTORIA**—White, fine form.

**KILLARNEY**—Very good pink.

**KILLARNEY WHITE**—White.

**KILLARNEY BRILLIANT**—Deep rosy carmine.

**LADY ASHTOWN**—Beautiful pale rose.

**LOS ANGELES**—Flame pink, toned coral.

**LIEUTENANT CHAURE**—Velvety crimson red.

**MME. EDOUARD HERRIOTT**—Coral, shaded yellow

**MME. BUTTERFLY**—Bright pink, apricot and gold.

**MILADY**—Extra good red.

**PREMIER**—Pure shade or rose pink.

**Hybrid Perpetual Roses ---- Each \$0.75 Dozen \$7.50**

**ANNE DE DIESBACH**—Pink, long pointed buds.

**BARON DE BONSTETTIN**—Red, good bloomer.

**CLIO**—Flesh color, very large.

**FRAU KARL DRUSCHKI**—Ideal pure white

**GENERAL JACQUEMINOT**—Brilliant crimson.

**GEORGE AHRENDS**—Pink Frau Karl Druschki.

**HEINRICH MUNCH**—Soft pink.

**MAGNA CHARTA**—Pink, large flowering.

**MARGARET DICKSON**—White, flesh color center.

**MARSHALL P. WILDER**—Bright crimson-scarlet.

**MRS. R. G. S. CRAWFORD**—Rosy pink.

**PAUL NEYRON**—Pink, largest rose.

**PERSIAN YELLOW**—Deep yellow, hardy.

**PRINCE CAMILLE DE ROHAN**—Deep maroon.

**SOLIEL D'OR**—Reddish gold, shaded orange.

**ULRICH BRUNER**—Red, large cup-shaped flowers.

**Baby Rambler Roses ----- Each \$0.75; Dozen \$7.50**

**BABY RAMBLER CRIMSON** (Madame Norbert Levavasseur)—A dwarf form of the widely known and popular climbing rose, Crimson Rambler, being hardy, vigorous and perpetual flowering. The flowers are large, well formed, of a crimson red color, and borne in clusters.

**Climbing and Rambler Roses ----- Each \$0.50**

**CRIMSON RAMBLER**—The best known and most popular of all the climbing roses. A rapid grower making sometimes 8 to 10 feet in a season. Flowers are borne in clusters of 15 to 25 perfectly shaped blossoms of a rich glowing crimson.

**DOROTHY PERKINS (Pink)**—This is one of the new rambler types. Has the same strong habit of growth as the Crimson. Flowers are borne in large clusters of 25 to 30 and are a beautiful shell pink. The individual flower is larger than the Crimson Rambler.

**WHITE DOROTHY**—Closely resembles the Dorothy Perkins, except for its immense clusters of pure white flowers. The most valuable white climber of its class.

**EXCELSA**—An intense crimson, with the edges of the petals a little lighter, produced in immense clusters. Foliage glossy.

## GLADIOLUS

**ALICE TIPLADY**—(Prim. Kund) Large flower; beautiful orange-saffron color; choice.

**Each 10c; 3 for 25c; Doz. \$1.00; per 100 \$6.00**

**AMERICA**—Very light lavender pink. Usually referred to as an orchid shade. The most popular variety in existence.

**Each 5c; 3 for 15c; Doz. 50c; per 100, \$3.00**

**AUGUSTA**—(Gand. Hallock) Blush white with blue. anthers. Florists' late white.

**Each 10c; 3 for 25c Doz. \$1.00**

**BARON HULOT**—(Lem. Lemoine) Rich deep color of an indigo shade.

**Each 10c; 3 for 25c; Doz. \$1.00**

**BERTREX**—White with lilac lines in throat. Size and form of America. Tall straight spike. New.

**Each 20c; 3 for 50c; Doz. \$2.00**

**BREAK O' DAY**—(Bill's Origination) Massive spikes with several flowers opening at a time, its soft LaFrance pink flowers will always be marketable at high prices. The most striking extra early variety ever produced.

**Each \$4.00; 3 for \$10.00**

**BLACK PANSY**—(Kundred) Beautiful rich dark red with pansy like throat. One of the very dark ones.

Each 15c; 3 for 40c; Doz. \$1.50

**DARDANELLA**—(Bill's Origination) Congo pink flaked deep hellebore red at the tips. Strong feather of jasper red on straw yellow throat. Tall and straight with 8 to 10 open flowers placed in double row. Best of the ashen varieties.

Each 50c; 3 for \$1.25; Doz. \$5.00

**EARLY ONE**—(Bill's Origination) New 1925. One of the very earliest to flower and valuable as an early market variety. Subdued begonia rose, amber yellow throat stippled with aster purple. Flowers wide open with reflexed petals.

Each 10c; 3 for 25c; Doz. \$1.00

**ETENDARD**—Upper petals rich cream tinted rose, lower petals marked with large fiery red blotches, clearly margined with bright yellow. An exceedingly rich combination.

Each 15c; 3 for 40c; Doz. \$1.50

**EVELYN KIRTLAND**—(Austin) Very tall, straight and graceful shell pink, shading to rosy pink at the edges. Fine!

Each 10c; 3 for 25c; Doz. \$1.00

**FRECKLES**—(Bill's Origination) An orange salmon with the pazeley effect. Large open flowers and a sure bloomer. Always stands erect. Always good regardless of weather conditions.

Each 5c; 3 for 15c; Doz. 50c

**GOLD DROP**—(Kundred) (Ruffled Prim.) Extra large pure yellow with beautiful red line on lower petals. Ruffled and grand.

Each 10c; 3 for 25c; Doz. \$1.00

**HALLEY**—(Lem.) The predominating color of these flowers is delicate salmon pink with a slight roseate tinge.

Each 5c; 3 for 15c; Doz. 50c; per 100 \$3.00

**HERADA**—Blooms of immense size on tall straight spikes. Massive in every way. The large blooms are pure mauve, glistening and clear, with deeper markings in throat.

Each 10c; 3 for 25c; Doz. \$1.00

**LITTLE BILL**—(Bill's Origination) "Little but OH! My." Just the daintiest little prim you ever saw. Perfect open type, slender stem with soft creamy florets. Wonderful for use in a rose bud vase.

Each 10c; 3 for 25c; Doz. \$1.00



**LUCETTE**—(Bill's Origination) As seen growing in the fields it appears to be absolutely pure white but backs of petals carry a trace of faint pink which imparts an alluring orchid sheen to the flowers.

Each 15c; 3 for 40c; Doz. \$1.50

**MARY FENNELL**—(Kundred) Beautiful deep lavender flower on a tall slender spike. Lower petals penciled with primrose yellow.

Each 15c; 3 for 40c; Doz. \$1.50; per 100 \$10.00

**MARY PICKFORD**—(Kun.) Wonderful creamy white with handsome heavy spikes showing many flowers open at once. Admired by everyone and has received special awards of merit.

Each 15c; 3 for 40c; Doz. \$1.50

**MISS MADISON**—(Boynton) Very bright pink overlaid on white.

Each 35c; 3 for 90c; Doz. \$3.50

**MRS. FRANCIS KING**—A large open brilliant flame pink.

Each 5c; 3 for 15c; Doz. 50c; per 100, \$3.00

**MRS. FRANK PENDLETON**—(Lem. Kund.) The flowers are very large and well expanded, of a lovely flushed salmon-pink with brilliant carmine, or deep blood red blotches in the throat, presenting a vivid contrast of orchid-like attractiveness.

Each 5c; 3 for 15c; Doz. 50c; per 100 \$3.00

**NIAGARA**—Nankeen yellow spotted and veined carmine.

Each 10c; 3 for 25c; Doz. \$1.00

**NORWALK**—(Bill's Origination) Large open flowers well placed on a strong straight stem. Deep scarlet with large yellow throat. Petals are pointed, slightly waved and a faint tinge of blue on the borders.

Each 30c; 3 for 80c; Doz. \$3.00

**1910 ROSE**—(Kundred) Pure rose shade with white central line on lower petals. An extra fine variety for florists.

Each 10c; 3 for 25c; Doz. \$1.00

**OPALESCENT**—(Bill's Origination) Wonderful spikes of very large pale rose lavender. A pure self color with soft lilac throat lines. A vigorous grower with excellent foliage and strong, straight bloom stalks. Flowers well placed with broad petals of good substance.

Each 35c; 3 for 90c; Doz. \$3.50

**PANAMA**—Large, strong rose pink; very popular.

Each 5c; 3 for 15c; Doz. 50c; per 100 \$3.00

**PINEHURST**—(Bill's Origination) Sulphur yellow with pale greenish yellow throat. Very tall strong grower with 18 to 20 buds on a stalk. Usually opens 6 to 8 flowers at a time. Good sized blooms well placed facing regularly.

Each 25c; 3 for 65c; Doz. \$2.50

**REVUE**—(Bill's Origination) Very tall and straight with petals reflexed and slightly frilled. Added to this beauty in form the delicate coloring makes it a most desirable acquisition. The center of the flowers is pure martius yellow, daintily flushed with eosine pink on the tips of the petals. Quite early.

Each 25c; 3 for 65c; Doz. \$2.50

**ROSALIND**—(Kundred) A massive ruffled variety of rich analine red with deeper throat. One of the best ruffled ones.

Each 40c; 3 for \$1.00; Doz. \$4.00

**SCHWABEN**—Strong grower with heavy spikes of yellow flowers. The most popular standard yellow.

Each 5c; 3 for 15c; Doz. 50c

## DAHLIAS

(S) Show (D) Decorative (P) Pompon (C) Cactus (H. C.) Hybrid Cactus (Peo.) Peony Flowered.

### SIX OF THE BEST DAHLIAS

**CLAIRE KULP**—The greatest of all reds. It not only grows more than 10 inches in diameter but it is the richest shade of red.

\$1.50 Each (H. C.)

**SUNSET GLOW**—This plant is one of the very first to bloom. The color is yellow at base of petal, outer part overlaid flame scarlet, tipped yellow.

\$2.00 Each (H. C.)

**MARY DORR**—One of the most beautiful of all cactus dahlias and the best of the deep pink and white type.

\$1.00 Each (C)

**MRS. J. HARRISON DICK**—The very best of all the bronzy yellow garden and cut flower dahlias.

50c Each (D)

**MRS. LEO NIESSEN**—A beautiful shade of scarlet red, blending to peach red at center of flower, with bright yellow at base of petal and at tips.

\$1.00 Each (C)

**SOPHY MOREY**—A giant cactus. Color white, lightly suffused and overlaid phlox purple.

\$2.00 Each (C)

These Dahlias Each 15c; Doz. \$1.50

**ARABELLA**—Yellow, pink center (S).

**A. D. LIVONI**—Soft pink (S).

**BIG RED**—Very good red (S).

**BLACK BEAUTY**—Rich maroon (Peo).

**CLIFFORD W. BRUTON**—Yellow (D).

**COLLARETT**—Red with white.

**EMILY**—Best lavender (S).

**EVENTIDE**—Shell pink; extra large (D).

**FLORDORA**—Red; profuse bloomer (C).

**GOLDEN DUKE**—Canary yellow (S).

**JACK ROSE**—Red (S).

**JOHNNY WALKER**—Best white (S).

**KREIMHILDA**—Deep cerise pink (C).

**LEMON GIANT**—Light yellow (S).

**OREGON BEAUTY**—Large red (D).

**POND LILY**—White (S).

**RED HUSSAR**—Extra red (S).

**ROSE**—Old rose (S).

**SYLVIA**—White; pink center (S).

**SNOW CLAD**—White (P).

**VARIEGATED**—Red and white (D).



## CANNAS

Each 20c; Dozen \$1.50

**KING HUMBERT**—4 ft. Bronze foliage. Orange scarlet. Very popular.

**THE PRESIDENT**—4 ft. Green foliage. The best red canna.

**YELLOW KING HUMBERT**—4 ft. Green foliage. Yellow spotted. A very attractive variety.

## IRIS

Each 20c; Dozen \$1.50

**CELESTE**—Sky blue.

**FLAVESCENS**—S. and F. delicate soft yellow, large, sweet scented. Early.

**FLORENTINE**—Dark blue.

**MAD. CHEREAU**—White, elegantly frilled, clear blue. Very handsome.

**QUEEN OF MAY**—Soft rose lilac, almost pink.

**JAPANESE IRIS**—Mixed colors.

## PEONIES

Each 75c; Dozen \$7.50 except as noted

**DUCHESS DE NEMOURS** (Cal. 1856)—Medium size. Pure white crown, sulphur white collar, no flecks. Fragrant and very free. Early. Extra good.

**EDULIS SUPERBA**—The famous Memorial Day Peony. Color a beautiful light clear pink with silvery reflex, large fragrant flowers.

**FELIX CROUSSE** (Cr. 1881)—Large globular bomb. Brilliant red. Fragrant and free. One of the best reds. ----- Each \$1.00.

**FESTIVA MAXIMA** (Miel. 1851)—Very large, rose type. Pure white center flecked crimson. Tall grower. Early.

**HUMEI** (And. 1810)—Large, globular rose type. Cherry pink tipped silver. Fragrant. Very late.

**MAD. DUCEL** (Mech. 1880)—Large, globular bomb. Light mauve rose, with silvery reflex. Fragrant and free. Extra.

# PERENNIAL PHLOX

Strong, Field Grown Stock

Each 25c; Dozen \$2.50 except as noted

**BRIDESMAID**—White, with large crimson center.

**DEUTSCHLAND**—Unquestionably the brightest red yet introduced; a brilliant oriental-red with orange suffusion and crimson red eye.

Each 35c; Dozen \$3.50

**ELIZABETH CAMPBELL**—Light salmon pink. Very large truss.

**ECLAIREUR**—Salmon scarlet, clearly defined crimson eye. Medium.

**F. G. VON LASSBURG**—Pure white immense petals.

**LOTHAIR**—Bright crimson.

**MAD. BEZANSON**—Deep crimson.

**MISS LINGARD**—An early flowering variety. White with faint lilac.

**MRS. JENKINS**—The best all around pure white.

**RHINELANDER**—Handsome salmon pink, large truss and individual florets. Medium dwarf.

**RIJNSTROM**—Beautiful clear pink. Large flower and truss.

**RICHARD WALLACE**—Pure white with dark eye.

**R. P. STRUTHERS**—Bright rosy red, crimson eye. The best of its color.

**ROSENBURG**—Wine with red eye.

**MIXED COLORS**—Unnamed. Dozen \$1.75.

# PERENNIALS

Each 20c; Dozen \$2.00

**COREOPSIS (Tickseed)**—One of the best hardy perennials. Used extensively for cut flowers. Very free-flowering, blooming from June to October. The large, showy, golden-yellow flowers are borne on long stems, and will last a week or more when cut.

**DIGITALIS OR FOXGLOVE**—The Foxgloves are quite stately and highly ornamental plants when well

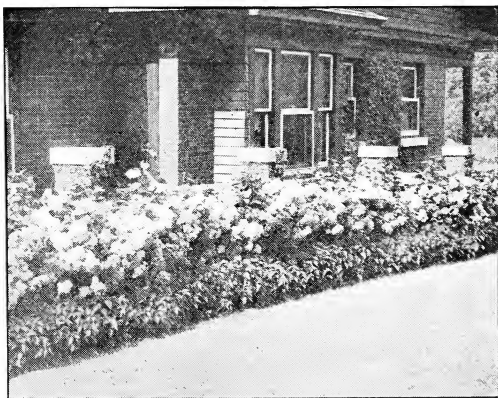
grown, with flower stems at least three feet in height. They are fine for mixed border, or planted singly in half shaded places near a walk or drive. The racemes of the flowers are often two feet in length, containing scores of prettily-spotted thimble shaped flowers. Perfectly hardy. Pink, white and purple.

**DELPHINUM OR LARKSPUR**—From among many of the most beautiful hardy plants we select the Delphinium as the most satisfactory border plant—tall and stately with many shades of blue, and blue and pink combined.

**GOLDEN GLOW**—A large, showy plant, attaining in good soil a height of 5 to 6 feet the same season planted. Flowers a deep golden color, resembling yellow chrysanthemums. A profuse bloomer; excellent for cutting.

**SHASTA DAISY—New Improved Alaska**—A fine hardy perennial, 12 to 18 inches high. The flowers are pure white, with a bright yellow center, average about four inches in diameter, and are borne on long, stiff, wiry stems. Valuable for cutting, remaining fresh for two weeks or more.

**SWEET WILLIAM or Dianthus Barbatus**—Mixed colors.



# Hardy Flowering Shrubs

Each 75c

**ALMOND, *Prunus sinensis*, Double Flowering Pink**—Double rose colored flowers borne in profusion.

**ALTHEA, Rose of Sharon, Double Red, Double Pink**—The Altheas are free growers and not particular as to soil.

**NEW EVERBLOOMING BUTTERFLY BUSH, *Buddleya Variabilis Magnifica***—Flowers of a pleasing shade of violet mauve, borne on long, cylindrical spikes.

**DOGWOOD, *Cornus*, Red-Twigged (*C. Alba*)**—Shrub with erect stem, good clean foliage and bright blood red branches. Also yellow-twigged variety.

**CORONARIUS, Mock Orange**—Early June. Fragrant, pure white flowers in dense clusters, so numerous as to bear the branches down when flowering. One of the best.

**DEUTZIA, Pride of Rochester**—The pinkish white flowers are borne in large panicles. A tall growing variety.

**FORSYTHIA, *Suspensa Fortuneia*, (Golden Bell)**—One of the best early flowering shrubs. Golden yellow flowers appear early in spring.

**HONEYSUCKLE, *Lonicera*, Bush. (*L. morrowi*)**—A shrub with wide-spreading branches; flowers in May and June, followed by bright red fruits.

**HYDRANGEA, *arborescens grandiflora***—The flower clusters are large, averaging 4 to 5 inches in diameter. Color is pure snow white, blooming at a time when flowers are scarce.

**HYDRANGEA, *paniculata grandiflora***—The well-known hardy Hydrangea. Flowers are borne in dense panicles, pure white when opening, but later of a purplish rose color.

**JAPAN FLOWERING QUINCE**—Very ornamental in early spring, as its bright, scarlet flowers completely cover the branches before the leaves are formed. Makes a good hedge. Blooms in early May:

## LILACS

Lilacs have always been popular on account of their hardiness, vigorous growth, abundant foliage, grace-

ful and luxuriant sweet-scented flower panicles. The large flowered Red, White and Purple, are among the most desirable.

**SNOWBERRY, Symphoricarpus, Racemosus**—White. Small, rose colored flowers in June and July, followed by large clustered, milk-white fruits, which remain far into the winter. The combination of pink flowers and white berries on the same twig is charming. July and August.

**SNOWBERRY, Vulgaris, (Red Indian Currant)**—A low growing, graceful shrub. Its fruits are red, and the smaller red berries cluster in thick ropes along the weighted-down stems. August.

**CALYCANTHUS FLORIDUS (Sweet or Strawberry Shrub)**—An old favorite with double chocolate-colored strawberry-scented flowers in May.

**PRUNUS PISSARDI (Purple-leaved Plum)**—A dwarf Shrub, covered with single white flowers in spring; when they first appear the leaves are a lustrous crimson, changing to a rich purple. Plants, 3 to 4 feet high, \$1.00 each.

**TRILOBA (Double-flowering Plum)**—An interesting Shrub, of medium height, bearing in early spring semi-double delicate pink flowers over an inch in diameter. Plants, 2 to 3 feet high, \$1.00 each.

**SNOWBALL, Virburnum Opulus Sterilis, (Common Snowball)**—Grows 6 to 8 feet high, the old-fashioned Snowball; its large, globular clusters of pure white flowers are produced in May and June, and make a very attractive appearance.

**SPIREA, Meadow Sweet, Anthony Waterer**—A new dwarf, compact growing shrub. Blossoms in broad flat heads of beautiful deep red color. A perpetual bloomer. July.

**SPIREA, Billardi**—Blooms nearly all summer; rose colored; fine, showy. July to September.

**SPIREA, Billardi Alba**—White.

**SPIREA, Van Houttei**—The finest of all Spireas, a most charming and beautiful shrub; having pure white flowers in clusters. Extraordinarily profuse in bloom, and the plant is a vigorous grower and very hardy.

**TAMARIX AFRICANA (Tamarisk)**—Strong, slender, tall-growing irregular shrubs, with feathery foliage and small, delicate flowers borne profusely on gracefully-bending branches. These pink flowers are very attractive during May.



**WEIGELA, Eva Rathke**—An erect, free flowering variety; flowers brilliant crimson. Blooms more or less all summer.

**WEIGELA, rosea**—A strong, symmetrical grower, with good foliage; pink flowers in June.

## Hardy Climbing Vines

50c each except as noted

**AMPELOPSIS, Veitchi** (Boston Ivy)—Best vine for covering stonework.

**CINNAMON VINE**—A strong, hardy climber from China. 10 to 30 feet. Leaves heart-shaped; flowers small, white, cinnamon-scented. Very fragrant. impervious to insects and blight. One of the best.

**CLEMATIS, Paniculata**—Flowers are medium in size, but exceptionally fragrant, with fine foliage in late summer.

**DUTCHMAN'S PIPE** (Birtworth)—Large, heart-shaped leaves and quaint, pipe-shaped green flowers.  
Price \$1.50 each

**EUONYMUS, Radicans Odorata**—The trailing Euonymus are particularly desirable for their dense evergreen foliage and extreme hardiness.

**HONEYSUCKLE, Hall's Japan**—Flowers white, bloom from July to winter. Fine climber.

**WISTARIA, White**—An attractive and strong grower with a large number of hanging pea-shaped, white flowers.

**WISTARIA, Purple**—A beautiful climber of very rapid growth, producing long, pendulous clusters of pale, blue flowers in June, also in fall; is perfectly hardy and one of the most superb climbing vines ever introduced.

Place your order early. All orders are shipped in the rotation they are received. We box and pack all shipments without charge.

## HEDGE PLANTS

**BERBERIS THUNBERGI** (Japan Barberry)—Where a dwarf deciduous hedge is wanted, nothing equals this beautiful Barberry. Requires but little pruning to keep in shape. The leaves are small, light green, and towards fall assume rich, brilliant colors, the fruit or berries becoming scarlet. Absolutely hardy in all parts of the country. Plant 12 to 15 inches apart. Extra strong 3-year old plants, 18 to 24 inches high, 40 cents each; \$3.50 per doz.; \$25.00 per 100.

---

### A Real Novelty in Shrubs

#### New Red-leaved Japanese Barberry

It is only once in a lifetime that a really worth while outstanding novelty in hardy shrubs is introduced, and in this new Barberry we have such a plant.

It is similar in all respects to the green-leaved Japanese Barberry which is so popular for mixing in the shrubbery border, as single specimens, or for planting in clumps on the lawn, as well as for foundation plantings and for hedges, but the foliage of this new variety is of a rich, lustrous, bronzy red, becoming more brilliant and gorgeous throughout the summer and in the fall changes to vivid orange, scarlet and red shades. In this coloring it is unequalled by any other shrub and is followed by the same brilliant scarlet berries common to the type which remain on the plant the entire winter.

In order to develop its brilliant coloring at all seasons it must be planted in full exposure to the sun.

**Heavy Two-year Old Plants, Each \$1.00; Doz. \$10.00**

---

**CALIFORNIA PRIVET**—A species of unusual beauty that has become the most popular of hedge plants. Its shining foliage shears nicely to any shape.

**Strong Plants, 18 to 24 in., \$1.00 per doz.; \$6.00 per 100**

**IBOTA PRIVET**—Spreading and tall growing, the hardiest of the group. Color grayish green, fruits black.

**2 to 3 ft., each 20c; ten \$1.60; hundred \$12.00**

# ORNAMENTAL TREES

**AMERICAN ARBOR VITAE**—Much used for hedges, screens, singly on lawns, and in tubs for porches, etc. It is a handsome little tree, and if allowed to grow naturally will be quite tall and pyramid-shaped. Can be trimmed and kept in any form and height. In the summer the foliage is bright green above, yellowish beneath, and when winter comes this changes to the richest tones of brown and bronze.

Price 18 to 24 in., \$1.00 each

**Birch (Cut-Leaved Weeping)**—This noble tree is not only the most popular of the weeping trees, but it is indeed a picture of delicacy and grace. Its tall, slender yet vigorous growth, graceful branches, silvery white bark and delicately cut foliage present a combination of attractive characteristics rarely met with in a single tree. Excellent for lawn and cemetery planting.

4 to 6 ft., \$3.00 each

**BIRCH (European White)**—A fine tree of moderate size. Bark silvery white; spray-like branches.

4 to 6 ft., \$1.00 each

**BETCHEL'S DOUBLE FLOWERING CRAB**—(*M. ioensis* Bechteli.) A medium size tree bearing delicate pink, double flowers; very fragrant.

2 to 3 ft., \$1.50; 3 to 4 ft., \$2.00

**CATALPA BUNGEI**—(Umbrella Catalpa) Grafted on stems six to eight feet high, it makes an umbrella shaped top without pruning. Perfectly hardy, and flourishes in almost all soils and climates. Leaves large, glossy, heart shaped, deep green, lying like shingles on a roof; always making a symmetrical head. One of the most unique trees; desirable for lawn, park and cemetery planting.

Price 6 to 8 ft., \$2.00 each; 8 to 10 ft., \$2.75 each

**CATALPA SPECIOSA**—(Hardy or Western Catalpa). Very popular throughout the country on account of its hardy nature. It has immense leaves, velvet brown when they first appear, changing to a rich dark green, followed by immense panicles of pink and white flowers.

Each, 6 to 8 ft., 75c each

**COLORADO SPRUCE**—(*P. pungens*) The original form of the now famous Colorado Blue Spruce. The

foliage is a light green. A hardy grower in almost any soil.

15 in. \$1.75; 18 in. \$2.50; 2 ft. \$3.50

**COLORADO BLUE SPRUCE**—(*P. pungens glauca*)  
Form of *Picea pungens*, with same general character, but the foliage is of an exceedingly rich, silvery blue.

12 in. \$3.50; 15 in. \$4.25; 18 in. \$5.00

**IRISH JUNIPER**—Junipers are handsome evergreens. Always neat and clean. This variety grows exceptionally slim and column-like. The branches grow almost straight up, and a 7 or 8 foot tree will not be more than a foot and a half thick.

2 to 3 feet, \$2.25 each

**ELM, AMERICAN**—The most admired of all American trees. It is very attractive in any suitable location, is extremely hardy, easily transplanted, and makes the finest shade tree in the world.

Each, 8 to 10 ft., \$1.75; 10 to 12 ft., \$2.50

**MAPLE, NORWAY**—One of the most beautiful and desirable trees known, of large size, perfect outline, with deep green foliage. Its compact habit, stout, vigorous growth, freedom from disease and insects, render it one of the most desirable trees for the street, park or garden. See illustration.

Each, 8 to 10 ft., \$3.50

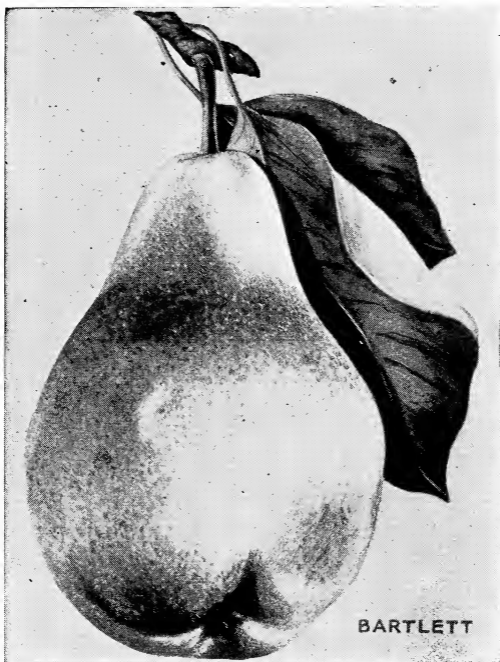
**MAPLE (Silver Leaf or Soft Maple)**—A well-known native tree of rapid growth, large size, and rounded form. Foliage bright green above and silvery-white beneath; tree very hardy and easily transplanted. One of the most useful trees.

Each, 8 to 10 ft., \$2.00

**NORWAY SPRUCE**—A lofty, elegant tree of perfect pyramidal habit, remarkably elegant and rich. As it gets age, has fine, graceful, pendulous branches. It is exceedingly picturesque and beautiful. Very popular and should be largely planted. One of the best evergreens for hedges.

18 to 24 inches, \$1.00 each

Remit by Check, Bank Draft, Express Money Order, Post Office Money Order or Registered Letter. Return envelope and order blanks are for your convenience in sending your order and remittance.



# FRUITS

## Apple Trees

### Three New Apples of Special Merit

**ROGERS RED SPY**—This new apple, developed by Isaac B. Rogers, in his Dansville, N. Y., orchards, is destined to take the place of the old Spy. It has all the fine qualities of the old Northern Spy but has a red skin, which makes it a big seller.

Each, 1 yr., 3 to 5 ft., \$1.00

**EARLY MC INTOSH**—An early variety of the dependable McIntosh. We have just a few of these.

Each, 1 yr., 3 to 5 ft., \$1.00

**CORTLAND**—This beautiful, high colored apple is a cross between McIntosh and Ben Davis, inheriting the good qualities of both and none of the bad ones. It matures one month later than McIntosh, is larger, of better quality and colors earlier. The fruit hangs on the trees like Ben Davis, keeps late in the winter, and can be handled like a Baldwin. We offer one year trees only.

3 to 5 ft., Each 90c; Ten, 8.00; Hundred, \$60.00

All other varieties	Each	10	100
2 yr. 5 to 7 ft. -----	\$0.85	\$7.50	\$55.00
2 yr. 3½ to 5 ft. -----	.50	4.50	35.00
1 yr. 3 to 5 ft. -----	.80	7.00	50.00

BALDWIN	RED ASTRACHAN
DELICIOUS	R. I. GREENING
DUCHESS OF	ROME BEAUTY
OLDENBURG	SPITZENBURG
HYSLOP (Crab)	STAYMAN'S WINESAP
JONATHAN	TWENTY OUNCE
KING	WINTER BANANA
MAIDEN'S BLUSH	WOLF RIVER
MC INTOSH	YELLOW
NORTHERN SPY	TRANSPARENT

## Cherry, Pear and Plum Trees

### PRICES

	Each	10	100
2 yr. 5 to 7 ft. -----	\$0.90	\$8.00	\$60.00
2 yr. 3½ to 5 ft. -----	.55	5.00	40.00
1 yr. 3 to 5 ft. -----	.85	7.50	55.00

## CHERRY—Sweet Varieties

BING	LAMBERT
BLACK TARTARIAN	NAPOLEON
SCHMIDT'S	WINDSOR
BIGGAREAU	GOVERNOR WOOD
	YELLOW SPANISH

## CHERRY—Sour Varieties

DYEHOUSE	MAY DUKE
EY. RICHMOND	OSTHEIME
ENGLISH MORELLO	WRAGG
MONTMORENCY	LATE DUKE

## PEAR—Standard

ANJOU	FLEMISH BEAUTY
BARTLETT	KIEFFER
BUERRE BOSCH	SECKEL
CLAPP'S FAVORITE	SHELDON
DUCHESS de	WILDER
ANGOULEME	

## PEAR—Dwarf

2 yr. 3 to 4 ft. -----	50c each
DUCHESS de	BARTLETT
ANGOULEME	KIEFFER

## PLUM—European

BRADSHAW	MOORE'S ARCTIC
FELLEMBURG	POND'S SEEDLING
PRUNE	SHIPPERS PRIDE
GERMAN PRUNE	SHROPSHIRE
LOMBARD	DAMSON
MONARCH	YELLOW EGG

## PLUM—Japanese

ABUNDANCE	RED JUNE
BURBANK	SATSUMA
CLIMAX	WICKSON

## PEACHES

	Each	10	100
1 yr. 4½ to 6 ft. -----	\$0.70	\$6.00	\$35.00
1 yr. 3½ to 4½ ft. -----	.65	5.50	30.00
BELLE OF GEORGIA	ELBERTA		
CARMAN	GREENSBORO		
CRAWFORD'S EARLY	HALE		
CRAWFORD'S LATE	ROCHESTER		
CHAMPION	YELLOW ST. JOHN		

## QUINCES

2 yr. 3½ to 5 ft -----	\$1.00 each
CHAMPION	ORANGE

---

---

## Hints on Transplanting

1. Do not allow roots to be exposed to the sun, drying winds, or frost.
2. Prune, with a sharp, clean cut, any broken or injured roots.
3. Have the holes dug large enough to admit all the roots without cramping.
4. Plant in fine loam, enriched with thoroughly decomposed manure.
5. Do not allow any green unfermented manure to come in contact with roots.
6. Spread out the roots in their natural position, and work fine loam in among them, making it firm and compact.
7. Do not plant too deep. Let upper roots be set an inch lower than before.
8. Remove all broken branches, and cut back at least one-half of the previous year's growth of wood.
9. If the season lacks the usual rainfall, water thoroughly twice a week.
10. After culture! Keep soil in a good degree of fertility. Mulching the trees in Autumn with manure is beneficial.

Plant Gladiolus this spring for rainbow colors in your garden this fall. To put brilliance in your garden early next spring be sure to plant Tulips, Daffodils, Hyacinths, Crocus and other delightful bulbous plants this fall. They provide the earliest spring flowers—flowers we appreciate as much as any. Get our catalog. Ready in August.

**PLEASANT VIEW GARDENS**  
**BABCOCK & ZERFASS**  
**DANVILLE, NEW YORK**

---

---