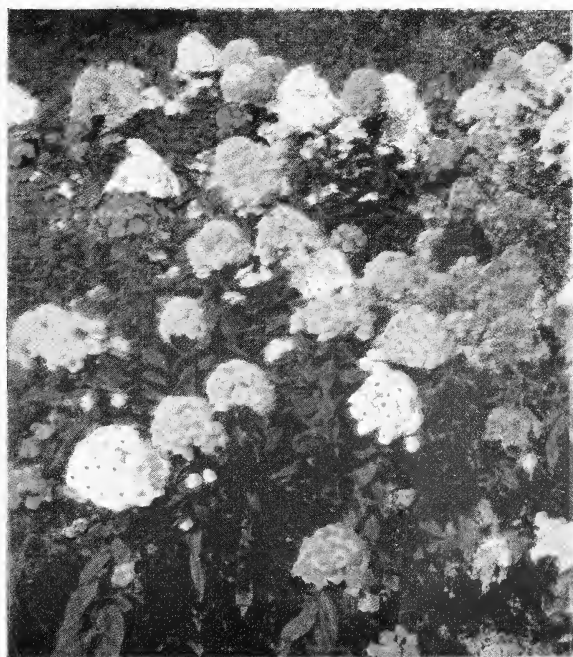


Historic, Archive Document

Do not assume content reflects current scientific knowledge, policies, or practices.

PALMER'S SEEDS

1927



PHLOX DRUMMONDII

— ■ —
**PALMER
SEED CO.**

419 Franklin Avenue
St. Louis, Missouri

"MAKE ALL THE EARTH A GARDEN"

Special Inducement!

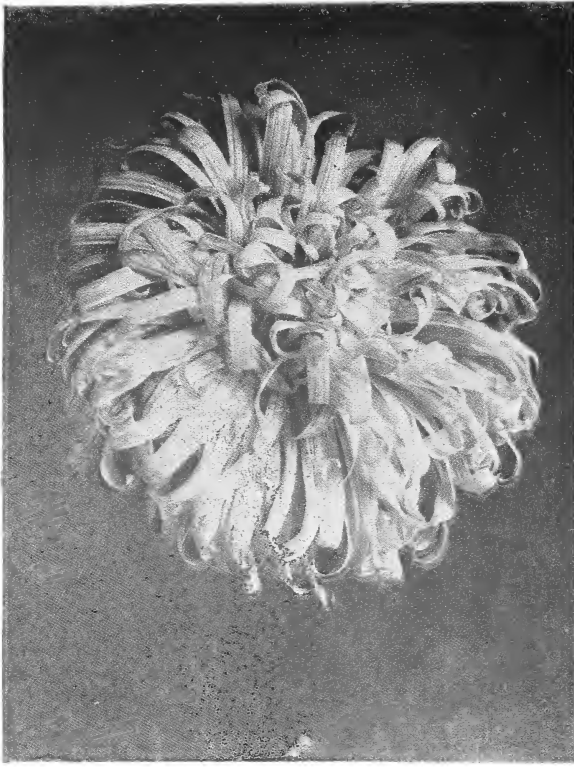
We offer a very choice packet of the most beautiful Asters FREE to every customer who orders \$2.00 worth of seed or more before March 1st. After the first sign of spring weather, seed houses are literally flooded with orders and about 75% of the business is crowded into the short span of a few weeks. In order to relieve this congestion we will appreciate your taking advantage of this liberal inducement.

A 25c Packet of

Giant Comet Asters FREE!

This magnificent strain of American Aster is without a rival. The immense flowers measuring 4 to 6 inches across are borne on long stems from 18 to 24 inches high, having 20 or more blooms on a plant. Has wavy and crested petals resembling chrysanthemums. Very beautiful.

**SEND YOUR ORDER IN NOW
WHILE IT'S FRESH ON
YOUR MIND**



Giant Astermum Aster

Palmer's Bargain Collections For Small Gardens

We have exercised our best judgment in the arrangement of these very special offers, and know you will find them good values. The vegetables are all of popular varieties and the flowers are among the most demanded.

SPECIAL Vegetable Assortment

2 Pkts. Stringless Beans.....	20c
1 Pkt. Blood Turnip Beet.....	10c
1 Pkt. Rubicon Carrot.....	10c
2 Pkts. Sparkler White Tip Radish	20c
1 Pkt. American Wonder Peas.....	10c
2 Pkts. New York Wonderful Lettuce	20c

90c

**ALL SENT POSTPAID
TO YOU FOR ONLY 50c**

SPECIAL Flower Assortment

1 Pkt. Giant Asters	10c
1 Pkt. Heart of France Asters....	10c
1 Pkt. Giant Petunia	10c
1 Pkt. Spencer Sweet Peas.....	10c
1 Pkt. Dahlia Flowered Zinnia....	10c
1 Pkt. Giant Pansy.....	10c

60c

**ALL SENT POSTPAID
TO YOU FOR ONLY 35c**

Special Prize for Ten Names

Send us ten names of the leading families in your neighborhood who plant vegetables and flowers and we will send you a packet of the most beautiful Zinnia—Dahlia Flower Mixed—regular value 20c. In submitting names mention post office and R. F. D.

A Message to Gardeners

Who Consider Quality Seeds The First Requisite to a Good Crop

THIS is the first annual catalogue of Palmer's vegetable and flower seeds. Hereafter it will be the chief medium of contact between the House of SUPER-QUALITY SEEDS and the people who plant them. In presenting it to you we desire to cultivate your friendship and your confidence, familiarize you with our company and our Seeds, and bring about a closer relation and better understanding as years go by. Therefore, may we bespeak your thoughtful consideration of this book and the principles that actuate our business policies.

SEEDS ARE BOUGHT ON FAITH

Perhaps in no other business does the element of trust play such an important part as in the seed business. You take the seedsman's word for the variety of the seed, the type or strain, and its ability to grow—and you cannot test his reliability until the crop is well on its way to maturity. Is it not wise, then, to buy your seeds from a firm composed of seed experts—men whose background of training and experience inspires your confidence?

A STAFF OF SEED EXPERTS TO SERVE YOU

Every man in the Palmer Seed Company is fitted for his job. Edward C. Palmer spent ten years in the various departments of the Schisler-Corneli Seed Company prior to purchasing the retail department of that firm. The market gardener's department is under the supervision of John W. Eckles, who is known intimately by every grower who comes to St. Louis. Mr. Eckles received his first experience as a boy on his father's truck farm in St. Louis County and later spent twenty years with Schisler-Corneli Seed Company. In choosing a qualified man to look after Flower Seeds and retail business William J. Sherry of Philadelphia was selected. He has an enviable reputation as a seedsman and comes to us with thirty-five years experience in flower seeds, vegetable seeds, bulbs and nursery stock. Mr. Sherry's advice will be valuable to anyone who plants seeds. These men are at your command. Their thorough understanding of the problems of gardening gives them an appreciation of your work and a desire to assist you in every way possible.

WHY PALMER SUPER-QUALITY SEEDS ARE BETTER

Good seeds are certainly the controlling element in gardening. No matter how fertile your soil, nor how favorable the rain and sunshine, if the seeds are not the best your efforts will be wasted. Our prime purpose will be to sell only select quality. We will strive constantly to maintain uniformity of varieties and strains and our seeds will be selected from the fields of the world's best seed growers. They will represent the highest perfection in purity and germination, labeled to comply with your state Pure Seed Law. We want to sell you "Results" and not just seeds. Your success is ours, because if you succeed with our seeds, we succeed with you.

On these clearly defined principles we respectfully solicit your seed business, and know you will be pleased with anything you buy from us.

Cordially yours,

PALMER SEED COMPANY, INC.

SUGGESTIONS FOR ORDERING

For quick attention to your order we advise you to make it out according to the following procedure:

CASH WITH ORDER. Please send money with the order sufficient for the whole bill, to facilitate the execution of your order. When only part is remitted goods will be sent to amount of remittance.

WE PAY POSTAGE, EXPRESS OR FREIGHT CHARGES ON ALL ORDERS FOR GARDEN AND FLOWER SEEDS, excepting beans, peas and corn. Field seeds and other items are strictly F. O. B. St. Louis, charges to be paid by purchaser.

REMITTANCE. Remittances should be made by Post Office Money Orders, Bank Drafts, or Express Money Orders. Postage Stamps will be found a convenient method of remitting for small amounts, and can be used by us to advantage.

FORWARDING. We cannot assume any responsibility for delay in transit. When customers fail to receive their packages in a reasonable time, they should inform us, and at the same time send a copy of their order and any other information necessary to trace the goods. In ordering do not fail to give full shipping directions. When such are omitted,

The freshest Seeds may sometimes fail; hence the value of this precaution to send out none but good seeds. We know with proper treatment our Seeds will grow, and by following the cultural directions given the least experienced gardener cannot fail to have success.

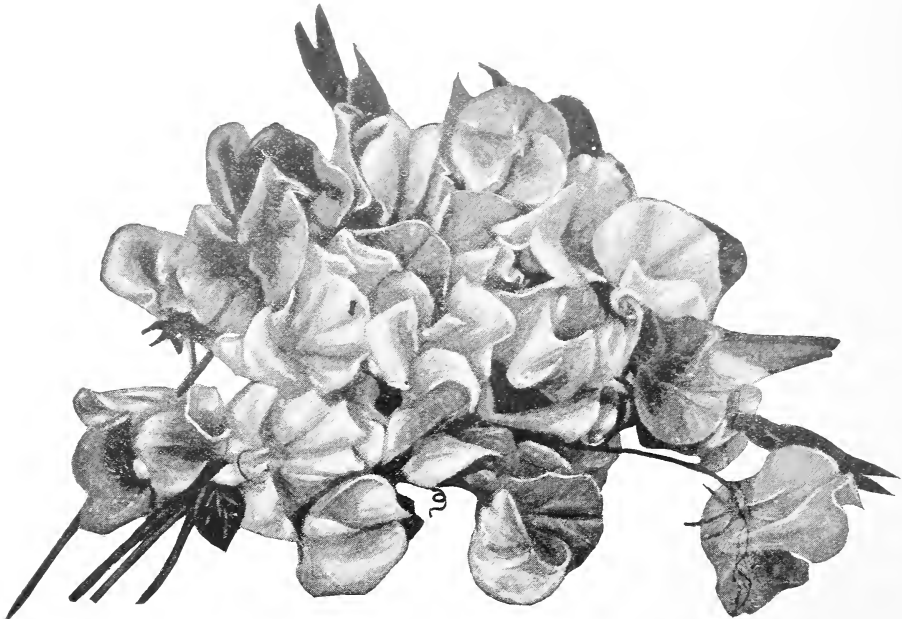
we shall use our best judgment and will forward by Express, Railroad or Mail, as may seem to us most advisable.

NAME AND ADDRESS. Please remember to write plainly your Name, Rural Route, Post Office, County and State; also give number and street or P. O. Box as distinctly as possible, to facilitate execution and prevent error; also give name of your nearest Express Office or Railroad Station.

WARRANTY. While we feel that it is to our interest to furnish customers with good seeds, yet we cannot guarantee a crop, as this is dependent upon natural causes, which are beyond our control. But we do guarantee that all seeds sold by us are first-class, pure and of strong germinating power. However, we give no warranty, express or implied, as to description, quality, productiveness or any other matter of any Seeds, Bulbs or Plants we send out, and we will not be in any way responsible for the crop. If the purchaser does not accept the goods on these terms, they are at once to be returned.

Palmer Seed Company, Inc.

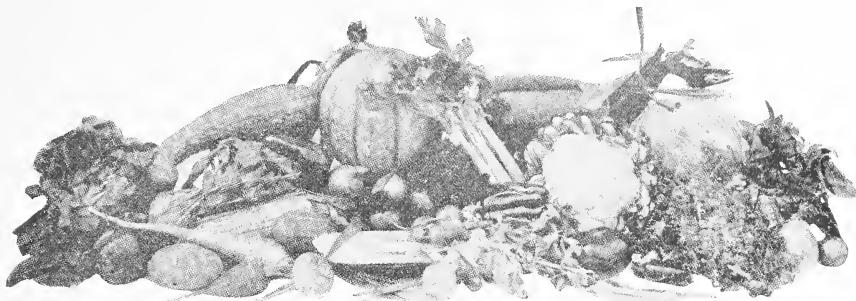
419 Franklin Avenue
ST. LOUIS, MISSOURI



GIANT SPENCER SWEET PEAS

See Special Offer on Page 32.

Palmer's Super - Quality Seeds



Increased Interest in Gardening

THE steadily increasing demand for better and more beautiful homes has brought with it a new appreciation for gardening. People everywhere are having a finer regard for nature's beauty. They are planting flowers and shrubs to make their home more beautiful, and vegetable gardens are increasing by the thousands.

Plant a garden this year. Whether you desire the beauty of flowers or the tastiness of fresh home-grown vegetables, in raising them you will find wholesome recreation and healthful outdoor exercise. There is a fascination about making things grow that touches the heart of everyone who fully appreciates life.

A small piece of ground will supply a family of average size with fresh vegetables throughout the season. You can do it by selecting more than one variety of each kind; some that mature early and others that mature late, bearing all through the Summer. Even if you have already planned your garden we hope you will find a few things in this catalog that will fit in very nicely.

Vegetable Seeds

Asparagus

Sow the seed in drills, about one inch deep, and the rows about one foot apart. Keep the soil mellow and free from weeds during the summer and in the fall or succeeding spring the plants should be set about one foot apart and the crown one foot below the surface. The beds should be narrow so as to permit of cutting to the center. Before winter cover the transplanted beds with about four inches of manure. Salt is an excellent manure for asparagus. Sow a little on the surface in the spring and it will keep down the weeds. The young tops may be cut for the table the second summer, but not very freely until the third.

MARY WASHINGTON—An early giant variety, immune from rust, vigorous in habit, productive and of rare quality. Parcel Post Paid. Pkt. 10c; oz. 25c; ¼ lb. 75c; 1 lb. \$2.50.

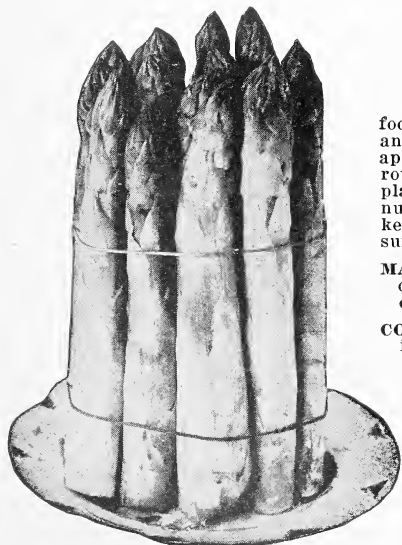
CONOVER'S COLOSSAL—A well known variety; stalks green; good quality. Pkt. 5c; oz. 15c; ¼ lb. 30c; 1 lb. 75c.

PALMETTO—A heavy producing rust resistant variety, of delicious quality, tender and extremely early. Parcel Post Paid. Pkt. 5c; oz. 15c; ¼ lb. 30c; 1 lb. 75c.

GIANT ARGENTEUIL—An excellent variety of rust resisting qualities, early, productive, and a popular market Asparagus. Parcel Post Paid. Pkt. 5c; oz. 10c; ¼ lb. 30c; 1 lb. 75c.

Artichoke

FRENCH GLOBE—The standard and best variety. Parcel Post Paid. Pkt. 10c.



Giant Washington

Bush Beans

Green Pod

IMPROVED RED VALENTINE—If you are in doubt about what variety to plant, you will make no mistake in selecting Red Valentine. The pods are about 4 inches long, fleshy, crisp, tender. Parcel Post not prepaid. Pkt. 10c; ½ lb. 20c; lb. 35c; 5 lbs. \$1.40.

LONGFELLOW—Yields round, straight, fleshy pods that average 6 inches or more in length; free of tough lining and until the pods are old are almost entirely stringless. Parcel Post not prepaid. Pkt. 10c; ½ lb. 20c; lb. 35c; 5 lbs. \$1.40.

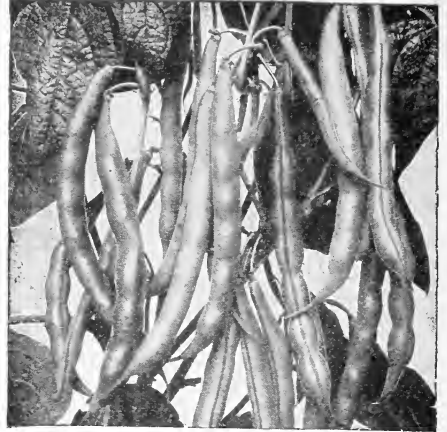
STRINGLESS REFUGEE—Fine for later planting, pickling and canning. The round pods are 5 inches long, tender and of splendid quality. Parcel Post not prepaid. Pkt. 10c; ½ lb. 20c; lb. 35c; 5 lbs. \$1.40.

BLACK VALENTINE—The hardiest of all beans; will stand more frost than any other sort. The pods are long, straight, very handsome; are produced very profusely. Parcel Post not prepaid. Pkt. 10c; ½ lb. 20c; lb. 35c; 5 lbs. \$1.40.

BURPEE'S STRINGLESS GREEN POD—Early and hardy, pods round, perfectly stringless, tender and brittle, and of the highest quality. Parcel Post not prepaid. Pkt. 10c; ½ lb. 20c; lb. 35c; 5 lbs. \$1.40.

GIANT STRINGLESS GREEN POD—Exceptionally fine for either home use or market. The pods are round, 5 to 6 inches long, meaty, perfectly stringless, and are borne continuously for weeks. Parcel Post not prepaid. Pkt. 10c; ½ lb. 25c; lb. 40c; 5 lbs. \$1.65.

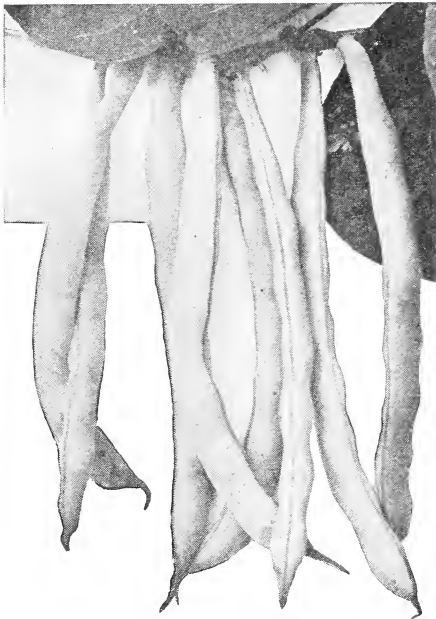
BOUNTIFUL—Not quite as early as some kinds, but bears for a long season; the rich, green pods are extra long, broad, thick, meaty, meltingly tender and with scarcely a trace of string. Parcel Post not prepaid. Pkt. 10c; ½ lb. 25c; lb. 40c; 5 lbs. \$1.65.



Improved Red Valentine

FULL MEASURE—One of the best and most satisfactory of the stringless, green-podded snap beans. A very early, productive, high quality variety, with long, straight, fleshy, round pods and entirely without strings; excellent for either market or home garden. Parcel Post not prepaid. Pkt. 10c; ½ lb. 25c; lb. 40c; 5 lbs. \$1.65.

TENNESSEE GREEN POD—Yields the longest and largest pods of any Bush Bean, often 6 to 7 inches long, flat and somewhat irregular in shape but of fine flavor. Parcel Post not prepaid. Pkt. 10c; ½ lb. 25c; lb. 40c; 5 lbs. \$1.65.



Brittle Wax

Wax Pod

BRITTLE WAX—An extra early hardy variety with round pods, entirely stringless. Very prolific and good flavored. Parcel Post not prepaid. Pkt. 10c; ½ lb. 20c; lb. 35c; 5 lbs. \$1.50.

DAVIS WHITE—Productive; the pods are long, creamy yellow and free from rust. Parcel Post not prepaid. Pkt. 10c; ½ lb. 20c; lb. 35c; 5 lbs. \$1.40.

UNRIVALED WAX—A very desirable, extra early, productive variety with beautiful, showy golden-yellow pods, which show their color at an early stage of growth. The pods are nearly six inches long, almost round, straight or slightly curved, and while showing a trace of string, are brittle and tender. The plant is strong and vigorous and quite free from rust. Parcel Post not prepaid. Pkt. 10c; ½ lb. 20c; lb. 35c; 5 lbs. \$1.40.

SURE CROP WAX—Bears round, clear, rich, yellow pods in 50 days which are meaty and tender. Parcel Post not prepaid. Pkt. 10c; ½ lb. 20c; lb. 35c; 5 lbs. \$1.40.

IMPROVED GOLDEN WAX—Vines medium sized, vigorous and hardy; pods broad, flat and of golden yellow color. This variety is an improvement over the old Golden Wax. The plants are very resistant to rust. Parcel Post not prepaid. Pkt. 10c; ½ lb. 20c; lb. 35c; 5 lbs. \$1.40.

PENCIL POD BLACK WAX—Bushy vines, very prolific, 15 inches high, bear round, thick, stringless, rich yellow pods, 6 to 7 inches long, of excellent quality. Parcel Post not prepaid. Pkt. 10c; ½ lb. 20c; lb. 35c; 5 lbs. \$1.40.

CURRIES RUST PROOF WAX—The best round podded variety. Sure to yield an early and profitable crop. Pkt. 10c; ½ lb. 20c; lb. 35c; 5 lbs. \$1.40.

REFUGEE WAX (Stringless)—A popular mid-season, hardy and desirable variety with numerous round, stringless, bright yellow pods; desirable for canning. Parcel Post not prepaid. Pkt. 10c; ½ lb. 25c; lb. 40c; 5 lbs. \$1.50.

WARDWELL'S KIDNEY WAX—A strong grower; bears heavy crop of broad, waxy yellow pods, brittle and fine flavor. Parcel Post not prepaid. Pkt. 10c; ½ lb. 20c; lb. 35c; 5 lbs. \$1.40.

Bush Lima

HENDERSON'S BUSH LIMA—Beans are small but very productive. Parcel Post not prepaid. Pkt. 10c; ½ lb. 20c; lb. 35c; 5 lbs. \$1.50.

beans. Matures in 60 days. Parcel Post not prepaid. Pkt. 10c; ½ lb. 30c; lb. 50c; 5 lbs. \$1.75.

FORDHOOK BUSH LIMA—A very large seeded Bush Lima Bean; produces a very large, strong, true bush-like growth. The pods are borne in clusters of from 4 to 8 and measure from 4 to 5½ inches long, about 1 ¼ inches wide. The pods contain from 3 to 5 large

BURPEE'S IMPROVED BUSH LIMA—A decided improvement on the old sort and by far the best of the large, flat-seeded type. The vine is more sturdy and productive; beans are larger and thicker than in the old form and average one more bean to the pod. Parcel Post not prepaid. Pkt. 10c; ½ lb. 20c; lb. 35c; 5 lbs. \$1.50.

Pole or Running Beans

KENTUCKY WONDER, or OLD HOMESTEAD—It is almost needless to say anything about this great Pole Bean, for who has not grown it? The yield is great, the quality is good, and no bean is more sure of making a crop. It bears in 65 days from planting; should be kept picked so that it will continue bearing until frost. The beans are 6 to 12 inches long tender and rich. Parcel Post not prepaid. Pkt. 10c; ½ lb. 20c; lb. 35c; 5 lbs. \$1.40.

SPECKLED CUT-SHORT OR CORN HILL—Used for planting among corn; one of the best. Pods short, cylindrical and tender. Beans nearly oblong, cut off diagonally at the ends; white covered at one end and slightly over the surface with reddish-brown dots. Parcel Post not prepaid. Pkt. 10c; ½ lb. 20c; lb. 35c; 5 lbs. \$1.40.

DUTCH CASE KNIFE—Pods long, green and flat; can be either snapped or shelled. Immensely productive and excellent flavor. Parcel Post not prepaid. Pkt. 10c; ½ lb. 20c; lb. 35c; 5 lbs. \$1.40.

WHITE CREASEBACK—Especially valuable on account of its earliness. Parcel Post not prepaid. Pkt. 10c; ½ lb. 20c; lb. 35c; 5 lbs. \$1.40.

ST. LOUIS WHITE CORN FIELD—One of the earliest and most productive pole beans, bearing round, fleshy, long pods in large clusters. Seeds are pure white and can be used as a shell bean. Parcel Post not prepaid. Pkt. 10c; ½ lb. 20c; lb. 35c; 5 lbs. \$1.40.

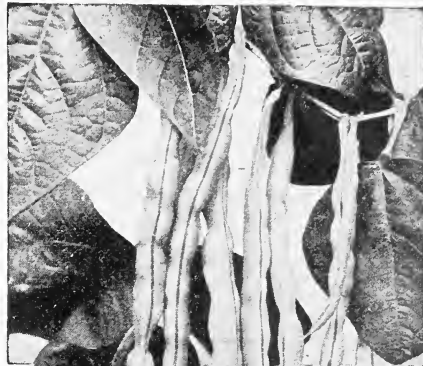
LAZY WIFE—Great favorite; pod from four to six inches long, stringless, rich buttery flavor; beans are white and make a fine shell bean; pods remain green and tender long. Parcel Post not prepaid. Pkt. 10c; ½ lb. 20c; lb. 35c; 5 lbs. \$1.40.

HORTICULTURAL OR SPECKLED CRANBERRY—Showy, excellent either as a snap or shell bean. Immense bean of finest quality. Parcel Post not prepaid. Pkt. 10c; ½ lb. 20c; lb. 35c; 5 lbs. \$1.40.

GOLDEN CLUSTER WAX—Early, productive; golden wax pods six to eight inches long. Parcel Post not prepaid. Pkt. 10c; ½ lb. 20c; lb. 35c; 5 lbs. \$1.40.

LARGE WHITE LIMA—Largely grown and highly esteemed. Parcel Post not prepaid. Pkt. 10c; ½ lb. 20c; lb. 35c; 5 lbs. \$1.50.

KING OF THE GARDEN LIMA—Pods are large, numerous and well filled, beans are large and uniform. Productive. Parcel Post not prepaid. Pkt. 10c; ½ lb. 20c; lb. 35c; 5 lbs. \$1.50.



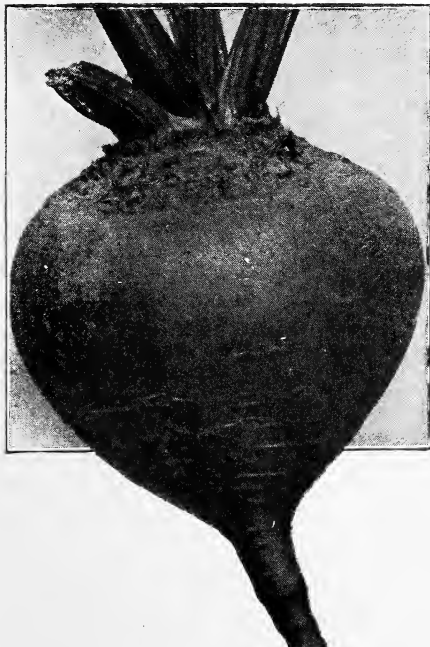
Kentucky Wonder

Brussels Sprouts

CULTURE—A vegetable cultivated the same as cabbage. The small heads which appear along the upper part of the stalk between the leaves make a fine dish when well prepared. Should be sown during Spring and Fall. Matures in 90 to 120 days. Parcel Post Paid. Pkt. 10c; oz. 25c; ¼ lb. \$1.00.

Beets

EARLY ECLIPSE—An early beet especially desirable for the home garden and used for bunching. The tops are small. The roots are bright deep red, smooth, slightly top shaped, with a small tap and small collar. The flesh is bright red, zoned with pinkish white, very sweet, crisp and tender. Parcel Post Paid. Pkt. 5c; oz. 10c; ¼ lb. 30c; lb. 90c.



Crosby's Egyptian Beets

NUTTING'S GEM—A rapid grower, for forcing and early outdoor sowing, dark color. Parcel Post Paid. Pkt. 5c; oz. 10c; ¼ lb. 30c; lb. 90c.

HALF LONG BLOOD—Fine dark strain; distinct variety; smooth and handsome. Parcel Post Paid. Pkt. 5c; oz. 10c; ¼ lb. 30c; lb. 90c.

DETROIT DARK RED—Here is a beet you will like, whether you grow for home use or market. Almost globe shaped with small tops and tap root, very smooth and of dark blood-red color without light rings. A good beet for both early and late planting. The quality is fine; for canning it has no superior. Parcel Post Paid. Pkt. 5c; oz. 10c; ¼ lb. 30c; lb. 90c.

EARLY BLOOD TURNIP—It is distinctly a beet that will please you. A beet that has the approval of the most discriminating gardeners everywhere. The roots are medium sized, round, of dark red color and fine flavor. Matures in about 45 days. Parcel Post Paid. Pkt. 5c; oz. 10c; ¼ lb. 30c; lb. 90c.

CRIMSON GLOBE—This is a splendid sort; medium size, about 10 inches around, globe shape, bronze color. Flesh is rich blood red, sweet, tender and never stringy. Parcel Post Paid. Pkt. 5c; oz. 10c; ¼ lb. 30c; lb. 90c.

EARLY WONDER BEET—The first beet of the market where it will command fancy prices; most perfect in shape and a beautiful red color. Superior to Crosby's Egyptian and one week earlier. Early Wonder Beet is the result of years of selection and the improving resulting we believe in the earliest and most handsome globe-shaped beet on the market. Parcel Post Paid. Pkt. 5c; oz. 10c; ¼ lb. 30c; lb. 90c.

EDMAND'S EARLY BLOOD TURNIP—One of the most uniform of all turnip beets, with very small tops of bronze red, good marketable variety and also good for home gardens. Parcel Post Paid. Pkt. 5c; oz. 10c; ¼ lb. 30c; lb. 90c.

CROSBY'S IMPROVED EGYPTIAN—We recommend Crosby's Egyptian as the combination of earliness, good shape, good color and good quality. It is not as flat as Extra Early Egyptian nor as round as Eclipse—these varieties are its rivals in earliness. The color is bright red with bright vermilion-red flesh, very sweet and tender. It has the advantage of being fit for use earlier than most beets, as it takes on its turnip shape at a very early stage of its growth. The tops and tap root are both small. Parcel Post Paid. Pkt. 5c; oz. 10c; ¼ lb. 30c; lb. 90c.

IMPROVED LONG SMOOTH BLOOD—Flesh tender and sweet. Parcel Post Paid. Pkt. 5c; oz. 10c; ¼ lb. 30c; lb. 90c.

Palmer's Sugar Beets

GIANT HALF SUGAR ROSE (Feeding Sugar)—A most valuable, large yielding variety for feeding, roots oval-shaped; skin rose colored, flesh white. Has a larger sugar content and feeding value than most beets of its class. Parcel Post Paid. Pkt. 5c; oz. 10c; ¼ lb. 20c; lb. 50c.

VILMORIN IMPROVED WHITE SUGAR—A much improved strain, very valuable as a sugar-producing beet. Parcel Post Paid. Pkt. 5c; oz. 10c; ¼ lb. 20c; lb. 50c.

KLEIN WANZLEBEN—Larger than Vilmorin; good sugar beet; very hardy. Parcel Post Paid. Pkt. 5c; oz. 10c; ¼ lb. 20c; lb. 50c.

Palmer's Mangel Wurzels



Improved Mammoth Long Red

ORANGE GLOBE MANGEL-WURZEL—Of distinct shape; one of the most productive, hardy, vigorous. Parcel Post Paid. Pkt. 5c; oz. 10c; ¼ lb. 20c; lb. 50c.

RED GLOBE MANGEL-WURZEL—Similar to the Yellow Globe; productive. Parcel Post Paid. Pkt. 5c; oz. 10c; ¼ lb. 20c; lb. 50c.

Use for Feeding Cattle—Sow Five Lbs. Per Acre

GOLDEN TANKARD MANGEL—Small top, smooth, rich skin, broad shoulders, very solid fleshed, golden stemmed, heavy producer. Parcel Post Paid. Pkt. 5c; oz. 10c; ¼ lb. 20c; lb. 50c.

IMPROVED MAMMOTH LONG RED—The well-known large, long variety; grows well out of ground. Color light red. Very productive. Pkt. 5c; oz. 10c; 2 oz. 15c; ¼ lb. 20c; lb. 50c. Parcel Post Paid.

Cabbage

DENMARK AND LONG ISLAND STOCKS

EARLY JERSEY WAKEFIELD—Long recognized as the earliest marketable cabbage. In size, medium; in shape, pyramidal with pointed peak. Its uncommonly fine heading qualities, together with its fitness for wintering in cold frames, pleases the most critical gardeners. Our strain of seed is of superior quality. Pkt. 10c; oz. 25c; 2 oz. 45c; ¼ lb. 75c; 1 lb. \$3.00. Parcel Post Paid.

NEW GOLDEN ACRE—A wonderfully fine extra early, round-headed variety on the order of Copenhagen Market. The plant is small, very compact, with few outer leaves and matures somewhat earlier than Jersey Wakefield. Parcel Post Paid. Pkt. 15c; oz. 75c; ¼ lb. \$2.00; lb. \$7.50.

COPENHAGEN MARKET—The earliest large round-headed cabbage offered today. It is as early as Early Jersey Wakefield, heads perfectly round and very solid. It is very compact in habit, and can be planted as close as Wakefield. The heads all mature at one time, and will stand a long time before bursting. Heads average about eight pounds each. Pkt. 10c; oz. 35c; ¼ lb. \$1.00; lb. \$3.50. Parcel Post Paid.

LARGE CHARLESTON WAKEFIELD—Similar in many respects to the Jersey Wakefield, except it is one week later and much larger, equally as solid and less pointed. Maturing as it does in about 95 days, it makes an ideal variety to follow the Jersey Wakefield either for market or home use. Of exceeding hardiness. Vigorous grower, slightly spreading leaves. Heads hard and solid. Mild, pleasing flavor. Crisp and tender. Good keeper and shipper. Pkt. 10c; oz. 25c; 2 oz. 45c; ¼ lb. 75c; 1 lb. \$2.50. Parcel Post Paid.

EARLY DWARF FLAT DUTCH—It is a large cropper and a dependable header. A short stemmed variety. Belongs to the second earlies. Matures in about 110 days. Grows compact and upright. Leaves few and short. Flat round, solid heads, which are very large for size of plant. Parcel Post Paid. Pkt. 10c; oz. 30c; ¼ lb. \$1.00; lb. \$3.00.

GLORY OF ENKHUIZEN—A medium early, short-stemmed, round-headed variety on the order of Copenhagen Market but later in maturing; can be highly recommended for market gardeners use. Pkt. 10c; oz. 35c; ¼ lb. \$1.00; lb. \$3.50. Parcel Post Paid.

HENDERSON'S EARLY SUMMER—A superior second-early sort, produces large and solid heads of fine quality. Parcel Post Paid. Pkt. 10c; oz. 25c; ¼ lb. 75c; lb. \$2.50.

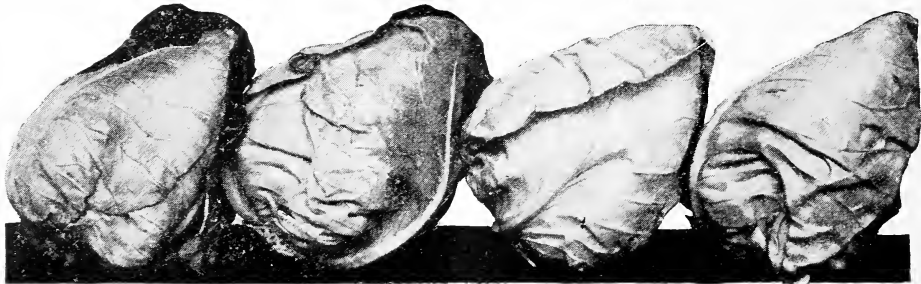


Copenhagen Market

WISCONSIN HOLLANDER NO. 8 (Yellows Resistant)—A heavy yielding late storage type, selected from Danish Ballhead or Hollander. Highly resistant to yellows; round head type; similar in color to Hollander. Pkt. 15c; ½ oz. 40c; oz. 60c; ¼ lb. \$1.75; lb. \$6.00.

MAMMOTH RED ROCK—By far the best, largest and hardest heading red cabbage in cultivation; very uniform in size, weight, solidity and deep red color. The heads grow to weigh 10 or 12 pounds. Pkt. 10c; oz. 40c; ¼ lb. 75c; lb. \$2.50. Parcel Post Paid.

MARBLEHEAD MAMMOTH DRUMHEAD—The largest Cabbage known, weighing in some instances over fifty pounds; under good cultivation acres have been grown where the heads would average thirty pounds each. Parcel Post Paid. Pkt. 10c; oz. 25c; ¼ lb. 75c; lb. \$2.50.



Large Charleston Wakefield Cabbage

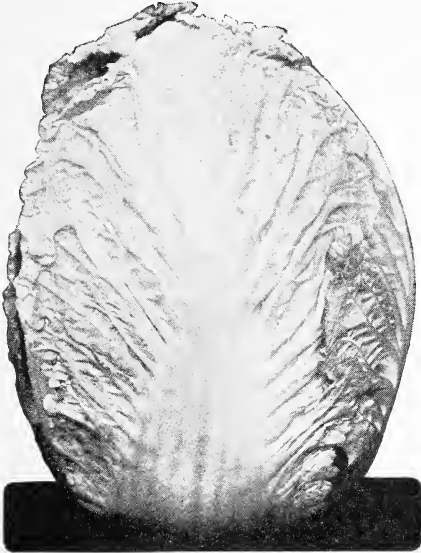
PREMIUM LATE FLAT DUTCH—Sure header, producing large, round, solid heads, flat on the top, of low growing habit, and few outer leaves. Parcel Post Paid. Pkt. 10c; oz. 25c; ¼ lb. 75c; lb. \$2.50.

EARLY DWARF ULM SAVOY—The heads are firm, solid, beautifully crimped, and of fine quality. Parcel Post Paid. Pkt. 10c; oz. 30c; ¼ lb. 85c; lb. \$3.00.

LARGE DRUMHEAD SAVOY—The best and largest heading of the Savoy Cabbage. Few people seem to know the delicious flavor of Savoy Cabbage. It is far superior to the flat-leaved sorts, and as tender as cauliflower after frosts. Parcel Post Paid. Pkt. 10c; oz. 40c; ¼ lb. \$1.40.



Premium Late Flat Dutch



Chinese or Celery Cabbage

CHINESE or CELERY CABBAGE—Pe-Tsai—Has a mild cabbage flavor, very delicate and very fine salad. When cooked it makes greens delicately cabbage-flavored and not at all like boiled cabbage. It blanches to almost clear white.

The culture is the same as for Cabbage. The seed should be sown for fall crop in June, July to September, half inch deep in the row and rows about 24 inches apart. When the plant has grown up to 5 or 6 inches in height, thin to 10 inches apart. Parcel Post Paid. Pkt. 10c; oz. 30c; ¼ lb. 85c; lb. \$3.00.

PALMER'S EARLY MARKET—A round headed variety of European origin, ready to market as early as Early Jersey Wakefield. Produces compact solid heads weighing 5 to 8 pounds with few outer leaves. Parcel Post Paid. Pkt. 10c; oz. 40c; ¼ lb. \$1.50; lb. \$5.00.

ALL SEASONS—A splendid main crop sort. Remarkable for its ability to stand hot sun and dry weather. Makes solid hard heads, of large size. Parcel Post Paid. Pkt. 10c; oz. 30c; ¼ lb. 85c; lb. \$3.00.

GENUINE SURE-HEAD—Never fails to make a large, fine head, with few outer leaves; fine grower; flat Drumhead....Parcel Post Paid. Pkt. 10c; oz. 30c; ¼ lb. 85c; lb. \$3.00.

Garden Carrots

RUBICON—Half long, stump rooted. Large, thick and dark orange color. Parcel Post Paid. Pkt. 5c; oz. 15c; ¼ lb. 35c; lb. \$1.00.

EARLY HALF-LONG SCARLET (stump rooted)—Bright scarlet color, becoming yellow in center. Parcel Post Paid. Pkt. 5c; oz. 15c; ¼ lb. 35c; lb. \$1.00.

EARLY SHORT HORN—Stump rooted; bright orange color. Parcel Post Paid. Pkt. 5c; oz. 15c; ¼ lb. 35c; lb. \$1.00.

DANVERS—Half long, stump rooted; bright orange color. Parcel Post Paid. Pkt. 5c; oz. 15c; ¼ lb. 35c; lb. \$1.00.

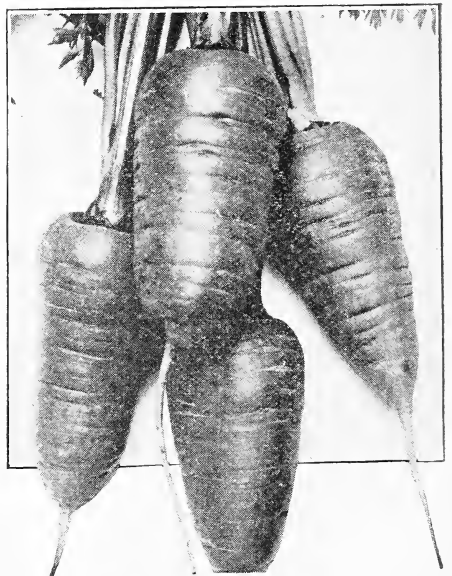
LARGE YELLOW BELGIAN—Very large; excellent stock Carrot. Parcel Post Paid. Pkt. 5c; oz. 10c; ¼ lb. 25c; lb. 75c.

OXHEART OR HALF-LONG GUERANDE—This is one of the most valuable of recent introduction, either for family or market; most beautiful shape and rich orange color. Parcel Post Paid. Pkt. 5c; oz. 15c; ¼ lb. 35c; lb. \$1.00.

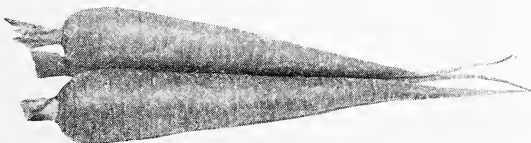
CHANTENAY—Deep orange flesh; fine grained; stump rooted. Parcel Post Paid. Pkt. 5c; oz. 15c; ¼ lb. 35c; lb. \$1.00.

LONG ORANGE—Large size for garden and field culture. Parcel Post Paid. Pkt. 5c; oz. 15c; ¼ lb. 35c; lb. 90c.

INTERMEDIATE—From 10 to 12 inches in length and 2 to 3 in. in diameter at top, tapering gradually. Parcel Post Paid. Pkt. 5c; oz. 15c; ¼ lb. 35c; lb. \$1.00.



Rubicon Half Long Carrots



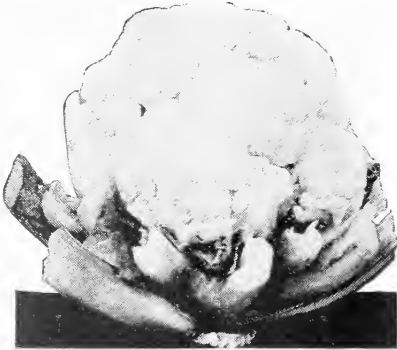
Long Orange

Cauliflower

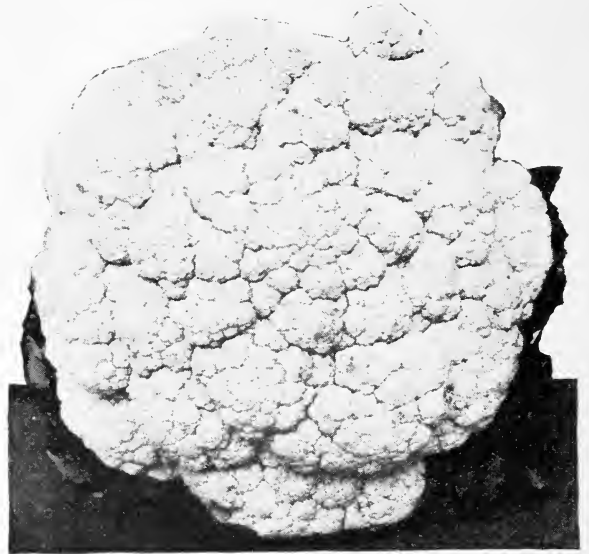
CULTURE—This is the same as for Cabbage, except that extra manure and plenty of water will pay upon this. If the soil be dry, water frequently, and if the plants could have a heavy mulch of hay or straw, it would keep the soil moist and the plants would not suffer from drouth. The early kinds should be strong enough to plant out not later than the middle of April; the late kinds may be planted out same time as for Cabbage. To destroy the Cauliflower maggot, it is recommended to take one ounce of sulphate of potassium and dissolve it in one gallon of water. Heat the liquid to about 100 degrees, take a large spoon, or something that will hold the 100th part of a gallon, and pour the liquid against the stalk of the plant just above the ground.

EXTRA EARLY DWARF ERFURT—Short stem; very fine. A very popular variety. Parcel Post Paid. Pkt. 15c; ½ oz. \$2.00; 1 oz. \$4.00.

EARLY SNOWBALL—A favorite with market gardeners. It is exceedingly early and hardy, and makes a solid, compact head. Parcel Post Paid. Pkt. 15c; ¼ oz. 75c; oz. \$2.50.



Extra Early Dwarf Erfurt



Danish Snowball

DANISH EARLY SNOWBALL—Without doubt the best of Cauliflowers; our seed is of the very finest strain; grown specially for us in Denmark, and sure to make a fine solid head; don't buy cheap Cauliflower seed; there is no seed in which quality counts so much. Parcel Post Paid. Pkt. 20c; ¼ oz. \$1.00; 1 oz. \$3.50

Chervil

CULTURE—Cultivate and use the curled variety of Chervil like Parsley. Sow at any time in the spring, in shallow drills, one foot apart, in well prepared ground. The leaves of this are used for flavoring and garnishing the same as Parsley. Parcel Post Paid. Pkt. 5c; oz. 35c; ¼ lb. \$1.00.

Chicory (FRENCH ENDIVE)

One ounce will sow 100-foot row

WITLOOF—Sow in May, in 12-inch drills; thin to 3 inches apart in rows. During their growth they should be banked up like celery. Use the leaves as a salad. The roots are excellent when boiled. Parcel Post Paid. Pkt. 5c; oz. 25c; ¼ lb. 75c; lb. \$2.00.



Chicory



Chervil

Collards

CULTURE—Sow seed as for Cabbage in June, July and August for succession; transplant when one month old in rows a foot apart each way and hoe often.

GEORGIA GROWN or **SOUTHERN**—Parcel Post Paid. Pkt. 5c; oz. 10c; ¼ lb. 35c; lb. \$1.00.

Corn Salad, or Fetticus

CULTURE—Sow during August or early in September, in drills a quarter of an inch deep and six inches apart. If the weather is dry when the seed is sown, tread it in slightly to insure germination. Keep down weeds with hoe. Just before winter cover thinly with straw or leaves.

LARGE SEEDED—The best variety for family use; makes delicious salad; used during the winter as substitute for lettuce. Parcel Post Paid. Pkt. 10c; oz. 15c; ¼ lb. 30c; 1 lb. \$1.00.

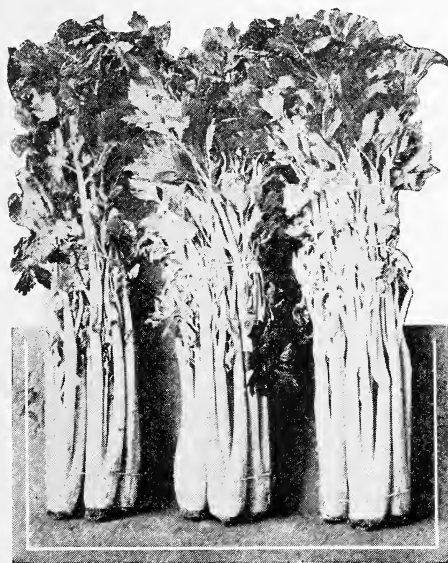
See the Special Bargain Offers on inside of
Front Cover Page.

Vegetable Collection..... 50c
Flower Collection..... 35c

Celery

CULTURE—Sow the seed in a light, rich dry border as early as the ground can be worked, in drills eight or ten inches apart, and cover the seeds about a quarter of an inch deep, rolling or treading them in if the ground be dry. When fairly out of the seed leaf they may be transplanted to another bed, or they may be thinned out in beds or trenches. The beds should be kept well weeded, and an occasional soaking with water in dry weather will do the plants good. Early in July at the north, a month or six weeks later in the southern states, is the proper time to set the plants out in beds or trenches. Press the soil firmly against the roots. In the garden the better way is to set the plants in shallow trenches—we say shallow, for it is obviously a bad plan to remove all the good soil (as must be done in a deep trench) and put the plants in that which is poor. The plants may be set in a single row in a narrow trench, or the trench may be made into a bed wide enough to hold two, three or four rows, and in that case the plants are in a compact form, to be covered for the winter where they grow.

IMPROVED WHITE PLUME—Naturally white or light foliage; requires but little banking up to blanch; very early and extensively grown for market. Parcel Post Paid. Pkt. 10c; oz. 25c; ¼ lb. 75c.



Giant Pascal

GOLDEN SELF-BLANCHING. A grand solid variety, on the style of the White Plume, except that it is golden yellow where the Plume is white. French grown seed. Parcel Post Paid. Pkt. 10c; oz. 50c; ¼ lb. \$1.75.

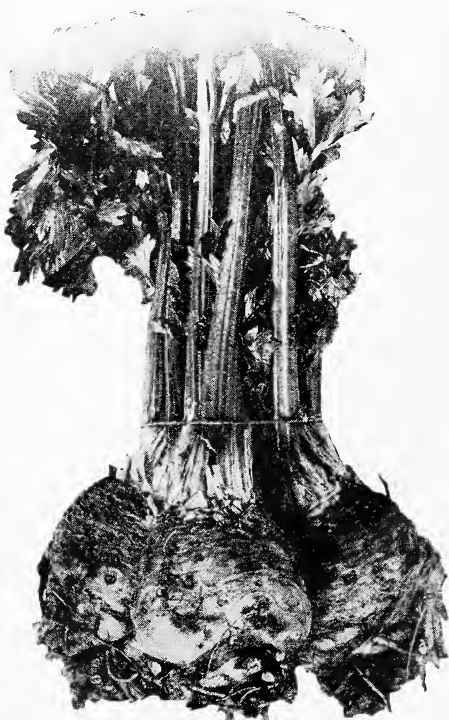


Sanford's Easy Blanching

GIANT PASCAL—An easily blanched and fine keeping large sort, of excellent flavor; superior for late use. Parcel Post Paid. Pkt. 10c; oz. 25c; ¼ lb. 85c.

SANFORD'S EASY BLANCHING—Plants are strong and stocky, green foliage, slight tinge of yellow in the inner leaves; large and heavy stalks; crisp, tender, handsome appearance, of excellent nut-like flavor. Blanches quickly and easily when boarded up. Grows immense stalks. Keeps well in trench. Parcel Post Paid. Pkt. 10c; oz. 60c; ¼ lb. \$2.00.

CELERY SEED FOR FLAVORING—Used in soups and to make celery salt. Parcel Post Paid. Oz. 10c; ¼ lb. 25c; 1 lb. 75c.



Celериac

Celериac

CELERIAC OR LARGE SMOOTH PRAGUE—An improved form of the rooted celery, roots smooth and round. Parcel Post Paid. Pkt. 5c; oz. 25c; ¼ lb. 75c.

Cress

CULTURE—Sow thickly in shallow drills every two or three weeks. It is useful not only for salad, but for the breakfast table and for garnishing. Water Cress should be sown in damp soil, or if a stream of water can be utilized, it would be much finer. It will also thrive in damp hot-beds. Rightly managed its culture is very profitable. To obtain early salad, it is a good plan to sow with the Water Cress seed a strip four inches wide on the outer margin of a hot-bed, inside the frame (where it is always cool). This will be found a satisfactory method of obtaining it early.

CURLED OR PEPPER GRASS—Parcel Post Paid. Pkt. 10c; oz. 15c; ¼ lb. 35c.

UPLAND WATER CRESS—Parcel Post Paid. Pkt. 10c; oz. 35c; ¼ lb. \$1.25.

TRUE WATER CRESS—Parcel Post Paid. Pkt. 10c; oz. 35c; ¼ lb. \$1.25.

Cucumbers

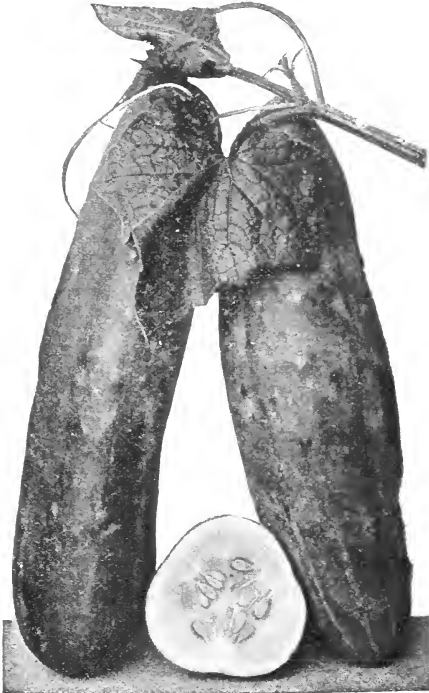
ARLINGTON WHITE SPINE—A selection from the White Spine, being more pointed at each end; the young fruits are usually crisp and tender and are of very dark green color, so that the variety is considered by some to be the best for small pickles. Parcel Post Paid. Pkt. 5c; oz. 10c; ¼ lb. 35c; 1 lb. \$1.00.

BOSTON PICKLING—A favorite eastern sort of fine quality. Parcel Post Paid. Pkt. 5c; oz. 15c; ¼ lb. 35c; 1 lb. 90c.

CHICAGO PICKLING—Very popular in Chicago market. Color deep green, medium size, prominent spines. Parcel Post Paid. Pkt. 5c; oz. 15c; ¼ lb. 35c; 1 lb. 90c.



Extra Long White Spine



The Davis Perfect Cucumber

EARLY FORTUNE—Holds its dark green color. Extensively used in the South. Parcel Post Paid. Pkt. 5c; oz. 15c; ¼ lb. 35c; 1 lb. \$1.00.

EARLY GREEN CLUSTER—Fruit small and in clusters; very prolific. Parcel Post Paid. Pkt. 5c; oz. 15c; ¼ lb. 35c; 1 lb. 90c.

EARLY SHORT GREEN (or Early Frame)—Good for pickling; productive. Parcel Post Paid. Pkt. 5c; oz. 15c; ¼ lb. 35c; 1 lb. 90c.

EXTRA LONG WHITE SPINE—Fruit straight, well formed, measuring 10 to 12 inches long, of a beautiful dark green color, resisting blight when many other varieties fail. Desirable for shipping to distant markets. Parcel Post Paid. Pkt. 5c; oz. 15c; ¼ lb. 35c; 1 lb. \$1.00.

NEW CENTURY—Distinct sort developed by ourselves. Beautiful shape and color; fine quality. Parcel Post Paid. Pkt. 5c; oz. 15c; ¼ lb. 35c; 1 lb. \$1.25.

ST. LOUIS PICKLING—Very prolific; extensively used by market gardeners. Parcel Post Paid. Pkt. 5c; oz. 15c; ¼ lb. 40c; 1 lb. \$1.25.

EVERGREEN WHITE SPINE—Retains its deep green color. Large and uniform in size. Parcel Post Paid. Pkt. 5c; oz. 15c; ¼ lb. 35c; 1 lb. \$1.00.

KLONDIKE—Early dark green strain. Fine, shapely fruit. Parcel Post Paid. Pkt. 5c; oz. 15c; ¼ lb. 35c; 1 lb. \$1.00.

JAPANESE CLIMBING—Can be grown on trellis. Used for ornament as well as eating. Fruit long and light green. Parcel Post Paid. Pkt. 5c; oz. 15c; ¼ lb. 35c; 1 lb. \$1.00.

LONG GREEN—Long and crisp, a popular and reliable variety for pickles. Parcel Post Paid. Pkt. 10c; oz. 25c; ¼ lb. 65c; 1 lb. \$2.00.

SMALL GHERKIN—Very small burr, used for pickles. Parcel Post Paid. Pkt. 5c; oz. 15c; ¼ lb. 50c; 1 lb. \$1.50.

THE DAVIS PERFECT CUCUMBER—An excellent cucumber for both outdoor use and forcing. It is a carefully selected strain of the extra long White Spine type made by a veteran outdoor and greenhouse grower of cucumbers. Its valuable points are length, slimness and its dark green color. It is a very vigorous sort and resists blight longer than most long sorts. Parcel Post Paid. Pkt. 5c; oz. 15c; ¼ lb. 40c; 1 lb. \$1.00.



Evergreen White Spine

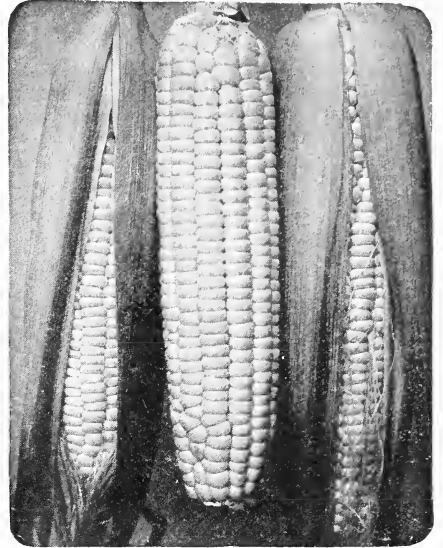
Garden and Sweet Corn

Sow the seed in a light, rich, dry border as early as the ground can be worked, in drills eight or ten inches apart, and cover the seeds about a quarter of an inch deep rolling them in if the ground be dry.

EARLY WHITE CORY—One of the very best, extra early varieties for market and home garden. Stalks about 4 feet high, generally producing two large, finely shaped ears which are fit for use earlier than most any sort; ears are 12 rowed, 7 to 8 inches long. Parcel Post not prepaid. Pkt. 10c; ½ lb. 20c; lb. 30c; 5 lbs. \$1.00.

WHIPPLE'S EARLY—A splendid new early variety with the deep grain of the Evergreen type. While maturing 5 days earlier than Early Crosby, it produces an ear nearly as large as Evergreen; ears rather blocky in form, 16 to 18 rows and well filled to the end with pearly white grain of exceptional quality. Parcel Post not prepaid. Pkt. 10c; ½ lb. 20c; lb. 30c; 5 lbs. \$1.00.

KENDEL'S EARLY GIANT—An excellent second early. Ears 8 to 9 inches long and desirable for family or market use. Parcel Post not prepaid. Pkt. 10c ½ lb. 20c; lb. 30c; 5 lbs. \$1.00. ground be dry.



Howling Mob

HOWLING MOB—One of the finest second early large eared sorts; very productive, white, and of excellent quality. Ears 9 to 10 in. long, 16-rowed. Parcel Post not prepaid. Pkt. 10c; ½ lb. 20c; lb. 30c; 5 lbs. \$1.00.

GOLDEN BANTAM SWEET CORN—You know how tender, delicious and sweet Golden Bantam is. Parcel Post not prepaid. Pkt. 10c; ½ lb. 20c; lb. 30c; 5 lbs. \$1.00.

MAMMOTH WHITE CORY—A large-eared, second early sort; on the order of Howling Mob, but while a trifle earlier, will not average so large an ear; ears 8 to 9 inches long, 12-rowed. Parcel Post not prepaid. Pkt. 10c; ½ lb. 20c; lb. 30c; 5 lbs. \$1.00.

BLACK MEXICAN—Well known and a favorite in a great many home gardens, the kernels having a decidedly bluish tinge when ready to eat, later turning to black. It is one of the sweetest varieties in cultivation. Parcel Post not prepaid. Pkt. 10c; ½ lb. 20c; lb. 30c; 5 lbs. \$1.00.

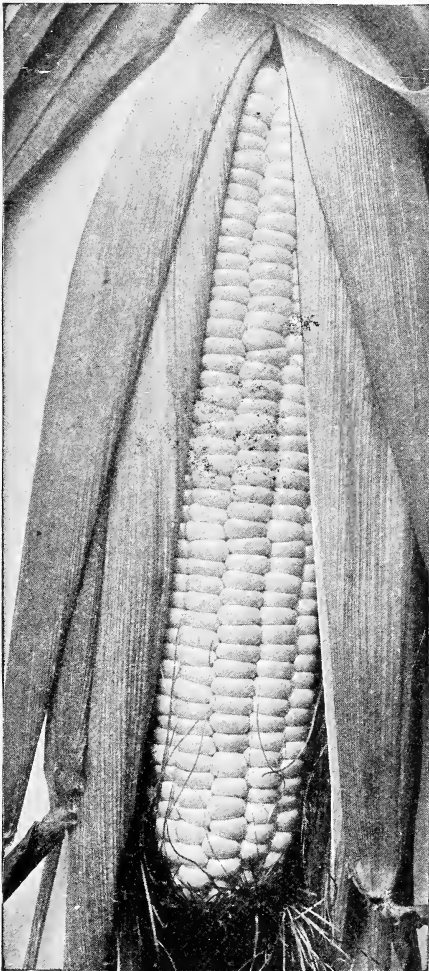
IMPROVED WHITE EVERGREEN—The cobs and kernels are at all stages of edibility beautifully white. The getting rid of the amber tint so prominent in a great many strains of sweet corn passing for Stowell's Evergreen is a great gain, as it fits this variety for extensive use in canneries. Parcel Post not prepaid. Pkt. 10c; ½ lb. 20c; lb. 30c; 5 lbs. \$1.00.

EARLY ADAMS—Not a sugar corn, but grown extensively all over the country for market purposes. Parcel Post not prepaid. Pkt. 10c; ½ lb. 20c; lb. 30c; 5 lbs. 90c.

EARLY CHAMPION—A new and very desirable sort; ears nearly as large as Evergreen; pure white; only a few days later than Minnesota; very fine for market gardeners. Parcel Post not prepaid. Pkt. 10c; ½ lb. 20c; lb. 30c; 5 lbs. \$1.00.

EXTRA EARLY ADAMS—Earliest white corn; small ear and stalk. It is not a Sugar Corn, but is grown for early use. Ears short, kernels very white. Parcel Post not prepaid. Pkt. 10c; ½ lb. 20c; lb. 30c; 5 lbs. \$1.00.

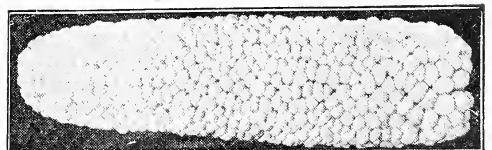
EARLY MINNESOTA—Five days earlier than the Golden Bantam. The stalk grows from 3 to 4 ft. in height. The ears average about 5 inches in length and are of perfect form, well filled out to the tip. When cooked, the corn is exceedingly sweet and tender, 65 days. Parcel Post not prepaid. Pkt. 10c; ½ lb. 20c; lb. 30c; 5 lbs. \$1.00.



Golden Bantam

COUNTRY GENTLEMAN—Small cob; long, slender, white grains, which are very sweet. Parcel Post not prepaid. Pkt. 10c; ½ lb. 20c; lb. 30c; 5 lbs. \$1.00.

STOWELL'S EVERGREEN—The standard and best known Sweet Corn. Ears 8 to 9 inches long, 16 to 18 rowed, with a very deep, sweet grain. Parcel Post not prepaid. Pkt. 10c; ½ lb. 20c; lb. 30c; 5 lbs. \$1.00.



Country Gentleman

Pop Corn

Write for Special Prices on Large Quantities.

POP CORN—This is the smallest variety of kernels; cultivated same as field or garden corn, but drilled instead of hills. Very extensively used for pop corn candy. We handle the two best varieties—**JAPANESE HULLESS** or **WHITE RICE**. Parcel Post not prepaid. Pkt. 10c; lb. 25c; 10 lbs. \$2.00; 50 lbs. \$6.00.

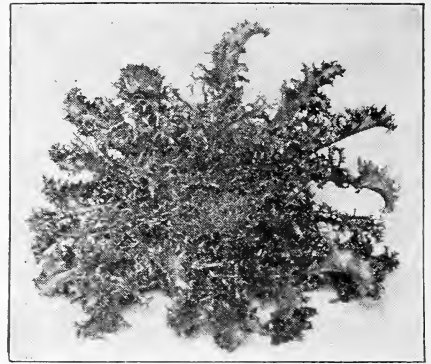
All Prices in this Catalog are Subject to Market Fluctuations.

Endive

This plant furnishes an attractive and appetizing salad for the fall and winter months, or by repeated sowing a supply may be had nearly all the year around.

GREEN CURLED WINTER—Standard sort for fall and winter crop. Parcel Post Paid. Pkt. 5c; oz. 15c; ¼ lb. 50c; 1 lb. \$1.50.

BATAVIAN—Forms large heads that may be blanched. Also used for greens. Parcel Post Paid. Pkt. 5c; oz. 15c; ¼ lb. 50c; lb. \$1.50.



Endive

Egg Plant

CULTURE—Egg Plant seed should be sown in hot-beds in March or April and transferred to pots or boxes when an inch or two high and planted out early in June in rows 2½ feet apart each way, cultivation same as for cabbage.

BLACK BEAUTY—Fruit broad and thick, rich deep black, spineless, very early. Parcel Post Paid. Pkt. 10c; oz. 40c; ¼ lb. \$1.50.

IMPROVED NEW YORK PURPLE—The best large oval, deep purple, grown more extensively than any other sort. Parcel Post Paid. Pkt. 10c; oz. 40c; ¼ lb. \$1.50.

THORNLESS OR SMOOTH STEM—Fruit early, very large, oval and of a fine deep purple. Parcel Post Paid. Pkt. 10c; oz. 50c; ¼ lb. \$1.75.



Black Beauty Egg Plant

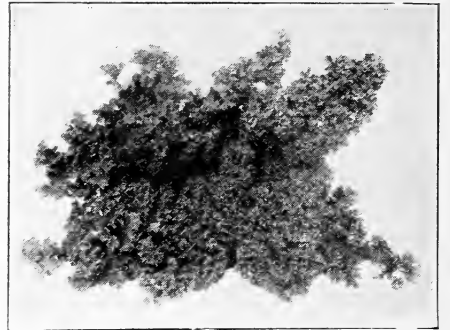
Kale

CORNEL'S SLOW SEEDER—Dwarf green curled; will stand longer than the other sorts before running to seed. Parcel Post Paid. Pkt. 5c; oz. 10c; ¼ lb. 30c; lb. 90c.

DWARF GERMAN GREENS—An improved strain, of dwarf spreading habit, beautifully curled, very hardy and much in demand for Spring and Fall sowing. Sow in September for Spring use. Parcel Post Paid. Pkt. 5c; oz. 10c; ¼ lb. 25c; 1 lb. 75c.

OSTRICH PLUME—Ornamental; rather broad, extremely curled leaves. Parcel Post Paid. Pkt. 5c; oz. 15c; ¼ lb. 40c; lb. \$1.25.

TALL GREEN CURLED SCOTCH—Grows about 18 inches high and spreads. Bright green leaves, beautifully curled. Parcel Post Paid. Pkt. 5c; oz. 15c; ¼ lb. 40c; 1 lb. \$1.10.



Kale

Kohl Rabi

CULTURE—Sow the seed in the spring in drills three-fourths of an inch deep and 2 feet apart and when the plants are a few inches high thin to 12 inches. Cultivate same as beets.

EARLY WHITE VIENNA—Handsome and delicate, white ball. Parcel Post Paid. Pkt. 10c; oz. 25c; ¼ lb. 75c; 1 lb. \$2.50.

EARLY PURPLE VIENNA—Very good sort. Parcel Post Paid. Pkt. 10c; oz. 25c; ¼ lb. 75c; 1 lb. \$2.50.



WHITE VIENNA KOHL-RABI

Leek

CULTURE—Sow seed in early spring in rows 1 foot apart and 1 inch deep. When 6 inches high, transplant 4 to 6 inches apart in rows 12 inches apart, setting plants in the ground up to their center leaves and as they grow draw the soil up around them.

BEST LARGE FLAG WINTER—Hardy and productive. Parcel Post Paid. Pkt. 5c; oz. 15c; ¼ lb. 50c; lb. \$1.75.

LARGE MUSSELBURGH—Leaves large and broad, flavor mild and pleasant. Parcel Post Paid. Pkt. 5c; oz. 15c; ¼ lb. 50c; lb. \$1.75.

HERBS—Sweet, Pot and Medicinal

Price		Price		Price	
Parcel Post Paid	Per Pkt. Per Oz.	Parcel Post Paid	Per Pkt. Per Oz.	Parcel Post Paid	Per Pkt. Per Oz.
Anise	10c 20c	Dill	10c 15c	Sage	10c 40c
Basil Sweet	10c 20c	Fennel Sweet	10c 20c	Savory Summer	10c 25c
Borage	10c 25c	Fennel Florence	10c 25c	Sweet Marjoram	10c 35c
Caraway	10c 15c	Horehound	10c 30c	Thyme Broad Leaved	
Catnip	10c 40c	Lavender	10c 30c	English	10c 60c
Coriander	10c 20c	Rosemary	10c 50c	Wormwood	10c 30c

Lettuce

CULTURE—Sow in the house or in frames any time after March 10th; if put outdoors, as early in the spring as ground can be worked and at intervals of two weeks till June 1st. Soil should be a rich, sandy loam with plenty of humus. Rows to be 1½ feet apart, plants two inches apart in row after thinning. Two ounces of seed will sow 150 feet of row, 4 to 5 pounds required per acre.

BIG BOSTON—The best large heading early variety. Most popular variety for the southern gardener who ships north. Also very valuable as first early in the North. Plants are large, vigorous; leaves bright, light green, very tender. Our strain is unsurpassed. Many gardeners in the South will plant only the Big Boston. Parcel Post Paid. Pkt. 5c; oz. 15c; ¼ lb. 50c; lb. \$1.50.

BLACK SEEDED SIMPSON (B. S.)

One of the best and most popular large, early, loose-heading varieties, succeeding everywhere and always dependable; leaves broad, much crumpled and frilled. Parcel Post Paid. Pkt. 5c; oz. 15c; ¼ lb. 50c; lb. \$1.50.

CALIFORNIA CREAM BUTTER

Round, solid heads, medium green, good size, compact, rich buttery taste. Parcel Post Paid. Pkt. 5c; oz. 15c; ¼ lb. 50c; lb. \$1.50.

NEW YORK WONDERFUL

Large solid heading variety. The inner portion is a beautiful white, the outer leaves are dark green; good shipper. Pkt. 10c; oz. 30c; ¼ lb. 85c; lb. \$2.50. Parcel Post Paid.

EARLY CURLED SIMPSON

An early, erect growing, clustering variety, which may be sown very thick and cut while the plants are very young, at which time they are exceedingly tender, sweet and well flavored; color light green. Parcel Post Paid. Pkt. 5c; oz. 15c; ¼ lb. 50c; lb. \$1.50.

EARLY PRIZE HEAD

Bright green tinged with brownish red, tender, crisp. Parcel Post Paid. Pkt. 5c; oz. 15c; ¼ lb. 50c; lb. \$1.50.

GRAND RAPIDS FORCING

Large, tender heads, one of the best for early forcing. Parcel Post Paid. Pkt. 5c; oz. 15c; ¼ lb. 50c; 1 lb. \$1.50.

ICEBERG

Fine compact heads which resist summer heat admirably; is very popular; leaves curled and light green; crisp, tender. Parcel Post Paid. Pkt. 10c; oz. 20c; ¼ lb. 65c; 1 lb. \$2.00.



Big Boston Lettuce

Black Seeded Simpson

Ready for Use in 40 to 60 Days.

IMPROVED HANSON—Very large and solid, sweet, crisp and tender. Parcel Post Paid. Pkt. 5c; oz. 15c; ¼ lb. 50c; lb. \$1.50.

TRIANON COS (Romaine) (W. S.)—Has smooth, long, narrow, upright leaves; blanches nicely when tied up, making a firm, loaf-shaped head; quality fine. Parcel Post Paid. Pkt. 5c; oz. 15c; ¼ lb. 50c; lb. \$1.50.

ST. LOUIS MARKET

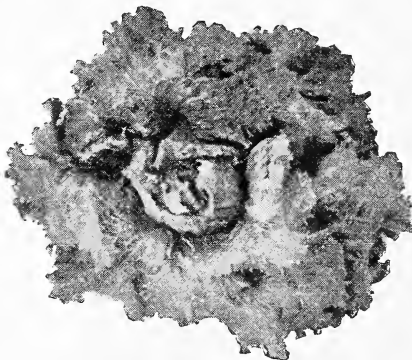
Popular variety for summer planting. Parcel Post Paid. Pkt. 5c; oz. 15c; ¼ lb. 40c; lb. \$1.25.

WAYAHEAD (W. S.)

A very early rather small, handsome compact heading variety with medium green leaves and a rich, buttery-yellow heart; superior quality. Parcel Post Paid. Pkt. 5c; oz. 15c; ¼ lb. 50c; 1 lb. \$1.50.

PALMER'S BLACK SEEDED FORCING

For forcing; also for early outdoors; forms very compact, solid heads. Parcel Post Paid. Pkt. 5c; oz. 15c; ¼ lb. 40c; lb. \$1.50.



Iceberg



Trianon Cos

Mustard

SOUTHERN GIANT CURLED—Leaves are large, light green with yellowish tinge, much crimped and frilled at the edges. Very succulent, pungent and of sweet flavor. Parcel Post Paid. Pkt. 5c; oz. 10c; ¼ lb. 25c; lb. 65c; 5 lbs. \$3.00.

WHITE LONDON—Plant of rapid, upright growth, soon going to seed; leaves rather small and smooth, deeply cut or divided; color deep green; seed large, light yellow. Parcel Post Paid. Pkt. 5c; oz. 10c; ¼ lb. 25c; lb. 65c; 5 lbs. \$3.00.

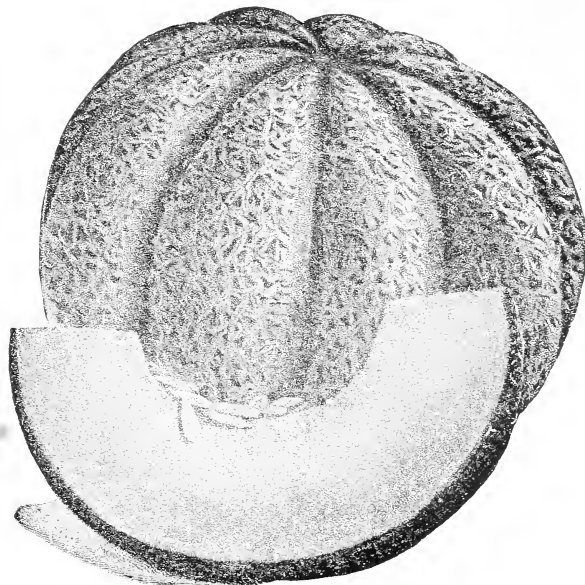
BLACK OR BROWN—Considered more pungent than White London; leaves oblong, broad and cut; seed reddish-brown. Parcel Post Paid. Pkt. 5c; oz. 10c; ¼ lb. 25c; lb. 65c; 5 lbs. \$3.00.

FORDHOOK FANCY—A handsome, vigorous growing, mild variety, standing a long time before going to seed; leaves dark green, beautifully curled and fringed; fine for salads and garnishings. Parcel Post Paid. Pkt. 5c; oz. 10c; ¼ lb. 25c; lb. 65c; 5 lbs. \$3.00.

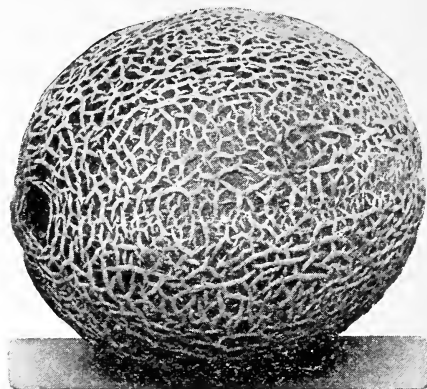
Muskmelons, or Cantaloupe

ROCKY FORD—One of the most popular. Just right size for restaurant and hotel service; flesh is green, thick, and lusciously sweet. It is netted and ribbed and ripens early. Parcel Post Paid. Pkt. 5c; oz. 10c; ¼ lb. 30c; lb. 90c.

EMERALD GEM—Unquestionably one of the best and earliest melons for home garden and local markets and in our opinion the best for quality; of medium size, a flattened globe in form, irregularly and distinctly ribbed and lightly netted; color deep emerald green; flesh very thick, sweet and of rich salmon color; seed cavity exceedingly small. Parcel Post Paid. Pkt. 10c; oz. 30c; ¼ lb. 40c; lb. \$1.25.



Emerald Gem



Burrell's Gem

EARLY GREEN NUTMEG—An early variety of medium to a small size; nutmeg in shape and thickly netted. Parcel Post Paid. Pkt. 5c; oz. 10c; ¼ lb. 30c; lb. 90c.

POLLOCK 10-25—The salmon or pink meat Rocky Ford combining earliness in addition to the good qualities of the Green Flesh Rocky Ford melon. Parcel Post Paid. Pkt. 5c; oz. 10c; ¼ lb. 30c; lb. 90c.

HEARTS OF GOLD—An improved type of the Hoodoo, being somewhat larger and slightly more oblong. A most excellent, small, mid-season variety; fruit round, with tendency to heartshape, distinctly ribbed and densely covered with a fine gray netting. Flesh very thick, of splendid quality and rich orange color; ripens thoroughly to the rind and has a very small seed cavity. Pkt. 10c; oz. 25c; ¼ lb. 50c; lb. \$1.50.

TIP TOP—Nearly round, deeply ribbed, moderately netted; flesh is bright salmon, thick and of good flavor. Pkt. 5c; oz. 10c; ¼ lb. 30c; lb. 90c. Parcel Post Paid.

BANANA—Long, shaped like a banana; has a most delicious flavor. Parcel Post Paid. Pkt. 5c; oz. 10c; ¼ lb. 30c; lb. 90c.

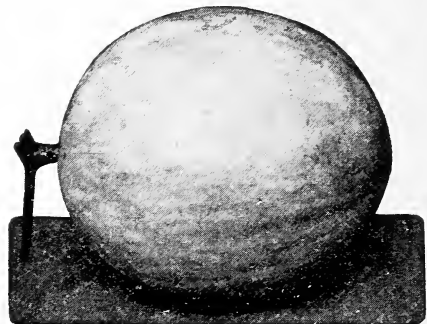
OSAGE—Fruit medium size to large, nearly round, slightly ribbed, dark green, almost smooth. Flesh very thick, deep salmon and of the finest quality. Parcel Post Paid. Pkt. 5c; oz. 10c; ¼ lb. 30c; lb. 90c.

EXTRA EARLY HACKENSACK—(Green flesh)—In shape and color it is similar to Hackensack. Matures earlier, in about 65 days. It is a round melon, flattened on the ends and well ribbed. The skin is netted, and the green flesh is rich and sugary. Parcel Post Paid. Pkt. 10c oz. 20c; ¼ lb. 30c; lb. 90c.

ST. LOUIS MARKET—Nutmeg shaped; rich aromatic flavor, greenish yellow flesh; solid; juicy, fine netted, strong rind. Parcel Post Paid. Pkt. 5c; oz. 15c; ¼ lb. 40c; lb. \$1.25.

HONEY DEW MELON—A splendid new variety; rind dull white when ripe. The flesh is a rich green, very sweet and delicious flavor. The average size is about six inches in diameter and they weigh five to six pounds. The skin is smooth with little netting. Parcel Post Paid. Pkt. 10c; oz. 15c; ¼ lb. 30c; lb. 90c.

BURRELL'S GEM—Skin is rather dark green and rind thin, leaving a thick lining of salmon flesh, which is of most delicious, juicy flavor. Parcel Post Paid. Pkt. 10c; oz. 15c; ¼ lb. 30c; lb. 90c.



Honey Dew

Okra

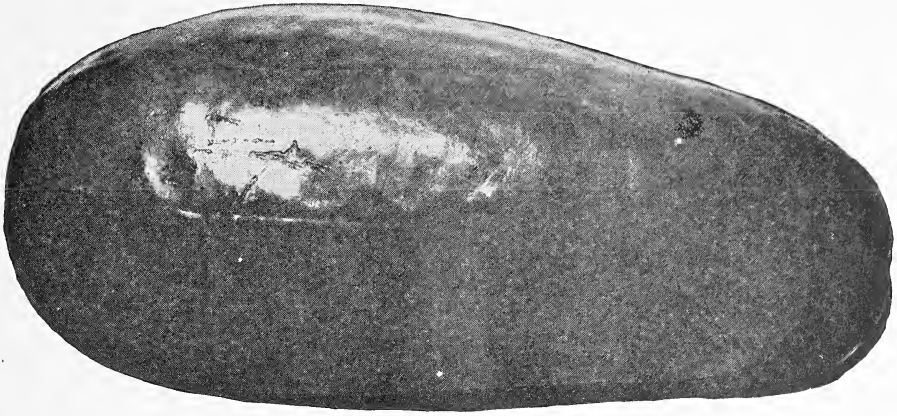
One Ounce Will Plant 100 Hills—This plant is extensively cultivated for its green pods, which are used in soups and stews and are very wholesome and nutritious. Sow about the first of May, in drills 3 feet apart, and thin out the plants to one foot apart. Soak seeds in water 12 hours—they germinate easier.

DWARF GREEN—Very early; pods green and tender. Parcel Post Paid. Pkt. 5c; oz. 10c; ¼ lb. 25c; lb. 80c.

MAMMOTH POD—This variety is about three feet high, very early and productive. Pods deep green, very long, slender, slightly corrugated, very tender and of good quality. Parcel Post Paid. Pkt. 5c; oz. 10c; ¼ lb. 25c; lb. 80c.

WHITE VELVET—This Okra takes its name from the smoothness of its pods, which are round, differing in this respect from the old sort. Parcel Post Paid. Pkt. 5c; oz. 10c; ¼ lb. 25c; lb. 80c.

TALL OR LONG GREEN—Long ribbed pods, very productive. Parcel Post Paid. Pkt. 5c; oz. 10c; ¼ lb. 25c; lb. 80c.



Halbert Honey Watermelon

Watermelons

ALABAMA SWEET—The flesh is bright red, fine grained, sweet and luscious. Parcel Post Paid. Pkt. 5c; oz. 10c; ¼ lb. 30c; lb. 75c.

FLORIDA FAVORITE—Oblong in shape, growing to a very large size; rind dark green striped with lighter; highly prized on account of its delicious flavor; seed light color. Parcel Post Paid. Pkt. 5c; oz. 10c; ¼ lb. 30c; lb. 75c.

GEORGIA RATTLESNAKE—A large striped variety of oblong shape; flesh scarlet and of superior quality. Parcel Post Paid. Pkt. 5c; oz. 10c; ¼ lb. 30c; lb. 75c.

"IRISH GREY" WATERMELON (Also called General Pershing)—The size of this melon is uniformly large and it closely resembles Kleckley's Sweets except the color, which is a yellowish gray. Flesh is very sweet and firm, without hard center, brilliant sparkling red. Rind almost as tough as a citron, making a grand shipper. Earlier than Tom Watson, Irish Grey has instantly met with universal favor. Parcel Post Paid. Pkt. 5c; oz. 10c; ¼ lb. 30c; lb. 75c.

SWEET HEART—Fruit oval shaped, skin pale green, distinctly veined with a slightly darker shade. Flesh deep red and of the finest quality. Parcel Post Paid. Pkt. 5c; oz. 10c; ¼ lb. 30c; lb. 75c.

THURMOND GRAY—A new greenish Gray Melon, grows very large, does not sunbake easily, and the best shipper that grows. The flesh is bright red, finely flavored, solid and sweet. On account of its color, large size and fine eating qualities it is a decided improvement on the regular Irish Grey. Parcel Post Paid. Pkt. 5c; oz. 15c; ¼ lb. 40c; lb. \$1.25.

FORDHOOK EARLY—Adapted for home garden and local markets; an extra early variety of fair size and fine quality; skin deep green, mottled a darker shade. Parcel Post Paid. Pkt. 5c; oz. 10c; ¼ lb. 30c; lb. 75c.

KOLB'S GEM—An old standard shipping melon of large size; nearly round in form with a dark green rind, striped lighter shades. Parcel Post Paid. Pkt. 5c; oz. 10c; ¼ lb. 30c; lb. 75c.



Sweetheart

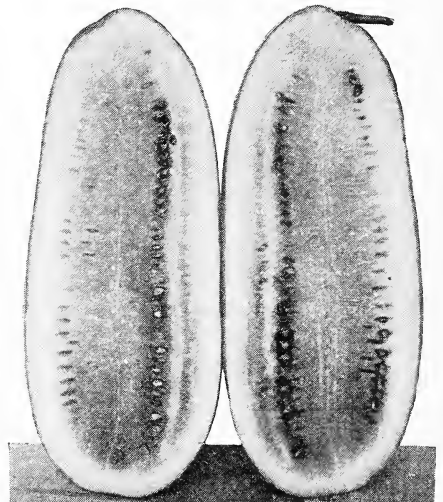
KLECKLEY'S SWEET—The best melon grown. Oblong, very large, dark green, faintly striped, very sweet, entirely stringless; very prolific. Parcel Post Paid. Pkt. 5c; oz. 10c; ¼ lb. 30c; lb. 75c.

HALBERT HONEY—The melons average eighteen to twenty inches long and are full or bluntly rounded at both ends. The skin is a dark, glossy green. The flesh is a beautiful crimson, the rich coloring and luscious quality extending to the thin rind. Parcel Post Paid. Pkt. 5c; oz. 10c; ¼ lb. 30c; lb. 85c.

TOM WATSON—Long, green and very prolific. The melons are uniformly large, running from 30 pounds to 40 pounds. The flesh scarlet, of extra fineness and sweetness, entirely stringless, fairly melts in your mouth. The rind is exceptionally strong, making it an excellent shipper. Parcel Post Paid. Pkt. 5c; oz. 10c; ¼ lb. 25c; lb. 60c.

PEERLESS, or ICE CREAM—A fine early, medium sized melon; one of the best for home gardens; short oblong in form, light green, mottled a darker shade. Parcel Post Paid. Pkt. 5c; oz. 15c; ¼ lb. 35c; lb. 90c.

DIXIE—Fruit long, skin dark green striped with a lighter shade. Flesh bright scarlet, rind thin but tough. Parcel Post Paid. Pkt. 5c; oz. 10c; ¼ lb. 30c; lb. 75c.



Kleckley Monte Cristo

WRITE FOR SPECIAL QUANTITY PRICE.

Onion Seed

One ounce of seed will sow 75 feet of drill; it will take 4 to 5 pounds to the acre to grow large onions. If sets are wanted, 50 to 60 pounds should be sown on an acre.

EARLY RED FLAT—Color of Wethersfield, early. Parcel Post Paid. Pkt. 10c; oz. 20c; ¼ lb. 60c; lb. \$1.50.

GLOBE WETHERSFIELD—Cross between Red Wethersfield and Large Red Globe; beautiful onion, fine keeper, fine for the market gardener. Parcel Post Paid. Pkt. 10c; oz. 20c; ¼ lb. 60c; lb. \$1.50.

LARGE RED WETHERSFIELD—Medium early and a good keeper; standard sort. Parcel Post Paid. Pkt. 10c; oz. 25c; ¼ lb. 65c; lb. \$2.00.

LARGE RED GLOBE—Southport strain, one of the best reds, good keeper. Parcel Post Paid. Pkt. 10c; oz. 25c; ¼ lb. 60c; lb. \$2.00.

LARGE WHITE PORTUGAL—Standard sort, flat. Parcel Post Paid. Pkt. 10c; oz. 30c; ¼ lb. 75c; lb. \$2.75.

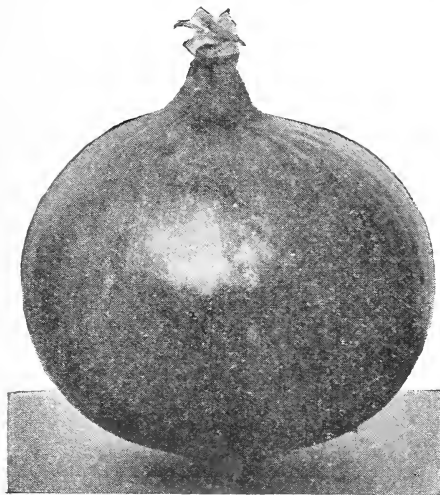
LARGE WHITE GLOBE—Large Southport strain. Parcel Post Paid. Pkt. 10c; oz. 40c; ¼ lb. 90c; lb. \$3.25.

LARGE YELLOW GLOBE—Southport strain, large, firm, mild, good keeper. Parcel Post Paid. Pkt. 10c; oz. 20c; ¼ lb. 75c; lb. \$2.25.

PRIZETAKER—Very large beautiful onion, white flesh, skin straw color; sweet, mild and tender....Parcel Post Paid. Pkt. 10c; oz. 20c; ¼ lb. 75c; lb. \$2.25.



White Silver Skin



Red Globe Wethersfield

OHIO YELLOW GLOBE—Most handsome globe onion with a deep yellow skin and crisp, fine-grained white flesh. They average from 2 to 2½ inches in diameter and ripen a little earlier than the Red Globe. Parcel Post Paid. Pkt. 10c; oz. 20c; ¼ lb. 75c; lb. \$2.25.

YELLOW DANVERS (Flat)—A standard sort, rather oval, early, good keeper. Parcel Post Paid. Pkt. 10c; oz. 25c; ¼ lb. 75c; lb. \$2.00.

YELLOW GLOBE DANVERS—Of more globular shape; keeps well. Parcel Post Paid. Pkt. 10c; oz. 25c; ¼ lb. 75c; lb. \$2.00.

WHITE SILVER SKIN—Pure white; mild flavor; best for growing sets. Parcel Post Paid. Pkt. 10c; oz. 25c; ¼ lb. 75c; lb. \$2.50.

MAMMOTH SILVER KING—Very large; white skin and flesh; mild flavor, flat shape; frequently weigh 3 pounds. Parcel Post Paid. Pkt. 10c; oz. 25c; ¼ lb. 75c; lb. \$2.50.

Onion Sets

Prices are subject to market fluctuations. When you want large quantities ask for market prices. Thirty-two pounds constitute a bushel.

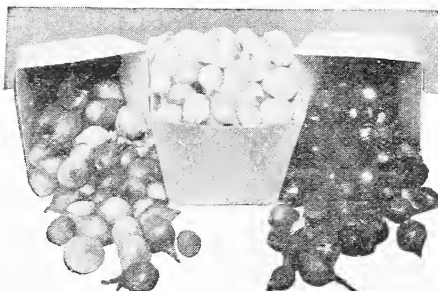
Plant 4 to 6 inches apart in 12 to 24-inch rows (except Potato, Onions, which should be in 2-foot rows.) Plant in Spring or Fall in fine rich soil, well manured.

RED WETHERSFIELD—Quart 20c; gallon 60c; peck \$1.00. Parcel Post Paid.

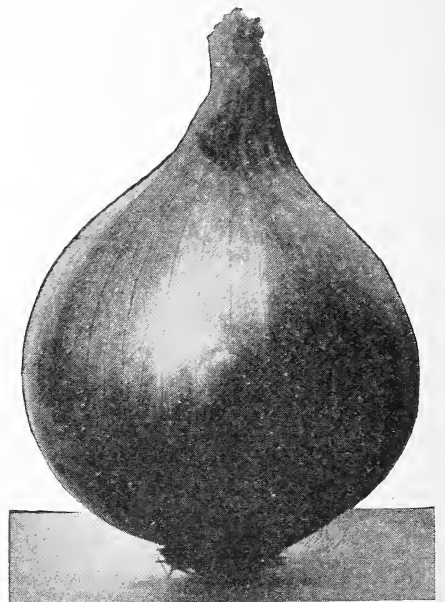
YELLOW DANVERS—Quart 20c; gallon 60c; peck \$1.00. Parcel Post Paid.

WHITE SILVER SKIN—Quart 30c; gallon 90c; peck \$1.50. Parcel Post Paid.

WHITE MULTIPLIER SETS—Quart 30c; gallon \$1.00; peck \$2.00. Parcel Post Paid.



Onion Sets



Ohio Yellow Globe

IN YOUR HOME GARDEN

"Dig deep, manure well, work often." Thus Pliny the Elder, nearly 2,000 years ago, summed up gardening. His advice is good today.

Parsley

CULTURE—Soak seed in water for a few hours and sow in rich soil early in spring in rows a foot apart and cover lightly. Parsley is slow to germinate and is sometimes 3 or 4 weeks in coming up. One ounce will sow 150 feet of drill. Sow in March and April, also in September.

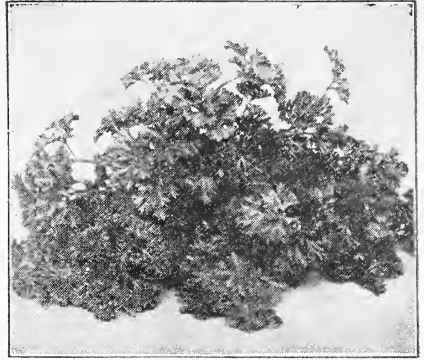
CHAMPION MOSS CURLED—More densely crimped and curled than some other sorts. Parcel Post Paid. Pkt. 5c; oz. 10c; ¼ lb. 30c; lb. 85c.

DOUBLE CURLED—Pkt. 5c; oz. 10c; ¼ lb. 30c; lb. 85c. Parcel Post Paid.

HAMBURG OR ROOTED—Edible roots, much like parsnips. Parcel Post Paid. Pkt. 5c; oz. 10c; ¼ lb. 30c; lb. 85c.

Parsnip

SUGAR OR HOLLOW CROWN—The best for table use; easily raised and of great productiveness. Pkt. 5c; oz. 10c; ¼ lb. 25c; lb. 75c. Parcel Post Paid.



Champion Moss Curled Parsley

Peas

LANTONIAN PEAS—The best of all Dwarf Peas. Produces finest quality. Parcel Post not prepaid. Pkt. 10c; ½ lb. 20c; lb. 35c; 5 lbs. \$1.25.

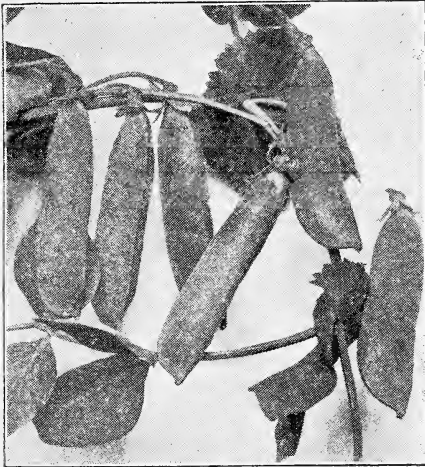
GRADUS OR PROSPERITY—Ripens early; vines about 3 feet high; bears profusely. The pods almost as large as those of Telephone. Parcel Post not prepaid. Pkt. 10c; ½ lb. 20c; lb. 35c; 5 lbs. \$1.25.

SUTTON'S EXCELSIOR—The Finest Dwarf Wrinkled Extra Early Variety—It is the best of recent introductions; vines are larger and more vigorous than the American Wonder, while the pods are fully one-third larger, containing six to eight fine, large peas, packed so closely together in the pods that the peas are always more square than round. The pods are always well filled with peas, which in sweetness and quality have no equal, being superior to any other wrinkled sort. Parcel Post not prepaid. Pkt. 10c; ½ lb. 20c; lb. 35c; 5 lbs. \$1.25.

NOTT'S EXCELSIOR—A strong, vigorous grower and continues to bear for a long time. Height 15 inches. Parcel Post not prepaid. Pkt. 10c; ½ lb. 20c; lb. 30c; 5 lbs. \$1.20.

CHAMPION OF ENGLAND—It grows 4 to 5 feet high and requires support, and large crop production more than repays any extra labor required. Parcel Post not prepaid. Pkt. 10c; ½ lb. 20c; lb. 30c; 5 lbs. \$1.20.

ALASKA—The earliest of all the extra early sorts; vines about 2 feet in height. The pod is about 3 inches long, well filled with uniformly round peas. Parcel Post not prepaid. Pkt. 10c; ½ lb. 20c; lb. 30c; 5 lbs. \$1.20.



Laxtonian Peas

***THOS. LAXTON**—The only rival to the famous Gradus, as a long-podded, extra or extremely early wrinkled pea, and in some respects even better. The growth is identical, but the pods are a deeper, richer green and square at the end. In the judgment of experts, Thos. Laxton is even sweeter and finer in flavor, while as the large peas are of a deeper green they present a more attractive appearance on the table. Parcel Post not prepaid. Pkt. 10c; ½ lb. 20c; lb. 30c; 5 lbs. \$1.25.

BLISS EVERBEARING—A good variety that continues in bearing a long time. A general favorite. Height 3 feet. Parcel Post not prepaid. Pkt. 10c; ½ lb. 20c lb. 30c; 5 lbs. \$1.20.

TELEPHONE*—The vines are tall, about four feet high, with large leaves, and producing an abundance of pointed pods of largest size, often four and one-half to five inches long, filled with very large peas, which are tender and sweet. Parcel Post not prepaid. Pkt. 10c; ½ lb. 20c; lb. 30c; 5 lbs. \$1.20.

AMEER—Extra early, large dark green pods, very productive. Height 2½ feet. Parcel Post not prepaid. Pkt. 10c; ½ lb. 20c; lb. 30c; 5 lbs. \$1.25.

LARGE PODDED ALASKA—Larger than Alaska and five days later, a splendid early market variety. Parcel Post not prepaid. Pkt. 10c; ½ lb. 20c; lb. 30c; 5 lbs. \$1.25.

BLUE BANTAM—An extra early prolific sort, producing large pods containing 8 to 9 peas of the most delicious flavor. Height 15 inches. Parcel Post not prepaid. Pkt. 10c; ½ lb. 20c; lb. 35c; 5 lbs. \$1.50.

AMERICAN WONDER—An old standard, very dwarf, extra early sweet pea, growing about 1 foot high. Parcel Post not prepaid. Pkt. 10c; ½ lb. 20c; lb. 30c; 5 lbs. \$1.20.



ALASKA PEAS

Irish Potatoes

EARLY RED TRIUMPH—One of the best early potatoes, combining the productiveness of the White Star with the excellent qualities of Irish Cobbler. A most valuable early variety for the South, and a dependable producer and ready seller. It withstands drouth. Matures in about ten weeks. Medium size, round, very uniform in shape; eyes slightly depressed and color of a beautiful light red and is a standard variety for shipping. Parcel Post not prepaid. 15 lbs. \$1.00; 60 lb. bu. \$3.25.



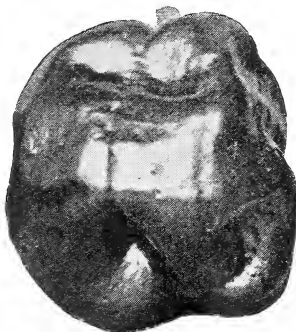
Early Ohio

PALMER'S EARLY GIANT PEPPER—This remarkable strain was developed by one of the leading gardeners in St. Louis County, whose peppers have always commanded the highest price on the local market. The plants bear abundantly of rich scarlet fruit, having a heavy texture. Palmer's Early Giant Pepper combines all the qualities of large size, mild flavor and extreme earliness. We highly recommend this superior strain for long distance shipping. Parcel Post Paid. Pkt. 10c; oz. 75c; ¼ lb. \$2.50; lb. \$8.00.

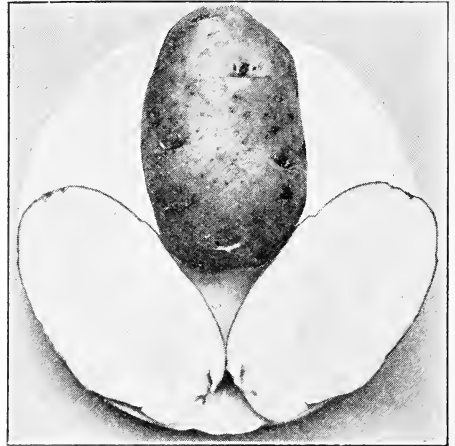
CHINESE GIANT—Very large size. Fruit is mild and sweet. Parcel Post Paid. Pkt. 10c; oz. 40c; ¼ lb. \$1.25.



Palmer's Early Giant



Chinese Giant



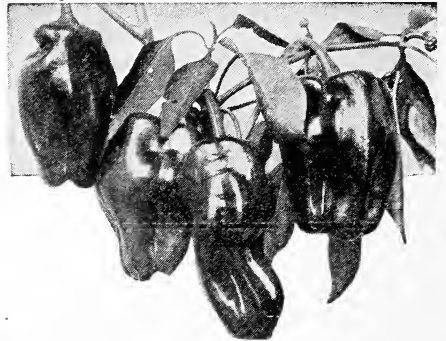
Early Red Triumph

Write for Prices
on Quantity lots.
Prices Subject to
Market Fluctua-
tions.

EARLY OHIO—Skin light pink or flesh color; flesh pure white. Potatoes all run good marketable size, very few small ones and the shape is so even they sell on sight in the market. Buyers know of the excellent quality, and housewives find there is no waste in peeling. Parcel Post not prepaid. 15 lbs. \$1.00; 60 lb. bu. \$3.25.

IRISH COBBLER—One of the most popular of the early varieties. Resembles the Triumph in shape. Its excellent quality, together with its cream-white color, makes it fine for the best trade. It is a vigorous grower, a good keeper and ripens uniformly. Parcel Post not prepaid. 15 lbs. \$1.00; 60 lb. bu. \$3.25.

Peppers



Ruby King

LONG RED CAYENNE—Bears long slender pods, bright red when ripe. Parcel Post Paid. Pkt. 10c; oz. 40c; ¼ lb. \$1.25.

PIMIENTO PEPPER—A delicious variety, most all meat. Very mild. Parcel Post Paid. Pkt. 10c; oz. 40c; ¼ lb. \$1.25.

SWEET MOUNTAIN—Large, regular and of mild flavor; one of the best for pickling. Parcel Post Paid. Pkt. 10c; oz. 40c; ¼ lb. \$1.25.

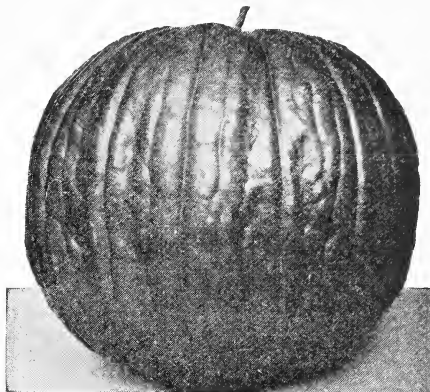
BELL OR BULL NOSE—A large early sort, of mild flavor. Fruits are large. Parcel Post Paid. Pkt. 10c; oz. 40c; ¼ lb. \$1.25.

RUBY KING—A fine variety, very large and attractive. Fruits are 4 to 5 inches long, bright red when ripe. Parcel Post Paid. Pkt. 10c; oz. 40c; ¼ lb. \$1.25.

Pumpkins

CONNECTICUT FIELD—Grown for stock, very productive, uniform type. Parcel Post Paid. Pkt. 10c; oz. 15c; ¼ lb. 30c; 1 lb. 90c.

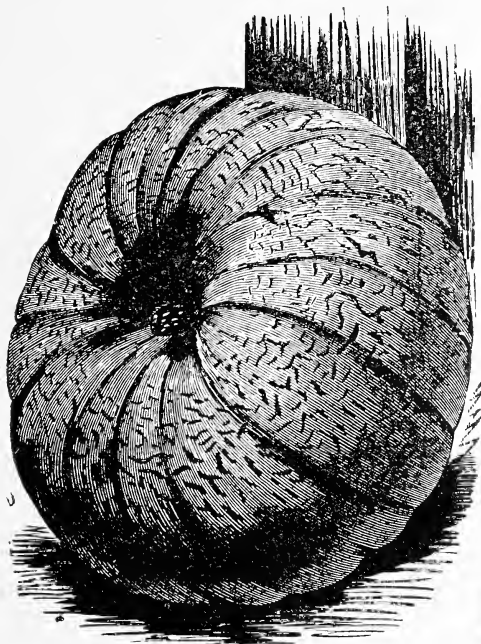
GOLDEN CUSHAW—Fine golden color. Parcel Post Paid. Pkt. 10c; oz. 15c; ¼ lb. 30c; 1 lb. 90c.



Connecticut Field

LARGE CHEESE or KENTUCKY FIELD—Flat; one of the best varieties for family use; good keeper. Parcel Post Paid. Pkt. 10c; oz. 15c; ¼ lb. 25c; 1 lb. 75c.

KING OF THE MAMMOTHS—Grows to an enormous size, 150 to 275 pounds; fine for exhibition. Parcel Post Paid. Pkt. 10c; oz. 15c; ¼ lb. 30c; 1 lb. \$1.00.



King of the Mammoths



Sweet or Sugar



Large Cheese or Kentucky Field

MAMMOTH TOURS—A very large French variety. The large seeds are fine for eating. Parcel Post. Pkt. 10c; oz. 20c; ¼ lb. 50c; 1 lb. \$1.50.

JAPANESE PIE—Fine for pies, very prolific and a good keeper. Parcel Post Paid. Pkt. 10c; oz. 15c; ¼ lb. 40c; 1 lb. \$1.00.

SWEET or SUGAR—Fine grained, sweet and prolific; small yellow best for pies. Parcel Post Paid. Pkt. 10c; oz. 15c; ¼ lb. 90c.

TENNESSEE SWEET POTATO—Bell shaped; thick, white flesh, fine for pies. Parcel Post Paid. Pkt. 10c; oz. 15c; ¼ lb. 30c; 1 lb. 90c.

STRIPED CUSHAW—Medium size, crookneck, very productive. Parcel Post Paid. Pkt. 10c; oz. 15c; ¼ lb. 35c; 1 lb. \$1.00.

WHITE CUSHAW—Fine white color. Parcel Post Paid. Pkt. 10c; oz. 15c; ¼ lb. 35c; 1 lb. \$1.00.

Rhubarb Seed

CULTURE—Sow the seed in cold frame in the spring and as soon as the plants are large enough to transplant in rows 1 ft. apart each way and cultivate. The following spring plant out in rows 4 feet apart each way and each spring work into the soil a liberal supply of decomposed stable manure. Rhubarb roots are set out and cultivated as the above and this method gives edible rhubarb in a very short time.

One ounce of the seed will sow 75 feet of row.

MAMMOTH—Very large, but good quality. Parcel Post Paid. Pkt. 10c; oz. 20c; ¼ lb. 50c; 1 lb. \$1.50.

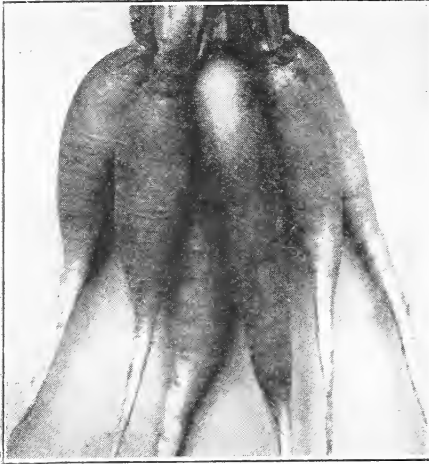
VICTORIA—Very fine in quality, but small. Parcel Post Paid. Pkt. 10c; oz. 20c; ¼ lb. 50c; 1 lb. \$1.50.



Mammoth Rhubarb

Radishes

To be tender and crisp, radishes must be grown quickly, and this requires rich soil and moisture. Begin as early as possible in the spring and sow at intervals of about 10 days in a light, rich, deeply worked soil. For fall and winter sow in August and September. One ounce sows 50 feet.



Chartier

CHARTIER or LONG ROSE—White tipped; long red, shading off to fine white tip. Parcel Post Paid. Pkt. 5c; oz. 10c; ¼ lb. 30c; lb. 90c.

STRASBURG—Pure white; oblong; firm, brittle, tender and retains its crispness and withstands severe heat. Parcel Post Paid. Pkt. 5c; oz. 10c; ¼ lb. 30c; lb. 90c.

PHILADELPHIA WHITE BOX—Turnip shape, for forcing or outdoors. Parcel Post Paid. Pkt. 5c; oz. 10c; ¼ lb. 30c; lb. 90c.

EARLY SCARLET GLOBE—A very distinct shape, brilliant red color, short leaved, crisp and white, of excellent flavor. Parcel Post Paid. Pkt. 5c; oz. 10c; ¼ lb. 25c; lb. 75c; 5 lbs. \$3.50.

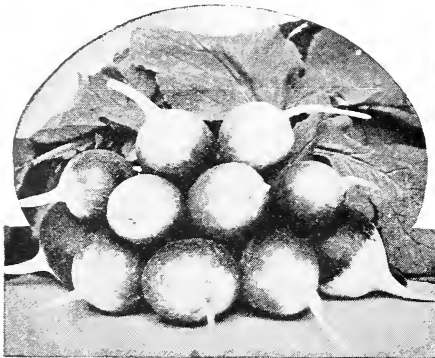
EARLY SCARLET TURNIP—A very early, small, round radish; entire radish is of a rich scarlet color. Parcel Post Paid. Pkt. 5c; oz. 10c; ¼ lb. 25c; lb. 65c; 5 lbs. \$3.00.

EARLY SCARLET TURNIP WHITE TIP—Market gardeners' favorite radish outdoor planting. A desirable one for the home garden. Turnip shaped; handsome scarlet in color, with a distinct white tip. Parcel Post Paid. Pkt. 5c; oz. 10c; ¼ lb. 25c; lb. 75c; 5 lbs. \$3.50.

EARLY LONG SCARLET SHORT TOP—Early, very short top, splendid shape and color. Parcel Post Paid. Pkt. 5c; oz. 10c; ¼ lb. 25c; lb. 75c; 5 lbs. \$3.50.

ST. LOUIS WHITE SUMMER—Of oblong shape, tapering to a point. Flesh pure white, almost transparent, tender and of a delightful pungent taste. Parcel Post Paid. Pkt. 5c; oz. 10c; ¼ lb. 30c; lb. 90c; 5 lbs. \$4.

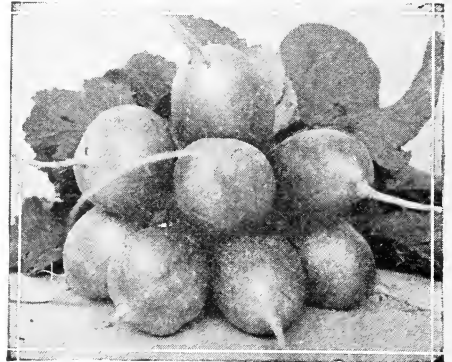
CRIMSON GIANT—A round radish of large size, for an early variety; nearly globe-shaped, of crimson-carmine color. Parcel Post Paid. Pkt. 5c; ¼ lb. 25c; lb. 90c; 5 lbs. \$4.00.



Sparkler White Tip Radishes



Icicle

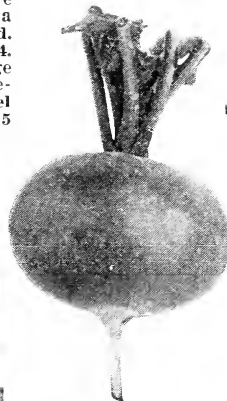


Early Scarlet Globe

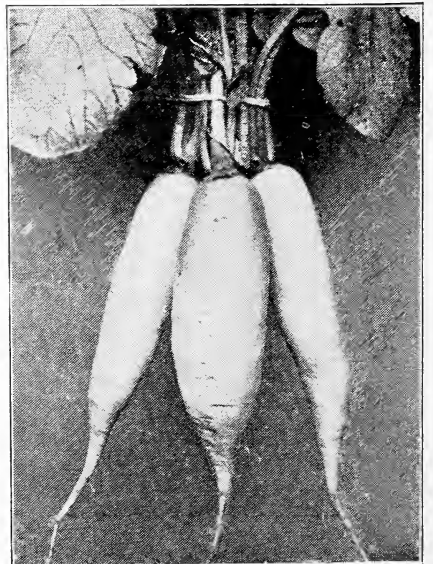
FRENCH BREAKFAST—A very popular French variety of very rapid growth, color scarlet, tipped with white, and small in size. Parcel Post Paid. Pkt. 5c; oz. 10c; ¼ lb. 25c; lb. 75c; 5 lbs. \$3.50.

ICICLE—Long, slender, pure white, the earliest and finest long, white radish. Parcel Post Paid. Pkt. 5c; oz. 10c; ¼ lb. 25c; lb. 75c; 5 lbs. \$3.50.

SPARKLER WHITE TIP—The most attractive bunching radish on the market—the best strain of Scarlet Turnip White Tip Radish, with the white tip well developed, covering the lower half of the radish. Extra early, crisp and tender. Parcel Post Paid. Pkt. 5c; oz. 10c; ¼ lb. 25c; lb. 75c; 5 lbs. \$3.50.



Crimson Giant



St. Louis White Summer

CHINA ROSE WINTER—One of the very best for fall and winter use, bright rose color, flesh white and firm, superior quality. Parcel Post Paid. Pkt. 5c; oz. 10c; ¼ lb. 30c; lb. 90c; 5 lbs. \$3.75.

ROUND BLACK SPANISH WINTER—This is a large, black-skinned radish; flesh white and firm; a good keeper. Parcel Post Paid. Pkt. 5c; oz. 10c; ¼ lb. 30c; lb. 90c; 5 lbs. \$3.75.

LONG BLACK SPANISH WINTER—Like the above, but the roots are longer and somewhat milder in flavor. Parcel Post Paid. Pkt. 5c; oz. 10c; ¼ lb. 25c; lb. 75c; 5 lbs. \$3.50.

Squash

CULTURE—After danger of frost is past, plant in a warm, well-pulverized, rich soil, mixing well-rotted manure with the soil in each hill. Plant 8 or 10 seeds to the hill; the bush varieties 4 to 6 feet apart, the running sorts 8 to 10 feet.

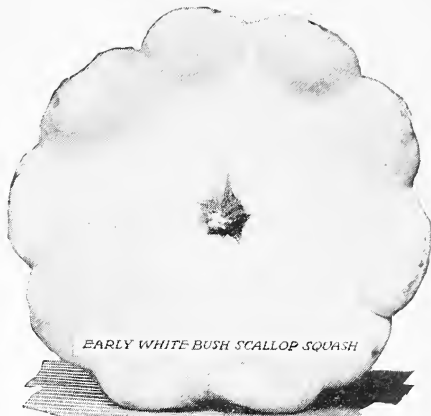
FORDHOOK (Vining)—A small, oblong variety, excellent for summer or winter; fruit 8 inches long, slightly ridged; light yellow in color. Parcel Post Paid. Pkt. 10c; oz. 20c; ¼ lb. 40c; lb. \$1.00.

EARLY BUSH SUMMER CROOKNECK—The best for summer use; fruit bright yellow. Parcel Post Paid. Pkt. 10c; oz. 20c; ¼ lb. 40c; lb. \$1.00.

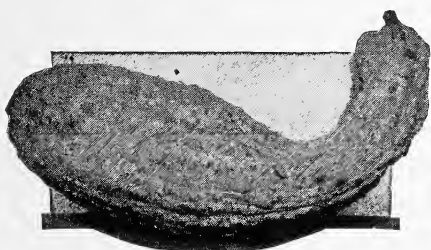
WHITE BUSH SCALLOP OR PATTYPAN—Of a light green color, flat, very productive and the earliest to mature. Parcel Post Paid. Pkt. 5c; oz. 15c; ¼ lb. 35c; lb. 90c.

YELLOW BUSH SCALLOP—Similar to White Bush except in color. Parcel Post Paid. Pkt. 5c; oz. 15c; ¼ lb. 35c; lb. 90c.

LARGE WINTER CROOKNECK—Most cultivated for fall and winter. Parcel Post Paid. Pkt. 10c; oz. 20c; ¼ lb. 40c; lb. \$1.00.



EARLY WHITE BUSH SCALLOP SQUASH



Early Summer Crookneck

MAMMOTH CHILI—Very large; excellent for pies or stock. Parcel Post Paid. Pkt. 10c; oz. 20c; ¼ lb. 40c; lb. \$1.00.

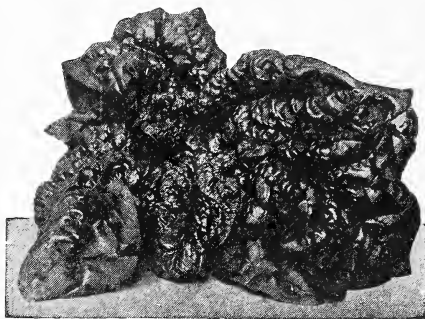
ITALIAN COCOZELLE—Grows about 20 inches long. Skin smooth, dark green, marbled yellow or paler green. Parcel Post Paid. Pkt. 10c; oz. 20c; ¼ lb. 40c; lb. \$1.00.

HUBBARD—A favorite winter squash. Shell dark green and extremely hard. Flesh rich orange; dry and sweet. Splendid for cooking or pies. Parcel Post Paid. Pkt. 5c; oz. 10c; ¼ lb. 20c; lb. 90c.

Holland Spinach

BLOOMSDALE CURLED SAVOY—In appearance the leaf is wrinkled in the same way as that of the Savoy Cabbage, hence the name. It produces nearly twice the bulk of crop as the ordinary sort, and fully as hardy. Parcel Post Paid. Pkt. 5c; oz. 10c; ¼ lb. 20c; lb. 40c; 5 lbs. \$1.50.

LONG SEASON—Of flat spreading but compact growth, this sort is especially noticeable for its short-stemmed, dark green leaves. Stands longer before going to seed than any other sorts. Parcel Post Paid. Pkt. 5c; oz. 10c; ¼ lb. 20c; lb. 40c; 5 lbs. \$1.50.



Bloomsdale Spinach

KING OF DENMARK—The largest growing variety. The glossy dark green foliage is attractively crumpled and thick in texture. The numerous leaves are extra large, broad and rounded. Ready to cut in 48 days. Parcel Post Paid. Pkt. 5c; oz. 10c; ¼ lb. 20c; lb. 40c; 5 lbs. \$1.50.

LONG STANDING—Is especially desirable because of the fact that it is much later in going to seed than the average variety. Parcel Post Paid. Pkt. 5c; oz. 10c; ¼ lb. 20c; lb. 40c; 5 lbs. \$1.50.

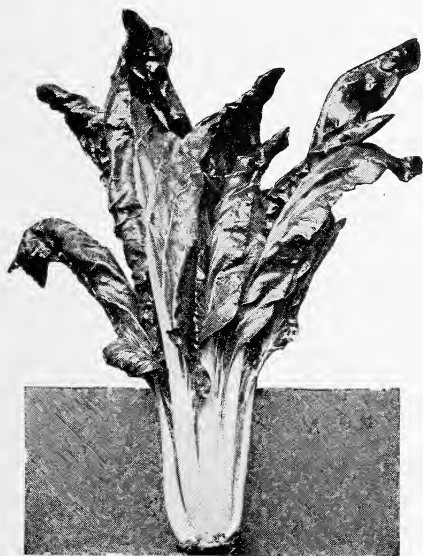
NEW ZEALAND SPINACH—This is not a spinach of the ordinary kind, but a plant of branching growth. One single plant will grow to dimensions of six feet across, producing an abundance of thick, fleshy juicy stems and leaves. Plant in hills 2 feet apart each way 3 or 4 seeds to a hill. Parcel Post Paid. Pkt. 5c; oz. 10c; ¼ lb. 20c; lb. 40c; 5 lbs. \$1.50.

Salsify, or Oyster Plant

MAMMOTH SANDWICH ISLAND—This splendid variety grows to fully double the size of the old sort; is of superior quality and delicate flavor. Parcel Post Paid. Pkt. 10c; oz. 20c; ¼ lb. 60c; lb. \$1.95.

Swiss Chard, or Silver Beet

Grown for its leaves and stems only. Cook the leaves as you do spinach and the stems like asparagus. The plant is almost perpetual if kept trimmed; also good for poultry greens. Lucullus Swiss Chard is the best variety. Parcel Post Paid. Pkt. 5c; oz. 10c; ¼ lb. 25c; lb. 60c.



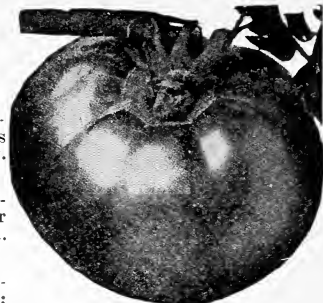
Lucullus Swiss Chard

Tomatoes

MARGLOBE—The newest and best Tomato. Resists Nail Head Rust and Fusarium Wilt. Produces a heavy crop of highest quality fruit in 136 days. Canners are especially pleased with this new variety. Parcel Post Paid. Pkt. 25c; oz. 85c; ¼ lb. \$4.50; lb. \$14.00.

GULF STATE MARKET—One of the finest early globe shaped tomatoes yet produced. A very vigorous grower and withstands blight exceptionally well. Color deep purple pink, smooth skin, and free from cracks. Parcel Post Paid. Pkt. 10c; oz. 50c; ¼ lb \$1.35; lb. \$5.00.

JOHN BAER—An extra early red fruited sort of merit. The fruits are large, nearly round, smooth and of good quality. Parcel Post Paid. Pkt. 10c; oz. 40c; ¼ lb. \$1.00; lb. \$3.50.



Ponderosa

TRUCKER'S FAVORITE—A purple fruited sort of excellent quality. Fruits are invariably smooth, solid and the flesh is of finest color throughout. Plants are very thrifty, free from rust or blight, and bear continually until killed by frost. Parcel Post Paid. Pkt. 10c; oz. 45c; ¼ lb. \$1.25; lb. \$4.50.

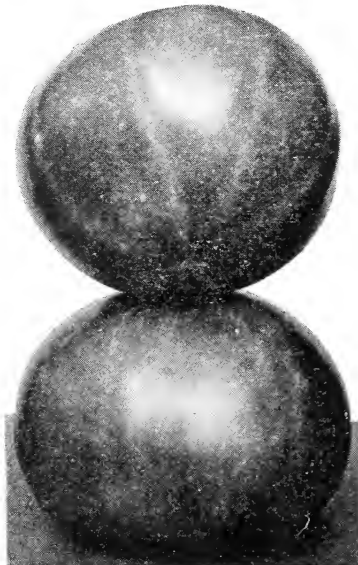
MATCHLESS—A fine, smooth main crop tomato of rich cardinal red color, with solid flesh of finest quality. Grows to good size. Parcel Post Paid. Pkt. 10c; oz. 40c; ¼ lb. \$1.00; lb. \$3.50.

DWARF CHAMPION—Quite distinct in foliage and habit of growth, being compact and upright; fruits early and resembles Acme in appearance. Parcel Post Paid. Pkt. 10c; oz. 40c; ¼ lb. \$1.00; lb. \$3.50.

PERFECTION (Livingston)—Early, regular productive, red, heavy cropper. Parcel Post Paid. Pkt. 10c; oz. 40c; ¼ lb. \$1.00; lb. \$3.50.

BONNY BEST—An excellent extra early variety, maturing between Earliana and Chalk's Early Jewel. Medium sized, scarlet, smooth, round shape. Parcel Post Paid. Pkt. 10c; oz. 40c; ¼ lb. \$1.00; lb. \$3.50.

EARLIANA—A fine scarlet tomato. Ready for the market several days ahead of any other variety. Ripens uniformly and is a good yielder. Parcel Post Paid. Pkt. 10c; oz. 40c; ¼ lb. \$1.00; lb. \$3.50.



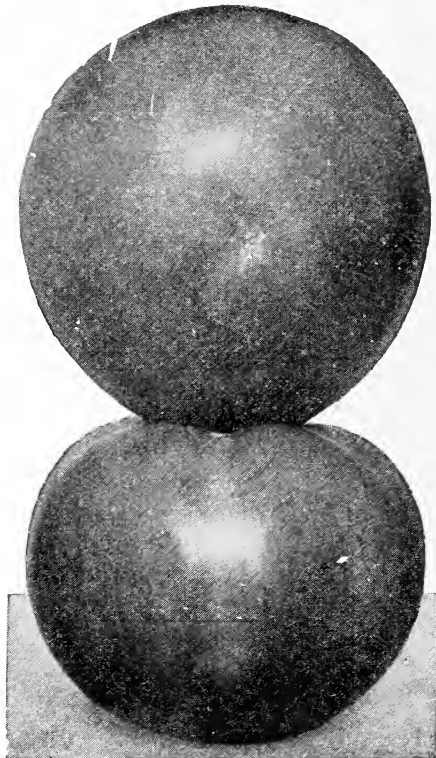
June Pink

EARLY ACME—Smooth, solid, purplish pink in color.—Parcel Post Paid. Pkt. 10c; oz. 40c; ¼ lb. \$1.00; lb. \$3.50.

LIVINGSTON'S GLOBE—A desirable variety; large, roundish fruits, excellent for slicing. Flesh firm, with few seeds; ripens evenly; has a delicate, agreeable flavor; vines very productive. Parcel Post Paid. Pkt. 10c; oz. 50c; ¼ lb. \$1.75; lb. \$6.00.

LIVINGSTON BEAUTY—A productive main crop variety, with large, smooth, solid, purplish-pink fruit. Parcel Post Paid. Pkt. 10c; oz. 40c; ¼ lb. \$1.00; lb. \$3.50.

JUNE PINK—The best extra early purple or pink fruited tomato, excellent for early market. Pkt. 10c; oz. 50c; ¼ lb. \$1.75; lb. \$6.00.



Dwarf Champion

PONDEROSA—An exceptionally large, purple fruited tomato, and for home use one of the best; fruit very solid, with few seeds. Parcel Post Paid. Pkt. 10c; oz. 60c; ¼ lb. \$2.00; lb. \$7.00.

STONE—Especially valuable for late plantings. Very solid and a good shipper; smooth and uniform in growth. Color a desirable red. Fine for canning for its solidity. Parcel Post Paid. Pkt. 10c; oz. 35c; ¼ lb. 90c; lb. \$3.25.

EARLY DETROIT—The largest and best of the early purplish tomatoes. Fruits very smooth, nearly globe-shaped, firm and of excellent quality. Parcel Post Paid. Pkt. 10c; oz. 40c; ¼ lb. \$1.25; lb. \$4.00.

RED ROCK—A selection from Matchless, but is more round or globe shaped than that variety. Parcel Post Paid. Pkt. 10c; oz. 40c; ¼ lb. \$1.00; lb. \$3.50.

WHITE'S EXCELSIOR—A main crop, purple variety, large size, heavy and solid, coloring evenly. Parcel Post Paid. Pkt. 10c; oz. 35c; ¼ lb. \$1.25; lb. \$4.50.



Stone

Turnips

EXTRA EARLY PURPLE TOP MILAN—A white variety, purple top and strapleaf. This with the White Milan, is the earliest of all turnips. Parcel Post Paid. Pkt. 5c; oz. 10c; ¼ lb. 25c; lb. 65c.

EXTRA EARLY WHITE MILAN—The earliest turnip. Tops very small, distinctly strap-leaved and growing very erect. Parcel Post Paid. Pkt. 5c; oz. 15c; ¼ lb. 35c; lb. \$1.00.

EXTRA EARLY WHITE EGG—A quick growing egg shaped, pure white variety. Very sweet, firm and mild. Parcel Post Paid. Pkt. 5c; oz. 10c; ¼ lb. 25c; lb. 75c.

LARGE WHITE GLOBE—Excellent for table or salad. A popular variety for winter. Makes large, round white roots, flesh white, solid, sweet and fine grained, maturing in about 75 days. Excellent for table or stock; also quite largely used for spring salad. Parcel Post Paid. Pkt. 5c; oz. 10c; ¼ lb. 25c; lb. 75c.

COW HORN—Excellent for table or stock. A long white turnip, 12 to 15 inches in length, 2½ inches in diameter and growing well above the ground. Of rapid growth, producing large, heavy roots in 75 days. One of the best and sweetest for home use or for stock feeding and excellent to plow under as a green fertilizer. Parcel Post Paid. Pkt. 5c; oz. 10c; ¼ lb. 25c; lb. 65c.

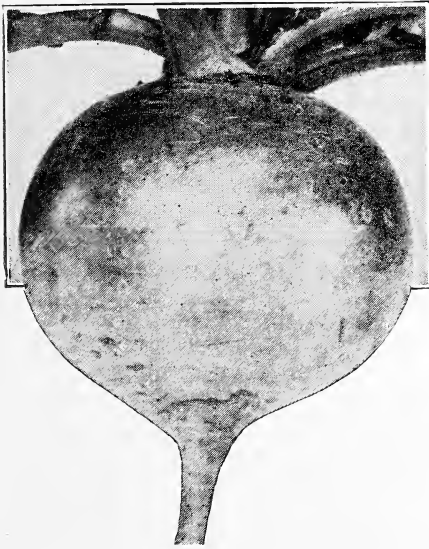
MAMMOTH PURPLE TOP WHITE GLOBE—The popular variety for general planting. One of the handsomest and most salable turnips. For home or market it is unsurpassed. It is a large, rapid growing sort, being ready for the table or market in about 65 days, with globular shaped roots. Flesh pure white

and the best flavored of all turnips raw or cooked. The skin is white, with a purple top. The most desirable sort. Parcel Post Paid. Pkt. 5c; oz. 10c ¼. lb. 25c; lb. 75c.

LARGE RED TOP GLOBE TURNIP—A perfect globe shape, with bright red or purple top and snow white bottom. It does not taper like other types of the same variety. This is due to the utmost care in selection when growing for seeds. We pride ourselves on this stock. Parcel Post Paid. Pkt. 5c; oz. 10c; ¼ lb. 25c; lb. 75c.



Large Red Top Globe Turnip



Mammoth Purple Top White Globe



White Egg

YELLOW GLOBE (Stone)—A round, smooth, clear yellow variety, of medium size and good quality. Parcel Post Paid. Pkt. 5c; oz. 10c; ¼ lb. 25c; lb. 75c.

RED OR PURPLE TOP STRAPLEAF—Flat, white with purple top. Fine grained and tender. Used for early market and table. Parcel Post Paid. Pkt. 5c; oz. 10c; ¼ lb. 25c; lb. 75c.

SEVEN TOP—The old standard popular salad variety, grown extensively for this purpose. Parcel Post Paid. Pkt. 5c; oz. 10c; ¼ lb. 25c; lb. 75c.

WHITE FLAT DUTCH STRAPLEAF—An extra early pure white, flat-growing variety. Recommended for early market. Parcel Post Paid. Pkt. 5c; oz. 10c; ¼ lb. 25c; lb. 75c.



Purple Top Rutabaga

Rutabaga

Sow in drills or broadcast in June, July and August.

IMPROVED PURPLE TOP RUTABAGA—The perfect Rutabaga, of symmetrical shape and firm flesh. The finest and most profitable of all yellow, purple top Rutabagas, being the hardest, heaviest, best shaped and most productive. The roots are better keepers than most sorts. The flesh is of a beautiful yellow color, of the choicest quality, full of nourishment. Excellent for table use and stock feeding. Matures in 95 days. Parcel Post Paid. Pkt. 5c; oz. 10c; 2 oz. 15c; ¼ lb. 20c; 1 lb. 70c.



Clovers

ALFALFA OR LUCERNE CLOVER—The most talked of and most widely planted of all the varieties of clover.

Alfalfa will produce 4 to 5 tons of hay to the acre each year and in money value is worth 45 per cent more than other clovers and 60 per cent more than Timothy hay. It will grow 3 to 4 crops a year and it does not exhaust the soil; it enriches the soil. Its long branching roots penetrate far down, 15 to 20 feet, and so loosens the subsoil that it is a gigantic subsoiler, resists drought, and gets plant food where other crops would be a failure.

It is said that the feeding value of a ton of alfalfa is equal to a ton of shelled corn. Plant from February to May for Spring, and August to November for Fall at the rate of 30 lbs. per acre.

We handle the following brands:

DAKOTA NO. 12—This strain of alfalfa is gaining widespread popularity throughout the North and Middle West because of its hardiness. Very productive and will resist winter-kill remarkably. If you have been disappointed in raising alfalfa try Dakota No. 12 this year. Parcel Post not prepaid. Lb. 45c; 5 lbs. \$2.00; 25 lbs. \$7.00. Write for special low prices in larger quantities.

CERTIFIED GRIMM—A strong rooted alfalfa that gives the plant a firm hold on the soil and will withstand the most severe freezes. While the hay production is not as great as the common varieties you are assured of a good stand the first year. It will grow on shallower soil than other sorts. Parcel Post not prepaid. Lb. 55c; 5 lbs. \$2.50; 25 lbs. \$11.25.

GENUINE KANSAS DRY LAND—This alfalfa is nearly as hardy as the Northwestern type and will stand the winters except in high altitudes where severe weather is found. We recommend it for the Middle West and Southern sections. Parcel Post not prepaid. Lb. 40c; 5 lbs. \$1.75; 25 lbs. \$6.50.

ALSIKE CLOVER—Parcel Post not prepaid. Lb. 60c; 5 lbs. \$2.75; 25 lbs. \$11.50.

MEDIUM RED CLOVER—The most universally grown throughout the country. On fertile soil and especially where hay is desired, it has only one superior, and that is Alfalfa. Sow in the Spring and fall, 12 pounds per acre. Parcel Post not prepaid. Lb. 60c; 5 lbs. \$2.75; 25 lbs. \$11.50.



Red Clover

WHITE DUTCH CLOVER—This is the common little running clover found in most good pastures. Its chemical analysis shows it to be richer in protein than almost any other legume which we grow for forage. It is of course, too small to grow for hay, but it is invaluable in all pastures. Sow in Spring and Fall. 8 pounds to acre. Parcel Post not prepaid. Lb. 90c; 5 lbs. \$4.00; 10 lbs. \$7.50. Write for quantity prices.

YELLOW BLOSSOM SWEET CLOVER—Parcel Post not prepaid. Lb. 30c; 5 lbs. \$1.25; 25 lbs. \$5.00.

JAPANESE CLOVER OR LESPEDEZA—One of the most valuable Southern clovers, growing well on rich or poor soil. On poor land it has a creeping habit; on better quality of land a bush form, making a vigorous plant, growing 12 to 18 inches high. Sow in spring or fall, about 25 pounds per acre. Harrow in to the depth of 1½ to 2 inches, according to character of soil, then roll or firm the soil in the most convenient way. Makes good grazing. Well adapted for use as green manure by turning it under; it enriches the soil and prevents "washing" of hill lands. Its abundant long taproots and laterals decaying make the soil porous and leave in it much valuable nitrogenous matter to be used by the following crops. Roots penetrate deeply, enabling the plant to stand severe dry spells, also bring up valuable plant food from the subsoil. Write for prices.

WHITE BLOSSOM SWEET CLOVER—Melilotus Alba or Bokhara. A relative of alfalfa and will make luxuriant growth on soils rich in lime and of insufficient depth for successful growing, of either Alfalfa or Red Clover. Seeds may be sown at the rate of 20 pounds to the acre from September to December or February to April, producing one cutting the first season, but furnishes three cuttings thereafter of from one to two each. Hulled, weight, 60 pounds to bushel. Parcel Post not prepaid. Lb. 30c; 5 lbs. \$1.25; 25 lbs. \$5.00.

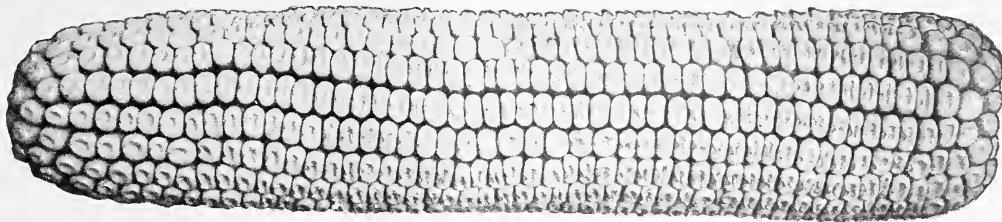
CRIMSON CLOVER—For the South. Farmers all through the Middle Atlantic and Southern States are increasing the acreage of Crimson Clover very materially, as they find it one of the best and most satisfactory of early forage and soil-improving crops. Its greatest value is a soil-improver, practical farmers maintaining that a crop of Crimson Clover turned under is equal to a good application of stable manure. Planted during September, October, February and March. Twenty pounds per acre. 60 lbs. to bushel. Parcel Post not prepaid. Lb. 30c; 5 lbs. \$1.25; 25 lbs. \$5.00.

WRITE FOR SPECIAL LOW PRICES IN LARGER QUANTITIES.

Wheat

RED MAY WHEAT—We have never been able to see where this variety was any earlier and better than the Fultz, although many prefer it to that variety, claiming great earliness. It is a standard variety. Beardless. Parcel Post not prepaid. Price, lb. 10c; peck, \$1.00; bu. 60 lbs., \$3.25.

WRITE FOR SPECIAL LOW PRICES IN LARGER QUANTITIES.



Iowa Silvermine

Seed Corn

We make a specialty of the best Seed Corn, and our volume of business enables us to supply the best stocks at prices that are very reasonable, indeed. As a bushel of corn will plant six to eight acres, there is no excuse for any farmer planting anything but the very best.

We have made a study of corn growing. We know good corn when we see it, and we know how to select only the best. For general field crops we urgently recommend our Selected Super Quality Stock. Whatever variety you may select, you may be assured that you can depend on getting the best seed from us.

All quotations are subject to important market changes. Special prices quoted on large amounts.

BOONE COUNTY WHITE—A large eared variety. Is especially adapted to Southern States. Requires from 100 to 120 days to mature. The ears are of large size, well proportioned, well rounded at butt and tip. Parcel Post not prepaid. 5 lbs. 60c; 15 lbs. \$1.50; 25 lbs. \$1.75; 56 lbs. (bu.) \$3.00.

IOWA SILVER MINE (100 days)—The stalks grow to a height of 7 to 8 feet and set the ears about 3½ to 4 feet from the ground. The ears measure from 10 to 12 inches in length. They are very uniform in size and shape, 16 to 20 straight rows of deep, pure white kernels on a small cob. It is the heaviest yielder we know, having yielded over 100 bushels to the acre. Seventy pounds of ears will make 62 pounds of corn. It is entirely distinct and will give satisfaction. 5 lbs. 60c; 15 lbs. \$1.50; 25 lbs. \$1.75; 56 lbs. (bu.) \$3.00. Parcel Post not prepaid.

YELLOW LEAMING—A very early growing corn; matures in about 90 days; always dries out quickly, therefore a desirable variety for early crop. 5 lbs. 60c; 15 lbs. \$1.50; 25 lbs. \$1.75; 56 lbs. (bu.) \$3.00. Parcel Post not prepaid.

ST. CHARLES RED COB (110 Days)—The premier ensilage and fodder corn. Has large white ears with red cob and a moderately rough deep grain. Stalks growing very leafy and will produce large quantities for hulling crops of fodder. Being a native of St. Charles County, Missouri, this variety is best adapted to the Middle West and Southern States for hulling corn as well as its chief use for ensilage and fodder. Our St. Charles Red Cob is grown under our personal supervision right here within 25 miles of St. Louis. Parcel Post not prepaid. 5 lbs. 60c; 15 lbs. \$1.50; 25 lbs. \$1.75; 56 lbs (bu.) \$3.00.

IOWA GOLD MINE (99 to 110 Days)—Not a very large corn but very good for a medium early variety. It matures in about 95 days, producing medium symmetrical ears of rich golden yellow color. The grain is deep and the cob is small. Our GOLD MINE corn has been bred up and selected from true strains and like all other varieties it is of strong germination. Parcel Post not prepaid. 5 lbs. 60c; 15 lbs. \$1.50; 25 lbs. \$1.75; 56 lbs. (bu.) \$3.00.

REID'S YELLOW DENT (100 to 110 Days)—This is the leading outstanding variety of yellow corn grown today. It was originated by Mr. James L. Reid of Illinois several years ago and even the best experts have failed to improve on merit on this corn. It is a deep yellow color and bears deep closely packed grain. REID'S YELLOW DENT is particularly adapted to this section of the country and we can recommend it as the best all around field corn. Its leaves and stalks make a fine ensilage and fodder. Parcel Post not prepaid. 5 lbs. 60c; 15 lbs. \$1.50; 25 lbs. \$1.75; 56 lbs (bu.) \$3.00.

WRITE FOR SPECIAL LOW PRICES IN LARGER QUANTITIES.

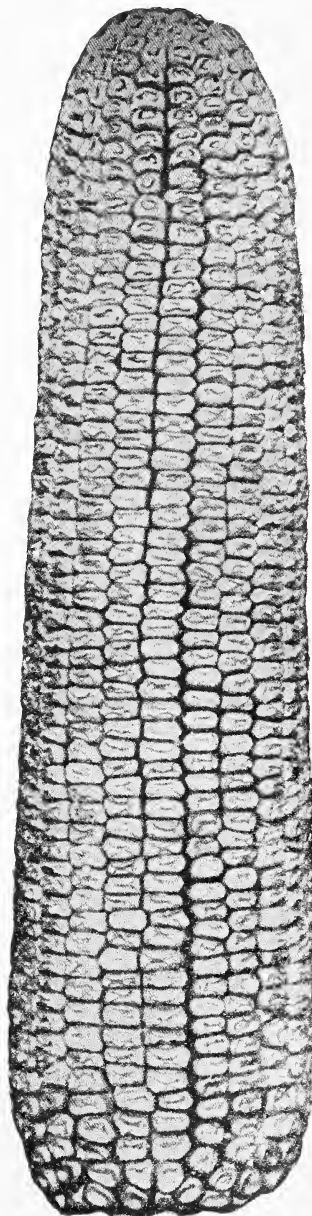
Oats

All Prices in this Catalogue are Subject to Market Fluctuations.

Oats should be planted for hay making during early October, though they may be sown as late as the early part of December, also in early Spring, with the expectation of making a fair return. When they are to be cut for hay, it is best to cut when the grain is in milk. While the time of planting is given under each variety, oats are also sown successfully in the early spring.

TEXAS RED RUST PROOF OATS—In the South Atlantic and Gulf States Red Rust Proof Oats have attained a prominent place in farming operations. This is particularly true in the coast region, where other varieties have not proved altogether satisfactory, but where the Red Rust Proof seems to be especially well adapted to the light, sandy soil of that section. They are vigorous growers, robust and productive, and have heavy heads. They are also preferred for sowing on low grounds and on land where other varieties seem inclined to rust. Peck 50c; bu. \$1.50; 5 bu. sack \$6.25, not prepaid.

WRITE FOR SPECIAL LOW PRICES IN LARGER QUANTITIES.



Reid's Yellow Dent



Vetch

Hairy, Winter or Sand Vetch

HAIRY, WINTER OR SAND VETCH—Planted from August to November or in early Spring, with small amounts of rye, oats, wheat or barley, for a support after it begins to run, vetch makes a magnificent hay crop in spring, coming in ahead of everything else except thoroughly established fields of alfalfa, and at the same time leaves added fertility to the soil. Crops like Vetch makes possible profitable live stock raising, which in turn means prosperity. Forty pounds per acre during October and November. Write for prices.

Seed Barley

SEED BARLEY—The particular value of Barley is for Winter and Spring grazing. Planted from August to October. Two bushels per acre. 1 lb. 25c; postpaid; ½ bushel, \$2.00; 48 lb. bu. \$3.00, not prepaid.

WRITE FOR SPECIAL LOW PRICES IN LARGER QUANTITIES.

Sorghums and Millets

All Prices in this Catalogue are Subject to Market Fluctuations.

GERMAN MILLET—Of all the Millets this is one of the favorites. It makes good hay, and produces heavily. Can be sown from April to June, but the former month is the best time, 50 pounds to the acre for hay. Should be cut when in bloom. Recommended for this climate. 1 lb. 25c; ½ bu. \$2.50; 50 lb. bu. \$4.50, not prepaid.

EARLY AMBER SORGHUM—More popular than ever for forage. Relished in its green state or cured, by all stock, on account of sweetness of stalk and leaves. Equals in value any other crop known. Makes good syrup, but as the stalk is smaller than the Orange, that variety is recommended when the intention is to grow for syrup. Twelve and a half pounds of seed will plant an acre. Plant in rows 3 feet apart, 6 to 10 seeds, 12 to 18 inches apart in the row, or drill slightly; can be sown broadcast. ½ bushel per acre. Price, 1 lb. 25c; ½ bu. \$2.00; 50 lb. bu. \$3.50, not prepaid.

EARLY ORANGE SORGHUM—Price, 1 lb. 25c; ½ bu. \$2.00; 50 lb. bu. \$3.50, not prepaid.

RED TOP, or SUMAC SORGHUM—1 lb. 25c; ½ bu. \$2.00; 50 lb. bu. \$3.50, not prepaid.

TEXAS SEEDED RIBBON CANE—Grows very similar to the Crook-neck variety except that it has a straight head. Is first class to use for ensilage, also for syrup. 15 lbs. per acre. 1 lb. 25c; ½ bu. \$2.00; bu. \$3.50. Not prepaid.



Early Amber Cane

JOHNSON GRASS—1 lb. 40c; ½ bu. \$2.75; 25 lb. bu. \$5.00, not prepaid.

SUDAN GRASS—A live stock food. Grows successfully everywhere. Stock of all kinds eat it readily. Yields more tonnage per acre than any other forage crop. Produces from ten to fifteen thousand pounds of great fodder per acre; suitable for hay or silage. 10 to 15 pounds per acre. 1 lb. 30c; 10 lbs. \$2.00; 100 lbs. \$15.00, not prepaid. Write for quantity prices.

JAPANESE HONEY DRIP CANE—1 lb. 30c; 10 lbs. \$2.50; 50 lb. bu. \$6.00, not prepaid.

DWARF YELLOW MILO MAIZE—1 lb. 30c; ½ bu. \$2.25; 50 lb. bu. \$4.00. Not prepaid.

WHITE KAFFIR CORN—Grows 4 to 5 feet high. The stems are very leafy and keep green and brittle, unlike other sorghums, which harden. Makes an excellent fodder, either green or dried. For grain, sow 10 pounds to the acre, in rows 3 feet apart. For fodder, sow from one-half to one bushel, either broadcast or in drills. Very good poultry feed. Sow from March to June. 1 lb. 30c; ½ bu. \$2.25; 50 lb. bu. \$4.00, not prepaid.

FETERITA—1 lb. 25c; ½ bu. \$2.50; 50 lb. bu. \$4.75, not prepaid.

EVERGREEN BROOM CORN—There are many farmers who make this a most profitable crop. One acre will produce about 500 cwt. of brush and nearly 40 bushels of seed which is equal in value almost to oats for feed. Requires soil similar to corn, same cultivation, but should be planted some later in the season. Put ground in prime condition. We think that more of our farmers should grow Broom Corn for market. It is profitable. Frequently planted in drills 3½ feet apart, leaving plants 6 inches apart; 20 pounds to an acre. Sow during March and April. 1 lb. 25c; ½ bu. \$2.50; 46 lb. bu. \$4.50. Not prepaid.



Field of Kaffir Corn

Grass Seeds

ENGLISH OR PERENNIAL RYE GRASS (*Lolium Perenne*)—Imported English Blue Grass. Height 15 to 24 inches. Considered invaluable for permanent pastures. It produces an abundance of remarkably fine foliage, tillers out close to the ground and soon forms a compact sward. After being cut it grows up in a very short time and remains bright and green throughout the season, consequently is well adapted for lawn mixtures to give quick results. Also a good variety for hay, if cut when in blossom, as it is then most nutritious. Sow, if alone, 50 to 60 lbs. per acre, (24 lbs. per bushel.) **Parcel Post not prepaid. Per lb. 25c; 10 lbs. \$2.25; 25 lbs. \$5.00.**

ITALIAN RYE GRASS—Lb. 25c; 10 lbs. \$2.25; 25 lbs. \$5.00, not prepaid.



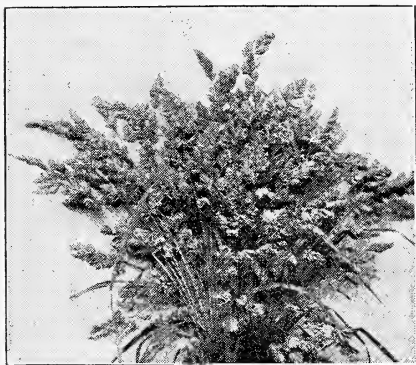
Timothy

TIMOTHY—This is the old standby for hay and pasture. Can be sown alone at the rate of 10 to 12 pounds per acre or with Red Clover or Alsike. Timothy can be seeded with a grain crop either in the Spring or Fall and produces a reliable and sure hay crop. We have some fine Timothy new crop and are able to give you the benefit of our very low price for this bright clean seed because we are in the heart of the Timothy growing section. Our Timothy is the cream of crop. **Parcel Post not prepaid. Lb. 20c; 5 lbs. 90c; 10 lbs. \$1.50.**



English Rye Grass

ORCHARD GRASS—A very vigorous grower, and yields large crops of excellent and nutritious hay, as well as having a special value as a pasture grass, furnishing good grazing from early Spring till Winter. It responds quickly after cutting or grazing. The roots extend to a great depth; it will stand drought better than most other grasses and is very hardy. It grows in tufts and is therefore best sown with other grasses. It is well suited for shady places, such as orchards and groves. Grows on all kinds of land, but does best on deep, rich sandy loam or clay soils. We have a fine lot of new seed and while the crop was short we can make very attractive prices, due to our early purchases. **Lb. 30c; 100 lbs. \$25.00, not prepaid.**



Orchard Grass

those which are sandy, and has little value for dry uplands. It is one of the best kinds for creek banks, the margins of swamps, overflow lands and similar places. **Lb. 50c; 5 lbs. \$2.25; 10 lbs. \$4.00; 100 lbs. \$36.00.**

WRITE FOR SPECIAL LOW PRICES IN LARGER QUANTITIES.

Sunflower

MAMMOTH RUSSIAN SUNFLOWER—Packet 5c; lb. 20c; 10 lbs. \$1.25, not prepaid.

All Prices in this Catalogue are Subject to Market Fluctuations.



Red Top

Rape

DWARF ESSEX RAPE—A splendid winter forage plant. This is sown broadcast and furnishes a rich, nutritious winter pasture; can be grazed 6 weeks after planted; use 50 lbs. per acre. Planted from September to March. Parcel Post not prepaid. Lb. 25c; 10 lbs. \$1.25; 25 lbs. \$3.00.



Rye



Rape

WRITE FOR SPECIAL LOW PRICES IN LARGER QUANTITIES.

Rye

ROSEN RYE—Rosen Rye in comparison with other ryes in the same season has the reputation of yielding 10 bushels more and sometimes 15 bushels more to the acre. Planted from September to December. 1½ bushels per acre. 56 lbs. per bushel. Parcel Post not prepaid. Lb. 15c; 10 lbs. 75c; 25 lbs. \$1.50

RYE—It stools heavily, can be grazed several times and then allowed to go to seed. Cut and fed green; has made as much as ten tons of green food per acre in five months. It is sown from the middle of August until November, and then again in the early Spring. The main planting time is in the Fall, however, as it is more valuable when sown early. It is a very hardy plant, withstanding all kinds of very cold weather without serious injury. Sown both broadcast and in drills; 1½ bushels per acre. The seed should be covered no more than two inches. Parcel Post not prepaid. Lb. 15c; 10 lbs. 75c; 25 lbs. \$1.50.

Cow Peas

Write for Prices on Cow Peas as the Market Fluctuates.

WHIPPOORWILL

—Has brown, speckled seeds, easily gathered, on account of the upright, bushy growth of the plants. A great favorite on account of its early maturity. Write for Prices.

CLAY—Furnishes large crop of nutritious forage, while the roots enrich the soil. Write for prices.

CANADA FIELD—Principally used for pigeon feed. It is a round pearl, planted in Spring and Fall. 1½ bushels to the acre. Write for Prices.

MIXED PEAS—Every year thousands of bushels of peas become mixed in handling, and on account of this they sell for a little less, although they are just as good for forage purposes as the straight varieties.

NEW ERA—(The famous Hay Pea)—The new Era Pea is one of the best peas grown. In fact the United States Department of Agriculture states that it is one of the best of our varieties. It is two weeks earlier than Whippoorwill and about one-third smaller. It is a bush pea and stands erect. Write for Prices.



Cow Peas



Soy Beans

Soy Beans

We have selected just a few of the most valuable Soy Bean varieties, on which we specialize. Soy Beans are a wonderful legume crop either for hay or pasture, or green manure. Sow 1 bushel per acre.

VIRGINIA (Brown)—An early variety yielding a good tonnage of hay and beans. Particularly suited for planting with corn for silage. However, it is used much as a straight hay crop. Write for prices.

WILSON (Black)—This variety is recommended as wilt resisting and has the advantage of holding the beans in pods for a long time. An early variety of true merit for hay or grain. Write for prices.

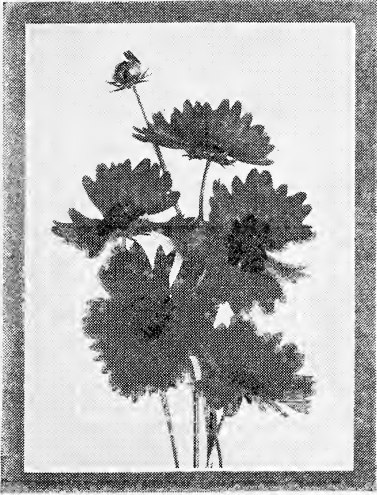
MANCHU (Early Yellow)—By far the most popular of the yellow varieties. Adaptable for all purposes, hay, grain or oil crushing. Write for prices.

Palmer's Super-Quality Flower Seeds

AGERATUM—A beautiful, hardy annual, covered with bloom all summer. Blue flowers. Parcel Post Paid. Pkt. 10c; $\frac{1}{4}$ oz. 40c.

ALYSSUM—Sweet-scented, hardy annual, blooms early in the spring; a pure white flower, and continues to bloom until late autumn. Parcel Post Paid. Pkt. 5c; $\frac{1}{4}$ oz. 15c.

LITTLE GEM—Annual. Pkt. 10c; $\frac{1}{4}$ oz. 25c. Prepaid



Calliopsis

CALLIOPSIS—Showy border plant, flowers bright yellow or rich brown, either self-colored or with these colors and red contrasted. All sorts mixed. Parcel Post Paid. Pkt. 10c; $\frac{1}{4}$ oz. 25c.



Marguerite Carnation

BALSAM—Known as Lady Slipper, and Touch-Me-Not. The colors range from white to dark purple. Hardy annual, one to two feet high. Pkt. 10c; $\frac{1}{4}$ oz. 25c; Parcel Post Paid.

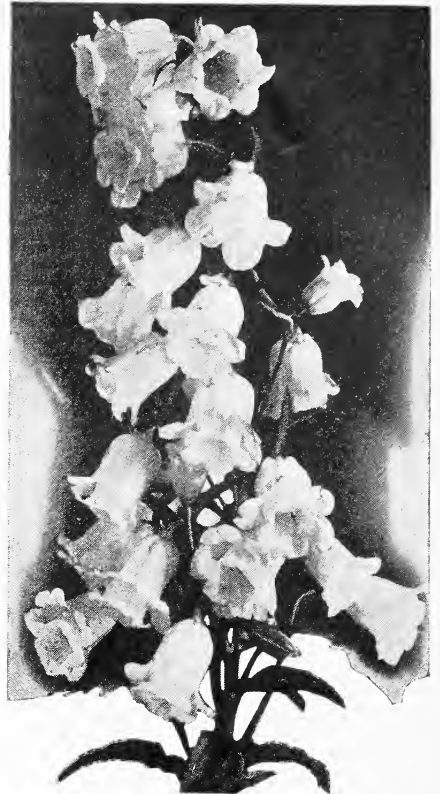
BALLOON VINE—Rapid-growing climber; flowers white; 5 feet. Parcel Post Paid. Pkt. 5c.

BALSAM PEAR—Large prickly pear-shaped fruit. Parcel Post Paid. Pkt. 5c; oz. 20c.

BALSAM APPLE—Parcel Post Paid. Pkt. 5c; oz. 20c.

CANARY BIRD VINE—Resembles a canary bird with its wings expanded; for baskets, vases, etc. Blooms all summer. Parcel Post Paid. Pkt. 5c.

COBAEA SCANDENS—A beautiful climber. Flowering the first season. If sown early in the house or hotbed; bell-shaped, purple flowers. Parcel Post Paid. Pkt. 10c.



Canterbury Bells

CANDYTUFT—Showy, branching plants six to twelve inches high; will bloom from July to September, or if planted in the fall, from May to July. Mixed varieties. Parcel Post Paid. Pkt. 10c; oz. 25c.

CASTOR BEAN (Ricinus)—Tall, majestic plants for lawns, with leaves of green metallic blue; of very quick growth in rich soil. Parcel Post Paid. Pkt. 5c; oz. 20c.

CANTERBURY BELLS (Campanula)—Very fine hardy plants profusely covered with extremely showy bell-shaped flowers, in single, semi-double and double forms in shades of blue, white and rose with some of the blooms 3 inches in length and 3 inches across of beautiful waxy texture. Single varieties mixed. Parcel Post Paid. Pkt. 10c. Double varieties mixed, pkt. 10c.

CELOSIA PLUMOSA—Distinct variety of bush form of growth about two feet, branching freely and bearing a profusion of beautiful ball shaped woolly flower heads of intense scarlet. Sometimes called the Wool Flower. Blooms all summer until the frost comes. Pkt. 10c. Parcel Post Paid.

CARNATION MARGUERITE—Easily grown from seed; free blooming; flowers bright with clove-like fragrance; some varieties are suited for house plants; others do best in the open ground. Plant in April. Half hardy perennial. Pkt. 10c; $\frac{1}{4}$ oz. 40c. Parcel Post Paid.

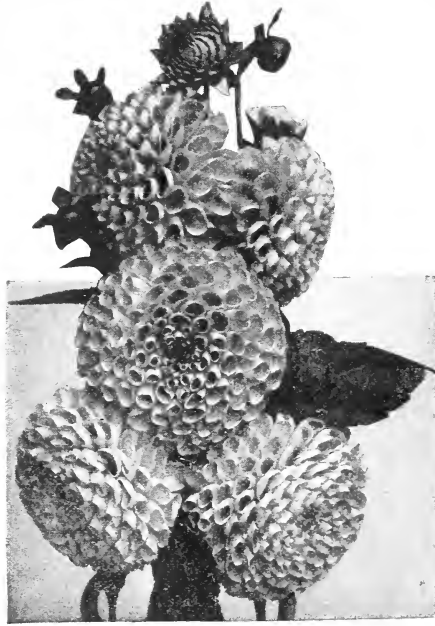
CENTAUREA-CYANUS (Bachelor Buttons, Corn Flower) in its improved forms is one of the most attractive of garden flowers. One to two feet high. Single or Double mixed. Each—Pkt. 10c.—Parcel Post Paid.

COLEUS OR FOLIAGE PLANT—Our seed mixture is saved from plants showing the choicest colors and best shaped leaves. They may be taken up in the fall and potted for house culture or the seed can be sown at any time for house plants. They like good soil and plenty of water and there is nothing better for a bedding plant or for making solid flower beds. Pkt. 15c. Postpaid.

COREOPSIS—Very showy, free flowering plants, native of this country, fine for borders and beds. Yellow Flowering. Pkt. 10c; $\frac{1}{4}$ oz. 25c. Parcel Post Paid.

COLUMBINE—One of the best of the hardy plants, bearing flowers of exquisite clear blue, white, rose, yellow, purple and striped colors. A fine plant for the shrubby border or grown as single specimens. Pkt. 10c. Parcel Post Paid.

FLOWERS—(Continued)

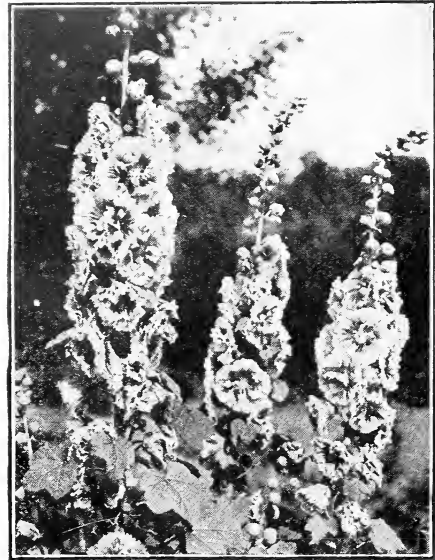


Dahlias

FEVERFEW—These are fine plants for bedding, growing about 3 feet high, with large double flowers pure white in color. They are well adapted for bedding or as house plants. Pkt. 10c. Post Paid.

FORGET-ME-NOT—(*Myosotis*)—A favorite old fashioned flower, bearing in profusion, clusters of blue blossoms. It thrives well in the shade or open border. Hardy perennial. Pkt. 10c. Post Paid.

FOUR O'CLOCK (*Marvel of Peru*)—The flowers are funnel-shaped and open about four o'clock in the afternoon and remain open all night and generally perish before noon next day; will grow in any soil. Hardy annual, 2 feet high. Pkt. 5c; oz. 20c. Post Paid.



Hollyhocks

HOLLYHOCK—Double Mixed (Perennial).—Pkt. 10c.

JOB'S TEARS—An ornamental grass known botanically as *Coix Lachryma*. Grows 2 to 3 feet high, with broad corn-like leaves. Pkt. 5c. Post Paid.

KOCHIA or **SUMMER CYPRESS**—(*Kochia Tricocphylla*). A highly ornamental annual, having a cypress-like appearance. Its bright autumn coloring has given it two other names: "Mexican Fire Plant" and "Burning Bush." Pkt. 10c. Post Paid.

COSMOS—A very effective autumn flower. Bush-like plants 3 to 5 feet high, and covered with large single dahlia-like flowers. Mixed. Pkt. 10c. Post Paid.

CYPRESS VINE—A most beautiful climber with delicate, dark green, feather foliage, scarlet blossoms. Tender annual. Mixed colors. Pkt. 10c. Post Paid.

DAHLIA Double Large Flowering—Dahlias can be grown the first season from seed. You will get many fine varieties in this way. Our seed is saved from all of the very best of the double flowering and is especially choice. Pkt. 15c. **Single Mixed Varieties**. There are many very beautiful single flowering dahlias, some of them making a greater display than the double kinds. Pkt. 10c. Post Paid.

EVERLASTINGS—

These old-fashioned flowers are still considered very useful. Many of them have fine colors and are very odd shapes and they are well worth growing. If cut when they come into bloom and hung with heads down and allowed to dry gradually in a shaded place they will be straight and perfect in shape and last forever. Our mixture of seed comprises all the best there is in these wonderful flowers. Pkt. 10c. Post Paid.



Cosmos

FOXGLOVE OR DIGITALIS—Produces long spikes of richly colored flowers that are excellent for cutting. They grow from 3 to 5 feet and are in many colors in white, pink, purple, yellow and many various shades. Excellent for borders. Pkt. 10c. Post Paid.

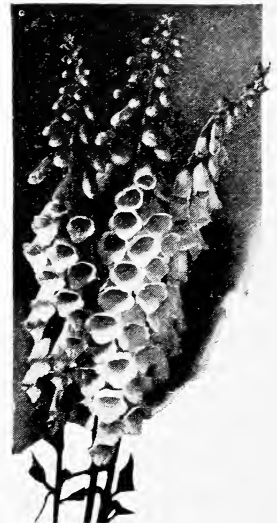
GAILLARDIA—Single and double mixed. There is nothing more admired for their rich blending of colors than the gaillardia. They thrive everywhere and their colors are very gorgeous. The plants grow from 1 to 2 feet high and the double daisy-like flowers are very fine for cutting. Pkt. 10c. Post Paid.

GODETIA—Quick growing and profuse flowering hardy annual of showy colors. Easily grown by anyone. Sow seed early in open ground. The equal of an Azalea. Pkt. 10c. Post Paid.

GYPSOPHILA — (*Baby's Breath*)—Pretty free flowering, elegant plants, succeeding in any garden soil. Their misty white panicles of bloom are largely used for mixing with other cut flowers. Pkt. 10c. Post Paid.

HELIOTROPE—Highly valued for the fragrance of their flowers and duration of bloom. Pkt. 10c. Post Paid.

HOLLYHOCK — Everblooming annual. The annual kind bloom the first year from seed. Sown in May they will flower in August, but if started inside and set out early they will bloom in July. They are free bloomers and continually in bloom throughout the season. Pkt. 10c. Post Paid.



Foxglove

MIGNONETTE—A well-known hardy annual, producing exceedingly fragrant flowers. Seed sown in autumn will bloom early in the spring; thrive best in cool temperature; 1 foot high. Pkt. 5c; oz. 25c. Post Paid.

MARIGOLD—Old-Fashioned flower blooming in profusion; usually 2 feet high; blooms till frost comes....Pkt. 10c. Post Paid.

MORNING GLORY—Handsome, showy climber, suitable for covering windows, trellis, old stumps, etc., if support be given the vines. Hardy annual; 10 feet high. Pkt. 5c; oz. 25c. Post Paid.

NASTURTIUMS—Giant Climbing—The best of the climbers, as the leaves are the most attractive and the flowers are held out from the foliage better. The foliage is very dark green and the flowers of a great variety of colors measure as much as 3½ inches across. Pkt. 5c; oz. 15c. Post Paid.

DWARF or TOM THUMB Nasturtiums are fine for bedding and have large flowers of every known color with a goodly mixing of the darker shades. It is well to plant the mixed, tall and short growing for bedding, as the tall growing hold up the mass of foliage and they make a better effect than if the dwarf kinds only were planted. Pkt. 5c; oz. 15c. Post Paid.

PANSIES—Pansies are now produced in almost infinite variety of form, color and markings. Choice Giant Mixed, all colors. Pkt. 10c. Post Paid.

PHLOX—Mixed will produce all the shades in red, crimson, rose, violet and purple and the best in the striped kinds. There is nothing better than the annual Phlox for bedding, as its bright colors cannot be excelled. It is one of the easiest of the annuals to raise and give a wonderful range of colors. Pkt. 10c; ¼ oz. 40c. Post Paid.

PINKS—(Dianthus)—For beautiful and lasting cut flowers, ease of culture and freedom of bloom, the hardy garden pinks have no superior among annuals. Pkt. 5c; ¼ oz. 25c. Post Paid.

POPPIES—No other flower produces a more brilliant display of colors during the blooming period.

New Shirley—Pkt. 10c. Post Paid.

Oriental Poppy—Pkt. 10c. Post Paid.

Eschscholtzia (California Poppy)—Pkt. 10c. Post Paid.

PORTULACA or ROSE MOSS—There are few flowers in cultivation that make such dazzling display of color in the bright sunshine as a bed of Portulacas. The flowers close in shadow, but are open in sunshine. Pkt. 10c. Post Paid.

PETUNIA—For freedom of bloom, variety of color and effectiveness these have no equals. A little care bestowed upon them, Petunias will produce their handsome, sweet-scented flowers in delicate and gorgeous colors throughout the whole summer. Pkt. 10c. Post Paid.

SMILAX—A climbing plant that holds beauty in its rich dark green shiny foliage. When grown in hanging baskets it droops in a graceful manner that makes it a favorite for that use. Pkt. 10c. Post Paid.

SNAPDRAGON (Antirrhinum)—These tall growing plants have spikes of flowers of very gorgeous colorings, growing to a height of about 2 feet, fine for flower beds or borders and can be cut back in September and potted for winter flowering. All the best colored kinds are produced from our selection of seed. Pkt. 10c. Post Paid.

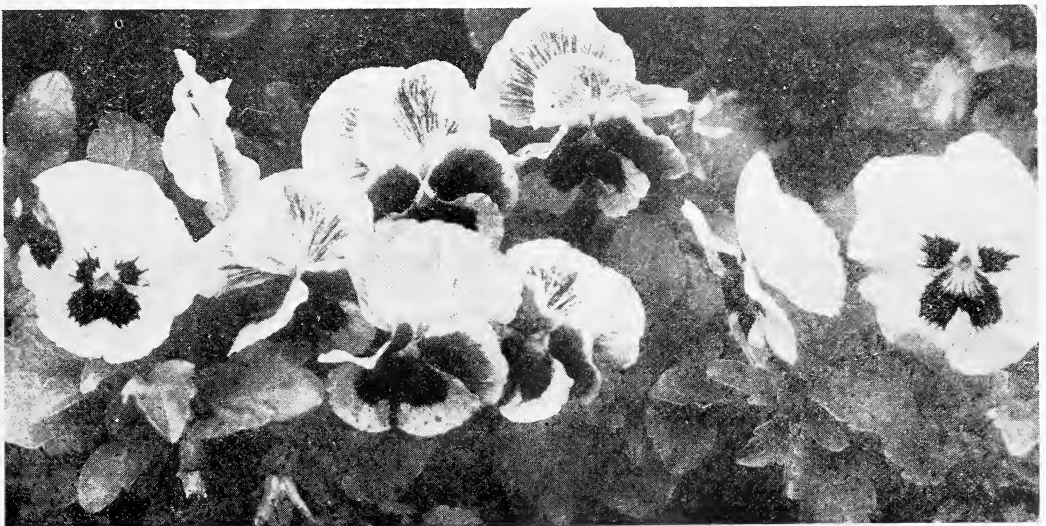


Nasturtiums

SALPIGLOSSIS—Very showy bedding or border plants, with richly-colored, funnel shaped flowers, which are purple, scarlet, crimson, yellow, buff, blue and almost black; height, 1 foot. Fine mixed sorts. Pkt. 10c. Post Paid.

SALVIA (Scarlet Sage)—The most brilliant colored flowers and extremely useful for bedding. Blooms are of fiery red crimson color, continuing to flower for a long time. Tender perennials; blooms until frost; height 3 feet; Splendens. Pkt. 10c. Post Paid.

STOCKS—The Ten Weeks Stocks produce immense spikes of perfectly double flowers, measuring from 2 to 2½ inches in diameter in colors of white, rose, blue, lilac, brown and yellow. They are very fragrant and fine to grow for cut flowers. Our assortment of seed includes the best colored and double kinds. Pkt. 10c. Post Paid.



PANSIES—Giant Trimardeau Mixed—Pkt. 10c; ¼ oz. 50c. Post Paid.

FLOWERS—(Continued)

Sweet Peas

Sweet Peas are among the most beautiful of all our hardy annuals. Select a sunny, open place several feet from any building and as far as possible from large trees. Sow as early in the spring as possible. Plant in rows and have the rows trenched for planting 4 to 6 inches deep. In dry weather water freely and keep the flowers picked closely. If allowed to go to seed plants will stop blooming.

THE SPENCER TYPES are exceptionally large size, with long stems, the wings waved or frilled and the effect remarkably graceful and attractive.

APPLE BLOSSOM SPENCER—(Rose Spencer)—Standard with primrose wings. Very large; true Spencer form. Pkt. 10c; oz. 25c. Post Paid.

PINK SPENCER—Some of the flowers show striping. It is one of the most attractive varieties ever introduced. Pkt. 10c; oz. 25c. Post Paid.

WHITE SPENCER—Standard and wings of pure white, beautifully waved and fluted. An especially attractive variety of very large size. Pkt. 10c; oz. 25c. Post Paid.

MRS. HUGH DICKSON (Salmon Pink Spencer)—A light on cream background, strong growers; throws four flowers to a stem. Pkt. 10c; oz. 25c. Post Paid.

FIERY CROSS—One of the finest new bright reds with cherry orange wings. Pkt. 10c; oz. 25c. Post Paid.

KING EDWARD VII (Red Spencer)—The best pure red Spencer; very large, with especially immense wings. Pkt. 10c; oz. 25c. Post Paid.

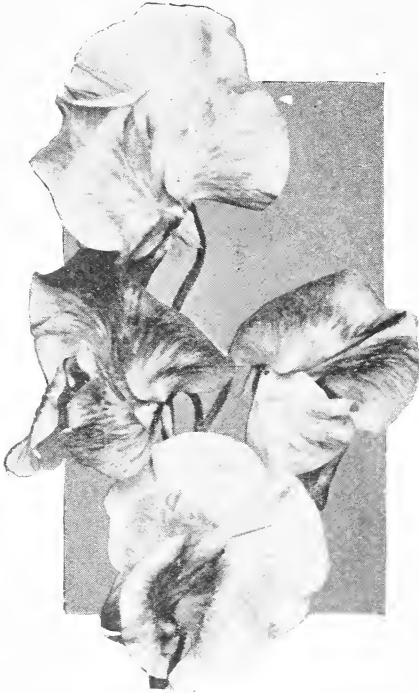
OTHELLO (Maroon Spencer)—Of immense size with large drooping wings; rich maroon. Pkt. 10c; oz. 25c. Post Paid.

PALMER'S ORCHID FLOWERED OR SPENCER SWEET PEA MIXTURE

A strain of unsurpassed quality comprising the best giant flowering sorts in a wide range of color from a well known American Specialist. Packets, 10c; oz. 20c; ¼ lb. 50c; lb. \$1.75. Post Paid.

PALMER'S BRILLIANT MIXTURE

A well blended mixture of the Grandiflora or Large Flowering type which will give excellent results. Packets, 5c; oz. 10c; ¼ lb. 30c; lb. 90c. Post Paid.



Sweet Peas

SUNFLOWER—The Double Dwarf or Globe of Gold is very double and round in form. They make a stately growth and remain in bloom for a long period. As a back-ground for the garden they are very useful. Pkt. 10c. Post Paid.

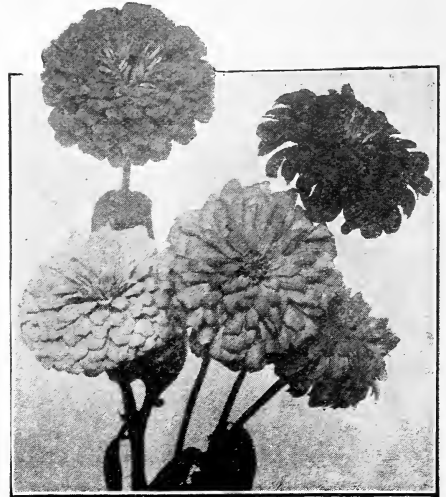
SWEET WILLIAM—Fine for beds and borders. The seed can be planted in the spring in the open ground and will blossom in the fall. Hardy perennial; 1½ feet high. Pkt. 10c. Post Paid.

VERBENA—Sown in May, they will bloom in August, but if started in the house in pots in winter, they will be in bloom sooner. Seeds should be soaked in luke warm water before planting, and care should be taken that the soil be very rich. Pkt. 10c. Post Paid.

WALLFLOWER—Dwarf Double Branching Mixed—Wallflowers should be better known, as their adaptability for pot culture and out-of-door bedding and the peculiar sweet fragrance of the flowers makes them a great favorite with all that grow them. The oriental colorings of the flowers in their rich reds and yellows is very effective. Pkt. 10c. Post Paid.

CHINESE WOOL FLOWER—This is the finest type of Celosia there is and has made a great sensation wherever grown. They are easily grown and have a plume-like head of dazzling colors in various shades of dark red and purplish-red. Are very valuable for decorative purposes and keep a long time when cut and placed in water. Pkt. 10c. Post Paid.

ZINNIA—Few flowers are more easily grown or bloom more abundantly throughout the season. Sow the seed early and transplant to 1½ feet apart in good rich soil. Mixed Double, all colors. Pkt. 10c. Post Paid.



Zinnias

Palmer's Special Offer of Flower Seed Collections

GIANT SPENCER SWEET PEAS

A DESIRABLE ASSORTMENT

10 Packets — 10 Varieties

50c

RETAIL VALUE \$1.00

GIANT FLOWERING ZINNIAS

WILL BLOOM ALL SUMMER

6 Packets — Separate Colors

40c

RETAIL VALUE 60c

Beautifully illustrated with cultural directions.

Palmer's Super-American Asters

This popular flower needs no introduction but the strains offered here come from the best specialist in America, are absolutely up-to-date, of the highest development in their respective classes and will give abundant bloom from late June until frost.

ALL ASTERS PARCEL POST PAID

EARLY WONDER ASTERS—The earliest blooming asters with large full flowers of the Comet type. Height 16 inches.

Pink, Packet, 10c; White, Packet, 10c; Purple, Packet, 10c.

CREGO'S IMPROVED GIANT COMET ASTER—(Midseason)—The finest of this type with long full fluffy flowers. Height 2½ feet.

Crimson, packet	10c	Deep Lavender, packet.....	10c
Dark Blue, packet.....	10c	Pure White, packet	10c
Light Blue, packet	10c	Mixed, ¼ oz.	50c
Shell Pink, packet.....	10c	Packet	10c

Special Collection, 6 Separate Colors for.....50c

KING ASTERS—A distinct type of sturdy habit with large double flowers and attractive quilled petals. Height 18 inches.

Crimson, packet.....	10c	Pure White, packet.....	10c
Lavender, packet	10c	Shell Pink, packet.....	10c
Brilliant Rose, packet.....	10c	Mixed, ¼ oz.	50c
Violet, packet	10c	Packet	10c

Special Collection, 6 Separate Colors for.....50c



Mixed Asters

ASTERS OF SPECIAL MERIT

CRIMSON GIANT—Large, showy, bright crimson double flowers measuring 4 to 5 inches across. Height 2 feet. Parcel Post Paid. Pkt. 10c.

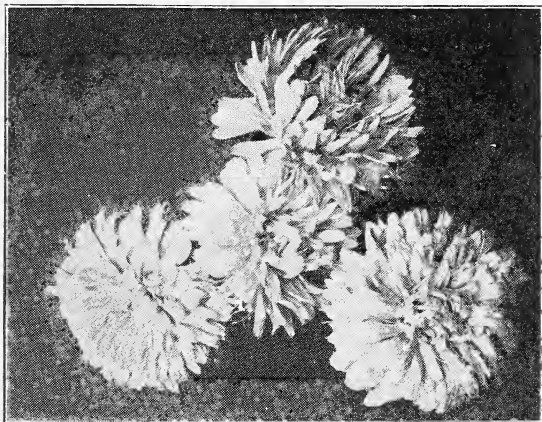
LAVENDER GEM—A lovely shade of lavender of the Comet type. An ideal sort for cutting. Parcel Post Paid. Pkt. 10c.

RED ASTER SENSATION—The double flowers are in tense red, measuring 3½ inches across and of free branching habit. Parcel Post Paid. Pkt. 10c.

QUEEN OF THE MARKET ASTERS—An early flowering aster of branching habit and excellent for cutting. Height 18 inches. Choice Mixed. Pkt. 10c; ¼ oz. 40c.

PEERLESS PINK ASTER—The finest aster of the late branching type. The flowers measure 4 to 5 inches across and 2½ inches in depth. Height 2½ feet. Pkt. 10c.

HEART OF FRANCE—Very large, rich dark red of branching habit. 2 feet. Pkt. 10c.



Crego Asters

SUPERB LATE BRANCHING ASTERS—Plants 2½ to 3 feet high, of branching and robust habit. Flowers double and of fine form.

Azure Blue, packet	10c
Pale Lavender, packet.....	10c
Crimson, packet	10c
Deep Purple, packet	10c
Rose Pink, packet	10c
Shell Pink, packet	10c
Deep Rose, packet	10c
Pure White, packet	10c
Mixed, ¼ oz.	50c
Packet	10c

Special Collection—8 Packets separate colors for.....60c

EARLY BRANCHING or ROYAL ASTERS—May be classed as dwarf early branching, following the Queen of the Market. Height 2 feet.

Lavender, Packet	10c
Purple, packet	10c
Rich Rose, packet	10c
Rose Pink, packet	10c
Shell Pink, packet	10c
Pure White, packet	10c
Mixed, ¼ oz.	50c
Packet	10c

Special Collection—6 Packets separate colors for.....50c



Superb Late Branching Aster

Palmer's Superb Gladiolus

In considering America's beautiful flowers one cannot help but think of Gladiolus as one of the leaders. In them are found the most exquisite shades and contrasts, making it one of the most attractive summer flowers. As a border flower or in a bed Gladiolus produces an effect that pleases. Keep in step with the ever increasing appreciation of this marvelous flower by planting a group in your flower garden. You will be amazed at their beauty. Plant 4 to 6 inches apart and 4 inches deep from May to June.

The Best Large Flowering Varieties for Show or Cutting Superb Large Flowering Gladiolus

Add 25c to 100 rate if sent by Parcel Post.

	Price Per Doz.	Per 100
AMERICA—Beautiful soft pink.....	\$0.60	\$4.00
ANNA EBERIUS—Dark velvety purple.....	.90	6.00
EVELYN KIRTLAND—Rosy pink with scarlet blotches.....	.60	4.50
FLORA—Large golden yellow.....	.90	6.00
GRETCHEN ZANG—Lovely soft pink with scarlet markings.....	.90	6.00
HERADA—Pure mauve with deeper markings in the throat.....	.75	5.50
LE MARECHAL FOCH—Large rose pink, very early.....	.85	6.00
MRS. FRANCIS KING—Light scarlet or flame color.....	.60	4.50
MRS. FRANK PENDLETON—Salmon pink with deep red blotches in the throat.....	.60	4.50
PANAMA—Rich rose pink.....	.60	4.00
PEACE—Large white with touch of carmine in the throat.....	.75	5.50
PRINCE OF WALES—Delicate apricot pink, suffused salmon.....	.60	4.50
WAR—Lovely rich crimson.....	.90	6.00
HALLEY—Delicate salmon pink, early.....	.60	4.00
SCHWABEN—One of the best yellow sorts.....	.60	4.50
WILLBRINK—Early, delicate pink.....	.60	4.50
MRS. DR. NORTON—White, soft pink and primrose yellow.....	.90	6.00
PRIMULINUS HYBRIDS MIXED—A strain of brilliant and beautiful orchid like flowers produced on strong slender spikes. An ideal strain for cutting or making showy display. Per doz. 50c; \$3.50 per 100.		
PALMER'S SUPERB MIXTURE—As its name implies this mixture comprises varieties of special merit that will please the most critical grower either for cutting or bedding. Doz. 75c; per 100, \$4.00.		
PALMER'S SPECIAL MIXTURE—We offer this carefully blended mixture with the assurance that it will give the utmost satisfaction. Doz. 50c; per 100, \$3.00. Single Bulbs of the above, 10c each, prepaid.		

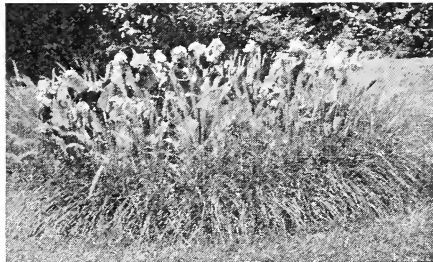


Gladiolus

Orchid Flowering Cannas

These magnificent Summer Flowering plants ranging in height from 3 to 6 feet are most effective when planted on the lawn in groups, circular beds, or along the border.

- CITY OF PORTLAND—3½ feet. Large flowers, glowing shade of pink.
- EUREKA—Beautiful large white..
- MRS. ALF. CONRAD—4 feet. Salmon pink; flowers large size.
- GLADIOFLORA—3½ feet. Crimson, changing to carmine rose; edged gold, green foliage.
- CANDELABRA—Three to five branches on each stalk. Orange, scarlet.
- GOLDEN GATE—Flowers pure gold richly rayed with orange, crimson and apricot.



Cannas

- KING HUMBERT—4 feet. Bronze foliage. Flowers very large with broad, rounded petals. A glowing orange scarlet streaked with crimson.
 - THE PRESIDENT—4 feet. Rich, glowing scarlet; immense, firm flowers.
 - WINTZER'S COLOSSAL—Largest flowered, of vivid scarlet.
 - YELLOW KING HUMBERT—4 feet. Green foliage. Large flowers of deep, rich yellow softly blotched with bright red.
 - WABASH—Bronze leaved. Pink.
- Any of the above choice sorts 20c each; per dozen \$2.00, postpaid. Roots will be ready in March and April.



Lily Speciosum

Japanese Lilies

(HARDY)

- Magnificent giant flowering Lilies blooming in July and August. Delightfully fragrant.
- LILIUM SPECIOSUM ROSEUM—Rosy, white with crimson spots.
 - LILIUM SPECIOSUM ALBUM—White with greenish band thru the petals.
 - LILIUM AURATUM—(The Golden-Banded Lily of Japan).—Large fragrant white flowers, with chocolate crimson spots and golden yellow band through center of petals. One of the finest.
- Any of the above 35c each; \$4.00 per doz. Postpaid.



Field of Peonies

Palmer's Double Peonies

Too much praise cannot be bestowed upon these "Queen of Spring Flowers" which provide so much pleasure early in June when their beautiful huge blooms are so much admired and appreciated. The popularity of this old garden favorite is attested by the remarkable increase in production in the last decade.

We offer some of the most popular varieties as follows:

	Price, Each Postpaid	Dozen
EDULIS SUPERBA—Early clear pink.....	\$0.50	\$5.00
MADAM CALOT Hydrangea—Pink with sulphur tint.....	.50	5.00
CHARLEMAGNE—Lilac white, salmon pink center.....	.50	5.00
LOUIS VAN HOUTTE—Rich deep crimson.....	.50	5.00
FELIX CROUSSE—Dazzling ruby red.....	.85	9.50
FESTIVA MAXIMA—Early, pure white flecked with crimson in center.....	.75	7.50

Add 25c to dozen rate if sent by Parcel Post.

Tuberose

DOUBLE PEARL, SELECTED BULBS—Delightfully sweet scented white flowers. Plant early in May. Each 10c; \$1.00 per doz.; Postpaid. \$7.50 per 100. Postpaid.

MADEIRA OR MEXICAN VINE

Fragrant white flowers with clean glossy green foliage and free from insects. Each, 10c; \$1.00 per dozen. Postpaid

Caladium, or Elephant's Ear

Excellent to give your lawn a tropical effect with their wide spreading leaves. Plant early, give them rich soil and a generous supply of water.

	Each Postpaid	Dozen
First size	\$0.10	\$0.75
Medium size25	2.00
Extra Large size40	4.00

Add 20c to dozen price if sent by mail.

Select Dahlias

We offer a large assortment of selected field grown roots of the different classes under the following separate colors:

Red—Pink—White—Yellow. 25c each; \$2.50 per doz. Postpaid.

Upon request we shall be glad to quote you on any specific named varieties that you may desire.

CINNAMON VINE

Hardy, white, sweet scented climber with cinnamon-like odor attaining 15 to 25 feet when established. Each 10c; doz. \$1.00.



Dahlias

Super-Plants and Bulbs

Our growers supply us with strong, healthy plants that will start thriving immediately when you set them out. Taking the quality into consideration you will find our prices on all plants very moderate.

Bermuda Onion Plants

Every home gardener should raise a good supply of big, tasty, Bermuda Onions. They are by far the easiest to raise. They mature much in advance of any other variety. Plant in rows 14 to 16 inches apart and space the plants 4 inches in the rows.

CRYSTAL WAX — In appearance the Crystal Wax Bermuda exceeds all and immediately stands out as the most desirable. Has a clear white skin and a very mild delicious flavor. Per 100, 30c; \$2.50 per 1000; \$10.00 per case of 6000.

YELLOW BERMUDA—A light straw colored onion that is used almost entirely by the large growers of onions for market. Ripens early and produces a very fine flavored onion of large size. Per 100, 30c; \$2.00 per 1000; \$9.00 per case of 6000.

We have our Onion Plants shipped direct from our growing station. Order 10 days before you want to plant them and they'll come to you fresh.

CABBAGE PLANTS

	25	100	1000
Copenhagen	25c	75c	\$6.50
Wakefield	25c	75c	6.50
All Season	25c	75c	6.50

CAULIFLOWER PLANTS

Early Dwarf Erfurt, Doz. 15c; 4 doz. 50c; 8 doz. \$1.00

KOHLRABI PLANTS

White Vienna 25, 15c; 50, 45c; 100, 80c.

TOMATO PLANTS

	12	4 Dz.	8 Dz.
Ponderosa	20c	75c	\$1.30
New Stone	20c	75c	1.30
Globe	20c	75c	1.30
Beauty	20c	75c	1.30

PEPPER PLANTS

	12	4 Dz.	8 Dz.
Bell or Bull Nose	20c	75c	\$1.30
Chinese Giant	20c	75c	1.30
Red Cayenne	20c	75c	1.30

SWEET POTATO PLANTS

Red, Yellow and White..... 100, 75c; 1000, \$6.00
(Ready in May)

Roots

ASPARAGUS ROOTS

Strong two-year-old roots..... \$1.25 per 100 lbs.
Giant Washington Rust Proof, 50, \$1.60; 100, \$1.75; 1000, \$16.00.
Palmetto 50, 90c; 100, \$1.00; 1000, \$10.00

HORSERADISH ROOTS

\$1.09 per 100 lbs.
Our special variety of horseradish roots will produce good horseradish for use in one season's growth.

RHUBARB ROOTS

Each, 15c; per dozen, \$1.60.
Every garden should have a row of rhubarb. Requires little labor to plant and will bear prolifically for several years.

Legume Inoculation HUMOGERM

Seed Inoculation

The Best Inoculation for All Legume Seeds
Means Better Crops, Better Soils, Less
Fertilizer Expense

Seeds of all Legumes—Clovers, Alfalfa, Sweet Clovers, Garden Peas, Beans, and Sweet Peas, Vetches, Soy Beans, etc.—will yield far better results if inoculated with HUMOGERM, and, in addition, leave in the soil a heavy deposit of nitrogen which benefits all succeeding crops. No other inoculant will produce the wealth of nodules obtained by using HUMOGERM. We believe in inoculation, we favor the soil medium, and we believe in HUMOGERM. Of all the inoculants manufactured, we believe it is the most effective, and cheapest, consistent with high quality.

WHAT HUMOGERM IS: A culture of bacteria especially selected and bred for maximum vitality and ability to take nitrogen from the air. They are carried in a sterilized, finely ground, porous humus medium that keeps them fresh, active, and vigorous. Economical and easy to use, HUMOGERM is a sensible insurance and a profitable investment.

HOW TO ORDER: Specify crop and number of bushels you wish to inoculate (one bushel size contains sufficient bacteria to thoroughly inoculate one bushel of designated variety of legume seed.)

OUR PRICES ARE LOW

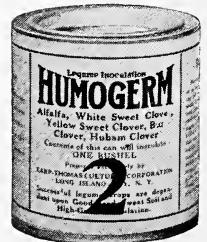
For small seeds—Clovers, Sweet Clovers, Alfalfa, etc.

1/4 bushel size.....	\$0.35	1 bushel size.....	\$1.00
1/2 bushel size.....	.60	2 1/2 bushel size.....	2.25

New Reduced Prices on Cultures for Large-Size Seeds—Soy Beans, Cowpeas, Peas, Beans, etc.

1/2 bushel size.....	\$0.35	1 bushel size.....	\$0.60
		5 bushel size.....	\$2.25

Special Garden Size for Garden Peas, Beans, and Sweet Peas, 25c.



Insecticides—Fungicides

SCALECIDE

THE COMPLETE DORMANT SPRAY



Known for many years as the most effective dormant spray for scale and many other pests. Scalecide alone does all that any combination of dormant sprays can do. It controls scale of all kinds, peach leaf curl, aphid and pear thrips, leaf roller, European red mite, bud moth, pear psylla, case-bearer, fire-blight and fungous cankers. In addition to all these things Scalecide invigorates trees.

Spray only on days when the temperature is above 40 degrees. Scalecide is pleasant to use—it does not injure even the eyes.

1 Quart Cans	Price
1 Gallon Cans, wt. 10 lbs.	\$.75
5 Gallon Cans, wt. 50 lbs.	1.75
2 Five Gallon Cans, wt. 100 lbs.	6.25
	10.60

15 Gallon Drum	Price
30 Gallon Bbl., wt. 270 lbs.	\$13.50
50 Gallon Bbl., wt. 450 lbs.	26.00
1 gallon makes 15 gallons of spray. Send for literature.	38.00

SULFOCID

A Better Summer Spray

SULFOCID—A highly concentrated, non-poisonous, liquid sulfur fungicide. Can be used on both peaches and apples and all kinds of fruits, vegetables and flowers. Within a few minutes after the spray is applied, it is broken down by the action of the air and the sulphur is deposited in the finest and most active fungicidal form. It gives the leaves a rich green color and imparts a beautiful lustre to the fruit. 1 pt. 70c; qt. \$1.00; gallon \$2.75. Use 1 qt. to 50 gallons of water.

HAMMOND'S SLUG SHOT—Non-poisonous; no danger to the person using it. It does not render vegetables or fruits on which it is applied injurious and is the best insect destroyer ever offered for the destruction of potato bugs, worms and all insects that chew. Price—5 lbs. 70c; 10 lbs. \$1.10; 50 lbs. \$5.50; 100 lbs. \$10.00. Cartons containing 1 lb. Slug Shot, 25c post-paid.

APHIS PUNK—Specially prepared for greenhouses and conservatories. It vaporizes the nicotine economically and evenly. Nothing keeps a house free from Aphis, Thrip and other plant parasites so thoroughly and cheaply. Dozen sheets in air tight package, \$1.00.

ARSENATE OF LEAD—A powder arsenic poison used to destroy leaf-eating insects that destroy foliage on shade trees, and similar insects that feed on the foliage of fruit trees, shade trees, vegetables, flowers and shrubbery. Mix 1 lb. to 50 gallons of water. Half lb. 30c; lb. 50c; 4 lbs. \$1.60.

BORDEAUX MIXTURE POWDER—A reliable fungicide. Especially recommended to control potato blight and fungus diseases affecting grapes. When used in water, for most purposes, use 6 pounds to 50 gallons of water. One gallon makes 16 to 20 gallons of spray. Send for circular, if interested. Half lb. 20c; lb. 35c; 4 lbs. \$1.50.

LIME AND SULPHUR SOLUTION—An up-to-date remedy for San Jose Scale and bark lice infecting fruit and shade trees. A superior fungicide and insecticide for summer use. Dilute 1 part of lime sulphur to 40 parts water. Quart 50c; ½ gallon 75c; gallon \$1.00; 5 gallons \$4.00.

BLACK LEAF "40" (Sulphate of Nicotine) for spraying. An economical and powerful extract to kill insects. Soluble in water. One oz. bottle 35c; ½ lb. tin \$1.00.

NIKOTEEEN (for spraying). An economical and powerful nicotine extract. One part to 600 of water to kill all insects. By express, not prepaid. Small bottles, 25c; ½ lb. bottle \$1.25.

TOBACCO DUST (fine). For green and black aphid, fleas, and beetles. Also a splendid fertilizer and preventive for insects in the ground and around roots. Per lb. 10c; 5 lbs. 40c; 100 lbs. \$4.50.



SEMESAN

Semesan Jr. Semesan Bel



The Premier Seed Disinfectants
Control Diseases, Increase Yields, Improve Quality

SEMESAN—The modern disinfectant can be applied in either liquid or convenient dust form to prevent or control effectively a most diversified variety of parasitic diseases and fungoid growths borne by seeds, seed pieces, plants, grafts and soils. Semesan is harmless to seed and plant life but extremely poisonous to disease and fungous organisms. It generally also hastens germination, produces sturdier plants, promotes earlier maturity and increases both the quantity and quality of crop yields.

SEMESAN JR.—A less expensive but equally effective form of Semesan for the dry dust disin-

fection of both field and sweet corn seeds against the ear, root and stalk rots. Under Government conducted field tests, Semesan Jr. successfully prevented or controlled these diseases and at the same time increased the yields obtained from diseased seeds by 10 to over 40 per cent.

SEMESAN BEL—Applied to whole or cut seed potatoes, either as a dry powder or a white-wash-like water mixture, Semesan Bel will prevent or control the common seed-borne potato diseases. In widely separated potato-growing sections it has caused quick sprouting, earlier maturity and greater yields.

PRICES FOR DU PONT SEMESAN

2 ozs.	\$0.50	5 lbs.	\$ 13.00
8 ozs.	1.60	25 lbs.	62.50
1 lb.	2.75	50 lbs.	122.50

SEMESAN JR. AND SEMESAN BEL

1 lb.	\$ 1.75
5 lbs.	8.00
25 lbs.	37.50

Free Descriptive Booklets Sent Upon Request
Semesan Disinfectants Make Good Seeds Grow Better

Sprayers that Pay Dividends

Judicious spraying of orchards and gardens is one of the best investments of time and money a gardener can make. By controlling and destroying insects and diseases of trees and plants you are rewarded with a greater yield of better quality fruit and vegetables. Every good gardener knows the value of regular spraying. We have to offer a few selected lines that have proved their worth.

Deming's Success Bucket Sprayer

Equipped with 4 ft. 3-8 inch hose and Bordeaux Nozzle. This is one of the best known and most serviceable bucket pumps on the market and can be used for many purposes. Price, \$7.00.



Auto Spray

Positively and Absolutely Guaranteed Against All Defects

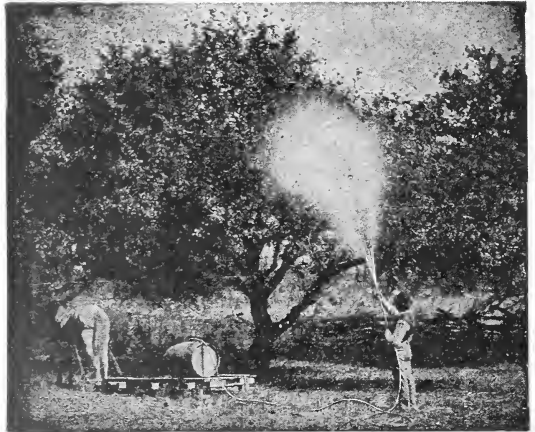
Eight or ten strokes of the air plunger in air chamber will compress enough air to discharge the entire contents and make a continuous spray for nine minutes. Has been improved by the addition of the "Auto Pop" shown in illustration.

	Price
Galvanized Tank with Stopcock	\$6.00
Galvanized Tank with Auto Spray	6.50
Brass Tank with Stopcock	9.00
Brass Tank with Auto Spray	9.50

Standard Spray Pump

Showing the Standard Pump attached to barrel with 30 feet of hose, enabling the operator to walk around without moving the barrel, covering the entire tree FROM THE GROUND without the use of elevated platforms, etc. An ideal orchard sprayer at small cost.

Standard Pump, complete with two nozzles and three feet of hose. Price, \$4.50.



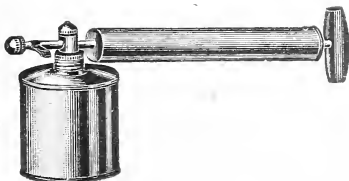
The Faultless Insect Exterminator

Galvanized Sprayer, 60c each. Brass Sprayer, \$1.00 each.

G. V. Sprayers

Due to its wide range of usefulness this all-purpose sprayer is becoming more in demand each year. Just like a garden hose, it throws a variable stream of liquid from a steady stream to a light mist with stopping operation. Successfully sprays water, insecticides, paint, varnish and all kinds of powders. "A dozen sprayers in one" as one user has chosen to term it. Can also be used as a blow torch.

No. 1, Tin, \$1.25; No. 2, Brass, \$1.65; No. 3, an intermittent tin sprayer for 50c.



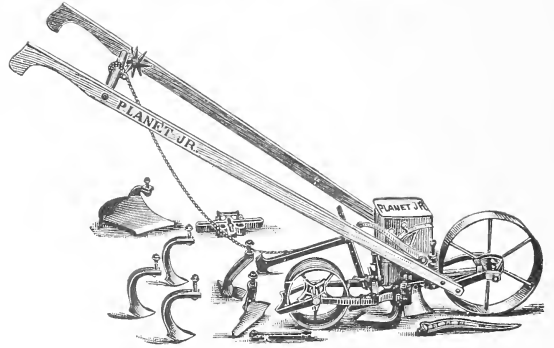
Planet Jr. Garden Tools

NO. 4 PLANET JR. COMBINED HILL AND DRILL SEEDER, WHEEL HOE, CULTIVATOR AND PLOW.

This tool combines, in a single convenient implement, a capital hill-dropping seeder, a continuous row seeder, an admirable single wheel hoe, an excellent furrower, a capital wheel cultivator and a rapid and efficient wheel garden plow. In a word, with a great variety of tools, excellent in design and quality, it is without an equal for easy adjustment, lightness, strength and beauty. It is a practical, every-day time, labor and money saver. Holds 2½ quarts of seed.

Weight, 49 pounds.

Price, complete\$18.00
As a seeder only..... 14.25



NO. 3. PLANET JR. HILL AND DRILL SEEDER

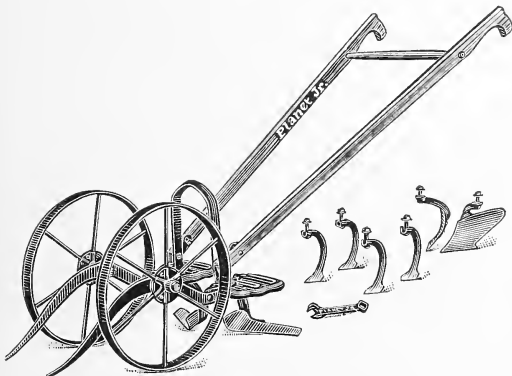
A favorite among onion growers, market gardeners and seedsmen.

The hill dropping is simple and reliable, making hills either 4, 6, 8, 12 or 24 inches apart.

Change of distance between hills may be made in less than a minute by substituting one gauge wheel for another.

Has 15-inch steel driving wheel. Holds 3 quarts of seed. Weight, packed, 44 lbs. Price.....\$17.50

NO. 12 DOUBLE WHEEL HOE, CULTIVATOR AND PLOW



The Planet Jr. Double Wheel Hoes are the greatest cultivating tools in the world for the onion grower, and also garden crops from drilled seed. They do more and do it better and easier than can be done in any other way. The frame is steel.

The plows are invaluable; use them with points together for opening furrows for manure, seeds, etc., then exchange sides for covering. Use them also for plowing away from or toward the crop, both sides at once.

The cultivating teeth for deep or shallow work, and for marking out.

Leaf lifters enable fine work to be done when plants are large or leaves are flat on the ground.

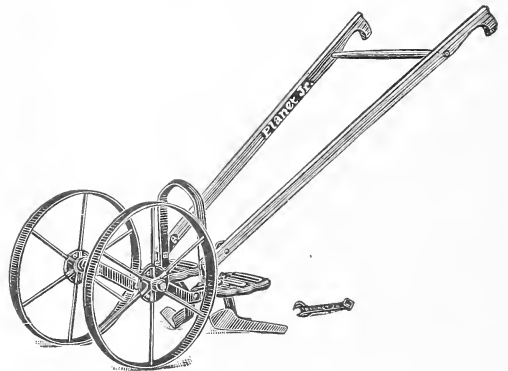
Price\$10.75
Weight, 33 lbs.

NO. 13 DOUBLE WHEEL HOE

This tool has 6-inch hoes only, these being the tools that are most generally useful.

The hoes are the most valuable of all the wheel hoe attachments; are oil tempered and polished.

Price\$8.00
Weight, 27 lbs.

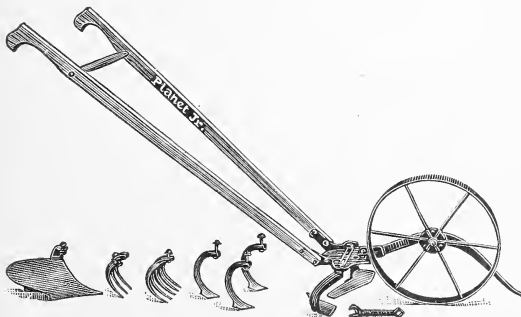


NO. 16 PLANET JR. SINGLE WHEEL HOE, CULTIVATOR, RAKE AND PLOW

This cultivator has a great variety of tools which adapt the implements to a large variety of work, and there is scarcely any garden culture of which they are not capable.

The handles are adjustable in height. The frame is steel, convenient and strong, with quick change device by which to exchange the tools.

Price\$9.00
Weight, 25 lbs.



Build Up Your Soil This Year



PLANT FOOD Makes Things Grow

SACCO is a specially prepared PLANT FOOD for the development of fine LAWNS, GARDENS, SHRUBS, FLOWERS and TREES. It has the endorsement of highest authorities on plant nutrition.

SACCO is very effective and economical. A light application once or twice a year, of 2 to 4 pounds per hundred square feet, will keep the lawn in excellent growing condition.

SACCO has four times as much plant food value as pulverized manure. Full directions for use on each package.



Clean--Odorless--Easy to Apply

1 lb. Can	\$0.25
5 lb. Bag50
10 lb. Bag85
25 lb. Bag	1.75
50 lb. Bag	3.00
100 lb. Bag	5.00

THE
PLANT FOOD
without an
EQUAL!

Prepared Fertilizers

The human race could not be expected to live long without food; we must constantly nourish our bodies to keep in existence. How many people fail to realize that plant life needs food, also? They plant their gardens year after year, diminishing the fertility of the soil each time, but never put back plant food into the soil. As a result they do not get full rewards for their work because the soil does not produce as good crops. Use a liberal application of fertilizer this spring. You will have better success with your gardening.

PULVERIZED SHEEP MANURE

This makes an efficient top dressing for lawns, requiring about 100 lbs. to 1000 square feet. Promotes increased vigor and productivity in garden and field crops when applied at the rate of 1 to 2 tons per acre. Price—5 lbs 30c; 10 lbs. 50c; 25 lbs. \$1.00; 50 lbs. \$1.75; 100 lbs. \$3.00.

HYDRATED LIME

Sweetens the soil and corrects acidity, making plant food elements more available. Price—10 lbs. 45c; 50 lbs. \$1.00.

NITRATE OF SODA

A soluble nitrogen fertilizer well known for its crop increasing results. (By express or freight only; cannot be mailed.) Price—lb. 15c; 10 lbs. \$1.10; 50 lbs. \$3.50.

BONE MEAL

An excellent top dressing for all uses. Especially suitable for gardens and around fruit trees and shrubs. Use 400 to 500 lbs. per acre. Analysis 1 $\frac{1}{4}$ -29-0. Price—10 lbs. 60c; 25 lbs. \$1.50; 50 lbs. \$2.25; 125 lb. sacks \$4.75.

Concentrated Fertilizers

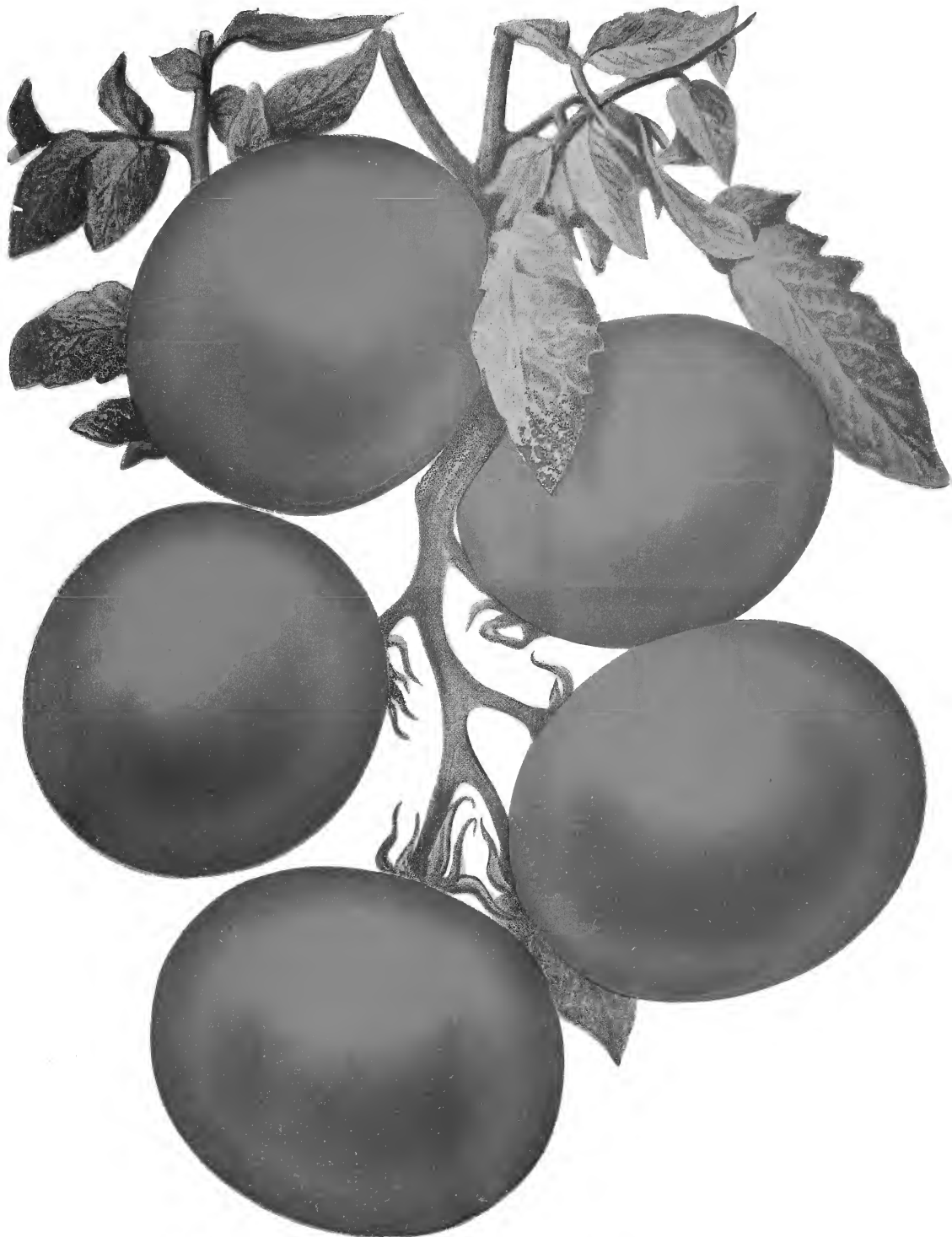
STIMUPLANT

Tablet form fertilizer for house plants, garden crops and flower beds. Rich in concentrated plant food, clean, odorless and convenient to use. Price—Box of 30 tablets, 25c.

FLORANID UREA

Contains 46 per cent nitrogen. A high grade organic plant food for vegetables, flowers, shrubs, and lawns. Pleasant to use and produces remarkable results. Price—Half lb. can 50c; lb. can 75c; 50 lbs. for \$11.00.

The Latest Sensation in Tomato Improvement!



Marglobe Tomato (Wilt Resistant)

A new early tomato with strong, vigorous vines producing beautifully shaped scarlet fruit. Will successfully withstand long periods of unfavorable weather, and is praised everywhere for its ability to resist Nailhead Rust and Fusarium Wilt. It is making a big hit with canners—one crop last year yielded 21 tons per acre. Give Marglobe a prominent place in your garden this year. Packet 25c; 1 oz. \$1.00; 1/4 lb. \$3.50; 1 lb. \$13.00.

Palmer's Super Quality LAWN GRASS SEED



**Forest
Park**

**Lawn
Grass**

Because of their original inheritance of vigor and beauty from carefully supervised fields, followed by the latest improved refining process, SUPER-QUALITY grass seeds represent the finest that nature produces. They are carefully selected and the quality is verified by careful tests before they are placed on the market.

We cater extensively to a critical trade, including many prominent golf courses, parks, estates and institutions. However, you will find our prices on the average not higher than you pay for the ordinary grades.

KENTUCKY BLUE GRASS (*Poa Pratensis*). The most popular and reliable of all domestic grass seeds. Produces a rich, green turf of firm structure which thrives easily under good care.

CANADIAN BLUE GRASS (*Poa Compressa*). Similar to Kentucky Blue Grass but of lighter green color and better adapted to poor, thin soils.

RED TOP GRASS (*Agrostis Alba*). An excellent fine leaved grass for quick growth. Used extensively in fairway mixtures on golf courses.

ENGLISH RYE GRASS (*Lolium Perenne*). A quick growing perennial grass, rather wide blades but very desirable in lawn mixtures for quick results.

CREeping BENT (*Agrostis Stolonifera*). By far the most beautiful of all turf grasses. It makes a low velvet like growth of rich green. Par-

ticularly desirable for putting greens and fine lawns.

RED CREEPING FESCUE (*Festuca Rubra*). A very fine grass producing an abundance of closely formed turf which makes an excellent lawn, flourishes well on sandy soils, but favorably adapted to the average soil as well.

ROUGH STALKED MEADOW GRASS (*Poa Trivialis*). Grows from one and one-half to two feet high, has a perennial creeping root and an erect, slender, smooth stem. Well adapted to shaded situations, such as orchards and parks. Sow about thirty pounds per acre. **Lb. \$1.00; bu. (15 lbs.) \$12.00.**

WHITE DUTCH CLOVER (*Trifolium repens*). This old reliable lawn grass needs no introduction as it is found everywhere.

Forest Park Lawn Grass

A SPECIAL FORMULA FOR OPEN OR SHADY PLACES.

This wonderful mixture is a blend of the most desirable imported and domestic grasses, each of which has its season of beauty. The result of this blending is the producing of a turf which is always green and velvety, insuring a beautiful lawn from early spring until late fall. Many of the finest lawns in our city are seeded with FOREST PARK LAWN GRASS. Inasmuch as a well blended mixture is to be preferred against a single variety of grass we recommend FOREST PARK LAWN GRASS to you as the best that can be produced. It is as free from impurities and weeds as expert knowledge and modern refining machinery can make it. Try it on your lawn this spring and we are sure you will use it always. If you pay twice as much you could not get better.

Prices on Lawn Grass Seed

	Lb.	3 lbs.	5 lbs.	10 lbs.		Lb.	3 lbs.	5 lbs.	10 lbs.
Forest Park Lawn.....	\$0.50	\$1.40	\$2.25	\$4.25	Red Creeping Fescue....	.60	1.75	2.75	5.50
Kentucky Blue Grass..	.50	1.40	2.25	4.25	South German Creeping				
Canadian Blue Grass....	.50	1.40	2.25	4.25	Bent	1.25	3.50	5.50	11.00
English Rye Grass.....	.25	.70	1.10	2.00	White Dutch Clover.....	.75	2.00	3.25	
Red Top.....	.50	1.40	2.25	4.25	Meadow Grass75	2.00	3.25	6.00

Sow 1 pound to 300 square feet.