

## **Historic, Archive Document**

Do not assume content reflects current scientific knowledge, policies, or practices.



RECORDED  
★ OCT 5 1926 ★

# Bulbs

and flower seeds  
for Fall planting

**California Wild  
Flower Seeds**



**Successful Gardens  
for 1926-27**

**THEODORE PAYNE**

345 South Main Street  
2969-99 Los Feliz Blvd

**LOS ANGELES**

D. N. Sheemaker

## Please Read Before Ordering

**HOW TO ORDER.** Write plainly your name, town, county and state, giving street numbers and postoffice box when expedient. Send all money by postoffice or express money order, bank draft or check, and small sums by registered letter. Postage stamps received in sums up to one dollar.

**NOTE.** Postage is prepaid only on orders amounting to One Dollar or more. Add 10c for postage on orders less than One Dollar.

**ORDER EARLY.** Orders will be filled in the order of receipt, and certain varieties may be sold out if orders are too long delayed.

# Flowers

*Fall and Spring*

1926-1927

Bulbs and Flower Seeds *for* Fall  
planting, *including* California  
Wild Flower Seeds



Theodore Payne

*Seedsman, Nurseryman*

*Landscape Architect*

345 S. Main Street      2969 99 Los Feliz Blvd

Los Angeles



## Landscape Department

Complete facilities for planning and planting of grounds of any size, type or location are at the disposal of architect or builder in either an advisory or constructive capacity. Creation of true California gardens a specialty. Suggestive plans and estimates cheerfully furnished.

## Ornamental Trees and Shrubs

A very complete assortment of trees, shrubs and flowering plants is on display at 2969-2999 Los Feliz Boulevard, between Hollywood and Glendale. An advisory service here is a feature that will be found of great help to the amateur gardener. Ten acres of plants and flowers are on display at all times and dependable information is given freely and cheerfully.

## California Native Trees, Shrubs and Plants

All of the better known and many of the rare species carried in stock for immediate planting. Being natives of California they are hardy, easily grown and require little water or care after becoming established. They are indispensable in hillside planting. Given the same care they are superior to the imported tree or plant in point of foliage and flower, and they will flourish where the other will perish, without care.

## Order Early

A knowledge both practical and scientific, acquired in thirty-three years of experience with plants and planting in California, is back of every item in this catalog—it is your guarantee of a

## *Successful Garden*

---

### AN APOLOGY

Owing to an unusual and unanticipated demand for our 1926 General catalog the supply is completely exhausted. A substantial increase in the number of copies over the 1925 edition were secured but not in sufficient quantity to meet the many requests we received. We ask your indulgence, and that you send in your name early to receive a copy of the 1927 edition, which will be the finest in our twenty-four years of business.

# Choice BULBS

Fall and Winter Planting, 1926-27



Emperor Narcissus

## NARCISSUS

The Narcissus is one of our most beautiful spring flowering bulbous plants, and thrives well in California. Some very desirable effects can be had by planting them in solid beds, and also by planting them among shrubbery and allowing them to become naturalized. They may be planted from the first of October to the middle of January, in any good garden soil, covering the bulbs to the depth of about 5 inches. The polyanthus varieties, of which the Chinese Lily is the best known, also succeeds well in water.

### SINGLE NARCISSUS

With Long Trumpets or "Daffodils"

**Emperor.** Pure yellow, of immense size. Each 20c; doz., \$2.00; 100, \$12.00.

**Empress.** White perianth with golden yellow trumpet. Each, 20c; doz., \$2.00; 100, \$12.00.

**Glory of Leyden.** Deep yellow, large. Each, 20c; doz., \$2.00; 100, \$12.00.

**Glory of Sassenheim.** White perianth, large, deep yellow trumpet. Each, 25c; doz., \$2.50; 100, \$18.00.

**Golden Spur.** Large, deep golden yellow, early, fine for forcing. Each, 20c; doz., \$2.00; 100, \$12.00.

**King Alfred.** (Novelty.) Flowers of great substance, clear golden yellow, tall vigorous grower. Each, 50c; doz., \$5.00; 100, \$30.00.

**Madame de Graaff.** Pure white perianth, soft primrose trumpet shading to white. Each, 15c; doz., \$1.50; 100, \$10.00.

**Van Waverens' Giant.** (Novelty.) The largest Narcissus ever grown. A grand flower, perianth primrose with bright yellow trumpet. Each, 70c; doz., \$7.00; 100, \$50.00.

## SINGLE NARCISSUS

## With Large Cups

**Barri Conspicuus.** Primrose yellow, crown orange scarlet. Each, 15c; doz., \$1.25; 100, \$9.00.

**Sir Watkin.** Large, perianth light yellow, cup golden yellow tinted with orange. Each, 20c; doz., \$2.00; 100, \$12.00.

## With Small Cups

**Poeticus Ornatus.** "Pheasant's Eye." Pure white, cup edged with scarlet. Each, 10c; doz., \$1.00; 100, \$7.50.

## POLYANTHUS NARCISSUS

**Paper White Large Flowering.** Pure white. Each, 10c; doz., \$1.00; 100, \$7.50.

**Grand Monarque.** White, lemon cup. Each, 15c; doz., \$1.25; 100, \$9.00.

**Grand Soleil D'Or.** Yellow with orange cup. Each 20c; doz., \$2.00; 100, \$12.00.

**Chinese Sacred Lily.** White with yellow cup. Large bulbs. Each, 20c; doz., \$2.00.



Single Narcissus—Sir Watkin

## POETAZ HYBRIDS

This class of bunch-flowering Narcissus is the result of crossing the *Narcissus poeticus* and some of the polyanthus varieties. The flowers are large, more or less of the *Poeticus* shape, but produced several on a stem. They are of remarkably good substance, lasting well when cut.

**Aspasia.** Pure white, yellow eye; large flowers, four to five on a stem. Each, 20c; doz., \$2.00; 100, \$12.00.

**Elvira.** Pure white, yellow eye; large flowers, three to four on a stem. Each, 15c; doz., \$1.50; 100, \$10.00.

## JONQUILS

Much prized for cut flowers, on account of their fragrance and graceful forms. They are easily forced, and also grow well in the open ground. Plant in any good garden soil, covering the bulbs to a depth of about four inches.

**Campernelle Regulosus.** Clear yellow. The largest variety. Each, 10c; doz., \$1.00; 100, \$7.50.





Darwin Tulips

## TULIPS

For many years it was considered almost impossible to grow tulips successfully in Southern California, but of late years it has been demonstrated that the late flowering varieties can be grown here with the very best of results. A shady or partially shady situation is preferable, and they thrive best in a sandy soil, well enriched with plenty of rotten manure. The bulbs should be covered about five inches deep, and may be planted from October to January, though early planting is advisable. The Gesneriana Major is the large, late, scarlet tulip seen in many of the floral stores late in the spring and so greatly admired.

### DARWIN TULIPS

**Bleu Aimable.** Soft bluish lilac, very large flower. Each, 10c; doz., \$1.00; 100, \$7.00.

**Clara Butt.** Soft salmon rose, long stems. Each, 10c; doz., 90c; 100, \$6.00.

**Calliope.** Soft rose, margined pink. Each, 10c; doz., \$1.00; 100, \$7.00.

**Dream.** Beautiful lilac. Each, 10c; doz., \$1.00; 100, \$7.00.

**Euterpe.** Mauve lilac. Each, 10c; doz., \$1.00; 100, \$7.00.

**Flamingo.** Beautiful shell pink, white center. Each, 10c; doz., \$1.00; 100, \$7.00.

**Glow.** (Claude Gilot.) Vermilion scarlet, white base with blue markings. Each, 10c; doz., \$1.00; 100, \$7.00.

**Gretchen.** Soft blush, early. Each, 10c; doz., 90c; 100, \$6.00.

**King Harold.** Deep purple red. Each, 10c; doz., \$1.00; 100, \$7.00.

**La Tulipe Noire.** (The Black Tulip.) Immense flower of unique color. Each, 10c; doz., \$1.00; 100, \$7.00.

**Madame Krelage.** Soft rose, margined blush. Each, 10c; doz., \$1.00; 100, \$7.00.

**Massachusetts.** Vivid pink, white center, large. Each, 10c; doz., \$1.00; 100, \$7.00.

**Mr. Farncombe Sanders.** Dark rosy red, long stems. Each, 10c; doz., \$1.00; 100, \$7.00.

**Pride of Haarlem.** Old rose, immense flower. Each, 10c; doz., \$1.00; 100, \$7.00.

**Prince of the Netherlands.** Deep cerise rose, margined pink, pale blue center, large flower. Each, 15c; doz., \$1.25; 100, \$9.00.

**Professor Rauwenhof.** Bright cherry red, shaded salmon; fine for forcing. Each, 10c; doz., \$1.00; 100, \$7.00.

**Psyche.** Soft rose, inside silvery rose, base tinted blue. Large flowers on long stems. Each, 10c; doz., \$1.00; 100, \$7.00.

**Rev. Ewbank.** Heliotrope lilac, with paler edge. Each, 10c; doz., \$1.00; 100, \$7.00.

**Darwin Fine Mixed.** Each, 10c; doz., 80c; 100, \$5.00.

## BREEDER TULIPS

On account of their large size and unique colorings, these Tulips are now in great demand; we cannot recommend them too highly. They require the same treatment and bloom about the same time as the Darwin Tulips.

**Bronze Queen.** Soft buff, inside tinged golden-bronze. Each, 10c; doz., \$1.00; 100, \$7.00.

**Dom Pedro.** Coffee brown, shaded maroon, inside rich mahogany. A magnificent flower. Height 25 in. Each, 20c; doz., \$2.00; 100, \$12.00.

**Fairy.** (Panorama.) Terra cotta and bronze, large flower. Each, 15c; doz., \$1.50; 100, \$10.00.

**Feu Ardent.** Brilliant carmine red, long stems. Each, 20c; doz., \$2.00; 100, \$12.00.

**Godet Parfait.** Bright violet with white base. Height 30 in. Each, 20c; doz., \$2.00; 100, \$12.00.

**MacMahon.** Bronze violet, margined bronze yellow, immense flower. Each, 25c; doz., \$2.50; 100, \$15.00.

**Medea.** Crushed strawberry, shaded heliotrope, yellow center. Flower of immense size. Each, 10c; doz., \$1.00; 100, \$7.00.

**Prince of Orange.** (Sunset.) Terra-cotta with orange edge, extra fine. Each, 20c; doz., \$2.00; 100, \$12.00.

**Velvet King.** Velvety purple with yellow base, large flowers. Extra fine for forcing. Height 24 in. Each, 25c; doz., \$2.50; 100, \$15.00.

**Yellow Perfection.** Bronze yellow shaded deep golden yellow. Height 24 in.. Each, 15c; doz., \$1.25; 100, \$9.00.

**Breeder Tulips.** Fine mixed. Each, 10c; doz., \$1.00; 100, \$7.00.

## LATE OR COTTAGE TULIPS

**Bouton D'Or.** Pure yellow. Each, 10c; doz., 90c; 100, \$6.00

**Gesneriana Spathulata Major.** Crimson scarlet with blue black center; sweet scented. Each, 10c; doz., 90c; 100, \$6.00.

**Gesneriana Lutea.** Beautiful golden yellow. Each, 10c; doz., 90c; 100, \$6.00.

**Jaune D'Oeuf.** (Sunrise.) Golden yellow, shaded apricot. Each, 10c; doz., \$1.00; 100 \$7.00.

**Inglescombe Pink.** (Salmon Queen.) Rosy pink, tinted salmon. Each, 10c; doz., 90c; 100, \$6.00.

**Inglescombe Scarlet.** Intense scarlet, black base. Each, 10c; doz., 90c; 100, \$6.00.

**Inglescombe Yellow.** Large canary yellow. One of the best. Each, 10c; doz., 90c; 100, \$6.00.

**Maiden's Blush.** (Picotee.) White margined rose, recurved petals. Each, 10c; doz., 80c; 100, \$5.00.

**Moonlight.** Pale yellow, large flower. Each, 10c; doz., \$1.00; 100, \$7.00.

**The Fawn.** Rosy fawn color, shaded blush. Each, 10c; doz., 90c; 100, \$6.00.

**Late Tulips Mixed.** Each, 10c; doz., 70c; 100, \$4.00.

## TULIPA CLUSIANA

## "The Lady Tulip"

A charming little species from the Mediterranean region and Persia. Flowers white with dark base, flushed red on outside; very fragrant. It thrives especially well in Southern California and should be in every garden. Each, 15c; doz., \$1.25; 100, \$9.00.



*Income Properties* can be made to produce a higher return on the investment through attractive gardening. The cost is small and, unlike the building and furnishings, its value is mounting each year, increasing *both* income and valuation, not to mention greater desirability in the eyes of the prospective tenant.

"Investigate the Cost"

## HYACINTHS

Hyacinths may be grown in the open ground, in pots, or in glasses, and can be planted from the beginning of October until the end of December.

For the open ground, plant in light rich soil, covering to the depth of 4 to 5 inches.

For pots, plant one in a 5-inch pot, pressing the earth down firmly and leaving one-third of the bulb exposed; then place the pots on the north side of a building or in a cellar and cover with a layer of sand, earth or leaf mould to the depth of about 8 inches; after 4 or 5 weeks unearth the pots and gradually inure to the light.

For glasses, fill the glass with water so as to nearly touch the base of the bulb; place in a cellar or dark place for a few weeks until the roots have grown half way to the bottom of the glass; the water should be changed frequently, care being taken not to injure the roots. A piece of charcoal placed in the water will help to keep it pure.



Hyacinth L'Innocence

### NAMED SINGLE HYACINTHS

Each, 25c; doz., \$2.50; 100, \$20.00

- Gigantea. Light pink, very large truss.
- La Victorie. Bright carmine rose, very large truss.
- Queen of the Pinks. Bright rosy pink, enormous truss.
- Albertine. Pure white, early.
- La Grandesse. Pure white, extra large.
- L'Innocence. Pure white, large truss.
- Grand Maitre. Deep porcelain blue, large spike.
- King of the Blues. Rich dark blue.
- Queen of the Blues. Pale azure blue, large spike.
- City of Haarlem. Bright yellow.

### SINGLE BEDDING HYACINTHS

Each, 15c; doz., \$1.50; 100, \$10.00

- Dark Red. Dark Blue. Pure White. Rose and Pink. Light Blue. Mixed Colors.

## WATSONIAS

A beautiful flower from South Africa, and one which thrives remarkably well in our climate; plants grow from three to five feet high, and produce great spikes of large flowers, which are especially valuable for cutting, lasting a long time in water. The plants succeed best in a rich loam, with liberal dressing of well-rotted manure.

**O'Brieni.** Pure white. The plants grow 4 to 5 feet high and produce long spikes of large flowers. Very desirable for cutting purposes. Each, 5c; doz., 50c; 100, \$3.50.

**Angusta.** Bright scarlet; 2½ to 3½ feet. Each, 15c; doz., \$1.50; 100, \$10.00.

**Giant Lilac.** Soft lilac, very large. Plants grow 4 to 5 feet high. Each, 15c; doz., \$1.50; 100, \$10.00.



General Pershing  
Fanny Lyon  
Marion Welsh

J. J. Dean  
Edward D. Sturtevant  
Roberto

## MRS. BULLARD'S NEW HYBRID WATSONIAS

These grand new hybrid Watsonias were originated by Mrs. J. H. Bullard of Los Angeles, who has spent fifteen years crossing and selecting this beautiful flower. Some varieties have large open flowers with broad petals, while others are star-shaped. They are produced in many new and beautiful shades.

**Clementina.** Salmon-rose, free bloomer, 4 to 6 feet. Each, 35c; doz., \$3.50.

**Diana.** Rich lilac, free bloomer. Each, 75c; doz., \$7.50.

**Edward D. Sturtevant.** Orange salmon, a wonderfully vivid shade, large open flowers; 3 feet. Each, 50c; doz., \$5.00.

**Fanny Lyon.** Apricot-buff, large star-shaped flowers, free bloomer, 5 to 6 feet. Each, 75c; doz., \$7.50.



**New Hybrid Watsonia, J. J. Dean**

**General Pershing.** Light rose-pink, with salmon shading, broad petals, large bold flower, dwarf habit. Each, 50c; doz., \$5.00.

**Harry Johnson.** Salmon-pink, with bluish hue, large bold flowers with broad petals, one of the best, 3 to 4 feet. Each, 35c; doz., \$3.50.

**Hazel.** Light coral-pink, large star-shaped flowers, extra fine, 3 to 4 feet. Each, 50c; doz., \$5.00.

**Herbert Hoover.** Coral-pink, with orange shading, free and early bloomer, 3 to 4 feet. Each, 50c; doz., \$5.00.

**J. J. Dean.** Deep rose-pink with bluish hue, very large open flowers with broad petals, free flowering; one of the best. 3 to 4 feet. Each, 25c; doz., \$2.50.

**James MacGillivray.** Deep rosy pink with coral shadings; late bloomer. Each, 50c; doz., \$5.00.

**Madame Modjeska.** Rich deep magenta, broad petals, quite distinct. Each, 50c; doz., \$5.00.

**Marion Welsh.** Orange vermillion, a brilliant shade, star-shaped flowers, free bloomer, extra fine. 3 to 4 feet. Each, 50c; doz., \$5.00.

**Roberto.** Soft rose-pink, with coral stripe in center of petals, lavender-rose on reverse side, large bold flower with broad petals. 4 to 5 feet. Each, 75c; doz., \$7.50.

**Santa Ana.** Apricot, darker on outside of tube, star-shaped flowers, free bloomers. 3 to 3½ feet. Each, 75c; doz., \$7.50.

**San Diego.** Pale salmon-pink, with dark vein in center of petal. Each, 50c; doz., \$5.00.

**Mrs. Bullard's New Hybrids.** Mixed. Various shades of salmon, buff, pink, rose, orange, scarlet, lilac, mauve, purple and white. Each, 20c; doz. \$2.00; 100 \$14.00.

## ANTHOLYZAS

Interesting plants from tropical and South Africa which thrive well in our Southern California Gardens. Plant the bulbs in September or October in any good garden soil placing them 8 to 12 inches apart and two to three inches deep.

**Antholyza aethiopica.** Especially valuable for winter flowers, coming into bloom in January and February. The plants grow 3 to 4 feet high with rich green, handsome foliage and red-yellow flowers. Each, 10c; doz., \$1.00; 100, \$7.50.

**Antholyza watsonioides.** Flowers cinnamon-colored, in shape like a watsonia but with a longer and more curved tube. The plants grow 5 to 6 feet high and the flowers appear in late spring and early summer. Each, 15c; doz., \$1.50; 100, \$10.00.

## SPANISH IRIS

Spanish Iris succeed remarkably well in California, and are of the easiest culture. The bulbs may be planted from October to December, in any good, light soil, three to four inches deep and six inches apart. The flowers are on long stems and are almost equal to orchids for richness and variety of color. They last a long time in water and are largely grown by florists for cut flowers.

Each, 10c; doz., \$1.00; 100, \$7.00

**British Queen.** White, large flower.

**Cajanus.** Golden yellow; strong grower, long stems.

**Chrysolora.** Bright yellow.

**Flora.** Creamy white with pale lavender standards.

**King of the Blues.** Dark blue, extra fine.

**Louise.** Pale blue and white.

**Reconnaissance.** Deep brongze with golden blotch.

**Choice Mixed.** All colors.

## IRIS FILIFOLIA

**Imperator.** Deep blue, large flower on strong stems, extra fine for cutting. Each, 15c; doz., \$1.50.



Spanish Iris

## DUTCH IRIS

A new race resembling the well known Spanish Iris but of much more vigorous growth and flowering fully two weeks earlier. The flowers, which are very large, are of remarkable substance and produced in many beautiful shades of blue, purple, lavender and white with very conspicuous orange blotches on the wide falls. They require the same treatment as Spanish Iris.

Each, 15c; doz., \$1.25; 100, \$9.00

**Anton Mauve.** Pearl blue, large flower.

**Der Kinderen.** Dark blue and yellow.

**Frans Hals.** Falls pale primrose, standards pale blue.

**Hart Nibbrig.** Rich clear blue.

**Hobbema.** Falls primrose yellow, standards pale blue.

**Rembrandt.** Falls deep blue with orange blotch, standards dark blue.

**Roland Holst.** Lilac and yellow.

**Choice Mixed.** All colors.

## HARDY IRIS

Commonly called Flag Lilies. They may be planted in almost any good soil, a good mulch of well rotted manure before the flowering season helps to increase the size of the flowers.

**Catarina.** Light blue, large flowers. Each, 35c; doz., \$3.50.

**Crimson King.** Rich claret purple. Each, 15c; doz., \$1.50.

**Dalmatica.** Light blue. Each, 35c; doz., \$3.50.

**Delicatissima.** White and lilac. Each, 25c; doz., \$2.50.

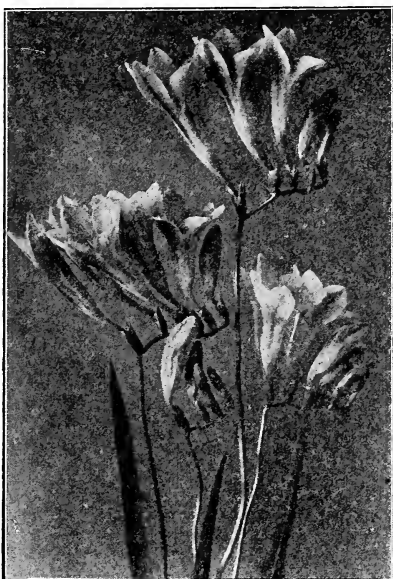
**Loreley.** Bronze and yellow. Each, 75c.

**May Queen.** Soft rosy lilac. Each, 25c; doz., \$2.50.

**Mrs. H. Darwin.** White and violet. Each, 25c; doz., \$2.50.

**Stella.** Light blue. Each, 15c; doz., \$1.50.

**Iris Stylosa.** Lilac blue. Each, 25c; doz., \$2.50.



Freesia, Purity

## FREESIAS

A very popular flower and one which does remarkably well in our climate. The bulbs can be planted from August to the middle of November, three or four inches apart and three inches deep. They bloom in February and March; the flowers, which are very fragrant, are largely used for cutting, and last a long time in water.

**Purity.** Pure white. Doz., 30c; 100, \$2.00.

**Purity.** Pure white. Mammoth bulbs. Each, 5c; doz., 40c; 100, \$3.00.

**New Rainbow Freesias.** Various shades of pink, rose, lilac purple, yellow and lavender. Each, 10c; doz., 80c; 100, \$5.00.

**California.** Bright golden yellow, large flowers; strong grower with long stems, one of the very best. Each, 10c; doz., \$1.00; 100, \$7.50.

**Carmencita.** New, orange salmon with buff shading on lower petals. Each, 10c; doz., \$1.00; 100, \$7.50.

**General Pershing.** Very large open flowers, pink and yellow suffused with bronze, extra fine. Each, 10c; doz., 90c; 100, \$6.00.

**Amethyst.** Rich amethyst blue, strong grower. Each, 15c; doz., \$1.25; 100, \$9.00.

**Aurora.** Yellow suffused with orange, large flowers. Each, 10c; doz., \$1.00; 100, \$7.50.

**Ilena.** Deep rosy lavender with orange blotch on lower petals; very attractive. Each, 15c; doz., \$1.25; 100, \$9.00.

**Mrs. Marc Peter.** Deep rose and salmon. Each, 15c; doz., \$1.50; 100, \$10.00.

**Olivette.** New, bright carmine red, with yellow throat. Each, 15c; doz., \$1.25; 100, \$9.00.

## CALOCHORTUS

"Mariposa Lily" or "Butterfly Tulip." The flowers are of the most varied and showy colors and resemble a tulip in form. Among the most beautiful of our native plants. The following species grow best in a rather heavy loam, but must have good drainage. Plant four to five inches deep. *C. albus* and *C. amabilis* succeed best in a shady situation.

*Calochortus albus*. "Fairy Bell" or "Lantern of the Fairies." Pendant globular flowers, pearly white, fine for fern beds and shady banks. Each, 5c; doz., 50c; 100, \$3.50.

*Calochortus amabilis*. "Golden Lily Bell." Pendant globular flowers, clear yellow. Useful for shady banks. Each, 5c; doz., 50c; 100, \$3.50.

*Calochortus catalinae*. "Common Mariposa Lily." Large handsome flowers, white or lilac with a large maroon spot at base of each petal. Height 1 to 2 feet; blooms several weeks before other Mariposas. Each, 10c; doz., 90c; 100, \$6.00.

*Calochortus clavatus*. "Large Yellow Mariposa Lily." Large flowers, sometimes 4 to 5 inches across, shaped like a broad based bowl; deep rich yellow, the lower half covered with stiff yellow hairs. Sturdy zigzag stems 2 to 3 feet high. Each, 15c; doz., \$1.50.

*Calochortus luteus*. "Yellow Mariposa Lily." Flowers yellow with penciled lines radiating from the base to center of petals. Each, 10c; doz., 80c; 100, \$5.00.

*Calochortus plummerae*. "Late Flowering Mariposa Lily." Large flowers, rich lavender purple, lined with long yellow, silky hairs. Grows 2 to 3 feet high. This species is of particularly easy culture, and will succeed in almost any garden. Flowers in early summer. Each, 10c.; doz., 90c; 100, \$6.00.

*Calochortus splendens*. "Lilac Mariposa Lily." Flowers clear lilac, 2 to 3 inches across, lower part of the petals covered with long cob-webby hairs. Each, 10c; doz., 90c; 100, \$6.00.

*Calochortus venustus oculatus*. White or pale lilac with reddish purple spot on the upper portion of each petal. The easiest kind to grow. Each, 5c; doz., 50c; 100, \$3.50.

*Calochortus venustus citrinus*. Similar to the preceding, but light yellow. Each, 10c; doz., 70c; 100, \$4.00.

*Calochortus venustus* El Dorado. Various shades of pink, rose, lilac, purple and white. Extra fine. Each, 10c; doz., 90c; 100, \$6.00.

*Calochortus vesta*. Very large, white flushed with lilac or rosy purple and red at center. One of the very best and of easy culture. Each, 10c; doz., 90c; 100, \$6.00.

*Calochortus*, choice mixed. Each, 5c; doz., 50c; 100, \$3.50

## LILIES

Lilies require good, rich soil, with thorough drainage, planting the bulbs about five inches deep.

*Auratum*. "Golden Banded Lily." White spotted crimson, with a distinct golden stripe running through each petal. Each, 35c; doz., \$3.50.

*Candidum*. "Annunciation Lily." "Madonna Lily." Large pure white, fragrant flowers. An old favorite and one of the hardiest of lilies. Each, 35c; doz., \$3.50.

*Humboldtii*. "Tiger Lily." A beautiful native California lily, growing from four to five feet high, with eight to twelve flowers on a stem; deep orange spotted with maroon; often five to six inches in diameter. Grows in partially shaded places, in rich loam, mixed with decomposed leaves. Each, 25c; doz., \$2.50; 100, \$15.00.

*Longiflorum giganteum*. "Easter Lily." Large, trumpet-shaped, pure white flowers; very fragrant. Largely grown for Easter trade. Each, 35c; doz., \$3.50.

*Pardalinum*. "Leopard Lily." Flowers earlier than *L. Humboldtii*, reddish orange dotted with maroon, of easy culture. Each, 25c; doz., \$2.50; 100, \$15.00.

*Parryi*. "Lemon Lily." A rare native California species. Flowers large on leafy stems; trumpet shaped, lemon-yellow, and very fragrant. Grows two to four feet high; requires a moist situation, light sandy soil mixed with plenty of leaf mould. Each, 30c; doz., \$3.00; 100, \$18.00.

*Speciosum Album*. "White Japan Lily." Large white flowers with reflexed petals, very fragrant. Blooms in July and August. Each, 35c; doz., \$3.50.

*Speciosum Rubrum*. "Red Japan Lily." Similar to the preceding but flowers white, heavily spotted and marked with crimson. Each, 35c; doz., \$3.50.



## CALLA LILIES

**White.** (*Richardia Aethiopica*.) "Lily of the Nile." The common Calla Lily. Each, 15c; doz., \$1.50.

**Yellow.** (*Richardia Elliottiana*.) One of the finest introductions for many years. Flowers fully as large as the white variety, but deep golden yellow; foliage dark green, faintly spotted with white. Each, 35c; doz., \$3.50.

## BRODIAEA

Beautiful native bulbs of easy culture; will thrive in any good garden soil; plant 2 to 3 inches deep.

**Brodiaea capitata.** "Cluster Lily" or "Wild Hyacinth." Flowers in clusters, violet or light blue, grows from 1 to 2 feet high. Each, 5c; doz., 40c; 100, \$3.00.

**Brodiaea coccinea.** "Floral Firecracker." A striking and beautiful plant, with long slender stems, headed with numerous tubular, bright crimson flowers, which are tipped with pale green. Very effective for planting in fern beds and will succeed well in shade or full sunlight. Each, 10c; doz., 80c.

**Brodiaea grandiflora.** "Harvest Brodiaea." A late flowering species. It grows from 6 inches to 1 foot high, with 5 to 10 large flowers on a stem, of a rich violet purple shade. Each, 5c; doz., 50c; 100, \$3.50.

**Brodiaea lactea.** "White Brodiaea." White flowers, sometimes pale lilac. Each, 5c; doz., 50c; 100, \$3.50.

**Brodiaea laxa.** "Ithuriel's Spear." A magnificent species, growing from 1 to 2 feet high. The flowers are very large, violet purple, and from 10 to 30 on a stem. Each, 5c; doz., 50c; 100, \$3.50.



Ranunculus

## RANUNCULUS

Ranunculus are strikingly beautiful flowers of all shades of color from bright red to pink, yellow and white; very free flowering, pretty for beds and borders, and also useful for cut flowers. They should be planted in rich, well-drained, sandy soil, six to eight inches apart and two inches deep.

**French.** Choice mixed. Each, 5c; doz., 60c; 100, \$4.00.

## BABIANAS

Sometimes called "Blue Freesia." A charming little plant of about the same habit as the freesia and very desirable for beds or borders; flowers rich deep blue and fragrant. Plant any time from August to end of November in good soil three or four inches apart and two inches deep.

**Blue.** Each, 5c; doz., 50c; 100, \$3.50; 1000, \$30.00.

## OXALIS

Charming little plants with pretty clover-like foliage and flowers of various colors; desirable for pots, hanging baskets, window boxes, small beds and borders. For planting in the open ground, place the bulbs four inches apart and two inches deep in any good soil.

Doz., 35c; 100, \$2.50.

**Grand Duchess, White.** Large, pure white, on single stems.

**Grand Duchess, Pink.** Large, bright pink, on single stems; compact grower.

**Grand Duchesses, Lavender.** Large, lavender changing to old rose; on single stems.

**Bermuda Buttercup.** Large flowers, bright buttercup yellow, produced in great abundance; on long stems, several flowers on a stem. Excellent for hanging baskets.

**Bowiei.** Large, brilliant rose pink. Extra fine, especially desirable for hanging baskets. Each, 5c; doz., 50c; 100, \$3.50.

## ANEMONES

Anemones are valuable for bedding on account of their neat, compact habit, and brilliant colored flowers. Plant any time from October to March in light, well-drained, sandy soil, placing them about six inches apart, and covering to a depth of three inches.

**St. Brigid.** The celebrated Irish strain of semi-double anemones, mixed colors. Each, 10; doz., \$1.00; 100, \$7.00.

**De Caen.** Single mixed. Each, 10c; doz., \$1.00; 100, \$7.00.

## BEGONIA, TUBEROUS ROOTED

Valuable as pot plants, also for planting out in sheltered places. The bulbs should be started in small pots using a mixture of loam, leaf mold and sand.

**Single, Rose, Orange, Yellow, Salmon, Crimson, or mixed.** Each, 35c; doz., \$3.50.

## AMARYLLIS

These beautiful summer and fall flowering plants are of easy culture, and thrive in a sunny situation. Do not cover more than one inch above the crown of the bulbs. They succeed best when the bulbs are undisturbed—this is especially true of *Amaryllis belladonna*—but when moving becomes necessary the best time is as soon as possible after the bulbs have flowered.

**Amaryllis Belladonna major.** "Belladonna Lily." Large rose pink flowers. Blooms in July and August. Each, 25c; doz., \$2.50.

**Amaryllis Belladonna minor.** Flowers more erect than the preceding. Rose pink with white throat. Blooms in September and October. Each, 35c; doz., \$3.50.

**Amaryllis formosissima.** "Jacobean Lily." Rich velvety crimson, very showy. Each, 20c; doz., \$2.00.

**Amaryllis Johnsonii.** Flowers very large, red striped with white in center of petals. Each, 25c.

**Amaryllis Vittata Hybrids.** A great variety of shades, mostly white grounds marked with pink, scarlet, crimson or maroon; very large flowers; extra fine. Each, 50c.

## AGAPANTHUS

"Blue African Lily"

A hardy evergreen plant with long, glossy green leaves. In spring and early summer the plant throws up tall, slender flower stalks 2 to 3 feet high, crowned with large umbels of from 30 to 90 sky-blue lily-like flowers. *Agapanthus* should be planted in a location where they will not be disturbed for a number of years, and the quantity of flowers will increase each season.

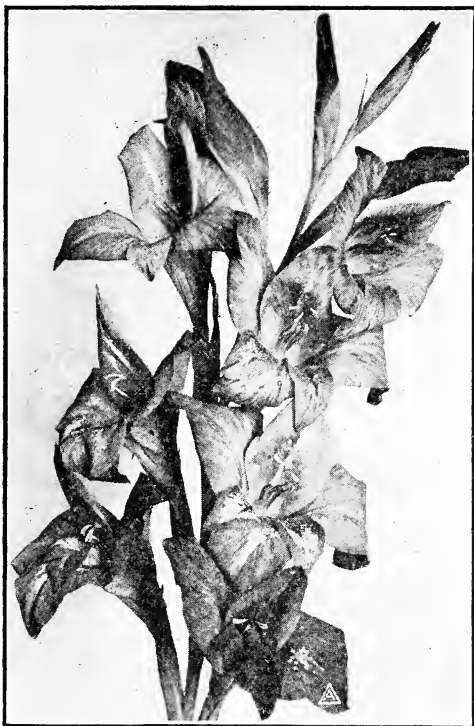
**Agapanthus umbellatus.** "Blue African Lily." Each, 35c; doz., \$3.50.

## GLADIOLUS

The gladiolus is one of the most popular of spring and summer flowering plants, both for making a display in the garden and also for cut flowers. The bulbs can be planted at intervals from the middle of November until April, thus supplying a succession of flowers. In locations where there is no danger from cold they can be had in bloom by Christmas by planting during the latter part of August. For this purpose either bulbs which have been kept in cold storage or bulbs which blossomed early in the spring and have been dormant for a few months should be used.

Gladioli thrive in any good garden soil. Prepare the ground by spading to a depth of ten to twelve inches. Plant the bulbs eight to ten inches apart and three to four inches deep. Covering the surface with a mulch of well rotted manure will be found very beneficial.

Great advancement has been made in the development of new varieties of gladioli in late years, and the following list will be found to contain some of the very best and up-to-date varieties.



Gladiolus America

**Alice Tiplady.** Primulinus hybrid. New, one of the most beautiful Gladioli ever introduced. Color, orange salmon and flame pink, a shade now in great demand in flowers. Excellent for cutting. Each, 15c; doz., \$1.50; 100, \$10.00.

**America.** Soft flesh pink. Each, 10c; doz., 80c; 100, \$5.00.

**Anna Eberius.** Deep velvety purple. Each, 20c; doz., \$2.00; 100, \$12.00.

**Baron Hulot.** Violet blue. Each, 15c; doz., \$1.50; 100, \$10.00.

**Byron L. Smith.** Lavender pink on white ground; color equal to an orchid, extra fine. Each, 20c; doz., \$2.00; 100, \$12.00.

**Crimson Glow.** Dark red. Each, 10c; doz., \$1.00; 100, \$7.00.

**E. J. Shaylor.** Deep, rich rose with ruffled petals. A vigorous grower, producing a tall stem with many flowers open at one time. Each, 10c; doz., \$1.00; 100, \$7.00.

## GLADIOLUS—Continued

- Evelyn Kirkland. Coral pink. Each, 10c; doz., \$1.00; 100, \$7.00.  
 Flora. Golden yellow, large flower. Each, 20c; doz., \$2.00; 100, \$12.00.  
 Halley. Salmon pink. Each, 10c; doz., \$1.00; 100, \$7.00.  
 Herada. Deep mauve. Each, 10c; doz., \$1.00; 100, \$7.00.  
 Lily White. Snow white. Each, 10c; doz., \$1.00; 100, \$7.00.  
 Le Marechal Foch. Rich pink, very large flowers. Each, 10c; doz., \$1.00; 100, \$7.00.  
 Los Angeles. New, shrimp pink tinted orange. The most beautiful gladiolus yet produced, and the nearest to an ever-blooming variety. Each, 50c.  
 Mrs. Frank Pendleton. Salmon pink with blood red blotch on lower petals. Each, 10c; doz., \$1.00; 100, \$7.00.  
 Mary Pickford. Creamy white, throat sulphur yellow. Each, 15c; doz., \$1.50; 100, \$10.00.  
 Nora. Light violet blue. Each, 15c; doz., \$1.50; 100, \$10.00.  
 Prince of Wales. Salmon shaded apricot, extra fine. Each, 10c; doz., \$1.00; 100, \$7.00.  
 Rose Glory. Deep rose. Each, 10c; doz., \$1.00; 100, \$7.00.  
 Virginia. Glowing scarlet. Each 10c; doz., \$1.00, 100, \$7.00.  
 Superb Mixture of all Shades. Each, 10c; doz., 80c; 100, \$5.00.  
 Primulinus Hybrids. A splendid mixture, mostly in tones running from pale yellow to apricot, buff, pink, and scarlet. The flowers are of good size, slightly hooded, and produced on tall, graceful stems, especially desirable for cutting. Each, 10c; doz., 80c; 100, \$5.00.

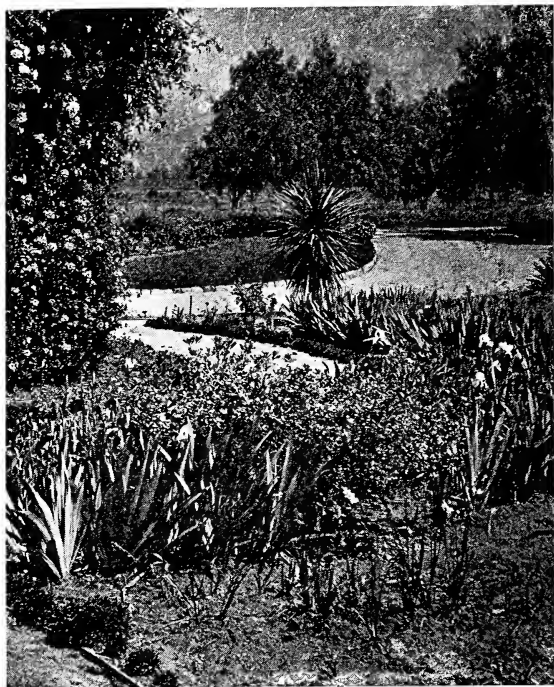
## BABY OR DWARF GLADIOLUS

- Ackermanni. Salmon and carmine. Each, 10c; doz., \$1.00.  
 Brilliant. Rich scarlet. Each, 10c; doz., 80c.  
 Blushing Bride. Flesh, crimson throat. Each, 10c; doz., 80c.  
 Peach Blossom. Soft pink. Each, 10c; doz., 80c.

## MISCELLANEOUS BULBS

- Caladium esculentum. "Elephants' Ears." Large, handsome leaves, often 3 feet long by 3 feet wide, very effective on a lawn; requires plenty of water. Each, 25c; per doz., \$2.50.  
 Leucojum vernum. "Snowflake." Flowers pendant, white tipped with green, on long stems. It blossoms very early, making a fine display in the garden also desirable for cutting, the flowers lasting a long time in water. Each, 10c; doz., 80c; 100, \$5.00.  
 Lily of the Valley. Each, 10c; doz., \$1.00; 100, \$7.00.  
 Montbretia crocosmiaeflora. Fiery orange scarlet. Each, 5c; doz., 50c; 100, \$3.50.  
 Ornithogalum Arabicum. "Star of Bethlehem." Throws up a tall stem with a cluster of star-shaped flowers; pure white with dark centers. Excellent for cutting, lasting a long time in water. Each, 10c; doz., 90c; 100, \$6.00.  
 Ixias. Finest mixed. Each, 5c; doz., 60c; 100, \$4.00.  
 Scilla campanulata coerulea. "Blue Bell." Rich blue. Each, 10c; doz., 80c; 100, \$5.00.  
 Scilla peruviana (S. clusii). "Hyacinth of Peru." "Cuban Lily." Large spike of bright blue flowers. Desirable for pot culture or for planting out in the garden. Each, 25c.  
 Sparaxis. Cream color. Each, 5c; doz., 60c; 100, \$4.00.  
 Sparaxis. Finest mixed. Each, 5c; doz., 60c; 100, \$4.00.  
 Tritoleia uniflora. "Spring Star Flower." Pale blue. Doz., 35c; 100, \$2.50.  
 Tritonia crocata. Sometimes called "Red Freesia." Orange scarlet. Each, 5c; doz., 60c; 100, \$4.00.  
 Tuberose, Double Pearl. White. Each, 10c; doz., \$1.00.  
 Zephyranthes candida. "Zephyr Flower" or "Fairy Lily." White, free flowering. Each, 5c; doz., 50c; 100, \$3.50.

**PLEASE NOTE.** In the following list of Seasonable Flower Seeds the descriptions are necessarily brief. Our General Catalog contains full descriptions and cultural notes on all of the following list and many more, including Vegetable and Flower Seeds, Tree and Shrub Seeds, California Wild Flower Seeds, Ornamental Trees, Shrubs and Flowering Plants and Native Trees and Shrubs of California. Many illustrations and helpful suggestions makes it a valuable handbook for the amateur or professional gardener. Send in your name to receive a copy of the 1927 edition, out in January. (1926 supply exhausted)



**NOTE THIS ILLUSTRATION**

It pictures a good way *not* to plant a flower garden. Obviously there was no plan in its arrangement — no thought was given to harmony in colors nor to habit of growth and foliage . . . Colors should have been grouped to give contrast; heights, types of foliage and adaptability to surroundings should have been considered . . . Successful gardens rarely "happen"—they are planned. It requires no more labor nor is it more costly to have an attractive garden—just a little thought *before* planting

# FLOWER SEEDS

*for* WINTER *and* SPRING  
FLOWERS .: *Sow them* NOW

**ACROCLINIUM.** "Everlasting Flower." Annual.

roseum. Bright rose. Pkt., 10c.

album. White. Pkt., 10c.

Mixed. Pkt., 10c.

**ALYSSUM.** "Sweet Alyssum." Annual.

maritimum. White, 6 to 9 inches. Pkt., 10c; oz., 40c.

Little Gem. Dwarf, 4 to 6 inches. Pkt., 10c; oz., 60c.

Carpet of Snow. Very dwarf. Pkt., 10c; oz., 75c.

Lilac Queen. Lilac, very dwarf. Pkt., 15; oz., \$1.00.

**ANTIRRHINUMS or SNAPDRAGONS.** Intermediate Varieties.

Amber Queen. Canary yellow, shaded chamois pink.

Bonfire. Orange buff shaded scarlet.

Cottage Maid. Coral pink with white throat.

Empress. Rich velvety crimson.

Golden Queen. Pure golden yellow.

Mauve Beauty. Rosy mauve.

Old Rose. Soft pink, suffused with terra cotta.

Purity. Pure white.

Silver Pink. Pearly pink, extra fine.

The Fawn. Terra cotta pink suffused yellow.

The above varieties, each, per pkt., 10c.

Intermediate, Mixed. Pkt., 10c.

**SPECIAL OFFER.** Full collection of the above ten varieties, one packet of each, for 85 cents.

**ANTIRRHINUMS or SNAPDRAGONS Tall Large Flowered**

- Cardinal. Dazzling scarlet.  
 Golden King. Large, clear yellow.  
 Lilac Queen. White, suffused with pale lilac.  
 Moonlight. Golden apricot and old rose.  
 Orange King. Orange scarlet, pink throat.  
 Othello. Deep claret color.  
 Princess Patricia. Pale rose overlaid chamois.  
 Queen Victoria. Very large pure white.  
 Rose Queen. Soft rose.  
 Venus. Pink on white ground, white throat.  
 The above varieties, each, per pkt., 10c.  
 Tall Large Flowered, Mixed. Pkt., 10c.

**SPECIAL OFFER.** Full collection of the above ten varieties, one packet of each, for 85 cents.

**NEW GIANT SNAPDRAGONS (*Antirrhinum maximum*)**

A new race of Giant Snapdragons producing flowers of enormous size on long spikes. Invaluable for cutting and also for display in the garden.

- Apple Blossom. Delicate pink, white throat. Pkt. 25c.  
 Canary Bird. Canary yellow. Pkt. 25c.  
 Copper King. Coppery scarlet. Pkt. 25c.  
 Gotelind. Light copper, old rose throat. Pkt. 25c.  
 Maralda. Coppery carmine. Pkt. 25c.  
 Nymph. Rosy lilac, white throat. Pkt. 25c.  
 Old Gold. Rich golden yellow. Pkt. 25c.  
 Purple King. Deep velvety purple. Pkt., 25c.  
 The Rose. Rich rose pink. Pkt. 25c.  
 Wallflower. Brownish orange and copper red. Pkt. 25c.

**ARCTOTIS GRANDIS.** Annual forming large, bushy, much branched plants, 2 to 3 feet high. Flowers large, white on the upper surface, the reverse of petals pale lilac-blue. Of easy culture and remarkably free flowering. Pkt. 10c.

**BELLIS PERENNIS. "Double Daisy."**

- Longfellow. Pink and white. Pkt., 10c.  
 Snowball. Pure white. Pkt., 10c.  
 Fine Mixed. Pkt., 10c.  
 Monstrosa. A new strain of strong, robust growth, with abundance of immense, very double flowers. Rose, red, white or mixed. Each, pkt., 15c.

**BRACHYCOME IBERIDIFOLIA. "Swan River Daisy."**

Annual 1 to 1½ feet, forming a close, compact plant, with immense numbers of large single blue or white flowers, in bloom nearly all the year.

- Blue. Pkt., 10c.  
 Mixed. Pkt., 10c.

**BROWALLIA ELATA.** Annual, 1 to 1½ feet high. A charming plant for beds and borders, with rich blue flowers, especially valuable in California for winter and spring blooming. Sow the seed in August or September in seed boxes and transplant. Pkt., 15c.

**CALCEOLARIA HYBRIDA GRANDIFLORA.** Large flowered tigered and spotted, superb mixed. Pkt., 50c.

**CALENDULA. Double "Pot Marigold."**

- Meteor. Yellow, striped orange. Pkt., 10c; oz., 40c.  
 Orange King. Deep orange. Pkt., 10c; oz., 50c.  
 Lemon Queen. Sulphur yellow. Pkt., 10c; oz., 40c.  
 The Ball. Extra fine, orange passing to a lighter shade toward the center. Pkt. 25c.

**CALLIOPSIS. Annual.**

- Bicolor. Golden yellow with black centers. Pkt., 10c; oz., 50c.  
 Golden Wave. Deep golden yellow. Pkt., 10c; oz., 50c.  
 Fine Mixed. Pkt., 10c; oz., 40c.

**CAMPANULA MEDIUM. "Canterbury Bells."**

- Single, Blue, Rose, White or Mixed. Each, pkt., 10c.  
 Double, Blue, Rose, White or Mixed. Each, pkt., 15c.  
 Cup and Saucer. Blue, Rose, White or mixed. Each per pkt., 15c.

**CANDYTUFT. Old-fashioned, free-flowering annual.**

- Carmine. Bright rosy carmine. Pkt., 10c; oz., 50c.  
 Crimson. Dark crimson. Pkt., 10c; oz., 50c.  
 Empress. White, long spikes. Pkt., 10c; oz., 60c.  
 Flesh Pink. A beautiful shade. Pkt., 10c; oz., 50c.  
 Lilac. Rosy lilac. Pkt., 10c; oz., 50c.  
 Choice Mixed. Pkt., 10c; oz., 40c.

**CENTAUREA CYANUS. "Cornflower."**

- Single Blue. Bright blue. Pkt., 10c; oz., 35c.  
 Mixed Colors. Pkt., 10c; oz., 35c.  
 Double Blue. Pkt., 15c; oz., 75c.  
 Double Pink. Pkt., 15c; oz., 75c.



*Centaurea imperialis*

**CENTAUREA IMPERIALS.** Royal Sweet Sultan.

Amaranth Red, Brilliant Rose, Delicate Lilac, Deep Lavender, White, Purple. Each, pkt., 10c.  
Mixed Colors. Pkt, 10c; oz., 75c.

**CHRYSANTHEMUM.** Annual Varieties.

Northern Star. Large, white with soft yellow zone and dark eye. Pkt., 10c.  
Morning Star. Beautiful pale yellow. Pkt., 10c.  
Evening Star. Golden Yellow, large. Pkt., 10c.  
Burrigeatum. White and red. Pkt., 10c.  
W. E. Gladstone. Rich crimson. Pkt., 10c.  
Single Mixed. Pkt., 10c; oz., 50c.  
Coronarium. Double yellow. Pkt., 10c.  
Coronarium. Double White. Pkt., 10c.

**CINERARIA HYBRIDA GRANDIFLORA.**

Payne's Large Flowered, extra choice mixed. This is without doubt the finest strain offered in the United States. The plants are of neat, compact habit, producing immense flowers with a large percentage of blue shades. Pkt., 50c.

Azure Blue, Royal Blue, Old Rose, Matador, brilliant scarlet. Each, pkt., 50c.

Stellata and Cruenta Hybrids. Especially desirable for making a display in the garden. Forms large plants 2 to 3 feet high, covered with hundreds of star-shaped flowers. The seed is carefully selected and will be found to contain a large percentage of blue and pink shades. Pkt., 25c.

**CLARKIA.** Free-flowering annual.

Salmon Queen. Double, salmon pink. Pkt., 10c.  
Scarlet Queen. Double scarlet. Pkt., 10c.  
Choice Mixed. Pkt., 10c.

**COREOPSIS LANCEOLATA.** Perennial. Large, bright yellow flowers. Pkt., 10c .

**CYCLAMEN.** Giant English, mixed.. Pkt., 25c.

**DELPHINIUM.** "Perennial Larkspur."

- Belladonna. Light blue. Pkt., 25c;  $\frac{1}{8}$  oz., 60c.  
 Bellamosa. Dark blue. Pkt., 25c;  $\frac{1}{8}$  oz., 60c.  
 Belladonna Hybrids. All shades of blue. Pkt., 25c;  $\frac{1}{8}$  oz., 75c.  
 Gold Medal Hybrids. All the richest shades of blue. Pkt., 15c.  
 Chinense, Blue Butterfly. Salvia blue. Pkt., 15c.  
 Chinense, Tom Thumb. Dwarf, ultramarine blue, extra fine. Pkt., 25c.

**DIANTHUS CHINENSIS.** "China Pinks."

- Heddewigi. Single, fine mixed. Pkt., 10c.  
 Hybridus. Double mixed. Pkt., 10c.

**DIGITALIS.** "Foxglove." Perennial, 3 to 5 feet.

- Gloxiniaeflora. Fine mixed. Pkt., 10c.  
 The Shirley. New, very large. White and shell pink to deepest rose beautifully spotted. Pkt., 25c.

**DIMORPHOTHECA AURANTIACA.** "African Orange Daisy." Annual, flowering in a very short time from seed.

- Deep Orange. Pkt., 10c; oz., \$1.50.  
 Hybrida. Splendid new hybrids; colors range from white, lemon yellow, golden yellow, orange to salmon. Pkt., 15c.

**ERYSIMUM PEROFSKIANUM.**

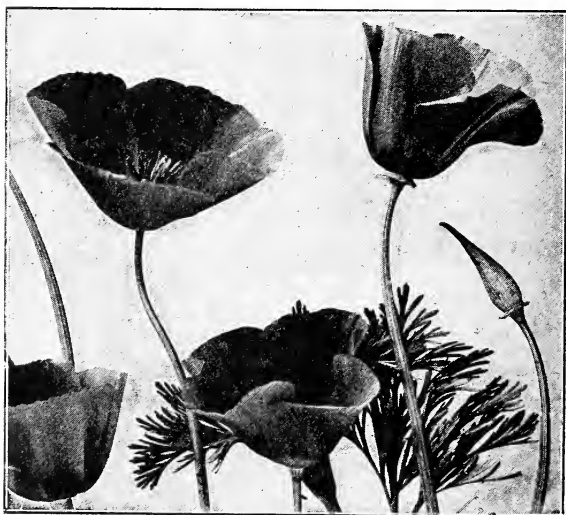
- Annual, 1 to 1 $\frac{1}{2}$  feet high, resembles the wallflower and produces in winter and spring great quantities of orange colored flowers; very effective when planted in masses. Pkt., 10c; oz., 60c.

**ERYNGIUM AMETHYSTINUM.** "Sea Holly."

- Perennial, 2 to 3 feet, producing in summer quantities of steel blue thistle-like flowers. Sow the seed in summer or early fall in seed boxes and transplant. Pkt., 15c.

**ESCHSCHOLTZIA CALIFORNICA.** "California Poppy."

- Yellow, Orange, White, or Mixed. Each, pkt., 10c; oz., 35c.  
 Burbank's Crimson-flowering. Crimson. Pkt., 10c.  
 Rose Cardinal. White, with rose on outside of petals. Pkt., 10c.  
 Carmine King. Carmine rose. Pkt., 10c.  
 Golden West. Canary yellow, with orange blotch at base of each petal. Pkt., 10c.  
 Mandarin. Inside of petals rich orange, outside orange-scarlet. Pkt., 10c.  
 Mikado. Brilliant orange-crimson. Pkt., 15c.  
 Orange Flame. New, orange scarlet. Pkt., 25c.  
 Scarlet Beauty. New, deep scarlet. Pkt., 25c.  
 Tango. New, bronzy red and terra cotta. Pkt., 25c.  
 The Geisha. Gold and orange crimson. Pkt., 15c.  
 Vesuvius... Wallflower red. Pkt., 15c.  
 New Hybrids mixed. Pkt., 15c.



Eschscholtzia californica—"California Poppy"





Delphinium Belladonna

**FREESIA HYBRIDA RAGIONIERI.** Exquisite shades of rose, pink, blue, purple, violet, yellow, orange and brown, often delicately veined and spotted. Pkt., 15c.

**GEUM COCCINEUM, MRS. BRADSHAW.** Perennial. Large, double, bright-scarlet flowers. Pkt., 15c.

Geum, Lady Stratheden. New; flowers large, deep, rich golden yellow. Pkt., 25c.

**GODETIA.** Annual, 1 to 2 feet high, with large, showy flowers. Especially valuable for sowing in partially shaded places.

Duchess of Albany. Pure white. Pkt., 10c.

Crimson Glow. Rich deep crimson. Pkt., 10c.

Lady Albemarle. Large, brilliant crimson. Pkt., 10c.

Lady Satin Rose. Bright carmine. Pkt., 10c.

Hybrids. Mixed colors. Pkt., 10c; oz., 50c.

**GOMPHRENA GLOBOSA.** "Globe Amaranthus." Annual, everlasting flower. Mixed colors. Pkt., 10c.

**GYPSOPHILA ELEGANS.** Annual. Flowers white. Pkt., 10c; oz., 40c.

Paniculata. Perennial. Small white flowers. Pkt., 10c.

**HEUCHERA SANGUINEA.** "Coral Bells."

Perennial, with heart-shaped leaves from which rise numerous slender graceful stems about 1 foot high bearing quantities of small coral-red bell-shaped flowers. Very effective for borders and rock gardens. Sow in seed boxes early in the fall and transplant. Pkt., 15c.

**HOLLYHOCK.** Old-fashioned favorite flower.

Chater's superb strain, finest double. White, rose, Newport pink, scarlet, crimson, sulphur yellow or mixed. Each, per pkt., 15c.

Single. Choice mixed. Pkt., 10c.

**LARKSPUR.** Free-flowering annual.

Tall, Stock-flowered, Branching, Double. Azure blue, dark blue, shell pink, lustrous carmine, white or mixed. Each, pkt., 10c; oz., 60c.

Tall, Exquisite Pink. New. Pkt., 25c.

Dwarf Rocket. Mixed colors. Pkt., 10c; oz., 60c.

- LINARIA MAROCCANA.** Annual, 12 to 15 inches high.  
Very pretty sown in masses.  
Mixed. Pkt., 10c.
- LINUM GRANDIFLORUM RUBRUM.** "Scarlet Flax." Annual, 1 to 2 feet high. Pkt., 10c; oz., 35c.
- LUPINUS. ANNUAL VARIETIES MIXED.**  
1 to 3 feet high. Well known free flowering plants. Pkt., 10c.  
Hartwegi. Annual, 2 to 3 feet. Long spikes of large flowers. Sky blue, dark blue, pink, white, or mixed. Each, per pkt., 15c.  
Sulphureus. Annual, 1 to 2 feet; yellow. Pkt., 15c.
- LUPINUS ARBOREUS, SNOW QUEEN.**  
Perennial, 4 feet. A magnificent variety, producing long spikes of pure white flowers. Sow in fall either in the open ground where the plants are to remain, or in pots, and afterwards transplant. Pkt., 15c.  
New Hybrids. A splendid new strain, producing large flowers in different colors. Pkt., 15c.  
polyphyllus roseus. Rosy pink, extra fine. Pkt., 15c.
- MIGNONETTE.** Annual, 8 inches to 1 foot high.  
Large Flowering. Sweet scented. Pkt., 10c; oz., 30c.  
Machet. Of dwarf pyramidal habit. Very fragrant. Pkt., 10c; oz., 50c.  
Goliath. Bright red, large spikes. Pkt., 10c; oz., \$1.00.
- MYOSOTIS. "Forget-me-not."**  
Perennial, 6 to 10 inches, succeeding best in a shady, moist situation. Sow the seed in the fall in seed boxes and transplant.  
alpestris. Bright blue. Pkt., 10c.  
dissitiflora. Of compact habit; deep blue. Pkt., 15c.
- NEMESIA.** Beautiful annual of recent introduction.  
New Hybrids. Pkt., 25c.  
Orange, Rose, Scarlet. Each per pkt., 25c.  
Dwarf Blue Gem. Very desirable for beds. Pkt., 25c.
- NIGELLA DAMASCENA. "Love-in-a-Mist."** Annual.  
Miss Jekyll. Cornflower blue. Pkt., 10c.

## PANSIES

- PAYNE'S ROYAL EXHIBITION PANSY.** This is undoubtedly the most superb strain of Pansies ever offered on this coast. The plants are of vigorous growth and are particularly free flowering. The blossoms are very large and of fine, velvety texture, including all the richest shades, many of them exquisitely blotched, spotted and margined. Pkt., 25c;  $\frac{1}{8}$  oz., \$1.25.
- Bugnot's Superb Blotched. Extra large, rich colors, each petal having a broad, deep blotch, many of them beautifully lined or penciled. Pkt., 50c.
- Cassiers' Large Flowered Blotched. A splendid strain; flowers beautifully blotched, of richest shades. Pkt., 25c.
- Masterpiece. "Frilled Pansy." A grand new class, each petal being conspicuously waved or curled, giving the flower a double or globular appearance. Rich colors, mostly of the dark, velvety shades. Pkt., 25c.
- Steele's Mastodon. Immense flowers, mixed colors. Pkt., 25c;  $\frac{1}{8}$  oz., \$1.25.
- Giant Trimardeau. Large flowered, mixed colors. Pkt., 15c.
- English Show or Faced Pansy. Mixed colors. Pkt., 15c.
- GIANT PANSIES, SEPARATE COLORS.**  
The following varieties, per pkt., 15c;  $\frac{1}{8}$  oz., 65c.
- Giant Bridesmaid. White and shining rose, beautifully blotched.
- Giant Bright Blue. Ultramarine blue.
- Giant Dark Blue. Darkest blue.
- Giant Golden Yellow, Five Spotted, a beautiful flower of Cassier type.
- Giant Golden Queen. Pure yellow.
- Giant King of the Blacks. Velvety black.
- Giant Light Blue. Pale blue.
- Giant Lord Beaconsfield. Violet, upper petals shading to white.
- Giant Madame Perret. Beautiful wine shades on white ground.
- Giant Peacock. Royal purple, shot with peacock blue.
- Giant Snowflake. Pure white.
- Giant White. White with purple eye.
- Giant Yellow. Yellow with black eye.
- Giant Purple. Deep purple.
- Giant mixed.

**PENTSTEMON.** Favorite perennial plant.

Large Flowered Mixed. Pkt., 15c.

**PHLOX DRUMMONDI GRANDIFLORA.** Annual.

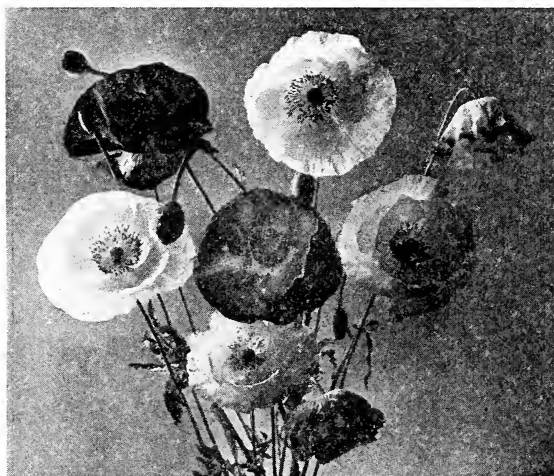
Large flowered, white, chamois rose, scarlet, crimson, red with white eye, pink, yellow, or mixed. Each, per pkt., 10c.

**PHLOX DECUSSATA.** "Perennial Phlox." All colors. mixed. Pkt., 15c.

**POLYANTHUS.** (*Primula elatior*.)

Perennial, 6 to 8 inches; succeeding best in a partially shaded place and flowering during winter and early spring. Sow the seed in spring or early fall in seed boxes and transplant. Large flowered choice mixed. Pkt., 15c.

**Giant Munstead Strain.** Very large flowers in beautiful light shades. Pkt., 25c.



Shirley Poppies

**POPPY. ANNUAL SORTS.**

Shirley. Choice mixed. Pkt., 10c; oz., 50c.

Shirley, Blue Shades. Grey-blue. Pkt., 15c.

Shirley, American Legion. New, brilliant orange scarlet. Pkt., 25c.

Shirley, Apricot Shades. Pkt., 15c.

Barr's Double Queen. Select strain of double Shirley. Mixed colors. Pkt., 25c.

Tulip. Single, dazzling scarlet. Pkt., 10c; oz., 50c.

Flanders Poppy. Single flaming red flowers. Pkt., 15c; oz., 75c.

El Dorado. A lovely new strain of the Shirley type, producing large double flowers measuring about 3 inches across. The colors range from palest pink through shades of rose and salmon to rosy scarlet. Pkt., 25c.

Ranunculus Flowered. Double flowers, about 2 inches in diameter and of every imaginable shade. Pkt., 10c; oz., 50c.

Carnation Flowered. Large double fringed. White, rose, scarlet, or mixed. Each, per pkt., 10c; oz., 40c.

**PRIMULA MALACOIDES.** Very desirable for outdoor culture; flowers delicate lilac. Pkt., 25c.

**PRIMULA OBCONICA GIGANTEA.** Choice mixed. Pkt., 25c.

**PRIMULA KEWENSIS.** Yellow, very desirable for outdoor culture. Pkt., 25c.

**PRIMULA SINENSIS FIMBRIATA.** "Chinese Primrose."

Bright Rose. Large. Pkt., 25c.

Defiance. Rich red, with dark eye. Pkt., 25c.

Holborn Blue. A unique shade. Pkt., 25c.

Snow Queen. Pure white, extra fine. Pkt., 25c.

Choice Mixed. Pkt., 25c.

**PRIMULA SINENSIS STELLATA.** "Star Primroses." A new strain of Primula, though the flowers are slightly smaller than *P. sinensis fimbriata*, the plants are of more robust growth and produce flowers much more freely.

Dark Blue Star. Dark blue. Pkt., 25c.

Light Blue Star. Pale blue. Pkt., 25c.

Lord Roberts Star. Pink. Pkt., 25c.

Ruby Star. Deep ruby red. Pkt., 25c.

Snow Star. Pure white. Pkt., 25c.

Choice mixed. Pkt., 25c.



Nice Giant Stocks

- RHODANTHE.** "Everlasting Flower." Annual. Pink, white, crimson, mixed. Pkt., 10c.
- SCHIZANTHUS.** Annual, 1½ to 2 feet.  
Wisetonensis. Large flowers. White, dotted rose. Pkt., 15c.
- SILENE PENDULA COMPACTA.** Annual, forms compact little plants about 6 inches high, flowers rose-colored; useful for edgings, etc. Pkt., 10c.
- STATICE MACROPHYLLA.** Perennial, large, handsome foliage and immense heads of deep blue flowers. The finest of all Statice. Pkt., 10c; oz., 60c.
- Latifolia.** "Sea Lavender." Perennial, large panicles of small lavender blue flowers. Pkt., 10c; oz., \$1.50.
- Perezii.** Perennial. Deep blue. Pkt., 10c; oz., \$2.00.
- Caspia.** Perennial. Pale blue, extra fine. Pkt., 10c; oz., \$2.00.
- Sinnata.** Annual. Blue. Pkt., 10c; oz., 60c.
- Bonduelli.** Annual. Yellow. Pkt., 10c; oz., 60c.

## NICE GIANT STOCKS

The Nice Giant strain forms well branched plants about 2 feet high, producing spikes of large double flowers not tightly clustered but borne along the entire stem. They are very graceful and especially desirable for cutting. The plants are extremely free flowering, continuing in blossom for a long time.

- Beauty of Nice.** Delicate flesh pink. Pkt. 15c; ⅛ oz. 65c.
- Belle d'Naples.** Old rose. Pkt., 15c; ⅛ oz., 75c.
- Cote d'Azur.** Deep lilac. Pkt., 15c; ⅛ oz., 75c.
- Heatham Beauty.** New, deep rose shading to pale pink, and chamois toward center, large spike, extra fine. Pkt., 25c; ⅛ oz., \$1.00.
- Madame Joseph Paquet.** New, deep cream-color overlaid chamois. Pkt., 25c; ⅛ oz., \$1.00.
- Mont Blanc.** Improved pure white. Pkt. 15c; ⅛ oz. 65c.
- Queen Alexandra.** Lilac rose. Pkt., 15c; ⅛ oz., 65c.
- Queen of the Belgians.** Silvery lavender, very large spike, extra fine. Pkt., 25c; ⅛ oz., \$1.00.
- Souvenir de Monaco.** Crimson. Pkt., 15c; ⅛ oz., 75c.
- Souvenir de Monte Carlo.** Cream color. Pkt., 15c; ⅛ oz., 75c.
- Summer Night.** Deep purple, large spike. Pkt., 15c; ⅛ oz., 75c.
- Nice Giant.** All colors mixed. Pkt., 15c; ⅛ oz., 50c.
- Nice Giant, Payne's Special Mixture of Pastel Shades.** Pkt., 25c; ⅛ oz., \$1.00.

## GIANT STOCKS—BISMARCK

This class of Giant-Ten-Week Stocks is of great merit and only needs a trial to be thoroughly appreciated by every flower grower. The plants grow from 2 to 2½ feet high and are of branching habit, producing numerous large spikes measuring 12 to 16 inches long. They are especially desirable for cutting and produce a high percentage of double flowers. We offer them in 9 distinct colors. White, cream-color, chamois, flesh pink, rose, blood red, lilac, lavender, deep purple, or mixed. Each, per pkt., 25c.

- SWEET WILLIAM.** Favorite perennial plant.
- Auricula-flowered.** Beautifully ringed and margined, mixed colors. Pkt., 10c.
- Newport Pink.** Bright pink. Pkt., 15c.
- Single,** all colors mixed. Pkt., 10c.
- Double,** all colors mixed. Pkt., 10c.
- Annual Sweet William.** A new strain flowering in a short time from seed. Mixed colors. Pkt., 10c.
- VIOLA CORNUTA.** "Tufted Pansies."
- Admiration.** Dark blue. Pkt., 15c; ⅛ oz., 75c.
- Papilio.** Delf blue. Pkt., 15c; ⅛ oz., 75c.
- Lutea splendens.** Clear yellow. Pkt., 15c; ⅛ oz., 75c.
- Mixed Colors.** Pkt., 15c; ⅛ oz., 75c.
- VISCARIA.** Free flowering annual growing about 1 foot high. Very effective for planting in masses making a great display for many months. The flowers come in various shades of pink, rose, carmine, blue and white.
- Cardinalis.** Bright carmine. Pkt., 10c.
- Oculata Coerulea.** Blue. Pkt., 10c.
- Oculata Mixed.** Pkt., 10c.
- Oculata, dwarf, Loyalty.** Blue. Pkt., 15c.
- WALLFLOWER, Winter Flowering.** Mixed colors. Pkt., 25c.

## NEW WINTER FLOWERING OR LONG SEASON SPENCER SWEET PEAS

A new race of Sweet Peas, having the large waved flowers of the Spencer type, but flowering fully two months earlier; they also continue in flower for a much longer period. For Christmas flowering sow in September; later sowing may be made up until March.

One can make no mistake in planting Sweet Peas, as they combine the four requisites of the ideal flower—beauty, exquisite fragrance, wonderful colors and hardiness. They are easy to grow, making an ideal plant for covering fences or trellis work, and they are very appealing as a cut flower. Sow the seed in drills about two inches deep in good rich soil and water frequently with a fine spray.

- All White. Pure white. Pkt., 25c; oz., \$1.00.
- Amethyst. Royal purple. Pkt., 25c; oz., \$1.00.
- Aviator. Crimson scarlet. Pkt., 25c; oz., \$1.00:
- Bluebird. Violet blue. Pkt., 25c; oz., \$1.00.
- Columbia. Pink and white. Pkt., 25c; oz., \$1.00.
- Fair Maid. Blush and salmon. Pkt., 25c; oz., \$1.00.
- Glitters. Glowing scarlet cerise. Pkt., 25c; oz., \$1.00.
- Grenadier. Dazzling scarlet. Pkt., 25c; oz., \$1.00.
- Harmony. Clear lavender. Pkt., 25c; oz., \$1.00.
- Hercules. Rosy pink, very large. Pkt., 25c; oz., \$1.00.
- Miss Louise Gude. Brilliant pink. Pkt., 25c; oz., \$1.00.
- Mrs. Kerr. Salmon buff. Pkt., 25c; oz., \$1.00.
- Quaker Maid. Clear mauve. Pkt., 25c; oz., \$1.00.
- Rose Charm. Bright rose. Pkt., 25c; oz., \$1.00.
- Rose Doré. Rose pink, suffused orange. Pkt., 25c; oz., \$1.00.
- Zvolanek's Rose. Rose pink, extra fine. Pkt., 25c; oz., \$1.00.
- Early Choice Mixed. Pkt., 25c; oz., 75c.

**SPECIAL OFFER.**—Five varieties Payne's New Winter Flowering Sweet Peas in separate packets for \$1.00.

## PAYNE'S SPENCER SWEET PEAS

The Spencer Sweet Peas have large, round, open flowers of extraordinary size, often 2 inches across, with wavy standard and wide-spreading wings, a large number of the flowers coming four on a stem. This class has now superseded the old large flowered type of sweet peas and there has been great improvement in the varieties in the last few years. We have discarded many of the older varieties for newer and better ones. The following list contains the very best varieties of each color to date.

- Barbara. Salmon pink. Pkt., 15c; oz., 50c.
- Crimson King. Rich deep crimson. Pkt., 15c; oz., 40c.
- Edna May Improved. Pure white. Pkt., 15c; oz., 50c.
- Elfrida Pearson. Shell pink. Pkt., 15c; oz., 40c.
- Fiery Cross. Brilliant orange cerise. Pkt., 15c; oz., 50c.
- Hawlmork Pink. Bright rose pink, shaded salmon. Pkt., 15c; oz., 50c.
- Hercules. Rosy pink, large. Pkt., 15c; oz., 40c.
- Illuminator. Brilliant orange scarlet. Pkt., 15c; oz., 50c.
- Margaret Atlee. Rich pink suffused with salmon. Pkt., 15c; oz., 40c.
- Matchless. Cream. Pkt., 15c; oz., 50c.
- Mrs. Tom Jones. Delphinium blue. Pkt., 15c; oz., 50c.
- Picture. Pink on cream ground. Pkt., 15c; oz., 50c.
- R. F. Felton. The best lavender. Pkt., 15c; oz., 50c.
- Rosabelle. Light rose pink, very large. Pkt., 15c; oz., 50c.
- Royal Purple. Deep rich purple. Pkt., 15c; oz., 40c.
- Royal Scott. Orange scarlet. Pkt., 15c; oz., 50c.
- Tangerine Improved. Glowing orange. Pkt., 15c; oz., 50c.
- The Cardinal. Poppy scarlet. Pkt., 15c; oz., 50c.
- Warrior. Deep rich maroon. Pkt., 15c; oz., 50c.
- Wedgewood. Light blue, extra. Pkt., 15c; oz., 40c.
- Spencer Mixed. Pkt., 15c; oz., 30c; ¼ lb., \$1.00.

**SPECIAL OFFER.**—Six varieties Payne's Spencer Sweet Peas in separate packets for 75c.

**NOTE.**—For a complete list of Flower Seeds, also full descriptions of the kinds listed here, and cultural directions, send in your name now to receive our 1927 General Catalog, ready January 1. (1926 supply exhausted.)



Godetia grandiflora—"Farewell to Spring"

## *California* WILD FLOWER SEEDS

There is nothing that gives a greater charm and interest to a flower garden than a planting of California Wild Flower Seeds. In their natural state they are indeed beautiful and when brought under cultivation they not only equal their imported rivals in point of size, color and foliage but have also that added attraction of bringing romance and sentiment into the garden—they mean something more than just beautiful flowers. They are easily grown and require a minimum of water and care. Plant California Wild Flower Seeds this year.

*Abronia umbellata*. "Sand Verbena." Annual, low trailing habit. Flowers rose-color, resembling a verbena. Thrives best in sandy soil. Pkt., 10c; oz., 70c.

*Antirrhinum coulterianum*. "White Snapdragon." Annual, 3 to 5 feet high. Small white flowers in spikes often 2 feet long. Pkt., 15c.

*Aquilegia truncata*. "Columbine." Perennial, 2 to 3 feet high. Flowers scarlet tipped with yellow. Succeeds best in a moist, shady place. Pkt., 15c.

*Argemone platyceras hispida*. "Prickly Poppy." Annual, 1½ to 3 feet high. Flowers white with yellow center. Pkt., 10c.

*Baeria gracilis*. "Sunshine." Annual, 4 to 8 inches high. Golden yellow, star-shaped flowers. Pkt., 10c.

*Castilleja californica*. "Indian Paint Brush." Perennial, 1 to 2 feet high. Flower bracts deep scarlet. Pkt., 15c.

*Clarkia concinna*. "Beautiful Clarkia." Annual, 8 inches to 2 feet high. Flowers rose-pink with crimson sepals. Prefers a shady spot. Pkt., 10c; oz., \$1.00.

*Clarkia elegans*. "Clarkia." Annual, 3 to 6 feet. A slender growing plant; flowers purple with white and crimson stamens. Thrives best in shade. Pkt., 10c; oz., 40c; lb., \$5.00.

*Collinsia bicolor*. "Innocence." Annual, 1 to 2 feet high. Flowers white, lilac and rose-purple. Prefers a shady situation. Pkt., 10c; oz., 35c; lb., \$4.00.

*Collinsia grandiflora*. "Blue Collinsia." Annual 6 to 10 inches high. Flowers deep violet blue. Prefers a shady situation. Pkt., 10c; oz., 50c.

*Coreopsis douglasii*. "Yellow Daisy." Annual, 6 to 12 inches. A graceful little plant with bright yellow daisy-like flowers. Pkt., 15c; oz., \$1.50.

*Coreopsis maritima*. "Sea Dahlia." Perennial, 2 to 2½ feet high. Flowers large, light canary yellow. Pkt., 15c.

*Coreopsis stillmani*. "Yellow Mountain Daisy." Annual, 9 to 12 inches high. Bright yellow, daisy-like flowers. Pkt., 15c; oz., \$1.50.

*Delphinium cardinale*. "Scarlet Larkspur." Perennial, 3 to 6 feet. Long spikes of bright scarlet flowers. Pkt., 10c.

*Delphinium parryi*. "Blue Larkspur." Perennial 1 to 3 feet high. Flowers large rich blue. Pkt., 15c.

*Dendromecon rigidum*. "Tree Poppy." Perennial shrub, 4 to 8 feet high. Bright yellow flowers, 3 inches or more in diameter. Seed is hard to germinate. Pkt., 15c.

*Dicentra chrysantha*. "Golden Ear Drops." Perennial, 3 to 5 feet high. Finely cut glaucous foliage and rich yellow flowers. Pkt., 15c; ¼ oz., \$1.00.



*Dodecatheon clevelandii*—"Shooting Star"

*Dodecatheon clevelandii*. "Shooting Star." Perennial, 1 to 1½ feet high. Flowers in shape like a cyclamen, delicate lilac and white. Pkt., 15c.

*Emmenanthe penduliflora*. "Whispering Bells." Annual, 1 to 2 feet high. Produces large quantities of bell-shaped, pendulous flowers, cream-colored or yellow. Pkt., 10c.

*Encelia californica*. "Bush Sunflower." Perennial shrub, 2 to 6 feet high; found on dry banks, blooming in spring and early summer. Flowers bright yellow dark centers. Pkt., 10c.

*Erysimum asperum*. "Wild Wallflower." Perennial, 2 to 4 feet high. Long spikes of large, orange-colored, fragrant flowers. Pkt., 15c.



*Eschscholtzia californica*. "California Poppy." Annual, 1 to 1½ feet. The most noted of California Wild Flowers. Orange-yellow, with a beautiful glossy sheen. Pkt., 10c; oz., 35c; lb., \$3.00.

*Floerkea douglasii*. "Meadow Foam." Annual, of low spreading habit; flowers cream-colored. Prefers a moist location. Pkt., 10c; oz., 50c.



*Castilleja californica*—"Indian Paint Brush"

*Frasera parryi*. Perennial, 1½ to 2½ feet high. Produces loose clusters of star-shaped flowers, brown, yellow and green, mottled and blended. Pkt., 15c.

*Gilia abrotanifolia*. Annual, 1½ to 2½ feet high. Large heads of very pale blue flowers. Pkt., 10c; oz., 60c; lb., \$6.00.

*Gilia achillaefolia*. "Blue Gilia." Annual, 1 to 1½ feet high. Small violet-blue flowers in dense heads on graceful, slender stems. Pkt., 10c; oz., 35c; lb., \$4.00.

*Gilia capitata*. "Large Blue Gilia." Annual, 1½ to 2½ feet high. A slender, somewhat branched plant, with finely cut foliage and light blue flowers. Blooms later than the preceding. Pkt., 10c; oz., 40c; lb., \$5.00.

*Gilia californica*. "Prickly Phlox." Shrub, 2 to 4 feet high. Prickly needle-like leaves. Fragrant phlox-like flowers of a delicate rose pink color. Pkt., 25c.

*Gilia dianthoides*. "Fringed Gilia," or "Ground Pink." Annual, 2 to 6 inches high. An exquisite little plant with minute leaves and phlox-like flowers, rose colored or lilac with yellowish throat. Pkt., 15c.

*Gilia tricolor*. "Birds' Eyes." Annual, 9 to 12 inches. Flowers pale lilac, yellow toward the center, with five purple spots. Pkt., 10c; oz., 40c; lb., \$5.00.

*Godetia amoena*. "Farewell to Spring." Annual, 1 to 2 feet high. A slender growing plant, usually found on shady banks. Flowers lilac-crimson or red-pink, often with a dark center. Pkt., 10c; oz., 60c; lb., \$7.00.

*Godetia bottae*. "Farewell to Spring." Annual, 2 to 3 feet high. Flowers pale rose or lilac. Prefers a partially shady place. Pkt., 10c; oz., 70c; lb., \$8.00.

*Godetia grandiflora*. "Farewell to Spring." Annual, 1 to 2 feet high. Flowers large, delicate pink, marked with rich crimson. Pkt., 10c; oz., 60c; lb., \$7.00.

*Helianthus annuus*. "Sunflower." Annual, 5 to 8 feet high. Flowers yellow with dark brown centers. Pkt., 10c; oz., 60c.

*Lathyrus laetiflorus*. "Wild Pea." Perennial climber. Flowers in loose clusters, white or flesh-color veined with purple. Pkt., 10c; oz., 60c.

*Lathyrus splendens*. "Pride of California." A perennial climbing pea. Flowers large, deep, rich crimson. Pkt., 15c.

*Layia elegans*. "Tidy Tips." Annual, 1 to 2 feet. A yellow daisy, edged with white or cream color. Pkt., 10c; oz., \$1.00.

*Linanthus densiflorus*. "California Phlox." Annual, 1 to 2 feet high. Flowers in crowded clusters; pink and purple with yellow throat. Pkt., 10c; oz., 60c; lb., \$7.00.

*Lupinus affinis*. "Blue Lupine." Annual, 1 to 2 feet. Flowers blue and purple. Pkt., 10c; oz., 40c; lb., \$5.00.

*Lupinus arboreus*. "Yellow Tree Lupine." Shrubby perennial, 4 to 10 feet high. Flowers rich sulphur yellow. Pkt., 15c; oz., 60c.

*Lupinus chamissonis*. "Beach Lupine." Perennial, 2 to 3 feet high. Long racemes of flowers, light blue or lavender. Grows in pure beach sand. Pkt., 15c.

*Lupinus cytisoides*. "Canyon Lupine." Perennial, 4 to 6 feet high. Flowers in long racemes, deep pink or rose purple and very showy. Pkt., 15c.

*Lupinus densiflorus*. "White Lupine." Annual, 1 to 1½ feet high. A stout, branching plant with rich green foliage and white flowers in dense whorls. Pkt., 15c; oz., 70c.

*Lupinus hirsutissimus*. "Hairy Lupine." Annual, 1½ to 2½ feet high. Flowers large, deep reddish purple. Pkt., 15c; oz., \$1.00.

*Lupinus longifolius*. "Blue Bush Lupine." Shrubby perennial, 3 to 4 feet high. Long spikes of light blue flowers. Very valuable for covering dry slopes. Pkt., 15c; oz., 70c.

*Lupinus nanus*. "Dwarf Blue Lupine." Annual, 10 to 15 inches high. A very showy plant; flowers rich blue and white, fragrant. Pkt., 10c; oz., 50c; lb., \$6.00.

*Lupinus paynei*. "Payne's Tree Lupine." Shrubby perennial, 4 to 8 feet high. Flowers fragrant, in long racemes, various shades of blue, lavender, lilac, pink, purple and white, all with a beautiful yellow blotch on the standard. Foliage silvery grey. Pkt., 25c.

*Malacothrix californica*. "Wild Marigold." Annual, 6 to 12 inches high. Flowers large, resembling a calendula or marigold, cream and yellow, beautifully blended. The blossoms are on single stems and open at daylight but close later in the day. They are produced in great numbers and present a wonderful sight in the early morning sunlight. A pretty little plant doing especially well in sandy soil. Pkt., 15c; ¼ oz., \$1.00.

*Meconopsis heterophylla*. "Flaming Poppy." Annual, 1 to 2 feet high. Flowers salmon-colored or brick red. Pkt., 15c.

*Mentzelia lindleyi*. "Blazing Star." Annual, 2 to 3 feet. Showy yellow flowers. Pkt., 10c; oz., 50c; lb., \$6.00.

*Mimulus brevipes*. "Yellow Monkey Flower." Annual, 1 to 1½ feet high. Flowers large, clear canary yellow. Pkt., 15c.

*Mimulus cardinalis*. "Scarlet Monkey Flower." Perennial, 1 to 3 feet. Flowers bright scarlet; grows in wet places. Pkt., 10c.

*Mimulus fremonti*. "Pink Monkey Flower." Annual, 4 to 6 inches high. Flowers large, deep rose pink. Grows in sandy places. Pkt., 15c.

*Nemophila insignis*. "Baby-Blue-Eyes." Annual, 4 to 8 inches high. A charming little plant of spreading habit, with clear, azure blue flowers. Prefers shade or partial shade. Pkt., 10c; oz., 35c; lb., \$4.00.

*Nemophila maculata*. "Spotted Nemophila." Annual, 4 to 8 inches. White with large deep purple blotch on each petal. Does well in shady places. Pkt., 10c; oz., 35c; lb., \$4.00.

*Oenothera bistorta vietchiana*. "Sun Cups." Annual, of low trailing habit. Flowers large, bright yellow. Grows in sandy places. Pkt., 15c.

*Oenothera trichocalyx*. "White Evening Primrose." Biennial, 1 to 1½ feet high. Large white flowers. Grows in sandy soil. Pkt., 15c.

*Orthocarpus purpurascens*. "Owl's Clover" or "Pink Paint Brush." Annual, 4 to 10 inches high. Rose, pink or purplish lilac shading to cream-color at center. Pkt., 10c.

*Pentstemon antirrhinoides*. "Yellow Pentstemon." Perennial shrub, 3 to 4 feet high. Flowers large, bright yellow. Pkt., 15c.

*Pentstemon centranthifolius*. "Scarlet Bugler." Perennial, 2 to 4 feet high. Rich vermilion colored flowers. Pkt., 15c.

*Pentstemon heterophyllus*. "Violet Beard Tongue." Perennial, 1½ to 2 feet high. Flowers trumpet shaped, royal purple marked with pink. Pkt., 15c.

*Pentstemon palmeri*. "White Pentstemon." Perennial, 1½ to 2½ feet high. Flowers large, creamy white shaded with pink. Pkt., 15c.

*Pentstemon spectabilis*. "Blue Pentstemon." Perennial, 4 to 7 feet high. Flowers in long spikes, and the richest combination of blue and royal purple. Pkt., 10c.

*Phacelia campanularia*. Annual, 1 to 1½ feet high. Flowers intense bright blue. Pkt., 15c; oz., \$1.50.

*Phacelia grandiflora*. "Large Flowered Phacelia." Annual, 1 to 3 feet high. Large saucer-shaped flowers, lavender, beautifully veined with violet. Pkt., 10c; oz., 70c.

*Phacelia parryi*. "Parry's Phacelia." Annual, 1 to 1½ feet high. Flowers saucer-shaped, deep violet, generally with five yellow spots. Pkt., 10c; oz., 70c; lb., \$8.00.

*Phacelia tanacetifolia*. "Wild Heliotrope." Annual, 1½ to 2½ feet high. Flowers lavender blue. Pkt., 10c; oz., 35c; lb., \$4.00.



*Layia elegans*—"Tidy Tips"

*Phacelia visida*. "Sticky Phacelia." Annual 1 to 2 feet high. Flowers saucer-shaped, rich salvia blue. Pkt., 10c; oz., 70c; lb., \$8.00.

*Phacelia whitlavia*. "Wild Canterbury Bell." Annual, 1 to 1½ feet high. Large bell-shaped flowers hanging in open, airy clusters; color violet purple. Pkt., 10c; oz., 60c; lb., \$7.00.

*Platystemon californicus*. "Cream Cups." Annual, 6 to 10 inches high. Cream colored flowers. Pkt., 10c; oz., \$1.50.

*Romneya coulteri*. "Matilija Poppy." Perennial, 6 to 10 feet high. Blossoms often 6 or 7 inches in diameter, pure glistening white with bright yellow centers. Pkt., 15c.

*Salvia carduacea*. "Thistle Sage." Annual, 1 to 2 feet high. Pale lavender flowers. Pkt., 10c; oz., 50c; lb., \$6.00.

*Silene laciniata*. "Indian Pink." Perennial, 1 to 3 feet. Flowers bright scarlet. Pkt., 15c.

*Sisyrinchium bellum*. "Blue Eyed Grass." Perennial, 8 to 15 inches high. Flowers bright blue with yellow centers. Pkt., 15c.

*Trichostema lanatum*. "Romero" or "Woolly Bluecurls." Shrubby perennial, 4 to 6 feet high. Flowers blue. Pkt., 15c.

*Viola pedunculata*. "Yellow Violet." Perennial 4 to 8 inches high. Flowers yellow the two upper petals beautifully blotched with brown on the outside. Pkt., 15c.

*Zauschneria californica*. "California Fuchsia." Perennial, 1 to 1½ feet high. Scarlet trumpet-shaped flowers. Useful for covering dry banks. Pkt., 15c.

For a full list of California Wild Flower Seeds, and also for more complete descriptions of the foregoing species, send for our special illustrated booklet, "CALIFORNIA WILD FLOWERS. THEIR CULTURE AND CARE." A treatise describing over a hundred beautiful species, with a few notes on their habits and characteristics. Price 15c, postpaid.

## California WILD FLOWER SEED *in prepared* MIXTURES

We particularly recommend these mixtures for sowing on unused pieces of ground, parkings, vacant lots, etc. The No. 1 Mixture has an established reputation, as the many letters of praise we have received will prove. It contains twenty distinct species mixed in their right proportions and will produce a succession of bloom for a long period. Many odd corners and unsightly pieces of unused ground can be transformed into beauty spots by sowing some of these seeds broadcast in the Fall about the time the rainy season commences.

In ordering it is only necessary to mention the number of the mixture desired.

**Payne's Mixture. No. 1.** General mixture of annual wild flower seeds. This mixture is made up of those kinds which will give a succession of flowers for a long period and will succeed under ordinary conditions. Pkt., 10c; oz., 40c;  $\frac{1}{4}$  lb., \$1.45; lb., \$5.00.

**Payne's Mixture. No. 2.** Mixture of annual wild flower seeds for sowing in shady places. Pkt., 10c; oz., 50c;  $\frac{1}{4}$  lb., \$1.75; lb., \$6.00.

**Payne's Mixture. No. 3.** Mixture of annual wild flower seeds in orange, yellow and cream shades. Pkt., 10c oz., 60c;  $\frac{1}{4}$  lb., \$2.00; lb., \$7.00.

**Payne's Mixture. No. 4.** Mixture of annual wild flower seeds in blue, purple and lavender shades. Pkt., 10c; oz., 50c;  $\frac{1}{4}$  lb., \$1.75; lb., \$6.00.

### Caution

As a result of our twenty-three years of effort in bringing before the public the beauty of California Wild Flowers there is now a considerable demand for these seeds. It is a regrettable fact that some seed stores have resorted to the practice of selling garden varieties of flowers as wild species. Some of these are cultivated forms of wild flowers, greatly changed, and in many cases much inferior to the original types and others are not native species at all. The No. 1 Mixture has been imitated with an inferior mixture of such flowers and sold at a price at which the true native species could not be furnished. In buying your seeds, be sure of getting the true wild species.

### Surprise Garden Mixture

For those who wish quantities of flower seeds for sowing on vacant ground and desire a less expensive mixture than the No. 1 Mixture of California Wild Flower Seeds, we have prepared a Surprise Garden Mixture which we are confident will be found superior to any such mixture offered by other firms. It is not a mixture of wild flowers, but of garden annuals, with a few wild species added. It contains a large number of different kinds, all of them quite hardy and varieties that will grow with the least amount of care and produce quantities of flowers for a long period. Indeed, there are so many kinds appearing in endless succession that it is a continual surprise from the time the first plant begins to blossom. We recommend it for vacant lots and unused pieces of ground. Pkt., 10c; oz., 35c;  $\frac{1}{4}$  lb., \$1.20; lb., \$4.00.

## Special Souvenir Collection of California Wild Flower Seeds

This collection contains twelve choice species in separate packets, all annuals of easy culture, and includes California Poppy, Baby Blue-Eyes, Blue Lupine, Blazing Star, Wild Heliotrope, Blue Gilia and six others equally beautiful.

Mailed to any part of the world

**\$1.00**



QUANTITY

NAMES OF BULBS AND SEEDS

PRICE

DOLLARS

CTS.

AMOUNT BROUGHT FORWARD

### Send for these books

**General Seed and Plant Catalog.** Contains a complete list of choice vegetable and flower seeds with special instructions for growing under California conditions. Contains the largest number of varieties of tree, shrub and palm seeds on the Pacific Coast and a very complete list of fine roses, flowering plants, ornamental trees and shrubs and fruit trees. Sent free upon request.

**California Wild Flowers, Their Culture and Care.** A treatise describing over one hundred species, with notes on their habits and characteristics. Many years of study and experiment with the native flora of California is contained in this book, making it a valuable and reliable reference for anyone interested in the wild flowers of California. Profusely illustrated. Price 15c postpaid.



*Successful Gardens  
since 1903*