

## **Historic, Archive Document**

Do not assume content reflects current scientific knowledge, policies, or practices.



62.61

LIBRARY  
RECEIVED  
★ JUN 1 1931 ★  
U. S. Department of Agriculture



In a beautiful Hardy Garden is where the peace and quiet that passeth all understanding can be found

# Palisades Popular Perennials

**HARDY GARDENS EASILY MADE**  
*for the* **BUSY MAN AND WOMAN**

## OUR LOCATION

Our Nurseries are located in Palisades, N. Y., just 14 miles north of New York City, on the new Hudson Driveway, leading directly from the Englewood, Dyckman Street, and 125th Street ferries, and about 7 miles south of the Nyack Ferry

*PRESENTED BY*

**THE PALISADES NURSERIES, Inc.**

*Horticulturists and Landscape Architects* : SPARKILL, NEW YORK

# 100 Best Hardy Perennials

Strong Plants of all varieties, named on these pages, 20 cts. each; \$2 per dozen; \$15 per 100



Achillea



Gaillardia



Lupinus



Sweet William

Botanical Name	Color of Bloom	Height
Achillea (Milfoil)	White, rose, or yellow	1 to 2 ft.
Agrostemma (Rose Campion)	White, rose, or red	1½ ft.
Alyssum (Madwort)	Yellow	1 ft.
Anchusa (Sea Bugloss)	Dark, medium, and light blue	2 to 3 ft.
Anthemis (Chamomile)	Yellow or white	1 to 1½ ft.
Aquilegia (Columbine)	All colors	1 to 1½ ft.
Arabis (Rock Cress)	White	6 to 9 in.
Armeria (Sea Pink)	White	1 to 1½ ft.
Artemisia (Southernwood; Old Man)	White, blue, and lavender	1 to 3 ft.
Aster (Michaelmas Daisy)	Blue or white	1 ft.
Aster (Alpine Daisy)	Blue or white	2 to 3 ft.
Baptisia (False Indigo)	White or pink	4 to 6 ft.
Boltonia (False Chamomile)	Rosy crimson	10 to 12 in.
Callirhoe (Poppy Mallow)	Rose, white, and blue	2 to 3 ft.
Campanula (Canterbury Bells)	Blue and white	1 to 1½ ft.
Centaurea (Hardy Cornflower)	Pink or white	1 to 1½ ft.
Chelone (Shell-Flower)	White	1 to 1½ ft.
Chrysanthemum (Giant Shasta Daisy)	All colors	2 to 3 ft.
Chrysanthemum, Hardy Japan	White	2 ft.
Cimicifuga (Snakeroot)	Yellow or pink	1 to 1½ ft.
Coreopsis (Tickseed)	Yellow	1½ ft.
Costmary (Bible-leaf Plant)	Blue or white	2 to 4 ft.
Delphinium (Larkspur)	Pink, red, or white	1 ft.
Dianthus (Hardy Carnation)	Pink, yellow, or white	2 to 4 ft.
Digitalis (Floxglove)	Blue	2 to 3 ft.
Eryngium (Sea Holly)	White or heliotrope	1 to 1½ ft.
Eupatorium (Hardy Stevia)	Lavender or white	1 to 1½ ft.
Funkia (Day Lily)	Gold and red	1 to 2 ft.
Gaillardia (Aurora Flower)	Lavender	2 ft.
Galega (Goat's-Rue)	Lavender, red, or white	1½ ft.
Geranium (Hardy Geranium)	Red or yellow	1½ ft.
Geum (Red Buttercup)	White	6 in. to 5 ft.
Grasses (Ribbon Grass)	White or rose	1 to 2 ft.
Gypsophila (Baby's Breath)	Red, golden yellow, or yellow	2 to 4 ft.
Helium (Sneezewort)	Yellow	1 to 5 ft.
Helianthus (Hardy Sunflower)	Golden	4 to 5 ft.
Heliopsis (Orange Sunflower)	Lemon or golden yellow	1 to 3 ft.
Hemerocallis (Yellow Day Lily)	Coral, white, or rose	1 to 1½ ft.
Heuchera (Alum Root)	Red, white, or rose	3 to 4 ft.
Hibiscus (Mallow)	All colors	4 to 5 ft.
Hollyhock, Double and Single	White or lavender	1 to 1½ ft.
Iberis (Candytuft)	All colors	1 to 1½ ft.
Iris (Fleur-de-lis)	All colors	2 to 3 ft.
Iris, Japanese	Red, pink, and white	1 to 2 ft.
Lathyrus (Everlasting Sweet Pea)	Rose	4 to 5 ft.
Liatris (Gay-Feather)	White, orange, red, yellow	3 to 5 ft.
Lilium (Hardy Lilies)	Blue or white	1 to 1½ ft.
Linum (Blue Flax)	Red or blue	1 to 1½ ft.
Lobelia (Cardinal Flower)	Rose, blue, white, or yellow	1 to 2 ft.
Lupinus (Lupines)	Rose, red, or white	1 to 1½ ft.
Lychnis (Ragged Robin)	Red, pink, or white	1 to 2 ft.
Lychnis chalconica (Maltese Cross)	Yellow	6 in.
Lysimachia (Creeping Jenny)	Deep rose	2 to 3 ft.
Lythrum (Loosestrife)	Blue and pink	1 to 1½ ft.
Mertensia (Blue Bells)	White, red, and rose	2 to 3 ft.
Monarda (Horse-Mint or Bee-Balm)	Blue	6 in.
Myosotis (Forget-me-not)	Blue	5 in.
Nepeta (Variegated Ground-Ivy)	Yellow, white, and rose	1½ to 2 ft.
Oenothera (Evening Primrose)	Red, pink, and white	2 ft.
Papaver (Poppy, Oriental and Alpine)	Coral, white, and lavender	1½ to 2 ft.
Pentstemon (Beard-Tongue)	Orange-red lanterns	1½ ft.
Physalis (Chinese Lantern Plant)	Pink or white	1½ to 2 ft.
Physostegia (Dragonhead)	All colors	2 to 3 ft.
Phlox decussata (Hardy Garden Phlox)	Pink, white, or lilac	4 to 6 in.
subulata (Moss Pink)	Blue or white	1½ ft.
Platycodon (Japanese Bellflower)	Blue or white	2 ft.
Polemonium (Jacob's Ladder)	Yellow	6 to 9 in.
Primula (English Primrose)	Yellow or red	6 to 9 in.
Primula (English Cowslip)	Pink, red, or white	1 to 1½ ft.
Pyrethrum (Persian Daisy)	Rosy purple	2 to 3 ft.
Rudbeckia (Coneflower)	Sky-blue	2 to 4 ft.
Salvia azurea (Rocky Mt. Sage)	Yellow	1½ ft.
Santolina (Lavender Cotton)	Azure-blue	1 to 2 ft.
Scabiosa (Blue Bonnet)	Yellow, rose, and white	4 to 12 in.
Sedum (Stoncrop)	Yellow, white, or red	2 in.
Sempervivum (House-Lcek)	Pink or white	2 ft.
Sidalcea (Greek Mallow; False Larkspur)	Pink or white	2 to 3 ft.
Spiraea (Meadowsweet)	Lavender	2 ft.
Statice (Sea Lavender)	Blue or white	1 to 2 ft.
Stokesia (Stokes' Aster)	Red, white, and pink	1½ ft.
Sweet William (Dianthus)	Yellow, lavender, and white	2 to 3 ft.
Thalictrum (Meadow-Rue)	Yellow	5 ft.
Thermopsis (False Lupine; Buffalo Pea)	Blue or white	2 to 3 ft.
Tradescantia (Spiderwort)	White, pink, and maroon	8 in.
Trillium (Wood Lily; Wake Robin)	Red, rose, or white	2 to 3 ft.
Valeriana (Garden Heliotrope)	Blue or white	1½ to 3 ft.
Veronica (Speedwell)	Blue	6 in.
Vinca (Creeping Myrtle)	Yellow or white	6 in.
Viola cornuta (Johnny-jump-up)	Blue	9 in.
Viola (Sweet-scented Violets)	White	2 to 3 ft.
Yucca filamentosa (Adam's Needle)		

*General Catalogue of Hardy Perennials, including New, Rare, and Meritorious Varieties Suitable for Rockery or Herbaceous Border, sent on request*



An enjoyable Hardy Perennial Border along driveway

## The Garden of Hardy Perennial Flowers

**P**ERENNIALS not only make a permanent border that will increase in beauty each succeeding year without the expense of replanting, but, with the proper selection of sorts, guided by our practical knowledge, a display of bloom may be had in succession from April until November, long before and long after all tender plants of the Geranium, Canna and Coleus orders are effective. The latter are desirable for a few weeks only, and may be had at a relatively exorbitant expenditure, whilst Perennials, because of the ease with which they are grown and the amount of neglect they will withstand, to say nothing of their extremely reasonable cost, are indeed the ideal plants for the permanent garden.

The diagrams or plans as shown on pages 4 and 8 are suggestions made to demonstrate and assist in making selections of hardy permanent effects, combining Perennials with Shrubs, Evergreens, Trees, etc., and, in each instance, we give the cost at which we will furnish the necessary plants as described, carriage paid to the nearest railroad station east of the Mississippi River.

Beds of this kind should be planted either in the early fall or spring; but, where it cannot be done until the summer months, we are prepared to furnish plants of Perennials grown in pots. These experience little change when shipped, arrive in good growing condition, and establish themselves readily.

In making the selection of kinds, we have named varieties that succeed in almost any situation, and have tried to arrange for succession of bloom throughout the summer and fall months, eliminating very early-flowering sorts.

A feature we strongly advise is planting bulbs of Tulips and Narcissi among the Perennial Plants for early spring flowering, and if planted deep (8 inches below the surface), the foliage can be cut off after flowering in spring and the bulbs, if left undisturbed, will flower each year before the Perennials.

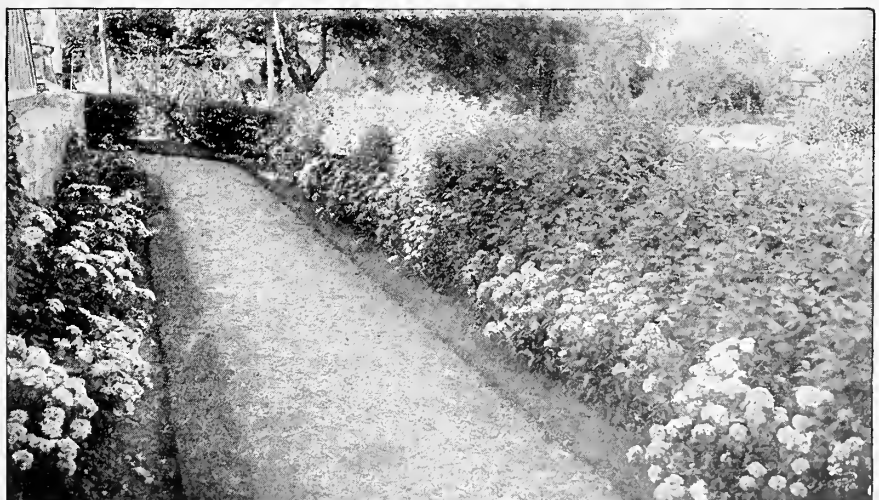
As the varieties of Perennials selected and arranged for the different beds are merely suggestions, changes can be made suitable

to the purchaser's requirements, but these must be noted at the time of ordering.

We usually allow about one plant to each square foot of surface. By some this may be considered too close, but it is a good fault, for the first year at least, or before the plant becomes firmly established. It is easily corrected the following season by removing elsewhere or discarding some of the plants that have outgrown their space, increasing the number of those liked best by division of the roots.

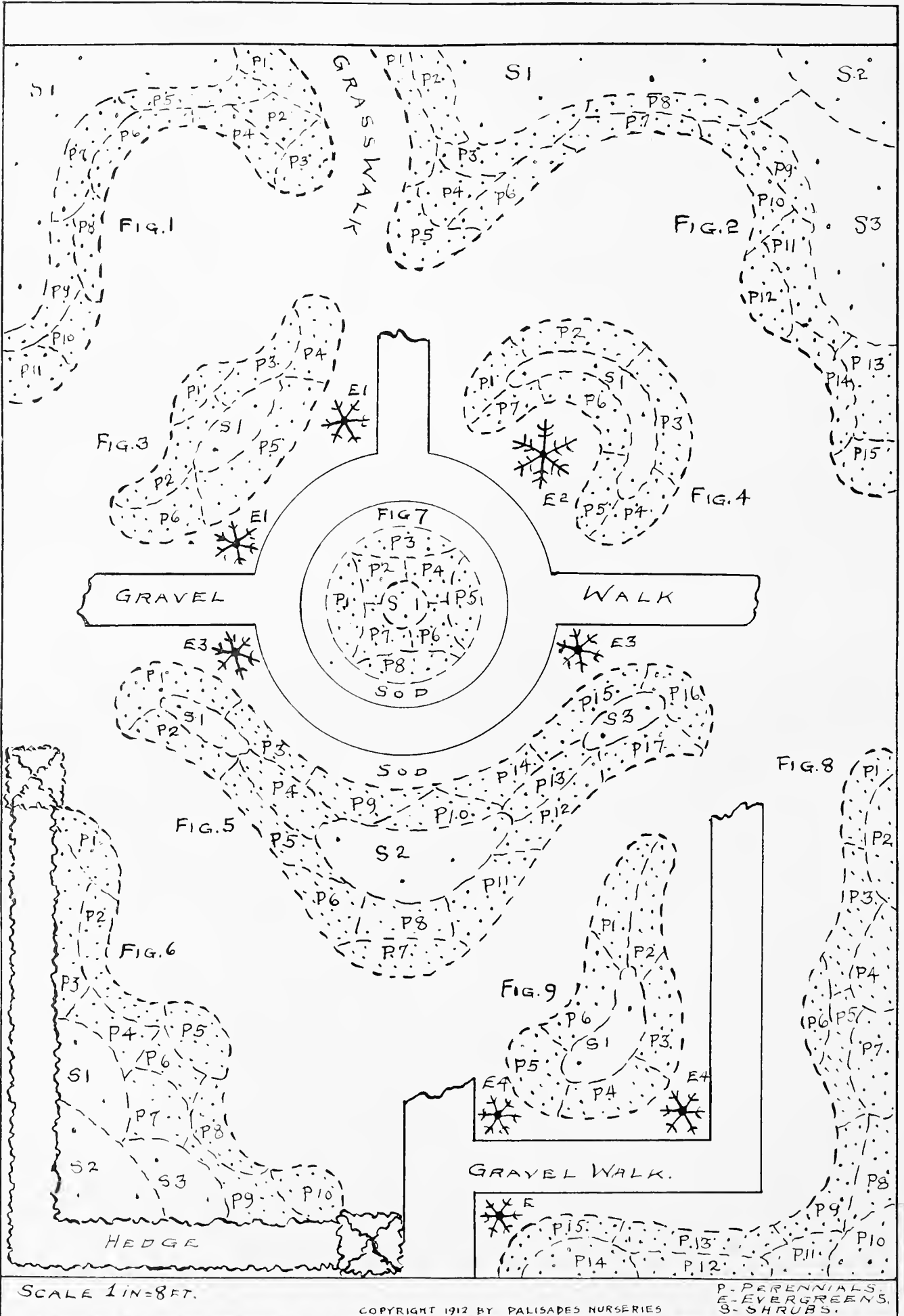
It is little wonder that hardy plants are so popular, and we think Mr. Miller in the "Garden Magazine" hits the nail on the head when he says:

"But now that the treasures of the Far East are lavished upon us, we have hardy plants suitable for practically every purpose the most exacting gardener can conceive. And wherever we have any special object to accomplish, we ought to try nine times to find a hardy plant that will do the work, before falling back on a tender one. And this for two reasons: First, hardy plants harmonize better with our climate and environment than tropical plants. Second, as a rule, they are cheaper to maintain. And, in the long run, those effects which grow naturally out of the soil, and out of true economy, will be recognized as the most artistic."



Perennial Border. Sweet William in the foreground

# PLATE A



All beds next to gravel walks or drives are outlined in solid lines. All beds next to grass walks or in lawn are outlined in dotted lines. The above beds are all drawn to a scale of 8 feet to 1 inch. For a bed similar in shape but double the size use a scale of 16 feet to 1 inch and double the quantity of plants; for one three times as large use a scale of 24 feet to 1 inch and order three times the quantity of plants, etc.



## Plate A

**FIG. 1**

**A Corner Bed, or Section of Lawn Border**

- 8 Extra-strong Shrubs, 2 to 3 ft. high, for background.
- 127 Clumps of Palisades Popular Perennials in 11 varieties.

Price for entire collection, boxed and shipped to destination, \$22.50

**KEY TO FIG. 1**

- S 1 8 Shrubs. Choice of Deutzia, Philadelphus, Weigela, Forsythia, etc.
- P 1 10 Milfoil, "The Pearl." *Achillea Ptarmica, fl.-pl.*
- P 2 9 Foxgloves, in variety. *Digitalis.*
- P 3 10 Hardy Garden Pinks. *Dianthus plumarius.*
- P 4 12 Sweet William. *Dianthus barbatus.*
- P 5 12 Tickseed. *Coreopsis lanceolata grandiflora.*
- P 6 12 Iris, or Fleur-de-lis. *Iris germanica.*
- P 7 16 Mallows. *Hibiscus Moscheutos.*
- P 8 10 Canterbury Bells. *Campanula.*
- P 9 14 Sea Bugloss. *Anchusa.*
- P 10 10 Larkspurs. *Delphinium chinense.*
- P 11 12 Blue-bird Flower. *Veronica longifolia subsessilis.*

**FIG. 2**

**A Larger Corner Bed, or Section of Lawn Border**

- 18 Extra-strong Shrubs, 2 to 3 feet high, for background.
- 188 Clumps of Palisades Popular Perennials in 15 varieties.

Price for entire collection, boxed and shipped to destination, \$36

**KEY TO FIG. 2**

- S 1 8 Deutzia, "Pride of Rochester."
- S 2 4 Golden Elder. *Sambucus nigra aurea.*
- S 3 6 Mock Orange. *Philadelphus coronarius.*
- P 1 12 Chrysanthemum, "Bridal Robe." *Chrysanthemum inodorum.*
- P 2 10 Blue-bird Flower. *Veronica longifolia subsessilis.*
- P 3 14 Tickseed. *Coreopsis lanceolata grandiflora.*
- P 4 10 Foxgloves, in variety. *Digitalis.*

- P 5 14 Shasta Daisies. *Chrysanthemum maximum.*
- P 6 12 Carpathian Harebells. *Campanula Carpatica.*
- P 7 12 Larkspur, "Tom Thumb." *Delphinium chinense ultramarine.*
- P 8 12 Hollyhocks. *Althæa rosea.*
- P 9 10 Sea Bugloss. *Anchusa italica, Dropmore.*
- P 10 14 Johnny-jump-ups. *Viola cornuta.*
- P 11 18 Purple Coneflower. *Rudbeckia purpurea.*
- P 12 12 Mule Pinks. *Dianthus hybridus, "Furst Bismarck."*
- P 13 16 Single Sunflower, "Miss Mellish." *Helianthus.*
- P 14 12 Mountain Bluet. *Centaurea montana.*
- P 15 10 False Chamomile. *Boltonia latisquama.*

**FIG. 3**

**A Corner Bed Next to Quarter-Circle Walk**

- 2 Extra-strong Shrubs, 3 feet high, for background.
- 2 Evergreens 2 to 3 feet high.
- 74 Clumps of Palisades Popular Perennials, in 6 varieties.

Price for entire collection, boxed and shipped to destination, \$18

**KEY TO FIG. 3**

- S 1 2 Hydrangeas.
- E 1 2 Evergreens.
- P 1 8 Hardy Garden Pinks. *Dianthus plumarius.*
- P 2 12 Foxgloves, in variety. *Digitalis.*
- P 3 10 Blue-bird Flower. *Veronica longifolia subsessilis.*
- P 4 14 Mountain Bluet. *Centaurea montana.*
- P 5 18 Phlox, "Miss Lingard." *Phlox decussata.*
- P 6 12 Maltese Cross. *Lycbnis chalcædonica.*

**FIG. 4**

**Another Design for Corner Next to Circular Walk**

- 4 Extra-strong Shrubs, 2 to 3 feet high, for background.
- 1 Evergreen, 2 to 3 feet high.
- 86 Clumps Palisades Popular Perennials in 7 varieties.

Price for entire collection, boxed and shipped to destination, \$18



*Philadelphus coronarius*

**KEY TO FIG. 4**

- s 1 4 Shrubs. Choice of Deutzia, Philadelphus, Spiraea, Forsythia, etc.
- E 2 1 Evergreen, good variety.
- P 1 12 Dwarf Alpine Phlox. *Pblox amæna rosea*.
- P 2 14 Forget-me-nots. *Myosotis palustris*.
- P 3 16 Milfoil, Yellow. *Achillea tomentosa*.
- P 4 10 Buttercups, Red and Yellow. *Geum atrosanguineum*.
- P 5 10 False Chamomile. *Boltonia latisquama nana*.
- P 6 14 Lance-leaved Tickseed. *Coreopsis lanceolata grandiflora*.
- P 7 10 Sea Bugloss. *Anchusa italica*, Dropmore.

**FIG. 5**

**A Border Bed Next to Half-Circle Walk**

- 8 Extra-strong shrubs, 2 to 3 feet high, for background.
  - 2 Evergreens, in variety, 2 to 3 feet high.
  - 233 Clumps Palisades Popular Perennials in 17 varieties.
- Price for entire collection, boxed and shipped to destination, \$45

**KEY TO FIG. 5**

- s 1 2 Mock Orange. *Philadelphus coronarius*.
- s 2 4 Golden Bell. Forsythia.
- s 3 2 Deutzia. *Deutzia crenata*.
- E 3 2 Evergreens in variety.
- P 1 17 Phlox, "Miss Lingard," white. *Pblox decussata*.
- P 2 12 Iris, or Fleur-de-lis. *Iris germanica*.
- P 3 12 Japanese Windflower. *Anemone japonica*.
- P 4 16 Foxgloves in variety. *Digitalis*.
- P 5 16 Blue-bird Flower. *Veronica longifolia subsessilis*.
- P 6 16 Canterbury Bells. *Campanula Medium*.
- P 7 15 Hardy Garden Pinks. *Dianthus plumarius*.
- P 8 10 Scarlet Beard Tongue. *Pentstemon barbatus Torreyi*.
- P 9 14 Columbines. *Aquilegia*.
- P 10 14 Canterbury Bells. *Campanula Medium*.
- P 11 16 Lance-leaved Tickseed. *Coreopsis lanceolata grandiflora*.
- P 12 14 Larkspurs. *Delphinium*.
- P 13 9 Kansas Gay Feather. *Liatris pycnostachya*.

- P 14 10 Sweet William. *Dianthus barbatus*.
- P 15 16 Phlox, "Champs Elysees," crimson. *Pblox decussata*.
- P 16 14 Flag, or Iris. *Iris sibirica*.
- P 17 12 Giant Shasta Daisies. *Chrysanthemum maximum*.

**FIG. 6**

**A Corner Bed Inside of Hedge**

- 8 Extra-strong Shrubs, 2 to 3 feet high, for background.
  - 140 California Privet, 3 feet high for Hedge.
  - 8 California Privet, extra-strong, for pillars.
  - 133 Clumps Palisades Popular Perennials in 10 varieties.
- Price for entire collection, boxed and shipped to destination, with Hedge, \$36, without Hedge, \$24

**KEY TO FIG. 6**

- s 1 2 Mock Orange. *Philadelphus coronarius*.
- s 2 3 Golden Bell. Forsythia.
- s 3 3 Weigela.
- P 1 16 Hardy Garden Pinks. *Dianthus*, "White Reserve."
- P 2 20 Stokes' Aster. *Stokesia cyanea*.
- P 3 12 False Chamomile. *Boltonia latisquama nana*.
- P 4 9 Rose Campion. *Agrostemma coronaria*.
- P 5 16 Hardy Garden Pinks. *Dianthus*, "Abbottsford."
- P 6 10 Foxgloves in variety. *Digitalis*.
- P 7 10 Red Sneezewort. *Helenium rubrum*.
- P 8 14 White Speedwell. *Veronica incana*.
- P 9 14 Michaelmas Daisies. *Aster*, "Wm. Bowman."
- P 10 12 Mule Pinks. *Dianthus hybridus*, "Furst Bismarck."

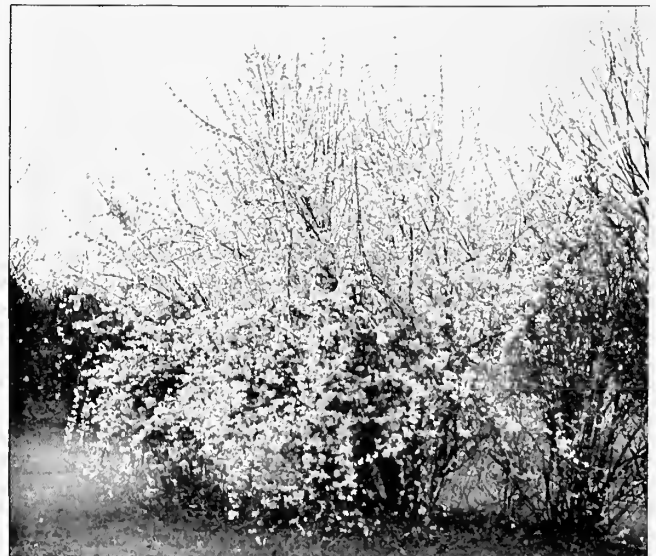
**FIG. 7**

**For Circular Bed**

- 1 Large Shrub or Tree. Purchaser's choice.
  - 80 Clumps Palisades Popular Perennials in 8 varieties.
- Price for entire collection, boxed and shipped to destination, \$14

**KEY TO FIG. 7**

- s 1 1 Large Shrub or Tree.
- P 1 10 Giant Shasta Daisies. *Chrysanthemum maximum*.
- P 2 10 Rose Campion. *Agrostemma coronaria*.
- P 3 10 Sea Thrift. *Armeria maritima*.
- P 4 10 Phlox, "Miss Lingard," white. *Pblox decussata*.
- P 5 10 German Catchfly. *Lychnis viscaria*.
- P 6 10 Scarlet Beard Tongue. *Pentstemon grandiflorus*.
- P 7 10 Tawny Day Lily. *Heemerocallis flava*.
- P 8 10 Iris, or Fleur-de-lis. *Iris germanica*.



Forsythia in early spring



FIG. 8

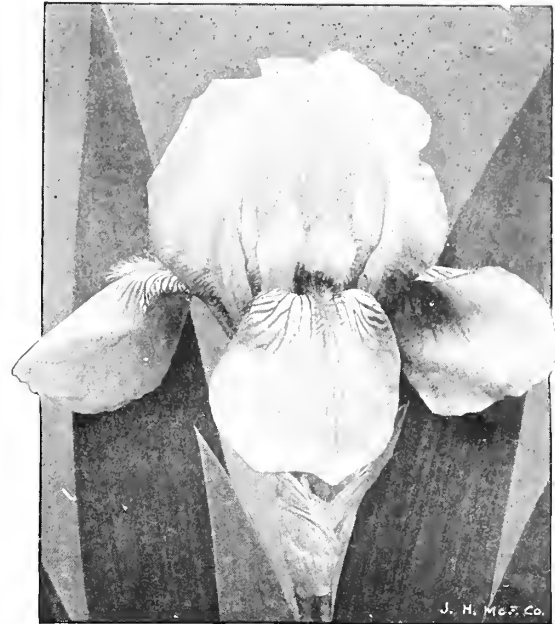
Bed 50 Feet Long for Outside Corner of Walk

- 1 Good Evergreen, 2 to 3 feet high.
- 199 Clumps Palisades Popular Perennials in 15 varieties.

Price for entire collection, boxed and shipped to destination, \$34

KEY TO FIG. 8

- E 5 1 Evergreen, good variety.
- P 1 14 Hardy Garden Pinks. *Dianthus plumarius*.
- P 2 8 False Chamomile. *Boltonia latisquama nana*.
- P 3 16 Blue-bird Flower. *Veronica longifolia subsessilis*.
- P 4 12 Lance-leaved Tickseed. *Coreopsis lanceolata grandiflora*.
- P 5 14 Foxgloves, in variety. *Digitalis*.
- P 6 10 Giant Shasta Daisies. *Chrysanthemum maximum*.
- P 7 13 Single Sunflower, "Miss Mellish." *Helianthus*.
- P 8 11 Hollyhocks. *Althea rosea*.
- P 9 18 Phlox, "Miss Lingard," white. *Phlox decussata*.
- P 10 8 Red Sneezewort. *Helenium rubrum*.
- P 11 9 Rose Mallows. *Hibiscus Moscheutos*.
- P 12 14 False Chamomile. *Boltonia asteroides*.
- P 13 22 Rose Campion. *Agrostemma coronaria*.
- P 14 12 Graceful Sunflower. *Helianthus orgyalis*.
- P 15 18 Iris, or Fleur-de-lis. *Iris Germanica*.



German Iris

KEY TO FIG. 9

- S 1 2 Shrubs. Choice of Philadelphus, Forsythia, etc.
- E 4 2 Evergreens in variety.
- P 1 16 Milfoil, "The Pearl." *Achillea Ptarmica*.
- P 2 16 Phlox in variety. *Phlox decussata*.
- P 3 14 American Senna. *Cassia Marylandica*.
- P 4 16 Larkspurs. *Delphinium formosum*.
- P 5 14 Foxgloves in variety. *Digitalis*.
- P 6 12 Giant Shasta Daisies. *Chrysanthemum maximum*.

FIG. 9

Bed for Inside Corner of Walk

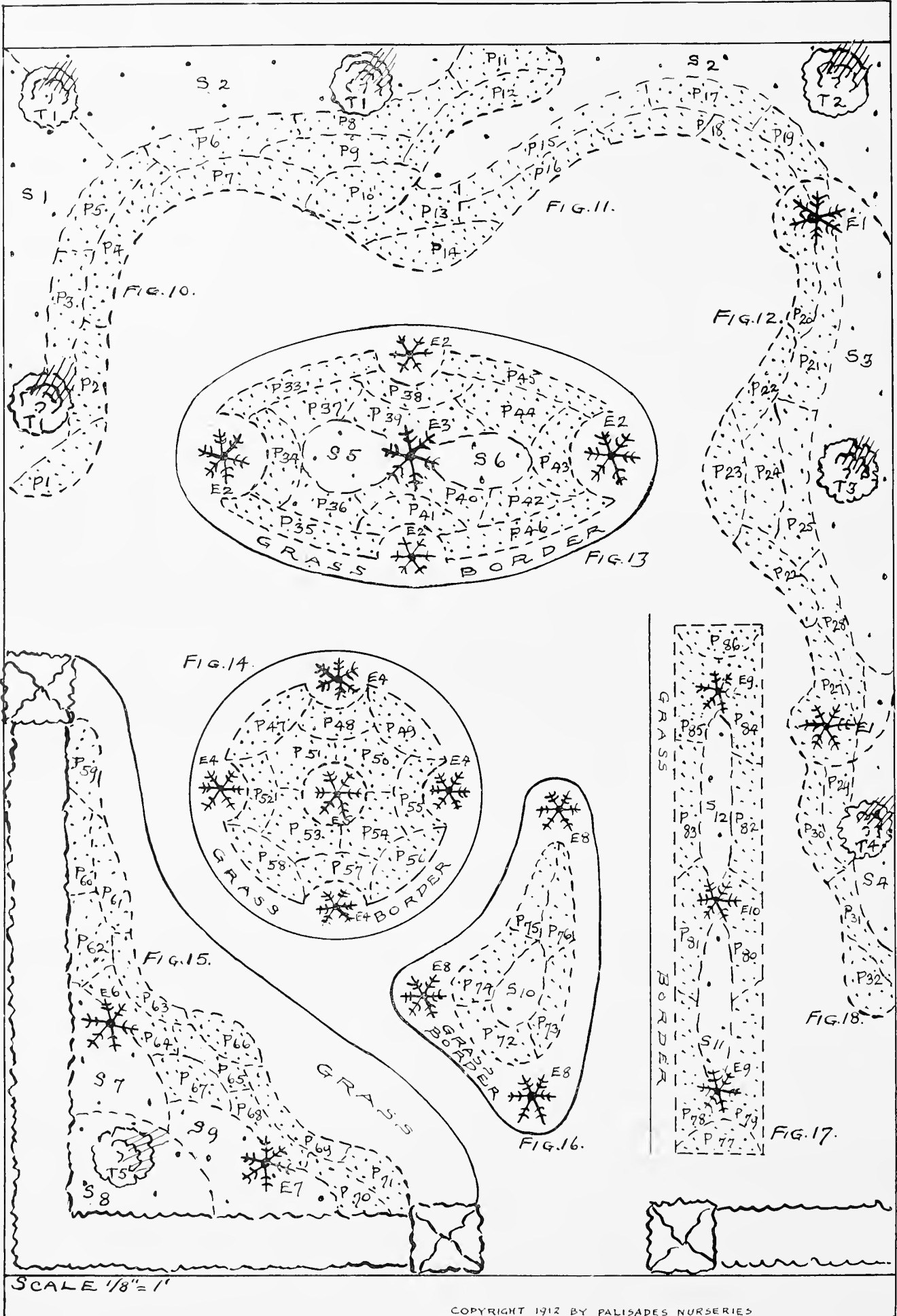
- 2 Extra-strong Shrubs, 2 to 3 feet high.
- 2 Evergreens in variety, 2 to 3 feet high.
- 88 Clumps Palisades Popular Perennials in 6 varieties.

Price for entire collection, boxed and delivered to destination, \$21



A border of Hardy Perennials. Foxgloves, Larkspurs and Sweet Williams the chief features

# PLATE B



SCALE 1/8" = 1'

COPYRIGHT 1912 BY PALISADES NURSERIES

All beds next to gravel walks or drives are outlined in solid lines. All beds next to grass walks or in lawn are outlined in dotted lines. The above beds are all drawn to a scale of 8 feet to 1 inch. For a bed similar in shape but double the size use a scale of 16 feet to 1 inch and double the quantity of plants; for one three times as large use a scale of 24 feet to 1 inch and order three times the quantity of plants, etc.

## Plate B

**FIG. 10**

Corner Bed, or Section of Large Border for Lawn

- 3 Large Trees, 8 to 10 feet high.
- 20 Extra-strong Shrubs, 2 to 3 feet high.
- 261 Clumps Palisades Popular Perennials in 12 varieties.

Price for entire collection, boxed and shipped to destination, \$58

**KEY TO FIG. 10**

- T 1 3 Trees. Choice of Maple, Poplar, or Dogwood.
- S 1 10 Shrubs. Choice of Lonicera, Deutzia, or Spiraea.
- S 2 10 Shrubs. Choice of Weigela, Philadelphus, or Forsythia.
- P 1 18 Hardy Garden Pinks. *Dianthus plumarius*.
- P 2 16 Purple Tufted Pansies. *Viola cornuta*.
- P 3 18 False Chamomile. *Boltonia latisquama*.
- P 4 24 White Speedwell. *Veronica incana*.
- P 5 18 Mallows. Hibiscus.
- P 6 20 Hardy Sunflower, "Wm. Moon." *Helianthus*.
- P 7 26 Larkspurs, "Tom Thumb." *Delphinium chinense*.
- P 8 25 Sea Bugloss. *Anchusa italica*, Dropmore.
- P 9 22 Tawny Day Lily. *Hemerocallis flava*.
- P 10 24 Canterbury Bells. *Campanula Medium*.
- P 11 32 Sneezewort, Red. *Helenium rubrum*.
- P 12 18 False Dragon Head. *Physostegia virginica*.

**FIG. 11**

Connecting Section in Large Border Between Figs. 10 and 12

- 1 Large Tree, 8 to 10 feet high.
- 15 Extra-strong Shrubs, 2 to 3 feet high.
- 148 Clumps Palisades Popular Perennials in 7 varieties.

Price for entire collection, boxed and shipped to destination, \$32



Flowering Dogwood Tree



*Artemisia lactiflora*

**KEY TO FIG. 11**

- T 2 1 Tree. Choice of Maple, Poplar, or Dogwood.
- S 2 15 Shrubs. Choice as in Fig. 10.
- P 13 20 Everblooming Ox-eye. *Heliopsis picheriana*.
- P 14 24 Blue-bird Flower. *Veronica longifolia subsessilis*.
- P 15 22 Hollyhocks. *Althæa rosea*.
- P 16 22 Baby's Breath. *Gypsophila reptans*.
- P 17 20 Larkspur Hybrids. *Delphinium hybridum*.
- P 18 24 Columbines. *Aquilegia*.
- P 19 16 Maltese Cross. *Lychnis chalcedonica*.

**FIG. 12**

A Bed for Lawn or Walk Border

- 1 Large Tree, 8 to 10 feet high.
- 2 Evergreens, good varieties, 2 to 3 feet high.
- 10 Extra-strong Shrubs, 2 to 3 feet high.
- 146 Clumps Palisades Popular Perennials in 9 varieties.

Price for entire collection, boxed and shipped to destination, \$36

**KEY TO FIG. 12**

- T 3 1 Tree. Choice as in Fig. 10.
- E 1 2 Evergreens, good varieties.
- S 3 10 Shrubs. Choice as in Fig. 10.
- P 20 20 White Speedwell. *Veronica incana*.
- P 21 20 Hardy Sunflower. *Helianthus*.
- P 22 16 Moonpenny Daisies. Shasta Daisy, "Alaska."
- P 23 18 Chamomile. *Anthemis Kelwayi*.
- P 24 12 Oriental Poppies. *Papaver orientale*.
- P 25 14 False Chamomile. *Boltonia latisquama*.
- P 26 14 Larkspur, Tom Thumb. *Delphinium chinense*.
- P 27 20 Milfoil, "The Pearl." *Achillea Ptarmica*.
- P 28 12 Hollyhocks. *Althæa rosea*.



Weigela rosea

FIG. 13

Oval Bed

- 5 Good Evergreens, 2 feet high.
- 6 Extra-strong Shrubs, 2 to 3 feet high.
- 235 Clumps Palisades Popular Perennials in 14 varieties.

Price for entire collection, boxed and shipped to destination, \$51

KEY TO FIG. 13

- E 2 4 Evergreens. Choice of *Retinospora aurea filifera*, etc.
- E 3 1 Evergreen 4 feet high, choice as above.
- S 5 3 Weigelas.
- S 6 3 Deutzias. *Deutzia Lemoinei*.
- P 33 22 Hardy Garden Pinks. *Dianthus*, "Abbottsford."
- P 34 20 Foxgloves in variety. *Digitalis*.
- P 35 22 Hardy Garden Pinks. *Dianthus*, "Cyclops."
- P 36 9 False Chamomile. *Boltonia latifolia nana*.
- P 37 12 Beard Tongue. *Pentstemon grandiflorus*.
- P 38 12 Columbines. *Aquilegia*.
- P 39 16 Bee Balm. *Monarda didyma*.
- P 40 14 Bee Balm. *Monarda didyma*.
- P 41 12 Stone Crop. *Sedum spectabile*.
- P 42 12 Dragon Head. *Physostegia*.
- P 43 18 Heavenly Blue Flower. *Anchusa*, Dropmore variety.
- P 44 22 Larkspur Hybrids. *Delphinium hybridum*.
- P 45 22 Hardy Garden Pinks. *Dianthus*, "White Reserve."
- P 46 22 Hardy Garden Pinks. *Dianthus*, "Furst Bismarek."

FIG. 14

Circular Bed

- 5 Good Evergreens, 2 feet high.
- 181 Clumps Palisades Popular Perennials in 12 varieties.

Price for entire collection, boxed and shipped to destination, \$40

KEY TO FIG. 14

- E 4 4 Norway Spruce. *Picea excelsa*.
- S 5 1 Thuja (arborvitæ).
- P 47 16 Milfoil, "The Pearl." *Achillea Ptarmica*.
- P 48 12 Trailing Myrtle. *Vinca minor*.
- P 49 18 Forget-me-nots. *Myosotis palustris*.
- P 50 15 Hardy Phlox, Rose. Phlox, "Sonnenkind."
- P 51 15 Hardy Phlox, White. Phlox, "Miss Lingard."

- P 52 15 Jacob's Ladder. *Polemonium reptans*.
- P 53 15 Hardy Phlox, Crimson. Phlox, "Champs Elysees."
- P 54 15 Hardy Phlox, Light Pink. Phlox, "Selma."
- P 55 14 Stonecrop. *Sedum acre*.
- P 56 16 Tufted Pansies. *Viola cornuta*.
- P 57 14 Japan Windflower. *Anemone Japonica*.
- P 58 16 Aurora Flower. *Gaillardia*.

FIG. 15

Corner Bed Inside of Hedge

- 1 Large Tree, 10 to 12 feet high.
- 2 Good Evergreens in variety, 2 to 3 feet high.
- 17 Extra-strong Shrubs, 2 to 3 feet high.
- 166 California Privet, 3 feet high, for hedge.
- 8 California Privet, extra-strong, for two pillars.
- 162 Clumps Palisades Popular Perennials in 13 varieties.

Price for entire collection, boxed and shipped to destination, with Hedge, \$55, without Hedge, \$41

KEY TO FIG. 15

- T 5 1 Tree. Choice of Maple, Poplar, or Dogwood.
- E 6 1 Norway Spruce. *Picea excelsa*.
- E 7 1 Thuja. *Arborvitæ*.
- S 7 5 Weigelas. *Weigela rosea*, or *candida*.
- S 8 6 Deutzias. *Deutzia Lemoinei*.
- S 9 6 Forsythia.
- P 59 13 Rose Sea Pinks. *Armeria maritima splendens*.
- P 60 10 Hardy Phlox, White. Phlox, "Miss Lingard."
- P 61 11 Dwarf Phlox, Red. *Phlox amana*.
- P 62 14 Hardy Sunflower. *Helianthus*.
- P 63 12 Speedwell, Blue. *Veronica longifolia subsessilis*.
- P 64 12 Sea Bugloss. *Anchusa*, Dropmore variety.
- P 65 10 Oriental Poppy. *Papaver orientale*.
- P 66 16 White Cup. *Campanula carpatica*.
- P 67 14 Red Sneezewort. *Helenium rubrum*.
- P 68 14 Mallows. *Hibiscus*.
- P 69 12 Sweet Williams. *Dianthus barbatus*.
- P 70 12 Irises, or Fleur-de-lis. *Iris Germanica*.
- P 71 12 Day Lilies. *Hemerocallis*.



Digitalis, or Foxglove

FIG. 16

Triangular Bed

- 3 Good Evergreens, choice sorts, 2 to 3 feet high.
- 2 Extra-strong Shrubs, 2 to 3 feet high.
- 66 Clumps Palisades Popular Perennials in 5 varieties.

Price for entire collection, boxed and shipped to destination, \$20

KEY TO FIG. 16

- E 8 3 Evergreens, choice sorts.
- S 10 2 Weigelas. *Weigela rosea*.
- P 72 14 Iris, or Fleur-de-lis. *Iris Germanica*.
- P 73 14 Larkspurs. *Delphinium*.
- P 74 18 Hardy Phlox, White. Phlox, "Miss Lingard."
- P 75 10 Chamomile, Yellow. *Anthemis Kelwayi*.
- P 76 10 Blue-bird Flower. *Veronica longifolia subsessilis*.

FIG. 17

Straight Border Bed, to Run Parallel with Walk or Drive on Each Side

- 3 Good Evergreens, 2 to 3 feet high.
- 6 Extra-strong Shrubs, 2 to 3 feet high.
- 188 Clumps Palisades Popular Perennials in 10 varieties.

Price for entire collection, boxed and shipped to destination, \$40

KEY TO FIG. 17

- E 9 2 Evergreens.
- E 10 1 Evergreen.
- S 11 3 Shrubs, in variety.
- S 12 3 Shrubs, in variety.
- P 77 14 Hardy Phlox, in variety. *Phlox decussata*.
- P 78 20 Maltese Cross. *Lychnis chalcedonica*.
- P 79 24 Rose Campion. *Agrostemma coronaria*.
- P 80 18 False Chamomile. *Boltonia latisquama*.
- P 81 20 False Dragon Head. *Physostegia virginica*.
- P 82 20 Giant Persian Daisies. *Pyrethrum uliginosum*.
- P 83 18 Moonpenny Daisies. Shasta Daisies.
- A 84 20 Speedwell. *Veronica longifolia subsessilis*.
- P 85 20 Chinese Larkspurs. *Delphinium chinense*.
- P 86 14 Hardy Phlox, in variety. *Phlox decussata*.



Larkspur

FIG. 18

Terminal Section to Larger Border

- 1 Large Tree, 8 to 10 feet high.
- 5 Extra-strong Shrubs, 2 to 3 feet high.
- 52 Clumps Palisades Popular Perennials in 4 varieties.

Price for entire collection, boxed and shipped to destination, \$13.50

KEY TO FIG. 18

- T 4 1 Tree. Choice of Maple, Poplar or Dogwood.
- S 4 5 Shrubs. Choice same as in Fig. 10.
- P 29 10 Lance-leaved Tickseed. *Coreopsis lanceolata*.
- P 30 16 Harebell. *Campanula carpatica*.
- P 31 14 Bee Balm. *Monarda didyma*.
- P 32 12 Sweet William. *Dianthus barbatus*.



Hardy Phlox



SHOWING LUXURIOUS RAMBLING ROCK-GARDEN EFFECTS PRODUCED BY PERENNIALS AND ROCK-GARDEN PLANTS

## Collection of the Best Rock-Garden Plants

All Perfectly Hardy and Bloom Abundantly

- Achillea tomentosa* (Milfoil). Yellow. 6 in. high.  
*Ajuga genevensis* (Bugle-Weed). Blue, rose, and white. 6 to 10 in. high.  
*Alyssum saxatile compactum* (Gold-Dust). Yellow. 6 in. high.  
*Arabis alpina* (Rock Cress). White. 6 to 9 in. high.  
*Armeria rosea* (Sea Pink). Pink. 6 to 8 in. high.  
*Aster alpina* (Alpine Aster). Blue and white. 6 to 9 in. high.  
*Aubrietia* (Rock Cress). Pink, lavender to crimson. 4 to 6 in. high.  
*Bellis perennis* (English Daisy). Pink and white. 4 to 6 in. high.  
*Campanula carpatica* (Bellflower). Blue and white. 5 in. high.  
*C. Portenschlagiana* (Dalmatian Bellflower). Blue. 4 in. high. 35 cts. each, \$3.50 per doz.  
*Cerastium Biebersteini* (Mouse-Ear). White; snowy white foliage. 4 in. high.  
*C. tomentosum* (Mouse-Ear). White; foliage silvery green. 4 in. high.  
*Cheiranthus Allioni* (Siberian Wallflower). Orange. 8 to 10 in. high.  
*Dianthus Alwoodi* (Perpetual Pinks). Pale pink to maroon-red. 9 to 12 in. high. 30 cts. each, \$3 per doz.  
*D. deltoides* (Maiden Pinks). Bright-rose. 6 to 9 in. high.  
*D. plumarius* (Hardy Pink). Pink, red, and white. 6 to 8 in. high.  
*Geum* (Barren Strawberry). Orange, yellow, and red. 9 in. high.  
*G. Lady Stratheden*. Frilled; double; golden yellow. 8 to 10 in. high. 25 cts. each, \$2.50 per doz.  
*G. Mrs. Bradshaw*. Frilled; double; scarlet. 8 to 10 in. high.  
*Gypsophila cerastioides* (Baby's Breath). White, red veined. 3 to 4 in. high.  
*G. repens*. White. 6 to 8 in. high.  
*Helxine Soleirolii*. Green. 3 in. high.  
*Helianthemum* (Sun Rose). Pink and white. 8 in. high.  
*H. Fire Ball*. Single; crimson. 6 to 8 in. high. 30 cts. each, \$3 per doz.  
*H. Mrs. Earl*. Double; crimson. 6 to 8 in. high. 30 cts. each, \$3 per doz.  
*Hepatica triloba* (Liver-Leaf). Pink, blue, and white. 6 in. high.  
*Heuchera* (Coral Bells). Pink and coral. 9 to 12 in. high.  
*Iberis* (Candytuft). White and lavender. 9 in. high.  
*Iris cristata* (Crested Iris). Pale blue. 9 in. high.  
*I. pumila* (Crimean Iris). Blue, white, and yellow. 8 in. high.  
*Lathyrus latifolius* (Hardy Sweet Pea). Pink, white, and red. 6 to 9 in. high.
- Linum perenne* (Flax). Blue and white. 12 in. high.  
*Lychnis alpina* (Maltese Cross). Pink and white. 15 in. high.  
*L. alpina Lapponica* (Dwarf Ragged Robin). Rose. 6 to 8 in. high.  
*Mertensia virginica* (Bluebells). Blue changing to pink. 12 in. high.  
*Myosotis* (Forget-me-not). Pink, blue, and white. 6 in. high.  
*Nepeta Mussinii* (Ground Ivy; Catnip). Blue. 10 in. high.  
*Phlox divaricata canadensis* (Dwarf Phlox). Silvery lavender. 9 in. high.  
*P. ovata (carolina)* (Laurel-Leaf Phlox). Bright rose, evergreen. 6 in. high.  
*P. reptans* (Dwarf Phlox). Bright rose. 6 in. high.  
*P. subulata* (Ground Pink). Lilac, white, and pink. 6 in. high.  
*P. subulata, Vivid*. Bright rose. 4 to 6 in. high. 30 cts. each, \$3 per doz.  
*Polemonium reptans* (Jacob's Ladder). Sky-blue. 8 to 10 in. high.  
*Potentilla* (Cinquefoil; Five-Finger). Orange, red, salmon, and yellow. 6 in. high.  
*Primula veris* (English Cowslip). Red, rose, and gold. 7 in. high.  
*Santolina incana* (Lavender-Cotton). Gray foliage. 12 in. high.  
*Saponaria ocymoides* (Rock Soapwort). Crimson. 6 in. high.  
*Sedum acre* (Stonecrop). Yellow. 6 in. high.  
*S. album* (Stonecrop). White. 3 in. high.  
*S. atropurpureum* (Stonecrop). Foliage coppery red; rose flowers. 9 in. high.  
*S. sarmentosum* (Stonecrop). Orange-yellow. 3 in. high.  
*Sempervivum* (Hen-and-Chickens). Red, yellow, and pink. 3 in. high.  
*Silene Schafta* (Moss Champion). Bright pink. 6 in. high.  
*Tiarella cordifolia* (Foam Flower). White. 9 to 12 in. high.  
*Thymus Serpyllum* (Wild Thyme). White. 6 in. high.  
*Tunica Saxifraga* (Coat-Flower). Rose. 9 in. high.  
*Trillium* (Ground Lily). Mahogany, pink, and white. 6 to 9 in. high.  
*Vinca minor* (Myrtle). Blue. 5 in. high.  
*Viola cornuta, G. Wermig* (Horned Pansy). Rich violet-blue. 8 to 10 in. high. 25 cts. each, \$2.50 per doz.  
*V. cornuta, Jersey Gem* (Viola). Deep pure violet. 8 to 10 in. high. 35 cts. each, \$3.50 per doz.  
*In Variety* (Violet; Pansy). Yellow, purple, blue, and white. 6 to 8 in. high.

PRICE FOR STRONG PLANTS OF ALL VARIETIES NAMED ON THIS PAGE, except where otherwise noted, 20 cts. each; \$2 per doz.; \$15 per 100. No less than three plants of one variety furnished at dozen rates, or twenty at hundred rates.

THE PALISADES NURSERIES, Inc.

Perennials

SPARKILL, NEW YORK