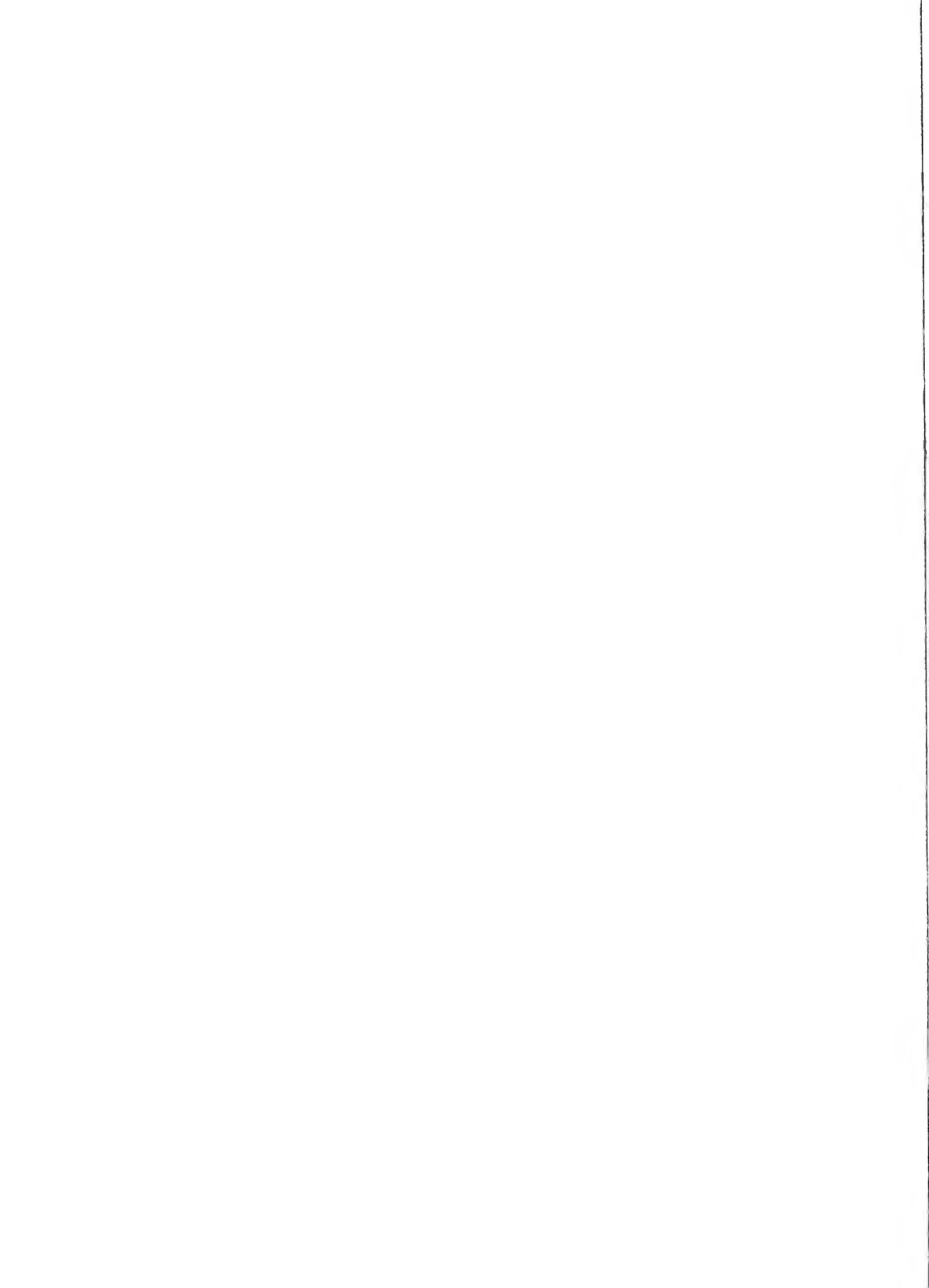


Historic, Archive Document

Do not assume content reflects current scientific knowledge, policies, or practices.



Price List—Supplement of "The Economizer"⁹⁹

PUBLISHED BY

THE POUGHKEEPSIE NURSERY COMPANY, Inc., SOUTH ROAD, POUGHKEEPSIE, N. Y.

VOL. V

Prices in this List Cancel Previous Quotations

Phone: Poughkeepsie 663

EVERGREEN TREES

All the Evergreens offered in this list have been transplanted repeatedly. They will be dug with a solid ball of earth and burlapped. They are of the highest quality and are, with reasonable care, sure to succeed.

When Evergreens are selected personally by the purchaser, in which case the very finest plants are usually picked, we reserve the right to charge, in particular instances, a slightly higher price than is listed here.

Mail orders will be filled promptly. Before ordering, please read the CONDITIONS OF SALE and particularly the NON-GUARANTEED CLAUSE. Orders are filled only on these conditions, whether or not the planting is done by us.

CONDITIONS OF SALE

Prices are f. o. b. our nursery. Packing will be charged at cost. Deliveries will be made free of charge within a radius of three miles of our office. Deliveries outside of this radius will be charged at cost.

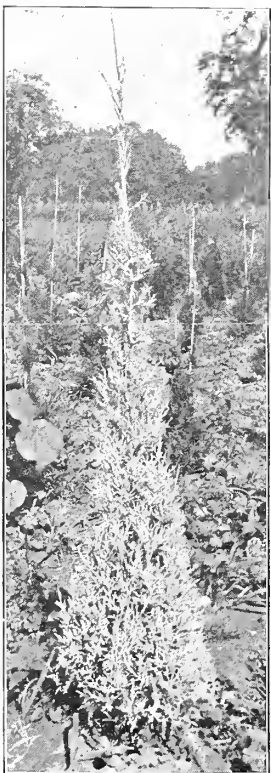
Shipments, except by our own motor trucks, travel at the purchasers' risk. We cannot entertain claims for shipments delayed or damaged in transit. Please file such claims with the carrying Company.

Claims for the adjustment of errors on our part should be made within three days of the arrival of stock.

NON-WARRANTY. We guarantee all stock to leave our place in a healthy condition and to be true to name. We do not undertake to replace any stock that fails to thrive. No exceptions can be made to this rule. It should be understood that in the event of errors on our part we shall not be liable beyond the original price of the stock furnished erroneously.

ORDERS WILL BE FILLED ON THE ABOVE CONDITIONS ONLY.

THE ARBOR VITAE (Thuya)



Juniperus Scopulorum

AMERICAN ARBOR VITAE (T. occidentalis). A tall growing tree of little width. Useful for tall "accents" in the Foundation Planting, for Hedges and as individual specimens.

2½ to 3 ft., \$3.00.

PYRAMIDAL AMERICAN ARBOR VITAE (T. occidentalis pyramidalis). An improved variety of the preceding, of more pronounced pyramidal habit and better color.

2 to 2½ ft., \$2.50.

DOUGLAS' PYRAMIDAL ARBOR VITAE (T. spiralis, T. plicatum). A slow-growing, pyramidal variety of a very deep green color. Compact and more desirable than the American A. v. for individual specimens.

2 ft., \$3.00; 2½ ft., \$4.00; 3½ to 4 ft., \$5.50.

CHINESE ARBOR VITAE (Biota orientalis). Specimens 7 to 8 ft., \$25.00; 8 to 9 ft., \$30.00.

THE CEDARS (Juniperus)

GREEK JUNIPER (J. excelsa stricta). A perfect cone-shape. Dwarf and compact. Grows about four feet high. Stiff, prickly foliage, which comes out steel-blue in the spring and tones down to bluish-gray towards fall. Particularly hardy and dependable. Suitable for dwarf hedges and for formal plantings. It endures in tubs and window boxes better than any other Evergreen.

15 to 18 ft., \$3.00; 18 to 20 ft., \$4.00.

IRISH JUNIPER (J. hibernica). One of the most striking and beautiful of all Evergreens. Grows up to 7 ft. as straight as a pillar, about a foot wide. Grayish green

foliage. This Juniper is unique in outline. Where a perfect column effect is wanted, no other Evergreen will do. Indispensable in formal plantings. Avoid planting them close to buildings. They thrive well in the open and along walks. The Irish Juniper does better in this locality than anywhere else.

2 to 2½ ft., \$3.00; 2½ to 3 ft., \$4.00; 3 to 3½ ft., \$5.00.

CHINESE JUNIPER (J. chinensis viridis). The Chinese Junipers are a very hardy race. This variety grows into a broad pyramid. The young plants show a good deal of grayish foliage, while the older plants are deep green.

2½ to 3 ft., \$4.00; 3 to 3½ ft., \$5.00.

CHINESE COLUMNAR CEDAR (J. chinensis columnaris). A narrow, perfect column of grayish green foliage. This Juniper is much more sturdy than the Irish J. and can be used safely in foundation plantings. With a little clipping it can be grown into a tree eight to ten feet high and about 1½ foot wide.

1½ to 2 ft., \$3.00.

SILVER JUNIPER (J. scopulorum). A distinct species of Junipers, native along the West coast. It has the tall, narrow habit of growth of the Red Cedar type, but grows slightly broader than it. The foliage has a strong odor. J. scopulorum responds well to clipping and is an excellent, hardy and tough evergreen. Seedlings range in color from dull grayish green to blue. The plants we offer are grafted and are of a uniform, brilliant, silvery blue color.

3 to 3½ ft., \$4.00; 3½ to 4½ ft., \$5.00.

PFITZER'S JUNIPER (J. Pfitzerianum). The most generally used and best of the spreading Junipers. Of irregular outline, with soft, feathery foliage. It grows about six feet high and reaches a considerable spread. Useful all-around,—for the Foundation Groupings, as single specimens and for planting in rocky spots and on slopes. The foliage of young plants is grayish, that of older plants deep green.

2 to 2½ ft. spread, \$3.50; 2½ to 3 ft. spread, \$4.00; 3 to 3½ ft. spread, \$5.00;

SABIN JUNIPER (J. sabina). Another spreading variety, but of more slanting habit of growth than the preceding. Dull-green, feathery, soft foliage.

1½ ft., \$3.00; 2 ft., \$4.00.



Greek Juniper, planted by us in 1920. The top was clipped round.

VISIT OUR NURSERY

The following are all varieties of *Juniperus virginiana*. They are of tall, narrow growth and are used where tall accents are needed in plantings. They may all be clipped and thus grown into lower and broader plants than they would naturally.

- JUNIPERUS VIRGINIANA BURKII.** Soft grayish foliage, of a fine texture. 3 to 3½ ft., \$4.50.
- JUNIPERUS VIRGINIANA CANNARTIL.** Grown only from grafts. The foliage is a rich, deep green, which places this variety above comparison with the Red Cedar. Grows tall and narrow. 3½ to 4 ft., \$5.00.
- JUNIPERUS VIRG. GLAUCA.** Similar in habit to the Red Cedar, but has steel-blue foliage, as striking as that of the Koster's Spruce. 3 to 3½ ft., \$4.00; 3½ to 4 ft., \$5.50; 4 to 5 ft., \$6.50; 5 to 5½ ft., \$7.50.
- JUNIPERUS VIRG. KETTLERI.** Grows tall and narrow; compact and formal. Rich green foliage of soft texture. The side branches show an upward habit of growth. 3½ to 4 ft., \$5.00; 4 to 5 ft., \$6.00; 5 to 5½ ft., \$7.00.

CRYPTOMERIA JAPONICA LOBBI

A tall-growing, graceful tree from Japan
Hardy and reliable. A fine Evergreen for foundation groupings, where tall accents are wanted.
Unlike any other hardy Evergreen.

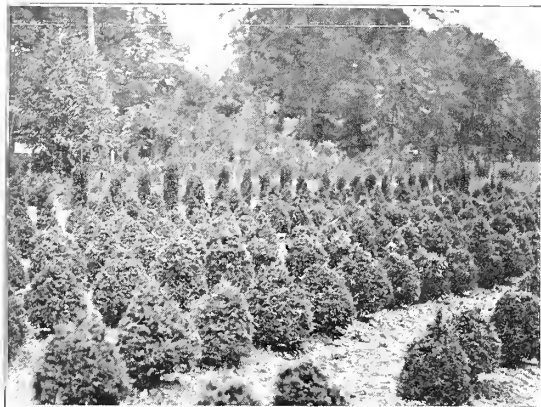
Sturdy, home-grown specimens
3½ to 4 ft., \$8.00
4 to 4½ ft., 9.00

Visit
Our
Nursery



Cryptomeria in our Nursery

THE CYPRESSES (Retinosporas)



Golden Plume Cypress in our nursery

O P
U O
R U
P H
P G
H K
H E
N E
E P
S I
N E
M E
B 6
E 6
R 3

- PLUME CYPRESS (R. plumosa).** Makes a dense pyramid, broad at the base. Responds marvellously well to clipping and may be trimmed by the amateur into almost any shape. Soft green foliage of a woolly texture. 1½ x 1½ ft., \$3.00; 20 x 20 ins., \$4.00.
- GOLDEN PLUME CYPRESS (R. plumosa aurea).** Same habit as the preceding. Rich golden foliage. Probably the most hardy upright growing Evergreen in these parts. 1½ x 1½ ft., \$3.00; 20 x 20 ins., \$4.00; 2 to 2½ ft., heavy, \$4.50; Specimens, 9 to 10 ft., \$30.00; selected specimens, \$40.00.

- SAWARA CYPRESS (R. pisifera).** A broad pyramid, less compact, but more graceful than the preceding. 2 to 2½ ft., \$3.50; 3 to 3½ ft., \$4.50; 3½ to 4 ft., \$5.50.
- THREAD CYPRESS (R. filifera).** A dark green, dignified Evergreen which grows into a broad bush. Long, thread-like, drooping branchlets. One of the finest of all Cypress. 20 ins. to 2 ft., \$3.00; 2 to 2½ ft., \$4.00; 2½ to 3 ft., \$5.00.

The following varieties of *Retinospora obtusa* are not recommended for general use in foundation groupings. They should have more open places and require a little more care as to soil and cultivation. They are perhaps the most beautiful group of *Retinosporas*, but they do not move as easily as the *pisifera* varieties. Once established, however, they will grow well. Their foliage is an intense, often glossy green.

RETINOSPORA OBTUSA MAGNIFICA. Grows into a good-size, broad pyramid. Graceful and of robust growth. 2 ft., three times transplanted, \$4.00.

RETINOSPORA OBTUSA GRACILIS. A slow-growing, narrower pyramid. Intense, deep green. 20 ins. to 2 ft., \$4.00.

RETINOSPORA OBTUSA GRACILIS NANA. A compact, very dwarf, clump of deep green, sculped foliage. A beautiful plant for the Rock Garden. Seldom grows over two feet high. Of irregular outline. This variety is used in Japan for miniature gardens. 10 to 15 ins., x 10 to 15 ins., \$4.00.



Retinospora obtusa gracilis nana

THE FIRS (Abies)

- BALSAM FIR (Abies balsamea.)** This is the real Christmas Tree, native in the North country. 4 ft., \$5.00.
- DOUGLAS FIR (A. Douglasi.)** A rapid growing, stately tree of great beauty. Does very well in this locality and may be recommended as one of the handsomest of large Evergreens. 1½ ft., \$2.00; 2 to 2½ ft., \$3.00.

HEMLOCK (Tsuga Canadensis) 2 ft., \$3.25.

THE PINES (Pinus)

- AUSTRIAN PINE (Pinus austriaca.)** A stiff-needed, compact Pine. 18 inch, \$2.25.
- JAPANESE PINE (Pinus densiflora.)** A tall-growing Pine, making a broad, irregular growth. The foliage is strikingly light green and contrasts pleasingly with that of other Pines. 18 in., \$2.25.
- MUGHO PINE (P. Montana Mughus).** A dwarf, spreading Pine; a massive, low clump of bright green. Rarely grows over three feet high and attains a considerable spread. It is a thing apart from the other Pines and is used wherever other dwarf Evergreens are planted,—in the Foundation Grouping, on slopes or as solitary plants. One of the easiest-to-transplant and indispensable in groupings. 10 to 12 inch spread, \$2.25; 15 to 18 inch spread, \$3.25.
- SWISS STONE PINE (Pinus Cembra.)** A very slow growing Pine, which grows about fifteen feet high and forms a narrow, dense pyramid, often not much wider than a matured Arbor vitae. The foliage is grayish green. Very hardy and scarce. 3½ ft., \$10.00.

NORWAY SPRUCE

For hedges, windbreaks or as individual specimens.
1½ to 2 ft., thrice transplanted, \$1.50; hundred rate, \$1.25.

THE YEWS (Taxus)

- CANADIAN YEW.** A heavy, low and spreading Yew, for use in the foundation planting and for massing like all Yews, it will thrive in shaded places. Bears red berries. One of the best and hardiest of evergreens. 1½ to 2 ft. spread, \$4.25; 2 to 2½ ft. spread, \$5.50.
- THICK-LEAFED JAPANESE YEW (Taxus cuspidata brevifolia).** A very dwarf, dense, spreading Yew. Grows very slowly, but reaches a width of ten feet when matured. Not over four feet high, 15 to 18 inches spread, \$4.50.
- SPREADING JAPANESE YEW (T. cuspidata).** The most used of all Yews for Foundation Plantings and as solitary plants. Very hardy and deep green. 18 to 20 ins. x 18 to 20 ins., \$4.00.
- UPRIGHT JAPANESE YEW (Taxus cuspidata).** A most desirable tree for broad, pyramidal effects. Hardy and reliable. 2 ft., \$5.00.