

Historic, archived document

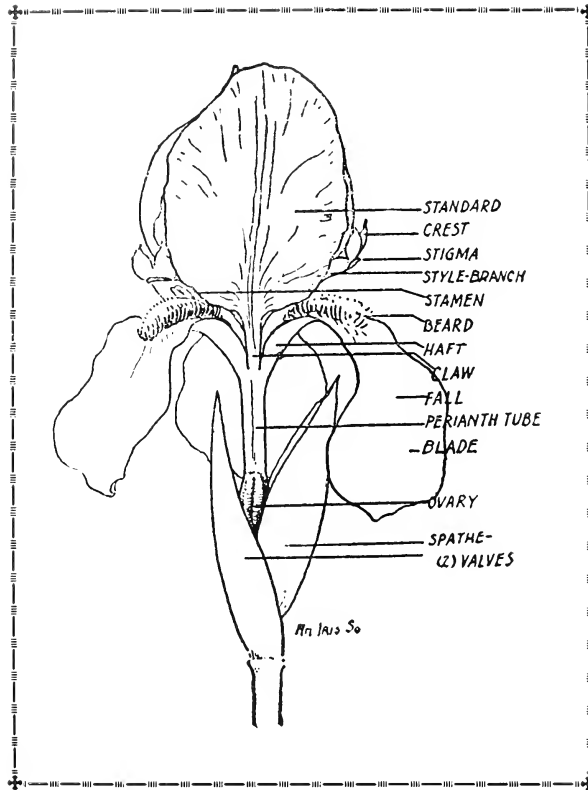
Do not assume content reflects current scientific knowledge, policies, or practices.





Carl Salbach
Iris

1927



JOIN THE AMERICAN IRIS SOCIETY—

We invite all iris growers to join the national society. The quarterly bulletins are full of valuable criticisms, descriptions, growing suggestions, etc. The price is \$3.00. Checks and applications should be made to the American Iris Society and mailed to John B. Wallace, Jr., Science Press Printing Co., Lancaster, Penn., or if more convenient, may be sent to us for forwarding.

Introduction

THE flower grower, unacquainted with irises has a world of enjoyment before him. The connoisseur, be his collection large or small, knows there is no thrill equal to that of watching a new iris open in his own garden. He knows too that every free hour of the iris season will be spent in his and his neighbors' gardens and the iris breeder knows that were the days three times as long there would not be hours enough at his disposal.

We give a great deal of thought to the list of irises we catalog, as we are ambitious to have our catalog stand as the criterion of quality. To this end we eliminate each year such varieties as have been superseded by something better. The new varieties are subjected to most careful criticism before they are included.

Our catalog is carefully compiled with the object of giving intelligent descriptions, the consensus of opinions of both amateur and commercial growers and the comments and official ratings, as announced by the American Iris Society.

In order to safeguard the color interpretations of those unfamiliar with the modern irises we explain that the colors predominating in irises are those of the orchids, i. e., the blues are lavender-blue and the pinks and reds are rose-pink and rose-red. Some of the pinks as Nancy Orne and Madame Cheri are suffused with yellow and are quite like the popular new dress goods shade of rose-beige, but none carries the salmon-pink of the Prince of Wales gladiolus. The color combinations of these beautiful flowers are nevertheless without limit and the spring garden that does not include an iris collection has missed its crowning glory.

The long rainless summers which permit our iris gardens to dry off and cure early in the season, our sloping hillside which provides fine winter drainage and the care we exercise in selecting and raising our stock enable us to ship promptly as fine rhizomes as can be grown.

Our gardens are always open to visitors and we wish that all those interested might visit them three times during the blooming season, to see the early, mid-season and late blooming varieties. Our iris season begins early in April and lasts through May, the dahlias and gladiolus begin in July and bloom till late fall.

The present easiest road of approach is via Shattuck Avenue to Eunice to Euclid Ave. and Grizzly Peak Boulevard, turning left onto Creston Road and right onto Woodmont Ave. The drive affords a wonderful panoramic view of San Francisco Bay, Oakland, Berkeley and Richmond.

Cordially yours,



General Information

Please read carefully before ordering.

Order Early. Early orders are solicited to prevent disappointments in case the variety selected should be sold out. We do not substitute unless directed to do so. If late in the season, we suggest that you indicate a second choice.

Please write your *name and address* plainly.

Stock. All orders will be filled with good blooming size rhizomes. The size of rhizome varies greatly in different varieties, some never growing larger than a man's thumb, others growing to the size of an ear of corn.

Time. Iris orders will be filled from June 1 to November 1.

Terms. Cash should accompany order unless satisfactory credit references are given. Remit by Postal Money Order from foreign countries.

Postage. All retail orders amounting to \$1.00 or over will be delivered prepaid to all points reached by Parcel Post.
On orders of less than \$1.00 add 25 cents for postage.

Guarantee. We exercise every care to ship only first-class stock, but give no warranty, expressed or implied and will not be in any way responsible for the results of planting or forcing of any seeds, bulbs, roots or tubers sent out by us. We are anxious to satisfy all of our customers and will gladly make replacement or refund purchase price of any article that does not prove true to name or does not arrive in good growing condition. Please notify us at once if a shipment should not arrive in satisfactory condition. If the purchaser does not accept the goods on these terms no sale is made, and they must be returned at once.

Prices given in this catalog cancel all previous quotations.

References. For our business standing, please refer to *First National Bank in Berkeley, Farmers and Merchants Savings Bank, or Bank of Italy, Oakland, California.*



Originator and Grower

Dahlias Gladiolus Irises

Woodmont Avenue

Berkeley, Calif., U. S. A.

Telephone Ashberry 1066

Cultural Directions for Bearded Irises

The prime requisites for bearded irises are good drainage and sunshine. Irises planted in the deep shade will produce foliage only. A good loamy soil of medium richness is preferable but they will grow in almost any nonacid ground. If the drainage is poor, raised beds should be prepared. Where the soil is heavy a little lime or wood ashes will make for better drainage and prevent the ground from getting sour. If the soil is very thin a little bone meal is the safest fertilizer.

Irises are best transplanted during the dormant season, which is after they have blossomed till late fall, and should be replanted while the ground is still warm enough to start a new root system. This time varies in different parts of the country. July and August are the best months in the northern states and September and October for the southern states where summers are hot and dry.

If the rhizomes appear dry on arrival, no concern need be felt as these plants are very drought resistant. They should however, be planted as soon as possible, with the roots well firmed into the ground and the *tops of the rhizomes left exposed to the sun*. They should be watered every two weeks till they become established. Do not overdo the watering for fear of causing root rot. As these irises are very drought resistant, they are especially valuable for planting dry sunny slopes. They should be kept free from weeds and other plants should not be allowed to cover them. Where the winters are severe a good mulch will prevent heaving out of the ground with the spring thaws.

When the clumps become crowded, usually in three years, either the center should be cut out and replaced with new soil or the whole clump taken up, broken into its natural divisions and replanted. The top third of the leaves should be trimmed off, to prevent undue evaporation. Single roots or at most double pronged ones are the best. If a clump effect is desired plant three or more roots of the same variety a foot or so apart. If the plants grow shabby in the fall it is better to pull off the dried leaves than to trim down the whole clump.

These directions are for bearded irises only. Other species as Japanese, Siberian, Spanish or oncocyclus require quite different treatment.

Mohr-Mitchell

Introductions for 1927

We have no apologies to offer for presenting eight new irises into a crowded world. These eight which are far in advance of anything in their respective classes, are the results of years of careful, systematic recorded crosses, made by the late Mr. Mohr and continued by Mr. Mitchell. That their work should result in such outstanding improvements is not surprising when one considers the broad scale of the work and the favorable climatic conditions of California for plant breeding.

Included are three plicatas, which absolutely outclass anything that has ever been offered in the plicata section, because they are fine big rounded flowers with broad petals and heavy substance, and are well placed on the tall, widely branched stems characteristic of such varieties as Esplendido or the older Alcazar. They are not the result of selection from crossing the best old type plicatas, but are the product of the introduction of new blood into this section. The three-eighths Mesopotamica represented in Los Angeles and San Francisco accounts for their size, shape, substance, branching stems; and the five-eighths plicata for their vigor, hardiness and color patterns. An A. I. S. jury, all owners of large collections and seedling raisers, rated the two submitted to them at 94 and 96, adding that this was really in comparison with other new large irises of the best types, as they superseded the older plicatas and no comparison with these would mean anything. See photograph page 5. Between Los Angeles and San Francisco the choice is a matter of individual taste. Alameda, which is of somewhat different parentage suffers only in comparison with them and carries for itself a real distinction of color.

Mohr-Mitchell Introductions for 1927 Continued

Purissima and Shasta, the new white irises were selected from over three thousand seedlings. Each is unusually fine and, as there is a wide difference as to form, growing habits and time of blooming, both are worthy of places in the same garden.

Don Quixote, a huge blend as distinct as Madame Durrand and with ten times its vigor; Fortuna, a break in breeding and a new type of flower in the yellow and brown color range and just one lavender, the lovely Aurifero, complete the offering.

Alameda. On 40-inch stems, low and well but not widely branched, are borne these very large distinct flowers. The white standards are heavily suffused blue violet and the falls both reticulated and irregularly flushed the same color. Striking and differing from any plicata we have ever seen. **\$10.00**

Aurifero. This lovely seedling derives its name from the Spanish word for goldfinch. Its brilliant golden beard and its hafts completely covered with golden reticulations on white give to its center the glow which is its chief claim to distinction. The tall standards of palest lavender and the flaring falls flushed rosy lavender are of the finest finish and style. For a time a beautiful Marian Mohr seedling at Campos Altos tentatively bore this name. A crossing of this with Sherbet to increase its vigor and height achieved both and admirers of the mother may now find all her beauty in her daughter, besides 42-inch stems, large flowers and rampant growth. **\$7.50**

Don Quixote. In effect this Argentina X Rameldo seedling is a huge flower of somewhat subdued Quaker Lady coloring. It is one of the strongest and quickest growers in our garden, with tall branched stems averaging 42 inches and flowers more than three times as large as older blends like Eldorado or Quaker Lady. In detail, the standards are deep lavender almost entirely overlaid yellow, the falls hyssop violet with heavy brown venation on a yellow ground, style arms buff and beard orange. **\$5.00**

Fortuna. This flower of variegata coloring most unexpectedly appeared in a large batch of Alcazar X Esplendido seedlings and has proven not only quite distinct and attractive in itself, but, as might be expected, of value in breeding. The clear amber yellow standards, 2½ inches across and the somewhat narrower wax yellow falls, lined red brown, form a broad, rounded flower of Alcazar or Esplendido shape,

something we have never seen before in this color scheme. Its growth is not that of a variegata but a modified Alcazar, with a very strong branched stem which measured 29 inches last season. **\$5.00**

Los Angeles. Great white flowers of fine shape and substance, the standards faintly edged pale blue, the falls beautifully reticulated red brown at the base, the blue style arms adding a note of clear color in the center. Each noble flower stands out like a great glorified Fairy, on the tall, widely branched stems, to show the progress that breeding has made in the plicata group. **\$25.00**

Purissima. It is going to be very hard to improve on this Argentina X Conquistador seedling for a pure white of great size, perfect form and heavy substance, this last a most important factor in white irises. These qualities, with its vigor and its tall branched stems, account for the rating of 96 given it by a jury of A. I. S. members, all seedling raisers themselves, who judged it in the garden last season. This is the variety referred to by Mr. Jacob Sass in A. I. S. Bulletin 21, page 36, which he says he doesn't expect to see surpassed. **\$25.00**

San Francisco. Tall stems, branching low and widely like a candelabra, carry the large white flowers, of which both standards and falls are distinctly edged lavender. In size, shape, substance there is nothing to approach it among the older plicatas, only the color pattern tells us it should be classed with them. **\$25.00**

Shasta. This new white of different parentage than Purissima, is also entirely distinct in style and effect and well worthy of being named for California's great white-capped mountain. The 40-inch stalks which are well but high branched bear the magnificent flowers proudly aloft. These are snow white, with a few faint amber reticulations on the haft and are of fine form and excellent substance. It blooms late with us so was not seen by the early visitors who so admired Purissima. **\$10.00**

To have held Purissima, Los Angeles and San Francisco for lower prices would have meant years of delay in their presentation to the iris enthusiasts. Frankly the stocks of these are still too small and with the unprecedented advance orders from those who have seen them growing at Campos Altos it is not unlikely that the supply of good rhizomes available for sale will be exhausted before the season is over.

William Mohr introduced in 1925, El Capitan, Frieda Mohr and Valencia in 1926 are outstanding varieties.

We are also cataloging for the first time such French, English and American originations as Ann Page, Aphrodite, Beau Ideal, Brandywine, Bruno, Cardinal, Dominion, Duke of Bedford, Germain e Perthuis, Gold Imperial, Jacinto, Jacqueline Guillot, Jean Chevreau, Jubilee, Leonato, Louis Bel, Madame Cecile Bouscant, Mildred Presby, Moa, Morning Splendor, Peerless, Primrose, Robert W. Wallace, Romola, Souv de Leotitia Michaud, Susan Bliss, Tancred, Tenebrae, Titian, Valkerie, Yellow Moon and Yolande. These are all described in the general alphabetical list.

Group Collections at Special Prices

Group 1. The eight 1927 Mohr-Mitchell introductions.

Alameda.....	\$10.00
Aurifero.....	7.50
Don Quixote.....	5.00
Fortuna.....	5.00
Los Angeles.....	25.00
Purissima.....	25.00
San Francisco.....	25.00
Shasta.....	10.00

Total.....\$112.50 for **\$90.00**

Group 2. The eight 1927 Mohr-Mitchell introductions.....\$112.50

Frieda Mohr.....	25.00
William Mohr.....	25.00

Total.....\$162.50 for **\$130.00**

Group 3. The eight 1927 Mohr-Mitchell introductions.....\$112.50

Either Frieda Mohr or William Mohr. Custom- er's choice.....	25.00
--	-------

Total.....\$137.50 for **\$110.00**

Group 4.

Aurifero.....	\$ 7.50
Don Quixote.....	5.00
Los Angeles or San Fran- cisco. Our choice.....	25.00
Purissima.....	25.00

Total.....\$62.50 for **\$50.00**

Group 5. The three new plicatas.

Alameda.....	\$10.00
Los Angeles.....	25.00
San Francisco.....	25.00

Total.....\$60.00 for **\$50.00**

Group 6. A lovely garden group.

El Capitan—blue.....	\$ 7.50
Frieda Mohr—rose.....	25.00
Shasta—white.....	10.00

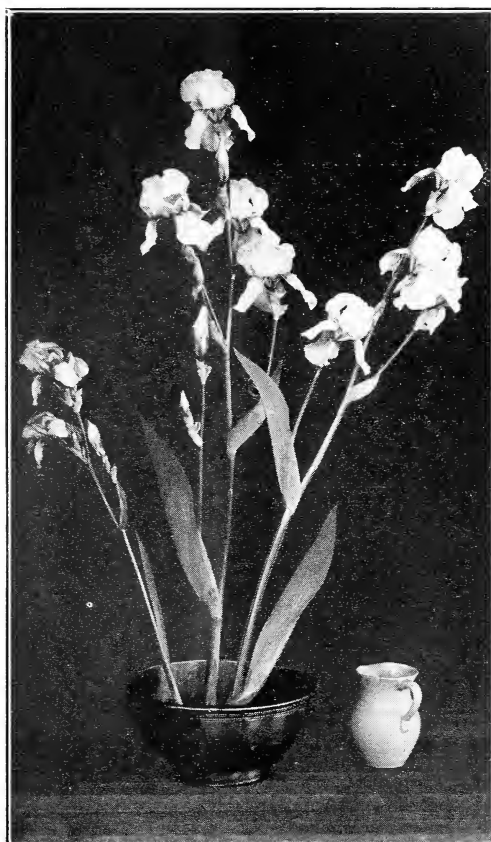
Total.....\$42.50 for **\$35.00**

Group 7. An interesting representative collection.

Alameda—plicata.....	\$10.00
Aurifero—self.....	7.50
Don Quixote—blend.....	5.00
Fortuna—variegata.....	5.00
Shasta—white.....	10.00

Total.....\$37.50 for **\$25.00**

Parisian on
left—



San Francisco
and
Los Angeles
on right—



Complete List of New and Standard Varieties

The figures following the names of varieties are the ratings given in the recent symposium of the American Iris Society. Some novelties, not yet voted on, have as yet no ratings. In the descriptions the name of the originator is given in brackets.

"S" signifies standards or upright petals; "F" the falls or drooping petals. Approximate height of flower stem is also given.

- Afterglow** (*Sturtevant*) 1917. 86—Pinkish lavender grey shading to buff style arms and rich yellow haft. 36 in. **60c**
- Alameda** (*Mohr-Mitchell*) 1927. This beautiful blue and white plicata of great size and distinction is borne on well branched 40-in. stems. The white standards are heavily suffused blue violet and the falls both reticulated and irregularly flushed the same color. This plicata is very striking and very different in size, quality and beauty from any plicatas we have ever seen. Los Angeles and San Francisco being the only ones that might score higher. The substance is excellent and the growth vigorous. **\$10.00**
- Albert Victor** (*Barr*) 1885. 79—Light violet self colored variety. Free blooming and vigorous 42 in. **50c**
- Alcazar** (*Vilmorin*) 1910. 89—S. mauve, F. dark purple. The bronze and yellow at its center add to the beauty of this large, vigorous well branched variety. 36 in. **50c**
- Alvarado** (*Mohr*) 1926. A fine seedling of Conquistador and Lent A. Williamson. Tall and vigorous, with blooms of deep rich purple. 40 in. **\$2.50**
- Amador** (*Mohr*) 1920. (*Mesopotamica X Parisiana*). A beautiful soft pink bicolor of early blooming habits. The flowers are large, of excellent substance and are borne on tall widely branching stalks. Strong grower. **\$2.50**
- Ambassadeur** (*Vilmorin*) 1920. 94—S. bronzy violet, F. dark velvety maroon of wonderful substance. Conspicuous orange beard. Tall, vigorous, widely branched. Late blooming. A most satisfactory iris. **\$1.00**
- Ambigu** (*Vilmorin*) 1916. 83—S. smoky red, F. velvety reddish brown. Strong growing, free flowering. **\$1.00**
- Ann Page** (*Newlands*) 1919. A lovely pale lavender blue self of fine form, good substance and delicious perfume. Stems stout and well branched. 36 in. **\$3.00**
- Antonio** (*Hort*) 1921. A very large and handsome red purple bicolor. Tall and early. Darker and larger than Col. Candelot. **\$2.50**
- Aphrodite** (*Dykes*) 1922. One of the most beautiful pink irises. Standards and falls are of the same pure bright violet-pink with no markings. The flowers are of good size, perfect form and sweetly scented, freely produced on 40-in. stems. **\$10.00**
- Archeveque** (*Vilmorin*) 1911. 83—S. deep purple violet, F. velvety raisin purple. Fine color and inclined in California to bloom in late fall as well as spring. 24 in. **50c**
- Argentina** (*Mohr*) 1924. A large, tall white Caterina seedling with gold veined haft. Has wintered well in Massachusetts where it was greatly admired. A fine flower and excellent seed parent. **\$5.00**
- Argynnis** (*Williamson*) 1924. 87—S. yellow, F. bright chestnut red with a very narrow yellow edge. Tall, free flowering, late. Very attractive; a good multiplier. **\$1.00**
- Arnols** (*Barr*) 1874. 78—S. rosy bronze, F. rich velvety purple. 30 in. **50c**
- Arsace** (*Millet*) 1913. 84—General effect pale pinkish lilac. Tall and vigorous in California. **\$1.00**
- Asia** (*Yeld*) 1920. 92—One of the outstanding irises in the garden. The plant is tall and vigorous, the flowers large, numerous and of excellent substance. S. which are broad and massive, are pale silvery lavender with golden yellow base. F. pale reddish purple, lighter at margins. Bright golden yellow beard. A flower of great elegance, both dainty and rich. Blooms from mid season till very late. 48 in. **\$3.50**
- Athene** (*Sturtevant*) 1920. A warm, white self of fine substance and form. 33 in. **50c**
- Aurifero** (*Mohr-Mitchell*) 1927. This lovely seedling derives its name from the Spanish word for goldfinch. Its brilliant golden beard and its hafts completely covered with golden reticulations on white give to its center the glow which is its chief claim to distinction. The tall standards of palest lavender and the flaring falls flushed rosy lavender are of the finest finish and style. For a time a beautiful Marian Mohr seedling at Campos Altos tentatively

Any three 50c varieties for \$1.00

Irisess—General List Continued

- bore this name. A crossing of this with Sherbert to increase its vigor and height achieved both, and admirers of the mother may now find all her beauty in her daughter, besides 42-in. stems, large flowers and rampant growth. **\$7.50**
- Autocrat** (*Cleveland*) 1920. 79—S. bright clear blue, *F.* rich dark velvety blue shading lighter to edges. Very distinct and attractive. 30-in. **\$1.00**
- Avalon** (*Sturtevant*). 91—An exceptionally large satiny pinkish lavender of fine shape and substance. Very vigorous, well branched and tall. Blooms over a long period. 40-in. **\$5.00**
- Azrael** (*Morrison*). *S.* ageratum violet, *F.* petunia violet. A Caterina-Alcazar cross of fine size, height and substance. **\$5.00**
- Azulado** (*Mohr*) 1924. Sister seedling of Argentina. Enormous blooms of lustrous pearl gray-blue. Tall, distinct and very lovely. Hardy in Massachusetts as well as in California. **\$5.00**
- Azure** (*Bliss*) 1918. 82—S. clear lavender, *F.* deep blue purple. Attractive flower of Perfect coloring. **50c**
- Balboa** (*Mohr*) 1923. (*Parisiana* X *mesopotamica*.) A large tall, bright red-violet bicolor. Fine, distinct flowers of good substance are borne on stout stems. Has proved a good grower in New England. Awarded a First Class Certificate from the Massachusetts Horticultural Society. **\$2.50**
- Balder** (*Morrison*). Lilac and velvety dark maroon purple, large flowers on tall stems. Stock limited. **\$3.00**
- Ballerine** (*Vilmorin*) 1920. 94—Enormous blooms with broad light blue violet standards, waved at margins, falls broad and deeper in color. Perfect, excellent substance. Blooms well placed on tall widely branched stalk. An unusually long blooming period. 48 in. . . . **\$1.25**
- Bandollero** (*Mohr*) 1926. Another Conquistador X Lent A. Williamson seedling of outstanding merit. The flowers are of a distinctive light blue, beautifully veined. Tall and vigorous. 40 in. **\$2.50**
- Baronet** (*Sturtevant*) 1920. 80—S. chicory blue, *F.* deep violet. 42 in. **50c**
- Beau Ideal** (*Sass*) 1924. White plicata with an almost solid border of petunia violet on both standards and falls. Large, fine substance and form. Medium height. **\$1.00**
- Bellorio** (*Mohr*) 1924. (*Korolkowi* X *Germanica*.) A similar cross to Carmelo has given a very lovely flower of mouse gray, not large but well placed on 30-in. branched stems. Absolutely distinct in its soft subdued coloring. Early, very free blooming over a long period. Stock limited. **\$2.00**
- Black Prince** (*Perry*) 1900. 77—S. blue purple, *F.* deep rich velvety black purple, bright orange beard. Very rich coloring. A fine late flower. Prefers leaf mould with more water and shade than most bearded irisess. 24 in. Stock limited. **\$1.00**
- Blue Jay** (*Farr*) 1913. *S.* bright clear blue, *F.* intense dark blue. 30 in. **50c**
- Brandywine** (*Farr*) 1920. Pale silvery blue with conspicuous orange beard. Stalk low branched. Growth vigorous. 30 in. **\$2.00**
- Bravura** (*Mohr*) 1926. A sister seedling of Alvarado and Bandollero. Like these two Bravura has inherited the vigor and size of its parents, Conquistador and Lent A. Williamson. The large well-placed flowers of deep rosy lilac are borne on stout well branched stems, their substance is excellent and the plant is vigorous. 40 in. **\$2.50**
- Bruno** (*Bliss*) 1922. An iris of exceptional size and quality. A dominion seedling on the order of Ambassadeur. *S.* bronze, tinted and lightened with lavender shading to yellow at base. *F.* deep rich purple of unusual size and quality, having the velvety texture of Dominion. 33 in. **\$10.00**
- B. Y. Morrison** (*Sturtevant*) 1917. 88—S. pale lavender violet, *F.* velvety raisin purple with broad lavender border. Beautiful flowers of medium size, very striking. 30 in. **\$1.00**
- Cardinal** (*Bliss*) 1919. One of the richest flowers of the Dominion race. *S.* a distinctive shade of lavender overlaid rose. *F.* rich velvety prune purple of wonderful glossy texture. Stalk low and widely branched. Stock very limited. **\$15.00**
- Carmelo** (*Mohr*) 1923. (*Korolkowi* X *Germanica major*.) This unusual seedling, half Regelia in parentage, is neither large nor tall, but its growth, slender foliage and stems, and long narrow flowers of an unusual shade of blue, put it in a new class, one which we hope to see enlarged. Award of Merit, 1924, Royal Horticultural Society, London. Stock limited. **\$1.50**
- Carthusian** (*Marshall*) 1906. 81—Clear, bluish lavender, quite like Caterina but larger and of better shape and later season. **50c**
- Caterina** (*Foster*) 1909. 89—A tall, branched light violet self. Fine and very vigorous in California. 36 in. **50c**
- Chester J. Hunt** (*Farr*) 1913. 69—In spite of its low rating desirable for its particularly pleasing blue color. **50c**
- Claridad** (*Mohr*) 1926. A beautiful clear lavender blue of great purity, horizontal falls, good substance and pleasing garden effect. Early flowering, medium height and size, the closest to true blue of any iris in the garden. Stock limited. **\$2.50**
- Clement Desormes** (*Denis*). A Ricardi—Her Majesty cross of deep red pink coloring. Large bright flowers, conspicuous orange beard. Very showy. Blooms over a long period. . . . **\$2.00**
- Cluny** (*Vilmorin*) 1920. 86—S. pale lilac blue, *F.* slightly deeper. Large, tall, vigorous. **50c**
- Col. Candelot** (*Millet*) 1907. 80—Medium sized flowers of unusual red tone. *S.* bronze overlaid with reddish lavender, *F.* dark rich velvety crimson. 30 in. **50c**
- Conquistador** (*Mohr*) 1923. (*Juniata* X *mesopotamica*.) A very tall vigorous plant with fine foliage and very large deep mauve to light violet flowers. The size and height make it an outstanding feature in our garden. Very vigorous. One of Mr. Mohr's favorites. . . . **\$2.50**
- Coronado** (*Mohr*) 1925. A glorious flower of the Asia class of Eldorado-mesopotamica parentage. Of heavier substance than Asia with flaring falls, wider branching stems, and greater vigor. *S.* lavender, *F.* red purple paling to lavender margins; beard and style arms golden. 36 in. Stock limited. **\$3.50**

Any three 50c varieties for \$1.00

Irisess—General List Continued

- Corrida** (*Millet*). 83—A delightful clear blue violet not large but of distinction. **75c**
- Crimson Glow** (*Millet*) 1924. Large handsome well shaped flowers of a uniform shade of brilliant crimson rose. *S.* frilled, incurved; *F.* exceptionally broad. Very free flowering. **\$10.00**
- Crusader** (*Foster*) 1913. Fine large flowers of clearest blue violet. Early, tall, of excellent texture, free flowering. **\$1.00**
- Cygnets** (*Sturtevant*) 1922. *S.* ivory tinted; *F.* white, flaring. Well shaped flowers nicely placed on tall stems. **\$4.00**
- Darius** (*Parker*) 1873. 68—*S.* rich canary yellow; *F.* lilac, with paler edges. **50c**
- Dejazet** (*Vilmorin*) 1914. 83—*S.* beautiful bronze rose, *F.* darker. Large flowers of fine substance, early and free flowering. 18 in. . . . **\$1.00**
- Delight** (*Sturtevant*). A very lovely plicata with rose colored venation and style arms. Tall, free flowering. One of the most attractive plicatas in commerce. 36 in. **\$5.00**
- Delicatissima** (*Millet*) 1914. 82—Large wax-like flowers of excellent substance. Color soft Cattelya rose. 36 in. **\$2.00**
- Deuil de Valery Mayet** (*Denis*) 1919. *S.* coppery rose, *F.* deep bronzy red. Not large but of unusual coloring. 24 in. **\$1.50**
- Dilkush** (*Foster*) 1909. A beautiful hybrid of Iberica X Pallida. Fine large rounded flowers. *S.* heavily veined, *F.* deep reddish purple with black throat blotch derived from the oncocyclus parent. An easy doer in California. Stock limited. **\$1.50**
- Dominion** (*Bliss*) 1917. The most richly colored of all the Dominion race and the outstanding member because of the extraordinary development of the falls. *S.* light bluish violet, large erect and of good breadth. *F.* deep rich indigo purple velvet, well expanded and of exceptional substance. Pronounced orange beard. 30 in. **\$10.00**
- Don Quixote** (*Mohr-Mitchell*) 1927. In effect this Argentina X Rameldo seedling is a huge flower of somewhat subdued Quaker Lady coloring. It is one of the strongest and quickest growers in our garden, with tall branched stems averaging 42 inches and flowers more than twice as large as older blends like Eldorado or Quaker Lady. In detail, the standards are deep lavender almost entirely overlaid yellow, the falls deep hyssop violet with heavy brown venation on a yellow ground, style arms buff, and beard orange. Shows as a beautiful old rose under electric light. **\$5.00**
- Dora Longdon** (*Bliss*) 1918. *S.* honey yellow, *F.* pale rose purple, conspicuous orange beard. Early. **60c**
- Dream** (*Sturtevant*) 1918. A very lovely crinkled rose pink, self color with orange beard. Perfect form, excellent substance, long blooming. A very orchid like flower. **75c**
- Duke of Bedford** (*Bliss*) 1922. A very fine iris of the Dominion race with well formed flowers of great substance. It is a rich deep violet purple, almost a self, very velvety and brilliant. Beard orange, stalks low and widely branched. Vigorous. **\$12.50**
- Dulcinea** (*Mohr*) 1925. A lovely Caterina-Trojana cross, with unusually low and wide branched stems and large shapely flowers. *S.* lavender, *F.* violet blue with lavender margins and beautiful pearly luster. Prof. E. O. James in A. I. S. Bulletin No. 17 rates it at about 90. **\$2.50**
- Edith Cavell** (*Denis*) 1921. A white Ricardi seedling with falls yellow-veined at base. Tender in cold climates but does well in California. Rare. Stock limited. 36 in. **\$2.50**
- Edouard Michel** (*Verdier*) 1904. 86—A large ruffled flower of red purple, the tallest and best in this color class. Grows vigorously in California though sometimes reported as weak in colder climates. 36 in. **50c**
- El Capitan** (*Mohr*) 1926. When exhibited at the Iris Show at the University of California, 1925, this noble Oriflamme—mesopotamica seedling was given an Award of Merit on a rating of 95 points. Saved from nearly 450 seedlings of this parentage, the only one to be named though many were fine, it has stood out among the manganese-violet bicolors as being of the best substance and largest size. These majestic flowers with flaring falls have the added advantage of a very extended season of bloom. Tall and vigorous in growth. One of the most conspicuous plants in the garden. A fit companion for Frieda Mohr and the new Mohr-Mitchell whites, Shasta and Purissima. Stock limited. 40 in. **\$7.50**
- E. L. Crandall** (*Farr*) 1915. A white plicata, falls heavily edged blue. 24 in. **50c**
- Eldorado** (*Vilmorin*) 1910. A very distinct and striking blend of bronze, heliotrope and violet purple. Low growing and very floriferous. **50c**
- Empire** (*Sturtevant*) 1918. Empire yellow to wax yellow. Good form. **60c**
- Ensign** (*Sturtevant*) 1918. A Caterina seedling with the bicolor pink tones of Leverrier and Amador. **\$1.00**
- Esplendido** (*Mohr*) 1924. (*Mesopotamica—Parisiana.*) A fine big red purple bicolor with such beautifully branched stems that its garden effect is striking. R. S. Sturtevant in A. I. S. Bulletin No. 17 says: "I had a wonderful stalk of Esplendido which I consider one of the finest of the red purples." 40 in. **\$3.00**
- Flammenschwert** (*G. & K.*) Flaming Sword. An improved Iris King. *S.* bright golden yellow, *F.* crimson maroon margined yellow. Vigorous and free flowering. 30 in. **\$1.00**
- Fortuna** (*Mohr-Mitchell*) 1927. This flower of variegata coloring most unexpectedly appeared in a large batch of Alcazar X Esplendido seedlings and has proven not only quite distinct and attractive in itself, but as might be expected, of value in breeding. The clear amber yellow standards 2½ inches across, and the somewhat narrower wax yellow falls, lined red brown, form a broad rounded flower of Alcazar or Esplendido shape, something we have never seen before in this color scheme. Its growth is not that of a variegata but a modified Alcazar with very strong branched stem which measured 29 inches last season. **\$5.00**
- Frieda Mohr** (*Mohr*) 1926. Last year's description of this wonderful big pink bicolor quite

Any three 50c varieties for \$1.00

Irisess—General List Continued

- failed to do it justice. That we gave it the name of the late Mrs. William Mohr is the best indication of our high esteem of its worth. Grown last year in comparison with the best pink irises in commerce, it at once arrested the attention of every hardened iris enthusiast. Many ordered it on the spot. What they saw was a vigorous plant with tall high branched stalks averaging 42 inches and bearing proudly erect its really huge flowers of heavy substance, with fine dome shaped standards of a lovely lilac pink and broad somewhat flaring falls of glowing lilac rose. We have seen nothing approaching it. This is not surprising as it was the result of several generations of crosses between selected and largely unnamed Mohr seedlings. . . . \$25.00
- Fro.** (G. & K.) 1910. 75—S. mustard yellow, F. oxblood red. The best variegata for general use in California. Vigorous and floriferous. 24 in. 50c
- Gagus** (G. & K.) 1906. 67—S. light yellow, F. crimson reticulated white. 18 in. 50c
- Gaviota** (Mohr) 1924. Creamy white plicata, both standards and falls edged yellow. Of fine finish and good texture, the coloring of its medium sized flowers is unusual. Hardiness quite unquestioned. Of real charm and distinction. Stock limited. \$1.50
- George Yeld** (Perry) 1923. A very free flowering tall iris, with stout branching stems which bear many large finely shaped flowers from mid season till very late. S. large, apricot yellow shaded rose. F. brilliant wine red edged buff. 40 in. \$10.00
- Georgia** (Farr) 1920. 89—Soft Cattelya rose, excellent substance. Strong growing, early and probably the best "pink" in mass effect. Stock limited. 30 in. \$1.50
- Germain Perthuis** (Millet) 1924. 90—An enormous rich violet purple self with striking orange beard. A seedling of Souv. de Madame Gaudichau. Tall, well branched, free flowering with wonderfully smooth velvety appearance. Sweet scented. 36 in. \$10.00
- Glowing Embers** (Sturtevant) 1923. S. light brownish lavender. F. very rich velvety pansy purple with orange beard and conspicuous yellow center. A rich heavy flower on a tall well branched stem. Vigorous. \$5.00
- Gold Crest** (Dykes) 1914. 75—Bright pure violet blue with conspicuous yellow beard. Not large but of lovely color. \$1.00
- Gold Imperial** (Sturtevant) 1924. Chrome yellow throughout except for the orange beard, it has rare finish of texture and form. Richer in color than Shekinah. H. M. A. I. S. 1922. 33 in. \$6.00
- Grapta** (Williamson) 1925. S. yellowish brown, F. deeper. A very free flowering and distinct variety, sometimes described as "Molasses colored" 75c
- Grevin** (Vilmorin) 1920. 85—Deep purple, standards shaded yellow. Large flower and vigorous grower. 20 in. 50c
- Her Majesty** (Perry) 1903. 73—Rose pink, falls lined darker. 24 in. 50c
- Hermoine** (Hort) 1920. 88—A very large purple bicolor. S. bright blue purple, F. very distinct rich reddish purple with orange beard. Exceptional form and substance. Vigorous. Much in demand. 36 in. \$3.00
- Hiawatha** (Farr) 1913. 74—S. pale rosy lavender, F. purple. Late, vigorous and fine for mass planting. 20 in. 50c
- Hidalgo** (Mohr) 1925. A very large lavender self of unusually broad shape, tall and upstanding and very desirable in California. 48 in. \$3.50
- Ibball** (Foster). As the name indicates, this beautiful hybrid is derived from Iberica and Pallida and the rounded shape and veining of these deep red violet flowers show the oncocylus parent. Grows very easily in California. Stock limited. \$1.50
- Iris King** (G. & K.) 1907. 79—S. golden yellow, F. velvety garnet, edges yellow. Frequently blooms in the fall in California. 50c
- Isolene** (Vilmorin) 1904. 86—S. silvery lilac flushed yellow, F. purplish old rose. Large striking flower of unusual coloring. 36 in. 50c
- Jacinto** (Berry). A beautiful flower in shades of violet. Tall and well branched. 44 in. \$3.50
- Jacqueline Guillot** (Cayeaux) 1924. Very large blooms of pure lavender blue with lustrous surface. Stalks stout and well branched. Very free flowering. \$5.00



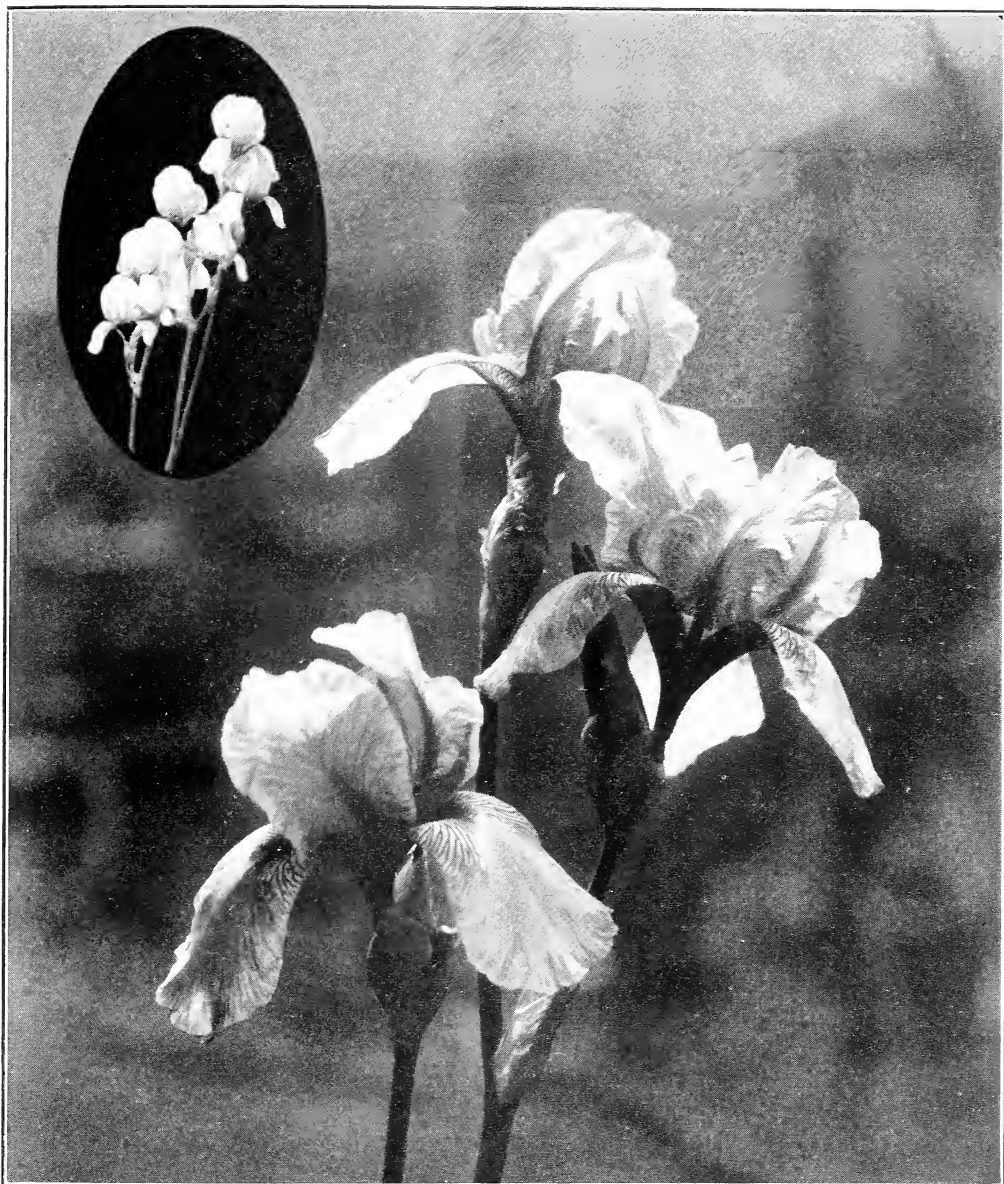
Any three 50c varieties for \$1.00

Irisess—General List Continued

- Jacquiesiana** (*Lemon*) 1840. 80—S. coppery crimson, *F.* deep red purple. 40 in.**50c**
- J. B. Dumas** (*Denis*) 1917. S. violet rose, *F.* deeper tone of same color, haft rich creamy yellow, conspicuous yellow beard, orange tipped. Stalks well and widely branched. 44 in.**\$2.00**
- Jean Chevreau** (*Cayeux*) 1923. Large flowers of fine texture. S. cream tinted buff yellow. *F.* milky white thickly stippled violet brown at throat and haft margins. Beard dense, yellow. Distinctive and of good quality throughout. 36 in.**\$2.50**
- Jeanne d' Arc** (*Verdier*) 1907. 78—A dainty white long blooming plicata with light lavender frilled edges. 30 in.**50c**
- J. J. Dean** (*Dean*). S. light violet, *F.* velvety royal purple. Large and tall.**\$1.00**
- Jubilee** (*Sass*) 1923. Buff heavily spotted dark copper at the haft. *F.* extra wide at haft and nicely rounded. Large and free flowering. A better Madame Chobaut.**\$3.00**
- Juniata** (*Farr*) 1909. 81—A fine tall violet pallida, deeper than Albert Victor. Vigorous and graceful in growth. 42 in. Fine for mass effect.**50c**
- Kashmir White** (*Foster*) 1913. 84—A good tall pure white for California and other warm sections. Fine heavy substance. 36 in.**50c**
- Knysna** (*Bliss*) 1917. 78—S. clear yellow, *F.* velvety red brown.**50c**
- Lady Foster** (*Foster*) 1913. 85—One of the noblest lavender blue irisess. The flowers are unusually large, of smooth texture and excellent substance. Fragrant and very floriferous, sometimes blooming in the winter in California. 42 in.**75c**
- Lady Lilford** (*Foster*). This cross of oncocyclus Paradoxa and Pallida gave a very distinct flower of deep violet purple with falls particularly deep in color. Needs no special culture in California. 30 in.**\$1.50**
- Lady Lou** (*Dean*). A tall lavender not unlike Mesopotamica in color, valuable in California for its extreme earliness. 42 in.**75c**
- Lent A. Williamson** (*Williamson*) 1918. 96—S. lavender violet, *F.* velvety pansy violet. Large richly colored flowers of splendid substance and perfect form. Stout branched stems.**60c**
- Leonato** (*Newlands*) 1922. A greatly improved Lady Foster, larger, taller, lighter in color but shapely and well proportioned. S. pale lavender to silvery heliotrope. *F.* slightly darker and widely expanded. Should be rated at 95. Early flowering, strong growing and very fragrant. 48 in.**\$8.00**
- Leverrier** (*Denis*) 1917. 90—Large early fragrant. S. Chinese violet, *F.* pansy violet, general effect light rose red. Long blooming. Stalks tall, well and widely branched, growth vigorous. A very lovely iris. 48 in.**\$2.00**
- Lohengrin** (*G. & K.*) 1909. 79—S. a beautiful shade of Cattleya rose, large flowers, free flowering, fine in mass. 30 in.**50c**
- Lord of June** (*Yeld*) 1911. 91—A very strong grower with massive flowers of great size. S. palest lavender blue, *F.* rich aniline blue. **\$1.00**
- Los Angeles** (*Mohr-Mitchell*) 1927. Great white flowers of fine shape and substance, the standards faintly edged pale blue, the falls beautifully reticulated red brown at the base, the blue style arms adding a note of clear color in the center. Tall and widely branched. Each noble flower stands out like a glorified Fairy, to show the progress that breeding has made in the plicata group.**\$25.00**
- Louis Bel** (*Denis*) 1925. M. Denis has made the statement that this wonderful Gaudichau seedling is his finest iris. Without question it is the darkest, most richly colored and most velvety of any iris so far introduced. S. very dark velvety pansy violet, *F.* a splendid blackish violet purple. The flowers are large, the plants of greatest vigor, good height, good habits and fine foliage.**\$25.00**
- Lucida**. A lovely lavender seedling found in a California garden. It is of the Lady Foster type but lighter in color and much more vigorous. Early, very prolific and very fragrant. 30 in.**75c**
- Lycaena** (*Williamson*). A real addition to the few good amoenas, the white standards and rich purple falls with paler margin being in attractive contrast. Stock limited.**\$1.00**
- Madame Cecile Bouscant** (*Millet*) 1924. A clear self color of light orchid pink, that is absolutely unique. An exquisitely lovely iris. **\$7.50**
- Madame Cheri** (*Sturtevant*) 1918. 84—Ageratum violet tinted with pink and warmed by a yellow undertone, a beautiful color. Fine form and substance. Well placed on good tall stalks. 42 in.**\$1.00**
- Madame Chobaut** (*Denis*) 1916. A lovely plicata, its yellow ground flushed red and veined brown, suggesting apricot tints. 32 in.**60c**
- Madame Claude Monet** (*Denis*) 1912. 86—An unusual deep red violet seedling of Kochii and Ricardi. Reputed difficult in cold climates but a good doer in California. Large and fine. Rare.**\$2.00**
- Madame Durrand** (*Denis*) 1921. 86—An iridescent buff, flushed with lilac and amber. A wonderful Ricardi hybrid. Large flowers on tall well branched stems. 48 in.**\$3.50**
- Mady Carriere** (*Millet*) 79—A pleasing flower of pastel shades, delicate metallic blue overlaid yellow. 36 in.**75c**
- Magnifica** (*Vilmorin*) 1920. 91—Huge flowers. S. light violet blue, *F.* red violet. A grand novelty, with us a vigorous grower. Early. 40 in.**\$1.00**
- Marian Mohr** (*Mohr*) 1923. (*Miss Wilmott X Carthusian*.) A beautifully finished flower of very pale glistening lavender, quite distinct, and very desirable for California and other dry sections. 36 in.**\$1.00**
- Mariposa** (*Mohr*) 1923. Pale porcelain, the falls variable flaked with red purple. Many medium sized flowers, well poised on fine branched stems. Its very late blooming extends the season. Perfectly hardy anywhere. 30 in.**75c**
- M. Austin** (*Denis*). Bright wine red, tinged yellow. 24 in.**50c**
- Medallion** (*Sturtevant*) 1917. 83—S. yellow, cone shaped, *F.* heavily veined red, a nice variegata.**50c**

Any three 50c varieties for \$1.00

Irisess—General List Continued

*Madame Durrand*

The stalk in inset had 15 blossoms

- Medrano** (*Vilmorin*) 1920. 85—Remarkable shade of bronzy claret. Fine flower on rather dwarf stems. 24 in. Stock limited. **\$1.00**
- Merlin** (*Sturtevant*) 1918. A large pink toned bicolor. 30 in. **50c**
- Mesopotamica** (*species*). 81—A very large flower of lavender violet on tall flexuous stems. Early. Rather coarse, but fine for breeding. 48 in. **\$1.00**
- Midwest** (*Sass*) 1922. An attractive plicata, similar to Parisiana but of brighter red purple edging and more ruffled. 30 in. **75c**

- Mildred Presby** (*Farr*) 1923. This is unquestionably the finest iris of the amoena type—a brighter Rhein Nixe. *S.* white faintly flushed pale rosy lavender, *F.* rich dark velvety pansy violet, with a very narrow edge of lavender white. Exceptional substance. 30 in. . . . **\$2.50**
- Minnehaha** (*Farr*) 1913. 78—Large flower of palest straw yellow, falls widely veined Prussian red. Orange beard. Late, distinct. 24 in. **50c**
- Miranda** (*Hort*) 1919. A tall and early violet blue with orange beard, considered by many the best in its class. 36 in. **\$1.00**

Any three 50c varieties for \$1.00

Irisess—General List Continued

- Miss Willmott** (*Foster*) 1910. 76—A fine tall white sometimes flushed with lavender. Large and of good substance. Earlier than Kashmir White. 30 in. **50c**
- Mistress Ford** (*Hort*) 1921. *S.* reddish purple, *F.* rich red violet. An English novelty of high reputation. 30 in. **\$2.00**
- Mithras** (*G. & K.*) 1910. 75—*S.* yellow, *F.* violet carmine with narrow edge. 24 in. **50c**
- Mlle. Schwartz** (*Denis*) 1916. 87—Large pale mauve self. One of the finest in this class. 40 in. **\$1.00**
- Moa** (*Bliss*) 1920. Enormous flowers with arching standards of pure violet and broad almost circular flat falls of deep violet purple or pansy violet. It is the tallest of the Dominion race. A grand grower with well branched spikes. Very free flowering. Excellent substance. A magnificent iris which in the opinion of some of the English experts is the finest iris in the world. 39 in. **\$19.00**
- Monsignor** (*Vilmorin*) 1907. 84—*S.* pale un-veined violet, *F.* mauve overlaid velvety purple deepening in shade to the center. Makes a rich and floriferous clump. 24 in. **50c**
- Montezuma** (*Farr*) 1909. 83—*S.* golden yellow dotted brown, *F.* yellow and white, dotted brown. Unique coloring, dwarf. **50c**
- Montserrat** (*Morrison*) 1923. A fine large Caterina Alcazar seedling. *S.* deep dull lavender. *F.* livid purple shadings, warm buff yellow at center. Stalk low and very well branched. Growth vigorous. 40 in. **\$3.00**
- Morning Splendor** (*Shull*) 1922. A larger and taller Opera with the same deep rich purple tones. Very fine habit, form and substance. 36 in. **\$5.00**
- Mother of Pearl** (*Sturtevant*) 1921. As the name indicates, the colors of this beautiful iris are the iridescent shades of mother of pearl. The beautiful flower is large and of excellent substance. Stems tall and well branched. **\$1.00**
- Mount Penn** (*Farr*) 1909. 82—*S.* lavender rose, *F.* crimson lilac—general effect deep rose pink. Golden beard. **50c**
- Mrs. Neubronner** (*Ware*) 68—A small flower of deepest golden yellow, orange beard. 24 in. **50c**
- Nancy Orne** (*Sturtevant*) 1921. A large rose purple flower suffused with yellow giving the effect of a lovely fawn pink. Stalk low and well branched. Growth vigorous. 40 in. **75c**
- Navajo** (*Farr*) 1913. 74—*S.* honey yellow, *F.* deep maroon, veined cream. 20 in. **50c**
- Nazarine** (*Foster*) 90—(*Pallida X Iberica.*) A beautiful pure light purplish-violet hybrid with a small throat blotch but no veining. Smooth texture. 24 in. **\$1.50**
- Nereus** (*Yeld*). Large flowers. *S.* lavender blue, *F.* rich aniline blue—a darker Lord of June. **\$1.00**
- Nibelungen** (*G. & K.*) 1910. 73—*S.* fawn, *F.* violet purple with fawn margin. Well branched, rampant growth, 30 in. **50c**
- Nine Wells** (*Foster*) 1909. 80—*S.* light lavender violet, *F.* velvety pansy violet. Tall, late, free flowering. Growth vigorous. 40 in. **50c**
- Nuee d'Orangee.** Syn. Storm Cloud (*Verdier*) 1905. 76—Slate blue shaded bronze. Large and vigorous. 30 in. **50c**
- Ochracea Coerulea.** See Sunset.
- Opera** (*Vilmorin*) 1916. 87—*S.* violet rose, *F.* rich velvety violet purple. Early and very beautiful. 24 in. **60c**
- Oriflamme** (*Vilmorin*) 1904. Large. *S.* dark lavender, *F.* hortense violet. Stalk well branched. 30 in. Fine for massing. **50c**
- Pandora** (*Sturtevant*) 1922. A large pleasing flower of an even toned pink color. 24 in. **\$1.00**
- Parce de Neuilly** (*Verdier*) 1910. 81—Deep violet blue, yellow beard. Spikes strong, flowers large and freely borne. Growth vigorous. 30 in. **50c**
- Parisiana** (*Vilmorin*) 1911. 79—*S.* netted and dotted lilac purple on cream white. *F.* cream white edged lilac purple. Large flowers. Vigorous. The seed parent of William Mohr. 30 in. **50c**
- Patience** (*Foster*). 69—*S.* mauve, *F.* dark violet. Medium size. So called because it is one of the last to flower. **50c**
- Peerless** (*Dykes*) 1924. A magnificent flower of enormous size and brilliant coloring, giving the effect of a rich glowing mahogany red. The standards are very erectly held with no tendency to "flop", 3½ in. long and 3 in. wide, light reddish violet in color. Fall straight, hanging 4½ in. long, 3 in. wide, deep purple red with bronze reticulations. Beard rich gold, so brilliant that it lights up the whole flower. Strong well branched stems, tall, a strong grower and free flowering. About 40 in. **\$35.00**
- Perfection** (*Barr*). 78—*S.* light lavender violet, *F.* velvety violet. A dark rich flower. Well branched, very floriferous. 24 in. **50c**
- Petrel** (*Morrison*) 1922. A distinct seedling of Oriflamme and B. Y. Morrison. *S.* hortense violet, *F.* amethyst violet shaded deep velvety purple. 24 in. **\$1.00**
- Phyllis Bliss** (*Bliss*) 1919. 89—Lavender mauve with a touch of rosy lavender. Large flowers of finest form, free flowering, vigorous. Rhizomes always small. 36 in. **\$1.00**
- Pocahontas** (*Farr*) 1915. 77—Ruffled white with light lavender violet border and style arms. Vigorous. **50c**
- Pont a Mousson** (*Millet*). A large early Ricardi hybrid. *S.* tan overlaid bluish lavender, *F.* darker, shading to purple. 36 in. **75c**
- Primavera** (*Mohr*) 1926. This lovely iris blooms into a lovely mass of soft primrose yellow very early in the season. The medium height stalks are well branched and full of blooms, which are of good size, beautifully rounded form and excellent substance. This iris has demonstrated its hardiness, vigor and distinction in a Massachusetts garden where it was sent for trial and we predict a big future for Primavera both as a specimen flower and for color masses. Quantity prices on request. **\$2.00**

Any three 50c varieties for \$1.00

Irises—General List Continued



Santa Barbara

Primrose (*Sturtevant*) 1923. *S.* amber yellow, *F.* lighter barium yellow, center of flower clear lemon yellow. Brilliant in effect. 30 in. . . **\$4.00**

Prince Lohengrin (*Mohr*) 1923. (*Juniata X Lohengrin.*) A light mauve pink that is considerably pinker than Lohengrin. The stalks low and widely branched, free flowering and about a foot taller than Lohengrin. Perfectly hardy anywhere and much better for mass effect than its name parent. 40 in. . . . **\$1.00**

Princess Beatrice (*Barr*). 95—A fine broad flower of lustrous lavender with flaring falls, satiny texture and exceptional substance. Often listed as *Pallida dalmatica*. 36 in. . . **50c**

Princess Victoria Luise (*G. & K.*) 1910. 72—*S.* primrose yellow, *F.* reddish purple edged primrose. 24 in. **50c**

Prosper Laugier (*Verdier*) 1914. 83—*S.* light bronze with a pink flush *F.* velvety crimson. Warm yellow center. One of best bronzes. **50c**

Any three 50c varieties for \$1.00

Irisess—General List Continued

- Prospero** (*Yeld*) 1920. A very large blended violet bicolor with smoothly rounded falls. Stalk well branched. Vigorous. 40 in. \$1.00
- Purissima** (*Mohr-Mitchell*) 1927. It is going to be very hard to improve on this Argentina X Conquistador seedling for a pure white of great size, fine form and heavy substance, this last a most important factor in white irisess. These qualities, with its vigor and its tall branched stems account for the rating of 96 given it by a jury of A. I. S. members, all seedling raisers themselves, who judged it in the garden early last season. This is the variety referred to by Mr. Jacob Sass in A. I. S. Bulletin 21, page 36, which says he doesn't expect to see it surpassed. \$25.00
- Quaker Lady** (*Farr*) 1909. 84—S. smoky lavender, F. same overlaid orange buff. A beautiful blend. Vigorous. 50c
- Queen Caterina** (*Sturtevant*) 1917. 90—Large pale lavender violet with smooth iridescent surface and exceptional substance. Stalk low and widely branched. Vigorous. 36 in. . . \$1.00
- Queen of May** (*Salter*) 74—Soft lilac rose that is pink in effect. Vigorous, fragrant and very popular. 50c
- Rajput** (*Sturtevant*) 1922. A large bright violet self with flaring falls and fine substance, exceptional vigor and growth. 40 in. . . \$2.50
- Rameldo** (*Mohr*) 1925. (*Ramona X Eldorado*.) An attractive blend plainly showing the parentage but taller and darker than either. Very unusual and perfectly hardy anywhere. 30 in. \$2.00
- Ramona** (*Mohr*) 1924. (*Juniata X Pfauenage*.) A new blend of colors, petunia violet flushed cinnamon brown, lightened up by an orange beard. Fine form and substance; vigorous growth. \$1.50
- Rhein Nixe** (*G. & K.*) 1916. 84—S. white, F. pansy violet, bordered bluish white. Growth rampant. 30 in. 50c
- Ricardi Blanc Bleute** (*Denis*). Very large white flowers flushed sky blue. Tall and of good vigor. 40 in. \$2.50
- Richard II** (*Dykes*) 1914. 74—S. white, F. velvety prune purple, margined white. A seedling of Black Prince. Dwarf. 20 in. Stock limited. \$3.00
- Rickochiii**. A cross of Ricardi and Kochii rarely offered, though of real merit. The large flowers are a blend of rosy lavender and yellow. . \$2.50
- Rita** (*Mohr*) 1924. (*Trojana X Caterina*.) A beautiful clear blue purple self of good size, wonderful stems, branching almost from the ground. Floriferous, vigorous and early. . 75c
- Robert W. Wallace** (*Perry*) 1923. A magnificent dark pallida. S. rich violet, F. very deep purple black, beard conspicuously orange tipped. It is the finest tall, large, very dark iris except Peerless. \$5.00
- Romola** (*Bliss*) 1924. This is one of the latest and very best of the Dominion race, having more attractively graceful and delicately colored flowers than the others. The flowers are very large, S. finely arched, pale lilac shading to ivory at the base, F. velvety red violet. A strong grower with well branched spikes. Free flowering and exceedingly beautiful. 40 in. \$20.00
- Rosado** (*Mohr*) 1925. (*Parisiana X mesopotamica*.) A most beautiful clear soft pink, tall, strong growing and of unusual size. Hardy in Massachusetts as well as in California. 42 in. \$7.50
- Rose Madder** (*Sturtevant*) 1920. 85—Brilliant rose madder, S. light, F. dark and velvety, beard orange, styles light yellow. Growth vigorous, fragrant. 40 in. \$3.50
- San Gabriel** (*Dean*) 1921. 90—A very large pinkish lavender of high excellence adding to its other merits the virtue of early flowering. Branching, very graceful. 48 in. \$2.50
- San Francisco** (*Mohr-Mitchell*) 1927. Tall stems, branching low and wide like a candelabra, carry the large white flowers, of which both standards and falls are distinctly edged lavender. In size, shape and substance, there is nothing to approach it among the older plicatas, only the color pattern tells us it should be classed with them. \$25.00
- Santa Barbara** (*Mohr*) 1925. This is the finest of the pure lavender blues. The size, substance, spreading horizontal falls, well branched stalks and the vigor of growth, entitle this beautiful iris to be rated with the highest. 40 in. (See Page 13) \$7.50.
- Saul** (*Denis*) 1921. S. golden yellow, F. maroon. A large spreading flower on the style of Iris King. Late. 24 in. \$1.00
- Seminole** (*Farr*) 1920. 83—A brilliant velvety light red purple with a conspicuous orange beard. Vigorous. 30 in. \$1.00
- Shasta** (*Mohr-Mitchell*) 1927. This new white of different parentage than Purissima is also entirely distinct in style and effect and well worthy of being named for California's great white-capped mountain. The 40-inch stalks which are well but high branched, bear the magnificent flowers proudly aloft. These are snow white, with a few faint amber reticulations on the haft and are of fine form and excellent substance. It blooms late with us so was not seen by the early visitors who so admired Purissima. \$10.00
- Shekinah** (*Sturtevant*) 1918. 88—Pale lemon yellow, deeper toward center. Of pallida form and growth. 30 in. 50c
- Sherbet** (*Sturtevant*) 1918. 81—Ecru shaded purple. Tall. Valuable to breeders for its height and vigor. 48 in. 50c

Any three 50c varieties for \$1.00

Irisess—General List Continued

Sherwin-Wright (*Kohankie*) 1915. 76—Small bright golden yellow of good form. Rampant growth. 24 in. **50c**

Silverado (*Mohr*) 1924. (*Juniata X Pfauenauge*.) *S.* silvered lavender, *F.* plumbago blue, orange beard. An unusual dull blue tone with orange contrast at center. A vigorous, hardy iris of excellent finish, fine form and wonderful substance. **\$1.50**

Sindjkha (*Sturtevant*) 1918. 83—A deep lavender combined with buff. Tall, of fine size and remarkable substance. 48 in. **75c**

Solana (*Shull*) 1923. *S.* lemon chrome, *F.* bordeaux. Brilliant and effective. Growth vigorous. **\$1.00**

Soledad (*Mohr*) 1924. (*Trojana X yellow pumila*.) *S.* pale yellow, *F.* amber yellow. Growth vigorous. Early and very fragrant. **75c**

Souv. de Leotitia Michaud (*Millet*) 1923. Enormous flowers of fine texture. Lobelia blue shading pale blue toward edges, falls, the same color with hafts beautifully veined yellow on white ground. R. W. Wallace, the eminent English iris authority says: "We consider this to be the finest of the recent French introductions." One of the foremost American commercial growers rates it at 96. Growth vigorous. **\$8.00**

Souv. de Madame Gaudichau (*Millet*) 1914. 93—*S.* Bradley's violet, *F.* brilliant blackish purple. An usually dark velvety bicolor of fine shape and finish and of exceptional substance. Stalks high and widely branched. Growth rampant. 36 in. **\$1.00**

Stanley H. White (*Sturtevant*) 1918. 83—A clear bright yellow, sparsely veined red on the falls. Of value to breeders as it is of Caterina parentage and is itself the pollen parent of Gold Imperial. Stock limited. 30 in. . . . **\$1.50**

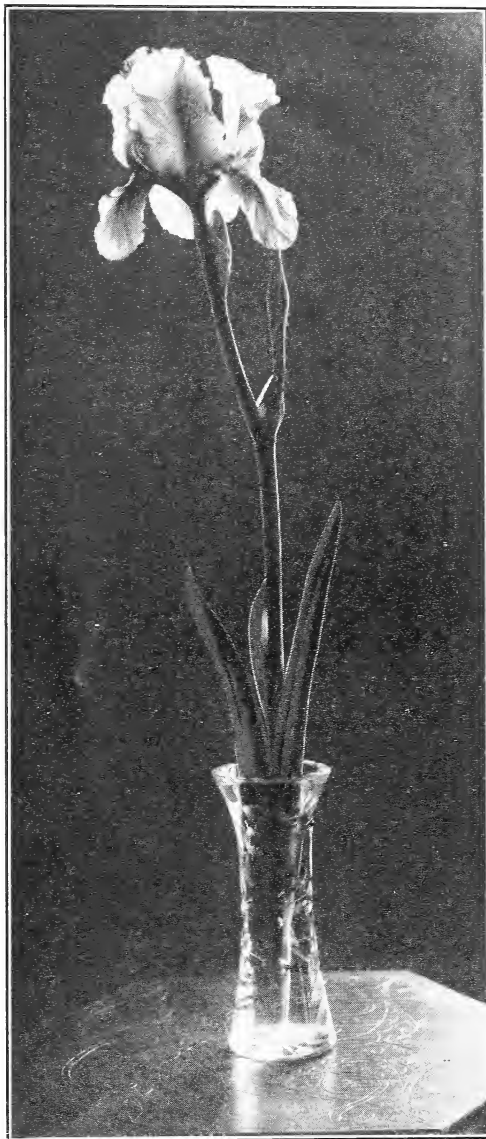
Sunset (*Denis*). The standards of this lovely iris are like cloth of gold, the falls of the same but suffused blue violet. A strong grower, free flowering, late and scented. Stock limited. **\$2.00**

Suzanne Autissier (*Denis*) 1921. A large Ricardi hybrid on tall stout stems. *S.* aniline blue, *F.* velvety purple violet. Very vigorous in California. 40 in. **75c**

Susan Bliss (*Bliss*) 1922. Deep rose pink with light orange beard. Beautifully shaped and of fine substance. Stalk low branched. Growth rampant. Rhizomes very small. 40 in. . **\$2.00**

Sweet Lavender (*Bliss*) 1919. 85—*S.* lavender violet, *F.* rosy lavender, broad and horizontal. These pastel colors are found in some of the choice new delphinium. Stalk low branched, substance excellent, growth vigorous. 36 in. **\$1.50**

Taj Mahal (*Sturtevant*) 1921. 83—Well shaped pure white flowers on rather taller stems than



William Mohr

are generally available in pure white varieties. Of unquestioned hardiness. Stalk low and well branched, growth rampant. 36 in. . . . **\$4.00**

Tancred (*Sturtevant*) 1924. *S.* buff, *F.* veined and flushed with purple. Habit and size markedly distinct. 30 in. **\$6.00**

Tenebrae (*Bliss*) 1922. Another finely formed iris of the Dominion race. *S.* rich violet purple, tinged maroon-purple in the center; of great size and substance. *F.* rich velvety blackish purple; smooth and circular. Stalk low branched. A wonderful flower of rich dark coloring. 36 in. **\$7.50**

Thunder Cloud (*Sturtevant*) 1921. Deep grayish lavender and rich heliotrope gray. 30 in. **50c**

Any three 50c varieties for \$1.00

Irisess—General List Continued

Titian (*Bliss*) 1919. Enormous flowers with spreading falls of very great substance. Arching standards, 3 in. broad, of light violet blue. Broad smooth falls of violet purple. Stalks massive, low and well branched. Growth vigorous. Very free flowering. The largest of the Dominion race. **\$4.00**

Tomtit (*Bliss*) 1919. 80—A small deep blue purple flower on 18 in. stems. Attractive for foreground planting. **75c**

Troost (*Denis*) 1908. 84—Deep rose pink with darker venations on the falls. Early and quite distinct. 30 in. **75c**

Trosuperba (*Trojana superba*). 78—S. lavender violet, large and broad. F. purple, drooping. 36 in. **50c**

Valencia (*Mohr*) 1926. A beautiful bright orange-buff self that attracted every visitor last year. One Middle Western professional grower wrote in regard to the color that "It is the only new color in iris I have seen in years." Another writes "Valencia, a new variety from California pleased me very much. I found it the same color we see on the Valencia oranges of its native state. I believe it has a future." We quite agree with them both. The flowers are of good form and excellent substance. The plants are very hardy and prolific. Medium height. Stock limited. **\$4.00**

Valkerie (*Sturtevant*) 1919. Shaded olive lake and velvety dark maroon purple, almost black, styles yellow, beard brown tipped. Exceptional substance, fragrant and most unusual coloring. 30 in. **\$4.00**

Violacea Grandiflora. 80—Clear violet blue pallida. 36 in. **50c**

Virginia Moore (*Shull*). 81—The brightest yellow self of any size or vigor under our California conditions. Falls only very slightly veined. 2½ ft. Stock limited. **\$1.00**

Wild Rose (*Sturtevant*). Rose pink, of medium height. **\$2.50**

William Mohr (*Mohr*) 1925. A wonderful hybrid from Parisiana X Gatesii. The ground color is pale lilac, standards flushed darker, the whole flower beautifully veined manganese violet. Substance and shape of the very best, a very large flower; actual measurements showing standards 3¼ by 2¾ inches and falls 3 by 2 inches. Stems strong and rigid, 20 to 24 inches, usually four flowers on each.

We quote from an article written by Mr. R. S. Sturtevant, one of America's best iris authorities in Garden and Home Builder, March, 1925: "William Mohr is undoubtedly the finest introduction of the year if not of the decade. It has all the curious charms of the Mourning Iris (*I. susiana*) without its gloom and promises also vigor of growth to a surprising extent considering its origin."

It has been successfully grown and flowered in the eastern gardens so we have no hesitation in recommending it for all sections of the country. As the rhizomes are not large we raise a few each year in 12-inch pots for exhibition purposes. They are also valuable as cut flowers, for the keeping qualities are very exceptional. See cut on back cover page. **\$25.00**

Wyomissing (*Farr*) 1909. 72—Creamy white suffused soft rosy pink. Best planted in partial shade to retain the delicate coloring. Most effective in mass. **50c**

Yellow Moon (*Sturtevant*). An amber yellow self of pallida habit. 36 in. **\$4.00**

Yolande (*Millet*) 1923. Large. S. lavender violet, F. dusky violet—an improved Gaudichau of wonderful velvety dark blue. Stalks well branched and growth vigorous. 36 in. **\$5.00**

Zanardelli. A pure lavender blue of fine form, with flaring falls and excellent substance. 24 in. **50c**

Zwannenburg (*Denis*) 1909. 85—(*Lutescens* X *oncocyclus Susiana*.) An unusual flower, large, very early. S. cream, blotched greenish buff, F. chamois to olive brown. Vigorous and floriferous. **60c**

BEARDLESS IRISES

The requirements of this group are almost opposite from those of the bearded irises, in that they do best in moist rich soils. They can however stand a summer rest and drying out.

The first three bloom after the bearded irises thus prolonging the season, the last is winter blooming.

Monnieri. Very tall with deep green foliage. Flowers large and of deep golden yellow. A fine variety for cutting. Should be planted from October to December. Early deliveries will be made only at customer's risk. Stock limited. **50c** each; **\$5.00** doz.

Ochroleuca. Another tall variety with much the same growing and flowering habits. The blooms are creamy white with golden yellow center. These should be planted at the same time as Monnieri. **50c** each; **\$5.00** doz.

Perry's Blue. A beautiful sky-blue iris with flaring falls, very floriferous. Foliage sword-like and tall. A rapid multiplier. These irises are especially beautiful on the edges of pools. **\$1.00** each; **\$10.00** doz.

Stylosa (Winter blooming iris). Plants are low growing with long grass like foliage. Flowers deep sky blue with orange tongue; delightfully fragrant. Begins blooming in September on the Pacific Coast and continues throughout the winter. Should be planted in early spring. **25c** each; **\$2.50** doz..

Carl Salbach

Woodmont Avenue,
Berkeley, Calif.

Member of

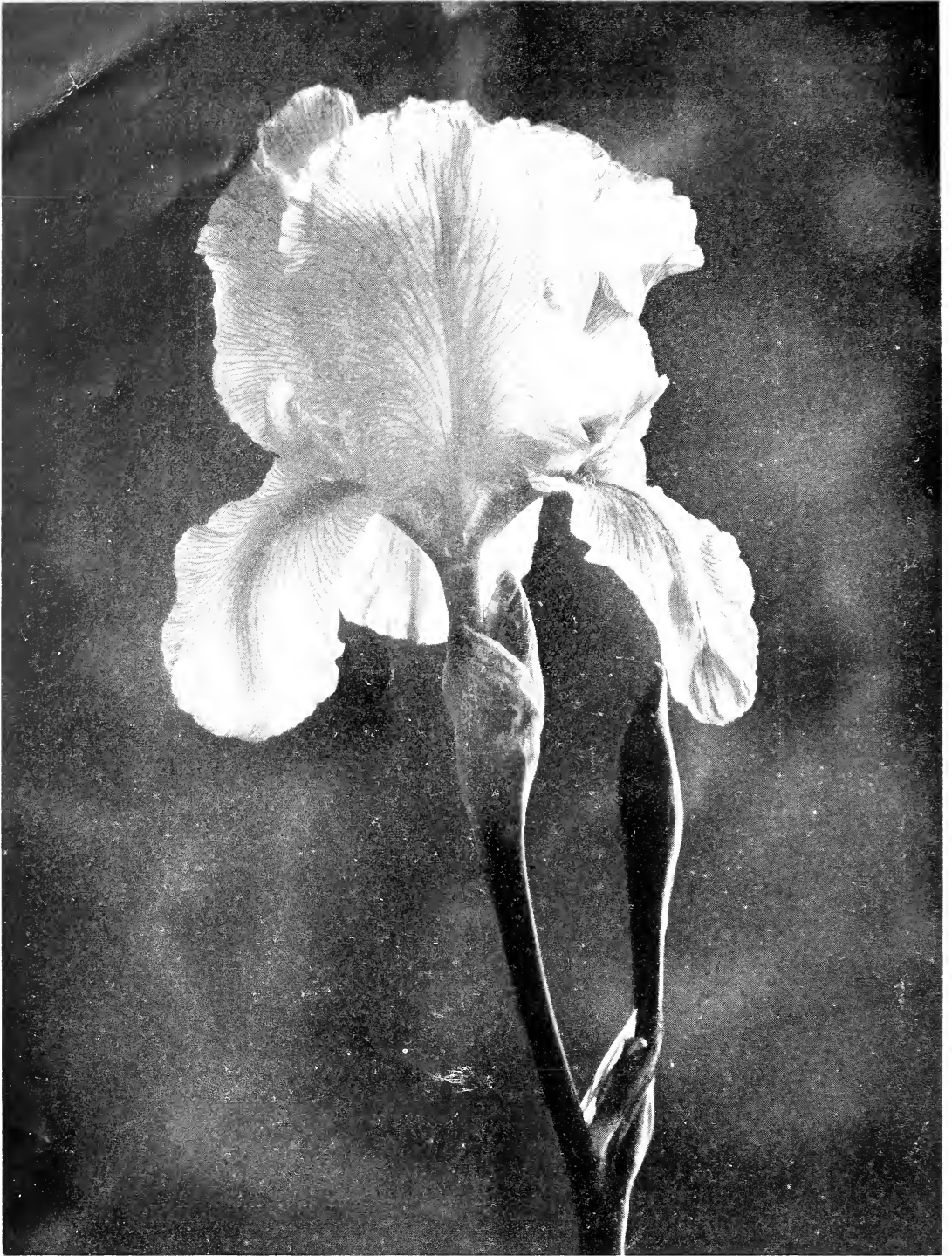
Alameda County Floral Society
American Dahlia Society
American Gladiolus Society
American Iris Society

California Gladiolus Society
Dahlia Society of California
Dahlia Society of Southern California
The Dahlia Society of San Francisco



IRISES deserve a place of honor in every flower garden. The beauty of their form and color is receiving the appreciation which it deserves.

The early varieties will be in bloom in our gardens the second week of April, the mid season varieties the latter part of April and the late varieties in mid May.



William Mohr

Carl Salbach
Iris

1927