

Historic, Archive Document

Do not assume content reflects current scientific knowledge, policies, or practices.

6-255
1427
AUG 8 1927
Division

J. Steckler Seed Co., Ltd.

The South's Leader

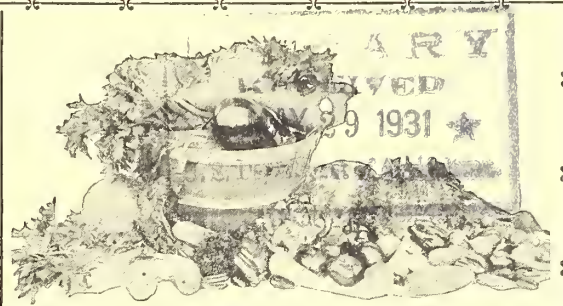
J. STECKLER, President

The South's Most Dependable Source of Seed Supplies

New Orleans, Louisiana

512 to 516 Gravier Street

Phone, Main 0428



J. Steckler Seed Co., Ltd., give no warranty, express or implied, as to description, quality, productiveness or any other matter of any seeds, bulbs plants or trees they send out, and will not be responsible for the crop.

ALL PRICES SUBJECT TO CHANGE WITHOUT NOTICE

THE POSTAGE TO FOREIGN COUNTRIES must be added to the cost of the goods selected in this price list, or the order will be reduced to allow for the postage. These rules will also apply to orders from the United States where no postage allowance is made for mailing, or we will send by express.

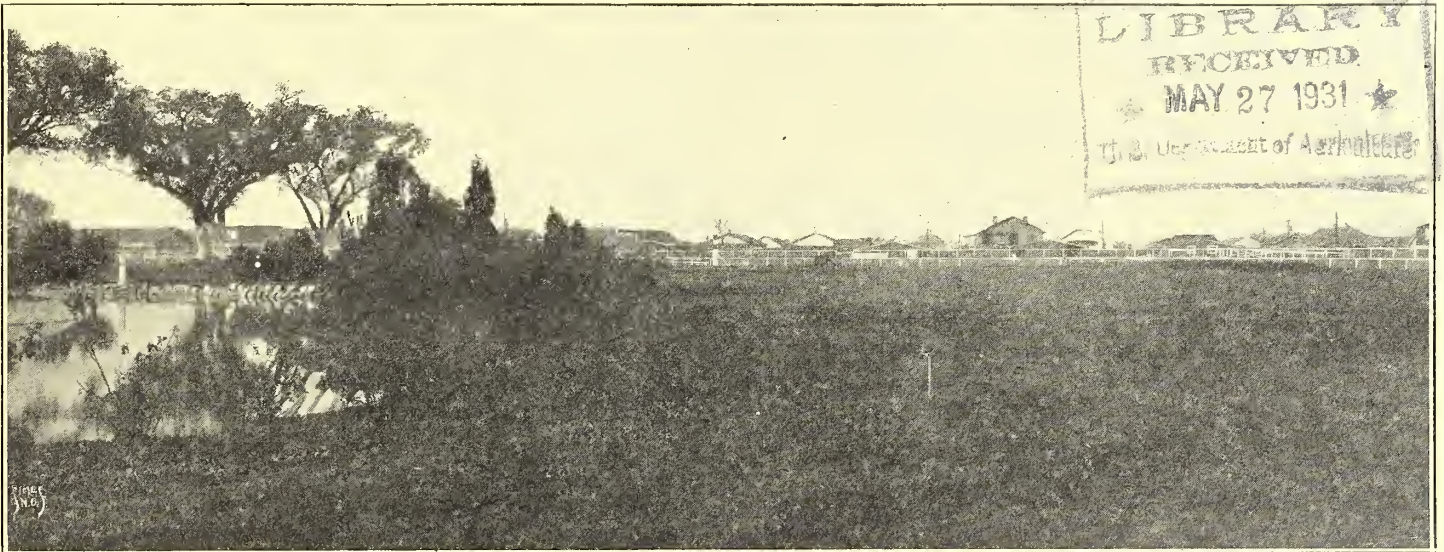
CENTRAL AND SOUTH AMERICA: Limit Weight, 20 lbs. Postage rate, 14c per pound.

PANAMA: Limit Weight, 50 lbs. Postage Rate, 12c per pound.

CUBA: Limit Weight, 10 lbs. Postage Rate, 14c per pound, plus following Consul Fees: Invoice for less than \$5.00, a fee of 10c; \$5.00 to \$49.99, a fee of 50c; \$50.00 to \$200.00, a fee of \$2.00.

CANAL ZONE: Limit Weight, 50 lbs. Postage Rate, 12c per pound.

MEXICO: Limit Weight, 20 lbs. Postage Rate, 14c per pound.



Louisiana Jockey Club—Steckler's Grass Planted Exclusively on These Grounds

July 1st, 1927.

TO OUR FRIENDS AND CUSTOMERS:

In issuing this fall price list of 1927, we are making it as small as it can be written and only outlining the varieties and prices, knowing that many of our friends already have our descriptive catalog of 1927 and if you should not have one, drop us a postal card and we shall be glad to mail same. We are doing this to minimize the cost of this price list and allow it to our friends in the cost of the seed, giving the same superior quality seed and of the highest germination. Upon receipt of this circular we hope that you will let us have your orders promptly which will be filled as soon as received.

Special Note

Having at heart the sympathy and welfare of our friends who are suffering from the flood situation, we will allow from this price list a special discount of 25 percent on all garden and flower seeds and bulbs, and a special discount of 10 percent on all field seeds.

Vegetable Seeds for Fall Planting

STECKLER'S ARTICHOKEs

Large Green Globe.....Pkt. 20c; Oz. 75c; ¼ lb. \$2.50. Postpaid

STECKLER'S ASPARAGUS (Seeds)

Columbia MammothPkt. 10c; Oz. 15c; ¼ lb. 50c; lb. \$1.50. Postpaid
 PalmettoPkt. 10c; Oz. 15c; ¼ lb. 35c; lb. \$1.00. Postpaid
 Martha Washington.....Pkt. 10c; Oz. 25c; ¼ lb. 70c; lb. \$2.25. Postpaid

BUSH LIMA BEANS

	Postpaid			Not Prepaid		
	Pkt.	Lb. 5 lbs.	15 lbs. 60 lbs.	Peck	Bu.	Bu.
Burpee's10	.50	\$2.25	\$4.00	\$15.00	
Fordhook10	.45	2.00	5.00		
Henderson's10	.45	2.00	3.25	12.00	
Steckler's New Calico Bush Butter10	.50	2.25	4.00	15.00	

POLE LIMA BEANS

	Postpaid			Not Prepaid		
	Pkt.	Lb. 5 lbs.	15 lbs. 60 lbs.	Peck	Bu.	Bu.
Carolina or Sewee10	.50	\$2.00	\$3.25	\$12.00	
Large Lima10	.50	2.25	4.00	15.00	
Seiberts10	.40	1.75	3.25	12.00	
Sou. Willow Leaved Butter10	.50	2.25	4.25	16.00	
Spotted Butter10	.50	2.25	4.00	15.00	

WINDSOR BEANS

Italian or English..... Pkt. 10c; lb. 45c; 5 lbs. \$2.00. Postpaid

Steckler's Garden Beans DWARF OR BUSH-GREEN PODDED

	Postpaid			Not Prepaid		
	Pkt.	Lb. 5 lbs.	15 lbs. 60 lbs.	Peck	Bu.	Bu.
Black Valentine10	.45	\$1.50	\$2.50	\$9.00	
Bountiful10	.40	1.75	3.25	12.00	
Burpee's Stringless10	.40	1.75	3.25	12.00	
Extra Early Refugee10	.45	1.75	3.25	12.00	
French Market10	.45	1.75	3.25	12.00	
Giant Stringless10	.45	1.75	3.25	12.00	
Hopkins Imp. Red Valentine10	.40	1.75	3.15	11.00	
Longfellow10	.40	1.75	3.15	11.00	
Red Kidney10	.35	1.50	2.75	10.00	
Steckler's New Per. Stra. Rnd10	.40	1.75	3.15	11.00	
White Kidney10	.35	1.50	2.75	10.00	
White Navy or Boston10	.35	1.50	2.75	10.00	

BUSH WAX BEANS

	Postpaid			Not Prepaid		
	Pkt.	Lb. 5 lbs.	15 lbs. 60 lbs.	Peck	Bu.	Bu.
Currie's Rust Proof10	.45	\$1.75	\$3.25	\$12.00	
Davis White Kidney Wax10	.40	1.75	3.00	11.50	
Hodson10	.45	1.75	3.25	12.00	
Pencil Pod Wax10	.45	1.75	3.25	12.00	
Round Pod Kidney10	.45	1.75	3.25	12.00	
Wardwell's Kidney10	.40	1.75	3.00	11.00	

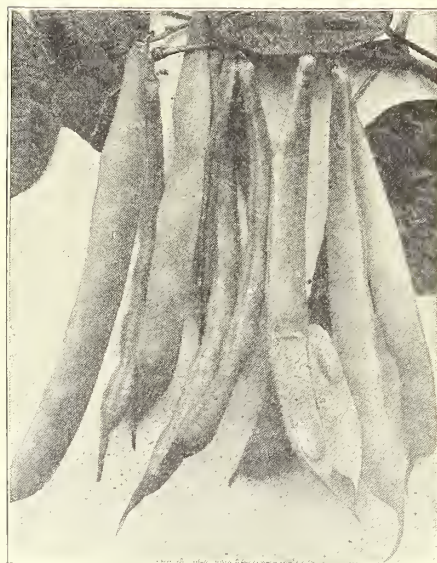
POLE OR RUNNING GREEN PODDED

	Postpaid			Not Prepaid		
	Pkt.	Lb. 5 lbs.	15 lbs. 60 lbs.	Peck	Bu.	Bu.
Black Valentine10	.45	\$2.00	\$3.65	\$14.00	
Imp. Ky. Wonder or Old Homestead.....	.10	.45	2.00	3.25	12.00	
Lazy Wife's10	.45	2.00	3.65		
McCasian10	.45	2.00	3.65		
Striped Creaseback10	.45	2.00	3.65	14.00	
White Cornfield10	.40	1.65	3.25		
White Creaseback10	.45	2.00	3.65	14.00	

Yard Long—Pkt. 15c; ½ lb. 40c; lb. 75c, postpaid.

POLE WAX BEANS

Early Golden Cluster.....Pkt. 10c; lb. 50c; 5 lbs. \$2.25, postpaid; 15 lbs. peck, \$4.00, not prepaid.



Black Valentine Bush

WE CARRY
Conkey's
Poultry
Remedies

Pets

We have Cats,
 Dogs, Monkeys,
 Canary Birds
 and Parrots.
 Write for prices.



Crosby's Egyptian

Steckler's Stock Beets

	Postpaid				
	Pkt.	Oz.	¼ lb.	lb.	5 lbs.
Golden Tankard10	.15	\$.25	.60	\$2.50
Long Red Mangel10	.15	.25	.60	2.50
Klein Wanzleben Sugar10	.15	.25	.60	2.50
White French Sugar10	.15	.25	.60	2.50

STECKLER'S BROCCOLI

Early Large White FrenchPkt. 15c; Oz. 60c; ¼ lb. \$2.00. Postpaid

Steckler's Brussels Sprouts Pkt. 10c; Oz. 30c; ¼ lb. \$1.00; Lb. \$3.25. Postpaid.

NOTE:—To our Friends and Customers. We are anxious to increase our mailing list with correct names and addresses of those interested in seed and for that courtesy, we will be glad to send 6 Papers of Assorted Flower Seeds suitable for the Season in return for this favor.

We Carry
 A Full Line of
Insecticides
 and
Sprayers

Steckler's Farm and Vegetable Seeds

Steckler's Cabbage

	Postpaid			
	Pkt.	Oz.	¼ lb.	lb.
All Head Early	.10	.25	.75	\$2.50
All Season	.10	.25	.75	2.50
Chinese	.10	.30	.90	3.00
Copenhagen Market	.10	.25	.90	2.75
Frotscher's Superior Large Late Flat Dutch	.10	.30	.90	2.75
Early Drumhead	.10	.25	.75	2.50
Early Drumhead Savoy	.10	.25	.75	2.50
Danish Ball Head	.10	.25	.90	2.75
Louisville Drumhead	.10	.25	.75	2.50
Mammoth Red Rock	.10	.30	.90	3.00
Red Dutch	.10	.30	.90	3.25
Selected Early Jersey Wakefield	.10	.30	.90	3.00
Steckler's Golden Acre	.15	.90	2.50	8.00
Steckler's Money Making	.10	.25	.75	2.50
Steckler's Special Charleston Wakefield	.15	.30	.90	2.75
Steckler's Special Succession	.15	.30	1.00	3.00
Stein's Early Flat Dutch	.10	.30	.90	2.75
Surehead	.10	.25	.75	2.50



Copenhagen Market Cabbage



Danver's
Half Long Carrot

Steckler's Carrots

	Postpaid			
	Pkt.	Oz.	¼ lb.	lb.
Danver's	.10	.15	.30	\$1.00 \$1.50
Early Half Long Chantenay	.10	.15	.30	1.00 4.50
Early Scarlet Horn	.10	.15	.35	1.25 5.00
Half Long Scarlet French	.10	.15	.35	1.25 5.50
Improved Long Orange	.10	.15	.30	1.00 4.50
Large White Belgian	.10	.15	.25	.75 3.00
Oxheart or Guerande	.10	.15	.40	1.25 5.50
Red St. Valerie or Three Quarter Long	.10	.15	.35	1.00 5.00
Steckler's Golden Rod	.10	.20	.45	1.50

STECKLER'S CAULIFLOWER

	Postpaid			
	Pkt.	Oz.	¼ lb.	Lb.
Early Italian Giant	.15	.75	\$2.50	\$ 8.00
Large Algiers	.15	1.00	3.00	10.00
Late Italian Giant	.15	.75	2.50	8.00
Steckler's Extra Snowball	.25	2.00	7.00	25.00
Steckler's Six Weeks	.35

STECKLER'S CELERY

	Postpaid			
	Pkt.	Oz.	¼ lb.	lb.
Celery for Soup	.10	.25	.75	\$ 2.50
Celeriac, Turnip Rooted	.10	.25	.75	..
Giant Pascal	.10	.35	1.00	3.50
Golden Self Blanching	.10	1.00	3.25	12.00
Large White Plume	.10	.25	.75	2.50

STECKLER'S CHERVIL

Chervil Pkt. 10c; Oz. 25c; ¼ lb. 75c. Postpaid

STECKLER'S COLLARDS

Georgia Collards..... Pkt. 10c; Oz. 15c; ¼ lb. 25c; lb. 75c. Postpaid

CORN SALAD

Pkt. 10c; Oz. 15c; ¼ lb. 50c; lb. \$2.00. Postpaid

STECKLER'S CUCUMBERS

	Postpaid			
	Pkt.	Oz.	¼ lb.	lb.
Davis Perfect	.10	.20	.45	\$1.50
Early Cluster	.10	.15	.40	1.25
Earliest of All	.10	.20	.45	1.50
Early Fortune	.10	.15	.40	1.25
Everbearing	.10	.15	.40	1.25
Frotscher's New Orleans Market	.10	.15	.40	1.25
Henderson's Perfect White Spine	.10	.20	.45	1.50
Japanese Climbing	.10	.20	.45	1.50
Klondyke	.10	.20	.40	1.25
Steckler's Improved Long Green	.10	.20	.60	2.00
West India Gherkin	.10	.20	.60	2.00

STECKLER'S CRESS

	Postpaid			
	Pkt.	Oz.	¼ lb.	lb.
Water Cress	.10	.50	\$1.25	\$4.00
Broad Leaved	.10	.25	.75	..

STECKLER'S EGG PLANTS

	Postpaid			
	Pkt.	Oz.	¼ lb.	lb.
Black Beauty	.10	.40	\$1.50	\$5.00
Frotscher's Large Purple or New Orleans Market	.10	.40	1.40	4.50
Improved New York Spineless	.10	.40	1.40	4.50
Steckler's High Bush	.10	.40	1.40	4.50

STECKLER'S ENDIVE

Postpaid
Broad Leaved or Batavian
Escarolle—Pkt. 10c; Oz.
15c; ¼ lb. 40c; lb. \$1.25.
Green Curled — Pkt. 10c;
Oz. 15c; ¼ lb. 40c; lb.
\$1.25.
Italian Red Ribbed—Pkt.
10c; Oz. 15c; ¼ lb. 40c;
lb. \$1.25.

STECKLER'S FENNEL

Postpaid
Italian or Florence—Pkt.
10c; Oz. 20c; ¼ lb. 60c;
lb. \$2.00.



New Orleans Market—Egg Plant

STECKLER'S KALE OR BORECOLE

Siberian.....Pkt. 10c; Oz. 15c; ¼ lb. 30c; lb. \$1.00. Postpaid

STECKLER'S KOHLRABI

Early White Vienna..... Pkt. 10c; Oz. 25c; ¼ lb. 75c; lb. \$2.50. Postpaid

STECKLER'S LEEK

Postpaid
Large London Flag—Pkt.
10c; Oz. 25c; ¼ lb. 60c;
lb. \$2.00.
Large Ronen — Pkt. 10c;
Oz. 25c; ¼ lb. 75c; lb.
\$2.50.



Steckler's Selected Big Boston

Steckler's Lettuce

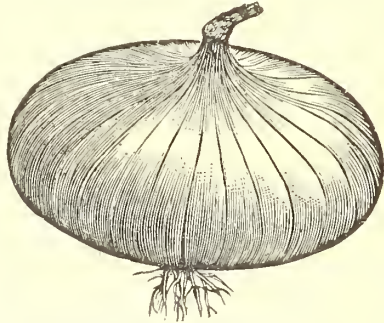
	Postpaid			
	Pkt.	Oz.	¼ lb.	lb.
Grand Rapids	.10	.25	.60	\$2.00
Improved Iceberg	.10	.20	.60	2.00
Improved Royal Cabbage	.10	.20	.50	1.50
Large Salamander	.10	.20	.60	2.00
Paris White Cos	.10	.25	.75	2.50
Steckler's New York or Wonderful Cabbage	.10	.25	.75	2.50
Steckler's Special White Winter	.10	.20	.60	2.00
Steckler's Selected Big Boston	.10	.20	.50	1.50

Steckler's Grass Seed Best Quality

STECKLER'S MUSTARD

	Pkt.	Postpaid		
		Oz.	¼ lb.	lb.
Chinese Large Cabbage Leaved	\$.10	\$.15	\$.25	\$.75
Glant Ostrich Plume10	.15	.25	.75
Large Leaved Curled10	.15	.20	.60
White or Yellow London10	.15	.20	.60

Steckler's Onions



Frotscher's Red Creole

	Pkt.	Postpaid		
		Oz.	¼ lb.	lb.
Australian Brown	\$.10	\$.30	\$.90	\$3.00
Crystal Wax Bermuda15	.60	2.00	7.00
Danvers Yellow Globe10	.60	.75	2.50
Frotscher's Red Creole10	.30	1.00	3.50
Red Wethersfield10	.25	.75	2.50
White Portugal10	.30	.90	3.00
Yellow Bermuda10	.35	1.25	4.00
Yellow Prizetaker10	.30	.90	3.00
Red Bermuda10	.30	.90	3.00

STECKLER'S ONION SETS

	Qt.	Postpaid		Not Prepaid
		Gal.	Peck	
Red Creole	35	\$1.00	\$1.50	\$4.00
Red Wethersfield	35	1.00	1.50	4.00
White Crystal Wax	35	1.00	1.50	4.50
White Silver Skin	35	1.00	1.50	4.50
Yellow Bermuda	35	1.00	1.50	4.50
Yellow Danvers	35	1.00	1.50	4.00

STECKLER'S WHITE SHALLOTS

Planted August to March. For home consumption and Northern markets. About 5 bushels per acre.
The quantity to be expected from an acre, if planted in field culture, 4 foot rows, would be from 50 to 60 barrels, but if planted, as is done near New Orleans, in 2 foot rows, 100 to 125 barrels, if planted in August and September. If planted later, they do not multiply so well. Quart 25c; gallon 75c; postpaid; peck \$1.25; bushel \$3.75, not prepaid. Write for quantity prices.

STECKLER'S OKRA

	Pkt.	Postpaid		
		Oz.	¼ lb.	lb.
Dwarf Green Prolific	\$.10	\$.15	\$.20	\$.60
French Market Dwarf Prolific10	.15	.20	.60
Tall Growing10	.15	.20	.60
White Velvet10	.15	.20	.60

STECKLER'S PARSNIPS

	Pkt.	Postpaid		
		Oz.	¼ lb.	lb.
Hollow Crown or Sugar	\$.10	\$.15	\$.30	\$1.00

STECKLER'S PARSLEY

	Pkt.	Postpaid		
		Oz.	¼ lb.	lb.
Double Curled	\$.10	\$.15	\$.25	\$.75
Plain Leaved10	.15	.25	.75

STECKLER'S ROQUETTE or Rocket Salad

	Pkt.	Postpaid		
		Oz.	¼ lb.	lb.
Rouquet	\$.10	\$.25	\$.75	\$2.50

STECKLER'S SPINACH

	Pkt.	Postpaid		
		Oz.	¼ lb.	lb.
Broad Leaved Flanders	\$.05	\$.10	\$.15	\$.40
Extra Large Leaved Savoy05	.10	.15	.50
King of Denmark05	.10	.20	.60
Monstrous Viroflay or Thick Leaved05	.10	.15	.50
New Zealand10	.15	.30	1.00
Steckler's Full Basket10	.15	.20	.60

(Write for prices in quantity lots)

Steckler's Garden Peas



Thos. Laxton

Wrinkled Varieties	Pkt.	Postpaid			Not Prepaid
		Lb.	5 lbs.	Peck	
American Wonder	\$.10	\$.40	\$1.75	\$3.00	
Carter's Imp. Telephone10	.40	1.75	3.25	12.00
Carter's Stratagem10	.40	1.75	3.25	
Champion of England10	.40	1.75	3.25	12.00
Daisy or Dwarf Telephone10	.40	1.65	3.00	11.00
Dwarf Sugar10	.50	2.25		
Gradus or Prosperity10	.40	1.75	3.25	12.00
Thos. Laxton10	.40	1.75	3.00	11.00
Melting Sugar10	.50	2.00		
World's Record10	.45	1.75	3.25	12.00

Smooth Varieties	Pkt.	Postpaid			Not Prepaid
		Lb.	5 lbs.	Peck	
Black Eyed Marrowfat	\$.10	\$.35	\$1.50	\$2.50	\$ 9.00
Early Alaska10	.40	1.65	2.65	9.50
Early Washington10	.40	1.75	3.00	10.50
Extra Early First & Best10	.40	1.65	2.65	9.50
Morning Star10	.40	1.65	2.65	9.50

STECKLER'S PEPPERS

	Pkt.	Postpaid		
		Oz.	¼ lb.	lb.
Bird's Eye	\$.15	\$.75		
Chinese Glant10	.50	1.75	6.00
Frotscher's Tabasco10	.50	1.50	5.00
Long Red Cayenne10	.40	1.25	4.00
Perfection10	.30	1.00	3.50
Ruby King10	.35	1.00	3.50
Steckler's Royal King10	.35	1.25	4.25
World Beater10	.35	1.25	4.00



Steckler's Radishes

W. Tip Turnip Radish

	Pkt.	Postpaid			
		Oz.	¼ lb.	1 lb.	5 lbs.
Black Spanish	\$.10	\$.15	\$.30	\$1.00	\$4.50
Brightest Scarlet or ¼ Long10	.15	.30	.90	4.00
Chartier10	.15	.30	1.00	4.50
Chinese Rose10	.15	.30	.90	4.00
Coopers Sparkler Turnip, White Tip10	.15	.30	1.00	4.50
Crimson Giant Turnip10	.15	.30	1.00	4.50
Early Deep Scarlet Turnip10	.15	.30	1.00	4.50
Early Long Scarlet Short Top Imp.10	.15	.30	1.00	4.50
French Breakfast10	.15	.30	.90	4.00
Glass or Cincinnati10	.15	.25	.75	3.50
Icicle10	.15	.30	1.00	4.50
Rosy Gem10	.15	.30	.90	4.00
Scarlet Half Long French10	.15	.30	.90	4.00
White Strassburg10	.15	.30	.90	4.00

STECKLER'S SALSIFY or Oyster Plant

Sandwich Island.....Pkt. 10c; Oz. 25c; ¼ lb. 75c; lb. \$2.50. Postpaid

STECKLER'S SORREL

Broadleaved.....Pkt. 10c; Oz. 25c; ¼ lb. 75c. Postpaid

STECKLER'S SQUASH

Postpaid

Early White Bush. Pkt. 10c; oz. 15c; ¼ lb. 40c; lb. \$1.25; 5 lbs. \$5.00.

Golden Custard, Pkt. 10c; oz. 15c; ¼ lb. 40c; lb. \$1.25; 5 lbs. \$5.00.

Large Warted Hubbard, Pkt. 10c; oz. 15c; ¼ lb. 40c; lb. \$1.25; 5 lbs. \$5.00.

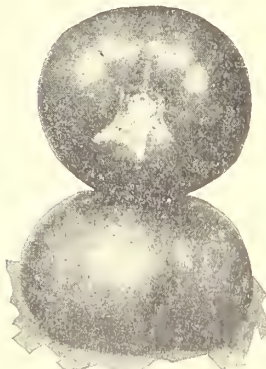
Long Yellow or Summer Crookneck, Pkt. 10c; oz. 15c; ¼ lb. 45c; lb. \$1.25; 5 lbs. \$5.00.

Mammoth Chili, Pkt. 10c; oz. 20c; ¼ lb. 50c; lb. \$1.50; 5 lbs. \$7.00.



EARLY WHITE BUSH SCALLOP SQUASH

Plant Steckler's Bulbs and Seed



Steckler's New Stone

Steckler's Tomatoes

	Pkt.	Postpaid		
		Oz.	1/4 lb.	Lb.
Avon Early	.10	.40	\$1.50	\$5.00
Bonny Best	.10	.40	1.25	4.00
Dwarf Champion	.10	.40	1.25	4.00
Early Detroit	.10	.40	1.25	4.00
Golden Queen	.10	.40	1.25	4.00
Greater Baltimore	.10	.35	.90	3.00
Gulf State Market	.10	.40	1.50	5.00
John Baer	.10	.35	1.00	3.50
June Pink	.10	.40	1.50	5.00
Livingston's Favorite	.10	.30	1.00	3.00
Livingston's Globe	.10	.40	1.25	4.50
Livingston's Stone	.10	.25	.90	3.00
Norton Wilt Resistant	.10	.50	1.75	6.00
Ponderosa	.10	.50	1.75	6.00
Red Rock	.10	.35	1.00	3.75
Red and Yellow				
Pear Shaped	.10	.50		
Sparks Earliana	.10	.30	1.00	3.25
Steckler's New Stone	.10	.25	.90	3.00
Yellow Ponderosa	.10	.50	1.75	6.00

Steckler's Turnips

	Pkt.	Postpaid			
		Oz.	1/4 lb.	Lb.	5 lbs.
Amber Globe	.10	.15	.25	.75	\$3.00
Early Purple Top					
Strap-leaved	.10	.15	.25	.60	2.50
Ea. White Flat					
Dutch	.10	.15	.25	.60	2.50
Ex. Early Purple					
Top Milan	.10	.15	.35	1.25	5.25
Extra Early					
White Egg	.10	.15	.25	.75	3.00
Imp'd Purple Top					
Rutabaga	.10	.15	.25	.60	2.50
Long Cow Horn	.10	.15	.25	.75	3.00
Large White					
Globe	.10	.15	.25	.60	2.50
Purple Top White					
Globe	.10	.15	.25	.60	2.50
Purple Top Yel-					
low Aberdeen	.10	.15	.25	.75	3.00
Seven Top	.10	.15	.25	.75	3.00
Steckler's					
Japanese	.10	.30	.60	2.00	9.00



P. T. White Globe

SEE OUR SPECIAL OFFER ON BACK OF ENVELOPE

Steckler's Field Seeds

CLOVERS

	Postpaid	Not Prepaid
	1 lb.	10 lbs.
Alfalfa or Lucerne Clover (30 lbs. per acre)	\$.45	\$2.80
Hairy Peruvian Alfalfa (30 lbs. per acre)	.45	3.00
Alsike (6 lbs. per acre)	.60	5.00
Medium Red (12 lbs. per acre)	.60	4.50
White Dutch (8 lbs. per acre)	.80	7.00
Yellow Blossom Sweet (20 lbs. per acre)	.35	1.20
Japan Clover or Lespedeza (25 lbs. per acre)	.45	2.50
White Blossom Sweet Clover (20 lbs. per acre)	.35	2.00

GRASS SEEDS

	Postpaid		Not Prepaid
	1 lb.	10 lbs.	
Kentucky Blue	\$.60	\$4.50	
Orchard	.45	3.50	
Red Top	.60	4.50	
Rye—English—Imported	.40	2.25	18.00
Rye—Italian—Imported	.40	2.25	18.00
	Postpaid	Not. Postpaid	
	1 lb.	10 lbs.	100 lbs.
Steckler's Sunny South	\$.60	\$4.00	
Sudan	.30	1.50	
Timothy	.30	2.50	
Bermuda Grass	.80	6.00	
Carpet Grass	.75	6.00	

STECKLER'S OATS

	Prepaid	Not Prepaid	
		Peck	Bu. 5 Bu. Sack
Steckler's Louisiana Red Rust Proof	\$.50	\$1.50	\$6.00
Texas Red Rust Proof	.50	1.25	5.00
Fulghum	.60	1.60	6.50

PRICES ON ALL SEEDS LISTED, SUBJECT TO CHANGE WITHOUT NOTICE

STECKLER'S RAPE

Dwarf Essex Rape, lb. 25c; 10 lbs. \$1.50; postpaid. 50 lb. bu. \$6.50; 100 lbs. \$12.00, not prepaid.

STECKLER'S FIELD RYE

	Postpaid		
	Lb.	1/2 Bu.	Not Prepaid Bu.
Rosen	\$.25	\$1.75	\$3.00
Southern Grown Rye	.25	1.50	2.75

STECKLER'S WHEAT

	Postpaid		
	Lb.	Peck	Not Prepaid 60 lbs. Bu.
Red May	\$.30	\$1.40	\$4.25
Fultz	.30	1.40	4.25

STECKLER'S HAIRY, WINTER OR SAND VETCH

Hairy, Winter or Sand Lb. 40c; 10 lbs. \$3.00, Postpaid

STECKLER'S BARLEY (Southern Grown)

Southern Barley.....Lb. 25c; 1/2 bu. \$1.75, Postpaid. Not Prepaid, 48 lbs. bu. \$2.75.

Special Bulb List

FREESIA COLORED MIXED—Novelty rapidly becoming popular. mixed colors, including pink, purple, blue, yellow, orange, etc. Planted from October to March. Each, 5c; Doz. 55c; 100 \$4.50. Postpaid.

BABY GLADIOLUS—Miniature type of Gladiolus, can be used for forcing and also grown in the open ground. All colors. October to March planting. Each, 10c; Doz. 80c; 100 \$6.00. Postpaid.

SIR WATKINS—NARCISSUS—Sulphur yellow petals with deep yellow trumpet or cup, extra large flower, 18 inches high. Planted from October to March. Each, 15c; Doz. \$1.60; 100 \$12.00. Postpaid.

EMPRESS NARCISSUS—Strong, robust grower, large flowers, rich yellow and perianth is white, very showy for holders, 18 inches high. Planted from October to March. Each, 15c; Doz. \$1.60; 100 \$12.00. Postpaid.

EMPEROR NARCISSUS—Giant Trumpet, finest in cultivation, pure yellow, excellent for out doors or house culture. 18 inches high. Planted from October to March. Each, 15c; Doz. \$1.60; 100 \$12.00. Postpaid.

JONQUIL—CAMPERNELLE—Largest flowering Jonquil, pure yellow and very fragrant. Very desirable for winter flowering.—Planted October to March. Each, 10c; Doz. 80c; 100 \$6.00. Postpaid.

MUSCARI (Grape Hyacinth)—Spikes almost as large as a small hyacinth and are really true blue in color, very fine and largely planted. Planted October to March. Each, 5c; Doz. 55c; 100 \$4.00. Postpaid.

LILIUM REGALE—Very fine Lily, well known and thrives well in this country, blooms in early June, white trumpet flowers with slight pink and other colored stripes on the lower petals and very fragrant. Planted October to March. Each, 70c. Postpaid.

TRITONIA CROCATA—An old and perhaps somewhat neglected bulb that has recently received much attention, very fine for winter and spring forcing. Flower spikes being thick, long, wiry and upright, flowers are bright orange scarlet and makes a very attractive pot or pan plant, very valuable for cut flowers. Plant from October to March. Each, 10c; Doz. \$1.00. Postpaid.

WATSONIA ARDERNEL—Native of the Cape of Good Hope, pretty gladiolus like flower of easy culture, fine for cutting. Blooms from July to September. Flowers White. Each, 10c; Doz. \$1.00. Postpaid.

STECKLER'S STRAWBERRY PLANTS

READY ABOUT OCTOBER 10th

Missionary, Klondyke—		Aroma, Lady Thompson—	
25 plants	\$.40 Postpaid	25 plants	\$.45 postpaid
50 plants	.75 postpaid	50 plants	.80 postpaid
100 plants	1.15 postpaid	100 plants	1.25 postpaid
1000 plants	6.00 not prepaid	1000 plants	7.00 not prepaid
Everbearers, Progressive—			
25 plants	\$.85 postpaid	100 plants	2.25 postpaid
50 plants	1.35 postpaid	1000 plants	12.00 not prepaid

VEGETABLE PLANTS

CABBAGE PLANTS

Early Jersey Wakefield	Postpaid—50c per 100; \$3.00 per 1000
Large Charleston Wakefield	Postpaid—50c per 100; \$3.00 per 1000
Early Flat Dutch	Postpaid—50c per 100; \$3.00 per 1000
Succession	Postpaid—50c per 100; \$3.00 per 1000
Copenhagen	Postpaid—50c per 100; \$3.00 per 1000

	Postpaid
	100
Lettuce	\$.50 \$3.00
Onion Plants—Bermuda and Red Creole	.50 3.00
Beet Plants	.50 3.00

Due to conditions of delay in transit, transportation of all plants sent at purchaser's risk.

Flower Seed and Bulbs

Bulbs

Name	Color	Height	Planting Time	Postpaid—Each	Doz.	100
Amaryllis Johnsonii	Red, White Striped	2 ft.	September to March	\$.40	\$3.00	\$ 5.00
Anemones	Mixed	8 in.	September to February		.60	
Callas, Aethiopica	White	30 in.	September to March	.35	3.50	
Callas, Elliottiana	Yellow	30 in.	September to March	.40	4.00	
Chinese Sacred Lily	White	15 in.	September to March	.35	3.50	
Crocus	Mixed	6 in.	September to February	.05	.35	2.75
Easter or Bermuda Lily	White	3 ft.	September to April	.25	2.50	
Freesias (Purity) Refracta	White	1 ft.	September to February	.05	.55	4.50
Hyacinths—Single Varieties:						
Roi des Belges	Bright Scarlet	1 ft.	September to February	.30	3.00	
Gertrude	Posy Pink	1 ft.	September to February	.30	3.00	
L'Innocence	White	1 ft.	September to February	.30	3.00	
Grand Maitre	Blue	1 ft.	September to February	.30	3.00	
Bedding	Assorted Colors	1 ft.	September to February	.15	1.50	
Roman	White and Other Colors	1 ft.	September to February	.15	1.60	12.00
Iris (Spanish)	Mixed Colors	15 in.	September to February	.10	1.00	8.00
Narcissus, Paper White	Pure White	15 in.	September to February	.08	.75	6.50
Oxalis	Mixed	8 in.	September to February	.05	.45	3.00
Ranunculus	Mixed	1 ft.	September to February		.60	5.50
Scilla	Mixed, Blue and White	1 ft.	September to March		.60	4.50
Tulips: La Candeur	White	1 ft.	September to March	.10	.80	5.50
Clara Butt	Salmon Pink	1 ft.	September to March	.10	.80	5.50
Wm. Copeland	Bright Violet	1 ft.	September to March	.10	.80	5.50
Farncombe Sanders	Scarlet	1 ft.	September to March	.10	.80	5.50
Darwin Mixture	Mixed	1 ft.	September to March	.05	.50	3.75
Zephyranthes, (Rain Lily)	Pink and White	1 ft.	September to April	.10	.80	

Steckler's Flower Seeds

NAME	COLOR	Approximate PLANTING Height	TIME	DESCRIPTION (An.—Annual; Per.—Perennial)	Postpaid Pkt.	Oz.
Alyssum, Sweet, Little Gem	White	6 in.	Oct. to Apr.	An. Small flowers, white	\$.10	\$.60
Browallia Elata	Mixed	18 in.	Aug. to Oct.	An. Many colors, large flowered	.10	1.60
Candytuft	Purple	1 ft.	Oct. to Apr.	An. Very small flowers, purple color	.10	.65
Candytuft	White	1 ft.	Oct. to Apr.	An. Very small flowers, white	.10	.65
Daisies: English	Mixed	4 in.	Oct. to Jan.	An. Small flowers, many colors	.10	2.00
Shasta	White	2 ft.	Oct. to Apr.	An. Large white with yellow eye	.10	1.25
Paris	White and Yellow	30 in.	Oct. to Mar.	An. White and yellow	.10	3.50
Heliotrope	Mixed	1 to 2 ft.	Oct. to Apr.	An. Light colored and dark colored blooms	.10	1.75
Hollyhock	Mixed	4 to 6 ft.	Oct. to Apr.	Per. Large velvet flowers, long stems	.10	1.50
Indian Shot	Mixed	1 ft.	Nov. to Mar.	Per. Crimson scarlet and spotted flowers	.10	1.00
Larkspur: Chinese	Mixed	1 ft.	Nov. to Apr.	An. Many colors on long spikes	.10	.75
Imperial	Mixed	1 to 1½ ft.	Nov. to Apr.	An. Pleasing assorted colors	.10	.65
Rocket	Mixed	1 ft.	Nov. to Apr.	An. Very showy, many colors	.10	.60
Love Lies Bleeding	Red	2 ft.	Oct. to Apr.	An. Drooping red flowers	.10	.75
Lobelia	Blue	6 in.	Oct. to Mar.	An. Very showy, blue flowers	.10	2.50
Marigolds: Double, Tall	Mixed	2½ ft.	Oct. to Apr.	An. Very showy, yellow flowers	.10	.75
Dwarf	Mixed	1½ ft.	Oct. to Apr.	An. Same as above, but dwarf	.10	.75
Nasturtiums: Tall	Mixed	20 in.	Oct. to Feb.	An. Many colors, very fine for borders	Pkt. \$.10	Oz. \$.25
Dwarf	Mixed	12 in.	Oct. to Feb.	An. Many colors, very fine for borders	.10	.25
Pinks: Japan Double	Mixed	1 ft.	Oct. to Apr.	An. Various colors, mixed	.10	1.25
Carnation Pink	Mixed	3 to 5 ft.	Nov. to Apr.	An. Various colors, mixed	.10	2.25
Double Margaret	Mixed	12 to 15 in.	Oct. to Apr.	An. Various colors, mixed	.10	2.00
Sweet William	Mixed	1½ ft.	Oct. to Apr.	An. Various colors, mixed	.10	1.25
Chinese Pink	Mixed	1 ft.	Oct. to Apr.	An. Various colors, mixed	\$.10	\$1.00
Phlox Drummondii Grandiflora	White	1 ft.	Sept. to Apr.	An. Very showy, delicate white blooms	.10	1.75
Drummondii Mixed	Mixed	1 ft.	Sept. to Apr.	An. Very showy, mixed colors	.10	1.60
Perennial	Mixed	1 ft.	Sept. to Apr.	Per. Very fine, mixed colors	.20	5.00
Petunia: Hybrida	Mixed	1 ft.	Oct. to Apr.	An. Very desirable, profuse bloomers	.10	1.50
Double, Large Flowering	Mixed	1 ft.	Oct. to Apr.	An. Very delicate, large flowering	.25	
Rosy Morn	Mixed	1 ft.	Oct. to Apr.	An. Pink with white throat	.25	3.50
Poppies: Carnation Single	Mixed	2 ft.	Oct. to Apr.	An. Mixed colors, very delicate	.10	1.50
Shirley Single	Mixed	2 ft.	Oct. to Apr.	An. Semi-double, many colors	.10	1.25
Paeony Flowered	Mixed	2 ft.	Oct. to Apr.	An. Double ball shaped flowers, mixed	.10	1.00
Pansies: English	Mixed	6 in.	Oct. to Mar.	An. Mixed flowers	.10	1.25
Tufted	Mixed	6 in.	Oct. to Mar.	An. Mixed flowers, very showy	.10	2.00
Large Trimardeau	Mixed	6 in.	Oct. to Mar.	An. A French variety, very large	.10	2.00
Snadragon	Mixed	2 ft.	Oct. to Mar.	An. Very showy, flowers on large spikes	.10	.75
Sweet Peas—Grandiflora:					Pkt.	Oz.
Dorothy Eckford	White	4 to 7 ft.	Sept. to Jan.	An. Very fine white	\$.10	\$.40
King Edward VII	Red	4 to 7 ft.	Sept. to Jan.	An. Large red flowers	.10	.40
Lady Grisel Hamilton	Lavender	4 to 7 ft.	Sept. to Jan.	An. Very large lavender flowers	.10	.40
Navy Blue	Indigo Blue	4 to 7 ft.	Sept. to Jan.	An. Indigo blue flowers, very showy	.10	.40
Prima Donna	Pink	4 to 7 ft.	Sept. to Jan.	An. Very showy, pink flowers	.10	.40
Blue Bird	Blue	4 to 7 ft.	Sept. to Jan.	An. Attractive shade of blue flowers	.15	.60
Early Columbia	Pink and White	4 to 7 ft.	Sept. to Jan.	An. Best pink and white bi-color	.15	.60
Early Glitters	Scarlet	4 to 7 ft.	Sept. to Jan.	An. Bright cerise scarlet	.15	.60
Early Heatherbell	Mauve	4 to 7 ft.	Sept. to Jan.	An. Mauve lavender flowers	.15	.60
Early Melody	Rose Pink	4 to 7 ft.	Sept. to Jan.	An. Rose pink flowers	.15	.60
Early Morning Star	Orange	4 to 7 ft.	Sept. to Jan.	An. Orange scarlet blooms	.15	.60
Early Snowflake	White	4 to 7 ft.	Sept. to Jan.	An. Pure white blooms	.15	.60
Early Spring Maid	Cream	4 to 7 ft.	Sept. to Jan.	An. Light cream	.15	.60
Early Warbler	Mauve Purple	4 to 7 ft.	Sept. to Jan.	An. Rich Mauve purple blooms	.15	.60
Steckler's Mixture	Mixed	4 to 7 ft.	Sept. to Jan.	An. Grandiflora mixture, very profuse	.10	.20
Spencer Mixture	Mixed	4 to 7 ft.	Sept. to Jan.	An. New, waved or fluted, mixed colors	.10	.25
Cupid Mixed	Mixed	4 to 7 ft.	Sept. to Jan.	An. Compact, large flowers, mixed colors	.10	.25
Ten Week Stocks	Mixed	1 ft.	Oct. to Apr.	An. All colors, mixed	Pkt. \$.10	Oz. \$1.50
Zinnias: Dwarf Double	Mixed	2 ft.	Mar. to Dec.	An. Mixed double flowers, very fine	.10	.75
Tall Double	Mixed	2 ft.	Mar. to Dec.	An. Mixed double flowers, tall	.10	.75
Giant	Red	2 ft.	Mar. to Dec.	An. Very fine red blooms	.10	1.00
Giant	Yellow	2 ft.	Mar. to Dec.	An. Very fine yellow flowers	.10	1.00
Giant	Purple	2 ft.	Mar. to Dec.	An. Very showy, purple flowers	.10	1.00
Giant	Pink	2 ft.	Mar. to Dec.	An. Very fine pink blooms	.10	1.00
Giant	White	2 ft.	Mar. to Dec.	An. Fine white blossoms	.10	1.00
Giant	Mixed	2 ft.	Mar. to Dec.	An. Mixed colors, very showy	Pkt. 10c; Oz. 80c; ¼ lb. \$2.50	

