

Historic, Archive Document

Do not assume content reflects current scientific knowledge, policies, or practices.

62.63
1927

Valdesian Nurseries

Bostic, North Carolina



An Artistic Grouping of Evergreens

Evergreens for Effect Now—Thousands to Select From—All Types and Sizes—Hardy, Strong and Beautiful—Transplant Now for Years of Enjoyment to Come.

*Trees, Shrubs, Vines, Roses
Perennials, Bulbs and Plants*

BEAUTIFY YOUR HOME THIS SEASON MAKE IT'S
SURROUNDINGS PLEASANT



Horse Chestnut (Rubra). For description see page 19.

Valdesian Nurseries Cordially Invite You to Visit Their Nurseries

BOSTIC is situated in Rutherford County, at the junction of the Seaboard and Carolina, Clinchfield & Ohio Railways. Trains reach here from Charlotte each day over the Seaboard, leaving Charlotte at about 9:30 in the morning, arriving at Bostic at 1:12 P. M. We are two and one-half miles from Forest City, on the Southern Railway. We will be glad to meet customers, and friends, who wish to visit our nurseries, either in Bostic, or, if more convenient for them, in Forest City. We are within one mile of the State Highway from Wilmington to Asheville.

We began business in 1904 in a very humble way, on a few acres of mostly rented land. We now own eight acres of land in Bostic, running down to the depot, on which are located our packing and storage house, offices, buildings and greenhouse, with three plantations a few miles out, where most of our stock is grown.

We did not engage in this business, planning to get what we could out of it for a year or two, and then stop. We have plants, thousands of them, growing in our nurseries that it took years to develop. Some of these quoted herein we have been growing for ten years or more. Our one main object is to grow specimen evergreens, that one may beautify his home and get effect NOW, without waiting years for his place to grow into beauty from small seedlings or other plants.

Our land is especially suited to the growing of evergreens and other ornamentals. The soil and underlying clay holds a ball of earth, thus well preserving intact the vital fibrous roots, so essential to the successful transplanting of evergreens.

We have no agents, our stock being mainly sold through catalog, our business extending into most of the States. We are indeed grateful to our many customers and friends for so many favors which they have shown us. Through all these years a kind Providence seems to have guided us, and every year, as the seasons come and go, we find new customers, many of them perhaps in distant States, whom we have never before known, but after filling their order, we usually get orders from their neighbors. The demand for our stock is constantly growing, and no one could be more thankful than we are, and even a small order will be handled just as carefully as if for a car load.

Any banker or business house in your city, it matters not where you are, can tell you that we are reliable, and you will be safe in placing your order with us.

If you want ornamentals, or other stock; if you want to beautify your home, that will bring beauty and cheer the whole year through; or, if you want to plant only a few rose bushes, small fruits for the garden, or an orchard, write us about it. If you don't know what you want, tell us; we can no doubt help you, and if we can't, we will tell you so. We are looking for satisfied customers, which means continued business, and not for simply what there would be in one order now.

If you wish to improve your surroundings, beautify your premises at the smallest possible cost, write us about it. We can send our man to look over the proposed improvement, make you an estimate on the stock, supply it and send men to plant it out; or, you can take your measurements, map out a general plan, send it to our office and nurseries, and we will go over it, make out a planting list and planting plan, and quote on same.

In sending our man to see the grounds, to lay out and make plans, we only charge railroad fare and expenses while away from the nursery, provided the stock is bought from us, but if this work is not done and planting stock is not supplied by us, besides railroad fare and expenses, we charge a reasonable price for our Gardener's services which can be agreed upon beforehand, if desired.

Discounts to Ministers and Churches

We have made it a custom for a number of years to allow a discount to ministers for their home or parsonage planting, as we also do for church planting. Quite a number have, during the past season, ordered for these plantings, and they have been highly pleased.

We have had various orders from parties seeing these plantings, who wished to beautify their own homes. Besides the benefit we get in this way from parties seeing our plantings and ordering themselves, we feel that it is good for us to give to these causes, so far as we are able and we will be pleased to hear from ministers and churches, regardless of denominations, who wish to beautify their surroundings—and the time has come when they are desirous of having pretty all-year surroundings.

We also allow a reduction in the prices of stock for use in the improvement and beautifying of cemetery grounds. We have thousands of plants especially suited for such plantings, and we will be glad to hear from any one wishing to make these improvements. We believe it is our duty, and one that we owe to those gone before us, to improve these grounds, that with a small expenditure we can change these silent "Cities of the Dead" from bare, lonesome places into all-year beauty.



Landscape Architecture

Hardy Trees, Shrubs and Vines



A Landscape Plan for Your Home

Change your grounds from an ordinary yard to a place of beauty, the cost is small and you will have something of enduring value, artistic, and satisfying to show for the money you spend on your grounds. Many people come to us who have spent considerable time and money with no pleasing results. Here is the trouble with most of us: We plant a tree and a rose now, then two or three shrubs and a few more later, and have no definite scheme. We wind up just about where we started. The beauty of planting depends greatly on the preparing, grouping and arrangements.

When Landscape Gardening is mentioned many people think of vast estates and the expenditure of large sums of money, but this is a mistaken idea, for the small and medium sized places lend themselves to artistic treatment fully as well as larger ones.

Planting Plans

Parties desiring the services of a Landscape Gardener will do well to correspond with us before contracting this work, as we can have one of our men call, if within a distance of 200 or 300 miles of our nurseries, and look over the work, make out planting plans, supply the nursery stock, and if a satisfactory man cannot be had to do the planting, we can send a man from our nurseries to oversee the planting.

Valdesian Nurseries

Bostic, North Carolina

Hardy Evergreens

Coniferous evergreens are particularly valuable in all classes of ornamental plantings. Every efficient Landscape Gardener knows that no grounds are complete without plantings of coniferous as well as deciduous shrubs.

During the summer months, when every tree and shrub is full of foliage, deciduous stock looks all right, but it appears lonesome during six months of the year.

Your new house may be all that you can ask for, yet no matter how substantial or how costly, it is not complete until its surroundings are blended with a sprinkling of coniferous evergreens.

Winter landscapes without evergreens are lacking and incomplete. If the home is to be made beautiful it can not be done with shrubs alone. It is to be regretted that the owners of pretty homes and villages, in attempting to beautify them permanently, have in so many cases planted shrubs and trees alone. They are pretty during the summer time, but at the first appearance of frost, the foliage and flowers are gone, and there is but little beauty until spring, when they again put on their summer foliage. But this is not the case with hardy evergreens. During the cold winter months, when all is so dreary and lonesome, lacking and wanting for beauty and cheer, there is nothing so desirable as the brilliant evergreen with its beautiful colors and forms. No other investment possible for one to make will bring as much pleasure, comment and beauty as the proper planting of *Arborvitae*, *Biotas*, *Hemlocks*, *Junipers*, *Pines*, *Retinosporas*, *Thuyas*, *Spruces* and other like sorts.

Some homes do not require all of these; it is owing to the size of the building, premises and situations. But, in our opinion, no home is complete and affords the owner the satisfaction and pleasure it should until it has had the proper plantings of coniferous evergreens. Of course, the variety and sort should be suited to the size and height of the buildings and the surroundings. Some large and tall-growing sorts are not suited to small homes and premises while the proper effect cannot be obtained unless the different sorts are arranged in artistic manner.

Many public buildings, schools, towns, factories and other institutions could be wonderfully changed for the better, if, instead of using *Maples*, *Poplars*, *Elms*, *Oaks*, *Lindens* and *Willows*, a few dollars were invested in evergreens.

It is true that many cotton mill owners of today are leading the community in which they live by beginning to use nursery stock to beautify their surroundings, which are without taste and beauty, be the plantings ever so varied and extensive, they are not complete without a mixture of evergreens. The broad-leaved sorts are good and there are places for them, but no planting is what it should be without coniferous sorts.



Juniper Glauca in Nursery Rows

For eighteen years we have made the growing of evergreens our specialty. We have them growing in our nurseries, from the propagating beds to large specimens ten or more feet in height.

It is necessary in the proper growing of evergreens that they should be transplanted a number of times, in order that they form a mass of fibrous roots.

This is one reason that so many fail in the transplanting of them. Most concerns who grow only a few evergreens buy their stock of plants from an Evergreen Specialist, who supplies them from seed bed or propagating frame, where they have been rooted. They are then lined out in the rows in the nursery and there grown until they are dug for the customer. Hence, they carry few roots and even if they are large specimen trees they have a poor root system, and while they may be dug and burlapped carefully, the earth becomes loose and when transplanted, even if it is done by an experienced gardener, they have not sufficient root system to take up enough nourishment from the soil to start them, and the result is you do not only suffer the loss and time in transplanting, but you are a year behind in securing successfully grown and transplanted stock.

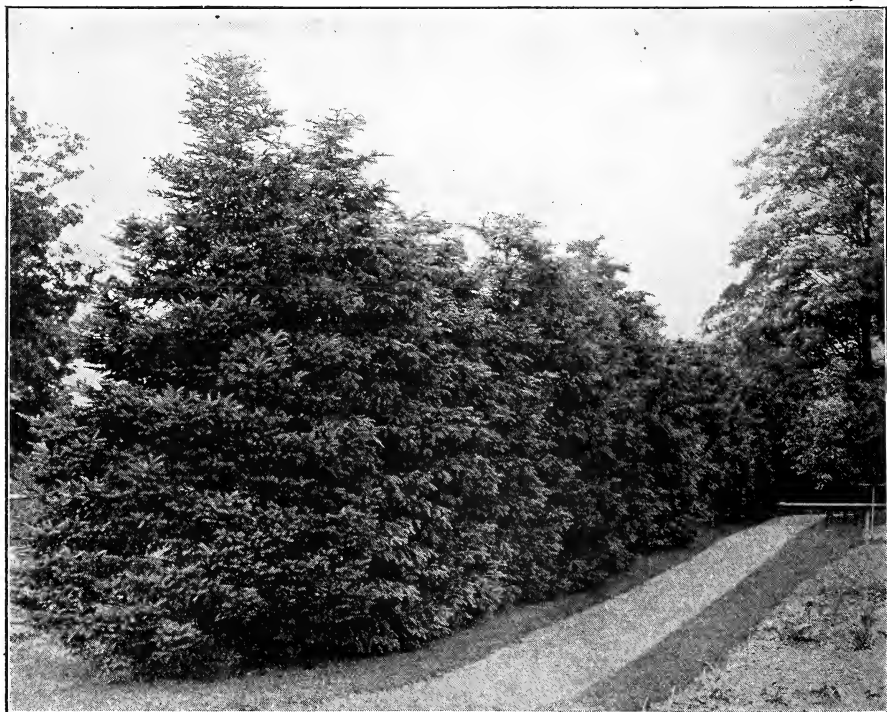
Our shipping season begins in September and we can make prompt shipment, weather permitting, continuing in the spring until new growth is too far advanced for removal.

The prices in this booklet are for plants packed and F. O. B. here for either express or freight shipments, purchaser paying transportation charges unless otherwise noted.

To nearby points, arrangements may sometimes be made that we make delivery by truck.

In carload shipments of evergreens, they are dug with a ball of earth, which is burlapped around the roots and placed in the car that they remain in perfect condition, the dirt not being molested but planted as they grew in the nursery, insures their living, and the best results.

Parties in this and adjoining states, who wish to purchase in car lots, can, by arrangements with us before shipment, secure at reasonable cost the services of our Landscape Gardener, who will direct the planting of the stock. This will be a man who has spent years in the growing of coniferous evergreens and who "KNOWS HOW."



Evergreens used as a Screen

Screen Planting

The planting of evergreens for screens or breaks can be made to do much more than beauty. For instance, there may be an unsightly view from some of your windows, an unkept vacant lot, the service yard, or a neighbor's place, or perhaps your own back yard, your own clothes line is exposed to view, your house may be too close to your neighbor's, one can look into your windows, or vice versa. Light from the other's house or from the street may annoy you. You have not the feeling of seclusion you would most enjoy, and the planting of deciduous trees and shrubs could not be satisfactory. You have likely been on your vacation during the summer months when you would have enjoyed the foliage and beauty of these deciduous shrubs, but now, during the winter months, when you spend more time in your own home, the leaves are off, and a more serviceable and beautiful type of screen to plant would be our Hardy Coniferous Evergreens. We have many sorts suitable for screen planting, and where it is desirable can ship in car lots of large sizes that will bring beauty and seclusion NOW.

The Arborvitae-Thuya

This group of ornamentals is among the loveliest of evergreens, including many varieties of upright growth, and adapted to small lawns as well as large areas. Medium size and delightful shape, fine color and beautiful foliage, combined give it first place in planting for lawns or banking.

The taller-growing sorts make a splendid background for other ornamentals and provide protection and seclusion for the flower vegetable garden.

With the Biotas and Junipers, it supplies the choicest groups for large or small plantings.

American Arborvitae (T. Occidentalis)—The most popular of the Arborvitae family, more widely planted for lawns, groups or hedges, makes a beautifully shaped tree, succeeding in all soil. It is especially valuable on account of its atmospheric odor. It forms an upright conical tree of medium size. It is valuable for screens or hedges, and can be trimmed like privet. Where mixed conifers are used for grouping it is always used to advantage. We can supply all sizes in this variety, running as large as 10 feet.

American Arborvitae	Each	Per 10
18 to 24-inch, B. & B.....	\$1.75	\$12.00
2 to 3 feet, B. & B.....	2.00	18.00
3 to 4 feet, B. & B.....	3.00	30.00
4 to 5 feet, B. & B.....	4.00	40.00

Compacta Arborvitae (T. Compacta)—Handsome cone shaped compact grower. Has fine foliage with limbs or branches extending from center as pages in a book. This sort is appropriate in various plantings, and most desirable.

	Each	Per 10
12 to 18-inch, B. & B.....	\$2.00	\$20.00
18 to 24-inch, B. & B.....	3.00	30.00

Globosa (T. Globosa)—A dense thick evergreen of dwarf habit, grows naturally round like a ball and one of the best varieties, used in all plantings, and especially suited for tubs or box plantings, corners or outer edges and groupings.

	Each	Per 10
12 to 18-inch, B. & B.....	\$2.50	\$22.50
18 to 24-inch, B. & B.....	4.00	35.00

Orientalis (T. Orientalis)—A pretty pyramidal or torch-shaped evergreen with erect branches and dense flat foliage of bright green color. A very popular sort. One gardener told us he did not want a better evergreen than the Orientalis.

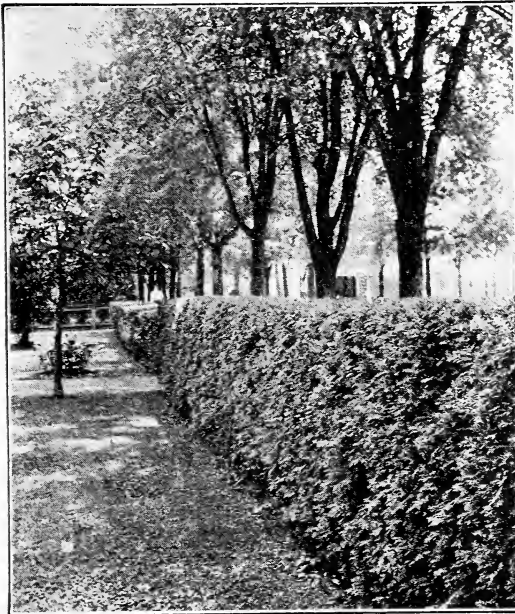
	Each	Per 10
12 to 18-inch, B. & B.....	\$1.00	\$ 8.00
18 to 24-inch, B. & B.....	1.50	12.50
2 to 3 feet, B. & B.....	2.50	20.00

Pyramidal (T. Occidentalis)—A most compact and erect sort. In erect form it almost equals the Pyramidal Juniper. Foliage deep green retaining its color throughout the year. Is called spiral shaped. Fine for tub, porch or special plantings. Used for piers, columns like Junipers.

	Each	Per 10
18 to 24-inch, B. & B.....	\$1.25	\$10.00
2 to 3 feet, B. & B.....	2.50	20.00
3 to 4 feet, B. & B.....	3.00	30.00
4 to 5 feet, B. & B.....	4.50	40.00
5 to 6 feet, B. & B.....	6.00	60.00

Tom Thumb—Smallest compact Arborvitae with feathery foliage, makes a beautiful ornament for box, porch or border planting.

	Each	Per 10
8 to 12-inch, B. & B.....	\$1.25	\$10.00
12 to 18-inch, B. & B.....	2.00	20.00
18 to 24-inch, B. & B.....	3.50	35.00



Arborvitae Hedge

Biotas



Field of Biotas Specimen Plants

Biota Aurea Nana—We believe this to be the best dwarfish evergreen in cultivation. It is a compact grower with yellow foliage, always shapely, and one of the most popular evergreens we have. Where a small-growing sort is wanted, we know of no other kind so desirable as this splendid variety, which may be used either singly or in groups for lawns, for borders or for banking in front of porches. This evergreen is most satisfactory and should not be overlooked in the smallest planting.

	Each	Per 10
12 to 18-inch. B. & B.....	\$2.00	\$20.00
18 to 24-inch. B. & B.....	3.00	30.00
2 to 3 feet. B. & B.....	5.00	45.00

Sheared specimens in this variety are very satisfactory for tub and porch planting. We can furnish these at \$8.00, \$12.00, \$16.00, \$20.00 per pair.

beauty to any collection. Fine for banking among other sorts.

	Each	Per 10
12 to 18-inch. B. & B.....	\$1.50	\$15.00
18 to 24-inch. B. & B.....	2.50	25.00
24 to 30-inch. B. & B.....	4.00	40.00

Biota Conspicua—This is a beautiful pyramidal evergreen of intense golden foliage. It is a variety we have never been able to get a large stock of, because most everybody seeing them desire some of them among their plantings. They are almost pyramidal and of dense foliage, and owing to their beautiful golden color they make a fine contrast among other varieties.

	Each	Per 10
18 to 24-inch. B. & B.....	\$2.50	\$25.00
2 to 3 feet. B. & B.....	3.50	35.00
3 to 4 feet. B. & B.....	5.00	50.00
4 to 5 feet. B. & B.....	6.50	65.00

Biota Pyramidalis—Compact and of narrow pyramidal growth. Its branches are short and densely clothed with bright green foliage. It retains its color throughout the winter better than many other sorts, and for this reason, together with its attractive pyramidal form, it is one of the most valuable evergreens. They are appropriately used for entrance, walks, corners, porch columns, piers, etc., and are also pretty and attractive in groups and various other plantings. Small ones are used among window box planting or tubs and porch boxes. We have a good lot of these that run 2 to 3 feet and 3 to 4 feet, many of which have been sheared, that are splendid specimen plants.

	Each	Per 10
18 to 24-inch. B. & B.....	\$2.00	\$20.00
2 to 3 feet. B. & B.....	3.00	30.00
3 to 4 feet. B. & B.....	4.00	40.00
4 to 5 feet. B. & B.....	6.00	60.00

Crozet, Virginia.

Valdesian Nurseries,
Bostic, North Carolina.

Dear Sirs:

Permit me to say that many things you have shipped to this section have proven highly satisfactory. The evergreens I purchased some years ago, have grown into most beautiful specimens. The barberry and other shrubs purchased by my next door neighbor have also been particularly satisfactory.

MISS SALLIE LECKIE.

Biota Blue Green—A handsome evergreen with beautiful bluish-green foliage that it retains throughout the winter. It is a dwarfish grower, making a pretty little tree and will add

Cedars

Cedrus Deodara (Indian Cedar)—A majestic tree of pyramidal outline from the Himalaya Mountains. Foliage grows in tufts or fascicles and of a bluish-green color. The color is nearly as deep blue as Koster's blue which it retains throughout the year, but it is unlike the Spruces in that it grows throughout the season, whereas the Spruces only grow in early spring. It is a most desirable variety for lawns, corners and various other plantings, but it is not suited for banking. For lawn planting *Cedrus Deodara* add greatly to the surroundings whether single or in small groups.

	Each	Per 10
10 to 12-inch, B. & B.....	\$2.00	\$20.00
12 to 15-inch, B. & B.....	3.00	30.00
2 to 3 feet, B. & B.....	6.00	55.00
3 to 4 feet, B. & B.....	10.00	90.00

Virginiana Glauca (Blue Cedar)—A pyramidal variety, with silvery-blue foliage. Distinctive and very desirable. They naturally grow into dense and shapely plants without trimming. Their rich blue foliage and erect habit of growth lend beauty and attraction to the most expensive plantings. THEY ALL WANT IT.

	Each	Per 10
18 to 24-inch, B. & B.....	\$2.50	\$25.00
2 to 3 feet, B. & B.....	4.00	40.00
3 to 4 feet, B. & B.....	5.50	50.00
4 to 5 feet, B. & B.....	6.00	60.00

Cedar Red (Cedrus Virginiana)—An attractive and popular tree. Sometimes attaining a height of 20 to 25 feet. It is pyramidal shape and very hardy. Fine for back-grounds, drives, and roadways. Turns to purplish-bronze in winter. We have a fine lot of these well known trees running from 2 feet to large and well developed trees 6 to 8 feet high.

	Each	Per 10
2 to 3 feet	\$2.00	\$20.00
3 to 4 feet	3.00	30.00
4 to 5 feet	5.00	50.00
5 to 6 feet	6.00	60.00

Cedrus Libani (Cedar of Lebanon)—This famed cedar of Lebanon is a tree which, on account of its beauty, has always been a favorite with poets and painters. It is a tree frequently referred to in the Scriptures; being perhaps the most beautiful of all cedars. The foliage is very dense and closely woven. In shape, the leaves are straight, tapering, cylindrical and pointed; they are about an inch long, and of a dark green color, and grow in alternate tufts of about thirty in number. They flourish in most foreign countries, and in North America and South America. In Europe it is extensively cultivated for ornamental purposes, where it is said to attain greater age and retain its beauty for centuries. From the noted Mr. Ellis' writings, we quote:

"As I strolled among the flowers and blossoming fruit trees, I found myself under the famous old cedar of Lebanon, which is the pride of the campus for the American College for Girls in Constantinople. This particular tree, the president of the college told me a few days ago, is more than eleven hundred years old, according to the records. It had lived for centuries before the Crusaders so sadly sacked Constantinople. It was mature before the first Turk set foot upon the soil of Asia Minor. What a picture of history it would be if one could visualize the procession of persons who have stood under this tree looking across the Sweet Waters of Asia during the past thousand years, and still the giant that has survived the fierce storms that sweep down from the Black Sea is symmetrical and beautiful and as alive as ever."

Lamartine tells us that the Arabs regard these trees as endowed with the principles of continual existence, and with reasoning and prescient powers, which enable them to prepare for the changes of the seasons.

Besides being a most beautiful ornamental tree, it must produce very valuable wood, as it seems to have been used by King Solomon in the building of the temple. Peling tells us that its wood was everlasting, therefore images of Gods were made of it. The oil of this cedar was used by ancients for preserving their books. Chips from these trees are now used to protect furs and woolen goods from moths. It is said that Cedar manna, which is a sweet exordation, flows from its branches.

While *Cedrus Deodara* is a most popular tree, we believe that *Cedrus Libani* is destined to become the most popular variety among all the cedars, from the very fact that it is so often referred to in the Scriptures, that it is always symmetrical and retains its beautiful form, living to an age hardly, if ever known, of any other tree, never being attacked by insects or diseases.

In the United States these trees will, of course, not grow as large as in their native land but they thrive splendidly here, succeed on almost any sort of soil, but would not flourish on soggy or swampy land. They put on reasonable growth and while we can supply only small sizes at this time, they will in a few years grow into beautiful trees. Certainly every American home will want Cedar Libani. For permanent street or park planting, we know of no tree that will compare with this valued and world-wide cedar.

	Each	Per 10
12 to 18-inch	\$2.50	\$25.00
18 to 24-inch	3.25	30.00
2 to 3 feet	5.50	50.00

Cypress

Cupressus Sempervirens (Italian Cypress)—A distinct variety, the foliage being almost a deep blue. Has tapering branches lying close to the stems. Grows very erect and shapely. Fine for landscape work in grouping, borders or single specimens. Its foliage and very erect growth makes it a most desirable variety for finest plantings. For years we have had calls for this variety—Italian Cypress, but have only recently been able to obtain sufficient plants to offer in quantity.

Arizona Cypress (Cupressus Arizonae)—A splendid new variety of good growth and of slender, pyramidal habit. Foliage bluish-green. Very hardy and rare.

	Each	Per 10
12 to 18-inch, B. & B.....	\$1.50	\$12.00
18 to 24-inch, B. & B.....	2.00	17.50
2 to 3 feet, B. & B.....	3.50	30.00
3 to 4 feet, B. & B.....	5.50	50.00

Lawsonian Cypress (Chamaecyparis Lawsoniana)—Has pendulous branches like ostrich feathers and foliage of silver-gray sheen. This graceful tree makes a fine specimen if planted alone. Its elegant, drooping branches and dark, glossy, green foliage, tinged with its glaucous hue makes it one of the rarest and most valuable sort.

	Each	Per 10
2 to 3 feet, B. & B.....	\$3.50	\$30.00
3 to 4 feet, B. & B.....	4.50	40.00
4 to 5 feet, B. & B.....	6.50	60.00

Firs

Douglas Fir (P. Douglassii)—This succeeds better in the South, and in other sections south of Massachusetts than any other variety we know. Some years ago we bought several hundred dollars worth of stock plants of some of the firs, but had very few to live through the summer. The Douglas is a healthy grower, conical in form with spreading horizontal branches. Foliage light blue above with silvery-white below. It is a handsome evergreen tree, and is an odd looking variety, making it conspicuous and justly so that it is worthy of a place in the finest plantings.

	Each	Per 10
2 to 3 feet, B. & B.....	\$5.00	\$50.00
3 to 4 feet, B. & B.....	6.50	60.00
4 to 5 ft., B. & B. specimens	7.50	70.00

Hemlock—Tsuga

Carolina Hemlock—Compact graceful tree of rare beauty. Its hardiness, dense, drooping foliage and beautiful form makes it rank among, if not ahead, of the Japanese sorts. Its fine feathery foliage makes a splendid contrast among other evergreens for lawn or park planting, and one could not think of anything finer for border or screen. It is a coming evergreen for the finest plantings.

	Each	Per 10
12 to 18-inch, B. & B.....	\$2.50	\$25.00
18 to 24-inch, B. & B.....	4.00	40.00
2 to 3 feet, B. & B.....	5.00	50.00

Hemlock (Canadensis)—A medium size graceful evergreen tree of dense growth, branches thickly set with beautiful, drooping, feathery foliage of a darker color than the Hemlock Caroliniana and a very handsome tree. It lends an attractive appearance in grouping,



Hemlock

owing to its drooping branches and feathery-like foliage. A sight of this tree as Nature's Architect scatters them in the Appalachian Mountains is something wonderful to behold. It is always beautiful and even during the summer time when deciduous trees and shrubs are covered with foliage, it appears pre-eminently among other sorts. No wonder Mrs. Wheeler from Redondo Beach, California, while traveling through the eastern Carolina mountains exclaimed, "This wonderful mountain scenery surpasses anything I have ever seen." Without this Hemlock, these mountains would be lacking. They not only grow singly, but in groups and clusters, appearing always beautiful and shapely. The noted Grove Park Inn at Asheville, being one of the finest resorts in the world, has prominently used among its plantings this beautiful evergreen. Hemlocks may be used to advantage on large estates as well as among other large plantings, while among smaller plantings, they should certainly have a place.

They bear trimming at any time of the year and are among the best evergreens for hedging. After being cut back a number of times, they become thick and dense, and with their graceful and feathery-like foliage, they make beautiful evergreen hedges.

	Each	Per 10
10 to 12-inch, B. & B.....	\$1.00	\$ 8.00
12 to 18-inch, B. & B.....	1.50	15.00
18 to 24-inch, B. & B.....	2.50	25.00
24 to 30-inch, B. & B.....	3.50	30.00
30 to 36-inch, B. & B.....	4.50	40.00
4 to 5 feet, B. & B.....	5.50	50.00

Junipers

Juniper Pyramidal (Hibernica or Irish)—One of the most popular Junipers in cultivation, slender rigidly upright and formal evergreen in character, resembling a solid green column. The underside of its foliage is of a silvery-gray while the tip is green color. Perfectly hardy retaining its beautiful color throughout the year. It is used in various plantings. Where groups are wanted and height is desired there is nothing prettier than a large clump of pyramidal Junipers. One of the most popular sorts for piers, columns, or corners.

	Each	Per 10
12 to 18-inch, B. & B.....	\$1.25	\$10.00
18 to 24-inch, B. & B.....	1.50	15.00
2 to 3 feet, B. & B.....	2.50	25.00
3 to 4 feet, B. & B.....	4.00	35.00
4 to 5 feet, B. & B.....	5.50	50.00
5 to 6 feet, B. & B.....	7.00	70.00
6 to 8 feet, B. & B.....	9.00	90.00

Juniper Glauca (New English)—A fine evergreen with distinct blue foliage, known by some as New English Glauca, is not so dense or columnar as the Irish. Where a little more spreading variety is desired, this is an ideal sort. They are always pretty, do not color up in the hardest of winter weather, and when planted singly, in groups or used in banking, they stand up making a prominent and attractive outline, lending beauty and attractiveness to the surroundings.

	Each	Per 10
12 to 18-inch, B. & B.....	\$1.25	\$10.00
18 to 24-inch, B. & B.....	2.00	20.00
2 to 3 feet, B. & B.....	2.50	25.00
3 to 4 feet, B. & B.....	4.00	40.00
4 to 5 feet, B. & B.....	5.50	50.00
5 to 6 feet, B. & B.....	7.00	70.00
6 to 7 feet, B. & B.....	9.00	90.00

Juniper Communis Depressa—One of the best prostrate forms of Juniper for ground covering. It will grow on sandy or gravelly hillsides. It may be appropriately used for borders, banks or edgings.

	Each	Per 10
12 to 18-inch, B. & B.....	\$1.50	\$12.50
18 to 24-inch, B. & B.....	2.00	20.00
24 to 30-inch, B. & B.....	3.50	30.00

Juniper Excelsa Stricta—A very symmetrical conical outline with steel blue pointed leaves which stand erect. Foliage glaucous and arranged around the branches in threes. A fine compact variety for all purposes and especially where formal effect is desired. Fine decoration for box or tub planting.

	Each	Per 10
12 to 18-inch, B. & B.....	\$2.00	\$20.00
18 to 24-inch, B. & B.....	3.50	35.00
24 to 30-inch, B. & B.....	5.50	50.00

Juniper Sabina (Savin Juniper)—A spreading form with dark green foliage. It is valuable for rockeries, grouping and borders, making a fine effect with other sorts. It is a popular variety, which up to this time we have never been able to grow enough to supply the demand. At present we have a large lot of them coming on and can supply same in quantity.

	Each	Per 10
10 to 12-inch, B. & B.....	\$1.50	\$15.00
12 to 18-inch, B. & B.....	2.50	25.00
18 to 24-inch, B. & B.....	4.00	40.00



Beautiful Evergreens

Retinosporas

Retinospora Plumosa Aurea—A compact tree of regular outline. Foliage plummy and graceful, tinged with a golden hue, which makes it a very striking and beautiful evergreen. A small group of this variety adds strikingly to the surroundings. They are used in various ways like other evergreens, making a beautiful contrast among groups and other plantings.

	Each	Per 10
12 to 18-inch, B. & B.....	\$1.00	\$10.00
18 to 24-inch, B. & B.....	2.00	20.00
2 to 3 feet, B. & B.....	\$3.50	35.00
3 to 4 feet, B. & B.....	5.00	50.00
4 to 5 feet, B. & B.....	6.00	60.00

Retinospora Pisifera Argentea—A splendid dwarf compact variety. This is a beautiful little evergreen of thick, dense foliage with silvery-tipped branches. Splendid sort for boxes, tubs, urns for steps or porch planting, and where dwarf sorts are needed it is a most desirable variety.

	Each	Per 10
12 to 18-inch, B. & B.....	\$2.00	\$20.00
18 to 24-inch, B. & B.....	3.00	25.00

Retinospora Squarrosa Veitchii (Silver Cypress)—Has beautiful soft, steel-gray foliage, a distinct variety, and a great favorite with those who know it.

	Each	Per 10
12 to 18-inch, B. & B.....	\$1.50	
18 to 24-inch, B. & B.....	2.50	
24 to 30-inch, B. & B.....	4.00	
2½ to 3 feet, B. & B.....	5.00	

Retinospora Pisifera Plumosa—With plummy green foliage but of the same nature and habit as the Aurea variety, with the exception of color, and is a very popular sort.

	Each	Per 10
18 to 24-inch, B. & B.....	\$2.50	\$25.00
24 to 30-inch, B. & B.....	3.50	35.00

Pisifera Squarrosa Sieboldii (Known to some as Biota Rosedale)—Foliage very fine, assuming a purplish hue in winter. A dwarfish and attractive variety, distinct from other evergreens. People who visit the nurseries usually include some of this variety. Used for banking among evergreens and for various other plantings.

	Each	Per 10
10 to 12-inch, B. & B.....	\$1.25	\$10.00
12 to 18-inch, B. & B.....	1.50	15.00
18 to 24-inch, B. & B.....	3.00	30.00
2 to 3 feet, B. & B.....	5.00	45.00

Cephalotaxus Pendunculata (Japanese or Korean Yew)—Medium size, grows bushy and compact, with dark glossy green leaves. A rare variety and makes a splendid contrast among other shrubs and trees.

	Each	Per 10
12 to 15-inch, B. & B.....	\$1.50	\$15.00
18 to 24-inch, B. & B.....	2.00	20.00
24 to 30-inch, B. & B.....	3.00	30.00

A small group of Evergreens will add greatly to the beauty and value of your home

Spruces



Norway Spruce

Norway Spruce (*P. Excelsa*)—A most desirable evergreen for all purposes. For ornamental planting in groups around large estates or parks as a wind-break, for orchard, farm house or as a fence or hedge, it is a most desirable variety. It is absolutely hardy, a good grower, its branches being of a drooping habit. If planted in rows and not pruned it soon becomes an excellent screen, but it can be pruned to any height. If it is to be kept into a hedge it should be trimmed in June and October. It can be made dwarfish and very attractive by shearing off the ends of the branches each season. Bears transplanting well and will grow under all conditions, even in crevices of rocks and on hillsides where it would be impossible for other trees to get nourishment. Small trees are attractive and conspicuous, but it increases in beauty every year of its life, and is most conspicuous during the winter time. It can be planted as small bordering around large growing beds or at intervals along borders of flowering beds for winter ornament. When the snow covers the earth like a blanket, the foliage of a Norway Spruce brightens the surroundings and makes us forget the dreariness of old winter.

	Each	Per 10
18 to 24-inch, B. & B.....	\$1.50	\$15.00
2 to 3 feet, B. & B.....	2.50	25.00
3 to 4 feet, B. & B.....	4.00	40.00

White Spruce (*Picea Alba*)—A compact pyramidal form. Has greater symmetry than Norway Spruce, is not as vigorous grower, has elegant silvery-gray foliage and makes a beautiful little tree. Can be used for all purposes for which the Norway is used, and more, owing to its being a compact dwarfish grower. They may be used for bordering small plantings and also among groupings and other evergreens for near the outer edges, for front of porch or

house banking. They too, like Norway, will thrive in most all soils and are perfectly hardy.

	Each	Per 10
12 to 18-inch, B. & B.....	\$1.50	\$15.00
18 to 24-inch, B. & B.....	2.50	25.00
24 to 30-inch, B. & B.....	3.50	35.00

Colorado Blue Spruce (*P. Pungens*)—A very shapely and popular Spruce. In color it is a bluish-green, and while even small plants are attractive, each year's growth brings greater beauty. A few well grown specimens make an almost priceless addition to a well-kept lawn. This tree is a native of Colorado. They are grown from seed and vary in color just a little, many of them being of a little deeper blue than others grown from the same bed. The intense blue can only be had in the grafted sorts known as "Koster's Blue," but the Colorado Blue is a desirable sort.

	Each	Per 10
12 to 18-inch, B. & B.....	\$2.50	\$26.00
18 to 24-inch, B. & B.....	4.00	40.00
2 to 3 feet, B. & B.....	6.50	65.00

Koster's Blue Spruce (*Picea Pungens Glauca Kosteriana*)—The most popular blue evergreen among the spruces and so generally used for lawns and specimens. This variety is identical in growth with the Colorado Blue, but has the bluest strain of foliage, being grafted from the famous Koster's variety. They are healthy and make beautiful trees, being attractive at all seasons. They do not make large trees but owing to their intense bluish color, if a few of them are scattered about the lawn they will lend attraction to the surroundings.

	Each	Per 10
12 to 18-inch, B. & B.....	\$4.00	\$40.00
18 to 24-inch, B. & B.....	5.50	55.00
24 to 30-inch, B. & B.....	7.50	75.00
30 to 36-inch, B. & B.....	10.00	100.00

Broad Leaved Evergreens

Magnolia Grandiflora

It has been said there is no tree which creates such admiration and beauty as the Magnolia Grandiflora and there is no doubt about its being king among all broad-leaved evergreen trees. To prize it is only necessary to see its beautiful radiant green leaves, and not any certain size, but anywhere from a small plant to a full grown tree, its fine foliage standing out in the coldest of weather, retaining its glistening, glossy-green color, and so wondrously fine, that they are sold by the thousands every year for decorative purposes. The tree begins to blossom in June, and continues through July and August, displaying hundreds of great, large flowers. These beautiful cream-like and bell-shaped flowers emit a very rich perfume that can be detected fully a block away.

We can ship them safely anywhere, having delivered them successfully in far away California and the Isle of Pines. Where wanted we can quote on large specimen trees, some of which have been successfully removed from our nurseries to Providence, Rhode Island, and other distant sections. Special planting directions are given with each shipment. By all means plan to plant a few Magnolia Grandiflora this season and do it NOW. You will be pleased with them.

	Each	Per 10
18 to 24-inch, B. & B.....	\$1.00	\$ 9.00
2 to 3 feet, B. & B.....	1.25	12.00
3 to 4 feet, B. & B.....	2.00	17.50
4 to 5 feet, B. & B.....	3.00	25.00
5 to 6 feet, B. & B.....	4.00	35.00
6 to 8 feet, B. & B.....	6.00	50.00

Abelia Grandiflora (A. Rupestris)—One of the most beautiful popular and satisfactory broad-leaved evergreens. The graceful drooping stems and branches are covered with dark glossy-green leaves, which in winter assume a metallic sheen. From the middle of May until frost this beautiful little evergreen produces beautiful little bell shaped cream colored fragrant flowers that almost cover the plant. It is hardy and a wonderfully fine thing, its foliage being attractive all the season. There is not a finer plant in cultivation than this Abelia. It is pretty anywhere and all the time. It seems almost to realize its own beauty, in that it is always trying to put on more loads of beautiful little fragrant flowers that always appear just at the right place so as to add more admiration and wonder to those who see it.

Its long blossoming period for nearly six months, which is given to no other like broad-leaved evergreen, makes it one of the most attractive and satisfactory sorts for groups, borders or banking among coniferous and other broad-leaved sorts.

	Each	Per 10	Per 100
10 to 12-inch	\$.50	\$ 4.00	\$30.00
12 to 18-inch65	6.00	40.00
18 to 24-inch75	7.00	60.00
24 to 30-inch, B. & B.....	1.25	10.00	
Heavy sheared specimens	3.00	25.00	

Aucuba Japonica Aurea-Maculata (Gold-Dust Tree)—A splendid ornamental tree or shrub with large handsomely variegated leaves. The bloom which comes in early spring is followed with clusters of pretty red berries, which it retains throughout the winter. The contrast with its pretty leaves and bright red berries make a very beautiful effect. They are hardy in the Southern states and about as far north as Washington. They are well adapted for city planting as they withstand dust and smoke to a considerable degree. They grow to a few feet in height and can be used to good ad-

vantage in winter as indoor plants. They are especially effective when planted in masses or groups with other shrubbery.

	Each	Per 10
Small plants	\$1.00	\$ 9.00
12 to 18-inch, B. & B.....	2.00	20.00
18 to 24-inch, B. & B.....	3.00	27.50
24 to 30-inch, B. & B.....	4.00	35.00
Mailing Size50	

Azalea Amoena—A very desirable little evergreen shrub, with dark glossy leaves. Flowers are of a rich wine color, which are produced in such profusion as to quite envelop the plant when in bloom. Its leaves somewhat resemble boxwood in summer, but as the cold weather sets in they assume a beautiful shade of bronze.

	Each	Per 10
12 to 15-inch, B. & B.....	\$1.50	\$15.00
12 to 20-inch, B. & B.....	2.50	25.00

Azalea Hinodegiri—A wonderful little early-blooming, hardy Japanese Azalea, more valuable than Amoena, which it somewhat resembles in habit of growth, but is a stronger grower. Produces bright, carmine flowers in enormous quantities. Remains in bloom longer than most other varieties.

	Each	Per 10
6 to 8-inch, well-branched.....	\$1.00	\$ 8.00
8 to 10-inch, well-branched.....	1.50	12.00

Azalea Kaemiferi—A beautiful, early-blooming Japanese Azalea, and a splendid addition to the collection of hardy, evergreen Azaleas. Its flowers profusely borne in May vary in color from light pink to rose. Each Per 10

10 to 12-inch	\$1.50	\$15.00
12 to 15-inch	2.00	20.00

Mandina domestica (Japanese Nandina)—A beautiful upright shrub, with numerous reed-like stems. In winter its leaves turn bright red and hang on until early spring, which with the bright red berries make it a very attractive plant. Used for specimens or banking.

	Each	Per 10
8 to 12-inch, B. & B.....	\$1.00	\$10.00
12 to 15-inch, B. & B.....	1.50	15.00
15 to 18-inch, B. & B.....	2.00	18.00
18 to 24-inch, B. & B.....	3.00	25.00

Cape Jasmine (Gardenia Florida)—An old southern, favorite evergreen shrub. The masses of beautiful, fragrant, white flowers make it graceful and attractive. It is not hardy in the cold sections of the country but is at home in the South.

	Each	Per 10
Small plants	\$.25	\$ 2.50
12 to 18-inch50	4.00
12 to 20-inch, bushy	1.00	10.00
Specimen plants	2.50	25.00

Louisville, Kentucky.

Valdesian Nurseries,
Bostic, North Carolina.
Gentlemen:

Those six Magnolias, the receipt of which I wrote you before receiving yours of March 9, are now safely planted.

To all appearance they arrived in perfect condition, not having damaged in the least. They were out of the ground a month, I assume, but were so excellently balled and burlapped that I do not see how they could have suffered. I never saw balling and burlapping so well done, and the trees arrived with the balls still solid and wet.

We took great pains in planting them and are much pleased with their size and general appearance of thriftiness.

A. COSSAR.

Boxwood—Used for boxes, edging, and pyramids in various sizes. Its glossy leaves are always pleasing. They are long lived shrubs and many can be seen growing about old places which have stood perhaps several generations.

	Each	Per 10	Per 100
6 to 12-inch, B. & B.....	\$.50	\$ 4.00	\$35.00
12 to 15-inch, B. & B.....	1.00	8.00	75.00

Rhododendron

Rhododendrons are among the most popular plants for background planting, drives, paths and in masses along streams or lakes as the great masses of foliage retain their coloring throughout the year and provide a distinct touch of green in the winter landscape. They should be planted in shady locations where the land is not soggy and the soil as nearly similar to woods earth as possible should be provided. They are invaluable for decorating the shady nook about the house foundation or on the lawn. A heavy mulching of leaf mold in the winter will be beneficial.

Rhododendron Catawbiense—Flowers a bright crimson,, borne in large clusters at the ends of the branches. Perfectly hardy in northern latitudes and one of the finest varieties. It is of a rather dwarfish growth, making bushy compact clumps and even small plants when around two feet flower freely. Its leaves which are of dark green are not as large as the Maximum and it makes a very pretty contrast among other broad-leaved evergreens.

	Each	Per 10
12 to 18-inch, B. & B.....	\$2.00	\$20.00
18 to 24-inch, B. & B.....	3.00	30.00
24 to 30-inch, B. & B., all bushy plants..	4.00	40.00

Rhododendron Maximum—Perfectly hardy in the coldest sections of the country, where it retains its beautifully-colored foliage through-out the year. In May and June, it bears great clusters of pink flowers, which are nearly double the size of those of other Rhododendrons.

Rhododendrons add taste that cannot be dispensed with in a complete planting.

	Each	Per 10
12 to 18-inch, B. & B.....	\$1.50	\$15.00
18 to 24-inch, B. & B.....	2.50	25.00
24 to 30-inch, B. & B.....	3.50	35.00

Laurocerasus (English Laurel)—Strong bushy shrub with handsome shining evergreen foliage. One of the finest broad-leaved evergreens for mass planting, banking, mixing with other shrubbery or coniferous evergreens. It has fine large leaves of deep glossy-green color, which it retains throughout the year. One of the most satisfactory evergreens for mass or specimen plantings.

	Each	Per 10
12 to 18-inch, B. & B.....	\$1.50	\$15.00
18 to 24-inch, B. & B.....	2.50	25.00
24 to 30-inch, B. & B.....	4.00	40.00

Cherry Laurel (Laurel Caroliniana)— Fine broad-leaved evergreen, native of the South. Has pretty shining leaves. Its blooms which appear in the spring are followed by blue berries which hang on throughout the winter. May be pruned to any desired shape, is used for mass planting, specimens or hedging.

	Each	Per 10
12 to 18-inch, B. & B.....	\$.75	\$ 7.00
18 to 24-inch, B. & B.....	1.25	12.00
24 to 30-inch, B. & B.....	2.25	20.00

Kalmia Latifolia—A valuable evergreen shrub which blooms in terminal clusters of clearest pink to a white. Has pointed shaped leaves which retain their color throughout the year. We have some very fine and shapely plants that are simply a mass of bloom during the last of May and into June. They are much used in landscape work for banking and mixing in. They are a valuable addition.

	Each	Per 10
12 to 18-inch, B. & B.....	\$1.25	\$12.00
18 to 24-inch, B. & B.....	2.50	25.00

Pyraecanthus Lelandi (Crateagus Lelandi)—A wonderful variety of evergreen or burning bush. Very desirable and effective. In early spring the plant is covered with a profusion of white flowers, followed by bright orange berries, which it retains throughout the winter. It is



Buxus Sempervirens

a most valuable little evergreen thorn, and with its beautiful white flowers followed with clusters of lustrous berries which almost cover the plant, is a most valuable addition to any collection.

Supply limited but at this writing we have a number of fine stocky plants.

	Each	Per 10
12 to 18-inch, B. & B.....	\$1.50	\$15.00
18 to 24-inch, B. & B.....	2.00	20.00
24 to 30-inch, B. & B.....	3.00	30.00

Camelia Japonica—China and Japan. Fine shrub with glossy glittering deep green leaves, large showy flowers like roses but are more formal in design, ranging in colors from pure white through pinks to dark red. We can supply single or double varieties but many prefer the single as they flower in late winter and early spring, and if too much wet the double sometimes rot while in bud, the single being free from rot or damage in bud. They are widely known and are very desirable. Will thrive perfectly in partially shaded situations.

Any good garden soil is suitable, but if mixed with leaf mold, better results will be obtained. They should be kept mulched with well-rotted leaves.

12 to 18-inch, Double, red, pink and white varieties.....	Each	Per 10
18 to 20-inch, Double, red, pink and white varieties.....	2.50	22.50
12 to 18-inch, Single varieties, all colors.....	1.50	15.00
18 to 20-inch, Single varieties, all colors.....	2.50	25.00

Eleagnus (Silver Thorn or Oleaster)—Japan. This wonderful group of ornamental evergreen shrubs will stand extremely dry weather when once established.

Eleagnus (Pungens)—Very dark green above and silvery beneath. Flowers which come in January and February are creamy-white and fragrant.

	Each	Per 10
12 to 18-inch, bushy plants.....	\$1.00	\$10.00
18 to 24-inch,	1.50	15.00
24 to 30-inch,	2.00	20.00

Ligustrums

The European sorts are especially valuable for ornamental planting. The *Lucidum*, *Napelensis*, *Japonicum* and *Chinensis* are evergreen in the South, and are valuable for ornamental purposes the whole year through. They are so adaptable to all sorts of exposure and conditions of soil that they should find a prominent place in most all plantings. Their bright shining fruit is borne in clusters, which stand up well on the ends of the branches above the lustrous dark green leaves, and remain throughout the winter, after which the beautiful foliage enjoys a place of its own. Ligustrums are unlike any other ornamental broad-leaved shrub and they make a beautiful contrast among

coniferous plantings, and it is said merit a freer use in English gardens than other like shrubs. They are easy to grow and will thrive in city yards, where most other plant life barely exist, and are very ornamental, whether grown as single specimen or in groups or banked with other plantings. Many of the flowering shrubs are beautiful while in flower but the plants have little to commend them the balance of the year, being very unlike the evergreen Ligustrums, which besides their splendid healthy foliage produces flowers abundantly in the spring time. This, together with their lustrous fruit, gives them a prominent place in the finest plantings.

Ligustrum Amurense—This is hardy and an evergreen in the South, and while it is mainly used for hedges, it is now used by some gardeners among shrubbery planting as a broad-leaved evergreen. It bears freely of very fragrant and white-cream colored flowers that are, if untrimmed, followed by clusters of little blue berries that hang on until late in the spring.

	Each	Per 10
12 to 18-inch, B. & B., bushy.....	\$.50	\$ 4.00
18 to 24-inch, B. & B.....	.75	7.00

Ligustrum Lucidum—A very pretty little evergreen shrub which very much resembles the *Napelensis* except its leaves are a little larger, yet a lustrous green with somewhat spreading branches and cream colored fragrant flowers followed by black berries, which hang on through the winter. This is fine for banking among evergreens, grouping among shrubbery or side of walls, or as specimens.

	Each	Per 10
12 to 18-inch, B. & B.....	\$1.25	\$10.00
18 to 24-inch, B. & B.....	1.75	15.00
24 to 30-inch, B. & B.....	2.50	25.00

Ligustrum Napelensis—A splendid, hardy, broad-leaved evergreen, which has fragrant and showy flowers. The leaves are larger than the *Abelia Grandiflora*, of a deeper glossy green and being in a class of itself bearing no resemblance to other hardy broad-leaved evergreens, and holding its splendid cheerful coloring throughout the year. It is one of the finest shrubs for landscape, banking among coniferous evergreens, or shrubbery. It grows rapidly until it gets a couple of years old when it seems to delight in a greater production of its beautiful glossy-green leaves and fragrant flowers.

	Each	Per 10
12 to 18-inch, B. & B.....	\$1.25	\$12.00
18 to 24-inch, B. & B.....	2.00	20.00
24 to 30-inch, B. & B.....	2.50	25.00

Ligustrum Japonicum—This is a valuable evergreen shrub, but does not have the glossy-green leaves as the other varieties and is much used by landscape gardeners among shrubbery, lending a splendid contrast among other sorts.

	Each	Per 10
12 to 18-inch, B. & B.....	\$.75	\$ 7.00
18 to 24-inch, B. & B.....	1.00	10.00
24 to 30-inch, B. & B.....	1.50	14.00

Ligustrums are now much used in landscape work. All of them making attractive and showy plants.

American Holly (Ilex Opaca)—Native variety so familiar in Christmas decorations. Has spikes on the edges of its peculiarly shaped evergreen leaves and makes a striking contrast among other shrubbery. Especially fine for specimen or open ground planting. It is hardy as far north as Pennsylvania. Bears a profusion of red berries that make it very orna-

mental and it is becoming more in demand each year.

	Each	Per 10
12 to 18-inch, B. & B.....	\$1.00	\$ 9.00
18 to 24-inch, B. & B.....	1.50	14.00
24 to 30-inch, B. & B.....	2.50	25.00

Ilex Crenata (Japanese Holly)—One of the most valuable broad-leaved evergreen shrubs. Closely branched shrub, with small dark green leaves. Can be trimmed in dense formal effect if desired, but will develop into interesting specimens if allowed to grow naturally. Ideal for working in among foundation plantings. Its thriving in partial shade near the seashore, and under city conditions, makes it perhaps one of the most useful of the broad-leaved evergreens.

	Each	Per 10
12 to 15-inch, B. & B.....	\$2.00	\$17.50
15 to 20-inch, B. & B.....	2.50	22.50
20 to 30-inch, B. & B.....	3.50	32.50

Mahomia Aquafolia—Holly-like leaves which remain throughout the winter, yellow flowers in May followed by great clusters of blue berries. Fine for mass planting or grouping among shrubbery or evergreens or under shade of trees.

	Each	Per 10
12 to 18-inch, B. & B.....	\$1.00	\$ 9.00
18 to 24-inch, B. & B.....	2.00	20.00
24 to 30-inch, B. & B. bushy	3.00	30.00

Japanese Holly (Mahomia Japonica)—This is a fine little evergreen tree which has large and fine foliage and makes a beautiful little tree. It is fine for places where small broad-leaved evergreens are wanted.

	Each	Per 10
12 to 18-inch, B. & B.....	\$1.50	\$15.00
18 to 24-inch, B. & B.....	2.50	25.00

Ilex Aquifolia (English Holly)—These we imported several years ago, thinking we were getting *Ilex Opaca* but owing to their peculiar foliage which is of dark green, with crinkled edges and stronger spikes than our native holly, but began to bear berries while the plant was quite small and not knowing just what it was, we sent a sample of it to Dr. Coker of the University of North Carolina and he writes us that it is *Ilex Aquifolia* (English Holly), and states in part that "At Kew Gardens, London, it is one of their most conspicuous ornaments and is often used to border walks, making formal columnar or spherical specimens." They are rather dwarfish in growth, perfectly hardy, producing abundantly red berries, which seem to be larger than other holly berries. A most desirable variety.

	Each	Per 10
18 to 24-inch, B. & B.....	\$2.00	\$20.00
24 to 30-inch, B. & B.....	3.00	30.00

Hardy Deciduous Ornamental Trees and Shrubs

Hardy shrubs require but little care when once established, and grow in size and beauty each year. They are effective for screens, borders and for grouping on the lawn. Nature is always bounteous in her gifts to man and has been unstinted in giving us a great wealth of shrubs with their perfumes and flowers, with their various colored foliage and bright fruit. No home, either large or small, should be without the enjoyment of these wonderful gifts. The uplifting influence they have upon thousands that are enraptured by their beauty and fragrance cannot be estimated. We can supply large plants for effect and beauty NOW. Height will vary 18 inches to 3 feet, depends upon habit of growth of the plants.

AZALEAS

Azalea Vaseyi—A beautiful sort which bears delicate pink flowers with dots of begonia-pink at base of petals. Foliage dark crimson in the fall.

	Each	Per 10
12 to 18-inch, select plants.....	\$1.50	\$15.00

Azalea Viscosa—Flowers white, slightly tinted rose, fine for swampy ground, but suitable for any soil. It bears fragrant flowers in profusion during June.

	Each	Per 10
Price	\$1.50	\$15.00

Azalea Nudiflorum—Fine and popular old variety. Perfectly hardy and free bloomer. Flowers appearing in early spring.

	Each	Per 10
12 to 18-inch, bushy plants.....	\$1.50	\$12.50
18 to 24-inch, bushy plants.....	2.00	20.00

ALTHEAS

Althea (Rose of Sharon)—A beautiful small flowering shrub, and if left untrimmed will grow five to six feet tall. This is much used for hedges and screens. Fine for a dividing line between houses. Many cotton mill owners use these as a hedge, dividing lots and tenant houses on the mill premises. They bloom from May until September and are attractive. They are also used in massing among shrubbery. We have different varieties, and if you will state the color you desire, we will make a selection that will please you.

	Each	Per 10
18 to 24-inch	\$.30	\$3.00
2 to 3 feet40	4.00
3 to 4 feet60	5.00

CALYCANTHUS

Calycanthus Floridus (Sweet scented shrub)—A native shrub foliage luxuriant and rare. Chocolate-colored blossoms terminate the branches, and are delightfully fragrant.

	Each	Per 10
1 to 2 feet	\$.25	\$2.00
2 to 3 feet50	4.00

CRAPE MYRTLE

Crape Myrtle, Pink (Lagerstroemia)—An old favorite. Has bright, green leaves, with brown-colored bark. Large crape-like flowers that are produced in panicles and bloom practically all summer. Easily grown and at home in the South, but will not succeed in the cold sections of the North and Northwest.

Crape Myrtle, Purple—A grand sort producing immense clusters of flowers of a deep rich purple.

	Each	Per 10
2 to 3 feet.....	\$1.00	\$ 7.00
3 to 4 feet.....	1.50	12.50

Crape Myrtle, White—Has pure white flowers bearing large clusters. A free bloomer and a showy shrub in any landscape.

	Each	Per 10
2 to 3 feet.....	\$1.25	\$12.00
3 to 4 feet.....	1.50	15.00

For screen or high shrubbery hedges the Crape Myrtles are unsurpassed.

DEUTZIAS

Deutzia (Pride of Rochester)—A distinct and valuable variety. Blooms in June with fine double white flowers. It is much used by all gardeners.

Deutzia Crenata (f. p.)—Flowers double white delicately margined with pink. This is evidently one of the most popular and desirable flowering sorts.

	Each	Per 10
12 to 18-inch.....	\$.25	\$ 2.00
18 to 24-inch.....	.35	3.00
2 to 3 feet.....	.60	5.50



Deutzias

FORSYTHIA

Forsythia Viridissima (Golden Bell)—Produces golden yellow flowers profusely in early spring. An old variety of shrub which for some years seemed to have been almost forgotten, but lately is being used a great deal both in shrubby gardens and landscape work.

Forsythia Weeping Suspensa—Handsome form, vigorous grower, and prolific bloomer. Flowers golden yellow which continue for some weeks. Conspicuous among other shrubbery. Has long curving branches used for covering arches and trellises. The stems and leaves retain their color until late in the fall.

Forsythia Intermedia—Erect in growth, somewhat slender, very profuse bloomer.

	Each	Per 10
12 to 18-inch.....	\$.25	\$ 2.00
18 to 24-inch.....	.35	3.00
2 to 3 feet50	4.50

GENISTA (Broom)

Desirable for rocky locations or hillsides: suitable for massing among evergreens or shrubs. Bears deep golden-yellow flowers in profusion, which resemble Sweet Peas. Has slender, bright green, drooping branches, making a conspicuous and desirable shrub.

	Each	Per 10
Small plants	\$.25	\$ 2.50
12 to 18-inch plants.....	.50	5.00
Large size plants.....	1.50	12.50

HYDRANGEAS

Hydrangea Paniculata Grandiflora—A beautiful hardy shrub, with bright shiny green leaves, bearing huge panicles of flowers 6 to 7 inches in diameter, and 8 to 10 inches long. Begins to flower in July, appearing white for

three or four weeks, when it begins to change to a light pink, turning brown later in the fall. A fine thing for planting with other shrubbery, banking with coniferous evergreens, clumps or border planting, or alone. This is the thing about which you hear so many exclaim "Oh! what is that pretty flower yonder?" It is fine.

	Each	Per 10
12 to 18-inch	\$.30	\$2.50
18 to 24-inch40	3.50
24 to 30-inch50	5.00
2 to 3 feet bushy specimen plants	1.00	8.00

Hydrangea Alba Grandiflora—Resembles the *Paniculata* variety in form and shape of flowers, which are not so large and round, being borne in panicles 5 to 8 inches in diameter. Begins to bloom early in June and if it is worked and old blooms are kept pinched off, it will bloom for a long time.

	Each	Per 10
12 to 18-inch.....	\$.40	\$4.00
18 to 24-inch.....	.50	5.00

Hydrangea Hortensis—A very ornamental shrub adapted for southern outdoor planting. The white varieties bloom true to color, the others may be either pink or blue, depending upon the soil and cultural conditions.

Hydrangea Otaksa—A Japanese sort, producing great clusters of pink flowers. This variety is extensively used in decorations. The immense loads of bloom make them very conspicuous. Easily transplanted and need no particular nursing. They bloom continuously throughout the growing season. They are attractive alone or with other shrubbery.

	Each	Per 10
Well rooted plants that bloom first season.....	\$.50	\$4.00
Large strong plants.....	1.00	8.50



Hydrangea Paniculata

MAGNOLIA OBOVATA

Magnolia Obovata—A dwarf-grower. Bears beautiful purplish-pink flowers before the leaves appear. Very beautiful on account of its fine large flowers, which appear so early in the spring.

	Each	Per 10
18 to 24-inch	\$2.50	\$25.00
24 to 30-inch	4.00	40.00

VIBURNUM—SNOWBALL

Viburnum Tomentosum Plicatum (Japanese Snowball)—It is hardy and produces great white balls of blooms, and with its handsome foliage it is more used in landscape work.

Viburnum Opulus or Red-berried Snowball—There are a number of attractive varieties of white-flowered and showy-berried Viburnum, but the old Viburnum Opulus is by far the handsomest for an all-year shrub as it does not only produce attractive, white blooms but these are followed by shiny, red berries that persist throughout the winter and make the plant most desirable.

Viburnum Opulis Sterilis (Common Snowball)—the old-fashioned sort, producing its large globular clusters of pure white flowers in May and June. Most everybody wants a few, as they bring back memories of the old home, and too, make a very attractive appearance.

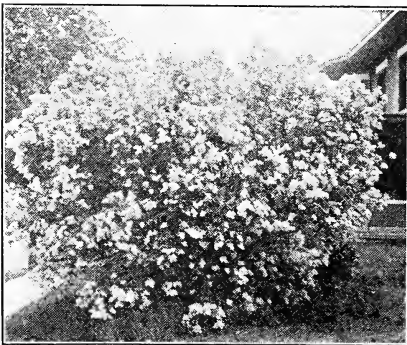
	Each	Per 10
1 to 2 feet	\$.30	\$2.50
2 to 3 feet50	4.00
Large specimens	1.00	7.50

Snowberry Red (Red Indian Currant)—Similar to the Snowberry, except that its fruits are red and that the small red berries cluster in thick ropes around the weighed-down stems.

Snowberry White—Flowers rose color. Blooms in June and July, followed by large clusters of milk-white fruits, which remain on in winter.

	Each	Per 10
2 to 3 feet, heavy plants.....	\$.50	\$4.00

LILACS



Lilac Bush

Persian Lilac—Five to six feet high with slender upright branches. Foliage rich green, blooming in early spring with pale lilac-colored flowers. Fragrant and popular variety.

	Each	Per 10
2 to 3 feet.....	\$.75	\$ 7.00
Heavy specimen plants.....	1.50	15.00

White Persian Lilac—Same as above with pure white flowers.

	Each	Per 10
2 to 3 feet	\$.75	\$7.00



Snowball Bush

PHILADELPHUS

Philadelphus Syringa or Mock Orange—The Syringa is an invaluable shrub of vigorous habit. Hardy, with large, handsome foliage, this variety which bears beautiful, white flowers is valuable in any collection of shrubbery.

Philadelphus Coronarius—A well-known shrub, with pure, white flowers, and a very early bloomer.

Philadelphus Grandiflora — Foliage bright green, blooms in June, has large, white flowers with the exception of the center which is yellow.

Philadelphus Lemoinei—Branches slender and arching, flowers double in large racemes, very sweet-scented, and a dwarfish grower.

	Each	Per 10
12 to 18-inch.....	\$.30	\$2.50
18 to 24-inch.....	.40	4.00
2 to 3 feet.....	.50	5.00

HYPERICUMS

Hypericum Aureum—Large-flowered St. John's Wort. Useful for edging borders, grouping among shrubbery and evergreen plantings.

Hypericum Densiflorum — Dense - flowered. Handsome shrub with numerous branches, attaining a height of 3 to 4 feet. Flowers very numerous, in compound clusters of golden yellow. This variety and Aureum are perfectly hardy, where the moserianum is only half hardy, and many times winterkills.

	Each	Per 10
1 to 2 feet.....	\$.35	\$3.00
2 to 3 feet.....	.50	4.00

Jasminum Nudiflorum—This is an evergreen in the South. The stems are a dark shiny green and during mild winter weather regardless of the calendar, its sunshiny clear flowers appear thickly along the branches. It is hardy, easy to grow, and a place can always be found for it about the flower garden. It will begin to bear its pretty yellow flowers while quite young. Many cotton mills and other corporations buy these in large lots for their planting.

	Each	Per 10
1-year plants	\$.25	\$2.00
2-year plants40	3.50

Flowering Crab (Pyrus)—Chinese Flowering Crab. A small tree with symmetrical broad crown, native of China. Has deep purple flowers and reddish-yellow fruit. Hardy, desirable and early flowering.

Jasminum Nudiflorum—This is an evergreen in the South. The stems are a dark shiny green and during mild winter weather regardless of the calendar, its sunshiny clear flowers appear thickly along the branches. It is hardy, easy to grow, and a place can always be found for it about the flower garden. It will begin to bear its pretty yellow flowers while quite young. Many cotton mills and other corporations buy these in large lots for their planting.

1-year plants.....	\$.25	\$2.00
2-year plants.....	.40	3.50
		Each
2 feet		\$1.00

Flowering Almond—Especially suited for planting in mixed borders or in front of shrubbery. A well-known desirable shrub.

18 to 24-inch.....	Each	\$1.00
2 to 3 feet.....		2.00

POTENTILLA

Potentilla (Fruiteosa)—A beautiful, hardy shrub, having distinctive, narrow, fuzzy leaves. Grows to a height of 2 to 3 feet. Rather round in form and succeeds almost anywhere. Has yellow blooms which resemble Hypericum but are not quite so large. Blooms freely from June until frost. Is especially fine for banking among other shrubbery and, owing to its attractive foliage and flowers, is most valuable for planting among evergreens.

12 to 18-inch.....	Each	Per 10
18 to 24-inch.....	\$.40	\$3.50
24 to 30-inch.....	.50	5.00
	.75	7.00

SPIREAS

Spirea (Anthony Waterer)—A fine variety of Spirea, growing to a height of 2 feet, and more

dwarfish than other Spireas. A profusion of rosy-crimson blooms appear in June and if these are cut off as soon as they begin to fade, the plant will bloom the entire season. A valuable addition to the shrubbery garden.

12 to 18-inch.....	Each	Per 10
18 to 24-inch.....	\$.40	\$3.50
2 to 3 feet60	5.00
	.75	7.00

Spirea Van Houttei (Bridal Wreath)—Has numerous arching branches, foliage dark green persisting until late autumn, blossoms in late spring, the white flowers often bending the branches in graceful curves to the ground under their profusion. The most popular sort for specimens or hedges.

12 to 18-inch, 2-year old bushy plants.....	Each	Per 10
18 to 24-inch.....	\$.25	\$2.50
2 to 3 feet35	3.00
	.50	5.00

Cydonia Japonica (Burning Bush or Japanese Flowering Quince)—Covers itself with large showy, scarlet flowers in early spring, followed by yellowish-colored fruit, which is two inches in diameter, and very fragrant. A splendid shrub for use among foundation planting, for massing in terraces, drives or walks. Everyone wants a few of its perfumed-like fruit.

1 to 2 feet.....	Each	Per 10
2 to 3 feet.....	\$.35	\$3.00
	.50	4.00

WEIGELIAS

Weigelia Candida—Pure white flowers, strong grower, but has a refined appearance.

Weigelia Rosea—Fine shrub with handsome rose colored flowers, which appear in early spring. Perfectly hardy and occupies a prominent place in other shrubbery.

Weigelia Hendersonia—Fine, compact habit, flowers medium size, outside of petals red.

1 to 2 feet.....	Each	Per 10
2 to 3 feet.....	\$.30	\$2.50
	.50	4.50



Spirea Van Houttei

Hedge Plants

We can supply any variety of hedge plants at very reasonable cost, as we grow them in quantity, shipping thousands every year to nurserymen for their retail trade, as well as supplying our own retail trade, shipping to almost every state in the Union. We have numerous large orders from land improvement companies, cotton mills, schools, parks, towns and cities.

PRIVET

California (Ovaliforum)—A well-known and popular variety, is a vigorous grower, with deep green foliage. It is used much for hedges and borders, but will winterkill occasionally in the colder sections, though in the South generally it is very nearly an evergreen.

	Per 10	Per 100	Per 1000
12 to 18-inch.....	\$1.50	\$4.00	\$40.00
18 to 24-inch.....	2.00	6.00	60.00

Amoor River Privet (Evergreen)—This is a fast growing hedge either in sun or shade, and bears trimming into any desired shape. We hold this stock in storage until July and August from which we can make prompt shipment of plants that will prove satisfactory. Several years ago in July we shipped 2,000 to a Georgia nurseryman, who afterwards wrote us that he never had better success, that it all lived and grew off nicely.

	Per 10	Per 100	Per 1000
12 to 18-inch.....	\$2.00	\$6.00	\$50.00
18 to 24-inch.....	3.00	7.50	70.00
24 to 30-inch.....	4.00	9.00	80.00

We can supply small well rooted and branched plants, every one a fine little plant, delivered prepaid to any address, at \$5.00 per hundred. The only difference in these and the 12 to 18-inch stock as listed above is that they are little smaller plants, but stocky, little fellows. We sell lots of them, as they soon make a pretty hedge, and for long distance there is some saving in transportation charges.

Privet—Northern type. Amoor River north—This variety is not an evergreen, but it is the kind that is hardy in Minnesota and other like cold climates. In habit of growth it is very much like the old California privet but does not winterkill and is a most valuable variety, which is fast taking the place of California.

	Per 10	Per 100	Per 1000
12 to 18-inch.....	\$2.50	\$6.00	\$50.00
18 to 24-inch.....	3.00	7.50	65.00

BARBERRY

Thunberg's Barberry—A beautiful shrub that is hardy anywhere. Even in cold Alberta, Canada, where for months during the winter, the thermometer hovers around 40 degrees below, one of our customers grows it successfully. It has small, round, bright green leaves changing in autumn to a beautiful shade of orange-scarlet and crimson. Little yellow blooms in the spring are followed by a profusion of beautiful red berries which hang on during the winter. After the leaves are gone, these berries give a most attractive appearance and for low hedges or border there is no better plant in existence.

This shrub needs no trimming and grows to a height of 2½ feet. It is used much in group planting while for hedges it should be planted about 10 inches apart. If the weeds are kept back and the soil well cultivated for one or two seasons, it can be left alone when it will grow into a shapely, slightly drooping hedge or border.

	Each	Per 10	Per 100
8 to 12-inch	\$.25	\$2.00	\$15.00
12 to 18-inch40	3.00	25.00



Thunberg's Barberry

Hardy Deciduous Shade Trees

The following list represents the most lasting and popular sorts of deciduous ornamental trees. We sell these in large quantities to towns, cities, schools, mill owners and land improvement companies.

Sugar and Norway Maples are among the most popular sorts, as they are of hard wood, free from insects and diseases, and do not break up by storms or snow as the soft wood-ed and many other varieties. They make pretty well-formed tops and we have never had a dissatisfied customer who purchased these sorts. If you wish a good, shapely, hardy and lasting tree these will please you.

	Each	Per 10
3 to 4 feet.....	\$.50	\$ 4.00
4 to 5 feet.....	.75	6.50
5 to 6 feet.....	1.00	8.50
6 to 7 feet.....	1.50	14.00
7 to 8 feet.....	2.00	18.00
8 to 10 feet.....	2.50	25.00

Red Birch—A well-known tree with ragged bark, suitable for naturalistic planting. The bark has a tendency to peel off, appearing unlike most other trees. It is a good grower, long-lived, valuable and effective tree. Used for parks and other public plantings as well as for individual lawn or other private plantings.

	Each	Per 10
6 to 7 feet.....	\$1.50	\$12.50
7 to 8 feet.....	2.00	15.00
8 to 10 feet.....	2.50	25.00

Lombardy Poplar—This is a tall growing sort and remarkable for its columnar spiral-like growth. Breaks the monotony of the lower rounded sorts, and is used by all gardeners.

	Each	Per 10
4 to 6 feet.....	\$.50	\$ 4.50
6 to 8 feet.....	.75	6.00
8 to 10 feet.....	1.50	14.00
10 to 12 feet.....	2.00	20.00

Tulip Poplar—A healthy, fast growing tree, which bears fine large tulip-shaped flowers of a greenish-yellow, blotched with orange which almost covers the tree in May and followed by curiously-shaped cones. This is a very lasting sort. We have some on one of our nursery farms that old men say are at least a century old. They are still beautiful and bear lots of pretty flowers every spring.

	Each	Per 10
4 to 6 feet.....	\$.75	\$ 7.00
6 to 8 feet.....	1.25	12.00
8 to 10 feet.....	2.00	20.00
10 to 12 feet.....	2.50	25.00

Horse Chestnut (Rubra)—Red flowering, somewhat smaller than the old variety, with darker leaves and splendid flower spikes a little later in the season, but of a beautiful red color. Fine contrast to plant among other trees owing to its odd-looking foliage, flowers and splendid form. Perfectly hardy and popular but rare sort.

	Each	Per 10
3 to 4 feet.....	\$1.50	\$15.00
4 to 5 feet.....	2.00	20.00
5 to 6 feet.....	3.00	30.00

Japanese Flowering Cherry—The traveling world goes to Japan in Cherry blossoming time because, among all flowering trees, the Japanese Roseflowering Cherry takes the lead, possibly because of the popular appeal of the well advertised "Cherry Season" of Japan, where visitors go by the thousands every year.

These Roseflowering trees vary a good deal in form, and, therefore, can be adapted to various uses for decorating the garden. One type stands almost erect in vase form, with the effect of a narrow column of many branches, but during the blooming period, the top of the vase widens, forming a beautiful floral piece. Most of the sorts have wide-spreading branches. They are most all tinted with pink, with the exception of a few varieties blooming white and a few red and old rose, and some are fragrant. They are the pride of the Japanese, where

they begin blooming in March and while they are not extensively grown in the United States, they are becoming more in demand every year as people learn to know them.

Years ago Japan presented to the United States the wonderful collection of Flowering Cherry, which is the glory of the capital city. This collection was presented to the government during President Taft's administration by the city of Tokyo and planted along the River Drive where it is said it is visited by every resident of Washington during the blooming season. "Have you seen the Cherry blossoms?" is the universal question in Washington during the spring-time.

Many parks and small cities are planting them, and it is said where they are known, it is an easy matter to raise funds for the planting of such wonderful little trees.

The three miles of cherry trees which border the driveway and shoreline of the Potomac Park, influence the travel of the nation, thousands flock to Washington every spring. The fame of these flowering cherry trees is becoming a nation-wide attraction. They are easy to grow, and bloom freely while very young; they only need a well-drained soil, but it should be fertile, mulching is valuable for 3 or 4 years. Manure may be used sparingly, but should be mixed thoroughly, digging into the soil. They will stand the coldest weather of the New England states. They have proven quite hardy in the Carolinas, Georgia and Alabama, and are now being planted in Florida.

Supply limited, parties wanting these trees had best place their orders early.

	Each	Per 10
18 to 24-inch.....	\$2.50	\$25.00
24 to 30-inch.....	3.50	35.00
2½ to 3 feet.....	5.00	50.00

Amygdalus Persica flore-pleno (Double-flowering Peach)—A dwarf-growing tree which is particularly charming. The rosy-like flowers cover practically every twig and branch of the tree. The white is possibly the purest white seen in any flower. To see these wonderful little trees in full bloom it would appear that nothing more beautiful could possibly be found. They are a valuable addition to any collection.

	Each	Per 10
White, Pink and Red.....		
2 to 2½ feet.....	\$1.50	\$15.00
2½ to 3 feet.....	2.50	25.00

Japanese Blood-Leaved Maple (A. Palmatum)—Has star-shaped foliage of a bright red color, turning to a purplish-red color. A most peculiar and valuable ornamental tree that has no equal for lawn planting.

	Each	Per 10
12 to 18-inch.....	\$2.50	
18 to 24-inch.....	4.00	
24 to 30-inch.....	6.50	

White Flowering Dogwood (C. Florida)—This is a splendid little tree which blooms in the spring before the leaves appear. Has a distinct grayish-green foliage that flames to bright red in autumn, followed with scarlet berry clusters on the crimson winter twigs, making it one of the most beautiful trees at that season. It is rather a unique tree in form and horizontal arrangement of its branches.

	Each	Per 10
2 to 3 feet.....	\$1.25	\$12.00
3 to 4 feet.....	2.00	18.50

Red Flowering Dogwood (Cornus Florida Auba)—A new and rare variety which has proven very valuable for ornamental planting. Its beautiful red flowers create a most pleasing effect. Its new branches are of a pink showy color, making a stout, stocky little tree which lends a pretty appearance among other trees. This tree is a wonder to many visitors here who have never seen the red flowering Dogwood.

	Each	Per 10
2 to 3 feet.....	\$2.50	\$25.00
3 to 4 feet.....	3.50	35.00

Fruit Trees

Apples

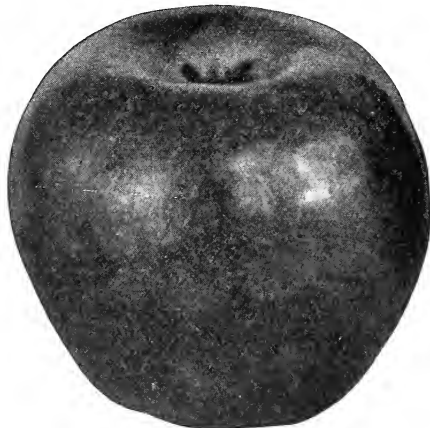
Parties desiring to plant commercial orchards will do well to correspond with us before placing their order. We can make special prices on most all varieties in quantity lots.

Price, 40c each, \$3.50 per 10 unless otherwise noted.

Red June—A well known and good variety, ripening the last of June.

Early Harvest—Medium size yellow apple; ripening about harvest time. Tender, delicious and of good quality.

Yellow Horse—Begins to ripen in July and continues until late in August. A good eating and cooking apple.



Winesap

Fall Pippin—Large, with creamy-white flesh, extra quality.

Red Limbertwig—Succeeds better in the mountains or hilly sections of the country, where it is a good bearer and one of the best keeping apples. In the cotton belt or lowlands it is a good bearer but does not keep well.

Baldwin—This is one of the best apples for commercial purposes and justly so, as the tree is a strong grower and produces heavy crops of large fruit of rounded form, deep red in color, flesh rich, crisp and juicy.

Gano—Similar to the Ben Davis but has all its good qualities in a higher degree. A deep coloring, runs more even in size and keeps fully as well. The tree is a vigorous, hardy and rapid grower, beginning to bear very young. Color bright red.

Grimes Golden—Originated in Virginia. Keeps well until last of January. It has a vigorous, upright spreading habit and is an annual bearer of fruit above medium size. Rich golden-yellow with flesh yellow, firm, crisp, aromatic and rich; of the best and most valuable winter sorts.

Rome Beauty—Fruit large, bright red with yellow background, flesh tender, juicy and of good quality. The large size and beautiful appearance of this apple renders it popular as an orchard variety.

Mammoth Black Twig—Many claim this valuable variety excels Winesap. It is a better grower, more hardy, the fruit larger, color a darker red and flesh firmer. Valuable keeping variety.

Stayman's Winesap—This variety is attracting much attention and is a profitable market sort, of large size, bright red color, very productive and of the best quality. The tree is a good grower, drooping in habit and adapted to all soil and situations. A good keeping variety.

Hollow Log—Originated in Rutherford county, North Carolina, being a seedling found near a hollow log, hence its name. This is a valuable variety and a strong grower. Makes an upright and well formed tree that, owing to its lateness of bloom, seldom fails to produce annually an abundant crop. Another strong point in favor of this variety is in its ripening period, beginning to ripen last of June and continuing through July and into August. It is almost a sure bearer of large fruit, deep yellow in color, tender, crisp, very juicy and with a most delicious aromatic spicy flavor. It has no superior as an eating and cooking apple. Wherever known, it is said to be the best apple in cultivation. We have only a limited number of these trees and have never been able to supply the demand. Parties desiring same had best place their orders early. We have sold these trees to many different sections of the country and we have never had a complaint from them. We believe they will succeed wherever other apples succeed and more generally so on account of their late blooming period. Do not fail to plant some Hollow Log. Price, \$1.00 each, 6 for \$5.00.

Peaches

Peach growing is becoming a most profitable industry in the sand hills and many other sections in North Carolina. The trees bear so young and thrive so generally over the entire country that it is little wonder so many people have engaged in the growing of them. Peaches cannot be expected to bear every season in all sections, but where one does not grow them for commercial purposes it usually pays an owner of even a small lot to plant a few peach trees as they can be planted close together and take up little room and may be expected to bear most every season. Even a few trees well cared for will give one lots of pleasure and fruit. If a tree is worth planting, it is worth taking care of afterwards. To avoid scale and fungus diseases, spray with Bordeaux mixture or Lime Sulphur Solution. The Entomologist of your state will be pleased to send

you bulletin on request, giving information and directions for spraying. Price, 3 to 5 feet, \$3.50 per 10.

Mayflower—The earliest peach. A cling of rich red color which makes it valuable for market and most salable on account of its ripening so early. Excellent for home too, as older people as well as children look forward to the ripening of early peaches. It is said to be one of the best bearers owing to its being the latest to bloom which makes it most free from frost and more certain to bear.

Greensboro—Flesh is very juicy, white and tender, good quality for early variety. Ripens about ten days after the Mayflower.

Red Bird Cling—One of the best early cling peaches. Medium size and valuable early cling.

Triumph—The earliest yellow flesh peach. Late bloomer and bears many times when others are killed by the frost. Ripens about the first of July.

Carmen—Large free-stone, creamy white with red cheek, flesh tender, white, tinted with red near the seed. Does well in many localities where many peaches fail. It belongs to the hardy North China group. It is like the Alberta, but ripens early in July.

Foster—Yellow meated, free-stone, sweet and juicy and excellent flavor. Fine for home use but not a good shipper. Ripens last of July.

Alberta—Everybody knows this variety and

hence it needs no description. Ripens about August first.

Chinese Cling—This is a well known variety, good for home or shipping. Ripens about the time or a little later than the Alberta.

Lemon Cling—Pale-yellow cling with dark red cheek about as large as Alberta. One of the best for eating and canning.

Indian or Blood Cling—Large, dark with deep red veins. Flesh red and very juicy. An old and valuable variety. No better cling grown.

Stintson's October Cling—Large and of fine quality, the best peach in cultivation, either for home or market.

Cherry Trees

There are few more desirable fruits than the cherry. They are being planted more and more each year and there is always a good demand for them. They make valuable ornamental trees on the lawn as well as being an early ripening fruit. They are strong, vigorous growers with large, glossy leaves that thrive in most any soil. There are not many poor cherries, at least the writer who has seen many varieties has seldom, if ever, found a poor one. No home or garden is complete without a few cherry trees. Price \$1.00 each.

May Duke—Large, dark red, juicy, rich and of superior quality.

Osthheim—Large, roundish, of dark red when fully ripe. Flesh tender, juicy, sub-acid and very good. Ripens early and over a long period.

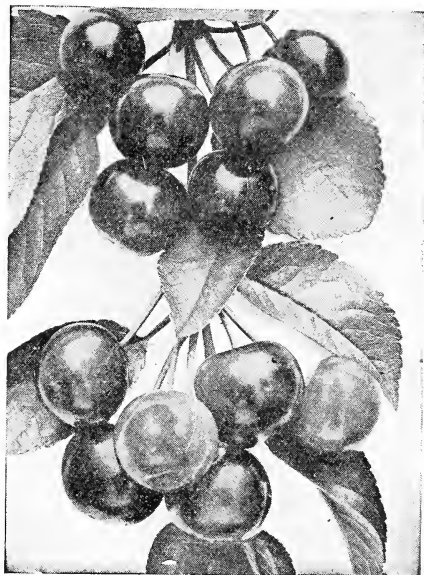
Yellow Spanish—Pale yellow with red cheek. Flesh firm, juicy and excellent, vigorous and very productive; one of the best light colored cherries yet introduced. Ripens in June.

Governor Wood—Large, rich, light yellow with red cheek, juicy and sweet.

Black Tartarin—Very large, purplish-black; very juicy, rich and of excellent flavor. The tree is a well-known and popular variety.

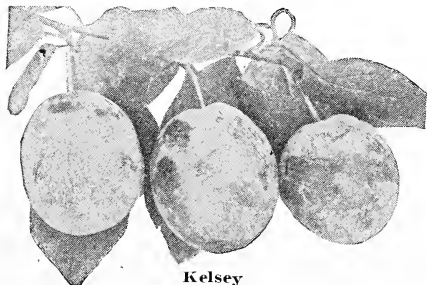
Large Montmorency—Large roundish, red; flesh tender and of good quality. Ten days later than Early Richmond. A most popular kind and one of the best for Western North Carolina.

Early Richmond—An old and well-known variety; ripens early.



Early Richmond

Japanese Plums



Kelsey

in almost any kind of soil. This is an excellent dessert fruit, of rich flavor, and unsurpassed for home use and profitable for market. The Japanese varieties are inclined to overbear and should be thinned when about one-third grown. They are extremely hardy and begin to bear while very young. Price, 75c each, \$7.00 per 10.

Abundance—Medium to large, bright red over yellow; flesh yellow, firm, juicy and sweet. Comes into bearing while quite young and yields abundantly.

Burbank—Medium to large, of orange yellow in color dotted with red; flesh is yellow, sweet, juicy and a good canning and market variety.

Kelsey—A vigorous and upright grower; very large and productive, being sometimes as large as an ordinary peach. Dark red, firm skin, flesh yellow, sweet, rich and of a very fine quality.

This is not only one of the most beautiful and delicious, but one of the most wholesome of all fruits that grow. Even invalids eat them, it is said, with positive benefit. They succeed

Pear Trees

When pear trees are heavily laden they should be thinned out when about one-third grown, else the fruit will be poor and the tree injured. The dwarf varieties are especially recommended, as they are good growers, coming into bearing very young, sometimes while yet in the nursery rows. Longer lived, of stronger growth and not so subject to blight. **Price, 75c each; \$6.50 per 10.**

Early Harvest—Medium size, greenish-yellow, sweet and juicy. July.

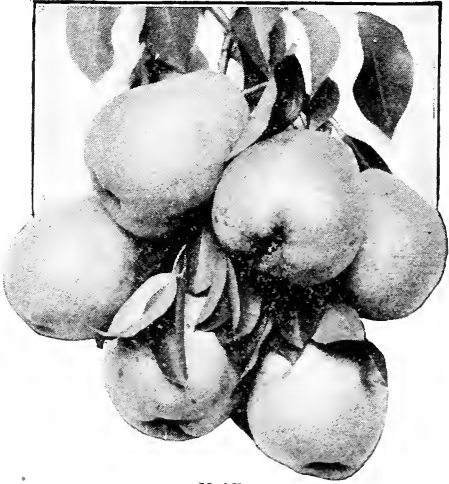
Bartlett—One of the most popular varieties. It is an excellent eating pear; flesh tender, juicy and good, having a rich and delicious flavor.

Keiffer—Large, golden yellow. Largely planted for commercial purposes, being an early and great yielder. The tree is inclined to break if a part of the fruit is not thinned out, which will not injure the crop or tree, and by all means should be done lest the tree should be damaged.

Seckel—The standard of excellence in pears, small but of highest flavor. This and the Bartlett are two of the best-known dwarf varieties.

Garber—A well-known variety and a good bearer.

Magnolia—A good bearer, large and valuable fruit. The fruit is nearly round in form and deep yellow in color, having rich, sweet, juicy and excellent flavor. Ripens last of September.



Keiffer

DWARF PEARS

(Grafted on Quince Roots)

These make beautiful little trees, and are many times planted on the lawn. They do not take up much room, make a beautiful form and are worthy of being planted as ornamental trees. Do not fail to include some dwarf pears with your order. We can supply them in varieties as follows. Seckel, Duchess d' Angoulême and Bartlett. **Price \$1.00 each.**

Nut Bearing Trees

Grow them for profit.

English Walnuts

The well-known commercial nut. Needs no description. Should be more generally planted.

	Each	Per 10
2 to 3 feet.....	\$1.00	\$7.50

Pecans

Of all the nuts grown in the world, none compare with the Pecan. Trees grow easily, are sure to bear good crops, live for generations, require no care after being well established, and the market for good nuts will never be glutted and they will always command a good price.

For home use, everyone should plant Pecan

trees. Besides producing an abundance of rich, nutritious, wholesome food, they are highly ornamental and become magnificent and lasting shade trees. They grow in almost any soil and in any location.

Stuart—Size large; long, pointed; shell thin; meats plump, full, separating easily; quality best; recommended by horticulturists, and the most popular sort for Southern planting. A good grower.

Van Deman Pecan—Large; oblong shell, moderately thin; cracks well; meats plump and full of good quality.

	Each	Per 10
2 to 3 feet.....	\$1.25	\$12.00
3 to 4 feet.....	1.50	15.00

Small Fruits

Grapes

Grapes are one of the most productive and hardy fruits that we have. They can be grown in small spaces and trained up the sides of buildings or along fences, occupying very little room. Make the soil mellow and plant vines about 6 feet apart.

A Wonderful Grape

Old English Grape—We secured our stock plants of this variety from our friend and horticultur-

ist, Joe DePriest. This grape has been in his immediate family for over one hundred years. In fact, his father and grandfather grew it before him, and why it was called by these old settlers "The Old English" he does not know, unless it was brought by them in coming over to this country. He has never seen or heard of but one other vine that was of the same variety. This was grown by an old settler who has long been dead, and the place has gone down many years ago and the vines from which we have secured our propagating plants are the only ones now known.

The vine is a strong grower, with large,

healthy and fine foliage. It is not very particular in its growth as to its location, as is shown by some of these bearing vines, which this old horticulturist has growing, not only on trellises and arbors, but some of them trained on growing trees, where the fruit ripens to perfection, even among the shady foliage. It is a most delicious variety. If it ripened among the general run of bunch grapes, it would stand out pre-eminently as one of the most valuable sorts, but yet another and a most valuable characteristic about it is that it does not ripen until the last of September and early October after all other bunch grapes are gone. In color, it is a light pink to red and ripens up splendidly. The bunches are well-shouldered, medium large and do not crowd on the bunches.

We have had inquiries from various northern and eastern states to know if this variety would succeed there and we certainly believe that it will; and for commercial purposes when the plants can be obtained in sufficient quantity, we believe it will prove the most valuable variety yet introduced. For home and family use, it certainly has not an equal in the entire list. Mr. DePriest says these grapes will hang on the vine until frost, and that they will keep for weeks in perfect condition after being picked. This with their late ripening period makes them a most profitable variety, being almost certain to bear every year, as we have known Mr. DePriest for nearly twenty years and never knew him to fail to have a crop of these grapes.

I do not see how an owner of even a small lot can afford not to plant at least a couple of these vines. Price \$1.50 each.

Agawan—Large, round, early, dark red or brown; large bunched berries, meaty and free from sour pulp; has tough skin and bees never attack it; in flavor it is sprightly, moderately sweet. Midseason.

Concord—The most popular and widely planted black grape. Very hardy and productive. Ripens about the middle of September. Because of its adaptability and low cost of production Concord is widely planted for both home and commercial use.

Niagara—Large, slightly oval; pale yellow with a white bloom; the quality is equal to Concord and is the standard white grape of the country. Bunches are large and compact. Vine vigorous, hardy and very productive.

Moore's Early—Very large, round, black with a blue bloom, quality very fine and is classed as better and sweeter than Concord. Extremely hardy and productive.

	Each	Per 10
Price, well rooted vines.....	\$.30	\$2.50

Lutie—Rich red, a good grape; succeeds better in the South; vigorous heavy bearer and always dependable.

Green Mountain—From the Green Mountains of Vermont. Bunches rather large, and shouldered. Berries medium, greenish white; thin skin, juicy with tender and sweet pulp.

	Each	Per 10
Price Lutie and Green Mountain..	\$.60	\$5.00

Scuppernon—Large, bronze-colored berry. Flesh sweet, pulpy and vinous. The most popular grape on the Southern market. Supply is seldom equal to the demand. Vines produce abundantly. Scuppernon wine is considered among the best.

	Each	Per 10
Price	\$.60	\$5.50

Brighton—Medium in size, red, flesh rich, sweet and of the best quality. Ripens earlier than Delaware. Vinous, vigorous and very hardy. Early.

Delaware—Berries rather small, round, skin thin, light red, flesh juicy without any hard pulp; sweet and spicy and delicious flavor.



Moore's Early

Vine moderately vigorous, hardy and productive. Mid-season.

	Each	Per 10
Brighton and Delaware well-rooted vines	\$.50	\$4.00

Blackberries

The Crop That Will Make You Money—Quick

Blackberries or dewberries make the best paying crops—five acres in berries will earn as much as 40 acres in corn or wheat, with less than one-eighth the upkeep or labor. Try out one-fourth, or better still, one acre; plant in rows or "hill fashion." Plant in rows 3 feet apart in your orchard. Make every foot of ground pay. Berries bring good prices and will go still higher.

Early Harvest—The first to ripen—a most productive early bearer. Fruit medium size, roundish-oblong. Flesh tender, juicy mild and of good quality. The very early variety.

Snyder—Extremely hardy, enormously productive, medium size, no hard, sour core. Easy to pick, fruit in clusters, mostly on top like raspberries.

Eldorado—Very vigorous and hardy enduring the winters of the Northwest without injury, and their yield is enormous. The berries are large, jet black, borne in clusters, and ripen well together; they are very sweet, melting and pleasing to the taste; have no hard core.

Rathbun—Berries very large; sweet, luscious; have no core and are firm enough to ship and handle well; canes make a strong erect growth, yielding fine crops.

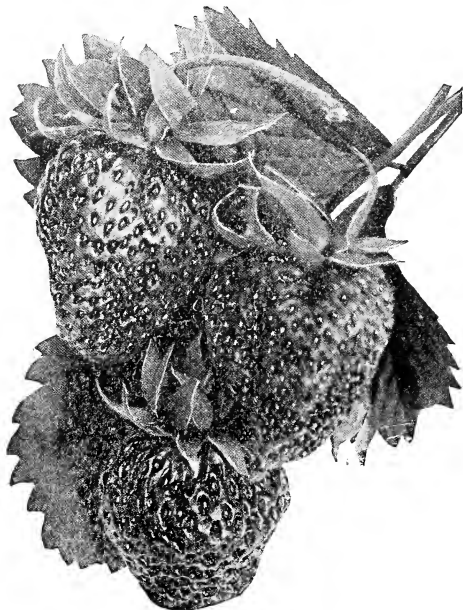
	Each	Per 10	Per 100
Price strong plants.....	\$.15	\$1.00	\$6.00

Dewberries

Plant in rows six feet apart, three feet distant in the rows, keep the soil mellow and clean.

Lucretia—The very best of the dewberry family. Berries are far larger and incomparably better than any blackberry; of unequalled excellence. The Lucretia Dewberry has received the highest praise from the best horticulturists in the country. Hardy, a great bearer, fruit large, black and glossy, without hard core and very delicious. Ripens early.

Price, strong plants Each Per 10 Per 100
 \$.15 \$1.00 \$5.00



Progressive Everbearing

Strawberries

Progressive Everbearing—Is without doubt the best everbearing strawberry plant in cultivation. The leading strawberry growers of the country agree upon this. It is the only one of the everbearing varieties that does well in the South. Though it is not a good shipping variety, but for home use and local market it is superior to any other sort. It is a good plant maker and will yield fruit the first year, that is truly wonderful. Berries of medium size, smooth and good color, a single plant often producing a hundred berries in one season. We believe it will produce more berries with less care than any other sort. No lover of strawberries should fail to plant at least a few rows of this variety.

Price Per 100 Per 500 Per 1000
 \$1.50 \$6.00 \$10.00

By All Means plant acclimated varieties that are best adapted for our climate. We list the kinds that do best in the South and East. You know the country is flooded with advertisements that list many kinds of berries that are not adapted to this part of the country.

Excelsior—Earliest berry in cultivation. Medium size, flesh firm, rich and red, rather tart,

but is an unequalled shipper. Largely raised in the South for the Northern markets. Plants very productive. Perfect. Extra early.

Price, common sorts, Per 12 Per 100 Per 1000
 strong plants \$.50 \$1.25 \$5.00

Improved Lady Thompson—This variety has been grown world-wide in great variety of soils, and it seems to succeed quite well. It is early, very large, and quite productive.

Price \$.50 \$1.25 \$6.00

Raspberries

Raspberries are one of the most delicious and popular fruits grown, are easily cultivated and require little care. Cut out old and weak roots each year. Plant in good soil in hills about 4 feet apart. With a little care and attention they will produce large crops of berries. In large plantings it is advisable to plant them thickly the same as hedge row.

Cumberland—The largest of all the blackcaps; coal black berries; very firm and quality of the very best; excellent shipper. Bush a strong grower, stocky canes and unusually prolific. Mid-season.

Price, strong plants Each Per 10 Per 100
 \$.20 \$1.00 \$5.00

St. Regis—Earliest of all, wonderfully prolific; it equals most blackcap varieties; gives a crop of fruit all summer and autumn, fruiting on old canes in generous quantities until late in August, when berries begin to ripen on young canes. Berries bright crimson, of large size and surpassing quality; canes, stocky, strong growth with abundance of dark green, leathery leaves. It succeeds upon all soils, whether light and sandy or cold, heavy clay, and canes are absolutely hardy.

Price, strong plants Each Per 10 Per 100
 \$.15 \$1.00 \$6.00

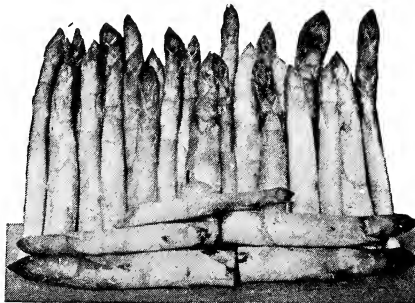
Garden Roots

Asparagus Roots should be planted in a well-prepared bed, the roots covered about 4 to 5 inches and the soil made very rich by mulching each season.

Per 50 Per 100
 2-year strong roots \$.75 \$2.00

You should have a row of Rhubarb or Pie Plant in your garden; 10 to 20 plants are enough for any family, and if the roots are well fed and continuously pruned or re-set, they will yield for years. Easy to plant, cultivating consists merely in keeping the weeds down and preserving the mulch until the leaves cover the ground. The soil should be rich and deep and for an early start it should be warm. Prepare the bed or hill for each plant to a depth of two feet if possible, working in much compost or well-rotted manure.

Myatt's Linnaeus, Each Per 10
 2-year roots \$.25 \$2.00



Conover's Colossal

Hardy Climbing Vines

Probably there is no element of decorative planting that is more essential than the climbing vine families. They produce the desired effect and mass backgrounds of green so restful and pleasing to the human eye while occupying the minimum of space, and upon brick or stone houses a few of the Ivy family is especially desirable to break the monotony of the mass effects of black walls.

AMPELOPSIS

American Ivy or Virginia Creeper—The well-known native vine with five parted leaves that change to rich crimson in autumn, berries are a blue-black. Very rapid grower and entirely hardy. One of the finest for covering walls, verandas, trunks of trees.

	Each	Per 10
Price	\$.60	\$5.00

Engelmanni (Engelmann Ivy)—Shorter jointed than *Quinquefolia*. A good climber, grows 6 to 10 feet in season.

Veitchi (Boston Ivy)—Of Japanese origin, entirely hardy, with foliage turning brilliant red in autumn. It clings tightly to walls, and is unsurpassed as a basket or vase plant.

	Each	Per 10
Strong Plants	\$.75	\$6.50

ARISTOLOCHIA, Dutchman's Pipe

A. Sipho—A magnificent vine of climbing habit, with beautiful foliage, 8 to 10 inches in diameter and curious-shaped, yellowish-brown flowers.

	Each	Per 10
Strong plants	\$.75	\$6.50

Hall's Japan Honeysuckle (*Lonicera Halliana*)—Pure white and creamy-yellow, very fragrant flowers that bloom the entire season. Almost evergreen. Besides its ordinary use as a climber, it is valuable for covering banks, bare places, etc., where grass will not grow.

	Each	Per 10
2-year strong	\$.50	\$4.00
1-year strong30	2.50

BIGNONIA—Trumpet Vine

B. Radicans (American Climbing Trumpet Vine)—A splendid hardy climbing plant with large trumpet-shaped scarlet flowers.

	Each	Per 10
Strong 2-year old plants.....	\$.60	\$5.00

Clematis

A beautiful class of hardy climbers, excellent for pillars or trellises. They delight in a rich soil and sunny situations and are perfectly hardy.

C. Paniculata—A vine of very rapid growth, quickly covering trellises and arbors with handsome glossy-green foliage. The flowers are of medium size, pure white, borne in immense sheets and of a most delicious and penetrating fragrance.

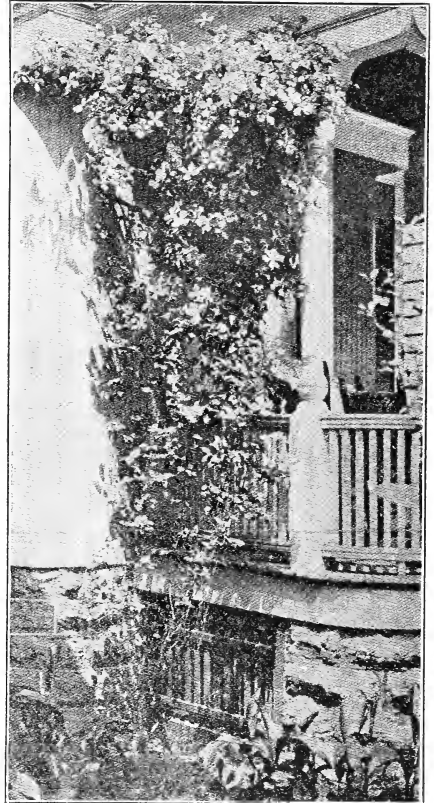
	Each	Per 10
Strong 2-year old plants.....	\$.50	\$4.00

Bush Honeysuckle

Lonicera Morrowi—A most valuable shrub for landscape work. Has white flowers in early season. Bears profusely bright crimson berries in June, July and August. Growth is upright, reaching a height of 4 to 5 feet. Its brilliant berries, and compact growth has given it a prominent place among ornamental plantings.

Lonicera Fragrantissima—Valuable on account of its pinkish-white flowers which appear in February. The flowers are exceedingly fragrant. The leaves are of dark green, and remain throughout the year. Splendid for mixing in hedges or borders.

	Each	Per 10
2-year, strong	\$.50	\$4.00
1-year, strong30	2.50



Clematis

Wistaria

The *Wistaria* is one of the most decorative of vines, and for porch decoration without too much shade it has no superior. The long twining branches bear great sprays of foliage, while its charming flowers sway with every passing breeze.

W. Sinensis (Chinese)—Flowers in clusters, pale blue, sometimes gives a second crop of flowers in the fall.

	Each	Per 10
Strong 2-year old plants.....	\$.50	\$4.00

W. Sinensis Alba—Of similar habit to *Chinensis*, with pure white flowers.

	Each	Per 10
Strong 2-year old plants.....	\$.50	\$4.00

Ornamental Ferns

In winter every home needs a touch of living green inside. Hallways can be made exceedingly attractive by the addition of a few ornamental ferns. The dining room and living-room also will immediately assume a more inviting and cozy look when a few of these graceful lovely plants are used. Order a dozen ferns now and grow them yourself for Christmas gifts.

Wilsonii—Has peculiar shaped foliage. A good healthy grower and one of the finest of all dish ferns.

Whitmanii—Rather dwarf in growth but very graceful, compact and feathery. Each frond has a double row of perfect little fronds set at right angles to the mid-rib.

Boston—A rapid-growing, graceful house fern, and many people prefer this to any other variety. It thrives in any ordinary living-room and specimen plants can be grown with fronds 5 to 6 feet in length. The sword-like fronds are produced in bewildering masses, arching, curving and strikingly beautiful. On account of its large growth the Boston Fern is particularly useful for hall decoration, where it can be placed on a stand and left undisturbed.

Roosevelt—In general characteristic it resembles the world-famous Boston Fern, but it is su-

perior to it for two reasons. It produces many more fronds than the Boston making a bushier and handsomer plant. Then the pinnae are beautifully undulated, giving the Roosevelt a pronounced wavy effect, that is seen in no other fern.

Asparagus Plumosa—Leaves bright green, arched as finely woven as the finest silk mesh. Their lasting quality when cut is remarkable, retaining freshness for weeks, hence they rank as the most valuable plant we have for this purpose. They are also fine for hanging baskets and jardinières.

Asparagus Sprengerii—A desirable species, useful as a pot plant or baskets, fronds frequently four feet long, a rich shade of green retaining their freshness for weeks after cutting. A fine house plant, as it withstands dry atmosphere.

	Each	Per 10
Small plants	\$.25	\$2.25
Medium size50	4.00
Large	1.00	

Wanamaker—Has long narrow graceful drooping fronds and is very compact, but does not decay in the center. A durable house fern, rapid grower, making an abundance of fronds. Very distinct from other ferns.

	Each	
Small plants	\$.25	
Larger plants50	

Evergreen Vines

In most varieties of vines we can supply either field-grown or pot plants. If it is desired that these plants should be moved during the summer months, it is best to get pot grown plants. These cost a little more but can be successfully moved any season of the year. Would be glad to quote on pot-grown plants on request. The prices quoted are on field grown plants for shipment while dormant from September to May.

English Ivy (Hedera Helix)—An old and popular evergreen vine. It is excellent for covering walls, tree trunks or unsightly objects. Grows in almost any soil, but succeeds best in rich soil, and does splendidly in shaded positions. Sometimes it is hard to get these vines to cling to the walls, in which case plant Boston Ivy among them and it will quickly cover any wall and at the same time support the English Ivy and keep the walls cool and green.

Do not worry about the Boston Ivy interfering with the English Ivy because after the English Ivy is well started it will quickly kill out the Boston Ivy, when it once covers the wall.

It is a most popular vine for covering cotton mills or other manufacturing establishments, as well as brick or rock walls of homes, trellises or other objects where continuous green is desired.

	Each	Per 10	Per 100
2-year plants, medium.....	\$.30	\$2.50	\$25.00
3-year, strong.....	.50	4.00	40.00

Euonymus Radicans—A fine little evergreen vine with small green foliage. Fine for rock or ground covering, rough walls, tree trunks or other objects. Clings to walls like Ivy.

Euonymus Radicans (Variegated)—Like Euonymus Radicans with the exception of its beautiful variegated foliage which is about half-green and half-yellow. Fine for vases, baskets and borders.

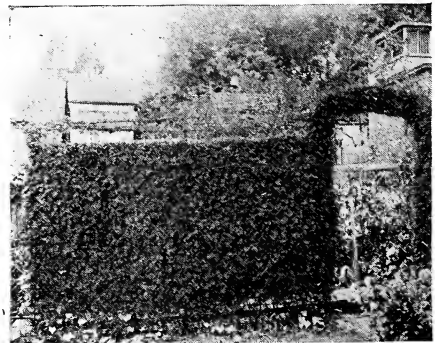
	Each	Per 10
Price	\$.50	\$4.00

Vine Minor (Periwinkle or Blue Myrtle)—Has deep glossy evergreen leaves, with blue flowers. Fine for ground covering, or mounds.

	Each	Per 10	Per 100
Price, 2-year bushy plants	\$.35	\$3.00	\$25.00

Vine Variegated—A trailing plant with glossy-green leaves, margined with creamy-white. Flowers blue. Used for baskets, vases or hanging over window or porch boxes.

	Each	Per 10	Per 100
2-year plants	\$.35	\$3.00	\$30.00



BEAUTIFYING YOUR HOME GROUNDS PAYS BIG DIVIDENDS

Your new house may be all that you can ask, substantial and costly even to the millionaire's liking, but the attractiveness lies in its surroundings, no home being complete until beautified, which enhances the value so quickly and brings that charm and fascination all its own. Don't wait. Write our landscape department for information now.

"Many a man practical and successful in his own business will give his order to the lowest bidder among nurserymen and waste years looking at sickly, struggling or dying trees, shrubs and perennials about his home, rather than invest a little more money, and get satisfaction and joy from the start."

Why wait years to secure effect, when you can buy from this Catalog large evergreens and ornamentals that bring beauty now?

Roses

The very name of roses carries with it the suggestion of the greatest perfection and beauty of the world of vegetation. No arrangement is satisfactory that neglects them, in fact they are indispensable. The stock we offer is all field-grown, acclimated to the outdoor life and will make much quicker and more hardy growth than the greenhouse plants offered by rose specialists.

Hardy Everblooming Varieties

Carolina Testout—Clear rose-pink. Flowers large, well formed, full with petals of good substance. Freer in growth and bloom than the Killarney.

	Each	Per 10
2-year, strong	\$.60	\$5.50

The everblooming roses are especially desirable for their profuse and continuous bloom, fragrance of their bloom, and the delicate beauty of their buds.

Killarney Pink—One of the most beautiful roses grown, strong, vigorous and perfectly hardy. Flowers are very large, buds long and pointed. Color an exquisite shade of deep seashell-pink.

Killarney White—An offspring of the pink with all the exquisite beauty of the parent in size and shape.

Killarney Brilliant—A very fine shining red rose. Has beautifully-formed buds, as the other Killarney. In nature of bloom, growth and hardiness it is the same. Beautiful red rose.

Richmond—This is said to be the best red variety yet produced. Strong grower. Color deep red, long buds, elegant dark foliage.

	Each	Per 10
2-year strong plants	\$.60	\$5.50

Ophelia—Brilliant salmon-flesh shaded with rose on outer edge of petals with a heart of glowing peach-pink and orange-yellow bleedings. Fragrant as Richmond. Perfect flowers on long stiff stems. Free from mildew.

Sunburst—This magnificent, grand, yellow rose ranks in value and grandeur with the American Beauty. Pointed buds, color, orange-copper or golden and orange-yellow, extremely brilliant in effect. This is the finest yellow rose in cultivation and pleases everyone who sees it. Many grow it in preference to White American Beauty and other leading roses. It puts all the yellows to sleep when it comes to bedding in the garden.

	Each	Per 10
2-year	\$.75	\$ 7.00
3-year, strong plants	1.25	12.00

We also have the following well-known varieties in 2-year old sizes: Red American Beauty, Francis Scott Key, Lady Hillingdon, Columbia, Kaiserin.

	Each	Per 10
Price	\$.60	\$6.00

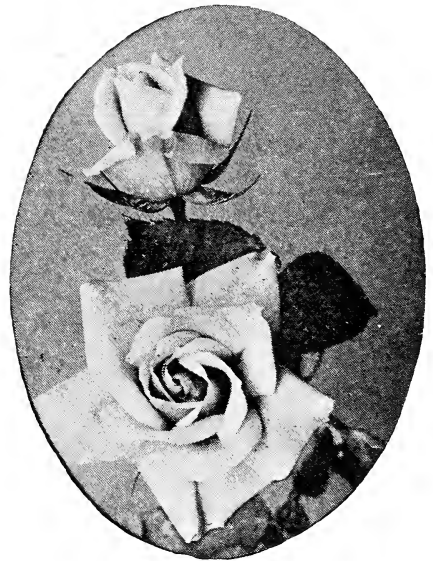
Mrs. Chas. Russell—A fine new rose of American origin, considered equal to and we believe better than the American Beauty. Has strong large buds, produced on long stiff stems. It is crowned with a bloom of a beautiful shade of rosy-pink. Blooms large, double with full and magnificent formation.

	Each	Per 10
2-year	\$.75	\$ 7.00
3-year strong plants	1.25	12.00

Los Angeles—We consider ourselves very fortunate in having been able to secure a num-

ber of this sensational new rose. It is described by various rose growers as the finest all-round rose ever introduced. The stems are long and stout, and in growth resembles the American Beauty. Its very large and attractive flowers, freedom and continuous blooms, make it a most remarkable sort. It is described as shining with translucent gold at the base of petals, but its beautiful flame-pink color underneath the petals with its distinctly different coloring on the face of the petals from cream to a taint streak of yellow with a slight gold-like or coppery coloring at the base of the petals, seems to us to be a better description of its beautiful flowers which appear on the plants. A most attractive rose and should be included in every collection.

	Each
Price	\$1.50



Ophelia Rose

White American Beauty—Snow-white flowers four to five inches across, deliciously fragrant. This magnificent rose has taken first prize at all the great flower shows of Europe. Makes splendid buds and immense flowers, perfectly double and delightfully fragrant; large thick petals, very durable and handsome. Has bright, shining, green leaves, elegantly veined, vigorous, healthy grower, entirely hardy and a constant and abundant bloomer. Recommended as the most beautiful and satisfactory snow-white hardy perpetual blooming rose.

	Each	Per 10
Price, 2-year strong plants.....	\$1.00	\$8.00

Climbing Roses

The demand for climbing roses has always been constant. The rose-covered cottage still carries the charms of romance and sentiment that it has done for hundreds of years. We have specialized on all these beautiful climbers, and here we offer the best.

Pink Dorothy Perkins—A splendid new climbing rose. In foliage and habit of growth it is remarkably like *Crimson Rambler*. The flowers are double, of good size, and borne in clusters. The petals are very prettily rolled back and crinkled, the buds remarkably handsome, color a clear shell-pink and holds a long time without fading.

Red Dorothy Perkins—It is a good deal to claim for a rose, but we are within bounds when we describe *Excelsa* as a brilliant *Crimson Rambler*, flowers on glossy varnished *Wichuraiana* foliage. The flowers are very double, produced in large trusses of thirty to forty and almost every eye on a shoot produces clusters of flowers. The color is intense crimson maroon, the tips of the petals tinged with scarlet. The finest of all *Crimson Ramblers*.

White Dorothy Perkins—This beautiful rose is the counterpart of the well-known *Dorothy Perkins*, except in the color, which is pure white, but it is quite as hardy and vigorous. It has now become a universal favorite.

Flower of Fairchild (Everblooming Crimson Rambler)—Similar to the *Crimson Rambler*, except that it blooms from early spring until frost. A rampant climber, but not a persistent bloomer.

Climbing American Beauty—The great and popular *American Beauty* Rose in a real climbing form. It has all the characteristics of its relative, including form and fragrance.

Lady Gay—Flowers of a delicate cherry-pink color, which fades to a soft white. It has deep green foliage, a vigorous grower and perfectly hardy. Will cover a large porch or trellis in an incredibly short time. One of the most charming of all climbers.

	Each	Per 10
1-year plants	\$.35	\$ 3.00
2-year plants65	6.00
3-year plants, heavy.....	1.00	10.00

Silver Moon (Hardy Climber)—Blooms very large, three or four inches in diameter, pure white in color and of good substance, beautifully cupped, forming a clematis-like flower.

	Each	Per 10
1-year old	\$.35	\$ 3.00
2-year old75	7.00
3-year old	1.25	12.00

Dr. W. Van Fleet—Flowers, when open, run four inches and over in diameter. The center is built high, petals beautifully undulated and cupped. The color is a remarkable delicate shade of flesh-pink on the outer surface, deep-

ening to rosy-flesh in the center. The flowers are full double, of delicate perfume, buds pointed. A strong and rapid grower.

	Each	Per 10
1-year	\$.35	\$ 3.00
2-year75	7.00
3-year	1.25	12.00

American Pillar—Large single flowers of rich rosy-pink, approaching brilliant carmine, golden-yellow stamens and profuse bloomer. Originated by the U. S. Government Department of Plant introduction.

Thousand Beauties—Flowers when opening are a delicate shade of pink changing to rose-carmine. It gets its name from its many flowers and the variation in coloring. A beautiful rose.

	Each	Per 10
2-year strong runners	\$.75	\$ 7.00
Strong heavy plants.....	1.00	8.50

ROSA RUGOSA

This class of roses is especially adapted to hedge or for shrubbery collections. The splendid foliage, flowers and later the seed pods, makes this class one that should be more largely used in landscape work.

Rugosa Alba—Single, pure white.

Rugosa Alba—Single, deep rosy carmine.

	Each	Per 10
Price	\$.40	\$ 3.00

Climbing Clotilde Soupert—Color white, shading in center to silvery-rose. In bloom all the time from May to frost, of healthy, vigorous habit, not subject to disease or insects. One of the most satisfactory, hardy ever-blooming climbers.

Climbing White Cochet—From Australia. Has awakened a lively interest among rose growers. Flowers are large, double and white, like the bush *White Cochet* Rose.

Golden Rambler—One of the prettiest ramblers, has golden yellow flowers. Very popular variety.

	Each	Per 10
2-year strong runners.....	\$.75	\$ 7.00

Hugonis—This is a rare new rose from China, and is as hardy as an oak. The color is an intense canary-yellow, very bright and attractive, and the plant is noteworthy all the growing season by reason of its dainty foliage. When in bloom the entire plant is covered with its bright yellow blossoms and buds. It is in great demand, there being nothing like enough to supply the demand. We paid \$1.50 each for our stock plants which were only little rooted cuttings. We quote you while they last.

	Each	Per 10
1-year old plants.....	\$1.00	\$10.00
2-year old strong plants.....	1.50	14.00

There is Always a Place for More Climbing Roses.

"Aunt Harriet" Rose—This is the rose the *Farm Journal* advertised and sold so many of a year or two ago. It is said that it continues to grow in popularity and that those who had one bush as a trial now want more, that neighbors and friends who saw it or read about it are anxious to secure it. It is said that the demand has always been greater than the supply. It is a climbing rose being a cross between *Appoline* and *Wichuraiana*, retaining the splendid characteristic qualities of both the *Appoline* and *Wichuraiana*, with brilliant scarlet petals, pure white center with golden anthers. Has clean shining foliage which is not subject to mildew. It is a good runner, will cover porch, post, stump, rock pile or mound, will

arch over the gate or arbor the front door, a very distinct and climbing variety.

	Each	Per 10
Price, 1 or 2-year plants.....	\$.50	\$ 4.50

Evergreen Gem—A new variety of running rose which has beautiful green foliage that it retains throughout the winter. It is perfectly hardy, being free from insects and disease. Has great clusters of beautiful red blooms of from thirty to fifty in a bunch. A beautiful bouquet or a pot of these roses may be had by cutting one stem containing a cluster of its beautiful blooms.

	Each	Per 10
Price	\$.75	\$ 7.00

Sweet Peas

To succeed best they should be sown in good soil, among which should be thoroughly mixed well-rooted stable manure, digging to a depth of about a foot, will give splendid results. They bloom earlier and seem to succeed a little better if sown in November or early winter. Any time so the ground is not freezing until the spring planting season is over, they will then bloom in the summer. They commence to bloom earlier, depending of course somewhat on the time they are sown, and if the flowers are well picked, they will continue in bloom all summer. Fine mixture Spencer variety. Large size package, 25c.

Peonies

There is something of magnificence about these aristocrats of flowers, as they produce an effect that one will long remember. Great gorgeous blooms, daintily dyed with the most exquisite shades from pure whites to the deepest reds, with almost every tint being shown among them. They are perfectly hardy. Requiring no protection in the severest weather, and will thrive in all kinds of soil, succeeding better in a deep mellow soil, which, if not already, can easily be made so when planting. For social functions, they are exceedingly effective and will last longer than most other

flowers after being cut. They thrive everywhere in open sun or light shade, except where water is accustomed to stand.

Andre Laurie—Big, full flowers, anemone shaped, violaceous, red, late. Owing to its good keeping qualities, its fine coloring and its fragrance, it is one of the standard cut flower varieties.

Humei (Anderson)—Immense bloom, carmine-pink, very late.

Sarah Bernhardt—Usually large, perfectly double rose-formed flowers in clusters, color of apple blossom, fragrant.

	Each	Per 10
Price 2 to 3 eyes.....	\$.75	\$7.00

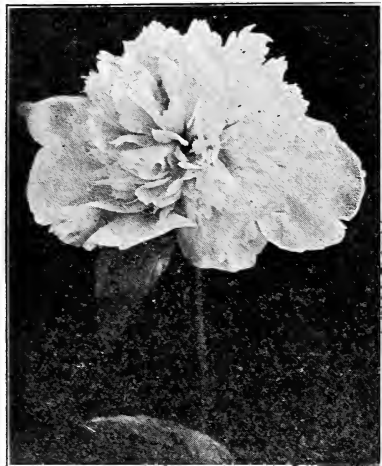
Festiva Maxima—Generally considered the finest white Peony grown. Though an old variety, it has never been surpassed, and the true variety is always scarce. Color snow white, center petals touched purplish carmine, enormous, full double bloom, very broad petals, handsome foliage.

Grover Cleveland—Large, double, brilliant crimson, from mid-season to late variety. Is a good keeper, fine for cut flowers and one of the best sorts.

Theodore Roosevelt—Semi-rose type; mid-season. A variety purchased in England under number (1) and named in Holland for our ex-president. It is a deep, rich, brilliant red in color, different from any red we know and a grand peony.

Mons. Jules Elie—Very large and full globular flower, finest glossy fresh pink, deepening at the base of the petals, reflex silvery pink, broad overlapping petals, strong, vigorous grower and free bloomer, probably the finest and most perfectly formed pink Peony in existence.

	Each	Per 10
Price, 2 to 3 eyes	\$1.25	\$10.00



Peony

Bulbous Plants

CANNAS

Of quick growth and tropical appearance. Throughout the summer and until they are killed by the frost they present a mass of gorgeous bloom. They will grow in any soil, but will respond quickly to liberal treatment. In groups or for background for other plants they present a brilliant display. We offer large bulbs from which may be had continuous clusters of blooms for the first season. They may be left in the ground south of Richmond, Va., and they seldom freeze.

Florence Vaughan—Flowers of the most brilliant golden-yellow, dotted with brightest scarlet.

Italia—Red flowers with yellow border with heavy, healthy foliage.

Chas. Henderson—4 feet. Green foliage and crimson flowers.

Burbank—3 to 4 feet. Green foliage. Canary-yellow flowers.

	Each	Per 10
Price, dormant roots	\$.20	\$1.50

America—Bright lemon yellow with red spots.

King Humbert—Orange, scarlet-striped crimson. Foliage bronze, Brandywine and Wyoming.

	Each	Per 10
Price, dormant roots	\$.15	\$1.50

	Per 10	Per 100
Various other sorts	\$1.50	\$8.00

CHRYSANTHEMUMS

Unaka—Strong grower with long stout stems, good foliage. Fine yellow incurved bloom from early buds. Color lavender-pink.

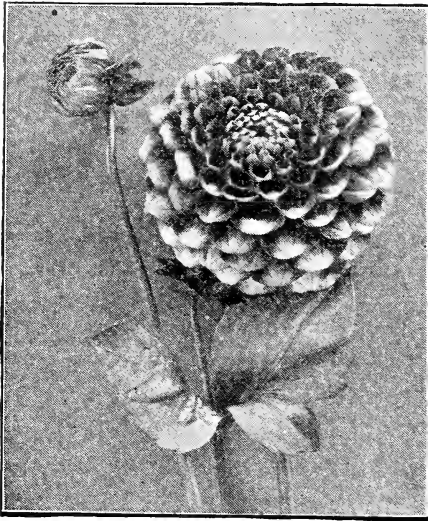
Mensa—Finest single white for cut flowers. A giant white of heavy substance and strong texture.

Mrs. Buckingham—The queen of singles, big flat flower with petals of wonderful texture. The loveliest shade of soft rose pink, very lasting both on and off the plant.

White Chieftain—Pure white sport of the variety Chieftain, duplicate of the parent in all respects save color, which is a pure white. One of the best varieties in cultivation.

Golden Wedding—A grand yellow Chrysanthemum maturing in October. It is claimed to be the finest yellow Chrysanthemum in cultivation. Fine incurved form and fully double. 4 to 6 inches in diameter, good stem and foliage.

	Each	Per 10
Price	\$.25	\$2.00



Dahlias

DAHLIAS

Mina Burtle—Originated by Mr. Burtle, a Dahlia grower of California. It is claimed that this variety is the best yet introduced. Produces flowers of gigantic size and remarkably beautiful. Color a glowing and most brilliant scarlet. Flowers are of perfect decorative type, and are borne on long stems well above the foliage.

	Each	Per 10
Price	\$.50	\$4.00

Souv. de Doazon—This is a good comparison to the Sunflower. It is the largest Dahlia in existence. The color is a pleasant shade of orange-red. Flowers are full to the center and often measure 9 inches and over in diameter. Has stout stems of upright type. It should be in every garden.

	Each	Per 10
Price	\$.50	\$4.00

Mme. Henri Cayeux—A reliable variety, flowers are of the largest size with long narrow florets, forming a bloom of magnificent form. Color is a beautiful rich pink, daintily-tipped white.

	Each	Per 10
Price	\$.30	\$4.00

Stern—A bright primrose-yellow. Said to be superior to the Golden West, which we have grown seven to eight inches in diameter. Flowers large, long and pointed. One of the most satisfactory varieties.

	Each	Per 10
Price	\$.75	\$6.00

Winsome—Pure, cream-white, better than White Swan which is claimed to be one of the best white Dahlias.

	Each	Per 10
Price	\$.35	\$3.00

HYACINTHS

Hyacinths are among the most popular and satisfactory hardy flower bulbs. They succeed with every one and may be had in flower throughout the winter, grown either in pots of soil fibre or glasses of water. Very popular for bedding.

Can mail promptly after the last of September all listed bulbs. All separate colors, Dark Blue, Pink, Red, White.

	Each	Per 10
Price	\$.20	\$1.75

GLADIOLI

A search of the floral kingdom, be it ever so painstaking and complete, will discover no flower to match the Gladiolus in ease of culture or another which shows so great a diversity of color in endless combination and variety. It is matchless as a cut flower. The great advancement recently effected in the size and colors of the blossoms justly entitle the Gladiolus to the position it now holds, aristocrat of the border.

The amateur gardener appreciates its sure blooming qualities, the stored up nourishment in the bulb making certain its vigorous growth. Seldom attacked by insects or disease, it blooms under conditions which would discourage any less hardy bulb plant.

We supply only, all color mixture, which includes every imaginable color, in big large bulbs that will bloom freely the first season.

	Each	Per 10
Price, dormant bulbs.....	\$.15	\$.65 \$5.00

TULIPS

Single or double, per 10.....	\$.75
-------------------------------	--------



Tulips



Narcissus

NARCISSI

Narcissi are fast coming to the front. They are easily grown and are unexcelled for beauty, fragrance, hardiness and value when cut for decorative purposes. Narcissi are perfectly hardy; they do well planted in any location and increase in size and flower year after year. For outdoor culture plant bulbs in October, November, or December, 5 to 6 inches apart, according to size of bulbs. Never use fertilizer.

	Each	Per 10
Strong bulbs	\$.08	\$.75

PAPER WHITE GRANDIFLORA

Flowers pure snow-white and pure yellow, desirable for their beauty and delicious odor; forces admirably and flowers freely in dense clusters; will come into bloom as early as December. For indoor planting only. Paper Whites may also be grown in fibre or sand and water like Chinese Sacred Lilies.

	Each	Per 10
Strong plants	\$.07	\$.60

Miscellaneous Hardy Perennials

These are so easily grown that almost without instructions a flower lover would give them proper care. Good garden soil well spaded to a depth of one or two feet, enriched with well-decayed manure or bone meal, light stirring of the soil during the summer and a winter mulch.

Prices quoted are for good, strong, outdoor plants, not the tiny plants offered in cheap collections by parcel post.

DELPHINIUM

Hardy Larkspur—These free-flowering plants can be depended upon for the necessary touch of blue in the hardy garden, producing tall spikes of dainty, spurred flowers in June and at intervals till frost if cut as they fade. Phlox and Larkspur make an excellent combination as they bloom alternately. Of easy culture and one of the most satisfactory plants in the herbaceous garden, and should be planted extensively even in the smallest garden.

	Each	Per 10
Large Flowering	\$.30	\$2.50

YUCCA—Adam's Needle

(Filamentosa)—Among hardy ornamental foliage and flowering plants this can be classed at the head of the list. Its broad sword like foliage and tall branched spikes of large, fragrant, drooping, creamy-white flowers during June and July make it an effective plant for all positions, easy to grow and with little care.

	Each	Per 10
Strong plants	\$.25	\$2.00

TRITOMA

Pfizerii (Ever-blooming)—The best variety. The flower spikes, which are produced with considerably more freedom than the old variety, grow as high as three feet, with blooms 6 to 10 inches long, which are of a rich orange-scarlet, shading to a salmon-rose on the edge.

	Each	Per 10
Strong plants	\$.25	\$2.00

SWEET WILLIAM

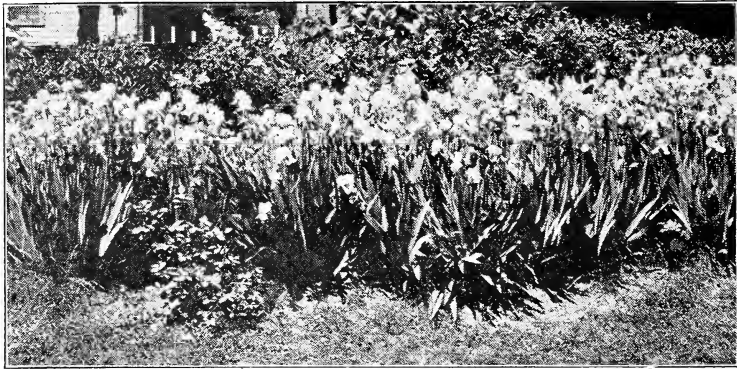
Sweet William (Dianthus Barbatus)—A well-known, attractive, free-flowering hardy perennial, producing in mid-summer a splendid effect in beds and borders with their rich and varied flowers.

	Each	Per 10
Strong plants	\$.25	\$2.00

HOLLYHOCKS

Hollyhocks—Few hardy plants combine as many good qualities as the Hollyhocks. For planting in rows or groups on the lawn or for interspersing among shrubbery they are valuable. The flowers form perfect rosettes of the most lovely shades of yellow, crimson, rose, pink, orange, white, etc. They require a rich, deep soil and will repay in quality and elegance of bloom any extra care.

	Each	Per 10
2-year strong plants	\$.30	\$2.50



Hedge of Iris

GERMAN IRISES

German Irises (*Fleur-de-lis*)—German Irises succeed in partial shade, but produce their best in full sun. They are not particular as to soil, will grow almost anywhere, but do best in well drained rich loam or garden soil, succeeding in quite dry locations. The beauty of their form and texture, shimmering in the sun with their delicacy and wide range of colors, has given them the name "Orchid of the Garden." Colors white, pink, blue and yellow.

	Each	Per 10
Strong bulbs	\$.25	\$2.00

MALLOW MARVELS

Mallow Marvels—In brilliancy of color and profusion of bloom they surpass all other summer blooming perennials. They bloom during the hot, dry weather better than almost any other flower, making bushy plants 4 to 6 feet high in one season. In winter cut off the old stalks to within 4 to 6 inches of the ground and they will come up again in the spring. We have found that a moist soil of average fertility with good cultivation gives better flowers than very rich soil, which sometimes causes so much top growth. Colors red, pink, and white.

	Each	Per 10
2-year strong plants	\$.30	\$2.50

CARNATIONS

Carnations—This beautiful old hardy variety of perennial Pink is coming back again. They are most fragrant, beautiful in color, continuous bloomers and are greatly admired by all. Exceedingly showy and fine for cut flowers. Flow-

ers of large size and very double. Mixed or in colors.

Price	Each	Per 10
	\$.25	\$2.00

SHASTA DAISIES

Shasta Daisies—The plants are as strong as a common field daisy, very tall, well branched, fine cut foliage and huge white flowers borne in profusion on long stiff stems. Flowers are pure white with gold center, petals very long and center soft and velvety. Hardy plant and one of the novelties that has come to stay.

	Each	Per 10
Price	\$.20	\$1.50

LILY OF THE VALLEY

Lily of the Valley—This wonderful Lily will thrive and throw up its beautiful modest, fragrant white bells in any kind of soil. It will make a carpet of refreshing green, daintly patterned by its pervading flower sprays, in the shady and cold spaces otherwise lost to ornamentation around every house.

	Each	Per 10
Price	\$.10	\$1.00

GOLDEN GLOW

Golden Glow (*Rudbeckia*)—A fine, hardy plant that should find a place in every garden. It will be found excellent for cut flowers. Plant attains a height of four to six feet and will produce hundreds of large blossoms, very double and of brilliant golden-yellow during August and September.

	Each	Per 10
Price	\$.25	\$2.00

Superb Hardy Phlox

Brilliant summer effects may be produced with these easily-grown, hardy perennials. They are especially desirable for their great variety of color, and many are delightfully fragrant. They are excellent as single specimens or in the mixed border, but the most imposing effects are produced by planting masses of each color. Phlox are admirably adapted for cemetery planting. They commence blooming in early summer, and if early midseason and late varieties are chosen and the flowers cut off as they fade they will bloom quite late. They succeed in almost any position or soil, but give best results in a rich, mellow soil, well prepared. Plant 18 inches to two feet apart. After

three or four years take them up, divide the clumps, remove any dead portions and replant. A winter mulch of old manure is a great benefit.

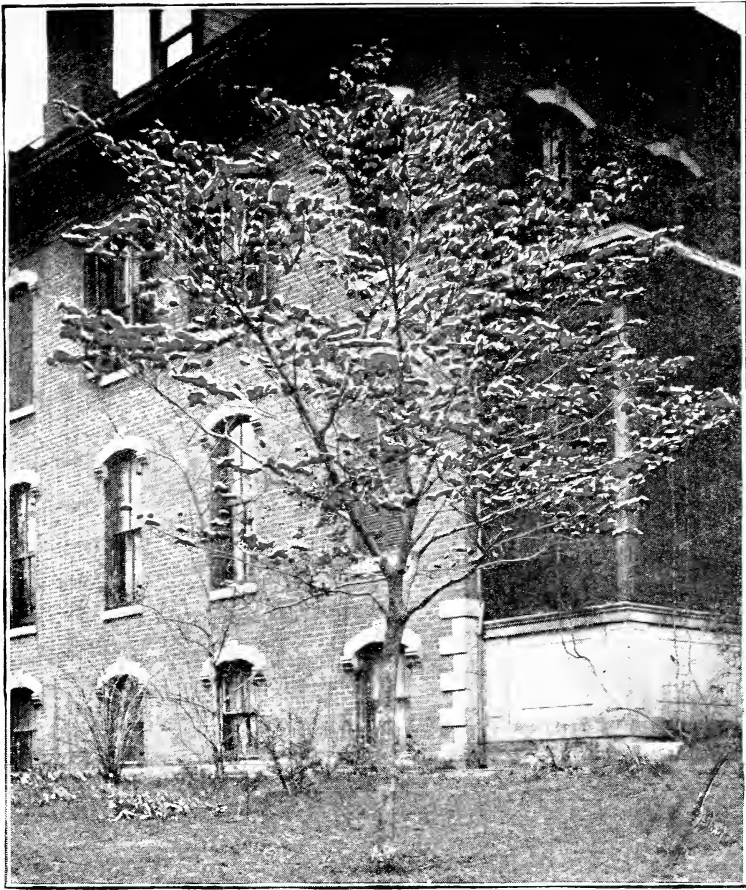
Bridesmaid—Pure white with large crimson center.

Lavogue—Pure mauve-pink with red eye.

Richard Wallace—Pure white with violet center.

Snowstorm—Beautiful white.

	Each	Per 10
Strong plants	\$.30	\$2.50
Mixed, all colors25	2.00



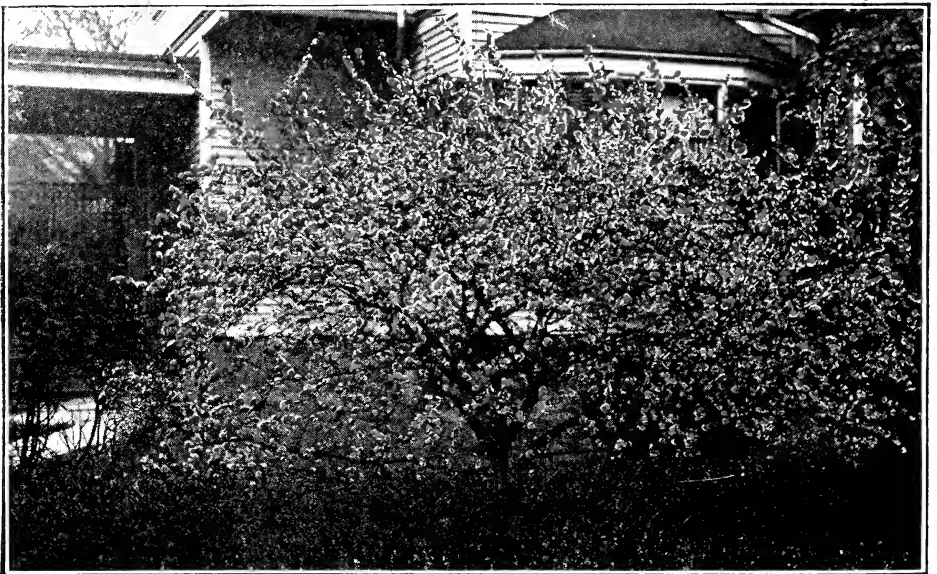
Red Flowering Dogwood. For description see page 19.

INDEX

Page	Page	Page	Page
Althea	14	Dahlias	30
Ampelopsis	25	Delphinium	31
Apples	20	Deutzias	14
Aristolochia	5	Dewberries	24
Azalea	14	Dogwood	19
Barberry, Thun-		English Walnuts	22
berg's	18	Ferns, Ornamental	26
Bignonia	25	Firs	8
Biotas	6	Flowering Crab	17
Blackberries	23	Forsythia	15
Broad-leaved		Garden Roots	24
Evergreens	11	Gladioli	30
Bulbous Plants	29	Golden Glow	32
Calycanthus	14	Grapes	22-23
Cannas	29	Deciduous Orna-	
Carnations	32	mental Shrubs	14
Cedars	7	Deciduous Shade	
Cephalotaxus	7	Trees	19
Cherry Trees	21	Evergreens, Hardy	3-10
Chrysanthemums	30	Hardy Perennials	31
Clematis	25	Hedge Plants	18
Crape Myrtle	14	Hemlock	8
Cydonia Japonica	17	Holly	13
Cypress	7	Hollyhock	31
		Honeysuckle	25
		Horse Chestnut	19
		Hyacinths	30
		Hydrangeas	15
		Hypericum	16
		Irises, German	32
		Jasminum, Nudi-	
		florum	17
		Junipers	8-9
		Ligustrums	13
		Lilacs	16
		Lily of the Valley	32
		Magnolia Grandiflora	11
		Mallow Marvels	32
		Maples	19
		Narcissi, Outdoor	
		Variety	31
		Narcissi, Paper	
		White Grandi-	
		flora	31
		Peaches	29
		Pear Trees	22
		Pecans	22
		Peonies	29
		Philadelphus	16
		Phlox	32
		Flum Trees	21
		Poplars	19
		Potentilla	17
		Privet	18
		Raspberries	24
		Retinisporas	9
		Rosa Rugosa	28
		Roses, Climbing	28
		Roses Everblooming	27
		Shasta Daisies	32
		Small Fruits	22
		Spireas	17
		Spruces	19
		Strawberries	24
		Sweet Peas	29
		Sweet William	31
		Tritoma	31
		Tulips	30
		Viburnum—Snow	
		Ball	16
		Vines, Evergreen	26
		Vines, Climbing	25
		Weigelia	17
		Wistaria	25
		Yucca	31



Old English Grape. For description see page 22.



Double Flowering Peach. For description see page 19.