

## **Historic, archived document**

Do not assume content reflects current scientific knowledge, policies, or practices.



5247

# FRUITS, TREES

# *and* FLOWERS

Spring 1927

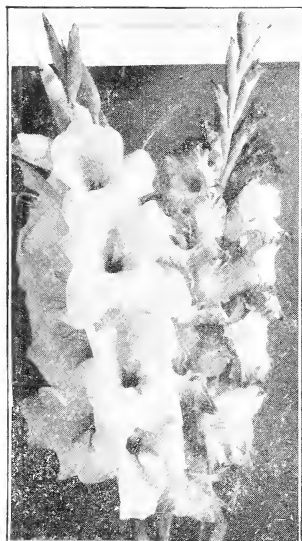


Weigela (See page 11).

SARCOXIE NURSERIES  
  
PEONY FIELDS

Wild Brothers Nursery Co., Sarcoxie, Mo.

# Gladiolus



Probably the most popular of summer and fall blooming bulbs. They are seldom troubled with insects or diseases, are easily grown and increase rapidly. Instructions for growing and increasing your stock sent with the bulbs. By planting as soon as danger of frost is over and at intervals of two weeks you can have gladiolus all summer.

**PLEASE NOTICE WE QUOTE BY SIZE.** Gladiolus are graded by size from first to sixth and bulblets. First size is 1½ inch and over in diameter, second 1¼ inch, third 1 inch. Naturally first size gives earlier and larger flowers, but all three are good blooming size and with suitable conditions will give nice results. In fact fifth size will almost all bloom though smaller spikes and flowers, so we hardly know what size is meant when offered as blooming size.

**THESE GLADIOLUS PRICES ARE PREPAID in Missouri, Iowa, Kansas, Oklahoma and Arkansas.** Other states add 10%. Three of a kind at dozen rate, 25 of a kind at 100 rate.

**Gladiolus Collection No. 1, 2d size \$1.40; 3d size \$1.00.**

36 bulbs, 6 each America, Halley, Crackerjack, Chicago White, Mrs. Francis King, Sunbeam.

**Gladiolus Collection No. 2, 2d size \$1.75; 3d size \$1.30.**

36 bulbs, 6 each Ida Van, Le Marechal Foch, Herada, Lily White, E. J. Shayler, 1910 Rose.

Mixed—Mixed Colors, Types, and Seasons.			
Price of Following:	Each	Per doz.	Per 100
First Size	5c	\$0.40	\$3.00
Second Size	4c	.30	2.50
Third Size	3c	.25	2.00

Price of Following:	Each	Per doz.	Per 100
First Size	5c	\$0.60	\$4.00
Second Size	5c	.50	3.00
Third Size	4c	.35	2.25

3 of a kind at doz. rate; 25 of a kind at 100 rate.

**America**—Light lavender pink; very large flowers; strong stems; blooms freely; midseason.

**Chicago White**—Good early white; medium tall. **Crackerjack**—Velvety carmine red blotched maroon, penciled yellow; large; midseason.

**Halley**—Pink tinged salmon, yellow blotch striped red; early; excellent.

**Le Marechal Foch**—Large delicate pink; early. **Mrs. Francis King**—Large; very tall spikes; vermilion scarlet, sometimes called flame pink.

**Panama**—Large; light rose pink; midseason.

**Peace**—Large; white; tall, midseason to late.

**Wilbrink**—Pale lavender pink; large; early.

Price of Following:	Each	Per doz.	Per 100
First Size	8c	\$0.75	\$5.00
Second Size	6c	.60	4.00
Third Size	5c	.50	3.00

3 of a kind at doz. rate; 25 of a kind at 100 rate

**Helen Franklin**—White feathered carmine; lower petals slightly ruffled; excellent.

**Herada**—Light purple tinged rose; large; good.

**Ida Van**—Scarlet, deeper throat; midseason.

**Lily White**—Glistening White; early; good.

**L'Immaculee**—Very fine, large, waxy white.

**Mrs. Frank Penleton**—Rosy flesh blending to white edges, maroon blotch; large; tall.

**Schwaben**—Canary becoming creamy yellow.

**Sunbeam**—Clear yellow; not blotched; long slender spikes; very early; Primulinus type.

Price of Following:	Each	Per doz.	Per 100
First Size	10c	\$1.00	\$7.00
Second Size	8c	.80	6.00
Third Size	6c	.60	4.50

3 of a kind at doz. rate; 25 of a kind at 100 rate

**Anna Eberius**—Velvety purple, deeper throat.

**Baron J. Hulot**—The leading purple.

**B. L. Smith**—Beautiful lavender pink.

**Crimson Glow**—Deep scarlet-erimson.

**E. J. Shayler**—Deep rose blending lighter.

**Evelyn Kirtland**—Orange pink blending darker.

**Flora**—Clear light yellow; large; tall.

**Joe Coleman**—Large rich red; fine.

**Mary Piekford**—Beautiful creamy white.

**Mrs. Dr. Norton**—LaFrance pink, creamy base, 1910 Rose—Deep, rich rose; early.

## For Your Information

### How to Order

Just make a list of what you want, giving number, name, size and price. Tell us whether to ship by freight or express. If you wish shipment at some special date tell us, otherwise we will ship when we think best according to season and locality. Our terms are cash but we will ship C. O. D. if half is sent with order.

### Please Tell Us

Please tell us whether you want us to send a similar variety if we are out of any variety ordered. If you do not want us to do so, mark "No substitution" on your order.

When we substitute the tree is labeled with the correct name of the variety filled. For example, if we sent Stayman Winesap in place of Winesap it would be labeled Stayman Winesap.

Don't forget to tell us if your freight or express office is different from your postoffice.

Copy of certificate attached to each shipment.

### Why We Don't Prepay

Prices herein are not prepaid unless so stated. If we prepaid we would have to do like anyone else who prepays—add it to the price we wanted to get and be sure to estimate it high enough so we wouldn't lose money on it on the average.

### Our Guarantee

We exercise care and diligence to have our varieties true to label and sell all our stock with the express guarantee that we will, on proper proof, replace any that may prove otherwise, or refund the amount paid for same, which shall constitute the extent of our liability.

Copyright, 1927 by Wild Bros., Nursery Co.  
Printed by CAMPBELL PRINTING COMPANY,  
Des Moines, Iowa, U. S. A.

## How Many Dollars Do You Spend for Fruit?

**H**ow many dollars a year do you spend for fruit, either fresh or canned? Did you ever stop to think that half that yearly sum, invested in a few fruit trees, would give you many times the amount of fruit you buy, and keep on giving it year after year? Some one has to raise all the fruit you eat. If you buy you pay some one a profit. When you raise your own you keep that profit in your pocket, you use more fruit, and you don't have to buy so much other table supplies on which you pay a profit.

## Peaches Bear the Third Year



**P**EACHES come into bearing quicker than any other tree fruit, under proper conditions giving a crop the third year. Select varieties from early to late and you can have three months of peaches. The trees won't cost as much as you would probably pay for peaches in one year. And none are so delicious as those freshly picked when fully ripened on the tree. A sandy loam or gravelly soil is best but the peach adapts itself to almost any well drained soil. Planted 16x16 ft. requires 170 per acre; 18x18 ft. 134 per acre.

Price of One-Year Peach:	Each	Per 10	Per 100
XX size, 11-16 in. caliper up, about 4 to 6 ft.....	\$0.45	\$4.00	\$35.00
Extra size, 9-16 to 11-16 in. caliper, about 4 to 5 ft.....	.40	3.50	30.00
Standard size, 7-16 to 9-16 in. caliper, about 3½ to 4½ ft.....	.35	3.00	25.00

Any five or more at the 10 rate; less at the each rate; 50 or more at the 100 rate.

The following list is arranged approximately in the order of ripening. The dates named are the approximate average in this section.

**Mayflower**—The earliest; good size; red all over, semi-cling; good shipper; hardy; productive.

**Greensboro**—Large, creamy white, with a yellowish cast, beautifully colored crimson; flesh white, very juicy; an excellent early peach; mid June; hardy and a profuse bearer.

**Carman**—Large; creamy splashed red; juicy, rich, sweet, good; nearly free; hardy; productive.

**Champion**—Large; white, red cheek; flesh white, sweet, juicy, rich, delicious; freestone; early Aug., quite hardy; bears young; productive.

**Belle of Georgia**—Very large; white, red cheek; firm, juicy, high quality; freestone; early Aug., hardy; very productive; an excellent shipper.

**Crawford Early**—Large; yellow, deep red cheek; rich, slightly sub-acid; freestone; early August.

**J. H. Hale**—A little more round and firmer than Elberta; about the same season.

**Elberta**—Very large; golden yellow, crimson cheek; firm, juicy, good; freestone; mid August, excellent shipper; vigorous, productive, profitable.

**Crosby**—Orange-yellow splashed red; medium size; juicy, rich; freestone; latter August; hardy.

**Indian Cling**—A red-fleshed clingstone, esteemed for preserving and canning.

**Crawford Late**—Large; yellow, deep red cheek; juicy, rich; freestone; latter Aug.-Sept.

**Stump**—Large; white, red cheek; flesh white, juicy, excellent; freestone; late August and September.

**Heath Cling**—Very large; creamy white, sometimes faintly blushed; flesh white to the pit, rich, very juicy, sweet, fine; latter Sept.

### PARCEL POST

If plants are wanted by parcel post allow extra for postage, except where quoted postpaid. Trees larger than 3 to 4 ft. cannot be sent by parcel post.

## Currants

Red and White, strong 2-yr. 20c each; \$1.75 pr 10.

# Apple Profits



Ed Hauser, a farmer near Nashville, Kingman county, Kansas, does not live in an orchard section but this fall he made a net income of more than \$600 from a 2½ acre orchard. The 932 bushels of apples which he picked sold for \$732. The cost of spraying and picking was about \$130. The record was taken from Mr. Hauser's answer to a questionnaire on orchard spraying sent out by L. C. Williams, extension horticulturist at the Kansas State agricultural college.—Joplin (Mo.) Globe, Dec. 23, 1922.

Price of Two-Year Apple:	Each	Per 10	Per 100
XX size, about 4½ to 6 ft., 11-16 in. caliper and up, branched .....	\$0.65	\$6.00	\$55.00
Extra size, about 4 to 5 ft., ½ to 11-16 in. caliper branched .....	.55	5.00	47.50
Standard size, about 3½ to 4½ ft., ½ to ¾ in. caliper, branched .....	.40	3.50	32.50
Medium size, 3 to 4 feet .....	.30	2.50	20.00

Any five or more at the 10 rate, less at each rate; 50 or more at the 100 rate.

## Summer Apples

Ripening dates named are approximate average here; allow 5 to 7 days for each 100 miles north or south. Altitude also affects the date.

**Early Harvest**—Bright straw; juicy, rich sub-acid; good; very early; bears rather young; productive.

**Red June**—Very red; juicy, brisk sub-acid, good; medium size; June-July; a young bearer.

**Sweet June**—Yellow; very sweet, rich and of good quality; vigorous and productive.

**Wilson June**—Deep crimson like Red June but sweeter, larger and later; latter July-August; bears young.

**Yellow Transparent**—Good size; yellowish-white; fine grained, crisp, juicy, sprightly sub-acid; good for eating and cooking; mid June; hardy; a very young, regular and abundant bearer.

## Winter Apples

**Black Ben Davis**—Large; rich red to maroon; firm, juicy, mild sub-acid; keeps well, ships well; bears young, regularly and abundantly.

**Delicious**—Roundish conic, medium to large, pale yellow, mostly covered with red, striped dark carmine; juicy; mild sub-acid; good.

**Grimes' Golden**—Of best quality; beautiful golden yellow; medium to large; crisp, juicy, rich sub-acid, aromatic; fine dessert apple, good for cooking, especially fine canned; Oct.-Dec.; blooms late; hardy; bears young.

**Jonathan**—Very attractive, lively deep red; high flavor; excellent for dessert, cooking and market; firm, crisp, juicy, very aromatic, mild sub-acid; Oct. and later; bears rather young.

**Mammoth Black Twig**—Greenish, largely over-spread, dull, deep red, sometimes almost black; very firm, moderately juicy, sub-acid, good; keeps late.

**Stayman Winesap**—Large; attractive shape, greenish-yellow striped and often nearly covered with dark red; firm, crisp, very juicy, aromatic, sprightly pleasant sub-acid; very good; keeps late.

**Winesap**—Bright deep red, flesh yellow, very rich, crisp, very juicy, sprightly sub-acid, very good; Dec.-March; bears young.

**York Imperial**—Large; attractive greenish-yellow shaded crimson; crisp, juicy, sub-acid, becoming mild; Dec.; bears heavily and rather young.

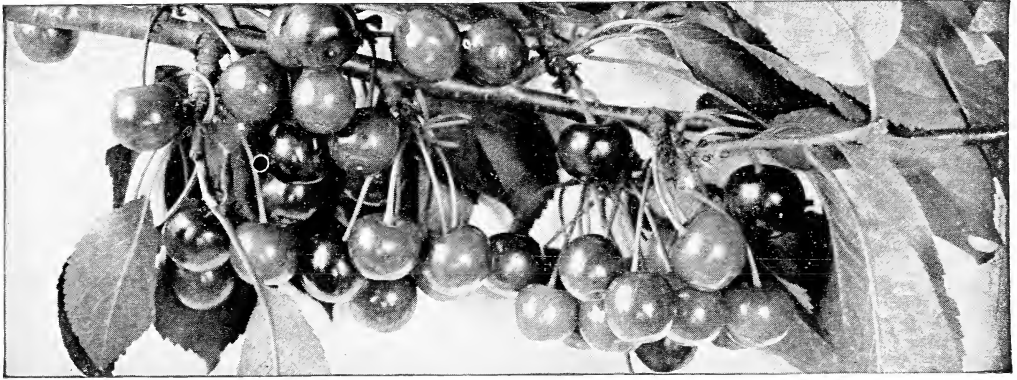
## Crab Apples

**Transcendent**—A large crab; golden yellow, crimson cheek; crisp, juicy, sub-acid; Aug.-Sept.

## Parcel Post

If plants are wanted by parcel post, allow extra for postage, except where quoted post-paid. Any balance will be returned. Trees larger than 3 to 4 feet cannot be sent by parcel post.

## Made Good with Cherries



**S**CHUYLER STEVENS of Smith Center has demonstrated beyond question the value of cherries in Western Kansas. In 1915 he planted 500 trees. Now if you will recall the summers since 1915, every one excepting 1915 must be classed as drouthy seasons. In spite of adverse conditions, here is what Mr. Stevens says in a letter dated June 28, 1919: "The Dychouse were the first to ripen, then the Early Richmond and now the Montmorencies are on hand. The Wragg will follow in July. I will have about 300 crates and they bring me \$3.00 net as I require the crates returned. This will bring me \$900 for the cherries on four acres the fourth season." \* \* \* I know Mr. Stevens personally, and I am familiar with his method of orcharding. \* \* \* The secret of his success has been cultivation. He has never allowed a weed to grow in his orchard.—Chas. A. Scott, in Kansas Farmer, March 6, 1920. Wragg and English Morello are very similar if not identical.

Plant 18 to 20 feet apart on well-drained ground. The list is arranged in the order of ripening.

Price of Cherry:	Each	Per 10	Per 100
XXX size 1 year 11-16 in. caliper up, about 4 to 5 feet, branched .....	\$0.75	\$7.00	\$65.00
XX size, 1 year 3½ to 4½ feet, 9-16 to 11-16 in. caliper, branched .....	.65	6.00	55.00
Extra size, 1 year, 3 feet to 4 feet, 7-16 to 9-16 in. caliper, branched .....	.50	4.50	40.00

Any five at the 10 rate, less at each rate; 50 or more at the 100 rate.

**Early Richmond (May Cherry)**—Medium size, round, bright red, darker when fully ripe; very juicy, sprightly acid; latter May-June; hardy, very productive; profitable; succeeds everywhere.

**Early Richmond**; vigorous, hardy, productive; successful everywhere.

**Late Duke**—A half-sweet cherry. XXX size only.

**Montmorency**—Rather large, dark rich red; juicy, pleasant acid; excellent; a week later than

**English Morello**—Large, dark red, nearly black; flesh dark purplish crimson; juicy; rich acid; prolific; latter June-July; dwarfish.

## Pear Trees

Price of Garber and Kieffer.	Each	Per 10	Per 100
XX size 2 year, 9-16 to 11-16 in. caliper, about 4 to 6 feet.....	\$0.60	\$5.50	\$50.00
X size 2 year, 7-16 to 9-16 in. caliper, about 3½ to 5 feet.....	.55	5.00	45.00

Price of Bartlett.

XX size 2 year, 9-16 to 11-16 in. caliper, about 4 to 6 ft.....	.70	6.50	60.00
X size 2 year, 7-16 to 9-16 in. caliper, about 3½ to 5 ft.....	.60	5.50	50.00

Any 5 or more at the 10 rate; 50 or more at the 100 rate.

Pears are graded by caliper or diameter. The height is the approximate average and varies with the habit of the tree. Arranged approximately in order of ripening.

**Bartlett**—Large; waxy yellow with red blush; juicy, rich; latter August; bears young.

### DWARF PEARS

**Dwarf Pear**—Occupy little room, are valuable where space is limited and begin bearing younger, often the year after planting.

They may be planted 10 to 12 feet apart and kept headed back.

**Duchesse d'Angouleme**—Very large, greenish yellow, dull red cheek; juicy, melting, slightly granular; Sept. Oct.; productive, hardy, vigorous.

XX. 5-8 in. caliper and up, 75c each; \$7.00 per 10; \$65.00 per 100.

**Kieffer**—Very large, rich, yellow tinted red; very juicy; develops good flavor if ripened slowly in a cool, dark room; very resistant to blight, hardy, very productive, ships well, profitable pear; Sept.-Nov.; bears about the fifth year; plant Garber to pollinize it.

## Plum Trees

Price of Plum:	Each	Per 10	Per 100
XX size, 11/16 in. caliper up, about 5 to 6 ft.....	\$0.60	\$5.50	\$56.00
Extra size, 5/8 to 11-16 in. caliper, about 4 to 5 ft., branched.....	.50	4.50	40.00
Standard size, 1/2 to 5/8 in. caliper, about 3 to 4 ft., branched.....	.40	3.50	30.00
Medium size, under 1/2 in. caliper, 3 ft and up.....	.30	2.50	22.50

Any five at the 10 rate, less at each rate; 50 or more at the 100 rate.



**Abundance**—Japan. Large bright red over yellow; juicy, sweet, rich; very good; cling; mid July; hardy, very productive; bears young.

**America**—Large; golden yellow, distinct red cheek; juicy; cling; July; hardy; productive; bears very young, one of the most reliable.

**Burbank**—Japan. Very large, bright, dark red on yellow; flesh yellow, firm, juicy, rich, sugary; cling; latter July; bears profusely.

**Deck Damson**—A great improvement on the common Blue Damson; larger, and the most productive Damson we have grown; small seed from which it parts when fully ripe; a very fine plum preserved or canned, developing excellent flavor; August.

**Red June**—Japan; dark coppery red; flesh yellow, juicy, sweet; semi-cling; early; productive.

## Blackberries

**Yield \$394 Per Acre**

Early Harvest Blackberry, in experiments by the Missouri Agricultural Experiment Station, yielded gross returns at the rate of \$347.00 per acre in 1919 and \$394.20 per acre in 1920.

Blackberries begin bearing the second year and may be depended on for regular, profitable crops under suitable conditions. They are at their best in a strong, deep loam that will retain moisture, tending toward clay rather than sand. If properly tended they may be planted 2x6 feet, requiring 3600 per acre.

**Early Harvest**—The most profitable of all on account of its extreme earliness, hardness and productiveness; glossy black, firm and ships well; growth strong. 35c per 10, 60c per 25, \$2.00 per 100, \$17.50 per 1,000.

**Lovett**—Large with little core; good. 35c per 10, 60c per 25, \$2.00 per 100.

**Mersereau**—Large; late midseason; sweet, 35c per 10; 60c per 25; \$2.00 per 100.

50 at the 100 rate; 500 at the 1000 rate.

## Raspberries

**Bear the Second Year**

They begin bearing the second year, ripen between strawberries and blackberries, sell well and are reliable croppers under suitable conditions. Deep soil that will retain moisture during a dry season is desirable. Planted 3x6 feet requires 2,420 per acre.

**Kansas**—Black; large; firm; of good quality; early; productive. 40c per 10; 85c per 25; \$3.00 per 100; \$25.00 per 1000.

**St. Regis; Ranere**—Bright red; quality good; season very early and long. After the old canes have borne the young canes begin and in some sections bear freely till fall; in others, especially where the summers are dry, but little in the fall. If its success as an everbearer or fall bearer in your locality is unknown, try it in a limited way at first. 40c per 10, 70c per 25, \$2.50 per 100, \$20.00 per 1,000; 50 at 100 rate, 500 at 1000 rate.

## Planting and Pruning Instructions

will be sent on request. Tell us if you want them.

### Parcel Post

If plants are wanted by parcel post, allow extra for postage, except where quoted post-paid. Any balance will be returned. Trees larger than 3 to 4 feet cannot be sent by parcel post.



Blackberries

## Dewberries

**EARLIER THAN BLACKBERRIES**

**Lucretia**—Large, often 1 1/2 inches long; sweet and luscious throughout; for size and quality is unexcelled by any of the blackberries; ripens at the close of the strawberry season before Early Harvest; the variety most extensively grown for market. 50c per 10; 90c per 25; \$3.50 per 100; \$30.00 per 1,000. 50 at 100 rate; 500 at 1000 rate.



## Grapes Bear After Freezing



SINCE living in Kansas I have several times seen the new growth on our grape vines killed by frost; but found that where grapes had been kept well pruned and cultivated they possessed sufficient latent force, owing to their widespread root growth, to push out new shoots from otherwise dormant buds \* \* \* \* You will find when your grape vines are frozen, even as late as the first of May, that if all green matter is frozen dead, then otherwise dormant buds will break and the new growth from them will come right on and produce new shoots, from which a fair crop of grapes will grow; but if a single joint of the first crop of shoots is left the new growth will start from the green bud on such shoots, and the resultant growth will not produce any grapes but will produce a shoot with leaves only. So if the new growth is not frozen back to the previous year's wood it should at once be pulled off, thus forcing the latent buds to start.—Wm. H. Barnes, before the Kansas State Horticultural Society.

**Agawam**—One of the best red grapes; large.

**Concord**—The most popular; large, black, juicy, sweet; vigorous, very hardy, healthy, productive; mid to late August here.

**Niagara**—Large; pale yellowish-green; juicy, sweet; good for table or market; a white Concord; ripens with it or a little later.

**Moore's Early**—Black; about two weeks before Concord; desirable for home and market for its size, season, hardness and productiveness.

**Worden**—Black; large; about 5 to 10 days earlier than Concord; berries larger, of better quality; vigorous, healthy, productive.

One-year No. 1.	One	Two	Three	Ten	Per 100
Agawam	18c	32c	46c	\$1.40	\$12.00
Concord	10c	18c	25c	0.70	6.00
Moore's Early	16c	28c	40c	1.20	10.00
Niagara	18c	32c	46c	1.40	12.00
Worden	16c	28c	40c	1.20	10.00
Moore's Early.					
2 year, No. 1	18c	32c	46c	1.40	12.00

Five or more of a kind at the 10 rate; 25 or more of a kind at the 100 rate. Lots of 500 and over, Concord, 1/2c each less other varieties 1c each less.

### Asparagus

The earliest of vegetables excepting Rhubarb. 50 at 100 rate; 500 or more at the 1000 rate.

**Conover's Colossal**—The standard market variety; very large; growth rapid; productive;

**Palmetto**—Large; early; productive; good; very resistant to rust; adapted to North and South.

#### Prices of Above

2 yr., 40c per 25; \$1.50 per 100; \$12.50 per 1000.

1 yr., 35c per 25; 1.25 per 100; 10.00 per 1000.

**Mary Washington**—One of the varieties developed by the U. S. Department of Agriculture, bred for vigor and resistance to rust. Perhaps the best of the Washington strains for general planting.

Two year, 40c per 25; \$1.50 per 100; \$14.00 per 1000.

One year, 35c per 25; \$1.25 per 100; \$12.50 per 1000.

### Rhubarb or Pie Plant

Large, tender, delicately flavored stalks. Plant 2 1/2 x 4 ft.; cover the crown 2 in. Easily grown. The secret of success is well drained soil.

Divisions, 10c each; \$1.00 per doz.; \$7.50 per 100 Heavy Divisions, 15c each; \$1.50 per dozen.

### Horseradish

Horseradish sets, 25c per dozen; \$1.50 per 100

## Gooseberries



Plant 3x5 or 4x5 ft. A northern slope is best, especially in the Central and Southern States. 5 at the 10 rate; 50 or more at the 100 rate.

**Houghton**—Of medium size, but a profuse bearer and a money maker. Very free from mildew; the best for most sections; glossy pale dull reddish brown when ripe, but usually picked green. One year 15 each, \$1.25 per 10, \$10.00 per 100.

## Strawberries

PRICES: 75c per 100; \$5.00 per 1000. 500 or more, assorted if you wish, at the 1000 rate. Not less than 25 of a kind sold.

If by parcel post add 5c for 25; 10c for 100; 15c for 200, except where quoted postpaid. This is sometimes a little more, sometimes a little less than the postage, but is a fair average.

Columbia and Haverland are imperfect flowered and every third or fourth row must be some perfect flowered variety to pollinize them. All others listed are perfect flowered. Planted 2x4 feet requires 5400 per acre.

**Aroma**—A heavy bearer; very large; firm; ships well; midseason to late; good.

**Columbia**—Large; red; good quality.

**Dunlap**—Deep red; juicy; good; midseason; a perfect flowered Warfield; productive.

**Gandy**—Very large; very late; bright red; firm.

**Haverland**—Large; long; midseason; productive; use Dunlap as a pollinizer.

Texas—Early; medium to large; good.

### HOME STRAWBERRY COLLECTION

200 for \$1.50      500 for \$2.50.

We will select 200 plants, early to late, for \$1.50 postpaid, or 500 for \$2.50 by express, charges collect.

## Hardy Evergreens

Our evergreens have been transplanted several times, to secure an abundance of fibrous roots. At these prices the roots will be dug with a ball of earth wrapped in burlap, termed "balled and burlapped," or B. & B. Five of a kind at the 10 rate, less at the each rate.

**Arborvitae, American**—Upright habit; foliage bright green assuming bronze tints in winter.

2 to 3 feet.....\$2.50 each; \$22.50 per 10  
3 to 4 feet.....\$3.50 each; \$27.50 per 10

**Arborvitae, American Pyramidal**—In form an almost perfect column; branches short, densely covered with bright green foliage.

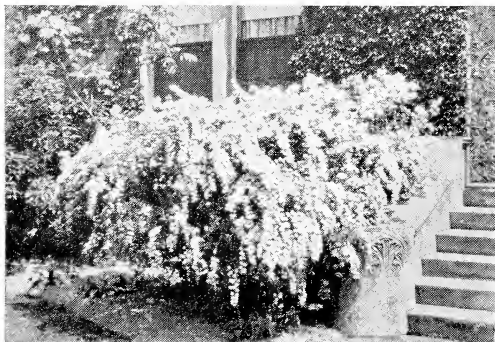
18 to 24 inches .....\$2.00 each, \$17.50 per 10  
2 to 3 feet.....\$3.00 each, \$27.50 per 10  
3 to 4 feet .....\$4.50 each, \$40.00 per 10

**Arborvitae, Blue-Green**—An attractive variety similar to Rosedale but more spreading in habit.

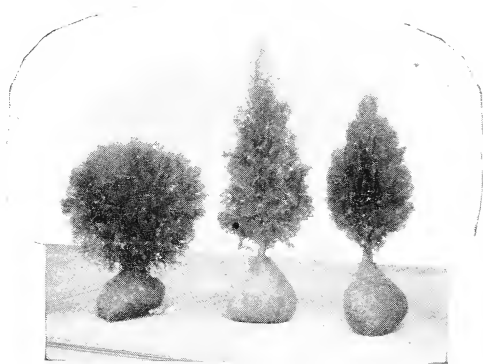
18 to 24 inches.....\$2.25 each; \$20.00 per 10  
2 to 3 feet.....\$2.75 each; \$25.00 per 10

**Arborvitae, Chinese Golden Dwarf or Berekman's (Biota aurea nana)**—In spring and summer gold suffused with green, in winter green to bronze green; dwarf, compact; of superb shape.

12 to 15 inches.....\$2.50 each; \$22.50 per 10  
15 to 18 inches.....\$3.50 each; \$30.00 per 10  
18 to 24 inches.....\$5.00 each; \$45.00 per 10



Spirea Van Houttei, a fountain of white in May.  
(See page 10)



Evergreens "Balled and Burlapped."

Pyramidal Arborvitae (center), Globe Arborvitae (left), Chinese Golden Dwarf Arborvitae (right).

**Arborvitae, Chinese Pyramidal**—A pyramidal type of the Chinese with green foliage.

18 to 24 inches.....\$2.25 each; \$20.00 per 10  
2 to 3 feet.....\$3.00 each; \$27.50 per 10

**Arborvitae, Globe**—A low, compact form of the American type, globular in outline.

10x10 inches.....\$1.50 each, \$14.00 per 10  
12x12 inches .....2.00 each, 18.00 per 10

**Arborvitae Goldspire (Biota aurea conspicua)**—The best large growing golden evergreen.

4 to 5 feet.....\$ 9.00 each; \$ 80.00 per 10  
5 to 6 feet.....\$12.00 each; \$110.00 per 10

**Arborvitae, Rosedale**—Bluish green finely cut foliage, its color well retained during winter.

12 to 18 inches.....\$1.25 each; \$10.00 per 10  
18 to 24 inches.....\$2.00 each; \$17.50 per 10  
2 to 3 feet.....\$2.50 each; \$22.00 per 10

**Cypress, Plume (Retinospora plumosa)**—Conical in outline; feathery, plume-like foliage.

18 to 24 inches.....\$2.00 each; \$18.00 per 10  
2 to 3 feet.....\$3.00 each; \$25.00 per 10

**Cypress, Golden Plume (Retinospora plumosa aurea)**—A form with golden tipped foliage.

2 to 3 feet.....\$3.00 each; \$25.00 per 10

**Juniper, Irish**—Finely cut bluish green foliage; dense, slender, columnar; growth rapid.

12 to 18 inches.....\$1.50 each; \$14.00 per 10  
18 to 24 inches.....\$2.50 each; \$22.50 per 10

## Hardy Flowering Shrubs

THE early days of Spring are brightened and made more cheerful by the great masses of Golden Bell, often blooming here in March. By a selection of those blooming at different times, for example, Pussy Willow, Dogwood, Deutzias, Bush Honeysuckle, Lilac, Mock Orange, Spirea, Hydrangeas, etc., a succession may be had until September. Shrubs give the lawn an attractive, finished appearance, and make a beautiful display in a year or two. They appear best in groups along the boundaries or division line, at the edges or corners of lawns, at the foundations of buildings, and along walks and drives.

Blooming dates named are for Southern Missouri. Five of a kind at ten rates.

**Althea; Rose of Sharon**—Of upright habit, reaching a height of 10-15 feet; hollyhock-like, flowers in late summer; easily grown; double white, double pink, double red.  
 2 to 3 feet .....35c each, \$3.00 per 10  
 3 to 4 feet.....50c each, \$4.00 per 10

**Barberry, Thunberg's** (Japanese Barberry)—Dwarf, dense, spreading habit; graceful spiny branches; autumn leaves bronze and crimson; excellent for low hedges. This Barberry does not produce wheat rust. Berries bright red.  
 Each Per 10 Per 100  
 12 to 18 inch. 2 year .....\$ .25 \$2.00 \$15.00

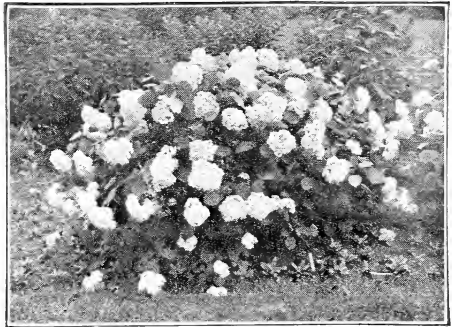
**Butterfly Bush; Summer Lilac**—Covered in summer with spikes of violet mauve flowers, resembling lilacs.  
 Strong plants .....40c each; \$3.50 per 10

**Calycaanthus**—Odd double spicily fragrant chocolate-red flowers in the spring.  
 18 to 24 inches.....50c each; \$4.50 per 10

**Deutzia crenata double**—Covered in early spring with double tassel-like white flowers in racemes 4-6 inches.  
 2 to 3 feet.....35c each; \$3.00 per 10  
 3 to 4 feet.....45c each; \$4.00 per 10

**Deutzia Lemoine**—Similar to gracilis; a little taller, with broad panicles of white flowers.  
 12 to 18 inches.....45c each; \$4.00 per 10

**Deutzia Pride of Rochester**—In early spring fairly covered with double tassel-like flowers in racemes 4 to 6 in., long; white, outer petals rose.  
 2 to 3 feet.....35c each; \$3.00 per 10  
 3 to 4 feet.....45c each; \$4.00 per 10



**This Hydrangea is well named Hills of Snow**

**Forsythia Fortunei**—Bright golden yellow.  
 18 to 24 inches.....30c each; \$2.50 per 10  
 2 to 3 feet.....35c each; \$3.00 per 10

**Forsythia intermedia** (Border Forsythia).—This variety is intermediate in habit between the other two Golden Bells offered, with somewhat arching branches; golden flowers.  
 18 to 24 inches.....30c each; \$2.50 per 10  
 2 to 3 feet.....35c each; \$3.00 per 10  
 3 to 4 feet.....45c each; \$4.00 per 10

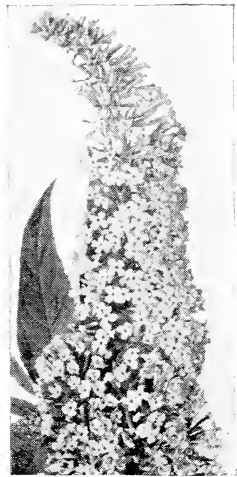
**Forsythia viridissima** (Greenstem Forsythia)—In early spring a mass of golden flowers, even before the leaves are developed; erect in habit.  
 18 to 24 inches.....30c each; \$2.50 per 10  
 2 to 3 feet.....35c each; \$3.00 per 10  
 3 to 4 feet.....45c each; \$4.00 per 10

**Forsythia suspensa** (Weeping Forsythia).—Droops gracefully; very long curving branches, well adapted to covering arches and trellises.  
 18 to 24 inches.....30c each; \$2.50 per 10  
 2 to 3 feet.....35c each; \$3.00 per 10  
 3 to 4 feet.....45c each; \$4.00 per 10

**Globe Flower; Japanese Rose** (Kerria Japonica)—Grows 4 to 6 feet tall with slender green branches; abundant single bright yellow flowers in spring.  
 12 to 18 inches.....35c each; \$3.00 per 10  
 18 to 24 inches.....45c each; \$4.00 per 10

**Golden Bell**—See Forsythia.

**Honeysuckle, Bush**—A bush form of Honeysuckle, covered in early spring with white and pink flowers, followed by ornamental berries. Specify color you wish if you have a preference.  
 18 to 24 inches.....25c each; \$2.00 per 10  
 2 to 3 feet .....35c each, 3.00 per 10  
 3 to 4 feet .....50c each, 4.00 per 10



**Butterfly Bush**



**Forsythia Intermedia**

**Parcel Post**

If wanted by parcel post allow extra for postage. Any balance will be refunded. Shrubs larger than 2 to 3 feet cannot be sent by parcel post.

**Shrubs--cont'd**

**Honeysuckle Fragrantissima** (Winter Honeysuckle)—Grows 6 to 8 feet tall; flowers creamy-white or light yellow in very early spring; deliciously fragrant.  
 2 to 3 feet.....40c each; \$3.50 per 10  
 3 to 4 feet.....50c each; \$4.50 per 10

**Hydrangea Hills of Snow or Everblooming**—Well named for its profusion of large snow white flowers from June to August; easily grown.  
 2 year .....50c each; \$4.50 per 10  
 1 year .....40c each; \$3.50 per 10

**Hydrangea paniculata grandiflora**—Blooms profusely in August and September; flowers in great cone-shaped panicles, white, assuming rose tints. 12 to 18 inches.....35c each; \$3.00 per 10

**LILACS, HYBRID**—The Hybrid Lilacs are more dwarf in habit than the common varieties, more varied in color and bloom younger, sometimes at two years old.

\*Those marked (\*) we have one year only.

\***Belle de Nancy**—Double Satiny rose, white center.

**Charles X**—A good single purplish-red.

\***Ludwig Spaeth**—Dark crimson-purple; single

**Marie Legraye**—Single white; blooms freely.

**Mad. Abel Chatenay**—Large double white.

**Mad. Lemoine**—Another fine double white.

\***Michael Buchner**—Double pale lilac-blue.

**Persian Purple**—Single; dwarf; very fragrant.

\***Pres. Grey**—Large; double; soft blue.

**Wm. Robinson**—Violet shaded pink; double.

Prices of above Lilacs:	Each	Per 10
12 to 15 inches, 1 year.....	\$0.50	\$ 4.00
12 to 18 inches.....	.75	7.00
18 to 24 inches.....	1.00	9.00
2 to 3 feet.....	1.50	14.00

**Mock Orange**—The name is almost a sufficient description. It produces a profusion of creamy white, four-petaled flowers in late spring.  
 18 to 24 inches.....25c each; \$2.00 per 10  
 2 to 3 feet.....30c each; \$2.50 per 10  
 3 to 4 feet.....35c each; \$3.00 per 10

**Pussy Willow**—Much esteemed for its extreme earliness, the fur-like bluish-gray catkins appearing before the leaves are developed.  
 2 to 3 feet.....35c each; \$3.00 per 10  
 3 to 4 feet.....50c each; \$4.00 per 10

**Quince, Japan**—Covered with brilliant scarlet flowers in early spring before the leaves appear.  
 18 to 24 inches.....35c each; \$3.00 per 10



Bush Honeysuckle



For wealth of bloom and fragrance nothing can displace well grown lilacs.

**Spirea Anthony Waterer**—Dark crimson flowers in large flat-topped clusters in early summer and at intervals till fall if cut as they fade. Grows about 24-30 in. high.  
 12 to 15 inches.....50c each; \$4.50 per 10

**Spirea Billardi Pink**—Bright pink flowers in dense finger-like panicles 5-8 in. long in summer.  
 2 to 3 feet.....40c each; \$3.50 per 10

**Spirea Billardi alba**—White flowers in dense feathery finger-like panicles in summer.  
 2 to 3 feet.....35c each, \$3.00 per 10  
 3 to 4 feet.....40c each; 3.50 per 10

**Spirea Golden**—Splendid for producing bright foliage effects or for screens; bright golden leaves, changing in summer to golden bronze; flowers numerous in clusters along the branches.  
 18 to 24 inches.....30c each; \$2.50 per 10  
 2 to 3 feet.....40c each; \$3.50 per 10

**Spirea Van Houttel** (Van Houtte's Bridal Wreath)—A fountain of white in May or June with its dense drifts of flower clusters on gracefully arching branches.  
 18 to 24 inches.....25c each, \$2.00 per 10  
 2 to 3 feet.....35c each, \$3.00 per 10  
 3 to 4 feet.....50c each, \$4.50 per 10

**Tamarix**—The Tamarisks are shrubs of upright growth with light, feathery foliage similar to Asparagus and miniature flowers in rather dense panicles. Grow 4 to 6 feet tall.

**Tamarix Amurensis**—Dainty pink flowers in summer; steel blue foliage.  
 18 to 24 inches, 1 year.....20c each; \$1.50 per 10  
 2 to 3 feet, 1 year.....30c each; \$2.50 per 10  
 3 to 4 feet, 1 year.....45c each; \$4.00 per 10

**Tamarix Odessana**—Pink flowers in late summer; silvery green foliage.  
 18 to 24 inches, 1 year.....20c each; \$1.50 per 10  
 2 to 3 feet, 1 year.....30c each; \$2.50 per 10  
 3 to 4 feet, 1 year.....45c each; \$4.00 per 10

**Parcel Post**

If wanted by parcel post allow extra for postage. Any balance will be refunded. Shrubs larger than 2 to 3 feet cannot be sent by parcel post.



Mock Orange

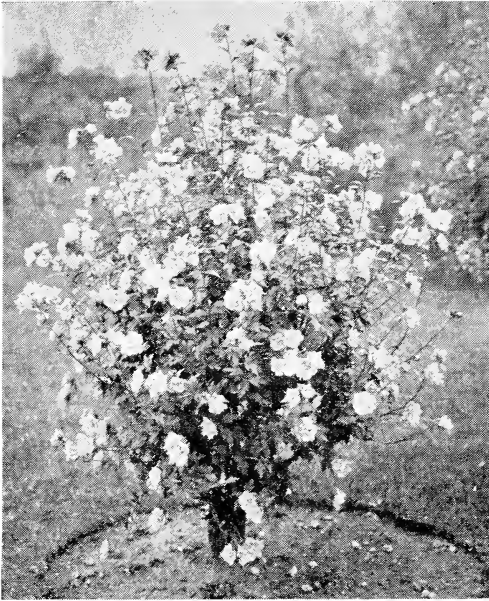


**Weigela, Rose Color**—Trumpet-shaped flowers, rose tinted white, clustered thickly along the branches in late May or early June.

18 to 24 inches.....35c each; \$3.00 per 10  
2 to 3 feet.....45c each; \$4.00 per 10  
3 to 4 feet.....55c each; \$5.00 per 10

**Weigela, Eva Rathke**—Carmine-red.

18 to 24 inches.....50c each; \$4.50 per 10  
2 to 3 feet.....60c each; \$5.50 per 10



Althea; Rose of Sharon. Page 9

## Shade Trees

Five or more of a kind at the 10 rate.

### Elm, American White.

8 to 10 feet.....\$1.50 each; \$12.50 per 10  
10 to 12 feet.....\$1.75 each; \$15.00 per 10

### Maple, Soft, White or Silver.

4 to 5 feet.....\$0.40 each; \$3.50 per 10  
6 to 8 feet.....\$0.70 each; \$6.00 per 10

### Maple, Sugar (Hard or Rock Maple).

8 to 10 feet.....\$1.25 each; \$10.00 per 10  
1¼ to 1½ in. caliper.....\$1.75 each; \$15.00 per 10  
1½ to 2 in. caliper.....\$2.50 each; \$20.00 per 10  
2 to 2½ in. caliper.....\$3.50 each; \$30.00 per 10

### Poplar, Lombardy—Tall pyramidal habit.

5 to 6 feet, straight stem.....30c each; \$2.50 per 10

### Poplar, Norway—Similar to Carolina.

8 to 10 feet.....\$1.00 each, \$ 9.00 per 10  
10 to 12 feet.....\$1.25 each; \$11.00 per 10

### Willow Babylonian Weeping.

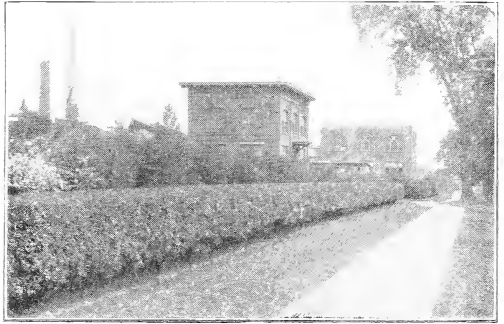
4 to 6 feet.....45c each; \$4.00 per 10  
6 to 8 feet.....70c each; \$6.00 per 10

### Tulip Tree—Greenish-yellow tulip like flowers.

6 to 8 feet.....\$1.00 each; \$9.00 per 10

## Privet Hedging

FIFTY OR MORE AT THE 100 RATE



**Amoor River of the North**—Resembles California but more spreading and much hardier. Has never frozen down here; white flowers like miniature lilacs.

	Per 10	Per 100
2 yr., 1 to 1½ ft., well branched.....	1.00	\$ 8.50
2 yr., 1½ to 2 ft., well branched.....	1.50	12.00
2 yr., 2 to 3 ft., well branched.....	2.00	15.00
1 year, 12 to 18 inches, 2 canes up.....	.50	4.00
1 year, 18 to 24 inches, 2 canes up.....	.60	5.00
1 year, 2 to 3 feet, 2 canes up.....	1.00	8.00

**Ibolium**—A cross of Ibota and California. The foliage resembles that of California, but Ibolium is much hardier, more branching and more spreading in growth. Use in place of California.

	Per 10	Per 100
2 yr., 12-18 in., well branched.....	\$1.00	\$ 8.00
2 yr., 18-24 in., well branched.....	1.50	12.00
2 yr., 2-3 ft., well branched.....	2.00	15.00

**California**—A very popular hedge; dark, glossy leaves, nearly evergreen in the South.

2 year, 2 to 3 feet, well branched.....	\$1.00	\$8.00
2 year, 18 to 24 in., well branched.....	.80	6.00
2 year, 12 to 18 in., well branched.....	.60	4.50
1 year, 2 to 3 feet, 2 canes up.....	.80	6.00
1 year, 18 to 24 in., 2 canes up.....	.60	4.50
1 year, 12 to 18 in., 2 canes up.....	.50	3.50



Bush Honeysuckle. Page 10





## Everblooming Roses

75c each; 5 or more 70c each; 2 year field grown.  
Everblooming roses should have winter protection in the colder states.

- Baby Rambler**—Large clusters; bright crimson.
- Duchess of Wellington**—Saffron yellow.
- Gruss an Teplitz**—Fiery crimson; blooms freely.
- Lady Hillingdon**—Large; apricot yellow.
- Pink Maman Cochet**—Medium pink; large; very full; fine outdoor rose.
- Pink Radiance**—Brilliant rose pink.
- Red Radiance**—Deep rose red.
- White Maman Cochet**—Large and full; white; outer petals sometimes tinged pink; fine.

## Hardy Bush Roses

- 55c each, 5 or more 50c each; 2 year field grown.
- C. F. Meyer**—Deep bright pink.
- Frau Karl Druschki**—Long pointed buds; large pure white flowers; the White American Beauty.
- Gen. Jack**—Handsome blooms of bright shining crimson, rich, brilliant and velvety; fragrant.
- J. B. Clark**—Large deep scarlet.
- Paul Neyron**—Deep shining rose, perhaps the largest of roses; blooms freely; very fragrant.



Pink and White Maman Cochet are two of the most beautiful.

## Hardy Climbing Roses

- 55c each, 5 or more at 50c each; field grown.
- American Pillar**—Carmine and rosy pink, white center; single; large clusters.
- Climbing American Beauty**—The same color and fragrance as American Beauty, but a climber. A fine rose; should be in all collections.
- Dorothy Perkins, Pink**—A beautiful shell pink, becoming lovely deep rose; sweet scented.
- Dr. W. Van Fleet**—A delicate shade of flesh pink deepening to rosy flesh in the center.
- Yellow Rambler**—Yellow becoming white.
- Lady Gay**—Delicate cherry pink passing to soft tinted white; fragrant; vigorous.
- Mary Wallace**—Large; rose-pink... 60c each.
- Red Dorothy Perkins (Excelsa)**—Brilliant crimson; very double for a rambler; glossy foliage.
- Thousand Beauties**—Soft pink to carmine rose; large clusters; fragrant; vigorous; long stems.
- White Dorothy Perkins**—A pure white sport of the popular Dorothy Perkins; excellent.

## Cannas

From early July till fall a profusion of dazzling blooms. The feet mentioned is the average height. Easily grown.

Plant 18 in. apart. If in circular beds, one plant in center, then with an 18 inch string mark a circle. Lengthen the string 18 inches for each circle. The first circle should have 6 plants, the second 12, the third 18, and so on.

Each, 10c; \$1.00 per dozen; \$7.50 per 100.

**Allemania**—Large orchid-flowers, scarlet with yellow border; green foliage; 4 to 5 feet.

**Austria**—Large; canary yellow dotted crimson; orchid flowered; green foliage; 4½ feet.

**King Humbert**—Large; bright orange-scarlet; orchid flowered; bronze foliage; 4 to 5 feet.

**Louisiana**—Large; orange-scarlet; orchid flowered; green foliage; 5 to 6 feet.

**President**—Rich scarlet; large; 4 feet.

**Yellow Humbert**—Large; rich yellow dotted red, occasionally a scarlet or scarlet-striped flower; orchid flowered; green leaves; 4 to 4½ feet.

**Bronze Leaf**—Orange red flowers; about 4 to 5 feet. 75c per dozen.



Blanket Flower  
(See page 13).



Larkspur  
(See page 13).



## Hardy Flowers

These are hardy, easily grown flowers that live from year to year. Good, strong, outdoor grown plants, not the tiny plants offered in cheap collections by parcel post. Six of a kind at dozen rates. Postage extra if wanted by parcel post.

**Blanket Flower (*Gaillardia grandiflora*)**—Flowers 2 to 3 in. across, maroon bordered yellow, as gaudy as a Navajo blanket; blooms from June till fall; easily grown. 15c each, \$1.50 per doz.

**Columbine (*Aquilegia*)**—Many dainty small branches bear the spurred flowers in profusion on spikes 1½ to 2 ft. tall. Mixed colors, 15c each, \$1.50 per doz.

**Coreopsis** — Golden-yellow daisy-like flowers from May to October, if cut they fade. 15c each; \$1.50 per dozen.

**Daisy, Shasta Alaska**—A flower every one can grow; very large, showy white daisies with a golden center, in great abundance on long stems during summer and fall if cut as they fade. 10c each, 3 for 25c, 12 for 75c.

**Hollyhocks**—Double rose, double yellow, double white. 20c each; \$2.00 per dozen.

**Larkspur Belladonna** — Beautiful spikes of dainty spurred flowers of the delightful blue of the skies; unrivalled for persistent blooming. 20c each, \$2.00 per doz.

**Larkspur Bellamosa**—A dark blue form of Belladonna. 20c each, \$2.00 per doz.

**Larkspur Formosum** — Deep blue, white eye. 20c each; \$2.00 per dozen.

**Larkspur Indigo**—Pure indigo blue; tall. 20c each; \$2.00 per dozen.

**Marvelous Mallows**—Six to ten weeks of flowers resembling immense single hollyhocks—the size of a pie plate and larger. Beautiful



Ten weeks of Shasta Daisies.

10 cents each, 3 for 25 cents, 12 for 75 cents.

pinks, red blush and white, beginning in July. Makes a grand display the first year.  
1 year, separate colors.....25c each, \$2.50 per doz.  
1 year, mixed colors.....20c each, 2.00 per doz.  
2 year, separate colors.....50c each, \$5.00 per doz.  
2 year, mixed colors.....40c each, 4.00 per doz.



Columbine

**Sweet William (*Dianthus barbatus*)**—A very popular flower, somewhat resembling phlox but with broad, rather flat, compact trusses instead of pyramidal panicles and the Sweet William are more varied in color—white, pink, red, crimson and variegated; blooms profusely in May while most phlox bloom in July; fragrant. These are grown from a specially fine mixture of seed; will bloom the first spring. For the most imposing effects plant in large groups. Mixed (cannot supply separate colors). 15c each, 3 for 40c, \$1.50 per doz.; 2 doz. for \$2.50; 4 doz. and over at \$1.00 per dozen.

**Violets, Sweet Russian, Single**—The hardiest of violets; easily grown; in early spring a mass of fine single deep purple violets with delicate fragrance. 10c each, 3 for 25c, 12 for 75c, 25 for \$1.50.

### Parcel Post

If wanted by parcel post allow extra for postage except where quoted postpaid. Any balance will be returned.



Coreopsis



## Liberty Irises—Fleur-de-lis

ALSO called German Irises. To those only familiar with the old common Flags many of the newer kinds will be a revelation. Perfectly hardy, easy to grow, they reward you with a lavish wealth of bloom, their iridescent colors, found in no other flower, shimmering in the sun. Well named "The Orchid of the Garden." They grow almost anywhere but do best in well drained, rich loam or garden soil.

The standards are the upright or standing petals. The falls are the lower or drooping petals. The inches mentioned is the approximate height of the flower stems.

**PRICE:** 15c each, 3 of a kind for 40c; \$1.50 per dozen except as otherwise quoted. Six of a kind at dozen rates.

**Black Prince**—Very deep rich velvety royal purple; early; 24 inch, 20c each, \$2.00 per doz.

**Caprice**—Standards cerise, falls deeper; early; 24 inches, 20c each, \$2.00 per doz.

**Caterina**—Standards light blue, falls lilac; very large; very tall; fine. 50c each.

**Celeste**—Azure blue, slightly deeper falls; mid-season; large; 30 inch.

**Crimson King**—Rich claret purple; 24 inches.

**Dr. Bernice**—Standards coppery bronze, falls velvety crimson; large; 24 in. 20c each, \$2 pr. doz.

**Eldorado**—Standards bronze yellow, falls bronze purple; midseason; 30 in., 25c each, \$2.50 per dozen.

**Honorabilis**—Gold and crimson-brown; early; 18 inch.

**Ingeborg**—Large; pure white; very early; dwarf, about 15 in., 20c each, \$2.00 per doz.

**Khedive**—Beautiful soft lavender; 30 inches.

**Loreley**—Standards canary, falls purple edged yellow; early; 30 in. 20c each, \$1.80 per doz.

**Mrs. H. Darwin**—White, base veined violet; medium early; good; blooms freely; 24 inches.

**Monsignor**—Standards satiny violet, falls purple-crimson; large; late; 24 in. 35c each, \$3.50 per dozen.

**Orientalis Blue**—Deep blue; late; 24 inches.

**Perfection**—Standards light blue, falls dark velvety violet-black. 20c each, \$2.00 per dozen.

**Queen of May**—Large lilac-pink; midseason; 32 inch.

**Sapho**—Violet-blue and royal purple; early; 30 inch.

**Speciosa**—Lavender purple and reddish purple.

**Violacea grandiflora**—Large; rich violet blue; late; 32 inch. 20c each, \$2.00 per doz.

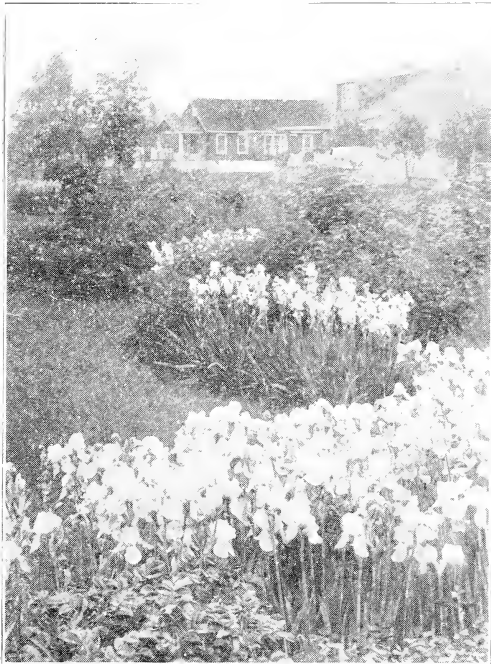
**Walhalla**—Standards light violet, falls deep purple; early; very large; 24 inches.

**Irises to Color, not named**—Shades of yellow, lavender, blue, purple, white and pink, 10c each, 90c per doz., \$6.00 per 100.

**Irises Special Collection F**—Assorted our selection, named varieties, half doz., 3 varieties, 70c; one doz., 6 varieties, \$1.25; 25, 6 varieties, \$2.25; 100, 6 varieties, \$7.50.

## Japanese Irises

The Japanese differ from the Liberty Irises in the flatness of the flower, shades of color, size of flower and breadth of petals. Large and showy. They should be planted in full sun. Any rich, mellow loam will produce flowers of wondrous size. Water must not stand on the roots. White, blue, and lavender. 25c each, \$2.50 per doz.



Liberty Iris are easily grown.

**Special Collection F**—Assorted, our selection: Half dozen, three varieties, 70c; one dozen, six varieties, \$1.25; 25, 6 varieties, \$2.25; 100, 6 varieties, \$7.50.

## Parcel Post

If wanted by parcel post, allow extra for postage. Any balance will be returned.



Sweet Williams (See page 13)



## Peonies

Prices are for good strong divisions averaging 3 to 5 eyes, from blooming plants. We consider them fully equal to one-year plants, they cost less and they average larger than those usually sent out, many of which are grown from small divisions to make more plants. If you want something larger order 5 to 8 eyes at 50 per cent advance.

Three of a kind at the dozen rate. Larger lots quoted by letter.

**Crown of Gold (Couronne d'Or; Calot, 1873)**—Famous for its beauty; snowy white, reflecting the golden stamens and lighting up the flower; center petals beautifully flecked and bordered carmine; immense semi-rose type flowers; fragrant; late; growth upright, vigorous, with very strong stems; blooms freely; late; fine. 50c each, \$5.00 per dozen.

**Duchesse de Nemours (Calot, 1856)**—One of the best regardless of price. Superb ivory white with greenish markings toward the center, becoming pure white without a trace of crimson; one of the most beautiful both in the half open bud and full blown; medium to large; crown type; medium early to midseason; strong, vigorous growth; good stems; blooms freely. 40c each, \$4.00 per doz.

**Duchesse d'Orleans (Guerin, 1846)**—Large carmine pink guards, center soft pink interspersed with salmon, becoming amber yellow; medium to large; bomb type; fragrant; midseason. This peony deserves a better rating than it gets. It is an extra strong, vigorous grower, very tall, a free bloomer and can be depended on for an abundance of blooms year after year. Ships well as a cut flower. 30c each, \$3.00 per doz.

**Duke of Wellington (Calot, 1839)**—Another indispensable variety. Two rows of broad white guards, center very full, sulphur white becoming pure white; fragrant; very large; bomb type; late; blooms freely; vigorous, with long, strong stems; as a cut flower, keeps and ships well; fine. 50c each, \$5.00 per dozen.

**Edulis superba (Lemon, 1824)**—Beautiful bright deep rose pink flowers with a quite extraordinary fragrance; crown type; large and of good form; extra early, several days before Festiva maxima, blooms freely over a long period; growth strong, vigorous, with long, strong stems. An extra good variety, both for lawn and cut flowers. 30c each, \$3.00 per dozen.

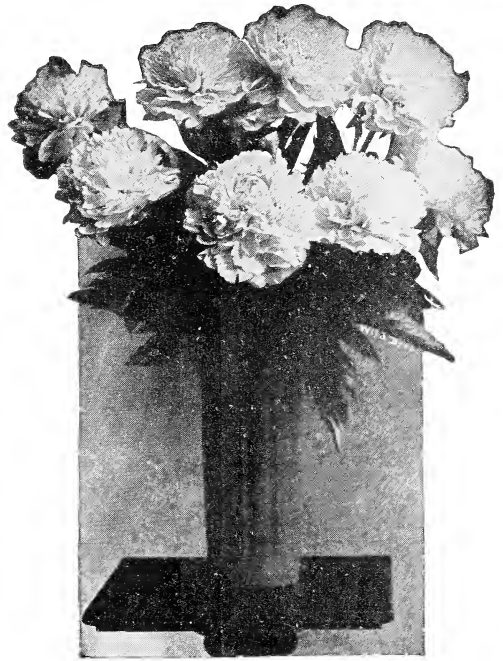
**Felix Crousse (Crousse, 1881)**—Very brilliant, rich, even dazzling ruby red; large; globular, solid and compact; bomb type; midseason; fragrant; blooms freely; fine. 75c each; \$7.50 per doz.

**Festiva maxima (Mieliez, 1851)**—For enormous size combined with wondrous beauty this variety has stood unsurpassed for 75 years. Pure paper white, some central petals flecked carmine; very large; rose type; very fragrant; early; very vigorous, with very long, heavy stems. You can't plant too many Festiva maxima. 50c each, \$5.00 per dozen.

**Fragrans**—Deep pink to solferno red; fragrant; bomb type; very late. 45c each; \$4.00 per dozen.

**Madame Calot (Mieliez, 1856)**—Opens very delicate pink becoming white; fragrant; large; rose type; early; strong stems; blooms freely. 40c each, \$4.00 per dozen.

**Madame de Verneville (Crousse, 1885)**—An enormous producer of extra fine flowers; large, compact, and very full, literally packed with petals; broad white guards, center slightly bluish becoming pure white, flecked carmine; large; bomb type; rose fragrance; very early; extra strong, vigorous growth, medium height, good stems; blooms very freely; fine. 50c each, \$5.00 per doz.



Crown of Gold Peony

**Madame Emile Galle (Crousse, 1881)**—Large; soft lilac pink; rose type; fragrant; midseason to late; stems long; blooms freely. 75c each.

**Red, Double**—Unnamed double red. 50c each; \$4.00 per 10.

**Queen Emma**—A large, very full, fragrant bright light pink rose type flower; growth strong, erect; stems medium long; blooms freely; midseason to late; an excellent cut flower variety as it ships and keeps exceptionally well. \$1.00 each.

**Theresé (Dessert, 1904)**—Very large; rich clear satiny pink changing to lilac white in the center, with glossy reflex; very fragrant; compact rose type; midseason; plant erect, medium tall, compact; blooming habit medium; fine. \$4.00 each.

**Zoe Calot (Mieliez, 1855)**—Very large, very full globular bloom; soft pink tinted lilac; fragrant; midseason; growth strong, upright, good medium height; very stiff stems; blooms freely. 40c each, \$4.00 per dozen.

## Pennant Mixed Peonies

If you want something good at a moderate price and do not care about the names or just what colors you get just so they are nice, order Pennant Mixed. This is not a cheap lot of undesirable varieties but a really good mixture of named peonies, the leading commercial varieties predominating. Do not ask for certain colors of these as they are grown mixed. 25c each, \$2.50 per doz., \$18.00 per 100.

## Peony Surprise Collection

6 for \$2.50; 12 for \$4.50.

We will furnish six good named Peonies, all different, for \$2.50, or twelve all different for \$4.50. At this price the selection must be left to us but we promise you a good selection and good value. Postage extra if wanted by parcel post.

# Superb Hardy Phlox



Phlox give brilliant summer effects. Strong field grown plants, \$2.00 per dozen.

**THESE** are easily grown and give brilliant summer effects. Many are delightfully fragrant. They are excellent in a mixed border, but the most imposing effects are produced by planting masses of each color. Plant 18x24 inches apart.

**PRICES:** Strong field grown plants that bloom the first summer, 20c each; \$2.00 per doz. Six or more at the dozen rate.

**Eclairer**—Rich crimson-carmine, darker eye, lighter halo; strong grower; free bloomer; fine.

**Europea**—White with crimson-carmine eye.

**F. A. Buchner**—A fine large white.

**La Vogue**—Mauve pink, aniline red eye; large floret, heavy truss; tall; blooms freely.

**Miss Lingard**—The earliest in this list; pure white, faint lilac eye; tall, excellent.

**Mrs. Jenkins**—A good early white; a strong grower and a free bloomer.

**Rheinlander**—Beautiful salmon pink.

**R. P. Struthers**—Clear cherry red, with darker eye; large floret, heavy truss; tall; growth strong.

**Rheinstrom**—Salmon-pink, clear and bright; large; a good grower.

**Von Hochberg**—Ideal dark crimson; large.

## Hardy Vines

These vines are outdoor grown and not to be confused with the small plants sold at low prices. Five of a kind at the 10 rate, less than five at the each rate.

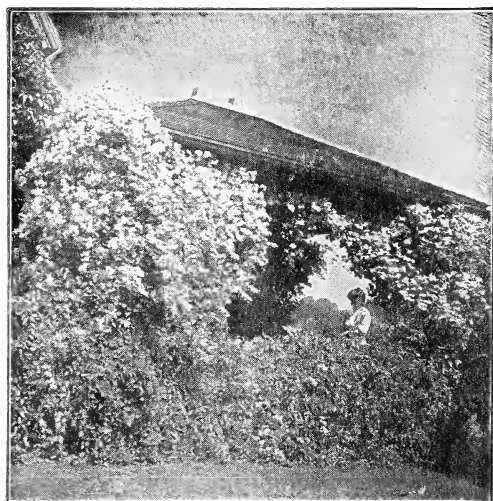
**Clematis Paniculata; Japanese Clematis**—One of the most beautiful hardy vines with its thousands of pure white four petaled starry flowers in large panicles fairly covering the upper part of the vine in August or September; its fragrance resembles the English Hawthorn; of rapid growth. 2-year 40c each, \$3.50 per 10.

**Honeysuckle, Scarlet Trumpet**—Flowers red, buff inside. 2-year, 40c each.

**Honeysuckle, Hall's Japan**—Almost evergreen; fragrant white flowers, becoming yellow 15c each.

**Wistaria, Purple**—An attractive and rapid grower with numerous hanging clusters of pea-shaped flowers. 1-year, 25c each, \$2.00 per 10.

**Wistaria, White**—A white flower form of the above. 2-year 30c each; \$2.50 per 10; 1 year 25c each; \$2.00 per 10.



The fragrance of *Clematis paniculata* resembles English Hawthorn.

## Does Apple Growing Pay?

Listen! One orchard near Troy that cost its owner not to exceed \$1500 in yearly expense, the fruit on the trees was sold this year for \$13,000. Report Kansas State Horticultural Society.