

## **Historic, Archive Document**

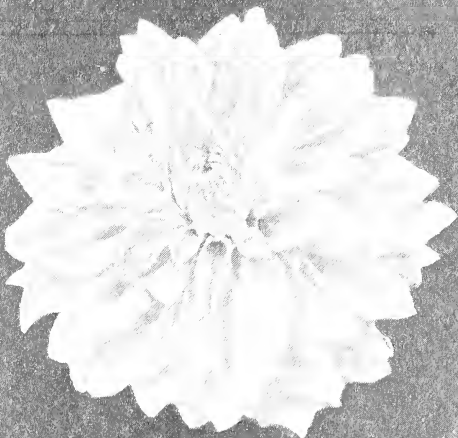
Do not assume content reflects current scientific knowledge, policies, or practices.



62.89

LIBRARY

MAY 1 1928  
U.S. DEPARTMENT OF AGRICULTURE



Snowdrift



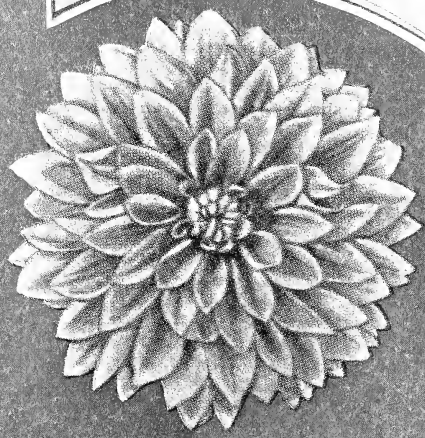
Pride of California

J. K. ALEXANDER  
*The World's largest  
Dahlia Grower*

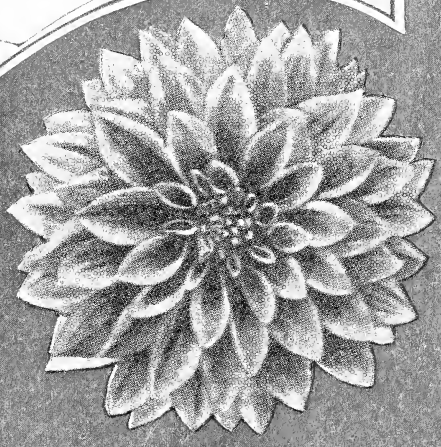
# ALEXANDER'S 1928 DAHLIAS

EAST BRIDGEWATER, MASS.

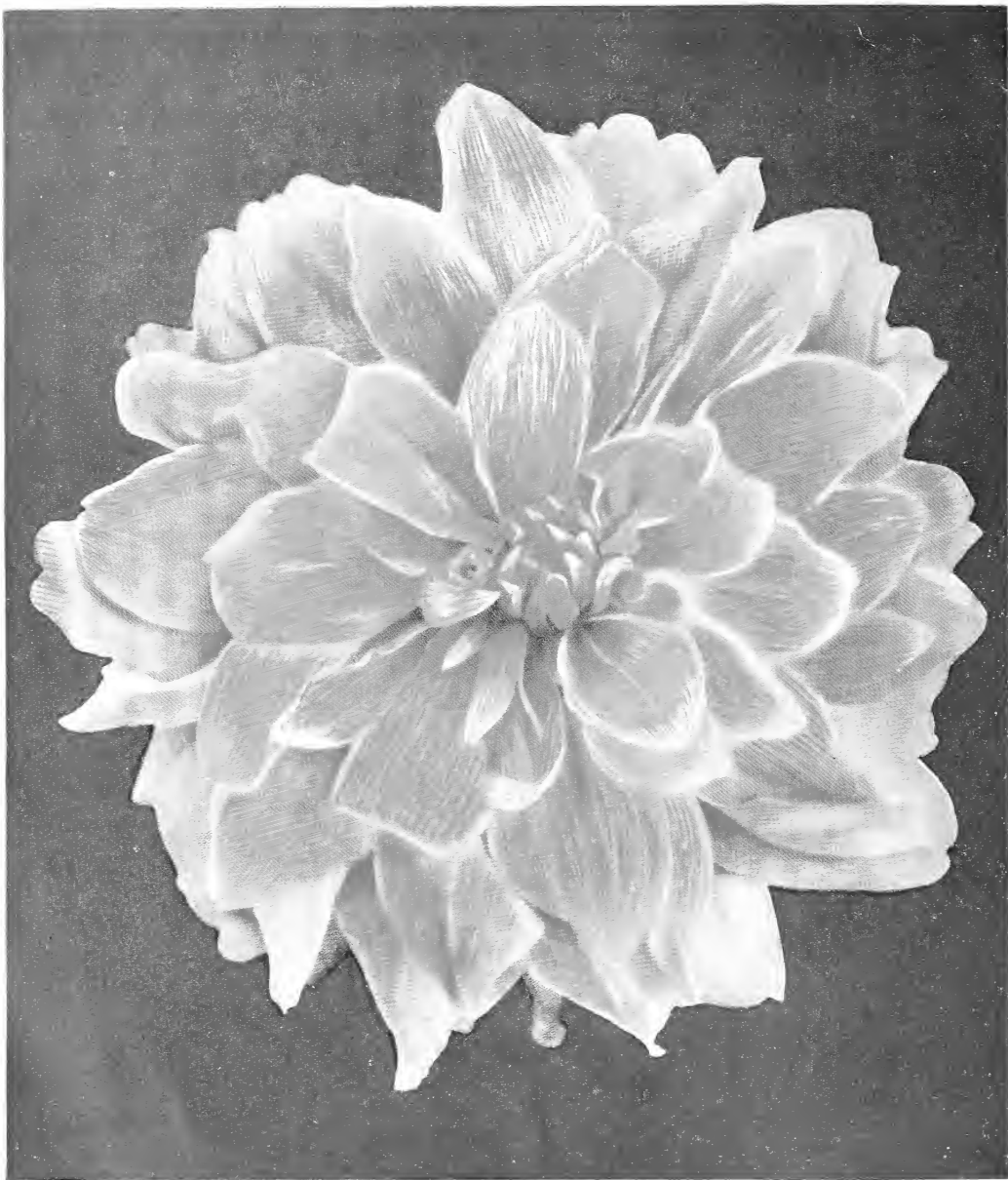
See Page 12 for this collection.



Mrs. Carl Salbach



Mrs. I. De Ver Warner



### **BONNIE BRAE**

This is one of the best Dahlias ever grown. The colors in this wonderful flower are a peach and cream combination of shadings showing strong on the peach pink at first, but after well opened comes out much lighter. The flowers in my fields this season grew from 8 to 10 inches in diameter and were carried on stems from 18 inches to 2 feet long. A very free bloomer. See Page 11.

**\$1.00 each; \$10.00 per dozen**





*J. K. ALEXANDER*

*The Dahlia King*

I print this not because I am proud of my own picture, but because most people like to see the man with whom they are doing business.

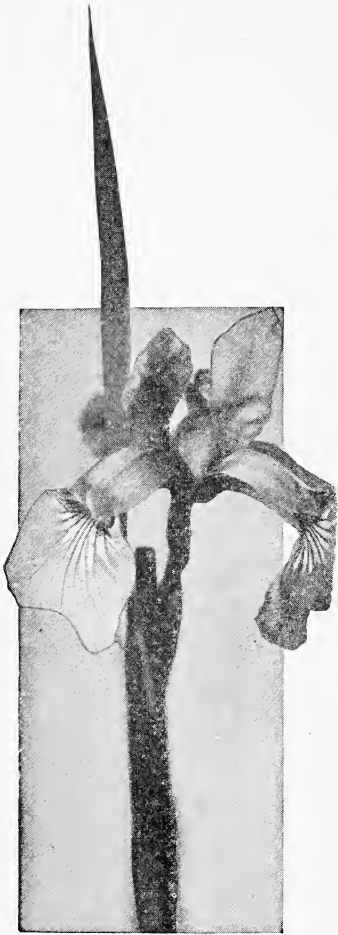
# Greetings

## FRIENDS and CUSTOMERS

### Old and New

---

---



I BELIEVE a heart to heart talk will give us a good opportunity to become better acquainted. You may be interested to know that Dahlias were my hobby thirty-eight years ago; I loved flowers but never dreamed of being in the business. I'll tell you how it happened. My neighbors had several old-fashioned Dahlias, and I purchased a few; I took good care of them, and the flowers I produced were larger and more beautiful than theirs. I became interested, and whenever I saw a color I did not have, I added it to my collection. They were like so many children, as I learned to call them all by name.

My friends became interested in my Dahlias, and urged me to sell them the new colors I had purchased; thus I started in the business, with only sixty Dahlia plants. That was thirty-eight years ago. My desire to secure a greater variety led me to search for the best and newest. In a few years I had all the varieties that American Dahlia specialists grew, and learning that new Dahlias were being originated in England and France, I sent for catalogs. That year I imported twenty varieties, and in the Fall the sales from my surplus amounted to \$72.00, not much; but enough to encourage me to go on.

Thinking other Dahlia lovers outside of East Bridgewater would be interested to know more about my favorites, I issued my first catalog in 1893. It was a very modest affair, but it did the business. The next year I exhibited at our local Fair, winning several premiums. Two years following, I imported thirty-two new varieties; which, with my collection, led me to believe I could win at the Boston Show, which at that time was the largest Dahlia exhibition in America. I staked mine against the best, and won first prize. Since then my exhibitions, together with my growing exhibits at the World's Fair, St. Louis Purchase Exposition, Jamestown Exposition, Alaska-Yukon-Pacific Exposition and Panama-Pacific Exposition have won honors of highest degree, acknowledging my Dahlias universally unsurpassed.

My ambition to develop something better, larger and more beautiful in Dahlias than was already on the market led me to experimenting. My first results from hybridizing were very gratifying, and each year I have devoted considerable time to cross-pollination, with very satisfactory results; and only wish I had more time to devote to this work. Many of the varieties in this catalog are my own seedlings, and I am developing choicer and better varieties each year, and will introduce them as soon as my stock is sufficient.

My intense enthusiasm and my desire to have the largest and most complete collection of Dahlias, have led me to all parts of the World, in an effort to secure the largest and finest varieties. Many are offered herein, but on some of the newest and choicest, where my catalog circulation is very large, my stock is insufficient to allow me to list them at this time, but they will appear in my catalog as soon as my stock is sufficiently large. Should you have in mind some new creation that you do not find listed, I would appreciate it if you will write me, as I have all that are worth while and will be pleased to supply you.

My interest in other flowers developed with that for my Dahlias. Soon I had a surplus of Gladioli and in 1902 offered choice varieties in my catalog. Since then I have always been on the alert keeping my collection up-to-date, and each year have added to my catalog some new bulb or plant. If I can be of help to you at any time in laying out your flower beds and grounds, or you wish my opinion on new varieties, feel free to write me, and I assure you I am always at your service.

In 1914 I constructed a storage and shipping plant, from which your orders are shipped. This building has a cement cellar containing 11,700 cubic feet of storage room and 4,680 square feet of floor space. In addition to this, I now use eight other cellars in which I store my bulbs, plants and shrubs.

If you are looking for some first-class up-to-date stock, whether it be Dahlias, Peonies or Hardy Plants, do not hesitate in placing your order in the hands of a man who has been doing business for 36 years and guarantees satisfaction. My stock is all tested before being shipped to my customers; it is grown on my own farms and I give special attention to producing good strong roots, which is the important part of a plant to insure satisfactory results. I shall take as much pains in the future as in the past, to send out nothing but first quality stock, and to continue the same prompt, liberal and conscientious dealings. Hoping to receive a share of your patronage this coming season, I am,

Yours for floral success,

## J. K. ALEXANDER, *The Dahlia King*

Copyrighted)

January 1, 1928

EAST BRIDGEWATER, MASS.



Partial View of My Fields. Maude Adams in Foreground.

## Instructions—Information

### Please Read Before Ordering

**ORDER EARLY**—Your orders are filled in rotation. Ordering early will insure the reservation of varieties that later may be sold out, and save you any disappointments.

**SUGGESTIONS TO CUSTOMERS**—If you are not acquainted with the different classes and varieties of Dahlias, Peonies, Iris, or any of the other plants I list, I would suggest that you leave the selection to me. Send the amount of money you wish to spend, and write me fully if you have any preferences in types or colors, and I will choose the very best varieties possible, in an effort to please you. My liberal selection I assure you will be satisfactory, as I strive to give the very best when you allow me the choice.

**TIME OF SHIPMENT**—Unless you give a specific shipping date, your order will be shipped to arrive at the proper time to plant in your locality. If you wish your order shipped at any special time, I will appreciate definite instructions, and assure you that you can depend upon me to serve you satisfactorily. It requires all Winter to separate my large number of clumps, but by the first of March I have one box of each variety systematically arranged in my shipping department, and am prepared to ship all varieties offered in this catalog after that date. As I start planting on June 1st, I cannot furnish all varieties listed herein after June 5th, but can supply good selections of all types if the choice is left to me. I assure you I will send the best possible where selections are left to my judgment.

**PACKING**—No extra charge for packing. I take great pains in packing my orders, and strive to give all my personal attention to insure their arrival in good condition. I assure you that your order will be securely and carefully packed.

**SHIPMENTS PREPAID**—All orders will be shipped by Parcel Post, Express or Freight, whichever way I deem advisable, prepaid to all parts of the world, unless otherwise stated.

**FOREIGN AND SOUTHERN ORDERS** that require shipment out of season. The fact that I receive large numbers of Foreign and Southern orders, and from the same customers year after year, leads me to believe my ability to serve is satisfactory to them. In view of the fact that I do not ordinarily complete harvesting before November 10th to 20th, and that it

requires considerable time to separate the clumps of the great number of varieties I grow, and the quantity makes my eight storage cellars very much congested, I would appreciate it if customers who wish their order shipped between November 30th and March 1st would mention a second choice when ordering. If they are not particularly desirous of special varieties it will insure them prompt shipment if they will leave the selection to me. I give Foreign orders special attention, packing them very securely, so that they will arrive in perfect condition.

**ACCURACY OF DESCRIPTION** — All descriptions and other matter in this Catalog and Cultural Guide will be found to be as nearly in accordance with actual facts as it is possible to write them, great care having been taken to avoid exaggeration in descriptions of varieties. My authority as to colors is Ridgways' "Color Standards and Color Nomenclature," a complete and authentic chart giving Eleven Hundred and Fifty named colors.

In making comparisons there must be an allowance made for variation caused by different soils and climatic conditions.

**SUBSTITUTION** — The varieties you select are always sent unless you grant me permission to substitute. If you wish a particular color, rather than a particular variety, many times it is to your advantage to mention the fact, as my intimate knowledge and experience oftentimes enables me to improve upon your selection. Therefore, if a substitute is acceptable, be sure to advise me, as otherwise everything is shipped absolutely as ordered.

**ERRORS** — While my system of handling orders is as nearly perfect as possible, in the rush of business errors occasionally occur, and I hope to be promptly notified of such, giving me an opportunity to make proper adjustments. I would suggest that you keep a copy of your order for comparison.

**REMITTANCES** — May be made by Check, Post Office or Express Money Order, or Registered Letter, and if for less than \$5.00 can be made in U. S. stamps. Coin and currency should be sent by registered letter. Customers residing outside the United States please do not send Foreign stamps or currency — a Post Office order is preferable. All unpaid orders will be sent C. O. D. unless satisfactory arrangements can be made when the order is given.

**GUARANTEE** — I wish it distinctly understood that although I take all possible pains, I will not be responsible beyond the purchase price. I guarantee every bulb, root and plant I send out to be just as represented, absolutely true-to-name, reach its destination safely in good growing condition. I will cheerfully replace anything that fails to prove otherwise, and will appreciate your calling my attention to it.

**PRICES** — The prices herein cancel all previous ones. These prices are void when my 1929 catalog is issued. Any one variety priced at 25 cents each may be had at \$2.50 per dozen; any one variety priced at 35 cents each may be had at \$3.50 per dozen, and so on with 50 cents, 75 cents, \$1.00, \$2.00, \$3.00 and \$5.00 varieties. Six of one variety may be had at the dozen rate. *Please order by number on Special Offers.*

This is a saving of about 20%. If wanted in lots of 25 or more of one variety, write for quantity prices, stating quantity desired.

All stock shipped are strong bulbs. As a special price is given on plants none are shipped except by request. Bulbs are guaranteed to grow but due to care and conditions beyond my control plants are **not** guaranteed to grow.

**CONNECTIONS** — Long Distance Telephone:

Office — East Bridgewater Number One.

Telegraph — Western Union, Brockton, Mass.

Post Office, Express and Freight Office, East Bridgewater, Mass.

**TERMS** — **Cash with orders** or in advance of shipment.

**NAME AND ADDRESS** — Please remember to write your name, street and number, Post Office, County, State and Country if Foreign, as plainly as possible. Post Office Box or R. F. D. number if you have one. This will avoid delays and chances for errors.

ALWAYS ADDRESS

## **J. K. ALEXANDER, *The Dahlia King*** 499 Central Street **EAST BRIDGEWATER, MASS.**

### **Classification of Dahlias**

As adopted by the American Dahlia Society.

The Dahlia belongs to the family Compositae (or *Carduaceae*, as the family is now sometimes known) and is a close relative of our native species of *Coreopsis* and *Bidens* ("beggarticks") and our cultivated *Cosmos*. What we commonly call the flower is botanically, as also in the sun-flower, a flower-cluster or head, made up of numerous closely aggregated flowers, which are often of two or more kinds. In the so-called Single Dahlia, a few outer flowers of the cluster have broad, flat, conspicuous expanded corollas or rays (popularly but not botanically the "petals,") while the inner or disc flowers, including most of the flowers of the cluster, have small inconspicuous tubular corollas.

Growers and exhibitors of Dahlias recognize several different classes or groups of Dahlias, based on the form and other characters of the "flower" or head. The extremes in form are very

pronounced, and it is usually easy to say into which class a flower is to be placed; but here, as elsewhere in nature, and more especially where nature has been interfered with by man, the lines of separation are not always hard and fast, and it sometimes happens that a variety may be found classified under two and sometimes three different headings in catalogs of different dealers. The names and their applications as recently defined by the American Dahlia Society follow:—

**SINGLE DAHLIAS.** Open-centered flowers, small to very large, with 8 to 12 floral rays (petals) more or less in one circle, margins often decurved or revolute (turned down or backward). There are no distinctions as to colors. This class embraces the large Century type as well as the small English varieties. They resemble the Cosmos.

**COLLARETTE DAHLIAS.** Of the single type, with not more than 9 large floral rays; but with a circle of smaller, narrower, usually different colored rays, standing at the base or in front of the larger rays and forming a sort of collar between them and the open center.

**DUPLEX DAHLIAS.** Semi-double flowers; center almost exposed on opening of bud, rays more than twelve, in more than one circle, long and flat, or broad and rounded, not noticeably twisted or curled. Many Dahlias previously classed as Peony-flowered belong here.

**PEONY-FLOWERED DAHLIAS.** Flowers are Semi-double, having two, three or more rows of broad, flat, loosely arranged rays or petals, surrounding an open center, which is usually a conspicuous golden-yellow. The inner floral rays being usually curled or twisted, the outer rays either flat, or more or less irregular. Sometimes the rays are pointed, occasionally they curl and twist over the center.

**DECORATIVE DAHLIAS.** Double flowers, full to the center, early in the season at least flat rather than ball-shaped, with broad, flat, somewhat loosely arranged floral rays with broad points or rounded tips which are straight or decurved (turned down or back) not incurved, and with margins revolute, if rolled at all.

**BALL SHAPED, DOUBLE DAHLIAS.** Full to the center.

(A) **SHOW TYPE.** Flower globular or ball shaped rather than broad or flat, full to the center, showing regular spiral arrangement of florets, with floral rays or petals more or less quilled or with their margins involute (rolled forward or inward) and rounded tip. (Dahlias of this type with flowers spotted, variegated or parti-colored, were formerly classed as Fancy; a group no longer recognized).

(B) **HYBRID SHOW, GIANT SHOW OR COLOSSAL TYPE.** Flowers fully double, broadly hemispherical to flatly globular in form, loosely built so spiral arrangement of florets is not immediately evident; floral rays broad, heavy, cupped or quilled, with rounded tips and more or less involute margins. Verging towards the Decorative Class and sometimes found classed with the Decoratives.

**POMPON TYPE.** Same shape and form as A and B, but flowers must be under two inches in diameter.

**CACTUS DAHLIAS:** Double flowers.

**TRUE FLUTED TYPE.** Flowers fully double, floral rays or petals long, narrow, incurved or twisted, with sharp, divided or fluted points and with margins revolute (rolled backwards or outward) forming the outer florets, a more or less perfect tube for more than half the length of the ray or petal.

**HYBRID CACTUS.** Flowers fully double, floral rays (petals) short as compared with previous type; broad, flat, recurved or twisted, not sharply pointed except when tips are divided (staghorn); margins only slightly revolute, and tubes of outer florets, if any, less than half the length of the ray or petal. This type intergrades with the Decorative and Peony-flowered classes.

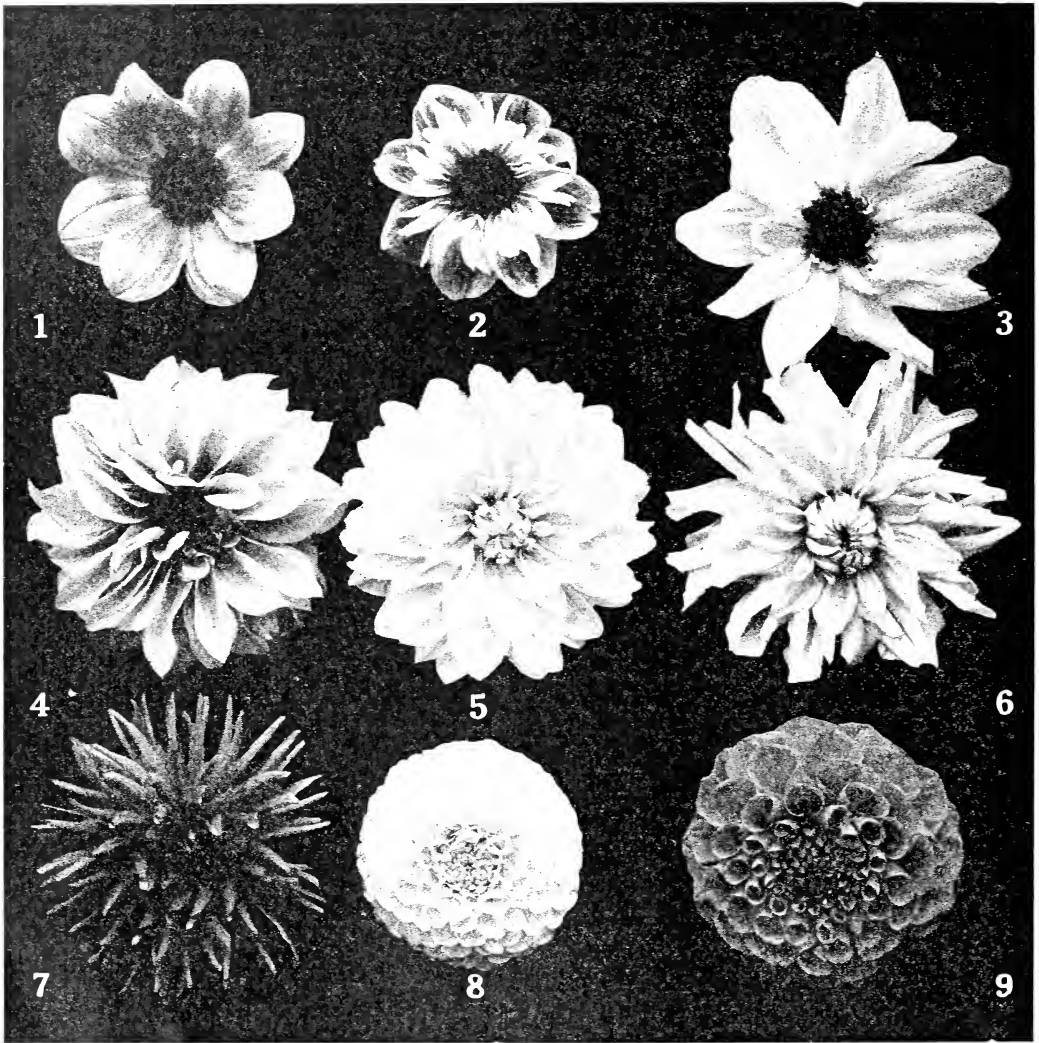
## History of the Dahlia

The Dahlia is a native of Mexico, where it grew wild, and in its single form. Earliest history dates back to 1657, when it was called Acoctli by the Aztec Indians. Later the name was changed to Georgiana, after Professor Georgi of St. Petersburg, which name is still used in some of the foreign catalogs. It was again changed to Dahlia, in honor of Dr. Andrew Dahl, a Swedish botanist.

The Dahlia was first cultivated in the Botanic Gardens, at Madrid, Spain, in 1789, and at about the same time was introduced into England by the Marchioness of Butte.

Dahlia Variabilis, from which most of the common or Show Dahlias have originated, was single in its wild state. The first double forms appeared in 1814 and were credited to M. Donkelaar of the Botanical Gardens at Belgium. The Pompon form appeared about 1858, followed by the Decorative, the origin of which is not clearly defined, but probably dates back some 40 or 50 years. Dahlia Juarezi, the first of Cactus Dahlia, was discovered in Juxphaor, Mexico, in 1872, by J. T. Vanderberg, and named Juarezi in honor of President Juarez of Mexico. It was sent by Vanderberg to an English florist, who exhibited it in England in 1880.

Dahlia tubers or bulbs were used as a food in Mexico and at one time in France. It was attempted to introduce them into cultivation in all Europe as a food for either man or cattle, but the taste was found nauseous to European palates.



**The Different Types of Dahlias**

- |                       |              |                 |
|-----------------------|--------------|-----------------|
| 1 Single              | 2 Collarette | 3 Duplex        |
| 4 Peony-flowered      | 5 Decorative | 6 Hybrid Cactus |
| 7 Cactus, fluted type | 8 Show       | 9 Hybrid Show   |

# The Culture of the Dahlia

**Success will Follow If You Observe These Instructions**

**LOCATION.** The Dahlia is not as particular as most of our flowers, and will succeed under a great many adverse conditions. There are, however, certain locations where Dahlias seem to outdo themselves. An open sunny location seems to favor them at all times. Dahlias do well on high and low lands, on hillsides or perfectly level land, giving good results in each location.



I find Dahlias are particularly adapted for seashore use, and not only do well, but thrive, for the reason of the moisture, and principally the heavy dews which collect during the nights.

I also find that many varieties do well in partial shade, producing fully as good flowers as they do in the hot sun, especially for exhibition purposes.

Dahlias will grow and do equally well in any kind of soil. I have sand, gravel, heavy and light loam, low land and hills, and find very little difference, as far as the number of flowers is concerned, the only difference being that in sand and gravel they form a short, sturdy, compact plant, and in heavy loam and low land they grow tall and rank, blossoming about a week later than those planted at the same time in sandy soil.

**PREPARATION** — The soil should be thoroughly cultivated; ploughed or spaded 8 to 10 inches deep, well pulverized and thoroughly worked over, thus affording an opportunity for rapid expansion, and making an easy path for the tiny rootlets. To secure exceptional results, have your soil ploughed or spaded in the Fall or as early as practicable in the Spring; then just before planting have soil thoroughly ploughed or spaded again.

**FERTILIZER.** Fertilization is one of the most important factors, to be successful with Dahlias. We all know that a growing plant, the Dahlia for instance, requires and takes from the soil certain properties; and in order to keep the soil in correct proportion, the materials the Dahlia takes from the soil must be restored. This must be done by fertilization. You can use dressing (either horse, cow, sheep or hen), or chemicals, or any commercial fertilizer rich in nitrogen, potash and phosphoric acid. Fish and potash, acid phosphate in the form of bone flour, or sulphate of potash, are also very effective. My system of fertilization — every other Fall I give my land a top-dressing of stable manure, ploughing under and alternate with lime, using this as a top dressing.

The manure restores the properties necessary, and makes the soil light and mellow, keeps it from being heavy and caking, while lime has the same tendency and keeps the soil sweet. When planting in the Spring I use commercial fertilizers exclusively (a complete potato fertilizer and ground bonemeal in equal proportions). Every fourth or fifth year I make a Fall planting of Winter rye, then turn under in the Spring, planting the bulbs with commercial fertilizers.

An application of manure (either in liquid or ordinary form), several times throughout the growing season proves very beneficial, furnishing new material for the growing plants and insuring you the very best results.

At the time of planting, two liberal handfuls of fertilizer around the individual tubers would be what I would recommend. After the plants attain a height of three feet, either a handful of fertilizer or any other dressing or manure should be used, and when hoeing, it should be hoed in around the plants. After the plants commence to bloom, it is always well to use fertilizer or dressing around the top of the plants, broadcast on the ground, so that the rains will carry it down to the roots. If applied every three weeks, it will prove very beneficial, although not absolutely necessary, as the fertilizer used when planting would be sufficient to carry the plants through. However, it helps your plants to produce larger and better quality flowers, giving them nourishment at the time they require it most.

In applying the fertilizer, it is best to sprinkle it around the tuber, two, three or four inches from where the sprout will come through, but every precaution should be taken to be sure it does not fall where the sprout will come in contact with it, when it pushes its way through the ground, as fertilizer will burn the sprout. It's better to have it a trifle farther away, as the roots will find the fertilizer.

**TIME OF PLANTING.** The time for planting Dahlias varies according to the locality; whether your spot is sheltered or open, earliness or lateness of the season, and the times when the general crop of flowers is desired. Dahlias can be planted any time after danger of frost is over, and under ordinary conditions will blossom in from 6 to 8 weeks after they have been planted. It is always best to wait until the ground becomes thoroughly warmed.

**PLANTING.** Plant bulbs in hills or drills, laying flat down, 6 inches deep. Do not stand the bulb on end. If you stand the bulb on end, having the sprout near the top of the ground, all the new bulbs which will form will grow near the top of the ground and when you have a dry spell your plant becomes stunted, whereas, if the bulbs were planted flat down 6 inches deep, no matter how dry the season, the bulbs would receive sufficient moisture to keep them growing. If planting with manure cover manure an inch or so before planting bulbs; fertilizer should be thoroughly worked into the soil. Either fertilizer or manure will burn the sprout; be sure to cover with soil.

By planting the bulb first, then covering an inch or so with soil and applying your fertilizer or manure, your plant receives the entire benefit of the dressing. The dressing is above the bulb and every rain carries the food down to the roots, whereas, if your dressing is below the bulb, each rain takes your dressing further away from your plant.

Summary. Plant bulb 6 inches deep, flat down, having sprout or eye facing upward; cover with soil an inch or so, applying dressing, and cover in level.

**CULTIVATION.** Cultivation is the principal requirement of the Dahlia — the most important of all operations to insure success. Keep the soil well cultivated and free from weeds; never allow the soil to crust.

**CARE OF PLANTS.** Give thorough cultivation, deep at first and continued once a week until the plants commence to flower. After they commence to blossom do not cultivate, as then is the time the new roots are forming and you are apt to cut off the new tubers, weakening the growth of the plant. Do not fail to stir the soil after each rain, keeping the soil from forming a crust on the surface, or baking, and conserving the moisture in the soil, thus avoiding the necessity of watering.

As the shoot or plant commences to show itself above the ground, care should be taken at this time for the prevention of cutworms and other pests that destroy the young shoots; I recommend Vermine, Arsenate of Lead, Cut-worm Killer or Tobacco Dust, as best preventatives for these pests.

As soon as the plants attain a height of 8 to 10 inches it is time to commence to "train" your plants.

There are three systems from which you must choose: The Staking System, the Branching Method and the Massing System.

**The Staking System** is the most popular, many amateurs finding it the most successful. Dahlias under this system should be planted from 2 to 4 feet apart, according to the amount of space you have to devote — the larger, the more robust the plants. Stakes should be set when the Dahlia is planted. As soon as plants attain a height of 2 to 3 feet they should be secured to the stakes, thus protecting them and preventing the brittle stalks from being blown over or getting broken.

**The Branching Method.** This system is advocated by many professionals and does away with staking. Plant in hills or rows from 18 to 30 inches apart. When your plant has two sets of leaves, pinch off or cut out the whole top of the plant; at each leaf a branch will start, thus making four branches, one at each leaf. Do not pinch off your plant more than once, as this system makes your plants two weeks later in flowering; but you receive four flower stalks, each of which will blossom equal to the one stalk which you would have received had you left your plants growing without pinching. When the plant is grown it will have a short, strong, single stalk, which comes only an inch or two above the ground, with four branches of flowering stalks. The plant is short and has a neat branching appearance; the branches are self-supporting and are not easily blown over by the wind.

**The Massing System.** This is the system I use in planting my immense fields — avoiding the extra labor and expense of staking, the woody effect of stakes and giving a solid mass of foliage and flowers, more beautiful and effective than where Nature's beauty is broken at each interval with a stake. Plant bulbs in rows from 10 inches to 2 feet apart according to the amount of space you have to devote. The plants are self-supporting, each plant supporting and protecting the others.

At the height of 18 inches spray occasionally with Arsenate of Lead, "Black Leaf 40," Bordeaux Mixture, Hellebore, Pyrox, Slug Shot, Whale Oil solution or other first-class solutions to kill and keep away the aphid or green fly, which often infests Dahlias.

Both wood ashes and lime are good at all times, improving the condition of the soil and are effective as preventatives against insect pests.

To obtain the largest and most perfect flowers, only the best and largest buds should be allowed to mature; the others being taken off, enabling the full strength to develop those into exhibition blooms.

**DISBUDDING.** Some varieties of Dahlias require thinning and disbudding to produce the best flowers. Varieties having an excessive amount of foliage and small growth should have a considerable part of their branches removed, while those having more buds than can be properly developed or matured should be disbudded. The operation in no way endangers the plants and anyone can do it. Thin and disbud if necessary, moderately or severely as conditions seem to require.

Taking a budded stalk or branch, you will note the large or first bud on the stalk, and also, that at each leaf all the way down the stalk new shoots or budstalks form; these in turn produce buds and flowering stalks, which overtop the first bud. The first bud on every stalk is always the largest and produces the largest and best flower, ordinarily. Before the first flower is in full blossom, the first two side shoots have formed buds and burst into flowers. These in turn become passe, to be replaced by flowering shoots from the set next below, or the second pair of side shoots.

On most varieties the first flower has a short, stiff stem; we disbud to lengthen the stem and to secure larger flowers.

**The Proper Way to Disbud:** When the first bud is small the first set of side shoots should be removed with a sharp knife. This forces all the plant life that under ordinary conditions would have developed the first two side shoots, into the first bud, making the first flower much larger and giving it a good long stem. Removing the first set of shoots also forces ahead the second set and they in turn burst into flower.

As you cut and remove your flowers, your plant sends forth new flowering stalks from the





**Dahlia Clump, Showing Proper Method of Dividing.**

Black lines show where you should cut with knife

**FORCING.** To produce the finest flowers for exhibition purposes use staking system. Plant 3 to 5 feet apart, using a liberal amount of manure or fertilizer; cultivate frequently; apply fertilizer or manure, broadcast or liquid form, at each or every hoeing and disbud. Nitrate of soda proves very effective for forcing. Apply in liquid or crystal form, when plants are in bud; make applications often, but do not use too much at a time. Nitrate of soda is very powerful and if too much is used it will burn up your plants or force them to such an overgrowth that the roots will decay during the Winter. Apply nitrate of soda in crystal form on top of the ground, or in liquid form, using one tablespoon of nitrate of soda crystals to a gallon of water, using sprayer or water can.

When the flower buds appear, only one bud should be allowed to come to maturity, enabling each branch to produce one exceptionally fine, perfect flower. The flowers, for quality, must not be allowed to receive the drenching rains or scalding sun when nearing full bloom and should be protected from such.

It is always advisable to cut flowers that are to be exhibited as late as possible at night when the dew is on them, placing them in water and keeping them as cool as possible over night, thereby enabling them to withstand handling, packing and transportation.

**WATERING.** The amount of water depends largely upon the locality and amount of rainfall. In regions where the rainfall is scanty and where sprinkling and irrigation must be regularly practised, Dahlias should be watered more frequently than in localities where there is abundant rain. Watering is very beneficial, adding perfection to blossoms and richness to color, but do it judiciously. A thorough soaking, with the soil stirred the following day, is excellent; but a constant surface sprinkling every day causes surface roots and soft growth. When you have continuous dry, hot weather, I recommend that you water your Dahlias as often as you think it beneficial.

**HARVESTING.** The harvesting and packing for Winter is very important, upon which depends your future success. Should you loose your Dahlias during the Winter, you will be obliged to buy new ones in the Spring; therefore, these suggestions are important.

Dahlias should be harvested shortly after their foliage has been killed by frost. I find from experience that as soon as the frost kills the foliage, the strength of the stalk recedes into the bulbs. By digging two or three days after your plant has been killed by frost, your clumps are in a perfectly dormant condition, having no sprouts, keeping perfectly all Winter and sending forth sprouts in the Spring, which is the proper time.

Dahlias may be dug with fork, spade or plow. In digging or harvesting the clumps great care should be taken. Dig them and dig very carefully; do not pull them up. You have large clusters of bulbs; each bulb has a neck, which is the small portion between the bulb and where it joins the stalk. The clumps should be dug or lifted carefully, so as not to break the necks of

bottom of the plant; the more flowers you cut, the more will grow.

Disbudding is more generally used for flowers for exhibition purposes. When wishing the largest flower possible, for exhibition purposes, you can disbud every side shoot down the entire length of your stalk, forcing all plant life into the one flower, thus growing one flower of gigantic size; this disbudding in addition to forcing with manure (taken up under forcing) insures you much greater success at exhibitions.

Anyone can grow Dahlias of exhibition quality if they will digest these remarks, study plant requirements and then act accordingly.

After your plant has been blossoming continually and flowers commence to grow smaller, then is the logical and proper time to fertilize. Apply any good fertilizer broadcast, or any kind of manure available, but it is better to make two moderate applications than too much at one time.

the bulbs. If you crack, girdle or break the necks sometimes they will dry up, other times decay. However, when the clumps are divided, the bulbs with broken necks are weak and not as good and it requires longer for the bulbs to become established before they commence to grow after they are planted in the ground. After removing the clumps, shake gently to remove the soil that would naturally fall off. Cut off tops within two or three inches above tops of clumps, allowing them to be exposed to the sun and air for only an hour or two. Do not allow them to stay out two or three days to dry up, then wonder why they are withered and fail to sprout. Pack in a cool, frost-proof place where extremes of temperature may be avoided — a place having an average temperature of about 45 degrees. Do not cover or pack in any material or with any substance. Cork, sawdust, shavings, coal ashes, sand or earth, all hold and retain a dampness or moisture which is unnatural, making it too close, compact and damp, causing the clumps to start to mildew or decay. Would you pack your potatoes in any of the above? Simply pack clumps one on top of the other, placing each clump upside down. Undoubtedly you are aware that the Dahlia stalk is hollow and that this hollow contains a watery substance or acid. If you pack your clumps with the stalks up, the acid will flow back into the crown of the clumps, causing decay, whereas, if you turn your clumps upside down the acid must flow out, and clumps will remain in a perfectly dormant condition. Pack clumps upside down in boxes or barrels, packing one on top of the other. Dahlias in an old-fashioned cellar will keep first-class without any covering; in a cellar having a cement bottom or heat, the boxes or barrels should be lined with heavy paper and covered with paper or burlap. Covering with paper or burlap excludes the air and preserves a more even temperature. In heated places the circulation of air and heat causes the bulbs to shrivel and dry up; a covering of this kind prevents the roots from shrivelling.

**DIVISION OF CLUMPS.** Although I divide clumps all Winter, it is because of the number of clumps I have to divide; I recommend that the amateur wait until Spring before dividing. Dahlias keep during the Winter much better in clump form. In the Spring the clumps commence to send out sprouts which aid in dividing properly.

Take the Dahlia clump as it was harvested with the portion of the original stalk from which the top was removed (same as shown on page 9).

Upon examining the clump you will notice that the tubers formed at the base of the stalk, and that each tuber has a crown, neck and body. The crown being the bulging portion where it is connected with the clump, the neck the small portion between the crown and the body of the tuber. By examining carefully, small eyes or sprouts can be detected on the crown and stalk base. These eyes produce the new plants, so in separating, it is necessary that each tuber have an eye. Without an eye the tuber is absolutely worthless.

In separating a sharp knife should be used and great care taken. The best way is to remove each tuber individually but in cutting it is necessary that each tuber have a crown or a portion of the stalk, as it is upon this that all eyes grow.

First of all, select the tuber that you think can be most easily removed. With the point of your knife cut deeply into the base of the stalk (the black lines in the illustration showing place to cut) cutting so to leave an equal amount of the stalk-base for each tuber, and so that each tuber has its crown. By cutting deeply into the stalk-base on both sides, the tuber becomes separated from the clump, leaving a "V" shaped portion of the stalk-base as a crown or head, upon which the eye is found or will grow. The next tuber favorably located from the separating standpoint can then be chosen, and removed by again cutting the stalk-base, and so on until the stalk-base becomes the crown of each individual tuber.

**SIZE OF BULBS.** The size of the bulb or tuber does not in any way designate the size or quality of the flower. Some varieties of Dahlias always produce very small bulbs, while other varieties make large ones. Do not consider small bulbs worthless, for they are equally as good and in many cases better than large ones. Medium and small sized bulbs more often produce the finest and highest colored flowers, and in many cases the best and most effective plants. The only requisite of a Dahlia bulb is: be sure that your bulb has one or two eyes or sprouts, whether large or small, and with proper cultivation, success is generally assured. A clump, root, bulb, or division of a clump, potroot, cutting, sprout, and even a Dahlia seed, will grow and blossom, all equally well. It is not the size, but the care and cultivation — cultivation is the principal requirement of the Dahlia.

**CONCLUSION.** There are no set rules to follow invariably by all or even by any one grower year after year. In fact, each soil, location, climate or season, may call for different treatment. Study your plants; watch them as they develop; try all experiments along lines in harmony with nature's laws. Success with Dahlias is the same as with anything else; do everything in moderation; excess in any direction is unwise. In many locations conditions are so favorable that Dahlias grow to perfection with practically no attention. So it is with seasons — some years Dahlias do well the entire season, but there is no reason why Dahlias should not be grown successfully year after year. My methods of cultivation are simple and easily followed, the treatment and requirements are so simple, there is no reason why you should not be successful with your Dahlias. The Dahlia is one of the easiest plants to grow and will produce more flowers than any other plant in the garden if properly cared for.

## Decorative Dahlias

The Decorative Dahlia is the pride of all Dahlias, standing out pre-eminently. In the garden the plants are strong, sturdy, vigorous growers, with heavy, dark green foliage and a remarkable constitution. The blossoms are produced in great profusion, which is exceptional for a type of giant-flowering Dahlias. For cut-flower purposes they are unsurpassed, having long, straight stems of wiry stiffness, and producing their flowers in a pleasing, upright manner; but principally their lasting qualities when cut — they are unequalled, lasting longer than any of the other types. As an exhibition flower the Decorative Dahlia is the most gigantic of all Dahlia blossoms having beauty, substance, quality — all essential characteristics of a true "Model of Perfection." As a decorative flower they are first in every respect; being graceful, adapted to designs, and most artistic.

The blossoms of the Decorative Dahlias are large, flat, but beautiful in shape, and full to the center; the petals are somewhat irregularly situated, long, broad, flat and nearly straight.

## Up-to-Date Varieties

This collection of 50 Gigantic New Decorative Dahlias prepaid for \$75.00.

Regular Price \$79.50.

An unusually good collection, and one sure to give satisfaction.

**AL KORAN.** Yellow, suffused with golden rod and amber. The petals have the Marcelle wave which makes it very attractive. **\$2.00.**

**AMUN RA.** An immense decorative. The outer petals of the mammoth blooms are of gorgeous shades of copper and orange, shading to gold and amber. **\$1.00.**

**AMANDA M. HOUGHTON.** Here is a Dahlia I recommend highly. It has a very large, pretty pink blossom with long, stiff stem. **\$1.00.**

**BEN WILSON.** Very large flower, orange-red tipped with gold. Very attractive as a garden plant. **\$1.00.**

**BERTHA STORY.** A very large flower of beautiful rose-pink on long stem. Sometimes has a wide white stripe through center of each petal and sometimes is a true Decorative. **\$1.00.**

**BONNIE BRAE.** (Dec.) This is one of the best Dahlias ever grown. The color of this wonderful Dahlia is a peach and cream combination of shadings, showing strong on the peach pink at first, but after well opened comes out much lighter. The flowers in my fields this season grew from 8 to 10 inches in diameter and were carried on stems from 18 inches to 2 feet long. Very free flowering. **\$1.00** each.

**BUTTERCUP.** One of the finest Dahlias ever offered in its color, being a pale chalcedony yellow very large and beautiful. **\$1.00.**

**CARMENCITA.** Clear yellow, spotted, penciled, and striped bright red. Plant dwarf and profuse bloomer; flowers large. **\$1.00.**

**CHAMPAGNE.** An immense flower. The color is a delightful warm autumn shade. Very free bloomer, and has long rigid stems. **\$1.50.**

**EAGLE ROCK BEAUTY.** A most beautiful combination of pink and cream and is greatly admired by all who have seen it. It has strong stems holding perfectly erect the immense blooms. **\$10.00.**

**EARL WILLIAMS.** (Dec.) The brilliant crimson and white of this flower are well distributed. It has both blooming quality and size. **\$1.00.**

**EL DORADO.** Vivid gold coloring, which is emphasized by the deeper tones at the base of the petals. Extra fine flower and a good stem. **\$2.00.**

**ELEANOR GRANT.** (Dec.) Large flowers borne on extra long stems, the outer petals of light cameo pink, while the center is sea foam green. A fine Dahlia. **\$1.00.**

**ELITE GLORY, D.** (Kennedy.) Immense flower, brilliant rich red, without any purple or maroon shading. Blooms and foliage gigantic in size. **\$5.00.**

**FAITH GARIBALDI.** (Dec.) Deep lavender rose, very large, stem extra strong, growth of plant good. **\$3.00.**

**F. L. MILLIS.** Yellow, base shading to orange. **\$1.00.**

**GEORGE H. CARR.** The color is a peculiar shade of magenta shading lighter at tips. Free-flowering. **\$1.00.**

**ISMALIA.** One of the finest large flowering Dahlias ever introduced, and are carried on long stiff stems, the color being a deep crimson. 6 to 8 inch flowers, without forcing. **\$2.00.**

**JERSEY'S BEACON, D.** (Waite.) Chinese scarlet with a paler reverse, giving a two-toned effect; a very large flower, vigorous grower, good stem. **\$2.50.**

**JERSEY'S BEAUTY.** A very fine true pink, flowers of perfect shape produced on long, straight, stiff stems. Very free bloomer, and a splendid keeper. **\$1.50.**

**JERSEY'S JEWEL.** Mallow pink, very large, long petaled flowers, on good stems. A splendid exhibition variety; flowers can be had nine inches without disbudding. **\$1.00.**

**JERSEY'S KING.** The color is carmine, the flowers are very large and exceptionally fine. **\$1.00.**

**JERSEY'S RADIANT.** (Waite.) Bitter sweet orange, large flowers produced on long stiff brown stems well above the foliage. A very attractive variety. **\$2.00.**

**JOHN MCGUIRE.** Alexander's new 1928 Seedling. Color a clear light greenish yellow, 6 to 8 inch flowers borne on long stiff stems. **\$3.00.**

**JUNIOR.** An enormous flower, one of the largest Dahlias grown. A pure lavender. Fine for exhibition purposes. **\$1.00.**

**LAKE ERIE.** One of the deepest lavender Dahlias grown. Fine exhibition flower. **\$1.00.**

**LA PALONA.** Orange chrome, yellow center, flaked white, 8 inch flower, fine. **\$1.00.**

**MAID OF THE MIST.** (Dec.) A deep cream shading to a beautiful salmon-pink on the outer petals which roll back to a depth of four inches, prettily pointed and twisted. One of the best flowers grown, eight inches in diameter. **\$2.00.**

**MARION COOPER.** A very fine flower of blush pink and cream. **\$1.00.**

**MR. ALEX. WALDIE.** One of the most beautiful Dahlias. A creamy ground overlaid with delicate salmon-pink. Gives immense flowers held erect on strong stems. **\$1.00.**

**MRS. CARL SALBACH.** (Salbach.) A sensational Decorative Dahlia of great size. In color, a mauve-pink, with occasional blending of white; the general impression being pink. For exhibition purposes this new creation is very desirable. **\$1.00.**

**MRS. EDITH HAYWARD.** This is one of Alexander's new Seedlings for 1927 introduced in 1926 for the first time. The color is a clear lemon yellow, it will produce flowers from 6 to 8 inches in diameter and has a wonderful stem and will keep longer after being cut than any other Dahlia. **\$3.00.**

**MRS. I. DE VER WARNER.** Deep mauve-pink. One of the very best Dahlias grown. Long stiff stems and excellent for cut flowers. **\$1.00.**

**MRS. JOHN L. EMERSON.** (Slocombe.) One of the largest and most attractive Decorative Dahlias grown. In color, a beautiful light golden yellow, overlaid carmine red. A favorite garden and exhibition Dahlia that will produce six to eight inch flowers. **\$1.00.**

**NOBILIS.** (Dec.) Scarlet, heavily tipped white, large and fine. **\$1.00.**

## Up-to-date Decorative Dahlias — Continued

**OUR COUNTRY.** The ground or main color is a very deep purple, while the florets are heavily tipped white, a very deep heavy flower, always coming with a full center and never producing any solid colored flowers. **\$3.00.**

**PAUL MICHAEL.** An immense flower of bright apricot with bronze shadings. Good stems and excellent for exhibition purposes. **\$1.00.**

**ROBERT TREAT.** It is a most pleasing American Beauty Rose color and is unlike any existing variety in shade or color. It has produced flowers eleven inches across and four inches in depth. It flowers on long strong stems well above the foliage. **\$2.00.**

**SAN MATEO.** (Dec.) Large yellow striped red. Plants. **\$1.00.**

**ST. FRANCIS.** Soft cream shading to pink. An immense flower, and good for any occasion, has a good stiff stem. **\$1.00.**

**SNOWDRIFT.** (Broomall.) A giant, clear white. The flower has good depth with broad waxy petals of the true Decorative type. **\$1.00.**

**THE BASHFUL GIANT.** (Dec.) This is one of the largest Dahlias ever produced. It is also of great merit for its beautiful color, being an apricot with golden shadings. Flowers are produced on stout stems. **\$1.00.**

**THE GIANTESS.** (Dec.) (Marean.) A very pleasing shade of amber on fine stems, neck slightly turned, an immense thick bloom. **\$1.00.**

**THE GRIZZLY.** (Burns.) A prize winning California Dahlia. A dark maroon-red with stems three feet long. The flowers are large with reflexed petals and stand well above the foliage, making a fine effect in the garden. **\$1.00.**

**THE EMPEROR.** (Dec.) Beautiful deep maroon of immense size, long flat petals. **\$1.00.**

**TOMMY ATKINS.** Color flaming scarlet, a somewhat different color than any other Dahlia, fine form and full centered and very large, and strong, stiff stems. **\$1.00.**

**VIOLET BEAUTY.** (Dec.) Dark violet shaded maroon. Extra good stem, and very free flowering, and grows from 8 to 10 inches in diameter without disbudding. **\$1.00.**

**W. E. COOPER.** (Dec.) A new California Decorative with huge blossoms of clear, true pink without a tinge of mauve; stems erect and strong. **\$1.00.**

**WM. H. SLOCOMBE.** (Slocombe.) The largest and best pale yellow Decorative to my knowledge. A clear sulphur yellow passing to martinus yellow at tips. Flowers of gigantic size, from six to eight inches in diameter under ordinary conditions. **\$1.00.**

**ZEBRA.** Very large well built flower of buff and orange shades, striped crimson scarlet. One of the best fancy Decorative Dahlias ever offered. **\$1.00.**

### Special Offer No. 1

#### This Beautiful Collection of Four Dahlias

Mrs. I. de Ver Warner	\$1.00	Pride of California	\$ .50
Mrs. Carl Salbach	1.00	Snowdrift	1.00

(See front cover)

**All for \$3.00 Prepaid**

### Special Offer No. 2

#### 10 Beautiful Dahlias, the Cream of the Dahlia World

(Try Them)

Mrs. C. B. Benedict, H. C., Light Yellow	\$2.00
The Bashful Giant, Dec., Apricot with golden shadings	1.00
The Grizzly, Dec., Maroon-red	1.00
Mrs. Ethel F. T. Smith, Dec., Light Lemon	1.00
Eleanor Grant, Dec., Light Pink	1.00
The Emperor, Dec., Deep Maroon	1.00
F. L. Millis, Dec., Orange	1.00
Bertha Story, Dec., Deep Pink	1.00
Mr. Alex. Waldie, Dec., Salmon Pink	1.00
El Dorado, Dec., Vivid gold	2.00

**\$12.00 Value all for \$10.00**

**PLEASE ORDER BY NUMBER ON SPECIAL OFFERS**

# General List of Choice Decorative Dahlias

These Dahlias all 50 cents each; \$5.00 per dozen.

The entire collection of 54 Dahlias for \$20.00 prepaid. Regular price \$27.00.

- ALADDIN.** A huge shaggy flower, petals long and fluffy, of a beautiful rose-red color. Extra fine flower.
- AZALIA.** Very large, soft, creamy yellow, with outer petals suffused pink.
- CAMBRIA.** One of the finest Decorative Dahlias yet introduced, unusually large and perfectly formed flowers, exceptionally free flowering, carried on stiff erect stems, of an exquisite shade of soft rose-pink passing to a lighter pink towards the center.
- COMSTOCK.** Large, full yellow on long stems.
- CATHERINE WILCOX.** (Dec.) White with points of petals tipped cerise. A very strong grower and free bloomer.
- CREAM KING.** This is often classed as a Peony, but with me a very large percentage of the blooms come perfect Decorative. The color is as the name indicates, a soft cream. It is of immense size, blooms freely, and is supported by the best of stems.
- DAKOTA.** (Marean.) A good exhibition variety. Color a deep tone of rich coral-red with coppery suffusion. This strong growing variety is very satisfactory.
- DOROTHY FLINT.** (Flint.) The color combinations are exquisite, being a blending of salmon and pink with a yellow stripe running through the center of the petals.
- DR. TEVIS.** Beautiful shade of salmon-rose, suffused with old gold.
- ELIAZBETH SLOCOMBE.** (Slocombe.) (Dec.) Color rich purplish-garnet. The large flowers are carried on long stiff stems.
- FRAU GEHEIMRAT SCHEIFF.** An exquisite blending of apricot-orange and yellow, with reverse of petals coral red, the unopened central and twisted petals showing the coral red prominently, making a very unusual and attractive flower.
- GEORGE E. BEMISTER.** (Bemister.) A gigantic clear lemon yellow Decorative. Flowers from five to eight inches in diameter. Long curling petals making this mammoth flower one of the most beautiful for both exhibition and garden purposes.
- GLORIANA.** (Dec.) Immense flowers of pure gold color, slightly reddish towards center. Long leafless stems. None better for exhibition or cutting.
- GLORY OF NEW HAVEN.** (Slocombe.) A beautiful shade of pinkish-mauve. The nearest to lavender to my knowledge in desirable Decorative Dahlias. Plants are tall robust growers and produce large flowers.
- GRACE ALLEN FAY.** (Dec.) Rosy crimson shading darker in the center. Large well formed flowers on good stems.
- HALLOWEEN.** (Dec.) An exceedingly large, stiff stem Dahlia with dwarf habits. Color a light cream overcast with pink and orange bronze.
- HERCULES.** Quilled, of enormous size, the beautifully colored flowers carried proudly on long, stout stem; color tangerine and deep yellow, the reverse of the petals is shaded tangerine and they are so placed that they blend in a most attractive way with the deep yellow of the flower.
- H. MAIER.** A very large California production of the greatest merit. Of a shade a little darker than primrose-yellow, each petal is slightly flecked carmine. A very fine yellow Decorative.
- IMMENSE.** Large, white suffused and tipped bright rosy crimson.
- JANE SELBY.** Exceptionally large flower of a delicate mauve pink. Great substance and good formation, on strong stems well above the foliage. A prize-winner.
- JOHN LEWIS CHILDS.** Yellow suffused, splashed and striped with brilliant scarlet, and generally tipped white. Bi-colored Dahlias occasionally have a flower of solid color. In this case the red blossom is often tipped white. Immense size; stiff stem; lasting cut flower.
- J. M. GOODRICH.** A beautiful salmon-pink, each petal effectively tipped primrose-yellow.
- JUDGE ALTON PARKER.** A wonderful shade of golden-buff. A wonderful exhibition variety, grown freely on long erect stems.
- JUDGE MAREAN.** A blending of salmon-pink, red, orange, yellow and pure gold. Very large flowers borne on strong stiff stems.
- KING OF THE GARDEN.** A beautiful pink and gold Decorative, with good stem.
- LE GRAND MANITOU.** The color of this superb variety is pure white artistically striped, splashed and blotched deep violet-purple. The plants occasionally bear a solid purple-colored flower.
- LE GRAND LILAS.** Lavender shading to royal purple; very large flower and excellent stem.
- LEO XIII.** Is a beautiful deep yellow.
- MADY SAVIGNON.** (Dec.) A vigorous plant producing large yellow flowers in abundance on good stems.
- MARJORIE FIELD.** Flowers grow as large as 7 inches in diameter with stems 2 feet long, color a wonderful shade of pink.
- MIGNON.** Large, upright flowers of clear light violet, tinting to white at center; free blooming.
- MILLIONAIRE.** (Stillman.) Most delicate lavender with faint pink cast overshadowing it, the whole having a blending of white. One of the best known lavender pink Dahlias, an immense flower, that attracts considerable attention on the exhibition table. Plants are very dwarf, so it is not recommended as a cut-flower variety.
- MME. VAN DEN DAELE.** Flowers are large and of fine form; produced upon exceptionally good stems, well above the foliage. The color is white, deeply edged live silvery-pink.
- MONS. LE NORMAND.** A very striking variety of large size and an extremely free bloomer. Color rich clear yellow, penciled and striped rich red.
- MOONBEAM.** An immense flower borne on excellent stems, and in color, a clear lemon-yellow.
- MR. CROWLEY.** A glowing shade of salmon-pink with yellow at base of petals.
- MRS. J. C. HART.** Rich scarlet-red without any shadings.
- MRS. J. HARRISON DICK.** Color citron yellow at center, outer petals suffused and overlaid salmon pink, a lovely and effective combination, long stiff stems.
- MRS. LOUISE FINGER.** A large Decorative of a pure white color, shading to a faint yellow in center of flower. Later in season blooms come pure white. Ideal long stems.
- MRS. R. R. STRANGE.** Autumn shades, buff salmon and orange. Fine form on good stems.
- MRS. T. B. ACKERSON.** Bright carmine tipped and shaded with whitish petal; fine cut flower.
- N. C. 4.** A very beautiful flower. The color is about equally divided with scarlet and white, the florets are more or less striped the whole length with yellow and white, reverse side of petals are white with yellow shadings.

## General List of Choice Decorative Dahlias — Continued

**NOIR ALVAREZ.** (Nonin.) A deep, velvety oxblood red. The plants make a sturdy, vigorous growth with long, stiff stems.

**PATRICK O'MARA.** (Dec.) One of the best Autumn shade varieties, the color is an unusually soft and pleasing shade of orange buff, slightly tinged Neyron rose.

**PEACE.** One of the best large pure white Decoratives.

**PRIDE OF CALIFORNIA.** (Lohrman.) Called the "American Beauty" Dahlia. Winner of Gold and Silver Medals. Huge crimson red flowers produced on long straight stems.

**RODMAN WANAMAHER.** (P.) (Peacock.) Center yellow, outer petals light salmon, toned amber, large, good form, except center which is often green, stem and growth excellent.

**ROSA NELL.** The color is a clear bright rose, and the flowers are very large, and is one of the best shaped Decorative Dahlias grown. Good stems and habits.

**SAMSON.** In color a very pleasing combination of yellow and red, making it a very striking and unusual flower.

**SEQUIA GIGANTEA.** Very large, buttercup yellow, lightly suffused red.

**SWIFT.** Lemon yellow tipped white.

**TANGO.** (Dec.) Showy orange bronze; a distinct and very attractive color; large, very double flower with pointed petals; long, stout stems and strong.

**W. D'ARCY RYAN.** (Dec.) Violet purple, heavily tipped white.

**WORLD'S WONDER.** (Stillman.) The color is a golden-salmon with a very large, deep, full flower on a rather dwarf growing plant. The stems are long and stiff. A profuse bloomer.

## General List of Select Decorative Dahlias

These Dahlias all 25 cents each; \$2.50 per dozen.

The entire collection of 23 Dahlias for \$4.00 prepaid. Regular price \$5.75.

**CLARABEL.** Color, rich, rosy purple.

**CLIFFORD W. BRUTON.** A large canary-yellow.

**DARLENE.** (Alexander.) An exquisite shade of live shell-pink with a dainty blending of white at center. The foliage is a heavy, deep green.

**DELICE.** The finest and brightest pink Decorative Dahlia in existence. A charming bright pink.

**DOLLY or SYLVIA.** White edged pink.

**ELSIE DAVIDSON.** A beautiful deep, golden-yellow, very large, and fine for cutting.

**EVENTIDE.** (Dec.) A beautiful flesh color shading to white, giving the appearance of white when in flower. Very free.

**FRANK A. WALKER.** Alexander's Decorative Seedling. A charming shade of deep lavender-pink. For garden decoration or for cut flowers this variety is exceptionally good, having long stems and producing flowers in great abundance.

**FREEDOM.** (Alexander.) Deep crimson, exceptionally free, early.

**GENERAL CUSTER.** (New.) A combination of yellow-white and coral-red.

**JACK ROSE.** The identical shade of the rose with the same name. Free-flowering.

**JEANNE CHARMET.** The color is a most exquisite shade of lilac-pink, daintily shading to pure white towards the center.

**JOHN R. BALDWIN.** A splendid variety. Color a beautiful salmon-red.

**MINA BURGLE.** A glowing and most brilliant scarlet. The flowers are of perfect Decorative type and are borne upon long, wiry stems well above the foliage. Attracts universal attention.

**MINOS.** The color is intense velvety maroon, almost black. An ideal cut-flower variety. Fine for all uses.

**ORA DOW.** A beautiful velvety maroon, effectively tipped white.

**PAUL BONYON.** Large salmon, shaded orange.

**PRINCESS JULIANA.** The best white Decorative Dahlia for cut-flower purposes, and also the best flowering.

**PURPLE MANITOU.** Enormous flowers of a rich, clear, deep purple. Identical in shape, form and size to "Le Grand Manitou." The very finest purple Decorative Dahlia in existence. I cannot recommend this variety too highly.

**QUEEN MARY.** This is a stronger grower than Delice. A large flower with full, rounded center. The color is a soft shade of pink.

**SOUVENIR DE GUSTAVE DOAZON.** The color is a pleasing shade of orange-red. The plant is a very tall, vigorous grower, glossy green foliage. Very long stems.

**WILHELM MILLER.** Very brilliant purple. This is a fine variety.

**WM. AGNEW.** Intense glistening scarlet-crimson. This variety is a rapid grower and one that always gives good satisfaction.

## Cactus Dahlias

The American Dahlia Society divides the Cactus group into two types: the true Fluted type and the Hybrid type. But in the following list I have made a further distinction, separating the Incurved from the Straight-petalled form. The shape of these two forms is so very different that I feel this distinction will be of great help to my customers in making their selections.

The Incurved type, of comparatively recent introduction, has slightly quilled petals or florets, incurving in greater or less degree towards the center; the Straight-petalled type has quilled petals that are straight, or nearly so; the Hybrid type has broad, straight, slightly quilled and pointed petals. These three forms are indicated after the names in parenthesis.

### New and Rare Cactus Dahlias for 1928

I will ship these 19 New and Rare Cactus Dahlias for \$30.00 prepaid to any part of the world.  
Regular price \$34.00.

**A. C. LAWRENCE.** A beautiful flesh-pink shade, the large flowers stand erect on long stems. **\$1.00.**

**ALAN SLOCOMBE — H. C.** Clear lemon yellow, and has pointed petals and perfect in type, with vigorous stems. The flower resembles a chrysanthemum. **\$3.00.**

**BOWEN TUFTS.** (Alexander.) (Incurved Cactus.) The flowers are of gigantic size, being a bright capucine orange blending to a bright golden-orange in the center with yellow reflex. Very stately, good stems. **\$1.00.**

**CIGARETTE.** — **H. C.** Variegated variety, the color is creamy white heavily edged with red and orange, but no two flowers are alike. Long strong stems and good form. **\$1.00.**

**ELSA BONNELL.** (Slocombe.) (Hybrid Cactus.) Rich deep velvety carmine. Deep well built flowers produced on long wiry stems. Flowers of large size and produced with great freedom. Almost as abundant as the well known "Countess of Lonsdale." Long stiff stems, holding flowers upright, making it very desirable. Recommended. **\$1.00.**

**ELSIE OLIVER.** (Hybrid.) Creamy-pink shading to white in the center. The bushes are laden with enormous size blooms all summer. **\$1.00.**

**GEE WHIZ, H. C.** A strong, vigorous grower, free bloomer, soft buff shaded with salmon. Immense size and form. Tubers. **\$1.00.**

**GLADYS SHERWOOD.** (Hybrid.) A pure white beauty, with good stems. **\$1.00.**

**J. HERBERT ALEXANDER.** A beautiful incurved cactus Dahlia of a charming shade of golden-yellow, exquisitely blending to clear deep salmon-pink. **\$1.00.**

**JACQUES FUTRELLE, H. C.** This is one of my new 1928 Seedlings. The flowers are of immense size on good strong erect stems, well above the foliage. The color is of the most attractive shade of light greenish yellow, one of the most showy of the yellow shades ever introduced. At the base of every petal it has a bright clear yellow filigree petal, which makes the flower very full like a chrysanthemum. This flower is named for the great novel writer who was lost at sea on the Titanic. Price **\$10.00.**

**MARGARET E. MILLIS.** (Hybrid.) (Millis.) A wonderful bloomer on good stems. The coloring is amaranth-pink combined with white in a streaked effect. The flowers are very deep and large with petals inclined to twist. This variety shows up in the field in a manner that makes it very conspicuous and attractive and I can recommend it highly. **\$2.00.**

**MASTERPIECE.** A wonderful new seedling of magnificent form and size. The blooms produced freely throughout the season are a delicate coral-pink in color. The petals incurve slightly, are long, slender, and numerous. **\$1.00.**

**MOTHER, H. C.** Pure white with the slightest tint of color. It is large and full and carries itself on an erect stem. Good for cut flowers and exhibition purposes. **\$1.00.**

**MT. SHASTA, H. C.** Cream yellow shaded pink, one of the best. **\$1.00.**

**MRS. C. B. BENEDICT.** (Hybrid.) **Alexander's New Seedling.** 8 to 10 inches across. A clear light yellow, one of the largest grown, a wonderful flower. **\$2.00.**

**MRS. ETHEL F. T. SMITH.** This is a white shading to a greenish lemon tint in the center. A monster Dahlia on a strong stem. Blooms freely and is a splendid exhibition variety. **\$1.00.**

**PAPILLON, H. C.** This large flower is a beautiful shade of old rose with golden lights. One of the most incessant bloomers I grew this season. Stems are long and carry the flower well. Tubers. **\$2.00.**

**SISKIYOU, H. C.** A wonderful introduction that has created a sensation wherever shown. Grows 9 to 11 inches without forcing. Color pink tinged mauve. Plants are dwarf but sturdy and vigorous and the flowers are held perfectly erect on strong stems. **\$2.00.**

**VALIANT, Cac.** Brilliant crimson, giant flowering, long stems, perfectly incurved long and narrow florets. **\$1.00.**



# General List of Superb Cactus Dahlias

These Dahlias all 50 cents each; \$5.00 per dozen.

The entire collection of 36 Dahlias for \$12.00 prepaid. Regular price \$18.00.

- BERTRAM S. VARIAN.** (Alexander.) (Incurved Cactus.) A very brilliant, deep scarlet of the moderately incurved form, of good size on long stems. This is one of the finest flowering Dahlias in my list.
- BRIDE'S BOUQUET.** (Hybrid.) An ideal white cactus and profuse bloomer, extra long stem, and a Dahlia that stands up well when cut.
- CALIFORNIA ENCHANTRESS.** (Hybrid.) A new California creation. Flowers of very delicate blush; buds open a creamy-white, changing to a soft rosy tint as the flowers develop. Flowers produced on long stiff stems in abundance making it a good cut-flower variety.
- COUNTESS OF LONSDALE.** (Hybrid.) Deep salmon-red. One of the best. Very free.
- CHAS. H. CURTIS.** (Incurved.) Rich, scarlet-crimson; large full.
- C. B. GITHENS.** (Cac.) An ideal Cactus Dahlia. The color is a clear light yellow without a spot or blemish. It is a strong vigorous grower and free bloomer.
- ETENDARD DE LYON.** (Hybrid.) The color is a trifle darker than rhodamine-purple, described by some as carmine-rose. The flower is held on fine, stiff stems.
- F. W. FELLOWS.** (Stredwick.) (Incurved.) This variety produces huge flowers in profusion. The petals are narrow, straight and very numerous, allowing the blooms to remain full until long past their prime. Color a bright orange-scarlet throughout.
- GOLDEN EAGLE.** New Incurved English Cactus Dahlia. Orange-yellow, suffused rose, and fawn. Flowers are produced on long stiff stems. Moderately incurved.
- GOLDEN WEST.** (Cactus.) Rich golden, bronzy yellow, with scarlet shading at base of petals and the center. A splendid commercial and garden variety.
- H. B. WESTON.** (Hybrid.) A fine clear yellow, very large and very free flowering.
- HELEN DURNBAUGH.** (Hybrid Cactus.) One of the most beautiful of the pink and white varieties. Serrated or notched petals add greatly to its beauty. The stems are stiff and of good length, making it very desirable for cutting.
- ICEBERG.** (Straight.) Ivory white, with pale yellow cast at center. Petals long, quilled and narrow.
- IGNEA.** (Moderately Incurved.) Bright crimson-scarlet. A very large and distinct variety. Perfect form.
- INDOMITABLE.** (Stredwick.) (Incurved.) Rich mauve-lilac: tips of petals pale lilac; very large.
- JUSTICE BAILEY.** (Hybrid.) A rich glowing pink, shading a little lighter toward the center. Large flowers on good stems.
- "KIKU." C.** The flowers are very large and incurve beautifully so they resemble a chrysanthemum. The color is bright yellow and the medium low bushes are a mass of bloom on excellent stems.
- KISSIMEE.** The color a wonderful blending yellow gold and ochre, reflex pale amaranth-pink. It is the best of its class, for exhibition, garden or cutting.
- LA FAVORITA.** (Hybrid.) A beautiful brilliant salmon, shading from dark to a pinker salmon at the twisted points, perfect center, good stems.
- MILTON HOWARD.** A charming shade of bright pink, with white at center and tips of petals.
- MME. HENRI CAYEUX.** (Straight.) A reliable exhibition variety. The flowers are of the largest size with long, narrow florets, forming a bloom of magnificent form. The color is a beautiful rich pink daintily tipped white.
- MRS. H. C. BRECK.** (Hybrid.) A new Cactus Dahlia of exceptional merit. Color, creamy-yellow passing to various shades of rose-pink.
- MRS. EDNA SPENCER.** (Hybrid.) A flower of the most delicate and exquisite shade of orchid-pink. Very beautiful and has a good stem.
- MRS. FERDINAND JEFFRIES.** (Hybrid.) The largest and best rich velvety maroon of the Hybrid type. The petals are broad, curled and twisted. A very free bloomer, large and massive.
- MRS. T. W. WILLIS.** White in the center with edgings of lilac on the younger florets, the greater part of the bloom being rose-lilac. Moderately incurved.
- MRS. W. E. ESTES.** A very large, pure white, of the finest quality, held on stems that are long and stiff. A prolific and continuous bloomer. Absolutely one of the best whites of its class.
- NIBELUNGENHORT.** (Hybrid Cactus.) Another gigantic flower of great value, both for exhibition and garden purposes. In color, a very beautiful shade of old rose, with a blending of salmon-pink and golden-apricot. The flowers often measure eight inches in diameter.
- PIERROT.** (Stredwick.) (Incurved Cactus.) A unique and striking novelty in color. Of unusual grace and refinement of form, being composed of very long, tubular, narrow petals, which are of a deep amber or orange-buff color occasionally showing white tips. A splendid garden variety and creates a furor wherever exhibited.
- RICHARD BOX.** A clear light soft shade of yellow. This variety blossoms early and maintains a steady average of fine flowers throughout the season. Moderately incurved.
- SUCCESS.** Clear yellow with long pointed petals; an early, free and continuous bloomer on long stems.
- STABILITY.** The flowers are produced upon strong, wiry stems; well above the foliage. The petals are long and straight, making a perfect flower. In color, most beautiful rose-pink imaginable.
- STORMER.** (Incurved.) A scarlet of the finest form. One of the most reliable varieties to date.
- TUSTU.** (Straight.) The color is perfectly gorgeous — a beautiful velvety maroon. The petals are very long, tightly quilled. We can highly recommend.
- WASHINGTON CITY.** A gigantic pure white, star-like flower. It has a long stem and holds its flower erect.
- WELLINGTON.** (Incurved.) In this we have a bright glowing crimson-scarlet, with a shade of purple towards the tips of florets. Flowers of good size on long stiff stems. Exquisitely incurved.
- YONNE CAYEUX.** (Straight.) A most beautiful form, perfectly star shape, petals being located with most exact regularity. Color, an immaculate white.



# General List of Standard Cactus Dahlias

These Dahlias all 25 cents each; \$2.50 per dozen.

The entire collection of 34 Dahlias for \$6.00 prepaid. Regular price \$8.50.

- ADVANCE.** (Straight.) Brightest fiery-scarlet, base tinged yellow. An immense flower.
- AMAZON.** A beautiful purple-violet.
- BOBBY WARREN.** (Incurved Cactus.) A pure white, extra good.
- CAPSTAIN.** (Hybrid.) Soft red, tinted apricot.
- COLUMBIA.** (Straight.) Vermilion, tipped and striped with white. Long, narrow, star-like petals. The plants make very little foliage.
- COMET.** (Incurved.) Soft lavender-pink, penciled and dotted deep crimson.
- COMRADE.** A clear salmon-pink, flowering freely on stiff stems well above the foliage.
- CONQUEST.** A robust and sturdy grower and one of the finest produced. Color, a deep crimson-maroon.
- CYCLE.** (Hybrid.) Deep mauve-red, very odd.
- DREADNAUGHT.** (Hybrid.) The color is a glowing crimson, deepening to maroon in the center.
- EARL OF PEMBROKE.** (Hybrid.) Bright plum color; large bold flower.
- ELLA KRAMER.** (Straight.) Rose-pink with much brighter center; fine form.
- ETNA.** (Hybrid.) Lilac, veined violet. Very attractive.
- EUREKA.** (Burrell.) (Straight.) Color very deep purple. Petals are long, straight and tightly quilled.
- FLORADORA.** (Incurved.) Wine-crimson. Flowers produced with remarkable profusion upon good stems. Moderately incurved.
- FRED COBBOLD.** (Incurved.) Bright crimson. Large, beautifully formed flowers. Moderately incurved.
- FRENCH MARATHON.** (Hybrid.) A beautiful deep, rich purple. Large flower, and one of the best of its color.
- GENERAL BULLER.** (Straight.) A rich velvety crimson-maroon, tipped white. Occasionally a solid crimson flower on same stalk.
- GEN. J. B. SETH.** Rich brilliant scarlet with orange-scarlet shadings.
- GOLIATH.** (Hybrid.) Yellow, tinged with salmon; broad petals; distinct.
- J. H. JACKSON.** (Vernon & Barnard.) (Straight.) The finest black Cactus Dahlia in existence. Color a perfectly gorgeous, deep velvety, blackish-maroon.
- LAWINE.** A magnificent flower on long stems. White, lightly suffused pink. A strong vigorous grower, early and profuse bloomer. One of the best for commercial cut flowers and for the garden.
- LIBELLE.** (Straight.) Clear, deep rose-purple.
- MRS. GEO. CASELTON.** This is one of the finest dark shades ever introduced. The color is a blackish maroon, shaded with purple; extra fine form.
- MR. SEAGRAVE.** (Straight.) Deep purple.
- MRS. HENRY WIRTH.** Rich glowing scarlet, free-flowering.
- PERLE DE LYON.** (Hybrid.) A pure white exhibition variety of great value. Petals fringed or nicked, giving unique appearance.
- RAINBOW.** (Straight.) A delicate shade of light pinkish salmon.
- STANDARD BEARER.** Fiery scarlet. Extra fine form. Very free flowering.
- THOMAS CHALLIS.** (Incurved.) A very rich tone of salmon-red or rosy-salmon. This variety can be recommended as one of the best for cut-flower purposes.
- VARIABILIS.** (Incurved.) A true novel of most graceful character. Beautiful deep orange artistically tipped pure white. The petals are fringed or nicked and very gracefully incurved.
- WINSOME.** Pure cream white; large, fine flowers. Good stems.
- W. B. CHILDS.** (Hybrid Cactus.) A very reliable variety. Color a beautiful dark purple-maroon.
- ZOE.** (Straight.) Pure white.

## Peony-Flowered Dahlias

The great development and present value of the Peony-flowered type is due to Mr. H. Hornsveld, an Orchid specialist of Baarn, Holland. After seven years of cross-hybridizing and developing (July, 1904) he was able to show the results at the meeting of the Dutch Horticultural Society at Rosendaal, where he exhibited four varieties, Queen Wilhelmina, Duke Henry, Baron G. de Grancy and Glory of Baarn. Here he received a first-class Certificate of Merit, and the admiration and encouragement of growers and Dahlia lovers. A still greater success was accorded him that same season at the International Exhibition at Dusseldorf, Germany, where he gained the highest awards. The horticultural world gathered at the Show was charmed by the elegant and artistic form, the strong stems, and the delicate colors of the flowers.

English and American Dahlia Specialists, seeing their value, immediately commenced experimenting, and to-day every up-to-date Dahlia specialist offers a collection.

The Peony-flowered Dahlias have exquisite semi-double flowers, with the conspicuous rich, golden-yellow center and loosely arranged petals. Many are large and fluffy, with long curling and twisting petals, giving them a certain fascination and artistic appearance that none of the other types possess. They are favorite garden and cut-flower Dahlias, producing their flowers abundantly and continuously. Their stems are long and graceful, and their blossoms remarkably effective in bouquets, hotel and house decorations, and in the garden.

## Up-to-Date Varieties

**I will ship this collection of 6 Up-to-date Peony-flowered Dahlias for \$5.00 prepaid.**

**BLUE BIRD.** (Pae.) Deep lilac; flowers large and produced on long stems; profuse. **\$1.00.**

**LA GLORIETTA.** Yellow at the base, shading to a beautiful rosy pink shade; the flowers are enormous in size; the habit is pendant; nevertheless I consider this the most beautiful Peony Dahlia I have seen; it will be sure to attract attention in any collection; won first prize at Los Angeles Show, 1920, for best Peony Dahlia. **\$1.00.**

**MRS. HOWARD M. EARL.** An exquisitely lovely Peony, light yellow, suffused and overlaid carmine scarlet, tipped yellow. A refined and glorified Geisha. Plant is very strong, producing the flowers on long

graceful stems. Owing to the great demand, stock is very limited. **\$1.00.**

**QUEEN MARGUERITE.** Salmon pink. A wonderful large flower. **\$1.00.**

**UNCLE SAM.** (Pae.) Orange buff, blending into pink at edge; reverse spinal red. Very large on long stems. **\$1.00.**

**YELLOWSTONE.** Color, pure canary yellow. Here is a flower that should be in every Dahlia lover's collection. The form, color and size are perfectly lovely. **\$1.00.**

## Peony-Flowered Dahlias of Exceptional Merit

**These Dahlias all 50 cents each. \$5.00 per dozen.**

**The entire collection of 12 Dahlias for \$5.00 prepaid. Regular price \$6.00.**

**ARCTIC.** (Pae.) Very large, pure white.

**BERTHA PAULDING.** (Alexander.) The flowers are of an exquisite, deep, rose-pink, of good depth and with an open center. Altogether one of the best pinks of its type.

**CAECILIA.** A magnificent flower of great individuality; one that will give perfect satisfaction. A wonderfully large creamy-white flower.

**CHANSON, P.** The color is deep lilac with a blush sheen. A large full flower on a splendid stem.

**CLEOPATRA.** (Marean.) Large flowers on good wiry stems. The color is a fine shade of yellow, the reverse of the petals being a tangerine shade, the combination being especially attractive. Fine for garden decoration.

**HELEN KELLER.** Named by request in honor of one of the world's most noted women; the color is almost identical with the well known Dahlia, Rosemavr, but it is an improvement on that variety, being larger and more beautiful in form.

**LATONA.** An unusual blending of orange, buff and yellow. Flowers are nearly full to the center, and produced freely, upon good stems.

**MME. VAN BYSTEIN.** A very distinct and new shade, lilac-blue throughout, holding blooms well above the foliage. An early and abundant bloomer.

**PEG O' ME HEART.** (Marean.) Very beautiful old rose, with yellow center.

**POLAR STAR.** Large, pure white, of fine form on long stems.

**ROSALIE STYLES.** (Peony.) A bright tyrian pink with a lighter reflex, which makes a very pretty effect as the petals twist about. The large flowers, of fine formation, and very freely produced on cane-like stems, make this a very valuable cut-flower variety.

**SUSAN COE.** A splendid flower of perfect form and size, carried on long stiff wiry stems, the outer petals a pleasing shade of rose-pink passing to a yellow center suffused salmon. As the season advances this variety develops from a perfect Decorative into a lovely Peony Dahlia, a very large flower.

# General List of Peony-Flowered Dahlias

These Dahlias all 25 cents each; \$2.50 per dozen.

The entire collection of 25 Dahlias for \$4.00 prepaid. Regular price \$6.25.

**BESSIE SEABURY.** Alexander's New Peony-flowered Seedling. White very daintily overlaid a delicate mallow-pink. An exceptionally free flowering variety, of good habit, that produces its blossoms on good long stems.

**CALIFORNIA.** In color it is a beautiful clear rich deep yellow. The blossoms are large, and produced upon good long stiff stems. Very free-flowering.

**CARDINAL.** A very large flower of a gorgeous maroon-purple.

**DR. PEARY.** Without exception the very finest dark Peony-flowered Dahlia in existence. A rich, velvety wine crimson or dark mahogany. Flowers of gigantic size and identical in form and shape to the "Geisha."

**ELLEN E. KELLEY.** (Alexander.) A long stemmed free-flowering golden-yellow variety. This variety is highly recommended, having all the good qualities of the Dahlia.

**GERTRUDE BURBANK.** The flowers are very large, and of a brilliant scarlet-red. Petals are perfectly original, being long and Cactus-like. The plants are very tall, producing their flowers upon long stems.

**GRACE KIRSCHNER.** White daintily overlaid cameo-pink. Its blossoms are very large and exceptionally fine. One of the most delicate of this collection.

**HORTULANUS BUDDE.** A bright scarlet of splendid habit.

**IMPROVED GERMANIA.** (Alexander.) A rich deep scarlet-red, very brilliant and showy, and producing their blossoms early and abundantly.

**KATHINKA ANDERSEN.** A beautiful lemon-yellow, exquisitely overlaid pale amaranth-pink.

**LOUIS GRATON.** A very delicate pale salmon, blending to golden-yellow at the center.

**MARY HOUGHTON.** (Alexander.) The color is a light mallow-purple with a ring of waxy cadmium-yellow around the golden-yellow center, the reverse of petals being a beautiful rhodamine-purple.

**MINA SEABURY.** A very large flower, with long curling petals, that is destined to become a great favorite. In color, a sulphur-yellow, very daintily overlaid mallow-pink.

**MISS BARBARA HAMMOND.** An exquisite shade of silvery rosolane-pink, blending to clear pale lemon-yellow at the center. One of the most beautiful. A very tall growing plant, producing its blossoms upon long stems.

**MISS LYMENA T. BAXTER.** The coloring is a very beautiful clear pale lemon-yellow.

**MRS. BOWEN TUFTS.** (Alexander.) Deep rosy-purple blossoms, which are produced well above the foliage upon long, graceful stems.

**MRS. JACQUES FUTRELLE.** (Alexander.) Flowers of medium size, but very attractive. An exquisite lemon-yellow, heavily splashed scarlet. Very free-flowering.

**MRS. M. W. CROWELL.** (Alexander.) Color, a beautiful orange-yellow. Very free-flowering.

**MRS. NEWELL D. ATWOOD.** Its color is very rich and brilliant; a gorgeous deep crimson-red. Its plants are very strong, sturdy growers.

**NEWPORT DANDY.** A lilac-pink of the most delicate shade. The yellow center is open with the inner petals curling and twisting over it.

**PHENOMENE.** The color is an exquisite salmon shade, suffused light amber.

**PRINCE CAMILLE.** Color, velvety crimson, shaded rose.

**QUEEN EMMA.** It is a charming shade of Hollyhock pink, the inner petals banded with gold.

**ROCHESTER.** (Alexander.) Color, a gorgeous crimson-maroon, effectively striped and splashed pure white.

**VIRGINIA MARSHALL.** (Alexander.) In shape and form the flowers are perfectly original; the petals are very long and "Geisha"-like, being beautifully quilled and twisted. The blossoms are an exceptionally dainty primrose-yellow, faintly overlaid a delicate rose-lilac shade.

# Show and Fancy Dahlias

This Grand Collection of Show and Fancy Dahlias includes introductions from all over the world as well as some of the choicest seedlings of my own introduction.

This type includes the globular or ball-shaped Dahlias, full to the center, showing regular arrangement of florets; floral rays more or less quilled or with markedly involute margins and rounded tips.

**These Dahlias all 50 cents each; \$5.00 per dozen.**

**The entire collection of 9 Dahlias for \$3.00 prepaid. Regular price \$4.50.**

**DAVID WARFIELD.** Beautiful deep cherry-red. Producing its mammoth flowers upon stiff, wiry stems, well above the foliage.

**DOROTHY PEACOCK.** (Peacock.) The color is that beautiful, clear, live pink that appeals to everyone.

**D. M. MOORE.** (Willmore.) In this offering we have one of the best "nearly black" varieties to date. It is a rich, deep, velvety Victoria-lake, which is a shade deeper than deep maroon. Has long, stiff stems.

**GOLDEN WEST.** One of the finest and most distinctive pure yellow Dahlias. The petals are deeply serrated, giving the flower a fluffy appearance which is most attractive.

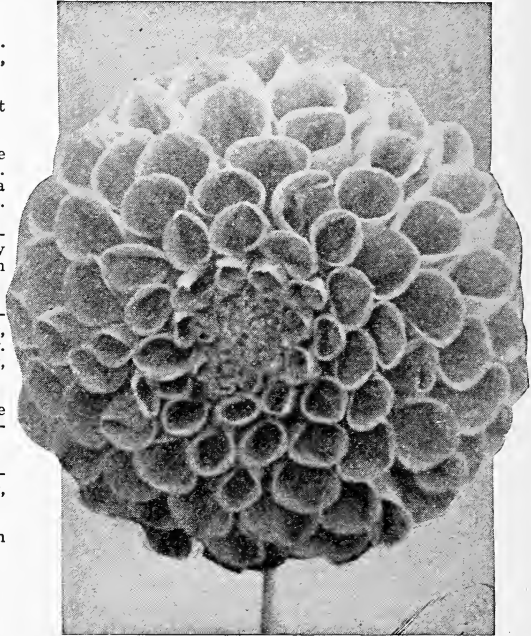
**LILY P. HATHAWAY.** The coloring is a clear lemon-chrome, blending to deep orange towards the center, giving a general impression of light orange-yellow. The plants are very sturdy and robust, with long, strong stems.

**MAUDE ADAMS.** (Alexander.) The color is a pure snowy white, very effectively overlaid clear delicate pink.

**MISS HELEN HOLLIS.** (Alexander.) (See illustration, this page.) Deep scarlet. Blossoms are on long, stiff stems, well above the foliage.

**MRS. C. D. ANDERSON.** It is a rich purplish crimson and bears large flowers freely on the best of stems.

**THOMAS AUSTISS.** Deep lilac. Good form.



**Miss Helen Hollis.** (For description see this page.)  
**Show Dahlia 50 cents each.**

## General List of Show and Fancy Dahlias

**These Dahlias all 25 cents each; \$2.50 per dozen.**

**The entire collection of 32 Dahlias for \$5.00 prepaid. Regular price \$8.00.**

**ACQUISITION.** An exquisite shade of deep lilac. Very large with cup-like petals. Especially good for cut-flower purposes.

**A. D. LIVONI.** Beautiful soft pink. Well formed flowers with long stems. Free-flowering.

**AMERICAN BEAUTY.** The flowers are of gigantic size and are produced on long, heavy stems, well above the foliage. The color of this acquisition is a gorgeous wine-crimson.

**ARABELLA.** Sulphur-yellow, tipped pinkish-white.

**ARTHUR LEFAVOUR.** Color a beautiful sulphur-yellow, lined, striped and speckled deep gorgeous crimson.

**AUGUS MEGAR.** The largest and finest lavender-purple Show Dahlia. Tall and sturdy.

**CUBAN GIANT, or DR. J. P. KIRKLAND.** Dark velvety crimson; large. Stems long and wiry.

**DIAMANT.** Pure white.

**FASCINATION.** Rose-pink, sometimes striped white. Extra fine.

**GLADIATEUR.** Clear violet, shaded blue. A splendid new exhibition variety

**GOLDEN AGE.** Sulphur-yellow. Free-flowering.

**GLOBE DE NANTES.** Bright scarlet; a perfect model.

**GLOIRE DE GUSCARD.** In color it is an almost indescribable combination of orange red, yellow, pink and white.

**HENRY GLASSCOCK.** Deep lilac, striped purple.

**IMPERIAL.** Deep purplish-maroon.

**JOHN THORP.** Pink, slightly tinged white at base. Good size.

**LES AMOURS DE MADAME.** Delicate pale rose, striped scarlet.

**LUCY FAUCETT.** Pale yellow, striped deep pink or light magenta. Very large and free-flowering.

**MAYOR DUNN.** A beautiful clear scarlet flower. Remarkably free bloomer and very showy.

**M. SOMERS.** A beautiful clear purple. Large.

## Show and Fancy Dahlias —Continued

**POLLY SANDALL.** A novel combination of bronze yellow, veined and blotched pinkish-white.

**PRINCESS VICTORIA.** Pure canary yellow. Long stems, perfect form and free bloomer.

**RED HUSSAR.** A clear, cardinal red, good stems and a free bloomer.

**ROBERT BROOMFIELD.** Pure white. Tall grower.

**ROSE.** (Alexander.) Color, an exceptionally deep rose shade. Flowers carried erect upon extra long stems. Exceedingly free-flowering.

**STORM KING.** A pure white, flowers produced freely upon long stems, well above the foliage.<sup>4</sup>

**STRADELLA.** (Alexander.) Rich deep purple crimson, very free-flowering, long stems, one of the first of my own introductions; should be in every garden.

**VIVIAN.** (Alexander.) (See illustration this page.) A great favorite which received the admiration of everyone who saw its wonderful flowers, the color being white, effectively edged rose-violet.

**UNCERTAINTY.** A brilliant combination of very light shell pink and scarlet. No two flowers are the same.

**WHITE SWAN.** Pearly white.

**WILLIE AUSTIN.** Fawn.

**YELLOW DUKE.** A splendid primrose-yellow of good form.

### SPECIAL COLLECTIONS

These are all extra fine varieties and are sure to please any one who is looking for something worth trying out. These are sure to satisfy the most critical garden expert.

#### SPECIAL OFFER No. 3.

6 extra fine Dahlias value \$3.00 for \$2.00 postpaid.

**Miss Helen Hollis.** Scarlet. 50 cents.

**Bride's Bouquet.** (Cac.) Pure white. 50 cents

**Ellen Kelley.** (Peony.) Golden-yellow. 25 cents.

**Frank A. Walker.** (Dec.) Lavender pink. 25 cents.

**Pride of California.** (Dec.) Bright scarlet. 50 cents.

**Snowdrift.** (Dec.) Pure white. \$1.00.

#### SPECIAL OFFER No. 4.

12 select Dahlias value \$3.00 for \$2.00 postpaid.

**A. D. Livoni.** (Show.) Soft pink. 25 cents.

**Achievement.** (Col.) Crimson and white. 25 cents.

**Eureka.** (Cac.) Crimson-purple. 25 cents.

**Imperial.** (Show.) Purple-maroon. 25 cents.

**Jack Rose.** (Dec.) Jack rose shade. 25 cents.

**Libelle.** (Cac.) Rose-purple. 25 cents.

**Mrs. Bowen Tufts.** (Peo.) Rosy-purple. 25 cents.

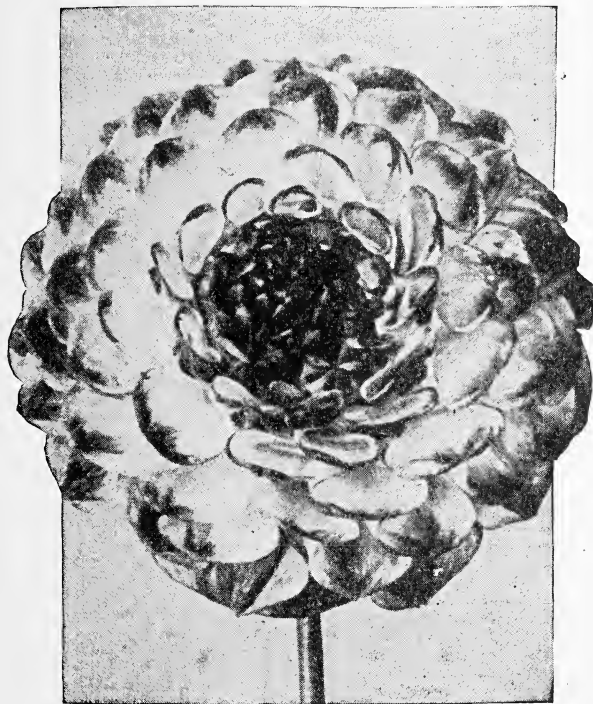
**Mrs. M. W. Crowell.** (Peo.) Orange-yellow. 25 cents.

**Ora Dow.** (Dec.) Velvety maroon tipped white. 25 cents.

**Rose Pink.** (Century.) Sin Pink. 25 cents.

**Storm King.** (Show.) Pure white. 25 cents.

**Vivian.** (Show.) White edged rose-violet. 25 cents.



VIVIAN

## Pompon Dahlias

The Pompon Dahlias are the finest for cut flowers; they bloom more freely than any of the other classes. The flowers are small, compact, less than two inches in diameter, full to the center, and are produced upon long, wiry stems. Extra fine for bouquets. I have won more first prizes on this class of Dahlias than any other competitor in the U. S. A.

**These Dahlias all 50 cents each; \$5.00 per dozen.**

**The entire collection of 34 Dahlias for \$12.00 prepaid. Regular price \$17.00.**

**ALEWINE.** Blush white, lavender tips.

**AMBER QUEEN.** Rich, clear amber, shaded apricot.

**ARIEL.** Deep orange buff.

**ARTHUR KERLEY.** Deep, rich cherry red. Good long stems.

**BELLE OF SPRINGFIELD.** The smallest Dahlia grown. Perfect miniature flowers of bright brick red.

**BRUNETTE.** Crimson, blotched white.

**CLARA HARSH.** Perfect blooms of yellow; tipped with crimson.

**CHALLENGE.** Red and white.

**DARKEST OF ALL.** Nearly black. Best dark Pompon Dahlia.

**DOUGLAS TUCKER.** Golden yellow, with crimson center.

**FASCINATION.** Pink and lavender, blotched white.

**FASHION.** Orange, fine.

**GANYMEDE.** Amber, tinted lilac, a novel and distinct variety.

**GOLDEN GEM.** Pure yellow.

**GOLDEN QUEEN.** (Alexander.) The most perfect yellow Pompon to date.

**GRETCHEN HEINE.** Blush white with light rose tips.

**JESSICA.** Yellow, edged red; a very effective combination.

**LASSIE.** Yellow, edged and tipped white.

**LITTLE BEAUTY.** (Pom.) Soft pink.

**LITTLE DOROTHY.** (Alexander.) White occasionally striped and blotched reddish-orange.

**LITTLE JENNIE.** Primrose-yellow.

**LITTLE JACKET.** Maroon and yellow.

**LITTLE MARION.** (Alexander.) The ground color is a soft salmon-pink with a veining of crimson through each petal and effectively tipped with a light reddish amber.

**MIDGET.** Salmon, edged pink.

**PHOEBE.** Orange, tipped crimson.

**PRINCE CHARMING.** Cream, tipped purple. One of the best.

**RAPHAEL.** Very dark maroon of extra fine form.

**REGULUS.** (Pom.) Crimson purple.

**SAN TOY.** White, very heavily tipped carmine.

**SNOW CLAD.** Small white. Free.

**SUNNY DAYBREAK.** Pale apricot, edged rosy red.

**VIRIDI FLORA.** (The Green Dahlia.) A very curious and remarkable flower.

**WINIFRED.** White tipped violet.

**ZOE.** Base of petals edged clear yellow, tips white. Sometimes blossoms come all yellow.

## Single and Collarette Dahlias

**These Dahlias all 25 cents each; \$2.50 per dozen.**

**The entire collection of 16 Dahlias for \$2.50 prepaid. Regular price \$4.00.**

**ACHIEVEMENT.** (Alexander.) The flower is a clear, rich, velvety maroon; collarette, a beautiful snowy white very daintily overlaid with a delicate shade of pinkish-crimson.

**AMI CACHAT.** Orange-red, yellow collarette.

**CARDINAL.** A very large flower of a gorgeous maroon-purple.

**DIRECTEUR RENE GERARD.** Gigantic French Collarette Dahlia. Beautiful violet-purple, shaded and tipped white; white collarette. Exceptionally large flowers produced in great profusion.

**ECKFORD CENTURY.** One of the largest of the single varieties. Pure white, streaked and dotted purple-crimson.

**EXPOSITION DE LYON.** A very gay flower of bright garnet, with exceptionally fine yellow tips; white collarette, daintily suffused lavender and overlaid crimson.

**HENRI FARNHAM.** Yellow blending to red; collarette a delicate yellow. Large.

**MAN FRIDAY.** Deep maroon.

**MARIE ANTOINETTE.** Pure white with the center of each petal heavily splashed with brilliant velvety crimson; a large flower borne on stems from 18 inches to 2 feet in length.

**MAURICE RIVOIRE.** The flower is a gorgeous, rich crimson with pure white collarette of short, well formed petals, perfectly arranged around the rich golden-yellow center.

**MR. FRANK I. SHOREY.** (Alexander.) The coloring is most fascinating and delightful, being a beautiful waxy white, effectively veined and shaded delicate pinkish lavender.

**NEWPORT WINNER.** A large crimson flower of the best size and form.

**ROSE PINK CENTURY.** (Peacock.) A rose-pink shaded. A very large variety and without doubt the best of its color.

**ST. GEORGE.** A very free-flowering variety of clear yellow.

**VIOLETTE.** Lively shade of crimson.

**VIRGINIA LEE.** (Alexander.) In color, a deep velvety carmine, edged sulphur-yellow; collarette, pale sulphur-yellow.

## Mixed Dahlias

This mixture is made up of some of the very best Dahlias grown, that have got mixed in handling, also some extra good seedlings. Only **\$1.50 per dozen, prepaid.**

## Dahlias Which are Not Catalogued

If you are looking for varieties that are not catalogued it will pay you to write to me before ordering elsewhere as I carry a large list of uncatalogued varieties; my stock being insufficient to warrant me to catalogue these varieties. I grow over 3000 varieties but must have over 250 clumps of a variety before I have sufficient to list herein. If you have any variety in mind that you do not see listed, I will be pleased to have you write me. If it is good I have it and will be pleased to quote you.

## Dahlia Seed

I offer this year seed carefully selected from the best varieties and all types. If you are interested in growing Dahlias in new forms and new colors you cannot do better than to get a packet of seed. One package will produce 15 to 20 plants.

**SPECIAL SEED.** I have selected and reserved some hand-pollinised seed and can supply a limited number of packets of this seed, being personally selected from my best and largest varieties. I highly recommend these seed. **\$2.00 per package of 50 seeds.**

**SPECIAL MIXED SEED.** 50 seed selected from all large flowering varieties Dec. H. C. and Peony flowered. **\$1.00 per package.**

**SELECT MIXED SEED.** 50 seed from some very select flowers. **Price 50 cents per package.**

**GENERAL MIXED SEED.** 25 seed from all types of Dahlias. **Price 25 cents per package.**

## Dahlia Cutting Knives



Many of my customers have asked me what kind of a knife I use in separating my clumps of Dahlias, so thinking it will make it convenient for my customers, I am offering the knives we use to separate the Dahlia clumps. The above illustration shows their general appearance. This knife has a two inch blade made of finest tool steel, with nickel-plated closed-end ferrules, and every blade securely riveted in the handle. The blades are ground sharp and hand honed. This knife has an oval taper rubberoid handle. In addition to being used in cutting Dahlias, it is made for Grape picking and Pruning purposes. A good pruning knife is always handy. The women folks like them for paring apples and potatoes. **50 cents prepaid.**

### Dahlia Labels

**Dahlia Labels, Painted, with Wires** — 3½-inch, iron wire, **75 cents per 100, prepaid; \$3.00 per 1,000 prepaid.** 3½-inch, copper wire, **\$1.00 per 1000 prepaid; \$4.00 per 1,000, prepaid.**

**Dahlia Labels, Plain, with Wires** — 3½-inch, iron wire, **50 cents per 100, prepaid; \$2.50 per 1,000, prepaid.** 3½-inch, copper wire, **75 cents per 1000 prepaid; \$3.00 per 1,000, prepaid.**

### Wooden Plant Labels

For any kinds of plants. These are plain labels to be used either in pots or out of doors, with one end pointed. I am also offering Dahlia labels which are suitable for labeling all kinds of Dahlias.

**Plant Labels.** 4-inch, plain, **50 cents per 100, prepaid; \$2.00 per 1,000, prepaid.** 5-inch, plain, **60 cents per 100, prepaid; \$3.00 per 1,000, prepaid.** 6-inch, plain, **75 cents per 100, prepaid; \$4.00 per 1,000, prepaid.** **Not less than 600 at 1,000 rates.**

### Oyama Plant Food

**A Wonderful Japanese Discovery  
MAKES PLANTS THRIVE**

By using OYAMA on house plants it will keep them in bloom all Winter and as green and luxuriant as if grown outdoors in the Summer. It will make your flower and vegetable garden wonderfully productive and the envy of your neighbors.

It makes no difference how healthy or delicate your plants may be, OYAMA will bring out new flowers and foliage and cause a marvelous transformation.

**FOOD FOR PLANTS, FLOWERS,  
VEGETABLES**

**Clean, Odorless, Safe to Use**

Full directions with every package.

PRICE

House Plant Size, makes 6 gallons . . . . . \$ .30  
Garden Size, makes 32 gallons . . . . . 1.10





**ACHIEVEMENT.** The Largest Collarette Dahlia Grown  
(For description see page 22)  
25 cents each; \$2.50 per dozen.



## Special Offer of Six of the Best Dahlias Grown for the Price

If you are a beginner and really don't know just what to order, try this nice collection of six all different sorts.

**No. 5. All for \$1.00 prepaid.**

NAME	COLOR	REGULAR PRICE
<b>LIBELLE CAC.</b>	Deep rose purple . . . . .	\$.25
<b>ELLEN E. KELLEY</b>	Yellow . . . . .	.25
<b>MINA BURGLE DEC.</b>	Scarlet . . . . .	.25
<b>MRS. BOWEN TUFTS P. F.</b>	Deep rose purple . . . . .	.25
<b>STORM KING S.</b>	White . . . . .	.25
<b>FRANK A. WALKER DEC.</b>	Rose pink . . . . .	.25
		<hr/> \$1.50

## A Beautiful \$2.00 Dahlia Collection

A collection of real value, one hard to beat for the price, buy them and be convinced.

**No. 6. All for \$2.00 prepaid.**

NAME	COLOR	REGULAR PRICE
<b>WASHINGTON CITY</b>	White . . . . .	\$.50
<b>EUREKA</b>	Purple maroon . . . . .	.25
<b>MME. VAN BYSTEIN P. F.</b>	Lilac blue . . . . .	.50
<b>LES AMOURS DE MADAME</b>	Rose striped scarlet . . . . .	.25
<b>H. MAIER DEC.</b>	Primrose yellow . . . . .	.50
<b>MISS HELEN HOLLIS S.</b>	Deep scarlet . . . . .	.50
		<hr/> \$2.50

## \$5.00 Selection

If you are looking for a small collection of real Dahlias that will surely bloom this season, and surprise you, try this lot of six Dahlias, a grand collection.

**No. 7. All for \$3.00 prepaid.**

NAME	COLOR	REGULAR PRICE
<b>BONNIE BRAE</b>	Cream to blush pink . . . . .	\$1.00
<b>LA FAVORITA</b>	Brilliant salmon . . . . .	.50
<b>MRS. ETHEL F. T. SMITH</b>	White, shading greenish yellow . . . . .	1.00
<b>MRS. CARL SALBACH</b>	Pink and white . . . . .	1.00
<b>PRIDE OF CALIFORNIA</b>	Deep crimson . . . . .	.50
<b>SNOWDRIFT</b>	White . . . . .	1.00
		<hr/> \$5.00

## A Prize Winning \$10.00 Collection

If you are growing Dahlias and want something still better than the ones you already have just try this collection of twelve (12) of the best large flowering Dahlias grown.

**No. 8. All for \$10.00 prepaid.**

NAME	COLOR	REGULAR PRICE
<b>EL DORADO</b>	Yellow and gold . . . . .	\$2.00
<b>ELSIE OLIVER</b>	Cream white and pink . . . . .	1.00
<b>JUDGE MAREAN</b>	Old rose . . . . .	.50
<b>JUDGE ALTON B. PARKER</b>	Golden buff . . . . .	.50
<b>JUNIOR</b>	Lavender . . . . .	1.00
<b>JANE SELBY</b>	Pink . . . . .	.50
<b>LAKE ERIE</b>	Deep lavender . . . . .	1.00
<b>SNOWDRIFT</b>	White . . . . .	1.00
<b>MRS. C. B. BENEDICT</b>	Light yellow . . . . .	2.00
<b>MRS. I. D. VER WARNER</b>	Mauve pink . . . . .	1.00
<b>MAID OF THE MIST</b>	Peach and cream color . . . . .	2.00
<b>PAUL MICHAEL</b>	Pure gold . . . . .	1.00
		<hr/> \$13.50



Bouquet taken from Alexander's select mixture. Try them and be convinced.

## Gladioli

The Gladioli are without an equal either for bedding or borders. As a cut flower they are far superior to any other Summer bloomer, either for lasting qualities or for the various uses for which they can be employed. If planted by the last of May they will bloom by the first to the middle of August, if cared for properly.

**The way to Plant** — Dig the row or bed from 8 to 10 inches deep, then spread a liberal amount of good fertilizer in the bottom of the row or bed, then rake it in thoroughly before planting your bulbs; but if stable dressing is used it should be spaded in when the bed is first dug over. I find that hen dressing can be used, giving first-class results, if applied properly; but it must be put in the bottom of the drill or bed, then covered with fully an inch of soil before the bulbs are planted. The bulbs after being planted should then be covered from 4 to 6 inches deep. Just as soon as they show their heads through the ground, they should be cultivated. If this is continued once a week till they commence to flower, one will be sure of first-class results. After the bulbs have flowered, and the stalks commence to turn brown they should be harvested. Dig carefully and allow to dry thoroughly for ten days or two weeks before placing in cellar for Winter storage.

## New and Choice Gladioli for 1928

This remarkable collection of one each of 40 Phenomenal Gladioli prepaid for \$6.00 — 6 at dozen rates.

**ANNA EBERIUS.** Dark velvety purple, throat deeper shade. 15 cents each; \$1.50 per dozen.

**BEATRICE MAY.** (Alexander.) New Gladioli Seedling. An ivory yellow with shading of light Corinthian pink. Deep tyrian rose throat markings. Early bloomer. 15 cents each; \$1.50 per dozen.

**BERTRIX.** Wonderful large white. 20 cents each; \$2.00 per dozen.

**CARMEN SYLVA.** Pure snow white, throat slightly penciled lilac. 20 cents each; \$2.00 per dozen.

**CRIMSON GLOW.** Dark red or crimson varieties, of branching habit, tall grower. While individual flowers are very large they are exceptionally well placed and not coarse. 20 cents each; \$2.00 per dozen.

**DIANA.** Very large crimson. Strong grower. 10 cents each; \$1.00 per dozen.

**E. J. SHAYLOR.** Tall, very strong plant and large blooms. A beautiful, pure deep rose-pink. Extra choice. 20 cents each; \$2.00 per dozen.

**EMPRESS OF INDIA.** Rich dark red; one of best of recent novelties. 10 cents each; \$1.00 per dozen.

**EVELYN KIRTLAND.** Lustrous rose-pink, with delicate shading of lighter pink. Very tall graceful spike. 20 cents each; \$2.00 per dozen.

**FLORA.** Beautiful golden yellow. One of the new introductions which I consider one of the best yellows in existence. The flowers are well placed and very showy. 15 cents each; \$1.50 per dozen.

**GOLDEN MEASURE.** Called by many the world's best yellow. Exceedingly tall leaves and spikes, and is a large flowered wide opening golden-yellow. Only a few good yellows in existence as yet. 25 cents each; \$2.50 per dozen.

**GRETCHEN ZANG.** Rose-pink shading into salmon. Tall spikes. 10 cents each; \$1.00 per dozen.

**HENRY C. GOEHL.** White, sharp cut blotch of deep crimson. 25 cents each; \$2.50 per dozen.

**HERADA.** The great blooms are pure mauve, glistening and clear, with markings deep in the throat. Unusual and attractive, stands without a peer in its color. 15 cents each; \$1.50 per dozen.

**JOE COLEMAN.** Popular red. 10 cents each; \$1.00 per dozen.

**L'IMMACULEE.** Extra tall pure white. 20 cents each; \$2.00 per dozen.

**LIBERTY.** A bright red with strikingly marked primrose throat. Large, well-expanded flowers. 15 cents each; \$1.50 per dozen.

**MARY PICKFORD.** An extraordinary flower of most delicate creamy white color. Throat finest sulphur-yellow. Stem and calix also white. No finer sort exists. 20 cents each; \$2.00 per dozen.

**METROPOLITAN.** The flowers are of the largest size, being well expanded. The color combination is most fascinating; the flowers are of light crimson-scarlet with a beautiful deep cherry throat, edged salmon pink, the whole being delightfully striped rich crimson. 10 cents each; \$1.00 per dozen.

## Gladioli — Continued

**MURIEL.** Pale violet blue, strong spike. 25 cents each; \$2.50 per dozen.

**MISS HELEN FRANKLIN.** Large ruffled white, violet penciling on lower petals. 10 cents each; \$1.00 per dozen.

**MISS SHIRLEY SHATTUCK.** One of the best yellow grown with a deep bronze throat, with many flowers open at one time. 25 cents each; \$2.50 per dozen.

**MR. MARK.** Light blue with darker spot. 20 cents each; \$2.00 per dozen.

**MRS. FREDERICK C. PETERS.** A valuable seedling described by its originator as a beautiful shade of rose violet or lilac, with a crimson blotch on lower segment. Dark green foliage, strong spikes and many flowers open at one time. Late. 25 cents each; \$2.50 per dozen.

**MRS. DR. NORTON.** White edged with soft La France pink, soft sulphurish blotch on lower petals. 10 cents each; \$1.00 per dozen.

**MRS. LEON DOUGLAS.** Light yellow tipped with red, throat light yellow with very fine spots. 50 cents each; \$5.00 per dozen.

**NEOGA.** Dark garnet, semi-ruffled, dark foliage. One of the most striking dark shades. 10 cents each; \$1.00 per dozen; \$8.00 per 100.

**ORANGE GLORY.** Orange color, with lighter throat, very fine. 25 cents each; \$2.50 per dozen.

**PEACOCK.** Beautiful light blue, with crimson and bright yellow throat, marked like a giant pansy. 15 cents each; \$1.50 per dozen.

**PURPLE GLORY.** The giant of the Kunderdi Glory race and of remarkable color. Deepest velvety maroon red, with almost black blotches, as if burned into the petals. Beautifully ruffled, and a most extraordinary variety. 15 cents each; \$1.50 per dozen.

**ROSE ASH.** Old rose, blended ashes of roses, creamy mark on lower petals. Tall grower and very attractive. 25 cents each; \$2.50 per dozen.

**ROSE GLORY.** Purest rose-pink, deeper in throat, highly ruffled. 25 cents each; \$2.50 per dozen.

**SCARLET PRINCEPS.** Large clear scarlet, very striking. 15 cents each; \$1.50 per dozen.

**SEABROOK GEM.** Large light rose lavender, wine colored feathering in throat. 20 cents each; \$2.00 per dozen.

**SENTINEL.** Rose pink, with white penciled throat. 25 cents each; \$2.50 per dozen.

**TEMPA.** Pink and old gold, large and fine. 25 cents each; \$2.50 per dozen.

**THE KING.** Rich deep old rose with cream blotch. 15 cents each; \$1.50 per dozen.

**VIOLET GLORY.** Big wavy blooms of violet on a tall strong stem. Attractive. 15 cents each; \$1.50 per dozen.

**YELLOW HAMMER.** Soft creamy-yellow, solid color. 20 cents each; \$2.00 per dozen.

**SCARLET WONDER.** This is without doubt the most beautiful scarlet variety yet introduced, has broad stalky dark green foliage, and compact truss of great rich velvety scarlet fiery crimson flowers. 25 cents each; \$2.50 per dozen.

## Primulinus Hybrids

It is within this type of Gladioli we find the most varied and beautiful tints — the reds, yellows, oranges, saffrons, pinks and some wonderful color combinations not found in the large flowering varieties. This type of Gladioli is becoming very popular.

6 at dozen rates, 25 at 100 rates.

**ALICE TIPLADY.** Perhaps the most popular of the Primulinus type. Large bloom, orange saffron in color. Always in demand as a cut flower. 10 cents each; \$1.00 per dozen.

**GOLD DROP.** Large bright yellow Prim., with lines pink on lower petals. 10 cents each; \$1.00 per dozen.

**MYRA.** Deep salmon over yellow ground; yellow throat with pink lines. A new and giant-flowered variety. 10 cents each; \$1.00 per dozen; \$8.00 per 100.

**RAMONA.** Dainty yellow, with deep golden yellow throat beautifully ruffled. 10 cents each; \$1.00 per dozen.

**ROANOKE.** Large, rich yellow blooms obtained by crossing with Kunderdi Glory. 10 cents each; \$1.00 per dozen; \$6.00 per 100.

**SWEET ORRA.** Fine pale sulphur with rich pink lines in the throat; tall grower. 10 cents each; \$1.00 per dozen; \$6.00 per 100.

The above six named Primulinus for 50 cents prepaid.

**MIXED PRIMULINUS HYBRIDS.** They are among the earliest of the Gladioli to blossom, flowering ten days to two weeks before most all other Gladioli. The upper petal droops, forming a "hood." The colors range from primrose-yellow to a beautiful rose. 10 cents each; 50 cents per dozen; \$3.50 per 100; \$25.00 per 1,000.



# Standard Gladioli

**I will ship this collection of one each of 25 varieties for \$2.00.**

**6 at dozen rates, 25 at 100 rates.**

A Gladioli bed displaying one color is most effective. The Gladioli are ideal for massing, and add greatly to the surroundings.

**BARON J. HULOT.** The finest blue to date. A rich deep color of indigo blue. **10 cents each; \$1.00 per dozen; \$7.50 per 100.**

**CHICAGO WHITE.** The **Early Snow-White.** Extra early and a fine pure white. **10 cents each; \$1.00 per dozen; \$6.00 per 100.**

**CHOCOLATE DROP.** Chocolate color, changing to lavender. **15 cents each; \$1.50 per dozen; \$8.00 per 100.**

**GEO. F. ELCOCK.** (Alexander.) Cream-white, effectively overlaid salmon-pink; throat bright crimson-maroon. **25 cents each; \$2.50 per dozen.**

**HALLEY.** Delightful salmon-rose with beautiful creamy blotch. Very large. **10 cents each; 75 cents per dozen; \$5.00 per 100.**

**ISA TINKHAM.** (Alexander.) A very rich deep purple-crimson, a very popular shade. Flowers of medium size and produced on long spikes. **20 cents each; \$2.00 per dozen.**

**LILYWHITE.** Almost a pure white, reliable for early forcing. Six blooms open at a time. **10 cents each; \$1.00 per dozen; \$7.00 per 100.**

**LE MARECHAL FOCH.** One of the earliest and largest Gladioli grown. A charming shade of clear light pink without any shadings. **10 cents each; \$1.00 per dozen; \$7.00 per 100.**

**MEADOWVALE.** One of the purest of whites without a shade of color except in the throat, where there is a touch of vivid crimson; the three lower petals have slight center markings of clear crimson pink. **10 cents each; 75 cents per dozen; \$5.00 per 100.**

**MISS FLORA SPRAGUE.** (Alexander.) White overlaid salmon-pink; throat deep carmine-red. **20 cents each; \$2.00 per dozen.**

**MRS. E. M. SMITH.** (Alexander.) Deep pink with bright cherry throat; two lower petals edged primrose-yellow. **10 cents each; 75 cents per dozen; \$5.00 per 100.**

**MRS. FRANCIS KING.** A pleasing shade of light scarlet. Flowers are large. **10 cents each; 75 cents per dozen; \$5.00 per 100.**

**MRS. FRANK PENDLETON, JR.** The color is the most exquisite salmon-pink, with a very conspicuous blood-red blotch in the throat on the lower petals. **10 cents each; \$1.00 per dozen; \$6.00 per 100.**

**MRS. JOHN HAYS HAMMOND.** (Alexander.) A beautiful begonia rose, blending to and streaked with a glowing velvety, carmine-red; throat Baryta-yellow thickly dotted and splashed a dull carmine-red. Gigantic flowers produced upon good sturdy plants. **25 cents each; \$2.50 per dozen.**

**NOVELTY.** An exceedingly odd variety of beautiful light salmon color with orange-yellow throat, the whole being dotted and mottled with crimson. **5 cents each; 50 cents per dozen; \$3.00 per 100.**

**NIAGARA.** In color the flowers are a delightful cream shade, with the two lower petals daintily marked canary-yellow. The throat is attractively splashed with rich carmine. The stamens are purple and the stigmas pale carmine. **10 cents each; \$1.00 per dozen; \$8.00 per 100.**

**PANAMA.** Is a deeper pink. Flowers very large and spike long. **10 cents each; \$1.00 per dozen; \$8.00 per 100.**

**PEACE.** The wide open flowers are of a glistening white, with an attractive narrow stripe of purplish-carmine through the center of each lower petal. This extra throat is not a detriment to its beauty but adds to its attractiveness. **10 cents each; \$1.00 per dozen; \$7.50 per 100.**

**PINK AUGUSTA.** Deep pink, same form as Augusta. **10 cents each; 75 cents per dozen; \$5.00 per 100.**

**PRESIDENT TAFT.** An exquisite variety of delicate salmon-pink, shaded darker at edge with deep crimson blotch in throat and an attractive white line through each petal. **25 cents each; \$2.50 per dozen.**

**PRINCEPINE.** One of the best of the new reds: carmine-red with large, white blotch. Tall spike and prolific bloomer. **10 cents each; \$1.00 per dozen; \$6.00 per 100.**

**PRINCE OF WALES.** The color is a delicate coral-pink with practically no throat markings. **10 cents each; \$1.00 per dozen; \$6.00 per 100.**

**ROUGE TORCH.** Large, creamy-white flowers, with a rouge torch-like tongue on the lower petals. **10 cents each; \$1.00 per dozen; \$6.00 per 100.**

**SCHWABEN.** A pure canary yellow, shading to soft sulphur-yellow when opening; the deep golden-yellow center is blotched with brilliant brownish-carmine. Foliage is large and vigorous. **10 cents each; \$1.00 per dozen; \$8.00 per 100.**

**WILLBRINK.** Large bloom of flesh pink, creamy blotch on lower petals, the earliest light colored variety. **10 cents each; \$1.00 per dozen.**

## Gladioli

If you have never planted any Gladioli begin this season and don't miss trying one of these collections.

### Special Offers

Knowing many of my customers are not familiar with the different named varieties, but want good, large flowering varieties, regardless of the name, and wishing to guarantee satisfaction and give them the greatest value possible for their money, I make these Special Offers, all of which I recommend. The varieties I am to use in these offers are only the largest and best.

**RECOMMENDED SPECIAL OFFER: For Massing and Borders.** 48 Gladioli, one dozen each of Le Marechal Foch, Cracker Jack, "Halley," Mrs. F. Pendleton. The 48 prepaid for \$3.00. 100 each of the four varieties for \$12.00 prepaid or 50 of each for \$6.00.

**RECOMMENDED OFFER.** One dozen named varieties, 12 different colors, varieties that are large, and that I will guarantee to give satisfaction, prepaid for \$1.00. I make this offer to insure you good results, and in the selection will give you the benefit of my experience.

**TRIAL COLLECTION.** Five giant-flowering Gladioli, five different colors, for 50 cents, prepaid, or 25 choice mixed Gladioli for \$1.00 prepaid.

**TRY THIS COLLECTION OF 6 GLADIOLI, NO BETTER GROWN FOR 75 CENTS OR 12 OF EACH FOR \$6.00 PREPAID.**

**CHICAGO WHITE.** Pure white. 10 cents each; \$1.00 per dozen; \$6.00 per 100.

**GEO. F. ELCOCK.** Cream-white overlaid salmon-pink. 25 cents each; \$2.50 per dozen; \$15.00 per 100.

**LE MARECHAL FOCH.** Clear light pink. 10 cents each; \$1.00 per dozen; \$7.00 per 100.

**MRS. FRANK PENDLETON.** Salmon-pink, blood-red blotch in throat. 10 cents each; \$1.00 per dozen; \$7.00 per 100.

**PRINCEPINE.** Carmine-red with white blotch. 10 cents each; \$1.00 per dozen; \$6.00 per 100.

**JOE COLEMAN.** Deep red shading to crimson. 10 cents each; \$1.00 per dozen; \$8.00 per 100.



The Marvelous Six

**ALEXANDER'S SELECT MIXTURE.** This strain comprises a large range of colors, flowering red and dark shades. **Blooming size: 50 cents per dozen, prepaid; \$4.00 per 100, prepaid; \$25.00 per 1,000, prepaid.**

**MY GRAND MIXTURE.** This strain comprises a large range of colors; some of the older types, together with a large number of new varieties, making it perfectly satisfactory and by far the best obtainable for the prices. **Blooming size: 50 cents per dozen, prepaid; \$3.00 per 100, prepaid; \$25.00 per 1,000, prepaid.**

### THE MARVELOUS SIX

FOR ONLY 50 CENTS PREPAID

No. 1. Diana. Crimson.

No. 2. Halley. Salmon-pink.

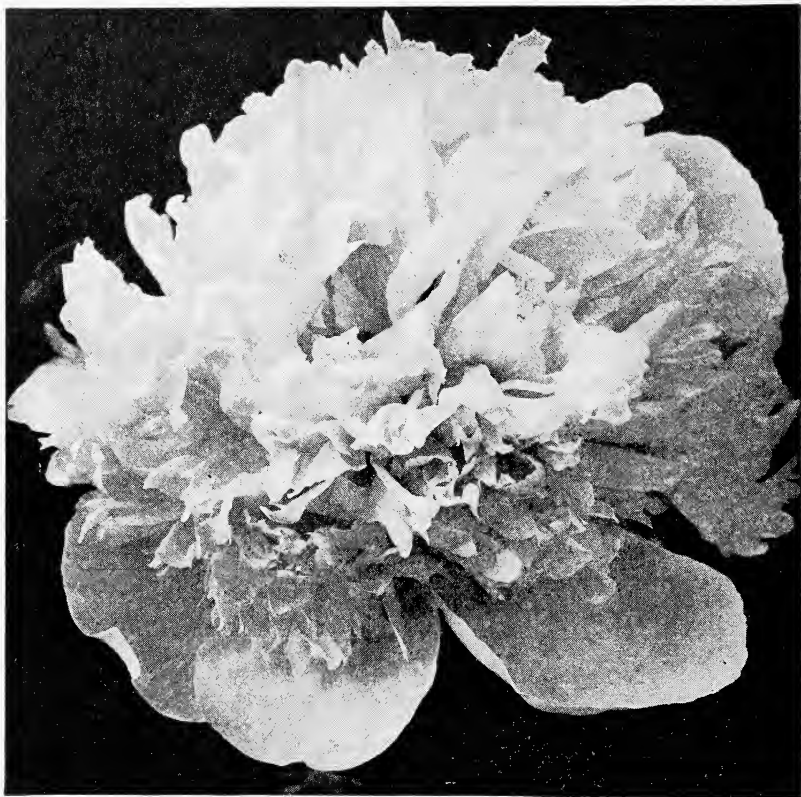
No. 3. Mrs. Frank Pendleton.  
Light Salmon-pink.

No. 4. Meadowvale. White.

No. 5. Pink Augusta. Deep pink.

No. 6. Le Marechal Foch. Light pink.

5 each of the six above varieties,  
30 bulbs for \$2.00 prepaid.



**MARY EDDY BAKER** — \$5.00 each. (See page 31)

## Peonies

The Peonies are among the noblest and most magnificent of our herbaceous plants. They are the "Queen of Spring Flowers," and are well adapted for massing in beds, and particularly valuable for planting in groups throughout the perennial or shrubbery border, where their brilliant hues add beauty to the entire surroundings. Their requirements are so simple, — a good rich, deep soil; they are perfectly hardy, and produce their wealth of flowers in great abundance.

**TIME TO PLANT:** Peonies may be planted with perfect safety any time from the middle of August till the ground freezes in the Fall, and in the early Spring until growth has advanced too far. September and October even as late as the ground is kept open is the best time, as they then make a root growth before Winter sets in, usually blooming the following Spring.

After being transplanted, Peonies will not produce typical blooms the first season, many fine double varieties throwing single or semi-double flowers, and it is not until the third year that the finest flowers are produced.

They will abundantly repay good care and nourishment; but they resent an over abundance of fresh manure too near the roots. Well decayed manure is far better. A division of the clumps at long intervals, when they become so crowded as to interfere with freedom of bloom; and the soil kept loose and free from weeds, is all that is necessary. Where grown for cut flowers, they should not be disturbed oftener than is necessary; where they are grown for the sale of roots, they may be divided every second or third year. Plant so the eyes will be from two to three inches below the surface. Lay roots flat. Do not stand them on ends.

My prices are for good strong roots that, planted in the Fall, and given proper care, may reasonably be expected to bloom the following Spring. Varieties differ so greatly in habit that the expressions one-year and two-year, or the number of eyes, convey no meaning whatever; a strong root with one eye often being far better than a weak one with many. My prices are as low as the true varieties, and the size of the roots I send out will warrant. I grow and sell my own roots, and make no pretense of competing with those who have no stock of their own but buy and sell indiscriminately.

All Peonies shipped prepaid to any part of the world at prices given.

# The Famous Hollis Peonies

Special Offer of One of each of the 18 varieties for \$45.00 prepaid. Regular price \$55.50.

**ADMIRAL DEWEY.** (Hollis 1903.) Rose-pink, shaded heliotrope; large, high built flower. According to color chart, color, total effect, solferino red, clear; guards solferino red, center same as guards; fades silver tipped, linear petals concealed throughout bloom. Type, bomb. Form of bloom, globular compact. Fragrance pleasant. Blooming time mid-season. **\$3.00 each; \$30.00 per dozen.**

**ADMIRAL TOGO.** (Hollis 1907.) Deepest mahogany red, large high built flower, luminous. According to color chart, total color effect, crimson carmine; guards clear, collar same as guards; center clear. Holds color well, no silver tip. Type of bloom semi-rose. Form of bloom flat, medium compact. Not entirely transformed. Plant medium tall, erect, compact. Blooming time mid-season. Medium to large size. **\$2.00 each; \$20.00 per dozen.** Recommended.

**ATTRACTION.** (Hollis 1906.) One of the very finest of the Japanese type termed "Wonderful Glowing Suns" as they are entirely distinct from the other types; most of them have cup shaped petals which surround a mass of petaloids or filamental petals like a crown of thorns. Very large, medium compact, flat blossom. General impression, crimson-pink, with golden center, but according to color chart, the guards are clear tyrian rose, center same color as guards, tipped with yellow which fades more quickly than guards. Pleasant fragrance. Growth strong and healthy, plants erect, medium to tall. **\$3.00 each.** Recommended.

**DAYBREAK.** (Hollis.) A large flowering Peony with long stems. Color a deep rose-pink fading out lighter as the flower gets fully open. Very fragrant. One of the best for wedding decorations and table use. **\$3.00 each; \$30.00 per dozen.**

**FLASHLIGHT.** (Hollis 1906.) A very large globular, medium compact to loose bloom of Japanese type. First impression, a crimson-pink with golden center. Not as dark a shade as "Attraction." According to color chart, the total color effect is tyrian rose; guards have light streak, center clear. The center is amber yellow, shading pink at base. Compact, erect plants of medium height. Early bloomer. One of the best of this type. **\$3.00 each; \$30.00 per dozen.**

**GEORGE HOLLIS.** (Hollis 1907.) Large, globular rose type. Center is a pale rose-pink with lilac-white guards. Very late blooming. **\$3.00 each; \$30.00 per dozen.**

**GEORGE WASHINGTON.** (Hollis 1904.) A large flat, loose bloom of semi-rose type. One of the brightest light crimson-red varieties. Guards clear, collar same as guards; center clear, uniform color. Stamens intermingled with petals. Blooming time mid-season. Habit of plant, erect, medium compact, medium height. Growth strong and healthy. A striking brilliant color that always attracts the attention of visitors. **\$2.00 each; \$20.00 per dozen.** Recommended.

**GOLDMINE.** (Hollis 1907.) Japanese type. Flat, loose, medium size. Guards tyrian rose, center same as guards, tipped golden yellow. Medium tall, erect variety of good habit. Mid-season. **\$3.00 each; \$30.00 per dozen.**

**INNOCENCE.** (Hollis 1904.) A medium sized flat compact Japanese type bloom. General impression, pale pink guard with golden center. According to color chart, lilac-rose; guards clear, center canary-yellow fading to cream-white, pale pink at base of stamens. Fragrant. Habit of plant, erect, tall, compact. Growth strong and healthy. Blooming time mid-season. **\$3.00 each; \$30.00 per dozen.**

**JOHN HANCOCK.** (Hollis 1907.) A very large globular semi-double flower. Its color is one not at all common in Peonies, total effect being bright rosy magenta, guards streaked light; center clear; secondary stamens absent. Bloom is very noticeably silver tipped. Fragrant. Blooming time mid-season. **\$2.00 each; \$20.00 per dozen.**

**JONTEEL.** (Hollis.) Large globular, high crown, guards and crown deep pink, outer petals deep rose-pink, center flecked deep carmine. Good size flowers on long graceful stems. **\$2.00 each; \$20.00 per dozen.**

**LOVELINESS.** (Hollis 1907.) Large, compact, flat, rose type. Hydrangea-pink changing to lilac-white. Strong stems and blooms in clusters. A remarkably fine variety. **\$7.50 each; \$75.00 per dozen.**

**LUCY E. HOLLIS.** (Hollis 1907.) Large flat medium compact; rose type blossom. First impression, pale pink and white. According to color chart lilac-white, guards clear, collar same as guards; center slightly flecked scarlet; secondary stamens present. Center of bloom, shaded to pale lilac-rose. Fragrance pleasant. Blooming time very late. Strong, healthy drooping habit; plants of medium height. **\$3.00 each; \$30.00 per dozen.**

**MARY A. LIVERMORE.** (Hollis 1907.) One of the most beautiful of the rose type. A very large flat medium compact, not differentiated, and entirely transformed blossom. General impression rose-pink and white. Petals are a beautiful rose-pink, passing to silver and white at the tips. Fragrance pleasant. Blooming time mid-season to late. Plants are medium erect, medium tall to tall, compact. Growth strong and healthy. Buds borne in clusters. Highly recommended. **\$3.00 each; \$30.00 per dozen.**

**MARY BAKER EDDY.** (Hollis.) Large, compact, globular rose type. Deep rose-pink with silvery tips. Plants of medium height, long, strong stems. Mid-season to late. Scarce. **\$5.00 each; \$50.00 per dozen.**

**MAUD L. RICHARDSON.** (Hollis.) Large, flat rose type. Pale lilac-rose, center lighter. Fragrant. Blooming time late. **\$3.00 each; \$30.00 per dozen.**

**WELCOME GUEST.** (Hollis 1904.) One of the very finest of the semi-double Peonies. A very large, loose, bright silvery-rose, fading to rose-white. Very strong and healthy, with long stem. Plant erect, tall and medium compact. Buds borne in clusters. Very pleasant fragrance. Mid-season. Highly recommended. **\$2.00 each; \$20.00 per dozen.**

**ZEST.** (Hollis.) A silvery shade of pink, very soft and very beautiful. The petals are long and loosely arranged. Both in color and in form this is a very charming variety. **\$3.00 each; \$30.00 per dozen.**



## Rare and Selected Peonies

Special Offer of 40 Selected Peonies one of each for \$45.00 prepaid. Regular price \$53.25.

**ALEXANDER DUMAS.** (See illustration.) (Guerin 1862.) Medium sized, light violet-rose crown; has creamy white collar of narrow petals, mingled with wide center petals; fragrant. Medium height, free bloomer, mid-season. Good cut flower variety. Recommended. **\$1.00 each; \$10.00 per dozen.**

**AVALANCHE.** (Crousse 1886.) Medium to large, fairly compact white crown type, flecked with carmine, with cream white collar. Collar well differentiated. Tuft of short, narrow, cream petals in center of bloom. Occasional carmine splashed on outside of guards. Odor pleasant. Plant is a medium strong grower of fair habit. Free bloomer in clusters. Mid-season to late. **\$1.00 each; \$10.00 per dozen.**

**AUGUSTIN D'HOUE.** (Calot 1867.) Same as "Marcehal Macmahon." Large medium compact, showy, bomb type blossom. General impression, dark reddish pink with slight silvery reflex. According to color chart a solferino red. Mid-season. Medium tall. **\$1.00 each; \$10.00 per dozen.**

**BARONESS SCHROEDER.** (Kelway.) A very beautiful rose type bloom. Form of bloom, globular compact, not differentiated, not entirely transformed. Color, total effect, flesh-white fading to milk-white; guards clear; collar same as guards, center clear; pleasant fragrance. Mid-season. Tall erect strong grower. **\$2.00 each; \$20.00 per dozen.**

**BEAUTE FRANCAISE.** (Guerin 1850.) A good medium sized, compact, crown type. General impression, pink and white. According to color chart, pale lilac-rose and cream-white, with prominent carmine flecks on center petals. Strong vigorous plant of rather dwarf habit, strong medium to short stems. Odor pleasant. Blossoms mid-season. **50 cents each; \$5.00 per dozen.**

**BERLOTZ.** (Crousse 1886.) A very large beautiful compact rose type blossom. A light carmine-rose or rosy magenta, tipped silver with golden-yellow stamens concealed in bloom. Color is somewhat splashed on tips of petals fading to nearly white. Guards not differentiated, perfect rose type flower. Plant is a medium vigorous grower, stems good length and medium strong, good habit. Mid-season to late. Good showy variety. **\$2.00 each; \$20.00 per dozen.** Recommended.

**COURONNE D'OR.** (Calot 1872.) Large full flower of pure white with a circle of golden stamens. A very beautiful variety and valuable as a cut flower. Late. **\$1.00 each; \$10.00 per dozen.**

**CURIOSITY.** (Dessert & Mechin, 1886.) Type, bloom anemone. Weak blooms nearly single while very strong ones may be semi-double. Form of bloom medium globular, compact. Differentiated. Color, total effect violet-red, guards clear, collar same as guards, center clear, with occasional yellow tips. Occasional wide petals appearing in center. Fragrance pleasant, one of the largest of the anemone type. Blooming time mid-season. Habit of plant, erect, tall, medium compact. Blooming habit free. **\$1.00 each; \$10.00 per dozen.**

**DORCHESTER.** (Richardson 1870.) Large, compact, rose type. Pale hydrangea-pink. Fragrant. Medium dwarf. Upright, free bloomer. **\$1.00 each; \$10.00 per dozen.**

**DUC D'WELLINGTON.** (Calot 1859.) Large bomb type. White guards, and sulphur yellow center. One of the finest white varieties. Medium tall, vigorous grower, free flowering. Very fragrant. Mid-season to late. **50 cents each; \$5.00 per dozen.**

**DUCHESS DE NEMOURS.** (Calot 1856.) Crown type, pure white in color, medium size and fragrant. Early. **\$1.00 each; \$10.00 per dozen.**



Peony—Alexander Dumas. \$1.00 each.  
(One-third actual size.)

**EDULIS SUPERBA.** (Lemoine 1824.) The popular early "Decoration Day" Peony, which is masquerading under all of the following names: "Delia," "Edulis odorato," "Rosa Lilacina," "Mamie Cutler," "Sylvanus," "Glorie de Douai," "Pizano," "Early Rose," "Acanum," "Sainfoin," "Lilacina." Large, loose, flat crown type. Bright deep mauve-pink; color mixed with lilac. Large tuft of wide petals same color as guards, surrounding a few narrow petals in extreme center of bloom, prominent collar. Very fragrant. Free-flowering. **50 cents each; \$5.00 per dozen.**

**EUGENIE VERDIER.** (Calot 1864.) (Also called Pottsi Alba.) Pale pink, center deeper, flecked crimson. Large flat rose type, rather loose; fragrant; tall, free. Mid-season. **\$1.50 each; \$15.00 per dozen.**

**FELIX CROUSSE.** (Crousse 1881.) Large globular typical bomb type. First impression, brilliant red. According to color chart, tyrian rose. Same color throughout. Compact and globular when first opening; but opens out somewhat with age, exposing linear petals in extreme center of bloom. Odor pleasant. Strong, vigorous grower, with long stem, rather spreading habit, medium height. Free bloomer in clusters. Mid-season. **\$1.00 each; \$10.00 per dozen.** Recommended.

**FESTIVA MAXIMA.** (Miellez 1851.) Very large globular rose type. Pure white center, prominently flecked crimson; outer petals sometimes faint lilac-white on first opening. Very tall, strong vigorous grower. The most popular white variety for cut flowers. **\$1.00 each; \$10.00 per dozen.** Recommended.

**GOLDEN HARVEST.** (Rosenfield 1900.) Bomb type. Guard petals lilac-rose, creamy-yellow collar. Blooms in mid-season. **\$1.00 each; \$10.00 per dozen.**



## Rare and Selected Peonies — Continued

- GLOIRE DE CHARLES GOMBAULT.** (Dessert 1896.) Guard petals fleshy-pink, collar clear salmon-flesh shaded with apricot; center petals flesh-pink, striped with carmine. Flowers very showy, on tall stems in great profusion; crown type. Late mid-season. **\$1.00 each.**
- JUBILEE.** (Pleas.) Unusually large, flat, compact rose type. Uniform blush-white, with fragrance. Very tall, erect strong grower. A very distinct variety and one that has many enthusiastic admirers. Mid-season. Very scarce. **\$5.00 each.**
- KARL ROSENFELD.** (Rosenfeld 1908.) A very brilliant crimson-scarlet, high built and a first-class bloomer. Tall, strong grower. **\$1.50 each; \$15.00 per dozen.**
- LA COQUETTE.** (1861.) Large, globular, high crown. Guards and crown light pink; collar rose-white, center flecked carmine. Strong, erect, medium height, free bloomer. Fragrant. Mid-season. **\$1.00 each; \$7.50 per dozen.**
- LA ROSIERE.** (Crousse 1888.) A dainty variety with semi-double white blooms having yellow tints like a tea rose. Foliage dark green and "cinkled." Not large, but very charming. Mid-season. **\$1.00 each; \$10.00 per dozen.**
- LA TULIPE.** (Calot 1872.) Synonym "Multicolore." Very large, flat, semi-rose type flower. Lilac-white, outer petals striped with crimson. Fragrant. Tall, strong grower, and free bloomer. Late mid-season. Very attractive. **\$1.00 each; \$10.00 per dozen.**
- LIBERTY.** This is without doubt one of the best lively rose-pink shades introduced. The flowers are very large, somewhat flat in appearance. Six to eight inches across, borne on good strong stems, the color grows lighter with age. It is a very strong grower with heavy foliage. This should be in every collection. One of the best. **\$2.00 each; \$20.00 per dozen.**
- MME. BOULANGER.** (Crousse 1886.) Glossy soft pink, tinged lilac, silvery flesh border; large, compact, rose type; upright, very fragrant. Late mid-season. **\$1.00 each.**
- MME. CROUSSE.** (Calot 1866.) A very large and beautiful pure white flower, sometimes showing a crimson fleck on a central petal. Extra. Mid-season. **\$1.00 each; \$10.00 per dozen.**
- MADAME CHAUMY.** (Calot 1864.) Medium size, globular, very compact, perfect rose type. Satiny rose-pink, or pale lilac-rose, with silver reflex, central petals slightly darker, flecked crimson occasionally. Free bloomer in clusters. Mid-season. **50 cents each; \$5.00 per dozen.**
- MADAME DUCEL.** (Mechin 1880.) Large, globular, typical bomb type, petals incurving somewhat resembling a chrysanthemum. Light mauve-rose, with silvery reflex. Fragrant. Mid-season. Foliage very large, green, medium height. **\$1.00 each; \$10.00 per dozen.** Recommended.
- MADAME EMILE GALLE.** (Crousse 1881.) Large, flat rose type of a very delicate sea-shell pink in the center passing to a lighter shade. Late bloomer. An extra fine light variety. **\$1.00 each; \$10.00 per dozen.**
- MADAME GEISSLER.** (Crousse 1880.) Very large, compact, globular, imbricated, rose-type. Violet-rose, tipped silver. Very fragrant, spreading habit. Mid-season. **\$2.00 each; \$20.00 per dozen.** Recommended.
- MARIE STUART.** (Calot 1856.) Crown type. First impression, white. Cream-white with pale pink guards, center flecked crimson, all fading to white. Guard petals are well differentiated, thick collar of narrow yellowish petals, on young bloom. Good yearly variety. **\$1.00 each; \$10.00 per dozen.**
- MILLAIS.** Single flowers deep crimson with golden-yellow stamens. **\$1.00 each; \$10.00 per dozen.**
- MONSIEUR BOUCHARLAT AINE.** (Calot 1868.) Large full, compact, semi-rose type. Uniform light violet-rose, with silvery reflex. Very strong erect grower, medium height, free bloomer. Mid-season to late. **\$1.00 each; \$10.00 per dozen.**
- MONSIEUR DUPONT.** (Calot 1872.) Large, flat semi-rose type bloom. Cream to milk-white, petals are intermingled with stamens at all stages of development, but mostly concealed; petals streaked or splashed crimson. Odor pleasant. Free bloomer in clusters. Plant is a strong, tall grower, with a very stout stem, and upright habit. Mid-season to late. Very good. Similar to "Boule de Neige." **\$1.00 each; \$10.00 per dozen.** Recommended.
- MONSIEUR JULES ELIE.** (Crousse 1888.) A very large, medium compact, bomb type flower. Total effect, pale lilac-rose, guards and center clear, collar tinted lighter than guards. A very attractive pink; base of collar petals amber-yellow. Fragrance very pleasant. One of the finest pink varieties grown, somewhat resembling a chrysanthemum. Early to mid-season. Habit of plant medium erect, medium height, medium compact. **\$1.00 each; \$10.00 per dozen.** Highly recommended.
- QUEEN VICTORIA.** (Kelway.) Large, globular in form, medium loose, low crown. Milk-white guards, tinted flesh; center cream-white, with crimson flecks. Very fragrant. Medium height, strong, free bloomer. Mid-season. Very popular, being one of the best white varieties. **50 cents each; \$5.00 per dozen.** Recommended.
- SARAH BERNHARDT.** (Lemoine 1906.) A very large, beautiful flat, imbricated, compact semi-rose, type blossom. Flowers of remarkable size and freshness in huge clusters, and of unusual perfection in form. First impression is an apple-blossom pink, with each petal silver tipped. According to color chart, a mauve-rose; guards clear, collar same as guards, center clear. Pleasant fragrance, late blossoming. Habit of plant, medium erect, tall, medium compact, growth strong. **\$3.00 each; \$30.00 per dozen.** Recommended. This variety should not be confused with Dessert's "Sarah Bernhardt" so-called, as it is entirely different.
- SIR THOMAS LIPTON.** (Kelway.) Large, loose, flat, semi-double flower. A uniform bright rosy crimson, showing the golden-yellow stamens prominently in the center. Pleasant fragrance. Mid-season. Plants of medium height, strong, erect growth, producing their flowers abundantly. **\$2.00 each; \$20.00 per dozen.** Recommended.
- THERESE.** (Dessert 1904.) One of the finest Peonies grown. Very large, compact, rose type; violet-rose, lighter in center. Very free bloomer on strong erect stems. Mid-season. **\$5.00 each; \$50.00 per dozen.**
- UMBELATA ROSEA.** (Unknown.) Informal rose type. Guards violet-rose shading to amber-white center. Strong upright grower. One of the most popular. **75 cents each; \$7.50 per dozen.**
- VENUS.** (Kelway 1888.) Rose type, almost white but tinged with shell-pink. Mid-season. Fragrant. Fine for cut flowers. **\$1.00 each; \$10.00 per dozen.**

## Mixed Peonies

Each season, in handling our Peonies, a small amount becomes mixed, many times the very choicest varieties. It does not prove worth while for me to plant these separately, to ascertain their names, so I am offering them at 35 cents each (3 for \$1.00) as long as they last. This mixture is apt to include some of the best new creations not offered in my catalog, and includes both Double and Single varieties.

**SPECIAL PEONY OFFER:** To give you an opportunity to have a more complete and choice collection of Peonies, I am making the following offer:—

I will ship you Three Choice Peonies for \$5.00, transportation charges prepaid to any part of the United States or Canada. These to be three distinct varieties, that I can recommend to give satisfaction.



KARL ROSENFELD \$1.50 each

## Special Offer

### No. 9

On 4 of the best Peonies to grow with wonderful large flowers. 3 to 5 eye divisions, sure to flower another season.

Regular price \$4.50; all 4 for \$4.00 postpaid.

**DUCHESS DE NEMOURS**  
White \$1.00.

**GOLDEN HARVEST**  
Lilac center yellow \$1.00

**KARL ROSENFELD**  
Deep crimson \$1.50.

**MONSIEUR JULES ELIE**  
Rose lilac, wonderful flower \$1.00.

## Special Offer

### No. 10

12 wonderful Iris and sure to please.

One each \$2.50 or 3 each \$7.00 (prepaid.)

**FLAVESCENS.** Soft yellow. 25 cents.

**FLORENTINE ALBA.** White. 25 cents.

**HERANT.** Lavender blue. 25 cents.

**IRIS KING.** Golden yellow and wine crimson. 50 cents.

**LORELEY.** Lemon yellow, F. Blue. 35 cents.

**KOCHI OR NIGHT.** Rich deep purple. 25 cents.

**LORD SALISBURY.** Smoky fawn, F. deep purple. 50 cents.

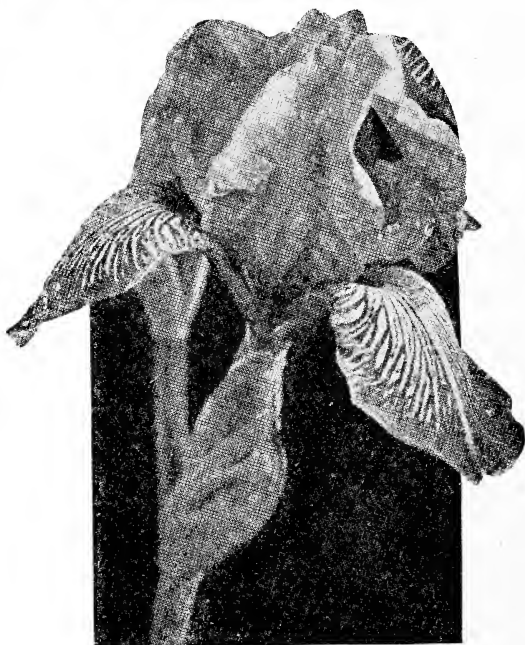
**PALLIDA DALMATICA.** Clear lavender. 35 cents.

**PRINCESS VICTORIA LOUISE.** Light yellow, F. plum color. 35 cents.

**PANCHUREA.** Light smoky shade, F. dull violet red. 25 cents.

**RHEIN NIXE.** Pure white, F. violet blue. 50 cents.

**ROSE UNIQUE.** Rose violet. 50 cents.



IRIS KING 50 cents each

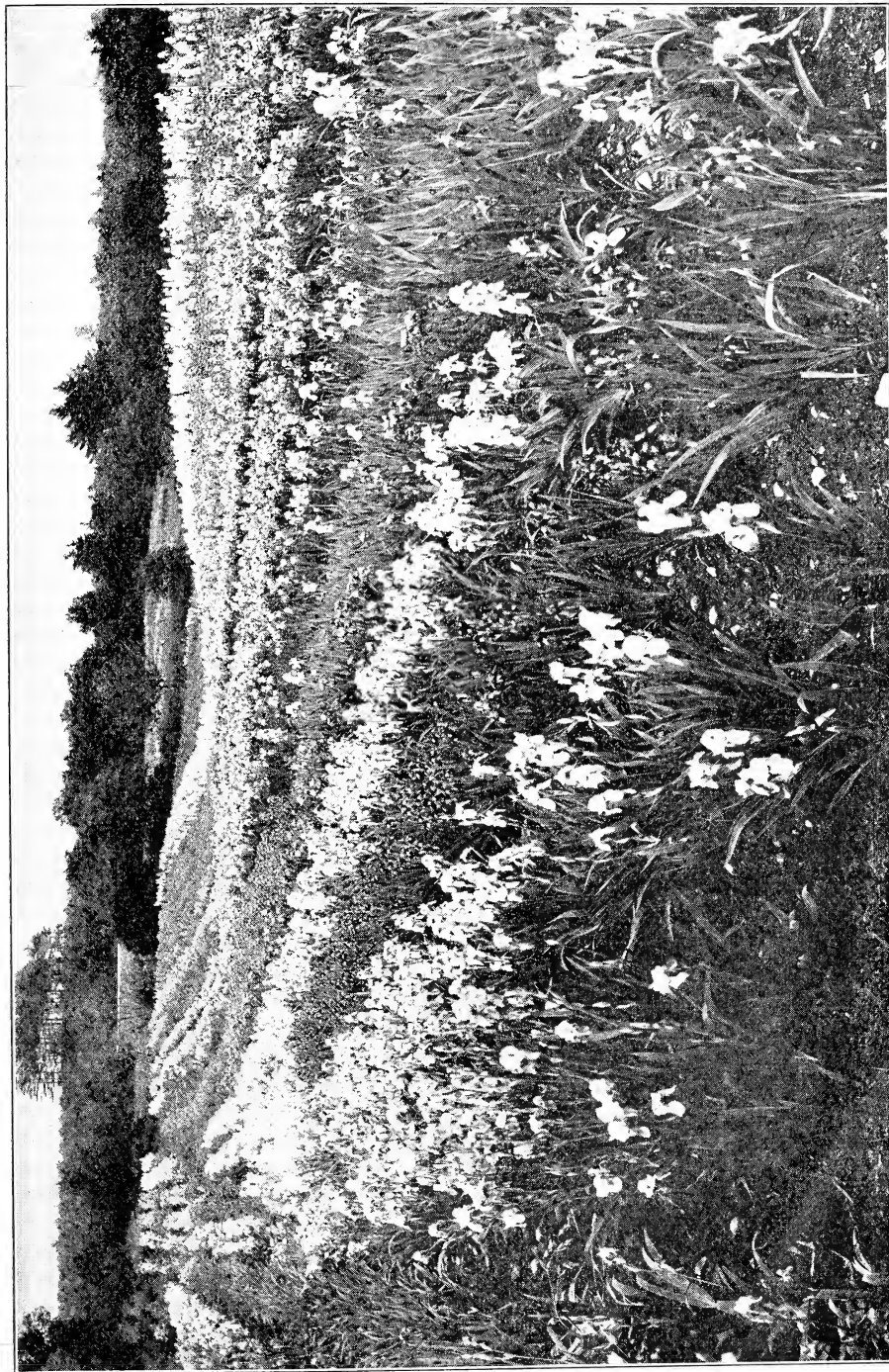


Photo taken June 19, 1927.

One of my fields of Iris Germanica with 69,000 plants in full bloom, containing 159 varieties.

# The Iris

## Fleur de Lis or Iris Germanica

Familiar and well-beloved flowers of Spring. The purity of their beauty and their haunting fragrance is decidedly refreshing. The winsome, modest beauty of some, forming a striking contrast to their more glorious sisters arrayed in a sheen of iridescent splendor. They fairly outrival the Orchid in the wide range of coloring, which includes yellows, from light canary to deep golden; blues, from soft lavender to intense purples; red, from pinkish mauve to claret and maroon; beautiful bronzes, and pure whites; while some varieties are marked and margined in exquisite harmony.

The Iris grows well in any kind of soil. Succeeds in partial shade but gives the most satisfactory results in well drained sunny location. Iris Germanica are perfectly hardy and require only ordinary cultivation; growing luxuriantly, but respond quickly to any extra care, giving larger and more beautiful flowers. They should be planted in the Fall during August, September and October. Plant the bud or crown about two inches below the surface hoe or cultivate frequently for best results.

In the following description Standards signify the three standards (erect, or upright curling petals); Falls — the three falls, or drooping petals.

## New and Rare Iris

This Collection of 41 New and Rare Iris, one each post paid for \$45.00

- ARAGON.** Deep bright, golden yellow, falls bright velvety red. Beard, deep orange. **\$2.00 each.**
- BEAUTY'S SECRET.** (Alexander.) Deep soft blue violet, falls deeper blue violet, veined white. **\$1.00 each.**
- BERCAGE.** (Alexander.) Pale verbene violet, falls dark violet veined white. **\$1.00 each.**
- BLACK PRINCE.** Lavender violet, falls dark velvety violet. **\$2.00 each.**
- CORDON BLEU.** A self colored Dauphin violet of medium size and height. **\$1.00 each.**
- DANIEL LESUEUR.** Red-brown at base, paling to mauve at the upper edge. Falls exquisitely dotted violet-blue on cream. **\$1.50 each.**
- DEJAZET.** Beautiful bronzed rose, the falls darker than the standards. Large flowers. **\$2.00 each.**
- DUSTY MAID.** Pale buff, falls deep mauve-purple, shading lighter to the edge with a border of buff. **\$1.00 each.**
- ELDORADO.** A very distinct and striking blend of bronze, heliotrope, and violet purple. **\$1.00 each.**
- EUGENE.** (Alexander.) Pale campanula blue, falls dark bluish violet veined white. **\$1.00 each.**
- FENELLA.** White widely branching stalks and flaring falls. Fine for massing. **\$1.00 each.**
- GENGHIS KHAN.** Palest rose, the falls velvety blackish purple. A noble flower. **\$2.00 each.**
- HIPPOLYTA.** Mauve in color. Flowers of good size, fine shape; vigorous growing habits. **\$3.00 each.**
- IVANHOE.** Gray-blue flower, not large or tall, but very attractive. **50 cents each.**
- KAWENA.** (Alexander.) Pale wisteria violet, falls purple veined white. **\$1.00 each.**
- KNYSNA.** Clear yellow, falls velvety red brown. **\$1.00 each.**
- KOYA.** A deep violet self, the haft veined on white, free flowering. **\$1.00 each.**
- LA NEIGE.** Cream white with flaring falls. **\$1.00 each.**
- MAGNATE.** A large flower of deep red-purple tones, stalks widely branched. **\$1.00 each.**
- MANNORA.** (Alexander.) Pale bluish gray, falls dull dusky purple veined white. **\$1.00 each.**
- MARY ORTH.** Rich soft dull violet tones and with flaring velvety falls. A very fine flower. **\$3.00 each.**
- MILKY WAY.** Clear white, very delicately etched with lavender on the haft. It is one of the loveliest of the whites. **\$2.00 each.**
- MOLIERE.** A large violet purple flower, the falls dark and velvety. Yellow center. **\$1.00 each.**
- MONHASSAN.** Lemon yellow, falls maroon veined white. **\$1.00 each.**
- MOTHER OF PEARL.** Standards and falls pale bluish lavender with a faint creamy undertone. Large flowers of exceptional substance and perfect form on well balanced stems forty inches high. Vigorous in growth and producing its wonderful flowers freely. We consider this an almost perfect Iris. **\$1.00 each; \$10.00 per dozen.**
- MIRANDA.** A tall and early violet blue with orange beard, considered by many the best in its class. **\$2.00 each.**
- NAUSHON.** Mauve and pansy violet, very free flowering. **50 cents each.**
- NEPTUNE.** Pale blue, falls rich dark purple-blue. **\$1.00 each.**
- OCHRACEA COERULEA.** Old gold, falls are flushed blue. **\$2.00 each.**
- PANHATAN.** (Alexander.) Light dull bluish violet, falls light blue veined white. **\$1.00 each.**
- PURPLE LACE.** Deep blue-purple except for the white haft that is laced with purple. **\$2.00 each.**
- QUEEN CATERINA.** A large iridescent pale lavender violet. **\$2.00 each.**
- QUETICO.** (Alexander.) Dark bluish violet, falls plum purple veined white. **\$1.00 each.**
- RACHEL FOX.** Pale gold, falls yellow with an iridescent blue flush. **\$2.00 each.**
- SHERBERT.** Ecu shaded with purple, tall and vigorous. **\$1.00 each.**
- SINDJKHA.** A very deep dull lavender of fine size. **\$1.00 each.**
- SYPHAX.** Combination of mauve and red purple velvet, with striking orange beard. **\$1.00 each.**
- THUNDERCLOUD.** Deep grayish lavender and rich heliotrope gray. **\$1.00 each.**
- TRIANON.** Pinkish buff, falls yellow washed blue. A beautiful blend, of fresh coloring. **\$1.00 each.**
- VALERY MAYET.** Rose-purple and velvety dahlia purple, with a strongly contrasting flush of tawny orange at the center. **\$1.00 each.**
- WHITE KNIGHT.** A compact rounded flower of pure white. **\$1.00 each.**

## Iris of Exceptional Merit

This superb collection of 44 wonderful Iris one of each for \$15.00 prepaid to any part of the world.

- AFTERGLOW.** (Sturtevant.) Misty lavender lit with yellow at center; 40 inches. **\$1.00 each.**
- ALBERT VICTOR.** Light hyssop violet, half veined brownish-purple; growth vigorous. **50 cents each; \$5.00 per dozen.**
- ALCAZAR.** Standards light bluish-violet. Falls brilliant purple. Orange beard. Stout. **50 cents each; \$5.00 per dozen.**
- ASSENDUS.** Standards, lavender-blue. Falls, same shade of blue but darker towards the tips, and with veining of dark red at the base. A very attractive blue. **25 cents each.**
- BLUE JAY.** (Neglecta.) S. bright clear blue; F. intense dark blue. Very attractive. **35 cents each; \$3.50 per dozen.**
- CAPRICE.** (Vilmorin.) Phlox purple flowers; Falls flaring; stalk short and widely branched; growth vigorous; 20 inches. **50 cents each; \$5.00 per dozen.**
- DOROTHEA.** This is an intermediate large flowered pale blue. 24 inches. **50 cents each.**
- DR. BERNICE.** Standards bronze-yellow. Falls maroon-red. **50 cents each; \$5.00 per dozen.**
- FLAVESCENS.** Standards and Falls, a delicate shade of soft yellow. Very fragrant, fine for massing. **25 cents each; \$2.50 per dozen.**
- FLORENTINA ALBA, Syn. SILVER KING.** The finest white variety. Standards and Falls, porcelain, changing to pure white. Large and very fragrant. **25 cents each; \$2.50 per dozen.**
- HECTOR.** Standards, soft clouded yellow; Falls, rich purple color with velvety reflex. **50 cents each; \$5.00 per dozen.**
- HELGA.** Lemon yellow with pearl shading. Huge flower. **50 cents each; \$5.00 per dozen.**
- HERANT.** Standards, beautiful lavender-blue. Falls, blue. Very large and tall. **25 cents each; \$2.50 per dozen.** The finest of the blue shades.
- HER MAJESTY.** Very attractive on account of its rich and unusual color. Standards, heliotrope of tissue-like delicacy; inner petals straw and lavender; Falls, light mauve traced with white. A very fine, rich flower. **35 cents each; \$3.50 per dozen.**
- HONORABILIS.** The most popular of all Iris. Similar to Sans Souci. Standards, beautiful golden-yellow. Falls, rich mahogany brown. Very effective. **25 cents each; \$2.50 per dozen.**
- INGEBORG.** Pure white. Large flowers of handsome form. **50 cents each; \$5.00 per dozen.**
- IRIS KING.** Truly properly named, as this variety is a king among Iris. Standards rich golden-yellow with shades of fawn; Falls, deep crimson-wine; all petals of peculiar velvety and superb coloring. A magnificent Iris. **50 cents each; \$5.00 per dozen.**
- KHEDIVE.** A beautiful soft lavender, with distinct orange beard. **25 cents each; \$2.50 per dozen.**
- KOCHI OR NIGHT.** Standards and Falls effective rich purple. This is one of the choicest. **25 cents each; \$2.50 per dozen.**
- KOENIG.** Very similar to Honorabilis with golden yellow Standards and mahogany brown Falls. The Falls are darker than in Honorabilis. **25 cents each.**
- LOHENGRIN.** Standards and Falls of catalyrea-rose; one of the largest and best of the Irises to my knowledge, and without exception the finest lavender-pink shade. **50 cents each; \$5.00 per dozen.**
- LORD OF JUNE.** (Yeld.) Large fragrant flowers; S. floppy, of lavender blue; F. long, of lavender violet; stems well branched; 42 inches. **\$1.00 each.**
- LORELEY.** Splendid landscape variety, with lemon-yellow, sometimes splashed with purple. Standards and Falls ultra-marine blue bordered cream and veined white. Mid-season. **35 cents each; \$3.50 per dozen.**
- LORD SALISBURY.** One of the finest for cutting, with stems 24 inches long. Standards, lavender shaded a smoky fawn; Falls, deep purple with a veining of white at the base. **50 cents each.**
- MADAME CHEREAU.** The pride of the German Iris; a tall, stately, queenly flower. A majestic specimen of entrancing beauty. Standards, white, edged and fringed mauve, interspersed with lilac; inner petals white; Falls, white, edged the same as the Standards. **35 cents each; \$3.50 per dozen.**
- MAD. PACQUETTE.** 30 inch. Medium to late. Rosy claret. Beautiful and fragrant. **50 cents each.**
- MONSIGNOR.** Standards violet. Falls heavily veined a deeper purple. **50 cents each; \$5.00 per dozen.**
- MRS. H. DARWIN.** A pure white. Falls slightly reticulated violet. Very beautiful and free-flowering. Recommended. **25 cents each; \$2.50 per dozen.**
- NIBELUNGEN.** Standards of fawn-yellow; Falls of violet-purple with fawn margins. A very handsome variety, that I can highly recommend. One of the very largest. **35 cents each; \$3.50 per dozen.**
- ORIENTALIS.** Deep blue. Very large for its class. **35 cents each; \$3.50 per dozen.**
- PALLIDA DALMATICA, or PRINCESS BEATRICE.** A much desired variety, with strong broad leaves, large plants producing tall, stately, clear lavender flowers. 36 inches in height. Highly recommended. **35 cents each; \$3.50 per dozen.**
- PALLIDA SPECIOSA or TURKEY FLAG.** Standards, dark lavender shaded lighter; Falls, shaded light purple. **25 cents each.**
- PANCHUREA.** Standards, a light, smoky shade; Falls, dull violet red. **25 cents each; \$2.50 per dozen.**
- PRINCESS VICTORIA LOUISE.** An exceptionally good landscape variety with light yellow Standards and plum colored Falls bordered cream. Similar to "Loreley" but in general of slightly lighter colors. Mid-season. One of the largest and best. **35 cents each; \$3.50 per dozen.**
- PROSPER LAUGIER.** (Verdier.) S. light cinnamon drab with a pinkish sheen; F. velvety carmine; 3 feet. **50 cents each; \$5.00 per dozen.**
- QUEEN ALEXANDRA.** Standards fawn, shot with lilac. Falls lilac, reticulated bronze at base. Beard yellow. Very beautiful. **50 cents each; \$5.00 per dozen.**
- QUEEN OF MAY.** Called by many "The Pink Iris," a variety that is a favorite everywhere. An early flowering delicate old rose. Tall and stately. **25 cents each; \$2.50 per dozen.**
- QUEEN OF THE GYPSIES.** Perfectly marvelous blending of colors. Standards smoky or dusky light bronze; Falls, purplish-red. An entirely new color, one of the finest to date. **35 cents each; \$3.50 per dozen.**
- RHEIN NIXE. Choice New German Iris.** One of the largest and finest. Standards, pure white; Falls, deep violet-blue, with a white edge. **50 cents each.**
- ROSE UNIQUE.** Bright violet rose. Nearest approach to a pink Iris. Early. **50 cents each; \$5.00 per dozen.**
- SEA GULL.** (Farr 1922.) S. white, dome shaped; F. white, netted blue. Large and distinct flower, 2 feet. **\$1.00 each.**
- SHERWIN WRIGHT.** (Kohankie.) Flowers small but produced freely, giving fine effect in mass. Color clear deep golden yellow. Strong grower; 2 feet. **50 cents each; \$5.00 per dozen.**
- WALHALLA.** Standards lavender. Falls wine red. Very showy. **50 cents each; \$5.00 per dozen.**
- WYOMISSING.** Standards creamy-white, suffused soft rose. Falls deep rose. **50 cents each; \$5.00 per dozen.**





**SIBERIAN IRIS: "SIBERICA ALBA"**  
25 cents each; \$2.50 per dozen. (See below for description.)

## Siberian Iris

Siberian Iris is a vigorous free flowering Iris and should be planted in great masses around shrubbery and trees, and a wonderful flower for a rock garden, also for water-side planting around water pools.

For large estates it is hard to find an Iris that will give more satisfaction for borders and massing.

For massing and borders Iris should be purchased in quantity lots. Liberal prices are allowed in such cases and special quotations will be gladly submitted.

**SIBERICA.** (Siberian Blue.) (See illustration, this page.) Rich blue flowers of exquisite beauty. **25 cents each; \$2.50 per dozen.**

**SIBERICA ALBA.** (See illustration above.) Siberian White. A beautiful white flower. **25 cents each; \$2.50 per dozen.**

**\$12.00 per 100 express prepaid; \$75.00 per 1,000 express prepaid;  
250 at 1,000 rate express collect.**

## Japanese Iris — *Iris Kaempferi*

The Japanese Iris is without doubt the king of all Irises. If grown in a favorable location the flowers will attain a size of from eight to twelve inches across and stand over four feet from the ground.

They should be planted in a location that has plenty of moisture but which is well drained, especially in Winter. Standing water during the Winter months will probably kill the plants. They should be planted in the Spring or early Fall and if properly planted and cared for will give excellent results the following season.

They start blooming the last of June just at a time when cut flowers are most appreciated in the garden, and continue for about six weeks. When used for cut flowers they should be cut in the bud and allowed to open in water. Order by name or number.

**I will sell this complete collection of 25 Japanese Iris, each one labelled with their names or number for \$20.00 prepaid.**

- No. 39 — A. L. SHERWOOD.** Three petals; two color flowers, lavender, blue and white. **50 cents each; \$5.00 per dozen.**
- No. 8 — AMISKOOKI.** Falls, plain white with six petals, standards white. **\$1.00 each; \$10.00 per dozen.**
- No. 19 — AOIGATA.** Reddish lavender falls, orange dash radiating into lines in dark plum field. Stands, dark plum. 3 petals. **50 cents each; \$5.00 per dozen.**
- No. 72 — CHOISEDEN.** Six petals. Early. White, bordered light crimson-rose. **\$1.00 each.**
- No. 10 — DATEDOGUE.** Six petals. Late. Falls, white splashed violet. Petaloid stamens white, tipped violet. **\$1.00 each.**
- No. 16 — GOLD BOUND.** Tall and showy with flowers of enormous size. Six petals, pure white with gold banded center. **50 cents each; \$5.00 per dozen.**
- No. 6 — GENJIYAMA.** S. and F. rich dark purple, long orange blotch with blue halo, very double, six petals. **\$2.00 each; \$20.00 per dozen.**
- No. 7 — GINGYOKU.** Three petals. Early. Pure white with orange bar. **50 cents each.**
- No. 30 — HELEN VON SEABOLD.** Three petals; reddish violet and white shadings, strong grower. **50 cents each; \$5.00 per dozen.**
- No. 1 — KAGARIBI.** A very beautiful all lavender flower, except a yellow beauty spot in the center of each of its six petals. An exceptionally well formed flower. **\$2.00 each; \$20.00 per dozen.**
- No. 38 — KBATA.** S. and F. purple blue, three petals. **50 cents each; \$5.00 per dozen.**
- No. 37 — KOHIO-HARE.** Light lavender ground mottled and veined purple. Three petals large. **\$1.00 each; \$10.00 per dozen.**
- No. 4 — KUMA-FUNGIN.** (Excited Bear.) F. purple-blue, stigmas lighter, long orange bars, six petals, very tall grower. **\$1.00 each; \$10.00 per dozen.**
- No. 44 — KUMA-NO-ISHO.** Falls rich dark purple with blue radiating lines. Six petals. **\$1.00 each; \$10.00 per dozen.**
- No. 32 — ORIOLE.** Rich plum with yellow center markings. Six petals. Wonderful flower. **\$1.00 each; \$10.00 per dozen.**
- No. 2 — OTOMENEWOODE.** Three petals. Early bloomer. Falls and standards royal purple. **50 cents each; \$5.00 per dozen.**
- No. 27 — OYODO.** This flower for beauty excels them all, with three large petals with yellow far set in a maroon field, this radiating into a wine colored margin center. Very large. **\$1.00 each; \$10.00 per dozen.**
- No. 21 — MEIRAN.** Falls very light lilac. Veined purple. Petaloid stamens lavender-white. Three petals, violet tips. **50 cents each; \$5.00 per dozen.**
- No. 12 — MANADZURA.** Six petals, white closely veined with blue, S. dark violet, tipped white. **\$1.00 each; \$10.00 per dozen.**
- No. 13 — TAKARA-DAMA.** Six rich purple falls, with blue halo surroundings, center yellow bars. Strong six petal flower. **\$1.50 each; \$15.00 per dozen.**
- No. 3 — TEMPLETON.** Violet-blue mottled pink and white. Extra fine flower, one of the best. Large. **\$1.50 each; \$15.00 per dozen.**
- No. 11 — TSURO-NO-KEGOROMO.** Three petals. Mid-season. Pure white with yellow blotch. Very large flower. **50 cents each.**
- No. 9 — WASI-BAURI.** Three wide petals, pure white, veined with violet-blue, up-rights rhodamine-violet edged white. A wonderful striking flower, very large strong grower. **\$1.00 each; \$10.00 per dozen.**
- No. 71 — WHITE SWAN.** A wonderful new seedling for 1928, with three pure white petals with a golden bar in center. **50 cents each; \$5.00 per dozen.**
- No. 15 — YEZONISHITAI.** F. red-lavender shaded purple and beautifully veined white, yellow blotch in center, three petal flower. Extra fine. **50 cents each; \$5.00 per dozen.**



## Hardy Perennial Phlox

Among hardy herbaceous plants, none are more showy or more easily grown than the Phlox. They are very desirable planted in groups. Individual clumps throughout perennial beds make a very satisfactory display, while mass plantings of one color make the most effective showing.

They produce magnificent trusses of flowers, commencing to bloom in July, and lasting for weeks, making them always favorites of the garden. Their flowers have a very agreeable odor, and are produced in abundance. The plants are perfectly hardy and will grow year after year with but little care. I recommend frequent cultivation, however, as they quickly respond to it, producing much larger trusses, and larger and more beautiful individual flowers. Simply keep the ground clear of weeds and well hoed. They will grow and do well in any soil; but prefer a good rich well drained loam. They may be planted in the Fall during August, September and October; and in the Spring during April, May and until the plants are too far advanced in June. In planting be sure that the crown of the root, that is, the part where the new shoots start, is two inches below the surface of the ground.

### Choice New Phlox for 1928

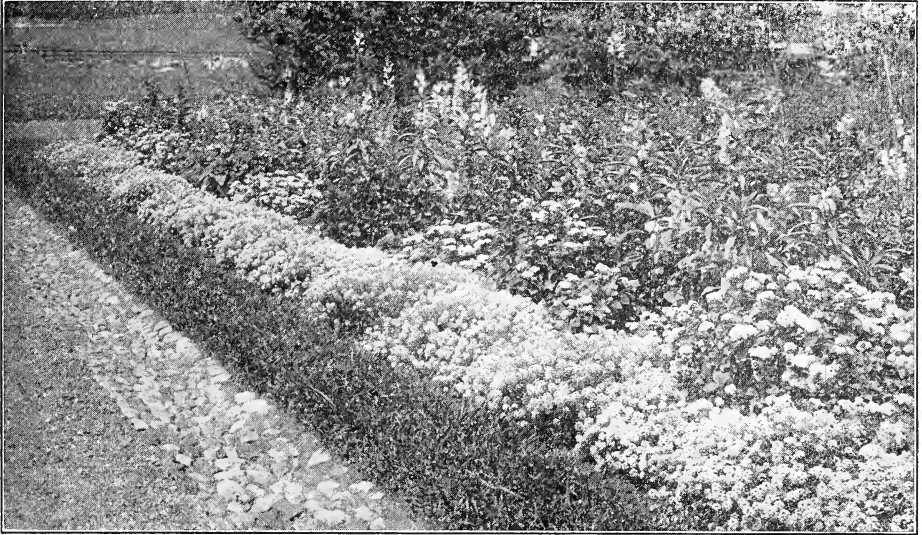
- ATHIS OR LOTHAIR.** Deep clear salmon. Very fine. 30 cents each; \$2.50 per dozen.
- BEACON.** Brilliant cherry-red, one of the best red shades grown. 50 cents each; \$5.00 per dozen.
- B. COMTE.** Dark red, very large trusses, not so tall a grower as many others, but one of the most showy varieties grown. 50 cents each; \$5.00 per dozen.
- BLUE HILLS.** A beautiful shade of lavender-blue, very large trusses. 50 cents each; \$5.00 per dozen.
- COQUELICOT.** Brilliant new Phlox. The finest and brightest red of all the Phlox; the color is a bright orange-scarlet. The plants are dwarf, exceptionally sturdy, and the individual flowers and trusses are very large. A splendid flower of almost dazzling brilliancy. 50 cents each; \$5.00 per dozen prepaid.
- CHAMPS ELYSEE.** Fine, rich crimson. 35 cents each; \$3.50 per dozen.
- DEBS.** The finest red Phlox there is. Color is bright fiery crimson. There is no other phlox that resembles Debs. Very tall strong grower. 50 cents each; \$5.00 per dozen.
- ECLAIREUR.** Bright carmine with light halo. Large flower. 35 cents each; \$3.50 per dozen.
- ELIZABETH CAMPBELL.** Bright salmon-pink, with lighter shadings and dark red eye; one of the handsomest and most attractive. 50 cents each; \$5.00 per dozen.
- JOHNSON'S FAVORITE.** Light salmon-pink with a dark red eye, resembling Elizabeth Campbell but far superior in every way. Strong grower. 50 cents each; \$5.00 per dozen.
- JULIUS SANDEAU.** Large, fine, very free-flowering, pure white. 35 cents each.
- MRS. CHAS. DORR.** A very beautiful shade of lavender. 25 cents each.
- MRS. E. E. JENKINS.** Pure white. Very large truss, and very free flowering. 35 cents each.
- MRS. MILLIE VON HOBOKEN.** Pure soft pink without eye. Large flower heads on long erect stems. A very fine novelty. 50 cents each; \$5.00 per dozen.
- MAUVE QUEEN.** A beautiful mauve-pink with white eye. 50 cents each; \$5.00 per dozen.
- ORNAMENT.** Bright clear rose with a light halo, darker center. 50 cents each; \$5.00 per dozen.

### Select Standard Phlox

- ALBION.** White with faint red eye. 25 cents each; \$2.50 per dozen.
- BRIDESMAID.** One of the very best Phlox grown. White with large rose-crimson center. Very showy and desirable. Plants exceptionally sturdy, producing large trusses. Medium height. 50 cents each; \$5.00 per dozen.
- EUGENE DANZANVILLIER.** Soft lavender with light center. 35 cents each; \$3.50 per dozen.
- FRAU ANTON BUCHNER.** An exquisite pure white variety. Plants are of medium height, and very sturdy. The individual flowers of this variety are much larger than those of any other white variety to my knowledge. 35 cents each; \$3.50 per dozen.
- GRUPPENKOENIGIN.** One of the finest new Phloxes. Deep mallow pink with tyrian rose eye. Very large trusses; individual flower of enormous size. 35 cents each; \$3.50 per dozen.
- LE MAHDI.** A perfect beauty of special merit. The flower is a rich, dark violet-purple, a color rare among Phlox. The plants are very strong and robust; they are of medium height and produce large flower trusses; individual flowers exceptionally large. 50 cents each; \$5.00 per dozen.
- LE SOLEIL.** One of the most beautiful Phlox grown. Brilliant china rose, with white ring around a deep rose eye. 35 cents each; \$3.50 per dozen.
- JEANNE D'ARC or SNOW QUEEN.** Undoubtedly the very finest pure white variety to date. The plants are extra strong growers of medium height, producing exceptionally large heads. Ideal for hedging or massing. Highly recommended. 25 cents each; \$2.50 per dozen; \$12.00 per 100; \$100.00 per 1,000.
- PEACH BLOW.** One of the most delicate shades among the new phlox. Deep rose-pink with white ring and tyrian pink eye. 35 cents each; \$3.50 per dozen.
- PROF. VIRCHOW.** Bright carmine, overlaid with orange-scarlet. 25 cents each; \$2.50 per dozen.
- R. P. STRUTHERS.** Very strong grower with large heads of fiery salmon-red. Very showy. Fine for borders or hedging. 35 cents each; \$3.50 per dozen.
- RICHARD WALLACE.** White with distinct violet eye. One of the most popular and best known. An exceptionally good variety, that is always reliable, proving a favorite everywhere. 35 cents each; \$3.50 per dozen.
- SPECIAL FRENCH.** Beautiful blush pink with salmon eye. Enormous flowers. Extra fine. 75 cents each; \$7.50 per dozen.
- THOR.** A most beautiful and lively shade of deep salmon-pink, suffused and overlaid with a scarlet glow; with a light, almost white halo surrounding the aniline-red eye. This lovely variety holds a supreme place among the deep salmon-pink, and it is a pleasure to recommend this new creation. It is of exceptionally good habit, being tall and sturdy and producing immense trusses. Flowers are of gigantic size. 35 cents each; \$3.50 per dozen.
- W. C. EGAN.** One of the very finest Phloxes yet introduced, and a variety that wins instant favor. While the individual flowers, according to color chart, are of a delicate lilac, illuminated by a large bright solferino eye, the color effect, as a whole, is a pleasing shade of soft pink. In habit of growth it is very strong and vigorous, producing immense panicles of flowers nine inches high by seven across and the individual flowers are frequently over 1½ inches in diameter. Very satisfactory and one that I can highly recommend. 35 cents each; \$3.50 per dozen.
- WIDAR.** A very attractive and rare variety that I can highly recommend. Pure purple with a prominent white center. Different from all the other varieties. 50 cents each; \$5.00 per dozen.

### Mixed Phlox

We have an extra fine assortment of Mixed Phlox, consisting of the best varieties to date. The mixture contains the following colors: Crimson, scarlet, violet, lavender, pink, white, variegated or striped varieties, and the above mentioned colors with deeper colored eyes. \$1.50 per dozen, prepaid; \$8.00 per 100, express collect.



## Hardy Perennials

We are sure that nothing gives our customers greater satisfaction about their grounds than a well arranged flower garden of Hardy Plants. With the proper selection of varieties, flowers may be had in bloom from early Spring until severe frost; many of them will succeed where less hardy varieties would prove a total failure; once planted they make a permanent bed and are therefore less trouble and expense than where tender plants are used, and while they are of the easiest culture and do better with less care than most other varieties, yet they well repay any extra attention that may be given them. A properly prepared bed to receive them should be deeply forked or spaded with a liberal supply of well-rotted manure thoroughly worked in. Bone-dust and also some commercial fertilizers produce excellent results and may be applied in small quantities several times during the season and lightly raked into the soil.

Although not absolutely necessary, a Winter covering of long, strong, coarse litter or similar material will afford such protection as to guard against sudden changes of freezing and thawing, and the plants will be in a stronger condition to make an early start in the Spring to pay for the little trouble incurred. Manure can also be used, but a heavy covering on evergreen varieties would be likely to rot and kill them. Roots cannot be shipped until about March 15th, because our ground is frozen or snow-covered until about that date, usually making it impossible to dig them. All hardy plants shipped prepaid at prices quoted.

### ACHILLEA — "The Pearl"

A Summer-blooming variety, worthy of a place in every garden. The flowers are pure white, very double, and are produced in large sprays on long stems; are much used by florists for cut-flower work. Perfectly hardy. Particularly desirable for cemetery planting. 18 inches. **25 cents each; \$2.50 per dozen, prepaid.**

### AQUILEGIAS or COLUMBINES

The Columbines are one of the most elegant and beautiful of hardy plants, producing their graceful spurred flowers on stems rising two or more feet above a beautifully divided foliage. No other plant has so airy a grace as the Columbine, is more generous of its blooms, or is more effectively adapted for cut flowers. They are not at all particular as to soil or location, although they prefer a sandy loam and a moist but well drained, sunny position. Their period of flowering covers the late Spring and early Summer months.

**COERULEA HYBRIDS.** (Rocky Mountain Columbines.) Including all the well-known colors and shades, blue, pink, red, salmon and yellow. **25 cents each; \$2.50 per dozen.**

### ASTILBE

**ASTILBE, QUEEN ALEXANDER.** Beautiful pink flowers on plants 12 to 18 inches tall. **50 cents each; \$5.00 per dozen.**

### ACONITUM (Monkshood)

**NAPELLUS.** (True Monkshood.) Grows from 18 inches to 2 feet high, blooms from July to August. Large dark blue flowers in a raceme. **50 cents each; \$5.00 per dozen.**

### ARTEMISIA

**A. VULGARIS LACTIFLORA.** (White Mugwort.) 3 to 4 feet. August and September. Unlike the other varieties, which are grown for their foliage, this introduction from China bears sprays of creamy white flowers on tall, erect stems which are clothed with fine-cut, dark green foliage. It makes a splendid cut flower for mixing with flowers of decided color or form, such as delphiniums. **50 cents each; \$5.00 per dozen.**

### BUDDLEIA or BUTTERFLY BUSH

**BUDDLEIA, VARIABILIS VEITCHIANA.** Beautiful violet-mauve flowers, with a distinctive odor. A continuous and very satisfactory Summer-flowering plant. Flowers are borne on long, cylindrical spikes, six to twelve inches in length. Blossoms satisfactorily first year planted. **50 cents each; \$5.00 per dozen.**

### CENTAUREA

**CENTAUREA, MONTANA.** (Perennial Cornflower.) Plants from 12 to 15 inches in height; a rosy-purple, flowering from July to September. **25 cents each; \$2.50 per dozen.**

**CENTAUREA, WHITE LEAVED, or DUSTY MILLER.** Fine plants of easy culture, that are suitable for hot sunny situations, in the border or rockery. Their white foliage contrasting with the foliage of other hardy plants, making them very showy. **25 cents each; \$2.50 per dozen.**

## Hardy Perennials — Continued

### DELPHINIUM or HARDY LARKSPUR

Mrs. Ely, author of "A Woman's Hardy Garden," says:

"Perennial Larkspur may be planted as soon as the Spring has opened. The ground should be well drained and carefully prepared, but manure must not be allowed to come in contact with the roots, or grubs are apt to destroy the plants. A little finely ground bone meal dug around each plant early in May will be of benefit, and in late Autumn, coal ashes should be sifted over the crowns of the plants to protect them from the white grub, which is their only enemy.

**BELLADONNA.** The freest and most continuous bloomer of all, never being out of flower from the end of June until cut down by hard frost. The clear turquoise-blue of its flowers is not equalled for delicacy and beauty by any other flower. **35 cents each; \$3.50 per dozen; \$25.00 per 100.**

**BELLAMOSUM.** A dark blue form of the popular light blue Belladonna. A very sturdy grower and a free bloomer. Flowers from June until frost. Grows 3 feet high. **35 cents each; \$3.50 per dozen; \$25.00 per 100.**

**CHOICE HYBRIDS.** Including all the standard colors. I can supply these in mixtures only. **25 cents each; \$2.50 per dozen.**

### DIANTHUS — PINKS

**DIANTHUS BARBATUS.** (Sweet William.) 10 to 20 inches high, blossoming in July and August. One of the oldest garden flowers, which perpetuates itself by self-sowing. Colors, a good mixture of the most beautiful shades of crimson, white and Newport pink. **25 cents each; \$2.50 per dozen.**

**DIANTHUS PLUMARIUS DELICATA.** New seedling pink, from Dianthus plumarius. The earliest of all to blossom. Very delicate beautiful cameo-pink flowers, blossoming in June. 9 inches in height. **35 cents each; \$3.50 per dozen.**

**DIANTHUS, SEMPERFLORENA.** 9 to 12 inches. Single and semi-double flowers. Pink, with crimson-red center. **25 cents each; \$2.50 per dozen.**

### FUNKIA — Plantain Lily

**FUNKIA — Plantain Lily.** The Plantain Lilies are among the easiest plants to manage; their broad massive foliage makes them attractive subjects for the border, even when not in flower. Lavender-blue blossoms in July, August and September. They succeed equally well in sun or shade. **20 cents each; \$2.00 per dozen.**

### HARDY GARDEN HELIOTROPE

Valeriana (Spurred Flower.)

**VALERIANA OFFICINALIS.** The old-fashioned garden Heliotrope with pinkish or lavender flowers with Heliotrope fragrance; flowers in June and July. Height, 4 feet. **25 cents each; \$2.50 per dozen.**

### HEMEROCALLIS

(Yellow Day Lily.)

Popular hardy plants, belonging to the Lily family. They succeed everywhere and should always be included in the border of old fashioned hardy plants.

Our stock of Hemerocallis is field-grown, and can be depended upon to be true to name.

**APRICOT.** Rich apricot colored flowers. Plants grow 2½ feet tall **25 cents each; \$2.50 per dozen.**

**AURANTIACA.** (Carolina Lily.) A beautiful, large trumpet-shaped Day Lily with fragrant orange flowers. One of the most satisfactory; height 2 to 3 feet; flowers in June and July. Easy to grow. **35 cents each; \$3.50 per dozen.**

**FLAVA.** (Yellow Day Lily.) The best known variety; very fragrant, deep, clear lemon-yellow; flowers in June; height 2 to 3 feet. **25 cents each; \$2.50 per dozen.**

### HIBISCUS (Mallow or Malva)

From Old Greek, meaning to soften, referring to its soft, mucilaginous qualities.

Tall vigorous growing perennials of the most ancient culture. Used among the Romans as a vegetable, and still serves as food to the Chinese.

**MALLOW MARVELS or GIANT FLOWERING Hibiscus.** (Marshmallow.) An improved form of our native Marshmallow or Rosemallow, in which the colors have been greatly intensified. Robust, upright habit, producing an abundance of flowers of enormous size, in all the richest shades of crimson and pink. Strong roots, **50 cents each; \$5.00 per dozen. Small divisions at 25 cents each; \$2.50 per dozen.**

### LYCHNIS

**CHALCEDONICA.** (London Pride.) Blooms July to September. Height 3 feet. Color orange-scarlet. It is an especially desirable perennial, with brilliant heads of flowers. **35 cents each; \$3.50 per dozen.**

### MONARDA (Bergamot)

(Bee Balm.)

**DIDYMA ROSEA.** (Bee Balm.) Showy plants growing from 2 to 3 feet in height, that succeed in any soil or position. Bright colored flowers of a reddish rose shade, with aromatic foliage. Blossoms during July and August. **25 cents each; \$2.50 per dozen.**

### PHYSOSTEGIA

**PHYSOSTEGIA VIRGINIANA.** (Ladies' Pink.) An elegant plant with dark, glossy, green foliage and long spikes of soft rose flowers; excellent for cutting. It produces its flowers during July, August and September when few flowers are in bloom. Height, 2 to 3 feet. **20 cents each; \$2.00 per dozen.**

### PHLOX SUBULATA

(Moss Pink.)

**PHLOX SUBULATA.** Dwarf Moss Pinks. A much prized old-time garden plant, useful for colonizing where it is desired to cover the earth with a tufted, dense, evergreen mat. It is much used in cemeteries, rockeries, for borders, and old-fashioned gardens. Blooms profusely in the Spring and is sweetly scented.

**ALBA.** Pure white. **25 cents each; \$2.50 per dozen.**

**LILACIANA.** Flowers clear lilac. **25 cents each; \$2.50 per dozen.**

### RANUNCULUS (Buttercup)

**ACRIS FL. PL.** Tall double Buttercup. **35 cents each; \$3.50 per dozen.**

**REPENS.** Creeping Buttercup. **35 cents each; \$3.50 per dozen.**

### RUDBECKIA

(Cone Flower.)

Indispensable plants for the hardy border; grow and thrive anywhere, giving a wealth of bloom, well suited for cutting.

**GOLDEN GLOW.** A well-known popular plant, strong, robust grower, attaining a height of 5 to 6 feet; produces masses of double golden-yellow flowers from July to September. **15 cents each; \$1.50 per dozen.**

### SEDUM (Stonecrop)

**ALBUM.** White Stonecrop. **25 cents each; \$2.50 per dozen; \$18.00 per 100.**

**KAMTSCHATICUM.** Orange Stonecrop. **25 cents each; \$2.50 per dozen; \$18.00 per 100.**

**PRUNAITUM FOSTERIANUM.** **25 cents each; \$2.50 per dozen; \$18.00 per 100.**

**SEXANGULARE.** Hexagone Stonecrop. **25 cents each; \$2.50 per dozen; \$18.00 per 100.**

**SPECTABILE.** Showy Stonecrop. **25 cents each; \$2.50 per dozen; \$15.00 per 100.**

**STOLONIFERUM.** Running Stonecrop. **25 cents each; \$2.50 per dozen; \$18.00 per 100.**

## Hardy Perennials — Continued

### SHASTA DAISY (Burbank)

**ALASKA.** Large pure white. **35 cents each; \$3.50 per dozen.**

### SPIRAEA or ASTILBE

(Goat's Beard, Meadow Sweet.)

Elegant border plants with feathery plumes of flowers and neat, attractive foliage; succeeds best in a half-shaded location in rich moist soil.

**FILIPENDULA FL. PL.** (Double-flowered Drop-wort.) Numerous corymbs of double white flowers; buds tinted rose-pink; produced on stems 15 to 18 inches high, during June and July. Finely cut distinctive fern-like foliage. **35 cents each; \$3.50 per dozen.**

### TRADESCANTIA

(Spiderwort.)

**TRADESCANTIA ALBA.** An all-round plant for wet or dry, sunny or shady situations, continuing in bloom from early Summer until frost. Pure white, three-petaled flowers in clusters on long stems, and long pointed foliage. Height 2 feet. **25 cents each; \$2.50 per dozen.**

### YUCCA

(Adams Needle.)

**YUCCA FILAMENTOSA.** A stately foliage and flowering plant equally imposing in solitary or group planting; always conspicuous. The broad sword-like foliage is evergreen, while in mid-summer it shows great erect, branching stems, bearing a showy display of pendant, creamy white bells. Very fragrant; flowers in July and August. Roots **25 cents each; \$2.50 per dozen;** larger plants, **50 cents each; \$5.00 per dozen.**

### CALADIUM ESCULENTUM

(Elephant's Ear.)

One of the most effective plants in cultivation for beds, borders, or for planting out upon the lawn; they are used extensively in many of the public parks, where their decorative value is greatly appreciated. To obtain the best results, it should be planted where it will obtain plenty of water and an abundance of rich compost. Frequent cultivation around the growing plant insures the best results. When full size it stands from 6 to 10 feet in height, and bears immense light green leaves, 3 to 4 feet long by 1½ to 2½ feet

wide. The size of the plant depends upon the size of the bulb, and its care.

	Price prepaid,	Each	Per dozen
Gigantic Bulbs . . . . .		\$.75	\$7.50
Large Size Bulbs . . . . .		.50	5.00
First Size Bulbs . . . . .		.35	3.50

### SAUROMATUM SIMLENSE

(Black Calla.)

A rare and curious garden bulb, with odd flowers and luxuriant palm-like foliage. The spathe of this Calla-shaped flower is between one and two feet in length, with tapering point, and is of very large size. Color of bloom: green on the outside, inside yellow, spotted with purple; which makes it very curious. Flowers do not appear on first, second, and third size bulbs, as only the large bulbs bloom the first year planted. The foliage is very novel however and always creates a sensation in the garden. The foliage is very large; the leaf-stem being light green thickly dotted a deep green, making it very attractive and novel. The blossoms appear shortly after the bulbs are planted; followed by the luxuriant leaves that remain a curiosity the entire season. This is sometimes called "The Snake Lily" and is very rare. These plants create a genuine sensation.

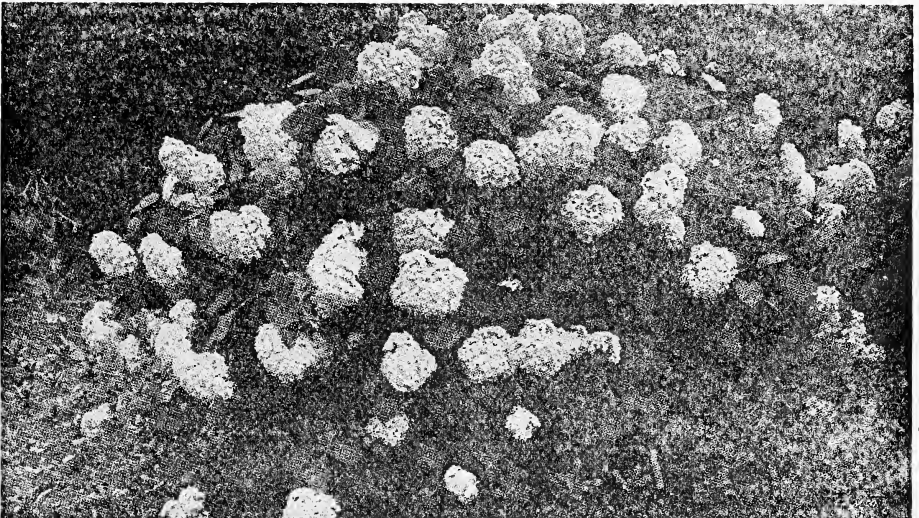
	Price, prepaid,	Each	Per dozen
Gigantic Bulbs . . . . .		\$.75	\$7.50
Large Size Bulbs . . . . .		.50	5.00

### TRITOMA

(Red-hot Poker, Flame Flower, or Torch Lily.)

The greatest bedding plant ever introduced, surpassing the finest Cannas for attractiveness and brilliancy, equal to Gladioli as a cut flower. Plants are perfectly hardy in the open ground all winter south of Philadelphia; further north they must be protected or wintered in a cellar. Just bury the roots in sand; nothing more is required. Should be planted out early in Spring, and will commence growth and bloom at once, growing larger and finer every day. Plants show from 6 to 20 grand flower stalks all the time, each holding at a height of 3 to 4 feet a great cluster of flame colored flowers of indescribable beauty and brilliancy. Fall frosts do not kill or stop its blooming, and it is as brilliant as ever long after all other garden flowers have been killed. For cutting it is unsurpassed, and the beautiful long spikes keep several weeks in water.

**PFITZERII.** (The Everlasting Flame Flower.) In bloom from August to November, with spikes from 3 to 4 feet high and heads of bloom of a rich orange-scarlet, producing a grand effect either planted singly in the border or in masses. **50 cents each; \$5.00 per dozen.**



**HYDRANGEA ARBORESCENS GRANDIFLORA**  
Specimen plants \$1.00 each; \$10.00 per dozen

# Ornamental and Flowering Shrubs

Shipped by Express at Purchaser's Expense.

A good Shrub collection will present the greatest variety of colors throughout the season, both in flower and foliage.

Irregular massing is the most picturesque method of shrub planting. When right selections are made, they will serve almost as well as Evergreens, to shut out from view fences and other low unsightly objects. It is my constant aim to grow everything that is useful, hardy and worthy of cultivation in our climate.

Annual pruning should be done directly after flowering. When planting, the best way to maintain a balance between roots and branches is to cut the latter to half their length. I prune all I ship out, so they are properly pruned, and ready to plant and grow. When pruning, the old scraggy wood and spindly shoots should be cut out. When planting, the holes should be made large enough to allow the roots to be spread out in a natural way. Firm planting is essential to the future well-being of the shrub. In planting, therefore, the soil should be crowded around the roots firmly. The top-soil should be kept cultivated to a depth of two to three inches.

If heavy bushes are desired I have good large specimens that will produce immediate effect. These are designated by the word specimens throughout the descriptions.

## BERBERIS. Barberry

**BERBERIS THUNBERGII.** Where a low, dwarf, deciduous hedge is wanted, nothing equals this beautiful Barberry. It is spreading of habit, growing extremely thick right from the base and requires but little pruning to keep it in shape. The leaves are small, light green, and towards Fall assume rich, brilliant color, the fruit or berries becoming scarlet; absolutely hardy in all parts of the country.

	Doz.	100
10 to 15 inches. . . . .	\$3.00	\$15.00
15 to 18 inches. . . . .	3.50	25.00
18 to 24 inches. . . . .	5.00	35.00
24 to 30 inches. . . . .	6.00	40.00

## CALIFORNIA PRIVET

Of all ornamental hedge plants this is the most popular and more of it is planted than all others combined. Its foliage is a rich, dark green and is nearly evergreen, remaining on the plant until mid-Winter. It is of free growth and succeeds under the most adverse conditions, such as, under dense shade of trees where other plants would not exist.

To form a dense hedge from the base up the plants should be severely pruned the first two seasons. Plant the one-year old size 8 inches apart in the row, the larger sizes 10 to 12 inches apart.

	Doz.	100
Strong, 1 year, 18 to 24 inches. . . . .	\$1.00	\$15.00
Strong, bushy, 2 year, 24 to 30 inches	2.50	20.00

## LIGUSTRUM. Amurensis

(Amoor River Privet.)

An ornamental hedge plant somewhat similar to the famous California Privet, but harder. Leaves dark, glossy green.

	Doz.	100
2 to 3 feet . . . . .	\$3.50	\$25.00
3 to 4 feet . . . . .	4.00	30.00

## DEUTZIA

We are indebted to Japan for this valuable genus of plants. Their hardihood, fine habit, luxuriant foliage and profusion of attractive flowers place them among the most beautiful and most popular of flowering shrubs at the present time. Flower in June and through July and August.

**PRIDE OF ROCHESTER.** A variety of Deutzia Crenata Flore Plena, producing large, double white flowers; backs of the petals slightly tinted with rose. It excels all the older sorts in size of flower, length of panicle, profuseness of bloom and vigorous habit; blooms nearly a week earlier.

	Each	Dozen
24 to 36 inches. . . . .	\$.75	\$ 7.50
36 to 48 inches. . . . .	1.00	10.00
48-inch specimen bushes . . . . .	1.25	12.00

## HYDRANGEA

**HYDRANGEA ARBORESCENS GRANDIFLORA.** (Snowball Hydrangea.) This magnificent, perfectly hardy American shrub has snow-white blossoms of largest size. One of its most valuable characteristics is its coming into bloom just after the passing of all the early Spring shrubs, while its long flowering season, from early June until late August, makes it a valuable acquisition in any garden. Small plants, **50 cents each; \$5.00 per dozen; specimen plants, \$1.00 each.**

## HYDRANGEA PANICULATA GRANDIFLORA.

Without doubt the best known and most popular Autumn flowering shrub in cultivation at the present time. The flowers, which are borne in dense, pyramidal panicles a foot long in the greatest profusion, are white when they first open, but gradually change to rose color, and remain in good condition for weeks. Extra fine bush plants, **\$1.00 each; \$10.00 per dozen.**

## SPIRAEA

**VAN HOUTTEI.** (Bridal Bower.) By many this is regarded as the finest of all Spiraeas, and it is assuredly one of the most esteemed shrubs in cultivation. It forms an erect bush with graceful arching branches, well covered with neat, rich green foliage, and in early Summer a profusion of large, pure white flower clusters. Very hardy and most effective.

	Each	Dozen
12 to 18 inches. . . . .	\$.50	\$ 5.00
18 to 24 inches. . . . .	.75	7.50
24 to 30 inch specimen bushes. . . . .	1.00	10.00
36 inch specimen bushes . . . . .	1.50	15.00

## Special Offer No. 11

Six Wonderful Iris, Value \$2.85, for \$2.00 Postpaid

<b>Ingeborg,</b>	<b>Pure White</b>	<b>\$ .50</b>
<b>Blue Jay,</b>	<b>Bright Blue</b>	<b>.35</b>
<b>Rose Unique,</b>	<b>Violet Rose</b>	<b>.50</b>
<b>Monsignor,</b>	<b>Violet, Falls Purple</b>	<b>.50</b>
<b>Mme. Pacquette,</b>	<b>Rosy Claret</b>	<b>.50</b>
<b>Wyomissing,</b>	<b>Creamy White</b>	<b>.50</b>

## Special Offers

I find many customers do not always know just what varieties are best suited for massing and planting among shrubbery or for borders around driveways and many such purposes where Peonies and Iris can be used for a grand effect, and will give the greatest satisfaction of any Hardy Plant in the garden, if planted in the Fall.

Try these Special Offers of some of the best kinds grown.

### NUMBER 12 \$8.00 SPECIAL OFFER

	Each
<b>BARONESS SCHROEDER</b> , Flesh-white fading to clear white, large . . . . .	\$2.00
<b>DORCHESTER</b> , Pale hydrangea-pink . . . . .	1.00
<b>FELIX CROUSE</b> , Tyrian-rose or brilliant-red, large . . . . .	1.00
<b>FESTIVA MAXIMA</b> , White, large . . . . .	1.00
<b>GOLDEN HARVEST</b> , Lilac-rose, creamy yellow collar . . . . .	1.00
<b>MADAME DUCEL</b> , Light mauve-rose, very large and much admired . . . . .	1.00
<b>KARL ROSENFELD</b> , Brilliant crimson-scarlet, extra large . . . . .	1.50
<b>LIBERTY</b> , Rose-pink, large . . . . .	2.00

8 of the best large Peonies grown for the amount invested, all for **\$8.00 prepaid**.

**Try them and Be Convinced!**

### NUMBER 13 \$3.00 SPECIAL OFFER

	Each
<b>CURIOSITY</b> , Violet-red . . . . .	\$1.00
<b>EDULIS SUPERBA</b> , Deep mauve-pink, early . . . . .	.50
<b>DOC D'WELLINGTON</b> , White with sulphur-yellow center . . . . .	.50
<b>LA COQUETTE</b> , Light pink, collar rose-white, fine . . . . .	1.00
<b>MILLAIS</b> , Single, deep crimson, yellow center . . . . .	1.00
<b>QUEEN VICTORIA</b> , White, early . . . . .	.50

The above 6 Peonies for **\$3.00 prepaid**, or 6 each for **\$15.00 prepaid**.

### NUMBER 14 \$1.00 SPECIAL OFFER

	Each
<b>FLAVESCENS</b> , Soft yellow . . . . .	\$ .25
<b>HERANT</b> , Deep lavender-blue . . . . .	.25
<b>HONORABILIS</b> , Golden-yellow and mahogany-brown . . . . .	.25
<b>KOCHI</b> , Rich deep purple, early . . . . .	.25
<b>MADAME CHEREAU</b> , White edged lavender. . . . .	.35
<b>RHEIN NIXE</b> . Pure white and violet-blue. . . . .	.50

Six of the best IRIS grown for the price paid, extra fine for massing. One each of the 6 for **\$1.00 prepaid** or 6 of each for **\$5.00**, 12 of each for **\$8.00, all prepaid**.

### OFFER NUMBER 15

Plants of Iris Siberica are most effective for massing in any location and grow very thrifty in any soil.

	Per dozen
<b>12 SIBERICA BLUE</b> . . . . .	\$2.50
<b>12 SIBERICA ALBA</b> . . . . .	2.50

The above two kinds for **\$4.00 prepaid**, or 50 each for **\$12.00**, 100 each of the two kinds for **\$16.00, express collect; \$75.00 per 1,000**.

## Special Offers

Special offer of some of the very best bulbs grown, for any Amateur to grow.

I will send you this collection of 12 extra fine Dahlias and 25 blooming size Gladioli Bulbs, Value \$4.25 all for \$2.50 Postpaid.

No better ever offered for the price. Try them, it's a whole garden full, of all colors mixed.

25 Blooming size Gladioli. . . . .	\$1.00
A. D. Livoni, Show. Pink. . . . .	.25
Eureka, Cac. Deep purple. . . . .	.25
Ellen Kelley, Peo. Golden yellow. . . . .	.25
Jack Rose, Dec. Crimson. . . . .	.25
Libelle, Cac. Rose purple. . . . .	.25
Miss Helen Hollis, Show. Deep Scarlet. . . . .	.50
Mrs. M. W. Crowell, Peo. Orange yellow. . . . .	.25
Mrs. Bowen Tufts, Peo. Deep rose purple. . . . .	.25
Mary Houghton, Peo. Rhodamine-purple. . . . .	.25
Ora Dow, Dec. Maroon and white. . . . .	.25
Wilhelm Miller, Dec. Brilliant purple. . . . .	.25
Vivian, Show. White and rose purple. . . . .	.25

**No. 16**  
**All for \$2.50**  
**Postpaid**

One of the best Giant-flowering Special Offers on Dahlias ever offered. Try them and surprise your friends and neighbors.

### Six Wonderful Dahlias

Jane Selby, Dec. Mauve pink. . . . .	\$ .50
Junior, Dec. Pure lavender. . . . .	1.00
Maid of the Mist, Dec. Cream shading to lavender pink. . . . .	2.00
Mrs. Ethel F. T. Smith, H. C. Light lemon. . . . .	1.00
Patrick O'Mara, Dec. Autumn shades. . . . .	.50
Washington City, H. C. Pure white . . . . .	.50

**No. 17**  
**\$5.50 Value**  
**all for \$3.00**  
**Postpaid**

### Big Special Offer on blooming size Gladioli, named varieties.

25 Beatrice May, Light Corinthian pink. . . . .	\$4.00
25 Empress of India, Rich deep maroon. . . . .	3.00
25 Gretchen Zang, Rose pink. . . . .	2.00
25 Miss Shirley Shattuck, Best yellow grown. . . . .	5.00

**25 each—100 bulbs in all—\$14.00 Value all for \$10.00**

### Big Special offer on 50 each blooming size Gladioli.

50 Chicago White. . . . .	\$3.00
50 Halley, Salmon rose. . . . .	3.00
50 Isa Tinkham, Deep purple crimson. . . . .	6.00
50 Mrs. Francis King, Light scarlet. . . . .	3.00
50 Le Marechal Foch, Light pink. . . . .	3.00
50 Mrs. F. Pendleton, Salmon pink. . . . .	3.00
50 Myra, Deep salmon, large. . . . .	3.00
50 Novelty, Orange yellow. . . . .	2.00
50 Schwaben, Pure canary yellow, large. . . . .	4.00
50 Sweet Orra, Pale sulphur. . . . .	3.00

**No. 18**  
**500 in all**  
**50 each of 10 named kinds**  
**Value \$33.00**  
**all for \$25.00**

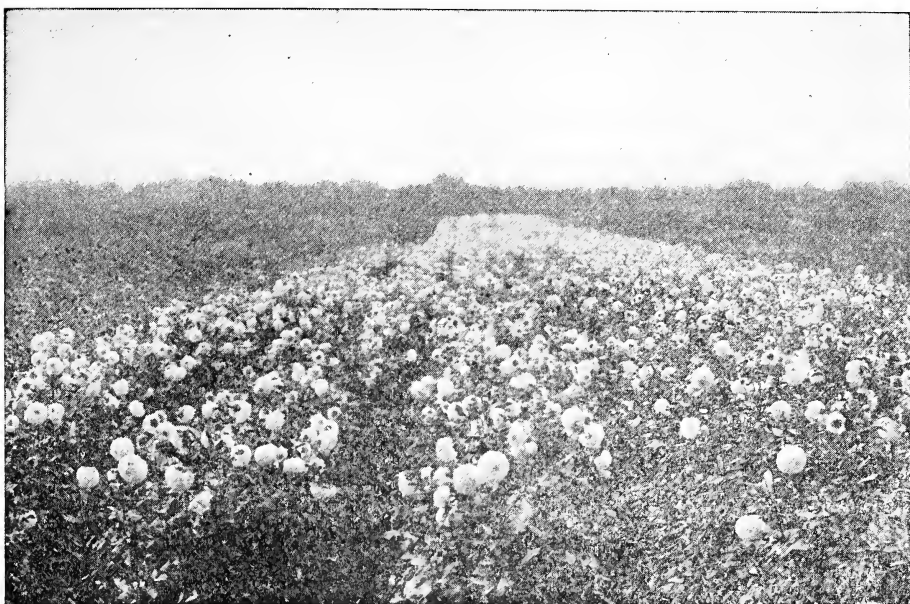
Big Special offer of 100 each named varieties, this is five of the best Gladioli ever grown.

100 Baron J. Hulot, Indigo blue. . . . .	\$7.00
100 Empress of India, Rich dark red. . . . .	7.00
100 Le Marechal Foch, Pink. . . . .	7.00
100 Lily White, White. . . . .	7.00
100 Mrs. Frank Pendleton, Salmon pink. . . . .	7.00

**No. 19**  
**\$35.00 Value**  
**all for \$25.00**  
**Postpaid**

These special Offers are only sold as the whole collection; they cannot be divided; must be sold as printed. As I am well stocked on these varieties I am giving you the benefit of my stock at rock bottom prices on all collections.





**Field View of the Magnificent Show Dahlia STORM KING.**



**Field View of HARDY PHLOX.**





### **MRS. EDITH HAYWARD**

One of Alexander's new seedlings for 1927 introduced in 1926. The color of this wonderful Dahlia is a clear lemon yellow and it will keep longer after being cut than any other variety introduced. No collection is complete without this new creation. See Page 11.

**\$3.00 each; \$25.00 per dozen**

**IF YOU ARE INTERESTED IN THIS CATALOG SEND ALONG A FRIEND'S NAME AND I WILL MAIL YOUR FRIEND A CATALOG.**



*Margaret E. Millis*

**MARGARET E. MILLIS**

A wonderful bloomer on good stems. The coloring is amaranth-pink combined with white in a streaked effect. The flowers are very deep and large with petals inclined to twist. This variety shows up in the field in a manner that makes it very conspicuous and attractive and I can recommend it highly. See Page 15.

**\$2.00 each; \$18.00 per dozen**