

Historic, Archive Document

Do not assume content reflects current scientific knowledge, policies, or practices.

12.5



Babylon Dahlia Gardens

"On The Sunrise Trail"

OFFICE AND SHOW GARDENS OF
15 ACRES ON THE MERRICK ROAD

BABYLON, L. I., N. Y.



DC



**LIBRARY
RECEIVED
★ MAY 2 1928 ★
U. S. Department of Agriculture**

U. S. DEPARTMENT OF AGRICULTURE

WASHINGTON, D. C.

BUREAU OF PLANT INDUSTRY
Horticulture

GOVERNMENT PRINTING OFFICE 332437



DAHLIAS

1928 Wholesale Price List

TO THE TRADE ONLY

We have discontinued our retail department so we can take better care of our rapidly increasing wholesale trade in bulbs and green plants and to better co-operate with our customers.

TERMS: F. O. B. Babylon, L. I., N. Y. 25% Cash with order, balance before shipping, except to Regular Customers, or those having established credit.

PROMPT SHIPMENTS—GOOD CLEAN STOCK

Quotations are per 100 divisions of Field Grown Stock except where noted.

Ten at 100 rate.

SUITABLE FOR CUT FLOWERS

Our Stock is true to name, Dependable and Well Known
Prices are Within Reason and Good Business Policy

FOR THE FLORIST

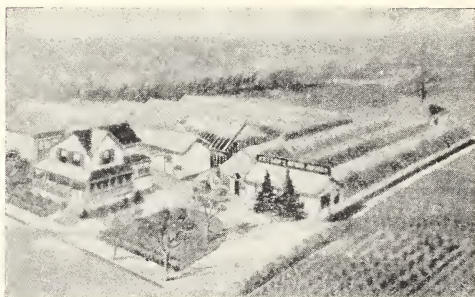
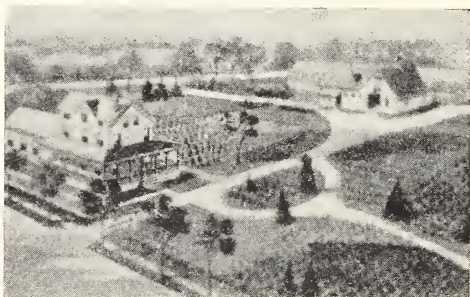
DAHLIAS FOR CUT FLOWERS

The Dahlia as a cut flower is becoming more popular every year, being in bloom and at its best when other flowers are on the wane.

We list only the best.

EXHIBITION DAHLIAS

We advise a few of these fine Dahlias planted in a conspicuous part of your garden. They will attract a lot of attention and promote more sales of cut flowers.



VIEWS OF OUR PLANT, SHOWING
PROPAGATING AND BULB HOUSES.
ALL MODERN CONSTRUCTION.

DECORATIVE TYPE

	ea.	100
ALEX WALDIE—Creamy ground overlaid and finished delicate pink35	30.00
AMUN RA—Giant flower of coppery orange and gold tints. Distinct form. Very popular50	40.00
BASHFUL GIANT—Apricot and amber. Enormous flower50	40.00
BLACK JACK—A very striking deep maroon almost black; long stems; large flower, fine	1.00	75.00
*CAMBRIA—Rich pink toning to lighter. Upright and vigorous grower, long stems. One of the very best30	25.00
*CAPT. JOHN (Howell)—Rich orange buff; large flower on perfect stems	1.25	100.00
*CARMELLO (Callahan) — Delicate amaranth pink. Deep full flower. Very fine, long stems. Splendid	1.25	100.00
*CARMEN SYLVIA—Salmon, fine shipper20	15.00
CARUSO (Stillman)—Amber shaded bronze, fine large flower of splendid stems. Very free75	60.00
*CASPER WARE (Bowen)—Bright silvery violet rose; large size and very free flowering; fine cutter	1.25	100.00
*CATHERINE WILCOX—White tipped cerise; very free, fine stems25	20.00
*CHAMPAGNE—Clear champagne color. Vigorous and free bloomer on long stems. Very large35	75.00
CHARM—Russet orange. Fine stems30	25.00
CHAS. STRATTON (Stratton)—One of the largest. Old gold shaded with old rose. A fine dahlia. Splendid stems75	60.00
CHOU (Boston)—Tyrian rose marked white. Giant flower50	
COPPER KING (Harding)—Copper and red. Deep full flower	2.00	150.00
*CLEMENTINA WING — Bright red; free bloomer on fine stems20	15.00
CURFEW (Slocombe) — Fine yellow; very large50	
CREATION—Cherry red; fine shade35	
DAKOTA—Fine shade of flame. Very fine. Popular25	20.00
D. M. MOORE—Very dark maroon almost black; fine form25	20.00
*DOROTHY ROBBINS—Carrot buff; first class garden and cut flower25	20.00
DOAZON—Very large orange scarlet15	10.00
DON WILLIAMS—Soft lilac, tipped white. Very large	1.00	75.00
*DREAM — Salmon and pink, amber glow; splendid form and good keeper20	15.00
DR. E. R. BARTLEY (Schwarz) — Seedling of Mrs. I. de ver Warner, only much larger and lighter shade. Stems sometimes slightly pendant. It is a whopper	6.50	

DR. TEVIS—Very large. Salmon rose and old gold	ea.	100
EAGLE ROCK BEAUTY (Broomhall)—Pink and cream; in a class by itself. Giant flowers; very free flowering25	20.00
*EARLE WILLIAMS — Very large; red and white distributed. Popular cut flower.....	.75	60.00
*EASTERN STAR—Saffron, shaded old gold. Fine type	1.25	100.00
*ELDORADO (Boston)—Pure gold, very fine	.85	75.00
*ELEANOR MARTIN — Mulberry. Giant flower; very fine	1.25	100.00
EILEEN ROXBOROUGH (Seal 1927)—Rosy pink, mauve and gold. Stiff stems.....	2.00	
*ELLINOR VANDERVEER — Lavender pink. Immense flower; very fine	1.25	100.00
*ELITE GLORY—Monster flower. Brilliant American Beauty red. Splendid	2.00	150.00
ELIZA CLARK BULL (Boston)—Deep full flower, very large and free; one of the best whites. Very popular	1.50	150.00
EMMA DEGROOT—Deep mauve; large and fine. New Holland importation60	50.00
*EMPEROR — Deep rose maroon, American Beauty shade; very large, long stems. Strong grower50	40.00
E. T. BEDFORD—Enormous flowers of silvery purple; free bloomer. Good stems.....	.75	60.00
FAITH GARIBALDI (Boston) — Satiny rosy pink; very large	1.50	
*FLAMINGO—Delice pink, free bloomer, good stems20	15.00
*FLORENCE FINGER—Deep phlox pink; fine cutter25	20.00
*FORT WASHINGTON (Rindfleisch) — Tall, strong grower. Immense perfect flowers of deep maroon. Very fine	3.00	250.00
FRAU SCHIFF — Old favorite. Blending of apricot orange yellow and coral red; very fine30	25.00
GIANT RUBY (Greinberg)—Bright ruby red; good size and stems. Very free.....	.75	
GLORIANA—Pure gold reddish glow, large....	.30	25.00
*GLORY OF SUNRISE TRAIL (Babylon)—Maise yellow edged violet; giant flower. Fine stems. A seedling of the famous Sunkiss. Will be one of the best sellers.....	7.50	
GRACE SHERMAN (Brock) — Soft pink. Fine deep built flower. Very long stems. One of the best75	50.00
*GRACE SPERLING—Two tone, golden buff reverse amaranth-purple. Splendid cut flower; perfect stems75	50.00
*GYPSYANNA (Babylon) — Burnt orange, erect long stems; very free. Giant75	50.00
*HALVELLA—Old rose. Very large flowers on perfect stems75	60.00

	ea.	100
HERALD TRIBUNE ELITE (Kennedy) — Splendid pure white of large size on perfect stems85	75.00
HERCULES —Coppery rose, fine large flower....	.40	30.00
HIS MAJESTY —Bright scarlet; very free; fine large flower85	75.00
HORTULANUS FIET —Salmon pink; large....	.50	40.00
INSULINDE —Bronze orange, very fine40	35.00
* JANE SELBY —Pinkish lavender. Fine form, long stems25	20.00
* JERSEY'S BEACON —Chinese scarlet; one of the very best. Enormous flower	1.25	100.00
* JERSEY'S BEAUTY —Most everyone knows the sensational record made by this wonderful peer of the pinks. It stands in a class by itself. Very vigorous and clean grower on perfect stems. Cut flowers last a week. Will be universally grown. Better get started on this35	30.00
JERSEY'S JEWELL — Mallow pink. Giant flower	1.00	75.00
* JERSEY'S KING —Carmine, good substance and stems. Splendid cut flower.....	.30	25.00
* JERSEY'S MAMMOTH —Burnt orange, very massive flower (12 inches)	1.25	
* JERSEY'S MONARCH — Very large, deep flower on extra long stems. Deep salmon orange, yellow base75	60.00
* JERSEY'S PRIDE —Buff-yellow and pink. Exhibition and cut flower30	25.00
JERSEY'S SOVEREIGN — Vigorous grower on very long stems. Salmon orange, full and deep. Good85	75.00
* JESSIE DAY —Deep golden-buff; fine for cutting; large30	25.00
* JOHN MERRITT —The best creamy white we have seen; very free bloomer on good stems30	25.00
JUDGE ALTON B. PARKER — Deep buff; large, fine for exhibition30	25.00
* JUDGE MAREAN —Orange, yellow, red and gold. Very fine35	30.00
JUNIOR (Seal) —Enormous flower, soft, true lavender60	50.00
* KING TUT (Seal) —Rich, dark, velvety crimson; very large, fine flower on splendid stems	1.50	125.00
* KITTY DUNLAP —Fine shade of American Beauty. Good form, long stems. Good keeper60	50.00
LADY BABBIE —Royal purple; exceptionally free50	40.00
LADY BETTY —Large, graceful, full flower; white suffused rose-pink50	40.00
* LADY BLANCHE —Buff orange with russet tints; very fine, large flower; perfect stems; fine for cutting or exhibition50	40.00

	ea.	100
*LAURA WEBER (Weber) — The largest and snowiest white we ever saw. Fine stem and free flowering	1.25	100.00
• LE GRAND MANITOU—White and reddish purple. Speckled and blotched. Very large	.20	15.00
*LA GROSSE BETE (Marean)—Full, perfect flower. Purple red. Fine50	40.00
*LE TOREADOR—Brilliant red large flower. Fine for cutting30	25.00
*LUCERO—Buff and yellow, like King of the Autumn15	10.00
MAID OF THE MIST—Deep cream shading to pink. Immense deep flower. Free bloomer. Great prize winner75	60.00
*MARCELLA—Delice-pink. Fine for florists...	.20	15.00
*MARGARET MASSON — Silvery rosy pink; massive deep flower	1.25	100.00
MARGARET WOODROW WILSON (F&M) — Creamy white, suffused lavender pink; very deep, full flowers. Very free. Good	2.00	150.00
MARJORIE HENNESSEY (Seal 1927)—Very large perfect flowers on splendid stems. Amber heavily suffused rose; very fine.....	2.50	
*MARIE HAUTMANN (Holland)—Color like the old King of the Autumn. Medium sized flower, freely produced on perfect stems...	.30	25.00
MARY C. BURNS (Boston) — Gold reverse, dull red. Very large and free.....	.30	25.00
MARMION (Tyler)—Pure golden bronze suffusion. Free bloomer on splendid stems. One of the largest	2.50	200.00
MERRICK—Score 92 A.D.S. Trial Grounds. Mahogany edged lighter. Large and free bloomer. Splendid seller. Good stems. Very much admired	1.00	75.00
MEPHISTOPHELES—Deep red; sometimes tipped gold; fine for exhibition60	50.00
*MERMAID (Slocombe)—Yellow; very bright; fine flowering60	50.00
MILLIONAIRE—Immense flower. Lavender-pink. Perfect form30	25.00
*MINA BURGLE—Deep red; fine cut flower...	.15	10.00
*MINNIE McCULLOGH—Soft yellow overlaid bronzy red10	6.00
MOTHER—Mauve pink, fine form30	25.00
MR. EDWARDS (Harding)—Very large deep full flowers. Amaranth-pink shaded deeper. Very fine	1.25	100.00
*MRS. CARL SALBACH—Lavender pink; very large, extra long stems. Flowers bring top price25	20.00
MRS. DINGEE (Brock) — Enormous flower. Coppery old rose, base yellow.....	1.25	100.00
MRS. GEORGE W. ELKINS—Buff, very large, free bloomer60	50.00
*MRS. I. DE VER WARNER—Orchid lavender, deep shade. Very vigorous grower on splendid stems. Free; superior cut flower	.30	25.00

	ea.	100
MRS. JAY CARLISLE—DuBarry pink shading apricot. Immense flower held upright and facing. Very fine	1.25	100.00
MRS. JOHN T. SCHEEPERS—Chamois edged pink. Very large and free. Very popular40	30.00
*MRS. T. B. ACKERSON—White suffused and tipped carmine20	15.00
*MRS. WM. WINCOTT—Best yellow cut flower we know of; perfect form and stems. Better get started on this one30	25.00
MYRA VALENTNE (Mills) —Immense flowers, 4-ft. stems. Orange buff	1.25	100.00
*NOBILIS (Doolittle) —Red and white, very large, fine flower40	35.00
*OYSTER BAY BEAUTY (Devine) (Chemar) Rich dark mahogany red almost black; very large and one of the freest flowering varieties; very fine	2.00	
*PATRICK O'MARA—Bronzy orange; fine cut flower25	20.00
PAUL MICHAEL —Enormous flower. Pure gold. One of the very best dahlias ever originated. Perfect for the garden50	40.00
*PEACH QUEEN—Peach-pink. Splendid cut flower; very free on long stems25	20.00
PERELLA (Boston, 1927) —Bright rose pink shading lavender	1.75	
*PINK LADY—Fine real pink cut flower50	40.00
POLAR SNOW—Immense deep flower. Pure white	1.25	100.00
POP STEWART—Very large flower. Lilac pink; delicate shade. Very good75	
*PRIDE OF CALIFORNIA—Deep rich red full flower, very fine, and best of this shade for cutting15	12.00
*PRIDE OF SAN FRANCISCO—Glowing salmon pink, very upright60	50.00
*PRINCESS JULIANA—White, very free15	10.00
*PRINCESS PAT—Old rose. Very fine30	25.00
*PRINCESS MARY—Live rose-pink. Most satisfactory cutter in this shade. A money maker20	15.00
QUEEN OF THE GARDEN BEAUTIFUL —Very large primrose yellow. Great prize winner	2.50	200.00
RADIO—Red and gold. Giant flower. Very good	1.25	
RED PLANET (Harding) —Very large full flower. Deep red suffused gold50	40.00
*ROBERT TREAT—American beauty rose color. Very large on fine stems	1.00	75.00
*ROBERT SCOTT (Brock)—Golden buff. Fine deep giant flower. One of the very best	2.00	150.00
RODMAN WANAMAKER (Peacock)—Lemon yellow marked and suffused gold and salmon-pink	1.25	100.00
ROMAN EAGLE —Brilliant copper. Very large and free. Semi dwarf	1.25	100.00

	ea.	100
*ROOKWOOD—Light rosy lavender. Large and very free. One of the best.....	.75	60.00
*ROSE FALLON—The sensational (Harding) dahlia of deep old gold. Giant flower on cane stem	2.50	200.00
*SAGAMORE (Badetty) — Apricot buff; fine cut flower85	75.00
*SAMSON—Variegated red and yellow. One of the very best40	35.00
SANICHAN'S MONARCH (F&M)—Tyrian rose edged lighter. Fine stems	1.00	
SANICHAN'S MAGNATE (F&M) — Pale amaranth tinged deeper reserve claret. Very large	1.50	
*SANICHAN'S ROSE—Clear rose-pink; very large; good cutter40	35.00
SHELIKOF—Very dark maroon. Very fine...	.40	35.00
*SILVER QUEEN (Kennedy 88 A. D. S.)—Silver very white, violet reverse. Very large and free	1.25	100.00
SNOWDRIFT—Huge flower of perfect form. Pure white, very popular. Dwarf grower. Vigorous35	30.00
STACEY TRENT (F&M)—Clear rosy pink; large and free50	40.00
*SUNNY JERSEY—Lemon yellow suffused gold; very free on fine stems; good cut flower	1.00	75.00
SUSAN G. TEVIS (Boston)—Very large, perfect form, lilac with bluish sheen; vigorous grower, long stiff stems75	60.00
*SYLVIA DICKEY—Light phlox pink. Very free on fine stems. Splendid for cutting25	20.00
TANFORAN — Deep scarlet; very large; fine stems50	40.00
TOMMY ATKINS (Boston) — Very brilliant scarlet. Fine large flower, good stems60	50.00
*TRENTONIAN—Brown coppery bronze. Immense flower on fine stems. Very fine	1.25	100.00
*VENUS—White suffused lavender. Good cut flower. Very popular25	20.00
*VERDUN—Yellow and scarlet. Very bright. Fine cut flower50	40.00
*WANDAMILLER (Rindfleisch) — Purple tipped white (color like "Our Country" but unlike that variety it has fine straight stems and blooms very freely). Large flowers.....	1.50	
*W. E. COOPER (Boston) — Real live pink. Stiff stem; free40	35.00
*WHITE DOVE—Here we have the best snowy white Florist's Dahlia. Splendid for making up20	15.00
*WINFIELD SLOCOMBE — Deep, full flower of golden-buff shading darker. Fine Autumn shades; long stems; good bloomer and keeper75	50.00
WM. SLOCOMBE — Very large and free. Canary yellow50	40.00

	ea.	100
WORLD'S BEST WHITE —Creamy white; large deep flower of fine form and stems	1.00	75.00
ZEUS —Bright red tipped yellow. Stunning effect	1.50	
CACTUS AND HYBRID TYPES		
* ALICE M. LONGFELLOW (F&M) —Shrimp pink tips lighter. Free bloomer. Very beautiful; flower 6 to 8 inches	.60	50.00
AMBASSADOR — Enormous flower; fine stems; in a class by itself. Straw edged pinkish. Won prizes all over the country. We have a fine stock of this variety	.85	75.00
BABYLONIAN —Wine crimson. The best in its color of this type. Very large, free, and fine form; splendid stems	1.50	100.00
BALLET GIRL —Buff orange tipped white, red striped white and solid buff on same bush; splendid type and large. Popular	.40	35.00
* BIANCA —Rosy lavender. Very fine	.20	15.00
BILLIE BURKE —Straw yellow, edged rosy lavender; very large	.35	30.00
* BOB PLEUSE —Ox blood-red tipped white. Very striking; free flowering	.75	60.00
* CALIFORNIA BEAUTY —Splendid cut flower of medium size and free flowering. Deep buff	.30	25.00
CANADIAN QUEEN —Enormous flowers; pink and white. Fine for exhibition	.25	20.00
* CIGARETTE —Red and white; 6 inch flower on very long stiff stems. Very good for cutting	.60	50.00
CINDERELLA (Boston) —Very large buff and orange-pink flush. Upright	.60	50.00
* COUNTESS OF CLAVERLEY (Babylon D. G.) —We consider this the only real pink Hyb. cac. A strong grower on fine stems. Very large flowers of perfect type. You will like this one. If not pleased you may return the stock and we will refund full purchase price	10.00	
* COUNTESS OF LONSDALE —Salmon and rose. Fine garden and cut flower dahlia	.15	12.00
* DADDY BUTLER —Carmine rose shaded lighter, large and attractive	.50	40.00
* DIANA (Holland) —Crimson violet reflex; large finely pointed petals; splendid	.25	20.00
DOROTHY DURNBAUGH —Very large upright flower. Salmon pink	.40	30.00
EAGLE ROCK SUNSHINE (Broomhall) —In a class by itself; extra large and full; fine shade of yellow. Splendid stems	5.00	
ELSIE DANIELS —Bluish lavender, centre white; beautiful	2.00	150.00
EL GRANADA —Vivid orange, creamy reverse; very large	1.00	75.00
ELSIE OLIVER (Boston) —Exceptionally large salmon and pink; fine form upright	.75	60.00

	ea.	100
*EMMA MARIE—Pink shading to white centre. Fine cut flower85	75.00
ETHEL T. SMITH (Broomhall)—Very large flowers of white shading lemon yellow at centre. Popular50	40.00
*FARNCOTT—Aster purple, tipped white; very free on perfect stems. Splendid for cutting. Very distinct75	60.00
F. W. FELLOWS—Orange terra cotta. Popular	.40	35.00
GEE WHIZ—Buff and salmon. Immense flower50	40.00
GEORGE WALTERS—Very popular; salmon, gold and pink; free flowering25	20.00
*GOLDEN GATE—Golden amber and bronze shadings20	15.00
ISLAM PATROL—Very showy. Deep velvety scarlet tipped and flushed gold	1.50	125.00
*J. B. RIDING—Orange and apricot. Large and free bloomer. Straight stems20	15.00
JERSEY'S RADIANT—Bitter sweet orange, 6 inch flower on fine stems60	50.00
KALIF—Scarlet, large; can't be beat as yet....	.30	25.00
KING SOLOMON (Andrews)—Large full flower. Orange buff; very fine	1.25	
LORAIN WOERNER—Creamy yellow and salmon pink; large and full50	40.00
*MARIPOSA—A great favorite; lavender pink; large. One of the best60	50.00
MONTAUK—Salmon pink. Full flower, good stem and growth. Our own introduction....	.25	20.00
*MRS. RICHARD LOHRMANN—Butter yel- low, fine form and free on good stems60	50.00
*MRS. EDNA SPENCER—Delicate pinkish lav- ender; upright25	20.00
*MRS. F. W. STREET—Crimson tipped white. Very showy60	50.00
MRS. GEORGE WAGSTAFF—Spinnel red. Very free on splendid stems, large	1.00	75.00
MRS. HAPPIE BEDFORD—Exhibition flower of immense size; perfect form. The best of this type and color	1.50	125.00
*MRS. H. J. JONES—Red and white; very pop- ular cut flower20	15.00
MRS. WARNAAR—White flushed pink, very large; great favorite40	30.00
NAGEL'S ROEM—Naples yellow tinted cham- ois and salmon; finely formed flower on very long stems. Created quite a stir at the show of 1926	3.00	
NIBELUNGENHORT—Salmon rose. Fine old favorite25	20.00
NICHU—Clear light yellow; large full flower	.75	60.00
RED CROSS—Scarlet and gold. Very large and fine50	40.00
PIERROT—Amber tipped white; large flower; pointed petals. A favorite25	20.00
ROLLO BOY (Burns)—Very large; strong stems. Amber shading to gold. Splendid	.85	75.00

	ea.	100
ROYCROFT (Tyler 1927)—Cinnamon buff deepening to russet. Very early and free. Splendid	1.25	100.00
RUTH FORBES—Mauve pink; large, fine stem	.15	10.00
SHIRLEY OLIVER (Seal 1926) — Light rose pink, yellow base. Very large.....	1.25	
SILVERADO (Seal 1927)—White, delicate silver lavender centre. Shaggy and long petalled. Very attractive	3.50	
SISKIYOU (Broomhall) — Extremely large flower; pink tinted mauve. Very fine.....	1.00	85.00
SOLE MIO—Pure yellow of very large size and fine form. Splendid	1.00	
*SONNENGOLD—Golden orange; very fine; long stems20	15.00
STABILITY—Upright grower; medium size; pink shaded lighter. Very good.....	.30	25.00
*SUNBRITE—Yellow and red, similar to Red Cross; very fine, good stems30	25.00
SUNKISS—Canary yellow flushed at edge with rosy salmon. One of the best75	60.00
*SUNSET GLOW (Peacock)—Red and gold; very fine; medium sized flower; fine for cutting40	30.00
SWEETBRIAR—An old favorite, Delice pink; finely formed flowers, 6 inches30	25.00
TOM LUNDY—A favorite. Splendid crimson; large and free30	25.00
VIOLETTA—Petunia violet. Splendid acquisition	1.25	
*VIOLA PHILLIPS—One of the best ever introduced of this type and color. Salmon and mauve. Fine keeper75	60.00
WASHINGTON CITY—Fine white flower of good depth. Popular40	30.00
WIZARD OF OZ—Enormous flowers. Amber pink and salmon. Splendid exhibition type	1.25	100.00
*YELLOW KING—Very large full flower; sulphur yellow tipped lighter20	15.00

COLLARETTES AND SINGLE TYPE

	ea.	100
MAURICE REVOIR (Col) — Crimson with white collar10	8.00
NEWPORT WONDER—Lovely shade of pink. Fine keeper. Artistic75	60.00
ROYALE (Col)—Deep crimson purple, white collar; very decorative10	8.00

POMPONS

	ea.	100
AMBER QUEEN—Amber and orange15	8.00
ARIEL—Buff tinted orange.....	.15	8.00
CATHERINE—Clear yellow15	8.00
FASCINATION—Fawn pink15	8.00

	ea.	100
GANYMEDE—Fawn20	15.00
HEDWIG POLLWIG—Red tipped white.....	.15	8.00
KLEIN DOMITEA—Orange buff15	8.00
LITTLE BEAUTY—Shrimp pink15	8.00
MADELINE—Primrose edged purple15	8.00
NEMESIS—Maroon and white15	8.00
NERRISSA—Pink15	8.00
SNOWBIRD—White20	15.00
SUNBEAM—Bright crimson scarlet15	8.00

PEONY TYPE

	ea.	100
*AURORE (Peo)—Large flower of orange buff. Good stems and keeper; very fine.....	.20	15.00
CAMILLE FRACHON (Peo)—Glistening garnet. Very attractive50	40.00
DREAMLIGHT (Peo)—Rose pink, base golden yellow; large and free.....	.75	60.00
*GORGEOUS (Peo) (Boston) — Very large. Scarlet and gold75	50.00
*LOUISE SCHWARTZ (Peo) — Buff flushed mallow pink. Very free, fine for decorations40	35.00
OREGON BEAUTY (Peo) — Oriental red. Fine garden dahlia15	12.00
PEARL RUGGLES (Peo)—Carmine suffused pink, white base; very artistic30	25.00
PITTI SING (Peo)—Scarlet and gold. Fine substitute for Geisha. Very brilliant.....	.40	35.00
SULPHERA (Peo dec)—Light yellow, shaped like a Chrysanthemum; fine.....	.30	25.00
SWEETHEART'S BOUQUET (Peo dec)—Lovely deep pink; large, long stems.....	.30	25.00
UNCLE SAM (Peo)—Immense golden apricot U. S. A.—Very large; orange buff; very popular	1.25	100.00
	.60	50.00

BALL OR SHOW TYPE

	ea.	100
*ACQUISITION (S)—Deep lavender; fine....	.20	15.00
*ARABELLA (S)—Pink and buff; an old favorite		
AUGUST MEGAR (S)—Pansy purple. Perfect form20	15.00
*BUTTERFLY (Superior) — Delicate pink and white, very free60	50.00
CUBAN GIANT (S)—Deep crimson; large....	.15	10.00
DELIGHTED (Hyb S) — Very large white. Fine stem15	10.00
*ELSIE BURGESS (S)—White tipped and suffused lavender. Fine for design work. Very long straight stems15	8.00
*GOLD MEDAL (S) — Scarlet suffused gold. Perfect type30	25.00
*JOHN BENNETT (S) — Perfect form; deep buff and red20	15.00
*MAUD ADAMS (S)—Mauve pink and white; very fine15	10.00

	ea.	100
*PEACOCK—Rich crimson purple tipped white	.75	
VIVIAN (S)—Dark magenta flushed cerise.		
Large, popular15	8.00
*WHITE SWAN (S)—Most reliable white for cutting in this type10	7.00
*W. H. WILLIAMS (S)—Maroon red; good form, fine for cutting15	10.00
*W. W. RAWSON—White shading amethyst. Splendid form and large size.....	.20	15.00

DAHLIA PLANTS FOR 1928

All plants will be shipped in Growell Peat Pots. Do not bind the roots. Roots grow into and thru the walls of the pot—free, unhampered, vigorous. Advances the flowering period 10 days to 2 weeks. Regulates temperature—nightly radiation of heat slow and uniform, doing away with chilling. No check in growing when transplanted, both pot and plant, planted in fields or beds without disturbing the roots.

Maintain correct moisture content by capillary attraction which keeps even balance of moisture in soil. No danger of over-watering or losing necessary water; absorbs as much as nine times their own weight in moisture.

Before planting you can dip these pots containing the plant in liquid manure. This is all the feed they need for thirty days to sixty days.

OUR GREEN PLANTS ARE

Not just ordinary rooted cuttings, but good strong plants, grown cool, well rooted, ready to grow right on, produce exhibition flowers and tubers free from disease. We have many repeat orders and our orders for them are increasing each year. Try them and be convinced.

Packed right to ship long distance and guaranteed to arrive in good condition.

All orders for less than \$5.00 add 50%.

	Per	Ea.	Doz.
ALEXANDER POPE	1.00	10.00	
ALICE WHITTIER (Reed)	1.00	10.00	
AUBURN BEAUTY (Weston)	1.00	10.00	
BARBARA REDFERN (Redfern)	1.00	10.00	
BEAU IDEAL (Boston)	1.00	10.00	
BERTHA JOST (Jost)50	5.00	
*BLACK JACK (Dressler)50	5.00	
BUENO (Boston 1927)	1.00	10.00	
CANARY BIRD (Harding)	1.25	10.00	
CASPER WARE (Bowen)75	7.50	
*CHARLES STRATTON (Stratton)50	5.00	
CHEMAR'S MASTERPIECE (Chemar)	2.00	20.00	
CHEMAR'S PURITY (Chemar)	2.00	20.00	
*COPPER KING (Marean)75	7.50	
*CHAMPAGNE (Boston)40	4.00	
CITY OF LAWRENCE (Reed)75	7.50	
*Dr. E. H. BARTLEY (Schwartz) — P. D. Gigantic flower. Orchid lavender. Can easily be grown 12 inches. Long stems....	2.00	20.00	
EAGLE ROCK BEAUTY (Broomhall).....	3.00	30.00	

	Per	Ea.	Doz.
EAGLE ROCK SUNSHINE (Broomhall)	2.00		20.00
*EASTERN STAR (Maytrott)	.75		7.50
E. E. HANBURY (Harding)	1.25		10.00
*ELITE GLORY (Kennedy)	1.00		10.00
EILEEN ROXBOROUGH (Seal)	1.00		10.00
*ELLINOR MARTIN (Pelicano)	.50		5.00
*ELLINOR VANDERVEER (Seal)	.50		5.00
ELKRIDGE (Griffith)	2.00		20.00
ELIZA CLARK BULL (Boston)	.75		7.50
*ELSIE DANIELS (Meechan & Sherman)	.75		7.50
EDNA FERBER (F. & M.)	1.50		15.00
EVA COLE (Murphy)	1.00		10.00
FAITH GARIBALDI (Boston)	.75		7.50
FARNCOTT (Davis)—Aster purple cactus tipped white. Very distinct	.60		6.00
FLAMELICH (Murphy)	2.00		20.00
*FORT WASHINGTON (Rhindfleisch)—Very large blackish maroon. Perfect form. Fine stems	1.00		10.00
FRANCIS LAROCCO (Rhindfleisch) — Fine yellow decorative. Very extra	1.00		10.00
GLORY OF NEW ENGLAND (McKinley)	1.50		15.00
GLORY OF SUNRISE TRAIL (Babylon D. G.) dec.—Maise yellow edged violet; giant flower. Splendid stem. A seedling of the famous Sunkiss. Will be one of the best sellers	1.50		15.00
GOLDEN FLEECE (Seal)	1.00		10.00
HATHOR (Seal 1927)	1.00		10.00
*ISLAM PATROL (Davies)	.75		7.50
ITALIAN SUNSET (Beatrice)	2.00		20.00
JACQUELINE DARNELL (Darnell)	1.00		10.00
*JERSEY'S BEACON (Waite)	.75		7.50
*JERSEY'S BEAUTY (Waite)	.25		2.50
JERSEY'S IDEAL (Waite)	1.00		10.00
*JERSEY'S MAMMOTH (Waite)	.60		6.00
JERSEY'S SOVEREIGN (Waite)	.60		6.00
KING SOLOMON (Andrews)	.75		7.50
*KING TUT (Seal)	.75		7.50
LINDA VISTA (Broomhall)	1.25		10.00
*MARGARET MASSON (F. & M.)	.60		6.00
MARGARET WOODROW WILSON (F. & M.)	1.00		10.00
MARJORIE HENNESSEY (Seal 1927)	1.50		15.00
MARMION (Tyler)	1.00		10.00
*MORDELLA (King)	.75		7.50
MR. EDWARDS (Harding)	.75		7.50
MRS. FRANCES E. BULLARD (Broomhall) —A great dahlia; light pink; immense	1.25		12.50
MRS. HENRY E. FOLEY (H. C.) (Murphy) —Ten-inch flower; white suffused magenta	1.25		10.00
NAGEL'S ROEM (Holland)	1.00		10.00
NATURE'S MASTERPIECE (White)—A sen- sational new dahlia	2.00		20.00

	Per	Ea.	Doz.
OLIVE REED (Seal)75		7.50
OYSTER BAY BEAUTY (Chemar) — Rich dark glowing red. Very free; fine stems. Does not burn. As large as Elite Glory	1.00		10.00
PERELLA (Boston)	1.00		10.00
POP STEWART (F. & M.)60		6.00
PRIMULA REX (Broomhall)	1.00		10.00
QUEEN OF THE GARDEN BEAUTIFUL	1.00		10.00
QUEEN MARIE (Formerly The Autocrat) (Harding)	2.00		20.00
*RADIO (Sampson)60		6.00
*ROBERT SCOTT (Brock)	1.00		10.00
*ROBERT TREAT (Mueller)60		6.00
RODMAN WANAMAKER (Peacock)75		7.50
ROLLO BOY (Pelicano) — Old gold shaded amber. Fine60		6.00
ROMAN EAGLE (F. & M.)60		6.00
*ROSE FALLON (Harding)	1.00		10.00
ROYCROFT (Tyler)75		7.50
SALBACH'S WHITE (Salbach)	1.00		10.00
SANICHAN'S GEM (F. & M.)60		6.00
SANICHAN'S MAGNATE (F. & M.)75		7.50
SANTA ANNA (Pelicano)	1.00		10.00
*SHIRLEY OLIVER (Seal)75		7.50
*SOLE MIO (Lohrmann) (Hyb. cac.)—Splendid yellow. Very large, fine form and free flowering. One of the best75		7.50
*SUNNY JERSEY (Maytrott)60		6.00
*SAGAMORE (Badetty)50		5.00
SHIRLEY EILEEN SHATTUCK (Murphy)	2.00		20.00
SHACKAMAXON (Searle)	1.00		10.00
SILVERADO (Seal)	1.50		15.00
SILVER QUEEN (Kennedy)	1.00		10.00
SISKIYOU (Broomhall)75		7.50
*SHUDOW'S LAVENDER (Boston)60		6.00
SUNMAID (Hyb. cac.) (Spacher)—Orange and gold. Very large. Profuse	1.00		10.00
SUNNY CALIFORNIA (Calif.)60		6.00
SUNRISE TRAIL (Darnell)	1.25		12.50
THE TELEGRAM (Marshall)85		8.50
*TRENTONIAN (F. & M.)60		6.00
*UNCLE SAM (Meechan & Sherman)75		7.50
*VIOLETTA (Waite)75		7.50
WANDAMILLER (Rhindfleisch)	1.00		10.00
*WIZARD OF OZ (Doolittle)75		7.50

DAHLIAS FOR COUNTER TRADE

MIXED	100	1000
MIXED FANCY	\$6.00	\$55.00
MIXED FANCY	7.50	70.00
MIXED FANCY, EXTRA	12.00	100.00
TO COLOR—Red, pink, yellow, white; equal quantities	6.50	60.00

Memorandum



