

## **Historic, Archive Document**

Do not assume content reflects current scientific knowledge, policies, or practices.



FALL—1928 Planting Guide and Catalog.

# Pecans Built My Home!

6275 They Can Build Yours!!

**BASS PECAN CO.  
LUMBERTON,  
MISS.**



Orchard  
and Home  
of I. H. Bass,  
President

**The Largest Pecan Nursery in the World!**

INDEXED

Sec. 435 1/2 P. L. & R.  
U. S. POSTAGE  
**1c Paid**  
Lumberton, Miss.  
Permit No. 1

LIBRARY  
REMOVED  
★ FFB 26 1929 ★  
U. S. Department of Agriculture

Mr L. C. Corbett  
Horticulture

L. C. Corbett  
U. S. Dept of Agriculture  
Bureau of Plant Industry  
Washington, D. C.

Let Pecans Be Your Hobby!



## The Independence and Joy of Old Age---

What greater thing is there than to see an old couple, enjoying life together, free from the cares of working or the worries of deriving an income. What a joy there is for them in their own independence—what a sorrow if they are merely objects of charity. Old people who have not done so, will tell you with regret that they wish they had planted pecans when they were young—*they would have been rich today!*

An instance of how pecans brought such happiness, independence and provided not merely an income but a successful start for eight children is that of "Father and Mother" Bass, shown here at their own home. I. E. Bass, founder of this business, was facing financial difficulties at the age of 58, when he planted his first Paper-shell pecans. Father has lived to see his trees support him, send eight children to college, establish this business and then retire with absolute independence.

You, too, may have such an easy carefree life in your old age. Plant now and profit meanwhile

**Pecans mean  
An Income  
for Life!**

**Plant Once  
for Always!**

**First Cost  
is  
Last Cost!**

BASS  
PECAN CO.  
Lumberton, Miss.

The Largest  
Pecan Nursery  
in the World

Here's the Meat of the Bass Nuts!

Bass  
Trees  
Hold  
World  
Record!

THE following is the remarkable bearing record of nine of our Extra Special pecan trees set out the last of February, 1923, for Dr. D. B. Stevenson of Lumberton, Miss. Most all of these trees bore pecans the first year set out. They were our largest size trees and have been given the very best of attention by Dr. Stevenson. He has fertilized the trees very heavily with barnyard manure and worked around them often so that weeds and grass would not get the fertilizer. Results have been remarkable.

The record that follows was carefully kept by Dr. Stevenson who is one of the best known physicians as well as loved and respected citizens of South Mississippi and is absolutely authentic as he gathered and weighed the pecans himself. The trees bearing the heaviest crops were the ones most favorably located. Trees with smallest yields were greatly handicapped by being near big oaks, sidewalks, etc. You will please notice the nuts were gathered in October and November of 1925—*actually before* the trees had been set in the ground *three years*.

Tree No.		Age	Yield
1	Bass Papershell	2 yrs. 8 mos.	25½ lbs.
2	"	2 " 8 "	15 "
3	"	2 " 8 "	16 "
4	Success	2 " 8 "	17½ "
5	"	2 " 8 "	28¼ "
6	Nelson	2 " 8 "	12 "
7	"	2 " 8 "	10 "
8	Success	2 " 8 "	4½ "
9	"	2 " 8 "	4 "



Pecan Tree planted beside  
"The House Pecans Built"  
four years ago.

## There's *Permanence* to Pecans!

### An investment that leads to prosperity

There are many kinds of investments but none as safe and sure and permanent as pecans. In three years time, if properly cared for, the trees start bearing and produce thereafter each year for centuries. It has been estimated that a pecan tree may live for 1200 years and still bear profitably.

Said J. B. Wight, before the American Pomological Society, "*Plant a Pecan Grove, and later on in life it will support you. It will do as much for your children and your children's children.*"

A pecan orchard involves practically no risks. Nature works for you day and night, soon producing a regular income for you and then allowing you to leave the grove as an estate, a most fitting and profitable inheritance and memorial.

## Have You Idle Land?

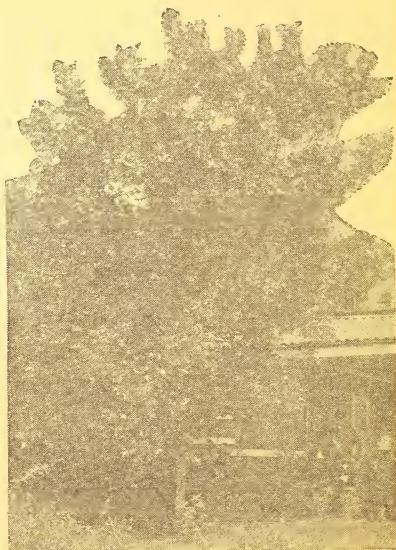
Perhaps you have land now that's idle or else poorly productive. Perhaps you have the opportunity now to buy some vacant land cheap. Why not plant that land in pecans and thus insure your future financial income and independent old age? Many business and professional men are buying up tracts and setting them in pecans. Make it your hobby, too.

Pecan trees interfere but little with crops. You can plant the trees in between the rows and even after they have developed, crops may still be planted in between the trees. However, pecan groves usually earn such big dividends and are such sure crops that you may not want to bother with risky one-time crops.

*Pecans make Investments of Confidence* for farmers, business or professional men, or women.

### Crops To Grow With Pecans.

The finest crops to grow with pecans are peas, beans, clovers or other leguminous crops, for these enrich the soil and build it up. In addition to these, here at Lumberton we grow cotton, corn, sweet potatoes, watermelons and all kinds of truck. Also strawberries and fruits. You might as well use that land. See pages 20, 21, 22, 23, 24 for fruits to plant.



Same pecan tree now, providing shade,  
beauty and lots of nuts.

*"The trees are growing fine." Tulsa, Okla.*

## Bass Pecan Trees are Heavy Bearers



## Shade, Beauty, Permanent Income

Financial Income, while a big consideration, is not the only factor in favor of pecan trees. These trees provide lots of shade as well as remarkable and unexcelled beauty. Note the photographs—note the shade and beauty along the city streets, the byways, the highways. Also see the view of pecan trees planted in front of school building. An idea for your School Board.

Property values are promptly and readily increased when pecan trees are planted—even if there are but one or two.

Then there are the nuts—Nature's gift to you, and such a nutritious food! Nuts for home use and nuts for market—and it's not a once in a while, but a regular occurrence, year after year.

*A view of our Nursery in  
one of our Pecan Orchards.*



*"The pecan trees are doing splendidly and are full of  
very large fine pecans." Onancock, Va.*



## Which will you Leave Behind?

### A Cold Slab or a Living Memorial That Produces Beauty and Profit

When you are gone, will you be soon forgotten—or will your name live for perpetuity? If you leave merely life insurance or great wealth, your heirs will spend your money and the memory of your good work on earth may pass away with it.

A monument or mausoleum soon fades and people pass it by unnoticed. Nor does it do any earthly good!

But why not leave behind a memorial that will *be* a memorial, that will produce an income for your heirs and their heirs and generations to come—a pecan grove or groves? They are places of beauty, of joy and of bountiful profit for even centuries to come.

## To Send Your Child To College

If you want to give your child or children a good chance in life *and it will soon be more so than ever a battle of brains*, plant pecans now and insure that income for their education.

In three years Bass Bred-up Papershell Pecan trees, if properly cared for, begin to bear and will be bearing heavily when they are grown. Fifty dollars worth of nuts per year from each single budded or grafted pecan tree is not at all uncommon. Twenty trees producing \$50 worth of nuts per year would provide a yearly revenue of \$1000. Isn't this better than a few dollars saved with a struggle each month and earning but 4%.

Then during college and after graduation your trees will still be paying their way—and yours—through life.



*Isn't this a better memorial than a  
lifeless stone?*

*"Your pecan trees bore first crop last year and are bearing this year." Grayson, La.*





**BASS BRED-UP TREES ... Thousands of Our Pecan Trees Bear Before They Are Three Feet High ~ ~ ~**

**Vigorous Root Systems--Hardy, Thrifty Trees!**

All Bass Trees have good substantial root systems, or else they are cast aside as "culls" and sold as seconds, along with any other trees with imperfections. Thus are you absolutely assured of well rooted trees, with properly developed root systems and a strain from a healthy bearing parent, resulting from our grafting or budding all trees sold.

Notice the illustration. Typical 3 to 4 foot Bass bred-up papershell pecan trees. See the strong straight trunks and the fine spread of root growth. Do they bear early? Thousands begin to bear while still in our nursery! The tree on page 17 is the result of just such a Bass bred-up Papershell Pecan Tree.

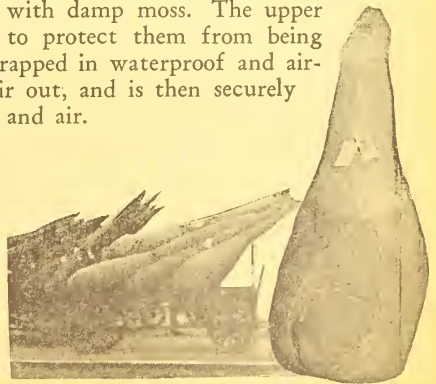
**Care in Packing and Shipping is Important!**

No other nursery, anywhere, packs trees as we do! We dig deeper to get all the roots and then we pack them carefully with damp moss. The upper parts of the trees are packed with oat straw to protect them from being skinned or bruised. The entire trees are then wrapped in waterproof and air-proof paper to keep the moisture in and the air out, and is then securely covered with burlap to keep out the sun, wind and air.

Such packing requires experts.

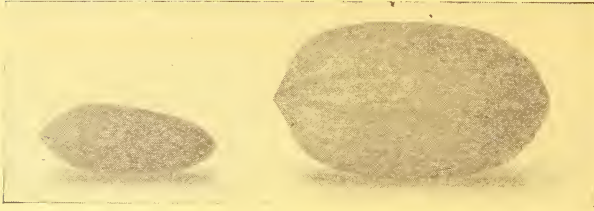
Thus the trees are well protected to reach you in excellent condition. (We've shipped trees to China three times and every shipment reached there in perfect condition and all trees are growing—the result of good trees plus good packing and shipping).

Be sure to examine your trees on arrival. If package is damaged notify railroad agent and us.



*"I purchased four trees two years ago and am sending samples of pecans on them." Goliad, Tex.*

## Bass Pecan Trees Make Money Every Day



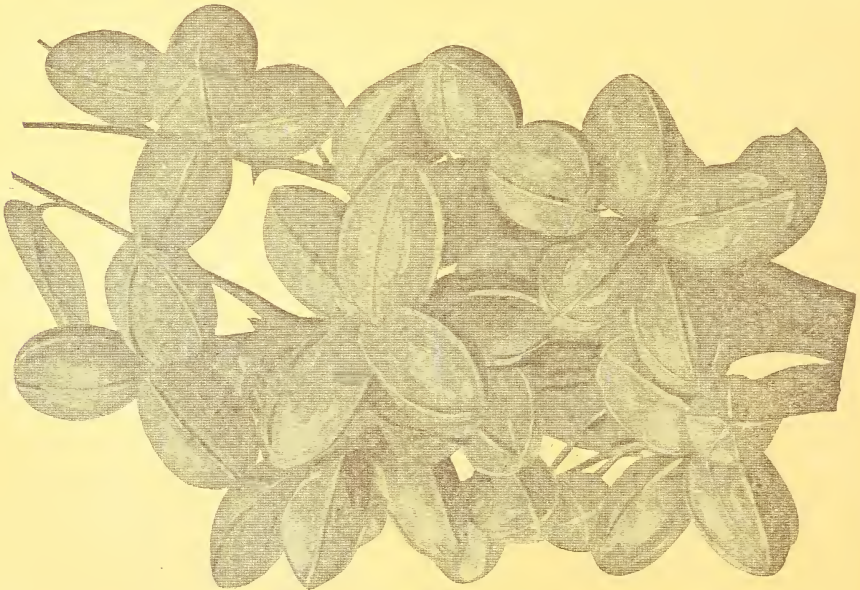
*Plant the big nut and you will  
get the small nuts. Read below.*

### A Pecan Tree Must Be Budded or Grafted Bass Pecan Trees Bear Early and Heavily!

Even if you plant a large pecan, it's almost sure to bear a tiny nut. To insure getting large pecans, trees should be budded or grafted.

Pecans have that tendency to breed back to the way they were produced ages ago. Through budding and grafting, such large fine tasty nuts have been produced, so to get fine nuts, budded or grafted trees must be planted. No planted pecan will reproduce the parent tree in all respects. You can't plant even the biggest pecan and expect to grow trees that will reproduce those same nuts.

All Bass trees are thus bred-up from heavy bearing parents, from our own orchards. We do both budding and grafting—each tree is *either* budded or grafted, for each method is equally as valuable and productive. Our trees thus bear earlier and bear heavily.



*A cluster of nuts made possible only through  
budding or grafting the tree that bore them.*

*"The pecan trees are loaded with fine nuts this year." Tullulah, La.*



Views of our Nursery. Note the clean rows and fine stock growing in such a healthy fashion.

## Bass Pecan Trees are Bred-Up From *Known* Parents that Bear

By actual comparative tests, in all sections of the South our trees are making records from the standpoint of earliest bearing, heaviest yields and quality of nuts.

Many nurserymen sell stock propagated from trees which have never borne a nut—but when you buy Bass trees you *know* that they are bred-up budded or grafted Papershell Pecans, whose buds or grafts are selected from early and heavy bearing parent trees **RAISED IN OUR OWN ORCHARDS**. We know the nuts that those parent trees produce and the history of those trees. Each tree sold by us is grown for high quality, and for the purpose of producing large and satisfactory profits for our customers.



One of our own parent trees.  
Mary Joe Bass with nuts.

## Pecan Trees---- A Life Business with Us

If this were a backlot proposition or a small indifferent nursery; if we were a mediocre quick-sell-out-nursery, we would not, nor have to, go to all this trouble, work and extra expense. But it's a lifetime business with us—twenty years old and young children growing up to carry on the business.

Would you buy a car if you weren't able to get replacements? Why buy from a man or firm who may be gone tomorrow? Bass is a permanent institution and the highest financially rated pecan nursery in the world. Read page 26.

*"Some of my first trees purchased from you have nuts on them this year." Yuma, Arizona*

## In Dry Weather—Bass Pecan Trees Grow.



Bass Trees planted one year, two years, three years and longer.

### How \$5, Invested In Five Trees, Produced \$6,336.41!

The table below is sufficient evidence of what an investment in Papershell Pecans will bring you. It gives the return from just five of our \$1 size trees when well cared for over a period of eighteen years. The last column of the table shows the income from sales of nuts, with the money put out at compound interest in a savings bank. *These figures are based upon actual experience.* They give you some idea of the remarkable dividends which your own orchard can be made to pay.



Another view of Nursery. Note uniform height of trees.

Year	No. Pounds	Sales for Year	With interest to 1914
1897	35	\$ 17.50	\$ 33.63
1898	52.52	26.26	49.52
1899	67.32	33.66	60.95
1900	135	67.50	117.53
1901	80	40.00	66.97
1902	225.50	112.75	181.39
1903	400	200.00	303.28
1904	605	302.50	449.48
1905	655	327.50	467.71
1906	480	240.00	329.47
1907	150	75.00	98.96
1908	845	422.50	535.83
1909	570	285.00	347.41
1910	980	490.00	675.12
1911	1530	765.00	861.52
1912	980	490.00	530.40
1913	1720	860.00	894.74
1914	725	362.50	362.50
<b>Totals</b>	<b>18</b>	<b>10,235.34</b>	<b>Sales \$5,117.67 Plus Int. \$6,366.41</b>

Remember this \$6,366.41 is just a dividend. Year after year, your orchard should increase its earnings, as your own earning ability decreases, enabling you to face the future without fears of financial distress. In what other occupation could such a record be made? In what other form of investment could \$5 be made to produce \$6,366.41 return, while keeping the capital which made it intact and steadily increasing in value?

"I can't praise your trees too highly—they are so fine and will save the buyer money." Toxey, Ala.

## Profitable Pecan Land for Sale Near Our Nurseries

While we are primarily producers of Pecan Trees, and handle some small fruits for the convenience and accommodation of our customers, from time to time we purchase tracts of land near our nursery and set them out with our own trees. Occasionally we sell those tracts or parts thereof.

We're in touch with a number of reputable real estate men throughout the south, to any of whom we can refer you and we can make recommendations as to various tracts.

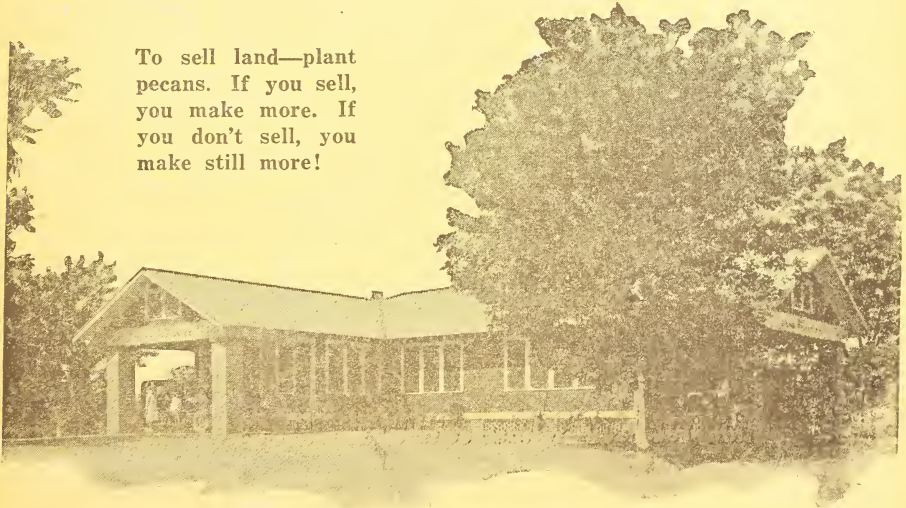
It will pay you to buy up some good land cheap and plant it in pecans—or to secure certain land already planted in them, but be sure that the trees are growing and healthy and the grove is in good condition. Get expert advice!

### : : Replacements : :

All trees don't grow (most do) just like all babies don't (most do). But we're willing to share the loss, should any of your pecan trees fail to grow. We'll replace, within one year, at half price, any pecan trees that die, where properly planted and cared for. (The average nursery doesn't replace any at all.) Last year we threw away 22% of our own trees that did not reach the high standard we set. We would not send them out.

So you see we take every care possible. See Bottom Page 13.

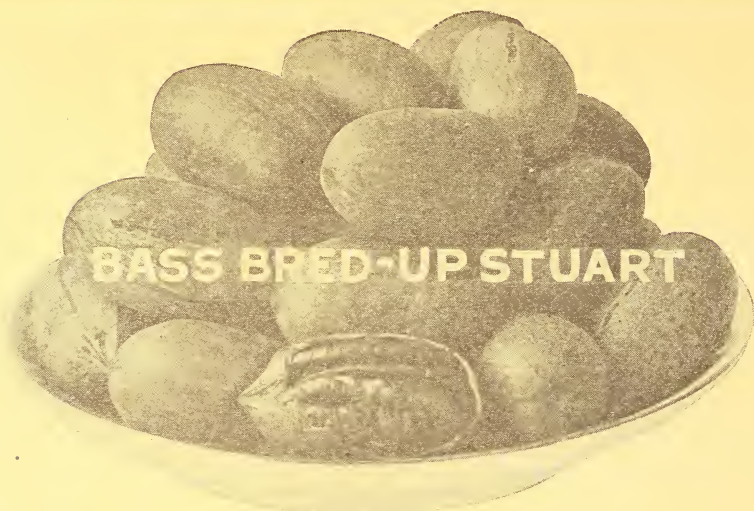
To sell land—plant  
pecans. If you sell,  
you make more. If  
you don't sell, you  
make still more!



*View of Office Building nestled among our Pecan Trees of our own Orchard.*

*"Trees are fine and true to variety." Courtland, Miss.*

## Bass Pecan Trees Are Heavy Bearers!



### Bass Bred-Up Stuarts Pay Dividends

In every crop there is usually one particular variety that is the most popular because it is the most profitable and the most satisfactory all the way around.

Though different varieties have their supporters, *Elberta* Peaches, *Tom Watson* Watermelons, *Wakefield* Cabbage, *Rocky Ford* Cantalopes are the criterions of their respective fruits and vegetables. In like manner does the *Stuart* pecan dominate the pecan varieties, and is the leader. This is the most popular variety and has been planted more extensively than any other. The tree is vigorous, resists scab, and bears regularly. An early and heavy bearer. The nuts are large and well filled, the kernel being plump with a meat content of 49%, and a good flavor. This nut is the easiest to grow, sells well on the market, and brings a high price.

The *Bass bred-up Stuarts* have proved successful, and we recommend this variety.

### Prices on Top Grade Trees--All Varieties

Size	Each	Six (Half Acre)	Twelve (Acre)	Sixty (5 Acres)	100	1000 Up Per 100
2-3 Feet.....	\$ .90	5.10	9.60	45.00	\$ 75.00	\$ 60.00
3-4 Feet.....	1.00	5.70	10.80	51.00	85.00	68.00
4-5 Feet.....	1.20	6.90	13.20	60.00	100.00	80.00
5-6 Feet.....	1.35	7.80	15.60	72.00	120.00	96.00
6-7 Feet.....	1.50	8.70	16.80	81.00	135.00	108.00
7 Ft. to Large.....	2.00	10.80	19.80	90.00	150.00	120.00
Large.....	2.50	14.40	27.00	120.00	200.00	160.00
Extra Large.....	3.50	20.40	36.00	165.00	275.00	220.00
Extra Special.....	4.00	22.80	42.00	195.00	325.00	260.00

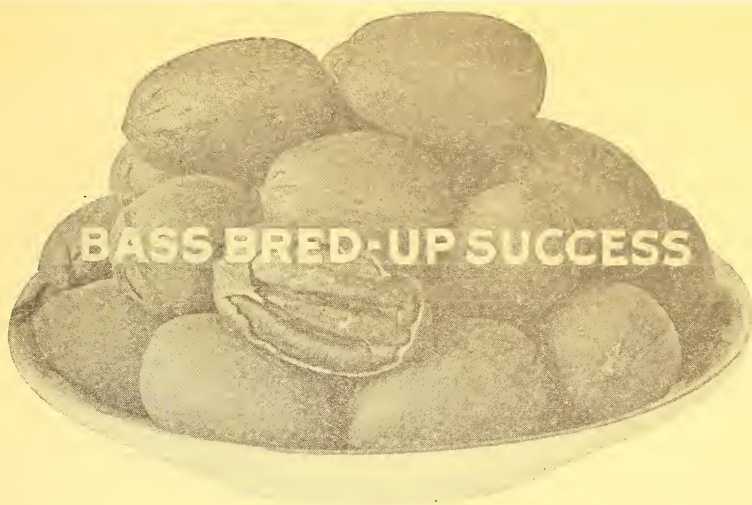
### Special Price on Large Orders

One to five trees take the each rate price.  
Six to eleven trees take the six rate price.  
Twelve to forty-nine take the twelve rate price.

Fifty and up take the one hundred rate price.  
500 and up take the 1000 rate price. Special prices cheerfully quoted on larger lots.

No Orders For Less Than \$5.00—Please

## Bass Pecan Trees Are Early Bearers!



### Bass Bred-Up Success---Are a Success

We also take off our hats to the *Success* pecan, which is running neck and neck with the *Stuart*, for it is also one of the leading varieties. The tree is an excellent grower and bears heavily in fertile soil. Early bearers too! The nuts are very large, though not the largest. However, the kernel has proved to be the heaviest in a test of 14 varieties made during recent years. It is plump and of excellent flavor. This nut is ovate in form, has a thin shell, and cracks easily. A most popular variety because it does so well in most all sections, and brings a high market price.

Because of its popularity we have grown an unusually large number of *Success* trees and they are in extra fine condition. This is one of our biggest sellers of our fine bred-up papershell pecan trees.

---

---

### For Sale---Our Culls and "Seconds"

No indeed, we do not sell all the trees that we grow—that is to our own customers. We either sell them to other nurseries or burn them. Last year we threw out 22% of our trees as being "seconds." When trees are not straight, when they are scarred, when the root systems are not so well developed, when the trees do not come up to our own high standard, we will not sell them as our top grade trees. These trees are good and MAY do as well as the others, but we play SAFE for our customers. We will, however, sell these trees at lower prices, but with the understanding that they are our culls, and without our usual guarantee. Write us for prices.

Bass Trees Bear by the Third Year—Sometimes Before.



## Bass Bred-Up Schley---Popular Nuts

On account of its thin shell, excellent cracking quality, unusual flavor and beautiful color, the *Schley* also brings a high market price. Since the *Schley* is one of the four varieties that we grow, that is indicative of our confidence and of our recommendation. This is also an early bearer, and the nuts are exceptionally full, having 61% meat, with a kernel that can be easily removed without breaking.

The tree itself is a slender grower, smaller than *Stuart* or *Success*, and not quite as hardy. We have a good stock of our own bred-up *Schley* for immediate delivery.

## Pecan Trees Withstood the Flood

Pecans withstood the recent floods of Mississippi River Valley better than any other tree or plant. We don't believe that any pecan trees will die, after set out 3 or 4 years and well established, if not overflowed for more than two or three weeks at a time.

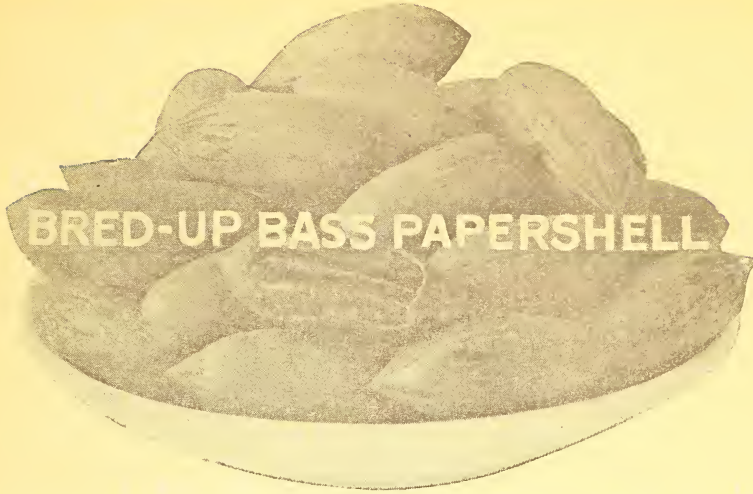
FOR PRICES SEE PAGE 12

	<p>Make your land do double duty. Plant fruit or berries in between your pecan trees, or plant pecan trees in your berry patches, cotton or corn fields. There is a chart for guidance as to how you may systematically plant and grow trees, fruits and berries on a tract of land.</p> <p>+ Pears, Peaches or Apples.          ○ Orange, Figs, Plums or Persimmons.   Pecans.</p>
--	---

No Orders For Less Than \$5.00—Please



Bass Trees Grow While You Sleep.



## Introducing The Bass Papershell Pecans

Though the Mississippi Department of Agriculture and Commerce have recognized the *Bass Papershell* variety, by listing in their pecan booklets, we have held it off the market until we could make sufficient tests, and in different sections, to prove its true value. This is, therefore, the introductory year of the *Bass Papershell* nuts, destined to be a most popular variety. The trees bear early, regularly and heavily with thin shelled nuts, large, long, of good color and shape, and filled with a good flavored kernel. Try a few of the *Bass Papershell* pecan trees—we believe you'll like this comparatively new variety

## Bass Trees Withstand Heavy Winds!

Some people fear that heavy winds will blow down Pecan trees. Have you ever seen or heard of a pecan tree being blown down? No, it's only rarely.

A young pecan tree withstood a cyclone on our place. A barn was totally wrecked but the tree beside it was unharmed and is now bearing nuts heavily.

At Purvis, Mississippi years ago practically every building and every tree but pecan trees were blown down. Pecan trees have that faculty of being deep rooted—they laugh at windstorms.

## How Many Trees to Plant Per Acre

Two usual questions asked us are how many trees to plant to the acre and what kind of soil in which to plant them?

On lands of only fair fertility, plant trees every 50 feet, but we generally recommend 60x60. If the ground is very rich, plant farther apart, such as 70x70, but for the average, figure on every 60 feet—12 trees to the acre. Please refer to page 18. You can get more trees to the acre by the triangle method of planting (14 as against 12).

As to soils—land that will grow hickory or oak trees will grow fine pecans. It has been well said that any land that will grow cotton will grow pecans. Well drained land is needed for best results. Practically any average land in the South will grow fine pecans.

No Orders For Less Than \$5.00—Please





The Tree—18 Years Ago

## Here's Another Instance of How Easy and How Profitable it is to Secure an Income from Pecans

Here is a picture of our regular \$1 trees. One of them produced that beautiful tree, shown on the next page, in only 18 years. But did the owner have to wait that long for his money back and a big income besides? Oh, No! It started bearing the third year and the one tree produced in its 18th year, 160 pounds of nuts worth \$80 or at the rare of \$960 per acre (12 trees to the acre) to say nothing of the value of the tree—growing all that time. That's not bad—more than four to one per year! Have your other investments produced more than 400% per year.

The tree is now producing over 240 pounds of nuts per year, and constantly increasing.

*It pays to deal with the largest nursery in the world!*

**\$1.00 Tree in it's 18th year—160 Pounds of Pecans—\$80 or \$960 per Acre**

## A Pecan Orchard on Your Land

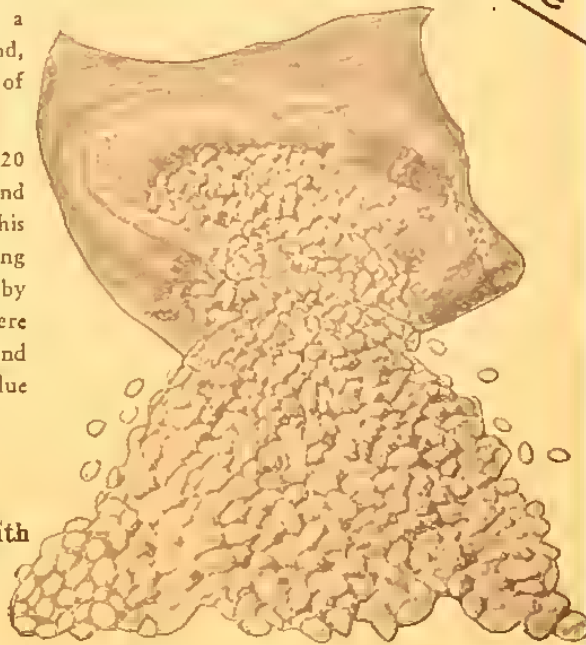
### May mean that You can Retire

Be you farmer, business man, professional man, or woman— if you want to retire in a few years with a substantial steady income, plant pecans on your land, or buy land for that purpose. Here's an instance of what one person did:

Twenty years ago he bought 5 acres of land at \$20 per acre. A few years later he had planted the land in Bass trees; he was offered \$1000 per acre for it. This price was refused. The owner realized that by planting pecan trees he had increased the value of his land by \$950 per acre for he couldn't have got but \$50 per acre for the land as he bought it. Thus his land, taxes and trees were quickly paid for in the actual increased value plus a big difference besides.

Plant pecans on either used or unused land.

**Pecan Trees will not greatly interfere with Growing Crops.  
Plant them between the Rows!**



The Nuts—160 lbs.—\$80.

## How to Plant Pecan T

The sooner the trees are set after the leaves shed (about November 1st) and the trees become dormant, will be your prospects for them living, and the more they grow off and naturally the earlier they will come in. Don't wait to set your pecan and fruit trees but set them soon as you can, in November, December, January or February. Pecan trees live and do well, set in all these months, but the best time is when you are ready and can give the trees the attention in setting them out. If you cannot set your trees at once, at least book your order at once so you can have some of the trees reserved for you.

In planting orchards it is best to plant the pecan trees 40 feet apart on average land, which gives you twelve trees to the acre. If the land is exceptionally fertile plant the trees 30 feet apart, which will give nine trees to the acre. If trees are planted about the home for shade purposes they may be placed 40 feet apart with good results.

Pecan trees can be planted in an orchard and then if one desires to use—place the small fruits fifteen, twenty or thirty feet from the planter.

*This tree now producing steadily increased*

Plant Fruits  
between the Rows  
of Trees.  
See Pages 20, 21,  
22, 23 and 24.

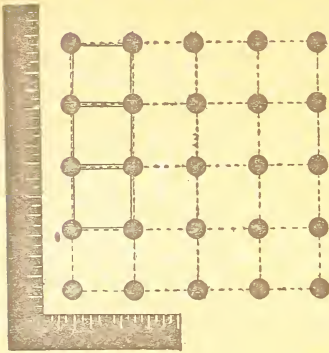
Plant Pecan Trees  
For:  
Shade,  
Beauty,  
Memorials,  
Profit.



"Every tree we bought from you are true to variety and all sure bearers." Bolinger, Ala.

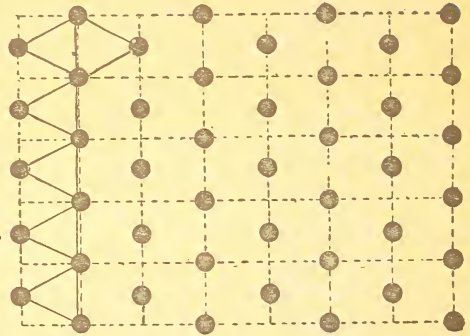
"Trees are bearing heavily, some bore the s

## How to Plant Pecan Trees



### The Square Method

To plant the square method, take an ordinary L-Square and place on ground in order to get your lines true. Sight and place a stake sixty (preferably) feet away on each line until you reach the ends of the field. Then stake off on parallel lines at every sixty feet and plant trees at each stake. Planting sixty feet apart, you have 12 trees to the acre.



### The Triangle Method

By planting the triangle method you get 15% more trees to the acre and besides all trees are exactly sixty feet apart in ALL directions and cultivation is permitted in three directions. To get a true equilateral triangle easily, drive a stake in the corner of the field. Then with aid of an L-Square find stakes along the outside lines. In order to get proper and exact distance inward toward the field, get a wire sixty feet long. Attach to stake. Get another wire of same length and attach to next stake. Let one man make an arc with his wire and another man, an arc with his. Where the two wires meet, properly taunt, drive stake for tree. Work from that stake and so on until field is covered.

## Rules for Setting Pecan and Fruit Trees Right

1. Never allow the roots of the trees to become dry or exposed to the atmosphere for any length of time from the time they reach you until they are set in the ground.

2. Wet the bundle just as soon as you can and if not ready to set out at once dig a hole and put roots in and cover up well. Place in a shady place if possible.

3. Set your trees at once upon arrival or heel-in promptly as above.

4. Have a large hole for your tree. Three feet wide and three feet deep will not be too large for pecans. Holes about 12 inches wide and one to two feet deep will do for fruit trees.

5. Set the tree about the same depth it stood in the nursery.

6. Fill in the hole with the best top soil, packing the dirt well around the roots, especially the tap root. Keep the roots of the trees out straight in their natural position and do not bend them down by the tree.

7. Mix thoroughly with the soil to be used to fill in the hole a peck or half bushel of well rotted manure or compost or some good guano, being very careful not to allow it to come into

contact with the roots in ANY QUANTITY, for if it does it will scald them and do more harm than good.

8. If the soil is dry when the trees are set, it is a good idea to pour a bucketful of water to each tree when the hole is nearly filled and then fill the hole completely up.

9. Pour one bucketful of water to each tree once a week during very dry spells in Summer. Make a basin-like hole at the base of the tree. Pour water and as soon as it is soaked in good fill completely up with dry dirt. This holds in the moisture and also keeps the ground from baking. If you cannot pull soil back, covering the wet earth well, DO NOT water at all. Water poured on top of the ground and left this way does more harm than good, as it causes the earth about to bake and the tree to scald.

10. Cultivate for four to six feet around each tree thoroughly all during the Summer. Never let grass or weeds grow up around your trees. Keep the ground dug up and soft at all times.

Our bred-up trees set as per above instructions seldom ever die and frequently bear the second and third year set. But give them a good chance.

"I would not take \$100 a piece for the trees for the nice shade and nuts they produce." West Helens, Ark.

Plant Bass Pecans to Leave Your Family an Estate.

## Bass Trees are Properly Pruned And Come All Ready to Plant

We endeavor to send out properly pruned trees, just as if we were going to plant them ourselves, leaving the planter nothing to do but to set them out. The taller grades of trees should be top-trimmed, as it balances the top against unavoidable loss of some roots when the tree is transplanted. Proper pruning insures the tree living and a good growth. Where trees are properly pruned, handled and planted, there is no reason why any of them should die. Our prices are made on the height of the trees when dug. *When properly top-trimmed, the height is often materially reduced. Therefore, if the height of a trimmed tree, when received, is less than the catalog height, this is the explanation.* We measure our trees from the ground up and not from the tip of the root as many nurserymen do. Our 3 to 4 feet trees are often as large as their 5 to 6 feet trees—we don't charge for the roots. You pay us for a smaller size tree.

### Care of the Young Pecan

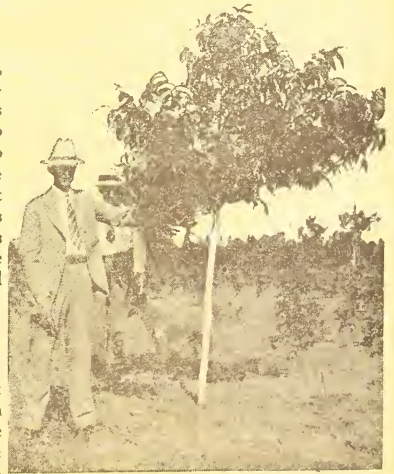
Pecan trees do best where the land is cultivated well. Our own experience has taught us that no tree responds to care and cultivation better than the papershall pecan. Frequent shallow cultivation is best. Keep weeds and grass down for they take the moisture and nourishment needed badly by the young growing pecan trees. No pruning is necessary after you once get the trees branching high enough. The larger trees we sell will branch high enough anyway, but the smaller trees have to have sprouts cut off occasionally that come out on the body of the tree until the branches get high enough. This may be done at any time required, either summer or winter. We do not let our pecan trees start branching lower than shoulder high. They look better and you can work around them better where they are not allowed to head too low.

### How to Fertilize Pecan Trees

If you desire to plant on land rather poor in fertility, thoroughly mix with the soil two or three shovelful of well-rotted compost when you plant the tree, or one or two pounds of bone meal. The best fertilizer after the tree is planted is to scatter manure around the tree. The more the better—one-half to one bushel to the tree, if possible. Do not bank it up around the tree, but scatter it around it for two or three feet. When it rains the substance will be taken down to the roots. Put this around your trees in the late winter if possible, so that the trees will be able to get a fine growth in the spring. When the trees are old enough to bear, use potash in some form—wood ashes will do.

### Special Notice!

Recent experiments in our own orchards have shown us that one pound of nitrate of soda or sulphate of ammonia for each year the tree has been planted will be of great benefit and cause the trees to grow very fast. Merely spread it around the trees for two or three feet and hoe or dig in well. This can be done at any time from April 1st to last of June, usually the earlier the better.



214 pecans from this tree the third year set out. An example of what our early bearing varieties will do for you.

*"Last year I got one hundred and eighteen pounds of pecans off the tree." Curve, Tenn.*

## Bass Sells Fruit Trees, Too! For Your Convenience!

Because we advocate planting fruits, berries, etc., between the rows of pecans, so many customers ask our recommendations as to the finest varieties, etc., and many want us to buy their fruits and berries for them, leaving the selection to our judgment. So for the accommodation and convenience of our customers, we are handling a few fruits ourselves. Thus if you want to order fruit trees along with pecans, we can serve you and relieve you of much trouble and extra expense. If your order calls for a variety which we do not have on hand, we shall—unless advised to the contrary—substitute another which we feel should prove quite as satisfactory. By doing this we save you disappointment and loss of time in getting your small fruit trees under way. *Ask for our special prices on large orders.*

### Guarantee

Our fruit trees and berry plants are supplied by reputable nurseries. We guarantee them to be true to name, high in quality, good healthy stock, free from disease. Stock damaged in transit, if notified immediately, will be replaced if express or freight receipt indicates damage. Should any stock prove not true to name we will return money or replace it with other stock, but are not liable for any damages beyond this.

## ∴ ∴ Peaches ∴ ∴

This popular and profitable fruit is grown in numerous varieties—the most popular and practical kinds to plant are those mentioned below. Plant between the rows of your pecan orchard. All good strong and hardy stock, with well developed root systems.

### Mayflower

Bright red cheeked. Carries to market in fine shape and sells well, as it is the only early peach that is well colored. Inclined to overbear, it should always be thinned. A good substantial variety to plant. Cling.

### J. H. Hale

Known as "The Million Dollar Peach." No better peach has ever been introduced. It is larger than the Elberta, and ripens about a week earlier. Flesh is golden yellow with deep scarlet blush. Semi-Cling.

### Elberta

Leads all peaches in quantities planted. It is grown with profit in every peach growing state. Hardy in budding, a consistent yielder of good crops, adaptable to almost any soil and climate. Fruit, large, golden-yellow with bright red cheek, firm, well flavored and juicy. Highly prized for dessert, canning and cooking. An early bearer. Freestone.

Plant Pecans  
on that  
same land  
at the  
same time.



#### PRICES—ALL VARIETIES

	Each	10
3 to 4 ft. _____	\$ .30	\$2.50
4 to 5 ft. _____	.60	5.00

"Your trees began bearing in three years. The best investment I ever made." Burgaw, N. C.

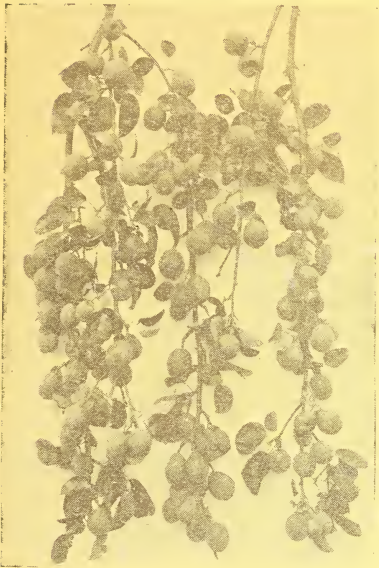


Photo of a few limbs of a blight-proof pear tree right back of our office, amid our pecan groves.

## Blight-Proof Pineapple Sand Pears

Now you may have pears that are positively blight-proof. In fact our Pineapple Sand Pears *are guaranteed not to blight in any section*—or your money back.

For an enormous yield, for quality and flavor as well as quantity, plant these pear trees. Very rapid growth, extremely hardy, take up but little room and require no cultivation. Plant these trees along the roadside, in the yard and have an orchard of them, too—they're easy and profitable to sell.

40 to 75 bushels each year from many of the older trees in this section is nothing unusual. Our Extra Special size is beautifully headed and destined to produce as well, in fact better since the young trees have had more and better parentage.

### PRICES ON PEARS

Size	Each	Ten	100
3 to 4 Feet.....	\$.45	\$.40	\$.30
4 to 5 Feet.....	.55	.50	.40
5 to 6 Feet.....	.70	.60	.50
6 to 7 Feet.....	.90	.70	.60
Large Size.....	1.15	1.00	.75
Extra Special Size.....	1.50	1.25	1.00

## :: Apples ::

### Red June

A well known variety—Medium conical; deep red; Juicy. Very productive. A choice fruit.

### Delicious

No new variety has ever so quickly gained popularity in so many different sections. Fruit large, nearly covered with brilliant dark red; flesh fine grained; crisp and melting, juicy, with a delightful aroma; of very highest quality. A splendid keeper and shipper. Tree one of the hardiest, a vigorous grower, with good foliage. A regular annual bearer.

#### PRICES

	Each	10
3 to 4 ft.....	\$.30	\$2.50
4 to 5 ft.....	.60	5.00

## :: Plums ::

### Burbank

Large and beautiful plum of Japanese type. Clear cherry red, with a thin lilac bloom; flesh a deep yellow, very sweet, with a peculiar and very agreeable flavor. The tree is a vigorous grower, with large broad leaves; usually begins to bear the second year after transplanting.

### Red June

An early market plum of large size, with deep vermilion red color. Light lemon yellow flesh. Very firm, slightly sub-acid. Free from rot. A good variety.

#### PRICES

	Each	10
3 to 4 ft.....	\$.50	\$4.50
4 to 5 ft.....	.65	6.00

No Orders For Less Than \$5.00—Please

Plant Pecan Trees to sell your land! If you sell, you profit.  
If you don't sell, you profit more!



## BASS Satsuma Oranges

Those "Kid Glove" Oranges  
Such Wonderful Eating!

Every year these oranges are becoming more and more popular. For in the first place, there's the flavor that has won its favor. Then they are easy to peel—without getting the juice all over you. Plump, golden, juicy fruit distinctively and deliciously different from any other orange.

From the growers' standpoint, the Satsuma withstands lots of cold, and bears, very heavily, in fact three year old trees often bear as high as 750 oranges. One of our own trees has this annual record. Do not plant these oranges where the temperature goes below 12° above zero.

We grow our own Satsuma trees—all are carefully selected and regularly inspected. Plant Satsumas!

### PRICES

Size	Each	10	100	1000
6 to 12 In.....	\$ .40	\$ .30	\$ .20	\$ .15
12 to 24 In.....	.50	.40	.30	.22 1/2
24 to 36 In.....	.75	.60	.50	.37 1/2

Plant Pecans on the Same Land at the Same Time



Mother Bass, 72 years old, enjoying our Satsuma Oranges. Over 750 on this young tree.

No Orders For Less Than \$5.00—Please



## Grow Your Own Strawberries



## Strawberries are Profit Producers, Too!

Besides the joy of picking your own strawberries, out in your field or garden and eating them fresh, getting their true flavor, there are splendid profits in growing them for market. Some farmers raise nothing else. You can have a field of strawberries amidst your newly planted, or even matured pecan orchard, and let that land be performing double duty.

Profits in berries vary from \$125 to \$1500 per acre and even upwards to almost unbelievable sums. We purchase the choicest plants from a strawberry plant specialist. These healthy berry plants are grown in Arkansas, whose berries have a nationwide reputation. Plants will be shipped direct from the center of the Arkansas berry fields, from October 15th to April 1st. Set out your plants 16 to 18 inches apart in 3½ ft. rows—it will pay you to do so. This will require about 7500 plants per acre.

Order any varieties mentioned below or leave judgment up to us, for all varieties will not be suitable for every section and climate. *Note that some of the plants are sent postpaid and others will be sent by express collect, so be sure to understand this fact in ordering.*

### PRICE LIST OF STRAWBERRY PLANTS

	Post Paid			Express Collect				
	25	50	100	250	500	1,000	5,000	10,000
Excelsior .....	\$.75	\$1.00	\$1.50	\$1.75	\$2.50	\$ 4.50	\$18.50	\$ 35.00
Imp. Klondike .....	.75	1.00	1.50	1.75	2.50	4.50	18.50	35.00
Michel .....	.75	1.00	1.50	1.75	2.50	4.50	18.50	35.00
Thompson .....	.75	1.00	1.50	1.75	2.50	4.50	18.50	35.00
Missionary .....	.75	1.00	1.50	1.75	2.50	4.50	18.50	35.00
Dunlap .....	.75	1.00	1.50	1.75	2.50	4.50	18.50	35.00
Aroma .....	.75	1.00	1.50	1.75	2.50	4.50	18.50	35.00
Gandy .....	.75	1.00	1.50	1.75	2.50	4.50	18.50	35.00
Champion K .....	.75	1.00	1.50	1.75	2.50	4.50	18.50	35.00
St. Louis .....	.75	1.00	1.50	1.75	2.50	4.50	18.50	35.00
Evening Star .....	.75	1.00	1.50	1.75	2.50	4.50	18.50	35.00
Lady Cornellie .....	.75	1.00	1.50	1.75	2.50	4.50	18.50	35.00
Premier .....	.75	1.00	1.50	1.75	2.50	4.50	18.50	35.00
Progressive .....	1.00	1.50	2.50	3.00	4.50	7.50	32.50	60.00
Champion .....	1.00	1.50	2.50	3.00	4.50	7.50	32.50	60.00
Mastodon .....	1.25	2.00	3.00	3.50	7.00	13.50	57.50	110.00

*Plant Pecans on the Same Land at the Same Time! Let Your Land do Double Duty!*

*"The trees are doing fine and are full of nuts." Hickox, Ga.*

If They're Bass Trees—They'll Produce.

## And Don't Overlook These Fruits



A typically southern home ordinarily has grapes, figs, or persimmons. Grow these fruits for the table, jellies and preserves. They are so easy to raise and occupy but a little space. All vines and trees selected by us carefully for early bearing, healthy growth and big yields.

### Japanese Persimmons

The Japan Persimmon has been slowly but steadily gaining in favor. They can be grown on as wide a range of soil as the native Persimmon, and will succeed with the minimum of care and attention. The trees are vigorous, prolific and have few enemies. The region in which the Japan Persimmon may be grown covers the cotton-growing belt. As the fruit keeps and ships well, it can be placed on the market in good condition. It meets with ready sale.

We recommend the TANE-NASHI variety. In high favor. Large fruit; flesh yellow and seedless. Vigorous; prolific; uniform size—most desirable to market.

#### PRICES

	Each	10
3 to 4 ft. ....	\$ .50	\$4.50
4 to 5 ft. ....	.60	5.00

### Bass Figs

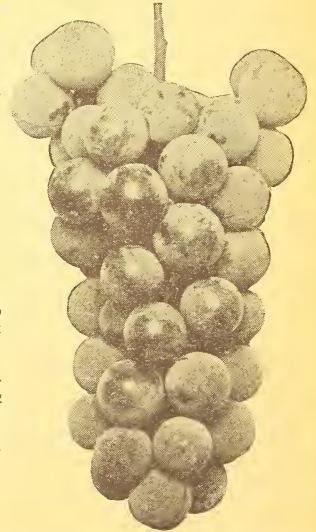
The Fig-canning industry is gradually extending throughout the South, and since several tons of fruit can be produced on an acre of ground, it is well adapted to intensive culture. The fresh Fig is also finding its way into the markets, and meeting with a ready sale.

Figs require little or no cultivation. Our favorite is the CELESTE one of the hardiest varieties of Figs, very desirable for canning and preserving. Small to medium, pear-shaped, ribbed. Flesh firm, juicy, sweet, excellent quality.

#### PRICES

	Each	10
3 to 4 ft. ....	\$ .35	\$3.00
4 to 5 ft. ....	.50	4.50

Plant Pecans  
on the Same Land  
At the Same Time



### Bass Grapes

Grow your own Grapes, for the table or your own grape jelly, etc. The grape is the most beautiful of all fruits and about the most popular.

CONCORD—The most widely grown most popular of all grapes for vineyards. Black, Healthy, hardy, vigorous vine, large bunch and berry and a good yielder. Grows quickly.

NIAGARA—Leading white grape. Widely planted. Bunch large; handsome juicy and fine flavor.

#### PRICES

	Each	10	100
2 Year No. 1 .....	\$ .25	\$2.00	\$15.00

No Orders For Less Than \$5.00—Please

## What we ask of You--- And what you may Expect from Us:

You may always expect of us the finest trees and plants. We absolutely guarantee trees to reach you in fine condition, if taken out immediately upon arrival—or new trees will be sent provided complaint is made with railroad agent. Also read on Page 27 our rigid guarantee that NO OTHER nurseryman will make. You may expect fair play in every way. Now please read and heed our:

### TERMS AND CONDITION OF SALE

*Terms are Cash with Order.* We pay spot cash for everything and sell the same way. It saves us a lot of bookkeeping and annoyance and enables us to sell our high-grade bred-up trees cheaper. Some prefer to have goods sent C. O. D. but why pay that extra fee for collection? Why not send money with order?

*How to Send Money*—Send money any way that is most convenient to you. Why not send the money and save the C. O. D. fee? We do not have to pay exchange on checks.

*We Cannot Ship Trees By Mail*—Except Smallest Pecans and Small Fruits

*Our Shipping Facilities* are exceptionally good. We are near the depots of two railroads and have open stations both day and night. Also have long distance telephone and telegraph service. You can get us over the telephone any time. Examine trees at railroad station. If damaged in shipment notify railroad agent and us.

*Our Trees Always Freshly Dug*—We can dig and ship your trees any day.

*Order Early*—The demand for our high-grade bred-up trees far exceeds the supply, and it is very imperative that you send in your order early. Those who order early naturally receive the choicest stock.

*Mistakes*—We take great interest in our work, and probably make as few mistakes as any one, yet we are not infallible, therefore stand ready to make good any mistakes that may occur as far as possible, or if any varieties ordered should accidentally not prove true to label, we will either replace the same free of charge or refund the purchase price, but are not liable for further damages.

*Time of Shipment*—Unless otherwise instructed, orders received during the shipping season will be forwarded as soon as possible after receipt of the order.

*Substitution*—If out of the varieties ordered we will send the ones we think to be the equal or superior unless instructed not to substitute.

*No Charge for Packing*—We carefully pack and tag all trees free of charge.

*Our Trees Free of Disease*—A certificate of inspection of the Mississippi State Entomologist guaranteeing our trees to be free of disease accompanies each bundle of trees. All inspection laws of other states are complied with.

(See Page 27 for Guarantee)

### The Result of Buying So Called “Cheap Trees”

*Poor trees are cheap at any price. Many have bought trees that won't bear a nut, and we've had to come in to save the wreck by tree-topping and budding with our bred-up stock.*



*Tree-topping and budding is a special craft and we are prepared to perform this service, going anywhere to rejuvenate non-bearing orchards, provided there is a large number of trees to topwork.*

**Please!** Because of our care in inspecting, packing and shipping, and the huge expense to which we are put, we cannot afford to fill orders that amount to less than \$5.00. So please order enough, even for friends, to make at least that much of an order.

*“My neighbors laughed at me, but now they are getting the pecan fever.” Louisville, Ky.*

If You Have Any Pecan Problems, Write Bass.

## In Buying from Bass--- You are Dealing with an Institution

Remember this—Bass is an established nursery, twenty years old. It is the largest pecan nursery in the world and the highest rated pecan nursery.

You are therefore not dealing with a backlot nurseryman nor a fly-by-night nursery nor a one-man one-truck outfit that makes many claims and promises, and tells how much "better" his trees are than ours and makes guarantees that cannot be backed up financially or otherwise.

This nursery has 600 acres in orchards and nurseries. In all it has 6,000 acres, which contains land being held for continued development and enlargement. There are over 2,000,000 trees growing in our nursery.

At all times there are employed from 100 to 150 men, with an average payroll (last year) of \$1500 *per week*—which is no mean sum. Many of the men live in homes, furnished by us. These homes have Bass fruit and nut trees growing around them, from which they get an abundance of fruit. They also have fine gardens, and good pastures, to enable them to live at home. There are now thirty such tenant houses. Thus no labor trouble—Contented labor that is faithful and loyal and who keep their jobs. In fact we still have working for us the first white man and the first negro that were employed when our nursery was started, twenty years ago. There are thirty mule teams on the place, and all kinds of power and farm machinery.

The entire nursery is inspected every week. The inspection is daily but it requires a week to walk through all the rows of all the fields. Trees are carefully watched to keep free of any pests and diseases, and to see that trees are in a fine growing condition.

Last year we mailed 1,500,000 catalogs at a postage cost alone of \$15,000, plus \$5,000 additional postage for acknowledgements of orders, etc. (This is more catalogs than sent by any other firm in Mississippi). So you see there are thousands and thousands of satisfied customers, many of whom order every year.

But though a large institution, we have grown on the satisfaction of each customer. So your order—regardless of size will be handled quickly, carefully and properly. We want YOUR business.



### Read about our Thanksgiving Feast

We treat our workmen fair and get conscientious work from them. Last Thanksgiving we gave them all a huge dinner. Here is what it required: 3,000 oysters, 22 'possums, 2 hogs, 100 loaves of bread, 10 gallons of coffee, 100 pies, 500 baked sweet potatoes, baked in 'Possum gravy—um, ever eaten any that way?



Truck load of part of 1,500,000  
catalogs mailed.



Modern machinery plus 30 mule teams plus 150 men required to keep up our nursery.

"Four trees bought seven years ago have been bearing for four years and are loaded with nuts." Rockingham, N. C.

There's An Increasing Market for Pecans.

## Proving our own Confidence---

Showing our faith in our trees, we'll pay your expenses and a liberal amount extra for your time, to visit our nursery, if you do not find us to have **MORE and FINER** Pecan trees than any nursery anywhere.



**GUARANTEE**  
All our BRED-UP Pecan Trees are absolutely guaranteed to be true to variety, strong, thrifty, vigorous, well dug, well packed and to reach you in excellent condition, if taken out immediately upon arrival, or we'll replace the trees, provided complaint is made with railroad agent. We further guarantee upon satisfactory proof that if any pecan tree we sell you does not prove true to variety, to refund promptly in Cash FIVE TIMES the amount you pay for it. Should any of our pecan trees die within one year—if properly cared for—we'll share the loss with you and replace the trees for one-half the regular price.  
**BASS PECAN COMPANY, LUMBERTON, MISSISSIPPI.**

## A Guarantee is Good, Only as are the Men behind it!

No other nursery has dared to duplicate it. Before buying from others ask them to duplicate this guarantee in writing.

Some folks will guarantee anything but will they make such a guarantee as this? And what assurance have you that ANY guarantee they make, will be carried out? Will they be in business when you learn the difference in the quality, etc.?

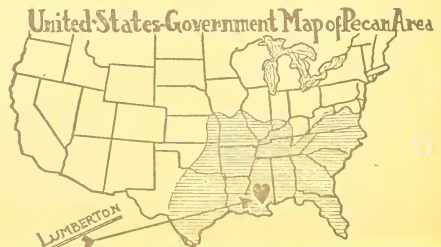
Our guarantee is backed by a good name and reputation, by an established nursery of 20 years and by a financial rating that can't be beat by any pecan nursery anywhere. You can believe us!

## GUARANTEE ON FRUIT TREES

Our fruit trees and berry plants are supplied by reputable nurseries. We guarantee them to be true to name, high in quality, good healthy stock, free from disease. Stock damaged in transit, if notified immediately, will be replaced, if express or freight receipt indicates damage. Should any stock prove not true to name, we will return money or replace it with other stock, but are not liable for any damage beyond this.

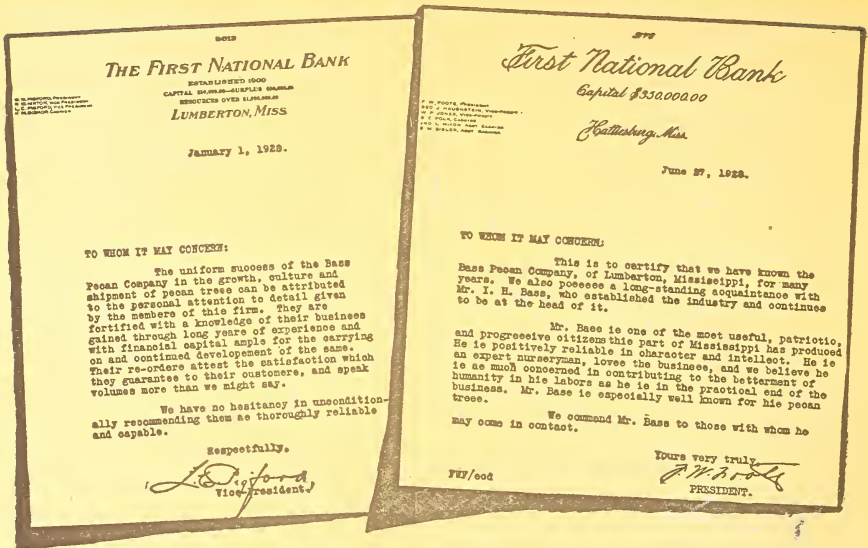
## Bass Pecan Company Ideally Located

South Mississippi is the mother section of the finest varieties of pecans. More fine varieties of pecans, now being planted, originated within 150 miles of Lumberton, than all the world put together. Lumberton, therefore, is in the **HEART** of this district, and virtually the heart of the entire Pecan area.



*"The trees are fruited so heavily, the limbs are bending over."* Woodruff, S. C.

You Can Believe Every Word in This Catalog! We Have Been in Business for 20 Years, and Have Built a Reputation.



## Ask Your Banker About Us--- or Read these Letters

Any bank has the facilities for investigating a firm. If in doubt about our ability to carry out what we promise, or our reputation for fair and square dealings, ask your banker to investigate us. (Ours is the highest rated pecan nursery in the world.) Notice the letters above, from two strong banks, that at Hattiesburg being the oldest in the area and having resources of more than \$6,000,000, and the Lumberton bank, with resources of over \$1,000,000.

## And Thousands of Customers Recommend Us!

### A WARNING!!

For your sake, beware of the nurseryman who calls at your door with a truckload of pecan trees for sale and offers to plant them for you. Sun and wind quickly dries out roots, and trees in trucks, unprotected, also previously half dug and poorly packed, are often dead before they are set in the ground. Don't lose that money and the time in waiting for them to grow. Use your own judgment about this. Promises, claims, and "guarantees" by utter strangers are easily made—be sure the maker has the means and money to carry them out, if need be.

### We'll Do This

If you're in doubt, we'll ship trees in competition with *any others* and allow you to select the trees with the finest developed root systems. Does anybody else have such confidence in their trees? **WE KNOW OUR TREES AND THOSE OF OTHERS!**

## Advice on Pecan Culture

Ask us all the questions you wish to in regard to pecan growing. We will gladly give you an expert's opinion. And as experts, let us advise you not to put off setting out your pecans. Remember the loss of a year's time in getting started means the loss of a year's splendid income later on, at a time when you will appreciate it most. Let Bass solve your pecan problems.

"One hundred pounds of pecans from two trees netted me \$50.00 last year. Trees are loaded this year." Arkadelphia, Ark.

# Plant Bass Pecan Trees—Once For Always

NO ORDERS FOR LESS THAN \$5.00, PLEASE.

## ORDER BLANK

TO

### BASS PECAN COMPANY

Largest Growers of Pecan Trees in the World  
LUMBERTON, MISSISSIPPI

For prices and complete descriptions, please refer to the following pages:

Pecans .....	Page 12	Japanese Persimmons .....	Page 24
Pears .....	Page 21	Grapes .....	Page 24
Plums .....	Page 21	Figs .....	Page 24
Peaches .....	Page 20	Satsuma Oranges .....	Page 22
Apples .....	Page 21	Strawberries .....	Page 23

Kind	Number	Size	Price
<b>PECANS</b>			
Stuart .....			
Success .....			
Schley .....			
Bass Papershell.....			
<b>PEARS</b>			
Pineapple Sand Pear.....			
<b>PLUMS</b>			
Burbank .....			
Red June.....			
<b>PEACHES</b>			
Mayflower .....			
Hale.....			
Elberta.....			
<b>APPLES</b>			
Red June.....			
Delicious .....			
<b>JAPANESE PERSIMMONS</b>			
Tane-Nashi .....			
<b>GRAPES</b>			
Concord .....			
Niagara .....			
<b>FIGS</b>			
Celeste .....			
<b>ORANGES</b>			
Satsuma .....			
<b>STRAWBERRIES</b>			
Total Amount of Bill.....			

I Guarantee to Take This Order and Pay For It.

Signed.....

Post Office.....

Express Office.....

Date to Ship.....

"Five of the first Stuart trees have nuts on them already." Paces, Va.

BASS  
PECAN CO.  
Lumberton, Miss.

The Largest  
Pecan Nursery  
in the World

Send the Money and Save the C.O.D. Fee!

All prices strictly for cash. No credit accounts to anyone. Please send cash with order and you'll save the C. O. D. charge. Your check will do —no exchange charged.

Satisfaction  
Guaranteed

See Page 27

## Visitors Always Welcome

IF you are touring or just passing through—or if you are somewhere near, come stop by and visit our pecan nursery—the world's largest! It would even interest you to make a special trip to Lumberton to see it. Read Page 26 for various details as to size, etc.

We like to have visitors and gladly take them over our place, show every operation and the many details of precaution, etc., we take in growing, grafting, budding, caring, packing, shipping our trees. You will then learn more about pecans and we'll gladly discuss in detail planting on any of your land. **BUT YOU WON'T BE OBLIGATED TO BUY.** Just visit us.

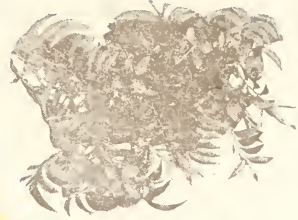
## Your Expenses Paid—If—

If you will visit us, especially in order to be sure about the trees you buy, we shall pay all expenses and pay you liberally for your time, *if you do not find our nursery to have more and better pecan trees.* You might care to visit around to make comparisons.

If we were not positive about our own trees, would we dare make such an offer?



Make Pecans Your Hobby



Here's a business in Lumberton that makes a specialty of buying and selling pecans.

## Is There a Market? Yes!!

There is always a ready market for pecans. People are eating them more and more and especially since Doctors and food specialists are reporting their wonderful nutrition. The demand therefore is growing, to say nothing of the increased use of pecans in confections of all kinds. There is a market always—yes.

Even the United States Government advocates nut culture. From Vol. 54, No. 27, of the Congressional Record, there appeared the following: "We are annually importing from 60,000,000 to 70,000,000 pounds of nuts at a cost of between \$12,000,000 and \$13,000,000. Why should we spend millions of dollars each year in buying nuts from foreign countries when we can grow at home the PECAN—the equal of any other nut, either native or foreign?"

## This Firm will Buy your Output!

If you want to be assured of a positive, quick available market, write this firm—the W. & H. Greer Co., Lumberton, Mississippi. Ask for current prices and full details.

## Fine Paper Shell Pecans for Sale

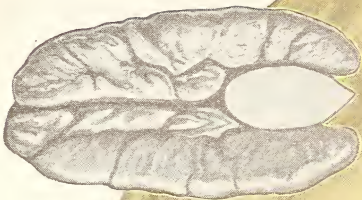
Our own pecan groves produce thousands of pounds of choice papershell pecans each season. All our pecans are now sold through the W. & H. Greer Co., which firm takes our output. Prices range from 35 cents to \$1.00 per pound, depending on quality, quantity, etc. Write them your needs and secure their prices—also ask about their Christmas packages.

**Bass Pecan Co.,  
Lumberton, Miss.**

**Largest  
Pecan Nursery  
in the World!**

This Book Is A Valuable Planting Guide---Please Don't Throw It Away

His Majesty  
The King  
Stuart



Actual  
size of  
nut meat

Plant Pecans  
for Profit

DESIGNED AND PREPARED BY BOTT ADVERTISING AGENCY, LITTLE ROCK, ARK.  
PRINTED IN U. S. A BY DITTLER BROS., ATLANTA, GA.