

Historic, Archive Document

Do not assume content reflects current scientific knowledge, policies, or practices.

72.27

LIBRARY
RECEIVED
★ MAR 23 1928 ★
U. S. Department of Agriculture

1928

Bancroft's Beautiful Flowers



JOSEPH BANCROFT & SON

Lock Box 35. Telephone 44

CEDAR FALLS, IOWA

TO OUR CUSTOMERS

THIS IS A CATALOG OF DEPENDABLE THINGS

We do not sacrifice quality for price. You cannot get something for nothing. Our rapidly growing trade is with the class of people who are willing to pay a reasonable price for merchandise of quality. We do business on this principle—one good plant that grows and blooms is worth a half a dozen that are grown so crowded and weak that they never make a good plant, no matter how you pet and fuss with them.

Our list is not as large as some but you will find that we have discarded the varieties that are not suitable here and list only those we know will prove satisfactory to you. Owing to large increase in our cut flower business we have been compelled to reduce our list of hardy plants and shrubs retaining only the most popular varieties.

SERVICE

Service means quality of goods plus the ability to care for your orders in such a manner that you will come again—Our ever-increasing trade shows that we have both and we are giving them to our customers.

Any order that does not prove satisfactory in every way we are ready and glad to make right—if proper claim is made within a reasonable time after time of shipment.

Errors. If goods received are not as expected compare with order, read Catalog carefully, and if we are in the wrong, write us at once. Every just complaint will have immediate attention.

Remit by bank draft, express order, post-office order or registered letter. **If personal checks are sent add 5 cents for exchange.**

To Responsible Parties goods will be sent on approval.

Plants by Express. Have your plants, shrubs, etc., sent by express when you can possibly do so. We guarantee safe arrival of all goods by express.

NOTICE. Plants by Mail. Add 10c per dollar on all orders for plants to go by mail. Prices given in this catalog are not prepaid. Postage or express is to be paid by purchaser. All large plants must be sent by express.

POINTS IN THE CULTURE OF FLOWERS

Treatment of Plants Received by Mail. If plants are wilted immerse them in water, without removing the packing material and allow them to remain for half an hour. Then unpack and set in small pots in rich fibrous loam, shade from the sun and sprinkle foliage every day being careful not to overwater the roots until the plants begin to grow, after which they may be shifted to larger pots if necessary.

Soil in Which to Pot Plants. The best soil for most plants is composed of two-thirds good garden soil, and one-third well-rooted manure, well mixed together. If not naturally sandy it is well to add some sharp sand.

Watering. Whenever the plants are dry water so that the earth will be saturated, and no more. No water should be allowed to remain in the saucers under the pots except in case of aquatic plants. Soft-wooded plants require much more water than hard-wooded ones.

Drainage is of the utmost importance. Every large pot should have at least an inch of broken pot, shredded moss or charcoal in the bottom.

Syringing. All plants are benefitted by liberal spraying two or three times a week on the under side of the leaf.

Air. Ventilate well every day when air above freezing point can be admitted. Do not allow cold air to blow directly against plants.

Insects. One of the most disgusting of these is the Scale which attacks the Ferns, Palms, Ivies, etc., lodging on the stem and under side of leaf. There is no remedy but scraping off and destroying. A severe scrubbing with an old tooth brush and soap will remove the scale. Mealy bugs lodge in the axils of the leaves and are easily removed by using an old tooth brush. Red spider shows itself in a brown dried condition of the leaves and is an indication of too dry an atmosphere. Sponge, sprinkle or wash the leaves often and thoroughly. The Green Fly or Aphis, is best destroyed by tobacco smoke (if the smoke can be confined about the plants; otherwise a tobacco tea, made by steeping one pound of tobacco stems in four or five gallons of water, can be used. Dip the plants in the liquid or sprinkle them thoroughly with it; or moisten the plants with water and sprinkle tobacco dust over them, letting it remain until the usual watering washes off.

Worms in the Soil. Lime water will usually expel them without injury to the plant, one part lime to twenty parts water, and when clear, give one or two waterings.

Mildew. A whitish or moldy appearance of the leaves. It is caused by a sudden change in the atmosphere from great heat to cold, or by a draft from open windows or door. At first appearance dust them with sulphur.

Planting. As soon as your shipment arrives open up to verify stock, then heel-in somewhere in shaded, moist soil. Take out a few at a time to location. Dig holes large and deep enough to receive the roots without cramping; sift fine dirt throughout the network of fibrous roots; fill up, tamp solid, leaving no fissures. Soak thoroughly and rake the surface level.

Maintenance. Thereafter, make sure there is sufficient soil moisture. Keep ground cultivated and free from weeds, preserving a straight clean edge.

Pruning in the dormant stage is not injurious to the plant and often easier to accomplish, but, as a result, the spring bloom is not as abundant. The ideal time to prune shrubs that blossom **along their stems** is just after the blooming period.

For Hydrangeas, Hypericum, some Spireas, Roses and other "**terminal blooming**" shrubs, pruning should be done in the dormant stage, or just as they start in the spring. Prune so as to encourage the plant to develop in its natural shape.

TWO PREPARATIONS OF UNUSUAL MERIT

VOLCK. The Scientific Insecticide for nursery, green house and garden. Controls scale insects, mealy bugs, white flies, red spiders, rust mites, aphid and thrips. $\frac{1}{2}$ pint, 50c; pint, 75c; quart \$1.00; gallon \$3.00.

VIGORO. Scientifically balanced and complete, VIGORO is a specially prepared plant food. It contains all of the elements necessary to grow flowers, lawns, vegetables, shrubbery and trees. The cost is only 10c to 20c for every 100 square feet. It is clean, odorless, easily sown by hand like grass seed. Complete directions in every bag. Price, 5 pounds 60c; 25 pounds \$2.25; 50 pounds \$3.25; 100 pounds \$5.45.

CUT FLOWERS



WE ARE CUT FLOWER GROWERS—NOT DEALERS. COME AND VISIT OUR GREEN-HOUSES WHEN IN THIS LOCALITY.

In design work and loose cut flowers we are better than ever prepared to care for your wants. With 60,000 feet of glass devoted to flowers, our excellent facilities for storing and shipping, we are sure that you cannot do better elsewhere. We carry on hand the largest stock of seasonable cut flowers in Central Iowa, even in the largest cities few firms carry the stock that we do. Frequently persons are undecided what to order and at such times you may leave the selection to us, stating what you wish to use them for and the price you wish to pay.

WHEN TO ORDER. Give us as much time as possible. Do not be afraid to order even a week or two ahead. You are sure of getting just what you want. Where an order is not sent in until the last thing, we sometimes have to substitute either in kind or color of flower wanted.

HOW TO ORDER. All customers will please notice that orders for early morning shipment must be in the night before. Our Post Office closes at 7 p. m. If you are not sure that your order will reach us before that time, it is safer to wire us. Telephone messages can be sent

after 8 p. m. at considerable reduction. It is always best to telephone or telegraph your order when time is limited, as you are then sure of reaching us on time. **Don't trust the mails;** trains are often late and we often do not receive orders on time.

SUNDAY AND HOLIDAY MAIL. If your order is sent by mail for next A. M. shipment, be sure and affix a special delivery stamp if letter is liable to reach here on Sunday or holiday, as we do not receive all our mail until day following.

FLOWERS BY EXPRESS. All cut flowers, designs, etc., packed to carry long distance safely, either winter or summer.

FLOWERS BY MAIL. On request we often send small boxes of loose cut-flowers by mail, as a rule they reach their destination all right, especially carnations, but much prefer sending by express, as flowers carry better. If orders are to go by mail, add 25c postage which includes special delivery stamp. We positively will not be responsible for time of delivery or for flowers freezing in transit by mail.

TERMS AND CONDITIONS. Cut flowers are strictly cash, and payment must be made immediately on receipt of flowers. We seldom send C. O. D. It often embarrasses those who buy, and it is a needless expense.

COMPLAINTS to be allowed should be made immediately on receipt of flowers. We stand ready always to make any wrong right.

RESPONSIBILITY. While we exercise the greatest care to have all flowers reach their destination on time, and will not ship unless we are reasonably sure they will reach you on time, we positively will not be responsible for delays in trains, wrecks or express agents' negligence. **Should your flowers reach you too late, accept them under protest, do the best you can with them. If for a funeral, lay them on the grave, we will share the loss with you and take care of any claim against express company.**

OUR SHIPPING FACILITIES. The fact that the great harvester companies have their general agencies in this city is in itself a sufficient guarantee that there are none better in Northern Iowa.

Flowers for the House the Season Through

ASSORTED BOXES OF FLOWERS, our selection. We put up thousands of these boxes throughout the year and invariably they give splendid satisfaction, being our own selection, we can always give splendid value. Are sent prepaid (special delivery) anywhere and are suitable for any occasion, \$1.20, \$2.00, \$3.00, \$5.00 prepaid.

A BIRTHDAY Send Flowers

For the home, a party, for a birthday, or for a sick friend. Just mail us your card and with the address of the person who is to receive it, and we will do the rest. We know you will be pleased.

Have you a friend you would love to remember, then say it with flowers, the most beautiful of remembrances. Our assorted boxes, \$2.00 and up, are very appropriate—say when they should reach destination.

You enjoy having flowers in the home and having them on the table when you have a few friends in; why not have them oftener? Part of the year you cannot grow them, but we make it easy for you to have them whenever you like, at a small cost. **Our \$1.20 and \$2 boxes of cut flowers sent prepaid anywhere are always suitable whatever the occasion.**

VERY IMPORTANT

How to Keep Your Cut Flowers

All design work. Leave in the boxes and set in a cool cellar until ready to use.

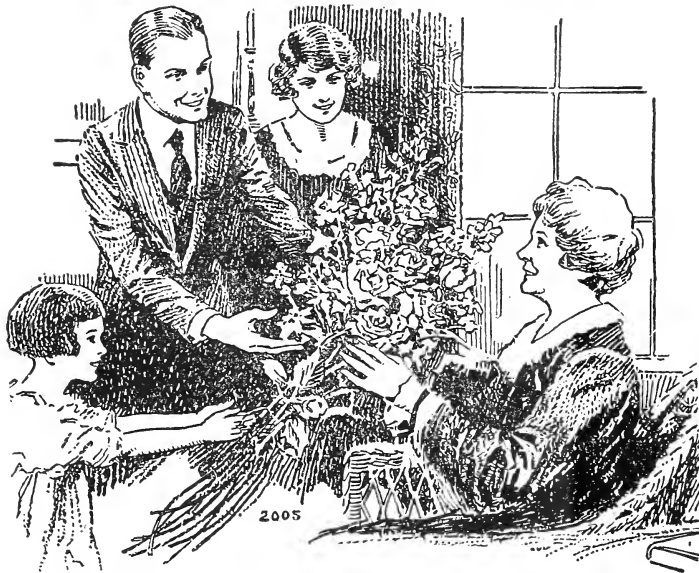
Loose Flowers. Remove from boxes at once, clip ends of stems and put them in water and set in cellar, using deep vase with plenty of water at bottom, and see that the stems are down in the water. By securing loose flowers early and keeping them 12 to 24 hours before using, you double the value of the flowers.



HOLIDAYS

Owing to the extraordinary demand, it is sometimes impossible to give you exactly the kind of flowers ordered. We do our best, but our customers will find we can give better value in mixed boxes of our own selection, \$2, \$3, \$5, \$10.

"Say it with Flowers"



On Mother's Day Let This Be Your Message

Mother's Day The Second Sunday in May

MOTHER'S DAY

Usually observed in all churches the second Sunday in May. Wear a flower for mother's sake, a white one for the mother that is dead, and a colored one for the one who is living.

Carnations. Assorted colors only, and our selection of color, \$2.00 per dozen. Purchaser's selection of color, \$3.00 per dozen.

Roses. \$2.50, \$3, \$4, \$5 per dozen.

Special Notice. All carnation orders for Mother's Day are taken by us with the distinct understanding that part Roses may be substituted for carnations if necessary.

Send for special list ready May 1st.

FLORIST TELEGRAPH DELIVERY

We are members of Florist Telegraph Delivery Association of America. Flowers Delivered to Any Part of the World.

We have a representative in or near every city, town or hamlet, who will fill and deliver anywhere any order, on short notice through our co-operate telegraph system.

SEASONABLE PRICE LIST OF LOOSE CUT FLOWERS

SWEET PEAS. Season, January 1st to June 1st, \$1 per bunch. After May 15th, 75c per bunch of 25.

LILIES, Easter and Callas. Season almost the entire year, \$4.00 and \$5.00 per dozen. Large quantities always on hand at Easter at regular prices. All large buds count same as flowers on Easter Lilies and average the dozen, eight open flowers. Place your Easter orders early. Easter Lilies during May and June 40c each, \$4.00 per dozen.

CORSAGE BOUQUETS. Made up of assorted flowers and tied with ribbon, \$1, \$2, \$3, \$5 each.

ASPARAGUS PLUMOSUS. Sprays, 25c and 50c per dozen.

SPRENGERI Sprays, 25c and 50c per dozen.

SMILAX. 35c per string of 4 to 5 feet; \$3.50 per dozen strings.

CHRYSANTHEMUMS. All the popular colors. Season October 15th to December 15th. Good flowers, \$3.00 per dozen; fancy, \$4 to \$5 per dozen; extra fancy, \$6 per dozen.

MARGUERITES. In season, 35c per dozen.

DUTCH HYACINTHS. February 15th to April 1st, 25c each, \$3.00 per dozen.

DECORATION DAY

One of the hardest days of the year to supply the demand. If the weather is hot and damp, it is a time of poor quality and high prices. We shall endeavor to bill all stock at most reasonable prices, according to quality. Prices from May 28th to June 1st will be about as follows:

Carnations, assorted colors only and our selection, \$2.00 per dozen. Purchaser's selection of color, \$2.50 per dozen; **Roses,** assorted colors our selection of color, \$2.50 per dozen, extra fancy \$3.00 and \$4.00 per dozen; **Columbia,** Premier and other best varieties, \$3.00 and \$4.00 per dozen, extra long, \$6.00 per dozen; **Jasmine,** 60c per dozen, \$4.00 per 100; **Gladiolus,** \$3.00 and \$4.00 per dozen; **Lilies,** \$4.00 per dozen. Count of lilies includes buds.

Send for special list.

PRICES OF LOOSE ROSES AND CARNATIONS

Below we give a table showing about what you may expect to pay at the different seasons. These prices are for the very best stock. Our Roses are the finest that grow and will compare favorably with any other firm. We believe they are better value than you will secure elsewhere.

ROSES	THANKS-GIVING		DEC. 22 to JAN. 1		EASTER		NOV. 1st to JUNE 10		JUNE 10 to NOV. 1	
	Per	Dozen	Per	Dozen	Per	Dozen	Per	Dozen	Per	Dozen
Price varies according to season and length of stem.										
Matchless, Columbia and Premier.										
Dark Pink	\$2.50 to	\$6	\$2.50 to	\$8	\$2.50 to	\$8	\$2 to	\$5	\$2 to	\$5
White Killarney	\$2.50 to	\$4	\$3 to	\$4	\$2 to	\$4	\$2,	\$3	\$2,	\$3,
Butterfly (Pinkish Yellow)	\$2.50 to	\$4	\$2.50,	\$3 \$4	\$2.50,	\$3 \$4	\$2,	\$3	\$2,	\$3,
Golden Ophelia (Yellow)	\$3.00 to	\$4	\$2.50,	\$3 \$4	\$2.50,	\$3 \$4	\$2,	\$3	\$2,	\$3,
Red Premier and Templar (Red)....	\$3 to	\$5	\$2.50,	\$3 \$4	\$2.50,	\$3 \$4	\$2,	\$3, \$4	\$2,	\$3, \$4
			extra fancy	\$5.00	extra fancy	\$5.00				
CARNATIONS										
White, Light and Dark Pink, Scarlet and Variegated.										
Good grade, assorted colors	\$2.00		\$2.00		\$2.00		\$1,	\$1.50, \$2	\$1.50	
Best Red	\$2.00		\$3.00		\$2.00		\$2.00		\$1.50	

For Decoration Day and Mother's Day, Prices See Page 4

FOR PARTIES, RECEPTIONS AND BIRTHDAY GIFTS

Loose flowers in vases or baskets are most suitable for table or room decoration. A carnation or short stemmed rose for each person where trays are passed. Where guests are seated at tables, one rose or carnation each for the gentlemen, and for the ladies, two or more tied with dainty cord or ribbon.

PRICES OF BOUQUETS

- Buttonhole.** For gentlemen. Short roses, 15c each, \$1.50 per dozen; short carnations, 10c each, \$1.00 per dozen.
- Boutonnier.** For ladies, small, 30c each, \$3 per dozen; larger, 60c each and \$1 each.
- Sprays of Roses, Lilies, Carnations** and other seasonable flowers made up for funerals and for laying on grave, tied with ribbon or chiffon, \$2.00, \$3.00, \$5.00, \$10.00 and up.

CORSAGE BOUQUETS

Large, made with shield and tied with ribbon. \$2, \$3 and \$5 each. Small size, \$1 and \$1.50 each.

BASKETS

Filled with flowers, very suitable for funerals, gifts, weddings and receptions. \$2, \$3, \$5, \$10 and up.

CHIFFONS, RIBBONS AND CORDS

We carry a full line of different styles and colors.

Chiffons and Nettings. Plain, white, pink, Nile green, lavender, purple, six inches wide, 20c per yard; 4 inches wide, 15c per yard.

Designs For Weddings

These are hung suspended on wall above bridal party.

- Bells,** \$8, \$10 and \$12.
- Bow and Arrow,** \$7, \$9.
- Yoke,** \$10.
- Horseshoes,** \$3, \$4 and \$5.
- Lovers' Knot,** \$8.

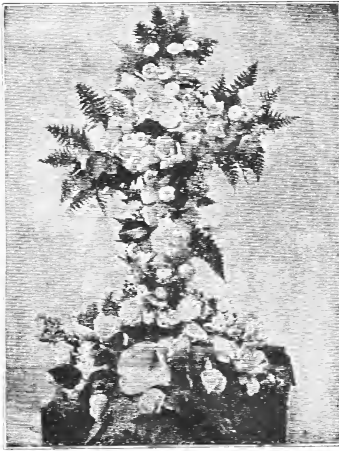


WEDDING BOUQUETS

As illustrated.
\$5, \$6 and \$8
With Shower Effect
\$6, \$8, \$10

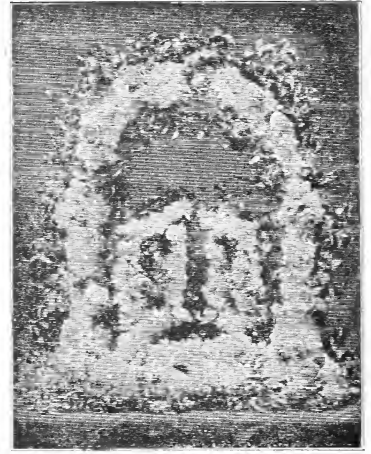


DESIGNS FOR FUNERALS



The use of flowers as a means of conveying sympathy is undisputed. The practical experience we have daily, in the making of various floral arrangements insures artistic as well as skillful ideas in making sprays, casket covers and funeral designs. Our aim is to fill your order as nearly as possible according to your wishes.

Below will be found approximate prices of designs—any special designs not on this list will be made to order at reasonable prices.



Measurement of Standing Designs Includes Height

Anchor Flat. 12 to 24 inches, \$4.00 to \$12.00.

Anchor on Base. 15 to 36 inches high, \$5.00 to \$20.00.

Anchor on Easel. 15 to 24 inches, \$5.00 to \$15.00.

Anchor on Easel with Scroll. 24 to 30 inches, \$15.00 and \$20.00.

Anchor Chained to Standing Cross. 24 to 36 inches high, \$20.00 to \$30.00.

Broken Column. 18 to 36 inches, \$10.00 to \$25.00.

Broken Wheel. 16 to 36 inches, \$8.00 to \$30.00.

Bible. 18 to 24 inches, \$15.00 to \$25.00.

Cross Flat. 12 to 36 inches, \$3.00 to \$20.00.

Cross of Magnolia, Galyx or Boxwood. 12 to 36 inches \$3.00 to \$10.00.
With flowers, \$2.00 extra.

Crosses Standing. 18 to 36 inches, \$6.00 to \$30.00.

Cross Maltese. 12 to 24 inches, \$4.00 to \$12.00.

Cross Casket. 15 to 25 inches, \$5.00 to \$12.00.

Cross and Sickle on Stand. 24 inches, \$10.00, \$15.00 and \$20.00.

Casket Covers or Blankets. Used for covering the entire casket or just the lower part of the casket. Price varies according to time of year and size of cover. Small for children, \$15, \$20, \$25; large for grown persons, \$30.00, \$40.00, \$50.00, and upward.

Door Badge. \$2.00 and \$3.00.

Door Badge. Wreath, \$3.00, \$4.00 and \$5.00.

Crescent. 12 to 21 inches, \$4 to \$10.00.

Crescent and Star, on Stand. 18 to 30 inches, \$8.00 to \$15.

Gates Ajar. 18 to 36 inches, \$15 to \$30.

Harp on Stand. 15 to 36 inches, \$6.00 to \$25.00.

Harp Flat. 12 to 24 inches, \$5.00 to \$10.00.

Heart Solid. 12 to 18 inches, \$5.00 to \$10.00.

Heart Open. 12 to 21 inches, \$5.00 to \$10.00.

Lyre on Base. 15 to 36 inches, \$6.00 to \$25.00.

Shield. 12 to 24 inches, \$6.00 to \$15.00.

Shield of Galyx or Magnolia. On easel with emblem, \$7.50, \$10.00, \$12.00 and \$15.00.

Scroll. 18 to 24 inches, \$10.





Spray Lilies

- Wreath of All Roses or All Carnations.** 12 to 30 inches, \$5.00 to \$20.00.
- Wreath Reclining on Easel.** 12 to 30 inches, \$5.00 to \$20.00.
- Wreath of Boxwood on Easel with Flowers.** \$15 to \$18.
- Wreath on Stand with Dove.** 18 to 36 inches, \$10.00 to \$25.00.
- Wreath Crescent Shape.** Price same as stand-ard wreaths.
- Wreath of Palm Leaves.** \$5.00 to \$10.00.

- Lyre Flat.** 12 to 24 inches, \$5.00 to \$12.00.
- Ladder Reclining.** 24 to 36 inches, \$8.00, \$10.00 and \$12.00.
- Pillows.** 12 to 36 inches, \$6.00 to \$30.00.
- Sickle.** 12 to 24 inches, \$4.00 to \$7.50.
- Star Flat.** 12 to 18 inches, \$5.00 to \$10.00, on base, \$2.00 extra.
- Star and Crescent on Easel.** 24 to 36 inches, \$10.00 to \$20.00.
- Star and Crescent on Base.** 18 to 30 inches, \$8.00 to \$15.00.
- Sheaf of Wheat.** \$1.00, \$1.50, \$2.00 and \$3.00 with flowers, \$2.00 to \$5.00 extra.
- Sickle on Panel of Magnolia on Easel with Sheaf of Wheat.** \$18.00, \$20.00, and \$25.00.
- Sheaf on Base standing with Sickle.** 24 to 36 inches, 24 to 30 inches, \$12.00 and \$15.00.
- Broken Wreath on Base.** 18 to 24 inches, \$8.00, \$10.00 and \$12.00.
- Solid Wreath of Carnations with a Cluster of Roses.** 15 to 24 inches, \$6.50, \$8.00, \$10.00 and \$15.00.

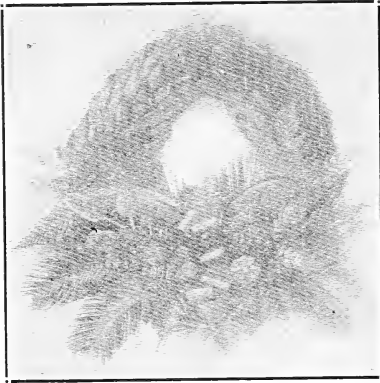


Spray Roses

- Wreath of Ivy Leaves, Galyx or Magnolia.** Leaves with Cluster Flowers, 12 to 30 inches, \$4.00 to \$15.00. All wreaths will be placed on easels without extra charge if so requested.
- Wreath of Assorted Flowers.** 10 to 30 inches, \$3.00 to \$20.00.
- Wreath Reclining on Easel with Palm Leaves.** \$2.00 extra each size.
- Sprays of Carnations or Roses.** Tied with ribbon or chiffon, \$2.00, \$3.00, \$5.00, \$8.00, \$10.00.
- Baskets of Flowers.** \$3.00 to \$15.00.
- Double Sprays of Assorted Flowers.** \$8.00, \$10.00, \$15.00, \$20.00.



Double Spray Roses
\$8.00, \$10.00, \$15.00, \$20.00 and \$25.00



Wreath of Magnolia Decorated

MEMORIAL WREATHS, ETC.

Wreaths, cross, etc., made up of prepared leaves and flowers (not artificial) are most suitable to lay on graves for Armistice Day, Christmas, Easter, Mother's Day and Decoration Day. These will last a long time out in the weather. Can be sent long distances safely and are beautiful in form and finish.

We also use many for funerals as they are very suitable especially for elderly people as they can be laid on the grave afterward and stay beautiful many weeks.

- | | |
|---|---|
| <p>No. 1. Green Lacapodium, Straw Flowers, Statice and Cones. 16 in., \$5.00; 18 inch, \$6.00.</p> <p>No. 2. Green Magnolia with clusters cymas, pink statice, green fibre ribbon. 16 inch, \$5.00; 18 inch \$6.00.</p> <p>No. 3. Brown Magnolia, lavender statice and orchids. 16 inch \$5.00; 18 inch \$6.00.</p> <p>No. 4. Plain wreath of Magnolia leaves. 12 inch, \$2.00; 15 inch, \$3.00; 18 inch, \$4.00.</p> | <p>No. 5. Brown Magnolia leaves cymas, statice with pods and cones. 16 inch, \$4.00; 18 inch, \$5.00.</p> <p>No. 6. Magnolia with three Palm leaves, lavender and white statice, pink bow and pine cones. 16 inch, \$5.00; 18 inch, \$6.00.</p> <p>No. 7. Lacapodium, statice and straw flowers and pink bow. 10 inch, \$2.50; 12 inch, \$4.00.</p> <p>No. 8. Cluster of Palm leaves tied with ribbon. \$2.00, \$3.00, \$4.00, \$5.00.</p> <p>No. 9. Cross, green lacapodium with cymas leaves and bow of fibre ribbon. 20 inch, \$4.00; 24 inch, \$5.00.</p> |
|---|---|

LODGE DESIGNS

Our Lodge designs are made right both as to arrangement of colors and form. We ask you to compare our work with that of any other firm.

- | | |
|--|--|
| <p>Epworth League. 12 to 21 inch, \$5.00 to \$10.00.</p> <p>Knights of Pythias Triangle. 12 to 30 inches \$5.00 to \$15.00.</p> <p>K. of P. on Easel With Panel. \$4.00 extra.</p> <p>Knights Templar. Maltese Cross with cross and crown, \$25.00.</p> <p>K. T. Cross and Crown. See cross and crown.</p> <p>Order of Eastern Star. 12 to 24 inches, \$5.00 to \$12.00. With Magnolia Wreath, \$3.00 extra.</p> <p>Daughters of Rebekah. Crescent and Seven Stars, 12 to 24 inches, \$5.00 to \$12.00.</p> <p>Pythian Sisters. \$7.00, \$10.00.</p> <p>Elks Dial. 21 to 24 inches, \$12.00 to \$15.00.</p> <p>G. A. R. Shield. 15 to 21 inches, \$6.00, \$8.00 and \$10.00.</p> | <p>G. A. R. Wreath. 12 to 21 inches, \$4.00 to \$8.00.</p> <p>L. O. T. M. 15 to 18 inches, \$7.50 and \$10.00.</p> <p>Shriners. Crescent and Star with Sword, 24 inches and 30 inches, \$15.00 and \$20.00.</p> <p>Odd Fellows. 15 to 30 inches, \$5.00 to \$12.00.</p> <p>Masonic. Square and compass, 12 to 24 inches, \$5 to \$12.</p> <p>Masonic On Easel. With Palm leaves, \$2.00 additional.</p> <p>M. W. A., Axe and Beetle on Shield. 16 to 24 inches, \$8.00, \$10.00 and \$12.00.</p> <p>M. W. A., Leaf. With M. W. A. and Axe and Beetle, 12 to 18 inches, \$5.00 to \$10.</p> <p>Other Lodge Designs. Made to order at reasonable prices.</p> |
|--|--|

SUMMER FLOWERING BULBS

GLOXINIA BULBS

These showy plants are easily grown in pots for summer. They make a glorious display and bloom for a long time. Start the bulbs in small individual pots, transplanting as they grow larger.

Scarlet Purple. White purple border, 40c each. All colors mixed 30c each, 4 for \$1.25. After May 1st started in pots, 50c each.

TUBEROSES

Pearl. Universal favorite, the pure white waxy flowers and sweetness recommend it to all. It is so easily grown that it should be in every garden. First size bulbs, 25c for 3; 75c per dozen.

Armstrong Everbloomer. A greatly improved single, the habit is such that it continues throwing up blooming stems through the season. 7c each, 25c for 4.

AMARYLLIS (King Lily)

Very popular for house culture and easily grown. New Hybrids, assorted colors, very large flowers, 75c each.

TUBEROUS ROOTED BEGONIAS

Unexcelled for summer bedding, such as lawn beds and borders. They will thrive best in partial shade.

Single Yellow, Red, Pink and White. 30c each, 4 for \$1.00.

Double Mixed Colors. 30c each, 4 for \$1.00. After April 15th, pot grown plants only 40c each, \$4.00 per dozen.

GIANT ISMENE

Flowers are large, like an Amaryllis of novel form, snowy white, exceedingly fragrant, 30c each.

ZEPHYRANTHES

Dwarf bulbous plants, with flowers in great profusion during the summer and fall.

Candida. Large, pure white flowers in the fall. 8c each, 30c for 4.

Hardy Lilies

Among the most stately of all garden plants. Perfectly hardy and will bloom for years to come.

Auratum. (Gold-banded Japanese Lily). One of the finest and most popular of the hardy garden lilies. Large ivory-white flowers, thickly spotted with chocolate crimson and striped with golden yellow. Each, 40c; 3 for \$1.10.

Suprbum. Bright orange spotted purple, 30c.

Rubrum. Clear pink spotted red. One of our very best hardy lillies, 35c each, 3 for \$1.00.

Melenomene. Very light pink, spotted rose, 35c each, 3 for \$1.00.

FANCY-LEAVED CALADIUMS

Valued for the gorgeous coloring and marking of leaves. 50c each.

MADERIA VINE

A beautiful, rapid-growing climber, bearing racemes of fragrant white flowers, 10c each, 3 for 25c.

HYACINTHUS CANDICANS

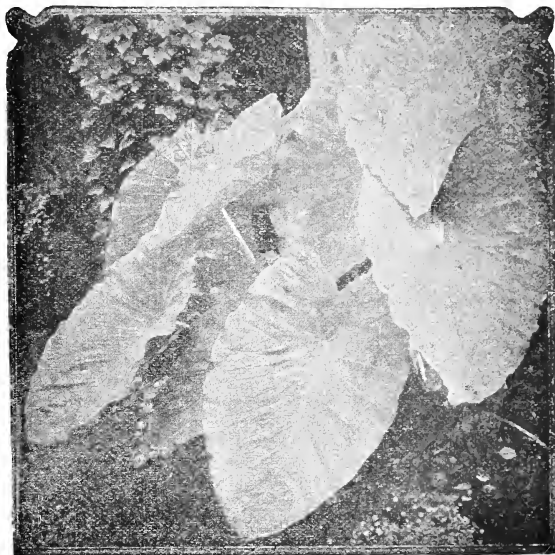
Large, yucca-like leaves growing as high as 4 feet, producing racemes of long, funnel-shaped pendulous flowers, 15c each. 50c for 5.

CALLAS

Elliotiana. Flowers are of a rich golden yellow foliage is the same as that of the Spotted Calla—deep green with white spots, 40c each.

APIOS TUBEROSA

An elegant climbing plant, growing from 8 to 10 feet high, bearing large clusters of brownish purple, sweet-scented flowers in July. Perfectly hardy, 15c.



CALADIUM ESCULENTUM (Elephant's Ears)

One of the most effective plants in cultivation for planting upon the lawn, growing 5 feet with handsome leaves often 3 feet long and 20 inches wide. It will grow in any good garden soil and is of easiest culture. Can be stored in sand in any warm place during the winter. Fine bulb, with live center shoots. Select size bulbs, 2½ to 3 inches in diameter, 15 inches each, \$1.50 dozen. Large bulbs, 3 to 4 inches in diameter, 25c each, 65c for 3. Mammoth sized, 50c each, \$1.60 for 4, \$5.00 per dozen.



Gloxinea

GLADIOLI—The Most Popular Summering Flowering Bulb.

You are sure of fine flowers if you plant *Gladiolus*, the most attractive of all summer flowering bulbs. They need only a little culture to keep the weeds down; will grow in any good soil and with ordinary rainfall seldom fail to flower.

The best time to plant is about the first of May, but they may be planted by the 20th of April in the Central States. A succession of bloom may be had from July to October by making planting ten days apart.

GIANT OR LARGE FLOWERING TYPE

This list is a selection of the very best varieties that grow.

Halley. Salmon pink, very early, 6c each, 60c a dozen.

Mrs. Francis King. Very vigorous in growth, color light scarlet, of very pleasing shade, which attracts attention at once. Flowers of very large size, 6c each, 6 for 35c, 12 for 60c.

America. Of large size, color, a delicate lavender pink, tinted white, 5c each, 6 for 25c.

Baron Hulet. Finest purple, 12c each.

Schwaban. Best yellow, 8c each, 6 for 40c.

Chicago White. Extra strong growers; pure white with faint lavender streak in lower petals. Very early. 8c each, 6 for 40c, 12 for 75c.

1910 Rose. One of the best dark pink, 8c each, 6 for 40c.

Carmines Sylva. Very fine white throat tinted lavender, 15c each, \$1.50 per dozen.

Europa. The best of all whites, 30c each, 4 for \$1.00.

Maiden's Blush. Primulus type, exquisite pink, lighter center, 10c each, 75c a dozen.

Joe Coleman. Large rich red, 15c each, 4 for 50c.

Myrtle. Beautiful rose pink, 10c each, 6 for 50c.

Evelyn Kirkland. Rosy pink, dark at edge, very fine, 10c each, \$1.00 a dozen.

Lily White. Very fine early pure white, 10c each, 6 for 50c.

Dr. Norton. The finest cream and pink shaded variety. 10c each, 6 for 50c.

E. J. Shalor. A beautiful deep ruffled rose pink—the best of its class. 10c each, 6 for 50c.

Niagara. Rich cream and canary yellow. Heavy spike, 7c each, 12 for 80c.

Mrs. Frank Pendleton. Delicate flushed salmon pink, maroon blotch on three lower petals. 8c each, 12 for 85c.

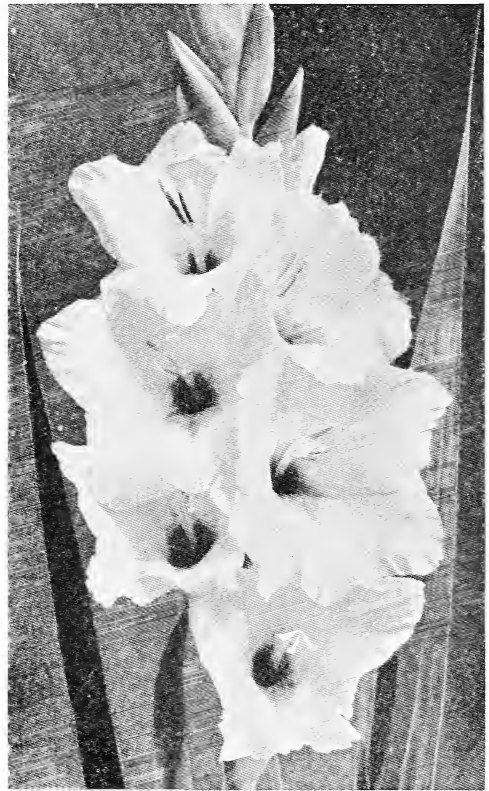
Alice Tiplady. Orange salmon primulus type. 10c. 6 for 50c.

Le Marshal Foch. Very large, light lavender pink, 15c each, 4 for 50c.

Arlon. Extra early, salmon, 10c each.

Rose Ash. A beautiful shade of lavender and rose, 15c each, 4 for 50c.

Pride of Lancaster. Ruffled salmon, fine, 15c each, 4 for 50c.



Scarlet Princeps. One of our best scarlets, 20c each, 3 for 50c.

War. Rich blood red, of largest size. A leader among the reds. 15c each, 4 for 50c.

Lost Red. The largest and finest red gladiolus grown. The gladiolus specialists have been unable to decide on name, hence called the "Lost Red." 25c each, 5 for \$1.00.

SPECIAL OFFER GLADIOLUS

One each of 10 named varieties, our selection, 75c. One each of 20 varieties, \$1.50.

All Colors Mixed. First size, 40c per dozen, \$3.00 per 100 postpaid; second size, good flowering bulbs, 30c per dozen, \$2.25 per 100, postpaid.

SPECIAL MIXTURE—Our special mixture of named varieties, made up of the very best cut flower varieties in finest assortment, 60c per dozen. \$4.50 per 100. (This mixture will give you satisfaction.)

General List of Flowering and Ornamental Plants



ASPARAGUS PLUMOSA

The stem is tufted, slender and gracefully arching. From the upper portions of the branch, which are finer than the fronds of the most delicate fern, spread in all directions. The whole plant is of bright, cheerful green, and one of the most distinct and effective decorative plants, of easy culture, thriving best in full light, but not direct sun, after the plants become large, they throw large tendrils, 4 to 6 feet long, which are beautiful for decoration. 15 cents each, 4 for 50 cents; large size, 20, 30 and 50c.

ASPARAGUS SPRENGERI

A grand trailing plant, especially useful to grow as a pot plant for house decoration or for planting in hanging baskets or window boxes, where it makes a graceful drooping plant with branches or fronds 4 or 5 feet in length, of a rich shade of green; valuable for cutting, or decorating, as it retains its freshness for weeks after being cut. 15 cents each, 50 cents for 4 large plants, by express, 25c, 30c and 40c each. \$2.50 and \$4.00 per dozen.

ABUTILIONS (Several Varieties)

10c to 25c each.

Abutilions Trailing. 15c each, 4 for 50c.

ACALPHA

Yellow and bronze and red varieties, 10c each, \$1.00 per dozen.

AGERATUM

Blue and White varieties, 5c each, 50c per dozen.

ALYSSUM

Double sweet, 60c per dozen, \$4 per 100.

ALTERNANTHAS (Jacob's Coat)

Largely used for edging, for grave use, and for lettering.

Yellow and red varieties, 60c per dozen, \$4.00 per 100.



BEGONIA SHRUBBERY

We have a beautiful lot of finest flowering varieties. Choice plants, 25c each, 5 varieties for \$1.00.

REX BEGONIAS

The high coloring and exquisite markings of Rex Begonias make them invaluable as decorative plants for house culture; are excellent for baskets and vases if given plenty of moisture and not exposed to the full sun. 25c and 50c each. Large size 50c and \$1.00 each.

Coleus

Every lover of foliage should have a bed or border of these. They are fine for edging or massed by themselves. The Coleus will give more pleasure at less cost than any other plant. Very tender, and therefore should not be planted until all danger of frost is past.

The number of varieties is so large and varied that we only attempt to describe the standard bedding varieties.

Trailing Queen. Green and pink drooping, fine for baskets.

White Trailing Queen. Green and white, fine for baskets.

Giant Hybrids. Same form as Brilliancy but in shades of bronze and green. 10c each; large size 25c and 50c.

Blackbird. Leaves and stems almost jet black with fringed edges.

Beckwith's Gem. Four shades of color, center maroon bordered red; edge green and yellow.

Golden Bedder. Yellow. This is the best Coleus for bedding; deep gold in the sun; dwarf.

Mrs. F. Sander. Large, creamy white center, bordered with green; blotched crimson.

Firebrand. Flaming red; fine bedder.

Mrs. Carolin Beek. Yellow and green; improved Snowcrest.

Verschafelti. The oldest, still one of the best rich velvety crimson.

Brilliancy. The finest Giant Coleus ever offered. Bright carmine shading to deep maroon margin of leaf yellow and green; 10c each; large size 25c and 50c.

PRICE OF COLEUS

(Except Noted)

10c each, 4 for 25c, 12 for 75c, \$4.00 per 100. Our selection, 5c each, 50c per dozen, large size 15c each, \$1.50 per dozen. After June 10th, \$3.00 per 100.



CANNAS

No bedding plant equal to the Cannas; are easily grown, and attain large size in ordinary soil. Plant in good, rich garden soil, about the end of May, when all danger of frost is past. Water sparingly for first two weeks after planting. Set the plants 18 inches apart each way, and where more than one kind is used, be careful to set the dwarf growing varieties at outside of bed. Should be taken up in the fall when the tops are killed by frost, and stored away in a dark, cool place. Our stock is very large, numbers many thousands, and all true to name, each variety being the best of its kind.

Many of our customers, appreciating the decorative value of the plant, and aware of its value in producing rich effects in the lawn or garden, want Canna beds, but are undecided as to what varieties should be included. For such we have prepared the following selections.

Three varieties:

For a round bed, 7 feet across, takes 19 plants—19 plants of our selection, \$3.50.

For a round bed, 7 feet across, take 27 plants, four varieties—37 plants our selection \$6.00.

For a rectangular bed, 5x8 feet, 25 plants, three varieties—our selection, \$4.50.

For oblong bed, 5x8 feet, 24 plants, three varieties, \$4.50.

For a round bed, 13 feet across, 61 plants, 6 varieties, strong plants, our selection, for \$10.50.

The above prices on Canna beds are by express at purchaser's expense.

Price List of Cannas—Standard Varieties

Notice: This price is for started plants growing in pots ready May 10th. Purchaser's selection, small plants 20c each, 12 for \$2.00. Purchaser's selection, second size, 30c each, 12 for \$3.00, 25 for \$5.50.

WHITE VARIETY

Eureka. The best of its color, creamy white, dwarf habit, 25c each, 5 for \$1.00.

PINK FLOWERING VARIETIES

Shenandoah. The best pink variety. Medium size habit, bronze foliage.

CRIMSON AND SCARLET SHADES WITH GREEN FOLIAGE

The President. Rich glowing scarlet, immense rounded flowers, medium height.

Chas. Henderson. Deep crimson, yellow throat.

Wintzers Colossal. Very large orchid flowering vivid red, tall grower.

BRONZE FOLIAGE VARIETIES

King Humbert. Of dwarf, sturdy habit, large leathery leaves. Flowers orange scarlet of large size.

Statue of Liberty. Tall, vigorous grower, large orange scarlet flowers.

GILT EDGE VARIETIES

S. D. Crosby. Dwarf habit, crimson; scarlet border, golden yellow.

YELLOW FLOWERING

Florence Vaughn. Golden yellow, spotted scarlet.

Yellow King Humbert. Large size flowers, deep rich yellow, dotted red, green foliage.

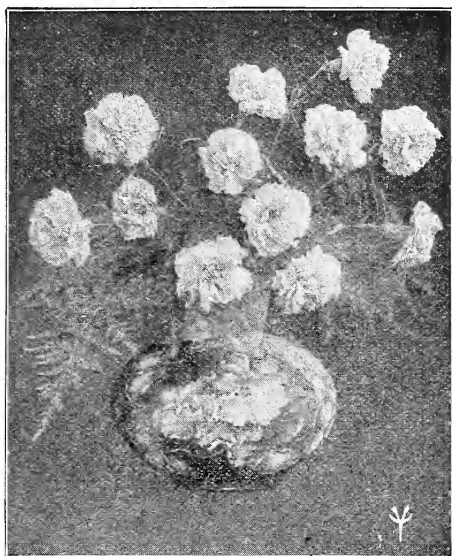
GIANT ORCHID-FLOWERING CANNAS

A distant race of Cannas, noted for the immense size of their orchid-like flowers, often 5 to 7 inches across.

Louisiana. 6 feet. Very large, beautiful vivid scarlet orchid-like flower often measuring 5 to 6 inches across. Foliage a glossy green.

Wyoming. Bronze foliage, large flowers, golden orange.

On all orders for small plants to go by mail add 10 per cent for postage.



CARNATIONS

Plant in the open ground as soon as the ground can be worked in the spring. If wanted to flower during the summer and fall, as soon as the flower shoots appear, tie to small stakes; if wanted for winter blooming, the flower shoots should be pinched off until about the middle of August; by that time they will have made very strong, bushy plants. Take up and pot before September first and keep shaded and close for a few days, when they will be ready for removal to the conservatory or window where they are to flower.

Our collection contains the best varieties grown.

Enchantress Supreme. A splendid light pink, deepening toward center.

Edna. Medium size, intense bright scarlet.

Matchless. Fringed white, Dwarf, sturdy grower.

Pink Matchless. Strong grower, deep rosy pink.

Rose Pink Enchantress. Clear, glistening pink.

Benora. Clear white, penciled and flaked scarlet.

Harvester. Tall grower. One of the best whites.

Betty Lou. Clear, dark pink, very prolific.

Price of Small Plants. For growing for next winter's bloom, 15 cents each, 4 for 50c, \$1.50 for 12, large size plants in fall, 25c each, \$2.50 per dozen.

Spectrum. The best scarlet, large heavily fringed flower. Very prolific, 20c each.

Radiolite. Strong, stiff stems, brilliant scarlet, 20c each.

North Star. A beautiful, clear yellow. Very fine. 20c each.

SPECIAL OFFER

One each of 12 best varieties for \$1.50 including several late introductions.

CARNATIONS FOR SUMMER BLOOM

This year we shall have a fine stock of plants, suitable for out door summer bloom, of best varieties suitable for that purpose. State varieties wanted. 20c each, 3 for 50c. This does not include the new varieties.

CALLAS

Dwarf Calla, the Godfrey. It far surpasses the common variety in freedom of bloom. Snow white and of perfect form. Blooming size, 25c each; large plants, 50c each.

Aethiopia or common calla. Excellent house-plant, requiring an abundance of water during its growing season. Strong plants, 20c 30c and 50c each, according to size.

CUPHEA TRICOLOR (Ladies Cigar Flower) 15 Cents

CENTUREA

Gymnocarpa (Dusty Miller). Fine for edging beds, 10c each, 75c a dozen, \$5.00 per 100.

CROTONS

Crotons are among the finest decorative plants. The leaves are more or less veined and margined and sometimes entirely variegated with shades of yellow, orange and crimson. They like heat, sunshine and moisture. Large size 75c each.

MARGUERITE OR PARIS DAISY

Always in demand because of the many uses to which they are adapted. One of the most satisfactory plants in cultivation, being easily grown.

Queen Alexandria. Is the only large-flowering pure white Daisy, with double, semi-double and single flowers on a single plant at one time. Flowers averaging $2\frac{1}{2}$ to 3 inches in diameter. 25c each; large size 40c and 50c.

Yellow Marguerite. (Queen Belgians), 15c each, large size 25c and 50c.

Small White Variety. Very free bloomer, fine for boxes and baskets, 15c each, 4 for 50c.

TRADESCANTIA (Wandering Jew)

Fine for hanging-baskets, vases, etc. Easily grown if given plenty of water.

Multicolor. Foliage brightly marked and striped white, pink, bronze. 10c each.

Sopens Vittata. Leaves bright green, striped with creamy white. 10c each.

ENGLISH DAISY

Beautiful little border plants, which bloom through the summer when planted in a shady situation.

Double Pink and Double White. 5c each, 50c per dozen.

DRACAENA INDIVISA

Beautiful window and green house plants, thriving in a warm, dry room. Should have their leaves sponged off once or twice a week. For general decorative purposes, this is one of the best plants we know. It is of graceful habit and an exceedingly rapid grower and is not affected by the sunshine, drought or storm. It forms a palm-like tree and does equally well either indoors or in the open ground; is especially suited for center vase, baskets and window boxes. Small size 25c; larger size, 50c and 75c each.

FORGET-ME-NOT (Myosotis)

These quaint, neat, low-growing plants love cool, moist soil, and, like pansies, bloom most freely in fall and early spring, producing star-like light blue flowers. 10c each, 75c per dozen.

FEVERFEW

One of our finest bedding and vase plants, giving an abundance of double white flowers, one inch across. 10c, 20c and 30c each, \$1, \$2, \$3 per dozen, according to size.

CHRYSANTHEMUMS



The Chrysanthemum is, without doubt, the queen of autumn flowers. Their large blossoms of every character and form attract the attention of all who are interested in flowers. We are continually adding new varieties to our large stock, and offer the cream of the best standard sorts of fine, well-grown plants.

EARLIEST VARIETIES LARGE FLOWERING

Golden Glow. The earliest yellow variety.
Smith's Advance. The earliest large white.
Smith's Enchantress. The best early pink.
Tints of Gold. Bronze and yellow, compact.
Betsy Ross. Fine dwarf, early white.

MIDSEASON VARIETIES LARGE FLOWERING

Golden Queen. An improved Golden Glow.
Angelo. Very early pink.
Sunglow. Of immense size—incurved yellow.
Richmond. Large, incurved, clear yellow.
Alice Byron. Incurved white, dwarf habit.
White Chieftain. Of large size, incurved.
Pink Chieftain. The loveliest pink of them all.
Chas. Razier. Tall grower; pure white.
Golden Glory. Very large incurved, dark yellow.
White Perfection. Similar in form to White Chieftain, but larger.

CAP VARIETIES

Lilac Cap. **Bronze Red Cap.** **White Cap.** Especially suitable for pot culture, as they grow dwarf and bushy; flowers double and good size.

LATE VARIETIES LARGE FLOWERING

Patty. Light pink, Japanese in form; dwarf.
Celebration. A golden Eaton, fine.
December Queen. Ball-shaped Japanese white.
Mrs. E. A. Seidwitz. Incurving, deep pink.
Whittier. Golden yellow, wonderful finish.
Golden Mistletoe. Incurved, golden yellow.
Mistletoe. Light pink, turning almost white.
White Mrs. Seidwitz. Incurved, pure white.
Midnight Sun. Dark yellow, strong grower.
Golden Chadwick. A large Japanese yellow.
Adrians Pride. Very brilliant golden yellow. Perfect variety.

POMPONES AND ANEMONES

The variety of Pompones are now so varied both as to time of flowering and color and size that they are rapidly taking the lead with the amateur.

Are very easily grown, require only good pinching back early and the large variety of color and form make them prized very much by the amateur grower. They are practically all hardy, but will not often bloom outside in this locality.

Sunshine. A beautiful new yellow Anemone, several rows of petals, late.
Golden Menza. Large single, yellow.
White Menza. Large single, white.
Bronze Menza. Clear bronze, single.
Bronze Doty. Dark bronze, good size flower.
Lillian Doty. Very full round flower. Clear white, sometimes changing to pink.
Crawford Pink. Semi-double, fine pink.
Juliana. Early, very double, light yellow.
Mrs. Beau. Late bronze with yellow center.
Golden Lida Thomas. Late, clear yellow.
Hilda Canning. Late, bronze red, fine habit.
Pink Lillian Doty. Same as the white except in color. Early.
Firebird. Best early red.
Primrose. Anemone, well built flower, very double; light yellow; dwarf habit.
Dusky Maid. A very large, late semi-double bronze. Very fine.
November Gold. Of large size and fine habit. Large clear light yellow.
December Gold. One of the latest of the pompones. Deep golden yellow, solid flower.
Mrs. G. W. Wickersham. One of the best large mid-season white.
Chicago Pearl. Large, late white.
Mrs. Tricker. Very early, bright yellow.
Godfrey's Perfection. Late, white anemone flowered, fine for pot plants.
Jack Bannister. Very early, yellow, large size.
White Wings. Best early white.
Capt. Cook. Tall grower, a lovely shade of lavender pink.
Mrs. H. Harrison. Very light early pink.
Mary Pickford. Very dainty flesh color, dwarf habit.
Glory of Seven Oaks. Very early deep yellow.

SPECIAL OFFER OF POMPONES

Our collection is so large: (we have many varieties not listed), we offer 15 different varieties for \$1.00, 32 for \$2.00.
(Except Noted)

PRICES OF ALL CHRYSANTHEMUMS

Small plant in spring, 10c each, \$1 per dozen. Or selections, 15 for \$1.00, \$6 per 100. Large size in the fall, 50c, \$1.00 and \$1.50 each.

FICUS ELASTICA (India Rubber Plant)

This has become a general favorite as a house plant because the large shining green leaves endure the dry air of a living room as well or better than any other plant. \$1 each; \$1.50 each; \$2.00 each.



FUCHSIA (Single)

This old favorite is surely coming back. Are very fine out doors if in partial shade and given plenty water on foliage.

Speciosa. Very early bloomer. Tube and petals light rose.

Charming. Corolla pink; sepals purple. Early and free.

Black Prince. Sepals bright carmine, corolla light rose.

Little Beauty. Very dwarf flowers, dark purple center, very free flowering. The best of all.

Irwin's Giant Pink. The largest of all, strong grower.

Swanley. Cream and pink drooping habit.

FUCHSIA (Double)

Jupiter. Sepals rich scarlet, corolla rich royal purple.

Mrs. E. G. Hill. Corolla clear white, strong grower.

Phenomenal. The largest double purple.

Price of Fuchsias. 25c each, 5 for \$1.00; larger size 50c and \$1.00. Specimen Plants \$2.00 each.

HELIOTROPE

Universal favorites on account of their delightful fragrance. They flower equally well as bedding plants in summer or pot plants in winter.

The Queen. Dwarf habit; flower royal purple, with distinct white center.

Snow Wreath. The nearest approach to snow white we have in the Heliotrope.

Lemoines Hybrids. Of wonderful size and coloring. Shades of lavender and blue.

Price of Heliotropes. Small plants 15c each, 4 for 50c; larger plants, 25c and 50c each.

JAPAN AIR PLANT. Similar to a very fine feathery fern; very odd; live without water or soil; should be hung up in a little vase. 25c each.

WIRE BASKETS. For Sword Ferns and for porch use, 35c, 50c and 75c each.

MOSS. For lining same, 35c per basket.

JARDINIERS. We carry a splendid assortment of fancy kinds, 50c, 75c and \$1. 12 to 16 inches across, \$2 and \$2.50 each.

FERN DISHES. Several kinds both in glazed and Rockwood ware, 75c, \$1 and \$1.50 each.

FERNS

Dwarf Boston Fern. Teddy, Jr. A dwarf type, of the Roosevelt, fronds broad and beautifully tapered and are of wavy appearance. A beautiful fern and well worthy of trial. 25c 50c, \$1.00 each.

Ostrich Plume Fern. (Whitmani). Unquestionably the most valuable type yet introduced. Of compact habit, the pinnae are deeply divided, giving the plant a very graceful appearance. Small plants, 25 and 50c each; strong, 5 inch pot plants, \$1 each; extra fancy specimens, \$1.50, \$2.00 and \$3.00.

Boston Fern. The most popular house plant in cultivation. In well known specimens, the fronds attain a length of 6 or 7 feet like plumes arching over in a most graceful manner. A very fine plant for hanging pots or baskets or window boxes in the summer, and conservatory in the winter. First size, 15c each, 50c for 4; second size, 25c each, \$1 for 5; third size, 50c each; fourth size, \$1.00 each. Beautiful specimens, \$2, \$3, and \$4 each.

Nephrolepis Schlozil. Very dwarf crested variety of Whitmani variety of Sword Fern, 25c, 50c and \$1.00.

FERNS FOR DISHES AND THE HOUSE

We have a good stock of the best growing varieties suitable for fern dishes and single pots in the home in the best of the easily grown varieties. Small plants suitable for fern dishes, 15c each, 4 for 50c, 9 for \$1; larger size for specimen plants, 25c and 50c each.

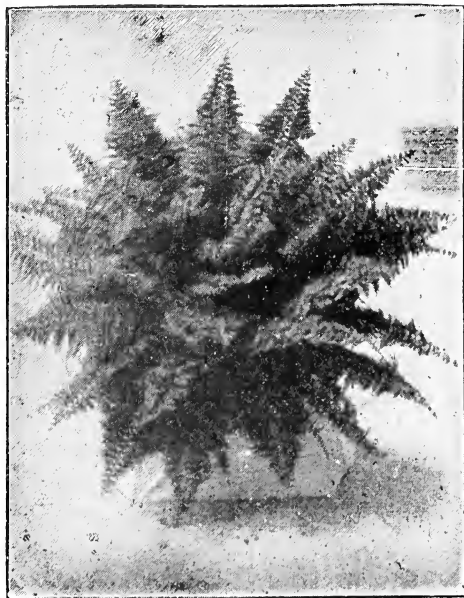
Adiantum Cuneatum. The popular fine foliage Maiden Hair, 25 and 50c.

Holly Fern. A compact growing heavy leaved fern of beautiful form and habit. 25c, 50c and \$1.00 each.

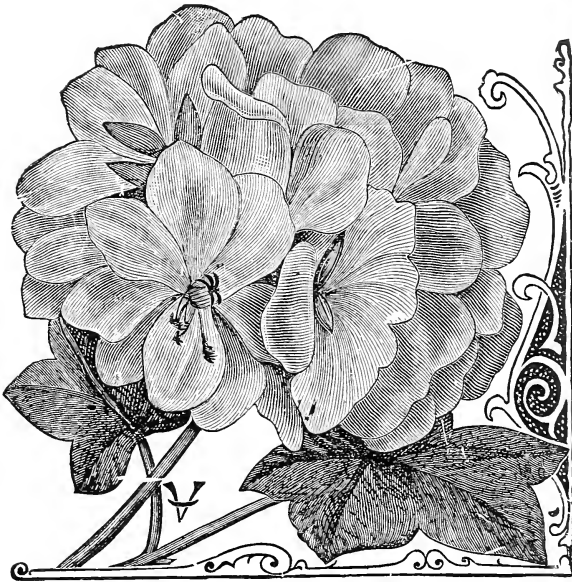
HARDY FERN

They do best in a partially shaded situation, as on the north side of a house. Ready in May.

Tall Growing Brakes. 30c each, \$3.00 per doz.



Whitmani



GERANIUMS

The Geranium is the most popular plant for bedding purposes, and deservedly so, as they continue to bloom profusely in the hot summer months when other plants are scorched by the sun and dry weather. The new double varieties bloom as freely as the single and make as fine bedders, being more durable.

Our list of flowering Geraniums will be found complete. We have taken great care in selecting the different varieties showing characteristics of their own.

The varieties listed are the best bedding varieties on the market today. They are the best there is for basket, window box and bedding outside.

HOW TO HAVE A GOOD BED OF GERANIUMS

Plant in medium soil, not too much sand or manure. See that they are in a bright, sunny place. After they once become established do not over-water as this will have a tendency to make them go to leaf growth; when weather becomes very hot a light mulch is beneficial. Always keep soil around plants stirred to a depth of at least one inch. Keep plants free from all old flowers and leaves and if any of the plants become ungainly, pinch off ends of long shoots.

SPECIAL NOTICE—have your Geraniums shipped by express—it takes a long time for them to get over mailing.

SCENTED GERANIUMS

Exceedingly useful on account of their fragrant foliage.

Skeleton Leaf Rose. 25 cents.

Large Green Leaf. Sweet scented, 15c and 25c each.

Dale Park Beauty. Flowers similar to a Pansy Geranium. Deep lilac color; foliage fragrant, 25c each.

BORDER GERANIUM

Madam Sallerol. Leaves from 1 to 2 inches in diameter; plant is quite dwarf, growing in dense, round masses quite rapidly. Leaves green with margins of pure white; valuable for baskets, vases and for second rows in bedding designs, 10c each. 25c for 3; \$1 for 12; \$6 for 100.

VARIEGATED SILVER LEAF VARIETIES

Madam Pollock... Green disc, bronze zone, edged silver, 30 cents.

IVY-LEAVED GERANIUMS

They are the grandest of all house plants, or for baskets or vases. They can be grown to droop or climb, as desired.

Double Red. Bright cherry red.

Joan d'Arc. Perfectly double; flowers white.

Madam Thibut. Beautiful rose pink, very large trusses.

Price of Ivy Geraniums. Small plants, 20c each, 3 for 50c; large plants, 30c.

BEST STANDARD SINGLE VARIETIES

The following are the best varieties on the market today. They are the best there is for basket, window box and for bedding outside.

Alice Rothchild. Very large, light pink.

Snow Queen. Single pure white.

Mrs. E. G. Hill. Salmon pink, very good bedder.

Telegraph. The foliage is dark green with heavy zone; flowers reddish deep orange.

Clifton. Intense scarlet. Free bloomer.

Granville. Deep rose pink.

BEST STANDARD DOUBLE VARIETIES

Jean Viaud. Semi-double, of largest size; pure soft pink with two white blotches.

S. A. Nutt. The best of all rich, dark crimson varieties. Of perfect shape and large size.

Helen Mitchell. An improved A. Richard. Semi-double, orange scarlet. A grand bedder.

Beaute Poitevine. Semidouble salmon pink, dwarf grower.

E. Blanck. Dark wine, almost purple. A very distinct and striking color. 20c.

Improved Poitevine. Taller grower than Beaute Poitevine, clear salmon pink, early bloomer.

Improved Countess. Deep pink, graduating to salmon toward the edges, dwarf habit.

Ruby. Dark wine color, dwarf grower.

Rosalia. Tall, strong grower. A purplish crimson, very showy bedder.

Mrs. Curtis. Light clear scarlet, upright grower.

American Beauty (new). Dwarf habit, color deep majenta pink. Very prolific, very much admired, 25c.

Mad Buckner. Very large white.

Red Barney (new). Dwarf habit, very free flowering, light clear red.

Mrs. Gloede (new). Rosy cerese, very prolific, fine our door.

PRICE OF ALL GERANIUMS (Except Noted). Small plants 2 inch pots, 10c each. \$1.00 per dozen; second size from 3 inch pots, 20c each; \$2.00 per dozen; \$15 per 100; third size, 4 inch pots, 30c each; \$3.00 per dozen; \$20.00 per 100. Extra large for window box and vase use, 40c each, \$4.00 per dozen. Specimen Pans \$1.00 and \$2.00 each.

Pelargonium or Lady Washington Geraniums

Showiest mass of bloom produced on any soft-wooded plant that we have. The flowers are of good substance, beautifully ruffled and fluted while the colors are perfection in gorgeous shades and markings and of great size and much better bloomer than the older varieties.

Easter Greeting. The new species is the earliest of all Pelargoniums with enormous flowers and clusters having light green foliage and of dwarf robust growth. Blooms from March until fall. The flowers are of a fiery amaranth red with five regular shaped spots.

Swabian Maid. A sort of Easter greeting, reddish carmine with five large black blotches bordered purplish carmine.

Prince Bismark. Very dark crimson, blotched black.

Luck Becker. Very similar to Easter greeting. Color rosy pink.

Gardener's Joy. Enormous clusters, apple blossom pink, two upper petals blotched carbon brown.

PRICE OF PELARGONIUMS

Small plants, 25c each; larger size 50c each; specimen plants, \$1.00 each.



Pelargonium

PANSY GERANIUMS

Mrs. Loyal. The flowers are of medium size and have white throat. Each petal is shaded toward the center with a rich lavender pink and a dark maroon blotch in the center; is of easiest growth, dwarf in habit and literally covered with flowers, 25c and 50c each.

LANTANA

Quite tender. They are strong-growing and very free-flowering. Valuable as bedding plants, standing the sun very well; also good for planting in pots. 20c each. Large size 30c and 50c.

Aurora. Strong grower, yellow.

Jubil. Purest white, a most beautiful flower.

L. Poitevine. Beautiful rose, rather dwarf.

Radiation. Brilliant red, center orange.

Weeping. A beautiful trailing variety, very desirable for planting in hanging baskets, vases, pots or open ground. Bears an immense profusion of lovely clear pink flowers from early summer until late in the fall.

HIBISCUS

Rapid-growing tropical shrubs with rich scarlet blossom—fine for summer bedding. 25c each; larger size 50c.

IVIES

English. An old favorite vine; hardy in the South, but will not stand our Iowa winters. Amber shaded Apricot, 20c each.

Kentworth. An old familiar trailing ivy. Perhaps the best for shaded places or rooms where the light is not strong. Each 10c.

Parlor. Well known ivy which is very popular as a plant for hanging baskets and vases. Easily grown. Each 10c, 3 for 25c; large 25c each.

MOONFLOWER

Strong-growing climber reaching a height of 40 feet by October 15, if planted in rich ground, exposed to the sun.

White. (*Ipomoea noctiflora*.) Flowers 5 inches in diameter and pure white, with five pointed star in the center, 25c each.

Blue. (Learl.) Flowers deep azure blue 4 inches in diameter. Very pretty. 25c each

A Select List Of Best Dahlias

In case we are sold out of any variety Dahlia we will substitute another variety same color and type.

Always stake your Dahlias as soon as they are tall enough, using good stout stake at least 4 feet high. In the fall, after hard frost, cut the tops off within 3 inches from the ground, take up and store in a cool cellar free from frost.

SPECIAL OFFER ON DAHLIAS. We have a fine lot of best named varieties that did not bloom early enough last year to true up. We offer them in assortment divided clumps—7 for \$1.00. They will give you satisfaction, as they are not only cheap, but they are valuable sorts.

David Harum. Bright orange scarlet with crimson shadings.

H. Patrick. Waxy white, (Decorative).

Jack Rose. Rich velvety crimson, (Decorative).

Mina Bingle. Largest size rich glowing scarlet.

Sylvia. White shading to pink.

Jack's Discovery. White, mottled violet rose.

Delice. Beautiful soft rose pink.

Aurora. Delicate rosy apricot, shaded lighter. (Cactus).

J. H. Jackson. Velvety blackish maroon (cactus).

Marjorie Castleton. Soft pink (cactus).

A. D. Livoni. Beautiful soft pink. Quilled petals.

Robert Broomfield. Pure white (Show).

Yellow Duke. Pure canary yellow.

Price of Named Dahlias, 30c each, 4 for \$1.00.

BEDDING PLANTS

The Following Are Especially suited For Bedding: *Acalpha*, *Alternanthera*, *Alyssums*, *Dahlias*, *Daisies*, *Feverfew*, *Forget-me-nots*, *Heliotrope*, *Lantanas*, *Marguerites*, *Pansy*, *Petunia*, *Achryanthus*. Also seedlings as quoted.

The following Are Especially Adapted For Vases and Window Boxes: *Alyssum*, *Asparagus Sprengeri*, *Crotons*, *Dracaena*, *Geraniums*, *English Ivy*, *Tradescantia*, *Vincas*, *German Ivies*.

In the following list will be found those especially suited for bedding, space not permitting a more general description in body of catalogue.

Alternantheras. Red and yellow, 60c per dozen, \$4.00 per 100.

Achryanthus Emersoni. Unexcelled for bedding, rich red solid color, 75c per dozen, \$4.50 per 100.

Achryanthus McNalli. White and green. 75c per dozen.

Cuphea. Ladies' Cigar plant, 10c each.

Centurea Gymnocarpa (Dusty Miller). Fine for edging beds, 10c each, 75c per dozen, \$4.50 per 100.

Lobelia, Crystal Palace. Dwarf blue. Fine for borders; stands sun and heat well. 10 cents each, 75c per dozen.

Lobelia Gracilis, Blue and White. Trailing suitable for baskets of window bordering. 10c each, 75c per dozen.

Pyrethrum or Gold Feather. For bordering beds, keeps its color throughout the summer, 5c each, 60c per dozen.

Caladium Esulentum. For center beds. Started in pot, 30c and 50c each.

Those wanting large quantities of bedding plants, such as *Geraniums*, *Coleus*, *Alternanthera*, *Cannas*, etc., will do well to submit their lists to us before buying.

GREENHOUSE PLANTS

General list, in which, owing to limited space, we are obliged to omit descriptions.

Pilea. (Artillery Plant). 10c and 20c each.

Lobster Cactus. (Christmas Cactus). 25c each.

Cobea Scandens. A grand climbing plant for porches; purple or white cup-shaped flower, 25c each.

Cyperus Alternifolius. (Umbrella Plant). 15c 25c and 50c.

Cineraria. Large flowering plants. February, March, April delivery only. 50c and 75c.

Impatiens Sultanii. 10c each, \$1 per dozen.

Madeira Vine. 5c each, 50c per dozen.

Stevia. Beautiful sprays of small white flowers; blooms in the fall. 10c each.

SEEDLINGS SUITABLE FOR BEDDING

We annually grow a large quantity of seedlings for our own use. Nearly all this stock is pot grown and especially suited for immediate effect. All pot grown and will give results.

Hardy Dianthus. \$1.00 per dozen.

Annual Chrysanthemum. \$1.00 per dozen.

Dwarf Calendulas. \$1.00 per dozen.

Zinnias. Tall kind, \$1.00 per dozen.

Zinnias Dwarf. \$1.00 per dozen.

Snapdragon. Best kinds assorted colors, 3 inch pot grown, \$1.00 per dozen.

Stocks. \$1.00 per dozen.

Pansies. 60c per dozen.

Larkspur. Annual, \$1.00 per dozen.

Cockscomb. \$1.00 per dozen.

Asters. Finest assortment of kinds and colors. 50c per dozen, \$3.50 per 100.

Candy Tuft. White, 50c per dozen.

Mignonette. 50c per dozen.

Petunia Giant California. \$1 and \$2 per dozen.

Petunia Rosy Morn. 50c, \$1 and \$1.50 per doz.

Ricinus (Castor Oil Beans). 25c each, 5 for \$1.00. Large size, 35c each, 3 for \$1.

VEGETABLE PLANTS

Tomato. Best early and late varieties. Not transplanted 25c per dozen. Transplanted 50c per dozen. Extra large pot grown \$1.00 per dozen.

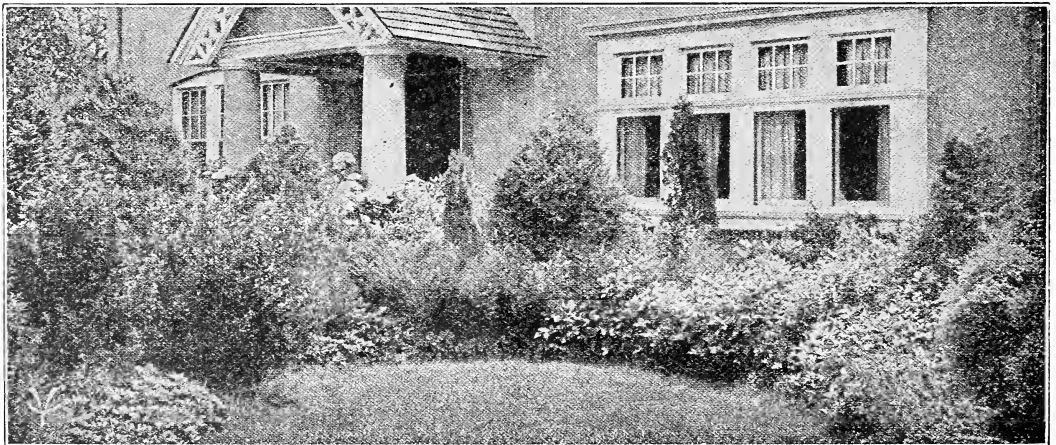
Cabbage. Early varieties, not transplanted, 20c per dozen. 3 dozen for 50c.

Cabbage. Late varieties, not transplanted \$1 per 100.

Egg Plants. 50c per dozen.

Pepper Plants. 50c per dozen.

Sage Plants. Pot grown, 5c each, 50c per doz.



STANDARD COLLECTION OF EVER-BLOOMING ROSES

These Roses are especially suited for summer bedding where large quantities of blooms are wanted. Are not hardy in this climate.

Bon Silenc. Bright cherry crimson; strong vigorous grower; wonderful bloomer.

Duchess de Brabant. Light rose, heavy, shading of amber and crimson.

Gruss an Teplitz. Richest scarlet, shading to a velvety crimson; larger than Hermosa.

Hermosa. Rosy Pink. An old garden favorite.

Mad. Cecil Bruner. Popular baby pink rose, comes in clusters, used largely for corsage.

COLLECTION OF TEA ROSES

The flowers are much larger and more perfect than the preceding list but not in such quantity.

Madam Cochet. Rich healthy foliage, longer stout stems, extra large and full. Bright rose.

Mad. Butterfly. A glorified sport of Ophelia, a wonderful shade of old gold, orange and yellow.

Kaiserine Aug. Victoria. Best summer bloomer white.

White Killarney. Identical with pink, except color, which is pure white.

Columbia. The Rose of all Roses, beautiful, clear, glistening pink, exceptionally strong grower, long stems, keeping qualities are very good. One of the best summer flowering roses.

Premier. Deep rose pink and very free flowering. Large size, good keeper.

Mrs. Coolidge. Similar in growth with Ophelia. Color, clear golden yellow.

Commonwealth. Strong, rugged grower, very dark pink. A strong grower and splendid summer bloomer.

American Legion. A wonderful grower and producer. A beautiful light, clear red.

Sensation. Very large pointed bud. Strong grower, a rich velvety crimson.

Templar. Is not a big rose but is a wonderful bloomer. Very free, dark rich red.

PRICES OF ALL TEA AND EVER-BLOOMING ROSES

Except where noted, first size, 15 cents each, \$1.50 per dozen; second size, 25 cents each, \$2.50 per dozen. Our selection, ten strong plants from 3-inch pots, especially suited for summer bloom, for \$1.75, by express. These will give you more satisfaction than \$3 invested in cheap little roses.

BABY RAMBLERS

All perfectly hardy and wonderful blooming qualities. Grow about 24 inches high, are ideal for bedding out as they flower almost continuously. Flowers in clusters like Crimson Rambler.

Pink Baby Rambler Dorothy. Clear rosy pink, equal in growth to the red.

Erna Teschendorf. Plant vigorous, foliage dark and glossy. Flowers rich crimson.

Jessie. An ideal Rose, possessing bright green foliage exempt from mildew, with a bushy branching growth; bright cherry crimson.

Edith Cavel. Bright crimson.

Ellen Paulsen. Dark pink.

Baby Tausendschoen. Similar to the climbing variety, its charm lays in the variable coloring, changing from white to shades of pink.

PRICE OF BABY RAMBLERS

Medium size, 50c each; large specimens, \$1.00, \$1.50, \$2.00 and \$3.00 each.

We have them in bloom in larger sizes at this price for Easter, Decoration Day and Mother's Day.

BENCH GROWN ROSE PLANTS

Ready May 1st to 10th

Columbia, American Legion, Commonwealth, Gold Mine, Butterfly, Premier, Sensation. Large two and three yearold plants. If cut back hard and planted early in season will give you a wealth of bloom, and the price is very reasonable. 25c each, \$2.50 per dozen, \$18.00 per 100.



Baby Rambler

HYDRANGEA

These beautiful shrub plants are valuable for lawn or porch decorations when planted in pots or tubs. The large clusters of flowers resemble those of the Snowball, being larger and remaining on the plant from two to three months.

Thomas Hogg. Large pure white, free bloomer.

Otaska. Bright pink. Sometimes tinted blue; dwarf, sturdy habit; profuse bloomer.

Avalanch. A splendid large white.

E. G. Hill. Of immense size, beautiful pink.

We also have a number of best early French varieties in larger sizes. State color wanted.

PRICE OF HYDRANGEAS

25c each; larger size, 50c.

Specimen plants in bloom during spring and early summer, \$1.00, \$1.50, \$2.00 and \$3.00 each.

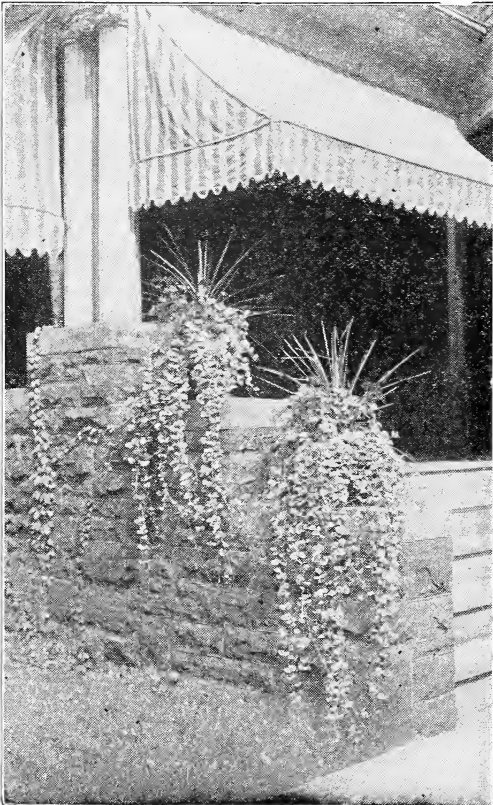
THE CARDINAL CLIMBER

A NEW TENDER CLIMBER

Very strong grower, beautiful fern-like foliage literally covered with a blaze of fiery cardinal red flowers, from mid-summer till frost. 25c each, 5 for \$1.00.

CYCLAMEN

Giant Flowered. Most beautiful and decorative of all pot plants, for winter and spring blooming. Foliage broad, massive and graceful, of dark green, beautifully variegated with silver and rose. The flowers are carried on long stems and produced in profusion for several months. First size, separate colors, suitable for next winter's bloom at 25c each. Large size in fall, \$1, \$1.50.



Vinea with *Draciana indivisa* in center.

PALMS

Kenita Belmoreana. An elegant species in which the Pinnae are beautifully curved and reflexed. One of the easiest to grow in cultivation. Nice plants \$1 each; large size, \$2, \$3 and \$5 each.

Kenita Forsteriana. Similar to the preceding, but taller and more robust. Nice plants, \$1 each. Large size, \$2, \$3 and \$5.

Arcaea Lutescens. A most elegant palm, \$1, \$2 and \$3 each.

Latania Borbonica. (Chinese Fan Palm.) One of the most desirable for general cultivation. Especially desirable for center vases, etc. \$1 and \$2.

Phoenix Ruebleana. Dwarf feathery growth. Very suitable for center of fern dishes. Takes the place of cocoa palm and easier to grow, 75c and \$1.00.

PANSIES

The Pansy begins to bloom in February and continues until late in the fall. Should be placed in very rich soil and watered freely. We offer a fine collection of carefully grown, from pots, that are sure to give satisfaction and bloom freely.

Our Special Mixture. Containing a fine mixture of all varieties. 60c per dozen, \$4.00 per 100.

SALVIAS

The Salvias now rank with the geranium in importance as a bedding plant. These French varieties are especially valuable on account of their dwarf and compact habit, and coming into bloom in mid July.

Clara Bedeman. Tall, upright grower.

Fireball. Dwarf compact habit, very free flowering. Flowers brilliant scarlet.

PRICE OF SALVIAS

First size, 10c each, \$1.00 per dozen, \$6.00 per 100. Second size, 15c each, \$1.50 per dozen, \$10 per 100. Third size, 25c each, \$2.00 per dozen; \$16 per 100.

VERBENA

Is one of the prettiest and most popular of the flowering plants suitable for forming beds on the lawn. It commences to flower and spread from the first day the plants are set until late in the autumn. Colors are white, blue, purple, pink, rosy, crimson, striped. 75c per dozen, 4 for 25c.

Verbena Beauty Oxford. A very large, rosy-pink variety. 10c each, \$1.00 per dozen.

Helen Wilmot. Salmon pink. Large size 10c each, \$1.00 per dozen.

SANSEVIERA ZEYLANCA

The leaves grow to a length of 3 to 4 feet and are beautifully striped crosswise, with broad white variegation on a dark green ground. 25c each; large size, 50c each.

VINCA

This great window-box and hanging-basket plant increases in popularity each year.

Major Variegata. A beautiful variegated trailing plant. Leaves glossy green, broadly margined with creamy white; flowers blue, 15c and 25c each, \$1.50, \$2.50 per dozen. Extra large, 40c each, \$4.00 per dozen.

Green Variety. Similar to the variegated, but leaves beautifully dark green. 10c and 20c, \$1.00 and \$2.00 per dozen.

Hardy Green Vinca. Very suitable for grave use, 15c each, 4 for 50c.

Vinca Flowering. Pink and white, blooms all summer. Fine for out door bedding, 10c each, \$1.00 per dozen; large size 20c each, \$2.00 per dozen.

VIOLETS

Mrs. C. W. Fry. Long stems and large flowers, deep blue. Very prolific, 15c each.

SMILAX

There is no climbing plant in cultivation for winter use that surpasses this in the graceful beauty of its foliage. Of no use outside in summer, 10c each; large size 20c each.

HARDY ROSES—A Selection of the Best

Knowing that there is a greater loss of Hardy Roses than any other dormant plant, it shall be our earnest endeavor to supply our customers with the very best plants possible, guaranteeing them to be in good condition when shipped.

HOW TO PLANT—VERY IMPORTANT

When planting, care should be taken to set the plants deeply, planting them at least two inches below first point or branches and pounding the soil firmly around the roots. Don't crowd the roots, but dig a good, large hole, spreading out the roots; work the soil around the roots and pack firm as you fill the hole. When about two-thirds full of soil, give thorough watering, then when water soaks away, fill up the hole and firm the soil with your boot. Never for an instant expose the roots to the hot sun. If weather is very warm, protect the dormant plants with straw, sacking or other protecting material, until the tops swell, gradually accustoming them to the light and air. By carefully observing above, you will have no trouble to make your dormant plants thrive, where by careless planting and after-care, one-half will die.



Winter Protection for Rose Plants. This may be done with material most convenient at hand, such as leaves, straw, light manure, street sweepings, pine or cedar boughs, etc. Large Rose bushes will stand several degrees of frost and the covering should not be put on until winter has set in.

How to Make Roses Bloom. In the axel of each leaf is a latent bud. Should the long, strong shoots or branches be placed and kept in a horizontal position, each latent bud will produce many flowers. Cut wooden hooks and peg the long straight shoots firmly to the ground. These branches will not only flower early and late, but will make robust wood, which can be treated in the same manner the following spring. Monthly and Hybrid Roses can thus be made to bloom continuously.

Suckers. Always remove any suckers that come up at side of plants—they are from the root graft of the rose, and they will not bloom and only rob the vitality of the plant.

HYBRID PERPETUAL ROSES

- Frau Karl Druschki.** One of the finest pure white roses.
- General Jacqueminot.** Rich, velvety, crimson, changing to scarlet crimson. Very fragrant.
- Magna Charta.** Extra large, full flowers; very double, clear rose, blushed with carmine.
- Mme. Plantier.** Grows in bush form, flowers in great abundance in June. Pure white.

Mrs. John Laing. Beautiful soft pink, delicious fragrance; of exquisite shape; very large and double.

Prince Camille de Rohan. Rich, dark velvety crimson, passing to maroon shaded black.

Ulrich Brunner. It is of a rich glowing crimson scarlet color. Free, continuous bloomer.

PRICE OF HARDY ROSES

Strong, pot-grown, two-year-old, April and May delivery. 75c each; \$8.00 per dozen.

ROSA RUGOSA

Rugosa Roses are sturdy bushes, 3 to 5 feet in height, and are covered with glossy green foliage and clusters of beautiful single flowers, which emit a fine odor. They bloom continuously and are covered during autumn with bright red pods.

F. J. Grootendorst. Small red flowers in clusters.

Rugosa Rubra. Single crimson.

Sir Thomas Lupton. Snow white.

PRICE OF RUGOSA ROSES

60c each, \$6.00 per dozen.

HARDY CLIMBING ROSES

Dorothy Perkins. Strong, vigorous growth. Flowers are borne in clusters, of a beautiful shell pink, full double.

White Dorothy Perkins. A seedling of Dorothy Perkins. Magnificent clusters of gleaming white flowers.

Crimson Rambler. Everybody knows this rose. Magnificent and hardy everywhere.

Tausandschon. Means, "Thousand Beauties." The color runs from delicate rose through shades of bright rose and carmine with white, yellow and other tints.

Dr. Van Fleet. Very dark pink, hardy and splendid bloomer. Flowers of good size.

Mary Wallace. Described as a pillar Rose, making a fine strong, self-supporting plant 6 to 8 feet high, with large glossy foliage, blooming with great freedom in spring and bearing a considerable number of fine buds in summer and fall. Flowers very large, generally exceeding 4 inches across; well formed, semi-double, of a bright clear rose-pink salmon base to the petals.

Paul's Scarlet Climber. No other climbing Rose can compare with this for brilliancy of color which is maintained until the petals fall. The flowers, a vivid scarlet, are of good size, semi-double, very freely produced in clusters of from 3 to 20 flowers each on much branched canes, the plants being literally covered from top to bottom with bloom. It is of strong climbing habit and perfectly hardy. This is one of the most popular climbing Roses.

PRICE OF CLIMBING ROSES

Strong two-year dormant plants, 65c each, \$7.00 per dozen.

HARDY PLANTS, SHRUBS, VINES, ETC.

(Ready for shipment April 15 to May 10. Send us your orders, as early as possible.)

We carry in stock only the best and most popular varieties of hardy shrubs.

Larger sizes will be shipped by express direct from the Nurseries.

Almond. Double white and double pink. 2 to 3 feet. \$1.00 each.

Barberry. Japanese. (For hedges.) 15 to 18 inch, 25c each, \$2.50 per doz. \$15.00 per 100. 18 to 24 inch, 40c each, \$4.00 per dozen.

Box Barberry. Grows like box wood, 12 to 15 inches, 50c each, \$5.00 per dozen.

Dogwood. Red branches, 2 to 3 feet. 40c each.

Cottoneaster. (For Hedges) 18 to 24 inches, 35c each, \$3.50 dozen.

Duetzia. Pride of Rochester. 2 to 3 feet. 50c each.

Deutzia Gracilis. Dwarf habit, 12 to 15 inches, 40c each, \$4.00 per dozen.

Elder Golden. 18 to 24 inch, 40c.

Forsythea Fortunei. (Yellow) 15 to 18 inch, 25c each.

Honeysuckle Bush Rosea. 18 to 24 inch, 35c.

Honeysuckle Bush Red. 18 to 24 inch, 35c.

Lilac. Common white and purple. 2 to 3 feet, 50c each.

Lilac. Best French in white, blue, lavender and purple. \$1.00 each.

Syringa (Mock Orange) 18 to 24 inch, 40c.

Snowberry. White and Red. 18 to 24 inch, 35c each, \$3.50 per dozen.

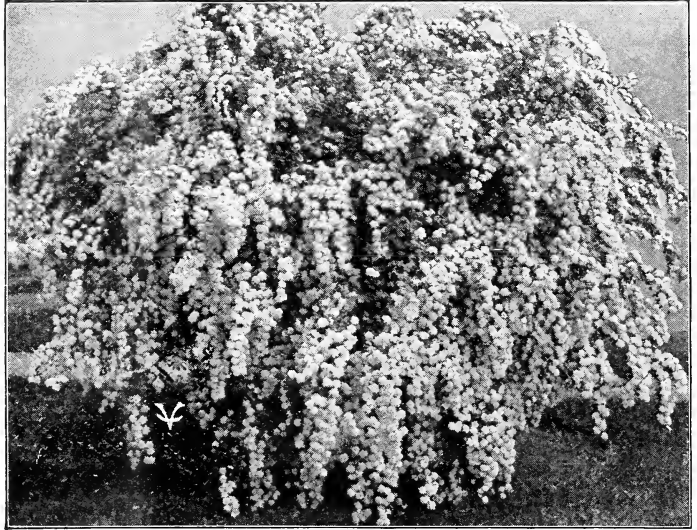
Hydrangea Paniculata. 18 to 24 inch, 60c \$6.00 per dozen, 2 to 3 feet, 85c, \$9.00 per dozen.

Hydrangea Arborescens (Snowball Hydrangea) 18 to 24 inch, 60c each, \$6.00 per dozen.

Snowball. 18 to 24 inch, 60c each.

Spirea Antony Waterer. (Red). 12 to 15 inch, 35c, \$3.50 dozen. 15 to 18 inch, 45c, \$4.50 per dozen.

Spirea Billordi. (Rose), 2 feet, 30c each, \$3 per dozen.



SPIREA VAN HOUTI. The most showy of all Spireas and one of the best flowering shrubs in cultivation.

Weigelia Rosea. 15 to 18 inch, 35c.

Weigelia Candlea. (White) 15 to 18 inch, 35c.

Weigelia Eve Ralke. (Red), 18 to 24 inch, 60c.

Privet Amoor. 18 to 24 inch, \$2.00 per dozen, \$12.00 per 100.

Spirea Van Houti. (Bridal Wreath) 18 to 24 inch, 25c each, \$2.50 per dozen, \$15 per 100. 2 to 3 feet, 40c each, \$4.00 per dozen, \$24.00 per 100. 3 to 4 feet, 75c each, \$7.50 per dozen.

HARDY CLIMBING VINES

Ampelopsis Engelmanni. 40c each.

Ampelopsis Veitchi or Boston Ivy. 60c each, \$6.00 per dozen.

Ampelopsis. (Woodbine), 30c each.

Aristolochia. (Dutchman's Pipe) \$1.00 each.

Bignonia. (Trumpet Vine), 40c each.

Cilastris. (Bittersweet), 40c each.

Clematis Panicalata. (Small white), 30c and 50c each.

Clematis Henri. (White), **Jachmani.** (Purple). **Mad Ed Andre.** (Red), 75c each.

Honeysuckle Scarlet Trumpet. (Red). **Halls Japan** (variegated) 40c each, 3 for \$1.00.

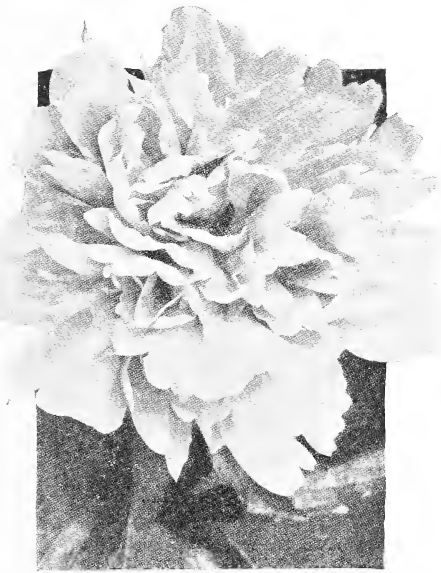
Yellow Trumpet. 60c.

Wisteria. Blue, 50c.

Wisteria. White, 50c.



HYDRANGEA PANICULATA GRANDIFLORA



PEONIES (Divided Roots)

If Sent By Mail Add 5 Cents Each.

Once Planted They Will Last a Lifetime.

Planting. An important point to observe is not to plant too deeply. The roots should be placed so that the crowns (or eyes) are covered with two or three inches of soil. Planting too deep is often the cause of shy blooming.

Plant with the southwest or west exposure.

Plant as early as possible in the spring, as they sprout very quickly. If order is received too late for planting we will hold that part of order and deliver early in the fall.

Dutchess de Nemours. White, 40 cents.

Festiva Maxima. Fine white, 50 cents.

Fragrance. Light red, late, 40 cents.

Philomele. Near yellow, 75 cents.

Rubra Triumphant. Fine red, large open flower, 60 cents.

Alex Dumus. Very early. Brilliant pink.

Edulus Superba. Very early, mauve pink, silver reflex, 50 cents.

Mad Buequet. Velvety crimson, almost black, midseason, 75c.

SPECIAL OFFER

Three Peonies all different, strong roots, for \$1.00. 12 divided roots assorted varieties unnamed for \$4.00. This collection is made up of some of the finest varieties that names have been lost and is a bargain for one who wishes to plant a row in the garden—by express at purchaser's expense.

HARDY PHLOX

F. A. Buchner. Pure white.

Miss Lingard. Very early white.

Rosenburg. Reddish violet, red eye.

C. Elysee. Purplish crimson.

H. J. Wijers. White, pink eye.

Mrs. Chas. Door. Beautiful shade of lavender.

Widar. Reddish violet, white margin.

Eclaire. Carmine, light eye.

LaVogue. Mauve, carmine eye.

Rynstroom. Bright pink.

Sunset. Bright pink.

SPECIAL ON HARDY PHLOX

Six strong, 1 year out-door grown, all different for \$1.00, 12 for \$2.00, not labeled.

PRICE OF PHLOX

Strong pot grown plants, 20c each; 6 for \$1.00. 1 year old plants 30c each, 4 for \$1.00.

IRIS GERMANICA

Caprice. Rosy red

Eldorado. Yellowish bronze.

Flavescens. Pure yellow.

Gertrude. Violet blue.

Kochii. Rich clarett purple.

May Queen. Rose.

Mad Chereau. White veined blue.

Florentine. Creamy white.

PRICE OF IRIS

Divided roots 20 cents each, 3 for 50 cents; 8 varieties, our selection for \$1.20.

Japan Iris. All colors mixed, 40c each, 3 for \$1.00.

HARDY PERENNIALS

Asters Hardy. Blue, white or pink, 25c.

Achillea Perle. 25c each.

Digitalis. (Foxglove), 25c each.

Day Lily. Blue, 25c.

Gypsophila. Baby breath, 25c each.

Gaillardia. Grandiflora bronze and yellow, 25c.

Coreopsis Lancolata. Yellow daisy-like flower, 15c and 25c each.

Hardy Chrysanthemums. Shades of white, red, bronze, pink, 25c each.

Hardy Ferns. Large growing variety, 30c each, 4 for \$1.00.

Daisy. (Shasta), 15c and 25c each.

Shasta Daisy. (H. & J.), early flowering variety, 25c each.

Sweet Williams. Assorted varieties, 20c each.

Hollyhocks. Assorted colors, 15c each, \$1.50 per dozen.

Hardy Pinks. Assorted varieties, 20c each, 3 for 50c.

Trailing Myrtle. Green, for grave use, 15c each, 6 for 75c.

Columbine. (Aquilegia), yellow, blue, white 25c each.

Aquelegia. (Columbine), blue, pink, yellow, 25c

Campanula. (Canterbury Bell) blue, rose, white, 25c.

Delphinium Belledona. Light blue, 25c.

Delphinium Bellemosa. Dark blue, 25c.

Delphinium. White, 25c.

Delphinium. Gold Medal Hybrids. The very finest varieties grown, 25c each, 5 for \$1.00.

Digitalis. (Foxglove), 25c.

Platycodon. (Starflower), blue and white, 25c.

Wall Flower. Mixed, 25c.

Statice Latifolia. Blue, 25c.

Scabiosa Japonicas. Blue, 25c.

Poppy Oriental Hybrids. (Red), 25c.

Poppy Iceland. Yellow, 25c.

SPECIAL OFFER ON HARDY PERENNIALS

Six strong 2-year-old for \$1.00; 12 strong 2-year-old for \$2.00. All different, just the thing for the home garden.

Special Collections for Window Boxes, Vases and Hanging Baskets



Porch Boxes, made of Cypress, Painted Green, Bolted together—8 inches deep and 10 inches wide. 2 ft., \$2.50; 3 ft., \$3.00; 4 ft., \$4.00; 5 ft., \$5.00.

Vincas, Asparagus Sprengeri and German Ivies, medium sizes for boxes and baskets—25c each; \$2.50 per dozen. Large size, 35c each; \$3.50 per dozen.

Boston Ferns—25c, 50c, \$1.00, and \$2.00 each.

Petunias—Rosy Morn, Rose of Heaven, Pride of Portland, (blue), Giant Fancy Mixed, \$1.00 and \$1.50 per dozen. Extra large, \$2.50 per dozen.

Geraniums—All colors for beds and boxes, \$2.00, \$3.00, \$4.00 per dozen.

Daisies—25c and 50c each. **Dracena Indivisa**—50c and \$1.00 each.

State size of box—how much you wish to pay—we will send you a collection suitable.

Plant Collections for Vase Use. A For a vase 18 inches across. One Dracaena, 2 petunias, 2 Daisies, 3 Geraniums, 2 Vincas, 2 Asparagus Sprengeri; all strong plants, ready for immediate effect, \$3.00.

Special Vase Collection. B For a vase 24 to 30 inches across: One large Dracaena or Boston Fern, 3 Petunias, 3 Daisies, 4 Geraniums, 6 assorted vines, for \$4.00.

Special Porch Box Collection. C Suitable for 2 ft. box: 2 Boston Ferns, 3 Geraniums, 2 Daisies, 4 Vincas, all strong plants, \$3. For 3 ft. box, \$3.75. For 4 ft. box, \$5.

Special Hanging Basket Collection. D One Dracaena or Fern, 4 Geraniums, 2 Vincas, 2 Asparagus Sprengeri, Moss and wire basket for \$3.25 by express.

Pots of Assorted Plants. Suitable for lawn and porch use. These pots are made up of Ferns, Geraniums, Vines, Petunias, Etc. Can be easily shipped by express. \$2.00, \$3.00, \$5.00.

PLANT AND FLOWER BASKETS

We make up hundreds of beautiful plant and flower baskets, ranging in price from \$1.50 to \$5.00 and up. These are very suitable for gifts and are also very appropriate for use on graves at Easter, Decoration Day, Mother's Day, and other like occasions. If taken care of they will keep a long time in splendid condition.



Bed of Castor Beans, Cannas, Pennisetum Longistylum, S. A. Nutt Geranium and Mme. Salleroi Geranium, 10 Feet in Diameter

This shows what can be done if plants are grouped correctly. Extended descriptions and prices will be found under their respective heads.

CENTER—Two Castor Beans.

FIRST ROW—36 inches in diameter, 6 Cannas, 18 inches apart.

SECOND ROW—66 inches in diameter, 18 Pennisetum, 11 inches apart.

THIRD ROW—96 inches in diameter, 24 Geraniums, all alike, 12 inches apart.

FOURTH ROW—104 inches in diameter, 40 Geraniums, M. Salleroi, or dwarf petunias or Dusty Miller for border, 8 inches apart.

Price for Entire Bed, Small Size Plants—\$9.00; Larger size plants, \$13.50.

Larger beds, price on application. In ordering state color of Geraniums wanted.

Castor Beans—

Small plants20c each, 4 for 75c
Large plants.....35c each, 3 for \$1.00

Cannas—

Small plants15c each, per dozen, \$1.50
Large plants.....25c each, per dozen \$2.50

Petunias, Rosy Morn or Rose of Heaven. Dwarf for edging, 50c, \$1.00, \$1.50 per dozen.

Pennisetum—

Strong plants15c each, dozen \$1.50

Geraniums—

Small size, 2 in. pots10c each, per doz. \$1.00
Medium size, 3 in. pots 20c each, per doz. \$2.00
Large size, 4 in. pots 30c each, per doz. \$3.25

Geraniums, Mad. Salleroi—\$1.00 per dozen, \$6.00 100.

Petunias. Giant varieties, 10c each, \$1.00 per dozen; large size, \$2.00 per dozen.

FERTILIZERS AND INSECTICIDES

PRICES OF INSECTICIDES

- Tobacco Dust.** 25c per pound, prepaid.
- Tobacco Whale Oil Soap.** 20c per ½ lb., prepaid.
- Nicotine Paper.** 8c per sheet, 4 sheets 25c, prepaid.
- Volek.** Controls scale, mealy bug, white flies, red spider thrips. The best all-around insecticide on the market, ½ pint, 60c; pint 90c; quart \$1.25, prepaid.
- Fertobac.** A preparation of tobacco stems used as a top dressing for fertilizer and insecticide, 20c per pound; 3 pounds 50c.

FERTILIZERS

- Wizard Sheep Manure Makes Plants Grow to Perfection**
- 5 lbs.35c 25 lbs.\$1.25
- 10 lbs.60c 50 lbs.\$2.00
- 100 lbs. \$3.35
- BONE MEAL**
- 10c per pound; 6 pounds for 50c.
- BLOOD AND BONE**
- 10c per pound; 6 pounds 50c.
- SWIFT'S VIGEROLE**
- 10c per pound; 6 pounds 50c.
- 25c pounds \$2.00; 100 lbs. \$6.00.
- WALKER'S PLANT FOOD**
- Very easily applied, either in powdered form or diluted with water. Small can, 25c; large can 40c; prepaid.

Bancroft's Money Saving Collection of Popular Plants

These collections are put up for those who want good small plants, yet do not feel able to pay the higher prices charged for those named in catalogs. We sell many thousands of money saving collections yearly, to satisfied customers. Try them. We know you will be more than pleased.

All orders for our Surprise Collections will be acknowledged and entered on our books as received.

We usually commence to send out the collections of Tender Plants about May 1st, and Hardy Plants, the latter part of April. We cannot promise to send them out before these dates. We cannot permit any change in the composition of these collections or in the time of delivery. Always order by letter.

All collections are strictly our own selection of varieties.

Combine your orders, having them shipped by express, and you will be more than pleased with the splendid value you receive. The cost is so small and the extra value of the plants will more than compensate you for the small amount of express charges YOU will have to pay.

Hardy Plant Collections

If by mail add 10c each collection for postage.

- A—Eight Hardy Perennials, all different, 1 year old for \$1.00.
- B—Six small Hardy Perennials, all different, for 50c.
- C—Eight Choice Hardy Phlox, our selection, for \$1.00.
- D—Twenty Pansies, large plants, all ready to bloom, for \$1.00.
- E—Five two-year-old Hardy Roses, pot grown for \$3.50.
- F—Three Peony, our selection, for \$1.00.
- G—One each, Crimson Rambler, Dorothy Perkins, Baltimore Belle, Prairie Queen, Strong two-year-old plants, for \$2.00.
- H—For \$2.00 we will send 6 Hardy Ornamental Shrubs, our selection of sorts, 2 to 3 feet high.

Tender Plant Collections

- I—12 fine Coleus. Fine plants, all different for 50c.
- J—Nine choice Salvia. Plants from two-inch pots for 50c. Of 12 from 3-inch pots for \$1.00.
- K—Six different varieties of the everblooming Cannas for 90c.
- L—Six assorted Bedding Plants for 50c.
- M—Ten fine named varieties Gladioli, all different, our selection, for 60c.
- N—Six Carnations, all different shades, for 50c.
- O—Six beautiful Geraniums for 50c, two-inch pots.
- P—Ten fine large Rose Plants all ready to bloom, all different, from three-inch pots, for \$1.50 by express at purchaser's risk. This collection will give you results.
- Q—Eight Chrysanthemums, all different, for 50c. 16 for \$1.00. All labeled.
- R—50 assorted annuals like Larkspur, Zinnias, Asters, Stocks and others. All fine pot grown, ready for immediate results, for \$2.00.

SPECIAL ON HARDY PERENNIAL PLANTS

Those that die to the ground every year.

No money you can invest will give you such pleasure and permanent returns as that you invest in Hardy Plants. Once planted they stay, growing in beauty every year. Our stock of these is large and complete and covers such a wide range of variety that we can select what

will give you a complete succession of flowers the entire summer and fall.

We will make up a collection of 25 Hardy Perennials, all different, for \$3.00. Strong one-year-old plants.

This will give you a wonderful variety of flowers almost the entire summer.

SURPRISE COLLECTION OF BEDDING PLANTS

READY AFTER JUNE 1. Every year we have a surplus of some special varieties of bedding plants, such as Roses, Cannas, Geraniums, etc. Those who have a bed they wish to fill late in the season will find this collection of exceedingly liberal value. Orders booked at any time and filled in rotation in June, \$1 for 18; \$2.50 for 50; \$4.50 for 100, strictly our selection of kinds and varieties.

No.....

Names and addresses of friends to whom you would like catalog mailed.

1 { 3 {

2 { Your Name and Address {

INDEX

- Abutilons11
 Acalpha11
 Achilea23
 Achryanthus18
 Ageratum11
 Air Plant, Japan15
 Almond, Flowering22
 Alternantheras18-11
 Alyssum11
 Amaryllis9
 Ampelopsis22
 Apios Tuberosa9
 Artillery Plant18
 Aristochia, Dutchman's
 Pipe22
 Aquelegia23
 Asparagus24-11-4
 Asters, hardy23
 Asters18

 Baby's Breath23
 Baby Rambler19
 Barberrry22
 Baskets7-24-15-5
 Bedding Plants25-18-26
 Begonia Shrubbery11
 Begonia Tuberos rooted.....9
 Begonia, Rex11
 Bignonia-Trumpet Vine22
 Bouquets5
 Boston Ivy22
 Bridal Bouquets5
 Bush Honeysuckle22

 Cactus Lobster18
 Calandula18
 Caladium18-9
 Callas13-9
 Campanula18-23
 Candy Tuft18
 Candytufts25-12-26
 Canterbury Bells23
 Climbing Climber20
 Climbers4-5-13
 Castor Bean25-18
 Centaurea13-18
 Cineraria18
 Chiffon5
 Chrysanthemums18-4-14
 Chrysanthemums, Hardy23
 Cockscomb18
 Celastris22
 Clematis22
 Climbing Plants22-21
 Cobea18
 Coleus11-26
 Cottoneaster22
 Columbine Aquilegia23
 Coreopsis23
 Corsages4-5
 Crotons13
 Cuphea13-18
 Cut Flowers8-7-6-3-4-5
 Cyperus (Umbrella Plant) 18
 Cyclamen20

 Dahlias17
 Daisy23-13
 Daisy Shasta23
 Day Lily23
 Designs5-6-7-8
 Digitalis23
 Delphinium23
 Dianthus18
 Dog Wood22
 Dracaena24-13

 Dusty Miller18
 Duetzia22

 Easter Lilies4
 Elder22
 Elephants Ears9
 Everblooming Roses19

 Fertilizer25-2
 Ferns24-15
 Fern Dishes15
 Ferns, Hardy23-15
 Feverfew13
 Ficus Elastica15
 Flowering Almond22
 Forget-Me-Not13
 Forsythe Fortunei22
 Fuchsia15
 Foxglove23
 Funeral Designs6-7-8

 Gaillardia23
 Geraniums16-17-20-24-25
 Geraniums, Pansy17
 Gladioli10
 Gloxinias9
 Giant Ismene9
 Gold Feather18
 Gypsophila23
 Gymnocarpa (Dusty Miller) 18

 Hanging Baskets24
 Hardy Lilies9
 Hardy Asters23
 Hardy Climbing Plants 23-22
 Hardy Ferns15-23
 Hardy Perennial Plants.....23
 Hardy Roses21
 Hardy Shrubs, Collection.....22
 Hedge Plants26
 Heliotrope15
 Hibiscus17
 Holly Hocks23
 Holidays4
 Honeysuckle22
 Hyacinthus4-9
 Hydrangea20
 Hydrangea, Hardy22

 Impatiens Sultani18
 Insecticide25-2
 Iris23
 Ivies24-17
 India Rubber Plant15
 Ismene9

 Jardinieres15

 Lantana17
 Larkspur18
 Larkspur, Hardy23
 Lilac22
 Lilies, Hardy4-9
 Lily, Day23
 Lily, King9
 Lobelia18
 Lodge Designs8
 Loose Cut Flowers3-4-5

 Maderia Vine18-9
 Marguerite13-4
 Memorial Wreaths8
 Mignonette18
 Moonflower17
 Money Saving Collections.....26
 Moss15
 Myrtle, Traiting23

 Mysotis13
 Orange Mock22

 Palms20
 Pansies18-20
 Pansy Geraniums17-20
 Pelargoniums17
 Peony23
 Pennisetum25
 Petunias25-18-24
 Phlox, Hardy23
 Plant Collections25-26-24
 Plants, Hardy21-22-26
 Platycodon23
 Pinks, Hardy23
 Poppies, Hardy23
 Pyrethrum18
 Plumosa11-4
 Pilea24
 Porch Boxes18
 Privet22

 Rambler Roses19-21
 Ribbons5
 Ricinus18
 Roses4-5-19-21
 Rubber Plant15

 Salvias20
 Sanseveria20
 Scabrosa23
 Shasta Daisy23
 Smilax4-20
 Snapdragon18
 Snowball22
 Snowberry22
 Special Collections26
 Spirea22
 Sprengerii24-11-4
 Statice23
 Stevia18
 Stocks18
 Seedlings for Bedding18
 Sultani18
 Summer Flowering Bulbs 9-10
 Sweet Peas4
 Sweet William23
 Syringa22
 Symplocarpos (Snow-
 berry)22

 Tea Roses19
 Tradescantia13
 Tuberoses9
 Trumpet Vine22

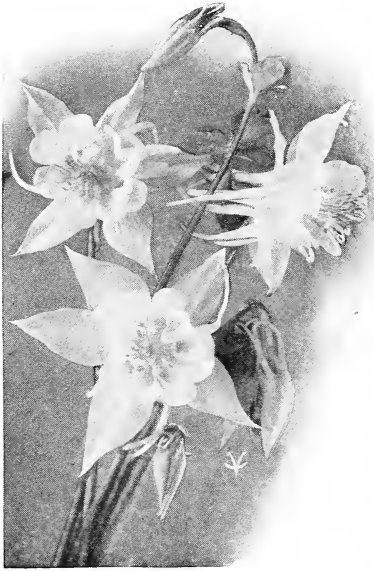
 Vase Collection24
 Verbena20
 Vegetable Plants18
 Vincas20-24
 Violets20
 Vines21-22

 Wall Flowers23
 Wandering Jew13
 Wedding Bouquets5
 Weigelia22
 Wedding Designs and
 Bouquets5
 Wire Baskets15
 Window Boxes24
 Wistaria22
 Woodbine22
 Wreaths, Memorial Day8

 Zephyranthes9
 Zinnias13

BENCH ROSES. For out door planting. Columbia Butterfly, Premier, Gold Mine, American Legion and others. Ready May 1st. These are the best value for out door planting you can buy. If planted in full sun, taken good care of, syringed thoroughly at least every other day, will give wonderful results. 25c each, \$2.50 per dozen, \$18.00 per 100.

PLACE ORDER EARLY



Aquilegia (Columbine)

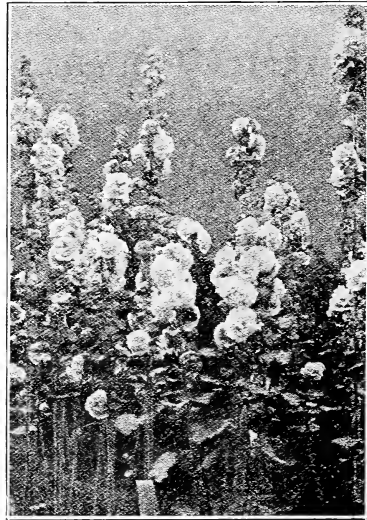
*Old Fashioned
Garden Favorites
That Are Coming Back
Into Popularity
Again*

•••••

SPECIAL OFFER ON PERENNIALS
Twenty fine one and two year old plants,
all different for \$2.00, 45 for \$4.00, by ex-
press at purchaser's expense.
(The old fashioned garden is coming
back.)



Delphinium (Larkspur)



Hollyhocks

JOSEPH BANCROFT & SON

Lock Box 35

CEDAR FALLS, IOWA

Telephone 44