

Historic, Archive Document

Do not assume content reflects current scientific knowledge, policies, or practices.

72,23

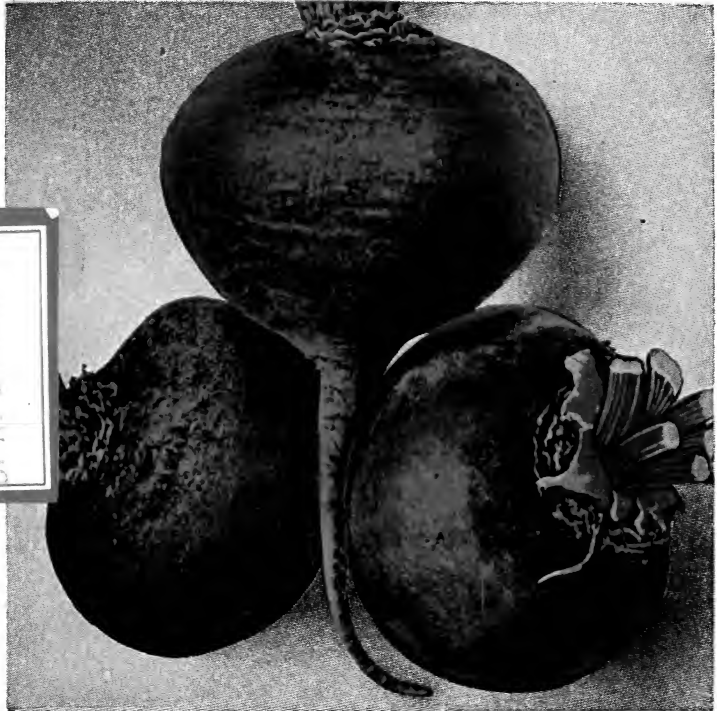
1926

LIBRARY
RECEIVED
★ FEB 3 1928 ★
U. S. Department of Agriculture

H. W. BUCKBEE

SEED AND PLANT

SUGGESTION BOOK



Buckbee's Sunset Blood Turnip Beet

Without exception the best second and main crop variety.
Round as a ball. Dark red color. Tender, fine grained and sweet.

Pkt. 10c; oz. 20c; 2 oz. 35c; ¼ lb. 60c; ½ lb. 95c;
lb. \$1.75, postpaid.

H. W. BUCKBEE

ROCKFORD, ILLINOIS

Rockford Seed Farms *Established 1871* Forest City Greenhouses

D. N. Spermaker



Zinnia—Buckbee's Mammoth Dahlia Flowered.

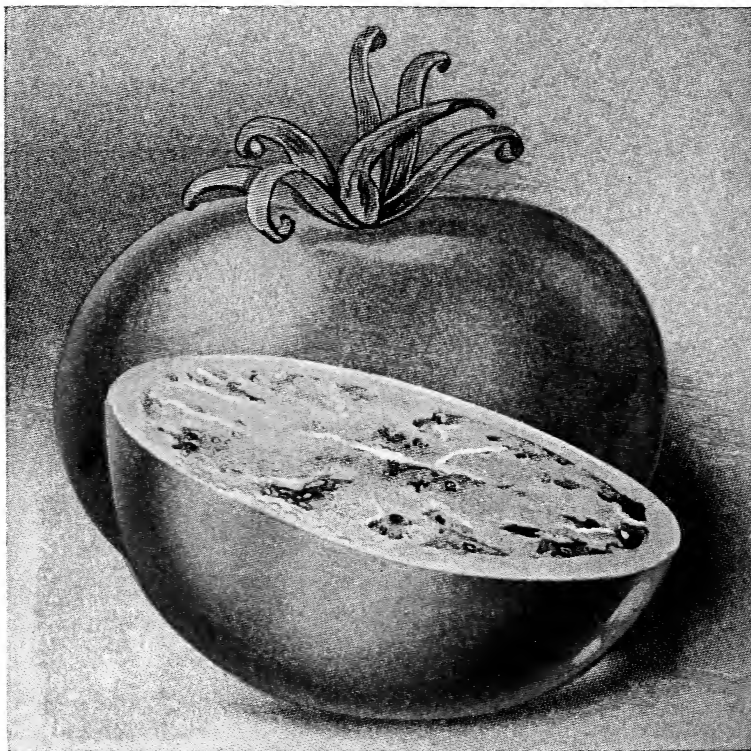
Buckbee's Mammoth World Renowned Dahlia Flowered Zinnia

There is no flower can equal the Zinnia for effect and lasting quality and in our new Dahlia Flowered Zinnia we have a strain that must be grown to be appreciated. Colors that are found in no other flower. Long strong stems and in bloom continuously until frost. Nothing like it ever seen in a Zinnia. Flowers mammoth in size and in appearance more like a Dahlia than a Zinnia. Mixed colors. Pkt. 12c; 3 pkts. 30c; $\frac{1}{8}$ oz. 55c.

Buckbee's Beefsteak Tomato

The King of All Tomatoes

Nothing in the way of a Tomato Creation has ever achieved in so short a time the tremendously excellent reputation that has come to Buckbee's Beefsteak. Growers from every section of the wide world have sent in unsolicited praise and the tests to which they have subjected it leave no room for doubt that it has all the qualities required in a Tomato. Its important features are—Earliness. Large Size, Perfect Shape, Solidity, Handsome Color (which is rich red), Productiveness, Ever-bearing, Fine Flavor, Best Keeper, Splendid Shipper. Pkt. 15c; 2 pkts. 25c; $\frac{1}{2}$ oz. 35c; oz. 60c; 2 oz. \$1.00; $\frac{1}{4}$ lb. \$1.85; $\frac{1}{2}$ lb. \$3.45; lb. \$6.50, postpaid.



Buckbee's Beefsteak Tomato.

**B
U
C
K
B
E
E**

"Full
of
Life"

**S
E
E
D
S**

Buckbee's "Full of Life" Seeds

DIRECT FROM THE GROWER TO THE PLANTER

They are Tested, Reliable Seeds for all Soils and all Climates

They Have Satisfied Every Buyer for 57 Years

NO BOOK ACCOUNTS

TERMS CASH WITH ORDER

USE ORDER BLANK AND ENVELOPE WHICH YOU WILL FIND ENCLOSED WITH
THIS CATALOGUE IN MAKING OUT YOUR ORDER

Customers from Canada and Foreign Countries

Must Remit at Postpaid Price as All Shipments Must Go Prepaid. In Addition Canadian and Foreign Customers Must Send Twenty-Five Cents Additional for Postage and Packing on Each Dollar's Worth of Seeds Ordered

REMEMBER—We cannot accept Canadian and Foreign Postage Stamps.

We Do Not Employ Agents to Sell Our Seeds or Plants

Plant Shipments We always recommend having plants shipped by express when there is an express office near. We guarantee the safe arrival of all plants and roots by Express or Parcels Post to all points in the United States. When plants or roots arrive in good condition our responsibility ceases and we cannot consider plant complaints unless made immediately upon receipt of your order. We do not ship plants to Canada, Mexico or foreign countries owing to Custom House delays.

READ THESE FEW WORDS ABOUT RELIABLE SEEDS

From good seeds only can good crops be grown

Yet a great many contingencies may arise to prevent the best seeds from giving satisfaction, and for all these reasons we cannot, of course, guarantee or be responsible for a crop, as success is dependent upon natural causes, which are beyond human control. Therefore, we do not warrant in any way, express or implied, the contents, or the description, quality, productiveness, or any other matter of any seeds, bulbs, or plants sold by us, and we will not be in any way responsible for the crop. If the purchaser does not accept these goods on above terms, no sale is made thereof, and he must return them at once, and money will be refunded. Subject to above conditions we make this sale, at the moderate prices at which we sell our goods.

FAIR PLAY GUARANTEE

First—We guarantee that all seeds sold shall reach customers in good condition.

Second—We guarantee to hold ourselves responsible for the safe arrival of all remittances sent us by P. O. Order, Bank Draft, Express Order, or Registered Letter.

Third—We guarantee to deliver free of charge in the United States all garden and flower seeds listed in this catalogue, except those quoted at wholesale prices and Field Seeds, Grass Seeds, Potatoes and such other items that are plainly marked to be shipped by Express or Freight at purchaser's expense.

Fourth—We guarantee Buckbee's "Full of Life" Seeds to be just as represented—if they prove otherwise, notify us immediately upon receipt of seeds, sending us the numbered shipping tag which was on the shipment and we will refill order free of charge, or refund money paid us for same.

Rockford
Seed
Farms

H. W. BUCKBEE
ROCKFORD, ILL.
Established 1871

Forest
City
Greenhouses

Buckbee's Improved Bush Lima Bean

Superior Quality, Exquisite Flavor, Fine Color, Good Shipper, Hardy Grower, Enormously Productive Matures Early, Excellent Keeper

This is the very "newest" in the Bush Lima Bean. It greatly excels all other Bush Limas in productiveness, being practically loaded down with pods continuously from early Summer till frost. It matures extremely early, and is a continuous bearer until frost. The bush is sturdy in habit and about 24 inches high, having good large leaves. There are several pods in each cluster, as many as ten having been counted. Each pod contains on an average of four Beans, though there are more containing five than three. In quality the Bean is par excellence, flavor unsurpassed, and color the very best, both before and after cooking. **Postpaid, pkt. 10c; ½ lb. 30c; lb. 50c.**

Buckbee's Early Wonder Bean

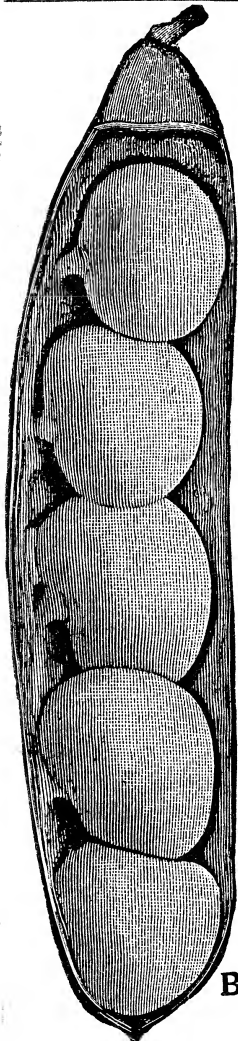
The Earliest Bean, An Ideal Snap Bean; Flavor is Most Delicious

The plants are quite large, grow erect and carry their crop well above the foliage. The pods average about 5 inches in length, usually containing about six seeds, and are round, broad of a dark green color, solidly meaty, extremely brittle and entirely stringless. Flavor is most delicious. Its bearing qualities are unexcelled and it matures its crop very regularly. Buckbee's Early Wonder is one of the most popular Beans grown, on account of its extreme earliness, hardness, great productiveness, freedom from stringiness, and splendid quality. **Postpaid, pkt. 10c; ½ lb. 25c; lb. 45c.**

Buckbee's Everbearing Stringless Pole Bean

Wonderfully Prolific. Continuous Bearer. Absolutely Stringless. White Seeded. Green Podded. Rustless. Extremely Early.

This splendid Pole Bean is an excellent heavy yielder. Robust, hardy and one of the very earliest. The enormous rich dark green pods which are produced in immense clusters often measure from 7 to 9 inches long and contain from 5 to 7 Beans. They are of admirable form, free from coarseness, exceedingly tender and of delicious mild and sweet flavor. The dry Beans are white. **Postpaid, pkt. 10c; ½ lb. 25c; lb. 45c.**

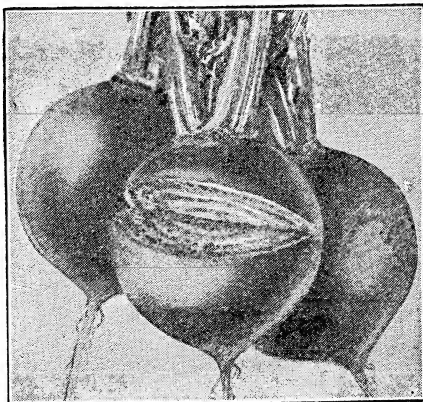


Bush Lima

Buckbee's Earliest of All Beet

Quality Unequaled; Perfect Globe Shape, Smooth and of Rich Red Color

A strikingly handsome Beet, much superior to any other variety equally as early. Its small top, early maturing and the splendid shape and color of the root make it popular with everyone who plants it. Top small, upright growing, so that the rows may be close together. Root globular or ovoid and very smooth. Color of skin dark blood red; flesh deep vermilion red zoned with a darker shade. Very crisp, tender and sweet. **Postpaid, pkt. 10c; oz. 15c; 2 oz. 25c; ¼ lb. 45c; ½ lb. 80c; lb. \$1.50.**



Earliest of All Beet

Buckbee's Mastodon Mangel

The Heaviest Cropping and Largest of All Mangels

It is truly a Mammoth, a single root often weighing 75 pounds and over; in yield it is enormously productive. It grows well above ground and on account of its shape is easily harvested, and is remarkable for its handsome shape and broad shoulders; flesh deep red, fine texture, roots solid, tops small. **Postpaid, oz. 10c; 2 oz. 15c; ¼ lb. 25c; ½ lb. 40c; lb. 75c.**

Buckbee's Select Danvers

The Best Carrot for Every Purpose; Very Uniform in Shape, Size and Color

In this selected strain of Danvers Carrot, we have not only a splendid appearing Carrot, which always sells readily, but a variety which is an extra heavy yielder in any soil. Enormously productive, yielding more than any other table Carrot, and often more than large field Carrots. The flesh is very tender and sweet; it is a valuable Carrot for both table use and for stock, being of very fine bright color, and exceptionally uniform in shape, size and color. **Postpaid, pkt. 8c; oz. 15c; 2 oz. 25c; ¼ lb. 40c; ½ lb. 75c; lb. \$1.25.**

Buckbee's Extra Early Large New Queen Cabbage

The Best and Largest Early Flat Cabbage Ever Grown. The Finest Cabbage for General Use. Make Money Growing Cabbage this Year

Buckbee's Extra Early Large New Queen is a dwarf, compact grower, allowing close planting; a sure header, most uniform in growth and beautiful in appearance; in fact, it possesses all the fine qualities of the best early varieties, it is unexcelled in flavor and always the leader in every market. Practically every plant will form a very large, solid head and will mature earlier than any variety of equal size. Its remarkable hardiness and vigor make it the safest Cabbage to plant. The heads become solid and eatable long before they are fully grown and they will stand well without splitting long after they are fully developed. **Postpaid, pkt. 10c; oz. 40c; 2 oz. 75c; ¼ lb. \$1.25; ½ lb. \$2.00; lb. \$3.75.**



Buckbee's Mastodon Mangel

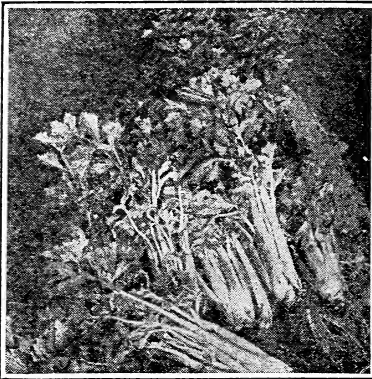


Buckbee's Christmas King Cabbage

Buckbee's Christmas King Cabbage

The Grandest Winter Cabbage. The Largest Cabbage in the World. The Longest Keeper and Surest Header

The grandest late Cabbage ever introduced. The leaves are deep blue, very wide and overlapping each other forming tight, compact heads, which are all very uniform in size and in time of maturity, and are of the most delicious flavor, crisp and sweet. It never bursts, has but few outside leaves and can be planted closer than most sorts and will then produce a larger crop per acre than any other variety. **Postpaid, pkt. 10c; oz. 40c; 2 oz. 75c; ¼ lb. \$1.25; ½ lb. \$2.00; lb. \$3.75.**



All Heart Celery

a specialty and we know Extra Early Chief will never fail to please the most exacting; it is a thoroughbred, pedigree-strain, the grandest large heading, early Cauliflower ever grown. **Postpaid. Pkt. 15c; ¼ oz. 90c; ½ oz. \$1.60; oz. \$3.00; 2 oz. \$5.50; ¼ lb. \$10.00.**

Buckbee's All Heart Celery

Crisp and Brittle—Rich Golden Color—Exquisite Nutty Flavor

The latest and best creation in Celery. The earliest of the Winter Celeries—ready for use about 14 days later than the early self-blanching sorts. It is a very showy sort, with very broad, medium sized stalks, of fine ivory-white color and rich golden heart. Crisp, tender and brittle. The flavor is delightfully rich and nutty. This is the best celery for Winter storage. It is unsurpassed for the professional Celery grower, the home and market garden. **Postpaid. Pkt. 10c; oz. 30c; 2 oz. 55c; ¼ lb. \$1.05; ½ lb. \$1.90; lb. \$3.50.**

Buckbee's New Early Sunrise Sweet Corn

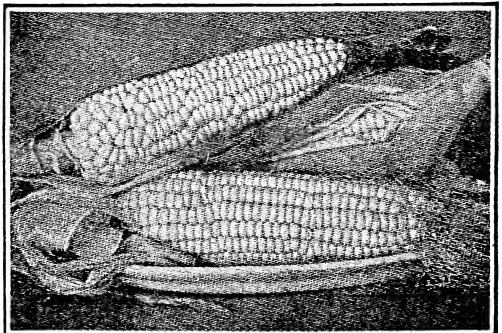
Absolutely the Earliest Good Sweet Corn

The beauty and quality of this remarkable variety give it prominence over all others for family, market, canning, shipping, and, in fact, all purposes. Ears large, grains of great depth, exceedingly tender and sweet. Our seed stock is the highest standard of excellence as the earliest, largest and best on record. This is a very distinct variety which has always proved earlier than any other so-called extra early variety. The ears are about 6 inches long, 10 to 12-rowed; they are very uniform and handsome and have a small white cob. **Postpaid. Pkt. 10c; ½ lb. 25c; lb. 40c.**

Buckbee's First Crop Cucumber

This is the Earliest of All Cucumbers Producing Marketable Fruits of Good Size

The fruits are 6 to 7 inches long, straight, cylindrical, blunt at the ends and of very dark green color, which they retain a long time after picking. They grow very uniform in shape, size and color. The flesh is firm, crisp and of the finest flavor. The vines are healthy, very vigorous and produce a good crop much before any other variety, and continue bearing for an unusually long time. Owing to its extreme earliness, good size, and its beautiful dark green color, it is of great value for the market gardener. **Postpaid. Pkt. 10c; oz. 15c; 2 oz. 25c; ¼ lb. 40c; ½ lb. 75c; lb. \$1.25.**

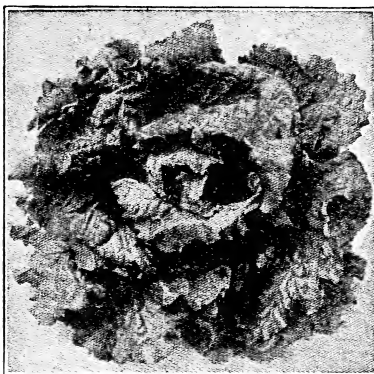


Buckbee's Sunrise Sweet Corn

Buckbee's Ice Drumhead Lettuce

**A Sure Header, Unaffected by Hot Weather
Crisp, Tender and Delicious
Absolutely Free from Bitterness**

Grows rapidly; the heads are as large as Summer Cabbage and as solid. The leaves are thick, broad, light green outside, changing toward the center from a golden yellow to a creamy white. Very tender; never bitter; of deliciously sweet buttery flavor. **Postpaid. Pkt. 10c; oz. 20c; 2 oz. 35c; ¼ lb. 55c; ½ lb. \$1.05; lb. \$1.90.**



Ice Drumhead Lettuce

Buckbee's New Strawberry Musk Melon

Delicious Quality; Rich and Spicy, with the True Strawberry Flavor

Flavor like that of a strawberry, hence the name. The fruits weigh from 6 to 8 pounds each. Its outside appearance compares favorably with the green nutmeg of old, turning to a yellowish hue when fully ripened. Its smooth, deep flesh is of an attractive pinkish rose color particularly soft and melting, and with that exceptionally delicious strawberry flavor leaves nothing more to be desired in a musk melon. **Postpaid. Pkt. 10c; oz. 20c; 2 oz. 35c; ¼ lb. 60c; ½ lb. \$1.10; lb. \$1.95.**

Buckbee's Monte Cristo Water Melon

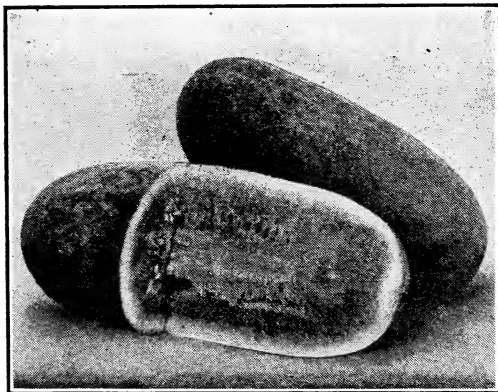
**The World's One Unbeatable Water Melon
The Sweetest Flavored Melon Known**

The Best Variety for the Table—For Shipping and Long Keeping

The sweetest, juiciest, crispest and most solid Melon ever produced, never having a hollow or pithy center when ripe. The easiest to sell on the market, when once tried, people will have no other. This is an early variety, ripening about a week or ten days later than the extra early kinds offered in this book. It is a grand, good shipper, has a firm, solid rind, not too thick, yet will stand the most severe handling. The outside skin is of a rich, dark green color, shaded with faint stripes of a somewhat lighter color. **Postpaid. Pkt. 10c; oz. 15c; 2 oz. 25c; ¼ lb. 45c; ½ lb. 80c; lb. \$1.50.**

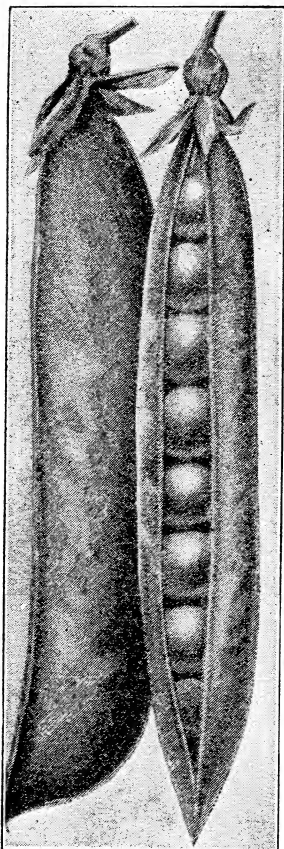
Buckbee's New Sweet Spanish Onion

**The World Beater Onion
The Largest, Sweetest, Best All Around Onion Ever Grown
Light Yellow Color. Good Shipper. Large Globe Shaped**



Buckbee's Monte Cristo Water Melon

In general color and shape it resembles Prizetaker and Denia, but it is a distinct type and neither of these wonderful varieties can ever be compared with our Sweet Spanish. Color is a light yellow or straw color, the flesh pure white, of very fine grain and exceptionally sweet. As Denia is nearly twice the size of Prizetaker, so is our new Sweet Spanish twice the size of Denia. We have seen 7 Sweet Spanish Onions set side by side on a yard stick and reach from end to end. These same 7 Onions weighed over 16 pounds. An exceptionally good keeper, and if allowed to dry thoroughly, will stand shipping long distances. **Postpaid. Pkt. 10c; oz. 30c; 2 oz. 55c; ¼ lb. \$1.05; ½ lb. \$1.90; lb. \$3.50.**



Little Marvel Peas

Buckbee's Little Marvel Peas

**A New Dwarf Extra Early Pea of Unusual Value
in Enormous Demand Among Market
Gardeners**

In season this new Pea ripens with the American Wonder, while the pods usually borne in pairs are more numerous, larger and contain one or two more Peas. Its two striking features are: The beautiful dark green color of the pods and its great keeping qualities. Vines 15 inches high; pods in pairs 2½ to 3 inches long, square at bottom, jammed with 6 to 8 quite large deep green, wrinkled Peas, which are of luscious, sugary flavor. **Postpaid, pkt. 10c; ½ lb. 22c; lb. 40c.**

New Banana Squash

The Best "All Purpose" Squash Grown

This new Squash is a heavy yielder and the best all-purpose variety ever grown. Can be used when quite young and will keep splendidly for a winter Squash. The color is grayish-green, shell soft, so that it can be cut with a knife. It grows from eighteen to thirty inches long and six to nine inches in diameter. Flesh is of high color; entirely free from fibre or stringiness. **Postpaid, pkt. 8c; oz. 15c; 2 oz. 25c; ¼ lb. 40c; ½ lb. 75c; lb. \$1.25.**

Buckbee's

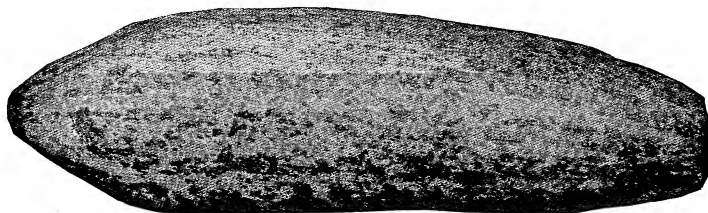
New 50-Day Tomato

**The Largest Fruited, the Smoothest, the Finest in
Quality of All Extra Early Scarlet Tomatoes**

The vines are short, very vigorous, enormously productive and ripen a very much larger crop at the early part of the fruiting season than any other extra early variety. The fruits are globular, always entirely free from wrinkled or cracked fruits, and weigh on an average about 5 oz. each, although many fruits as heavy as 6½ oz. each and over have been found in our fields. The color of the fruits is a beautiful bright scarlet. They ripen evenly, well up to the stem, have no hard core, small seed-cells, and are practically all heavy, solid meat of mild and most delicious sweet flavor. The skin is thin, but very tough, making it a splendid long-shipping variety. **Postpaid, pkt. 10c; oz. 50c; 2 oz. 90c; ¼ lb. \$1.50; ½ lb. \$2.60; lb. \$4.75.**

Buckbee's Giant Ruta Baga

This magnificent Ruta Baga, which is more largely grown than any other, is the largest of all, growing to much greater size than the American Purple Top variety, which is so much used in this country. Bulbs are somewhat oval or slightly oblong in shape; purplish red above and bright yellow below the ground. They are quite smooth with but small tap root and have a small top and very short neck and remain sound and good indefinitely. Flesh is of a beautiful yellow color always sweet, tender, juicy and nutritious. **Postpaid, pkt. 10c; oz. 15c; 2 oz. 25c; ¼ lb. 40c; ½ lb. 70c; lb. \$1.00.**



Buckbee's New Banana Squash

All Packets Offered on This Page Five Cents Each

BEAN—STRINGLESS GREEN POD. Unsurpassed for quality. Enormously productive. The finest green-pod Bean introduced. Tender and of delicious flavor.

BEAN—GOLDEN WAX. One of the earliest and best dwarf sorts for the home and market garden. Standard variety requiring no extended description.

BEAN—BLACK WAX. Unusually productive, very hardy, reliable and of the finest quality. Pods are of medium length, borne well off the ground.

BEAN—GOLDEN CLUSTER—POLE. Well known early and very attractive variety. Strong growing, vigorous, hardy vines. Beans abundant and of excellent quality.

BEEF—EARLY EGYPTIAN. One of the best varieties for forcing. Roots are very dark red, moderately thick, flesh firm, crisp and tender.

CABBAGE—EARLY ALL HEAD. The heads of this splendid variety are round but somewhat flattened, close, firm and very solid, of excellent quality.

CABBAGE—EARLY JERSEY WAKEFIELD. A most excellent sort, surest heading variety, desirable for market and private gardens. Plants very hardy. Heads medium sized and solid.

CABBAGE—MAMMOTH LATE FLAT DUTCH. A favorite everywhere. Quality extra fine and flavor excellent, heads, solid, crisp and tender, keeping in good condition until Spring.

CAULIFLOWER—EXTRA EARLY FAVORITE. Plants compact with few outside leaves. Heads medium sized, round and very white. Splendid sort for all purposes.

CARROT—EARLY CHANTENAY. One of the best in quality for market and home garden. Very productive. Roots half-long of a deep orange-red color.

CARROT—HALF LONG DANVERS. Grown principally for its great productiveness, does well in any soil. Flesh deep-orange, tender and of good quality.

CELERY—GOLDEN HEART. Short stocky growth with a large heart which blanches to a beautiful golden-yellow, crisp, brittle, tender and of unsurpassed flavor.

POP-CORN—SNOWBALL. The finest white variety grown. Splendid yielder; ears averaging 6 inches in length. Unsurpassed for popping.

SWEET CORN—EXTRA EARLY CORY. Extra early, large size, abundant yielder, sweet and tender. The ears are good sized, well filled with large grains to the tip.

SWEET CORN—GOLDEN BANTAM. Owing to its hardness can be planted earlier than other varieties of Sweet Corn. The grains are very tender, unusually rich and fine in flavor.

SWEET CORN—STOWELLS EVERGREEN. The finest of all mid-season varieties, equally good for the home garden and for canning. Retains its white color and delicate flavor canned.

CUCUMBER—SHORT GREEN. Is an early bright green Cucumber of medium size, used extensively for pickling. The flesh is crisp and tender. Our seed very choice.

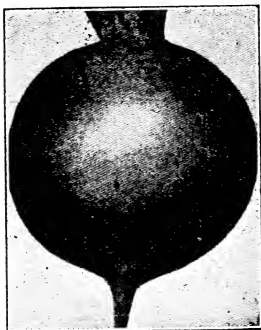
CUCUMBER—LONG GREEN. Vines are vigorous and productive. Fruits uniformly slender and of a beautiful green color. The most popular variety for home garden.

ENDIVE—GREEN CURLED. Very hardy and vigorous grower. Dense mass of leaves formed in the center blanch to a rich cream color. Much used for salads.

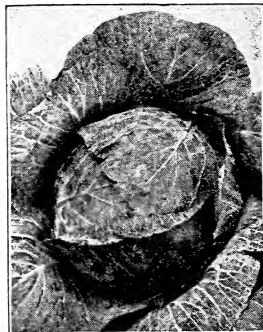
KOHL RABI—PURPLE. Very early with small tops. Leaf stems tinged with purple. Flesh white, desirable for forcing and early out-door planting.



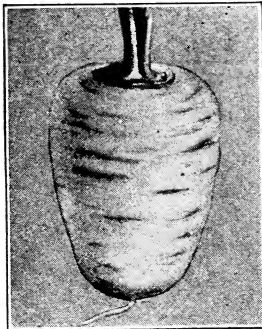
Bean



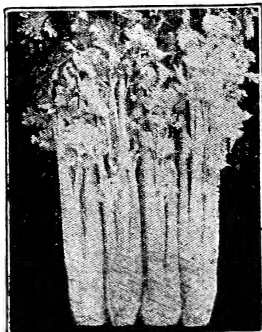
Beet



Cabbage

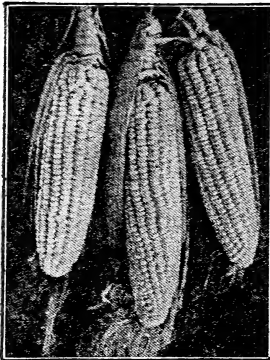


Carrot



Celery

All Packets Offered on This Page Five Cents Each



Sweet Corn

is a favorite with all who have given it a trial.

WATER MELON—ICE CREAM. One of the best for the home garden. The core is of a beautiful crimson color, finely grained and of excellent flavor. Very prolific. You will not be disappointed in this melon with so many splendid characteristics.



Lettuce

Onion of mild flavor, beautiful clear white skin. Great favorite with many to use when young, as a salad. Splendid for fall and early winter use. An excellent medium early variety.

PARSLEY—MOSS CURLED. A vigorous compact growing variety, handsome decorative plant, splendid for garnishing and flavoring. Leaves are finely cut and so closely curled as to resemble moss. The most popular sort.



Peas

LETTUCE—EARLY CURLED. A splendid variety of large clustering growth. leaves nice fresh green color, beautifully curled, sweet and tender.

LETTUCE—HANSON HEAD. The plants are compact forming a large cabbage-like head which remains in splendid condition for a long time. The inner leaves crisp and sweet.

LETTUCE—PARIS WHITE COS. This is considered the best and most reliable of the Celery or Cos Lettuces for home or market garden. The leaves are tender and sweet.

LETTUCE—PRIZE HEAD. This variety is very desirable on account of its hardness; leaves are green tinged with brown, sweet, tender and well flavored.

MUSK MELON—ROCKY FORD. One of the most popular of the small sized melons. The vines are vigorous and productive. The flesh is green and highly flavored. We offer an exceptionally fine strain of this seed. Try it.

MUSK MELON—TRUE OSAGE. This is an excellent variety for the home or market garden. The fruits have a very small seed cavity; the flesh sweet and melting. It



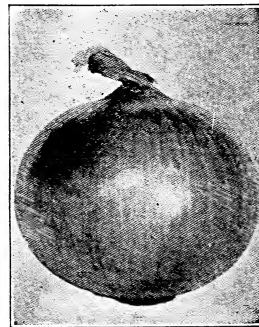
Cucumber

WATER MELON—KLECKLEY SWEETS. Without question, one of the sweetest of all melons. Oblong in shape, skin dark green; flesh bright red, solid and melting. Valuable alike for local markets as well as the family garden.

ONION—RED WETHERSFIELD. The standard Red variety, very productive. The bulbs are large and flattened, yet quite thick. The skin is purplish-red; the flesh is fine grained, rather strong but of pleasant flavor. One of the best keepers.

ONION—YELLOW DANVERS. A productive and extensively used variety of medium size. The skin is light copper-yellow in color; the flesh creamy-white, mild and of excellent flavor. This is the standard, general crop yellow onion.

ONION—WHITE SILVER SKIN. Medium sized variety. Splendid for fall and early winter use. An excellent medium early variety.



Onion

PARSNIP—NEW SUGAR. A very hardy Parsnip, will keep well throughout the winter without protection. Roots large, smooth, white and unusually tender of very excellent flavor. A splendid table variety.

PEAS—FIRST AND BEST. Vines vigorous and hardy bearing 7 to 8 straight pods containing 5 to 7 medium sized Peas of nice quality. Early and productive.

PEAS—LITTLE GEM. A very desirable variety, vines 18 inches high, covered with long pods well filled with sweet tender little Peas. Try them.

PEAS—LATE CHAMPION OF ENGLAND. The seed we offer is selected and will produce a variety we consider equal in quality to any in cultivation. Desirable for home and market.

For Larger Quantities See Page 32

All Packets Offered on This Page Five Cents Each

PEPPER—SWEET MOUNTAIN. Very vigorous and productive. Fruits large, long, very smooth and handsome; flesh thick, sweet and mild flavored. Give it a trial.

PUMPKIN—PIE OR SUGAR. One of the very earliest and best. Remarkably prolific and an excellent keeper. Flesh is thick, fine grained and very desirable.

RADISH—EARLY SCARLET TURNIP. Desirable alike for greenhouse, hotbed forcing and outdoors. Attractive globular form, magnificent glowing bright scarlet color, flesh pure white, crisp, tender and juicy.

RADISH—NEW ROSY GEM. Handsome turnip shaped Radish, a great favorite everywhere. Roots slightly flattened on the underside, color dark scarlet with white tip.

RADISH—FRENCH BREAKFAST. Medium sized roots, oblong in shape, beautiful bright scarlet color with pure white tip. Fine for open ground or forcing. Matures quickly.

RADISH—LONG WHITE ICICLE. Very attractive pure white Radish, the earliest of the long white summer sorts and of most excellent quality. One of the most desirable varieties.

RADISH—LONG SCARLET. One of the brightest and handsomest Scarlet Radishes. The roots are ready for use very early and remain in good condition until fully grown.

RADISH—BLACK SPANISH WINTER. Roots are round, skin almost black flesh is white, very compact, decidedly pungent but nicely flavored. Keeps well during the winter.

SPINACH — SUMMER BROAD LEAF. Large thick, slightly savoyed leaved; strong grower and a splendid market variety. One of the most desirable varieties. Give it a trial.

SQUASH—WHITE BUSH. Very uniform in size and wonderfully prolific. Beautiful clear white color and one of the handsomest of the summer varieties for home use.

SQUASH—GIANT SUMMER CROOKNECK. The color is deep yellow with a very warty surface. Its splendid size and attractive color make it a favorite with market gardeners everywhere.

SQUASH—WARTED HUBBARD. A standard variety and a general favorite. Leader in many markets. Ideal for home or shipping as it carries well. Our seed is very choice.

TOMATO—BEAUTY. A very fine good sized scarlet Tomato; shape attractive, quality the finest. Very desirable for the home garden.

TOMATO—NEW STONE. Standard main crop variety. Enormously productive; fruit large, solid, splendid shape and of finest quality. Unsurpassed for slicing and canning.

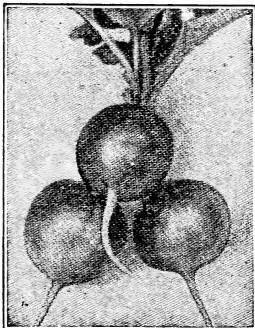
TOMATO—EARLIANA. Extremely early, smooth, bright red of good size and flavor. Vines are small but vigorous and productive. Excellent for shipping.

TURNIP—NEW WHITE FLAT DUTCH. Very early white Turnip, extensively used for table, especially in the south. The roots are medium sized, flesh white, fine grained and sweet.

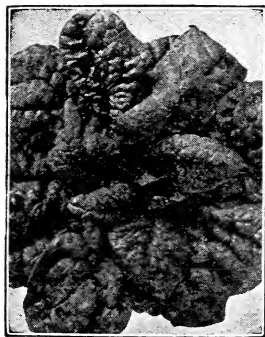
TURNIP—PURPLE TOP STRAP LEAF. Early strap leaved variety. The roots are flat, of medium size, purple above ground, white below. Flesh is white, crisp and tender.

TURNIP—PURPLE TOP WHITE GLOBE. This excellent table variety is globular in shape, of good size and very attractive. Good keeper for an early variety; one of the best for market.

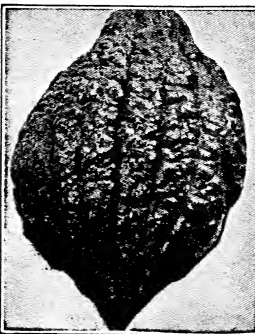
RUTA BAGA—AMERICAN PURPLE TOP. This variety grows to a large size and the flesh is of the finest quality. Excellent alike for table use and stock feeding.



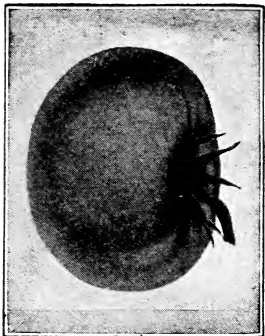
Radish



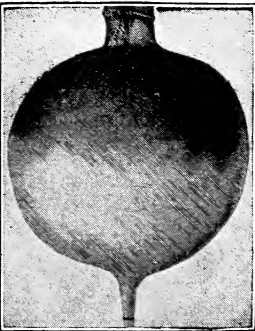
Spinach



Squash

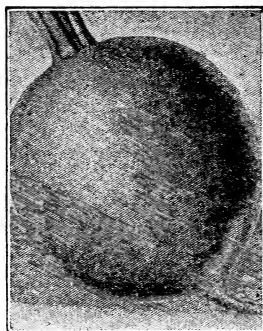


Tomato



Turnip

New Vegetables—See Prices After Each Variety



Beet

BEET—DETROIT DARK RED. One of the best for market and home garden. Tops, small. Roots medium sized, nearly round; and of dark red color. **Packet 8c.**

BEET—HALF LONG BLOOD. Money making variety. Roots symmetrical, of a deep red color; flesh is rich, sweet, crisp and tender. **Packet 8c.**

BEET—BISMARCK BLOOD TURNIP. This medium early table sort is tender, sweet and a good keeper. Roots dark purplish-red, turnip-shaped. **Packet 8c.**

CARROT—EARLIEST GARDEN. Standard Extra Early Forcing Carrot. Roots reddish-orange and nearly round. **Packet 8c.**

CARROT—PRIDE OF THE MARKET. Early, long, rich golden-yellow, splendid quality and fine yielder. **Pkt. 8c.**

CABBAGE—COPENHAGEN MARKET. The heaviest yielding first early Cabbage. Popular with Market Gardeners, and for the home garden. **Pkt. 8c.**

CABBAGE—GLORY OF ENKhuizen. Very early. Heads ball-shaped, thin ribbed, very firm, splendid quality and good keepers. **Packet 8c.**

CABBAGE—DANISH BALLHEAD. Heads, medium size, solid and deep and of a beautiful white color. Quality excellent all winter. **Pkt. 8c.**

CABBAGE—BRIDGEPORT DRUMHEAD. A standard fall shipping sort. Forms a large round, firm head uniform in shape and color. **Packet 8c.**

CABBAGE—RED POLISH. Raised extensively for pickling purposes. Small handsome hard heads of blood-red color. **Packet 10c.**

CAULIFLOWER—TRUE EARLY SNOWBALL. A great favorite with market gardeners. Very early, heads large and compact. **Packet 10c.**

CELERY—GOLDEN SELF BLANCHING. This is the strain used by large Celery growers throughout the country. Stalks crisp, solid, tender. **Packet 8c.**

CUCUMBER—ROCKFORD PICKLING. The finest variety for pickling. Fruit medium size, slender and of dark green color. **Packet 10c.**

CUCUMBER—MONARCH WHITE SPINE. A most profitable Cucumber for gardeners; extremely early; prolific yielder and an ideal variety. **Packet 10c.**

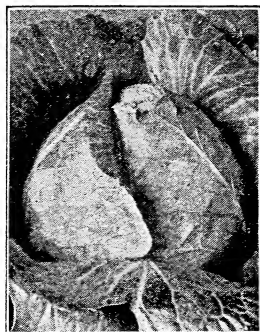
CUCUMBER—EVER BEARING. The vines continue to bear fruit until killed by frost. Fruit of perfect form, rich green in color. **Packet 8c.**

KALE—MOSS CURLED. Makes excellent greens for winter and spring use. Leaves are as curly as Parsley, tender and of fine flavor. **Packet 8c.**

LEEK—AMERICAN FLAG. Of quick strong growth, producing long stems of uniform shape and size. Blanching beautifully white. **Packet 7c.**

HERB—SAGE. The most largely used of all Herbs for seasoning. Hardy perennial. Cut the leaves and dry quickly in the shade. **Packet 8c.**

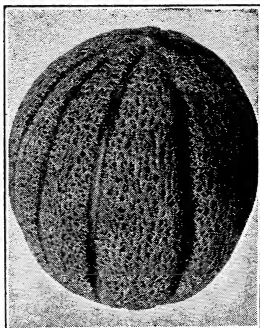
LETTUCE—EXTRA EARLY MAY KING. Handsome, extremely early, compact heading variety. Leaves light yellowish-green tinged with reddish brown. **Packet 10c.**



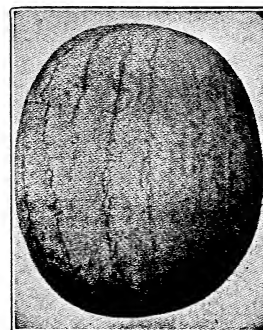
Cabbage



Cauliflower



Musk Melon



Water Melon

For Larger Quantities See Page 32

New Vegetables—See Prices After Each Variety

LETTUCE—ALL SEASONS OR DEACON. An excellent summer variety. Head is of large size, very firm and solid, round and slightly flattened on top. **Packet 8c.**

MUSK MELON—GOLD FLESHED ROCKY FORD. The best medium size melon. Very attractive and of wonderful flavor. **Packet 10c.**

MUSK MELON—HONEY DEW. The sweetest melon ever grown. Good keeper, and very desirable. **Packet 8c.**

MUSK MELON—TRUE TIP TOP. Medium size, rich, juicy, spicy flavor. **Packet 8c.**

WATER MELON—TOM WATSON. Dark green melon of wonderful flavor. Sweet flesh nearly to the rind. **Pkt. 7c.**

WATER MELON—IRISH GRAY. Very desirable, just the right size. Sweet and prolific. **Packet 10c.**

WATER MELON—FORDHOOK EARLY. Extra early melon, flesh bright red and very sweet. **Packet 7c.**

ONION—MAMMOTH SILVER KING. The best white onion, extra large, mild flavor. **Packet 10c.**

ONION—DENIA. An improved Prizetaker, the largest yellow onion grown. **Packet 10c.**

ONION—EXTRA EARLY RED. Earlier and a better keeper than Red Wethersfield, splendid yielder. **Packet 7c.**

PUMPKIN—KING OF THE MAMMOTHS. Good for pies, and will always take prizes at Fairs. **Pkt. 10c.**

PUMPKIN—TENNESSEE. Delicious flavor, makes excellent pies, remarkably fine grained. **Packet 8c.**

PEPPER—CHINESE GIANT. Large, mild and sweet, easy to grow, always pleases. **Packet 10c.**

PEPPER—PIMENTO. The mildest flavored pepper, excellent for salads. **Packet 10c.**

RADISH—CRIMSON GIANT GLOBE. Extra large, early, mild and brittle, flesh bright red. **Packet 8c.**

RADISH—BUCKBEE'S DELICIOUS. Half long, pure white, crisp and tender. **Packet 8c.**

RADISH—ROCKFORD MARKET. Long, bright red, tipped with white, mild and brittle. **Packet 7c.**

RADISH—CELESTIAL WINTER. Pure white, large, good keeper, luscious, mild flavor. **Packet 8c.**

SALSIFY—SANDWICH ISLAND. The true oyster flavor, roots long and thick. **Packet 8c.**

SPINACH—NEW ZEALAND. The only spinach that can be used all summer. **Packet 7c.**

SQUASH—DELICIOUS. Sweet, rich flavor, flesh dark orange—fine grain, good keeper. **Packet 8c.**

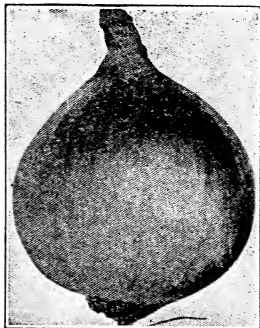
SQUASH—DELICATA. Large, oblong variety of fine flavor, very desirable. **Packet 7c.**

TOMATO—BONNY BEST. Medium early, heavy cropper, bright red color, very smooth. **Packet 8c.**

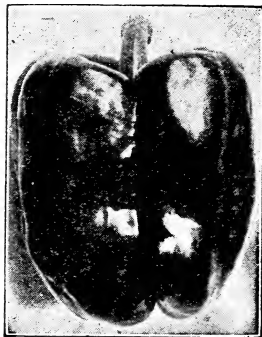
TOMATO—JOHN BAER. Early, smooth, solid and rich deep flesh, bright red color. **Packet 8c.**

TOMATO—PONDEROSA. The extra large tomato. Our stock is very fine. **Packet 10c.**

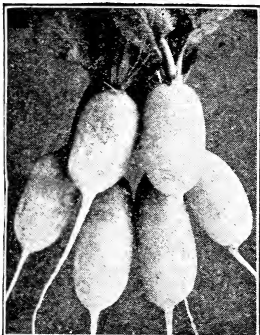
TOMATO—NEW TREE. Upright grower, holding its fruit well above the ground. **Packet 10c.**



Onion



Pepper



Radish



Salsify



Tomato

For Larger Quantities See Page 32

New Sensation Aster

**Deep Ox-Blood Red
Nothing Like it Ever Before
Seen In An Aster**

Entirely distinct from any other Aster, and so superior to others, that it should be in every garden. In size it is two-thirds as large as Honor, and the head is so unusually solid and fine as to never show any center, and so of course very little seed can be found. This is the reddest of all red Asters, the color being a rich garnet or ox-blood red which glistens in the sunshine like a live coal. The plants are of free-branching habit, about 18 inches high; the very double flowers average $3\frac{1}{2}$ inches across, are borne freely on stems a foot long from early in August till the close of September. **Pkt. 10c; $\frac{1}{2}$ oz. 40c.**



New Sensation Aster

Buckbee's Pure Honor Asters

An Entirely New Race of Magnificent Asters

These are wonderful new Asters introduced by us. The blooms average from $3\frac{1}{2}$ to $4\frac{1}{2}$ inches in diameter, produced on long, single stems and about 90 per cent of them have no laterals. They are of a branching variety. Seed stock is limited, however. No garden is complete without this Honor Class and all lovers of Asters should include this wonderful flower in their order. Our mixture comprises many splendid varieties blended in generous proportion. You will want nothing better in a mixture than this. You will be well repaid in satisfaction and pleasure. **Mixed Colors, pkt. about 75 seeds, 12c.**

Bird of Paradise Flower

The Plumage Of The Famed Bird Of Paradise Is This Flower's Only Rival

This striking and attractive flower has lately become widely popular. The blossoms are of a rich golden yellow, about $2\frac{1}{2}$ inches in diameter, produced in large trusses, the most striking feature being the long, incurving stamens and pistils of a beautiful bright crimson color. Seed should be soaked in warm water and started indoors or under glass in a light sandy soil. A sunny situation is required in dry warm soil. Plants should be carefully hardened by gradual exposure to fresh air before going into the open ground. If the seed is started early it will bloom the first year. **Pkt. 12c.**

Cactus

**A Real Curiosity And One Of the
Most Interesting Plants That
Can Be Grown**

The Cactus is one of the oddest appearing plants that have ever been cultivated. There are many different shapes and sizes, most of which blossom very easily. Much pleasure can be had from growing cactus from seed. Everyone is surprised at the odd appearance of a Cactus just sprouting; besides this is the only way to secure new and rare varieties, as no two plants are often alike. If you desire a fine collection sow the seed, start in a warm room in moist sand. The plants are easy to grow, as they endure the heat and dryness of the living room very well. **Pkt. 10c.**



Buckbee's Wonderful Cactus

Columbian Climber

**Remarkably Beautiful,
Quick Growing, Free
Blooming, Annual
Climber**

The most superb of all Annual Climbers and used almost exclusively for decorating the pillars, etc., at World's Columbian Exposition, where its graceful habit won the admiration of all who saw it. It is a splendid, rapid grower, of easy culture, always a dense mass of a rich exquisite green, showing no open spaces. Accompanying the luxurious foliage are large purple flowers of marvelous beauty. There are so few climbers that can be grown easily from seed and so few blue flowers of any kind that our Columbian Climber is especially desirable for use in all gardens. It is rarely troubled by insects and heat and drought do not seem to affect it in the least.

Pkt. 12c; ½ oz. 30c.



Buckbee's Columbian Climber

Delphinium— Buckbee's Gold Medal Hybrids

The Finest Perennial Flower Ever Grown. Easy to Grow and Will Last a Lifetime

This exquisitely beautiful Perennial produces beautiful spikes of immense flowers, semi-double and double, from 2 to 3 feet in length. The colors are very beautiful, ranging from pure white through all the shades of lavender and blue, to deep purple. **Mixed colors. Pkt. 15c; ½ oz. 50c.**

Dianthus Pinks— Rockford Favorite Mixed

One of the Most Useful and Desirable Plants. And for Beauty and Variety of Colors and Markings Cannot be Surpassed

Our New Mixture of Dianthus Pinks comprises over 50 of the choicest Chinese and Japanese varieties, and includes, besides the standard sorts, fringed varieties of late introduction, both single and double. This magnificent mixture contains the cream of the Dianthus family, and unexpected results may be obtained by planting a package. We cannot recommend this mixture to highly. **Pkt. 8c; ¼ oz. 30c.**

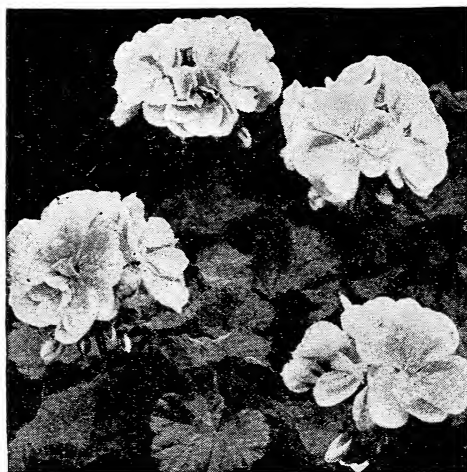
Chrysanthemums

Wonderful Prize Winning Varieties. Easily Grown From Seed. Flowers of Every Color. Unequaled for Bouquets. Most Desirable for House Plants and Flower Beds

BUCKBEE'S LARGE FLOWERING CHOICE MIXED — Best suited for pot culture and cut flowers. These are the famous Chrysanthemums that are grown so extensively by florists for cut flowers. Our seed is saved from our own collection of plants of the best and most varied colored flowers. The practice of raising these flowers from seed is now largely adopted by growers. From a sowing made in February fine plants may be grown which will furnish a magnificent display during the Autumn and Winter months. **Buckbee's Choicest Mixture. Pkt. 12c.**



Buckbee's Beautiful Chrysanthemums



Geranium—California Giants

The perennial varieties do not bloom until the second year, if grown from seed; these annual kinds, however, bloom the first year. They are continuously covered until frost with large flowers—some semi-double, but mostly densely double with fringed petals, and are unusually large. **Double Mixed, pkt. 8c; ½ oz. 20c.**

Moonflower—Giant White Seeded

A Beautiful Climber and Will Grow Thirty to Forty Feet in a Single Season and be Covered Evenings and Cloudy Days with Very Large, Trumpet Shaped Flowers

An improved strain of the well-known great white Moonflower, growing taller, producing larger flowers and in greater profusion. Bears great quantities, yes, hundreds of large waxy flowers of a rich creamy white, with an immense growth of vine and dense glossy green foliage—the real genuine Southern Moonflower, of whose beauty and fragrance so much is told. **Pkt. 12 seeds, 6c; ½ oz. 24c.**

Mignonette—New Red Goliath

The Fragrance is Rich and Powerful and the Keeping Qualities are Remarkable, the Flowers Remaining Fresh in Water for 8 to 10 Days

The grandest Mignonette ever introduced. Remarkable for color, size, fragrance and profusion of bloom. The plants are of strong yet compact growth with rich green foliage. The giant flower spikes are borne on erect, strong stalks and measure from 6 to 8 inches in length, by 2½ inches in diameter. The individual florets are of an immense size, forming a graceful as well as compact spike which is of fire red shade, surpassing all other varieties in brilliancy and color. **Pkt. 10c; ½ oz. 25c.**

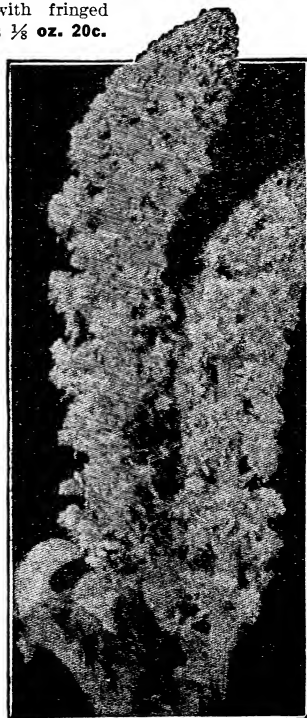
Geranium—California Giants

They Will Bloom From Seed in Four to Five Months. This is the Only Sure Way to Obtain New Varieties

Buckbee's Geranium Seed is saved from the finest double, semi-double and single varieties of the most gorgeous and brilliant colors; all shades of scarlet and crimson, rose, pink, salmon, cream veined pink, blush, snowy white and all new auriole types. **Pkt. 10c.**

Hollyhock— New Annual Everblooming

Larger and Better Than the Common Hollyhock, Blooms the First Year From Seed

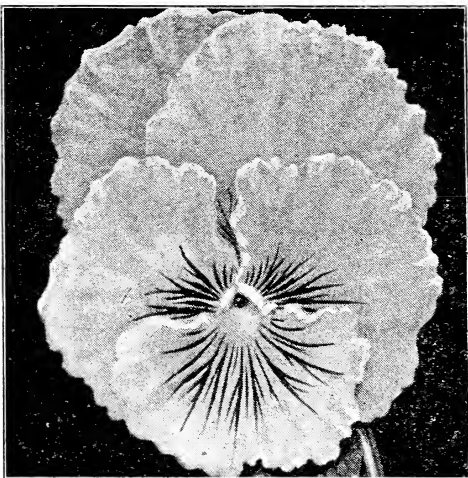


Mignonette—Goliath

Buckbee's Giant Masterpiece Pansy

**Magnificent And Strikingly
Attractive**

This magnificent Pansy comes nearer to being a double Pansy than anything ever introduced under that name; the border of every petal being conspicuously crimped and curled in such a fashion as to make the flowers appear double. The color combinations are very odd and contain some choice tints not found in any other strain of Pansies. It is, in fact, unsurpassed in variety of coloring, marking, veining, etc. The flowers are all of mammoth size, unusually heavy substance, and very fragrant. This new race of sturdy, stocky plants will bloom longer and more abundantly than any other type. **Pkt. 15c; 2 for 25c; 1/8 oz. 51.25.**

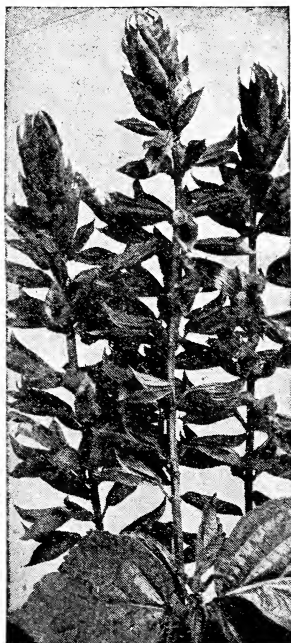


Pansy Giant Masterpiece

Buckbee's Mammoth Prize Mixed Phlox

The Most Satisfactory and Attractive Phloxes Ever Offered

Their long duration in bloom, combined with their almost unequalled richness and color, renders these Phlox of invaluable service in the flower garden. The color ranges in every conceivable shade. The flowers are twice the size of common Phlox, of great substance and beautiful form. The plants are of stout branching habit, always erect. **BUCKBEE'S MAMMOTH PRIZE. Grandest of all Phlox, in finest Mixtures, pkt. 10c; 1/8 oz. 40c.**



Salvia or Scarlet Dragon

Poppies—Buckbee's Oriental Hybrids

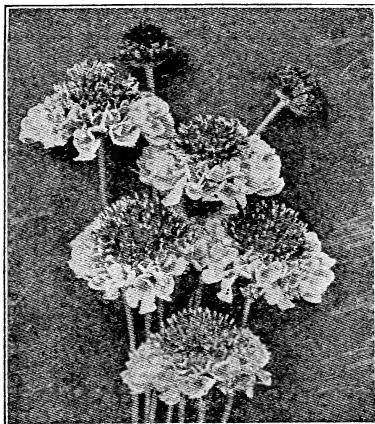
**The Best in Perennial Poppies. Flowers as Large as
Tea Plates and of Rich Dazzling Shades of Red
and Orange**

Hardy perennials with enormous flowers in endless variety of gorgeous colorings and markings. These flowers attracted more attention on our Rockford Seed Farms last Summer than any other plant. Enormous flowers, some of them 8 inches across in the most wonderful colors. **Assorted colors, pkt. 10c; 1/8 oz. 30c.**

Salvia—Scarlet Dragon

**The Most Magnificent Summer and Autumn
Flowering Plant**

The old *Salvia Splendens* or Scarlet Sage has long been a favorite and our customers can partially appreciate the superiority of this new variety when we state that the flowers are nearly double the size, closely crowding the immense long spikes that often measure 6 inches across. Full-grown plants in bloom form compact bushes 3 feet high and bloom from ground to summit. We know of nothing that can equal the gorgeous effect of a row or bed of these fine *Salvias* when in full bloom; the waving masses of glistening scarlet against green surroundings of lawn or foliage is matchless. Grows very easily from the seed. **Pkt. 10c; 1/8 oz. 45c.**



Sweet Scented Scabiosa

Sweet Scented Scabiosa

**Buckbee's New and Greatly Improved
Varieties of Fascinating Attractiveness
and Delightful Beauty**

This is one of the most attractive of old fashioned flowers. No garden is complete without a bed of fragrant Scabiosa. Their ease of culture and the long flowering season warrants their presence in every garden. The flowers are produced in great abundance and borne on long stems, making them very attractive and useful for cutting purposes.

**BUCKBEE'S TALL DOUBLE LARGE
FLOWERING MIXED. Pkt. 8c; 1/8 oz. 30c.**

Sweet William

Buckbee's Hardy Everblooming

**The Floral Wonder. Blooms in 50 Days
From Sowing of Seed.**

Flowers all Summer and Fall—Lasts for Years

The old favorite Sweet William, as all know, does not flower until the second year from seed, but this new hybrid strain begins to bloom in 50 to 60 days from seed sown in Spring and continues to flower all Summer and Fall. It is entirely hardy and will last for years. The plants are about one foot high, are neater and prettier than the old variety and bloom long after they are gone. The flowers are very fragrant and similar to the old Sweet William in size and form. Some of them have smooth edges and others are deeply fringed. **All Colors Mixed. Pkt. 10c; 1/8 oz. 35c.**

Red Riding Hood Zinnia

The Most Attractive Blood-Red Zinnia Ever Grown

Zinnias have long been acknowledged the most easily grown and one of the most attractive flowers grown. On the many and varied forms now being raised we know of none that are daintier and prettier, than the Little Red Riding Hood. Plants are of very dwarf and compact growth, 12 to 18 inches high. Covered the entire season with little button-like, very double flowers of brightest scarlet. These flowers are only an inch in diameter. Cannot be excelled as a border plant. **Pkt. 10c; 1/8 oz. 22c.**

Violet

The Most Delightfully Perfumed Flower Ever Grown

The true hardy Violet. This should be in every garden, on account of its fragrance and early appearance. Succeeds best in shady, sheltered place, and can be easily increased by dividing the roots. Out of doors the plants do nicely in the perennial border, being exceptionally hardy; of a deep violet-purple color, and very fragrant. **Finest Mixed. Pkt. 10c; 1/8 oz. 40c.**

Wondrous Weather Plant

**The Floral Barometer—
Foretells the Weather
a Day in Advance**

Bears clusters of bright yellow flowers, followed by pods with ornamental seeds. Leaves assume different positions in wet, dry, clear and cloudy weather. A great curiosity.

Pkt. 10c; 1/4 oz. 35c.



Sweet William—Hardy Everblooming

BUCKBEE'S "FULL OF LIFE" FIELD SEEDS

WHOLESALE FIELD SEED PRICE LIST

Recommended to Comply with the Pure Seed Law of Any State

All seeds delivered free on board cars, Rockford, Ill., purchaser paying transportation charges. If you don't want the seeds shipped at once, send us 25% of the amount of your order, to show good faith, and we will reserve the seeds for you at the prices here quoted, shipping upon receipt of the balance due.

PRICES ARE STRICTLY NET. SPOT CASH AND NO DISCOUNT.

THESE PRICES HOLD GOOD FOR ORDERS RECEIVED BEFORE FEB. 1, 1928

RETURN THIS LIST WITH YOUR ORDER TO SECURE THE SPECIAL PRICES HERE QUOTED. If the time limit has expired before you are ready to order—send for latest Field Seed Quotations, as you know that prices quoted on all items on this list are subject to market changes. Should our prices seem high in any instance, please write for samples and examine the high Quality of our "Full of Life" Seeds.

No. O-3 2 8 1 6 E-11

CLOVERS	10 lbs.	30 lbs.	Per bu. 60 lbs.	100 lbs.
	Alfalfa, Buckbee's Hardy Northern "Full of Life" 99% pure.....	\$3.05	\$ 8.85	\$17.10
Alfalfa, Hardy Northern Standard, 98% pure..	2.55	7.30	13.95	22.25
Alfalfa, Dr. W. X. Sudduth's Pedigreed Grimm, 99% pure.....	4.40	12.90	25.20	41.00
Liscom or Variegated Standard, 98% pure....	4.20	12.30	24.00	39.00
Alsike, Buckbee's "Full of Life" 98% pure....	3.70	10.80	21.00	34.00
Alsike, Standard, 97% pure.....	3.50	10.20	19.80	32.00
Mammoth Red, "Full of Life" 99% pure.....	4.15	12.20	23.75	38.50
Mammoth Red, Standard, 98% pure.....	3.95	11.55	22.50	36.50
Medium Red, "Full of Life" 99% pure.....	4.05	11.85	23.10	37.50
Medium Red, Standard, 98% pure.....	3.85	11.25	21.90	35.50
Crimson, Buckbee's "Full of Life".....	2.05	5.85	11.10	17.50
Crimson, Standard.....	1.80	5.10	9.60	15.00
White Sweet Bokhara or Bee, Buckbee's "Full Life" Genuine Grundy County.....	1.40	3.90	7.20	10.95
White Sweet Bokhara or Bee Buckbee's "Full of Life".....	1.40	3.90	7.20	11.00
White Sweet Bokhara or Bee, Standard.....	1.35	3.75	6.90	10.50
Yellow Sweet Bokhara or Bee, Buckbee's "Full of Life" 98% pure.....	1.50	4.20	7.80	12.00
Yellow Sweet Bokhara or Bee, Standard.....	1.45	4.00	7.35	11.75
Albtree—The New Yellow.....	2.80	8.10	15.60	24.95
White Clover for Lawn, "Full of Life".....	4.30	12.60	24.60	40.00
White Clover for Lawn, Standard.....	4.20	12.30	24.00	39.00
Burr Clover, 95% pure.....	2.30	6.60	20.00
Japan Clover or Lespedeza.....	2.40	6.90	21.00
Hubam, Certified.....	3.55	10.35	20.10	32.50

GRASSES	10 lbs.	Per bu. 14 lbs.	50 lbs.	100 lbs.
	Bermuda Grass, Buckbee's "Full of Life".....	\$4.80	\$ 6.60	\$23.00
Bromus Inermis, Buckbee's "Full of Life".....	1.60	2.10	7.00	13.00
Buckbee's Perennial Rye, "Full of Life".....	1.55	2.05	6.75	12.50
Johnson Grass, Buckbee's "Full of Life".....	1.80	2.40	8.00	15.00
Kentucky Blue, Buckbee's "Full of Life".....	2.80	3.80	13.00	24.90
Kentucky Blue, Standard.....	2.60	3.50	12.00	22.95
Meadow Fescue, Buckbee's "Full of Life".....	3.10	4.20	14.50	28.00
Orchard Grass, Buckbee's "Full of Life".....	2.50	3.35	11.50	22.00
Orchard Grass, Standard.....	2.45	3.25	11.15	21.25
Red Top, Solid Seed, "Full of Life".....	2.20	2.95	10.00	19.00
Red Top, Solid Seed, Standard.....	2.00	2.65	9.00	17.00
Red Top, Virgin Seed, "Full of Life".....	1.75	2.30	7.65	14.25
Red Top, Virgin Seed, Standard.....	1.75	2.30	7.65	14.25
1 all Meadow oat, Buckbee's "Full of Life".....	3.30	4.50	15.50	30.00

SUDAN GRASS

Sudan Grass, Buckbee's "Full of Life".....	.90	3.30	5.75
Sudan Grass, Standard.....	.80	3.00	5.00

H. W. BUCKBEE

ROCKFORD SEED FARMS

ROCKFORD, ILL.

BUCKBEE'S "FULL OF WHOLESALE FIELD

Recommended to Comply with the

FODDER AND ENSILAGE CORN	1/8 bu.	1/4 bu.	1/2 bu.	Per bu. 56 lbs.
Buckbee's Goliath	\$0.55	\$ 0.95	\$ 1.75	\$ 3.25
Red Cob Ensilage	.45	.80	1.40	2.65
White Cob Ensilage	.50	.85	1.55	2.85
Early White Dent Fodder	.55	.95	1.75	3.25
Earliest Ripe Fodder	.60	1.10	2.00	3.75
Sweet Fodder Corn (bu. 50 lbs.)	.75	1.35	2.50	4.50

BIRD SEED	10 lbs.	25 lbs.	50 lbs.	100 lbs.
Bird Rape	\$1.10	\$ 2.50	\$ 4.50	\$ 8.00
Sunflower, for Birds	1.20	2.75	5.00	9.00
Hemp	1.05	2.30	4.25	7.50
Canary	1.20	2.75	5.00	9.00
Bird Millet	.85	1.80	3.15	5.25

BARLEY	1/8 bu.	1/4 bu.	1/2 bu.	Per bu. 48 lbs.	10 bu. Per bu.
Buckbee's New White Hulless	\$0.50	\$0.90	\$ 1.60	\$2.95	\$ 2.90
Oderbrucker or Wis. No. 55	.25	.45	.80	1.45	1.40
Success Beardless	.45	.75	1.35	2.50	2.45
Wis. Pedigreed	.25	.45	.80	1.45	1.40
Manshury	.25	.45	.80	1.50	1.45

BEANS	10 lbs.	30 lbs.	Per bu. 60 lbs.	100 lbs.
Buckbee's Electric Tree	\$1.70	\$ 4.95	\$ 9.60	\$15.25
Montana White	1.85	5.25	9.90	15.50
White Navy	1.10	2.95	5.25	7.75
Pinto	1.30	3.60	6.60	9.90
Velvet Beans (Florida Speckled)	1.05	2.80	4.95	7.25
Velvet Beans (100 days)	1.00	2.70	4.85	7.10

SOJA OR SOY BEANS	10 lbs.	25 lbs.	Per bu. 50 lbs.	100 lbs.
Evans Early	\$0.95	\$ 2.15	\$ 3.75	\$ 6.50
Ito San or Earliest Yellow	.80	1.75	3.00	5.00
Ebony or Black Beauty	.90	2.00	3.50	6.00
Brown (Ohio 9035)	.80	1.75	3.00	5.00
Medium Early Yellow	.80	1.75	3.00	5.00
Manchu	.75	1.65	2.75	4.50

BROOM CORN	10 lbs.	Per bu. 46 lbs.	100 lbs.
Buckbee's Superior Tall Evergreen	\$0.85	\$ 3.00	\$ 6.25
Oklahoma Dwarf	.90	3.25	6.75

BUCKWHEAT	1/8 bu.	1/4 bu.	1/2 bu.	Bu. 48 lbs.	10 bu. Per bu.
Buckbee's Giant Japanese	\$0.40	\$0.70	\$ 1.25	\$ 2.20	\$ 2.15
Improved Silver Hull	.40	.65	1.15	2.15	2.10

FLAX	1/8 bu.	1/4 bu.	1/2 bu.	Bu. 56 lbs.	10 bu. Per bu.
No. 25 or Primost	\$0.60	\$1.10	\$ 2.00	\$ 3.75	\$ 3.70
North Dakota No. 52, Wilt Resistant	.70	1.30	2.35	4.25	4.20

OATS—Northern Grown	1/8 bu.	1/4 bu.	1/2 bu.	Per bu. 32 lbs.	10 bu. Per bu.
Buckbee's Famous Quaker	\$0.25	\$0.40	\$0.75	\$1.35	\$1.30
Regenerated Swedish	.20	.30	.55	1.00	.95
Buckbee's Illinois	.25	.40	.70	1.25	1.20
White Kherson (Iowa No. 103)	.20	.35	.60	1.05	1.00
Buckbee's New Avalanche	.75	1.15	1.75	2.75	2.50
Iowar	.20	.35	.60	1.10	1.05
Early Black Prolific Tartarian	.25	.40	.75	1.35	1.30
Texas Red Rust Proof (Winter)	.25	.40	.70	1.25	1.20
Winter Turf	.40	.70	1.25	2.30	2.25
New Appler Winter	.25	.45	.80	1.55	1.50

COW PEAS	10 lbs.	30 lbs.	Per bu. 60 lbs.	100 lbs.
Improved Whipporwill	\$0.90	\$2.30	\$3.95	\$5.65
New Era	.80	2.20	3.75	5.25
Prolific Black Eye	.90	2.35	4.15	5.95

REMEMBER WHEN COMPARING OUR PRICES
WE ADVISE EXPRESS SHIPMENT

OF LIFE" FIELD SEEDS D SEED PRICE LIST

the Pure Seed Law of Any State

FIELD PEAS		10 lbs.	30 lbs.	Per bu.	100 lbs.		
Buckbee's New Early Snowflake.....		\$0.95	\$2.55	\$4.50	\$6.50		
Improved White Canada.....		.90	2.40	4.20	6.00		
Bangalia.....		1.00	2.65	4.65	6.75		
RYE		1/8 bu.	1/4 bu.	1/2 bu.	Per bu.	10 bu.	
Buckbee's Mammoth Spring.....		\$0.40	\$0.65	\$1.15	\$2.15	\$2.10	
Buckbee's Giant Winter.....		.35	.55	1.00	1.85	1.80	
New Rosen Winter.....		.35	.55	1.05	1.90	1.85	
SPELTZ OR EMMER		1/8 bu.	1/4 bu.	1/2 bu.	Per bu.	10 bu.	
Spring Speltz or Emmer (bu. 36 lbs.)..		\$0.25	\$0.45	\$0.80	\$1.50	\$1.45	
New White Beardless Winter (bu. 36 lbs.)		.45	.80	1.40	2.70	2.65	
SUGAR CANE OR SORGHUM		10 lbs.	25 lbs.	Per bu.	100 lbs.		
Buckbee's New Honey Syrup—The Best.....		\$1.00	\$2.25	\$3.95	\$7.00		
Buckbee's Improved Early Amber.....		.75	1.65	2.75	4.50		
Buckbee's Improved Early Orange.....		.75	1.60	2.65	4.25		
Sugar Cane for Fodder.....		.70	1.50	2.40	3.75		
NON-SACCHARINE SORGHUMS		10 lbs.	25 lbs.	Per bu.	100 lbs.		
Wonderful Milo Maize.....		\$0.70	\$1.50	\$2.50	\$4.00		
Buckbee's Early Kaffir Corn.....		.70	1.50	2.50	4.00		
Egyptian Wheat or Shallu.....		1.25	2.90	5.25	9.65		
Feterita.....		.75	1.60	2.65	4.25		
SUNFLOWER		1/8 bu.	1/4 bu.	1/2 bu.	Per bu.	10 bu.	
Mammoth Russian.....		\$0.40	\$0.70	\$1.25	\$2.25		
WHEAT		1/8 bu.	1/4 bu.	1/2 bu.	Per bu.	10 bu.	
Macaroni Kubanka (Durum) Spring.....		\$0.45	\$0.80	\$1.40	\$2.70	\$2.65	
New Marquis (Spring).....		.45	.75	1.35	2.50	2.45	
Harvest King Beardless (Winter).....		.45	.75	1.30	2.35	2.30	
New Illinois 10-100 Drought Resistant.....		.50	.90	1.60	2.95	2.90	
Buckbee's Red Turkey (Bearded) Winter.....		.40	.65	1.15	2.15	2.10	
MISCELLANEOUS FORAGE PLANTS		10 lbs.	25 lbs.	50 lbs.	100 lbs.		
Giant Beggar Weed or Florida Clover.....		\$9.50					
Rape, Buckbee's Dwarf Bonanza.....		1.25	\$2.85	\$5.15	\$9.25		
Rape, Dwarf Essex.....		1.10	2.50	4.50	8.00		
Salt Bush Australian.....		8.50					
Thousand Headed Kale.....		4.50					
Vetch, Buckbee's Great Sand or Winter.....		1.90	4.50	8.50	16.00		
Vetch, Spring.....		1.25	2.85	5.15	9.25		
ONION SETS		Lbs.	1/8 bu.	1/4 bu.	1/2 bu.	Bu.	Per bu.
Buckbee's Red Bottom.....		\$0.32	\$0.55	\$0.95	\$1.75	\$3.35	\$3.30
Buckbee's Yellow Bottom.....		.32	.55	.95	1.75	3.40	3.35
Buckbee's White Bottom.....		.32	.65	1.15	2.15	3.90	3.85
Buckbee's Imp. Yellow Potato Multiplier.....		.32	.85	1.65	2.95	5.75	5.70
Egyptian or Perennial Winter Top.....		.28	.55	.95	1.75	3.35	3.30

Onion Sets and Potatoes travel at PURCHASERS RISK OF FREEZING.
Be sure to state date you want shipped.

SEED POTATOES		1/8 bu.	1/4 bu.	Bu.	100 lbs.	150 lbs.
Bliss Red Triumph.....		\$0.80	\$1.40	\$2.50	\$4.10	\$6.00
Buckbee's Extra Early Rockford.....		.85	1.55	2.75	4.50	6.65
Extra Early Six Weeks.....		.75	1.35	2.35	3.80	5.60
Improved Early Ohio.....		.70	1.30	2.25	3.65	5.35
Irish Cobbler.....		.70	1.25	2.20	3.60	5.30
Pure Early Rose.....		.70	1.30	2.25	3.65	5.35
Buckbee's Green Mountain.....		.70	1.30	2.30	3.70	5.45
Burbank.....		.70	1.25	2.15	3.50	5.15
Sir Walter Raleigh.....		.65	1.15	2.00	3.25	4.80
Rural New Yorker.....		.65	1.15	2.05	3.30	4.85
Carman No 3.....		.65	1.20	2.10	3.40	5.00

DES THAT WE MAKE NO CHARGE FOR BAGS
MENTS WHENEVER POSSIBLE

BUCKBEE'S "FULL OF LIFE" FIELD SEEDS

WHOLESALE FIELD SEED PRICE LIST

Recommended to Comply with the Pure Seed Law of Any State

MILLETS		1/8 bu.	1/4 bu.	1/2 bu.	1 bu.
Common (bu. 50 lbs.)		\$0.45	\$0.75	\$1.35	\$2.50
Buckbee's California Beauty (bu. 50 lbs.)		.50	.90	1.60	2.95
Golden or Liberty (bu. 50 lbs.)		.50	.85	1.50	2.75
Kursk or Siberian (bu. 50 lbs.)		.50	.85	1.50	2.80
Hungarian (bu. 48 lbs.)		.50	.85	1.55	2.85
New Japanese (bu. 36 lbs.)		.55	.95	1.75	3.25
New White Wonder (bu. 50 lbs.)		.45	.80	1.40	2.65
Hog or Broom Corn Millet (bu. 50 lbs.)		.45	.75	1.30	2.45
Pearl or Pencillaria	5 lbs.	\$1.00;	10 lbs.	\$1.85.	

TIMOTHY		10 lbs.	Per bu. 45 lbs.	100 lbs.
Timothy, Recleaned, Buckbee's "Full of Life" 99% pure		\$0.85	\$ 3.40	\$ 6.50
Timothy, Recleaned, Standard, 97% pure		.80	3.05	5.75
Alsike and Timothy Mixed, "Full of Life"		1.50	6.20	12.75
Alsike and Timothy Mixed, Standard		1.40	5.75	11.75

FIELD CORN DENT		1/8 bu.	1/4 bu.	1/2 bu.	Per bu. 56 lbs
Buckbee's Early Prosperity, Nor. Grown		\$0.80	\$ 1.50	\$ 2.75	\$ 4.95
Buckbee's Early Illinois, Nor. Grown		.80	1.50	2.75	4.95
Buckbee's Great Western Yellow Dent, Nor. Grown		.80	1.45	2.60	4.75
Buckbee's Great Western Yellow Dent, Sou. Ill. Grown		.55	1.00	1.85	3.50
Buckbee's Great Western White Dent, Nor. Grown		.80	1.45	2.60	4.75
Buckbee's Great Western White Dent, Sou. Ill. Grown		.55	1.00	1.85	3.50
Regenerated Red Hackberry, Nor. Grown		.75	1.35	2.50	4.50
Minnesota No. 13, Nor. Grown		.70	1.30	2.35	4.25
Golden Glow, Nor. Grown		.75	1.35	2.50	4.50
Minnesota White Dent, Nor. Grown		.70	1.30	2.35	4.25
Murdock Yellow Dent, Nor. Grown		.75	1.35	2.50	4.50
Silver King or Wisc. No. 7, Nor. Grown		.80	1.50	2.75	5.00
Reid's Improved Yellow Dent, Nor. Grown		.75	1.35	2.50	4.50
Reid's Improved Yellow Dent, Sou. Ill. Grown		.55	.95	1.75	3.25
Boone County White, Nor. Grown		.75	1.35	2.50	4.50
Boone County White, Sou. Ill. Grown		.55	.95	1.75	3.25
White Cap Yellow Dent, Nor. Grown		.75	1.35	2.50	4.50
Buckbee's Early Gold Mine, Nor. Grown		.80	1.45	2.60	4.75
Buckbee's Early Gold Mine, Sou. Ill. Grown		.55	1.00	1.85	3.50
Thorobred Leaming, Nor. Grown		.75	1.35	2.50	4.50
Thorobred Leaming, Sou. Ill. Grown		.55	.95	1.75	3.25
Iowa Silver Mine, Nor. Grown		.75	1.35	2.50	4.50
Iowa Silver Mine, Sou. Ill. Grown		.55	.95	1.75	3.25
Pride of the North, Nor. Grown		.75	1.35	2.50	4.50

FIELD CORN (Flint)—Northern Grown		1/8 bu.	1/4 bu.	1/2 bu.	1 bu.
Buckbee's Early Norther.		.80	1.50	2.75	5.00
Indian Squaw		.85	1.60	2.90	5.50
North Dakota White		.65	1.15	2.15	4.00
North Dakota Yellow (Gehu)		.65	1.15	2.15	4.00
Longfellow Yellow		.65	1.15	2.15	4.00
Extra Early King Philip		.70	1.30	2.35	4.25
Sanford's White		.60	1.10	2.00	3.75
Great Brazilian Flour Corn	1.50	2.75	5.25	9.85	

H. W. BUCKBEE

ROCKFORD SEED FARMS

ROCKFORD, ILL.

All Packets Offered on This Page Five Cents Each

ASTER—FINE MIXED. Beautiful colors, fine long stems and large, handsome extremely double flowers. Our Asters cannot be excelled.

ALYSSUM—LITTLE GEM. This pretty dwarf growing plant is unequalled for borders of flower beds or for edging. Flowers pure white.

BABY'S BREATH. Tiny white flower grown on long graceful branches. Very pretty by themselves, and look fine along with other flowers.

BACHELOR'S BUTTON—MIXED. Many colors of this popular flower. Always in bloom and a favorite everywhere. Sure to grow with very little attention.

BALSAM OR LADY FINGER—MIXED COLORS.

Flowers are borne along the main stem, among the leaves in a most charming manner. Colors varied and unusual.

BURNING BUSH. Easily grown from seed. Large bush like plants, very attractive alone or in clumps. Fine green color in summer, turning red in winter.

CALIFORNIA POPPY. Beautiful annual with cup shaped flowers borne in profusion. Many charming colors, the yellow in particular being extra fine.

CALENDULA OR SCOTCH MARIGOLD. One of the most popular flowers today. Many shapes and shades of flowers from yellow to orange.

CALLIOPSIS—MIXED. Always in bloom from early summer until the fall frosts. Single red or yellow flowers



Burning Bush

with a garnet red eye. Very desirable.

CANDYTUFT—ALL COLORS MIXED. All colors from carmine to pure white. Compact little bushes covered with flowers the entire summer.

CANDYTUFT—HYACINTH FLOWERED. Largest of all.

Flowers pure white, always in bloom, and desirable for cut flowers as well as in the garden.

CANTERBURY BELL—MIXED. This plant is always covered with bell shaped flowers, of delicate colors, mostly blue shades. Easily grown. Very pretty.

COCKSCOMB—OSTRICH PLUME. This has always been a popular flower. Immense blood red combs or flowers on every plant. Very hardy annual.

COLUMBINE—MIXED. A splendid flower always covered with flowers of many colors. Trumpet shaped with long spurs. Easy to grow. Novel and attractive.

COREOPSIS LANCEOLATA. Hardy Perennial. Lives forever. Blooms all

season. Flowers large, yellow and orange with a darker colored center.

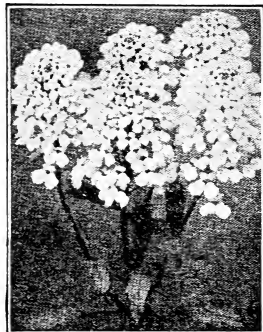
COSMOS—GIANTS OF CALIFORNIA. The largest Cosmos ever grown. Flowers somewhat late in blooming. Foliage graceful and attractive.

CYPRESS VINE—MIXED. Beautiful climber. Delicate fernlike foliage. Flowers star shaped. Colors rose, scarlet and red. A very fine climber for all purposes.

DAHLIA—SINGLE NOVELTY MIXED. Easily grown from seed and bloom the first season. Many colors and always unusually fine flowers.



Aster



Candytuft



Calliopsis



Cosmos

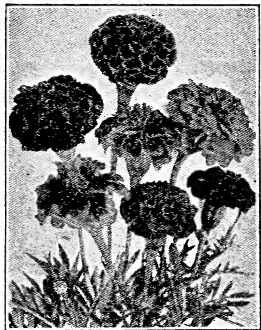
All Packets Offered on This Page Five Cents Each



Dianthus Pinks

TAL JAPANESE. The finest climber we have. Fruits are of many shapes and colors, and always very attractive.

HUMULUS OR JAPANESE HOP—Another desirable climber. Grows rapidly. Foliage is luxuriant, brilliant green occasionally splashed with lighter markings. Insects do not bother it.



Marigold

duces immense spikes of beautiful flowers, the colors running mostly in shades of blue and purple.

LOVE IN A MIST OR NIGELLA. Lovely blue flowers on long stems. Foliage is finely cut, bright green making a charming contrast. Easily grown annual.



Morning Glory

DIANTHUS PINKS—CHINA MIXED. Every color from darkest red to pure white, as well as varied markings and different colors in the same flower.

DIANTHUS PINK—CLOVE SCENTED. Choice perennial variety with many colored flowers which are delightfully fragrant and clove scented.

FEVERFEW—GOLDEN FLEECE. Something new in this charming flower. Plants about 18 inches high. Free bloomers. Flowers button shaped, pure yellow.

FOUR O'CLOCK—MIXED COLORS. Direct from Japan. Large flat flowers in many colors. Blossoms are best early in the morning and after Four O'Clock in the afternoon.

FORGET-ME-NOT—QUICK BLOOMING. Charming flowers in shades of blue. Exquisitely sweet scented. Delicate and make fine cut flowers.

FOXGLOVE—LARGE FLOWERED. Hardy Perennial. Fine for shrubbery and will do well in partially shaded places. Two feet high. Flowers of clear bright colors.

GOURDS—ORNAMENTAL

HYACINTH BEANS. Sometimes called Australian Pea Vine. Flowers borne in clusters. Colors purple and white, followed by attractive seed pods.

ICE PLANT. Dwarf trailing annual plants with white flowers. Foliage is covered with sparkling ice like globules. Very fine also for vases and boxes.

JOB'S TEARS. Curious ornamental grass with broad corn-like leaves and seeds of a light slate color. Seeds resemble beads and are often made into strings.

KENILWORTH IVY. A very pretty perennial trailing plant for covering rock work, and also desirable for hanging baskets. Flowers small and pretty.

LARKSPUR OR DELPHINIUM—MIXED. Produces immense spikes of beautiful flowers, the colors running mostly in shades of blue and purple.

LOVE IN A PUFF—OR BALLOON VINE. Flowers followed by husks which resemble inflated balloons. Rapid grower, succeeds everywhere.

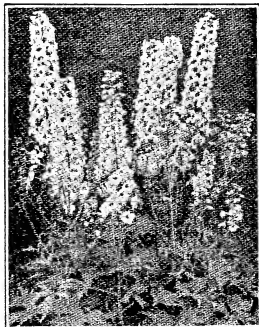
LANTANA. Sweet scented flower freely produced in clusters. Somewhat resemble Verbenas in appearance. Many fine colors in mixture.

MARIGOLD—TALL MIXED. Long strong stems. Flowers are extra large and very attractive. Colors range from light yellow to dark orange.

MARIGOLD—DWARF MIXED. Very dwarf plants, covered all the season with small button-like flowers, in all shades of orange and yellow.

MIGNONETTE—SWEET. Large flowers, most deliciously sweet scented. This is the finest of all the Mignonettes.

MORNING GLORY—DWARF. This is the true Morning Glory except that it grows in bush form and does not climb. Many beautiful colors.



Larkspur



Mignonette

All Packets Offered on This Page Five Cents Each

All Packets Offered on This Page Five Cents Each

MORNING GLORY—JAPANESE. Flowers much larger than the ordinary Morning Glory. Fancy colors. Many fancy striped and variegated. This is the finest of them all.

MORNING GLORY—TALL OR CLIMBING. Has always been a favorite. Colors are unusually varied. In bloom all summer. Grows easily everywhere.

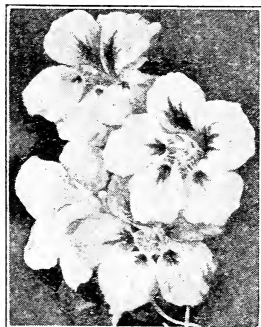
NASTURTIUM—FINE MIXED. Nothing can compare with these in wonderful colors. Our mixture is unexcelled, and will always please.

PAINTED DAISY. Large daisy like flowers in all colors from white to red. Blooms in the spring and again in the fall. Perennial almost everywhere.

PANSY—IMPERIAL MIXTURE. Good large flowers on long stems. Every known Pansy color as well as unique and beautiful shades and markings.



Phlox



Nasturtium

PETUNIA—HYBRIDA MIXED. There is nothing prettier than a bed of Petunias. Also useful and pretty in porch boxes and vases. Many colors mixed.

PHLOX—FINEST MIXTURE. Make a wonderfully showy flower bed. Easily grown annual. Colors are brilliant and showy.

PINCUSHION FLOWER OR SCABIOSA. Large single flowers with a soft raised center resembling a pincushion. Colors delicate and varied.

POPPY—DOUBLE MIXED. Large double flowers of all colors and shapes. Foliage is also attractive, and a bed of Poppies makes a wonderful show.

MOSS ROSE OR PORTULACA. Showy and brilliant flowers completely covering the plant which is dwarf and spreading. Good for beds and borders; also for baskets and boxes.



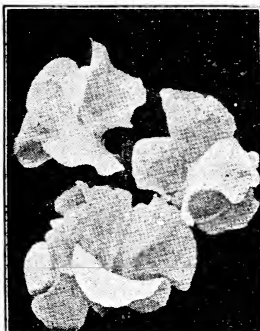
Poppy

SNAP DRAGON—MIXED COLORS. Bushy plants two feet high covered with spikes of flowers of many colors. Easy to grow, sure to bloom, very fragrant.

SUNFLOWER MIXED. All the best varieties, both large and small. Many colors and sizes from the large mammoth to the dainty little midgets.

SWEET PEAS—FINE MIXED. Our mixture is carefully blended from the best colors, both light and dark and will surely delight all who plant them.

SWEET WILLIAMS—FINE MIXED. This beautiful perennial is most popular and the best of all. Large flowers and all the best colors mixed.

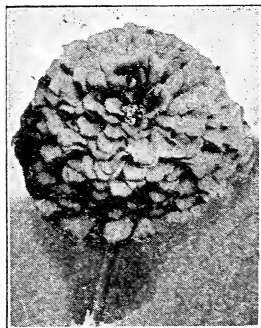


Sweet Pea

VERBENA—CHOICEST MIXED. Dwarf trailing plants with immense heads of bloom. Colors are clear and pleasing. In bloom all summer.

WILD FLOWER GARDEN. Especially mixed for those who wish an assortment of beautiful flowers. Over 100 beautiful varieties carefully mixed together.

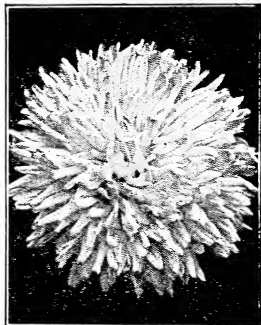
ZINNIA—GIANT FLOWERING MIXED. A wonderful strain of Zinnias. Enormous flowers, selected colors. Flower stems are long and strong. In bloom all summer and fall.



Zinnia

All Packets Offered on This Page Five Cents Each

New Flowers—See Prices After Each Variety



Aster

best pure white Alyssum. Very sweet and fragrant. **Pkt. 10c.**

AGERATUM—MIXED COLORS. In bloom all summer. Colors blue and white. Large fluffy flowers. **Pkt. 6c.**

BALSAM APPLE. Fine climber, grows ten feet a season. Fruits are apple shaped and very attractive. **Packet 8c.**



Cardinal Climber

Phines of flowers are very beautiful. **Packet 10c.**

CYNOGLOSSUM. The new Chinese Forget-Me-Not. Blue flowers. In bloom all Summer. **Pkt. 15c.**

COSMOS — ANEMONE FLOWERED. Many colors. Flowers have heavy disc centers, surrounded by beautiful petals. **Packet 12c.**



Gaillardia

ASTER—SINGLE MIXED. Something entirely new. Single instead of double. Very attractive colors. **Packet 7c.**

ASTER—DAYBREAK MIXED. The earliest of the Asters. Wonderful colors, good large flowers. **Packet 8c.**

ASTER—AMERICAN BEAUTY. The true American Beauty Rose color. Large flowers on strong stems. **Pkt. 10c.**

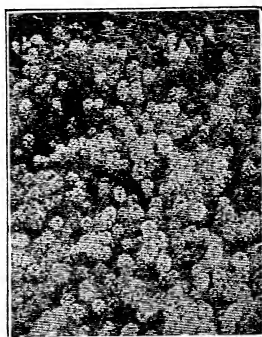
ASTER—GIANT COMET MIXED. The largest Aster. Plants covered with flowers all summer until frost. **Packet 7c.**

ASTER—KING MIXED. Very unique. Petals are quilled making an unusually beautiful flower. **Packet 8c.**

ASTER—GIANT CREGO MIXED. Large branching plants, always covered with mammoth flowers. **Pkt. 8c.**

ASTER—MAMMOTH WONDER MIXED. Early flowering; wonderful colors and a good keeper. **Packet 10c.**

ALYSSUM—Carpet of Snow. The dwarfest and very sweet and fragrant. **Pkt. 10c.**



Alyssum

BLUE LACE FLOWER. Flowers large and unusually attractive. Blooms all summer. **Packet 10c.**

BUTTERFLY FLOWER. Dainty butterfly shaped flowers on pretty foliage. All colors, always in bloom. **Packet 6c.**

CARDINAL CLIMBER. A novel and beautiful climber. Trumpet shaped flowers of the brightest red color. **Packet 10c.**

CARNATION — GIANT MARGUERITE MIXED. Can be grown outdoors. Flowers as fine as the greenhouse varieties. **Pkt. 10c.**

CHINESE WOOL-FLOWER. Large satiny flowers of a rich red color. **Packet 10c.**



Chinese Woolflower

EVERLASTING FLOWERS MIXED. Pick the flowers and dry them for winter bouquets. Many forms and colors. **Packet 7c.**

FAIRY ROSE. Roses from seed in three months. Very dwarf, easily grown. **Pkt. 10c.**

FUCHSIA. Easily grown from seeds. This is a beautiful house plant but may be grown outside during Summer. **Packet 15c.**

GAILLARDIA—ANNUAL MIXED. Large flowers of yellow shades with a darker center. Single and double. **Packet 6c.**

New Flowers—See Prices After Each Variety

New Flowers—See Prices After Each Variety

HELICHRYSUM OR STRAWFLOWERS. Easily grown. Pick the flowers and dry them for winter decoration. **Pkt. 8c.**

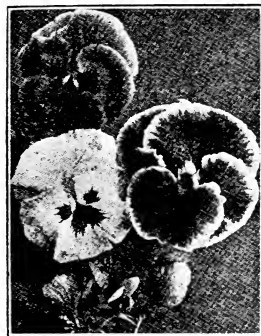
HELIOTROPE—GIANT MIXED. Delightfully fragrant blue flowers, easily grown, sure to bloom. **Packet 8c.**

HOLLYHOCK—DOUBLE MIXED. Perennial; fine colors; easily grown. One of the finest plants grown. **Packet 7c.**

LOBELIA—FINEST MIXED. Light green foliage. Dainty light blue flowers. Fine for garden or porch boxes. **Packet 7c.**

LUPINUS OR SUN DIALS. Many colors. Pea shaped flowers. Fine for beds and borders. **Packet 6c.**

PANSY—SWEET SCENTED. The beauty of the Pansy, the perfume of the violet. Many wonderful colors. **Pkt. 8c.**



Pansy

PRIMROSE—SUPERB MIXED. Large flowered varieties, many are fringed and ruffled. **Packet 10c.**

CASTOR OIL BEAN. Wonderful decorative plant. Often grows 12 feet high. Ornamental. **Packet 6c.**

SALVIA OR SCARLET SAGE. The brightest colored flower ever grown, a flame of red until frost. **Packet 8c.**



Salvia

appear double. Select colors. **Packet 10c.**

SWEET PEAS—DWARF CUPIDS. A true Sweet Pea, but grows dwarf instead of climbing. **Packet 8c.**

ZINNIA—NEW STAR. A miniature Zinnia. Dainty little flowers all summer. **Packet 10c.**

ZINNIA—CALIFORNIA GIANTS. The largest Zinnia grown. Flowers so compact as to resemble Dahlias. All colors. **Packet 10c.**



Helichrysum

PANSY—GIANT FLOWERED MIXED. The largest of all. This mixture cannot be excelled anywhere. **Packet 12c.**

PETUNIA—ROSY MORN. Dainty pink flowers, in bloom all summer. **Packet 8c.**

PETUNIA—DWARF SINGLE MIXED. A very satisfactory mixture. Good size and colors. **Packet 10c.**

PHLOX—STARRED AND FRINGED MIXED. Petals are star shaped and finely cut. Very desirable; good colors. **Packet 7c.**

PHLOX—DOUBLE MIXED. Very unusual in Phlox. Long stems; good large flowers. **Packet 10c.**

POPPY—THE SHIRLEY. Single, beautiful colors. Easily grown from seed. **Packet 8c.**



Petunia

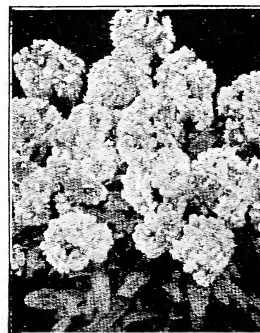
STOCKS—GIANT BEAUTY. Flowers enormous and very double. Colors delicate and pleasing. **Pkt. 10c.**

SWEET SCENTED TOBACCO PLANT. An unusually ornamental plant of delightfully sweet fragrance. **Pkt. 7c.**

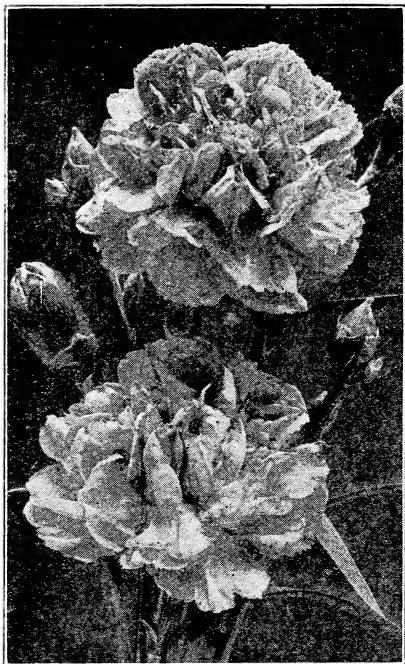
SWEET PEAS—EARLY FLOWERING SPENCER MIXED. Fully two weeks earlier than any other. Fine colors. **Packet 10c.**

SWEET PEAS—GIANT FLOWERED SPENCER MIXED. Large orchid colored flowers, petals waved and crinkled. **Packet 7c.**

SWEET PEAS—NEW DOUBLE MIXED. Petals so crinkled that the flowers



Stocks



Buckbee's Carnations

Forest City Greenhouses when we threw our doors open to Rockford and vicinity November 12th and 13th, 1927. Wonderfully long and strong stems; mammoth flowers; exceptionally beautiful colors; and all of the plants listed below are from the exceptionally desirable prize winners. **3 Plants—each a different color 57c, postpaid.**

Buckbee's Prize Winning Carnations

**Strong Healthy Plants; Select Colors;
Large Flowers; Continuous
Bloomers**

Buckbee's Forest City Greenhouses at Rockford undoubtedly contain the finest array of Carnations to be found in the United States. Repeated Blue Ribbon Winners at all the largest National Exhibits. Our famous varieties will please you, as they are nice healthy plants, well rooted and very easy to grow. Carnations, when grown in the house make charming pot plants with their large flowers of wonderful colors. Selection of varieties must be left to us, but we will send **3 Plants—each a different color 55c, postpaid.**

Buckbee's Wonderful Prize Winning Chrysanthemums

**Unequaled for Size. Unequaled for
Beauty. Unequaled for Lasting
Qualities**

For over 50 years Buckbee's Chrysanthemums have been exhibited each year in all the leading flower shows in the country and have never failed to carry off many prizes and high honors. Over 15,000 people viewed our wonderful collection in bloom in our

The Ostrich Plume Fern

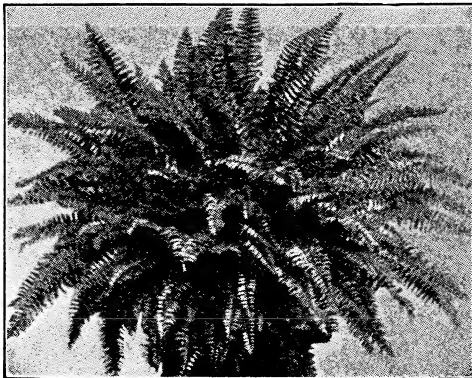
Gracefully Drooping Leaves of Delicate and Exquisite Texture

Every home should have a Fern, as they are hardy growers, and make a beautiful decoration. We devote one entire Greenhouse to Ferns, and have a wonderful assortment. The Ostrich Plume Fern is a strong, vigorous grower, but the fronds are heavy and feathery, and arch over in a most graceful manner, showing two shades of green and producing a lovely mossy effect, which adds greatly to its beauty. **Fine young plants, 30c, 40c and 50c, each, postpaid. Larger plants, \$1.00, \$2.00 and \$3.00 each, by express, not prepaid.**

Liberty Bell Fuchsia

**Very Brilliant Single Flowers of
Scarlet and Purple Often
Measuring 3½ Inches
Across**

The largest flowering Fuchsia in cultivation. The plant is a tall grower, branching like a tree; the leaves are dark, glossy green; with veins of dark crimson, giving the foliage a rich ornamental appearance. The flowers are of enormous size, a single flower measuring 3½ inches across; sepals bright scarlet, with rich violet purple corollas, very double. **Select plants 25c each; 3 for 70c, postpaid.**



Ostrich Plume Fern

Buckbee's New Sweet Scented Heliotropes

Delightfully Fragrant—The Sweetest Flower that Blooms. Luxuriant Grower in any Location.

Prodigious Bloomer—In Fact it Blooms Almost the Year Around

The Heliotrope has been a favorite in all flower gardens for years. Great improvements have been made in growing this flower, until now the blossom heads are fully double the size of the ones we used to know. In colors they run from lavender to purplish red and the color is retained until the flower is nearly gone. These Heliotropes are now universal favorites on account of their delightful fragrance. The plants bloom equally as well as bedding plants out of doors during the Summer or as pot plants inside during the Winter. **Fine plants 20c each; 3 for 55c, postpaid.**

Buckbee's Single Geraniums

There Is No Better Plant For Outdoor Bedding Than The Geranium

The Single Geraniums are considered by many to be superior to all other kinds. At all events the most delicate colors are found in the Singles as are also the largest blossoms. We probably grow the largest assortment of Geraniums in the country, and have many choice colors and varieties. Order now and have them ready for planting when you need them.

3 Select Plants—each a different color, 53c, postpaid.

Buckbee's Double Geraniums

Large Flowers—Good Colors—Attractive Foliage—Sturdy and Robust Growers

Double Geraniums are used more extensively than any other bedding plant: in vases or window boxes, in flower beds, as well as for cemetery decoration. Be sure to have some this season. We have a splendid assortment, and want to send you our selection of varieties, which will be of the newer colors at the following low prices.

3 Fine Plants—each a different color, 54c, postpaid



Sweet Scented Heliotropes



Beautiful French Hydrangeas

New and Beautiful French Hydrangeas

These New Varieties are the Showiest and Most Durable Decorative Plant Ever Offered

Grand low growing bushy shrubs; used for decorating lawns and porches during Summer; they bear enormous heads of flowers; not being entirely hardy are usually kept in tubs or boxes where they are easily grown, and set out in Summer and taken to cellar over Winter where they should bloom nicely during the late Winter and Spring. The color of the flowers runs through the lighter shades, from silvery white to mauve pink. **Strong plants 30c each; 3 for 85c, postpaid.**



Oleanders

Oleanders

Very attractive plants that can be grown in almost any soil or situation and kept growing all the year or rested in the cellar. The dark green willow-like foliage is very neat and pleasing.

ORANGE KING. Large and beautiful, strong grower, very double and wonderful salmon yellow color. **Each 40c; 3 for \$1.15, postpaid.**

LILLIAN HENDERSON. White. Magnificent large, snow-white double blossoms. Fully as fragrant as a rose and much prettier. **Each 30c; 3 for 85c, postpaid.**

ROSY MORN. Pink. Large rosy pink blossoms. A truly magnificent plant, the contrast of foliage and the delicate color of the flowers being so very striking. **Each 35c; 3 for 95c, postpaid.**

SPECIAL OFFER. The full set, one each of the three varieties of Oleanders for **97c, postpaid.**

Buckbee's Everblooming Monthly Roses

Beautiful Sure Blooming Roses with Good Size Flowers of Great Beauty and Sweet Fragrance

These wonderful Roses, while not hardy enough to stand the winters out of doors, are fast taking the place of other classes of Roses on account of their ease of culture, strong constitution, sweet fragrance, and large, beautiful flowers. Only the Everblooming or Tea Roses can be depended upon to grow and bloom every month in the year. You can grow as fine Roses in your own home as you can buy from the Florist. Our collection contains all colors and is very complete. **3 Fine Plants—each a different color, 70c, postpaid.**

Buckbee's Best Hardy Out-Doors Roses

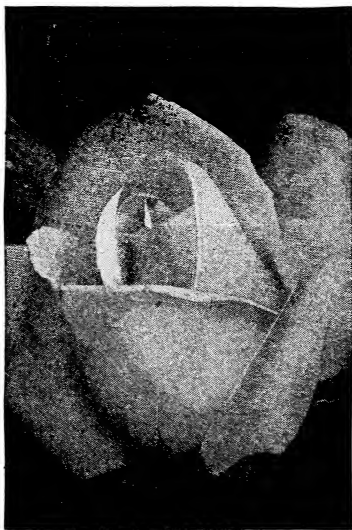
Vigorous Summer Blooming Roses, Noted for Their Delightful Fragrance. Flowers Large and Last Well. Colors Strikingly Beautiful!

This class of Roses live out of doors the year around and are of vigorous upright growth with an abundance of dark green foliage, and very large, double, sweet scented flowers, which are borne profusely in June and often times again in the Autumn. You cannot do without these roses. Planted in groups, by themselves, or in the perennial border they are showy and attractive all the time, whether in bloom or not. We have a fine assortment. **3 Fine Plants—each a different color, 70c, postpaid.**

Buckbee's Hardy Climbing Roses

The Most Attractive Ornament to Climb Over the Porch or on a Trellis

We know of nothing that will attract so much attention and at the same time add so much to the beauty of a home, as a climbing Rose in full bloom. Perfectly hardy, they live forever and grow larger and handsomer all the time. We grow over 100,000 Roses each year in our Forest City Greenhouses and can supply the finest plants to be had in the country. **3 Fine plants—each a different color, 70c, postpaid.**



Buckbee's Roses

Buckbee's Hardy Perennial Plants

Start Now to Prepare Your Perennial Border and Add to It Every Year. You will be Surprised How Beautiful It Will Be

The old-fashioned hardy garden flowers are very popular, and deservedly so. No feature of the garden can be more satisfactory than a good assortment of these hardy plants, producing from early Spring to late in the Fall a continuous succession of charming flowers, which are equally valuable for garden ornamentation and cutting purposes. No class of plants will yield better or more pleasing results for the money invested. They require very little care or attention, are perfectly hardy and yield a rich harvest of bloom. **3 Select Plants, each a different variety 70c, postpaid.**

Buckbee's Beautiful Palms

A Beautiful and Decorative House Plant.

Sure to Grow and Thrive in Any Location

JAPANESE FAN PALM. One of the hardiest of Fan Palms. Foliage dark green; the segments of the fan-shaped leaves deeply cut, the edges covered with tooth-like spines. Very desirable for lawn decoration **Fine plants 35c each, postpaid.**

KENTIA BELMOREANA. Exceedingly popular parlor Palm. Decidedly rugged under all kinds of treatment. **Fine Plants 40c each, postpaid. Large Specimen plants, \$5.00 to \$7.50 each, by express, not prepaid.**

KENTIA FOSTERIANA. Without exception the most hardy Palm in its class. Quite graceful and scarcely has an equal for table decorations. **Fine plants 40c each, postpaid.**

LATANIA BORBONICA. This is one of the very best Palms for house culture so hardy as to thrive in any ordinary living room in spite of heat, cold, dust, or draught. Has elegant fan-shaped leaves, rich dark green, beautifully fringed. Grows easily, needs no petting or coaxing. **Fine plants 40c each, postpaid.**

PHOENIX CANARIENSIS. Beautiful and strong growing Palm with glossy dark green foliage. Sure to please and easily grown. **Fine plants 60c each, postpaid.**

SEAFORTHIA ELEGANS. A magnificent plant for jardiniere or center of tropical bed. Most graceful. Leaves of rare formation. **Fine plants 45c each, postpaid.**



Palms



Buckbee's Perennials

Sweet Violets

Beautiful Violets Can Be Grown Inside as Well as Out of Doors

ROYALTY. The new double Violet. Beautiful azure blue, of rare fragrance. **25c each; 3 for 70c.**

THE CALIFORNIA. Flowers, single, of immense size; color, clear violet purple. The fragrance is delightful. **20c each; 3 for 55c.**

GOVERNOR HERRICK. Rich, dark purple; single flowers of lovely fragrance. **20c each; 3 for 55c.**

IMPROVED MARIE LOUISE. One of the finest double blue Violets grown. Very fragrant and a continual bloomer. **20c each; 3 for 55c.**

THE BRIDE. A grand pure white variety. Flowers are double and immense in size, extra early and deliciously fragrant. **25c each; 3 for 70c.**

Buckbee's Shower of Gold or Genista

The Decorative Easter Plant, Very Attractive Dark Green Foliage and Dainty Yellow Flowers

A beautiful yellow flowering plant that grows and flowers freely with ordinary care, literally covering the plant with its rich golden yellow blooms when well grown. A very popular plant for Easter decorations, at which time it is usually a mass of bloom. **25c each; 3 for 70c, postpaid.**



Wonderful Himalaya Berry

The Wonderful Himalaya Berry

The Greatest Wonder of All

Ripening after all other berries are gone and extending the berry season several weeks. It is a vigorous grower and should be grown on trellis, as the vines will grow from 30 to 40 feet in one year. The berries are large, black and borne in clusters. **Strong plants, 25c each; 3 for 60c; doz. \$1.75, postpaid.**

Burbank's New Thornless Blackberry

The Finest Flavored, Heaviest Cropping, Best Appearing Berry Ever Grown—Easily Harvested—Sure to Please

This new variety is the peer of all the Mammoth Blackberries and produces a Berry superior to any other, on vines which are absolutely free from thorns. It is not an evergreen, but some leaves usually stay on all Winter. It is enormously productive. The size is immense, berries usually measure 3 inches in length and are as large as a man's thumb. It is practically free from seeds and the core is very small and firm. **Strong plants, 30c each; 3 for 80c; doz. \$2.75, postpaid.**

Burbank's Hybrid Berry "Phenomenal"

Burbank's Latest Berry Triumph and the Largest Berry Known

The color and flavor are those of the Raspberry, while in size and shape, it is more like the Dewberry. The berries grow in clusters from five to ten, and single berries have measured 3 inches. The color is a bright crimson. They are of delicious flavor. **Strong plants, 25c each; 3 for 65c; doz. \$1.95, postpaid.**

New Logan Berry

The Blackberry-Raspberry. The Fruit Ripens Before Raspberries and Blackberries

This thornless Blackberry-Raspberry is an exceedingly strong grower, making the growth of ten feet in one season. The fruit is as large as the largest size Blackberry, of the same form and shape and the color, when fully ripe, is a dark bright red. It is excellent for the table. **25c each; 3 for 60c; doz. \$1.75, postpaid.**

\$1.07 PEERLESS COLLECTION By Mail
STRAWBERRY PLANTS
 Dr. Burrell, 25 selected plants, value45c
 Great Northern, 25 selected plants, value .71c
 Warfield, 25 selected plants, value40c
 In all, 75 plants, value \$1.56, for **\$1.07, postpaid.**

\$1.97 MATCHLESS COLLECTION By Mail
STRAWBERRY PLANTS
 Dr. Burrell, 50 selected plants, value . . . \$0.70
 Great Northern, 50 selected plants, value 1.06
 Warfield, 50 selected plants, value65
 In all, 150 plants, value \$2.41, for only **\$1.97, postpaid.**

We have a very complete line of small Fruits. Ask for prices on Dewberries, Grapes, Raspberries, Blackberries, Strawberries, etc.



Buckbee's Strawberries

Buckbee's Hardy Ornamental Shrubs

No Flowering Plants Are More Worthy
of Cultivating than Shrubs, and
None Can Be Cultivated More
Easily

HARDY BUTTERFLY BUSH OR SUM- MER LILAC

A pretty shrub of spreading habit, growing 4½ feet and flowering freely the first season. The long tapering flower spikes, often 12 to 15 inches long, are densely covered with lilac-like violet-mauve colored blooms from June till frost. Delightfully fragrant. During the Summer this plant is a Mecca for butterflies and for this reason it is named the "Butterfly Bush." **Fine young plants, 30c each; 3 for 85c, postpaid. Extra size plants, 55c each, postpaid.**

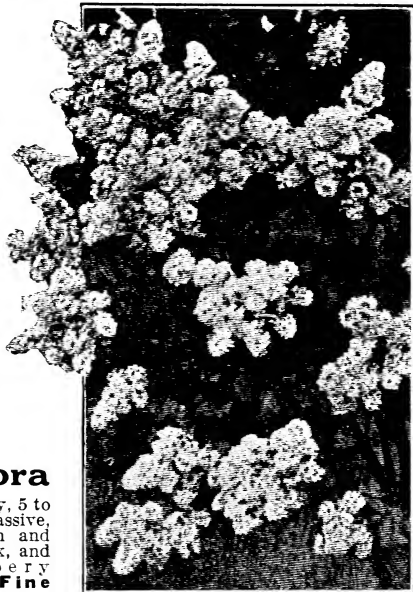
Hydrangea— Paniculata Grandiflora

Unsurpassed for the lawn, hedge, or cemetery, 5 to 7 feet, hardy in all localities, the flowers are massive, cone-shaped, sometimes 10 inches in length and changing from the original pure white to pink, and

coppery red. **Fine Plants, postpaid, 25c each; doz. \$2.50. Larger plants, by express, not prepaid, 35c each; doz. \$3.50. Extra large plants, 60c each; doz. \$6.00.**



Butterfly Bush



Persian Tree Lilac

Persian Tree Lilac

Popular Favorites for Their Beauty and Perfume

A neat, handsome little tree, growing 7 to 8 feet high, with slender branches and long narrow foliage. The flowers grow in immense clusters, delightfully and deliciously sweet and fragrant.

PERSIAN BLUE. Fine young plants, 35c each; 3 for 95c, postpaid. Extra size plants, 60c each, postpaid.

PERSIAN WHITE. Fine young plants, 35c each; 3 for 95c, postpaid. Extra size plants, 60c each, postpaid.

The New Hardy Japanese Snowball

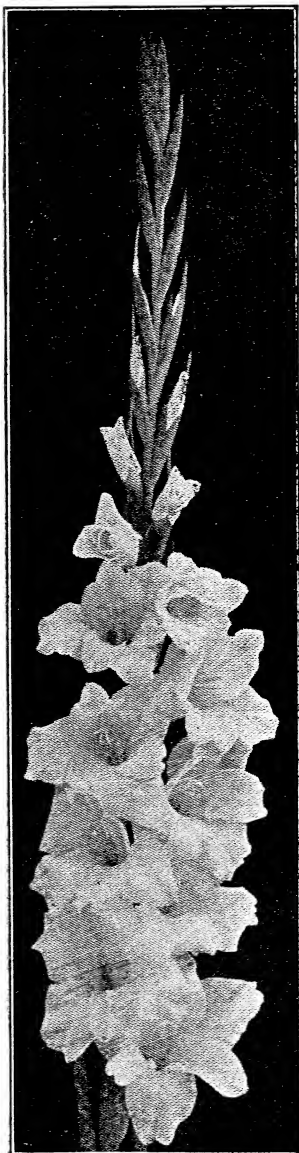
This Japanese variety of the old-fashioned Snowball is one of the grandest and most striking of all hardy shrubs. It forms an erect, compact plant 6 to 8 feet in height, blooms in June and for a long time the plants are filled with hundreds of big snowy balls that glisten with ethereal whiteness like gems in the sunlight.

Fine young plants, 35c each; 3 for 95c, postpaid. Extra size plants, 60c each, postpaid.

Spirea—Bridal Wreath

This lovely shrub is always popular and justly so, because of its real beauty; bears large spirals of densely crowded pure white flowers, each blossom like a miniature rose the entire length of the branches—and they appear by the million—hence the common title of "Bridal Wreath." A beautiful floral wreath is made at once by bending and tying the ends of the branch together. **Fine young plants, 30c each; 3 for 85c, postpaid. Extra size plants, 50c each, postpaid.**

Beautiful Gladiolus Bulbs



Be sure to plant a good bed of Gladiolus this year. They come into bloom early and are a mass of color all season. In the fall you can dig up the bulbs and plant them again the following spring. We grow all our own bulbs on our own farm here at Rockford.

ALBATROS

A favorite pure white, unequaled for cutting. Our field this year showed nearly every flower a pure white. A good bloomer, large strong stems, and fine in every way. **7c each; 6 for 40c; 12 for 75c, postpaid.**

ECLIPSE

Splendid new Gladiolus with large flowers of wonderful substance. Color clear rosy pink with dark crimson scarlet blotch in throat. Strong grower. **6c each; 6 for 35c; 12 for 65c, postpaid.**

GOLD BUG

Flowers gracefully arranged on very slender, tall, and strong spikes, medium sized and somewhat hooded in form. Colors: mostly yellow, orange, pink and crimson. **7c each; 6 for 40c; 12 for 75c, postpaid.**

JUPITER

Large flowers of light scarlet color. About four and one-half inches across. Five to six flowers open at one time. **8c each; 6 for 45c; 12 for 85c, postpaid.**

NIMROD

Very large flowers, soft cream yellow, slightly tinged rosy-carmine in the throat. **7c each; 6 for 40c; 12 for 75c, postpaid.**

PEACH BLOSSOM

Beautiful soft shell-pink color, tinged lavender; growth and habit perfect. **8c each; 6 for 45c; 12 for 85c, postpaid.**

RED BIRD

Dark variety—darkest red ever grown. Flower spikes are tall, strong, and well filled with large flowers of a rich blood red shaded with crimson black. **7c each; 6 for 40c; 12 for 75c, postpaid.**

SIERRA

Magnificent large flowers and spikes. Canary-yellow with crimson center. **6c each, 6 for 35c; 12 for 65c, postpaid.**

TWILIGHT

Soft flesh pink, orchid-like in coloring, magnificent large flowers. **8c each; 6 for 45c; 12 for 85c, postpaid.**

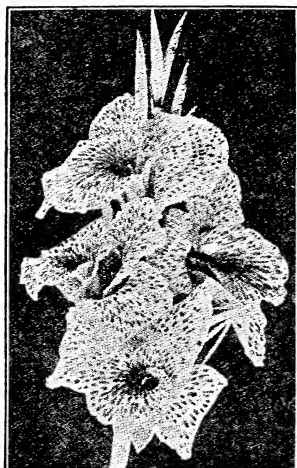
YOSEMITE

Immense, wide-open flowers of rich, dazzling scarlet, with white on the lower portion. **6c each; 6 for 35c; 12 for 65c, postpaid.**

Fannie A. Stebbins, Supervisor Public Schools, Springfield, Mass., writes: "Your service to us during the years we have been dealing with you has been such that we are very glad to commend it. We have always received the most courteous of treatment, good rates and a good quantity of seed. We hope that many other cities may have the opportunity to profit by the same good service that we have had."

Beautiful Cannas

We grew five acres of Cannas on our Rockford Farms last summer, and offer below a few of the best varieties. Nothing makes a more attractive show than the Mammoth Heads of Bright Colored Flowers.



Canna—Superba

CANNA NEW VARIETIES IN MIXTURE

Our Canna Mixture will make a Wonderful showy Bed. Every season we mix a splendid assortment of new and standard Cannas for those of our customers, who wish several varieties without the expense of ordering named sorts (our selection). **Fine bulbs, 3 for 30c; 6 for 55c, postpaid.**

Prof. O. J. Kern, University of Calif., Berkeley, Calif., writes: "Can heartily recommend your famous Rockford Seeds. Have enjoyed our pleasant business relations with you for many years."



Canna—Charmer

CANNA—CHARMER

The finest, largest, and best Red Canna ever offered. The rich, glowing, immense, rounded flowers, 7 inches across when open, are so surpassingly fine that no other Red Canna can compete with "The Charmer." The flowers are most attractive, produced on strong, erect stalks well above the large, rich green foliage which grows about 4 feet high. Solid beds or borders of this variety are a sight to behold. **Price fine bulbs 20c; 3 for 55c, postpaid.**

CANNA—LUCIFER

A fiery orange suffused with scarlet; the effect of which is fairly dazzling—yet beautifully rich and distinct. **Price fine bulbs 15c; 3 for 40c, postpaid.**

CANNA—PRIMROSE

An Orchid flowering Canna; foliage dark green; flowers measuring 5 to 7 inches across; individual petals 3 to 3½ inches in diameter. Color of flower, a deep rich yellow; yellow is spotted and blotched with bright red. **Price fine bulbs 17c; 3 for 46c, postpaid.**

CANNA—PRINCESS

The most wonderful pink Canna ever grown. Flowers are of largest size, borne on heavy trusses, and bloom continuously. The color is a glowing shade of pink, much brighter and clearer than any other pink variety. It is a profuse bloomer and one of the best varieties for bedding. The foliage is substantial and strong, of rich green color and free from defects. Height 3½ feet. **Price fine bulbs 20c; 3 for 55c, postpaid.**

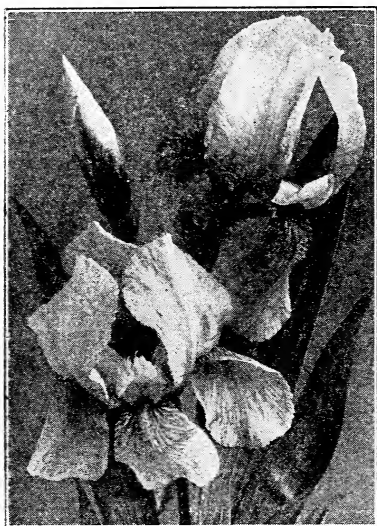
CANNA—SUPERBA

Color rich, clear canary yellow; with crimson spots in the center. Five feet. The flowers are truly gigantic in size. **Price fine bulbs 17c; 3 for 47c, postpaid.**



Canna—Primrose

Butterfly or Orchid Flowered Iris



Butterfly Iris

LORELEY. Fine creamy yellow. While not as showy in striking color combinations as the above sorts, it is really one of the finest being nearly the same color throughout. Grown alone or with others, it is hard to beat. **Price 17c each; 3 for 45c, postpaid.**

The earliest blooming Perennial Plant, makes a wonderful show along the drive or in beds by itself. We offer the best six varieties.

BLACK BEAUTY is the very darkest colored of all the Iris, and claimed by many to be the finest. The upright or standing petals are purplish-lilac, while the drooping petals are deep velvet black, making a very striking flower. **Price 12c each; 3 for 30c, postpaid.**

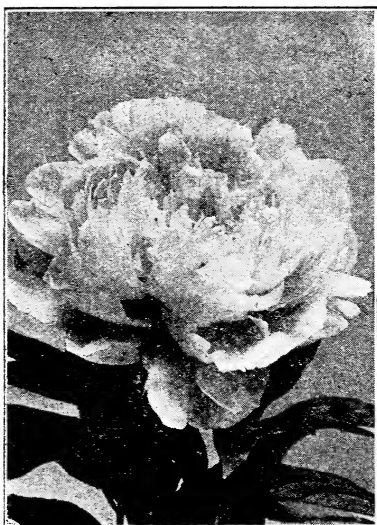
TERESSA. Fine satiny lavender blue and one of the most beautiful of the Hardy Iris. The upper petals appear delicate grayish-blue while the falls are a bright blue, giving the entire flower a lavender effect. **Price 17c each; 3 for 45c, postpaid.**

RAINBOW is a combination of colors which is hard to beat. The uprights are a primrose-yellow, while the falls are lilac and primrose. Many petals come in lemon yellow with purple edge. **Price 12c each; 3 for 30c, postpaid.**

MAJESTIC is an extremely large flower for an Iris. Standards or upright petals are a beautiful cream color; falls white striped with rosy lilac. This flower must be seen to be appreciated and must be in every garden to know its value. **Price 12c each; 3 for 30c, postpaid.**

SNOW QUEEN. One of the most beautiful of its class. The flowers are a pure white with a broad and irregular border of clear blue, and are borne on strong stems which are often more than 2 feet high. **Price 12c each; 3 for 30c, postpaid.**

Hardy Chinese Paeonies



Hardy Chinese Paeonies

This flower has been a favorite for 50 years, and always will be. Bulbs live in the ground over winter and come up early in the spring with a wonderful display of foliage and flowers.

ADELINE—(Pure White). This is probably the most popular and beautiful white paeony. Flowers are of immense size, often 7 to 8 inches in diameter. The edges of center petals are dotted with Carmine spots. It is a free and willing bloomer and quite early. **Price fine bulbs 30c each, postpaid.**

DIADEM—(Rose Pink). This is one of the grandest paeonies, a tall grower, and is such a free bloomer that it completely hides the plant; the coloring is so refined as to instantly arrest the attention, being a delicate rose-pink; fine for cut flowers. **Price fine bulbs 30c each, postpaid.**

LOUISE—(Apple Blossom Pink). This is the one paeony sought after by every progressive paeony grower. It stands preeminently in a class by itself. It bears enormously large, full rather flat, perfectly double flowers that are deliciously fragrant. Color: soft apple blossom pink, reflecting mauve. **Price fine bulbs 30c each, postpaid.**

VESUVIUS—(Bright Crimson). This is probably one of the best red paeonies, being of a rich even shade of dark red. Flowers are large globular and freely produced, rose type flower, late mid-season. **Price fine bulbs 35c each, postpaid.**

New and Beautiful Dahlias

At the lowest prices ever offered

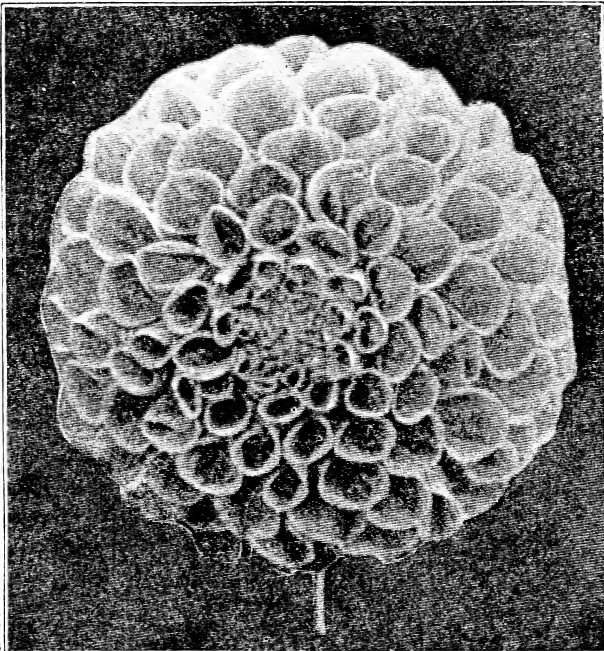
Our Danja Bulbs are grown here at home and are carefully dug and handled so as to give the very best of satisfaction to our customers. We are offering six different and distinct varieties which will make a wonderful show wherever grown.

AUTUMN QUEEN.

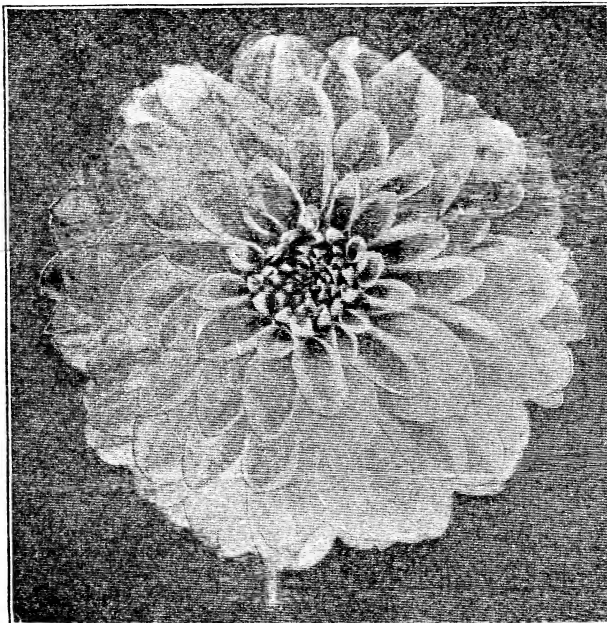
A very beautiful salmon shading to a soft pink. The plants are tall and healthy producing their lovely blossoms on strong stems. **Fine bulbs 24c each.**

BRONZE BEAUTY.

A good sized flower on long, strong stems. Color is very unusual being a rich coppery bronze. **Fine bulbs 24c each.**



Crimson Beauty Dahlia



White Hawk Dahlia

CRIMSON BEAUTY. The largest of all Dahlia Flowers, and blossoms are held well above the foliage. The color is a wonderful wine crimson—the true American Beauty color. **Fine bulbs 29c each.**

HERCULES. A very effective flower of good size. Color is a rich deep purple shaded crimson. Petals are tubular and incurved. **Fine bulbs 29c each.**

WHITE HAWK. An ideal pure white. One of the first to blossom and stays in bloom the entire season. This is one of the finest Dahlias we have ever grown. **Fine bulbs 29c each.**

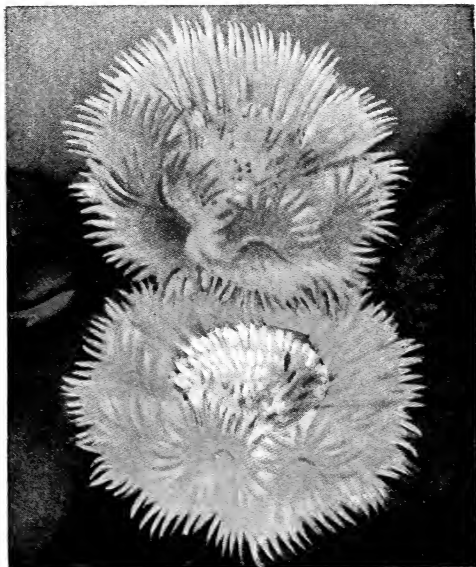
YELLOW QUEEN. Flowers are of enormous size and produced on long stems. Color is a deep golden yellow, very decorative. **Fine bulbs 24c each.**

Buckbee's "Full of Life" Flower Seeds

BUCKBEE'S RAINBOW BOUQUET FLOWER

Delightfully Sweet Scented, Exquisitely Beautiful, Charming and Graceful. Easily Grown and an Ornament to Any Garden.

For Summer Flowers our New Rainbow Flower heads the list for general all around good qualities. This striking and attractive flower is one of the finest you can grow for cut flowers and bouquets, as it is very solid, never shows any objectionable center, and comes in forms and colors seen in no other flower. Beautiful and deliciously sweet scented flowers are borne on long strong stems and are particularly striking, lasting for several days after cutting. Many of the flowers will also have beautifully fringed edges, which show up to advantage with the other flowers. The most satisfactory way is to plant seed every two weeks from May until July and you should have blossoms continuously from early summer to late fall. All colors from purple to white, including rose, lavender, etc., make a veritable rainbow of color. Flowers are well shown by illustration. Pkt. 10c, $\frac{1}{8}$ oz. 25c.



Buckbee's Rainbow Bouquet Flower.

CYCLAMEN

THE BEAUTIFUL PERSIAN VIOLET

Buckbee's Mixture of Cyclamens
Contains Many Wonderful
Colors

Favorite pot plants for winter and spring blooming, producing handsome bright colored flowers, with beautiful variegated foliage, in different shades of green. The seed should be sown in the spring and by autumn will produce a bulb which will blossom the following spring. The Cyclamen is without question the most beautiful of all pot plants giving the richest profusion of elegant flowers and the foliage being variegated with different shades of green, helps to show off the richly-colored flowers.

**BUCKBEE'S LARGE FLOWERED
MIXED.** Pkt. 15c.

PERSICUM—Splendid mixed. Pkt. 12c.

CYCLAMEN PLANTS

We can also supply nicely started, healthy young plants at 30c each; 3 for 85c, postpaid.



Buckbee's Large Flowered Cyclamen.

H. W. BUCKBEE

ROCKFORD, ILLINOIS

Rockford Seed Farms *Established 1871* Forest City Greenhouses

Buckbee's "Full of Life" Flower Seeds



Petunia—Giants of California.

PETUNIAS

BUCKBEE'S FAMOUS GIANTS OF CALIFORNIA

Our Petunias Are World Renowned. Flowers Are Unusually Large and Beautiful, Deeply Fringed and Ruffled and of Exquisite Colors.

A California strain of great beauty, size and luxuriance. This is a mixture of the best large flowering and fringed Petunias, the flowers often measuring 5 to 6 inches across. The variety of colors, markings, veinings, and blotches distinguish them from all others. The seed is carefully selected from especially fine plants. The flowers are usually ruffled and fringed on the edges and present a most wonderful appearance. This is without question the largest, prettiest and most wonderful Petunia ever grown. Equally desirable in pots in the house or grown in beds out of doors. Seed is very fine and care must be used not to plant the seed too deep. Pkt. 15c.

PETUNIAS

Buckbee's New Double Fancy Fringed

Entirely distinct from the above as a large per cent of the flowers will be entirely double. Many fine colors mixed. Pkt. 18c.

CHINESE WOOL FLOWER

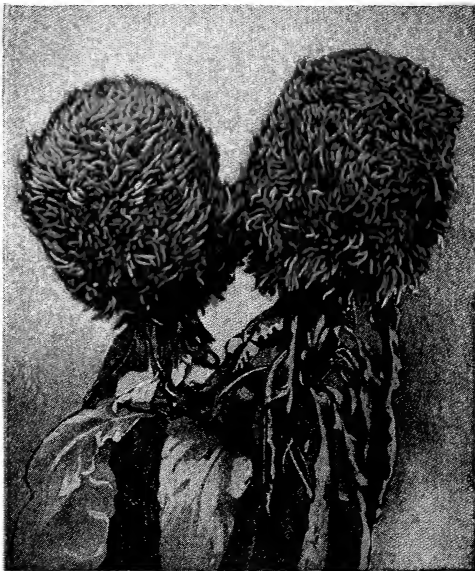
A World-Beating Floral Wonder.

A valuable novelty. A unique form of the Feathered Cockscomb. The plants grow 2 to 3 feet high, branching freely. Each branch terminates in a large ball-shaped flowerhead of rich color, looking as if made of some silky-wool material. All these branches uphold numerous side shoots with smaller heads of bloom intermingled with the attractive green foliage so that one plant forms an immense, beautifully arranged bouquet. Very effective in beds and borders and valuable for cutting. The flowers may also be cut and dried, retaining their bright coloring for a long period. They flower profusely from early June till frost. Besides the original Rose color that we have been offering for the past few years, we also have a clear pink and bright yellow at the following prices:

Chinese Wool Flower—Rose. Pkt. 10c; $\frac{1}{8}$ oz. 40c.

Chinese Wool Flower—Pink. Pkt. 12c; $\frac{1}{8}$ oz. 50c.

Chinese Wool Flower—Yellow. Pkt. 12c; $\frac{1}{8}$ oz. 50c.



Chinese Wool Flower.

H. W. BUCKBEE

ROCKFORD, ILLINOIS

Rockford Seed Farms *Established 1871* Forest City Greenhouses