

Historic, Archive Document

Do not assume content reflects current scientific knowledge, policies, or practices.

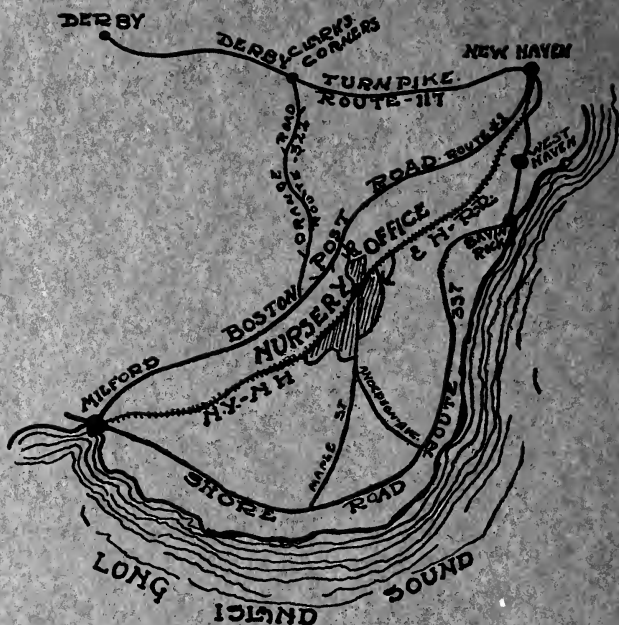
79/13

1028a

LIBRARY
 RECEIVED
 MAR 31 1928
 U. S. Department of Agriculture

The **ELM CITY**
NURSERY
COMPANY

Woodmont Nurseries, Inc.
NEW HAVEN, CONN.



How to Reach Our Woodmont Office and Nurseries

Our office and sales grounds are located at the Nurseries near the Woodmont Railroad Station.

To reach the office by automobile from New Haven follow the Shore Road (Route 337), pass Savin Rock to Oyster River; then take the first road to the right (Anderson Avenue), and follow the white arrow-signs to the office.

From Milford follow the Shore Road (Route 337) to Woodmont Borough Line, then turn left on Maple Street and follow the signs to the office.

From Derby and Naugatuck Valley points, follow Derby Avenue (Route 117) to Clarks Corners; then turn right on Orange Road (Route 322) through Orange Center to the Boston Post Road (Milford Turnpike); turn left, following the Post Road to the first road to the right (fair in dry weather); follow white arrow-signs to the office.

If traveling by trolley, take the Bridgeport or New Haven trolley lines to Anderson Avenue, Woodmont. If visitors coming by trolley will notify us of the time of arrival at Anderson Avenue, we will be glad to meet them.

THE ELM CITY NURSERY COMPANY

Woodmont Nurseries, Inc.

Office and Sales Ground at Nurseries near Woodmont Railroad Station

New Haven, Connecticut

P. O. Box 1588

New Haven and Milford Telephones

A Word to the Friends of The Elm City Nursery Company

PREPARING a new catalogue is a real pleasure, for it means that we can greet our friends and customers who live many miles from New Haven, as well as those who are our near-by neighbors.

Through these catalogue pages, we take the nursery to you. We present some of the new plants that have come into use during the past few years; we remind you of the familiar trees and shrubs that adorn New England's grounds and gardens; and we wish to place the experience and facilities of our entire organization at your service.

Every year we test many new plants. Not all will be listed in the catalogue. Should you be interested in plants that are not listed, please write us—we may have them in limited quantities, provided they are hardy in New England.

The nursery business is crowded into a few weeks in spring—stock must be dug, packed and shipped without needless delay. Therefore, we will appreciate receiving your orders as early in the season as possible, so that we may give you prompt service.

The map on the second cover shows how to reach the nursery and office. We shall be glad to greet you any day except Sunday, and a guide through the grounds will be at your service.

Landscape Department

Experience and knowledge of trees and plants are demanded if a landscape development (small or large) is to be a success. We offer a practical service in planning and planting, whether the work involves a small home or a large estate.

Simple suggestions for home grounds are made without charge to intending purchasers, but where landscape problems require special visits, plans, specifications, and so on, a reasonable charge must be made consistent with the services rendered.

“Hardy New England grown—best by test”

THE ELM CITY NURSERY COMPANY

Woodmont Nurseries, Inc.

Office and Sales Ground at Nurseries near Woodmont Railroad Station
New Haven, Connecticut

P. O. Box 1588

New Haven and Milford Telephones

All trees, shrubs and plants (with the exception of a few varieties), in this catalogue are listed according to Standardized Plant Names. If you have any difficulty in finding varieties under this new listing, please telephone or write us; we shall be glad to assist you.



Evergreen Foundation Planting

Evergreens

All evergreen trees and evergreen shrubs are dug with balls of earth and wrapped in burlap (technically known as B&B). In planting it is usually desirable to remove the burlap, although in some cases the strings may be cut, the burlap rolled back and dropped in the hole immediately under the roots. The burlap will soon decay.

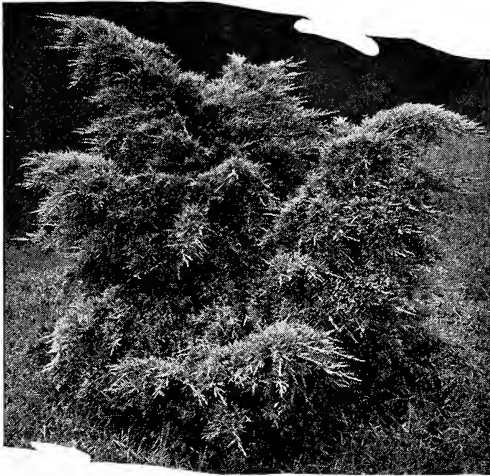
Abies · Fir

Abies balsamea. Balsam Fir. Native of our northern woods. Rich, dark green foliage; becomes open and straggling at maturity.	Each	10
2 to 3 feet.....	\$2 00	\$17 50
A. concolor. White Fir. A stately, dignified Fir with sage-green foliage. Valuable as a lawn specimen or for border planting.		
18 to 24 inches.....	3 50	30 00
2 to 3 feet.....	5 00	45 00
3 to 4 feet.....	7 50	70 00

- ARBORVITAE. See Thuja.
- BIOTA. See Thuja.
- CEDAR, RED. See Juniperus.
- CHAMAECYPARIS. See Retinospora.
- CYPRESS, JAPAN. See Retinospora.
- DOUGLAS FIR. See Pseudotsuga.
- FIR. See Abies.
- HEMLOCK. See Tsuga.

Juniperus · Juniper

Juniperus chinensis globosa. Globe Chinese Juniper. Very low-growing, with ascending branches; rich green foliage. Valuable for rockery.		
18 to 24-inch spread.....	5 00	47 50
2 to 2½-foot spread.....	7 50	70 00



Juniperus pfitzeriana is a graceful evergreen for foundation or specimen planting

<i>Juniperus chinensis pfitzeriana</i>. Pfitzer Juniper. A graceful Juniper with light olive-green foliage; branches grow horizontally from the stem, forming a low, broad pyramid at maturity. 18 to 24-inch spread.....	Each	10
2 to 2½-foot spread.....	\$4 00	\$37 50
2½ to 3-foot spread.....	5 00	47 50
	6 00	57 50
<i>J. communis</i>. Common Juniper. A low, spreading native variety, which is at home in sandy or gravelly soil.		
18 to 24 inches.....	2 50	22 50
<i>J. communis hibernica</i>. Irish Juniper. Slender, pillar-like habit; blue-green branchlets.		
18 to 24 inches.....	2 00	17 50
<i>J. communis depressa plumosa</i>. A new variety, of low spreading habit. Summer foliage is a light blue-green which turns to a deep purple in the late fall.		
12 to 15-inch spread.....	2 50	22 50
15 to 18-inch spread.....	3 00	27 50
<i>J. communis suecica</i>. Swedish Juniper. Compact, upright form, with light green foliage.		
18 to 24 inches.....	2 50	22 50
<i>J. excelsa stricta</i>. Spiny Greek Juniper. Compact-growing, pyramidal form; blue-green foliage.		
12 to 15 inches.....	2 00	17 50
15 to 18 inches.....	2 50	22 50
<i>J. japonica aurea</i>. Golden Japanese Juniper. Low-growing; spreading branches; golden yellow in early spring.		
15 to 18 inches.....	3 00	27 50
<i>J. procumbens</i>. Trailing Juniper. Low shrub with spreading branches, closely covering the ground; rich silvery gray foliage. Valuable for rockery or terrace slope.		
18 to 24-inch spread.....	3 50	32 50
2 to 2½-foot spread.....	5 00	45 00
<i>J. sabina</i>. Savin. A low spreading variety; foliage very dense and of a very pleasing dark green.		
15 to 18 inches.....	2 00	17 50
<i>J. sabina tamariscifolia</i>. Tamarix Savin. A beautiful, low-spreading variety; soft gray-green foliage. Useful for foreground planting or rockery.		
12 to 15 inches.....	2 50	22 50
<i>J. virginiana</i>. Red Cedar. Our native Red Cedar is the best of the tall, pyramidal-growing evergreens for planting in the eastern United States. Inquire for special prices on collected specimens.		
2 to 3 feet.....	2 00	15 00
3 to 4 feet.....	3 00	27 50
4 to 5 feet.....	5 00	47 50

Norway Spruce (*Picea excelsa*)

<i>Juniperus virginiana cannarti</i> . <i>Cannart Red Cedar</i> . Similar in appearance to the Red Cedar, but with rich green foliage.	Each	10
3 to 4 feet.....	\$5 00	\$47 50
4 to 5 feet.....	6 00	55 00
<i>J. virginiana glauca</i> . <i>Silver Red Cedar</i> . Tall, slender habit; silvery blue foliage, similar in shade to Colorado blue spruce.		
2 to 3 feet.....	5 00	47 50
<i>J. virginiana schottii</i> . <i>Schott Red Cedar</i> . Compact form with upright branchlets; bright pea-green foliage.		
3 to 4 feet.....	5 00	47 50
4 to 5 feet.....	6 50	62 50

Picea · Spruce

<i>Picea canadensis</i> (alba). <i>White Spruce</i> . Compact, upright grower, forming a broad pyramid at maturity; foliage light green with slight bluish tinge.		
18 to 24 inches.....	1 50	14 00
2 to 3 feet.....	2 50	22 50
<i>P. engelmanni</i> . <i>Engelmanni Spruce</i> . Resembles the Colorado Spruce in outline but has softer needles.		
2 to 3 feet.....	4 00	37 50
3 to 4 feet.....	7 50	70 00
<i>P. excelsa</i> . <i>Norway Spruce</i> . A vigorous, quick-growing tree that adapts itself to adverse conditions. Valuable for windbreaks and for the tall border plantings among pines.		
18 to 24 inches.....	1 50	12 50
2 to 3 feet.....	2 00	17 50
<i>P. koyamai</i> . <i>Koyamai Spruce</i> . Native of Japan, introduced into this country in 1915 and has proved to be hardy in New England. Leaves light green, with slender branches.		
18 to 24 inches.....	2 00	17 50
2 to 3 feet.....	2 50	22 50
<i>P. pungens</i> . <i>Colorado Spruce</i> . Symmetrical; leaves light green. Valuable for border.		
18 to 24 inches.....	3 00	27 50
2 to 3 feet.....	4 00	37 50
3 to 4 feet.....	6 00	55 00

<i>Picea pungens glauca.</i> <i>Blue Colorado Spruce.</i> Rich blue foliage; very hardy. Valuable as a specimen.	Each	10
18 to 24 inches	\$5 00	\$47 50
2 to 3 feet	7 50	70 00
3 to 4 feet	10 00	
<i>P. pungens kosteri.</i> <i>Koster Blue Spruce.</i> The most beautiful of the Blue Spruces; rich silvery blue foliage.		
2½ to 3 feet	15 00	
3 to 4 feet	20 00	

Pinus · Pine

<i>Pinus austriaca.</i> See <i>Pinus nigra.</i>		
<i>P. banksiana.</i> <i>Jack Pine.</i> Fast-growing Pine of irregular outline. Will thrive in gravelly and sandy locations, where other trees could not live. 2 to 3 feet	1 50	12 50
3 to 4 feet	2 00	17 50
<i>P. cembra.</i> <i>Swiss Stone Pine.</i> Slow-growing; compact habit; foliage resembling the White Pine somewhat, but the needles are shorter. 2 to 3 feet	6 00	
<i>P. densiflora.</i> <i>Japanese Red Pine.</i> Rapid grower; soft, light green foliage. Valuable for windbreak.		
18 to 24 inches	2 00	17 50
2 to 3 feet	2 50	22 50
<i>P. koraiensis.</i> <i>Korean Pine.</i> Compact habit, forming dense pyramid; light green foliage. 2 to 3 feet	3 50	32 50
3 to 4 feet	4 50	42 50
<i>P. montana mughus.</i> <i>Mugho Pine.</i> A low, spreading Pine; very dwarf; dark green needles.		
12 to 15-inch spread	2 50	22 50
15 to 18-inch spread	3 00	27 50
<i>P. nigra.</i> <i>Austrian Pine.</i> A compact, symmetrical, sturdy Pine; rich, glossy green needles.		
18 to 24 inches	2 00	17 50
2 to 3 feet	3 00	27 50
<i>P. parviflora.</i> <i>Japanese White Pine.</i> Slow-growing Pine with horizontal branches; picturesque outline.		
2 to 3 feet	3 50	32 50
3 to 4 feet	4 50	42 75
<i>P. resinosa.</i> <i>Red Pine.</i> Similar to the Austrian Pine but with softer foliage. Valuable for screen planting.		
18 to 24 inches	1 25	10 00
6 to 8 feet	12 00	
<i>P. strobus.</i> <i>White Pine.</i> The tall stately Pine so often met within our New England woods; beautiful, with its long, soft, bluish-green needles.		
2 to 3 feet	2 00	17 50
3 to 4 feet	3 00	27 50
<i>P. sylvestris.</i> <i>Scotch Pine.</i> Upright, rapid-growing Pine for tall border or screen plantings.		
2 to 3 feet	2 50	22 50
3 to 4 feet	3 50	32 50
<i>Pseudotsuga douglasi.</i> <i>Douglas Fir.</i> Resembling the spruce in outline, but with beautiful soft foliage, varying in color from deep green to silvery blue.		
18 to 24 inches	2 00	17 50
2 to 3 feet	3 00	27 50
3 to 4 feet	4 00	37 50

Retinospora · Cypress

<i>Retinospora filifera.</i> <i>Thread Cypress.</i> One of the most graceful Retinosporas; medium height; pendulous, dark green, thread-like branches.		
18 to 24 inches	3 00	27 50
2 to 2½ feet	3 50	32 50
<i>R. filifera aurea.</i> <i>Golden Thread Cypress.</i> Dwarf habit than the preceding; bright golden foliage.		
15 to 18-inch spread	4 00	37 50
18 to 24-inch spread	5 00	47 50
<i>R. obtusa.</i> <i>Hinoki Cypress.</i> Upright, graceful habit; soft frond-like foliage which remains dark green.		
15 to 18 inches	2 00	17 50
18 to 24 inches	2 50	22 50
2 to 3 feet	4 00	



Evergreens in variety are indispensable for grouping around the house

<i>Retinospora pisifera. Sawara Cypress.</i> Tall, pyramidal form; slender, graceful branches; light green foliage.	Each	10
2 to 3 feet.....	\$3 50	\$32 50
3 to 3½ feet.....	4 50	42 50
<i>R. pisifera argentea. Silver Sawara Cypress.</i> Compact habit; silver-tipped foliage. 15 to 18 inches.....	3 00	27 50
18 to 24 inches.....	3 50	32 50
2 to 2½ feet.....	4 50	42 50
<i>R. pisifera aurea. Golden Sawara Cypress.</i> Similar to the above in form; rich golden leaves.		
18 to 24 inches.....	2 50	22 50
2 to 3 feet.....	3 50	32 50
3 to 3½ feet.....	4 50	42 50
<i>R. plumosa. Plume Cypress.</i> The plume-like foliage is of a soft green color. 15 to 18 inches.....	2 00	17 50
18 to 24 inches.....	2 50	22 50
2 to 2½ feet.....	3 50	32 50
2½ to 3 feet.....	4 50	42 50
<i>R. plumosa argentea. Silvertip Cypress.</i> Dwarf habit; compact; white-tipped feathery foliage.		
12 to 15 inches.....	2 50	22 50
15 to 18 inches.....	3 50	32 50
18 to 24 inches.....	4 50	42 50
<i>R. plumosa aurea. Golden Plume Cypress.</i> Soft, plume-like foliage of a rich golden yellow. 15 to 18 inches.	2 00	17 50
18 to 24 inches.....	2 50	22 50
2 to 2½ feet.....	3 50	32 50
2½ to 3 feet.....	4 50	42 50
<i>R. squarrosa veitchi. Moss Cypress.</i> A beautiful variety with soft, graceful foliage of silvery blue.		
15 to 18 inches.....	2 50	22 50
18 to 24 inches.....	3 00	27 50
2 to 2½ feet.....	5 00	47 50
<i>Sciadopitys verticillata. Umbrella Pine.</i> A rare Japanese evergreen; compact growth, forming a narrow pyramid.		
18 to 24 inches.....	5 00	
5 to 6-foot specimens.....	25 00	

SPRUCE See *Picea*.

Taxus · Yew

Taxus baccata repandens. <i>Spreading English Yew.</i> Low, spreading growth, with graceful drooping branches. Valuable for foreground planting.	Each	10
15 to 18-inch spread.....	\$3 00	\$27 50
T. canadensis. <i>Canada Yew.</i> Dwarf spreading Yew, seldom growing more than 2 feet in height. The rich green foliage assumes a bronze tinge in winter. Thrives well in dense shade.		
12 to 15-inch spread.....	2 00	17 50
T. cuspidata (spreading form). <i>Spreading Japanese Yew.</i> Broad and spreading in habit; foliage a rich dark green throughout the entire year. Will thrive well in shady locations. Very hardy.		
15 to 18-inch spread.....	3 00	27 50
18 to 24-inch spread.....	5 00	47 50
2½ to 3-foot spread.....	10 00	
T. cuspidata capitata. <i>Upright Japanese Yew.</i> This type is of upright growth, with deep green foliage. Valuable for hedges or formal work.		
18 to 24 inches.....	3 00	27 50
2 to 2½ feet.....	5 00	
2½ to 3 feet.....	7 50	
3 to 4 feet.....	10 00	
4 to 5 feet.....	15 00	
T. cuspidata nana (brevifolia). <i>Dwarf Japanese Yew.</i> A rare and beautiful evergreen of low and spreading habit. Rich, dark green leaves throughout the year.		
12 to 15-inch spread.....	3 50	32 50
15 to 18-inch spread.....	4 50	42 50
18 to 24-inch spread.....	6 00	57 50

Thuja · Arborvitae

Thuja occidentalis. <i>American Arborvitæ.</i> Erect habit and rapid growth makes this a popular evergreen for general planting. Endures shearing and is easy to transplant.		
18 to 24 inches.....	1 50	12 50
2 to 3 feet.....	2 00	17 50
3 to 4 feet.....	3 50	32 50
4 to 5 feet.....	4 50	42 50
T. occidentalis douglasi pyramidalis. <i>Spiral or Douglas Pyramidal Arborvitæ.</i> Spiral-like form with beautiful dark green, crested foliage.		
2 to 3 feet.....	3 00	27 50
3 to 3½ feet.....	4 00	37 50
T. occidentalis ellwangeriana. <i>Tom Thumb Arborvitæ.</i> Compact pyramid, with foliage resembling <i>Retinospora plumosa.</i>		
15 to 18 inches.....	2 00	17 50
18 to 24 inches.....	2 50	22 50
T. occidentalis globosa. <i>American Globe Arborvitæ.</i> Foliage bright green, growing naturally round or globe shape.		
12 to 15 inches.....	2 00	17 50
15 to 18 inches.....	2 50	22 50
T. occidentalis hoveyi. <i>Hovey Arborvitæ.</i> Slow-growing, compact and conical, with light green foliage.		
15 to 18 inches.....	2 00	17 50
18 to 24 inches.....	2 50	22 50
T. occidentalis pyramidalis. <i>American Pyramidal Arborvitæ.</i> Tall, columnar evergreen, useful in formal effects, retaining its bright green color throughout the winter.		
2 to 3 feet.....	3 00	27 50
3 to 4 feet.....	4 00	37 50
T. occidentalis reidi. <i>Reid Arborvitæ.</i> Broad and bushy, forming compact globes with rich green foliage.		
15 to 18 inches.....	2 00	17 50
T. occidentalis rosenthalii. <i>Rosenthal Arborvitæ.</i> Columnar form; very compact. Useful in formal plantings.		
18 to 24 inches.....	3 00	27 50
2 to 2½ feet.....	3 50	32 50

Thuja occidentalis wareana. <i>Ware or Siberian Arborvitæ.</i> Compact habit; dense foliage of dark grayish green color.	Each	10
18 to 24 inches.....	\$2 50	\$22 50
2 to 2½ feet.....	3 50	32 50
T. orientalis. <i>Oriental Arborvitæ.</i> Tall and slender, forming a broad pyramid at maturity; rich green leaves which turn to a rich bronzy brown in the fall.		
2 to 3 feet.....	2 50	22 50
T. orientalis aurea nana. <i>Berckmans Golden Arborvitæ.</i> Globe-shaped, with golden tipped, frond-like foliage.		
12 to 15 inches.....	3 50	32 50

Tsuga · Hemlock

Tsuga canadensis. <i>American or Canada Hemlock.</i> One of the most beautiful evergreens. Naturally open and drooping in growth, but very dense when pruned.		
18 to 24 inches.....	2 50	22 50
2 to 3 feet.....	3 00	25 00
3 to 4 feet.....	4 00	35 00
4 to 5 feet.....	5 00	
T. caroliniana. <i>Carolina Hemlock.</i> Somewhat richer in appearance than the American Hemlock and of more compact growth.		
18 to 24 inches.....	3 00	27 50
2 to 2½ feet.....	4 00	37 50
3 to 4 feet.....	6 00	57 50
T. diversifolia. <i>Japanese Hemlock.</i> Graceful, spreading branches; rich green, glossy foliage.		
18 to 24 inches.....	4 00	37 50
2 to 2½ feet.....	5 00	47 50

UMBRELLA PINE. See *Sciadopitys*.

YEW. See *Taxus*.



Canada Hemlock is useful for screens, hedges, or specimens



Andromeda floribunda

Evergreen Shrubs

The great beauty of evergreen shrubs makes them most valuable for gardening purposes; shade enduring and extremely hardy. Rhododendron and Mountain Laurel grow more satisfactorily when planted in rather heavy masses.

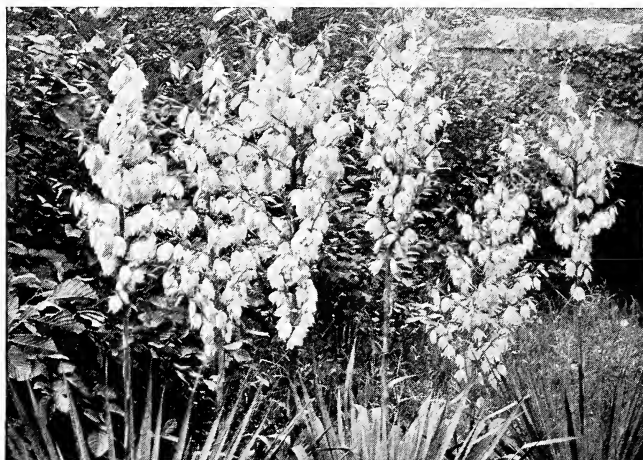
- | | | |
|--|--------|------------------|
| ABELIA grandiflora. <i>Glossy Abelia.</i> Graceful evergreen shrub with small glossy leaves and beautiful small white flowers, blushed with pink. | Each | 10 $\frac{1}{2}$ |
| 12 to 15 inches..... | \$1 50 | \$12 50 |
| ANDROMEDA floribunda. <i>Mountain Andromeda.</i> A native plant of distinct characteristics. Its rich evergreen foliage and abundance of lily-of-the-valley-like flowers, makes it most effective when grouped with other broadleaved evergreens. | | |
| 15 to 18 inches..... | 3 50 | 32 50 |
| A. japonica. <i>Japanese Andromeda.</i> A native of Japan, resembling the above in most characteristics, but having a richer and glossier foliage. | | |
| 12 to 15 inches..... | 2 50 | 20 00 |
| AZALEA amœna. <i>Amœna Azalea.</i> Charming, low-growing evergreen, with dark pink or magenta flowers. Very showy when in bloom. | | |
| 12 to 15 inches..... | 2 50 | 22 50 |
| A. hinodegiri. <i>Hinodegiri Azalea.</i> Deep green foliage, turning a rich, bronze-green in autumn; flowers a brilliant crimson. | | |
| 12 to 15 inches..... | 3 00 | 27 50 |
| COTONEASTER horizontalis. <i>Rock Cotoneaster.</i> A dwarf, spreading variety, with evergreen foliage in sheltered locations. Bright red berries which remain throughout the winter. | | |
| 6 to 8 inches, from 6-inch pots..... | 75 | 6 00 |



Foundation planting of Rhododendrons

- DAPHNE cneorum.** *Rose Daphne.* Low-growing tufts, with attractive foliage and producing terminal clusters of clear pink flowers in June.
- | | | |
|----------------------|--------|--------|
| | Each | 10 |
| 6 to 8 inches..... | \$0 75 | \$6 50 |
| 10 to 12 inches..... | 1 25 | |
- EUONYMUS patens.** *Spreading Euonymus.* Vigorous grower, forming a broad shrub; leaves persistent until late winter. Ornamental fruits.
- | | | |
|----------------------|----|------|
| 12 to 15 inches..... | 75 | 6 00 |
|----------------------|----|------|
- E. radicans.** *Winter Creeper.* Rich, deep green foliage.
- | | | |
|---------------------|----|------|
| 9 to 12 inches..... | 35 | 3 00 |
|---------------------|----|------|
- E. radicans argenteo-marginatus.** *Silveredge Winter Creeper.* Similar to preceding, with exception of foliage.
- | | | |
|---------------------|----|------|
| 9 to 12 inches..... | 35 | 3 00 |
|---------------------|----|------|
- E. radicans minimus.** *Baby Winter Creeper.* Has tiny evergreen leaves and a dainty trailing habit. Fine for rockery.
- | | | |
|-----------------------|----|------|
| From 3-inch pots..... | 50 | 3 50 |
|-----------------------|----|------|
- E. radicans vegetus.** *Big-leaf Winter Creeper.* Resembles *Radicans*, except more erect and branching habit, and larger leaf. Excellent plant for foreground to rhododendrons.
- | | | |
|----------------------|----|------|
| 9 to 12 inches..... | 50 | 3 50 |
| 12 to 15 inches..... | 75 | 6 00 |
- HOLLY GRAPE.** See *Mahonia*.
- KALMIA latifolia.** *Mountain Laurel.* Well known throughout all New England, where it is indigenous. Blooming earlier than *Rhododendron maximum*, it can be used either in connection with it or in individual masses.
- | | | |
|----------------------|------|-------|
| 18 to 24 inches..... | 2 50 | 22 50 |
|----------------------|------|-------|
- LEUCOTHOE catesbæi.** *Drooping Leucothoe.* A low-growing evergreen shrub, producing tresses of andromeda-like flowers. The foliage is a rich green during the summer months, turning to a bronze with the approach of winter.
- | | | |
|----------------------|------|-------|
| 15 to 18 inches..... | 2 00 | 17 50 |
| 18 to 24 inches..... | 2 50 | 22 50 |
- MAHONIA aquifolium.** *Oregon Holly Grape.* Handsome, broad, holly-like leaves; yellow flowers in May.
- | | | |
|----------------------|------|-------|
| 18 to 24 inches..... | 2 00 | 17 50 |
|----------------------|------|-------|
- MOUNTAIN LAUREL.** See *Kalmia*.
- MYRTLE.** See *Vinca*.

PACHYSANDRA terminalis. <i>Japanese Pachysandra.</i> A low, evergreen cover-plant, with rich, dark green foliage. Valuable for planting among evergreens or as a cover where grass will not grow.			
From 3-inch pots.....	\$15 per 100..	Each \$0 25	10 \$2 00
PERIWINKLE. See Vinca.			
PIERIS. See Andromeda.			
RHODODENDRON carolinianum. <i>Carolina Rhododendron.</i> Dwarf, compact habit; small dainty green leaves; flowers of a pale rose-pink, borne in great profusion. 15 to 18 inches.			
		3 50	32 50
R. catawbiense. <i>Catawba Rhododendron.</i> This is one of our finest broadleaf evergreens. Flowers are a bright rose-purple, borne in large clusters at the end of the branches. 12 to 15 inches.			
		2 00	17 50
18 to 24 inches.....		3 00	27 50
2 to 2½ feet.....		4 00	37 50
2½ to 3 feet.....		5 00	47 50
3 to 3½ feet.....		6 00	
R. maximum. <i>Rose Bay Rhododendron.</i> Our native Rhododendron is by far the most extensively planted of all broad-leaved evergreens. Large mass plantings of these make a most brilliant effect, not only during the blossoming period, with their white and pink clusters, but wonderful foliage effects during summer and winter. Will grow under extreme, dense shade and is very hardy.			
18 to 24 inches.....	\$200 per 100..	2 50	22 50
2 to 2½ feet.....	\$250 per 100..	3 00	27 50
2½ to 3 feet.....		3 50	32 50
3 to 3½ feet.....		4 00	37 50
4 to 4½ feet.....		6 00	
R. minus. <i>Piedmont Rhododendron.</i> Compact habit, rarely over six feet high. Small rosy-pink flowers.			
18 to 24 inches.....		3 50	32 50
VINCA minor. <i>Common Periwinkle.</i> One of the best evergreen plants for covering the ground, forming a dark green carpet.			
Field-grown.....	\$12 per 100..	25	2 00
V. minor alba. <i>White Common Periwinkle.</i> A variety of the above with white flowers. From 3-inch pots....			
		35	3 00
WINTER CREEPER. See Euonymus.			
YUCCA filamentosa. <i>Common Yucca.</i> Tropical-like foliage 2 to 3 feet long. Lily-like flowers in July, on tall stems. Valuable for sandy, rocky soils.			
2-year plants.....		50	4 00



Yucca filamentosa



Oaks are among the best trees for street planting

Deciduous Trees

Many of our deciduous trees—notably Japanese Maples, Dogwoods, the Beeches, Magnolias, and other varieties—are shipped balled and burlapped. In most instances this is indicated in the price-list as B&B.

Acer · Maple

Acer dasycarpum. <i>Silver Maple.</i> A rapid-growing Maple of spreading habit; foliage silvery underneath. Valuable for planting on sandy soil.	Each	10
8 to 10 feet.....	\$2 00	\$17 50
10 to 12 feet.....	3 00	25 00
A. dasycarpum wieri. <i>Wier Maple.</i> A strong grower with pendulous branches and fern-like foliage. Valuable as a specimen. 6 to 8 feet.....	2 00	17 50
8 to 10 feet.....	2 50	22 50
A. ginnala. <i>Amur Maple.</i> Graceful, shrub-like tree, with handsome foliage turning bright red in autumn. Valuable for screen or tall border.		
2 to 3 feet.....	75	6 00
A. palmatum. <i>Green-leaf Japanese Maple.</i> A graceful, shrubby grower; foliage beautifully tinted in spring and very brilliant in the fall.		
18 to 24 inches.....	2 00	17 50
6 to 8 feet.....	8 00	75 00
A. palmatum atropurpureum. <i>Blood-leaf Japanese Maple.</i> A red-leaved variety of the preceding. Popular lawn specimen. 12 to 18 inches.....	3 00	
18 to 24 inches.....	4 00	
A. palmatum rubrum dissectum. <i>Red Thread-leaf Japanese Maple.</i> The color of the foliage is similar to the preceding, but the leaves are so deeply divided that it rivals the most delicate fern in its gracefulness.		
18 to 24 inches.....	6 00	
A. platanoides. <i>Norway Maple.</i> One of the best trees for street planting. Rapid grower; develops into a broad, symmetrical specimen.		
8 to 10 feet.....	3 00	27 50
10 to 12 feet, 1½-inch diam.....	4 00	
14 to 16 feet, 3 to 4-inch diam.....	15 00	

<i>Acer platanoides schwedleri</i> . <i>Schwedler Maple</i> . Same habit of growth as the Norway Maple, but the unfolding leaves are a rich amber-red.	Each	10
8 to 10 feet.....	\$3 50	
A. rubrum . <i>Red Maple</i> . Scarlet flowers in early spring. Foliage changes to gorgeous tints of scarlet, crimson, and orange in autumn. Thrives best in moist ground.		
8 to 10 feet, 1¼-inch diam.....	2 50	
10 to 12 feet, 1½-inch diam.....	3 50	
A. saccharum . <i>Sugar Maple</i> . Excellent street or lawn tree; upright, compact habit; foliage assumes brilliant tints in autumn. Avoid planting on wet ground.		
8 to 10 feet, 1¼-inch diam.....	2 50	\$22 50
12 to 14 feet, 2-inch diam.....	6 00	
ÆSCULUS hippocastanum . <i>Horse-chestnut</i> . Large, symmetrical tree, with upright spikes of white flowers in May.		
5 to 6 feet.....	2 00	17 50
AMYGDALUS rubroplena . <i>Double Red-flowering Peach</i> . Shrub-like tree, bearing an abundance of double red flowers in May.		
3 to 4 feet.....	1 00	9 00
BEECH . See <i>Fagus</i> .		
BETULA alba pendula . <i>European Weeping Birch</i> . A graceful, drooping tree with finely cut foliage and white bark.		
5 to 6 feet.....	2 50	20 00
6 to 7 feet.....	3 50	30 00
B. papyrifera . <i>Canoe Birch</i> . The largest growing of the Birch family, with creamy white bark. A native of the extreme North, and, in many respects, the best of the white-barked varieties.		
6 to 8 feet.....	2 00	17 50
BIRCH . See <i>Betula</i> .		
BUTTERNUT . See <i>Juglans</i> .		
CATALPA bungei . <i>Umbrella Catalpa</i> . Globe-shaped heads.		
1-year heads, 5-foot stems.....	2 00	17 50
2-year heads, 5-foot stems.....	2 50	20 00
C. speciosa . <i>Western Catalpa</i> . Hardy, quick-growing tree with large leaves. Sweet-scented white flowers in June.		
6 to 8 feet.....	1 00	9 00
8 to 10 feet.....	1 50	12 50
CERCIS canadensis . <i>American Redbud</i> . Of medium growth, with heart-shaped foliage and attractive pink blossoms in early spring.		
2 to 3 feet.....	1 00	7 50
3 to 4 feet.....	1 50	12 50
CHERRY . See <i>Prunus</i> .		
CORNUS florida . <i>Flowering Dogwood</i> . Our native White Dogwood is without a rival among small ornamental trees, with beautiful white flowers in spring and red fruit in fall. It is unexcelled for use as a specimen, group, or for planting in the shrubbery border.		
2 to 3 feet.....	75	6 00
3 to 4 feet.....	1 00	9 00
4 to 5 feet.....	1 50	12 50
5 to 6 feet, B&B.....	2 00	17 50
6 to 8 feet, B&B.....	3 00	27 50
8 to 10 feet, B&B.....	4 00	37 50
C. florida rubra . <i>Red-flowering Dogwood</i> . Similar in habit to the white-flowering variety, except a little slower grower. Flowers of deep rosy pink. Especially desirable when grouped with the white variety for contrast of color.		
18 to 24 inches, B&B.....	2 00	17 50
2 to 3 feet, B&B.....	3 00	27 50
3 to 4 feet, B&B.....	4 00	37 50

Flowers of the White-flowering Dogwood (*Cornus florida*)

Cornus kousa. <i>Kousa Dogwood.</i> Similar in habit to our native Dogwood. White flowers in June.	Each	10
5 to 6 feet, B&B.....	\$3 50	\$32 50
8 to 10 feet, B&B.....	6 00	57 50
10 to 12 feet, B&B.....	7 50	72 50

CRABAPPLE. See *Malus*.

CRATAEGUS coccinea. <i>Thicket Hawthorn.</i> A native variety with white blooms in May and large scarlet fruit in the fall.		
6 to 8 feet, B&B.....	4 00	35 00

C. oxycyantha splendens. <i>Paul's Double Scarlet Hawthorn.</i> A form of the English Hawthorn with clusters of scarlet flowers.		
4 to 5 feet.....	2 00	17 50
5 to 6 feet.....	2 50	

DOGWOOD. See *Cornus*.

ELM. See *Ulmus*.

Fagus • Beech

Fagus americana. <i>American Beech.</i> Our native Beech. Somewhat slow grower, but in time reaching magnificent size. Smooth gray bark and dark shiny leaves make it distinctive, in summer and winter.		
18 to 24 inches.....	1 00	9 00
5 to 6 feet, B&B.....	5 00	
F. sylvatica. <i>European Beech.</i> Compact-growing tree of fine shape and holding the leaves until late winter.		
6 to 8 feet, B&B.....	7 50	
8 to 10 feet, B&B.....	10 00	
F. sylvatica heterophylla. <i>Fern-leaf Beech.</i> A shrub-like form having deeply cut foliage.		
8 to 10 feet, B&B.....	12 50	

FLOWERING CHERRIES. See *Prunus*.

FLOWERING PLUM. See *Prunus*.

GINKGO biloba. <i>Maidenhair Tree.</i> A Japanese tree of pyramidal habit; rapid grower and hardy.		
8 to 10 feet, 1¼-inch diam.....	3 00	27 50
12 to 14 feet, 2½-inch diam.....	7 00	65 00

GLEDITSIA triacanthos. Common Honey Locust. Vigorous tree with wide-spreading branches.		
5 to 6 feet.....	Each \$1 50	10 \$12 50
6 to 8 feet.....	2 00	17 50
HAWTHORN. See <i>Crataegus</i> .		
HONEY LOCUST. See <i>Gleditsia</i> .		
HORSE-CHESTNUT. See <i>Aesculus</i> .		
JAPAN MAPLES. See <i>Acer palmatum</i> .		
JUDAS TREE. See <i>Cercis</i> .		
JUGLANS cinerea. Butternut. Native; grayish bark.		
6 to 8 feet.....	2 50	20 00
J. nigra. Black Walnut. A handsome, spreading tree, bearing delicious nuts.		
6 to 8 feet.....	2 50	
LARCH. See <i>Larix</i> ; also <i>Pseudolarix</i> .		
LARIX leptolepis. Japanese Larch. The most rapid grower of all the Larches. Soft, bluish green, needle-like foliage in spring, turning to warm yellow in fall.		
5 to 6 feet, B&B.....	3 50	32 50
LINDEN. See <i>Tilia</i> .		
LIRIODENDRON tulipifera. Tulip Tree. Very rapid-growing tree, bearing yellowish green flowers.		
6 to 8 feet.....	2 00	
MAGNOLIA kobus. Kobus Magnolia. A beautiful and fragrant Magnolia from Japan; makes a handsome tree.		
2 to 3 feet, B&B.....	2 50	22 50
3 to 4 feet, B&B.....	3 50	32 50
4 to 5 feet, B&B.....	5 00	47 50
5 to 6 feet, B&B.....	6 00	
MAIDENHAIR TREE. See <i>Ginkgo</i> .		

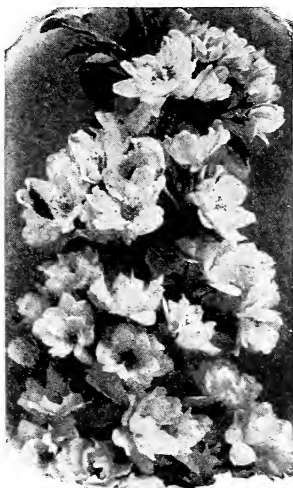
Malus · Flowering Crab

Malus atrosanguinea. Carmine Crab. Wide-spreading tree with a profusion of rose-pink flowers.		
3 to 4 feet.....	1 50	12 50
4 to 5 feet.....	2 50	20 00
5 to 6 feet.....	3 00	25 00

M. floribunda. Japanese Flowering Crab. One of the best of the Flowering Crabs; bright pink flower-buds, opening white. Small yellow fruit in autumn.		
	Each	10
3 to 4 feet.....	\$1 50	\$12 50
4 to 5 feet.....	2 50	20 00
5 to 6 feet.....	3 00	25 00

M. ioensis plena. Bechtel Crab. Fragrant, large, double flowers of a delicate pink color.		
18 to 24 inches.....	1 00	9 00
2 to 3 feet.....	1 50	12 50

M. niedwetzkyana. Red-vein Crab. An interesting, upright-growing variety, with red flowers, branches, leaves and fruit.		
3 to 4 feet.....	1 50	12 50
4 to 5 feet.....	2 50	20 00



Malus floribunda (Flowering Crab)

Write us for suggestions for rearranging present plantings or new developments



Weeping Willow. See page 17

Malus parkmani. <i>Parkman Crab.</i> Broad and spreading form with bright rose semi-double flowers.	Each	10
2 to 3 feet.....	\$1 25	\$10 00
M. scheideckeri. <i>Scheidecker Crab.</i> Upright habit, bearing an abundance of small pink flowers.		
3 to 4 feet.....	1 50	12 50
4 to 5 feet.....	2 50	20 00
5 to 6 feet.....	3 00	25 00
M. spectabilis. <i>Chinese Flowering Crab.</i> Upright habit with spreading branches. Large, fragrant, pink, semi-double flowers.		
3 to 4 feet.....	1 50	12 50
4 to 5 feet.....	2 50	20 00
MAPLE. See Acer.		
MORUS alba pendula. <i>Weeping Mulberry.</i> Commonly called the Umbrella-shaped Mulberry.		
2-year heads.....	3 50	
M. alba tatarica. <i>Russian Mulberry.</i> Rapid growth and beautiful foliage. Large, black edible fruit.		
6 to 8 feet.....	1 75	15 00
MOUNTAIN-ASH. See Sorbus.		
MULBERRY. See Morus.		
NYSSA sylvatica. <i>Tupelo.</i> A large tree with angular branches and small, glossy leaves which turn brilliant red in early autumn.		
2 to 3 feet, from pots.....	1 75	
OAK. See Quercus.		
OXYDENDRUM arboreum. <i>Sourwood.</i> One of the most ornamental shrub-like trees in cultivation. Foliage a rich glossy green, turning to brilliant crimson in the fall. An abundance of blooms, resembling lily-of-the-valley, in July.		
18 to 24 inches, B&B.....	1 00	9 00
2 to 3 feet, B&B.....	1 50	12 50

PEACH, DOUBLE-FLOWERING. See *Amygdalus*.

PLUMS. See *Prunus*.

POPLAR. See *Populus*.

POPULUS <i>eugenei</i> . <i>Carolina Poplar</i> . Rapid-growing tree. Should only be used as fillers.	Each	10
8 to 10 feet.....	\$1 25	\$10 00
10 to 12 feet.....	1 50	12 50
P. <i>nigra italica</i> . <i>Lombardy Poplar</i> . A favorite tree where striking pyramidal masses of foliage are required. Valuable for tall screens.		
6 to 8 feet.....	75	6 00
8 to 10 feet.....	1 00	8 00
PRUNUS <i>pissardi</i> . <i>Purple-leaf Plum</i> . An ornamental variety with deep purple foliage.		
3 to 4 feet.....	1 50	12 50
P. <i>subhirtella</i> . <i>Higan Cherry</i> . The small, single, light pink flowers are produced in abundance in early April. Under favorable conditions will reach a size of 10 to 12 feet high.		
2 to 3 feet.....	2 00	17 50
P. <i>subhirtella pendula</i> . <i>Japanese Weeping Cherry</i> . Producing an abundance of delicate pink flowers.		
4 to 5 feet.....	6 00	

Quercus · Oak

Quercus <i>alba</i> . <i>White Oak</i> . One of America's most noble trees.		
5 to 6 feet.....	3 00	27 50
Q. <i>coccinea</i> . <i>Scarlet Oak</i> . A symmetrical tree; deeply cut leaves turn a vivid scarlet in autumn.		
6 to 8 feet.....	3 00	
Q. <i>palustris</i> . <i>Pin Oak</i> . The Pin Oak is by far the most used of all native Oaks. Graceful form; glossy deeply pinnated foliage. Splendid for lawn or street.		
8 to 10 feet, 1¼-inch diam.....	2 50	22 50
14 to 16 feet, 2½-inch diam.....	7 50	
14 to 16 feet, 3-inch diam.....	10 00	
Q. <i>rubra</i> . <i>Common Red Oak</i> . A spreading symmetrical tree with deep green leaves turning to red in fall.		
6 to 8 feet.....	2 50	22 50
8 to 10 feet, 1¼-inch diam.....	3 00	27 50
14 to 16 feet, 2-inch diam.....	7 50	
REDBUD. See <i>Cercis</i> .		
SALISBURIA. See <i>Ginkgo</i> .		

Salix · Willow

Salix <i>babylonica</i> . <i>Babylon Weeping Willow</i> . The well-known Weeping Willow.		
6 to 8 feet.....	1 50	12 50
8 to 10 feet.....	2 00	17 50
S. <i>mutabilis</i> . <i>Dwarf Pussy Willow</i> . Low-growing shrub Willow, with extra-large silver "pussies." Dwarf enough habit to be used in average border planting.		
2 to 3 feet.....	75	6 00
3 to 4 feet.....	1 00	8 00
S. <i>pentandra</i> . <i>Laurel Willow</i> . Broad, shiny green leaves. Tree erect and somewhat spreading.		
6 to 8 feet.....	1 50	12 50
S. <i>sieboldiana</i> . <i>Siebold Willow</i> . A very graceful, slender-branched, shrub-like Willow, with sage-green foliage and small "pussies."		
6 to 8 feet.....	1 50	12 50
S. <i>vitellina</i> . <i>Golden Willow</i> . The bark is bright yellow in winter, giving a pleasing effect.		
6 to 8 feet.....	1 50	12 50
8 to 10 feet.....	2 00	17 50
S. <i>vitellina pendula</i> . <i>Weeping Golden Willow</i> . A most beautiful weeping Golden-bark Willow.		
8 to 10 feet.....	2 00	17 50
10 to 12 feet.....	3 00	27 50

SORBUS aucuparia. European Mountain-ash. Large clusters of bright red berries in the fall.		
	Each	10
5 to 6 feet.....	\$1 50	\$12 50
6 to 8 feet.....	2 00	17 50
8 to 10 feet.....	2 50	22 50
SOURWOOD. See Oxydendrum.		
THORNS. See Cratægus.		
TILIA platyphyllos. Big-leaf European Linden. Compact, pyramidal habit; large, dark green foliage; valuable for lawn or avenue planting.		
6 to 8 feet.....	2 00	17 50
TULIP TREE. See Liriodendron.		
TUPELO. See Nyssa.		
ULMUS americana. American Elm. The queen of our native trees; long-lived and reaching majestic proportions. One of the best Elms for avenue planting.		
8 to 10 feet.....	2 00	17 50
10 to 12 feet, 1½-inch diam.....	3 00	27 50
U. pumila. Dwarf Asiatic Elm. Small tree or shrub, with slightly drooping branches; foliage dark green.		
3 to 4 feet.....	75	6 00
U. moline. Upright in habit; foliage like the common Elm; especially valuable for street planting.		
8 to 10 feet.....	2 50	
WALNUT. See Juglans.		
WILLOW. See Salix.		



American Elm



Foundation Planting of Shrubs

Deciduous Shrubs

ACANTHOPANAX pentaphyllum. <i>Aralia.</i> Rapid-growing; graceful habit; dark green foliage. Valuable for shady places.	Each	10
2 to 3 feet.....	\$0 50	\$4 00
3 to 4 feet.....	60	5 00
ALMOND. See <i>Prunus.</i>		
ALTHEA. See <i>Hibiscus.</i>		
AMELANCHIER canadensis. <i>Downy Shadblow.</i> White flowers in early May, followed by red fruit.		
2 to 3 feet.....	75	6 00
ARALIA. See <i>Acanthopanax.</i>		
ARONIA arbutifolia. <i>Red Chokeberry.</i> A native shrub of medium size. Much planted for its attractive white flowers and abundant clusters of red fruit in autumn. 2 to 3 feet.....	50	4 00
3 to 4 feet.....	75	6 00
ARROWWOOD. See <i>Viburnum dentatum.</i>		
AZALEA calendulacea. <i>Flame Azalea.</i> Brilliant shades of yellow to orange; flowers in May.		
18 to 24 inches, B&B.....	2 50	22 50
2 to 2½ feet, B&B.....	3 50	32 50
A. canescens. <i>Piedmont Azalea.</i> Deep pink flowers and quite fragrant.		
18 to 24 inches, B&B.....	2 00	17 50
A. kaempferi. <i>Torch Azalea.</i> The foliage remains on all winter in sheltered locations. Flowers vary from light pink to rose.		
12 to 15 inches, B&B.....	3 00	27 50
A. mollis. <i>Chinese Azalea.</i> Bushy habit; flowers yellow to deep rose.		
12 to 15 inches, B&B.....	2 50	22 50
A. nudiflora. <i>Pinxter Bloom.</i> Our native Honeysuckle. Deep pink flowers in May.		
18 to 24 inches, B&B.....	2 00	17 50
2 to 2½ feet, B&B.....	2 50	22 50



Buddleia. See page 21

- Azalea vaseyi.** *Pink-shell Azalea.* Graceful shrub, bearing shell-pink blooms in May. Foliage rich red in autumn. Each 10
 12 to 15 inches, B&B.....\$3 00 \$27 50
 15 to 18 inches, B&B..... 3 50
- A. viscosa.** *Swamp Azalea.* Fragrant white flowers in July. Useful for moist grounds.
 18 to 24 inches, B&B..... 2 50 22 50
 2 to 2½ feet, B&B..... 3 00 27 50
- A. yodogawa.** *Yodogawa Azalea.* Double, deep lilac flowers in early May. One of the earliest Azaleas to bloom.
 18 to 24 inches, B&B..... 3 50
- BARBERRY.** See *Berberis*.
- BAYBERRY.** See *Myrica*.
- BENZOIN æstivale.** *Spice-bush.* Small yellow flowers in early spring; bright red berries in fall.
 2 to 3 feet..... 75 6 00
- BERBERIS thunbergi.** *Japanese Barberry.* For hedges, group plantings, and specimens, this is the most popular plant in America. Will thrive in shady places. In autumn the foliage turns to brilliant shades of crimson and bronze, and holds the color until well into the winter. Bright scarlet berries add color all winter. When in doubt, plant Japanese Barberry.
 12 to 18 inches.....\$15 per 100... 30 2 00
 18 to 24 inches..... \$20 per 100... 40 2 50
- B. thunbergi minor.** *Box Barberry.* Box Barberry is quite dwarf, rarely more than a foot high. The foliage resembles *Berberis thunbergi*, but is much smaller. In spring and summer the foliage is deep green, but as cool weather comes on in the fall, changes to crimson, like the ordinary type of Barberry. The plants can be sheared or allowed to grow naturally—in either instance they are dainty and effective. Box Barberry is fully as hardy as the other varieties and has successfully withstood the severe climates of the northern lake region and Canada.
 6 to 8 inches, 2-year.....\$25 per 100, \$225 per 1,000..

Berberis thunbergi atropurpurea. <i>Red-leaf Japanese Barberry.</i> Similar in habit to the popular green-leaved Japanese Barberry, but the foliage of this new variety is a rich, bronzy red which remains throughout the summer and in the fall changes to the rich shades of the popular Barberry. Should be planted in a sunny location.	Each	10
1-year plants.....	\$0 75	\$6 50
BLUEBERRY. See <i>Vaccinium.</i>		
BOX BARBERRY. See <i>Berberis thunbergi minor.</i>		
BUDDLEIA davidi magnifica. <i>Oxeye Butterfly Bush.</i> Long spikes of lilac-blue flowers from midsummer until late.		
2-year plants.....	50	4 00
BUTTERFLY BUSH. See <i>Buddleia.</i>		
BUTTON BUSH. See <i>Cephalanthus.</i>		
CALYCANTHUS floridus. <i>Common Sweet Shrub.</i> Fragrant, chocolate-colored blooms.		
18 to 24 inches.....	50	3 50
CARAGANA arborescens. <i>Siberian Pea Tree.</i> A hardy, upright-growing shrub with small, compound foliage, and bearing a profusion of yellow pea-shaped flowers that are very attractive among the small foliage.		
2 to 3 feet.....	50	4 00
CEPHALANTHUS occidentalis. <i>Common Button Bush.</i> Large clusters of white, ball-shaped flowers in July; prefers moist location.		
18 to 24 inches.....	35	3 00
CHERRY. See <i>Prunus tomentosum.</i>		
CHIONANTHUS virginica. <i>White Fringe Tree.</i> Tall-growing shrub with fringe-like white flowers in June.		
2 to 3 feet.....	1 50	12 50
3 to 4 feet.....	1 75	15 00
CHOKEBERRY. See <i>Aronia.</i>		
CLETHRA alnifolia. <i>Summersweet.</i> Fragrant white flowers in midsummer. Valuable for moist places.		
18 to 24 inches.....	35	3 00
2 to 3 feet.....	50	4 00
CORAL BERRY. See <i>Symphoricarpos vulgaris.</i>		
CORNUS alba. <i>Tatarian Dogwood.</i> The branches are bright coral-red.		
2 to 3 feet.....	50	4 00
3 to 4 feet.....	60	5 00
C. paniculata. <i>Gray Dogwood.</i> Upright habit, white flowers in clusters, followed by white berries in fall.		
18 to 24 inches.....	35	3 00
2 to 3 feet.....	50	4 00
C. stolonifera lutea. <i>Golden-twig Dogwood.</i> A striking variety with yellow twigs.		
2 to 3 feet.....	50	4 00
3 to 4 feet.....	60	5 00
COTONEASTER dielsiana. <i>Diels Cotoneaster.</i> Handsome shrub; slender, spreading branches; attractive red fruit in the autumn.		
12 to 18 inches, from 6-inch pots.....	1 25	
C. foveolata. Upright habit; rich, green foliage, turning to yellow in fall; abundance of black fruit.		
12 to 18 inches, from 6-inch pots.....	1 25	
C. horizontalis. See <i>Evergreen Shrubs.</i>		
CRANBERRY BUSH. See <i>Viburnum opulus.</i>		
CYDONIA japonica. <i>Flowering Quince.</i> Medium-growing shrub; green glossy foliage; scarlet blooms in early spring.		
18 to 24 inches.....	75	6 00
C. japonica umbilicata. <i>Navel Flowering Quince.</i> Similar habit to preceding, but with rose-colored flowers.		
18 to 24 inches.....	75	6 00



Deutzia lemoinei

Deutzia

<i>Deutzia gracilis</i> . <i>Slender Deutzia</i> . Dwarf shrub of graceful habit, with single white flowers in May.	Each	10
15 to 18 inches.....	\$0 75	\$6 00
<i>D. lemoinei</i> . <i>Lemoine Deutzia</i> . Medium grower of upright habit; long spikes of white flowers.		
18 to 24 inches.....	50	4 00
2 to 3 feet.....	75	6 00
<i>D. scabra plena</i> . <i>Double Rose Deutzia</i> . Tall grower, double pink flowers.		
2 to 3 feet.....	50	4 00
3 to 4 feet.....	60	5 00
<i>D. scabra</i> , <i>Pride of Rochester</i> . <i>White Deutzia</i> . Tall, graceful shrub with double white flowers.		
2 to 3 feet.....	50	4 00
3 to 4 feet.....	60	5 00
4 to 5 feet.....	90	8 00
<i>DIRCA palustris</i> . <i>Leatherwood</i> . Compact shrub with tough, fibrous bark; abundance of small yellowish flowers in early spring.		
18 to 24 inches.....	1 50	12 50
2 to 2½ feet.....	2 00	17 50
DOGWOOD. See <i>Cornus</i> .		
ELDER. See <i>Sambucus</i> .		
<i>ELÆAGNUS angustifolia</i> . <i>Russian Olive</i> . A beautiful ornamental shrub with handsome foliage of silvery hue; white, fragrant flowers and yellow fruit.		
2 to 3 feet.....	75	6 00

Elæagnus umbellata. <i>Autumn Elæagnus.</i> Tall, spreading shrub with yellowish brown twigs. The flowers are yellowish white, appearing in May. Oval, scarlet fruits in September.		
2 to 3 feet.....	Each \$0 50	10 \$4 00
3 to 4 feet.....	75	6 00
EUONYMUS alatus. <i>Winged Euonymus.</i> A vigorous, strong-growing shrub with corky, winged branches. The rich, dark green leaves turn to a deep crimson in the fall.		
2 to 3 feet.....	1 00	9 00
3 to 4 feet.....	1 50	12 50
EXOCHORDA grandiflora. <i>Common Pearl Bush.</i> A tall, rapid-growing shrub, covered in early summer with white star-like flowers.		
2 to 3 feet.....	75	6 00
FORSYTHIA intermedia. <i>Border Forsythia.</i> Hybrid garden form and extremely free blooming. One of the best.		
2 to 3 feet.....	50	4 00
3 to 4 feet.....	60	5 00
4 to 5 feet.....	90	8 00
F. intermedia spectabilis. <i>Showy Border Forsythia.</i> A strong growing variety with very large golden-yellow flowers completely covering the branches.		
2 to 3 feet.....	75	6 00
3 to 4 feet.....	90	8 00
F. suspensa. <i>Weeping Forsythia.</i> A wealth of slender, vine-like branches and golden bell-like blossoms.		
2 to 3 feet.....	50	4 00
F. suspensa fortunei. <i>Fortune Forsythia.</i> More upright, vigorous growth than <i>Suspensa</i> .		
2 to 3 feet.....	50	4 00
3 to 4 feet.....	60	5 00
FRINGE TREE. See <i>Chionanthus</i> .		
HALESIA tetraptera. <i>Great Silver Bell.</i> A shrub-like tree with an abundance of white, bell-shaped flowers in early spring.		
3 to 4 feet.....	1 00	9 00
HAMAMELIS virginiana. <i>Common Witch-hazel.</i> Tall, native shrub with yellow flowers in the late fall.		
2 to 3 feet.....	75	6 00
HIBISCUS syriacus. <i>Shrub Althea.</i> Old-fashioned garden shrubs, blooming in August and September.		
2 to 3 feet.....	50	4 00
3 to 4 feet.....	75	6 00
H., Comte de Haimont. Light pink.		
2 to 3 feet, 3 to 4 feet.		
H., Jeanne d'Arc. Pure white.		
2 to 3 feet, 3 to 4 feet.		
H., paeoniæflora. Rosy purple.		
2 to 3 feet, 3 to 4 feet.		
HONEYSUCKLE. See <i>Lonicera</i> .		
HYDRANGEA arborescens grandiflora. <i>Snowhill Hydrangea.</i> Abundance of showy white snowball-like flowers in July. Does well in shady places.		
18 to 24 inches.....	50	4 00
2 to 3 feet.....	75	6 00
H. paniculata grandiflora. <i>Hydrangea Peegee.</i> The well-known autumn-blooming variety; extra-large blossoms, turning pink late in the fall.		
2 to 3 feet.....	75	6 00
3 to 4 feet.....	90	8 00
HYPERICUM densiflorum. <i>St. John's-wort.</i> Clusters of bright yellow blooms in midsummer. Narrow, glossy green foliage.		
18 to 24 inches.....	50	4 50
2 to 3 feet.....	75	6 00

ILEX verticillata. <i>Common Winter Berry.</i> A deciduous Holly much planted for its red berries in autumn. Thrives in damp soil.		
18 to 24 inches.....	Each \$0 75	10 \$6 00
JAPAN QUINCE. See <i>Cydonia.</i>		
JETBEAD. See <i>Rhodotypos.</i>		
KERRIA japonica florepleno. <i>Double Kerria.</i> Graceful shrub with deep green bark and yellow double blooms resembling small roses. Blooms from June to September.		
2 to 3 feet.....	75	6 00
LEATHERWOOD. See <i>Dirca.</i>		

Ligustrum · Privet

Ligustrum amurense. <i>Amur Privet.</i> An upright Privet which is hardier than California but has smaller foliage. Valuable as a hedge plant or tall screen.		
18 to 24 inches.....	\$15 per 100..	25 2 00
2 to 3 feet.....	\$20 per 100..	35 3 00
3 to 4 feet.....	\$25 per 100..	50 4 00
L. ibolium. <i>Ibolium Privet.</i> A cross between <i>Ibota</i> and California Privet. It has the attractive dark green leaves of the California and is of a more branching habit, making a more compact hedge in less time. Reports that <i>Ibolium</i> show no signs of winter injury, when California has been killed to the ground, are being received from many places in the New England and Middle States.		
18 to 24 inches.....	\$12 per 100..	
2 to 3 feet.....	\$15 per 100..	
L. ibota. <i>Ibota Privet.</i> Strong-growing, spreading shrub, with graceful branches; white flowers in June, followed by black berries in fall. Unexcelled for tall informal hedge or shrub border.		
18 to 24 inches.....	\$15 per 100..	25 2 00
2 to 3 feet.....	\$18 per 100..	35 3 00
3 to 4 feet.....	\$27 per 100..	50 4 50
L. ibota regelianum. <i>Regel Privet.</i> Low-spreading shrub with pendent branches. Valuable for hedge and border planting. Foliage assumes rich tints in autumn.		
18 to 24 inches.....	\$27.50 per 100..	35 3 00
2 to 2½ feet.....	\$35 per 100..	50 4 00
L. ovalifolium. <i>California Privet.</i> This shrub is now in universal demand for hedge purposes. It will thrive almost everywhere, even in the crowded city atmosphere and at the seashore.		
12 to 18 inches.....	\$6 per 100, \$50 per 1,000..	1 00
18 to 24 inches.....	\$8 per 100, \$60 per 1,000..	1 20
2 to 3 feet.....	\$10 per 100, \$85 per 1,000..	1 50
LILAC. See <i>Syringa.</i>		

Lonicera · Honeysuckle

Lonicera bella albida. <i>White Belle Honeysuckle.</i> Tall shrub of graceful habit; white flowers in spring followed by showy red fruit by midsummer.		
2 to 3 feet.....		50 4 00
3 to 4 feet.....		60 5 00
4 to 5 feet.....		90 8 00
L. fragrantissima. <i>Winter Honeysuckle.</i> A tall, broad-spreading shrub with rich green foliage and sweet-scented flowers in early spring.		
2 to 3 feet.....		50 4 00
L. morrowi. <i>Morrow Honeysuckle.</i> A graceful shrub of medium height, with bluish green foliage. An abundance of red fruits stud the branches in early fall.		
2 to 3 feet.....		50 4 00
L. tatarica. <i>Tartarian Honeysuckle.</i> Well-known Bush Honeysuckle; white flowers in June; red fruit in early autumn.		
2 to 3 feet.....		50 4 00
3 to 4 feet.....		60 5 00

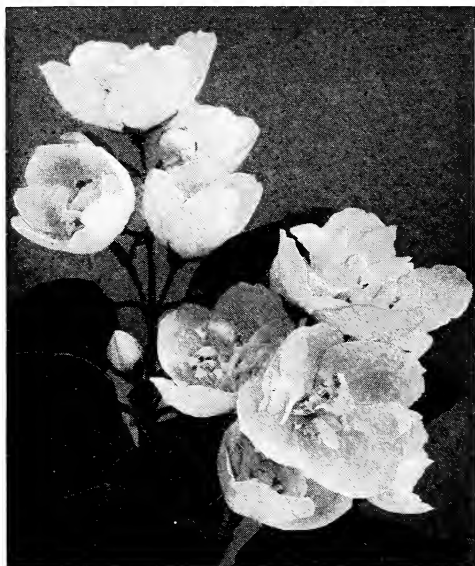


Shrubs and shade trees make a wonderfully fine lawn border

<i>Lonicera tatarica rosea</i> . <i>Rosy Tartarian Honeysuckle</i> . Form of preceding, with pink flowers freely produced. Each	10	
2 to 3 feet.....	\$0 50	\$4 00
MOCKORANGE. See <i>Philadelphus</i> .		
<i>MYRICA carolinensis</i> . <i>Northern Bayberry</i> . Low, spreading native shrub with rich green foliage, bearing an abundance of bluish white berries, which are frequently used for winter decoration.		
18 to 24 inches, B&B.....	75	6 00
NANNYBERRY. See <i>Viburnum lentago</i> .		
PEARL BUSH. See <i>Exochorda</i> .		
PEA TREE. See <i>Caragana</i> .		
PHILADELPHUS coronarius . <i>Sweet Mock Orange</i> . True old-fashioned sweet <i>Syringa</i> . The most fragrant of all. 2 to 3 feet.....	50	4 00
3 to 4 feet.....	60	5 00
P. coronarius aureus . <i>Golden Mock Orange</i> . Of compact habit; bright yellow foliage.		
12 to 18 inches.....	75	6 00
P. falconeri . <i>Star Mock Orange</i> . A graceful shrub with arching branches covered with pure white starry flowers in May. 2 to 3 feet.....	50	4 00
3 to 4 feet.....	60	5 00
P. lemoinei . <i>Lemoine Mock Orange</i> . Graceful, slender habit; producing an abundance of pure white flowers.		
2 to 3 feet.....	75	6 00

Philadelphus. New and Rare Varieties

Philadelphus albatre . Extremely free flowering, resembling <i>Virginal</i> in this respect. The branches are quite slender, droop gracefully, and carry dense panicles of double, pure white flowers.		
18 to 24 inches.....	75	6 00
P., Glacier . The extremely attractive and beautiful flowers are double, rich cream color, and carried in clusters of six or seven, giving the appearance of one enormous bloom. 18 to 24 inches.....	75	6 00
P., Manteau d'Hermine . A new pure white variety, of dwarf habit, with slender, drooping branches with sweet-scented flowers.		
18 to 24 inches.....	60	5 00
P., Norma . The flowers are single, very large, and pure white. An extremely desirable variety because of the freedom of bloom. 18 to 24 inches.....	75	6 00



Philadelphus, Virginal

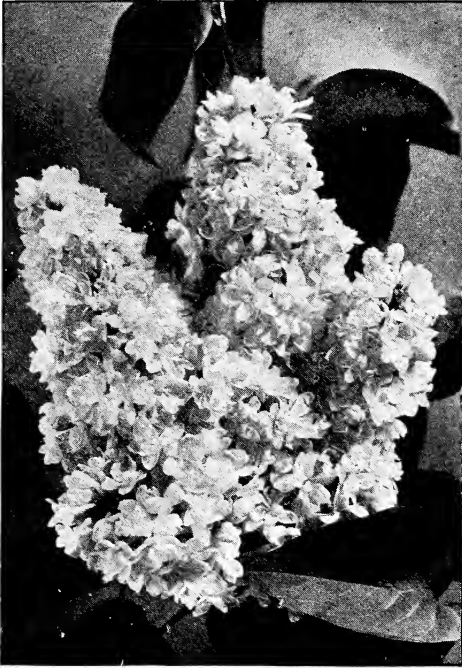
- Philadelphus, Virginal.** This desirable Mock Orange is one of the best flowering shrubs introduced in recent years; vigorous growth; dark green foliage; large, fragrant, semi-double flowers. 18 to 24 inches. \$0 75
- | | | | |
|----------------------|------|------|--------|
| 2 to 3 feet. | 1 00 | 10 | \$6 50 |
| | | 9 00 | |
- PHOTINIA villosa.** Upright shrub with glossy foliage and bright red fruits in fall. 5 to 6 feet. 1 50 12 50
- PLUM.** See Prunus.
- PRIVET.** See Ligustrum.
- PRUNUS glandulosa.** *Pink-flowering Almond.* Beautiful pink flowers in early spring.
- | | | | |
|----------------------|----|------|--|
| 2 to 3 feet. | 75 | 6 00 | |
|----------------------|----|------|--|
- P. tomentosa.** *Nanking Cherry.* Tall shrub with arching branches, which are completely covered with delicate pink blossoms in early spring. 2 to 3 feet. 75
- | | | | |
|----------------------|------|------|------|
| 3 to 4 feet. | 1 00 | 6 00 | 9 00 |
|----------------------|------|------|------|
- P. triloba.** *Flowering Plum.* Shrub of medium size, with double pink flowers in early spring.
- | | | | |
|----------------------|----|------|--|
| 2 to 3 feet. | 75 | 6 00 | |
|----------------------|----|------|--|
- RHODOTYPOS kerrioides.** *Jetbead.* Medium-sized shrub, bearing single white flowers followed by black berries. 18 to 24 inches. 50
- | | | | |
|----------------------|----|------|------|
| 2 to 3 feet. | 75 | 4 00 | 6 00 |
|----------------------|----|------|------|
- RHUS cotinus.** *Common Smoke Tree.* An old-fashioned shrub with purplish clusters of fine flowers.
- | | | | |
|----------------------|------|-------|--|
| 3 to 4 feet. | 1 25 | 10 00 | |
|----------------------|------|-------|--|
- R. typhina laciniata.** *Shredded Sumac.* Fern-like foliage which turns a rich crimson in autumn.
- | | | | |
|----------------------|----|------|--|
| 2 to 3 feet. | 50 | 4 00 | |
|----------------------|----|------|--|
- ROSES, NATIVE and SPECIES.** See Roses, page 53.
- RUSSIAN OLIVE.** See *Elæagnus angustifolia.*
- SHADBLOW.** See *Amelanchier.*
- SILVER BELL.** See *Halesia.*
- SMOKE TREE.** See *Rhus cotinus.*
- SNOWBALL.** See *Viburnum plicatum.*
- SNOWBERRY.** See *Symphoricarpos racemosus.*
- SPICE BUSH.** See *Benzoin.*

Spiraea

<i>Spiraea arguta</i> . <i>Garland Spirea</i> . Resembles <i>Thunbergi</i> in habit, but a better flowering variety.	Each	10
2 to 3 feet.....	\$0 50	\$4 00
3 to 4 feet.....	75	6 00
<i>S. bumalda</i> , Anthony Waterer. <i>Crimson Summer Spirea</i> . A most desirable variety, having deep, red flowers.		
12 to 18 inches.....	40	3 00
18 to 24 inches.....	50	4 00
<i>S. prunifolia plena</i> . <i>Double Bridal Wreath</i> . Very erect, tall shrub, covered in May with small, double, white flowers.		
2 to 3 feet.....	75	6 00
<i>S. thunbergi</i> . <i>Thunberg Spirea</i> . A charming <i>Spiraea</i> of graceful form and abundant white blooms. Desirable for its showy autumn tints.		
18 to 24 inches.....	50	4 00
2 to 2½ feet.....	75	6 00
<i>S. vanhouttei</i> . <i>Van Houtte Spirea</i> . The most beautiful of all the <i>Spireas</i> , both in flower and foliage. Graceful, drooping habit, loaded with round clusters of white flowers.		
2 to 3 feet.....	50	4 50
3 to 4 feet.....	60	5 00
4 to 5 feet.....	90	8 00
STEPHANANDRA flexuosa . <i>Cut-leaf Stephanandra</i> . Graceful shrub; pendent branches and delicate fern-like foliage.		
18 to 24 inches.....	50	4 00
ST. JOHN'S-WORT . See <i>Hypericum</i> .		
SUMAC . See <i>Rhus</i> .		
SWEET SHRUB . See <i>Calycanthus</i> .		
SUMMERSWEET . See <i>Clethra</i> .		
SYMPHORICARPOS racemosus . <i>Common Snowberry</i> . Slender shrub, bearing clusters of waxy white fruits late in the fall.		
2 to 3 feet.....	50	4 00
3 to 4 feet.....	60	5 00
<i>S. vulgaris</i> . <i>Coral Berry</i> . One of the best shrubs, with its attractive red fruits. Especially desirable for shady places but equally good in sunlight.		
2 to 3 feet.....	50	4 00



Spiraea Van Houttei



Double Lilacs

Syringa · Lilac

<i>Syringa chinensis</i> (rothomagensis). <i>Chinese Lilac</i> . A tall growing shrub of graceful habit, with purple flowers.	Each	10
2 to 3 feet.....	\$0 75	\$6 00
3 to 4 feet.....	1 00	8 50
<i>S. japonica</i> . <i>Japanese Tree Lilac</i> . A stately tree-like shrub. Large white blossoms in July.		
2 to 3 feet.....	1 00	9 00
<i>S. josikaea</i> . <i>Hungarian Lilac</i> . Glossy foliage; flowers a clear blue; later blooming than the common Lilac.		
2 to 3 feet.....	75	6 00
<i>S. persica</i> . <i>Persian Lilac</i> . A graceful shrub with slender, arching branches and pale lilac flowers.		
2 to 3 feet.....	75	6 00
<i>S. persica alba</i> . <i>White Persian Lilac</i> . Graceful habit; produces an abundance of white flowers.		
2 to 3 feet.....	75	6 00
<i>S. villosa</i> . <i>Late Lilac</i> . Late bloomer of delicate pink color.		
2 to 3 feet.....	75	6 00
<i>S. vulgaris</i> . <i>Common Lilac</i> . Probably the best known of all shrubs. Very effective in large groupings. Makes an excellent hedge.		
2 to 3 feet.....	75	6 00
3 to 4 feet.....	1 00	7 50
<i>S. vulgaris alba</i> . <i>Common White Lilac</i> . The old White Lilac, growing oftentimes to tree-like proportions.		
18 to 24 inches.....	50	4 00
2 to 3 feet.....	75	6 00

Flowering Shrubs will give color from early spring to mid-autumn. We shall be glad to advise you about varieties, where and how to use them

Hybrid Lilacs

Rapid strides have been made in the improvement of the Lilac by a number of European specialists. The trusses have been enlarged, many of them have double flowers of great size, ranging in color from white and creamy-white to soft shades of pink, blue and purple.

We cannot supply any hybrid Lilacs in the larger sizes. There is nothing to be gained by waiting for larger sizes as the demand is greater than the production.

Alphonse Lavalle. Double; panicle medium size. Flowers large and very double, reddish-purple. 2 to 3 feet, and 3 to 4 feet.

Ludwig Spaeth. Single; panicle long, individual flower large, dark purplish-red. One of the best dark-colored varieties. 2 to 3 feet.

Marie Legraye. Single. Medium size trusses of pure white, very free bloomer. Of quite dwarf habit. 2 to 3 feet.

Mme. Florent Stepman. Single; large panicles, pure white blooms. 2 to 3 feet.

Mme. Lemoine. Double; very large trusses of creamy white flowers which are quite double. Strong upright grower. 2 to 3 feet, and 3 to 4 feet.

Pres. Carnot. Double; compact panicles of large size. Lilac colored flowers. 2 to 3 feet.

Pres. Grevy. Double; very large trusses. Individual florets very double, soft blue. There is no true blue but this variety is the best bluish shade. Very strong grower. 2 to 3 feet, and 3 to 4 feet.

Pyramidalis. Double; rosy blue. 2 to 3 feet.

Prices on above named Lilacs, 2 to 3 feet, \$1.25 each, \$10 for 10. 3 to 4 feet, \$1.50 each, \$12.50 for 10

TAMARIX africana. *African Tamarix.* An unusually attractive shrub with long feathery spikes of light green foliage; delicate pink flowers.

	Each	10
2 to 3 feet.....	\$0 50	\$4 00

T. odessana. *Odessa Tamarix.* Similar to above, with silvery gray foliage and lavender flowers.

2 to 3 feet.....	50	4 00
------------------	----	------

VACCINIUM corymbosum. *High-bush Blueberry.* Handsome pinkish white flowers; edible blue berries; will grow in moist or dry soils.

2 to 3 feet.....	1 50	12 50
3 to 4 feet.....	1 75	16 00

Viburnum

Viburnum carlesi. *Fragrant Viburnum.* A beautiful variety, bearing small clusters of sweet-scented white flowers.

12 to 15 inches.....	1 50	
----------------------	------	--

V. cassinoides. *Withe-rod.* A native variety; cream-colored blossoms followed by most attractive fruit, ranging from pink to deep red.

18 to 24 inches.....	50	4 00
2 to 3 feet.....	75	6 00

V. dentatum. *Arrow-wood.* A vigorous grower; white flowers followed by black fruit. Does well in moist ground.

2 to 3 feet.....	50	4 00
3 to 4 feet.....	75	6 00

V. lantana. *Wayfaring Tree.* Tall-growing shrub; silvery cut foliage. Produces an abundance of large black fruits.

2 to 3 feet.....	75	6 00
------------------	----	------

V. lentago. *Nanny Berry.* Tall-growing. The young foliage has a bronze cast, later turning to rich green.

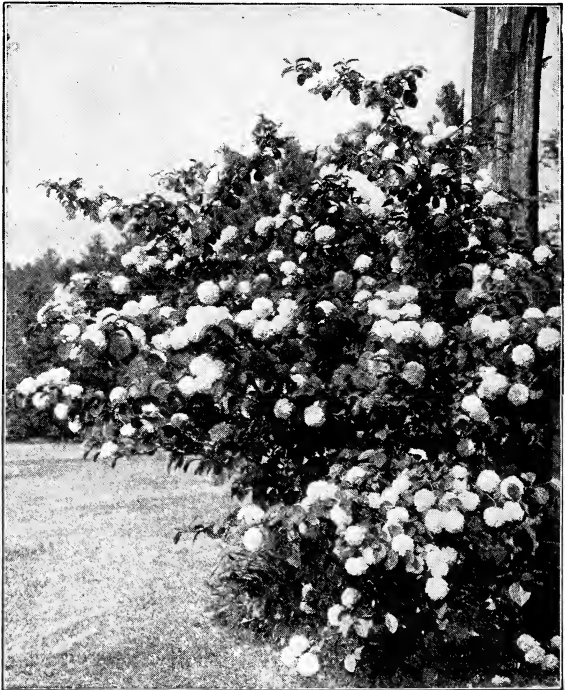
2 to 3 feet.....	50	4 00
3 to 4 feet.....	75	6 00

V. opulus. *European Cranberry Bush.* White, flat flowers, followed by large red fruits closely resembling cranberries.

2 to 3 feet.....	50	4 00
3 to 4 feet.....	75	6 00

V. plicatum. *Japanese Snowball.* Large cluster of pure white flowers in May; rich dark green foliage.

2 to 3 feet.....	1 00	9 00
3 to 4 feet.....	1 50	12 50



Viburnum tomentosum plicatum (Japanese Snowball)

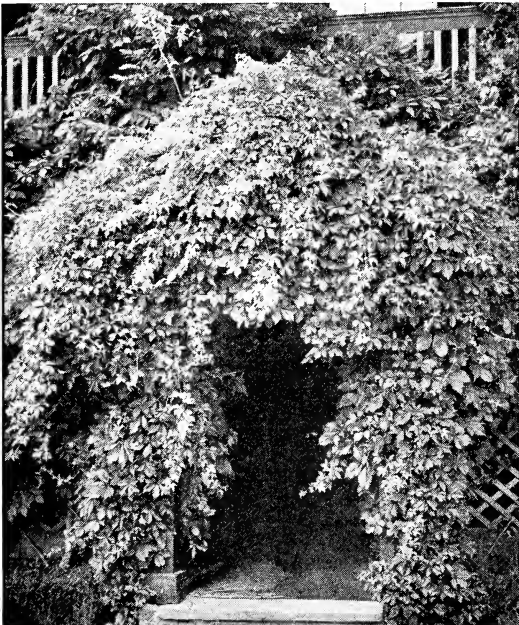
- Viburnum sieboldi*. Siebold Viburnum.** One of the handsomest of all shrubs, having glossy green foliage, single white flowers, and most gorgeous fruit, first turning yellow, then orange, red and black.
- | | | |
|------------------|-------------|-----------|
| 2 to 3 feet..... | Each \$0 75 | 10 \$6 00 |
|------------------|-------------|-----------|
- V. tomentosum*. Double-file Viburnum.** Similar in habit to *Plicatum* but having single flowers; foliage turns to rich bronzy tints in autumn.
- | | | |
|------------------|----|------|
| 2 to 3 feet..... | 75 | 6 00 |
| 3 to 4 feet..... | 90 | 8 00 |
- WAYFARING TREE.** See *Viburnum lantana*.

Weigela

- Weigela, Eva Rathke*. Carmine Weigela.** The most showy of all Weigelas; rather dwarf in habit. Deep red flowers appearing throughout the summer.
- | | | |
|----------------------|----|------|
| 18 to 24 inches..... | 50 | 4 00 |
| 2 to 3 feet..... | 75 | 6 00 |
- W. rosea*. Pink Weigela.** Moderately dwarf; flowers a very light pleasing pink. 2 to 3 feet.....
- | | | |
|------------------|----|------|
| 3 to 4 feet..... | 50 | 4 50 |
| | 60 | 5 00 |
- W. rosea variegata*.** Variegated leaved form of the preceding. 2 to 3 feet.....
- | | | |
|-------|----|------|
| | 75 | 6 00 |
|-------|----|------|
- WINTERBERRY.** See *Ilex*.
- WITCH-HAZEL.** See *Hamamelis*.
- WITHE-ROD.** See *Viburnum cassinoides*.
- YELLOWROOT.** See *Zanthorhiza*.
- ZANTHORHIZA apiifolia*. Yellowroot.** Dwarf shrub useful for ground-cover and undergrowth. Thrives either in sun or shade.
- | | | |
|---------------------|----|------|
| 8 to 12 inches..... | 40 | 3 00 |
|---------------------|----|------|

Vines

ACTINIDIA arguta. <i>Bower Actinidia.</i> Rapid-growing vine with dark green foliage. Valuable for arbors. Each 10		
18 to 24 inches.....	\$1 00	\$8 50
6 to 8 feet.....	3 50	32 50
AKEBIA quinata. <i>Five-leaf Akebia.</i> A dainty vine for the arbor with shiny, five-lobed leaves.		
2 to 3 feet.....	75	6 00
5 to 6 feet.....	1 25	10 00
AMPELOPSIS quinquefolia engelmanni. <i>Engelmann Creeper.</i> Similar to Virginia Creeper, but with smaller leaves. Will cling to walls. 2 to 3 feet.....	35	3 00
A. tricuspidata. <i>Boston Ivy; Japanese Creeper.</i> The most popular vine for climbing and clinging to walls.		
2-year.....	50	4 50
ARISTOLOCHIA siphon. <i>Dutchman's Pipe.</i> A vigorous and rapid-growing vine with large, light green leaves.		
2-year.....	1 50	12 50
BIGNONIA radicans. <i>Trumpet Creeper.</i> Desirable vine with brilliant red, trumpet-like flowers. 2-year.....	50	4 00
BITTERSWEET. See <i>Celastrus.</i>		
BOSTON IVY. See <i>Ampelopsis tricuspidata.</i>		
CELASTRUS orbiculatus. <i>Oriental Bittersweet.</i> Brilliant red fruit in autumn. 2 to 3 feet.....	50	3 50
C. scandens. <i>American Bittersweet.</i> Rapid-growing; orange-yellow fruit. Valuable for covering stone walls and slopes. 2 to 3 feet.....	50	3 50
CLEMATIS crispa. <i>Curly Clematis.</i> An old-fashioned garden favorite, producing rather long, individual flowers of various shades of blue. 2-year.....	75	6 00
C. Hybrids. <i>Large-flowering Clematis.</i> Henry, White; Jackmani, Purple; Mme. Edouard André, Wine-red; Ramona, Lavender. 2-year.....	1 00	8 50



Ampelopsis quinquefolia

Clematis paniculata. <i>Sweet Autumn Clematis.</i> Handsome foliage; abundance of pure white flowers in August.	Each	10
2-year.....	\$0 50	\$4 00
3-year.....	75	6 00
6-year, B&B.....	2 00	18 50
C. texensis (coccinea). <i>Scarlet Clematis.</i> A handsome vine with bell-shaped flowers of bright coral-red.		
2-year.....	50	4 50
DUTCHMAN'S PIPE. See <i>Aristolochia.</i>		
ENGLISH IVY. See <i>Hedera helix.</i>		
FLEECE VINE. See <i>Polygonum.</i>		
HEDERA helix. <i>English Ivy.</i> Useful, evergreen climbing vine for shady places.		
18 to 24 inches, from 4-inch pots.....	75	6 00
HONEYSUCKLE. See <i>Lonicera.</i>		
HYDRANGEA petiolaris. <i>Climbing Hydrangea.</i> A vine little known but of unusual merit, having well-defined Hydrangea blossoms and rich, glossy leaves.		
3-inch pot plants.....	1 50	
JAPANESE CREEPER. See <i>Ampelopsis tricuspidata.</i>		
JAPAN IVY. See <i>Ampelopsis tricuspidata.</i>		
LONICERA japonica halliana. <i>Hall Japanese Honeysuckle.</i> Dark green foliage; fragrant yellow and white flowers. Valuable for dense screen on lattice, or as a ground-cover under trees.		
2 to 3 feet.....	35	3 00
LYCIUM chinense. <i>Chinese Matrimony Vine.</i> Hardy, vigorous plant suitable for embankments.		
2 to 3 feet.....	50	4 00
MATRIMONY VINE. See <i>Lycium.</i>		
POLYGONUM auberti. <i>China Fleece-vine.</i> One of the most desirable flowering climbers, producing through summer and fall, great sprays of white flowers.		
2-year.....	1 00	9 00
TECOMA. See <i>Bignonia.</i>		
TRUMPET CREEPER. See <i>Bignonia.</i>		
VIRGINIA CREEPER. See <i>Ampelopsis quinquefolia.</i>		
WISTERIA multijuga. <i>Long-cluster Wisteria.</i> A Japanese species with long racemes of purple flowers.		
2 to 3 feet.....	1 00	9 00
3 to 4 feet.....	1 50	12 50
W. sinensis. <i>Chinese Wisteria.</i> The common purple Wisteria with the short, compact blooms.		
18 to 24 inches, grafted.....	1 00	9 00
W. sinensis alba. <i>White Chinese Wisteria.</i> Less vigorous grower than preceding; white blooms.		
18 to 24 inches, grafted.....	1 00	9 00



Chinese Wisteria



Herbaceous Perennials

Most varieties of hardy plants are thoroughly at home in New England. In spite of the sharp winters, the roots need little, if any protection, although a little mulch of leaves or straw is always of benefit. Hardy Perennials give more genuine satisfaction, because of the freedom of growth and charm of color, than almost anything else in the whole plant kingdom.

Strong, field-grown plants, 30 cts. each, \$2.50 for 10, \$18 per 100, except where otherwise noted

ACHILLEA ptarmica, *Boule de Neige*. *Sneezewort*. A new variety with double white flowers; good for cutting. 1 to 2 ft. June to Sept. 25 cts. each, \$2 for 10, \$15 per 100.

ACONITUM autumnale. *Autumn Monkshood*. A tall variety with dark blue flowers. 4 to 5 ft. Aug., Sept. 35 cts. each, \$3 for 10.

A. fischeri. *Azure Monkshood*. A dwarf variety, 1½ feet high, with pale blue flowers. Valuable for planting in semi-shade. Sept., Oct. 35 cts. each, \$3 for 10, \$25 per 100.

A. napellus. *Aconite*. Large, dark blue flowers in a raceme. July, August. 3 to 4 ft.

ÆGOPODIUM podagraria variegatum. *Silveredge Goutweed*. Splendid for covering the ground under trees and high shrubs; rapid growing; variegated foliage. 1 ft. 25 cts. each, \$2 for 10, \$15 per 100.

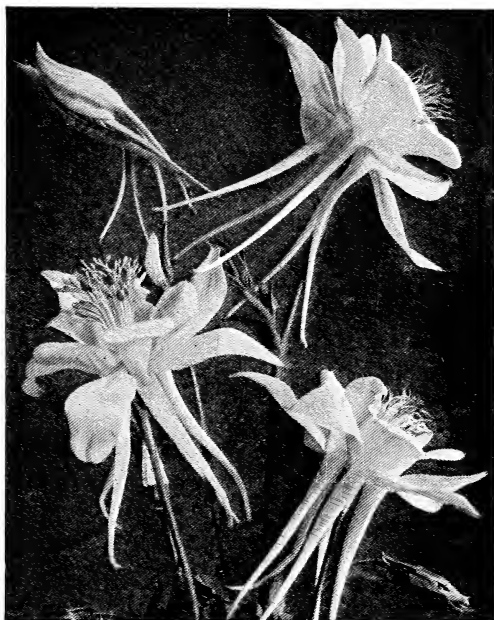
ALTHÆA rosea. *Hollyhock*. The Hollyhock is an old garden favorite and should be planted more extensively. Double Pink, Red, White, and Single, mixed. 25 cts. each, \$2 for 10, \$15 per 100.

ALUM-ROOT. See *Heuchera americana*.

ALYSSUM saxatile. *Goldentuft*. A fine little plant for the rock garden or as a foreground plant in the border; yellow blooms. May, June. 25 cts. each, \$2 for 10, \$15 per 100.

ANCHUSA italica, *Dropmore*. *Dropmore Bugloss*. An effective plant with pretty gentian-blue flowers. 3 to 4 ft.

ANTHEMIS tinctoria kelwayi. *Kelway Camomile*. Finely cut foliage; golden yellow blooms produced all summer. 25 cts. each, \$2 for 10, \$15 per 100.



Long-spurred Hybrid Columbines

AQUILEGIA cærulea. *Colorado Columbine.* As a cut-flower, the Long-spurred Aquilegias are unexcelled and they have a long flowering season. Deep blue. 2 to 3 ft.

A. chrysantha. *Golden Columbine.* Beautiful, golden yellow flowers.

A., Mrs. Scott Elliott's Strain. The very best of the Long-spurred Hybrids, and come in various shades. 35 cts. each, \$3 for 10

A. vulgaris Hybrids. Various shades from light pink to dark maroon.

A. vulgaris nivea. *Munstead White Columbine.* Pure white flowers.

ARABIS alpina. *Rock Cress.* Adapted for rock gardens and borders. Pure white flowers. 6 to 8 in. April, May. 25 cts. each, \$2 for 10, \$15 per 100.

ARTEMISIA vulgaris lactiflora. *White Mugwort.* A tall-growing plant with fine-cut foliage and fragrant white flowers. 4 ft. Aug., Sept.

ASCLEPIAS tuberosa. *Butterfly Weed.* A native plant with bright orange flowers. 2 ft. July, Aug. 35 cts. each, \$3 for 10, \$22 per 100.

ASTERS, HYBRID. *Hardy Asters.* Every garden should have a few of these plants. They bloom when other flowers are scarce and are very good for massing. Sept., Oct.

A., Climax. One of the best in cultivation. Large, lavender-blue flowers with golden yellow centers. 4 to 5 ft.

A., Glen Eyrie. A very effective variety, bearing large mauve-pink flowers. 6 to 7 ft.

A., Mauve Cushion. A distinct species, forming a circular, cushion-like plant $2\frac{1}{2}$ feet across, rarely exceeding 9 inches in height. The flowers of delicate mauve, with silvery white reflection, measure over $1\frac{1}{4}$ inches in diameter. The blooms are at their best in early November.

A., Mrs. F. W. Rayner. Large, rosy crimson flowers. 4 ft.

Aster novæ-angliæ. *New England Aster.* Large purple flowers with yellow centers. 25 cts. each, \$2 for 10.

A. subcæruleus. *India Aster.* Large, bluish violet flowers 3 inches across. 10 to 12 in. June, July. 25 cts. each, \$2 for 10, \$15 per 100.

A. tataricus. *Tatarian Aster.* An excellent hardy Aster for the perennial border. Flowers blue or purplish. 3 to 5 ft. Oct. 25 cts. each, \$2 for 10, \$15 per 100.

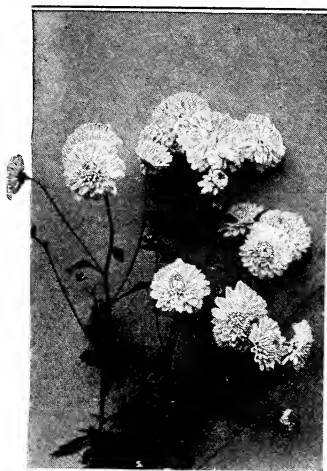
Strong, field-grown plants of above, 30 cts. each, \$2.50 for 10, \$18 per 100, except where otherwise noted

- ASTILBE chinensis.** *Chinese Astilbe.* Large heads of silvery pink flowers in June. 2 to 3 ft. 35 cts. each, \$3 for 10.
- A. arendsi Hybrids.** The following varieties of hardy hybrid Astilbes will thrive in any good, rich soil, if given plenty of water during the growing season. Flowers freely produced on showy panicles. June, July.
- A., Juno.** Violet-rose plumes; strong, upright growth.
- A., Kriemhilde.** Salmon-rose. Very good variety.
- A., Peach Blossom.** Light pink flowers. Good spikes.
- A., Rose Pearl.** Shell-pink; pyramidal trusses.
35 cts. each, \$3 for 10, \$25 per 100
- BABY'S BREATH.** See *Gypsophila.*
- BALLOON FLOWER.** See *Platycodon.*
- BEEBALM.** See *Monarda.*
- BELFLOWER.** See *Campanula carpatica.*
- BETONY.** See *Stachys.*
- BLEEDINGHEART.** See *Dicentra.*
- BOCCONIA cordata.** *Plume Poppy.* Beautiful in foliage and flower, and adapted for planting in the shrubby borders. Flowers creamy white, in terminal panicles. 6 to 8 ft. July, Aug.
- BOLTONIA asteroides.** *White Boltonia.* Pure white, aster-like flowers produced in great profusion; fine for cutting. 5 to 6 ft. Aug., Sept. 25 cts. each, \$2 for 10, \$15 per 100.
- B. latisquama.** *Violet Boltonia.* A form of the above with pinkish lavender flowers. 25 cts. each, \$2 for 10, \$15 per 100.
- BUSH CLOVER.** See *Lespedeza.*
- BUTTERCUP.** See *Ranunculus.*
- BUTTERFLY WEED.** See *Asclepias.*
- CAMOMILE.** See *Anthemis.*
- CAMPANULA carpatica.** *Carpathian Bellflower.* A dwarf variety, growing 8 inches high, with clear blue flowers on erect stems. As an edging plant, for the hardy border or rock garden, it is unsurpassed.
- C. carpatica alba.** *White Carpathian Bellflower.* A pure white form of the preceding.
- C. glomerata.** *Danesblood.* Dense clusters of funnel-shaped, violet-blue flowers. 18 in. June to Aug.
- C. glomerata superba.** *Showy Cluster Bellflower.* More compact than the above variety, with large clusters of deepest blue flowers.



Spiraea (Astilbe) japonica

Strong, field-grown plants of above, 30 cts. each, \$2.50 for 10, \$18 per 100, except where otherwise noted



Hardy Chrysanthemums

Campanula persicifolia. *Peach-leaf Bellflower*. Blue, bell-shaped flowers arranged along a tall flower-spike. 3 ft. June, July.

C. persicifolia alba. *White Peach-leaf Bellflower*. White form of above.

CAMPION. See *Lychnis*.

CANDYTUFT. See *Iberis*.

CARDINAL FLOWER. See *Lobelia*.

CAT-TAIL GAYFEATHER. See *Liatris*.

CENTRANTHUS ruber. *Jupiter's Beard*. Desirable variety for rock garden or border. Handsome deep red flowers.

CERASTIUM tomentosum. *Snow-in-Summer*. Silvery foliage, with white, satiny flowers. Fine for rockery. 8 in. May, June. 25 cts. each, \$2 for 10, \$15 per 100.

CHRYSANTHEMUMS, HARDY. When all other flowers in the garden have been browned by the frost, the Hardy Chrysanthemums burst forth in a profusion of bloom and color. They grow best when planted in a sheltered location, in a light sandy loam where the water does not stand. Mulch plants during the winter.

C., *Alice Howell*. Orange-yellow. Bloom Sept. 25 to Oct. 5.

C., *Autumn Glow*. Large; red. Oct. 20 to 30.

C., *Brown Bessie*. (Pompon.) Reddish bronze. Oct. 15 to 20.

C., *Framefield*. Purest white; very early. Sept. 15 to 20.

C., *Harvest Moon*. (Pompon.) Pure golden yellow. Oct. 10 to 20.

C., *Homestead*. Silvery mauve. Oct. 1 to 10.

C., *Le Pactole*. Large, bronzy yellow flower. Oct. 15 to 20.

C., *Maduse*. Terra-cotta-bronze. Oct. 15 to 20.

C., *Maid of Kent*. (Pompon.) White. Oct. 15 to 20.

C., *Normandie*. Cream-white, yellow center; early. Sept. 20 to 30.

C., *Ruth Cumming*. Glowing reddish bronze. Oct. 1 to 10.

C., *Skibo*. (Pompon.) Yellow, with reddish center. Oct. 1 to 10.

C. maximum hybridum. *Shasta Daisy*. Pure white, daisy-like flowers 4 inches in diameter. 1 to 2 ft. June to Aug. 25 cts. each, \$2 for 10.

COLUMBINE. See *Aquilegia*.

CONEFLOWER. See *Echinacea*.

CLEMATIS davidiana. Flowers are tubular in form and a delicate lavender-blue in color; quite sweetly scented. Aug., Sept. 50 cts. each, \$4.50 for 10.

CONVALLARIA majalis. *Lily-of-the-valley*. A popular favorite. 25 cts. each, \$2 for 10, \$15 per 100.

CORAL BELLS. See *Heuchera*.

CORAL LILY. See *Lilium tenuifolium*.

Strong, field-grown plants of above, 30 cts. each, \$2.50 for 10, \$18 per 100, except where otherwise noted

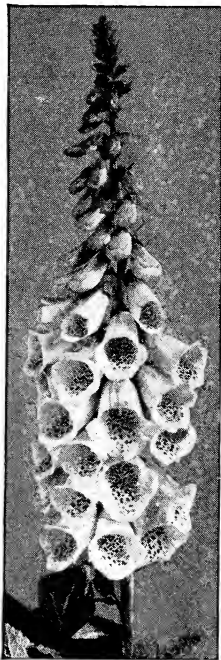
- COREOPSIS lanceolata.** *Lance Coreopsis.* One of the best golden yellow flowers for the garden. Excellent for cut-flowers. 2 to 3 ft. June to Oct. 25 cts. each, \$2 for 10, \$15 per 100.
- C. verticillata.** *Thread-leaf Coreopsis.* Rich golden yellow flowers; cut foliage. 2 ft. July to Sept. 25 cts. each, \$2 for 10.
- DAY LILY.** See *Hemerocallis.*
- DELPHINIUM.** *Larkspur.* Our best blue flowers for cutting, and should be planted freely. Thrives in well-fertilized soil.
- D. belladonna.** Light sky-blue.
- D. bellamosa.** Dark blue.
- D. chinense.** *Slender Larkspur.* A very pretty variety, with fine feathery foliage and intense gentian-blue flowers in open panicles.
- D., Gold Medal Hybrids.** Large flowers on spikes 2 feet and over long, the majority running in the lighter shades of blue. 5 to 6 ft.
- DIANTHUS allwoodi.** *Hardy Pinks.* A new addition to our list of hardy garden plants. They are almost as large as the carnation and very fragrant. 35 cts. each, \$3 for 10, \$25 per 100.
- D., Harold.** Pure white; large; double.
- D., Jean.** White, with crimson center; double.
- D., Robert.** Old rose, with light maroon center.
- D. barbatus.** *Sweet-william.* The old-fashioned Sweet-william should not be forgotten for the garden. It is hard to find anything that will surpass it. The flowers are lasting and fine for cutting. 25 cts. each, \$2 for 10, \$15 per 100.
- D. chinensis heddewigi.** *Heddewig Pink.* Very large flowers of brilliant colors, from pure white to rich crimson; some are laced or striped. 25 cts. each, \$2 for 10, \$15 per 100.
- D. deltoides,** *Brilliant.* *Maiden Pink.* A beautiful little plant with narrow leaves and bearing a profusion of small crimson-red flowers during June and July. A most striking rock-plant.
- D. grenadin.** Large flowers on stems 12 to 15 inches long. Three shades: pink, white and yellow. 12 to 18 in. May, June.



Dianthus allwoodi

Strong, field-grown plants of above, 30 cts. each, \$2.50 for 10, \$18 per 100, except where otherwise noted

Dianthus plumarius. *Grass Pinks*. Large fragrant flowers on long stems. Very good for rockeries. 1½ ft. June. 25 cts. each, \$2 for 10.



Giant Shirley Digitalis

DICENTRA eximia. *Fringed Bleeding-heart*. A dwarf-growing variety with beautiful finely cut foliage and short racemes of purplish red flowers. 1½ ft. All summer. 35 cts. each, \$3 for 10, \$25 per 100.

D. spectabilis. *Bleeding-heart*. An old-fashioned favorite. Prefers semi-shade and plenty of moisture. 50 cts. each, \$4.50 for 10.

DICTAMNUS albus. *Gas Plant*. The most satisfactory hardy plant in cultivation. It has rich green foliage and curious white flowers. 2 to 3 ft. June. 50 cts. each, \$3.50 for 10.

D. albus ruber. *Purple Gas Plant*. A pink form of the preceding. 2 to 3 ft. 50 cts. each, \$3.50 for 10.

DIGITALIS purpurea. *Common Foxglove*. An old-fashioned border plant; purple flowers with spotted throats. 3 to 5 ft. June, July. 25 cts. each, \$2 for 10, \$15 per 100.

D. purpurea alba. *Common White Foxglove*. White form of above. 25 cts. each, \$2 for 10, \$15 per 100.

D., *Giant Shirley*. The flower-heads are over 3 feet long, crowded with big, bell-shaped blossoms. Colors range from white and shell-pink to deepest rose, many attractively dotted with crimson or chocolate. We offer them in mixture. 25 cts. each, \$2 for 10, \$15 per 100.

DORONICUM magnificum. *Sunflower Leopard-bane*. Large, bright yellow flowers in early spring; valuable for cutting. 50 cts. each, \$4.50 for 10.

ECHINACEA purpurea. *Coneflower*. Crimson-purple flower with a dark cone in the center. Good for cutting. 2 to 3 ft. July to Sept.

EUPATORIUM cœlestinum. *Mistflower*. A pretty plant with light blue flowers similar to *ageratum*. 1 to 1½ ft. Aug. till frost.

EUPHORBIA corollata. *Flowering Spurge*. Bears masses of small, pretty white flowers. Valuable for cutting. 2 to 3 ft. July, Aug. 25 cts. each, \$2 for 10.

FALSE DRAGONHEAD. See *Physostegia*.

FILIPENDULA hexapetala fl.-pl. *Double Dropwort*. Beautiful fern-like foliage. Double white flowers. 2 to 3 ft. May, June.

FLAX. See *Linum*.

FLOWERING SPURGE. See *Euphorbia*.

FORGET-ME-NOT. See *Myosotis*.

FOXGLOVE. See *Digitalis*.

FUNKIA. See *Hosta*.

GAILLARDIA aristata. *Common Perennial Gaillardia*. Showiest of hardy perennials, producing yellow flowers, splashed with red. Blooms the entire season, from June. 2 ft. 25 cts. each, \$2 for 10, \$15 per 100.

G., *Portola*. This new variety is of compact, upright habit. Very large flowers of rich coppery scarlet, tipped with golden yellow. 35 cts. each, \$3 for 10.

G., *Golden Gleam*. A new variety offered for the first time. Large flowers of a pleasing clear yellow. 35 cts. each, \$3 for 10.

GAS PLANT. See *Dictamnus*.

GLOBE FLOWER. See *Trollius*.

GOLDEN TUFT. See *Alyssum*.

GOUT WEED. See *Ægopodium*.

GRASS PINK. See *Dianthus plumarius*.

GREEK VALERIAN. See *Polemonium*.

Strong, field-grown plants of above, 30 cts. each, \$2.50 for 10, \$18 per 100, except where otherwise noted.

- GYPSOPHILA paniculata.** *Baby's Breath.* An excellent plant for the hardy border or rockery. The small, minute flowers, if cut and dried, will keep indefinitely.
- G., Bristol Fairy.** (New.) White; very double; continuous bloomer. A decided improvement over the old-fashioned variety. \$1.50 each.
- HELENIUM autumnale.** *Common Sneezeweed.* Desirable border plant with golden yellow flowers. 5 to 6 ft. Aug., Sept. 25 cts. each, \$2 for 10.
- H. autumnale rubrum.** *Red Sneezeweed.* A splendid new variety; deep ox-blood-red, changing to terra-cotta. 5 to 6 ft. Sept.
- H., Riverton Beauty.** Rich, lemon-yellow with large, dark center. 5 to 6 ft. Aug., Sept. 25 cts. each, \$2 for 10, \$15 per 100.
- H., Riverton Gem.** A new variety; terra-cotta changing to wallflower-red. 5 to 6 ft. Aug., Sept. 25 cts. each, \$2 for 10, \$15 per 100.

Hemerocallis · Day Lily

All of the varieties of *Hemerocallis* are perfectly hardy and may readily be naturalized along streams or in moist places. The blooming period is from May to August.

25 cts. each, \$2 for 10

- Dr. Regel.** Orange-yellow.
- Flava.** *Lemon Day Lily.* Clear lemon-yellow.
- Fulva.** *Tawny Day Lily.* Coppery orange.
- Fulva kwanso.** *Double Tawny Day Lily.* Rich orange-red.
- Luteola.** *Golden Day Lily.* Bright golden yellow.
- Middendorffi.** *Amur Day Lily.* Golden yellow.
- Thunbergi.** *Japanese Day Lily.* Lemon-yellow.
- HEUCHERA americana.** *American Alum-root.* A native plant with mottled foliage and bright pink flowers. 2 to 3 ft. July. 35 cts. each, \$3 for 10.
- H. brizoides.** *Pink Bells.* New. It has the same foliage as *Heuchera sanguinea*, but the color is not as brilliant, though it produces many more flowers. 18 in. June. 35 cts. each, \$3 for 10.
- H. sanguinea.** *Coral Bells.* Small coral-red flowers produced in loose clusters. 1½ ft. July to Oct. 35 cts. each, \$3 for 10.
- HIBISCUS HYBRID, Red Marvel.** *Red Rose Mallow.* Large flowers in shades of crimson and pink. 3 to 5 ft. Aug., Sept.
- HOLLYHOCK.** See *Althæa*.
- HOSTA lancifolia undulata.** *Variiegated Wavy-leaf Plantain Lily.* Leaves variegated white and green.
- H. plantaginea grandiflora.** *White Plantain Lily.* Flowers purest white.
- IBERIS gibraltarica.** *Gibraltar Candytuft.* Large, delicate lilac flowers. Should be protected.
- I. sempervirens.** *Evergreen Candytuft.* A very desirable dwarf plant with evergreen foliage and masses of white flowers. 8 to 10 in. April, May.

Iris germanica · German Iris

The Iris is one of the finest of our hardy plants, with orchid-like flowers ranging in color from white through mauve to deep blue and purple. Not particular as to soil or location, except they want sunshine a part of the day.

RATINGS. The figures given after each variety are the ratings given by the American Iris Society in 1921. 9.5 is almost perfect; 9.0 very fine, 8.0 very good; 7.0 good. Note the uniform high rating of the following:

In the descriptions, S is used to signify standards, or the erect petals; F, falls, or the drooping petals.

Choice New Introductions

- Ambassadeur.** (Vilmorin, 1921.) 9.4. S. smoky lavender; F. velvety purple-maroon. A regal flower. One of the best of the newer varieties. 40 in. 75 cts. each, \$6.50 for 10.
- Cecil Minturn.** (Farr, 1922.) S. and F. a soft shade of cattleya-rose, with broad petals, gracefully waved and crinkled. 75 cts. each, \$6.50 for 10.

Strong, field-grown plants of above, 30 cts. each, \$2.50 for 10, \$18 per 100, except where otherwise noted



German Iris

CHOICE NEW INTRODUCTIONS OF GERMAN IRIS, continued

- Lent A. Williamson.** (Williamson, 1918.) 9.6. S. campanula-blue-violet; F. rich royal purple. Rated in 1922 by American Iris Society as the finest Iris in the world. 40 in. 75 cts. each, \$6.50 for 10.
- Lord of June.** (Yeld, 1911.) 9.1. S. pale lavender-blue; F. deep aniline-blue. A magnificent variety. 40 in. 75 cts. each, \$6.50 for 10.
- Mme. Chobaut.** (Dennis, 1916.) 8.5. S. and F. a rich Prussian-red, with faint brown veins on a pale chalcedony ground. 36 in. 75 cts. each, \$6.50 for 10.
- Mme. Gaudichau.** (Millet, 1914.) 9.3. S. and F. rich, deep purple; undoubtedly the largest and finest of this shade. 42 in. \$1.50 each.
- Queen Caterina.** (Sturtevant, 1918.) 9.0. S. and F. a beautiful uniform shade of clear orchid-purple. 40 in. 75 cts. each, \$6.50 for 10.
- Shekinah.** (Sturtevant, 1918.) 8.8. S. and F. pale yellow, deepening to amber at base of petals. 36 in. 75 cts. each, \$6.50 for 10.

General List of German Iris

30 cts. each, \$2 for 10 of one variety

- Archeveque.** (Vilmorin, 1911.) 8.3. S. and F. deep velvety purple. 24 in.
- Caprice.** (Vilmorin, 1904.) 7.5. S. rosy red; F. deeper rosy red. 24 in.
- Flavescens.** 7.0. S. and F. a pale lemon-yellow. 20 in.
- Florentina alba.** 7.6. S. and F. white, slightly tinged lavender; very early. 24 in.
- Iris King.** (Goos & Koenemann, 1907.) S. clear lemon-yellow; F. rich maroon, bordered yellow. 24 in.
- Jacquesiana.** (Lemon, 1840.) 8.0. S. rich coppery rose; F. rich maroon. An old variety but one of the choicest Irises. 30 in.
- Kochi.** 7.8. S. and F. rich claret-purple; early variety. 20 in.
- Mme. Chereau.** (Lemon, 1844.) 7.4. S. and F. pale blue, margin penciled darker blue.
- Pallida dalmatica.** (True.) 8.8. S. clear lavender-blue; F. clear lavender. A superb variety. 40 in.
- Quaker Lady.** (Farr, 1909.) 8.4. S. smoky lavender, with yellow shadings at base; F. ageratum-blue and old-gold. 36 in.
- Queen of May.** 7.4. S. and F. a clear rosy lavender. 26 in.
- Rhein Nixe.** (Goos & Koenemann, 1910.) 8.4. S. pure white; F. violet-blue, with a white edge. 28 in.
- Sherwin-Wright.** (Kohankie, 1915.) 7.6. S. and F. bright golden yellow. 24 in.

Japanese Iris (*Iris Kaempferi*)

Iris Kaempferi · Japanese Iris

50 cts. each, \$4.50 for 10

- Gekka-no-nami.** Double; midseason to late; finely formed flower; medium size; white.
- Kumo-no-wye.** Double; large; splendid form; velvety royal-blue.
- Manadzuru.** Single; midseason; dark maroon on opening, shading to royal purple, with slight royal blue lines at base.
- Pyramid.** Deep blue, suffused royal purple; light blue at base; six petals.
- Taiheiraku.** Midseason; rich maroon-purple; six petals.
- Tsuru-no-kegoromo.** Single; midseason; large; white, with faint yellow lines at base.

Other Irises

- Iris cristata.** *Crested Iris.* A dwarf native species with handsome blue flowers. Short green foliage. 4 to 6 in. May. 25 cts. each, \$2 for 10.
- I. ochroleuca.** *Yellow-band Iris.* A most desirable variety with pale yellow flowers. 3 to 4 ft. June. 35 cts. each, \$3 for 10.
- I. orientalis.** A beautiful Iris of the most vivid velvety deep blue, of medium size and blooming with great freedom. 2 to 3 ft.
- I. pseudacorus.** *Yellow Flag Iris.* The common Yellow Flag. Robust grower; flowers of medium size, clear deep yellow. 3 to 5 ft. June. 35 cts. each, \$3 for 10.
- I. pumila.** Blooms before Germanica; has smaller flowers. 6 to 15 in.
- I., Bridesmaid.** White, splashed light blue.
- I. cyanea.** Deep blue, white veinings.
- I. excelsa.** Clear yellow.
- I. sibirica alba.** *White Siberian Iris.* Foliage somewhat like the Japan Iris; dainty white flowers on tall stems. 2 to 3 ft.
- I. sibirica, Snow Queen.** A handsome variety with beautiful pure white flowers; very free flowering. 2 ft. June.

JUPITER'S BEARD. See *Centranthus*.

Strong, field-grown plants of above, 30 cts. each, \$2.50 for 10,
\$18 per 100, except where otherwise noted



Lupines (Lupinus)

KNIPHOFIA pfitzeriana. *Bonfire Torch Lily.* The ever-blooming flame flower; all season; best variety for massing. It is best to dig these plants up in the fall and store in a cool cellar. 35 cts. each, \$3 for 10.

LARKSPUR. See Delphinium.

LATHYRUS latifolius. *Perennial Pea.* Large flowers, similar to the annual sweet pea. Pink and white varieties. 3 ft. June to Aug.

LAVANDULA officinalis. *True Lavender.* The true sweet lavender; needs protection in winter; blue flowers. 35 cts. each, \$3 for 10.

LEOPARD-BANE. See Doronicum.

LESPEDEZA formosa. *Purple Bush Clover.* Purple flowers in September and October. 50 cts. each, \$4.50 for 10.

LIATRIS pycnostachya. *Cattail Gayfeather.* Flowers rosy-purple in dense spikes. 4 to 6 ft. July, Aug. 25 cts. each, \$2 for 10.

LILIUM candidum. *Madonna Lily.* Well-known fragrant garden Lily. 40 cts. each, \$3.50 for 10, \$30 per 100.

L. regale. *Royal Lily.* One of the most satisfactory hardy Lilies for the garden. Flowers white slightly suffused with pink, with a pronounced canary-yellow throat. 75 cts. each, \$6 for 10, \$50 per 100.

L. speciosum album. The Speciosum varieties are the most satisfactory of the Japanese Lilies. Large, white flowers, with greenish band running through each petal. 40 cts. each, \$3.50 for 10.

L. superbum. *American Turk's-cap Lily.* Flowers are bright orange with dark spots. 35 cts. each, \$3 for 10, \$20 per 100.

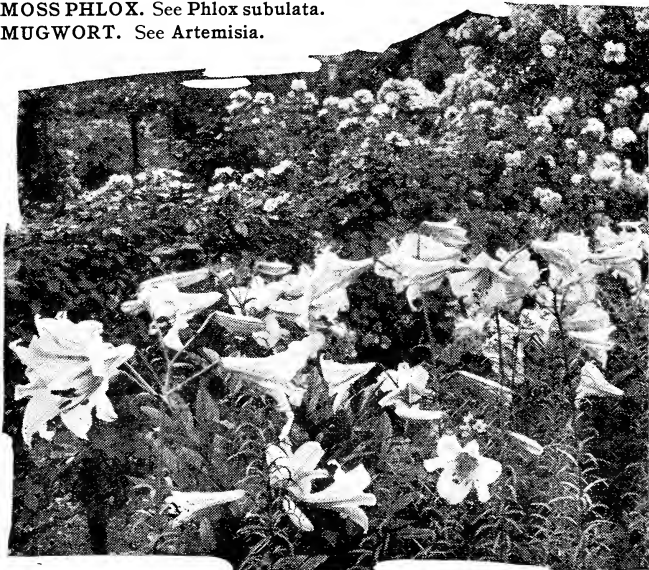
L. tenuifolium. *Coral Lily.* Rich scarlet. One to twenty nodding flowers on each stem. 40 cts. each, \$3.50 for 10, \$30 per 100.

L. tigrinum splendens. *Giant Tiger Lily.* Large orange-red flowers spotted with bright purple.

LILY-OF-THE-VALLEY. See Convallaria.

Strong, field-grown plants of above, 30 cts. each, \$2.50 for 10, \$18 per 100, except where otherwise noted

- LIMONIUM latifolium.** *Big-leaf Sea Lavender.* A graceful plant for the border or rockery, with mist-like flowers. 1 to 2 ft. Aug., Sept.
- LINUM perenne.** *Perennial Flax.* A very fine border or rockery plant, with graceful, glaucous foliage and large blue flowers. 18 in. June to Aug.
- LOBELIA cardinalis.** *Cardinal Flower.* A very beautiful native plant often bearing 10 to 12 fiery, cardinal-red spikes to a plant. Prefers a moist location. 2 to 3 ft. July, Aug.
- LOOSESTRIFE.** See *Lythrum.*
- LUPINUS polyphyllus.** *Washington Lupine.* Pea-shaped flowers on spikes. Should be planted in moist location. 2 to 3 ft. June, July. Blue, Pink, and White.
- LYCHNIS chalcedonica.** *Maltese Cross.* Brilliant orange-scarlet. Fine border plant. 1 to 2 ft. May, June. 25 cts. each, \$2 for 10.
- L. haageana.** *Haage Campion.* Very showy, producing orange-scarlet flowers in May and June. 1 ft. 25 cts. each, \$2 for 10, \$15 per 100.
- L. viscaria splendens.** *Rose-pink Campion.* Double, bright crimson flowers, resembling Scotch Pinks. 12 to 15 in. May, June. 25 cts. each, \$2 for 10.
- LYSIMACHIA nummularia.** *Moneywort.* Valuable for planting under trees where grass will not grow, as it quickly forms a dense carpet. 25 cts. each, \$2 for 10, \$15 per 100.
- LYTHRUM roseum superbum.** *Rose Loosestrife.* A strong-growing plant with long spikes of rose-colored flowers. 3 to 4 ft. July to Sept. 25 cts. each, \$2 for 10.
- MADONNA LILY.** See *Lilium candidum.*
- MALLOW.** See *Hibiscus.*
- MEADOWSWEET.** See *Filipendula.*
- MISTFLOWER.** See *Eupatorium.*
- MONARDA didyma superbum.** *Oswego Bee-balm.* A very showy plant with aromatic foliage, producing bright scarlet flowers in July and August. 3 to 4 ft. 25 cts. each, \$2 for 10, \$15 per 100.
- MONEYWORT.** See *Lysimachia.*
- MONKSHOOD.** See *Aconitum.*
- MOSS PHLOX.** See *Phlox subulata.*
- MUGWORT.** See *Artemisia.*



Lilium regale. See page 42

Strong, field-grown plants of above, 30 cts. each, \$2.50 for 10, \$18 per 100, except where otherwise noted

MYOSOTIS scorpioides. *True Forget-me-not.* The true variety, blooming all summer. Valuable for shady or moist places. 25 cts. each, \$2 for 10, \$15 per 100.

ŒNOTHERA fruticosa youngi. *Young's Sundrops.* A strong-growing plant with lemon-yellow flowers borne in profusion.

ORIENTAL POPPY. See *Papaver orientale.*

PAINTED LADY. See *Pyrethrum.*

PANSIES. Our Pansies are good, stocky, transplanted plants, and a very choice strain of assorted colors. 50 cts. per doz.

PAPAVER nudicaule. *Iceland Poppy.* Very graceful flowers ranging from white to scarlet. 1 ft. Blooms all summer.

P. orientale. *Oriental Poppy.* Common variety of the Poppy. Orange-scarlet flowers with black blotches at base of each petal.

P., Apricot Queen. Large; apricot.

P., Beauty of Levermere. Crimson with black blotch.

P., Mrs. Perry. Orange-apricot; very fine.

P., Perry's White. New. Satiny white, with crimson-maroon blotch at the base of each petal.

P., Princess Victoria Louise. Soft salmon-rose, shading to blush-rose.

P., Royal Scarlet. Brilliant scarlet; medium size; a most prolific bloomer.

Any of the above Poppies, 35 cts. each, \$3 for 10, \$25 per 100

PEA, PERENNIAL. See *Lathyrus.*

PENTSTEMON torreyi. *Torrey Pentstemon.* Spikes of bright scarlet flowers. 4 to 5 ft. June to Aug. 25 cts. each, \$2 for 10.



Oriental Poppies (*Papaver orientale*)

Strong, field-grown plants of above, 30 cts. each, \$2.50 for 10, \$18 per 100, except where otherwise noted

Peonies

The varieties here listed include most of the new introductions, together with some of the old favorite sorts. The abbreviation in parentheses, following the variety name, refers to the originator—Cr., Crousse; Kel., Kelway; Cal., Calot; Lem., Lemoine; Des., Dessert; Miel., Miellez; Ros., Rosenfield; D. & M., Dessert and Mechin; Del., Delache; Gr., Guerin. The figures immediately following the abbreviation indicate the year of introduction. The second set of figures (8.5 and so on) indicate the rating given the variety by the American Peony Society.

- Albatre.** (Cr., 1885.) 8.7. Large, compact white blooms, center petals faintly tinged pale lilac. 75 cts. each.
- Albert Crousse.** (Cr., 1893.) 8.6. Tall; late; free bloomer; rose-white, flecked with crimson. 75 cts. each.
- Baroness Schroeder.** (Kel., 1899.) 9.0. Very large, globular typé; flesh-white, fading to milk-white. \$3 each.
- Comte de Horace Choiseul.** Late; large; full; dark rich red. 75 cts. each.
- Couronne d'Or.** (Cal., 1872.) Late; large, flat, full flower; pure white. showing yellow stamens around center petals. 75 cts. each.
- Duchesse de Nemours.** (Cal., 1856.) 8.1. Early to midseason; large, full bloom; pure white; very free. 75 cts. each.
- Edulis Superba.** (Lem., 1824.) 7.6. Large, loose flower of bright mauve-pink. One of the earliest to bloom. 75 cts. each.
- Emil Lemoine.** (Cal., 1866.) Rich red, bomb-shaped bloom; midseason. 75 cts. each.
- Eugenie Verdier.** (Cal., 1864.) 8.6. Midseason; large, full, compact bloom; delicate hydrangea-pink; choice variety. \$1.50 each.
- Felix Crousse.** (Cr., 1881.) 8.4. Large; bright red; bomb shape; mid-season. 75 cts. each.
- Festiva Maxima.** (Miel., 1851.) 9.3. Early; very tall; vigorous grower; very large and full blooms of pure white, center petals faintly flecked crimson. 75 cts. each.
- Karl Rosenfield.** (Ros., 1908.) 8.8. Brilliant dark crimson; good form and substance. One of the best reds. \$3 each.
- Livingstone.** (Cr., 1879.) 8.1. Late; free; lilac-rose, silvery sheen on ends of petals. 75 cts. each.
- Marcelle Dessert.** (Des., 1899.) 8.2. Milk-white, minutely splashed with lilac, center flecked crimson. \$2 each.
- Melaine Henry.** (Gr., 1840.) Midseason; very full flower of light solferino-red fading to pink. 75 cts. each.
- Mme. de Verneville.** (Cr., 1885.) 7.9. Early to midseason; medium height; very free bloomer; pure white, center pale blush on opening. 50 cts. each.
- Mons. Jules Elie.** (Cr., 1888.) 9.2. Midseason; very large, full blooms of clear pink. \$1.50 each.
- Mons. Martin Cahuzac.** (Des., 1899.) 8.8. Medium-sized, semi-rose type; very dark purple-garnet; free bloomer. The darkest Peony in the trade. \$4 each.
- Officinalis.** Brilliant crimson. The common early flowering red Peony. 75 cts. each.
- Rubra Triumphans.** (Del., 1854.) Midseason; large; semi-double; dark crimson. 75 cts. each.
- Sarah Bernhardt.** (Lem., 1906.) 9.0. Flat, compact, semi-rose type bloom; uniform mauve-rose with silver tip; late. \$3 each.
- Souvenir de l'Exposition Universelle.** (Cal., 1867.) 7.6. Late; very full bloom; light pink with silvery sheen. 75 cts. each.
- Suzette.** (Des., 1911.) 8.0. Beautiful form and superb coloring—bengal-rose, shaded deeper, showing golden stamens. \$2 each.

Single and Japanese Peonies

- La Fiancée.** Single. Early; very large; pure white. \$1 each.
- Lemon Queen.** Single. Broad white petals; center filled with sulphury yellow stamens. \$1 each.
- Mikado.** Single. Late; rich crimson, showing an abundance of golden yellow stamens. One of the best single reds. \$1 each.
- No. 28 (Kabata).** Single. Wild-rose, edge of petals lighter, fading to lilac. Petals do not open out flat like most singles, but recurve. \$3 ea.
- No. 10 (Sanbo-nishiki).** Japanese. Guard petals opening solferino-red, fading to rosy pink at maturity; petaloides solferino-red with silver tippings; ideal Japanese form. \$3 each.
- No. 42 (Oki-no-nami).** Japanese. Guard petals lilac-rose, edges silver tipped; petaloides lilac-rose, tipped with silver. \$3 each.



Single-flowered Peonies

SINGLE AND JAPANESE PEONIES, continued

- No. 49 (*Akashigata*). Japanese. Guard petals mauve, silvery tipped; petaloides golden yellow. \$3 each.
 No. 52 (*Fuji-no-mine*). Japanese. Guards pure white; petaloides creamy at tips and sulphury at base; very large. \$3 each.
 No. 59 (*Hana-no-kagami*). Japanese. Guards rose-mauve; petaloides mauve, fringed yellow; midseason to late; medium size; free; odor good. \$3 each.

Phlox

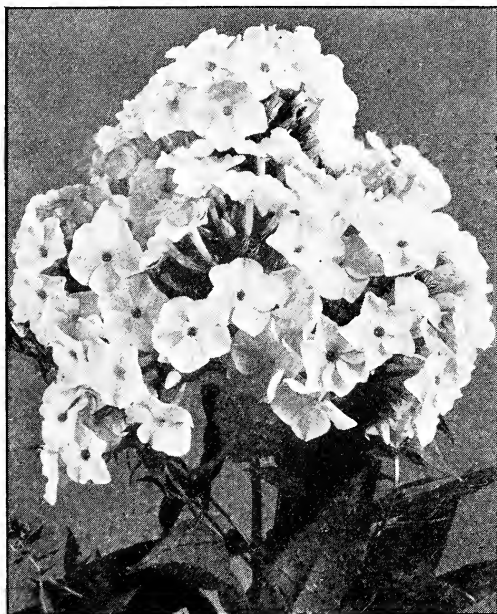
Perfectly hardy, easy to make thrive, and producing gorgeous color effects. The following list has been selected from our large collection, as comprising the cream of the distinct colors.

All Phloxes 30 cts. each, \$2.50 for 10 of one variety, except where otherwise noted

- Baron von Dedem.** Blood-red, with salmon shadings.
B. Comte. Rich satiny amaranth; very effective.
Commander. New. Crimson-red with darker eye. 35 cts. each, \$3 for 10, \$25 per 100.
Elizabeth Campbell. Bright salmon-pink with lighter shadings and dark red eye. 35 cts. each, \$3 for 10.
Enchantress. New. Vivid salmon-pink with crimson eye; robust habit.
Europa. Snow-white with carmine eye.
Firebrand. New. Brilliant orange-scarlet, with dark eye. 35 cts. each, \$3 for 10.
Frau Anton Buchner. The finest pure white; very large flowers.
Gen. van Heutz. Bright salmon-red, with white eye.
Jules Sandeau. Very large flowers of pure pink.
Maid Marian. A new variety with soft lavender flowers. 35 cts. each, \$3 for 10.
Mia Ruys. Dwarf, not over 16 inches high. Large trusses of pure, waxy-white flowers. 35 cts. each, \$3 for 10.
Mrs. Ethel Prichard. New. Large trusses of clear rose-mauve flowers. 35 cts. each, \$3 for 10.
Mrs. Jenkins. Pure white; tall.
Mrs. Milly van Hoboken. New. Soft pink without eye; large flowers on long spikes. 35 cts. each, \$3 for 10.
Ornament. Very large, bright pink flowers.
Pantheon. Clear, deep carmine-pink.
Special French. Beautiful shade of clear pink.
Thor. Rich salmon-pink with crimson eye.

PHLOX, continued

- Phlox amœna.** *Amœna Phlox.* Rich bright pink flowers. 4 to 6 in. April, May. 25 cts. each, \$2 for 10.
- P. divaricata.** *Blue Phlox.* Very fragrant, lavender flowers during April and May; fine for massing. 10 to 12 in. 35 cts. each, \$3 for 10.
- P. divaricata laphami.** An improved robust form of *P. divaricata*., with larger and darker flowers. 35 cts. each, \$3 for 10.
- P. maculata hybrida alpha.** A new variety secured by crossing the native *P. maculata* and some of the varieties of *P. decussata*. The color is soft amaranth-pink. The plants grow about 2½ feet high and produce large panicles of bloom from June until late fall.
- P. ovata.** *Mountain Phlox.* Rosy pink flowers; low mat of evergreen foliage. 4 to 6 in. May. 25 cts. each, \$2 for 10.
- P. suffruticosa, Miss Lingard.** Probably the earliest flowering of the hardy Phloxes, beginning to bloom in May and continuing until late October. Flower trusses pure white; plants about 2 feet high.
- P. subulata.** *Moss Phlox.* Forms low, flat masses of evergreen foliage with rose-pink flowers. 3 to 4 in. May. 25 cts. each, \$2 for 10.
- P. subulata alba.** *White Moss Phlox.* A white form of the above. 25 cts. each, \$2 for 10.
- P. subulata lilacina.** *Lilac Moss Phlox.* Lavender flowers. 25 cts. each, \$2 for 10.
- P. subulata, G. F. Wilson.** Soft lavender. 35 cts. each, \$3 for 10.
- PHYSALIS francheti.** *Lantern Ground Cherry.* This is a very ornamental plant, producing bright orange-scarlet, lantern-like fruits often used for winter decorations.
- PHYSOSTEGIA virginiana.** *Virginia False Dragonhead.* Large spikes of tubular-shaped flowers of delicate clear pink. 3 to 4 ft. July, Aug. 25 cts. each, \$2 for 10.
- PINKS.** See Dianthus.
- PLANTAIN LILY.** See Hosta.
- PLATYCODON grandiflorum.** *Balloon Flower.* A very attractive plant, seldom seen in the garden but which should be planted more extensively. Mixed colors, White, Blue and Lavender. 2 ft. June to Sept. 35 cts. each, \$3 for 10.



Phlox, Miss Lingard

Strong, field-grown plants of above, 30 cts. each, \$2.50 for 10, \$18 per 100, except where otherwise noted



Platycodon grandiflorum

POLEMONIUM cæruleum. *Greek Valerian.* Fern-like foliage; terminal spikes of blue flowers with yellow anthers. A very good plant for the hardy border. 2 to 3 ft.

P. cæruleum album. *White Greek Valerian.* Similar habit to the above, but with pure white flowers.

POPPY. See Papaver.

PRIMROSE. See Primula.

PRIMULA veris Hybrids. *Cowslip Primrose.* For an early spring-flowering plant, there is nothing more beautiful than the hardy Primulas. They are quite hardy.

PYRETHRUM roseum. *Painted Lady.* A plant of easy culture, adapted to any soil. Flowers range in color from almost white to deep rose; very good for cutting.

RANUNCULUS repens. *Creeping Buttercup.* A free-growing, creeping plant with double yellow flowers. Good for the rockery. 1½ ft. June, July. 20 cts. each, \$1.50 for 10, \$12 per 100.

ROCKCRESS. See Arabis.

ROSEMALLOW. See Hibiscus.

SAGE. See Salvia.

SALVIA azurea. *Azure Sage.* Produces slender, graceful spikes of light blue flowers during August and September. 3 to 4 ft. 35 cts. each, \$3 for 10.

S. azurea grandiflora (pitcheri). *Great Azure Sage.* Similar to the preceding, but with rich, deep blue flowers. 35 cts. each, \$3 for 10.

SEA LAVENDER. See Limonium.

SEDUM spectabile. *Showy Stonecrop.* An upright plant with heavy glaucous foliage and large heads of rose-colored flowers. 1½ ft. Aug., Sept.

SHASTA DAISY. See Chrysanthemum maximum.

SIDALCEA, Rosy Gem. Erect-growing plants, producing their pretty, bright rose-colored flowers during June and July. 2 to 3 ft.

SNEEZEWEED. See Helenium.

SNEEZEWORT. See Achillea.

SNOW-IN-SUMMER. See Cerastium.

Strong, field-grown plants of above, 30 cts. each, \$2.50 for 10, \$18 per 100, except where otherwise noted

SPEEDWELL. See *Veronica*.

STACHYS lanata. *Woolly Betony.* Valuable for its very pearly, velvety foliage and ruby-red flowers on spikes. 1 to 1½ ft. July, Aug.

S. officinalis. *Common Betony.* An attractive plant with shell-pink flowers. 1 ft. June.

STATICE mauritanica. *Algerian Thrift.* An attractive, dwarf plant, forming evergreen tufts of bright green foliage and producing an abundance of small pink flowers. A useful plant for the rockery. 9 to 12 in. 25 cts. each, \$2 for 10.

STOKESIA laevis. *Stokesia.* A very beautiful, late-flowering plant with lavender-blue flowers. 1 to 2 ft.

S. laevis alba. *White Stokesia.* A white form of the above.

STONECROP. See *Sedum*.

SUNDROPS. See *Oenothera*.

SWEET WILLIAM. See *Dianthus barbatus*.

THRIFT. See *Statice*.

TIGER LILY. See *Lilium tigrinum*.

TORCH LILY. See *Kniphofia*.

TROLLIUS europæus. *Common Globe Flower.* Large lemon-colored, buttercup-like flowers. Should be planted in a shady location. 12 to 18 in. May, June. 35 cts. each, \$3 for 10.

TURK'S-CAP LILY. See *Lilium superbum*.

ULMARIA. See *Filipendula*.

VALERIANA officinalis. *Common Valerian.* Showy heads of rose-tinted flowers. 3 to 4 ft. June, July.

VERONICA incana. *Woolly Speedwell.* Bright silvery foliage, with spikes of amethyst-blue flowers; July and August. 1 ft.

V. longifolia subsessilis. *Clump Speedwell.* Large, dense spikes of deep blue flowers from July to September. 2 to 3 ft.

V. spicata rosea. Long spikes of rose-colored flowers. 2 ft. June, July.

VINCA MINOR. See *Evergreen Shrubs*.

VIOLA cornuta. *Tufted Pansy.* One of the best plants for a low border. Blooms from May until October. **Golden Yellow, Purple Queen, Rose Queen, and White Perfection.** 25 cts. each, \$2 for 10, \$15 per 100.

V., Jersey Gem. New. Possesses the dwarf habit and continuity of blooming of the true horned *Viola* (*V. cornuta*). Color is pure, rich violet; slightly perfumed. 35 cts. each, \$3 for 10, \$20 per 100.

Strong, field-grown plants of above, 30 cts. each, \$2.50 for 10, \$18 per 100, except where otherwise noted

Perennials for a Succession of Bloom

APRIL-MAY

Alyssum saxatile
Aquilegia
Arabis alpina

Cerastium
Iberis
Iris pumila

Pblox divaricata
Pblox subulata

JUNE

Achillea
Astilbe
Campanula
Delphinium

Dianthus
Digitalis
Gypsophila

Hemerocallis
Iris
Peonies

JULY-AUGUST

Aconitum
Artemisia
Asclepias
Coreopsis

Dianthus
Gaillardia
Heuchera
Lobelia

Monarda
Papaver
Pblox

SEPTEMBER-OCTOBER

Aconitum
Asters
Chrysanthemums

Helenium
Hibiscus

Salvia
Tritoma



Rose Garden

Hybrid Tea and Everblooming Roses

While this class of Roses may not be quite so strong in growth as the Hybrid Perpetuals, the extreme freedom of bloom amply repays the grower for any extra care that the plants may demand. In our New England winters, the plants should be heavily mulched with leaves, straw or litter, or otherwise protected against extreme cold. The Hybrid Tea Roses are obtained by crossing Hybrid Perpetuals with the tender Tea Roses. In color, texture and fragrance, the blooms retain all of the qualities of the Tea Roses, while the plants have in a large degree the growing characteristics of the Hybrid Perpetuals.

Any of the following Roses, \$1 each, \$9 for 10

- Columbia.** A large Rose with long, stiff stems and of lively, bright pink color, deepening as it opens.
- Duchess of Wellington.** Long-pointed buds of golden orange, slowly opening to saffron-yellow blooms.
- Edward Mawley.** The large, bright crimson flower develops from long buds and shows its greatest beauty when about half open.
- Golden Emblem.** Intensely yellow buds and blooms; superb form.
- Golden Ophelia.** A seedling of Ophelia, possessing many of its characteristics; golden yellow center, paling slightly at outer petals.
- Gruss an Teplitz.** Brightest scarlet-crimson and flowering profusely.
- Hadley.** Buds well formed; flowers large, rich, crimson-red retaining its color in all seasons; delicate fragrance.
- Hoosier Beauty.** Splendid dark red blooms; very fragrant.
- Jonkheer J. L. Mock.** Large carmine buds, opening to a deep carmine-pink bloom, with reflex petals showing an inner surface of silvery rose.
- Kaiserin Auguste Viktoria.** Creamy white flowers of splendid substance.
- Killarney.** Long-pointed buds and large bright, sparkling pink flowers.
- La France.** Bright, satiny pink with silvery reflex; especially noted for its fragrance.
- Laurent Carle.** Deep carmine-crimson; large; very free.
- Los Angeles.** Large, pointed buds which open full; luminous flame-pink, toned with coral and shaded with translucent gold at base.
- Mme. Butterfly.** Light pink buds and flowers, tinted with gold near the base of the petals, of exquisite shape and richly perfumed.
- Mme. Caroline Testout.** One of the hardy reliable varieties; satiny rose shaded lighter toward outer edge of petals.
- Mme. Edouard Herriot (Daily Mail).** The buds are a beautiful deep coral-red and orange which changes to orange-pink and salmon.
- Mrs. Aaron Ward.** Center Indian-yellow, with edge of primrose; medium-sized flowers; free and full.

- Mrs. Arthur Robert Waddell.** Yellowish copper buds opening to nearly single, upper blooms of bronze-pink and apricot.
- Ophelia.** Creamy white and pale pink blooms, with a glint of golden yellow in the fold of its petals.
- Pharisaer.** Graceful buds, developing into double blooms of white and rose-pink shaded with silvery salmon.
- Radiance.** Bright rose-pink buds, opening to well-formed flowers with lighter tints on the inside of the petals.
- Red Radiance.** A deep, rose-red sport of Radiance, with all the magnificent qualities of the parent.
- Souvenir de Claudius Pernet.** Fine buds of fadeless yellow, paling somewhat toward the edge, produced on long, stiff stems, beautiful when half open.
- White Killarney.** A sport from Killarney. It is pure white in color, long in bud, and of fine form.
- William F. Dreer.** A beautiful Rose in all stages of development but at its best in the half-expanded flower; color golden fawn and orange-pink; moderately fragrant.

Hardy Climbing Roses

Any of the following Hardy Climbing Roses, 75 cts. each,
\$6 for 10, except where otherwise noted

- American Pillar.** Single flowers, borne in immense trusses; crimson-pink, approaching carmine, white at center, and golden yellow stamens.
- Bess Lovett.** Large, fragrant flowers of light crimson-red. Clearer color than Climbing American Beauty and superior to that variety.
- Climbing American Beauty.** Heavy, strong grower; very hardy; large flowers of brilliant carmine.
- Crimson Rambler.** Thrifty grower; flowers deep crimson, borne in good-sized clusters.
- Dorothy Perkins.** Very double, clear shell-pink flowers, borne in clusters of ten to twenty.
- Dr. W. Van Fleet.** Large perfect blooms with petals beautifully undulated and cupped; delicate shade of light flesh-pink on the outer surface, slightly deeper in the center.
- Emily Gray.** Long, tapering golden yellow buds, opening to semi-double flowers of large size and delightful buff-yellow color. \$1 each.
- Excelsa.** Intense crimson, with the edges of petals a little lighter. Very similar to Crimson Rambler, but much superior.
- Gardenia.** Yellow buds and creamy flowers, with rich yellow centers.
- Mary Lovett.** Pure waxy white, sweetly scented flowers, borne singly and in sprays.
- Mary Wallace.** Large, glossy foliage; flowers large, well-formed, semi-double, bright pink illumined with shining gold; free blooming.



Paul's Scarlet Climber Roses. See page 52

HARDY CLIMBING ROSES, continued

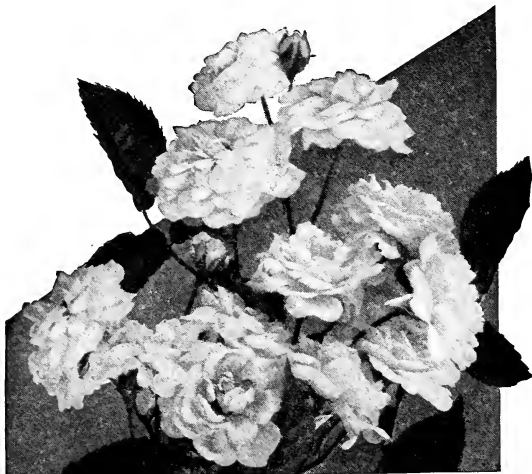
- Paul's Scarlet Climber.** The most brilliant Climbing Rose known. Large, semi-double flowers of clear, vivid, shining scarlet which remain in good condition unusually long on the plants. The flowers never turn blue but retain their intense coloring until the petals fall.
- Silver Moon.** Large, fragrant, creamy white, nearly single flowers, showing an abundance of yellow stamens; borne in clusters on long stems.
- Tausendschon.** Charming; strong grower without thorns. Large clusters from creamy white to bright pink all in the same cluster.
- White Dorothy.** Same as Dorothy Perkins, except that color is white.

Hybrid Perpetual and Miscellaneous Roses

These were the old garden favorites before the vogue of the Hybrid Teas. During June and July they make a magnificent display.

Any of the following Hybrid Perpetual Roses, strong, 2-yr., field-grown plants, \$1 each, \$9 for 10

- Anna de Diesbach.** Carmine—beautiful shade; very large.
- Clio.** Flowers large, of fine globular form, flesh white, shaded in the center with rosy pink.
- Frau Karl Druschki.** Very large, beautiful, pure white flowers. One of the best white Hybrid Perpetuals.
- General Jacqueminot.** Brilliant crimson; not full, but large and extremely effective.
- Georg Arends.** A seedling of Frau Karl Druschki with the same free-blooming qualities but of delicate rose-pink color.
- Harison's Yellow.** Golden yellow, medium-sized semi-double flowers. A free bloomer.
- Juliet.** Golden buds, opening to a full bloom of glowing pink, splashed with old-gold on outside petals.
- Magna Charta.** Full, globular pink blooms, suffused with carmine.
- Marshall P. Wilder.** Extra-large, full, crimson flowers.
- Mrs. John Laing.** Soft pink blooms on strong stems.
- Paul Neyron.** Immense deep rose-pink blooms; by far the largest variety in cultivation.
- Persian Yellow.** Small, bright yellow, nearly full flowers.
- Soleil d'Or.** Reddish gold, shaded with orange.
- Ulrich Brunner.** Brilliant cherry-red—a very effective color.



White Baby Rambler

Baby Rambler Roses

These dwarf bushy Roses have many uses. Hardy and continuously in bloom throughout the entire growing season. They are very useful in a border or foreground in beds, and for planting in groups in the herbaceous garden.

Any of the following Baby Rambler Roses, \$1 each, \$9 for 10

BABY RAMBLER ROSES, continued

- Katharina Zeimet.** Produces pure white flowers in abundance; free grower and very attractive.
- Louise Walter.** Medium-sized, half-double flowers of light, creamy pink, with rosy veinings.
- Maman Levavasseur** (also known as Baby Dorothy). Crimson-pink.
- Miss Edith Cavell.** Small, semi-double flowers of brilliant scarlet-red, shaded darker.
- Mme. Norbert Levavasseur.** The first red Baby Rambler sent out, and is of the utmost value by reason of its compact habit and continuous production of bright purple-crimson flowers.
- Yvonne Rabier.** Small, pure white flowers with creamy base, produced in bunches with the utmost freedom.

Rose Species for Mass Planting

Under this subdivision are included species of Roses that are admirably adapted for large masses and for growing in shrubbery borders.

Any of the following Roses, strong, 2-yr., field-grown plants, 75 cts. each, \$6 for 10, \$50 per 100, except where noted

- Rosa hugonis.** Has long slender and spreading branches which are covered with fragrant, single flowers of a pleasing shade of soft yellow. Makes a symmetrical bush about 6 feet high when fully developed and is valuable for the shrub border. \$1.50 each, \$10 for 10.
- R. lucida alba.** Dwarf; native; attractive pure white. Foliage beautiful in autumn; yellow branches, effective in winter.
- R. rugosa.** Beautiful rosy red; large berries of a rich orange-red.
- R. rugosa alba.** Single pure white flowers, highly scented. A splendid shrub-like Rose.
- F. J. Grootendorst.** Hybrid Rugosa. Small, fringed flowers of bright orange-red, produced in clusters freely throughout the whole growing season; vigorous.
- R. spinosissima altaica.** Single pure white flowers followed by attractive black fruits. Dainty foliage.
- R. wichuraiana.** This species is especially adapted as a ground-cover where other Roses are not likely to succeed. The flowers are borne freely in late spring or early summer and the plants continue to bloom for three to four weeks.

Fruit Department**Apples**

5 to 6 feet, selected, \$1 each, \$9 for 10

EARLY

- Red Astrachan.** Large; deep crimson. A favorite cooking Apple.
- Sweet Bough.** Large; yellow; sweet, tender and juicy.
- Yellow Transparent.** Pale yellow; subacid; early bearer.

MIDSEASON

- Fall Pippin.** Large; yellow; flesh tender, rich and delicious.
- Gravenstein.** Large; striped; fine quality.
- McIntosh.** Medium; deepest crimson; finest quality.

LATE

- Baldwin.** Large; bright red; very productive.
- Delicious.** Large; bright red; highest quality.
- King.** Unusually large; red; productive.
- Northern Spy.** Medium to large; red striped; excellent flavor.
- R. I. Greening.** Fruit rather acid; excellent flavor.
- Roxbury Russet.** Medium size; crisp, juicy, long keeper.

Crabapples

Prices same as Apples

- Hyslop.** Large; deep crimson.
- Transcendent.** Yellow, striped with red.

Plums

5 to 6 feet, \$1 each, \$9 for 10

- Abundance.** Amber; flesh yellow, sweet; productive. September.
Burbank. Cherry-red. An abundant bearer. September.
Lombard. Violet-red; flesh yellow. September.
Red June. Purplish red; flesh yellow. August.
Shropshire. Medium; dark purple; very productive. September.
Yellow Egg. Large; yellow; excellent for cooking. August.

Pears

5 to 6 feet, selected, \$1.50 each, \$12.50 for 10

EARLY

- Bartlett.** Buttery; very juicy and highly flavored.
Clapp's Favorite. Very large; yellow, flushed red on sunny side.

MIDSEASON

- Seckel.** Small; yellowish brown; flesh very fine-grained, sweet.
Sheldon. Greenish russet; melting, juicy, with a rich flavor.

LATE

- Bosc.** The best of the winter varieties; russet; extra large.

Cherries

All Cherries, 4 to 6 feet, \$1.50 each, \$12.50 for 10

OXHEART OR SWEET VARIETIES

- Black Tatarian.** Very large; bright purplish black.
Governor Wood. Large; nearly white, with red cheek.
Windsor. Large; dark red.

DUKE OR TART VARIETIES

- Dyehouse.** Large; red; fine flavor. Early.
Montmorency. Large; red; very productive. Late.
Richmond. Dark red; tart flavor. Midseason.

Peaches

4 to 5 feet, 60 cts. each, \$5 for 10

- Belle (Belle of Georgia).** Very large; flesh white. Midseason.
Early Crawford. Fruit large; flesh deep yellow. Midseason.
Elberta. Large; flesh yellow; delicious flavor. Midseason.
Mountain Rose. Large; flesh white. Early.

Quinces

3 to 4 feet, \$1 each, \$9 for 10; 4 to 5 feet, \$1.50 each, \$12 for 10

- Orange.** Large; round; bright golden yellow.
Champion. Fruit larger than the Orange.

Grapes

2-yr., 40 cts. each, \$3.50 for 10, except where otherwise noted

- Agawam.** (Red.) Early. Fine quality; sweet.
Brighton. (Red.) Early. Bunches large; fine quality.
Caco. Secured by crossing Catawba and Concord. The berries, are red, overlaid with amber. Rich flavor. 2-yr., \$1 each.
Concord. (Black.) Fine market leader, with large berries.
Diamond. (White.) A seedling of Concord but ripens earlier.
Moore's Early. (Black.) Early. Sweet and luscious.
Niagara. (White.) Clusters are large and compact; thin skin.
Worden. (Black.) Seedling of Concord, of better flavor and earlier.

Currants

2-yr., 30 cts. each, \$2.50 for 10

- Cherry.** Red. A well-known and popular variety.
Fay. Deep red; great bearer; large clusters.
White Grape. Very large; yellowish white.

Raspberries

\$1.25 for 10, \$8 per 100

Columbian. (Purple.) Very large; very productive.

Cuthbert. (Red.) A reliable variety; hardy and productive.

Plum Farmer. (Black.) Large and very sweet.

Ranere (St. Regis). (Everbearing.) Red; very sweet and rich; excellent quality.

Blackberries

\$1.25 for 10, \$8 per 100

Eldorado. Large size; fine flavor; very hardy.

Snyder. Medium size; very hardy; enormously productive.

Gooseberries

25 cts. each, \$2 for 10

Downing. Fruit large, roundish, light green.

Houghton. Medium size; fruit red; bears abundantly.

Red Jacket. Large red fruit.

Strawberries

Layers, \$3 per 100

Belt. Early to midseason. Highest quality.

Big Joe. Midseason. Large berries of highest quality.

Early Jersey Giant. The best early variety; large; fine quality.

Gandy. Late. Large firm berries.

Klondyke. Early. Fine quality.

Progressive. The most popular of the everbearing varieties.

Asparagus

Giant Argenteuil. Palmetto. Each variety, 2-yr., \$3 per 100.

Mary Washington. An extra-fine new variety for home or market. Rustproof; rapid-growing. Stalks 1 to 2 inches in diameter. 2-yr., \$4 per 100.

Rhubarb

25 cts. each, \$2 for 10.

Pulverized Sheep Manure

Unequaled for lawns; splendid for shrubbery, trees and roses.

25-lb. bag.....	\$1 00
50-lb. bag.....	1 75
100-lb. bag.....	3 00

Garden Furniture

WOOD

Our garden furniture is made for us by one of the largest manufacturers in the world. Heart Cypress, the "wood eternal" is used in the construction. All joints are mortised and tenoned, put together with Casine Certus Waterproof glue. Three coats of paint on Rose Arches, etc. or imported enamel on chairs, tables, etc.

Complete line of this artistic furniture can be seen at our sales ground or we will be glad to send photos of same with prices.

CONCRETE

Our products are acknowledged to be of the best material of which garden furniture is made. Of correct design and a large variety to select from. Garden Seats, Bird Baths and Sun Dials all lend to the charm of the garden.

INDEX

Page		Page	Page
<p>Abelia 9 Abies 2 Acanthopanax 19 Acer 12, 13 Achillea 33 Aconite 33 Aconitum 33 Actinidia 31 Ægopodium 33 Æsculus 13 Akebia 31 Almond, Flowering 26 Althæa 33 Alyssum 33 Amelanchier 19 Ampelopsis 31 Amygdalus 13 Anchusa 33 Andromeda 9 Anthemis 33 Apples 53 Aquilegia 34 Arabis 34 Aralia 19 Arbovitæ 7, 8 Aristolochia 31 Aronia 19 Artemisia 34 Asclepias 34 Ash, Mountain 18 Asparagus 55 Asters 34 Astilbe 35 Azalea 9, 19, 20 Barberry 20, 21 Bayberry 25 Beech 14 Bellflower 35, 36 Benzoin 20 Berberis 20, 21 Betula 13 Bignonia 31 Birch 13 Blackberries 55 Bocconia 35 Boltonia 35 Bridal Wreath 27 Buddleia 21 Bush, Cranberry 29 Butternut 15 Butterfly Bush 21 Calycanthus 21 Camomile 33 Campanula 35, 36 Campion 43 Candytuft 39 Caragana 21 Catalpa 13 Cedar, Red 3, 4 Celastrus 31 Centranthus 36 Cephalanthus 21 Cerastium 36 Cercis 13 Cherry 17, 47, 54 Chionanthus 21 Chrysanthemums 36 Clematis 31, 32, 36 Clethra 21 Columbine 34 Convallaria 36 Coreopsis 37 Cornus 13, 14, 21 Cotoneaster 9, 21 Crabapples 53 Crab, Flowering 15, 16 Cratægus 14 Currants 54 Cydonia 21 Cypress 5, 6 Daphne 10 Deciduous Shrubs 19-30 Deciduous Trees 12-18 Delphinium 37 Deutzia 22 Dianthus 37 Dicentra 38 Dictamnus 38</p>	<p>Digitalis 38 Dirca 21 Dogwood 13, 14, 21 Doronicum 38 Echinacea 38 Elæagnus 22, 23 Elm 18 Euonymus 10, 23 Eupatorium 38 Euphorbia 38 Evergreens 2-8 Exochorda 23 Fagus 14 Filipendula 38 Fir 2, 5 Forget-me-not 44 Forsythia 23 Foxglove 38 Furniture, Garden 55 Gaillardia 38 Ginkgo 14 Gleditsia 15 Gooseberries 55 Grapes 54 Gypsophila 39 Halesia 23 Hamamelis 23 Hawthorn 14 Hedera 32 Helinium 39 Hemerocallis 39 Hemlock 8 Herbaceous Perennials 33-49 Heuchera 39 Hibiscus 23, 39 Hollyhock 33 Honeysuckle 24, 25, 32 Horse-chestnut 13 Hosta 39 Hydrangea 23, 32 Hypericum 23 Iberis 39 Ilex 24 Iris 39-41 Ivy, English 32 Juglans 15 Juniper 2-4 Juniperus 2-4 Kalmia 10 Kerria 24 Kniphofia 42 Larch 15 Larix 15 Larkspur 37 Lathyrus 42 Lavandula 42 Lavender 42, 43 Lespedeza 42 Leucothoë 10 Liatris 42 Ligustrum 24 Lilac 28, 29 Lilium 42 Lily 39, 42 Lily-of-the-Valley 36 Limonium 43 Linden 18 Linum 43 Liriodendron 15 Lobelia 43 Loblicera 24, 25, 32 Lupinus 43 Lychnis 43 Lycium 32 Lysimachia 43 Lythrum 43 Magnolia 15 Mahonia 10 Malus 15, 16 Maple 12, 13 Mock Orange 25 Monarda 43 Morus 16 Mulberry, Weeping 16 Myosotis 44 Myrica 25 Nyssa 16</p>	<p>Oak 17 Oenothera 44 Oxydendrum 16 Pachysandra 11 Pansies 44, 49 Papaver 44 Peach 13, 54 Pears 54 Pea Tree, Siberian 21 Pentstemon 44 Peonies 45, 46 Philadelphus 25, 26 Phlox 46, 47 Photinia 26 Plum, Flowering 26 Physalis 47 Physostegia 47 Picea 4, 5 Pine 5 Pine, Umbrella 6 Pinks 37 Pinus 5 Platycodon 47 Plums 17, 54 Polemonium 48 Polygonum 32 Poplar 17 Poppy 35, 44 Populus 17 Primrose 48 Primula 48 Privet 24 Prunus 17, 26 Pyrethrum 48 Quercus 17 Quince 21, 54 Ranunculus 48 Raspberries 55 Retinospora 5, 6 Rhododendron 11 Rhodotypos 26 Rhus 26 Roses 50-53 Salix 17 Salvia 48 Sedum 48 Shrubs, Evergreen 9-11 Sorbus 18 Spiræa 27 Spruce 4, 5 Stachys 49 Statice 49 Stephanandra 27 Stokesia 49 Strawberries 55 Sumac 26 Sidalcea 48 Symporicarpos 27 Syringa 28, 29 Tamarix 29 Taxus 7 Thuja 7, 8 Tilia 18 Trollius 49 Tsuga 8 Tulip Tree 15 Tupelo 16 Ulmus 18 Vaccinium 29 Valeriana 49 Valerian 48, 49 Veronica 49 Viburnum 29, 30 Vinca 11 Vine, Matrimony 32 Vines 31, 32 Viola 49 Walnut, Black 15 Weigela 30 Willow 17 Winter Berry 24 Wisteria 32 Witch-hazel 23 Withe-rod 29 Yellow-root 30 Yew 7 Yucca 11 Zanthorhiza 30</p>	

Important to Purchasers

Order Early. We aim to fill all orders as soon as received, but during the rush season, from April 1 to May 20, delays are unavoidable. This congestion can be largely overcome if you will cooperate by placing your order early. It will enable us to plan for the spring rush and give prompt service.

All Orders are accepted subject to the following terms and conditions of sale:

Prices in this catalogue cancel all those given in previous price-lists and quotations, and are subject to change without notice.

Stock Personally Selected at our nurseries will be charged for according to the value of the plant chosen, irrespective of the prices published in this catalogue.

Quantity. One to 4 plants of any one size and variety will be furnished at the each rate.

Five to 24 plants of any one size and variety will be furnished at the 10 rate.

Twenty-five or more plants of any one size and variety will be furnished at the 100 rate.

Two hundred-fifty or more plants of any one size and variety will be furnished at the 1,000 rate.

Terms. Cash with Order or satisfactory references from unknown customers. All accounts are due and payable thirty days after date of invoice, and no credit will be extended after the due date, except by special agreement.

Guarantee. All goods are guaranteed to reach you in good condition; mistakes, if made, will be promptly rectified. Accept shipment and examine and notify us at once should there be any errors. We do not guarantee continued growth as trees, shrubs, and plants are living organisms which breathe, drink, and feed, and are liable to attacks of disease and insects. It is, therefore, impossible for us to guarantee growth or to be responsible for stock after delivery to our customers in good condition.

NON-WARRANTY. While we hold ourselves in readiness, on proper proof, to replace, free of charge, all trees, etc., that may prove untrue to label, or refund the amount paid, we give no warranty, expressed or implied, as to description, quality, productiveness, or any other matter of any nursery stock, seeds, bulbs or plants we sell.

(Signed) THE ELM CITY NURSERY CO.
Woodmont Nurseries, Inc.

Claims. No complaints will be considered that are not made within five days after receipt of stock.

Packing and Shipping. No charge is made for packing on any stock purchased at the prices published in this catalogue, or for delivery to local freight or express companies, from which points our responsibility ceases. Claims for damage or delay for Goods in Transit must be made to the transportation company delivering the goods.

Delivery. Auto-truck delivery within a range of 75 to 100 miles from our nurseries is quite economical, providing the order is of sufficient size to make a truck-load. Charges are made according to the size of the truck and the distance traveled.

No charge is made for local auto-truck delivery within 10 miles of our nurseries at Woodmont, except when special trips are requested.

THE ELM CITY NURSERY COMPANY

Woodmont Nurseries, Inc.

Office and Sales Ground at Nurseries near Woodmont Railroad Station

New Haven, Connecticut

P. O. Box 1588

New Haven and Milford Telephones

