

Historic, Archive Document

Do not assume content reflects current scientific knowledge, policies, or practices.

62.91

FALL BULBS " for SPRING GARDENS

1928



The Beautiful Dutch Iris

Delkin's Puget Sound Bulbs

|||

INCORPORATED

GROWERS OF THE WORLD'S
FINEST FLOWERS

Bellevue,

Washington

FOREWORD

OUR BUSINESS is growing and selling bulbs of the highest quality. Being in the best bulb-raising section in the world, we have the natural advantages which, combined with knowledge and experience, permit us to offer bulbs of the greatest blooming value.

GUARANTEE. Inasmuch as we grow our own stock, we can guarantee it absolutely true to name and we will gladly replace any that proves otherwise.

VARIETIES. In presenting varieties we do not offer long lists but those kinds only which experience has taught us are best.

UNUSUAL FLOWERS. You will find, herein, many rare and unusual bulbs. As bulb specialists it is our desire to add to American gardens the finer things gathered from the four corners of the earth.

PRICES. Our prices are the lowest possible consistent with the quality of bulbs we send out. We do not attempt to compete with dealers of inferior stock.

TERMS. Cash with order for immediate delivery. When goods are held for future delivery, a deposit of one-fourth is asked.

DELIVERY is by parcel post prepaid free anywhere within the United States, its possessions, and Canada, unless otherwise noted.

SPRING BLOOMING BULBS FOR FALL PLANTING

TULIPS

We offer the finest bulbs that can be obtained anywhere. The varieties we present are the finest of their type and color and are the best of the long lists of kinds so frequently catalogued by other plantmen.

DARWIN TULIPS

		Hun- Dozen	dred
BARON DE LA TONNAYE. Rose margined blush pink.....	.50		3.50
BLEU AIMABLE. Light violet-purple shaded blue. A lovely tulip.....	.85		5.00
CLARA BUTT. The best pink, salmon pink bud changing to true rose pink..	.50		3.00
COLONEL CUNEY. (New). Very large flower of wonderful substance. Deep carmine. Each \$5.00.			
ENCHANTRESS. (New) Violet bordered heliotrope. Pointed petals. An unusual tulip. Each \$1.00.			
FARNCOMBE SANDERS. Best red, very large.....	.60		4.00



Tulip Dido

	Hun-	Dozen dred
FAUST. Violet black, large.....	1.00	6.50
HELEN EAKING. (New). The finest of all white tulips. Pure white, large flower on tall stem, chaste and magnificent. Each \$5.00.		
LA TULIP NOIRE. Velvety maroon black85	5.00
MADONNA. (New). White merging into soft lilac. One of the most attractive of the new varieties. Each \$8.00.		
NEW ORLEANS. (New). Large substantial flower of unusual coloring. Pansy violet shading to dark crimson. Each \$4.00.		
REV. H. EWBANK. Clear lavender.....	.60	4.00
VICTOIRE D'OLIVIERA. A wonderful new carmine red tulip. Prolific.....	1.00	6.50

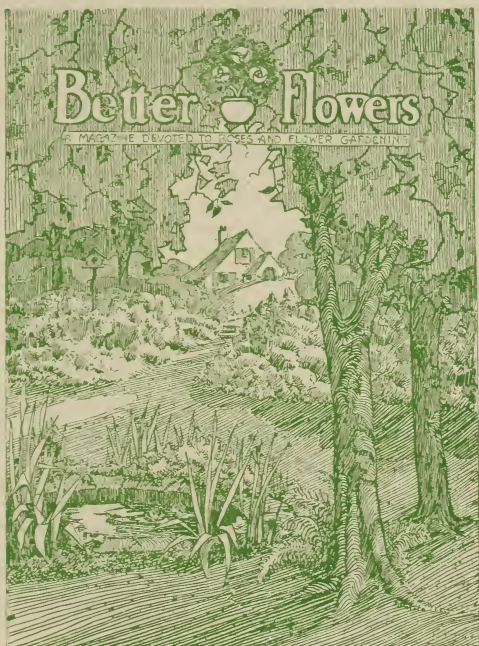
BREEDER TULIPS

BRONZE QUEEN. Soft bronze.....	.60	4.00
---------------------------------------	-----	------

CHERBOURG. (New). Very large globular flower, cadmium and saffron yellow tinged slate-violet, on tall stem. Each \$2.00.		
DON PEDRO. Coffee brown.....	1.20	9.00
GODET PARFAIT. Plum violet.....	1.10	8.50
HIRSCHBRUN. (New). Large flower, dull carmine violet with brown merging into mahogany edges. Each \$4.00.		
LOUIS XIV. Purple edged golden bronze	1.25	8.50
LOS ANGELES. (New). Purple with crimson flush. A magnificent flower. Each \$4.00.		
LUCIFER. Dark orange. A splendid show variety.....	2.10	15.00
PRINCE OF ORANGE. Terra-cotta edged yellow, sweet scented.....	1.50	10.50
THE IMP. (New). Large egg shaped flower, terra-cotta purple and brownish orange. Each \$6.00.		
TURENNE. Purplish brown, yellow margined	1.25	8.25
WILLEM DE ZWIJGER. (New). Enormous dark violet-purple flower. Each \$.50.		
INDIAN CHIEF. One of the largest of all tulips. Reddish mahogany. Each \$.80. Dozen \$7.50.		

COTTAGE AND HYBRID TULIPS

AVIS KENNICOTT. Deep yellow, tall stems	1.55	11.00
BARBARA PRATT. (New). Slightly reflexed petals, light cochineal-carmine edged lilac-rose. Very beautiful exhibition flower. Each \$2.00.		
DIDO. A most striking tulip. Huge size, remarkable beauty of coloring, a blending of coral pink, flame and orange shades	3.50	30.00
GESNERIANA MAJOR. Crimson-scarlet	.60	4.00
INGLESCOMBE YELLOW. Yellow darwin60	4.00
MAYFLOWER. (New). The largest of all existing tulips. Fiery scarlet of unusual brilliance. Each \$10.00.		
MONGOLIA. (New). The largest yellow tulip, enormous and of beautiful soft deep shade. Each \$3.00.		
MOONLIGHT. Pale yellow, egg-shaped	.70	5.00
MRS. HAROLD I. PRATT. (New). White tinged purple and flushed lilac-mauve, margined yellow. Very large and round. Each \$5.00.		
MRS. MOON. Deep yellow, pointed petals	.70	5.50
ORANGE KING. Magnificent tulip.....	.60	4.00
PICOTEE. White edged pink, pointed petals55	3.60



*PUBLISHED WHERE
THE
FLOWERS ARE GROWN*

Dedicated to
**BETTER GARDENS
BETTER HOMES
and
BETTER FLOWERS**

Keep Posted

IDEAS are valuable.

A **HINT** about fertilization, location or pruning may show you why some of your flowers are not doing well.

A **NEW** wrinkle about pest control may save your choicest plants from destruction.

ANNOUNCEMENTS of new varieties will enable you to add immeasurably to the beauty of your rockery, perennial border, or garden proper.

BETTER FLOWERS gives the latest information on:

PLANTING and care of Gladiolus, Dahlias, Asters, Delphiniums, Roses, Pansies, Iris, Lilies, Tulips, Violas—in fact all flowers which grow to perfection in this climate.

Flower Grouping

Fertilization

Landscaping

Indoor Plants

Pest Control

Shrubs

Tree Surgery

Wildflowers

BETTER FLOWERS is the Official Authority for 90 per cent of the Flower and Garden Clubs in the Pacific Northwest.



Get Northwest Ideas

NOWHERE are more beautiful blossoms produced than in the Pacific Northwest, one of the garden spots of America.

BUT cultural practices which will produce excellent results east of the Rockies and in Southern California will be failures here.

THE only spot on the globe with climate and soil conditions comparable to that in the Pacific Northwest is England.

BETTER FLOWERS is published in the Pacific Northwest by men who live here and know local conditions.

ITS contributors include the foremost amateur and professional flower growers of this section.

*The Managing Editor of
BETTER FLOWERS is
Frank C. Riggs, F. R. H.
S., one of the outstanding
Garden Authorities in the
United States.*

His monthly "Timely Hints for Amateurs" are internationally quoted.

You should read
BETTER FLOWERS

For 8 years the leader in the field—the friend, adviser and confidant of successful flower growers and garden enthusiasts of the Pacific Northwest.

**PUBLISHED WHERE
THE
FLOWERS ARE GROWN**



Enclose This Slip With Check, Postal Money Order, Draft or Currency.

Mark With (X) Subscription Term Desired.

Five years for - - \$3.00

Three years for - - \$2.00

One year for - - \$1.00

(For Canadian and Foreign addresses, add 50%)

Mail to:

Better Flowers

101 Livestock Exchange Bldg.
North Portland, Oregon
U. S. A.

Name _____

P. O. Box or Street _____

City _____

State _____

DELKIN'S PUGET SOUND BULBS, INC.
BELLEVUE, WASHINGTON

Hun-
Dozen dred

QUAINTNESS. Chestnut brown flushed rose. Much admired..... 2.50 20.00

SULPHUR BEAUTY. (New). Immense flowers of soft yellow with wax-like texture. A flower of wonderful substance. Each \$5.00.

VIRIDIFLORA PRAECOX. Large, wide-open and well-formed flower, soft pale green edged creamy yellow. An unusual and charming variety. Each \$1.00.

WALTER T. WARE. Deep orange yellow like a California poppy. A splendid tulip of brilliant coloring..... 1.20 8.50

LILY-FLOWERED TULIPS

(A new race of tulips with pointed, reflexing petals)

ALASKA. A wonderful tulip of great substance. A soft shade of bright strong yellow. Beautiful form 3.00 21.00

SIRENE. Brilliant satin-rose..... 1.00 6.00

PARROT TULIPS

FANTASY. A beautiful novelty. A sport of Clara Butt and of the same beautiful pink coloring. Each \$.75..... 7.50

LUTEA MAJOR. Yellow suffused scarlet. Very large75 4.50

LATE DOUBLE TULIPS

MOUNT TACOMA. (New). A May-flowering tulip that has the size and appearance of a semi-double white peony. Each \$1.00.

BUNCH-FLOWERED TULIPS

(A new fine race. A number of flowers to a stem).

MONSIEUR MOTTET. Creamy white.. 1.25 9.00

TULIP SPECIES

(Charming for rock gardens and the perennial border)

CLUSIANA. White with crimson exterior. 9 to 12 inches high..... .90 6.00

KAUFMANNIANA. White with yellow base, outside shaded red..... 2.70 20.00

ANEMONE

(Coronaria or Poppy Anemone)

Hun-
Dozen dred

DE CAEN STRAIN. (Single). Brilliant shades of lavender, purple, red, white and pink. Large flowers..... 1.00 6.00

ST. BRIGID STRAIN. (Semi-double). Flowers in all the above colors ranging from almost single blooms to

ANEMONE—Cont.

Hun-
Dozen dred

those having many rows of petals surrounding the black central boss. The true St. Brigid Anemone..... 1.00 6.00

DOUBLE STRAIN. Wonderful fully double flowers in which all stamens and pistils have turned to petals. Introduced into America by us. Will be offered for sale for the first time, fall 1929, in two named varieties—

CORNFLOWER. A beautiful amethyst-lavender blue.

KING OF THE SCARLETS. A marvelous bright shade of red.

CALOCHORTUS

(*Mariposa or Butterfly Tulips*)

Mixed varieties of these wonderfully dainty and striking flowers which are splendid acquisitions for the rock garden. They readily naturalize themselves

.85 5.00

CAMASSIA

LEICHTLINI. Beautiful three-foot spike of light blue flowers coming from a hardy bulb which readily naturalizes itself

1.25 10.00

CHIONODOXA

(*Glory-of-the-Snow*)

These are very charming harbingers of spring, are very brilliantly colored and are among the first flowers to bloom. Bulbs remain established after once being planted.

LUCILIAE. Lavender-blue
.....\$.65 dozen, \$4.00 hundred

SARDENSIS. Rich intense blue.....
.....\$.65 dozen, \$4.00 hundred

CROCUS

Exceptional varieties, of wonderful size and substance, of the large flowered spring crocus. Largest size bulbs only.

Hun- Thou-
Doz. dred sand

ENCHANTRESS. Soft blue, dark base, pale edge..... 2.00 16.00

PURPUREA GRANDIFLORA.
Large purple60 4.50 40.00

MAMMOTH YELLOW60 4.50 40.00

WHITE LADY. Largest white..... .60 4.50 40.00

QUEEN OF THE BLUES. Soft ageratum blue 2.00 16.00

EREMURUS

(Foxtail Lily)

ROBUSTUS. Rosy pink flowers. Stem 10 feet high when well established. A remarkable garden subject. Each \$4.00.

GLADIOLUS

“BABY GLADS” EARLY FLOWERING

Blooms in June. Unlike the summer “glads.” Must be planted in the fall. Sprays of graceful blooms unsurpassed in beauty. Splendid for either outside or indoor growing.



Gladiolus Peach Blossom

APOLLO. Beautiful salmon pink

BLUSHING BRIDE. Blush white with brilliant marking on lower lip.

BRILLIANT. Bright Scarlet.

CARDINALIS ELEGANS. Cardinal red with cream blotches. Tall, slender stems.

PEACH BLOSSOM. The most delicate and beautiful shade of pink in the plant kingdom.

THE BRIDE. Pure white. Beautiful in combination with Peach Blossom.

Any of the above varieties—

\$1.00 dozen, \$6.00 hundred, \$40.00 thousand.

HERALD GLADIOLUS

A sensation. A large flowered, gladiolus much earlier than any of the miniature types above. Six weeks ahead of the earliest summer glads. Can be grown outside or forced under glass.

	Each	Dozen
JOOST VAN VONDEL. Scarlet-----	1.00	8.00
P. C H.OOFT. Salmon orange-----	1.00	8.00



Gladiolus P. C. Hooft

HYACINTHS

- CITY OF HAARLEM. Yellow.
 GRAND MAITRE. China blue.
 KING OF THE BLUES. Dark purple.
 LADY DERBY. Clear soft pink.
 QUEEN OF THE BLUES. Light blue.
 Top size \$3.50 a dozen, \$25.00 per hundred.
 First size \$2.40 a dozen, \$18.00 per hundred.

IRIS

GERMAN OR GARDEN IRIS.—Tall, Bearded

Rating		Each Dozen
8.9	ALCAZAR. Smoky violet and royal purple. Large and handsome35 3.50
9.4	AMBASSADEUR. S. Purplish bronze F. maroon purple90 9.00
7.5	CAPRICE. Rosy purple throughout.	.25 2.50
7.8	ELDORADO. S. bronzy yellow. F. violet shaded yellow.....	.25 2.50

7.9	IRIS KING.	S. copper bronze. F. Maroon25	2.50
8.6	ISOLENE.	S. lilac pink. F. purplish old rose40	4.00
7.0	JEAN D'ARC.	S. light blue. F. pure white with cast of lavender on edge.25	2.50
8.0	JACQUESIANA.	S. coppery crimson. F. rich maroon.25	2.50
9.6	LENT A. WILLIAMSON.	S. smoky violet. F. royal purple. Unsurpassed in size, vigor and beauty.....	.50	5.00
8.2	LOHENGRIN.	Cattleya rose shaded pinkish mauve. Large, graceful bloom.25	2.50
7.9	LORELEY.	S. yellow. F. purple..	.25	2.50
9.1	LORD OF JUNE.	Large, lavender blue. Very beautiful.....	1.00	10.00
7.4	MADAME CHEREAU.	White, edge of petals frilled blue.....	.20	2.00
9.1	MAGNIFICA.	S. lilac rose. F. reddish purple. Enormous flowers	1.00	10.00
8.4	MONSIGNOR.	Rich satiny violet and crimson.....	.25	2.50
	MOTHER OF PEARL.	Iridescent blue lavender on cream base	1.00	10.00
8.8	PALLIDA DALMATICA.	Light lavender blue throughout. Tall grower, prolific bloomer. One of the very best25	2.50
8.3	PROSPER LAUGIER.	S. fiery bronze. F. ruby purple. Handsome.25	2.50
7.2	PRINCESS VICTORIA LOUISE.	S. yellow. F. purple25	2.50
7.4	QUEEN OF MAY.	Soft lilac or lavender pink. The nearest approach to pink. Beautiful.....	.25	2.50
8.4	RHEIN NIXE.	S. white. F. deep lavender pink edged and reticulated white25	2.50
8.3	SEMINOLE.	Violet rose and crimson. Distinctive coloring85	8.50
9.3	SOUVENIR DE MME. GAUDICHAU.	Rich velvety purple	1.00	10.00
	INTERMEDIATE IRIS.—Slightly smaller, but earlier than the Garden Iris.			
	CRIMSON KING.	Claret purple.....	.20	2.00
	WALHALLA.	S. lavender. F. wine red.20	2.00

PUMILA OR DWARF IRIS.—Very Early

		Each Dozen		
ATROPURPUREA.	S. lavender. F. purple25	2.50	
CYANEA.	Deep velvety blue.....	.25	2.50	
PRAIRIE GEM.	Golden yellow.....	.50	5.00	

BULBOUS---The Cut Flower Iris

These irises begin blooming very early in the spring and continue until the garden and Japanese irises have finished. Fine in the garden and one of the best cut flowers in existence, for either indoor or outdoor growing.

BULBOUS IRIS—Cont.

TINGITANA HYBRID IRIS—Very Early

Offered for sale for the first time in America.

- THE FIRST.** Huge flower of beautiful deep blue shades, contrasted by an orange blotch on the falls. Each 50c, doz. \$5.00
- WEDGEWOOD.** Large clear blue.....
.....Each \$1.00, dozen \$7.00

DUTCH IRIS—Early Bloomer Hun-
Dozen dred

- APOL.** The largest Dutch iris to date. White, shaded lavender with brilliant golden eyeEach 50c 5.00
- ADRAIN BACKER.** Large, most refined rosy lavender 3.50
- BERKEMEYER.** Purple with bronze lipped falls 2.50 15.00
- D. HARING.** Large early white with golden eye 2.50 15.00
- FRANS HALS.** Lavender standards, yellow falls 1.00 5.00
- HART NIBBRIG.** Medium deep blue, two toned 1.00 7.00



Dutch Iris "Adrian Backer"



Dutch Iris "Imperator"

		Hun-
		Dozen dred
IMPERATOR. Dark blue with orange blotch	1.00	7.00
J. W. DE WILDE. Very large golden yellow	Each 35c 3.50	20.00
MINISTER HEMSKERK. Light yellow standards, deep golden falls. Withheld for propagation.		
YELLOW QUEEN. Early. Rich yellow thruout	2.50	15.00

SPANISH IRIS—Later than the Dutch

BELLE CHINOISE. Light yellow, very early.

CAJANUS. Large deep yellow, handsome.

EXCELSIOR. Very deep blue.

FLORA. White and light lilac.

KING OF THE BLUES. Tall dark blue.

KING OF THE WHITES. Large, pure white.

LA NUIT. Violet-blue.

PRINCE HENRY. Large, beautiful bronze.

Above varieties—75c doz., \$5.00 hundred, \$35.00 thousand.

BULBOUS IRIS—Cont.

ENGLISH IRIS—The Orchid Iris, Last to Bloom

It is impossible to accurately describe these beautiful orchid-like flowers. They are quite hardy, thrive in any soil that is kept moist, but prefer a heavy, moist loam. We grow the largest variety in the United States.

		Each Dozen
ALMONA. (TRICOLOR). Marked and veined like certain Japanese irises. Purple and bright blue. Very distinct	.25	2.50
AZURE BLUE. Clear sky blue without marking of any kind. A tall, wonderful variety	.50	5.00
BAVARIA. Pale blue, slightly mottled	.15	1.50
BLUE GIANT. Much larger than any other English iris. Brilliant deep blue flaked violet-black. A grand flower	2.50	
BLUE JAY. Tall deep blue	.25	2.50
BLEU AIMABLE. Heavily mottled and blotched claret and purple on a silvery lavender ground. Unique	.35	3.50
CATTLEYA (QUEEN ALEXANDRA). The color of the orchid itself, rosy lavender. Slightly flaked deep lilac. Withheld for increase.		
CLARA BUTT. Pale blue mottled a deeper shade	.25	2.50
DE LAMARTINI. Claret rose splashed upon a pure white ground	.25	2.50
ELECTRA. Pale blue standards streaked lilac	.25	2.50
FRANS HALS. Dark blue standards, porcelain blue falls with white eye. Beautiful	.25	2.50
GRAND LILAS. Light lavender-blue flaked a deeper shade. Tall and fine	.15	1.50
HUGO DE GROAT. Tall clear blue on white ground. Dark standards	.25	2.50
JAMES DEWAR. China blue. Withheld for increase.		
LILACEA. Rosy lilac flaked deeper tone	.25	2.50
LORD DERBY. (BLEU CELESTE). Clear light blue, violet markings	.25	2.50
NIMROD. Rich violet-blue. Tall and fine	.25	2.50
ORCHID. Clear self color, rosy orchid lavender. Withheld for increase.		
OTHELLO. (PRINCE MAURITZ). Dark red-purple. Rich	.25	2.50
MER DE GLACE. Large white	.25	2.50
MONT BLANC. Pure white	.25	2.50
PRINCE OF WALES. Brilliant deep blue flaked violet-black	.25	2.50
ROYAL BLUE. Deep purple blue	.15	1.50
SUNSET. (VICEROY). Light rosy lavender slightly flaked a deeper shade. Very pretty	.25	2.50
TANTALUS. Large broad standards and falls. Lavender-blue flaked deep blue	.25	2.50
TRAFALGAR. Clear light blue with claret flaked standards	.25	2.50
MIXED. Hundred	\$5.00	.75

JAPANESE IRIS

This wonderful broad-petaled iris is one of the most handsome subjects one can plant. It grows readily in any soil but prefers a sour, moist location that is not too soggy. All varieties listed are exertmely large and are among the finest in cultivation. Quantity growing enables us to offer at low prices.

- No. 1. Large flowers, dwarf plant. Standards purple, falls white covered with purple veins.
- No. 2. Huge flower. Yellow center surrounded by blue which shades into purple.
- No. 3. Huge flower, lined and shaded from light to medium blue.
- No. 4. Lavender standards, white falls overlaid blue and purple.
- No. 5. Lilac standards, white falls.
- No. 6. Dark bluish-purple. Rich coloring.
- No. 7. Reddish purple, lightly flaked white.
- No. 8. Three petaled white, dwarf habit.
- No. 9. Late plum-purple with large golden eye, 6 petals.
- No. 10. Purple oddly mottled white.
- No. 14. Very tall pure white, 3-6 petals.
- No. 15. ..Purple standards, falls heavily veined blue and purple.

Any of the above varieties 25c each, \$2.50 dozen, \$18.00 hundred.

VARIOUS IRISES

Including some rare species never before offered in America.

		Each Doz.
AUREA. A magnificent species, 4-6 feet high. Golden yellow50	5.00
CHRYSOFOR. Beautiful hybrid species. Deep purple flowers	2.50	
CHRYSOGRAPHES. Rich velvety violet with gold lines. Very rare. 1½ feet....	2.50	
CRISTATA. Dainty creeping species, 3 inches high. Amethyst blue30	2.50
DELAVAYI. New Chinese species. Deep violet. 2 feet	1.00	10.00
FORRESTI. Chinese species. Pale yellow50	
GRACILIPES. A fairy-like iris of the Evansia group. Pinkish lilac with golden crest. July delivery only.....	1.25	
MONSPUR. Tall blue-purple. Fine with Aurea. 4-6 feet	1.00	
MONNIERI. Tall species. Primrose yellow. 4-6 feet50	5.00
OCHROLEUCA. (ORIENTALIS GIGANTEA). Superb white flowers with orange blotch on falls. 4-6 feet..	.25	2.50
PSEUDACORUS. Golden yellow with markings. Will grow on dry land or in the water. Fine for the lily pool. 4-6 feet25	2.50

VARIOUS IRISES—Cont.

	Each Doz.	
SAMBUCINA. Deep claret purple almost black. Sweet scented. A rare and choice species. 2 feet	5.00	
STYLOSA. Winter blooming iris flowering from January to March in Puget Sound district. Beautiful lavender.....	.25	2.50
TECTORUM. Roof iris of Japan.....	.50	
TENAX. Mauve, marked yellow and white. Beautiful native species25	2.50
TRICUSPIS. Large violet flowers on a compact, dwarf plant. Rare. 1 foot....	1.00	10.00
WILSONI. Chinese species. Yellow or lavender veined brown. 3 feet.....	.50	5.00

IXIA

AFRICAN CORN LILY

A most charming flower in bright colors and combinations. Long, wiry stems 15 to 21 inches high. A bed will remain in bloom for six weeks. Excellent for cutting.

	Hun- Dozen	dred
ALTHEA. Creamy white, dark center.....	.75	5.00
AMBASSADOR. Deep wine red75	5.00
AZUREA. Azure-blue, violet center75	5.00
BEAUTY OF NORFOLK. Light yellow stained red75	5.00
BRIDESMAID. Pure white, carmine eye	.80	5.50
EMPEROR OF CHINA. Deep yellow and red75	5.00
EGBERT. Cerise80	5.50
GOLD DROP. Clear yellow striped red..	.75	5.00
HUBERT. Dull cherry red80	5.50
KING OF THE YELLOWS. Clear yellow self	1.00	7.00
LADY SLADE. Rosy pink	1.00	7.00
LA MAJESTEUSE. Clear magenta75	5.00
NELSONI. Creamy white, red stripe.....	.75	5.00
ROSALIND. Bright pink75	1.00
SMILING MARY. Cherry red. The best	1.25	7.50
VIRIDFLORA. Sea-green, black center..	1.00	6.00
WONDER. Double, clear rose.....	.75	5.00
MIXED50	3.50

LILIES

	Each Large Bulbs
AURATUM. Golden-banded lily of Japan. 4-6 feet	\$.75
AURATUM PLATYPHYLLUM. An improved strain75
CANDIDUM. The Madonna lily, pure white, 3-4 feet50
COLUMBIANUM. Native "wild tiger lily," 2½ feet25

LILIES—Cont.

Each
Large Bulbs

GRAYI. Blood-crimson spotted black and shaded orange inside35
HENRYI. Orange yellow of the form of L. Speciosum, 8 ft.75
LONGIFLORUM. The Easter lily. Pure white, 3 feet50
MYRIOPHYLLUM. (REGAL LILY). Pure white shaded brownish pink on the outside. (Smaller bulb 50c). 3-5 feet.....	1.00
KRAMERI. Beautiful pink lily, from Japan, 2 feet60
PARDALINUM. Bright scarlet shading to yellow. 5-6 feet35
PARRYI. Light yellow, 3 ft. Very fine.....	1.00
SPECIOSUM. Splendid late summer lily, good cut flower40
MELPOMENE. Dark crimson bordered white.	
MAGNIFICUM. Earlier than the above.	
RUBRUM. Darker than the above.	
ALBUM. White.	
TENUIFOLIUM. Dainty red lily much at home in the rockery35
TIGRINUM. Tiger lily20
TIGRINUM FLORA PLENA. Double Tiger lily30
WASHINGTONIANUM. Mt. Hood Lily. White changing to pinkish mauve. 3-5 feet	.50
A dozen at 10 times the single price.	

MONTBRETIA

A bulbous flower, hardy on the Pacific Coast where it does not require resetting each year. Elsewhere it is treated the same as the gladiolus. Blooms in August and has deep yellow and red-orange flowers arising from sword-like leaves that remain green the greater part of the year.



MONTBRETIA—Continued

- | | Hun-
Dozen | dred |
|---|---------------|------|
| CROCOSMIAFLORA. Orange yellow .. | .50 | 3.50 |
| EARLHAM HYBRIDS. A new strain of mammoth flowers, three to five inches across. | | |
| HIS MAJESTY. Scarlet shading to gold. The finest montbretia in existence. Each \$1.00. | | |
| Other varieties withheld for propagation. | | |

MUSCARI

(GRAPE HYACINTHS)

- AZUREUS.** Sky blue. Blooms in February. A choice rock plant and one of the choicest and earliest spring bulbs.
- CONICUM.** Dark purple-blue. Strong grower. Late bloomer.
- HEAVENLY BLUE.** Beautiful dark blue; for edgings.
- Any of the above 50c doz., \$3.50 hund., \$25.00 thou.
- PLUMOSA.** (The feather hyacinth). Beautiful lilac. Odd, but extremely pretty. \$2.00 doz., \$12.00 hundred.
- MOSCHATUM MAJUS** (Musk Hyacinth). Grey-purple fading to yellow-brown. \$5.00 Dozen
- MOSCHATUM FLAVUM (MUSK HYACINTH).** Yellow shaded purple. \$5.00 dozen.

NARCISSUS

(Add postage beyond 2nd zone)

Narcissus is the general name for all daffodils, jonquils and similar flowers of this wonderful group of bulbous plants. So great has been the improvement of this flower in Europe that one has only to see some of the recent novelties to understand the furore of admiration they have stirred up in England, Holland and elsewhere. The finest of these novelties have only just reached America and are in the hands of a few growers, most of whom are located in the Pacific Northwest. Thru an unusual cooperative arrangement we are able to be the first to offer a considerable number of the cream of these marvelous novelties to the American public. The ones herein listed have been the wonders of the 1927 shows in the Pacific Northwest and in Europe.

DAFFODILS

(Large Trumpets)

- AEROLITE.** (Novelty). Bright yellow trumpet and perianth. Each \$1.00.
- DUCHANEL.** (Novelty). The giant of daffodils. Mammoth. Bright yellow thruout. Each \$3.00.

- | | Hun-
Dozen | dred |
|--|---------------|-------|
| EMPEROR. Primrose yellow thruout | 1.50 | 12.00 |

NARCISSUS—Cont.

Hun-
Dozen dred

GLORY OF SASSENHEIM. White perianth, golden trumpet, Large blossoms	2.25	16.00
GOLDEN SPUR. Early, golden yellow thruout	1.50	12.00
KING LEAR. (Novelty). Free-flowering King Alfred of lighter color. Each \$2.00.		
KING ALFRED. Large blossom of deep golden yellow. Still one of the finest daffodils	3.50	25.00
OLYMPIA. Perianth bright yellow, trumpet deeper yellow. Huge blossoms.....	3.00	25.00
PETER BARR. (Novelty). Pure white perianth, ivory trumpet. Large and beautiful flower. Each \$1.00.		
TRESSERVE. Immense deep yellow blooms. An unusually fine variety.....	4.00	35.00
VAN WAVEREN'S GIANT. Perianth primrose, trumpet bright yellow. One of the largest of daffodils.....	3.50	30.00

BARRII NARCISSUS

(Short Cupped)

ALCIDA. (Novelty). One of the best of the aristocrats. Creamy white perianth, pale yellow cup edged orange-red. Stock very limited. Each \$20.00.		
MRS. BARCLAY. (Novelty). One of the most outstanding of all the best varieties, today. Creamy white perianth, orange edged yellow cup. Each \$1.00.		
MASTERPIECE. A perfect flower. Pure white perianth, red, short cup. Each 40c	4.00	
NANNIE NUN. Pure white perianth, orange-scarlet cup. A beautiful variety of the newer type. Each 60c.....	6.00	
SUNRISE. White perianth with a golden ray on each petal. Orange-yellow crown edged scarlet. Distinct. Each 80c	8.00	

LEEDSI NARCISSUS

(White or Pale Yellow Cup, Fragrant)

HERA. (Novelty). A most beautiful white flower. Chaste and alluring. Each 50c	5.00	
SILVER STAR. (Novelty). A pure white giant Leedsi. Lovely	5.00	
WHITE LADY. White perianth, yellow cup. Large and beautiful	1.25	10.00

POETAZ NARCISSUS

(Cluster-Flowered, Large-Blossomed)

ELVIRA. Pure white, yellow eye.....	1.25	10.00
--	------	-------

POETICUS OR POET'S NARCISSUS

GLORY OF LISSE. Large flowered and very showy	1.50	12.00
RECURVUS. (Phaesant's Eye). Late. Splendid for naturalizing	1.00	8.00

INCOMPARABILIS NARCISSUS

(Large Cup, Shorter than Daffodil Trumpet)

Doz. Hund.

- BERNARDINO.** A beautiful new flower. Cream perianth, pale cup edged orange. Each 50c.
- CROESUS.** (Novelty). A remarkably fine one. Very large flower, creamy white with orange cup edged scarlet. Each \$2.00.
- GREAT WARLEY.** A huge flower. White perianth, large yellow crown. A wonderful show flower. Each \$1.00.
- LOUDSPEAKER.** (Novelty). The center of attraction at every show. Enormous flower. White perianth, huge yellow trumpet edged orange. Each \$20.00.
- LUCIFER.** Large creamy white perianth, long, narrow orange cup..... 1.50 12.00
- WHITEWELL.** One of the new fine varieties which has made a name for itself. White with deep yellow cup. Each 50c 5.00
- WILL SCARLET.** Short white perianth, broad, large fiery cup. Each 40c.

JONQUILS

(Small, Fragrant Flowers, Usually Three to a Stem)

- COMMON JONQUIL.** Small, deep yellow, extremely sweet scented..... 1.00 7.00
- CAMPERNELLE REGULOSUS.** Large, deep yellow. Very fine 1.25 10.00
- GOLDEN SCEPTRE.** (Novelty). One flower to a stem, extremely large and of a deep golden color. Fine. Each \$1.00 10.00
- TILLIUS HOSTILLIUS.** (Novelty). Two to three large flowers to a stem. Each bulb throws a number of flower stems. Each \$2.00

TRIANDRUS HYBRID NARCISSUS

- THALIA.** (Novelty). Three large pure white daffodil blooms on a single stem. An exquisite and charming flower. Each \$2.50 20.00

POLYANTHUS NARCISSUS

(Small Flowers in Large Clusters)

- PAPER WHITE.** For indoor growing in pots and bowls 1.00 7.00

DOUBLE NARCISSUS

- ALBA PLENA ODORATA.** Double white, gardenia-flowered 1.50 12.00
- ROYAL SOVEREIGN.** (Novelty). White and lemon-yellow petals interspersed. Very beautiful. Each \$2.00.
- TWINK.** (Novelty). A sensational show flower. Sulphur yellow and fiery orange. Each \$2.00.

ORNITHOGALUM UMBELLATUM

STAR OF BETHLEHEM. Beautiful white flowers for mass planting.

50c dozen, \$3.50 hundred, \$20.00 thousand.

PEONIES

Rating		Each
8.6	ALBERT CROUSSE. Bomb type; rose white; late75
8.7	AVALANCHE. Crown type; white, flecked carmine, cream collar.....	.75
8.4	ALBIFLORA (The Bride). Large, pure white single; golden center; early	1.00
9.0	BARONESS SCHROEDER. Rose type; white, midseason	1.50
8.1	DUCHESS DE NEMOURS. Crown type; white with sulphur collar, early	.50
8.4	FELIX CROUSSE. Bomb type; bright red; midseason75
9.3	FESTIVA MAXIMA. Rose type; pure white, crimson marking; early	.50
9.1	LADY ALEXANDRA DUFF. Light pink shading lighter toward center; large and fluffy. Exceedingly beautiful	4.00
9.0	LA FRANCE. Soft pink. exquisite.	6.00
9.9	LE CYGNE (The Swan). Semi-rose; milk white. The finest white. Mid-season	10.00
7.9	MADAME DE VERNEVILLE. Bomb type. Pure white carmine tipped; early75
	MADAME EMILE GALLE. Rose type; shell pink; late	1.00
8.5	OCTAVIE DEMAY. Flat crown; pink, white collar; midseason	1.00
9.0	SARAH BERNHARDT. Semi-rose; lilac rose, silver tipped; late; fine..	2.00
9.7	SOLANGE. Cream shaded salmon..	5.00
9.3	WALTER FAXON. Beautiful late pink	5.00

Other varieties at our nurseries. Prices on healthy three to five eye divisions.

RANUNCULUS

	Hun- Dozen	dred
Large, attractive, rose-shaped flowers similar in growth to the anemone, about 1 foot high. Colors, red, yellow, pink, white, salmon.		
FRENCH. Black center75	5.00
PALESTINE STRAIN. Marvelous giants, originated in Italy. Withheld for propagation.		
TURBAN. Fully double	1.00	7.00

SNOW DROPS

	Doz.	Hund.
GALANTHUS NIVALIS. Common snowdrop75	5.00
GALANTHUS ELWESI. Large snow-drop75	5.00

SNOWFLAKES

LEUCOJUM AESTIVUM. Three or more drooping bells on a stem 1½ feet long, each bell segment tipped with a spot of green. A wonderful flower for cutting or bedding.....	1.00	7.00
LEUCOJUM AESTIVUM GRAVETYE. Grand new variety. Five bells on taller stem	3.50	25.00

SCILLA

(WOOD HYACINTHS)

CAMPANULATA. Beautiful erect spikes of graceful bells, 12 to 15 inches high. They thrive in shady places or anywhere, multiply rapidly, and are fine for naturalizing or use as a cut flower. For borders around Darwin tulips they are unexcelled. BLUE, WHITE, PINK or MIXED.....	.60	4.00
NUTANS. The English bluebell. Similar to Campanulata which we recommend as the better. Bells more drooping.		
SIBERICA. Early blue flowers 3-4 inches high75	5.00

SPARAXIS

An attractive dwarf bulbous plant for rock work.
MIXED COLORS \$.75 doz., \$5.00 hundred

PLANTS FOR FALL PLANTING

DELPHINIUM

(Perennial Larkspur)

KELWAY'S, BLACKMORE & LANGDON AND WREXHAM STRAINS.		
Unselected plants	1.00	10.00
Selected plants50	5.00
Finest Varieties25	2.50

COSMOS DAHLIOIDES

An unusual plant, a dwarf cosmos which propagates from small dahlia-like tubers. Leaves are basal from which arise the long-stemmed cosmos blooms.

Tubers, 15c each, \$1.00 dozen.

Seed, 25c packet.

GEUM

(One of the finest of all perennials)

	Each	Doz.
MRS. BRADSHAW. Scarlet red.....	.25	2.50
LADY STRATHEDEN. Golden yellow.....	.25	2.50



Lupin "Belle of Bellevue"

LUPIN

Each Doz.

MARVELOUS MODERN HYBIRDS.

Light pink, deep pink, apricot, light blue, deep blue, yellow (tree lupin).

Separate colors labeled25 2.50

BELLE OF BELLEVUE, an unusually fine deep pink variety. Withheld for propagation.

ROSES

Bush

Our selection of the finest varieties in cultivation.

Bushes are 2 years old, A grade and are as fine as can be grown. They are carefully packed free of charge for shipment anywhere in the world. Postage Prepaid

Each

ASPIRANT MARCEL ROUYER (H. T.). Apricot. Fragrant. Very popular -----	1.00
BETTY UPRICHARD (H. T.). Upper face of petals salmon pink, lower carmine. Fragrant. An exquisite flower -----	1.25
CHAS. K. DOUGLAS (H. T.). A fine fragrant red rose -----	1.00
COLUMBIA (H. T.). Rosy pink -----	1.00

ROSES—Cont.

	Each
DUCHESS OF WELLINGTON (H. T.). Saffron yellow shaded apricot. Fragrant.....	1.00
FRAU KARL DRUSCHKI (H. P.). Large pure white75
FEU JOSEPH LOOYMANS (H. T.). Sweet scented deep yellow and apricot of extra substance. Stiff stems. A wonderful rose.....	1.50
GOLDEN EMBLEM (Pern.). The best yellow. Deep, clear yellow flushed red on outer petals...	1.00
GENERAL MACARTHUR (H. T.). Large, full, crimson-scarlet75
HOOSIER BEAUTY (H. T.). Full deep crimson, free blooming	1.00
HUMBOLDT (H. T.). Long buds. Clear deep pink. Fine	1.00
INDEPENDENCE DAY (H. T.). Orange flame flushed yellow, a most striking color. Free flowering	1.00
ISOBEL (H. T.). The best single rose far surpassing Irish Elegance or Fireflame in color and size	1.00
JOSEPH BAUD (H. T.). Brilliant orange apricot. One of the most striking and beautiful of all roses. Prolific bloomer	1.00
K. OF K. (H. T.). The most velvety and brilliant of all red roses.....	1.00
LA CHAMPAGNE (H. T.). Rosy peach and apricot	1.00
LADY HILLINGDON (T.). Deep orange yellow...	1.00
LADY PIRRIE (H. T.). Coppery salmon shaded apricot	1.00
LORD CHARLEMONT (H. T.). The best red rose. Large flowers. Continuous bloomer.....	1.50
LOS ANGELES (H. T.). Coral, rose and gold. Free bloomer	1.00
LOUISE C. BRESLEAU (Pern.). Coral red overlaid yellow	1.00
MABEL MORRIS (Per.) Clear yellow. Unusually fine foliage.....	1.25
MISS MARIAN MANIFOLD (H. T.). A new Australian rose of great merit. Dark red.....	1.50
MME. BUTTERFLY (H. T.). Flesh pink tinted apricot	1.00
MME. CAROLINE TESTOUT (H. T.). Vigorous grower and prolific bloomer. Large rose pink flowers75
MME. EDOUARD HERRIOT (Pern.). Coral red flushed and orange.....	1.00
MRS. FARMER (Pern.). Bright apricot.....	1.00
NORMAN LAMBERT (H. T.). A new, fine, rose. Yellow flushed with pink.....	2.00
OPHELIA (H. T.). Flesh pink suffused pale salmon	.75
PADRE (H. T.). Coppery-scarlet shaded old gold. Striking	1.00
RADIANCE (H. T.). Deep pink.....	1.00
RED RADIANCE (H. T.). Crimson sport of Radiance	1.00
RICHARD C. WEST (H. T.). Sweet scented saffron yellow. Splendid foliage.....	1.50
ROSE DAWN (H. T.). Most wonderful delicate pink	1.50
SHOT SILK (H. T.). Fragrant cherry-cerise shaded, golden. Brilliant.....	1.50

ROSES—Cont.

	Each
SOUV. DE CLAUDIS PERNET (Pern.). Deep yellow. Upright growth-----	1.00
SOUV. DE GEORGES PERNET (Pern.). Beautiful red with carmine and yellow shadings	1.00
SOUV. DE H. A. VERSCHUREN (H. T.). Apricot yellow suffused chrome yellow. Fragrant-	1.00
SUNSTAR (H. T.). Unusual novelty. Orange yellow edged vermillion-----	1.00
THE QUEEN ALEXANDRA (Pern.). Vermillion with orange base. Wonderful rose-----	1.50
VILLE DE PARIS (Per.). Wonderful yellow rose	1.50
WM. F. DREER (Pern.). Golden yellow overlaid silvery pink -----	1.00
Baby Roses	
MME. CECIL BRUNNER. Flesh pink-----	.75
PERLE D'OR. Light orange yellow-----	.75
Climbing Roses	
AMERICAN PILLAR. Cherry-red, white eye. Single flowers -----	.75
DR. VAN FLEET. Perfect foliage, delicate pink, large double -----	.75
CL. HOOSIER BEAUTY-----	1.00
CL. LADY HILLINGDON-----	1.00
CL. LOUISE C. BRESLEAU-----	1.25
CL. MME. BUTTERFLY-----	1.25
CL. MME. TESTOUT-----	.75
CL. CECIL BRUNNER-----	.75
PAUL'S SCARLET (H. W.). Brilliant scarlet. Good foliage -----	1.00
SILVER MOON (H. W.) -----	.75
STAR OF PERSIA (H. F.). Saffron yellow, semi-double -----	1.00
Shrub Roses (Very desirable)	
AUSTRIAN COPPER. Fiery orange, yellow center. Single -----	1.00
HUGONIS. Small single, yellow flowers, blooming all along the stems-----	1.00

COME AND SEE US

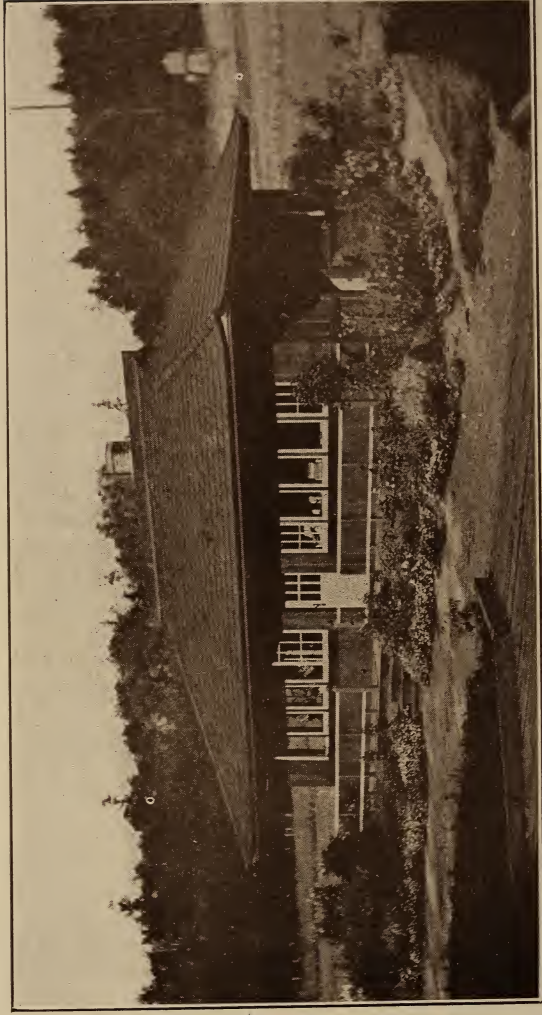
Our gardens are located opposite the city of Seattle on the east side of Lake Washington on the paved highway near Medina. We can be reached by phone, Medina 136-J.

We, in addition to bulbs, grow a complete line of perennial and rock plants and furnish landscape service.

Visitors are always welcome at our gardens and may be assured of seeing many new and rare plants of our own importation.



Visitors always
welcome
at our gardens.



Mail Orders
given careful
attention.



Salesroom and Bulb Storage House, Lake Washington Boulevard near Medina.