

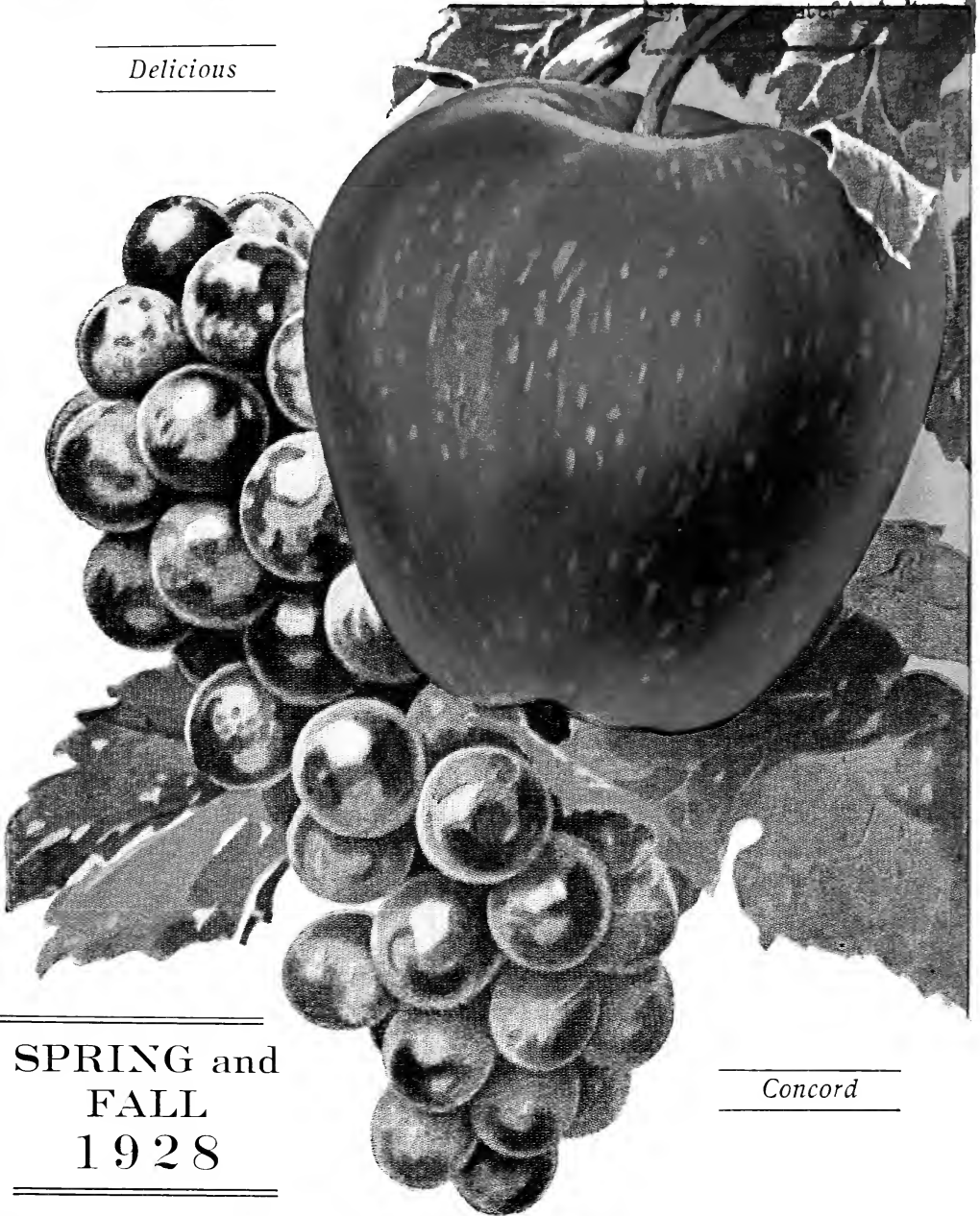
Historic, Archive Document

Do not assume content reflects current scientific knowledge, policies, or practices.

FAIRBURY NURSERIES

FRUIT TREES and ORNAMENTALS 1928 ★

Delicious



Concord

SPRING and
FALL
1928

C. M. HURLBURT & SON
PROPRIETORS

FAIRBURY, NEBR.



Elberta Cling

By Freight or Express

5 to 6 feet, each.....	.75c
4 to 5 feet, each.....	.60c
3 to 4 feet, each.....	.50c

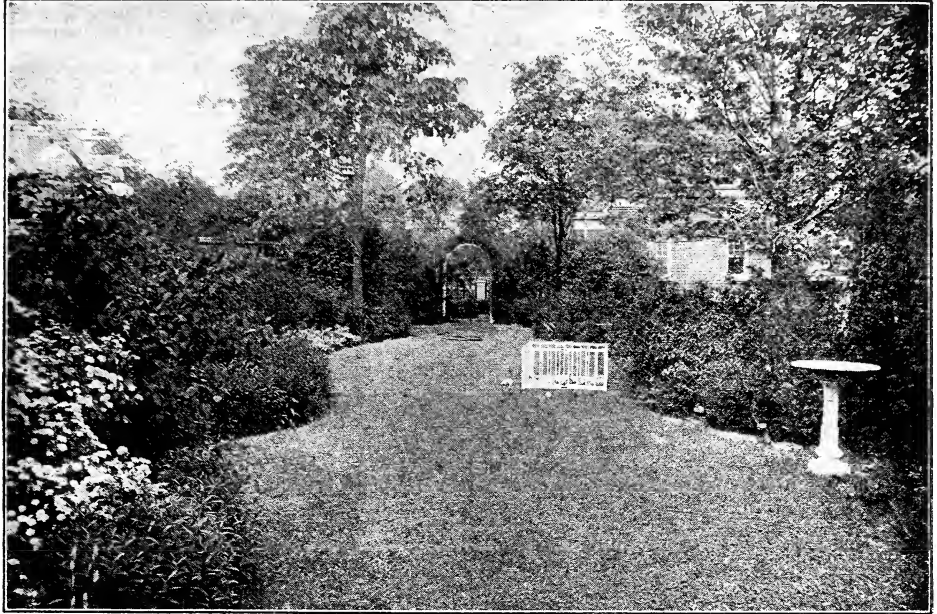
By Parcel Post

4 to 5 feet, each.....	.65c
3 to 4 feet, each.....	.55c

FAIRBURY NURSERIES

C. H. HURLBURT AND SON
PROPRIETORS

FAIRBURY, NEBR.



Our Latest Price List

WE are presenting you with our new catalog for 1928 which describes our general assortment of high grade, hardy fruit and shade trees, small fruits, ornamental shrubs and vines. We have been in the nursery business for forty-five consecutive years, thoroughly understanding all the details and conduct our business on the basis of "a square deal to all." In addition to the growing of young trees and plants, we have orchards and vineyards and grow an abundance of fruit, such as Cherries, Plums, Peaches, Grapes, Pears, Strawberries, etc.

You can raise fruit, too, for it has been proven that good fruit and plenty of it can be grown in any locality where other crops are grown and with very little time and labor.

Convince yourself of the truth of this by buying some of our young, healthy stock this spring and grow your own fruit. It will pay you and it will add beauty and value to your home. We have carefully prepared this catalog for you, giving descriptions of the best varieties so you can easily make your selection. Every plant, vine or tree you select represents the result of our long years of experience in the nursery business. You are sure to be pleased.

What We Do

We cultivate our trees in the most thorough manner and dig with the best improved tree digger, thus getting good length of roots.

We guarantee all trees, vines and plants to be in good, healthy and growing condition when they leave our packing rooms.

In packing we use paper lined boxes or bales, using plenty of wet moss and straw, thus preventing our stock from becoming dry in transit; we make no charge for bales or boxes.

While we take the best care, in filling orders with stock true to name, should a mistake occur we will be responsible only for the original cost of the stock.

We usually commence shipping in the fall, October 15th, and in the spring, about March 10th. We can, however, ship a greater portion of our stock any time during the winter from our frost-proof cellars; by this plan we can accommodate our customers who live in the South.

On receipt of an order we notify the customer at once by card; if after a reasonable length of time you do not hear from us, write again; sometimes letters go astray.

In filling orders we send varieties called for as far as possible; for those varieties we are out of we substitute others equally as good, unless you write us not to substitute.

What You Should Do

In ordering always give age or size and price of stock wanted; please be very particular in writing your name and address plainly. Send cash with order; if you wish stock sent C. O. D. send one-fourth cash with order; we will then ship it and you can pay balance due to your express agent on receipt of stock. **Please do not ask us to ship C. O. D. unless you have sent a remittance to apply on the order.**

All remittances should be made payable to C. M. Hurlburt and Son. Send by Postoffice or Express Money Order, Bank Draft, Check or Registered Letter. For amounts less than one dollar you may send one and two cent stamps. Orders for less than fifty cents are not advisable.

Our references are R. G. Dun & Co., the First National Bank, or any business man in Fairbury, Nebraska.

Special Offers

We sell 5 trees at 10 rates, 50 trees at 100 rates, 500 at 1,000 rates. On all cash orders, at prices in this catalog, sent us before March 1, 1928, we will allow 5% discount. This offer is to induce you to order early. Please notice that no discount is allowed after March 1. We make no deviation from this rule.

OUR SPECIAL OFFER, POSTPAID

4 Apple, 2 Cherry Trees.....\$1.00

4 Houghton and 4 Champion

Gooseberry 1.00

20 Concord Grape Vines, 1-year..... 1.00

These trees and vines are healthy and well rooted.

Above Special Offer is the same as the one you will find advertised in the Newspapers. If you have only a small amount to invest in nursery stock you cannot go wrong by sending us a trial order.

Shipping Information

We ship over the St. Joseph & Grand Island, the C. R. I. & P., and the B. & M. railroads; over the American Express Company and by parcel post.

We prepay the freight to any railroad station in the United States, on single or club orders, for plants or trees amounting to \$10.00 or more, provided the full amount of the order is sent before shipment is made; should you prefer to have a \$10.00 order or more sent by express we will prepay one-half the express-charge.

We do not prepay any of the transportation charges on orders that are to be sent C. O. D.

Do not make the mistake of making out a \$10.00 order, deducting from that amount the discount, and expect the freight to be prepaid. To secure prepaid freight, the order or total amount of club orders must be \$10.00 or more, net.

Sometimes our railroad agents here fail to collect enough freight charges from us on prepaid shipments; should your agent require you to pay additional charges in such a case, send us the receipt he gave you and we will return the money to you.

If you desire stock sent by Parcel Post, be sure and send the correct parcel post price which you will find plainly stated after each size or variety desired. We cannot send trees larger than 4 or 5 feet by mail. As a rule express is cheaper than parcel post prices where the distance to be carried is short as the parcel post prices specified in catalog are for any point in the United States. Where stock is to be sent a long distance, parcel post prices on small bundles would probably be cheaper than express.

The cost of packing stock to go by mail is much more than to go by freight or express, it takes better and more expensive material and more labor. Remember the additional cost by parcel post is not all for postage. We must fix prices so that the customer in the sixth zone can buy at the same prices as the one in the first zone.

Suggestions To Planters

Never buy trees from a traveling tree agent. As a rule they are not trustworthy, and will charge from two to ten times what the tree is worth. Buy direct from some reliable nursery or from a local nursery agent whom you know to be reliable. By this plan you will save money and have a source of redress in case there is anything wrong with your order.

It is a good plan to send in your order early, while the nursery's list of varieties is complete. Another thing, if you wait until late in the season, chances are that you will be so rushed with work that you will neglect to order at all, and thus lose a year's growth on your orchard.

As soon as trees are received the boxes and bundles should be unpacked and the roots of the trees soaked in a barrel or tank of water for twenty-four hours before planting; don't leave them in the water longer than this. If you are not ready to plant at once they may be heeled in moist earth well packed around the roots.

In preparing ground plow deep and pulverize the soil well before planting. Dig holes large enough so that roots of trees will have plenty of room; in planting fill holes two-thirds full of loose soil, working it well among the roots as put in, then firm as solid as you can with the foot, fill remainder of hole with water; after it has soaked away fill up the holes with more earth and do not firm it.



Apples

THE first fruit in importance is the apple. Its period of ripening, unlike that of other fruit, extends nearly or quite through the year.

By making judicious selections of summer, autumn and winter sorts, a constant succession can easily be obtained of this indispensable fruit for family use.

If apples are planted at the rate of fifty trees per acre, rows of peach trees can be planted between the apples, which, growing more quickly than the apple trees, soon protect them from the winds and thus prove a great benefit to them. After eight or ten years of productiveness, as the space is needed for the apples, the peach trees may be removed, leaving the orchard better for the protection, and at the same time having yielded the planter a large return for his outlay and labor.

We would advise you in planting an apple orchard to select those varieties which have proven hardy and productive in our western country. We give a brief description of varieties which we consider best suited for Kansas and Nebraska.

PRICES, BY FREIGHT OR EXPRESS

	Per 1	Per 10	Per 100
5 to 6 feet, 3 years, extra fine trees	\$0.50	\$4.50	\$40.00
4 to 5 feet, 2 years, well branched35	3.00	27.50
3 to 4 feet, 2 years, well branched25	2.25	20.00
2 to 3 feet, 2 years, partly branched20	1.75	15.00

PARCEL POST PRICES

	Per 1	Per 10	Per 100
2 to 3 feet	\$0.25	\$2.25	\$20.00
3 to 4 feet30	2.70	25.00
4 to 5 feet40	3.50	32.00

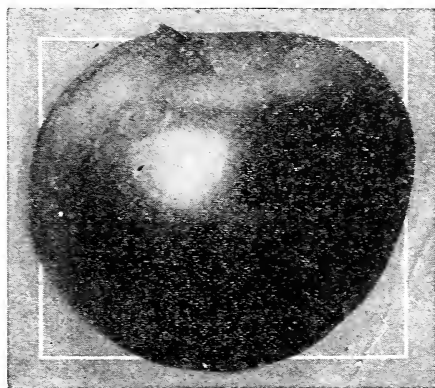
Summer Varieties

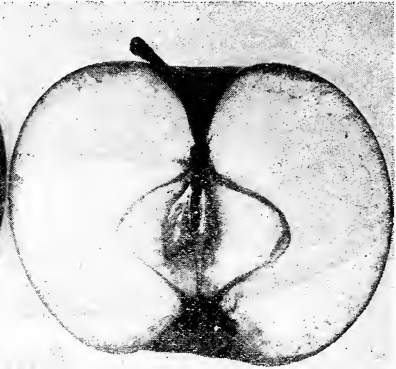
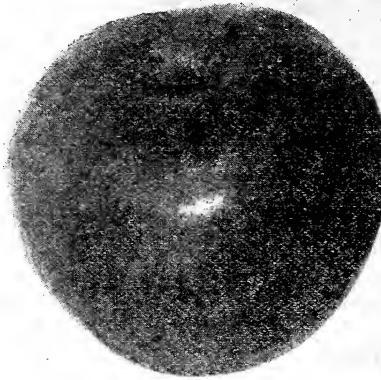
CAROLINA RED JUNE. Tree hardy, upright, early bearer, shoots slender, foliage dark, color red, almost black in sun, fruit medium, form variable, surface smooth with minute dots.

DUCHESS OF OLDENBURG. Tree rather poor in nursery, but has proven one of the best for the North; fruit large, surface smooth, waxen yellow ground covered with bright carmine stripes; sour; one of the very best for cooking; very productive. August.

EARLY HARVEST. Fruit medium size, greenish yellow; tender, and juicy. First to ripen in July.

YELLOW TRANSPARENT. One of the earliest apples. Fruit is medium large, smooth, transparent. Skin is clear white, turning pale yellow when ripe. Flesh white, fine grained, aromatic, and of splendid quality. Tree is vigorous, good bearer. Two-year old trees frequently produce fruit. Succeeds well in all eastern states, and should be planted in all cold climates. Succeeds well on thin soils. Ripens in early August. Its hardiness and early bearing commend it to planters.





Wealthy

Fall Apples

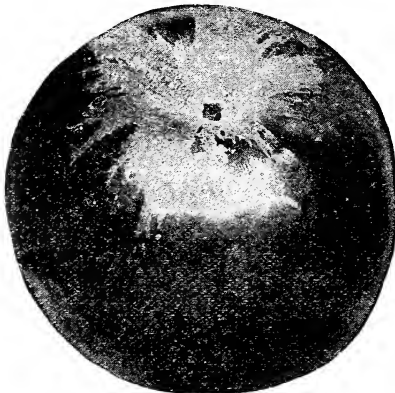
WEALTHY. A variety highly valuable for its extreme hardness at the far North. Tree is a thrifty grower and a good bearer. Fruit medium, roundish, skin is smooth, mostly covered with dark red, flesh white, fine grained, juicy, sub-acid, good quality. Will keep until January. Extra good sort and splendid dessert and cooking apple. This is one of the few most desirable varieties for Minnesota, Wisconsin, Iowa and Nebraska, as well as the eastern and middle states.

MAIDEN BLUSH. Good size, fine flavor, beautifully blushed, good bearer; a fine apple for home and market. September.

Winter Apples

WINESAP. Too well known to require a description. Tree hardy almost wherever planted, early bearer and profitable; tree inclined to overbear, causing fruit to be undersized. Color red, sometimes almost black; flesh almost yellow, firm and crisp; one of the best. November to May.

DELICIOUS. Fruit is large, with the surface almost covered with a most beautiful brilliant dark red, blending to golden yellow at the blossom end.



Gano

In quality it is unsurpassed, in flavor it is sweet, slightly touched with acid, but only enough so as to make it all the more pleasing, with an aroma delightfully fragrant. The flesh is fine grained, crisp, juicy, melting and withal delicious. In keeping quality it ranks with the best, coming out of storage in March and April in perfect condition. Tree is very hardy. Delicious originated twenty years ago at Peru, Madison County, Iowa, by the late Jesse Hiatt, and on his farm the original tree still flourishes, bearing annual crops of beautiful fruit.

BEN DAVIS (New York Pippin). Fruit medium to large, round, skin yellowish, splashed and striped and almost covered with red, flesh white, tender, moderately juicy, sub-acid; an excellent variety; tree very hardy, a free grower, coming into bearing early and very productive; it blooms late in the spring, thereby often escaping late frosts; very popular in the West and Southwest. December to March.

MAMMOTH BLACK TWIG. One of the best for the Middle West. Fruit large, dark red, firm sub-acid and juicy. Keeps as long as any apple in a common cellar; tree a strong grower; resembles Winesap, but is superior in many ways and fully one-third larger. January to April.

JONATHAN. Beautiful tree, good grower, fruit full medium, fair producer, color dark shaded to almost black in the sun, fruit drops in dry season. November and December, but can be kept until April.

MCINTOSH RED. Origin, Ontario. Season, December and January. A choice variety of the Fameuse type. Tree vigorous with spreading head; a good annual bearer. Fruit above medium to large, highly perfumed; smooth polished yellow, almost covered with brilliant solid crimson, a beautiful fruit; flesh snow white, crisp, very tender, sprightly aromatic, sub-acid; very good quality.

GANO. The fruit is bright red on yellow ground (no stripes); large; oblong, tapering to the eye; surface smooth, polished; dots minute; basin shallow, sometimes deep; eye large, cavity deep, brown in color; stem medium to long; core medium. Season, January to April. Tree healthy, vigorous, hardy; an early annual and prolific bearer.

GRIMES GOLDEN. Tree upright and hardy, fruit full, color golden yellow when ripe, medium to large, quality sub-acid, mild and melting; valuable in any orchard.

TALMAN SWEET. Of medium size, pale yellow, slightly tinged with red; firm, rich, sweet. The most valuable apple for baking and otherwise fine. Keeps well till April.

Choice Varieties of Apples

We have two varieties of apples to which we call especial attention as they should be in every orchard.

Prices of Golden Winesap and Hurlburt's Golden Pippin by freight or express.

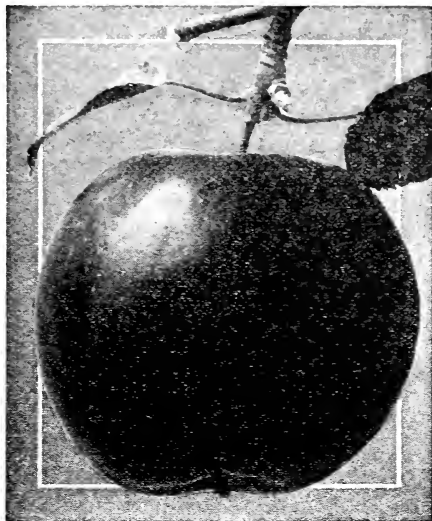
	Per 1	Per 10	Per 100
2 to 3 feet.....	\$0.40	\$3.50	\$30.00
3 to 4 feet.....	.60	5.50	50.00
4 to 5 feet.....	.70	6.50	60.00
5 to 6 feet.....	.80	7.50	70.00

PARCEL POST PRICES

	Per 1	Per 10
2 to 3 feet.....	\$0.45	\$4.00
3 to 4 feet.....	.65	6.00
4 to 5 feet.....	.75	7.00

GOLDEN WINESAP. This is a fine variety introduced by the Fruit Grower of St. Joseph, Missouri, and originated in Utah. Many specimens from the original tree were from 4 to 4½ inches in diameter. The tree is a fine, healthy grower and the apples are good keepers. Golden yellow with a deep red blush. It has been unanimously recommended and you will make no mistake if you plant a few Golden Winesaps this year.

HURLBURT'S GOLDEN PIPPIN. From the appearance of this variety in the nursery row and orchard, the time of its ripening, color, shape, flavor and keeping qualities, we are inclined to think it is a seedling from Grimes Golden. Tree is a robust grower, perfectly hardy, fruit is yellow and somewhat larger than Grimes; take our word for it; you will find it a mighty good substitute for Golden Delicious.



Golden Pippin

DWARF APPLES

These are budded on a variety of wild apple tree which is grown in France. The young trees are brought to this country and budded, which dwarfs them the same as a Dwarf Pear. They are perfectly hardy here and begin to bear when two years old, and can be planted 10 feet apart. They make a fine tree for planting on town lots where little room can be had for an orchard. We only catalog two varieties which we consider best, the Jonathan and Wealthy.

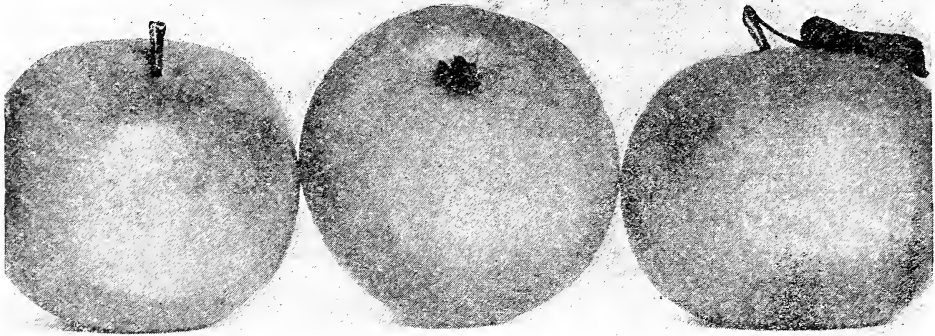
PRICES OF DWARF APPLES BY FREIGHT OR EXPRESS

	Per 1	Per 10
2 to 3 feet.....	\$0.65	\$6.00
3 to 4 feet.....	.80	7.50

PARCEL POST PRICES

	Per 1	Per 10
2 to 3 feet.....	\$0.70	\$6.50
3 to 4 feet.....	.85	8.00



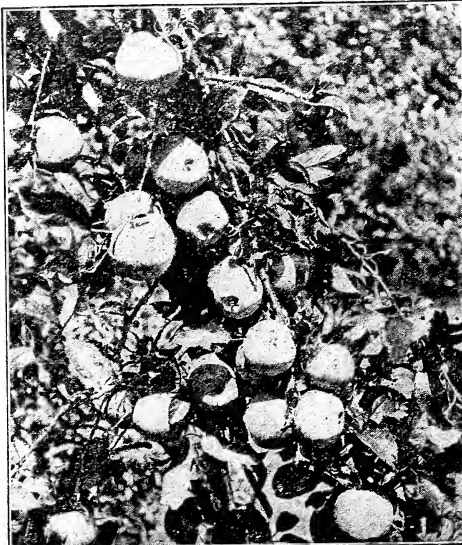


Crab Apples

The improvements in the varieties of Crab Apples have kept pace with the other kinds of fruit. A few years ago it was only thought fit for cider, jelly and preserves, but there are varieties now that command good prices in the market for dessert purposes; especially is this true of the Whitney. Besides being useful they are very ornamental when in bloom and when burdened with their load of highly colored fruit.

PRICES BY FREIGHT OR EXPRESS

	Per 1	Per 10	Per 100
5-6 ft., 3 years, fine trees.....	\$0.50	\$4.50	\$40.00
4-5 ft., 2 yrs., well branched..	.35	3.00	27.50
3-4 ft., 2 yrs., well branched..	.25	2.25	20.00
2-3 ft., 2 yrs., partly branched	.20	1.75	15.00



Dolga

PARCEL POST PRICES

	Per 1	Per 10
2 to 3 feet.....	\$0.25	\$2.00
3 to 4 feet.....	.30	2.50
4 to 5 feet.....	.40	3.50

WHITNEY No. 20. A large crab, 1½ to 2 inches in diameter. Skin smooth, glossy green, striped with red. Flesh firm, juicy and flavor very pleasant. A fair dessert apple and one of the best for cider and vinegar. Tree a great bearer and very hardy. Really deserves a place in our apple list. There are few early varieties of so much merit. One of the best for northern states. Ripens in August.

TRANSCENDENT. Fruit medium, brownish red and handsome. Excellent for jelly and preserves. Good grower and immense bearer. September.

FLORENCE. Originated in Minnesota. The hardiest of all. An early and profuse bearer. When in full bloom or fruit, one of the prettiest ornamental trees grown. Fruit larger and better than Transcendent. Ripens in September.

GOLDEN BEAUTY. Very large and handsome; fine amber or golden yellow.

HYSLOP. Seasons, September and October. Fruit large, very brilliant color, dark red or purplish, over-spread with thick blue bloom; borne in clusters. The tree is a good grower, very hardy and a reliable cropper, yielding good crops annually. It is desirable for both home use and for market.

DOLGA or IMPROVED RED SIBERIAN. A Russian variety of rare beauty and peculiar lemon acid flavor, entirely different from any other crab. It is exceptionally hardy and productive and free from blight. Superior to any other crab for jelly. When filled with the large dark red fruit the tree appears from a distance to be covered with dark red flowers.

PRICE OF DOLGA CRAB, BY FREIGHT OR EXPRESS

	Per 1	Per 10
2 to 3 feet.....	\$0.25	\$2.00
3 to 4 feet.....	.35	3.00
4 to 5 feet.....	.45	4.00
5 to 6 feet.....	.55	5.00

PARCEL POST PRICES

	Per 1	Per 10
2 to 3 feet.....	\$0.30	\$2.50
3 to 4 feet.....	.40	3.50
4 to 5 feet.....	.50	4.50

Pears

PEARS being upright growers, may be planted twenty feet apart each way. They should be trained to branch as near the ground as possible. The first four years' planting, the top leaders should be cut out and thus compel them to form a bushy top. Dwarf pears come into bearing four years after transplanting and standards not until the eighth year.

PRICES, BY FREIGHT OR EXPRESS		Per 1	Per 10	Per 100
5 to 7 feet, Standard, 3 years, extra fine	\$0.80	\$7.50	\$70.00
4 to 6 feet, Standard, 2 years, well branched70	6.50	60.00
3 to 4 feet, Standard, 2 years, branched45	4.00	35.00

PARCEL POST PRICES, PEAR, STANDARD

	Each	Per 10
3 to 4 feet.....	\$0.55	\$5.00
4 to 5 feet.....	.80	7.50

BARTLETT. Large size with often a beautiful blush to the sun; buttery, very juicy and highly flavored; bears early and abundantly; very popular. August.

CLAPP'S FAVORITE (Fay). Large; pale lemon yellow with red cheek; flesh of fine texture, melting, buttery, juicy, with a rich, vinous flavor; good for market and kitchen. Tree hardy and very productive, does well in all sections. Standard or dwarf. August.

DUCHESS d'ANGOULEME. Very large, dull greenish yellow streaked and spotted with russet, flesh white, buttery and very juicy, with rich and very excellent flavor, on the quince, to which stock this variety seems well adapted; it is always fine, the large and fine appearance of the fruit makes it a great favorite. September and October.

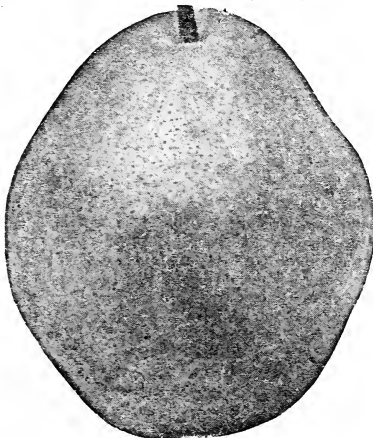
SECKEL. Small, skin rich yellowish brown when ripe, with a dull brownish red cheek, flesh very fine grained, sweet, is exceedingly juicy, melting, buttery, the richest, highest flavored pear known. August and September.

FLEMISH BEAUTY. Is a large, beautiful, juicy, melting, rich and fine, good bearer, is hardy everywhere. August and September.

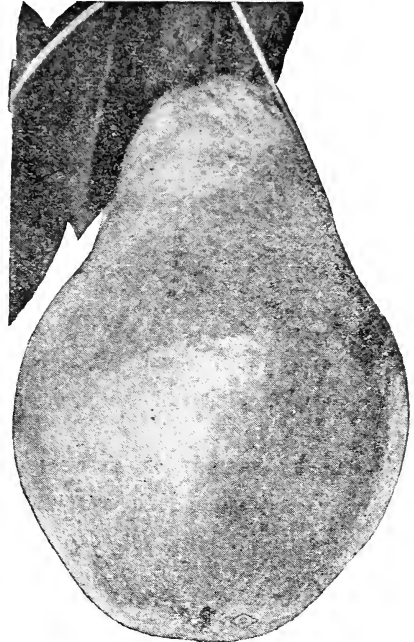
Kieffer Pear

We are making a special price on Kieffer Pear this year.

KIEFFER'S HYBRID. The pear was raised from seed from Chinese Sand Pear accidentally crossed with the Bartlett or some other kind grown near it. Tree has large, dark green, glossy leaves and is of itself very ornamental; is an early and very prolific bearer; the fruit is of good quality, wonderfully



Kieffer



Bartlett

showy and is valuable for the table and market; it never rots at the core, and is as nearly blight proof as it is possible for any pear to be. September and October.

PRICES ON KIEFFER PEAR BY FREIGHT OR EXPRESS

	Per 1	Per 10	Per 100
5 to 6 feet, extra fine.....	\$0.60	\$5.50	\$50.00
4 to 5 feet, well branched.....	.50	4.50	40.00
3 to 4 feet, branched.....	.40	3.50	30.00

PARCEL POST PRICES

	Per 1	Per 10
4 to 5 feet.....	\$0.60	\$5.50
3 to 4 feet.....	.50	4.50

DWARF PEARS

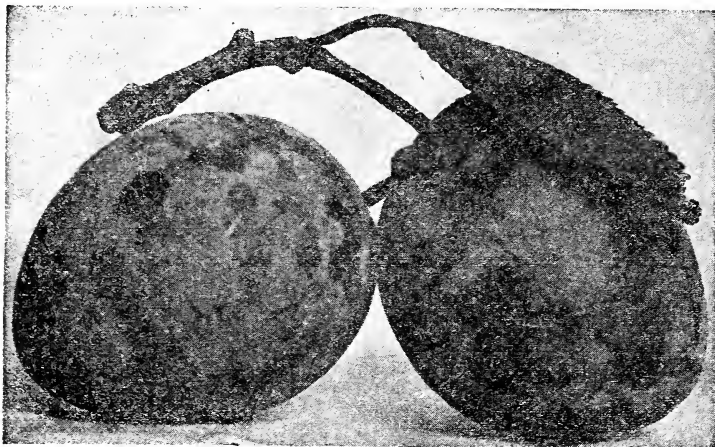
In the Dwarf Pears we have the following varieties: Bartlett, Duchess and Seckel.

PRICES, BY FREIGHT OR EXPRESS

	Per 1	Per 10	Per 100
4 to 5 ft., Dwarf, 2 yrs.....	\$0.70	\$6.50	\$60.00
3 to 4 ft., Dwarf, 2 yrs.....	.50	4.50	40.00
2 to 3 ft., Dwarf, 2 yrs.....	.40	3.50	30.00

PARCEL POST PRICES, PEAR, DWARF

	Each	Per 10
2 to 3 feet.....	\$0.50	\$4.50
3 to 4 feet.....	.60	5.50
4 to 5 feet.....	.80	7.50



Lombard

Plums

THE Plum does best on a rich, well drained soil. The trees should be planted 16 feet apart, and it is well to plant several varieties together, for they seem to produce larger crops in that way than where a single variety is planted alone. Prune them so they will be low headed, and thus protect the fruit from the wind storms which sometimes play sad havoc with the fruit when commencing to ripen.

PRICES BY FREIGHT OR EXPRESS

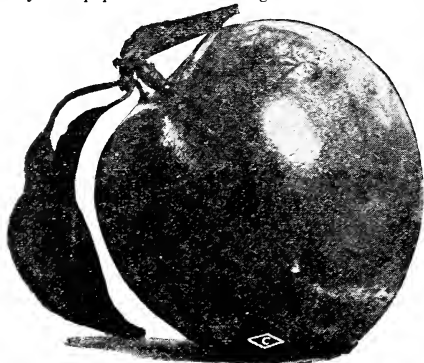
	Per 1	Per 10	Per 100
5 to 6 ft., 3 yrs., fine trees	\$0.80	\$7.50	\$70.00
4 to 5 ft., 2 yrs., well well branched	.70	6.50	60.00
3 to 4 ft., 2 yrs.	.50	4.50	40.00
2 to 3 ft., 1 year	.40	3.50	30.00

PARCEL POST PRICES

	Per 1	Per 10
2 to 3 feet	\$0.45	\$4.00
3 to 4 feet	.55	5.00
4 to 5 feet	.75	7.00

GERMAN PRUNE. A large, long, oval variety much esteemed for drying. Color dark purple of very agreeable flavor. September.

LOMBARD. Medium, round, oval, violet red, juicy, pleasant and good, adheres to the stone, productive. A valuable market variety, one of the most hardy and popular. Last of August.



Opata

BURBANK. The best of all the Japan sorts of plums, nearly globular, clear cherry red, and with a thin lilac bloom. The flesh is deep yellow color, very sweet with a peculiar and very agreeable flavor, free, vigorous with strong, upright shoots, large, broad leaves; commences to bear usually at two years. It blooms late and consequently more liable to escape the late spring frosts.

Prof. Hansen's New Hybrid Plums

PRICES BY FREIGHT OR EXPRESS

	Per 1	Per 10
5 to 6 feet, 3 years	\$0.85	\$8.00
4 to 5 feet, 2 years	.70	6.50
3 to 4 feet, 2 years	.50	4.50
2 to 3 feet, 2 year	.40	3.50

PARCEL POST PRICES

	Per 1	Per 10
4 to 5 feet, 2 years	\$0.75	\$7.00
3 to 4 feet, 2 years	.55	5.00
2 to 3 feet, 1 year	.45	4.00

SAPA. Very fine, perfectly hardy, new plum. Professor Hansen's description: "The female parent is one of our selected seedlings of the Western Sand Cherry (*Prunus Beseyi*), a favorite fruit of the Sioux Indians. The male parent, a large, purple flesh Japanese plum originated by Luther Burbank, and by him named the Sultan. Sultan is of the Satsuma type and is perhaps a cross with some other species. The Sapa fruited first in 1907 on a tree cut back very severely for bud sticks. The tree is plum-like in habit; one-year trees in nursery have many fruit buds; the glossy, dark purple skin, and the rich dark purple red flesh of its Japanese sire. Sapa is Sioux Indian for black. As dark as the shades of evening ranked in the western heaven."



Waneta

Turning the branches of this tree back and exposing the long ropes of glossy black fruit to the rays of the sun, the background of brown, smooth bark and the glossy, dark green foliage, is certainly a pleasant sight and one to be remembered. The fruit is edible and hangs on the tree for more than three weeks. When it first commences to mature, the skin is dark green and the flesh of the royal purple. The color of the skin and the flesh gradually changes until it is as black as the darkest midnight. The skin of this variety is especially tender and practically disappears with ordinary canning. This plum makes excellent preserves and jelly and is of the finest quality for eating fresh from the tree.

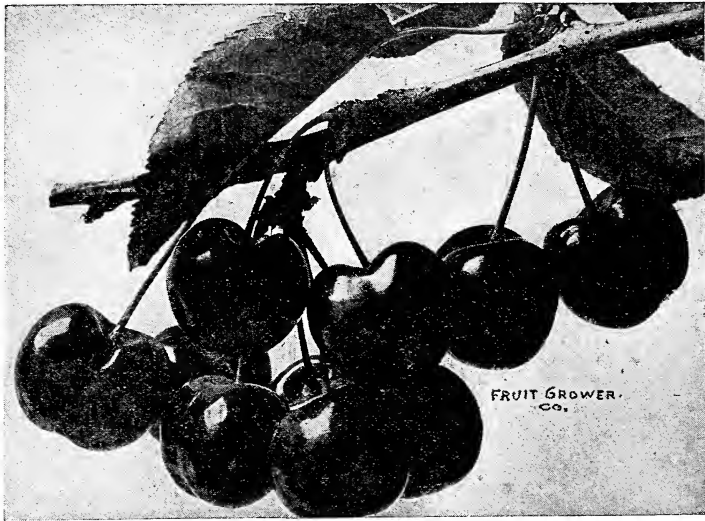
This **OPATA** plum is a cross of the Dakota Sand Cherry and the Gold Plum, a large Hybrid Japanese variety, originated by Luther Burbank and for which \$3,000 was paid when first introduced. The Opata is vigorous in growth, heading very low and of quite spreading habits. It forms fruit buds freely on one-year old shoot in nursery and bears without exception the next year. The color of the flesh is green, flavor very pleasant, combining the spicy acids of the Sand Cherry with the rich sweetness of the Gold Plum. The plums of this type are the earliest of any to mature.

WANETA. This wonderful big new plum is the latest of Professor Hansen's productions, and gives the northern orchardist his first opportunity to compete with California in growing large market plums. The following is Professor Hansen's description: "My belief is that in this variety I have combined the best points of the native and Japanese Plum. It is the largest of 10,000 seedlings. In size it is two inches in diameter and weighs two ounces. The female parent is the apple plum, a large Japanese va-

riety. The male parent is the Terry, the largest of the native varieties. We regard this as the most promising plum that has been offered to our planters since the settlement of the country. All the reports coming in from those who have tried it describe the Waneta as bearing early and producing the largest fruit that has been raised in their locality."

HANSKA (Sioux Indian for Tall), and refers to the extraordinary growth and symmetrical shape of the Hanska plum. The Hanska does not come into bearing as early as those varieties containing Sand Cherry blood, but three and four-year-old trees in the nursery were loaded with most excellent fruit. The Hanska was produced by crossing a wild Northwestern plum with the very large, firm fleshed fragrant apricot plum of China—Prunus Simoni—which is so very popular in all of the orchards of California. This variety has all of the good qualities a plum should have. The Hanska is a very large plum, a great many specimens measuring better than 1½ inches in diameter. Is of the best quality for eating from the tree, for canning, preserving, or making jelly. None of the California or native American plums compare with it in any way. In color it is a bright red with heavy blue bloom. In shape it resembles its male parent, the Apricot plum.

UNDERWOOD. Tree extremely vigorous and attains a large size. Very hardy and productive. Fruit is large, roundish-oval, attractive red in color. Flesh is juicy, fairly firm; hangs well to tree. Ripens very early and continues over a long season. Stone is small, cling. Quality excellent. Many growers consider Underwood as combining most of the good points required for a hardy plum of large size and excellent quality. Hardy everywhere.



Early Richmond

Cherries

A great deal of attention is now given to the growth of Cherries in the West, and no well planted home orchard is complete without its proportion of cherry trees, and it is one of the most prolific of garden fruits. It will succeed in any kind of soil that is not wet. It may be planted near the street, or used to line avenues as an ornament, and it will at the same time produce an abundance of delicious fruit. This may be eaten out of the hand, preserved, or it will find a ready market at highly profitable prices, for shipping, canning, etc.

Our cherry trees are budded on Mahaleb cherry stocks, which do not sprout from the roots. Care must be taken in planting that the trees are not planted too deep; one inch deeper than were budded is deep enough; should they be planted deeper than this the tree will be liable to throw out roots above where budded, and these roots, if broken, will throw up sprouts or suckers.

Plant trees twenty feet apart, keep the main leaders headed back the first two or three years after transplanting. By so doing you will have fine bushy tops near the ground, which will be of great advantage in picking the fruit.

Sour Varieties

PRICES OF SOUR VARIETIES BY FREIGHT OR EXPRESS

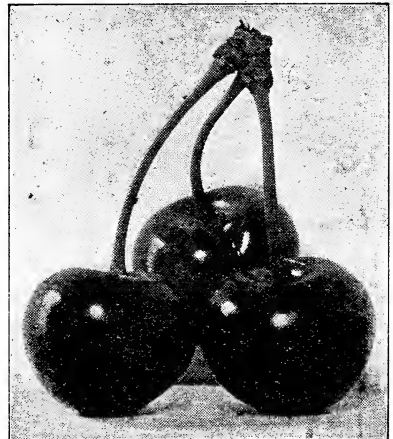
	Per 1	Per 10	Per 100
5 to 6 ft., 3 years.....	\$0.75	\$7.00	\$65.00
4 to 5 ft., 2 years.....	.65	6.00	55.00
4 to 5 ft., 1 year.....	.60	5.50	50.00
3 to 4 ft., 1 year.....	.45	4.00	35.00
2 to 3 ft., 1 year.....	.35	3.00	25.00

PARCEL POST PRICES

	Per 1	Per 10
2 to 3 feet.....	\$0.40	\$3.50
3 to 4 feet.....	.55	5.00
4 to 5 feet.....	.80	7.50

LARGE MONTMORENCY. The best of Montmorency family and equaled in value only by Early Richmond. The Montmorency has all the good quality of the Early Richmond, but ripens two weeks later. The fruit is identical with the Early Richmond. Some firms have put the Large Montmorency out under different names, but there is only one Large Montmorency and we have the true strain.

EARLY RICHMOND. The oldest and most reliable cherry tree grown today. It has proven its excellence for generations for home and local consumption. There is nothing to take its place. Light red



Montmorency

in color. Very juicy and acid flavor. It ripens about the first of June. It bears very heavy and will produce a crop oftener than any other variety known. When in doubt plant the Early Richmond, as it does best in all climates or on any soil.

ENGLISH MORELLO. Fruit large, very dark red, nearly black; tender, juicy, acid, rich, of good quality. Owing to its rich, red color, looks much better when canned than Early Richmond. Tree dwarf, slender and spreading, bears young. I would not advise planting this variety farther north than the middle of Nebraska. Ripens July.

Sweet Varieties

PRICES OF SWEET VARIETIES BY FREIGHT OR EXPRESS

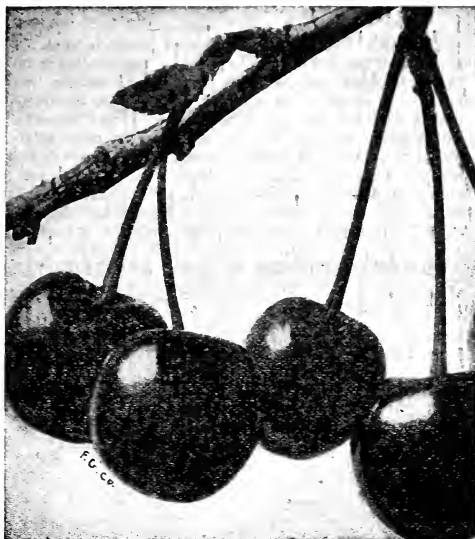
	Per 1	Per 10
4 to 5 feet.....	\$0.85	\$8.00
3 to 4 feet.....	.70	6.50
2 to 3 feet.....	.50	4.50

PARCEL POST PRICES

	Per 1	Per 10
4 to 5 feet.....	\$1.00	\$9.00
3 to 4 feet.....	.80	7.50
2 to 3 feet.....	.55	5.00

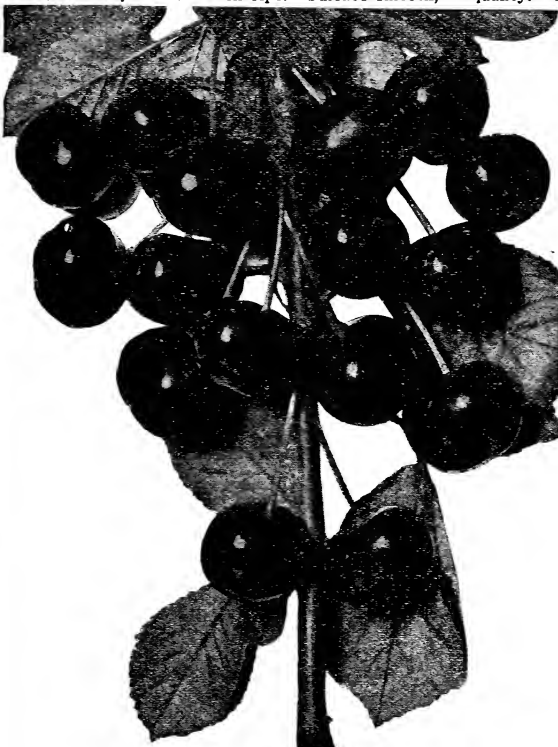
BING. Very large, dark brown, almost black, flesh firm, sweet, rich and delicious. On the Pacific coast, where this variety originated, it is considered one of the most profitable sorts.

LAMBERT. This very promising cherry is of the largest size, bright, rich, dark purplish-red color, turning almost jet black when ripe. Surface smooth,



Napoleon

glossy, covered with minute russet dots. Flesh reddish with white veins; very firm, of unsurpassed quality. Stands well in the lead as a shipping variety; tree healthy, rugged, strong grower, immense bearer. Ripens 10 days later than Napoleon Bigarreau.



Bing

NAPOLEON BIGARREAU (Royal Ann). Magnificent cherry of largest size; pale yellow, amber in the shade, richly dotted deep red. Very firm, juicy and sweet. Rapid grower and immense bearer. Most popular for canning, preserving and shipping. Is hardiest and best yellow sweet sort. Immense market for the fresh fruit at top prices. Ripens end of June.

Rocky Mountain Cherry

This is a novelty and a very profuse bearer, but the fruit is not as good as our leading sorts; grows in the form of a bush, and is as hardy as Wyoming sage brush. It has stood 45 degrees below zero and unharmed in limb or fruit bud; fruit about as large as English Morello; cherry black when fully ripe; acid and very good for pie or wine. Season, July.

	Per 1	Per 10
2 to 3 feet.....	\$0.35	\$3.00
Mailing price.....	.40	3.50
3 to 4 feet.....	.45	4.00
Mailing price.....	.50	4.50

Zumbra Cherry

ZUMBRA CHERRY. Originated in Minnesota, is a cross of the Pin Cherry, the large Sweet Cherry of the west coast and the wild Sand Cherry of the Dakotas. It seems to be a happy combination as Zumbra is as hardy as the Sand Cherry, grows like the Pin Cherry and the fruit is as large as good quality as the California Sweet Cherry. Comes into bearing the next year after planting, very prolific, maturing large annual crops. Zumbra is placed on the Minnesota recommended fruit list as "leading variety." It ripens after the sour varieties are gone.

PRICES OF ZUMBRA CHERRY BY FREIGHT OR EXPRESS

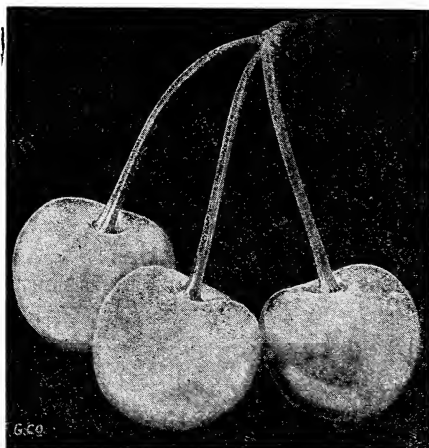
	Per 1	Per 10
4 to 5 feet.....	\$0.80	\$7.50
3 to 4 feet.....	.70	6.50
2 to 3 feet.....	.50	4.50

PARCEL POST PRICES

	Per 1	Per 10
4 to 5 feet.....	\$1.00	\$9.00
3 to 4 feet.....	.80	7.50
2 to 3 feet.....	.55	5.00

The Compass Cherry Plum

The Compass Cherry-Plum originated with H. Knudson of Springfield, Minnesota, and is believed to be a cross between the Western Sand Cherry and the Miner Plum. Its habit of growth is like the Miner, while the leaf, twig and bark very much resemble the Sand Cherry. It is a strong grower, and makes a very fine orchard tree. Fruit about an inch in diameter, and is as much a plum as it is a cherry. The shape is oblong and slightly flattened. The pit is between the ordinary American plum and



Early Richmond pit in shape and size. It has a flavor peculiar to itself, very palatable and rich. An increase and early bearer. Tree perfectly hardy as far north as Manitoba.

PRICES OF COMPASS CHERRY-PLUM BY FREIGHT OR EXPRESS

	Per 1	Per 10	Per 100
5 to 6 feet.....	\$0.80	\$7.50	\$70.00
4 to 5 feet.....	.65	6.00	55.00
3 to 4 feet.....	.50	4.50	40.00
2 to 3 feet.....	.40	3.50	30.00

PARCEL POST PRICES

	Per 1	Per 10
4 to 5 feet.....	\$0.75	\$7.00
3 to 4 feet.....	.60	5.00
2 to 3 feet.....	.45	4.00

Quince

Owing to the negligence of the cultivator, this valuable fruit is seldom seen in perfection, being mostly allowed to grow without the least attention or cultivation. The Quince requires good, deep soil, which should be clean and mellow, with an occasional dressing of manure and a sprinkling of salt; but does not need severe pruning like many other varieties of fruit; a careful thinning out of the old decayed wood will be sufficient. Keep a vigilant search for the borer.

CHAMPION. Noticeable for its early bearing and superb appearance. Very large, mostly oval; deep yellow; excellent quality. Tree very prolific and vigorous. A good keeper.

APPLE OR ORANGE. This popular old Quince is one of the most reliable varieties for market. Large to very large, roundish, with short neck; golden flesh; firm and of fine flavor. October.

PRICES BY FREIGHT OR EXPRESS

	Per 1	Per 10
3 to 4 ft., well branched.....	\$0.75	\$7.00
2 to 3 ft., partly branched.....	.65	6.00

PARCEL POST PRICES

	Per 1	Per 10
2 to 3 feet.....	\$0.75	\$7.00
3 to 4 feet.....	.85	8.00



Champion



Budded Peaches

THE Peach tree requires a moderately rich, well drained soil, and in order to preserve the continued healthy growth of the tree and thus cause it to produce well matured fruit, its branches should be headed in each year.

Peach trees when planted alone should be set twenty feet apart, or they may be planted between apple trees. Plant them deep enough so that the crooks in tree where they were budded is covered over with earth.

In Nebraska we cannot expect a full crop of peaches each year, owing to our cold winters, which kill the bloom buds; but if you can only get a full crop once in three years they will pay you better than any other crop that can be raised in Nebraska, cherries and strawberries excepted.

Below we give a short description of those varieties which we consider among the best, the greater number of which we have fruited in our own grounds.

SALWAY (Free). Large, roundish, deep yellow with rich red cheek; flesh yellow, firm and juicy, and sugary; a late market sort.

CHAMPION. Many specimens have measured 10 inches in circumference. The flavor is delicious, rich, sweet and juicy; surpasses all other varieties; skin creamy white with red cheek, strikingly handsome. It is hardy, productive, the largest size, highest flavor and best shipper of the early peaches. Ripens in early August.

ELBERTA. A Georgia cross between Crawford and Chinese Cling; very large, well colored; all things considered, the finest yellow free-stone in cultivation; no one can go amiss by planting it; fruit perfectly free from rot, and one of the most successful shipping varieties. August 20.

RED BIRD—A fine early peach; bright glowing red. A good shipper. Flesh juicy, firm and most delicious peach flavor imaginable. Tree hardy and vigorous.

MAYFLOWER. Earliest peach known, semi-cling, medium size, color bright red; ripens well to the seed. Young and prolific bearer. Tree an upright good grower.

ELBERTA CLING. This is a seedling from the Elberta peach which we found two years ago; as you know, the Elberta peach was secured by crossing Chinese Cling with Crawford. This seedling has reverted to the original type and is a true cling-stone peach. In all other ways it is the same as its parent, the Elberta. It seems to stand cold weather better and seems to be more prolific, and if you want a cling-stone peach, you cannot go wrong by planting this variety. You will find cut and prices on the second page of cover.

J. H. HALE. Yellow. Very large in size, and globular in shape. Skin is thick, smooth and without fuzz. Flesh deep yellow, fine grain, firm, excellent quality. Good shipper. Ripens immediately after Elberta.

PRICES OF BUDDED PEACHES BY FREIGHT OR EXPRESS

	Per 1	Per 10	Per 100
5 to 7 feet	\$0.55	\$5.00	\$45.00
4 to 5 feet	.45	4.00	35.00
3 to 4 feet	.35	3.00	25.00
2 to 3 feet	.20	1.90	18.00

PARCEL POST PRICES

	Per 1	Per 10	Per 100
2 to 3 feet	\$0.30	\$2.50	\$20.00
3 to 4 feet	.45	4.00	35.00
4 to 5 feet	.55	5.00	45.00

Seedling Peach Trees

We have a fine lot of seedling peach trees grown from seed taken from choice fruit but they will not produce true to name and for this reason we cannot furnish named seedlings.

PRICES OF SEEDLING PEACH TREES BY FREIGHT OR EXPRESS

	Per 1	Per 10	Per 100
4 to 5 feet	\$0.20	\$1.80	\$15.00
3 to 4 feet	.18	1.50	12.00
2 to 3 feet	.15	1.20	10.00

PARCEL POST PRICES

	Per 1	Per 10	Per 100
4 to 5 feet	\$0.25	\$2.25	\$18.00
3 to 4 feet	.23	1.80	15.00
2 to 3 feet	.20	1.50	12.00

Apricots

A most delicious fruit of the plum species. It has a distinct flavor and one of our best and most profitable market fruits. The tree bears very young and most profusely. Ripening as it does between the cherries and peaches, the apricot is a most welcome fruit. In very sunny localities it is apt to bloom too early in the spring and get caught by the frost. The tree is slender in form, has beautiful dark foliage, pretty pink blossoms, and will give very satisfactory results as an ornamental tree in any garden or house lot.

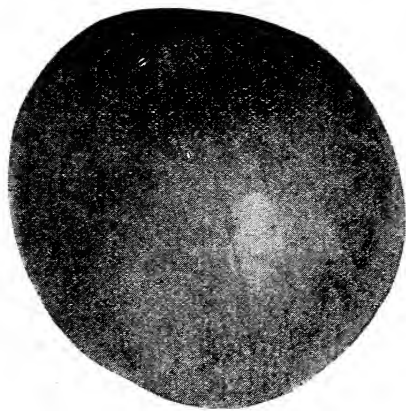
ROYAL. Large; yellow with orange cheek; juicy, rich and delicious; a fine variety. Last of July.

MOORPARK. One of the largest; orange with red cheek; firm, juicy with rich flavor; very productive. July.

SUPERB. One of the largest; orange with red cheek; firm, juicy, with rich flavor; very productive. August.

PRICES BY FREIGHT OR EXPRESS

	Per 1	Per 10
5 to 6 feet, budded	\$0.70	\$6.50
4 to 5 feet, 2 yrs., budded	.60	5.50
3 to 4 feet, 2 yrs., budded	.45	4.00
2 to 3 feet, 1 year, budded	.35	3.00



Royal PARCEL POST PRICES

	Per 1	Per 10
2 to 3 feet	\$0.40	\$3.50
3 to 4 feet	.50	4.50
4 to 5 feet	.65	6.00

Grapes



Niagara

The history of the grape is almost as old as that of man. Vineyards were extensively planted before orchards or other collections of fruit trees were at all common, and today, it is one of the most highly appreciated fruits. In its flavor it is hardly surpassed by any other fruit in delicacy and richness, and few or none are more beautiful in the dessert. Any person having a plot of ground ever so small, either in the country or city, can find room for one-half to one dozen grape vines. They can be trained up the side of any building or over a garden fence; but the best and cheapest way to grow them in small or large quantities is on the wire trellis.

Work the ground deep and plant a little deeper than they were in nursery. Make rows eight feet apart and six to eight feet in the rows. Some of them, the tender varieties, would be benefited by laying the vines flat on the ground during the winter, with a light covering of earth or litter.

Care should be taken to prune thoroughly each year; no more bearing canes should be left than the roots can sustain in a vigorous growth of new shoots. In a commercial way no fruit crop shows greater returns on the investment. On all markets grapes are very popular and command good prices. They should be planted more generally everywhere.

CONCORD. Bunches large, berries large, round, skin thick and covered with bloom; flesh juicy, sweet. Very hardy, vigorous and productive, at present the most popular of all our native sorts.

AGAWAM. Large, round, early and of great vigor of growth, rich, high, peculiar aromatic flavor, much subjected to disease and too highly flavored, where all its aroma is developed, to be desirable. Red.

MOORE'S EARLY. A large, black grape of the Concord type, the entire crop ripening before the Concord; bunch medium; berries large with blue bloom; flesh pulpy, of medium quality. Vine hardy, moderately productive, better as it attains age. Planted extensively as a market sort.

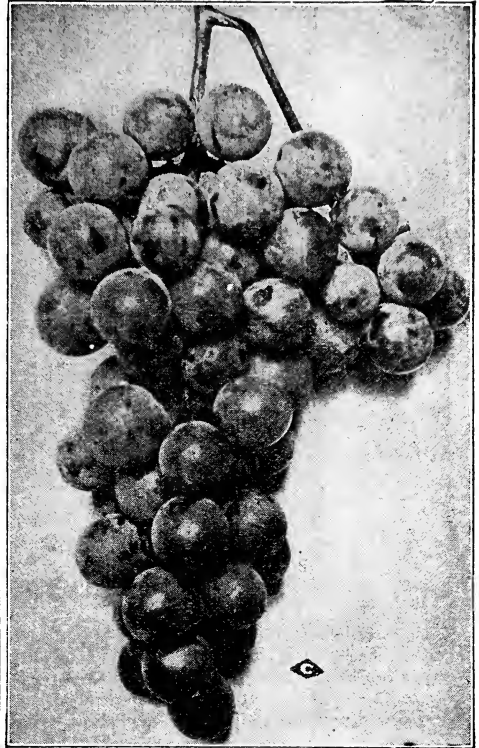
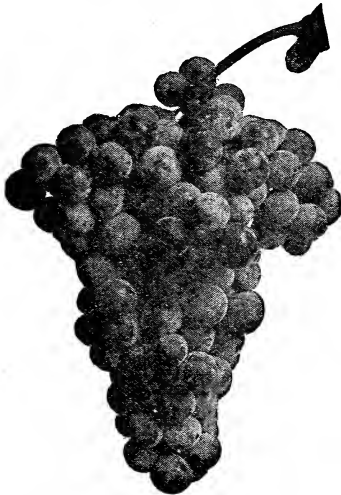
CAMPBELL'S EARLY. The king of grapes. The best all around grape on the market. A very strong, hardy vine, with perfect, self-fertilizing blossoms, always setting its fruit well and bearing abundantly. Clusters very large, berries round and of great size, very sweet and rich. The seeds separate easily from the pulp. Ripens first of August, but can be kept until December in cold storage; color black, with a light purple bloom.

ELVIRA (White). Bunch medium, shouldered and very compact; berry medium, pale green with yellow shade, sweet, tender and free from foxiness; in the West it is grown as wine grape.

NIAGARA. A magnificent white grape and very valuable for both garden and vineyard; a rank grower and very productive of beautiful bunches of the largest size; berries large, with tough skin; quality good; ripens with the Concord.

MOORE'S DIAMOND. White. A seedling of Concord, partaking of all its good qualities. Of a beautiful greenish color, without any of the yellow spots so common on white grapes. Berries are large, sweet, and of as good quality as some of the more delicate varieties. It is as hardy as the Concord, a profuse bearer and in all one of the best of the newer sorts. Ripens early, a few days before Concord. Very hardy. I recommend this grape for Nebraska and Kansas; does well here.

LUCILE. A beautiful large red grape, which yields as much as Concord; the very best quality, as hardy as any grape listed, except the Beta. A very strong, robust grower; ripens its fruit early. Vine is healthy and free from disease; never drops its berries.



Concord

WORDEN. This variety is a seedling of Concord which it greatly resembles in appearance and flavor, but the berries are larger, the fruit is better flavored and ripens several days earlier. Black.

BRIGHTON. A cross between the Concord and the Diana Hamburg. Bunches large, berries of medium size; flesh sweet, tender, and of the highest quality; ripens early. Red.

BETA. A small to medium sized black grape, quite acid, but of good quality and fine flavor. Very early, prolific and healthy. It is valuable chiefly for its hardiness. It is hardy without protection far into Minnesota and on this account it is especially valuable for arborers where the large varieties are a little too tender. They are fine for jelly, better than other varieties and make excellent grape juice.

	Per 1	Per 10	Per 100	Per 1000
Agawam, strong vines	\$0.25	\$2.25	\$20.00	
Brighton, strong vines25	2.25	20.00	
Concord, 1 year, good vines.....	.08	.60	5.00	\$ 40.00
Concord, 1 year, select vines10	.80	7.00	60.00
Concord, 2 years, select vines14	1.20	10.00	80.00
Elvira, strong vines20	1.75	15.00	
Lucile, strong vines25	2.20	20.00	
Moore's Early, strong vines17	1.50	14.00	120.00
Niagara, strong vines17	1.50	14.00	120.00
Worden, strong vines17	1.50	14.00	120.00
Campbell's Early, strong vines35	3.00	27.50	
Beta, strong vines25	2.20	20.00	
Moore's Diamond, strong vines25	2.20	20.00	

BY PARCEL POST, PREPAID, ADD 2 CENTS FOR EACH VINE ORDERED.



Oregon Champion

Gooseberries

Should be planted in good, rich soil, and well manured once a year. They will do well on any variety of soil if well drained and fertile. Prune regularly and thoroughly; cutting out all dead wood and all surplus branches. Do not let the bushes grow too thick; the fruit will be larger and more plentiful. Plant in rows four to six feet apart and four feet apart in the rows. Gooseberries should be planted in every garden, no matter how small; they are hardy, rugged and easily grown, and the fruit is sought for by every housewife for culinary purposes and sells well in all markets.

HOUGHTON. An enormously productive and always reliable old variety. Of vigorous growth, slender and spreading, not subject to mildew. Fruit of medium size, smooth, pale red, tender and of good quality.

CARRIE. A variety of Minnesota and claimed to possess "more valuable points of excellence than any other gooseberry" because "it is the most productive, the most salable, the most profitable, the hardiest, the healthiest, the freest from mildew, the earliest bearer." Fine for the North. Of a bright maroon color and of excellent quality. Most valuable gooseberry for jams, jellies and canning.

PEARL. A very desirable American variety. Very hardy, entirely free from mildew, superior in size and quality, and more productive than Downing. We take pleasure in recommending it for small or extensive planting as one of the best berries of recent introduction. The large berries are pale green and of the finest quality, and valuable for home or market.

RED JACKET (Josselyn). This American seedling has been widely planted in recent years, and is highly recommended by all growers. Bush is very

hardy, clean, healthy foliage and entirely free from mildew. Fruit large, smooth, pale red, and of first class flavor and quality. It is considered the best fruited gooseberry in cultivation.

DOWNING. A well known American sort, which has given the best results everywhere; large and handsome, pale green berry; of splendid quality for dessert and cooking. Bush vigorous, a strong upright grower and exceedingly productive. An excellent sort for family use and suitable for market. This variety is seldom affected by mildew.

POORMAN'S. It is so called from the fact that when ripe it is perfectly sweet, like a sweet cherry, and requires little, if any, sugar for culinary purposes. This most remarkable gooseberry is a seedling from Houghton and is as hardy as its parent. It is a strong grower, the bushes being inclined to grow in tree shape. It is red when ripe, very large and has a shape and flavor like a plum.

OREGON CHAMPION. Berries very large, brownish red color, very sweet and fine for table use and pies. Bush a strong grower, healthy and not very thorny and a very prolific bearer. I recommend this variety to my customers, especially for large plantations. It will bring good returns. Best berry for the market.

	Per 1	Per 10	Per 100
Houghton, 2-yr. plants	\$0.20	\$1.50	\$12.00
Downing, 2-yr. plants	.22	2.00	18.00
Pearl, 2-yr. plants	.30	2.50	23.00
Red Jacket, 2-yr. plants	.22	2.00	18.00
Poorman's Sweet, 2-yr. plants	.40	3.50	30.00
Oregon Champion, 1-yr. plants	.25	2.00	18.00
Carrie, 2-yr. plants	.18	1.50	12.50

BY PARCEL POST, PREPAID, ADD 3 CENTS FOR EACH VINE ORDERED.

Currants

A cool, moist location is best for this fruit, and for this reason it succeeds admirably when planted by a stone wall or fence, being benefited by partial shade. Plant in rows four feet apart, and the plants three feet apart in the rows. They should be pruned each year, and all dead wood cut from them. Keep them thinned out so that air can freely pass through them. Currant worms can be destroyed by the use of hellebore. Dissolve an ounce in three gallons of water, and apply with a syringe or small sprinkling can. This can be done with a very little expense if performed at the right time.

	Per 1	Per 10	Per 100
Cherry, 2 years.....	\$0.12	\$1.10	\$10.00
Victoria, 2 years.....	.12	1.10	10.00
Red Dutch, 2 years.....	.12	1.10	10.00
White Dutch, 2 years.....	.15	1.30	12.00
White Grape, 2 years.....	.15	1.30	12.00
Perfection, 2 years.....	.25	2.20	20.00

By parcel post, prepaid, add 4 cents for each vine ordered.

WHITE GRAPE. The best white currant. The bunches are large and full, berries large, sweet, of a beautiful translucent white and of mild, superior quality; very fine for table. Bush grows quite vigorous, somewhat spreading, and produces large crops. A dependable and very popular variety.



White Grape

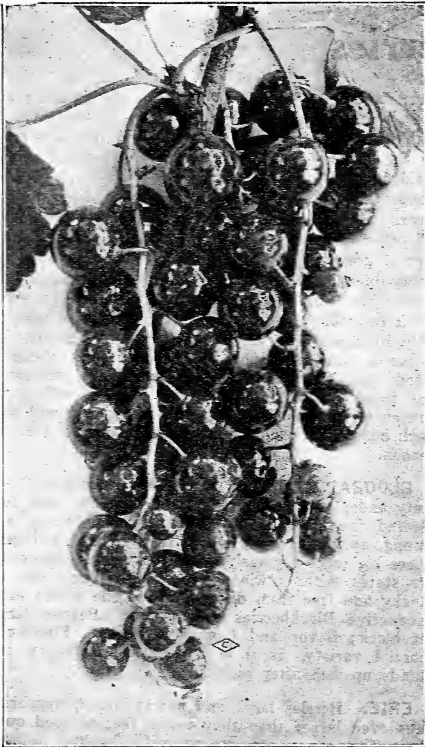
VICTORIA. Red. Bunches long; berries large, of a bright red color and excellent quality. A strong grower, extremely hardy. The best late variety.

RED DUTCH. An old well-known standard variety; berries dark red, mild sub-acid; one of the most valuable late varieties.

PERFECTION. This grand new fruit was originated by Charles G. Hooker of New York, by crossing the Fays Prolific with the White Grape Currant, with the view of combining the large size and color of the Fay with the good quality and productiveness of the White Grape. The color is a bright red; size as large or larger than Fay, the cluster averaging longer. The Perfection has a long stem, making it easy to pick without crushing any of the berries. It is a great bearer. The berries are of rich, mild flavor, sub-acid, plenty of pulp with few seeds. Less acid and of better quality than any other currant in cultivation. In my garden the Perfection is the best bearer with largest berries; the sweetest currant I ever tasted, and the easiest to pick. Anybody can pick a basket of Perfection as fast or faster than cherries.

CHERRY. Red. Bunches very large, berries sometimes measuring one-half inch in diameter. A strong grower and must have good cultivation to do well.

WHITE DUTCH. Clusters two to three inches long, berries medium, translucent, a little darker than white grape; quality excellent and ripens early, vigorous and productive.



Cherry



Early Harvest

Blackberries

In field culture plant in rows eight feet apart and three feet in rows. In garden culture plant rows five feet and three feet distant in rows. The pruning should be governed by the growth of cane and should be severe. Pinch back the canes in summer when three feet high, causing them to throw out laterals. Cultivate for first season to get plants well established, then the ground between the rows may be mulched enough to keep down the weeds.

We grow our Blackberries from root cuttings which are much better than sucker plants.

	Per 1	Per 10	Per 100	Per 1000
Erie	\$0.08	\$0.60	\$ 5.00	\$40.00
Early Harvest08	.60	5.00	40.00
Snyder10	.80	6.00	45.00
Eldorado12	1.00	8.00	60.00
Oregon Evergreen15	1.20	10.00	85.00

By Parcel Post add 2 cents for each plant ordered.

SNYDER. Very popular for North and Northwest on account of the extreme hardiness. Wonderfully productive, size medium, fruit juicy and sweet, without the hard core of many sorts; cane remarkably strong and thrifty; more largely planted than any other of the ironclad varieties. We have a heavy demand for them every year. Season early.

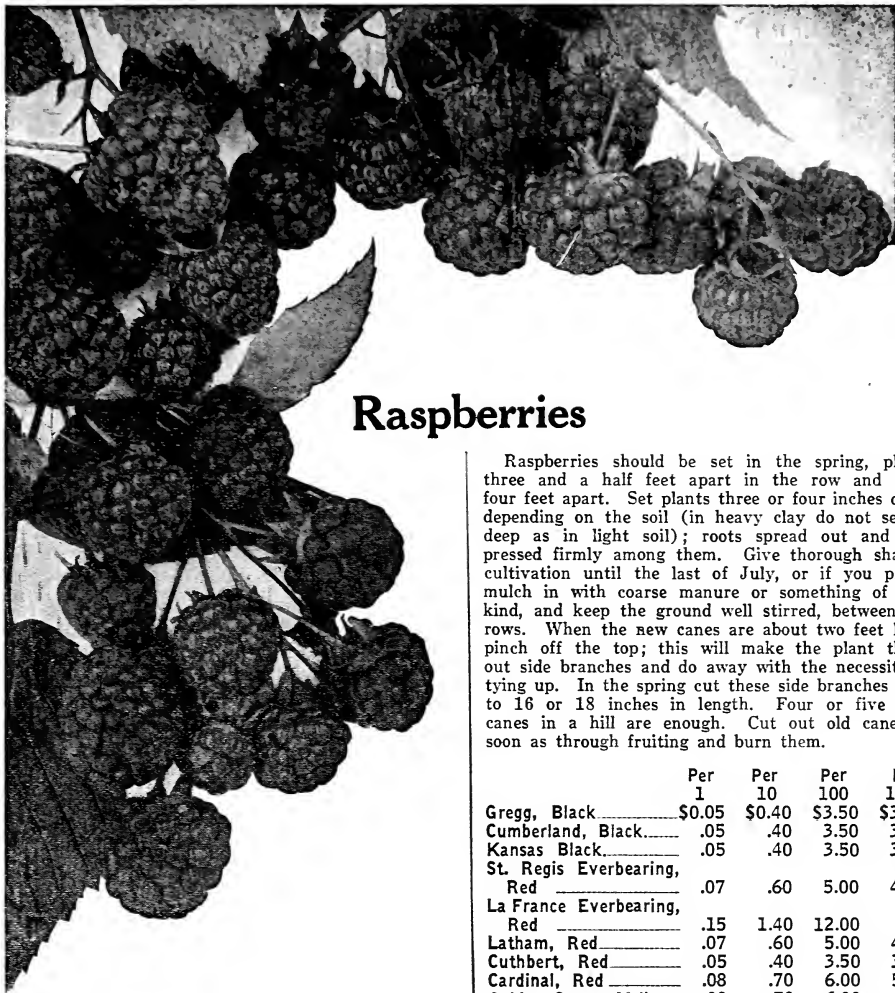
EARLY HARVEST. One of the earliest blackberries in cultivation; a compact dwarf grower, fruit rather small and of good quality, heavy bearer; its extreme earliness makes it a very profitable variety. Bloom stands the spring frosts best of all.

OREGON EVERGREEN. The Oregon Evergreen blackberry is one of the good things that have come to stay with us and will prove a great boon to all lovers of the wholesome and luscious fruit. Everyone who has a dooryard or a piece of ground, how-

ever small, can now have plenty of the sweetest and best blackberries at little trouble or cost, as this valuable new variety will thrive and bear immense crops of the most luscious fruit wherever it can get a foothold in the soil, and any kind of trellis, arbor or support for the magnificent, grape-like vines to run over. The Oregon Evergreen blackberry differs from all other blackberries in form of its foliage and manner of growth. The canes do not die in winter like other blackberries, but continue to grow and bear year after year like a grapevine. The foliage somewhat resembles that of the fern and forms a remarkably handsome covering for arbors. The berries are borne in clusters of four or five on a stem, are good sized, fine flavored, sweet and delicious, either to eat from the hand, canning or cooking. They are immensely productive. No other blackberry will bear such heavy crops and continue fruiting so long in the season.

ELDORADO. This is the leading commercial variety under cultivation today, and long has been considered the most profitable variety. Eldorado is a strong, upright grower, and perfectly hardy, as it produces big crops regularly, even throughout the northern states, without winter protection. The canes are stocky and free from disease. It is one of the most productive Blackberries ever grown. Berries large, jet black; flavor and quality excellent. Fine commercial variety, as it is a fine looking berry and stands up well after picking.

ERIE. Berries large and nearly round, appearing thus even larger than they really are; of good quality. The canes are strong with healthy foliage, hardy, free from rust, supporting heavy crops of fruit. Ripens between Early Harvest and Snyder.



Raspberries

Raspberries should be set in the spring, plants three and a half feet apart in the row and rows four feet apart. Set plants three or four inches deep, depending on the soil (in heavy clay do not set as deep as in light soil); roots spread out and dirt pressed firmly among them. Give thorough shallow cultivation until the last of July, or if you prefer mulch in with coarse manure or something of that kind, and keep the ground well stirred, between the rows. When the new canes are about two feet high, pinch off the top; this will make the plant throw out side branches and do away with the necessity of tying up. In the spring cut these side branches back to 16 or 18 inches in length. Four or five good canes in a hill are enough. Cut out old canes as soon as through fruiting and burn them.

	Per 1	Per 10	Per 100	Per 1000
Gregg, Black.....	\$0.05	\$0.40	\$3.50	\$30.00
Cumberland, Black.....	.05	.40	3.50	30.00
Kansas Black.....	.05	.40	3.50	30.00
St. Regis Everbearing, Red07	.60	5.00	40.00
La France Everbearing, Red15	1.40	12.00	-----
Latham, Red07	.60	5.00	40.00
Cuthbert, Red05	.40	3.50	30.00
Cardinal, Red08	.70	6.00	50.00
Golden Queen, Yellow..	.08	.70	6.00	-----

Parcel Post price, add 2 cents for each plant ordered.

KANSAS. This is the earliest of all Black Raspberries. A very strong grower and produces its crops of top quality fruit in a very short time. Berries medium size, firm, handsome and of the best quality. Kansas is perfectly hardy, drought resistant; in fact, a good all purpose variety that will give both pleasure and profit.

CARDINAL (Red). The most remarkable plant of cane growth yet introduced; canes not injured by temperature of 26 degrees below zero; color dark red, almost purple; very productive; berries large and round. The best of its kind.

LA FRANCE—Everbearing Raspberry. This is a new berry originated in New York, it is a very robust grower and fruit is dark red in color, fine flavor and twice as large as St. Regis.

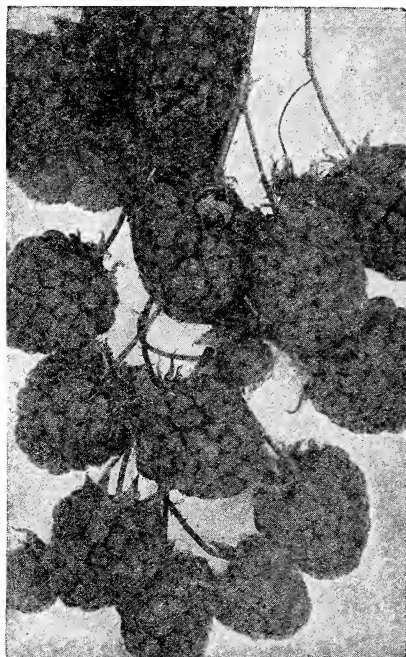
GREGG. Leading Black Cap and a popular market sort; canes of strong, vigorous growth and under good cultivation very productive; berries are large, covered with heavy bloom, firm, meaty and of fine flavor. It requires a good strong soil to produce best results; it is not entirely hardy, but suffers during unusually severe winters; it is by far the best Black Cap and the largest of any.

CUMBERLAND. A mammoth mid-season Black Cap that loads its stalk canes with handsome fruit. The great glossy berries out-sell all others of their season, and are firm enough to ship well. Excellent quality. Many berries are seven-eighths of an inch in diameter. Hardiness, productiveness, size and quality make it desirable. Ripens a few days before the Gregg.

ST. REGIS EVERBEARING RASPBERRY. An excellent novelty. Raspberries for four months! That's what you get when you plant the St. Regis, the new everbearing variety. Moreover, they are not only raspberries, but raspberries of the highest grade—in size, in brilliant crimson color, in firmness, in flavor. The variety has been aptly termed "the early till late" variety; for it is the first red raspberry to give ripe fruit, while it continues to produce berries without intermission until late October. The St. Regis is of pure American blood, and of ironclad hardihood. In addition to the brightest crimson color, and large size of the fruit, it is so firm and rich in sugar that it will stand shipping two hundred miles, arriving at market in first class order; and it can readily be kept in perfect condition for several days after being gathered. Unlike any other raspberry, the St. Regis yields a crop of fruit the season it is planted. Plants of it planted in early April gave ripe berries on June 20th of the same year. For four weeks thereafter the berries were large and beautiful, firm and full flavored to the very last.

CUTHBERT, OR QUEEN OF THE MARKET. A remarkably strong, hardy variety, standing the northern winters and southern summers equal to any. Berries very large, conical, rich, crimson; flavor is sweet, rich and luscious.

LATHAM. Although this is a comparatively new variety it is entirely past the experimental stage, and we unhesitatingly recommend Latham as one of the very best Red Raspberries ever grown. This variety originated at the Minnesota State Fruit Breeding Farm and is being grown extensively in Minnesota, the Dakotas, also in Canada, and has never been known to winterkill, even though exposed to 45 degrees below zero. Latham is a tall, vigorous grower, canes extra heavy, foliage dark green, entirely free from disease. Ripens with Cuthbert and is enormously productive. Berries much larger than any other Red Raspberry, many of them one inch



Latham

in diameter. Color good, quality of the best, full Raspberry flavor. Excellent for shipping or home use.

GOLDEN QUEEN. This variety is very much like Cuthbert in every way except color which is a golden yellow. You should plant some of this variety, it has a fine flavor.

LOGANBERRY

The Loganberry is a hybrid between the raspberry and blackberry. The fruit is as large as the largest blackberry, and is produced in immense clusters. The color is clear, dark red. It partakes of the flavor of both the blackberry and the raspberry, mild, pleasant, vinous flavor, delicious and peculiar to this berry alone. Seeds small, soft and few. Berries very firm and carry well. Strong grower, enormous bearer. Ripens early, just after strawberries. Not hardy north of the 40th parallel. Do not plant them in Nebraska unless you wish to cover them over winter. Lay canes down late in the fall and cover with straw.

Price—25 cents each; \$2.25 per 10; \$20.00 per 100. By parcel post, prepaid, add 2 cents for each vine ordered.

Chappell, Neb., April 2, 1927.

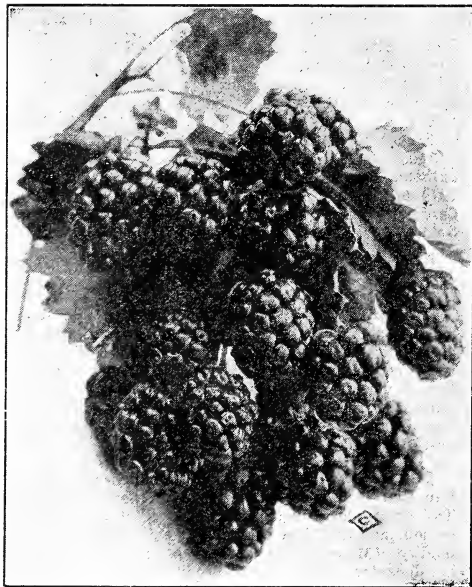
C. M. Hurlbert & Son,
Fairbury, Neb.

Dear Sirs:

Every tree and plant, except the one cherry tree, of our order from you last spring, lived and made fine growth. We certainly were pleased. If you find it necessary in any case to substitute we will trust your judgment fully for whatever is best for this altitude.

Respectfully,

H. S. FLETCHER,
Pine Bluffs, Wyo.



Blackberry

HIMALAYA BERRY

The vine is a vigorous grower making a growth from 20 to 30 feet in a season, which can be trained upon a fence or arbor similar to grape vines. Fruit is black, very sweet with no core, fine for pies and jellies. The vines should have some protection in winter, which can be done late in the fall by pruning the plants and leaving only two canes to each plant. Lay them on the ground and cover with 4 inches of earth which should be removed in early spring.

Each, 15c; 8 for \$1.00; \$10.00 per hundred. By parcel post, prepaid, add 2 cents for each vine ordered.

DEWBERRIES

BARTEL'S MAMMOTH—Fruit very large, luscious and handsome; perfectly hardy, a strong grower and enormously productive; a superb and profitable market fruit. The vines should be allowed to lie on the ground in winter and staked up early in the spring.

LUCRETIA. This is the leading and most popular Dewberry yet discovered; it succeeds everywhere and is not particular about the kind of soil. Berries very large, black and fine flavor. It should not be picked oftener than twice a week, when it is very sweet and rich. It ripens with the last strawberries.

Price—8 cents each; 75c for 10; \$6.00 for 100. By parcel post, prepaid, add 2 cents for each vine ordered.

AUSTIN'S THORNLESS. A new variety just introduced, entirely without thorns, which makes it much easier to pick them than the common sorts; it is a good grower, hardy and fruit is of fine quality and should be planted in every garden.

Price—20 cents each; \$1.75 for 10; \$15.00 for 100. By parcel post, prepaid, add 2 cents for each vine ordered.



Himalaya Berry

ELDERBERRIES

A well known bush which bears a fine fruit for pies or wine.

Price—15 cents each; 10 for \$1.00. By parcel post, 20 cents each.

BUFFALO BERRY

The Buffalo Berry belongs to the Olive family of trees. It grows in bush form and sometimes attains a height of ten feet; its leaves are of bright silvery color, and with its load of red fruit, makes a nice shrub. It is perfectly hardy, and bears immense crops of fruit, which is very good for tarts, jellies, pies and preserves.

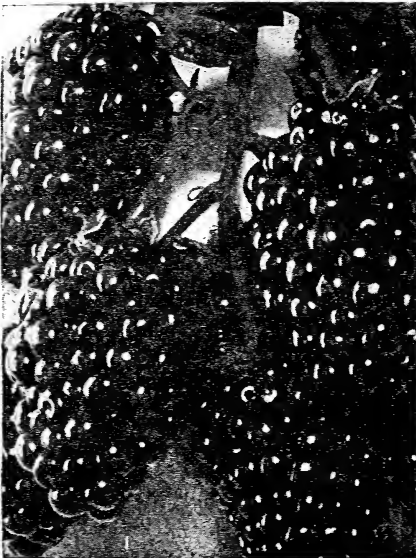
It is sometimes called the winter currant from the fact that the fruit remains on until January.

PRICES BY FREIGHT OR EXPRESS

	Each
4 to 5 feet.....	\$0.60
3 to 4 feet.....	.50
2 to 3 feet.....	.35

PARCEL POST PRICES

	Each
4 to 5 feet.....	\$0.70
3 to 4 feet.....	.60
2 to 3 feet.....	.40



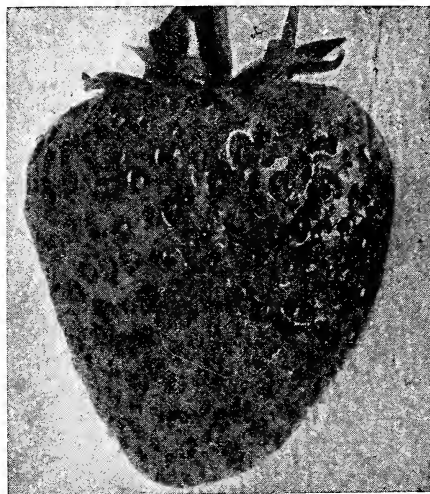
Dewberries

RUSSIAN MULBERRY

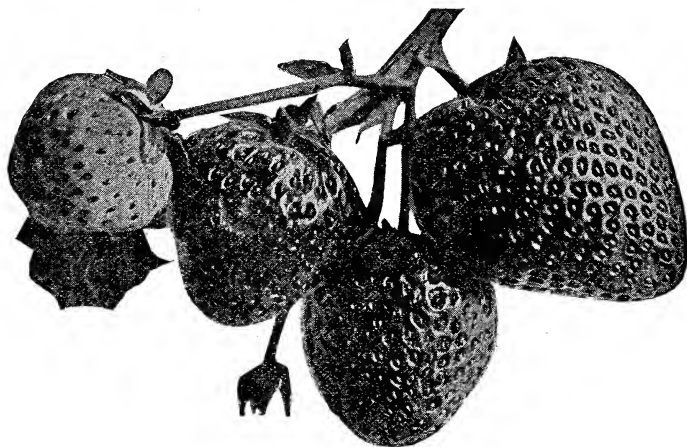
This tree has been planted very extensively in the western states for the past fifteen years, and we know of no other tree that will stand as much drought and neglect and yet make a good growth each year.

It makes a good shade tree, holding its leaves late into the fall; and for a hedge, without thorns, it has no superior. Trees commence to bear at two years old; fruit resembles the blackberry and will ripen from July 1st to September.

	Per 1	Per 10	Per 100
5 to 6 ft., well branched, transplanted	\$0.25	\$3.00	\$28.00
4 to 5 ft., well branched, transplanted22	1.80	17.00
Mailing price27	2.30	
3 to 4 ft., well branched, transplanted17	1.50	12.00
Mailing price22	2.00	
2 to 3 ft., transplanted15	1.20	10.00
Mailing price20	1.50	
	Per 10	Per 100	Per 1000
6 to 12 in. seedlings	\$0.10	\$0.35	\$3.00
Mailing price12	.45	3.50
12 to 18 in. seedlings15	.50	4.00
Mailing price18	.60	5.50
18 to 24 in. seedlings20	.70	6.50
Mailing price25	1.00	8.50
2 to 3 ft. seedlings25	2.00	15.00
Mailing price35	2.50	



Strawberry

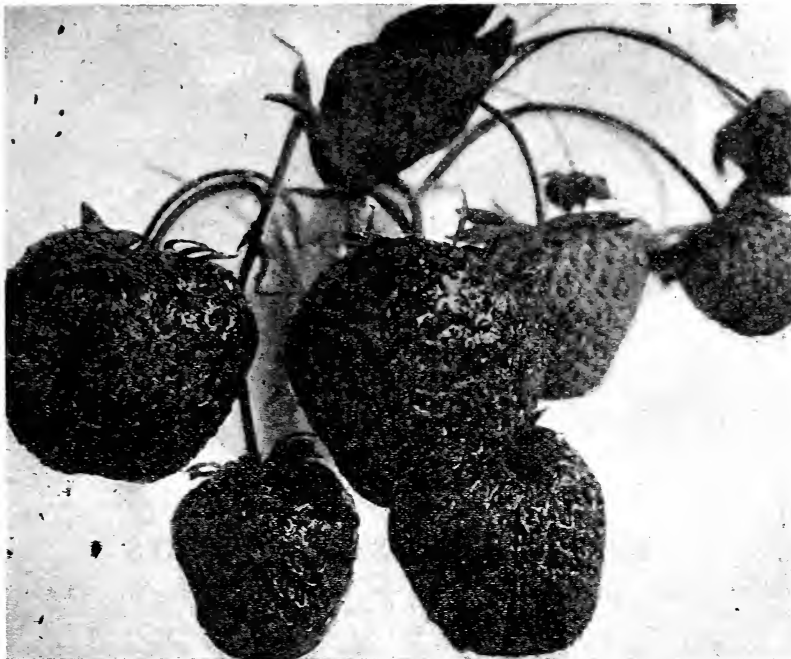


Strawberries

THE ground should be worked ten or fifteen inches deep and be properly enriched as for any garden crop. Drainage is necessary in very wet soil. For family use plant fifteen to eighteen inches apart each way, and after a few strong plants have been set from runners, then pinch off all runners as fast as they appear. Keep the ground free from weeds and frequently stirred with a hoe or fork. Plants treated in this manner will produce more crowns and therefore double the amount of well developed fruit than when runners are left to grow.

When the winters are severe, it is well to give the ground a light covering with coarse straw or litter. The covering should not be placed on until the ground is frozen. Fatal errors are made by putting on too much and too early. If coarse straw is used, it may be left on until the plants have done fruiting; taking care to open it up around the plants early in the spring, so as to give them plenty of sunlight and air.

CAUTION: Be sure and cut off all fruit-stems the first year. This will cause the plants to make new runners and is what you want for next season's crop.



Cooper

SENATOR DUNLAP (Per). A well tested, wonderfully productive variety, one of the safe sorts to plant everywhere and sure to take a high place among the prominent standard sorts. Plant resembles Warfield, rampant runner, should be restricted in its production of plants; fully equal to Crescent and Warfield in its ability to succeed under all circumstances. Fruit good size, regular form, beautiful bright red, glossy, firm, splendid keeper and shipper; excellent quality. One of the best for canning. Ripens early and continues a long time.

Price—25 plants 25 cents; 100, 80c; 1000, \$6.00. Parcel post, 25 plants 35 cents; 100, \$1.00; 1000, \$7.00.

GIBSON (Per). Without doubt this is one of our best berries. The plant growth is very good and the plant is larger than the Dunlap. It is wonderfully prolific and the berry is excellent for market, of bright color and holds up well. The plant is a thrifty grower and all that can be desired.

Price—25 plants 25 cents; 100, 80c; 1000, \$6.00. Parcel post, 25 plants 35 cents; 100, \$1.00; 1000, \$7.00.

COOPER. This variety has had a wonderful sale during the past two years and it seems to merit the confidence placed in it. Cooper is probably the largest strawberry grown and it is also a heavy cropper, so the amount of fruit produced is enormous. It is a mid-season, staminate variety. The fruit is of a beautiful bright red color and of excellent quality. On account of its large size and beautiful appearance it sells at a premium over most other sorts and is especially recommended for supplying home markets.

Price—25 plants, 40 cents; 100, \$1.25; 1000, \$8.00. Parcel post, 25 plants, 45 cents; 100, \$1.35; 1000, \$9.00.

GANDY (Per). This is one of the most reliable, large late berries that is grown. It is one of the old standard varieties that you can depend upon. It is a strong grower and a good plant-maker. The large, handsome appearance of the fruit always commands for it a high price in market. The fruit always grows large and is one of the best shipping varieties known.

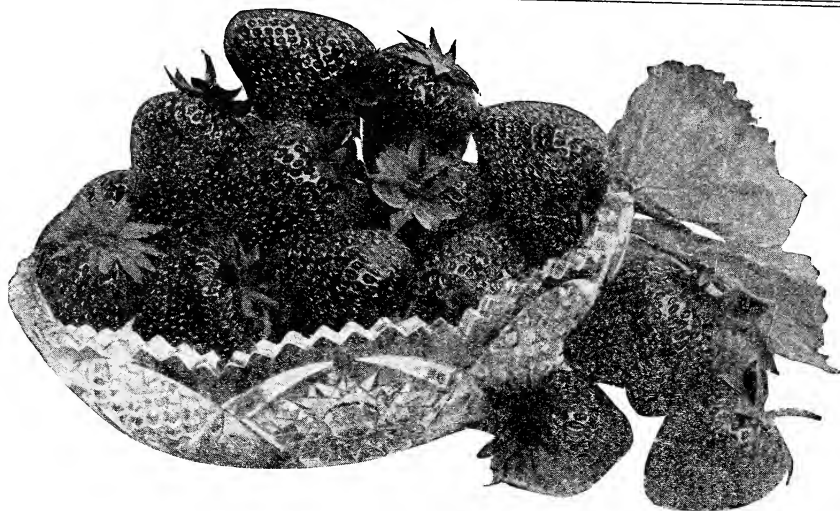
Price—25 plants, 30c; 100, \$1.00; 1000, \$7.50. Parcel post, 25 plants, 35c; 100, \$1.10; 1000, \$6.00.

JUMBO. A new variety introduced by L. J. Farmer of Pulaski, N. Y., from whom we purchased our stock plants. A perfect flowering sort, late season, very thrifty and produces large crops of fruit of immense size. We recommend that you give this variety a trial.

Price—25 plants, 50c; 100 plants, \$1.75. Parcel post, 25 plants, 55c; 100, \$2.00.

PREMIER (Per). This is the most popular early strawberry of the day. The berries are very large, long pointed, light red in color and present a good appearance in the basket and in market. It produces such a quantity, that growers are simply carried away with it; no other early strawberry is anything near equal to it in productiveness. It is rather light colored for canning but for home use and near market no other early strawberry can anywhere compete with it. The plants are light green in color and the true variety may be identified by a slight upward curl of the leaves.

Price—25 plants, 40c; 100, \$1.25; 1000, \$8.00. Parcel post, 25 plants, 45c; 100 plants, \$1.35; 1000 plants, \$9.00.



Champion

EVERBEARING STRAWBERRIES

Strawberries that yield fruit continually from May until frost have been known for a long time. We have tested on our own grounds many varieties which have been discarded and now offer the three varieties we consider best.

Plant and care for them the same as the common summer sorts. When plants are set they will commence to bloom and bear fruit at once. You should not allow them to do this for it will check the growth of the plants, so for the first six weeks after planting keep all bloom stems cut off, then allow them to bear and you will have fruit until cold weather.

PROGRESSIVE. This popular Everbearing variety is so well known that we will give only a very short description. In manner of plant growth Progressive closely resembles Senator Dunlap and also has the productive ability of that grand old variety. The plants are medium in size, foliage healthy, very deep rooted which enables it to produce its big load of berries during severe droughts. Progressive commence to bear three months after the plants are set and will continue all summer and fall. The berries are medium sized, beautiful rich red color, flavor sweet and delicious, unsurpassed as a canning or table berry. We have a fine stock of genuine Progressive.

Prices on Progressive—25 for 35c; \$1.25 per 100; \$10.00 per 1000. Mailing price, 25 for 50c; \$1.50 per 100; \$11.00 per 1000.

CHAMPION. This remarkable berry should have space in every garden in America, as it is by far the best fall bearing strawberry ever introduced. It prolongs the season of this most delightful of all fruits—strawberries—from the one short month of June to cover the entire summer and fall season. When you plant Champion you are certain of success because three months after planting every mother plant and many runner plants will commence bearing and will continue all summer and fall.

Prices on Champion Strawberry—25 for 35c; \$1.25 per 100; \$10.00 per 1000. Mailing price, 25 for 50c; \$1.50 per 100; \$11.00 per 1000.

MASTODON. This is a new variety of strawberry which was introduced a few years ago and we have the genuine stock. This variety has been greatly advertised by nearly all plant growers and seems to be a success wherever planted. Up to this time prices have been rather high for this variety, but we now have a good stock of the plants and will make prices so reasonable you can afford to buy them. The plant is very thrifty, grows large, has a fine root system and fruit is at least twice as large as other varieties of everbearing strawberries. The leaves are very large which protects the fruit from the sun.

Prices on Mastodon—1 dozen plants, 35c; 50 plants for \$1.50; 100 for \$2.50; 1000 for \$20.00. Mailing price, 1 dozen for 45c; 50 for \$1.75; 100 for \$2.75; 1000 for \$22.00.

Fairbury, Neb.

Dear Sirs:

Received the trees in fine condition and was very much pleased with their size and want to thank you for the honeysuckle.

Yours truly,
JOE E. BARTON.

Salina, Kan.

Dear Sirs:

Have ordered stock from you for 25 years (or from this nursery), and have always found everything satisfactory. Please ship at once, freight prepaid, as per your offer.

Yours truly,
W. A. WELAND.
Feb. 17, 1927.

Ogden, Utah, March 25, 1927.

Hurlbert and Son,
Fairbury, Neb.

Dear Sir:

We received the trees yesterday the 24th. They passed inspection and come in first class condition. They are fine looking trees and we are well pleased with them.

Yours very truly,
R. B. CARTER,
Ogden, Utah.

965 Liberty Ave.

ASPARAGUS

This earliest and finest of spring vegetables is among the earliest cultivated and most profitable. A bed once planted suffers no deterioration for many years. See that the ground is well manured and well drained; work it up fine and deep, and make it very rich with well rotted barnyard manure. Place the plants 8 inches apart in rows 3 feet apart. Spread out the roots in a trench made deep enough to permit their crowns to be covered with 3 to 4 inches of mellow dirt.

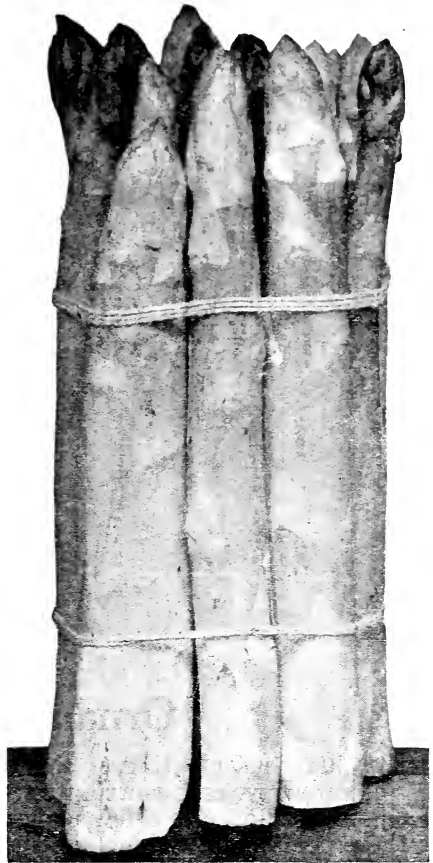
CONOVER'S COLOSSAL. A remarkably strong growing and very valuable variety. It has such vigor that it gives shoots large enough for cutting in one year from planting, if planted in good soil and well cultivated. The shoots are of a decidedly purple color and are produced in great numbers over a season of 2 to 3 months. Valuable for market as well as table.

Price—10 plants, 25 cents; 100, \$2.00; 1000, \$15.00. Parcel post, 10 plants, 35 cents; 100, \$2.35.

MARTHA WASHINGTON. A New Rust-resistant Asparagus. This new pedigreed rust resistant variety was bred up by the U. S. Bureau of Plant Industry co-operating with the Massachusetts Agricultural Experimental Station covering a period of 14 years. Stalks extra large in size, purple color, very



Horseradish



Conover's Colossal

tender, crisp, and extra fine flavored. Grows fast and thick; making it the most productive variety in existence. The heads stay very compact, solid and always bring a premium over any other variety.

Prices—10 plants, 35c; 100, \$3.00; 1000, \$25.00. Parcel post, 10 plants, 45c; 100, \$3.50.

RHUBARB OR PIE PLANT

This deserves to be ranked among the best early vegetables in the garden. It affords the earliest material for pies and tarts, continues long in use, and is valuable for canning. Make the border very rich and deep.

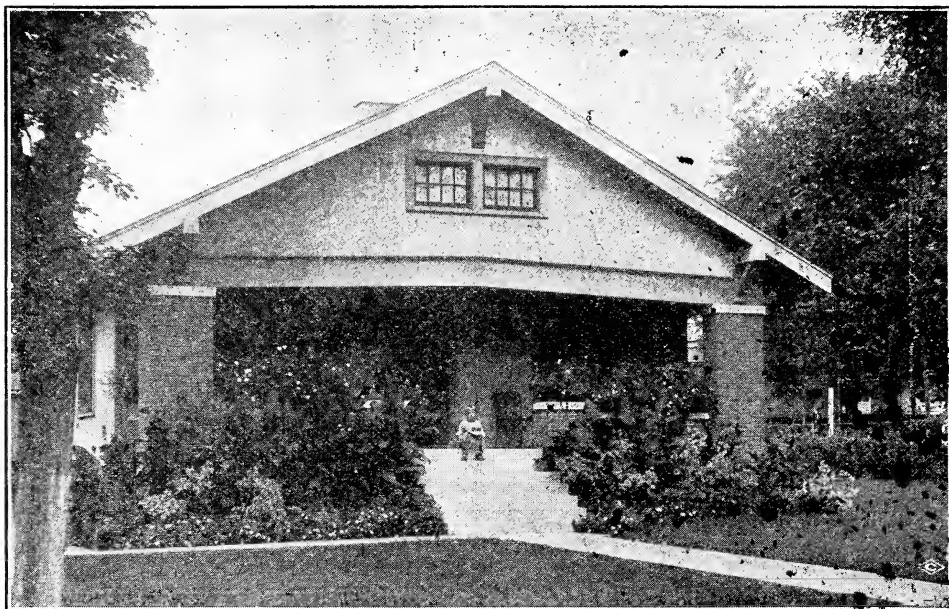
Price—10c each; 80c per 10, \$6.00 per 100. By parcel post, 15c each; 10 plants for \$1.30.

LINNEAUS. Large, early, tender and fine; the very best of all.

VICTORIA. The best for market because of its giant growth.

HORSE RADISH

Price—3c each; 20c per 10; \$1.50 per 100. By parcel post, 5c each.



Ornamental Shrubs

THE judicious planting of shrubs adds greatly to the beauty and value of property, and contributes a wealth of pleasure and interest to the home. There are a few principles governing the artistic arrangement of these beautiful ornamentals, that should be more strictly observed. In general, individual specimens should rarely be isolated from the body of the design. Irregular groups or masses arranged against buildings, fences or property lines, or as border plantations, along walks or drives, are much more effective. A good arrangement of shrubs invariably provides wide open stretches near the center of the lawn.

We have reduced our shrub list somewhat, omitting varieties for which, although very desirable in themselves, there is but little demand.

MOSS ACACIA. An elegant shrub; 5 to 6 ft. tall, with light green pinnate leaves and long, graceful clusters of pea-shaped, rose colored flowers in June, often throughout the summer. The branches are covered with a moss-like growth similar to Moss Roses. The shrub is hardy here, is beautiful when in full bloom and should be in every garden. Can be raised in tree form if desired. It is easily raised and really a good shrub for any garden. 2 to 3 feet, 70c each. Postpaid, 75c.

ALMOND, DOUBLE FLOWERING PINK. The Flowering Almonds are pretty dwarf bushes that bloom quite early and are very showy in spring. Their slender, leafless, upright branches are entirely hidden by stemless very double flowers of pink color resembling small roses. Grows to a height of 4 to 5 feet and blooms in May. One of the best flowering shrubs and highly recommended for the western states. 2 to 3 feet, 75c each; postpaid, 80c.

ALTHEA or ROSE OF SHARON. These are fine shrubs and especially valuable because of their flowering in the fall when nearly all other shrubs are out of blossom. Hardy and easy of cultivation. Red, white and pink. Each, 35c; by parcel post, 40c each.

BECHTEL'S DOUBLE FLOWERING CRAB. A medium sized hardy ornamental tree of great beauty. When in bloom this tree presents the appearance of being covered with roses, fragrant flowers of immense size, sure to give satisfaction to those who plant this beautiful tree. Each, 75c; by mail, 85c.

BARBERRY THUNBERGII (Japanese Barberry—Berberis). The Barberry Thunbergii can be planted anywhere. It has nothing to do with Black Rust. You need not be afraid to plant the Thunbergii. Invaluable little shrub that fits in almost every planting. Grows about everywhere, handsome foliage of bright green, oval leaves that turn to most brilliant

shades of orange and red in the fall. Slender, graceful branches protected by thorns, are lined with little scarlet berries of great attractiveness from early autumn well into winter. Very valuable for a low hedge.

PRICES OF BARBERRY

	Per 1	Per 10	Per 100
8 to 12 inches.....	\$0.20	\$1.50	\$12.00
Mailing price.....	.22	1.80	14.00
12 to 18 inches.....	.25	2.00	17.00
Mailing price.....	.28	2.50	20.00
18 to 24 inches.....	.30	2.75	25.00
Mailing price.....	.35	3.00	27.00

NEW RED LEAVED JAPANESE BARBERRY. It is similar in all respects to the green-leaved Japanese Barberry which is so popular for mixing in the shrubbery border, as single specimens, or for planting in clumps on the lawn, as well as for foundation plantings and for hedges, but the foliage of this new variety is of a rich, lustrous, bronzy red, similar to the richest red-leaved Japanese Maples. However, unlike these and other colored shrubs in which the coloring fades or disappears entirely as the season advances, this new Barberry becomes more brilliant and gorgeous throughout the summer, and in the fall its foliage changes to vivid orange, scarlet, and red shades, more brilliant and more effective than in the ordinary Japanese Barberry. In this coloring it is unequaled by any other shrub and is followed by the same brilliant scarlet berries common to the type, which remain on the plant the entire winter. One year plants, 50c; by mail, 60c.

EVERBLOOMING BUTTERFLY BUSH (For cut see second page of cover). This shrub from a young plant set out either in the spring or fall, will mature to full size the first summer, producing a handsome bush, which the first year often attains a height of four feet. It produces long, graceful stems, which terminate in tapering panicles of beautiful lilac-colored



Barberry

flowers that are of miniature size and borne by the hundreds on a flower head which is frequently 10 inches long. A single plant the first season will throw out as many as 50 flower spikes, which increase greatly in number during the succeeding years. 40c each; by mail, 45c each.

SIBERIAN or RED DOGWOOD. Free growing, 6 to 10 feet tall and very hardy; forms a small, handsome tree in some situations; its clusters of small, white flowers in early summer are very dainty, and its bark is a showy dark red in winter. All the Siberian Dogwoods bear in early fall a profusion of whitish-blue berries, making them distinctly ornamental after the flowers have gone. A very brilliant shrub in the winter and early spring when the bark is intensely colored. 2 to 3 foot trees, 40c each; by mail, 45c.

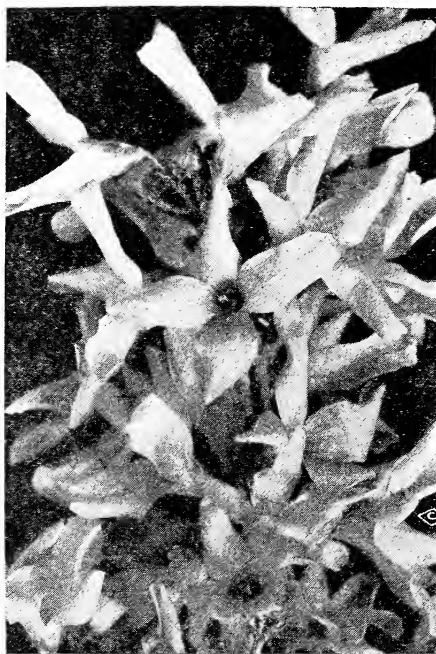
BUSH HONEYSUCKLE, PINK TARTARIAN. The best known of all Bush Honeysuckles, and in our estimation, the finest variety of all. Grows to a height of 8 to 10 feet, with upright, somewhat spreading branches and bright green foliage. The flowers are borne freely in May and June, are of bright pink color, followed by showy, red berries, which ripen in midsummer, and cling to the bush for several weeks. Each, 40c; by mail, 50c.

CALCYCANTHUS. Sweet Scented Shrub or Allspice. An interesting shrub having a rare and peculiar fragrance of wood and flowers; its blooms are abundant and of peculiar chocolate color. Each, 50c; by mail, 60c.

DEUTZIA. A small dwarf shrub with spreading branches, usually growing about 3 feet tall. Leaves bright green, 2 to 3 inches long, flowers pure white, in large clusters or panicles. Of vigorous growth, very free flowering and of easy culture. Each, 40c; by mail, 50c.



Deutzia



Forsythia

ELDER, GOLDEN. A variety with golden yellow foliage. A valuable plant for producing contrast when planted with other shrubs. Grows to a height of about 8 feet, and is of vigorous, spreading habit. The berries, as of the American Elder, are edible, but more red in color. Should have full sun to give best effect. Grows well on all soils and can be pruned into a neat, compact little bush. One of the best golden foliaged shrubs. Each, 45c; by mail, 55c.

FORSYTHIA (Golden Bell). Few, if any, of the spring flowering hardy shrubs can surpass the splendor and brilliancy of the Forsythia. Both the grace and beauty give them a prominent place in all shrub plantations. Of upright, vigorous growth, foliage rich, dark green and lustrous. Flowers brilliant golden yellow, borne in great profusion early in April before the leaves appear. 2 to 3 feet, 40c each; by mail, 50c.

HYDRANGEA. A fine shrub of recent introduction, blooming from July to November. Large, showy panicles of white flowers in the greatest profusion. It is quite hardy and altogether a most admirable shrub for planting singly on the lawn or in the margin of masses. To produce largest flowers it should be pruned severely in the spring and the ground enriched. 2 foot plants, 75c each; by mail, 80c.

TREE HYDRANGEA. These are 4 to 5 foot trees with stems and splendid crowns. They are very effective for the lawn or park, or planted along the sidewalks or driveways, about 10 feet apart, they make a most beautiful sight when in full bloom. By planting one or more of these beautiful trees you can show to your neighbors and friends something nice and not commonly seen. Each, \$1.25; 10 for \$11.00. Mailing price, \$1.50 each; 10 for \$12.00.

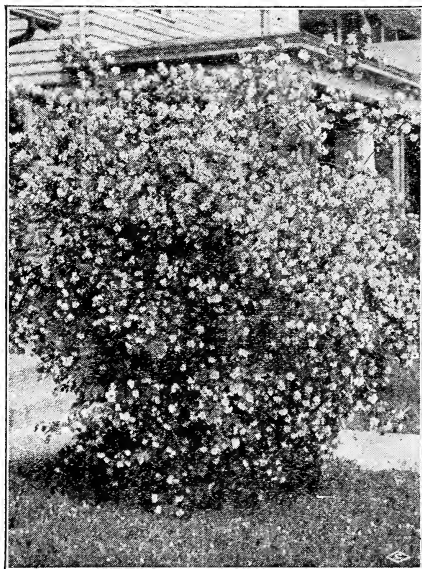
LILAC, PURPLE. With glossy green foliage and beautiful, fragrant flowers. A good plant for the lawn and one of the best for a fancy hedge. Hardy everywhere. Flowers purple. Each, 25c; by mail, 35c.

LILAC, WHITE. Same as above, with white flowers. Each, 25c; by mail, 35c.

PERSIAN LILAC (Purple). Blooms a good deal more than the common, and has smaller leaves. Does not sprout as much from the roots. I prefer the Persian for the flowers, but the leaves of the common are decidedly prettier all summer. Grows 6 to 8 feet high. 2 to 3 feet, 50c each; by mail, 60c.

MOCK ORANGE, CORONARIUS. One of the very best of the old, well-known shrubs. It seldom or never fails to bloom. Fragrant and beautiful waxy white flowers appear in great profusion in June. Here, most years, they bloom by Decoration Day and mixed with Paeonies, make a wonderful and fragrant bouquet. In shape and fragrance, they resemble the orange blossoms, therefore the name. The shrub grows to a height of 10 feet, can be kept lower, though by pruning. Often used for ornamental hedge. Hardy everywhere and valuable for immediate effect in landscape planting. This is one of the most satisfactory shrubs for the Middle West, hardy and it never fails to bloom and needs little care. Each, 35c; by mail, 40c.

JAPANESE QUINCE (Red)—Cydonia. Also called Firebush. Very showy and one of the earliest shrubs to bloom, the flowers appearing before the leaves are fully developed. The brilliant scarlet flowers gleaming like red-hot coals. Fruit about two inches in diameter, yellowish green, and of aromatic fragrance. Invaluable for border or garden planting and make beautiful informal or clipped hedges. As a harbinger of spring the Japanese Quince deserves a prominent

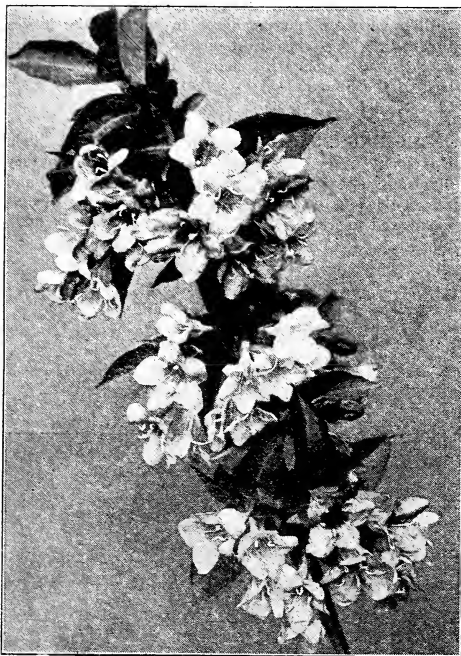


Mock Orange

place on the lawn, where its bright red flowers can be seen to advantage. Sometimes, when snow may be seen in sheltered corners, this shrub will put forth brilliant flowers, glowing like living coals of fire. Very hardy and easily transplanted, and will thrive in almost any well drained soil. Each, 40c; by mail, 50c.

SPIREA (Van Houttei or Bridal Wreath). The best white spirea. The annual growth is long and abundant, and covered in June with a wealth of pure white blossoms. Perfectly hardy. Should be in every collection. 2 to 3 feet, 30c each; mailing price, 40c; 3 to 4 feet, 40c each; mailing price, 50c.

SPIREA (Anthony Waterer). A small, dwarfish grower, 15 to 18 inches high, and covered the entire season with large umbels of deep pink flowers. Quite hardy here and very desirable. Each, 50c; by mail, 60c.



Weigelia

SPIREA THUNBERGII (Snow Garland). A Japanese variety of medium size, narrow delicate leaves and a profusion of small, white flowers in early summer. One of the best. Leaves narrow, bright green, turning in autumn to brilliant shades of orange and scarlet. Each, 50c; by mail, 60c.

JAPAN SNOWBALL. A rare and exceedingly beautiful species from Japan; flowers pure white, in very large globular heads; 2-foot trees. Each, 75c; by mail, 80c.

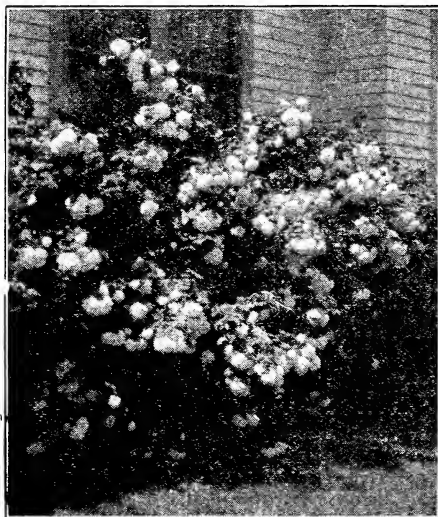
SNOWBALL. A well known and favorite bush of large size. Bears balls of pure white flowers in June. We have a bush on our farm on which we counted over 100 blossoms at one time. Hardy everywhere. Each, 40c; by mail, 50c.



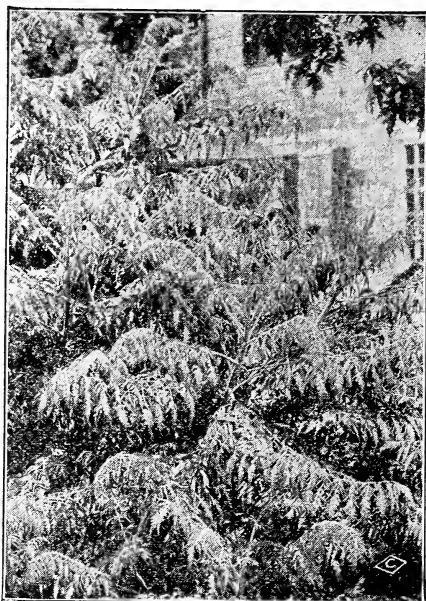
Van Houttei

TAMARIX AFRICANA. Has, like all Tamarix, very pretty feathery leaves of a bright green color, and pink flowers. This variety is not hardy here in Nebraska, freezes to the ground every winter, but always comes up again in the spring and generally gets to be 6 to 8 feet high by fall. Each, 30c; by mail, 35c.

WEIGELIA ROSEA. An elegant shrub with beautiful rose colored flowers. Blooms very profusely. June. It is erect in habit with good foliage. The height is five feet. Very hardy. I find this to be really hardy in Nebraska and does not need winter protection. Each, 40c; by mail, 45c.



Snowball



Fern Leaf Sumac

WEIGELIA, EVA RATHKE. A new variety from Germany and probably the best and finest of all Weigelias. Flowers are of brilliant crimson color, a beautiful and distinct shade. Blooms nearly all summer and when in full bloom the whole plant fairly glows with color. On September 27, my Eva Rathke Weigelias were still in full bloom and the plants literally covered with their beautiful, intensely rich flowers. Grows 5 feet tall. Each, 75c; by mail, 80c.

SUMAC, FERN LEAVED. Staghorn. Sumac (*Rhus Typhina*). This variety of native Staghorn Sumac was found on the hills of Vermont. It is of rapid, robust growth, producing cones of bright red fruit. Leaves beautifully formed, rivaling the most delicate fern. For massing with other shrubs, the effect is striking. Can also be cut to the ground each season and a mass of beautiful foliage will result. The shrub will thrive on the poorest of soils with a surprising luxuriance. In the fall the leaves turn to the most beautiful pinkish red, a large group of them is a wonderful sight. This is probably the best of the Sumacs. 2 to 3 feet, each, 50c; by mail, 60c.

BURNING BUSH. Grows about 6 to 8 ft. high. Has corky winged branches; a fine shrub for solitary plantings as well as for massing. The rich red and crimson leaves being very showy in the fall. Blooms yellow-red in June. 2 to 3 feet, each, 35c; by mail, 50c.

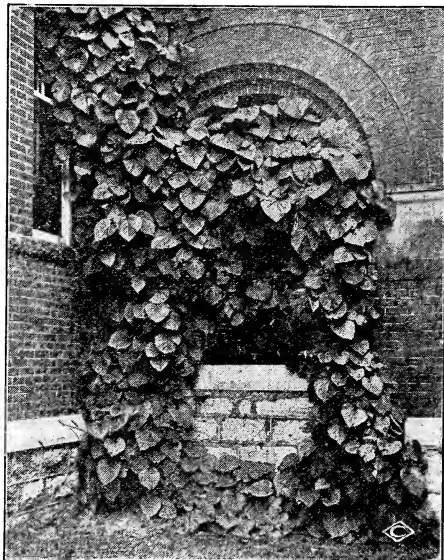
Climbing Vines

ARISTOLOCHIA (Dutchman's Pipe). Derives its name from the peculiar shape of its flowers, which resemble the old-fashioned Dutch pipes. It is one of the most rapid climbers in use. Does best on the north side of houses, where the full force of the noonday sun does not strike it. This is an extremely desirable feature, however, as it fills locations where most other vines are not a success. A very pretty and odd climber. Blooms in June. Each, 80c; by mail 85c.

BITTER SWEET (*Celastrus Scandens*). A native climber with handsome, glossy foliage and large clusters of beautiful orange-crimson berries, remaining all winter. Very bright in effect and charming for winter house decorations. Vary hardy. Each, 30c; by mail, 35c.

BIGNONIA or TRUMPET FLOWER (Scarlet Radicans). A splendid climber, vigorous and hardy, with clusters of large trumpet-shaped scarlet flowers in August. Each, 30c; by mail, 40c.

JAPANESE KUDZU VINE—Jack and the Bean Stalk Vine (*Pueraria*). The most remarkable, rapid growing, hardy perennial extant. In rich soil the plant will grow 70 feet in one season. Starts into growth slowly, but after three or four weeks it grows almost beyond belief. Leaves in shape like Lima Beans; dark green, soft and woolly. For porches, arbors, old trees, etc., I know of nothing its equal. Here in November it freezes to the ground over winter, but always comes up again in the spring, and soon it is as large as it was in the fall. Each, 40c; by mail, 50c.



Japanese Kudzu Vine

BOSTON IVY. A beautiful, hardy climbing plant. This is one of the finest climbers we have for covering walls, as it clings firmly to the smoothest surface, covering it smoothly with overlapping foliage, giving it the appearance of being shingled with green leaves. The color is a fresh, deep green in summer, changing to the brightest shade of crimson and yellow in the autumn. It is quite hardy and becomes more popular every year. Strong plants, 60c each; by mail, 65c.

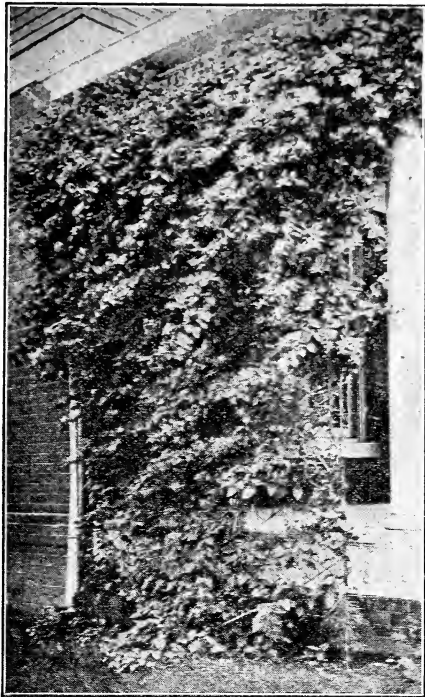
MADEIRA VINE. Also called Mignonette Vine and Mexican Vine. A beautiful tuberous rooted climber, with glossy green leaves and handsome racemes of fragrant white flowers. The vines make a rapid growth, and a few plants will cover a trellis or cottage wall in a single season. Will grow anywhere without care. Each, 6c; 12 for 60c, postpaid.

VIRGINIA CREEPER. A luxuriant vine of rapid growth, with large, luxuriant foliage, which in the autumn assumes the most gorgeous magnificent coloring. The blossoms, which are inconspicuous, are succeeded by handsome dark blue berries. The vine is the best calculated to take the place in this country of the celebrated English Ivy, and is really in summer not inferior to it. Each, 15c; by mail, 25c.

CLEMATIS PANICULATA (New Sweet Scented Japan Clematis). No introduction of recent years has met with such ready sale, and given so perfect satisfaction wherever planted. It grows and thrives anywhere and is a very rapid grower and profuse bloomer. The flowers are pure white. Its extreme hardiness, bright green foliage and delightfully fragrant flowers serve to make this one of the finest hardy climbing plants in cultivation. Strong 2-year plants, 35c each; by mail, 40c.



Clematis Paniculata



Madeira Vine

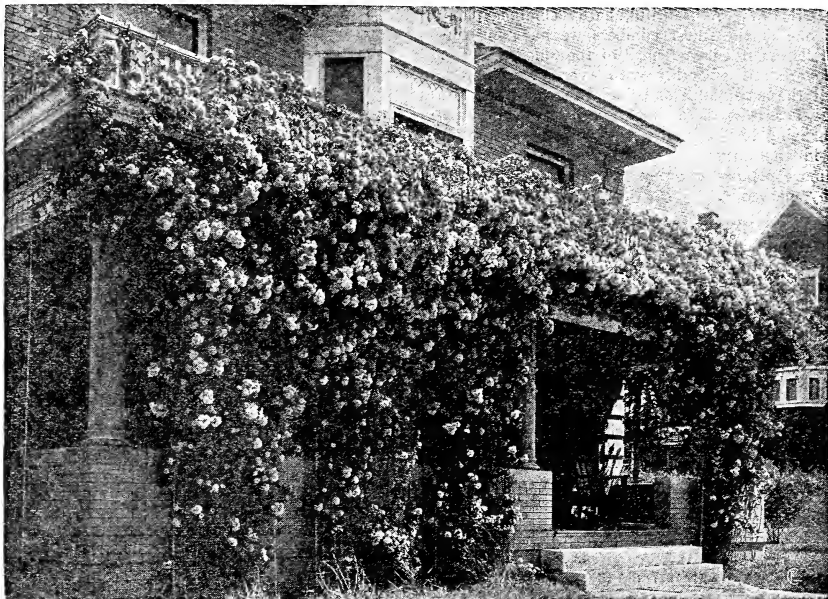
CLEMATIS (Jackmanii). A beautiful blooming variety, with flowers from four to six inches in diameter, of an intense violet purple color, borne successfully in continuous masses on the summer shoots. Each, 80c; by mail, 85c.

HALL'S JAPAN HONEYSUCKLE. This beautiful honeysuckle is almost evergreen, very strong and hardy in growth. The flowers are delightfully fragrant, and blooms profusely from May until frost. A handsome and valuable vine. Each, 15c; by mail, 25c.

HONEYSUCKLE (Monthly Fragrant, or Dutch). Blooms all summer. Very sweet. Red and yellow flowers. Each, 30c; by mail, 35c.

PURPLE WISTERIA. A rare and charming variety, with perfect double flowers, deeper in color than the single, and the racemes of remarkable length. The plant is perfectly hardy, resembling the single Wisteria, so well known as one of our best climbing plants. Each, 40c; by mail, 50c.

WISTERIA, Grafted. As a usual thing Wisteria grown from seed do not come into bloom for four or five years and sometimes then do not bloom at all. We have found that by grafting and using the wood from plants that bloom early, we can produce plants that will bloom the second year after planting. We now have in stock, both the purple and white grafted Wisteria and we are sure they will please you. Each, 75c; by mail, 80c.



Crimson Rambler

Roses

Climbing Roses

Our Roses are all very strong two-year-old plants, either grown on their own roots or budded on Manetti, and not to be compared with the puny greenhouse Roses from two-inch pots sent out by some nurserymen.

CRIMSON RAMBLER. The famous crimson clustered climber, so extremely effective when grown on pillars and trellises. The plant is a vigorous grower, making shoots 8 to 10 feet in a season. The foliage is large and glossy, the plant looks like a mass of double crimson flowers when in bloom. The panicles are large and remain perfect for several weeks. Perfectly hardy anywhere. Each, 35c; by mail, 40c.

WHITE RAMBLER. Resembles Crimson Rambler in foliage and habit; flowers pure white. Each, 35c; by mail, 40c.

YELLOW RAMBLER. It is related to the Crimson Rambler and, like it, blooms in large trusses. Each, 35c; by mail, 40c.

BLUE RAMBLER. I give here the introducer's description: "This new climbing rose surpasses all others of recent introduction in having a blue color. The flowers appear in large clusters, after the manner of the Crimson Rambler; are semi-double and of medium size. Upon first opening, the color is partly bright red and partly bright blue, turning soon to a steel blue. The color is best described by saying it resembles that of early violets. This variety is a strong grower, has shining green foliage and few thorns. It has not been troubled with mildew, and is classed among the hardiest climbing roses, withstanding the winters successfully." Each, 35c; by mail, 40c.

PRAIRIE QUEEN. A rapid climber; flowers are very large; a bright rosy-red, changing lighter as the flowers open; strong and vigorous. Each, 35c; by mail, 40c.

PINK RAMBLER. Resembles the white Rambler except in color. Each, 35c; by mail, 40c.



White Rambler

SEVEN SISTERS. One of the best of the old-fashioned sorts; flowers in clusters and color varies from dark to light red or pink. Each, 35c; by mail, 40c.

DOROTHY PERKINS. Pink. In general habit closely resembling the Crimson Rambler, but of a beautiful shell pink, full and double, of an unusually large size for a Cluster Rose. The trusses are made up of from 20 to 40 flowers. Each, 35c; by mail, 40c.

DOROTHY PERKINS. Red. Intense crimson-scarlet; double flowers in brilliant clusters set in glossy, shining foliage which never mildews or spots. Each, 35c; by mail, 40c.

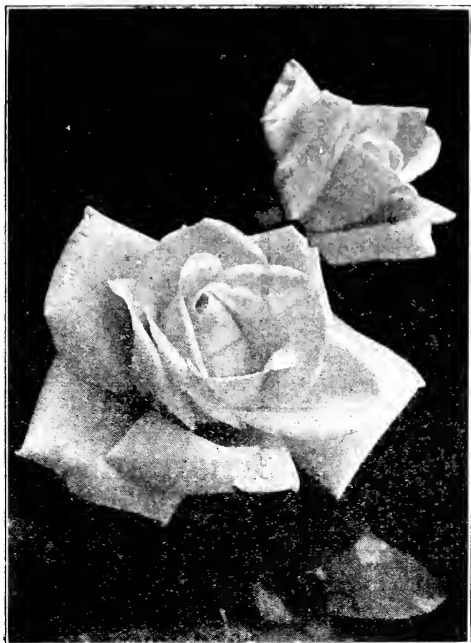
Monthly Blooming Roses

PAUL NEYRON. Deep rose color, splendid foliage and habit, with large flower. Each, 50c; by mail, 55c.

ULRICH BRUNNER. The flowers are very large, of beautiful form and very double; color, deep rich rose. Each, 50c; by mail, 55c.

GENERAL JACQUEMINOT. Brilliant crimson scarlet. Very showy and effective. Each, 50c; by mail, 55c.

AMERICAN BEAUTY. This rose has become as famous as the Marechal Neil. It is a hardy rose of



Dorothy Perkins

the largest size, having the everblooming qualities of the Tea Rose, with the delicious odor of the Damask or Moss Rose. It is sweetest of all roses. Color a deep, brilliant red, shading to a rich carmine crimson. A valuable rose for the garden or indoor culture, flowering freely during the winter. Each, 70c; by mail, 75c.

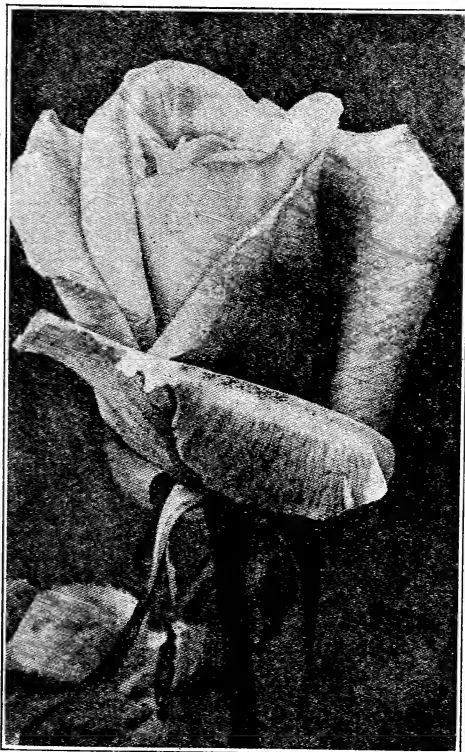
FRAU KARL DRUSCHKI or **WHITE AMERICAN BEAUTY.** A pure paper white, free flowering, large size Hybrid Perpetual. It is a remarkably handsome plant, with bright, heavy foliage filled with strong, upright growth. Two-year-old field grown, 70c each; by mail, 75c.

HARRISON'S YELLOW. A well known favorite, free flowering and beautiful. Each, 50c; by mail, 55c.

"BABY RAMBLER." A dwarf (bush, not climbing) form of Crimson Rambler, and furthermore everblooming. Will bloom constantly throughout the summer if planted out of doors. Has the same bright crimson color as the Climbing Rambler, and blooms in clusters of 20 to 40 flowers at one time on plants of fair size. Baby Rambler is one of the best red roses for bedding and is going to be just as popular and extensively planted as the climbing form has been. May be grown in pots. Two-year plants, each, 50c; by mail, 60c.

Memorial Roses

A rose of trailing habit, a very hardy and rapid grower, with a glossy foliage, which remains on until late in the fall. Its flowers are pure white and very fragrant. It is especially adapted to cemetery planting, hence its name; or it may be trained as a screen to hide some unsightly root, stump or rock. Each, 35c; by mail, 40c.



Karl Druschki



Ornamental and Shade Trees

Trees larger than 4 to 5 feet cannot be sent by parcel post.

CAROLINA POPLAR. One of the most rapid growing trees, with large, handsome, glossy, deep green leaves. Succeeds everywhere; especially adapted to cities where it makes unusually fast growth and resists smoke and gas. Pyramidal in form, making a spreading head and dense shade when properly trimmed. It is unexcelled for quick growth and effect; makes a splendid windbreak or screen. It is used in larger numbers for street planting than any other tree.

PRICES BY FREIGHT OR EXPRESS

	Per 1	Per 10	Per 100
3 to 4 feet, whips	\$0.12	\$1.00	\$ 8.00
4 to 5 feet, whips	.15	1.25	10.00
5 to 6 feet, branched	.20	1.75	15.00
6 to 8 feet, branched	.30	2.50	22.00
8 to 10 feet, branched	.40	3.50	32.00

PARCEL POST PRICES

	Per 1	Per 10
3 to 4 feet	\$0.22	\$1.75
4 to 5 feet	.25	2.00

THORNLESS HONEY LOCUST—Same as Honey Locust, except that it is entirely free from thorns and is therefore much more suited for a lawn tree.

PRICES BY FREIGHT OR EXPRESS

	Per 1	Per 10
3 to 4 feet	\$0.25	\$2.00
4 to 5 feet	.30	2.70
5 to 7 feet	.35	3.40

PARCEL POST PRICES

	Per 1	Per 10
3 to 4 feet	\$0.35	\$2.75
4 to 5 feet	.40	3.75

ELM. American White. A noble native tree of large size, wide spreading head, and graceful drooping branches. Easy to transplant; a hardy grower. One of the best park and street trees. Hardy everywhere.

PRICES BY FREIGHT OR EXPRESS

	Per 1	Per 10	Per 100
3 to 4 feet	\$0.20	\$1.75	\$15.00
4 to 5 feet	.25	2.20	20.00
5 to 7 feet	.35	3.00	27.00
6 to 8 feet	.50	4.50	
8 to 10 feet	.75	6.50	

PARCEL POST PRICES

	Per 1	Per 10
3 to 4 feet	\$0.30	\$2.50
4 to 5 feet	.35	3.00

MAPLE, SOFT OR SILVER. A native tree of very rapid growth. Hardy everywhere and easily transplanted. Leaves are finely cut, bright green on the upper and whitish on lower side. When you order a Silver Maple, you will get what is called a Soft Maple. When quick effect or shade is desired, the Soft Maple is one of the best trees to plant. Largely used for street or park planting.

PRICES BY FREIGHT OR EXPRESS

	Per 1	Per 10	Per 100
3 to 4 feet	\$0.20	\$1.70	\$15.00
4 to 5 feet	.25	2.20	20.00
5 to 6 feet	.45	4.00	37.00
6 to 8 feet	.50	4.50	40.00

PARCEL POST PRICES

	Per 1	Per 10
3 to 4 feet	\$0.30	\$2.50
4 to 5 feet	.35	3.00

RUSSIAN OLIVE. A beautiful lawn tree, with spreading top; nearly black shining bark and silvery-white, long, narrow foliage. The small yellow blossoms have a wonderful appearance. The exquisite perfumes are carried long distances in the air. Fine if planted in a group with green leaved trees, among shrubbery, or as a lawn tree. Hardy as far north as Canada. It deserves a place in every park or garden. Should be much more largely planted. Can also be used as a hedge or screen, as it stands pruning or shearing well.

PRICES BY FREIGHT OR EXPRESS

	Per 1	Per 10
2 to 3 feet	\$0.25	\$2.00
3 to 4 feet	.35	3.00
4 to 5 feet	.45	4.00
5 to 6 feet	.60	5.00

PARCEL POST PRICES

	Per 1	Per 10
2 to 3 feet	\$0.30	\$2.50
3 to 4 feet	.40	3.75
4 to 5 feet	.55	5.00

ASH, American White (Fraxinus Americana). A medium grower and valuable for planting in the streets or in parks; may be extensively planted for timber.

PRICES BY FREIGHT OR EXPRESS

	Per 1	Per 10	Per 100
4 to 5 feet.....	\$0.25	\$2.20	\$20.00
5 to 6 feet.....	.45	4.00	37.00
6 to 8 feet.....	.70	6.00	

RED BUD, Judas Tree. A very ornamental native tree of medium size, with perfect heart-shaped leaves and hardy even in Canada. Blooms early in the spring, before the leaves appear, covering the branches with small reddish purple flowers. Hardy; does well also on wet land.

PRICES BY FREIGHT OR EXPRESS

	Per 1	Per 10
3 to 4 feet.....	\$0.50	\$4.50
4 to 5 feet.....	.75	6.00
5 to 6 feet.....	1.00	9.00

PARCEL POST PRICES

	Per 1	Per 10
3 to 4 feet.....	\$0.60	\$5.50
4 to 5 feet.....	.85	7.50

PIN OAK (Quercus Palustris). An upright, vigorous growing variety, forming a stately, round topped tree, with long, slightly pendulous branches. The dark green, deeply cut foliage turns to brilliant yellow and crimson shades in autumn, forming one of the best of our fall colored trees. Grows faster than other Oak, often making shoots of 2 feet or more in one season. 5 to 6 feet, each, \$1.50; 10 for \$14.00.

LINDEN or BASSWOOD. A very pretty pyramidal tree with large leaves and fragrant flowers. A valuable tree for street or lawn planting, developing into beautiful specimens. Extensively planted for ornamental purposes and for bee culture. Rapid growth, not particular as to soil, and perfectly hardy. 5 to 6 feet, each, \$1.35; 10 for \$12.00.

BLACK WALNUT. A native of Nebraska. Of large size and majestic form, with beautiful foliage. Grows best on low ground, bears very freely. The most valuable of all trees for timber, which enters largely into the manufacture of furniture and cabinet work and brings the very highest price in the market. Tree is a fairly rapid grower, and also makes a fine shade tree. The large, oily nuts are of fine flavor and marketable at a fair price.

Black walnuts are getting very scarce. Our government has bought up thousands of walnut logs, using them for gun stocks and in the manufacture of aeroplanes. The price of walnut logs is very high now.

PRICES BY FREIGHT OR EXPRESS

	Per 1	Per 10
3 to 4 feet.....	\$0.35	\$3.20
4 to 5 feet.....	.50	4.50
5 to 6 feet.....	.70	6.50

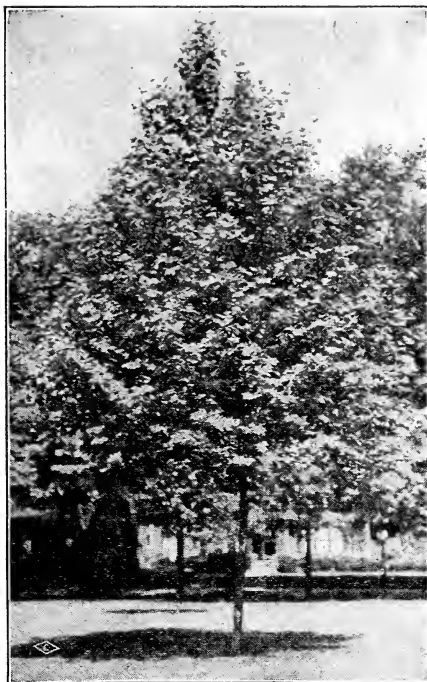
PARCEL POST PRICES

3 to 4 feet.....	\$0.45	\$4.00
4 to 5 feet.....	.65	6.00

BUTTERNUT or WHITE WALNUT. The nuts are large, long, oily and nutritious. The lofty, spreading tree is one of our finest natives, valued for its tropical appearance and beautiful wood as well as for its nuts. Does well in Nebraska and as far north as Dakota.

PRICES BY FREIGHT OR EXPRESS

	Per 1	Per 10
4 to 5 feet.....	\$1.00	\$ 9.00
5 to 6 feet.....	1.25	11.00



Hard Maple

MOUNTAIN ASH. Hardy tree of medium size, a smooth bark, head dense and regular, covered from July till winter with large clusters of bright red berries. A fine lawn tree and very hardy. Does well here in Nebraska, also in the higher altitude of Colorado.

PRICES BY FREIGHT OR EXPRESS

	Per 1	Per 10
2 to 3 feet.....	\$0.25	\$2.00
3 to 4 feet.....	.35	3.00
4 to 5 feet.....	.50	4.50
5 to 6 feet.....	.75	6.00
6 to 8 feet.....	1.00	7.50

PARCEL POST PRICES

	Per 1	Per 10
2 to 3 feet.....	\$0.30	\$2.50
3 to 4 feet.....	.45	4.00
4 to 5 feet.....	.60	5.00

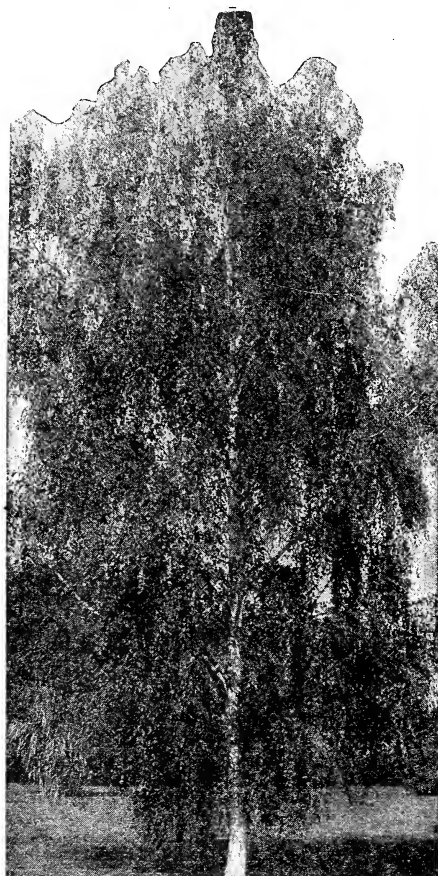
PUSSY WILLOW. The catkins which come out early in the spring before the leaves start to grow, are large, very silky. Very useful for early effects.

PRICES BY FREIGHT OR EXPRESS

	Per 1	Per 10
2 to 3 feet.....	\$0.25	\$2.20
3 to 4 feet.....	.40	3.50
4 to 5 feet.....	.50	4.50

PARCEL POST PRICES

2 to 3 feet.....	\$0.30	\$2.70
3 to 4 feet.....	.50	4.25
4 to 5 feet.....	.60	5.50



Weeping Birch

MAPLE SUGAR or HARD. A popular American tree of pyramidal form. The foliage is large and handsome, and of rich, pleasing green, turning to orange yellow and red in summer. Its upright habit of growth, dense shade and adaptability to different soils has rendered it one of the most extensively used. Valuable for sugar and timber.

PRICES BY FREIGHT OR EXPRESS

	Per 1	Per 10
5 to 6 feet	\$1.00	\$9.00
6 to 8 feet	1.30	12.00

CHINESE POPLAR. A new tree from China which is perfectly hardy and makes a fine appearance; grows somewhat like the Lombardy; leaves are small and very glossy.

PRICES BY FREIGHT OR EXPRESS

	Per 1	Per 10
3 to 4 feet	\$0.50	\$4.50
4 to 5 feet	.75	6.50
6 to 8 feet	1.25	10.00

PARCEL POST PRICES

	Per 1	Per 10
3 to 4 feet	\$0.60	\$5.50
4 to 5 feet	.85	8.00

LAUREL-LEAVED WILLOW. A beautiful, distinct, medium-sized tree, 8 to 20 feet high, with shining laurel-like leaves that make it very conspicuous in sunshine. It can be clipped into form like a bay tree; has bright green bark; is beautiful the year round. The tree does well in Nebraska; stood our severe winter a few years ago at 23 degrees below zero without being injured.

PRICES BY FREIGHT OR EXPRESS

	Per 1	Per 10
2 to 3 feet	\$0.10	\$0.80
3 to 4 feet	.15	1.00
4 to 5 feet	.20	1.50

PARCEL POST PRICES

	Per 1	Per 10
2 to 3 feet	\$0.15	\$1.25
3 to 4 feet	.25	2.00
4 to 5 feet	.30	2.75

GOLDEN WILLOW (Salix Aurea). An exceedingly showy and pretty variety, with bark of bright golden color, making it very conspicuous during the winter. The catkins also are of yellow color. A handsome tree at all seasons will make lots of wood in a short time. Very hardy, even in the Dakotas.

PRICES BY FREIGHT OR EXPRESS

	Per 1	Per 10
3 to 4 feet	\$0.20	\$1.50
4 to 5 feet	.25	2.00
5 to 6 feet	.30	2.50

PARCEL POST PRICES

	Per 1	Per 10
3 to 4 feet	\$0.30	\$2.50
4 to 5 feet	.35	3.00

SYCAMORE, AMERICAN (Platanus). Noble, upright growing tree, with spacious head and large, deep green foliage. A free grower and very desirable for park or street planting. It is not hardy, though, north of here, and I cannot recommend it north of the middle of Nebraska. It is hardy here. Claimed to be one of the best trees for large cities as it stands smoke and gas very well.

PRICES BY FREIGHT OR EXPRESS

	Per 1	Per 10
3 to 4 feet	\$0.45	\$4.00
4 to 5 feet	.75	6.50
5 to 6 feet	1.00	9.00

PARCEL POST PRICES

	Per 1	Per 10
3 to 4 feet	\$0.55	\$4.75
4 to 5 feet	.85	7.50

TULIP TREE. One of the very largest native trees, with large, smooth, shining leaves, greenish-yellow and orange tulip shaped flowers. A very beautiful stately tree.

PRICES BY FREIGHT OR EXPRESS

	Per 1	Per 10
2 to 3 feet	\$0.35	\$3.00
3 to 4 feet	.50	4.00
4 to 5 feet	.75	7.00

PARCEL POST PRICES

	Per 1	Per 10
2 to 3 feet	\$0.40	\$3.75
3 to 4 feet	.60	5.00
4 to 5 feet	.85	8.00

WHITE BIRCH. A graceful tree with white bark; a very desirable lawn tree. Will stand severe winters if not too dry.

PRICES BY FREIGHT OR EXPRESS

	Per 1	Per 10
2 to 3 feet	\$0.35	\$3.00
3 to 4 feet	.50	4.50
4 to 5 feet	.70	6.50

PARCEL POST PRICES

	Per 1	Per 10
2 to 3 feet	\$0.40	\$3.75
3 to 4 feet	.60	5.50
4 to 5 feet	.85	8.00

WEeping TREES

Trees larger than 4 to 5 feet cannot be sent by parcel post.

These trees form objects of great beauty when planted as single specimens on lawns, in the front yard and especially when used for cemetery decorations. Also of great value for covering arbors. Our list embraces the best varieties.

CAMPERDOWN WEEPING ELM. Its vigorous branches, which have uniform habit, overlap so regularly that a compact, roof-like head is formed. Leaves are large, glossy, dark green. A strong, vigorous grower. One of the best weeping trees. It can be trained to form an arbor if desired. The peculiar characteristics of this tree make it very popular and valuable for the lawn. Hardy. Each, \$2.25.

CUT-LEAF WEEPING BIRCH. This magnificent tree is, without question, the most popular and the most planted of all pendulous or so-called weeping trees. It is a tall, slender tree, yet with vigorous growth. It has an erect central trunk, somewhat pyramidal in shape with graceful, drooping branches and glistening, silvery-white bark. The foliage is fine, thin, deeply and delicately cut, and of a beautiful shade of green. The whole tree presents a soft and delightful effect not found in any other hardy ornamental tree.

PRICES BY FREIGHT OR EXPRESS

4 to 5 feet.....	Each
5 to 6 feet.....	\$1.50
4 to 5 feet, postpaid.....	2.00
	1.75

TEAS' WEEPING MULBERRY. The most graceful hardy weeping tree in existence. Forms a perfect umbrella-shaped head, with long, slender, willow branches, drooping to the ground. It has beautiful foliage, is wonderfully vigorous and healthy; is one of the hardiest; safe and easy to transplant; admirably adapted for ornamental small or large grounds, or for cemetery planting. Each, \$2.50.



Red Cedar



Catapa Bungei

CATALPA BUNGEII or **UMBRELLA TREE.** One of the finest ornamental trees we have; it is perfectly hardy; you will be pleased with this tree on your lawn. Trees grafted, 6 feet high. Each, \$1.50.

THURLOW WEEPING WILLOW (*Salix Elegantisima*). This willow, like the *Babylonica*, is not grafted or budded; its nature is weeping. Tree vigorous, fast grower, very hardy, and a graceful weeper. The branches are very slender, leaves long, of bright green with lighter shade of green on the lower side.

PRICES BY FREIGHT OR EXPRESS

	Per 1	Per 10
3 to 4 feet.....	\$0.30	\$2.50
4 to 5 feet.....	.40	3.50
5 to 6 feet.....	.50	4.50
6 to 8 feet.....	.60	5.50

PARCEL POST PRICES

	Per 1	Per 10
3 to 4 feet.....	\$0.40	\$3.25
4 to 5 feet.....	.50	4.50

Evergreens

Evergreens cannot be sent by parcel post.

The evergreens which we offer this season will be taken up with a ball of earth and burlapped and everyone should grow. When planting do not remove the burlap. On account of the weight it is not advisable to ship by express.

	Each
Red Cedar transplanted, 8 to 12 in.	\$1.00
Red Cedar transplanted, 12 to 18 in.	1.50
Red Cedar transplanted, 18 to 24 in.	2.00
Red Cedar transplanted, 2 to 3 ft.	2.50
Red Cedar transplanted, 3 to 4 ft.	3.00



Hedge Plants

Hedge plants to make a thick hedge should be planted 8 inches apart. After planting, all varieties should be cut back to within 4 inches of the ground, this will cause each plant to throw a number of stems and thus thicken the hedge.

	Per 10	Per 100	Per 1000
Barberry, 8 to 12 inches	\$1.50	\$12.00	
Mailing price	1.80	14.00	
Barberry, 12 to 18 inches	2.00	17.00	
Mailing price	2.50	20.00	
Barberry, 18 to 24 inches	2.75	25.00	
Mailing price	3.00	27.00	
Hardy Privet, 6 to 12 in.	.50	4.00	
Mailing price	.55	4.25	
Hardy Privet, 12 to 18 in.	.60	5.00	
Mailing price	.75	7.00	
Hardy Privet, 18 to 24 in.	1.00	8.50	
Mailing price	1.20	11.00	
Mulberry, 6 to 12 inches	.10	.35	
Mailing price	.12	.45	
Mulberry, 12 to 18 inches	.15	.50	
Mailing price	.18	.60	
Mulberry, 18 to 24 inches	.20	.70	
Mailing price	.25	1.00	
Mulberry, 2 to 3 feet	.25	2.00	
Mailing price	.35	2.50	
Osage number one		.80	\$7.00
Mailing price		1.00	9.00
Osage number two		.60	5.00
Mailing price		.70	6.00
Russian Olive, 12 to 18 in.	.35	3.00	
Mailing price	.40	3.50	
Russian Olive, 18 to 24 in.	.50	4.50	
Mailing price	.60	5.50	

Cuttings and Scions

	Per 100	Per 1000
Cottonwood	\$0.35	\$ 3.00
Mailing price	.40	3.50
Carolina Poplar	.35	3.00
Mailing price	.40	3.50
Golden Willow	.35	3.00
Mailing price	.40	3.50
Hardy Privet	.60	5.00
Mailing price	.65	6.00
Apple Scions	.35	3.00
Mailing price	.50	

Tree Seedlings

	Per 100	Per 1000
Ash, 6 to 12 inches	\$0.50	\$ 4.50
Mailing price	.60	
Ash, 12 to 18 inches	.75	7.00
Mailing price	.90	
Box Elder, 6 to 12 inches	.60	5.00
Mailing price	.70	
Box Elder, 12 to 18 inches	.75	7.00
Mailing price	.90	
White Elm, 6 to 12 inches	.50	4.50
Mailing price	.60	
White Elm, 12 to 18 inches	.75	7.00
Mailing price	.90	
White Elm, 18 to 24 inches	1.00	9.00
Mailing price	1.15	
White Elm, 2 to 3 feet	1.35	12.00
Mailing price	1.60	
Black Walnut, 6 to 12 inches	3.00	25.00
Mailing price	3.50	
Black Walnut, 12 to 18 inches	4.00	35.00
Mailing price	4.50	
Apple Seedlings No. 1	1.20	
Mailing price	1.50	
Hardy Catalpa, 6 to 12 inches	.50	4.50
Mailing price	.60	
Hardy Catalpa, 12 to 18 inches	.75	7.00
Mailing price	.90	
Hardy Catalpa, 18 to 24 inches	.90	8.00
Mailing price	1.15	
Hardy Catalpa, 2 to 3 feet	1.10	10.00
Mailing price	1.50	
Black Locust, 6 to 12 inches	.50	3.75
Mailing price	.60	
Black Locust, 12 to 18 inches	.75	6.00
Mailing price	.90	
Black Locust, 18 to 24 inches	1.00	8.00
Mailing price	1.20	
Black Locust, 2 to 3 feet	1.35	10.00
Mailing price	1.60	
Black Locust, 3 to 4 feet	1.50	12.00
Mailing price	2.00	



Peonies

That Herbaceous Peonies are as fine and effective in their way as Rhododendrons or roses is now being generally recognized. They are hardier and more easily cultivated than either of their rivals, and are being used in the same way for bold display of color. Their flowers are very lasting; some of them are finely finished and exquisitely colored. Plant in deep, rich, well prepared soil, covering the buds but an inch or two. Do not expect too much of them the first year. They are a little slow in establishing themselves.

We can furnish red, white and pink, common sorts, strong plants, at 35c each; 3 for \$1.00; by mail, 40c each.

We also have choice varieties as named below at 50 cents each; by mail, 55 cents.

EDULIS SUPERBA (Lemon)—Very large, bright rose flowers; a beautiful early variety.

INDISPENSABLE—Shell pink, showy; a beautiful variety.

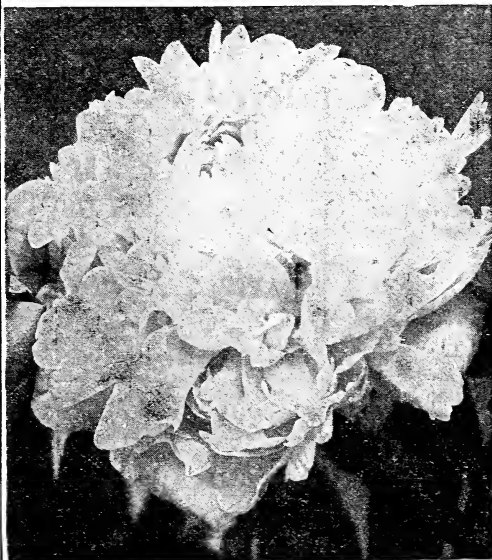
DELICATISSIMA—This beautiful flower should be in every garden. Very large; delicate, clear pink, lighter in the center; very fragrant; free blooming. Exceptionally pretty in the bud; a quality flower in every sense. It is unexcelled as a cut flower.

FESTIVA MAXIMA About the largest and undoubtedly the most popular Peony of them all. High built flowers borne on long, stiff stems. The purest white inner petals slightly tipped carmine. Early.

FELIX CROSSE 30 inches. Large, compact, globular bomb. Large guard petals. Brilliant ruby red, without any shades of violet or purple. Fragrant. Strong grower.

MODEST GUERIN Brilliant carmine-rose with a high and stiff center full of rosy pink petals.

QUEEN VICTORIA The broad guard petals are a pretty bluish-white; center slightly edged pink.



Festiva Maxima



Cannas

Cannas

One of the most popular of bedding plants with their green and bronze foliage and bright flowers; we grow six of the best varieties. Each 10c; dozen \$1.00, for dry bulbs. By parcel post, prepaid, add 2 cents to the price of each.

MADAME CROZY 3 1-2 ft. Green foliage; flowers vermilion with gold border.

WINTZER'S COLOSSAL Bright crimson scarlet; extra large flowers.

The price of the three following varieties is 15 cents each; \$1.25 per dozen. By parcel post, add 2 cents to the price of each bulb.

KING HUMBERT 4 to 5 feet. Giant flowered, orange scarlet, bronze leaf. The flowers are very large and very free blooming. The handsome leathery foliage is of strong habit.

YELLOW KING HUMBERT Same as above except that the flowers are yellow.

PRAIRIE GOLD A very fine variety; flowers clear yellow.

Golden Glow

The most prolific and satisfactory of all yellow-flowered sorts. Grows 5 to 7 feet and blooms from early summer until frost. Flowers are produced on long stems in enormous quantities and resemble golden-yellow Cactus Dahlias. 20 cents each; by mail, 25 cents each.

Iris

The true "Fleur-de-Lis," the National flower of France. They are perfectly hardy, thrive anywhere, grow and bloom luxuriantly, particularly if plentifully supplied with water. Plants well established produce 50 to 100 spikes of bloom. In beauty the flowers rival the finest of orchids. The plant grows 18 to 24 inches high. Six assorted colors: 10 cents each; 3 for 25 cents, postpaid.

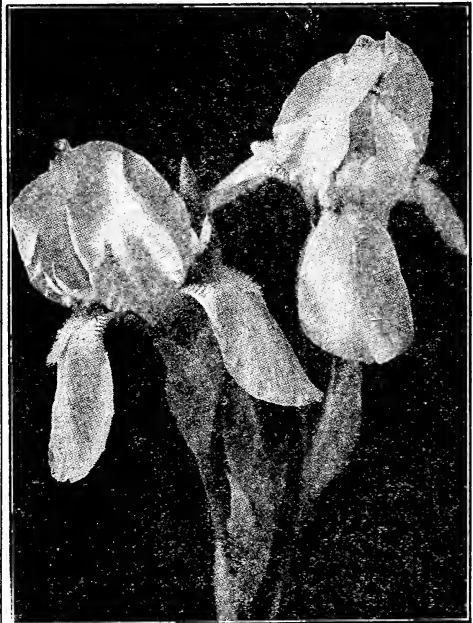
We cannot select colors.

Tuberoses

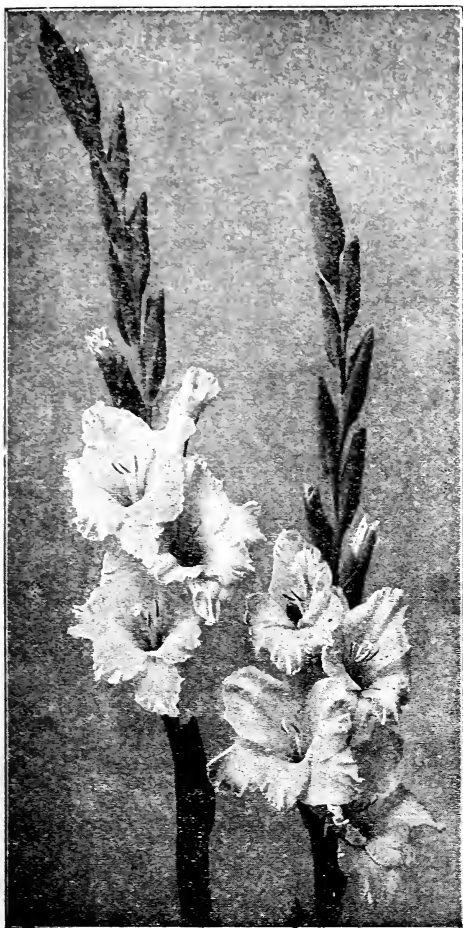
A beautiful wax-like, very sweet-scented, double flower growing on tall stems. Price, 6 for 25 cents, by mail, 7 cents each.

Bleeding Heart

DICENTRA Bleeding Heart, the popular name of the *Dicentra*, is derived from the curious heart-shaped blossoms with the drop of blood below; were great favorites in the old gardens. Fine for the border or margins of shrubbery. In the spring these plants bear beautiful heart-shaped flowers of a light red color. The stems grow 18 to 24 inches high, with abundant deeply cut leaves of light green color. 75 cents each; 10 for \$7.00, postpaid.



Iris



Gladiolus

Gladiolus

One of the most attractive summer flowering bulbs. Very ornamental for the lawn. To obtain a succession of bloom there should be several plantings made at intervals of about a week. Set bulbs 6 to 9 inches apart and about 4 inches deep. If the soil is poor see that it is carefully enriched. The flowers are excellent for cutting, and last a week in water, the bulbs opening well. The bulbs should be taken up in the fall before heavy freezing weather sets in and allowed to dry off in the sun. Cut off the stem close to the bulb, put in paper bags, and place where they will not freeze. A cold, dry atmosphere is best. We have a fine collection of the large flowering sorts. Dry bulbs, 5 cents each; \$4.00 per 100; mailing price, 6 cents each.

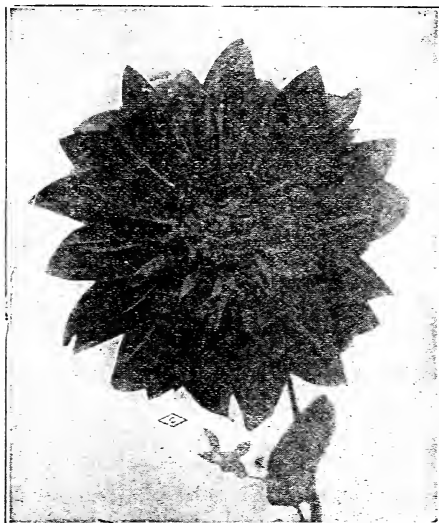
Phlox

No class of hardy plants is more desirable than the Perennial Phloxes. They will thrive in any position and can be used to advantage in the hardy border, in large groups on the lawn, or planted in front of belts of shrubbery, where, by judicious pinching back and removing faded flowers, a constant succession of bloom may be had until frost.

Assorted colors: Each, 20c; 6 for \$1.00; mailing price, 22c each. We cannot select colors.

Dahlias

No garden is complete without a show of these brilliant and steady autumn flowers, and nothing gives greater return for so little money and care. We have a fine assortment of the best varieties. Price, 20 cents each; 6 for \$1.00, postpaid.



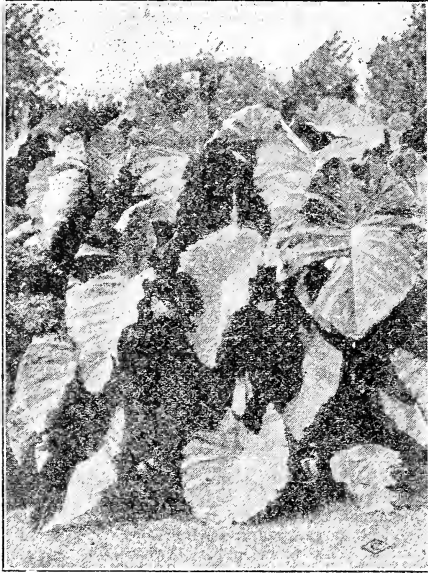
Dahlia

Gaillardia Grandiflora

(Blanket Flower)

Among the everblooming hardy plants there is none more showy or ornamental than this. Flowers borne in prodigal confusion from June to frost; useful for cut flowers. They are of gorgeous coloring, dark red-brown in center with bands of crimson, orange and vermilion, meriting the popular title of "Aurora Flower." Height 2 ft. I find this to be one of the best perennials in my garden. It is very hardy, needs little care, blooms continuously all summer, has long stems and therefore can be used in almost any bouquet. Those who wish flowers and have not much time to take care of them, should plant Gaillardia.

Price, postpaid, 15 cents each; per dozen, \$1.50.



Caladium

Yucca Filamentosa

(Adam's Needle)

Tropical looking plant with long, narrow leaves; remain green the entire year. Grows in clumps and throws up a flower stalk 3 to 4 feet high, from which hang from 100 to 300 creamy white, bell-shaped flowers. It blooms a long time. A fine plant for the lawn or cemetery. Price 35 cents each; by mail 50 cents.

Hardy Chrysanthemum

We offer an assortment of the hardy varieties. They flower profusely in October, after everything else has been killed. They are excellent for cut flowers and bouquets. Sure bloomers and satisfactory growers should be included in all orders. Even after several light falls of snow, in sheltered positions, it is sometimes possible to cut uninjured clusters of beautiful flowers. The fine, thick foliage makes a good screen or background.

OLD HOMESTEAD Large, double flowers, light pink in color, with white stripes; strong growers, profuse in blooming in September and October. Four feet high.

OLD ROSE Red rose shading to a light lavender.

SNOW CLAD Large double flowers of pure white color in September and October. Four feet high.

INDIAN BROWNISH RED each, 25 cents; 5 for \$1.00, postpaid.

Caladium

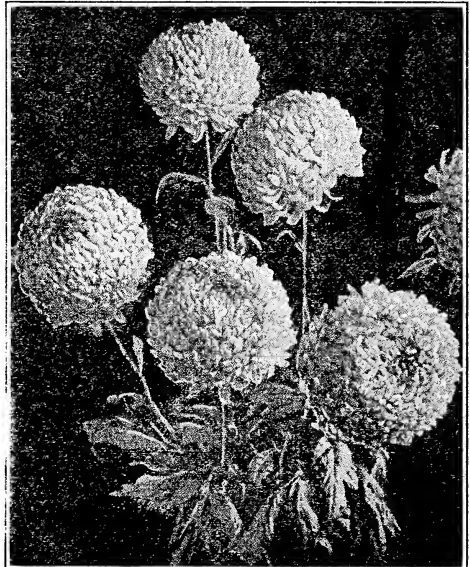
ELEPHANT'S EAR A splendid tropical appearing plant usually growing 4 to 5 feet high. Very showy leaves, often growing 3 feet long. Of easy culture. They are used to a great extent for large beds, together with Cannas, also as single specimens or as groups on the lawn. For obtaining tropical effects in lawn and garden, this beautiful plant takes a prominent place. Will grow in any soil, but to get the best results, they should have plenty of water and good, rich soil. When at its best, stands 6 to 7 feet high, with bright green leaves, 3 to 4 feet long and 2 1-2 feet wide. Bulbs, 30 cents each; 3 for 75 cents, postpaid.

Mallow Marvels

Most gorgeous perennial creation of the twentieth century. The plants are perfectly hardy and grow from strong, fleshy roots to a height of 6 to 8 feet in one season. They seem to thrive in almost any soil, having a preference, however, for a moist rather than a dry situation. In the last days of July the blooms appear and continue until late in fall. The huge flowers, some of them measuring over 10 inches in diameter, come in the most gorgeous and brilliant shades. 25 cents each; postpaid.

Gypsophila

Also called Angel's Breath and Baby's Breath. Thrives everywhere and furnishes the loveliest material for all kinds of bouquets. Price, 20 cents each; 10 for \$1.80, postpaid.



Chrysanthemum



Hollyhock

Shasta Daisy

Remarkably large, semi-double daisies, 3 to 4 inches across and pure white, with petals in two or more rows about a golden center. The plant is extra vigorous and maintains a fine show of great flowers throughout the summer and autumn. A splendid border plant and of great value for cutting. My plants are strong, field grown and will bloom abundantly the first season. Each, 20 cents; 6 for \$1.00, postpaid.

HARTJE DAISY This is an improved Shasta Daisy, much larger flower, longer stems and earlier. Each, 25 cents; 5 for \$1.00, postpaid.

Hollyhocks

Among the very finest of old hardy garden plants, the Hollyhock still holds a proud place and may be termed one of the great flowers of July. It has the widest range of colors among tall garden plants. Flowers are very showy, produced in great abundance on long, towering spikes. Height 6 to 8 feet. Blooming period June to August.

Each, postpaid, 15 cents, per dozen, \$1.50.

Canterbury Bells

(Campanula)

An old time favorite, growing 2 to 3 feet high and bearing in great profusion very pretty bell-shaped flowers. The Campanulas give to our gardens exceedingly pretty flowers for almost every location, moist or dry, sunny or shaded, and the flowers are produced even in summer drought. Valued for cut flowers. Each, postpaid, 15 cents; 10 for \$1.25.

Aquilegia

(Columbine)

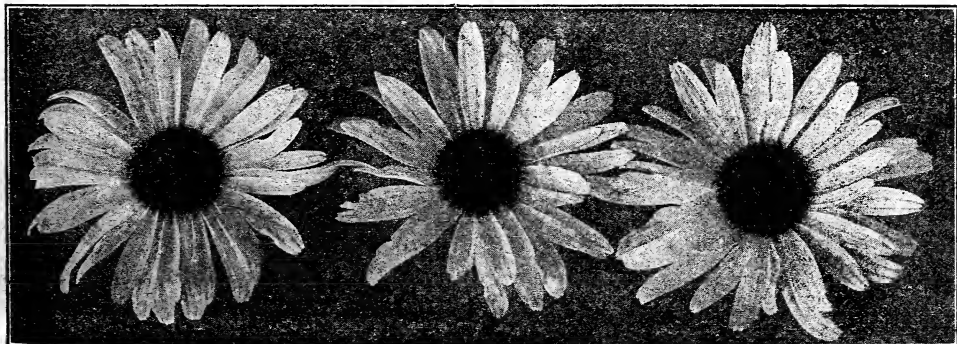
The Columbines have established a place in all old-fashioned gardens. Their curious forms and many pleasing shades of color and the readiness with which they adapt themselves to all localities, have made them prime favorites. Price, postpaid, 15 cents each; 10 for \$1.25.

Delphinium

(Larkspur)

One of the finest sights of modern gardens is a fine collection of blooming Larkspurs. They give us the greatest abundance of flowers and utmost variety in tints and shades of blue during June and July. The Delphiniums make good border backgrounds. Although plants thrive in any good garden soil, a deep, rich, loamy one, with sunny exposure is best.

Each, postpaid, 15 cents; 10 for \$1.25.



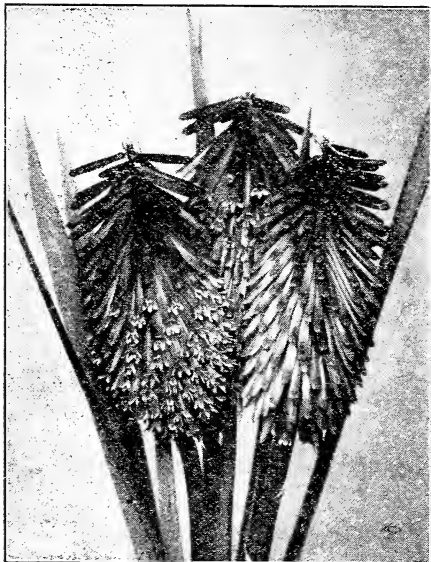
Shasta Daisy

Lilies

With a well selected collection, Liliiums may be had in bloom from June to October. They should be planted in the fall, from October 1 as long as the soil can be worked, and in spring until the first of May. Plant about 5 inches deep.

AURATUM (Gold Banded Japan Lily) Flowers are very large, broad white petals, thickly studded with crimson maroon, bright golden band through center of each petal. Stalks frequently have from 12 to 15 flowers of immense size. Large bulbs, each 40 cents; 10 for \$3.50.

SPECIOSUM RUBRUM Flowered white with crimson band on each petal. Large and very fragrant. Perfectly hardy. Grows 2 to 3 feet high. Blooms in August. Large bulbs, each 40 cents; 10 for \$3.50, postpaid.



Red Hot Poker

TIGER LILY Perfectly hardy, easily grown Lily, with very large double flowers of rich orange color, spotted with black. Exceedingly pretty. Each, 25c; 10 for \$2.00, postpaid.

Hemerocallis

(Day Lilies)

A well known family of plants resembling lilies in character and bloom; very sweet scented and bearing great numbers of yellow and brown flowers during long periods of summer. Foliage is similar to the Iris.

HEMEROCALLIS FLAVA (Lemon Lily) These are among the oldest and best loved of garden plants. Very hardy and persisting; they need no winter protection and thrive in any good soil, preferring, however, a rich, moist loam. For garden borders and waterside planting, few perennials are more satisfactory. A good clump of this fine old lily, when blooming in June and July, lights up the border superbly with many tall stems of fragrant, waxen, clear yellow blooms, grows about 2 feet high. Each 15c; 10 for \$1.20, by parcel post.



Lily

DAY LILY (Funkia)

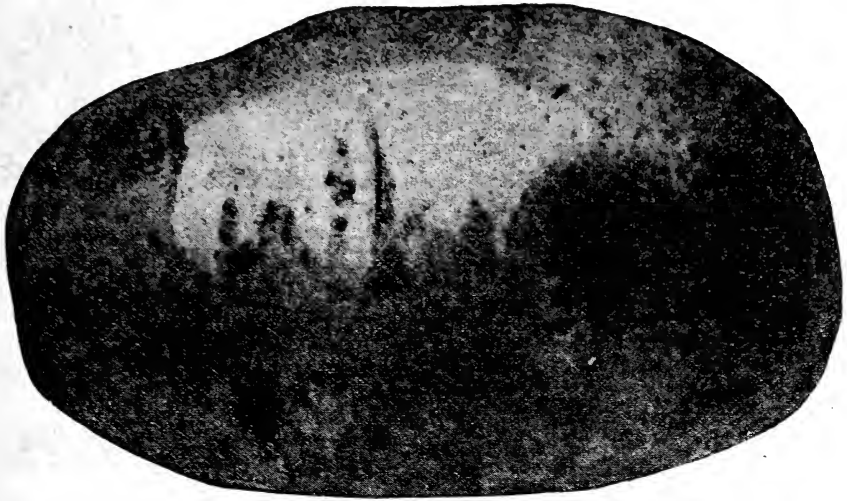
FUNKIA LANCIFLORIA Narrow Leaved Day Lily. Hardy plant, with lily-like flowers forming dense clumps of foliage. The leaf blades are 4 to 6 inches long. Flowers pale lilac, nodding, borne in long, loose racemes. Height, 18 inches. Blooms August. They thrive well in deep soil in a half shady position. Each 25c; 10 for \$2.30.

Tritoma

Red Hot Poker, Flame Flower, or Sky Rocket Plant. An old favorite. Sends up fine spikes of scarlet-orange flowers which look well in masses or alone. They are not absolutely hardy and must be mulched well. Each 25c; 5 for \$1.00, postpaid.



Day Lily



Early Ohio

Seed Potatoes

We are now prepared to furnish our customers with first-class seed potatoes and would be pleased to receive a trial order from you. The necessity for changing seed often is universally admitted by all well posted growers, especially when the best seed can be had, at so little additional outlay. Owing to the perishable nature of seed potatoes and the unsettled condition of all markets, prices are made subject to market changes, and confirmation of order on receipt of same.

All of our seed potatoes were grown in the Red River Valley in Minnesota and were shipped to us in October, before danger of frost, so you may be sure the potatoes are in good condition to grow.

EXTRA EARLY OHIO (Red River Grown). This is without a doubt the most popular early potato in the country. We have more calls for it than any other variety. Everyone knows what it is and that it can be relied upon for an early market variety in almost any locality. They are smooth, clean and free from prongs and scabs. They grow stronger and more vigorous, maturing the crop in shorter time and yielding much more than home-grown seed, so there is the utmost satisfaction in planting them. Potato growers in the South will have their crop ready for market from ten days to two weeks earlier if our Red River Valley Ohios are planted. This variety is sometimes sold under the name of Early Six Weeks Potato. It will pay you to change your seed this year. Peck, 75c; bushel, \$2.50; barrel, (3 full bushels), \$7.00, not prepaid.

RED RIVER IRISH COBBLER. An excellent early variety, maturing good sized tubers seven weeks from the time of planting. It has also the remarkable characteristics of producing very few, if any, small potatoes, all the tubers being of marketable size. The vines are short, of upright growth, so

that the hills may be only a short distance apart. Skin is clean and smooth, flesh is pure white and of excellent quality, always cooking dry and mealy. The Irish Cobbler enjoys the distinction of being the only variety that is planted more extensively on Long Island (New York) than any other potato. In this locality I find they do better than any other variety I have ever tried out. Peck, 75 cents; bushel, \$2.50; barrel (3 full bushels), \$7.00, not prepaid.

Seed Sweet Potatoes

We have a fine lot of sweet potatoes in storage for spring shipment.

We consider Nancy Hall, Nansemond and Yellow Jersey the best varieties. Three lbs. postpaid, 50c; by express, 6c per pound; 100 lbs., \$5.00. We do not pay express charges.

Poultry

S. C. RHODE ISLAND REDS

For a number of years we have been breeding and showing this variety and have some extra good stock at present. This is the most popular breed of chickens.

We have four pens mated to produce show birds and are quite sure stock produced from our eggs will prove very satisfactory to you. \$3.00 per 15 eggs, postpaid.

We have on hand 20 of the best cockerels we raised last year at \$5.00, \$7.00 and \$10.00 each. Will ship them to you on approval; if they are not satisfactory they may be returned and we will refund price paid.

Plants

In early spring of each year we grow large quantities of vegetable plants, such as Sweet Potato, Tomato, Cabbage, Peppers, Egg Plant. We ship either by mail postpaid or express, when sent by express the customer pays the expressage. It is not advisable to ship vegetable plants west of the Rock Mountains or east of the Mississippi on account of their perishable nature.

Tomatoes

Earliana, Stone and Dwarf Champion

	Per 10	Per 100
By Mail	\$0.15	\$1.00
By express	.10	.80

Egg Plant

Per dozen, postpaid, 35 cents.

Cabbage

Early Wakefield and Copenhagen Market

	Per 100	Per 1000
By mail	\$0.60	\$5.00
By express	.50	4.50

Sweet Potatoes

Plants cannot be set with safety until danger of frost is past. No orders accepted for less than 50 plants.

	Per 100	Per 1000
By mail, postpaid	\$0.60	\$5.00
By express	.50	4.00

Varieties: Nancy Hall, Nansemond and Yellow Jersey.

Peppers

Giant Sweet Mango and Cayenne

	Per 10	Per 100
By mail	\$0.25	\$1.50
By express	.15	1.00

Tree

Protectors



PRICE—2 1-2 cents each; \$2.00 per 100
Mailing price, 3 cents each

Same are made of veneer and are the best and easiest applied of anything ever used. Two men can wrap 1,000 trees a day. They are 18 to 24 inches long, 9 to 12 inches wide and one-twelfth inch thick, and are fastened with a small wire around the center, and will last from three to five years.

Will protect your trees from rabbits, mice and borers; will also protect the stems from sunscald and can be left on all summer and will not injure the tree. They are furnished green, tied in bundles of 100 each, and are ready for use. Soak in water before applying.

INDEX

	Page
Apples	3
Apples, Dwarf	5
Apples, Crab	6
Apricots	14
Asparagus	25
Althea	26
Ash	35
Baby Breath	42
Blackberry	18
Buffalo Berry	21
Barberry	26
Butterfly Bush	27
Bush Honeysuckle	27
Burning Bush	30
Bitter Sweet	30
Boston Ivy	31
Black Walnut	35
Butternut	35
Bleeding Heart	40
Cherries	10
Compass Cherry	12
Currants	17
Calycanthus	27
Clematis	31
Carolina Poplar	34
Chinese Poplar	36
Camperdown Elm	37
Catalpa Bungli	37
Cuttings	38
Cannas	40
Caladium	42
Chrysanthemum	42
Canterberry Bell	43
Columbine	43
Dewberry	21
Deutzia	37

	Page
Dutchmans Pipe	32
Dahlia	41
Daisy	43
Elderberry	21
Elder Golden	28
Films	24
Evergreens	37
Flowering Almond	26
Flowering Crab	26
Grapes	14
Gooseberry	16
Golden Bell	38
Golden Glow	40
Gladiolus	41
Hollyhocks	43
Himalaya Berry	21
Horse Radish	25
Hydrangea	38
Honeysuckle	31
Hedge Plants	38
Iris	40
Japanese Quince	28
Japan Snowball	29
Kudzu Vine	30
Loganberry	20
Lilac	28
Linden	35
Larkspur	43
Lillies	44
Mulberry	22
Moss Acacia	26
Mock Orange	28
Madeira Vine	31
Maple	34
Mountain Ash	35
Mallow Marvels	42

	Page
Pears	7
Plums	8
Pin Oak	35
Pussy Willow	35
Peonies	39
Phlox	41
Peaches	13
Quince	12
Rocky Mountain Cherry	11
Raspberry	19
Rhubarb	25
Red Dogwood	27
Roses	32
Russian Olive	34
Red Bud	35
Strawberry	22
Spirea	29
Snowball	29
Sumac	30
Sugar Maple	36
Sycamore	36
Tamarix	29
Trumpet Vine	30
Tulip Tree	36
Tree Seedlings	38
Tuberose	40
Tritoma	44
Virginia Creeper	31
Weigelia	29
Wisteria	31
Willows	36
White Birch	36
Weeping Birch	37
Weeping Willow	37
Weeping Mulberry	37
Yucca	42
Zumbra Cherry	12



Champion Everbearing Strawberries

SEE PAGE 24

STATE OF NEBRASKA
DEPARTMENT OF AGRICULTURE
LINCOLN

Certificate No. 18
Fee Received \$20.00

Certificate of Inspection of Nursery Stock

THIS IS TO CERTIFY THAT, in accordance with an Act of the Legislature of Nebraska approved April 18, 1927, on the 25th day of July, 1927, the growing nursery stock and premises of the Fairbury Nurseries, of Fairbury, Nebraska, was inspected by a duly authorized inspector and found apparently free from San Jose Scale and other dangerously injurious insects and plant diseases, including white pine blister rust. This certificate does not certify to the apparent freedom of raspberries and other bramble fruits from mosaic or other injurious systemic diseases.

This certificate is good until July 1, 1928, unless sooner revoked, and does not include nursery stock not grown within this State, unless such stock is previously covered by a valid certificate accepted by the Nebraska State Department of Agriculture.

By L. M. GATES, Inspector.

H. J. McLAUGHLIN, Secretary of Agriculture.



Spirea Waterer Anthony



Mock Orange



Butterfly Bush

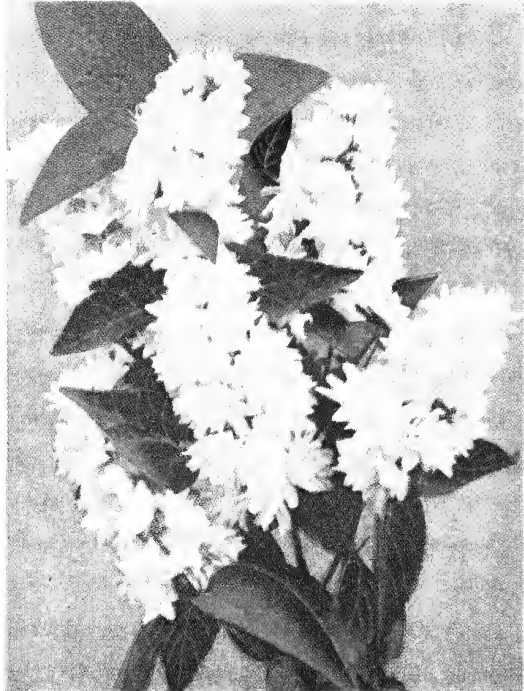
SPECIAL OFFER

We will send you these fine shrubs, one of each variety for only \$2.00, postpaid.

FAIRBURY
NURSERIES
FAIRBURY — NEBRASKA



Weigelia Rosea



Deutzia