

## **Historic, Archive Document**

Do not assume content reflects current scientific knowledge, policies, or practices.



1928 CATALOG

# GREENS



62.61

NU  
Roc



*Luxemburg*  
Rose  
90¢ each



*Red Radiance*  
Rose 90¢ each  
See Page 18

# Green's Jubilee Bargains

## In Fruits and Plants

THIS 50th Anniversary edition of our catalog is chock full of Bargains. We want everyone to participate in our Golden Jubilee so we are passing on to our customers big savings in fruits, trees, shrubs, plants and flowers. We have been planning for three years to make the 1928 season the biggest year in the history of Green's Nursery Company. In figuring how we could do it, we decided to offer more bargains and bigger bargains than ever before. Notice the new low prices on many items. The Golden Jubilee specials are practically unheard-of offerings. And in every item you will find the same high quality for which Green's Nursery Company has been noted for 50 years.



### The New Cortland Apple

Never sold before at this low price

The American Pomological Society awarded to the Cortland the Wilder Silver Medal for new fruits. To qualify for a Wilder Medal a new fruit must exhibit superiority to all existing varieties with which it will compete. We predict the Cortland will soon be the leading apple in the United States. Unusual value at

**60c**

See Page 26 for details.

each and up

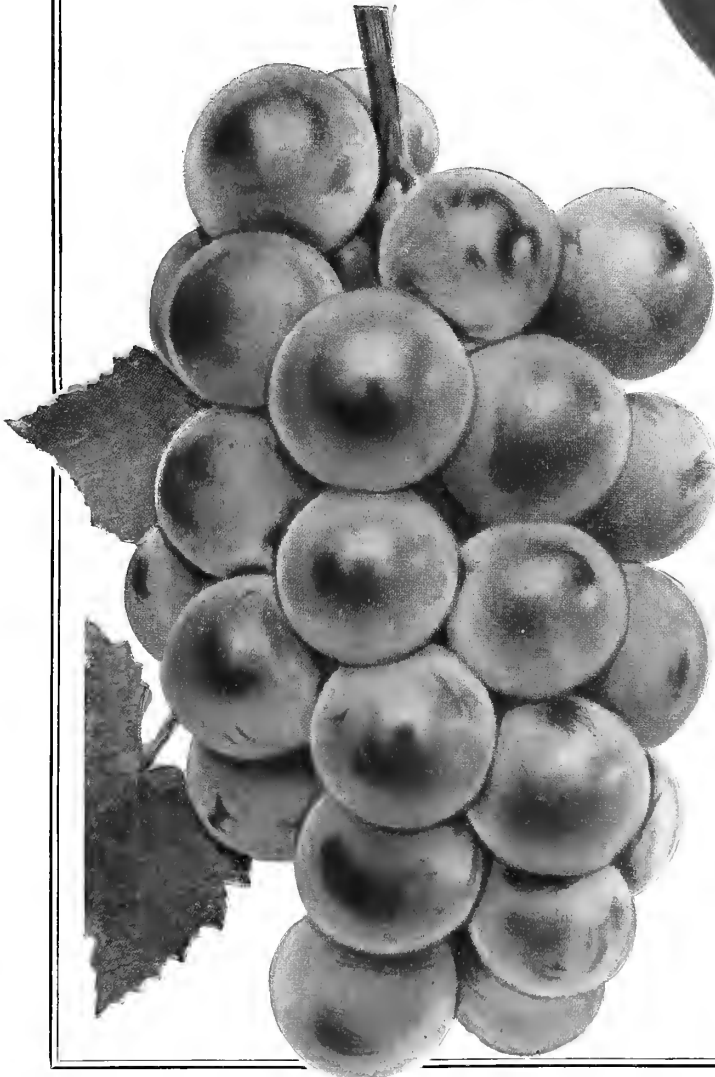
### The Delicious Caco Red Grape

This new red grape has the most delicious flavor and highest quality of any grape we have ever tested. Experts claim Caco equals in quality and melting texture the finest varieties grown under glass. The berries are unusually large, bunches of good size, compact and good form. It is one of the earliest grapes. Ripens here early in September.

See Page 41 for full description.

Price of extra size two-year-old  
Caco Grape Vines, only

**60c**



# BIG FREE GOLDEN JUBILEE PREMIUMS FOR EARLY ORDERS

As a rule most people wait until the first warm, sunshiny days of spring before they think of ordering trees, plants and vines. Then they all send their orders in at one time, and to take care of these orders properly we have to employ a large number of extra clerks and packers. If we can induce you or all of our patrons to send us their orders early, we can distribute this work over a longer period of time and not only handle the orders better but with less labor. This means a considerable saving of time and money to us and is the one and only reason we can make the liberal premium offer as set forth on this coupon. This does not mean that your order will be shipped too early. We will reserve the trees, bushes, plants and vines for you and ship them at the proper time for planting in your locality.

## FREE PREMIUMS FOR \$5.00 TO \$10.00 ORDERS

With all orders amounting from \$5.00 to \$10.00 received not later than March 15, 1928, payment in full with order, we will give you a choice of either PREMIUM No. 1 or PREMIUM No. 2. Please state which of these two premiums you want.

### FREE SHRUB PREMIUM No. 1

1 Hydrangea P. G. Bush Shrub

### FREE FRUIT TREE PREMIUM No. 2

1 Dwarf Pear Tree  
(Green's Selection of Variety)

---

## FREE PREMIUMS FOR \$10.00 TO \$15.00 ORDERS

With all orders amounting from \$10.00 to \$15.00 received not later than March 15, 1928, payment in full with order, we will give you a choice of either PREMIUM No. 3 or PREMIUM No. 4. Please state which of these two premiums you want.

### FREE SHRUB PREMIUM No. 3

1 Hydrangea P. G. Bush Shrub  
1 Golden Bell Shrub  
1 Spiraea Van Houttei Shrub

### FREE FRUIT TREE PREMIUM No. 4

1 Dwarf Apple Tree  
1 Dwarf Pear Tree  
1 Plum Tree  
(Green's Selection of Varieties)

---

## FREE PREMIUMS FOR \$15.00 TO \$20.00 ORDERS

With all orders amounting from \$15.00 to \$20.00 received not later than March 15, 1928, payment in full with order, we will give you a choice of either PREMIUM No. 5 or PREMIUM No. 6. Please state which of these two premiums you want.

### FREE SHRUB PREMIUM No. 5

1 Hydrangea P. G. Shrub  
1 Golden Bell Shrub  
1 Spiraea Van Houttei Shrub  
1 Mock Orange Shrub  
1 Spiraea Billardi Shrub

### FREE FRUIT TREE PREMIUM No. 6

1 Dwarf Pear Tree  
1 Plum Tree  
1 Cherry Tree  
1 Standard Apple Tree  
1 Standard Pear Tree  
(Green's Selection of Varieties)

---

## FREE PREMIUMS FOR ORDERS OF \$20.00 OR MORE

With all orders amounting to \$20.00 or more received not later than March 15, 1928, payment in full with order, we will give you a choice of either PREMIUM No. 7 or PREMIUM No. 8. Please state which of these two premiums you want.

### FREE SHRUB PREMIUM No. 7

1 Hydrangea P. G. Shrub  
1 Golden Bell Shrub  
1 Spiraea Van Houttei Shrub  
1 Mock Orange Shrub  
1 Spiraea Billardi Shrub  
1 Deutzia Crenata Rosea Shrub  
1 Deutzia Pride of Roch Shrub

### FREE FRUIT TREE PREMIUM No. 8

1 Cortland Standard Apple Tree  
1 Delicious Standard Apple Tree  
1 Bartlett Standard Pear Tree  
1 Seckel Standard Pear Tree  
1 Seckel Dwarf Pear Tree  
1 York State Prune Tree  
1 Early Richmond Cherry Tree

---

Premiums can only be sent as listed above. Please do not ask us to make any changes in them. Premiums will be made up of trees and shrubs of good quality. Varieties of fruit trees selected by us will be leading varieties.

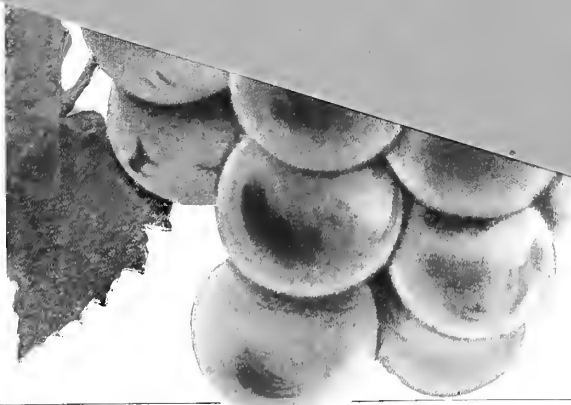
**GREEN'S NURSERY COMPANY**

**ROCHESTER, NEW YORK**



# G In

C



is one of the most delicious  
in September. We have  
in quality. These grapes  
are grown in California  
and are very large,  
and in good form. It  
arrives here early

See Page 41 for description.

Price of extra size two-year-old  
Caco Grape Vines, only

**60c**

# A Jubilee Message- To Our Many Friends

[ Celebrating with New Low Prices ]  
[ Looking Forward to a Glorious Future ]



We know that this message will interest our friends everywhere for it is the most important message we have ever sent out.

Fifty years is a long time to be in business, and no firm can be successful over such a long period without the loyal support of its customers. Fortunately we have always had the support and confidence of our customers throughout this period. One can hardly believe it but there are people living today who have bought trees and plants from Green's every year for the last fifty years. When we began to think about our Jubilee Celebration our thought first turned to our customers.

## Now Here's What We've Planned

We want to make our Jubilee year a year in which our customers profit more than ever in their dealings with Green's. With this in mind we started three years ago planning and setting out the biggest supply of fine stock in our history. I just wish everyone reading this could walk over our nursery with me, for I know that you would not only buy from us yourself but go right out and persuade all your friends to become customers of Green's.

But here's the point—now we have this great supply of well-rooted, healthy stock and we *must* sell it. With this in mind, we have planned our catalog accordingly.

## Startling New Prices

You will find this catalog chuck full of bargains and special offers. It is a veritable storehouse for yard and garden at rock-bottom prices. Look through this catalog—you will discover special of-

fers as well as many useful ideas for planning your yard or orchard. We have spared no time and effort to make this catalog the most helpful we have ever issued.

## And Another Thing

We want you to know that we are all working for you and we want to please you. If there are any questions you would like to ask, write us and we'll do what we can to give you the answer. Write me personally. I am never too busy to give your letter first place on my day's schedule.

Now, here's something you can do for us. We would appreciate it if all of our friends would help us to make our Jubilee year a big business year, and we'll do our share in sending you the finest stock we can grow at the lowest prices we can quote you.

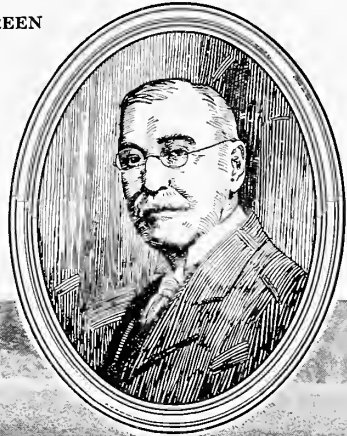
Sincerely yours,

*Morris H. Green*

CHARLES A. GREEN

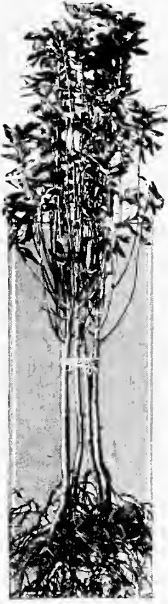
Founder

The First to  
Sell Direct  
from Nursery  
to Consumer.





**When You Buy from Green's You Get the Best  
Our Direct Plan Saves You Money**



**F**OR fifty years Green's Nursery Company has been supplying buyers with a quality of nursery stock which has built our present enviable reputation, and we have been supplying this stock at the lowest prices possible, quality considered. You may rest assured that we will do nothing to violate the public confidence we now enjoy and which has taken 50 years of hard, conscientious effort to build.

We number our satisfied customers by the thousands—in all parts of the country.

Charles A. Green, founder of this business, was the first man to start a service of supplying reliable nursery stock **DIRECT FROM NURSERY TO GROWERS.**

**Direct Plan Saves 30 Per Cent**

We employ no agents, consequently we have no agent's commission (usually 30 cents on every dollar) to pay. This saving we pass on to you—the buyer.

Why pay an agent 30 cents on every dollar for simply making out an order? We make buying easy. The descriptions in this catalog are authoritative and accurate. You need but to make a selection, fill out the order blank and send it in.

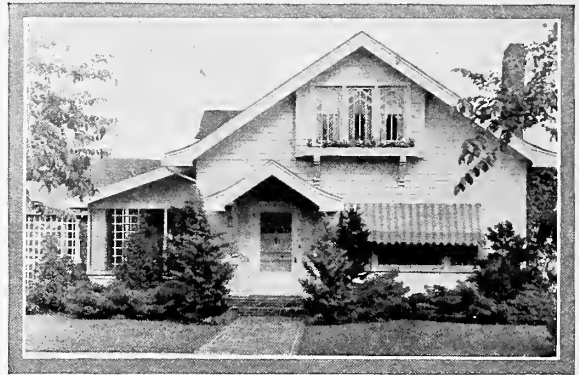
**Cash Plan Makes Low Prices Possible**

Perhaps you wonder why our prices are so low. They are low because we sell for cash. This enables us to save you an additional 20 per cent. Statistics prove

that nurseries which extend credit are fortunate if they collect 80 per cent of the money due them.

They must overcome this loss by adding 20 per cent to their prices. Our cash plan enables you to save this 20 per cent, as it is not added to our prices.

This together with the agent's commission of 30 per cent, means **A CLEAR, CLEAN SAVING TO YOU OF 50 CENTS ON EVERY DOLLAR YOU SPEND WITH GREEN'S NURSERY COMPANY.**



**Attractive Plantings Add Beauty and Value To Your Home**

**UNITED STATES DEPARTMENT OF AGRICULTURE ADVISES YOU TO BUY DIRECT FROM NURSERY**

This is what they say: "If the farmer makes his purchases direct from the nurseryman, he will save the expense of the agent and is less liable to mistakes and injury that may occur through repeated handling." United States Department of Agriculture, Farmers' Bulletin Number 113.



**Thanks for the Fine Letters  
You Write Us**

**W**E want our customers to know how much we appreciate the letters they write us. During the past fifty years we have received thousands and thousands of letters from our friends. These letters have made life pleasant for us and filled our hearts with happiness. This expression of good will from our customers shows us that our efforts are appreciated and that the Green Nursery Company is giving the public the kind of service it desires.

**"Always Gave A Square Deal"**

Green's Nursery Co.: Although I never had the pleasure of meeting your Father he seems like an old friend. Back thirty years ago I began buying trees from him and I have quite a number in bearing condition. The best thing about your Father's business was that he always gave a square deal and his stock was always true to name.

J. C. Clark, Woodbine, Pa.,  
January 19, 1927.

**Just Read This**

Green's Nursery Co.: Forty years ago or more we sent to Green's Nursery for trees for the farm. They grew and bore fruit. I am now eighty years old. Two years ago I sent to you for a few trees and grape vines for the town home of my great grandchildren and they have grown. Here in this home of mine I still enjoy fruit from Green's Nursery, always so satisfactory.

Sarah J. Stewart, Towanda, Pa.,  
January 7, 1927.



# Our Liberal Terms

*Read Before Ordering to Avoid Mistakes*



Order from this catalog—Simply make your selection, use the order blank found in the back of this catalog and mail it to GREEN'S NURSERY CO., ROCHESTER, NEW YORK.

### TERMS

Please send payment with order. An express money order, postal money-order, or bank draft is the best form of remittance. You can send your personal check if you desire. It is not safe to send silver or bills except in a registered letter. This "payment with order" plan saves us the enormous expense of making book records and of collecting accounts, and is one of the features of our business that enables us to sell you such high quality trees and plants at such low prices. To new customers, we extend the privilege of C. O. D. shipments and paying when delivery is made by expressman, mailman or freight agent. No premiums are given on C. O. D. orders. Prices are free on board cars at our nurseries.

### WHEN TO ORDER

It is best to order early, as this enables us to reserve for you the varieties you want and avoids the possibility of our being sold out. The time of shipment may be left to us, as we keep track of weather conditions throughout the country and ship each order so as to reach our customers at the very best time for planting in their localities. If it is necessary that an order arrive on a certain date, please note it on your order sheet and we will ship to arrive as near to that date as possible.

### WHEN TO PLANT

Planting can be done any time the trees and bushes are dormant and the ground not frozen. In most states the spring planting season extends from March 1st until June 1st, and the fall season from October 1st until December 1st.

### HOW TO PLANT

We make every effort to help you get best results and will send you complete planting instructions with your order. Should you desire these planting instructions before shipment, let us know and we will gladly send them.

### ORDERS FOR LESS THAN THREE DOLLARS

If your order amounts to less than three dollars, please add fifty cents extra for packing costs. In our endeavor to make our prices as low as possible, we have based our packing costs on orders amounting to ten dollars or more. As it costs practically as much to pack a small order as it does a large one, we find we cannot profitably handle orders of less than three dollars without an additional charge for packing. This does not apply to orders for shipment by parcel post. On parcel post orders of less than \$3.00 no charge is made for packing.

### CLUB ORDERS

It is advisable to order all your wants at one time. This will save you time in handling and planting. If your wants are few, have one or more of your friends and neighbors join with you in ordering. We will tie and tag each person's order separately, bundle all together in one package, and ship to whatever address you desire.

### SPECIAL QUOTATIONS ON LARGE QUANTITIES

Write us for special prices on large orders. Be sure to state the number of each variety wanted and the size of the trees desired.

## Green's Guarantee

*Delivery—We guarantee delivery in good condition. If the customer will notify us immediately that shipment arrived in unsatisfactory condition because of delay in transit or other cause, we will be pleased to make immediate adjustment.*

*True to Name—No human caution could be more exacting than ours. If any of Green's trees prove untrue to name, we will gladly replace the items or refund the purchase price. Obviously, we cannot assume further responsibility than that.*



## This Interesting and Helpful Booklet Free

*Makes Planting and Care After Planting Easy; Insures Results*

The Green's Nursery Company's interest in your purchase does not end when we have your money; rather it continues until you have obtained full satisfaction.

Realizing that even the best and hardiest nursery stock will not thrive unless properly planted and cared for, we will send FREE, with every order shipped, a copy of one of the most practical planting booklets ever written.

In it you will find simple, practical instructions which will enable you to get your trees and shrubs started right. Even though you have never done any planting, this little booklet, "HOW TO PLANT" makes it easy and the results sure. It is written by authorities, in language the layman can understand and is fully illustrated.

This "HOW TO PLANT" booklet is another evidence of the friendly and helpful manner in which we help our patrons obtain a greater measure of satisfaction in the growing of Green's Trees and Shrubs.

# Hardy Flowering Shrubs

You Will Find It Easy to Landscape Your Grounds with the Help of the Following Descriptions



**N**O other class of ornamentals plays such an important part in the decorative scheme for the home grounds. Without shrubs the foundation planting would lose all its bloom and fragrance. In our descriptions we endeavor to give the height of each variety at maturity and the time of blooming in this latitude. This makes it easy to select the right plants for foundation or border planting.

Plant the tall-growing shrubs in the background and at corners where height is needed. Use the lower-growing shrubs in between groups of the taller growers and in front of them. Consider the height of your windows from the ground in selecting shrubs and plant those which will not grow too tall and later have to be cut back every year. In general, plant shrubs in masses using five or more of a kind; leave the center of the lawn open and border it with shrubs and flowers. Make the shrub border irregular and curving in outline rather than a long straight line.

**Distance Apart to Plant Shrubs**—A close planting of shrubs will give an immediate effect. An open planting of shrubs will take longer to make a showing but will eventually be very nice. Most folks try to strike an average such as this: plant shrubs which grow 1 to 4 feet tall about 2 feet apart; plant shrubs which grow 4 to 8 feet tall 3 feet apart; plant any shrubs that grow over 8 feet at least 4 feet apart.

**How Close to Plant to the Foundation**—Shrubs must have moisture to grow so do not get them too close to the foundation. Where the roof does not extend out from the house, it is safe to plant about 1½ feet from the foundation. Where the roof overhangs, especially in bungalows, plant shrubs at least 2½ feet away from the foundation.

**Parcel Post:** Ornamental shrubs can be sent by parcel post, post-paid, for 5 cents per shrub extra.

**ALTHEA (Rose of Sharon)** — This beautiful shrub is of unusual value due to its habit of blooming late in the season after other shrubs are thru flowering. Blooms in August and September and continues in flower until cut off by the frost. Very hardy, erect, compact, reaching 8 to 10 feet at maturity. Bell-shaped flowers of striking colors. Used extensively as a flowering hedge. We can furnish double-flowering varieties in the following colors: White, red, purple, rose with darker center, white with dark center. In single-flowering sorts we can supply white and rose. Order by color and state whether single or double sorts are wanted. **Prices of strong bushes, 2 to 3 feet, 50 cents each.**



Althea (Rose of Sharon)



Deutzia Crenata

**BUTTERFLY BUSH**—Bushes grow from 3 to 4 feet tall and are crowned with long racemes of lilac-colored flowers in July. Its honeyed fragrance attracts the butterflies, and as many as fifty have been counted on one bush at one time. (See illustration in color on Page 9). **Prices of strong bushes, 2 to 3 feet, 50 cents each.**

**DEUTZIA CANDIDISSIMA**—A strong growing shrub 6 to 8 feet high, with bell-shaped, pure white, double flowers in June. The flowers are borne in erect panicles 2 to 4 inches long and are so perfect in shape they are frequently used as cut flowers. **Prices of strong bushes, 2 to 3 feet, 50 cents each.**

**DEUTZIA CRENATA (Flore Pleno)**—This variety has very full, bell-shaped, double flowers, white tinged with rose. They are produced in great profusion in racemes 4 to 5 inches long. Blooms in June. Grows 6 to 8 feet tall. **Prices of strong bushes, 2 to 3 feet, 50 cents each.**

**CALIFORNIA PRIVET**—(See page 16).

**DEUTZIA GRACILIS (Dwarf Deutzia)**—A low, dense-growing shrub bearing a profusion of single, white flowers in May. Excellent for shrub borders in front of taller kinds. Grows 3 to 4 feet high. **Prices: 12 to 15 inches, 50 cents each.**

**DEUTZIA PRIDE OF ROCHESTER**—An early and large-flowering variety that blooms in May. Flowers white and bell-shaped. Grows 6 to 8 feet tall. **Prices of strong bushes, 2 to 3 feet, 50 cents each.**

**RED LEAVED BARBERY (Berberis Thunbergii Atropurpurea)**—A new form of the common dwarf barberry. See illustration in color on back cover page. Foliage a reddish bronze in spring, turning to a brilliant red as the heat of summer intensifies its color. An exceedingly attractive shrub for mass plantings where contrasting colors are

Our Shrubs Bloom the First Season After Planting



desired. Produces striking effects planted with green and yellow foliage shrubs. Must be planted in the sun to bring out and retain its full red color. **Price: Two-year-old plants, \$1.00 each.**

**DWARF BARBERRY**—(See page 16).

**GOLDEN BELL (Forsythia Intermedia)**—A harbinger of spring. One of the earliest flowering shrubs, blooming with the crocuses. Its striking yellow flowers, appearing as they do before the leaves, brighten up the garden at a time when other flowers are scarce, a hardy variety. Grows 5 to 7 feet high. **Prices of strong bushes, 2 to 3 feet, 50 cents each.**

**GOLDEN ELDER**—Planted among shrubs of green foliage, this golden-leaved Elder forms a pleasing contrast, adding tone and character to the planting. The flowers are white, in flat-topped cymes, in early summer. Grows naturally 6 to 8 feet high, but should be pruned back severely each spring to secure denser and brighter foliage. **Prices of strong bushes, 2 to 3 feet, 50 cents each.**

**HYDRANGEA ARBORESCENS**—One of the finest of the Hydrangeas, growing 6 feet high, and bearing in July, August and September, a profusion of large clusters of snow-white flowers resembling the familiar Snowball in appearance. The blossoms are smaller and more refined than those of the *Paniculata Grandiflora*. Very desirable for a flowering hedge. **Prices of strong bushes, 2 to 3 feet, 75 cents each.**

**HYDRANGEA PANICULATA GRANDIFLORA (Bush Form)**—In our opinion, no other shrub gives quite the "value received" of this hardy hydrangea. It is easy to grow, never fails to bloom the first season planted, and produces in abundance immense clusters of greenish white flowers which gradually change to white and later to delicate pink. Normally grows 7 feet high, but severe pruning each spring greatly increases the size of the flower heads. Blooms in August and September, and if the flowers, which keep for an extremely long time, are allowed to dry on the bush, they turn to a bronzy green and are valuable for winter decoration in the home. Makes a beautiful flowering hedge. See illustration in color on back cover page. **Prices of strong bushes, 1½ to 2 feet, 40 cents each, 10 for \$3.00, 50 for \$12.50; 2 to 3 feet, 50 cents each, 10 for \$4.00, 50 for \$17.50; 3 to 4 feet, 60 cents each, 10 for \$5.00, 50 for \$20.00.**



Golden Bell (Forsythia)

**HYDRANGEA PANICULATA GRANDIFLORA (Tree Form)**—We train the bush hydrangea to single stems which form small, compact, miniature trees very much like the tree rose in appearance. Same characteristics as the bush form except shape. **Prices of Tree Form Hydrangeas: 2 to 3 feet, \$1.00 each.**

**PINK BUSH HONEYSUCKLE**—A handsome shrub growing 6 to 8 feet high, bearing in abundance pretty pink flowers in late spring. Literally covered in summer and autumn with a mass of showy orange and scarlet berries. Makes a very pretty flowering hedge. See illustration in color, page 9. **Prices of strong bushes, 2 to 3 feet, 50 cents each.**

**WHITE BUSH HONEYSUCKLE**—Identical to the pink variety except that the flowers are a creamy white. **Prices of strong bushes, 2 to 3 feet, 50 cents each.**



Hydrangea P. G. Is Ideal For Foundation Planting

**GORGEOUS HYDRANGEA P. G. JUBILEE SPECIAL**

Plan a border or a foundation planting of this gorgeous shrub. It is just the right thing to plant with other plants and is inexpensive in large quantities. Enjoy its huge flowers from August until frost. Order Today.

**40 cents each**  
Special Quantity Price  
**10 for \$3.00**

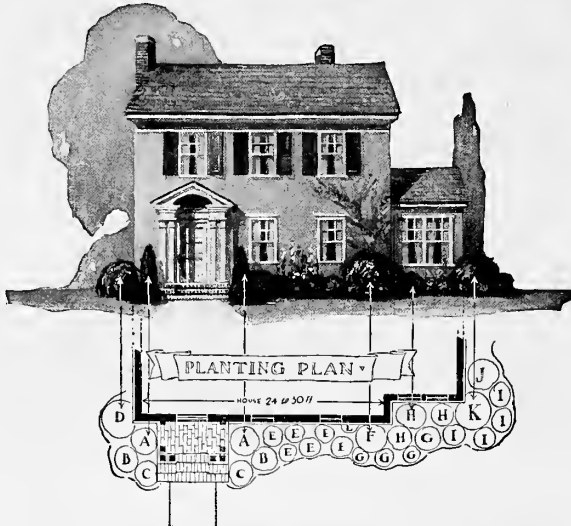
**Certain To Grow**

Green's Nursery Co.: I received the last consignment of trees ordered from you and they are O. K. Your trees are always a joy to put in the ground as they come in such good condition and always grow.  
A. L. Duggan, R. D. 1, Bethlehem, Pa.  
June 2, 1927.

*Everyone Admires Hydrangea P. G.*



**A Suggestion for a Foundation Planting for Homes Old and New**



Landscape Plan No. 1

Key	No.	NAME	Size	Cat. Price
A	2	Silver Juniper	1½-2 ft.	\$ 9.00
B	2	Globe Arborvitae	12-15 in.	6.00
C	2	Siberian Arborvitae	15-18 in.	6.00
D	1	Spiraea Van Houttei	2 -3 ft.	.50
E	6	Spiraea Anthony Waterer	1½-2 ft.	4.50
F	1	Bush Honeysuckle	2 -3 ft.	.50
G	4	Hydrangea Paniculata Grandiflora	2 -3 ft.	2.00
H	3	Pink Weigela	2 -3 ft.	1.50
I	4	Snowberry	2 -3 ft.	2.00
J	1	Flowering Almond	2 -3 ft.	.75
K	1	Golden Bell	2 -3 ft.	.50
L	1	Boston Ivy (Vine)		.75

Regular Catalog Price, \$34.00  
**OUR SPECIAL PRICE, \$30.50**

**Lilacs**



**LILAC — ALBA** — Common White Lilae. Heart-shaped foliage and splendid panicles of pure white, single flowers in May. Grows 6 to 8 feet tall. Prices of strong bushes, 2 to 3 feet, 50 cents each.

**LILAC — CHARLES X** — Loose trusses of single flowers of a reddish purple. Grows 6 to 8 feet high. Prices of strong bushes, 2 to 3 feet, \$1.10 each.

**LILAC — LUDWIG SPAETH**—Large trusses of dark purplish blue, single flowers. Grows 6 to 8 feet high. Prices of strong bushes, 2 to 3 feet, \$1.10 each.

**LILAC—MADAM CASIMIR PERIER**—Medium sized, clusters of double white flowers. Dwarf grower. Prices of strong bushes, 2 to 3 feet, \$1.10 each.

**LILAC — MARIE LEGRAYE** — Large clusters of single white flowers. Grows 6 to 8 feet high. Prices of strong bushes, 2 to 3 feet, \$1.10 each.

**LILAC — PRESIDENT GREVY**—Large, full clusters of double, pale wisteria violet flowers. Grows 6 to 8 feet high. Prices of strong bushes, 2 to 3 feet, \$1.10 each.

**LILAC—VILLOSA**—A bushy lilac rarely over 6 feet high, with rosy pink flowers late in the spring. Prices of strong bushes, 2 to 3 feet, 75 cents each.

**LILAC—VULGARIS**—Common Purple Lilac. Probably the best known of any of the lilacs. Heart-shaped foliage and splendid typical lilac flowers in May, which are delightfully fragrant. Grows 8 to 12 feet high. Prices of strong bushes, 2 to 3 feet, 50 cents each.

**Snowball**

**SNOWBALL (Guelder Rose)**—A well-known favorite shrub with globular clusters of white flowers the latter part of May. Grows 8 to 10 feet high. See illustration in color, page 9. Prices of strong bushes, 2 to 3 feet, 75 cents each.

**JAPANESE SNOWBALL**—An erect, compact shrub, 6 to 8 feet tall, with purple-tinted foliage. Ball-shaped clusters of white flowers in June. Prices of strong bushes, 2 to 3 feet, \$1.00 each.

**Ornamental Shrubs — Continued**

**INDIAN CURRANT (Coral Berry)**—A desirable shrub for shady places. Grows 3 to 5 feet tall, producing inconspicuous rose-colored flowers in June and July. Its dull red, coral-like berries cling in great profusion along the under side of the branches. One of the showiest of the berried shrubs. Fine as a hedge. Prices of strong bushes, 2 to 3 feet, 50 cents each.

**JAPAN QUINCE**—Completely covered with dazzling scarlet flowers in May, this grand old shrub is a striking object to behold. The fruits which follow later on are quince-shaped and quite fragrant. With stout branches armed with fine thorns, it makes not only a desirable flowering hedge, but a defensive one as well. Grows naturally 6 to 8 feet high, but can stand any amount of shearing. Prices of strong bushes, 1½ to 2 feet, 50 cents each.

**PARCEL POST:** Ornamental shrubs can be sent by parcel post, postpaid for 5 cents per shrub extra.



Lilac Blossoms

*Shrubs Increase Value As Well As Beautify Your Home*



**SNOWBERRY**—A slender, medium-growing shrub, which does well in any soil and will flourish under trees and in densely-shaded places where little else will grow. Leaves are dark green and slender, small rose-colored flowers in June and July. Clusters of attractive milk-white berries which last until late in winter. Grows 3 to 5 feet high. Very attractive as a hedge. Prices of strong bushes, 2 to 3 feet, 50 cents each.



Snowberry

**SPIRAEA ANTHONY WATERER**—A dwarf variety growing 2 to 3 feet high and covered with large heads of crimson flowers. See illustration in color, page 9. Very desirable for planting in front of taller-growing shrubs. If the flowers are removed as they fade, it will cause the plant to keep up a continuous bloom until late in the fall. Prices of strong bushes, 1½ to 2 feet, 75 cents each.

**SPIRAEA BILLARDI**—An erect-growing shrub with dense spikes of rose-pink flowers in July and August, and again in the fall. Grows 4 to 6 feet high. Does well in moist places. Prices of strong bushes, 2 to 3 feet, 50 cents each.

**SPIRAEA CALLOSA ROSEA** — A free-blooming variety, producing large panicles of deep, rosy blossoms nearly all summer. Grows 4 to 6 feet high. Prices of strong bushes, 2 to 3 feet, 50 cents each.



Japan Quince

**SPIRAEA FROEBELI**—This is another beautiful red variety. Just a trifle taller than Anthony Waterer. It is a strong, healthy grower, dwarf in nature and can be used as edgings or foundation plantings. Everyone should have a few of these and the Anthony Waterer mixed in with their other plants, or just in front of the graceful Van Houttei or other tall-growing Spiraeas. Prices of strong bushes, 2 to 3 feet, 50 cents each.

**GOLDEN SPIRAEA**—A rapid-growing variety with masses of snowy white flowers in June. Young foliage bright yellow, changing to golden browns in autumn. Very desirable for group planting. Grows 8 to 10 feet high. Prices of strong bushes, 2 to 3 feet, 50 cents each.

**Special Quotations on Landscape Plantings**

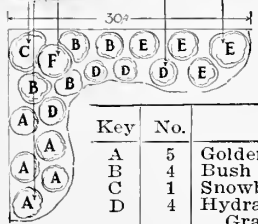
Write us for special quotations on large plantings of all leading ornamental and shade trees, flowering shrubs, flowering vines, roses, etc. Please state quantities and varieties desired.

**Landscape Plan No. 2**

Border Planting of Flowering shrubs



This harmonious planting of flowering shrubs will make a pleasing corner planting on any grounds. These shrubs also make this a good planting for screening out some unsightly view. This is an unusual value at the price given below.



Key	No.	NAME	Size	Cat. Price
A	5	Golden Bell.....	2-3 ft.	\$2.50
B	4	Bush Honeysuckle....	2-3 ft.	2.00
C	1	Snowball .....	2-3 ft.	.75
D	4	Hydrangea Paniculata.	2-3 ft.	2.00
E	4	Pink Weigela.....	2-3 ft.	2.00
F	1	Lombardy Poplar (Tree) .....	5-6 ft.	.50

Regular Catalog Price, \$9.75  
**OUR SPECIAL PRICE, \$8.80**

**"SPLENDID MATERIAL SENT"**

April 19, 1927

Green's Nursery Company:—

I wish to congratulate you upon the manner in which you fill orders and the splendid material you furnish your clients. My shipment of trees, shrubs and berry bushes arrived in perfect condition and they are all of the finest stock. Should they not prosper, I can certainly lay no blame on you.

C. W. Rosevear,  
 Atlantic City, New Jersey

**"PLANTS RECEIVED IN FINE CONDITION"**

May 6, 1927

Green's Nursery Company:—

Everything in my order received in fine condition and growing nicely. I have been dealing with you for years now and can truthfully say your firm is one of the most reliable I ever dealt with. I thank you again for your kind treatment.

Ralph E. Moore,  
 Rosslyn, Virginia.

**"STOCK IS GROWING FINE"**

Green's Nursery Company:—

I want to tell you how pleased we are with the stock we got from you this Spring. Our trees are growing fine and so are the shrubs. The Gruss an Teplitz rose is lovely and has 13 big blossoms. The Weigela is full of bloom and has made lots of growth. Everything lived and is doing fine. Please send me your next catalog for we shall want more stock next season.

Mrs. L. C. Cooper,  
 East Bridgewater, Mass.

Note That We Offer Shrubs By Parcel Post, Postpaid for 5c Per Shrub Extra



**Ornamental Shrubs — Continued**

**SPIRAEA VAN HOUTTEI**—Better known and more largely planted than any other shrub. An extremely graceful shrub with long, drooping branches completely covered with flat clusters of white flowers in May and June. See illustration in color on next page. When in blossom, a hedge of Spiraea Van Houttei is a sight long to be remembered. Cannot be too highly recommended. We consider it the best general-purpose shrub. Grows 6 to 8 feet high. **Prices of strong bushes, 2 to 3 feet, 50 cents each; \$4.50 per 10; \$20.00 per 50.**

**MOCK ORANGE (Syringa)**—One of the best-known shrubs with a wealth of white blossoms in May and June. Derives its name from its blossoms which resemble orange blossoms. Grows 8 to 10 feet high. **Prices of strong bushes, 2 to 3 feet, 50 cents each.**

**PHILADELPHUS VIRGINALLIS (Sometimes Called Mock Orange)**—A new, choice, fragrant variety, with large, creamy white flowers in May and early June, and intermittently until fall. Grows 6 to 8 feet high. **Prices of strong bushes, 2 to 3 feet, \$1.00 each.**



*Philadelphus Virginallis*

**GOLDEN SYRINGA**—A compact, dwarf-growing shrub with very brilliant yellow foliage and white flowers in May and June. Retains its color all season and is very valuable for creating pleasing and striking contrasts with green-leaved shrubs. Grows 2 to 3 feet high. **Prices of strong bushes, 1½ to 2 feet, 75 cents each.**

**HIGH BUSH CRANBERRY**—Sometimes called Tree Cranberry. An upright and spreading shrub with smooth, light grey branches and broad, rough

leaves. Produces flat heads of white flowers 3-4 in. across in May and June, followed by scarlet fruits which remain on the branches and keep their bright scarlet color until the following spring. Grows 8 to 10 feet high. **Prices of strong bushes, 2 to 3 feet, 75 cents each.**

**JAPANESE TREE LILAC**—Beautiful for lawn specimens. Grows 20 to 30 feet high. Large, creamy white flowers in great profusion in June and July. **Prices of strong bushes, 3 to 4 feet, \$1.50 each.**

**KERRIA JAPONICA**—A medium dwarf shrub with beautiful globe-shaped flowers of bright orange. Not hardy in extreme northern latitudes. Grows 6 to 8 feet high. **Prices of strong bushes, 2 to 3 feet, \$1.00 each.**

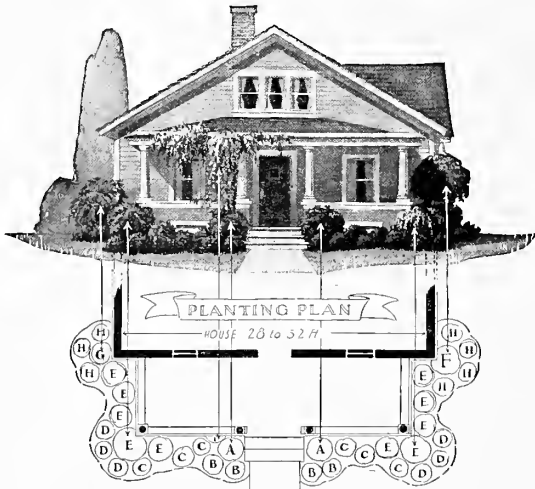
**PEARL BUSH**—Buds, like pearls strung on slender threads, opening up to fragrant clusters of pure white, starry flowers. Grows 6 to 10 feet high. **Prices of strong bushes, 2 to 3 feet, 75 cents each.**



*Kerria Japonica*

**PARCEL POST:** Ornamental shrubs can be sent by parcel post, postpaid for 5 cents per shrub extra.

**This Will Help You Plan Your Foundation**



**LANDSCAPE PLAN NO. 3 (Above)**

Key	No.	NAME	Size	Cat. Price
A	2	Althea .....	2 -3 ft.	\$ 1.00
B	4	Spiraea Anthony Waterer... 1½-2 ft.		3.00
C	6	Snowberry .....	2 -3 ft.	3.00
D	6	Hydrangea Arborescens.....	2 -3 ft.	4.50
E	10	Spiraea Van Houttei.....	2 -3 ft.	4.50
F	1	Mock Orange.....	2 -3 ft.	.50
G	1	Named Lilac.....	2 -3 ft.	1.10
H	7	Indian Currant.....	2 -3 ft.	3.50
I	1	Clematis Paniculata (Vine).....		.50

**Regular Catalog Price, \$21.60  
OUR SPECIAL PRICE, \$19.50**

*Notice Our Landscape Plans In This Section*

# Green's Golden Jubilee Collection No. 2

## 10 of the Best Flowering Shrubs



Variety	Size
1 Spiraea Van Houttei.....	2-3 ft.
1 Pink Weigela.....	2-3 ft.
1 Pink Bush Honeysuckle..	2-3 ft.
1 Snowball.....	2-3 ft.
1 Butterfly Bush.....	2-3 ft.
1 Spiraea Anthony Waterer	1½-2 ft.
2 Hydrangea P. G.....	2-3 ft.
1 Golden Bell.....	2-3 ft.
1 Mock Orange.....	2-3 ft.

ALL FOR **\$4<sup>65</sup>**  
 By Parcel Post  
 Postpaid for  
 \$5.15

See Shrub Section, Pages 4-11

SPIRAEA VAN HOUTTEI



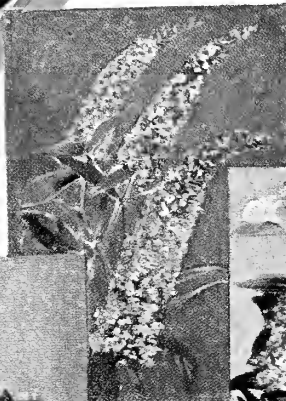
WEIGELA



BUSH HONEYSUCKLE  
Tatarian Pink



SNOWBALL



BUTTERFLY  
BUSH



SPIRAEA  
ANTHONY WATERER

# The TEN MOST POPULAR PERENNIALS

The most attractive and  
the easiest to grow

- |                |                    |
|----------------|--------------------|
| 1. Foxglove    | 6. Coreopsis       |
| 2. Columbine   | 7. Iris            |
| 3. Hardy Phlox | 8. Oxslip          |
| 4. Hollyhocks  | 9. Canterbury Bell |
| 5. Larkspur    | 10. Shasta Daisy   |

PRICES—STRONG PLANTS

25c each; **\$2.00**  
10 for

By parcel post postpaid, 2c  
per plant extra.

For descriptions of above  
varieties see pages 20 and 21.





**PINK FLOWERING ALMOND** — Similar to White Flowering Almond except blossoms are pink or rose-colored. Grows 6 to 8 feet high. **Prices of strong bushes, 2 to 3 feet, 75 cents each.**

**WHITE FLOWERING ALMOND**—Beautiful, double, white flowers, snuggling tightly to twigs, early in spring before the leaves appear. Grows 6 to 8 feet high. **Prices of strong bushes, 2 to 3 feet, 75 cents each.**

**PRUNUS TRILOBA**—A handsome, small lawn tree with a mass of very double pink blossoms early in the spring before the leaves appear. Grows 10 to 12 feet high. **Prices of strong bushes, 2 to 3 feet, \$1.00 each.**

**REGEL'S PRIVET**—A low, dense shrub with graceful drooping branches. Desirable for planting in front of tall-growing shrubs. Grows 6 to 8 feet high. **Prices of strong bushes, 2 to 3 feet, 50 cents each.**

**WEIGELA**—One of the most charming of all the shrubs, growing 6 to 8 feet high, with a profusion of trumpet-shaped flowers in May and June. We offer them in three colors—red, pink and white. Order by color. (See illustration in color on page 9).

**Prices of Red Weigelas**—Strong bushes, 2 to 3 feet, \$1.00 each.

**Prices of Pink Weigelas**—Strong bushes, 2 to 3 feet, 50 cents each.

**Prices of White Weigelas**—Strong bushes, 2 to 3 feet, 75 cents each.



Pink Almond

## A Successful Base Planting for New and Old Homes



Landscape Plan No. 4 (Above)

Key	No.	NAME	Size	Cat. Price
A	2	Pyramidal Arborvitae (Evergreen)	2-3 ft.	\$ 9.00
B	3	Dwarf Barberry	2-3 ft.	1.20
C	2	Spiraea Callosa Rosea	2-3 ft.	1.00
D	1	Clematis Paniculata (Vine)		.50
E	4	Hydrangea Arborescens	2-3 ft.	3.00
F	5	Deutzia Crenata	2-3 ft.	2.50
G	1	Named Lilac	2-3 ft.	1.10
H	2	Spiraea Van Houttei	2-3 ft.	1.00
I	1	Bush Honeysuckle	2-3 ft.	.50
J	4	Indian Currant	2-3 ft.	2.00
K	2	Pink Weigela	2-3 ft.	1.00
L	1	Golden Bell	2-3 ft.	.50

Regular Catalog Price, \$23.30  
**OUR SPECIAL PRICE, 19.80**

### "WELL SATISFIED FOR THIRTY YEARS"

Mr. M. H. Green: I have had trees and shrubbery from your father for over thirty years and will order a few this year, as I am well satisfied with them. Ralph W. Bell, Ashland, Mass., January 14, 1927.

### "EVERY SHRUB PERFECT"

Green's Nursery Company: I bought a number of shrubs from you this Spring and every one of them is a perfect shrub. I cannot give too much praise for your goods. John Henderson, Hingham Center, Massachusetts, June 16, 1927.

## SHRUBS for SPECIAL PURPOSES



### Shrubs for Low Foundations

- Spiraea, several
- Japanese Barberry
- Coralberry
- Snowberry
- Hydrangea
- Deutzia

### Shrubs for Shady Locations

- |                     |              |
|---------------------|--------------|
| Van Houttei Spiraea | Honeysuckles |
| Japanese Barberry   | Golden Bell  |
| Snowberry           | Privets      |
| Coralberry          | Deutzias     |
| Hydrangea           | Mock Orange  |

### Weigela

### Shrubs With Attractive Berries

- |                         |             |
|-------------------------|-------------|
| Dwarf Barberry          | Coral Berry |
| New Red-Leaved Barberry | Snowberry   |
| Honeysuckles            | Kerria      |
| Elder                   | Privets     |

*Without a Doubt Gardening is the Finest of all Hobbies for Women*

# Ornamental Trees

## Add Value to Your Property



RULY, "It's not a home until it's planted." Imagine if you can what a bleak and barren place this country of ours would be without shade and ornamental trees. Have you ever noticed that the homes which look the most attractive to you invariably are those with a few well-placed ornamental trees around them? There is a growing appreciation of trees. More people are learning to know and love them every day. It is well recognized that shade trees around the farm and city home not only add to its beauty and comfort, but greatly increase the value of the property.

How far apart to plant trees: Oftentimes it is a question how many trees are needed and how far apart they should be planted. Trees planted on the sunny side of the house to give shade should be close enough to each other to provide the needed shade without waiting too many years. For this reason sometimes shade trees, such as elms and lindens, are planted as close as 15 to 20 feet apart. Street trees should be planted from 30 to 50 feet apart. Smaller growing trees like the flowering cherry, mountain ash, and catalpa bungei, are usually planted in pairs or as single specimens on the lawn, and they can be as close as 10 or 15 feet to other trees or to each other.

We do not advise planting big, overgrown ornamental trees. They do not transplant as successfully as the sizes offered herein.

**RATES**—Less than ten at each rates. Ten to fifty at ten rates. Fifty or more at hundred rates.

**AMERICAN ELM**—In our opinion the handsomest and most dignified of all the native trees. Probably more largely planted and better known than any other. A tall-growing stately tree reaching 60 feet, with a wide arching top and vase-like form. Extensively used for street planting, where its wide-sweeping branches form perfect Gothic arches over the streets. Prices: 6 to 8 feet, \$1.00 each, 10 for \$8.00; 8 to 10 feet, \$1.50 each, 10 for \$12.50.

**AMERICAN LINDEN (Basswood)**—A tall-growing, stately tree, growing 60 to 80 feet tall, with large shining green leaves and light yellow fragrant flowers in July. A splendid tree for lawn or street planting. Valuable for its beautiful white wood. Prices: 6 to 8 feet, \$1.75 each.

**EUROPEAN LINDEN**—A medium growing, symmetrically shaped tree with dense foliage. The leaves are deep



Catalpa Bungei along driveway



Lombardy Poplars

green above, silvery beneath. Very attractive yellowish white flowers appear in June in drooping clusters of from five to twenty blossoms to a cluster. Very fragrant. Grows as high as 50 feet. Prices: 6 to 8 feet, \$1.75 each; 8 to 10 feet, \$2.25 each.

**BECHTEL CRAB**—A handsome bush or little tree seldom over 20 feet in height. One of the finest for lawn decoration. Produces in profusion double, delicate pink flowers resembling at a distance dainty little roses. Blooms when young and is very fragrant. Prices: 2 to 3 feet, \$1.00 each; 3 to 4 feet, \$1.25 each.

**CATALPA SPECIOSA**—One of the most showy flowering trees, noted for its fast and vigorous growth. Fine for lawn and street planting. Large heart-shaped leaves with clusters of white flowers tinged with violet and dotted with purple and yellow. Its long, narrow "beans" in autumn are unique. Used extensively for fence posts and railroad ties. Its wood though soft is very durable. Grows to a height of 60 feet. Very hardy. Prices: 4 to 5 feet, 50 cents each, 10 for \$4.50; 5 to 6 feet, 65 cents each, 10 for \$6.00; 6 to 8 feet, \$1.00 each, 10 for \$9.00.

**CATALPA BUNGEI (Umbrella Catalpa)**—A beautiful, umbrella-shaped tree with large, heart-shaped leaves laid with shingle-like precision, forming an even, compact, dome-shaped head; hardy, unique and handsome; very useful in formal plantings. Grows about 8 feet tall. This is a grafted variety of catalpa, and while the top of the tree becomes larger and more compact each year, the trees do not grow any taller. We have these trees grafted on stems of three different heights: 4 feet, 5 to 6 feet, and 6 to 8 feet. Prices: 4 feet, \$1.50 each; 5 to 6 feet, \$2.25 each; 6 to 8 feet, \$3.00 each.

**CUT-LEAVED WEEPING WHITE BIRCH**—A tall, graceful, weeping tree, with silvery-white bark and delicately cut foliage. Excellent for lawn and cemetery planting. Reaches 60 feet at maturity. Price: 4 to 5 feet, \$2.25 each, 5 to 6 feet, \$3.00 each.

**RED FLOWERING DOGWOOD (Cornus Florida Rubra)**—Similar to White Flowering Dogwood except that flowers vary from pink to light red. Grows 10 to 20 feet high. Price: 2 to 3 feet, \$3.50 each.

**WHITE FLOWERING DOGWOOD (Cornus Florida)**—A slow-growing dwarf tree with abundant, large white flowers appearing very early in the spring before the grayish-green leaves, and followed by attractive red berries. Leaves turn to deep red in autumn. Grows 10 to 20 feet high. Price 2 to 3 feet, \$1.00 each.

Ornamental Trees Cannot Be Sent By Parcel Post



**ENGLISH OAK**—The Royal Oak of England. A spreading long-lived tree 60 feet or more at maturity, with dark green leaves smaller than those of our native species. Well adapted for lawn and public grounds. **Prices 4 to 5 feet, \$2.50 each.**

**RED OAK**—A massive tree with light grey bark and green, round-lobed foliage that turns a beautiful red in the autumn. Excellent for parks and large lawns. Grows 60 feet and upwards. **Price: 4 to 5 feet, \$2.50 each.**

**JAPAN FLOWERING CHERRY** — A mass of rose-colored blossoms, clinging closely to the branches, gives the tree the appearance of being buried beneath a wealth of exquisite color and fragrance. Grows 20 feet and upwards. **Price: 3 to 4 feet, \$2.00 each.**

**MOUNTAIN ASH** — A handsome little lawn tree growing 20 to 30 feet high, with long, dark green foliage and clusters of bright red berries. **Prices: 4 to 5 feet, \$1.00 each; 5 to 6 feet, \$1.50 each.**

**ORIENTAL PLANE** — A hardy, rapid-growing, shade tree that does well in smoky cities, near the seashore, or in unfavorable situations where other varieties would not flourish. Excellent for street planting. Beautiful, dense, foliage. Grows 60 feet and upwards. **Prices: 6 to 8 feet, \$1.50 each.**

**CAROLINA POPLAR**—A very rapid-growing tree, giving shade in a very short time. Very easy to transplant and does well on any kind of soil. Desirable for roadside planting, in parks, and along rivers and streams for the protection of the banks. Used extensively for screens to hide unattractive buildings. Attains a height of 60 feet at maturity. Bright heart-shaped, glossy green leaves, silvery white underneath. **Prices: 6 to 8 feet, 50 cents each, 10 for \$4.00, 50 for \$15.00; 8 to 10 feet, 75 cents each, 10 for \$6.00, 50 for \$25.00; 10 to 12 feet, \$1.00 each, 10 for \$8.00, 50 for \$35.00; 12 to 14 feet, \$1.50 each, 10 for \$12.50, 50 for \$50.00.**

**LOMBARDY POPLAR**—A tall, narrow, tapering tree, 60 feet high at maturity, a striking feature in any landscape. Fine for planting in groups, along driveways, or to make boundary lines. Sometimes used for tall screen hedges. **Prices: 5 to 6 feet, 50 cents each, 10 for \$4.00; 50 for \$15.00; 6 to 8 feet, 75 cents each, 10 for \$6.50, 50 for \$25.00; 8 to 10 feet, \$1.25 each, 10 for \$10.00, 50 for \$37.50.**

**PURPLE-LEAVED PLUM (Prunus Pissardi)** — A handsome, showy little tree 20 feet in height with striking pinkish-purple leaves in the spring that deepen in color as the season advances. Small, white, single flowers. Very striking and ornamental for lawn planting. **Prices: 3 to 4 feet, 75 cents each; 4 to 5 feet, \$1.00 each.**

**BABYLON WEeping WILLOW**—Our well-known weeping willow. A large graceful tree, especially effective when planted near water. Grows 30 to 60 feet high. **Price: 5 to 6 feet, \$1.00 each.**

**GOLDEN WILLOW**—A very showy, yellow-barked tree reaching a height of 60 feet at maturity. A handsome tree at all seasons, but particularly conspicuous in winter and early spring before the leaves appear. **Prices: 6 to 8 feet, 75 cents each.**

**GOLDEN WILLOW (Bush Form)**—4 to 5 feet, 65 cents each, 10 for \$6.00; 3 to 4 feet, 50 cents each, \$4.50 per 10.

**ASH-LEAVED MAPLE (Box Elder)**—A very hardy, fast-growing tree about 60 feet high, planted extensively in the West for timber and windbreaks because it endures both drought and cold unusually well. Easily distinguished by its greenish-yellow bark. Bright green leaves which turn to yellow in autumn. **Prices: 5 to 6 feet, 75 cents each; 6 to 8 feet, \$1.00 each; 8 to 10 feet, \$1.25 each.**



**The American Elm  
The Most Beautiful of Shade Trees**

**NORWAY MAPLE (Hard Maple)**—Without a doubt one of the most desirable shade trees for street and lawn planting. Of fairly rapid growth, reaching a height of 60 feet at maturity. Sturdy, compact and vigorous, forming a rounded head of stout branches and broad, deep green leaves. **Prices: 6 to 8 feet, \$2.25 each; 8 to 10 feet, \$3.00 each; 10 to 12 feet, \$5.00.**

**SILVER MAPLE (Soft Maple)** — The fastest growing of the maples, very valuable where immediate shade is required. Grows to a height of 60 feet, forming a large, spreading head, with bright green leaves, silvery white on the under side. Does equally well in well-drained or low, swampy locations. **Prices: 6 to 8 feet, \$1.00 each; 8 to 10 feet, \$1.50 each.**

**SUGAR MAPLE (Rock Maple)**—One of the most useful of all our maples, excellent for street and lawn planting and used extensively in the production of maple sugar. A tree of magnificent proportions, often 80 feet in height, straight, spreading and symmetrical in shape. Long-lived. It roots deeply, allowing the grass to grow close about its trunk. Dark green leaves turning to scarlet and gold in autumn. **Price: 6 to 8 feet, each \$2.50.**

**WEIR'S CUT-LEAVED MAPLE**—A rapid-growing tree with slender, drooping branches, very graceful in appearance. Beautifully dissected foliage. Height 50 feet or more. **Price: 6 to 8 feet, \$2.50 each.**

**DOUBLE WHITE THORN (Hawthorn)**—The famous May Thorn of England. Low, dense little tree about 20 feet in height. A mass of clustered, double, rose-shaped white flowers in May, followed by a display of showy, scarlet fruits which remain a long time. Makes a pleasing flowering hedge. **Price: 3 to 4 feet, \$2.25 each.**

**PAUL'S SCARLET THORN (Hawthorn)**—Similar to White Flowering Thorn except that the flowers are a deep crimson scarlet. Grows 10 to 12 feet high. **Price: 3 to 4 feet, \$2.25 each.**

**RUSSIAN MULBERRY**—A very hardy, low-growing tree 20 to 30 feet high with beautifully cut foliage and an abundance of fruit which attracts the birds. Not one of the edible varieties. **Prices: 4 to 5 feet, 50 cents each, 10 for \$4.50; 5 to 6 feet, 75 cents each, 10 for \$6.00; 6 to 8 feet, \$1.00 each, 10 for \$8.00.**

**WHITE HORSE CHESTNUT**—A large tree of regular outline, 60 to 80 feet tall, completely covered in May with great upright spikes of white flowers. Satisfactory either as a street or lawn tree, particularly desirable where dense shade is required. **Prices: 3 to 4 feet, \$1.00 each; 4 to 5 feet, \$1.25 each.**

## LIST of TREES for ALL PURPOSES

### TREES FOR QUICK GROWTH

Catalpa Speciosa  
Carolina Poplar  
Lombardy Poplar  
Willows  
Ash-Leaved Maple  
Silver Maple

### TREES THAT FLOWER

Bechtel Crab  
Catalpa Speciosa  
Flowering Dogwood  
Japanese Flowering Quince  
Double White Thorn  
Paul's Scarlet Thorn  
White Horse Chestnut

### FOR STREET OR AVENUE PLANTING

American Elm  
American Linden  
Oriental Plane  
All Maples

### WEeping TREES

Cut-Leaved Birch  
Babylon Weeping Willow

*You Get Fifty Cents More Value Out of Every Dollar Spent With Green's*



# Evergreens - - For Year Round Effects

## The Following Description Makes It Easy to Select

**D**UE largely to their regular and very pleasing outlines and the fact that they retain their foliage and color all the year around, evergreens have become exceedingly popular for private and public plantings. Their varied shades of blue, silver and green permit a most attractive combination of colors. Planted about the foundations of a home they hide the sharp outlines of the dwelling and form a very pleasing and striking background for shrubs and perennials, and in winter give an appearance of coziness and warmth not attained by any other class of trees.

**RATES**—Less than ten at each rates. Ten to fifty at ten rates. Fifty or more at hundred rates.



For beauty and form and color all the year round, plant evergreens. The arrangement of this delightful planting is as follows: Pyramidal Arborvitae at each side of steps and corner; Silver Juniper, tall plants, beside Arborvitae; Pfitzer's Juniper, low graceful plants, by steps. Mugho Pine, low round-shaped plants, in front; Blue Spruce at corners in front.

## Arborvitae

### AMERICAN ARBORVITAE (White Cedar)

—A beautiful pyramidal-shaped tree, which grows to a height of 40 ft. when allowed to develop fully. Its deep green foliage is feathery and spray-like, becoming more dense after each shearing. It stands trimming well, and for this reason is widely used for hedges and screens—6-8 ft. high. By annual shearing, a hedge of arborvitae can be kept at almost any height desired. It is hardy and dependable in almost any situation, but does best on a cool, moist soil. For a close, compact hedge, trees should be set 15 inches apart. **Prices:** 1½ to 2 feet, \$1.50 each, \$12.00 for 10; 2 to 3 feet, \$2.00 each, \$18.00 for 10; 3 to 4 feet, \$3.00 each, \$25.00 for 10.

**GLOBE ARBORVITAE**—A very dwarf and compact evergreen that grows naturally into an almost ball-like form about 2 to 3 feet high. Very desirable for planting in front of taller-growing varieties. Used extensively as single specimens, in groups for

formal plantings about garden walks and in vases. **Specimens, 12 to 15 inches, \$3.00 each.**

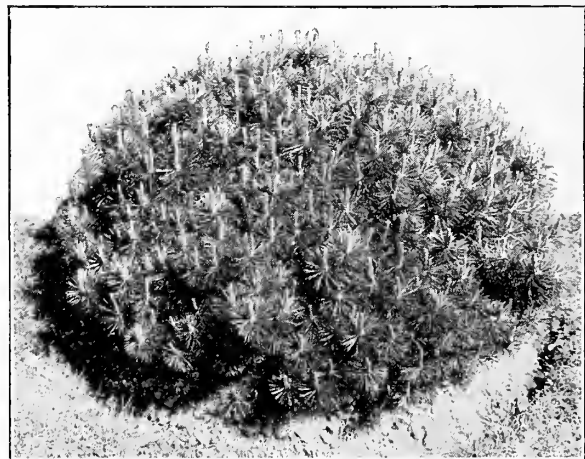
**PYRAMIDAL ARBORVITAE**—An extremely narrow pyramidal-shaped evergreen with spray-like foliage, identical in character with the American arborvitae or white cedar. The growth is close, compact and regular. The beautiful dark green color is retained all winter. It requires little space, and, therefore, is very desirable for planting near the house in foundation plantings. Planted singly or in groups of two or three on either side of the entrance, or at the corners of the buildings and lawn, it breaks the sharp outlines and gives an extremely pleasing and ornamental effect and makes an attractive background for other evergreens and ornamental shrubs. When fully matured, it reaches a height of 10 to 15 feet, but can be kept at almost any height desired by annual pruning in late August or September. **Specimens, 1½ to 2 feet, \$3.50 each; 2 to 3 feet, \$4.50 each.**

**SIBERIAN ARBORVITAE**—A dwarf conical-shaped evergreen with a broad globe-shaped base abruptly tapering to a rather blunt point. The foliage is dark green, heavy and deeply crested. Grows 6 to 8 feet in height at maturity, but can be kept lower by pruning. Much sought for foundation plantings and frequently for hedges. Makes a very desirable combination with the taller-growing pyramidal arborvitae. Originated in the famous royal gardens of England, but named Siberian on account of its extreme hardiness. **Specimens, 15 to 18 inches, \$3.00 each.**

**TOM THUMB ARBORVITAE**—A small, compact, dwarf evergreen with feathery foliage. Very desirable for foundation plantings in front of taller kinds. **Specimens, 1 to 1½ feet, \$2.50 each.**

## Pine

**DWARF MUGHO PINE**—A dwarf globe-shaped evergreen never growing over 4 to 5 feet high. By annual shearing of the new growth, it can be kept as small as desired. A true dwarf grower, many-stemmed, compact, with good dark green foliage which is retained throughout the winter. Excellent for planting in front of taller evergreens, in foundation plantings, borders, etc. Its usefulness is almost unlimited. **Specimens, 12 to 15 inches spread, \$4.00 each.**



Mugho Pine (Excellent for Foundation Planting)

*Plant Evergreens For All Year Beauty*



**Junipers**



**PFITZER'S JUNIPER**—A low, broad, pyramidal-shaped evergreen with graceful and very beautiful lacy foliage of a healthy blue-green color. The branches grow horizontally from the stem, forming a flat spreading top. Height 6 to 8 feet, but can be kept smaller by annual pruning. The handsomest of the Chinese junipers and the most satisfactory in this climate. Originated near Berlin, Germany. **Specimens, 12 to 15 inch spread, \$4.00 each.**

**SILVER JUNIPER (Juniperus Scopulorum)**—This beautiful silvery-blue cedar is of exquisite color and is a distinct addition to any planting. It is narrow, compact and symmetrical in shape and very desirable for foundation plantings, borders, groups or as individual specimens. In the fall months the berries begin to appear, some of them being clear sky-blue, others darker and silver colored. The berries are borne abundantly and make a great attraction for the song birds. Grows to medium height. **Specimens, 1½ to 2 feet, \$3.75; 2 to 3 feet, \$4.50 each.**



**Spruce**

**BLACK HILL SPRUCE**—A very symmetrical, compact, tree. Very hardy. Foliage varies from green to bluish tint. Grows about 40 feet tall. **Specimens, 1½ to 2 feet, \$3.00 each.**



**COLORADO BLUE SPRUCE**—A magnificent tree with a silvery-blue sheen that makes it a striking object in any landscape. Its conspicuous blue color makes it a very desirable tree for group planting. Grows 20 to 30 feet at maturity, but can be kept at almost any height by annual pruning. **Specimens, 1½ to 2 feet, \$10.00 each.**

**COLORADO GREEN SPRUCE**—When seeds of the Colorado Blue are planted in the nursery, 75 per cent of the trees are green and the balance various shades of blue. We select the blue specimens to offer as Colorado Blue and the balance are sold as Colorado Green Spruce. These green specimens make exceedingly attractive trees, having all the characteristics of the Colorado Blue except color. **Specimens, 1½ to 2 feet, \$3.00 each; 2 to 3 feet, \$4.00 each.**

Green's Extra Large Fruit Trees for Quick Bearing, P. 49.



Norway Spruce

Norway Spruce are usually planted 10 feet apart.

**NORWAY SPRUCE**

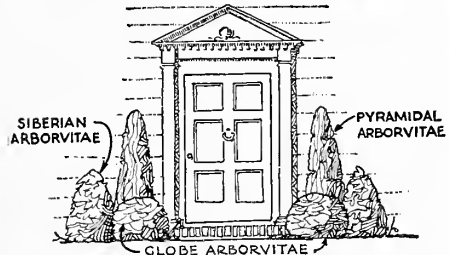
The time-honored Christmas tree, universally used for this purpose. A tall, graceful, picturesque tree reaching a height of 60 feet at maturity. Pyramidal in shape with broad, drooping branches at the base. Foliage deep green with light brown cones 5 to 7 inches long in the fall. Stands pruning well and is universally used for hedges and screens 6 to 8 feet tall. Planted largely for protection as a windbreak around orchards, farm houses and other buildings, and often planted as line fences to separate fields. Fruit growers report that an orchard protected by such a windbreak will yield double the crop of sound fruit of one left exposed to bleak and cutting winds of winter. As a windbreak,

**PRICES**

	Each	10
1½ to 2 feet.....	\$1.50	\$12.00
2 to 3 feet.....	2.00	18.00
3 to 4 feet.....	3.00	25.00
4 to 5 feet.....	5.00	40.00

**GOLDEN JUBILEE OFFER**

**GREEN'S DOORWAY COLLECTION**



**TYPICAL FOUNDATION PLANTING**  
Makes the Home Cheery the Year Round

- 2 Pyramidal Arborvitae, 1½ to 2 ft.
- 2 Siberian Arborvitae, 15 to 18 in.
- 2 Globe Arborvitae, 12 to 15 in.

**BARGAIN COLLECTION**  
**PRICE COMPLETE ..... \$16.20**

Cannot be sent by parcel post.

**Certificate of Inspection**

State of New York  
**DEPARTMENT OF FARMS AND MARKETS**  
Division of Agriculture

**Certificate of Inspection of Nursery Stock**

This Is to Certify That the nursery stock of Green's Nursery Company of Rochester, County of Monroe, State of New York, was duly examined in compliance with the provisions of Article 14 of the Farms and Markets Law, and was found to be apparently free from any contagious or infectious disease or diseases, or the San Jose scale or other dangerously injurious insect pest or pests. This certificate expires September 1, 1928.

**BYRNE A. PYRKE,**  
Commissioner.

By Geo. G. Atwood, Director, Bureau of Plant Industry Dated, Albany, N. Y.,  
September 10, 1927

All Our Evergreens Sent Balled and Burlapped. No Additional Charge.

# Hedges, Screens and Windbreaks .

**Beautify as they Serve**

**H**EDGES—Leaving the question of beauty aside, hedges are far superior to fences because they get better each year, while fences need painting and repairing every few years and ultimately must be replaced. What to use for a hedge depends entirely upon your taste. For formal treatment, demanding a regular outline, we recommend California Privet and Dwarf Barberry; for decorative effect one of the flowering kinds like Althea, Spiraea Van Houttei, Deutzia Crenata, Japan Quince, Bush Honeysuckle, Mock Orange, Snowberry, Indian Currant, Hydrangea and Ostrich Plume. For a hedge 2 to 3 feet high, we suggest Dwarf Barberry; from 3 to 4 feet high, California Privet; from 4 to 6 feet, the above named flowering shrubs; from 6 to 8 feet, American Arborvitae and Norway Spruce.

As California Privet and Dwarf Barberry are the most popular and extensively used hedge plants, we describe them under this heading.

**RATES**—Less than ten at each rates. Ten to fifty at ten rates. Fifty or more at hundred rates.

**CALIFORNIA PRIVET**—An almost evergreen shrub of dense, shapely habit with shining dark green foliage and a few minute flowers in June. Universally popular as a hedge plant because it stands trimming well and can be kept at any height or in any shape desired. The most desirable shrub for a hedge 4 to 5 feet high. Usually planted in single rows 10 inches apart, but where a broad hedge is desired, can be set in double rows—the rows 1 foot apart with the bushes 1 foot apart in each row, but alternated or staggered so as to come 6 inches apart in the hedge. Untrimmed, California Privet grows upright to 8 to 12 feet and makes a very desirable bush for planting alone or in groups. Not remarkably hardy in extreme northern sections.

**PRICES**

	Each	10	50
1½ to 2 feet.....	\$0.15	\$1.00	\$2.50
2 to 3 feet.....	.20	1.60	3.00
3 to 4 feet.....	.25	2.00	4.00

Parcel Post Size: 1½ to 2 feet, 20 cents each; \$1.20 per 10, postpaid.

**IBOLEUM PRIVET**—A remarkable sturdy and cold-resistant variety of privet very similar in foliage and appearance to the well known California privet. We recommend this variety very highly for climates too cold for the



**Dwarf Barberry Is Considered By Many To Be The Finest and Most Beautiful Hedge Plant Grown**

California variety. Prices: 18 to 24 inches, 25 cents each, \$1.60 per 10, \$6.00 per 50; 2 to 3 feet, 30 cents each, \$2.00 per 10, \$8.00 per 50.

**DWARF BARBERRY (Berberis Thunbergii)**—A very attractive dwarf shrub, barely 3 feet high under the best conditions. Dense in growth, yet graceful on account of its drooping branches. Its yellow flowers are borne on long stems followed by scarlet berries in great profusion, clinging through most of the winter. The leaves color to scarlet and gold in the autumn. Very desirable for planting as single specimens and used extensively in foundation plantings or in borders planted in front of taller-growing shrubs. Very desirable for planting in corners where side-walks meet. For a hedge not over 2 to 3 feet high, this makes a very desirable shrub. Very hardy. As a hedge, set bushes 2 feet apart.

**PRICES**

	Each	10	50
1 to 1½ feet.....	\$0.25	\$2.00	\$ 9.00
1½ to 2 feet.....	.30	2.50	11.00
2 to 3 feet.....	.40	3.00	12.00

Parcel Post Size: 1 to 1½ feet, 30 cents each; \$2.50 per 10 postpaid.

**SPIRAEA VAN HOUTTEI**—Makes a fine flowering hedge. It is extremely hardy, dense growing, with pleasing foliage and delightful flowers. See illustration in color, page 9. Prices of strong bushes, 2 to 3 feet, 50 cents each; \$4.50 per 10; \$20.00 per 50.

**SCREENS**—For this purpose almost any of the Ornamental Trees and Evergreens are desirable, but those most universally used are the American Arborvitae, Norway Spruce, Lombardy Poplar and Carolina Poplar.


**WINDBREAKS**—To be effective both summer and winter, windbreaks demand the use of evergreens. American Arborvitae and Norway Spruce will be found the most desirable for this purpose.



**Privet Makes a Fine Clipped Hedge**

**IT IS EASY TO GROW HEDGES**

**How to Trim**



At planting cut tops back to 4 or 6 inches above the ground. Each spring the hedge can be trimmed back to the desired height and width. Frequent trimming during early summer will make the hedge grow dense. Trim both the sides and the top or else the hedge will grow wider at the top and become open at the bottom.

*Plant a Hedge Where You Would Like a Fence*



# Ornamental Vines

**A** HOME planting is seldom complete without at least a few ornamental vines. They add a certain charm and grace not obtained from any other source. Vines keep the home cool in summer and furnish protection and shade to the porch, arbor and pergola. When planted close to a building the top soil should be replaced to the depth of a foot or two with rich garden soil, as the soil immediately about the foundation of a house is usually subsoil thrown up in the digging of the cellar.

**Strong Two-Year-Old Vines**—Prices (except where otherwise noted): 50 cents each, 10 for \$4.50.

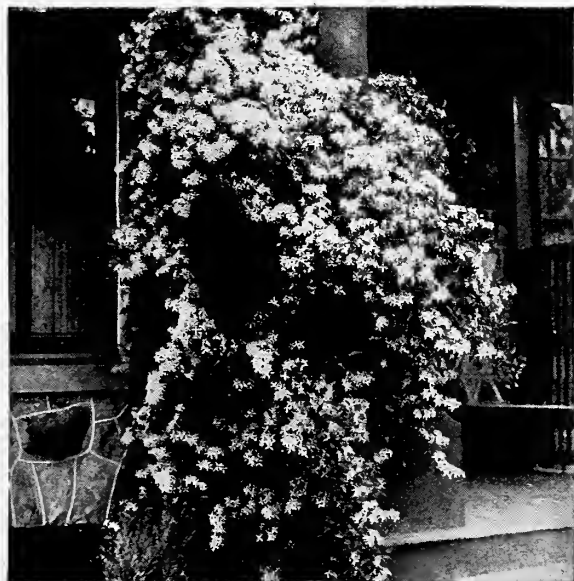
**Parcel Post:** Wisterias can be sent by parcel post, postpaid, for 10 cents per vine extra. Other vines at 5 cents per vine extra.

**BITTERSWEET (Celastrus)**—A popular vine for covering rough fences. Handsome glossy foliage and large clusters of orange crimson fruits. Its graceful sprays of berries make charming winter house decorations. **Price: 2 year, 50 cents each.**

**BOSTON IVY (Ampelopsis Veitchii or Japan Ivy)**—It is a rapid grower and clings to brick or stone walls without artificial fastening. The foliage is handsome dark green in summer, changing to crimson and yellow in autumn. It is a little tender while young and requires protection the first winter, but once established there is no further risk. **Price, strong two-year-old vines, 75 cents each, 10 for \$7.00.**

**CLEMATIS JACKMANNI**—A large-flowering variety, the flowers often 4 to 6 inches in diameter. Intense violet-purple with a rich, velvety appearance. It blooms continually from July until frost. **Prices, 85 cents each, 10 for \$8.00.**

**CLEMATIS PANICULATA** — A rapid-growing vine with handsome, clean, glossy foliage and medium sized, star-shaped, fragrant, white flowers in September when few other vines are in blossom. Very attractive and probably the most largely planted of all the vines.



Clematis Paniculata



Wisteria

## DUTCHMAN'S PIPE

—A very rapid-growing vine, which on account of its very large heart-shaped leaves is desirable when dense shade is required. Obtains its name from its peculiar brownish flowers, resembling in shape a miniature pipe. **Prices, \$1.25 each, 10 for \$10.00.**

**HALL'S JAPAN HONEYSUCKLE**—One of the most popular of all the climbing vines, which in addition to its ordinary uses as a climber is valuable for covering banks, bare spaces, etc., where grass will not grow. Flowers white, changing to yellow, very fragrant and in bloom the whole season.

**TRUMPET VINE**—A grand old favorite. Showy, orange-scarlet flowers and evergreen leaves. A strong grower often over 30 feet tall. Fine for training on walls, trellises, trunks of trees and arbors.

**VIRGINIA CREEPER (American Ivy or Woodbine)**—The well-known native ivy with five-parted leaves that change to scarlet in fall. Blue-black berries. Hardy and quick-growing. Requires artificial support on walls.

**PURPLE WISTERIA**—Very desirable for heavy trellises and pergolas, also attractive if trained to old trees. Pea-shaped, purple flowers in dense, pendant clusters sometimes a foot long. Blooms in May. **Price: 2 year vines, 75 cents each.**

**WHITE WISTERIA**—A white-flowering form of the Purple Wisteria. Same as above except in color of blossom. **Price: 2 year vines, 75 cents each.**

**BLUE WISTERIA**—Probably the best of the Wisterias. It flowers while very young and produces abundant, loose clusters of deep blue flowers, sometimes two feet long. Blooms in May. **Price: 2 year vines, 75 cents each.**

## YOUR MONEY REFUNDED IF YOU SEND TOO MUCH

You can send money with your order to Green's Nursery Co. and have no fear of sending too much. We carefully check every order sent in and if you have made a mistake and sent too much **WE GUARANTEE TO RETURN TO YOU EVERY CENT** over the amount of your order. This has been a policy of Green's Nursery Co. for the entire 50 years of business.

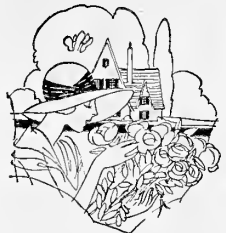
### JUST ONE OF MANY LIKE IT

Green's Nursery Co.: Your letter received in regard to balance due me because of overpayment. I have already found out that I am dealing with a good house. Harvey F. Wint, Allentown, Pa., March 16, 1927.

*Ornamental Vines Make Unightly Buildings Beautiful*

# Roses - The Favorites of Every Garden

(See illustrations in color, inside back cover.)



**P**ROBABLY no other class of ornamentals gives quite as much "value received" as roses. Very often the blooms of the first season repay the planter many times over for the time and money expended. The following list includes the best varieties selected by vote of the rose growers in the United States as the most satisfactory for the garden. Our roses are all two years old, field grown, budded stock, that will bloom this season.

**RATES**—Less than ten at each rate. Ten or more at ten rates.

## Hybrid Tea Roses

The Everblooming or Hybrid Tea Roses, commonly called Monthly Roses, are the most popular for the garden because of their long blooming season, beginning in June and continuing until frost. Hardy in the United States with winter protection, which is simply earth hilled 8 to 12 inches high around the bushes. Plant Hybrid Tea Roses 1½ to 2 feet apart.

**Prices of Hybrid Tea Roses:** Strong two-year-old bushes, 90 cents each, 5 for \$4.00, 10 for \$7.50.



Mme. F. Kruger

- By parcel post, postpaid, for 5 cents per bush extra.**
- COLUMBIA**—One of Ophelia's daughters or sports, full petaled, rose pink buds, deepening as the blossom opens, held erect on long, sturdy stems. Very vigorous, intensely fragrant and an excellent keeper, lasting 3 or 4 days as a cut flower.
- DUCHESS OF WELLINGTON**—Large, well-formed, semi-double, saffron-yellow buds, opening well. The most dependable yellow rose, fragrant, absolutely to be depended upon to produce flowers all during the season.
- GRUSS AN TEPLITZ**—Dark, rich crimson, the freest of bloomers and one of the favorites among the reds. Strong, tall canes with a continuous succession of bloom, a heavy grower that does well in the herbaceous border.
- EDWARD MAWLEY** — A perfectly formed rose of deep, blackish-crimson. Strong grower, fragrant and free of bloom.
- LOS ANGELES** — A luminous flame-pink overlaid with translucent golden yellow deep at the base. A long pointed bud opening to a most perfect flower of indescribable beauty with full reflexed petals.
- LUXEMBURG**—Long, pointed buds on stiff stems, opening up to large, deep yellow, fragrant blooms. Very attractive. Excellent for cutting. See illustration in color on front cover.

- garden roses. Long, pointed buds on stiff stems. Free blooming with beautiful foliage.
- RADIANCE**—This rose stands high among amateur growers because of its vigorous growth, hardness and continuous production of lovely, light silver-pink flowers with a deeper pink on the reverse side of the petal. Upright and disease resistant, flowering under all weather conditions.
- RED RADIANCE**—As good as its parent, Radiance, in habit of blossom and growth. Lovely deep red with an intense fragrance. See illustration in color on front cover.
- SOUVENIR DE CLAUDIUS PERNET**—Unlike most yellow roses, the color of this excellent new variety does not fade as the buds open up and the petals become exposed to the sun. Long, pointed buds, opening up to large, full, sunflower-yellow blooms. Bushes vigorous and erect. One of the very finest of the new varieties. \$1.25 each, 5 for \$5.50, 10 for \$10.00.
- SUNBEST**—A handsome, long, yellow bud, opening to cup-shaped flower of light sulphur yellow. Plant strong and spreading with few thorns.

## Polyantha Roses

This class does equally well indoors and can be dug up and potted in the fall and kept in bloom all winter. Plant 1½ to 2 feet apart.

**Prices of Polyantha Roses:** Strong two-year-old bushes, 90 cents each, 5 for \$4.00, 10 for \$7.50. By parcel post, postpaid, for 5 cents per bush extra.

- WHITE BABY RAMBLER**—Compact bush 1½ to 2 feet high, with clusters of small white flowers.
- CRIMSON BABY RAMBLER**—A bush form of the Crimson Rambler.

## Two Good Tea Roses

**Prices of Tea Roses:** Strong two-year-old bushes, 90 cents each, 5 for \$4.00, 10 for \$7.50. By parcel post, postpaid, for 5 cents per bush extra.

- MME. F. KRUGER**—An old favorite with creamy yellowish-pink buds. Free bloomer on long, slender stems with dainty foliage.
- WILLIAM R. SMITH**—One of the most perfectly formed roses in existence, long white, slightly tinged pink buds, opening slowly, with most perfect foliage, a splendid keeper.



Frau Karl Druschki

- MADAME BUTTERFLY** — A strong grower, producing a profusion of large flowers. Color a blending of bright pink, apricot and gold.
- MRS. AARON WARD** — Very double, pointed buds of deep Indian yellow, vigorous and compact in growth, floriferous with a rich, bronzy green foliage.
- OPHELIA** — Delicate salmon flesh-shaded with rose. A variety that has made such an enviable record that it heads the list of

*Our Roses Will Bloom the Same Season Planted*





**Hybrid Perpetual Roses**

Hybrid Perpetual Roses are not as free-blooming as the Hybrid Teas, but are completely hardy and of vigorous growth. They bloom tremendously in June and sometimes sparingly until autumn. Plant 2 to 2½ feet apart.

Prices of Hybrid Perpetual Roses: Strong two-year-old bushes, 90 cents each, 5 for \$4.00, 10 for \$7.50. By parcel post, postpaid, for 5 cents per bush extra.

**FRAU KARL DRUSCHKI (Saow Queen)**—An ideal, hardy, pure snow-white rose. Perfect in flower, strong in growth and very free-flowering.

**GENERAL JACQUEMINOT**—An old favorite and one of the best known of all roses. Brilliant scarlet crimson.

**MADAME PLANTIER**—Large, white, double flowers, wonderful fragrance, produced in abundance early in the season.

**MAGNA CHARTA**—Large flowers of rose carmine, very fragrant and free on strong plants.

**PAUL NEYRON**—Probably the largest rose in existence, fragrant, cream pink blossoms on long stems.

**Moss Roses**

Moss Roses bloom but once a season, but the flowers remain in bloom a long time. Much admired for the beautiful moss covering of the buds. Plant 2 to 3 feet apart.

Prices of Moss Roses: Strong two-year-old bushes, 90 cents each, 5 for \$4.00, 10 for \$7.50. By parcel post, postpaid, for 5 cents per bush extra.

**WHITE MOSS**—Pure white flowers of medium size, full, free and vigorous.

**PINK MOSS**—Fragrant, rosy pink buds crested with rich green moss.

**RED MOSS**—Large red flowers of great beauty heavily mossed with a deep green.

**Hardy Climbing Roses**

The Climbers or Ramblers not only afford a burst of bloom upon trellises, over fences and hedges, against the porch or the home, but having attractive foliage they are an object of beauty and ornament even when not in bloom.

Prices of Hardy Climbing Roses: Strong two-year-old bushes, 60 cents each, 5 for \$2.50. By parcel post, postpaid, for 5 cents per bush extra.

**CLIMBING AMERICAN BEAUTY**—One of the best climbing roses. Healthy, vigorous growth, making 10-foot shoots. A lovely, deep, rich, rose-pink bloom of splendid form on a long stem.



A Gorgeous Display of Climbing Roses

*Our Roses Are All Hardy Northern Field Grown Roses*

**BUSH ROSE COLLECTION**

(See inside back cover for illustration in colors)

10 Extra Strong 2-Year Bushes for \$7.35

- 1 Frau Karl Druschki (White)
- 1 Madam Butterfly (Apricot)
- 1 Los Angeles (Flame Pink)
- 1 Paul Neyron (Cream Pink)
- 1 Duchess of Wellington (Yellow)
- 1 Columbia (Pink)
- 1 Souvenir De Claudius Per-net (Yellow)
- 1 General Jacqueminot (Crimson)
- 1 Gruss An Teplitz (Dark Crimson)
- 1 Pink Radiance (Pink)



By Parcel Post, \$7.85, Postpaid Special Price . . \$7.35

**CRIMSON RAMBLER**—Unusually vigorous. Produces a great profusion of medium size, double red blossoms.

**DOROTHY PERKINS**—Full, double, shell-pink flowers in large clusters, very attractive.

**DR. VAN FLEET**—Lightest shell pink to silver flesh. Double.

**EXCELSA**—Red Dorothy Perkins. Very double, crimson, produced in large clusters.

**HIAWATHA**—Single crimson flowers with white base.

**PAUL'S SCARLET CLIMBER**—The brilliant, vivid scarlet which this rose maintains until the petals fall puts it in a class by itself. Good-sized flowers, freely produced in clusters of from 3 to 20, literally cover the plant with bloom. Strong and perfectly hardy.

**SILVER MOON**—A beautiful, semi-double, pure white rose four inches in diameter, with a cluster of prominent yellow stamens in the center which greatly adds to its attractiveness.

**TAUSENDSCHON (Thousand Beauties)**—Varies in color. A beautiful combination of colors, including several shades of pink. Semi-double.

**VEILCHENBLAU (Blue Rambler)**—Double flowers of light lilac, fading to light purple and blue.

**WHITE DOROTHY**—A duplicate of Dorothy Perkins except in color.

**YELLOW RAMBLER**—Yellow buds, which fade to creamy white as the flower opens. Strong and hardy.

**GOLDEN JUBILEE OFFER**

**CLIMBING ROSE COLLECTION**

4 Extra Strong 2-Year Bushes for \$1.75

- 1 Climbing American Beauty (Rose-Pink)
- 1 Crimson Rambler (Crimson)
- 1 Dorothy Perkins (Shell-Pink)
- 1 White Dorothy (White)

By Parcel Post, \$1.95, Postpaid Special Price . . \$1.75

# Hardy Perennials

Everybody Loves these Old Fashioned Flowers



AS THE trees and shrubs make the setting for the house, so the perennials form the nucleus of the flower garden. A well arranged, hardy border adds interest and delight to every home. Beginning to flower in the early spring and continuing until frost, without special care other than good soil and occasional cultivation, they produce a mass of color and an unfailling supply of flowers for cutting.

The growing popularity of perennials is due to their loveliness, plus their hardiness, for they withstand zero weather with only a protection of leaves. A yearly mulch of well-rotted manure or a liberal scattering of bone meal is gratefully received if the soil is poor.

These old-fashioned flowers may be effectively combined with shrubs by using them in the foreground, but the favorite combination is with annuals, either in a garden or a border planting. In case of the latter, the ornamental grasses, yucca, hollyhocks and belladonna larkspur are used as a background to the lower-growing perennials and annuals.

We offer only strong, field-grown plants that will bloom the first year with either spring or fall planting, spring preferred.

**STRONG PLANTS**—Prices (except where otherwise noted): 25 cents each, 10 for \$2.00. Parcel post: Perennial plants can be sent by parcel post, postpaid, for 2 cents per plant extra.

**ANCHUSA (Dropmore)**—This is one of the choicest hardy border plants, growing from 4 to 6 feet with good culture. It is fully covered with pure blue flowers an inch in diameter, which are of a surpassing beauty and loveliness. It flowers in May, lasting about two months in bloom.

**ANEMONE (Pink)**—Same as white anemone except soft rose pink flowers.

**ANEMONE (White)**—One of the most desirable fall blooming perennials. Tall, pure white blooms with deep yellow stamens, producing a succession of flowers during September and October. 18 to 24 inches high.

**BLEEDING HEART (Dicentra)**—Blooms very early in the spring, bearing numerous, rosy red, heart-shaped flowers in drooping racemes. 1½ feet high. Prices: Strong plants, 50 cents each, \$4.50 per 10.

**CANTERBURY BELL (Campanula Medium)**—With its handsome spikes of bell-shaped flowers of porcelain-blue, rose-pink, and white, the Canterbury Bell makes a gorgeous showing in the garden in July. Plants 2 to 3 feet high. Order by color.



Hemerocallis



Hollyhocks

**COLUMBINE (Aquilegia—Long-Spurred Hybrid)**—An old garden favorite. Thrives well in shady places where most plants cannot grow. One of the most beautiful of hardy plants, producing an abundance of graceful, peculiar-shaped flowers with long, slender spires. A most varied and delicate combination of colors, blue, white, yellow, pink, cream, lavender, red, scarlet and orange mixed together. Height, 2 to 4 feet.

**COREOPSIS (Lanceolata Grandiflora)**—A beautiful, hardy border plant that grows 15 to 18 inches high and produces its bright, golden yellow flowers from June until frost.

**FOX GLOVE (Digitalis Gloxiniflora)**—An old time favorite. Tall spires, 4 to 6 feet high, of inflated, bell-shaped flowers in shades of white, rose and purple mixed together. Beautifully spotted. It makes a fine background for lower-growing plants.

**GOLDEN GLOW (Rudbeckia Laciniata)**—Tall-growing, hardy perennial about 6 feet high. Produces a multitude of large, double, golden yellow flowers in August and September.

**HARDY ASTER (Michaelmas Daisy)**—Among the showiest of our late-flowering, hardy, native plants, giving a wealth of blooms in summer and late fall. Easy to grow and very popular. We offer a fine collection in mixed colors. 1 to 2 feet.

**HARDY CHRYSANTHEMUMS (Pompons)**—The well deserved popularity of this hardy plant is largely due to its abundance of beautiful flowers in the dull November days when every other hardy plant has succumbed to the frost. They can be had indoors, either cut or as potted plants. As cut flowers, they have no equal for lasting qualities, remaining fresh for several weeks. We offer a fine collection of Pompon varieties in four distinct colors, white, red, pink, and yellow. Order by color. 2 to 3 feet in height.

**HEMEROCALLIS**—Lovely, yellow day lilies, hardy, succeeding everywhere. One of the most popular perennials and should be included in every garden. 12 to 18 inches high.

**HEPATICA (Liver Leaf)**—A very hardy, native, spring-flowering plant, which thrives well in extremely shady places. One of the very earliest to bloom in the spring. We offer them in mixed colors of light blue, pink and white. Grows 4 to 6 inches.

See Colored Illustrations of Perennials Page Ten



**HEUCHERA SANGUINEA**  
—Lovely, coral pink bells on slender stems, producing flowers throughout the season. About 6 to 8 inches high.

**HIBISCUS MALLO MARVEL**—A new introduction valued for its large, attractive flowers measuring 6 to 8 inches in diameter. We can furnish in separate colors, pink, red, white and bluish, or a mixture of colors at a lower price. **Prices: Separate colors, 25 cents each; \$2.00 per 10; Mixed colors, 20 cents each; \$1.50 per 10.**

**HOLLYHOCKS** — Unrivaled favorites everywhere. No perennial garden is complete without a few. Planted in the back of the hardy border, massed in fence corners or scattered among the shrubbery, they produce a bold and showy effect hard to duplicate. Their towering spikes, 4 to 6 feet high, are a mass of flowers all summer. We offer a fine collection of double sorts in five separate colors, pink, white, yellow, dark red and scarlet. Order by color.

**IRIS**—Four colors of this most desirable and most easily grown, hardy plant. A mass of bloom in May and June. Roots should be barely covered with soil. Yellow, purple, blue and bronze. Order by color. Grows 18 to 24 in. high.

**LARKSPUR (Delphinium Belladonna)**—Plants 2 to 3 feet high, bearing mammoth spikes of sky blue flowers. Cut back severely after flowering to produce a succession of bloom.



Yucca

**GREEN'S SPECIAL PHLOX COLLECTION**

10 STRONG PLANTS FOR \$1.85

2 Athis (Pink)  
2 Mrs. Jenkins (White)  
2 Sir Edwin Landseer (Crimson)  
4 Green's Selection

**BIG VALUE AT..... \$1.85**

By Parcel Post, \$2.05 Postpaid

**LILY-OF-THE-VALLEY**—This popular and fragrant old-time favorite is a delightful addition to any planting. It is grand for massing near shrubs or along shaded corners. Grows about 9 inches high.

**OSTRICH PLUME (Ornamental Grass)**—Long, narrow, green leaves, 4 to 6 feet long, with white stripes along center. Beautiful plumes resembling ostrich plumes when dry.

**OXSLIP (Primula Primrose)**—Large, bright yellow flowers produced in great profusion in early spring. 9 inches to 1½ feet high.

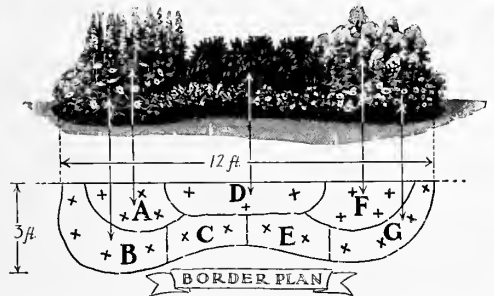
**SHASTA DAISY (Chrysanthemum Maximum)** — Large snow-white flowers with bright yellow centers borne on long stiff stems from June to September. Plants 1 to 2 feet high.

**YUCCA (Filamentosa)**—A subtropical plant resembling the century plant in foliage. Long, narrow, green leaves with tall spikes, 3 to 5 feet high, of large, bell-shaped, white blossoms resembling the lily. **Strong plants: Prices, 35 cents each, 10 for \$3.00.**

**VARIEGATED-LEAF YUCCA**—Very similar to the Yucca Filamentosa except that the leaves are a dark bronze green at the center broken up with minor stripes to a broad outer edge of yellow. The foliage, like the Yucca Filamentosa, retains its color all winter. **Strong one year plants, \$1.00 each.**

**GOLDEN JUBILEE OFFER**

**12 ft. BORDERS OF HARDY FLOWERS**



Enough plants to fill a border 12 feet long and 3 feet wide. All hardy flowers which will give you intermittent bloom all season.

Key No.	Name	Key No.	Name
A 4	Hollyhocks	E 2	Columbine
B 4	Coreopsis	F 4	Hardy Phlox
C 2	Oxslip	G 4	Shasta Daisy
D 3	Paenies (in variety)		

Enough plants for a 12 foot Border.  
23 Plants Large Size, Special at ..... **\$5.00**

By Parcel Post, Postpaid \$5.50

**Hardy Phlox**

Unsurpassed for brilliant, bold color effect. Very effective when planted in a border of hardy perennials or in large groups on the lawn. Desirable for planting in front of tall-growing shrubs. They bloom in July and August at a time when few other plants are in flower, but by pinching back the first buds the blooming period can be extended until frost. Usually grow 2 to 3 feet tall. Watering them in periods of drought is well worth while as the size of the bloom is greatly increased.

Prices of strong plants, 25 cents each, 10 for \$2.00. Parcel Post: Phlox can be sent by parcel post, postpaid, for 2 cents per plant extra.

- ATHIS**—Deep, clear, salmon pink. Large and strong.
- MRS. JENKINS**—Immense panicles of pure white flowers.
- LA VAGUE**—Clear, silvery rose.
- PANTHEON** — Cerise-salmon, white center, branching spikes.
- R. P. STRUTHERS**—Brilliant rosy red, crimson center.
- RHEINLANDER**—Salmon pink with claret eyes.
- SIR EDWIN LANDSEER** — Very bright crimson. Free grower.

**GREEN'S MIXTURE PHLOX**—We offer in addition to the above named varieties, our own mixture of unnamed sorts, ranging in color from pure white to dark red, and including almost all shades and combinations of colors. Very desirable for mass planting where separate colors are not required. **Prices of mixed Phlox, 20 cents each, 10 for \$1.75.**

**MIXED HOLLYHOCKS**

Our own mixture of colors. Very desirable for mass planting where separate colors are not required. Special price, 15 cents each, 10 for \$1.25.

*Perennials Add the Color Note to Yard or Garden*

# Paeonies

## Most Beautiful of Perennials



**T**HE most magnificent of all the perennials. The blooms are of great size and of a wide range of colors. In bloom from the middle of May until the first of July. They last well and are excellent for cutting. Plant the roots in deep, rich soil, setting them not more than 3 inches deep. The first year the blooms are not always true to type as even the most perfect double types will ordinarily produce single blooms the first season after planting. They grow 1 to 4 feet tall.

Prices: Strong roots, 50 cents each, \$4.50 per 10, (except where otherwise noted).

Parcel Post: Paeonies can be sent by parcel post, postpaid, for 5 cents per root extra.

**DELACHEI**—Large, medium compact, rose type. Violet crimson, slightly tipped with silver. Strong, erect, medium height, very free bloomer. Late mid-season.

**DORCHESTER**—Large, compact, rose type. Pale hydrangea pink. Fragrant. Medium dwarf. Upright free bloomer. Late.

**EDULIS SUPERBA** — Large, loose, flat crown. Bright mauve pink. Color striped with narrow lilac. Fragrant. Strong, upright, very free bloomer. Early. (See illustration in color on back cover.)

**GOLDEN HARVEST** — Guards pale lilac - rose, center creamy white, developing many wide petals of a peach-blossom-pink, on strong plants. Fragrant. Dwarf habit. Very free bloomer. Mid-season.



**Festiva Maxima—The Best White**

**FELIX CROUSSE**—Bright ruby red, large, compact. A strong grower with long stems. Mid-season. **Price 75 cents each, \$7.00 per 10.** (See illustration in color on back cover.)

**FESTIVA MAXIMA**—Very large, globular, rose type. Pure white center prominently flecked with crimson. Outer petals sometimes faint lilac white on first opening. Very tall, strong, vigorous grower. Early. (See illustration in color on back cover.)

**GREEN'S MIXTURE PAEONIES**—In addition to the above named varieties we have a mixture of red, white and pink unnamed sorts, which are very desirable for mass planting where separate colors are not required. **Price of strong roots, 35 cents each, \$3.00 per 10.**

### **GOLDEN JUBILEE OFFER**

#### **GREEN'S FAMOUS PAEONY COLLECTION**



4 Choice  
Paeonies for  
\$1.95

- 1 Festiva Maxima (Crimson)
- 1 Edulis Superba (Pink)
- 1 Felix Crousse (Red)
- 1 Green's Selection

Special Price **\$1.95**  
By Parcel Post, \$2.15,  
Postpaid

#### **"PLANTS ALWAYS GREW"**

February 11, 1927

Green's Nursery Co.:—

We have always had fine luck with all your trees and vines. I only wish you could see our trees that we got two years ago. They are surely a fine lot and so are the grapes.

Mr. William French,  
R. F. D. 2,  
Fayetteville, N. Y.

#### **"VERY FINE PLANTS"**

May 24, 1927.

Green's Nursery Co.:—

The three Crimson Rambler rose bushes are received and they are certainly very fine bushes and make good your claim for fair dealing. I surely appreciate your willingness to do what is right:

John E. Barrell,  
York Village, Maine.

May 18, 1927.

Green's Nursery Co.:—

I think your service is perfect. I received the shrubbery I ordered in excellent condition. All nursery stock which I have bought from your company so far has been fine.

Mrs. Joseph Walheim,  
Neeah, Wisconsin.

#### **"IN FIRST CLASS SHAPE"**

May 20, 1927.

Green's Nursery Co.:—

Your shipment of shrubs and perennials arrived in excellent condition. Everyone seemed in first class shape. I appreciate your courtesy in every way shown.

Mrs. F. W. Galbraith,  
Fultonville, N. Y.

See Paeonies in Color on Back Cover

# Gladiolus

## Beautiful and Easy to Grow

**N**O garden is complete without some of these glorious, summer-flowering bulbs. Any good garden soil will grow gladiolus if fully exposed to the sun. If your soil is heavy or stiff work in a liberal amount of well-rotted manure in the fall. Planting can be done as soon as the frost is fully out of the ground in the spring. Set bulbs two to four inches deep and four inches apart. After the blooming season is over they should be lifted carefully, shaken free of earth and allowed to dry in the sun for a day or two. Then cut off the stalks close to the bulbs and store them away in a cool, dry place in open boxes or shallow baskets. Gladiolus grow 2 to 3 feet tall.

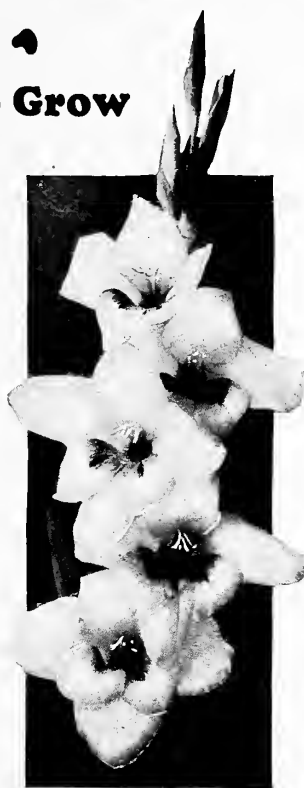
**Strong bulbs:** Prices (except where otherwise noted) 15 cents each, 10 for 90 cents, 25 for \$1.75, 50 for \$3.00.

**Parcel Post:** Gladiolus bulbs can be sent by parcel post, postpaid, for 5 cents per ten bulbs, or 35 cents per 100 bulbs, extra.

**AMERICA**—Beautiful, soft flesh pink faintly tinged with lavender.

**LUCETTE**—A new ivory white with lines of faint pink.

**1910 Rose**—Rose-pink shading to rose-red.



Gladiolus

**CRACKER JACK**—Dark red, throat spotted with yellow and maroon.

**MRS. FRANCIS KING**—Pure light scarlet. Flowers large.

**MRS. FRANK PENDLETON, JR.**—Delicate salmon pink with blood-red blotch in throat.

**SCHWABAN** — Pure canary yellow shaded with sulphur color. The golden yellow throat is slightly blotched with dull carmine.

**PRIMULINUS HYBRIDS**—A new, distinct small-flowered type. We offer a mixture of beautiful shades of yellow and orange.

### GREEN'S RAINBOW Collection of GLADIOLUS

Eighteen Extra Size Bulbs

Wonderful Assortment of Colors

No Two Alike

All for Special Price of **\$1.20**  
Postpaid \$1.25

**FALL BULBS** — Write for prices on bulbs for fall planting.

# Dahlias

## Wonderful as Cut Flowers



This good, old-fashioned, fall-blooming plant has increased so rapidly in popularity that it now holds a place second to no other plant in the garden. Owing to its free-growing habit it requires little care and is very easily grown. 4 to 5 feet tall. We offer the following varieties:

**ETENARD de LYON (Cactus)**—Rich carmine rose or royal purple.

**FLORA (Decorative)**—Pure white. One of the finest whites.

**FLORID (Cactus)**—Bright scarlet. A vivid and pleasing color.

**JACK ROSE (Decorative)**—Crimson. A general favorite.

**LAWINE (Cactus)**—White lightly suffused with pink.

**MINA BURGLE (Decorative)**—Rich cardinal red.

**PRIMA DONNA (Cactus)**—Pure white.

**YELLOW CLOSSE (Decorative)**—Lemon yellow.

Strong bulbs, 50 cents each.

A wonderful assortment of colors, 10 for..... **\$4.00**

**Parcel Post:** Dahlias can be sent by parcel post, postpaid, for 2 cents per bulb extra.



Dahlias are at their best in late summer and autumn when most other flowers are through blooming. Cut them and take them indoors to brighten the home.

# FRUIT DEPARTMENT

**We List Only the Best Varieties —  
Selected After 50 Years Experience**



**It is Easy to Succeed with Green's Trees  
We Have a Fine Supply at Jubilee Prices**

**G**REEN'S customers obtain a value that only many years of propagating and improving of varieties can give. During the fifty years we have been in business we have been developing unusual standards of quality. Not only have we, from time to time, added the best varieties obtainable, but we have spent years observing and caring for them until, today, everything we offer you in our catalog has the Green endorsement behind it.

Only the strongest, most vigorous stock is employed in propagating the trees you buy from us. This means that, with reasonable care, you are certain of a full measure of success.

Every care is taken to have our trees reach you in perfect condition. Given the proper attention by you after arrival, they will thrive and bring you profit. We urge that you follow to the letter the instructions in our "How to Plant" booklet. It is easy to succeed with Green's Trees.

### Age of Bearing

It is impossible to accurately tabulate the age at which fruit trees will bear, due to varying conditions such as soil, climatic conditions and care given. Also, varieties differ. The following table, based upon averages, will give you fairly dependable approximations:



### Distance Apart — Number Per Acre

To ascertain the number of trees or plants required for any given space, multiply the length of space by the breadth to ascertain the number of square feet available. Then, multiply the distance apart you intend to set your rows, by the distance between each tree or plant in the row to get the number of square feet each tree or plant will take. Divide the number of square feet in the given space by the number of square feet each tree will require and the result is the quantity of trees or plants required for that given space. Example: Given space, 20 feet by 10 feet. Asparagus set 2 feet by 1 foot, 20 feet by 10 feet, equals 200 square feet. 2 feet by 1 foot equals 2 square feet. 200 divided by 2 equals 100 roots.

	Age of Bearing	Distance Apart	Number per Acre
Apples, Std...	3 to 6 years	35 x 35 ft.	35
Apples, Dwf...	2 years	10 x 10 ft.	435
Apricots.....	3 years	15 x 15 ft.	193
Asparagus...	2 years	Field 4 ft. x 18 in.	7,260
		Garden 2 x 1 ft.	21,780
Blackberries.	1 year	8 x 6 ft.	907
Cherries.....	3 to 4 years	Sours 15 x 15 ft.	193
		Sweets 20 x 20 ft.	108
Currants.....	2 years	4 x 4 ft.	2,722
Gooseberries.	2 years	4 x 4 ft.	2,722
Grapes.....	2 years	8 x 8 ft.	680
Horse Radish	1 year	3 x 1 ft.	14,520
Peaches.....	2 years	15 x 15 ft.	193
Pears Std....	3 to 4 years	20 x 20 ft.	108
Pears, Dwf...	2 years	10 x 10 ft.	435
Plums.....	3 to 4 years	20 x 20 ft.	108
Quinces.....	4 to 5 years	10 x 10 ft.	435
Raspberries..	1 year	6 x 4 ft.	1,815
Rhubarb.....	1 year	4 x 3 ft.	3,630
Sage.....	1 year	3 x 3 ft.	4,840
Strawberries.	1 year	Field 4 x 1 ft.	10,890
		Garden 2 x 1 ft.	21,780



Planting Currant Cuttings at Our Nursery

# Big Profits in Apples

Here are the Most Prolific Bearers Selected from over 2000 Varieties

**T**HE apple is a good investment. Trees planted now will begin bearing in from 3 to 6 years and the value of the crop will increase yearly. The apple is without doubt the most important orchard fruit in the country. According to a census made by the United States Department of Agriculture, the number of old trees dying out is far in excess of the number of new trees being planted, in spite of the constantly growing demand. The orchardist who takes advantage of this fact, and plants apples now, will reap rich rewards from his small investment. A few apple trees planted about any home will greatly increase its value. The yearly fruit crops often yield more fruit than is needed for home use, giving a source of extra income as well as added pleasure and satisfaction.

Apples do well on almost any good average soil that will produce a good crop of corn or potatoes. They are usually planted 35 feet apart each way.

The varieties offered in this catalog are a selected list of varieties, the result of nearly fifty years' careful study and investigation on our part. They are dependable varieties of known and recognized value.

## Prices of Green's Standard Apple Trees

All Varieties except McIntosh

Age	Height	Each	10	50
2 yrs. old, Well Branched, 3 to 4 ft.		\$.60	\$4.00	\$10.00
2 yrs. old, Well Branched, 4 to 5 ft.		.70	5.00	17.50
2 yrs. old, Well Branched, 5 to 6 ft.		.85	7.00	27.50

Parcel Post Size: First-class, light grade, 3 to 4 ft. trees can be sent by parcel post for 40 cents each, \$3.00 per 10, postpaid.

## Prices of McIntosh Standard Apple Trees

Age	Height	Each	10	50
2 yrs. old, Well Branched, 3 to 4 ft.		\$.70	\$5.00	\$17.50
2 yrs. old, Well Branched, 4 to 5 ft.		.90	7.00	25.00
2 yrs. old, Well Branched, 5 to 6 ft.		1.00	9.00	32.50

Parcel Post Size: First-class, light grade, 3 to 4 ft. trees can be sent by parcel post for 50 cents each, \$4.00 per 10, postpaid.

**RATES**—Less than ten standard apple trees at each rates. Ten to fifty at ten rates. Fifty or more at fifty rates.

## Summer Apples

**SWEET BOUGH**—A large, pale, greenish-yellow, sweet apple of excellent quality. Should be in every home orchard. Ripens in July.

**RED ASTRACHAN**—The best mid-summer cooking and eating apple for home and market. Yellow, splashed with deep crimson. Brisk subacid in flavor. Very good in quality. The tree is medium in size, a reliable cropper, moderately productive, very hardy and bears the fourth year. Ripens in July and keeps until September.



Baldwin—The Old Reliable

**YELLOW TRANSPARENT**—One of the best of the extra early apples; waxy-yellowish white, mild acid, juicy and pleasant. Bears annually, or nearly so, starting the fourth year. Extremely hardy in the North. A good filler tree. Ripens late in July and continues in season until September.

## Autumn Apples

**GRAVENSTEIN**—A variety of excellent quality. For culinary purposes unexcelled by any variety of its season. The skin is slightly rough and of an orange-yellow color, overlaid with broken stripes of light and dark red. Sprightly subacid in flavor. The trees grow rather large, come into bearing early, are quite productive and are pretty reliable croppers. Moderately hardy. The fruit ripens about the middle of September and continues in season till early November.

**OLDENBURG**—Often called Duchess of Oldenburg, or just Duchess. Has excellent culinary qualities; pleasant to eat out of hand when fully ripe. Skin is yellow, with splashes and stripes of red. A good filler tree, as it is dwarf in habit. Comes into bearing at about the fourth year. In season late August and September.

**TWENTY OUNCE**—One of the most satisfactory of the fall varieties for commercial planting. Large, attractive, greenish-yellow, with broad stripes and splashes of red. Bears young, almost annually, and is a good cropper. Ripens in September and keeps until early winter.

## Winter Apples

**BALDWIN**—Due to its dependability, desirable season, good size, attractive color and good quality, Baldwin is the leading commercial variety for New York, New England, and certain parts of Canada, Ohio and Michigan. Every orchard in the Baldwin belt should have at least a few trees of this grand "old reliable" variety. Large, strong, vigorous trees, producing an abundance of large to very large apples of a bright red color, with yellowish, crisp, tender, very juicy flesh. Agreeably subacid in flavor. Very good in quality. Rather slow to come in bearing, but rapidly makes up for lost time when it begins bearing. Long-lived. Ripens in November and lasts until April in common storage and to May or later in cold storage.

For Prices On Dwarfed Apple Trees See Page Twenty-Nine



**BLenheim**—Often called Blenheim Orange. Fruit large, yellow, striped with red. Has attractive appearance and excellent quality. Slightly subacid. Its fine qualities make it desirable for home and market uses. One of the very best for making sauce and pies. In season October to December.

**DELICIOUS**—Sometimes called Stark's Delicious. A really delicious apple with a distinct flavor all its own. A high-quality apple. Fruit large, somewhat conical in shape, tapering at the base into five distinct knobs. Its beautiful crimson and unique shape make it an ideal apple for the fancy or box trade. Sells readily for high prices at the fruit stands. The flesh is crisp and juicy. Mild in flavor, but not a sweet apple. Has a decided aroma which is very pleasing. The tree is hardy, vigorous and productive. Bears about the fourth year. In season from November until May.

**FAMEUSE**—Probably better known as Snow. Its white, tender, exceedingly crisp flesh and mild subacid flavor make it a delicious eating apple. It is a moderate grower, producing rather heavy crops of medium-sized, dark red fruit, almost annually. Hardy. Succeeds well in the North. Ripens in November and keeps until January.

**GRIMES GOLDEN**—Probably the best yellow apple. Desirable for both dessert and culinary uses. Generally not considered a good commercial apple in the northern states. It is, however, a fine apple for the home garden. Flesh yellow and firm, with a rich, refreshing flavor. Tree bears early. Vigorous. In season November to January.

**HUBBARDSTON**—By many known as Hubbardston Nonesuch. Identical, we believe, with American Blush. Considered one of the most profitable varieties of its season, ripening as it does between the autumn varieties and the late ripening winter apples. Fruit large, of good flavor, mottled red and yellow in color. In season October to January.

**JONATHAN**—A very beautiful, bright red apple, highly flavored, and of excellent quality for either dessert or culinary uses. Is much in demand as a fancy apple during the holiday season. Grows best in the Middle West where it attains its full size. Under favorable conditions, the tree is a reliable cropper, bearing good crops biennially. In season November to January.

**McINTOSH**—In our opinion, not equaled in quality and flavor by any other variety with the exception of the Cortland, its progeny, which it resembles very much. Due to its very high quality and its exceedingly attractive appearance, it commands a ready sale and a fancy price in all the large Eastern markets. Has held the record for high price for years in Boston, New York, and Chicago markets. Rapidly making a place for itself as one of the leading if not leading commercial apple of the East. The fruit is very attractive in appearance, of bright deep red color, which in highly colored specimens is almost purplish-red overspread with a thin lilac bloom. Fruit above medium in size, with white, firm, very crisp flesh, fine-grained, tender, very juicy. Sprightly subacid in flavor with a characteristic perfume and aroma. The tree is rather a strong grower, very hardy and healthy. Comes into bearing about the fourth year and is a reliable cropper, yielding good crops. We recommend it highly to orchardists. In season from October to December or later.

# The Wonderful New C



The New Cortland Apple

**Y**EARS ago Professor U. P. Hedrick of the New York State Agricultural Experiment Station decided that the public needed a better apple of the McIntosh type. As a result of his work you are now offered the wonderful Cortland. This great apple was produced by science.

## Nine Good Reasons Why You Should Plant Cortland Apple Trees

1. Cortland apples are of the highest quality and flavor—equal to McIntosh. Just what the apple-eating public demands.
2. Cortland bears quickly—the third and fourth year after planting—a money crop the sixth year. No long wait for returns on your investment.
3. Cortland apples hang to the tree unusually well—do not drop or blow off. No losses from unmarketable fruit. Has an exceedingly long picking season.
4. Cortland apples are very easy to handle and pack—do not bruise easily. Reach the consumer in perfect condition.
5. Cortland apples are large and uniform in size and shape. A large percentage will grade number one.
6. Cortland should be picked later and will keep longer than McIntosh.
7. Cortland is an annual bearer—sets an abundance of fruit buds. No off season.
8. Cortland apple trees are very thrifty and fast growers. The trees develop an abundant framework to carry big crops.
9. Cortland apples have the bright red color that appeals so strongly to the apple eating public. Their beautiful and attractive appearance sells them on the open market.

Note—See Inside Front Co





**Delicious Apples—All the Name Implies**

The Cortland apple has been thoroughly tested by experts and unqualifiedly endorsed. Commercial planters may well consider the future market for this apple and plant Cortland to take the place of less popular sorts. Read what Mr. U. P. Hedrick of the N. Y. Agricultural Experiment station has to say of the Cortland, page 42.

**NORTHERN SPY**—An old-time favorite with a distinct flavor that appeals to those who like a brisk spicy apple that is not actually sour. One of the leading commercial varieties. The fruit is large and attractive, being of bright red color, overspread with a delicate bloom. The flesh is very juicy, crisp, tender, and most excellent for either dessert or culinary purposes. An excellent keeper. It is too tender and juicy for evaporating. May be slow to come into bearing, but has been known to bear paying crops in seven years. Bears moderate to heavy crops, biennially, or almost annually. Being a late bloomer, it sometimes succeeds when others fail from late frost damage. Ripens November.

**LARGE SIZE APPLE TREES**

See page 49 for special prices on large size fruit trees.

**CORTLAND TREES WERE FINE**

Green's Nursery Company: The Cortland apple trees, currant and gooseberry bushes arrived safely and are much nicer than I ever expected to see. Surely your stock can be commended. Those Cortland apple trees had such nice roots and fine trunks and I surely am very well pleased. Thanks to you. Reo Johnson, Columbia City, Indiana, April 20, 1927.

**Cortland Apple — Bargain Prices**

**Description of Cortland**

The fruit of Cortland is as large or larger than that of McIntosh, round to somewhat conical in shape. In color it is a bright red, blushed with darker red, splashed and striped with carmine and more or less overlaid with a deep purplish bloom. The flesh is white, firm, fine-grained, crisp, tender, very juicy, aromatic, perfumed, sprightly subacid, and very good to best for dessert. The trees are large, vigorous, upright-spreading, very hardy, productive and healthy. Flowers bloom in mid-season. Fruits about two weeks later than McIntosh. Bears very young and full crop every year.

In our nurseries last year some two year old Cortland trees produced 2 or 3 good specimens per tree.

**Big Money in Cortland**

Cortland apples sold this year for \$5.00 per bushel box. Cortland apples are being called for in the market by name. We advise orchardists to plant at least one-half of their new orchards with Cortland—they will make more money if they planted all Cortland. In order to compete with the Pacific Coast orchardists the Cortland and McIntosh should be planted.

**Origin of Green's Cortland Trees**

We secured our Cortland buds direct from bearing trees that were propagated at the New York State Agricultural Grounds at Geneva, New York.

**Important Notice**

New low prices on Cortland apple trees. This year we offer the new Cortland apple at the same low prices as our standard apple. See page 25, for rates on parcel post size.

**New Low Prices Cortland Apple Trees**

Age	Height	Each	10	50
2 yrs. old, Well Branched, 3 to 4 ft. ....		\$.60	\$4.00	\$10.00
2 yrs. old, Well Branched, 4 to 5 ft. ....		.70	5.00	17.50
2 yrs. old, Well Branched, 5 to 6 ft. ....		.85	7.00	27.50

**Cortland Receives Another Medal**

Cortland has been given the highest honors obtainable in the horticultural world. Three years ago the American Pomological Society awarded to Cortland the Wilder silver medal for new fruits. To qualify for a Wilder medal, a new fruit must exhibit superiority to all existing varieties with which it will compete. At the last meeting of the Pomological Society at Grand Rapids in December 1926, Cortland was one of a collection of new fruits to win another Wilder medal.

**Cortland Cannot Be Surpassed**

Professor U. P. Hedrick, of the New York State Agricultural Station, has this to say about Cortland: "The Cortland cannot be surpassed by apples grown anywhere in the world, and apple growers in New York and New England have opportunity to specialize in a distinctive fruit that will bring renown and profit to the industry of the region."



**PUMPKIN SWEET**—Generally known in central and western New York as Pound Sweet. One of the best sweet apples of its season for baking, and for canning or stewing with quinces, but generally is not valued for dessert. Fruit very large, yellow in color. The tree is a strong grower, long-lived and fairly hardy. A pretty reliable cropper, yielding good crops biennially. In season from early October to January.

**RHODE ISLAND GREENING**—Commonly called by the simple name of Greening. As a cooking apple it is unsurpassed, and as a dessert fruit of its season, has few equals. It is a good variety to grow with Baldwin in commercial orchards, because, being a little earlier in season, it can be picked and marketed before it is necessary to pick Baldwin. The fruit is large, yellowish-green, often with a dull blush. It is long-lived, productive and a reliable biennial cropper. In season from October through January.

**ROME BEAUTY**—A medium to large apple, yellowish more or less mottled with bright red. It is thick skinned, stands handling well and is a good keeper. It has an established reputation in market and sells at a good price. As compared with Baldwin it is not quite as good in quality either for dessert or culinary uses, but the tree comes into bearing at a much earlier age and under right conditions is more nearly an annual bearer. Can be grown successfully except along the Canadian border, but is at its best in New Jersey and along the Ohio River. Flesh is firm, crisp and juicy. Commonly good but not of high quality. Ripens in November and keeps until April or May.

**ROXBURY RUSSET**—The most popular russet apple. An excellent keeper, of good size, with a russet-brown skin and a bronze blush in highly-colored specimens. Flesh is tinged with yellow or greenish, firm, somewhat coarse, moderately tender and crisp. Sprightly subacid in flavor. Good to very good in quality. A biennial bearer and under favorable conditions a reliable cropper. In season from December to July.

**STAYMAN'S WINESAP**—At its best in the Middle West and South, but can be grown successfully in almost any apple section. Fruit medium to large in size, yellowish, striped and splashed with dull red in color, and with a firm, crisp, yellow flesh, mildly subacid in flavor. Good quality. Comes into bearing about the fourth year and is a reliable annual cropper, alternating heavy with light crops. In season from December to May.

**TOMPKINS KING**—More often known as King or King of Tompkins County. Fourth in commercial importance in New York State, but the tree lacks the qualities of a good commercial sort. Its excellent, large, attractive, beautiful red fruit, makes it worthy of a place in the home orchard. In maturity, it is a regular bearer, yielding moderately heavy crops annually. Fruit tender and juicy, and subacid in flavor. In season from October to January.

**TOLMAN SWEET**—A medium size, whitish-yellow, sweet apple, much esteemed for pickling, boiling and baking. Very hardy. Ripens in November.



**Winter Banana—An Apple with a Distinctive Banana Flavor**

**TRANSCENDENT CRAB**—This for many years has been one of the most popular of the crab apples. The fruit is medium to rather large, skin clear bright yellow with red cheek overspread with bloom. Flesh yellow, crisp, juicy, somewhat astringent and subacid in flavor. Very good for culinary uses. A good grower, hardy, and usually very productive. In season from late August to middle of September or later.

**WAGENER**—The fruit is medium to large, bright red in color, having a fine texture, high flavor, and excellent quality. Good for cooking, but especially prized for dessert. A steady bearer, needing to be thinned to keep it from over bearing. Is recommended as a filler between longer lived varieties. In season from October to February or later.

**WEALTHY**—Particularly valuable in cold climates where a hardy tree is needed. A thrifty grower when young, but forming a medium-sized tree. Planted in commercial orchards as a filler between rows of stronger-growing varieties. Fruit a very attractive red and yellow color, rated good to very good quality. In season from October to January.

**WINTER BANANA**—An exceedingly attractive yellow apple, usually with a bright red cheek. Has distinct banana flavor and good dessert quality. Keeps well. Have kept them in ordinary home cellar in excellent condition until May. Is thrifty, bearing when young and almost annually. Moderate to heavy crops. In season from mid-November to April first.

**GOLDEN JUBILEE OFFER**

**GREEN'S SPECIAL APPLE COLLECTION**

5 Standard Apple Trees  
4 to 5 ft. high—all for \$2.60

1 Cortland	1 Delicious
1 Baldwin	1 Winter Banana
1 McIntosh	

Attractively Priced at . . . **\$2.60**

2-3 ft. trees by parcel post postpaid, \$1.80  
4-5 ft. trees cannot be sent parcel post.

**ONE YEAR OLD APPLE TREES**

We have an unusually nice lot of one year old apple trees and will be glad to quote special prices on application. Please state varieties and quantities desired.

**LIKES OUR DWARF TREES**

Green's Nursery Company: We were immensely pleased with the dwarf trees, such fine sturdy ones and such good size. They are doing finely so far and every one that sees the Clapp's Favorite asks what it is. The currants are doing beautifully and even have a few blossoms. I am so pleased with them. The raspberries, shrubs and grapes you sent were much appreciated and are doing fine. I certainly thank you. Mrs. W. H. Burnham, 903 Central Avenue, Charlotte, North Carolina, March 25, 1927.

*You Get Fifty Cents More Out of Every Dollar Spent With Green's*

# Dwarf Apple Trees

Always in Demand — We Have a Good Supply

**THESE TREES BEAR YOUNG  
HAVE LARGE FRUIT  
REQUIRE LITTLE SPACE**



**W**HAT more could one ask for than apples from trees when they are only two years old? Our dwarf apples usually commence to bear the second year after planting. Apples the same color, quality, and flavor, but larger than standard apples, ripening the same season, are borne on these popular varieties of dwarf trees listed below. The low-growing habit of dwarf trees makes them especially suitable

for use in small gardens or in small lots. The fruit can be easily picked without ladders. Dwarf apples and pears make beautiful and profitable hedge rows when planted in rows 4 to 5 feet apart. The usual distance for orchard planting is 10 feet apart each way. Prune dwarf apples quite severely each spring. They thrive best when well headed back.

Our dwarf apple trees are grown on Doucin roots and are really semi-dwarf trees, being neither as small as the extremely dwarf trees grown on Paradise roots, or as large as those on standard roots. Depending on variety, they average in size with the peach or plum. This makes them extremely desirable for planting where space is limited.

## Prices of Green's Dwarf Apple Trees

Age	Height	Each	10	50
2 yrs. old, Well Branched	2½ to 3½ ft.	\$.75	\$5.50	\$20.00
2 yrs. old, Well Branched	3½ to 4½ ft.	.85	7.50	25.00

Parcel Post Size: First-class trees, 2 to 2½ ft. high, can be sent by parcel post for 70 cents each, \$6.50 per 10, postpaid.

**RATES:** Less than ten dwarf apple trees at each rates. Ten to fifty at ten rates. Fifty or more at fifty rates.

## Plant the New Improved Cortland Dwarf Apples

We can now furnish this new prize variety in fine, 2-year-old, well-branched trees

Prices of Improved Cortland Dwarf Apple Trees are the same as Dwarf Apple Trees listed above



A Two-Year-Old Dwarf Apple Tree

### List of Varieties We Can Supply In Dwarf Apple Trees

Baldwin	Red Astrachan
Cortland	Wealthy
Delicious	Winter Banana
McIntosh	Yellow Transparent
Oldenburg	

**Note**—Descriptions of these varieties will be found on preceding pages. Dwarf apple trees produce fruit of the same color, quality and flavor as standard trees. The season of ripening is the same, but dwarf trees come into bearing younger, do not grow as tall and the fruit as a rule is larger in size.

## BIG BARGAIN

### Dwarf Apple Collection

#### 4 Dwarf Apple Trees

- 1 Cortland
- 1 McIntosh
- 1 Delicious
- 1 Red Astrachan

2½ to 3½ ft.

Special Price . **\$2.55**

2 to 2½ ft., parcel post, postpaid, \$2.35

2½ to 3½ ft. trees cannot be sent parcel post.

# Peaches —

**WE LIST the MOST BOUNTIFUL  
AT GOLDEN JUBILEE PRICES**

**S**ECOND in commercial importance comes the peach. Despite the rapidly increasing demand for this fruit, new orchards are not being planted as rapidly as old ones are dying off, and orchardists should take full advantage of this by planting more peach trees. Peach trees make very desirable fillers in an apple orchard. They come into bearing very young and they will pay you for the care and maintenance of the apple trees and net a handsome profit besides; and by the time the apple trees need the room, they will have borne a full crop and can be dug up without loss. Peaches prefer a good sandy loam, but will do well on almost any soil except a heavy clay. They are usually planted 16 feet apart each way.

This is a selected list of varieties—the cream of hundreds of varieties—all thoroughly tried and tested and found to be possessed with the essential characteristics of a good peach. Our peach trees are all hardy, northern-grown.

## Prices of Green's Peach Trees

Age	Height	Each	10	50
1 yr. old	2 to 3 ft.	\$.50	\$4.00	\$12.50
1 yr. old	3 to 4 ft.	.60	5.00	15.00
1 yr. old	4 to 5 ft.	.75	6.00	17.50

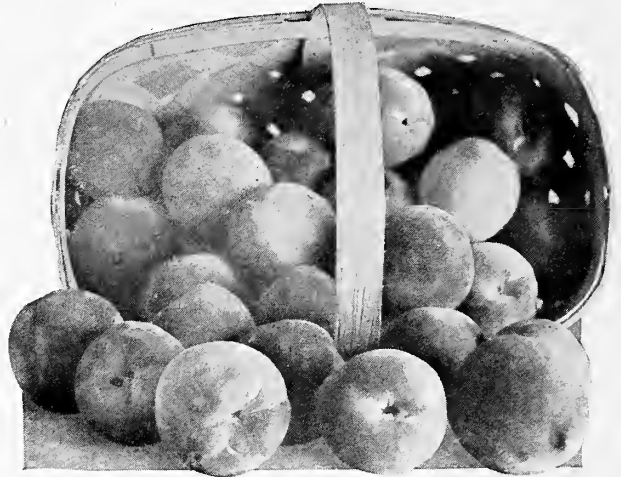
**Parcel Post Size:** First-class trees, 2 to 3 ft. high, can be sent by parcel post for 55 cents each. \$4.50 per 10, post-paid.

**RATES—**Less than ten peach trees at each rates. Ten to fifty at ten rates. Fifty or more at fifty rates.

**BELLE OF GEORGIA (White, Freestone)** — A creamy white peach with a beautiful crimson cheek, grown largely as a commercial peach in the South. Trees hardy, vigorous, and very productive. Of good quality, but in our opinion not equal in flavor to Champion. Ripens here in August.

**CARMAN (White, Freestone)**—One of the most profitable peaches of its class and season. Does well on soils and in climates where others would not succeed. The color is a brilliant red splashed with darker red on a creamy-white background. Very good in quality. Ripens here about the middle of August.

**CHAMPION (White, Freestone)** — This is considered the highest in quality of all the white-fleshed peaches. In addition to its tender flesh, juiciness and pleasant flavor, it has a peculiar honeyed sweetness that gives it individuality. It is vigorous, healthy and productive, but on some soils is apt to produce fruit not fully up to standard in size or



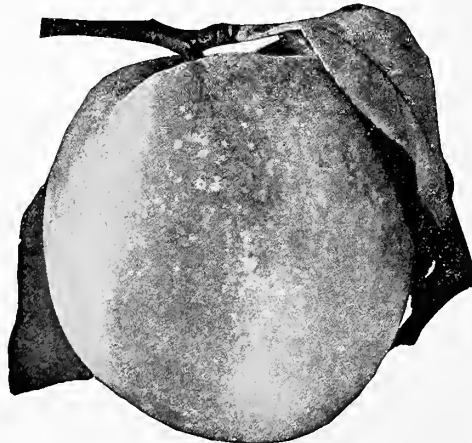
**Rochester—The Most Delicious Peach of All**

color. The skin is creamy-white with splashes of carmine and darker red. Ripens in late August or early September.

**ELBERTA (Yellow, Freestone)**—Deservedly Elberta is the peer of all commercial peaches. It leads all other varieties in number of trees planted in America and is the most popular peach in the markets. The two characteristics that enable Elberta to hold first place undisputed are its ability to do well in almost any soil or climate and its fruitfulness. Added to these great points of superiority are its healthiness, large size, vigor, early bearing, and longevity in tree, and large, handsome, well-flavored fruit which ships and keeps remarkably well. A beautiful, large, golden-yellow peach, with a brilliant red cheek, firm, juicy, rich and sweet. While possibly not quite as high in flavor as Rochester or Early Crawford, a peach of excellent quality, prized for dessert, canning and culinary uses. A peach whose place would be hard to fill with any other variety for no other peach has yet been introduced that will fill the requirements of a commercial peach with such success as the Elberta. Ripens here early in September.

**CROSBY (Yellow, Freestone)**—A remarkable peach for growing in sections too far north for other varieties. Often called "frost-proof" on account of its extreme hardiness. Besides hardiness, the tree has vigor, health and productiveness. The quality of the fruit is excellent. The rich yellow flesh is delicious to the taste either as a dessert or culinary fruit. Yellow, blushed with dull red. Often handsome under favorable conditions, but apt to run small in size and less attractive in appearance in soils to which it is not perfectly suited. An ideal home sort. Ripens here in September, following quickly after Early Crawford.

**EARLY CRAWFORD (Yellow, Freestone)**—This peach has all the characteristics that gratify the taste: richness in flavor, pleasant aroma, tender flesh and abundant juice. Unapproached in quality by any other variety except Rochester, its offspring. Fruit very large, golden-yellow blushed with dark red. The flesh is a beautiful marbled-yellow rayed with red at the pit and perfectly free from the stone. The trees are all that could be desired in health, vigor, size and shape, but do not bear as heavily as some varieties and are somewhat tardy in bearing. An excellent home orchard variety. Ripens here in late August or early September.



**Early Crawford Peach**

*Peaches Paid Big Returns, Season 1927*



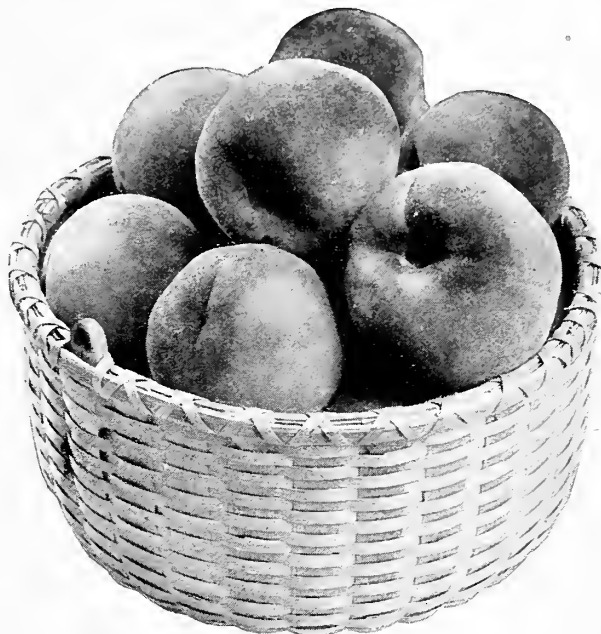
**GREENSBORO (White, Freestone)**—One of the leading white-fleshed peaches, principally because of its great productiveness and early bearing. The fruit is large and showy but not equal in quality to Champion. Well thought of by fruit dealers, not only on account of its attractiveness but because the fruits carry well and keep long. Skin is creamy-white blushed and striped with dark red. Ripens here in July.

**J. H. HALE (Yellow, Freestone)**—A notable variety of recent introduction, unusually large in size of fruit and very handsome. Largely advertised as a rival to Elberta for commercial honors, but reported in many sections as not prolific enough to compete with that grand old variety. Of a deep golden-yellow color overlaid with bright carmine. Flesh firm, fine-grained and good in quality. An excellent shipper. Should at least be in every home orchard. Ripens here in late August or early September.

**LATE CRAWFORD (Yellow, Freestone)**—A peach of high quality and richness in flavor that ought long to remain one of the treasurers of the home garden. The trees are hardy, vigorous and healthy, but it had to give way as a commercial peach to Elberta because it lacks somewhat in productiveness and is a little tardy in coming into bearing. Fruit large and very handsome, deep yellow blushed and splashed with dark red. Ripens here the last of September.

**ROCHESTER (Yellow, Freestone)**—A remarkable new early peach which seems to combine the high quality of the Early Crawford with the productiveness of the Elberta. Generally recognized as the best early variety. Coming into the market as it does about two weeks ahead of Early Crawford, it commands not only the highest price but a ready sale. An early bearer, often producing fruit the year after planting. Not only an ideal home orchard variety but an excellent commercial peach as well. Makes a great combination with Elberta. We recommend it very highly. It is being planted largely here in western New York and fruit growers report it as being a very profitable variety. The fruit is large, yellow mottled with red in color, with thick, firm, juicy flesh, rich and sweet in flavor. The trees are hardy, vigorous and productive. Ripens here the middle of August.

**WILMA (Yellow, Freestone)**—A new variety of great promise. Fruit growers have long wanted a good productive yellow peach a little later in season than Elberta.



**J. H. Hale—Large and Luscious**

Wilma seems to be that variety. It is about ten days later than the Elberta. The trees are vigorous, productive and very hardy. The fruit is large, handsome and of good quality, yellow mottled and blushed with bright dark red, with tender, juicy flesh of good flavor and quality. Ripens here about the middle of September.

**GOLDEN JUBILEE OFFER**



**Here's a Real Bargain**

**PEACH TREE COLLECTION**

4 Peach Trees  
4 to 5 ft. high—all  
for \$2.00



- |             |              |
|-------------|--------------|
| 1 Rochester | 1 J. H. Hale |
| 1 Elberta   | 1 Champion   |

Unusual Value at . . . **\$2.00**

2 to 3 feet trees by parcel post, postpaid \$1.50  
4 to 5 feet trees cannot be sent by parcel post.

**SPECIAL QUOTATIONS to Orchard Planters**

We have a complete assortment of all leading varieties of fruit trees in both two year and one year old trees. All trees budded on the best French whole root seedlings. Write us for special price on large quantities. If possible state number of each variety desired and the size of trees you prefer.

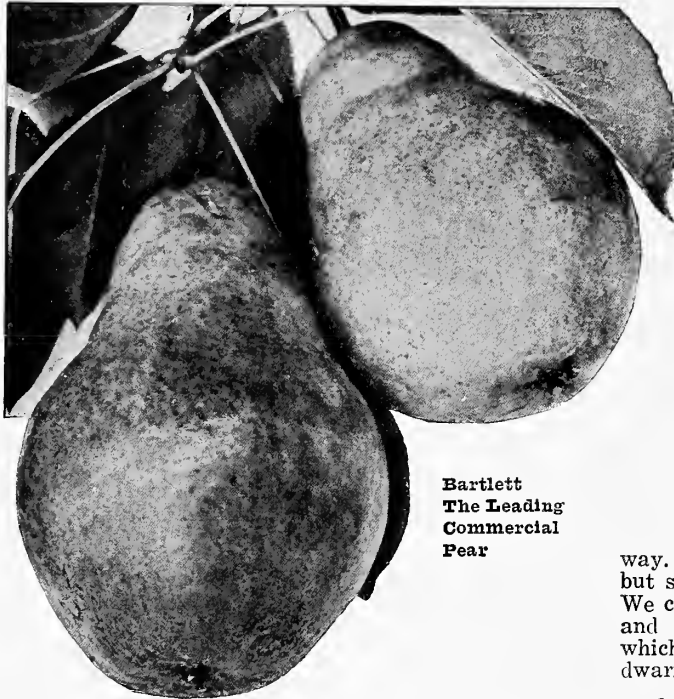
**PEACHES BORE HEAVILY**

Green's Nursery Company: I bought your trees and I never received stock in as good order, well packed and up to the standard. I had to prop my peach trees they bore so heavily. Different people asked me where I got my trees. I love my trees and shrubs and never lose a tree from careless planting. I am a Civil War veteran, not a real young man, but healthy. John B. Caldwell, Butler, Pennsylvania, January 13, 1927.

**BEST TREES EVER RECEIVED**

Green's Nursery Company: I received my peach and apple trees and they are certainly the best I ever received from a nursery. I shall recommend them to my friends and neighbors. David C. Shellhammer, Tamaqua, Pa., April 13, 1927.

*Order Early—It Pays*



**Bartlett  
The Leading  
Commercial  
Pear**

# Pears

## Thoroughly Tested Varieties

**E**VERY home orchard should have a few pears. Pears have delicious eating qualities and are excellent for canning. Their much deserved popularity makes them a fine market crop. There are but a few varieties which have the qualities essential to a real good Pear. After years of experience, careful investigation, and thorough testing, we have developed this list of selected varieties. They are the cream of the hundreds of varieties known to mankind. We recommend all of them, too, without hesitation.

Nearly all of these varieties do well on both standard and dwarf roots. The descriptions apply to both except that the dwarfs are naturally lower-growing trees. They also come into bearing sooner and the fruit, as a rule, is of larger size. Standard pear trees are usually planted 20 feet apart each way and dwarfs 10 feet apart each way. Pear trees do well on almost any type of soil, but seem to prefer a heavy clay land for best results. We can furnish all varieties described, in both standard and dwarf trees, except Bosc, Kieffer, and Sheldon, which are grown only on standard roots. For prices of dwarf pear trees, see page 34.

### Prices of Green's Standard Pear Trees

Age	Height	Each	10	50
2 yrs. old, Well Branched	3 to 4 ft.	\$.65	\$5.00	\$15.00
2 yrs. old, Well Branched	4 to 5 ft.	.80	7.00	25.00
2 yrs. old, Well Branched	5 to 6 ft.	.95	9.00	35.00

Parcel Post Size: First-class light grade trees, 3 to 4 ft. high, can be sent by parcel post for 50 cents each, \$4.00 per 10, postpaid.

**RATES**—Less than ten standard pear trees at each rates. Ten to fifty at ten rates. Fifty or more at fifty rates.

## Summer Pears

**BARTLETT**—The most popular pear both for home use and market, a leader among canning pears, commands top prices. Should be in every garden and orchard. Large, golden yellow with reddish blush on the sunny side. Flesh tender, melting and juicy, with a delicious musky flavor. Tree vigorous, an erect grower, bears abundantly. Ripens in September.

**CLAPP'S FAVORITE**—The most productive pear in cultivation. Very good for the home garden and a desirable commercial variety. Large, long, pale lemon color richly flushed with russet red on the exposed side. Flesh fine-grained, juicy, melting and buttery. A good grower and hardy. Ripens here in August about ten days ahead of Bartlett.

**WILDER EARLY**—One of the very earliest pears, it always finds a ready sale in the market and is largely grown by commercial orchardists. Of medium size, pale yellow shaded with russet red, flesh melting and delightful, with a small core. The trees are good bearers, bearing annually. Ripens in early August. This variety was introduced by Charles A. Green several years ago.

### THIS GROWER FAVORS OUR PEAR COLLECTION

Green's Nursery Co.: In 1917 I cleared four acres of old orchard land and planted your trees. I must commend you on the nice trees that are memorials to your craft, especially the pear collection, which is the best that grows. Everyone admires a well-kept orchard near a big city and my gospel is "Plant Green's trees." There's a reason.—M. A. Oehm, Crafton (Pittsburgh), Pa., January 19, 1926.

## GOLDEN JUBILEE OFFER

### STANDARD PEAR COLLECTION

4 Standard Pear Trees

4 to 5 ft. high—all for \$2.55

1 Bosc

1 Bartlett

1 Clapp's Favorite

1 Seckel

**Bargain Collection Price . . \$2.55**

2 to 3 foot trees by parcel post, postpaid for \$2.00

4 to 5 feet trees cannot be sent parcel post.

For Prices of Dwarf Pears See Page Thirty-Four

## Autumn Pears

**ANJOU (Buerre d'Anjon)**—A large greenish pear, shaded with russet-crimson. The flesh is buttery and melting, with a sprightly vinous flavor. Trees are vigorous and productive. One of the best varieties for late fall and early winter use. Ripens in October and keeps until mid-winter.

**BOSC (Buerre Bosc)**—Without a doubt the highest quality and best-flavored pear of all. Should be in every home garden. Very large, having a distinct gourd shape—roundish at the blossom end with a long, thin, tapering neck. Beautiful golden russet color. Flesh fine-grained, juicy and melting, very delicious and highly flavored. In great demand at fancy fruit stores, often selling as high as 10 cents apiece. We grow it as a standard tree only as it does not do well grown as a dwarf. The tree is a moderate grower, fairly erect and rather productive. Ripens here in late September or early October.

**DUCHESS (Duchess d'Angouleme)**—This variety does exceptionally well when grown as a dwarf on quince roots, and we advise our customers to plant dwarf trees of **Duchess in preference to standard trees.** As a dwarf it is an all around, profitable, market variety, very prolific and a dependable cropper. It is an early bearer, often fruiting the season after planting. The fruit is very large, larger on dwarf than on standard trees. The color when fully ripe is bright golden yellow with a blush on one side and sometimes slightly russeted. Flesh white, juicy, and of good quality. An excellent keeper. On dwarf roots it is an excellent commercial variety. In season here in October.

**SECKEL**—The small size and peculiar, rich, juicy flavor of this variety make it a most desirable variety for pickling and preserving. It is generally conceded to be the sweetest of all pears and is greatly prized as a dessert fruit to eat fresh out of the hand. Although small in size it is very attractive in appearance, being of a russet-yellow color with a bright red cheek. It is very prolific. Every home orchard should have a tree or two of this excellent variety. In season in September and October.

**SHELDON**—A pear of unusually good quality and high flavor. Large, round, greenish-yellow in color, covered with light russet. It is very juicy, melting and has a tasty flavor. The tree is a fine grower and a good bearer. It is not recommended as a commercial variety as the fruit has a tendency to drop before ready to pick. Grown only as a standard tree as it does not grow successfully on dwarf roots. In season here in October and November.

**WORDEN SECKEL**—An improved Seckel. Equal in quality to its famous parent, which it much resembles in flavor. It is fully as luscious, more juicy, and with an aroma equally as rich and inviting. The fruits are beautifully smooth and regular, golden yellow with a russet-red cheek. Ripens in October and will keep until Christmas.

## Late Autumn and Winter Pears

**KIEFFER**—A very profitable market variety on account of its great productiveness and its excellent keeping and shipping qualities. While only fair in quality, it is an excellent canner and is in great demand for this purpose. The fruit is large, golden yellow sometimes tinted with red on the exposed cheek. The trees are strong, vigorous growers and very healthy. Ripens in October and November. Grown only as a standard tree as it does not do well on dwarf roots.

**LAWRENCE**—A long-keeping winter pear that should be planted more extensively. The fruit is medium to



**Bosc—Unexcelled in Flavor and Quality**

large golden yellow, melting and aromatic. The trees are moderate growers but abundant bearers. A profitable market variety. Ripens in November.

### ALWAYS SATISFACTORY

Green's Nursery Company: You will find enclosed check and order for trees and vines. Have been ordering trees from you for more than 25 years, and am proud to inform you they have always been entirely satisfactory and true to name. Do not know of one mistake in name. Thanking you for your courtesy and honesty, J. H. Ringer, Jeannette, Pa., March 21, 1927.

### BEST STOCK IN THE COUNTRY

Green's Nursery Company: I am glad that I can send you the names of some of my friends that they may benefit by your wonderful catalog, not so much the catalog as the best nursery stock that is grown in the country at the lowest price. Charles Place, Willow Grove, Pa., January 7, 1927.



## Green's Assorted Fruit Tree Collection

7 Assorted Fruit Trees for \$4.20

- 1 Royal Apricot, 3 to 4 ft.
- 1 Rochester Peach, 3 to 4 ft.
- 1 York State Prune, 4 to 5 ft.
- 1 Cortland Dwf. Apple, 2½ to 3½ ft.
- 1 Duchess Dwf. Pear, 2½ to 3½ ft.
- 1 Blk. Tartarian Sweet Cherry, 4 to 6 ft.
- 1 Montmorency Sour Cherry, 4 to 5 ft.

Unusual Value at . . . . . **\$4.20**

2 to 3 ft. trees parcel post, postpaid \$3.80

Larger sizes cannot be sent parcel post.

*Ask Your Neighbor About Green's, He's Probably a Customer of Ours*

# Dwarf Pear Trees

**Usually Start Bearing Second Season After Planting**

**D**WARF pear trees are particularly valuable for the city or village garden where space is limited, as they can be grown very closely together and permit a large assortment of varieties to be planted in a very small area. The dwarfish habit of the trees permits easy picking from the ground without the use of ladders.

The trees come into bearing sooner than standards, usually bearing the second season after planting. The color, quality and flavor of the fruit is identical with that produced on standard trees, but is as a rule larger in size. The trees are very productive, hardy and vigorous.

Dwarf pear trees are grown on quince roots and should be planted deep enough to cover the junction of pear and quince 2 or 3 inches.

The side branches should not be removed higher than a foot from the ground, but the tops and ends of the branches should be pruned severely every spring, removing one-half or nearly all the past season's growth. Dwarf pears are usually planted 10 feet apart each way. For a description of varieties, see the preceding pages devoted to standard pears. We grow all varieties on quince (dwarf) roots except Sheldon, Bosc and Kieffer. The Duchess seems to do remarkably well on quince roots and many profitable orchards of Duchess dwarf pears have been planted throughout the country. We recommend Duchess very highly as a commercial variety if planted as a dwarf.



**Clapp's Favorite**  
(See letter, this page.)

## Green's Dwarf Pear Trees at Attractive Low Prices

Age	Height	Each	10	50
2 yrs. old, Well Branched	2½ to 3½ ft.	\$.65	\$5.00	\$15.00
2 yrs. old, Well Branched	3½ to 4½ ft.	.75	6.00	20.00

Parcel Post Size: First-class trees, 2 to 3 ft. high, can be sent by parcel post for 60 cents each, postpaid. **RATES**—Less than ten dwarf pear trees at each rates. Ten to fifty at ten rates. Fifty or more at fifty rates.

## The Dwarf Pear Hedge

**Plenty of Fruit—Small Cost—Takes Up Little Room**

Our C. A. Green several years ago planted a row of dwarf pear trees across the center of his vegetable garden. These trees were planted only three feet apart. They have thrived amazingly and have borne bountiful crops each year. When in bloom they make an extremely ornamental hedge row and attract wide attention. A vast amount of fruit can be grown on a single row of

dwarf pears. The trees, of course, do not grow as large as when planted farther apart, as this close planting permits them to grow in two directions only. Many others have followed Mr. Green's example and advice. **Read below about a customer's dwarf pear hedge.**

List of varieties we can supply in Dwarf Pears:

- |                  |               |
|------------------|---------------|
| Anjou            | Lawrence      |
| Bartlett         | Seckel        |
| Clapp's Favorite | Wilder Early  |
| Duchess          | Worden Seckel |

## GREEN'S FAMOUS DWARF PEAR COLLECTION



**4 Dwarf Pear Trees 3½ to 4½ ft. high—All for \$2.65**

- |                    |           |
|--------------------|-----------|
| 1 Bartlett         | 1 Duchess |
| 1 Clapp's Favorite | 1 Seckel  |

**Special Price . . \$2.65**

2 to 3 ft. trees parcel post, postpaid \$2.00  
3½ to 4½ ft. trees cannot be sent parcel post.

## A MARVELOUS SIGHT

Mt. Clemens, Michigan.

My Dear Mr. Green:

About two or three years ago I bought from your company among other things a few dwarf pear trees which I planted, according to your suggestion, in a hedge row—from the back porch steps to the garden gate. The enclosed pictures (see photograph above) are ones of the little trees, Clapp's Favorite, one of them showing an ordinary-sized sprinkling can alongside of tree for comparison. The little tree measures just thirty inches from the ground to tip of highest branch, and started out this spring with 27 pears, of which 10 matured into fine, large, luscious pears. Everyone who saw the tree with fruit on it, marveled at the sight, and some felt like the farmer who said: "There ain't any such animal."

JOHN A. HENK.

For Descriptions of Varieties See Preceding Pages





# Cherries

## Make Wonderful Pies

**D**UE to the rapidly increasing demand for fruit juices, cherries are becoming more profitable every year. Orchardists who plant cherries now can with reasonable assurance look forward to big returns on their investment. Cherries are easy to grow and very prolific. Plant them in sandy or gravelly loam for best results, although they will be quite successful anywhere if the roots are not wet. Practically no pruning is necessary except for the formation of a head. Every home garden should have at least a tree or two of both the sweet and sour varieties. Sour varieties are usually planted 15 feet apart each way, and sweet varieties 20 feet apart each way.

Sour cherries are of slower growth, do not attain so large a size and are more hardy than sweet varieties. As a rule, they are more profitable commercially than the sweets.



## Sour Cherries

### Prices of Green's Sour Cherry Trees

Age	Height	Each	10	50
2 yrs. old, Well Branched	3 to 4 ft.	\$.70	\$5.50	\$22.50
2 yrs. old, Well Branched	4 to 5 ft.	.85	6.50	27.50
2 yrs. old, Well Branched	5 to 6 ft.	.95	7.50	32.50

Parcel Post Size: First-class trees, 2 to 3 ft. high, can be sent by parcel post for 50 cents each, \$4.00 per 10 post-paid.

**RATES**—Less than ten sour cherry trees at each rates. Ten to fifty at ten rates. Fifty or more at fifty rates.

**EARLY RICHMOND**—The best of the early sour varieties. While not in as great demand for canning as Montmorency, it makes a good canned product and is used largely to extend the canning season on account of its earliness. Medium size, light red changing to dark red, tender, juicy and of good quality. Vigorous, healthy and fruitful. Ripens in June.

**ENGLISH MORELLO**—The standard late sour cherry, the best of its season. A little too acid to eat fresh out of hand, but one of the best for culinary uses. Cooked, the fruit has a rich, dark, wine color, very attractive in appearance, and a most pleasant, sprightly, aromatic flavor. The fruit is very dark red, becoming almost black in color. The trees are hardy and very dwarfish in habit. Ripens in August.

**MONTMORENCY**—The most popular sour cherry grown in America—at least three-fourths of all the sour cherry trees grown are of this variety. It leads in demand for this fruit in the markets, for the cannery and for home use as a culinary cherry. It is surpassed by no other sour cherry in vigor, health and productiveness. The preserved product, whether canned at home or commercially, is attractive in appearance and very good. For any and all purposes to which sour cherries are put Montmorency may be recommended as the best. The fruit is about average in size, rather dark red, tender, juicy and of very good quality. Hardy and very productive. Ripens last of June.

## Sweet Cherries

Sweet cherries are strong and vigorous growers, making large, open, spreading heads or tops, are better suited to the purpose of shade, and produce large, heart-shaped, sweet fruit. Often called Oxheart cherries.

### Prices of Green's Sweet Cherry Trees

Age	Height	Each	10
1 yr. old	3 to 4 ft.	\$.70	\$6.00
1 yr. old	4 to 5 ft.	.80	7.00
2 yrs. old, Well Branched	4 to 6 ft.	.90	8.00
2 yrs. old, Well Branched	5 to 7 ft.	1.00	9.00

Parcel Post Size: First Class trees, 3 to 4 ft. high, can be sent by parcel post for 75 cents each, \$6.50 per 10, postpaid.

**RATES**—Less than ten sweet cherry trees at each rates. Ten to fifty at ten rates. Fifty or more at fifty rates.

**BING (Dark Red)**—Few sweet cherries equal Bing in size and attractiveness, and none equal it in quality. Very dark red, almost black in color. Very meaty. Ripens in July.

**GOLDEN JUBILEE OFFER**

**SPECIAL CHERRY TREE COLLECTION**

4 Cherry Trees for \$2.75

1 Black Tartarian	4 to 6 ft.
1 Napoleon	4 to 6 ft.
1 Montmorency	4 to 5 ft.
1 Early Richmond	4 to 5 ft.

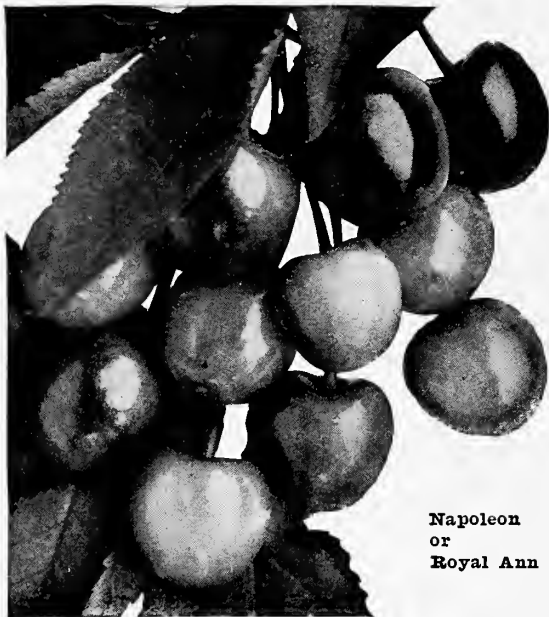
Attractively Priced at . . . **\$2.75**

2 to 3 ft. trees parcel post, postpaid \$2.15  
Larger sizes cannot be sent parcel post.

*Cherries Make Delicious Wine*

**Sweet Cherries — Continued**

(For prices see page 35)



Napoleon  
or  
Royal Ann

**BLACK TARTARIAN (Black)**—The favorite home garden sweet cherry. Best for table use. Produces immense crops of heart-shaped cherries, bright, glossy, purplish black. Flesh tender, juicy, rich, and of best quality. Ripens middle of June.

**GOVERNOR WOOD (Yellow)**—We highly recommend this variety for the home garden on account of its earliness, beautiful appearance and delicious flavor. Large, beautiful, yellowish-white tinted with shades of crimson, with conspicuous russet dots. The flesh is tender, juicy, with an abundance of colorless juice and a flavor that has given it a reputation of being one of the best in quality. Ripens in June.

**NAPOLEON (Light Red)**—Sometimes called Royal Ann. By virtue of its large size, handsome appearance and high quality, probably the leading sweet variety. Extremely popular as a canning cherry and very good for all culinary uses. Color bright red on a yellowish background. The flavor is rich and sweet, which, with the abundant juice and firm, crackling flesh, makes it a most delicious and refreshing cherry for dessert and home uses. Ripens in July.

**WINDSOR (Dark Red)** — The leading late sweet cherry. The hardest of the sweet varieties. Large, very dark red, with firm, tender, juicy flesh. Prolific and of excellent quality. Ripens in July.

**PLEASED WITH EVERYTHING**

Green's Nursery Company: I am well pleased with everything I got from you. My trees are doing fine. We had a nice lot of cherries, some pears and apples this year. I got one Yellow Transparent apple tree and there were twenty-five nice apples ripened the second year. I sure can vouch for your goods and promptness. H. Alvin Johns, Falls Creek, Pa.

**Plums — Luscious and Easy to Grow**

**F**EW people realize how easy it is to grow luscious, edible, plums. Plums thrive and bear readily on most any land that is not too wet. In fact, most plum trees need thinning to prevent overbearing, the consequences of which are branch breakage and smaller fruit. This is a selected list of varieties chosen for the size, appearance, and flavor of their fruit and the hardiness and strong-growing characteristics of the trees.

Our plums are all grown on plum roots and are hardier and longer-lived than those on peach roots. For a commercial orchard, plant plum trees 20 feet apart each way. In a garden where space is limited, plums can be set 10 feet apart if pruned annually.

*Prices of Green's Plum Trees*

Age	Height	Each	10	50
2 yrs. old, Well Branched	3 to 4 ft.	\$.60	\$4.50	\$12.50
2 yrs. old, Well Branched	4 to 5 ft.	.70	5.50	17.50
2 yrs. old, Well Branched	5 to 7 ft.	.85	6.50	22.50

Parcel Post Size: First Class trees, 3 to 4 ft., can be sent by parcel post for 65 cents each, \$5.00 per 10, postpaid.

**RATES**—Less than ten plum trees at each rates. Ten to fifty at ten rates. Fifty or more at fifty rates.

**BRADSHAW (Purple)**—Sometimes called Niagara. Probably the most largely planted plum in the East. The trees are large, hardy, bear regularly and heavily and are robust, well-formed and healthy. The fruit is of good



York State—  
The Leading  
Commercial Prune

quality, large, attractive, and keeps and ships well, especially if picked when a little green. Skin a dark reddish-purple. Flesh yellow, juicy, sweet and pleasant. Semifreestone, ripens in August.

**BURBANK (Red)**—One of the leading Japanese varieties. The fruit of this plum is very large—often 5 to 6 inches in circumference—and of a very attractive cherry-red color. A good keeper and shipper. Its yellow flesh is meaty, firm, juicy, and sweet. The tree is very vigorous and spreading and needs close pruning. Ripens in late August.

*Over Two Hundred Thousand Satisfied Customers. This Speaks For Itself.*

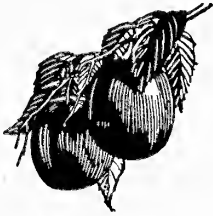


Lombard--A Great Favorite

**GOLDEN JUBILEE OFFER**

**GREEN'S PLUM TREE COLLECTION**

4 Plum Trees  
5 to 7 ft. high—  
all for \$2.95



1 Shropshire Damson	1 York State Prune
1 Burbank	1 Lombard

Special Price . . . . . **\$2.95**

3 to 4 ft. trees by parcel post, postpaid \$2.20  
5 to 7 ft. trees cannot be sent parcel post.

**GERMAN PRUNE (Purple)** — German Prune reproduces itself very close to type from the seed. As a result of this many strains of the old German Prune have been developed. York State Prune is the most desirable of all and is the only strain we offer. See description of York State on this page.

**GUEH (Purple)**—Sometimes called Blue Magnum Bonum. Not a high quality plum but a money-maker as it bears early and abundantly and comes on the market earlier than other good shipping plums. Dark purplish black with thick bloom. Flesh yellow, sweet and of fair quality. Trees large, hardy, healthy, and vigorous. Ripens in early September.

**LOMBARD (Purple)**—A great favorite as it adapts itself to widely different soils and climates and does well where other varieties would not thrive. Robust, healthy, productive and a regular bearer. Extremely hardy. Not of the very highest quality, but does very well for canning, cooking and preserving. Skin dark purplish red overspread with a thick bloom. Flesh yellowish, firm and sweet. Freestone. Ripens in late August.

**MONARCH (Purple)**—A very handsome, large, rich, purple plum that has attained popularity more quickly than any other plum of recent introduction. Flesh golden yellow, juicy and sweet. Trees hardy and productive. Ripens in October.

**SHIPPEES (Shipper's Pride) (Purple)**—Quite popular with many fruit growers here in the East, but in our opinion not large enough or high enough in quality to rank it with one of the leaders. Color, purplish black over-

spread with thick bloom. Flesh greenish yellow, firm and sweet. Keeps well and ships a very long distance. Trees hardy and productive. Ripens in September.

**SHROPSHIRE (Shropshire Damson) (Purple)** — This grand old variety is the best known of the Damsons and is greatly prized both for canning and preserving. Enormously productive, vigorous, hardy and healthy. Dark purplish black overspread with thick bloom, with golden flesh, juicy, agreeably tart and of good quality. Ripens in October.

**YELLOW EGG (Yellow)**—An extremely large and handsome yellow plum worthy of consideration by either the amateur or commercial fruit grower. Golden yellow covered with thick bloom. Flesh firm, sweet, rather juicy. Only fair in quality and is prized more for culinary use than for eating out of the hand. Trees large, vigorous, hardy and very productive. Ripens in late August.

**YORK STATE PRUNE (Purple)**—A superior strain of the German Prune. Known in some sections as Felleberg or Italian prune. The most widely grown of all plums. In our opinion the most profitable prune for orchard purposes and a variety that should be in every home garden. It is finely flavored whether eaten out of hand, stewed or cured as a prune. In cooking it changes to a dark wine color, very attractive in appearance, with a most pleasant sprightly flavor. The trees are large, hardy, productive, well formed and bear regularly. Purplish black overspread with a thick bloom. Flesh yellow, juicy and of best quality. Freestone. Keeps and ships well. Ripens here in September.

Shropshire Damson Plums



Buy Direct From Green's And Save Fifty Cents On Every Dollar



# Quinces

**Q**UINCES ought to be grown more largely, as there is no finer fruit for jellies, preserves and canning. They are easy to grow and need little attention, finding a good sale in all local markets. Plant quinces 10 feet apart each way.

## Low Prices on Green's Quince Trees

Age	Height	Each	10	50
2 yrs. old, Well Branched	3 to 4 ft.	\$.75	\$7.00	\$25.00
2 yrs. old, Well Branched	4 to 5 ft.	.85	8.00	30.00

**Parcel Post Size:** First-class trees, 2 to 3 feet high, can be sent by parcel post for 65 cents each, \$6.00 per 10, post-paid.

**RATES**—Less than ten quince trees at each rates, ten to fifty at ten rates, fifty or more at fifty rates.

**ORANGE**—We offer only this variety of quince as we consider it by far the best. There are several strains of this old-fashioned Orange Quince and we are propagating from the most desirable strain. The fruit is large, roundish, bright golden yellow, cooks tender and is of excellent flavor. An excellent variety for baking and preserving. The trees are vigorous and productive. Ripens in late September or early October.

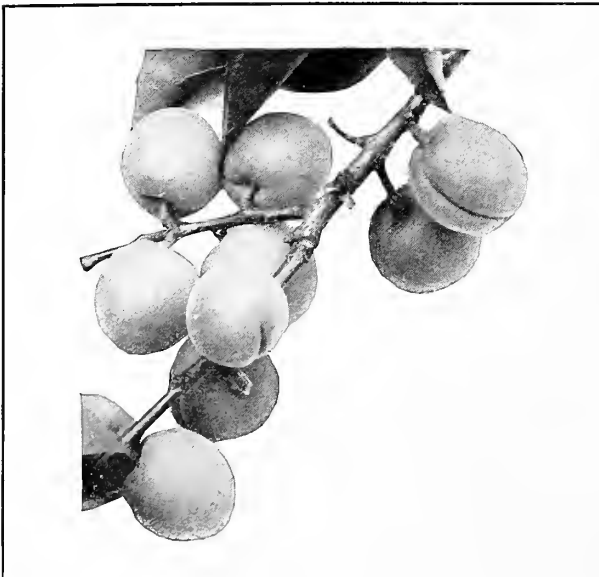


Quince—Excellent for Jelly and Preserves

# New American Mulberry

Produces delicious fruit, very large, black, sweet, rich and excellent. Vigorous and productive. The best of the edible mulberries. Fruit ripe from middle of June to September.

New American Mulberry, 5 to 6 ft., \$1.25 each.



Apricots—Much Prized for Canning and Drying

# Apricots

**T**HE apricot is a cross between a peach and the plum. In shape and color, it resembles the peach, but in texture and smoothness of its skin, it is more like the plum. Apricots have a delicious flavor and, in addition to being very desirable for eating fresh, they are much prized for canning and drying. The trees usually begin to bear two years after planting. Plant 15 feet apart each way.

## Green's Apricot Trees are Low Priced

Height	Each	10
3 to 4 ft., Well Branched.....	\$.75	\$6.50
4 to 5 ft., Well Branched.....	.95	8.50

**Parcel Post Size:** First-class trees, 2 to 3 ft. high, can be sent by parcel post for 65 cents each, \$5.50 per 10, post-paid.

**RATES**—Less than ten apricot trees at each rates. Ten or more at ten rates.

**ROYAL**—There are several varieties of apricots but they are all very much alike in general characteristics. We offer only this variety as we consider it the best. Large, roundish-oval; pale orange with faintly-tinged red cheek. Flesh yellow, firm, sweet, highly flavored, slightly subacid, good quality, rich and juicy. Ripens late in July.

### IT PAYS TO BUY DIRECT

Green's Nursery Company: When I go out and look at the trees I got from you last spring, I feel we are friends and that I know all you fellows personally. The trees are budding now and as healthy as you could wish. Guess I'll come regularly every spring now with an order. I lost two years fooling with agents' stock. Enclosed find my order for trees. Next year I hope to give you a larger order. V. W. Butler, Mogadore, Ohio, Mar. 24, 1927.

There Is Nothing Finer Than Quince Jelly



# Big Money in Nuts

## Use Waste Land to Grow Profitable Crops

**A** SMALL investment now will bring you many dollars return in years to come. Nuts may be planted on waste land which would otherwise be unprofitable. They require practically no attention and can be grown on land too rough to develop otherwise. The nuts are always in great demand. The prices received are making the returns bigger each succeeding year. Considering the cost of operation, nuts are even more profitable than apples. The wood of the nut trees is exceedingly valuable for lumber and always in great demand.

Let one of the shade trees in the yard be a nut tree. All of the nut trees are attractive and everyone will enjoy the fine nuts you can gather in a few years. On every farm there is room for many nut trees. Plant them now for big money in the future.

**ENGLISH FILBERT (Hazelnut)**—A low-growing bushy tree, producing abundant crops of roundish, tender nuts of nice flavor greatly prized for home use and used extensively in the manufacture of candy. Will grow in almost any location but prefers a rather moist soil such as can be found along brooks or streams. Nuts larger and of better quality than the native American Filbert.

**Prices of English Filbert (Hazelnut)**—2 to 3 feet, 60 cents each, 10 for \$5.50; 3 to 4 feet, 70 cents each, 10 for \$6.50. Parcel post size, 12 to 18 inches, 55 cents each, 10 for \$5.00, postpaid.

**JAPAN WALNUT (Siebold)**—This is a very hardy variety, will stand 20 degrees below zero without injury, a rapid-growing, handsome tree which bears young and abundantly. The shell is but a little thicker than that of the English walnut, the meat of which comes out whole and is of excellent quality. This variety begins to bear when two or three years old.

**Prices of Japan Walnut (Siebold)**—3 to 4 feet, \$1.00 each, 4 to 5 feet, \$1.25 each. Parcel post size, 2 to 3 feet, 90 cents each.

**ENGLISH WALNUT**—A fine lofty-growing tree with handsome, spreading head. Produces large crops of thin-shelled, delicious nuts, which are always in demand at good prices. We offer a hardy seedling strain grown from nuts secured from a successful grove a few miles from Rochester. The trees are grown here and have been thoroughly acclimated to our cold winters. Will do well in climates not too severe for peaches.

**Prices of English Walnut Trees**—2 to 3 feet, \$1.00 each, 10 for \$9.00; 3 to 4 feet, \$1.25 each, 10 for \$11.50. Parcel post size, 1½ to 2 feet, 95 cents each, 10 for \$9.00, postpaid.



One Corner of a Block of Our Fruit Trees. Note the Clean Straight Trunks and Well-Shaped Tops



A Dish of English Walnuts

**BLACK WALNUT (Standard Strain)**—A fast-growing tree prized not only for its heavy crops of large, nutritious nuts, but also for its exceedingly valuable wood in great demand by furniture makers and gunsmiths.

**Prices of Black Walnut (Standard Strain)**—  
 3 to 4 ft. . . . . 50 cents each, 10 for \$4.50  
 4 to 5 ft. . . . . 75 cents each, 10 for \$7.00  
 5 to 6 ft. . . . . 85 cents each, 10 for \$8.00  
 Parcel post size, 2 to 3 feet, 45 cents each, postpaid.

**BUTTERNUT**—This rapid-growing, lofty-spreading tree is one of our finest native trees. Valued for its tropical appearance and beautiful wood. Produces large crops of long, nutritious nuts, greatly prized for home uses and in good demand by bakers and confectioners. Bears early.

**Prices of Butternut Trees**—3 to 4 feet, 60 cents each, 10 for \$5.50; 4 to 5 feet, 85 cents each, 10 for \$7.50; 5 to 6 feet, \$1.00 each, 10 for \$9.00. Parcel post size, 2 to 3 feet, 50 cents each, postpaid.

**AMERICAN FILBERT**—The common native Hazelnut. A low growing shrubby tree, 10 to 15 feet high, used largely for ornamental purposes. Makes very attractive hedges. In fall the trees produce abundant crops of delicious nuts.

**Prices of American Filbert Trees**—2 to 3 feet, 60 cents each, 10 for \$5.50. Parcel post size, 2 to 3 feet, 75 cents each, \$7.00 for 10, postpaid.

**GOLDEN JUBILEE OFFER**

**DWARF FRUIT TREE COLLECTION**

4 Dwarf Trees

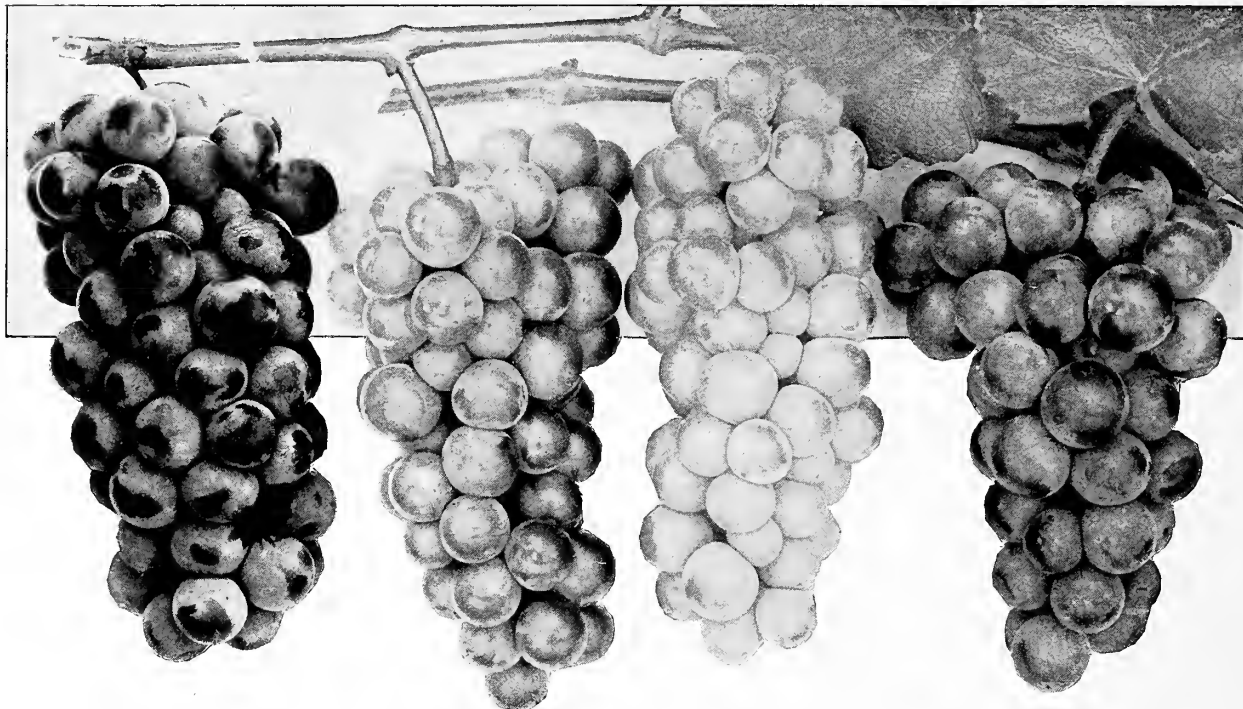
3½ to 4½ ft. high—All for \$2.75

- 1 Cortland Dwarf Apple
- 1 Oldenburg Dwarf Apple
- 1 Clapps' Favorite Dwarf Pear
- 1 Bartlett Dwarf Pear

**Special Price . . . . . \$2.75**

2 to 3 ft. trees parcel post, postpaid \$2.35  
 Larger sizes cannot be sent parcel post.

*Our Fruit Trees Are All Grown On Best Whole Root French Seedlings*



**Worden (Black)**

**Lucile (Red)**

**Niagara (White)**

**Concord (Black)**

# Grapes

## Popular and Profitable

**N**O fruit requires less attention or bears more heavily. A small arbor takes up almost no room, yet it can produce many splendid bunches of grapes. The rapidly-increasing demand for grape juice has made the commercial growing of grapes exceedingly profitable. Grapes are usually planted 8 feet apart each way.

### *Green's Extra Size Two-Year-Old Vines*

PRICES OF ALL VARIETIES EXCEPT CONCORD AND CACO

**Extra Size, Two Years Old: 30 cents each, 10 for \$2.50, 25 for \$5.75, 50 for \$9.00**

Only  
**30c**  
Each

**Parcel Post:** Grape vines can be sent by parcel post, postpaid, for 5 cents per vine extra.

**RATES—**Less than ten grape vines at each rates. Ten to twenty-five at ten rates. Twenty-five to fifty at twenty-five rates. Fifty or more at fifty rates.

**AGAWAM (Red)**—An excellent keeper that may be kept in common storage until January. Large in both bunches and berries, dull purplish red, rich, sweet and of a decidedly foxy flavor. Vigorous and moderately productive. Ripens here last of September.

**BRIGHTON (Red)**—A very handsome dark red grape of high quality that should be in every home garden. Not generally recommended as a commercial variety, as it will not ship to distant markets. Vigorous, productive and easy to grow. Ripens here about the middle of September.

**CAMPBELL'S EARLY (Black)**—The characteristics which give this grape its merit are high quality, freedom from foxiness, small seeds, earliness of maturity, large size and attractive appearance both of bunch and berry, hardiness and good keeping qualities. Unfortunately, it is somewhat capricious as to soils and for this reason is not generally rated as a good commercial sort. Ripens here first of September.

**CATAWBA (Red)**—Of all the grapes grown in New York, Catawba is the best keeper, lasting until March or later. Because of its fine quality, it often brings a higher price than other varieties. Berries and bunches of medium size, dull, purplish red. Vines vigorous, hardy and productive. Ripens here last of September.

**CONCORD (Black)**—Without any question, the leading commercial grape on the continent. Due to its high degree of fruitfulness and its great adaptability to various soils, it can be produced so cheaply that no other grape can compete with it in the markets. Blossoms late and, therefore, seldom suffers from spring frosts. Grape juice is made almost entirely of Concord. Vines hardy and healthy. Bunches and berries of fair size, glossy black with abundant bloom, and of good quality. Ripens here middle to last of September.

**Prices of Extra Size Two-Year-Old Concord Vines: 20 cents each, 10 for \$1.50, 25 for \$3.35, 50 for \$6.00, 300 for \$22.50. By mail, 5 cents per vine extra.**

*Order Early from Green's—It Pays*



# A Remarkable New Red Grape

(See color illustration inside front cover)



**CACO (Red)**—This new red grape has the most delicious flavor and is of the highest quality of any grape that we have ever tested. It is one of the earliest grapes in ripening. It has a peculiar characteristic not common to other grapes in that, on account of its being so rich in sugar and excellent in flavor, it can be eaten with enjoyment fully two weeks in advance of its being fully ripe. In appearance, it is the most beautiful of hardy grapes, wine red in color with abundant bloom. The berries are unusually large, bunches of good size, compact and of good form. The vines are very strong, vigorous growers, hardy, healthy and prolific. This variety is a cross of the two well-known grapes, Catawba and Concord, and is said by expert grape-growers to have all the good qualities of both these varieties without the defects of either. Ripens here early in September.

Just think! These fine grapes for only . . . . .

**60c**

Prices of extra Size Two-Year-Old Caco Vines 60 cents each, 10 for \$5.00, 25 for \$11.25, 50 for \$20.00. By mail, 5 cents per vine extra.

## CACO BEATS THEM ALL

Green's Nursery Co.: I owe you a report on Caco grapes which you kindly sent me in 1919. They exceed the Concord in growth and are about equal to that variety in fruitfulness, but in appearance and flavor they certainly beat them all. I expect great results from them when they reach their age of full capacity. Thus far I can only say that the Caco seems destined to hold a position among the red grapes as enviable as is that of the Concord among the blues.

J. A. BISCHOFF,  
Holyoke, Mass.

**DELAWARE (Red)**—A rich and delicately-flavored little red grape that is generally recognized as the standard of quality to judge other grapes by. An exceptionally desirable variety for home gardens on account of its compact habit of growth. Commands a premium in all the markets, often selling for twice the price of Concord. Very hardy. Ripens here about the middle of September.

**DIAMOND (White)**—(Moore's Diamond). The best white grape for the home garden. Unsurpassed in quality and beauty. Early, hardy, vigorous and productive. A very profitable commercial variety that would take first place among the white grapes as a commercial sort were it not for the fact that Niagara is even more productive. Should be in every home garden collection. Ripens here about the middle of September.

**LUCILE (Red)**—Recommended where an extra hardy grape is desired, and for localities where the season is short. Its foxy flavor, which condemns it to some, is considered an asset by many who like this foxy taste. Exceedingly productive, even more so than Concord. Large in both bunch and berry and very attractive in appearance. Quality considered fair to good. Ripens here early in September.

**MOORE EARLY (Black)**—The best early black commercial grape, ripening as it does two or three weeks ahead of Concord. Vines vigorous, hardy and moderately productive. Bunch and berry medium to large. Fair to good in quality. Ripens here first of September.

**NIAGARA (White)**—The leading commercial white grape, not as high in quality as Diamond, but more productive. In great demand. Holds the place among white grapes that Concord holds among blacks. Bunches and berries large and handsome, compact, and of good quality. Vines vigorous, hardy and very productive. Ripens with Concord about the middle of September.

**WORDEN (Black)**—This is a seedling of the Concord and while its berries and bunches are larger and the fruit is of better quality, it is not as good a keeper and does not ship as well to distant markets. It is a superior variety for home use and for nearby markets, and, on account of its high quality and large size, usually brings a higher price than Concord. For home use we know of no grape of greater value. Fruit ripens one or two weeks earlier than Concord. Ripens here early in September.

**NEW THIS YEAR**—Two pages of tools, sprays and supplies. See pages 50-51.



A Field of One-Year-Old Grapes in Our Nursery

## GOLDEN JUBILEE OFFER



### GREEN'S GRAPE VINE COLLECTION

6 Extra Strong 2-Year Vines for \$1.50

- |                   |   |                          |                                  |
|-------------------|---|--------------------------|----------------------------------|
| 1 Caco (Red)      | } | Splendid Value at \$1.50 | By Parcel Post, \$1.80, Postpaid |
| 1 Concord (Black) |   |                          |                                  |
| 1 Niagara (White) |   |                          |                                  |
| 1 Worden (Black)  |   |                          |                                  |
| 1 Lucile (Red)    |   |                          |                                  |
| 1 Catawba (Red)   |   |                          |                                  |

See Illustrations of Caco Grape in Color. Inside Front Cover.



The  
New  
Cortland  
Apple

## New Cortland Apple Endorsed by Experts

*Read what Mr. U. P. Hedrich of the New York Agricultural Experimental Station says of the New Cortland Apple (Quoted from Rural New Yorker)*

### Tested in Every Apple Growing Section of United States

I write to assure fruit growers who have planted Cortland in regions where McIntosh succeeds, or those who contemplate planting it, that they need have no fear of disappointment in the new variety. Cortland was fruited on the grounds of this station 10 years before trees were offered for sale. During this period of probation, hundreds of experienced fruit growers compared it with McIntosh, and pronounced it equal or superior in quality and appearance to that variety.

### 1100 Planters Find No Fault with Cortland

Meanwhile it was being tested in the apple regions of the country, and was then distributed by the New York State Fruit Testing Association to 1,100 members in every apple growing section in the United States, in most of which it is now in bearing, and no member of this testing association has reported unfavorably on the new variety.

### Cortland Wins Second Medal in Three Years

Cortland was awarded the Wilder Medal three years ago by the American Pomological Society as the best new apple, an award made by judges who must have taken quality into consideration. At the last meeting of this society at Grand Rapids in December, 1926, Cortland was one of a collection of new fruits from this station to win another Wilder Medal.

### Better in Quality

At this meeting in Grand Rapids, Cortland was sampled by a score or more of fruit growers from several states, and specimens grown in Michigan and New York were pronounced "better in quality," or "as good," or "nearly as good," as the McIntosh, opinions differing with the tastes of individuals. Those who like a mild apple preferred the McIntosh; those who like refreshing tartness, the Cortland.

### New Low Prices on Cortland

This year for the first time we offer Cortlands at the same price as other standard apples. See page 26. **60c** EACH and up  
Get special price on 100 lots.

### Cortland Sells Better Than McIntosh

Both have the delectable aromatic taste found in apples of the McIntosh type. Growers in New York who have begun to market the Cortland find that early in the season it sells as well as McIntosh, and that after the first of January it sells better, for in quality it is then markedly better. Cortland is a splendid apple in fruit and tree, and will be grown commercially in every apple region in America where McIntosh succeeds.

### Best to Replace Baldwin, Spy, Etc.

It, of all apples, promises best to fill the place of Baldwin, Spy and other winter apples, the popularity of which as commercial sorts, as shown by market reports, is on the wane.

### Better Commercial Variety Than McIntosh

The tree is equal to that of McIntosh in every character; the fruits are as attractive and as high in quality as those of the McIntosh, but Cortland is a better commercial variety than McIntosh because the fruits hang on the tree longer, keep later, and ship better.

### Will Hold Its Own With McIntosh

I end as I began by assuring those who have planted the Cortland that they have no reason to fear that the apple will not hold its own with McIntosh, now, in market value, at the head of commercial varieties of apples grown in America. I write this strong commendation of the Cortland deliberately, out of the full knowledge of it, with special regard to the fruit regions in which its planting is recommended, and out of considerable experience in testing apples.

U. P. Hedrick,  
of New York Agricultural Experiment Station,  
The Rural New Yorker, February 5, 1927

### Green's Advice to Fruit Growers

It does not make any difference what variety of apple trees or other fruit trees you plant because we have grown an abundance of all the leading varieties. However, before you order we ask you to think carefully and consider seriously of planting the McIntosh type of apple (Cortland and McIntosh apple trees) because we know that the McIntosh type of apple has and will make money for you.  
M. H. Green.

There Is Good Money In Small Fruits



**GREEN'S  
Golden  
Jubilee  
APPLE  
COLLECTION**

[See below]

2

1

3

4

5

**SPECIAL  
OFFER of  
Five Trees**

- No. 1. McIntosh
- No. 2. Baldwin
- No. 3. Cortland
- No. 4. Delicious
- No. 5. Winter  
Banana

One each of above five  
selected varieties, 4 to  
5ft. Standard **\$2.60**

Apple Trees—All for .....  
Collection by parcel post in 2 to 3 ft.  
trees, \$1.80 postpaid.  
See detailed collection offer on page 28.



## Four Fruits That Should Be In Every Garden

No. 1—Rochester Peach,  
Page 31.

No. 2—Black Tartarian  
Cherry, Page 36.

No. 3—Corsican Straw-  
berry, Page 47.

No. 4—Worden Grape,  
Page 41.

**Order  
Early**

# Currants - Easy to Grow



**T**HE currant is always in demand for making jellies, jams, preserves, pies, tarts, etc. Every home garden should contain a dozen or two of bushes of the leading varieties. Plant 4 feet apart each way.

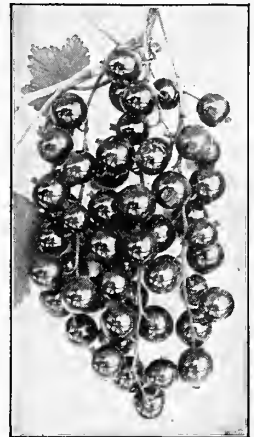
*Green's Extra-Size Two-Year-Old Currant Bushes*  
 PRICES OF ALL VARIETIES EXCEPT PERFECTION

Each	10
\$ .40	\$3.50

**RATES**—Less than ten currant bushes at each rates.

**PERFECTION**—In color it is a beautiful bright red, the berries averaging larger than most varieties, the clusters averaging longer, and the size of the berries is maintained to the end of the bunch. It has a rich, mild, subacid flavor with plenty of pulp and few seeds.

Each	10
\$ .50	\$4.50



Perfection Currant

### IMPORTANT NOTICE

All shipments of currants and gooseberries will be made by parcel post, in a separate package from other nursery stock. These prices include postage.

**RED CROSS**—The clusters are long, with berries of largest size and of bright red color. This variety is unusually sweet for a currant, requiring less sugar in canning than other varieties.

**WHITE GRAPE**—This is the best of all white currants. It is an excellent dessert variety because of its mildly acid flavor and large, handsome clusters of golden green or white berries. It is very prolific.

## Gooseberries

**Will Pay You Well**



**E**VERY home garden should have a dozen or two bushes, as gooseberries are very easy to grow and the fruit is extremely desirable for cooking and other culinary uses. Plant gooseberries 4 feet apart each way.

*Prices of Two-Year-Old Extra-Size Gooseberry Bushes*

Each	10
\$ .50	\$4.50

**CHAUTAUQUA**—An excellent variety for the home garden. Large, greenish yellow, of excellent quality, sweet and high-flavored. Vigorous, upright bushes, hardy and productive.

**RED JACKET (Josselyn)**—A large, bright red gooseberry of the best quality that can be planted with entire confidence. Vigorous, upright, hardy and very prolific.

## Blackberries

**Make Poor Lands Pay Profit**

**T**HE ideal crop for obtaining money returns from poor lands. Will do well where other fruits could not hope to succeed. Plant 6 feet apart in rows 8 feet apart. Canes should be pinched back early when they are 3 to 4 feet high and only three canes should be allowed to a hill.

*Prices of Green's Strong Two-Year-Old Blackberry Bushes*

5	10	25	50	300
\$ .75	\$1.00	\$2.25	\$3.50	\$13.50

**Parcel Post:** By mail, 2 cents per bush extra.

**RATE**—Five to ten at five rate. Ten to twenty-five at ten rate. Twenty-five to fifty at twenty-five rate. Fifty to three hundred at fifty rate. Three hundred or more at three hundred rate.

**BLOWERS**—A large, clean, bright berry of exceptionally good quality, with no perceptible core when fully developed. This is a first-class shipper, standing up well in the market for several days. The season of ripening is from the middle of July until frost, with the bulk of the crop maturing in August. The bushes are upright growers, are very hardy and enormously productive.

**ELDORADO**—An early to medium season berry of great merit. The bushes are hardy and very productive. The berries are large, jet-black, borne in large clusters and ripen well together. They are sweet and melting, have no hard core and keep for 8 to 10 days after picking, without quality impaired. We consider this the best variety for home and market use.

**SNYDER**—A very popular early variety, possibly the hardest of all, and very productive. The berries are of medium size, sweet, melting and delicious.

*Don't Be Afraid To Send Too Much Money—We Will Return It*



# Raspberries

## First in Commercial Importance

**R**ASPBERRIES are rightfully deserving as leaders in commercial importance among the bush fruits. They are easy to grow, require but little care and attention, yield good-looking, large-sized, richly-flavored fruits—a combination hard to beat. You can depend on any variety we list to produce fruit having all these desired qualities.

Plant Raspberries 4 feet apart in rows which are 6 feet apart. The old wood should be cut out as soon as it has fruited, and with the red varieties, thin out the suckers each spring to 5 or 6 on each hill. Black and purple varieties should be pinched back early when the canes are about 2 feet high. We advise all those except experienced commercial growers to plant the two-year-old transplanted bushes.

### Prices of All Varieties

	5	10	25	50	300
Strong Two-Year-Old Transplanted Bushes	\$.90	\$1.25	\$2.75	\$4.50	\$19.50

Parcel Post: By mail, for 2 cents extra per bush.

**RATE**—Five to ten at five rates. Ten to twenty-five at ten rates. Twenty-five to fifty at twenty-five rates. Fifty to three hundred at fifty rates. Three hundred or more at three hundred rates.

### NOTICE TO COMMERCIAL RASPBERRY GROWERS

We have some very nice one-year tip and sucker plants. Write us for special prices.

**COLUMBIAN (Purple)**—At Green's Fruit Farm we have found this variety to be the most profitable of all. A strong grower and unexcelled for productiveness. An excellent shipper and in great demand for canning. Very large, dark reddish purple, rich, juicy and delicious. Ripens in midseason.

One of the fields of Columbian, from which our plants are taken, two acres in extent, netted in one season, \$2700.00. A farmer nearby sold his entire crop of wheat from 40 acres for \$900.00. Mr. Adrian Voogdt, Sodus, N. Y., a year or two ago, picked 8350 quarts from two acres



Syracuse—Large and Luscious

of Columbian and sold them for \$1,947.00. Mr. Henry Du Bois, of the same place, recently sold his crop from three acres for \$2,596.00, and the year previous for \$2,450.00.

**CUTHBERT (Red)**—An old favorite, probably the best known of any. Canes tall, vigorous and very productive. Berries large, handsome, rich crimson. A good shipper and of the best quality. Season medium to late.

**HERBERT (Red)**—This is probably the hardiest and most beautiful red raspberry grown. It originated at Ottawa, Canada, and has withstood without injury 40 degrees below zero. The cane of the Herbert is very strong and vigorous, the leaves large and healthy. Fruit oblong, very bright red, and probably the largest of all red raspberries except Syracuse. It is firm, sweet, subacid, juicy and of good flavor. Quality very good. Season begins a few days before Cuthbert. An exceptionally fine variety both for garden and commercial planting.

**LATHAM (Red)**—Sometimes called Redpath or Minnesota No. 4. A new variety of great promise. It has been predicted by authorities that the Latham will soon take first place as a commercial sort, among the red varieties at least. Is being tested on the grounds of the New York Agricultural Station at Geneva, N. Y., and is very highly recommended by them. It is a splendid strong-growing variety and produces immense quantities of bright red, extra large berries. This is the earliest berry to ripen. It is not considered an everbearer, but the season of ripening is very long, sometimes a month and a half in length. Reports received from the cold northwestern states indicate that this is an extremely hardy variety.

**PLUM FARMER (Black)**—In our opinion, the best of the black cap varieties. At Green's Fruit Farm it has not been surpassed in size or productiveness by any other black variety. Ripens early and quickly. Berries large, thick-meated, firm and of excellent quality. A profitable early market variety. Sells for the highest prices.

**SYRACUSE (Red)**—A new variety recently introduced by us. We consider it the very best red sort for the home garden and nearby market. Somewhat capricious as to soils, but on a good, rich garden soil it produces an abundance of extra large, bright red berries of exceptionally high quality and most delicious flavor. Grown under favorable conditions, we know of no other berry that will approach it in quality of fruit.

## GOLDEN JUBILEE OFFER

### GREEN'S RASPBERRY COLLECTION



- 40 Extra Strong Two-Year Old Transplanted Bushes All for \$2.75
- 10 Latham (Red)
- 10 Columbian (Purple)
- 10 Plum Farmer (Black)
- 10 Cuthbert (Red)

Special Price . \$2.75

By Parcel Post, \$3.00, Postpaid

#### BIG YIELD FROM PLUM FARMER

Green's Nursery Co.: I am writing to tell you of the wonderful production I got from 25 of your Plum Farmer black raspberries. Such bushes I have never before seen. We got eight quarts from the 25 bushes the first year and this year (1926) we got 63 quarts. Maybe others have done better, but we're satisfied. The fruit was large and of very fine quality. Mr. John Q. A. Gardiner, Barrington, R. I., August 9, 1926.



# Strawberries

**Pay Big Profits**

**A**LL the varieties we offer are perfect-flowering and do not require another variety planted near them to make them productive. For garden culture set plants in rows two feet apart, with plants one foot apart in the row.

## Prices of Green's Strawberry Plants

	10	25	50	100
Corsican . . . . .	\$.50	\$1.00	\$1.50	\$2.50
Kellogg's Premier . . .	.50	1.00	1.50	2.50
Cooper . . . . .	.50	1.00	1.50	2.50
Progressive (Everbearing)	.80	1.50	2.25	4.00

Parcel Post: Postage paid for 15 cents per 25, 20 cents per 50, and 25 cents per 100, additional to above prices.

**RATES**—Twenty-five to fifty at twenty-five rates. Fifty to one hundred at fifty rates. One hundred or more at hundred rates.

**NOTE**—Strawberry plants cannot be dug and shipped as early as the other items so we pack and ship them separately in the latter part of April or early in May.

**COOPER (Perfect-flowering)**—Midseason. Plants extra large, strong growers, of a decidedly upright habit of growth, and exceedingly productive. The berries often referred to as the "biggest berries grown," are of a beautiful bright red color, firm and deliciously sweet in flavor.

**CORSICAN (Perfect-flowering)**—Midseason. We consider this the finest home garden berry. The plants are exceedingly vigorous and healthy, resisting disease, drought, weeds and even neglect of cultivation. The berries are large, bright red, firm, juicy and of exceedingly high quality and flavor. Very productive.

**KELLOGG'S PREMIER (Perfect-flowering)**—Early. Unquestionably the best extra-early variety known. In



**Corsican—Our Favorite**

all soils and climates it will be found producing enormous crops of uniformly large, deep red berries, which have made this variety famous.

**PROGRESSIVE (Everbearing)**—In our opinion the most desirable of the ever-bearing varieties. A strong, vigorous grower, producing medium large, dark red berries of delicious flavor. Produces one crop in June and, after a rest period in July, another crop in late summer and fall. To obtain the largest size and finest quality of fruit in the fall, keep flowers picked off until about the first of August.

## Free Fruit Growing and Gardening Bulletins

**Write to the Experimental Stations Listed Below**

We receive a great many requests for information on various kinds of growing things and try to answer them all. But as gardening and horticulture are such large subjects we cannot possibly supply as much information as the Department of Agriculture at Washington, D. C., and the various state departments can give you. We suggest that you write your state department for answers to any reasonable questions you may have. The Department of Agriculture at Washington and the various state departments publish a great variety of booklets on horticultural subjects which can be obtained on application without charge.

### STATE EXPERIMENT STATIONS

**NOTE**—The abbreviations Agri. Exper. Sta. used below mean Agricultural Experiment Station.

- Colorado Agri. Exper. Sta., Fort Collins, Colorado
- Connecticut Agri. Exper. Sta., New Haven, Connecticut
- Delaware Agri. Exper. Sta., Newark, Delaware
- Illinois Agri. Exper. Sta., Urbana, Illinois
- Indiana Agri. Exper. Sta., Lafayette, Indiana
- Iowa Agri. Exper. Sta., Ames, Iowa
- Kansas Agri. Exper. Sta., Manhattan, Kansas

- Kentucky Agri. Exper. Sta., Lexington, Kentucky
- Louisiana Agri. Exper. Sta., Baton Rouge, Louisiana
- Maine Agri. Exper. Sta., Orono, Maine
- Maryland Agri. Exper. Sta., College Park, Maryland
- Massachusetts Agri. Exper. Sta., Amherst, Mass.
- Michigan Agri. Exper. Sta., East Lansing, Michigan
- Minnesota Agri. Exper. Sta., University Farm, St. Paul, Minnesota
- Missouri Agri. Exper. Sta., Columbia, Missouri
- Nebraska Agri. Exper. Sta., Lincoln, Nebraska
- New Hampshire Agri. Exper. Sta., Durham, N. H.
- New Jersey Agri. Exper. Sta., New Brunswick, N. J.
- New Mexico Agri. Exper. Sta., State College, New Mex.
- New York Agri. Exper. Sta., Geneva, New York, and Ithaca, New York
- North Carolina Agri. Exper. Sta., Raleigh, N. Carolina
- North Dakota Agri. Exper. Sta., Agri. College, N. D.
- Ohio Agri. Exper. Sta., Wooster, Ohio
- Pennsylvania Agri. Exper. Sta., State College, Penn.
- Rhode Island Agri. Exper. Sta., Kingston, Rhode Island
- South Carolina Agri. Exper. Sta., Clemson College, South Carolina
- Tennessee Agri. Exper. Sta., Knoxville, Tennessee
- Vermont Agri. Exper. Sta., Burlington, Vermont
- Virginia Agri. Exper. Sta., Blacksburg, Virginia
- West Virginia Agri. Exper. Sta., Morgantown, W. Va.
- Wisconsin Agri. Exper. Sta., Madison, Wisconsin
- Wyoming Agri. Exper. Sta., Laramie, Wyoming.

*Many People Make Big Money Out of Strawberries*

# Asparagus

**R**IGHTFULLY called the "vegetable aristocrat." No vegetable that we know of has its rich, refined, delicious flavor. You never will really know how delicious this vegetable can be until you go out into your own patch and within a short time after cutting, dish out the long big stalks of this vegetable delicacy.

It is easy to grow asparagus. Asparagus does well in any good well-drained garden soil, with no extra preparation required. Simply work the soil well as you would prepare any garden for planting. Set the plants 1 foot apart in rows 2 feet apart, for garden culture. For field culture, the rows are usually 4 feet apart, with the roots 18 inches apart in each row.

## Prices of Green's Extra-Size Two-Year-Old Roots

ALL VARIETIES EXCEPT WASHINGTON			
25	50	300	1000
<b>\$.75</b>	<b>\$1.00</b>	<b>\$3.50</b>	<b>\$10.00</b>

Parcel Post: Postage paid for 10 cents per 25, 20 cents per 50, 25 cents per 100 additional to these prices.

**RATES**—Twenty-five to fifty at twenty-five rates. Fifty to three hundred at fifty rates. Three hundred to one thousand at three hundred rates. One thousand or more at thousand rates.

**CONOVER'S COLOSSAL**—Large, a strong grower, productive and of fine quality.

**PALMETTO**—The most popular variety both for home garden and commercial planting. Larger, more productive and earlier than Conover's Colossal.

**WASHINGTON**—A new rust-resistant variety of great promise that is being planted largely in this vicinity. The stalks are large, dark green, with a heavy purple overtone. The tips are tight and firm and do not open out until well out of the ground. **Prices of Extra Size Two-Year-Old Roots:** 25 for \$1.00, 50 for \$1.25, 300 for \$4.00, 1000 for \$12.00.



Washington Asparagus—

The New Rust-Proof Variety of Easy Culture—Very Productive

## Sage

**HOLT'S MAMMOTH**—Forms a dense mass of beautiful light green leaves used extensively for flavoring dressings and sauces. Set plants 3 feet apart each way. **Prices of Strong Transplanted Roots:** 35 cents each, 10 for \$3.00, 25 for \$6.00. By parcel post, postpaid, for 2 cents per root extra.

## Horse Radish

**ENGLISH or COMMON**—The variety in general use. Will stand a great deal of hardship and persist in soil year after year. Does best in deep, rich, cool soil. As high as ten tons have been received from an acre. Plant in rows 3 feet part and 1 foot apart in row. **Prices of Strong Sets:** 25 for \$1.00, 50 for \$1.50, 300 for \$7.50. By parcel post, postpaid, for 5 cents per 10 extra.

### WONDERFUL TREES

Green's Nursery Company: Enclosed find check to cover order. Part of this is a gift for a friend who is one of the most prosperous farmers in his section of Virginia, therefore I want him to get acquainted with you and your wonderful trees. I have bought trees of you and they are wonderful. W. L. Dobson, Baltimore, Maryland, March 31, 1927.

### WELL PLEASSED FOR TWENTY YEARS

Mr. M. H. Green: For the past twenty odd years I have bought from your father and with one exception the trees all lived. The Banana apple tree bore about six bushels this year, being only a young tree, and there is not a finer apple growing. As for the hydrangeas sent me last spring, I cannot begin to tell you of the number who believed they were several years old. I set them on the cemetery lot where my wife is buried and they were loaded with flowers. I feel I have good reasons to help you by sending a list of prospective buyers and will do all I can as in the past. Fred O. Parke, Fulton, N. Y., December 30, 1927.



Rhubarb

## Rhubarb (Pie Plant)

The first thing in the spring to furnish material for pie and sauce. Its health-giving, tonic properties make it invaluable as a spring regulator. Easy to grow. Should be in every home garden. Plant in rows 4 feet apart, with roots 3 feet apart in row.

**MYATT'S LINNAEUS** — The best variety for general use. Stems large, tender and of refined flavor. Yields abundantly. **Prices of Extra Strong Two-Year-Old Roots:** 25 cents each, 10 for \$2.00, 25 for \$3.75, 50 for \$5.00. By parcel post, postpaid, for 3 cents per root extra.

*Our Business Was Built Up By The Recommendations of Our Satisfied Customers*



# Special Prices — Large Fruit Trees

## For Quick Bearing



**E**XTRA large—extra fine—reasonably priced. Just the right trees for the home owner who wants to save time in getting good sizeable trees in his orchard.

Inquiries for older and larger fruit trees than those we usually offer have become more numerous each year. In answer to this demand for older and larger trees to give quicker results we have grown a supply of **SUPER-SIZE FRUIT TREES** and offer them in the favorite varieties.

These trees are all the same high class trees we always send out, especially grown in our own nurseries. They are large, sturdy and have a well developed root system. We can recommend them to anyone who wants to get quicker results with his fruit tree planting.

Trees of this size are usually hard to locate and our supply is limited. We suggest that you order early and avoid disappointment. We offer the following:

**STANDARD APPLES:** Extra size—6½ to 7½ feet high—\$1.50 each.

Varieties: Cortland, Delicious, Blenheim, Winter Banana, Oldenburg, Fameuse, Gravenstein, Grimes Golden, Pound Sweet, Rome Beauty, Hubbardston, Rhode Island Greening, Stayman's Winesap, Transcen-

dent Crab, Tompkins King, Wealthy, Yellow Transparent.

**DWARF APPLES:** Extra size—4 to 6 ft. high—\$1.50 each.

Varieties: McIntosh, Winter Banana, Oldenburg, Red Astrachan, Wealthy, Yellow Transparent.

**STANDARD PEARS:** Extra size—6 to 7 ft. high—\$1.50 each.

Varieties: Anjou, Clapp's Favorite, Kieffer, Sheldon, Wilder Early.

**DWARF PEARS:** Extra size—4 to 6 ft. high—\$1.50 each.

Varieties: Anjou, Bartlett, Clapp's Favorite, Duchess, Seckel, Wilder Early.

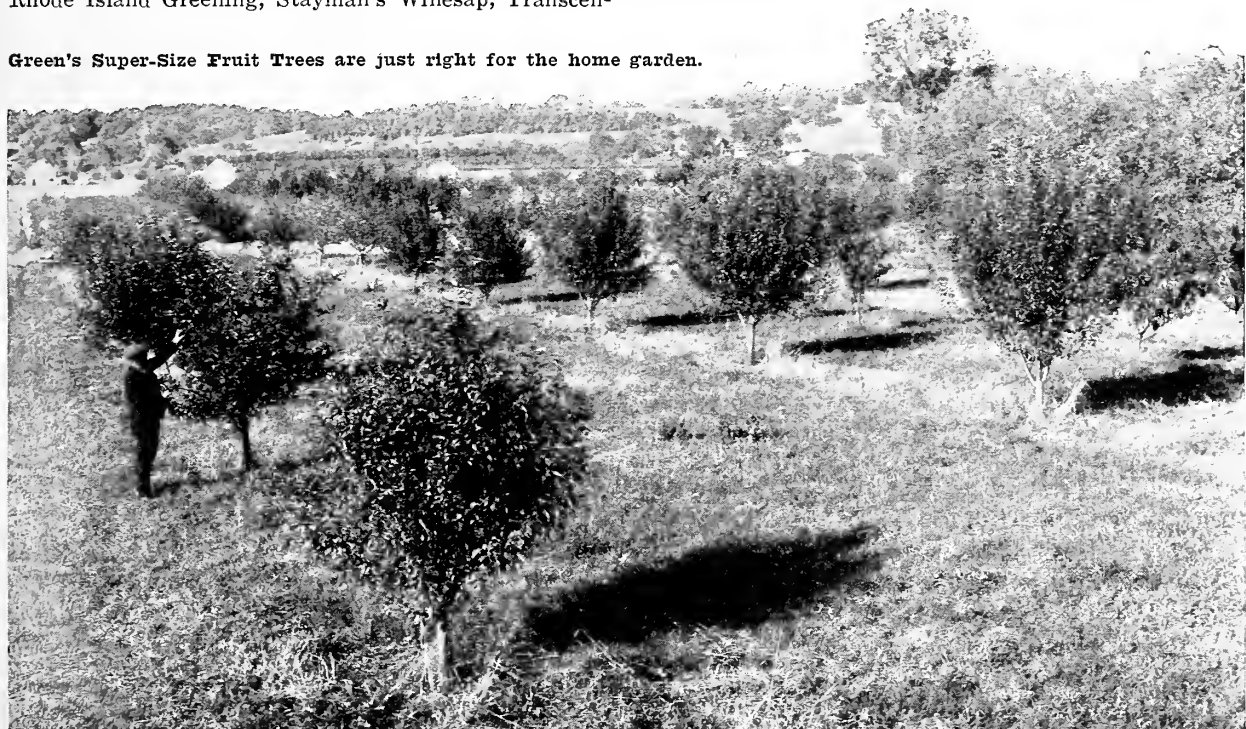
**CHERRIES:** Extra size—5½ to 6½ ft. high—\$1.50 each.

Variety: Early Richmond.

**PLUMS:** Extra size—6 to 7 ft. high—\$1.50 each.

Varieties: Bradshaw, Burbank, Shropshire Damson, York State Prune, Gueii, Lombard, Monarch, Shipper's Pride.

Green's Super-Size Fruit Trees are just right for the home garden.

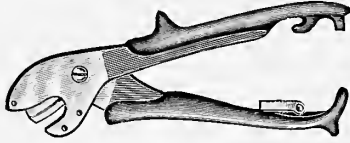


*Your Dollar Buys Fifty Cents More From Green's*



# Needs of the Home Gardener

**F**OR fifty years we have taken pride in furnishing our customers with the very best trees, plants, and vines. Nature will work wonders with what you plant but you must co-operate with her to get the best results. Our Service Department offers tools, materials, and other helps to make it easy for you to co-operate in making your home more beautiful and more profitable. We have selected some of the most convenient and best known tools, materials, and helps, and offer them to you at the lowest price consistent with good quality. We do this for the convenience of our customers and friends because they are sometimes unable to secure them in their local market.



**The Levin Tree and Grape Pruner**

One of the strongest and easiest cutting pruning shears. The Levin is the most practical pruner made. Price by mail, postpaid ..... **\$1.25**

**Green's Grafting Tool**

A complete tool for grafting, made in one piece of forged steel.

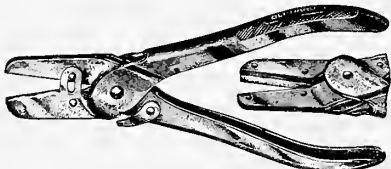


Price, Postpaid. **\$1.50**

**Green's Grafting Wax**

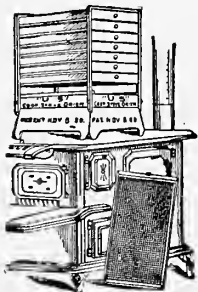
In convenient pound packages. Price, pound package, postpaid.... **\$1.00**  
Price, 5 lbs., postpaid ..... **\$4.00**

**Grape and Rose Shears**



This nickle plated tool will pick grapes, small fruit, flowers, or those berries which grow in clusters. Clips the fruit or flower stem cleanly and holds it, freeing one hand for holding basket or bouquet. Price, Postpaid..... **\$1.25**

**Green's Home Evaporator**



For drying all kinds of fruits, vegetables, e t c., can be used on any stove. No extra fire needed. It has been thoroughly tested and proved to be the best for the price. Don't let your fruit go to waste. Order one of these driers at once. Price, f. o. b. Rochester **\$7.00**



**Dagger Point Pruning Saw**

Is a general purpose saw, which can be used for pruning and farm work. Fruit growers prefer this saw on account of narrow point, which is handy for cutting out limbs that are close together. The blade is 20 in. in length and is made of the best steel which is fully warranted.

Price each, postpaid ..... **\$2.75**



**Tiffany's Dandy Tree Pruner**

Made of steel, cuts very easy, smooth, and fast. It is light, handy and efficient. Fully warranted against all flaws. Every fruit grower should have one. Length, 24 inches; weight, 3 lbs.

Price, postpaid ..... **\$3.75**



**Green's Berry Hook**

A new and useful tool for thinning berry bushes and shrubbery. A very handy and practical tool. Length, 30 inches; weight, 1 lb.

Price, post-paid ..... **\$1.50**

**Tree Protectors**

The most practical tree protection against mice, rabbits, and other pests is the "Wood Veneer Protector," size; 10 by 20 inches placed about the trunks of young trees. We can furnish them to you as follows: in lots of 50 at **\$1.50**; or **\$2.25** per hundred, f. o. b. Rochester.

**The Most Helpful Books**

Here are a few books that cover in a very practical way almost everything you need to know about growing things.

**Farm and Garden Rule Book**

By L. H. Bailey

This is a practical book in which the author has placed all kinds of information pertaining to care and cultivation of the soil in easily located rules, receipts, formulae and tables for the use generally of farmers, gardeners, fruit growers, nurserymen, stockmen, dairymen, etc. 487 pp., 12", **\$3.00y.**

**The Pruning Manual**

By L. H. Bailey, (Rural Manuals)

A knowledge of the practice of pruning is one of the essentials in horticulture. This is supplied by the Pruning Manual which the author has divided into two parts, the Fundamentals and the Incidentals, covering every phase of the practice. It treats fully of the pruning of trees, bushes, and vines. 400pp., Ill., 12", **\$2.50y.**

**Manual of Tree and Shrub Insects**

A practical handbook on the insect problem of both shade and forest trees as well as ornamental shrubs. The author tells how to prevent and control every kind of tree and shrub pest. The indexes are arranged so that the insect may be found by scientific name, by common name or by the plant it damages. 382 pp., Ill., 12 mo., **\$3.50p.**

**Suburban Garden Guide**

By Parker Thayer Barnes.

A neat little guide for the amateur who wishes to plant either a vegetable or flower garden. It mentions alphabetically the best vegetables and flowers for a home garden, when to make war on the insect pests, when and how to fertilize a small garden, and has useful tables showing when to plant, spray, and prune. 147 pp., 16", **\$1.75a.**

Send for descriptive catalog of other books on kindred subjects.

**NOTE**—We can furnish you with power sprayers and almost anything that you may need for the orchard or garden. Write us about your requirements, we can help you.



## Efficient Pumps, Sprays and Dusters



### Bucket or Barrell Spray Pump

Two pumps in one. It has the advantages of the ordinary barrel pump and bucket pump combined. When used as a barrel pump detach the footrest and attach pump to top of small barrel. Remove cap to nozzle and use for washing buggies, windows, etc. Complete with Agitator.

Price  
By Express ..... **\$6.95**  
Postpaid ..... **\$7.25**

### Auto Spray No. 1

Strong, simple compressed Air Sprayer, equipped with a clog proof nozzle. Made with 3 1/2 gallon brass or galvanized tank, as ordered. Uses—For spraying trees, shrubs, white washing or painting wall papers, washing windows and automobiles and all purposes. Weight—packed for shipment, 10 lbs. Equipped complete for spraying with hose, solid stream nozzle, fine spray nozzle and auto pop. 2 foot extensions with each machine. New solid seamless, brass pump and brass ball check valve.

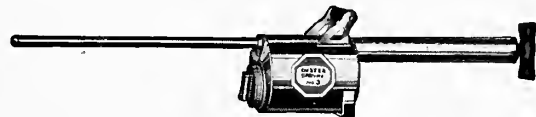
Auto-Spray No. 1-B, brass, Postpaid ..... **\$9.95**  
Auto-Spray No. 1-D, galv., Postpaid ..... **\$6.95**



### Auto Spray No. 50

Lighter weight, smaller capacity. This sturdy little machine is entirely suitable for spraying on a smaller scale. It is particularly recommended for use where weight is a factor, as when the women-folk or youngsters help out with spraying. Solid brass pump and brass ball check valve. Weight, empty 6 lbs., loaded 23 lbs., shipping 7 lbs.

Auto-Spray No. 50-B, brass, Postpaid ..... **\$8.75**  
Auto-Spray No. 50-D, galv., Postpaid ..... **\$6.25**



### Duster Brown No. 3

Every duster equipped with 17 1/2 in. extension for dusting under side of leaves while standing. A new and larger type of duster for field and truck crops. Made of extra heavy materials. Screw cap for easy filling, and so designed that it can be used at any angle without changing volume of dust expelled. About 2 1/2 quart capacity. Postpaid ..... **\$2.00**

### Broadway Duster

A splendid high-grade duster. Dusts everything in powdered form. Built of the finest material and made to stand long, hard service. Will dust under side of leaves or at any angle. Nozzles and extensions—3 furnished. For dusting under side of leaves on low or high grown plants. For dusting directly down or straight ahead or at any angle. Postpaid ..... **\$4.00**



## Insecticides and Fungicides that Assure Results

We offer here some of the most effective materials with which to overcome the common insects and plant enemies. This we believe will strike a responsive chord with the trade that has been ours for half a century.

We have chosen the Dusting Materials manufactured by the New York Insecticide Company. Careful investigation discloses that they manufacture 300 mash products which are extremely fine and adhesive and thus spread and stick better than any other dusts on the market. Greater spread and sticking qualities mean that you secure the desired protection at reasonable cost. When problems pertaining to insect pests and plant diseases arise we want you to feel free to call upon our Service Department for information.

### Sulpho-Tobacco Soap

Sulpho-Tobacco Soap makes a very effective liquid spray for Aphis—the little green bug often found on rose bushes and other plants, and the Black Aphis on cherry and other fruit trees and plants.

One 8 ounce cake dissolved in four gallons of warm water, when cooled is ready to use for these very common and other sucking insects.

Price, postpaid ..... **50c**  
One 16 ounce cake making eight gallons of spray.  
Price, postpaid ..... **\$1.00**

### Combination Dust

(Nicotine-Lead Arsenate-Sulphur). Recommended for fruit and ornamental trees, shrubs, roses and other flowers and garden vegetables.

### Nicotine Dust

(S-23). Patented Process Dust for control of Aphids, Red Bug, Psylla and all sucking insects.

#### Prices of Combination Dust and Nicotine Dust

3 lb. package Postpaid .... **\$ 1.25**  
10 lb. package Postpaid .... **2.75**  
25 lb. package By Express . **5.50**  
100 lb. package By Express . **16.00**

### Sulphur-Lead-Arsenate Dust

(S-2 85-15). Combination poison and fungicide for use on flowers and fruits for control of chewing insects, blight and mildew; controls Leaf Roller, Caterpillars, Slugs, etc. Excellent materials for use on Roses.

### Blue-Copper-Arsenic Dust

(S-6). Same uses as Sulphur-Lead-Arsenate Dust except material is Bordeaux instead of Sulphur. This product is better fungicide. Do not use on peaches.

#### Price of above two Dusts

3 lb. package Postpaid .... **\$ 1.25**  
10 lb. package Postpaid .... **2.50**  
25 lb. package By Express .. **4.50**  
100 lb. package By Express .. **9.00**



# USE THIS INDEX

## It Will Help You Find Things Quickly



Asparagus . . . . .	Page 48	Nuts . . . . .	Page 39
Evergreens . . . . .	Pages 14-15	Perennials . . . . .	Pages 20-23
Fruits, Large . . . . .	Pages 24-38	Roses . . . . .	Pages 18-19
Fruits, Small . . . . .	Pages 40-47	Shrubs . . . . .	Pages 4-11
Hedges . . . . .	Page 16	Trees . . . . .	Pages 12-13
Implements . . . . .	Pages 50-51	Vines . . . . .	Page 17

Almond, Flowering . . . . .	11	Dwarf Apples . . . . .	29	Indian Currant . . . . .	6	Plums . . . . .	36, 37, 49
Althea . . . . .	4	Dwarf Pears . . . . .	34	Insecticides . . . . .	51	Poplar . . . . .	13
Anchusa . . . . .	20	Elm . . . . .	12	Iris . . . . .	21	Privet . . . . .	11, 16
Anemone . . . . .	20	Evaporator . . . . .	50	Japan Quince . . . . .	6	Prunus . . . . .	11, 13
Apples . . . . .	25-29, 42, 49	Evergreens . . . . .	14-15	Japan Cherry . . . . .	13	Pruning Implements . . . . .	50
Apricots . . . . .	38	Filberts . . . . .	39	Japanese Tree Lilac . . . . .	8	Pumps, Spray . . . . .	51
Arborvitae . . . . .	14	Flowering Almond . . . . .	11	Junipers . . . . .	15	Purple Leaved Plum . . . . .	13
Ash, Mountain . . . . .	13	Flowering Cherry . . . . .	13	Kerria Japonica . . . . .	8	Quinces . . . . .	38
Asparagus . . . . .	48	Flowering Crab . . . . .	12	Larkspur . . . . .	21	Quince, Flowering . . . . .	6
Aster, Hardy . . . . .	20	Flowering Quince . . . . .	6	Lilacs . . . . .	6	Raspberries . . . . .	46
Barberry . . . . .	4, 16	Forsythia . . . . .	5	Lily of the Valley . . . . .	21	Rhubarb . . . . .	48
Berry Hook . . . . .	50	Fox Glove . . . . .	20	Linden . . . . .	12	Rose of Sharon . . . . .	4
Birch . . . . .	12	Gladioli . . . . .	23	Lombardy Poplar . . . . .	13	Roses . . . . .	18-19
Bittersweet . . . . .	17	Golden Bell . . . . .	5	Maple . . . . .	13	Sage . . . . .	48
Blackberries . . . . .	45	Golden Elder . . . . .	5	Michaelmas Daisy . . . . .	20	Shasta Daisy . . . . .	21
Bleeding Heart . . . . .	20	Golden Glow . . . . .	20	Mock Orange . . . . .	8	Shrubs . . . . .	4-11
Boston Ivy . . . . .	17	Golden Spiraea . . . . .	7	Mountain Ash . . . . .	13	Snowball . . . . .	6
Bush Honeysuckle . . . . .	5	Golden Syringa . . . . .	8	Mulberry, Flowering . . . . .	13	Snowberry . . . . .	7
Butterfly Bush . . . . .	4	Gooseberries . . . . .	45	Mulberries . . . . .	38	Spiraea . . . . .	7, 8, 16
Butternuts . . . . .	39	Grapes . . . . .	40-41	Nuts . . . . .	39	Sprayers . . . . .	51
California Privet . . . . .	16	Guelder Rose . . . . .	6	Oak . . . . .	13	Spruce . . . . .	45
Canterbury Bell . . . . .	20	Grafting Implements . . . . .	50	Oak . . . . .	13	Strawberries . . . . .	47
Catalpa . . . . .	12	Grafting Wax . . . . .	50	Oaxslip . . . . .	21	Syringa . . . . .	8
Cherries . . . . .	35, 36, 49	Hawthorn . . . . .	13	Paeonies . . . . .	22	Thorn . . . . .	13
Cherry, Flowering . . . . .	13	Hazelnut . . . . .	39	Peaches . . . . .	30-31	Trees . . . . .	12-13
Chestnut . . . . .	13	Hedges . . . . .	16	Pearl Bush . . . . .	8	Trumpet Vine . . . . .	17
Chrysanthemum, Hardy . . . . .	20	Hemerocallis . . . . .	20	Pears . . . . .	32-34, 49	Vines . . . . .	17
Clematis . . . . .	17	Hepatica . . . . .	20	Perennials . . . . .	20-21	Virginia Creeper . . . . .	17
Columbine . . . . .	20	Heuchera . . . . .	21	Philadelphus . . . . .	8	Walnuts . . . . .	39
Coral Berry . . . . .	6	Hibiscus . . . . .	21	Phlox . . . . .	21	Weigela . . . . .	11
Coreopsis . . . . .	20	High Bush Cranberry . . . . .	8	Pie Plant . . . . .	48	Willow . . . . .	13
Crab, Bechtel's . . . . .	12	Hollyhocks . . . . .	21	Pine . . . . .	14	Wisteria . . . . .	17
Cranberry, High Bush . . . . .	8	Honeysuckle, Bush . . . . .	5	Paeonies . . . . .	22	Yucca . . . . .	21
Currants . . . . .	45	Honeysuckle Vine . . . . .	17	Peaches . . . . .	30-31		
Dahlias . . . . .	23	Horse Chestnut . . . . .	13	Pearl Bush . . . . .	8		
Deutzias . . . . .	4	Horse Radish . . . . .	48	Pears . . . . .	32-34, 49		
Dogwood . . . . .	12	Hydrangea . . . . .	5	Perennials . . . . .	20-21		
Dutchman's Pipe . . . . .	17			Philadelphus . . . . .	8		
Dusters, Insecticide . . . . .	51			Phlox . . . . .	21		

### READ BEFORE ORDERING TO AVOID MISTAKES—

To order from this catalog—Simply make your selection, use the order blank found opposite this page, and mail it to GREEN'S NURSERY COMPANY, ROCHESTER, NEW YORK.

#### TERMS

Please send payment with order. An express money order, postal money-order, or bank draft is the best form of remittance. You can send your personal check if you desire. It is not safe to send silver or bills except in a registered letter. This "payment with order" plan saves us the enormous expense of making book records and of collecting accounts, and is one of the features of our business that enables us to sell you such high quality trees and plants at such low prices. To new customers, we extend the privilege of C. O. D. shipments and paying when delivery is made by expressman, mailman or freight agent. No premiums are given on C. O. D. orders. Prices are free on board cars at our nurseries.

#### ORDERS FOR LESS THAN THREE DOLLARS

If you order amounts to less than three dollars please add fifty cents extra for packing costs. In our endeavor to make our prices as low as possible, we have based our packing costs on orders amounting to ten dollars or more. As it costs practically as much to pack a small order as it does a large one, we find we cannot profitably handle orders of less than three dollars without additional charge for packing. This does not apply to orders of less than \$3.00 by parcel post. On parcel post orders of less than \$3.00 no charge is made for packing.

#### SPECIAL QUOTATIONS ON LARGE QUANTITIES

Write us for special prices on large orders. Be sure to state the number of each variety wanted and the size of the trees desired.







**NATIONAL ROSE SELECTION**

*Varieties chosen by popular vote of  
Rose Lovers of America*

- |                          |                                |
|--------------------------|--------------------------------|
| 1. Frau Karl Druschki    | 6. Columbia                    |
| 2. Madam Butterfly       | 7. Souvenir De Claudius Pernet |
| 3. Los Angeles           | 8. General Jacqueminot         |
| 4. Paul Neyron           | 9. Gruss an Teplitz            |
| 5. Duchess of Wellington | 10. Pink Radiance              |

**PRICES OF ROSES**

Souvenir De Claudius Pernet, \$1.25 each. All other varieties above, 90 cents each, 5 for \$4.00, 10 for \$7.50. By parcel post, postpaid, 5 cents per bush extra.

**SPECIAL COLLECTION.**

One bush each of above ten varieties all for ....

**\$7<sup>35</sup>**

By parcel post, postpaid, \$7.85

For description of these roses,  
see pages 18-19

**Green's  
Nursery Co.**  
Rochester, N. Y.  
**Hydrangea P. G.  
Bush Form**

This beautiful flowering shrub makes a gorgeous showing when planted in a mass of ten in a bed or in the border.

10 for **\$3.00**

See Page 5.

**New  
Red-Leaved  
Barberry**

A vivid red-leaved variety of the Japanese Barberry. Stays red all summer. New and desirable.

Strong plants **\$1.00**

See Page 4.



*Hydrangea P. G.*  
BUSH FORM **40¢**

**PAEONIES**

Red—Felix  
Crousse **75¢**

Pink—Edulis  
Superba **50¢**

White—Fes-  
tiva Maxima **50¢**

See Page 22



*New Red Leaved Barberry* **\$1.00**

