

Historic, Archive Document

Do not assume content reflects current scientific knowledge, policies, or practices.

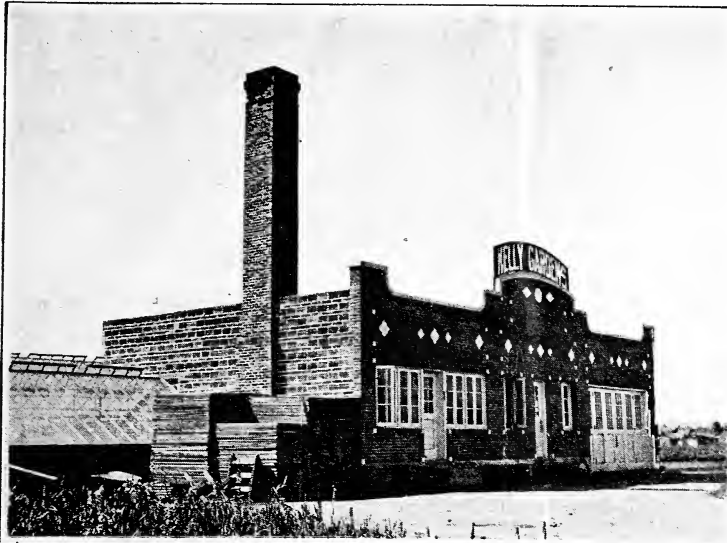
62.91

Kelly Plant Gardens

ESTABLISHED
1889

FALL
1928 CATALOG

THIRTY-NINTH
YEAR



Plants
Bulbs
Shrubs
Trees

*For Fall
Planting*

Above—
SERVICE
PLANT

NURSERY



Partial View of Service Plant and Green Houses

Seeds • • Nursery

VEGETABLE and FLOWERING PLANTS

*Strawberry and Small Fruit Plants, Roses
House Plants and Shrubs for
Your Home and Garden*

E. 4100 Sprague Avenue
SPOKANE, WASHINGTON

DOUBLE PEONIES



Queen Victoria

A Peony of Much Merit

Plant peonies in deep, rich, well-prepared soil, covering the buds but an inch or two. Do not expect too much of them the first year as they are a little slow in establishing themselves. Many of the finest double varieties will bloom single or semi-double the first year, and will not always attain full perfection until the third year after transplanting. Plant in the fall or early spring. Figures indicate rating by American Peony Society. All peonies postpaid.

FELIX CROUSSE 8.4 (Crousse, 1881)—Very brilliant red. Medium to large. Globular, typical bomb shape; fragrant, strong growth. Each, \$1.10; doz., \$12.00.

QUEEN VICTORIA—6.8 bomb type, early full, compact bloom; opens flesh white, changing to pure white, center petals tipped with carmine spots. A grand white peony for any purpose. Keep well when cut. Each, 75c; doz., \$8.00.

FESTIVA MAXIMA—9.3 (Mielze, 1851). Paper white, crimson markings in center. Very large and full, rose type; very tall, strong growth. Each, 75c; doz., \$8.00.

MASTERPIECE—Brilliant rose, rich softerino-red. Each, \$1.00.

EDULIS SUPERBA—7.6 (Lemon, 1834). Dark pink, even color; large, loose, flat crown when fully open. Very fragrant; upright growth; early bloomer. Each, 75c; doz., \$8.00.

DUCHESS OF ORLEANS—Fine, large flower, long stem, healthy grower, profuse bloomer; color, light flesh pink, with creamy yellow center. Rare and beautiful. Each, 75c.

MONS. JULES ELIE—9.2 bomb type, early mid-season. King of all peonies. Color an ideal glossy lilac-pink, shading to a deeper rose at the base, the entire flower overlaid with a sheen of silver. Ideal for cut flowers. Each, \$1.50; doz., \$15.00.

KARL ROSENFELD—8.8. Very large flower, globular, semi-rose type. Extremely vigorous grower, tall, and free flowering. Dark velvety crimson. Each, \$2.00.

SPECIAL—One each of the eight varieties. Postpaid, \$8.00.

EXTRA SPECIAL PEONIES

DOUBLE RED—Unnamed. Each, 50c; doz., \$5.00.

DOUBLE PINK—Unnamed. Each, 50c; doz., \$4.50.

DOUBLE WHITE—Unnamed. Each, 50c; doz., \$4.50.

EVERGREENS

It is winter time that makes us appreciate the EVERGREENS. When other trees and shrubs and plants are shivering in the cold, the warm, green color of the evergreens gives us cheer and color to the winter landscape.

All Evergreens are balled and burlapped. Crating and transportation are charged at cost.

CYPRESS

ALUMII—A columnar Evergreen with the most beautiful bluish metallic hue foliage and very glaucous. Requires some protection from the winter's sun rays. Without question the most distinctive evergreen. Each 3 ft. over, \$5.50; 4 ft. over, \$7.25.

THUJA

ARBOR VITAE (Pyramidalis)—The most compact and erect of the specie. Foliage a deep green retaining its color. Always beautiful and always admired. Each, 4 ft. over, \$8.00.

ARBOR VITAE (Globoso)—A globe form. Wonderfully attractive in pairs at home entrance or graceful and attractive in tubs or pots. Each, 2½ ft., \$5.00; 2 ft., \$4.00; 1½ ft., \$3.50; 1 ft., \$3.00.

BIOTA (Orientalis)—This is another type of THUJA or ARBOR VITAE. Grows erect somewhat pyramidal. Very robust, symmetrical tree and stately in its effect. Each, 4 ft. over, \$7.00.

MAHONIA

ACQUIFOLIA (Holly Leaved)—An evergreen shrub with smooth, shining holly leaves changing their color capriciously during the year, from green to reds and bronze. Each, 3 ft. over, \$2.75.

RETINOSPORA

One of the most beautiful evergreens related to the cypress. Foliage and form quite distinct.

PLUMOSIS-AUREA (Globe form)—Bright green plume-like branches, yellow tinge on outer leaves. Hand-some specimens. Each, 1½ ft., \$4.00;

PYRAMID AUREA—2½ ft., \$5.00.

PYRAMIDALIS—A pyramidal form. Beautiful feathery leaves. Distinctly beautiful. Each, 3 ft. over, \$6.50; 4 ft. over, \$7.50.

JUNIPER

CHINESE—One of the best in cultivation. It forms a compact pyramidal tree, bright green color. Rapid growth. Each, 2 ft. over, \$4.50; 3 ft. over, \$5.00.

IRISH—Grows to 20 or more feet high and seldom over two feet in diameter. Bright glaucous green color. Fine for columnar architecture. Each, 4 ft. over, \$6.00; 5 ft. over, \$7.00.

TAMARISCIFOLIA—A creeping dwarf variety. Average height about 1 ft., spreads to 8 ft. Forms a perfect mat. Bluish and gray green. Each, 1 ft., \$2.00; 1½ ft., \$3.00.

INDEX

	Page
Agrostemma	7
Alyssum Sax.	5
Anchusa	5
Anthemis	5
Arabis	5
Armeria	7
Asparagus Roots	Back Cover
Asters, Perennial	5
Baby Breath	5
Barberry	4
Begonia Tuberos Rooted	4
Bleeding Heart	6
Blue Grass	7
Bugleweed	7
Butterfly Bush	4
Canterbury Bells	5
Cemetery Plant	5
Chives	11
Climbing Vines	9
Clover Seed	7
Columbine	5
Coral Bells	5
Coreopsis	5
Creeping Bent Seed	7
Crocus Bulbs	3
Cut Flowers	8
Delphinium	6
Deutzia	4
Dill	Back Cover
Doronicum	6
English Daisy	5
Evergreen Trees	2
Ferns	8
Fertilizers	11
Flags (Iris)	7
Flax	7
Forget-Me-Not	5
Forsythia	4
Foxglove	5
Fungicides	11
Fuschia	8
Galliardia	5
Geraniums	8
Geum	5
Globe Thistle	7
Goldenglow	6
Greens (Bouquets)	8
Greenhouse Potted Plants	8
Hedge Plants	4
Heliotrope	8
Herb Plants	4
Hollyhocks	7
Honeysuckle	4
Hvacinths Bulbs	3

Hydrangeas	4
Insecticides	11
Jerusalem Cross	5
Jonquil Bulbs	3
Kerria	4
Lavender	7
Lawn Grass Seed	4
Lilacs	7
Lilies	4
Lupins	5
Mallow Marvels	5
Narcissus Bulbs	3
Palms	8
Pampas Grass	6
Pansy	7
Peonies	2
Penstemon	6
Phlox	6
Philadelphus	4
Pinks (Carnation)	7
Pinks (Clove)	6
Poppy	6
Platycodon	6
Potting Soil	8
Primrose	7
Privet	4
Pyrethrum	6
Rhubarb Roots	11
Roses	9
Rubber Plants	8
Saxafraga	7
Scotch Broom	4
Seeds (Perennial)	4
Shamrock	7
Shasta Daisy	7
Small Fruit Plants	11
Snowball	4
Snow on the Mountain	5
Spiraea	4
Spurge	7
Statice	6
Stokesia	6
Strawberry Plants	Back Cover
Sweet Pea (Perennial)	5
Sweet William	6
Trees (Fruit)	10
Trees (Shade and Ornamental)	10
Tritoma (Red Poker)	6
Tulip Bulbs	3
Veronica	6
Vinca	8
Viola	7
Violets	7
Wallflower	7
Weiglia	4
Yucca	6

NON-WARRANTY—While we hold ourselves in readiness on proper proof, to replace free of charge all stock that may prove untrue to label, or refund the amount paid, we give no warranty expressed or implied as to description, quality, productiveness or any other matter of any stock, seeds, bulbs or plants, we sell.

FROM
Write name very plain in ink.

P. O.

R. F. D. NO.

STATE

PLACE
POSTAGE
STAMP
HERE

"Ship Safely Anywhere"

GROWERS OF

Plants, Shrubs, Seeds, Bulbs, Etc.

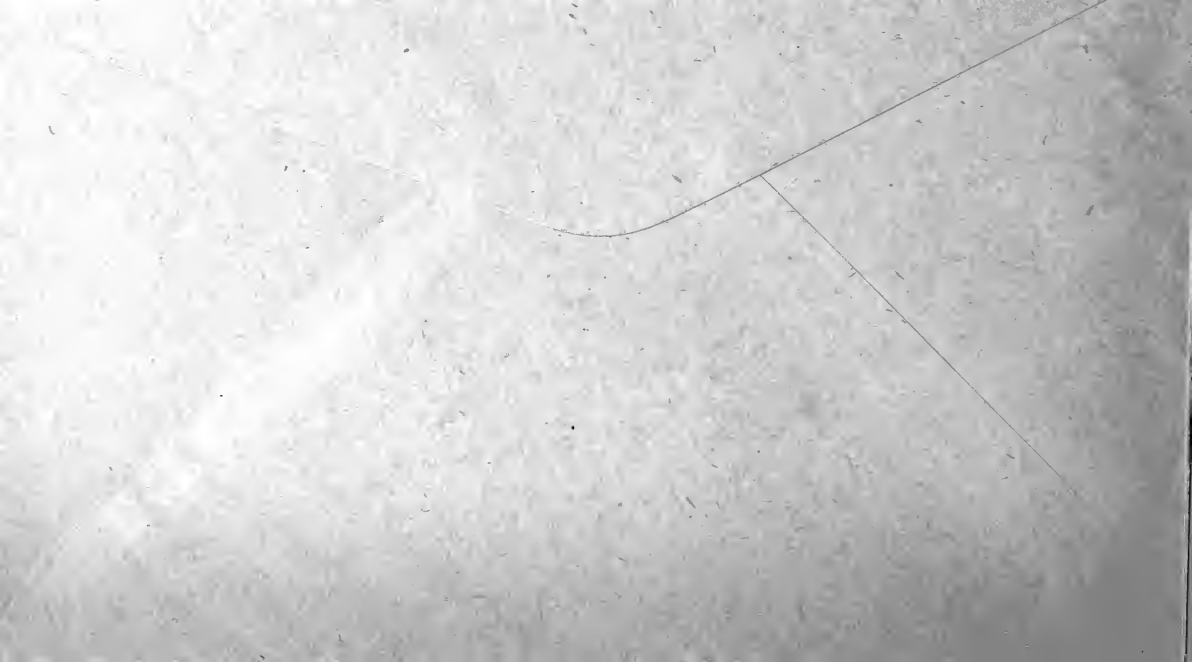
Free Catalogue

KELLY-PLANT GARDENS

SPOKANE,

East Sprague Ave.

WASH.



Kelly Plant Gardens

EAST SPRAGUE AVENUE
SPOKANE, WASH.

Established 1889

Telephone Lakeview 0156

ORDER NUMBER

KELLY PLANT GARDENS gives no warranty, express or implied, as to description, purity, productiveness or any other matter of any seeds, bulbs, plants or roots they send out, and they will not be in any way responsible for the crop. If the purchaser does not accept the goods on these terms they are at once to be returned.

AMOUNT ENCLOSED

DATE.....
 NAME
 Print or write your name very plain
 STREET
 POST OFFICE BOX
 Print or write very plain R. D.
 STATE

P. O.
or Express Order - \$.....
 Check or Draft - \$.....
 Cash - - - - \$.....
 Postage Stamps - \$.....
 Total \$.....

C. O. D.'s are discouraged on account of the extra collection charge which must be assumed by the purchaser.

Ship by Parcel Post..... Express..... Remittance must accompany this order.

Quantity	VARIETY	Dollars Cents	
		Price	

You may send your entire order now. Will deliver when directed or when each variety is seasonable in your locality.

SEND MY ORDER ABOUT.....

We are grateful to you and will appreciate the names and addresses of a few of your friends who are interested in FLOWERS, VEGETABLES and FRUIT GARDENING.

Please Write Their Names on the Back of This Order Blank.



BULB CULTURE

OUTDOOR Culture. Plant any time from September first till frozen soil prevents. Plant deep enough so that top of bulbs are from two to three inches below surface and from three to eight inches apart in the row depending on the size of the bulb. Never plant bulbs on land subject to water accumulation during winter as water saturation of bulbs for a week or more is almost sure to decay them.

Indoor Pot Culture. Plant bulbs in well prepared soil as early as possible. A four-inch pot will grow one large or two small Hyacinths or three tulips, and a six-inch pot will grow three hyacinths and five tulips. Water well and store in a dark, cool and well ventilated basement or plunge the pot in the soil in a cold frame excluding light and heat. It requires six weeks in this storage to develop a strong root

system after which the potted bulbs will develop their blooms when placed where the temperature is from 50 to 60 degrees in plenty of light and regular watering. Successive crops of blooms will be had by consecutive introduction from the storage to light and heat. Never use fresh manure in bulb culture, but old, well rotted compost thoroughly incorporated with the soil. Be very liberal with Bone Meal. It adds lustre to the blooms.

Bowl-Glass and Pebble Culture. Hyacinths, Narcissus and Chinese Sacred Lilies when grown in water culture should be set so that the base of the bulb barely touches the surface of the water. These should be stored in a cool, dark place until the roots have developed and permeated the receptacle when they should be introduced to light and about 60 degrees temperature. The water must be changed weekly.

TULIPS

The tulip will never cease to be the early spring flower of the masses. Easily grown, inexpensive and positively sure to give pleasure. They may be planted where many plants in the garden have matured in the late summer and fall and bulbs can be harvested early enough to follow with other plants the following spring.

The following list is the cream of varieties:

EARLY TULIPS

CRAMOISE BRILLIANT—Vermilion Red, large flowers, great substance, fine for forcing. Postpaid, each, 8c; doz., 75c; 100, \$4.75.

PRINCE OF AUSTRIA—Sweet scented and a grand red. Postpaid, each, 8c; doz., 80c; 100, \$4.90.

YELLOW PRINCE—Nothing better in yellow for bedding or forcing. Postpaid, each, 8c; doz., 90c; 100, \$6.60.

INGLEScombe—Pink—One of the most beautiful. Pink with blue base. Postpaid, each, 8c; doz., 80c; 100, \$4.50.

PICOTEE—A very odd and handsome strain of tulips. White with pink border. The petals are pointed and with the tall stems are very showy. Postpaid, each, 7c; doz., 75c; 100, \$4.80.

MIXED—In the digging and handling of bulbs we lose the names of many lots which make up our mixed. Fine stock and our price is very low. Postpaid, each, 6c; doz., 50c; 100, \$3.25.

BREEDER TULIPS

In the Breeder tulips we have the distinct Bronzes, Browns and Buff colors. Very showy, and admired. Postpaid, each, 12c; doz., \$1.05; 50, \$3.00.

PARROT TULIPS

The Parrot have very large flowers with petals fringed and oddly cut. They are different. Postpaid, each, 10c; doz., \$1.00; 100, \$6.00.

BEAUTIFUL GIANT DARWIN TULIPS

The Darwins have majestic beauty distinctively their own. Their long stems and varied colors make them the attraction in the tulip season.

CLARA BUTT—Pink—Conceded to be the most brilliant and universally admired. Postpaid, each, 7c; doz., 75c; 100, \$4.75.

FARNCOMBE SANDERS—The magnificent scarlet. Postpaid, each, 8c; doz., 80c; 100, \$4.75.

PRIDE OF HAARLEM—Salmon Rose shaded scarlet, blue at base, fine form. Postpaid, each, 7c; doz., 75c; 100, \$4.50.

MME. KRELAGE—Bright pink. Handsome. Postpaid, each, 8c; doz., 80c; 100, \$4.75.

WILLIAM COPELAND—Rose Lilac. Very showy. Postpaid, each, 8c; doz., 80c; 100, \$5.00.

YELLOW DARWIN—Will add beauty by contrast. Postpaid, each, 7c; doz., 75c; 100, \$4.50.

KING HAROLD—Deep Garnet Red. Lustrous and attractive. Postpaid, each, 8c; doz., 80c; 100, \$4.75.

WHITE HAWK—Pure White. Fine for mixing. Postpaid, each, 6c; doz., 65c; 100, \$4.00.

PROF. RAUENHOF—Without question the greatest red in tulipdom. It's a sensation. Postpaid, each, 8c; doz., 80c; 100, \$4.75.

SPECIAL COLLECTION

Kelly Gardens Darwins

One each of the above cream of nine beautiful Darwin Tulips for 55c; or 5 each, 45 in all, for \$2.00; or 11 each, 99 in all, \$4.00, postpaid.

EXTRA SPECIAL MIXTURE

of Unnamed Varieties—All Colors

Fine for mass bedding, forcing and general planting. Postpaid, 25, \$1.00; 50, \$1.50; 100, \$2.85. Not prepaid, 500, \$10.00.

HYACINTHS

A fine collection of white, pink, yellow, red and blue. Large bulbs. Specify color wanted. Postpaid, each, 25c; doz., \$2.75; 100, \$22.00.

BEDDING HYACINTHS

A high class grade intended for outdoor beds or borders or for forcing. All colors. Postpaid, each, 15c; doz., \$1.50; 100, \$12.00.

NARCISSUS

The Narcissi are probably the most satisfactory flowering bulbs for their splendid keeping qualities. Once planted they need no further attention, with a source of pleasure continuously for years.

POETICUS—Pure white flowers, orange cup. Fine for cutting in spring. Postpaid, each, 10c; doz., \$1.00; 50, \$3.50.

PAPER WHITE

Fragrant white flowers in dense clusters. Easily grown, indoor culture in pans, pots or water pebble or glass. Every one should grow "Paper Whites." Postpaid, each, 12c; doz., \$1.10; 50, \$5.00.

JONQUILS

A species of Narcissus distinguished by the rush-like leaves. Easily grown and beautiful. Postpaid, each, 10c; doz., \$1.00; 50, \$3.50.

DAFFODILS

VON SION—Rich golden yellow perianth and trumpet. The most popular and beautiful. Postpaid, each, 10c; doz., \$1.00; 50, \$3.50.

EMPEROR—Trumpet, large rich yellow. One of the finest grown. Postpaid, each, 12c; doz., \$1.35; 50, \$5.00.

VICTORIA—Magnificent sweet scented deep yellow. Postpaid, each, 10c; doz., \$1.35; 50, \$5.00.

GOLDEN SPUR—Extra large flowers—striking foliage—fine for outdoor and forcing. Postpaid, each, 12c; doz., \$1.25; 50, \$4.00.

CHINESE SACRED LILY

Lavish in white flowers with golden cup. Grown in pots of soil or the usual method is in bowls of water set in pebbles. (See bulb culture.) Postpaid, each, 30c; doz., \$3.00.

CROCUS

This most desirable bulb is very effective in beautifying lawns and any odd spots. Just lift the sod and insert a bulb two inches deep with resultant beautiful blooms, the first of the spring. They gladden the landscape and are done when the lawn mower appears, and will continue for many years.

CROCUS—White, yellow, blue (specify color.) Postpaid, doz., 50c; 100, \$2.50.

Hardy Ornamental Shrubs

Not Prepaid.

Used as single specimens and make magnificent hedges.

BERBERIS (Barberry)

THUNBERGI (Japan Barberry)—Where a dwarf deciduous hedge is wanted nothing equals this beautiful Barberry. Requires but little pruning to keep in shape. The leaves are small, light green, and towards fall assume rich, brilliant colors, the fruit or berries becoming scarlet. Absolutely hardy. Plant 12 to 15 inches apart. 2 yr. each, 40c; 6 for \$2.00; 3 yr. each, 50c; fine large specimens, 75c to \$1.00.

BARBERRY (Purple Leaf)—A very handsome reddish purple leaf. Attractive anywhere. Large specimens, \$1.00.

BUDDLEIA (Butterfly Bush)

Plants grow three to four feet and are covered with long racemes of lilac-like flowers in July. The best location is in good, rich, well drained soil in a sunny situation. It attracts the butterflies, and as many as fifty have been counted about a plant in a single afternoon. Each, 60c and \$1.00.

DEUTZIA

PRIDE OF ROCHESTER—Dainty blooming bell or tassel flowers, born in wreaths along the branches in June and July. Outer petals tinged with pink. Fine specimen shrubs. Each, \$1.00.

FORSYTHIA (Intermedia)

Among the first to bloom and their bright yellow flowers seem the very spirit of Spring, opening before the leaves appear. They attain an ultimate height of eight or ten feet. Fine specimen shrubs. Each, \$1.00.

HONEYSUCKLE

TARTARIAN—A beautiful flowering shrub. One of the hardy growing hedge and screen plants. Probably the most rapid grower of all the hardy shrubs, often attaining a height of ten or more feet in a few years. Not prepaid, 2 to 3 feet, each, 75c; per 10, \$6.00; per 100, \$50.00.

1 to 2 ft., each 50c; per 10, \$4.00; 100, \$30.00.

HYDRANGEA

PANICULATA—A beautiful, tall shrub, with leaves of bright, shiny green; flowers borne in huge panicles from 8 to 12 inches long, light pink, changing to brown later in the fall; blooms in August and September; can be grown in tree form successfully and makes a very desirable lawn ornament. Height about 7 feet. Each, \$1.00; per 10, \$9.00.

ABORESCENS (Hills of Snow)

Conspicuously white and imposing Hydrangea. Mounds of snow white blooms July to September. Each, \$1.00.

KERRIA

JAPONICA—Double flowered. A fine shrub for most any location. Abundant double yellow flowers like half opened rose buds. Specimen plants. Each, \$1.00.

LILACS (Syringa)

COMMON PURPLE—A harbinger of spring shrub. Easily grown and admired. 3 ft., 50c; 4 ft., 75c; large specimens, \$1.00.

PERSIAN PURPLE—Dwarf growing, slender branches, narrow leaves. Specimen plants. Each, \$1.00.

PHILADELPHUS (Mock Orange)

VIRGINALIS—A magnificent new variety. The flowers are the largest, most fragrant and longest blooming immaculate white bloom, yellow stamens. Summer blooming. 3 ft., each, \$1.00.

Our advice will be valuable to you on Plants and Planting. IT'S FREE.

HEDGE PLANTS

A living fence—one made of plants, attractive with their green leaves, formal trained or arched branches, colored foliage or bright berries is surely more pleasing than the still, rigid, mechanical effect obtained by the similar use of wood or metal.

The following shrubs can be used for beautiful HEDGES and SCREENS.

PRIVET, BARBERRY, FORSYTHIA, HONEYSUCKLE, HYDRANGEA*, PHILADELPHUS, LILACS, SPIREAS.

PRIVET

PRIVET (*Ligustrum Vulgaris*)—This hardy privet will make the most beautiful and lasting hedge. Used as a border it will complete the lasting and natural beauty of your home and grounds. Not prepaid. 2 to 3 feet, each, 50c; per 10, \$3.50; per 100, \$30.00. 1 to 2 ft., per 10, \$2.00; 100, \$15.00. One year plants per 10, \$1.25; 100, \$8.00.

SPIREA

All the SPIREAS bloom in a riotous extravagance. Style and color differ in varieties which make this plant most acceptable to all.

ANTHONY WATERER—A fine dwarf Spirea with dark crimson flowers. Height 2 to 3 feet. 1 ft., 50c; 2 ft., \$2.00.

VAN HOUTTEI—The grandest of all the Spireas, and one of the very best of all shrubs. A complete fountain of pure white bloom in May and June. 1 to 2 ft., each, 50c; 2 to 3 ft., 75c; 3 to 4 ft., \$1.00.

PRUNIFOLIA (Bridal Wreath)—One of the earliest to bloom. Plum leaved foliage turning to brilliant red in fall. Double white clustered flowers. Each, 2 ft., 75c; 3 ft., \$1.00.

SNOWBALL VIBURNUM

COMMON SNOWBALL (*V. Opulus Sterilis*)—Grows 6 to 8 feet high, the old-fashioned snowball; its large globular clusters of pure white flowers are produced in May and June and make a very attractive appearance.

TREE FORM—Very ornamental. Not prepaid. Each, \$1.50.

AMERICANUM

(High Bush Cranberry)

Somewhat similar to OPULUS but more open growth. Bright scarlet fruit from July till spring. Birds won't eat this fruit. 4 to 5 ft. Each, \$1.50.

SCOTCH BROOM

A very attractive spring flowering shrub. The yellow blooms are a mass of color. Each, 50c.

WEIGELIA

Very thrifty shrub with delightful blooms during summer, May to Sept.

EVA RATHEKE—Distinct and most attractive variety. Flowers deep carmine red. Each, \$1.00.

ROSEA—Very popular. Pink flowers. Each, \$1.00.

LILIES

Emblems of Purity

HARDY LILIES—Postpaid. Lilies have always been looked upon as amongst the noblest of garden plants. Their conspicuous flowers, striking colors and their stately forms appeal strongly to the eye and to the imagination.

REGALE (The Regal Lily)—The flowers are white, slightly suffused with pink, with a beautiful shade of canary-yellow at the center, and extending part way up the trumpet. It is delightfully perfumed, reminding one of the Jasmine. Each, 50c; doz., \$5.00.

MADONNA OR ST. JOSEPH'S LILY (Candidum)—Flowers pure pearl-white, fragrant; one of the most ornamental species, 2 to 3 feet. June. Each, 40c; doz., \$3.50.

AURATUM (Golden-Banded Japan Lily)—Undoubtedly one of the finest. Its large, graceful, fragrant flowers are composed of six petals of a delicate ivory-white color, thickly studded with chocolate-crimson spots and striped through the center a golden yellow; 3 to 5 feet. July to September. Each, 40c; doz., \$3.50.

AURATUM (Macranthum)—This is a greatly superior Auratum. Flowers much larger, sometimes a foot across and plant growth 6 to 8 ft. Beautifully white, slightly spotted. P. P. each, 50c; doz., \$5.00.

TIGRINUM (Double Flowering Tiger Lily)—Very superior to the old common single tiger lily. Orange red and very double. Nice large bulbs. P. P. 30c; doz., \$3.00.

SPECIOSUM (Magnificum)—Very large flowers of rich deep red. The Speciosums are the most distinctive and important of all Japanese Lilies. P. P. Each, 50c; doz., \$5.50.

WASHINGTON, Mount Hood Lily—New. Native. Grows 4 ft. Flowers white shading to pink in the throat. Thrives anywhere. Requires little moisture. Each, 50c; doz., \$5.00.

LILY OF THE VALLEY

The Lily of the Valley will thrive and throw up its beautiful, modest, fragrant white bells in any kind of soil. It will make a carpet of refreshment in green. Clumps, each, 30c; dozen, \$3.00; single buds or pips, each, 5c; doz., 50c.

LEMON LILY

HEMEROCALLIS FLAVA—Few plants present a more striking appearance on the lawn or border than a large clump of this clear, lemon-colored Lily, which is produced in the greatest profusion, lasting in flower a long time. Each, 25c; doz., \$2.50.

BEGONIA

TUBEROUS ROOTED

A very interesting flowering plant which may be grown in quite shady locations and adapted to inside pot culture. Postpaid, each, \$3.00; dozen, tubers, \$3.00.

HERBS

MINT (Spearmint) Plants—The flavor is a lasting, agreeable one. Prepaid, each, 10c; doz., 75c; 100, \$4.00.

SAGE (English Mammoth)—Most used for all herbs.

SPRING PLANTS—Prepaid. Doz., 40c.

1 year roots. Not prepaid. Each, 20c; doz., \$1.50; 100, \$10.00.

CHIVES

18—CHIVES (Schnittlauch)—An onion-like plant with finely grown leaves. Invaluable for flavoring soups, stews and salads. Postpaid, roots, 15c bunch; doz. bunches, \$1.25.



CEMETERY PLANT

ACHILLEA—Plant in sun or partial shade. Hardy. Grows 24 inches. Blooms in July and August. Flowers are pure white, perfectly double, produced in large sprays, fine for cemetery plant. Potted, each, 20c; doz., \$2.00. Spring plants, 3 for 25c; doz., 90c.

ALYSSUM SAXTILE—An excellent perennial covered with masses of bright yellow flowers in early spring. Potted, each, 20c; doz., \$2.00. Spring plants, 3 for 25c; doz., 90c.

ANCHUSA

A plant of beautiful blue color. Flowers the entire summer. Potted, each, 20c; doz., \$2.00. Spring plants, 3 for 25c; doz., 90c.

ANTHEMIS

HARDY MARGUERITE—Hardy perennial bearing all summer daisy-like golden-yellow blossoms. Potted, each, 20c; doz., \$2.00. Spring plants, 3 for 25c; doz., 90c.

ARABIS (Rock Cross)

ALPINA—Pure white, very useful for rock-garden or edging. 9 inches. April, May. Potted, each, 20c; doz., \$2.00. Spring plants, 3 for 25c; doz., 90c; 100, \$5.00.

COLUMBINE



LONG SPURRED HYBRID

Thrives luxuriantly in any good soil; suitable for the open garden, permanent beds of borders or edges of shrubbery. Blooms during May and later when flowers are scarce. Plants grow 2 to 3 feet high.

Colors: Blue, white, pink, yellow. Potted, each, 20c; doz., \$2.00. Spring plants, 3 for 25c; doz., 90c; 100, \$5.00.

Potted Perennial Plants are from 6 months to 1 year old, while Spring Plants are 3 to 6 months. The older plants will bloom earlier. Prices on this page are Prepaid.

ASTERS PERENNIAL

MICHAEL MASS DAISIES—Blue. Showy late flowering. Potted, each, 20c; doz., \$2.00. Spring Plants, 3 for 25c; doz., 90c.

BELLIS

(Double English Daisy)

Makes a fine display in the border. 6 inches. Potted, each, 20c; doz., \$2.00. Spring plants, 3 for 25c; doz., 90c; 100, \$4.50.

CERASTIUM

SNOW IN SUMMER—Charming creeping plant, silver foliage, fine border, white flowers. Potted, each, 20c; doz., \$2.00. Spring plants, 3 for 25c; doz., 90c; 100, \$4.50.

COREOPSIS

LANCEOLATA GRANDIFLORA—This is one of the finest of hardy plants with large, showy, bright yellow flowers produced in the greatest abundance from June till frost. Potted, each, 20c; doz., \$2.00. Spring plants, 3 for 25c; doz., 90c; 100, \$4.50.

GAILLARDIA

(Blanket Flower)

This will produce from early spring until late fall a continuous profusion of brilliantly colored flowers. Potted, each, 20c; doz., \$2.00. Spring plants, 3 for 25c; doz., 90c; 100, \$4.50.

GEUM

MRS. BRADSHAW—A splendid new variety, with large, double flowers of a fiery red, blooming nearly all summer. Peculiarly attractive. 18 inches. Each, 30c; doz., \$3.00.

LADY STRATHEDEN—A fine double yellow, of same habit as Mrs. Bradshaw. Potted, each, 20c; doz., \$2.00. Spring plants, 3 for 25c; doz., 90c; 100, \$5.00.

GYPSOPHILA, Baby's Breath

Free flowering plants, the flowers of which are in great demand for cutting or combining with other flowers. Spring plants, 3 for 25c; doz., 90c; 100, \$4.00.

LUPINUS (Lupines)

The Lupines produce beautiful long spikes of pea-shaped flowers a foot long on stems three feet high. **NEW HYBRIDS**—Each, 30c; dozen, \$2.50.

LYNCHNIS (Lampflower)

A very pretty easily grown summer flowering plant.

CHALCEDONIA (Jerusalem Cross)—Vivid scarlet and brightest in the garden. Postpaid, each, 25c; doz., \$2.50. Spring plants, 3 for 20c; doz., 60c.

MYOSOTIS

(FORGET-ME-NOT)—Beautiful, small blue flowers. Splendid for beds, borders and rockeries. Each, 25c; doz., \$2.50. Spring plants, 3 for 25c; doz., 90c.

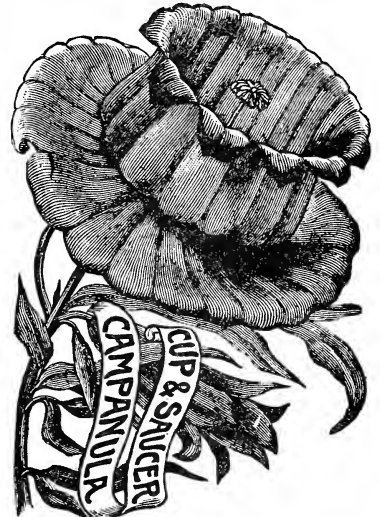
HIBISCUS

NEW GIANT-FLOWERING MARSHMALLOWS OR HIBISCUS

A wonderfully improved form of our greatly admired native Marsh-mallow or Rose-mallow, in which not only the colors have been greatly intensified, but in which flowers of enormous size, frequently 10 to 12 inches in diameter, have been developed. Each, 35c; doz., \$3.50. Spring plants, 3 for 25c; doz., 90c; 100, \$4.00.



FOXGLOVE (Digitalis)—Plant in sun or partial shade. Blooms June and July. The strong flower stalks, 4 to 6 feet high, rise from rich and luxuriant masses of leaves. Colors: Purple, white, rose, yellow. Potted, each, 20c; doz., \$2.00. Spring plants, 3 for 25c; doz., 90c; 100, \$4.00.



CANTERBURY BELLS (Cup and Saucer)—This is one of the most popular and hardiest forms. Single cup-shaped flower set in a saucer-like calyx. Entire flower of one color. Potted, each, 20c; doz., \$2.00. Spring plants, 3 for 25c; doz., 75c; 100, \$3.50.

HEUCHERA (Coral Bells)

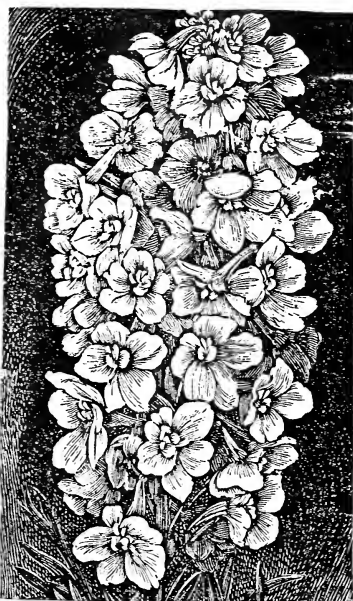
Blooms in May, June, 12 to 18 inches. Flowers bright crimson; very free flowering. Nice for cutting. Excellent for rock garden. Postpaid, 30c; doz., \$2.50. Spring plants, 3 for 25c; doz., 90c.

PERENNIAL SWEET PEA

A vigorous climber. Suitable to cover unsightly places. Flowers all summer; excellent for cut flowers.

SEPARATE COLORS—Red, pink and white. Postpaid. Each, 30c; doz., \$2.50.

DELPHINIUM
(Hardy Larkspur)



Everblooming Hardy Larkspur

VANDEBILT, HYBRIDS (Perennial)—This is the freest and most continuous blooming Hardy Larkspur.

Flowers from this strain are huge blooms in light and dark blue, royal purple tones of mauve with pink and lavender blendings.

Postpaid, each, 30c; doz., \$2.50.

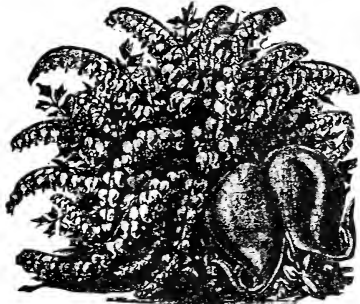
BELLADONNA—Among the very best light blue cut flowers.

BELLAMOSIA—A dark blue type. Very attractive in the tall border. Spring plants, 3 for 25c; doz., 90c; 109, \$4.00.

CHINENSIS—A very pretty feathery foliage intense light and dark blues and white. 12 to 18 in. high. Spring plants, 3 for 20c; doz., 60c.

GOLDEN GLOW

One of the most popular hardy plants. Grows six feet high, producing masses of large, double golden yellow flowers, shaped like a cactus dahlia. Postpaid, each, 35c; doz., \$3.00. Spring plants, 3 for 25c; doz., 90c.



BLEEDING HEART 75c

BLEEDING HEART—Dozen, \$8.00. (The Best Variety)

DIELYTRA SPECTABILIS — (Hardy. Grows 24 inches. Plant in sun or shade. Blooms in May.) These pretty spring bloomers with their graceful drooping sprays of heart-shaped pink and white flowers are very ornamental, and bloom freely early in the season. Fine for cemetery plant. Postpaid, each, 75c.

PAMPAS GRASS, 50c

ORNAMENTAL GRASS PLUME—A handsome imitation of Ostrich Plume. The bloom is an everlasting. Postpaid, each50c

ORIENTAL POPPY

Nothing in the hardy plant line can compare with the Oriental Poppy for brilliancy and beauty. With their large fiery scarlet flowers, they are conspicuous in any position. Each, 30c; doz., \$2.50. Spring plants, 3 for 25c; doz., 90c.

ICELAND POPPY—A neat dwarf graceful yellow poppy blooming all summer. Potted plants, each, 20c; doz., \$2.00. Spring plants, 3 for 20c; doz., 60c.



PHLOX, Hardy Perennial

The perennial phlox should have a place in every flower garden. Succeed in almost any soil with a minimum of care and are long continuous bloomers.

373—ECLAIREUR—Bright rosy carmine.

374—CHAMPS ELYSEES—Red Magenta, beautiful.

375—EYNSTROOM—Rose pink, large and attractive.

237—E. P. STRUTHERS—Cherry red, diffused salmon.

378—BEIDESMAID—Pure white with crimson eye, extra tall.

379—IRIS. Light purple.

380—MICHAEL BUCKNER. Dark purple.

MRS. JENKINS—Flowers large pure white; early free bloomer.

LA VAGUE—Lavender-pink.

ALL PHLOX—Each, 30c; doz., \$3.00.

PENSTEMON

A handsome plant with graceful, slender stems covered almost the entire length with bright colored flowers. Invaluable for cutting. 2-3 feet. June-Aug. Each, 30c. Spring plants, 3 for 25c; doz., 90c.

PLATYCODON
(Balloon Flower)

Blue, 12 to 15 inches. July until late September. A beautiful dwarf species, with broad, thick foliage and large, deep violet-blue flowers. Each, 30c; doz., \$2.50. Spring plants, 3 for 25c; doz., 90c.

VERONICA

Bushy plants about 2 feet high with dense spikes of deep blue flowers. A beauty in the garden.

SPICATA—One of the best. Postpaid, each, 25c; doz., \$2.50. Spring plants, 3 for 25c; doz., 90c.

PINKS (Hardy Garden)

Flowers are very large and fragrant. Each, 30c; doz., \$2.50. Spring plants, 3 for 20c; doz., 60c.



Hardy Sweet William

SWEET WILLIAMS

Hardy; grows 18 inches tall, plants multiply in size yearly. Large fragrant flowers of extreme richness and diversity of color.

SCARLET BEAUTY and **PINK BEAUTY**—All colors. Each, 30c; doz., \$3.00. Spring plants, 3 for 20c; doz., 60c.

PYRETHRUM—Perennial
Painted Daisy

Nothing can surpass the Pyrethrums in profusion of flowers during the summer. In White, Rose and Mixed, postpaid, each, 25c; doz., \$2.25. Spring plants, 3 for 20c; doz., 60c.

PHYSALIS

Chinese Lantern Plant—Scarlet seed pods for winter bouquets. Pretty all summer. Each, 30c; doz., \$2.50. Spring plants, 3 for 25c; doz., 90c.

TRITOMA

(Red-hot Poker, Flame Flower or Torch Lily)

The early, free and continuous blooming qualities of this variety have made it one of the great bedding plants. Hardy if given protection. Postpaid, each, 40c; doz., \$3.50. Spring plants, 2 for 25c; doz., \$1.00.

STOKESIA

Cornflower Aster

A charming native plant with lavender blue blossoms three to five inches in diameter. Much admired. Postpaid, each, 30c; doz., \$2.75. Spring plants, 3 for 20c; doz., 60c.

STATICE

Invaluable for cutting and floral work. Minute purplish flowers during June and August. 2 ft. Postpaid, each, 30c; doz., \$2.50. Spring plants, 3 for 20c; doz., 60c.

DORONICUM, 30c
(Leopard's Bane)

Large bright yellow flowers; one of the most effective early spring flowering perennials. Each, 30c; doz., \$3.00.

YUCCA

(Adams Needle or Spanish Bayonet) **FILAMENTOSA**—Among hardy plants there is nothing more effective and striking for isolated positions on the lawn or on dry banks where few other plants thrive. Should be planted in spring. Postpaid, each, 40c; doz.\$3.50
Spring plants, 3 for 25c; doz., 90c.



THE SHASTA DAISY

A much improved hardy daisy, bearing a profusion of large, white flowers from early summer until late in the fall. Fine for cut flowers. Each 30c; per doz. \$3.00 Spring plants, 3 for 20c; doz., 60c; 100, \$4.00.

IRIS GERMANICA

Always satisfactory, never failing to bloom. A somewhat dry situation well exposed to the sun will be found best as they are all great sun-lovers. Do not plant too deep. Average height, 1½ to 2 feet.

FLORENTINE ALBA — Creamy white, flushed lavender.
PUMILA—Violet blue, blue and purple.

SAN SOUCI—Canary yellow, with brown.

PERFECTION—Standards fresh lavender, flecked with deeper shade. Postpaid. Each, 10c; doz., \$1.00; not prepaid, 100, \$5.00.

SMOKESCREEN—Odd and curious, predominating.

SULTAN—A new variety in pretty form and colors. Postpaid. Each, 10c; doz., \$1.00; not prepaid, 100, \$5.00.



PANSIES

I use only Steele's famous Mastodon Pansies Private Stock Seed and produce the most showy, exquisitely marked and largest blooms grown. Any dozen plants will show more varieties in color than any rainbow ever seen.

Set KELLY'S PLANTS this fall and have fancy blooms soon after the snow is gone next spring. Postpaid, doz., 20c; 25, 35c; 100, \$1.00; 500, \$4.50.

LAVENDULA Sweet Lavender

Pretty blue flowers for many ornamental purposes. The leaves are used green or dry for their fragrant odor. Potted, each, 20c; doz., \$2.00. Spring plants, 3 for 25c; doz., 90c.

LINIUM

PERENNIAL FLAX—A very pretty blue flowering plant that pleases. Spring plants, 3 for 20c; doz., 60c.

HARDY VIOLETS

(Sweet Scented)

DOUBLE RUSSIAN—Not suited for forcing under glass, but is perfectly hardy, producing in early spring, large, double, deep purple flowers of exquisite fragrance. Postpaid, each, 40c; doz., \$3.50. Potted, each, 20c; doz., \$2.00.

VIOLA, Jersey Gem—The newest and most handsome flower and plant of Violas. A beautiful blue. Spreading rapidly. Postpaid. Each, 30c; doz., \$3.00.

AGROSTEMMA

AGROSTEMMA (Rose Campion)—A fine plant with silvery foliage and very showy pink flowers, in July-Aug. Spring plants, 3 for 20c; doz., 60c.

DIANTHUS

DIANTHUS (Heddewigi) Pinks — This is a beautiful dark red double bloom as large as outside carnations. For bedding and cut flowers. Spring plants, 3 for 20c; doz., 60c.

SHAMROCK, True Irish—Imported stock. Potted. Each, 25c.

LAWN GRASS SEED CREEPING BENT

Produces the finest lawn and putting greens. Its creeping stolon habit makes a close knit turf choking all weeds. It adapts itself to any soil and thrives in an acid soil. If you want the best lawn and the least weed troubles use this seed. One pound of seed sows a 25x25 ft. area. Postpaid, 1 lb., \$2.00; 5 lbs., \$9.75.

Read what one of our customers writes about our Rhode Island Bent Seed.

Whitefish, Mont., Aug. 4, 1928.
 Kelly Plant Gardens,
 Spokane, Wash.

My Dear Mr. Kelly,—Please send me in mail one pound of your Rhode Island Bent grass seed. Think this will do me for this year.

This sure is a wonderful grass. I enclose a runner more than 27 inches long. Notice the new roots. The grass itself is very even and thick and certainly does well from seed. I now have about half of the lawn of about 3200 sq. feet into seed and the second patch of about 400 feet is coming fine. Sowed it July 4th and it is way up and coming. Sowed another 400 feet about a week or ten days ago and expect to get the entire lawn in before snow falls.

Thought you might be interested in the actual growth of the grass. I know they said it would creep from three to six feet a year but I had my doubts. Now I know that it will. You might get up a trade name for it—call it the baby grass on account of its creeping and then name it woman's love because it's hard to kill.

Sincerely,
 I. T. DUGAN.

P. S.—You said one pound would sow about 400 sq. feet. You're wrong. One pound of your Bent seed will sow 800 sq. feet and then it may be too thick. Wonderful stuff. I. T. D.

HOLLYHOCKS



This stately old plant is truly "King of the Garden. Hollyhocks inject so much of color and life and picturesqueness into tall backgrounds with their gorgeous, densely-set pillars ranging in height from 4 to 7 feet, ablaze throughout the summer.

DOUBLE FLOWERED—Large rosettes of paper-like tissue, very compactly layered. We offer them in the following separate colors: Crimson, black, yellow, white, maroon and pink. Postpaid, each color separate, 30c; doz., \$3.00. Postpaid, mixed colors, doz., \$2.25. Spring plants, 3 for 20c; doz., 60c; 100, \$4.00.

PACHYSANDRA, Terminalis, Japanese Spurge—A trailing plant 6 to 8 inches high forming broad mats of glossy green foliage and small spikes of flowers in early summer. Will grow in any shady situation and the only plant that will thrive under pine trees. Evergreen and hardy. Each, 50c; doz., \$5.00.

PRIMULA, Hardy Primrose — As beautiful as they are varied. Succeed in shady locations.

Triumph—The finest strain in cultivation. Each, 40c; doz., \$4.00.

SAXIFRAGA, Rockfoil — A great group of plants mostly used as rock-garden and Alpine with some as border plants. This family of plants should be well represented in the lovers rock and perennial gardens.

SARMENTOSA, Strawberry Geranium—A fuzzy leaf plant. Ornamental white flowers. Each, 30c; doz., \$3.00.

AIZOON—White flowers, leaves tufted in rosettes. Real Alpine rock plant.

ARMERIA

THRIFT—A plant of dwarf tufted habit, suitable for border or rock-garden. Extra fine for cut flowers. Flesh to deep rose. 9 in. June-July. Potted, each, 20c; doz., \$2.00. Spring plants, 3 for 25c; doz., 90c.

ECHINOPS GLOBE THISTLE

Interesting thistle-like globular heads of metallic blue. Can be summer dried for winter bouquets. Postpaid, each, 30c; doz., \$3.00. Spring plants, 3 for 25c; doz., 90c.

AJUGA (Bugle Weed)

REPTANS RUBRA—A very useful plant for the rock garden and especially fine for shady places under trees, etc. Grows about 4 inches high, purplish blue flowers. Potted, each, 20c; doz., \$2.00. Spring plants, 3 for 25c; doz., 90c.

CHEIRI (Wallflower)

CHEIRI (Wallflower) (Perennial)—A fine rock plant and useful anywhere for its odd colors of browns and orange. Its extreme blooming habits shortens its perennial life. Spring plants, 3 for 20c; doz., 60c.

Cut
Flowers

DECORATIVE HOUSE PLANTS

Bedding, Basket and Vase Plants

Bouquets
and
Designs

All plants in this department are potted and are NOT PREPAID. If wanted by parcel post add 10c to each for the smaller priced plants, add 25c for each priced from 50c to \$1.00 and 50c for the large potted plants. Any excess will be returned in cash or extra plants.

There are so many decorative house plants many of which may be used for bedding, porch boxes, hanging baskets, tubs, etc., that we would deem it a pleasure to be permitted to aid you in the selection if you will advise us of your desires.

AMARYLISS

AMARYLISS — A beautiful broad hyacinth-like leaf with very showy bloom in early summer. In 5 and 6 inch pots. Each, 75c to \$1.50.

ABUTILON (Flowering Maple)

Popular as pot plants, and for summer bedding vases and baskets. The flowers are deep bell-shaped in various colors. Each, 25c.

BEGONIAS

Few families of house plants are so entirely satisfactory in every way as the Begonias. They are rich in color and beautiful in design, and all classes are easily handled under any condition. Each, 50c to \$1.00.

CACTUS (Christmas)

A beautiful variety of the Crab or Lobster Claw Cactus, with bright scarlet flowers of large size and unusually bright and showy. Each, 60c to \$2.00.

COLEUS

Broad-leaved, bushy foliage plants which are unmatched for brilliancy and unique arrangement of colors. Some of the fancier sorts are painted in designs as indescribable as the traceries of frost. Each, 30c; doz., \$3.00.

DRACENA—For window boxes, hanging baskets or as a pot plant. Palm-like leaves. In 3-inch pots. Each, 30c. In 4-inch pots, each, 50c to 75c.

FERNS

No foliage plant grows that presents so many varied charms or is so practical for all general house, table, hanging pot, floral or window decoration.

BOSTON or SWORD—The well known type. Each pot, 75c to \$2.50.

WHITMANI or OSTRICH PLUME—Fine cut leaves and erect. Each pot, 75c to \$2.50.

ASPARAGUS FERN

PLUMOSUS NANUS—The lace-like texture of its foliage outclasses Maiden Hair Fern for grace and daintiness; the long emerald sprays making a rich setting for cut flowers of all descriptions. Each, 40c to 75c.

SPRENGER!—Mostly used for hanging baskets where its long dense trails make a gleaming mass of green. Each, 40c to 75c.

POTTING SOIL

POTTING SOIL—In our plant operations yearly tons of sand, alluvial soil, decomposed animal manures are graded, screened and mixed for our plant beds and boxes. We offer you this soil for your flowering or other plants. Not prepaid. 20 lbs., 40c; 50 lbs., 75c; 100 lbs., \$1.00.

SPIREA, Astilbe—Producing long feathery heads of pink and white flowers in summer. Grows in any soil. Loves moisture and part shade. Beautiful house plant. 2 to 3 ft. Each 75c.

ASPIDISTRA—A most desirable broad leaved dark green foliage plant for the living room. Will thrive under any condition even the extreme and lasts forever. Each, \$1.25.

MYRTLE—A very fine trailing vine dark green glossy leaves for window, porch box or hanging basket. Each 30c.

CHRYSANTHEMUM — Beautiful Japanese.

CACTUS, Globe—A very odd variety. Magnificent bloom. Each, 50c to \$2.00.

LANTANA—Excellent for hanging baskets, porch boxes and bedding. Each, 25c.

GENISTA—Highly ornamental plant for the living room having rich golden flowers. Each, 75c.

GERANIUMS

We have a general assortment in Reds, Salmon, White, Pink. Some single but mostly double flowering. Each, 25c to 50c.

Rose Geraniums, each, 30c.

Ivy Geraniums, each, 30c.

PELAGORIUMS (Lady Washington Geraniums)—A valuable class of house and garden plants related to the geraniums, resembling them closely in character, habit and treatment. Each, 30c; to 50c.

ASPARAGUS GREENS

Probably the finest decorative green material for mixing in bouquets of any flowers and largely used because of its cheapness to beautify walls, large vases and festooned on arches, pillars, etc. Much used for wall covering in horticultural exhibits, society and church functions. Large bunch. Not prepaid, \$1.00.

PRIMROSE—Very useful for table and house decoration. Each, 50c to \$1.50.

PALMS — Kentia — Nothing adds more to the inside beauty of the home than a stately PALM. Each, \$1.50 to \$3.00.

PETUNIAS—Gorgeously blooming ruffled monsters. Each, 25c.

CINERARIA — Flowers large in shades of browns and yellows. Each, 75c to \$1.50.

CYCLAMEN—Probably the most exquisite and showy pot plant in its class. In pink, red, salmon and carmine colors. Each, 75c to \$2.00.

CHRYSANTHEMUMS

POMPOM—These furnish the daintiest of table decoration as well as parlor. In pots. Each, 50c to \$1.00.

HOUSE RUBBER PLANTS

ELASTICA (India Rubber Tree)—This is the old reliable thick leaved, substantial house plant which has ever patiently served its purpose, under abuse and neglect; its dark green, shiny foliage always handsome. Each, \$1.00.

ECHEVERIA (Mexican foliage rubber plant)—Each, 50c to \$2.00.

ROSES, CARNATIONS CHRYSANTHEMUMS

and all cut flowers from our GREENHOUSES during the winter season and flowers for all purposes from outside during the summer.

ALWAYS YOUR MONEY'S
WORTH

VINCA

MAJOR VARIEGATA—More of this used for baskets and vases than there is of any other two basket plants. Beautiful variegated green and white foliage; strong trailing habit of growth.. Each, 25c.

FUCHSIAS

Highly prized for winter blooming, also popular for summer beds in partially shaded situations and make excellent color-spots in porch boxes and baskets. Each, 25c.

HELIOTROPE

This altogether delightful old plant has ever been a great favorite among those who enjoy and appreciate garden perfumes, and flowers of dainty type. Each, 25c.

CALCEOLARIA

Highly ornamental greenhouse or window plants, producing richly colored pocket-like flowers in abundance in the spring. All colors. Each, 25c.

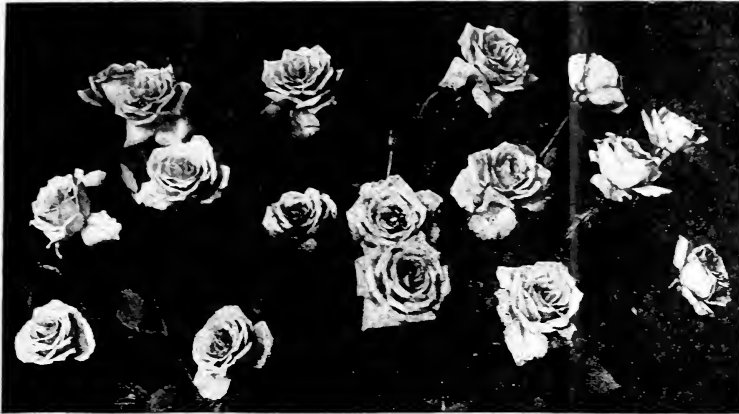
PARLOR IVY—Used with striking effect to decorate interior walls, hanging baskets and urns. Each, 20c.

UMBRELLA PLANT — A dainty house and window plant. Each, 25c.

We have many other decorative house plants which space prevents listing. Write us your wants. Please write for quantity prices. Please remember our cultural service is free.

FINE SELECTED VARIETIES

The Cream of American Grown Roses for the Pacific Northwest



Frau Karl Druschki

ROSES

The Queen of Flowers

Among all the flowering shrubs that make for beauty, grace and ornamentation, there is none that can compare with the rose. The wide range of color, shape and size of the blooms and the diversity and character of the foliage give it a wider range of decoration than any other single group of plants.

Owing to the difficulties that most people have in establishing Roses with bare roots, we have decided to supply only **POTTED AND STARTED ROSES**. This method not only **INSURES** your Rose to grow, but induces earliest blooming and lengthens the season.

Special prices on lots of one dozen or more upon application. **PRICES HERE QUOTED POSTPAID.**

FRAU KARL DRUSCHKI (H. P.)—Pure snow-white; long, pointed buds; large, full flowers; free and constant. Each, 2 yr., \$1.20; 1½ yr., 60c.

RED RADIANCE (H. T.)—All who know that grand Rose Radiance will welcome this red form of that great favorite. Radiance is a rose that does well everywhere; a fine grower and free bloomer. Each, 2 yr., \$1.20; 1½ yr., 65c.

GOLDEN EMBLEM H. T.—Long golden yellow buds tinted with crimson on the outer petals. Long stiff stems bloom freely. A very high class new rose. 2 yr., \$1.00; 1½ yr., 65c.

PADRE H. T.—A rich copper scarlet just a little more intense than Herriot. A distinctive rose. 2 yr., \$1.70; 1½ yr., 65c.

SOUV. DECLAUDIUS PERNET, H. T.—The sensation in a large yellow bloom perfectly formed. Glossy foliage. Strong grower. 2 yr., \$1.25; 1½ yr., 75c.

COLUMBIA H. T.—It is a big true pink, deepening as it opens to a glowing pink. 2 yr., \$1.00; 1½ yr., 60c.

MME. EDOUARD HERRIOT, H. T.—Buds coral red shaded yellow at base developing into handsome blooms of same colors passing to rosy scarlet. No rose more beautiful in its color markings. 2 yr., \$1.00; 1½ yr., 65c.

OPHELIA (H. T.)—Salmon-flesh, shaded rose, large, and of perfect shape; of excellent habit; the flowers standing up well on long, stiff stems and produced in great profusion. 2 yr., \$1.20; 1½ yr., 60c.

AMERICAN BEAUTY (H. P.)—Rich carmine color, very large and fragrant. As a cut flower American Beauty has for years commanded the highest price of any rose on the market. 2 yr., \$1.25; 1½ yr., 60c.

MME. CAROLINE TESTOUT (H. T.)—Clear, bright satiny-pink; flowers very large and handsome. One of the freest blooming large roses. Each, 2 yr., \$1.10; 1½ yr., 60c.

PAUL NEYRON (H. P.)—Deep rose in color, of immense size and very fragrant. One of the largest roses in cultivation. Each, 2 yr., \$1.15; 1½ yr., 60c.

GEN. JACQUEMINOT (H. P.)—Crimson-scarlet, large, full, very fragrant. One more of the old ones that will always please our customers. Each, 2 yr., \$1.00; 1½ yr., 50c.

ETOILE DE FRANCE (H. T.)—Rich velvety-crimson, center ruby red, large and double. Likes hot weather. Each, 2 yr., \$1.10; 1½ yr., 60c.

LOS ANGELES (H. T.)—One of the finest roses ever introduced. The growth is very vigorous and produces a long-stemmed flower of a luminous flame-pink, toned with coral and shaded with translucent gold at the base of the petals. The buds are long and pointed. Each, 2 yr., \$1.25; 1½ yr., 65c.

GRUSS AN TEPLITZ (H. T.)—Bright crimson, white, fiery-red center; cup-shaped; semi-double flowers in clusters; so free in bloom as to present a blaze of scarlet. Each, 2 yr., \$1.10; 1½ yr., 60c. Secrets of Rose Culture on Request.

HARDY CLIMBING ROSES

TAUSENDSCHOEN OR "THOUSAND BEAUTIES"—Soft pink. The most sensational climbing rose yet introduced. 2 yr., \$1.00; 1½ yr., 50c.

DR. W. VAN FLEET, W. (Cl.)—Flowers when open run four inches and over in diameter. The center is built high, petals beautifully undulated and cupped. The color is a delicate shade of flesh-pink on the outer surface, deepening to rosy-flesh in the center. Each, 2 yr., \$1.00; 1½ yr., 50c.

DOROTHY PERKINS—This is unquestionably the thriftiest, showiest, and most practical of the older pink climbers. Each, 2 yr., \$1.00; 1½ yr., 50c.

CRIMSON RAMBLER—The best known and most popular of all the climbing roses. A rapid grower. Each, 2 yr., \$1.00; 1½ yr., 50c.

MARY WALLACE, H. W.—The most charming pillar rose and half climber. Bright, clear rose pink with salmon at base. Most delightful rose in its type. 2 yr., \$1.00; 1½ yr., 60c.

PAUL'S SCARLET, H. W.—Vivid scarlet shaded crimson. It makes a brilliant display over a long period. Now considered one of the very best climbers. 2 yr., \$1.00; 1½ yr., 60c.

CLIMBING PLANTS AND VINES

With their variance in color, their beauty of foliage and blossom, their grace wherever used, these vines frequently provide the finishing touches of any planting. Some adhere to the masonry, some must be trained through lattice or trellis and others with their tendrils will cling tenaciously, unshaken by wind or weather.

CLIMBERS

See Perennial Sweet Peas, Morning Glory, asturtium, Cobea Scandens.

AMPELOPSIS 50c

AMPELOPSIS, Boston Ivy—For covering cement, brick, stone or wood and clings to the smoothest surface. Beautiful foliage. Postpaid, each, 50c; doz., \$5.00.

ENGELMAN'S IVY OR WOODBINE (A. quinquefolia, var. Engelmanni)—A type of quinquefolia which has long been desired. It has shorter joints and smaller and thicker foliage. It is better equipped with tendrils, by which it will climb walls of stone or brick as closely as the Veitchii (Boston Ivy). It should be planted in the Northwestern states, in place of Veitchii, as it is perfectly hardy, withstanding heat and cold much better. Postpaid, each, 50c; doz., \$4.00.

MATRIMONY VINE—Strong growing woody vine producing small purple flowers in midsummer and numerous orange red fruits in the fall. Price, 50c each; per doz., \$5.00.

DUTCHMAN'S PIPE

A vigorous and rapid growing hardy vine, producing a splendid dense shade. Leaves are large and broad. The plant bears singular brownish colored flowers, resembling the shape of a pipe. The plant does not seem to be subject to insects or disease. Postpaid, each, 75c.

HONEYSUCKLE—50c

HALL'S JAPAN—Color an intermingling of white and yellow. Extremely fragrant and most satisfactory. Postpaid, each 50c; doz. \$4.00

CLEMATIS

PANICULATA—Probably the most popular of the small flowering sorts; vine is a rapid grower with glossy green foliage; in September the flowers appear in a perfect mass of white, giving the appearance of a bank of snow; the fragrance is most delicious and penetrating. Postpaid, each, 50c.

JACKMANI—Immense flowers of an intense violet-purple color; bloom continually all summer. Perhaps the best known Clematis. Postpaid, each, \$1.25.

ENGLISH IVY 50c

The old Evergreen Ivy. Foliage thick. Postpaid, each, 50c; doz., \$5.00.

HOP ROOT 10c

HOP ROOTS—A leading climber for porches, veranda, etc. Rapid grower. Postpaid, each, 10c; doz., 75c; 100, \$5.00.

KUDZU VINE—Will grow 40 feet in one season from established roots. Postpaid, each, 25c; doz., \$2.25.

WISTERIA

Woody vines that cling to rough surfaces for Pergolas, Arbors and Trellis. Fragrant drooping clusters of blooms.

MULTISUGA—Purple—3-year-old plants. Postpaid, each, \$1.50; 2 yr., \$1.00.

You may send your entire order now. Will deliver when directed or when each variety is seasonable in your locality.

HARDY ORNAMENTAL TREES

For Lawn, Street and Shade Planting

(Sent Only by Express)

LINDEN

EUROPEAN—Used much for street and ornamental planting. Flowers fragrant and yellow. Each \$2.50.

WILLOW

WEeping—A graceful tree. Fresh green tint and wavy branches are very attractive. Each \$1.25.

WALNUT

FRANQUETTE GRAFTED—It is not likely that the English Walnut will succeed generally in this altitude and climate, but there no doubt is certain localities where this beautiful tree may be grown. Propagators claim it is as hardy as the Apricot and many varieties of Peach. Our trees are two years from grafted on 3 and 4 year old roots. Each, \$2.50.

ASH

EUROPEAN—Handsome small tree with pinnate foliage. White flowers in late spring followed by large clusters of attractive red berries all summer and fall. Nice for lawn or curb planting. Each \$1.75.

HAWTHORNE—English

PAULS DOUBLE RED—Rich brilliant scarlet red flowering tree. Fine for lawns. Each, \$2.25 to \$3.00.

CATALPA

SPECIOSO—A very rapid grower. Large heart shaped downy leaves and panicles of blooms. Each, \$1.50.

JAPAN QUINCE

SCARLET QUINCE—One of the best flowering tree shrubs. Flowers a bright scarlet crimson in profusion in the spring. Leaves retain their glossy green color during the summer. A good hedge plant. Each, \$1.00 to \$1.50.

FLOWERING CRAB

BETCHELS FLOWERING DOUBBLE—A medium sized tree of rather upright growth covered in early spring with large clusters of pink double flowers. Each, \$1.00 to \$1.50.

BIRCH

CUTLEAVED WEEPING—Its graceful drooping habit vigorous growth and silvery bark with nicely cut foliage is rarely met with in a single tree. Each, \$2.50.

ELM

SIBERIAN or ASIATIC—A wonderfully rapid growing tree. Introduced by U. S. Government especially for the semi-arid sections. 25 feet tall and one foot in diameter in five years from planting is recorded. Each, \$1.00.

FLOWERING CHERRY

JAPAN—Double Pink. A very pretty dwarf tree with a mass of spring blooms. Each, \$2.00.

MAPLE

NORWAY—Probably the most suitable tree for street planting. Has a general recommendation by landscape architects and park departments. Each, \$1.50.

LOCUST

BLACK—Native tree of large size. Fragrant small flowers. Fine for windbreaks. Each, \$1.00 to \$2.00.

POPLAR

LUMBARDY—A slender erect columnar growing tree. One of the best for windbreaks and a beauty anywhere. Each, \$1.00 to \$1.50.

SYCAMORE

PLANE—A decidedly fine tree for shade and curb planting. Each, \$1.50.

BOX ELDER

A well-known and popular tree that thrives in almost any location. Each, 75c to \$1.50.

FRUIT TREES—Sent Only by Express

APPLES

Summer and Autumn Varieties

YELLOW TRANSPARENT—The earliest and best. White, tender, juicy, sub-acid. August maturing. Each, 90c; 10 for \$3.00.

RED JUNE—Red and a delicious early. Each, 90c; 10 for \$3.00.

GRAVENSTEIN—Considered the finest quality fall apple. Each, \$1.00; 10 for \$3.00.

Winter Varieties

Prices—All winter varieties, each, 90c; 10 for \$3.00.

JONATHAN—A vigorous grower and high quality fruit. Known everywhere.

DELICIOUS—Probably the most favored apple in America.

GRIMES GOLDEN—Rich golden yellow of best quality.

WAGNER—Deep red on sunside. Prolific and high quality on many soils.

BALDWIN—Crisp and fine flavor. A great winter keeper.

SPITZENBERG—Rich flavor never forgotten.

ROME BEAUTY—One of the most positive croppers of fine quality fruit.

WINESAP—Late winter. Dark red. A favorite.

CRABAPPLES

SIBERIAN—Yellow with scarlet cheek. October. Each, 85c.

HYSLOP—Large deep crimson. Very fine. November. Each, 85c.

APRICOTS

MOORPARK—The largest and best known variety. Deep orange color, very juicy. Each, 85c; 10, \$3.00.

CHERRY—Sweet

BING—Very large. Dark brown. Delicious. Each, \$1.00; 10, \$3.50.

LAMBERT—Heavy bearer. Black when dead ripe and rich quality. Each, \$1.00; 10, \$3.50.

ROYAL ANNE—A magnificent large yellowish fruit with reddish cheek. Popular everywhere. Each, \$1.00; 10, \$3.00.

CHERRY—Sour

MONTMORENCY—A very large red productive fruit that has succeeded to the highest place in a canning or sauce fruit. Each, 90c; 10, \$3.00.

LATE DUKE—Large light red fruit. A popular variety. Each, 90c; 10, \$3.00.

PEACHES

Price—Each, 75c; 10, \$6.50.

EARLY CRAWFORD—Freestone. A bright yellow with red cheek. Universally known.

ELBERTA—Freestone. Considered to be the best in peaches.

PEARS

BARTLETT—The king of early pears. Nothing better. Each, \$1.00.

FLEMISH BEAUTY—Very hardy. Juicy and productive. Each, 90c.

SECKLE—Small fruit. Highest flavored pear known. Used for pickling and dessert. Each, \$1.00.

PLUMS

Price—Each, 75c; 10, \$6.50.

BRADSHAW—Reddish purple skin. Flesh yellowish and juicy.

PEACH PLUM—Very large brownish red. Freestone. Well known.

YELLOW EGG—Deep golden color skin, best quality.

PRUNES

Price—Each, 75c; 10, \$6.50.

HUNGARIAN—Dark red, juicy and sweet.

ITALIAN—A large oval dark purple freestone. Flesh greenish yellow, best for canning and drying.

PLEASE NOTE—Greater quantities than here listed are entitled to special wholesale prices which will be promptly made if you will specify amount, variety and size.

You may send your entire order now. Will deliver when directed or when each variety is seasonable in your locality.

Small Fruit Plants

CULTURAL DIRECTIONS ON REQUEST
The culture of small fruit has been very much neglected in our great north-west, consequently small fruit products are scarce and command fancy prices. Their culture and care is not more exacting than other similar products.

GRAPES

CONCORD—A large, black, well known grape. 2 year plants. Postpaid, each 40c; 10, \$3.50.

WORDEN—Earlier, better quality and larger than Concord, equally hardy and healthy, but not as good a shipper. Best black grape for home use. Postpaid, each, 40c; 10, \$3.50.

MOORE'S EARLY—Earliest best grape for the Inland Empire and Rocky Mountain section. 2-year-old plants. Postpaid, each 40c; 10, \$3.50.

NIAGARA—Earliest, best white grape. Postpaid, each, 40c; 10, \$3.50.

FLAME TOKAY—Large, handsome bunches; berries large, flame red. The Tokay is not as hardy as above varieties but should you have warm protected location you will be rewarded with the best table grapes. Postpaid, each, 40c; 10, \$3.50.

RASPBERRIES

EVERBEARING (St. Regis)—This is the best variety, particularly for home use, as it is in almost continuous bearing. Postpaid, each, 40c; 10, \$3.25.

Cuthbert—The very best market and home variety. 2-year-old plants. Postpaid, each, 35c; 10, \$3.00.

Cumberland—The best black cap. Postpaid, each, 35c; 10, \$3.00.

GREGG (Black Cap)—Of good size, fine quality, very productive and hardy. Postpaid, 35c each; 10 for \$3.00.

CURRENTS

CURRENTS (Perfection)—The largest and best red currant. 2 year old plants. Postpaid, each, 30c; 10, \$2.50.

GOOSEBERRIES

GOOSEBERRIES (Champion)—The best standard variety. 2 year old plants. Postpaid, each, 40c; 10, \$3.50.

POTASH—Muriate—An element often lacking in the heavier moist soils. Builds robust plants and enhances color to fruit. 10 lbs., 75c; 100 lbs., \$4.50.

SULPHUR—Black—While sulphur has been known as a fungicide and as a cleansing agent to plant life its value as an agent to increase the soil's food supply is somewhat new, yet positive. Astonishing results have been reported. 10 lbs., 75c; 100 lbs., \$5.00.

Write for prices on quantities.

INSECTICIDES

Not Prepaid.

It seems to be almost impossible to produce clean healthy products unless insecticides and fungicides are used to control and eradicate the pests common to all plants. The following remedies will be found effectual for most pests. **OUR FREE SERVICE** provides for special information upon specific pest control.

DERISOL—An easier and more effective remedy for the control of leaf and plant sucking insects such as aphids, red spider and other pests. 1 oz. makes 6 gals. spray, 40c. 1/2 lb. makes 50 gals. spray, \$1.50. 1 lb. makes 100 gals. spray, \$2.50.

ARSENATE OF LEAD

For leaf and plant eating insects. 1 lb. makes 25 gals. spray, 45c. 4 lbs. makes 200 gals. spray, \$1.00.

BORDEAUX

A Dry Powder

9 lbs. to 50 gals. of water. The most effective known remedy for plant protection from the fungous diseases. 1 lb., 40c; 4 lbs., \$1.00.

SULPHUR—Dusting. A special form of sulphur for mildew and other fungus for roses and all plants. 1 lb., 15c.

SEMESAN

This disinfectant can be applied either as dust or liquid to control parasitic and fungoid growth on seed pieces, plants, grafts and is most valuable on bulbs and in diseased soils. 2 oz., 50c; 1 lb., \$2.75.

SPRAY PUMPS

For effective and economical distribution of spray materials good pumps are indispensable. We have well made PUMPS from 50c to \$10.00.

Write for List and Prices.

BLACKBERRIES

MERSEREAU—We consider this the very best. 2-year-old plants. Postpaid, each, 35c; 10, \$3.00.

SNYDER—This is the standard early blackberry for the North country. Postpaid, each, 35c; 10, \$3.00.

HIMALAYA GIANT—A strong, rampant, trailing plant; very productive. Hardy, and thrives even under severe conditions. Fruit large, handsome and fine quality. Postpaid, each, 35c; 10, \$3.00.

CORY THORNLESS—It is a strong, vigorous grower; bears prolific; the canes grow thick and stout. Postpaid, 35c each; 10 for \$3.00.

LOGANBERRIES

LOGANBERRY—This fruit partakes of the blackberry in shape and form and has the flavor of the blackberry and raspberry combined. 2 year old plants. Postpaid, each, 35c; 10, \$3.

DEWBERRIES

DEWBERRIES (Lucretia)—Best variety for the Northwest. 2 year old plants. Postpaid, each, 25c; 10, \$2.25.

FERTILIZERS—NOT PREPAID

Feeding plants is as essential as that of feeding animals. While most soils are provided with an abundance of the elements to produce crops, wise nature has so combined and locked up the natural fertilizer agents in the soil so that greedy man would not be able to rob them too hastily. The liberation of this plant food becomes a basic study for the producer. This involves keen judgment and much experimentation. This subject is merely presented to interest you sufficiently to cause some experimenting with the use of organic and inorganic fertilizers. You will find it very interesting and highly profitable. We may be able to assist you. Our service is FREE.

MANURE—Animal. As everyone knows, animal manures are the best food for a hungry, poor soil. Not only the fertility that it contains but the organic matter is equally essential to plant growth. We decompose hundreds of tons annually and offer this "best of all" fertilizer well rotted. Price not prepaid. 25 lbs., 75c; 100 lbs., \$2.00; one ton, \$20.00.

NITRATE OF SODA—This salt is the most quick acting stimulant to plant growth known. Not prepaid, 1 lb., 10c; 10 lbs., 85c; 50 lbs., \$3.50.

Use as a top-dressing at the rate of 100 lbs. per acre. For the home garden apply as a solution one ounce to two gallons of water.

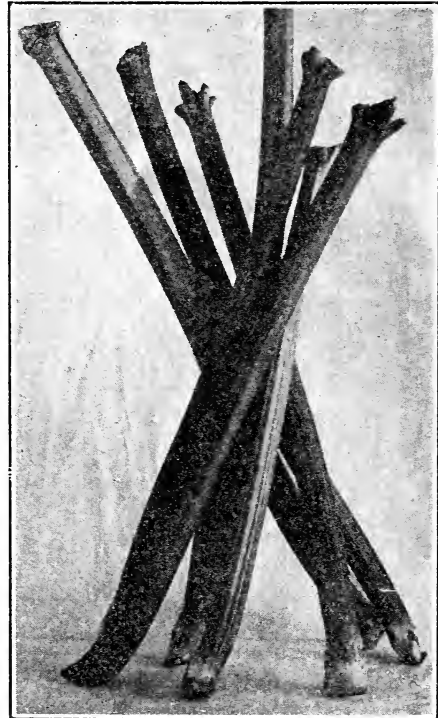
SULPHATE OF AMMONIA—Used to create a rapid growth and leafy leaf development in all plants. We recommend this especially for our R. I. Bent Lawns as it tends to create a sour acid condition in the soil in which Bent grass thrives while dandelion and most weeds refuse to grow. Use one tablespoonful to 3 gallons water. One pound to 100 sq. ft. of Bent Lawn surface. NOT PREPAID. 1 lb. 10c; 10 lbs., 85c; 50 lbs., \$3.50.

TANKAGE—A rich food for all plants. 100 lbs., \$2.50; 1/2 ton, \$22.50.

BLOOD MEAL—A finely ground dry quick acting food for plant life. Easily applied. 5 lbs., 50c; 100 lbs., \$5.00.

BONE FLOUR—Rich in phosphorus. The use of which is a secret in securing beautiful lustre to flower blooms. 1 lb., 10c; 10 lbs., 60c; 100 lbs., \$4.00.

SHEEP MANURE—Dry and fine. Very soluble and quick acting. Use liberally on vegetables and flowers. It will pay handsomely. 10 lbs., 50c; 50 lbs., \$1.00; 100 lbs., \$1.50.



KELLY'S VICTORIA STRAWBERRY RHUBARB

RHUBARB OR PIE PLANT

Not prepaid. By parcel post add 15c each; 50c doz.

RHUBARB (Victoria)—Strawberry color. The most popular variety grown. A good market sort, with beautiful red stalks, giving satisfaction everywhere.

1 year: Each, 10c; doz., \$1.00; 50, \$3.00; 100, \$5.00; 500, \$15.00; 1000, \$30.00.

2 year: Each, 20c; doz., \$1.50; 50, \$4.00; 100, \$8.00; 500, \$30.00; 1000, \$50.00.

3 year: Each 35c; doz., \$3.00; 50, \$8.00; 100, \$15.00; 500, \$50.00; 1000, \$100.00.

KELLY'S EVERBEARING STRAWBERRIES

For over 25 years the Kelly Plants have been distributed over this Northwest in quantities with many shipments into California, Nevada, Wyoming and an occasional lot into Alaska, with universal reports of excellent production returns to the grower.

Testimonials to these statements are many by our customers. Space prevents but very few voluntary expressions.



CULTURAL DIRECTIONS ON REQUEST

SUPERB—The fruit is very large, very firm. We recommend it as the best variety everything considered, as a canning and shipping variety. Postpaid, doz. 50c; 25, \$1.00; 100, \$2.50. Not prepaid, 200, \$4.00; 500, \$8.00; 1000, \$16.00.

NEW CHAMPION—It seems to combine the good qualities of **SUPERB** and **PROGRESSIVE**. We like it and believe you will. Postpaid, doz., 50c; 25, \$1.00; 100, \$2.00. Not prepaid, 200, \$3.00; 500, \$6.00; 1000, \$12.00.

EVERBEARING STRAWBERRIES are the greatest addition to the small fruit family that has ever been introduced. Anyone can appreciate the value of the **EVERBEARING** when the fruit production has been hastened at least nine months.

Think of picking ripe fruit ninety days from the setting of the plant and continually fruiting until the freezing of the fruit and plant prevents further growth, in the early winter.

Then the following spring the Kelly **EVERBEARERS** resume their activities with all varieties of strawberries, but differ from the standard varieties in that the **EVERBEARERS** continue fruiting all the summer and fall.

Fresh Ripe Strawberries From June till December

You may send your entire order now. Will deliver when directed or when each variety is seasonable in your locality.

Regardless of the price paid no better plants are grown than the **KELLY PLANTS**.

MASTODON

A recent introduction that has created nation-wide interest as an extra large Everbearing Strawberry. The introducer, Lubke, claims for it the equal of Superb in foliage, averages larger in fruit, almost as sweet as Progressive and much better plant maker.

These recommendations coming from the same strawberry hybridizer who introduced that wonderful Everbearer, the "Champion," which we grow and offered our customers for two years, we have no hesitancy in accepting Mr. Lubkes' claims.

Our stock of plants are direct from originator's strawberry experimental farm.

Since the Inland Empire climate and soil are ideal for the production of Everbearing Strawberries, in fact is the highest producing section in the U. S., the Mastodon will surely be a money maker.

Order at once as stock is very limited.

Postpaid, doz., 50c; 25, \$1.00; 100, \$2.50. Not postpaid, 200, \$4.50; 500, \$10.00; 1000, \$18.00.

Remember our **MASTODON** plants are direct from the originator. "BE SURE YOU START RIGHT."

PROGRESSIVE—A prolific sweet berry. Is not as firm as Superb, but a popular berry for the home garden.

Postpaid, doz., 50c; 25, \$1.00; 100, \$2.00. Not prepaid, 200, \$3.00; 500, \$6.00.

Standard Varieties of STRAWBERRIES

Cultural Directions on Request.

NEW OREGON—A western variety and seemingly combines the splendid characteristics of the Hood River and Glen Mary types in its fruit. It is grown extensively with complete satisfaction.

GLEN MARY—A bright handsome standard sort, grows the country over.

MARSHALL—A well known popular berry.

Above Varieties—Postpaid, 25, 50c; 100, \$1.25. Not Postpaid, 500, \$4.25; 1000, \$8.50.

HOWARD NO. 17 or Premier—The plant growth is fine. Foliage very dark and healthy. Fruit firm and large. This is a good one to plant.

DR. BURRILL—A marvel of productivity, quality, color, size and firmness.

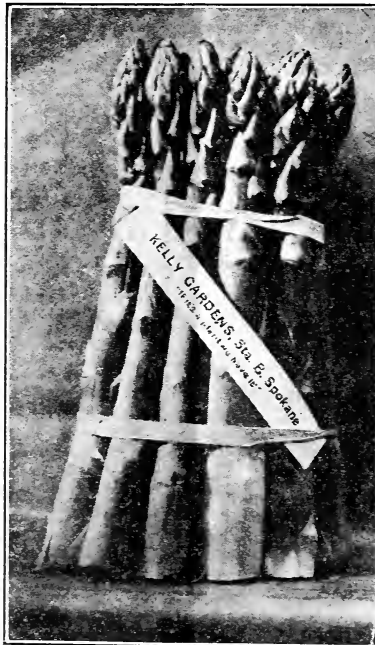
CLARK SEEDLING—It is unsurpassed as a shipping variety.

HOOD RIVER—The leading standard shipping variety.

SEN DUNLAP—Its color is a rich dark red.

WM. BELT—Nothing better for quality.

WARFIELD—A very popular variety. Above varieties, postpaid, 25, 50c; 100, \$1.25. Not prepaid, 500, \$3.75; 1000, \$7.50.



KELLY'S WASHINGTON ASPARAGUS

A crop that is never overproduced. Cultural Directions on request.

The grower finds this vegetable about the first one that always finds ready sale at profitable prices, and the earliest income of his "out-in-the-open" crops. In addition it is so easily harvested and prepared for market that indeed it is a most acceptable crop. No garden, whether it be for the market or the home, is really complete without a bed of good roots.

PALMETTO—The best acquisition to our comparatively few varieties.

ARGENTEUIL—This comparatively new variety is becoming very popular.

WASHINGTON—Pedigreed. The new rust resistant variety. Our strain from the Department of Agriculture of the U. S. tested seeds.

Not Prepaid.

PRICES: Asparagus Roots—All varieties. 1 year: Doz., 25c; 25, 40c; 50, 75c; 100, \$1.00; 1000, \$6.00.

2 year: Doz., 40c; 25, 50c; 50, 85c; 100, \$1.50; 1000, \$10.00.

3 year: Doz., 50c; 25, \$1.00; 50, \$1.50; 100, \$2.25; 1000, \$15.00.

By Parcel Post add 15c doz.; 50c 100.

DILL

DILL—The plant that gives zest to dill pickles. Plants, prepaid. Doz., 20c; 100, \$1.00.

MATURED DILL—At pickle time. Prepaid. Bunch, 20c; doz. bunches, not prepaid, \$1.25.