

## **Historic, Archive Document**

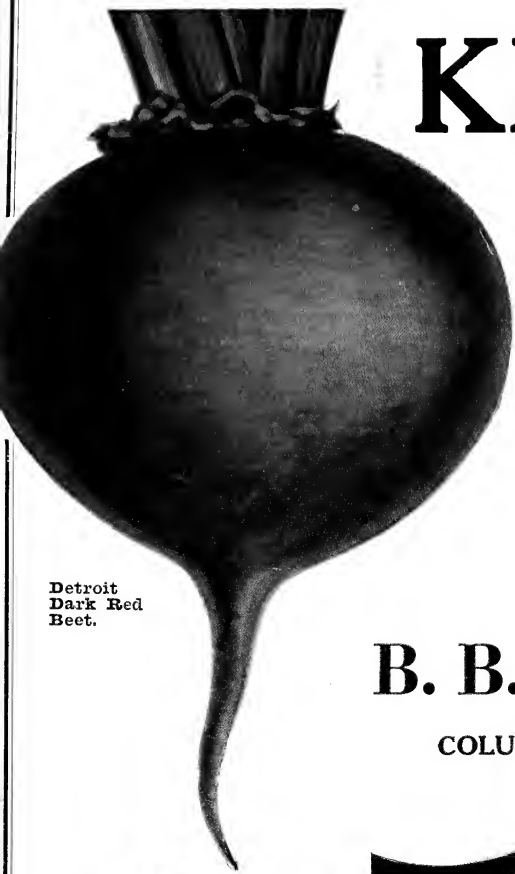
Do not assume content reflects current scientific knowledge, policies, or practices.



# KIRKLAND'S

FALL CATALOG  
*for 1928*

*Garden and Field Seeds  
Flower Seeds, Bulbs, etc.*




Detroit  
Dark Red  
Beet.

## B. B. Kirkland Seed Co.

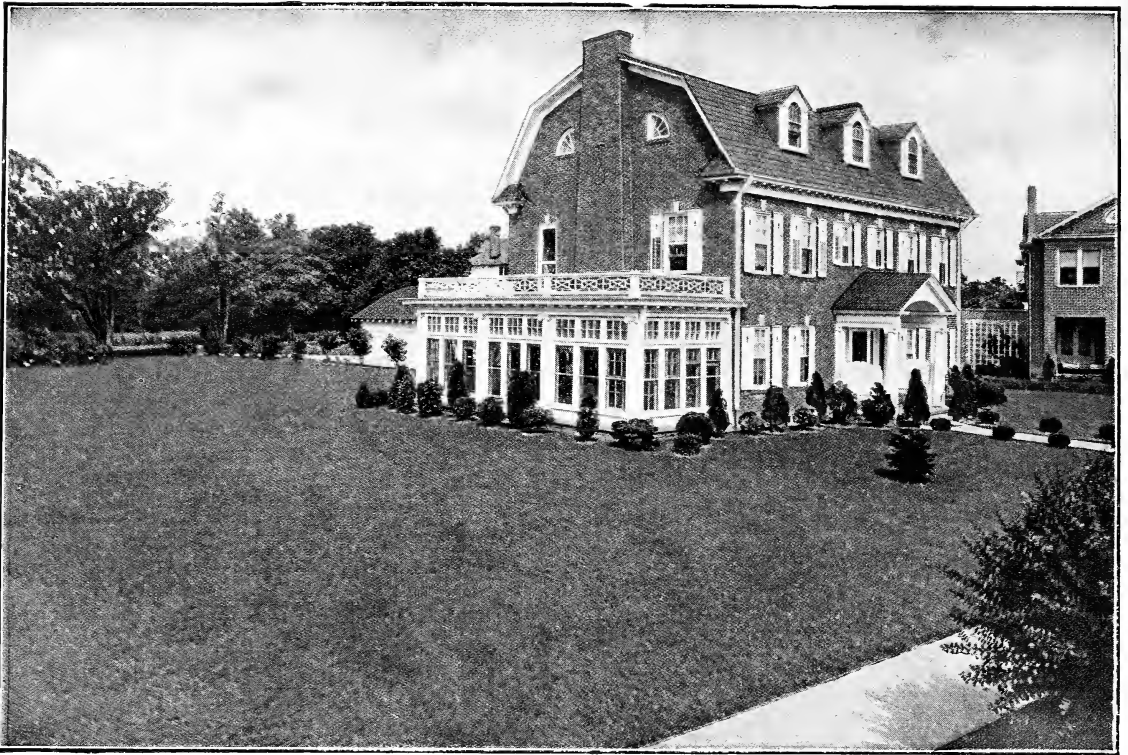
COLUMBIA, S. C.

AUGUSTA, GA.



Chantenay Carrot.

Charleston Wakefield Cabbage.



# Kirkland's Lawn Mixtures

**PREPARATION AND CARE OF LAWNS.**—The proper preparation of the ground in starting a new lawn is essential. This is too often neglected. The ground should be deeply ploughed, or spaded deep enough to leave a bed of loose earth 4 to 6 inches deep. This should be thoroughly pulverized and raked, removing all sticks, roots and stones. After getting the ground perfectly smooth, put on an application of Wizard Brand Sheep Manure, at the rate of 5 pounds to 100 square feet or 2,000 pounds to the acre; or Bone Meal, which is more lasting in its effects, 5 pounds to the 200 square feet, 1,000 pounds to the acre. **DO NOT USE STABLE MANURE;** it is unsightly, and is also a hotbed of weed seeds and worms, the very thing to be guarded against in laying a foundation for a pretty lawn. We recommend a thick seeding, sowing the seed at the rate of 1 pound to the 200 square feet (100 to 120 pounds to the acre). The land should then be gone over with a heavy roller, or the seed raked in thoroughly with a small hand-rake. The best months for seeding a lawn in this section are September, October and November. Let the grass get a start of 4 inches before cutting, as too early cutting retards growth; after this cut every ten days. During dry weather it should be watered frequently in the evenings to get the best results.

The best method to renew an old lawn in which the grass is thin and bare in spots, is to go over the lawn loosening the soil thoroughly with a sharp hand-rake. Then sow the seed, after which it is best to roll the ground, covering the seed in this way. It is best also to do this after the grass has been cut and just after a good rain. If this is done in the spring and fall your lawn will be kept thick and flourishing.

## "BLUE RIBBON" BRAND SHEEP MANURE

This is an excellent fertilizer for top dressing lawns and flower beds. It is entirely free from weed seeds, thoroughly dry and easily applied.

5-lb. sack .....	\$ .30
10-lb. sack .....	.50
25-lb. sack .....	1.00
50-lb. sack .....	1.75
100-lb. sack .....	3.00
Per ton .....	57.00

**KIRKLAND'S "PALMETTO SPECIAL" LAWN MIXTURE.**—Some of the most beautiful lawns in the South have been made with this mixture of grass seed, which has stood the test of many climates, and must not be compared with the ordinary Evergreen Mixtures usually sold. It is the result of over ten years of untiring study and experiment, coupled with the endeavor to give those who appreciate and desire a lawn a grass-seed mixture that will produce a rich green sod in six weeks after planting, and yet make a fine and thick turf the longer it stands. It is composed of fine-leaved hardy grasses, which not only stand the heat of the summer but outlive the severest winters. Do not be afraid of sowing grasses too thickly, as a heavy seeding always means a better sod. We recommend one pound to 200 square feet; 100 lbs. to 120 lbs. per acre. **Price, 1b. 40c; 10 lbs. \$3.80; 50 lbs. \$18.00; 100 lbs. \$35.00. Information for making and care of lawns will be mailed free on request.**

**KIRKLAND'S "STAI-GREEN."**—This mixture is essentially a winter and early spring grass. It will not subdue the hot weather of summer. Should be planted in October and November or in February or the first days in March. **Lb. 30c; 10 lbs. \$2.80; 50 lbs. \$13.00; 100 lbs. \$25.00.**

**KIRKLAND'S "SHADY-NOOK."**—A mixture of grasses that thrive in shaded situations, under trees, or close to walls where there is little sun. This mixture can be planted in the fall or early spring. **Lb. 40c; 10 lbs. \$3.80; 50 lbs. \$18.00; 100 lbs. \$35.00.**

**KIRKLAND'S TERRACE MIXTURE.**—A mixture of fine stoloniferous grasses peculiarly adapted to terraces. **Price, 1b. 40c; 10 lbs. \$3.80; 50 lbs. \$18.00; 100 lbs. \$35.00.**

## LAWN GRASSES

Perennial Ryegrass, per lb. ....	20c
Italian Ryegrass, per lb. ....	20c
White Dutch Clover, per lb. ....	60c
Kentucky Blue Grass, per lb. ....	45c
Carpet Grass, per lb. ....	60c
Bermuda Grass, per lb. ....	65c

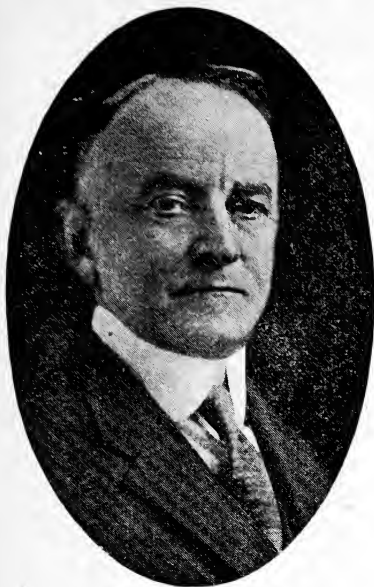
**Note.**—For other grasses, see index for Grass Seed Pages.

No article on this page can be mailed except those quoted "postpaid."





# To My Friends and Customers



**B. B. KIRKLAND**  
President and Founder

**WE** ARE glad to send you our 1928 Fall Seed and Bulb Catalog and trust that you will find listed here all of your needs in the way of Seeds and Bulbs. We have this year a fine lot of both American Grown and Imported Bulbs and you will find that they will produce wonderful results and blooms. Don't fail to list a liberal amount of Flower Seeds with your order. Nothing adds more to the home than beautiful Lawns and Flowers. For the lawn we recommend to you our Palmetto Special Lawn Mixture which has given excellent results to Southern Homeowners, Parks, Golf Courses, etc., for many years. For the farm our Seed Oats, Rye, Wheat, etc., can not be surpassed. Our seeds are the best that money can buy. Also, don't overlook the importance of cover crops, such as Clovers, Vetches, etc., as this will build up your worn-out lands and add new life to the soil. **AND BY ALL MEANS, PLANT A FALL VEGETABLE GARDEN.** Our stores at both Columbia and Augusta are eager to serve you and you will get prompt and efficient service from both branches of our organization. **SEND US YOUR ORDERS.** Very truly yours,

## B. B. KIRKLAND SEED COMPANY

August 15, 1928

B. B. KIRKLAND, *President.*

## Hints on Bulb Culture

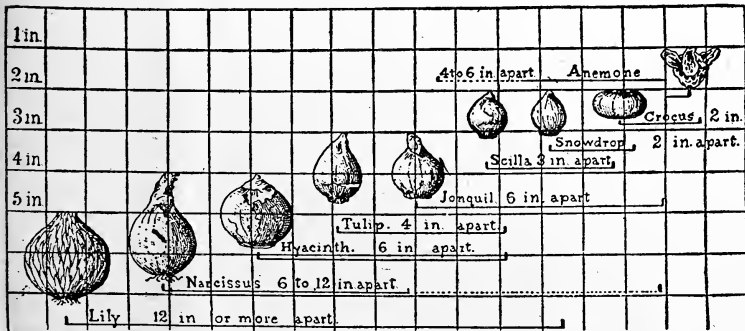
**GROWING BULBS** has a peculiar charm and interest for all flower-loving people; its easiness appeals to everyone. Bulbs produce flowers of remarkable beauty, unsurpassed by any other class of plants, and besides many of them are deliciously fragrant. As a rule, they flower equally well under either garden or house culture.

**OUTDOOR CULTURE.**—In our Southern territory where climatic conditions vary, we recommend putting out bulbs in October or November, as cool weather is necessary to deter top growth, which is liable to start after four or six weeks of root development, and young succulent top growth is apt to be injured by winter freezing.

Bulbs grow well in almost any garden soil. The ground should be well dug before planting and a liberal application of **Kirkland's Special Fertilizer** will greatly assist their growth besides adding considerably to the luxuriance and brilliancy of the blooms. The treatment of bulbs after flowering is important where the same bulbs are to be used again, for it must never be forgotten that the flowers and resources for the next season are garnered within the bulb after blooming through the agency of the roots and foliage: imperfectly developed and matured foliage this year means poor flowers or none at all next year. It is best to leave the bulbs alone until the leaves have died down. When summer bedding plants are to be substituted, it is sometimes necessary to remove bulbs before they are ripe. In such cases they should be carefully taken up with a spade, disturbing the roots as little as possible, and neither cutting nor crushing the leaves.

**INDOOR CULTURE.**—Bulbs should be planted in pots as early as possible, left out in the open covered with a few inches of ashes or soil until it freezes, then brought into a cellar where the temperature is not over 50 degrees and kept in the dark until the roots are well established. They may then be brought to the light at intervals and can be flowered until Easter. It is better to leave the bulbs outdoors or in the cellar until the sprout has reached a length of 3 or 4 inches. This brings them in a little later, but is the surest way to secure fine blooms. If brought to the light sooner, especially with hyacinths, the top bells will open first and fade before the lower bells open, spoiling the flower. The sprouts will be yellow from being kept covered, but will quickly turn green when brought to the light. By successive planting of the different kinds of bulbs, one may have a continuous variety of flowers during most of the winter months.

For house culture, there is nothing more beautiful than a bowl of sweet-scented Paper White Narcissus, California Fressia or Chinese Sacred Lilies. When growing Narcissus or Chinese Lilies, be sure to keep them in the dark for the first two or three weeks. This is essential for strong root growth. They can then be brought to the light and will produce much better blooms. These bulbs can be started indoors in October and will produce blooms by Christmas. They can be grown in pots of soil, pebbles, or **Kirkland's Prepared Fibre**; the latter furnishes, in an assimilable form, all the plant food elements needed by the bulbs.



Grow Bulbs in Your Own Home in

**Kirkland's Prepared Bulb Fibre**

Price, 1b. 20c; 2 lbs. 35c;  
3 lbs. 45c; 5 lbs. 65c; 10 lbs. \$1.10, postpaid.

# Kirkland's Vegetable Seeds

## For Summer and Fall Planting

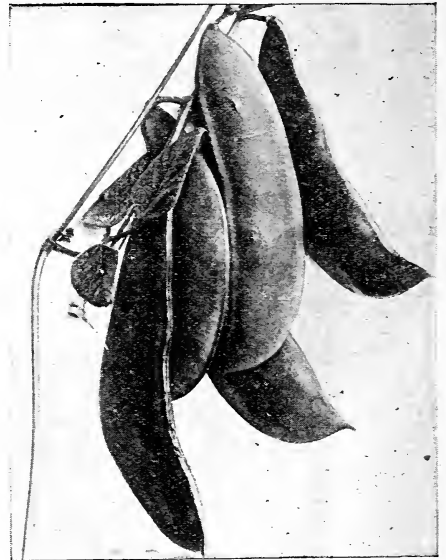
### BEANS

#### Dwarf or Bush—Green Podded Varieties

9. **EXTRA EARLY Black Valentine.** Pkt. 10c; ½ lb. 15c; lb. 30c; peck \$3.00; bushel \$11.50; per 100 lbs. \$16.00.
8. **BURPEE'S Stringless Green-Pod Bean.** Pkt. 10c; ½ lb. 15c; 1 lb. 30c; peck \$3.50; bushel \$12.00; per 100 lbs. \$18.00.
12. **BOUNTIFUL.** Pkt. 10c; lb. 40c; 2 lbs. 75c; peck \$5.00; bushel \$18.00. Limited stock.
13. **TENNESSEE GREEN POD.** Pkt. 10c; lb. 25c; peck \$2.75.
14. **LONGFELLOW'S GREEN POD.** Pkt. 10c; lb. 30c; peck \$2.75.
19. **KIRKLAND'S REFUGEE, or 1,000 TO 1.** Pkt. 10c; lb. 30c; 5 lbs. \$1.00; per bus. \$11.50; per 100 lbs. \$16.00.
18. **EXTRA EARLY RED VALENTINE.** Pkt. 10c; lb. 30c; peck \$3.00; bushel \$11.50; per 100 lbs. \$17.50.
11. **KIRKLAND'S GIANT STRINGLESS GREEN POD.** Pkt. 10c; lb. 30c; 5 lbs. \$1.25; pk. \$3.50; bus. \$12.00; 100 lbs. \$18.
10. **LONG YELLOW SIX WEEKS.** Pkt. 10c; lb. 30c; 2 lbs. 50c; peck \$3.75; bushel \$14.00.

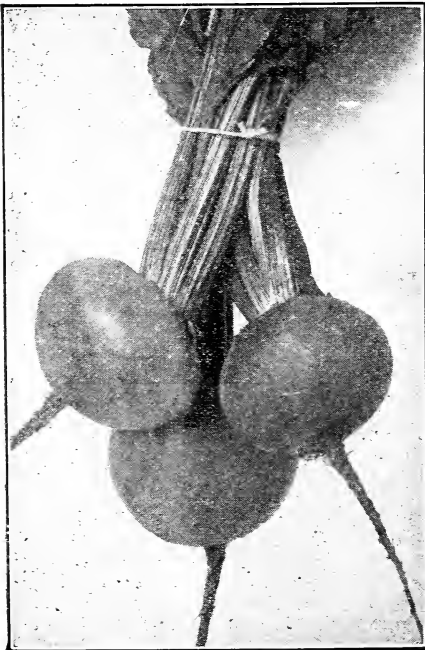
#### Wax Podded Varieties

15. **CURRIE'S BLACK WAX.** Pkt. 10c; lb. 30c; peck \$4.50; bushel \$14.00; per 100 lbs. \$20.00.
16. **RUST-PROOF GOLDEN WAX.** Pkt. 10c; lb. 30c; peck \$4.50; bushel \$14.00; per 100 lbs. \$20.00.
17. **PROLIFIC BLACK WAX.** Pkt. 10c; lb. 30c; bushel \$14.00.



Prolific Bush Lima Beans.

We specialize on Trucker's Supplies and Seeds. We have a complete line of shipping crates, barrels, baskets, and other accessories for the truck grower and shipper that you will not find listed in this catalog. Write us for prices on your needs.



Detroit Dark Red Beets.

#### Dwarf or Bush Limas

21. **HENDERSON'S BUSH LIMA.** Pkt. 10c; lb. 30c; peck \$3.00; bushel \$11.50; per 100 lbs. \$16.00.
20. **JACKSON'S WONDER BUSH LIMA.** Pkt. 10c; lb. 30c; peck \$3.00; bushel \$11.50.
22. **FORDHOOK BUSH LIMA.** Pkt. 10c; lb. 40c; peck \$4.75; per 100 lbs. \$28.00.
24. **BURPEE'S BUSH LIMA.** Pkt. 10c; lb. 40c; peck \$5.50.

#### Pole Butter, or Lima Beans

23. **SIEVA (or Small White Pole Butter).** Pkt. 10c; lb. 30c; peck \$3.00; bushel \$11.50; per 100 lbs. \$16.00.
24. **DREER'S CHALLENGER.** Pkt. 10c; lb. 30c; peck \$3.00.
25. **LARGE WHITE LIMA (or King of the Garden Lima).** Pkt. 10c; lb. 25c; peck \$4.50; bushel \$17.50.

Large buyers should send list of requirements for special prices.

#### Pole, or Running Snap Beans

26. **KENTUCKY WONDER (Texas Prolific, or Old Homestead).** Pkt. 10c; lb. 30c; peck \$3.25; bushel \$12.50.
27. **KIRKLAND'S GENUINE CORNFIELD BEAN.** Pkt. 10c; lb. 30c; peck \$4.00; bushel \$13.50.
28. **WHITE KENTUCKY WONDER.** Pkt. 10c; lb. 35c; peck \$3.50; bushel \$12.75.
29. **WHITE CREASEBACK.** Pkt. 10c; lb. 35c; peck \$3.50; bushel \$12.75.

## TABLE BEETS

One ounce of seed sows sixty feet of drill; five pounds will sow an acre in drills.

35. **DETROIT DARK RED.** Pkt. 10c; oz. 15c; ¼ lb. 35c; lb. 90c.
30. **EARLY BLOOD TURNIP.** Pkt. 10c; oz. 15c; ¼ lb. 35c; lb. 90c.
34. **HALF-LONG SMOOTH BLOOD.** Pkt. 10c; oz. 15c; ¼ lb. 35c; lb. 90c.
33. **IMPROVED EARLY BLOOD TURNIP.** Pkt. 10c; oz. 15c; ¼ lb. 35c; lb. 90c.





Late Flat Dutch Cabbage.

## KIRKLAND'S CABBAGE SEED

(Cabbage seed is one of our specialties, our seed are grown by the most reliable growers in the Long Island section. These seed are best adapted to this climate and no better seed can be had.)

**Note.**—We make special prices to truckers who buy in quantities.

43. **CHARLESTON WAKEFIELD.** Pkt. 10c; oz. 25c;  $\frac{1}{4}$  lb. 75c; lb. \$2.50; 5 lbs. \$2.25 per lb.
44. **LATE FLAT DUTCH.** Pkt. 10c; oz. 25c;  $\frac{1}{4}$  lb. 85c; lb. \$2.50.
45. **EARLY JERSEY WAKEFIELD.** Pkt. 10c; oz. 25c;  $\frac{1}{4}$  lb. 75c; lb. \$2.50; 5 lbs. \$2.25 per lb.
46. **EARLY FLAT DUTCH.** Pkt. 10c; oz. 25c;  $\frac{1}{4}$  lb. 80c; lb. \$2.50.
47. **EARLY WINNIGSTADT.** Pkt. 10c; oz. 25c;  $\frac{1}{4}$  lb. 80c; lb. \$2.75.
48. **ALL SEASONS.** Pkt. 10c; oz. 35c;  $\frac{1}{4}$  lb. 90c; lb. \$2.75.
49. **COPENHAGEN MARKET.** Pkt. 10c; oz. 25c;  $\frac{1}{4}$  lb. 90c; lb. \$3.00; 5 lbs. \$2.75 per lb.
50. **LATE DRUMHEAD.** Pkt. 10c; oz. 25c;  $\frac{1}{4}$  lb. 75c; lb. \$2.25.
51. **SUCCESSION.** Pkt. 10c; oz. 25c;  $\frac{1}{4}$  lb. 75c; lb. \$2.25.
52. **SUREHEAD.** Pkt. 10c; oz. 25c;  $\frac{1}{4}$  lb. 75c; lb. \$2.75.
53. **EARLY TRUCKER.** Pkt. 10c; oz. 25c;  $\frac{1}{4}$  lb. \$1.00; lb. \$2.50.



Dwarf Green Curled Kale.

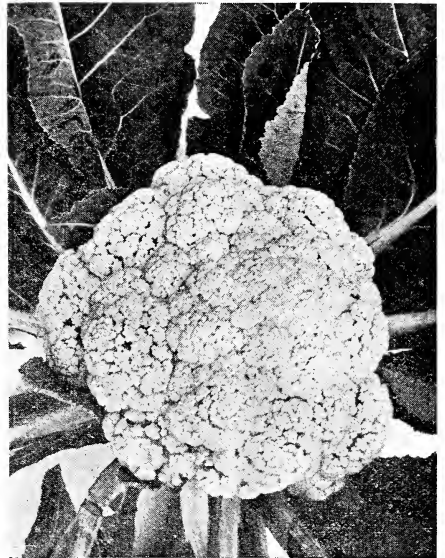
## TABLE BEETS—Continued

32. **IMPROVED LONG BLOOD BEET.** Pkt. 10c; oz. 15c;  $\frac{1}{4}$  lb. 35c; lb. 90c.
31. **KIRKLAND'S EXTRA EARLY ECLIPSE.** Pkt. 10c; oz. 15c;  $\frac{1}{4}$  lb. 35c; lb. 90c.
36. **CROSBY'S EGYPTIAN.** Pkt. 10c; oz. 15c;  $\frac{1}{4}$  lb. 30c; lb. 90c.
37. **TRUCKER'S PERFECTION BEET.** Pkt. 10c; oz. 15c;  $\frac{1}{4}$  lb. 30c; lb. 90c.
38. **SWISS CHARD OR SEA KALE.** Pkt. 10c; oz. 15c;  $\frac{1}{4}$  lb. 40c; lb. 1.25.

## MANGELS AND SUGAR BEETS

Use for Feeding Cattle—Sow Five Pounds Per Acre.

39. **GOLDEN TANKARD.** Pkt. 10c; oz. 15c;  $\frac{1}{4}$  lb. 25c; lb. 80c.
40. **MAMMOTH LONG RED MANGEL.** Pkt. 10c; oz. 15c;  $\frac{1}{4}$  lb. 35c; lb. 80c, postpaid.



Snowball Cauliflower.

## Red Cabbage

55. **MAMMOTH RED ROCK.** Pkt. 10c; oz. 35c;  $\frac{1}{4}$  lb. \$1.00; lb. \$3.50.
54. **RED ZENITH.** Pkt. 10c; oz. 35c;  $\frac{1}{4}$  lb. \$1.00; lb. \$3.50.

## Chinese Cabbage

56. **PE-TSAI.** Pkt. 10c; oz. 30c;  $\frac{1}{4}$  lb. 90c; lb. \$3.00.

## Collards

An old-time standby for winter greens all over the South. Well adapted to every Southern State, and is a species of cabbage, not only hardy but a vigorous and continuous grower, producing a mass of leaves and later a fairly good head. Not in its best condition until touched by frost. Seed can be sown here from early spring up to October 1st. When plants are 6 inches high transplant to open ground, setting 2 feet apart in the row. Cultivate like cabbage. Sow one ounce of seed to 200 feet of row.

57. **IMPROVED WHITE CABBAGE COLLARD.** The only collard to plant for profit. Pkt. 10c; oz. 15c;  $\frac{1}{4}$  lb. 35c; lb. 80c, postpaid.
58. **TRUE GEORGIA.** Pkt. 5c; oz. 10c;  $\frac{1}{4}$  lb. 25c; lb. 65c.

## Carrots

59. **DANVER'S HALF LONG.** Pkt. 5c; oz. 15c; 2 oz. 25c; ¼ lb. 35c; 1 lb. 85c, parcel post paid.
61. **CHANTENAY.** Pkt. 10c; oz. 15c; ¼ lb. 30c; lb. 80c.
65. **OXHEART, or GUERANDE.** Pkt. 10c; oz. 20c; ¼ lb. 35c; lb. 90c.
60. **IMPROVED LONG ORANGE.** Pkt. 10c; oz. 20c; ¼ lb. 40c; lb. \$1.00.
62. **LARGE WHITE BELGIAN CARROT (For Stock Feed Only).** Pkt. 10c; oz. 15c; ¼ lb. 35c; lb. 90c.

## Cauliflower

63. **SNOWBALL.** Pkt. 25c and 50c; oz. \$3.00; 2 ozs. \$5.00; ¼ lb. \$9.00; lb. \$35.00. Postpaid.

## Kale

96. **DWARF GREEN CURLED.** Pkt. 5c; oz. 10c; 2 oz. 15c; ¼ lb. 30c; 1 lb. 60c. Parcel post paid.
97. **TALL CURLED SCOTCH.** Pkt. 5c; oz. 15c; 2 oz. 25c; ¼ lb. 40c; 1 lb. \$1.00. Parcel post paid.



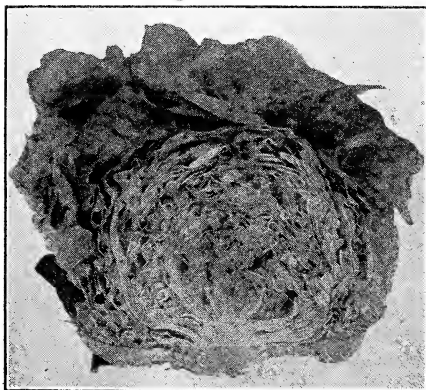
Oxheart or Guerande Carrots.

## Kohl-Rabi

95. **EARLY WHITE VIENNA.** Pkt. 5c; oz. 25c; 2 oz. 40c; ¼ lb. 75c; lb. \$2.50. Parcel post paid.

## Kirkland's Lettuce Seed

99. **BIG BOSTON.** Pkt. 10c; oz. 25c; ¼ lb. 75c; lb. \$2.50. Special price in quantities.
100. **ICEBERG.** Pkt. 10c; oz. 30c; ¼ lb. 75c; lb. \$2.75. Special price in quantities.
101. **NEW YORK, or WONDERFUL.** Pkt. 10c; oz. 20c; ¼ lb. 65c lb. \$2.00.
102. **ROMAINE, or COS.** Pkt. 10c; oz. 25c; ¼ lb. 60c; lb. \$2.00.
103. **MAY KING.** Pkt. 10c; oz. 20c; ¼ lb. 60c; lb. \$2.00.
104. **GRAND RAPIDS.** Pkt. 10c; oz. 25c; ¼ lb. 60c; lb. \$2.00.
105. **CALIFORNIA CREAM BUTTER.** Pkt. 10c; oz. 25c; ¼ lb. 60c; lb. \$2.00.
106. **EARLY WHITE CABBAGE.** Pkt. 10c; ¼ lb. 60c; lb. \$2.00, postpaid.



Big Boston Lettuce.

## Onions

130. **LARGE RED WEATHERSFIELD.** Pkt. 10c; oz. 25c; ¼ lb. 50c; lb. \$1.75.
131. **SILVER SKIN, or WHITE PORTUGAL.** Pkt. 10c; oz. 20c; ¼ lb. 60c, postpaid.
132. **YELLOW GLOBE DANVERS.** Pkt. 10c; oz. 20c; ¼ lb. 60c; lb. \$2.00.
133. **EXTRA EARLY WHITE PEARL.** Pkt. 10c; oz. 25c; ¼ lb. 75c.
134. **PRIZE TAKER, or SPANISH KING.** Pkt. 10c; oz. 25c; ¼ lb. 75c; lb. \$2.60, postpaid. Not prepaid, lb. \$2.50.

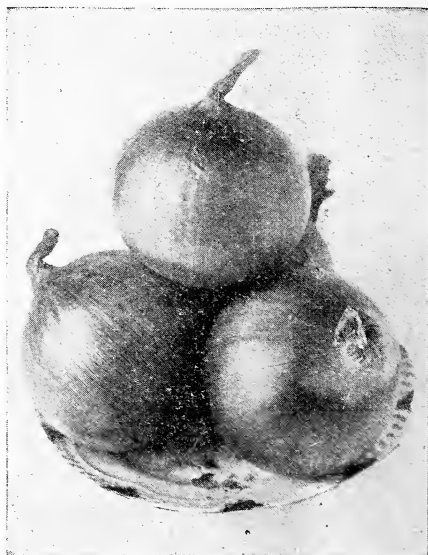
## Onion Sets

Prices on Onion Sets Fluctuate. Current Prices on Request.

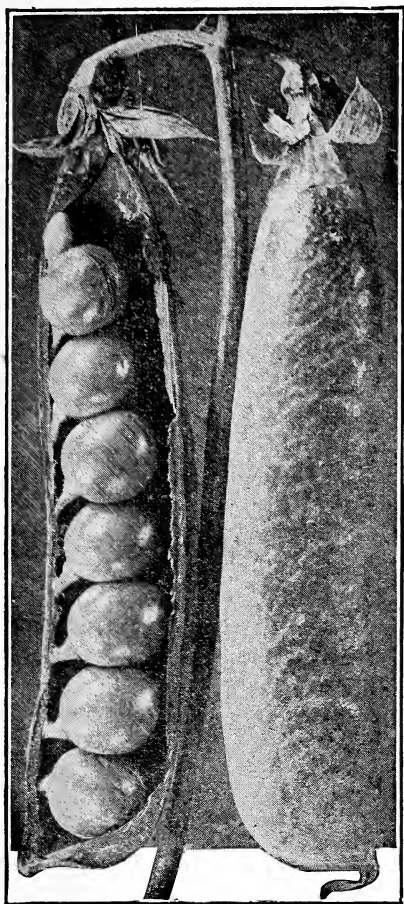
135. **YELLOW DANVERS.** Qt. 25c; pk. \$1.00; bushel of 32 lbs. \$3.00.
136. **RED WEATHERSFIELD.** Qt. 25c; pk. \$1.00; bushel of 32 lbs. \$3.00.
137. **SILVER SKIN.** Qt. 25c; pk. \$1.25; bushel of 32 lbs. \$3.25.
138. **AUSTRALIAN BROWN.** Qt. 25c; pk. \$1.00; bushel of 32 lbs. \$3.00.

## Parsley

198. **SPECIAL DOUBLE CURLED MOSS.** Pkt. 10c; oz. 15c; ¼ lb. 30c; lb. 90c.



Yellow Danvers Onion.



Thomas Laxton Peas.

## Mustard

139. **CHINESE MUSTARD.** Pkt. 10c; oz. 10c;  $\frac{1}{4}$  lb. 30c; lb. 75c.  
 140. **GIANT SOUTHERN CURLED.** Pkt. 10c; oz. 15c;  $\frac{1}{4}$  lb. 35c; lb. 75c, postpaid.  
 141. **WHITE MUSTARD.** Pkt. 10c; oz. 15c;  $\frac{1}{4}$  lb. 35c; lb. 75c, postpaid.  
 142. **OSTRICH PLUME.** Pkt. 10c; oz. 15c;  $\frac{1}{4}$  lb. 35c; lb. 75c.

## Kirkland's Garden, or English Peas

179. **FIRST AND BEST.** Pkt. 10c; lb. 30c; peck \$3.25; bushel \$11.00.  
 180. **ALASKA EXTRA EARLY.** Pkt. 10c; lb. 30c; peck \$3.00; bushel \$9.00; per 100 lbs. \$12.00.  
 181. **AMEER, or LARGE-PODDED ALASKA.** Pkt. 10c; lb. 30c. Not prepaid, peck \$4.00.  
 182. **THOMAS LAXTON.** Pkt. 10c; lb. 30c; peck \$4.00; bushel \$11.00; per 100 lbs. \$17.00.  
 183. **LAXTONIAN.** Pkt. 10c; lb. 40c; peck \$5.00.  
 184. **POT LATCH.** Pkt. 25c; lb. 30c; peck \$3.25; bushel \$10.00.  
 185. **WHITE MARROWFAT.** Pkt. 10c; lb. 25c; peck \$3.00.  
 186. **BLACK-EYE MARROWFAT.** Pkt. 10c; lb. 25c; pk. \$3.00.  
 187. **TELEPHONE.** Pkt. 10c; lb. 30c; peck \$3.50; bu. \$12.00.  
 188. **GRADUS, or PROSPERITY.** Pkt. 10c; lb. 30c; peck \$3.00; bushel \$11.00.  
 189. **CHAMPION OF ENGLAND.** Pkt. 10c; lb. 30c; peck \$3.00; bushel \$11.00.

### MAMMOTH LUSCIOUS SUGAR PEA (EDIBLE PODDED)

190. **DWARF AND TALL.** Pkt. 10c.  
 191. **SMALL WHITE LADY PEA.** Pkt. 10c; lb. 25c; 2 lbs. 45c.  
 192. **LARGE WHITE BLACK-EYE, or RAMSHORN PEA.** Pkt. 10c; lb. 25c; 2 lbs. 45c.

## Salsify

177. **MAMMOTH SANDWICH ISLAND.** Pkt. 10c;  $\frac{1}{2}$  oz. 20c; oz. 30c;  $\frac{1}{4}$  lb. 85c; lb. \$2.75.  
 178. **SORREL.** Pkt. 10c; oz. 25c;  $\frac{1}{4}$  lb. 75c, postpaid.

## Radish

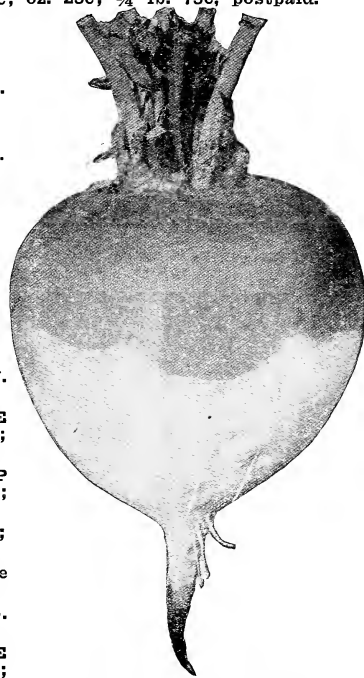
208. **EARLY LONG SCARLET.** Pkt. 10c; oz. 15c;  $\frac{1}{4}$  lb. 35c; lb. 90c.  
 209. **FRENCH BREAKFAST.** Pkt. 10c; oz. 15c;  $\frac{1}{4}$  lb. 35c; lb. 90c.  
 210. **CHINA ROSE WINTER.** Pkt. 10c; oz. 15c;  $\frac{1}{4}$  lb. 35c; lb. 90c.  
 211. **EARLY SCARLET TURNIP, WHITE TIPPED.** Pkt. 10c;  $\frac{1}{4}$  lb. 40c; lb. \$1.25.  
 212. **WHITE ICICLE.** Pkt. 10c; oz. 15c;  $\frac{1}{4}$  lb. \$1.25.  
 213. **LARGE BLACK SPANISH.** Pkt. 10c; oz. 15c;  $\frac{1}{4}$  lb. \$1.25.

## Turnips

161. **GOLDEN BALL or ORANGE JELLY.** Pkt. 10c;  $\frac{1}{4}$  lb. 20c; lb. 60c.  
 163. **PURPLE-TOP GLOBE.** Pkt. 10c; oz. 15c;  $\frac{1}{4}$  lb. 25c; lb. 60c.  
 165. **SOUTHERN SNOW-WHITE GLOBE.** Pkt. 10c; oz. 15c;  $\frac{1}{4}$  lb. 25c; lb. 60c.  
 166. **EXTRA-EARLY WHITE EGG.** Pkt. 10c; oz. 15c;  $\frac{1}{4}$  lb. 20c; lb. 50c.  
 167. **YELLOW or AMBER GLOBE.** Pkt. 10c; oz. 15c;  $\frac{1}{4}$  lb. 20c; lb. 60c.  
 168. **SEVEN TOP.** Pkt. 10c; oz. 15c;  $\frac{1}{4}$  lb. 20c; lb. 65c.  
 169. **YELLOW PURPLE-TOP ABERDEEN.** Pkt. 10c; oz. 15c;  $\frac{1}{4}$  lb. 25c; lb. 60c.  
 170. **IMPROVED PURPLE TOP YELLOW RUTABAGA.** Pkt. 10c; oz. 15c;  $\frac{1}{4}$  lb. 25c; lb. 70c.

### Other Well-Known Varieties Are

156. **LONG WHITE COW HORN.** Oz. 10c;  $\frac{1}{4}$  lb. 20c; lb. 60c.  
 157. **EARLY FLAT WHITE DUTCH.** Oz. 10c;  $\frac{1}{4}$  lb. 20c; lb. 60c.  
 158. **PURPLE TOP STRAP LEAF.** Oz. 10c;  $\frac{1}{4}$  lb. 25c; lb. 60c.  
 159. **WHITE MILAN.** Oz. 15c;  $\frac{1}{4}$  lb. 25c; lb. 75c.  
 160. **PURPLE TOP MILAN.** Same as the White.  
 162. **SOUTHERN PRIZE.**  $\frac{1}{4}$  lb. 20c; lb. 60c.  
 164. **POMERANIAN WHITE GLOBE.** Oz. 10c;  $\frac{1}{4}$  lb. 20c; lb. 50c.



Purple Top Globe Turnip.

# Kirkland's Field Seeds

## For Fall Sowing

### Oats

**CULTURE**—(32 pounds to bushel). Usually two bushels of oats are sown per acre broadcast. Drilling requires one and a half bushels per acre. Can be planted here up to March, and as a rule makes good crops. The most popular oats for spring planting are Fulghum and Burt.

**FULGHUM OATS.** Practically two to three weeks earlier than all of our rust-proof oats. It is absolutely beardless; drills easily and is a safe horse feed proposition. The best and most remarkable of the Southern oat crops. One of the best spring oats known today. Price, bu. \$1.25; 5 to 10 bus. \$1.10; 25 bus. or more, \$1.05 per bushel.

**BURT OATS.** Known distinctively as spring oats. Better and safer than all other oats except Fulghum. Before the introduction of the Fulghum Oat, this was practically the only safe spring oat. Price, 1 bu. \$1.50; 5 to 10 bus. \$1.35; 25 bus. or more, \$1.25 per bushel.

**TEXAS RED RUST-PROOF OATS.** Red Rust-Proof seems to be especially well adapted to the light, sandy soil of this section. They are vigorous growers, robust and productive and have heavy heads. They are also preferred for sowing on low grounds. Price, bus. \$1.00; 10 bus. lots 95c; 25 bus. or more, 90c.

**APPLER OATS.** Improved variety of the Rust-Proof type, makes a strong, quick growing oat; large bunchy heads, with heavy grain. One of the best and most reliable rust-proof oats for the South. Price, per bu. \$1.00; 10 bus. lots, 95c; 25 bus. or more, 90c.

**KIRKLAND'S 100 BUSHEL OATS.** This oat is one of the greatest producers for Spring or Fall planting, and will positively not rust. Our stock is limited, and we offer the same, at Price, bus. \$1.25; 10 bus. lots, \$1.15; 25 bus. or more, \$1.10.

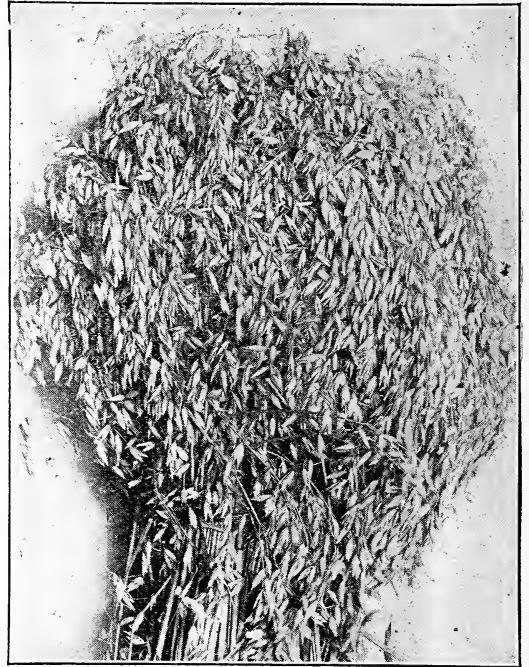
### Rye

**ABRUZZI RYE.** Said to be fully a week or ten days earlier than the ordinary Rye, and is claimed to yield much more per acre than common Rye. It is rapidly becoming popular in the South and Southwest generally. Planted from September to January. 1½ bushels per acre, 56 pounds per bushel. Pk. \$1.00; bu. (56 lbs.) \$3.50.

**ROSEN RYE.** In the same season has the reputation of yielding ten bushels more and sometimes fifteen bushels more to the acre. Planted from September to January. 1½ bushels per acre. 56 pounds per bushel. Pk. 90c, prepaid; ½ bu. \$1.50; bu. \$2.25, not prepaid.

**COMMON RYE.** Rye makes a splendid cover crop, and when grown on land to which it is suited, makes heavy grain head on thick stiff straw about 5 feet high. It is fine for grazing. Price, lb. 20c; 2 lbs. 35c, postpaid. Not prepaid, 14 lbs. (peck) 75c; 48 lbs. (bushel) \$2.50; 5 bushel lots or over at \$2.25 per bushel.

**CAROLINA TALL GROWING.** It has proved its value throughout the westerly sections of Virginia, North and South Carolina, in the heavier uplands of Georgia and in the mountain districts farther west. To the heavier uplands, Piedmont Rye is as important as Abruzzi Rye, is to the lighter lands nearer the seacoast. Its adaptability to these sections is principally because of its extreme hardiness, as it stands the severest winters without injury, but it is successfully grown throughout the entire South. In our tests, it made an exceptionally quick spring growth, in this respect excelling all other varieties and yielded more grazing; it matured its crop before other varieties were ready to cut, yielded well and made an average growth of about 6 feet. When sown in September, it yielded good grazing in the fall and winter. Price, per peck, \$1.00; per bus. \$3.50. Not prepaid.



Appler Oats.

### Clovers

**RED, MEDIUM (Tryfolium Pratense).** This well known clover is indispensable on every well managed farm. It not only furnishes fine pasturage and excellent hay crops, but it is one of the cheapest and most effective mediums for improving worn-out lands. Its enormous root development greatly loosens and ventilates the earth and the turning under of the entire plant is very beneficial on account of the humus obtained. Red Clover on good land will yield two cuttings a year, and should be cut for hay when in full bloom. The finest permanent pastures are made by sowing it with Orchard Grass, Tall Meadow Oat Grass, or the Fescues, a favorite mixture being 15 lbs. Orchard, 12 lbs., Tall Meadow Oat, 8 lbs. Clover. Sow either in the fall or spring. Avoid cutting or pasturing too close in late summer or autumn, as more or less foliage is required for protection during the summer or winter. Bu. 60 lbs. Sow 15 lbs. to the acre. Per lb. 45c; 25 lb. lots, 40c; 50 lb. lots, 38c; 100 lb. lots, 35c.

**CRIMSON (Tryfolium Incarnatum).** This valuable variety grows from 1½ to 3 feet high, and has long cone-shaped dark red blossoms. The stem is smaller than that of Red Clover and is apt to fall over unless supported by rye or some stronger plant. Sowing is begun during the last of July and continues until the last of October. Farther South it can be sown later. A common practice is to sow the seeds in furrows of corn and cotton fields at the time of the last cultivation. Prepare the land sometime previous to sowing and wait for a rain, and as soon as the land is dry enough, break the crust with a light harrow, sow the seeds and cover lightly. The seed always make a much better start in land which has been worked shortly before and needs nothing more than the harrow. The seed should not be covered deeply, and in dry weather rolling is very helpful. For winter pasturage there is nothing better than a mixture of Rye and Crimson Clover. The plant is an annual, and re-sowing every year is necessary. Bu. 60 lbs. Sow 20 lbs. to the acre. Per lb. 25c; 50 lb. lots, 16c; 100 lb. or more, 14c.

## CLOVERS—Continued

**CRIMSON, WHITE BLOOMING.** Two or three weeks later than Crimson Clover, and has a white blossom. Bu. 60 lbs. Sow 20 lbs. to the acre. Per lb. 25c; 50 lb. lots, 20c; 100 lb. or more, 16c.

**BOKHARA, or WHITE BLOOMING SWEET (Melilotus Alba).** This biennial Clover is adapted to almost any kind of soil, grows from 3 to 5 feet high, and on rich soil can be cut three times. Bu. 60 lbs. Sow 15 lbs. to the acre. Per lb. 25c; 50 lb. lots, 20c; 100 lb. lots, 16c.

**BURR (Medicago Mocolata).** In the South for winter and early spring pasturage, this is most valuable. It grows rapidly, and is liked by all stock. In the far south, when sown with Bermuda Grass, the two makes a splendid all-the-year-round pasturage. It reseeds itself, and improves in growth each succeeding year. Bushel cleaned, 60 lbs. In the burr, 14 lbs. Sow 15 lbs. to the acre. Per bus. \$1.75.

**JAPAN (Laspedeza Striata).** This is a perennial, and thrives in any soil in the South. Its most valuable quality is its ability to last through the driest seasons in soils which would support nothing else. Often used in mixtures with Carpet Grass for pastures. Bu. 25 lbs. Sow 25 lbs. to the acre. Per lb. 40c; 50 lb. lots, 35c; 100 lbs. or more, 30c.

**WHITE DUTCH CLOVER.** Thrives in any soil or climate, and being of low, creeping growth, is especially valuable for pastures and lawns, also for bees as it probably makes better and clearer honey than any other blossoms. Per lb. 50c; 25 lb. lots, 45c; 50 lbs. or more, 42c.

## Wheat

Sixty pounds to the bushel. For an acre, one and one-half bushels.

**LEAP'S PROLIFIC.** This Virginia-bred selection of beardless wheat has now established a wide reputation for productiveness and high milling value. We have more demand for it than for all other beardless kinds combined. Peck \$1.00; per bus. \$3.50.

**FULCASTER.** This variety is favored by many planters of North and South Carolina. It is a vigorous grower and makes the finest quality of flour. Peck \$1.25; per bus. \$4.00.

**BLUE STEM.** If the Blue Stem were not such a sterling wheat it would long since have been discarded in favor of the newer kinds. On the contrary, it is today one of the most popular and generally planted. It has a good berry, stiff straw, is very hardy, unusually free from rust, and makes the best grade of flour. Per peck 90c; per bushel \$3 00.

**RED MAY.** Red May makes a good, round, plump berry, has strong straw with well-filled heads, is a good and reliable yielder, and is as free of rust as any wheat grown in the South Atlantic States. It is somewhat similar to Fultz, and whatever good qualities may be claimed for Fultz are equally true of Red May. It is a thoroughly dependable wheat, with a good reputation for yield, especially on light lands. Peck \$1.00; bushel \$3.50.

**RED HEART.** We have reports from wheat farmers in sections where wheat is grown as the money crop, that Red Heart had run five bushels and over to the acre more than other wheats grown in the same vicinity. Red Heart is one of the hardiest wheats in our list, has a stiff straw and stands up well. Peck \$1.25; bushel \$4.00.

**GEORGIA FLINT.** One of the hardiest wheats, stands adverse weather remarkably well, and so far has been rust-proof. A thoroughly reliable wheat, yielding well, the heads are large and well filled. Peck 90c; bushel \$2.75.

## Barley

Forty-eight pounds to the bushel. For an acre, two bushels.

**BEARDLESS.** The great value of Barley for winter pasturage has not been generally recognized as yet, but many Southern dairymen have adopted it as one of their main crops for this purpose, using it also for hay. If the ground is reasonably strong, it may be firmly established before winter, and will bear almost continuous grazing until late spring, the beneficial effect upon milk cows in particular being most noticeable. If intended to be cured for hay, the head should not be allowed to form. Sowings are made both in summer and fall, and sometimes it is broadcasted when corn or cotton crops are "laid by." Peck \$1.00; ½ bus. \$1.75; per bus. \$3.25. Not prepaid.

**BEARDED SPRING BARLEY.** It can be grown on a greater variety of soils and under a wider range of climatic conditions than almost any other grain crop, and adapts itself to the conditions under which it is grown, but do not sow it on moist land. Barley when ground and soaked makes a highly nutritious hog food, and when fed with skim milk makes the most delicious hams and bacon. As a winter feed for poultry it stimulates egg production. Sow 1 to 1½ bushels to the acre. Peck 90c; ½ bus. \$1.50; bus. \$2.75. Not prepaid.

Plant Vetch or Austrian Winter Peas  
with Oats and Eye.



Field of Leap's Prolific Wheat.



## Vetches

**HAIRY OR WINTER VETCH.** King of all soil builders. As a pasture plant for late Fall and early Spring, or as a fertilizer, Hairy Vetch is without an equal. It is a wonderful plant and has made a record wherever it is used. It is much superior to rye as Winter pasture, staying green all Winter and starting out ahead of all other plants in the Spring. There are thousands of acres of sandy dry land that are practically lying idle and worthless through different parts of this country that will produce fine crops of Vetch. Make this land produce more for you. The fertilizing value of Vetch cannot be overestimated. Our price on selected seeds is very low. **Per lb. 20c; 50 lbs. 16c; 100 lbs. or more, \$12.50. Not prepaid.**

**AUGUSTA VETCH.** Makes the same tall growth as Hairy Vetch; has larger leaves, does better on heavier soils, and makes a fine hay of high feeding value. It is a wonderful soil-builder and gatherer of nitrogen. It is adapted to the same purposes as Hairy Vetch, but requires better soil and is not as resistant to drought and cold. Where conditions are favorable, the yield is equally as large. **Per lb. 20c; 50 lbs. 17c; 100 lbs. or more, \$14.00. Not prepaid.**

**HUNGARIAN VETCH.** Almost as hardy as Hairy Vetch; well adapted to heavy acid soils and lands with poor drainage and generally adverse soil conditions. A surer cropper than common vetch, hardier, growth more erect, makes a better colored hay, and is the equal of any legume in feeding value. **Per lb. 15c; 50 lbs. 12½c; 100 lbs. 10c.**

Inoculate Vetch, Clover, Austrian Winter Peas and Alfalfa. See page 9 for prices and description.

## Austrian Winter Peas

A winter legume rapidly coming to the front. Similar to Hairy Vetch, they make a more rapid early growth, hence may be turned under several weeks earlier in the spring. They yield more hay per green weight than vetch. Though they may be sown with a grain crop, this is not necessary as they will produce well alone. Inoculate same as vetch. **Per lb. 15c; 50 lbs. 12c; 100 lbs. or more, \$9.50.**



Dwarf Essex Rape.



Alfalfa.

## Rape, Dwarf Essex

An excellent forage plant, especially for sheep and hogs, and grown extensively for them in Europe though little known in this country until recent years. It grows with wonderful rapidity, being usually ready for pasturage six or eight weeks after sowing, and an acre is said to support a dozen sheep for more than a month, poultry also revelling in it. Almost any soil will grow it, and the yield per acre is simply enormous, more than twenty tons per acre having been often produced on good ground. Stock feeding upon Rape should be supplied with salt freely. When young it makes a delicious, tender, sweet salad, being often sown solely for this purpose. Sow from early summer until late fall, putting six pounds to the acre broadcast, or three pounds in drills. We offer the genuine Dwarf Essex, importing it ourselves, which is free from mixture with the inferior annual variety. **Lb. 20c. Postpaid. By express or freight, 10 lbs. \$1.25; 25 lbs. \$2.50; 100 lbs. \$9.50.**

## Alfalfa

**AMERICAN ALFALFA.** Is probably the most talked of, most widely grown, and the most profitable of all kinds of Clover grown in the South. It will produce from 5 to 7 tons of hay to the acre each year, and it can be cut four, and with favorable weather conditions, five times a year, and it does not exhaust the soil; its long roots penetrate 15 to 20 feet in the ground, and it therefore successfully resists droughts and gets moisture from this depth during dry spells, whereas any other crop would be a failure. Although fall sowing is preferable, good results can be obtained from spring sowing, if sown in March or early April. It should be seeded on high and rather dry land, as it does not succeed as well on wet grounds. It should be seeded at the rate of about 25 to 30 pounds to the acre broadcast. The soil should be thoroughly prepared and a plenty of lime applied, not less than 1,000 lbs. to the acre, and if your land has never had Alfalfa grown on it before be sure to inoculate the seed with Farmogerm, for without inoculation your success is exceedingly doubtful. Alfalfa is adapted to almost the entire South, and is said to have the highest feeding value of any other hay. Do not risk your crop of Alfalfa by sowing cheap or inferior seed. Our Alfalfa is the highest grade seed we can obtain, both in purity and germination. **Per lb. 35c; 25 lb. lots, 32c; 50 lb. lots, 30c; 100 lbs. or more, 29c.**

**HAIRY PERUVIAN ALFALFA.** Is fast supplementing in the Southwest the other nine types of Alfalfa. It carries a very much longer season and, therefore, carries more cuttings, and yields according to all tests, 1¼ to 1½ tons more of hay per acre than other types; the hay is of finest quality because of the greater abundance of leaves which are much larger than the usual type. Grows at a lower temperature than other Alfalfas. Remarkable to say, this Alfalfa keeps practically green and an edible proposition throughout the whole

## ALFALFA—Continued

year, while other Alfalfas go down at frost. Takes on a fuzz in winter which protects the plant. Leaves off fuzz in summer. Drill 10 pounds per acre, 20 pounds, broadcast. Per lb. 45c; 25 lb. lots, 40c; 50 lb. lots, 38c; 100 lbs. 36c.

**GRIMM ALFALFA.** Claimed to be hardy in any and all regions, a heavy yielder and of deep rooting ability. Highly recommended by various State Experiment Stations. Requires about 10 lbs. of Grimm Alfalfa to properly seed an acre, on account of its great root system and spreading habit. 45c per lb. (by parcel post, 55c).

## Grasses

**ORCHARD GRASS.** This is one of the most reliable grasses for hay or pasture grown in this section, making a quick, vigorous and continuous growth from early spring to winter. Sow 25 lbs. to the acre in the spring or fall, and in any soil; loamy upland is best. It is excellent to mix with other grasses. Per lb. 40c; 25 lb. lots, 35c; 50 lb. lots, 32c; 100 lbs. 30c.



Timothy.

**TALL MEADOW OAT GRASS.** A most valuable grass for the South, as it stands heat and drought well and flourishes on dry, light soils. Splendid for pastures and for hay; it may be cut twice in a season. Sow 25 lbs. to the acre. Per lb. 35c; 25 lb. lots, 30c; 100 lbs. 28c.

**KENTUCKY BLUE GRASS.** This grass succeeds best on lime stone soils, but does well on any stiff soil. Stands cold, but does not do well in extreme heat. Grows slowly at first, making a thick, compact turf. Used for lawns or pastures. Sow either in the fall or spring, 30 lbs. to 35 lbs. to the acre. Per lb. 60c. Write for prices in larger lots.

**TIMOTHY.** Very nutritious, and salable for hay, but not recommended for pasture, as it is injured by close cutting or grazing. Thrives best on heavy moist soils; should not be sown on light dry land. Good crops of hay are obtained if mixed with Red Top or Herd's Grass and Sapling Clover, or some grass maturing at the same time. Sow 15 lbs. to the acre. Per lb. 15c; 25 lb. lots, 12c; 100 lb. lots, 10c.

**HERD'S GRASS, or RED TOP.** This excellent pasture and hay grass does well on any soil, but, perhaps, thrives best on moist, heavy soils. It spreads and thickens from year to year, and will gradually supplant other grasses. Matures at the same time as Timothy, with which it makes a good mixture. Sow 10 to 12 lbs. to the acre. Per lb. 35c; 25 lb. lots, 32c; 100 lb. lot., 28c.

**PERENNIAL RYE GRASS.** Good for hay and pastures, if sown on strong, moist soil, but does not stand drought well. It grows rapidly and matures very early and lasts several years. Sow 30 lbs. to acre. Per lb. 20c; 50 lbs. 16c; 100 lbs. or more, 14c.

**ITALIAN RYE GRASS.** Larger and stronger than Perennial Rye Grass; has large, broad, glossy green blades. Thrives best on moist, fertile soils, furnishing 2 to 3 cuttings a year. Sow about 35 lbs. to the acre. Per lb. 20c; 50 lbs. 16c; 100 lbs. or more, 14c.



Orchard Grass.

**DALLIS GRASS.** Plant March to June. Indicated in wet heavy lands where Bermuda is not good. Do not confound with Western grass called Dallas. Sow in spring, 8 to 10 lbs. per acre, by hand, roll or plank under on harrowed land. A perennial. The great permanent cattle pasturage of Australia, where one acre supports one cow year round. Grows 2 to 4 feet high. Makes enormous pasturage, or several green cuttings. Grows in clumps; its broad leaves are near the ground. Mixes well with Bermuda. Known, also, as Large Water Grass and Golden Crown Grass. Spreads by root stock and seed. Has cow-foot seed heads. In Florida green all winter. Keep cattle off till plants are well rooted and firm. Has double feeding value of Bermuda, and is a month earlier, and also later for grazing. Plowing kills it. This grass is spreading naturally now in Georgia. Prices, postpaid, lb. 65c; 5 lbs. \$3.00. Not prepaid, 5 to 10 lbs. at 50c; 25 to 50 lbs. at 45c; 100 lbs. at 42c lb.

**CARPET GRASS.** Known also as Louisiana Grass, and recommended for the Coastal Plain area of the South for pasture grass. It should only be sown in the spring. It is strictly a pasture grass and does splendidly when sown with Japan Clover. It should be sown from early spring until late summer. Bu. 28 lbs. Sow 15 lbs. to the acre. Per lb. 60c; 50 lbs. 55c; 100 lbs. \$52.00.

## NITRAGIN

### Restores and Maintains Soil Fertility THE ORIGINAL SOIL INOCULATOR

Grow legumes—alfalfa, clovers, soys, vetch, peas, and beans—for valuable feed crops, soil improvers, cover crops: BUT BE SURE TO INOCULATE THEM WITH NITRAGIN. Agricultural Colleges advise inoculation. Inoculated legumes draw valuable nitrogen from the air—not the soil—increase yield and quality of the crop and leaves a rich store of nitrogen in the soil for future crops. Inoculated legume seed develops heavy clusters of nodules, where nitrogen is stored, on the roots of the legume plant and without which the legume is valueless as a soil builder. Nitragin inoculated legume crop bears heavy nodules and pays big in increased soil fertility.

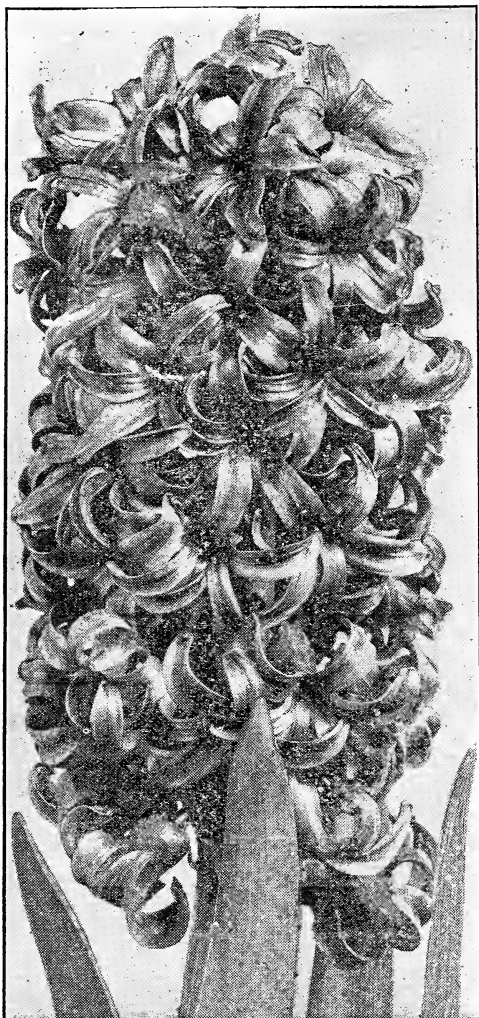
¼ bu. size for 15 lbs. seed.....	\$0.40
½ bu. size for 30 lbs. seed.....	.60
½ bu. size for Soy Beans and Cow Beans	.40*
1 bu. size for 60 lbs. seed.....	1.00
1 bu. size for Soy Beans and Cow Peas	.70*
5 bu. size for 300 lbs. seed.....	4.75
5 bu. size for Soy Beans and Cow Peas.	2.50*

\*These prices on Nitragin for Soy Beans and Cow Peas have been greatly reduced from former prices. Buy the economical 5 bu. size for 50c per bushel of seed, treated.

When ordering, always state kind of seed you want to inoculate.

### Nitragin for Garden Use

Every garden needs Nitragin; garden size is for Peas, Sweet Peas, and Beans including Lima (3 in one Inoculant). Price.....20c



Grand Maitre Exhibition Hyacinth.

## Hyacinths

Although less graceful than the lily, the Hyacinth is still Queen of the Dutch Bulbs, and is the most familiar of them all. It is perfect in form, of beautiful coloring, and carries its burden of fragrant bells with a stateliness characteristic of no other small flower. It does equally as well indoors as in the garden, and can be grown in fiber, water, sand, or soil. When grown in sand or soil it should be enriched with bone meal or sheep manure. For indoor blooming, it is best to plant the bulbs in **Prepared Bulb Fiber**, and bring them to the light at intervals of ten days or two weeks, for a succession of bloom. The bulbs should be planted from 4 to 6 inches deep and about 6 inches apart.

20c each, \$2.10 per dozen, \$15.00 per 100.

### Red and Pink

**GERTRUDE.** Rosy pink, compact well formed spike. A first class variety for forcing, and, being of erect habit, it is very useful for bedding.

**LADY DERBY.** Vivid pink, fine spike of large waxy bells, forces easily. One of the finest pink Hyacinths.

**LA VICTOIRE.** Brilliant red, large well shaped spike, splendid flower. Forces easily and early. One of the finest red Hyacinths. An exhibition variety.

**QUEEN OF THE PINKS.** Bright rosy pink, large compact spike of fine form. An exhibition variety of great merit, late.

### Pure and Blush White

**L'INNOCENCE.** Pure white, well formed broad spike. Early and excellent for forcing, also recommended for bedding.

### Blue and Lilac

**GRAND MAITRE.** Deep porcelain blue, broad well formed spike. Recommended for forcing and bedding.

**KING OF THE BLUES.** Deep glossy blue, large compact spike, fine formed flower. Excellent bedding variety, late.

**MARIE.** Purple blue, broad spike. Good for forcing and bedding, early.

**QUEEN OF THE BLUES.** Light blue with silvery appearance, large spike, splendid flower. An exhibition variety of great merit. Excellent for forcing and bedding.

### Yellow

**CITY OF HAARLEM.** Bright golden yellow, large loose spike. One of the finest yellow Hyacinths.

### Kirkland's HIGH GRADE Fertilizers

**SPECIAL GARDEN AND FLOWER  
GRO.** 25 lbs. \$1.00; 50 lbs. \$1.75;  
per lb. \$3.00.

**"BLUE RIBBON" SHEEP MAN-  
URE.** Per 25 lb. \$1.00; 50 lbs.  
\$1.75; 100 lbs. \$3.00.

**"BLUE RIBBON" BONE MEAL.**  
25 lbs. \$1.75; 50 lbs. \$2.75; 100  
lbs. \$4.75; 200 lbs. sacks \$7.50;  
per ton \$63.00.

**MASCOT AGRICULTURAL LIME.**  
Per 100 lbs. \$1.00.

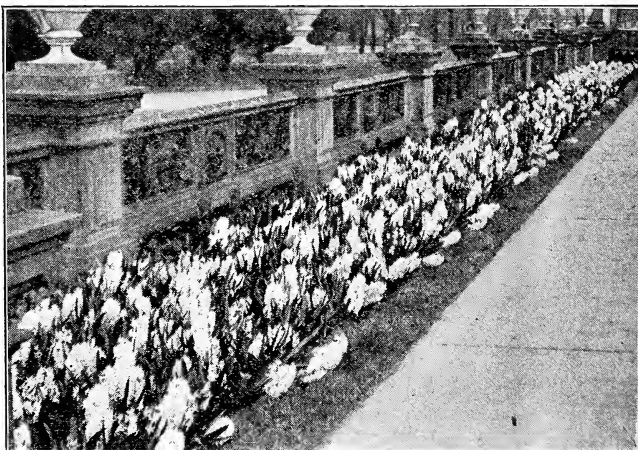
**"BLUE RIBBON" BLOOD MEAL  
FOR FLOWERS AND BULBS.**  
25 lbs. \$1.50; 50 lbs. \$2.75; per  
100 lbs. \$5.00.

**SWIFT'S "VIGORO."** 5 lbs. 50c;  
25 lbs. \$1.50; 50 lbs. \$2.75; per  
100 lbs. \$5.00.

**"BLOOMMAID" TABLETS.** Per box,  
25c.

**NITRATE OF SODA.** Per 100 lbs.  
\$3.00.

Write for prices on other grades  
of fertilizers and quantity prices.



Bed of Kirkland's Exhibition Hyacinths.



## Tulips

In recent years the Darwin has become the most popular of all Tulips. Their gorgeous display of Globular Blossom in rich shades and colors on long stiff straight stems fully merit this popularity. They are very stately in appearance, attaining a height of 20 to 30 inches.

Plant 4 inches deep and about 5 inches apart in good garden soil, and top dress during winter months with sheep manure will bring out the fullness of their size and color.

10c each, 3 for 25c, 70c per dozen.  
Per 100 \$4.50.

### Darwin Tulips

**AFTERGLOW.** Dark pink, edged orange. Very exceptional color. Adaptable for growing in cold frames.

**BARTIGON.** Dazzling scarlet, big strong stem, large flower. The leading red Darwin Tulip for early forcing, which has proved to be very profitable both for cut flowers and growing in pans, all through the season.

**CITY OF HAARLEM.** Brilliant scarlet, large.

**CLARA BUTT.** Deep apple blossom, extra fine.

**FARNCOMBE SANDERS.** Bright scarlet, large.

**FLAMINGO.** Fine pink.

**LA TULIPE NOIRE.** Black, large.

**PRIDE OF HAARLEM.** Carmine pink, extra fine large flower, tall stem.

**REV. EWBANK.** Lilac light edge.

**VICTORY (Victoire d'Oliviere).** Deep scarlet, an excellent variety for forcing. Strong stem, and large flower.

Choice Mixture Darwin Tulips.

### Single Early Tulips

**BRILLIANT STAR.** Brilliant scarlet, early, very fine for early forcing and bedding.

**DUC DE BERLIN.** Red, bordered yellow, early.

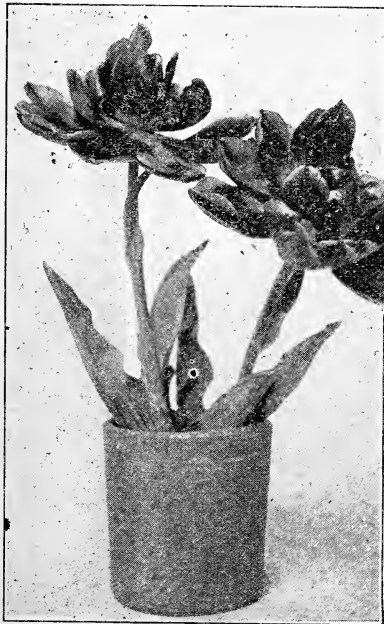
**FLAMINGO.** Beautiful pink and white, darker to the base, extra fine for forcing.

**FRED. MOORE.** Apricot orange, fine shaped flower. The finest orange Tulip for forcing, very early.

**PRINCE OF AUSTRIA.** Bright orange vermilion, large flower, sweet scented, fine for forcing.



Darwin Tulip,  
Pride of Haarlem.



Early Double Tulip, Triumph.

### Double Early Tulips

**BOULE DE NEIGE.** Large pure white full double flower.

**EL TOREADOR.** Orange red, lighter towards the edge.

**TRIUMPH (Triumphator).** Deep pink sport of Murillo. Improved peach Blossom being fuller double and having a larger and stronger flower. Certificate of Trialgrounds Haarlem 1919.

### Breeder Tulips

**BRONZE KING.** Bronze and yellow.

**DOM PEDRO.** Coffee brown, largest in this color; highly recommended, both for forcing and bedding.

**LOUIS XIV.** Purple with broad golden brown edge. A conspicuous and attractive flower.

**PRINCE OF ORANGE (Orange Beauty).** Orange scarlet, light edge. A very substantial flower, excellent for forcing.

**YELLOW PERFECTION.** Bronze yellow with golden edge.

## Crocus

Crocuses are among the very earliest to bloom in the Spring and the great variety of colors makes them very attractive if planted in masses of white, blue, yellow, purple and striped. Crocuses are easily flowered in the house in Winter in pots of soil or fibre.

Prices, named varieties, 1/2 dozen bulbs, 15c; 30c per dozen; \$2.00 per 100, postpaid.

**KING OF THE STRIPED.** Dark lilac striped.

**KING OF THE WHITES.** Snow white, large flower. The largest of the white varieties.

**MONT BLANC.** Pure white. The most popular white variety.

**SIR WALTER SCOTT.** White with light blue stripes.

**GENERAL MIXTURE.**

# Narcissi and Daffodils

## The Earliest Spring Flowers

Few bulbous flowers are more graceful than the Daffodils. While they do not possess the gorgeous colorings of the Darwin and Cottage tulips, the fact that they come into bloom in April and precede the tulips, suggests their use. You can plant Daffodils in scattered clumps about the garden, and arrange them in borders. Daffodils can be grown in any ordinary garden soil, enriched with bone meal and sheep manure. Plant 6 inches deep, 6 inches apart.

**EMPRESS.** A bicolor, having a pure white perianth. Large, rich yellow trumpet. 15c each; \$1.50 doz.

**EMPEROR.** Primrose-yellow perianth, large golden-yellow trumpet. Long graceful stem. Excellent for garden. 17c each; \$1.75 per doz.

**KING ALFRED.** Golden-yellow perianth and trumpet of immense size. A veritable giant, stands unrivaled in size and beauty. 30c each; \$3.00 per doz.

**BARRI CONSPICUOUS.** Light yellow perianth, turning paler with age; short yellow cup with orange-scarlet edge; very popular and good grower; admirably suited for planting en masse. 10c each; \$1.00 per doz.

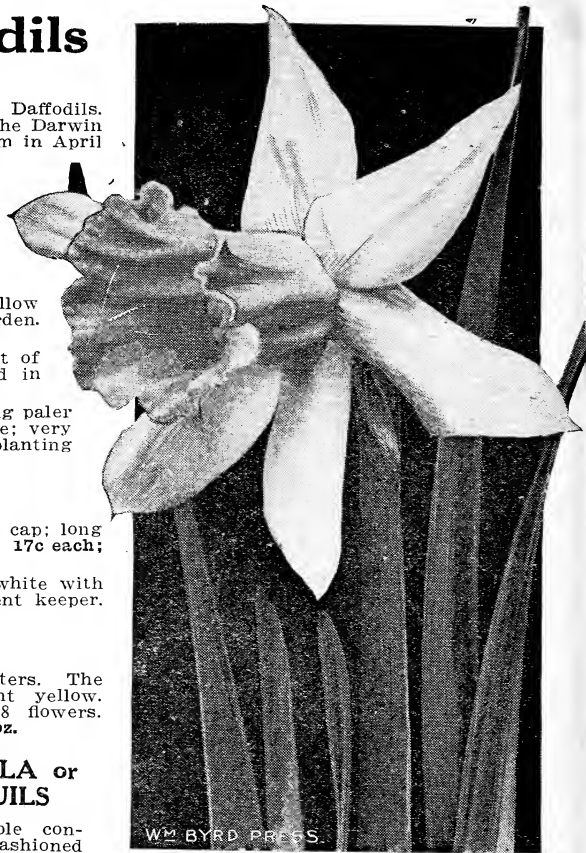
## Narcissus Incomparabilis

**AUTOCRAT.** Primrose-yellow perianth, golden-yellow cap; long graceful stems, making it very useful for cut flowers. 17c each; \$1.75 per doz.

**SIE WATKINS.** Primrose-yellow perianth, turning white with age, deep yellow cup. Long stems and an excellent keeper. 15c each; \$1.50 per doz.

## Poetaz Hybrid Daffodils

**IRENE.** A new type of Narcissi flowering in clusters. The perianth silky sulphur-white, changing into light yellow. Orange eye, large broad clusters bearing 5 to 8 flowers. Extra good forcing variety. 20c each; \$2.00 per doz.



King Alfred Narcissus.

## JONQUILLA or JONQUILS

Many people confuse the old-fashioned Jonquil with the Narcissi or Daffodil. The Jonquills listed

below are small bulbs and produce small flowers which are very fragrant. Intending purchasers should use care in ordering and not confuse the Jonquills with the Narcissi or Daffodils.

**SINGLE JONQUILS.** Beautiful rich yellow flowers; very fragrant. 6 bulbs 75c; 12 for \$1.35; 25 for \$2.75; 100 for \$8.00.

**DOUBLE JONQUILS.** Heads of small but very double deep yellow flowers, powerfully scented. 3 bulbs 45c; \$1.35 per dozen; \$11.00 per 100, postpaid.

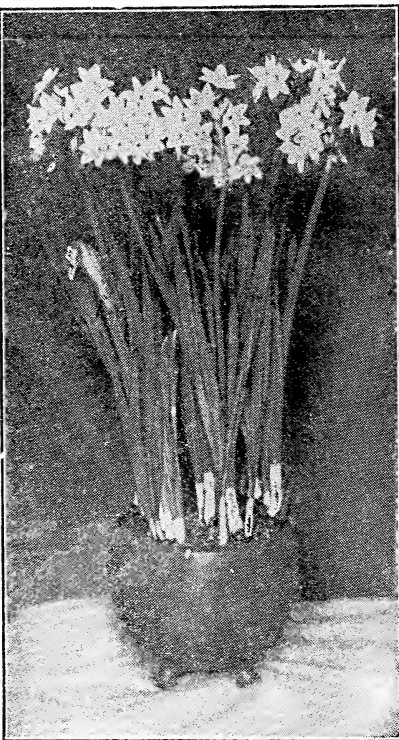
## Paper-White Grandiflora Narcissus

The most satisfactory flowers that can be grown in the house for winter blooming, and they require little care. The bulbs grow very rapidly, usually blooming in about six weeks, and will thrive under nearly every condition, provided they are given fresh air and not too much heat. For a succession of bloom the bulbs should be started every ten days from September to January. When grown in **Prepared Bulb Fibre**, care should be taken to keep the fiber moist, but not too wet. They can also be grown in water, but it is best to change the water occasionally to keep it from becoming stagnant. **Prices**—5 for 45 cents; 10 for 80 cts.; 100 for \$7.00, postpaid.

### THE BOOK OF BULBS

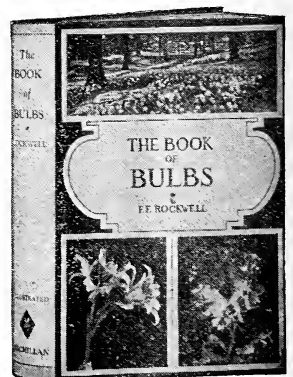
By F. F. Rockwell.

We can recommend this as the most complete and practical book on bulbs for American conditions. Pictures and text show and tell just how to make the most from bulbs



Paper-White Grandiflora Narcissus.

in your garden, both outdoors and inside the home. In addition to the more widely-grown bulbs, the book introduces others not so well known that will bring new beauty to your garden and new pleasure to your gardening. Illustrated, 264 pages, \$3.00.



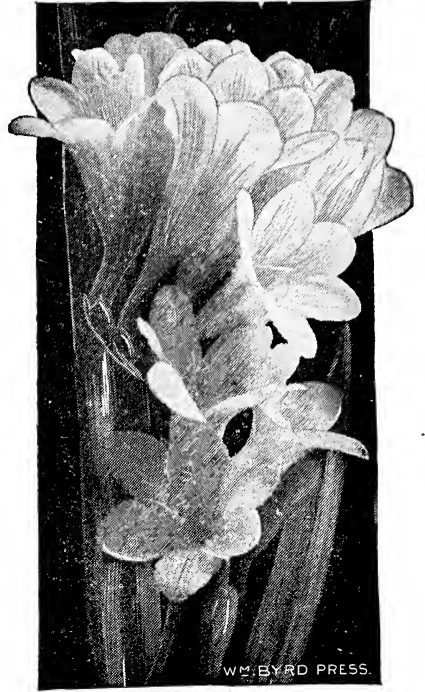
## Freesia

Very popular for indoor blooming, and can be grown almost as readily as Paper-White Narcissus. There is only one important point to remember—they must have good drainage.

**FREESIA PURITY (Improved).**  $\frac{1}{2}$  to  $\frac{3}{8}$  inch diameter. 50 cts. per dozen; \$3.00 per 100.

$\frac{3}{4}$  inch diameter and up—75c per dozen; \$5.25 per 100.

**FREESIA CALIFORNIA.** Bright yellow.  $\frac{1}{2}$  inch diameter and up. 75c per dozen; \$5.25 per 100.



Freesia Purity.

## Japanese Lily Auratum

No garden should be without some of these Queens of Flowers. They are perfectly hardy and can be planted in the late fall or early spring. Very seldom are they ready for delivery before November. See illustration.

**LILIUM AURATUM (The Gold-Banded Lily of Japan).** Large, graceful flowers, composed of six petals of a delicate ivory-white, thickly studded with chocolate-crimson spots and striped through the center by a golden yellow band. Large bulbs, 35c each; \$3.50 per dozen, postpaid.

## Calla Lilies

**AETHIOPICA, or LILY OF THE NILE.** The old favorite White Calla Lily makes a very pretty pot plant. They can be grown in the greenhouse or home, and produce large snow-white lilies. Only one bulb should be put in each pot. See illustration. Large bulbs, 35c each; \$3.50 per dozen, postpaid.

## Chinese Sacred Lily

This is the Joss Flower of the Orient, the lily grown to decorate the temples of worship of the Chinese on their New Year's Day. It will flower profusely when grown in pebbles and water. 15c each; \$1.75 doz.

## Lily of the Valley Pips

Lily of the Valley Pips are the best of all for forcing purposes and will do fine for you for pot or box growing this coming winter in the house. They produce strong spikes of 12 to 18 extra large, pure white bells each and are delightfully fragrant. The new crop generally arrives in November. We will book your order and ship to you as soon as they reach Columbia. Very easy for anybody to grow. See illustration. Prices: Large size Crowns or Pips, 6 for 45c; 85c per doz.; 25 for \$1.50; 50 for \$2.75; 100 for \$5.00, postpaid.

## Peonies

Peonies head the list of beautiful flowers and rival the rose in beauty of form and color. Nothing makes a greater display in the garden for the amount of time and money expended and no flower is easier to grow. The Peony is affected by few plant diseases and no insect pests, and given good soil and a little attention, will bloom profusely and increase in size and beauty yearly. Plant in the fall in a well prepared bed, covering the crown with not over two inches of soil.

**DUC DE WELLINGTON.** Very large, sulphur-white bloom; fragrant. 85c each; \$8.00 per 10.

**FESTIVA MAXIMA.** Flowers of immense size, 7 to 8 inches in diameter, snow-white with red blotches. 35c each; \$3.00 per 10.

**MADAME DE VERNEVILLE.** Guard petals sulphur-white, center delicate rose-white. 85c each; \$8.00 per 10.

**EDULIS SUPERBA.** Mauve-pink with silvery reflex; fragrant. 85c each; \$8.00 per 10.

**JEANNE D'ARC.** Color, cream-white, shaded with sulphur. 85c each; \$8.00 per 10.

**MAD. BARRILLET DESCHAMPS.** Color delicate silvery-pink. 75c each; \$7.00 per 10.

**M. JULES ELIE.** The best pink. \$1.00 each; \$9.00 per 10.

**FELIX CROUSSE.** Best red. \$1.00 each; \$9.00 per 10.

**MARECHAL VALLIANT.** Immense light red, resembling the American Beauty rose. \$1.00 each; \$9.00 per 10.

### Peony Roots in Separate Colors

**EXHIBITION DOUBLE WHITE, ROSE PINK, CRIMSON.** 50c each; \$5.00 per doz.; \$35.00 per 100.

**DOUBLE MIXED COLORS.** 45c each; \$4.50 per doz.; \$32.50 per 100.



Lily of the Valley Growing in Kirkland's Prepared Bulb Fibre.

# Beautiful Flowers You Can Plant This Fall

A great variety of both Annual and Perennial Flowers can be raised from seed during the Summer and Fall months. Perennial flowers, such as Snapdragons, Carnations, Pinks, Hardy Phlox, Pansies, etc., do far better in the South when the seed is sown in the fall and all of them will bloom in early spring. Many choice annual flowers can also be sown during the summer and fall and will bloom all winter until killed by frost. We recommend the following annuals as the best for planting this time of year: Alyssum, Calendulas, Candytuft, Larkspur, Marigold and Popples will all give excellent results. Kirkland's Flower Seeds are grown by the world's best growers both in Europe and America.

## Alyssum (Mad Wort)

**"Carpet of Snow" or Little Gem.** Pure white, very dwarf and sweet scented; the best white flowering border plant. **Pkt. 10c; oz. 75c.**

**Alyssum, Saxtile Compacta, Yellow.** A beautiful dwarf hardy perennial for spring beds or edging a flower border. The flowers are produced in large clusters and are of a deep pure yellow. **Pkt. 15c; ¼ oz. 40c.**

## Antirrhinum (Snapdragon)

You will be delighted with this bedding and border plant with its long blooming season. The long, showy spikes of tubular flowers are very beautiful and showy.

**Mixture Tall Varieties. Pkt. 10c; ¼ oz. 40c; oz. \$1.40.**

The following separate colors: **Blood Red, Deep Scarlet, Light Pink, Dark Maroon, Orange-Scarlet, White, Yellow.** Pkt. each 10c; 3 pkts. for 25c.

## Aquilegia (Columbine)

**Double-Flowering, Long-Spurred Hybrids, Mixed.** Beautiful long-spurred, large double flowers, formed of several rows of cornucopia-like petals and in various shades. **Pkt. 25c.**

**Single, Large-Flowering, Mixed Colors.** Pkt. 10c; ¼ oz. 40c; 1 oz. \$1.25.

## Balsam (Lady Slipper)

The old and familiar Touch-Me-Not or Lady Slipper improved until those familiar with the old forms would hardly recognize the large waxy flowers. They grow luxuriantly all through the South with little attention in any good garden soil, and well repay one for the little trouble.

**Tall Double Mixed. Pkt. 10c; ¼ oz. 40c; oz. \$1.25.**

The following separate colors in **Double Balsam, 10c per pkt.; 3 pkts. 25c.**

White Yellow Purple  
Rose Scarlet

## Bellis Perennis (English Daisy)

A low growing spring flowering plant. Loves a shady place and will reward the gardener with a mass of blossoms.

**Double Mixed. Pkt. 10c; ¼ oz. \$1.**

## Canterbury Bells (Campanula Medium)

Grows about 3 feet high and bears double and single varieties of blue, white, purple and red flowers.

**Single Mixed. Pkt. 10c; ¼ oz. 50c. Double Mixed. Pkt. 10c; ¼ oz. 50c.**

## Calendula (Pot Marigold)

They make fine cut-flowers: attractive beds and borders and bloom profusely until frost. In Florida and along the Gulf Coast they do well into the winter.

**Double Mixed. Pkt. 10c; 3 pkts. 25c; ½ oz. 35c; oz. 60c.**

**Lemon King.** Large very double lemon flowers. **Pkt. 10c; ¼ oz. 25c.**

**Prince of Orange.** A fine deep orange; double. **Pkt. 10c; ¼ oz. 25c.**

## Candytuft

A well-known garden favorite for beds, borders and edging.

**Fancy Mixed. Pkt. 10c; ¼ oz. 25c; oz. 75c.**

**Giant Hyacinth-Flowered or Improved Empress.** As the result of extra care and painstaking selection this is now the finest of all the white varieties. **Pkt. 10c; ¼ oz. 35c; oz. \$1.25.**

## Coreopsis

No flower is longer in bloom during the whole season than Coreopsis. It is a most excellent cut flower, lasting well; color, bright yellow. Hardy perennial. **Pkt. 10c; 3 pkts. 35c; ¼ oz. 50c.**

## Carnations (Marguerite)

An extra vigorous race. The plants are trim in habit, perpetual, and flower abundantly; are highly fragrant and have beautiful double flowers.

**Mixed. Pkt. 10c; ¼ oz. 50c.**

## Everblooming Carnations

Plants thick-set and bushy; stalks stiff and upright, bearing immense double blossoms of perfect regularity, some with fringed edges, some with smooth, some with rich solid colors, others tinted and blended.

**Mixed. Pkt. 25c; 2 pkts. 40c.**

## Dahlias

These grand autumn flowers can be as easily raised from seed.

**Finest Double Mixed.** Seeds saved from choicest double flowers, including shades of red, pink, dark maroon, yellow, white, etc. **Pkt. 10c; 3 pkts. 25c.**

**Finest Single Mixed.** Will produce brilliant flowers running through a wide range of striking colors. **Pkt. 10c; 3 pkts. 25c.**

## Delphinium Hardy Perennial Larkspurs

These are taller than the annual sorts and their brilliant flower spikes arrest your attention even at a distance.

**Finest Single Mixed. Pkt. 10c; ¼ oz. 50c; 1 oz. \$1.50.**

## Dianthus or Pinks

Hardy annuals, about one foot high, and bearing beautifully colored single and double blossoms in profusion.

**Double Mixed Chinese. Pkt. 10c; 3 pkts. 25c; ¼ oz. 75c.**

**Heddewigii (Japanese Pink).** Finest Single, Mixed. **Pkt. 10c; ¼ oz. 75c.**

**Vadco Plumarius (Grass Pink, Pheasant Eye or Scotch Pink).** A single hardy perennial pink with light colored flowers. **Pkt. 10c; 3 pkts. 25c; ¼ oz. 60c.**



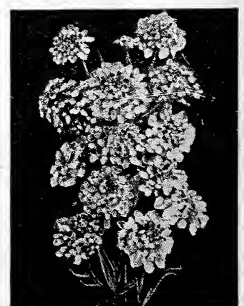
Alyssum.



Columbine.

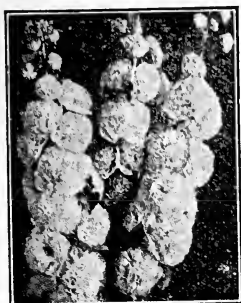


Carnation.



Candytuft.

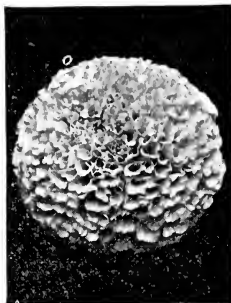




Hollyhock.



Larkspur.



Marigold.



Mignonette.

**Digitalis (Foxglove)**

Stately, old-fashioned border plants, affording dense spikes of large brilliantly colored flowers.

Mixed. Many shades and markings. Pkt. 10c; 3 pkts. 25c; ¼ oz. 40c.

**Gaillardia**

A very showy garden plant, with brilliant flowers, in scarlet yellow, blended and shaded.

Perennial Varieties Mixed. Pkt. 10c; 3 pkts. 25c; ½ oz. 50c.

Double Mixed Annual (Picta Lorenziana). Pkt. 10c; ¼ oz. 25c.

**Hollyhock**

Some grow to the top of the second-story window and in some gardens they only grow 3 to 10 feet tall. The double ones are usually about 6 feet tall.

Choice Double Mixed. Pkt. 10c; 3 pkts. 25c; ¼ oz. 75c.

Single Fine Mixed. Pkt. 10c; ¼ oz. 50c.

**Larkspurs Annual**

Well-known rapid growing annual with long erect spikes of beautiful double flowers.

Emperor Fancy Mixture. Pkt. 10c; 3 pkts. 25c; ½ oz. 50c; 1 oz. 85c.

The following separate colors in Tall Emperor Larkspur: White, Light Blue, Bright Rose, Deep Red, Dark Blue. Price, 10c per pkt.; any 3 pkts. 25c, or 1 pkt. each the 5 colors for 35c, postpaid.

**Mignonette**

A well-known hardy annual producing thickly set flowers of modest colors, and pleasing fragrance.

Sweet Scented Mixed. Pkt. 10c; 3 pkts. 25c; ½ oz. 50c; 1 oz. 85c.

**Marigolds (African)**

These grand African Marigolds produce densely double flowers, 8 to 10 inches in circumference.

African Orange. Enormous flowers of perfect shape, deep golden orange. 2½ feet. Pkt. 10c; ¼ oz. 35c.

African Lemon. A charming color. 2½ feet. Pkt. 10c; ¼ oz. 35c.

**Nasturtiums**

**TOM THUMB, DWARF**

Mammoth Flowering Dwarf Nasturtiums, Mixed. These wonderful new Nasturtiums produce flowers twice the size of the old-time dwarf mixed. Oz. 10c; ¼ lb. 35c; 1b. \$1.25, postpaid.

**TALL, OR CLIMBING**

Mammoth Flowering Climbing Nasturtiums, Mixed. Mixed by ourselves from all the choice separate colors, including new and rare varieties. Oz. 10c; ¼ lb. 35c; 1b. \$1.25, postpaid.

**Pansies**

Exhibition Mixed. The result of years of scientific culture in raising Pansies. Pkt. 25c; ½ oz. \$1.50.

Royal Mixture. This mixture comprises a large number of colorings. Pkt. 15c; 2 pkts. 25c; ½ oz. \$1.00.

**Phlox Drummondii**

The easiest grown of all annual flowers in the South.

Finest Large Flowering Varieties Mixed. Pkt. 10c; 3 pkts. 25c; ¼ oz. 75c; oz. \$2.50.

Hardy Perennial Phlox (Decussata). This is the perennial phlox which grows 3 feet high. Soak seed for 24 hours before sowing. Pkt. 25c; 2 pkts. 40c.

**Poppy**

Shirley Finest Single Mixed. Dainty flowers on slender stems, in the most delicate shades, varying in color. Pkt. 10c; ¼ oz. 25c; oz. 75c.

Double "Featherball" Mixed. These double-fringed annual Poppies are very beautiful. Pkt. 10c; ¼ oz. 25c; 1 oz. 75c.

Orientele (the large Oriental Poppy). A hardy plant, bearing large brilliant crimson flowers, with a black blotch on each petal. Pkt. 15c; 2 pkts. 25c.

**Salpiglossis**

A half-hardy annual, growing about three feet high and bearing blossoms of richest colors. Mixed. Pkt. 10c; ½ oz. 50c.

**Sweet William**

Old-fashioned flower, growing about 1½ feet high with large clusters of flowers in all shades from white to dark red.

Single Mixed. All colors. Pkt. 10c; ½ oz. 30c; ¼ oz. 50c.

Double Mixed. All colors. Pkt. 10c; ½ oz. 40c; ¼ oz. 65c.

**Mammoth Verbenas**

The trusses and individual flowers of our Verbenas are of the largest size, of brilliant colors.

Mammoth Mixed. Finest colors. Pkt. 10c; ½ oz. 50c; 1 oz. 85c.

**Wall Flower**

These perennials make nice bushy plants, 1½ feet high, bearing various colored flowers.

Large Double Mixed Colors. Pkt. 15c; 2 pkts. 25c.

Large-Flowering Single. Mixed Colors. Pkt. 10c; 3 pkts. 25c; ¼ oz. 1.25; 1 oz. \$4.00.



Pansy.



Phlox.

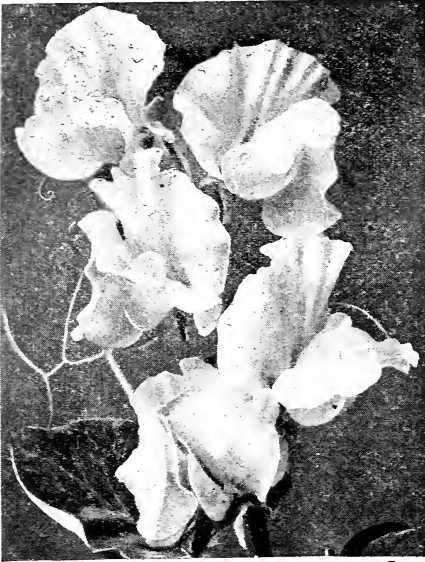


Shirley Poppy.



Salpiglossis.

# Spencer or Orchid Flowering Sweet Peas



Giant Spencer Sweet Peas.

Sweet Peas have been frequently referred to as the poor-man's Orchid solely because of the abundance of blooms, the colors of which may be likened to those found in the rarest Orchids.

America for years has been looked upon as headquarters for seed of this beautiful climbing annual, and with the result that there is now in cultivation hundreds of named varieties.

We are fortunate in having close acquaintance with all the noted producers of Sweet Pea seed. So we have gone over the list of varieties repeatedly and now offer under color classification what we consider the best of their respective classes.

**CULTURE**—Sweet Peas should be sown in drills as early as possible in spring in rich, friable soil. Prepare the bed thoroughly, digging in a quantity of well-rotted manure, if it can be done, making a furrow 1 to 6 inches deep. In this sow the seed and cover 2 inches deep. As soon as the plants begin to show through fill in the furrow. This will secure a deep planting without the bad effects of deep covering of the seed at first, and so enable the plant to bloom continuously through the heat of summer. As fast as the flowers come into full bloom they should be cut off, for if the pods are allowed to form the plants will stop blooming. In the selection and growing of our Sweet Peas we have obtained the services of one of the leading expert Sweet Pea growers in the world, who has made the growing, propagation and development of grand, new, elegant varieties of Sweet Pea one of the highest aims of life. We, therefore, commend our extra-superior varieties to you with the assurance that if you plant them you will have, without exception, the finest collection of colors and varieties of Sweet Peas of any one in your locality.

## LAVENDER

Florence Nightingale  
Tennant Spencer

## BLUE

Margaret Madison  
Wedgewood  
Royal Purple

## MAROON

Nubian  
King Manuel

## BI-COLOR

(Pink and White)  
Blanche Ferry Spencer  
Mrs. Cuthbertson

## FICOTEE EDGED

Dainty Spencer, white,  
edge pink.  
Mrs. Townsend, white,  
edge pink.

Mrs. C. W. Breadmore,  
cream, edged pink.

## STRIPED or Varigated

Senator Spencer

Prices: Pkt. 10c; oz.  
25c; ¼ lb. 85c; lb. \$3.00;  
except Fiery Cross—Pkt.  
15c; oz. 40c; ¼ lb. \$1.25;  
lb. \$4.00.

## SUPERB MIXED SPENCERS.

This mixture not only contains all the above, but also a host of other varieties all blended together in just the right proportion. Pkt. 10c; oz. 25c; ¼ lb. 75c; lb. \$2.50.

## WHITE

Snowstorm  
Primrose  
CREAM or YELLOW

## LIGHT PINK

Elfreda Pearson

## DEEP PINK

Countess Spencer  
Hercules

## SALMON PINK

Doris Usher  
Illuminator

## ROSE

George Herbert  
Ie Marion Marshall

## CRIMSON or SCARLET

King Edward Spencer

## ORANGE

Fiery Cross  
Helen Grosvenor  
Thomas Stevenson

## SALMON

Barbara  
Sterling Stent

# Zinnias

**CULTURE**—Sow the seed in good soil. Thin out or transplant 1 to 2 feet apart in rows 2 to 3 feet apart when plants are about 2 inches high.

**GIANT ZINNIAS MIXED COLORS.** This is a mixture of all the separate colors of Giant Zinnias mixed by ourselves. Pkt. 10c; 3 pkts. 25c; ¼ oz. 50c; ½ oz. 85c; oz. \$1.50.

**NEW DAHLIA FLOWERED DOUBLE MIXED.** (See illustration.) Mixed from new varieties of Dahlia Flowered Zinnias. Pkt. 15c; 2 pkts. 25c; ¼ oz. 75c; ½ oz. \$1.50; 1 oz. \$2.50.

## Separate Colors

Apricot, Buff  
Apricot Orange  
Bright Rose  
Canary Yellow  
Crimson  
Golden Yellow  
Deep Flesh  
Lavender

Purple  
Salmon Rose  
Scarlet  
Shrimp Pink  
White  
Golden Pheasant  
New Orange King



New Dahlia Flowered Zinnia.

Any of the above separate colors of **GIANT ZINNIAS**: Each one packet 10c; 3 pkts. 25c; ¼ oz. 50c; ½ oz. \$1.00; oz. \$1.75.





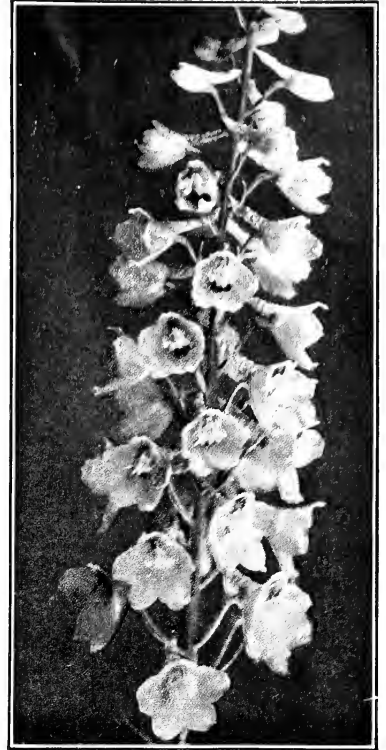


# FLOWER SEEDS

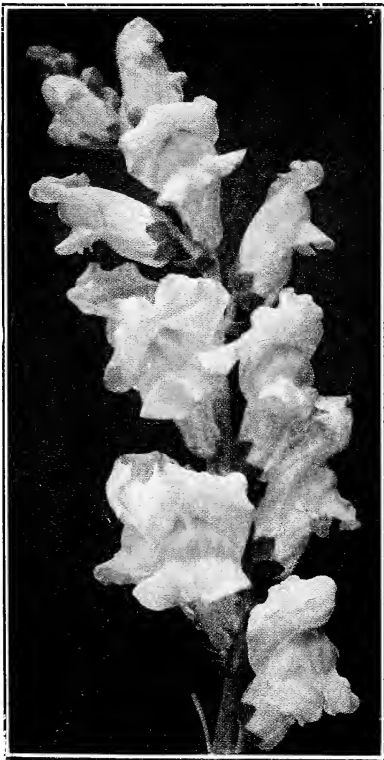
*for*  
**Fall  
Planting**



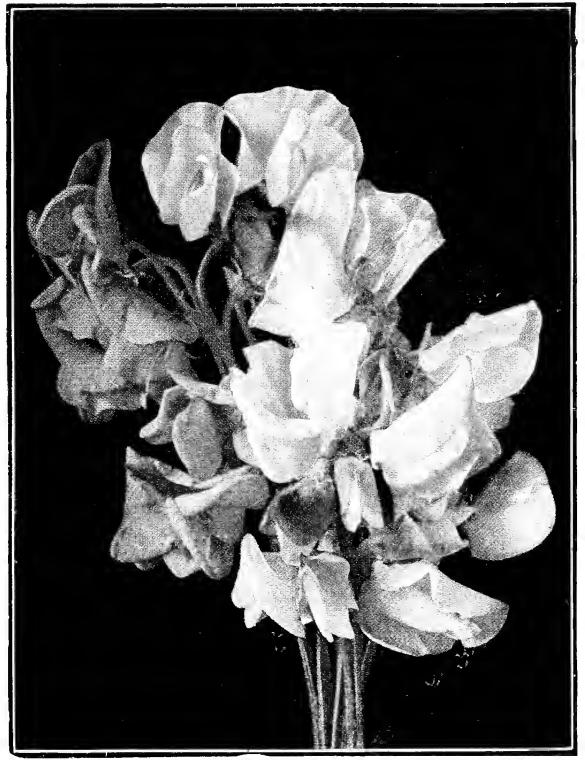
Giant  
Flowering  
Zinnia



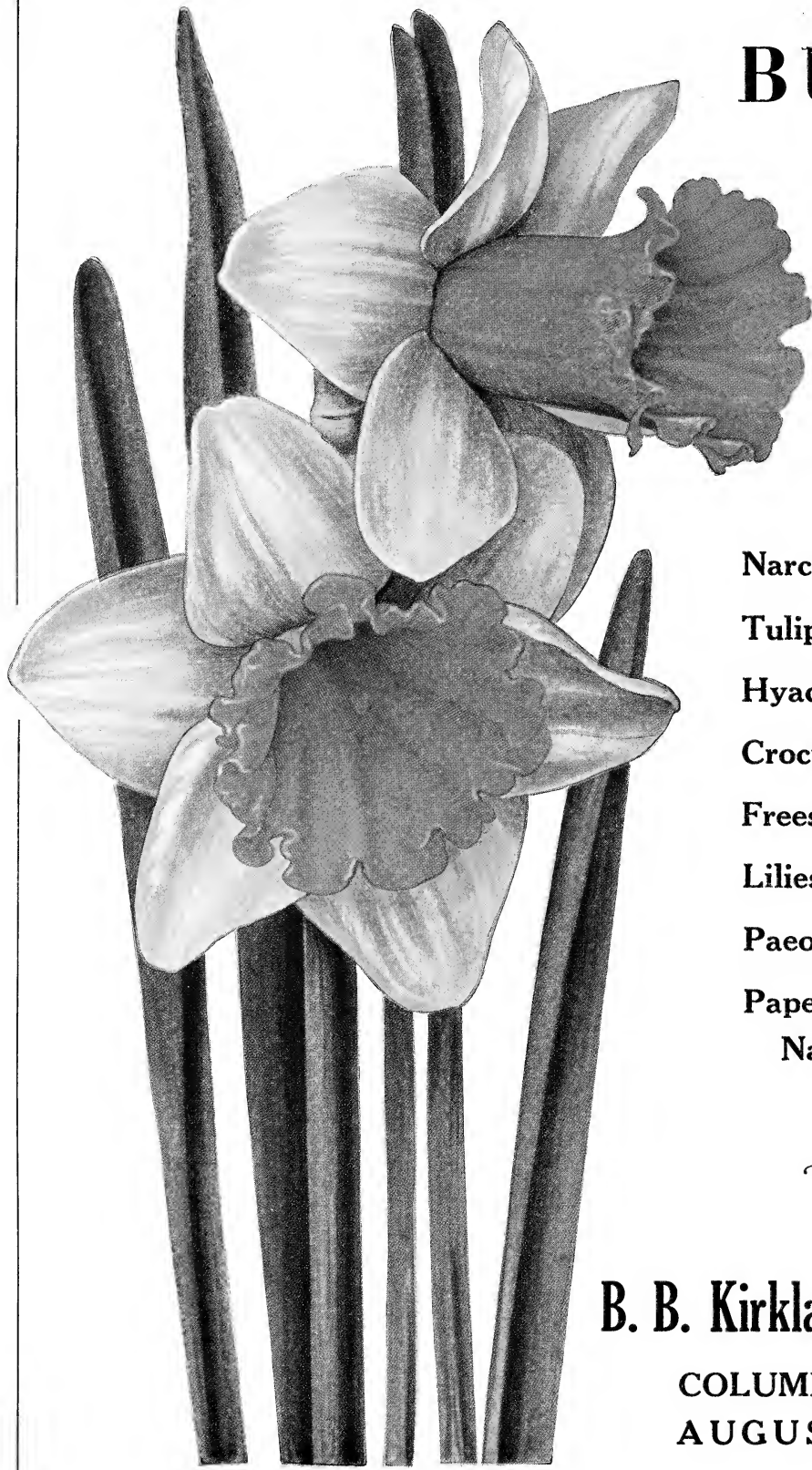
Delphinium—Belladonna  
(Hardy Larkspur)



Anemone, or Snap Dragon.



Sweet Peas.



# BULBS

*for*

**Fall  
Planting**

**Narcissus**

**Tulips**

**Hyacinths**

**Crocus**

**Freesias**

**Lilies**

**Paeonies**

**Paper White**

**Narcissus, Etc.**



**B. B. Kirkland Seed Co.**

**COLUMBIA, S. C.  
AUGUSTA, GA.**