

## **Historic, Archive Document**

Do not assume content reflects current scientific knowledge, policies, or practices.



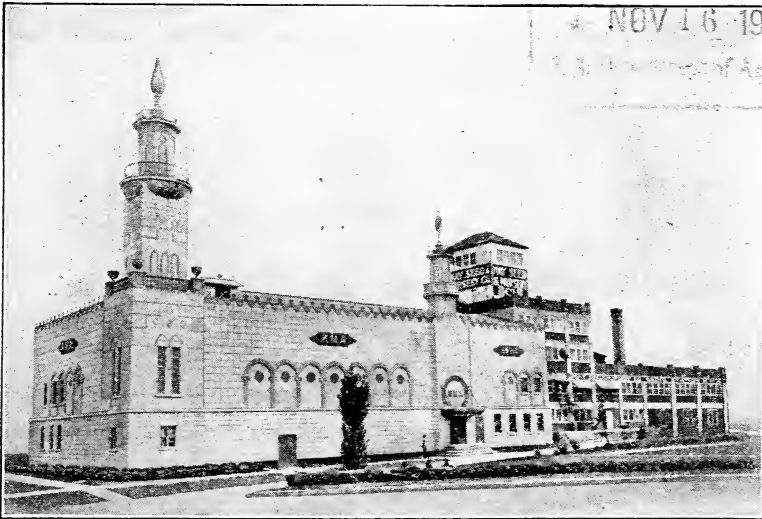
12321

# MAY'S

*Big*

## FALL CATALOG

1928



THE HOME OF KMA

### BULBS & MERCHANDISE

# EARL E. MAY

## SEED & NURSERY CO.

### SHENANDOAH, IOWA

PRICES IN THIS CATALOG SUBJECT TO CHANGE WITHOUT NOTICE

D. N. Shoemaker



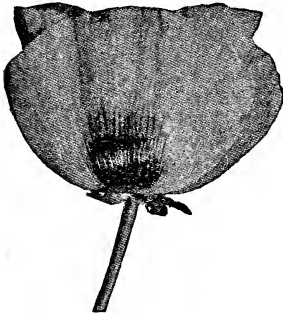
Dear Friends:

I know that there are just lots of you who did not get to see Mr. Henderson from KWKH, Shreveport, La., when he was here this Spring. I am holding the Gold Cup and that is Mr. Henderson just to the left of me, and Cy Rapp just behind us.

I want to thank you for the nice orders all of you have sent in. By all means come and see us at "Mayfair," our new auditorium and radio studio. You will enjoy your visit.

This is my Fall 1928 catalogue you are reading—it is chuck full of bargains! Prices on tires, paint and dependable merchandise of all kinds, are right down to rock bottom in this catalogue. I save you money on every order. My offerings of Tulips, Hyacinths, Peonies, Iris and other Fall bulbs are very complete and at the lowest price ever offered for No. 1 stock.

Your friend,



## ORIENTAL POPPIES

August is the ideal time for planting Oriental Poppies—they are almost sure to grow if planted at this time.

Hybrida Red.....	} <b>35c each</b> <b>3 for \$1.00</b> <b>postpaid</b>
Princess Victoria Louise, pink.	

# DARWIN TULIPS - - - - Long Stemmed

## PLANTING INSTRUCTIONS

Plant Tulips on well drained soil. Dig deeply, pulverize well and if soil is rather heavy, place a layer of sand just under the bulb. Bone Meal is the only safe fertilizer; put a handful around each bulb when planting. The top of the bulb should be from 4 to 6 inches below the level of the ground. Early Tulips 4 to 5 inches and late Tulips, Darwins, Cottage and Breeders 5 to 6 inches.



### Darwin Tulip Collection

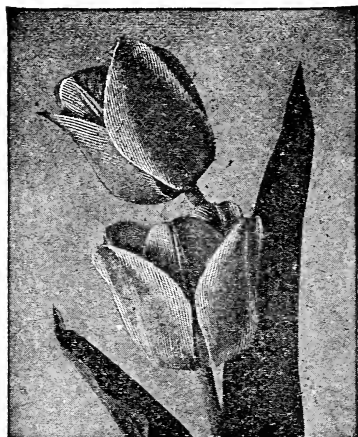
- 5 Pride of Harlan, big, Carmine Red
  - 5 Clara Butt, Pink
  - 5 Zulu, Black Purplish Red
  - 5 Painted Lady, Creamy-White
  - 5 Rev. H. Ewbank, Heliotrope-Lilac
- 25 bulbs named as above sent to you for \$1.15 postpaid.

	Per 3	Per 10	Per 100
BARTIGON. Dazzling scarlet, strong stem-----	.20	.50	\$3.85
BARONNE DE LA TONNAYE, 26 inch. Vivid pink-----	.20	.50	3.95
LARA BUTT, 20 inch. Apple blossom pink-----	.20	.45	3.60
CREAM. 25 inch. Large lilac, inside deep violet with blue base----	.20	.50	4.25
FARNCOMBE SANDERS. 25 inch. Rich deep rosy red, distinct white base, perfect shaped flowers and long stems-----	.20	.45	4.25
INGLESCOMBE YELLOW. Rich yellow, large solid flower-----	.20	.45	4.25
LA CANDEUR. White, slightly tinged, fine bedder. Late-----	.20	.50	4.00
LA TULIPE NOIRE (The Black Tulip.) Best of all Black Tulips--	.25	.55	4.75
MRS. POTTER PALMER. 26 inch. A bright purplish violet-----	.20	.50	3.95
PAINTED LADY. A popular variety, creamy white with a lavender tint at the base-----	.20	.50	4.00
PRIDE OF HAARLEM. 28 inch. Carmine-red. An enormous large flower with blue base, sweet scented-----	.20	.45	3.60
REV. H. EWBANK. 20 inch. Vivid heliotrope-lilac, lightly bordered. Early, one of the best-----	.20	.50	4.00
WHITE QUEEN. White passing to pink-----	.25	.55	4.45
ZULU. 27 inch. Red velvety-black purple color-----	.20	.50	4.25
VALENTINE BLUE. A light blue with electric blue center. Fine forcer-----	.25	.60	4.50
DARWIN MIXED-----	.15	.35	2.85
MAY'S ECONOMICAL MIXTURE OF DARWINS, splendid value some we have mixed here from named varieties-----	.20	.45	3.75
ONE EACH OF THE ABOVE NAMED VARIETIES-----			\$ .95
TWO EACH OF THE ABOVE NAMED VARIETIES-----			1.75

NOTE—If we should run out of any of the varieties listed in these two special offers, we will be glad to put in other varieties to full value as good in color.

**I PAY POSTAGE ON BULBS**

# SINGLE EARLY FLOWERING TULIPS



Single early tulips are rich in color; not as tall as Cottage or May-flowering. Excellent for mass planting. When not planted in beds, Tulips are best planted in clumps of 4, 6 or more. Single Tulips are also fine for forcing purposes.

---



---

**Remember!**  
**I PAY POSTAGE**  
**ON BULBS EVERYWHERE**

---



---

	Per 3	Per 10	Per 100
ARTUS. Splendid dark scarlet, one of the most used reds.....	.20	.50	\$ 4.25
CHRYSOLORA. Large golden yellow, only good for outdoors....	.25	.60	5.00
COTTAGE MAID. Rosy pink with white edge.....	.20	.50	4.25
CRAMOISI BRILLIANT. Rich glowing crimson, very popular variety for bedding and forcing.....	.20	.45	3.95
DUK DE BERLIN. Red and yellow.....	.25	.60	5.00
KEIZERKROON. Large carmine scarlet with broad yellow border.....	.30	.75	6.25
PRINCE OF AUSTRIA, deep orange red, sweet scented, long stemmed, excellent for cutting.....	.25	.60	5.00
ROSE GRIS DE LIN. Delicate rose, flushed white.....	.20	.50	4.25
WHITE HAWK. Pure white, fine for forcing, a good bedder; flowers large.....	.25	.55	4.50
WHITE SWAN, pure white, egg shape.....	.20	.50	4.25
WOUWERMAN, rich purple violet.....	.25	.55	4.50
YELLOW PRINCE. Lemon-yellow, sweet scented.....	.25	.65	5.25
ONE EACH OF THE ABOVE NAMED VARIETIES.....			\$ .80
TWO EACH OF THE ABOVE NAMED VARIETIES.....			1.25

## UN-NAMED STRAIGHT COLORS

RED SHADES, mixed.....	.17	.45	---
PINK SHADES, mixed.....	.17	.45	---
WHITE SHADES, mixed.....	.17	.45	---
YELLOW SHADES, mixed.....	.17	.45	---
FINE MIXED.....	.15	.35	---
SPECIAL MIXED, named varieties used.....	.20	.45	3.65

## SINGLE EARLY COLLECTION

5 White Swan, White  
5 Chrysolora, Yellow

5 Cramoisi Brilliant, Red  
5 Cottage Maid, Rosy-Pink  
5 Due de Berlin, Red and Yellow

This collection of 25 named bulbs for \$1.25 postpaid.



## DOUBLE EARLY TULIPS

These Tulips bloom a trifle later than the single early flowering variety. Their brilliant colors and beautiful Peony-like bloom add greatly to the beauty of your flower garden. Plant in beds or just back of the single varieties in your Tulip border.

	Per 3	Per 10	Per 100
BOULE DE NEIGE. Creamy white, very large flower-----	.20	.55	\$4.75
COURONNE D'OR. Orange-yellow, and bronze, tinted-----	.25	.65	5.00
IMPERATOR RUBRORUM. Glowing scarlet, showy-----	.25	.65	5.50
LA CANDEUR. Double white, large and full double-----	.20	.55	4.75
LUCRETIA. Fine deep pink-----	.25	.65	5.00
MURILLO. Beautiful pale pink-----	.20	.55	4.50
RUBRA MAXIMA. Deep, red, beautiful bedding Tulip full double	.25	.65	5.50
TEAROSE (Brimstone Beauty), Primrose Yellow-----	.20	.55	4.75
TOURNESOLL RED and YELLOW. Bright Red with Yellow border-----	.30	.70	6.00

### DOUBLE TULIP MIXTURE OF ALL VARIETIES

Double early, fine mixed-----	.20	.50	3.95
May's double early special mixed, named varieties used-----	.25	.55	4.50

## Lawn Seeding Can Be Done in the Fall

Lawns can be seeded practically at all seasons of the year. We find that Fall seeding using our Maypark and Shady Place Mixtures give unusually satisfactory results. Apply 1 lb. to every 400 square feet if re-seeding, and 1 lb. to every 300 square feet if new seeding.

MAY PARK LAWN GRASS MIXTURE has made a beauty place around the Courthouse at Sidney, Iowa; about the postoffice at Shenandoah, Iowa; around the Country Clubhouse, and about many of the better homes here in Shenandoah, and our own May Park, one of the beauty spots about our administration building, is a beauty spot because of the healthy, green lawn. Price, lb., 50¢; 3 lbs. \$1.45; 10 lbs., \$4.50 postpaid.

MAY'S SHADY LAWN GRASS MIXTURE is especially blended to build up a lawn where shade is a consideration. For this purpose, we have prepared this mixture very carefully for sowing under trees and shady places where the ordinary grasses do not succeed well. Price, lb., 60¢; 3 lbs., \$1.70; 10 lbs., \$5.50, postpaid.

## LOOK!! PANSIES IN AUGUST

Pansy seed can be planted in August and early September so they will bloom in the spring. Make a fine light seed bed mixing in sand if necessary, water well after very lightly covering the seed. It is best to mulch pansy seedlings over winter and also shade the seed bed for the first ten days. Can give you any variety listed in our big SEED CATALOG. Big, full sized packets MAY'S MIRACLE MIXED our super mixture at 20¢ per packet; 2 for 35¢ postpaid.



## Cottage or May-Flowering Tulips

Cottage Tulips bloom in early May. They come in all colors, are well shaped and are borne on long stems. Especially attractive are the shades of yellow, orange, fawn, salmon, old rose and amber which are found in the Cottage varieties. Do not fail to provide good drainage.

	Per 3	Per 10	Per 100
<b>BRIDESMAID</b> (Maid of Holland) Cherry-rose striped scarlet, violet and white.....	.25	.60	4.95
<b>ELEGANCE</b> . 16 inch. Brilliant crimson, pointed petals, very early.....	.30	.80	5.95
<b>FAIRY QUEEN</b> . 20 inch. Heliotrope color with yellow margin.....	.25	.60	4.75
<b>GOLDEN SPIRE</b> . Orange-yellow, large flower, pointed reflexing petals.....	.25	.70	5.90
<b>INGLESCOMBE PINK</b> . 24 inch. (Salmon Queen.) Beautiful pink salmon.....	.20	.45	3.95
<b>INGLESCOMBE YELLOW</b> . Rich yellow, large solid flower, sometimes called "The Yellow Darwin".....	.20	.45	4.25
<b>ISABELLA</b> . 16 inch (Shandon Bells; Blushing Bride) Creamy colored, rosy shade.....	.20	.45	3.95
<b>ORANGE KING</b> . 24 inch Bright glowing orange, tinged rose on the outside, very sweet scented.....	.25	.60	5.00
<b>SUNSET</b> . Large yellow, bordered orange.....	.30	.70	6.25
<b>THE FAWN</b> . 20 inch. Light greyish-rose, changing to rosy white, large.....	.25	.55	4.25
<b>COTTAGE MIXED</b> , a very fine mixture.....	.20	.45	3.65

### HINTS FOR INDOOR FORCING

You will want to plant some bulbs now to force into bloom for this winter. It is easy to do. Use rich soil and plant the bulbs just below the surface. Keep in a cool dark place for at least six weeks to allow the root system to become well established. This is essential. The ideal way is to bring the bulbs to light and yet keep in the cool until just the time that you want the flowers. Then they should be kept in a warm, light place.

Plant your hyacinths, narcissi, and tulips now for blooms this winter.

ORDER NOW.



# FAMOUS DUTCH OR MAMMOTH BREEDER TULIPS

For the Open Ground

Breeder Tulips are in a class by themselves, because of their unusual size, and remarkable range of colors. If you like purple, old gold, bronze, terra cotta, brown, velvet buff, and maroon, you will find these colors in the late blooming, large size, sweet scented Breeder Tulips.



**I Pay Postage  
on Bulbs**

	Per 3	Per 10	Per 100
ATTRACTION. 23 inch. Glowing bluish violet, white center-----	.30	.80	\$6.00
BRONZE QUEEN. 28 inch. Apricot color Bronze-----	.25	.65	5.50
CARDINAL MANNING. 28 inch. Dark rosy violet, flushed rosy bronze-----	.25	.65	5.65
CHESTNUT. 25 inch. A novelty, very dark brown-----	.25	.65	5.25
DOM PEDRO. 25 inch. Unique shade of coffee brown shaded maroon. Inside flower is shaded rich mahogany-----	.30	.80	6.25
GODET PARFAIT. 30 inch. Bright bluish violet, with white base--	.35	.85	7.25
LUCIFER. 26 inch. Novelty, bright terra cotta orange, very large	.35	.85	7.25
MAY'S SPECIAL MIXED BREEDERS. All colors, excellent selec- tion of this popular class of Tulips-----	.25	.60	5.00

## PARROT TULIPS LATE TULIPS

For the Open Ground

For unusual, bright colors and large flowers with cut or fringed petals or a novelty, plant Parrot tulips, height about 15 inches.

	Per 3	Per 10	Per 100
COULEUR CAFE (Cafe Brun.) Rich purple mixed with golden brown and yellow-----	.25	.60	4.75
CRAMOISI BRILLIANT. Rich deep crimson-scarlet, the best of the red colored Parrots-----	.25	.60	4.50
LUTEA MAJOR. Large yellow-----	.25	.60	4.75
MIXED. Several shades and colors-----	.20	.50	4.25

## DOUBLE EARLY TULIP COLLECTION

- |                              |                         |
|------------------------------|-------------------------|
| 5 Rubra Maxima, Red          | 5 Couronne d'Or, Yellow |
| 5 Murillo, Pink              | 5 Boule de Neige, White |
| 5 Tournesoll, Red and Yellow |                         |

These 25 bulbs, all named varieties for only

**\$1.30 Postpaid**

# TULIP COLLECTIONS



GUARANTEED TO BLOOM FIRST YEAR.

At this low price everyone can have a tulip bed. Think of it—100 top size Darwin Tulip bulbs for only \$2.85 postpaid! Send your order now—plant after September 15th.

These low priced collections of named varieties of Tulips, will give you an assortment of the better varieties and colors. In case you want a larger bed than one collection would make, I am making a special price on the 4 collections of 100 bulbs for \$4.00 POSTPAID. My Tulips are top sized bulbs and bloom the first year.

## DARWIN TULIP COLLECTION

- |                                    |                                      |
|------------------------------------|--------------------------------------|
| 5 Painted Lady, Creamy-White       | 5 Pride of Haarlem, big, Carmine Red |
| 5 Rev. H. Ewbank, Heliotrope-Lilac | 5 Clara Butt, pink                   |
| 5 Zulu, Black Purplish Red         |                                      |

25 bulbs named as above sent to you for \$1.15 postpaid.

## SINGLE EARLY COLLECTION

- |                                 |                           |
|---------------------------------|---------------------------|
| 5 Duc de Berlin, Red and Yellow |                           |
| 5 White Swan, White             | 5 Cramoisi Brilliant, Red |
| 5 Chrysolora, Yellow            | 5 Cottage Maid, Rosy-Pink |

This collection of 25 named bulbs for \$1.25 postpaid.

## DOUBLE EARLY TULIP COLLECTION

- |                     |                         |
|---------------------|-------------------------|
| 5 Rubra Maxima, Red | 5 Couronne d'Or, Yellow |
| 5 Murillo, Pink     | 5 Boule de Neige, White |

Tournesoll, Red and Yellow

These 25 bulbs, all named varieties for \$1.30 postpaid to you.

## LARGE FLOWERING COTTAGE COLLECTION

- |   |                            |
|---|----------------------------|
| 5 Bridesmaid, Cherry, Scarlet, Violet and White |                            |
| 5 Elegance, Crimson                             | 5 The Fawn, Greyish-Rose   |
| 5 Orange King, Orange                           | 5 Inglescombe Pink, Salmon |

I will mail this splendid assortment of 25 Cottage Tulips for \$1.30 postpaid

**SPECIAL OFFER— All 4 combinations for \$4.00 postpaid**

**GROWERS OF TRUST-WORTHY NURSERY STOCK**

# BEDDING HYACINTHS

(Extra Select Bulbs)

All large size bulbs suitable for both indoor and outdoor culture. The Hyacinths are among the most popular of the fall bulbs as they force easily and bear large well developed trusses. Their wonderful rich coloring and sweet fragrance make them a favorite with everyone. For garden culture, plant from September to December. Set bulbs six inches apart and six inches below surface of the soil. Before ground freezes cover with leaves or straw to a depth of four inches. Do not uncover too early in spring.

## PRICES ON ALL BEDDING HYACINTHS,

NAMED VARIETIES, 20¢ each; 3 for 50¢; \$1.75 per dozen; \$3.25 for 25; \$12.50 per 100.

### RED AND DEEP ROSE

**LA VICTOIRE.** Beautiful rosy red with large well-filled spikes. An early forcer and a wonderful bedder.

**GERTRUDE.** Deep rose-pink, large, compact and well filled spikes.

### LIGHT BLUE AND LILAC

**CZAR PETER.** Light blue, very pretty with immense well filled spikes.

**LORD BALFOUR.** Light purple, tinted with lilac-pink, very early.

### PURE WHITE

**LA GRANDESSE.** Pure white with fine, compact spikes. The best late forcing variety and fine for bedding as well.

**L'INNOCENCE.** Finest pure white, does well indoors and out. Very early.

### BLUE AND DARK BLUE

**GRAND MAITRE.** Porcelain blue with long compact spikes and large bells.

**KING OF THE BLUES.** Rich indigo blue, bearing enormous flowers on long stems. Excellent bedding variety. Late.

### YELLOW AND ORANGE

**YELLOW HAMMER.** Lemon-yellow. Opens creamy yellow, the color deepening as the flower ages.

**CITY OF HAARLEM.** One of the best golden yellows. Orange-yellow bells. Good for forcing and bedding.

### MIXED HYACINTHS

**FINE MIXED.** All varieties and colors. 20¢ each; 4 for 60¢; \$1.25 per doz.; \$11.50 per 100.

## Miniature Dutch Roman or French Roman Hyacinths

Beautiful little flowers, are fine for planting in masses, either in shade or sun. Once planted, they multiply rapidly and send up flower stems by the score each year. Also adapted for growing indoors. Plant six bulbs in a five-inch pot. They are perfectly hardy. 15¢ each; 3 for 40¢; \$1.50 per doz.; \$10.00 per 100.

**GERTRUDE.** Rosy pink.

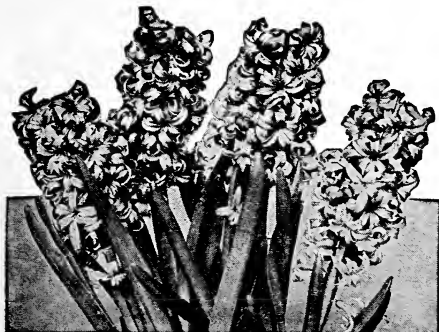
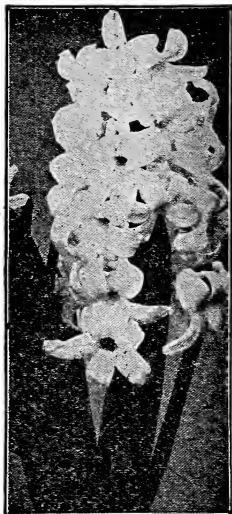
**GRAND MAITRE.** Dark blue.

**L'INNOCENCE.** Pure white.

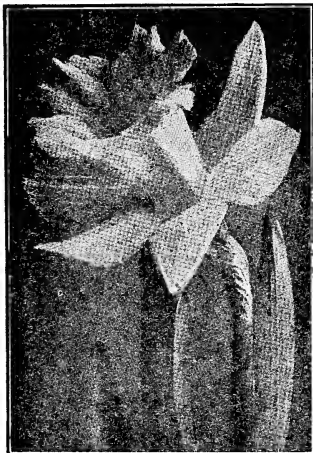
**LA VICTOIRE.** Beautiful rosy red.

**YELLOW HAMMER.** Yellow.

**FINE MIXED.** 14¢ each; 4 for 50¢; \$1.40 per doz.; \$9.00 per 100.



**Prepay Bulbs**



## NARCISSUS

Narcissus are too well known to spend many words of introduction. Everyone is acquainted with their splendid forcing qualities and admires their natural beauty in the garden. They are perfectly hardy and thrive in almost any situation sun or shade outdoors or indoors. As cut flowers, they will last in water a week or ten days. For outdoor culture, plant 5 or 6 inches apart and five inches below the surface of the soil.

**EXCEPT AS NOTED OUR PRICES ON NARCISSUS ARE ALL 15¢ each; 3 for 40¢; 12 for \$1.35; \$10.00 for 100. All postpaid.**

### GIANT TRUMPET VARIETIES

**EMPEROR.** Large, rich yellow trumpet, primrose perianth, fine for cutting, large bulbs.

**GOLDEN SPUR.** Native of the Netherlands, large lobed trumpets; rich deep soft yellow perianth, large and early.

**KING ALFRED.** Rich yellow, very large. 20¢ each; \$2.00 per doz.

**MME. PLEMP.** Large white perianth, rich yellow trumpet.

**VICTORIA.** Clear yellow trumpet, large size, beautifully frilled at the mouth, broad perianth of creamy white.

### SHORT TRUMPET NARCISSUS

Some of the most beautiful and graceful Narcissus are found among the short-cupped kinds, and are fine when grown in pots.

**CONSPICUUS.** (Barri) Broad yellow trumpet, edged with orange-scarlet, soft yellow perianth.

**LUCIFER** (Incomparabilis) Perianth sulphur-white, cup yellow to bright orange-red, very showy.

**MRS. LANGTRY** (Leeds.) White or pale primrose. Cup edged bright yellow, broad white perianth. Free blooming variety.

**SIR WATKINS.** Deep sulphur perianth, large golden yellow tinted orange, very useful for cut flowers and an early forcer.

### POET'S AND POETAZ NARCISSUS

These are the old-fashioned Narcissi, having a wide open cup, sometimes edged with orange or scarlet. Planted in clumps and allowed to remain, they will naturalize themselves. Are perfectly hardy and need no protection. They have a delicate perfume and very charming form and color.

**POETAZ ELVIRA.** Broad white petals, golden yellow cup edged with orange, fragrant, free flowering.

**LAURENS KOSTER.** Orange cup. White perianth.

**POETICUS ORNATUS.** The early-flowering Poeticus, large white flowers with cup edged with bright orange-red. Fragrant.

**POETICUS ORNATUS.** The early-flowering Poeticus, large white flowers with saffron cup margined scarlet. Fragrant with a rich spicy odor.

**All Bulbs Prepaid To You**

## DOUBLE FLOWERING NARCISSUS

The double varieties of Narcissus are more commonly known as Daffodils and may be grown either in the open or forced in pots.

**ORANGE PHOENIX.** (Eggs and bacon.) Large, double rose-shaped flowers with a reddish orange center, an ideal cut flower.

**SILVER OR SULPHUR PHOENIX.** Large creamy white flowers with sulphur-yellow center. Excellent for cut flowers.

**VON SION.** Rich golden yellow, distinct perianth and double trumpet. The old-fashioned yellow Daffodil. Fine for beds and borders.

### Paper Whites

The most popular Narcissus for growing in the house, in pebbles and water or in prepared bulb fibre. Produces clusters of pure white, fragrant star-shaped flowers in 5 or 6 weeks after starting. Planted this fall makes fine flowers for Christmas. American grown. 12¢ each; 5 for 55¢; \$1.25 per dozen; \$10.00 per 100.

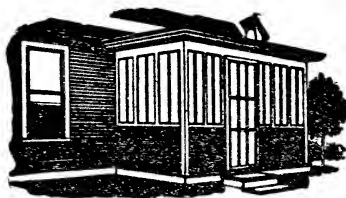


**GRAND SOLEIL d'Or.** Sometimes known as the Yellow Paper White. 20¢ each; 4 for 75¢; \$2.00 per doz.

## MIXED NARCISSUS

A good mixture of Giant Trumpet, Short Trumpet and other kinds of Narcissus, one that will give a good assortment of color and many surprises in the way of new types and shades. 12¢ each; 4 for 40¢; \$1.00 per dozen; \$7.50 per 100.

## GLASS CLOTH



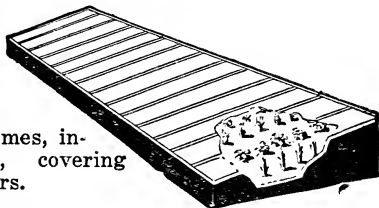
**EASY TO USE—QUICK AND EFFECTIVE**

GLASS CLOTH comes in rolls 36 inches wide. You can easily build with GLASS CLOTH. The only tools necessary being shears, tacks and a hammer. Tack or strip GLASS CLOTH so rain and snow can drain off for lasting results.

**REASONABLE PRICES**

Prices on GLASS CLOTH: 6 sq. yds., \$2.25; 10 sq. yds., \$3.50; 15 sq. yds., \$5.00, all postpaid.

Use GLASS CLOTH for scratch sheds, brooder houses, poultry houses, hot beds, cold frames, inclosing porches, covering windows and doors.



# MISCELLANEOUS FALL BULBS



My home in Shenandoah, showing what can be done with flowers and shrubs to improve its looks. I have two thousand bulbs planted around the house.

## Grape Hyacinths Muscari

Beautiful little spikes of small blue or white flowers, resembling miniature bunches of grapes. Grow well in either sun or shade. Bloom outdoors in May, perfectly hardy.

	Per 10	Per 100
White Grape Hyacinths	.....50	\$3.50
Light Blue Grape Hyacinths	.....45	3.25

## Amaryllis

Beautiful red or red and white flowers of large size. Borne in cluster on the tip of a one to three feet stem. Fine for pot plants in the house during the winter. Not hardy 50¢ each; 3 for \$1.25.

## Scilla

Hardy spring bulbs producing masses of exquisite rich blue flowers, very early in the spring. They may also be grown in pots indoors and planted this way bloom for Christmas. 55¢ per doz.; \$3.50 per 100.

## Snowdrops

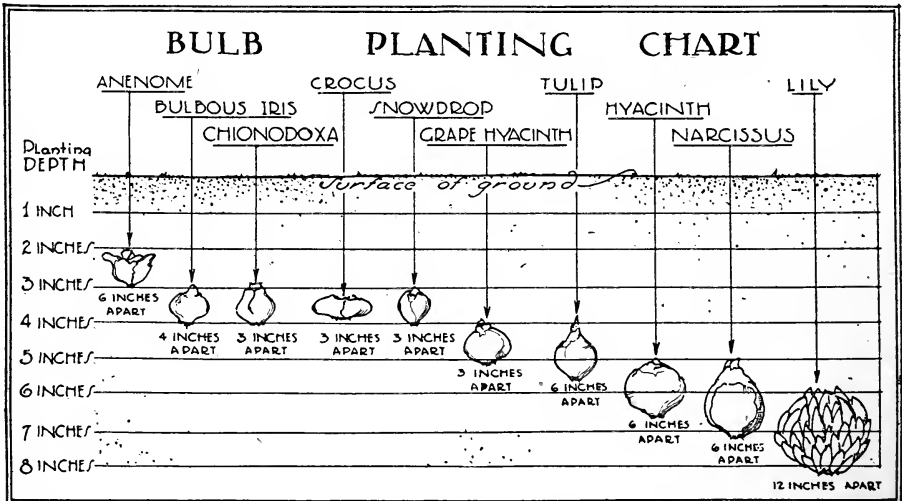
The first flowers to bloom in the spring. They can be planted in borders or lawns. Flowers white. 55¢ per doz.; \$3.50 per 100.

## Crocus

This is one of the earliest flowers to open in the spring and makes an effective showing on the lawn and can be planted in pots. A good method of planting is to scatter them over the lawn by digging up a small piece of lawn here and there and placing one or two bulbs in each spot.

	Per doz.	Per 100
MEYERBEER. Fine large blue.....	.45	\$3.00
MAMMOTH YELLOW.....	.50	3.65
MONT BLANC. Pure white.....	.40	2.75
SIR WALTER SCOTT. White striped lilac.....	.45	3.00
MIXED. The above in mixture.....	.40	2.50

I PAY DELIVERY CHARGES ON BULBS



## VIGOROUS PEONIES THAT GROW

My dependable peonies will be ready for shipment about the 10th of September. I offer you a complete assortment of the popular varieties. You may order now and I will send you these roots at the proper time for Fall planting.

### PLANTING INSTRUCTIONS—READ CAREFULLY

Plant Peonies in the Fall between September 1st and freezing weather. If planted in late October, November or December, mulch well so that the roots will not become loosened by alternate freezing and thawing. Plant in full sun, away from trees, on well drained soil.

When the roots arrive, immerse them in water for about 6 hours they are then ready to be set at least 3 ft. apart, and with the top of the pink buds 2 inches below the surface of the soil. Work the soil firmly around the roots with the fingers being careful not to injure the bud. Finish filling the hole with loose soil, then pack again firmly a couple of inches of soil above the ground. Give your peony plenty of water. Keep the soil loosened on top of the ground around the peony.

**Rating.** The figures in parenthesis are the ratings given by the American Peony Society, on a basis of ten being perfect. See quantity prices page 15.

## RED AND DARK COLORS

### EARLY

**OFFICINALIS RUBRA.** Vivid Crimson. The earliest Peony of all. In bloom for Decoration Day, \$1.00 each.

### MIDSEASON

**FELIX CROUSSE (8.4.)** Large, compact, deep ruby red. Fragrant. Vigorous grower. Blooms in clusters.

**F. ORTEGAT (6.7).** Deep Crimson blooms with Golden Yellow anthers. Large flower of semi-rose type. Always out in full bloom for Decoration Day. 60¢ each.

**GENERAL JACK.** Same color as the famous Jack rose. Good red. 60¢ each.

**KARL ROSENFELD (8.8.)** Very large dark crimson. A brilliant and striking variety. Free bloomer in clusters. \$1.25 each.

**RACHEL. (7.9)** Semi-rose type, Ruby Red in Color, medium sized, and produces but one beautiful blossom on each stem. Fragrant. \$1.00 each.

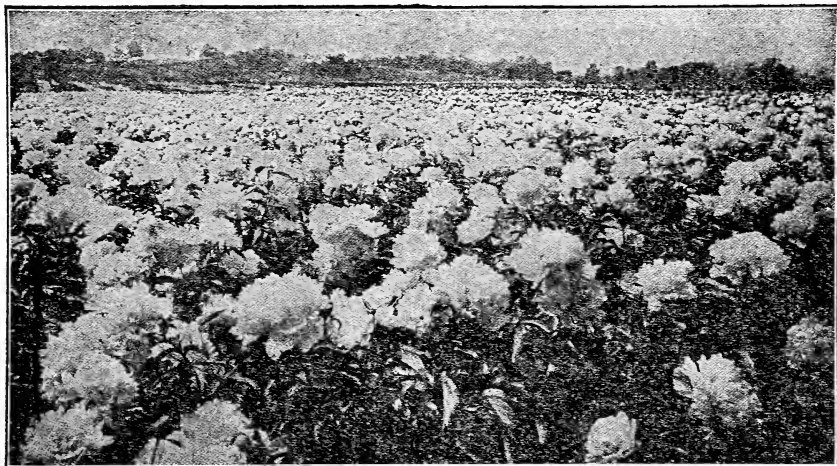
**RUBRA TRIUMPHANS. (6.7.)** Semi-double type, loose, very large, Crimson flowers. 70¢ each.

### LATE

**ANDRE LAURIES.** Dark rose very late. Strong grower and a free bloomer. Does well anywhere. 50¢ each.

**FULGIDA.** Amaranth red, silver tipped. Medium size, loose semi-double, tall, strong, erect grower. 70¢ each.

**LOUIS VAN HOUTTE.** Dark red. Semi-double, late bloomer, fairly good form and size, medium height. 60¢ each.



## PINK AND MEDIUM COLORS

### EARLY



**EDULIS SUPERBA.** (7.6) Decoration Day pink. Large loose crown type, a bright pink with violet shadings at the base of the petals. Fragrant and a very free bloomer. 50¢ each.

**MONS. JULES ELIE** (9.2) Bomb type. Pale lilac rose overlaid with a sheen of silver. Fragrant. One of the most popular of all varieties, excellent for cut flowers as well as landscape. \$1.00 each.

**OCTAVIE DEMAY** (8.5.) Large flat crown guards delicate, flesh-pink with narrow collar of ribbon-like white petals, center deeper pink. Fragrant. 70¢ each.

### MIDSEASON

**DELICATISSIMA** (7.6.) Rose type, pink, large, compact bloomer of a delicate all-one-color pink, borne in great profusion on erect, medium length stems. One of the best all round Peonies. Fine to plant for low hedge where one color is desired, 50¢ each.

**GENERAL BERTRAND.** Pink, with tips silvery tinted. Large, compact. A very good midseason variety. 60¢ each.

**GOLDEN HARVEST** (7.3.) Pink globular bomb developing a crown, soft pink guard, creamy white collar, pink center bloom tipped carmine. Fragrant. 60¢ each.

**VENUS** (8.3.) Pink, very large pale hydrangea-pink, large petals, tall, free bloomer. Late. \$1.00 each.

**FRAGRANS.** Dark pink, almost a red. The last peony to bloom. Very prolific bloomer. 50¢ each.

## WHITE AND LIGHT COLORS

### EARLY

**DUCHESS DE NEMOURS** (8.1.) White. Crown type, early; follows Festiva Maxima a few days. Sulphur-white flower with a greenish reflex that lights up the entire blossom which gradually changes to a pure white. Beautiful when half opened 60¢ each.

**FESTIVA MAXIMA** (9.3.) Rose type, white with prominent crimson markings, very fragrant. Sturdy strong stems; blooming habit very dependable, the most popular of all cut flower Peonies. 50¢ each.

**MME. DE VERNEVILLE** (7.9.) Bomb type, pure white; petals carmine tipped, pleasant odor. Extra strong and vigorous and extra free bloomer. It has a true June rose fragrance. 60¢ each.

### MIDSEASON

**GLORY OF BOSKOOP,** creamy white shaded with light pink. 60¢ each.

**QUEEN VICTORIA** (6.8.) Bomb type, pure milk white, occasional crimson flecks. Buds in clusters. Fragrant, medium height. 50¢ each.

### LATE

**AVALANCHE** (8.7.) Crown type, white flecked carmine, with creamy collar. Medium grower, late, odor pleasant. It is a waxy white, opens like a rose bud. 60¢ each.

**COURONNE d'Or.** White. Semi-rose. Very large imbricated blooms of perfect form. Color milk white reflecting yellow with golden stamens showing between the petals. A very beautiful flower. 50¢ each.





# CHOICE PEONY COLLECTIONS

## MAY'S DECORATION DAY COLLECTION

These are all early varieties, blooming for Decoration Day. Healthy, 3 to 5 eye divisions of the three varieties.

- Frances Ortegat, red.
- Festiva Maxima, white.
- Edulis Superba, pink.

**3 for  
\$1.40**

### May's Three Color Collection

Red, Pink, White

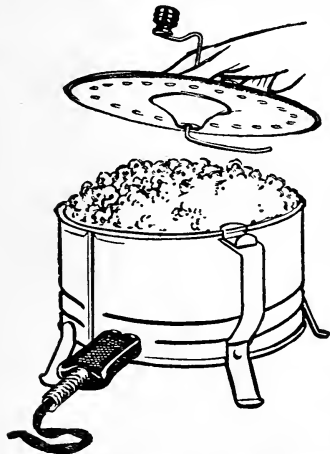
1 of each color or 3 of any color, your choice for **\$1.00** postpaid.



## PEONIES—QUANTITY PRICES THAT SAVE

You may apply the following prices in quantities of more than one peony:

Varieties listed at:	2 for	3 for	5 for	Varieties listed at:	2 for	3 for	5 for
50¢ each-----	.95	\$1.25	\$2.00	90¢ each-----	1.70	2.50	4.00
60¢ each-----	1.00	1.50	2.40	1.00 each-----	1.90	2.75	4.50
70¢ each-----	1.30	1.90	3.00				



## Our Wizard Popper

You cannot do justice to May's 100% popping corn without using one of our guaranteed corn poppers. It makes the flavor stay right in the corn. **\$1.00** each, postpaid.

## Pop it with Electricity

The easy way! Just attach the plug to any light socket operating on 110 volts alternating current and eliminate standing over a hot stove to pop corn. **Easy** to use, sure and reliable.

**\$1.95** Postpaid, With Cord and Plug

# May's KMA Special

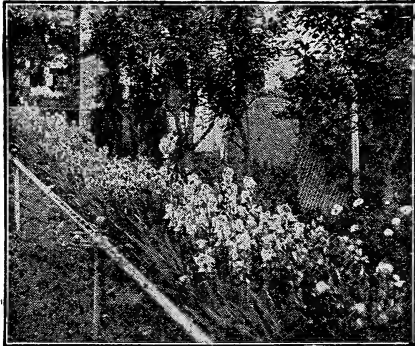
100% POPPING CORN

If you have tried May's OH-SO-GOOD Popcorn you have tasted the best popcorn money can buy. If not you have missed a real treat. And it all pops too!

All Postpaid

8 lbs. for \$1.00 in zones 1, 2 and 3      7 lbs. for \$1.25 in zones 4 and 5

# GERMAN IRIS - Garden Favorites



Iris should be planted in a sunny location, the soil should be dry and well drained. Garden Iris cannot stand water around the roots. It should not be deeply planted. The bulbs should be just below the surface of the ground. The roots should be spread out and soil packed around them. Bone meal and finely ground limestone are good fertilizers. Iris should be taken up, divided, freed from grass and roots, and reset once in every four or five years. The best time to do this, as well as to make new plantings, is soon after the blooming season. Iris, may be planted any time during the year when not in bloom or when the ground is not frozen.

**Suggestions for Planting Iris.** The sunny side of a shrubbery hedge is a good place for Iris. It will not suffer from being robbed of moisture and food from the larger plants. It is especially beautiful with lilacs and spirea Van Houttei as a background. All these bloom at the same time.

**LENT A. WILLIAMSON.** 42 inches. Early. S. very broad soft violet; F. very velvety royal purple, brilliant gold beard. In the first rank of American Iris. 75¢ each.

**AMBASSADEUR.** 42 inches late. S. Smoky purple. F. velvet purple maroon. One of the world's best Iris. 90¢ each.

Any 15¢ Iris, 4 for 50¢; any 20¢ Iris, 4 for 70¢; any 25¢ Iris, 5 for \$1.00. POSTPAID

## REDDISH-PURPLE

**CAPRICE** (7.5.) Stems 24 inches long. Clear cerise color, nearest red. Early bloomer. It has rather a grape juice fragrance. 15¢ each.

**KHARPUT.** S. Violet, F. Purple. 20¢ each.

**KOCHI** (7.8.) Deep claret-purple. The buds are soot black. One of the very finest Irises. 20¢ each.

**MME. PACQUETTE.** Almost deep Rosy Red. 15¢ each.

**MONSIGNOR** (8.4.) Length of stems 24 inches. Very late. S. satiny violet. F. purple. 20¢ each.

**ROSE UNIQUE,** S. and F. old rose, very near pink. Very prolific bloomer. 20¢ each.

## BLUE-LILAC

**GERTRUDE MAY.** 34 inches. Earliest of all. This is without doubt one of the very finest of the blue-lilac Irises. You cannot beat it. 25¢ each.

**JUNIATA** (8.1.) Clear blue deeper than Pallida Dalmatica. One of the tallest. Flowers are large and fragrant. 15¢ each.

**QUAKER LADY,** Standards and falls smoky lavender shading to deep blue 25¢ each.

**PALLIDA DALMATICA.** (9.5) S&F delicate lavender. 20¢ each.

## PINK-LILAC

**KHEDIVE.** Beautiful soft lavender with distinct orange beard. Stem 33 inches. 20¢ each.

**LOHENGRIN** (8.2.) Stem 33 inches. Midseason. Pink-silver-mauve. Has very heavy buds opening into large flowers, borne on sturdy stalks. 15¢ each.

**MAY QUEEN.** Beautiful pink-lilac. Very early bloomer. 20¢ each.

## BRONZE

**ELDORADO** (7.8.) S. Yellowish Bronze, F. violet Purple. 15¢ each.

**NIBELUNGEN.** S. fawn-yellow. F. violet purple on bronze. Very large and fragrant. 15¢ each.

**FREDERICK.** F. lavender barred with brown. Medium height. 15¢ each.





## BEAUTIFUL HARDY LILIES

Probably there is no other flower to compare with the Lily in fragrance and queenly beauty. These bulbs are all hardy and with a little mulching each fall, will survive nearly all winters south of the Canadian border. With the exception of the Candidum, they can all be planted in the spring or fall. The *Lilium Auratum* and *Speciosum Rubrum*, usually reach us early in December. It may be necessary to hold these two items for early Spring shipment, depending upon weather conditions. *Candidum* Lilies, however, usually arrive with our Tulip, Hyacinths, etc. from Holland and will be ready to ship in plenty of time for fall planting.

**CULTURE.** With a little care, you are certain to have good success with these Lilies. If planted in the fall, they can be planted any time from the first of October, until the soil can no longer be worked. If in the spring, they should be planted as soon as the frost is out of the ground the earlier the better.

Plant in a well drained soil, and if the soil is heavy, add a little sand. Also add a little fertilizer such as bonemeal. Set the bulbs from 5 to 6 inches below the surface of the soil surrounding them with sand. During the winter, cover with a thin layer of leaves, straw or some other good mulch which should be removed in the early spring.

**GOLD BANDED LILY OF JAPAN (*LILIAM AURATUM*.)** Splendid Lily to plant in borders. Very hardy. Flowers white dotted crimson with a clear gold band running down the center of each petal. Blooms in August. Mammoth size bulbs. 40¢ each; 3 for \$1.10; \$1.75 per 5.

**MADONNA LILY (*LILIAM CANDIDUM*.)** Can only be planted in the fall. Ours is a six petal type and is imported from northern France. There will be from 3 to 20 flowers on each stem. Snow white with yellow stamens. Blooms in the open ground about June 20th. Orders should be mailed during the summer and reservations made for this beautiful *Candidum* Lily. 40¢ each; 3 for \$1.10; \$1.75 per 5.

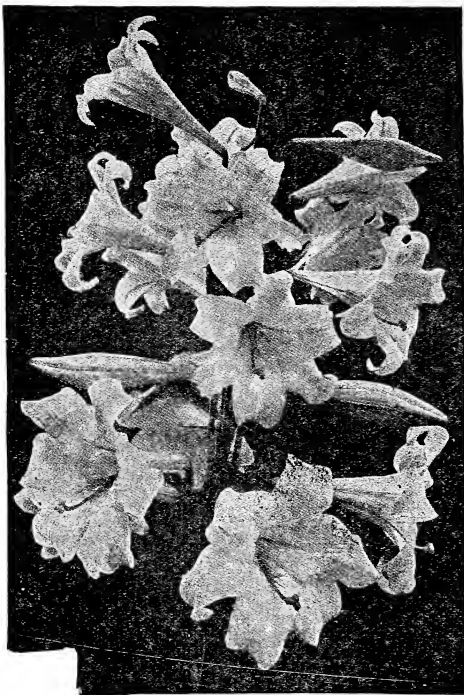
**ELEGANS TIP-TOP.** Hardy and easily grown out of doors. Orange-scarlet bloom remaining in bloom over a period of about two weeks. 25¢ each; 3 for 65¢; \$1.00 per 5.

**SHOW LILY (*LILIAM SPECIOSUM RUBRUM*.)** Attractive white flowers, spotted with rosy-red. Most satisfactory of all the Lilies. Mammoth size bulbs. Two to three feet high. 40¢ each; 3 for \$1.10; \$1.75 per 5.

**TIGER LILY.** The old-fashioned single Tiger Lily with polished black stamens. Orange-red flowers spotted with black. Vigorous grower. 25¢ each; 3 for 65¢; \$1.00 per 5.

**REGAL LILY.** Single. New variety from western China. Hardy in all localities. Flowers are ivory-white striped on the outside with pink and splashed with canary-yellow at the base of the petals. Delightfully perfumed, stems 3 to 5 feet. 50¢ each; 3 for \$1.35; \$2.10 per 5.

**DOUBLE TIGER LILY.** A magnificent Lily of stately habits bearing immense clusters of very large double flowers, nodding on tall, strong stems. Color, bright orange-red, spotted with black. Usually blooms from the middle of July to the middle of August. 3 to 5 feet tall. 30¢ each; 3 for 80¢; \$1.25 per 5.





We have clean dodder-free seed to offer you for fall seeding of alfalfa. We believe the best is the cheapest in the long run and will guarantee to please you with quality alfalfa seed for immediate shipment. You are the judge.

Sow alfalfa any time in July, August and early September. We advise 15 to 20 pounds per acre on a well prepared seed bed; broadcast and harrowing in or drilling with an alfalfa drill, covering not more than 1/2 inch.

Now as to varieties: we can offer you Nebraska-Kansas, So. Dakota No. 12 (supply limited,) Idaho, Utah, Grimm and Cossack. If you have a hard pan or clay sub-soil or high water level by all means use CERTIFIED Grimm or Cossack. They are hardiest. All of our Alfalfas are Northern grown.

We handle only one grade of seed, the BEST.

	100 lb.	Bu.		100 lb.	Bu.
Nebraska-Kansas Blend	\$23.00	\$13.80	Hardy Northwestern (Utah)	23.00	13.80
Dakota No. 12 Extra Hardy	29.00	17.40	Grimm Certified (Idaho)	40.00	24.00
Hardy Northwestern, Idaho			Cossack Certified (Idaho)	41.00	24.60
Grown	24.00	14.40	F. O. B. Shenandoah—Bags Free		

On all orders calling for 1 bushel or more of Alfalfa, I will include enough May's Inoculator, no charge, to inoculate the seed.

We also have Nitragin, the old standby, at these postpaid prices:

5 bushel size for alfalfa	\$4.75	1/2 bushel size	\$ .60
1 bushel size	1.00	1/4 bushel size	.40

(Prices on this page subject to change, though I rather believe they will be good until August 25th at least.)

## BONE MEAL FOR FERTILIZER

Analysis: 3% ammonia, 2.47% nitrogen and 24% phosphoric acid.

This is finely ground and of first quality, it starts to decompose quickly and builds up the fertility of the soil. With Bone Meal there is no danger of burning the plants

For Lawns: Apply a top dressing of Bone-Meal at the rate of 50 lbs. per 1,000 square ft. For bulbs, a small handful around each bulb when planted. For pot plants, one part Bone-Meal to 50 parts of soil. It's good to use any time. 5 lbs. 65¢ postpaid; 10 lbs. \$1.00 postpaid; 25 lbs. \$1.50 f. o. b. Shenandoah; 50 lbs. \$2.50 f. o. b. Shenandoah; 100 lbs. \$4.00 f. o. b. Shenandoah.

## BLEEDING HEARTS—Hardy

That Old Fashioned variety. Spectabilis. Small heart shaped, distinctly beautiful flowers. 55¢ each; 3 for \$1.45 postpaid.

Shipment September, October.

# \$ 5 0 0 , 0 0 0 . 0 0

## COULD NOT BUY THE GOOD WILL OF MAY-TIRE CUSTOMERS

I build a better tire for less money, as my thousands of tire customers testify.

## DIRECT TO YOU

When you buy May-Tires you do not pay the usual middlemans profit.

Shipped direct to you from my fresh stock.

## 15,000 MILES GUARANTEED

My tires are giving such wonderful service that I am now able to increase my guarantee without increasing the price. On tires that you buy now I give you the Guarantee Mileage Bond for 15,000 Miles satisfactory service.

## 25% REDUCTION IN PRICE

I formerly guaranteed my tires for only 12,000 miles. Now I have raised it to 15,000 miles. This is almost the same as reducing the price 25 per cent. Consider what this means when you buy tires.

**Buy Tires for Mileage.** Don't just buy a new tire so that you will have something that looks nice on your wheels. Buy these big rugged May Tires and they will wear. This has been proven by 50,000 motorists.

## LOOK FINE and WEAR

My tires look fine and wear beyond any question of a doubt. Everywhere you hear a good word for May's Tires. Throughout America motorists are telling their friends and neighbors about these wonderful tires. I am sure that if you put them on your car you will do the same.

## TESTED AND APPROVED BY 50,000 MOTORISTS

### WORLD BEATERS

No one will make a mistake in buying tires from May. I bought 4 and they are World beaters. Everybody says they are sure dandies. Best they ever saw.

C. A. Kemble,  
Bosworth, Mo.

### SAVED \$6.90 ON TIRES!

We saved \$6.90 on the two tires we bought from you. They are certainly fine and are giving splendid service. My husband says: "Earl May is a square shooter." Thanks for the quick service.

Mrs. L. P. Laft,  
Cherokee, Iowa

### SPLENDID SERVICE

We received the tires. They are fine. Looks like they would last a life time. I am certainly pleased with them. I am thankful for your splendid quick service

Fred Manners,  
Eagle, Nebr.



### MAY'S MONEY BACK TIRE GUARANTEE

I guarantee May's Tires for 15,000 miles of service against defects in material and workmanship. If any defects develop before the tires have had that amount of service, return them to me and I will repair them or furnish New Tires and charge you only for the amount of mileage you have actually received.

#### FREE COMPARISON OFFER

Simply send us your order, inclosing remittance or instructing us to send the tires to you C. O. D. Make any comparison you wish and if, for any reason, they do not come up to your expectations, return them to me at once and I will return your money and include all transportation charges you have paid.

*Earl E. May*



**NEW IMPROVED**

# MAY'S HEAVY DUTY

**OVERSIZE CORDS**

**15,000 MILE  
GUARANTEE**

I do not believe there is another tire made that has as good value as my tire. I want you people to order these tires and get in on this wonderful saving as well as convince yourself that you will hereafter order MAY-TIRES.



**30 x 3½**

**740**  
CL. O. S.

---

REGULAR CL

**6.55**

**Experts Marvel at New  
MAY SAFETY TREAD**

These treads are the latest designs that are known today. They are built for long wear and the maximum amount of traction. The tread is so constructed that it usually frees itself of mud, dirt, stones, or other foreign substances that adhere to its surface, at each revolution of the tire.

**AMERICA'S FINEST TIRES**

I want to make comparisons and prove this point to your own satisfaction. The large buying capacity that I have, together with the extremely low overhead, enables me to pass a good size profit along to my customers. And that has been my goal since I organized the May Seed and Nursery Co., to furnish my friends and customers high quality merchandise at low cost.

**MAY-TIRE  
HEAVY DUTY CORDS AT  
MONEY SAVING PRICES**

SIZE		Wt.	Ply	Each
30x3	O S	10-9	4	\$ 5.95
30x3½	Reg cl	12-4	4	6.55
30x3½	CL.O.S.	14-12	4	7.40
30x3½	SS OS	14-9	4	7.65
31x4	"	20-2	5	10.80
32x4	"	20-12	5	11.20
33x4	"	21-6	5	11.55
34x4	"	22	5	12.25
32x4½	"	25	5	15.00
33x4½	"	25-14	6	15.35
34x4½	"	26-10	6	16.55
33x5	"	33-10	7	20.10
35x5	"	34-12	7	21.20

Postage Paid 1st—2nd—3rd  
Zone.

THESE PRICES ARE SUBJECT TO CHANGE WITHOUT NOTICE

# MAY'S 15,000 Mile BALLOON TIRES

Riding on MAY-TIRE BALLOONS makes Touring a pleasure. These great big Heavy-Duty, easy-riding balloons are built for thousands of miles of service. They iron out the ruts and bumps in the road and give you solid comfort.

## NEW SAFETY TREAD

The latest scientific non-skid tread holds the road easy to steer and assures long satisfactory service.

29x4.40  
**8.10**  
NEW FORD SIZE  
8.60  
30x4.50

## MAY'S FULL SIZE BALLOON TIRES

15,000 MILE GUARANTEE

SIZE	PLY	RIM	WT.	EACH
29x4.40	4	21	15-8	\$ 8.10
30x4.50	4	21	17	8.60
28x4.75	4	19	17-14	10.15
29x4.75	4	20	18-10	10.30
30x4.75	4	21	19-6	10.50
31x4.95	4	22	22-8	13.50
30x5.00	4	20	21	11.50
31x5.00	4	21	22	11.95
30x5.25	6	20	26	14.80
31x5.25	6	21	26-14	15.55
30x5.77	6	20	28-2	15.80
32x5.77	6	22	29-8	18.45
33x5.77	6	23	30-8	19.20
30x6.00	6	18	28-4	16.65
33x6.00	6	21	30-2	17.45
30x6.20	6	18	29-13	18.25
32x6.20	6	20	30-15	18.75
33x6.20	6	21	31-14	19.75

Postage Paid 1st—2nd—3rd Zone.

**K. M. A.**



# May's Giant Heavy Duty

## BUS AND TRUCK 15,000 MILE TIRES

Guaranteed for 15,000 miles over rough roads and under heavy loads. All roads and all loads look alike to these big Giant truck tires. Massive over-size tires. The extra heavy rut ribs extending at right angles on the sides of the tires combat the ruts and the holes of the road. Cut down your truck tire bill by ordering **MAY-TIRE HEAVY DUTY TRUCK TIRES.**



Made for  
Hard Drivers

### LESS THAN WHOLESALE PRICES

TIRE SIZE	Shpg Lbs.	Wt. Ozs.	Ply	Price
30x3½ Cl. OS	17-2	5	\$ 9.25	
32x4½ SS OS	33-12	8	20.10	
34x4½ " " "	36-8	8	21.75	
30x5 " " "	37-8	8	23.60	
33x5 " " "	40-11	8	24.00	
35x5 " " "	45	8	29.45	
32x6 " " "	60	10	42.65	
36x6 " " "	65-10	10	47.55	

Protected By Mileage Guarantee Bond

# MAY'S FULL MOULDED TUBES



**INCREASE YOUR MILEAGE 25% BY USING MY NEW FULL MOULDED INNER TUBE.**

If your tires pinch your tubes and cause blow outs and punctures order May's Full Moulded Inner Tubes from me.

Built like a tire. Fits the casing. Seamless. Cannot be pinched. Makes a tire last for many years longer.

**LOOK HOW THEY FIT**

They go in tires just like they were tailor made. Don't use old style tubes when you can get May's Full Moulded Tubes for no higher price.



THEY  
FIT THE  
TIRE

### Over-size Cord Tube

SIZE	Wt.	Price
30x3	2-8	\$1.25
30x3½ Reg.	2-8	1.40
30x3½ OS	3	1.40
30x3½ " "	3	1.40
31x4	3-4	1.70
32x4	3-8	1.75
33x4	3-14	1.80
34x4	4-2	1.85
32x4½	4-2	2.40
33x4½	4-4	2.45
34x4½	4-6	2.50
33x5	5-4	2.65
35x5	5-10	2.75

### Balloon Tubes

Size	Wt.	Price
29x4.40	3-4	1.60
30x4.50	3-4	2.05
28x4.75	3-4	1.80
29x4.75	3-8	1.85
30x4.75	3-8	2.00
31x4.95	3-12	2.55
30x5.00	3-12	2.30
31x5.00	4	2.35
30x5.25	4	2.65
31x5.25	4	2.75
30x5.77	4-4	2.70
32x5.77	4-4	2.75
33x5.77	4-2	2.85
30x6.00	4-4	2.60
33x6.00	4-4	2.85
30x6.20	5	2.65
32x6.20	5-4	3.15
33x6.20	5-8	3.50

### For Truck Tires

SIZE	Wt.	Price
30x3½ OS	3	\$1.60
32x4½	4-2	2.40
34x4½	4-6	2.55
30x5	5	2.70
33x5	5-4	2.80
35x5	5-10	3.15
32x6	8-4	4.50
36x6	9-4	5.80

Prices Subject to Change Without Notice.

# Free PAINT

*If You are not Satisfied*

USE May's Farm Belt Paints and if you are not satisfied, I will pay for the paint.

My Paints and Varnishes are Guaranteed. You are the sole judge of their quality. Thousands of property owners used my paint this season and last season. They were well satisfied with the results.

## 2 GALLONS ON TRIAL

So positive am I that you will be well pleased with May's Farm Belt Paints that I will allow you to use two gallons of it out of your order—and then if you are not satisfied—return the balance and I will immediately refund all your money.



*The Strongest Paint Guarantee Ever Written*

I Back This Guarantee and the Manufacturer Backs Me.

We guarantee May's Farm Belt Paints to be satisfactory in every way you may expect. If for any reason whatsoever, you are displeased with May's Farm Belt Paints; if for any reason the Paint does not give perfectly satisfactory service, we will replace it free of all charge or give all your money back, whichever you prefer. We Guarantee May's Farm Belt Paints to cover from 250 to 300 square feet, two coats, per gallon.

*Earl E. May*  
MAY SEED & NURSERY COMPANY

Printed on Every Gallon

**Saved \$1<sup>37</sup> Gal.**

The House Paint I ordered from you is certainly fine. Much better than we pay \$3.75 a gallon for here. Spreads much further and is lots whiter. Everything we buy from you is always the best.

Mrs. Emma Langford,  
Great Bend, Kans.

**OK'd by Property Owners Everywhere**

**Freshly Made**

We liked the White House Paint. It was so well mixed, so creamy, not like so many mixed paints with the lead all in the bottom. Our house hadn't been painted for 14 years. Everyone says our house looks fine.

Mr. and Mrs. W. H. Gordon,  
St. Catharine, Mo.

**Dried Hard & Glossy**

An experienced painter put on the Paint I bought from you. He said it was the finest paint he ever used. It dried with a hard glossy finish. My home certainly looks nice. My neighbors want to buy some of your paint.

J. N. Miller, Osceola, Ia.

**Spread Easy-Covers Well**

I used 10 gallons of your paint last spring, and it is all and more than you say it is. The white paint is sure white and holds its gloss well. It also spreads easily and goes a long way. It covers as well or better than any paint I have ever used.

Chas. R. Watson, Unadilla, Nebr.

# May's Farm Belt HOUSE PAINT

**MONEY BACK GUARANTEE**

**ALL COLORS**  
**\$2 25**  
**GALLON**  
 ANY SIZE CONTAINER



**Freshly Made**  
**READY TO PUT ON**

Many of my customers tell me that this is the best House Paint they have ever used. It is an extraordinary good paint.

It is a heavy-bodied paint. It stands liberal reducing with linseed oil. The pigments used are finely ground. Being freshly made it does not have time to settle hard in the bottom of the can.

The paint film dries hard with high gloss. It covers the surface with remarkable hiding power. On ordinary surfaces it will cover 250 to 300 square feet—two coats to each gallon. It wears and looks good for years. Put May's Farm Belt House Paint on your buildings and if you are not satisfied, I will refund your money.

**LONG LASTING BEAUTIFUL COLORS**

Our paint is ready to put on. You don't have to mix any special colors. It's made in almost any color you want. The price is the same for all colors.

Select any of the following colors:

- |                     |                    |
|---------------------|--------------------|
| Outside White       | B12 Tobacco Brown  |
| Inside White        | B25 Bungalow Brown |
| Black               | B30 Sky Blue       |
| B29 Ivory           | B36 Shutter Green  |
| B26 Green           | B28 French Gray    |
| B27 Colonial Yellow | B21 Pearl Gray     |
| B13 Light Buff      | B32 Light Lead     |
| B09 Rose Pink       | B33 Slate Color    |
| B20 Apple Green     | B31 Red Oxide      |
| B08 Terra Cotta     | B10 Maroon         |



**Freight Paid On**  
**Order of 5 Gal.**  
**Or More**

**2 GALLONS**  
**2 LINSEED**  
**OIL FREE**  
**WITH 5 GALLON HOUSE**  
**PAINT ORDER**

**Big 4 inch Brush**  
**FREE With**  
**5 Gallon Order**

## TUNE IN ON THE PAINT BOYS

**Russ & Billy Will Entertain You!**

One of the most popular entertainments on the air is Russ and Billy—the May Paint Boys. Tune in on KMA and listen to their programs. Our paint department sponsors these entertainers and we are sure you will enjoy these boys. When you order paint ask for special request numbers by Russ and Billy.

**SPEND HAPPY HOURS WITH KMA**

You are always welcome to come to Shenandoah and enjoy the Mayfair programs. Come in and meet us. Talk to the entertainers that you hear over your radio. Enjoy our programs at your own fireside or at our studio.



# May's Farm Belt BARN PAINT



THE ideal paint for painting barns and farm buildings. Goes on smoothly and holds its color. Will not crack, chalk, peel or blister. Suitable for wood or metal. May's Farm Belt Barn Paint is an exceptional value. It is compounded from the highest grade oils and minerals.

## I PAY FREIGHT

ON 5 GALLONS OR MORE

Every gallon thoroughly Guaranteed to give absolute satisfaction. You can buy it with confidence of getting full value for every dollar you spend.

White, Green and Gray

Per Gallon ..... **\$1.78**

Put up in 1 gal., 5 gal., 25 gal., 30 gal., 50 gal. containers.

**RED & BROWN**  
**\$1.30 GAL.**  
**FREIGHT PAID AND PAINT BRUSH FREE**  
*With 5 Gallons Or More Order*

*Defies the Weather  
 Lasts for Years*

**FREE BRUSH**

### BEST BARN PAINT

Six months ago I bought 15 gallons of your Red Barn Paint. I never used paint that went on as smooth and even. It has a wonderful gloss and finish. It is as bright as the day it was put on.

Chas. Garnett,  
 Hamlin, Iowa.

We never use any paint that spreads so smoothly and looks so well as May's Farm Belt Paint. We recommend it highly.

Mr. and Mrs. P. D. Caskey, Parsons, Kas.

## FARM INTERIOR PAINT

For Barns, Chicken Houses, Dairies, Creameries, and all interiors. Keeps everything sanitary.

### KEEP AWAY DISEASES

Seals up the cracks and pores in the wood. Keeps out lice, mites and other parasites. Make your farm interiors light. This paint may be used on inside or outside. Can be used on Wood, Metal, Brick, Concrete, or almost any surface. Made only in pure white.

Freight Paid on 5 gallons or More.

**1.75 Gal.**

## ROOF PAINTS AND STAINS

May's Farm Belt Shingle Stain penetrates into the Shingle. Dries quick and Guaranteed not to fade. Preserves wood for long life. Red and Green.

Gallon ..... **\$1.45**

### MOSS GREEN ROOF PAINT

Not a stain but a paint. Covers and hides surface. Per gallon..... **\$1.75**

### BLACK ASPHALT ROOF PAINT!

For Metal Roofs, Felt or Paper. Also shingles. Gallon ..... **75c**

Freight Paid on 5 Gallons or More.



## FIX YOUR ROOFS NOW!

If your roofs are beginning to show wear, fix them. One coat of May's Asbestos Roofing will make any asphalt, metal, composition roof Leak Proof.

### LIQUID ASBESTOS ROOFING

Put on with a brush. For all roofs except worn out shingle roofs. Made in black only.

Special per gallon..... **68c**

Any size container.

Freight Paid on 5 gallons or More.

### FREE BRUSH

With order for 25 gallons or more we furnish Free Roofing Brush.

## PLASTIC ROOF CEMENT

For big leaks and patching work. Black only. Put on with a trowel.

**9c Pound**

Freight Paid on 100 pounds or more.

## CONCRETE OR STUCCO PAINT

This is an oil paint and it is made especially for Stucco, Stone and Concrete. Penetrates all cracks and crevices. Keeps moisture out. House Paint colors. **\$2.25** Per Gal. **\$2.25** Freight paid and free brush on 5 gallons or more.

## CONCRETE FLOOR PAINT

Dries hard and wears for years. Made in the same colors as our Porch Floor Paint. **\$2.75** Per Gal. **\$2.75** Freight Paid and Free Brush on 5 Gallons or More.

## INSIDE FLOOR PAINT

Dries quickly with brilliant gloss and exceptionally good quality.

Per Gal. .... **\$2.50**

Freight Paid and Free Brush on 5 Gallons or More.

## PORCH FLOOR PAINT

Not effected by scrubbing. Dries with glossy hard surface.

Per Gal. .... **\$2.80**

Freight Paid and Free Brush on 5 Gallons or More.

### FLOOR PAINT COLORS

May's Farm Belt Floor Paint, Concrete Floor Paint and Porch Floor Paint are made in the following colors:  
 Dust Golden Yellow  
 Light Lead Tan  
 Dark Lead Dark Yellow  
 Maroon Drab

## HOW TO MEASURE YOUR BUILDINGS

It is easy to measure a building for paint. Start at one corner of your building and measure it by feet all around. Multiply this by the height of the building. This gives you the number of square feet in the building. Divide this by 250 (as May's Farm Belt Paint covers at least 250 sq. ft.—two coats to the gallon) and you will have the amount of paint required.

## I PAY THE FREIGHT

Order five gallons or more of May's Farm Belt Guaranteed Paint and I will pay the freight direct to your railroad station, and also give you the Paint Brush Free.

### Four Inch Paint Brush FREE

with order for 5 gallons or more Paint. Genuine Chinese Bristles set in rubber.



### INTERIOR GLOSS ENAMEL

For woodwork, Iron beds, Household Articles, Kitchens and Bathrooms. Washable and durable. Freshly made and flows on without showing brush marks. Made in White, White Ivory, Buff, Light Yellow, Deep Blue, Ivory, Pearl Gray, Silver Gray, Light Green, Sky Blue and Medium Brown. Per Gallon

**2.95 Gal.**

Freight paid and free brush on 5 gallons or more.

### ENAMEL UNDERCOAT

First coat the surface with Undercoat and then apply Enamel.

Per Gallon .....\$2.50

Freight paid and free brush on 5 gallons or more.

### FLAT WALL PAINT

Painted walls are easy to clean and sanitary. May's Farm Belt Flat Wall Paint has soft velvety finish. Made in the following colors:

Light Ivory      Light Green  
Cream            Sky Blue  
Light Buff      Buff  
Medium Brown   Light Yellow  
Pearl Gray      Deep Blue  
Silver Gray      Ivory

**2.45 Gal.**

Also White

Freight paid and free brush on 5 gallons or more.

### WALL SIZE

Used as an undercoat for our Flat Wall.

Per Gallon .....\$1.95

### MAKE YOUR CAR NEW

Paint your car yourself with our Auto Enamel. Dries in 24 hours with high lustre. Five beautiful colors: Brewster Green, Carmine Red, Wine, Yellow and Black.

Per Gallon...\$3.95



### WAGON AND IMPLEMENT PAINT

Keep your wagons, implements, tractors and combines painted. They will last longer and won't rust. Made in Red, Black, Green and Yellow.

**2.95 Gal.**

Freight paid on 5 gallons or more.

### ALL PURPOSE VARNISH

For general use around the home. Furniture, floors and woodwork. Guaranteed not to turn white. Price per gallon.....

**\$1.90**

### FLOOR VARNISH

Mar-proof and scarp-proof. Dries quickly. Price per gallon.....

**\$2.50**

### INTERIOR VARNISH

Excellent for woodwork, cabinets, furniture and all interior work. Price per gallon.....

**\$2.40**

### FURNITURE VARNISH

Dries with high lustre. For all kinds of furniture. Price per gallon.....

**\$2.15**

### OUTSIDE SPAR VARNISH

For use on surfaces exposed to the weather. Will not turn white. Price per gallon.....

**\$3.25**

### VARNISH STAIN

Combination of Stain and Varnish for interior woodwork and furniture. Dark Oak, Light Oak and Mahogany. Price per gallon.....

**\$3.25**

### OIL STAIN

For hardwood finish on soft wood can be varnished over or left dull finish. Dark Oak, Light Oak, Yellow and Mahogany. Price per gallon....

**\$3.00**

### GROUND COLOR FOR VARNISH

#### STAIN

Light Yellow only. Price per gallon.....

**\$2.60**

Freight paid on 5 gallons or more.

### MISCELLANEOUS PAINTS

#### STREET MARKING PAINT

Used on the streets and concrete curbing. Made only in White and Yellow. Price per gallon.....

**\$1.95**

#### BLACKBOARD SLATING

Use on either wood or plaster. Gives a good hard finish. Black only. Price per gallon cans.....

**\$2.60**

#### HOT SURFACE PAINT

Painting stores, boilers, smoke stacks, steam pipes, furnaces and all surfaces subjected to heat. Price per gallon.....

**\$1.45**

#### BOILER AND TANK PAINT

All kinds of boilers, tanks, grain bins and metal surfaces where it is not exposed to excessive heat. Prevents rust. Price per gallon only.....

**75c**

#### BRIDGE PAINT

Painting bridges and other steel work. Protects against rust. Made in Red and Black. Price per gallon.....

**\$1.40**

### VERY LOW BRUSH PRICES

High grade 4 inch wall brush can be used for all kinds of paint.

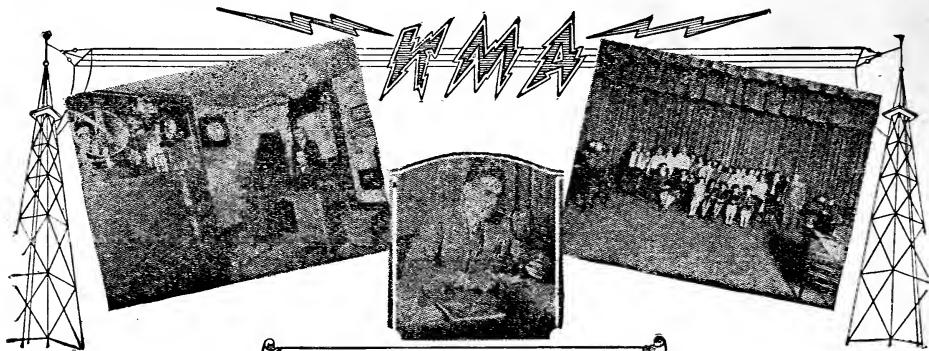
**\$1.00**

Leather Bound Stucco Brush guaranteed to wear for years. 4 inch size.

**\$2.75**

A Quality Wall Brush. Pure Chinese Bristles. 4 inch size.

**\$2.00**



J.C. RAPP KMA. RADIO ENGINEER

# We are RADIO Experts

**F**RIENDS, I want you to meet J. C. Rapp —who is known as "Cy" to most everybody.

Cy is our Radio Man. He knows radio sets from A to Z. Recently he attended the big radio show in Chicago. When he got back he said to me: "I looked all the sets over and believe none of them have any more improvements, or are any better than our new 1929 Shielded Sets."

## YOU WOULDN'T BUY A WATCH FROM A BLACKSMITH

You wouldn't think of taking your horse to a jeweler to get it shod. Then why buy a radio set from somebody who don't know anything about it. We are radio experts. We own and operate our own station. We know radio. We are the folks for you to buy your set from.

## FREE RADIO SERVICE

Cy talks over the radio and answers questions. He will also answer any questions about your set by letter and tell you what you want to know when you are having trouble with your set.

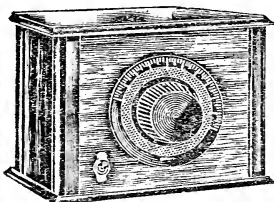
## RADIO HEADQUARTERS

We are Headquarters for all Radio supplies. Buy your tubes, batteries and supplies from us. Our stock is always fresh and complete.

\*\*\*\*\*  
**WHAT OWNERS SAY**  
 \*\*\*\*\*  
**Used Clothesline as Aerial**  
 My brother bought a radio from you which is certainly fine. The evening they got it they hooked it up on the clothesline. Stations came in fine. Mrs. Herman Kamman Avoca, Nebraska  
 \*\*\*\*\*  
**Volume Unexcelled.**  
 I have now owned my May's "Shielded Six" for about six weeks. It's better than you claim. I receive New York, Los Angeles, and Minneapolis without any trouble. The tone is soft, clear and easy to understand. "When better Radios are sold May will sell them."  
 M. A. Knoth  
 Neola, Iowa  
 \*\*\*\*\*  
**Tells Neighbors to Buy.**  
 I'm telling all my neighbors about your wonderful Radios. Fred Dunn bought one from you last week. Mrs. Dunn says it is fine. Gets all the stations. Another neighbor, Lee Mickey says he will buy one, too. We surely enjoy our set.  
 Mrs. Rudolph Urban  
 Osceola, Nebraska  
 \*\*\*\*\*



## DO AWAY WITH INTERFERENCE RADIO TRAFFIC COP



Brings out full tonal quality of your set, reduces operating cost, saves tubes and batteries. New principle, New Hook-up, New Circuit, New Arrangement of Mechanical Factors. Traps one station and one alone. Traps in not out, and holds the Station trapped as in a vise. Buy the Radio Traffic Cop. Price \$6. Our guarantee goes with it. No Radio Receiver is complete without it.

**Make Your Old Set NEW**

**50% More Volume**

**SPECIAL \$6.00**



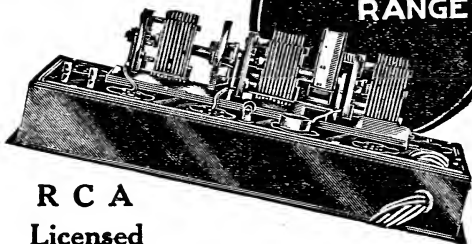
All Radio Receivers F. O. B. Shenandoah.

# Mays **SHIELDED** 1929 RADIO

## Inside Facts About THIS MASTER SET

Here is the new 1929 Shielded Six chassis. Note how simple and accessible everything is. Nothing to get out of order. Built like a fine watch. Interference can readily be tuned out. Stations come in one right after the other in a steady stream. Distance reception is not an occasional event but a nightly occurrence. The tone quality is especially fine and highly pleasing.

This Chassis comes in the Table Model or Console Set of the Mays' Shielded "6" Radio. You can order either model with the assurance that you are getting the best value in radio.

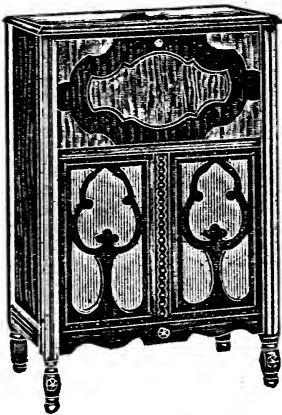


**R C A**  
Licensed

The **PERFECT RADIO**  
Here is the set that you have been waiting for. Enjoy the best in radio by buying one of these sets now at May's exceptionally low prices.

## MAY'S SHIELDED "6" CONSOLE

A lovely adornment for the home — an unrivaled entertainer 1929 MODEL. Licensed under R C A and Associated Patents:



We know you will like the new model sets which combine wonderful tone quality and selectivity with a degree of sensitivity which bring in the far distant stations clear and strong.

Co-operation of one of the largest radio manufacturers in the country make it possible to offer this wonderful value.

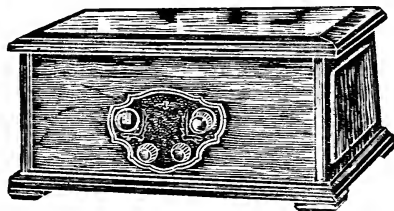
Note the beautiful design of this console cabinet with its two tone burl walnut finish. When not in use, the set is protected by the door which also forms a convenient arm rest when open. Your choice of air column horn speaker with Baldwin Unit or latest type cone speaker mounted behind lower grill. Dimensions of console cabinet, 40 in. high, 25½ in. wide, 16½ in. deep. Plenty of room for all batteries.

MODEL DC-6—May's Shielded Six Console with built in **\$69.85** speaker (no accessories) ..

**COMPLETE READY TO OPERATE**  
MODEL DC-6 CONSOLE RECEIVER. Complete with following equipment; 120 ampere hour storage "A" battery, three Heavy Duty KMA Special "B" batteries, two 4½ volt "C" batteries, five UX-201A Tubes, one type 112A Power Tube, complete aerial and ground equipment .....

**\$93.50**

## MAY'S SHIELDED "6" TABLE MODEL



This set includes the same tuning unit as the big console receiver. Note these important features; completely shielded tuning units, single illuminated tuning dial, perfect control on selectivity allowing satisfactory reception under all conditions; completely balanced radio frequency circuit which brings in powerful signals from even the most distant stations, anything from a whisper to brass band volume under perfect control; battery wiring so arranged that anyone can connect up set without difficulty. Complete instruction book accompanies all sets.

MODEL DC-6 TABLE MODEL SET only **\$38.85**

**COMPLETE READY TO OPERATE**  
TYPE DC-6 TABLE MODEL RECEIVER. Complete with following equipment; 120 ampere hour storage "A" battery, three Heavy Duty KMA Special 45 volt "B" batteries, two 4½ volt "C" batteries, perfected cone speaker, five UX-201A Tubes UX-112A Power Tube, complete aerial and ground equipment .....

**\$73.50**

These Prices Are Subject to Change Without Notice.

# New **7** Electric Radio

**SHIELDED** 100% Light Socket

**A-CTUBE**

ENTIRELY AUTOMATIC — NO BATTERIES  
RADIO'S GREATEST ACHIEVEMENT

No batteries required. Operates direct from your light socket. Radio fans who have 110 volt current available will welcome this wonderful radio receiver which includes many improvements and new features, making this the most practical receiver ever developed for home use.

Complete elimination of all hum, compensates for variations in line voltage, no separate power units required, uses the latest type long life AC tubes, extremely low consumption (one-half cent per hour).

**SO MARVELOUS,  
ALMOST UNBELIEVABLE**

**Specifications:** Completely shielded tuning circuit, three stages completely neutralized tuned radio frequency amplification, shielded construction throughout. Tubes required; five type UX-226, one type UX-227, one type UX-171, one type UX-230 Rectifier tube. Console model includes powerful cone speaker, especially designed for operation with this circuit.

**TEN DAY FREE TRIAL**

Sold subject to your approval. Order one of these sets today. Try it in your own home for ten days and if not completely satisfied, you are privileged to return it for full refund.

**A-C TUBES**

This new AC Set is the result of years of development and anyone who is familiar with the earlier models of light socket receivers will readily appreciate the wonderfully improved performance obtainable with this new May's Shielded Seven All Electric Set.

← **JUST PLUG IN  
ANY SOCKET**



## THIS 7 TUBE SET FOR BATTERY OPERATION

For those who do not have the 110 alternating current available, we are prepared to supply this powerful 7 tube radio receiver, wired for use with standard tubes so that it can be operated from batteries.

Very few of the new and improved radio receivers are available for battery operation but we are glad to announce this new development which is especially for the benefit of our friends living in the country district where 110 current supply is not available.

May's Shielded Seven, Console Model receiver, complete with the following equipment: 120 Ampere-hour storage "A" battery, three heavy duty KMA Special "B" batteries, two 4½ volt "C" batteries, six type UX-201A tubes, one type 112A power tube, complete aerial and ground equipment price **\$102.50**

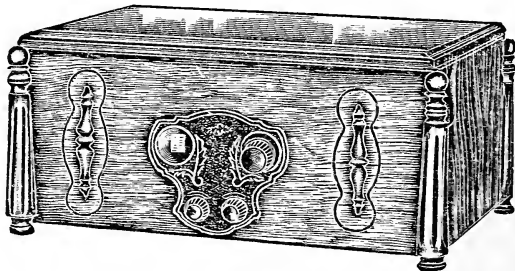
Table Model May's Shielded Seven radio receiver complete with the following equipment: 120 Ampere-hour storage "A" battery, three heavy duty KMA Special 45 volt "B" batteries, two 4½ volt "C" batteries, perfected cone speaker, six UX-201A tubes, one type 112A power tube, complete aerial and ground equipment, price **\$81.50**

## TYPE AC-7, ALL ELECTRIC

Console Receiver, complete with tubes and all other necessary equipment .....

**\$120.40**

## ELECTRIC SHIELDED-SEVEN TABLE MODEL



Same Chassis—Same Specifications as the Big Console Model. Full rich tone color, big life size volume. Only one tuning control. Sold with the understanding that your money will be refunded if you are not entirely satisfied. Complete .....

**\$96.40**

These Prices Are Subject to Change Without Notice.



# GUARANTEED BATTERIES

## K-M-A POWERFUL "B" BATTERIES

Earl May's KMA Special Radio Batteries give you the most service per dollar. Take notice of these attractive prices on my KMA Special dependable radio batteries.

These wonderful prices are only possible through our direct connection with one of the largest and most reliable battery manufacturers in the country. KMA Special "B" batteries are the highest grade first quality batteries on the market and include many features not found in other batteries. When you are in need of new "B" batteries, try a set of my KMA Special Batteries and be convinced of the wonderful service and long life that they give. KMA batteries come to you fresh from the factory, full of pep and guaranteed to give you more radio service for your money than any other "B" battery on the market.

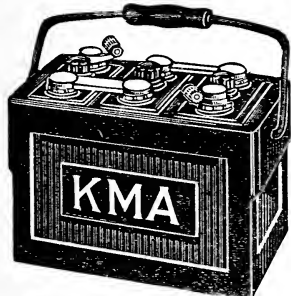


**ALWAYS  
FRESH**

Double Duty 45 Volt Jumbo "B" Battery, postpaid .....	\$3.00	22½ Volt "B" and "C" Battery, Postpaid .....	\$1.25
Standard Size 45 Volt "B" Battery, postpaid .....	\$2.00	Standard 4½ Volt "C" Battery, Postpaid .....	\$.50

## K-M-A Special Radio "A" Batteries

*Guaranteed Eighteen Months*



These popular priced radio "A" batteries are manufactured by a well known and reputable concern who have recently developed in co-operation with our engineers, a battery that will give you from 12 percent to 15 percent greater capacity than the batteries of regular construction which are now in common use. Notice that our 100-120 ampere hour battery has 12 heavy plates instead of 11 as formerly. In other words, with the new construction, the battery has 6 positive plates instead of 5 and the capacity of the battery is directly proportional to the number of positive plates that are used. Compare these low prices with those quoted elsewhere and figure your own saving.

COMPARE OUR PRICES  
WITH OTHERS  
SEE WHAT YOU SAVE

100-120 Ampere Hour, 12 Heavy plate, rubber case "A" Battery	140-150 Ampere Hour, 14 Heavy plate, rubber case "A" Battery	160-175 Ampere Hour, 16 Heavy plate, rubber case "A" Battery
<b>\$8.25</b>	<b>\$10.25</b>	<b>\$12.25</b>

## SUPER-POWER—200 HOUR BATTERY

This big husky battery has been a tremendous favorite this past season with many of our radio friends, especially those in the country who have to take their batteries to town to get them recharged. This is the cheapest battery that you can buy, because its extra heavy construction gives you long life and its high capacity cuts your charging bills in two, to say nothing of your trips to town.

This 200 Ampere hour Super-Power Battery is **guaranteed for two** years of service.

All storage batteries are priced f.o.b. Shenandoah and are packed in individual crates, filled and fully charged, ready to use the minute you receive them.

**KMA SUPER-POWER RADIO "A" BATTERY,  
200 AMPERE HOUR CAPACITY, NEW LOW  
PRICE .....**

14<sup>25</sup>

# K-M-A RADIO TUBES

**GUARANTEED FOR SIX MONTHS**

**TYPE 171A POWER TUBE**  
Often used as standard equipment on many of the newer sets, but not recommended where the set must be operated from dry "B" batteries because of heavy drain.  
Each ..... **\$2.00**

**TYPE 112A Power Tube**  
Recommended for use in the last stage of all sets that are properly wired to allow the use of 135 volts of "B" battery with 9 volts of "C" battery  
Each ..... **\$2.00**

**TYPE UV-199 Dry Cell Tube**  
This Three Volt dry cell tube is standard equipment on such sets as the old Radiola Super-Heterodyne Receiver.  
Each ..... **\$1.25**

**TYPE 120 Dry Cell Power Tube**  
Standard equipment on Radiola 20, 25 and 28; requires 135 volts of "B" battery and 22½ volts of "C" battery.  
Each ..... **\$1.50**

**TYPE UX-199 Dry Cell Tube**  
Standard equipment on Radiola 20, Radiola 25 and Radiola 28. A long prong base.  
Each ..... **\$1.25**

**TYPE WD-11 One Volt Dry Cell Tube**  
Standard equipment on Radiola IIIA.  
Each ..... **\$1.25**

**TYPE UX-210 7½ Watt Power Tube**  
Standard equipment on Radiola 30 and 32; also RCA Speaker 104; also on any radio and phonograph combinations.  
Each ..... **\$4.50**

**TYPE WD-12 One Volt Dry Cell Tube**  
This Dry Cell Tube is fitted with the large base for use in standard sockets  
Each ..... **\$1.25**

**TYPE UX-280 Rectifier Tube**  
Full Wave Rectifier Tube used in many AC operated Sets and also in many "B" Battery Eliminators.  
Each ..... **\$3.50**

**TYPE 200A Special Detector**  
Recommended for use in the Detector Socket of all sets operating from a storage "A" battery, because of improved results in receiving weak and distant stations; requires no additional "B" or "C" batteries and no changes in wiring  
Each ..... **\$2.00**

**TYPE UX-201A**  
This tube is used in the majority of sets to day that are operated from a storage "A" battery, and can be used either as a detector or amplifier. Standard equipment on such sets as Atwater Kent, Crosley Band-box, etc. **86c**  
Each ....



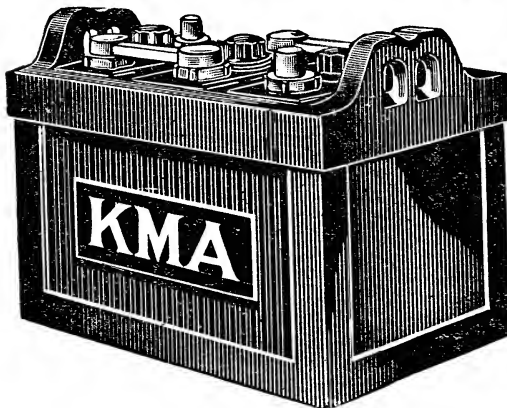
**TYPE 226-AC Amplifier Tube**  
Standard equipment on practically all new AC Sets such as Atwater-Kent Model 37.  
Each ..... **\$2.00**

**TYPE 227-AC Detector Tube**  
Five Prong Base Standard equipment on nearly all AC Sets such as Atwater-Kent Model 37.  
Each ..... **\$3.25**

**TYPE 281 Half-Wave Rectifier Tube**  
Used in many of the radio and phonograph combinations, also in RCA loud speakers type 104  
Each ..... **\$4.00**

**Note:** Radio tubes are postpaid in any quantity. Remember that we guarantee these tubes to give you six months of satisfactory service and any tube will be replaced within that period providing the filament is still intact

## AUTOMOBILE STORAGE BATTERIES



**Heavy Duty Ford Battery, 12 Extra Heavy Plate** ..... **\$8.25**  
Construction .....  
Guaranteed 18 Months.

Materials used in these Super-Power batteries are the very finest obtainable anywhere. Genuine hard rubber cases are used, plates are of extra thickness, separators of genuine Port-Orford Cedar, new type construction is used giving 12 per cent to 15 per cent greater capacity at no additional cost.

**14 Heavy Plate Battery** ..... **\$10.25**  
For Big Cars .....  
**NOTATION:** This size battery fits larger cars such as Master Six Buick, Studebaker, Hudson, new model Dodge, etc.  
**12 volt, Dodge Battery, for older models of Dodge cars** ..... **\$12.25**  
**18 Plate Car Battery, fits older models of Willys-Knight and Packards** ..... **\$14.25**

All automobile batteries are shipped in individual crates f.o.b. Shenandoah, fully charged and ready to use when you receive them.

These Prices Are Subject to Change Without Notice.

# Keep Warm Now!

**HEAT WITH GAS NO PIPES TO CONNECT**  
 No muss or fuss. This New Heater will keep any room nice and warm—even in zero weather.

## MAY'S BRITE-LITE HEATER

Bright Red Hot Radiant Glow! Nothing to get out of order. Generates quickly. Steady heat. No odor or fumes.

### MAKES ITS OWN GAS!

Takes ordinary gasoline and generates it into gas! Burns 94 per cent air. Costs only 1½ cents per hour to operate. Very economical. Can be carried from room to room. Elegant gleaming nickel and enamel finish. This Heater is something new, Guaranteed to satisfy or your money back.

MAY'S PRICE

**\$1895**

F.O.B. K.C.MO.



## BRITE - LITE Self Heating IRON



Handle always cool. Iron all day without getting tired. Saves time and labor. Every housewife should have one of these self-heating Irons. Send for one and if you are not satisfied return it and get your money back. May's Price **425** Postpaid

## Great Lantern Value



Lights with match. Built-in-pump. Large Green canopy. Simple—safe and dependable. 300 Candle Power. Heavy Nickel. All weather Lantern for outside and inside use.

With Green Canopy  
**\$6 98**  
 Postpaid

Without Canopy  
**\$5 95**  
 Postpaid

## Generators and Mantles

Long life generators for gasoline lamps and lanterns.

**\$1.00 for 4**

### MANTLES!

Made from highest grade Egyptian Cotton. Withstands hard usage.  
**85c a dozen**



## SATISFACTION OR YOUR MONEY BACK

Read These Letters From Customers!

### BEST COFFEE FOR PRICE

We received 2 lbs. coffee and find it cannot be beat at any price. One try will convince anyone that it is best.

I. V. Range,  
 Alton, Kansas

### IT'S GREAT PAINT

May's house paint covered well. Spread easily and left a smooth elastic coat gleaming and rich in appearance. It is live paint seeming to expand with the heat or contract with cold. It never checks or cracks. There is no dead flakiness or chalkiness to May's Paint.

Mrs. Albert C. Olsen,  
 328 Riverside Drive,  
 Ames, Iowa.

### OVERALLS STAND HARD WEAR

I bought overalls of you this fall and I would say they are dandy. I call them the Wear Ever because they sure stand hard wear. Will send for send for more soon for my other boys.

Mrs. T. M. Simonson,  
 Rt. 3,  
 Rolfe, Iowa

These Prices Are Subject to Change Without Notice.



## Enjoy Your Radio While Paying For It!

All of May's Radio sets are sold to responsible people on easy payments Write us about special terms. Don't miss the best radio because your set is out of date. Get a new May's set and pay for it monthly.

### BUY ON EASY MONTHLY PAYMENTS

Select the set you want to buy and then write us about terms.

# MAY'S SHEEPSKIN COAT

## THIS IS THE COAT I WEAR

I sold thousands of these coats last season and already the inquiries are coming in for more of them. Owing to the enormous quantity purchased for this season I have been able to improve the coat in a great many ways and still sell it to you at the same price. This coat is made especially for me and is made to my rigid specifications and I sell it on "SATISFACTION OR MONEY BACK" basis.

### NOW! A BETTER COAT

Heavy strips of leather reinforce the pocket corners which prevents ripping and tearing.

The arm holes are cut extra full permitting free arm movement, they are also especially reinforced to give longer wear.

The linings are carefully selected from only first quality imported pelts which are thick, generously soft, and warm.

The sleeves are equipped with soft knitted wristlets which fit the wrists snugly.



Forest Green MoleSkin Cloth lined with Sheepskin

Beaverized Sheepskin Collar

Reinforced Armholes prevent tearing of Sleeves

Knitted Wristlets inside the Sleeves

Blanket Cloth Sleeve Lining

Pocket flaps all Leather faced

Leather Button Loops

Coat is full 36 inches long

### MY GUARANTEE

I guarantee the lining in this coat to be genuine especially selected good quality sheepskins.

I guarantee the material to be heavy weight moleskin and the workmanship to be equal to that in coats sold elsewhere for more money.

If after receiving and thoroughly inspecting this coat you are not entirely satisfied, return the coat and I will promptly refund your money.

If you have never owned a Sheep Lined Coat—get one now by all means. If you have owned one—you will want another one. This coat formerly sold for \$15.00 to \$20.00. We have cut the price to rock bottom this year.

36 to 46 inch chest

**\$7.25**

Postage Paid

48 to 56 inch chest

**\$7.95**

Postage Paid

# WORK SHIRTS

## TRIPLE STITCHED

Here is a shirt you will be proud to wear. Cut extra large. Extra wide across body insuring comfort to wearer. Large elbow width. Two button pockets. Lined collar and cuffs.

**VERY HEAVY CHAMBRAY**

Full length. Guaranteed not to rip or tear at seams. An extra value in a quality work shirt.

Blue or Gray  
 Sizes 14½ to 17  
 3 for .....

**\$2.48**

**6 for \$4.95**

Sizes 17 to 20 add 10 percent.  
 Postage Paid



These Prices Are Subject to Change Without Notice.

# OVERCOATS

## STYLISH AND WARM

If you need a new overcoat this is the place to buy it. I bought a lot of these coats but they will go fast at these prices. Get yours NOW. These coats were "made up" during the summer months in order to keep tailors busy. I bought them at the low dollar. I can't guarantee these prices only while my stock lasts.



**ALL WOOL  
HAND TAILORED** **\$17.85**  
**EXCEPTIONAL VALUE**

Great big fine hand tailored—all wool overcoats. Very high quality. Others sell coats of similar quality for \$25.00 to \$45.00. Very latest patterns. All colors—plaids—plain. Be sure to tell us color wanted. Lined with high grade satin—guaranteed for full life of coat. Order one of these beautiful coats and if it is not satisfactory, return the coat and your money will be promptly refunded.  
 Sizes 34 to 46 inch chest. **\$17.85**  
 Postage paid .....

### A Great OVERCOAT VALUE

Just because this overcoat is very low in price—do not think that it is of cheap quality. This is a very good overcoat and one that will wear and look good for years. It's woolen—well tailored and is usually retailed for \$22.50 to \$30.00. Lined with Rayon—guaranteed for the life of the coat.

Choice of Dark Blue, Oxford Gray and Dark Brown. Be sure to state size and color wanted. Sizes 34 to 46 inch chest. Special. Postage Paid **\$14.85**

**K-M-A**

— SPECIAL —

I recommend these overcoat values as a very special K-M-A OFFER. You know what that means.

# LOW PRICES ON MEN'S UNDERWEAR

We are offering you a nationally known brand of men's athletic union suits cut generously full and true 1 size. They are sturdy materials; legs wide and correct length. Armholes roomy and twin needle stitched; buttons of fine quality, sewed on to stay. Flap button sewed on seam, 4 thicknesses of material, not just two. Neck strongly reinforced, properly shaped yoke. Material fancy checks and fancy Madras, round or V Neck. Sizes 36 to 46. 3 suits **\$2.40**  
 postpaid .....

Now for you who prefer a summer weight ribbed garment, we can furnish you a fine knitted summer weight union suit with rayon silk strip and trim down the front, fine pearl buttons, short sleeves, ankle length style. Sizes 36 to 46. 3 suits **\$2.40**  
 postpaid .....

You can order one or two knitted and the rest athletic style if you order a total of three or more suits. Be sure to state size and kind wanted, whether check or fancy Madras, and round or V neck.

# May's Farm Belt Overalls

## Sensational Value



All pockets Reinforced Double-Stitched and Bar Tacked

Triple Stitched Seams

Adjustable Collar & Cuffs

Each Leg has Two Seams

Safety Rule Pocket

Roomy-Big All Over

Hammer Strap

Lined Suspenders

If there is anything I don't like it's a pair of tight fitting overalls that bind you all up like an Egyptian Mummy.

How can a fellow do any work if he can hardly stoop over. When I decided to sell overalls I knew just the kind that you men want. I went to big manufacturers and told them that I wanted big, loose, roomy overalls that would wear and wear. I didn't want them to skimp on material just in order to save a few dimes.

### EXTRA HEAVY DENIM

I told them the price that I would pay. They laughed at me and said, "Why we can't make overalls for that price—not the kind you want." So I went elsewhere. I was determined that I should get what I wanted for a low price. Finally, one manufacturer said, "Give me a big order to make up this summer and I'll take it even if I do not make any profit on it."

So I gave him the order and am passing the saving on to you. These few Farm Belt Overalls are big roomy fellows, made of heavy Denim. The cloth is shrunk before it is made up. Full Pockets everywhere. Rustproof buttons, Double Seams, Big Roomy Seat.

I can't think of a thing that would make these overalls any better. They look nice—much better than common ordinary overalls. The Jacket is especially well-tailored. Has lined cuffs—Adjustable Buttons and is made with four large pockets. Has genuine "Set up Collar." Overalls made in high or low back.

# 3 For \$4.65

Sizes 30 to 42  
Postpaid.

Assorted to meet your requirements.  
Add 10 percent for sizes 44 to 50.  
Add 20 percent for sizes 52 to 54.

## BOY'S OVERALLS

3 to 7 8 to 11 12 to 16

2 Pr. of Boys Overalls .. \$2.65 \$2.90 \$3.65

Overalls may be ordered in assorted sizes. Be sure to give size when you order them. Same quality and construction as men's.

## BLANKET LINED JACKETS

### KEEP YOU WARM

In cool days—slip into this Blanket Lined Jacket and keep warm. Made of same material as overalls—Blue Denim. Just what you've been wanting. Heavy. Serviceable.

\$2.55 Each

Sizes 36 to 44  
Postpaid

\$2.85 Each

Sizes 46 to 50  
Postpaid

## COWBOY

### Copper Riveted Pants

Made of same high grade, extra heavy pre-shrunk 8 oz. Denim. Cowboy style. Copper riveted, Triple Stitched with Orange thread. Yoke back and take up strap. Extra wide belt loops. Same price as overalls.

#### IDEAL COMBINATION

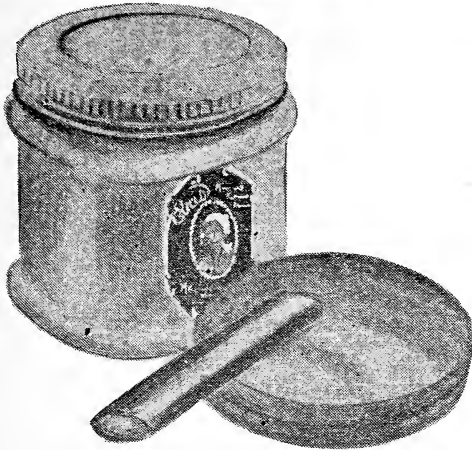
1 Pair of Overalls }  
1 Jacket } **\$4.65**  
1 Pair Cowboy Pants }

Include a pair of Cowboy Pants in your overall order.

These Prices Are Subject to Change Without Notice.

# EVA HOPKIN'S CREME

## Powder and Rouge



EVA'S ROUGE is the most clinging, the most velvety of any rouge and is made for either blonde or brunette.

**Price (Lipstick Free) \$1 Postpaid**

**"STAYS ON"**

Mrs. V. N. Danish of Willisca, Ia.: "There is nothing to compare with your wonderful Creme Powder. I am a busy mother of five, and can apply your powder in the morning and be fresh and clean all day. I would not have time to keep applying the old fashioned puff powders."

**"VELVETY"**

Mrs. Richard Rancy, of Chula, Mo., Rt. 2, writes: "Your powder makes one's skin so cool and soft and velvety."

**DIRECTIONS:**  
Cleanse the face well with a good soap and luke warm water—then rinse with cold water, or ice—then moisten sponge with water, rub over Eva's Creme Powder and apply. Smooth with finger tips to avoid streaking. Use Eva's Rouge under Eva's Creme Powder. If skin is dry or harsh, remove powder at night with cleansing cream—if oily, use soap and water.

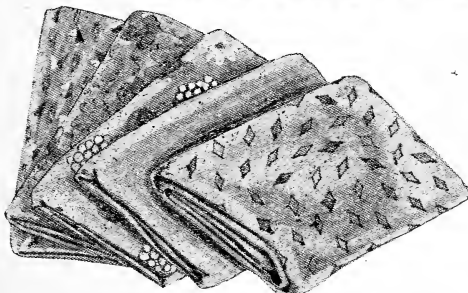
Everybody knows Eva Hopkins, she is the Marvel Creme Powder Lady of KMA. She tells you daily about the merits of this wonderful Creme Powder which is sold from coast to coast, from the Gulf of Mexico to far into Canada.

**Eva Hopkin's Creme Powder**

Over 30,000 satisfied customers in a little over a year is the sales record of these marvelous products. Eva's powder heals while it beautifies, and is the perfect preventative for tan and sunburn. Sent to you with the guarantee to please you or your money back.

**PRICE (Sponge Free) \$1 Postpaid**

## MAY'S DRESS GOODS BUNDLE



17½ yards of FAST COLOR, high quality dress material for \$5.00.

All brand new patterns and designs, direct from the mill. Latest word in style. More and more women turn to KMA for their materials every year. Many homes use 2 and 3 bundles. It's a pleasure to sew with these new, fast color fabrics, and the remarkable saving we make you on each and every bundle amounts to many dollars. Why pay more when we can furnish you the best for less?

Among the materials we have in the bundle are HIGH GRADE RAYON, lustrous and washable, worth 75¢ or 80¢ a yard; PONGEE, soft, smooth and evenly woven. Very practical for children's clothes; GENUINE BROADCLOTH, noted for its long wearing qualities, excellent for men's shirts, etc.; CHALLIE, figured or plain, soft and very popular; FANCY COTTON WASH FABRICS, especially nice for school clothes, the kind that wears and washes so well; and other new materials as they come to us from the mill. Each bundle contains two lengths of ENGLISH PRINTS. Beautiful new patterns, light or dark, any color you wish and good, firm material.

Five 3½ yard lengths	<b>\$5.00</b>	} postpaid
for -----		
Five 4 yard lengths	<b>\$6.00</b>	} postpaid
for -----		

Plan ahead for the children's school clothes when you are ordering. It will mean real economy. Choice new patterns in gayest, freshest colors. Send your order now.

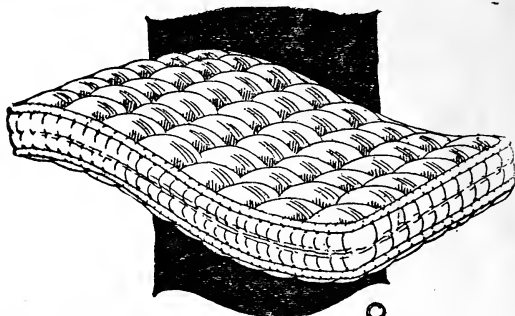
# Big Values in MATTRESSES

OUR  
FINEST  
MATTRESS

**OLD COMFORT**

Only \$13<sup>85</sup>

Freight Paid



You will get up in the morning full of pep, eager for a days work after a nights sleep on this mattress. High quality, all felted cotton throughout. Layer upon layer of spun cotton that makes a springy mattress that gives wonderful comfort. Hand tailored throughout, the corners are rounded to fit either bow or straight end beds. Covered with a heavy twill ticking of floral design with satene edge, hand straps on side.

Full 50 lb. weight—Price Only \$13.85

**OLD HOMESTEAD**

A wonderful value in a cotton felt mattress. With this mattress so moderately priced it is true economy to equip yourself for sound sleep. Closely biscuit tufted, carefully packed and wrapped to reach you in a clean, sanitary condition.

Full 50 lb. wt. \$10.90

## SOD SHANTY

Is an outstanding value on account of its reasonable price and good quality. It is well made, weight 50 lbs., has rolled edges, hand straps on side, covered with a fancy floral design ticking of good quality, and for a reasonably priced mattress it cannot be equalled.

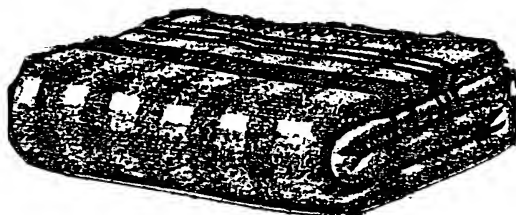
Price \$7.65

All mattresses delivered. Free doll bed mattresses included FREE with each order, if requested. 10 per cent discount on any order for more than one mattress. All mattresses guaranteed or money refunded. Standard sizes but will make them up any size.

Clean inside and out. Will pass bedding laws of any state. Wrapped in heavy kraft paper and burlapped when made. Reach you clean, fresh and nice.

# MAY'S QUALITY BLANKETS

At Most Reasonable Prices



## SPECIAL SAVINGS ON PART WOOL BLANKETS

Fluffy, warm blankets, made of strong cotton yarns for service, with wool interwoven for warmth. Large double blanket with ends satene bound.

Your choice of colors—rose, blue, tan, apricot, green and lavender.

Here is a real blanket buy.

Size 66x80 **\$3.85**  
Postpaid, Pr.

Size 70x82 **\$4.25**  
Postpaid, Pr.

## HIGH GRADE COTTON BLANKETS

This soft, velvety blanket is made up of selected long and sturdy cotton fibers. Woven in pairs two full length blankets in one, doubled to make a pair.

Full size—66x80—in colors, tan and gray.

PLAIN COLORS **\$229**

Postpaid Pr.

PLAIDS **\$249**

Postpaid Pr.

## INDIAN BLANKETS

Here is a blanket of gorgeous Indian colors. You'll want one of these striking Navajo designs in a warm, part wool blanket. Just the thing for an extra cover on a cold night, for they are part wool and that means warmth and softness. They are beautiful and serviceable for couch covers, too.

The nap is extra thick and heavy. Ends turned back and double stitched for strength.

## THE BLANKET OF MANY USES

COLORS: Dark blue with tan border; tan with red border; tan with brown border.

Size 66x80 **\$2.69**  
Postpaid, Pr.



# May's-Better Coffee Less Money



Direct From the  
Coffee Planta-  
tions to Our  
Roaster and Then  
to You



Prices Postpaid	
5 lb.	\$ 2.40
10 lb.	4.60
25 lb.	10.95
Packed in Towel Bags	

FRESHLY ROASTED—THE SAME DAY YOUR ORDER IS SHIPPED

HIGH QUALITY. Goes farther than average coffee that sells for more, because of its strength and wonderful flavor.

STEEL CUT. All of the chaff and other waste is taken out by special machinery.

SATISFACTION GUARANTEED. Drink May's Better Coffee. Your order at my risk, that's my money back guarantee. Prices subject to change without notice.

### NONE BETTER

We have used 10 pounds of May's Golden Cup Coffee and have found none better.  
Mrs. J. W. Rawlings, Battle Creek, Iowa



# MAY'S SMOKED MEAT

**PRICES  
ON SMOKED MEATS  
PRICES ARE GIVEN  
DAILY FROM  
K M A**

Here is my KMA meat—the best on the market, inspected by the Government and sold to you at lowest price.

Wonderful mild flavor, tender juicy hams cured with the real old fashioned flavor. Bacon and hams from young tender hogs "Export grade."

Orders filled and shipped promptly after the order is received. You will pay the market price on the day your order is shipped. For example, if you buy at the prevailing price and the market drops, you will be refunded; if the market advances our prices will advance also—just the same as when you sell your hogs. You can send us your blank check and allow us to fill in the proper amount.

## Regular Hams

Regular Hams are our biggest sellers, cut from the choicest prime fed finished medium weight hogs neither too lean nor too fat—just right. Average 15 lbs.

## Skinned Hams

Are cut from a little heavier hog and the excess fat and skin are trimmed off so as to leave satisfactory proportion of fat and lean. Average 15 lbs.

## Smoked Pork Nuggets

Are made from the thick loin muscle of the shoulder. They are the most delicious portion obtainable. You can boil them whole and eat hot or cold, broil or fry, the same as Ham. You will probably prefer them to Ham. Average 5 lbs.

## Breakfast Bacon

Is full width choicest bellies from young tender well finished animals. A delightful breakfast or for any other meal. Average 10 lbs.

# Dried Fruit



**Direct From  
the Orchards  
in California**

**Packed by  
John Leonard  
of Santa Clara Valley**

## MAY'S FAMOUS Prunes

**1928  
Crop**

You know there is a world of difference between the dehydrated prunes and the common sun dried variety. Dehydration retains the full life sugar and flavor of the fruit as well as the natural color of the meat.

**VERY LITTLE OR NO SUGAR IS NEEDED**

We sold thousands of boxes of dehydrated prunes last year and received in return testimonial letters from all over the country saying they were the best prunes they had ever tasted.

Allow 35¢ postage in zones 1 and 2, and 60¢ in zone 3



**Price—25 lbs. for \$3.25**

**Special  
Value**

## Combination BOX

A well balanced assortment of California Dried Fruits selected especially for the use of the average family.

**High Quality—Low Cost**

The box contains:

- |                                  |                 |
|----------------------------------|-----------------|
| 5 lbs. Thompson Seedless Raisins |                 |
| 10 lbs. 40-50 Dehydrated Prunes  |                 |
| 2 lbs. Figs                      | 2 lbs. Pears    |
| 2 lbs. Peaches                   | 2 lbs. Apricots |

**Price \$3.95**

1928 CROP

23 lbs. net wt.

Postage 35¢ Zones 1 and 2 and 60¢ Zone 3

