

Historic, Archive Document

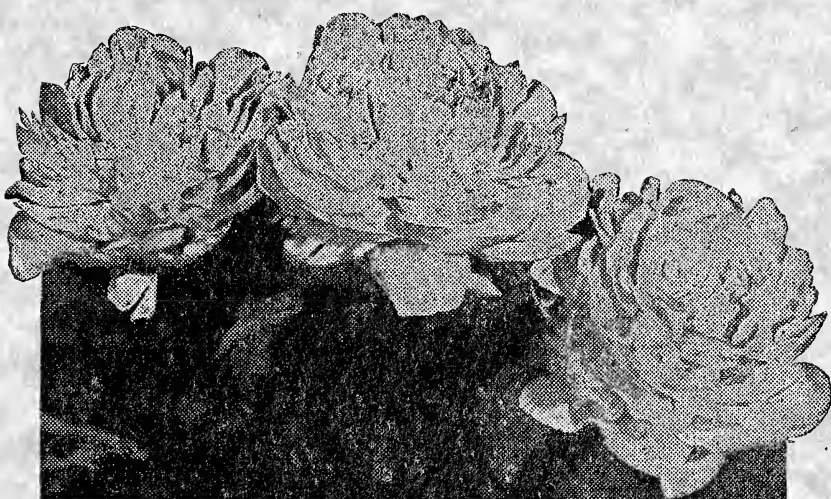
Do not assume content reflects current scientific knowledge, policies, or practices.



62.67
SEP 1 1928
U.S. DEPARTMENT OF AGRICULTURE
WHOLESALE PRICE LIST

Fall 1928

MARTIN'S PERENNIALS



JOSEPH F. MARTIN
PERENNIAL NURSERIES

ONE-HALF MILE SOUTH OF RANDALL
TAVERN ON CHESTNUT STREET

PAINESVILLE, OHIO

Trade Customs

Important

PLEASE ADVISE, when ordering, if you wish goods shipped by express or freight; also give us the best route to insure quick delivery. Write us on business stationery that we may be assured you are in the trade and that you are entitled to our wholesale prices. To insure receiving the full order from us your ordering early will greatly facilitate selection and reservation of stock and shipments may go forward on time.

ALL ORDERS SUBJECT TO PRIOR SALE

Prices

The prices in this catalog are net, and are subject to change without notice. All stock is delivered F. O. B. Painesville, Ohio. We charge for packing at cost. This price list cancels all sales conditions and prices quoted in previous lists.

Terms

Cash or satisfactory trade references must accompany all orders from purchasers unknown to us. To customers whose responsibility and credit standing is known to us, all bills are due net 30 days from date of invoice. On 60-day accounts and older, 6 per cent interest will be charged. We allow 2 per cent discount if bill is paid by the 10th of the month following invoice.

Our Responsibility

While we exercise the greatest care possible to have our nursery products all genuine and reliable, we hold ourselves and will replace, on proper proof, all that prove untrue. We do not give any warranty, express or implied, or guarantee them to live and grow or give specific results. In case of error on our part, it is understood that we shall at no time be held responsible for a greater amount other than the original price of the goods.

Adjustment of Complaints

Complaints for adjustment must be mailed to us in writing immediately upon arrival of stock.

Inquiries

It is part of our service to you to answer your inquiries promptly. We solicit your correspondence. It will help us, however, if you will make your inquiry as brief and as clear as possible.

Shipping Facilities

Are unexcelled. Northern Ohio is centrally located; freight and express shipments to all parts of the country move rapidly. The American Express Company at Painesville give us excellent co-operation in dispatching all shipments promptly. The main line of the New York Central and Nickel Plate railroads with a switch near our nurseries, and Cleveland terminals but 30 miles west of us, make it possible to move freight shipments in quick time to any part of the United States.

Location

To find our nurseries, drive west from Painesville to Randell Tavern, turn south on Chestnut street one-half mile.

Visit With Us

We extend one and all an invitation to visit us at any time of the year. "Our door is always open and the key thrown away." Should you wish to come when certain perennials are in bloom, advise us and we will advise you when the blooms are at their best.

A Personal Message To The Trade

FEEEL sure you will get new inspiration and some new ideas when you read this catalog price list. I have tried to place myself in your position, to describe each plant from your point of view. If I have failed, it is due to lack of accurate knowledge of the business. I know you believe that I am interested in your success, if I was not I would not give you the pointers I have to help you increase your sales.

It is a pleasure to hand you herewith this price list for Fall 1928. You will find quite a number of new offerings as well as some of the old standard varieties that have proved their worth in the years gone by. All of them are moneymakers for the Florist and Nurserymen.



JOSEPH F. MARTIN

FIELD GROWN HEALTHY PLANTS IS WHAT IS SUPPLIED

Yes, no doubt you can buy some varieties cheaper, but the old adage, "*Cheap stock is dear at any price*" has proven itself true in hundreds of cases. Don't buy cheap *half-starved* perennials; you will not be pleased with the results if you force them; your customers will be dissatisfied with the blooms they get from them after planting.

The variety of soil and climate assure healthy, hardy plants, that are well matured, plants that will give immediate results and larger profits. If you sell them to your customers for their perennial garden, it will make them come back for more; if you bench them for forcing you will make better blooms and naturally better profits from your investment.

I thank the old customers for their patronage in the past. On the basis of the service and satisfaction rendered I solicit your orders again this year. To those who have never planted this HIGH GRADE STOCK, I ask you to give me a chance to prove that you will be satisfied with Martin's Perennials.

Yours for Service and Satisfaction,

JOSEPH F. MARTIN.

A Tip for the Florist

HOW many times during the Summer have you wished you had some hardy perennials growing making it possible for you to make up a beautiful basket of cut flowers on some special order. A reproduction from a photograph taken in the middle of July will tell the story. **YOU CAN DO IT** and at little expense. By careful selection from this price list you can have hardy perennials to fall back on from early Summer until **Jack Frost** makes his visit.

The basket as below contain such flowers as Lily Regale, Achillea, Gypsophilla, Delphinium, Daisies and so forth. It is not necessary for you to stick to these varieties. Pick out the varieties that do best in your particular location and **PLANT THEM**. **YOU WILL BE SURPRISED** at the dollars you will be able to take in, that have in the past been handed to you and you had to return to the customer with the sorrowful reply, "I'm sorry."

You will be doing your customers a favor by growing perennials and having the flowers on hand during the Summer months for making sprays, wreaths and even Wedding Bouquets. Not price alone, but the keeping qualities of baskets made up by using **HARDY PERENNIALS** are better.

If you are not familiar enough with some of the varieties listed, we will be pleased to give you more information. Don't hesitate to ask questions as we are here to answer them and to help you make more and larger profits during the summer months if you will but allow us the opportunity. **OTHERS ARE DOING IT—SO CAN YOU.**





PRICE LIST

THE following list represents extensive field displays of healthy, hardy plants that will give you results in your business. We grow every item of stock we list and can fill orders immediately. The plants we offer are well established.

	Per 10	Per 100
ACHILLEA <i>Boule de Neige</i> (Ball of Snow). An improvement on the Pearl. Wonderful for cut flowers or garden. Flowers in June. A good filler.....	1.00	7.00
Filipendulina (A Eupatorium). This fine plant from the shores of the Caspian Sea grows 2 to 3 feet high; flowers bright yellow, in flat heads, and with lace-like foliage. June to September. Nice to plant among shrubbery, evergreens, or for back border, also a good flower for basket work	1.00	7.00
Millefolium <i>Roseum</i> (Rosy Milefoil). Finely cut deep green foliage; pink flowers in dense heads and found all summer. Suitable for general use	1.00	7.00
Ptarmica Fl. Pl. "The Pearl." Pure white flowers borne in the greatest profusion the entire summer on strong, erect stems, 2 feet high; as a summer cut flower it is of great value. An excellent variety for use in sprays	1.00	7.00
Perry's White . 1 to 2 feet. June to September. A choice new variety; pure white flowers; broad, overlapping petals. Nothing better for cutting. An excellent filler.....	1.00	7.00
ACONITUM (Monkshood, Helmet Flower). Aconites form bushy clumps, and are invaluable for planting under trees or in shady or semi-shady position. Also classed as an outstanding cut flower.		
Autumnale . A very striking form on account of its navy-blue flowers. Fine glossy foliage. September to October. 2 to 3 feet.....	1.50	10.00
Fischeri . A dwarf variety growing 30 inches high, with very large pale blue flowers in September and October. Decorative foliage even when not in flower. A very attractive plant in a perennial planting.....	1.50	10.00
Napellus . Produces long spikes of blue and white flowers. Well adapted for planting among shrubbery or in shady corners; 3 to 5 feet.....	1.50	10.00
Spark's Variety . Tall branched spikes, covered with deep-blue, Monkshood flowers. July and August. The deepest blue of all flowers in cultivation	1.50	12.00
Uncenatum . A climbing variety well branched. Light blue flowers in July	1.00	7.00
Volubile . A very tall, slender-growing, semi-climbing variety, with dark blue flowers. July.....	1.00	7.00
Wilsoni . Tall growing, 5 to 6 feet, very late fall, violet blue flowers; very effective	2.50	20.00
ACORUS <i>Calamus</i> (Sweet Flag). Desirable for waterside plantings.....	1.00	7.00
AGROSTEMMA <i>Coronaria Atrosanguinea</i> . Stout erect-growing plant with silvery foliage and rosy crimson flowers.....	1.00	7.00
Walkerii . Brilliant rose-crimson; excellent for cutting. 2½ to 3 feet. June and July	1.00	7.00
AEGOPODIUM <i>Podogeria</i> Var (Bishop's Weed). Variegated foliage, suitable for use as a growing cover in the rockery or border; very desirable	1.00	8.00

	Per 10	Per 100
ALYSSUM saxatile, var. compactum (Golddust). A handsome yellow-flowered perennial which comes in May. It is useful for wall gardens or rockery or in any place where early spring flowers are desired. Attractive gray foliage. Eight to twelve inches.....	1.50	10.00
ANCHUSA italica, Dropmore (Bugloss). An interesting border plant three to four feet high, with pretty gentian-blue flowers in June. A favorite with all who see it.....	1.50	10.00
Myosotidiflora . A distinct, dwarf perennial variety from Russia, with clusters of charming blue flowers resembling forget-me-nots. An effective rock plant for shady places. 1 foot.....	2.00	15.00
ANEMONE globosa	1.50	10.00
Pulsatilla (Pasque Flower). Grows from 9 to 12 inches high and produces violet or purple flowers during April and May. An interesting plant for the rockery or well drained border.....	1.50	10.00
Sylvestris . This is one of the best in moist, sandy soils. Bears good-sized, delicate white flowers on long stems. Late May.....	1.50	10.00
ANTHEMIS Kelwayii (Hardy Marguerite) 2 ft. Daisy-like yellow blossoms, produced all summer. Excellent for cutting.....	1.00	7.00
Kelwayi Alba . Hardy white Marguerite. 3 ft.....	1.00	7.00
AQUILEGIAS or COLUMBINES The Columbines are one of the most beautiful of all hardy plants and make themselves at home in any hardy border. Their period of flowering covers the late spring and early summer months. Taken as a whole they are the most important part of the hardy garden and should be grown in quantity by every lover of old-fashioned garden flowers. The following varieties are all suitable for cutting and are attractive when used with other flowers.		
Alpina . Grows about a foot high, having blue or sometimes paler flowers.	1.00	8.00
Canadensis (American Wild Columbine; Honeysuckle). It flowers early, next after the oxysepala, and few of our wild flowers are better suited to the rock garden than this. Flowers an inch or more long, red and yellow are borne in abundance. Very graceful and attractive plant. It seems to do well in any garden soil both in sun and shade. Eighteen to twenty-four inches	1.00	8.00
Chrysantha Alba . A fine long-spurred white.....	1.00	8.00
Chrysantha fl. pl. Double yellow.....	1.00	8.00
Coerulea . Sepals blue, petals white, a dainty effect.....	1.00	8.00
Farquhar Pinks . A beautiful strain of nothing but clear pink colors.....	1.00	8.00
Flabellata . A fine Japanese species with pale or nearly white flowers. 12 to 18 inches.....	1.00	8.00
Glandulosa Major . Black-violet with white corolla, 36 inches.....	1.00	8.00
Haylodgensis . Variation of colors. A fine strain.....	1.00	8.00
Jaeschkani . Yellow and red types.....	1.00	8.00
Long-Spurred Pink Hybrids . A beautiful and reliable strain comprising a large percentage of pink and rose shades. Long spurs.....	1.00	8.00
Nivea Grandiflora . Large, pure white.....	1.00	8.00
Oxysepala . This native of Siberia is the first to bloom, and is quite hardy and with some white and yellow tints.....	1.00	8.00
Rose Queen . Deep pink.....	1.00	8.00
Silver Queen . Beautiful rose flowers, long spurred.....	1.00	8.00
ARABIS (White Rockcress).		
Alpina . 6 to 8 in. Pure white flowers, densely cover this plant in April and May. Wherever you see a Rock Garden you will always find this perennial	1.50	10.00



Per 10 Per 100

ARMERIA Sea Pink or Thrift. The following varieties are used extensively in rock garden planting:		
Formosa. 12 inches. Light pink.....	1.50	10.00
Formosa Alba. White. 12 inches.....	1.50	10.00
Lauchiana. Deep pink. 4 to 6 inches.....	1.50	10.00
Maritima. Low-growing, with pale pink or rose flowers. 4 to 6 inches....	1.50	10.00
Plantaginea (Sea Pink). Taller than either of the preceding. Flowers on long, naked stems, pale pink or nearly white, of easy culture and a good garden plant.....	1.50	10.00
ARTEMISIA <i>lactiflora</i> . An excellent hardy border plant, producing large, branching panicles of sweetly-scented, creamy white flowers excellent for cutting. Three to four feet. August-September. A perennial you should have on hand for bouquets.....	1.50	10.00
Silver King. Unquestionably one of the best all-around decorative plants. Its bright silver-colored stems and foliage are of great value as a filler for bouquets, sprays, baskets, or all sorts of floral combinations. By cutting and drying the stems it is very valuable in the winter for filler. Florists in our districts paid high prices for their supplies last winter. It is a showy plant in the perennial border or amongst shrubbery. Height 30 inches. We supply large field grown clumps.....	2.00	15.00
ASCLEPIAS (Butterfly Weed)		
Tuberosa. Very showy native plants, about 2½ feet high, producing flowers of brilliant orange-scarlet during July and August. Nice for cutting.....	1.00	8.00

ASTERS

If you don't plant Asters you are passing up some good orders for flowers the other fellow is getting.

Per 10 Per 100

Asters Hardy (Michaelmas Daisies). These are among the showiest of our late flowering hardy plants giving a wealthy bloom during September and October. Very showy in garden plantings. Also used extensively for decorative purposes. The following assortments are the choice of a long list of varieties. We are confident you will be pleased with the generous plants we will ship you.		
Abendrothe. 2½ feet. Very effective rosy red flowers.....	1.50	10.00
Acris. Feathery foliage, light blue. Flowers in August and September....	1.50	10.00
Amellus Elegans. Grows 12 to 15 inches high and produces large showy flowers of a rich bluish-violet during July and August.....	1.50	10.00
Anita Ballard. Double flowers of a clear petunia violet.....	1.50	10.00
Beauty of Colwall. Double lavender blue flowers, very freely produced on stout erect stems, about 5 feet high.....	1.50	10.00
Belgian Queen. Attractive bluish lilac.....	1.50	10.00
Blue Gem. Double flowers of rich blue.....	1.50	10.00
Climax. One of the best and showiest, with large pyramidal spikes of large light lavender-blue flowers. Very free. 5 feet.....	1.50	10.00
Emilie Thoury. Light ageratum blue.....	1.50	10.00
Mauve Cushion. Very dwarf. Delicate mauve. Fine for rockery	1.50	10.00
Mons. Distinct reddish violet; a very showy type of refined character, useful in autumn hampers, and in general bouquets.....	1.50	10.00
Mrs. Raynor. The deepest red of all Asters.....	1.50	10.00
Novae Angeliae. Bright purple violet. 4 feet.....	1.50	10.00
Novae-Angeliae Rosea. Deep reddish violet. Height 4 feet.....	1.50	10.00
St. Egwin. One of the finest, covered with beautiful pink flowers.....	1.50	10.00
Tartarica. Large bluish-lilac. 6 feet.....	1.50	10.00
White Climax. Like Climax, except in color, which is pure white.....	1.50	10.00
ASPERULA <i>Hexaphylla</i> (Misty Woodruff). 1-2 feet. Leaves in whorls of six, the plant strongly resembling asparagus plumosus; the small white flowers in recumbent open panicles. The growth is normally equal height and breadth.....	1.00	7.00
ASPHODELUS (King's Spear). Luteus. Tall spikes of bright yellow, lily-like flowers; very fragrant; sword-like foliage; fine for borders.....	1.50	10.00



A Field of Astilbes. Note the good flowering qualities.



ASTILBES

They have paid others and will pay you to buy your supply from us.

Throughout the growing season we are visited by many people from all parts of the United States and from leading nursery centers of Europe. It so happened that among our visitors in the year 1922 was a representative of one of the largest Astilbe growers in Holland. In showing this gentleman through our nursery he pointed out to us a tract of land which he thought would grow Astilbes of the finest quality and he urged us to give these plants a trial on this particular ground.

Giving his advice our careful consideration we decided to import a good supply of the forcing and some of best garden varieties for a trial as to the size of clump we could develop and also to the quality of the forcing eyes. After being satisfied that we were growing an exceptionally good sized clump, we distributed some of the plants to florists for forcing purposes, having in mind to offer our customers stock that would please and give good returns for their investments.

These florists have pronounced our stock of superior quality. With all this assurance we decided to propagate Astilbes in quantity and offer same to our customers. By glancing at the illustration on the opposite page you will note that we are now growing them in extra large quantities.

If you are interested in larger quantities, please write for special prices by the thousand; it will pay you.

	Per 10	Per 100
America. Deep pink; excellent forcing variety; fine for early forcing. By all means plant this variety.....	3.00	25.00
Betsy Cuperius. Splendid new variety, growing 5 feet high. The fine drooping flower spikes 2 feet long, show in summer during June a great number of white flowers with pink center. A nice garden variety.....	3.00	25.00
Chinensis. Large heads of silvery pink flowers. Garden variety.....	3.00	25.00
Gladstone. A fine variety. Immense trusses of flowers are as white as snow, borne on erect, strong stocks; best white for forcing.....	3.00	25.00
Palmata elegans. 3 feet. June to August. Graceful plumes of lovely light pink flowers. Fine for waterside planting.....	2.50	20.00
Peachblossom. A beautiful peachblossom pink. Compact grower. Prolific bloomer. One of the best for forcing.....	3.00	25.00
Pink Pearl. Delicate pink, 3 feet; forcing variety.....	3.00	25.00
Queen Alexandra. Flowers are bright pink, extra large trusses. One of the best forcing varieties.....	3.00	25.00
Queen of Holland. Blush-white; forcing or garden.....	3.00	25.00
Rose Pearl. Shell pink. An excellent variety for forcing or for use in the perennial garden.....	3.00	25.00
Salland. Stems of a fine red color, growing over 6 feet high. A very decorative novelty.....	3.00	25.00
Vesta. New. Tall, lilac-rose spikes; beautiful garden variety.....	3.00	25.00
BAPTISIA Australis (False Indigo). A strong growing plant about 3 feet high, suitable either for the border or wild garden with dark green deeply cut foliage and spikes of dark blue, lupine-like flowers; good for cutting.....	1.50	10.00
BOCCONIA Cordata (Plume Poppy). 6 to 8 feet. Big, feathery heads of creamy white flowers. Tall, upright habit. Fine for backgrounds, also makes a nice filler in basket work.....	1.50	10.00
BOLTONIA Asteroides. Among the showiest hardy plants with large single Aster-like flowers. The plant is in bloom during the summer and autumn months with its thousands of flowers open at one time producing a very striking effect. Pure white, very effective. 5 to 7 feet. Good for cutting.....	1.00	7.00
Latisquama. Lavender-pink. 4 to 5 feet. Good for cutting.....	1.00	7.00

**CALIMERIS** (Star Wort).

Per 10 Per 100

Incisa. An attractive, free-flowering plant; grows 12 to 18 inches high, producing from July to September daisy-like, pale, lavender flowers, with yellow center..... 1.50 10.00

CAMPANULA (Bellflower). A large and varied family of the greatest value for general garden decorations. They are of the easiest culture, thriving in any ordinary garden soil.

Aelliariaefolia. One to 2 feet, branching at the top; leaves heart shaped; flowers white, about 2 inches long, borne in racemes. Native to Asia Minor: **Suitable for garden or rockery**..... 1.50 10.00

Latifolia Macracantha. 3 feet. June and July. Very handsome, enormous drooping bells of fine satiny lilac and deep purplish shades. Nice for rockery 1.50 10.00

Medium Calycanthema (Cup and Saucer). **Blue and Rose.** Colors separate. Classed among the showiest garden plants; also one of the most desirable cut flowers..... 1.00 7.00

Media. The well known "Canterbury Bells"; its numerous branches crowded with deep bells, the edges softly rolled back and fluted. In July; height 2 to 3 feet. Blue, rose or white. Very showy for garden; valuable for cutting..... 1.00 7.00

Rotundifolia (Harebell; Blue Bells of Scotland). Attains a height of six to twelve inches, forming dense tufts. **Useful for the rock garden;** will do well in partial shade or in open border..... 1.50 10.00

Trachelium (Coventry Bells). A good border plant 2 to 3 feet high with large racemes of light purple bell-shaped somewhat drooping flowers.... 1.50 10.00

CARNATION (The Truest Hardy Outdoor Carnation). **No Florist should be without them.** A beautiful strain of hardy pink, which resembles most of all the indoor Carnation, blooming in great abundance all summer, in the most magic colors, flowers being semi to full double. Excellent for cutting and very hardy.

Giant Pink 1.50 10.00

Grenadin Red. A large flowering type. Very desirable for garden or cutting 1.50 10.00

Grenadin White. White form of above..... 1.50 10.00

CATANANCHE (Cupid's Dart).

Caerulea. 2 feet. July and August. Heads of pretty deep blue flowers on long stems. Profuse and excellent cut flowers..... 1.50 10.00

Alba. White form of above..... 1.50 10.00

CENTAUREA (Hardheads of Knapweed). Makes a fine display in the border; also excellent for cutting.

Dealbata. Large and striking rose-pink flowers. June-July. 2 feet..... 1.50 10.00

Macrocephala. Large thistle-like golden-yellow flowers; useful for cutting and showy in the border; July and August; 3½ feet..... 1.50 10.00

Montana (Perennial Corn Flower). Grows 2 feet high, bearing large violet blue flowers from July to September..... 1.50 10.00

Montana Alba. Pure white..... 1.50 10.00

CERASTIUM tomentosum. A low, creeping plant with the upper surface of the leaves light in color and woolly; it bears a profusion of pretty white flowers. Much used for edging, also to plant in crevices of walls or rockwork, where it keeps up a succession of bloom all summer

1.50 10.00

CHEIRANTHUS (Siberian Wallflower). **Allioni.** A beautiful rock plant. Dazzling fiery orange flowers, on stems about a foot high. Best used as a biennial as it frequently blooms itself to death.....

1.00 7.00



Per 10 Per 100

- CHELONE** (Shellflower). Handsome perennials, growing about two feet high, and bearing numerous spikes of large flower heads, Summer and Fall.
- Glabra alba.** Terminal spikes of creamy white flowers..... 1.00 7.00
- Lyonii.** Heads of showy purplish red flowers..... 1.00 7.00
- CHRYSANTHEMUMS, HARDY** This is the flower above all others that gladdens your heart when your garden is growing bare. The inclusion of Hardy Chrysanthemums in your plantings makes it possible to have the garden bright with flowers after the majority of hardy herbaceous flowers are past. They are also valuable for cut flowers. The varieties offered below have been carefully selected and will give a flowering period of two months, from the middle of September until the middle of November.
- Autumn Glow.** Rose crimson large..... 1.50 10.00
- Elkton.** Profuse, very compact, multi-petaled flowers of dollar size, bluish white slightly tinged lavender..... 1.50 10.00
- Excelsior.** Bright orange yellow; very free. Large..... 1.50 10.00
- Field of Snow.** Pure white button..... 1.50 10.00
- Golden Queen.** Yellow, large..... 1.50 10.00
- Hilda Wells.** Beautiful Tuscan red shaded yellow at base of petals..... 1.50 10.00
- Indian.** Copperish red 1.50 10.00
- Little Bob.** Bronze button..... 1.50 10.00
- Marie Antoinette.** Deep pink 1.50 10.00
- Old Homestead.** A buff pink. One of the best..... 1.50 10.00
- Victory.** White, large..... 1.50 10.00
- Skibo.** Showy, golden button Pompon..... 1.50 10.00
- CHRYSANTHEMUM MAXIMUM** (Giant Moonpenny or Shasta Daisy). In the garden they are classed among the most known Hardy Plants. They also hold an important position as desirable cut flowers.
- Alaska.** Extra large 1.00 7.00
- Arcticum** (Arctic Daisy). Among fall flowering perennials this is one of the best. It forms an attractive clump of dark green foliage, and in September multitudes of white flowers, slightly tinged rose or lilac, 2 inches wide, appear. 2 to 2½ ft. September to November..... 1.00 7.00
- Glory of Wayside.** The earliest to flower coming into bloom in May with pure glistening white flowers, which are produced in great profusion on symmetrical compact plants from 12 to 15 inches high..... 1.00 7.00
- Leucanthemum flore pleno** (Double White Shasta Daisy). Flowers double, pure white, of medium size, excellent for cutting; each plant produces from 30 to 50 flowers; perfectly hardy without any protection. Our latest and best addition to the Shasta Daisies..... 1.00 7.00
- Mrs. C. Lothian Bell.** This magnificent white Daisy is undoubtedly the largest flowered variety of its class. Flowers frequently measure six inches across with very broad petal of great substance. 2½ to 3 feet. Extra for florists use..... 1.50 10.00
- Memorial.** A strong growing variety with extra good stems. Large flowers in bloom for use on Decoration Day. Very good cut flower..... 1.00 7.00
- ELDER DAISY** This Daisy is now recognized by all for its earliness of flower and it is being used for forcing..... 1.50 10.00
- CIMICIFUGA** (Snake Root). **Racemosa.** A handsome native species bearing in July and August spikes of pure white flowers..... 1.50 10.00
- COREOPSIS** **Delphinifolia**—**Larkspur Coreopsis.** Very floriferous, with yellow flowers a little smaller and later than lanceolata..... 1.00 7.00
- Lanceolata grandiflora.** A beautiful hardy border plant, grows 15 to 18 inches high and produces its bright yellow flowers in great profusion. By cutting off old flowers, will bloom until fall..... 1.00 7.00



Delphinium, English Hybrids, Blackmore and Langdon Strain.

Per 10 Per 100

DELPHINIUM (Perennial Larkspur). Indispensable to the herbaceous garden. Their long showy spikes of flowers persist from June till frost and furnish the most satisfactory blues to any color scheme.

Belladonna. The most continuous blooming of all, never being out of bloom from June first until cut down by hard frost. The clear turquoise blue of its flowers is not equalled for delicacy and beauty by any other flowers. 1 year..... 1.00 7.00
 Select two-year-old clumps 1.50 10.00

Bellamosum. The dark blue form of the popular Belladonna. 1 year... 1.00 7.00
 Select two-year clumps..... 1.50 10.00

Chinensis. A very pretty variety with fine feathery foliage and intense gentian-blue flowers in open panicles, 1 year..... 1.00 6.00

Chinensis Album. A pure white form of the above, 1 year..... 1.00 6.00

English Hybrids. (Blackmore and Langdon's best strain). For many years we have grown many different strains of Delphinium having in mind to supply our customers with the best obtainable. This strain without a doubt stands in a class by itself. It has the range of colors well divided in the palest shades of blue to the deepest indigo with a strong run of the most delicate shades of rose, double and single. 1 year..... 1.00 7.00
 2-year plants 1.50 10.00

DELPHINIUM, REGAL Hybrid Larkspurs are deservedly popular both for their beauty in the garden and their effectiveness as cut flowers. There are many strains, all good. These are from an English specialist and fulfill every promise their name implies. Heavy, compact growth, large individual flowers in long, dense spikes. Colors range from pink shades to deep blue and mostly double. 1 year..... 1.50 10.00

Lamartine. Single, deep blue. 1 year..... 1.50 10.00

Nudicaule. Brilliant scarlet with peach-red interior, 30 inches. 1 year... 2.00 15.00

Tall English Hybrids. A fine strain of mixed hybrids. A grand assortment of single and double flowers. Colors ranging from lightest blue to purple, with flower spikes two feet long. Select 2 year..... 1.50 10.00

DIANTHUS Barbatus (Sweet William). Old favorites, bearing their sweet, clove-scented flowers in the greatest profusion during May and June. They are indispensable for the edge of the hardy border and for cutting.

Atro-Sanguineus. Blood-red..... 1.00 7.00

White Beauty. Pure white..... 1.00 7.00

Pink Beauty. Improved fine deep salmon pink color..... 1.00 7.00

Scarlet Beauty. Rich deep scarlet, bright green foliage, very fine..... 1.00 7.00

Deltoides (Maiden Pink). A dwarf variety with sprays of pink flowers; fine for rockery..... 1.00 7.00

Deltoides Alba. A white form of the above..... 1.00 7.00

Her Majesty. Double white..... 1.50 10.00

Latifolius Atrococcineus fl. pl. (Everlasting Hybrid Sweet William). Beautiful summer bedding variety producing masses of brilliant fiery crimson flowers all season..... 1.00 7.00

Mrs. Simpkins. Pure white; sweet scented..... 1.50 10.00

Plumarius Cyclops. Red hybrids..... 1.00 7.00

Essex Witch. Bright pink..... 1.50 10.00

Procumbens. A trailing form with rich green foliage. Flowers wine red, almost maroon. A valuable rockery plant..... 1.50 10.00

DICENTRA Spectabilis (Bleeding Heart, or Seal Flower). An old-fashioned favorite; its long racemes of graceful heart-shaped pink flowers are always attractive. It is used largely for forcing..... 3.50 30.00

Eximia (Plumy Bleeding Heart). A dwarf-growing sort, with beautiful finely cut foliage and showy racemes of pretty pink flowers throughout the season 2.00 15.00



Per 10 Per 100

DIGITALIS <i>gloxiniaeflora</i> . Alba, fine variety with spotted flowers; height 4 ft.	1.00	7.00
<i>Gloxiniaeflora</i> rose. An excellent rose-colored type. June and July.....	1.00	7.00
<i>Purpurea Gloxiniaeflora</i> . Purple, spotted flowers; height 4 ft. June and July	1.00	7.00
DORONICUM <i>Excelsum</i> (Leopard's Bane). Has large, yellow marguerite-like flowers, 2½ to 3 inches across, in early spring. 1½ to 2 ft. May, June. Suitable for cutting.....	2.50	20.00
ECHINACEA <i>purpurea</i> (Purple Coneflower). Is without doubt one of the most interesting of hardy plants. It has reddish purple flowers, four inches in diameter. Three to four feet. July-August. Desirable for cutting	1.50	10.00
ECHINOPS <i>Ritro</i> . Metallic blue flowers; thistle-like foliage 3 to 4 ft. July-August. Used for garden or cutting.....	1.50	10.00
ERYNGIUM (<i>Sea Holly</i>). Finely cut spiny foliage and thistle-like heads of flowers a beautiful steel-like blue. Very decorative in the hardy border, and useful for dry bouquets in winter.		
<i>Alpinum</i> . Rich metallic blue.....	1.00	7.00
<i>Amethystinum</i> . The finely-cut, spiny foliage and the beautiful thistle-like heads are of glistening amethystine-blue. For garden or cutting.....	1.00	7.00
<i>Hybridum Grand</i> . Larger heads of light blue thistles. Garden or cutting	1.00	7.00
EUPATORIUM <i>Purpureum</i> (Joe Pye Weed). 6 to 7 feet. July-September. Pink flower, purple stalked. Good for bold effects in border or against shrubbery.....	1.00	7.00

Coelestinum (Hardy Ageratum.) A fine perennial closely resembling the Ageratum, flowers a lavender blue, flowering from August to frost. A fine perennial for florists' use..... 1.00 7.00

EUPHORBIA *Corollata* (Flowering Spurge). A branchy low-growing plant with fine stems and foliage, literally covered from June to August with loose umbels of pretty white flowers. Good for cutting in long sprays; and one of the most charming mist-flowers to mix with bouquets of Larkspur.. 1.00 7.00

EULALIA *Japonica Variegata*. Very ornamental; long, narrow leaves, striped green, white, and often pink or yellow. Very attractive planted around ponds or background for perennial plantings 1.50 10.00



Echinacea purpurea (Rudbeckia Purpurea).



	Per 10	Per 100
FUNKIA Lanceolata. Valuable by reason of its late flowering, lilac flowers in September; 2 feet. A good landscape variety.....	1.00	7.00
Undulata Variegata (Day Lily). Graceful green leaves having fluted white edge. Very conspicuous plant for border. They are also beautiful when used as a foliage pot plant for Easter sales.....	1.50	10.00
FESTUCA GLAUCA Dwarf ornamental grass growing 4 inches high. A good plant for border or rockery.....	1.50	10.00
GAILLARDIA Grandiflora (Blanket Flower). This is considered one of the most beautiful and desirable plants in cultivation, beginning to bloom in June they continue one mass the entire season. Base of petals are scarlet crimson, bordered golden yellow. A most beautiful combination. Fine for cutting.....	1.00	7.00
Maxima. This fine strain of Blanket Flower far surpasses the older ones in vigor and brilliance of color. Three to four feet.....	1.00	7.00
Mastadonte. An excellent large flowering type. Pure yellow.....	1.00	7.00
Sanguinea. Orange red shades.....	1.00	7.00
GALLIUM Borialis. Flowers resemble the Gypsophila. June and July. Good for cutting.....	1.50	10.00
GENTIANA (Blue Gentian). Andrewsi. One of the most fascinating native plants. The flowers, which are tightly closed, are borne at the top of a stem from 6 to 8 inches long, and are an intense deep blue. Blooms best in moist places. July and October.....	1.50	10.00
GYPSOPHILA (Baby's Breath). Does well in rather dry places. Valuable for "mist effect" in bouquets and in the garden where a mass of delicate, misty bloom will fill a bare place.		
Acutifolia, lilac-rose; height 4 ft.....	1.50	10.00
Paniculata (Baby's Breath). A beautiful old-fashioned plant possessing a grace not found in any other perennial and attracting the eye of everyone. Dense spreading bush, numerous tiny flowers in light feathery panicles, delicate foliage, fine for cutting, excellent for border or large rock gardens. July and August. Strong roots. If cut and dried will make excellent filler for winter use.....	1.00	7.00
Repens. A beautiful trailing plant for the rockery, with clouds of small, white and pink flowers in July and August.....	1.00	7.00
HELENIUM (Helen Flower). This magnificent perennial during its blooming season from early August until the middle of September, literally produces hundreds of beautiful yellow to bronze-colored flowers. The flowers on one and the same plant vary in colors according to their growth and different stages of development. Beautiful for the garden. Fine for cutting.		
Autumnale (Sneezeweed). This handsome native perennial attains a height of three to five feet. It branches at the top and bears many large yellow flowers in autumn.....	1.50	10.00
Autumnale Rubrum. Similar to superbum, but has bright terra cotta red flowers; makes a wonderful display during the month of September. 3 to 4 feet.....	1.50	10.00
Hoopesi. Charming yellow flowers, fine for cutting. Hardy and interesting. Spreads from root division. Flowers about June.....	1.50	10.00
Riverton Gem. Old gold, changing to wall flower red. August and September. 4 feet.....	1.50	10.00
HELIOPSIS laevis, var. pitcheriana. Is a better plant than <i>H. laevis</i> ; not so tall, very floriferous and the flowers are deeper yellow.....	1.00	7.00
Scabra Zinniaeflora. Grows about 2 feet high with large semi-double, yellow flowers about 3 inches across.....	1.50	10.00



HEMEROCALLIS

Well known family resembling Lilies in character and bloom, usually sweet scented and bearing a great quantity of yellow flowers during long periods of summer varying with the variety. Are very showy in the garden. They run in height from 2 to 4 feet.

	Per 10	Per 100
Aurantiaca. Bright orange Day Lily. 2½ to 3 feet. Blooms in July.....	1.50	10.00
Flava (Lemon Daylily). Fragrant yellow flowers in June. Grows 2 feet high with flowers on long stems for cutting.....	1.50	10.00
Kwanso Fl. Pl. Double orange flowers. July. 4 to 5 feet.....	1.50	10.00
Luteola (Golden Day Lily). Bright golden-yellow with Indian-yellow shadings; June and July.....	1.50	10.00
Minor. Dwarf lemon yellow. First of June.....	1.00	7.00
Thunbergi. Much like Flava, but flowers in July, a month later, and 6 to 10 inches of the upper portion of the flower scapes are thickened and flattened	1.00	7.00

HESPERIS (Sweet Rocket).

Matronalis. 2 to 3 feet. June and July. Fragrant purple flowers in showy spikes. Desirable for wild garden, shrubby or mixed border....	1.00	7.00
Matronalis Alba. White.....	1.00	7.00

HEUCHERA (Coralbells). Beautiful plants for front row of borders, with slender, fairy-like spikes of richly colored flowers; most striking in the garden and light and graceful for cutting.

Brizoides. Has the same foliage and habit as Heuchera sanguinea, but the flower is pale pink, though three times as many flowers are produced. Blooms in May.....	2.00	15.00
Sanguinea ("Coral Bells"). Grows about 2 feet high, with scalloped purple-tinged round leaves; and throughout the summer throws up innumerable erect, slender flower stems, each crowned with a loose umbel of coral-red flowers.....	2.00	15.00

HIBISCUS

Crimson Eye. Of quick, shrubby growth to 5 feet, bearing quantities of large open flowers like single Hollyhocks; white with prominent crimson throat	1.00	6.00
Moscheutos. Large, bright pink flowers, on bushes about 4 feet high.....	1.00	6.00
Mallow Marvels. A giant race derived from the common native Hibiscus, which has elevated this type almost to the dignity of shrubs. Massed in great groups or generously interspersed with shrubs, these "Marvels" grow very rapidly, sometimes getting up to 8 or 10 feet in height; with plenty of broad foliage to furnish a rich setting for the mammoth flowers. Can supply in mixture of white, pink and red.....	1.00	7.00

HOLLYHOCKS We have this season a fine lot of strong, clean, healthy, vigorous one-year-old flowering plants of the finest strains under **Double Pink, Double Red, Double White, Double Yellow, Double Maroon**

Double New Lilac	1.50	10.00
Lemon Yellow	1.00	7.00
New Allegheny. Immense semi-double flowers, with fringed edges.....	1.00	7.00

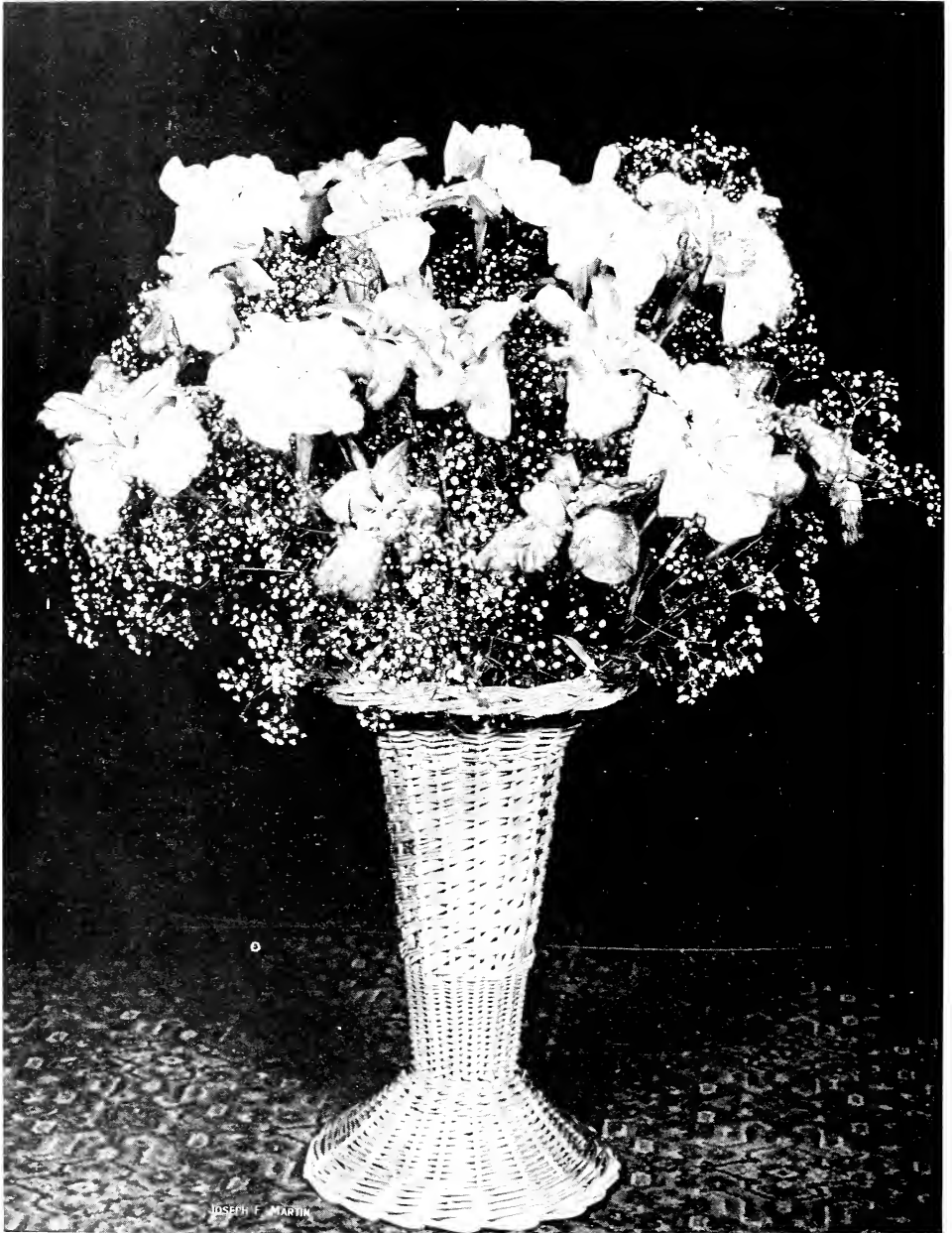
IBERIS *Gilbaltarica* (Hardy Candytuft). Very desirable dwarf plant with evergreen foliage, covered by dense heads of flowers early in spring; height 8 inches.....

Sempervirens. Very dwarf, covered with a sheet of white; height 6 to 8 inches.....	1.50	10.00
---	------	-------

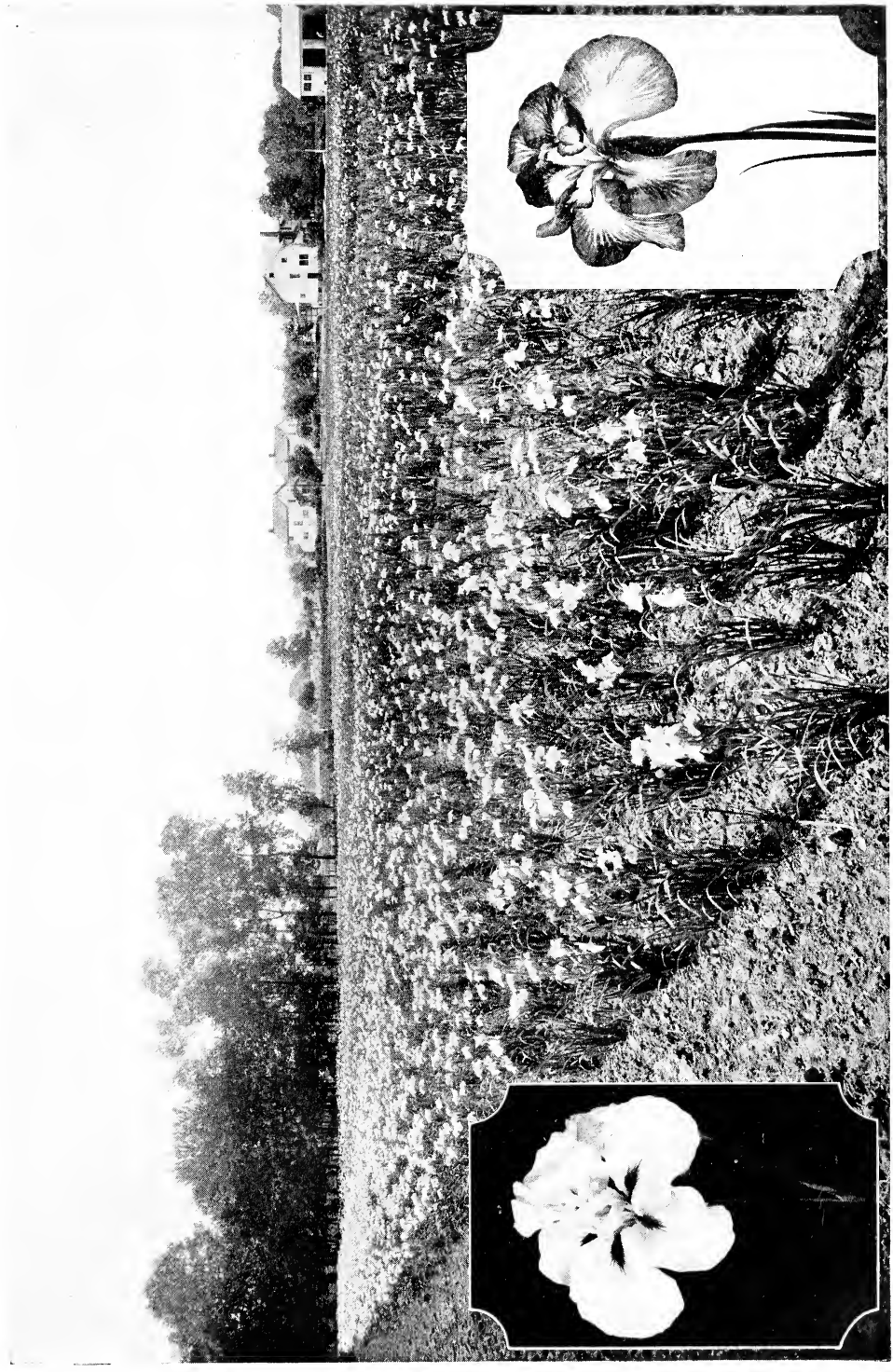
IRIS GERMANICA (German Iris)

	Per 10	Per 100
Ambassadeur. A strong growing late variety with very large flowers. Standards reddish-violet falls deep velvety brown beard and style arms yellow. Of exceptional merit and superior to many varieties of a similar color	4.00	35.00
Alcazar. Very large, broad petals. Standards, pale lilac blue with golden bronze throat; falls rich violet purple.....	1.50	10.00
Candelabra. Large and striking. Standards light mauve dusted with violet; scapes silvery white. Falls perfectly limp with sharply defined veins converging to a solid blotch of almost black violet at the ends....	1.00	6.00
Cecil Minturn. 24 inches. "S" and "F." A uniform soft shade of cattleya-rose. A beautiful flower, dome shaped with broad ruffled petals.....	3.00	25.00
Dorothea. Milk white, clouded with porcelain blue, brown reticulations at base of all petals.....	1.00	6.00
Iris King. Old gold rich crimson bordered with gold; a very desirable variety; tall, with large flowers.....	1.00	7.00
Jeanne d' Arc. A delicate, dainty sort of good size and form; white with edges partly checked and scapes heavily suffused in violet.....	1.00	7.00
Lent A. Williamson. Early. Rated in 1922 by the American Iris Society as the finest Iris in the world. Campanula violet and velvety royal purple. Brilliant gold beard. Massive in growth and flower.....	3.50	30.00
Lord of June. "S" flappy lavender-blue; "F" rich violet blue. An exceedingly handsome Iris. Very bold and vigorous habit.....	3.50	30.00
Mme. Chobaut. 36 inches. "S" white shot with chalcedony yellow, shading into wine red. "F" white edged with lilac. A very pleasing contrast of colors.....	2.50	20.00
Pallida Dalmatica. Tall growing; with very large full-formed flowers of soft lavender, the falls being of deeper hue.....	1.00	7.00
Princess Beatrice. This is the true type of pallida Dalmatica and still one of the most attractive and satisfactory all-around varieties, with flowers of large size; both standard and falls of a clear lavender blue shading to a pale silvery blue at the base and sweetly scented. It is of strong, vigorous growth, over three feet high with unusually heavy, glaucous foliage.....	1.50	10.00
Queen Caterina. Pale lavender-violet with orange beard; white haft, veined with bronze. A strong grower.....	2.00	15.00
Shekinah. 36 inches. Clear, soft yellow, shaded through the center. One of the finest yellow Irises and the first of Pallida growth. Mid-season	2.50	20.00
Souv. de Mme. Gaudichau. Standards violet blue; falls a deep velvety purple. Large flowers of exceptional substance on stalks three feet high. One of the most beautiful.....	6.00	50.00

DO NOT confuse our Iris with some on the market. We have built up our business on selling "Stock of Quality." We wish to supply your Iris requirements this year, and feel confident you will be pleased with our stock as well as our service.



Assorted Varieties of Japanese Iris.



Gekka-no-nami.

A Field of Japanese Iris.

Uchiu.



IRIS KAEMPFERI (Japanese Iris)

For years back we have been accumulating the Japan Iris we are now offering to the trade. Testing out hundreds of varieties, adding, and discarding varieties which did not come up to our satisfaction, we feel at this time that the varieties we are offering are by some special merit the best in their particular class considering the nature of growth, type and distinction of flower.

We believe that we have a sufficient supply of all the varieties listed with which we can take care of your wants, in large or small quantities, at a reasonable price.

We are sure if our customers could visit our fields in blooming season the sight would remain in their minds forever. We consider these as showy as a field of Peonies. We urge our customers to try out our varieties. Our prices are reasonable.

	Per 10	Per 100
Astarte. Double beautiful dark violet.....	1.75	12.00
Circe. Double dark violet blue, finely lined with white.....	1.75	12.00
Eumee. Single dark violet.....	1.75	12.00
Gekka-no-nami. Earliest to bloom, and the choicest white; very free. Glistening white with creamy white stigmas.....	1.75	12.00
Gold Bound. A fine double, pure white, enriched by a creamy glow from the gold banded center.....	1.75	12.00
Hercule. Double, clear lilac, blue.....	1.75	12.00
Iso-no-nami. Double soft blue, silvery veins.....	2.00	15.00
Patrocle. Single, superb dark reddish violet.....	1.75	12.00
Proserpine. Single bright rich blue produced by sanding of velvety blue on white.....	1.75	12.00
Koki-no-Iro (Purple and Gold). Enormous double flowers often ten inches across, early and free blooming; one of the very best varieties. Color, rich violet-purple with white petaloids tipped violet. The con- spicuous golden throat extends outward in sharp bluish white rays.....	1.75	12.00
Ski-No-Ryo. Double blue and white.....	1.75	12.00
Uchiu (Universe). Beautiful, six-petaled flowers of largest size, on the longest stems. Color, cerulean blue with golden center and white. This variety covers the longest blooming season and is altogether one of the most attractive.....	1.75	12.00
Zama-No-Mori. Only three petaled, but larger than most; one of the daintiest and most delightful of the delicate toned kinds. White, with a heavy azure blue zone.....	1.75	12.00

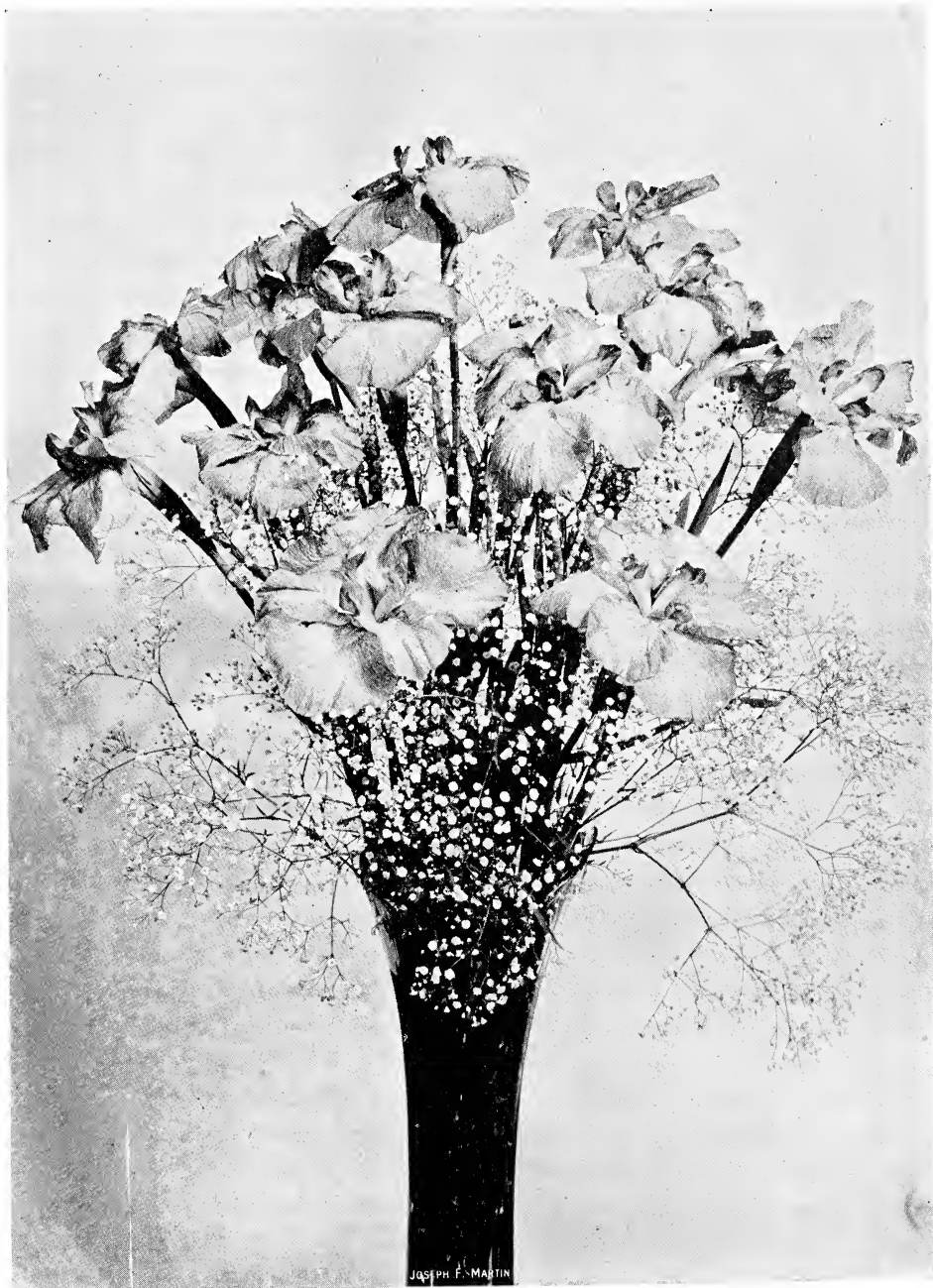
SIBERIAN IRIS

Siberica. The flowers resembling the Spanish and English Iris. These make a bright show in the garden and are excellent for cutting. They can be cut when in bud and will fully develop in water, blooming from latter part of May until end of June, purplish-blue flowers, 3 ft.	.85	6.00
Sibirica alba. Pure white, 3 feet.....	1.00	7.00

LAVANDULA (Lavender). Vera. The true Sweet Lavender, growing 18 inches high, wonderfully fragrant, blue flowers blooming July and August.....	1.50	10.00
---	------	-------

LATHYRUS Everlasting Pea).

Latifolius. These Everlasting Peas are but little known in this country, but are great favorites in England. They are extremely showy and fine. Charming climbers for covering trellises, arbors, etc.	1.00	7.00
Alba. Pure white.....	1.00	7.00
Pink Beauty. Large racemes of pleasing deep rose flowers.....	1.00	7.00
Red. The well-known red Everlasting Pea.....	1.00	7.00
White Pearl. A great improvement on the older white variety, the stems giving from 12 to 15 flowers each.....	1.50	10.00



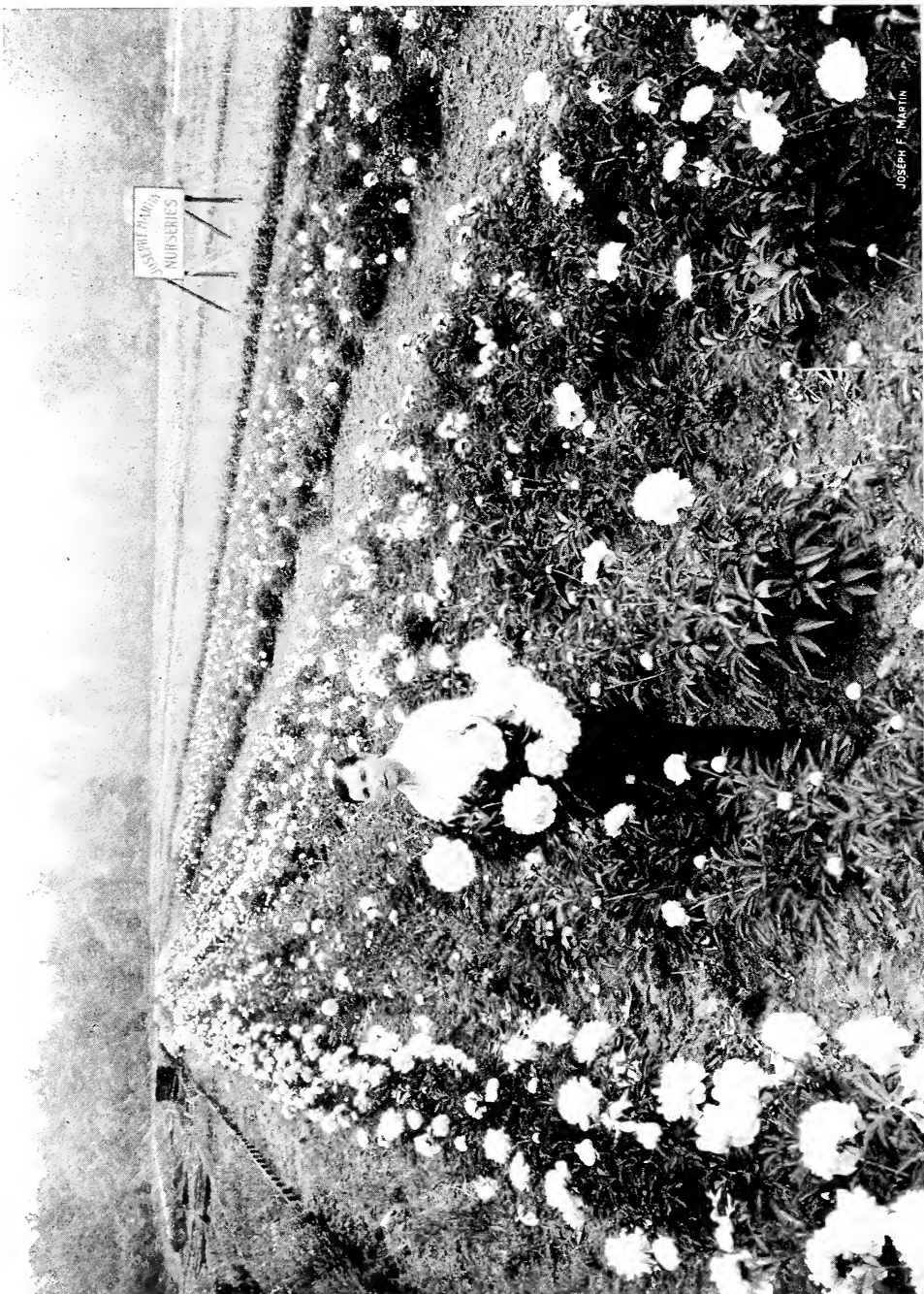
Japanese Iris—Iso-no-nami. See general list for price.



	Per 10	Per 100
LIATRIS <i>Pachnostachia</i> (Blazing Star or Gayfeather). A perfectly hardy perennial of luxuriant growth, doing well in any kind of soil, poor or rich, moist or dry, producing richly colored purple flowers on stout stalks 6 feet high in graceful spikes one foot long. In bloom during July and August. First rate cut flower.....	1.50	10.00
Scariosa . This is a much showier form than is usually sent out for this plant. It has large, showy, purple heads and flowers much later than the others. A very imposing form. September. Four to five feet.....	1.50	10.00
LILIUM <i>Candidum</i> (Madonna or Annunciation Lily). This is the old-fashioned garden Lily, and one of the most beautiful. Ready in September only. We offer Northern France grown bulbs.....	2.50	20.00
Regale, or Myriophyllum (The Regal Lily). It is absolutely hardy, and is excellent for forcing. It has been predicted that this will become the Easter Lily of the future and being so hardy, may be grown at home. The flowers are white, slightly suffused with pink, with a beautiful shade of canary yellow at the center, and extending part way up the trumpet. It is delightfully perfumed, reminding one of the Jasmine, and lacking the heavy, oppressive odor of most lilies. Blooms out-of-doors early in July. Strong bulbs. Flowering size.....	2.50	20.00
Superbum (Swamp Lily). Graceful stems. 5 to 6 feet, terminating in a pyramid of bright orange-crimson flowers.....	1.00	7.00
Tigrinum, var. Splendens . By far the best form of Tiger Lily we have had. It is taller, with handsome, large flowers and a much healthier plant	1.50	10.00
LINUM (Flax) <i>Perenne Blue</i> . May-August. Pearly blue flowers. A graceful, hardy perennial.....	1.00	7.00
Alba . Milk white flowers, very decorative.....	1.00	7.00
LOBELIA <i>Cardinalis</i> (Cardinal Flower). Rich, fiery cardinal flowers. Strong plants, often producing ten to eighteen spikes. 24 to 30 inches long	1.50	10.00
Syphilitica . Blue. 3 feet. August-September.....	1.50	10.00
LUPINUS (Lupine). Effective plants producing large spikes of flowers, blooming in May and June.		
Polyphyllus . Blue, Rose and White separate.....	1.75	12.00
Harkness Hybrids . A mixture of this wonderful strain in the garden is a credit to any flower lover.....	2.00	15.00
Regal . A wonderful new strain of perennial Lupines. There are creamy shades, amber, coppery orange and almost canary yellow, mingled with bronze, bright rose, terra-cotta, slate and lavender blue. Some are distinctly bi-colored, having wings or standards of one solid color and keel of another, while in some the whole flower is suffused and overlaid with a glossy sheen of rose or copper over a groundwork of pale yellow or amber.....	2.00	15.00
LYCHNIS <i>Chalcedonic</i> (Maltese Cross; Jerusalem Cross; Scarlet Lighting). Two to 3 feet high, with white or scarlet flowers in good-sized corymbose heads. Give it a rich soil and it will bloom all summer. June. A showy plant for the garden and a striking cut flower....	1.00	7.00
Coronaria (Mullen Pink; Rose Campion). Flowers red; showy in June.	1.00	7.00
Viscaria Splendens . Spikes of handsome flowers on stems one foot high, blooms in June. A very attractive plant in the border.....	1.00	7.00
LYTHRUM <i>Roseum Superbum</i> . Shrubby perennial 2 to 5 feet, at its best in cool and moist location although quite successful in the average border and among shrubs. Bright rose-colored flowers are borne freely in long terminal racemes from June intermitently to September.....	1.50	10.00



	Per 10	Per 100
MERTENSIA virginica (Virginia Bluebells). A foot or two high, with dark green foliage, and loose panicles of rich blue-purple flowers in early spring	1.50	10 00
MONARDO Cambridge Scarlet (Bergamot). Brilliant crimson scarlet, showy plants growing from 2 to 3 feet high, succeeding in any soil or position, with aromatic foliage and producing their bright flowers during July and August.....	1.00	7.00
MYOSOTIS Palustris . The true "Forget-me-Not," appealing in its modest, azure beauty and cherished for its sentiment. Bushes up to 18 inches high and blooms profusely during early summer.....	1.00	7.00
NEPETA (Ground Ivy; Catnip; Catmint). Mussini . An excellent plant for any position, but especially useful in the rock garden. Of dwarf, compact habit, producing masses of bloom of a beautiful shade of lavender. 1 to 1½ feet.....	1.50	10.00
OENOTHERA (Evening Primrose). Elegant for a sunny position in the border or on the rockery, blooming all summer. Youngi . 2 feet. June to August. A strong, stocky, large-leaved plant with firm, shiny foliage; numerous bright lemon-yellow flowers.....	1.50	10.00
PACHYSANDRA Terminalis . One of the best ground covering plants, averaging 6 to 8 inches in height and branching freely into a dense mat. Its shapely indented foliage is practically evergreen; thick, rubbery, lustrous dark green. It bears small spikes of light colored flowers during May and June.....	1.50	10.00
PAPAVER Bracteatum . Like <i>P. orientale</i> , but with extremely large, blood-red flowers, not spotted, shaded orange.....	1.50	10.00
Nudicaule (Iceland Poppy). Pure white, yellow, or orange-scarlet flowers. Freely flowering. 1 foot.....	1.50	10.00
Oriental (Oriental Poppy). Tremendous scarlet, cup-shaped blooms of brightest crimson-scarlet, with large, purplish black blotches at base of petals, creating a wonderful contrast when bloom is fully open. Clumps of these throughout the border add a brilliancy that no other flower can provide	1.50	10.00
PENTSTEMON (Beard-Tongue). Few genera among the popular hardy perennials afford a greater number that are so attractive. Their natural gracefulness, variety of colors, and great abundance of flowers make them useful in many places. Though hardy as a rule, too much frost with an excess of moisture in winter seems to be fatal to most of this genus. Every flower garden should have at least a few of these lovely flowers.		
Acuminatus . Lilac or violet flowers in July. Stems erect, about a foot high. A very attractive flower and nice for cutting.....	1.50	10.00
Barbatus, var. torreyi . About two feet high; showy flowers; red or scarlet. One of the most attractive.....	1.00	7.00
Grandiflorus . One of the showiest, with thick, leathery leaves at base of stem and long, one-sided spikes of large, showy, lilac or purple flowers.	1.50	10.00
Pubescens (Hirsutus). Stems 24 inches high, covered with violet flowers often producing flowers colored a flesh-pink; excellent for hot, dry place in the garden; is also a very fine wall plant. It stands hot, dry exposures as well as a Sedum. Do not fertilize this plant, except give it plenty of lime to bring out the color of the flowers.....	1.50	10.00



JOSEPH F. MARTIN

Field views of our Peonies, showing our two-year-old field variety, at extreme left is Therese. Our dark red varieties are not showing up in the picture. Three to five dimensions will be furnished from this stock.

PEONIES

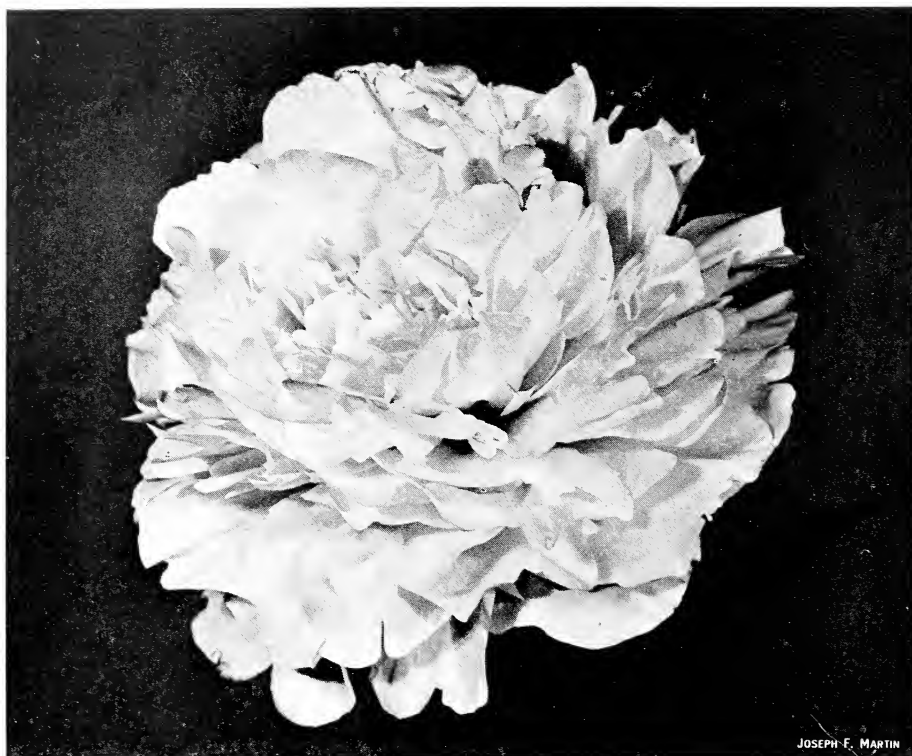
The varieties we are offering are a selection of an endless list of varieties in the many years since we have made a specialty of Hardy Plants. We have given the Peonies our closest study and accordingly selected what in our opinion the best and distinct, considering nature of growth and type of flower. We have given our stock the greatest care to keep them free from disease. Our fields have been pronounced without question the best kept, the cleanest and healthiest that is possible to grow any place. We grow 100,000 annually and supply hundreds of critical buyers. All plants offered are from two and three-year-old stock, 3 to 5-eye divisions, with good roots.

We are sure our liberal divisions will please the most critical buyer.

	Per 10	Per 100
Albatre. A magnificent flower which opens like a rose. Pure white with a few pencillings of carmine on the edge of center petals. Fragrant; crown type; late midseason. An old variety, but one that will stand comparison with anything there is.....	3.00	25.00
Alexander Dumas. A brilliant pink, interspersed with salmon, white and chamois. Early, very profuse bloomer, and very rigid plant. One of the greatest bloomers of all.....	3.00	25.00
Augustin d'Hour. Bomb type; midseason. Extremely large; showy, perfectly built bloom. Color very deep, rich, brilliant solferino-red with slight silvery reflex. It is a taller grower and larger flower than Felix Crousse.....	4.00	35.00

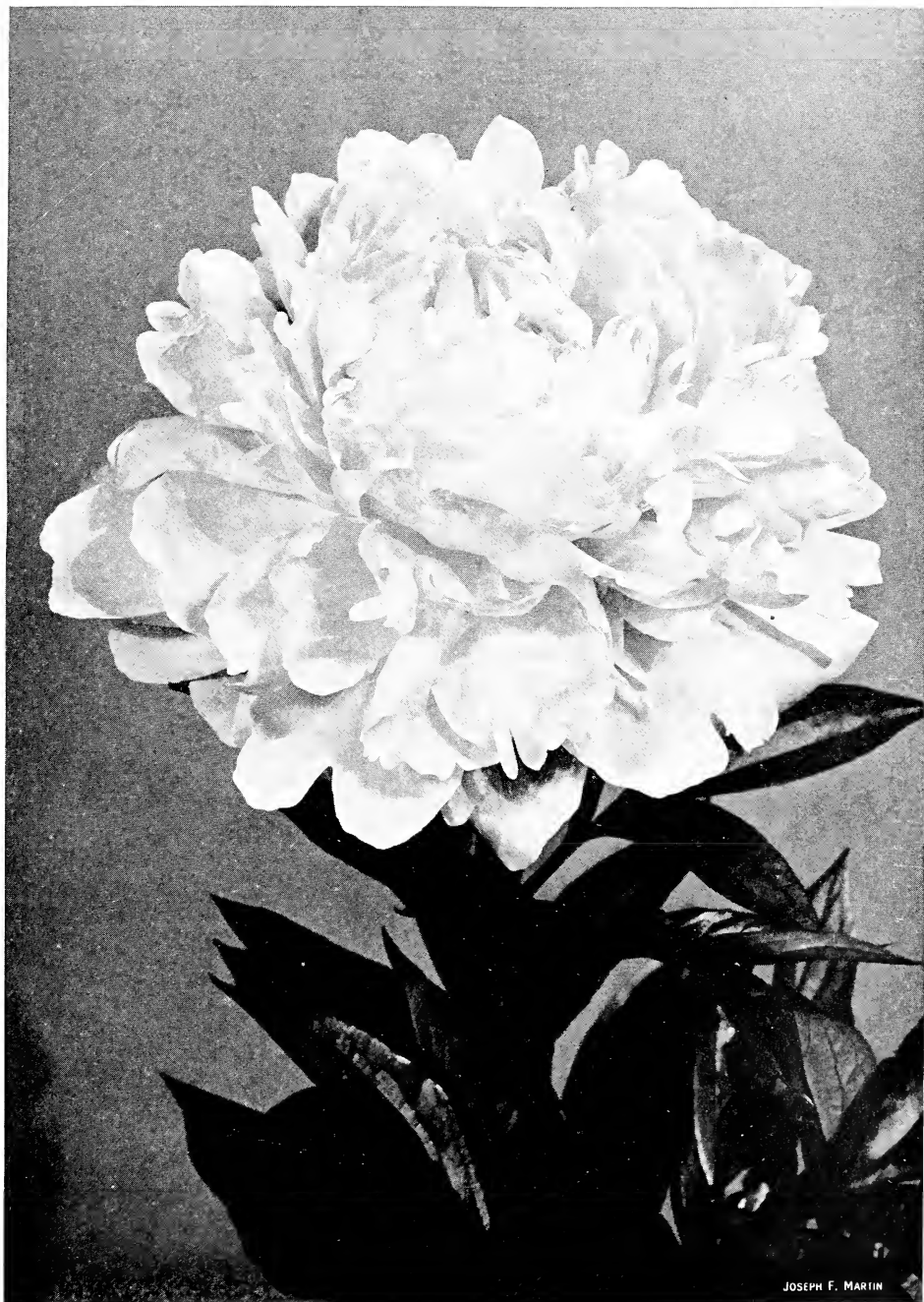


Monsieur Jules Elie.



Mad. Jules Dessert.

	Per 10	Per 100
Baroness Schroeder. Rose type; late. White with shadings of flesh. This is one of the finest Peonies. Its immense flowers of great substance with high chalice-shaped center are freely produced, lasting a long time. Very fragrant	6.00	50.00
Charles McKellip (Brand). Crown type; midseason. Open rose-shaped and develops into crown type. The irregular rich crimson petals of the center are mingled with gold stamens and surrounded by rows of broad silky guard petals. It has a charm peculiarly its own.....	10.00	75.00
Chestine Gowdy (Brand). Crown type; late midseason. The broad outer petals are silvery pink. These enclose a zone of fine irregularly shaped petals of deep rich cream, which in turn surround a prominent cone of broad pink petals splashed and tipped with crimson. One of the best varieties for cut flowers.....	10.00	75.00
Duchesse de Nemours. Early. A lovely pure white variety, with sulphur-white collar; medium size; fragrant.....	2.50	20.00
Eugenie Verdier (Calot). Large flat semi-rose type flower. Pale hydrangea pink, collar lighter, center deeper flecked crimson. Tall, erect, free bloomer with fine fragrance. Very distinct from Eugene Verdier	5.00	40.00
	Each	Per 10
Fuyajo (Japan). A rich dark maroon with velvety shading. Two rows of guard petals, center petaloids striped crimson and white. Very outstanding and desirable.....	8.00	75.00



Kelway's Queen.



JOSEPH F. MARTIN

La Perle.

	Per 10	Per 100
Floral Treasure. Midseason. Very large; showy, pale lilac-rose; free bloomer; fragrant	3.00	25.00
Felix Crousse. Medium, bright red, fragrant.....	4.00	35.00
Festiva Maxima. Early, pure white with crimson markings in the center, strong grower, fragrant.....	2.50	20.00
Germaine Bigot. Very large, midseason, to late, a royal variety, most excellent pink	3.50	30.00
Jeanne d'Arc (Calot). Crown type; midseason. Soft pink intermingled with sulphur-white and rose. Center spotted carmine. Extra.....	3.50	30.00
Jubilee (Pleas). Rose type; midseason. Buds show delicate opal tints; as they unfold the color changes to ivory-white. Unlike other Peony buds which are round, these are pointed like a rose.....	12.00	100.00
Karl Rosenfield. A better Peony and a better quality of red than any of the older red sorts; pure, rich, intense crimson. Of half-rose type, it makes and remains a splendid full, rounded flower of excellent substance, equally valuable as cut flowers or garden glow.....	7.50	65.00
Kelway's Queen (Kelway True). The true variety is one of the most beautiful Peonies. Its large, globular, rose type blooms, similar in form to Solange, have the center high-built and cupped. In color it is a uniform mauve-rose, with the broad center petals tipped carmine, and a tinting of carmine-pink deep down in the petals that livens up the bloom wonderfully. Fragrant. Midseason.....	8.00	75.00
La Fee (Lemoine—"The Fairy"). Crown type; early. Very large globular flowers. Guards mauve-rose, collar creamy white.....	10.00	85.00
La Perle (Crousse). Midseason to late. Rose type. Large cup-shaped flowers, blush white, growing a little darker around the edges. Extra good. A fine cut flower variety and a perfect landscape plant.	6.00	50.00



JOSEPH F. MARTIN

La Fee.



Karl Rosenfield.

	Per 10	Per 100
L'Indispensable. Late. Very full, globular flowers of lilac-white, shading to pale violet-rose toward center.....	3.50	30.00
	Each	Per 10
Marcelle Dessert (Dessert). Crown type; midseason. Large bloom of admirable shape and perfect regularity. Creamy-white, lightly spotted lilac, center flecked crimson.....	1.00	7.50
Marchioness of Landsdowne (Kelway). Rose type; midseason. Full double flowers of clear pink with shades of Hydrangea-pink, sometimes flecked carmine. Fragrant. Desirable.....	1.50	10.00
Marie Crousse (Crousse). Bomb type; midseason. Color soft salmon-pink shaded a glossy satiny-lilac. A most desirable Peony.....	1.00	7.50
	Per 10	Per 100
Marie Jacquin. The water-lily peony. Semi-double, cup-shaped white flowers, borne in great profusion. Beautiful landscape variety. Mid-season	4.00	35.00
	Each	Per 10
Martha Bullock (Brand). Late. Enormous cup-shaped flowers of soft rose-pink, well formed and of good substance, supported on strong, stiff stems. Very vigorous and free bloomer. Fragrance quite pronounced but decidedly pleasing.....	6.00	50.00
Mary Brand (Brand). This midseason Peony of a rich, deep red is most distinct	1.50	10.00
	Per 10	Per 100
Madame Auguste Dessert (Dessert). Rose. Very large flower, semi-rose type. Uniform violet rose, petals slightly flecked crimson. Erect, medium height, free bloomer. Early midseason.....	6.00	50.00



JOSEPH F. MARTIN

Milton Hill.

	Per 10	Per 100
Madame Crousse (Calot). Crown type; midseason. Free bloomer in clusters; large flowers of pure white with crimson flecks on crown....	3.50	30.00
Madame Ducl. Bomb type; midseason. A very large, wonderfully built flower; broad guard petals; center bomb shaped like a huge ball; very double and compact.....	3.50	30.00
Mme. Jules Dessert (Dessert). Rose type; midseason. Color pure white overlaid with a sheen of delicate blush with a pronounced pink center, intermixed with golden stamens.....	15.00	125.00
	Each	Per 10
Milton Hill (Richardson). Rose type; late. Flowers large, cupped, clear soft flesh color. Turns nearly white in full sunlight before fading. One of the finest varieties in existence.....	3.50	30.00
Mons. Jules Elie (Crousse). Bomb type; early midseason. King of all Peonies. Color an ideal glossy lilac-pink, shading to a deeper rose at the base, the entire flower overlaid with a sheen of silver. Ideal for cut flowers	5.00	40.00
Mons. Martin Cahuzac (Dessert). Semi-rose type; midseason. A perfect solid ball of deep maroon with garnet hues and brilliant black lustre. Claimed by some to be the darkest Peony in existence.....	20.00	150.00

We commence shipping **SEPTEMBER 1st**, and ask you to place your order upon receipt of this price list.



Therese.



President Taft.

	Per 10	Per 100
Philomele (Calot). Anemone type; midseason. Guard or primary petals bright violet-rose, anemone center, of lingulated narrow golden-yellow petals changing to cream or amber-yellow. As the flower develops a crown appears of bright rose edged dark crimson. Has the true honey fragrance; very strong, upright grower and fine bloomer. Distinct and novel	3.50	30.00
Primevere (Lemoine). Bomb type; midseason. Outer petals sulphur-white, center petals deep sulphur-yellow. Best yellow Peony grown....	15.00	125.00
President Roosevelt (Holland). Semi-rose type; midseason. A variety purchased in England under number and named in Holland for our ex-President. It is a deep, rich, brilliant red in color, different from any red we know, and a grand Peony.....	5.00	40.00
Rosa Bonheur (Dessert). Rose type; midseason. Large flat flower with light rose fringed petals, guards flecked crimson. Extra fine.....	Each	Per 10 3.50 30.00
Sarah Bernhardt (Lemoine). Semi-rose type. Midseason. Apple-blossom pink with each petal silver tipped, giving the appearance of a distinct border. Very strong growing and free blooming. Substance is heavy and lasting and as flowers are borne on strong, erect stems, they are unequalled for cutting. Delightfully fragrant.....	Per 10	Per 100 10.00 75.00
Souvenir de Charles Gombault . Crown type. Midseason. Globular flower of deep pink with crimson splashes. Very beautiful.....	7.50	50.00
Therese (Dessert). Rose type. Midseason. One of the three highest rated Peonies. Color rich satiny pink with glossy reflex. Flowers are enormous in size of full rose type. Sturdy, vigorous grower with upright stems and rich green foliage. Delicately fragrant.....	Each	Per 10 3.50 30.00



Rosa Bonheur.



Primevere.

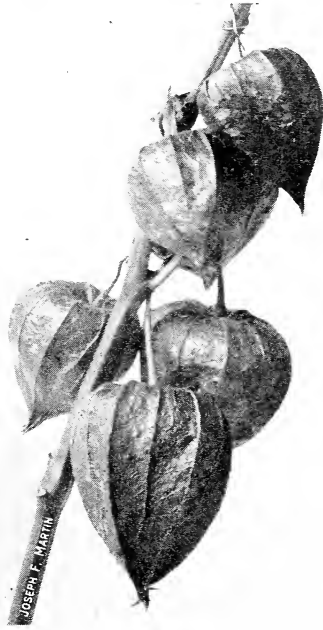


	Per 10	Per 100
Umbellata Rosea (Dessert). Rose type; very early. Large flower, guards laid with delicate salmon and Le France pink tints. Exquisitely beautiful in form and color.....	3.50	30.00
Tourangelle (Dessert). Rose type; late midseason. Pearly white over-violet-rose shading to an amber-white center.....	2.50	20.00
Walter Faxon (Richardson). Semi-rose type; midseason. Outstanding in color; a soft coral-pink shaded lighter at the ends of the petals and a deeper rose-pink at the base, with a salmon reflection. Exquisitely beautiful. Medium to large size flower, globular in form with a cupped center. Medium tall and vigorous grower.....	3.00	25.00

PHLOX

Phlox Decussata (Hardy Phlox)

	Per 10	Per 100
Athis . Deep, clear salmon. Very fine.....	1.50	10.00
Antonin Mercie . Clear lilac with white eye. Extra large.....	1.50	10.00
Baur's Pink . Bright deep pink.....	1.50	10.00
Beacon . Brilliant cherry-red.....	1.50	12.00
B. Comte . Rich satiny amaranth.....	1.50	12.00
Bridesmaid . Pure white with large crimson-carmine eye.....	1.50	10.00
Commander . Beautiful. New. Crimson-red with darker eye. The most striking of Phloxes.....	2.00	15.00
Eclairer . Brilliant rosy Magenta, white eye.....	1.50	10.00
Feuerbrand . Bright vermilion-scarlet. New variety.....	2.50	20.00
Jules Sandeau . Large, fine, very free flowering; pure watermelon-pink; rapid grower; one of the best varieties in cultivation.....	1.50	12.00
La Vague . An improvement over older varieties of similar color, with immense, conical heads, borne in great profusion. Warm mauve with emphatic carmine eye.....	1.50	10.00
Lord Raleigh . Rich purple, free-flowering variety.....	1.50	12.00
Miss Lingard . Pearly white flower, with delicate pink eye. Very remarkable bloomer, producing two or three crops of flowers during the season; indispensable as a cut flower for florists' use.....	1.50	10.00
Mrs. Jenkins (Tall). The best tall, early white for massing.....	1.50	10.00
Mrs. Milly van Hoboken . New. Soft pink, without eye. Large flowers on long, erect spike.....	2.00	18.00
Peachblossom . Peachblossom pink.....	1.50	10.00
Percheau d'Island . A splendid variety with deep red blossoms. Tall.....	1.50	10.00
Prime Minister . Large white red eye.....	1.50	10.00
Rheinlander . This new variety has immense blossoms of salmon pink with claret eye.....	1.50	10.00
Sir Edwin Landseer . Very bright crimson; large trusses and vigorous, healthy growth.....	1.50	10.00
Special French . Glowing pink. Mammoth trusses.....	1.50	10.00
Thor . A beautiful lively shade of deep salmon-pink, suffused and overlaid with a scarlet glow; has aniline-red eye.....	1.50	10.00
Von Lassburg . Splendid pure white; very large trusses; free bloomer; medium early.....	1.50	10.00
Subulata (Moss Pink). The moss-like foliage covers the ground like a carpet; covered in April and May with a blanket of white or pink flowers.		
Alba . Pure white.....	1.00	7.00
Lilacina . Soft lilac.....	1.00	7.00
Rosea . Bright pink.....	1.00	7.00
G. F. Wilson . Soft lavender.....	1.00	7.00
Amoena . A useful variety for carpeting the ground, the rockery, or the border; it grows but 4 inches high, and in spring is a sheet of rich bright pink flowers.....	1.00	7.00



JAPANESE LANTERNS

(*Physalis Francheti*). This wonderful decorative plant is easy to grow and multiplies rapidly. A big money maker that will yield more than any other outside crop. The fruits are becoming more popular each year for decorative purposes in the early fall and winter. The color of these lantern fruits is orange-vermilion and are everlasting after drying. Single plants produce as many as thirty lanterns that sell readily in any flower market. They are beautiful for home decoration, being an everlasting.....

	Per 10	Per 100
	1.00	7.00

PHYSOSTEGIA *virginiana*
(False Dragonhead). Flowers about an inch long, varying in color from purplish red to pink and white.....

	1.00	7.00
Alba. Pure white; very fine....	1.00	7.00
Gigantea. New dwarf pink.....	1.00	7.00

PLATYCODON *Grandiflorum*
(Chinese Bellflower). June to September. Blue.....

	1.00	7.00
Alba. White bellflower.....	1.00	7.00
Mariesi. Large blue.....	1.00	7.00
Mariesi alba. White-flowered form of the above.....	1.00	7.00

Physalis Francheti (Lantern Plant).

PLUMBAGO (Leadwort). *Larpenatae*. One of the most desirable border and rock plants. It is of dwarf, spreading habit, growing 6 to 8 inches high, covered with deep blue flowers during the summer and fall.....

	1.50	10.00
--	------	-------

POLEMONIUM (Jacob's Ladder) *Caeruleum* (Greek Valerian). 2 ft. Beautiful sky-blue spikes. April-July. Foliage fern-like.....

	1.50	10.00
Caeruleum album. White form of Jacob's Ladder.....	1.50	10.00
Reptans (Greek Valerian). Loose paniced corymbs of blue or sometimes white flowers. Plants six inches high, blooming in spring.....	1.50	10.00
Richardsonii. Dwarf, blue, early.....	1.50	10.00

POTENTILLA (Cinquefoil). These plants lend themselves well to the border; they produce brilliantly colored single or double flowers from June to August. Succeeds in any soil.

Formosa. Cherry-red; height 2 ft.....	1.00	7.00
Rupestris. Flowers white, June, 2 ft.....	1.00	7.00

PRIMULA Primrose. *Elatior*. Different shades.....

	1.50	10.00
Veris (Cowslip; Pansy-wort). Plant in rich, well-drained soil, in the border or in the rockery. Flowers vary from a clear yellow to pleasing shades of yellow and maroon.....	1.50	10.00

PYRETHRUM *Roseum Hybridum* (Painted Daisies). Red, white and pink mixed, blooms in June and July, a most beautiful hardy plant for garden or cutting.....

	1.50	10.00
Roseum Atrosanguineum. Dark red shades.....	1.50	10.00
Uliginosum (Giant Daisy). White flowers, carried on long, erect stems. Good for cutting. 3 ft.....	1.50	10.00

RANUNCULUS (Buttercup). Well-known double yellow buttercup, effective either as a cut flower or grouped in the hardy borders.	Per 10	Per 100
Acris fl. pl. A pretty double flowering bright golden yellow buttercup blooming in great abundance in May and June, 24 inches. Good for cutting	1.50	10.00
Repens fl. pl. A pretty, double-flowering bright golden yellow buttercup; flowers in May and June.....	1.50	10.00
RUDBECKIA Newmanii (Black Eyed Susan). Dark orange flowers with deep purple cone, borne on stiff wiry stems three feet high. July to September.....	1.50	10.00
RUTA <i>Graveolens</i> . Common Rue.....	1.50	10.00
Patavina . Graceful tufts of finely-divided foliage with crowded heads of canary-yellow flowers. A choice Alpine.....	1.50	10.00
SALVIA <i>Azurea</i> (Meadow Sage). A Rocky Mountain species. Grows 3 to 4 feet high, producing during August and September pretty sky-blue flowers in the greatest profusion.....	1.00	7.00
Pratensis . Deep blue and white flowers. Very desirable.....	1.00	7.00
SAPONARIA officinalis (Common Soapwort; Bouncingbet). Will grow in poorest soil	1.00	7.00
Ocymoides . Trailing vine, which is completely covered with rosy pink flowers from May to July. Fine for rockery	1.50	10.00
SCABIOSA <i>Caucasia</i> (Pin Cushion Flower) (Blue Bonnet). A soft and charming shade of lavender; commences to bloom in June. Fine for cutting	1.50	10.00
Alba . Flowers pure white.....	1.50	10.00
Perfecta . Lilac blooms, excellent for cutting; height 2½ ft.....	1.50	12.00
Japanica . Lavender-blue flowers, from July to September; 2 ft.....	1.50	10.00
SEDUM (Stonecrop). Has thick glaucous foliage; drouth resisting and suitable for rockery or border.		
Acre (Wall Pepper; Mossy Stonecrop). A pretty species for rockwork; well known and considerably used.....	1.00	7.00
Album . Foliage green. Flowers white. 2 to 3 inches. May-July.....	1.00	7.00
Ibericum . Numerous pink or white flowers; coarsely toothed leaves. 6 inches	1.00	7.00
Kamtschaticum . Orange Stonecrop	1.00	7.00
Spectabile . Erect growing mass of rose colored flower heads 18 inches high. August and September.....	1.50	10.00
Spectabile Brilliant . Bright red form of the above.....	1.50	10.00
Spurium Coccineum . Flowers rosy crimson. 6 inches. July and August. Very good	1.00	7.00
Stahlii . Compact growth, with crimson autumn foliage.....	1.00	7.00
SIDALCEA (Greek Mallow). Erect-growing, more or less branching plants, producing their showy flowers during June and July. They will succeed in any garden soil in a sunny position.		
Rosy Gem . Pretty, bright rose-colored flowers. 2 to 3 feet.....	1.50	10.00
SPERGULA <i>Pilifera</i> . 4 inches. A hardy evergreen suitable for grass edging or rockwork.....	1.50	10.00
SPIREA (Goat's Beard; Meadow Sweet). Elegant border plants with feathery plumes of flowers and neat, attractive foliage; succeeds in all locations.		
Aruncus . June. Produces long, feathery panicles of white flowers, forming graceful plumes.....	2.00	15.00
Filipendula (Dropwort). Numerous corymbs of white flowers on stems 15 inches high. June and July; pretty fernlike foliage.....	1.50	10.00



	Per 10	Per 100
Ulmaria Aurea	2.00	15.00
Ulmaria Flora Plena (Meadow Sweet). One of the most useful hardy plants, grows about 3 feet high and produces its double white flowers during June and July.....	2.00	15.00
STACHYS (Woundwort). Lanata . Fine old-fashioned cottage garden plant for edging; useful in rock garden; dwarf; soft silvery foliage; flowers useless. 4 inches.....	1.00	7.00
STATICE Latifolia (Sea Lavender). Grows 15 to 18 inches high with tufts or clumps of thick, leathery foliage and immense panicles of delicate blue flowers. Individual flowers very minute, similar in form to the Forget-me-not, but made into heads 18 inches or more across....	1.50	10.00
STOKESIA cyanea (Stoke's Aster). A rare hardy plant of the Aster family. Twelve to eighteen inches high, and very thrifty. Rich green leaves, the flowers of a wonderful shade of azure blue, the petals finely divided, good for cutting. August.....	1.50	10.00
Cyanea alba . White flowers.....	1.50	10.00
THALICTRUM Aquilegifolium (Meadow Rue). Pure white. 1 to 3 feet. May-July	1.50	10.00
Adiantifolium . Leaves resemble Maidenhair fern. Yellow. 1 ft. June-July	1.50	10.00
Flavum . Common yellow variety. 2 to 4 ft. Flowers in June.....	1.50	10.00
Glaucum . Fine cut glaucous foliage. Bronze-yellow flowers in June. 2 ft.	1.50	10.00
THYMUS Citriodorus . Foliage has strong lemon fragrance. Excellent for rock garden . 4 inches.....	1.50	10.00
Lanuginosus (Woolly Thyme). A species of Thyme with small, roundish leaves. It is a desirable plant for edgings or in rockwork	1.50	10.00
TRADESCANTIA (Spiderwort). Virginiana . Produces a succession of blue flowers all summer; height 2 ft. Alba . A white-flowered form.....	1.50	10.00
TRILLIUM (Wood Lily, or Wake Robin) Grandiflorum . Excellent for shady positions in the hardy border. Large pure white flowers in early spring	1.00	7.00
TRITOMA (Red Hot Poker). Pfitzeri . Rich orange-scarlet blooms borne on stems 3 feet high, very attractive for mass planting or singly in the border. In bloom from August to October. Succeeds in any garden soil, but responds quickly to liberal feeding. Must be protected in winter	2.00	12.00
TROLLIUS Europaeus (Common Globe Flower). Stems six to twenty inches high, bearing pale yellow flowers an inch or more wide. A very interesting plant with handsome flowers. June-August.....	2.50	20.00
TUNICA saxifraga . Has small pink flowers in the greatest profusion. Nice for the low border or for rockwork; blooms profusely	1.00	7.00
VALERIANA (Valerian; Garden Heliotrope). Coccinea . Showy heads of old rose flowers. June to October. 2 feet.....	1.00	7.00
Coccinea alba . White form of the above.....	1.00	7.00
VERONICA Elegans . A nice erect growing variety. 18 inches; big flowers. Pink. July.....	1.50	10.00
Gentianoides . Beautiful variety with spikes of large flowers, palest blue edged deep blue, in June and July. 1 foot.....	1.50	10.00
Incana . Deep blue flowers with silvery foliage. 1 foot. July-August.....	1.50	10.00
Longifolia Subsessilis (Speedwell). A 2-foot border plant with attractive foliage of distinct character, a roughened bronze green. Flowers are borne abundantly during July and August in long compact spikes. Deep blue	1.50	10.00
Spicata . 18 inches. June and July. Long spikes of violet-blue flowers	1.50	10.00
True Blue . Literally covers itself with blossoms of intense blue. June-July flowering	1.50	10.00



A Fine Field of Viola Jersey Gem.

VIOLAS

VIOLAS or TUFTED PANSIES

The improved forms of *Viola Cornuta* are rapidly growing in favor. They flower continuously for nearly eight months in the year; and while their flowers are not so large as those of the Pansy, their bright colors and floriferousness make them welcome additions to any garden.

Per 10 Per 100

Admiration. Rosy purple	1.00	7.00
Blue Perfection. Deep purplish blue.....	1.00	7.00
Bosniacea. A superb, everblooming Pansy, makes neat clumps that are covered with reddish violet flowers throughout the summer. A fine, new European introduction.....	1.00	7.00
G. Wermig. A variety of Tufted Pansy, forming clumps which are covered with rich, violet-blue flowers the entire season.....	1.50	10.00
G. Wermig. Alba. White.....	1.50	10.00
Jersey Gem (New). Possesses the dwarf habit and continuity of blooming of the true horned <i>Viola</i> (<i>V. cornuta</i>), and the vigorous, bushy growth and roundish foliage of the finest English bedding varieties. Color is pure, rich violet, and slightly perfumed. It is one of the best introductions in the list of the hardy plants in recent years. Our propagations are from the original stock planted from divisions.....	1.50	10.00
Lutea Splendens. Golden yellow.....	1.00	7.00
Mauve Queen. Mauve. Light blue.....	1.00	7.00
Papilio (The Butterfly Violet). A distinct and attractive variety of the tufted Pansy producing its violet-blue flowers with dark eye from early spring throughout the summer until late in the fall.....	1.00	7.00
White Perfection. An excellent white.....	1.00	7.00

VIOLET (Prince of Wales). The demand with the florist grows for this variety from year to year. This year we have a nice supply of strong field grown clumps that will make an extra good grade for greenhouse planting

1.50 10.00



Special Stock for Forcing



We have made a specialty of growing **FORCING STOCK** for many years. The shipping and curing of this kind of stock has been given careful study and feel qualified after careful study and experimenting to be able to ship you this stock, properly packed and cured at the right time for you to plant.

When we ship plants for forcing, they are ready for benching and will give you excellent results when properly planted in your benches.

A great deal of inferior forcing stock is now being offered as being **FROST CURED** etc. You have had many disappointments in the failure of this stock to grow and losing your entire crop.

WE WANT YOU TO CONSIDER not price alone but the quality of the forcing stock we offer you. Take the **GAMBLING** out of planting your benches this year and let me have your order for what you can use from the following list. **We are sure we can please you.**

Two-Year Clump of Astilbes. Photograph taken July 1, 1928.

ASTILBES All our plants are two-year, field-grown, large clumps, grown in suitable soil, stock fully matured. We have the following established varieties:

		10	100	1000			10	100	1000
America.	Lavender pink.....	3.00	25.00	200.00	Pink Pearl.	Delicate pink.....	3.00	25.00	200.00
Gladstone.	Dwarf white.....	3.00	25.00	200.00	Queen of Holland.	Blush white..	3.00	25.00	200.00
Peachblossom.	Peachblossom pink	3.00	25.00	200.00	Queen Alexandria.	Bright pink..	3.00	25.00	200.00

DELPHINIUMS We have the well-known and popular varieties:

			100	1000			100	1000
Belladonna.	Light blue.	1 year.....	7.00	50.00	English Hybrids.	Blackmore and		
Belladonna.	Light blue.	2 year.....	10.00	75.00		Langdon strains,	1 year.....	8.00 60.00
Bellamosa.	Dark blue.	1 year.....	7.00	50.00	English Hybrids.	Blackmore and		
Bellamosa.	Dark blue.	2 year.....	10.00	75.00		Langdon strains.	2 year.....	10.00 85.00

DICENTRA Spectabilis. Bleeding Heart..... 30.00 250.00

ELDER DAISY Large clumps 15.00 100.00

FUNKIA Undulata Variegata 10.00 85.00

NOTE.—As this stock has to be dug in the late **FALL** and properly cured for forcing we urge you to place your orders early that we may reserve for you your requirements and ship at the proper time.



Stock That Must Be Moved

In order to give our entire attention to our *Perennial Growing* we have decided to clean out our entire list of shrubs. We have made the prices attractive for this *high quality stock*. This list carries excellent list of varieties.

We know you will be interested in all or part of this list. Stock is well grown, has a good root system and up to the "*Martin Standard*."

We will appreciate your order for what you can use and suggest your ordering early.

		Per 10	Per 100	Per 1000	
1000	Ampelopsis veitchi	2-yr.	2.00	15.00	100.00
500	Berberis thunbergi	2/3	1.50	12.00	100.00
3500	Berberis thunbergi	18/24	1.00	8.00	75.00
6200	Berberis thunbergi	12/18	.80	6.00	50.00
1200	Bechtels crab	4/5	4.00	35.00	300.00
1000	Bechtels crab	3/4	3.50	30.00	250.00
3200	Bechtels crab	2/3	3.00	25.00	200.00
600	Catalpa speciosa	5/7	2.00	15.00	100.00
2000	Clematis recta	2-yr.	2.00	15.00	100.00
200	Cornus elegans	2/3	2.00	15.00	-----
25	Cornus elegans	12/18	1.50	10.00	-----
200	Cornus stolonifera	2/3	1.00	8.00	-----
200	Cornus stolonifera	3/4	1.50	10.00	-----
50	Cornus stolonifera	18/24	.85	6.00	-----
400	Deutzia lemoinei	2/3	2.00	15.00	120.00
1000	Deutzia lemoinei	18/24	1.50	10.00	90.00
400	Euonymus vegetus	3-yr.	2.50	20.00	150.00
950	Euonymus vegetus	2-yr.	1.50	10.00	90.00
275	Forsythia	2/3	1.50	10.00	90.00
150	Forsythia	18/24	1.00	8.00	-----
400	Forsythia fortunei	3/4	2.00	15.00	100.00
300	Forsythia fortunei	2/3	1.50	10.00	80.00
650	Forsythia intermedia	2/3	1.50	10.00	80.00
200	Forsythia sieboldi	4/5	2.50	20.00	150.00
600	Forsythia sieboldi	3/4	2.00	15.00	100.00
30	Hydrangea arborescens	18/24	2.00	-----	-----
150	Hydrangea arborescens	12/18	1.50	10.00	-----
50	Hydrangea paniculata grandiflora.....	2/3	2.00	15.00	-----
500	Ligustrum amurense	2/3	1.00	7.00	60.00
2250	Ligustrum amurense	18/24	.85	6.00	50.00
500	Ligustrum amurense	12/18	.75	5.00	40.00
250	Ligustrum ibolium	3/4	1.50	8.00	70.00
400	Ligustrum ibolium	2/3	1.00	7.00	60.00
2500	Ligustrum ibolium	18/24	.85	5.00	40.00
1800	Ligustrum ibolium	12/18	.75	4.00	30.00
250	Ligustrum ibota	2/3	1.50	8.00	70.00
5900	Ligustrum ibota	18/24	1.00	6.00	50.00
2300	Ligustrum ibota	12/18	.85	5.00	40.00
200	Ligustrum lodense	12''	1.50	10.00	-----
150	Ligustrum regelianum	2/3	1.50	10.00	-----
350	Ligustrum regelianum	18/24	1.00	7.00	60.00
100	Lonicera bella albida	3/4	2.00	15.00	-----
150	Lonicera bella albida	2/3	1.50	10.00	-----
150	Lonicera Scarlet Trumpet	2-yr.	2.00	15.00	-----
850	Prunus japonica alba	2/3	3.00	25.00	200.00
100	Prunus japonica alba	18/24	2.50	20.00	-----
300	Prunus japonica rosea	3/4	3.50	30.00	250.00
3000	Prunus japonica rosea	2/3	3.00	25.00	200.00



		Per 10	Per 100	Per 1000	
800	<i>Prunus japonica rosea</i>	18 24	2.00	15.00	120.00
600	<i>Prunus japonica rosea</i>	12 18	1.50	10.00	80.00
250	<i>Prunus othella</i>	4 5	4.00	35.00	—
750	<i>Prunus othella</i>	3 4	3.50	30.00	250.00
275	<i>Prunus othella</i>	2 3	3.00	25.00	—
300	<i>Prunus pissardi</i>	4 5	4.00	35.00	300.00
300	<i>Prunus pissardi</i>	3 4	3.50	30.00	250.00
300	<i>Prunus pissardi</i>	2 3	2.50	20.00	150.00
200	<i>Prunus triloba</i>	3 4	3.50	30.00	—
800	<i>Prunus triloba</i>	2 3	2.50	20.00	150.00
75	<i>Prunus triloba</i>	18 24	1.50	10.00	—
100	<i>Fyrus japonica</i>	2 3	2.00	15.00	—
75	<i>Rhodotypos kerrioides</i>	2 3	2.50	20.00	—
150	<i>Ribes aureum</i>	2 3	2.50	20.00	—
50	<i>Ribes aureum</i>	18 24	2.00	15.00	—
100	<i>Rosa rugosa</i>	2-yr.	2.00	15.00	—
100	<i>Sambucus aurea</i>	3 4	2.00	15.00	—
175	<i>Sambucus aurea</i>	18 24	1.50	10.00	—
275	<i>Sambucus aurea</i>	2 3	2.00	12.00	—
2150	<i>Spiraea Anthony Waterer</i>	18 24	2.00	15.00	125.00
3300	<i>Spiraea Anthony Waterer</i>	12 18	1.50	12.00	100.00
300	<i>Spiraea billardi</i>	2 3	1.50	10.00	—
600	<i>Spiraea douglasi</i>	3 4	2.00	15.00	125.00
400	<i>Spiraea douglasi</i>	18 24	1.50	12.00	100.00
1300	<i>Spiraea douglasi</i>	2 3	2.00	14.00	120.00
700	<i>Spiraea prunifolia</i>	2 3	2.00	15.00	125.00
650	<i>Spiraea prunifolia</i>	18 24	1.40	12.00	100.00
4500	<i>Spiraea thunbergi</i>	12 18	1.50	10.00	90.00
750	<i>Spiraea thunbergi</i>	2 3	2.00	15.00	125.00
600	<i>Spiraea thunbergi</i>	18 24	1.50	12.00	100.00
2450	<i>Spiraea van houttei</i>	3 4	2.00	15.00	100.00
3300	<i>Spiraea van houttei</i>	2 3	1.50	10.00	80.00
400	<i>Spiraea van houttei</i>	18 24	1.00	6.00	50.00
400	<i>Symphoricarpos mollis</i>	2 3	1.50	10.00	80.00
50	<i>Symphoricarpos mollis</i>	18 24	1.50	7.00	—
1000	<i>Symphoricarpos racemosus</i>	3 4	2.00	15.00	100.00
2400	<i>Symphoricarpos racemosus</i>	2 3	1.50	10.00	80.00
75	<i>Symphoricarpos racemosus</i>	18 24	1.00	7.00	—
100	<i>Syringa vulgaris</i>	3 4	2.50	20.00	—
250	<i>Syringa vulgaris</i>	2 3	2.00	15.00	—
50	<i>Viburnum sterile</i>	2 3	3.00	25.00	—
60	<i>Viburnum sterile</i>	3 4	4.00	30.00	—
75	<i>Weigela rosea nana var.</i>	3 4	2.50	20.00	—
50	<i>Weigela rosea nana var.</i>	2 3	2.00	15.00	—
50	<i>Weigela rosea nana var.</i>	18 24	1.50	10.00	—

25 at 100 rate; 250 at 1000 rate.

WE REFER YOU TO PAGE 38. Our Astilbes and other stock listed on this page is making excellent growth. You will be WISE if you place your order early for what you can use of this stock for forcing.

