

## **Historic, Archive Document**

Do not assume content reflects current scientific knowledge, policies, or practices.



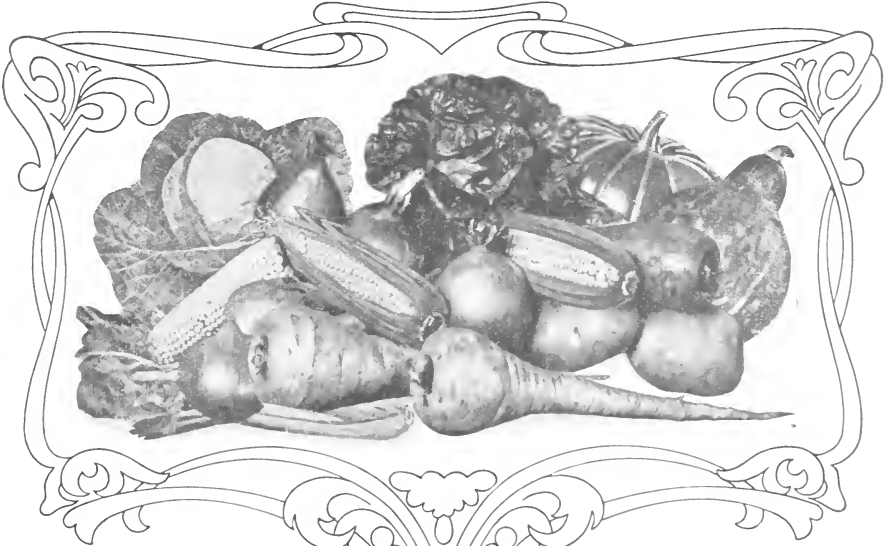
65,35

LIBRARY  
RECEIVED  
★ FEB 25 1928 ★  
U.S. Department of Agriculture

TRUSTWORTHY  
GARDEN-FIELD-FLOWER

# SEEDS

ADAPTED TO NEW ENGLAND



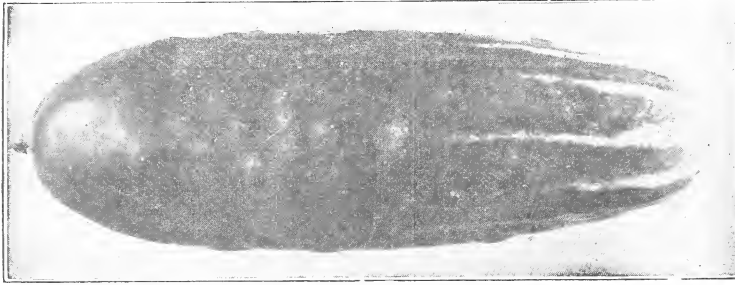
19 28

PINE TREE STATE SEED CO.  
· BATH, MAINE ·

ESTABLISHED  
1894

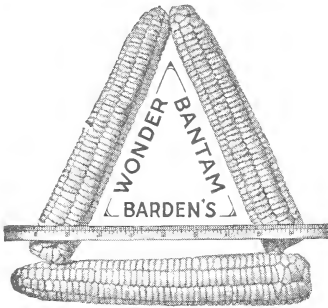
## SOME NEW VARIETIES OF SPECIAL MERIT

### Cucumber— Early Fortune



The finest type of White Spine yet introduced. Early, very productive and disease-resistant. Color, rich dark green; flesh white, very firm and crisp with few seeds. It keeps its color a long time. A fine shipping sort, also fine for pickles.

Pkt. 10c; oz. 25c; ¼ lb. 75c.



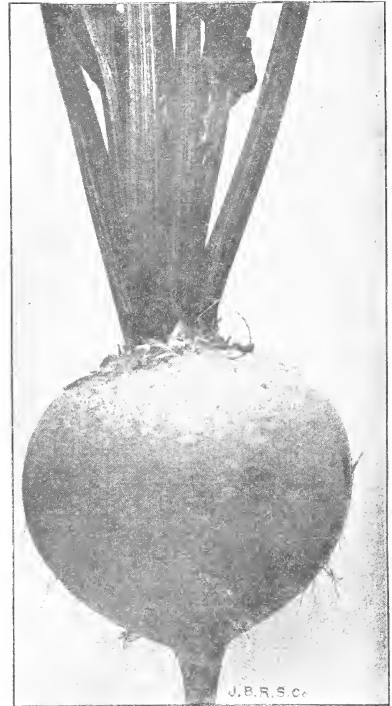
### Wonder Golden Bantam Sweet Corn

See page 5 for a description of this fine new sweet corn.

### Beet—Early Wonder

One of the earliest and most perfect shaped Beets. Its beautiful, deep blood-red, nearly globular-shaped root, small-sized top, and small clean tap root, make it desirable. Its attractive appearance, uniformity of size, shape and color, and excellent keeping qualities have created a splendid demand for this sort.

Pkt. 10c; oz. 20c; ¼ lb. 50c; lb. \$1.50.



### Marglobe Tomato

Dr. Twitchell writes us as follows regarding the New Marglobe Tomato:

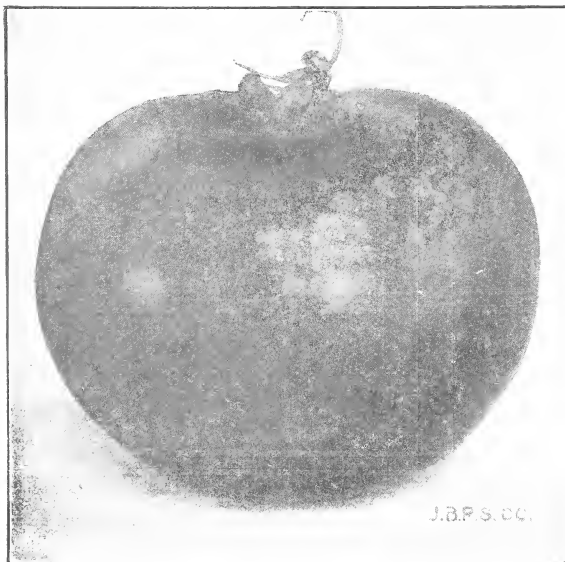
"In long experiments with tomatoes I have been forced to discard many popular varieties for the reason I found something better.

"Thus the Red Head took the place of the Earliana and John Baer and now Marglobe has come in to take the place of all save Red Head, grown solely because earlier. It is of smooth shape, not overgrown, but comes in large clusters of medium size."

G. M. TWITCHELL.

Auburn, Maine, Jan. 21, 1928.

See page 17 for Description and Price





We have the pleasure of herewith handing you our thirty-fourth Annual Catalog, and we wish to extend our hearty thanks to all those, who, during the past years have so kindly favored us with their orders. We are proud of the fact that many of our customers have dealt with us for a third of a century, and we appreciate highly the support of our friends who have contributed to our success during all these years.

We want you to have the very best garden possible this year and we are ready to furnish you with the highest grade seeds that can be secured.

Our policy has always been to sell the very highest quality Seeds, Bulbs and Plants at the very lowest prices; when you buy direct from us you save the middleman's profit and get the benefit of our low prices.

Send in your order early.

Fraternally yours,

WILLIAM R. KIMBALL, Manager.



#### TO MEMBERS OF THE GRANGE

You can save money by getting up a Seed Club in your Grange and sending the order to us.

We will send you some extra Catalogs and order blanks free. (Will also wrap each order separately and properly label them and will include a lot of free packets). Write for full information about the advantages secured on Grange orders. Address Grange Department.

#### FRATERNITY

Perhaps your neighbor would like to see our catalog. It would be a real service of helpfulness to pass this little book along, after you have finished with it, or if you will send us their address we will be glad to mail them a copy. There is a fraternity among garden lovers that makes us all appreciate suggestions and help—even though it may only be the passing along of a seed catalog to a friend.

**Bags are Free** and not weighed in with seed. Bags are expensive, but we make no charge as most firms do. This will mean a big saving to you. We will ship your grass and field seeds in heavy cotton bags, they to be returned at our expense.

#### IMPORTANT

If you want your seeds sent by Parcel Post it is necessary that the amount of money required to pay the postage be sent with the order so as not to cause any delay in filling your order.

We pay the postage on all seeds by the packet, ounce and quarter pound.

**OUR GUARANTEE:** We guarantee the safe arrival of your seeds and we guarantee their quality to the full amount of the purchase price.

#### GENERAL INSTRUCTIONS FOR CUSTOMERS

**Order—Early. Terms—**Our terms are cash. **Remittances—**May be made by check, express or post office order or money in registered letter; small amounts in stamps. **Packing—**We make no charge for boxes or packing, or delivery to depot or express office. **Seeds Postpaid by Mail—**We pay the postage on seeds by the packet, ounce, quarter pound and half pound. If pints and quarts of Beans, Corn, Peas, Onion Sets and Lawn Seeds are wanted sent by Parcel Post, add at the rate of 8 cents for first quart and 3 cents for each additional quart. Seeds by the pound add at the rate of 7 cents for the first pound and 2 cents for each additional pound. This will include safe and proper packing.

**Address—**In ordering be particular to sign your name, postoffice, R. F. D. route, county and state, plainly. **Small Orders—**If you only want a single packet do not hesitate to send for it. **Free Seeds—**With every order we shall include, free of charge, a liberal amount of Trial Packets. **Seed Packets—**Our Vegetable and Flower Seeds are put up in neat packets, large and well filled. **Agents—**We want an agent in every town. Write for terms. Telephone 108.

**25c.**

**WORTH OF SEEDS EXTRA WILL BE ALLOWED ON EACH ONE DOLLAR SENT FOR SEEDS IN PACKETS AND OUNCES ONLY.**

**N. B.—**This does not apply to Bulbs or Seeds by pound, quart, peck, collections or agents' orders.



Gathering Bobolink Beans for Home Canning

## BOBOLINK POLE BEANS

### BEST ON EARTH

If you want the very best, most tender and delicious "String Beans," raise the Bobolink. The best pole bean for northern planting, extremely early and very prolific, the vines bearing long, flat, meaty pods, entirely free from strings or fiber, a rich, light green color, very attractive most excellent quality, the very best of all the pole beans. Plant enough to can—they are delicious. This splendid variety is soon bound to be the most popular Pole Bean grown. In many respects they surpass anything we know of. The pods retain their stringless and tender qualities until they are almost ripe. They are hardy, easily grown and enormously productive. Large packet, post paid, 15c; 1/2 pt. 20c; pt. 40c; qt. 75c.

Monmouth, Me., Feb. 1st, 1921.

Pine Tree State Seed Co.,  
W. R. Kimball, Mgr.

My dear Mr. Kimball:—The years but confirm my judgment regarding the superiority of your Bobolink Pole Beans. Selecting my seed from the pods at the top of the pole, I find that the season for maturity has been shortened so that the past year they were ready for the table three days after the first picking of my earliest bush Wax. Growth is rapid and abundant, yield heavy and quality beyond anything I ever raised. Twenty years' reliance on your goods justifies a strong word of commendation—my best wishes are with you.

Sincerely,  
G. M. TWITCHELL.

## A GRAND MELON FOR NEW ENGLAND

### Metcalf's "Thousand Dollar" Musk Melon

This melon has been grown by Mr. Metcalf of Cumberland County for over twenty years, of whom we secured a small supply of seed.

The following is his description:

"More than 20 years ago, a horticultural friend told me he had been talking with a man interested in gardening who told him of a superior variety of Musk Melon he was growing. Soon after he gave him a few of the seeds; these he divided with me. We both planted them the next season with good success. After they had ripened I called at the home of my friend one evening. When he brought in a nice looking melon and opened it, as he did so, its fine appearance and delightful odor caused him to exclaim:

'Ah! That's worth a thousand dollars.' Since then it has been known as the Thousand Dollar Melon. I have continued to plant this variety every year since, saving seeds from the best and first to ripen each year and know of no other variety any better or will ripen as early."

The Melons average two to six pounds.

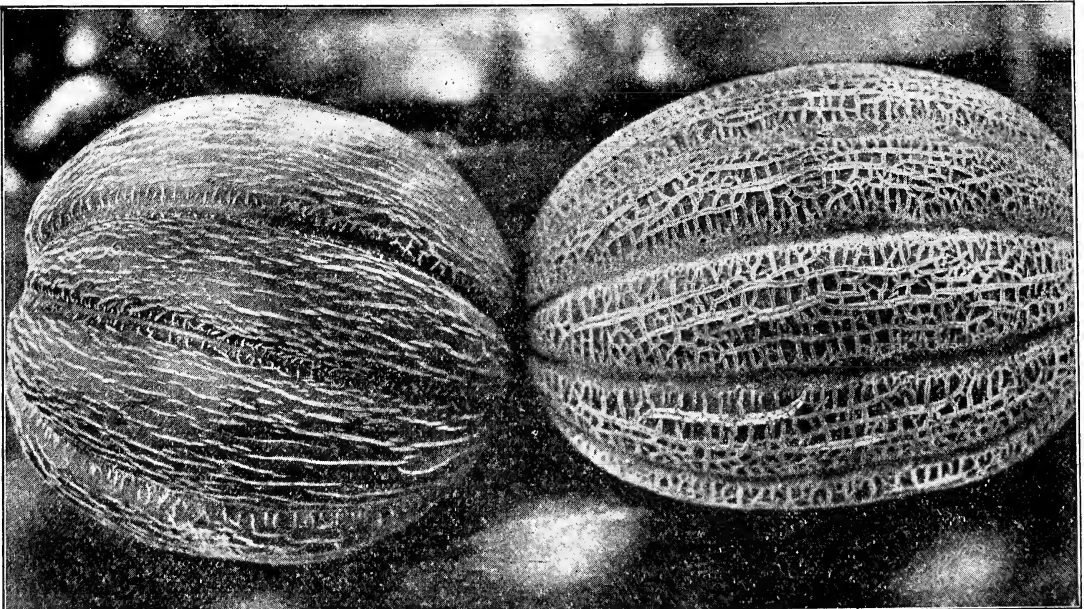
Price per packet, 15c. Maine Grown Seed.

Per 1/2 oz. 25c; oz. 40c.

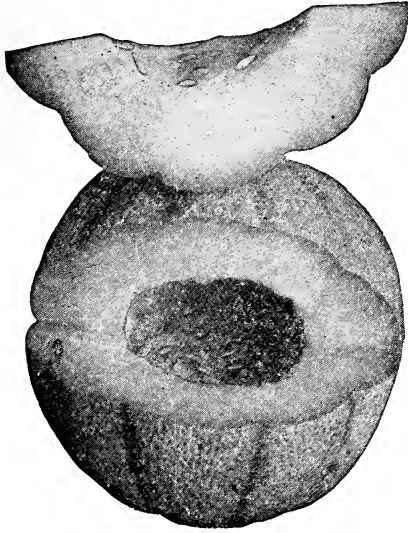
Your Thousand Dollar Musk Melon is the best melon I ever saw, very meaty and the finest flavor. Grew some that weighed 14 lbs. and they were just as good as those that weighed 5 to 8 pounds.

Auburn, Maine.

W. P. JONES.



If You Want the Best All-round Musk Melon, Plant Our Thousand Dollar



## “Hearts of Gold”

### Musk Melon

The melons are almost round, thickly netted and very firm. The flesh is deep orange color, firm, very sweet and of delicious flavor. It ripens clear to the skin. A splendid keeping melon of uniform size. The vines are vigorous and free from blight and very productive.

Pkt. 15c; oz. 35c; ¼ lb. 80c.

## New Extra Early Pea

### Carter's Early Eight Weeks

By far the earliest grown coming into picking condition before any of the other extra earlys. It bears large, well filled pods on dwarf, but vigorous vines, 15 to 18 inches high. Especially desirable for the home gardener who wants peas earlier than his neighbor.

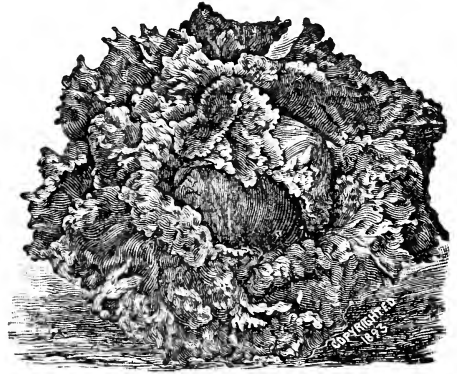
Large pkt. 10c; ½ pt. 20c. pt. 35c; qt. 65c; pk. \$4.00.

## Lettuce

### New York or Wonderful

Recommended for Summer heading. Produces immense heads, 15 to 18 inches across and as solid as a cabbage. The outer leaves are rich dark green, white, the heart blanches up beautifully and the quality is superb. Crisp, tender and delicious. Absolutely free from bitterness. This is the lettuce grown so largely in California and shipped East.

Pkt. 10c; oz. 40c; ¼ lb. \$1.25.



## King of Denmark Spinach

A remarkable new spinach that is far superior to all of the older kinds. Its principal advantage is that it stands two weeks longer before running to seed than any other variety. It also grows larger and yields more and is of superior quality.

The leaves are large, rounded, somewhat blistered, and deep green. The plants grow vigorously and are ready to use as soon as any kind; while at the same time they remain a long time in good condition after other kinds have run to seed.

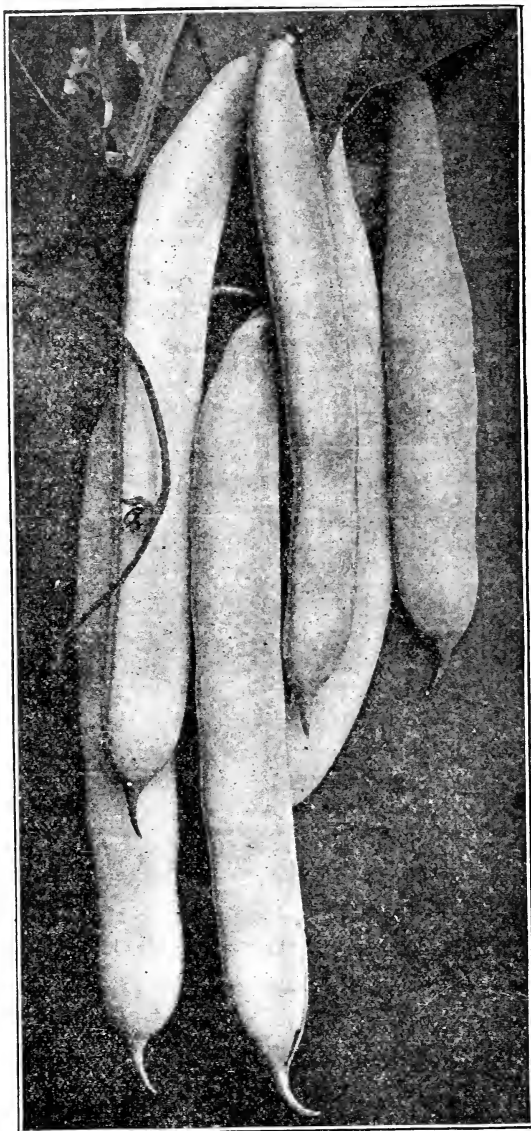
Pkt. 10c; oz. 15c; ¼ lb. 30c; lb. 85c.



J.B.R.S. Co.

**GOLDEN ACRE CABBAGE.**—A valuable new variety from Denmark considered the most important recent Cabbage introduction. Eighty days from date of sowing. Heads measure 9 in. in diameter, entire plant occupies a space of 20 in. Ten days earlier than Copenhagen Market Cabbage. If you cater to the early market by all means try the Golden Acre. Pkt. 15c; ½ oz. 50c; oz. \$1.00.

OUR 10c PACKETS OF VEGETABLE SEEDS ARE EXTRA LARGE AND WELL FILLED



## New Pole Bean—Sunset Or Golden Podded Bobolink

This fine new golden podded butter pole bean originated here in Maine. We have named it the Sunset. The seed was grown for us by Mr. Donald W. Elliott at Sunset Ridge Farm in Kennebec Co. The pods are of a bright golden yellow sunset color, very early, a few days earlier than our celebrated Bobolink Bean which it resembles in many ways except for the color of the pod.

The pods are tender and entirely stringless, of a rich creamy buttery flavor possessed by no other bean, very productive and bears a large quantity of rich golden yellow pods until the vines are killed by frost, very meaty and growing in clusters and entirely stringless at all stages of growth. The dry beans are of very superior quality for baking.

We are the first to introduce this fine bean and after giving it a thorough trial last season we offer it with confidence to the public. If you want the very best, most tender and delicious "String beans," raise the Sunset. Packet 15c. ½ pt. 25c; pt. 50c. Short crop, only one pint to a customer.

## Hybridized Potato Seed

From the Seed-Balls—Headquarters Stock



Millions never saw a Potato Seed Ball. Thousands have tried in vain to get the seed. Now is your opportunity. This unrivaled seed will produce an endless variety of new kinds. They are as easy to grow as tomatoes.

There's money in it, and fun galore. No product so interesting—none may be of such value. The result will be amazingly diversified—potatoes of all conceivable colors, shapes and sizes—50 or more new varieties. This may be your last chance to obtain this rapidly vanishing seed. Please tell your friends. Packet with full Directions for Growing, 15c. 4 for 50c.

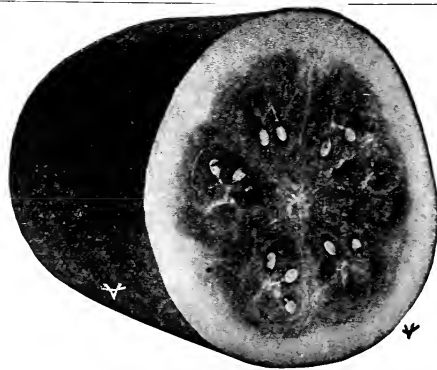
New Pole Bean—Sunset or Golden Podded Bobolink

## Bush Beans—Brittle Wax

One of the best early varieties. The pods are round and long, often six to seven inches in length, a rich, golden yellow; stringless and brittle.

When ripe makes a good shell bean. Large packet 10c; ½ pt. 20c; pt. 35c; qt. 70c.

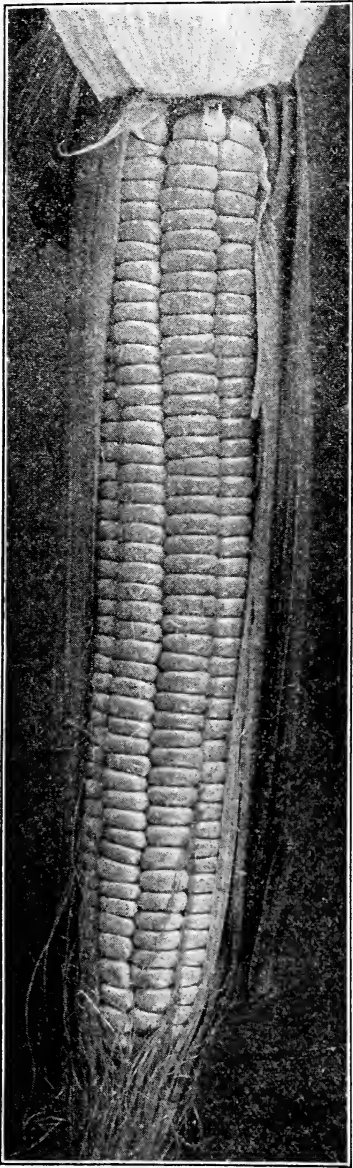
**WATER MELON YANKEE.**—Best for New England. This new melon is a fine variety for the family and market, very early and prolific. The bright red flesh is cool crisp and sweet. Will mature anywhere in Yankee land. Pkt. 10c, oz. 20c; ¼ lb. 45c; lb. \$1.50.



Yankee Water Melon



## The Best of the Yellow Kinds of Sweet Corn



Wonder Golden Bantam

**WONDER GOLDEN BANTAM.**—It is the very cream of the Yellow Sweet Corns today on the market. It is Golden Bantam larger, stronger grower and a much better yielder. The stalks grow from five to six feet high and have ears from eight to ten inches in length, filled with eight rows of rich golden colored kernels and just as early as the old style Golden Bantam but more vigorous and productive. It is a variety that will appeal to the critical Market and Home Gardener. Packet 15c;  $\frac{1}{2}$  pt. 20c; pt. 35c; qt. 70c.

Dr. G. W. Twitchell tested this corn at his experimental farm at Monmouth, Me., the past season and writes as follows:

"Your Wonder Bantam Corn is about a week later than Burpee's Golden Bantam, has a much larger ear, holds a longer season without hardening, is full, sweeter and very delicious."

**EXTRA EARLY GOLDEN BANTAM.**—An extra early type grown especially for us by Mr. Yeaton of Somerset County, Maine. Very hardy and will stand planting earlier than most varieties. Because of its extremely early character is especially adapted to our New England soil and climate, of vigorous growth and surpassing delicious flavor, maturing a week earlier than other varieties of the golden type. Mr. Yeaton has been carefully selecting and breeding up his stock for the past ten years and now has a strain that is large, more productive, early and of excellent eating qualities. Large packet 10c;  $\frac{1}{2}$  pt. 20c; pt. 35c; qt. 70c.

**GOLDEN GIANT.**—The most desirable sweet corn yet introduced with its 12 to 16 rowed ears and deep golden kernels, very sweet and extremely early. The stocks are short and sturdy and producing two large ears. It excels all other early varieties in size, productiveness and quality.

Large packets 10c;  $\frac{1}{2}$  pt. 15c; pt. 30c; qt. 60c.

**BURPEE'S GOLDEN BANTAM.**—One of the best extreme early varieties. Dwarf and sturdy in habit, growing about four feet high and bearing two or three good ears to each stalk. The ears five or six inches in length, having eight rows of broad yellow grains of a delicious flavor. Pkt. 10c.  $\frac{1}{2}$  pt. 15c; pt. 30c; qt. 60c.

**GOLDEN NUGGET.**—Sweetest on earth. The ears of this new golden sweet corn are larger and more prolific than Golden Bantam tender and unusually sweet. Ready for market only a few days behind the earliest. Pkt. 10c;  $\frac{1}{2}$  pt. 20c; pt. 30c; qt. 60c.

**GOLDEN ROD.**—Very productive, having two or three good ears on a stock golden yellow kernels; quality unequalled. Good variety to follow Golden Bantam. Pkt. 10c;  $\frac{1}{2}$  pt. 15c; pt. 30c; qt. 60c.

**SIX CHOICE VARIETIES OF GOLDEN SWEET CORN.**—One large packet of each of the above for 45c, postpaid.

## New Cucumber Woodruff's Hybrid

This grand new cucumber grows a medium size vine and the fruit is long and slim carrying its size about the same its entire length. In color a fancy shade of dark green and keeps its color a long time, the flesh white, crisp and tender. Early and productive.

Pkt. 10c; oz. 20c;  $\frac{1}{4}$  lb. 65c.

## TWO CHOICE RUTA BAGA SWEDE TURNIPS.

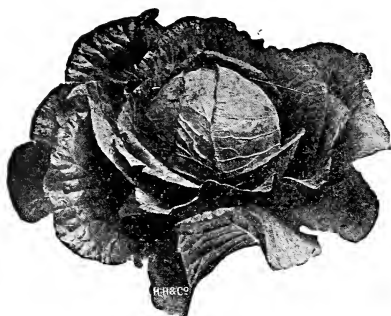
—We have imported these seeds from a noted English grower of turnips, and we urge all our customers to try at least one variety.

**RUTA BAGA PERFECT MODEL.**—A heavy cropping purple top Swede with small tops of fine flavor, and a long keeper. Matures early.

**RUTA BAGA NE PLUS ULTRA.**—A new English turnip, superior to our American varieties. Flesh richly colored, fine grained and sweet. Cooks quickly, free from strong odor.

Price each, 10c pkt.; 20c oz.;  $\frac{1}{4}$  lb. 50c; lb. \$1.50.

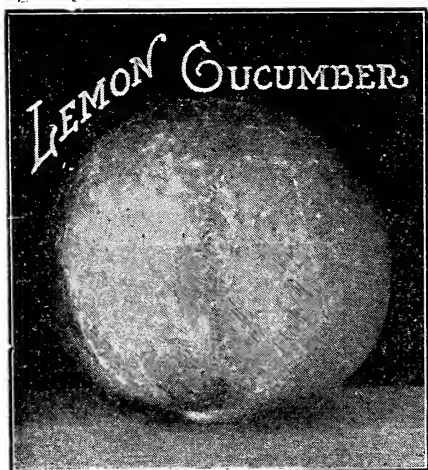
SEE PAGE 13 FOR OTHER VARIETIES OF CORN



Copenhagen Market Cabbage

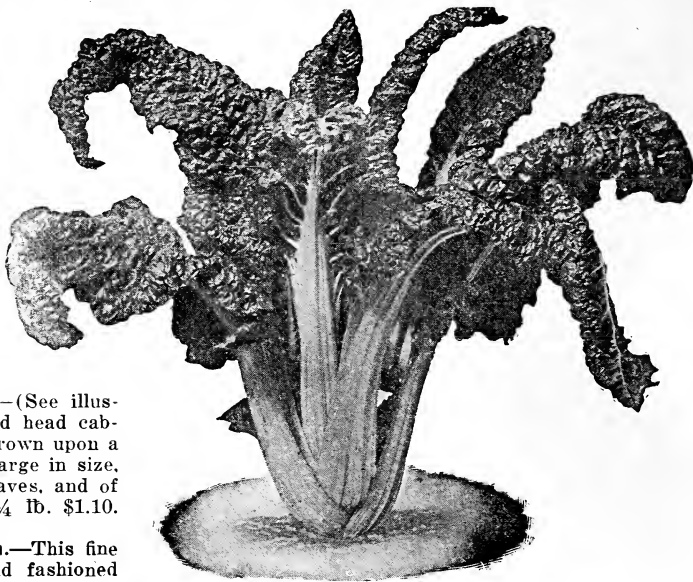
**COPENHAGEN MARKET CABBAGE.**—(See illustration.) A splendid extra-early round head cabbage from Denmark. The heads are grown upon a remarkably short stem, are solid and large in size, weighing 10 to 12 lbs., light green leaves, and of excellent quality. Pkt. 10c; oz. 45c;  $\frac{1}{4}$  lb. \$1.10.

**POLE BEAN, DIRIGO—15 Minute Bean.**—This fine bean is not a new variety it's an old fashioned Yellow Cranberry type of a green string bean. Very little known and grown only by a few gardeners who prize it highly. Early, broad green flat pods, absolutely stringless, fine flavor as a string or shell bean, also makes a fine bean to cook when dry. When used as a snap bean it is often called fifteen minute bean on account of its quick cooking qualities. Supply limited. Large Pkt. 15c;  $\frac{1}{2}$  pt. 25c; oz. 45c. Short crop.



**LEMON CUCUMBER.**—The Garden Lemon.—The Lemon Cucumber resembles a lemon in shape color and size, but grows on a vine like a cucumber. It has a thin skin, is crisp, tender, sweet and fine flavored. We are safe in predicting the Lemon Cucumber will become a great favorite for slicing, or pickles. The best time for picking is just as it turns yellow. Pkt. 10c; oz. 25c;  $\frac{1}{4}$  lb. 75c.

**WHITE WONDER CUCUMBER.**—Ivory white in color, thin skin, excellent quality and very hardy. Can be planted early. It is a sure cropper and very prolific. Pkt. 10c; oz. 25c;  $\frac{1}{4}$  lb. 75c.



Swiss Chard—Giant Lucullus

**SWISS CHARD LUCULLUS.**—The stalks are thick and broad. The leaves are large and heavily crumpled, crisp, tender and of fine flavor. Pkt. 10c; oz. 20c;  $\frac{1}{4}$  lb. 50c; lb. \$1.50.

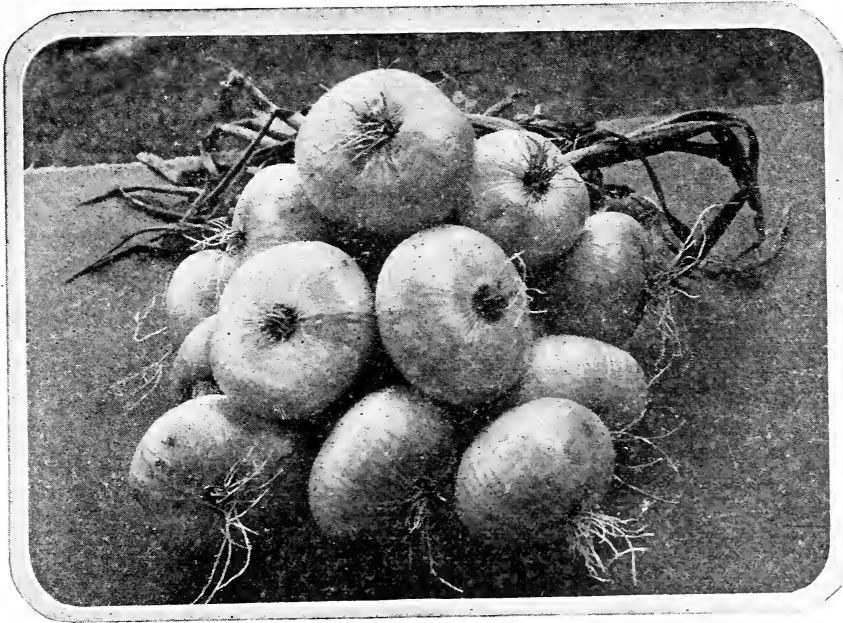
**LETTUCE, MAY KING.**—A new early head lettuce, its growth is extremely rapid and its fine large heads are ready in advance of any other heading variety. Crisp and very brittle. Pkt. 10c; oz. 35c;  $\frac{1}{4}$  lb. 75c.

**LETTUCE, ICEBERG.**—Very large extremely crisp, hard-heading variety. The plants grow to a large size, sweet and mild in flavor. Pkt. 10c; oz. 35c;  $\frac{1}{4}$  lb. 75c.

**BEEFSTEAK LETTUCE.**—This grand new variety grows to an immense size, and makes large, loose heads of a rich and buttery flavor. The leaves are of a soft green, tinged and flaked with red, never grows bitter. A fine summer variety. Pkt. 10c; oz. 35c;  $\frac{1}{4}$  lb. 75c.

**A WONDERFUL NEW TOMATO, JOHN BAER.**—Earliest and best; brilliant deep red color; smoothest; no core; almost free from seed; delicious flavored; far more solid and meaty than any other; no culls; ripens even up to the stem; perfect beauties; uniform in size and ripening; a perfect shipper; blight proof. Pkt. 10c;  $\frac{1}{2}$  oz. 30c; oz. 50c;  $\frac{1}{4}$  lb. \$1.25.

**NEW BURBANK TOMATO.**—One of the earliest Tomatoes in existence. Burbank is everything that can be desired in a home garden tomato, attractive bright red fruits—medium size, smooth—well formed and ripens evenly all over. It is a good cropper also so you will enjoy many good dishes from your plants. Pkt. 10c;  $\frac{1}{4}$  oz. 25c; oz. 75c.



Monmouth, Maine,  
Oct. 17, 1922.

Friend Kimball:

I want to thank you for sending me the Japanese Onion Sets. From two quarts I grew three bushels of very choice onions, many weighing three-quarters of a pound each and some fifteen ounces. The quality superior. The sets were planted April 26th and early in July I was selling bunches of four each, weighing one and one-half pounds. I want to thank you for introducing this very valuable variety of onion sets. Have just closed the twenty-seventh year with your seeds and have not met failure in any case yet.

Very truly,

G. M. Twitchell.

## JAPANESE ONIONS GROWN FROM SETS

We call your attention to the photograph above of Japanese Onions grown from sets. This onion was originally called Ebenezer, was grown and introduced by the Market Gardeners of Ebenezer, N. Y.

These sets were grown by Dr. G. M. Twitchell at his experimental farm at Monmouth, Maine and weigh three-quarters of a pound each.

This onion will actually double the yield of any other onion set on the market. It throws no seed stalks; is the best keeper and best flavored onion we have ever seen. Similar in size and shape to the Old Fashioned Yellow Danvers. One Thousand Bushels Per Acre is common. One customer last year actually reported ninety bushels of onions grown from one bushel of sets. Price per  $\frac{1}{2}$  pt. 15c; pt. 25c; qt. 40c.

**JAPANESE OR EBENEZER ONION SEED.**—See Page 17 for a description of this fine new onion.

## FIVE GRAND NEW GARDEN PEAS

**FAMOUS NEW PEA—PIONEER.**—In this wonderful new pea we believe we have something that has long been sought after by the market gardener who wishes to second crop his ground. The plant is very robust in habit, makes a very heavy crop of large dark green pods. In our trial grounds last summer it grew a vine about 16 inches high and they were so heavily podded on dwarf vines that it resembled almost a windrow of picked peas. They are more than a week earlier than Gradus and fully as handsome in appearance. Pkt. 10c;  $\frac{1}{2}$  pt. 20c. pt. 35c; qt. 65c; pk. \$4.00.

**QUITE CONTENT PEA**—The largest and finest podded pea in cultivation. Received First Class Certificate from the Royal Horticultural Society of London. A main crop variety. Grows 5 feet high, foliage and pods deep green; pods 6 to 7 inches long, hanging mostly in pairs; ten to twelve peas in a pod. Flavor superb. Pkt. 10c;  $\frac{1}{2}$  pt. 20c; pt. 35c; qt. 60c; pk. \$3.75.

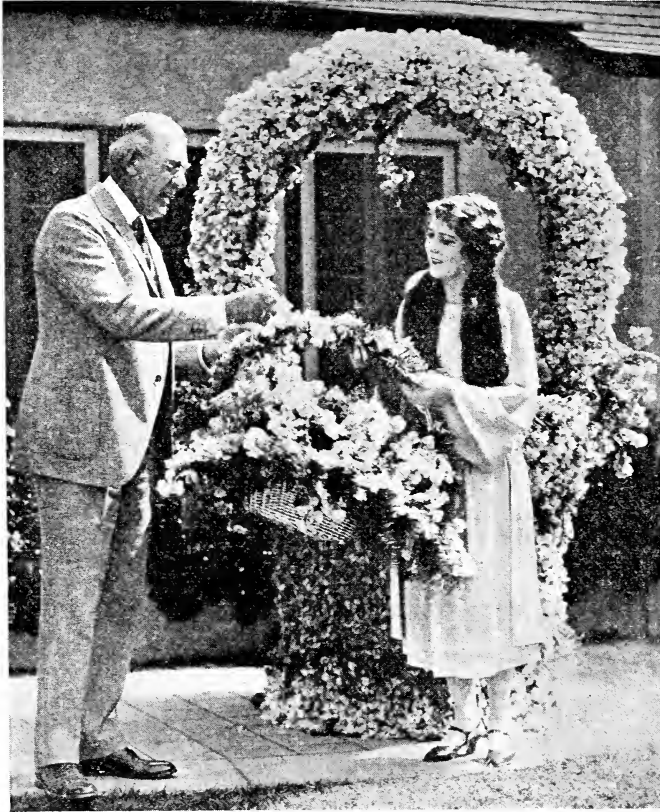
**LAXTONIAN.**—One of the most remarkable varieties yet introduced; very dwarf, 15 to 18 inches high, producing pods in great abundance; nearly as large as the Telephone. The peas are large with a flavor the very sweetest and best. Pkt. 10c;  $\frac{1}{2}$  pt. 20c; pt. 35c; qt. 65c. peck \$3.75.

**GRAND NEW PEA, MAY DAWN.**—The largest and earliest of the wrinkled varieties of peas. It is an improved Gradus but earlier, more prolific, large pods, a great cropper. One of the best money-making peas that grow. Pkt. 15c;  $\frac{1}{2}$  pt. 20c; pt. 35c; qt. 60c; pk. \$3.75.

**WORLD'S RECORD PEA (New).**—A popular large-podded, extra early, wrinkled pea which matures a little earlier than the well-known Gradus. Its growth is very similar to that of Gradus, but somewhat more dwarfed and stouter; pods uniformly large, measuring from four and one-half to five inches, nearly round and packed with extra large, handsome peas of the finest flavor. Pkt. 10c;  $\frac{1}{2}$  pt. 20c; pt. 30c; qt. 60c; pk. \$3.75.

SEE PAGES 15 AND 16 FOR OTHER VARIETIES OF GARDEN PEAS

## GIANT SPENCER TYPE OF SWEET PEAS



Giant Spencer Sweet Pea "Mary Pickford"

### SWEET PEA "MARY PICKFORD"

Our picture shows Miss Pickford, "America's Sweetheart," being presented with a basket of flowers of the beautiful variety named for her. This delightful Sweet Pea is undoubtedly the finest novelty that has been introduced for many years. Color, beautiful light and dainty cream pink, faintly suffused salmon. A very free bloomer, with perfectly formed ruffled flowers.

Pkt. 15c; 1/2 oz. 40c; oz. 75c.

### FIVE NEW SPENCERS

**BUTTERCUP**—Rich deep cream.

**GLADYS**—A beautiful lilac.

**PICTURE**—Flesh pink and apricot.

**WARRIOR**—Rich deep maroon.

**VALENTINE**—Large bluish pink.

Price of above New Spencers: 10c pkt.; 35c oz.

Special offer one 10c pkt., each for 35c

**ASTA OHN SPENCER**—A charming soft lavender, suffused with mauve.

**BLANCHE FERRY SPENCER**—Bright rose standards with white wings.

**HERCULES**—This is a magnificent deep rose-pink. The standard is of enormous size and the whole flower is of excellent form.

**COUNTESS OF SPENCER**—Large, wavy petals, soft, rose-pink in color, free flowering. The large handsome flowers are produced on long stems.

**DAINTY SPENCER**—A most beautiful pink edged variety.

**DOBIES CREAM**—The best of all the primrose or cream shades.

**FIERY CROSS**—Has all the appearance of live fire, the color being a scorching fire-red. Pkt. 15c; oz. 35c.

**HELEN LEWIS SPENCER**—A rich crimson orange, enormous sized flowers.

**KING EDWARD SPENCER**—The best pure red Spencer. Very large.

**FLORENCE MORSE SPENCER**—Light pink edged variety, very beautiful, borne upon strong, stiff stems, four flowers to each stem.

**BURPEE'S KING WHITE**—The finest pure white Sweet Pea ever offered. The vines are extremely strong, flowers the largest, of the finest frilled type, while the color is of the purest white, and eclipses all other white kinds.

**LOVELY**—White ground with blotch of deep pink at base shading to light pink.

**MARGARET ATLEE SPENCER**—The largest and finest Spencer Sweet Pea yet introduced. A rosy salmon pink on a creamy buff ground. The flowers are of extraordinary size, beautifully waved. Pkt. 10c; oz. 35c.

**MRS. TOM JONES**—Bright delphinium blue, flowers very large and beautifully waved and usually borne four on a stem. Pkt. 10c; oz. 35c.

**OTHELLO SPENCER**—A rich deep maroon; flowers beautifully waved.

### TWO FINE NEW SPENCERS

**YOUTH**—A large, fine white, edged with a delicate soft rose pink.

**THE CARDINAL**—Intense scarlet, large wavy flowers.

Each of the above 15c pkt.; 1/2 oz. 25c; 1 oz. 40c

**PRIMROSE SPENCER**—The color is a primrose or creamy yellow.

**SWEET LAVENDER SPENCER**—A charming soft lavender, large flowers, finely waved.

### THREE NOVELTY SPENCERS

**AMETHYST**—A new bright blue. Flowers large and beautifully waved, producing usually four flowers to a stem.

**AMERICAN LEGION**—Intense poppy-scarlet. Very large waved flowers retaining its bright color after cutting. Blooms freely.

**SUNPROOF SCARLET**—The color of the flower is an intense bright pure scarlet, finely waved. The blooms are borne freely on long stems and does not fade or burn in the brightest sun.

Price of above Novelty Spencers, 10c pkt.; 20c 1/2 oz.; 35c oz.

Special offer one packet each for 25c.

**VERMILION BRILLIANT.**—The most brilliant iridescent scarlet Spencer yet produced. The standard is very bold and beautifully waved.

**WEDGEWOOD SPENCER.**—Producing usually four flowers to a stem of Wedgewood blue.

### Hawmark Type

**HAWMARK PINK.**—The color is a most beautiful shade of rich, rose pink deeply flushed and shaded with salmon. Large well waved blooms. Pkt. 10c; oz. 35c.

**HAWMARK LAVENDER.**—There is nothing quite so pure in lavenders as this fine variety. Of exquisite form, with broadly expanded standard and large spreading wings. Blooms freely. Pkt. 10c; oz. 35c.

**HAWMARK SALMON-PINK.**—A rich, deep pink, attractively tinted with salmon and orange. Pkt. 10c. oz. 40c.

**HAWMARK CERISE.**—Glowing rose-cerise on cream ground. Pkt. 10c; ½ oz. 20c; oz. 45c.

### Two Charming New Spencers

**MISS CALIFORNIA.**—This exquisite California novelty is a charming iridescent tone of cream-pink with a salmon and orange hue. Very large. Pkt. 15c; ½ oz. 25c; oz. 40c.

**CAMPFIRE.**—A rich, glowing scarlet. Pkt. 15c; oz. 40c.

Price each of above Spencers, except where noted otherwise: pkt. 10c; ½ oz. 15c; oz. 25c; ¼ lb. 75c; lb. \$2.50.

**SUPERB MIXED SPENCER.**—This blend contains the cream of all the best Spencers, including many novelties. It is the finest and most gorgeous mixture ever offered and will delight all who want a good variety of colors. Pkt. 10c; ½ oz. 15c; oz. 25c; ¼ lb. 65c; lb. \$2.25.

**THE BURPEE BLEND SPENCERS.**—Contains the cream of all the finest Spencers and will surely delight all who want a grand variety of colors. Pkt. 10c; oz. 30c; ¼ lb. 75c; lb. \$2.75.

**MIXTURE OF LIGHT SHADES.**—Some of our customers do not care for the deeper colors in Sweet Peas and we have therefore prepared this special mixture which contains only the lighter shades, such as white, cream, pink, salmon, lavender, etc. Pkt. 10c; oz. 30c; ¼ lb. 75c; lb. \$2.50.

**CHOICE MIXED SPENCERS.**—This mixture is made up of the large summer-flowering Spencer varieties. The greatest care is taken to insure a well balanced range of colors. Pkt. 10c; oz. 20c; ¼ lb. 60c; lb. \$2.00.

**SIX BEAUTIFUL SPENCER SWEET PEAS.**—We have selected for our customers six beautiful sorts which we offer as our Spencer Collection of Giant Sweet Peas.—6 regular size 10c pkts. for 35c.—Giant White, Countess, Lovely, King Edward, Sweet Lavender and Helen Lewis.

## TALL NASTURTIUMS

**TALL NASTURTIUM, TWILIGHT.**—The flowers are most distinct and pleasing in color, having a faint salmon or buff tint heavily overlaid or suffused with a deeper rosy salmon. Oz. 20c.

**TALL NASTURTIUM, MOONLIGHT.**—Flowers of an exquisite pale straw yellow.

**TALL NASTURTIUM, SUNLIGHT.**—Clear, rich, golden yellow, and are produced so profusely as to almost conceal the large dark green foliage.

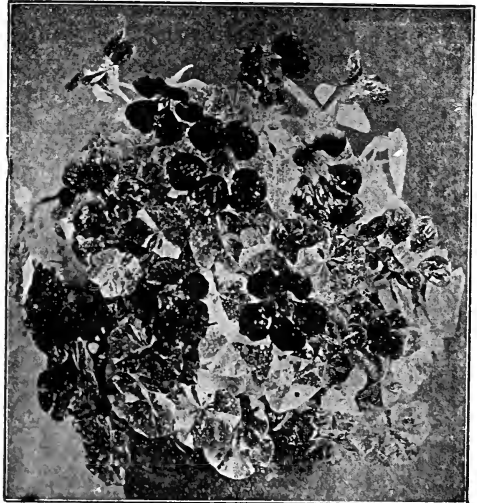
**TALL NASTURTIUM, MIDNIGHT.**—The foliage is a deep dark green and the flowers are a deep red.

**TALL NASTURTIUM, VARIEGATED LEAVED.**—A new race of Nasturtiums, every leaf is variegated with yellow, white and green, beautifully blotched and striped.

**TALL NASTURTIUM, IVY LEAVED.**—The leaves are of a rich green, veined with white resembling the foliage of the English ivy. The flowers are of many colors and star-like in appearance. Pkt. 10c.

**RAINBOW MIXTURE TALL NASTURTIUM.**—The most showy and varied in color of all the Running Nasturtiums.

Price each of above, except where noted, pkt. 10c; oz. 20c; ¼ lb. 50c.



Variegated Leaved Dwarf Nasturtiums

## DWARF NASTURTIUMS

**DWARF NASTURTIUM.**—Golden leaved. Pkt. 10c.

**DWARF SPENCER NASTURTIUM.**—A new type of Nasturtium. The very peculiar wavy emerald green foliage is different from any other known variety. The plants grow very compact, covered with beautiful velvety flowers borne on long stems. Choice mixed, pkt. 10c; oz. 30c.

**DWARF NASTURTIUM, CLOTH OF GOLD.**—The foliage is of bright golden yellow, with scarlet flowers. Pkt. 10c; oz. 30c.

**DWARF NASTURTIUM, VARIEGATED LEAVED.**—Many colored flowers in charming contrast to the silver variegated foliage. Oz. 30c.

**RAINBOW MIXTURE DWARF NASTURTIUM.**—The most showy and varied in color of all the Dwarf Nasturtiums, the mixture contains over thirty of the choicest named varieties, exceedingly fragrant and flower freely until severe frost.

Price each of above, except where noted, pkt. 10c; oz. 20c; ¼ lb. 50c.

## GLADIOLI BULBS



Gladiolus are the most attractive and useful of summer flowering bulbs, and as a cut flower all through the summer months and well into the autumn they hold a place that cannot be taken by any other flower.

(If wanted by mail add 5c per dozen; 25c per 100.)

**20 small Gladiolus bulbets for 10c post-paid.**

**These make fine blooming bulbs next season.**

**Good Mixed.**—3 for 15c, 50c doz.; \$2.75 per 100.

**Rainbow Mixed.**—A splendid mixture, including all of the above kinds and many others, 6 for 40c, 75c doz., \$3.50 per 100.

**America.**—One of the best Gladiolus. The color is a most beautiful soft lavender pink; very large and massive. Large bulbs 10c each; 3 for 25c; 60c doz., \$3.50 per 100; medium size 50c doz., \$3.00 per 100.

**Anna Eberius.**—Dark velvet purple rose, 15c each.

**Chicago White.**—Pure white with lavender markings in throat. 12c each, \$1.00 per doz.

**Cracker Jack.**—Dark red, blotched with maroon or yellow ground. 12c each, \$1.00 doz.

**Crystal White.**—Large white with red stripes. 15c each, \$1.25 doz.

**Empress of India.**—A rich maroon red, 12c each, 75c per doz.

**Glory of Holland.**—Pure white, 15c each, \$1.00 per doz.

**Halley.**—A delicate salmon pink, large flowers, blooms early. 10c each, 75c doz., \$3.00 per 100.

**Herada.**—Pure mauve, deep markings in throat. 15c each; \$1.50 doz.

**Le Marshal Foch.**—A new bright early pink, very large flowers. 15c each \$1.50 doz.

**Loveliness.**—Cream white and apricot, 20c each

**Miss Helen Franklin.**—Pure white with violet markings on lower petals, vigorous and tall, averaging 6 to 10 open blooms at one time. An early variety. 15c each, \$1.50 doz.

**Mrs. Francis King.**—A splendid light scarlet, flowers large, well expanded, tall, straight spike, 10c each, 75c doz., \$3.50 per 100.

**Mrs. Watt.**—American rose color. 15c each, \$1.25 doz.

**Niagara.**—Magnificent large flowers, soft primrose yellow, tinged rose pink in the throat, tall strong spike 15c each, \$1.25 per doz.

**Panama.**—The finest pink, long spikes and large flowers, very beautiful, 15c each, \$1.25 per doz.

**Peace.**—Immense, pure white flowers with a delicate lilac feathering in the lower petals. The flowers are unusually large, and borne on a strong spike, 15c each, \$1.25 per doz.

**Pink Perfection.**—Apple blossom pink, 15c each, \$1.25 per doz.

**PRINCE OF WALES.**—A delicate salmon rose with a warm, yellow feathering in the throat. Early and very fine. 15c each, \$1.25 per doz.

**Rose Ash.**—Ashes of roses, 20c each.

**Salmon Beauty.**—A beautiful salmon pink, 10c each, 75c doz., \$3.00 per 100.

**Scarlet King.**—The best bright scarlet, 10c each, 75c doz., \$3.00 per 100.

**Schwaben.**—Canary yellow, red stripe on lower petals. 15c each, \$1.25 doz.

**Wilbrink.**—Flesh pink, cream blotch, 15c each.

## GIANT DAHLIA FLOWERED ZINNIA

This type is the latest development in Zinnias, bears flowers of mammoth size, in form like a perfect decorative Dahlia. The flowers often measure 6 to 8 inches in diameter, choice mixed. 15c Pkt.

**EXTRA EARLY COSMOS.**—A new early type coming into flower a month ahead of the late varieties. 15c pkt.

**SHIRLEY POPPY, AMERICAN LEGION.**—This fine new poppy is a dazzling orange-scarlet of large size and free bloomer. 10c Pkt.

## CHOICE NEW ASTERS

**ASTER LAVENDER GEM.**—Large double flowers of exquisite lavender shade of the Ostrich feathered type. The flowers are borne in profusion on long stems. Pkt. 15c.

**ASTER, PINK ENCHANTRESS.**—A splendid new Aster, immense flowers of a soft, delicate pink, borne on strong, upright stems. Pkt. 15c.

**ASTER SENSATION.**—A new branching Aster, bright red. Pkt. 10c.

**ASTER CREGO GIANT MIXED.**—Grand large flowers, measure four inches. The petals are double the length of the old varieties and are twisted and curled. Pkt. 10c.

**ASTER PEERLESS PINK.**—Large double flowers; the color is a wonderful and most pleasing shade of rich pink. Pkt. 10c.

**HEART OF FRANCE.**—A new startling beautiful type of Aster of the purest deep red flowers on long, strong stems. Pkt. 15c.

**SPECIAL MIXTURE.**—All of the above kinds mixed, large packet 15c.





**CHOICE  
LIST OF  
VEGETABLE  
SEEDS**

**ASPARAGUS**

**PALMETTO.**—Bright green color; very desirable. Pkt. 10c; oz. 15c;  $\frac{1}{4}$  lb. 40c.

**BEANS (DWARF OR BUSH)**

If pints and quarts are wanted sent by Parcel Post, add at the rate of 8 cents first quart and 3 cents for each additional quart.

**BRITTLE WAX.**—See page 4.

**GOLDEN EYED WAX.**—Early, hardy and productive. No finer wax bean known. Pkt. 10c;  $\frac{1}{2}$  pt. 20c; pt. 30c; qt. 60c.

**DWARF HORTICULTURAL.**—Excellent as a green or shell bean. Pkt. 10c; pt. 30c. qt. 60c.

**RUST PROOF WAX.**—Pods long, nearly straight, broad, flat, golden yellow, stringless and brittle. Pkt. 10c;  $\frac{1}{2}$  pt. 20c; pt. 35c; qt. 60c.

**DETROIT WAX.**—Early and productive. Pkt. 10c; pt. 30c; qt. 60c.

**BOUNTIFUL.**—Extra early, flat, green pods, tender and stringless. Pkt. 10c;  $\frac{1}{2}$  pt. 20c; pt. 30c; qt. 60c.

**BURPEE'S BUSH LIMA.**—This bean grows from fifteen to eighteen inches high in a compact bush form, and produces heavy crops. Two weeks earlier than the common Lima. Pkt. 10c;  $\frac{1}{2}$  pt. 20c; pt. 30c; qt. 65c.

**IMPROVED GODDARD DWARF HORTICULTURAL.**—A standard variety shell bean, very prolific, long, highly colored pods. Very attractive. Pkt. 10c.  $\frac{1}{2}$  pt. 20c; pt. 35c; qt. 65c.

**LOW'S CHAMPION.**—Early, hardy and enormously productive, large podded, stringless and very tender. Pkt. 10c;  $\frac{1}{2}$  pt. 15c; pt. 30c; qt. 60c.

**BURPEE'S NEW STRINGLESS GREEN POD.**—For either the market or home garden, no other green-podded bean is so satisfactory. The pods are a rich green, round and straight, five inches long, solid, meaty and broad, tender and brittle, and stringless. Pkt. 10c;  $\frac{1}{2}$  pt. 15c; pt. 30c; qt. 60c.

**DWARF RED CRANBERRY.**—Early, tender and stringless. Pkt. 10c;  $\frac{1}{2}$  pt. 15c; pt. 30c; qt. 60c.

**FIELD BEANS**

**JOHNSON.**—Early, very productive. Maine grown. Qt. 45c; peck \$3.25.

**OLD FASHIONED YELLOW EYE.**—An excellent field bean, very productive. Qt. 45c.

**SULPHUR.**—An excellent field bean, very fine for baking light cream colored. Qt. 45c.

**SNOWFLAKE PEA.**—A decided improvement over the common pea bean, early and very productive. Qt. 40c.

**SOLDIER.**—Early, very productive. Qt. 45c.

**RED KIDNEY.**—Fine for baking. Pt. 25c; qt. 40c. Per peck of any of the above, \$3.00.

**POLE BEANS**

**KENTUCKY WONDER WAX.**—Pkt. 10c;  $\frac{1}{2}$  pt. 20c; pt. 35c; qt. 65c.

**POLE HORTICULTURE.**—Excellent as a string or shell bean. Pkt. 10c;  $\frac{1}{2}$  pt. 20c; pt. 30c; qt. 60c.

**MAMMOTH PODDED HORTICULTURAL.**—The vine is vigorous, pods very large, bright carmine, slightly streaked, very handsome and exceedingly productive. Beans large, splashed and spotted with red, either green or dry. Pkt. 10c;  $\frac{1}{2}$  pt. 20c; pt. 35c; qt. 65c.

**LAZY WIFE'S.**—Abundantly productive, and of excellent flavor, with long green, fleshy and stringless pods. Fine for shelling or baking when dry. Pkt. 10c;  $\frac{1}{2}$  pt. 20c; pt. 35c; qt. 65c.

**EARLY GOLDEN CLUSTER WAX.**—The pods of this variety are enormously large and long and borne in clusters. Pkt. 10c;  $\frac{1}{2}$  pt. 20c; pt. 35c; qt. 60c.

**SCARLET RUNNER.**—Very ornamental, free climbers, bright scarlet flowers. Pkt. 10c;  $\frac{1}{2}$  pt. 20c; pt. 35c; qt. 65c.

**WHITE RUNNER.**—Very pretty planted with the scarlet runner. Pkt. 10c;  $\frac{1}{2}$  pt. 20c; pt. 35c; qt. 65c.

**BOBOLINK.**—Very early, tender and stringless. Best of all the pole varieties. Pkt. 15c;  $\frac{1}{2}$  pt. 20c; pt. 40c; qt. 75c. For full description see Novelty page.

**SUNSET OR GOLDEN PODDED BOBOLINK.**—(New.) Best wax pole bean. See Novelty Page 4 for full description.

**LARGE PACKET OF ANY OF THE ABOVE VARIETIES OF BEANS 10c POSTPAID**

**KENTUCKY WONDER.**—Very early and productive. The pods, though large, cook tender and delicious. Pkt. 10c; ½ pt. 20c; pt. 30c; qt. 60c.

**POLE BEAN, DIRIGO.**—When used as a snap bean is often called Fifteen Minute Bean on account of its quick cooking quality. See page 6.

**ARLINGTON RED CRANBERRY.**—Early and productive, pods large and tender. Pkt. 10c; ½ pt. 20c; pt. 35c; qt. 65c.

## BEETS

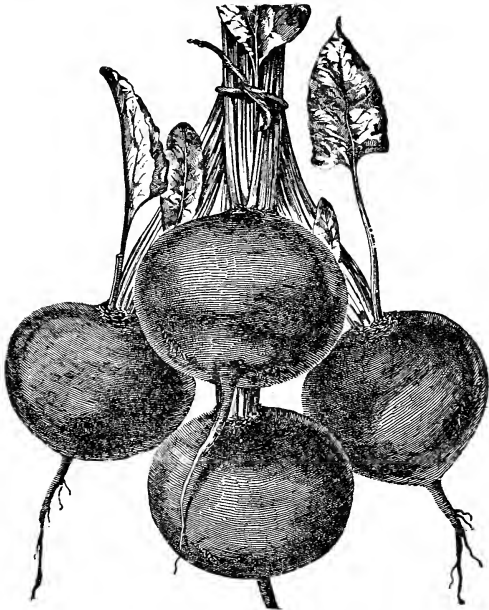
(For large shipments by mail, see rates on page 1)

**EARLY WONDER.**—See second cover page for description. Pkt. 10c; oz. 20c; ¼ lb. 50c.

**CRIMSON GLOBE BEET.**—This beet is remarkable for its smooth skin and fine shape, and it does not grow large and coarse. The flesh is very dark and quality fine, sweet and tender. Pkt. 10c; oz. 20c; ¼ lb. 50c; lb. \$1.50.

**EARLY BLOOD TURNIP.**—A standard sort, early, round and smooth. Pkt. 10c; oz. 15c; ¼ lb. 40c; lb. \$1.25.

**ECLIPSE.**—One of the best early sorts, fine grained, crisp and tender. Pkt. 10c; oz. 20c; ¼ lb. 45c; lb. \$1.25.



Crimson Globe Beet.

**DETROIT DARK RED.**—One of the very best sorts, either for market or home use. Tops small, roots globular and very smooth skin, dark red, flesh bright red. Very crisp, tender and sweet. Pkt. 10c; oz. 20c; ¼ lb. 45c; lb. \$1.50.

**CROSBY'S EGYPTIAN.**—For early use, either for market or family gardens, this variety easily takes the lead. Pkt. 10c; oz. 20c; ¼ lb. 45c; lb. \$1.50.

**EDMAND'S TURNIP.**—The flesh is deep, blood red in color and exceedingly sweet and tender in quality. Pkt. 10c; oz. 20c; ¼ lb. 45c; lb. \$1.25.

**BEET SEED.**—To sow for greens only. Oz. 10c; 30c ¼ lb.; \$1.00.

**MIXED VARIETIES.**—Of all of the above kinds. Large package 10c; oz. 15c; ¼ lb. 35c; lb. \$1.00.

**SWISS CHARD—LUCULLUS.**—See novelties. Pkt. 10c; oz. 20c; ¼ lb. 50c.

**SWISS CHARD.**—Used as greens. Pkt. 10c; oz. 20c; ¼ lb. 35c; lb. \$1.25.

**PERPETUAL SPINACH BEET.**—Fine for greens, has the flavor of spinach. Pkt. 10c; oz. 20c; ¼ lb. 45c; lb. \$1.50.

## MANGLE WURZEL

**LANE'S IMPERIAL SUGAR.**—Long white variety, excellent for feeding stock.

**MAMMOTH LONG RED.**—Producing roots of mammoth size. This is the best long red.

**GATE POST.**—Heavy cropper, small top. Price each of the above varieties, pkt. 10c; oz. 15c; ¼ lb. 30c; ½ lb. 50c; lb. 80c.

**GIANT SLUDSTRUP.**—The best of all the Mangolds, the largest yield per acre and of great feeding value. Pkt. 10c; oz. 15c; ¼ lb. 35c; lb. \$1.00

## SPECIAL OFFER

**VARIETIES OF MANGOLDS MIXED.**—Oz. 10c; ¼ lb. 25c; lb. 75c. postpaid.

## BRUSSELS SPROUTS

**IMPROVED EXTRA.**—Closely covered with large, compact sprouts. The very best sort Pkt. 10c; oz. 30c.

**SUTTON'S MATCHLESS.**—Large and extra fine. Pkt. 10c; oz. 35c.

## CABBAGE

**COPENHAGEN MARKET.**—Is certainly a valuable early maturing cabbage, producing round hard heads of the finest quality for the table, or market. The plants are short stemmed. The light green colored leaves are medium in size, saucer shaped, and are always tightly folded. Pkt. 10c; ½ oz. 25c; oz. 45c; ¼ lb. \$1.10.

**GOLDEN ACRE.**—A first-early variety of the round-headed type. The head and leaves are a little smaller than that of the Copenhagen Market, and is ready to cut from 8 to 10 days sooner. It is wonderfully true to type. Pkt. 15c; ½ oz. 50c; oz. \$1.00.

**HENDERSON'S EARLY SUMMER.**—Earliest of all the large cabbages, solid and compact. Pkt. 10c; ½ oz. 20c; oz. 40c; ¼ lb. \$1.00.

**EARLY WINNIGSTADT.**—Heads large, cone-shaped, solid one of the best for all soils. Pkt. 10c; ½ oz. 20c; oz. 35c; ¼ lb. \$1.00.

**DANISH BALL HEAD.**—The hardest heading cabbage in existence, and of excellent quality, white, crisp and tender. The heads are round, fine grained and a good keeper. Pkt. 10c; ½ oz. 20c; oz. 40s; ¼ lb. \$1.00.

**HENDERSON'S SUCCESSION.**—One of the finest cabbages in existence, whether for medium, main crop or winter use. Pkt. 10c; ½ oz. 20c; oz. 40c; ¼ lb. \$1.00.

**PREMIUM FLAT DUTCH.**—Excellent winter variety. Pkt. 20c; ½ oz. 20c; oz. 35c; ¼ lb. 90c.

**BURPEE'S SUREHEAD.**—Heads remarkably uniform, very hard and firm. A good keeper. Pkt. 10c; ½ oz. 20c; oz. 35c; ¼ lb. 90c.

**ALL SEASONS.**—An early drumhead, sure headings, solid variety. Pkt. 10c; ½ oz. 20c; oz. 35c; ¼ lb. 90c.

**MAMMOTH RED ROCK.**—Best and deepest blood red. Pkt. 10c; ½ oz. 25c; oz. 40c.

If You are Fond of Greens, Try Lucullus Swiss Chard—See Page 6.



**WARREN STONE MASON.**—A fine late variety. In reliability for heading, no cabbage surpasses it; an excellent sort to carry through the winter. Pkt. 10c; ½ oz. 25c; oz. 45c; ¼ lb. \$1.25.

**SAVOY, SUTTON'S BEST OF ALL.**—Fine curled leaves, delicate flavor. Pkt. 10c; oz. 45c.

**MIXED VARIETIES.**—A large packet of all the above mixed, 10c; oz. 30c; ¼ lb. 85c; lb. \$3.00.

### CARROTS

**EARLY FRENCH FORCING.**—Very early and small. Pkt. 10c; oz. 20c; ¼ lb. 60c.

**OXHEART.**—Very thick, enormous cropper. Pkt. 10c; oz. 20c; ¼ lb. 50c; lb. \$1.50.

**IMPROVED DANVERS.**—Best main crop variety, fine quality, a great yielder. Pkt. 10c; oz. 20c; ¼ lb. 50c; lb. \$1.50.

**LONG ORANGE IMPROVED.**—Roots large and long, yields large crops. Pkt. 10c; oz. 20c; ¼ lb. 50c; lb. \$1.50.

**CHANTENAY.**—Early, of a rich dark orange color, fine for bunching. Pkt. 10c; oz. 20c; ¼ lb. 50c; lb. \$1.50.

**LARGE WHITE BELGIAN.**—Very large, good keeper, fine for stock. Pkt. 10c; oz. 20c; ¼ lb. 35c; lb. \$1.25.

### CAULIFLOWER

**DANISH GIANT.**—(Dry Weather).—The growth is very similar to that of Early Dwarf Erfurt but with heavier foliage, and is less liable to blight in hot weather. It has been grown with excellent results where other varieties fail to form heads. Pkt. 20c; oz. \$2.25.

**EARLY FAVORITE.**—One of the best large growing, early kind, forming solid heads. Pkt. 15c; ¼ oz. 50c; oz. \$1.75.

**HENDERSON'S EARLY SNOWBALL.**—An extremely early dwarf variety, producing large white heads of the finest quality. Pkt. 15c; ¼ oz. 65c; ½ oz. \$1.20; oz. \$2.25.

**EARLY DWARF ERFURT.**—Very early dwarf, compact heads, tender and delicious. Pkt. 15c; ¼ oz. 60c; oz. \$2.00.

**SNOWSTORM.**—New early dwarf variety with beautiful snowy heads. Very early. Pkt. 20c; ¼ oz. 75c; oz. \$2.25.

**MIXED CAULIFLOWER.**—A mixture of all the above kinds, pkt. 10c; ½ oz. 75c; oz. \$1.25.

### CRESS, OR PEPPER GRASS

Extensively used as a small salad. Pkt. 10c; oz. 20c; ¼ lb. 50c.

### CELERY

**GOLDEN SELF-BLANCHING.**—Solid and crisp, in color a beautiful golden yellow; very tender. Pkt. 10c; ½ oz. 30c; oz. 50c; ¼ lb. \$1.50.

**WHITE PLUME.**—Crisp, solid and of a sweet, nutty flavor; needs very little earthing up. Pkt. 10c; oz. 30c; ¼ lb. 75c.

**BOSTON MARKET.**—A favorite variety, peculiarly mild flavor; keeps well. Pkt. 10c; oz. 25c.

**ALL KINDS MIXED.**—Pkt. 10c; oz. 25c.

**EASY BLANCHING.**—The very best variety for general use. In quality it is very sweet and tender. Pkt. 10c; oz. 30c; ¼ lb. \$1.00.

### POPCORN

**POPCORN, BLACK BEAUTY.**—An extra early variety, pops very large, most tender and crisp of all. Pkt. 10c.

**POPCORN, RED BEAUTY.**—An improved variety, very prolific and tender when popped. Pkt. 10c.

**WHITE RICE.**—One of the best. Pkt. 10c.

### SWEET CORN

If pints and quarts are wanted sent by Parcel Post, add at the rate of 8 cents for the first quart and 3 cents for each additional quart, Large Packets pre-paid, 10c.

**GOLDEN GIANT**  
**GOLDEN BANTAM**  
**GOLDEN NUGGET**  
**GOLDEN ROD**

See page 5 for a description of these fine golden yellow types of Sweet Corn.

Price of above 10c pkt.; ½ pt. 15c; pt. 30c; qt. 60c.

**EXTRA EARLY GOLDEN BANTAM.**—See page 5.

**WONDER BANTAM.**—See Novelty Page for a description of this wonderful golden sweet corn.

**EARLY MAYFLOWER CORN.**—The earliest variety yet produced, seven to ten days earlier than Cory. Very productive and for so early a variety, is of excellent quality. Pkt. 10c; ½ pt. 15c; pt. 30c; qt. 50c.

**PEEP-O'DAY SWEET CORN.**—Ten days earlier than any other sort and the sweetest of all Extra Early Corn. The stalks are 3½ to 4½ feet high and bear from two to five ears; will stand very close planting. Pkt. 10c; pt. 25c; qt. 50c.

**EARLY CROSBY.**—The very best early sweet corn, habit dwarf ears set low, twelve to sixteen rowed and of rich flavor. Pkt. 10c; pt. 25c; qt. 50c.

**BLACK MEXICAN.**—Late, sweetest of all. Pkt. 10c; pt. 25c; qt. 50c.

**COUNTRY GENTLEMAN.**—The sweetest and most tender of all sweet corns. Kernels and cob pure white; cob small, kernels deep; ears average twelve inches in length. Pkt. 10c; pt. 25c; qt. 50c.

**STOWELL'S EVERGREEN.**—A late standard variety, ears very large, keeps green till cold weather. Pkt. 10c; pt. 25c; qt. 50c.

### FODDER AND FIELD CORN

(Corn ordered by mail is subject to an extra charge. See page 1. Write for bushel rates.)

**SWEET FODDER CORN.**—This variety excels all others for feeding to stock. Qt. 30c; pk. \$1.50.

**LEAMING.**—An early, hardy, dented flint variety. It is tall and leafy, with large ears, will mature in New England. The best for ensilage. Qt. 25c; pk. \$1.25.

**EARLY YELLOW MAINE.**—A fine yellow variety, long ears, matures early. Qt. 30c; pk. \$1.50.

**LONGFELLOW.**—The best early yellow variety, having long ears, large kernels and small cob; yields immense crop. Safe to plant in New England. Qt. 30c; pk. \$1.25.

**MAMMOTH 90 DAY YELLOW FLINT.**—A fine, early yellow variety, extra large ears. Stalks 10 to 12 feet. Matures early. Qt. 30c; pk. \$1.50.

**EUREKA ENSILAGE CORN.**—Grows from 12 to 15 feet high and will produce more tons of good material for the silo than any other kind. Also very productive of ears. Our seed is the genuine Eureka grown from stock seed procured from Ross Bros., the originators. Qt. 30c; ½ pk. 75c; pk. \$1.25.

**EXCELSIOR ENSILAGE.**—Grows 12 to 15 feet high will yield 20 to 25 tons to the acre. qt. 30c; pk. \$1.25; bu. \$4.50.

**SWEEPSTAKES ENSILAGE.**—Similar to Excelsior.

**EARLY SANFORD.**—Early white flint variety for ensilage or grinding. Qt. 30c; pk. \$1.25.

**CUCUMBERS**



**Cucumber Woodruff's Hybrid**  
(See page 5 for description.)

**THE NEW DAVIS PERFECT.**—This new variety beats all others in points of beauty, quality and productiveness, a beautiful dark green color, handsome shape and enormously productive. This variety enables one who has no glass to produce the same high priced cucumbers as those grown in a greenhouse. Pkt. 10c; oz. 20c; ¼ lb. 60c; lb. \$2.00.

**BURPEE'S FORDHOOK FAMOUS.**—Pkt. 10c; oz. 20c; ¼ lb. 50c.

**EARLY CLUSTER.**—Bears in clusters, early and productive. Pkt. 10c; oz. 20c; ¼ lb. 50c; lb. \$1.50.

**WHITE SPINE IMPROVED.**—A great bearer, an excellent variety for the table. Pkt. 10c; oz. 20c; ¼ lb. 50c; lb. \$1.50.

**IMPROVED LONG GREEN.**—Fruit of above twelve inches long, tender and excellent. Pkt. 10c; oz. 20c; ¼ lb. 50c; lb. \$1.50.

**BOSTON PICKLING.**—Splendid for pickles. Pkt. 10c; oz. 20c; ¼ lb. 50c; lb. \$1.50.

**CUMBERLAND.**—Fine for pickles or slicing. Pkt. 10c; oz. 20c.

**JAPANESE CLIMBING.**—Pkt. 10c; oz. 20c.

**WEST INDIA GHERKIN.**—Grown exclusively for pickling. Pkt. 10c; oz. 20c; ¼ lb. 50c.

**ALL VARIETIES MIXED.**—Pkt. 10c; oz. 20c; ¼ lb. 40c; lb. \$1.25.

**DANDELION**

**IMPROVED.**—Large leaved.—Pkt. 10c; oz. 50c.

**ENDIVE**

**GREEN CURLED.**—One of the best salad plants. Pkt. 10c; oz. 20c; ¼ lb. 50c.

**KALE**

**GREEN CURLED SCOTCH.**—A round dwarf variety rarely exceeding eighteen inches in height but spreading out under good cultivation to three feet. Pkt. 10c; oz. 20c; ¼ lb. 40c; lb. \$1.50.

**WOODRUFF'S HYBRID CUCUMBER STAYS GREEN**

**KOHLRABI, OR TURNIP CABBAGE**

**EARLY PURPLE.**—Tender, best market sort. Pkt. 10c; oz. 25c; ¼ lb. 75c.

**LEEK**

**GIANT CARENTAN.**—A large variety of superior quality. Pkt. 10c; oz. 25c; ¼ lb. 75c.

**LETTUCE**

**BEEFSTEAK.**—See Novelty page. Pkt. 10c; oz. 35c.

**ICEBERG (new).**—See page 6. Pkt. 10c; oz. 35c.

**NEW YORK OR WONDERFUL.**—See page 3.

**MAY KING.**—See Novelty page. Pkt. 10c; oz. 35c.

**BOSTON CURLED.**—The best curled variety. Pkt. 10c; oz. 30c; ¼ lb. 75c.

**BOSTON MARKET.**—Forms fine, perfect heads, crisp and tender, grows very compact, good for forcing. Pkt. 10c; oz. 30c.

**BIG BOSTON.**—Is of unusual size and solidity of head. Pkt. 10c; oz. 35c.

**GRAND RAPIDS.**—Best of the curled leaved sorts. Large beautiful leaves, crisp and tender. Pkt. 10c; oz. 30c.

**WHITE SEEDED TENNIS BALL.**—A fine early sort and very hardy. Pkt. 10c; oz. 30c.

**BLACK SEEDED TENNIS BALL.**—Fine for forcing. Pkt. 10c; oz. 30c.

**EARLY CURLED SIMPSON.**—Curled variety. Fine for cutting. Pkt. 10c; oz. 30c.

**HANSON.**—Large, solid heads and fine flavor. Pkt. 10c; oz. 35c.

**MIGNONETTE.**—Forms a small but very compact head of finest quality. The outer leaves are tinged with brown. One of the best varieties for the home garden. Pkt. 10c; oz. 35c.

**PRIZE HEAD.**—Large, loose heads tinged with red; very fine. Pkt. 10c; oz. 35c.

**CHOICE VARIETIES** mixed in one package, try it. Pkt. 10c; oz. 30c; ¼ lb. 75c; lb. \$1.50.

**MELON (MUSK)**

**METCALF'S "THOUSAND DOLLAR" MELON.**—See Novelty page. Pkt. 15c; oz. 35c.

**HEARTS OF GOLD.**—See Novelty Page.

**ROCKY FORD MUSK MELON.**—The fruit is oval, slightly ribbed, densely covered with coarse netting, greenish flesh and delicious flavor. Pkt. 10c; oz. 20c; ¼ lb. 50c.

**BANANA.**—The fruits are from fifteen to twenty inches in length, having a banana-like aroma, of delicious flavor. Pkt. 10c; oz. 25c.

**ALL VARIETIES MIXED.**—Pkt. 10c; oz. 20c; ¼ lb. 40c.

**MELON (WATER)**

**YANKEE.**—See Novelty page. Pkt. 10c; oz. 20c.

**COLE'S EARLY.**—Extra early, best for New England. Pkt. 10c; oz. 20c; ¼ lb. 50c.

**SWEETHEART.**—This new melon is uniformly of good size, skin light green mottled. The bright red flesh is solid and sweet. Pkt. 10c.

**CITRON.**—The standard for preserves. Pkt. 10c.

**COLORADO CITRON.**—Fine for preserves. Price each, pkt. 10c; oz. 20c; ¼ lb. 40c.

**ALL VARIETIES MIXED.**—Pkt. 10c; oz. 20c.

**MARTYNIA**

The pods when young and tender are used for pickles. Pkt. 10c; oz. 35c.

**OKRA**

Excellent for soups, stews, etc. They impart a rich flavor. Pkt. 10c; oz. 20c; ¼ lb. 35c.

**ONIONS**

**EBENEZER OR JAPANESE.**—This is the mildest flavored onion we have ever tasted. The flesh is white, firm and of a very delicate flavor. The onions are large, somewhat flattened, yellow skinned and have very small tops and mature early. They will keep sound and hard all winter. Pkt. 10c; oz. 35c; ¼ lb. \$1.00. lb. \$2.75.

**LARGE EARLY RED.**—A close-grained, mild-flavored variety. A good keeper. Pkt. 10c; oz. 35c; ¼ lb. 75c; lb. \$2.50.

**BURPEE'S YELLOW DANVERS.**—One of the very best varieties for general crops. Succeeds well in New England. True stock. Pkt. 10c; oz. 30c. ¼ lb. 75c; lb. \$2.50.

**LARGE RED WETHERSFIELD.**—Very large, of finest flavor keeps well. Pkt. 10c; oz. 30c; ¼ lb. 75c; lb. \$2.50.

**BEST YELLOW GLOBE DANVERS.**—(True stock.) The best variety for general crop, an early, round variety, yield large crops and keeps well. We ask attention to the seed we offer and recommend it as a superior quality. Pkt. 10c. oz. 35c; ¼ lb. 90c; lb. \$2.75.

**PRIZE TAKER.**—A large yellow globe onion, sweet, mild and tender. Pkt. 10c; oz. 35c; ¼ lb. 90c.

**BARLETTA.**—Very early white onion, fine for pickles. Pkt. 10c; oz. 35c; ¼ lb. 90c.

All the above varieties mixed, 10c pkt.; 25c oz.; ¼ lb. 70c; lb. \$2.00.

**ONION SETS**

If wanted sent by Parcel Post, add at rate of 8 cts. for first quart and 3 cts. for each additional quart.

**YELLOW SETS.**—The best for general use. The small bulbs are used in the spring for setting out, in place of sowing the seed, and produce large onions earlier than can be done by the seed. Qt. 35c; pk. \$2.00.

**MULTIPLIER ONIONS.**—Same price as above.

**JAPANESE SETS.**—See novelty page 7.

**PARSNIPS**

**KELWAY'S DON.**—Crop failed.

**HOLLOW CROWN.**—Good old sort, fine flavor.

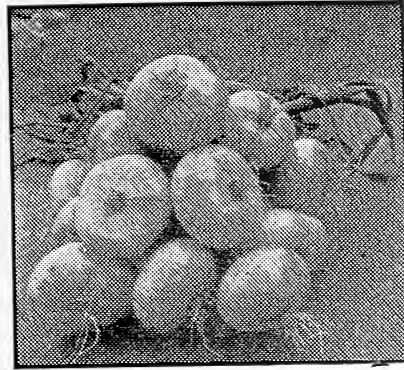
**LONG SMOOTH WHITE.**—Smooth and quite large  
Each, per Pkt. 10c; oz. 20c; ¼ lb. 40c; lb. \$1.00.

**PARSLEY**

**EXTRA FINE CURLED.**—Fine for garnishing. Pkt. 10c; oz. 20c; ¼ lb. 40c.

**PEANUTS**

**MAMMOTH VIRGINIA.**—Pkt. 10c; pt. 30c.



**EBENEZER ONIONS  
GROWN FROM SETS**

**EBENEZER SETS** (Also called "Japanese" sets). By the uses of these sets large ripe onions of the finest quality can be easily raised. The quality of the onions is far superior to other kinds and the yield is also larger. If the sets are planted early in the Spring the onions will be ripe in July and can be used all through the Fall and Winter. The onions, whether raised from seed or sets are wonderfully firm and solid and will keep almost the year around. Seed—Pkt. 10c; oz. 35c. Sets—40c qt.

For further description see page 7.

**GARDEN PEAS**

If pints and quarts are wanted by Parcel Post, add at the rate of 8 cts. for first quart and 3 cts for each additional quart.

Extra large packet, 10c, postpaid. Write for bushel rates.

- WORLD RECORD
- MAY DAWN
- PIONEER
- QUITE CONTENT
- LAXTONIAN

See page 7 for a description of these extra fine peas.

**CARTER'S EARLY EIGHT WEEKS.**—See page 3.

**NOTT'S EXCELSIOR.**—A fine new extra early dwarf wrinkled pea, producing in profusion, long, handsome pods, closely packed with large peas of fine flavor. An improvement on American Wonder, being more vigorous and prolific, with larger pods and more peas. Height, 15 in. Pkt. 10c; ½ pt. 15c; pt. 30c; qt. 60c.

**BOSTON UNRIVALLED.**—Improved Telephone, extra large podded, very prolific. Pkt. 10c; ½ pt. 20c; pt. 35c; qt. 60c.

**SUTTON'S EXCELSIOR PEA.**—A new early dwarf English variety. Pods very large and well filled with delicious flavored peas. Grows about 18 inches high. Pkt. 10c; ½ pt. 15c; pt. 30c; qt. 60c.

**IMPROVED AMERICAN WONDER.**—The earliest and very best wrinkled pea known, growing about 15 ins. high, in productiveness, flavor and quality it is unsurpassed. Pkt. 10c; ½ pt. 15c; pt. 30c; qt. 60c.

**EARLY MORN PEA.**—The earliest large wrinkled pea in cultivation, a great cropper. Larger pod and more prolific than Gradus. The best money-making pea grown. Pkt. 10c. ½ pt. 20c; pt. 30c; qt. 60c; pk. \$3.50.

Price on any of the above varieties except those listed on pages 3 and 7: peck \$3.50. ½ peck \$2.00.

**DWARF CHAMPION or JUNO.**—Very similar to the Champion of England except in growth of vine, which is only about two and one-half feet in height. Pods are dark green, good size, and very prolific. Quality excellent. Pkt. 10c; pt. 30c; qt. 60c.

**DWARF TELEPHONE.**—Is the famous Telephone without its long vines. Pods dark green, frequently measure five inches, well adapted to marketing. Pkt. 10c; ½ pt. 20c; pt. 35c; qt. 60c.

**THOMAS LAXTON.**—A new extra early, large podded pea, very hardy and productive. As early as the Gradus and the pods a little larger and a deeper green. Pkt. 10c; ½ pt. 20c; pt. 35c; qt. 60c.

**GRADUS OR PROSPERITY.**—Large, handsome pods resembling Telephone in size and shape, well filled with large peas, ripening with the earliest, of vigorous habit, very quick to germinate and push to maturity. The best extra early wrinkled pea ever introduced. Height 3 ft. Pkt. 10c; ½ pt. 15c; pt. 30c; qt. 60c.

**ALDERMAN.**—A fine large pea of the Telephone type. Pkt. 10c; ½ pt. 15c; pt. 30c; qt. 60c.

**IMPROVED STRATAGEM.**—The vines are strong and vigorous and covered with immense pods, filled with large, dark green peas of the finest quality. Pkt. 10c; ½ pt. 15c; pt. 30c; qt. 60c.

**PRINCE EDWARD.**—An extra large podded variety, vines five feet high, pods are large, filled with enormous peas, tender and sweet. Pkt. 10c; ½ pt. 15c; pt. 30c; qt. 60c.

**ADMIRAL DEWEY PEA.**—Without exception the largest podded pea grown, a tremendous cropper, dark green pods, of excellent quality. Remarkable healthy and vigorous, producing abundance of pods of very large size and well filled. Height 3½ ft. The very best of the late varieties. Pkt. 10c; ½ pt. 15c; pt. 30c; qt. 60c.

**TELEPHONE.**—Immensely productive of the finest quality, pods of large size and filled with large, delicious peas. Pkt. 10c; ½ pt. 15c; pt. 30c; qt. 60c.

Price on any of the above varieties: peck \$3.50; ½ peck \$2.00.

**MARROWFAT.**—20c pt.; 40c qt.

**WHITE CANADA FIELD.**—25c qt.; \$1.50 pk.; \$5.00 bu.

## PUMPKINS

**LARGE FIELD.**—The common large yellow, good for stock. Pkt. 10c; oz. 20c; ¼ lb. 35c; lb. 95c.

**PUMPKIN, WINTER LUXURY.**—We consider this the best pumpkin grown for making pies, medium in size, very finely netted, and in color it is golden russet. Pkt. 10c; oz. 20c; ¼ lb. 40c; lb. \$1.25.

**GOLDEN OBLONG.**—Fine for pies. Pkt. 10c; oz. 20c; ¼ lb. 35c; lb. 95c.

**SUGAR.**—A small variety, fine-grained and sweet. Pkt. 10c; oz. 20c; ¼ lb. 40c; lb. 95c.

**PUMPKIN, KING OF MAMMOTHS.**—Grows to enormous size, a splendid keeper, always a prize winner at fairs. Pkt. 10c; oz. 25c.

**CHOICE MIXED.**—Mixed in one package. Pkt. 10c; oz. 15c; ¼ lb. 30c; lb. 85c.

**GIANT PUMPKIN MIXED.**—All the known mammoth varieties, mixed. Pkt. 10c; oz. 25c.

## PEPPER

**SWEET MOUNTAIN.**—Large and fine. Pkt. 10c; oz. 35c.

**LARGE BELL.**—Large, bright red, a handsome variety. Pkt. 10c; oz. 40c; ¼ lb. \$1.15.

**FINE CHOICE VARIETIES.**—Mixed in one package. Pkt. 10c; oz. 40c.

## RADISH

**VICK'S SCARLET GLOBE.**—Best of the globe varieties.

**CRIMSON GIANT GLOBE.**—Large size, remains solid a long time.

**FRENCH BREAKFAST.**—A variety of quick growth, mild tender, olive-shaped.

**EARLY SCARLET GLOBE.**—Small top, very crisp and tender.

**WHITE TIPPED SCARLET GLOBE.**—Early, crisp and tender.

**EARLY SCARLET TURNIP.**—Round, scarlet, mild and crisp.

**LONG SCARLET.**—Very long and crisp, a standard variety.

**ICICLE.**—A handsome first class early long variety, snow white in color. Very mild.

**MIXED RADISH.**—All of the above kinds mixed. Price each, Pkt. 10c; oz. 20c; ¼ lb. 50c; lb. \$1.25

## RHUBARB

**VICTORIA.**—Pkt. 10c; oz. 20c; ¼ lb. 90c.

## SALSIFY, OR VEGETABLE OYSTER

**MAMMOTH SANDWICH ISLAND.**—The roots are very large and very delicate in flavor. Pkt. 10c; oz. 20c; ¼ lb. 65c.

**SAGE.**—Large leaf. Pkt. 10c; oz. 40c.

## SPINACH

**LONG STANDING.**—One of the best varieties, dark green, slow in running to seed.

**VICTORIA SPINACH.**—We can recommend this variety as very large, thick dark green leaf. As early as any other.

Each, Pkt. 10c; oz. 15c; ¼ lb. 30c; lb. 75c

**NEW ZEALAND.**—Pkt. 10c; oz. 20c; ¼ lb. 60c.

**KING OF DENMARK.**—See page 3.

## SQUASH

**BLUE HUBBARD SQUASH.**—A new variety obtained by selection from the original Hubbard. The fruit is of a gray-blue color, grows very large and keeps remarkably well as the shell is extremely hard. The quality is equal to or even better than the original Hubbard. The meat is thick, fine grained, dry and very sweet. Pkt. 10c; oz. 25c; ¼ lb. 75c.

**MAMMOTH SUMMER CROOKNECK.**—Early, large, fine for Summer use. Pkt. 10c; oz. 20c; ¼ lb. 40c; lb. \$1.50.

**NEW MAMMOTH WHITE BRUSH SCALLOPED.** The earliest Summer sort. Pkt. 10c; oz. 20c; ¼ lb. 40c; lb. \$1.50.

**EARLY PROLIFIC ORANGE MARROW.**—No variety can compete with it for earliness, very productive. Pkt. 10c; oz. 20c; ¼ lb. 40c; lb. \$1.50.

**BOSTON MARROW.**—A standard early fall squash, rich orange color, sweet and dry. Pkt. 10c; oz. 20c; ¼ lb. 40c; lb. \$1.50.

- HUBBARD.**—Standard winter squash, an excellent keeper. Pkt. 10c; oz. 20c; ¼ lb. 50c; lb. \$1.75.
- MARBLEHEAD.**—An excellent winter variety, remarkably sweet and dry. Pkt. 10c; oz. 20c; ¼ lb. 50c; lb. \$1.50.
- GOLDEN HUBBARD.**—A true Hubbard except in color, which is a beautiful orange red. Pkt. 10c; oz. 20c; ¼ lb. 50c; lb. \$1.65.
- WARTED HUBBARD.**—This excellent strain of Hubbard squash grows to a large size, is blackest green in color, with warty knobs all over it. Pkt. 10c; oz. 20c; ¼ lb. 50c; lb. \$1.75.
- DELICIOUS.**—A superior fall and winter variety that for thickness of flesh and richness of flavor is unsurpassed. Color a handsome green, weighing from 5 to 10 lbs. Pkt. 10c; oz. 20c; ¼ lb. 50c; lb. \$1.75.
- ESSEX HYBRID TURBAN.**—Productive, with very hard shell, of excellent flavor, and keeps well. Pkt. 10; oz. 20c; ¼ lb. 45c; lb. \$1.50.
- MAMMOTH WHALE.**—Largest and heaviest of all squashes, fine for exhibition. Pkt. 10c; oz. 25c.
- MAMMOTH CHILI.**—Grows to an immense size. Pkt. 10c; oz. 25c; ¼ lb. 80c.
- MIXED SQUASHES.**—All above varieties mixed, 10c Pkt.; 20c oz.; 40c ¼ lb.; \$1.50 lb.

**TOMATO**

**Marglobe Tomato**

Developed by the Bureau of Plant Industry, U. S. Dept. of Agriculture, produces large, smooth, meaty globular red fruits, which ripen evenly, and are free from cracks. An extremely heavy cropper. Especially valuable to those who are in districts troubled with rust and wilt.

Pkt. 15c; ½ oz. 40c; oz. 75c.

- RED HEAD.**—See Novelty page.
- NEW BURBANK TOMATO.**—See Novelty page.
- JOHN BAER.**—The wonderful new tomato. See Novelty page. Pkt. 10c; oz. 50c.
- DWARF CHAMPION.**—A very early variety, beautiful, solid fruit, fine flavor. Pkt. 10c; oz. 35c; ¼ lb. 95c.
- NEW STONE.**—Large perfectly smooth, scarlet, one of the best. Pkt. 10c; oz. 30c; ¼ lb. 75c.
- BONNY BEST.**—Early productive, smooth and uniform in size. Pkt. 10c; oz. 35c.
- CHALK'S EARLY JEWEL.**—The earliest tomato in cultivation. Large smooth and fine flavored, flesh bright scarlet. Pkt. 10c; oz. 40c.
- PONDEROSA.**—Very large, solid and of good flavor. Pkt. 10c; oz. 45c.
- EARLIANA.**—Best early. Pkt. 10c; oz. 40c.
- YELLOW PEAR.**—For preserving. Pkt. 10c.
- RED PEAR.**—For preserving. Pkt. 10c.
- YELLOW PONDEROSA.**—Mammoth yellow. Pkt. 10c.
- HUSK OR STRAWBERRY.**—Small yellow fruit used for preserves. Pkt. 10c.
- TWENTY CHOICE VARIETIES MIXED.**—Including all the above varieties and others. Pkt. 10c; oz. 30c; ¼ lb. 75c.
- SMALL FRUITED VARIETIES.**—Mixed, 10c pkt.; 40c oz.

**TOBACCO, CONNECTICUT LEAF.**—10c Pkt.

**TURNIPS**

- EARLY PURPLE TOP STRAPLEAF.**—Very early, sweet, mild and a rapid grower. Pkt. 10c; oz. 20c; ¼ lb. 35c; lb. \$1.00.
- WHITE EGG.**—Excellent early variety, egg shaped, mild flavor. Pkt. 10c; oz. 20c; ¼ lb. 35c; lb. \$1.00.
- EXTRA EARLY WHITE MILAN.**—The best of the white varieties, early and sweet. Pkt. 10c; oz. 20c; ¼ lb. 45c; lb. \$1.25.
- GOLDEN BALL.**—Bulb of fine form and bright yellow color; a fine keeper; unsurpassed for table use. Pkt. 10c.; oz. 20c; ¼ lb. 45c.

**SWEDE, OR RUTA BAGA**

- IMPROVED PURPLE TOP.**—Very early, free growing, the best Purple Top Swede in cultivation. Pkt. 10c; oz. 15c; ¼ lb. 40c; lb. \$1.00.
- CARTER'S IMPERIAL.**—Very popular, flesh very solid and a fine keeper. Pkt. 10c; oz. 15c; ¼ lb. 35c; lb. \$1.00.
- LARGE WHITE FRENCH.**—The best of the white varieties, sweet and excellent. Pkt. 10c; oz. 15c; ¼ lb. 40c; lb. \$1.00.
- RUTA BAGA KELWAY'S MAMMOTH.**—An enormous cropper, grows freely in all kinds of soil. It possesses very dense, sound flesh, globe shaped, short neck, dwarf foliage and a clean, single tap root. The highest quality Swede in cultivation. Pkt. 10c; oz. 20c; ¼ lb. 50c; lb. \$1.50.

**Two Fine Swedes from Canada**

- CANADIAN GEM and NEW CENTURY.**—Purple topped varieties of fine appearance, heavy croppers, roots clean and handsome, unexcelled for cooking and shipping purposes. They resist mildew better than any other Swede. Largely grown in Canada for the American market.
- Each 10c pkt.; 20c oz.; 50c ¼ lb.; \$1.35 lb.

**HERBS**

We can supply the following kinds of Herb Seed at 10c pkt.:

Catnip, Caraway, Dill, Horehound, Sage, Lavender, Summer Savory, Sweet Marjoram, Thyme, Wormwood.

**LAWN SEEDS**

- EVERGREEN LAWN SEED.**—A superior mixture of lawns, tennis courts, etc. Gives a fine, smooth, velvet sward within a few weeks after sowing. ½ lb. 25c; lb. 45c.
- KIMBALL'S VELVET LAWN GRASS MIXTURE.**—A very fine mixture and will give general satisfaction. ½ lb. 25c; lb. 45c.
- SHADY SPOT LAWN SEED.**—For shady places and under trees. ½ lb. 25c; lb. 50c.
- ENGLISH LAWN SEED.**—Imported mixture, makes the finest lawn. Lb. 50c.
- We are prepared to make special mixtures for Tennis Courts, Golf Links, Shady Lawns, etc.
- WHITE CLOVER.**—50c lb.
- KENTUCKY BLUE GRASS.**—For lawns, 45c lb.

# TRY OUR PINE TREE STATE BRAND OF TIMOTHY, CLOVER AND RED TOP

PLANT THE BEST	<b>RELIABLE FARM SEEDS</b>	PLANT THE BEST
-------------------	----------------------------	-------------------

**Bags are Free** and not weighed in with seed. Bags are expensive, but we make no charge as most firms do. This will mean a big saving to you. We will ship your grass and field seeds in heavy cotton bags, they to be returned at our expense.

Too much emphasis cannot be laid upon the importance of selecting the purest seed obtainable. Clean seed means clean crops. It is economy to buy the best, for results will justify the slight increase in cost over cheaper grades. The crop is what counts.

## GRASSES, GRAINS, CLOVERS, ETC.

(Prices on all field seeds subject to change)

We wish our customers to know that we deal only in the very highest grade of grass seed, quality and purity our first considerations. Every farmer has learned to his sorrow that the ordinary and low priced grass seed contain more or less foul weeds, chaff, sand, etc. Our choice Timothy and Red Clover guaranteed 99% to 99.5% pure U. S. Government test.

**TIMOTHY PINE TREE STATE BRAND.**—Extra choice, clean, plump seed. Lb. 10c; pk. \$1.15; bu. \$4.00.

**TIMOTHY.**—Domestic Brand. 10c lb., pk. \$1.00; bu. \$3.75.

**TIMOTHY AND ALSIKE MIXED.**—Extra fancy, large plump berries, no inferior seed. Lb. 18c; send for sample.

**TIMOTHY AND RED CLOVER MIXED.**—20c lb.

**RED CLOVER.**—Domestic Brand. 42c lb.

**RED CLOVER.**—Pine Tree State Brand. 42c lb.

**RED CLOVER.**—Choice Strain. 40c lb.

**ALSIKE CLOVER.**—Domestic Brand. 36c lb.

**ALSIKE CLOVER.**—Pine Tree State Brand. 38c lb.

**RED TOP.**—Pine Tree State Brand. 30c lb.

**RED TOP.**—Fancy re-cleaned. 25c lb.

**RED TOP.**—Fancy unhusked. 20c lb.

**ALFALFA.**—Pine Tree State Brand. 32c lb.

**HUNGARIAN.**—10c lb; \$1.25 pk.

**JAPANESE MILLET.**—12c lb.

**BARLEY.**—\$1.00 pk.

**JAPANESE BUCKWHEAT.**—\$1.00 pk.

**SELECTED SEED OATS.**—\$1.25 bushel.

**DWARF ESSEX RAPE.**—20c per lb.

**SPRING WHEAT.**—\$1.25 pk.; \$3.50 bu.

**WINTER RYE.**—\$1.00 pk.

**SWEET CLOVER.**—A valuable sowing for soiling and for ensilage and bees. 20c lb.

**SUNFLOWER.**—Mammoth Russian. 15c lb.

## CANADA FIELD PEAS AND OATS FOR FODDER

Sow at the rate of one bushel of peas to two bushels of oats per acre. Makes profitable fodder from June to August. Peas per peck, \$1.50; bushel, \$5.00.

The prices on Farm and Field Seed are constantly changing, write for prices.



**PINE TREE TIMOTHY.**—The economy of sowing high grade, extra re-cleaned Timothy seed explains why "Pine Tree" has met with such favor. It meets the requirements of careful farmers. Costs only a trifle more than inferior qualities. Write for prices.

**STATE OF MAINE OATS NO. 340.**—The best oat thus far produced for New England, a very high bushel weight, a low hull percentage, and a good stiff straw. True stock, Maine grown. Pk. 60c; 1/2 bu. \$1.00; bu. \$1.75.

**PINE TREE STATE BRAND OATS.**—One of the most productive oats we have ever introduced. The straw is of good height, and does not readily lodge, ripens uniformly, free from rust. Price, pk. 50c; 1/2 bu. 80c; bu. \$1.50.

## POTATOES

**Maine Grown Certified Stock. Free From Disease**

If to be shipped by Parcel Post add at the rate of 2c per peck.

**IRISH COBBLER.**—A splendid cropper and very early, about two weeks ahead of the Early Rose. Smooth skin, white flesh and good flavor. 1/2 pk. 60c; pk. \$1.00.

**GREEN MOUNTAIN.**—A tremendous cropper, strong and vigorous, good keeper, white skin, best quality. 1/2 pk. 60c; pk. \$1.00. Write for bushel rates.

**SHEEP MANURE.**—5c lb.; 25 lbs. \$1.00; \$3.50 100 lbs.; 5 lbs., prepaid, 40c; 10 lbs. prepaid, 65c.

**NITRATE OF SODA.**—10c lb., not prepaid.

**GROUND BONE MEAL.**—8c lb., not prepaid.

If small orders of grass or field seeds are to be sent by parcel post, add at the rate of 7c for first pound and 2c for each additional pound to cover postage and packing.

FARM SEEDS ARE SENT BY FREIGHT OR EXPRESS at customer's expense. We pack carefully and deliver to transportation company here, and always make the shipments via the best and quickest route

PRICES ON ALL FARM SEEDS ARE SUBJECT TO MARKET CHANGES



## ASTERS

Peerless Pink  
Sensation  
Giant Crego  
Lavender Gem  
Heart of France  
Pink Enchantress

See page 10 for a description of these fine Asters. Price 15c pkt., 2 pkts. for 25c. One packet each of the six varieties for 60c.

**Vick's New Branching.**—Magnificent large flowers borne on long stems. The long, broad petals are frequently twisted and curled, giving the blossom the appearance of a large graceful chrysanthemum. Finest mixed, 10c.

**White, Pink, Crimson and Lavender,** 10c each.

**New Come.**—These varieties make a grand display, often carrying thirty-two flowers on one plant, curled and twisted like Japanese chrysanthemums. Mixed, 10c. White, 10c.

**Simple's Branching.**—A new American strain, producing handsome, large, double flowers on long stems. Finest mixed, 10c.

**Queen of the Market.**—Very early, many beautiful colors, mixed, 10c.

**Chrysanthemum Flowered.**—Very beautiful, the flowers are exceedingly large and very double, mixed, 10c.

**Victoria.**—One of the best and most popular asters grown. Forms a handsome, pyramidal bush, with perfectly double imbricated flowers on long stems, mixed, 10c. Pure white, very fine, 10c.

**Ostrich Feather.**—A new class of asters, with long, curved, fringe-like petals, mixed, 10c. White, 10c.

**Finest Mixed.**—This collection includes all colors and shades of many choice varieties, 10c.

**Adonis.**—Free flowering border plant, 10c.

**Acroclinium.**—One of the handsomest everlastings, and used extensively in bouquet of dried flowers, mixed, 10c.

## Choice Flower Seeds and Bulbs

**Ageratum Blue.**—Free flowering; good for the beds and pots, 10c.

**Agrostemma.**—Attractive, free-flowering plants of easy culture and excellent for cutting, mixed, 10c.

**Alyssum.**—Sweet scented, white flowers, 10c pkt.; ½ oz. 30c; oz. 50c.

**Amaranthus.**—Highly ornamented foliage and flowering plants of easiest culture. Annual, mixed, 10c.

**Antirrhinum or Snapdragon.**—One of the most beautiful and useful border plants. Half hardy perennial, flowering the first season. Tall mixed, 10c; dwarf mixed, 10c; all kinds, mixed, 10c.

**Aquilega—(Columbine).**—Popular free-flowering plants, blooming profusely through the spring and early summer. Hardy perennial, mixed, 10c.

**Bachelor's Buttons.**—A fine, deep blue, 10c pkt.; oz. 50c.

**Bachelor's Buttons.**—Various colors, mixed, 10c.

**Double Mixed.**—All colors, 10c; oz. 50c.

**Balsam.**—Superb, fine double mixed, 10c.

**California Poppy.**—Hardy annual, profusion of rich, single, yellow flowers. Mixed, 10c; oz. 40c.

**Calendula—(Marigold).**—Prince of Orange, color intense orange, blooms all summer, 10c.

**Calendula—(Meteor).**—Beautifully striped, 10c.

**Calendula—(Orange Giant).**—10c.

**Calendula—(Choice Mixed).**—½ oz. 30c; pkt. 10c.

**Canterbury Bells.**—Best mixed, 10c.

**Coreopsis.**—All shades of yellow, orange and brown, 10c.

**Coreopsis—(Drummond)**—Large, yellow, red spots, 10c.

**Coreopsis—(Sunshine).**—Mixture, 10c.

**Canary Bird Flower.**—A beautiful climber with bright yellow flowers, 10c.

**Candytuft, White Queen.**—A mass of white flowers, 10c pkt.; oz. 35c.

**Candytuft—(Finest Mixed).**—All colors, 10c pkt.; oz. 40c.

**Candytuft—(Empress).**—Large flowering white, 10c.

**Cannas.**—Handsome foliage, choice mixed, 10c.

**Carnation Marguerite.**—A very large percentage of the flowers come double and of good size, fine form and great beauty. They begin to bloom four months from the time seeds are sown. Finest mixed, 10c.

**Chrysanthemum.**—Glorious and snowy annual, are easily raised from seed, finest mixed, 10c.

**Celosia—(Cockcomb).**—Dwarf mixed, strikingly brilliant, 10c.

**Clarkia.**—Snowy, hardy annuals of easy cultivation, mixed 10c.

**Cosmos.**—Mammoth California, mixed, 10c.

**Cosmos.**—Extra early flowering, mixed, 10c.

**Cosmos.**—Pink, white, red, 10c each.

**Cobæa Scandens.**—A climber of rapid growth. Flower first season if sown early, 10c.

TRY OUR GIANT DAHLIA FLOWERED ZINNIA. 15c PKT.

**Cuphia**—(Cigar Plant).—A fine border plant, bright scarlet, 10c.

**Dahlia**.—Single mixed, many colors, 10c.

**Dahlia**.—Double mixed, 20c.

**Dianthus**—(China Pink).—Finest mixed, double, in great variety of colors, 10c.

**Heddewigi**—(Japan Pink).—Best double, 10c.

**Datura**—(Trumpet Flower).—Handsome, bushy plants, covered with deliciously fragrant, trumpet-shaped flowers, until late in the fall, mixed, 10c.

**Dolichos**—(Hyacinth Bean).—A rapid climber, with clusters of white or purple flowers, 10c.

**Eschscholtzia**.—Fine for edgings, 10c.

**Everlasting Flowers**.—10c pkt.

**Forget-Me-Not**—(Myosotis).—Beautiful little plants, with bright, star-like flowers; useful for cutting. Succeed best in moist situations. Half hardy perennial, 10c.

**Gaillardia**.—Greatly admired, blooming from July until frost, choicest mixed, 10c.

**Gilia**.—Handsome plants with showy flowers. Hardy annual. Finest mixed, in great variety, 10c.

**Godetia**.—Profuse blooming plants, very showy, deserving more extensive cultivation, 10c.

**Gourds**.—Ornamental climbers, varieties of singular shaped fruit, mixed, 10c.

**Orange shape**, 10c. **Egg shape**, 10c.

**Grasses**.—Ornamental, all the best mixed varieties, 10c.

**Gypsophila**—(Baby's Breath).—Fine to mix with bouquets, 10c.

**Helianthus**—(Sunflower).

**Chrysanthemum**.—Flowered Sunflower, very double, a truly beautiful variety, 10c.

**New Red Sunflower**.—10c pkt.

**New Mammoth Russian**.—Very large, single, 10c.

**Many fine varieties**.—Mixed, 10c pkt.; oz. 25c.

**Hollyhock**.—One of the oldest garden favorites, which ranks among the finest of our autumn flowers. The beautiful flowers of almost every shade and color, on the tall spikes, are very striking, 10c.

**Humulus Japonica**—(Japan Hop).—Rapid summer climber, foliage very luxuriant, 10c.

**Ice Plant**.—Pretty trailing plant, with thick, succulent foliage covered with transparent globules. Tender annual, 10c.

**Kochia or Mexican Fire Plant**.—Pkt. 10c.

**Larkspur**.—Annuals of great beauty, stock flowered all colors, mixed, 10c.

**Double Rocket**, choice mixed, 10c.

**Hyacinth**.—Flowered, choice mixed, 10c.

**Lobelia**.—Free flowering and of easy culture, mixed, 10c.

**Marigold**—(African).—Planted by everyone, larger flowers than the French, mixed, 10c.

**French Double Dwarf**, finest mixed choice.

**Mixed**, all kinds, 10c.

**Marvel of Peru**—(Four o'clock).—Brilliant, does well in any location, 10c.

**Mignonette**.—Sweet-scented, large flowering, per oz. 40c; pkt. 10c.

**Mignonette**—(Golden Queen).—Flowers very large and very fragrant, 10c.

**Mignonette**—(Matchet).—Fine for pot culture, 10c.

**Morning Glory**.—Splendid climbers, profusion of bloom, 12 colors, 10c; oz. 40c.

**Morning Glory**—(Double Mixed).—Many colors, 10c.

**Morning Glory**—(Imperial Japanese).—Of exquisite beauty and enormous size 10c.

**Moonflower**.—A beautiful climber, 10c.

**Mimulus**—(Monkey Flower).—They bloom early from seed and are treated as annuals, mixed, 10c.

**Nicotina**.—Fragrant annual with clusters of white, tube-shaped flowers, 10c.

**Nigela**.—Love in the Mist, 10c.

## TALL NASTURTIUM

Our seeds of these popular flowers have gained a reputation for brilliancy and variety of color, form and substance of flower, which cannot be surpassed. In our mixture, which we make up from separate and distinct sorts, will be found a very great variety of most beautiful colors.

**Choice Mixed**.—Pkt. 10c; oz. 15c; ¼ lb. 35c; lb. \$1.25.

**Extra Choice Mixed**.—Pkt. 10c; oz. 20c; ¼ lb. 50c; lb. \$1.50.

**Rainbow Mixture**.—Pkt. 10c; oz. 20c; ¼ lb. 50c; lb. \$1.50.

**Lobb's**.—This magnificent climber is unusual vigorous growth, with beautiful foliage and splendid large flowers in the richest and most brilliant colors. Mixed, oz. 20c; pkt. 10c; ¼ lb. 50c; lb. \$1.50.

**Variegated Leaved**.—The flowers are of many bright colors in charming contrast to the handsomely variegated foliage. Pkt. 10c; oz. 20c.

**Madame Gunter's Hybrid Varieties**.—The foliage is mostly dark, and forms a striking contrast with the rich colors and shades, many of which are new to this family. Finest mixed, pkt. 10c; oz. 15c; ¼ lb. 60c.

**Ivy Leaved**.—Choice mixed, pkt. 10c; oz. 20c.

**Dark Crimson, Scarlet, Deep Maroon, Yellow, Violet, Blush Rose, Striped Rose**, each 10c; oz. 20c.

**Collection of seven tall varieties**, for 50c.

For Other Varieties See Novelty Page.

## DWARF NASTURTIUM

**Prize Mixed Dwarf Varieties**.—Embraces all the best colors; pkt. 10c; oz. 20c; ¼ lb. 50c; lb. \$1.50.

**Choice Mixed**.—Oz. 15c; pkt. 10c; ¼ lb. 35c; lb. \$1.25.

**Rainbow Mixed**.—10c pkt.; oz. 20c.

**King of Tom Thumb**.—Oz. 20c; pkt. 10c.

**New Chameleon**.—A grand new variety, flower varying in color. pkt. 10c; oz. 20c.

**Dark Leaved Sorts**.—Mixed, pkt. 10c; oz. 20c.

**Spotted Varieties**.—Mixed, pkt. 10c; oz. 20c.

**Empress of India**.—Best brilliant scarlet, 10c; oz. 20c.

**Ivy Leaved**.—10c pkt.; 20c oz.

**Golden Leaved**.—10c pkt.; 20c oz.

**Variegated Leaved**.—This new Royal Race of Dwarf Nasturtium are very attractive. The leaves are variegated with yellow, white and green. Pkt. 10c; oz. 20c; ¼ lb. 60c.

**Dwarf Spencer**.—See Novelty Page. Pkt. 10c; oz. 30c.

## PANSIES

**Bugnots**.—This is the finest strain known, finest mixed, 15c.

**Odier**.—Superb flowers of fine form and beautifully blotched choice mixed, 15c.

**Trimardeau or Giant**.—Extra choice strain of vigorous growth and flowers of enormous size, 15c pkt.; ¼ oz. \$1.00.



## PANSIES--Continued

- Cassier Giant.**—Large flowers, a rich, showy strain, choice mixed, 15c.
- French Mixed.**—A fine mixture in a great variety of choice colors, 10c.
- Giant Royal Show.**—This is the finest mixture ever produced, and of enormous size, 15c.
- Good Mixed.**—Fine showing of flowers, 10c; ¼ oz. 65c.
- Special Mixed.**—The best strain of large flowering sorts from the leading European growers; a grand variety, finest mixed, 15c; ¼ oz. 75c.
- Bugnot, Cassier, Odier and Trimardeau mixed,** large pkt. 15c.
- Snow Queen.**—A beautiful large white, 10c.
- Golden Yellow, King of the Blacks, Shining Red, Pure Yellow, Pure White, Azure Blue,** each, per pkt. 10c.
- Masterpiece.**—New Giant Curled or ruffled pansy, mixed, 15c.

- Petunia.**—Finest single varieties, mixed, 10c.
- Petunia (Finest Mixed).**—Colors mixed in great variety, 10c.
- Petunia (Large Flowered).**—Best mixed, 10c.
- Petunia (Fringed).**—Large fringed varieties, 30c.
- Petunia (Doubled Mixed).**—All colors, 30c.
- Portulacca.**—Valuable for bedding, showy colors, mixed, 10c.

- Phlox.**—Unequaled, showy for bedding, all colors, 10c

## POPPY

- Poppy.**—Exceedingly showy annual, making a gorgeous display, fine mixed, 10c; oz. 35c.
- Carnation Flowered.**—Mixed, splendid large double 10c pkt.; oz. 35c.
- Mikado.**—Double white fringed petals, tipped with scarlet, 10c.
- Admiral.**—Pure white with a broad band of brilliant scarlet around the top, 10c.
- Peony Flowered.**—All colors, mixed, 10c pkt.; oz. 40c.
- The Shirley.**—Beautiful light shades of white and pink, desirable, 10c; ½ oz. 30c. oz. 50c.
- Scarlet King.**—Very brilliant, 10c.
- White Swan.**—Large double pure white, 10c.
- Mephisto.**—Deep scarlet with violet spots, 10c.
- Danebrog.**—Single scarlet with white blotch on each petal, 10c.
- All the above varieties, mixed, 10c pkt.; oz. 40c

- Ricinus (Castor Bean).**—Large tropical plants, or ornamental leaved, 10c.

- Salpiglossis.**—Grandiflora, finest mixed, 10c.
- Salvia (Scarlet Sage).**—An old time favorite red beeder, 10c.
- Scabiosa (Mourning Bride).**—Old time plant, but better and larger, choice mixed, 10c.
- Schizanthus (Butterfly flower).**—10c.
- Snapdragon.**—Mixed, 10c. See Anturrrhinum.
- Stock.**—German ten-weeks, double, fine mixed, 10c.
- Sweet William.**—A well known and popular favorite. Single mixed, 10c; double mixed, 10c.

- Silene (Catchfly).**—A beautiful genus of profuse flowering plants, with bright and attractive flowers, mixed, 10c.

- Thumbergia.**—A rapid climbing vine, 10c.

- Venus Looking Glass.**—Finest mixed free flowering, hardy annual, blooming the entire season, 10c.

- Verbena.**—Finest mixed, a splendid strain, 10c.

- Verbena.**—Mammoth, mixed, 10c.

- Violets.**—Blue, sweet, 10c.

- Viscaria (Rose of Heaven).**—10c.

- Wild Cucumber (Creeping Jennie).**—A rapid climber, 10c.

- Xeranthemum.**—Showy, everlasting flowers, 10c.

- Zea.**—Striped leaves, ornamental foliage, 10c.

## ZINNIA

- Zinnia.**—Always popular, easily grown, brilliant display all Summer double mixed 10c; ½ oz. 50c.

- Dwarf Mixed.**—Large flowering, 10c.

- Single Mixed.**—All colors, 10c.

- Giant or Robusta.**—Extra large, beautiful double flowers in great variety of colors, 10c.

- Scarlet Zinnia.**—10c.

- All above kinds mixed.—10c pkt.; ½ oz. 50c.

- New Dahlia Flowered Zinnia.**—Mammoth flowers, a wonderful new variety, choice mixed, 15c pkt.

## SWEET PEAS—Grandiflora Type

- Eckford's Finest Mixed.**—Includes the newest and best large flowering varieties of the most beautiful shades and colors. Pkt. 10c; oz. 15c; ¼ lb. 35c; lb. \$1.25.

- American Beauties.**—This mixture contains only grand, new named varieties of the large flowering type, highly recommended. Pkt. 10c; oz. 15c; ¼ lb. 40c; lb. \$1.50

- Special Mixture.**—Of Spencer and Grandiflora types. All colors. 10c pkt., oz. 15c; ¼ lb. 45c.

## Hardy Perennials and Biennials

This class of flowers is coming into increased favor each year. Seeds may be sown in spring or later in June and July. Once started they require very little care and will bloom year after year.

- Aconitum.**—(Monkshood.)

- Alyssum Saxatile.**—Golden yellow.

- Aquilegia.**—(Columbine). See description, page 19.

- Canterbury Bells.**—Large bell-shaped flower.

- Delphinium.**—(Hardy Larkspur.)

- Double English Daisy.**—Fine for borders.

- Digitalis.**—(Foxglove.)

- Dahlia.**—Single and double mixed.

- Gypsophila Hardy.**—Baby's Breath.

- Gaillardia.**—Blooms the entire season.

- Hollyhock.**—Single mixed and double mixed. See page 20 for description.

- Myosotes.**—Forget-Me-Not. See page 20.

- Oriental Poppy.**—Brilliant scarlet.

- Perennial Hardy Phlox.**—All colors.

- Sweet William.**—Old fashioned sweet scented flower.

- Violets.**—Blue sweet scented.

- Price each of above varieties 10c pkt.; 3 pkts. 25c.

### WILD GARDEN MIXED FLOWER SEED

A splendid mixture of over one hundred varieties of beautiful, free-blooming, hardy growers, which can be offered at a much less price than when sold in separate packages. When flowering commences something new blooms almost daily. Extra large packages, 10c; 1/2 oz. 25c; oz. 40c; 1/4 lb. 75c.

### CUT FLOWER GARDEN MIXTURE

A mixture of choice annuals suitable for cut flowers. A splendid mixture of over fifty choice varieties. Pkt. 10c; 1/2 oz. 20c; oz. 35c.

### EVERLASTING OR STRAW FLOWERS. FOUR BEST VARIETIES

Acroclinium.—Mixed, 10c pkt.

Gomphrena.—Mixed 10c pkt.

Helichrysum.—Mixed, 10c pkt.

Xeranthemum.—Mixed, 10c pkt.

All of above kinds mixed, 10c pkt. One packet each of the above four varieties for 30c.

### DAHLIAS

Will grow in any kind of soil and give continuous bloom from July till after frost. Ours are from finest named sorts. Show, Decorative, Pompon, and Single varieties, 15c each, postpaid.

Jack Rose.—Brilliant crimson red, 20c each.

White, Yellow, Red.—Each 15c.

Special offer, one that will please you. 5 for 50c; 10 for \$1.00. The selection to be left to us. Mailed to your door, postpaid.

### EVERLASTING FLOWERS

The Everlasting flowers with their rich, brilliant colors, are very valuable for winter decorations. They should be cut as soon as they come into full bloom, tied in small bunches and dried slowly in the shade. Choice mixed, large packages, 10c.

Cinnamon Vine.—From the Oriental land is one of the most charming climbers. Beautiful hardy and very fragrant. Grows in sun or shade, wet or dry. Can be grown in the house in the winter. Everyone should plant these lovely vines. No home is complete without them. They stand the hardest winter without injury, and burst forth in all their marvelous splendor early in the spring—as fine a climber as any lover of beautiful flowers can wish. Postpaid, 10c each, 3 for 25c.



Japanese Gazon Flower Garden.—This mixture we imported direct from Japan and it contains almost every imaginable kind of Annual flower. It is most interesting to plant and cultivate, because you never know what hour new beauties may spring up and blossom out. It is also useful as an inexpensive way to produce displays on large borders or to sow on hillsides or along lanes or walks. By using this seed liberally it is easy to convert many an unsightly spot into a bower of beauty. For the children nothing is so interesting, as they can pick flowers and bouquets to their hearts' content. Every day furnishes new surprises. Pkt. 10c; 3 pkts. 25c; oz. 35c; 1/4 lb. 75c.

Special Notice: In the back of this catalog you will find an order blank and return envelope for your convenience in ordering. We hope there will be something you will want even if only a small amount. We would appreciate the address of some of your friends who are interested in gardening.

## A Very Special Offer for You

if you are the first in your locality to sign and mail this blank



The "Kant-Klog" has original and distinct features found on no other sprayer. Larger diameter, stands more firmly on uneven surfaces, doesn't tip over. The only nozzle ever made to give flat sprays, round sprays and solid streams. Nozzle cleaned without stopping spray—saves time and solution. All styles—two to fifty gallons. Last a lifetime. Many users write—"After twenty years it's still working fine."

Mail this blank promptly and get a special discount on one for your tree or garden spraying, whitewashing, etc., or a plan to get one free for introducing them to your friends. Sign and mail now—not to us—but to

THE ROCHESTER SPRAY PUMP CO.  
181 Broadway, Rochester, N.Y.

Name .....

P. O. ....

343 St..... State.....

Order your seeds when you receive this book; don't wait until you are ready to plant.

SEND IN YOUR ORDER EARLY

ORDER SHEET

PINE TREE STATE SEED CO., BATH, MAINE

We give no warranty, express or implied, as to description, quality, productiveness, or any other matter of any seeds, bulbs or plants we send out, and will not be in any way responsible for the crop. If the purchaser does not accept the goods on these terms, they are at once to be returned.

WRITE YOUR NAME AND ADDRESS PLAINLY

Date.....Forward (State whether by Mail Express or Freight) .....
Name .....
Street Address or Rural Delivery .....
Post Office .....
Express .....
County .....State .....
Amount Enclosed \$.....

Please Do Not Write Here.
Orders Rec'd .....
Shipped .....
Packed by .....
Mo .....Exo .....
Ck .....St .....C .....
Bgs ....Bx ....Bd .....

To insure prompt reply, letters requiring an answer should be written on separate sheet.

Table with 3 columns: QUANTITY, ARTICLES, PRICE. The table contains multiple rows of dotted lines for data entry.

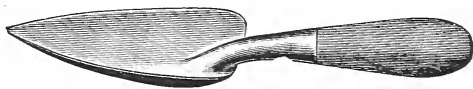
IMPORTANT—If the seeds or other articles ordered are to be sent by Parcel Post do not forget to add the necessary amount for postage. See rates on page 1. Quarts of Beans, Corn and Peas weigh 2 lbs., pints 1 lb., pecks 15 lbs. We pay the postage on all Seeds by the Packet, Ounce and Quarter Pound.

A LIBERAL LOT OF FREE SEEDS WITH EVERY ORDER



# FLOWER AND VEGETABLE SEED COLLECTIONS

Save time and money by ordering one of the following collections. The seeds are of the best quality and regular full sized packets. All collections sent pre-paid.



**This Handy Garden Tool  
FREE**

With Every Collection on This Page

## VEGETABLE COLLECTION NO. 1. Price 50c Postpaid.

One 10 cent packet each of the following and the Handy Garden Tool.

BEET—Crimson Globe.	SWISS CHARD—Lucullus.	LETTUCE—Hanson.
CABBAGE—All Seasons.	RADISH—Scarlet Globe.	SQUASH—Delicious.
CUCUMBER—White Spine.	SPINACH—Long Standing.	TURNIP—White egg.
	CARROTS—Chantenay.	

## VEGETABLE COLLECTION NO. 2. Price 75c.

The Handy Garden Tool and one 10 cent packet each of the following.

BEET—Crimson Globe.	RADISH—Scarlet Globe.	SWEET CORN—Golden Bantam.
CABBAGE—Succession.	WINTER SQUASH—Hubbard.	ONION—Yellow Globe.
CARROT—Chantenay.	SWISS CHARD—Lucullus.	SUMMER SQUASH—Crook-neck.
LETTUCE—Hanson.	BUSH BEANS—Golden Wax.	TURNIP—White egg.
PARSNIP—Hollow Crown.	CUCUMBER—Davis Perfect.	

## FLOWER SEED COLLECTION. Price 50c.

One 10c packet each of the following. If purchased separately would cost \$1.10.

ASTER—All kinds.	ALYSSUM—Sweet Scented.
BACHELORS' BUTTONS—Single and double.	CALIFORNIA POPPY.
CALENDULA—Best mixed.	MORNING GLORY—All colors.
TALL NASTURTIUM—Best mixed.	PETUNIA—Single mixed.
MIGNONETTE.	POPPY—All kinds.
	SWEET PEAS—Grandiflora and Spencer mixed.

## SPENCER SWEET PEA COLLECTION. Price 50c.

Nine regular 10c packets of the following choice Spencers.

COUNTESS SPENCER.	OTHELLO SPENCER.
HELEN LEWIS SPENCER.	KIND EDWARD SPENCER.
LOVELY SPENCER.	KING WHITE SPENCER.
PRIMROSE SPENCER.	SWEET LAVENDER SPENCER.

Large Packet Superb Best Mixed Spencer varieties, including new and old varieties.

## HAPPINESS COLLECTION for the Boys and Girls

Twelve regular, full sized packets of choice Flower and Vegetable Seeds, easy to grow and a handy Garden Trowel, all for 50c. prepaid.

### LET THE CHILDREN HAVE THEIR GARDEN

In every home yard and on every farm there should be some little space where the boys and girls can have a garden of their own. They will enjoy planting seeds, watching the plants grow and seeing them produce gay flowers and crisp vegetables. Our HAPPINESS COLLECTION will bring health and happiness.

Twelve full sized 10c packets and garden tool all for 50c. prepaid.

## OUR DOLLAR BOX OF VEGETABLES

A Complete Vegetable Garden for \$1.00. with Handy Garden Tool.

This box contains an ideal selection of Vegetables suited to New England. If purchased alone would cost \$2.00. Sent prepaid to any address.

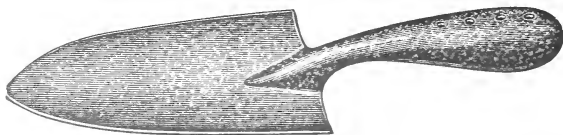
One Packet Each: BEET—Detroit Dark Red; CARROT—Oxheart; CABBAGE—Succession; CABBAGE—Danish Ball Head; CUCUMBER—White Spine; LETTUCE—Beefsteak; LETTUCE—Hanson; MUSK MELON—Hearts of Gold; PARSNIP—Hollow Crown; PUMPKIN—Mixed varieties; RADISH—Scarlet Globe; TURNIP—White Egg; SQUASH—True Hubbard; SQUASH—Marrow; SPINACH—New King of Denmark; SWISS CHARD—Lucullus; TOMATO—Earliana; and one half pint each: SWEET CORN, Golden Bantam, BUSH BEANS, Low's Champion.

 Also our Handy Garden Tool FREE with each of the above collections.

SEE OUTSIDE COVER PAGE FOR OTHER COLLECTIONS

# Collections at Reduced Prices

The collections we offer contain the best seed obtainable. Because they are made up in advance of the busy season we cannot make any changes in the assortments, but of course, anyone may order additional seed to go with the collections.



**FREE:** One extra heavy GALVANIZED TROWEL and EXCELSIOR WEEDER free with each Collection on this page.

Extra GALVANIZED TROWELS or EXCELSIOR WEEDERS 30c each, prepaid.

## HOME GARDEN COLLECTION \$1.25 PREPAID

A splendid collection for the Home Garden. If purchased separately would cost \$2.25—Prepaid for \$1.25  
ONE 10c PACKET EACH OF THE FOLLOWING

BEET—Early Blood; CABBAGE—Succession; CARROT—Oxheart; CUCUMBER—White Spine; CORN—Golden Bantam; ONION—Yellow Globe; RADISH—Scarlet Globe; PUMPKIN—Sugar; SPINACH—Victoria; SQUASH—Hubbard; LETTUCE—Beefsteak; RUTA BAGA—Purple Top; SWISS CHARD—Lucullus; PARSNIP—Hollow Crown; LETTUCE—May King; MUSK MELON—Rocky Ford; TOMATO—Earliana; BUSH BEAN—Low's Champion; PEAS—Gradus.

## KITCHEN GARDEN COLLECTION \$1.50 PREPAID

A complete assortment that will meet the requirements of the Suburban or Country Garden. Every farm should have a Kitchen Garden.

If purchased separately would cost \$2.50—Prepaid for \$1.50.

BEET—Crimson Globe; CAULIFLOWER—Mixed; CARROT—Chantenay; CABBAGE—Danish Ball Head; CUCUMBER—White Spine; LETTUCE—Beefsteak; CORN—Golden Bantam; CORN—Mayflower; ONION—Yellow Globe; PARSNIP—Hollow Crown; RADISH—Scarlet Globe; PUMPKIN—Mixed; SQUASH—Hubbard; SQUASH—Marrow; SWISS CHARD—Lucullus; TOMATO—Earliana; TURNIP—White Egg; RUTA BAGA—Purple Top; one-half pint PEAS—Gradus; one-half pint BUSH BEANS—Golden Wax.

## LAWN SEED FOR EVERY PURPOSE

Make your home grounds beautiful. We blend our own lawn seed mixtures.

For the best lawns we recommend our Evergreen Lawn Seed. It contains a well-balanced blend of various fine-bladed and deep-rooting varieties which will produce the best results under varied conditions as to soil and climate. Our "Evergreen Mixture" contains the right kind of grasses in correct proportions and will produce a thick sod of rich, deep green throughout the entire growing season.

We use only the finest grades of re-cleaned seeds in this mixture. It contains no chaff and will give a green, smooth, velvety sod within a few weeks after sowing. It is the best value at any price.

Quantity required for new lawns, one pound to 300 square feet.

Price 1/2 lb. 25c; 1 lb. 45c. By Parcel Post prepaid, 50c per lb.

SHADY SPOT LAWN SEED—For shady places and under trees. 1/2 lb. 25c; 1 lb. 50c.

**WIZARD BRAND** Sheep Manure

We find the Wizard Brand of Sheep Manure is a most effective fertilizer for lawns. Send for a copy of our free circular.

SEE INSIDE COVER PAGE FOR OTHER BARGAIN COLLECTIONS