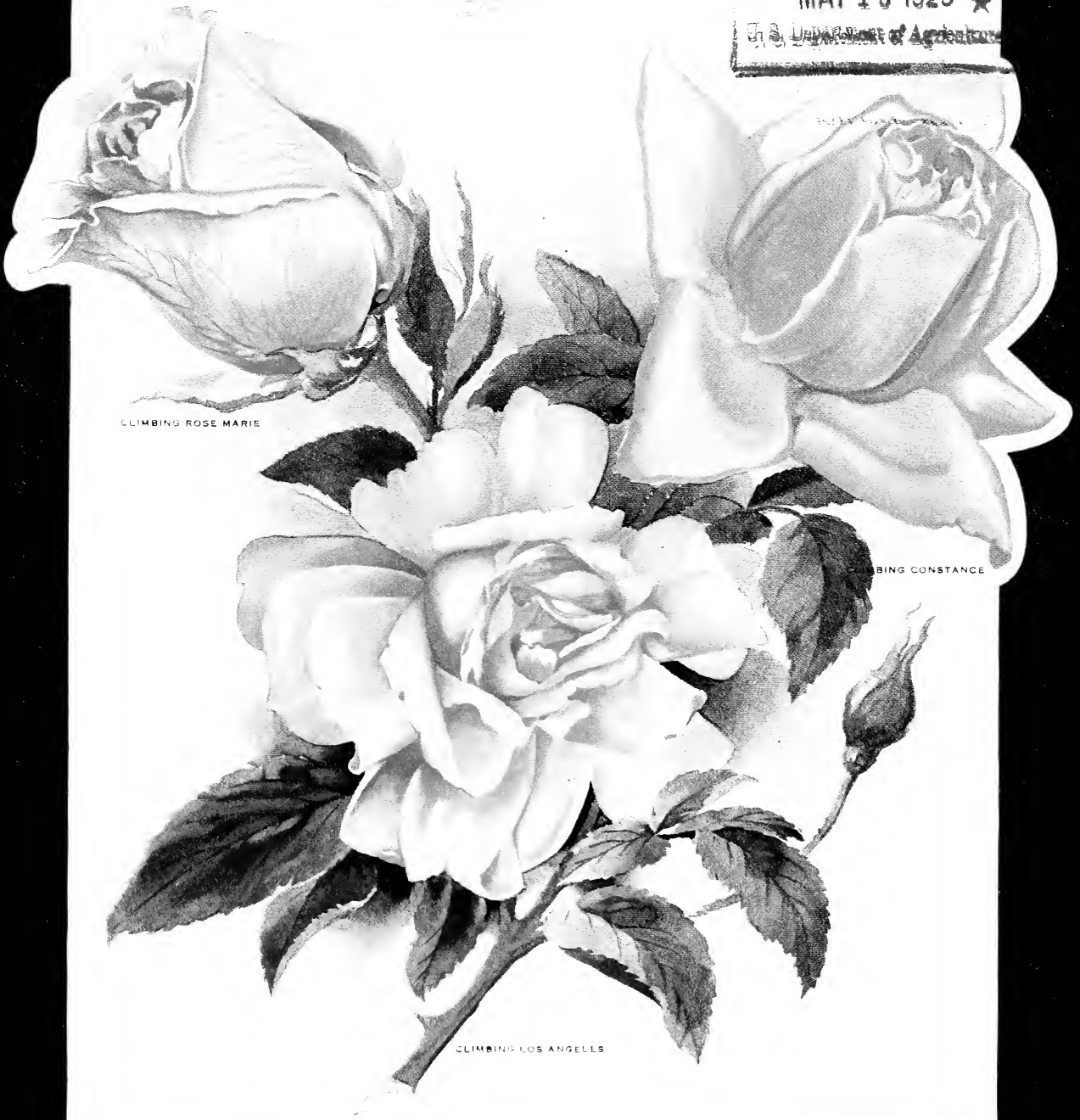


Historic, Archive Document

Do not assume content reflects current scientific knowledge, policies, or practices.

MAY 13 1929 ★

U. S. Department of Agriculture



CLIMBING ROSE MARIE

CLIMBING CONSTANCE

CLIMBING LOS ANGELES

Pacific Rose Co.

LOS ANGELES, CALIFORNIA

SPRING ROSE CATALOGUE

• • 1928 • •

Foreword . . .

SINCE 1908 the Pacific Rose Company has been growing rose bushes for the wholesale trade, with steadily increasing business. We are now maintaining growing fields 100 acres in extent in the ideal climate and facilities at Pacoima, California, where our experts are exercising their utmost skill in production of better budded roses for long-distance shipping.

Long experience in rose culture, with skilled testing and hybridization has rewarded us with many remarkable new roses which are listed in detail in this catalogue. Each of our creations is officially registered with the American Rose Society. These rose creations in their beauty and uniqueness are tested and proven repeatedly before they are presented to the public. Most of these new roses are now being grown successfully in the states of the Pacific slope, adding splendor to rose lovers' gardens.

These new roses were sold previously at much higher figures than listed herewith. Desiring our roses to be planted in every state in the Union, they are now priced at greatly reduced figures. Every plant we furnish is two-year-old budded stock of healthy established bush.

We ask that the following terms and particulars be observed carefully when placing your order, in order to facilitate handling and execution:

YOUR NAME AND ADDRESS:

Be sure to print your name plainly with prefix. Address should be carefully written with name of county, P. O. address and name of state. We will not be held responsible for loss or delay of packages when full address is not given. Use our order sheet for every order.

TERMS:—CASH

Send post office money order, express money order, bank draft or certified check with order. No order will be sent C. O. D. unless accompanied by one-half the amount due. All prices are F. O. B. Los Angeles, Calif. Be sure to add 10c per plant for Parcel Post fee. When orders are large enough to warrant express shipment (over a dozen plants) they may be sent express collect and in that case Parcel Post fee should be omitted.

SUBSTITUTION

Please mark your second choice as well as first choice on the order blank whenever possible, as there are times when we are completely sold out of certain varieties. When no instruction is given as to substitution, we will take the liberty of sending the nearest similar variety. (This will be done only when the variety ordered is sold out, to avoid holding and delaying your order.)

PACKING:

No charge is made for packing to any point in the United States, Canada or Mexico. When extra materials in packing are necessary for shipments to foreign countries, a charge is made only to cover cost of materials.

INSPECTION:

We guarantee all our shipments to pass inspection wherever shipped. However in certain states new laws and restrictions are being enforced requiring shippers to notify the Horticultural Commissioner of the county or state of the destination of the contents and the name of the party to whom packages are shipped. In such cases delay in delivery to destination for two or three days should be expected.

GUARANTEE:

The Pacific Rose Co., will exercise great care in keeping all varieties true to name. Nevertheless it is mutually agreed that we shall not at any time be liable for any amount greater than the original price of the stock. If stock should arrive injured by flood, drouth, frost or any other causes beyond our control, the order will be void.

SHIPPING:

All orders are accepted at our general office address, PACIFIC ROSE COMPANY, North Western Ave., at Beverly Blvd., Los Angeles, Calif. All mails should be so addressed. Packing and shipping will be done direct from our immense growing field at Pacoima near San Fernando, California. This will assure prompt execution of orders.

PACIFIC ROSE CO.

General Office:

**NORTH WESTERN AVENUE at BEVERLY BOULEVARD
LOS ANGELES, CALIFORNIA**

Introduction of Our Rose Creations

1927 - 1928

MISS TALMADGE, H. T.—Sport of Constance

This mildew-proof rose has a strong, firm stem and shiny green foliage, and bears deep yellow blooms similar to those of Souv. de Claudius Pernet, but highly doubled, like the Golden West Dahlia. It does not expose the center when fully developed. Very free bloomer and different in form from other roses. A superb novelty of our own creation.

PACIFIC, H. T.—Sport of Los Angeles

One of the many 1927 introductions from the Pacific Rose Company. It's a sport of the famous Los Angeles, and is a free bloomer the year round. Very strong and hardy bush. Its beautiful soft pink blooms resemble Pink Frau Karl Druschki. Unusually large double petaled blooms which last long.

PACOIMA, H. T.—Sport of William Dreer

This is another 1927 Pacific Rose Company creation, originated from William Dreer in our own fields. Very sturdy growth, abundance of foliage, brilliant large flowers colored in flesh pink and shading to yellow in the center, are features of this new creation. The popularity of this variety is evident from the increasing local demands.

MARY NISH (White Radiance)—Sport of Red Radiance

This newest creation, is a sport of Red Radiance which is being introduced to the public this year. It is noted for abundance of fine blooms on long stems and glossy dark green leaves, and is the rarest production among rose varieties. The flowers are white, tinted with faint shell pink in the center. It's a very easy grower with rich foliage and plenty of flowers. It has been tested and proven to be absolutely new in its type.

RUSSELL SUPREME, H. T.—Sport of Mrs. Charles Russell

This wonderful sport of the famous Mrs. Charles Russell has all the merits of its mother rose. It is of a pleasing pink, lighter than its parent variety, producing very long buds of dainty formation, that remain half open for several days, before unfolding to full large blossoms. The color retains remarkably well. The foliage is dark green. A strong and sturdy rose.

CLIMBING CONSTANCE, H. T.

One of our 1927 creations. This unusually attractive climber is one of the best. Its growth is vigorous and strong; it has positive mildew-proof foliage, and produces long stems with long, pointed buds of deep gold, opening into full double blooms of canary yellow. Its beauty can only be appreciated by planting one in your own garden.

CLIMBING RED RADIANCE, H. T.

Another of our 1927 creations. It's very new and scarce. It climbs sturdily to a great height. The Red Radiance produces large globular blooms of deep rose-red throughout the season. It is considered one of the best and most easily cultivated climbing red roses in existence—another proud achievement of the Pacific Rose Company.

CLIMBING ROSE MARIE, H. T.

Of all the roses we culture, climbing Rose Marie is the queen of pink climbers in our estimation. With this creation in 1926, we have established our reputation as a rose hybridizer and originator. One can depend upon this climbing rose for an ample supply of extremely long stemmed, beautiful and perfect cut flowers of exquisite rose-pink color, enhanced with delightful fragrance. Its growth is so vigorous that it will reach over ten feet in the first year of planting under proper cultivation. This climber surpasses bush Rose Marie in many respects.

CLIMBING WILLIAM DREER, H. T.

Also our 1927 creation and another pride of Pacific Rose Company. Being the sport of the high class rose William F. Dreer, it retains all the merits of its parent rose. Blooms are of beautiful yellow, developing from buds of silvery-pink with deep golden base. Well established, high climbing habit with glossy, attractive foliage.

ALL THESE NEW ROSES OF OUR OWN CREATION ARE REGISTERED WITH THE
AMERICAN ROSE SOCIETY

AMERICAN BEAUTY—Hybrid Perpetual

This favorite of the American public still commands preference in rose gardens. Flowers are of deep maroon red of immense size, and are highly perfumed.

Price—50c each

BETTY UPRICHARD—Hybrid Tea

One of the most charming semi-double decorative varieties. Copper-red buds develop into lovely bi-colored blooms of soft pink on the inner side and rich orange-carmine on the outer side of petals. Grow tall and erect.

Price—\$1.00 each

BLACK PRINCE, H. P.

As the name implies, this is one of the richest dark crimson roses known. Large, full blooms open to a shade approximately black.

Price—50c each

BRIARCLIFF, H. T.

This new sport of the well known Columbia is far superior to its mother variety. Bright, clear, pink blooms with deep rose-pink center and of unusually sweet scent, borne on long stems, made this creation remarkably popular. Tall and vigorous.

Price—\$1.00 each bush

CALIFORNIA BEAUTY, H. T. (Pacific Rose Company's Creation 1926)

Fine free bloomer of Mme. Edouard Herriot type. Blooms are large and full. Its exquisite, salmon-yellow blooms are indeed well worthy of the name. Very vigorous grower.

Priced Specially at 50c each

CHARLES K. DOUGLAS, H. T.

An abundance of healthy, beautiful foliage on well branched bush bearing striking crimson-scarlet blooms that are unfading, make this variety indispensable in rose collections.

Price—50c each

CHATEAU de CLOS VOUGEOT, H. T.

Free bloomer; of magnificently colored blossoms, has crimson center with fiery-scarlet tips. These gorgeous colors will not fade for a long time. Foliage is very dark green, heightening the color of the flowers. A vigorous grower.

Price—50c each

CHEERFUL, H. T.

Very vigorous dwarf variety, distinctive and unique in the form and color of flowers. Pure orange flame, the flame intensifying the petals of double bloom. It is fragrant, flowers freely and continuously throughout the season.

Price—50c each

CONSTANCE, H. T.

Splendid yellow, has few equals. Beautiful orange-yellow buds streaked with crimson, develop into very attractive yellow blooms of various shades. It blooms very profusely. Its popularity is increasing in California as well as other sections.

Price—50c each

CRUSADER, H. T.

Very large, highly double blooms of rich, dark velvety crimson, borne on long, straight vigorous stems. Very fine for cut flowers. Mildew-proof.

Price—50c each

DUCHESS OF WELLINGTON, H. T.

Very vigorous and liberal bloomer. Enormous tapering buds of golden-orange opening to very large saffron-yellow, with exquisite fragrance.

Price—50c each

FRAU KARL DRUSCHKI, H. P.

Known also as White American Beauty or Snow Queen. It is the superb white rose. Its magnificent pure white blooms of fine, deep and firm petals often reach six inches in diameter. Strong and vigorous growth with abundant foliage. No rose garden is complete without this variety.

Price—50c each

GENERAL McARTHUR, H. T.

Sturdy, disease-resisting bedding rose of magnificent, well-shaped blooms, fiery red in color, with rich fragrance. Free from mildew.

Price—50c each

GEORGE AHREND, H. P.

Also known as Pink Druschki, makes vigorous tall bush of five feet in height, with artistic wavy foliage. Flowers are of delicate rose shade, very large and full. Deliciously scented.

Price—50c each

GOLDEN EMBLEM, H. T.

It is so perpetual flowering that as a garden and bedding rose it is without rival. At its best it surpasses Marshall Neil in shape and formation, and with its wonderful cadmium yellow toning to sunflower yellow added to many technical superiority, was awarded in 1917 with gold medals from N. R. S. also A. N. R. S. at Philadelphia. Do not fail to include this number in your order.

Price—50c each

GOLDEN OPHELIA, H. T.

This is the seedling from the universal favorite Ophelia and is not a sport. It is a sturdy stiff stemmed grower, with beautiful glossy, wavy foliage set quite closely. Flowers are of medium size of excellent texture in bright golden yellow. Very fine for cut.

Price—50c each

GORGEOUS, H. T.

Plant is of strong, vigorous habit. Flowers are large, full and exquisitely formed of deep orange-yellow, flushed with copper-yellow and heavily veined with reddish-copper which makes most striking novel color.

Price—50c each

H. V. MACHIN, H. T.

Of intensely black grained beautiful scarlet-crimson of gigantic size. "This is the most magnificent exhibition variety ever introduced" is the statement of the originator of this creation. Rigid, sturdy stems with fine foliage are added merits of this variety. Indeed this is an amazing offer.

Price—50c each

HADLEY, H. T.

So popularly seen at florists as cut flowers in splendid long stems with fine decorative foliage. Its blooms have no parallel in richness and fragrance. Deep, red velvety crimson of exquisite shape, retains its brilliancy and its fragranciness very long to compare with those of American Beauty. Very fine for cut flowers.

Price—50c each

HOOSIER BEAUTY, H. T.

Strong and clean grower, free from mildew, producing long stiff stems with a bud on every shoot, needing no pinching. Buds are of good length and splendid shape, opening into glowing velvety crimson-scarlet of dazzling brilliancy. Fragrant as Richmond. Good summer rose.

Price—50c each

INDEPENDENCE DAY, H. T.

Another new combination of the shades which are so popular in roses. Yellow, copper and orange make it most attractive. The bush is strong and heavily branched with deep glossy green foliage and is never without bloom. New and rare.

Price—75c each

IRISH FIREFLAME, H. T.

This delightfully tea-scented single rose is one of the best and artistic varieties known. The bush is well covered with artistic spiral shaped buds of deep orange-red with golden base, on well foliated slender stems of exquisite violet color. Open flowers are often five inches broad with bevelled petals out-curving, showing the beautiful center. An easy grower.

Price—50c each

ISOBEL, H. T.

Very vigorous grower. This variety is classed in the same family as Irish Fireflame and has similar habit of growth and similar form of single petals, as of Irish Fireflame. The color of the flowers is intense carmine with a tint of orange.

Price—50c each

JULIET, H. P.

Handsome, vigorously erect habit of growth with very dark glossy green foliage. Flowers are rather large, double and fragrant. The outside of petals is old gold, the interior rich rosy-red changing to deep rose as the blooms expand.

Price—50c each

KAISERINE AUGUSTA VICTORIA, H. T.

Vigorous, free-blooming and hardy white rose of well established reputation. Well formed creamy buds develop slowly into blooms of absolutely perfect form, snowy white with a slight tinge of lemon at center. The extreme loveliness of this white rose makes it a splendid cut flower variety.

Price—50c each

LAFAYETTE—Dwarf Polyantha

A rambler type of bright colored new baby rose. Grows in large clusters of light cherry-red. Free bloomer.

Price—50c each

LADY HILLINGDON, H. T.

Solid deep apricot-yellow rose of strong and vigorous growth. Long pointed buds, expanding without any shading in tint. Absolutely unique in type, that it can be told at a glance from any other roses known.

Price—50c each

LOS ANGELES, H. T.

This variety, planted in a garden will furnish the finest cut blooms, even better than those procured from hot houses. For this reason Los Angeles through its own intrinsic worth and beauty will eventually find its way into the gardens of every rose lover throughout the world. The color is quite new in roses. Luminous flame pink, toned with coral and shaded into translucent tangerine gold at the base, it has long pointed buds opening into extra large blossoms. Free strong grower.

Price—50c each

LOUISE CATHERINE BRESLAU, H. T.

Exceedingly strong grower of free and constant bloomer. Buds coral-red shaded with chrome-yellow, opening into very large flowers, full and globular shape with large heavy petals of great depth, in superb shrimp-pink shaded with copper, orange and chrome yellow. Very fine foliage.

Price—50c each

MARY NISH, H. T.

(White Radiance) Our creation. Sport of Red Radiance introduced to the public this year. With an abundance of fine blooms on long stems and glossy dark green leaves, it is the rarest production among rose varieties. The flowers are white, tinted with very faint shell pink in center. Its a very easy grower with rich foliage and plenty of flowers. Mary Nish has been tested and proven to be absolutely new. Registered with the American Rose Society.

Introductory Price—\$5.00

MME. ALEXANDER DREUX, H. T.

Rose of unique color and great beauty. Introduced in 1927. Buds of intense yellow open with double reflexed petals, deep orange in center. Free grower.

Price—\$1.00 each

MME. EDOUARD HERRIOT, H. T.

Also known as Daily Mail. Hardy, vigorous, well branched and thorny shrub with burnished bronze green foliage, bearing coral red blooms shaded yellow at the base, passing to shrimp red or bronze and geranium red of wonderfully beautiful color. A most constant bloomer.

Price—50c each

MISS LOLITA ARMOUR, H. T.

Firm grower resembling the well known Caroline Testout. Flowers are double with ball-like appearance in deep coral-red and golden, copper-red suffusion. The base of the petals is rich golden yellow with reddish sheen.

Price—50c each

MISS TALMADGE, H. T.

This mildew-proof rose has strong, firm stems and shiny green foliage, and bears deep, yellow blooms similar to those of Souv. de Claudius Pernet, but highly doubled, like the Golden West Dahlia. It does not expose the center when fully developed. Very free bloomer and different in form from other roses. A superb novelty of our own 1927 creation.

Priced Specially at \$1.00

MRS. AARON WARD, H. T.

Remarkably floriferous compact variety with beautiful wavy foliage bearing splendidly formed blooms of distinct Indian yellow, shading slightly lighter toward the edge of the petals. Very good for cut flowers.

Price—50c each

MRS. ARTHUR ROBERT WADDELL, H. T.

Exceptionally showy, large semi-double rose, and very excellent keeper, grows luxuriantly with handsome foliage. Rosy scarlet long pointed buds opening into coppery-salmon.

Price—50c each

MRS CHARLES RUSSELL, H. T.

In many localities, this rose is taking the place of the famous American Beauty. It compares favorably with American Beauty and in many respects even surpasses the latter. The blooms are dark rose-pink, deepening towards the center. Comparing with American Beauty, Russell is equal in size and fragrance, superior in its longer buds, and far more beautiful in the color which does not discolor or turn blue. Stems are sturdier, its leathery foliage holds fast and is almost mildew-proof. Prolific bloomer and excellent keeper as a cut flower.

Price—50c each

OLD GOLD, H. T.

Everyone loves this rose in buds, of vivid orange-red. When opened, copper-red and apricot shading appears. Its beauty is further set off by healthy, glossy, bronze-green foliage. Delightfully fragrant and is a vigorous grower.

Price—50c each

OPHELIA, H. T.

Excellent cut flower variety which is lovely at every stage of development. The blooms are salmon-flesh shaded rose with chamois center. Good erect long stems.

Price—50c each

OPHELIA SUPREME, H. T.

This new improvement of Ophelia is even more lovelier than its mother variety. Its buds, flowers, habit, foliage and growth are indeed akin to Ophelia but its deeper salmon pink appeals to those who seek newness in roses.

Price—50c each

ORLEANS—Polyantha

A baby rose family. Very strong, healthy and bushy grower, fine for massing. Its clustered flowers are small and double in brilliant geranium-red suffused rose and deep cerise, and bloom in profusion.

Price—50c each

PACIFIC, H. T.

One of the many new introductions from the Pacific Rose Co., in 1927, registered with American Rose Society. A sport of the famed Los Angeles. Free blooming the year round. Very strong and hardy bush. Its beautiful soft pink blooms are somewhat like pink Frau Karl Druschki. Too much praise cannot be accorded to this supreme new creation.

Priced Specially at 75c each

PACOIMA, H. T.

This is another 1927 creation of the Pacific Rose Co., originated from William Dreer in our own field. Sturdy growth, abundance of foliage, brilliant large flowers in flesh pink color shaded into yellow in the center, are the features of this new creation. The popularity of this variety is evident from the increasing local demand.

Priced Specially at 75c each

PADRE, H. T.

Extremely effective bedding rose of strong erect habit. Flowers are intense copper-scarlet with bright yellow at the base, of semi-double blooms, often with curiously notched petals. Foliage, light yellow green. Excellent unfading color.

Price—50c each

PINK RADIANCE, H. T.

A well known variety among rose lovers as the easiest growing and most reliable pink Hybrid Tea Rose. Splendid for bedding and lasts a long time as cut flowers. Its buds are brilliant rose-pink, opening to well formed shining flowers with lighter tints on the reverse side of petals. Globular in shape and very fragrant.

Price—50c each

QUEEN ALEXANDRA, H. T.

Of astonishing and dazzling vermilion-red blooms with old gold at the inside of petals, which created a sensation when introduced. The plant is of medium size, well branched with beautiful deep glossy green foliage. True perpetual bloomer of large and brilliant flowers.

Priced Specially at 75c each

RED RADIANCE, H. T.

An even better rose than its parent Radiance. Pink Radiance in habit, shape of flowers and foliage, with deep rose-red flowers. Wonderful cut flower variety.

Price—50c each

RED ROSE MARIE, H. T.

A new rose, sport of Pink Rose Marie. Blooms are clear cherry-red. Habit, form and foliage are just like those of its parent Rose Marie, described below.

Price—50c each

ROSE MARIE, H. T.

An ideal pink rose of perfect shaped flower for bedding and cutting. Its indisputably lovely formed flowers with long stems make this variety the finest out-of-door cut rose known. Blooms are very fragrant and are clear rose-pink in color. Mildew resisting foliage with exceedingly free blooming habit.

Price—50c each

RUSSELL SUPREME, H. T.

This wonderful sport of the famous Charles Russell has all the merits of its mother rose. It is of a delicate pink color, lighter than its parent variety, producing very long buds of pretty shape, remaining in half open form for several days, and opening to full, large blossoms, retaining their color remarkably. Foliage, dark green, somewhat wavy. Bush is strong and sturdy. Very fragrant.

Priced Specially at 75c each

SENSATION, H. T.

Superbly beautiful florists' rose as well as for gardens. Enormous scarlet-crimson blooms of fine deep appearance. Over 30 petals of great size and substance; very sweetly scented. Plant is very sturdy and active in producing new booming shoots.

Price—50c each

SHOT SILK, H. T.

Rather recent introduction. The general color effect is a delicate salmon-rose, flushed and overshot with apricot and orange, while the base of the petals is yellow. The bush is low and branching with beautiful clear cedar-green foliage. Richly perfumed.

Price—75c each

SOUV. de CLAUDIUS PERNET, H. T.

Popular commercial variety, supplying the long-wanted truly yellow rose. Fine long buds of fadeless yellow, on long and strong peduncle, open to large and full blooms, elongated, cup-shaped, in superb pure sun-yellow color, shaded to greater warmth in the center. A prize winner in many flower shows and horticultural expositions.

Priced Specially at 75c

SOUV. de GEORGE PERNET, H. T.

Astonishingly beautiful, enormous flowers of glorious deep orange-pink, quite fragrant and lasting as cut flowers, borne on well spreading and branching bush. Stems are thorny and foliage resistant to mildew.

Priced Specially at 75c each

SUNBURST, H. T.

Giant golden-orange yellow rose borne on long stems of vigorous free growing bush. Its buds are pointed and long. As a cut flower this has splendid keeping quality.

Price—50c each

WILLIAM F. DREER, H. T.

For delicacy of coloring this rose has few equals. Blooms are similar to those of Los Angeles, as it is of the same parentage. It holds its beauty at all stages of development, but is at its best when half opened. When expanding, soft silvery shell pink, with rich golden yellow base prevails, opening into golden tints that suffuse the entire flower. The prime season of this rose is during the cooler months.

Price—50c each

WILLOWMERE, H. T.

One of the finest of all roses, making wonderful bed and cut flowers. Superb buds of coral color suffused with carmine, develop into large handsome blooms of rich shrimp-pink shaded yellow in the center. This may be described as an improvement on the Lyon rose.

Price—50c each

CLIMBING ROSES**CL. BELLE OF PORTUGAL, H. G.**

A vigorous salmon-pink climber which covers the porch, fence or pergola in a short period of time. From the second year after planting, its floriferousness shows itself immediately after the danger of frost is past until summer. The well-shaped buds are often three inches in length.

Price—75c each

CL. BLACK BOY, H. T.

New climber from Australia, considered to be the finest red climbing rose. The blooms are large and double, very fragrant, colored a deep crimson red shaded with blackish maroon and scarlet. Excellent for cut flowers and the blooms are on long firm stems.

Price—\$1.00 each

CL. CECILE BRUNNER—Polyantha

Also known to many as Sweetheart Rose. Perfectly formed miniature rose of utmost grace and delicacy, exquisitely clustered with cute buds and flowers of light pink with yellowish base. Rich with waxy and healthy foliage.

Price—50c each

CL. DOROTHY PERKINS—Hybrid Wichuraiana

Well known among florists as potted trellis rose. Too popular to need much description. It has beautiful miniature flowers of brilliant shell-pink in splendid pendulous sprays. Very long and slender canes with pretty foliage.

Price—50c each

CL. CHATEAU de CLOS VOUGEOT, Cl. H. T.

Dark velvety red, double and fragrant. It is of a dwarf-like form growing from 3 to 4 feet high. Blooms with considerable freedom.

Price—75c each

CL. CONSTANCE Cl. H. T.

Our own creation of 1927. This unusually attractive climber is one of the best of our own creations. Its growth is hardy and strong; with positive mildew-proof foliage. It produces long stems with long pointed buds of deep gold, opening into full double blooms of canary-yellow. Its beauty can only be appreciated by planting one in your own garden.

Priced Specially at \$1.50 each

CL. GEN. McARTHUR, H. T.

Free flowering climber in successive crops. Beautiful fiery red blooms with rich fragrance.

Price—50c each

CL. H. V. MACHIN, Cl. H. T.

A vigorous climbing sport of the well known and justly prized H. V. Machin. A climbing novelty of greatest value. It flowers profusely and gorgeously in intense scarlet-crimson. The plant is very strong, clean and disease-resisting.

Price—75c each

CL. HADLY, Cl. H. T.

Deep velvet crimson blooms of rare beauty with deliciously rich fragrance like its mother rose Hadley. Blooms all through the summer.

Price—75c each

CL. HOOSIER BEAUTY, Cl. H. T.

Like the bush form of Hoosier Beauty in all respects except in vigorous climbing habit. Rich velvety scarlet in color.

Price—75c each

CL. KILLARNEY, Cl. H. T.

Exact counterpart of the famous Killarney rose in every aspect except that it is of vigorous climbing growth. Blooms are of bright sparkling pink, rather flat in form. Killarney for years has been popular as a standard greenhouse and garden rose. Now it may be had in climbing habit.

Price—75c each

CL. KAISERIN AUGUSTA VICTORIA, Cl. H. T.

Those who favor the merits of the famous Kaiserin Augusta Victoria, should include the climbers of same, for your arbor, pergola, fence or sides of house. Its ivory white blooms of waxy texture borne on exceptionally long stems not only decorate your garden but are also fine for cut flowers.

Price—75c each

CL. LADY HILLINGDON, Cl. H. T.

Sport of the well known Lady Hillingdon in deep apricot yellow blooms of large size. A very vigorous grower.

Price—75c each

CL. LOS ANGELES, Cl. H. T.

The wonderful merits of Los Angeles are described elsewhere in this catalogue. This is the climbing sport furnishing just as exquisite blooms as its mother rose. It grows vigorously and strong. The Los Angeles climber will bring sunny California into your garden.

Priced Specially at 75c each

CL. LOUISE CATHERINE BRESLAU, Cl. H. T.

A minute description of its mother rose is printed under Louise Catherine Breslau. Free growth, freedom from mildew, and brilliant shiny foliage added to the qualities of its mother rose are the remarkable features of this climber. The flowers are very large and full, shrimp-red tinting predominating.

Price—75c each

CL. MME. EDOUARD HERRIOTT, Cl. H. T.

This coral-red rose, a climbing sport of the like-named bush, is very attractive against a white wall or white arbor. Blooms of this climber thus planted may be seen to advantage from a great distance. A new creation and a rare variety.

Priced Specially at \$1.50 each

CL. MME. CAROLINE TESTOUT, Cl. H. T.

One of the best climbers that has all the virtues of the well-known Mme. Caroline Testout. It has large globular blooms of bright satin rose, shaded somewhat lighter, immense broad petals and extremely large flowers. A vigorous and free bloomer.

Price—75c each

CL. MRS. AARON WARD, Cl. H. T.

Exact counterpart of Mrs. Aaron Ward bush. Its cute blooms of exquisite Indian-yellow make this climber an ideal trellis ornament. Very fine as a cut flower for corsage bouquets.

Price—75c each

CL. PAPA GONTIER, Cl. H. T.

This vigorous grower and constant bloomer is as well known and popular as the bush rose. Its large buds and deep semi-double flowers of dark crimson passing to glowing rosy-crimson are more attractive than words can describe.

Price—75c each

CL. PAUL'S SCARLET, Cl. H. W.

These flowers are vivid scarlet, shaded with crimson, the color being well retained without burning or fading; of strong climbing habit with good foliage and flowering in great profusion with large clusters of medium size, semi-double blossoms, of exceptional value for pillars, pergolas and other climbing purposes. Awarded gold medal by The National Rose Society. Flowering in mid-season.

Price—75c each

CL. RED CHEROKEE

This climber has very large single flowers in beautiful red with conspicuous yellow stamens. The foliage is very attractive, being evergreen and colored a rich lustrous deep green. Being of Formosan origin this is particularly adapted for southern climates.

Price—75c each

CL. RED RADIANCE, H. T.

This is another one of our own creations. Very new and scarce. Climbing strong and very high, and bears big globular blooms of deep rose-red all summer until frost.

Price—\$1.50 each

CL. ROSE MARIE, Cl. H. T.

Of all the pink climbing roses we culture, Climbing Rose Marie is the queen in our estimation. With this creation in 1926 we established our reputation as a rose hybridizer and originator. One can depend upon this climbing rose for an ample supply of extremely long stemmed beautiful and perfect cut flowers of exquisite rose-pink color, enhanced with delightful fragrance. Its growth is so vigorous that it will reach over ten feet in the first year of planting, under proper cultivation. This climber surpasses bush Rose Marie in many respects.

Previously offered at \$7.50—Now Special at \$1.50 each

CL. SUNBURST, Cl. H. T.

Vigorous sport of the popular bush Sunburst, being better flowers than those of its parent rose. It has large golden yellow buds, bursting into pure yellow blooms of good size suffused with orange tint. Of a strong climbing growth and excellent blooming habit, producing flowers all the year round in California.

Price—75c each

CL. THOUSAND BEAUTIES—Polyantha

Blooms in varying shades from a delicately flushed white to a deep pink or rosy-carmine in bright clusters of blossoms which almost cover the lovely pale green foliage. The plant is very strong and climbs to a height of 15 feet. Hardy, healthy and almost thornless.

Price—50c each

CL. WILLIAM F. DREER, Cl. H. T.

Our 1927 creation—another pride of the Pacific Rose Co. Being the sport of the high class rose Wm. F. Dreer, it retains all the merits of its parent rose. Blooms are of beautiful yellow developing from buds of silvery-pink with deep golden base. Well established high climbing habit with attractive glossy foliage.

Reduced for the first time to \$2.00 each

CL. WINNIE DAVIS, Cl. H. T.

Flesh pink, outer petals, silvery blush. Buds are long and pointed; flowers are large and the form resembles Clara Watson or Miss Kate Moulton. Semi-double. Growth vigorous, slender and high. An extremely heavy bloomer, especially in the spring.

Price—75c each

CL. YELLOW CECILE BRUNNER—Polyantha

This is the true yellow baby rose, blooming in clusters on long thornless stems with very attractive small foliage of medium green. A most dainty and pretty variety with easy-growing habit.

Price—75c each

Planting and Care of Roses

If convenient, it is a good plan to plant late in the day or during cloudy weather. Have your ground well prepared; dig liberal holes to accommodate the roots without cramping or bending; make them considerably larger than necessary, and partially fill in with finely pulverized mellow soil, so as to afford a good mellow surrounding for the roots to start in. The use of good surface soil or decayed sod is good for the filling in and to place about the roots, as it is richer and more mellow than the soil removed in digging.

Remove all packing materials from the plants. Place in a shady spot and protect them from dry winds; keep the roots covered well with moist soil after unpacking until ready to plant. Prune roses severely, removing all small weak wood, leaving only two or three strong and not too long canes of the hardest wood and strongest eyes, shaping the plant to a symmetrical form; with the Hybrid Perpetuals, they should be trimmed back to about two canes (the strongest and hardest wood) and not over from four to six inches high.

Severely pruned plants will grow quicker and be larger in a few weeks than if left unpruned, and they stand a much better chance of living. Having properly attended to the tops, it is generally advisable to prune the roots somewhat—Balance the pruning of tops and roots, eliminating all bruises or breaks. Use the sharp knife or pruning shears for all pruning work. Set the plant in the hole prepared, sifting in with the hand finely pulverized soil and press down firmly as each root and part of root may come in contact with the soil; continue this operation in the layers until covered to within a little less than the final desired depth, leaving just enough basin to hold water. Water thoroughly to settle the soil about the roots; and let it drain into the ground, then completely fill the hole with more soil, up to the budded joint. A few inches of mulch about the plants (old litter, leaves, leaf mould, clippings from the lawn) will keep the roots more evenly moistened; this plan is preferable to continuous watering. **No manure of any kind should be used in the soil at planting time**, as it is apt to burn the new fibers as they start from the roots; manure may be applied after plants are in full foliage. If planting is done in very warm weather, it is a good plan to shade the plants for a few days, thus helping to keep the tops from starting before the roots get hold of the soil. When troubled with alkali in the soil, a proper drainage should be prepared before planting; by making a good sized excavation, filling in at the bottom with eight inches of cobble stones directly under the area where the roses are to be planted; this drainage will prevent the alkali from rising.

Plant roses in a sunny spot where you can control watering; properly cultivate; where a good circulation of air is to be had. Do not expect them to produce "perfect blooms every week day and twice on Sunday; they must have some rest or they get "fagged out" like the rest of us. Right here is

where so many errors are made. Plants should be rested two or three months of the year; this can best be done during the latter part of the summer months by simply withholding watering, allowing them to be absolutely quiet—if the foliage withers and drops, so much the better; just keep the wood from shriveling. After they are rested, remove all scragged, weak and small wood, and shape the plants—**don't be afraid of overdoing it**—cut the hybrid perpetuals back as outlined for first planting out; give them a good dressing of well-rotted cow manure and a thorough soaking of the ground and you will be surprised with prompt and vigorous awakening and wonderful quality of blooms they will produce.

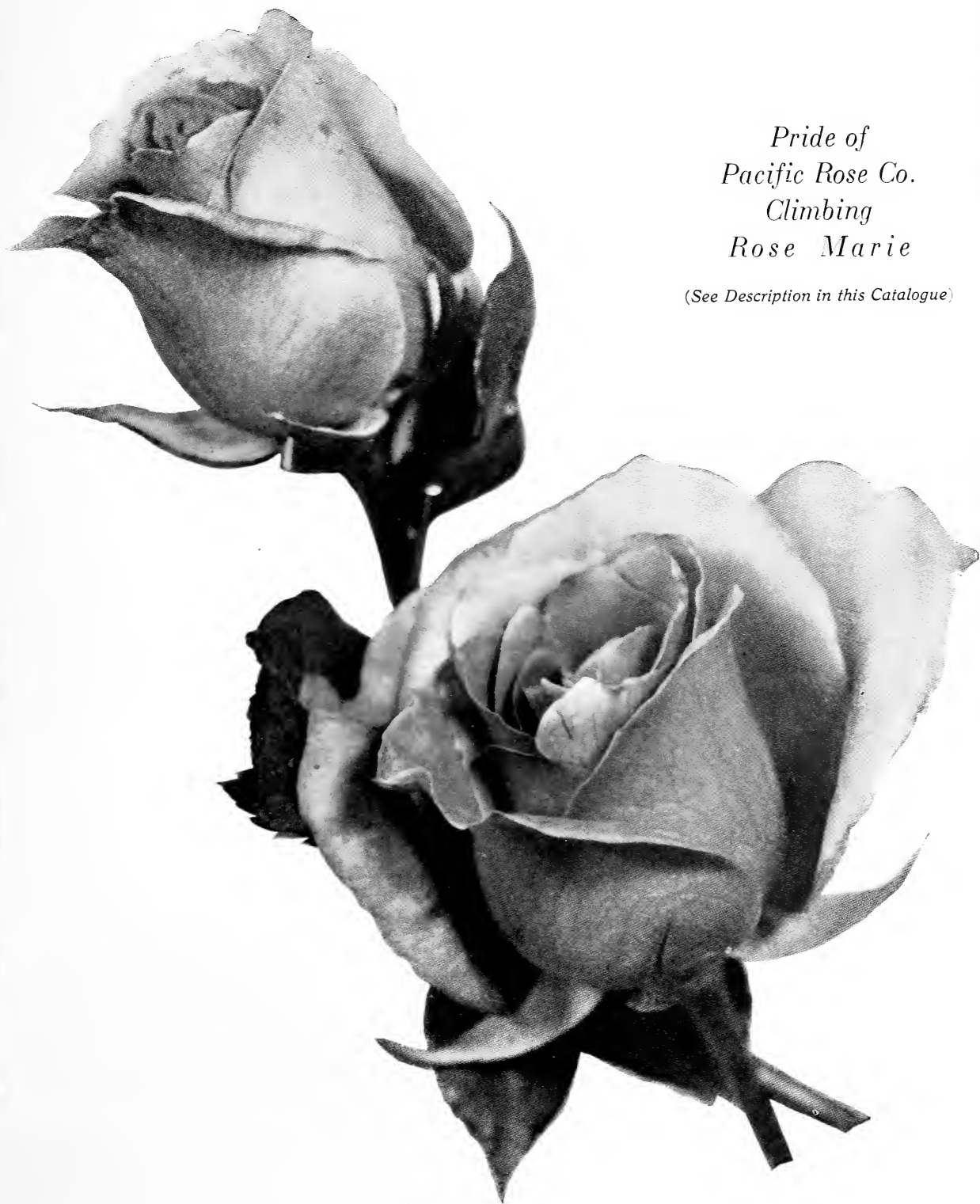
Do not overwater your rose; keep the ground mulched, or at least, the soil worked up loose, and water, say once in ten days or so, according to nature of the soil. Overwatering usually produces mildew, rust and disease; **water in the morning—never at night**. Sudden changes of climate, continuous foggy weather, etc., sometimes produce mildew, even under good care, but mildew may be warded off by applying dry flowers of sulphur when foliage is damp when minor stage of mildew is detected. "Black spot" and red rust are also caused by overwatering or unfavorable weather; foliage once thus infected cannot be cured and it should be removed and burned. Aphis and green fly are generally prevalent during the spring months; these are not serious and regardless of the many "remedies" which can be applied, such as soap suds, kerosene emulsion, tobacco juice, etc., they will return for the time being and keep coming until the little red lady bugs devour them. The most simple remedy we know of is to use a good strong spray of water from the hose, which easily washes them off; repeat as often as necessary.

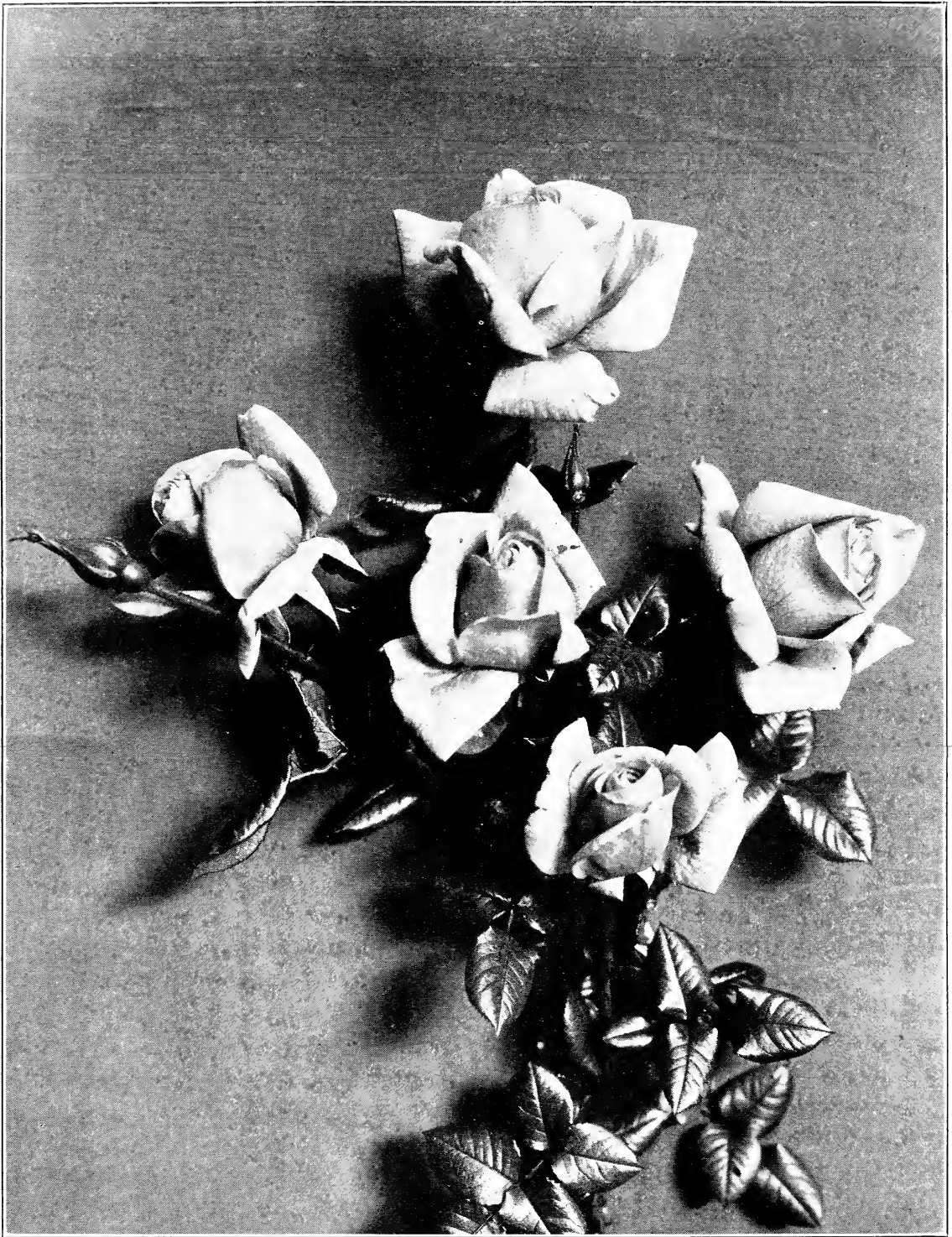
Rose bushes are much injured every year by green lice or aphids and the so-called Rose "thrips" or Rose leaf hopper. Both are sucking insects and may be readily controlled by early spraying with a contact insecticide such as an ivory soap solution (a five-cent cake to eight gallons of water), a whale oil soap solution (one pound to seven gallons of water), the standard kerosene emulsion diluted with twelve to fifteen parts of water, or a tobacco preparation, such as Black Leaf Forty. This latter is perhaps one of the most promising materials to be used against such pests, since it is easily diluted and there is practically no danger of injuring the foliage.

There is a great advantage in spraying rose bushes early, to destroy the plant lice before they become abundant, cause material injury, and curl the leaves as to make spraying almost ineffective. Early treatment is especially important in the case of leaf hoppers, since the pale green, inconspicuous sluggish young hatch from eggs concealed in slight blisters in the bark and feed on the under side of the developing leaves. They are easily killed at this time by throwing any one of the above named preparations on the under side of the foliage, especially the lower leaves.

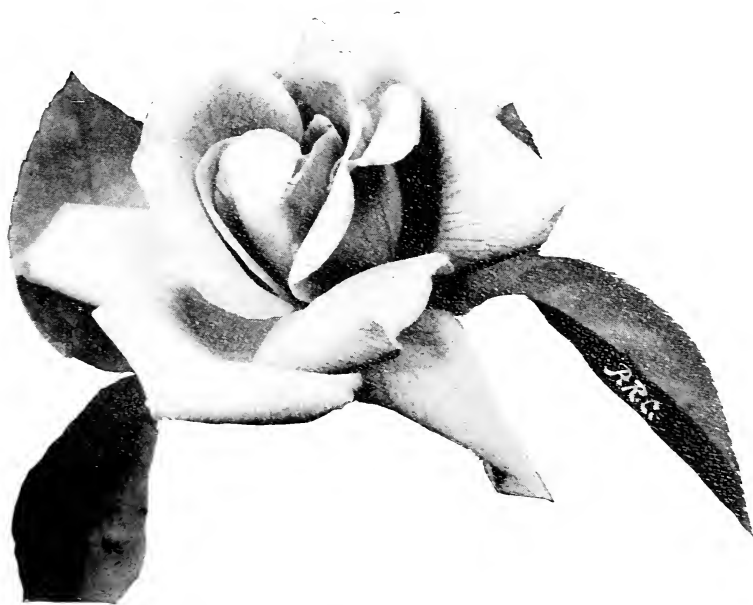
*Pride of
Pacific Rose Co.
Climbing
Rose Marie*

(See Description in this Catalogue)





GOLDEN EMBLEM



"CALIFORNIA BEAUTY"

"CROWNED"

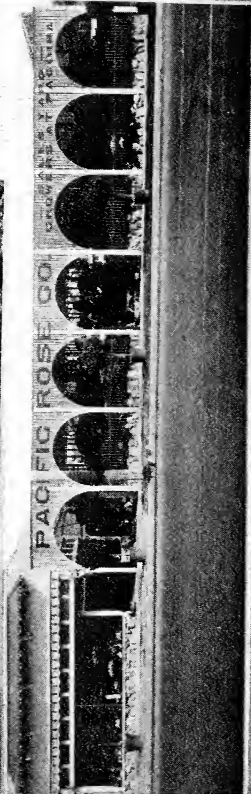
*"Radiant flowers of many a land,
Who is the Queen of your happy band?
Quivering petal; give glad acclaim—
O Beautiful Rose is her royal name.*

*Winging zephyrs the tidings tell;
Singing waters the chorus swell;
Famed in story, enshrined in songs—
To the beautiful Rose our Crown belongs!*

*Tinted with blushes of soft desire;
Shining with passion's living fire:
White for the bridal her spirit glows—
O Queen of the flowerland, Beautiful Rose!*

*Golden with sunlight; tender and true;
Kissed by the moonbeam; fed by the dew;
Sweetly her incense to heaven flows—
O Queen of the Flowerland, Beautiful Rose!*

Our Hundred-Acre Rose Field



Our Los Angeles Headquarters

